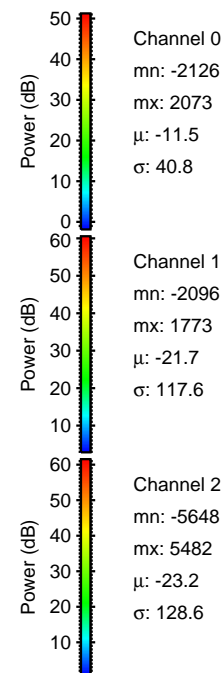
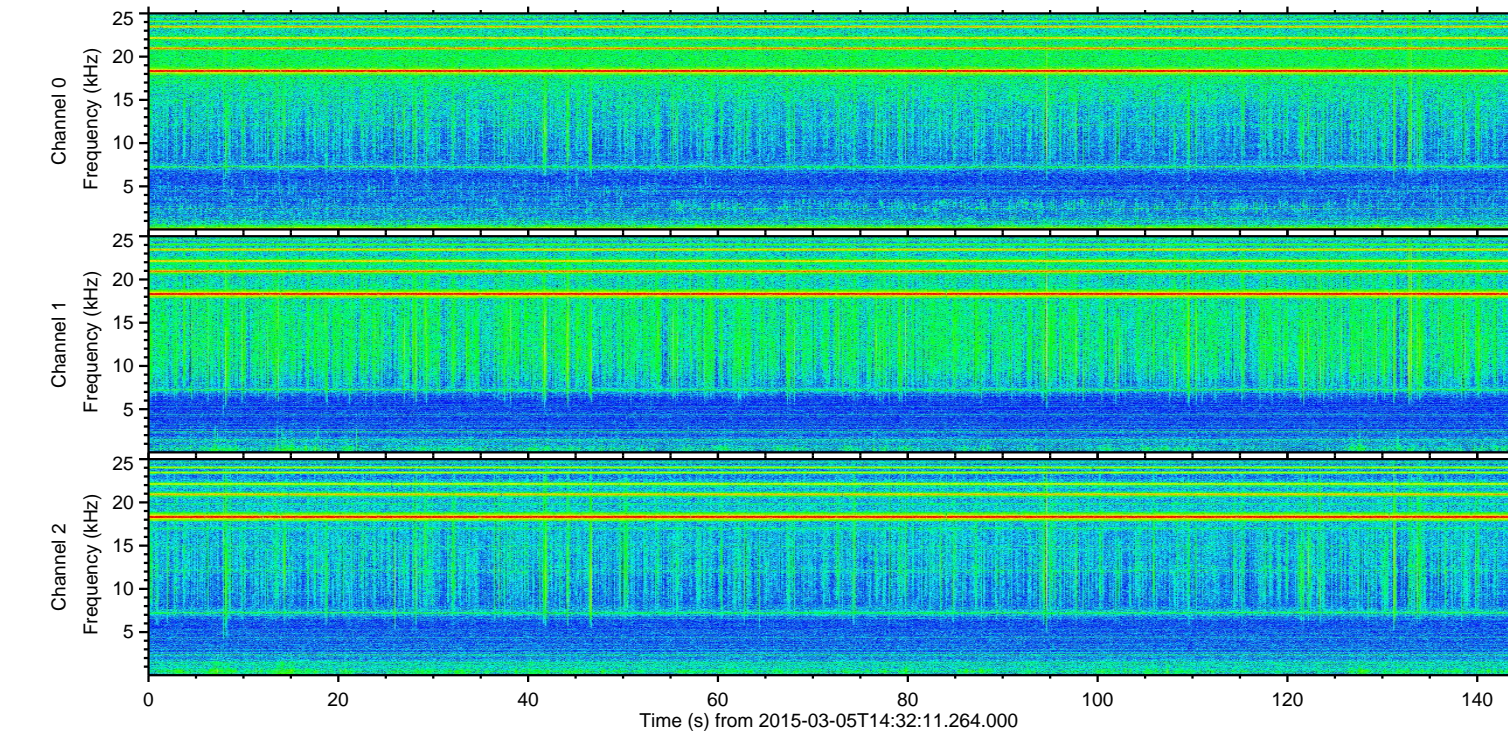
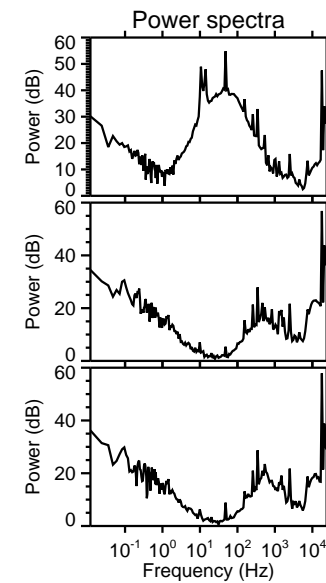
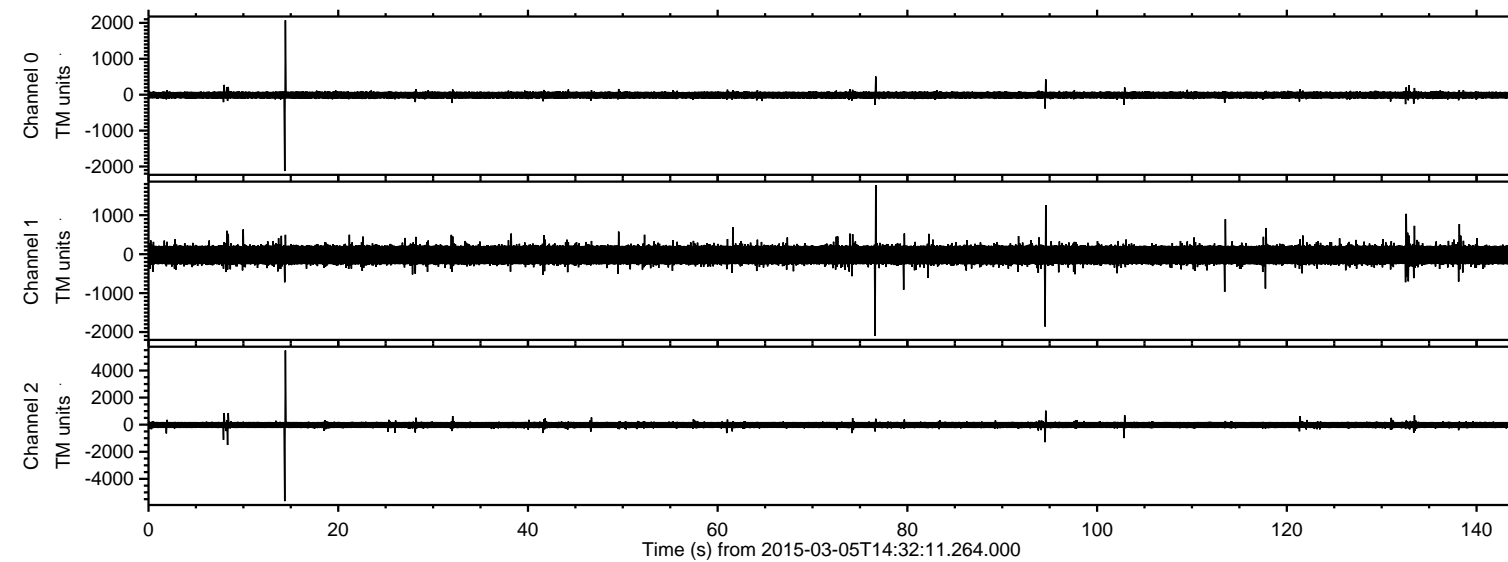
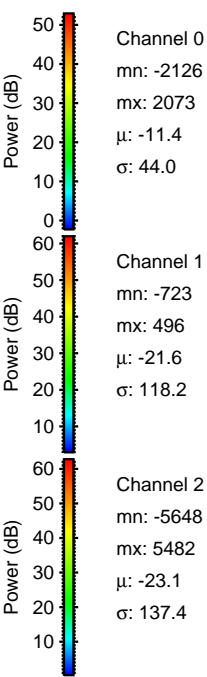
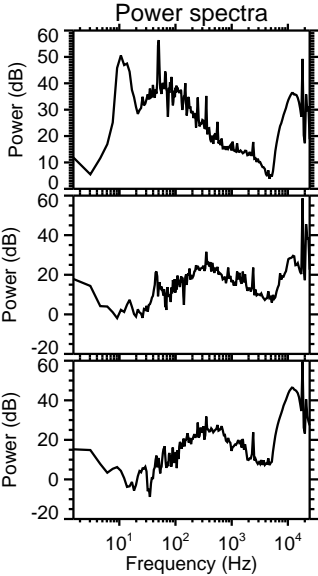
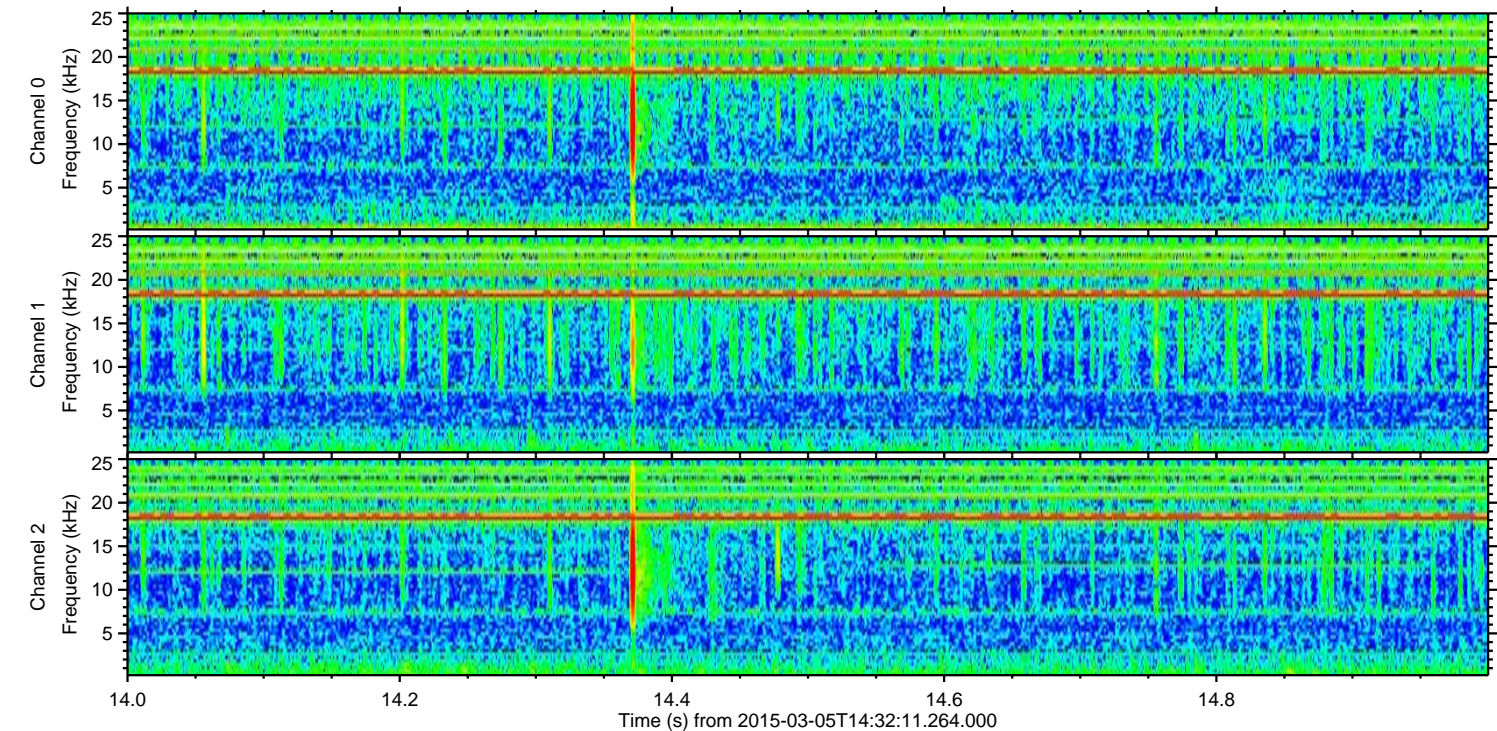
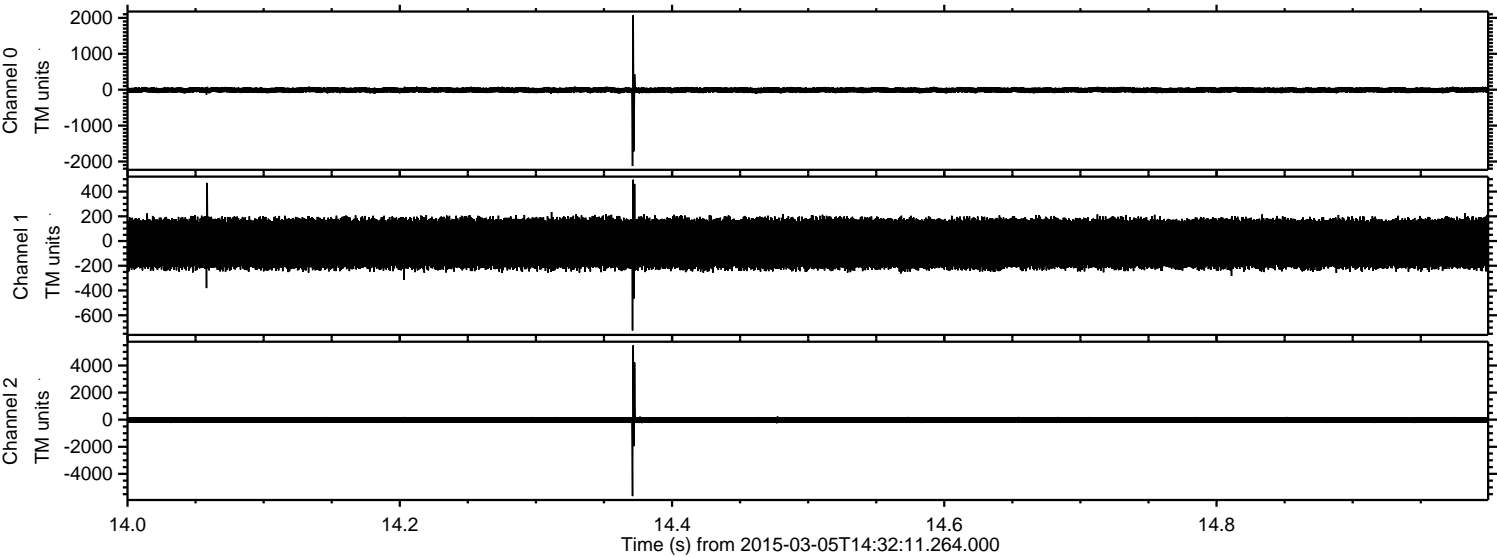


ELMAVAN 3D WAVEFORMS (Measured data sampled at 50 kHz) 49805 packets of 144 samples from 2015-03-05T14:32:11.264.000.

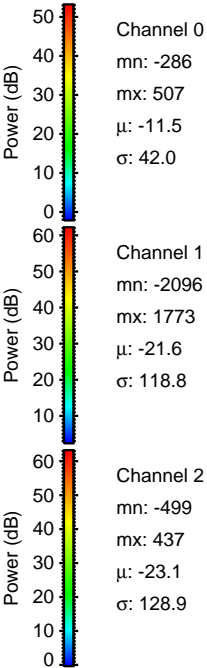
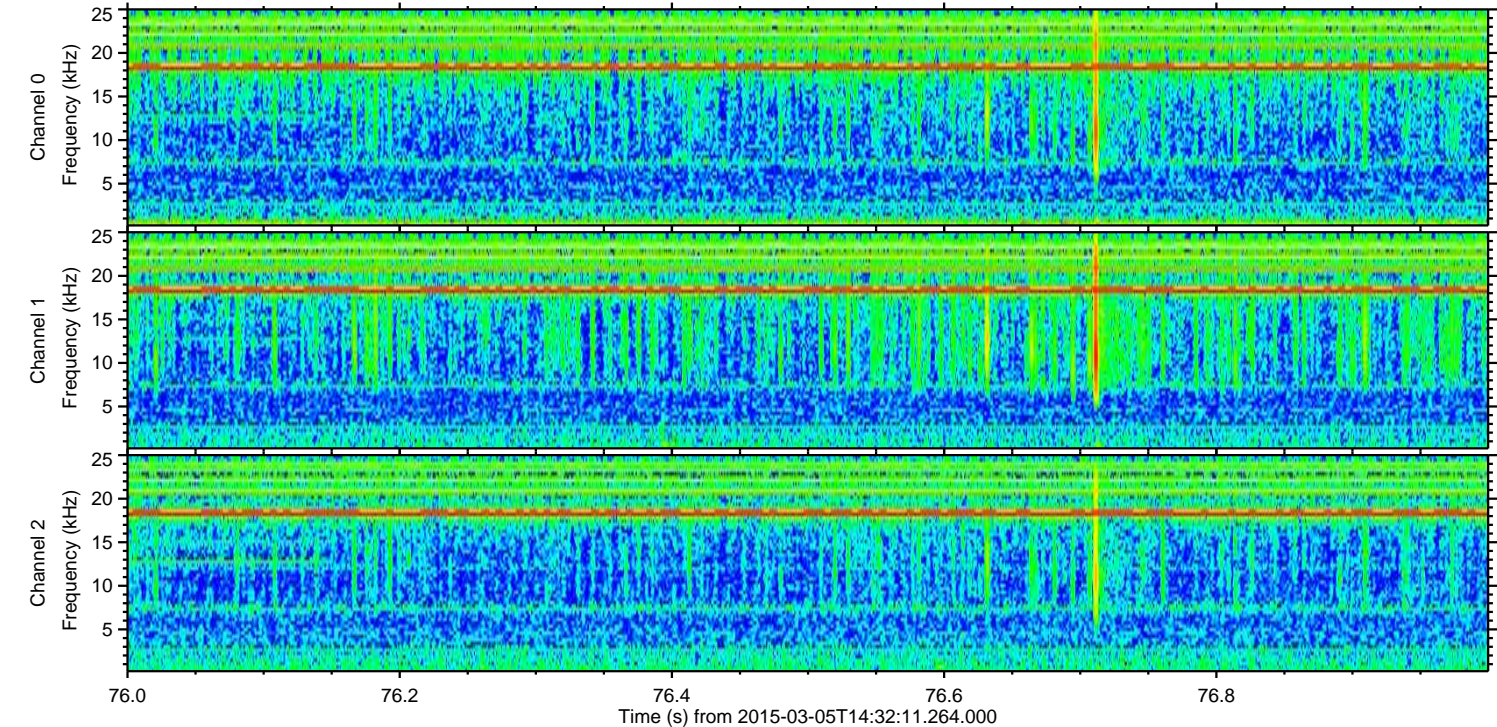
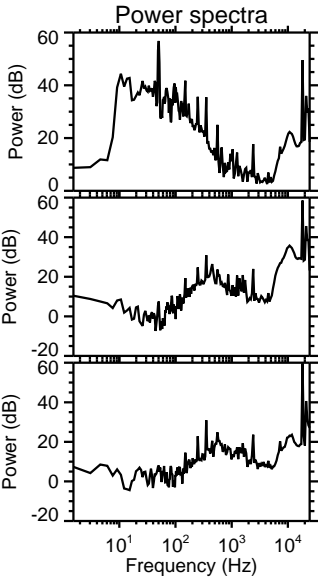
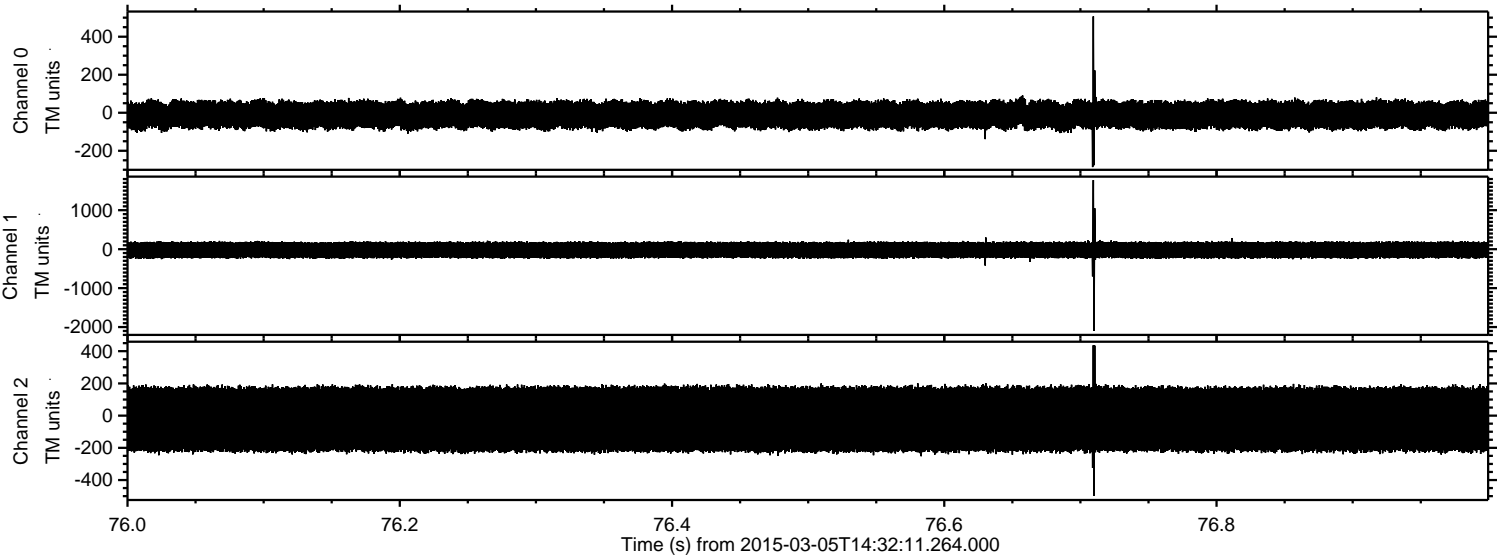
Processed Sat Mar 7 20:37:39 2015 by ELM ver.2012-10-06 from 001__elm20150305_143210__dat00.bin



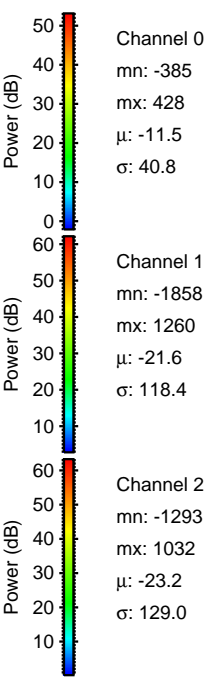
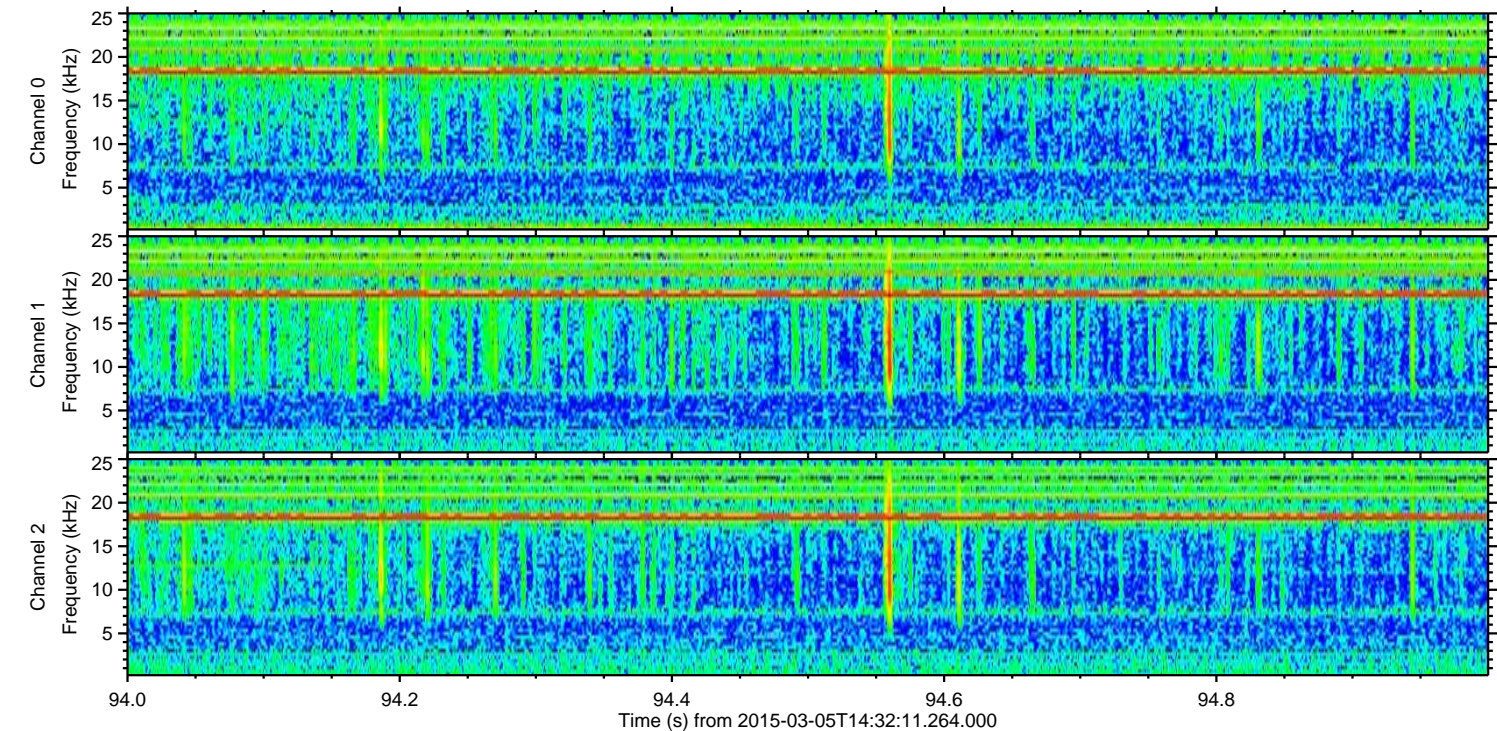
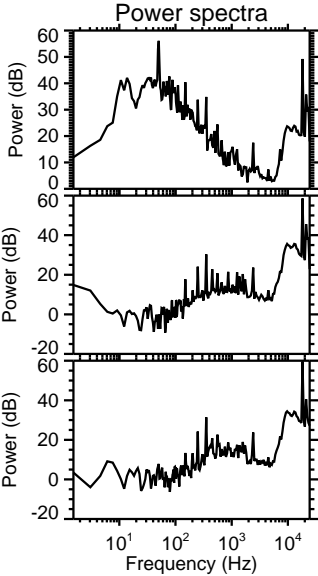
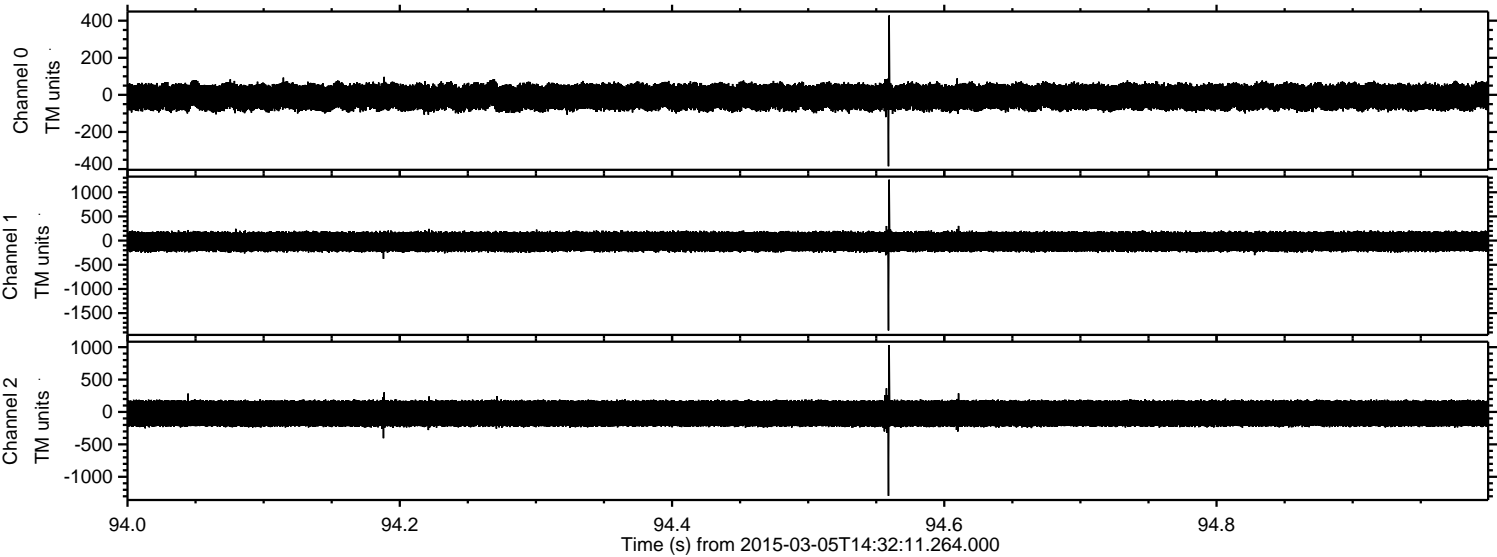
Processed Sat Mar 7 20:37:50 2015 by ELM ver.2012-10-06 from 001__elm20150305_143210__dat00.bin



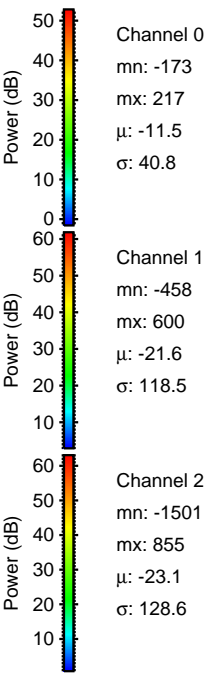
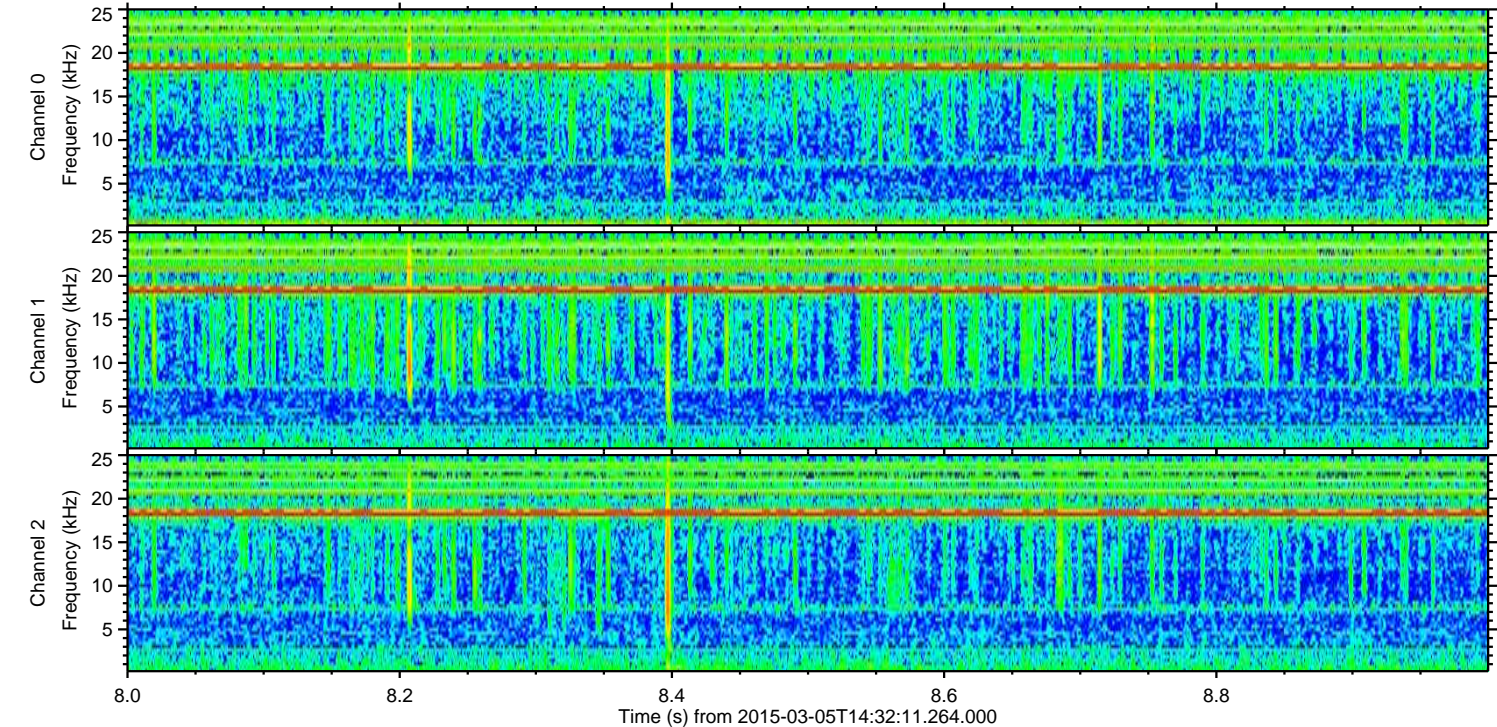
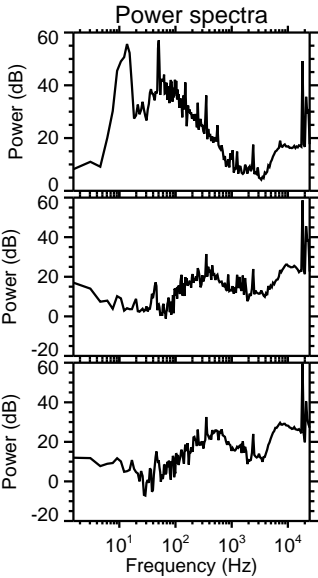
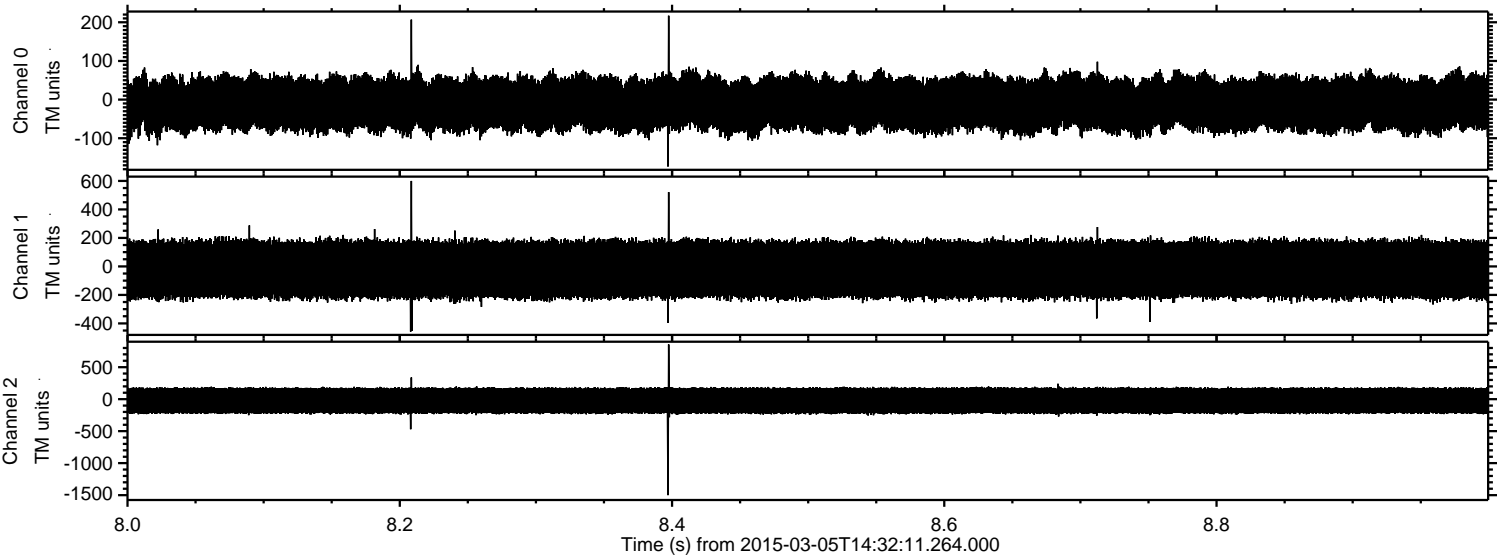
Processed Sat Mar 7 20:37:51 2015 by ELM ver.2012-10-06 from 001__elm20150305_143210__dat00.bin



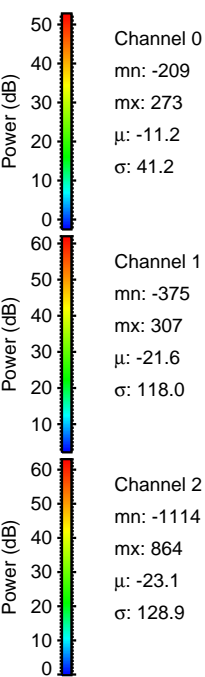
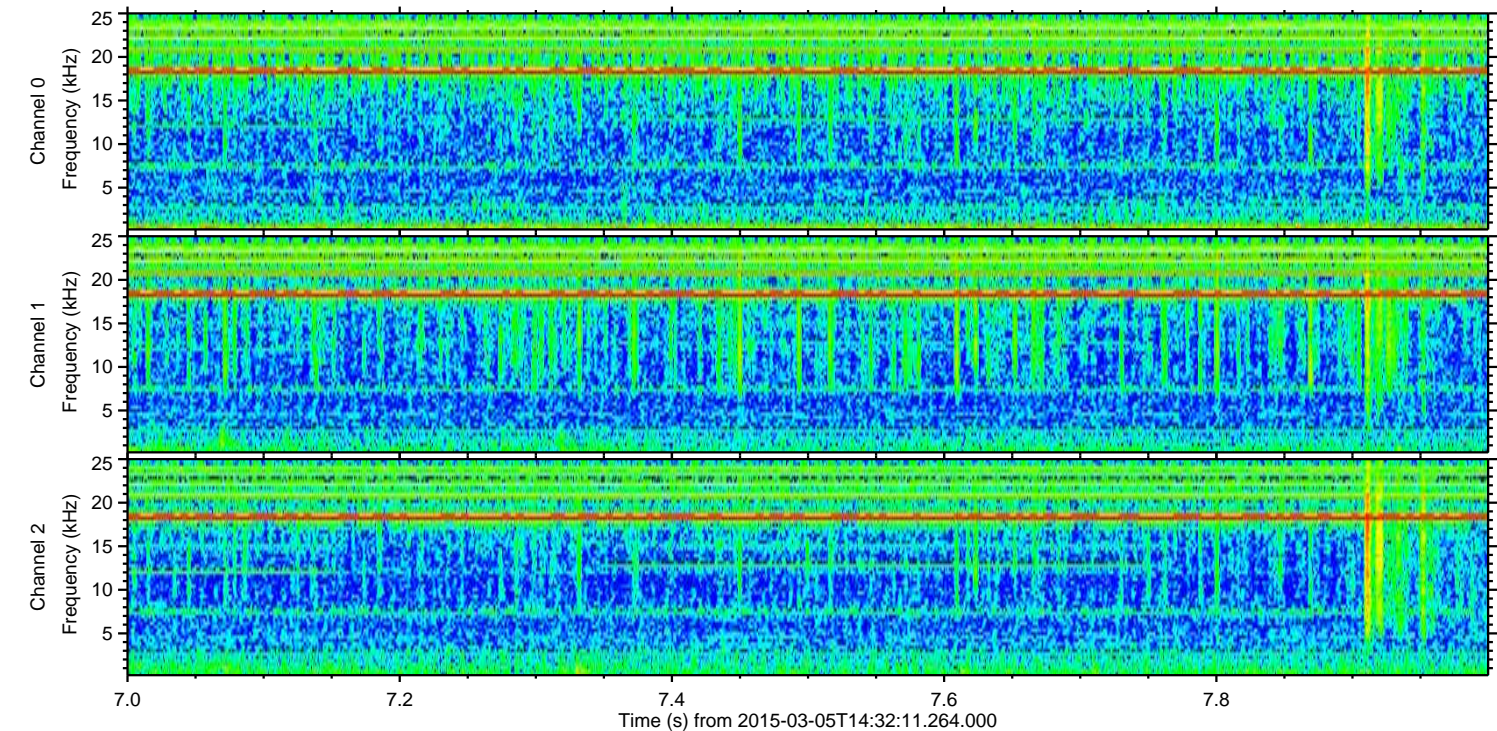
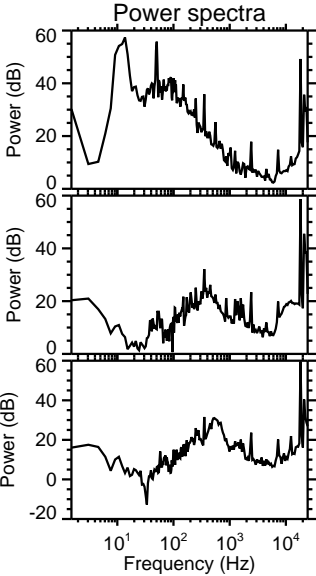
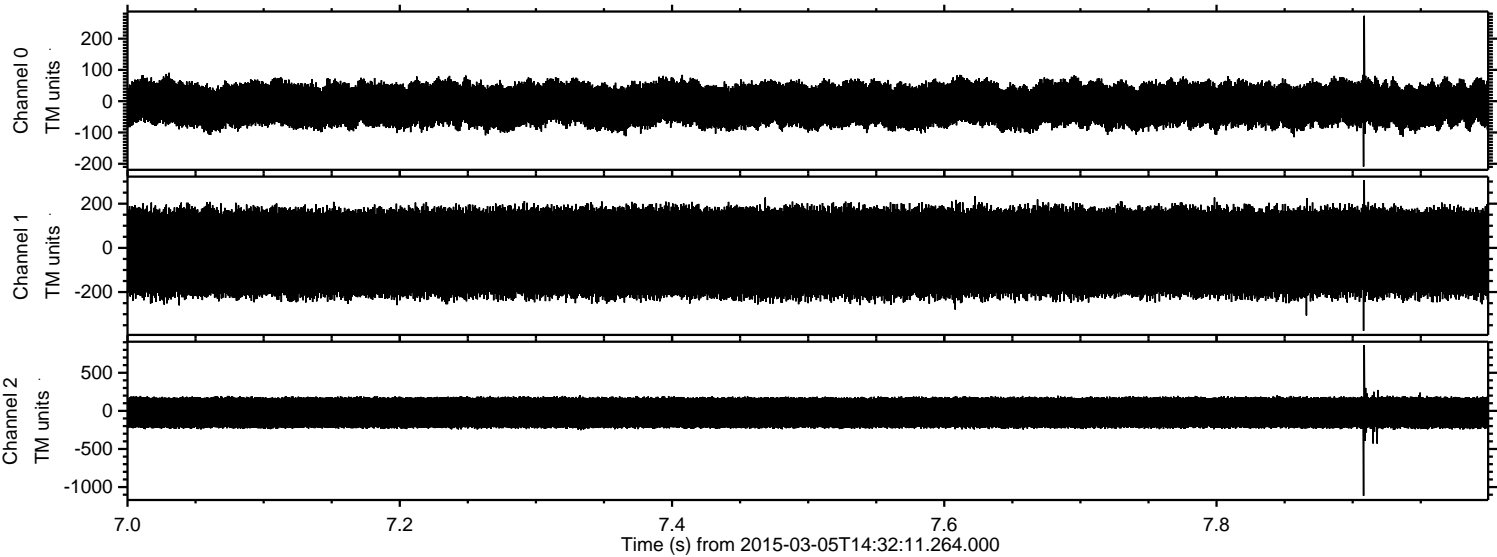
Processed Sat Mar 7 20:37:52 2015 by ELM ver.2012-10-06 from 001__elm20150305_143210__dat00.bin



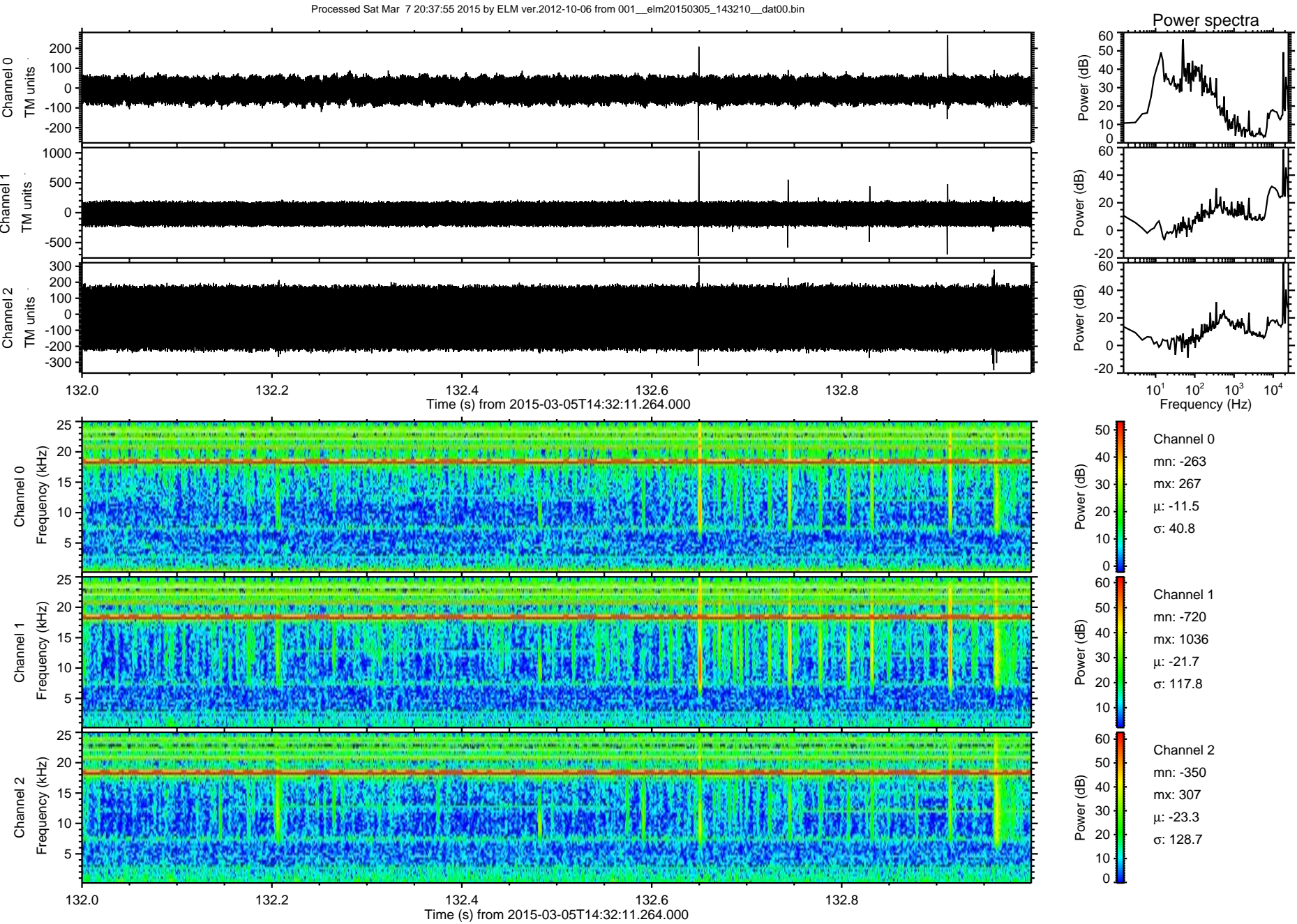
Processed Sat Mar 7 20:37:53 2015 by ELM ver.2012-10-06 from 001__elm20150305_143210__dat00.bin



Processed Sat Mar 7 20:37:54 2015 by ELM ver.2012-10-06 from 001__elm20150305_143210__dat00.bin

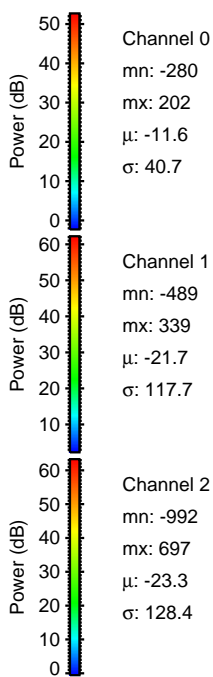
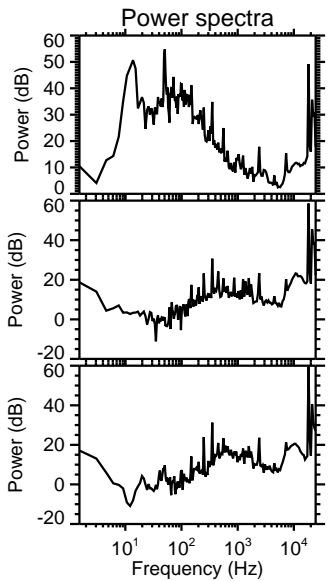
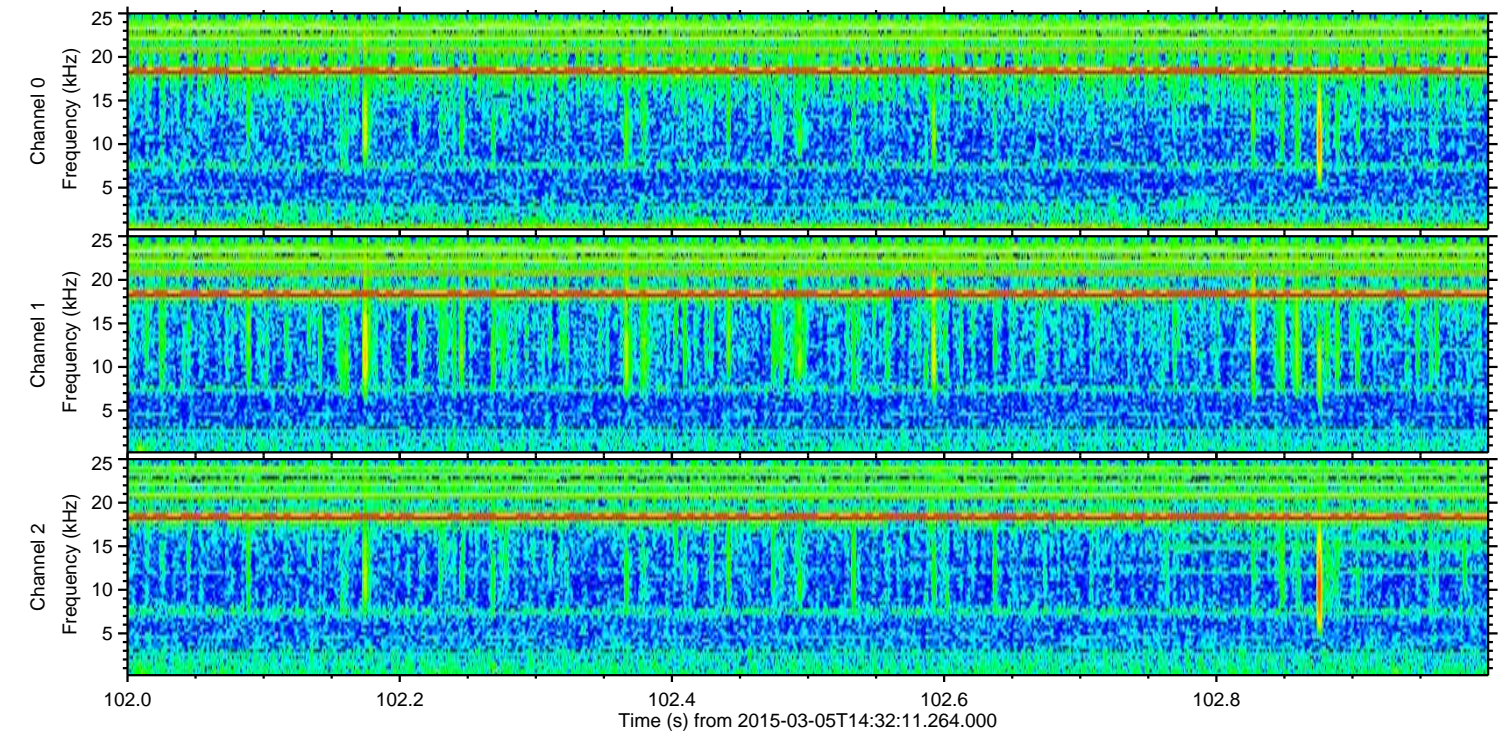
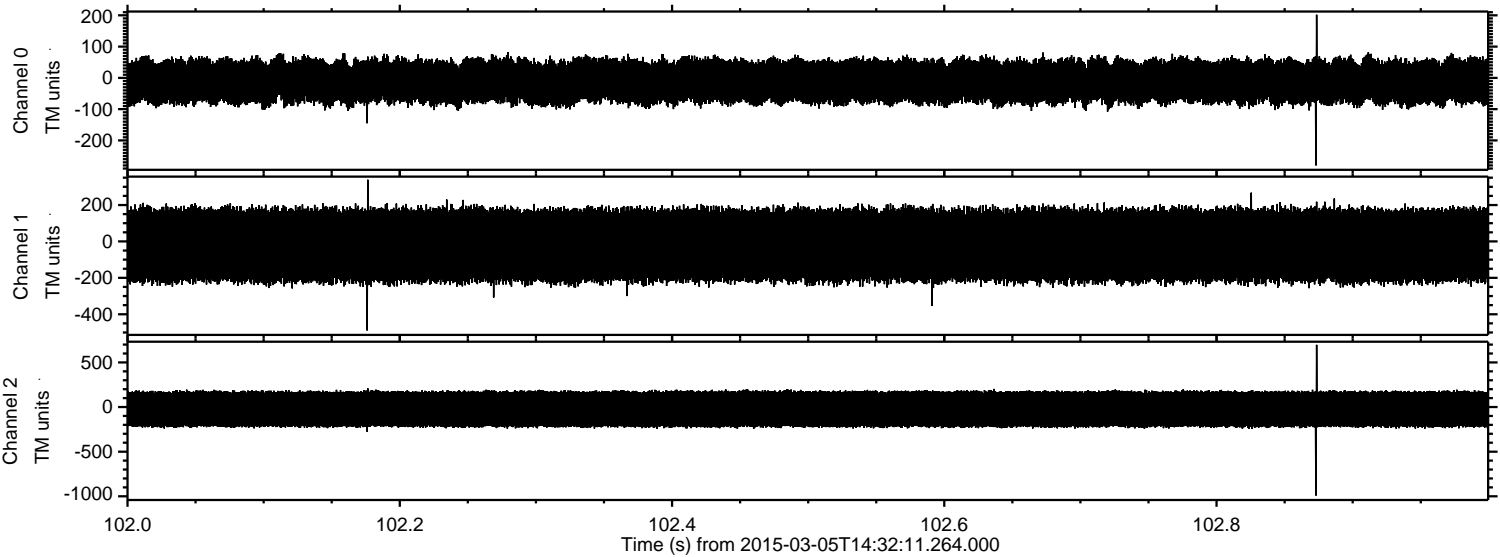


ELMAVAN 3D WAVEFORMS (Measured data sampled at 50 kHz) 49805 packets of 144 samples from 2015-03-05T14:32:11.264.000. Part 133/144



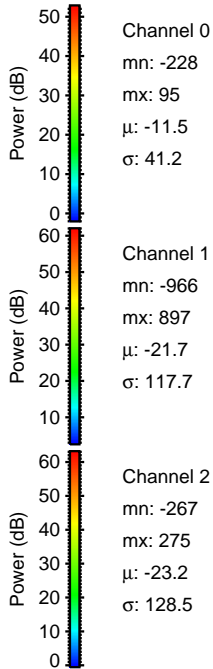
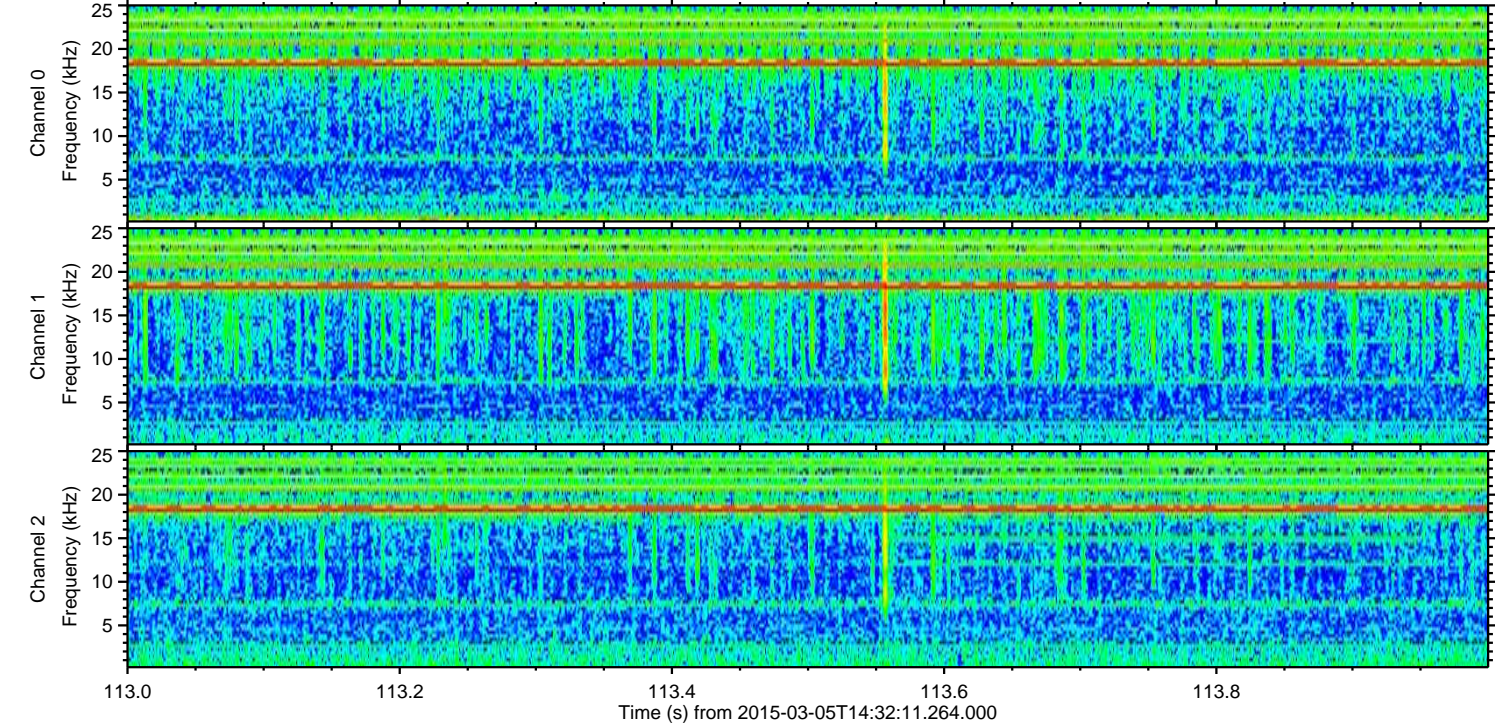
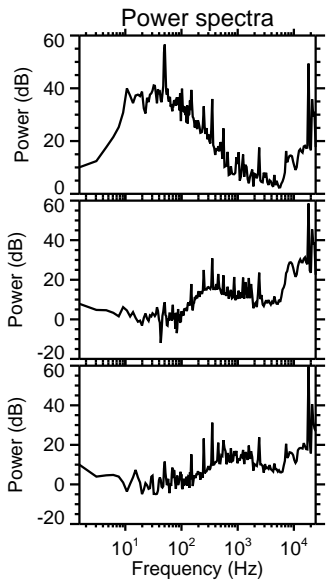
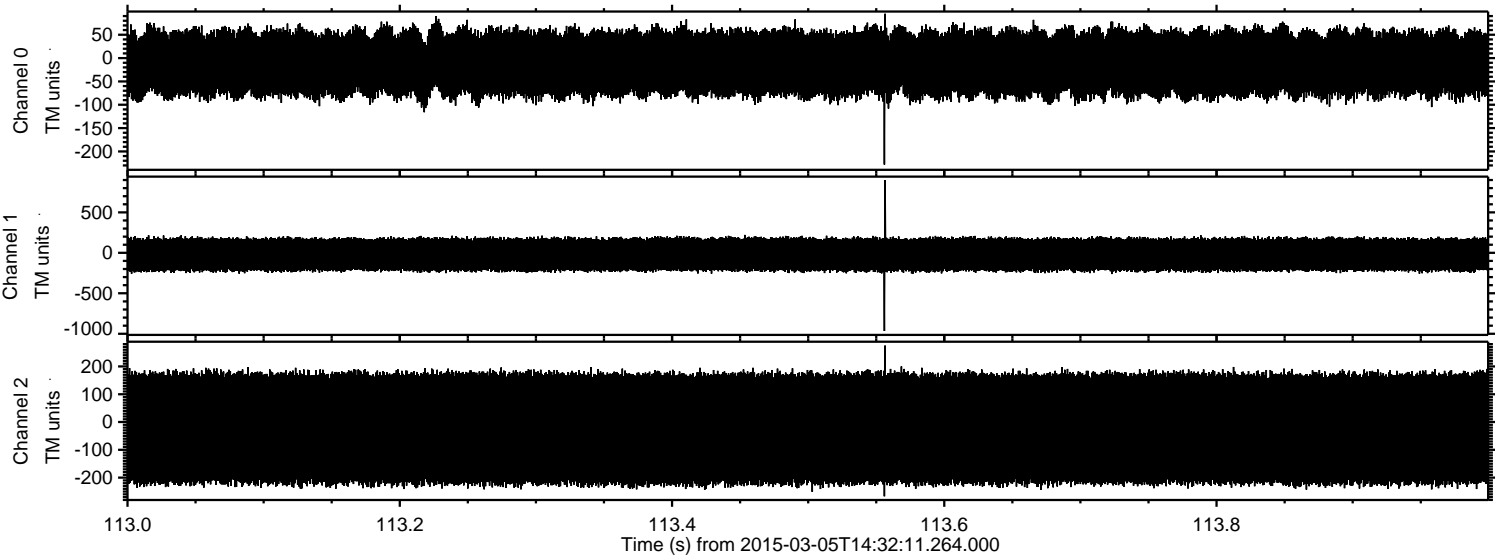
ELMAVAN 3D WAVEFORMS (Measured data sampled at 50 kHz) 49805 packets of 144 samples from 2015-03-05T14:32:11.264.000. Part 103/144

Processed Sat Mar 7 20:37:56 2015 by ELM ver.2012-10-06 from 001__elm20150305_143210__dat00.bin

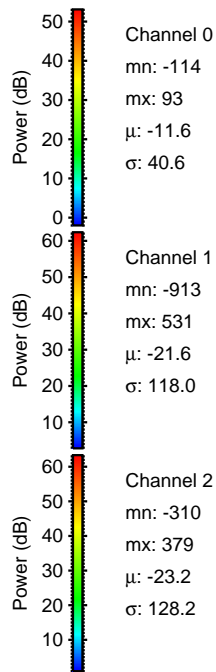
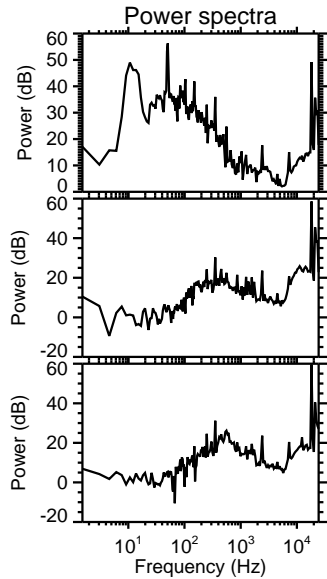
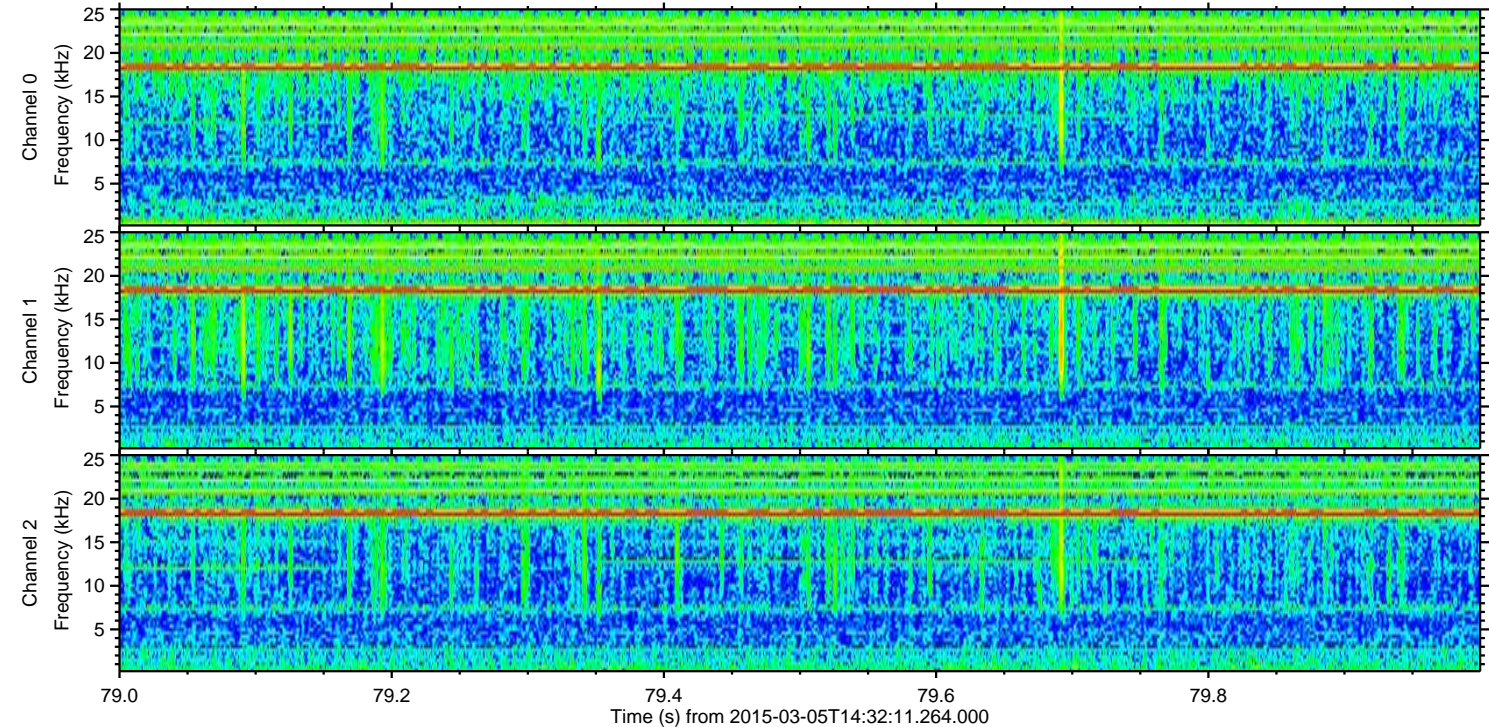
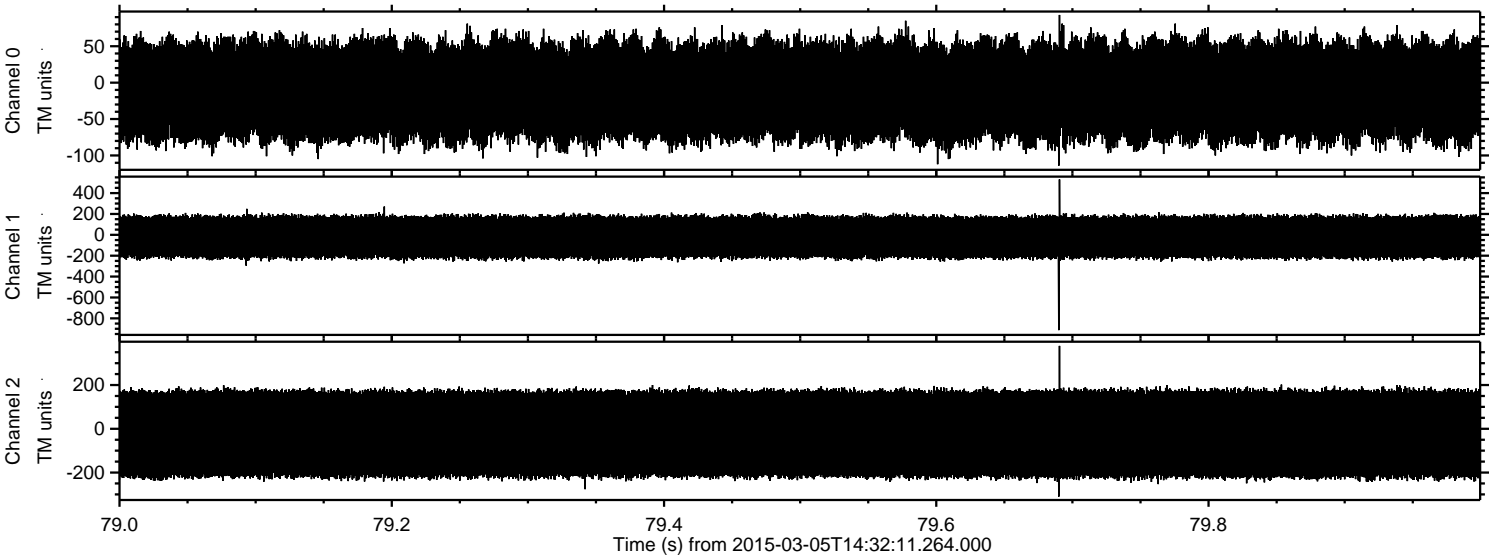


ELMAVAN 3D WAVEFORMS (Measured data sampled at 50 kHz) 49805 packets of 144 samples from 2015-03-05T14:32:11.264.000. Part 114/144

Processed Sat Mar 7 20:37:57 2015 by ELM ver.2012-10-06 from 001__elm20150305_143210__dat00.bin



Processed Sat Mar 7 20:37:58 2015 by ELM ver.2012-10-06 from 001__elm20150305_143210__dat00.bin



Channel 0
mn: -114
mx: 93
 μ : -11.6
 σ : 40.6

Channel 1
mn: -913
mx: 531
 μ : -21.6
 σ : 118.0

Channel 2
mn: -310
mx: 379
 μ : -23.2
 σ : 128.2

Processed Sat Mar 7 20:37:59 2015 by ELM ver.2012-10-06 from 001__elm20150305_143210__dat00.bin

