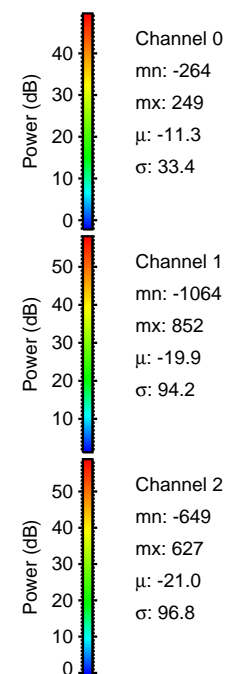
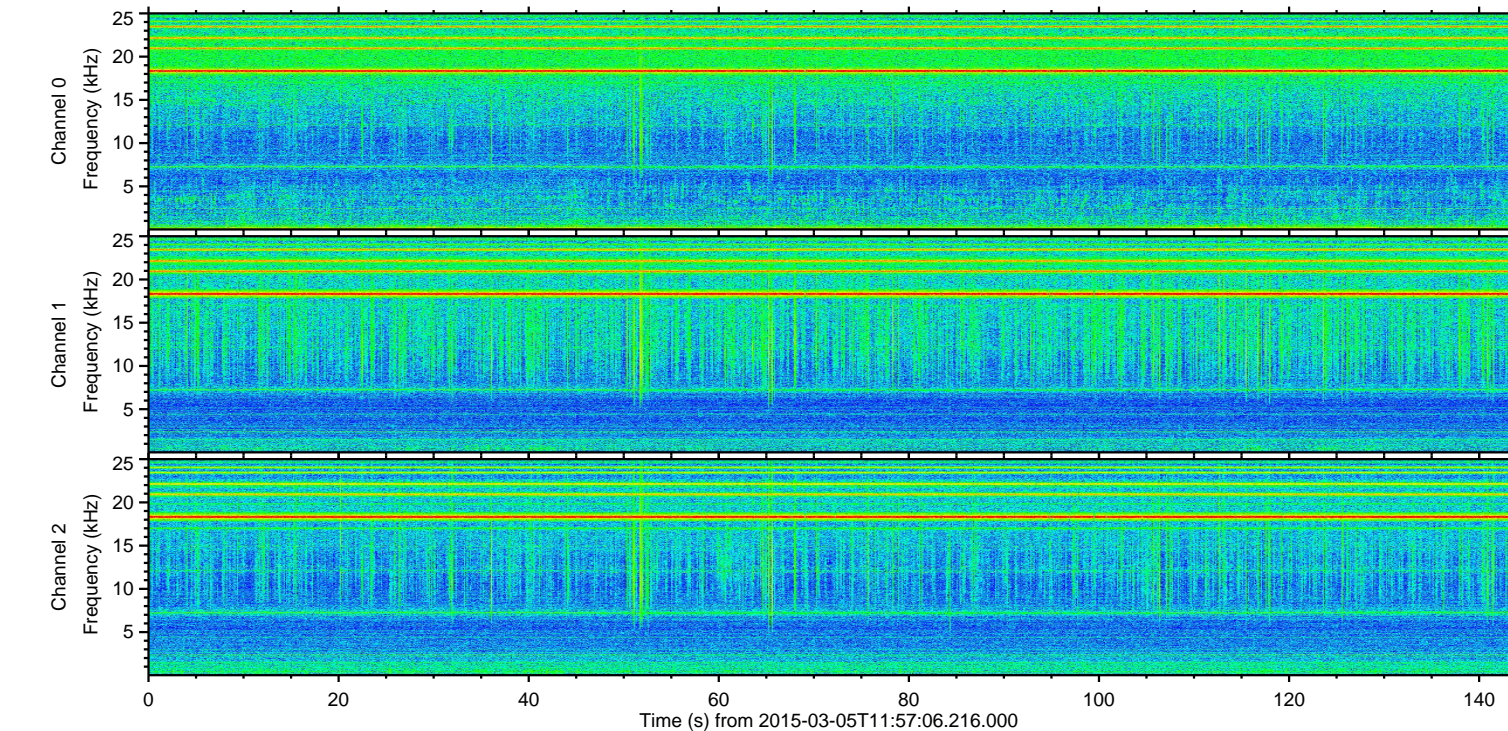
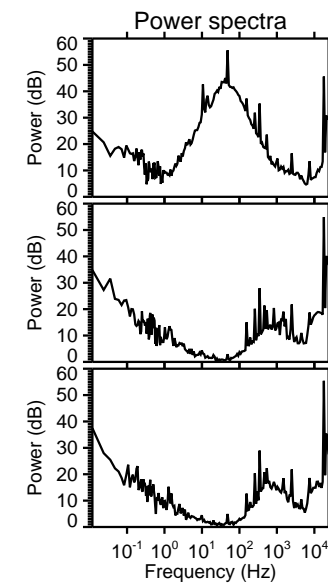
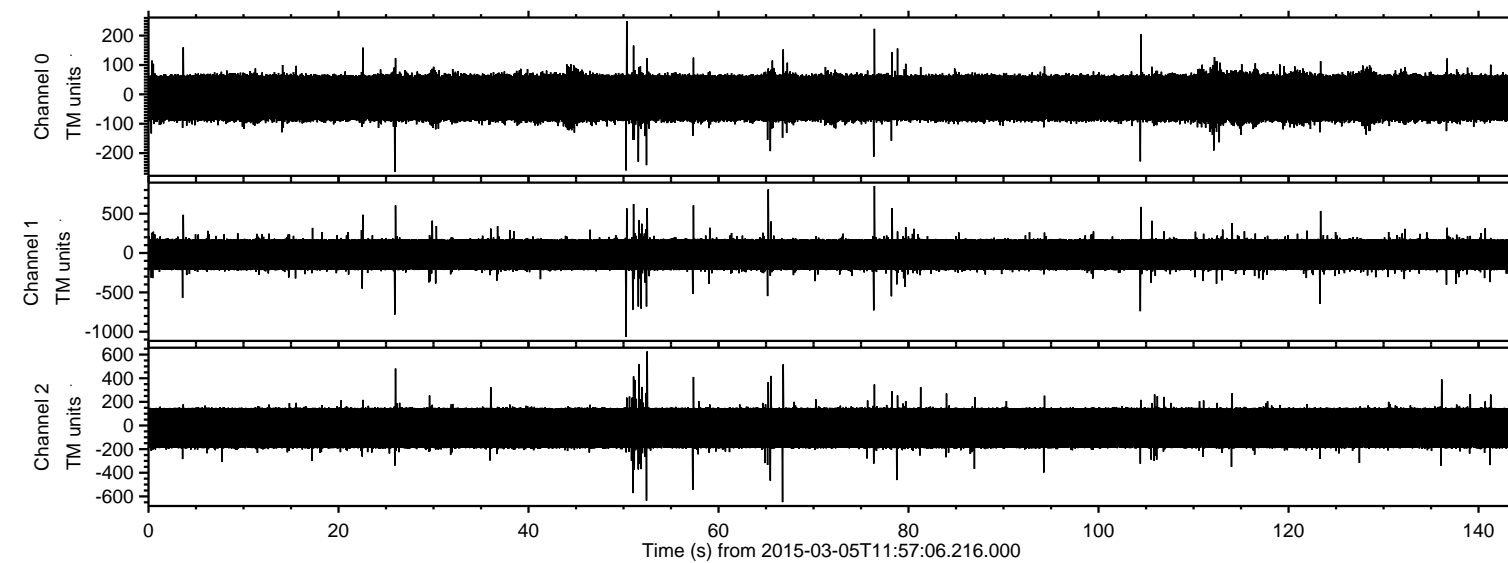
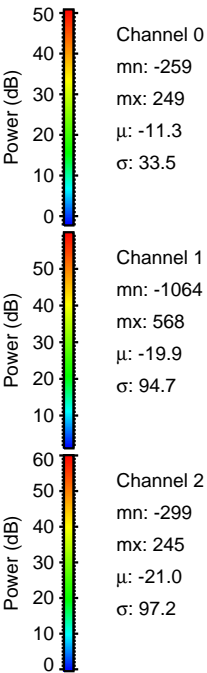
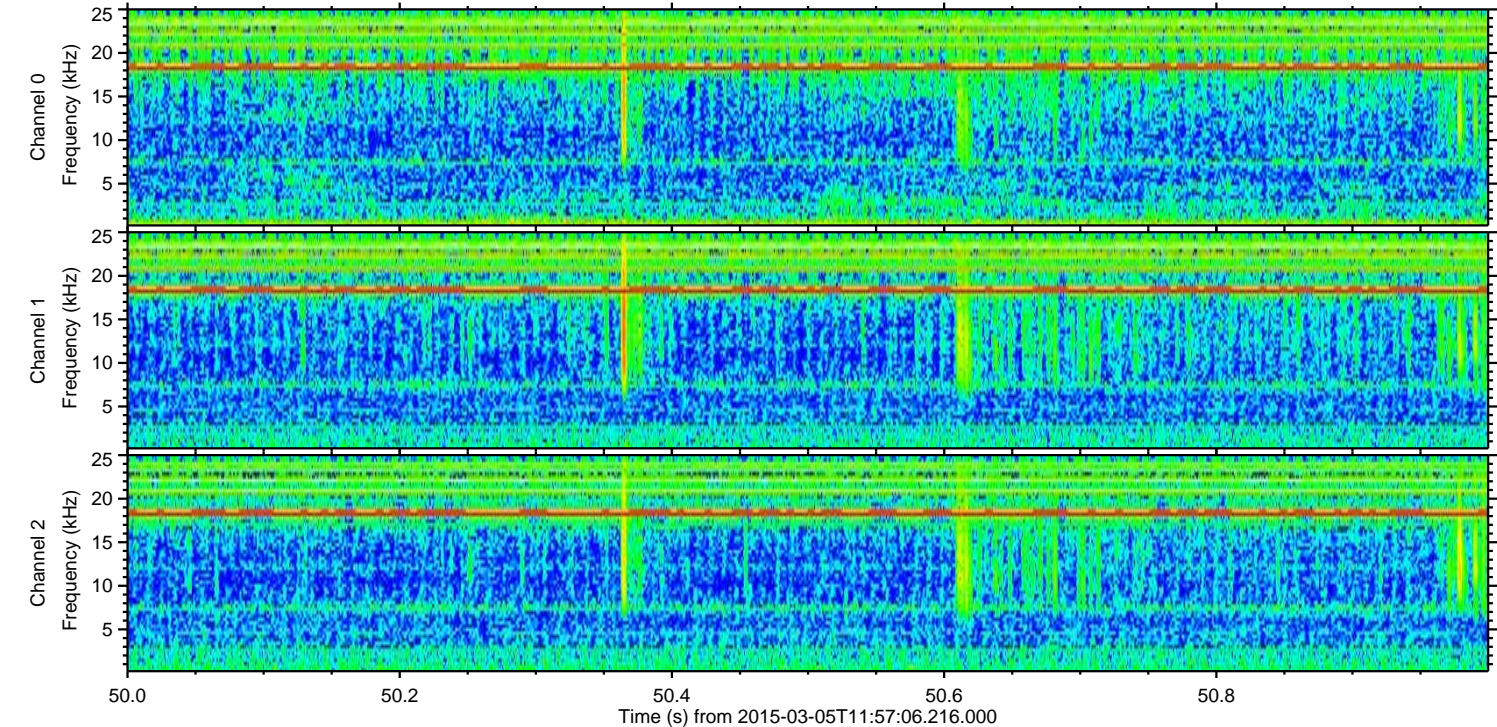
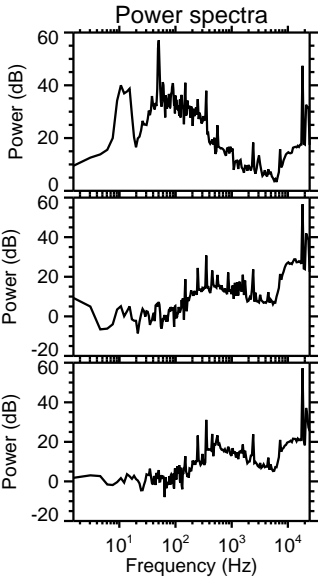
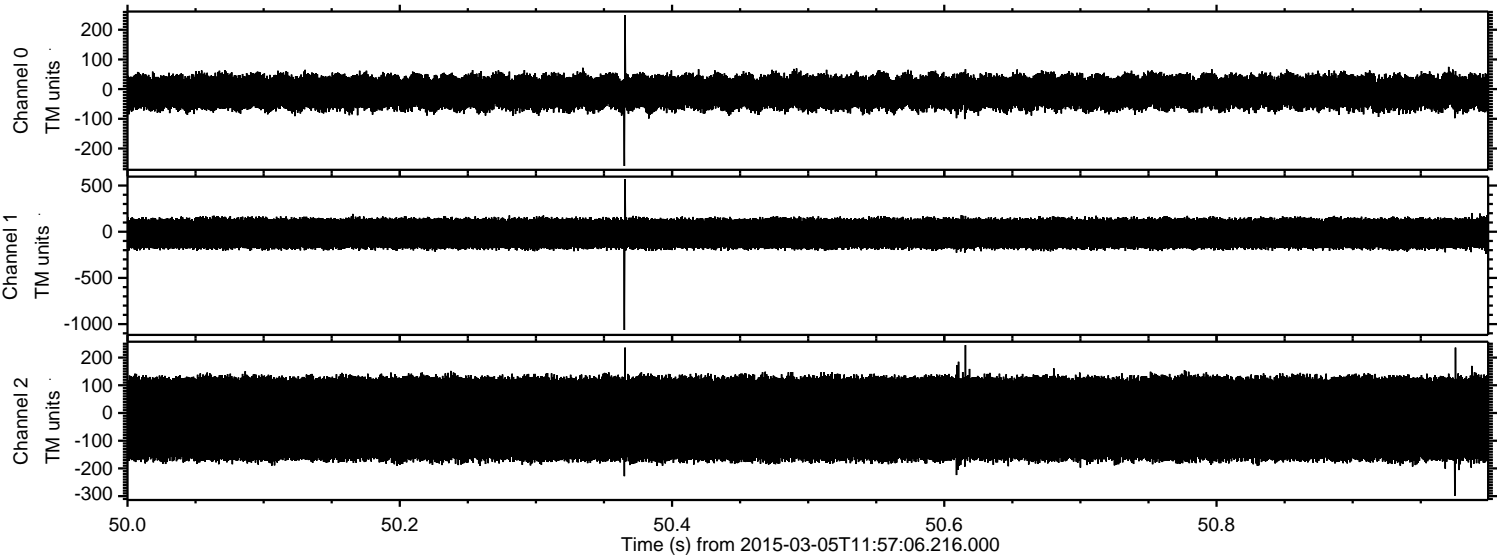


ELMAVAN 3D WAVEFORMS (Measured data sampled at 50 kHz) 49729 packets of 144 samples from 2015-03-05T11:57:06.216.000.

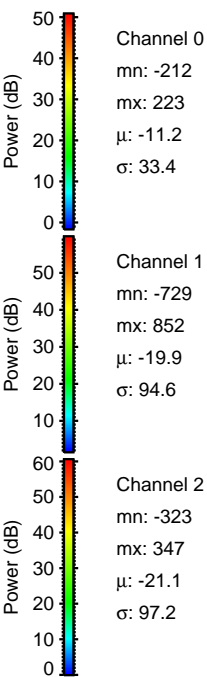
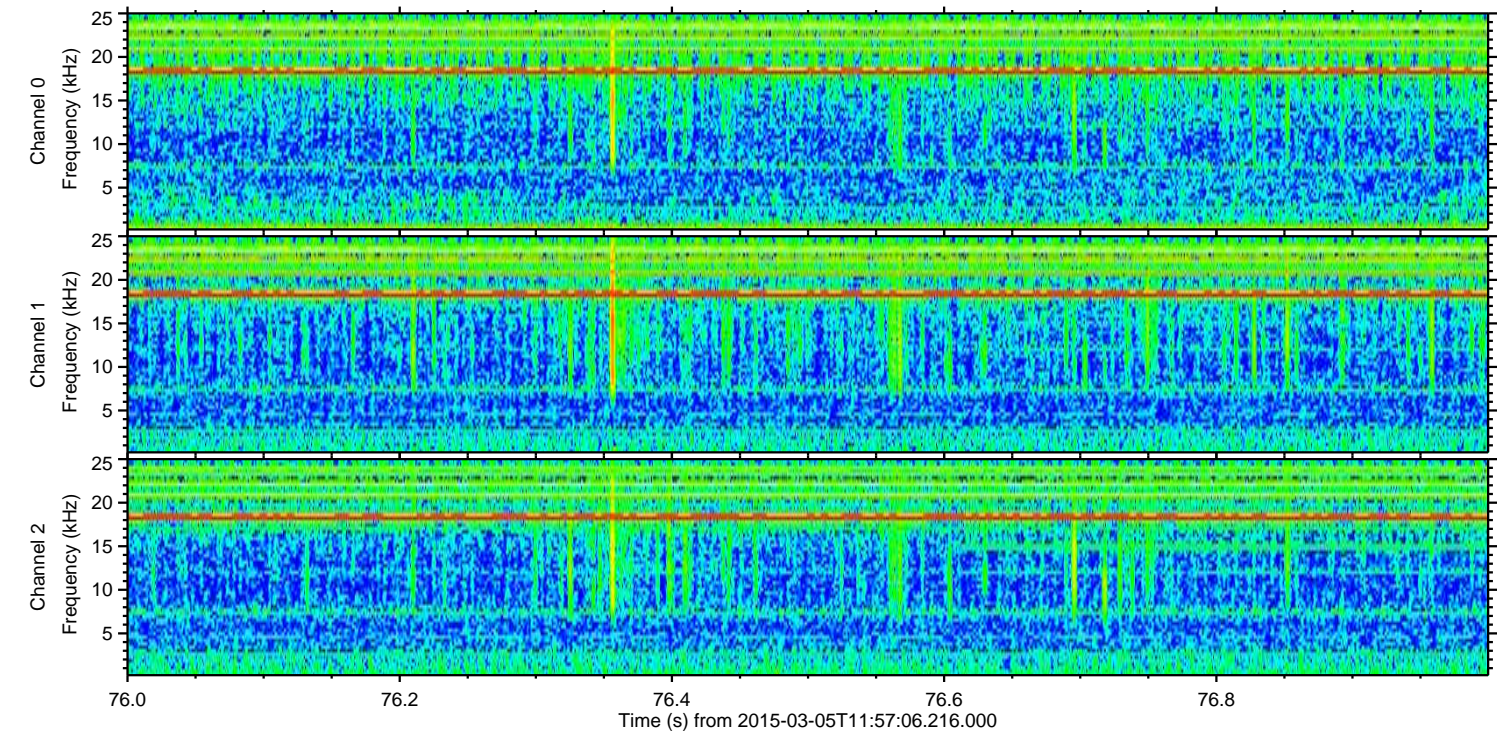
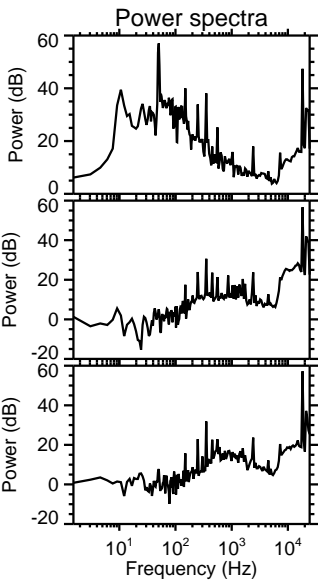
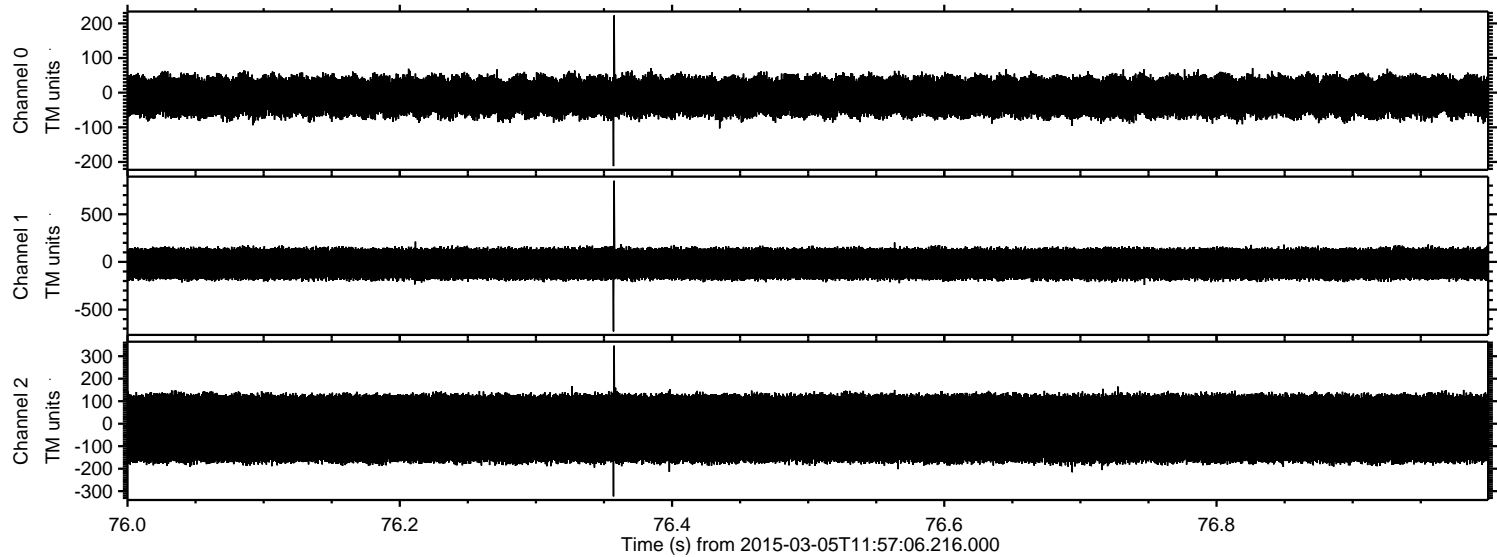
Processed Sat Mar 7 20:02:45 2015 by ELM ver.2012-10-06 from 001__elm20150305_115705__dat00.bin



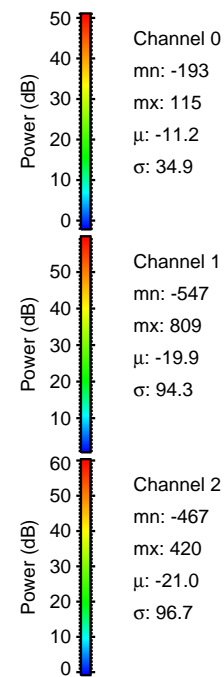
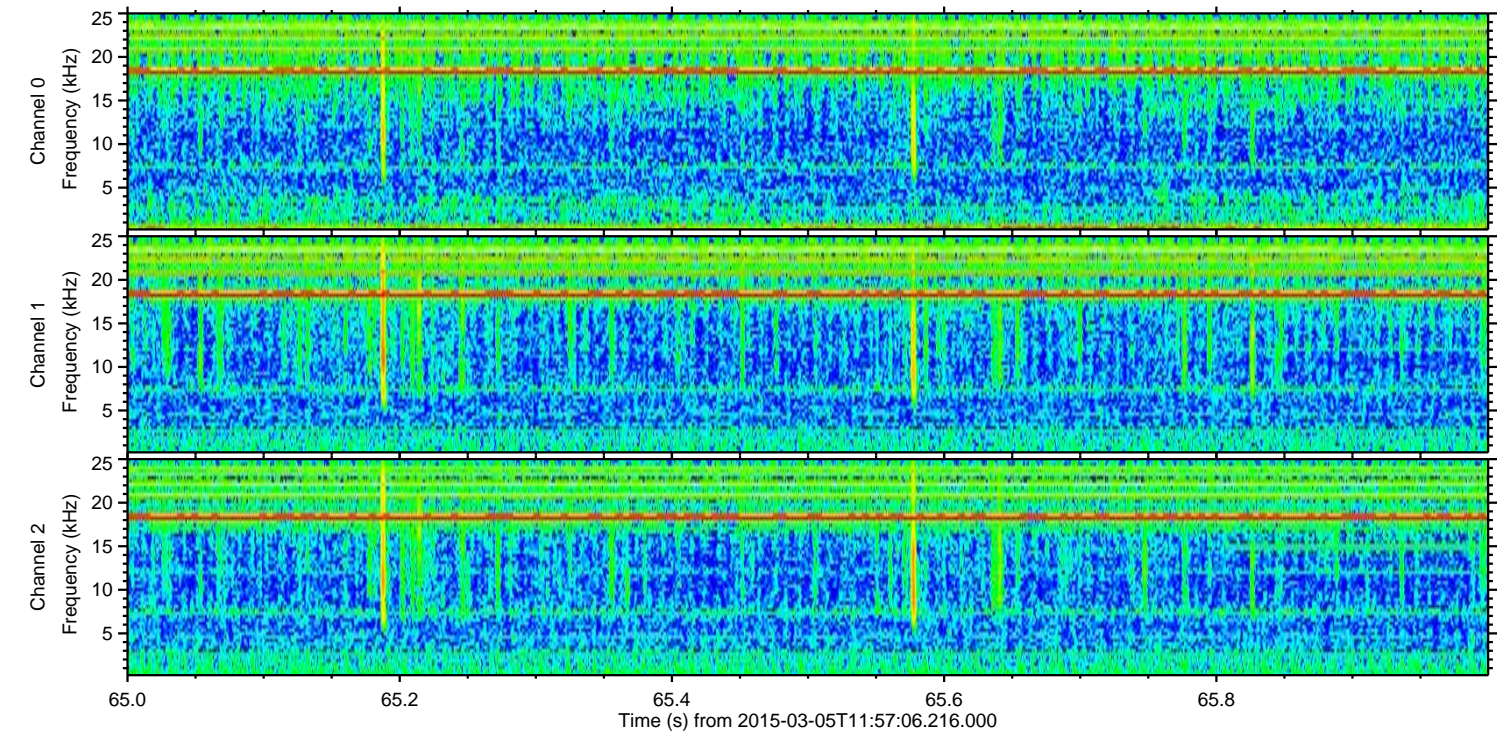
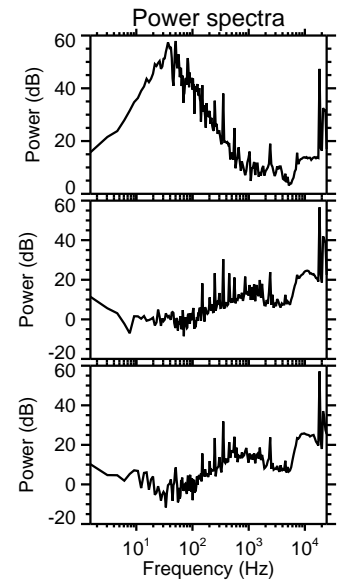
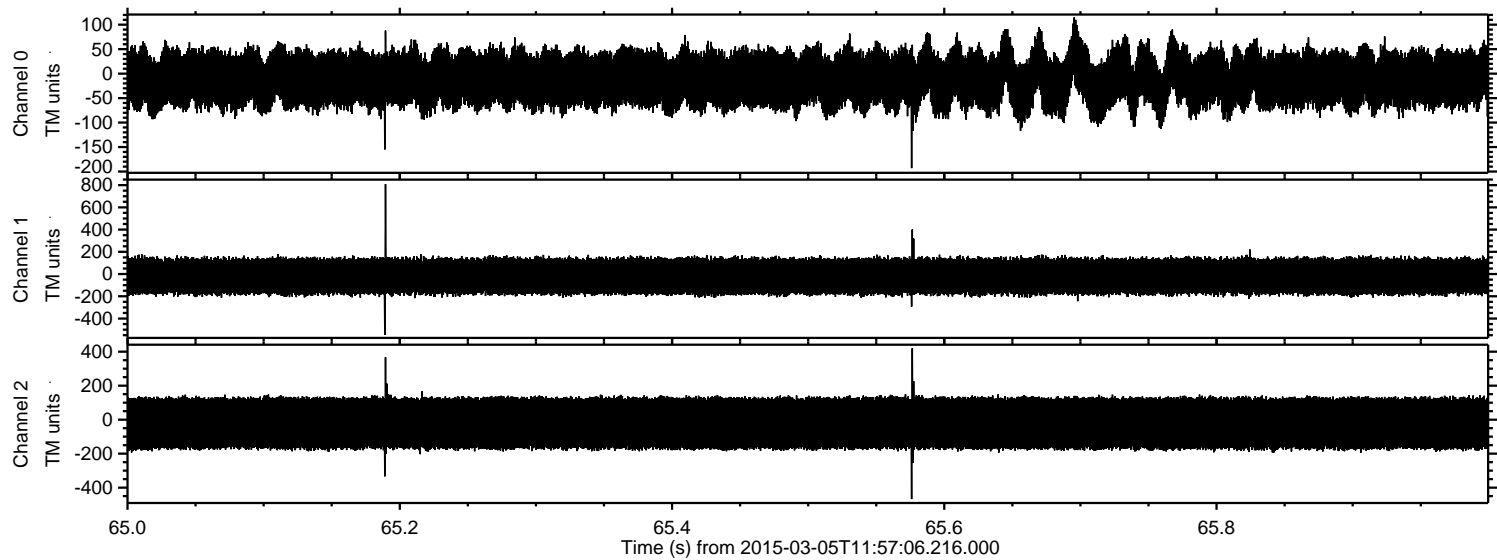
Processed Sat Mar 7 20:02:57 2015 by ELM ver.2012-10-06 from 001__elm20150305_115705__dat00.bin



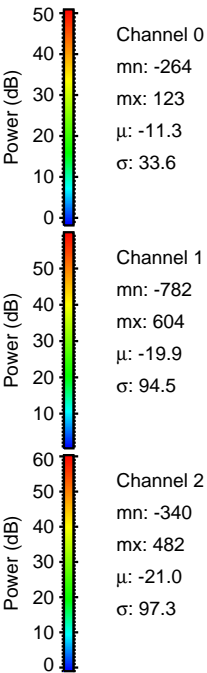
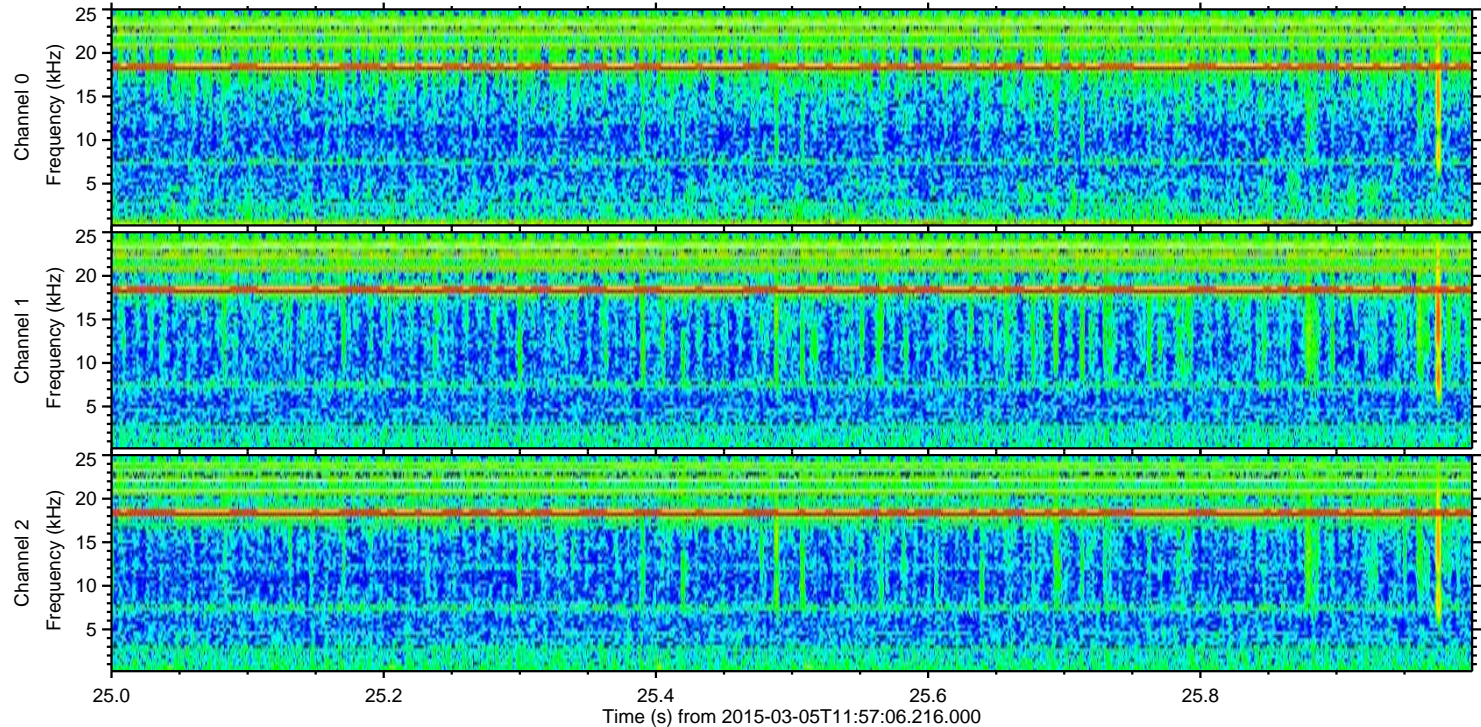
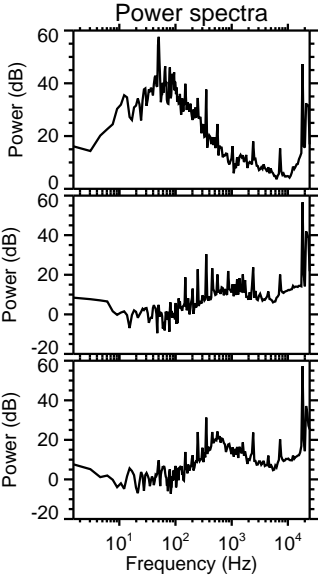
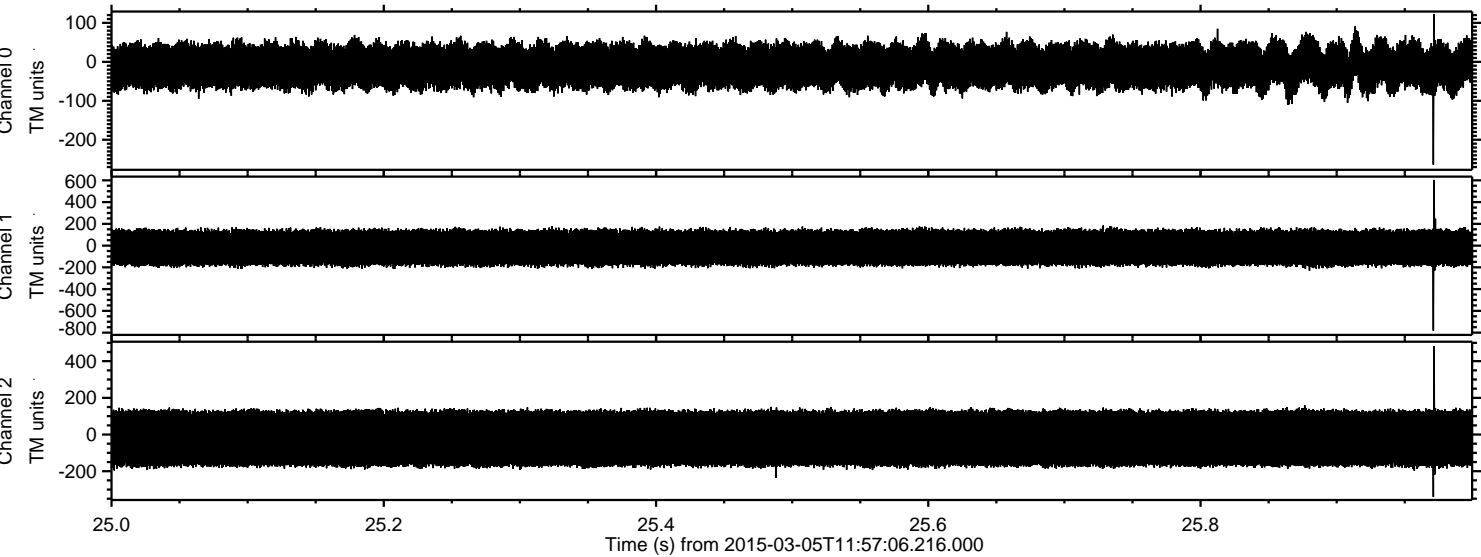
Processed Sat Mar 7 20:02:58 2015 by ELM ver.2012-10-06 from 001__elm20150305_115705__dat00.bin

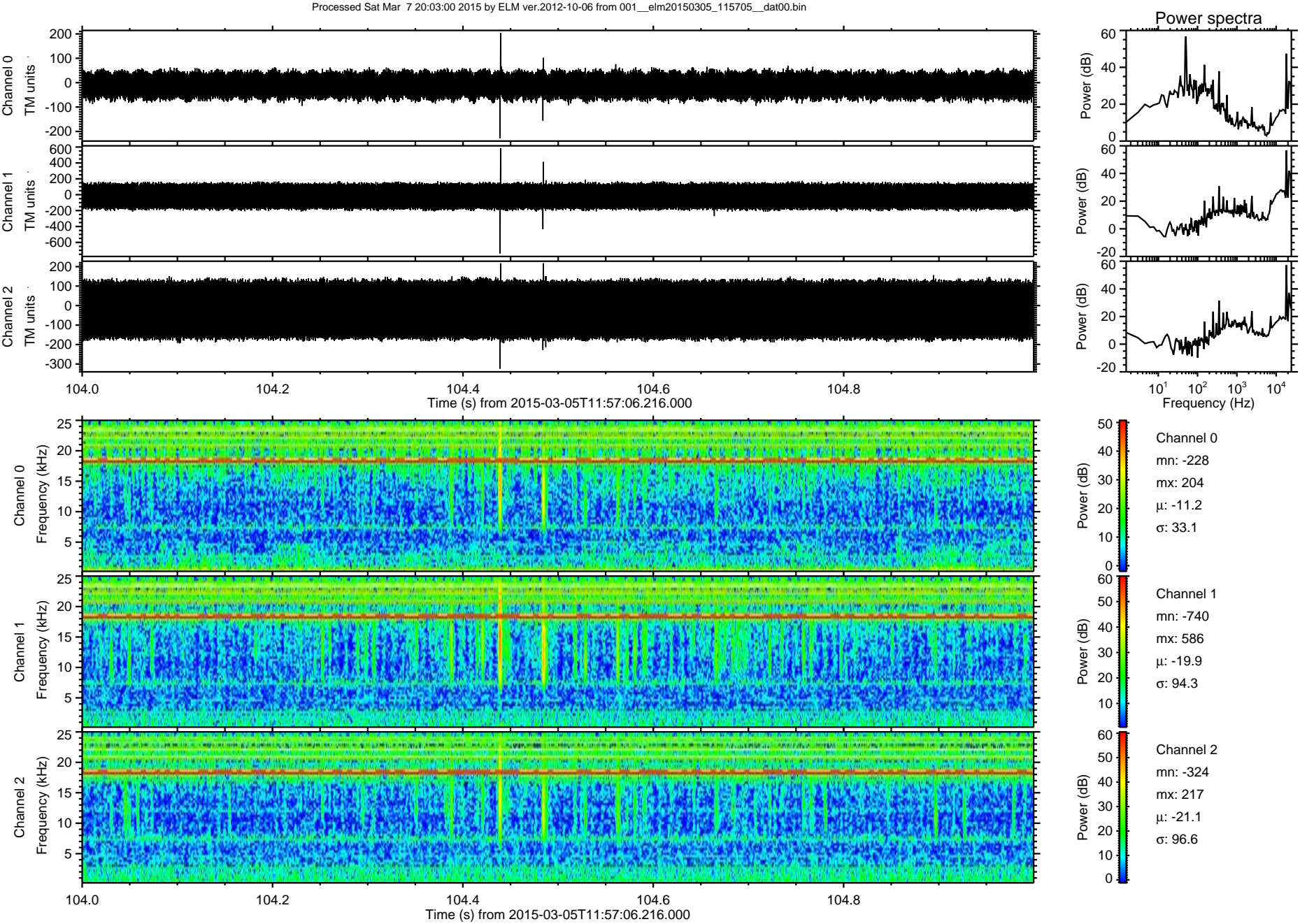


Processed Sat Mar 7 20:02:59 2015 by ELM ver.2012-10-06 from 001__elm20150305_115705__dat00.bin

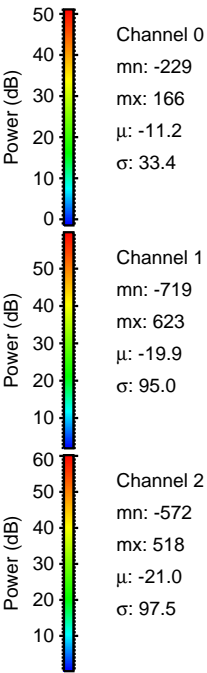
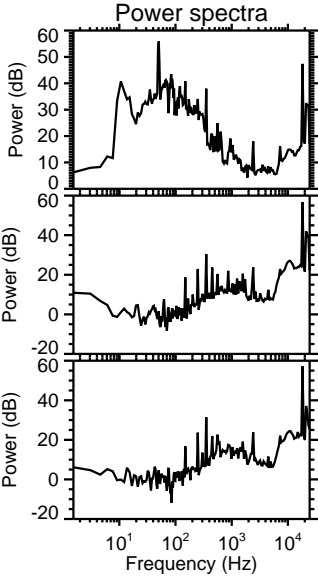
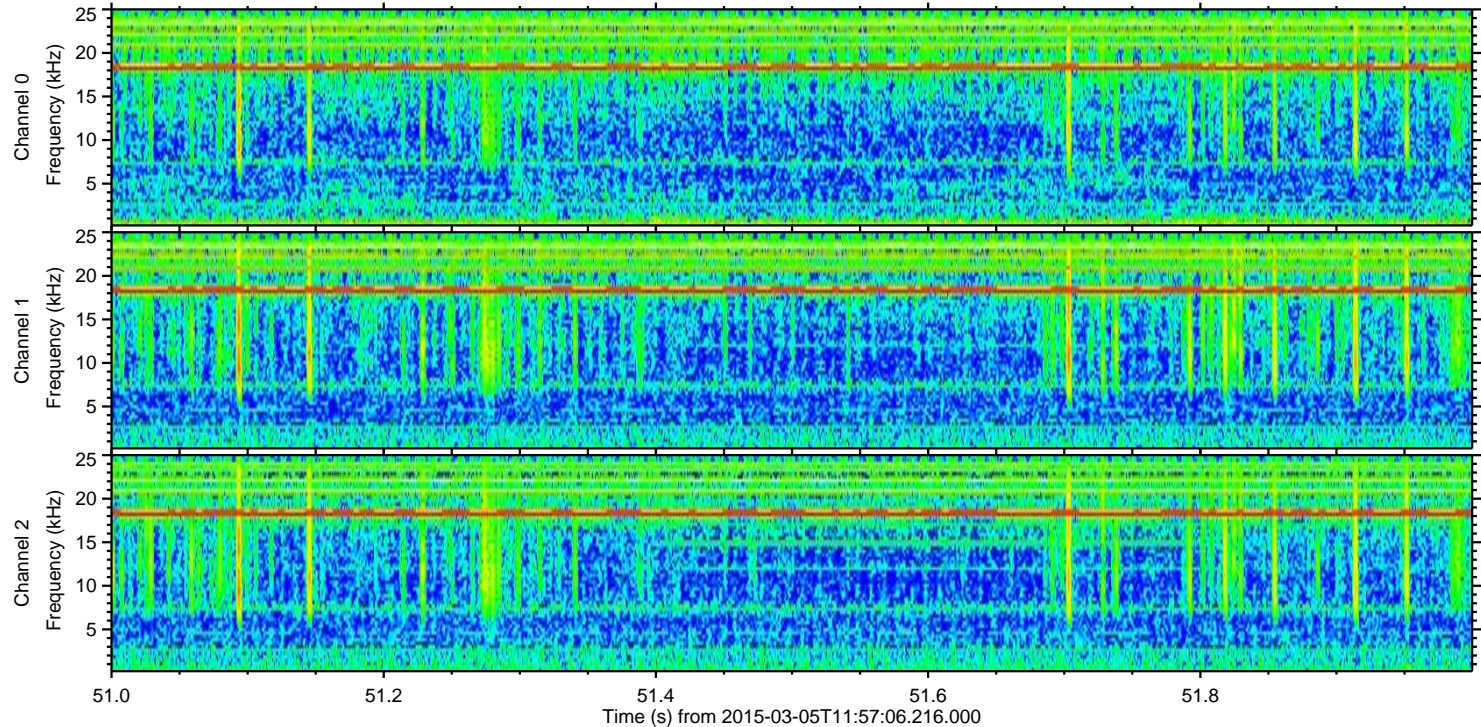
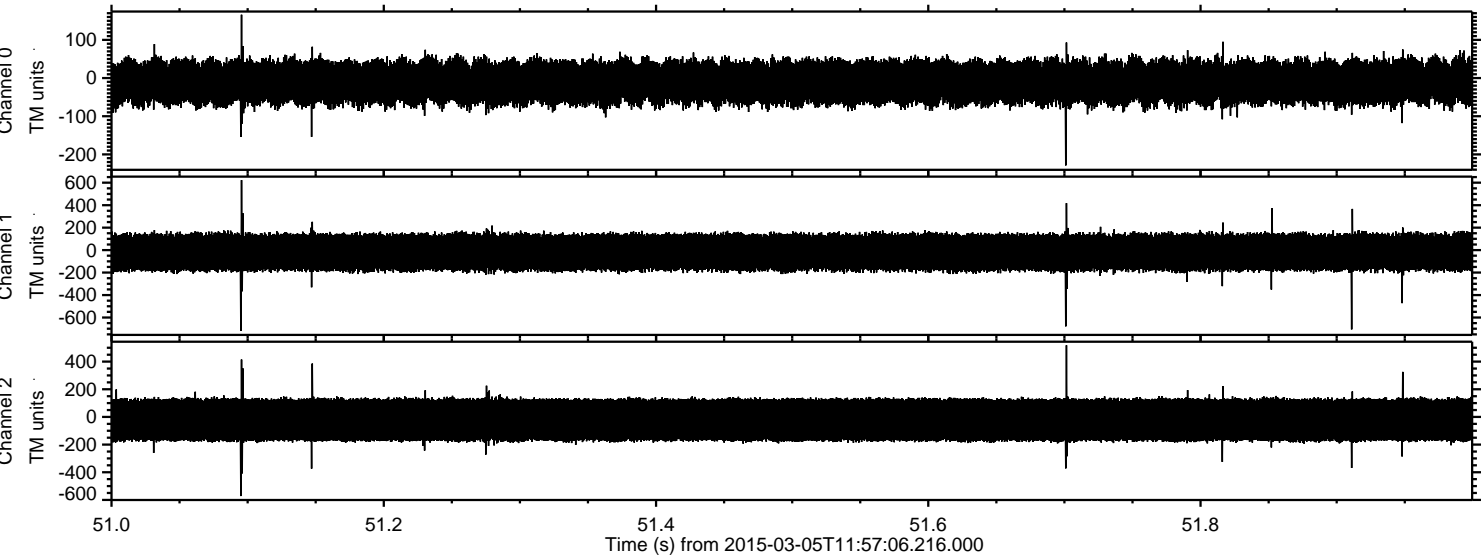


Processed Sat Mar 7 20:02:59 2015 by ELM ver.2012-10-06 from 001__elm20150305_115705__dat00.bin





Processed Sat Mar 7 20:03:01 2015 by ELM ver.2012-10-06 from 001__elm20150305_115705__dat00.bin

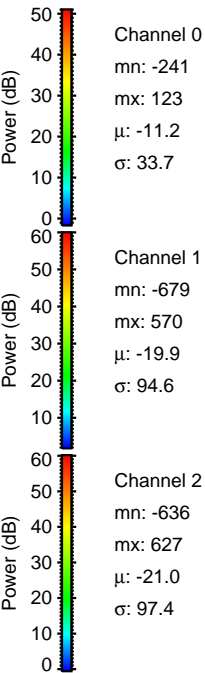
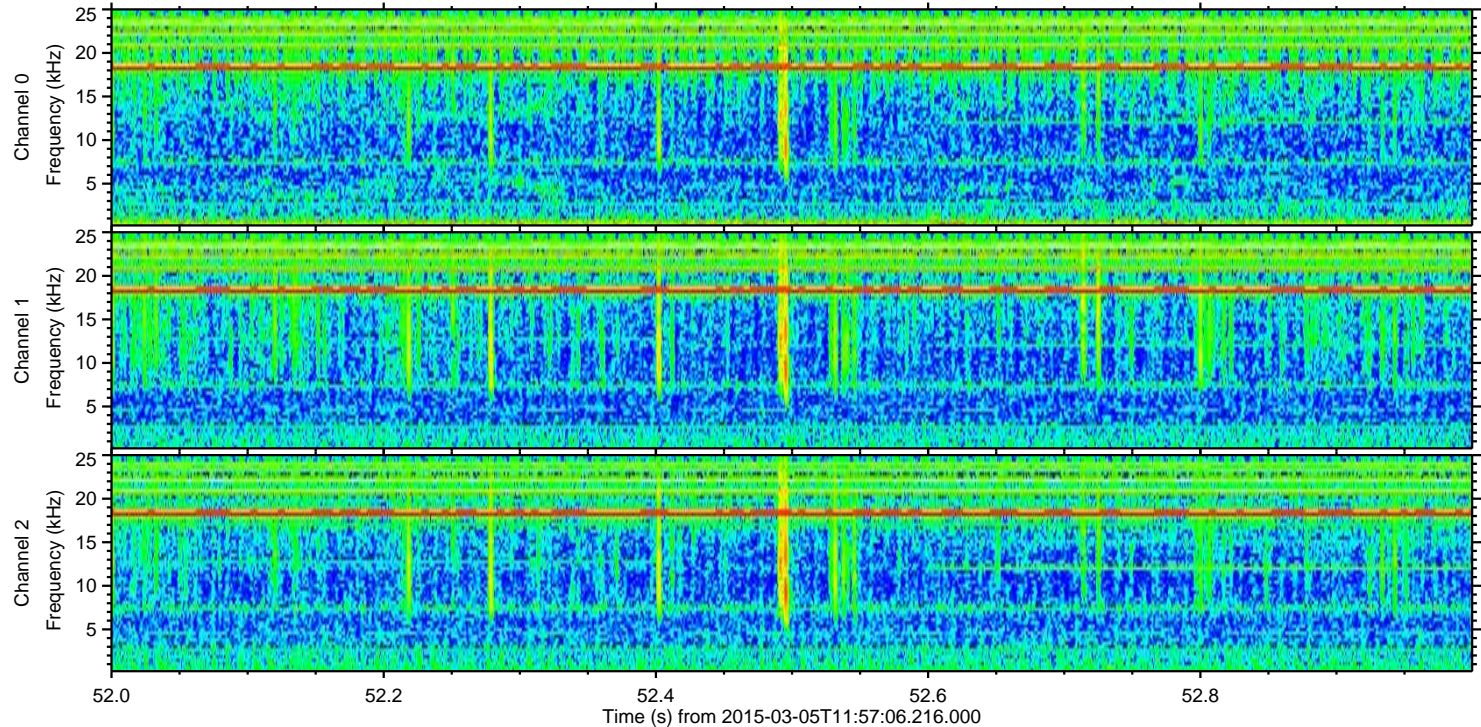
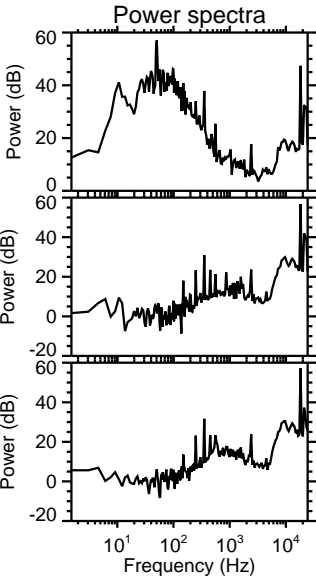
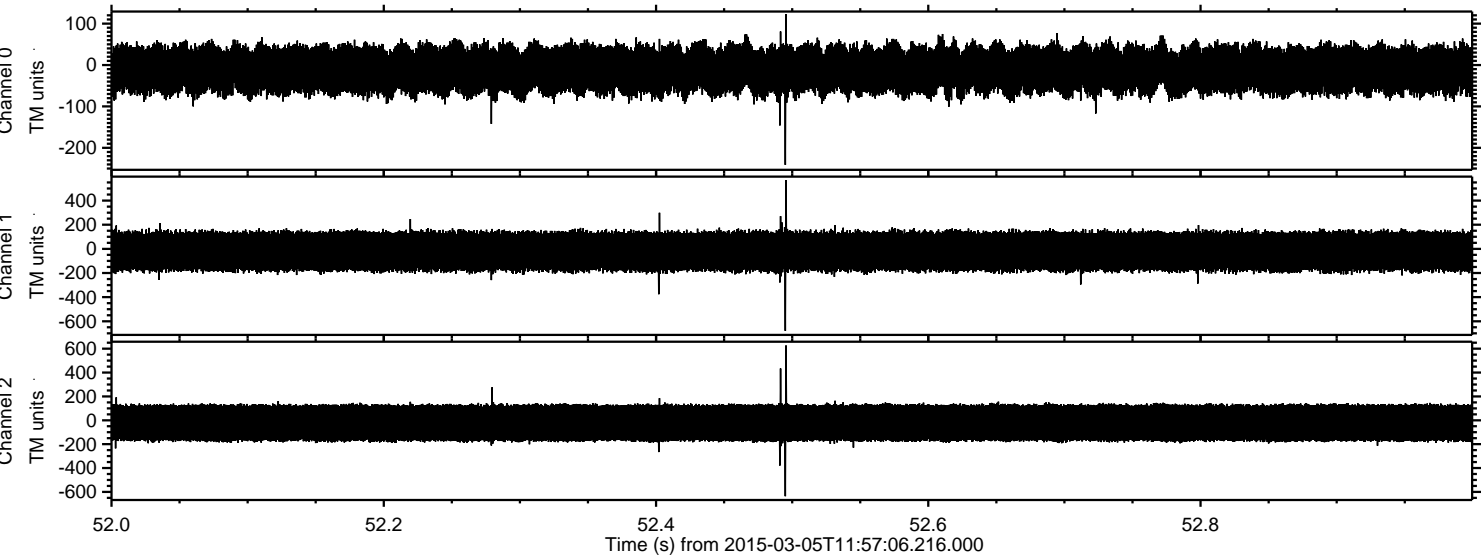


Channel 0
mn: -229
mx: 166
 μ : -11.2
 σ : 33.4

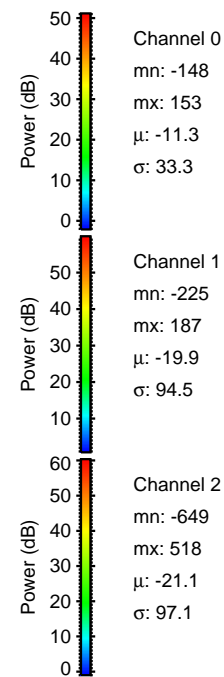
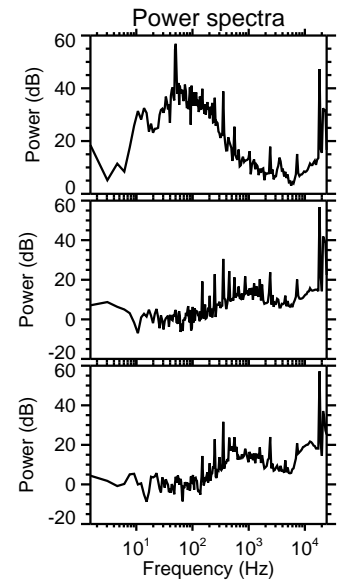
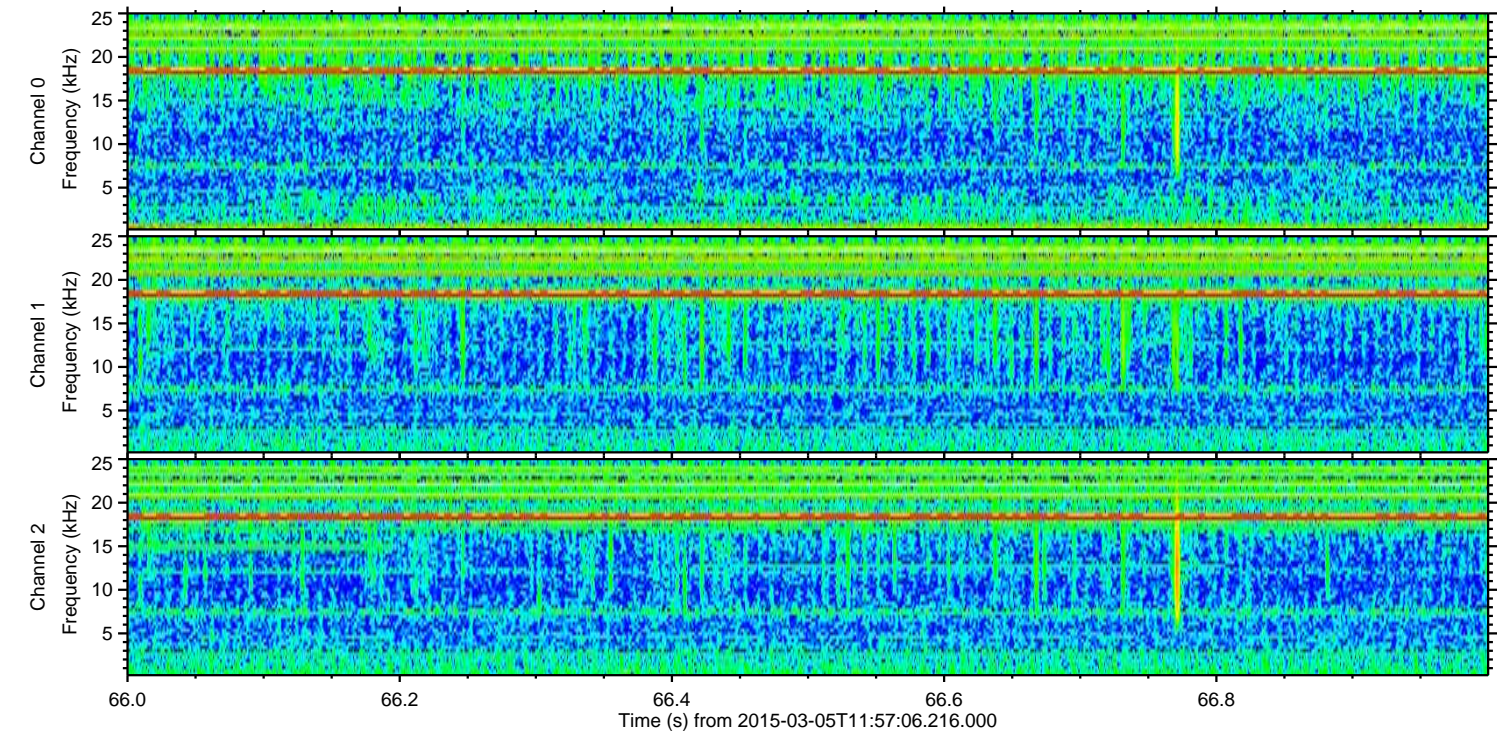
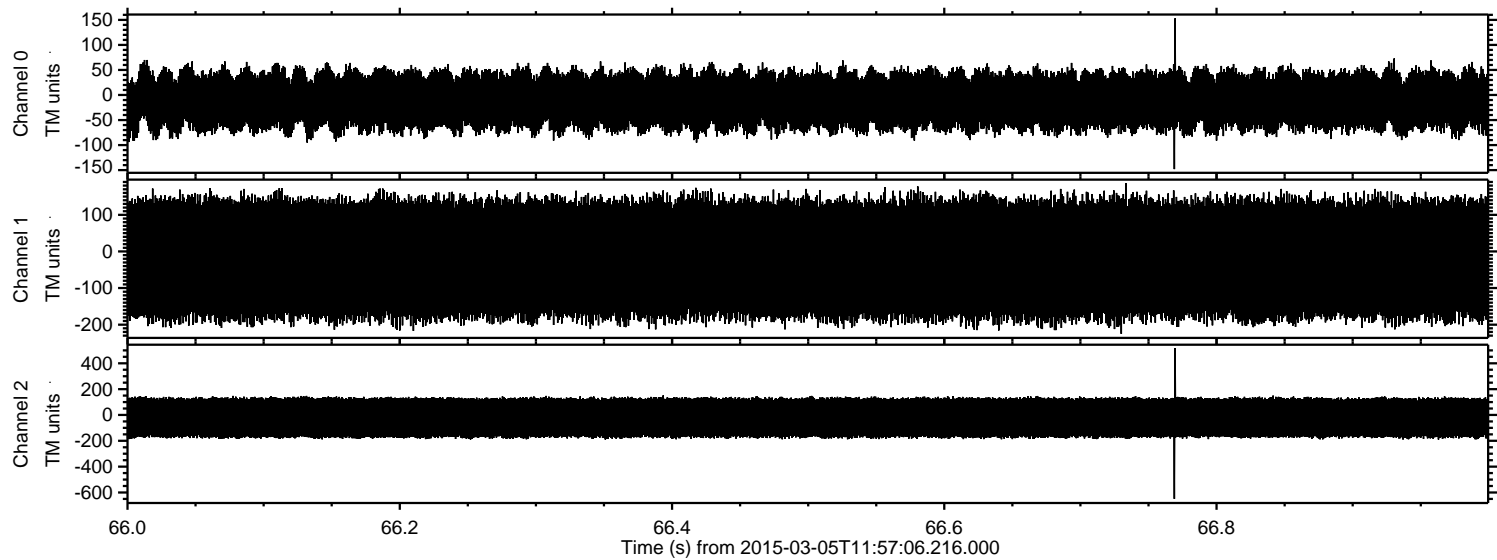
Channel 1
mn: -719
mx: 623
 μ : -19.9
 σ : 95.0

Channel 2
mn: -572
mx: 518
 μ : -21.0
 σ : 97.5

Processed Sat Mar 7 20:03:02 2015 by ELM ver.2012-10-06 from 001__elm20150305_115705__dat00.bin



Processed Sat Mar 7 20:03:03 2015 by ELM ver.2012-10-06 from 001__elm20150305_115705__dat00.bin

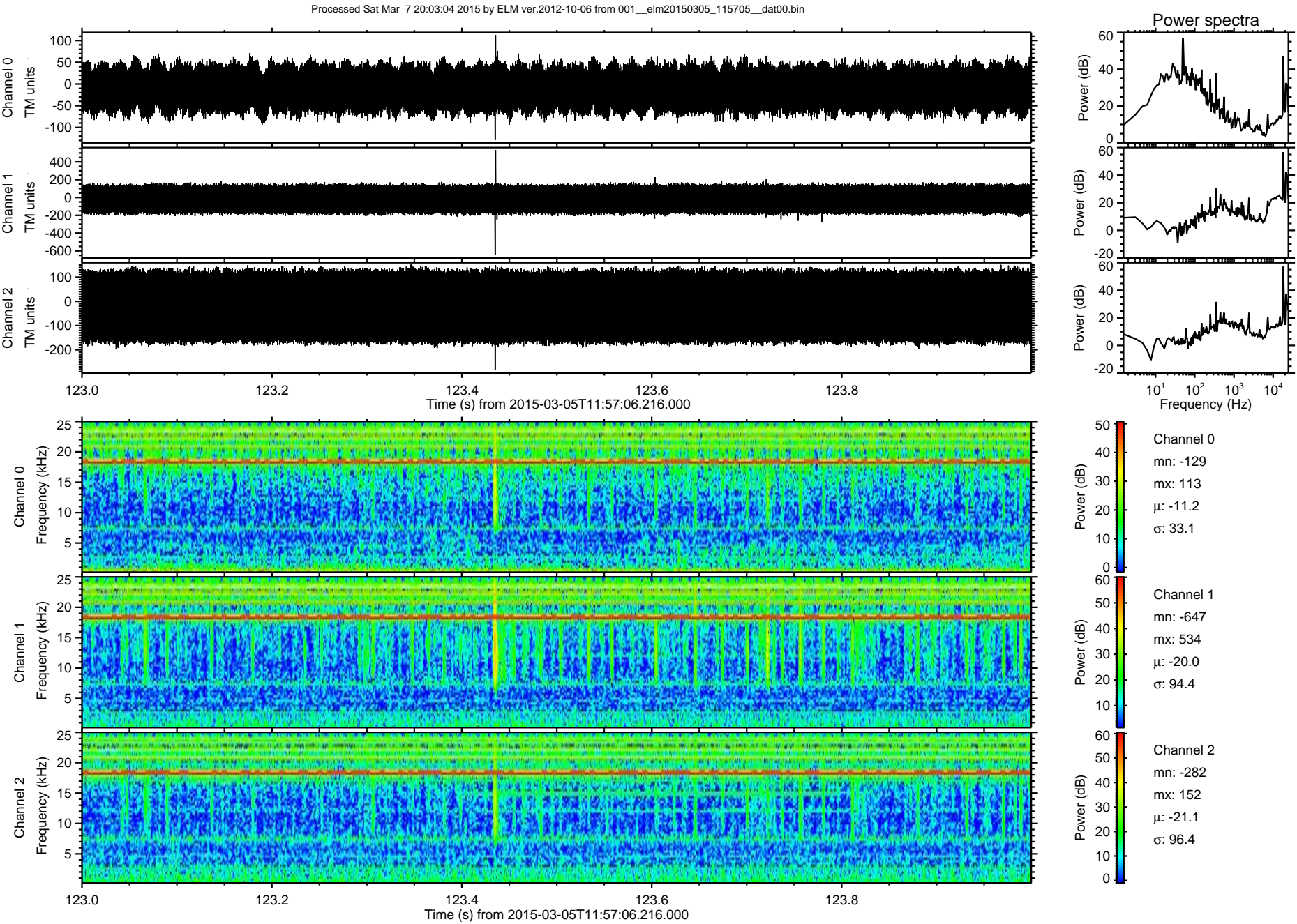


Channel 0
mn: -148
mx: 153
 μ : -11.3
 σ : 33.3

Channel 1
mn: -225
mx: 187
 μ : -19.9
 σ : 94.5

Channel 2
mn: -649
mx: 518
 μ : -21.1
 σ : 97.1

ELMAVAN 3D WAVEFORMS (Measured data sampled at 50 kHz) 49729 packets of 144 samples from 2015-03-05T11:57:06.216.000. Part 124/144



ELMAVAN 3D WAVEFORMS (Measured data sampled at 50 kHz) 49729 packets of 144 samples from 2015-03-05T11:57:06.216.000. Part 104/144

