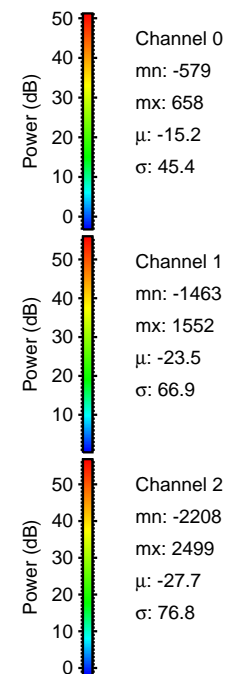
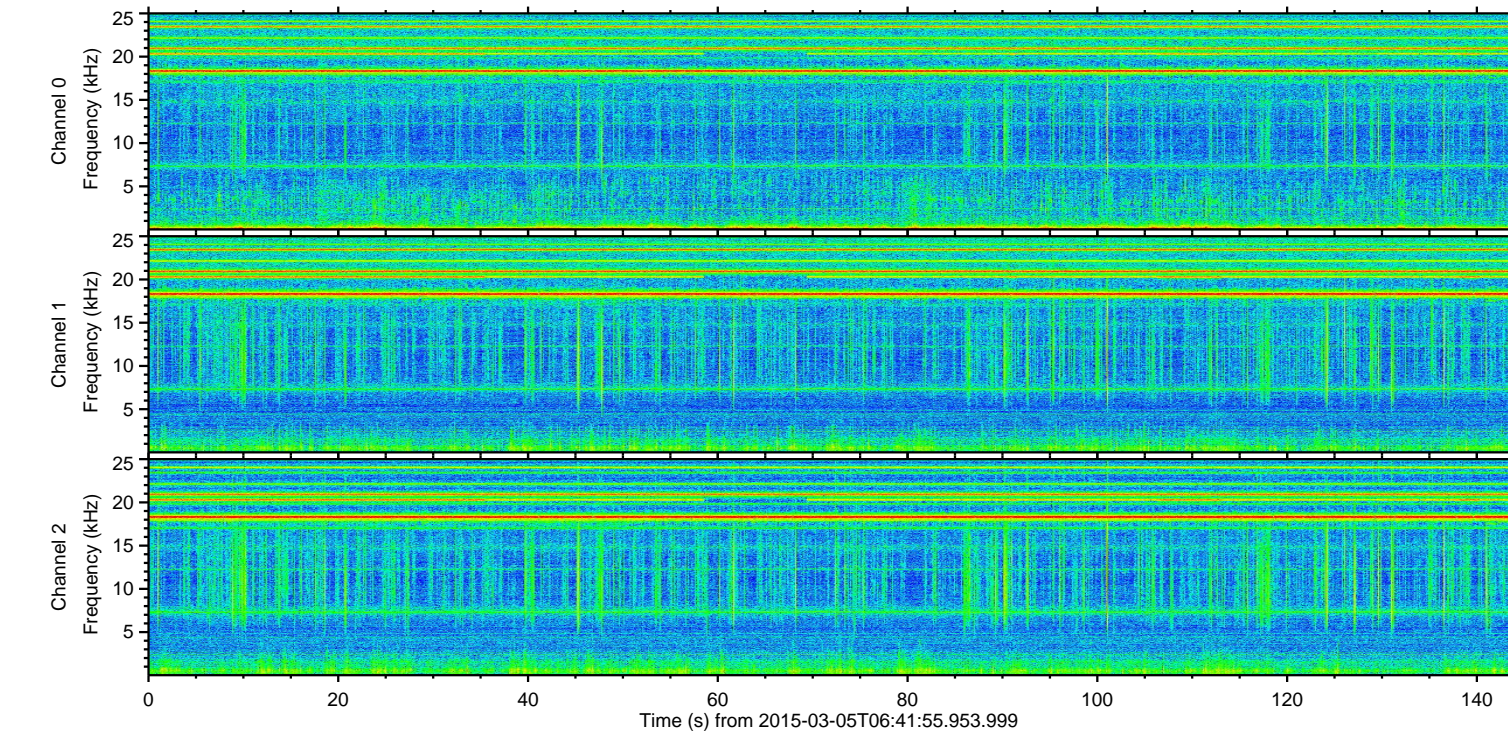
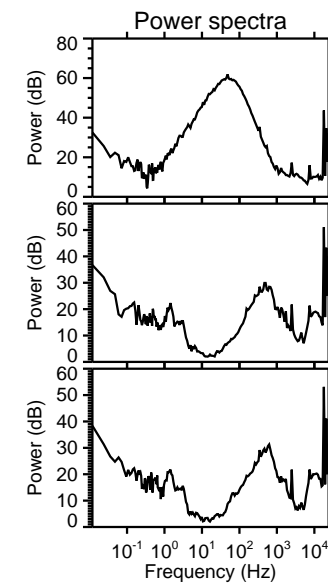
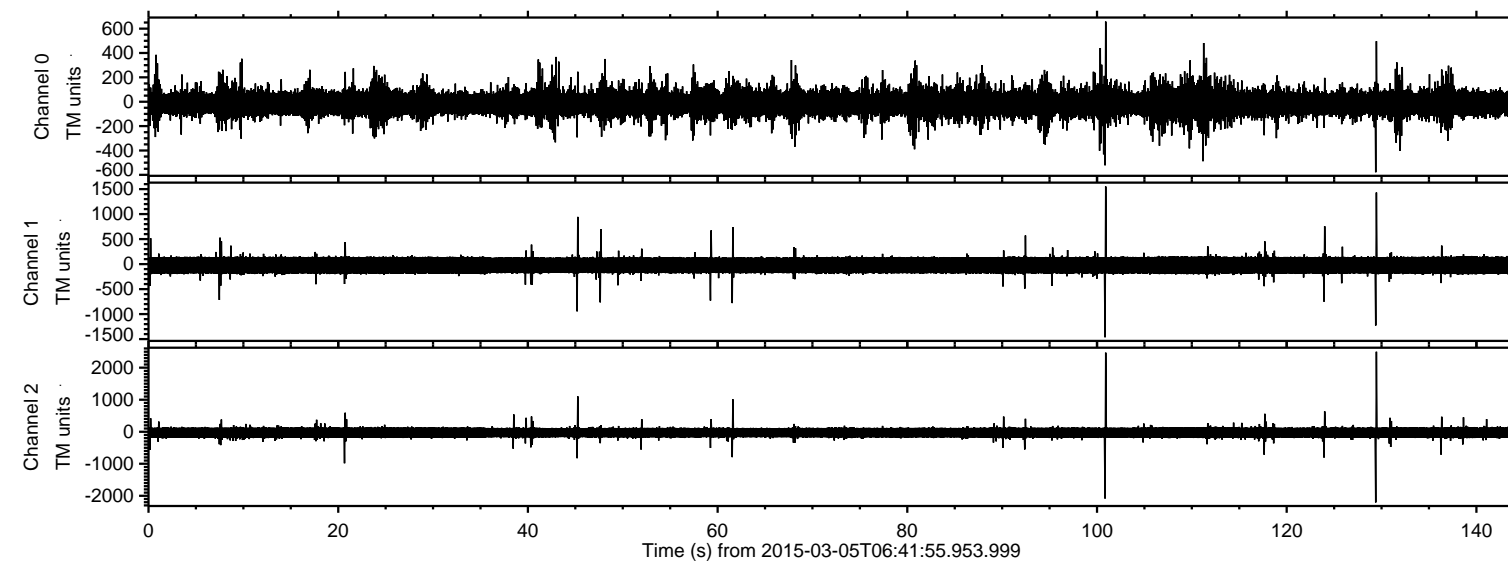
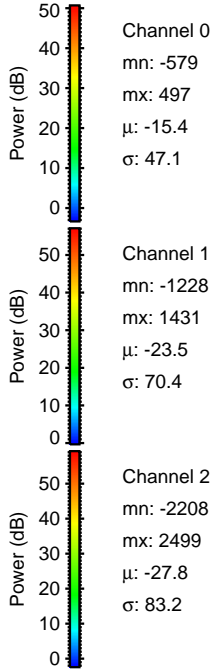
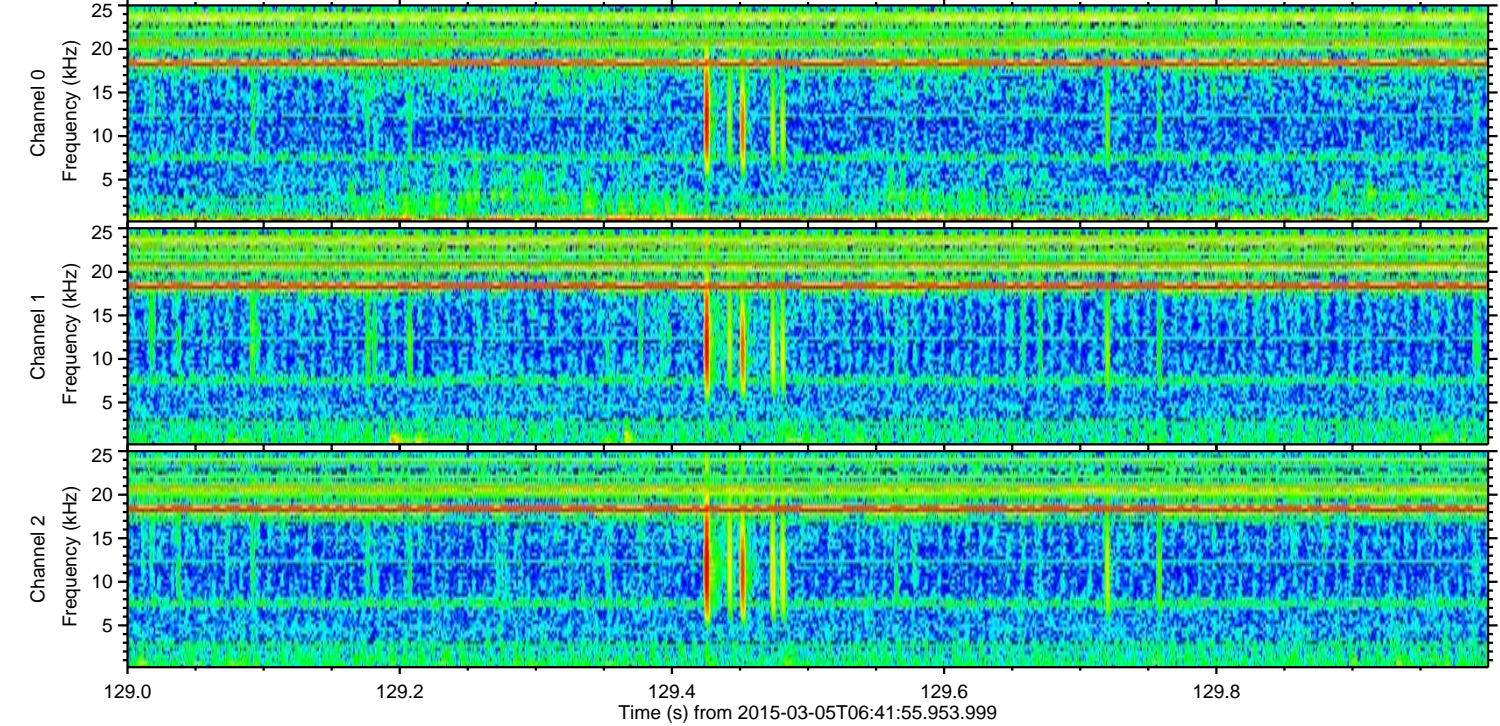
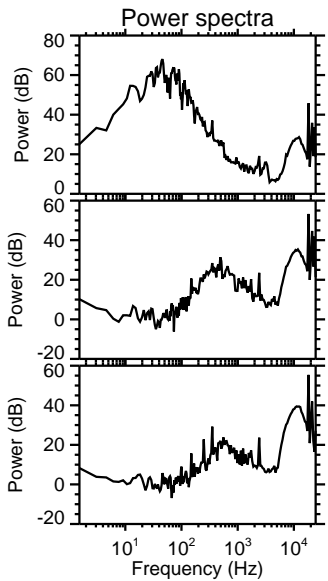
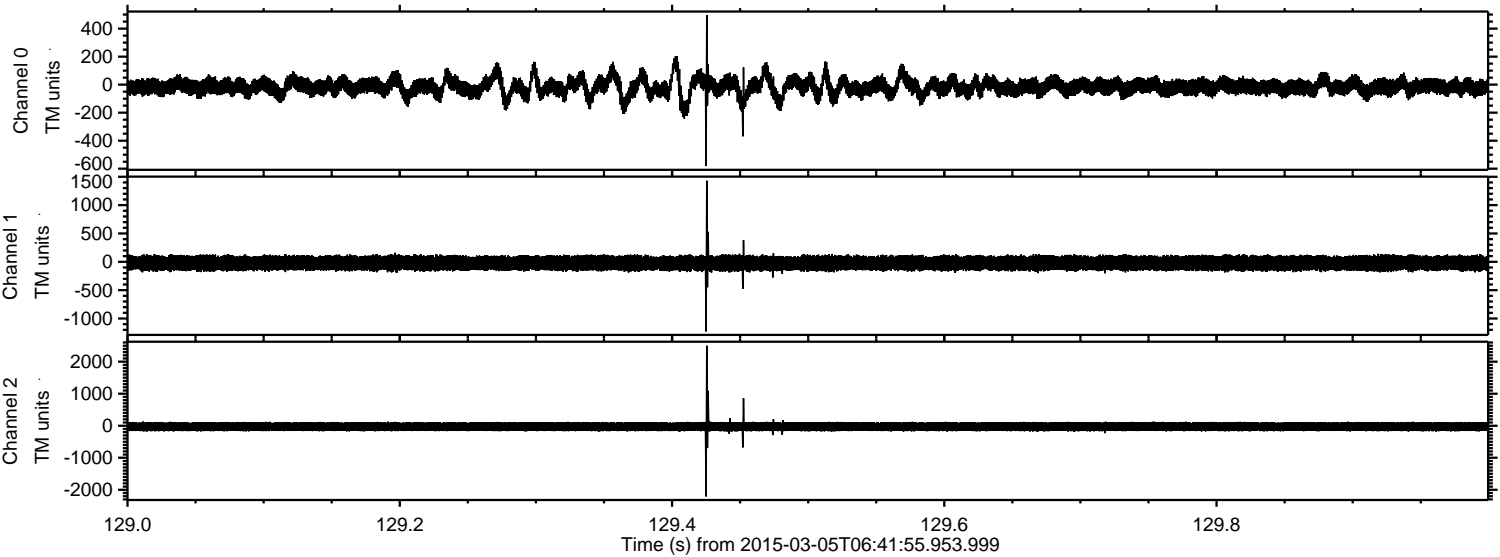


ELMAVAN 3D WAVEFORMS (Measured data sampled at 50 kHz) 49810 packets of 144 samples from 2015-03-05T06:41:55.953.999.

Processed Sat Mar 7 18:51:26 2015 by ELM ver.2012-10-06 from 001__elm20150305_064154__dat00.bin

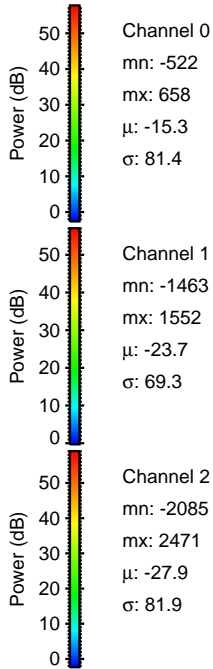
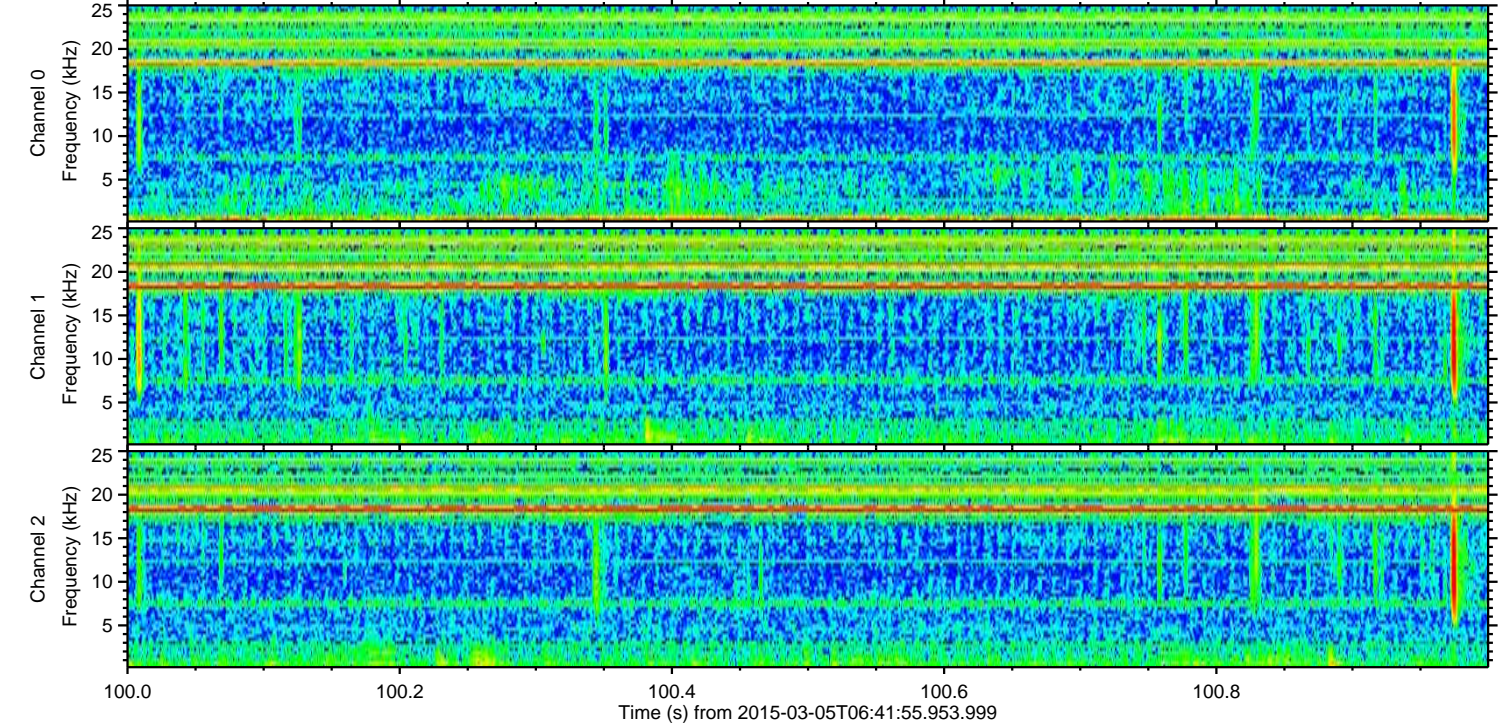
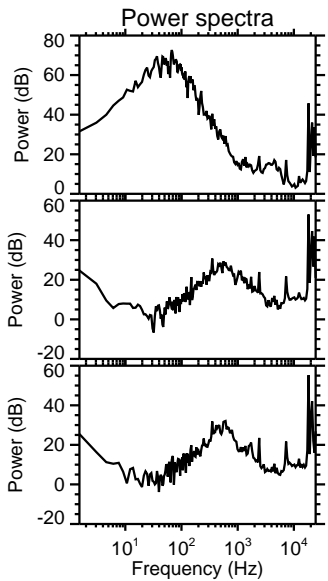
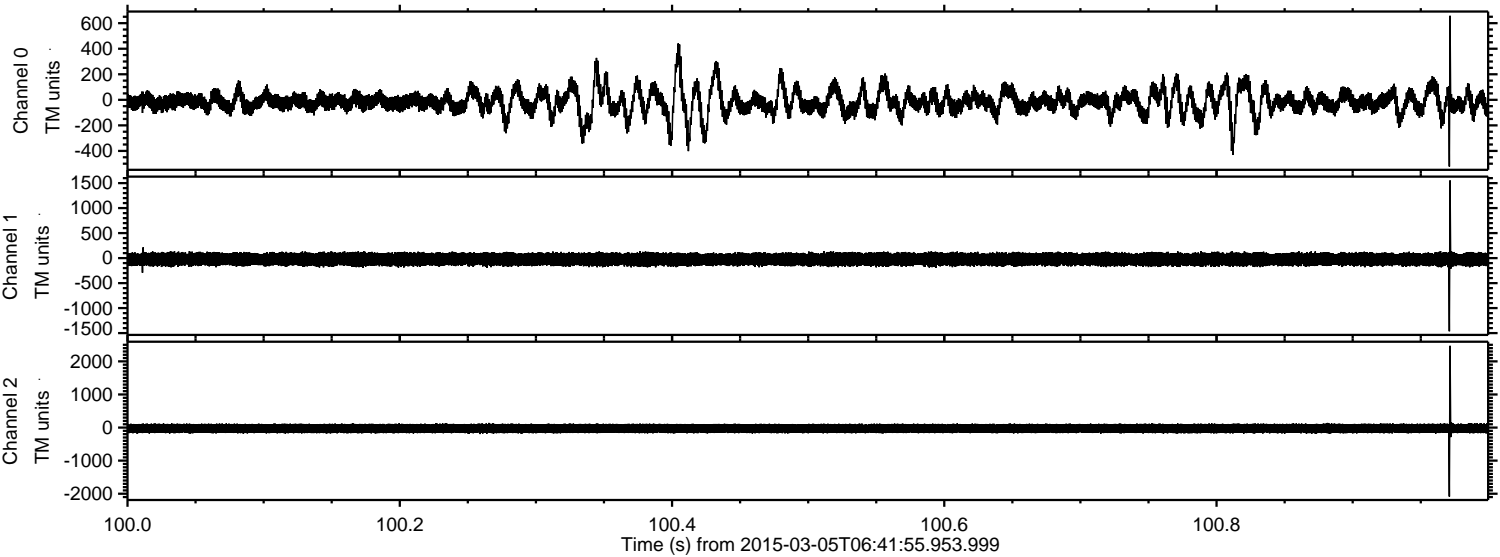


Processed Sat Mar 7 18:51:37 2015 by ELM ver.2012-10-06 from 001__elm20150305_064154__dat00.bin

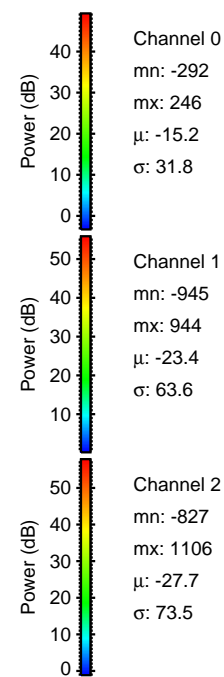
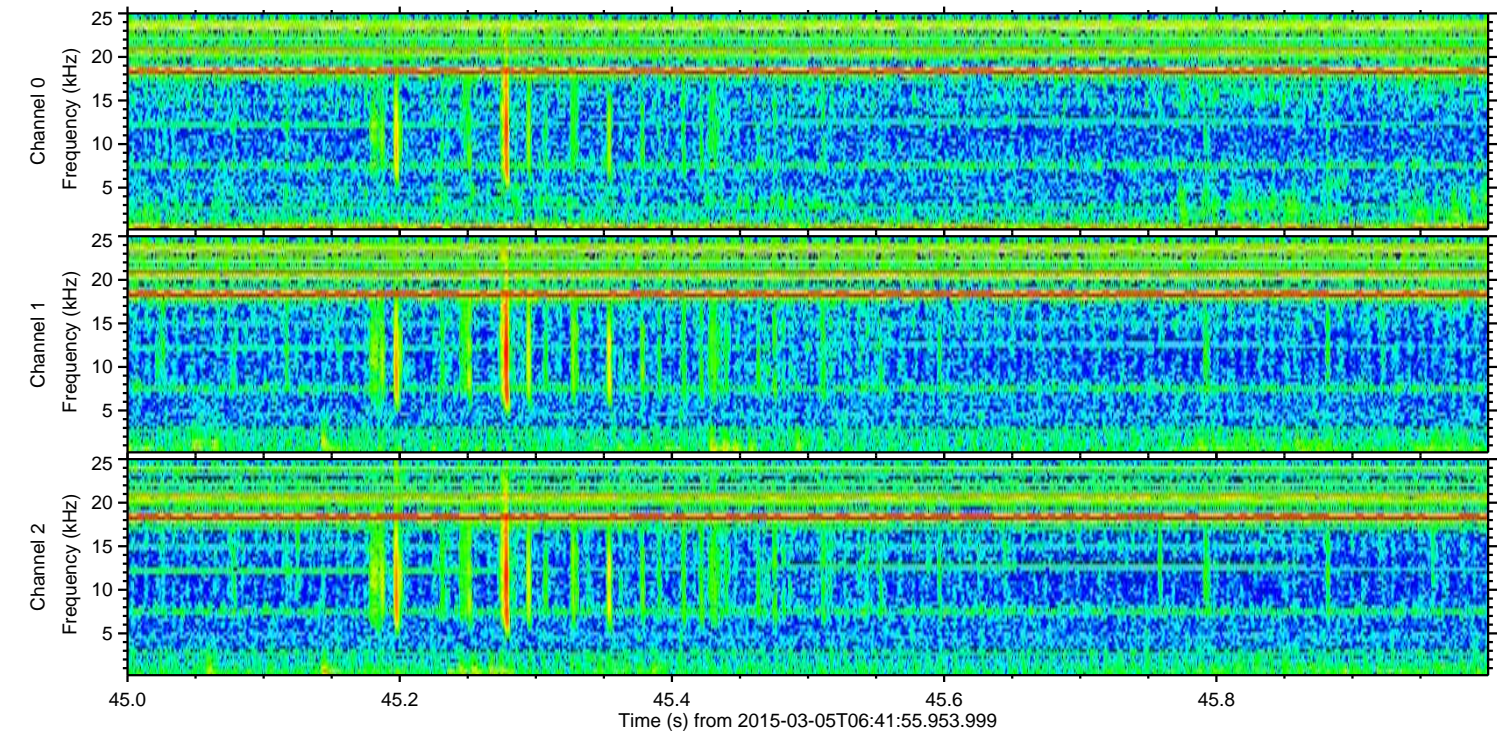
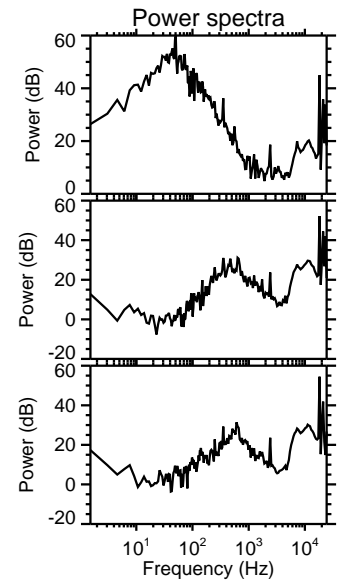
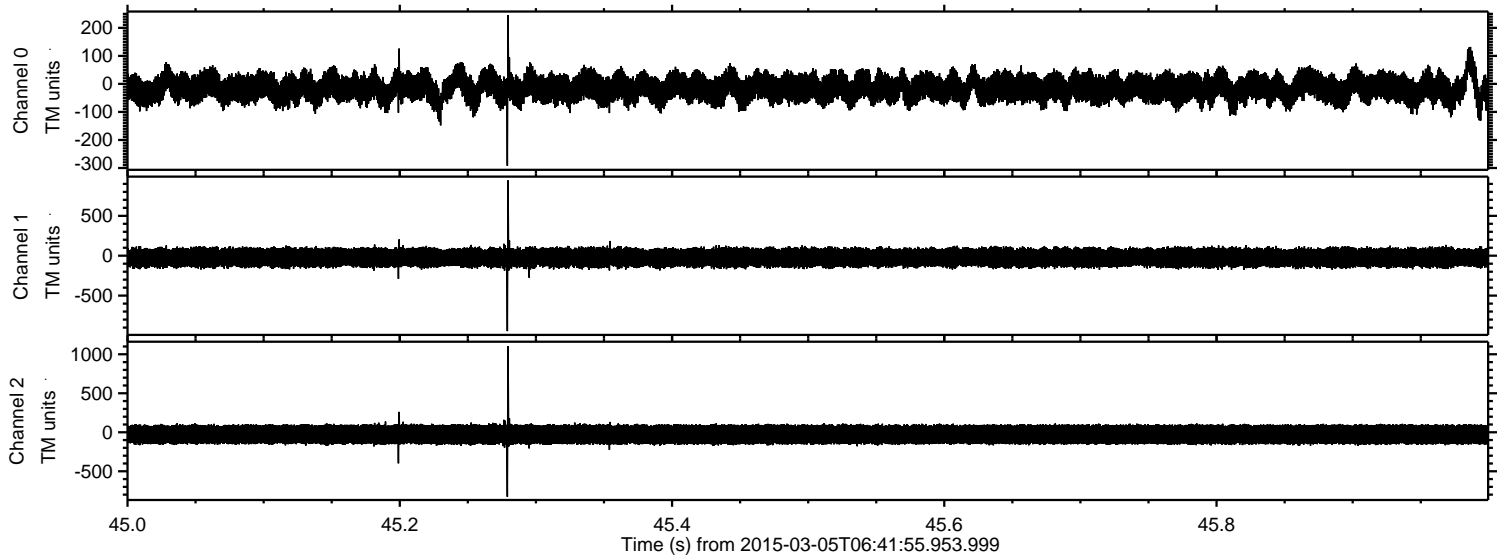


ELMAVAN 3D WAVEFORMS (Measured data sampled at 50 kHz) 49810 packets of 144 samples from 2015-03-05T06:41:55.953.999. Part 101/144

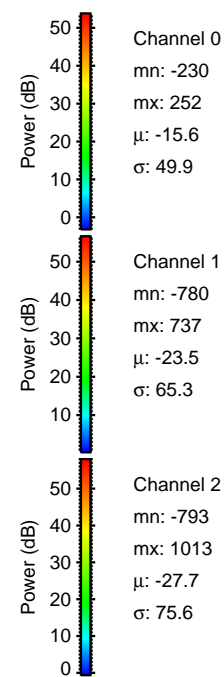
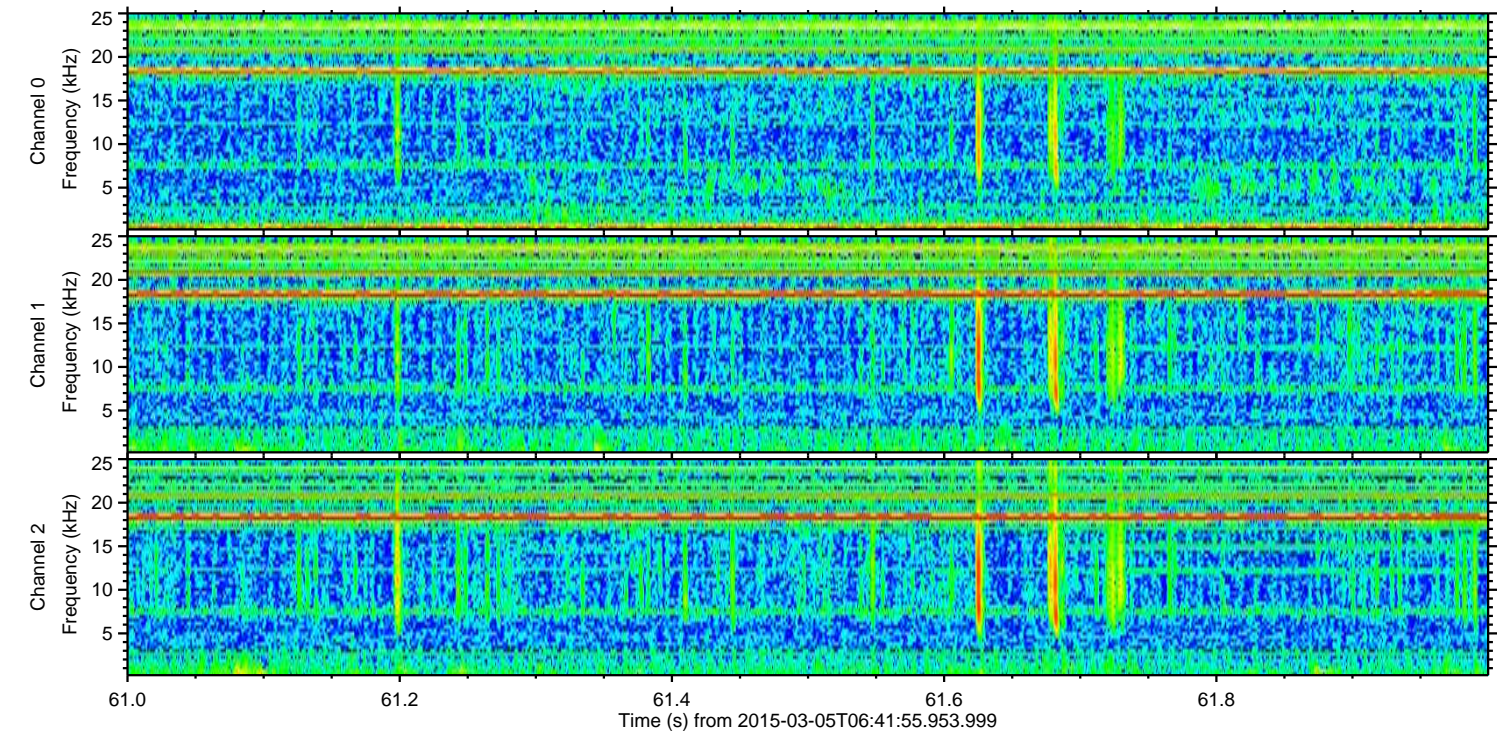
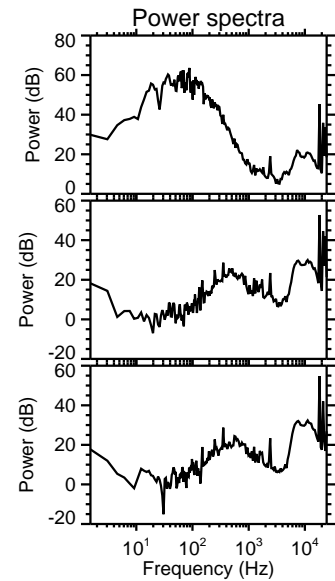
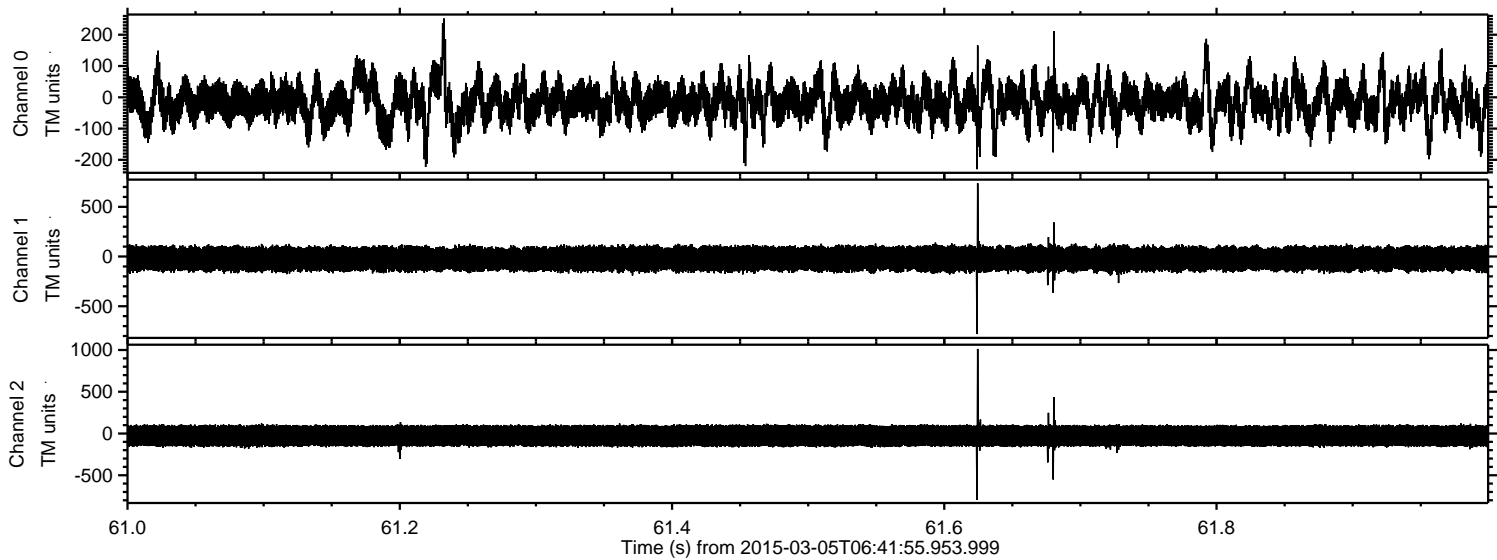
Processed Sat Mar 7 18:51:38 2015 by ELM ver.2012-10-06 from 001__elm20150305_064154__dat00.bin



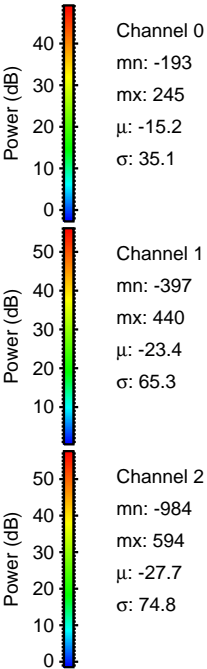
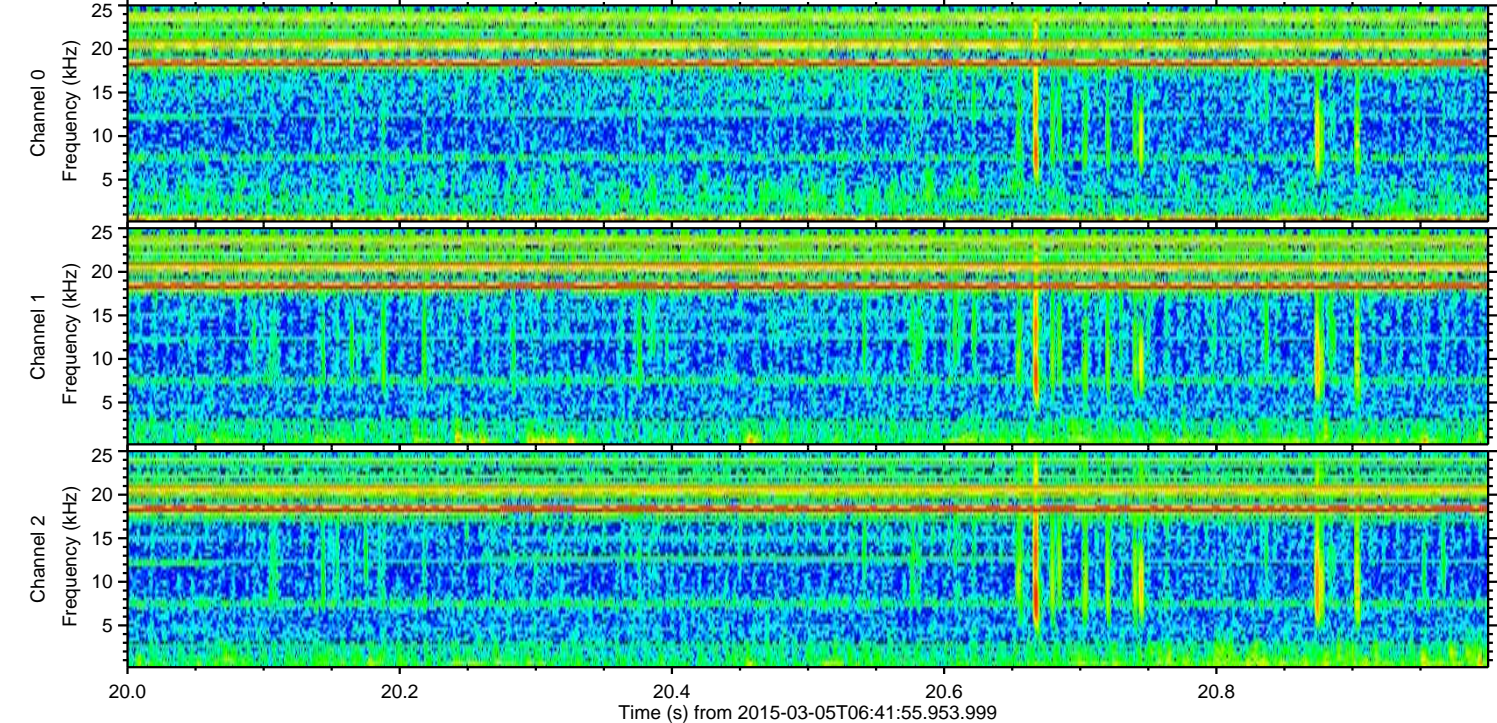
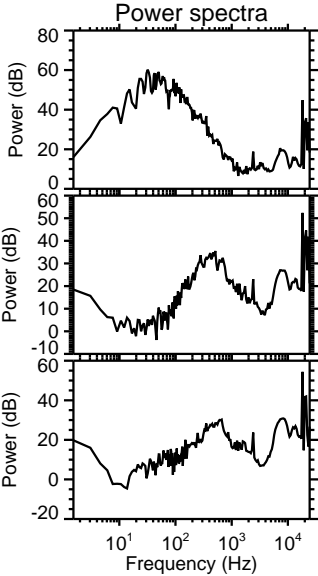
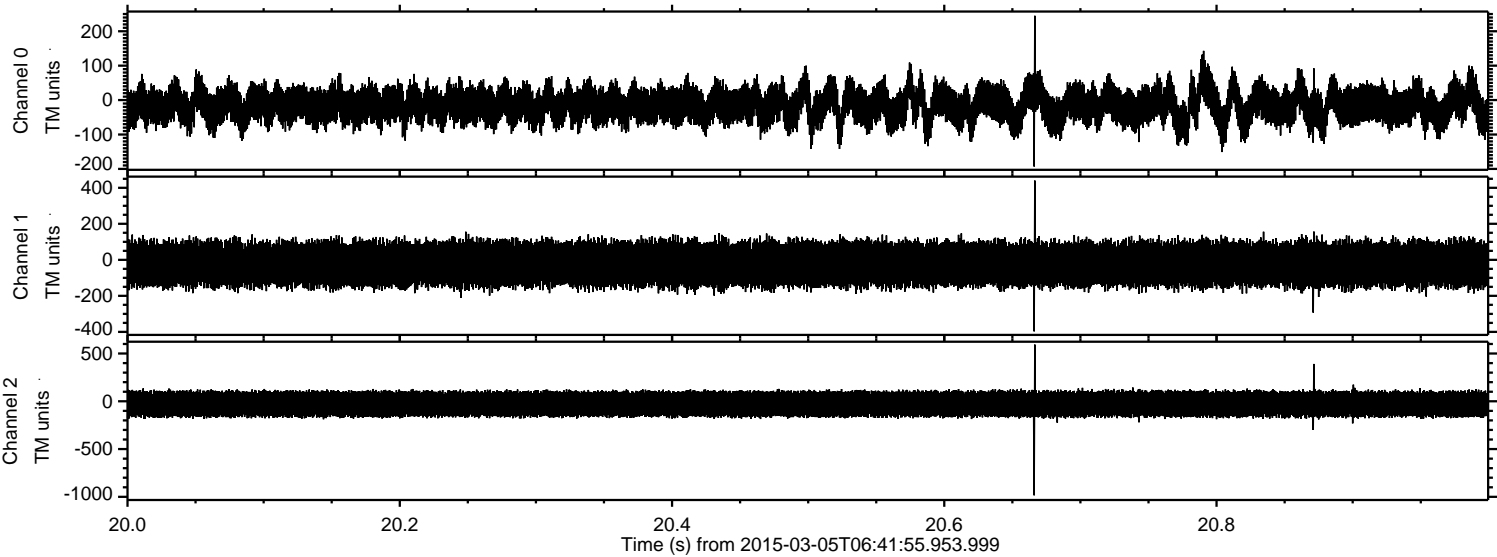
Processed Sat Mar 7 18:51:39 2015 by ELM ver.2012-10-06 from 001__elm20150305_064154__dat00.bin



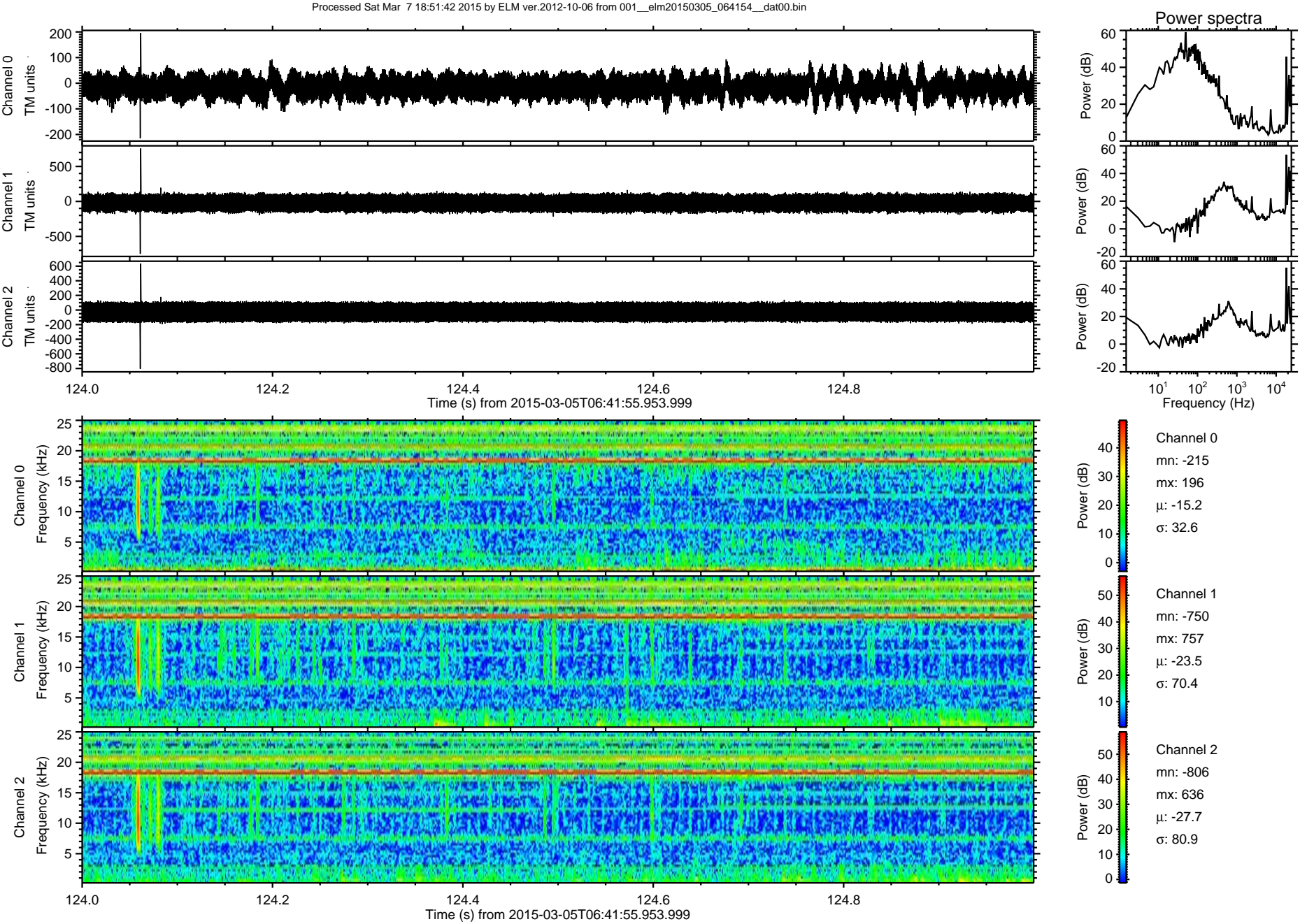
Processed Sat Mar 7 18:51:40 2015 by ELM ver.2012-10-06 from 001__elm20150305_064154__dat00.bin



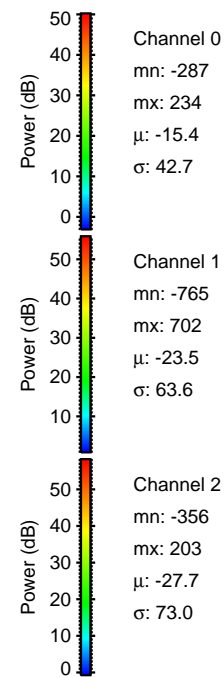
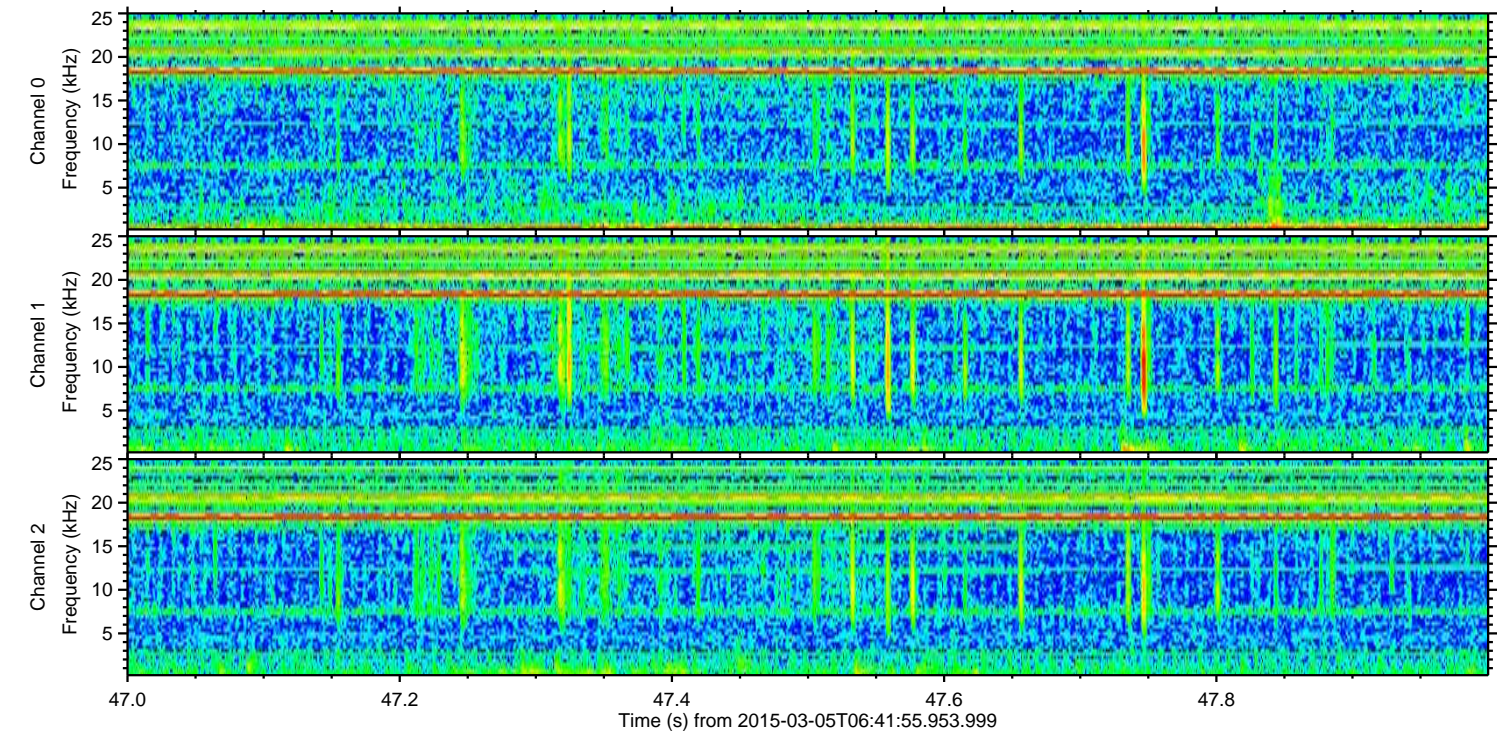
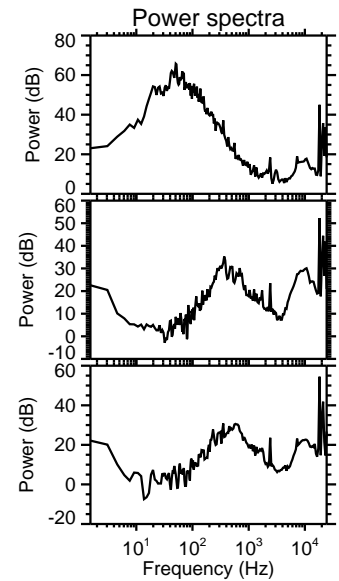
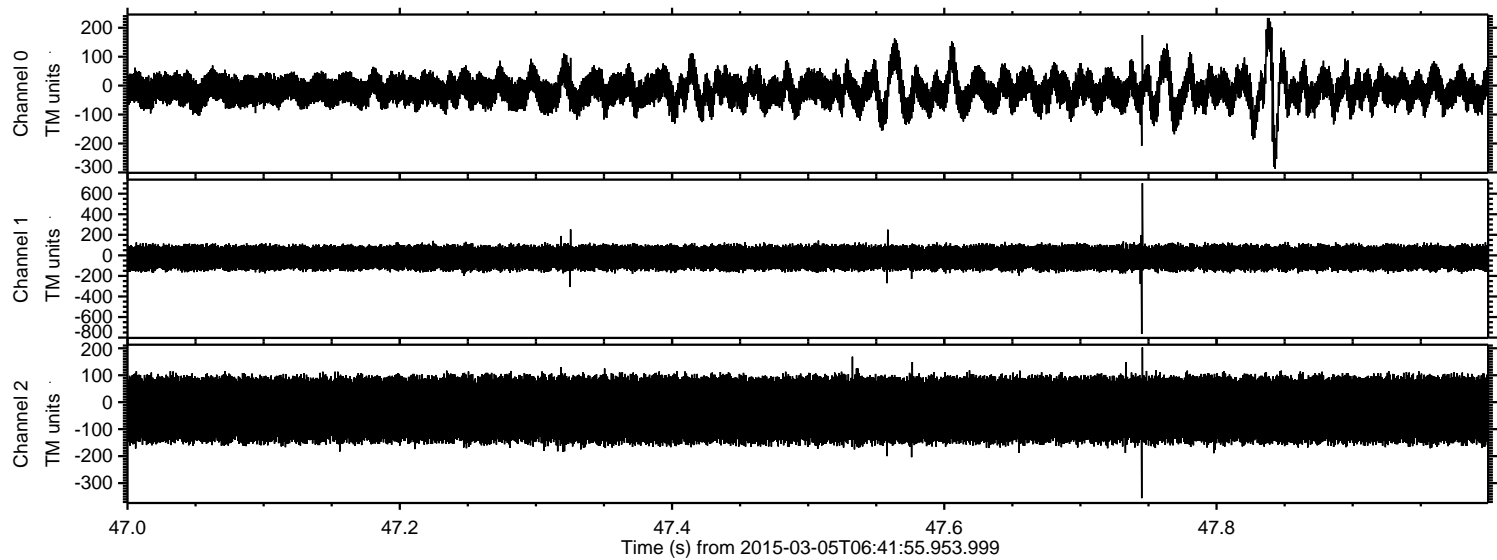
Processed Sat Mar 7 18:51:41 2015 by ELM ver.2012-10-06 from 001__elm20150305_064154__dat00.bin



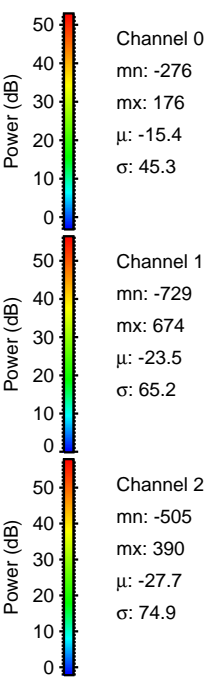
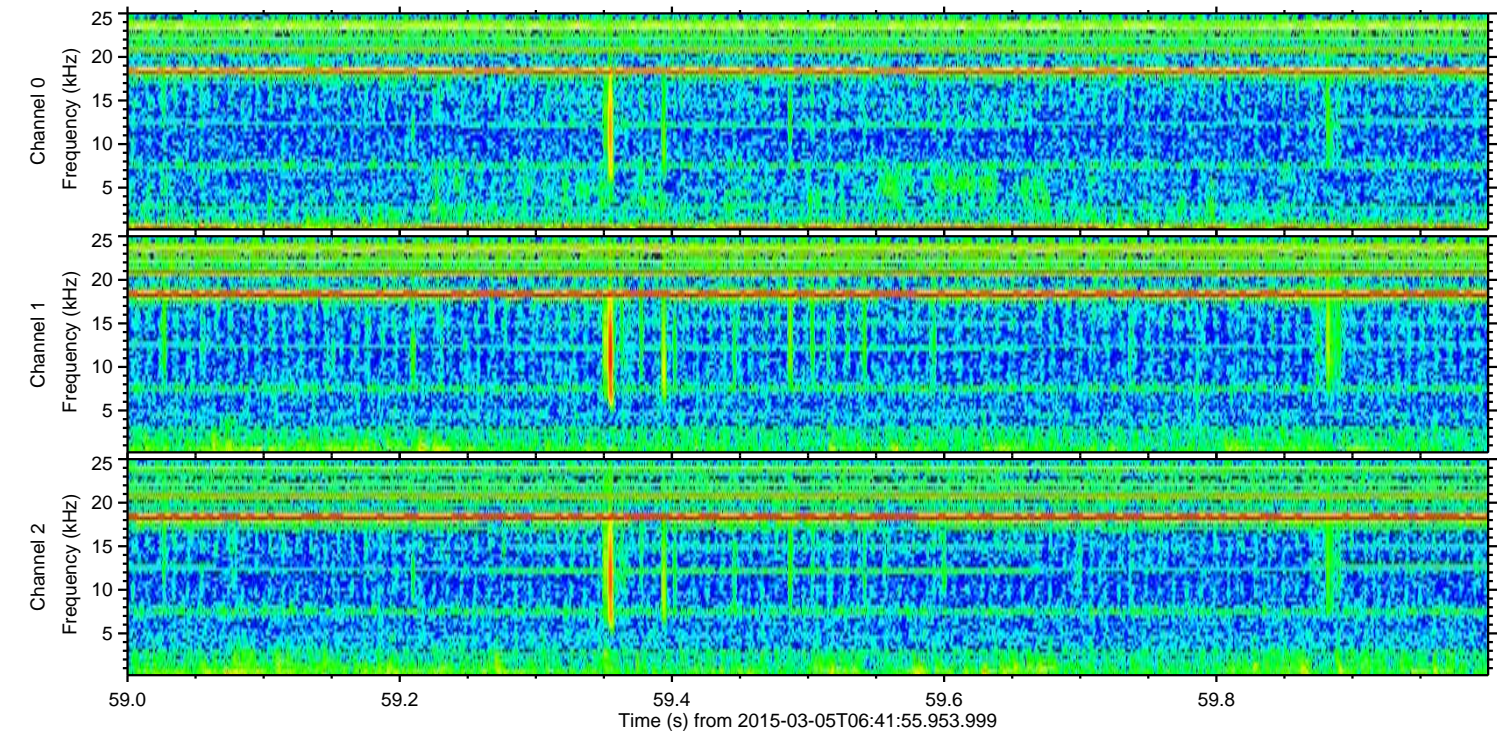
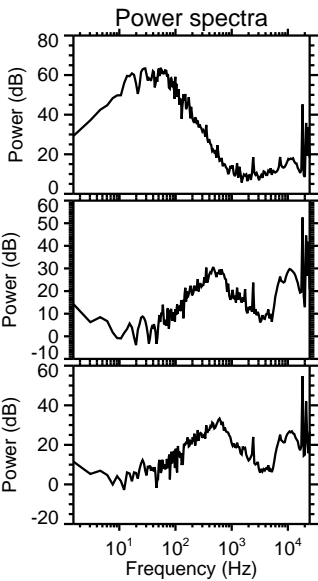
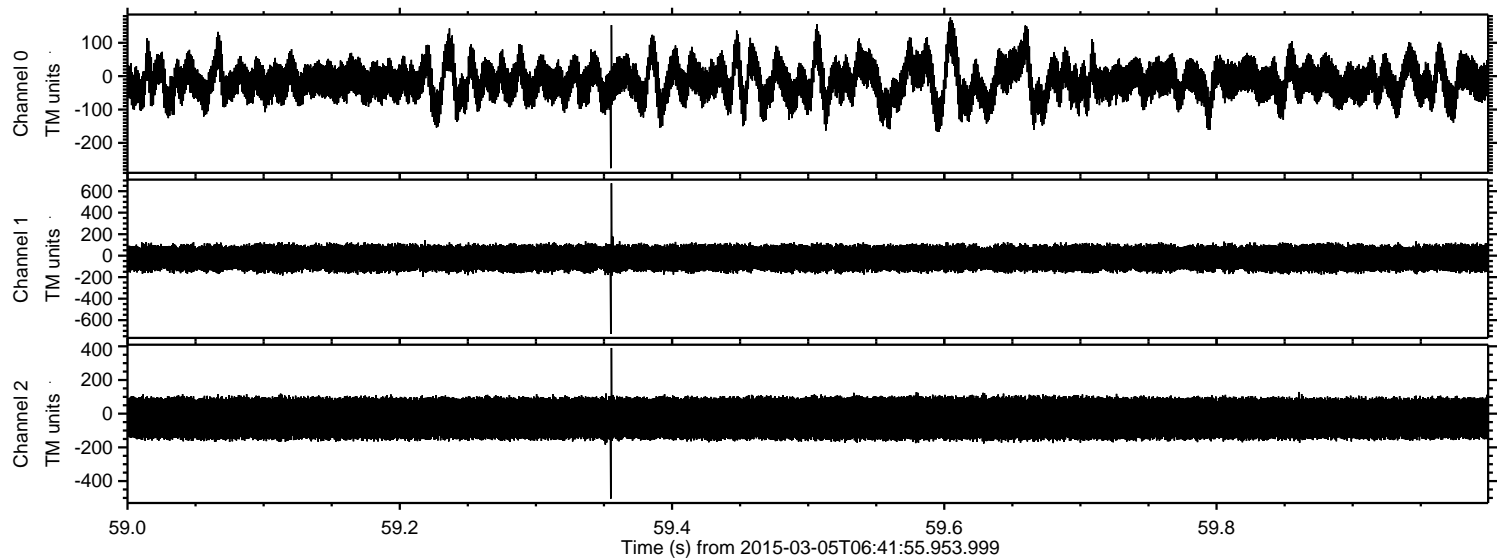
ELMAVAN 3D WAVEFORMS (Measured data sampled at 50 kHz) 49810 packets of 144 samples from 2015-03-05T06:41:55.953.999. Part 125/144



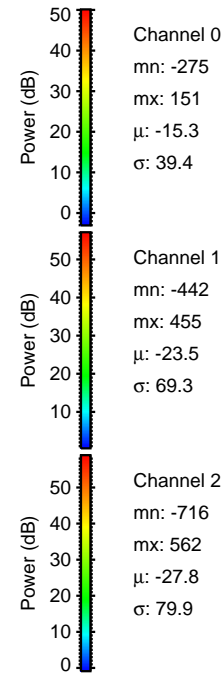
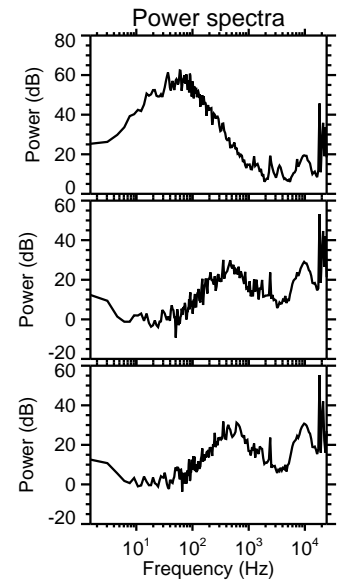
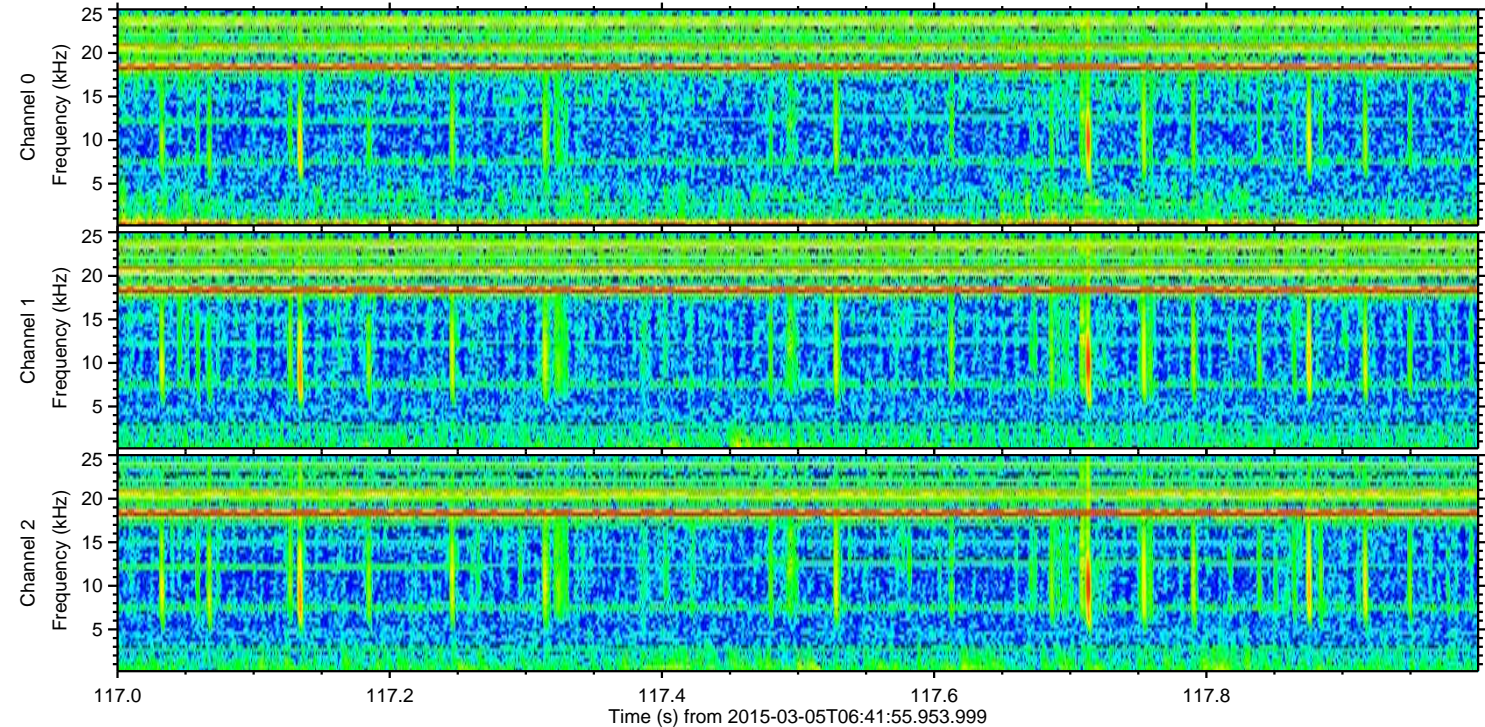
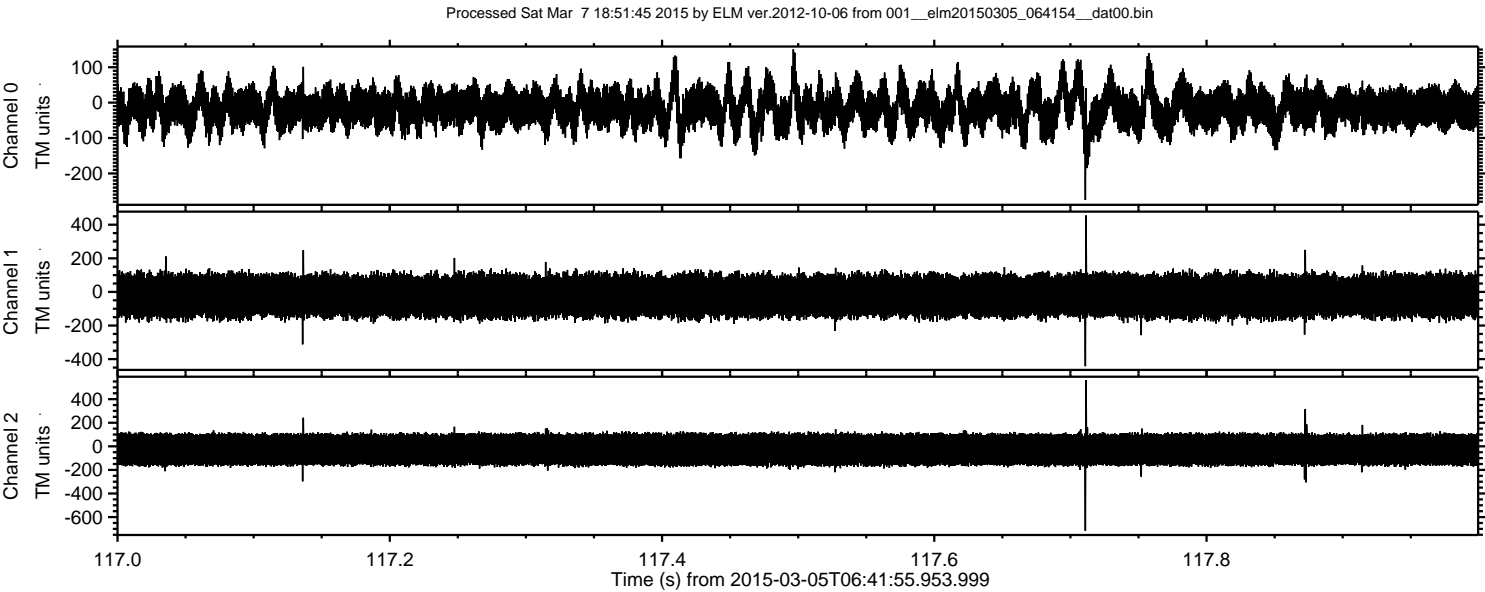
Processed Sat Mar 7 18:51:43 2015 by ELM ver.2012-10-06 from 001__elm20150305_064154__dat00.bin



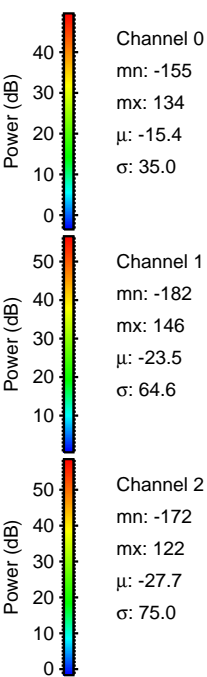
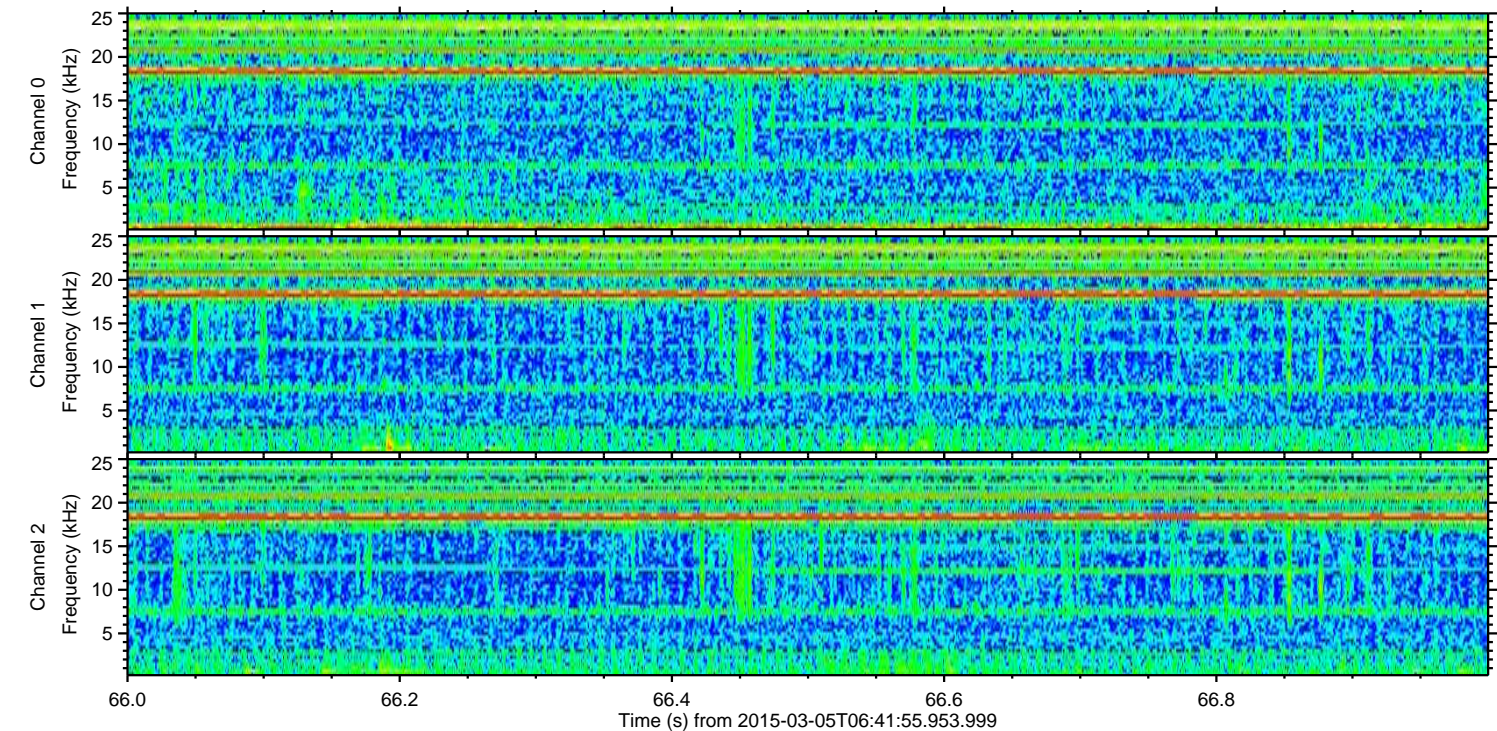
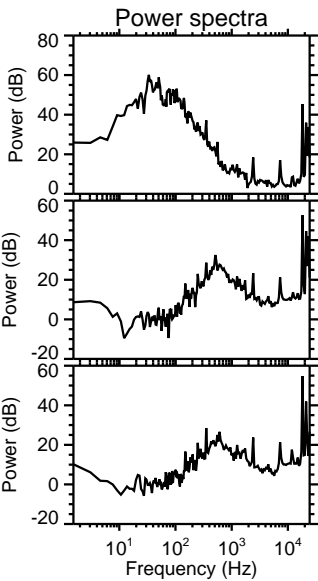
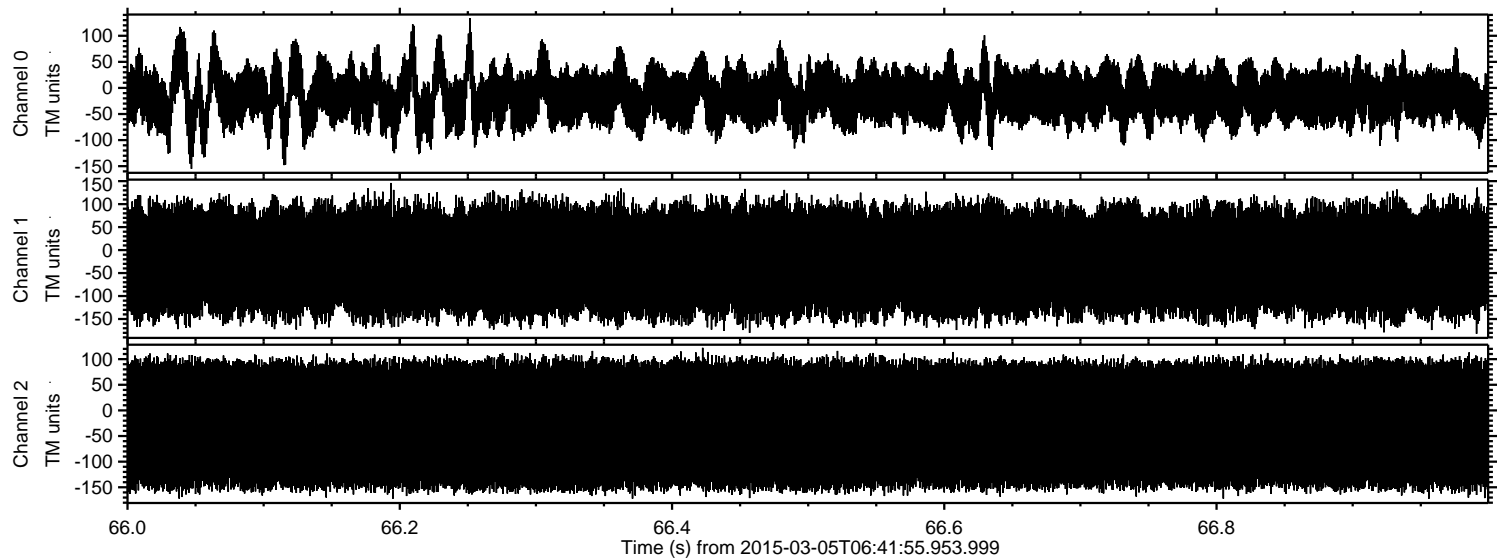
Processed Sat Mar 7 18:51:44 2015 by ELM ver.2012-10-06 from 001__elm20150305_064154__dat00.bin



ELMAVAN 3D WAVEFORMS (Measured data sampled at 50 kHz) 49810 packets of 144 samples from 2015-03-05T06:41:55.953.999. Part 118/144



Processed Sat Mar 7 18:51:46 2015 by ELM ver.2012-10-06 from 001__elm20150305_064154__dat00.bin



Channel 0
mn: -155
mx: 134
 μ : -15.4
 σ : 35.0

Channel 1
mn: -182
mx: 146
 μ : -23.5
 σ : 64.6

Channel 2
mn: -172
mx: 122
 μ : -27.7
 σ : 75.0