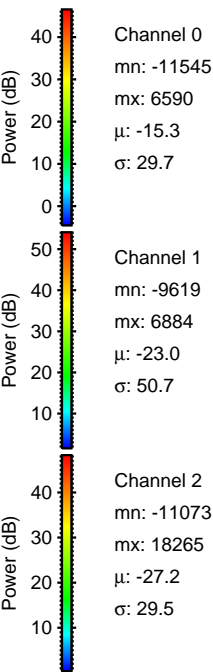
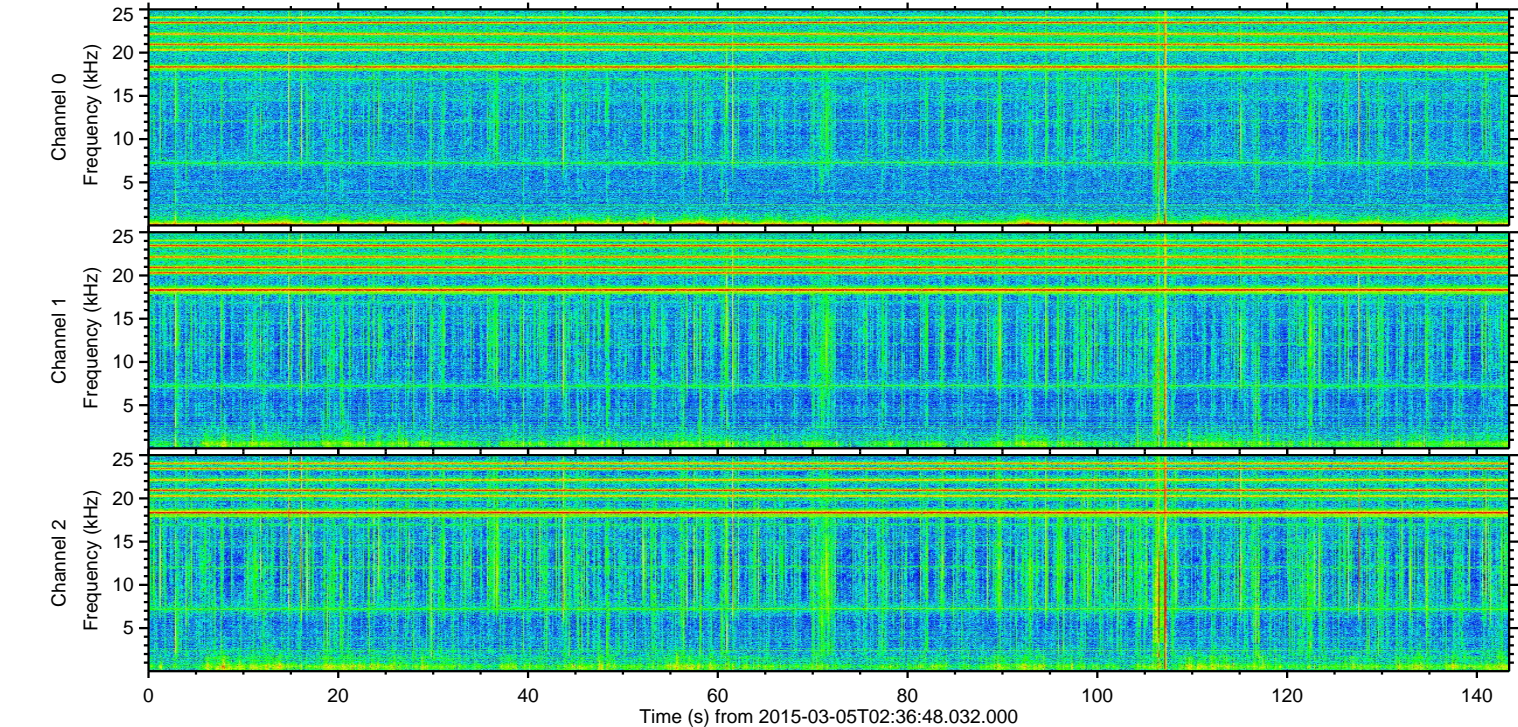
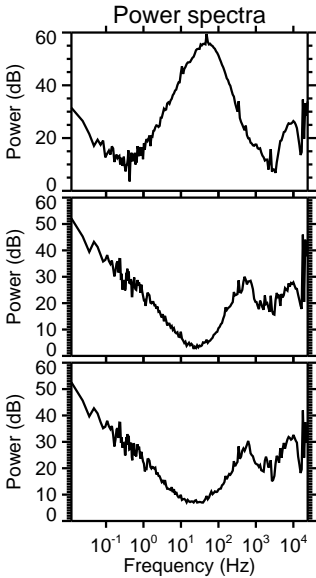
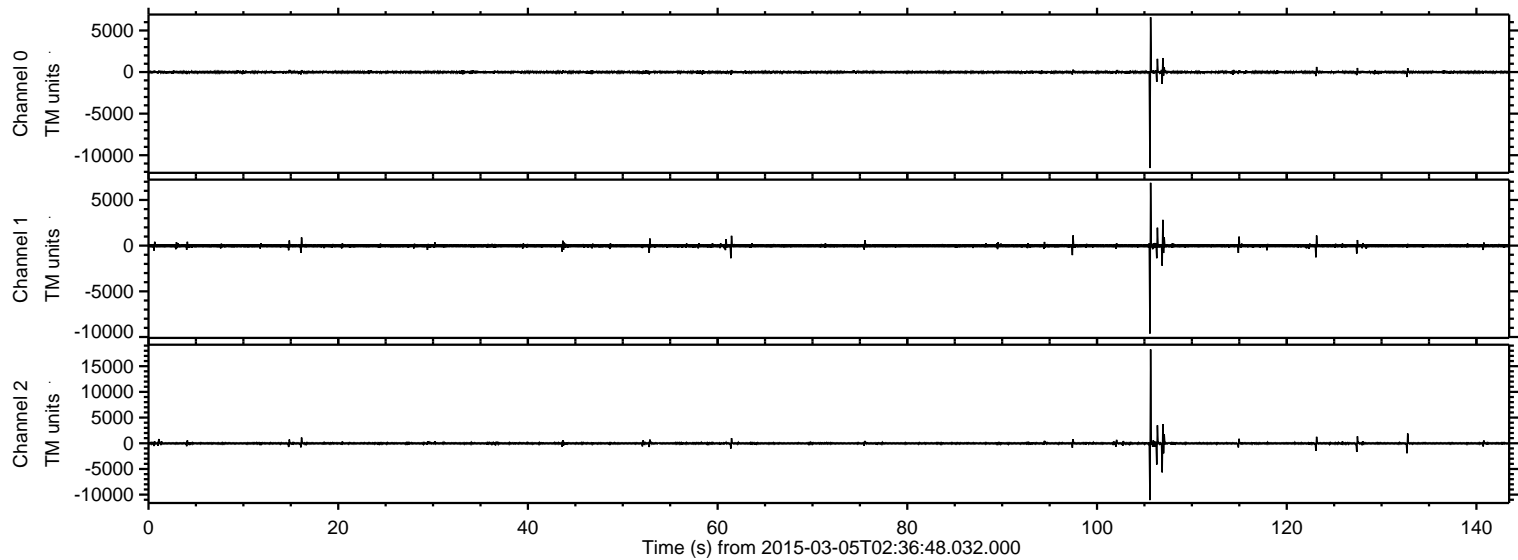


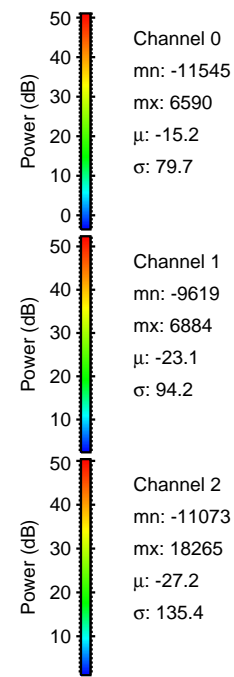
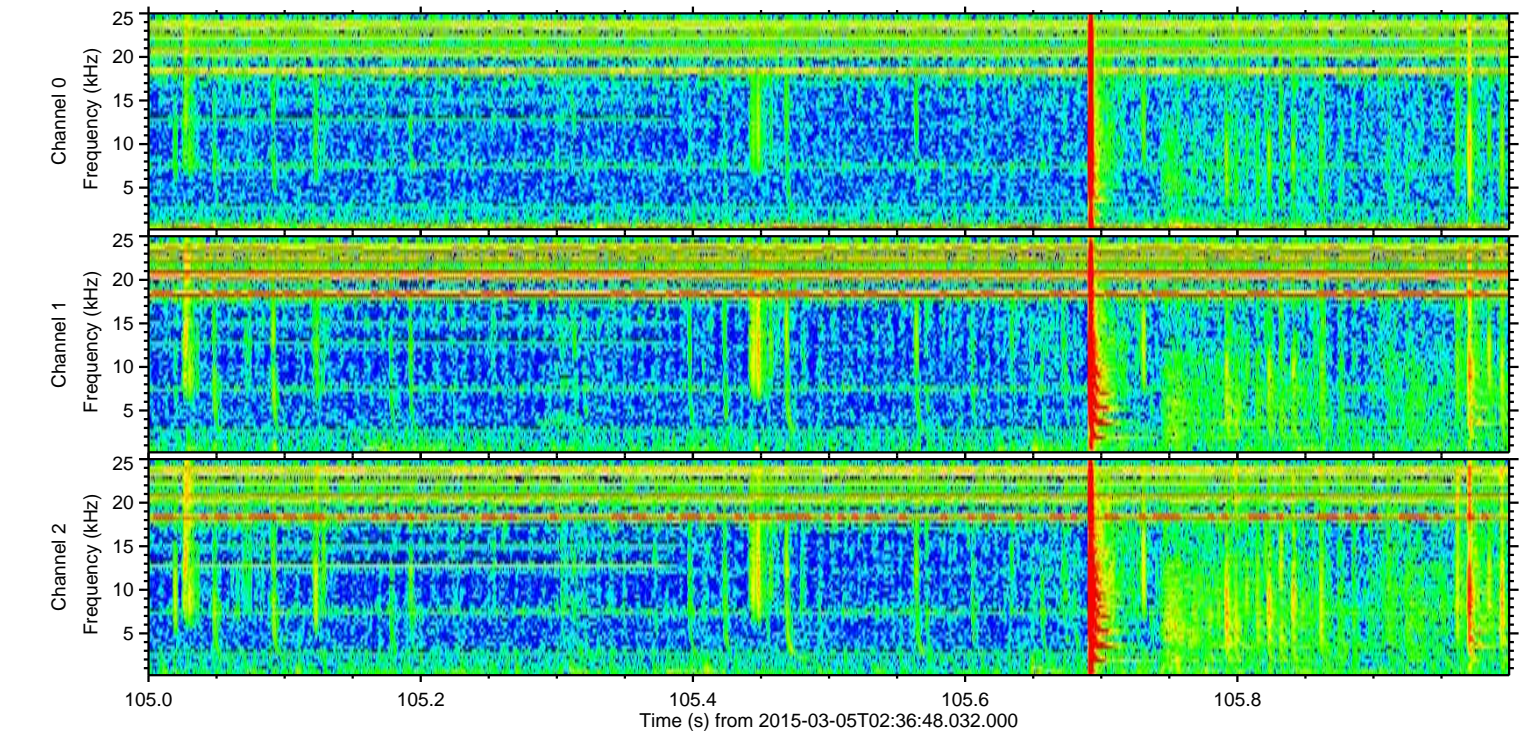
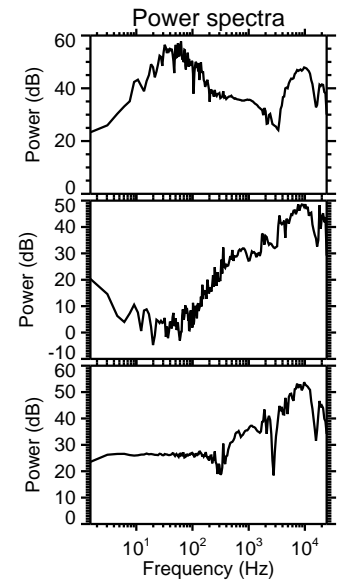
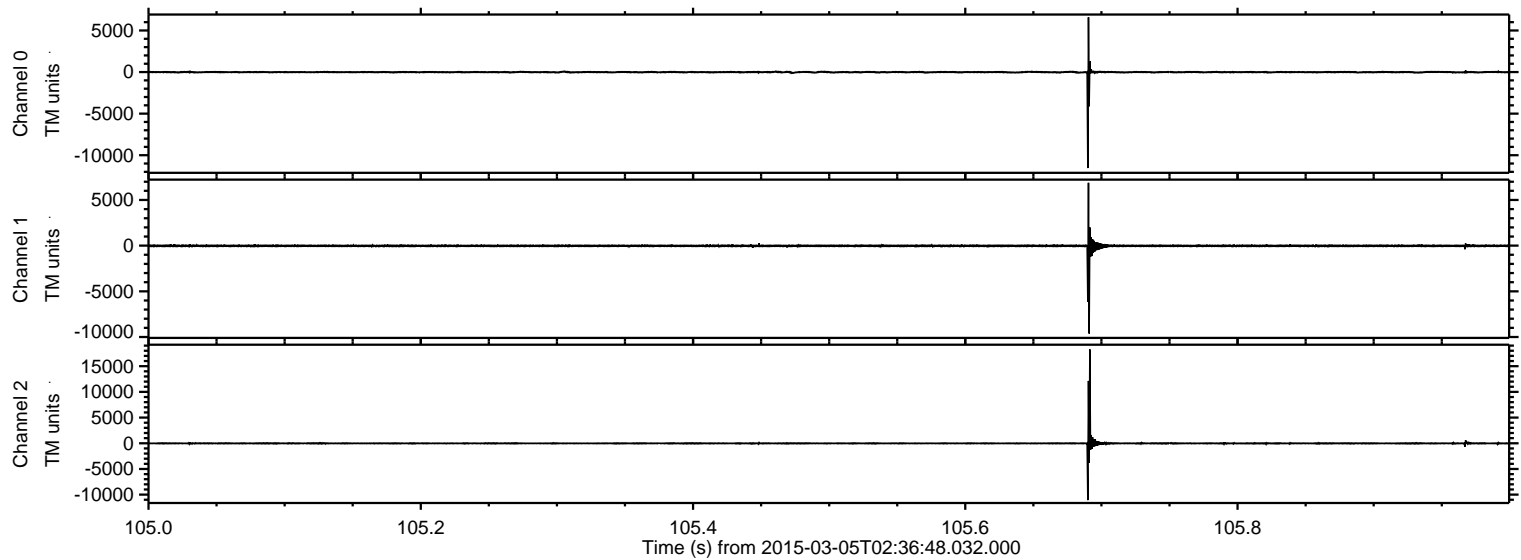
ELMAVAN 3D WAVEFORMS (Measured data sampled at 50 kHz) 49809 packets of 144 samples from 2015-03-05T02:36:48.032.000.

Processed Sat Mar 7 17:56:43 2015 by ELM ver.2012-10-06 from 001__elm20150305_023647__dat00.bin



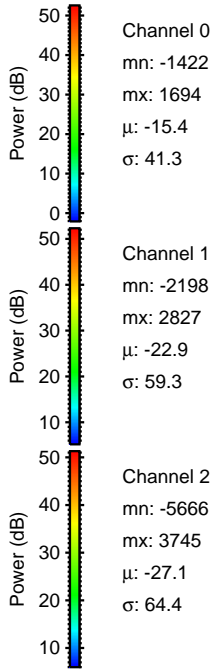
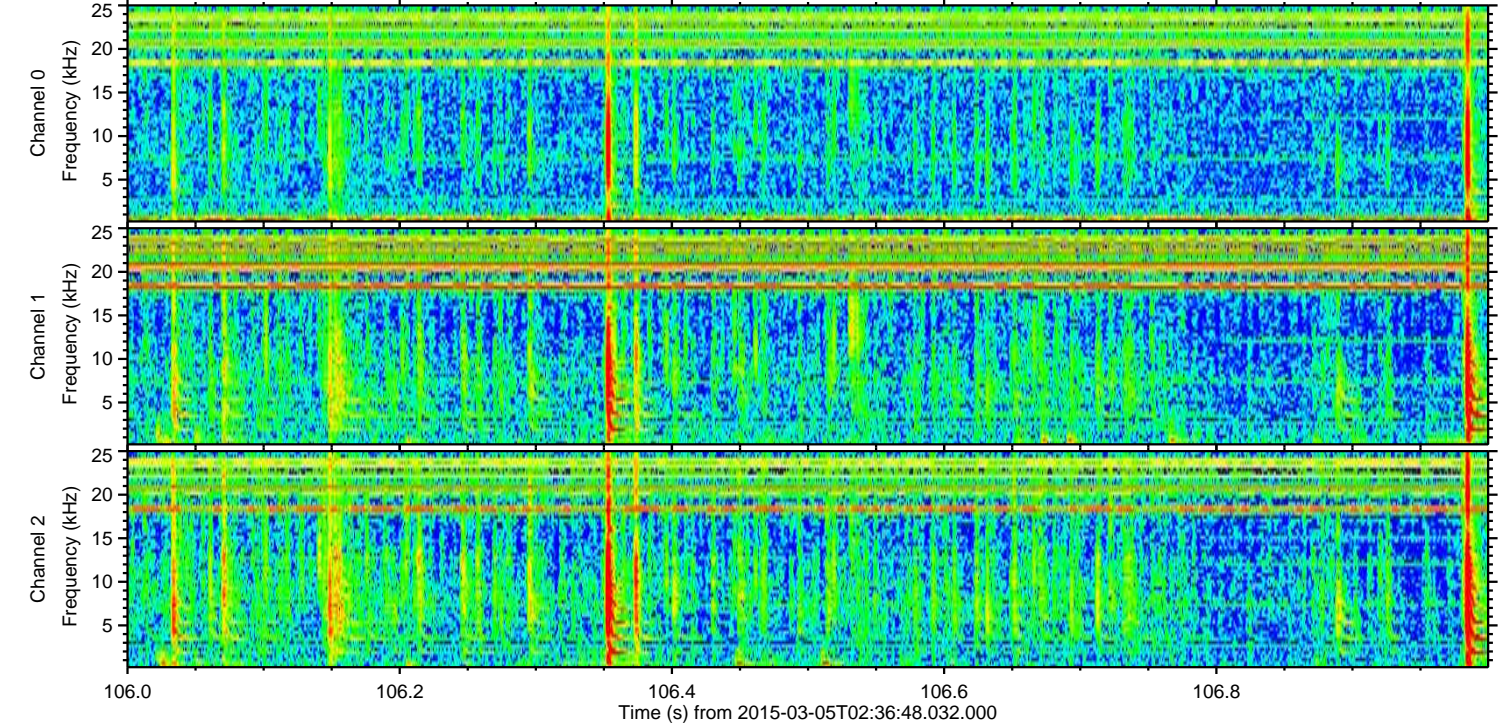
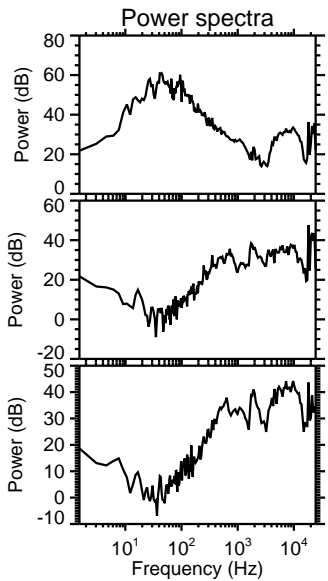
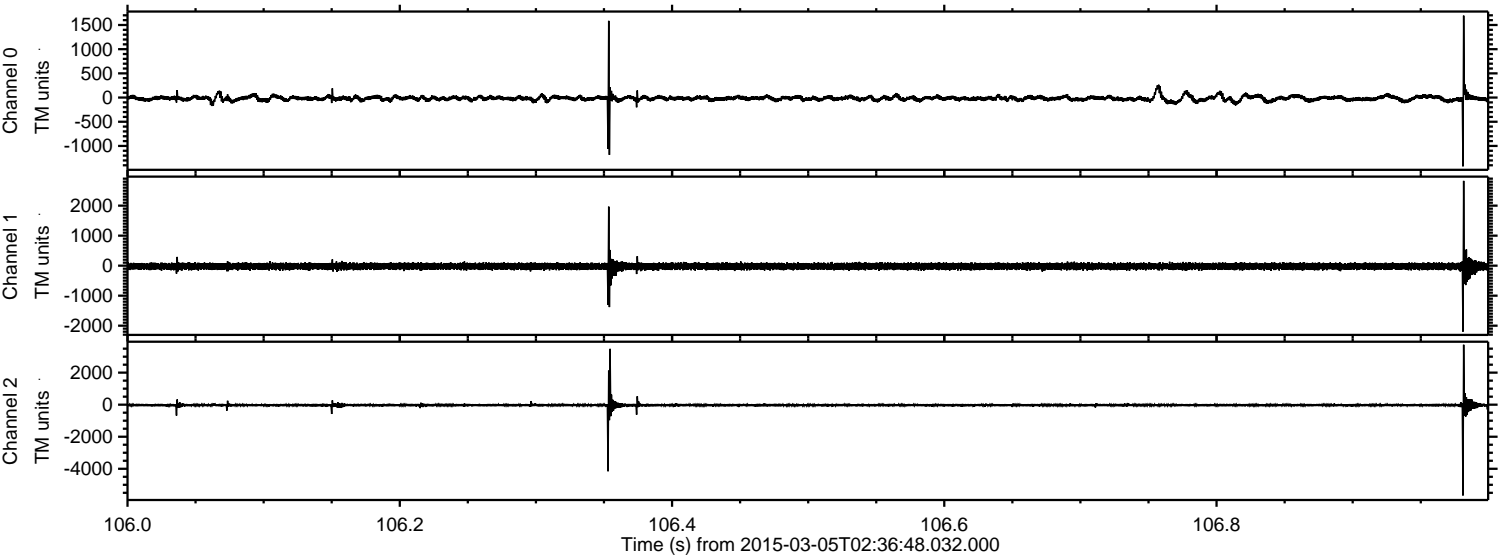
ELMAVAN 3D WAVEFORMS (Measured data sampled at 50 kHz) 49809 packets of 144 samples from 2015-03-05T02:36:48.032.000. Part 106/144

Processed Sat Mar 7 17:56:55 2015 by ELM ver.2012-10-06 from 001__elm20150305_023647__dat00.bin



ELMAVAN 3D WAVEFORMS (Measured data sampled at 50 kHz) 49809 packets of 144 samples from 2015-03-05T02:36:48.032.000. Part 107/144

Processed Sat Mar 7 17:56:55 2015 by ELM ver.2012-10-06 from 001__elm20150305_023647__dat00.bin



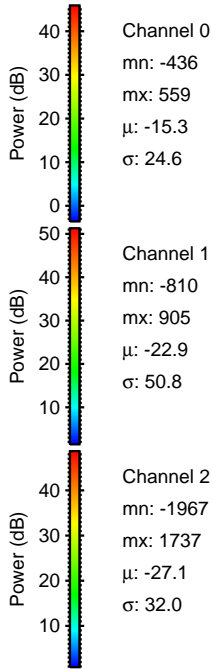
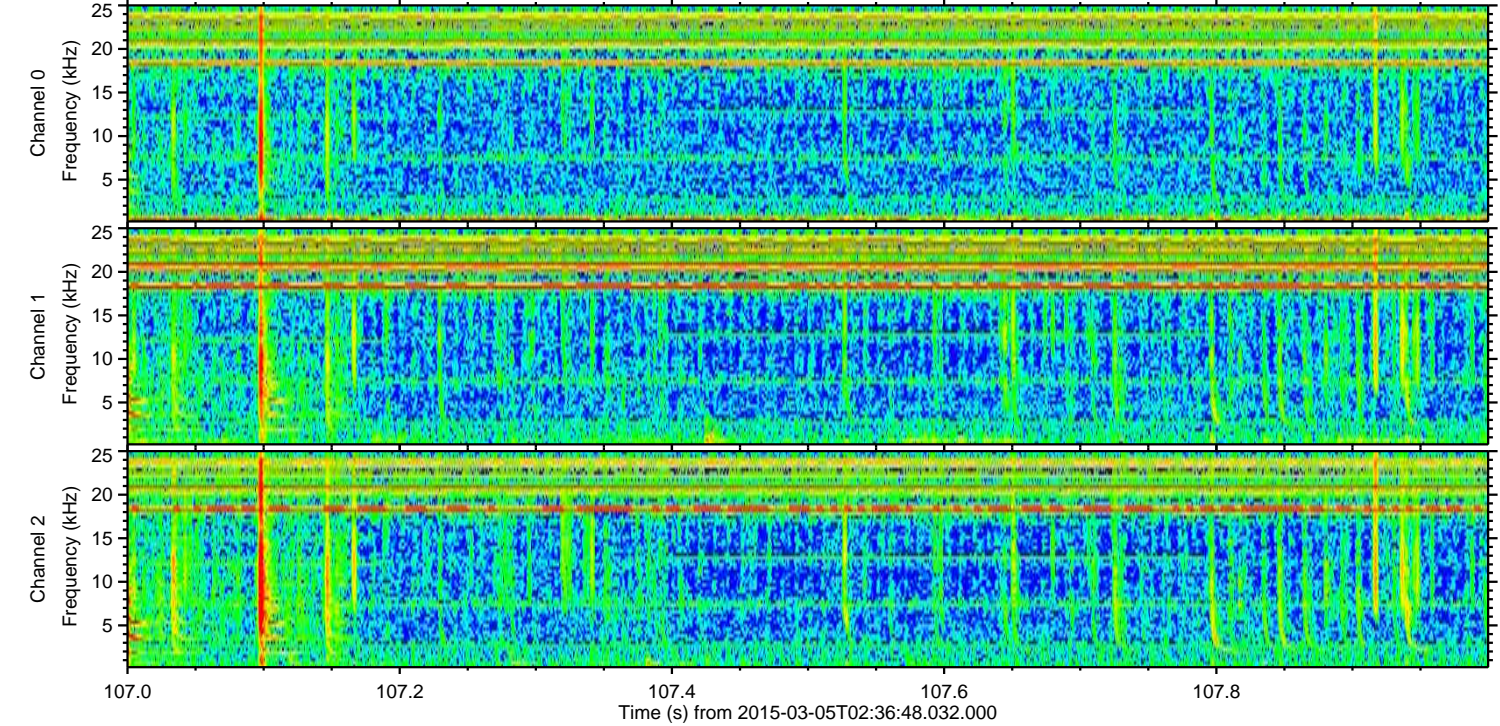
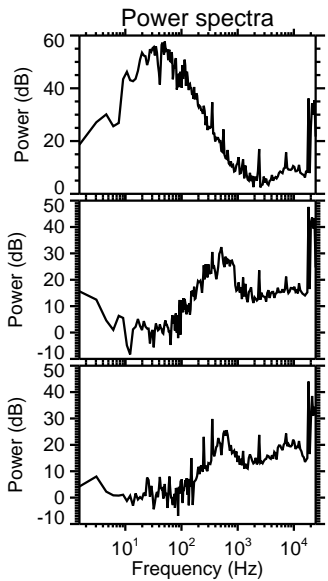
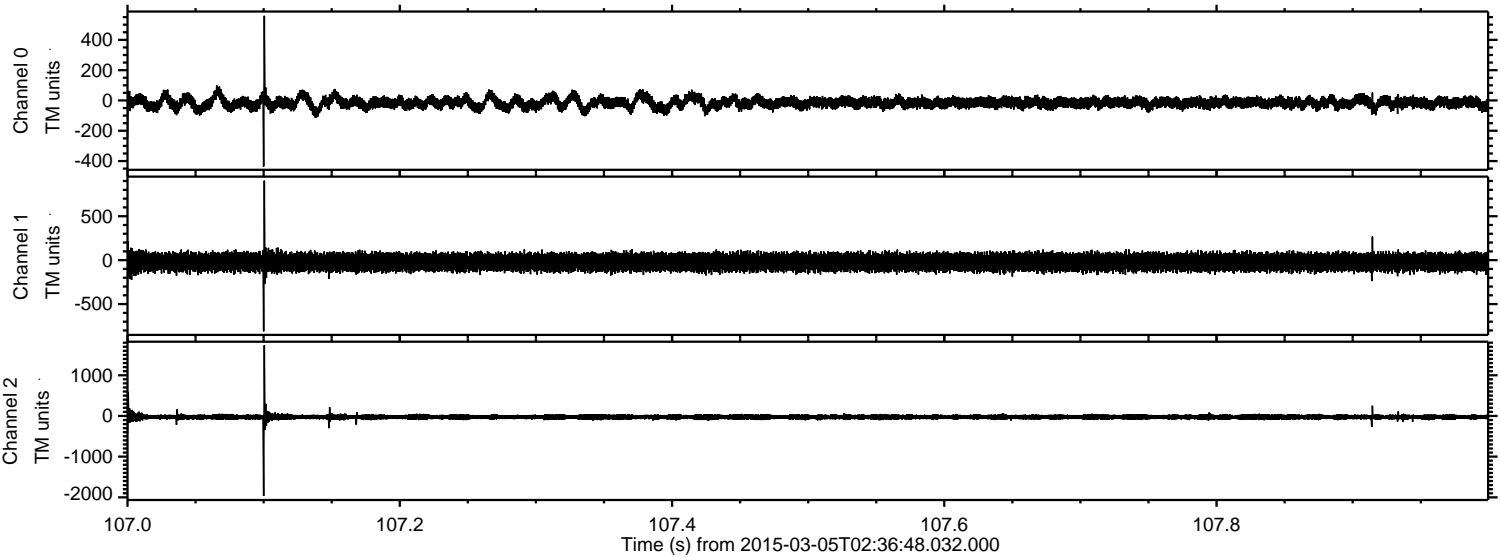
Channel 0
mn: -1422
mx: 1694
 μ : -15.4
 σ : 41.3

Channel 1
mn: -2198
mx: 2827
 μ : -22.9
 σ : 59.3

Channel 2
mn: -5666
mx: 3745
 μ : -27.1
 σ : 64.4

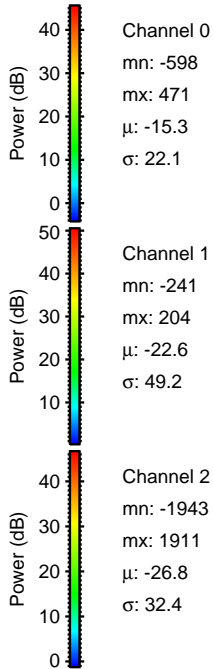
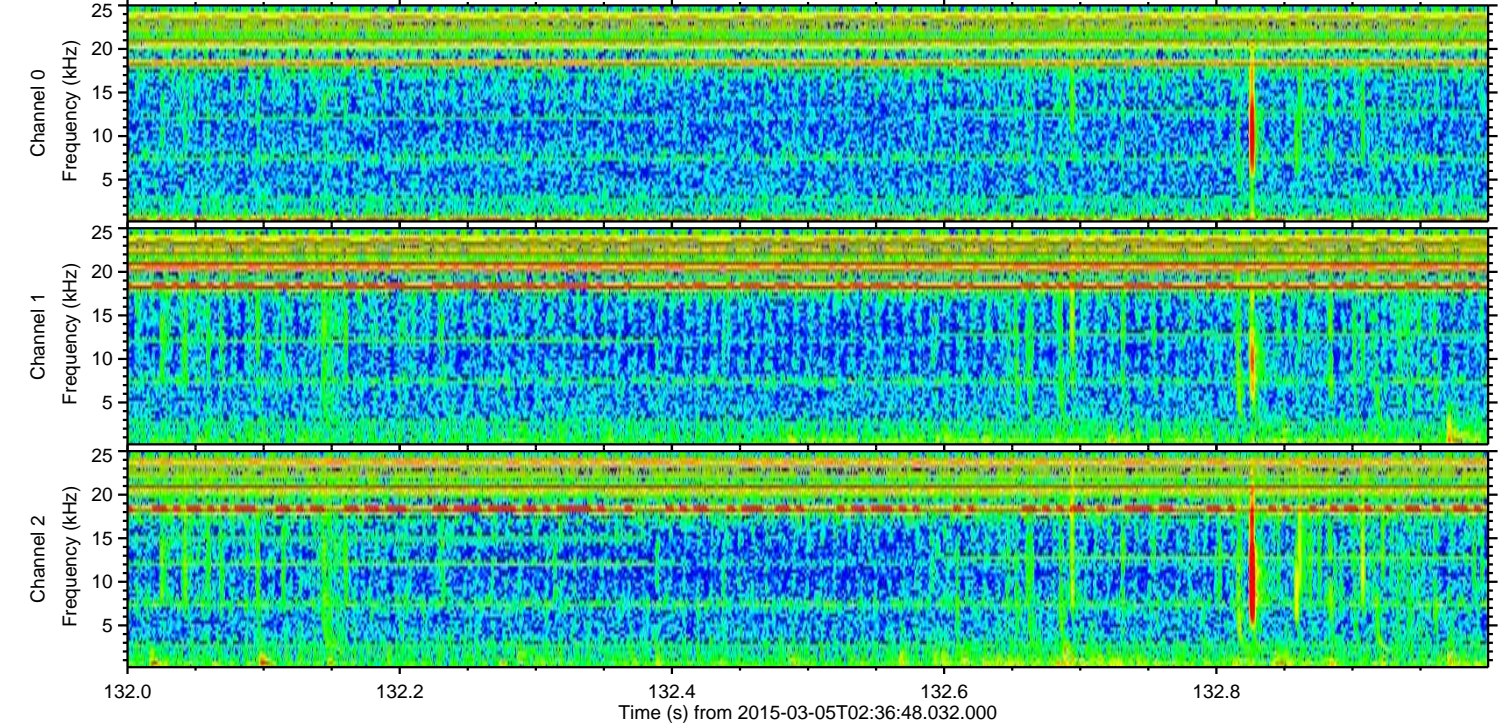
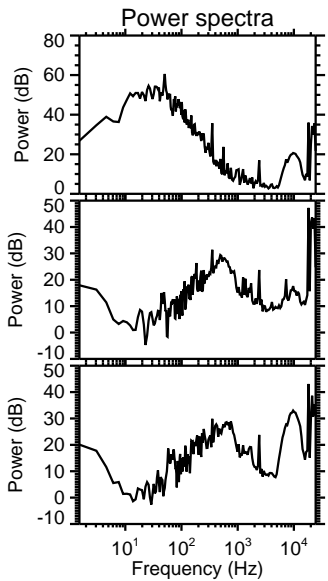
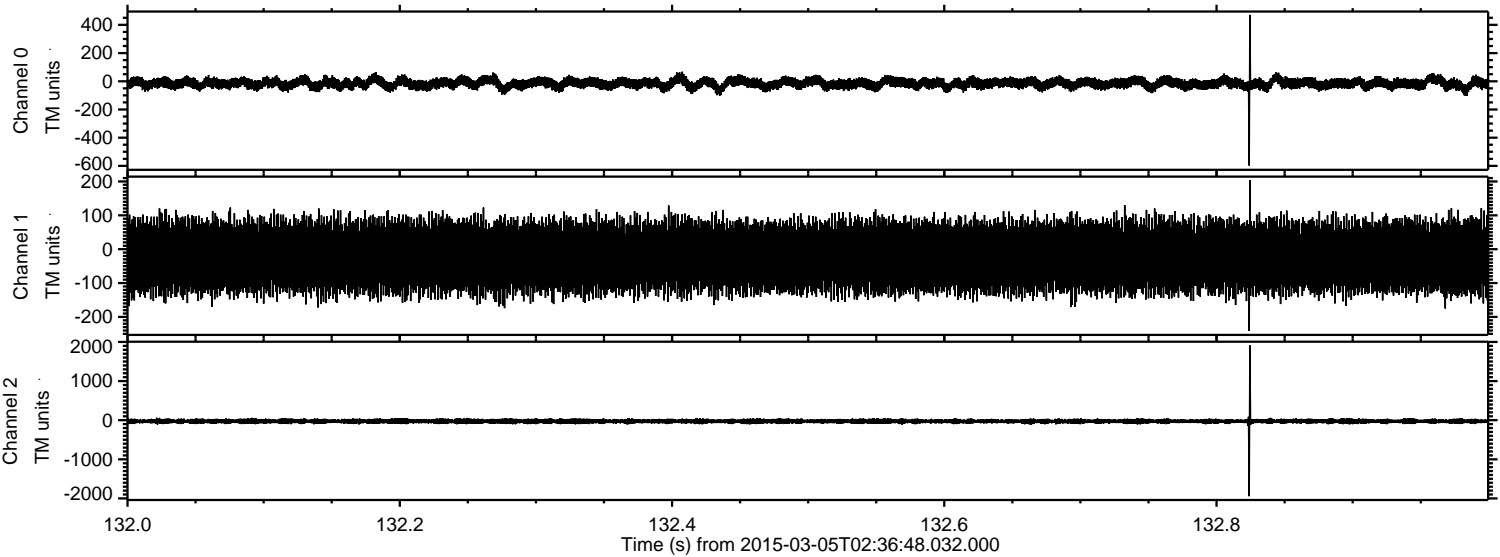
ELMAVAN 3D WAVEFORMS (Measured data sampled at 50 kHz) 49809 packets of 144 samples from 2015-03-05T02:36:48.032.000. Part 108/144

Processed Sat Mar 7 17:56:56 2015 by ELM ver.2012-10-06 from 001__elm20150305_023647__dat00.bin



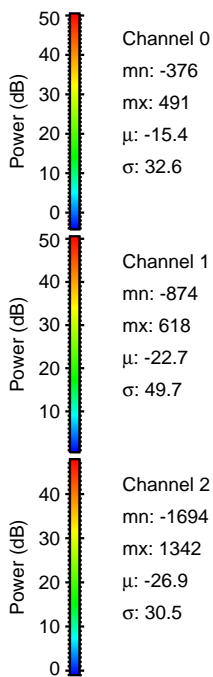
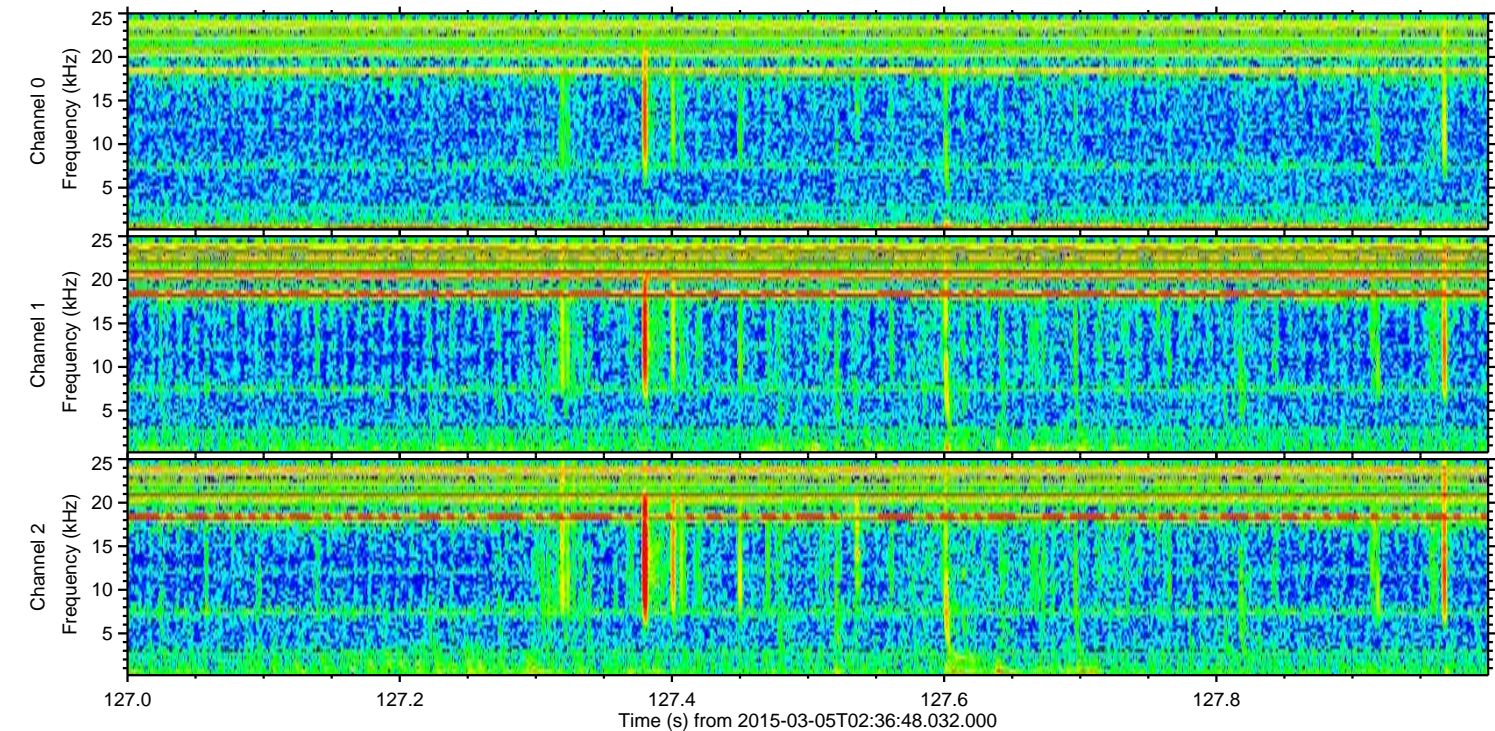
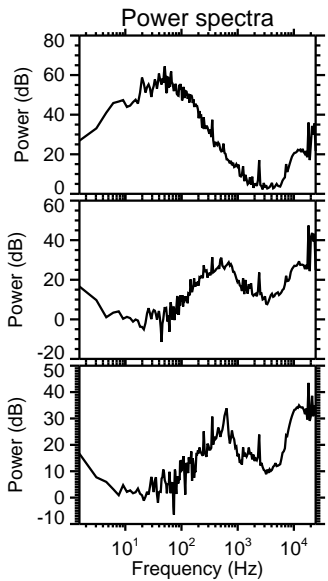
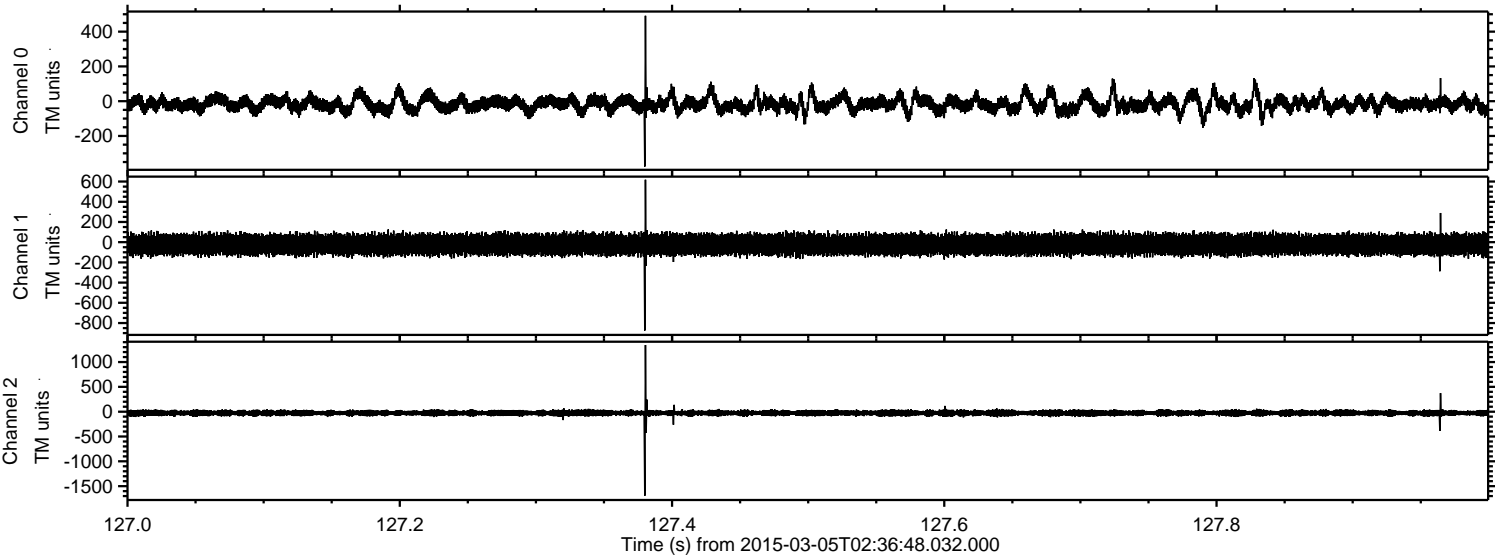
ELMAVAN 3D WAVEFORMS (Measured data sampled at 50 kHz) 49809 packets of 144 samples from 2015-03-05T02:36:48.032.000. Part 133/144

Processed Sat Mar 7 17:56:57 2015 by ELM ver.2012-10-06 from 001__elm20150305_023647__dat00.bin

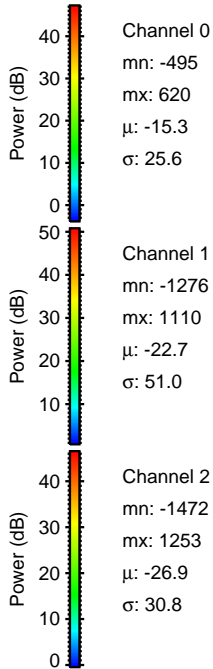
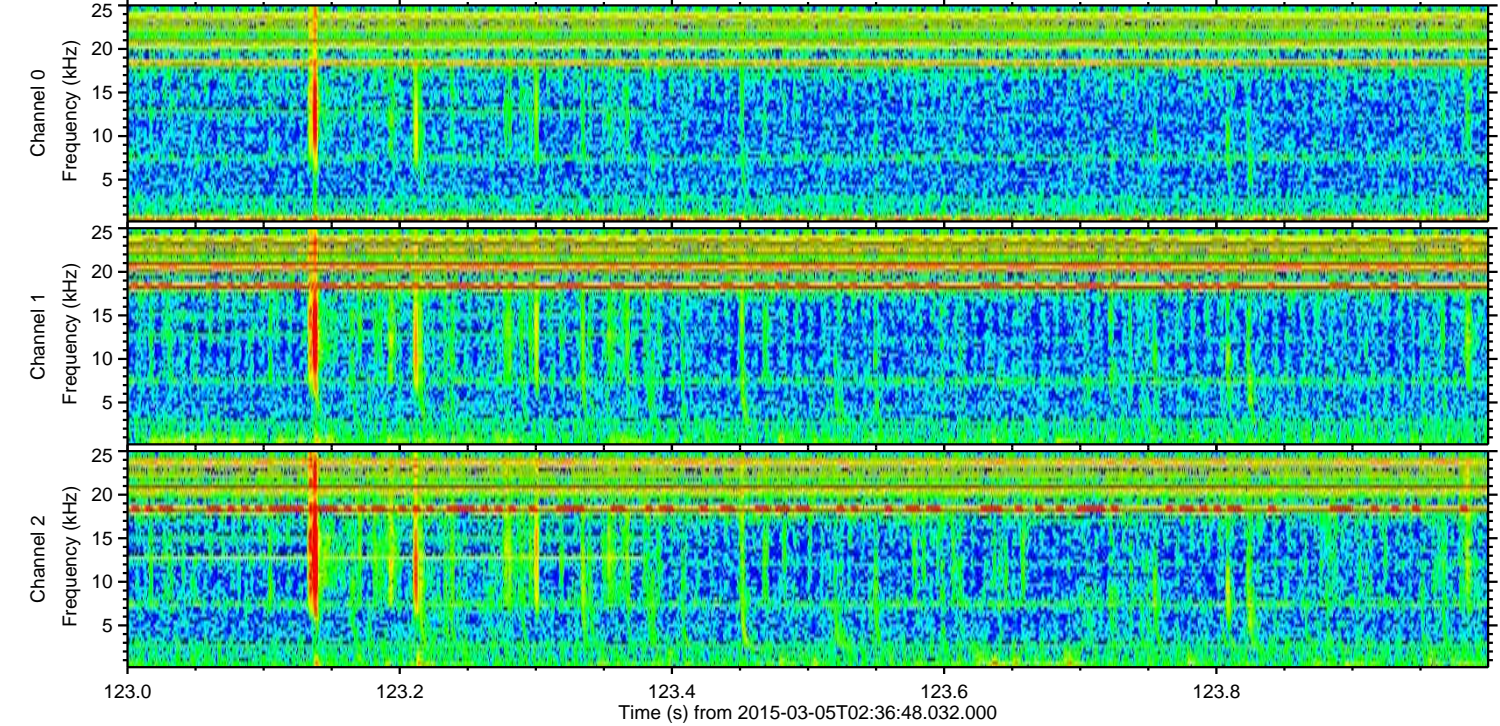
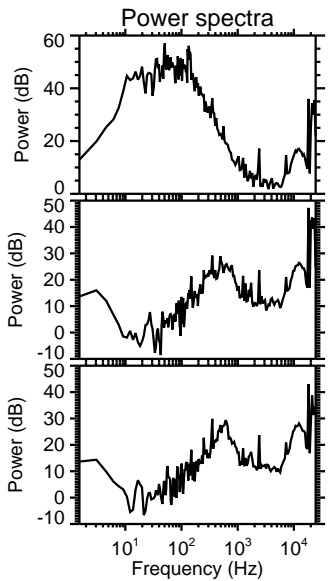
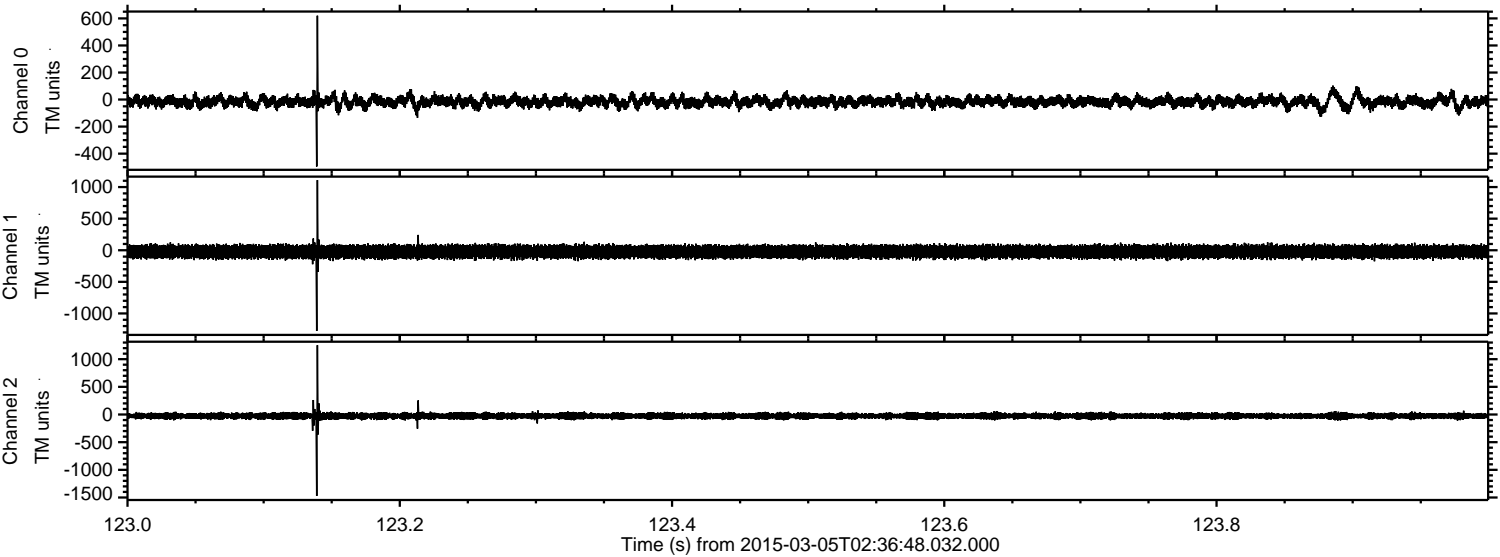


ELMAVAN 3D WAVEFORMS (Measured data sampled at 50 kHz) 49809 packets of 144 samples from 2015-03-05T02:36:48.032.000. Part 128/144

Processed Sat Mar 7 17:56:58 2015 by ELM ver.2012-10-06 from 001__elm20150305_023647__dat00.bin



Processed Sat Mar 7 17:56:59 2015 by ELM ver.2012-10-06 from 001__elm20150305_023647__dat00.bin

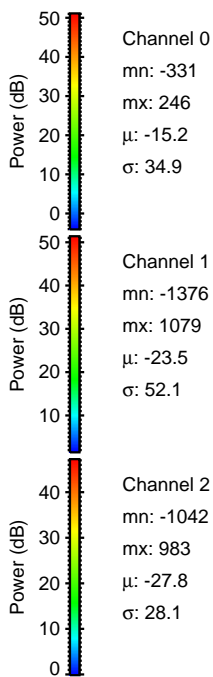
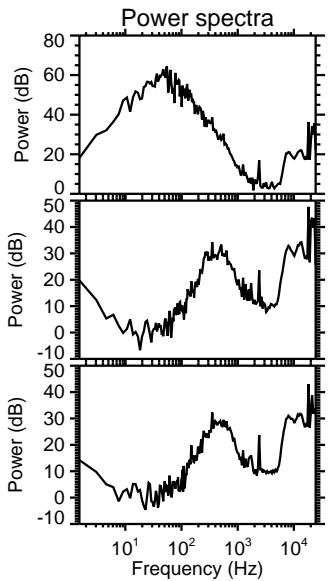
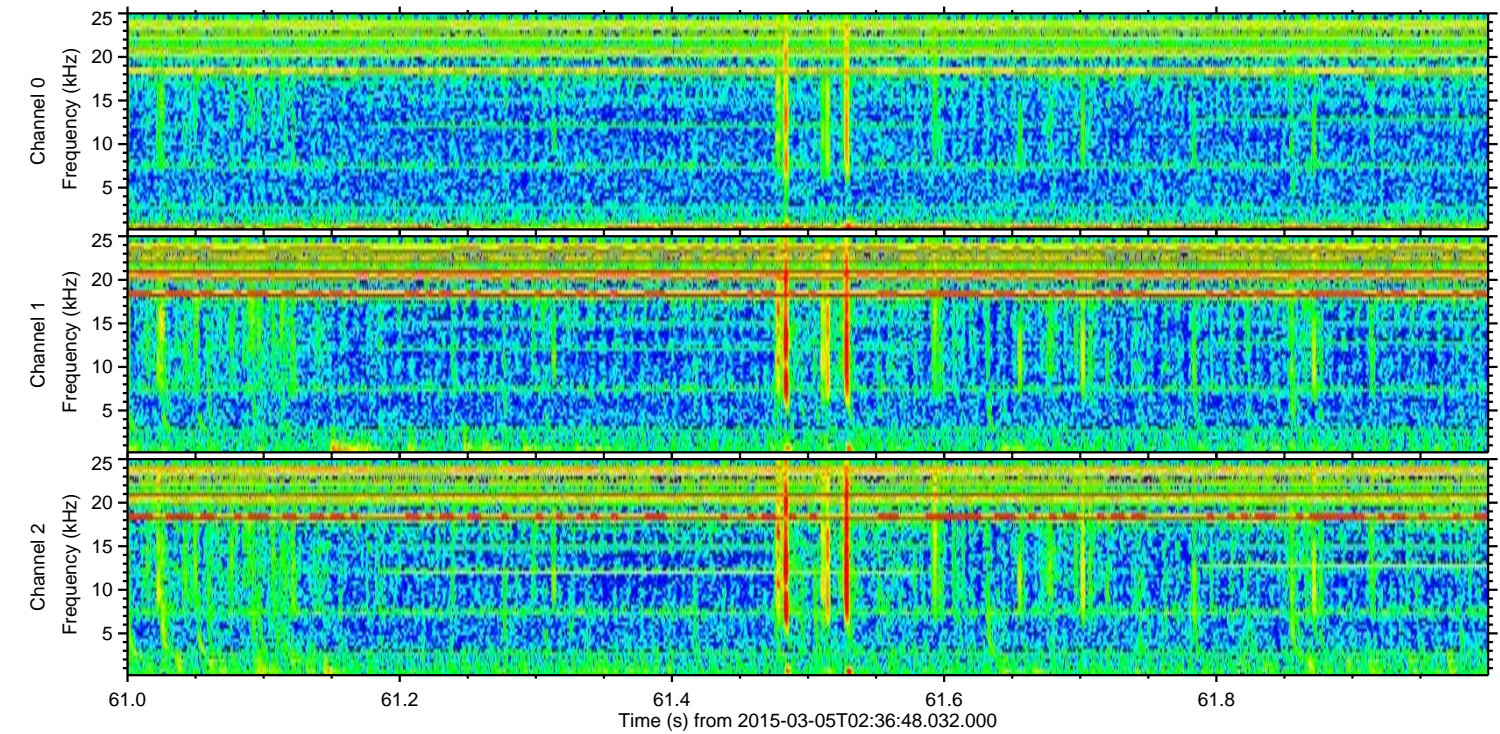
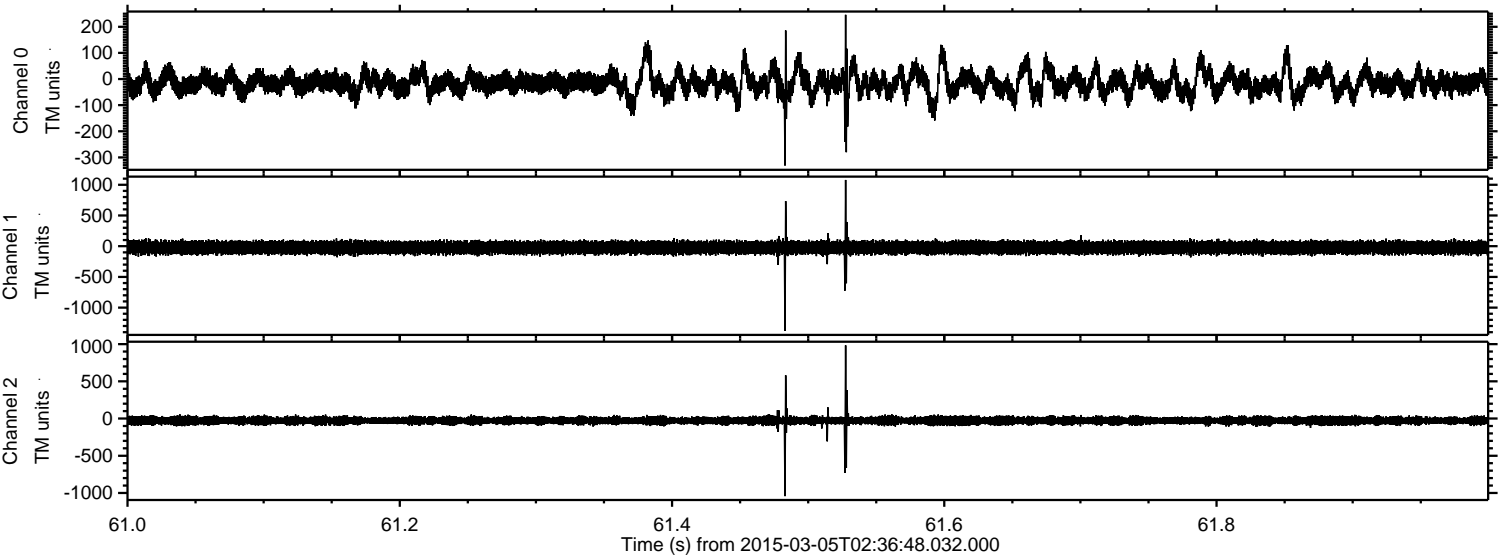


Channel 0
mn: -495
mx: 620
 μ : -15.3
 σ : 25.6

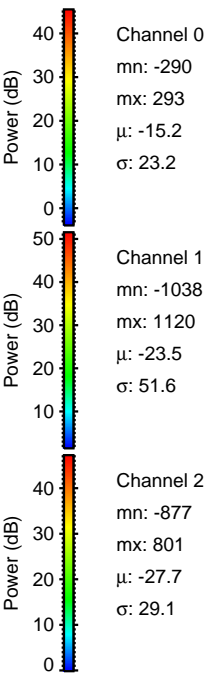
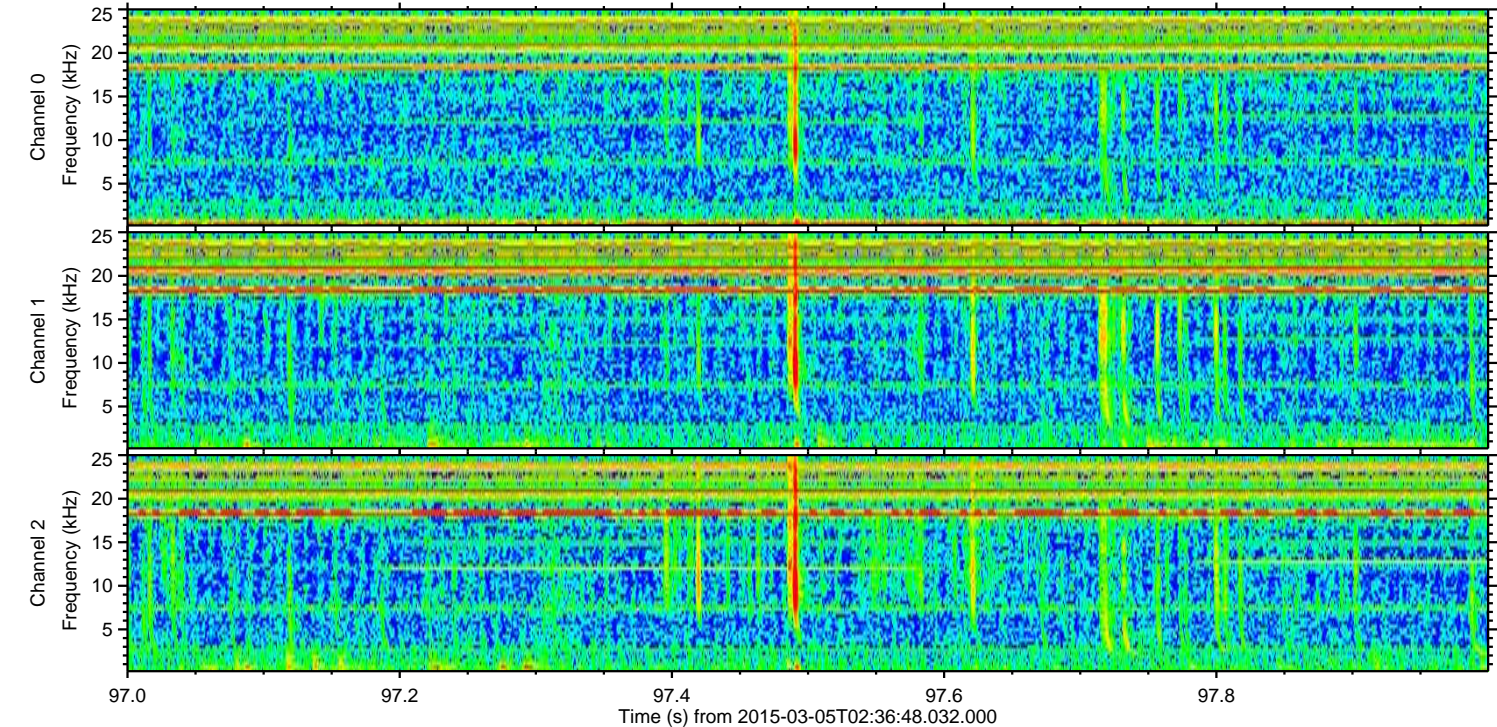
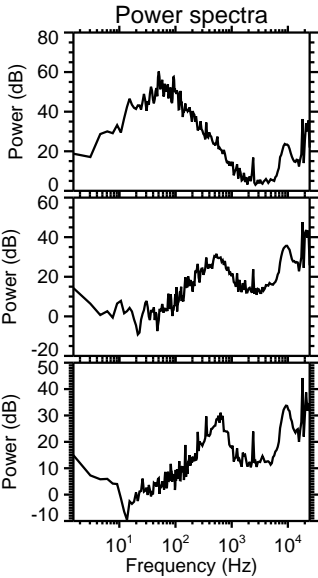
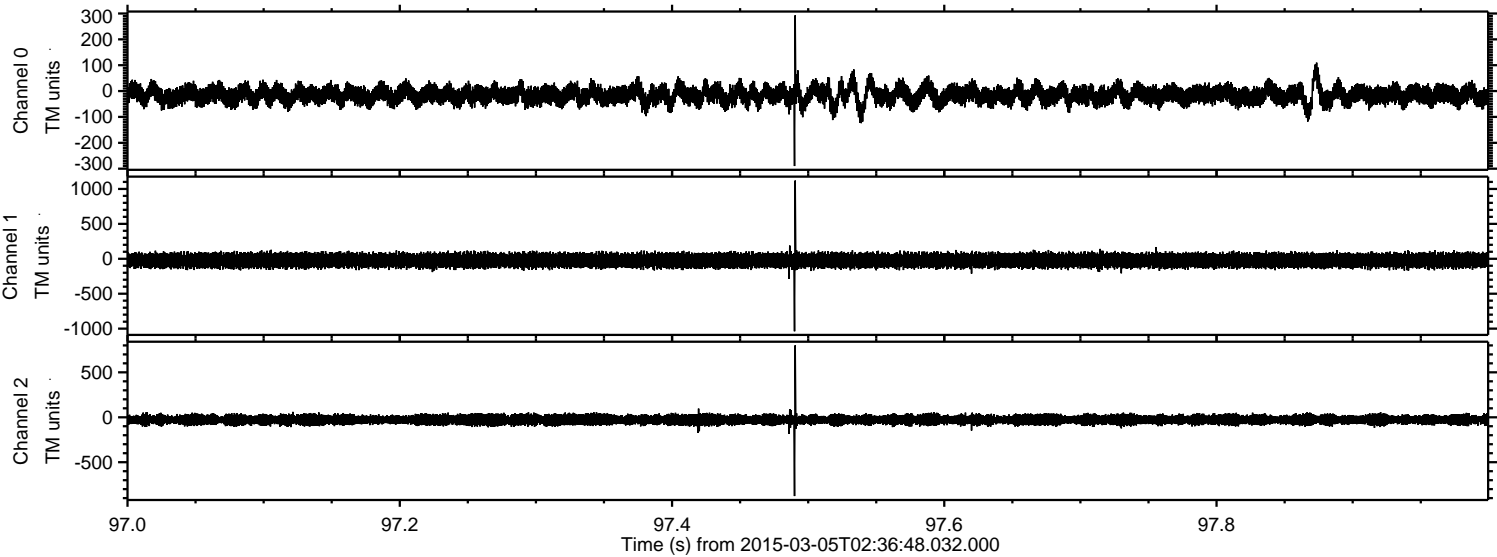
Channel 1
mn: -1276
mx: 1110
 μ : -22.7
 σ : 51.0

Channel 2
mn: -1472
mx: 1253
 μ : -26.9
 σ : 30.8

Processed Sat Mar 7 17:57:00 2015 by ELM ver.2012-10-06 from 001__elm20150305_023647__dat00.bin



Processed Sat Mar 7 17:57:01 2015 by ELM ver.2012-10-06 from 001__elm20150305_023647__dat00.bin



Processed Sat Mar 7 17:57:02 2015 by ELM ver.2012-10-06 from 001__elm20150305_023647__dat00.bin

