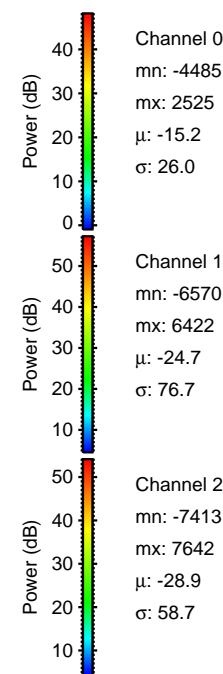
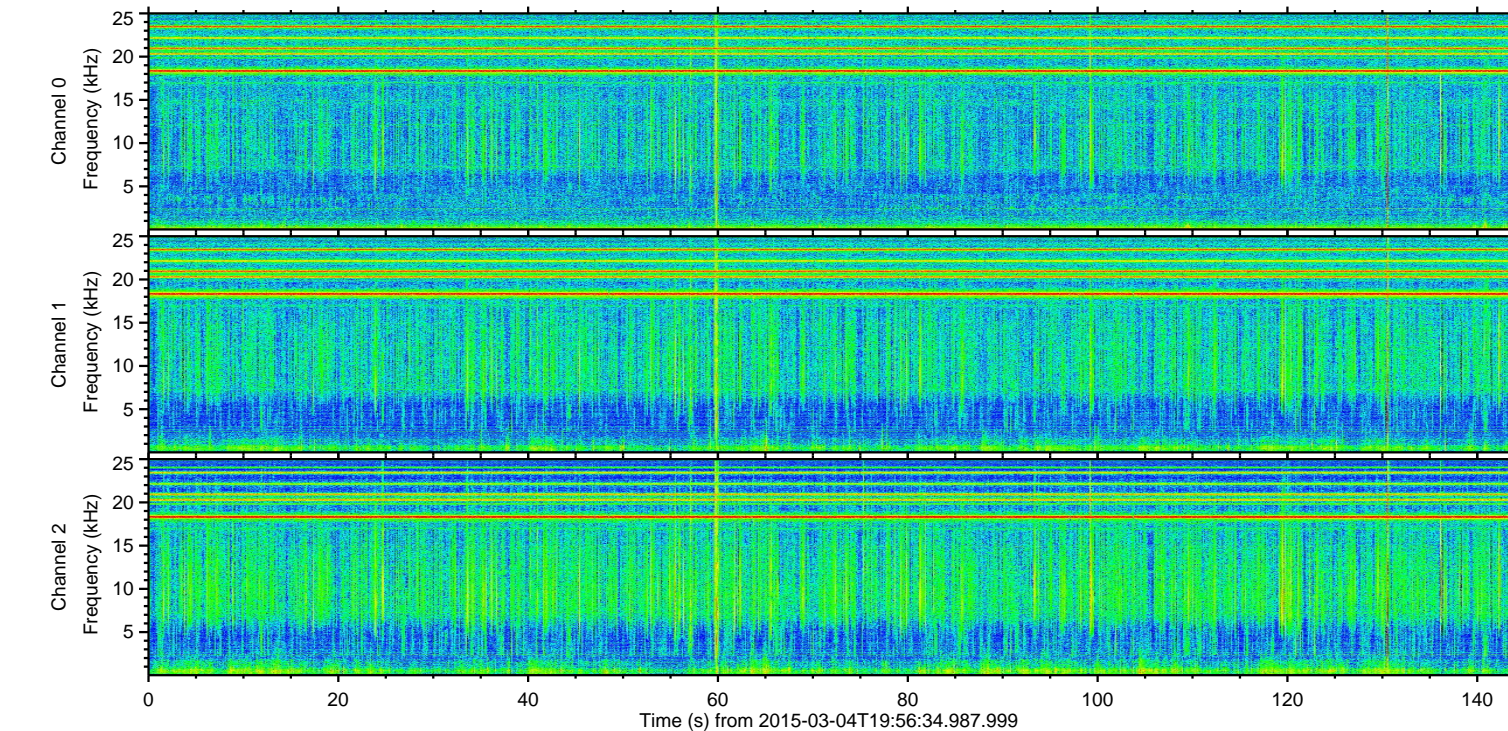
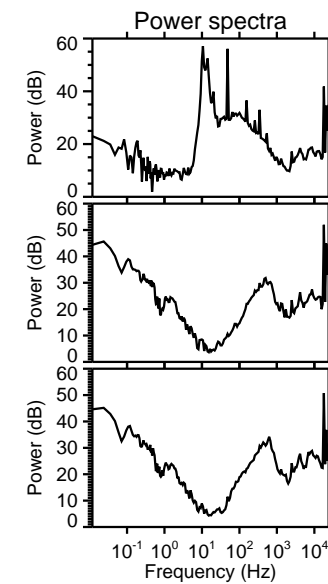
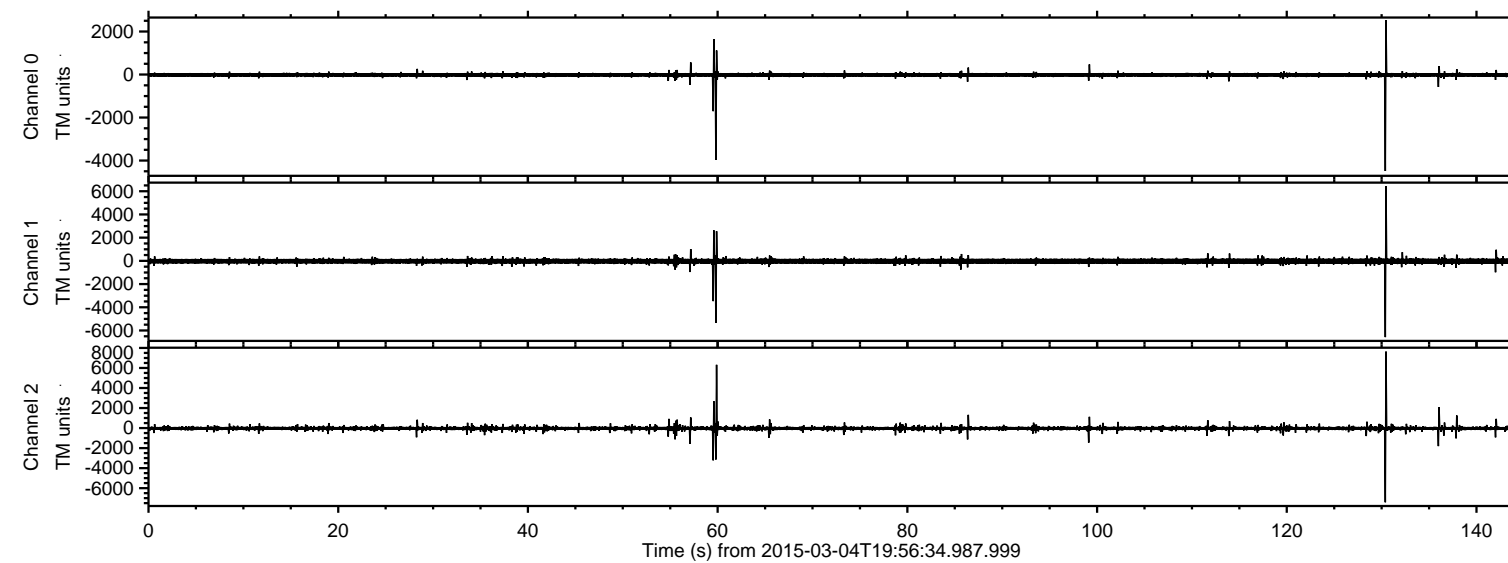


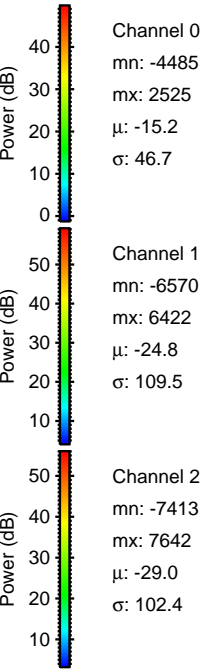
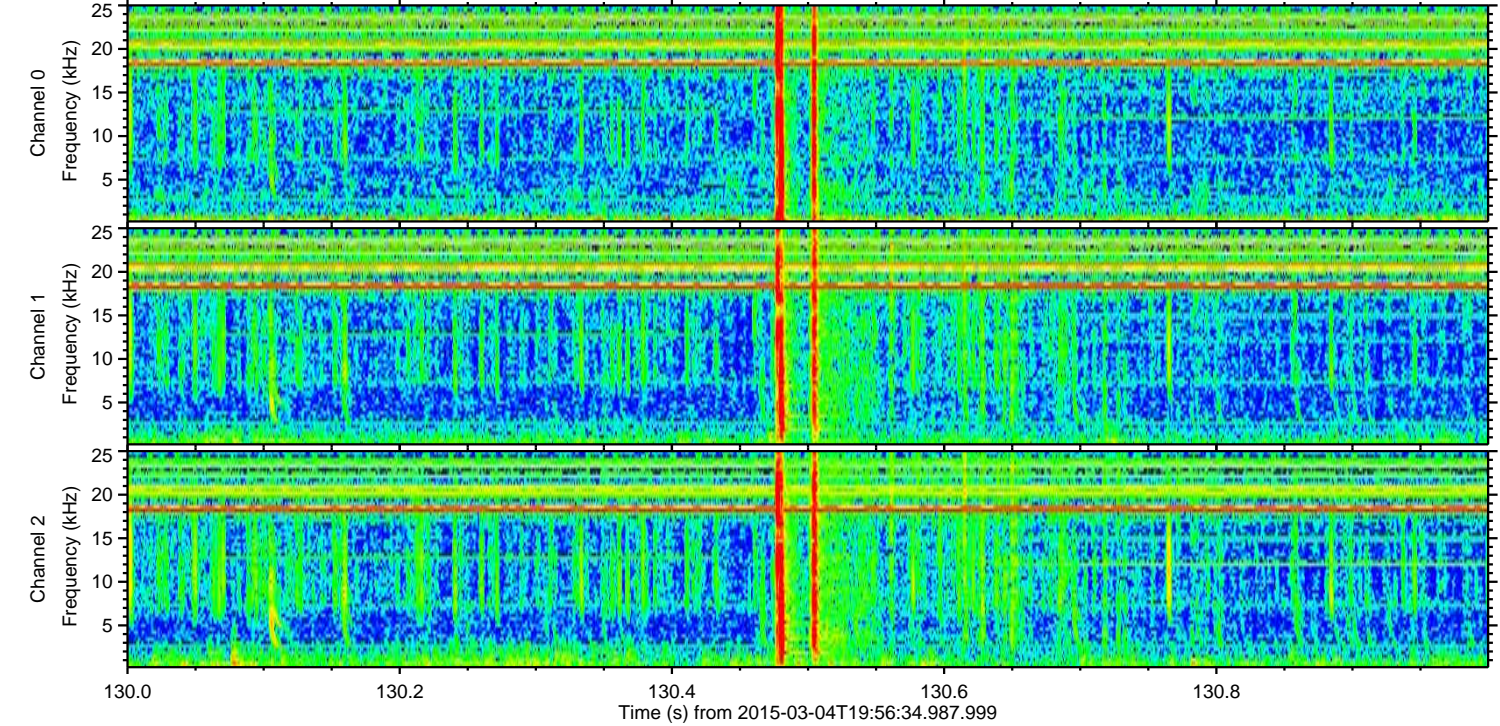
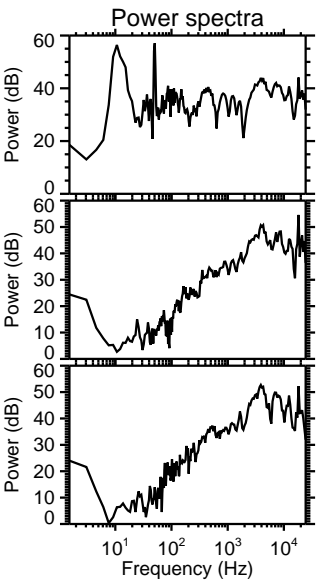
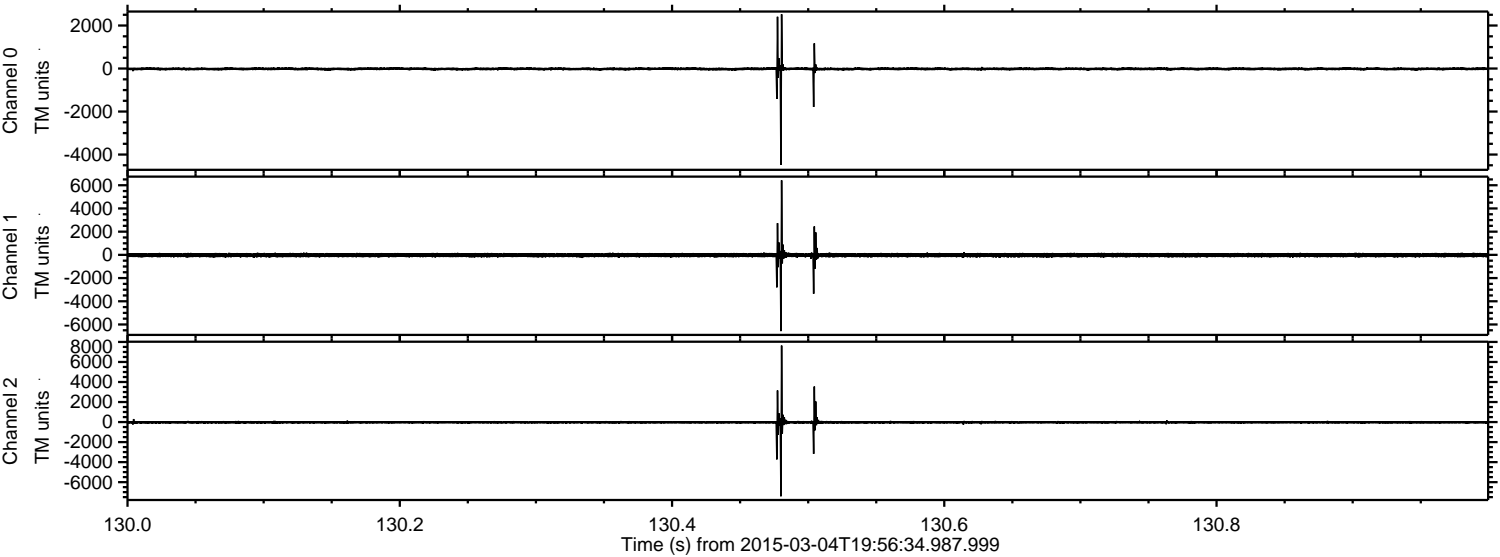
ELMAVAN 3D WAVEFORMS (Measured data sampled at 50 kHz) 49806 packets of 144 samples from 2015-03-04T19:56:34.987.999.

Processed Sat Mar 7 16:06:28 2015 by ELM ver.2012-10-06 from 001__elm20150304_195633__dat00.bin



ELMAVAN 3D WAVEFORMS (Measured data sampled at 50 kHz) 49806 packets of 144 samples from 2015-03-04T19:56:34.987.999. Part 131/144

Processed Sat Mar 7 16:06:39 2015 by ELM ver.2012-10-06 from 001__elm20150304_195633__dat00.bin

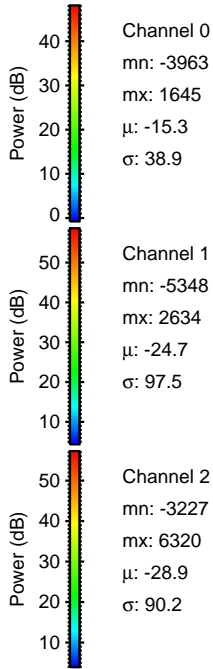
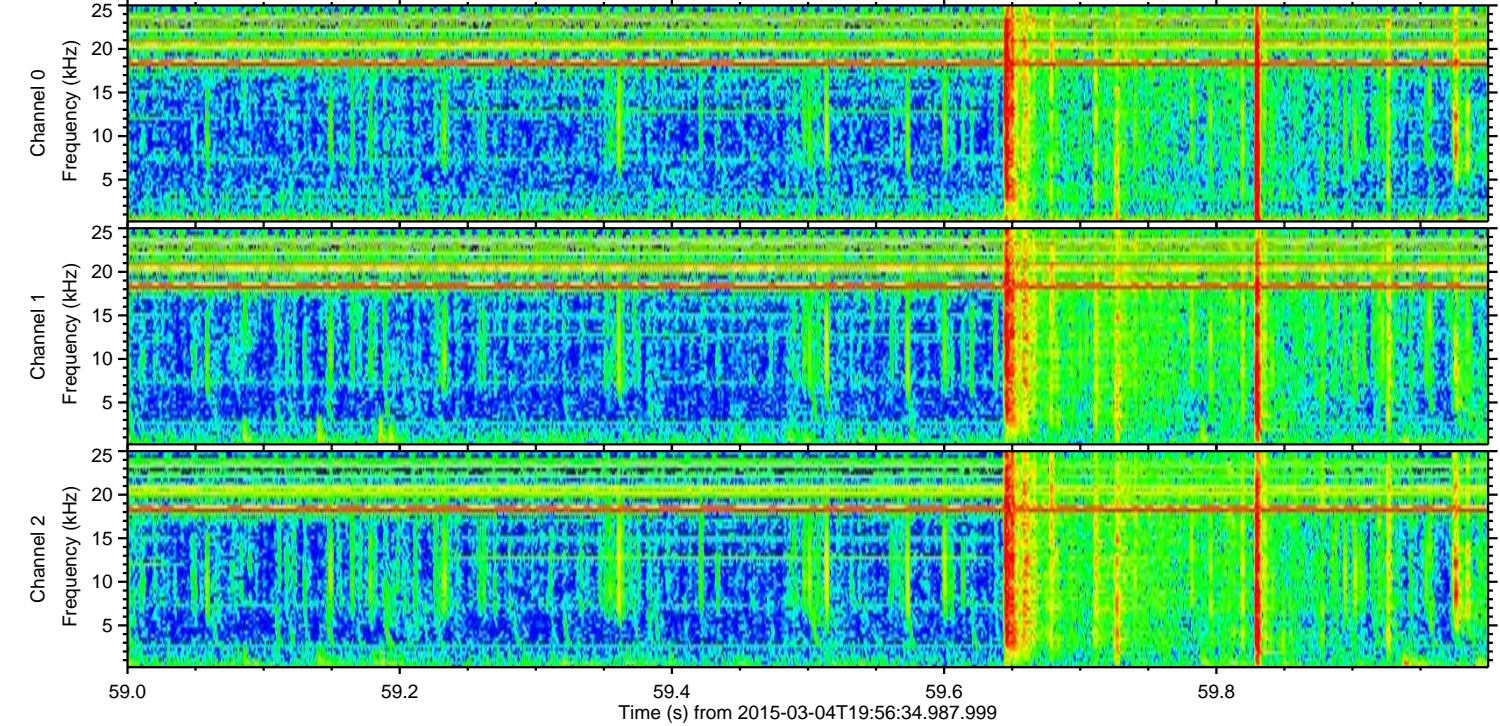
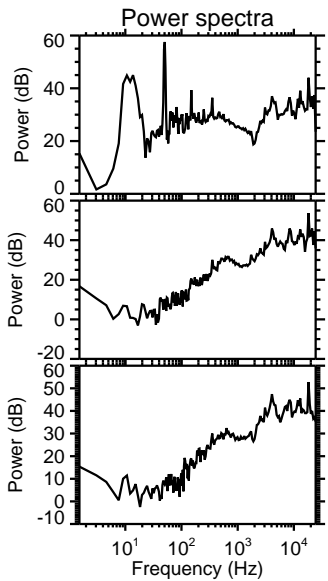
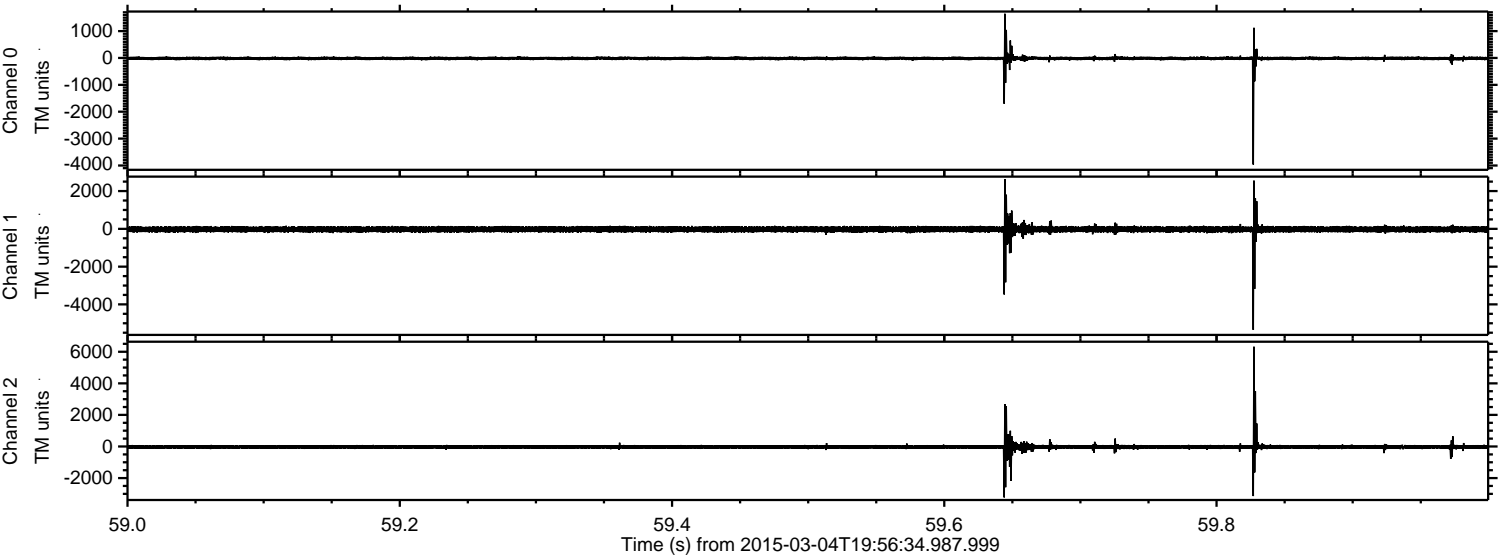


Channel 0
mn: -4485
mx: 2525
 μ : -15.2
 σ : 46.7

Channel 1
mn: -6570
mx: 6422
 μ : -24.8
 σ : 109.5

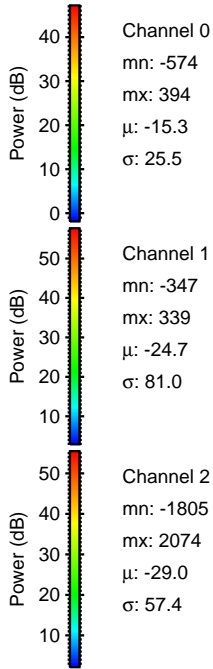
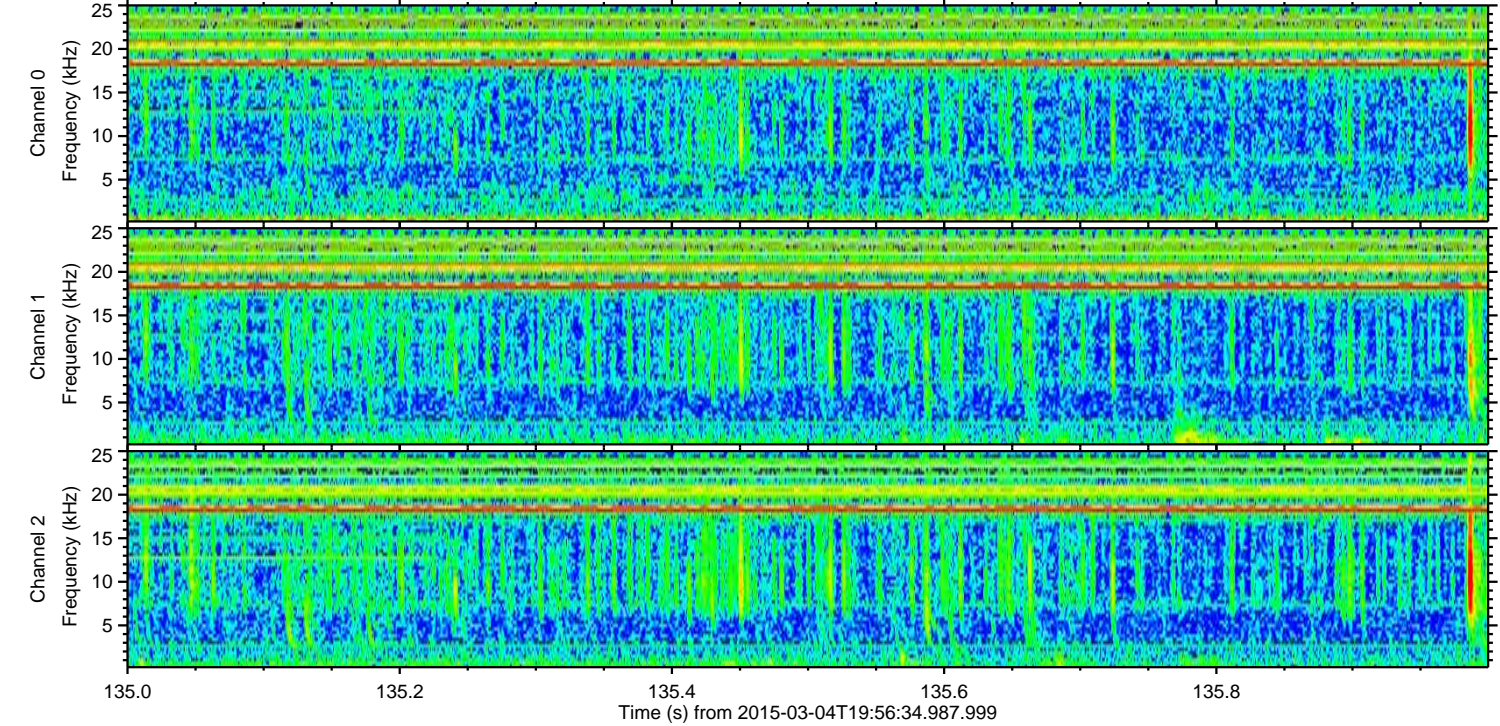
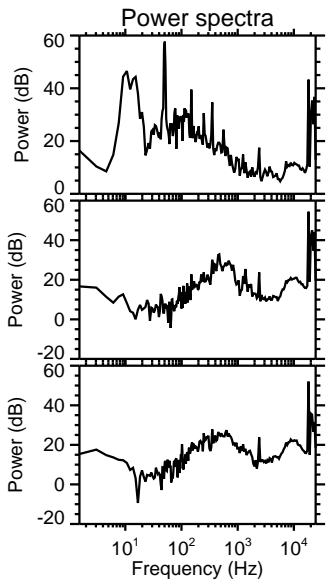
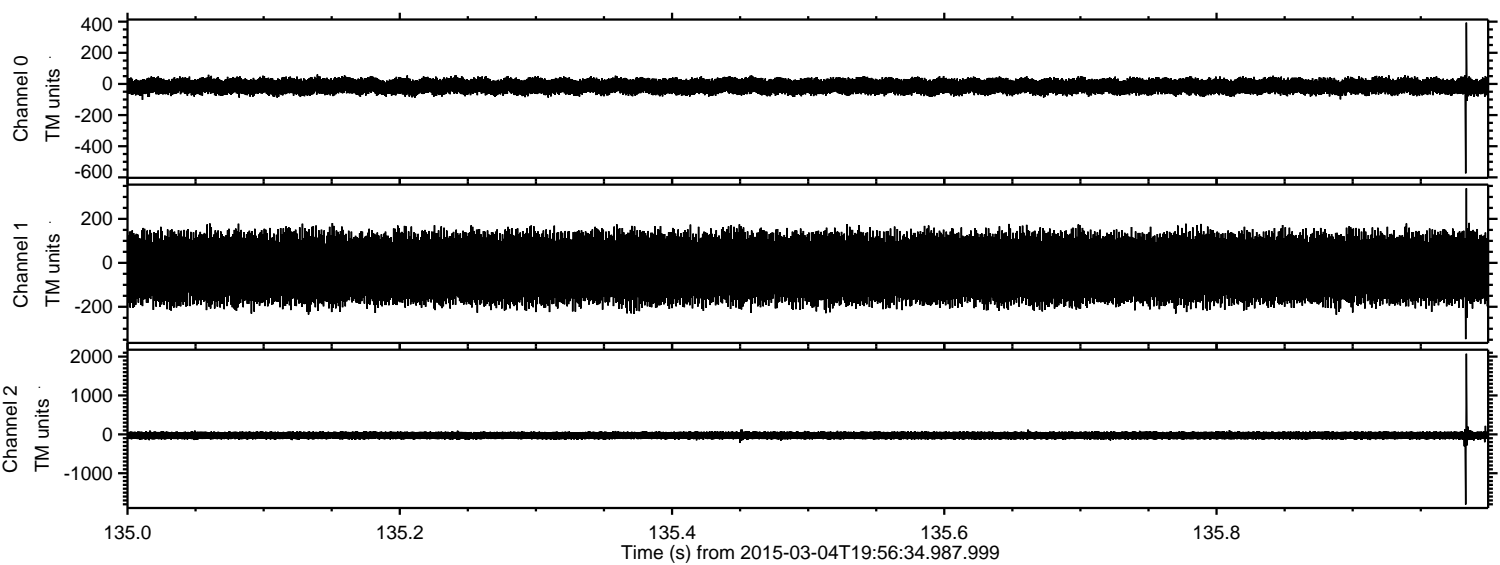
Channel 2
mn: -7413
mx: 7642
 μ : -29.0
 σ : 102.4

Processed Sat Mar 7 16:06:40 2015 by ELM ver.2012-10-06 from 001__elm20150304_195633__dat00.bin

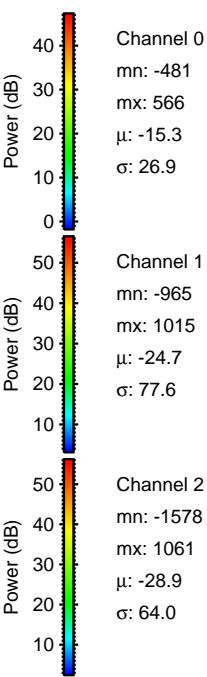
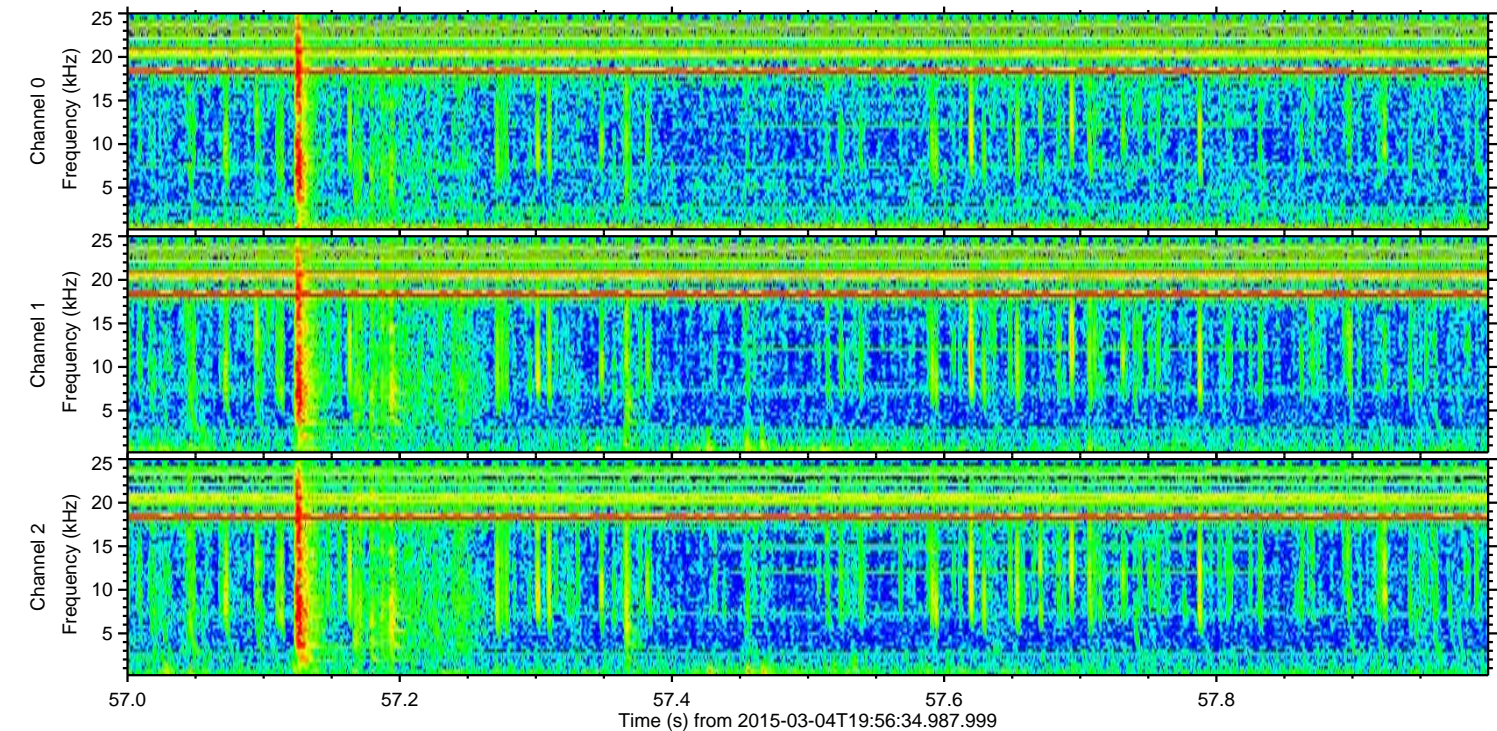
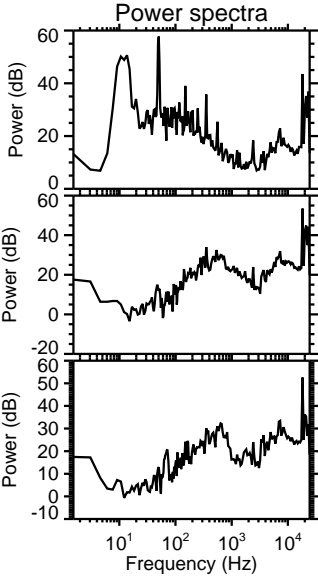
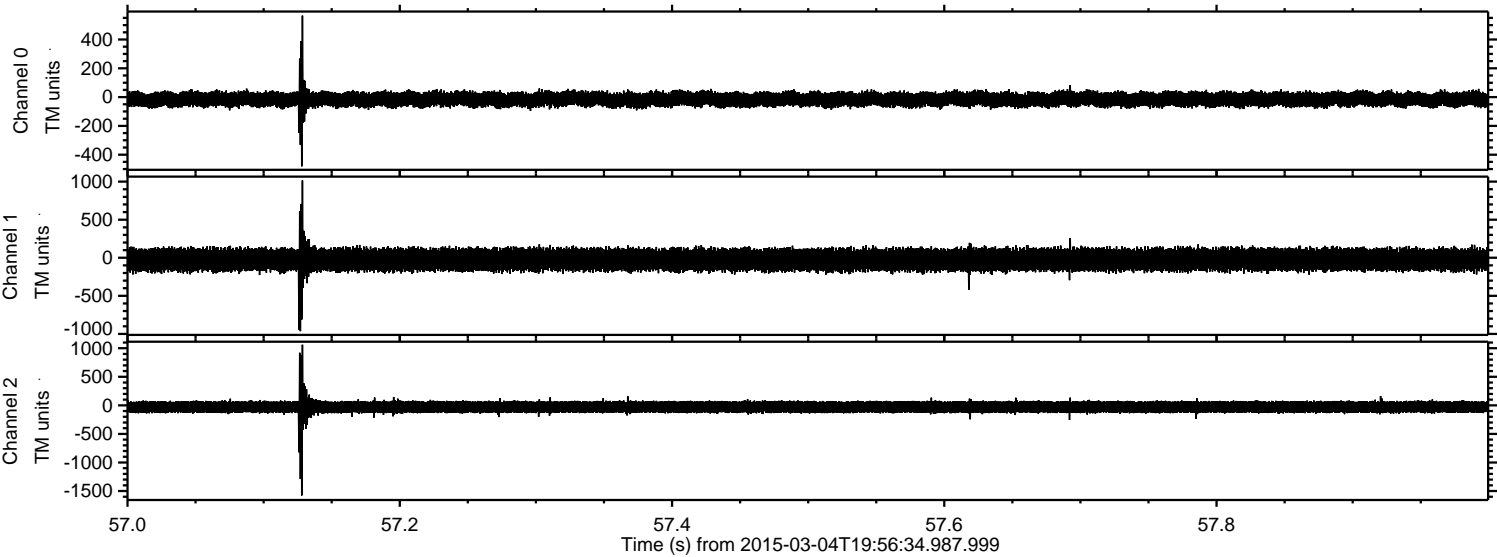


ELMAVAN 3D WAVEFORMS (Measured data sampled at 50 kHz) 49806 packets of 144 samples from 2015-03-04T19:56:34.987.999. Part 136/144

Processed Sat Mar 7 16:06:41 2015 by ELM ver.2012-10-06 from 001__elm20150304_195633__dat00.bin

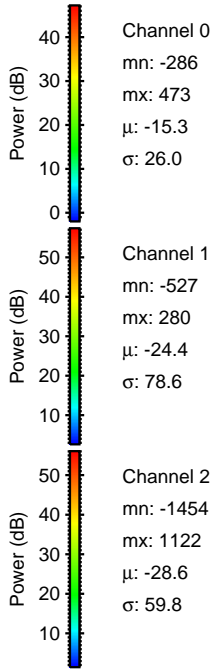
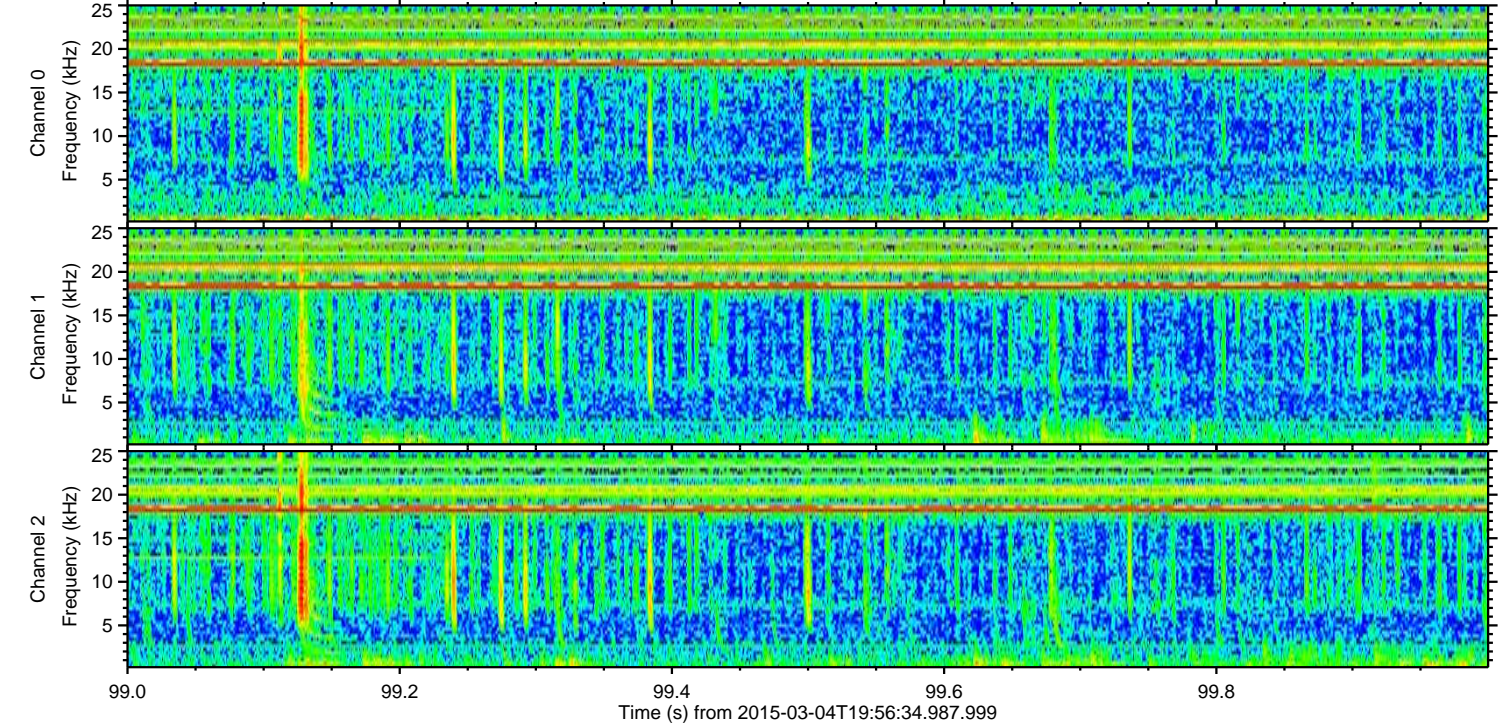
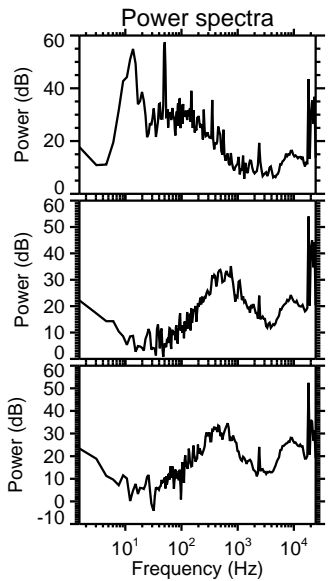
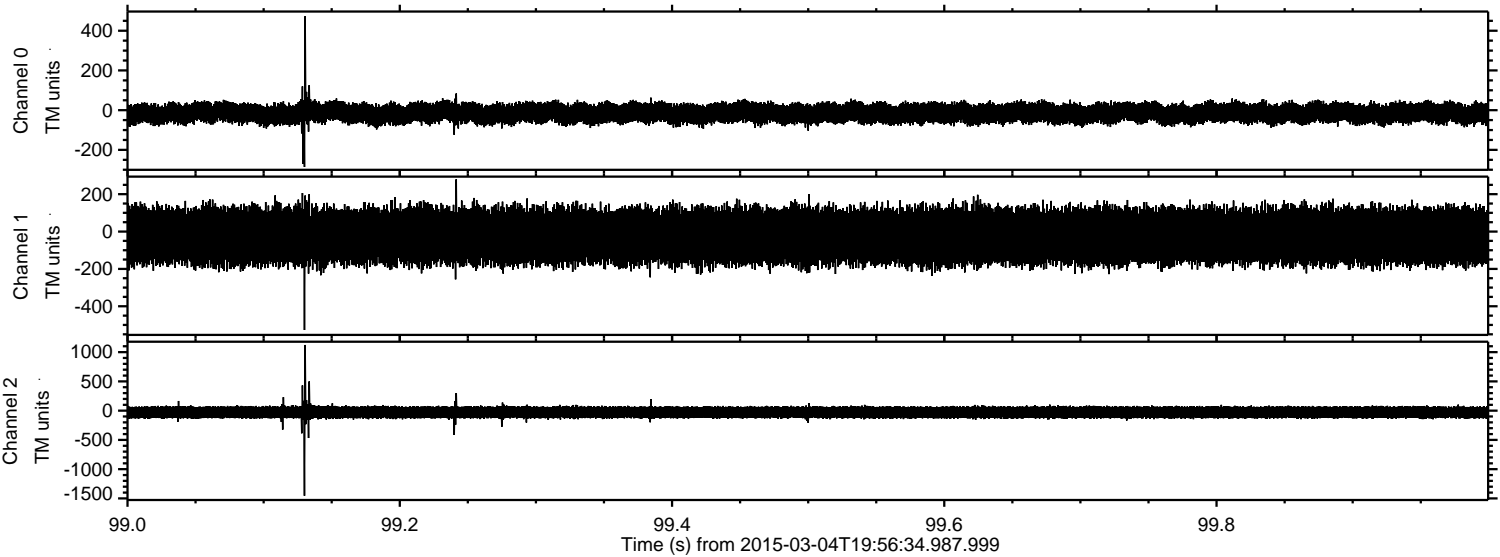


Processed Sat Mar 7 16:06:42 2015 by ELM ver.2012-10-06 from 001__elm20150304_195633__dat00.bin

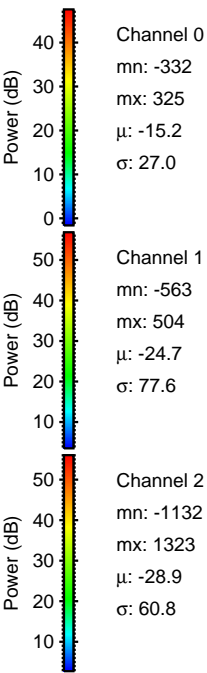
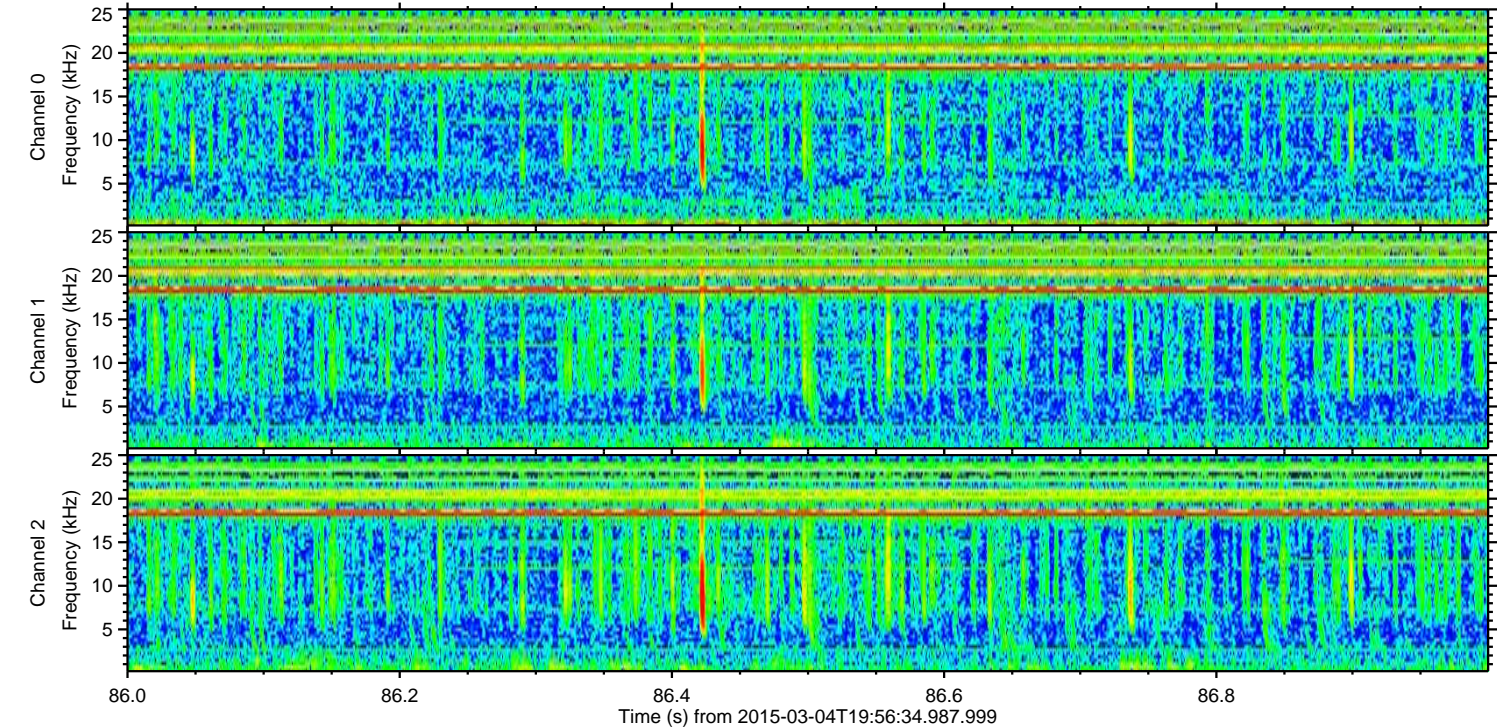
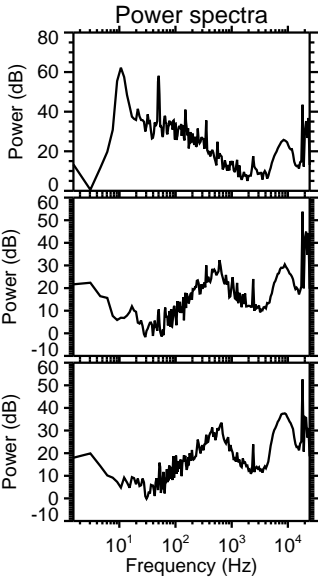
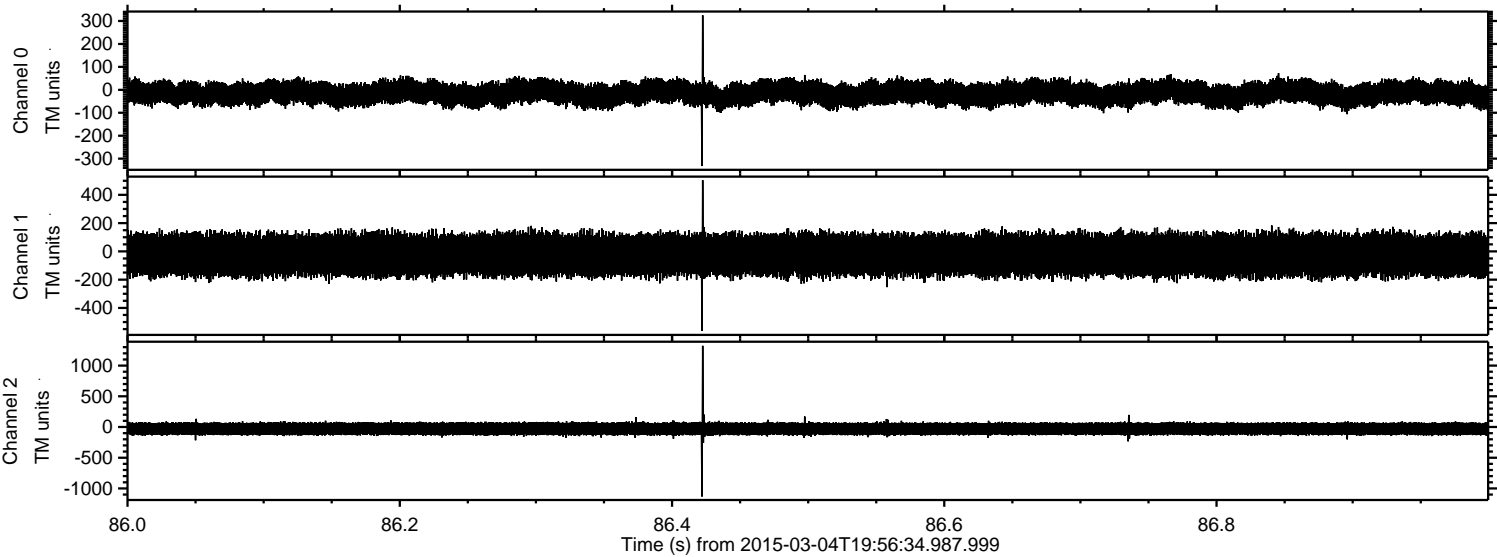


ELMAVAN 3D WAVEFORMS (Measured data sampled at 50 kHz) 49806 packets of 144 samples from 2015-03-04T19:56:34.987.999. Part 100/144

Processed Sat Mar 7 16:06:43 2015 by ELM ver.2012-10-06 from 001__elm20150304_195633__dat00.bin

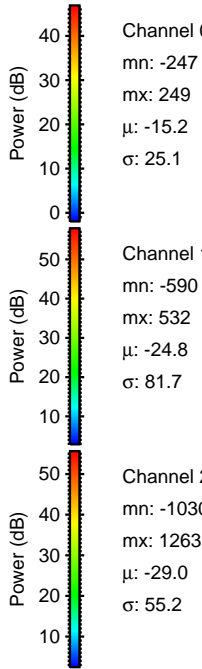
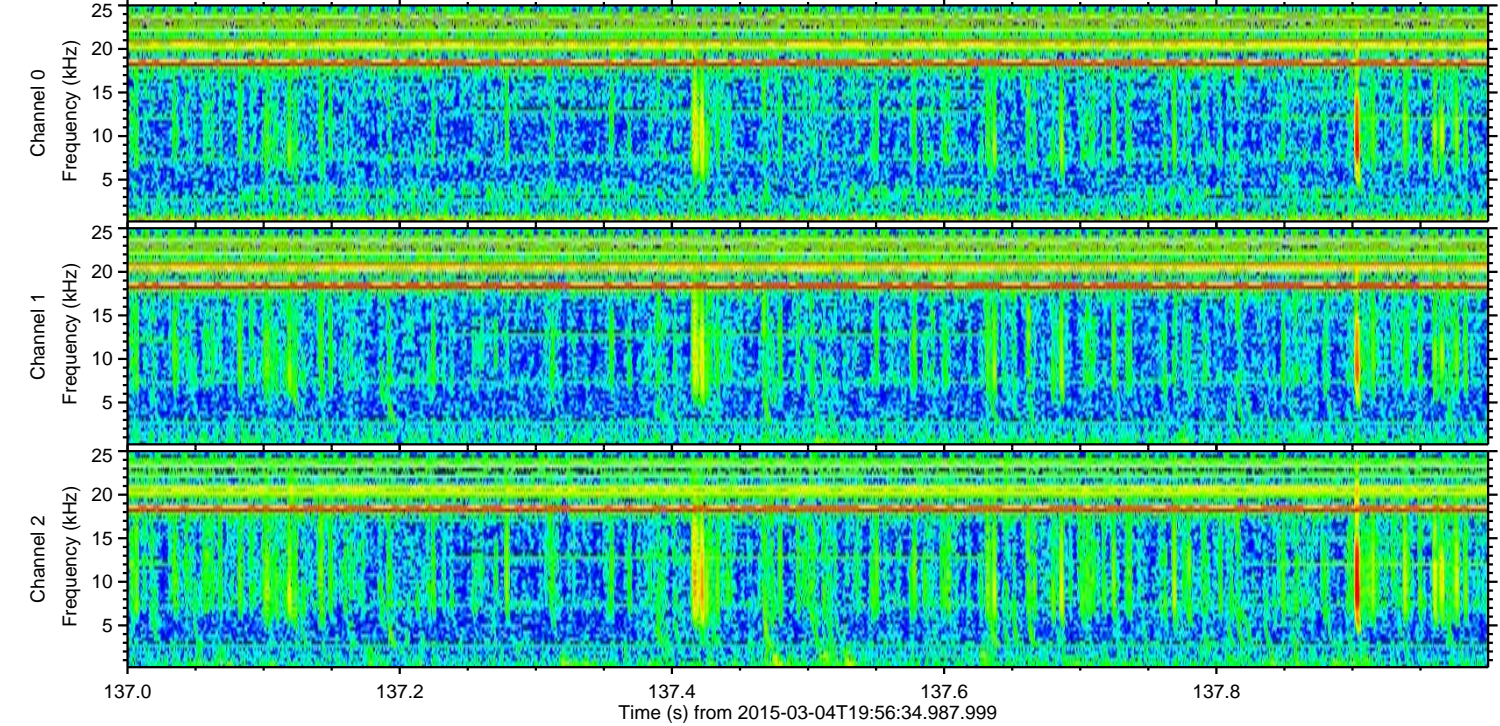
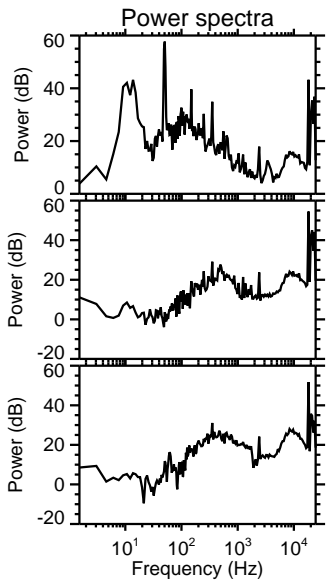
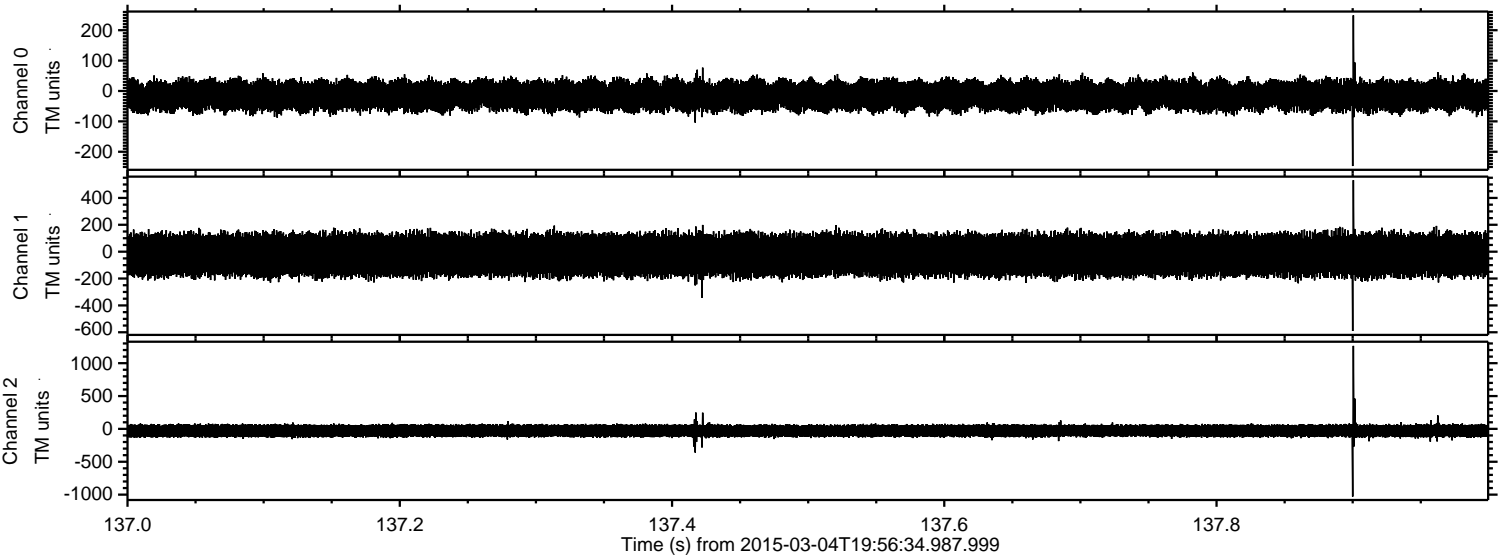


Processed Sat Mar 7 16:06:44 2015 by ELM ver.2012-10-06 from 001__elm20150304_195633__dat00.bin



ELMAVAN 3D WAVEFORMS (Measured data sampled at 50 kHz) 49806 packets of 144 samples from 2015-03-04T19:56:34.987.999. Part 138/144

Processed Sat Mar 7 16:06:45 2015 by ELM ver.2012-10-06 from 001__elm20150304_195633__dat00.bin

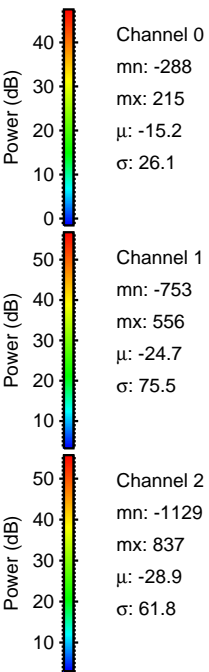
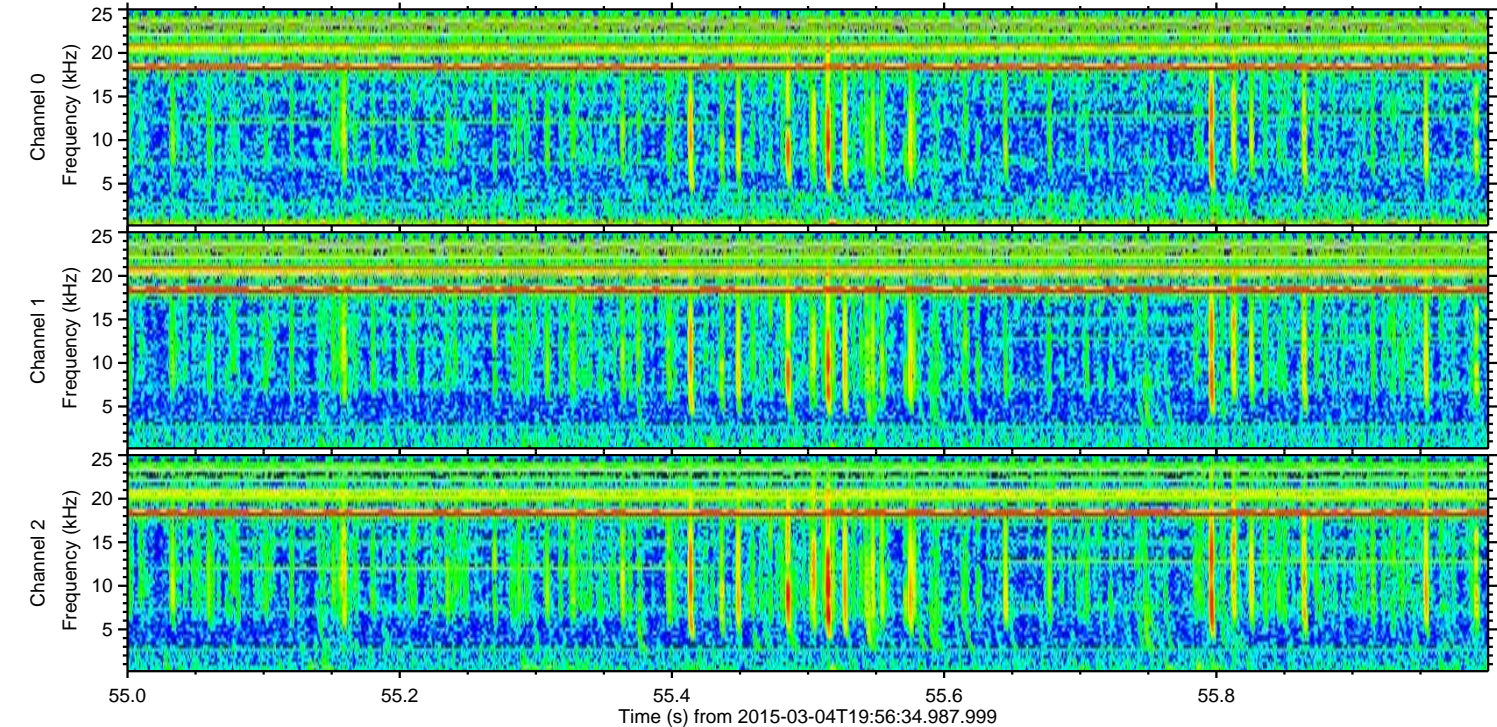
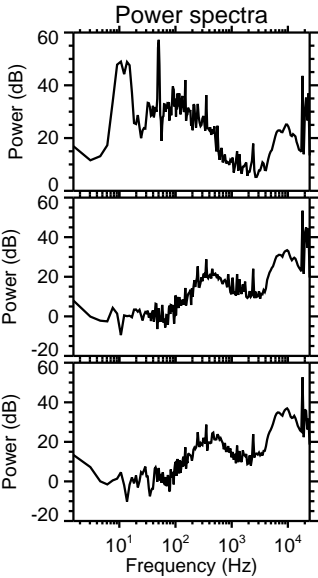
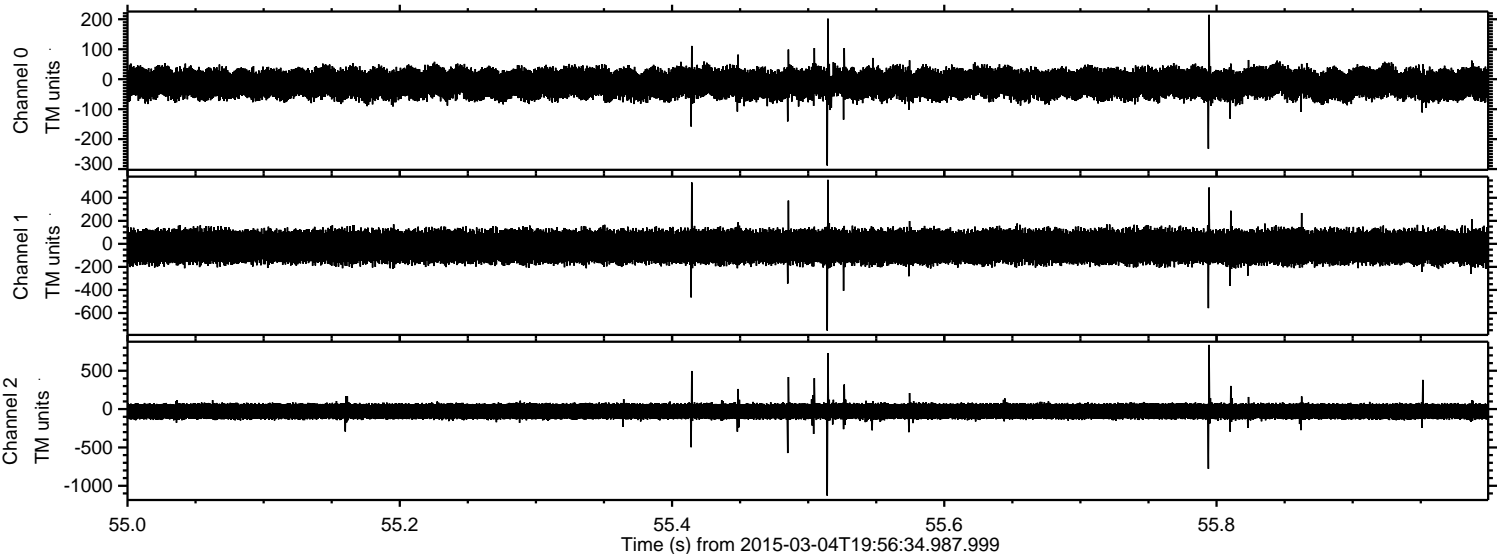


Channel 0
mn: -247
mx: 249
 μ : -15.2
 σ : 25.1

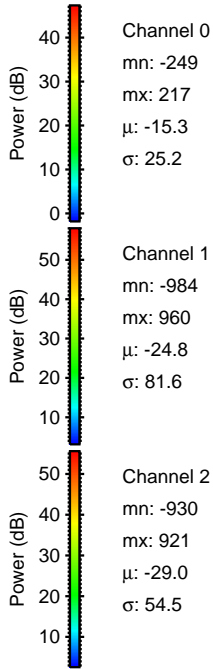
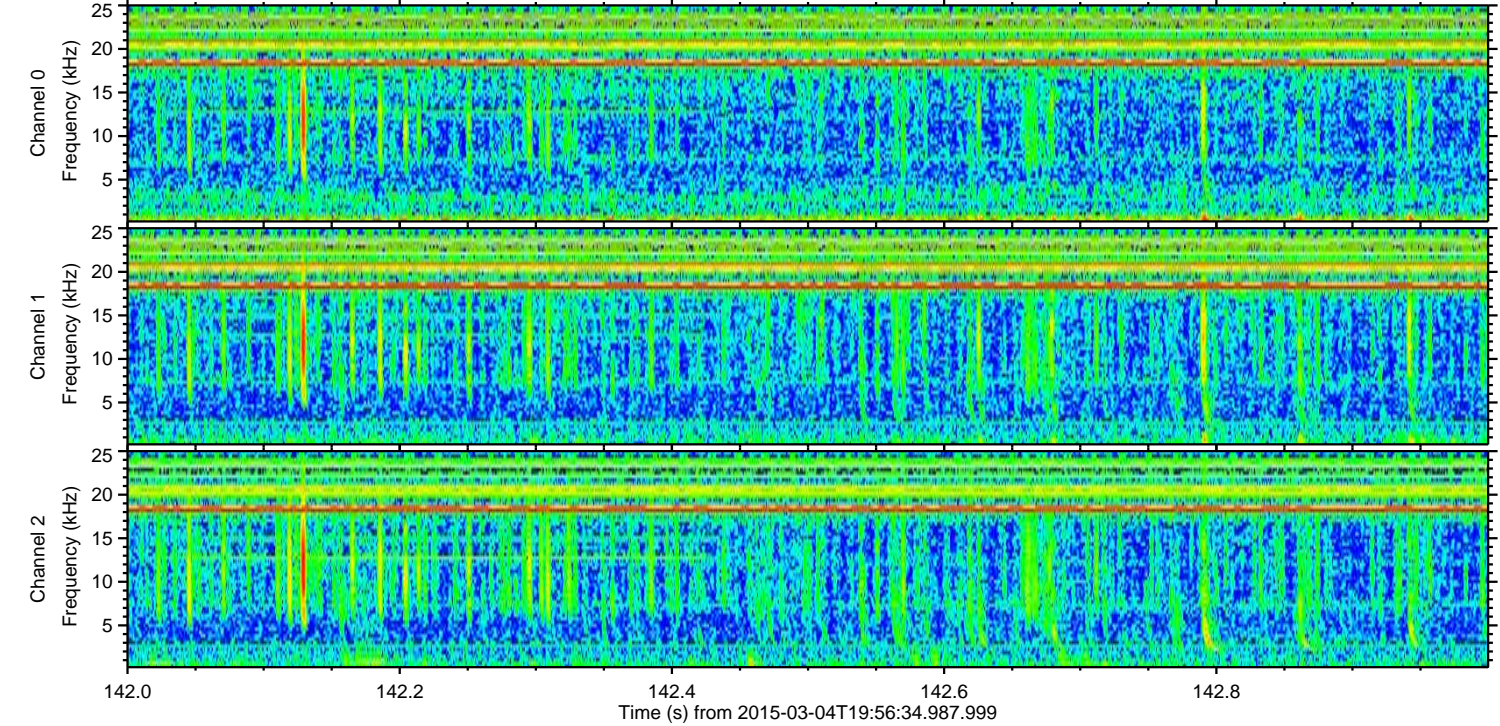
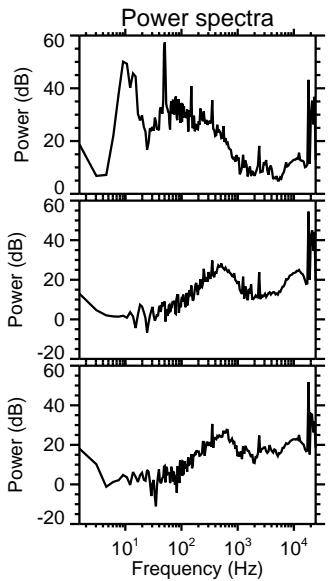
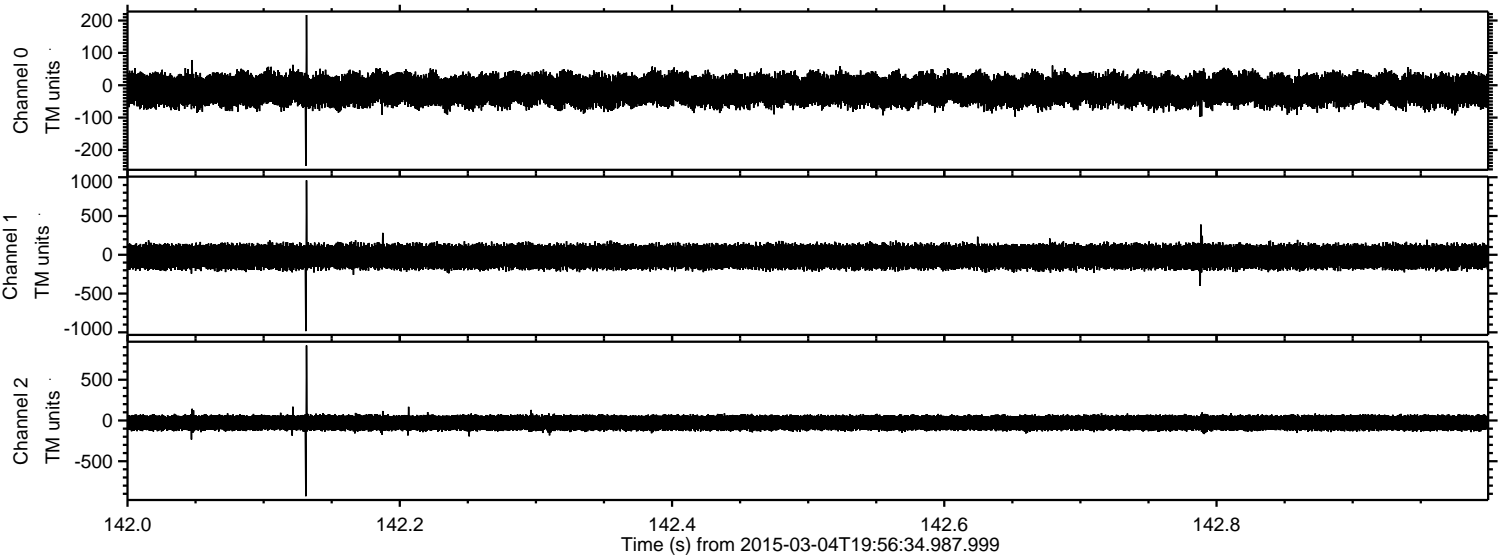
Channel 1
mn: -590
mx: 532
 μ : -24.8
 σ : 81.7

Channel 2
mn: -1030
mx: 1263
 μ : -29.0
 σ : 55.2

Processed Sat Mar 7 16:06:46 2015 by ELM ver.2012-10-06 from 001__elm20150304_195633__dat00.bin



Processed Sat Mar 7 16:06:47 2015 by ELM ver.2012-10-06 from 001__elm20150304_195633__dat00.bin



Processed Sat Mar 7 16:06:48 2015 by ELM ver.2012-10-06 from 001__elm20150304_195633__dat00.bin

