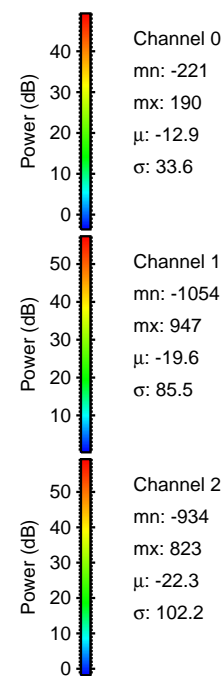
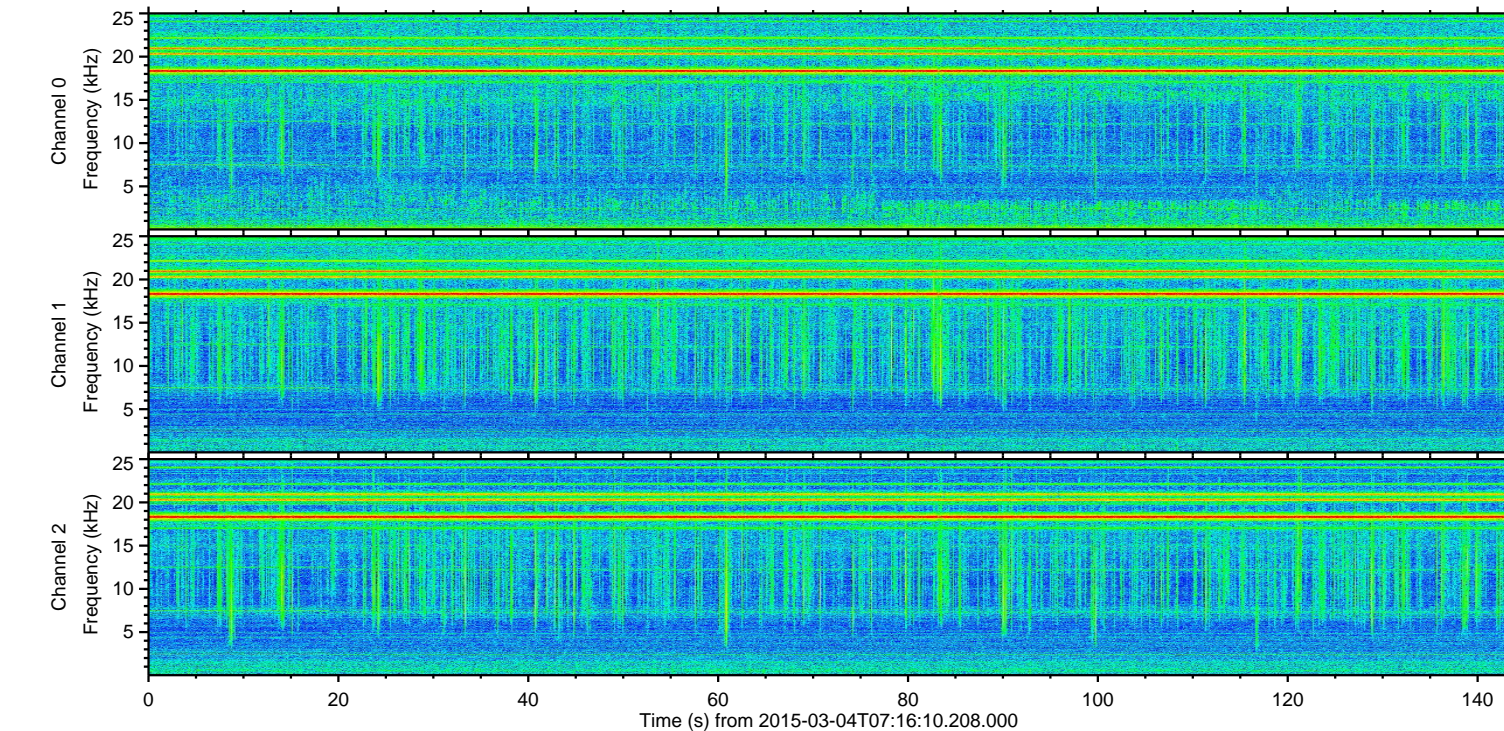
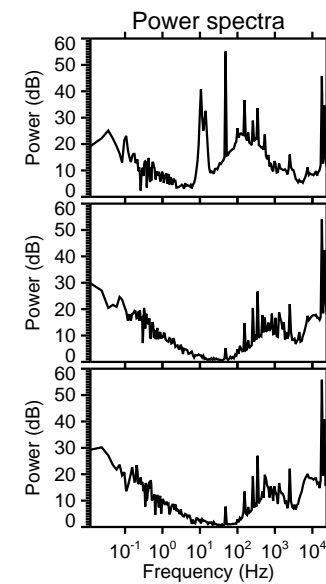
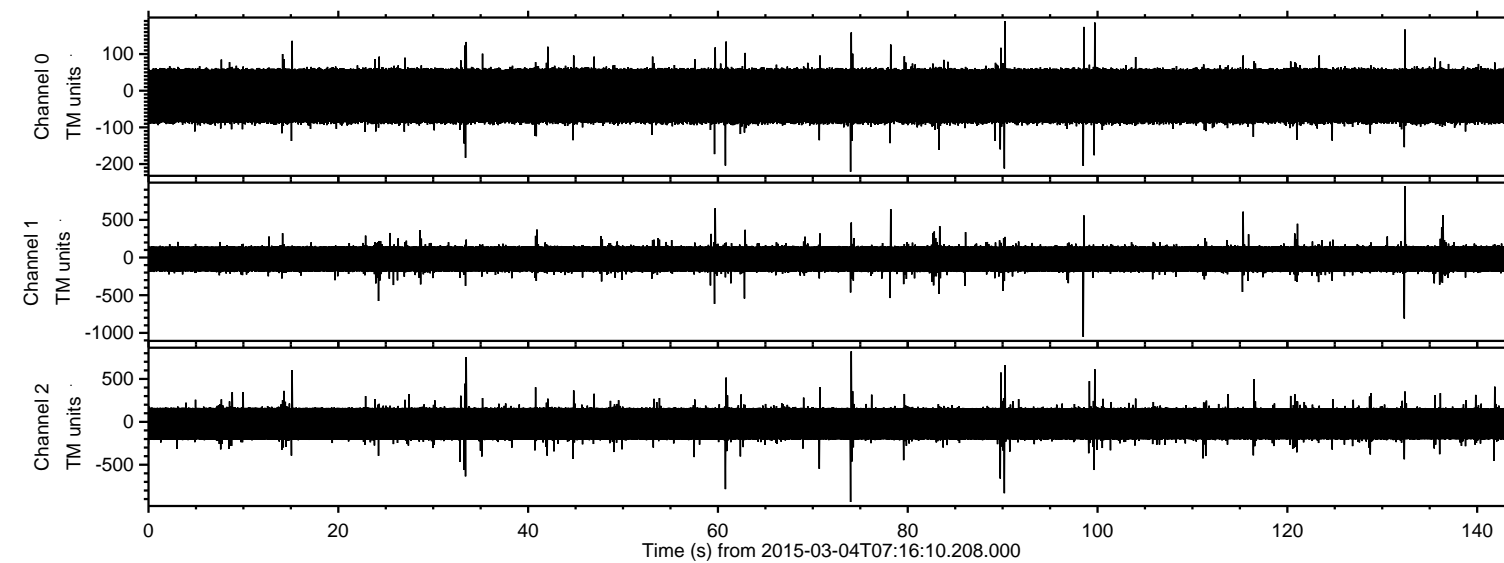
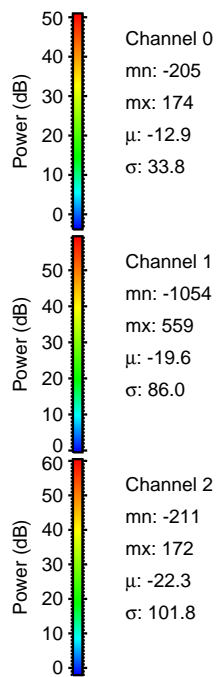
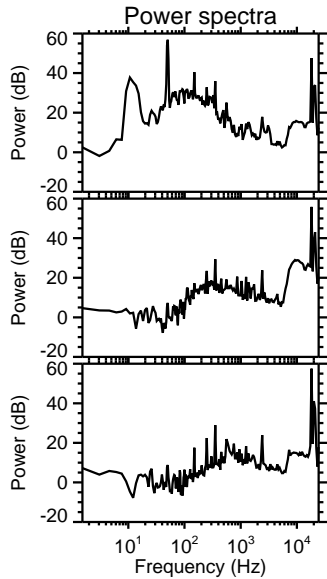
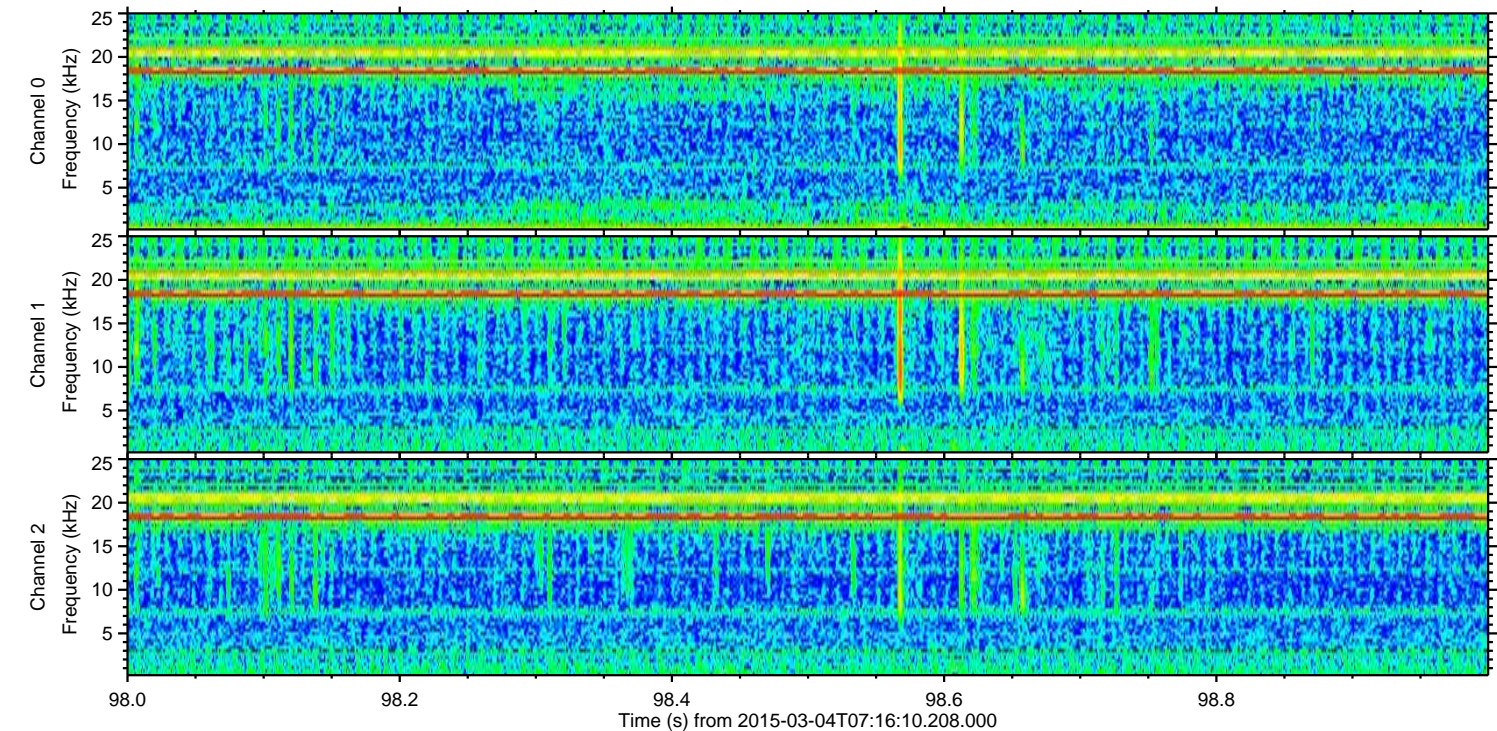
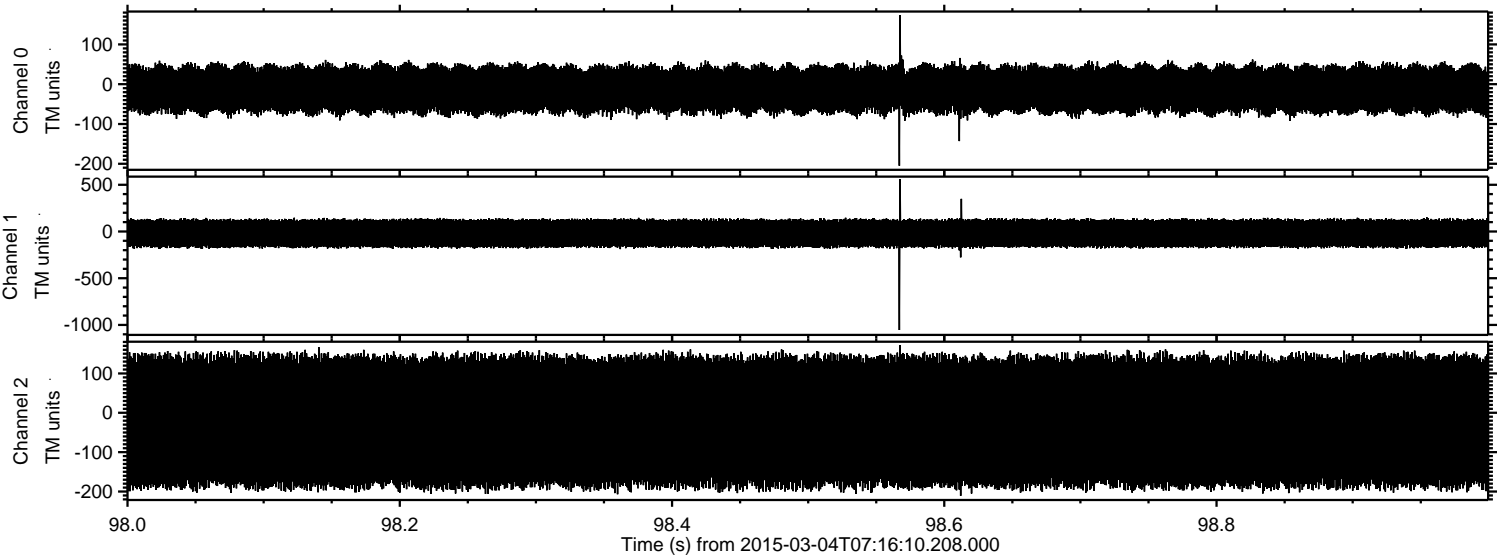


ELMAVAN 3D WAVEFORMS (Measured data sampled at 50 kHz) 49782 packets of 144 samples from 2015-03-04T07:16:10.208.000.

Processed Sat Mar 7 13:12:32 2015 by ELM ver.2012-10-06 from 001__elm20150304_071609__dat00.bin



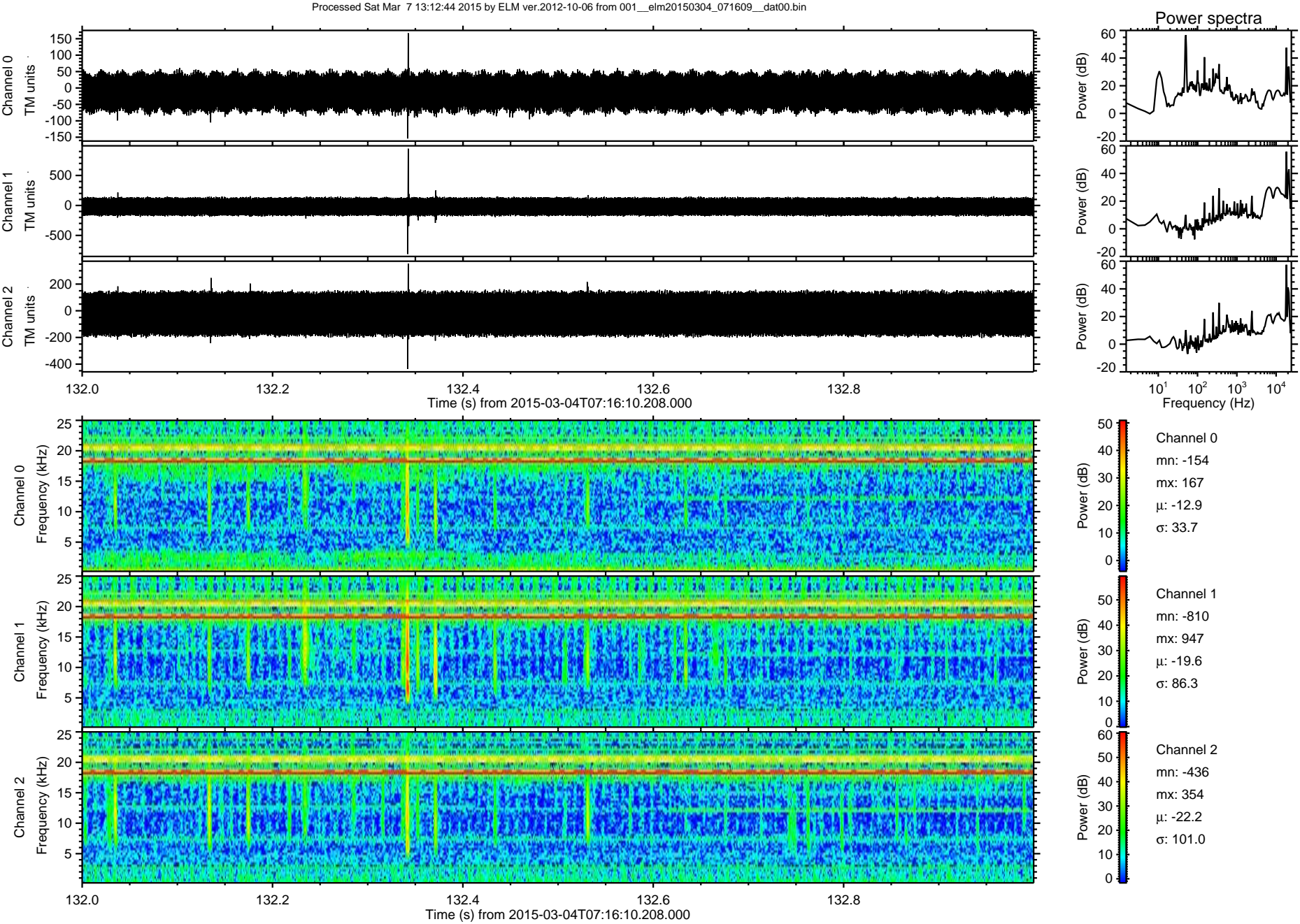
Processed Sat Mar 7 13:12:43 2015 by ELM ver.2012-10-06 from 001__elm20150304_071609__dat00.bin



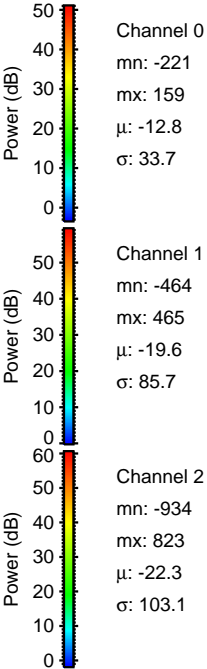
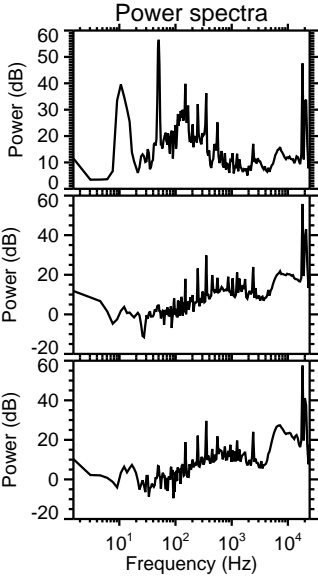
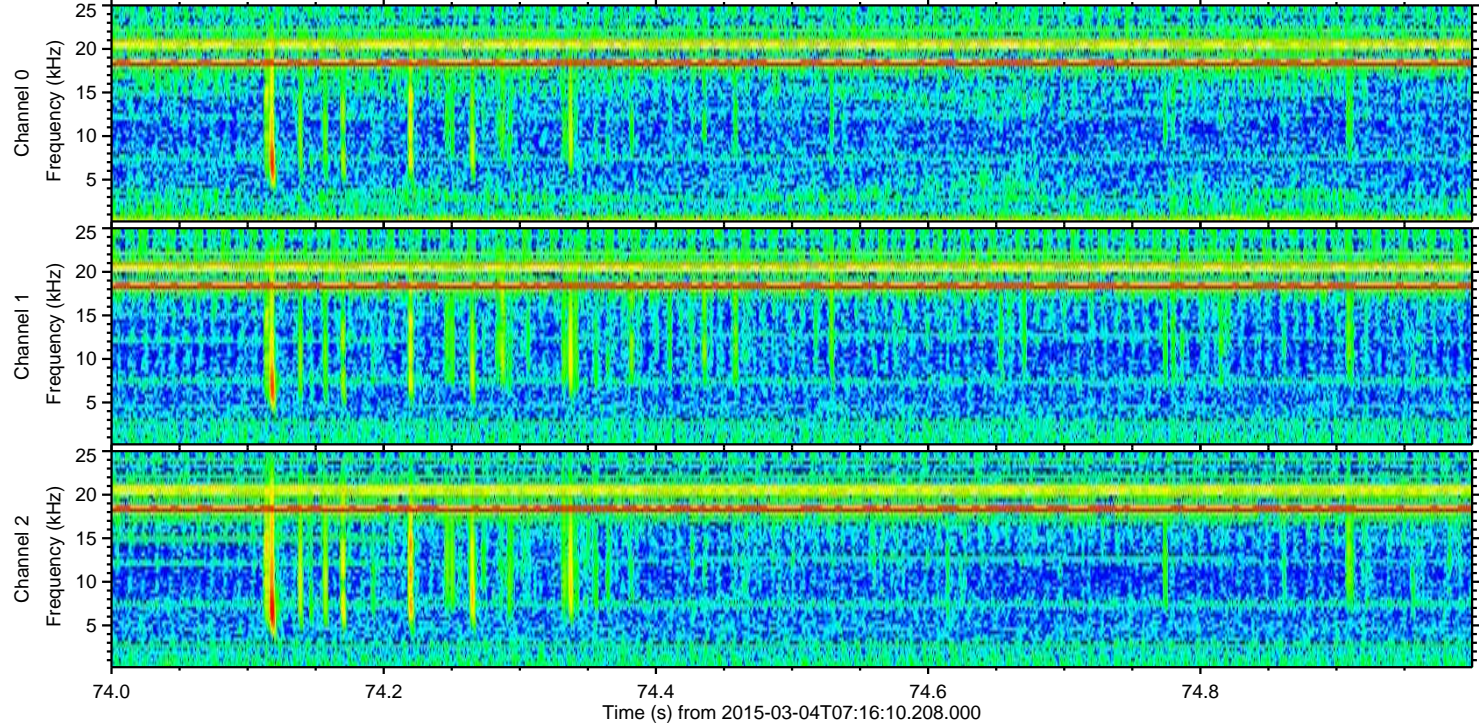
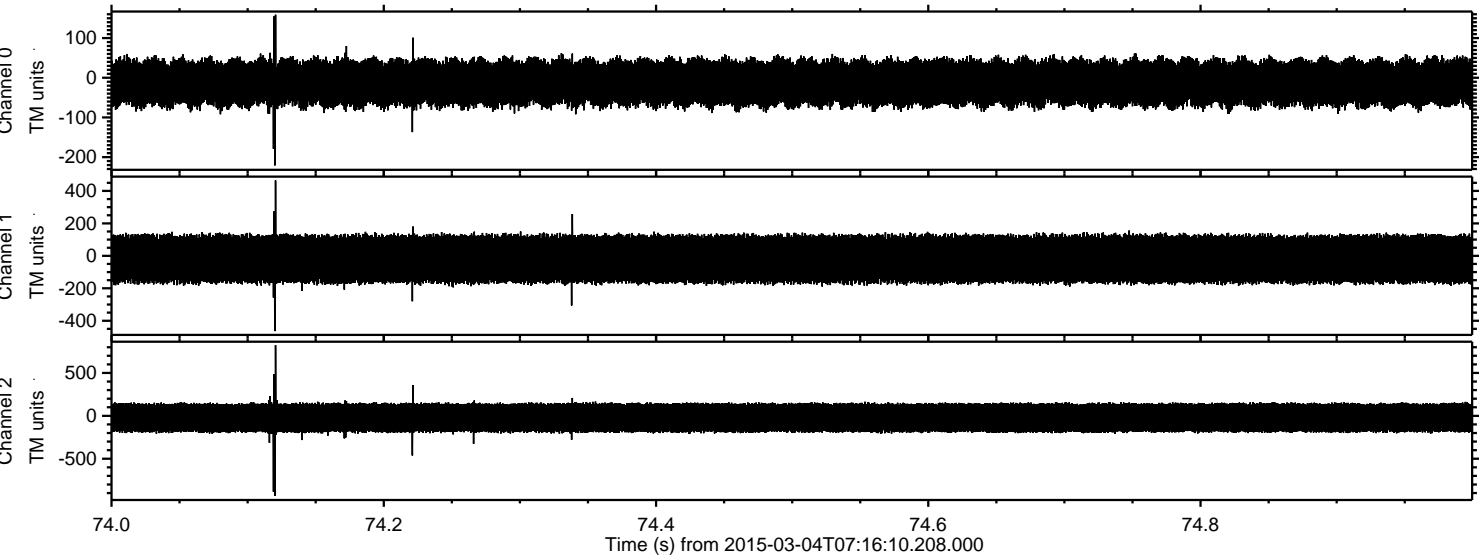
Channel 0
mn: -205
mx: 174
 μ : -12.9
 σ : 33.8

Channel 1
mn: -1054
mx: 559
 μ : -19.6
 σ : 86.0

Channel 2
mn: -211
mx: 172
 μ : -22.3
 σ : 101.8



Processed Sat Mar 7 13:12:45 2015 by ELM ver.2012-10-06 from 001__elm20150304_071609__dat00.bin

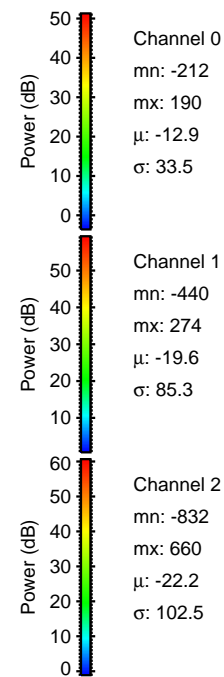
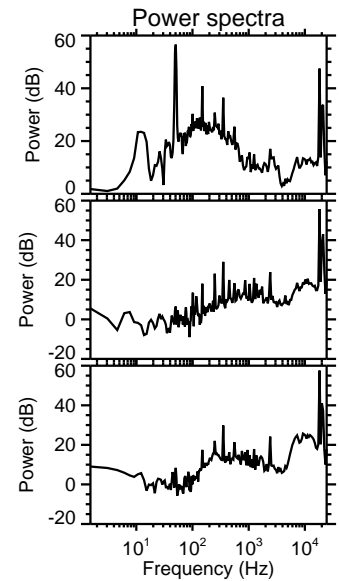
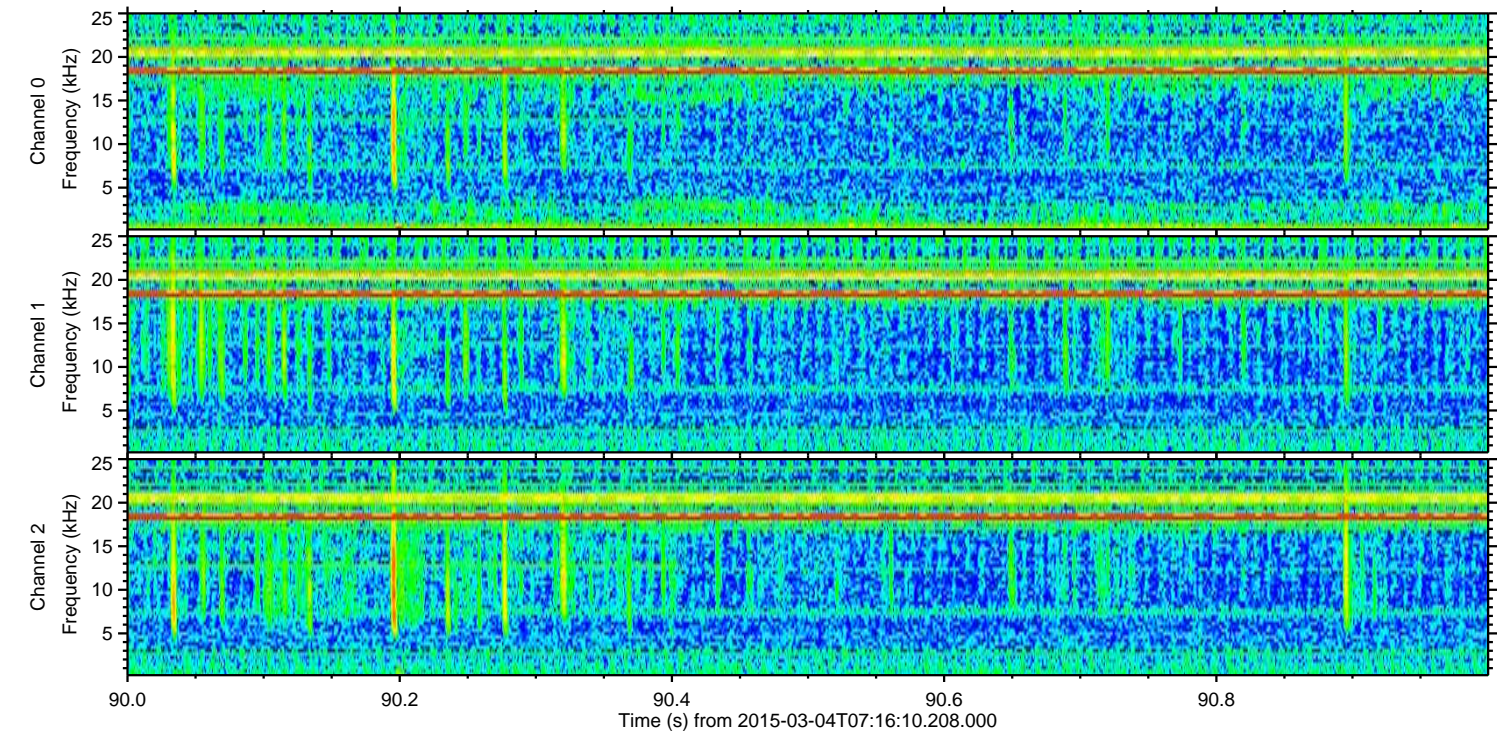
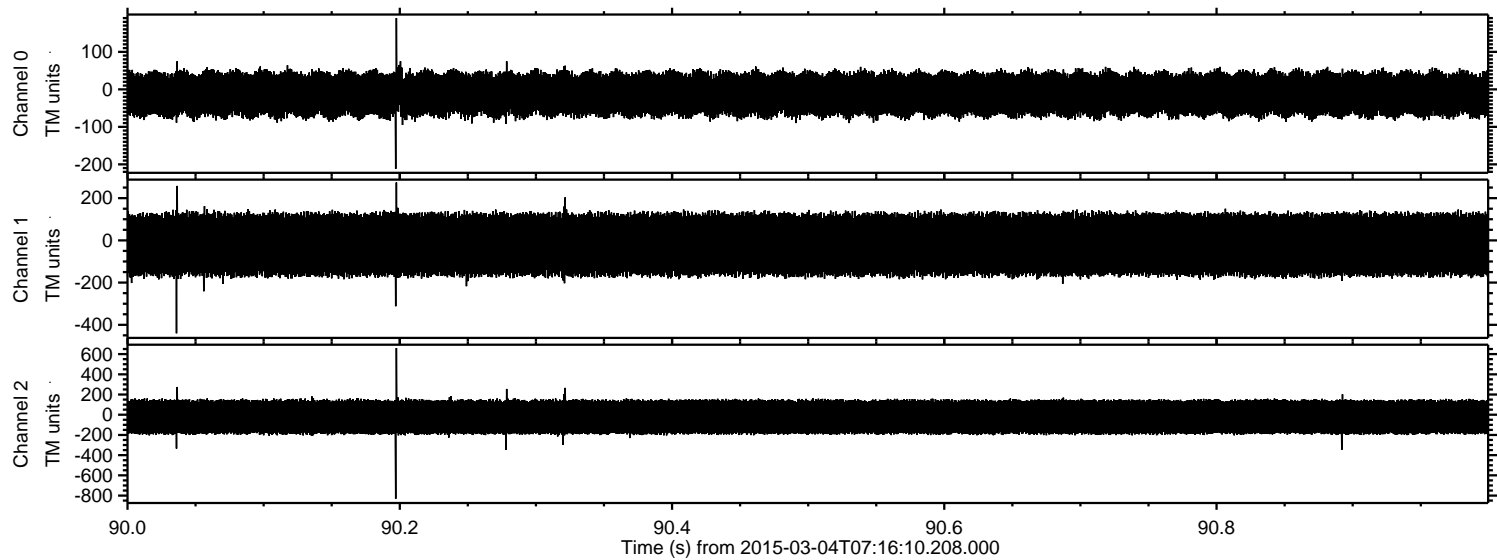


Channel 0
mn: -221
mx: 159
 μ : -12.8
 σ : 33.7

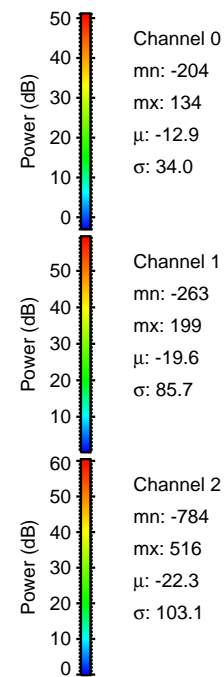
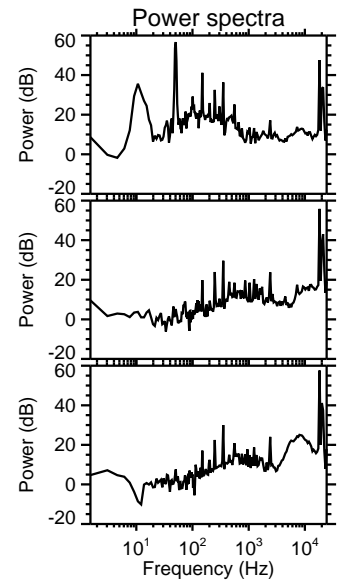
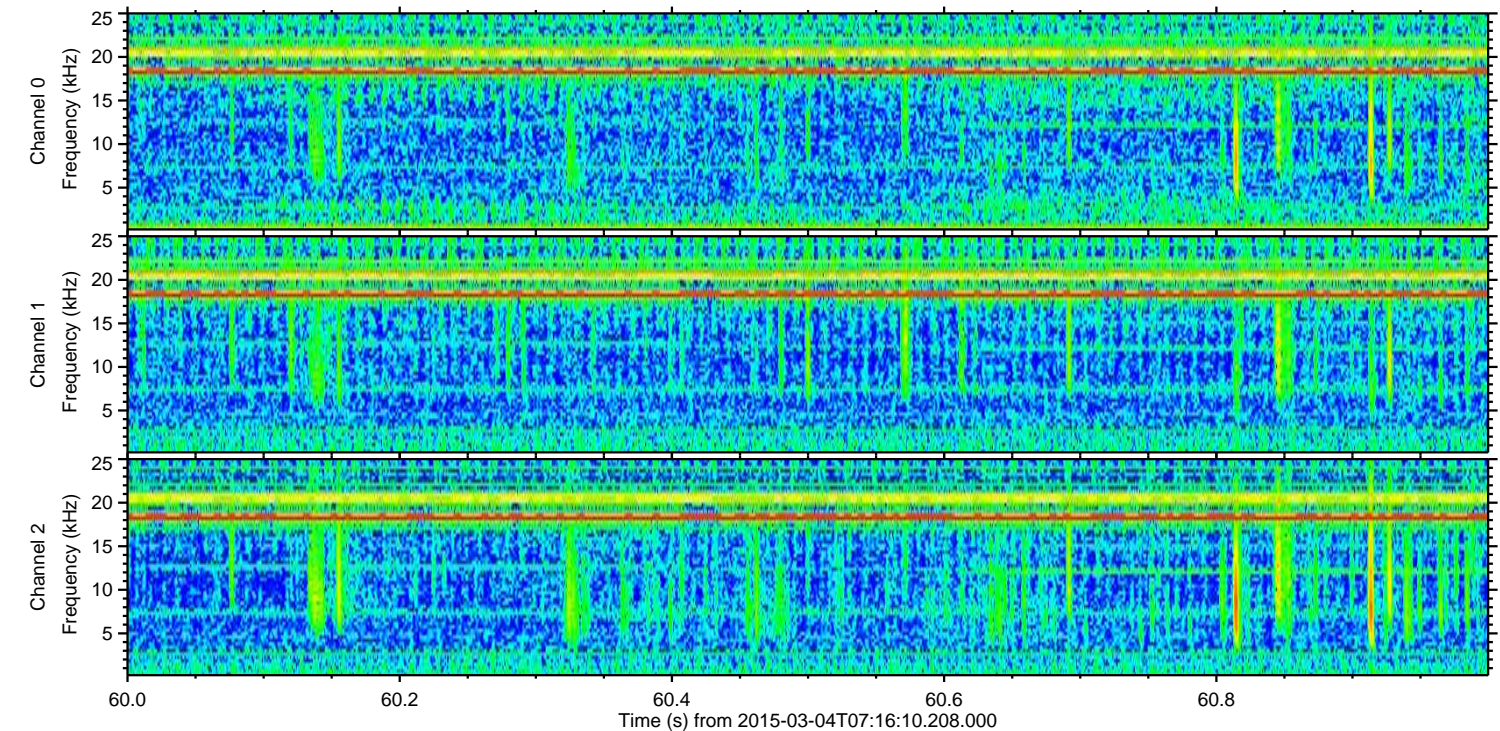
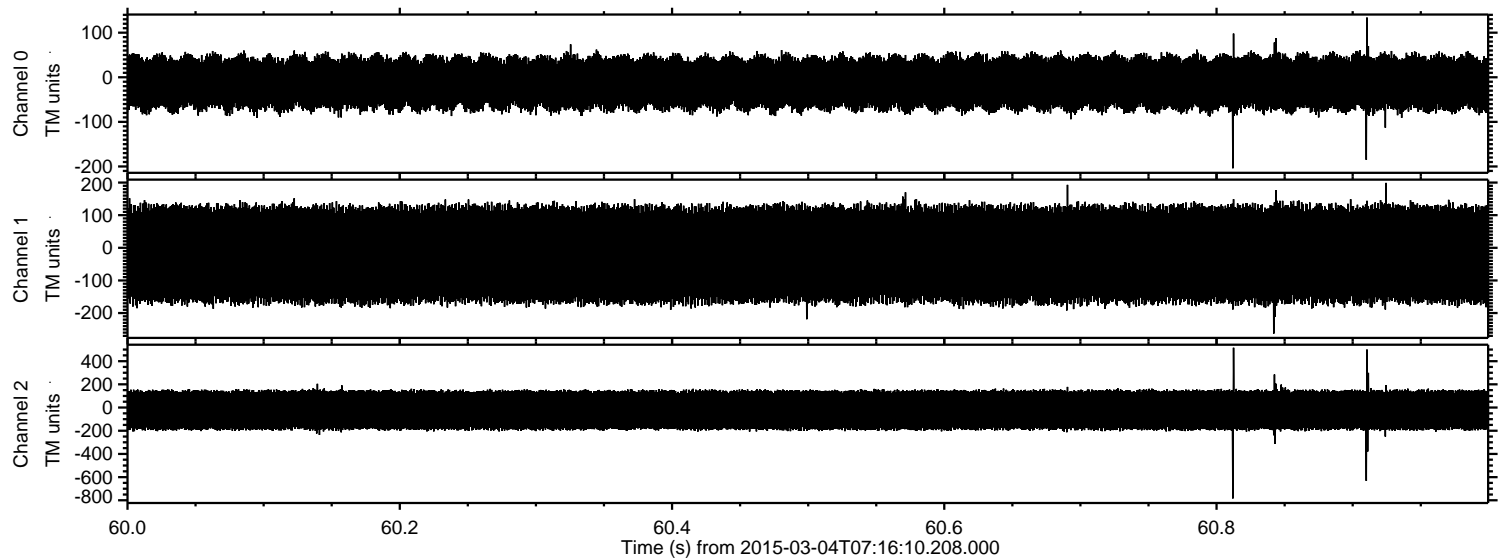
Channel 1
mn: -464
mx: 465
 μ : -19.6
 σ : 85.7

Channel 2
mn: -934
mx: 823
 μ : -22.3
 σ : 103.1

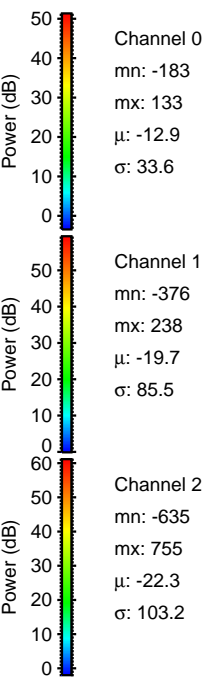
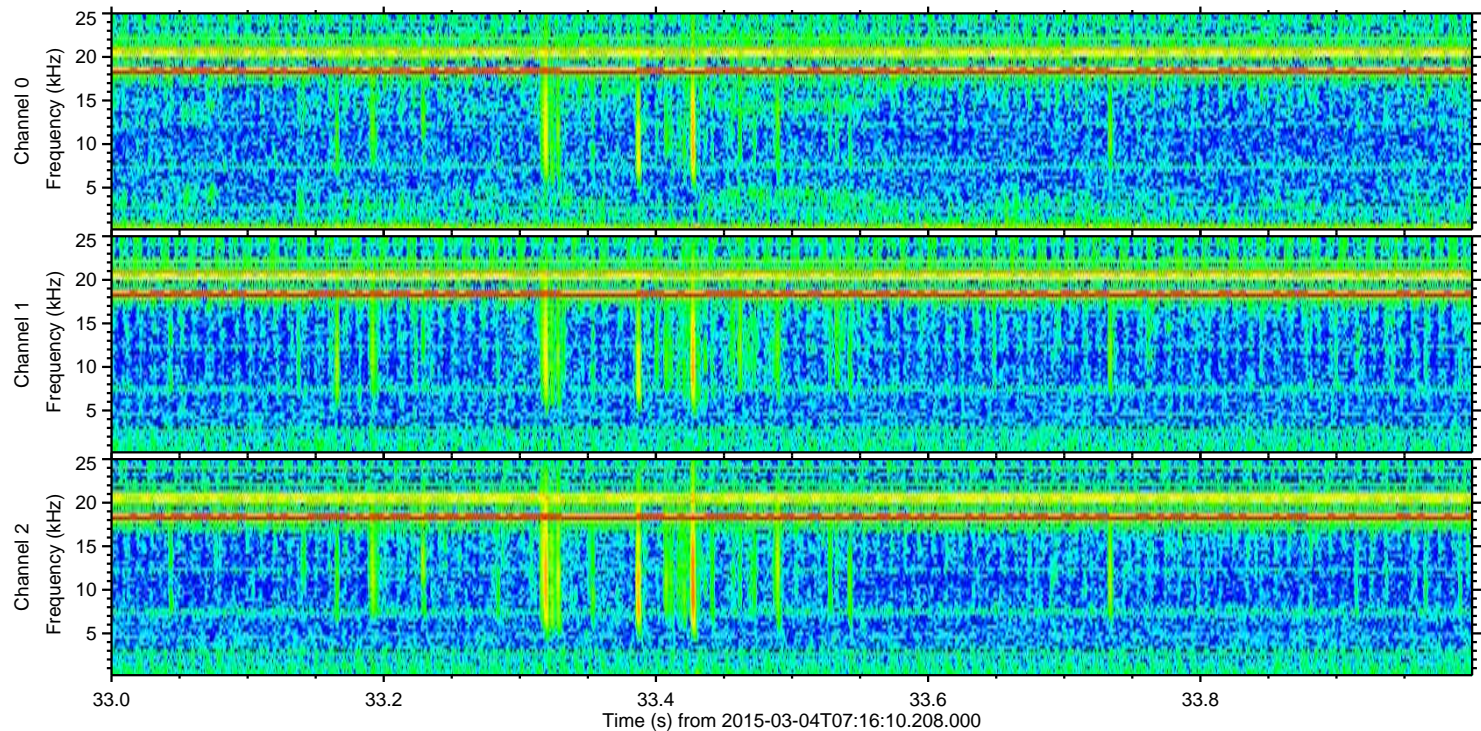
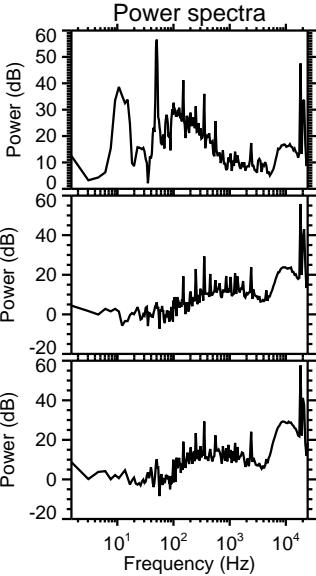
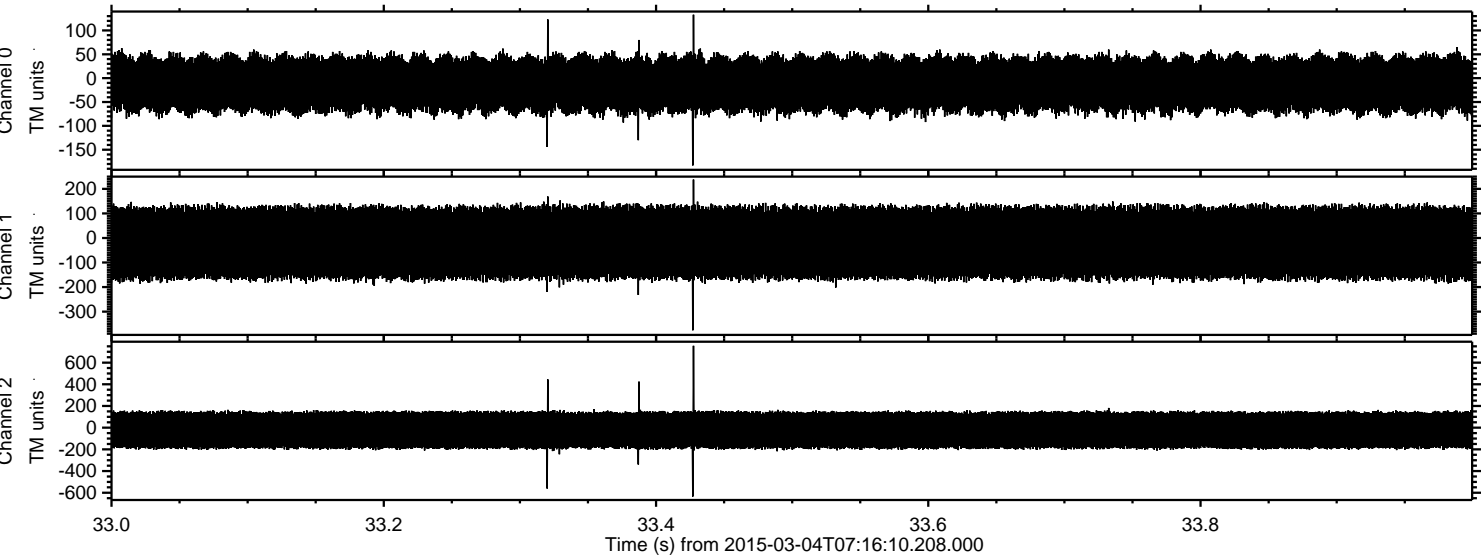
Processed Sat Mar 7 13:12:46 2015 by ELM ver.2012-10-06 from 001__elm20150304_071609__dat00.bin



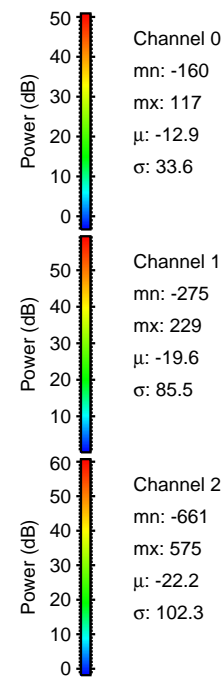
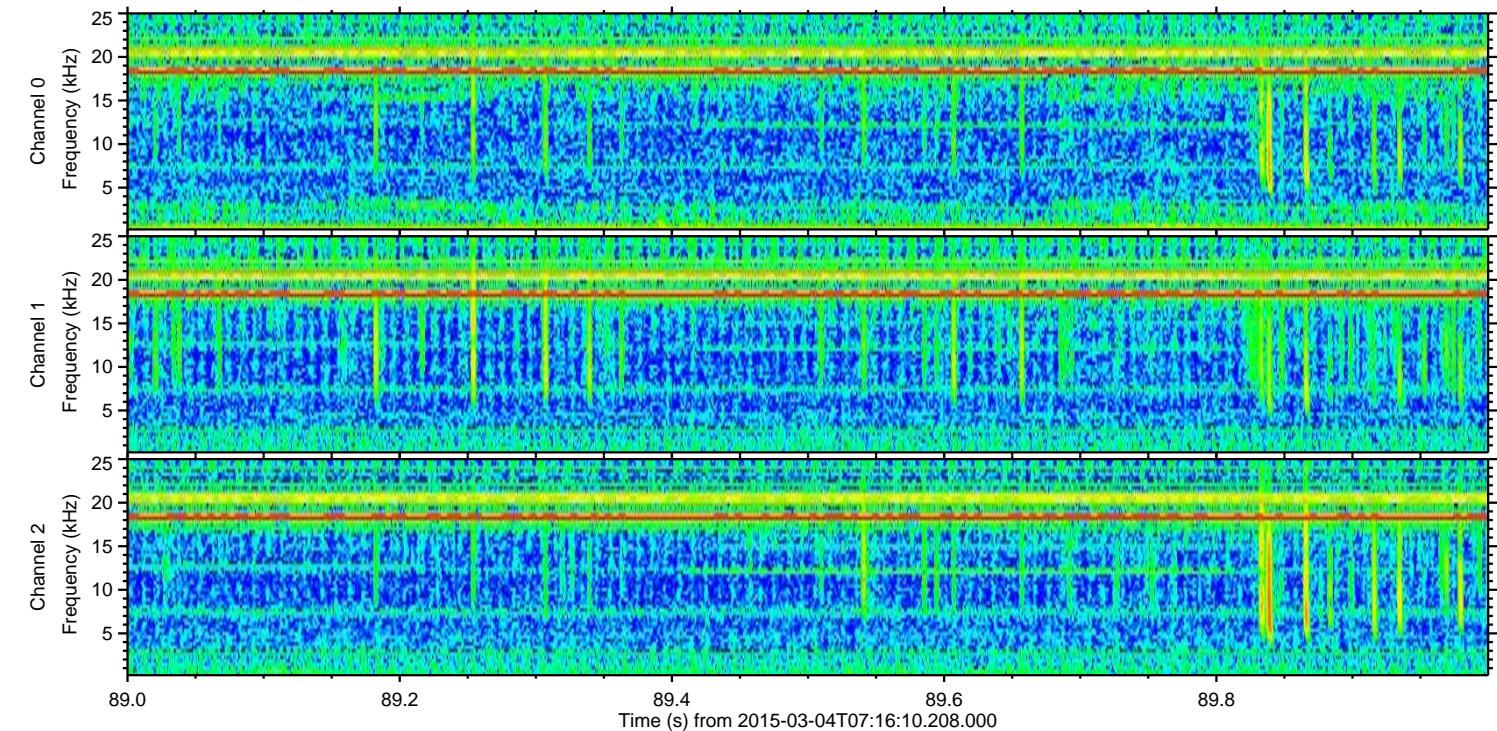
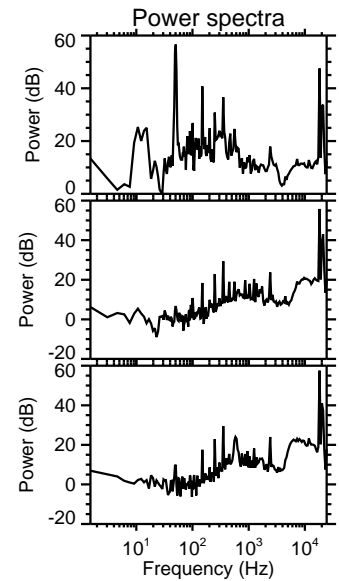
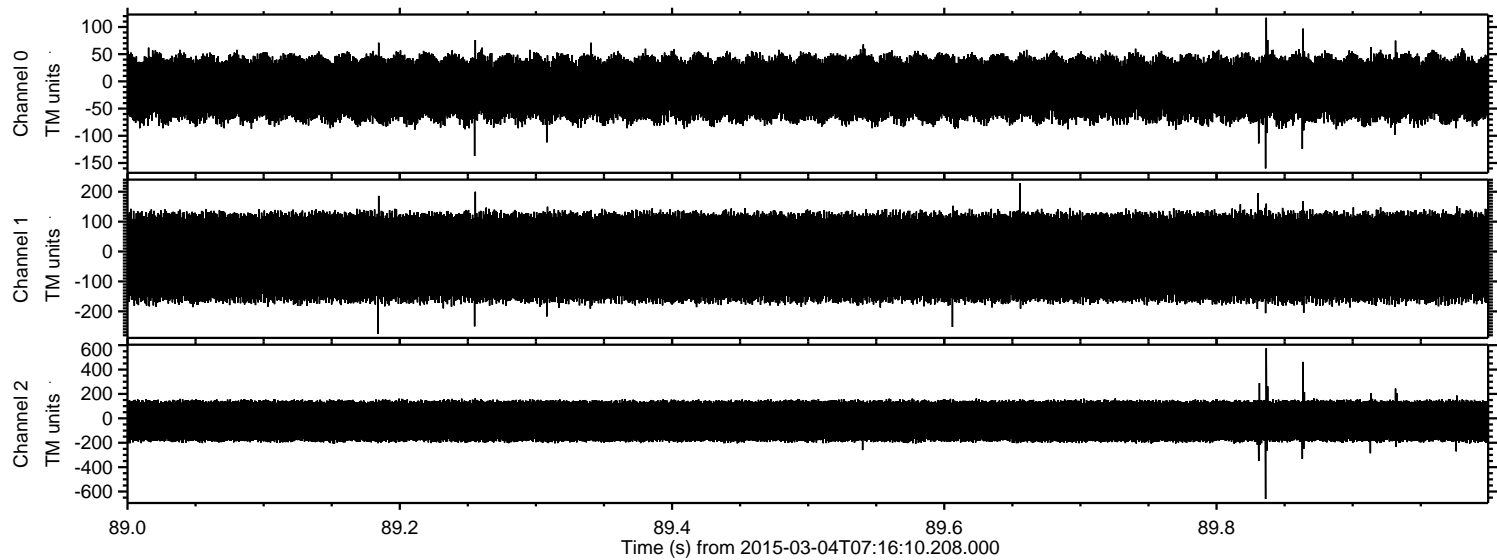
Processed Sat Mar 7 13:12:47 2015 by ELM ver.2012-10-06 from 001__elm20150304_071609__dat00.bin



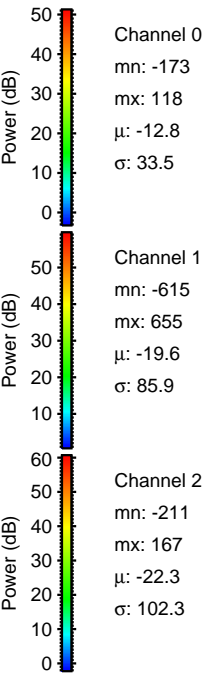
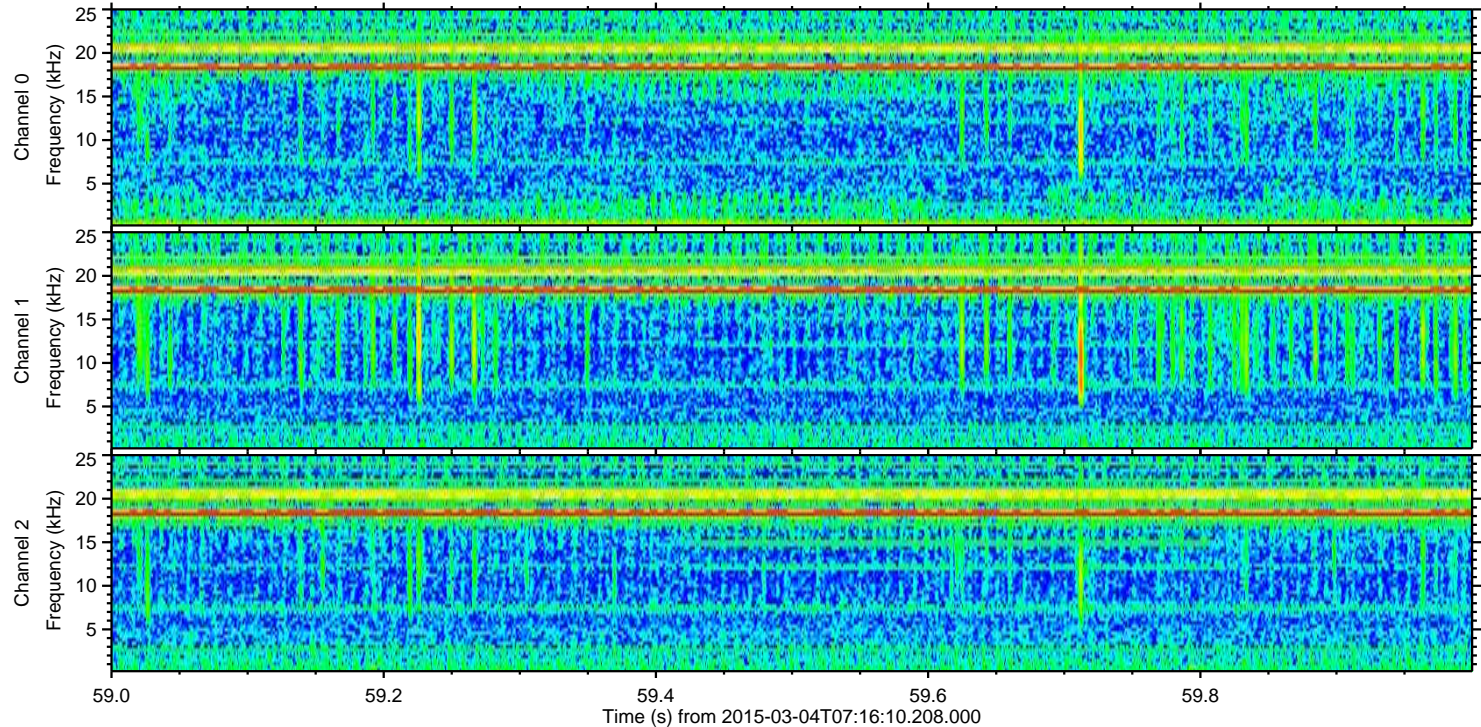
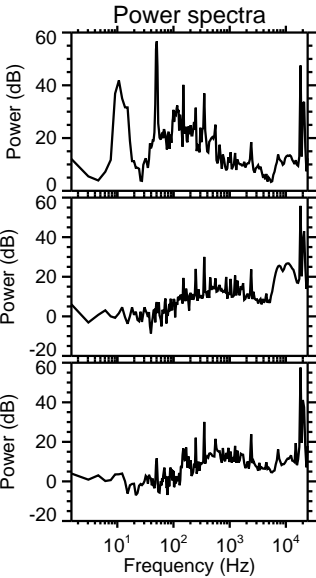
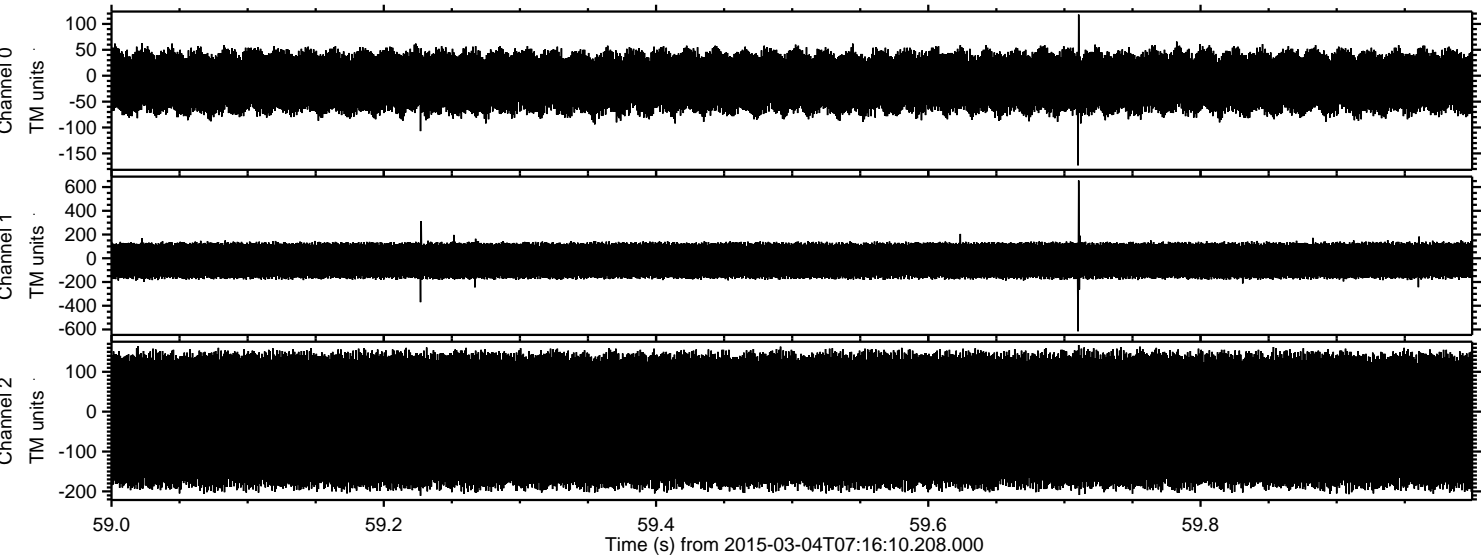
Processed Sat Mar 7 13:12:48 2015 by ELM ver.2012-10-06 from 001__elm20150304_071609__dat00.bin



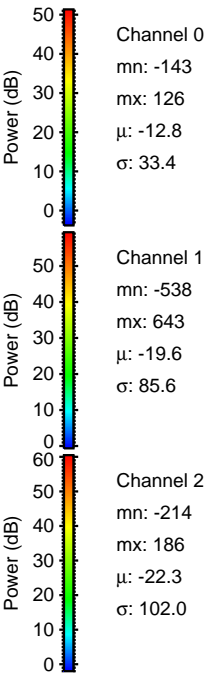
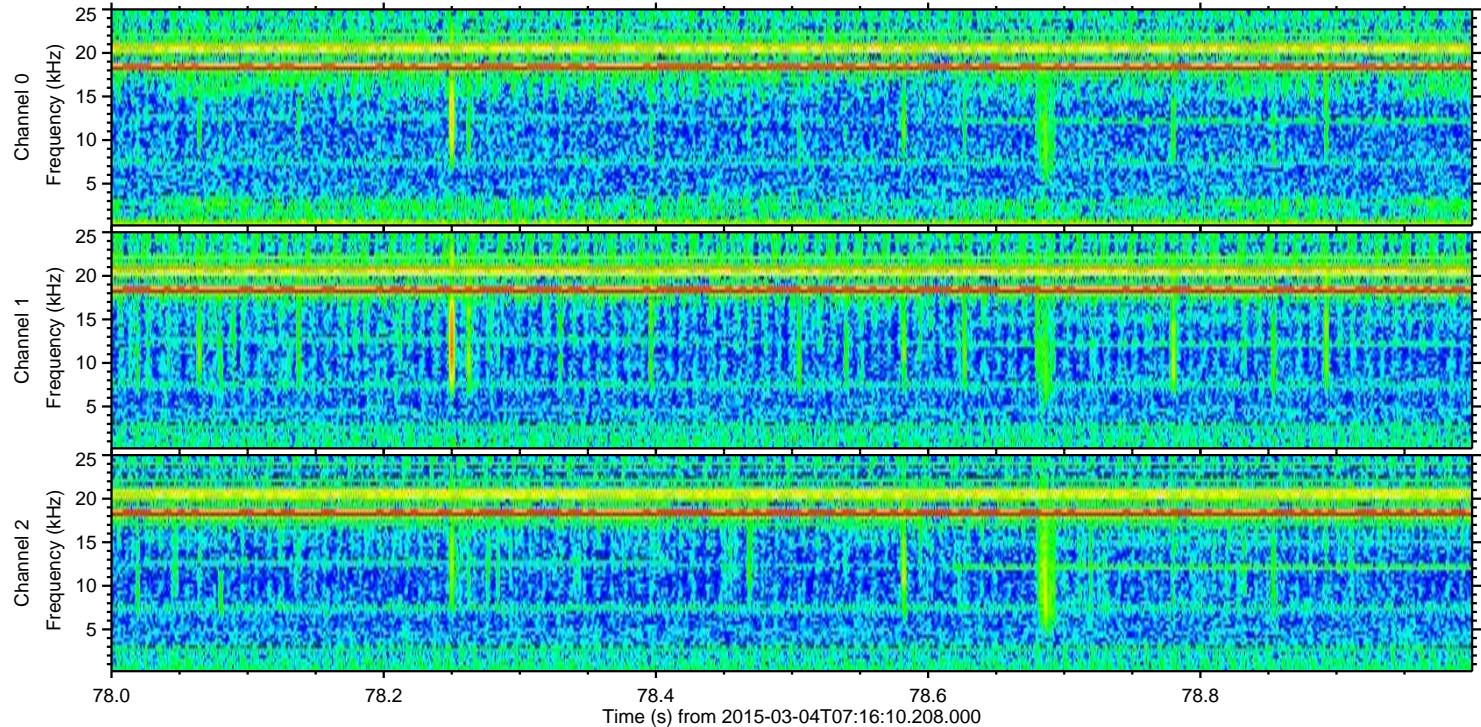
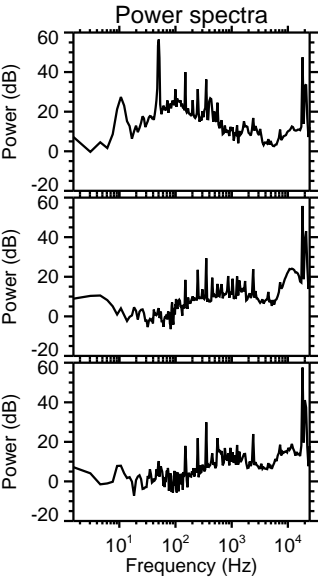
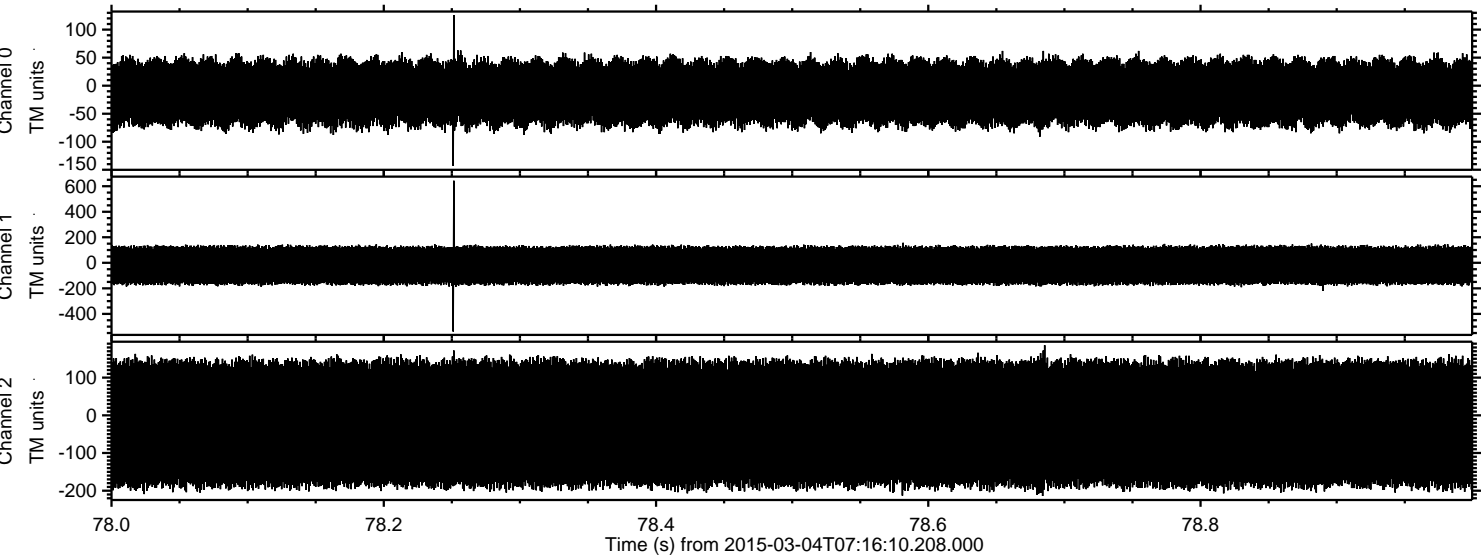
Processed Sat Mar 7 13:12:49 2015 by ELM ver.2012-10-06 from 001__elm20150304_071609__dat00.bin



Processed Sat Mar 7 13:12:50 2015 by ELM ver.2012-10-06 from 001__elm20150304_071609__dat00.bin



Processed Sat Mar 7 13:12:51 2015 by ELM ver.2012-10-06 from 001__elm20150304_071609__dat00.bin



ELMAVAN 3D WAVEFORMS (Measured data sampled at 50 kHz) 49782 packets of 144 samples from 2015-03-04T07:16:10.208.000. Part 115/144

