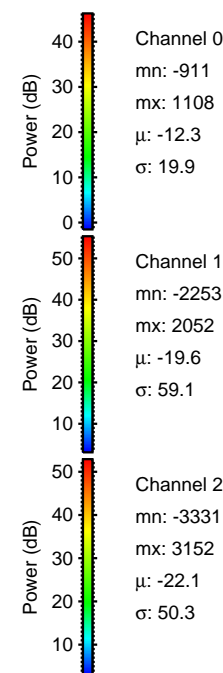
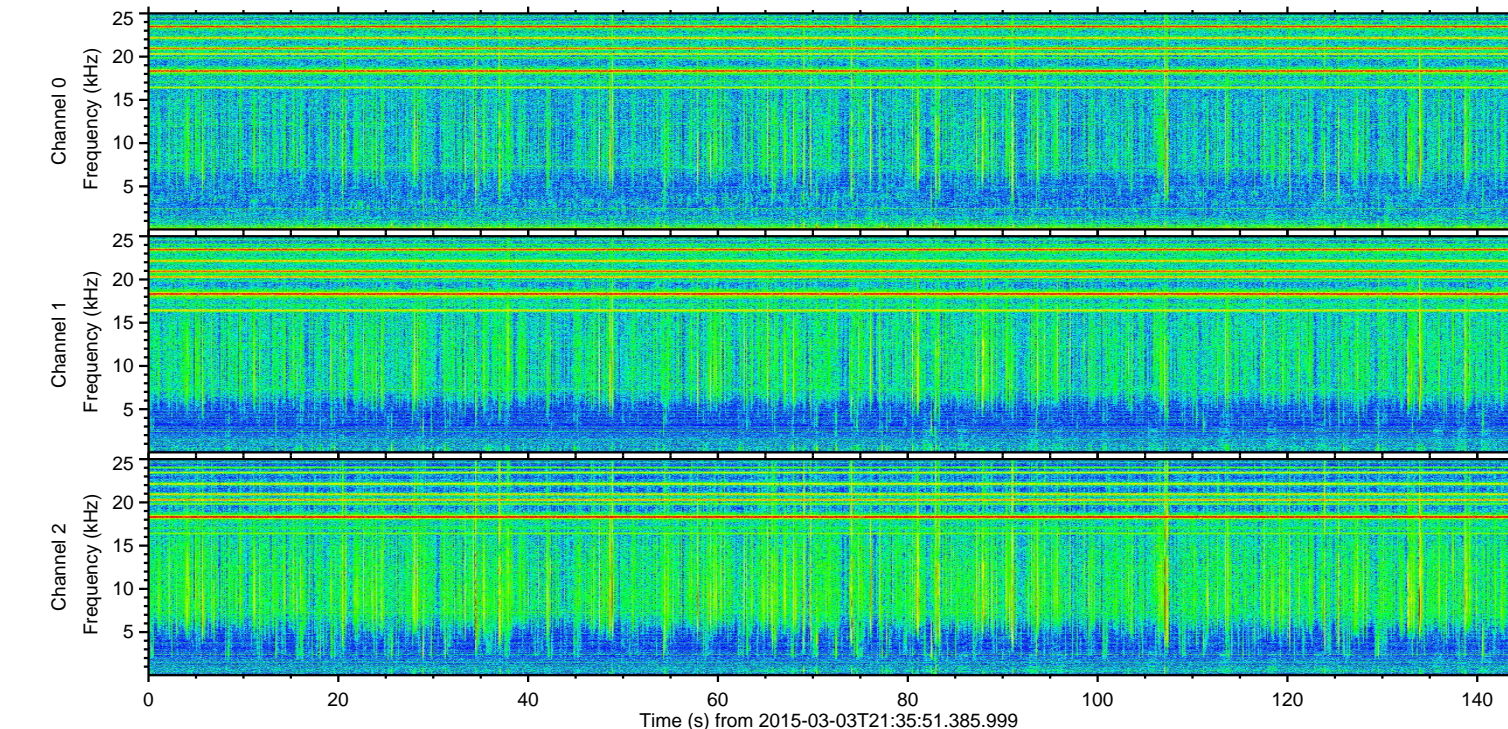
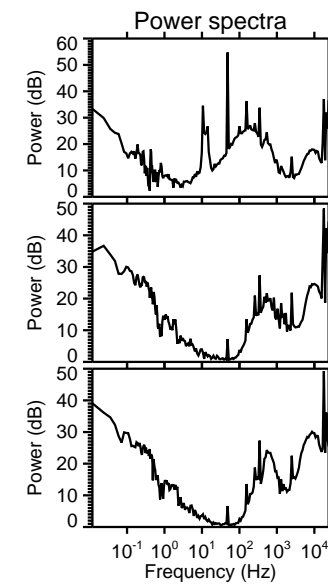
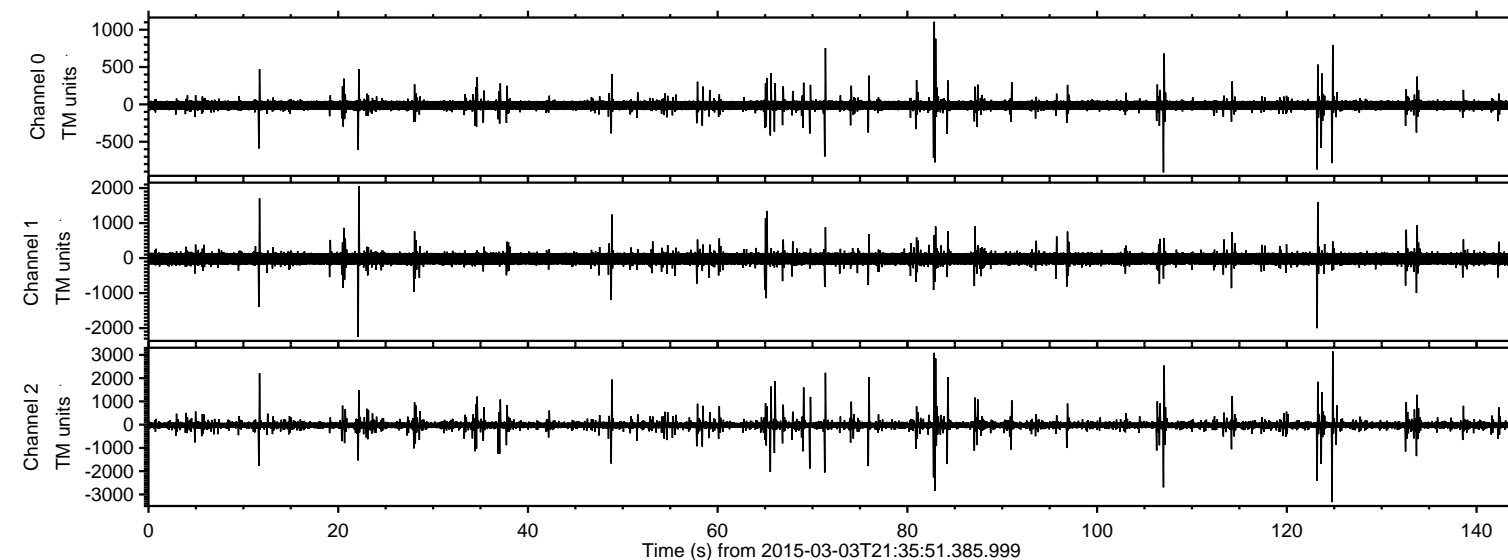


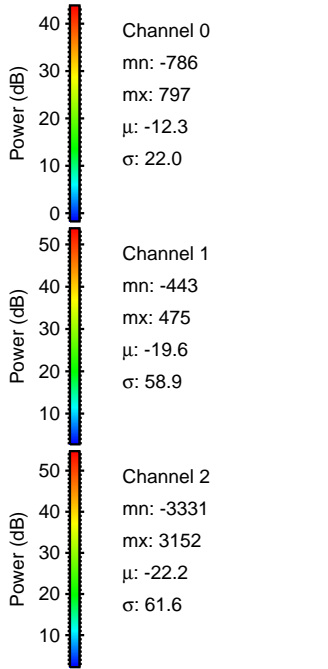
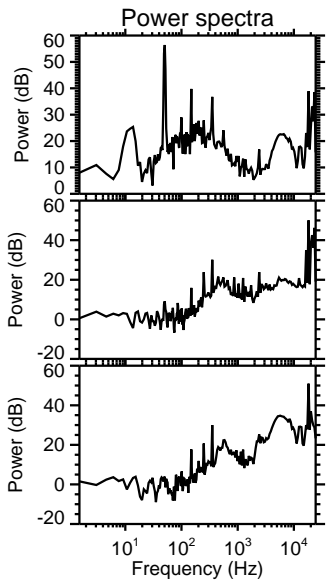
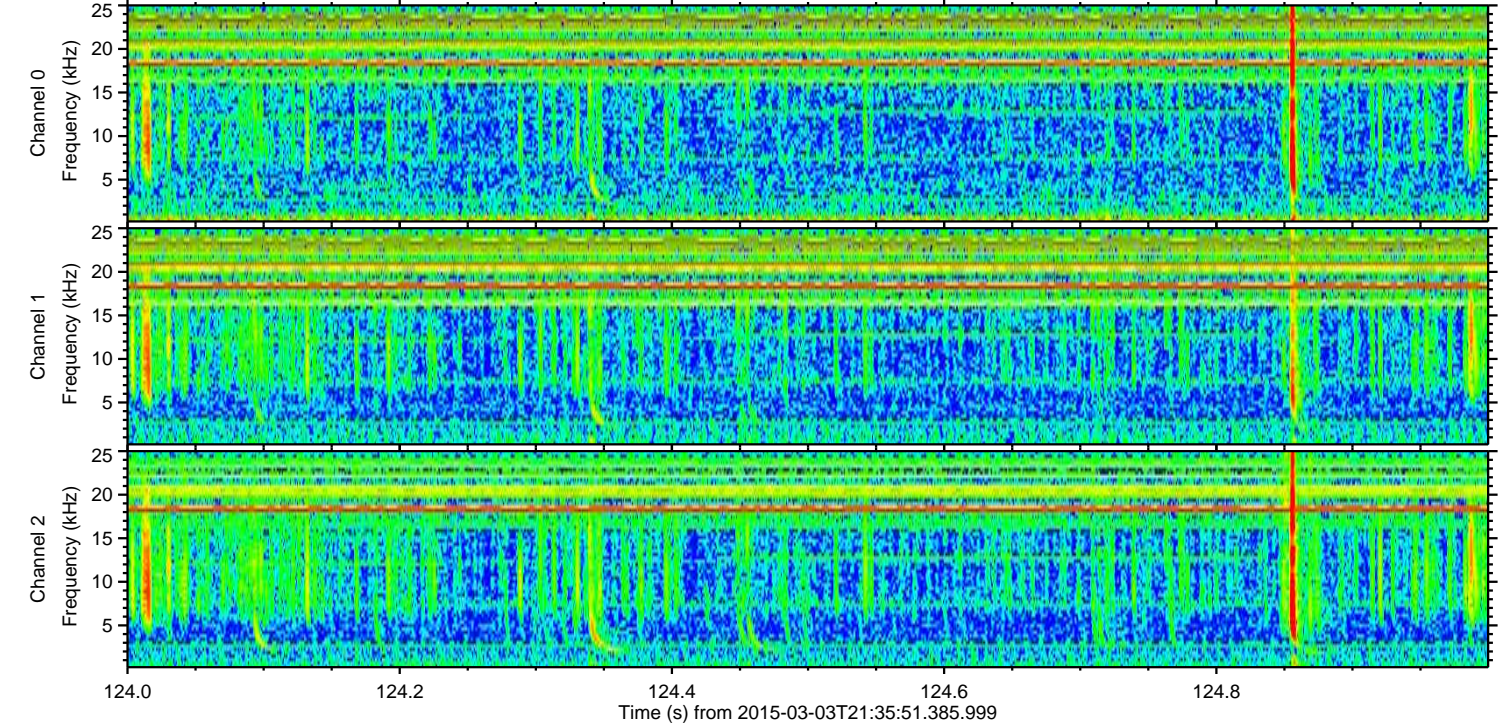
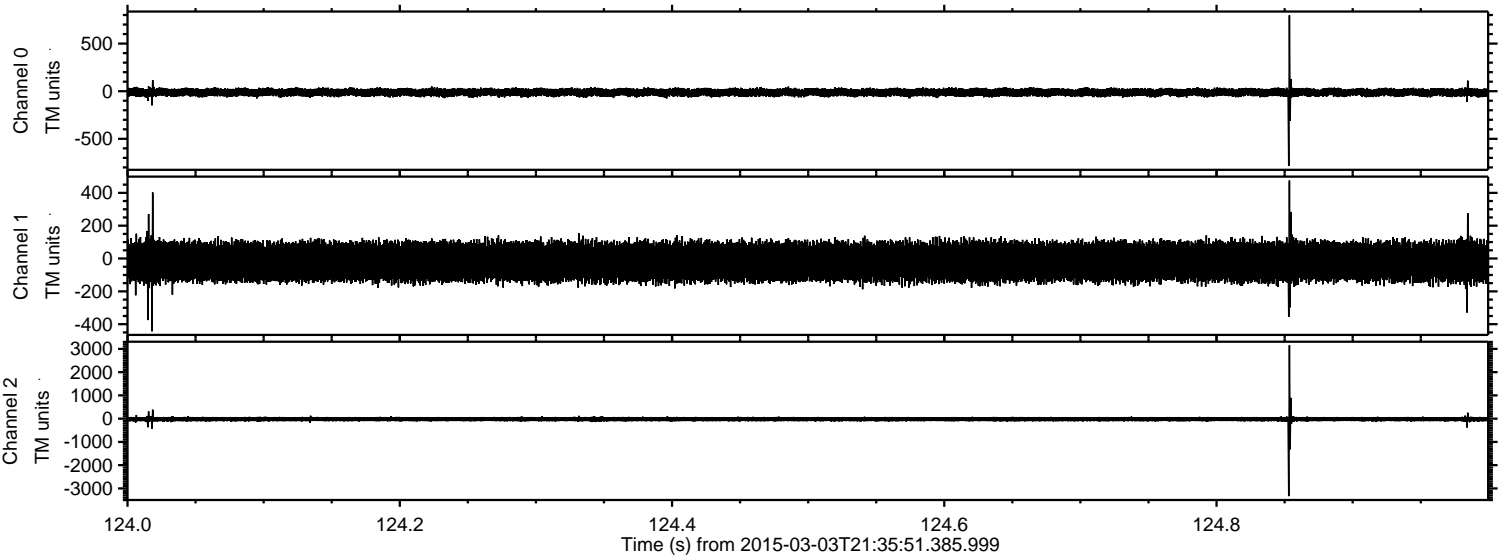
ELMAVAN 3D WAVEFORMS (Measured data sampled at 50 kHz) 49805 packets of 144 samples from 2015-03-03T21:35:51.385.999.

Processed Sat Mar 7 10:42:15 2015 by ELM ver.2012-10-06 from 001__elm20150303_213550__dat00.bin

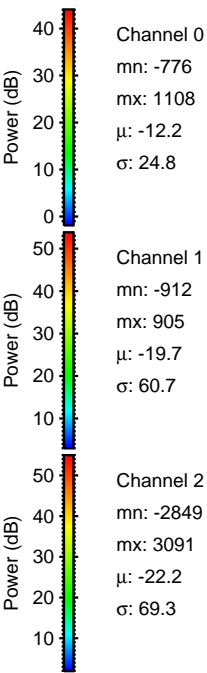
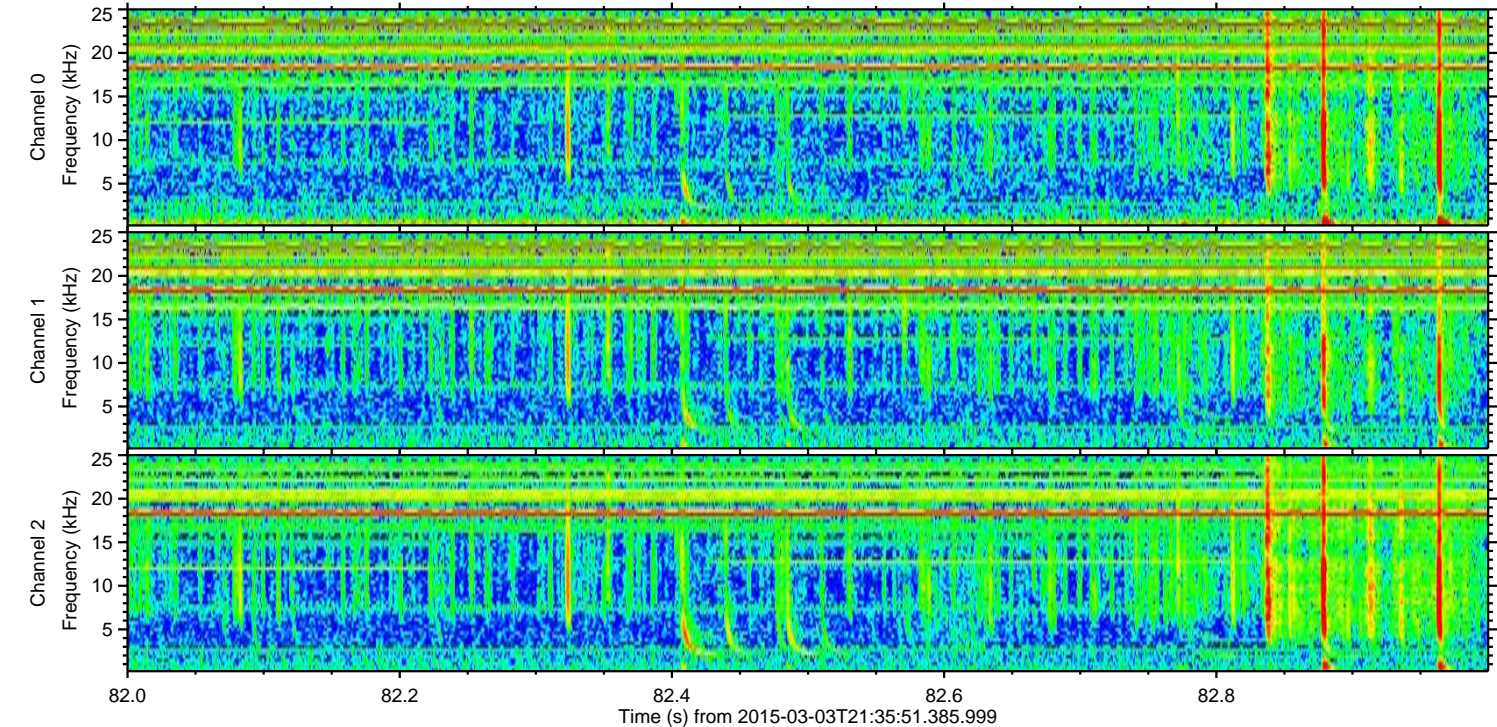
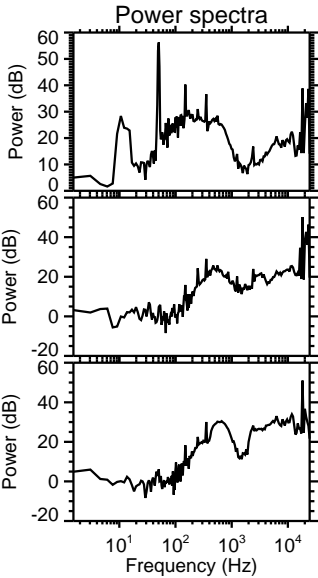
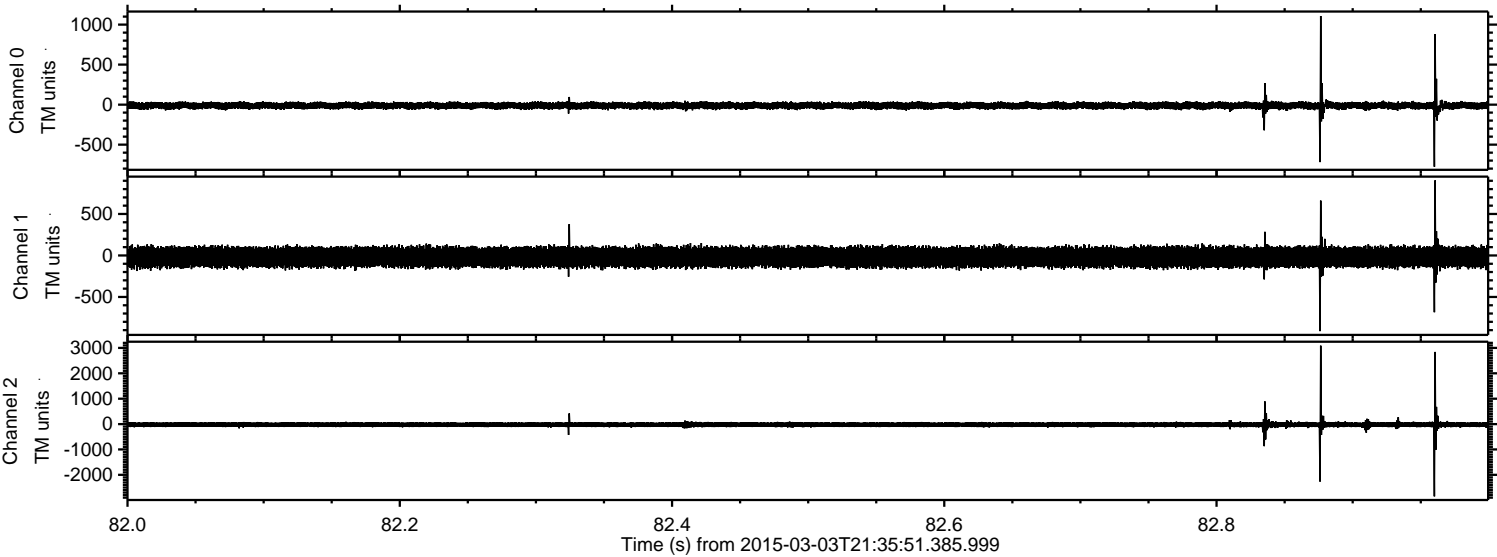


ELMAVAN 3D WAVEFORMS (Measured data sampled at 50 kHz) 49805 packets of 144 samples from 2015-03-03T21:35:51.385.999. Part 125/144

Processed Sat Mar 7 10:42:26 2015 by ELM ver.2012-10-06 from 001__elm20150303_213550__dat00.bin

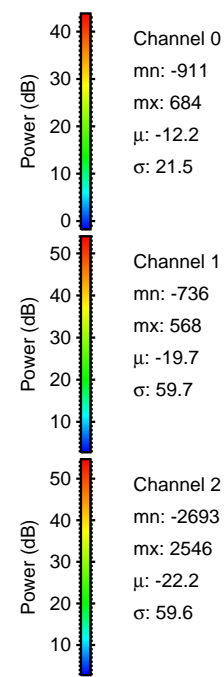
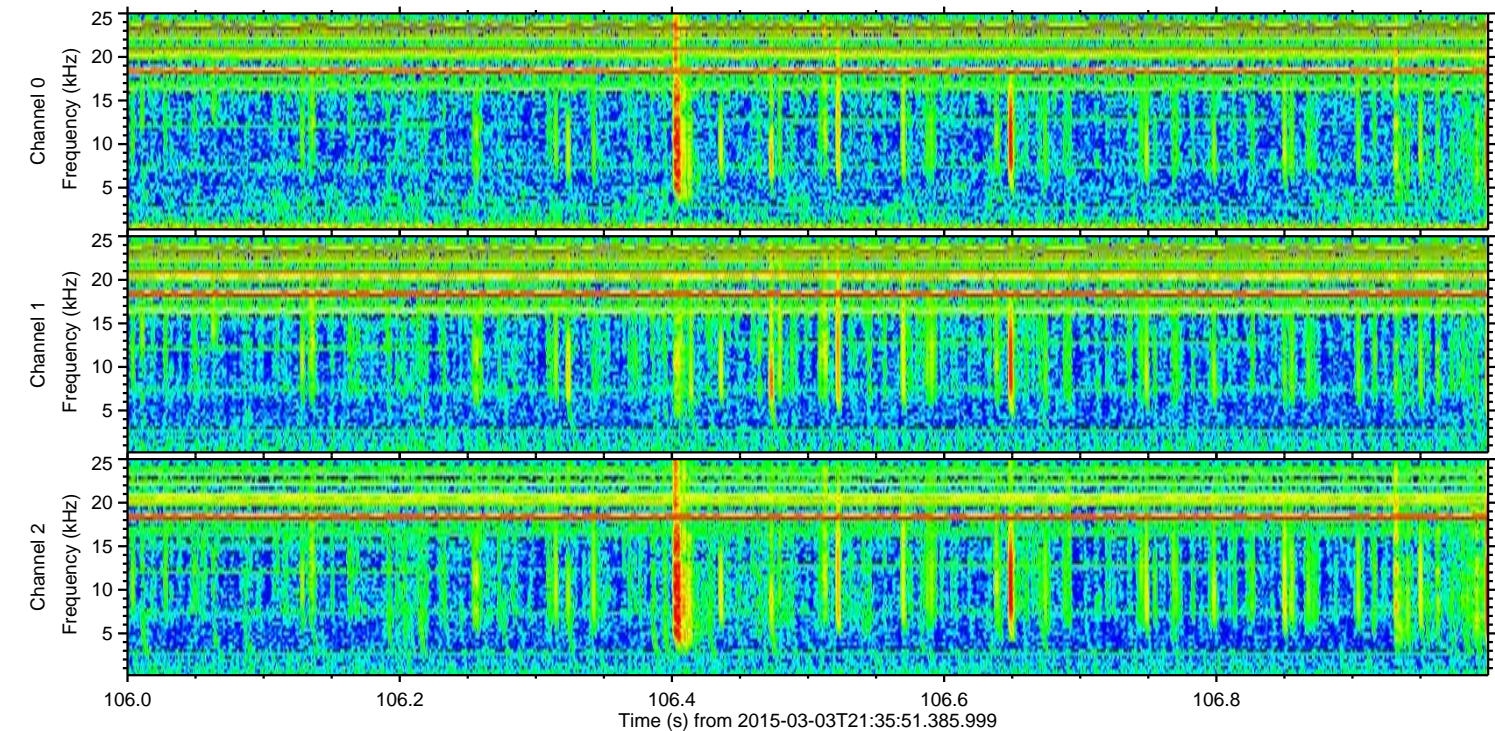
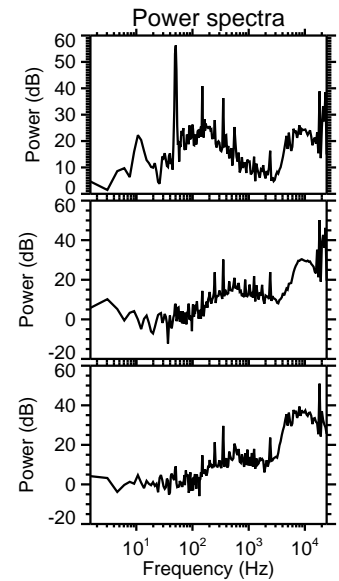
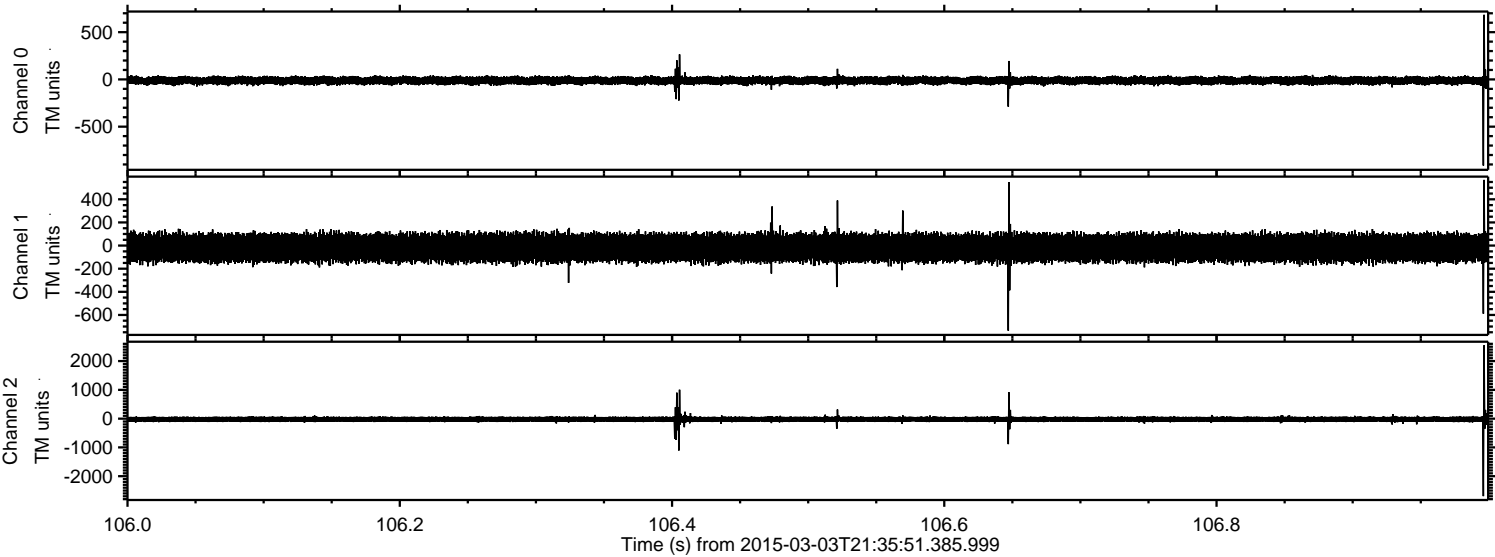


Processed Sat Mar 7 10:42:27 2015 by ELM ver.2012-10-06 from 001__elm20150303_213550__dat00.bin



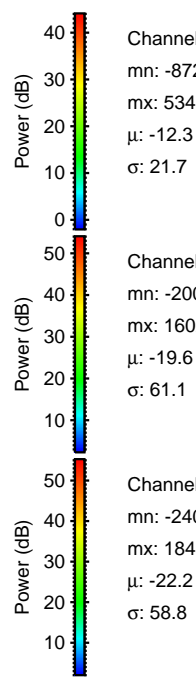
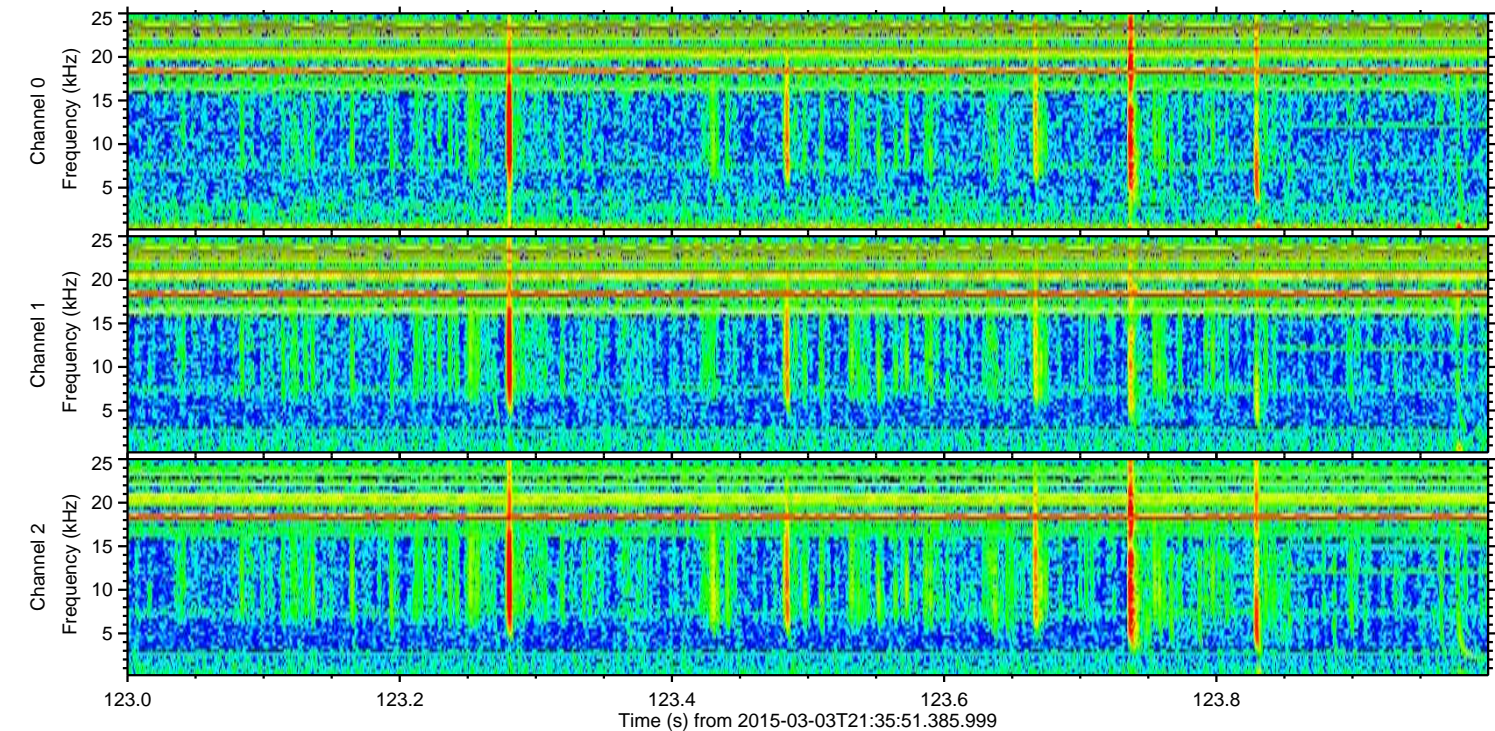
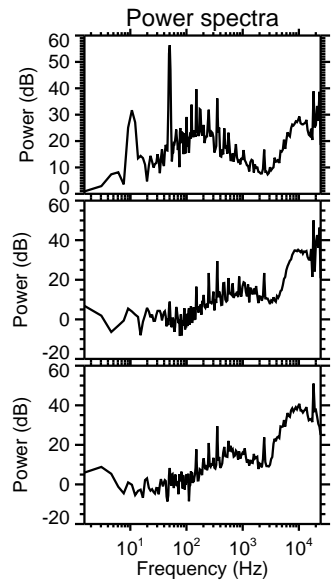
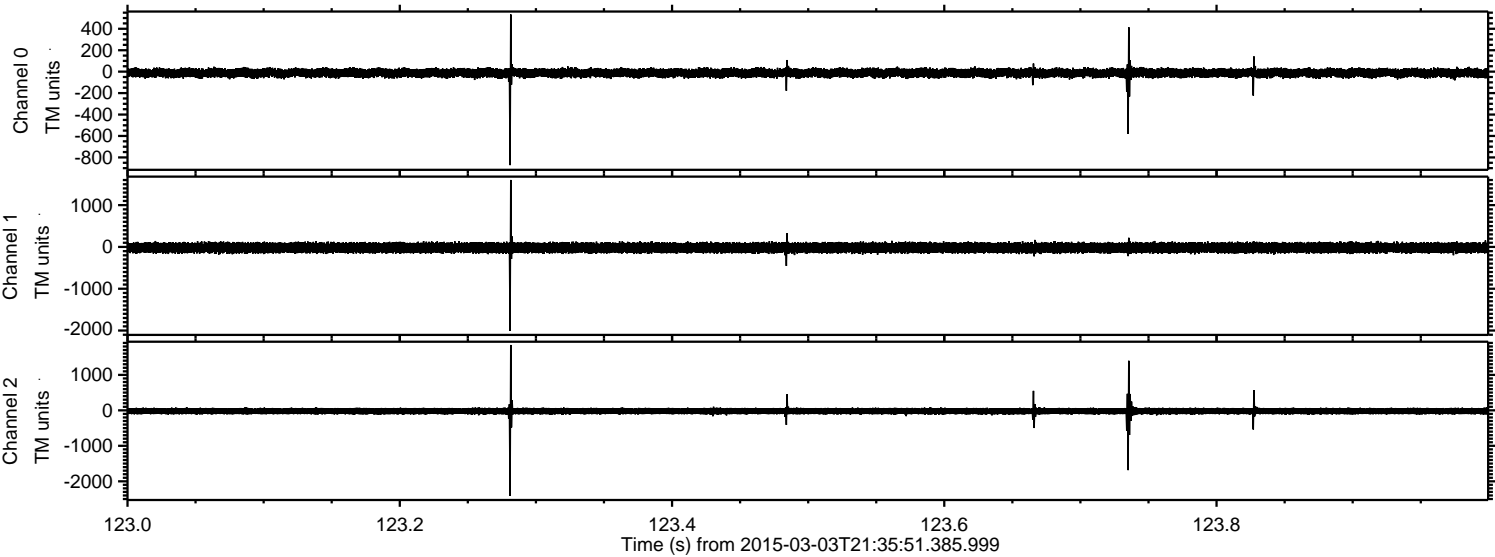
ELMAVAN 3D WAVEFORMS (Measured data sampled at 50 kHz) 49805 packets of 144 samples from 2015-03-03T21:35:51.385.999. Part 107/144

Processed Sat Mar 7 10:42:28 2015 by ELM ver.2012-10-06 from 001__elm20150303_213550__dat00.bin



ELMAVAN 3D WAVEFORMS (Measured data sampled at 50 kHz) 49805 packets of 144 samples from 2015-03-03T21:35:51.385.999. Part 124/144

Processed Sat Mar 7 10:42:29 2015 by ELM ver.2012-10-06 from 001__elm20150303_213550__dat00.bin

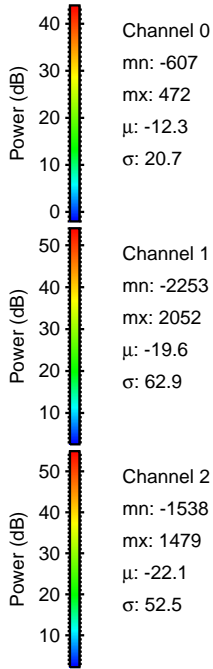
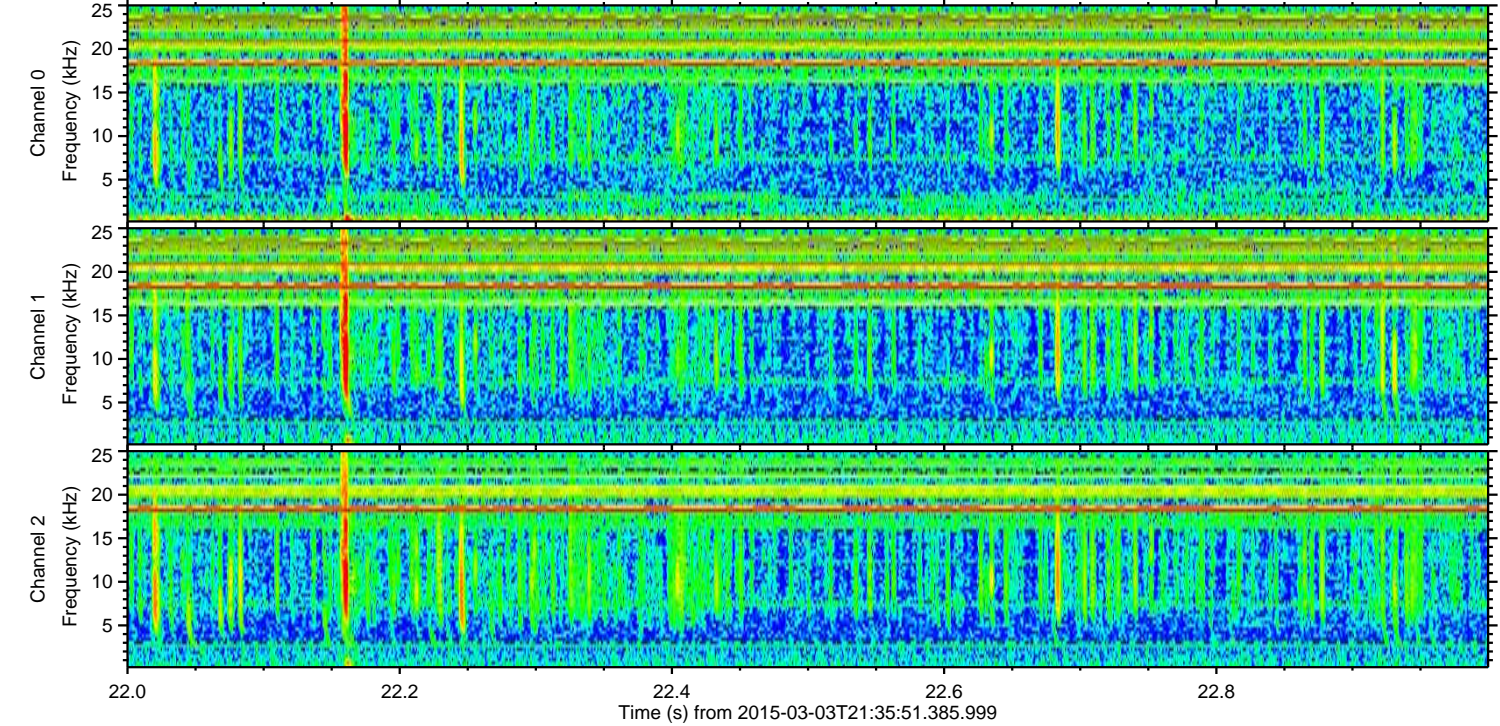
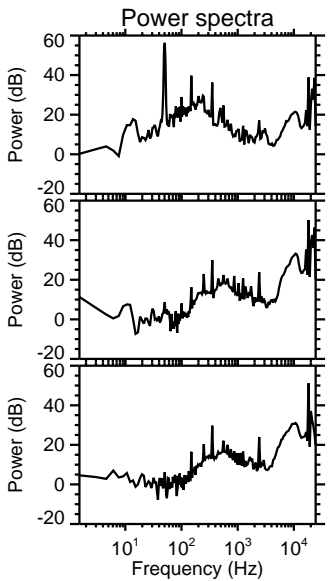
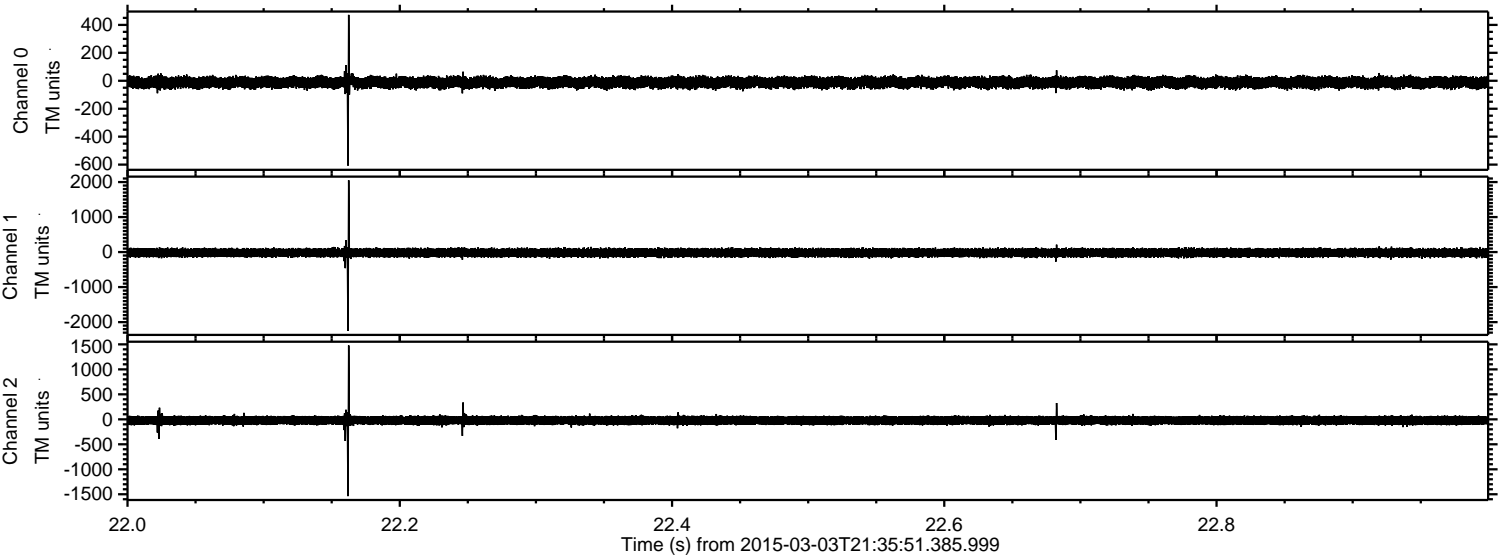


Channel 0
mn: -872
mx: 534
 μ : -12.3
 σ : 21.7

Channel 1
mn: -2004
mx: 1602
 μ : -19.6
 σ : 61.1

Channel 2
mn: -2407
mx: 1843
 μ : -22.2
 σ : 58.8

Processed Sat Mar 7 10:42:30 2015 by ELM ver.2012-10-06 from 001__elm20150303_213550__dat00.bin

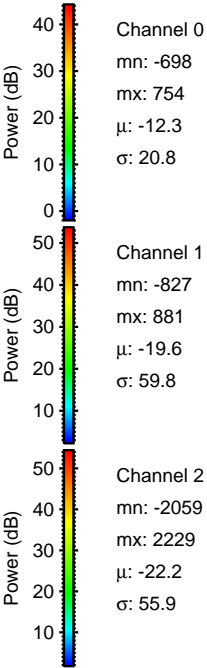
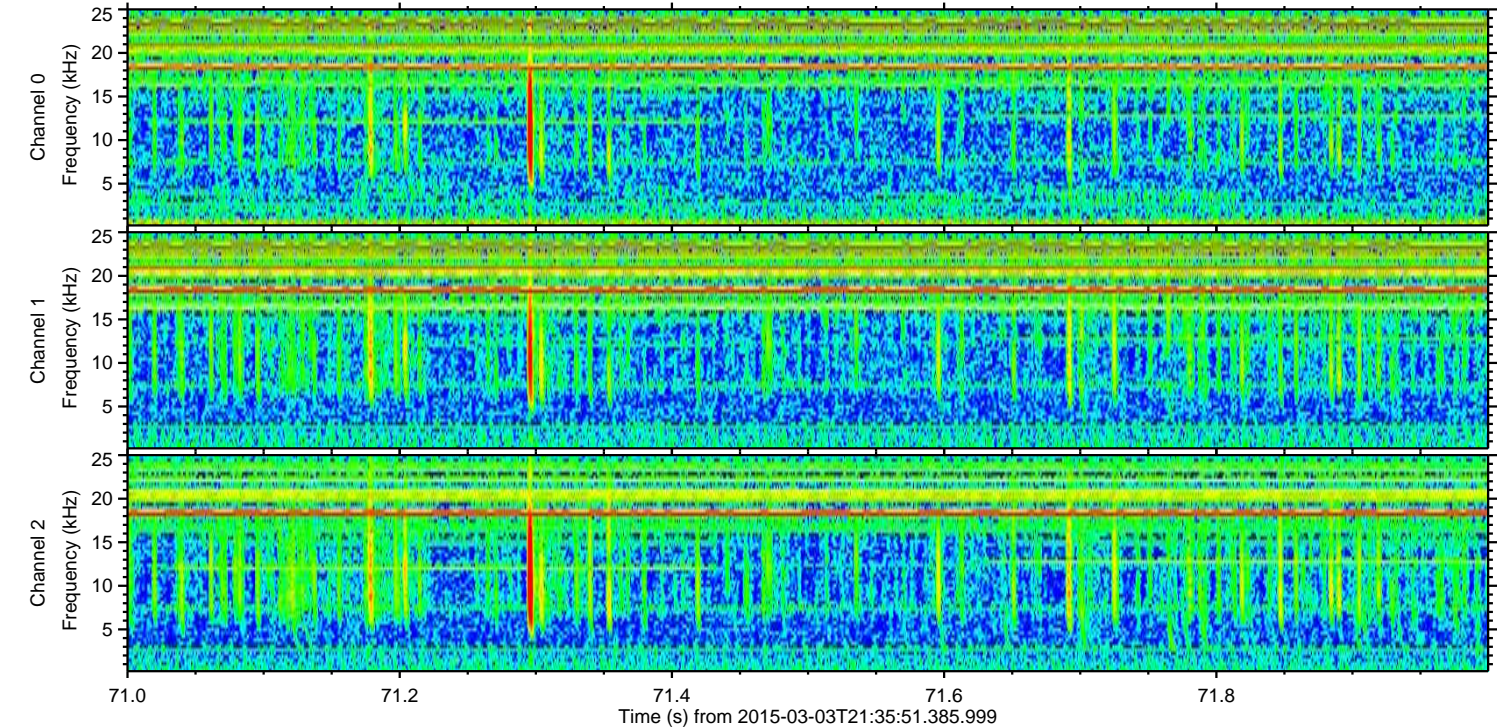
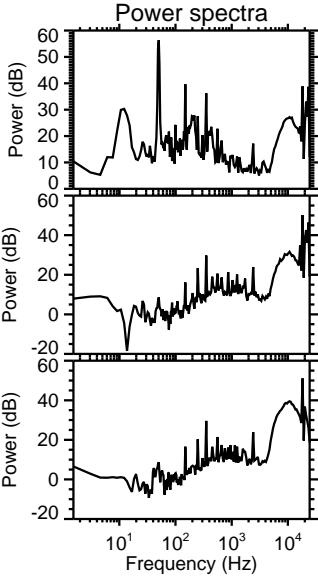
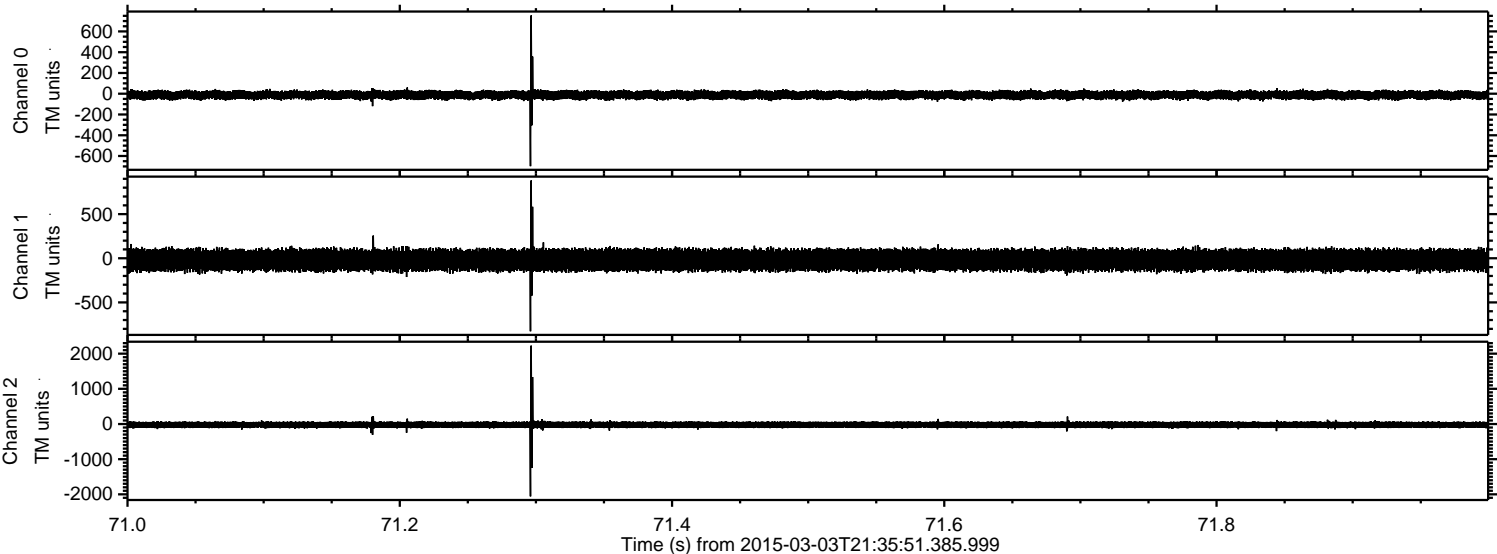


Channel 0
mn: -607
mx: 472
 μ : -12.3
 σ : 20.7

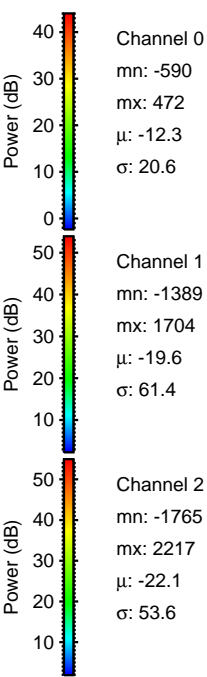
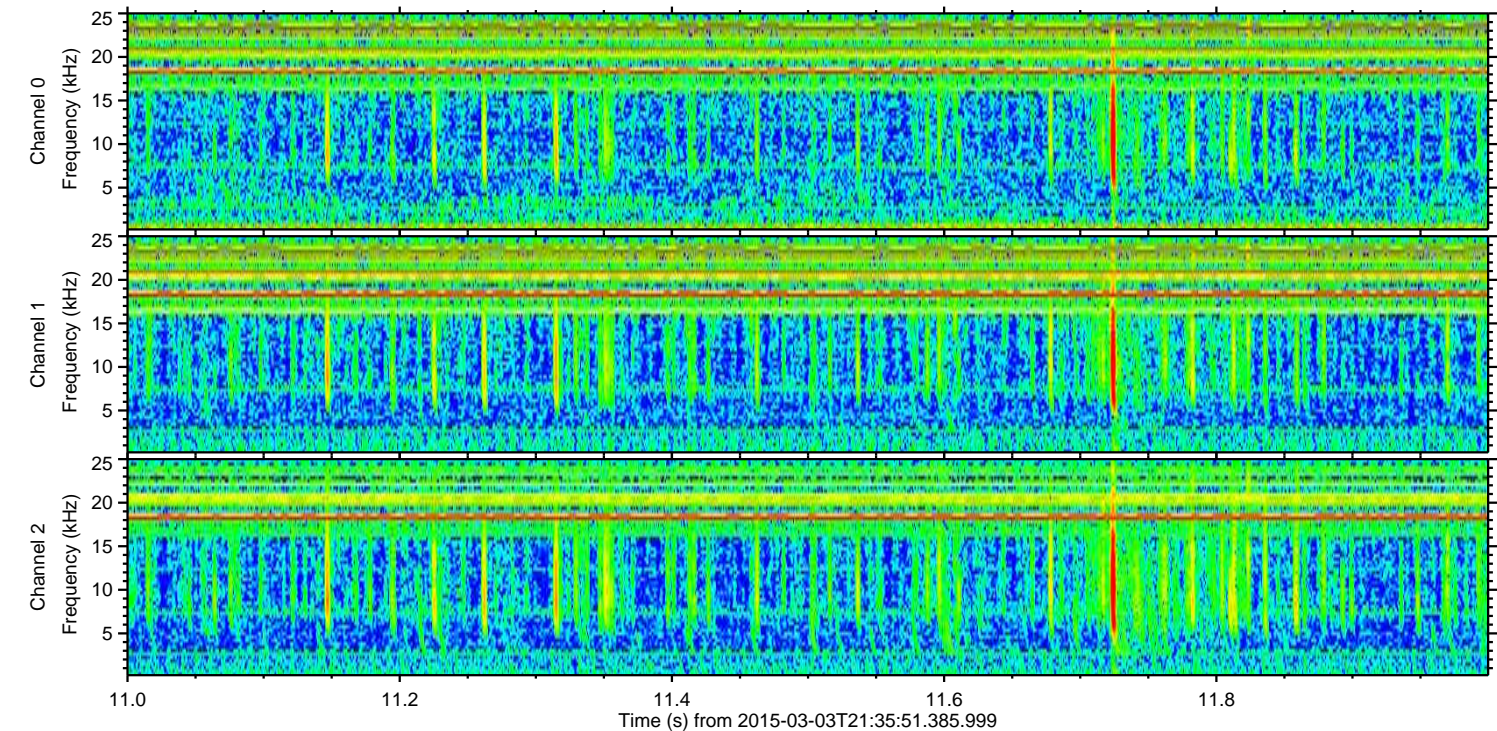
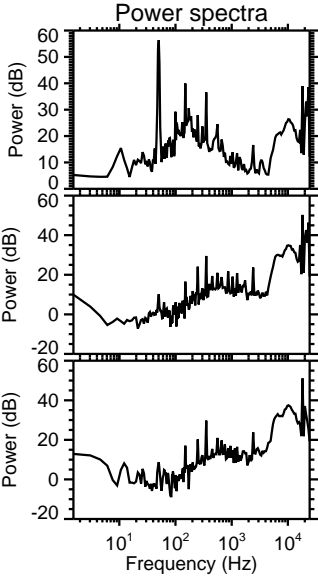
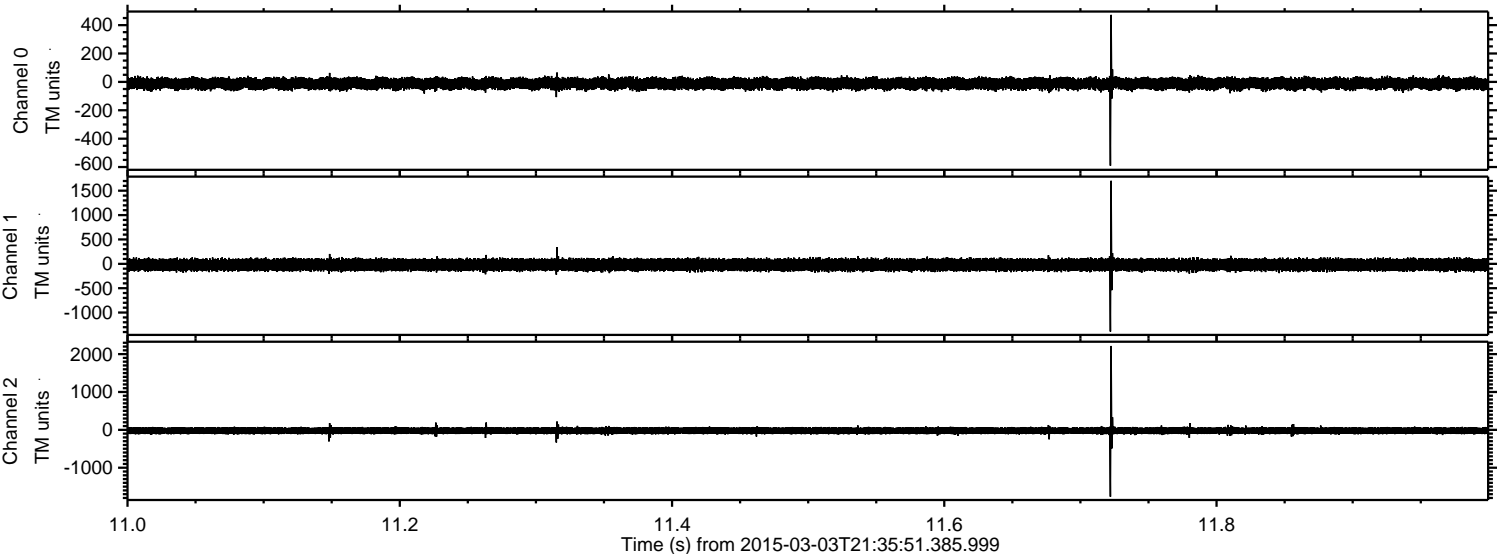
Channel 1
mn: -2253
mx: 2052
 μ : -19.6
 σ : 62.9

Channel 2
mn: -1538
mx: 1479
 μ : -22.1
 σ : 52.5

Processed Sat Mar 7 10:42:31 2015 by ELM ver.2012-10-06 from 001__elm20150303_213550__dat00.bin



Processed Sat Mar 7 10:42:32 2015 by ELM ver.2012-10-06 from 001__elm20150303_213550__dat00.bin

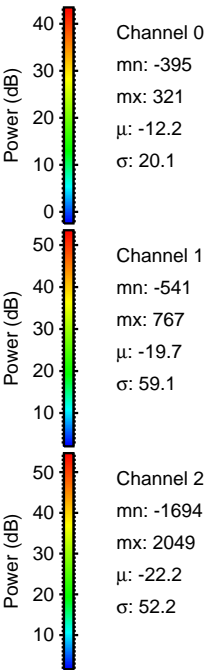
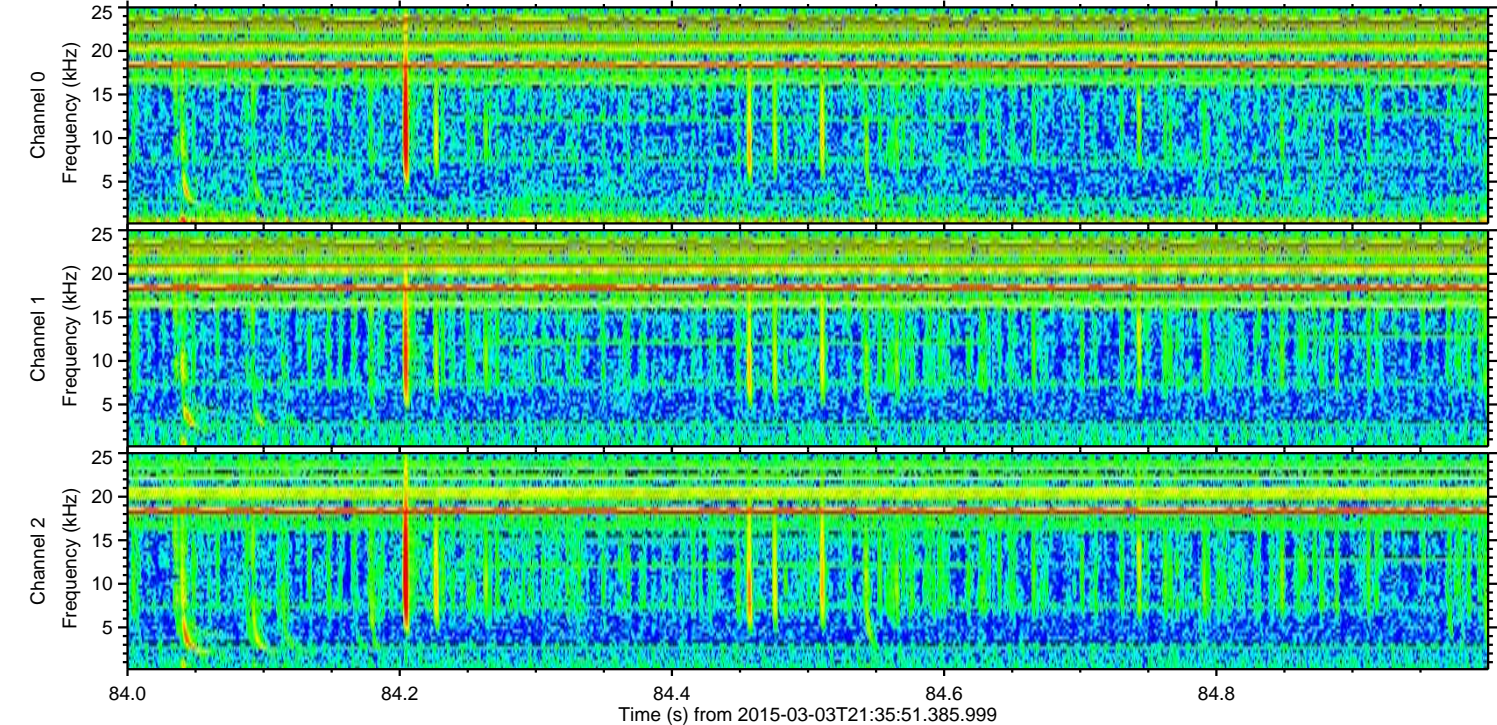
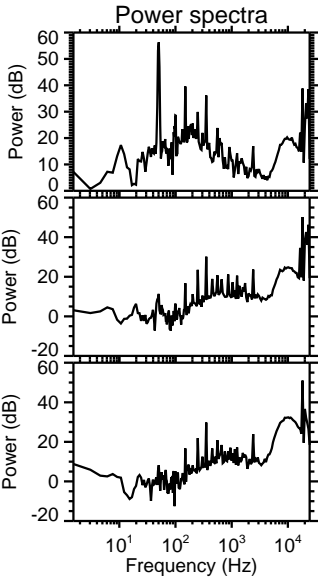
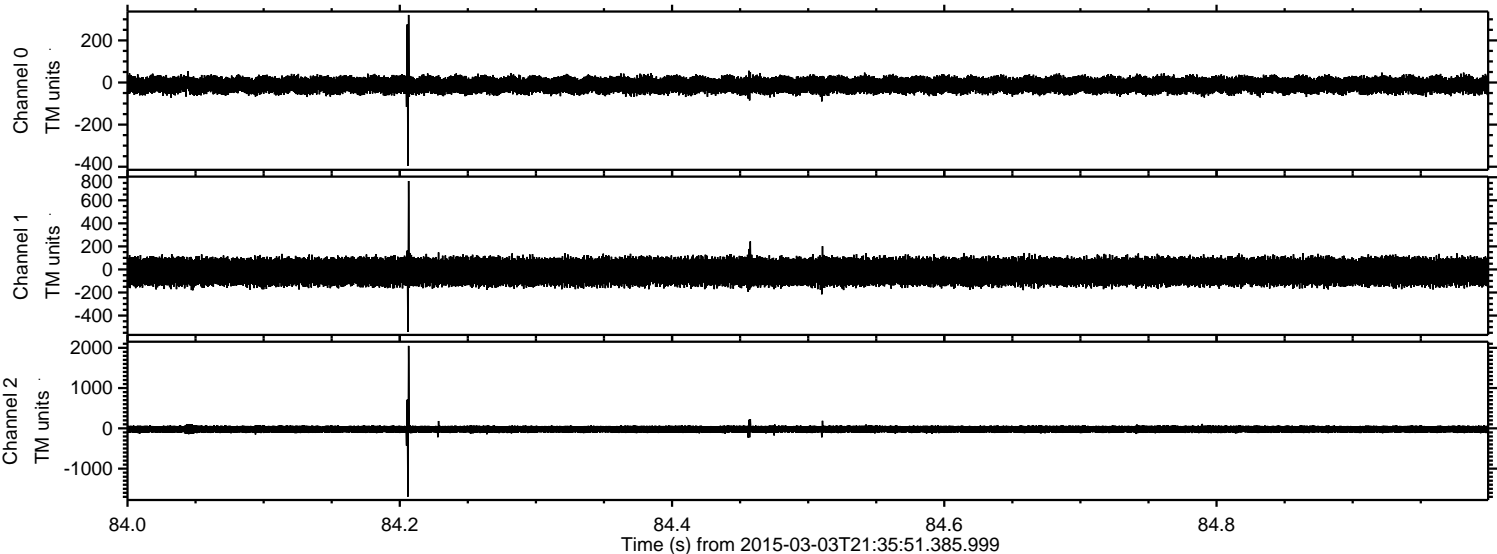


Channel 0
mn: -590
mx: 472
 μ : -12.3
 σ : 20.6

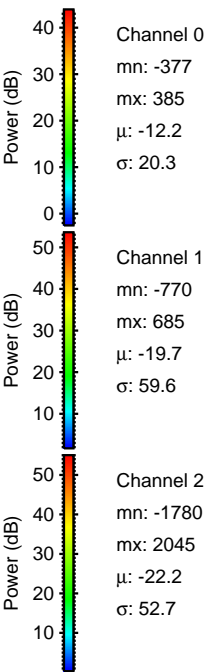
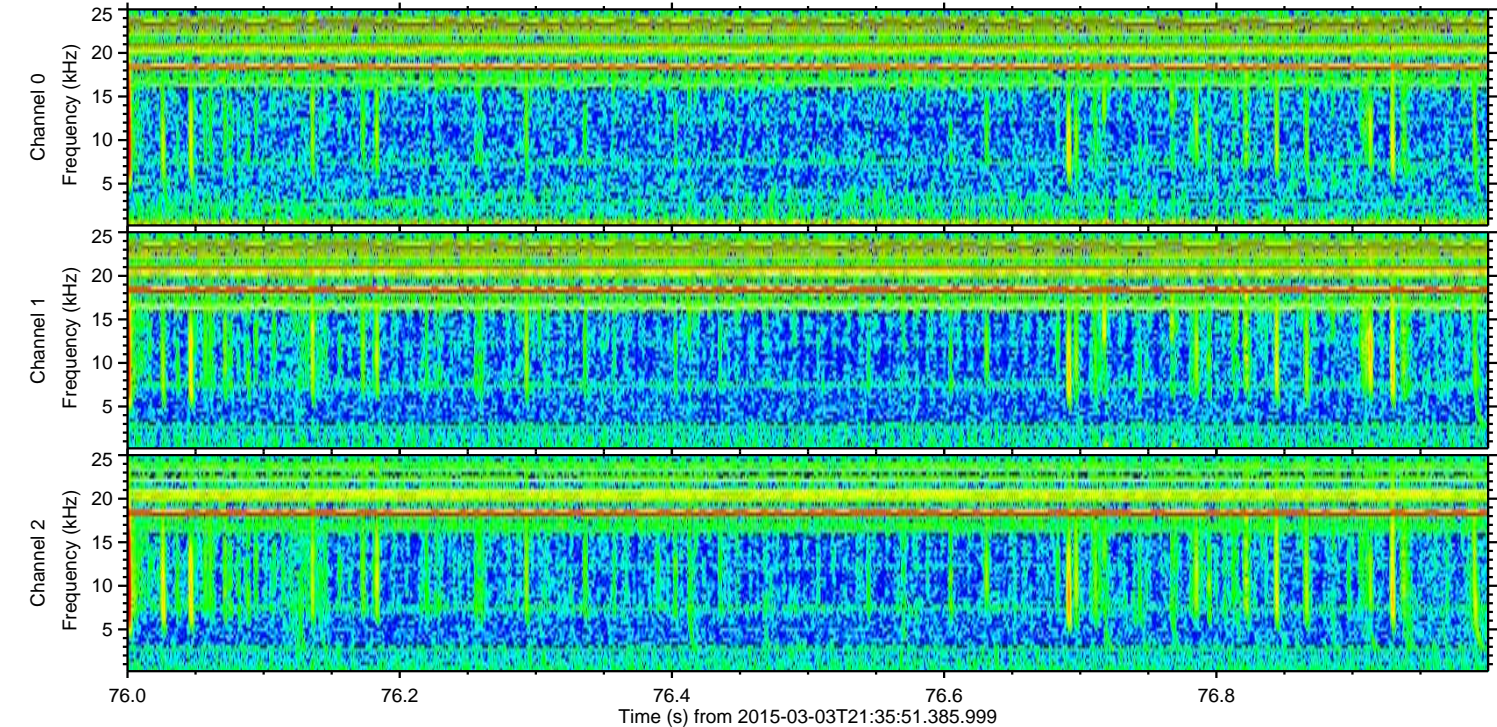
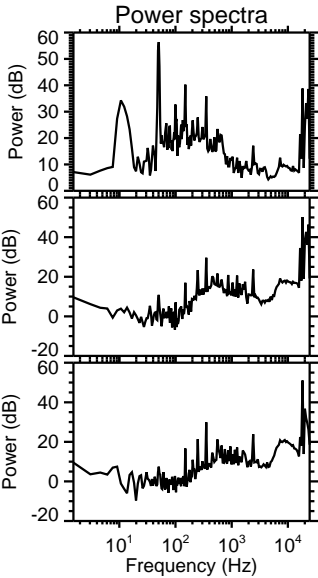
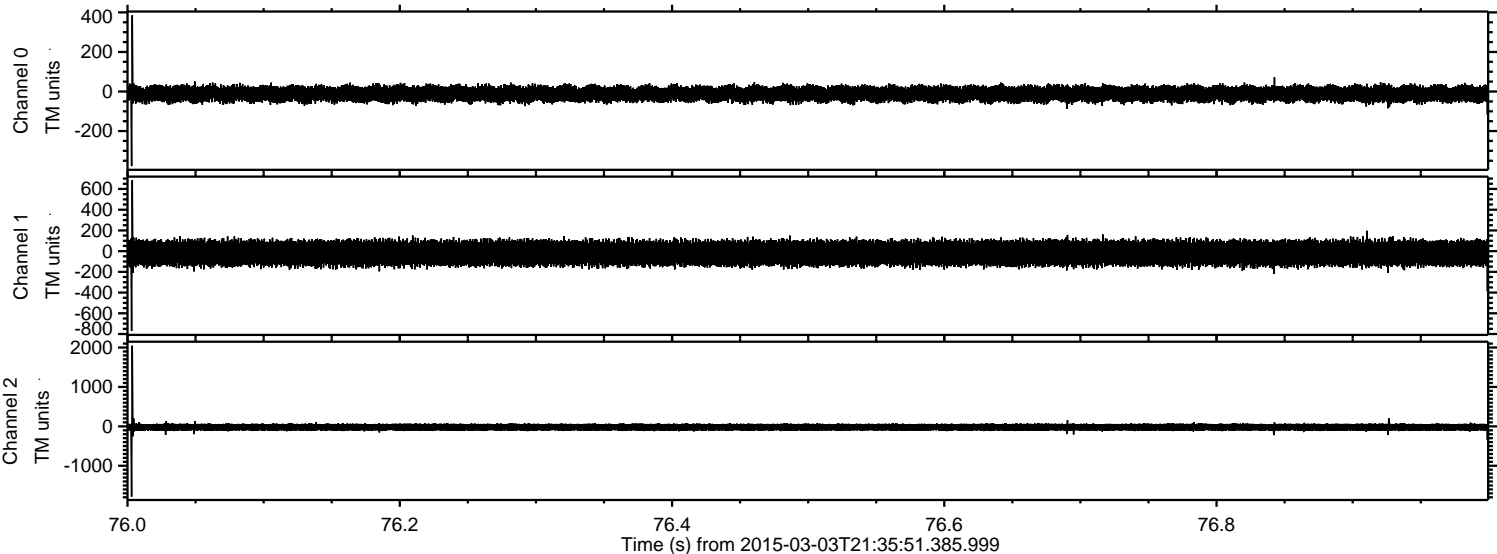
Channel 1
mn: -1389
mx: 1704
 μ : -19.6
 σ : 61.4

Channel 2
mn: -1765
mx: 2217
 μ : -22.1
 σ : 53.6

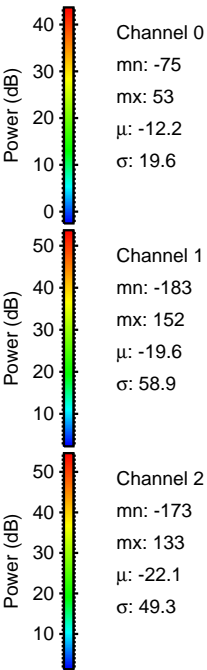
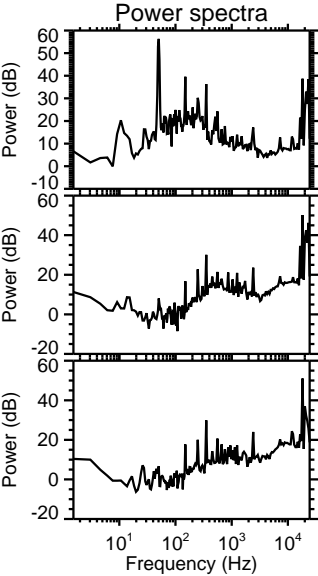
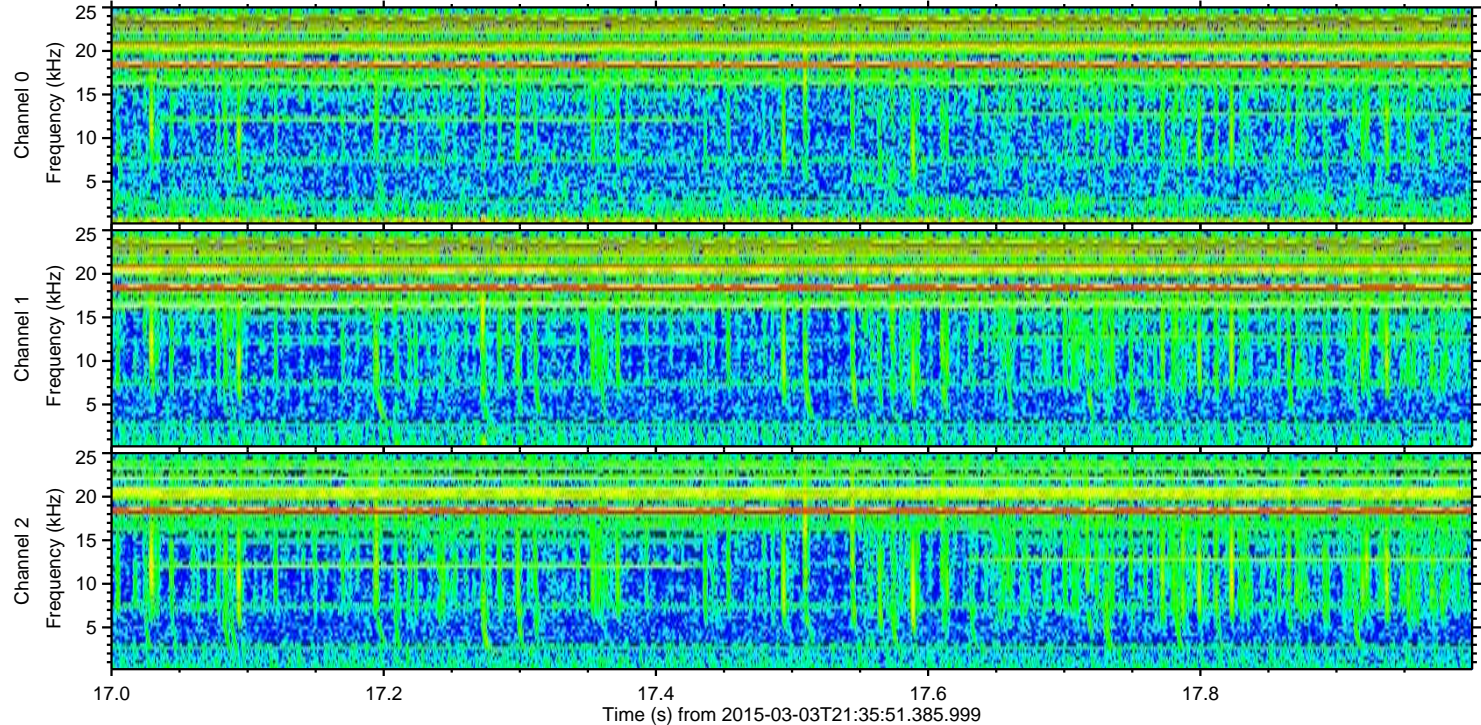
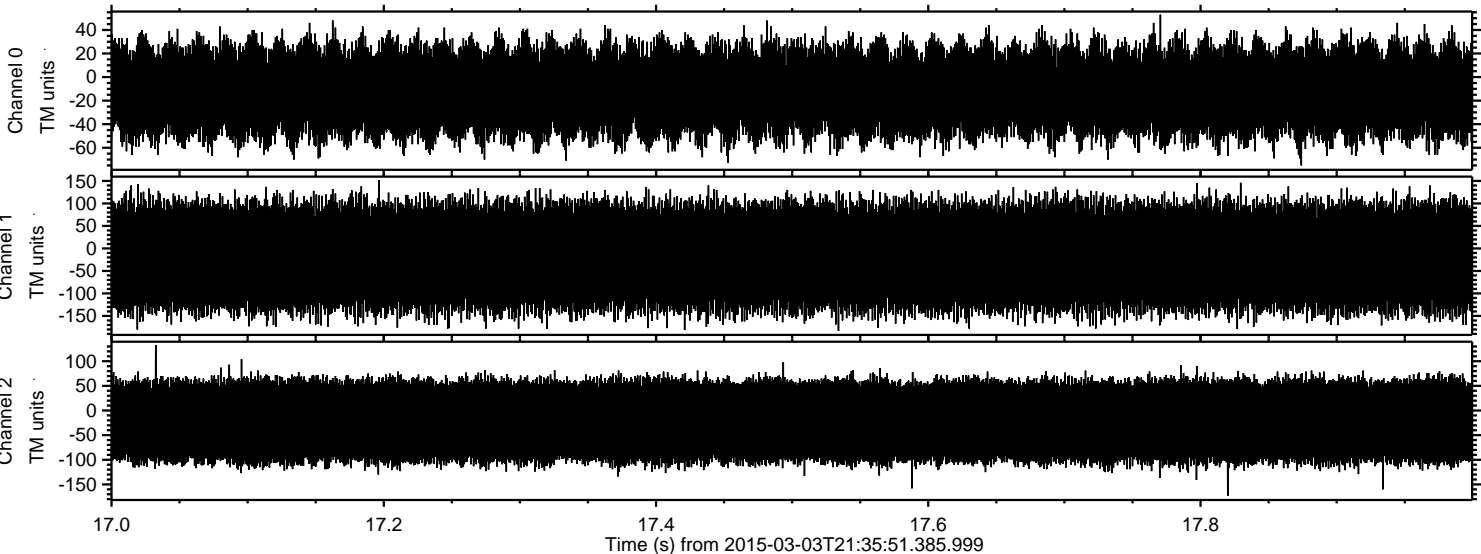
Processed Sat Mar 7 10:42:33 2015 by ELM ver.2012-10-06 from 001__elm20150303_213550__dat00.bin



Processed Sat Mar 7 10:42:34 2015 by ELM ver.2012-10-06 from 001__elm20150303_213550__dat00.bin



Processed Sat Mar 7 10:42:35 2015 by ELM ver.2012-10-06 from 001__elm20150303_213550__dat00.bin



Power spectra

Channel 0

mn: -75
mx: 53
 μ : -12.2
 σ : 19.6

Channel 1

mn: -183
mx: 152
 μ : -19.6
 σ : 58.9

Channel 2

mn: -173
mx: 133
 μ : -22.1
 σ : 49.3