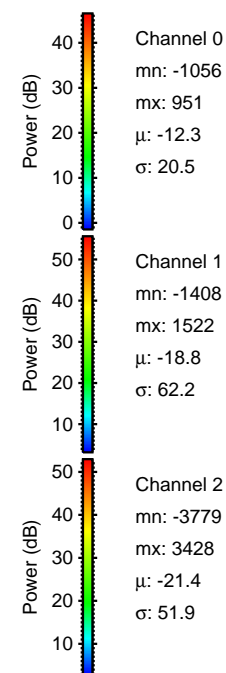
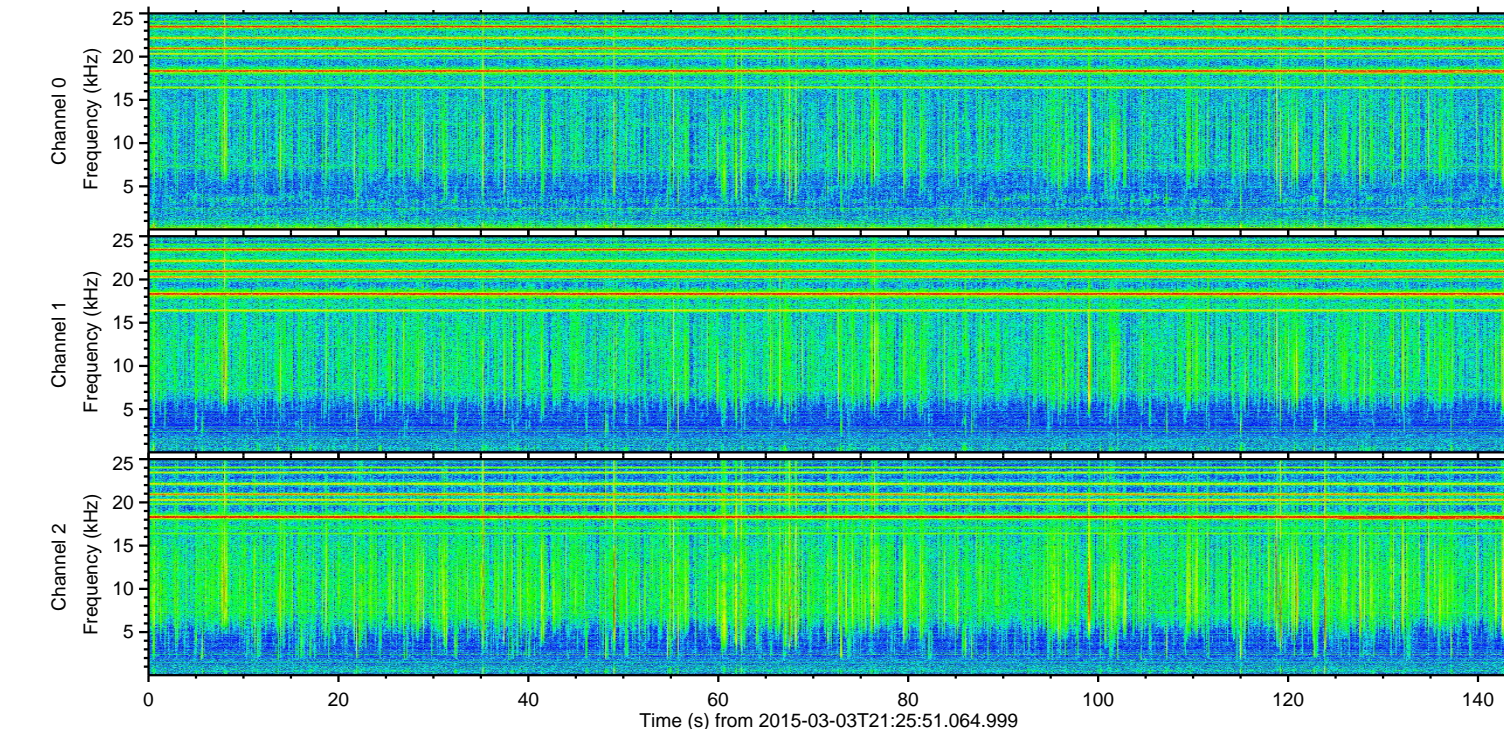
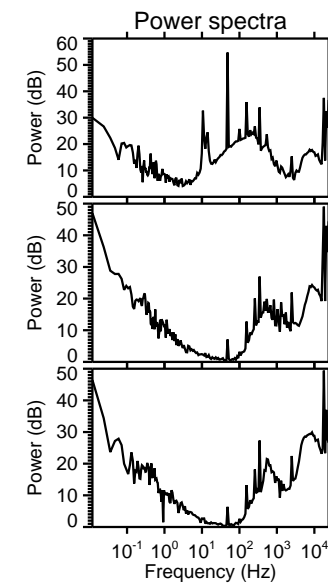
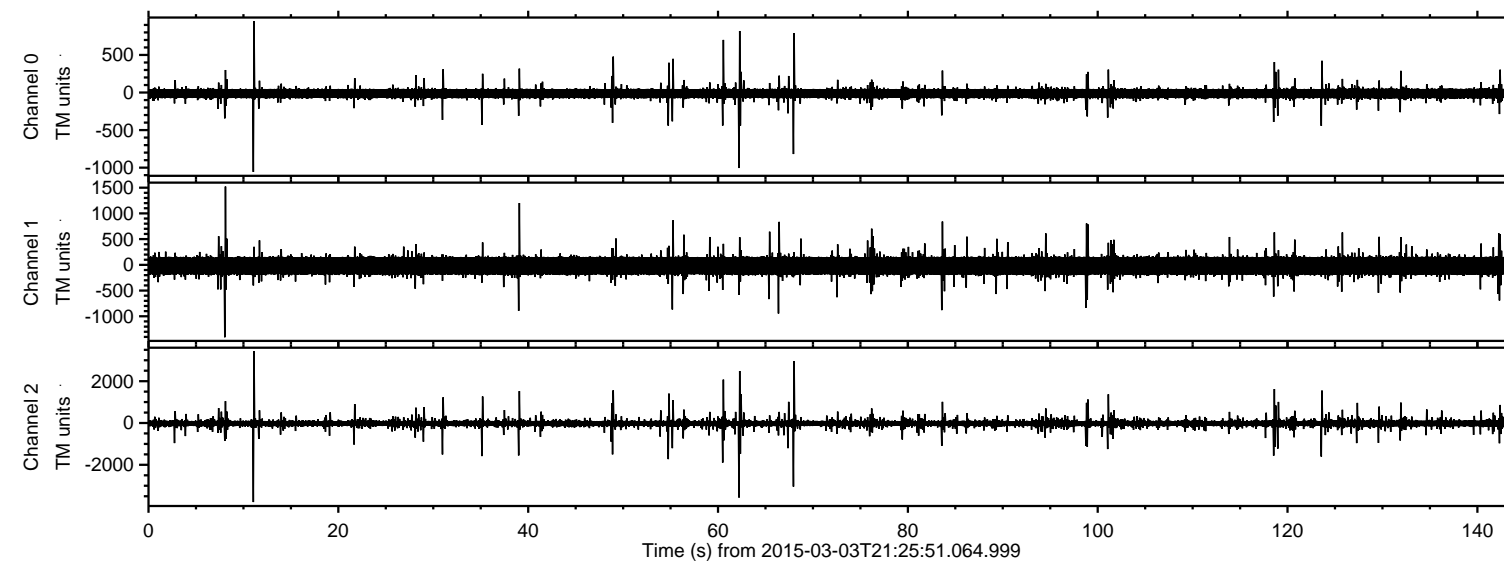


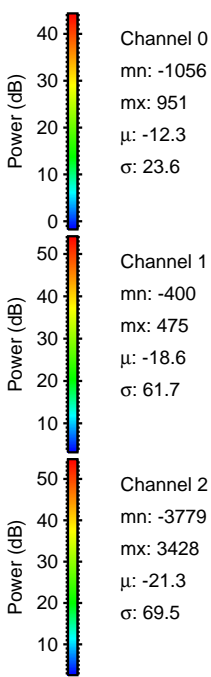
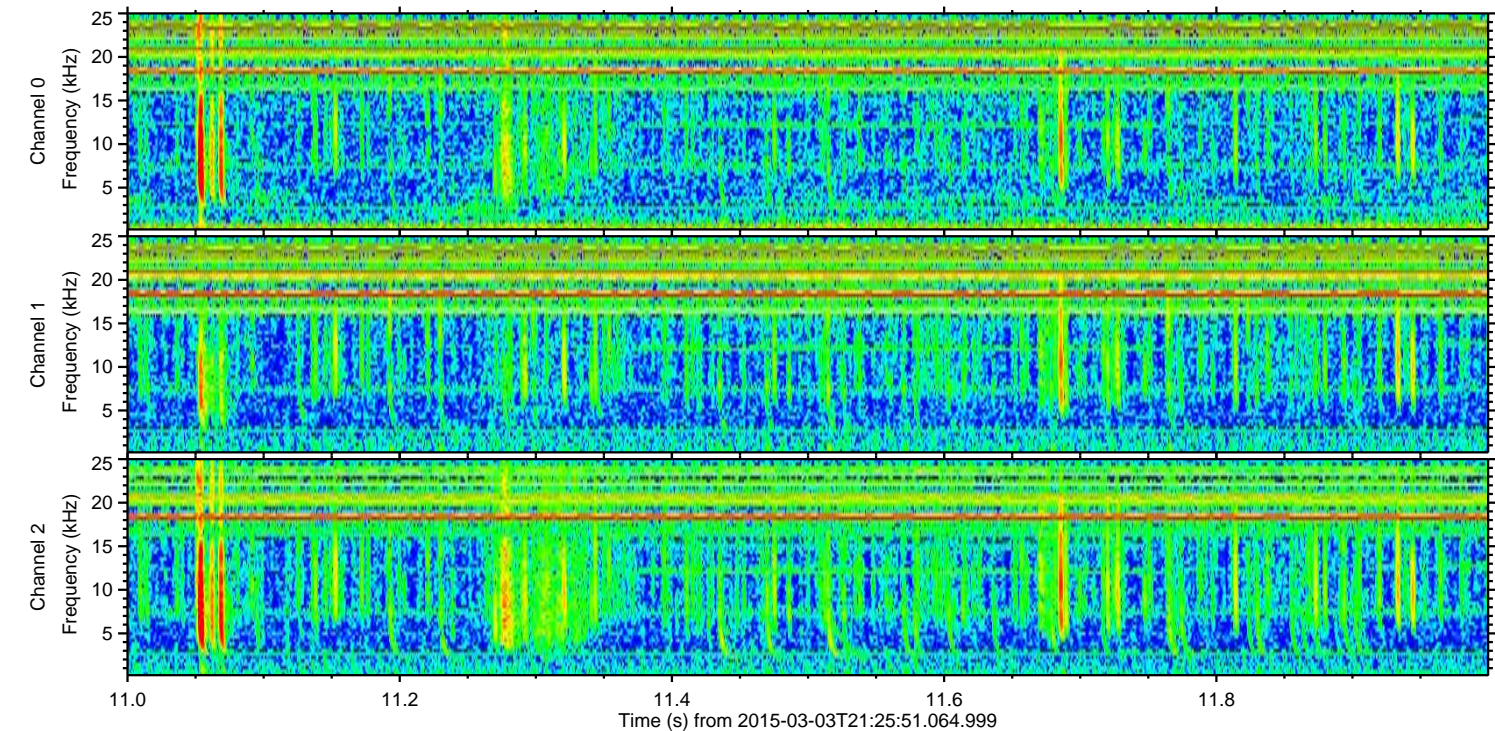
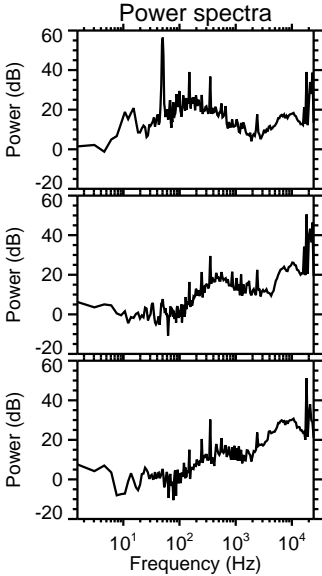
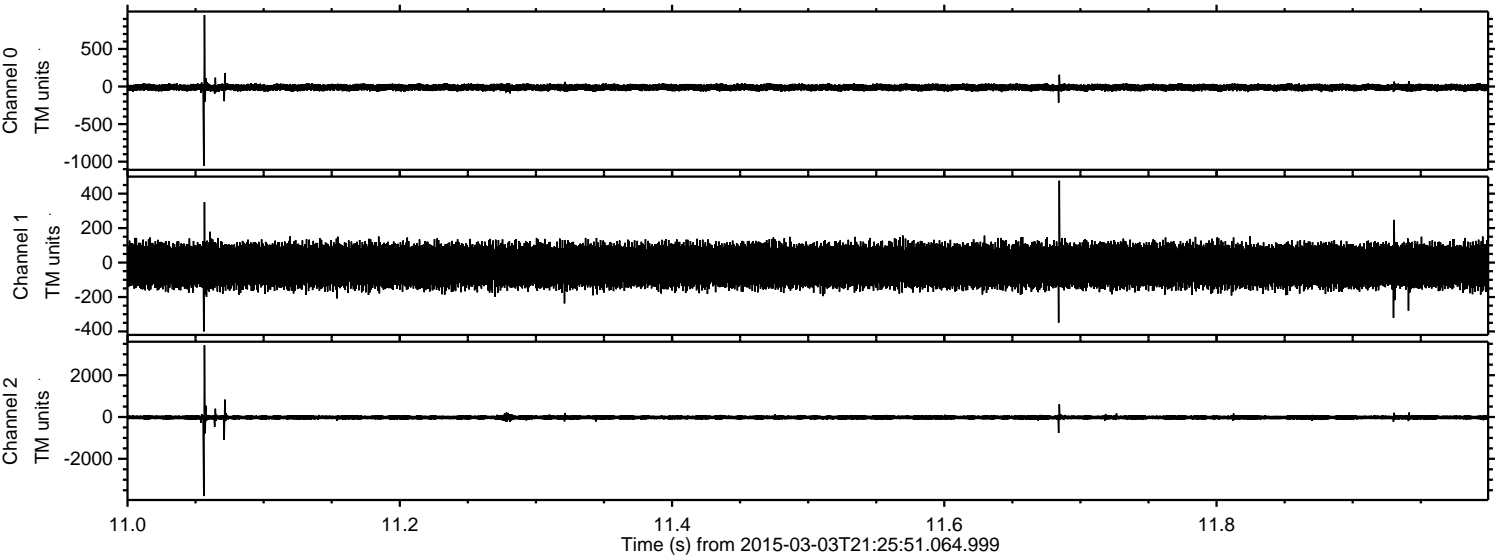
ELMAVAN 3D WAVEFORMS (Measured data sampled at 50 kHz) 49773 packets of 144 samples from 2015-03-03T21:25:51.064.999.

Processed Sat Mar 7 10:40:10 2015 by ELM ver.2012-10-06 from 001__elm20150303_212550__dat00.bin



ELMAVAN 3D WAVEFORMS (Measured data sampled at 50 kHz) 49773 packets of 144 samples from 2015-03-03T21:25:51.064.999. Part 12/144

Processed Sat Mar 7 10:40:22 2015 by ELM ver.2012-10-06 from 001__elm20150303_212550__dat00.bin

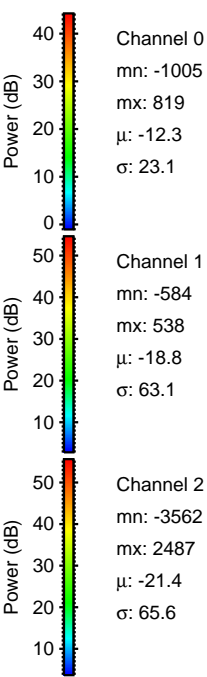
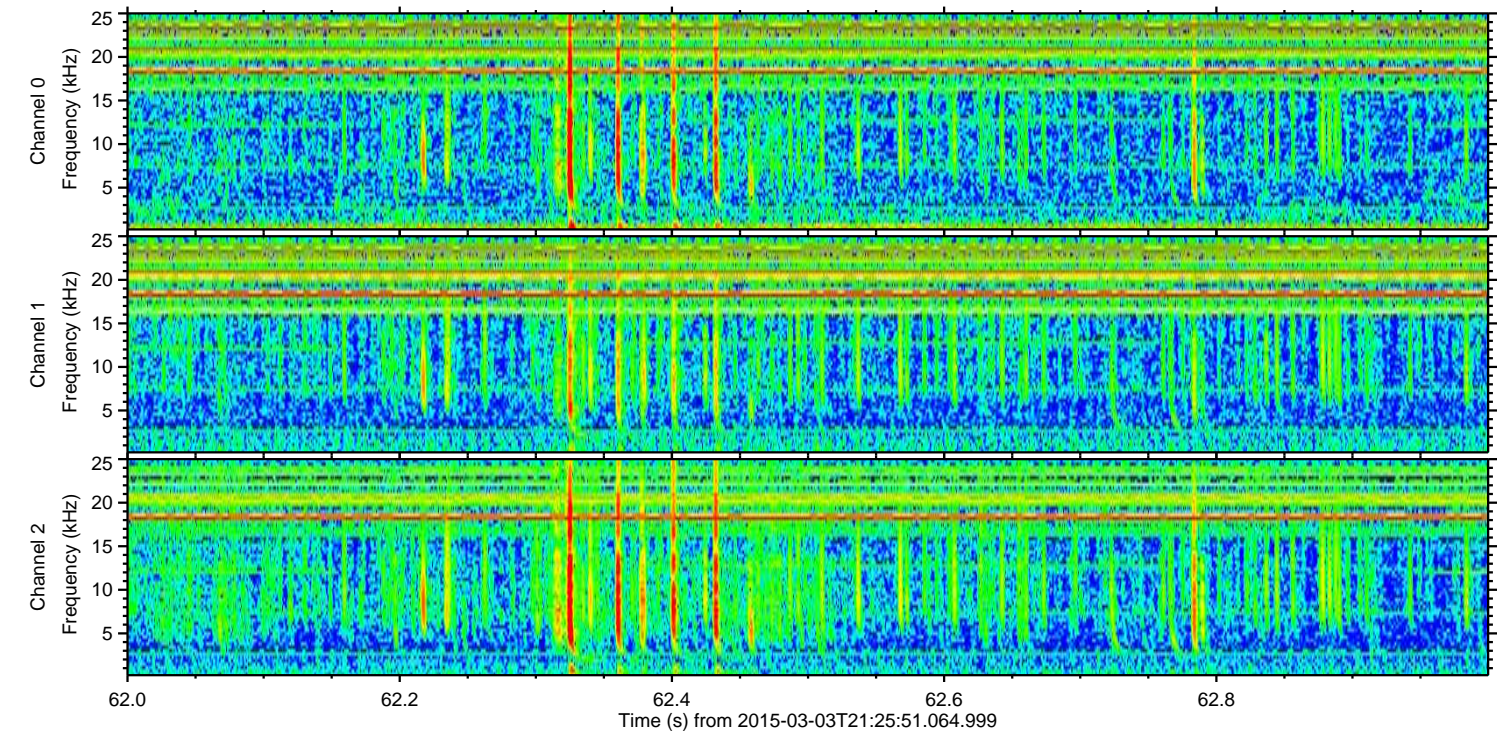
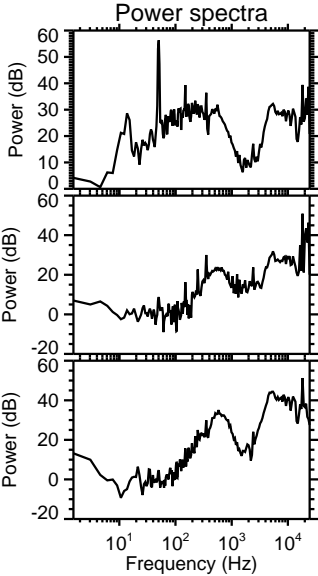
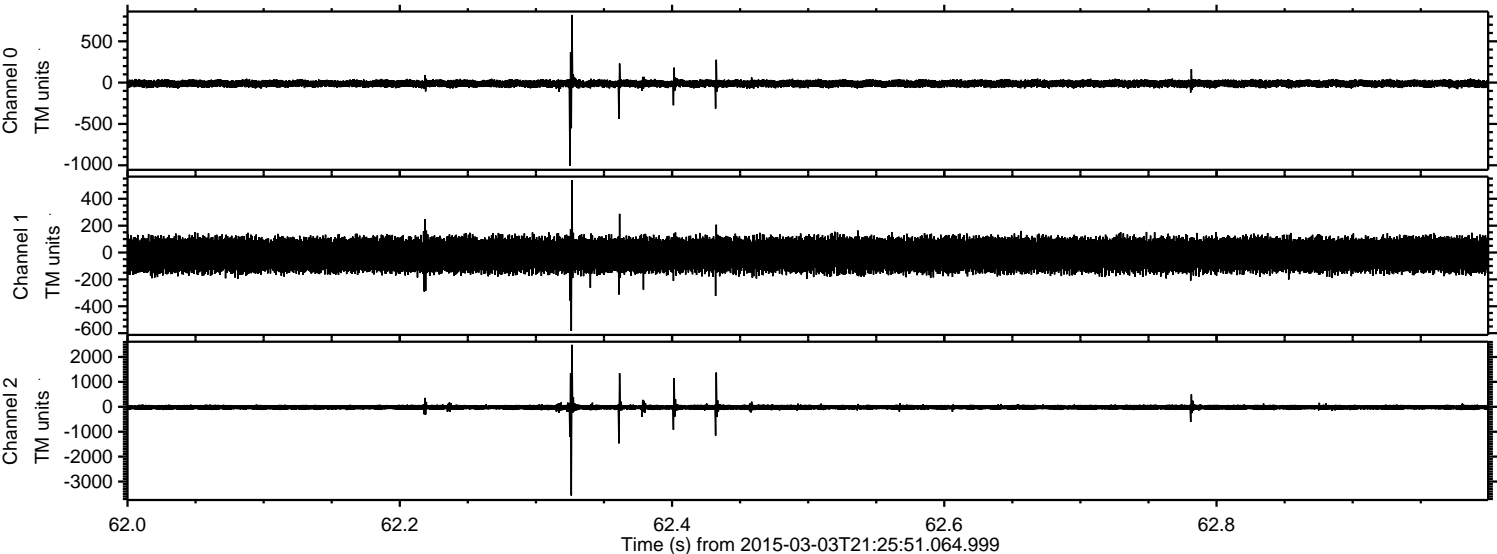


Channel 0
mn: -1056
mx: 951
 μ : -12.3
 σ : 23.6

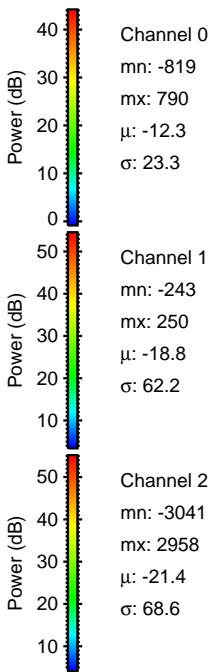
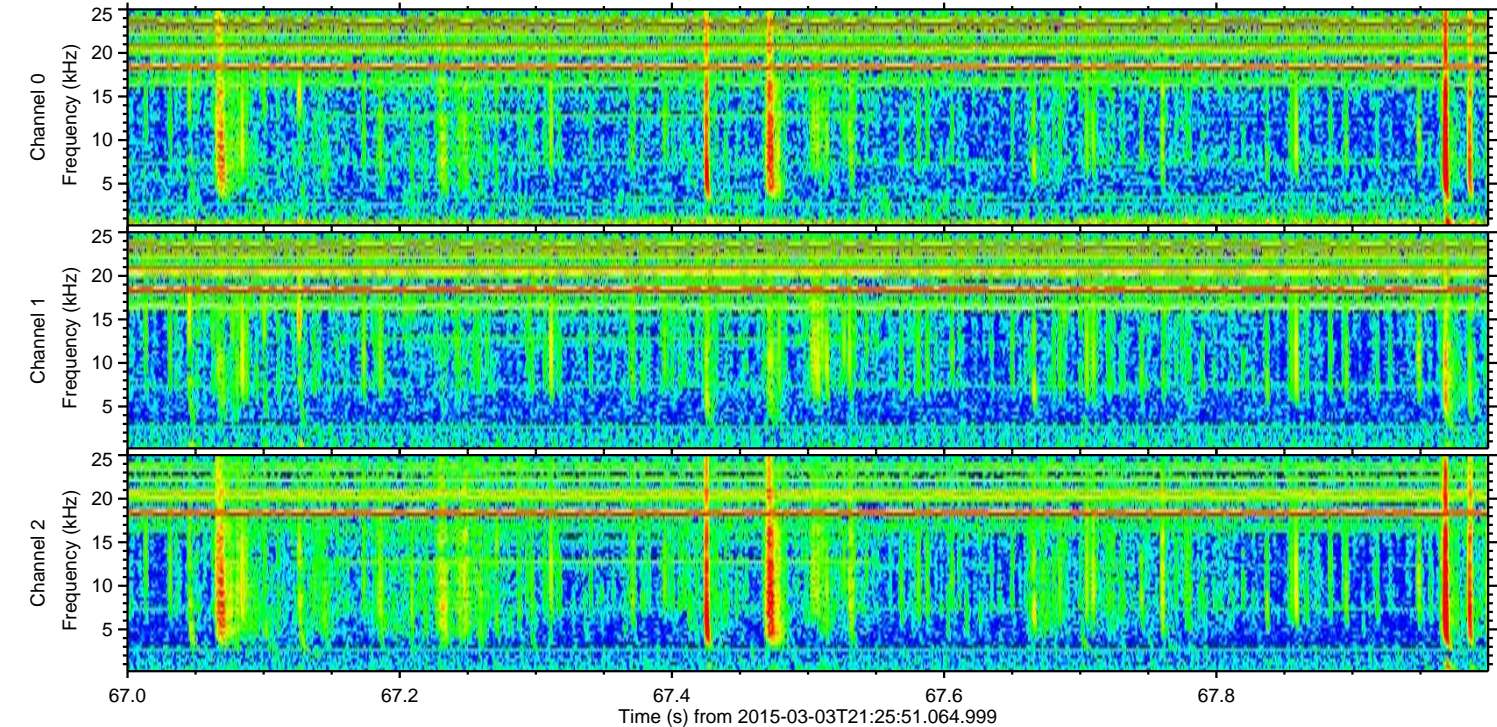
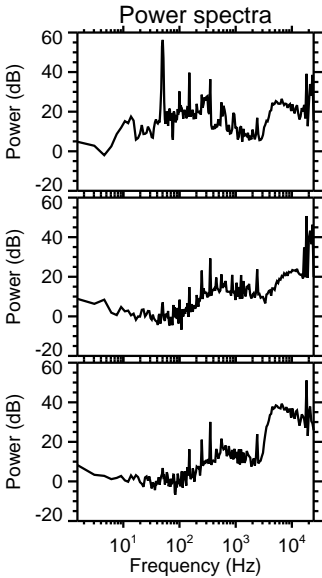
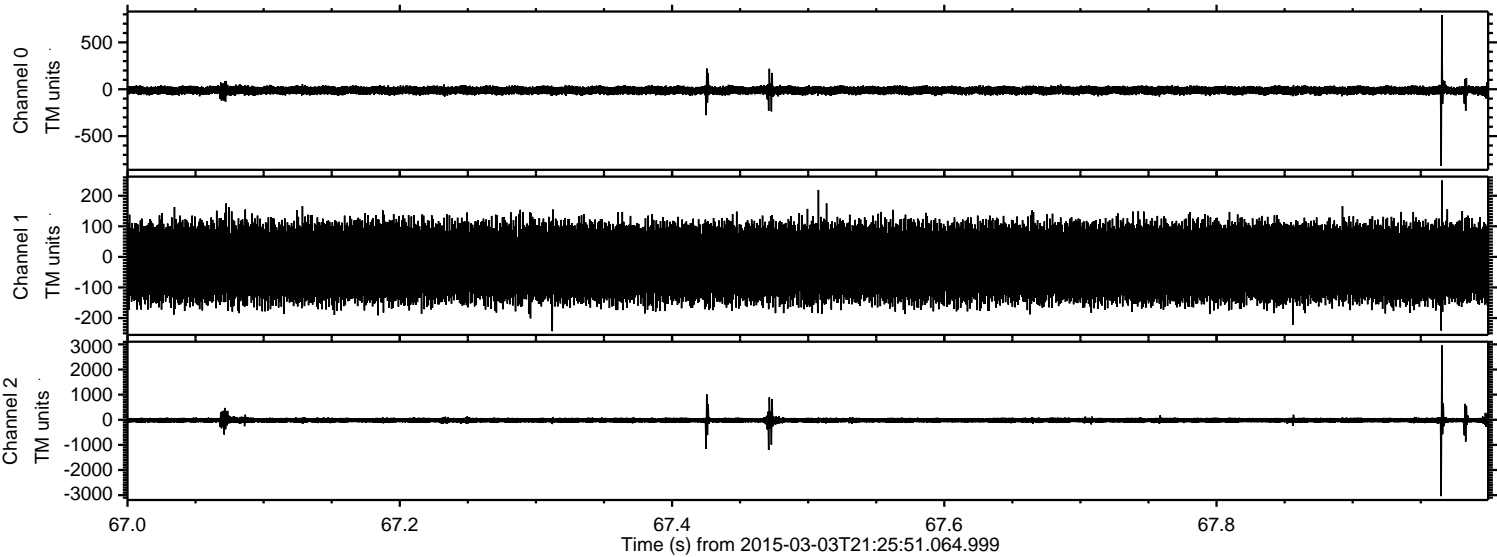
Channel 1
mn: -400
mx: 475
 μ : -18.6
 σ : 61.7

Channel 2
mn: -3779
mx: 3428
 μ : -21.3
 σ : 69.5

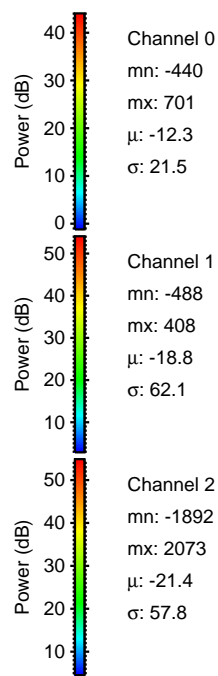
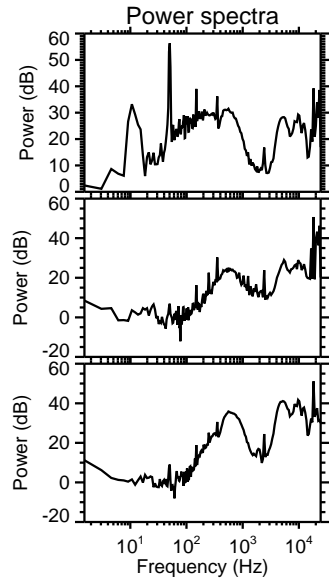
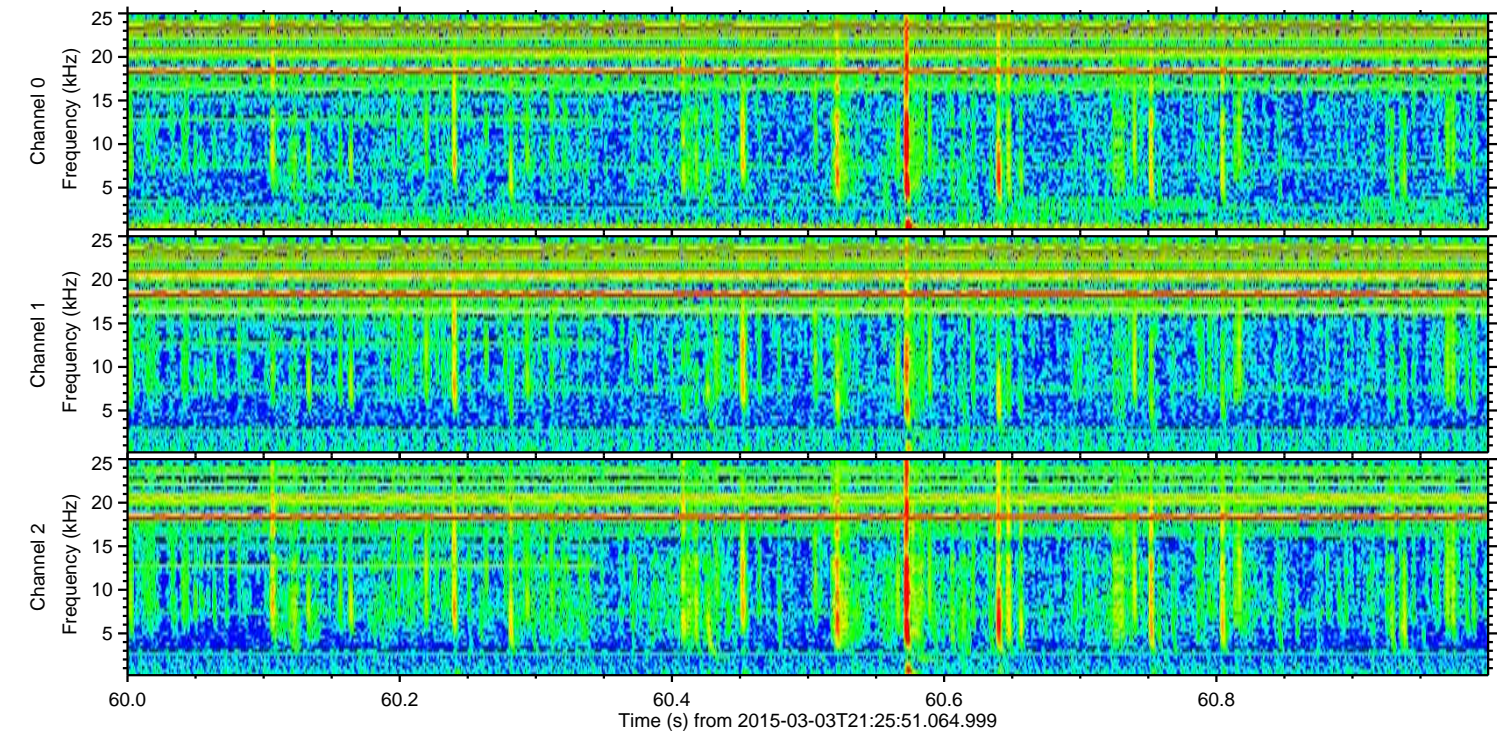
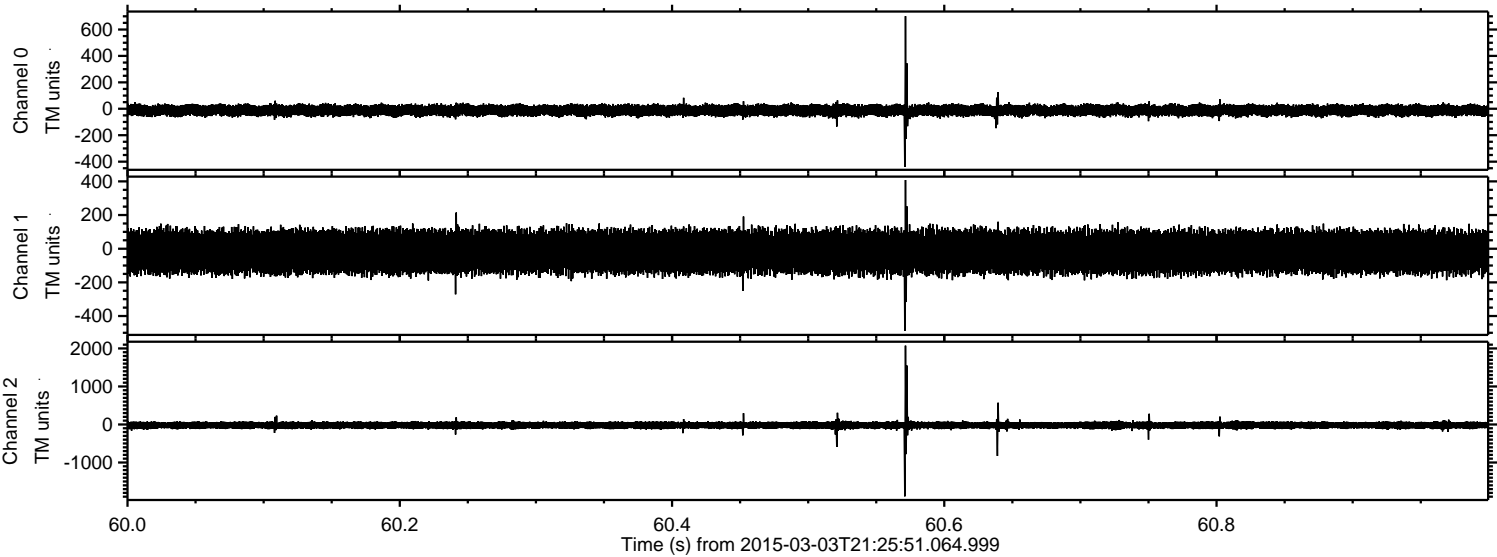
Processed Sat Mar 7 10:40:23 2015 by ELM ver.2012-10-06 from 001__elm20150303_212550__dat00.bin



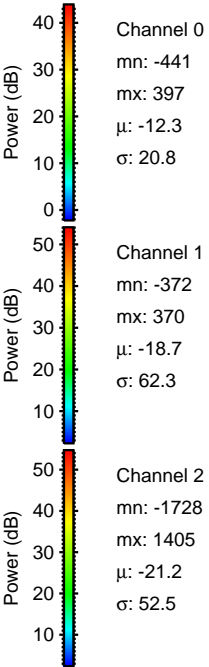
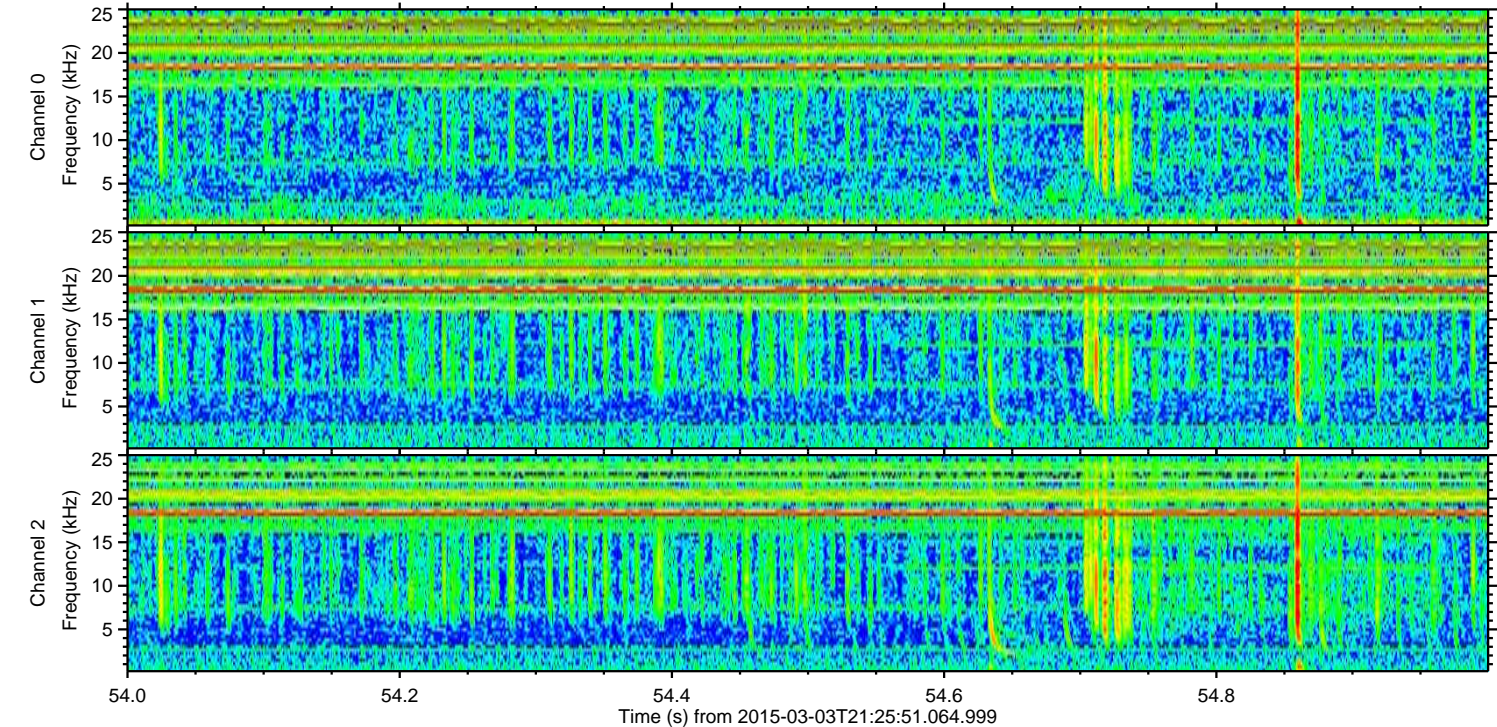
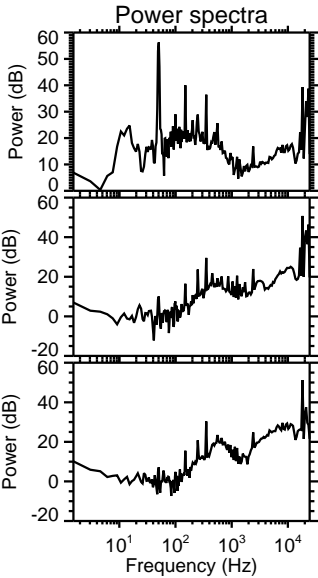
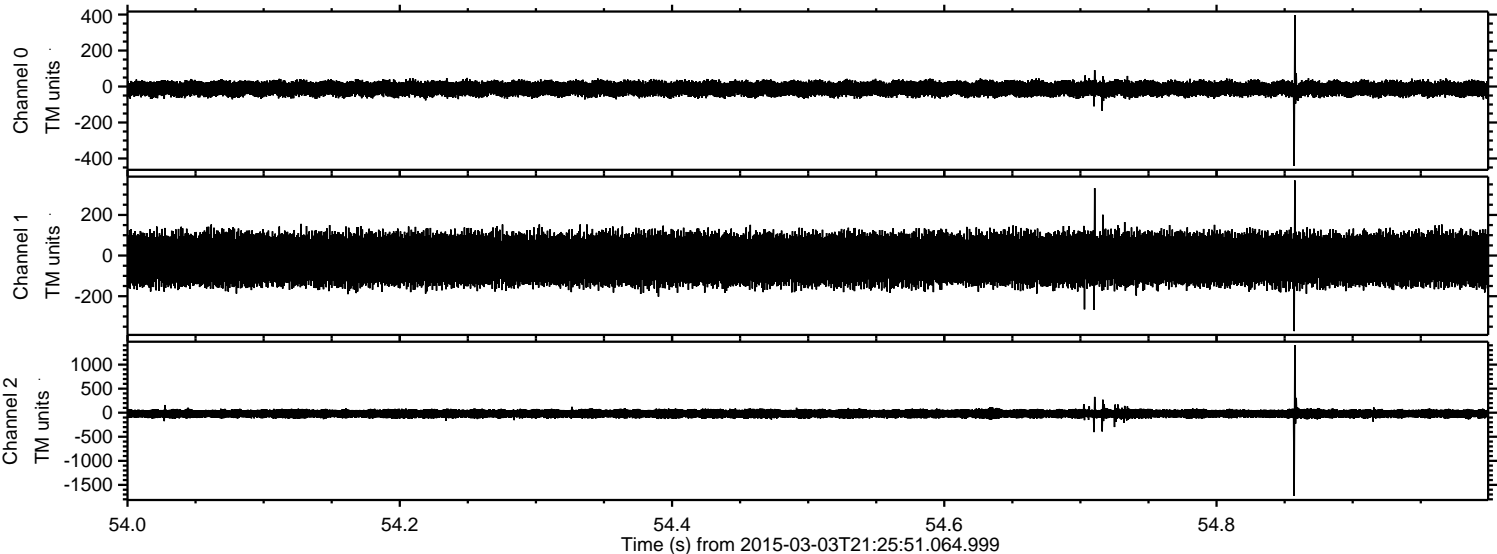
Processed Sat Mar 7 10:40:24 2015 by ELM ver.2012-10-06 from 001__elm20150303_212550__dat00.bin



Processed Sat Mar 7 10:40:24 2015 by ELM ver.2012-10-06 from 001__elm20150303_212550__dat00.bin

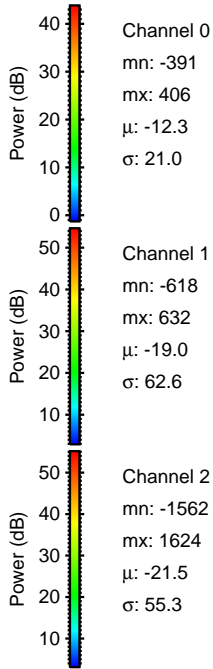
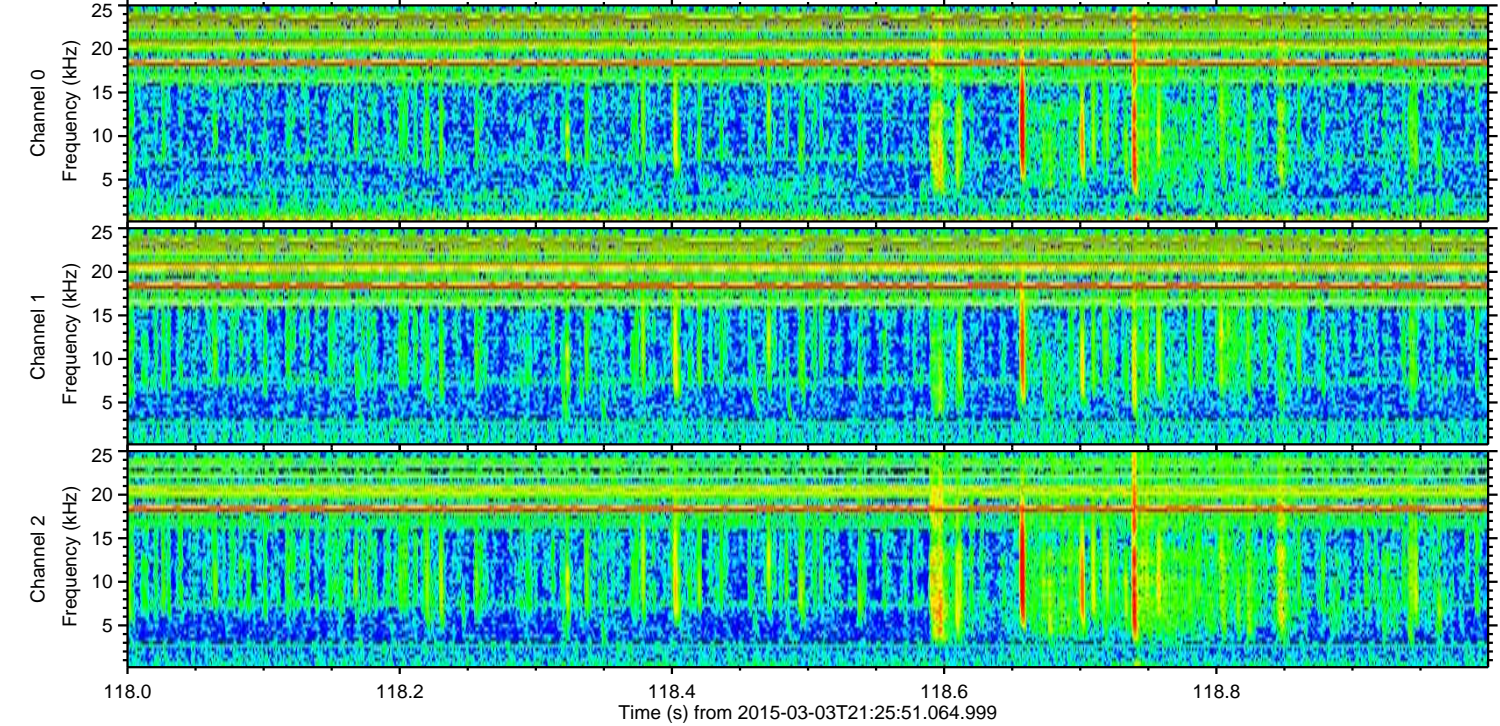
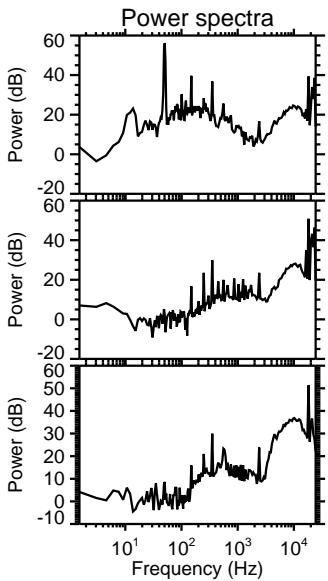
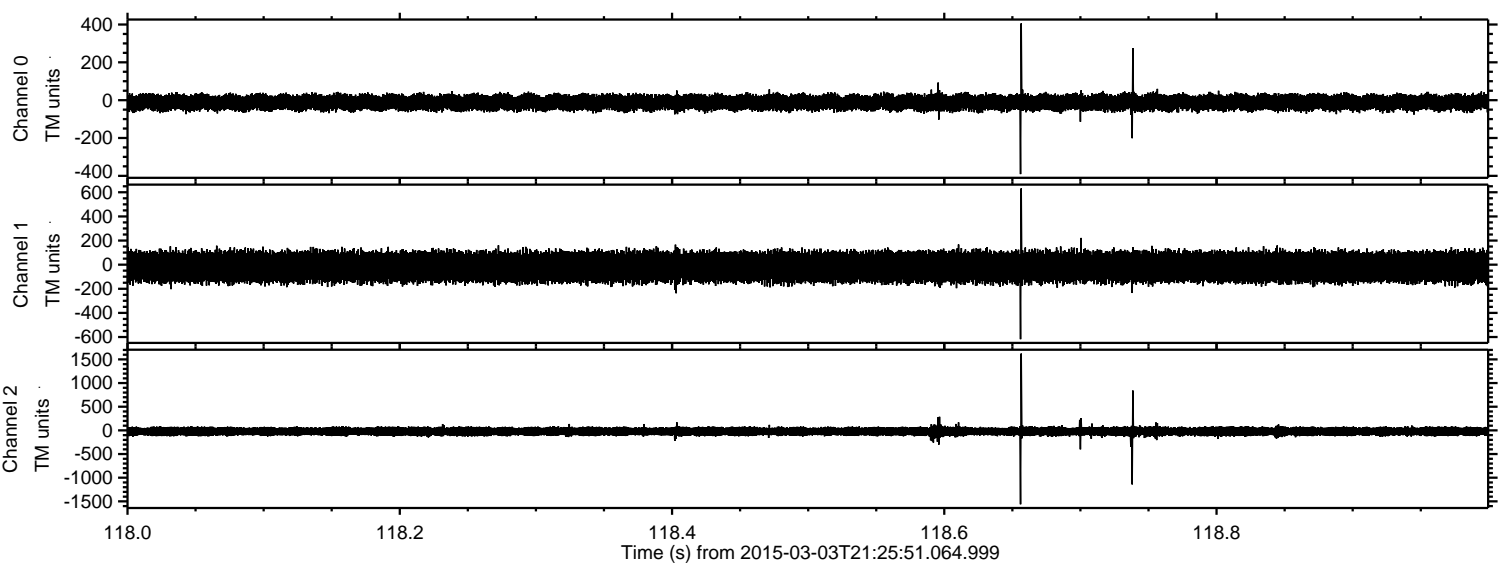


Processed Sat Mar 7 10:40:25 2015 by ELM ver.2012-10-06 from 001__elm20150303_212550__dat00.bin



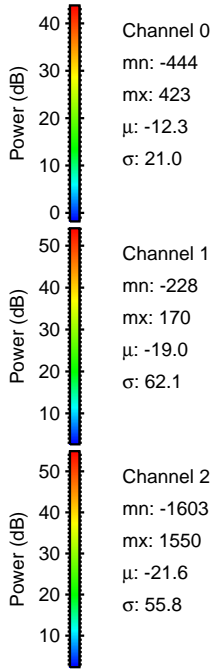
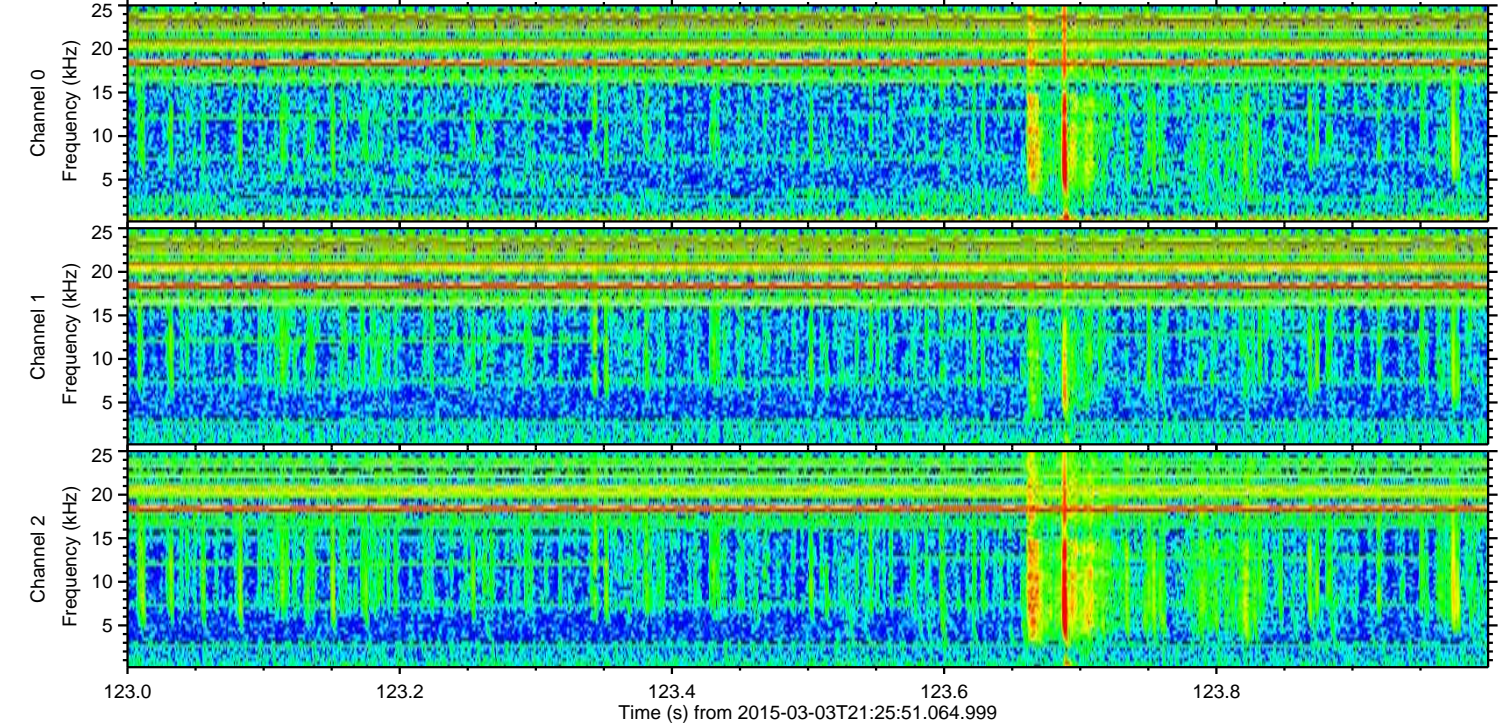
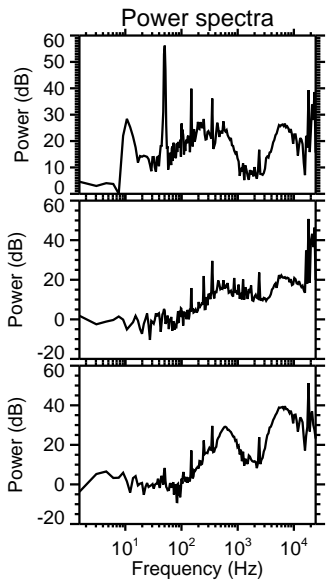
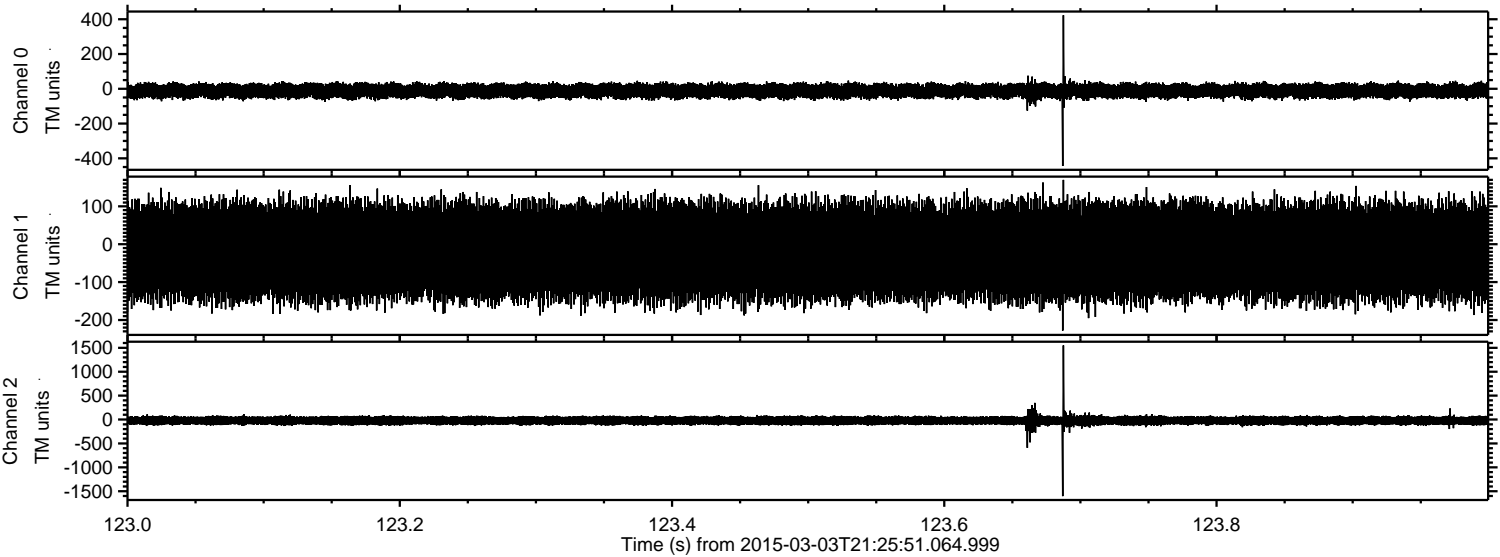
ELMAVAN 3D WAVEFORMS (Measured data sampled at 50 kHz) 49773 packets of 144 samples from 2015-03-03T21:25:51.064.999. Part 119/144

Processed Sat Mar 7 10:40:26 2015 by ELM ver.2012-10-06 from 001__elm20150303_212550__dat00.bin



ELMAVAN 3D WAVEFORMS (Measured data sampled at 50 kHz) 49773 packets of 144 samples from 2015-03-03T21:25:51.064.999. Part 124/144

Processed Sat Mar 7 10:40:27 2015 by ELM ver.2012-10-06 from 001__elm20150303_212550__dat00.bin

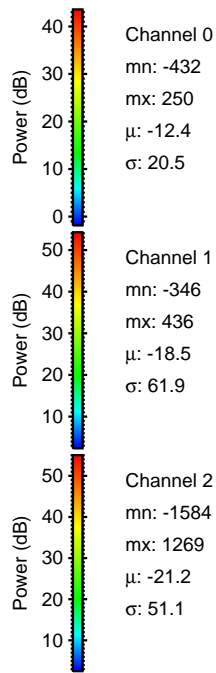
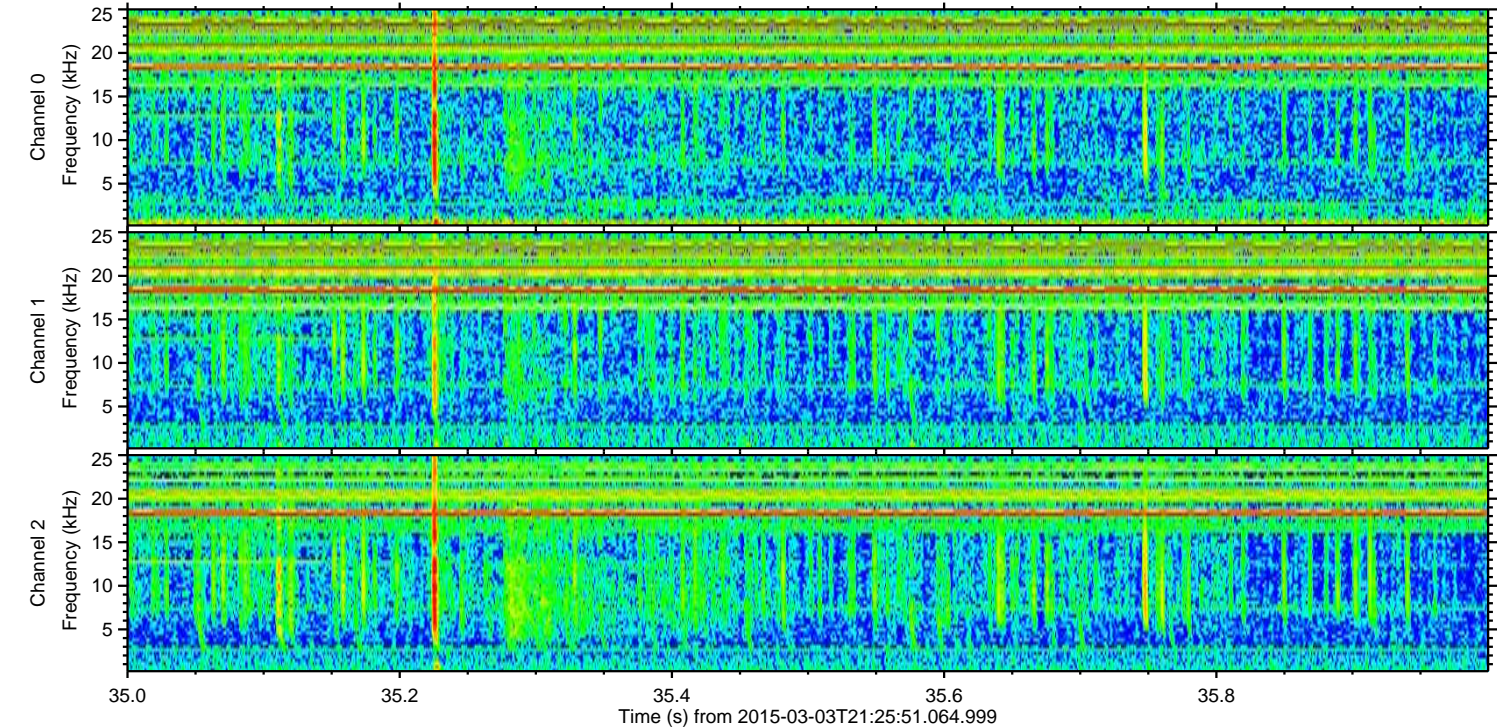
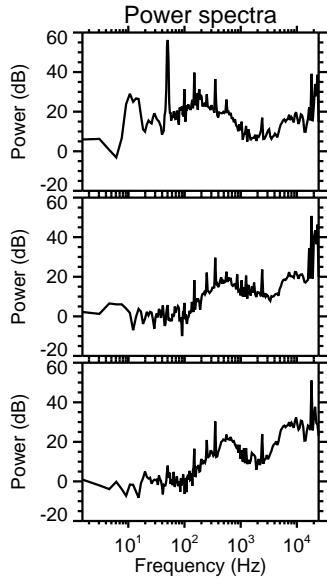
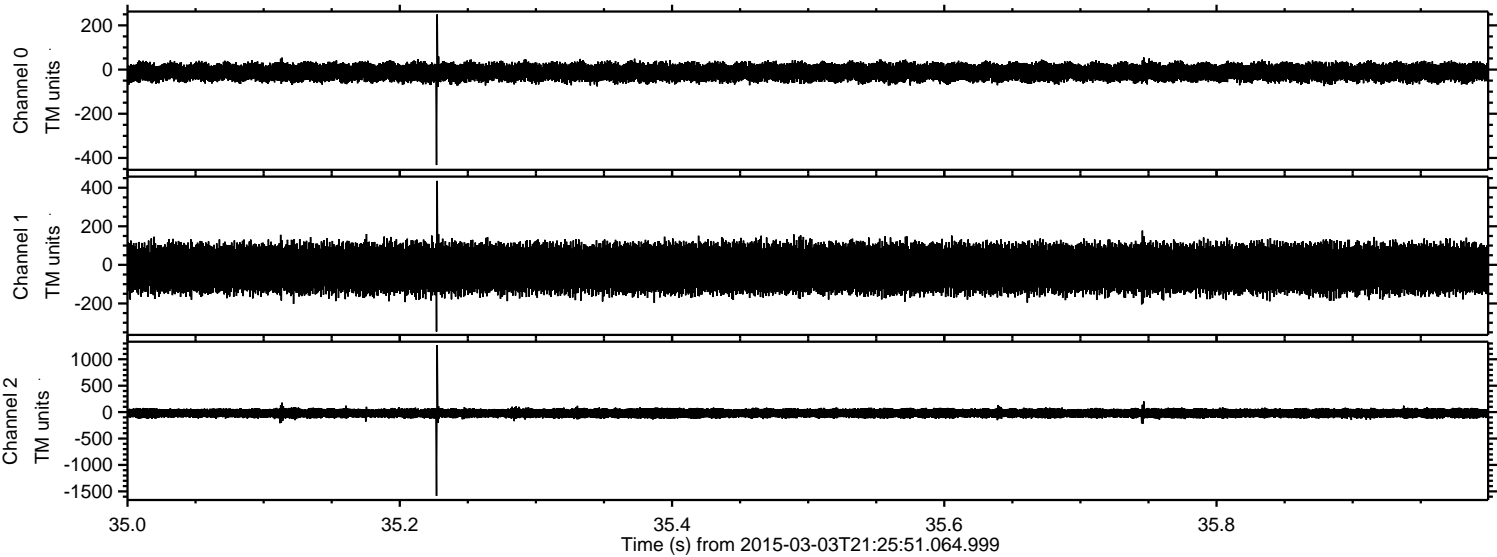


Channel 0
mn: -444
mx: 423
 μ : -12.3
 σ : 21.0

Channel 1
mn: -228
mx: 170
 μ : -19.0
 σ : 62.1

Channel 2
mn: -1603
mx: 1550
 μ : -21.6
 σ : 55.8

Processed Sat Mar 7 10:40:28 2015 by ELM ver.2012-10-06 from 001__elm20150303_212550__dat00.bin

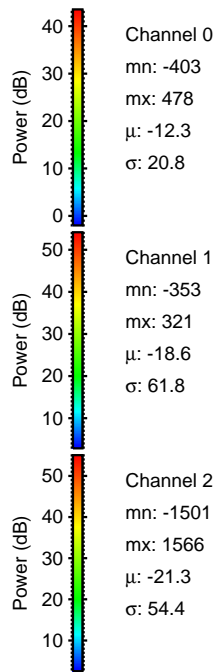
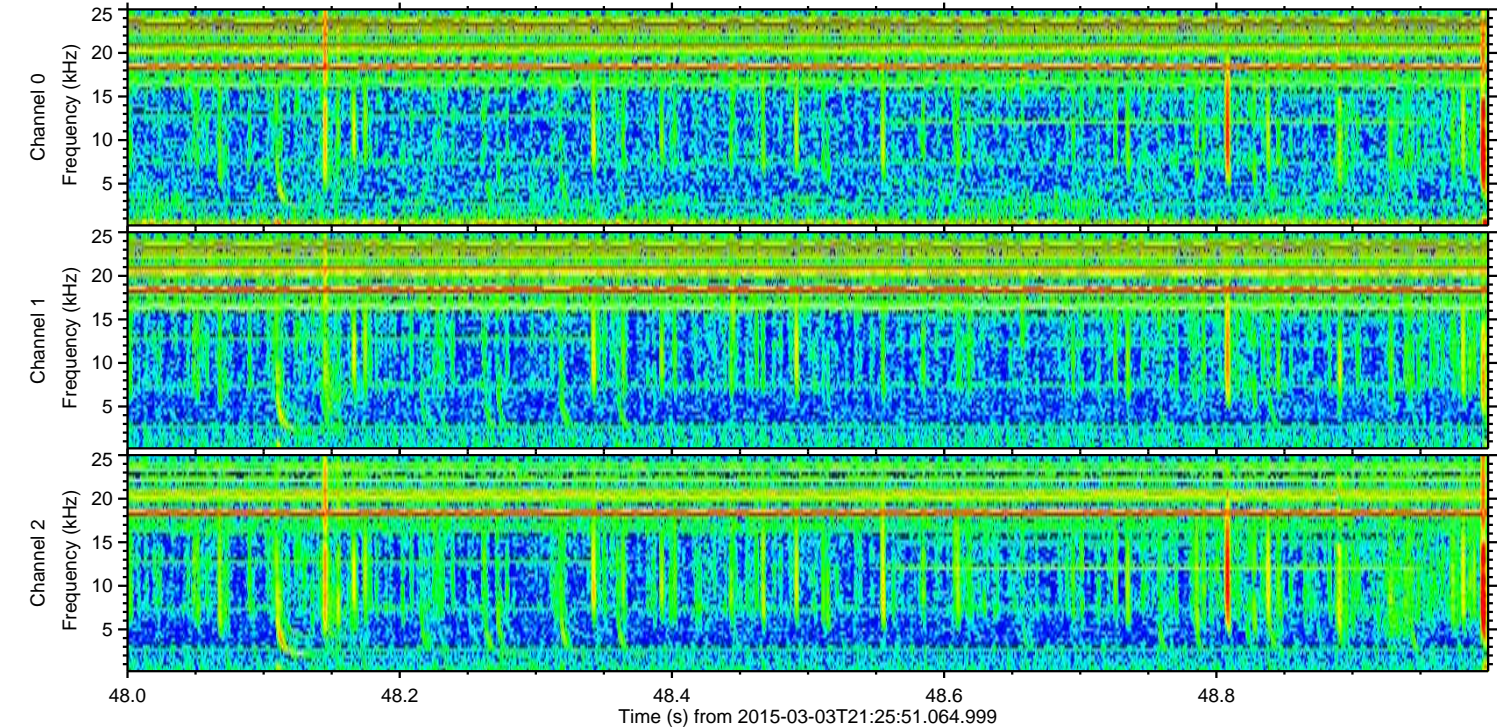
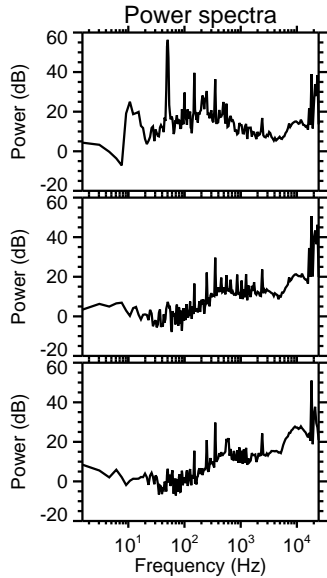
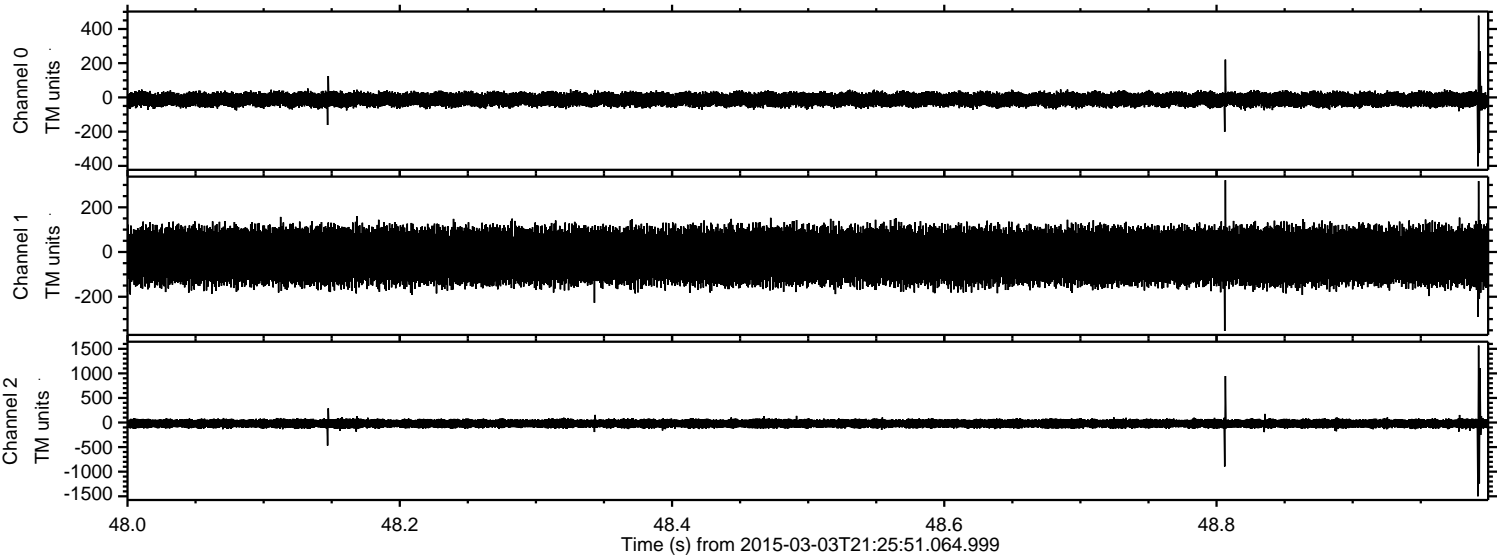


Channel 0
mn: -432
mx: 250
 μ : -12.4
 σ : 20.5

Channel 1
mn: -346
mx: 436
 μ : -18.5
 σ : 61.9

Channel 2
mn: -1584
mx: 1269
 μ : -21.2
 σ : 51.1

Processed Sat Mar 7 10:40:29 2015 by ELM ver.2012-10-06 from 001__elm20150303_212550__dat00.bin



Processed Sat Mar 7 10:40:30 2015 by ELM ver.2012-10-06 from 001__elm20150303_212550__dat00.bin

