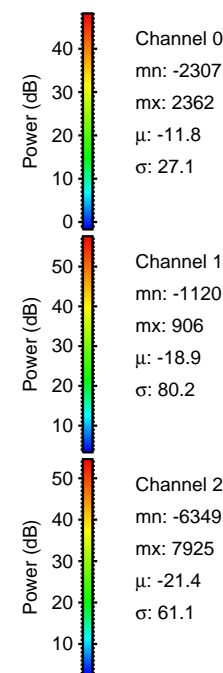
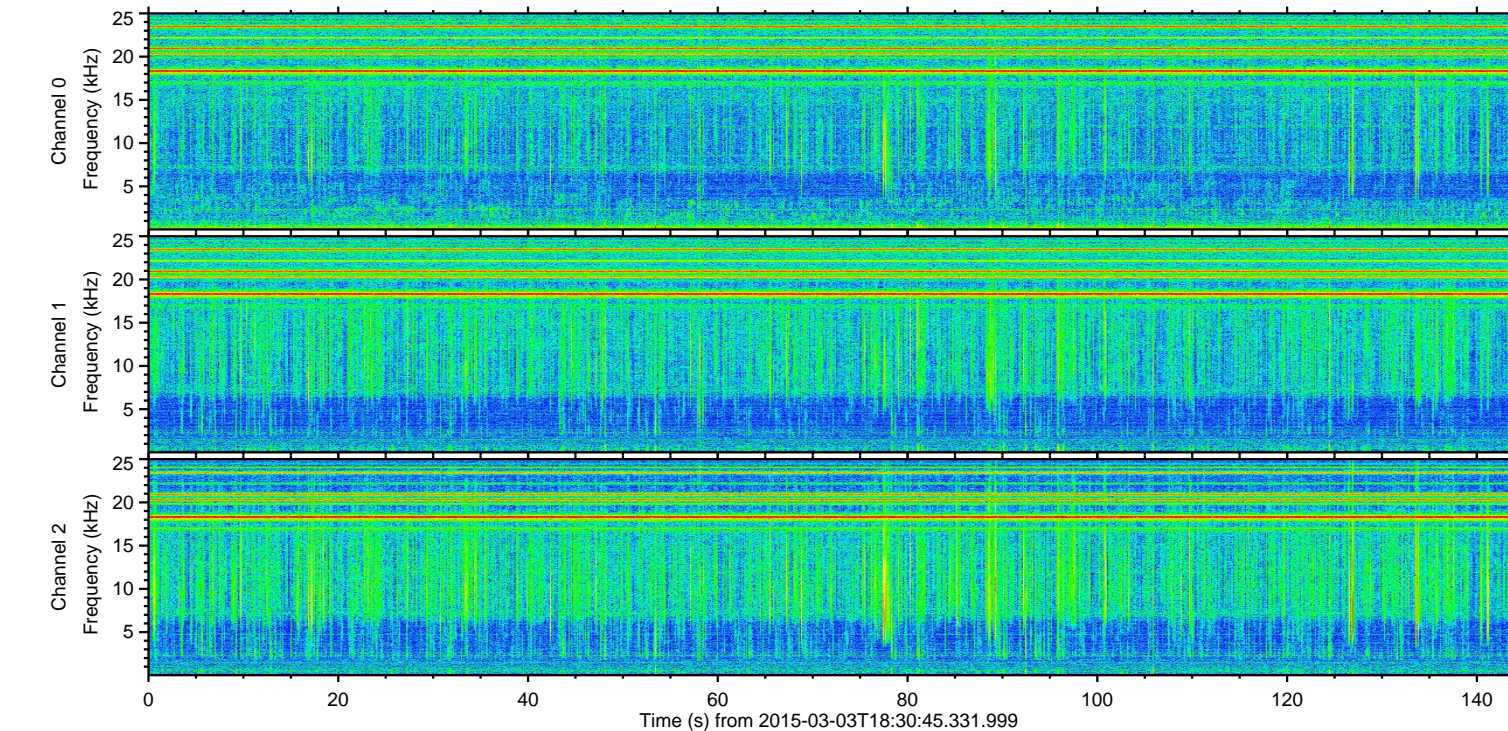
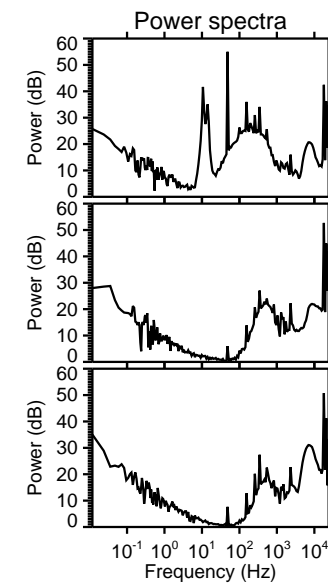
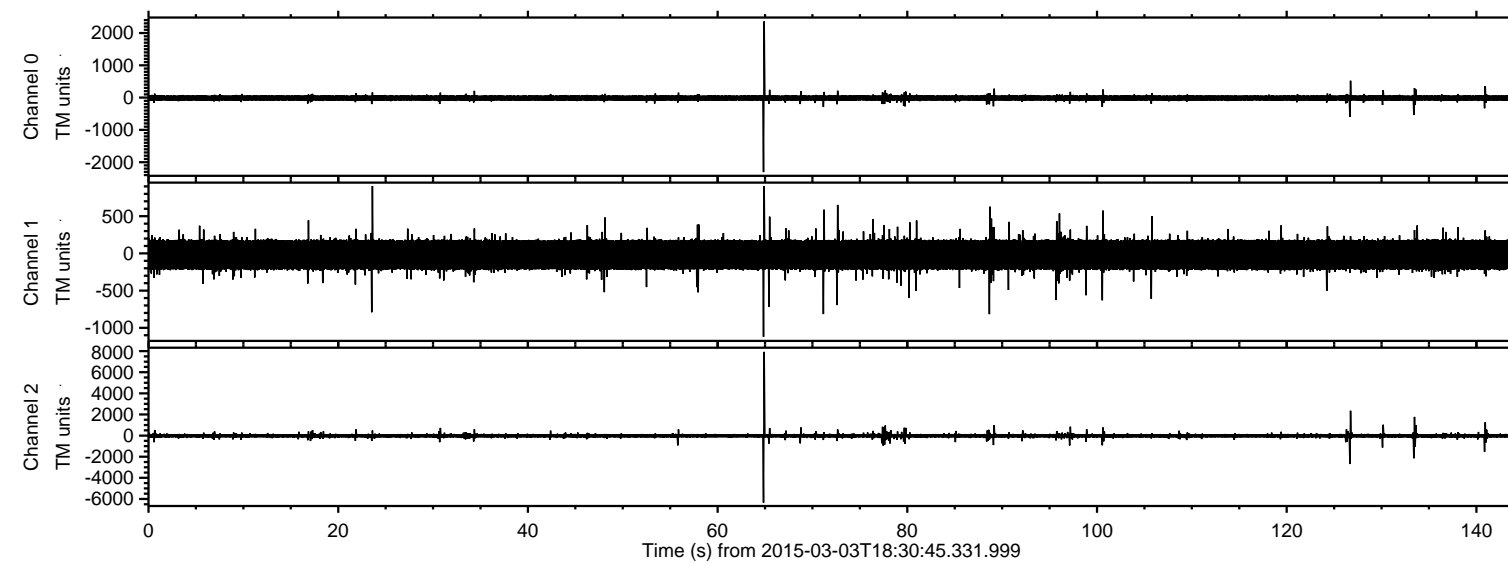
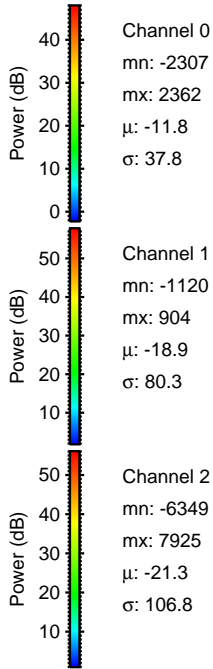
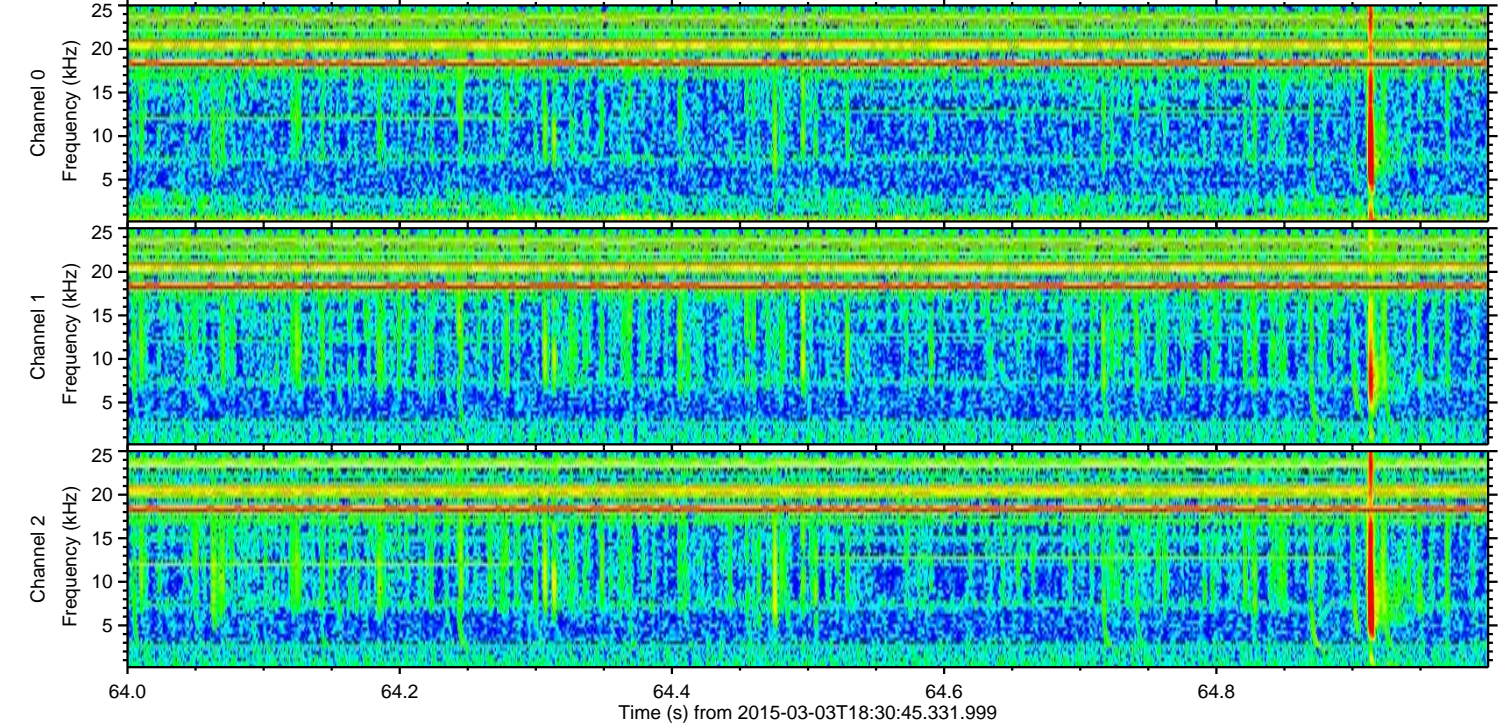
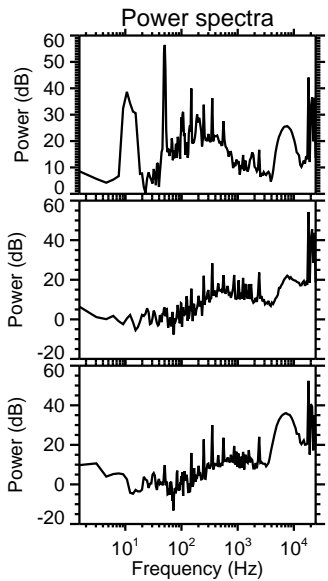
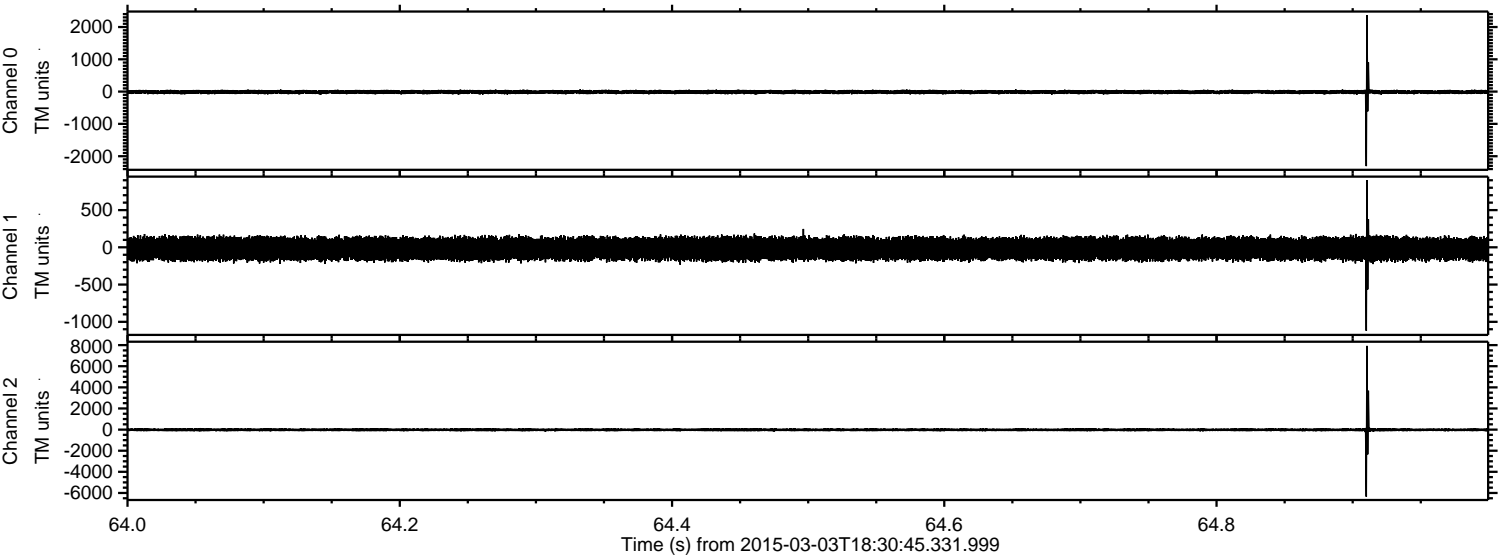


ELMAVAN 3D WAVEFORMS (Measured data sampled at 50 kHz) 49810 packets of 144 samples from 2015-03-03T18:30:45.331.999.

Processed Sat Mar 7 09:42:48 2015 by ELM ver.2012-10-06 from 001__elm20150303_183044__dat00.bin

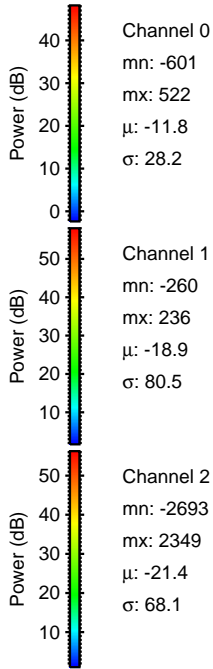
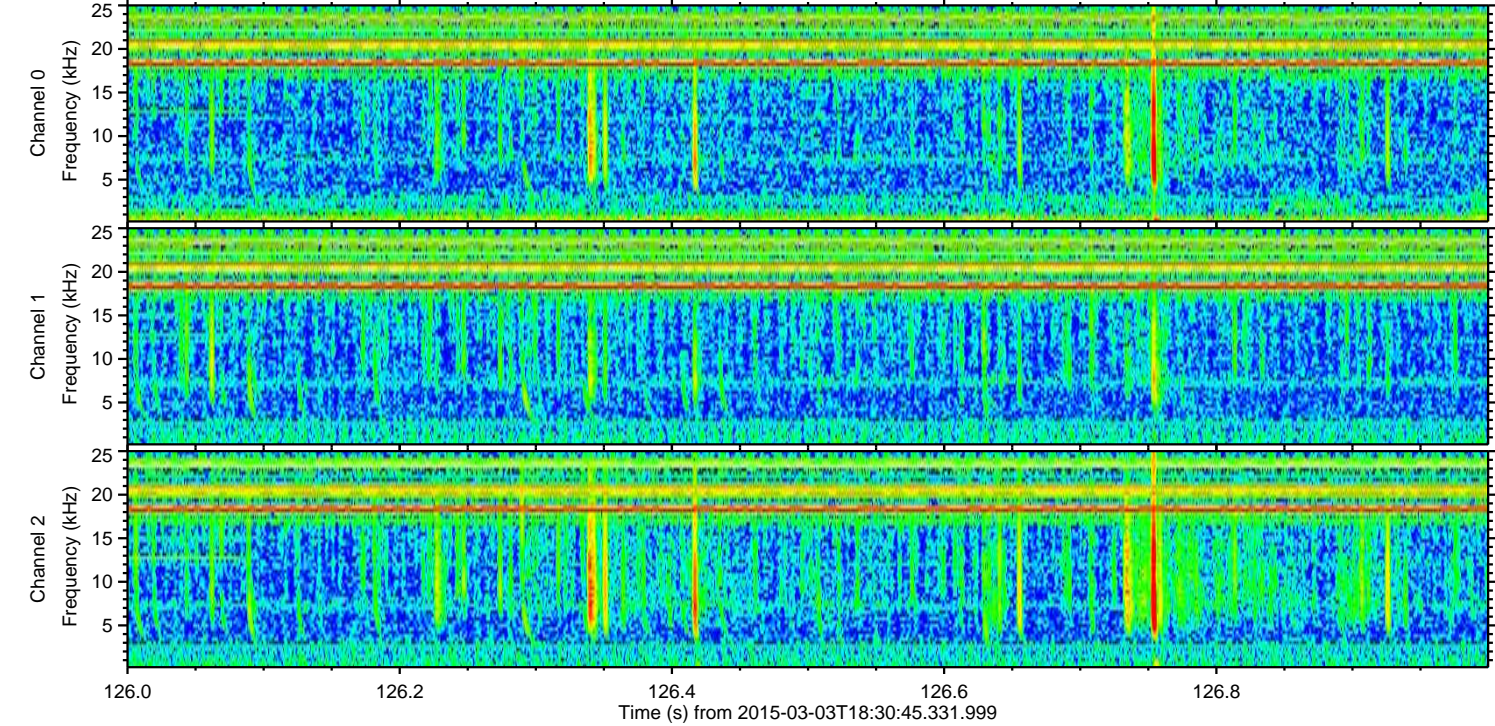
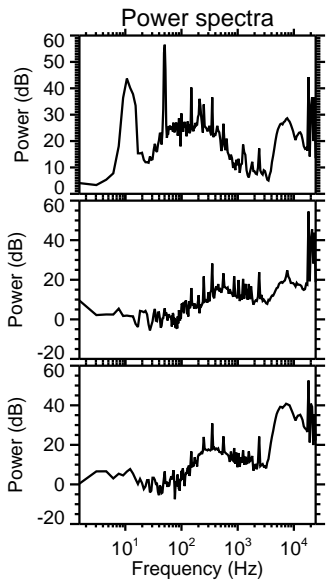
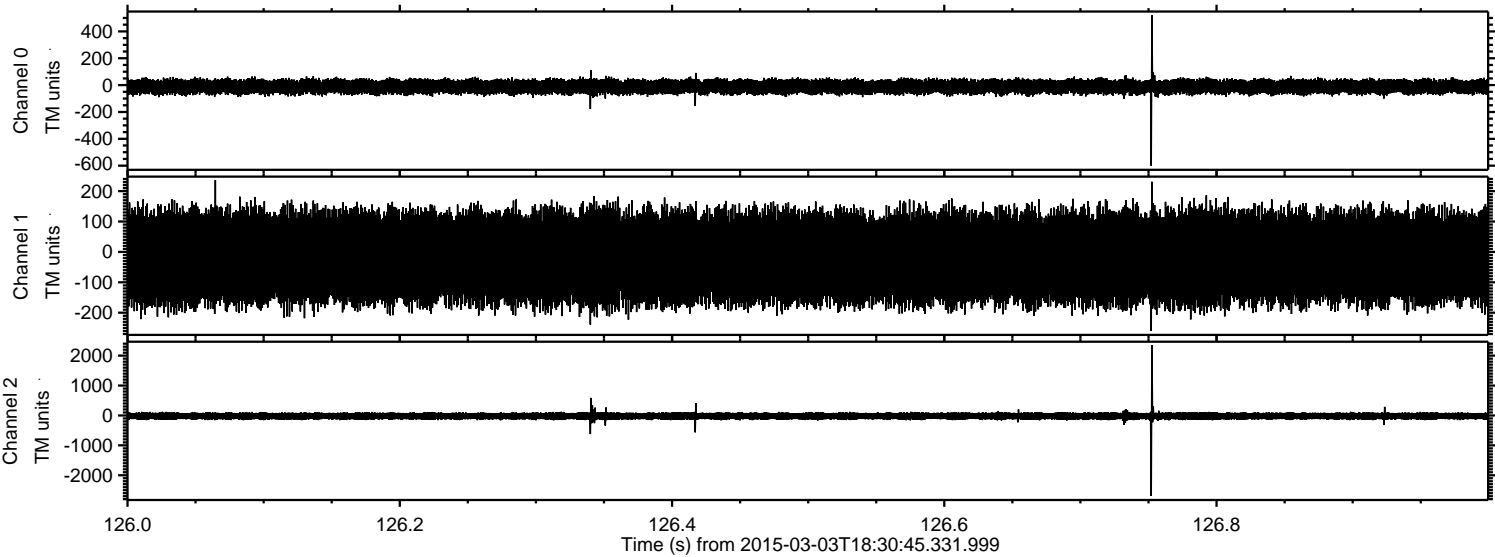


Processed Sat Mar 7 09:42:59 2015 by ELM ver.2012-10-06 from 001__elm20150303_183044__dat00.bin



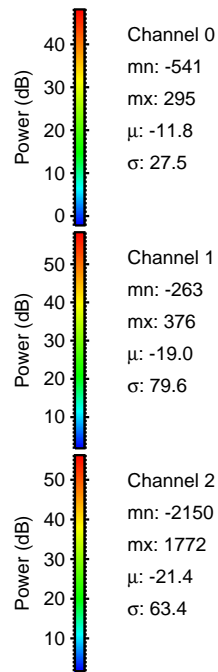
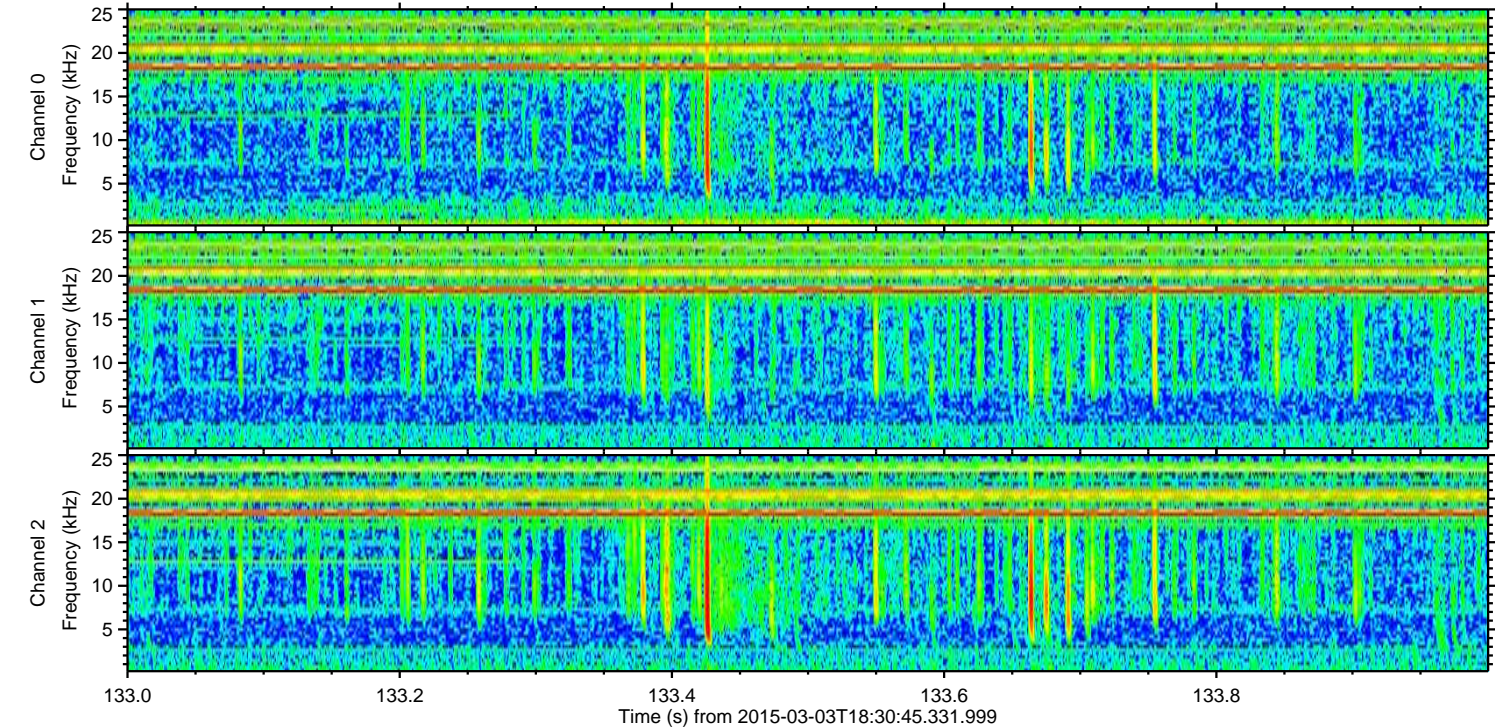
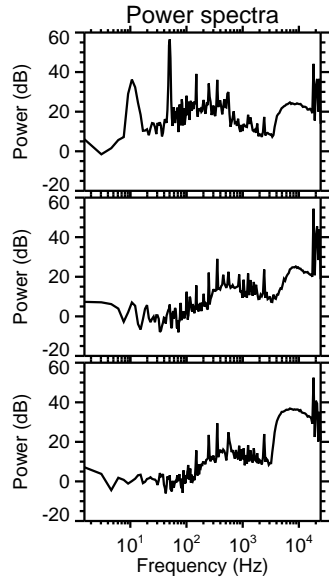
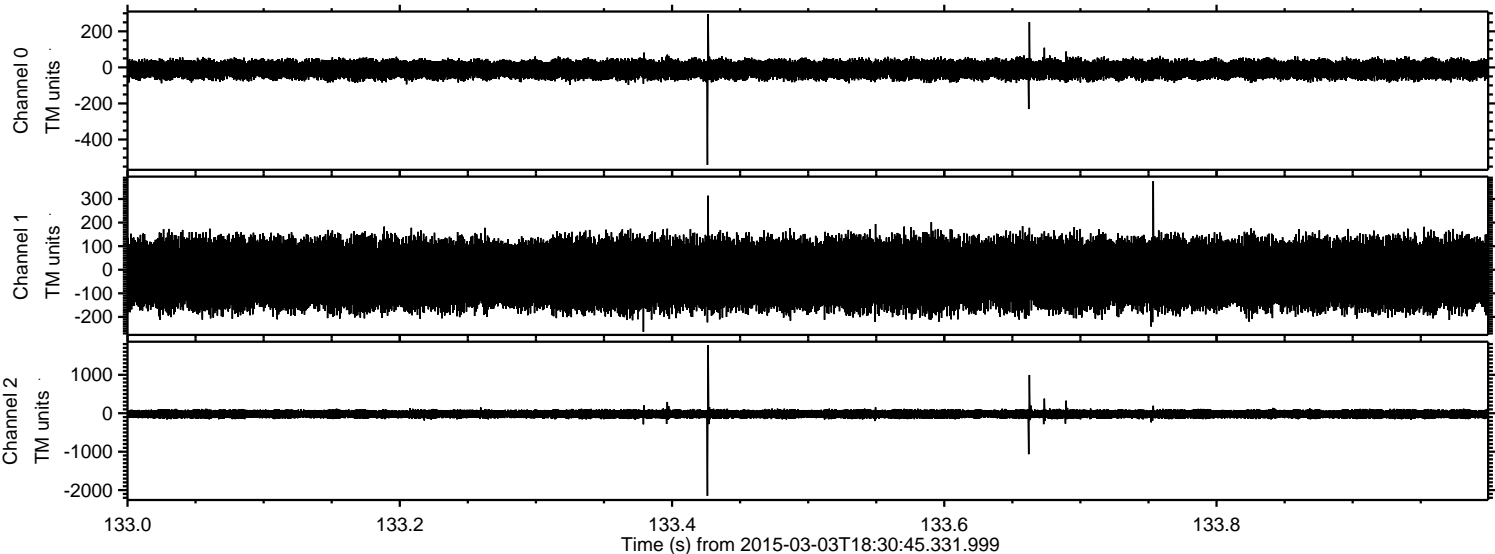
ELMAVAN 3D WAVEFORMS (Measured data sampled at 50 kHz) 49810 packets of 144 samples from 2015-03-03T18:30:45.331.999. Part 127/144

Processed Sat Mar 7 09:43:00 2015 by ELM ver.2012-10-06 from 001__elm20150303_183044__dat00.bin



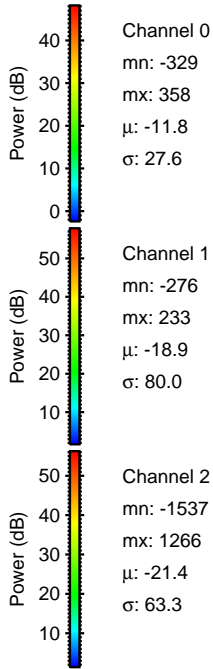
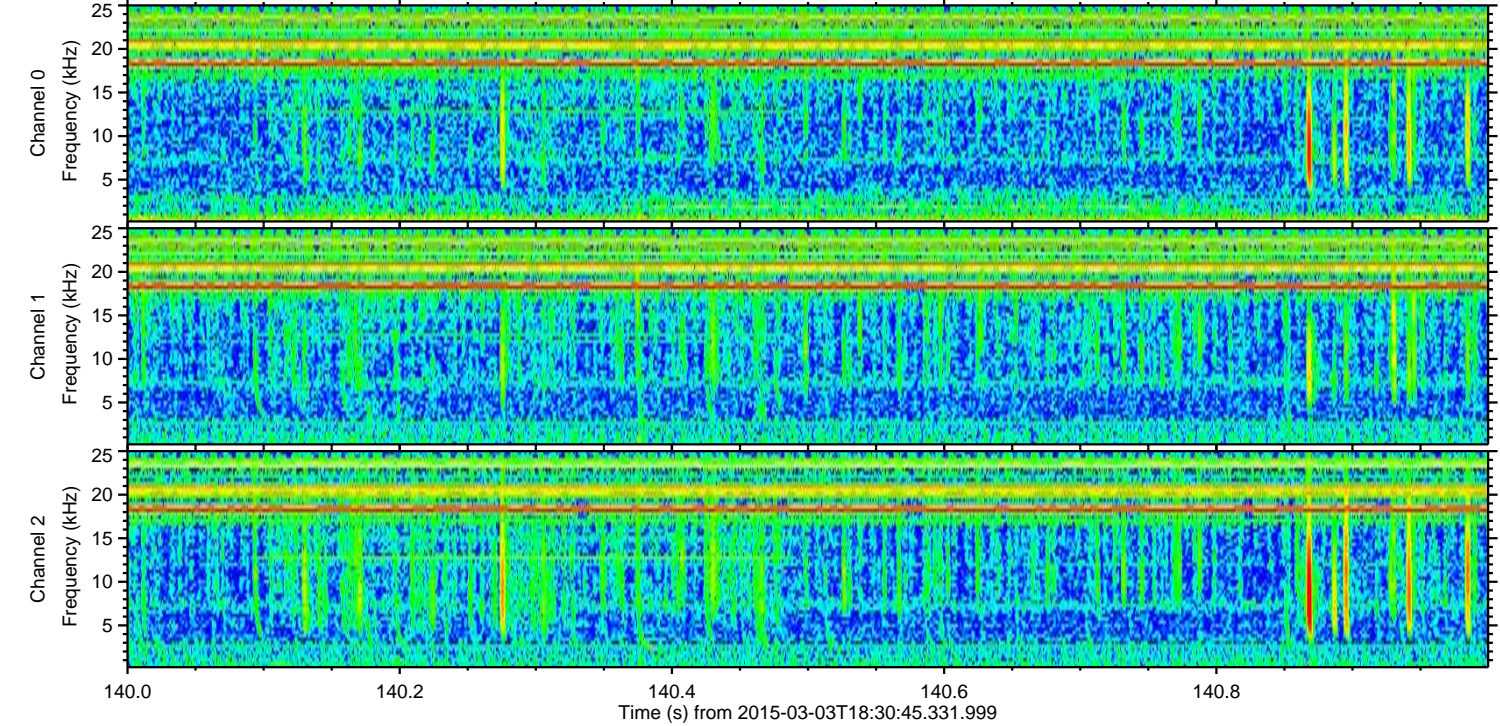
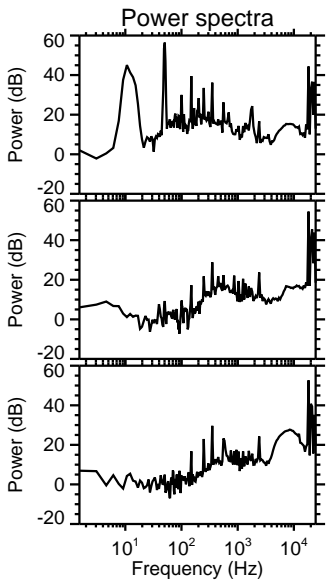
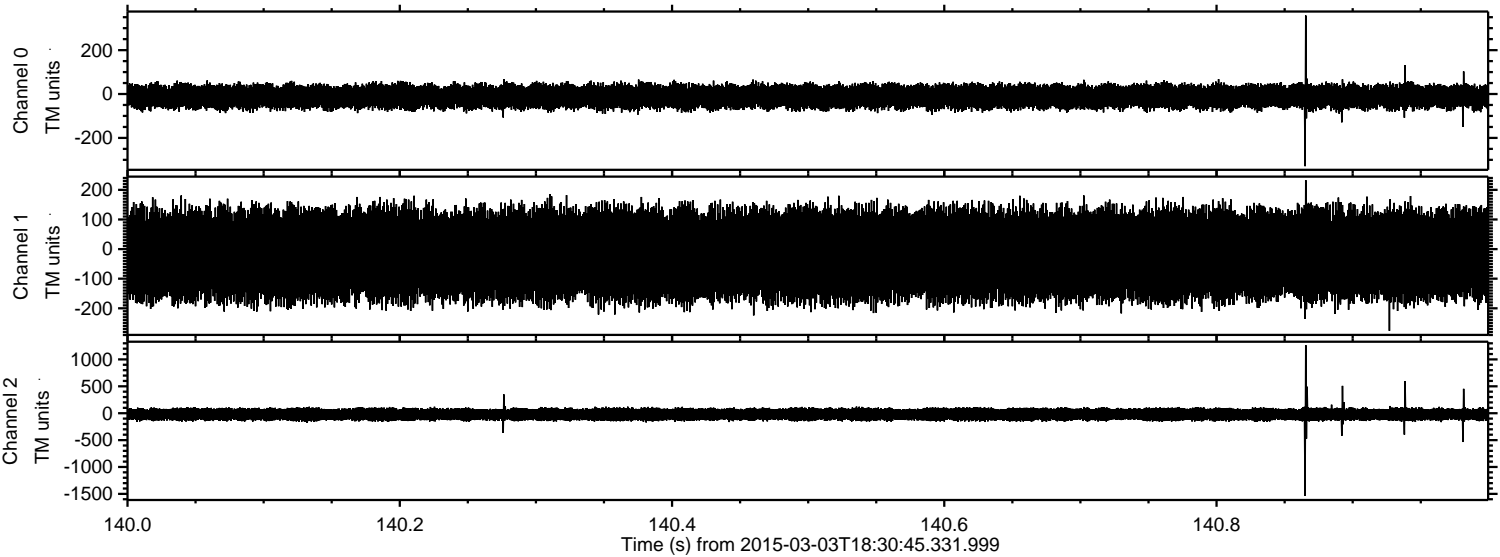
ELMAVAN 3D WAVEFORMS (Measured data sampled at 50 kHz) 49810 packets of 144 samples from 2015-03-03T18:30:45.331.999. Part 134/144

Processed Sat Mar 7 09:43:01 2015 by ELM ver.2012-10-06 from 001__elm20150303_183044__dat00.bin



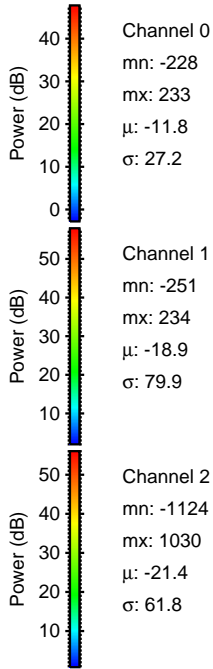
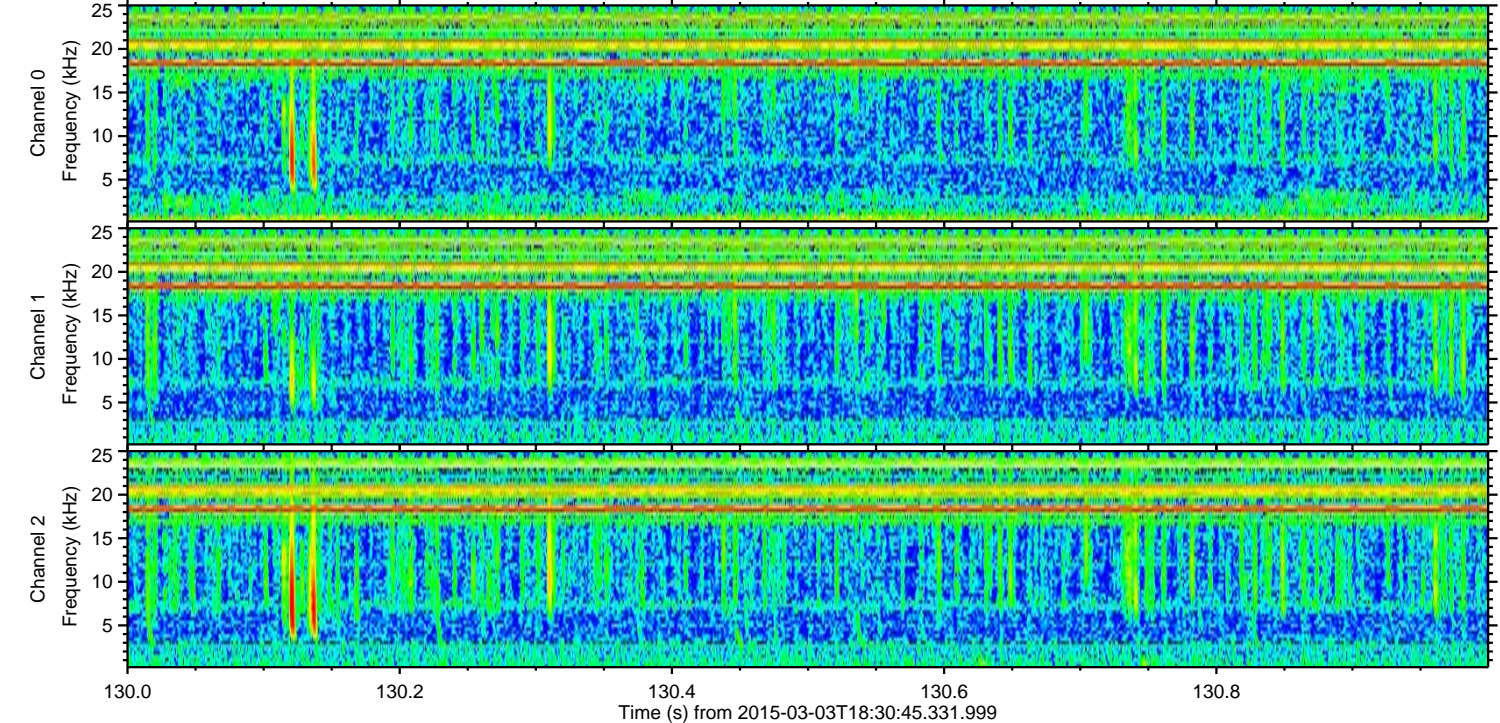
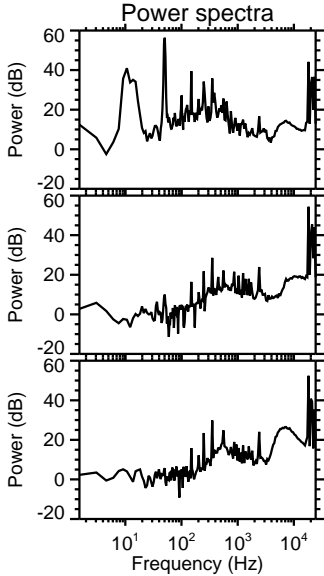
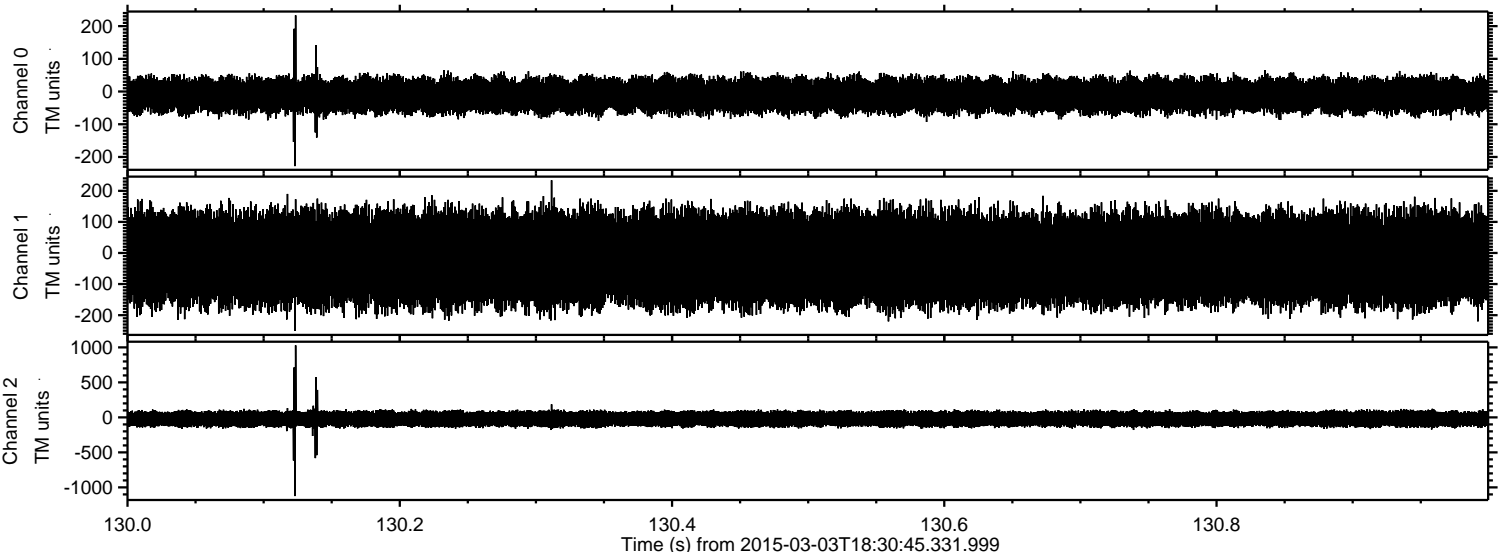
ELMAVAN 3D WAVEFORMS (Measured data sampled at 50 kHz) 49810 packets of 144 samples from 2015-03-03T18:30:45.331.999. Part 141/144

Processed Sat Mar 7 09:43:02 2015 by ELM ver.2012-10-06 from 001__elm20150303_183044__dat00.bin

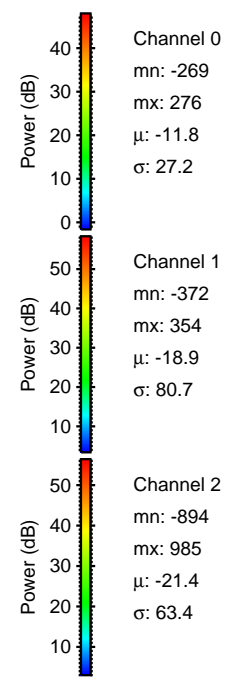
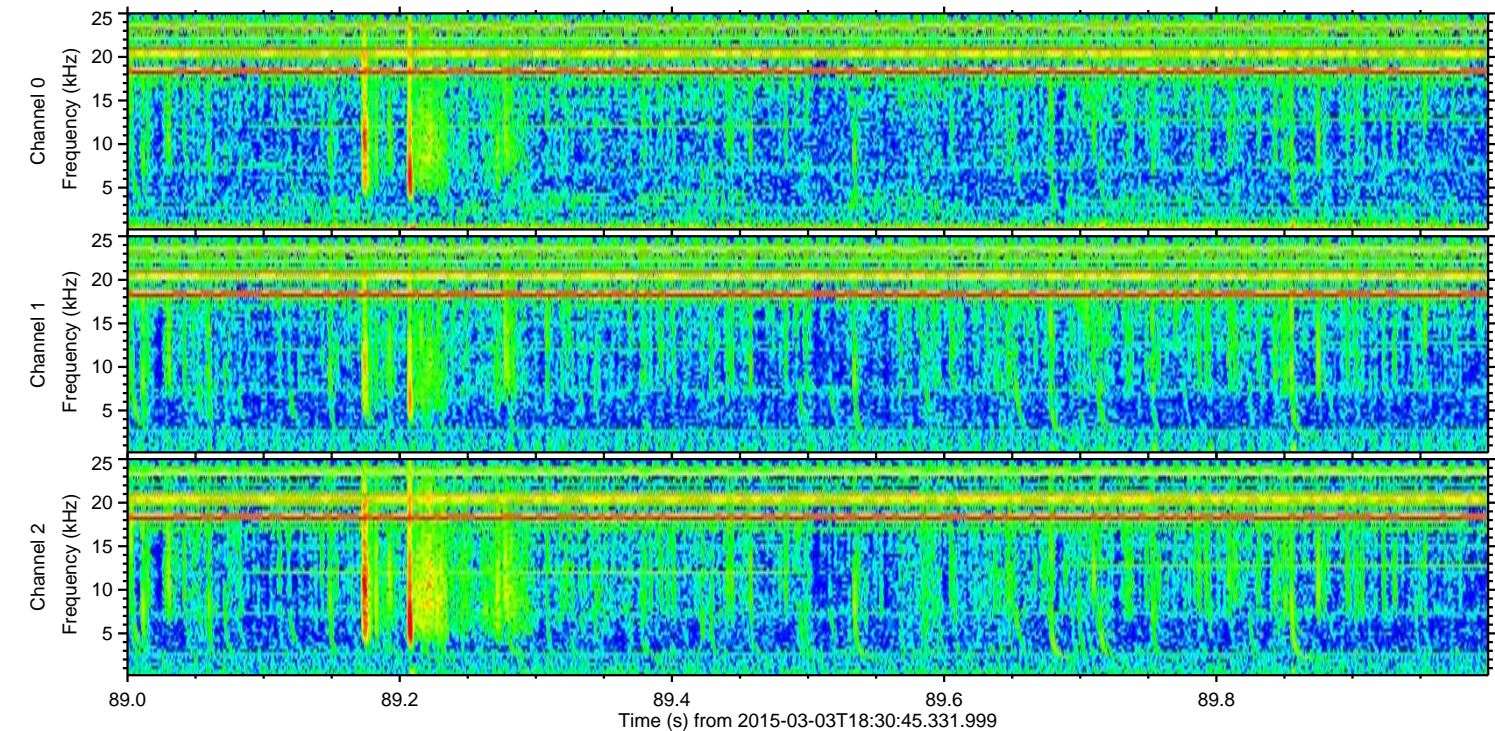
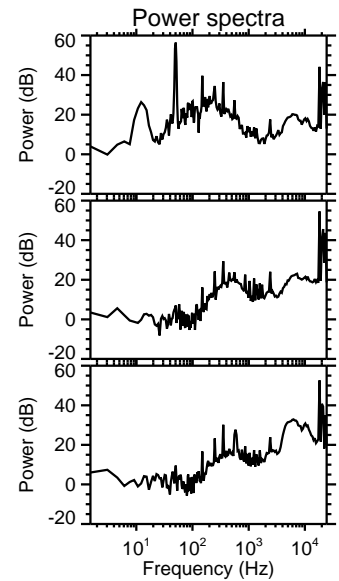
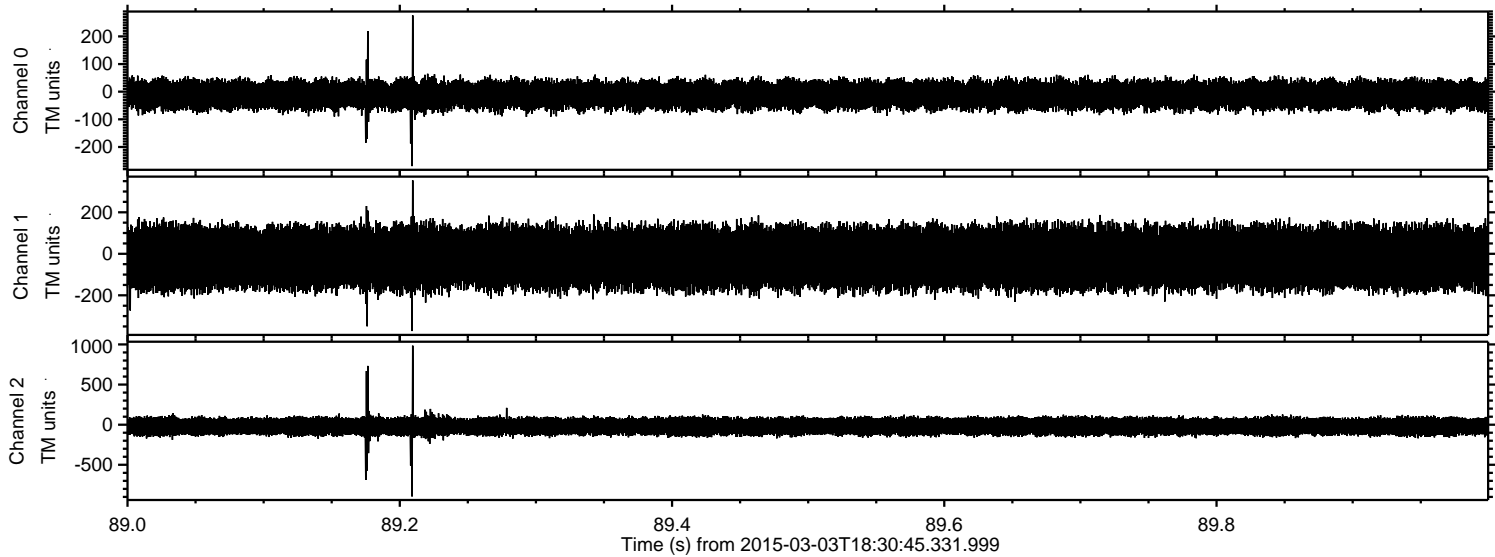


ELMAVAN 3D WAVEFORMS (Measured data sampled at 50 kHz) 49810 packets of 144 samples from 2015-03-03T18:30:45.331.999. Part 131/144

Processed Sat Mar 7 09:43:03 2015 by ELM ver.2012-10-06 from 001__elm20150303_183044__dat00.bin

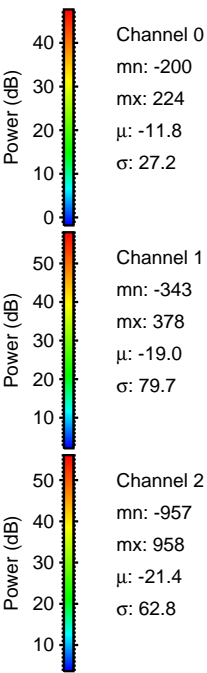
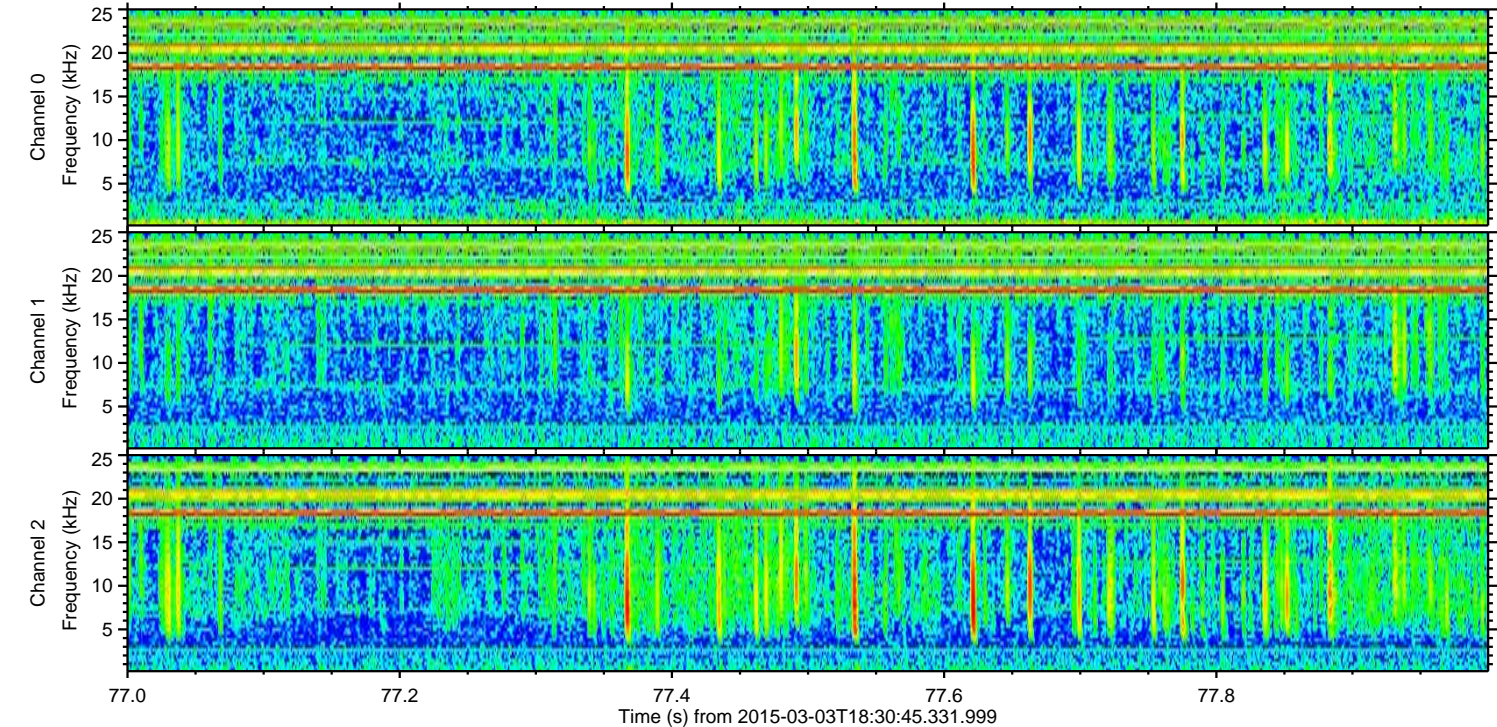
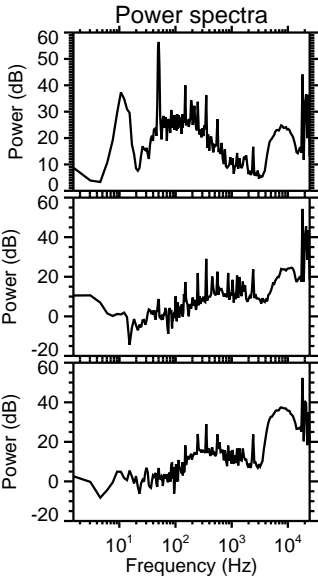
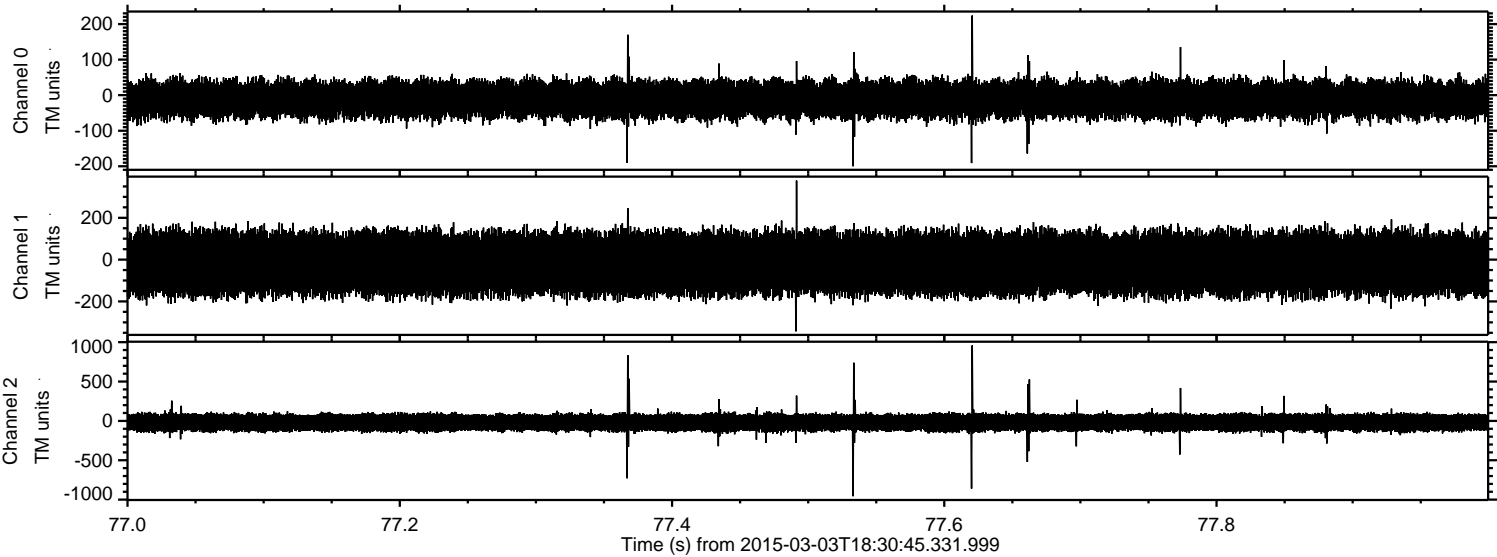


Processed Sat Mar 7 09:43:04 2015 by ELM ver.2012-10-06 from 001__elm20150303_183044__dat00.bin

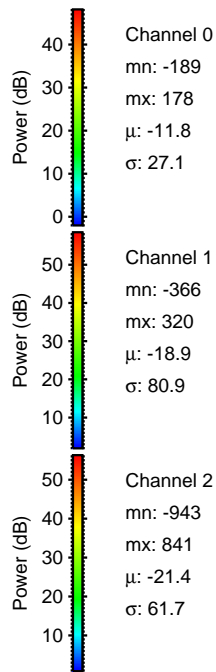
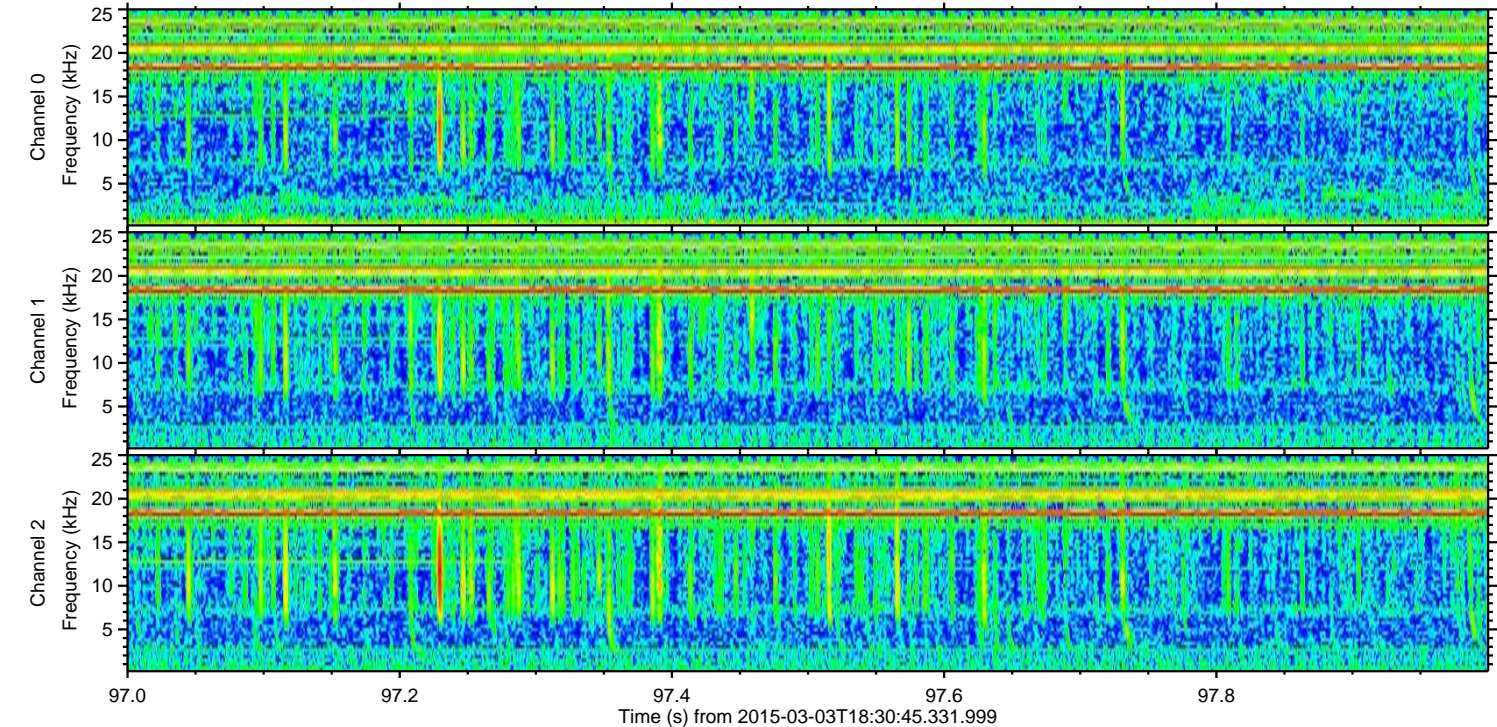
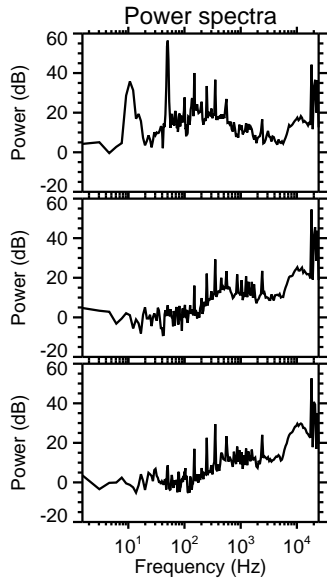
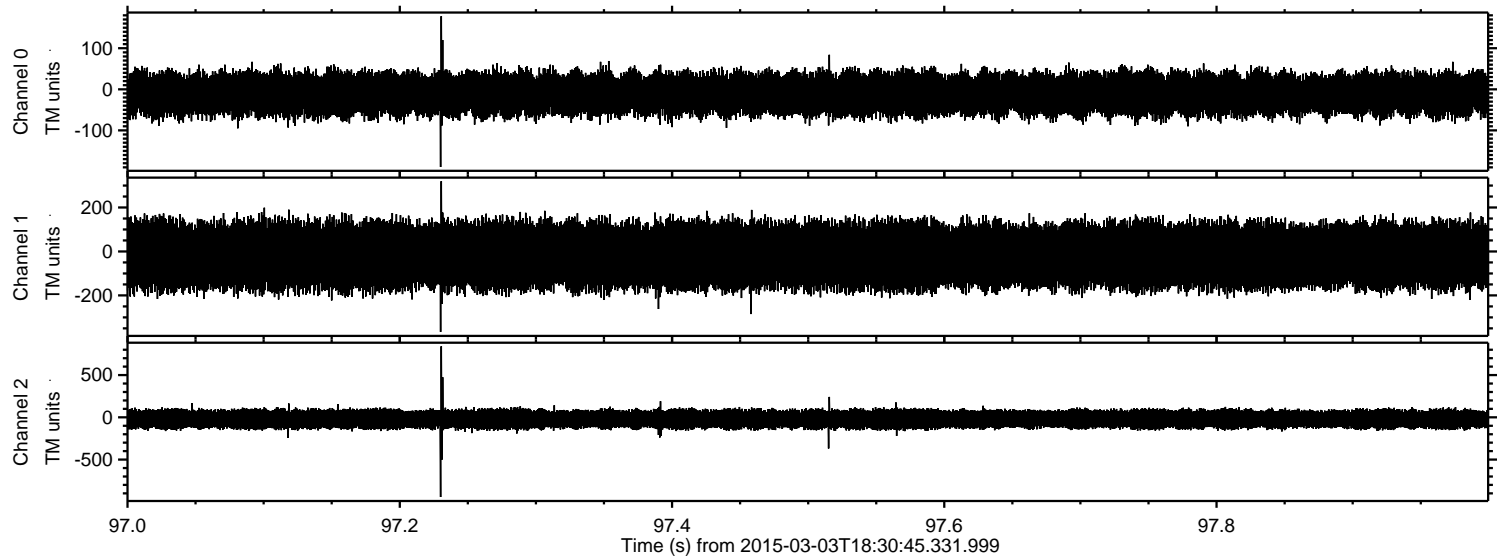


ELMAVAN 3D WAVEFORMS (Measured data sampled at 50 kHz) 49810 packets of 144 samples from 2015-03-03T18:30:45.331.999. Part 78/144

Processed Sat Mar 7 09:43:05 2015 by ELM ver.2012-10-06 from 001__elm20150303_183044__dat00.bin



Processed Sat Mar 7 09:43:06 2015 by ELM ver.2012-10-06 from 001__elm20150303_183044__dat00.bin

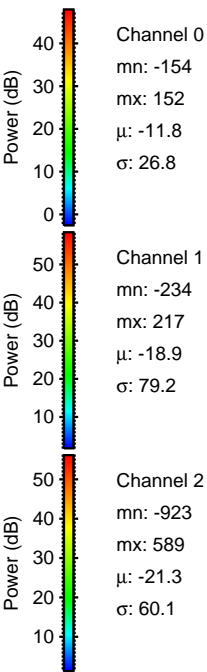
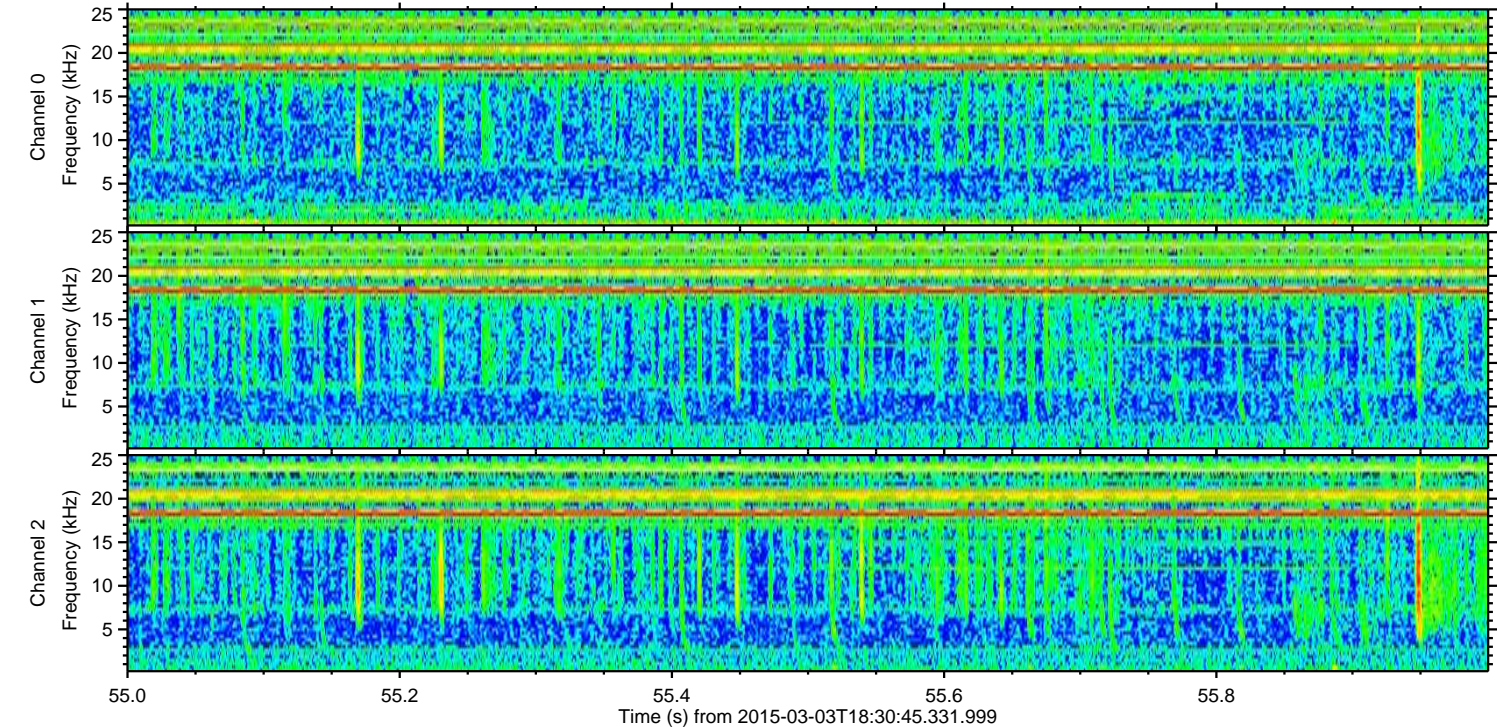
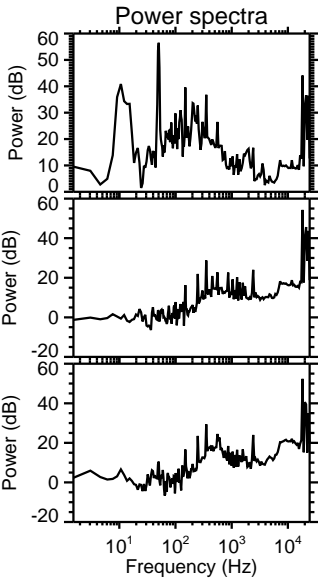
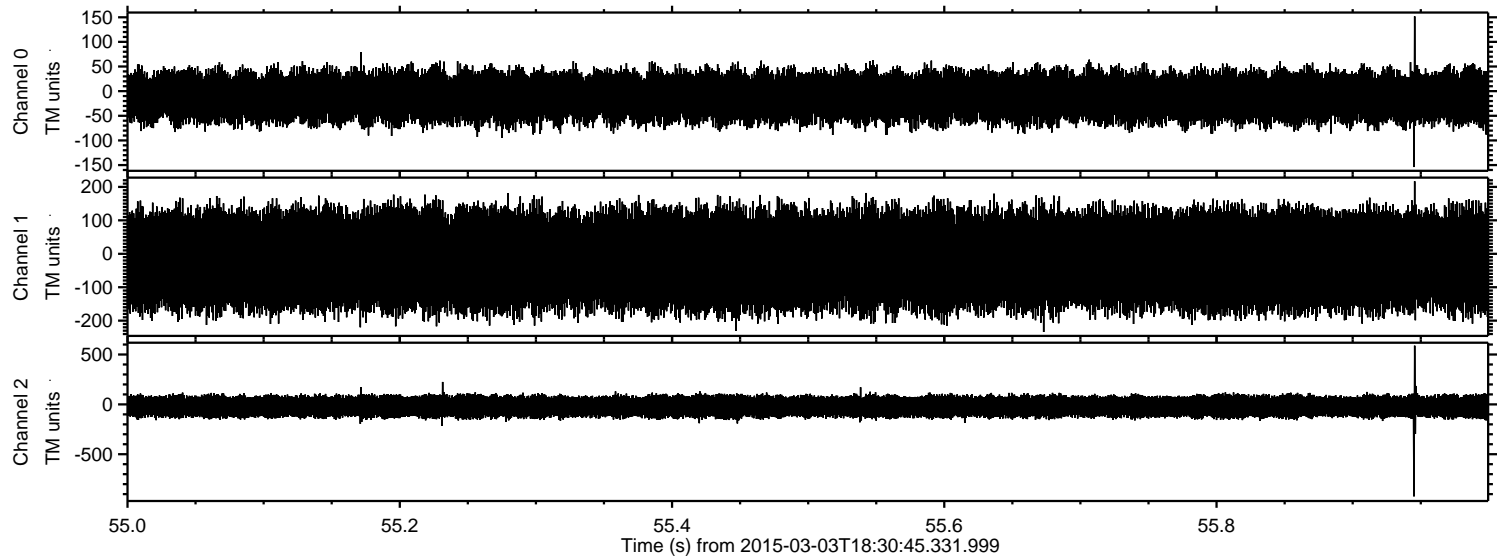


Channel 0
mn: -189
mx: 178
 μ : -11.8
 σ : 27.1

Channel 1
mn: -366
mx: 320
 μ : -18.9
 σ : 80.9

Channel 2
mn: -943
mx: 841
 μ : -21.4
 σ : 61.7

Processed Sat Mar 7 09:43:07 2015 by ELM ver.2012-10-06 from 001__elm20150303_183044__dat00.bin



Processed Sat Mar 7 09:43:08 2015 by ELM ver.2012-10-06 from 001__elm20150303_183044__dat00.bin

