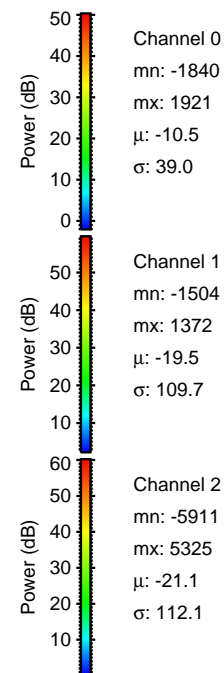
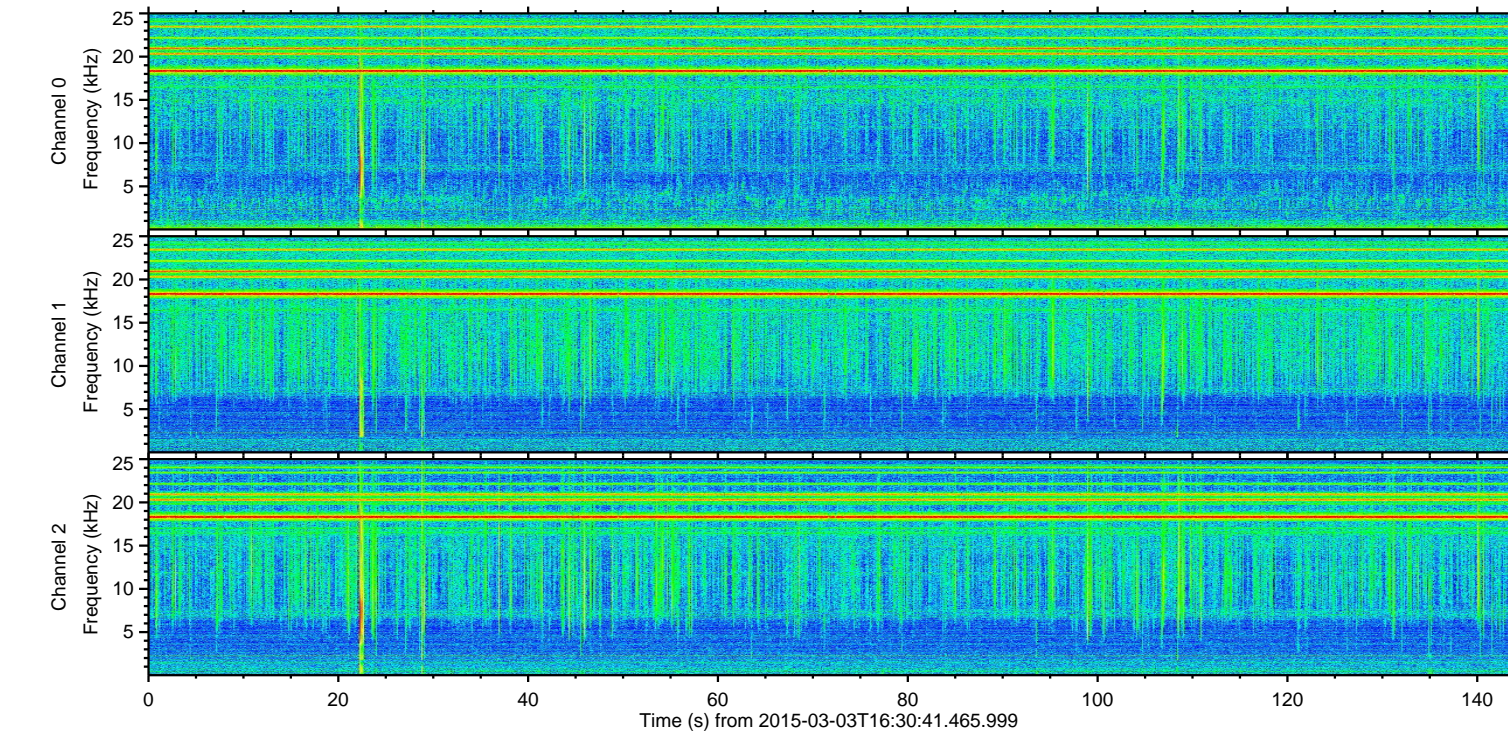
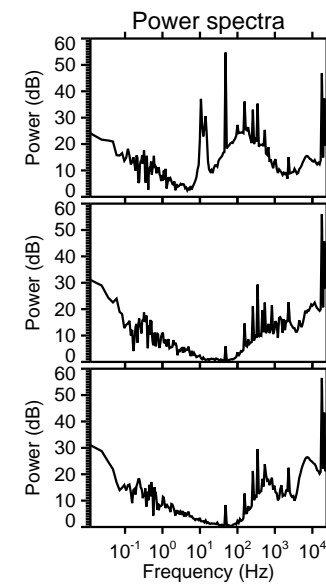
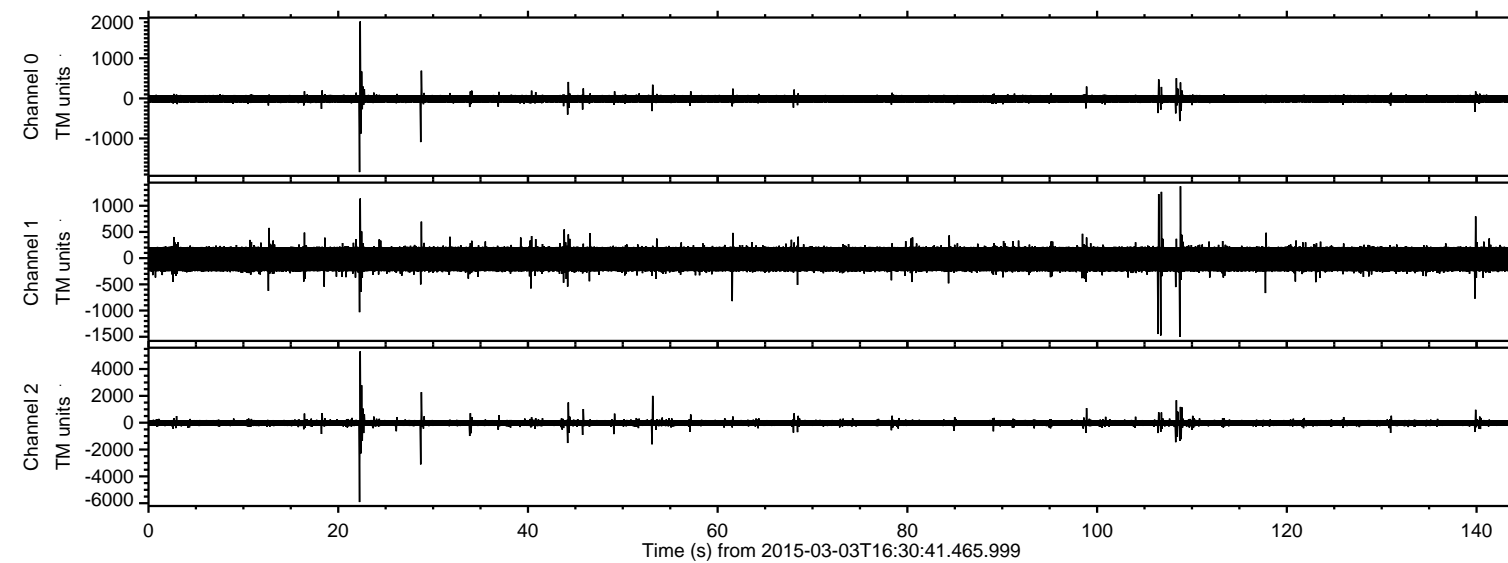


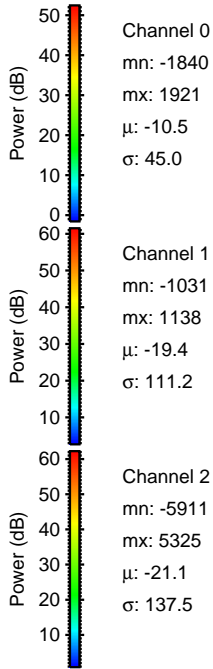
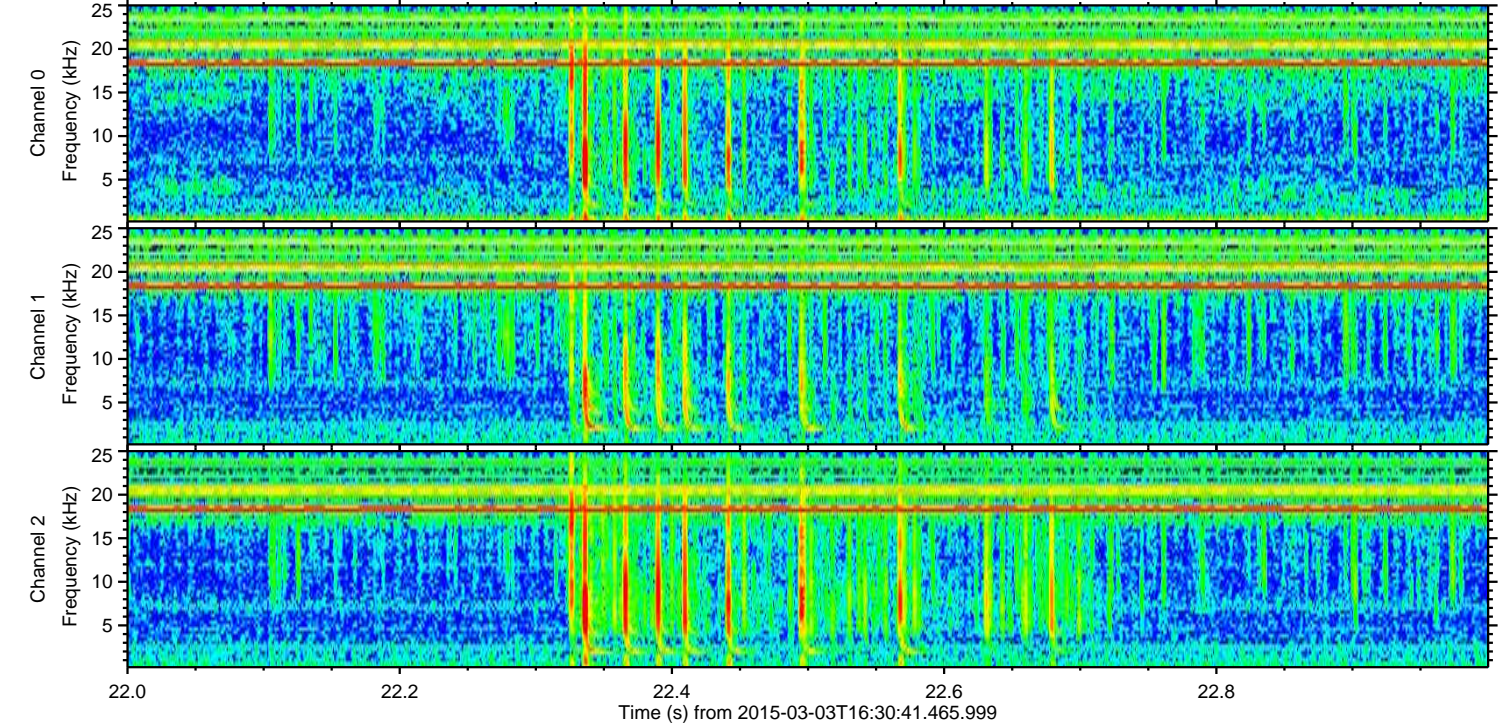
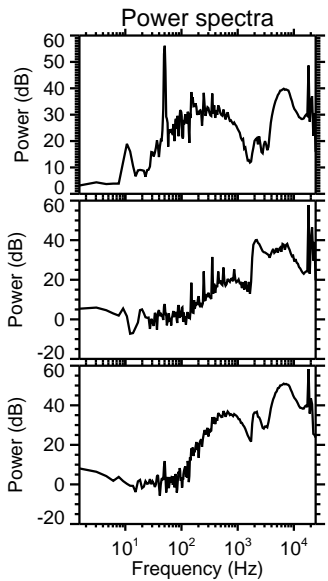
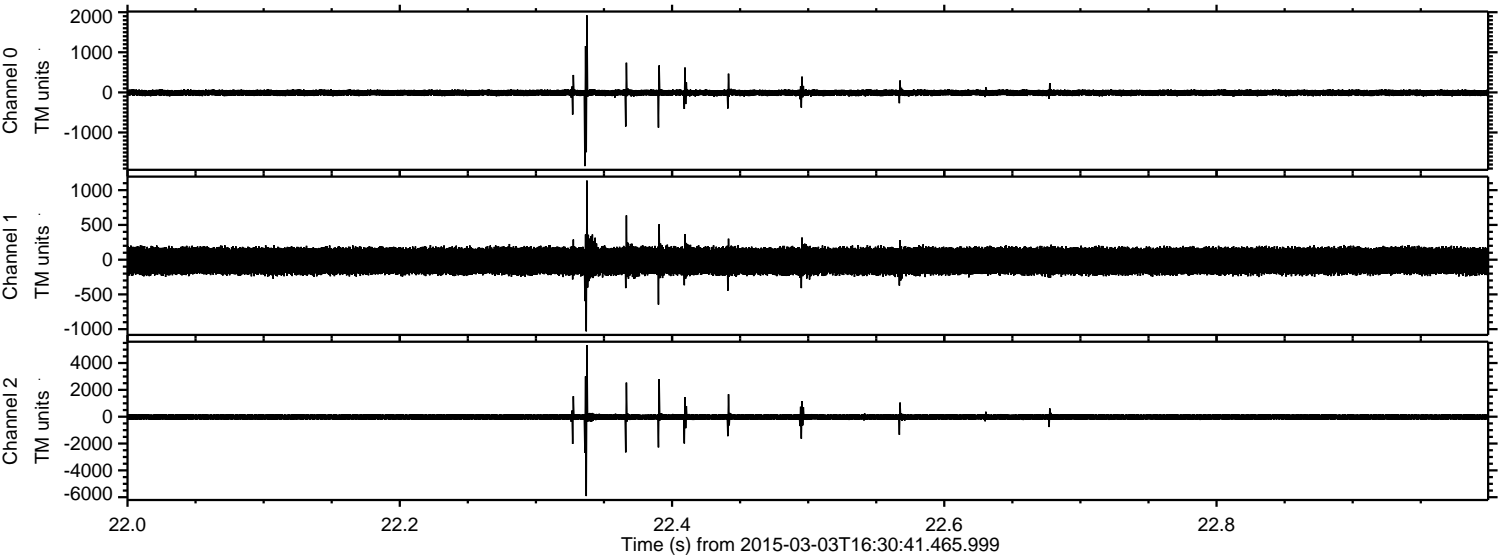
ELMAVAN 3D WAVEFORMS (Measured data sampled at 50 kHz) 49805 packets of 144 samples from 2015-03-03T16:30:41.465.999.

Processed Sat Mar 7 08:46:52 2015 by ELM ver.2012-10-06 from 001__elm20150303_163040__dat00.bin

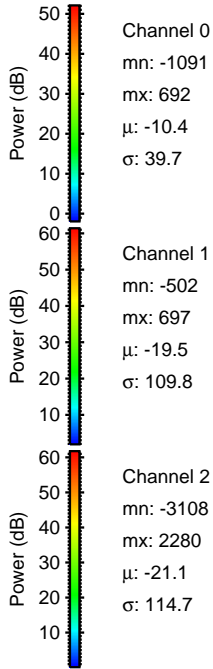
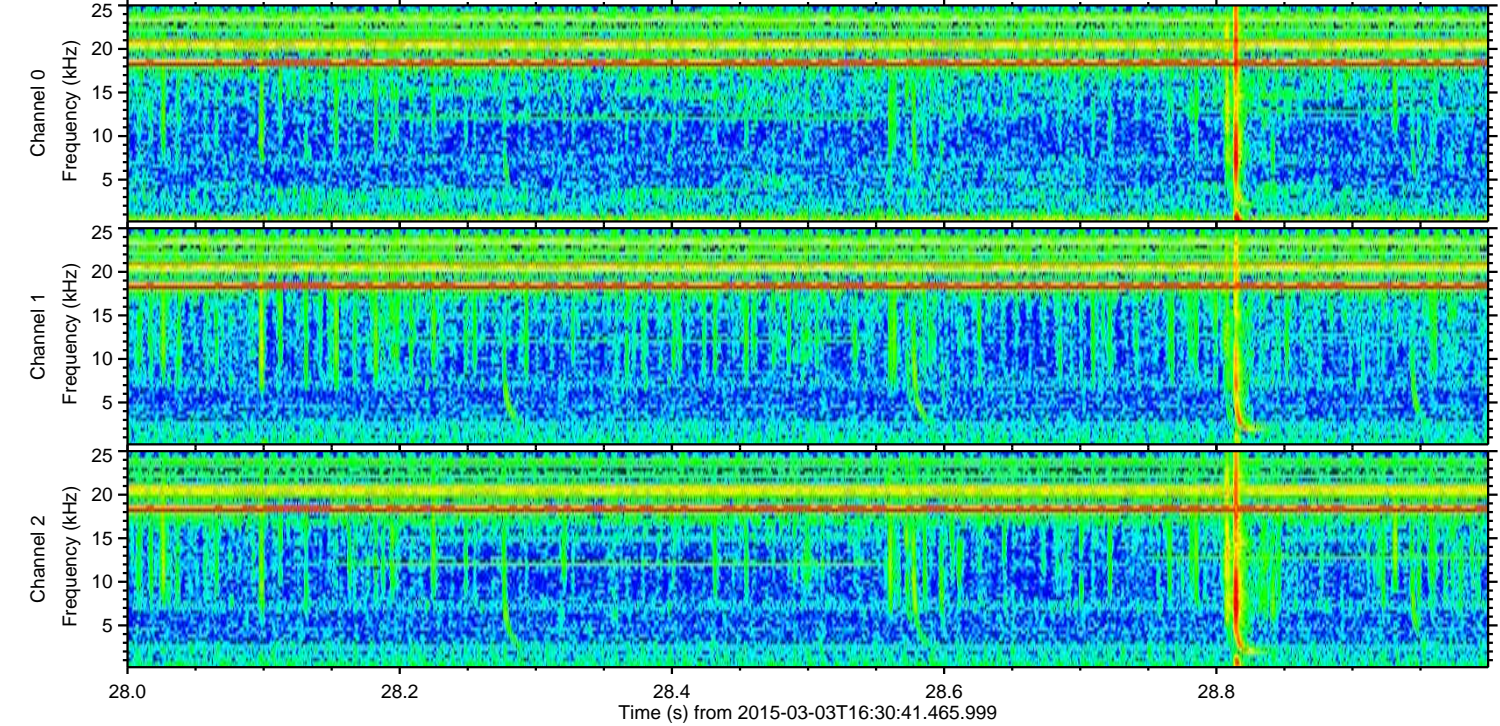
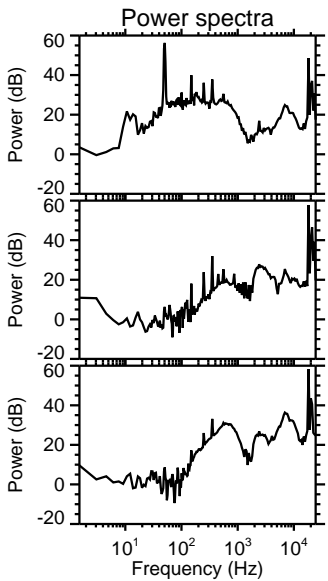
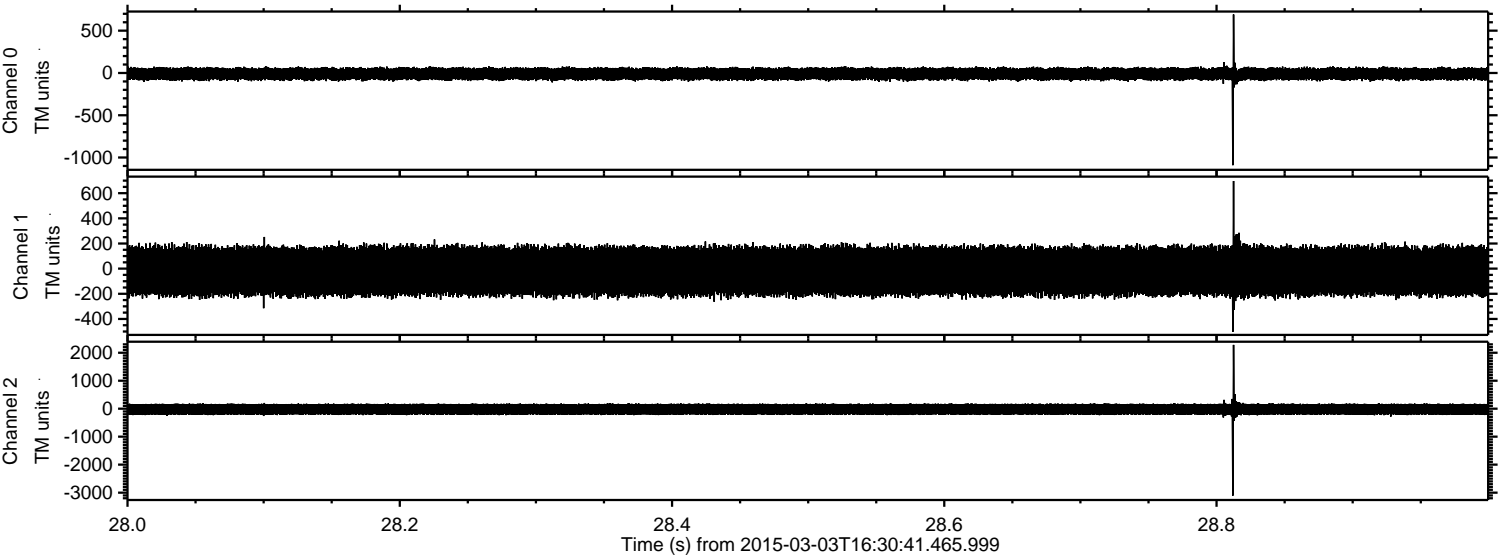


ELMAVAN 3D WAVEFORMS (Measured data sampled at 50 kHz) 49805 packets of 144 samples from 2015-03-03T16:30:41.465.999. Part 23/144

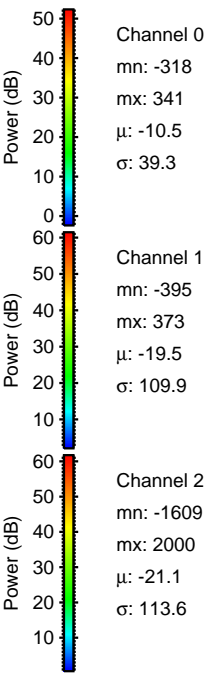
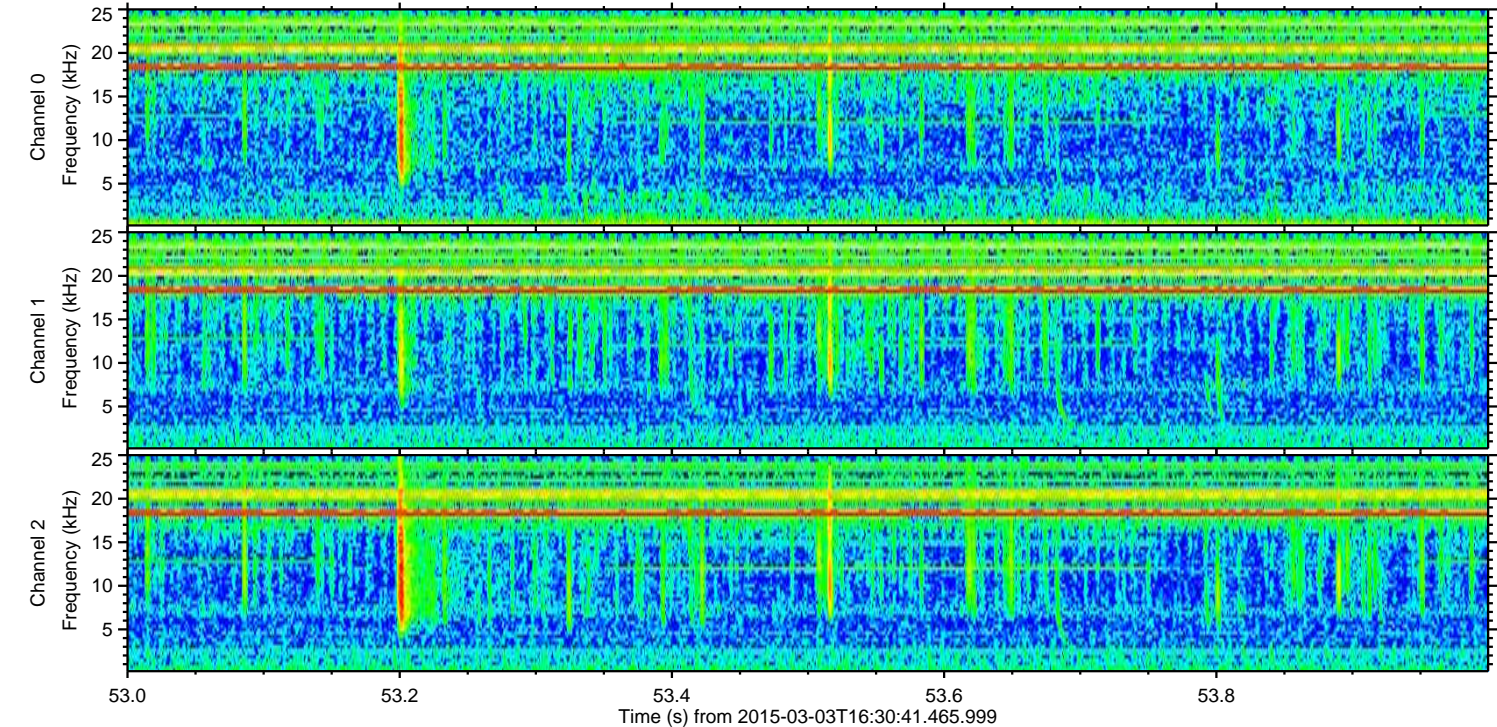
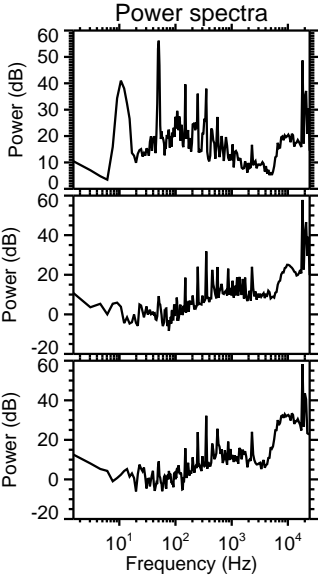
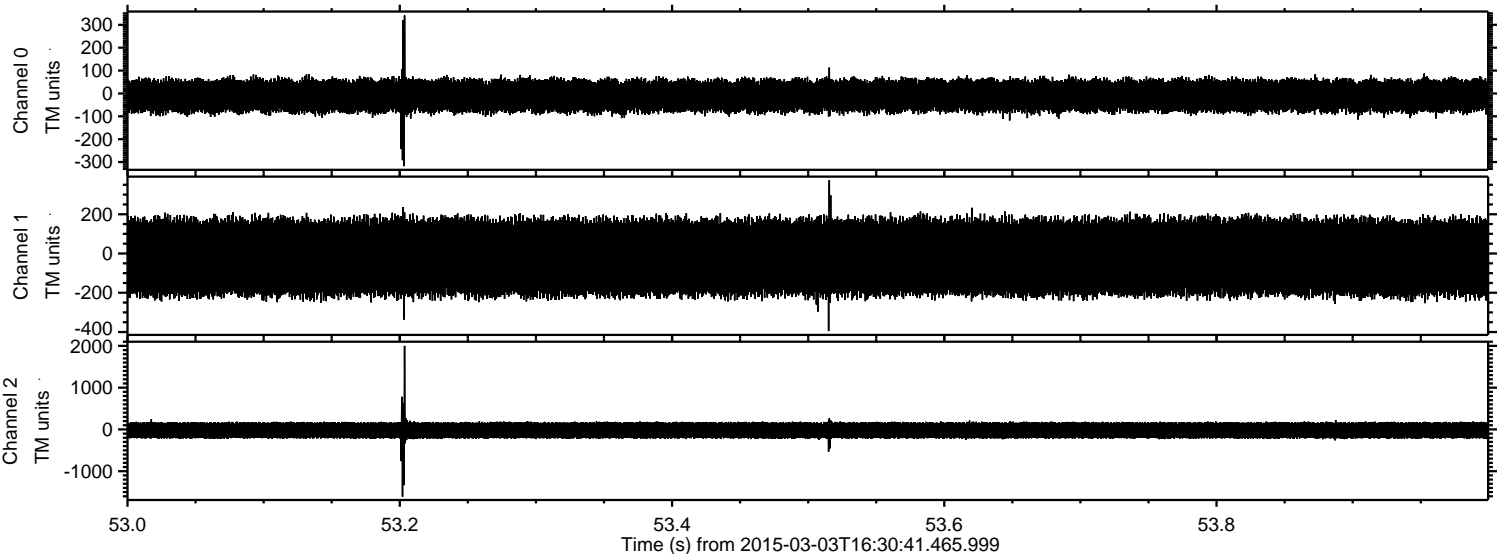
Processed Sat Mar 7 08:47:03 2015 by ELM ver.2012-10-06 from 001__elm20150303_163040__dat00.bin



Processed Sat Mar 7 08:47:04 2015 by ELM ver.2012-10-06 from 001__elm20150303_163040__dat00.bin

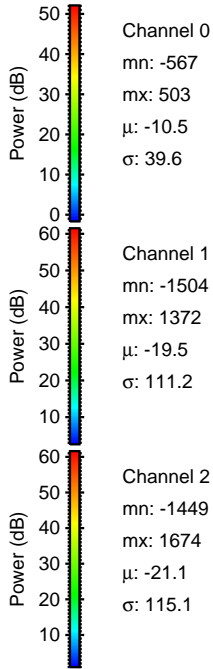
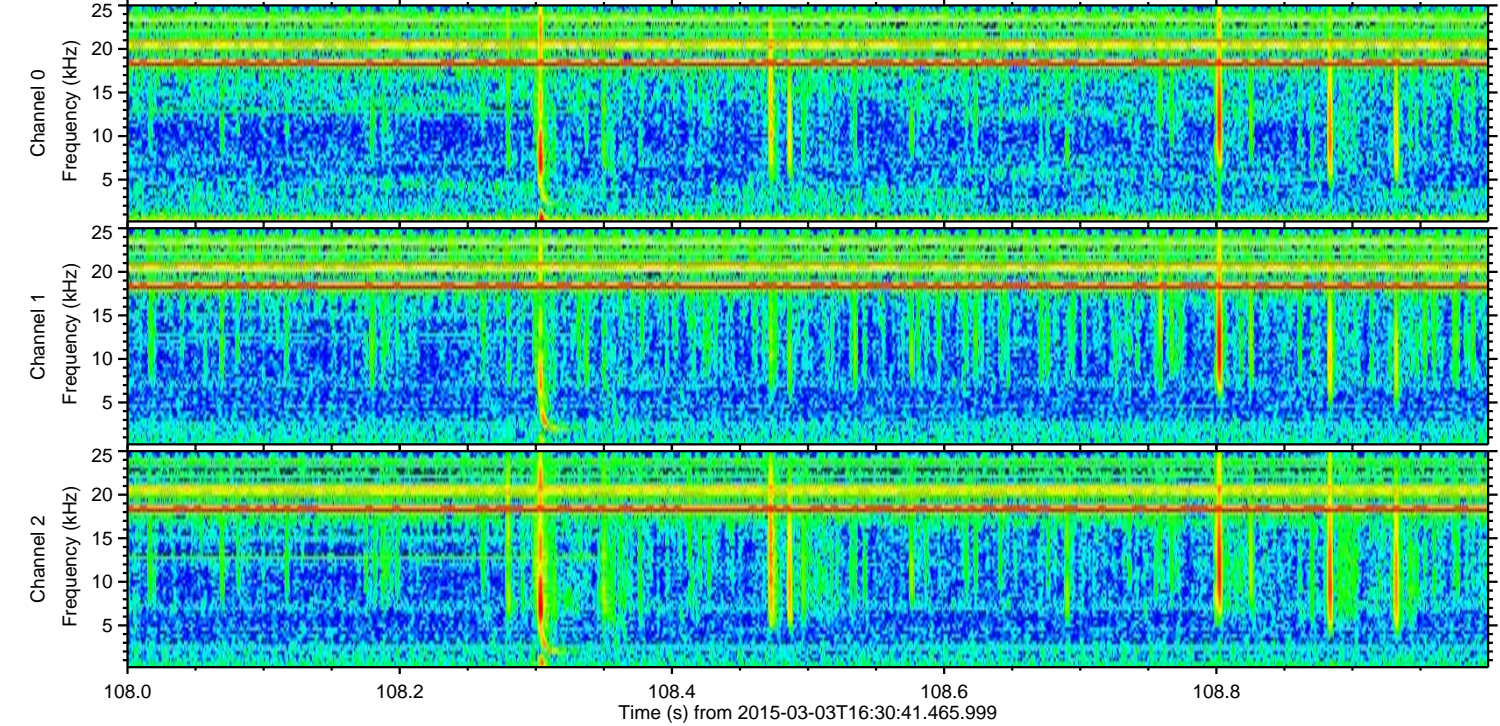
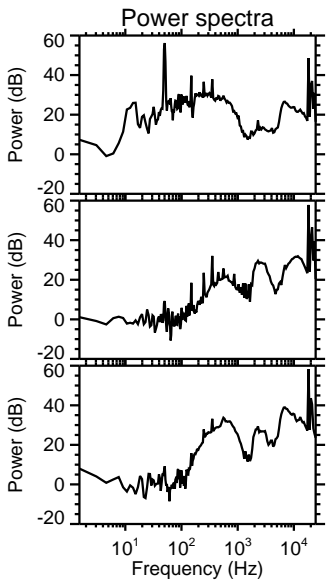
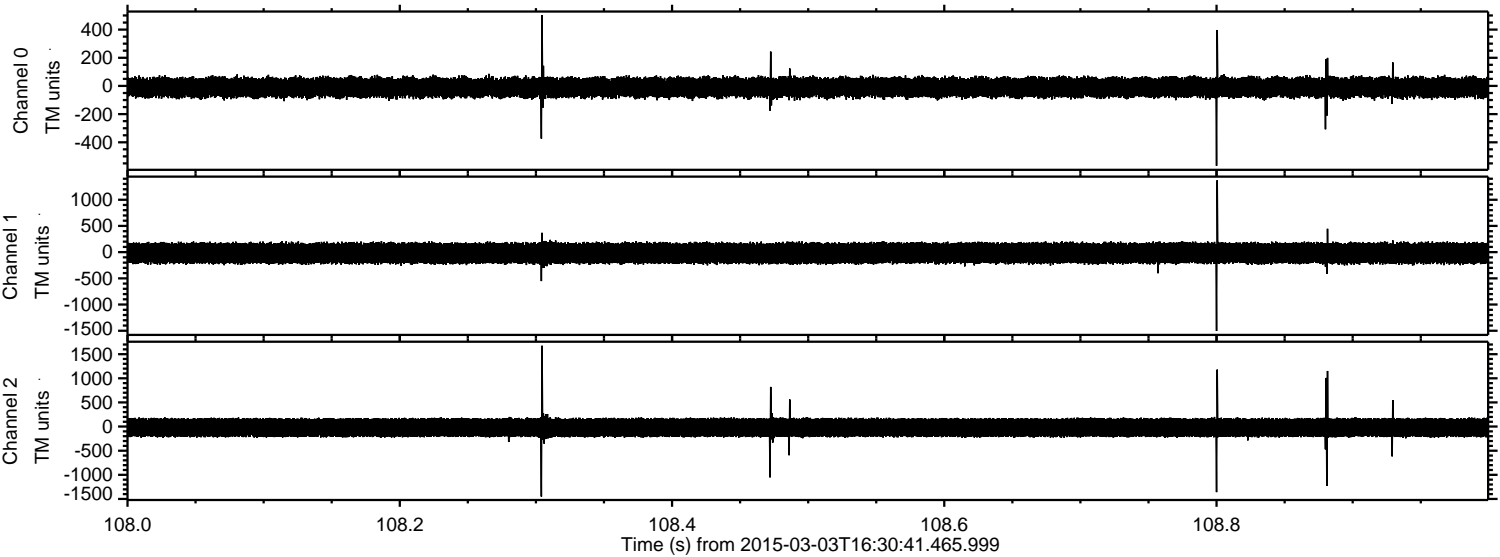


Processed Sat Mar 7 08:47:05 2015 by ELM ver.2012-10-06 from 001__elm20150303_163040__dat00.bin



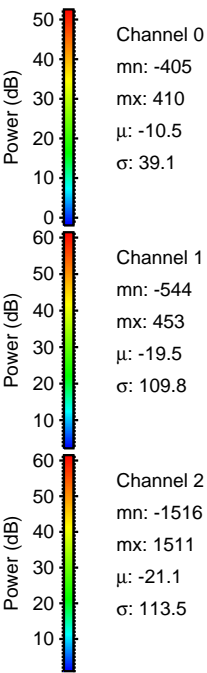
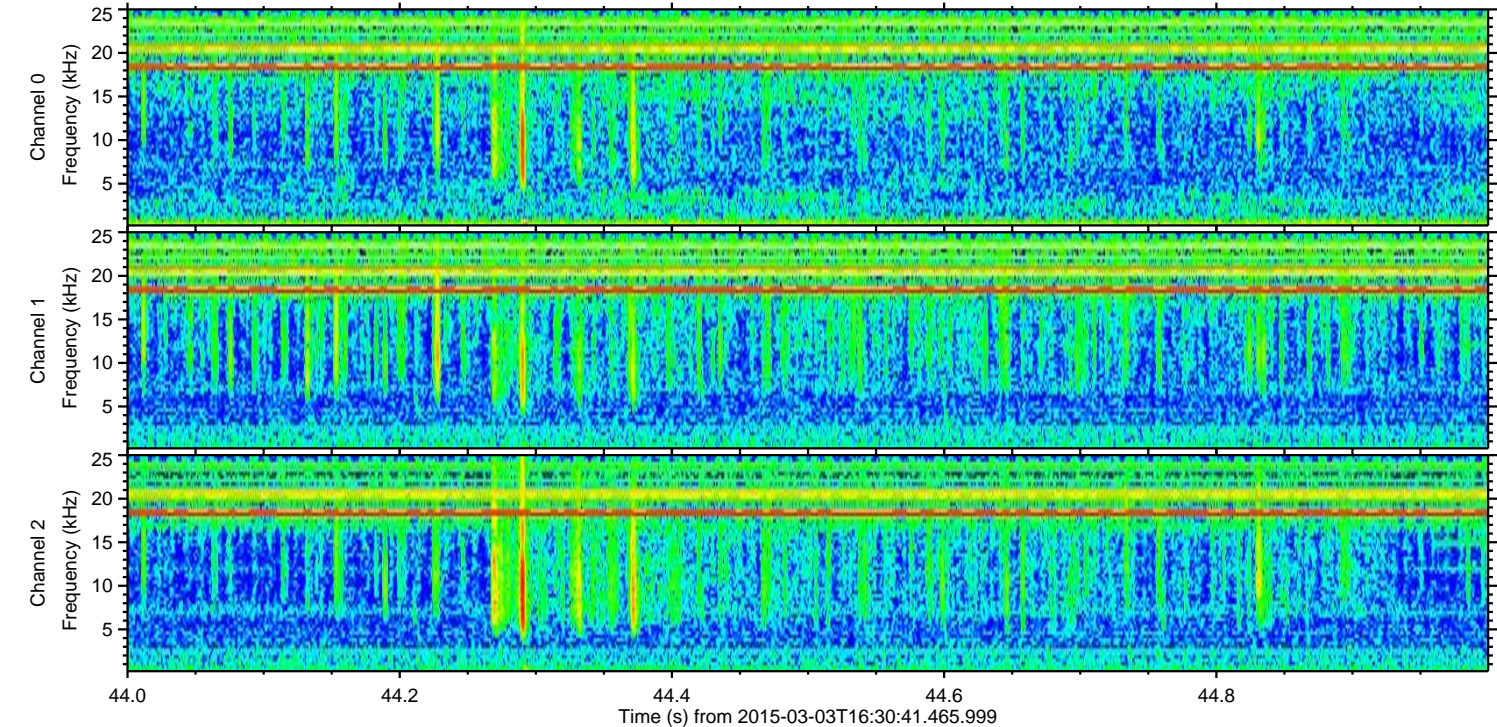
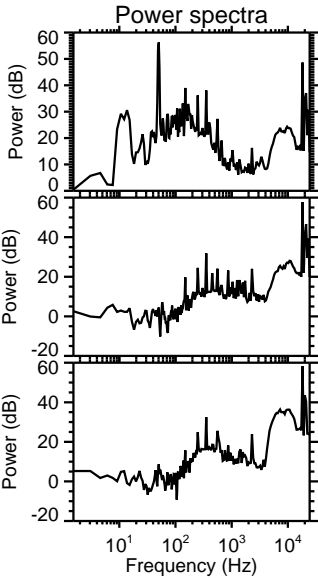
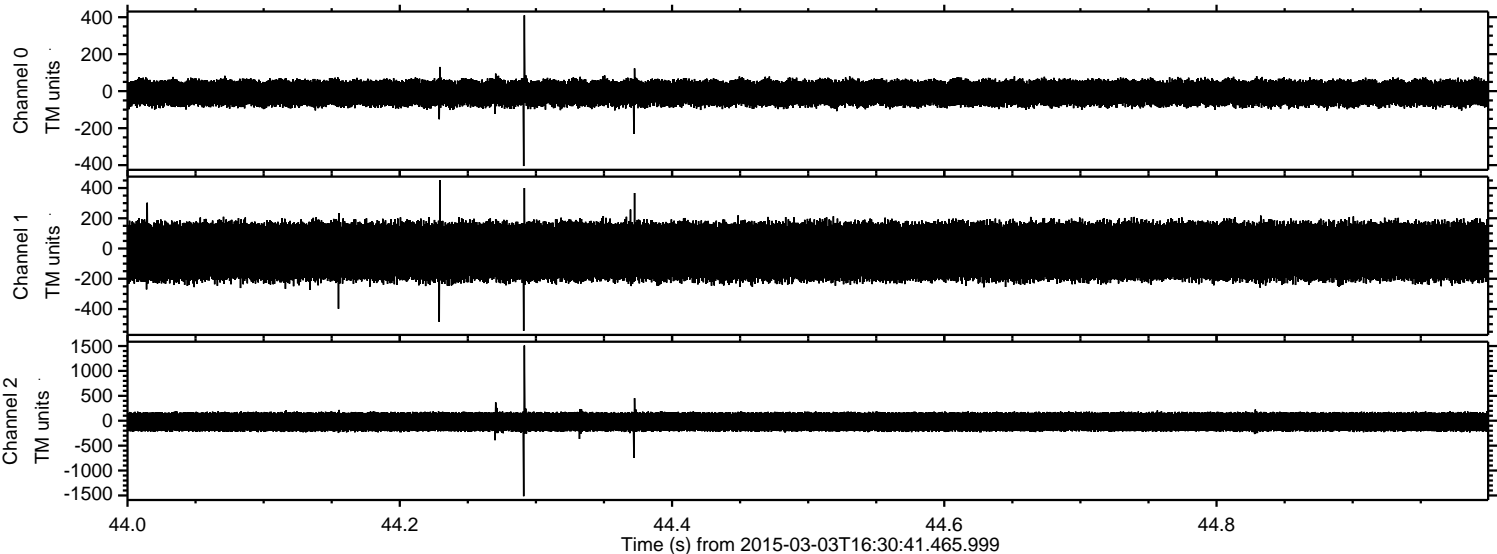
ELMAVAN 3D WAVEFORMS (Measured data sampled at 50 kHz) 49805 packets of 144 samples from 2015-03-03T16:30:41.465.999. Part 109/144

Processed Sat Mar 7 08:47:06 2015 by ELM ver.2012-10-06 from 001__elm20150303_163040__dat00.bin



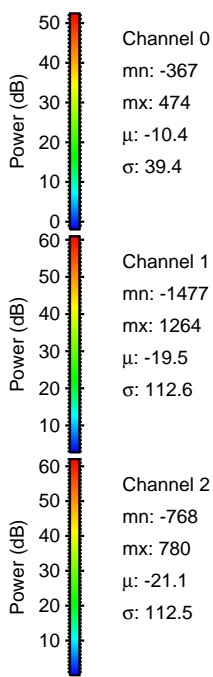
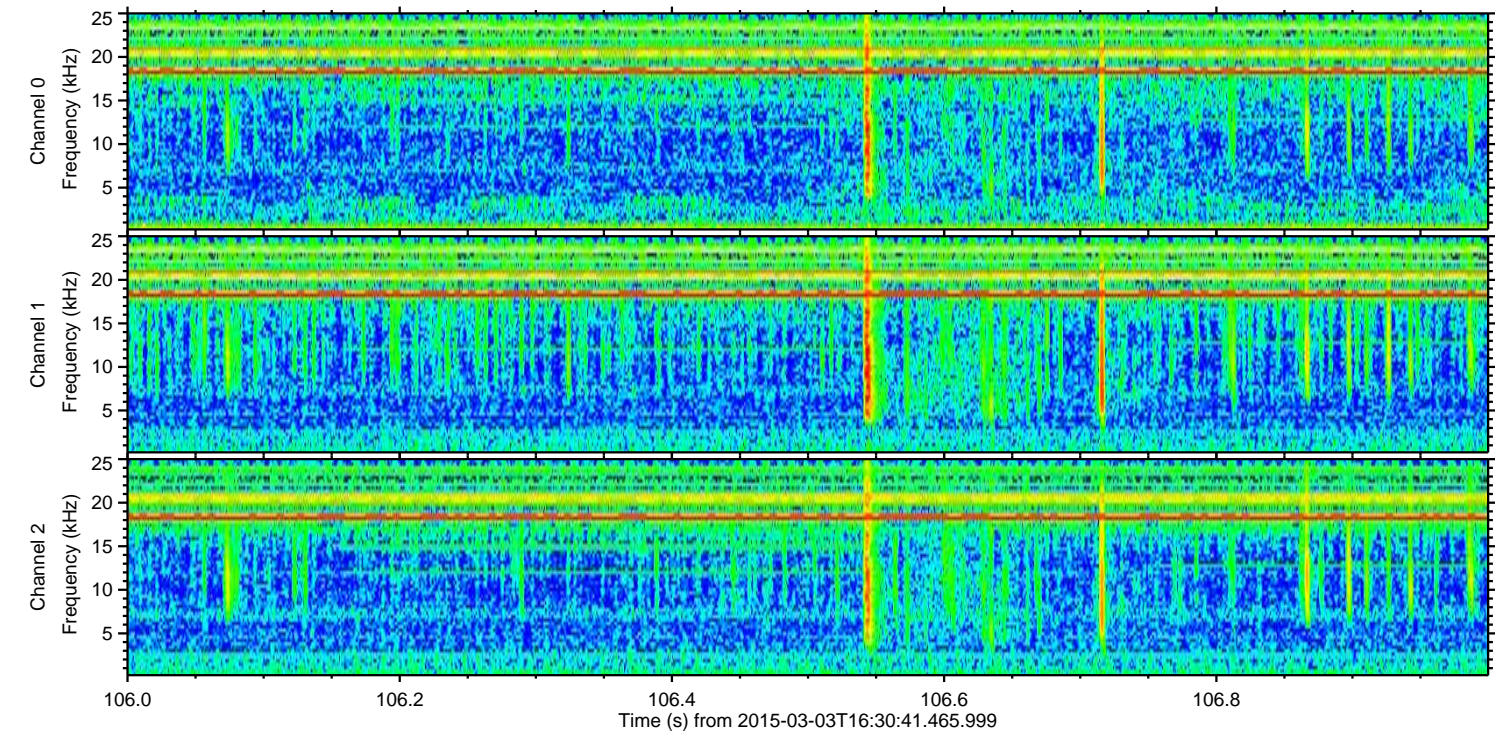
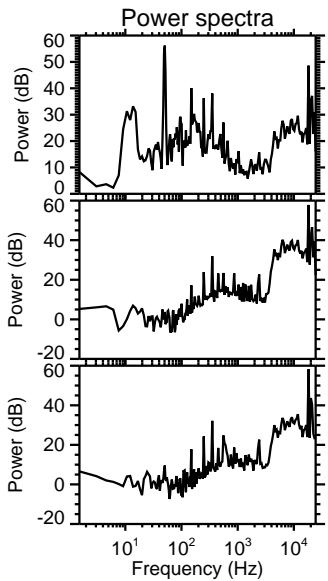
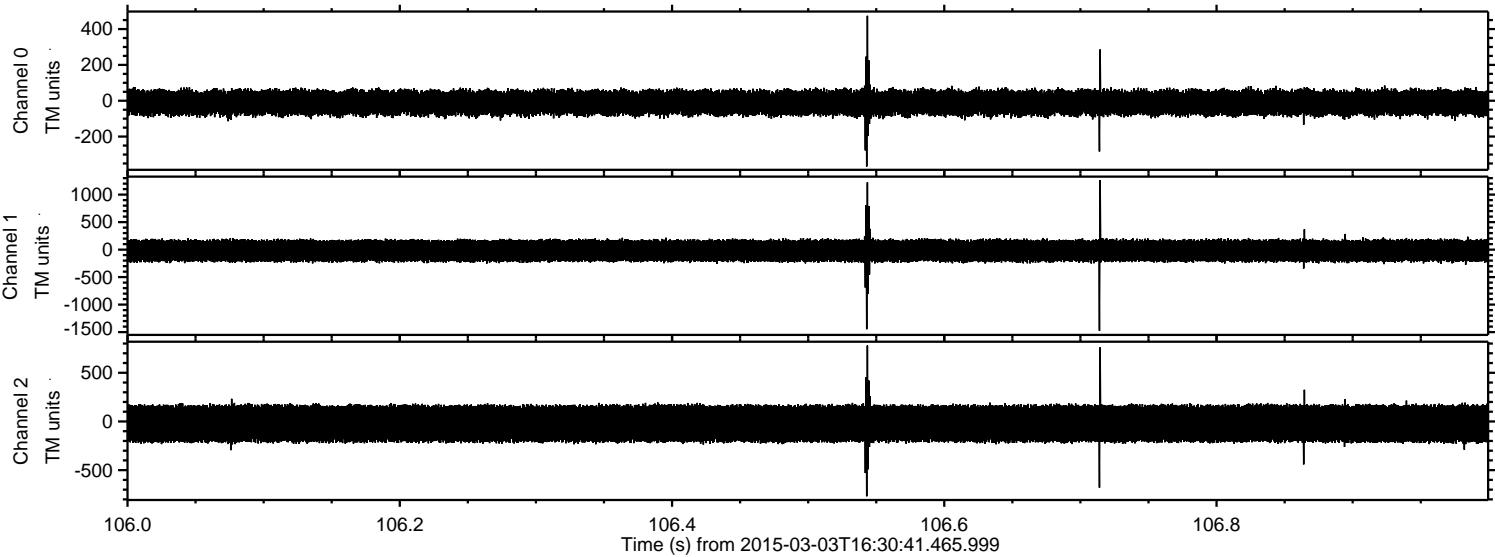
ELMAVAN 3D WAVEFORMS (Measured data sampled at 50 kHz) 49805 packets of 144 samples from 2015-03-03T16:30:41.465.999. Part 45/144

Processed Sat Mar 7 08:47:07 2015 by ELM ver.2012-10-06 from 001__elm20150303_163040__dat00.bin

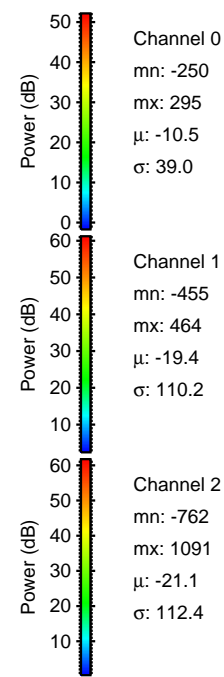
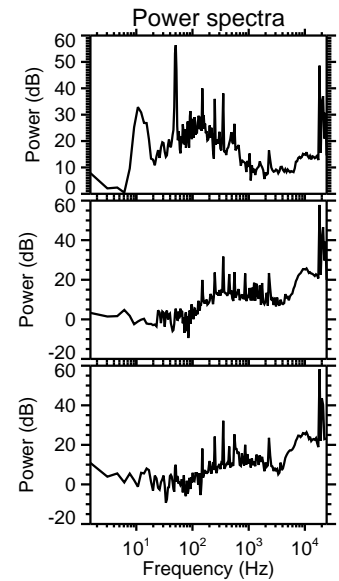
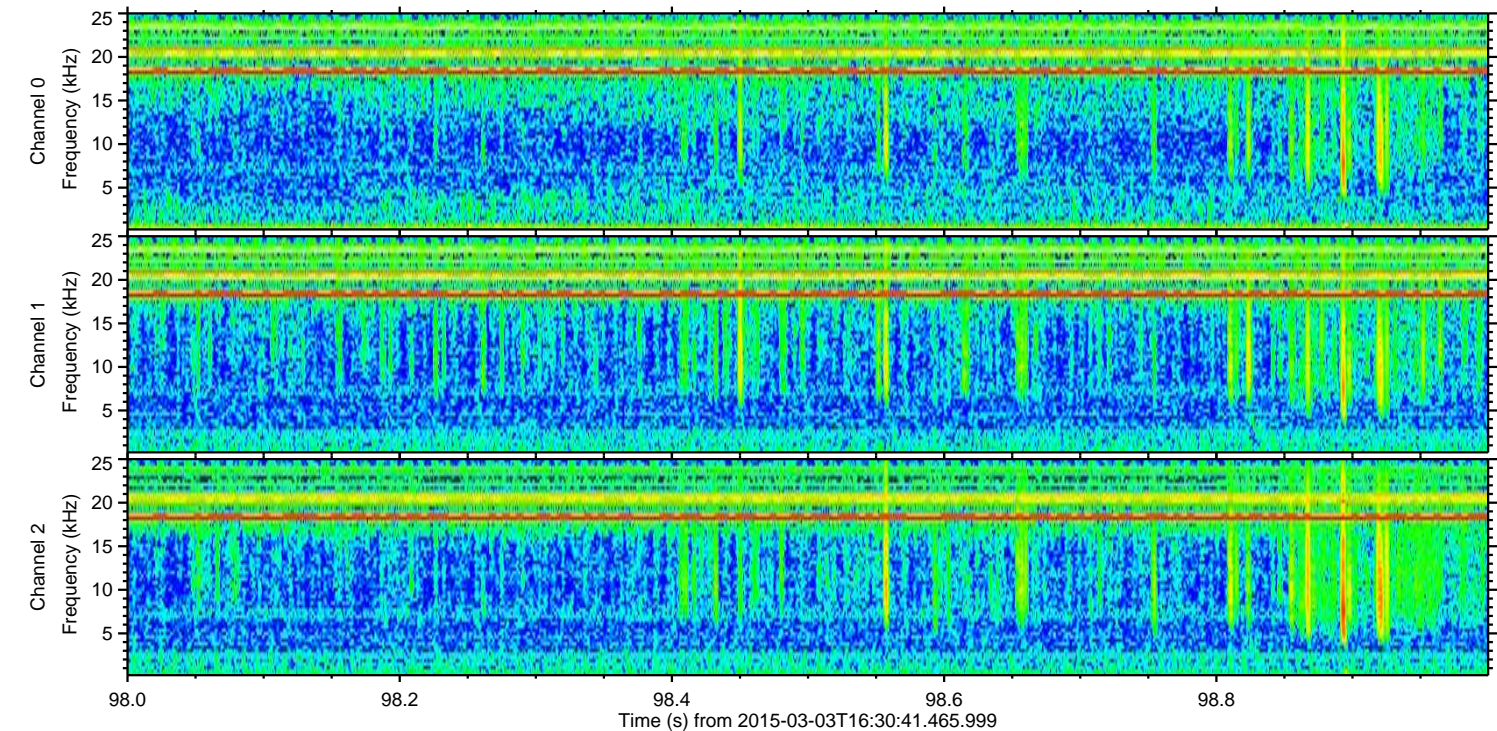
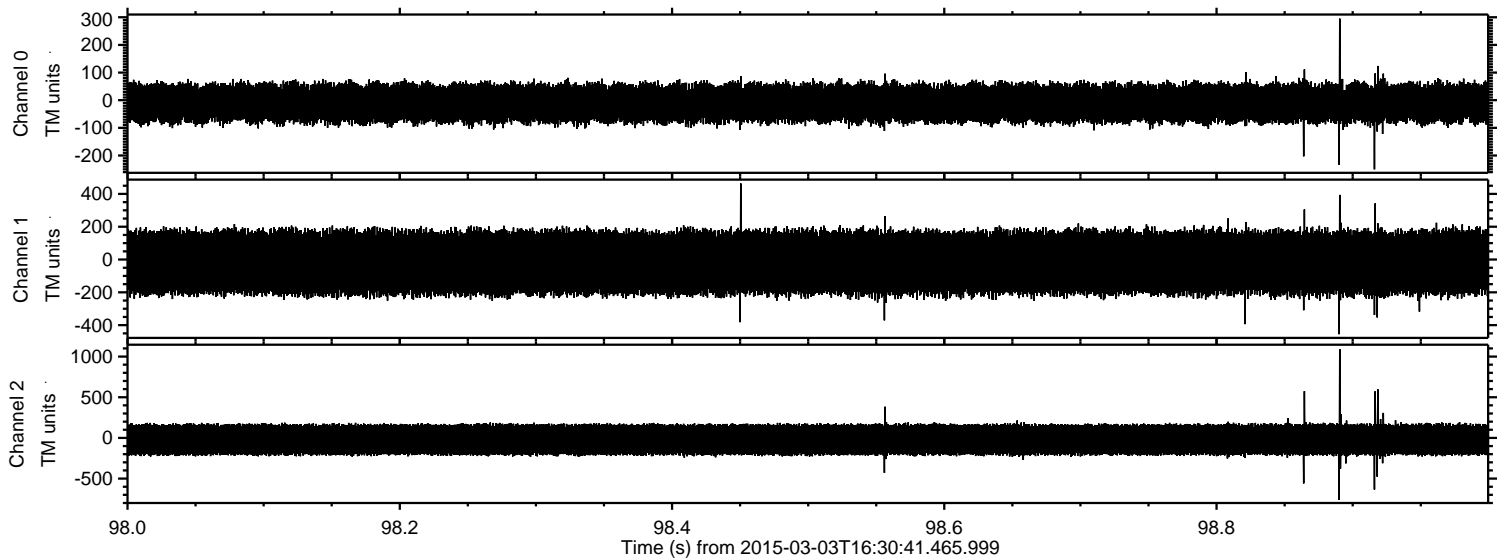


ELMAVAN 3D WAVEFORMS (Measured data sampled at 50 kHz) 49805 packets of 144 samples from 2015-03-03T16:30:41.465.999. Part 107/144

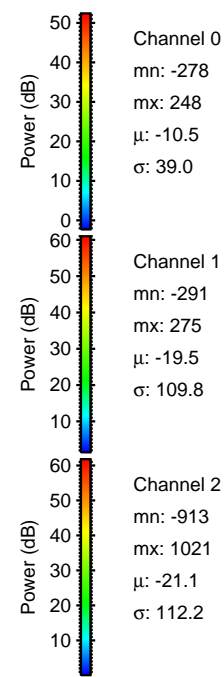
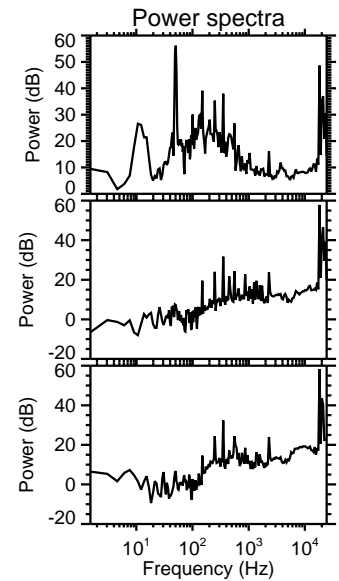
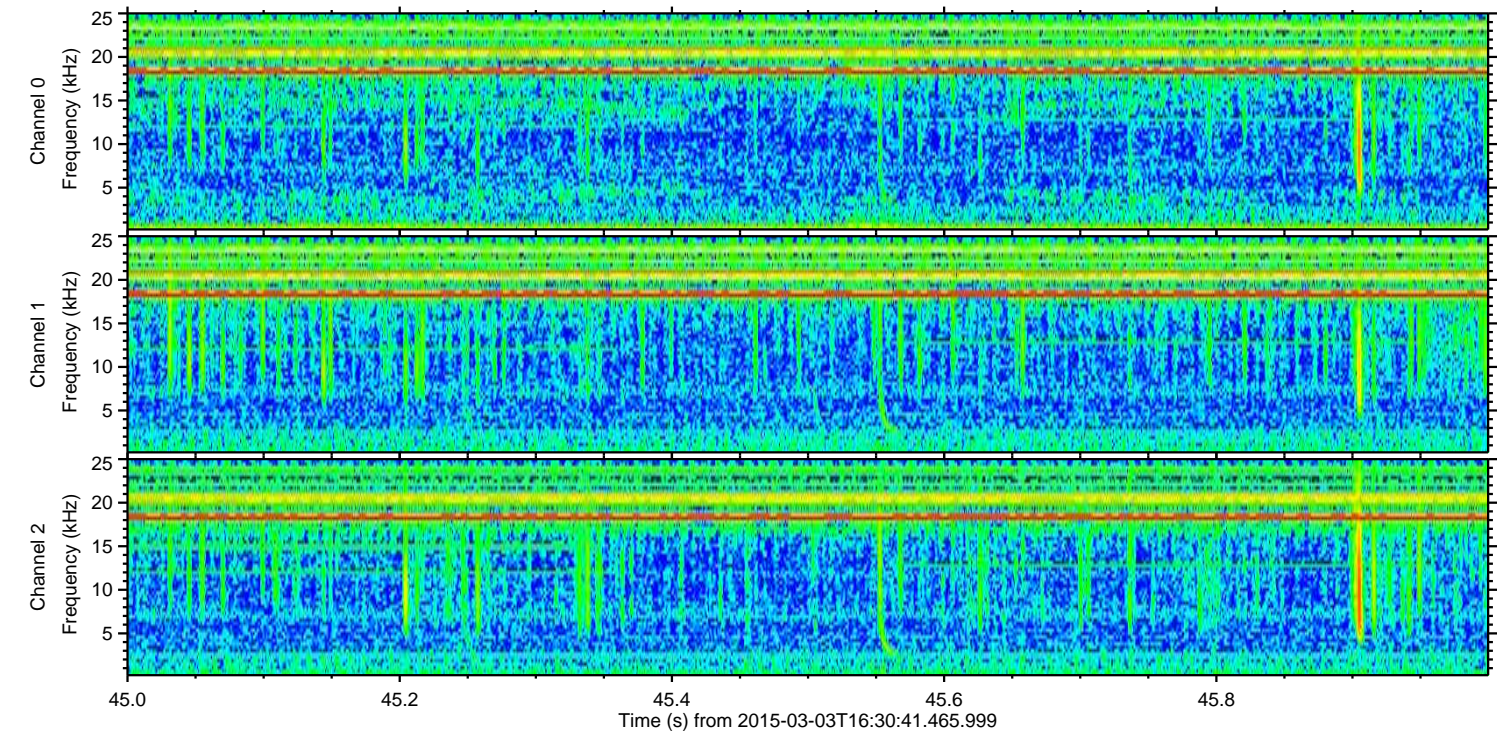
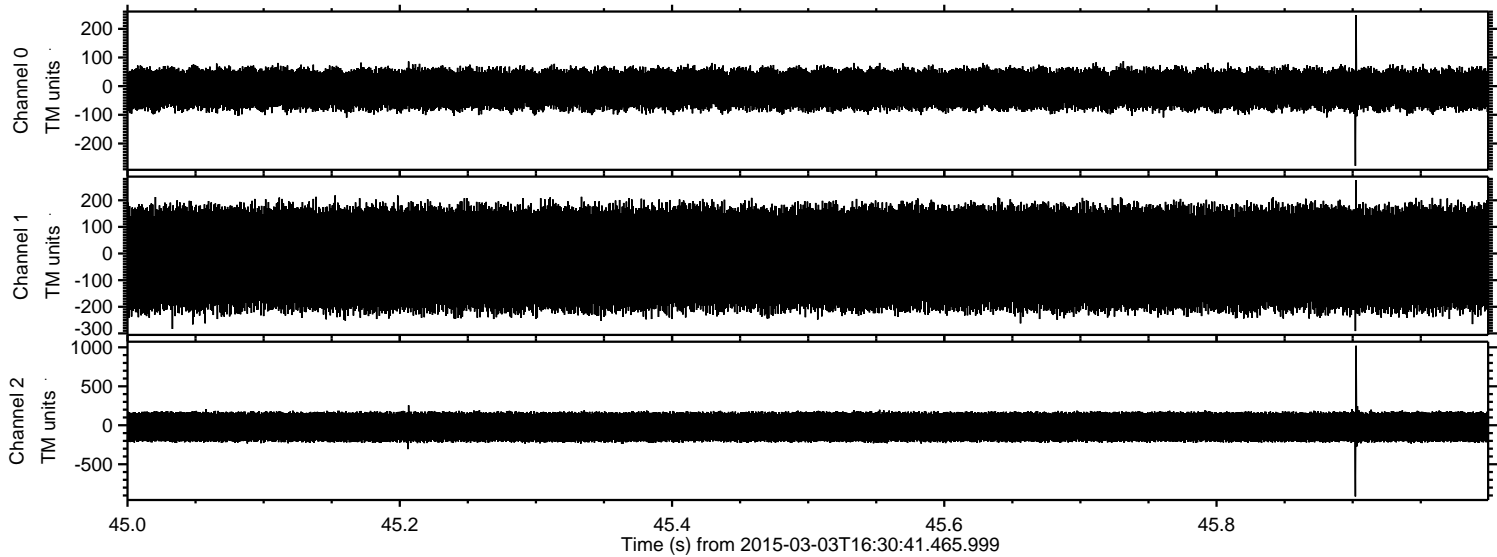
Processed Sat Mar 7 08:47:08 2015 by ELM ver.2012-10-06 from 001__elm20150303_163040__dat00.bin



Processed Sat Mar 7 08:47:09 2015 by ELM ver.2012-10-06 from 001__elm20150303_163040__dat00.bin



Processed Sat Mar 7 08:47:10 2015 by ELM ver.2012-10-06 from 001__elm20150303_163040__dat00.bin

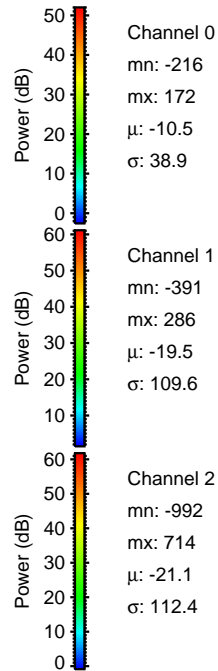
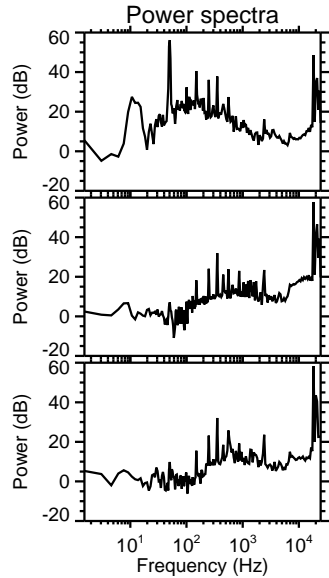
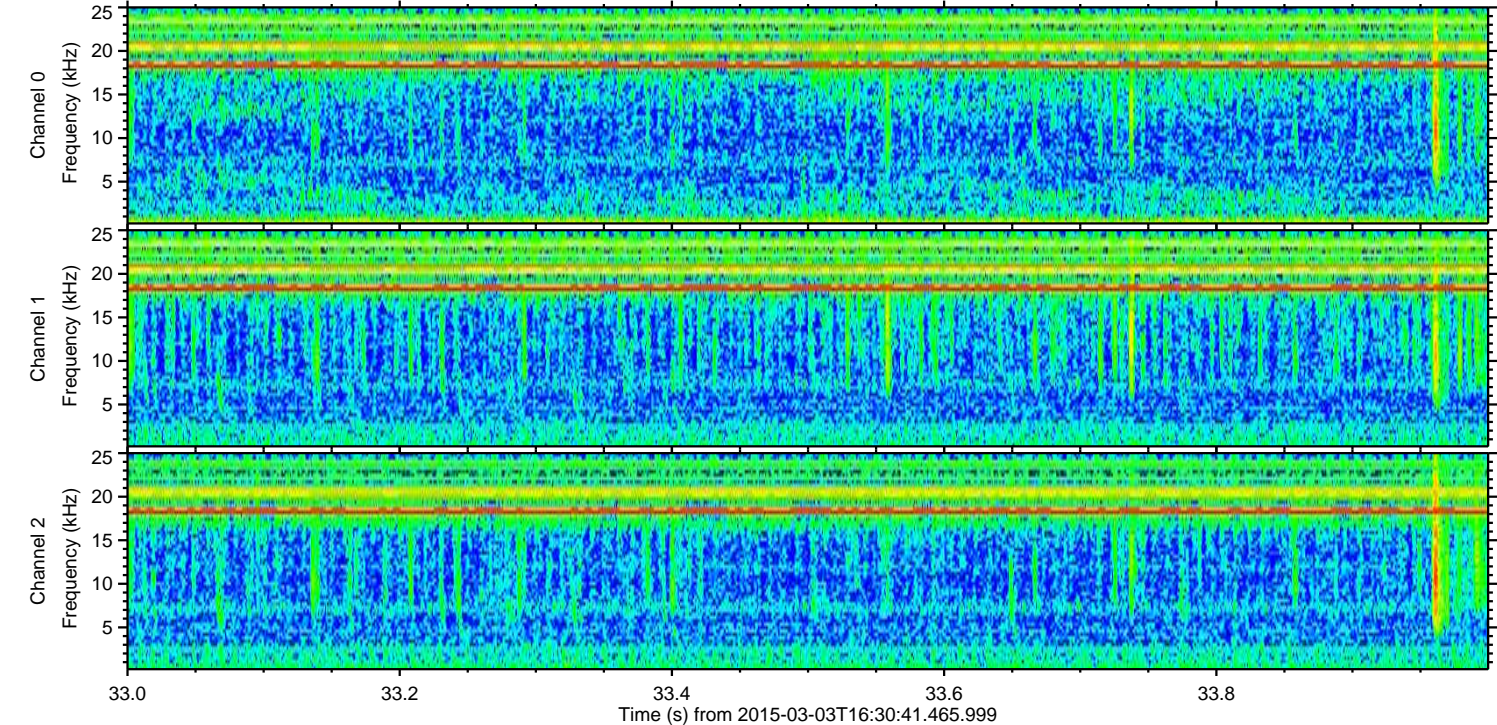
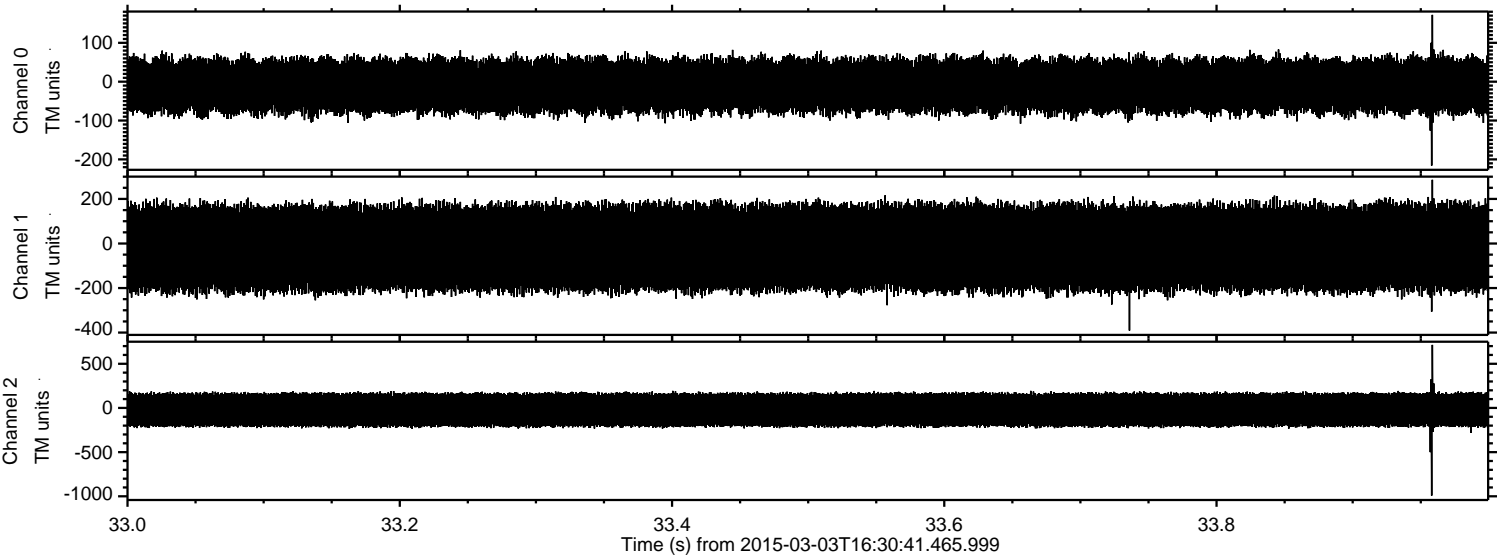


Channel 0
mn: -278
mx: 248
 μ : -10.5
 σ : 39.0

Channel 1
mn: -291
mx: 275
 μ : -19.5
 σ : 109.8

Channel 2
mn: -913
mx: 1021
 μ : -21.1
 σ : 112.2

Processed Sat Mar 7 08:47:11 2015 by ELM ver.2012-10-06 from 001__elm20150303_163040__dat00.bin



Channel 0
mn: -216
mx: 172
 μ : -10.5
 σ : 38.9

Channel 1
mn: -391
mx: 286
 μ : -19.5
 σ : 109.6

Channel 2
mn: -992
mx: 714
 μ : -21.1
 σ : 112.4

Processed Sat Mar 7 08:47:12 2015 by ELM ver.2012-10-06 from 001__elm20150303_163040__dat00.bin

