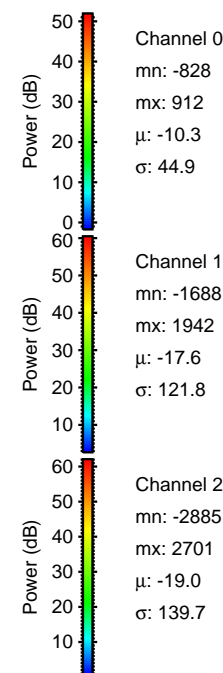
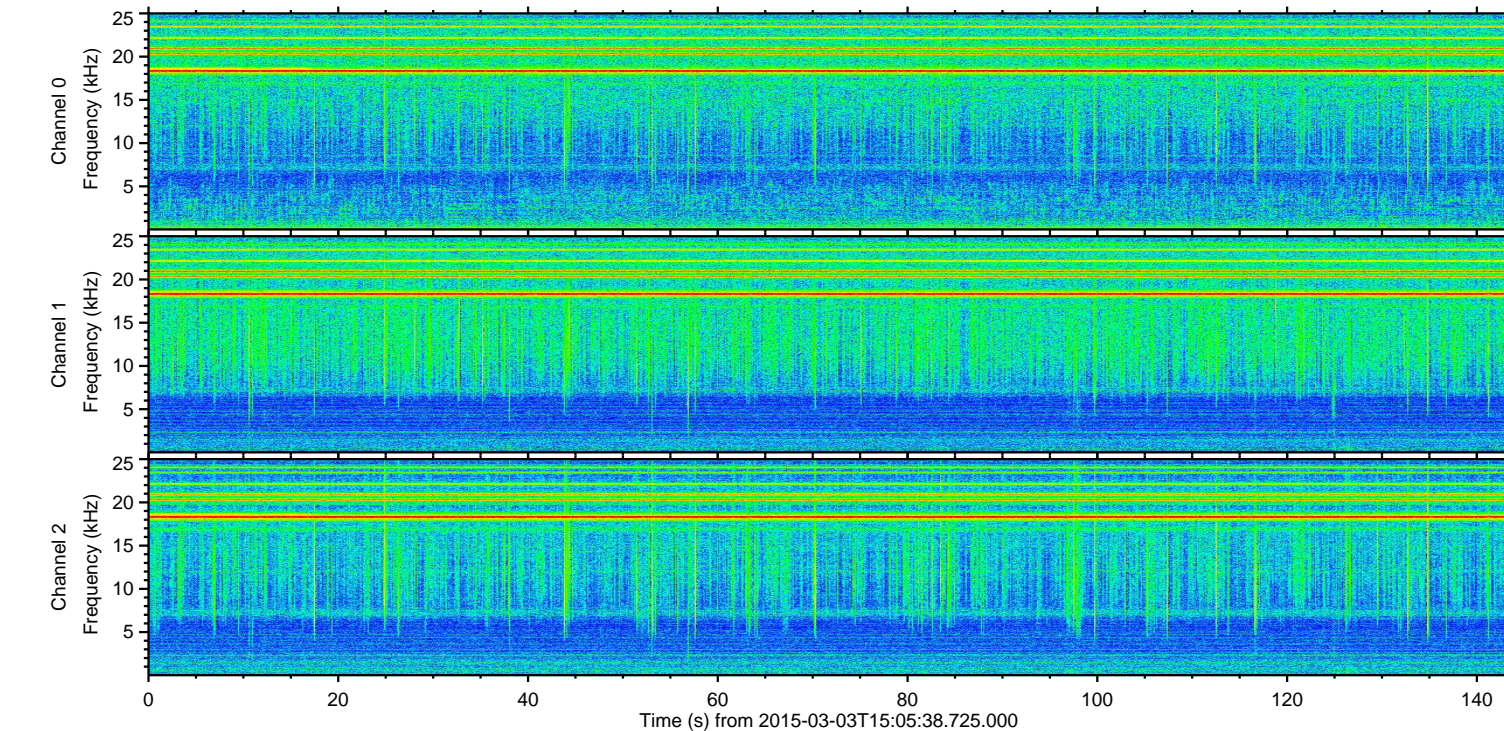
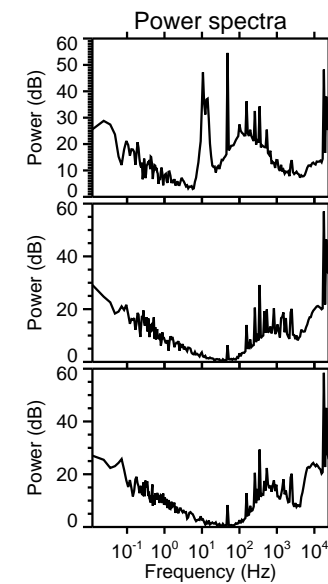
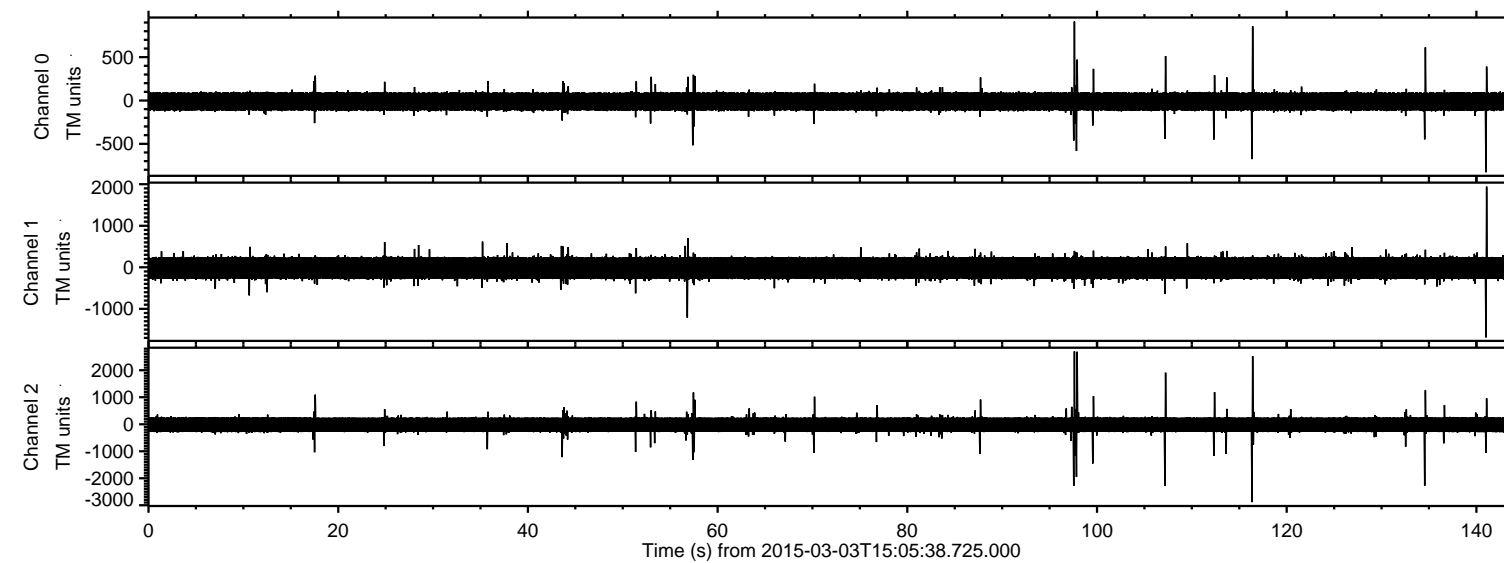


# ELMAVAN 3D WAVEFORMS (Measured data sampled at 50 kHz) 49810 packets of 144 samples from 2015-03-03T15:05:38.725.000.

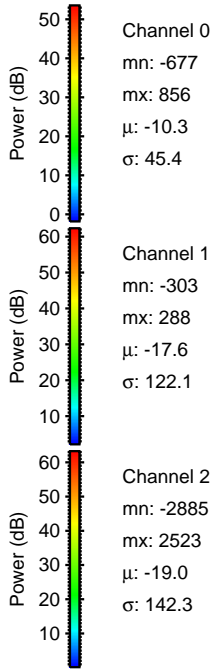
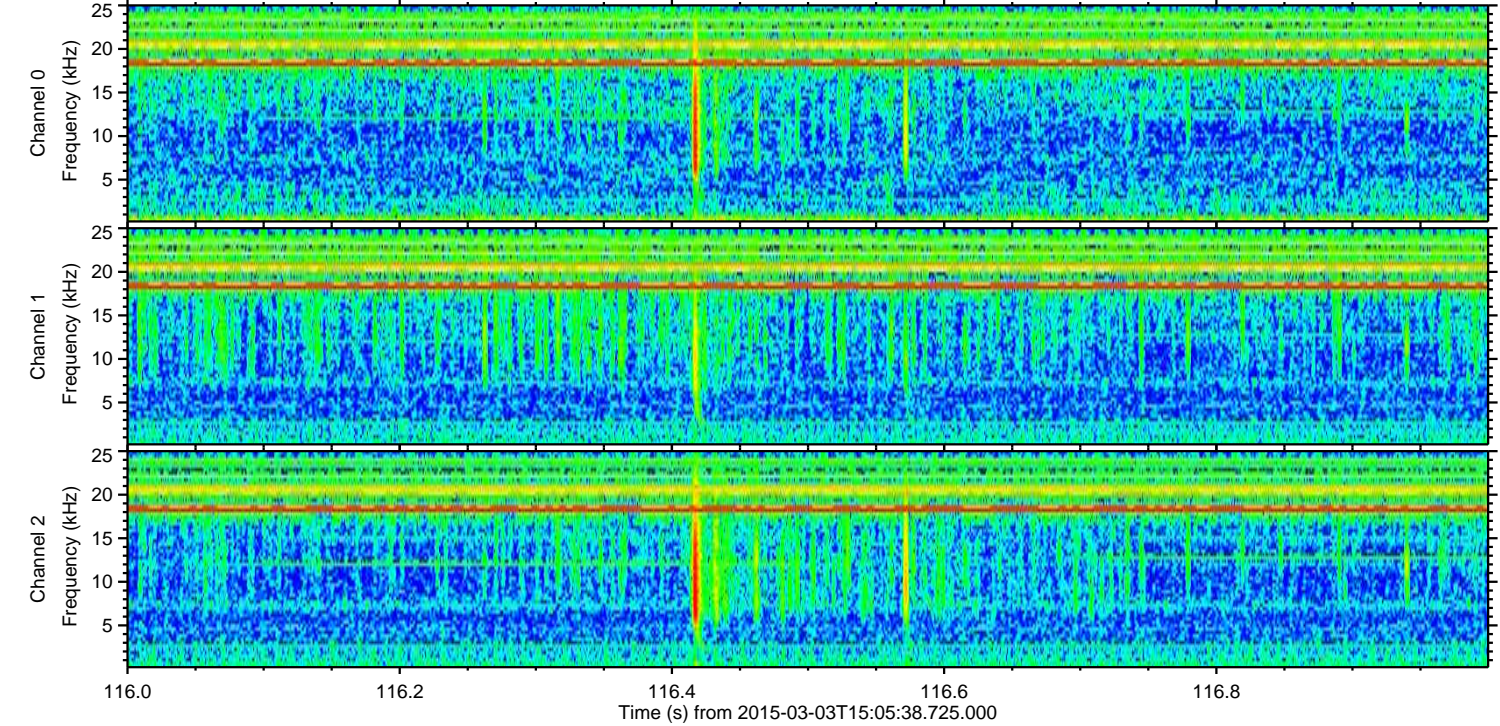
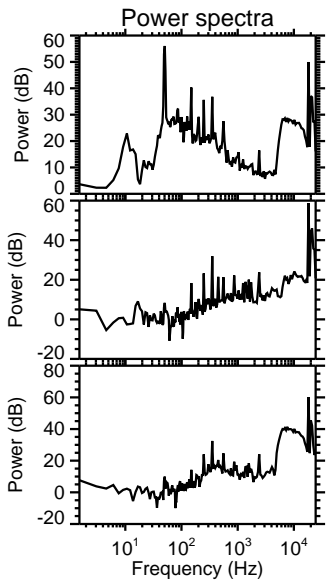
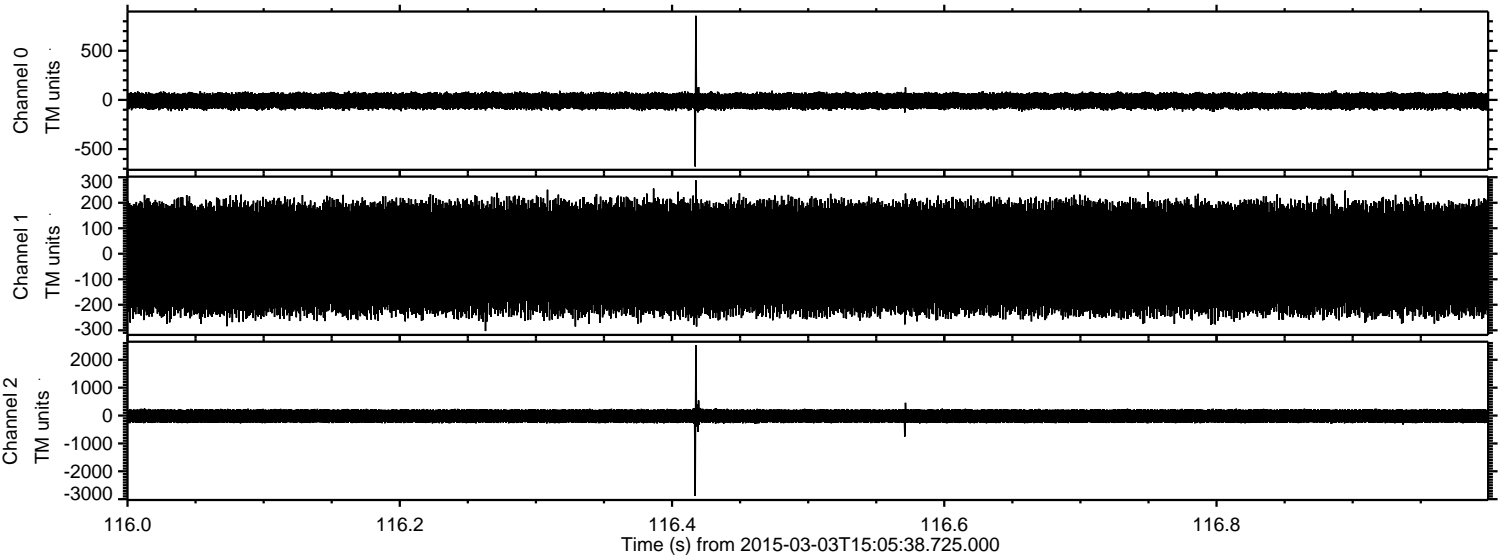
Processed Sat Mar 7 08:06:41 2015 by ELM ver.2012-10-06 from 001\_\_elm20150303\_150537\_\_dat00.bin





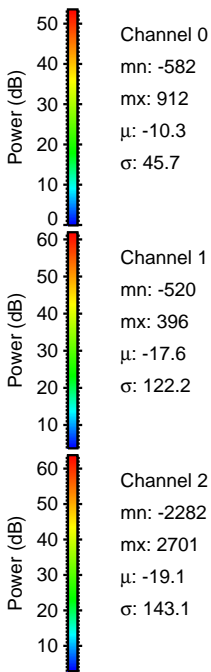
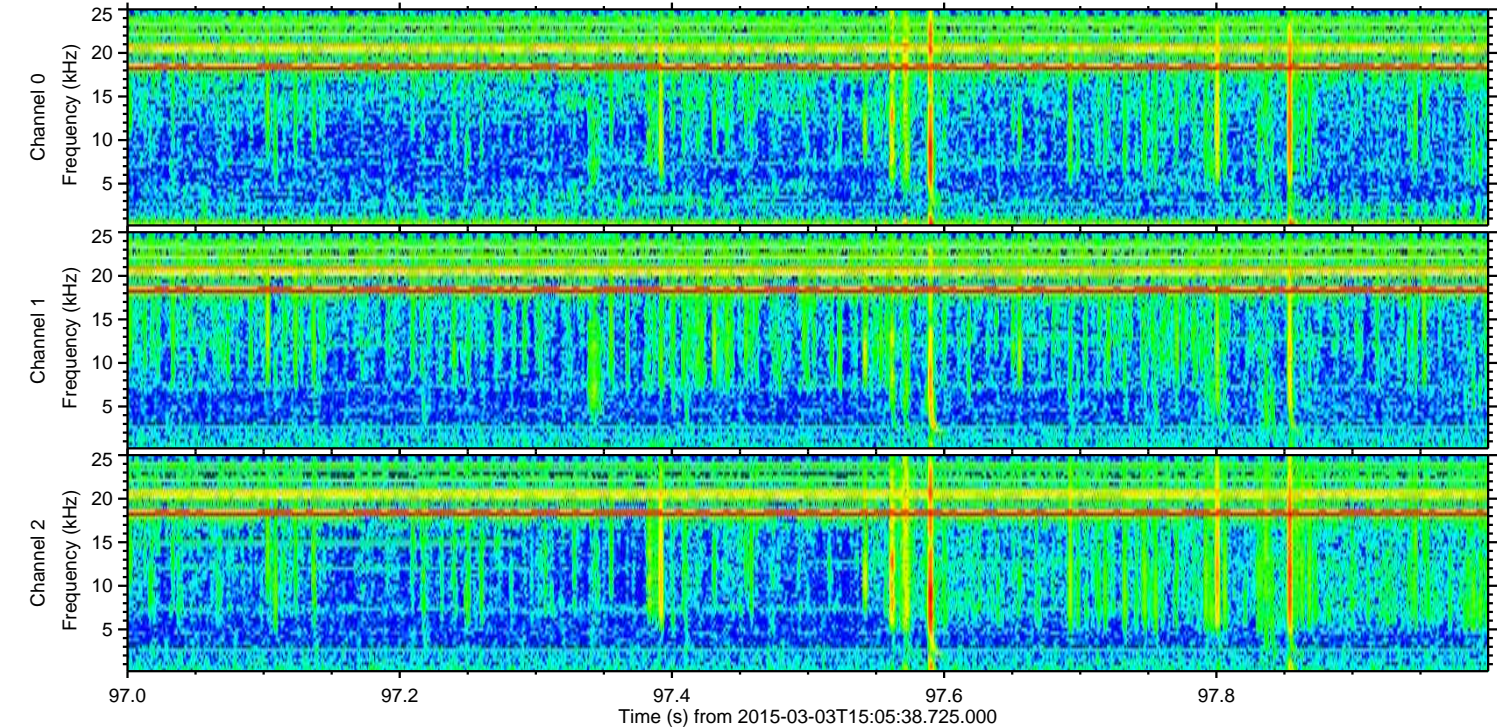
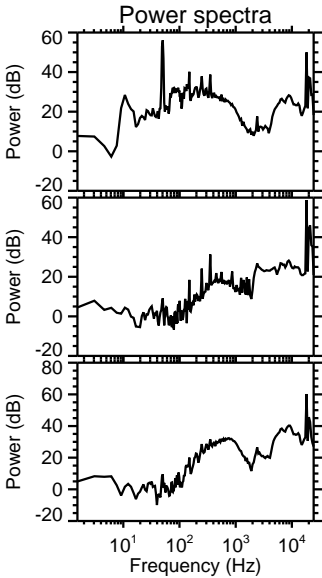
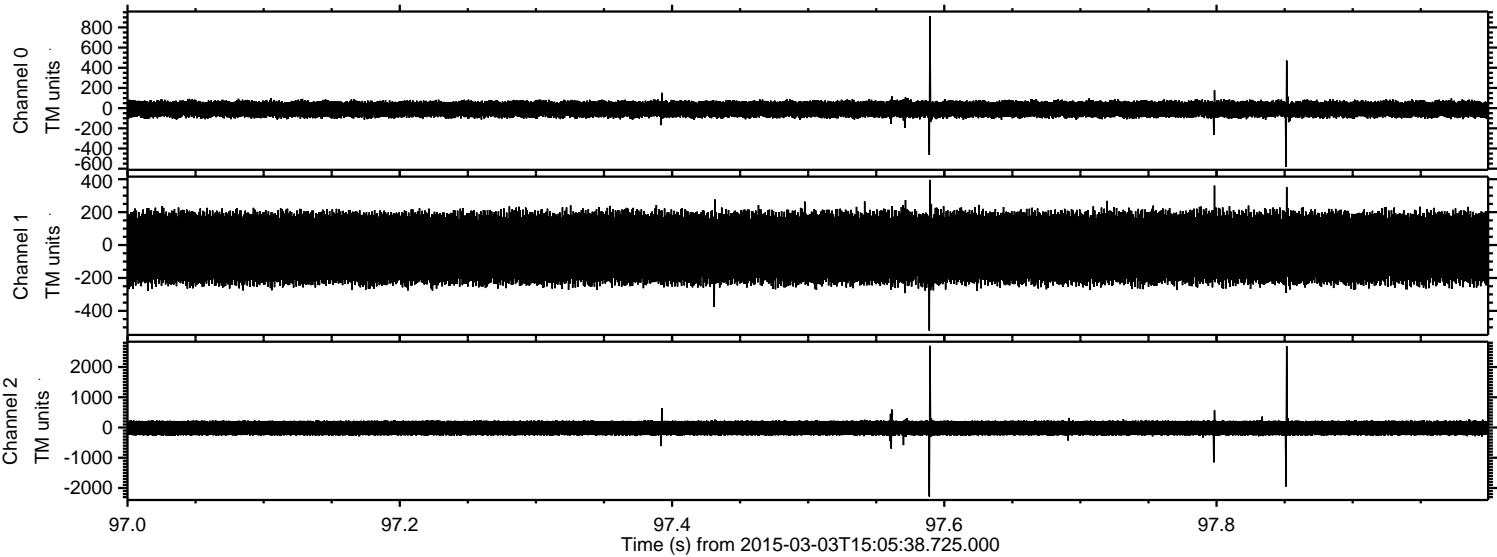
ELMAVAN 3D WAVEFORMS (Measured data sampled at 50 kHz) 49810 packets of 144 samples from 2015-03-03T15:05:38.725.000. Part 117/144

Processed Sat Mar 7 08:06:53 2015 by ELM ver.2012-10-06 from 001\_\_elm20150303\_150537\_\_dat00.bin



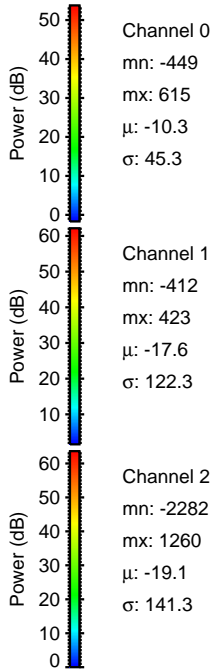
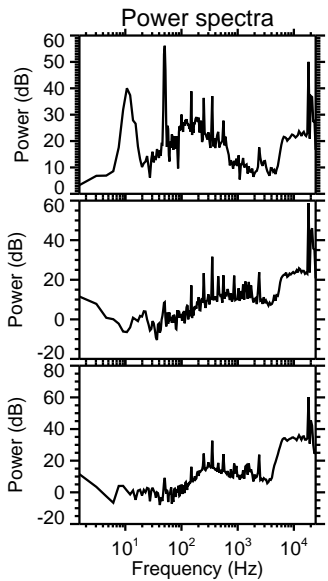
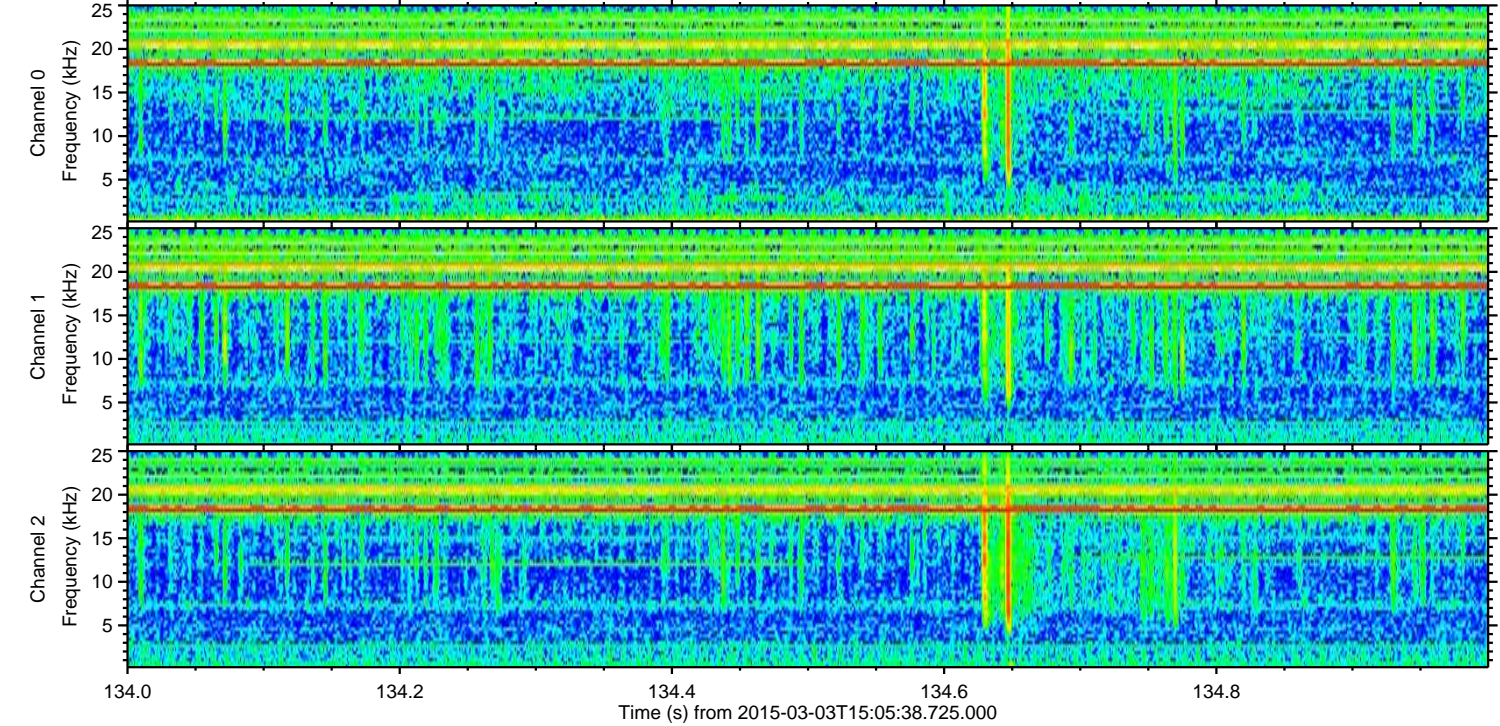
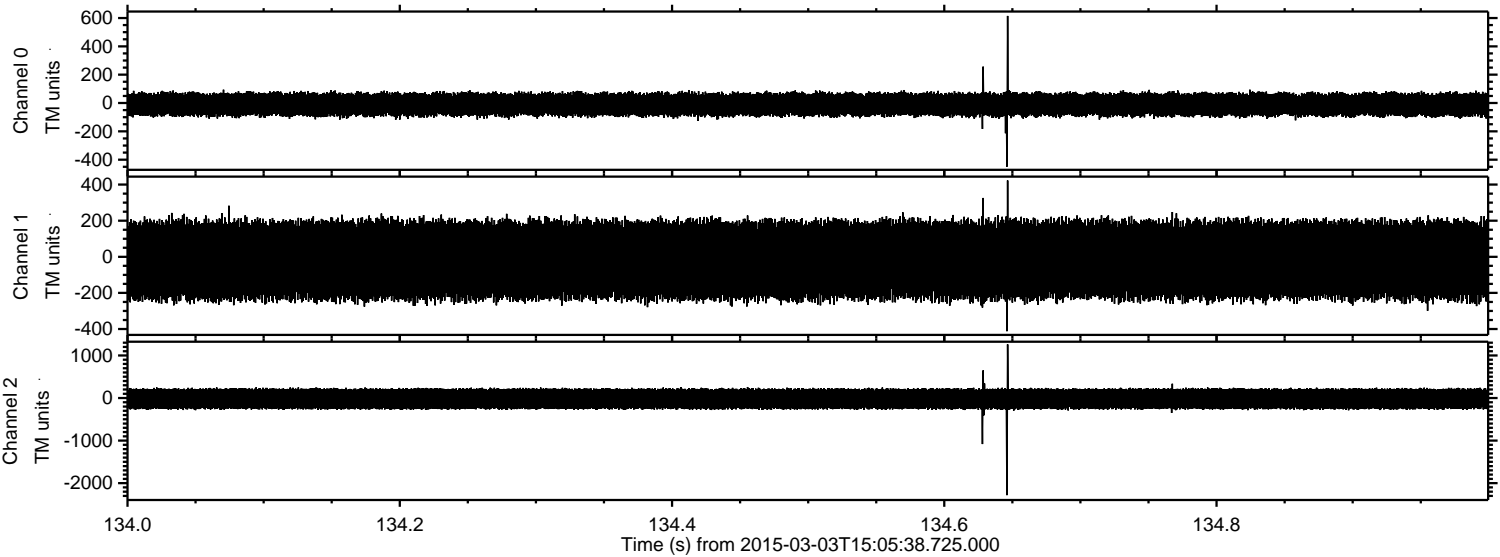


Processed Sat Mar 7 08:06:54 2015 by ELM ver.2012-10-06 from 001\_\_elm20150303\_150537\_\_dat00.bin





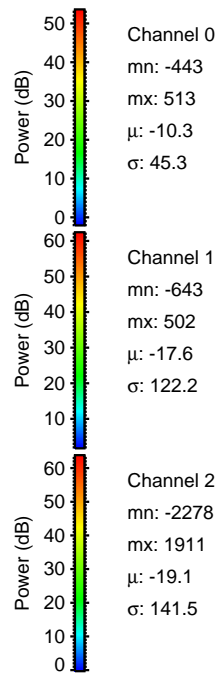
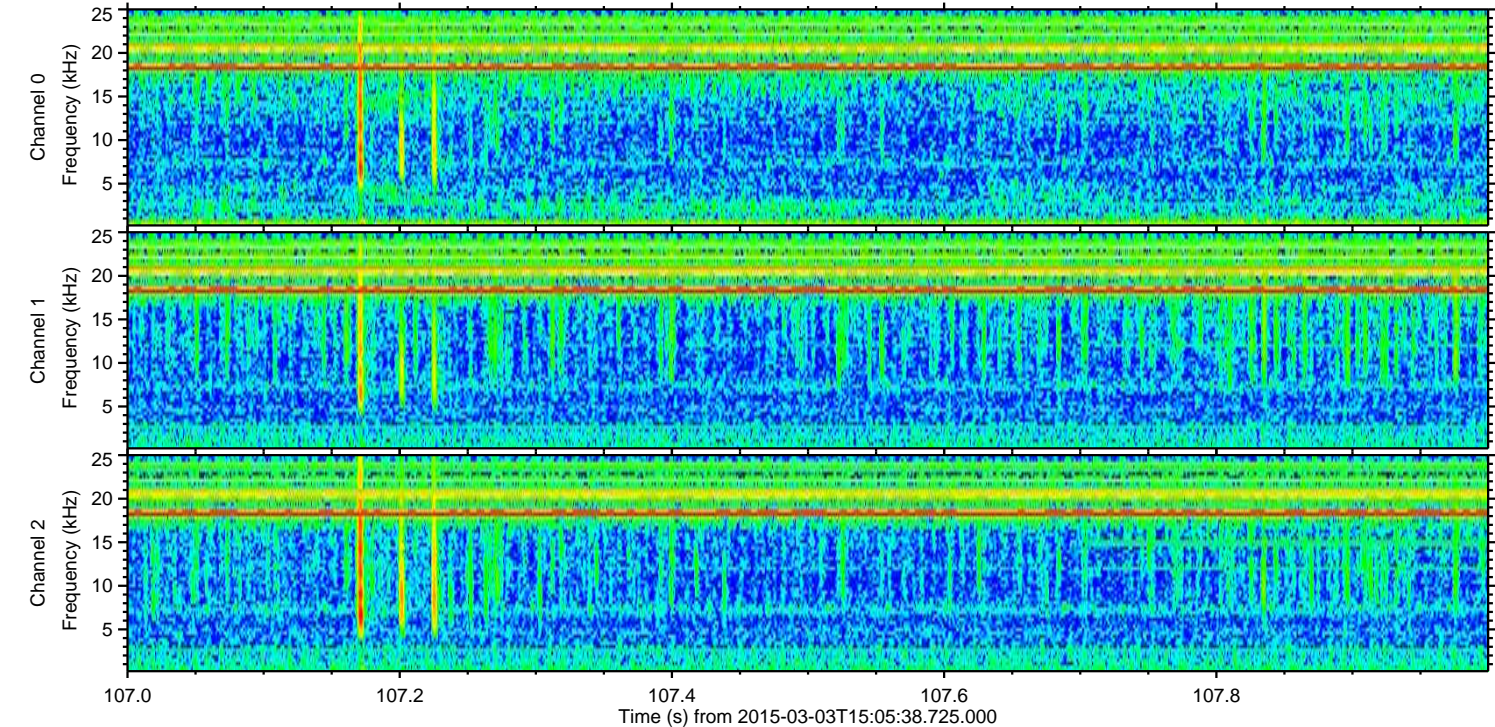
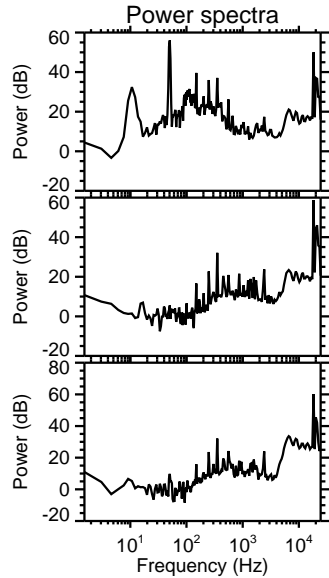
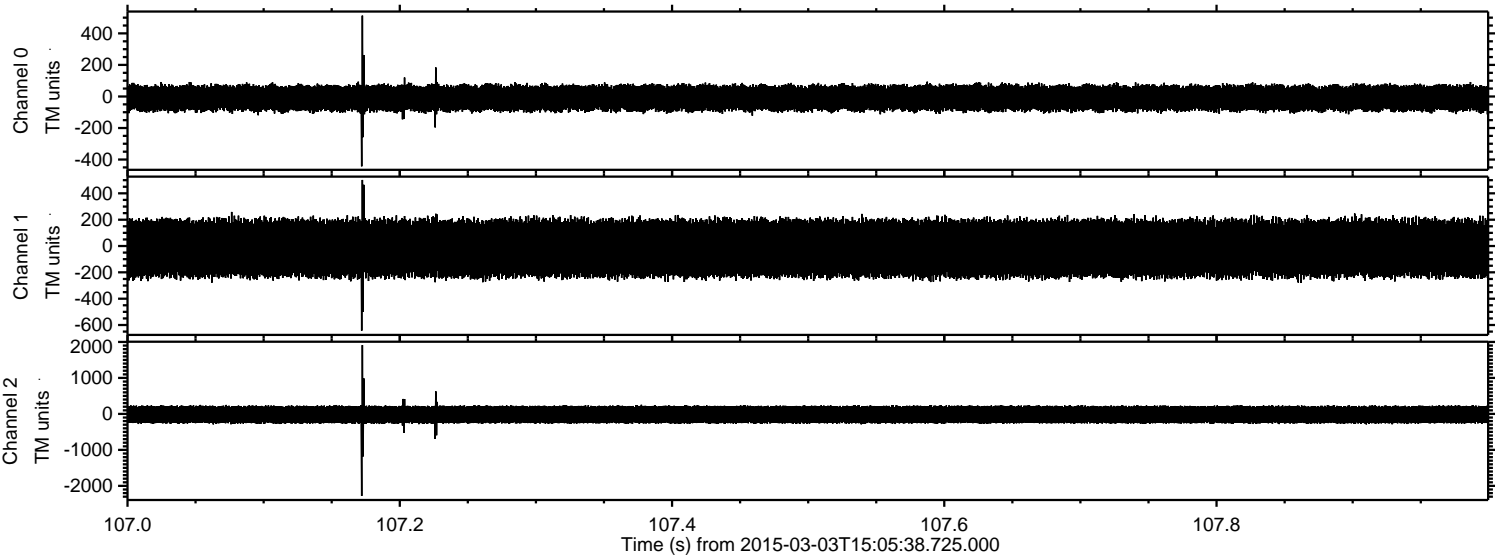
Processed Sat Mar 7 08:06:55 2015 by ELM ver.2012-10-06 from 001\_\_elm20150303\_150537\_\_dat00.bin





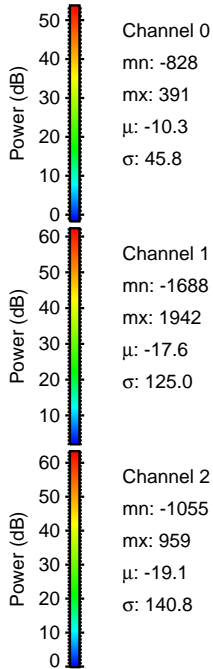
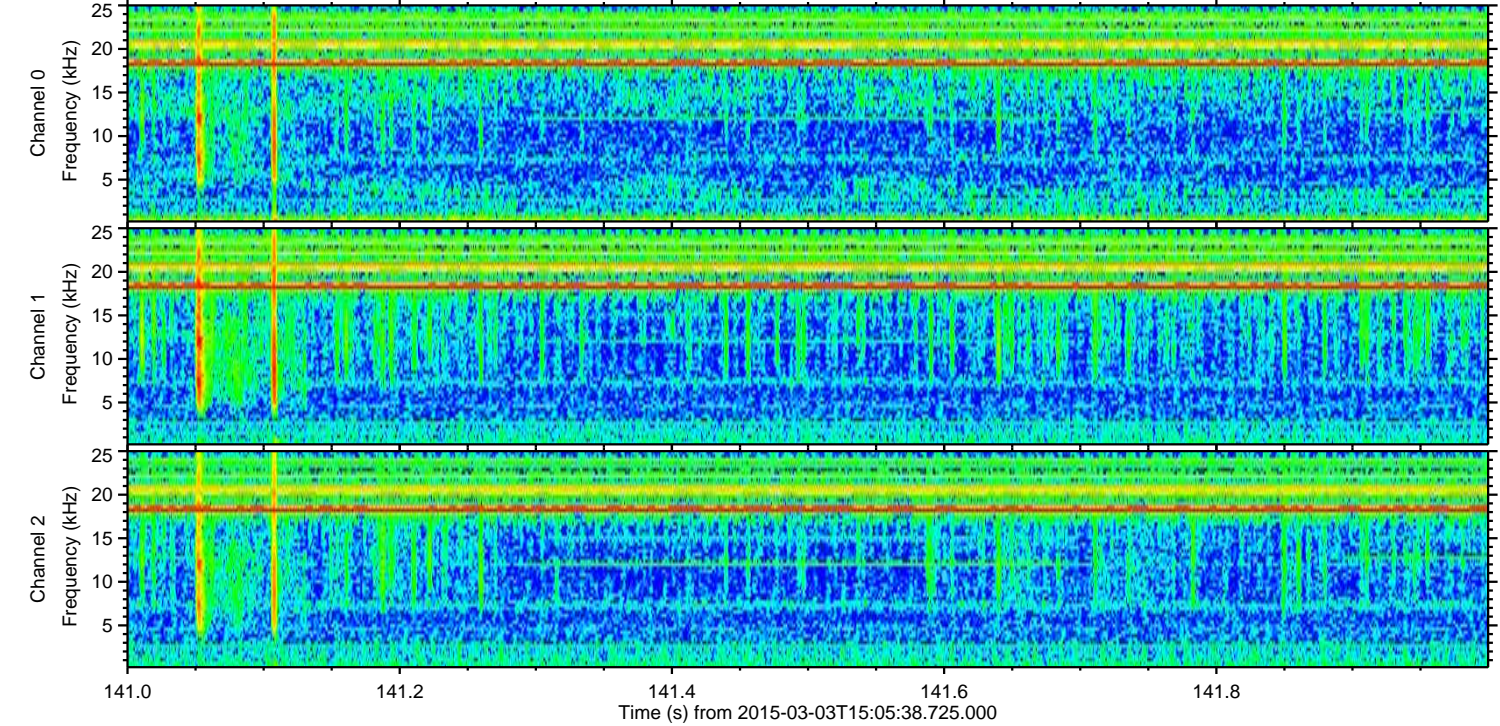
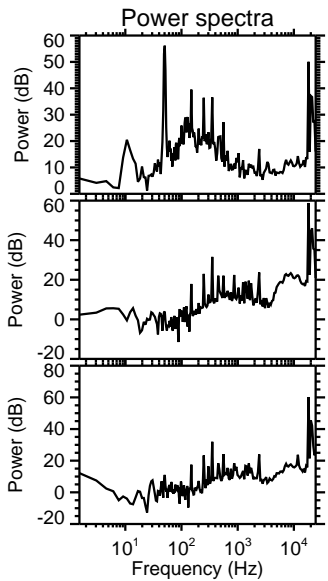
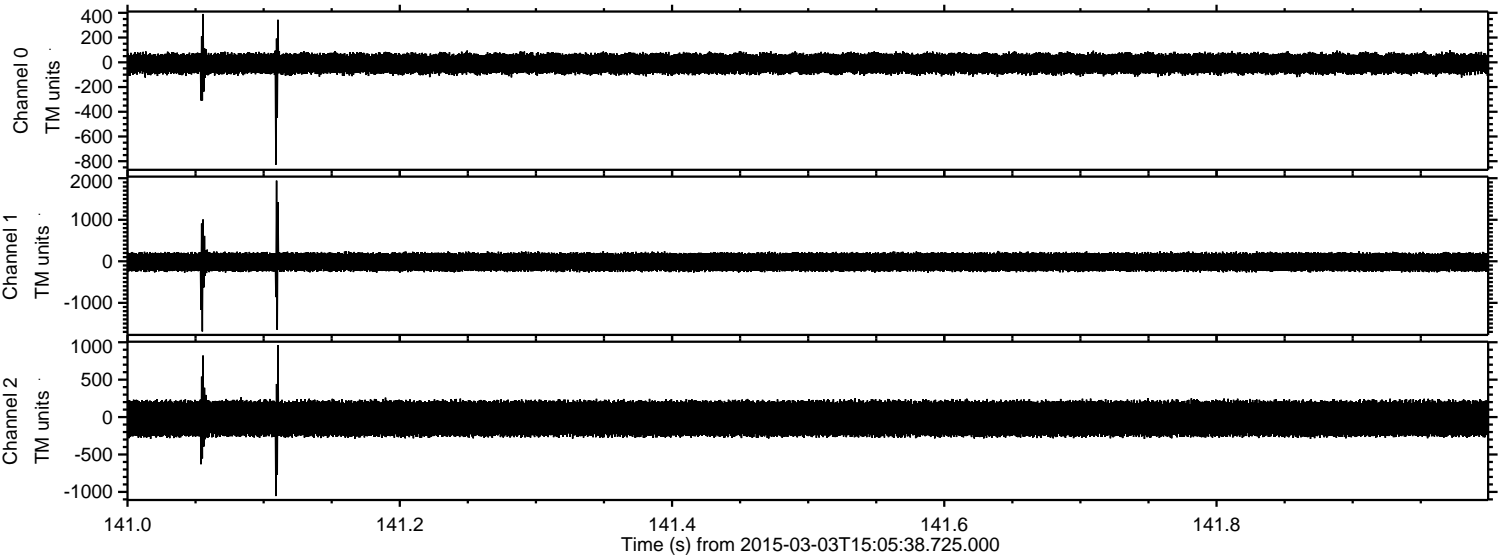
ELMAVAN 3D WAVEFORMS (Measured data sampled at 50 kHz) 49810 packets of 144 samples from 2015-03-03T15:05:38.725.000. Part 108/144

Processed Sat Mar 7 08:06:56 2015 by ELM ver.2012-10-06 from 001\_\_elm20150303\_150537\_\_dat00.bin



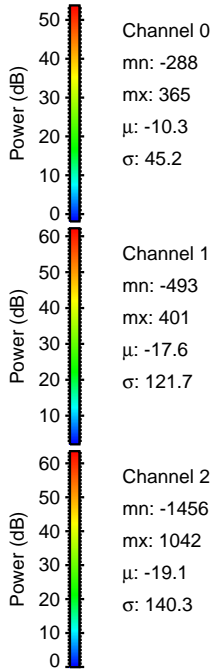
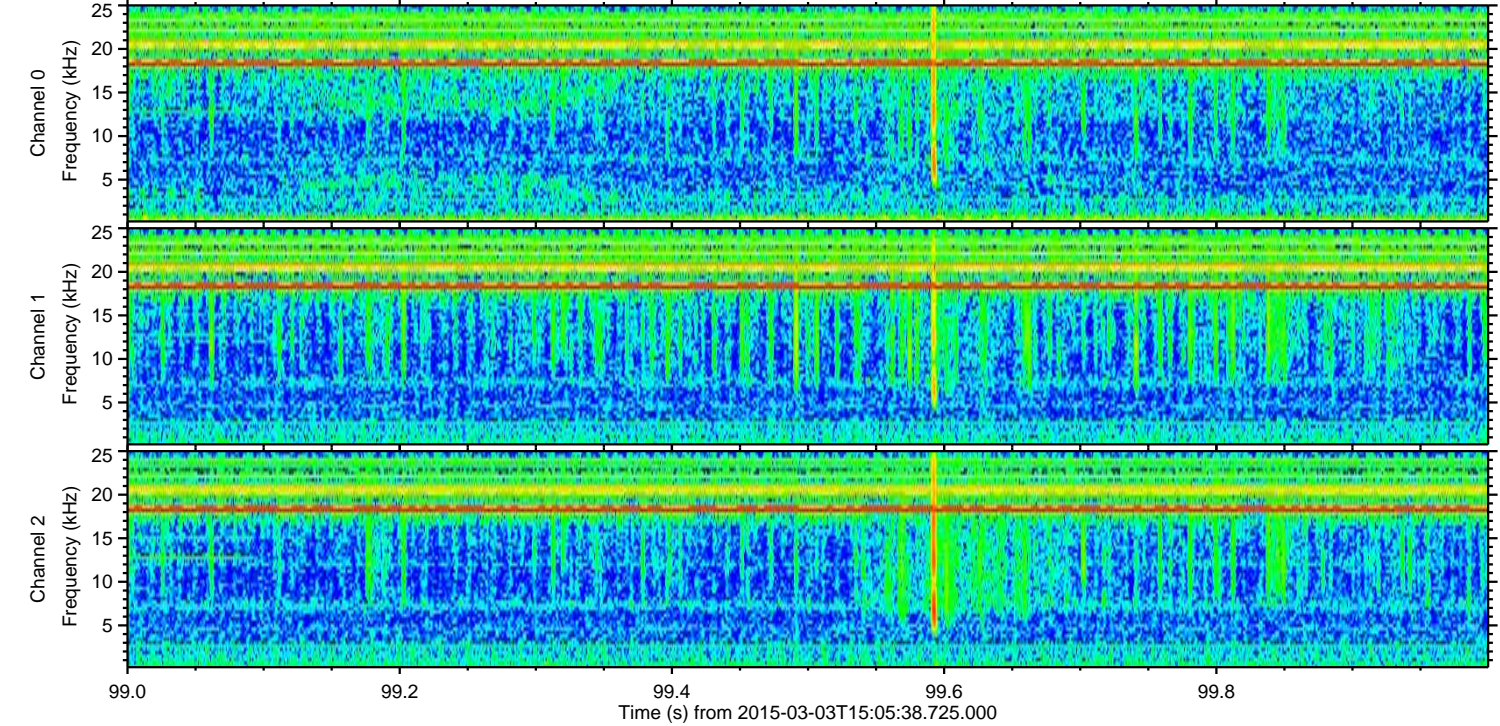
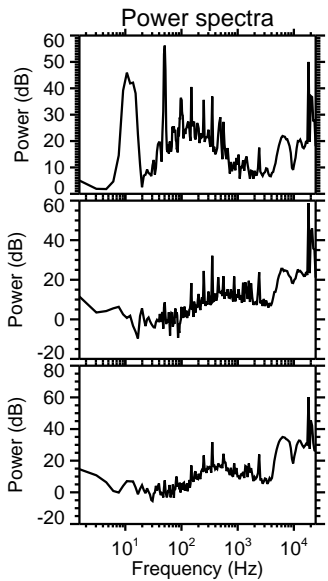
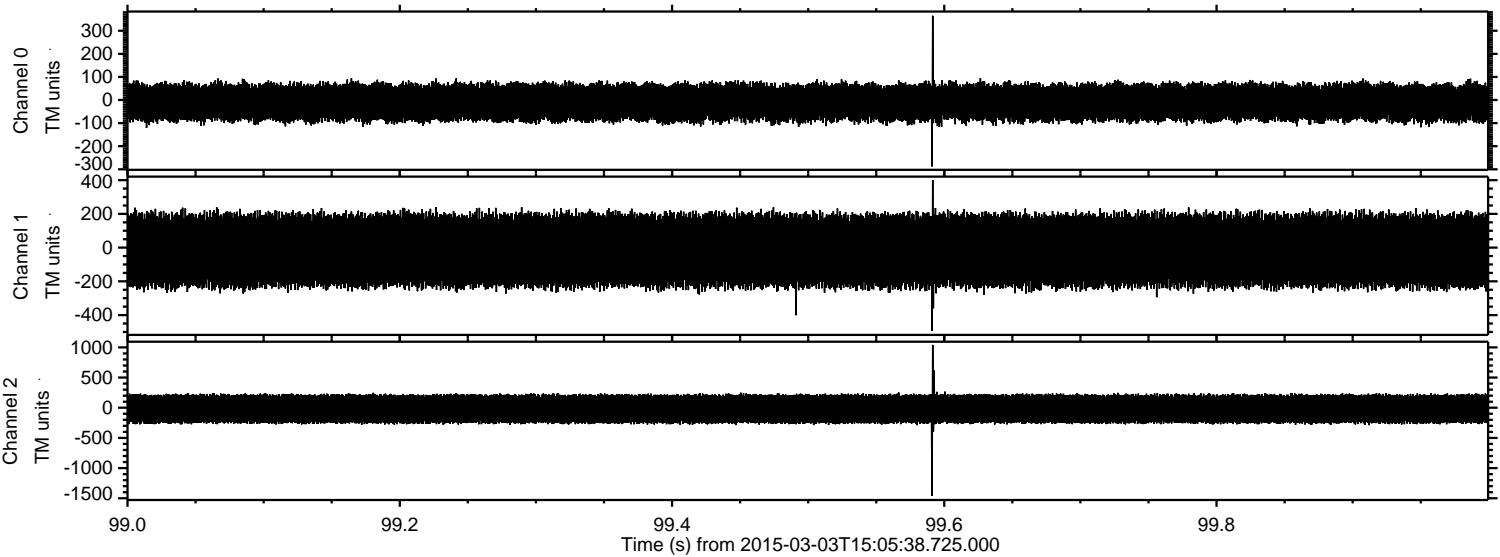


Processed Sat Mar 7 08:06:56 2015 by ELM ver.2012-10-06 from 001\_\_elm20150303\_150537\_\_dat00.bin



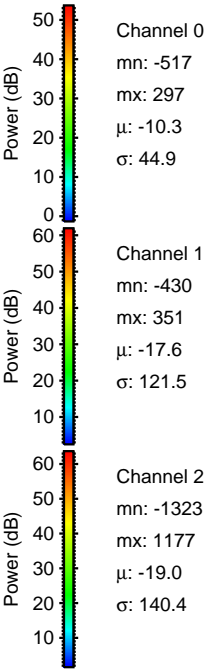
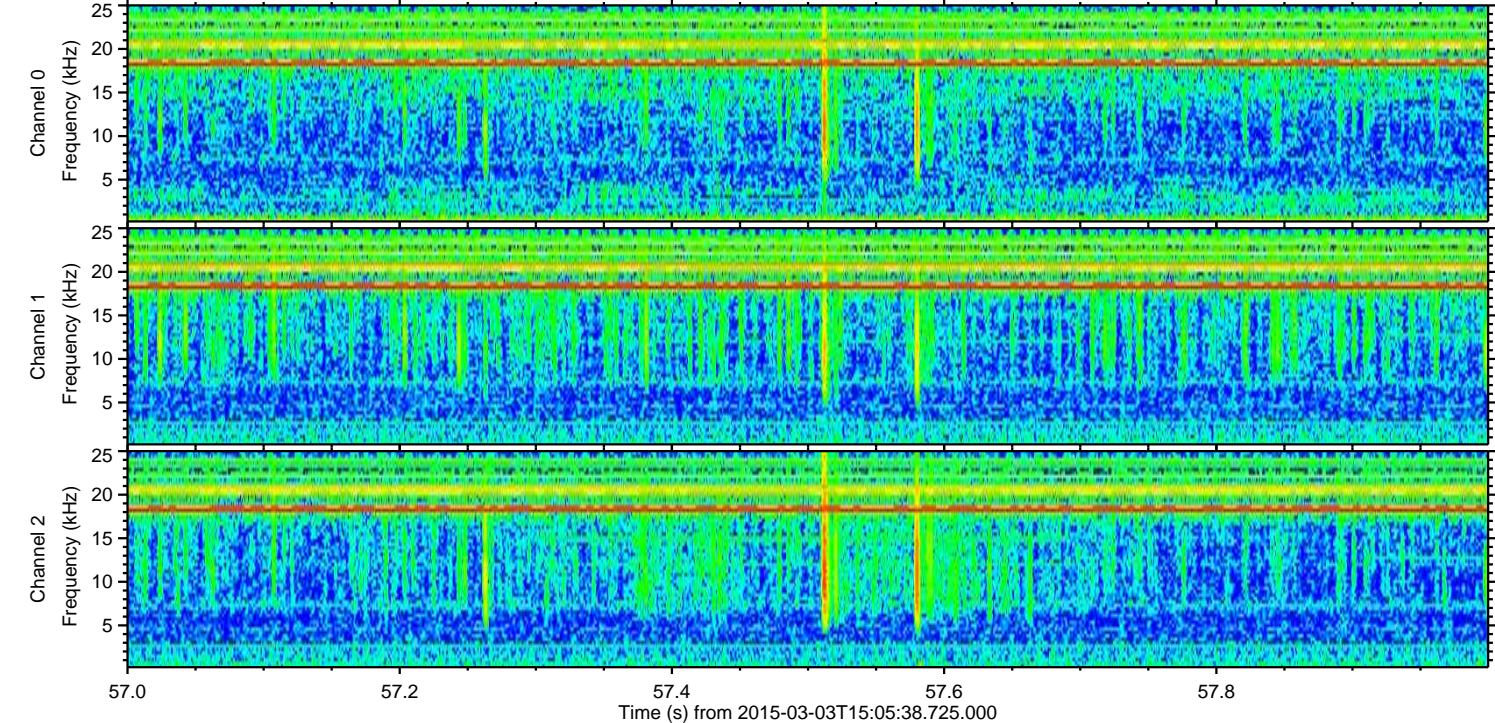
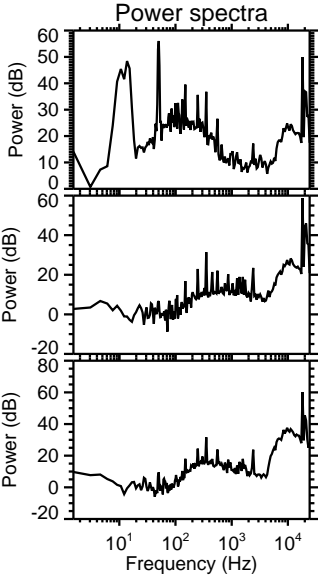
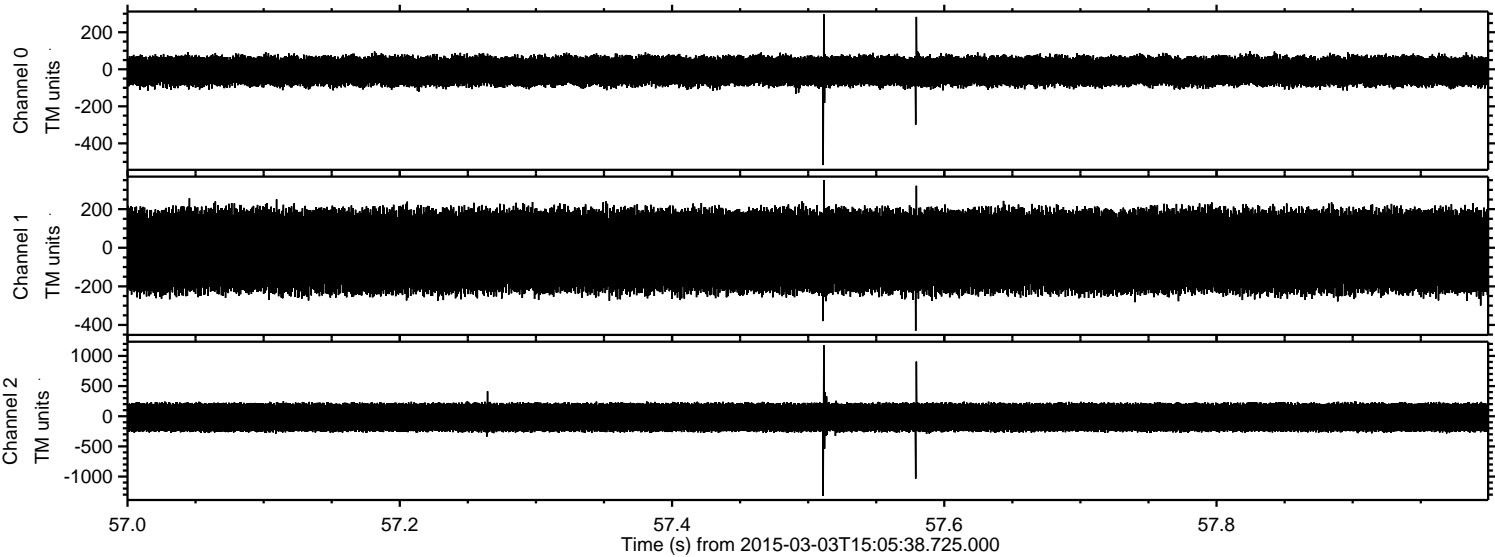


Processed Sat Mar 7 08:06:57 2015 by ELM ver.2012-10-06 from 001\_\_elm20150303\_150537\_\_dat00.bin



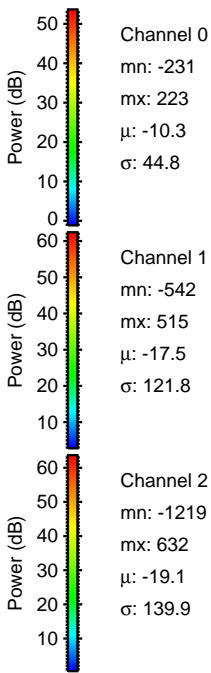
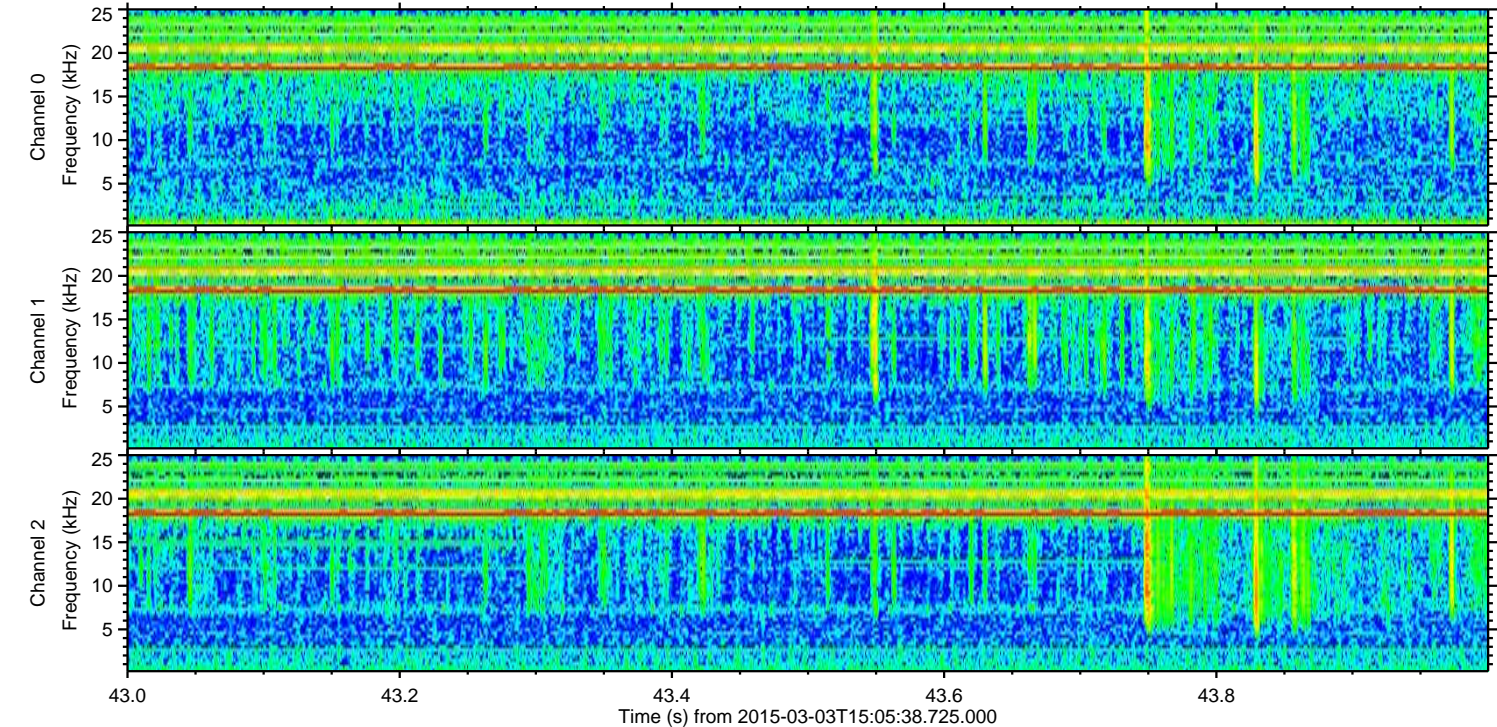
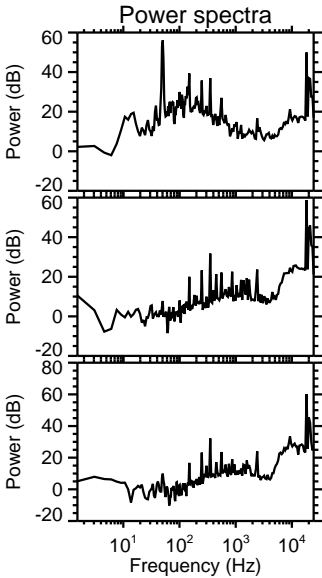
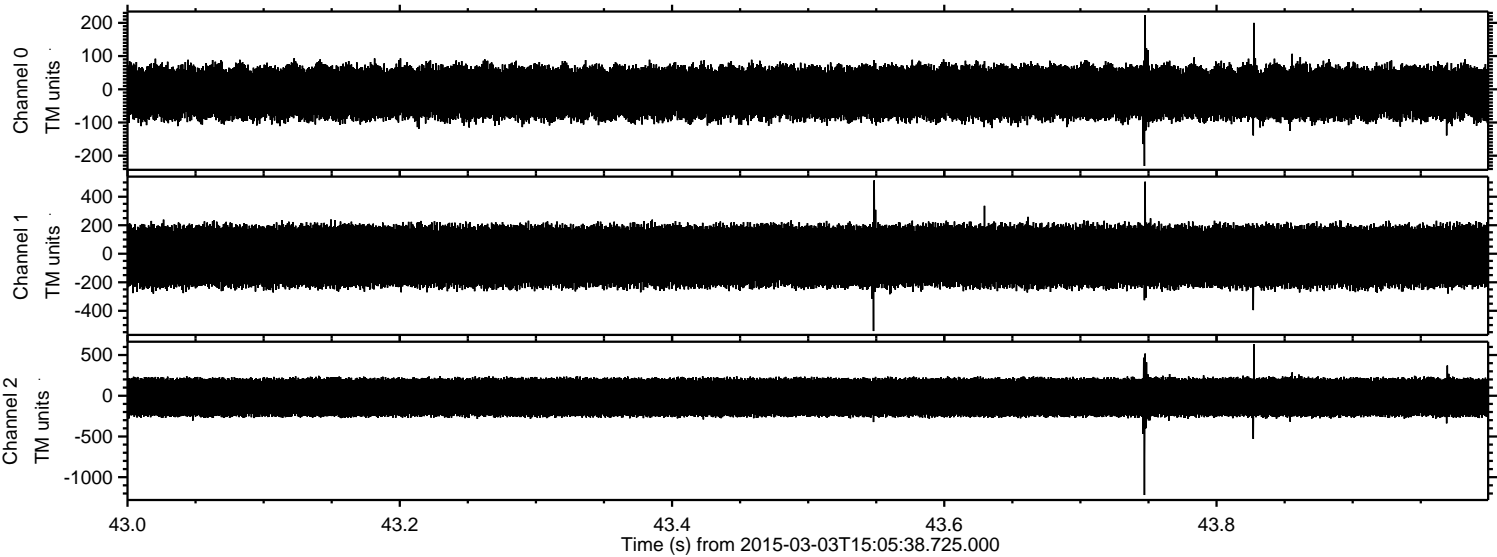


Processed Sat Mar 7 08:06:58 2015 by ELM ver.2012-10-06 from 001\_\_elm20150303\_150537\_\_dat00.bin



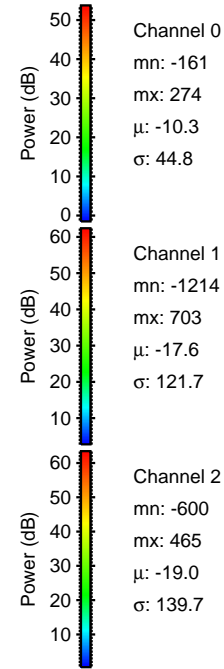
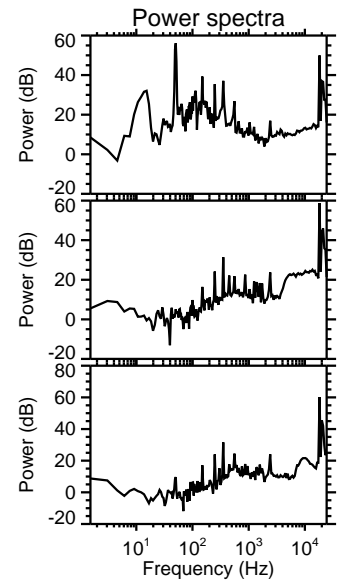
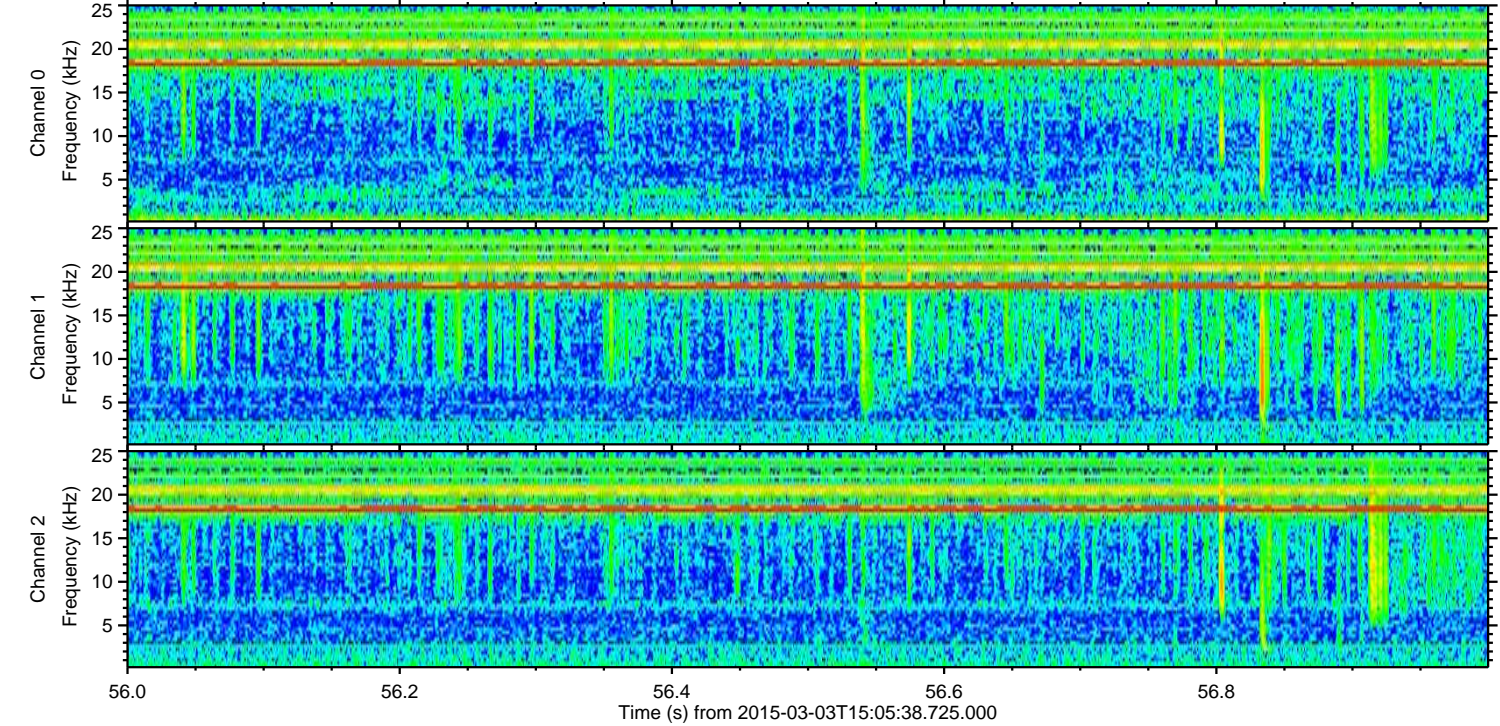
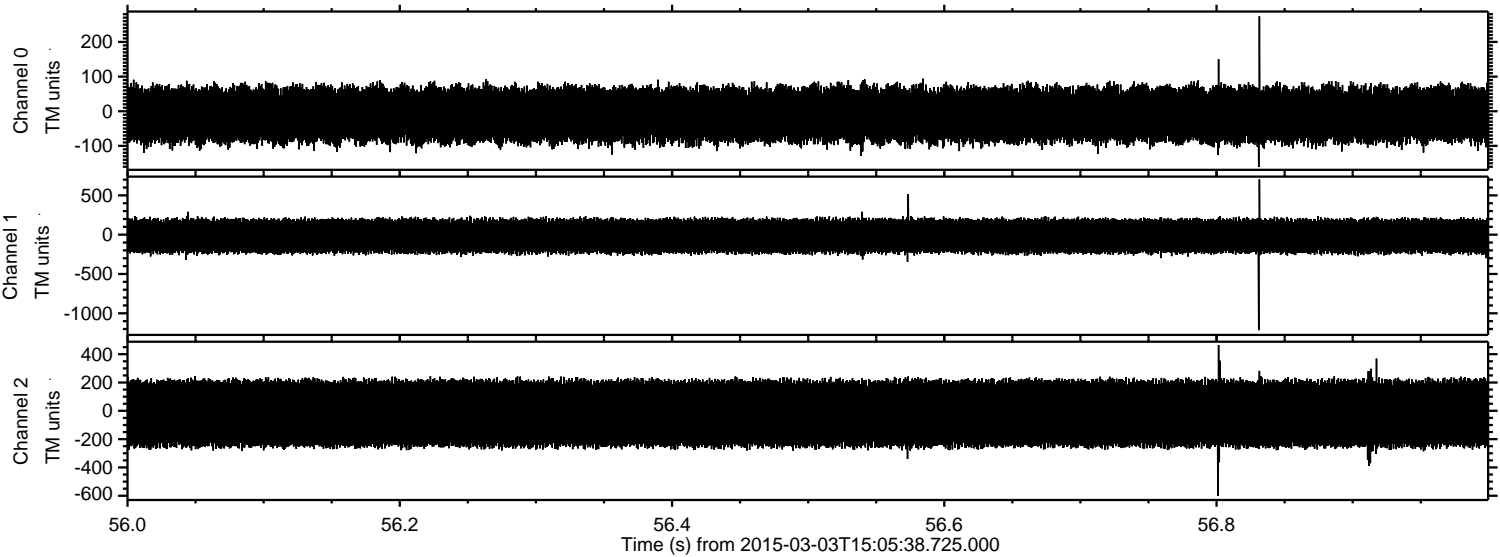


Processed Sat Mar 7 08:06:59 2015 by ELM ver.2012-10-06 from 001\_\_elm20150303\_150537\_\_dat00.bin





Processed Sat Mar 7 08:07:00 2015 by ELM ver.2012-10-06 from 001\_\_elm20150303\_150537\_\_dat00.bin



Channel 0  
mn: -161  
mx: 274  
 $\mu$ : -10.3  
 $\sigma$ : 44.8

Channel 1  
mn: -1214  
mx: 703  
 $\mu$ : -17.6  
 $\sigma$ : 121.7

Channel 2  
mn: -600  
mx: 465  
 $\mu$ : -19.0  
 $\sigma$ : 139.7



Processed Sat Mar 7 08:07:01 2015 by ELM ver.2012-10-06 from 001\_\_elm20150303\_150537\_\_dat00.bin

