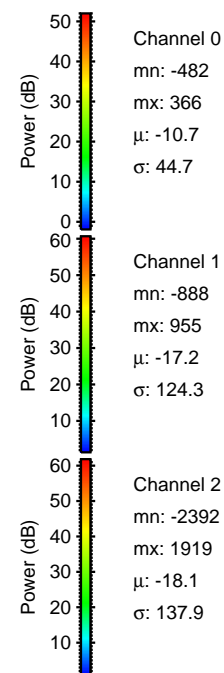
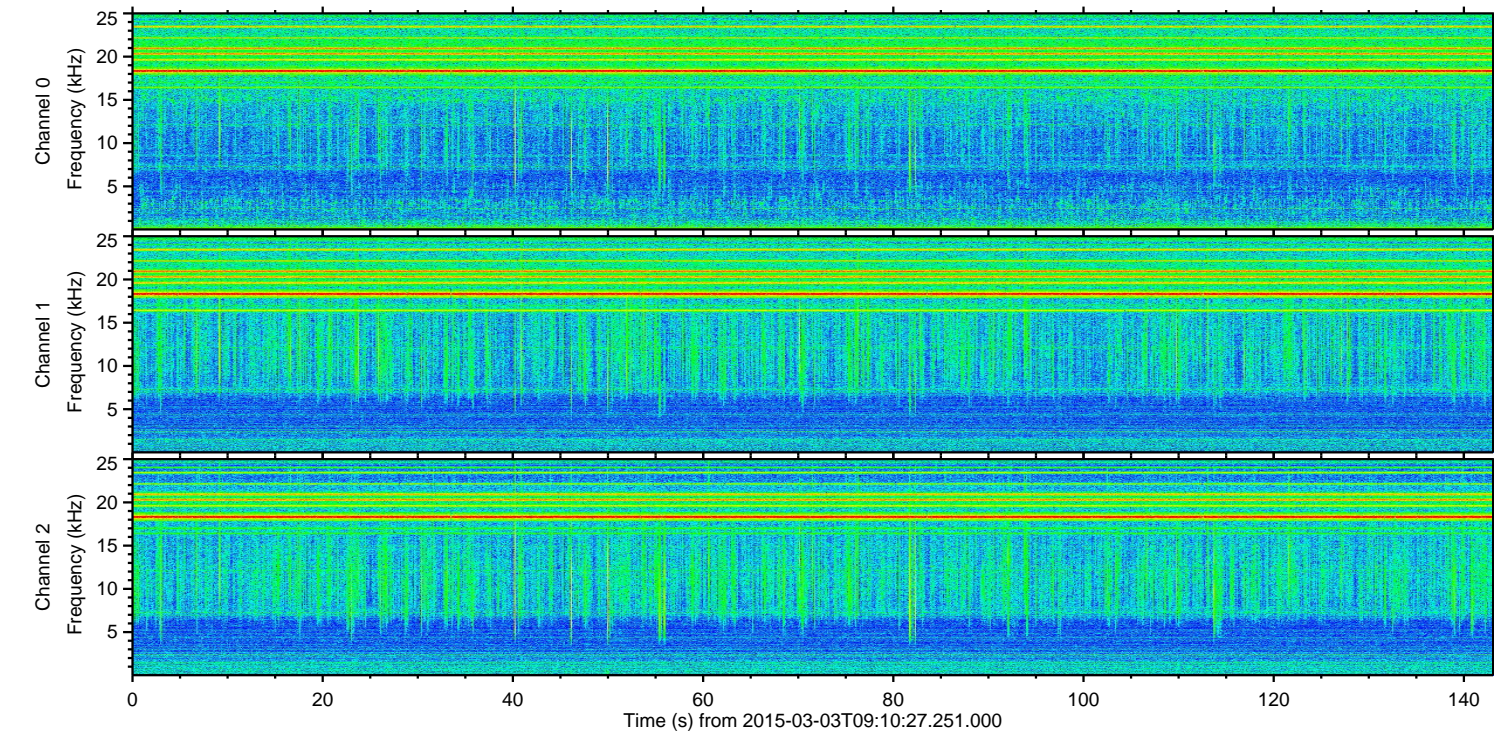
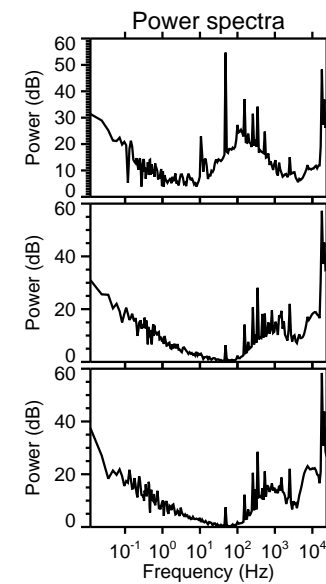
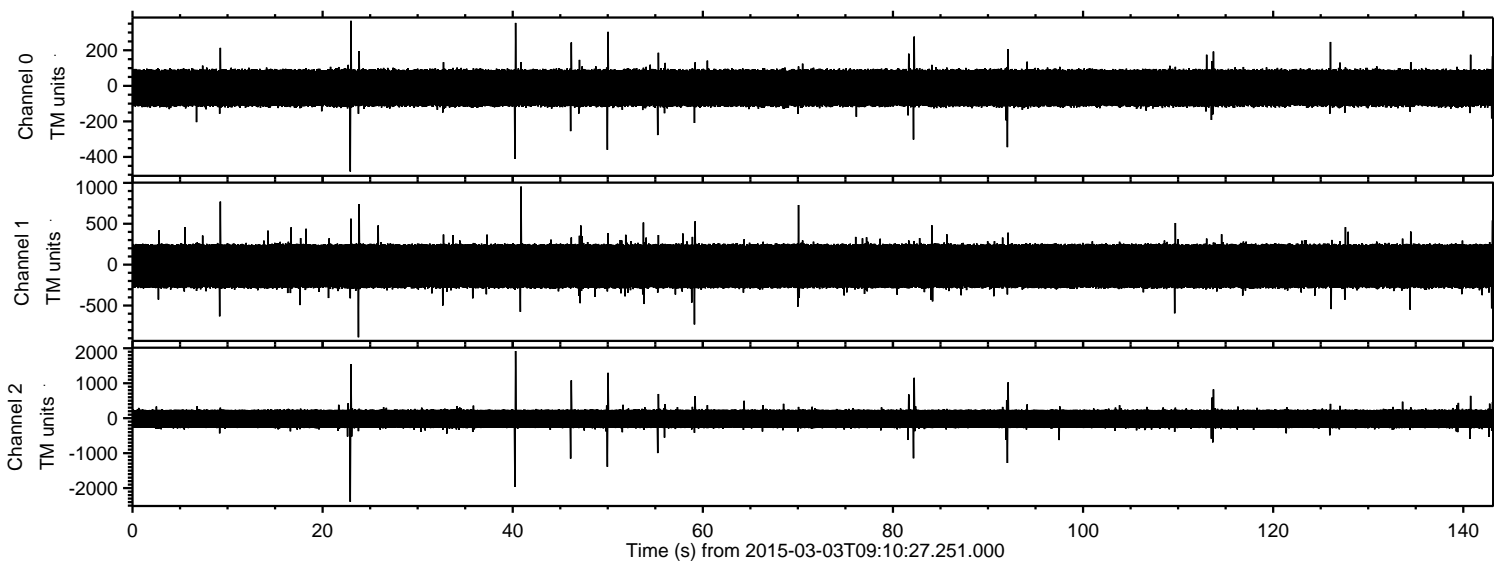
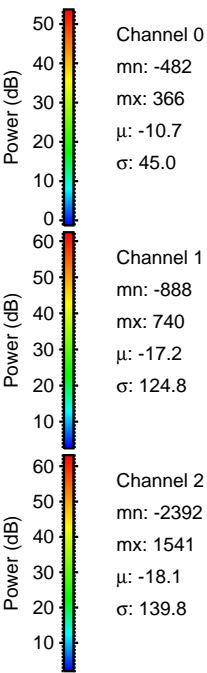
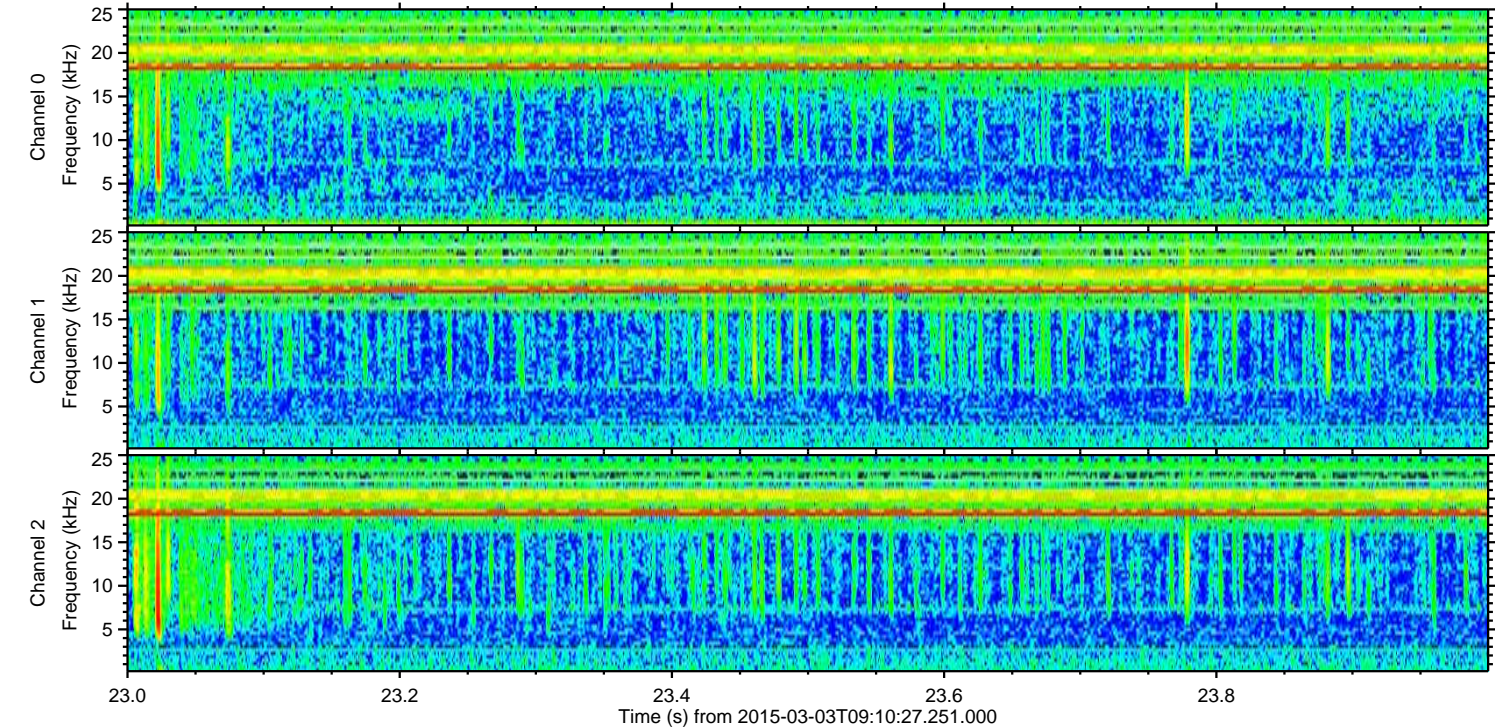
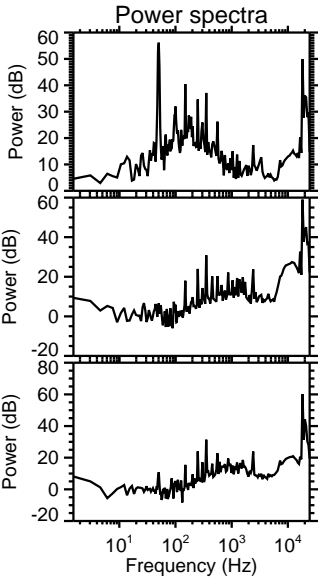
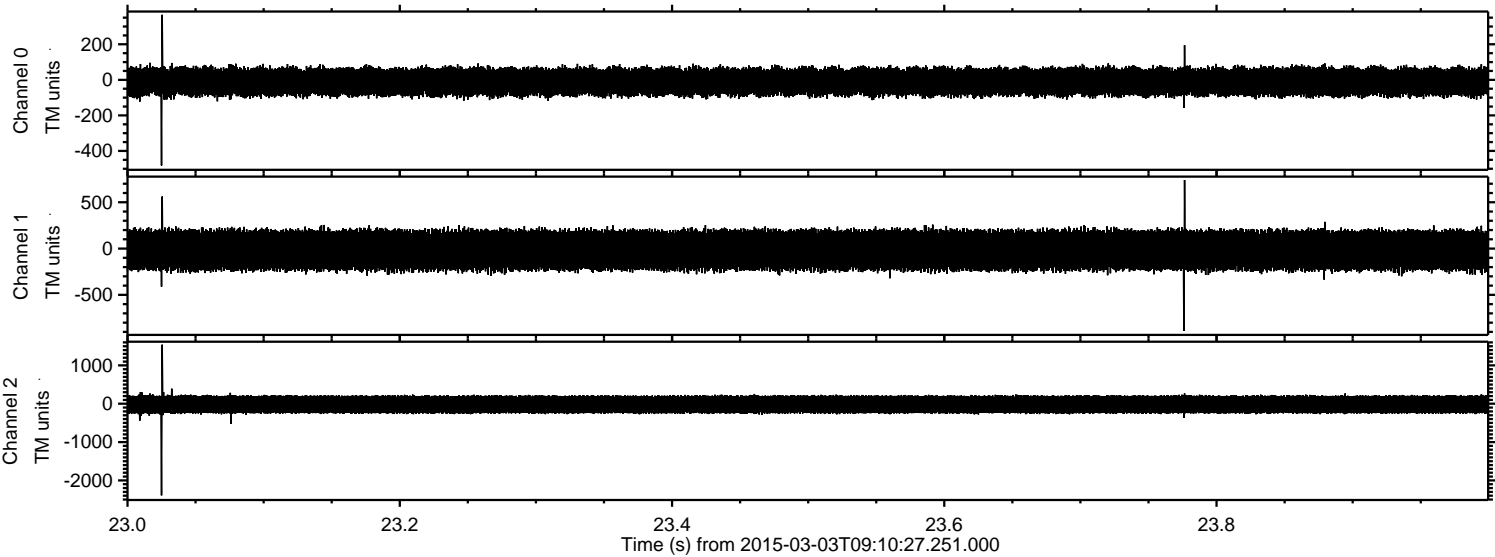


ELMAVAN 3D WAVEFORMS (Measured data sampled at 50 kHz) 49702 packets of 144 samples from 2015-03-03T09:10:27.251.000.

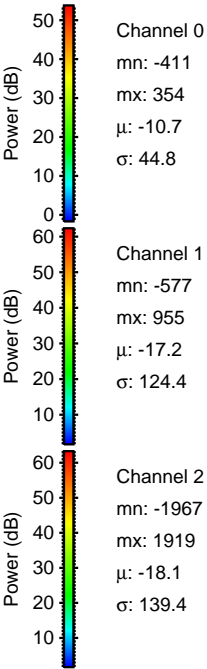
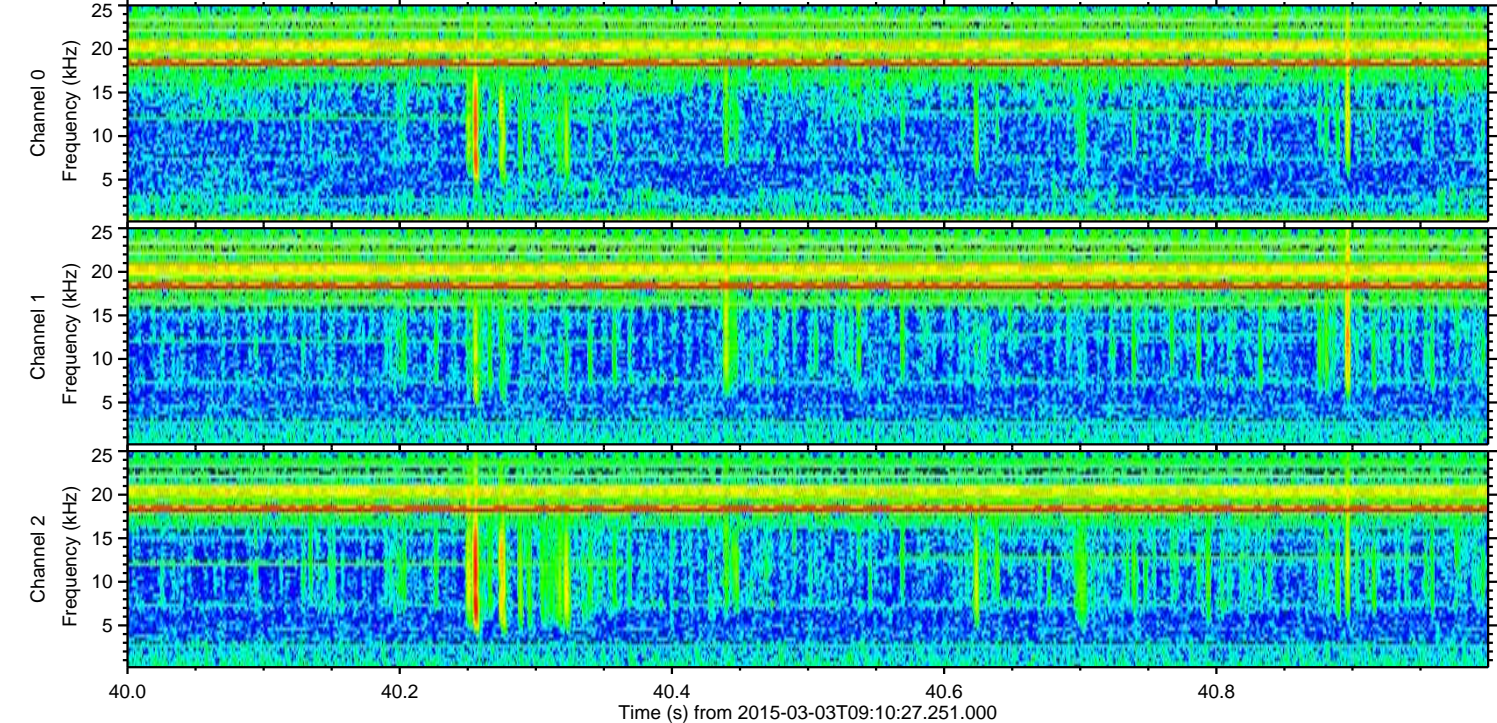
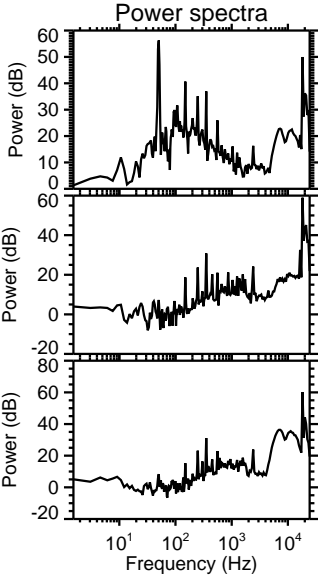
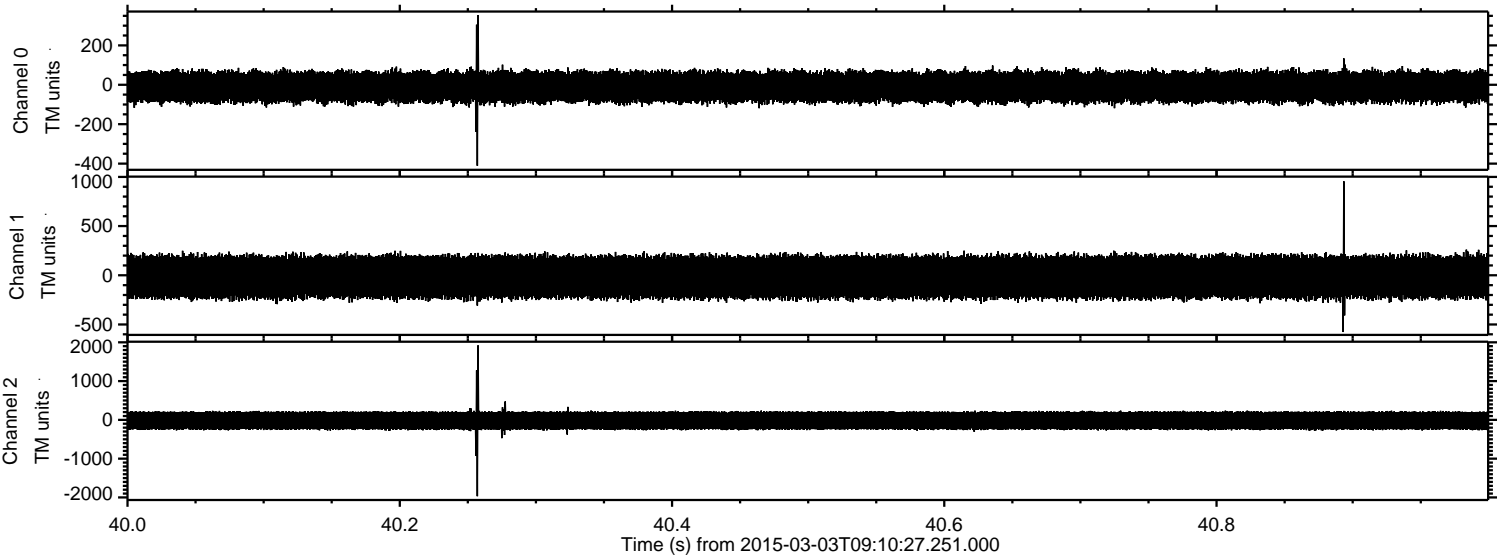
Processed Sat Mar 7 05:43:10 2015 by ELM ver.2012-10-06 from 001__elm20150303_091026__dat00.bin



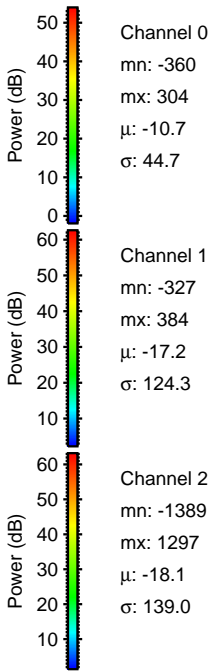
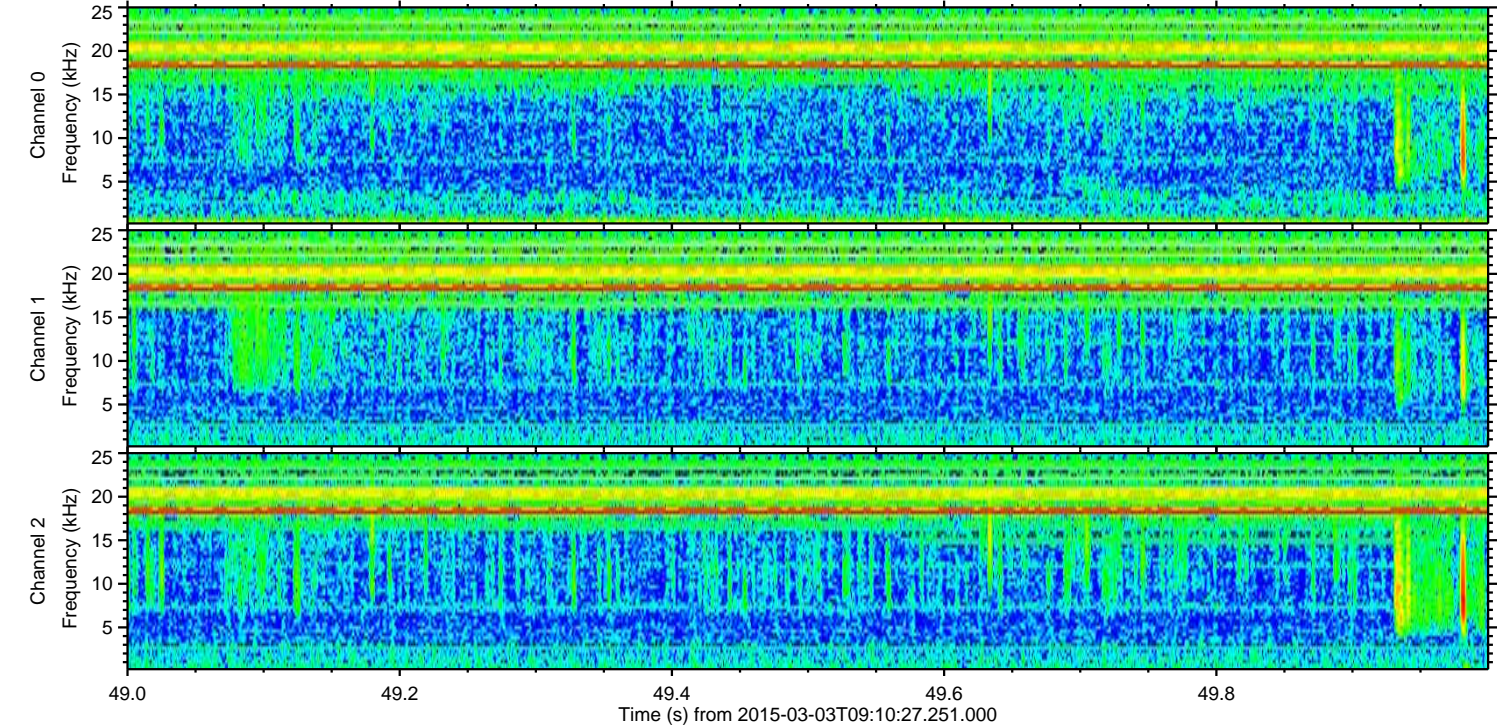
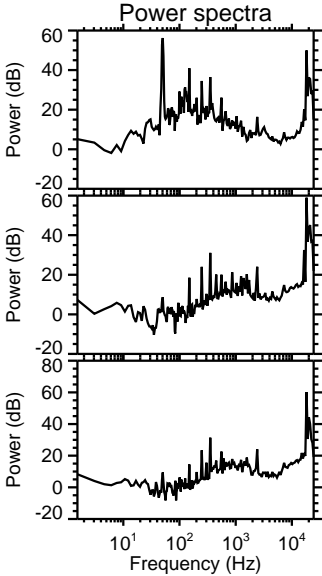
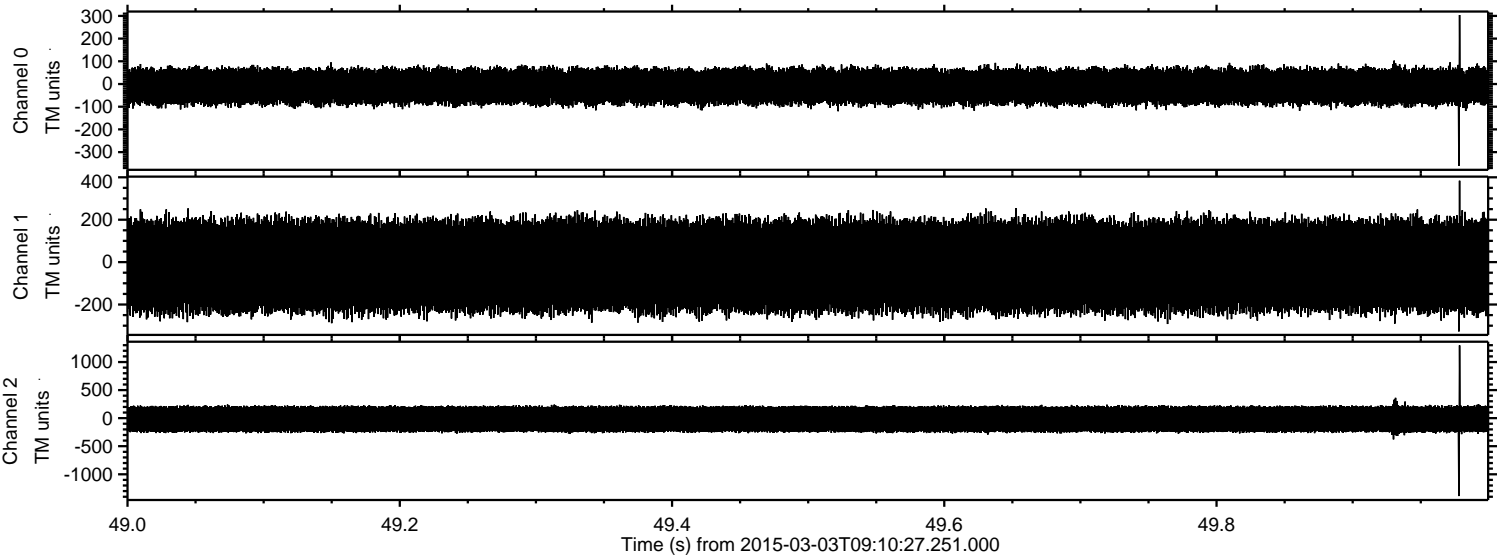
Processed Sat Mar 7 05:43:25 2015 by ELM ver.2012-10-06 from 001__elm20150303_091026__dat00.bin



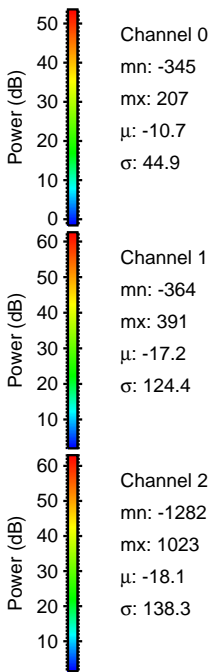
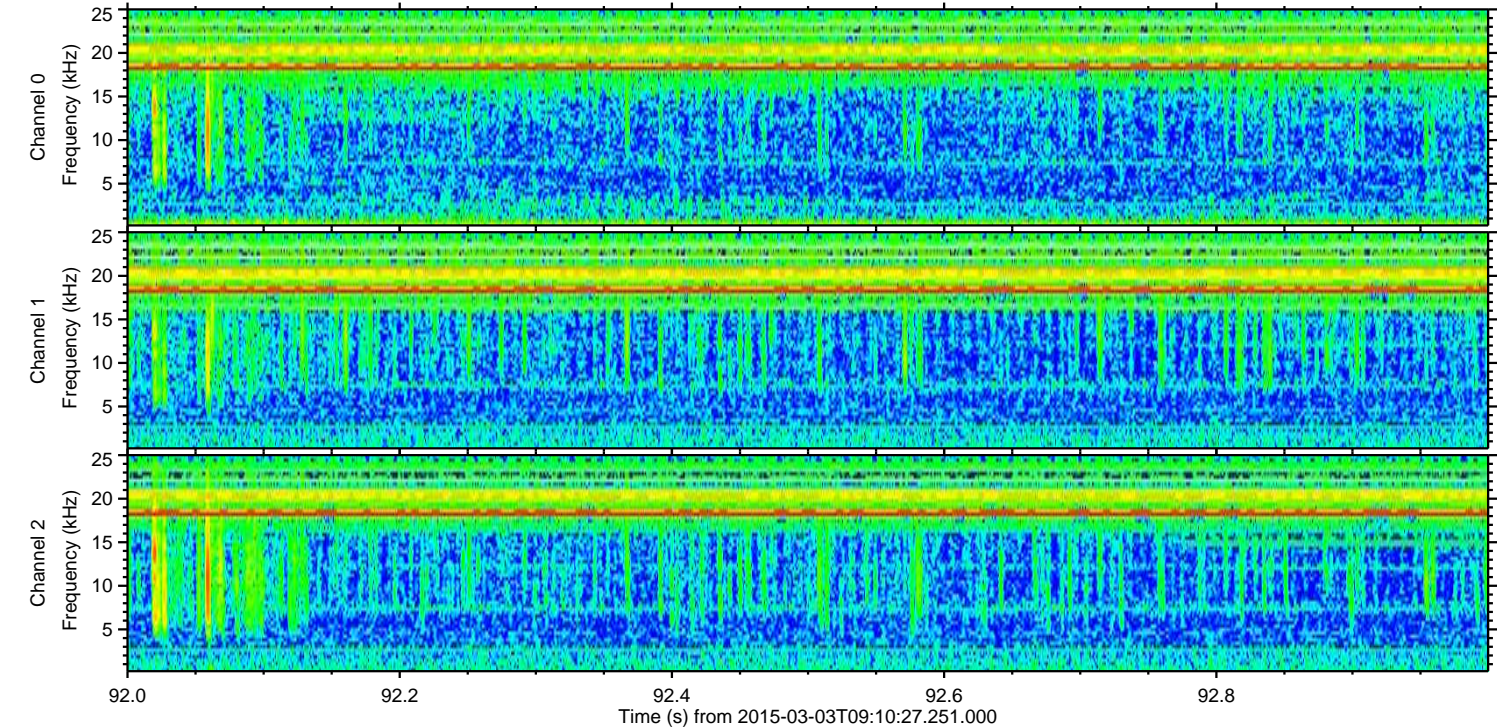
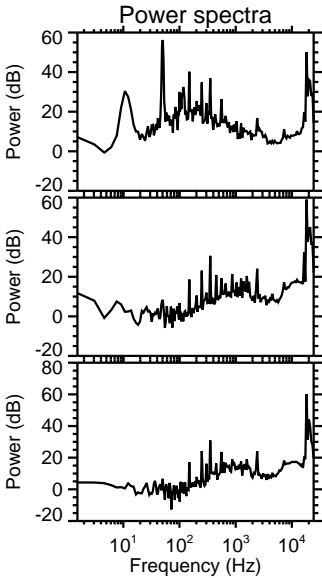
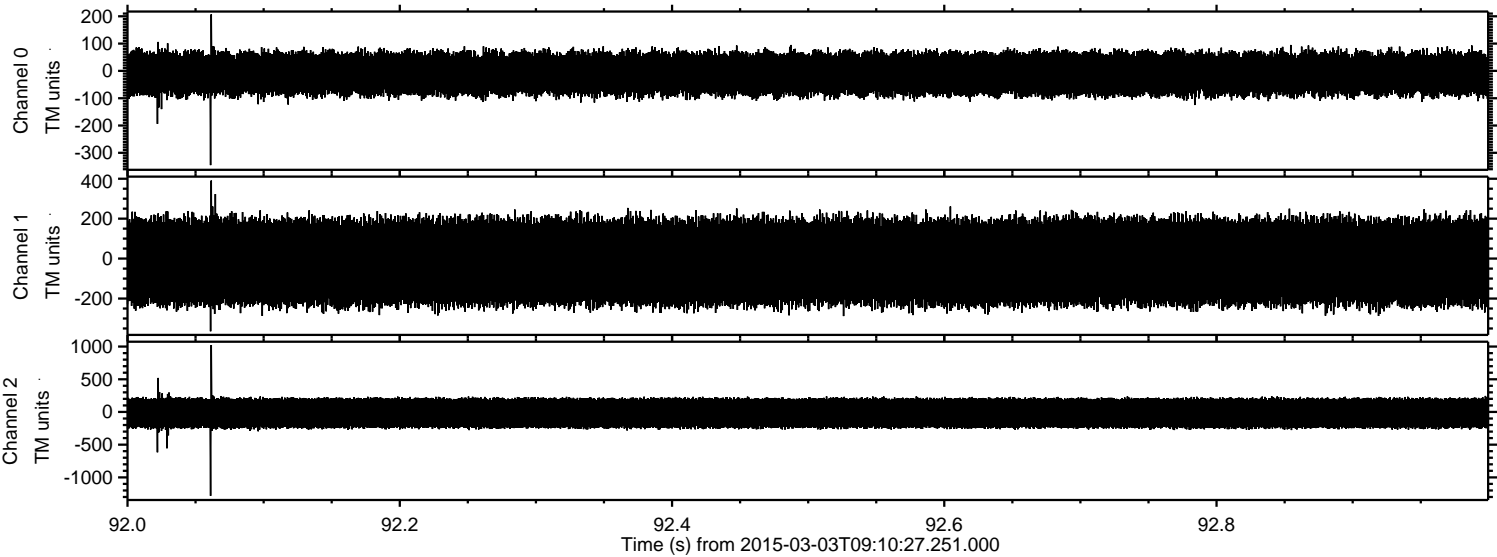
Processed Sat Mar 7 05:43:26 2015 by ELM ver.2012-10-06 from 001__elm20150303_091026__dat00.bin



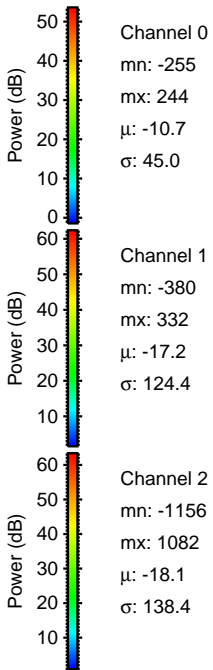
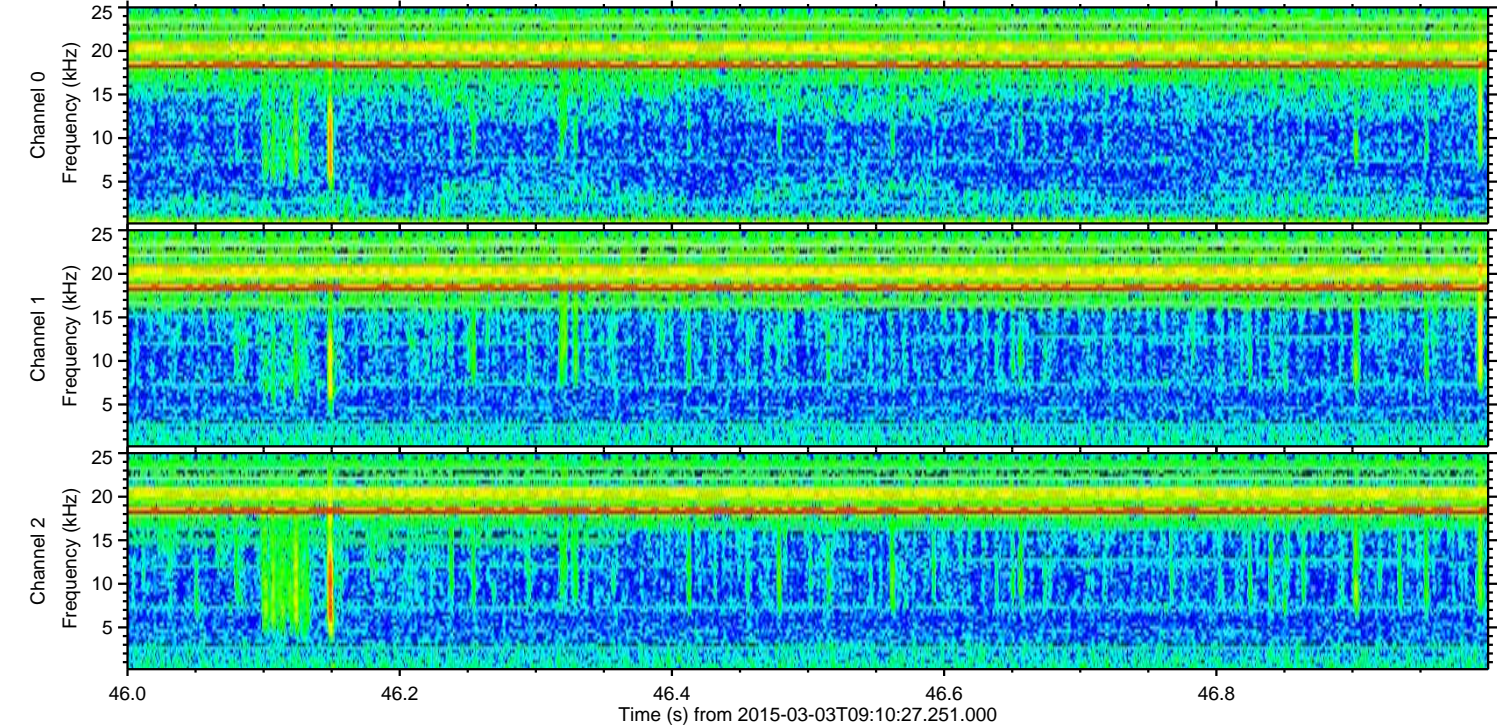
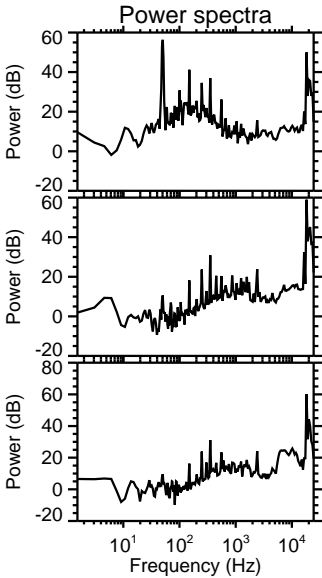
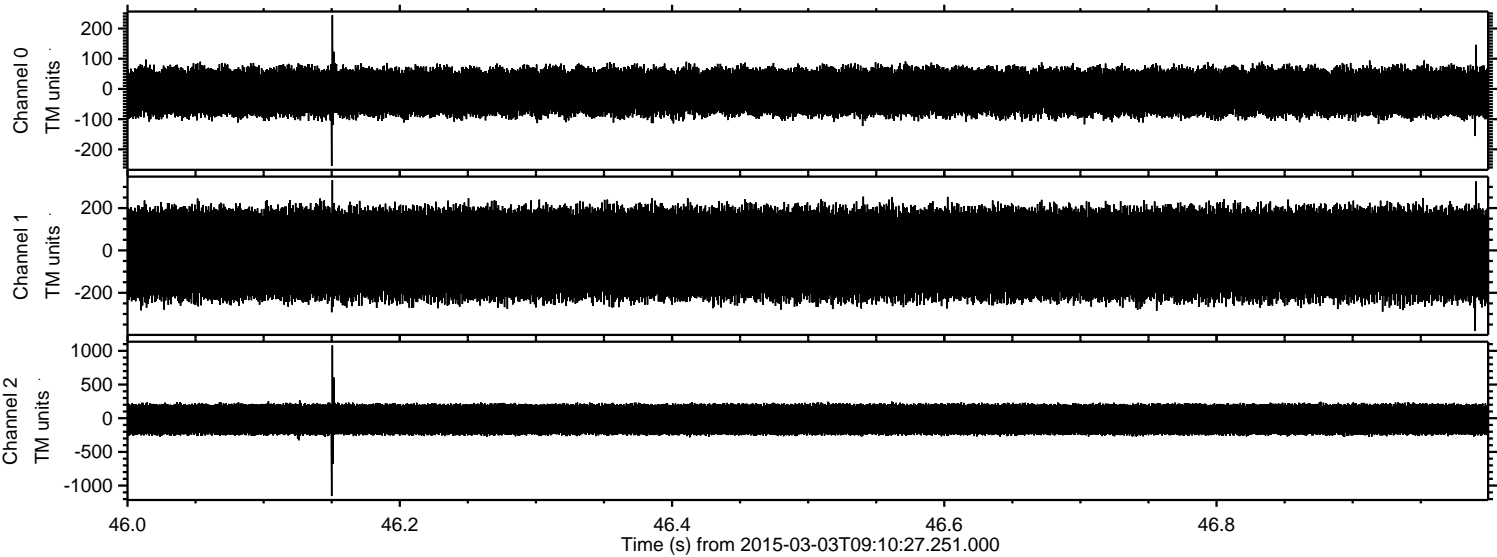
Processed Sat Mar 7 05:43:27 2015 by ELM ver.2012-10-06 from 001__elm20150303_091026__dat00.bin



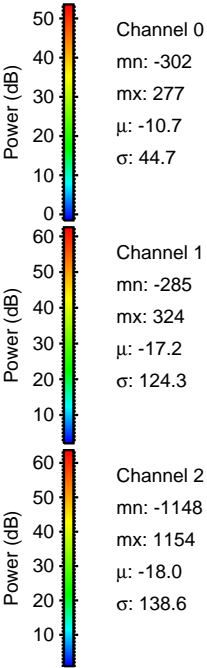
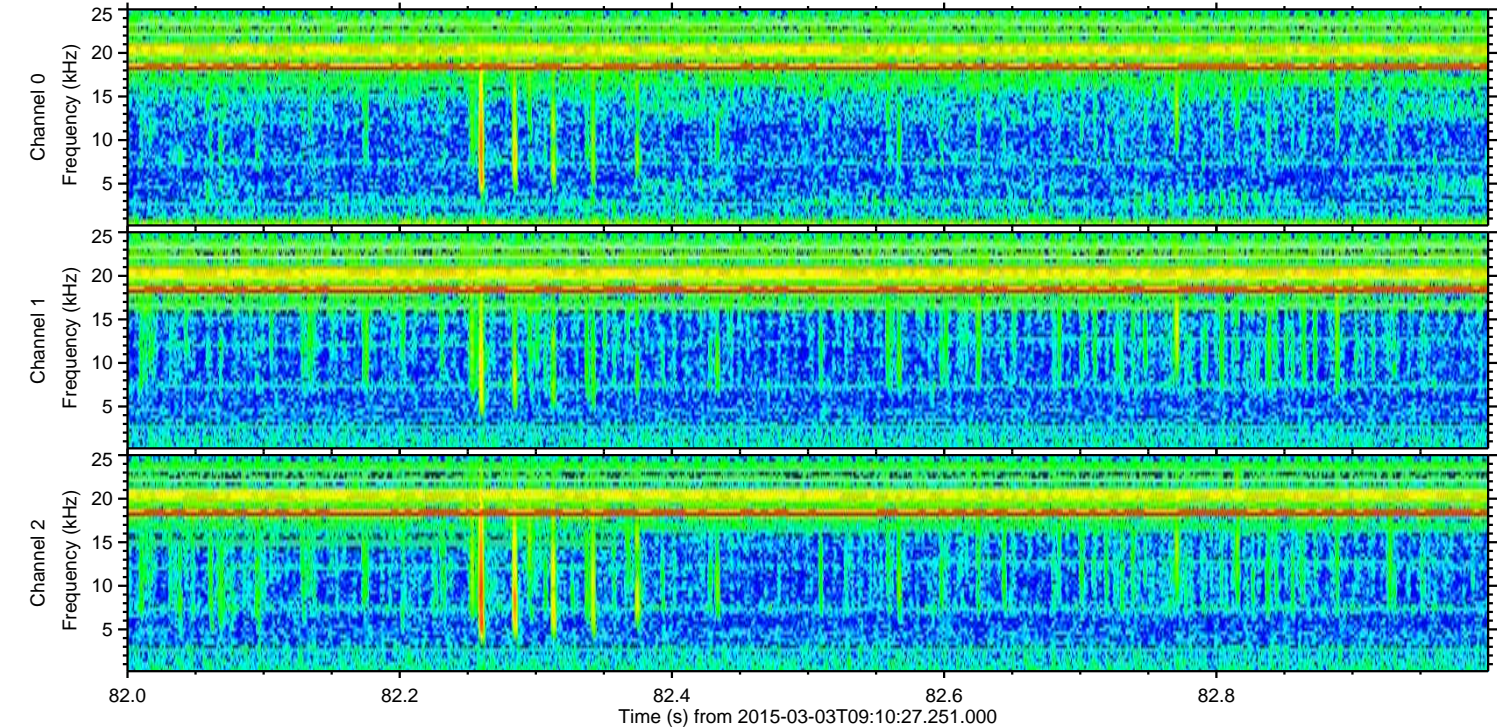
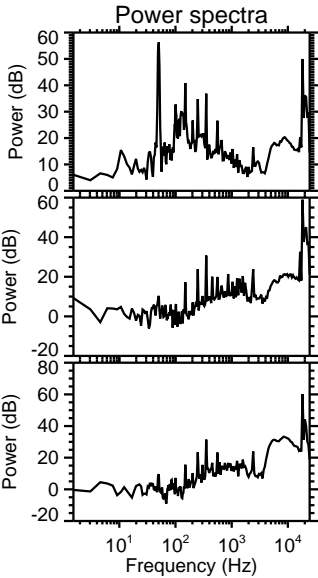
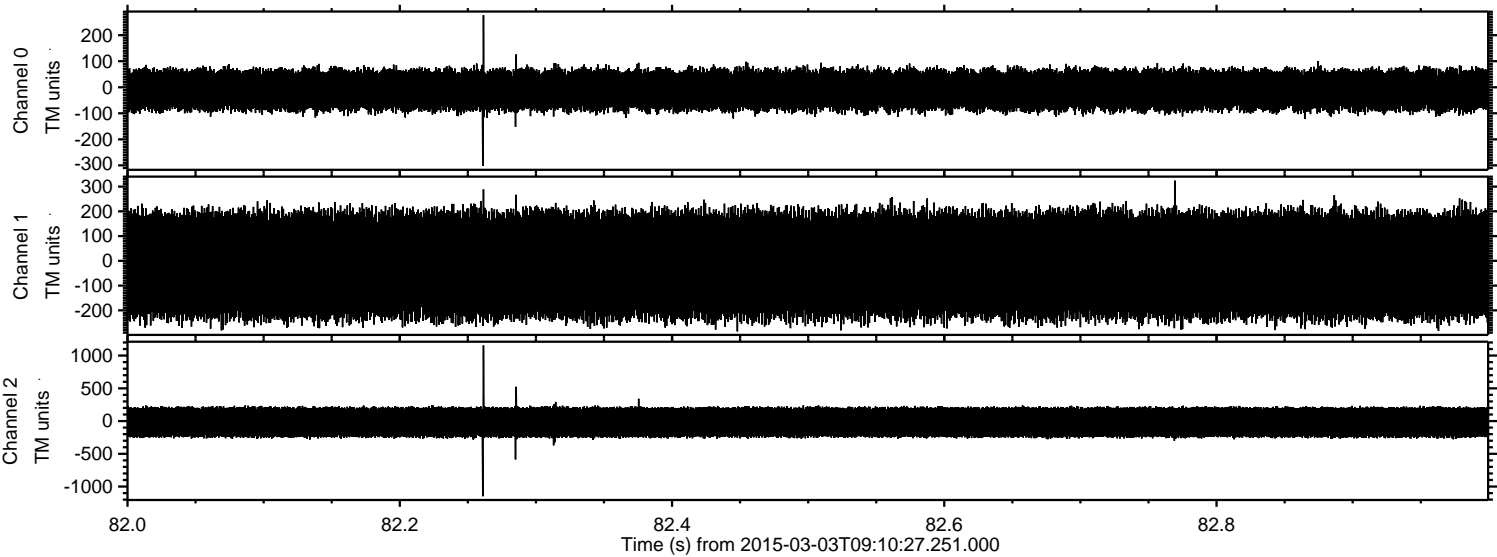
Processed Sat Mar 7 05:43:28 2015 by ELM ver.2012-10-06 from 001__elm20150303_091026__dat00.bin



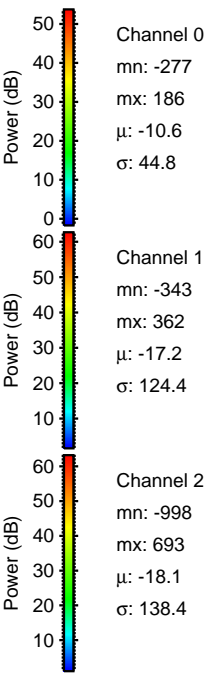
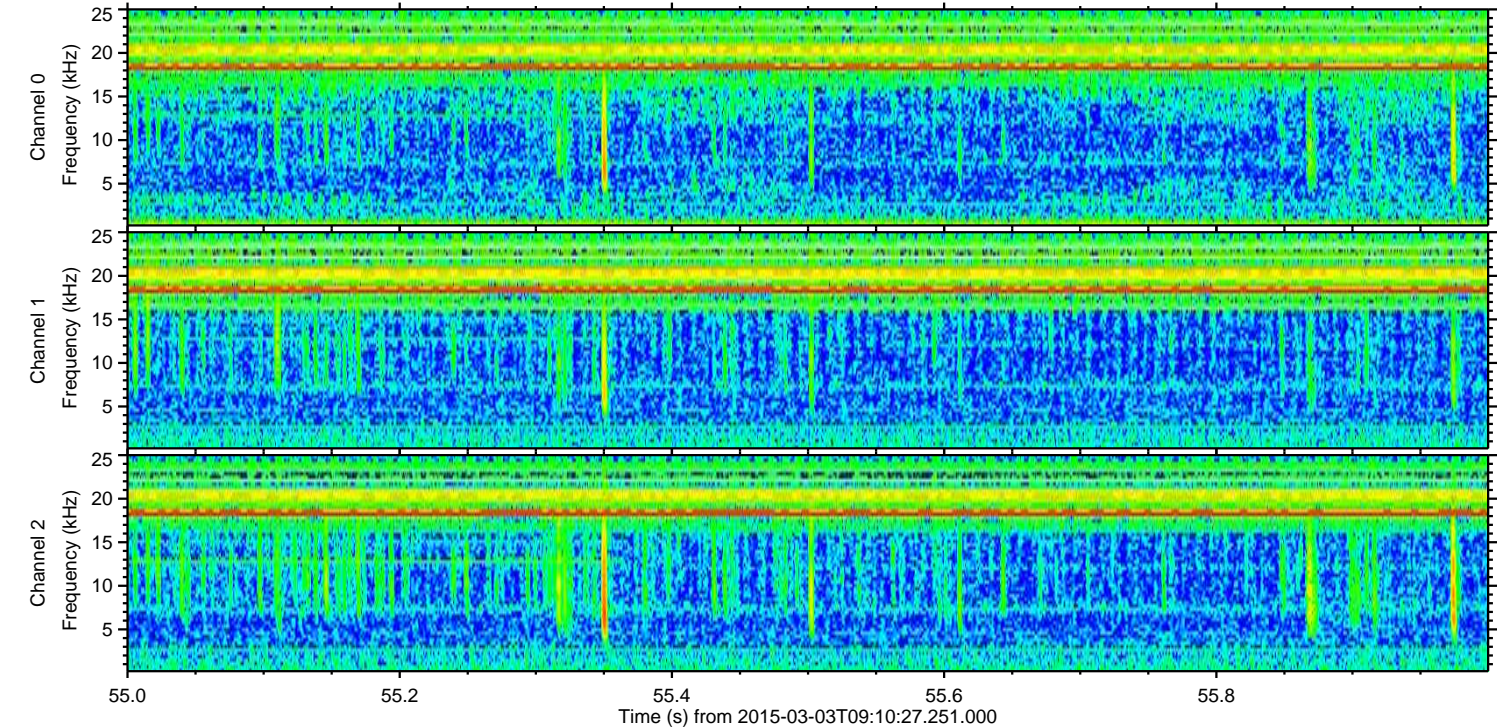
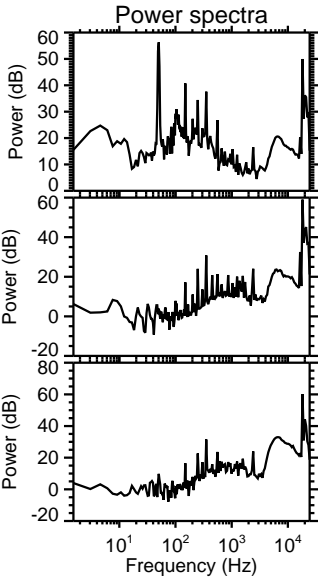
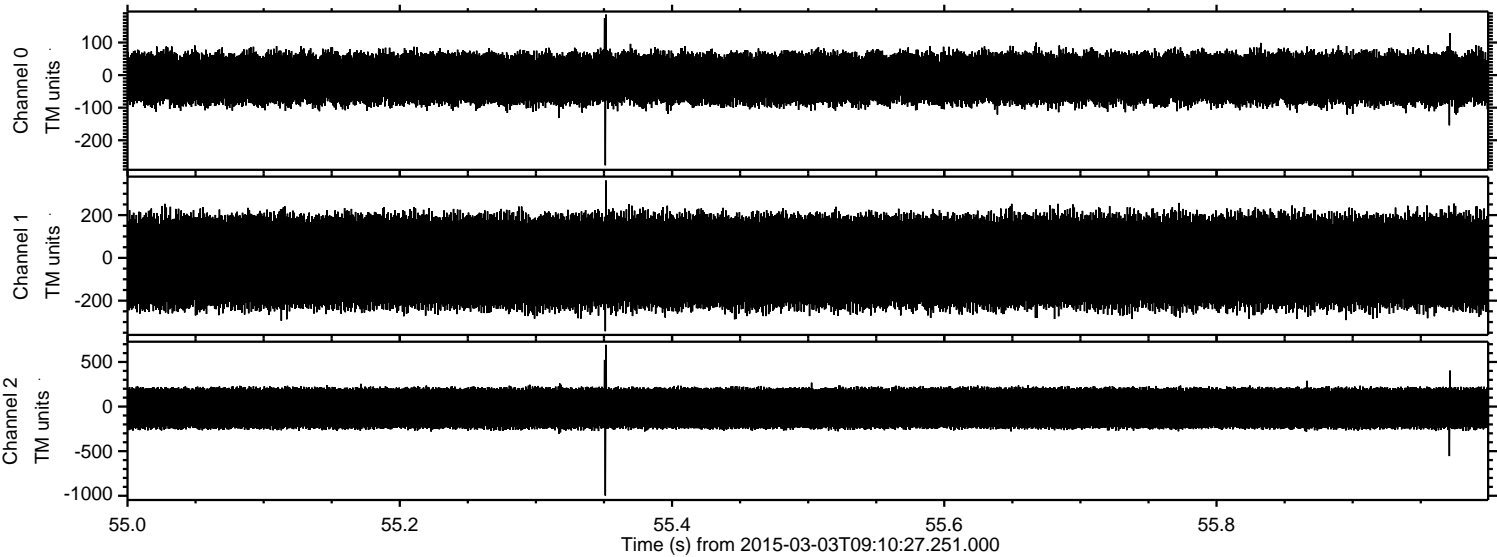
Processed Sat Mar 7 05:43:29 2015 by ELM ver.2012-10-06 from 001__elm20150303_091026__dat00.bin



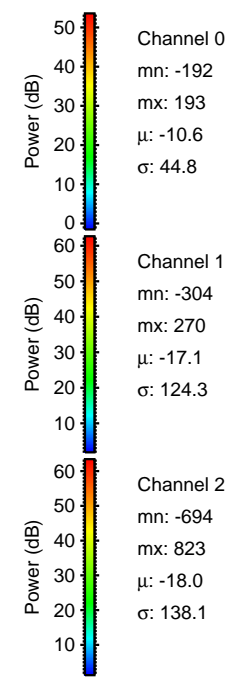
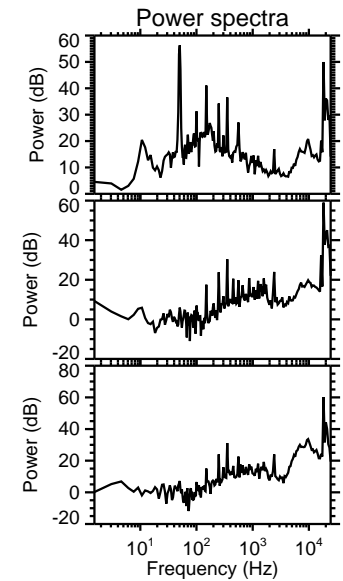
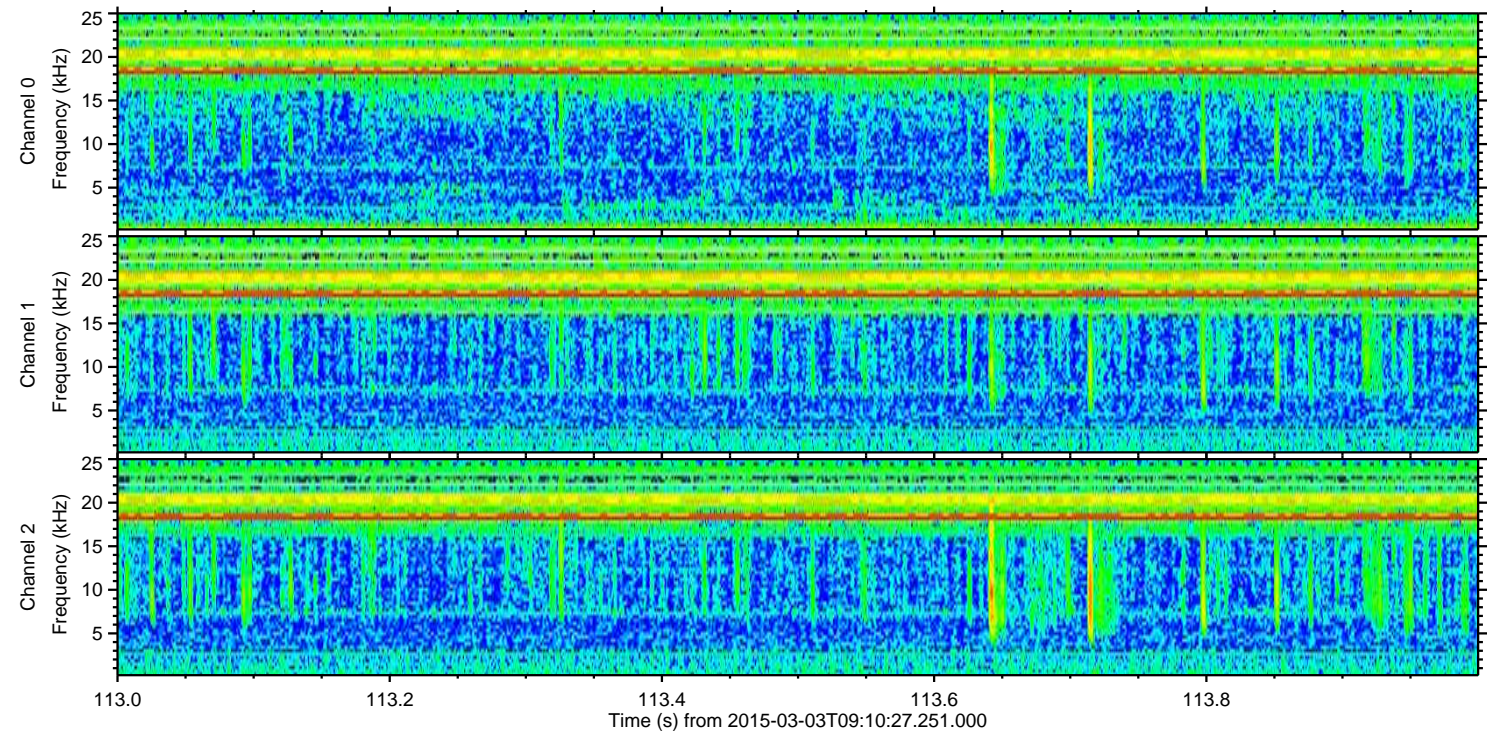
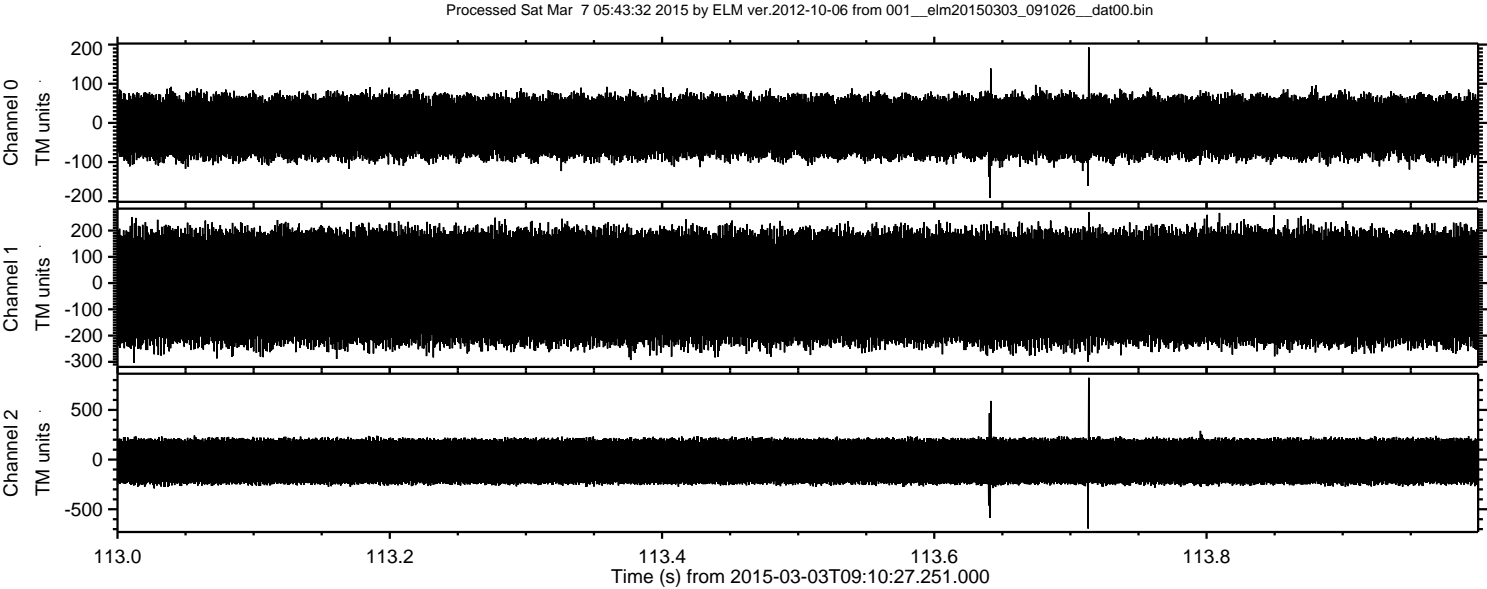
Processed Sat Mar 7 05:43:30 2015 by ELM ver.2012-10-06 from 001__elm20150303_091026__dat00.bin



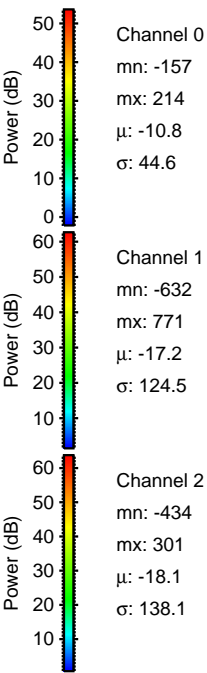
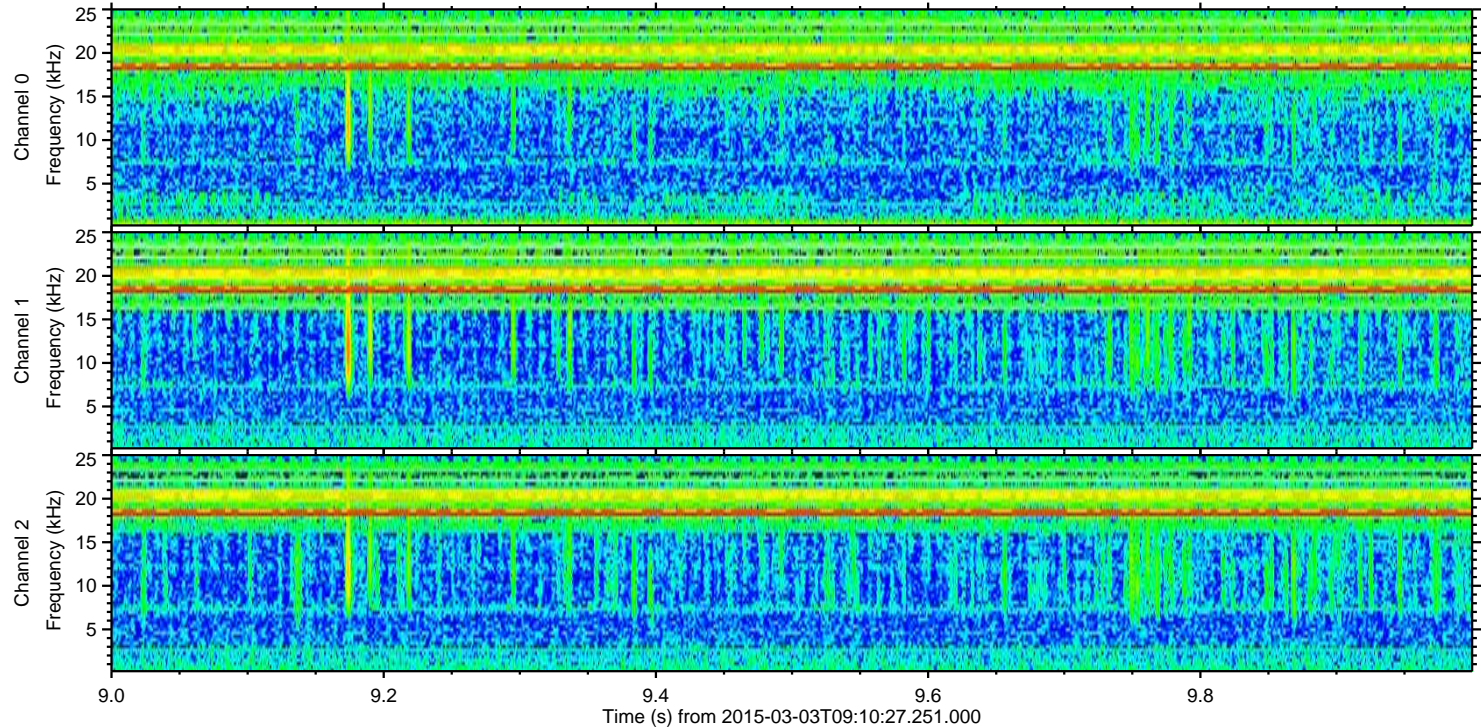
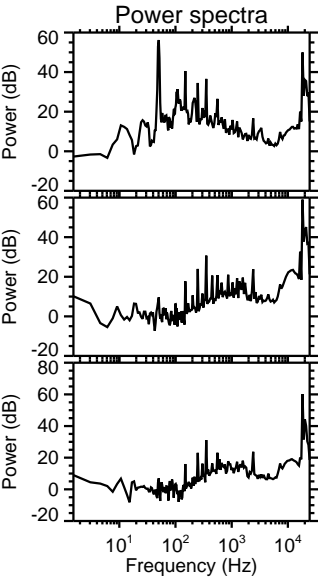
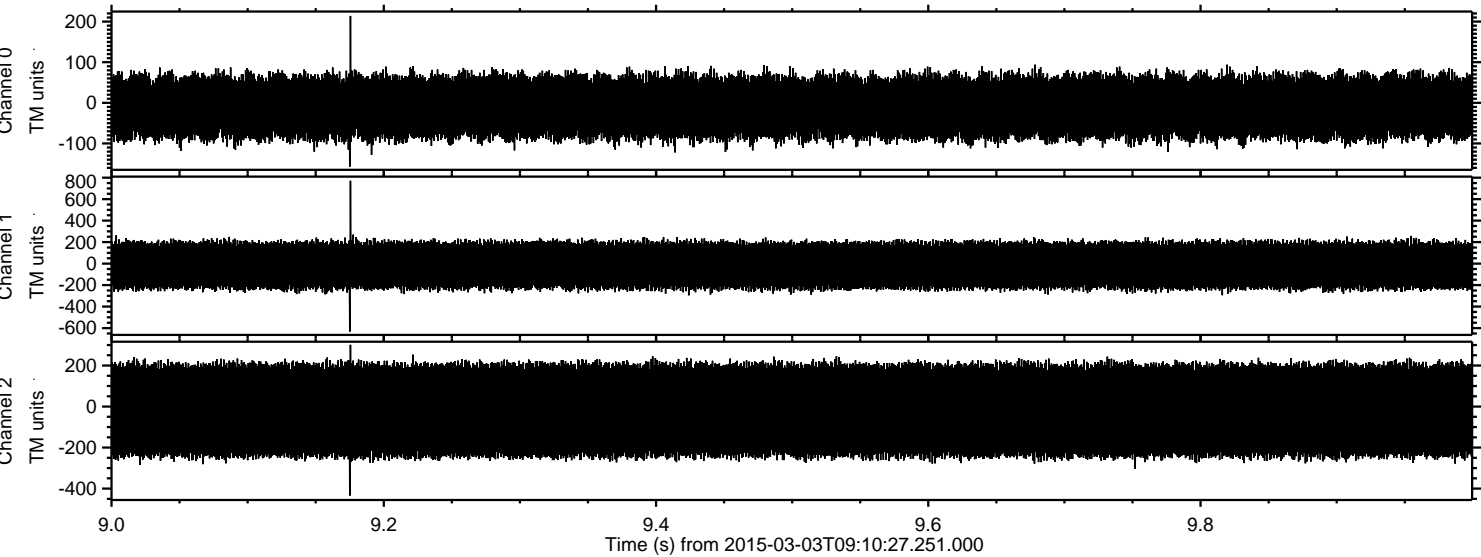
Processed Sat Mar 7 05:43:31 2015 by ELM ver.2012-10-06 from 001__elm20150303_091026__dat00.bin



ELMAVAN 3D WAVEFORMS (Measured data sampled at 50 kHz) 49702 packets of 144 samples from 2015-03-03T09:10:27.251.000. Part 114/144



Processed Sat Mar 7 05:43:33 2015 by ELM ver.2012-10-06 from 001__elm20150303_091026__dat00.bin



ELMAVAN 3D WAVEFORMS (Measured data sampled at 50 kHz) 49702 packets of 144 samples from 2015-03-03T09:10:27.251.000. Part 101/144

Processed Sat Mar 7 05:43:34 2015 by ELM ver.2012-10-06 from 001__elm20150303_091026__dat00.bin

