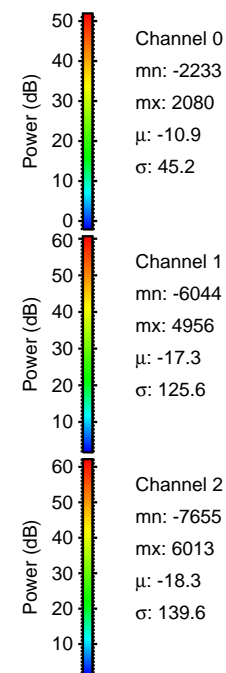
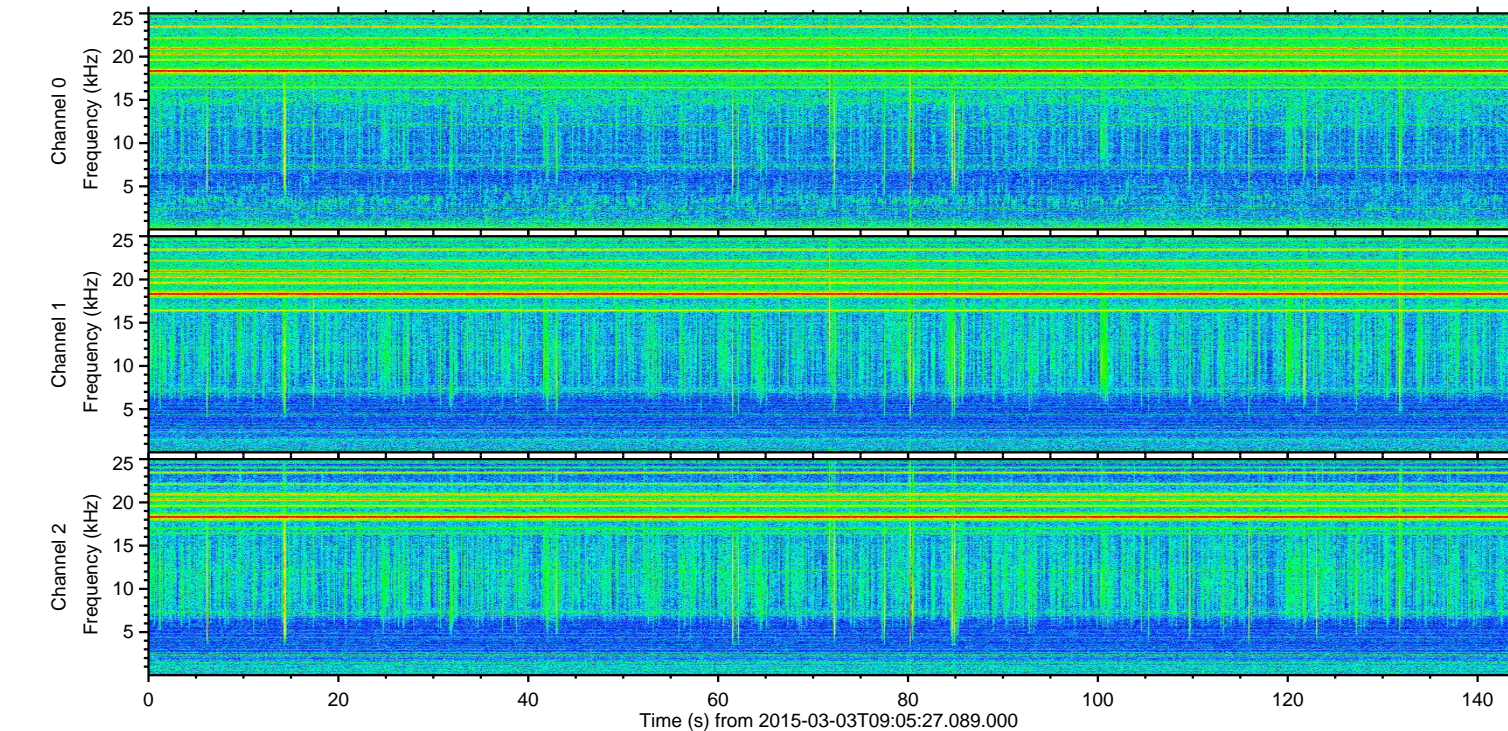
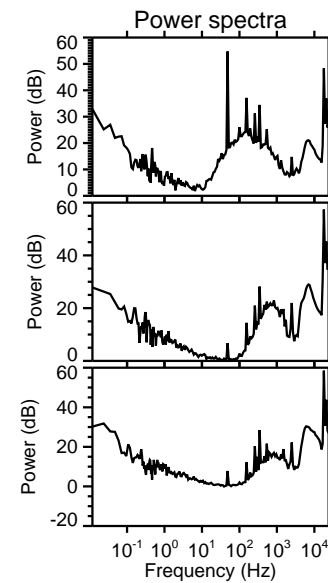
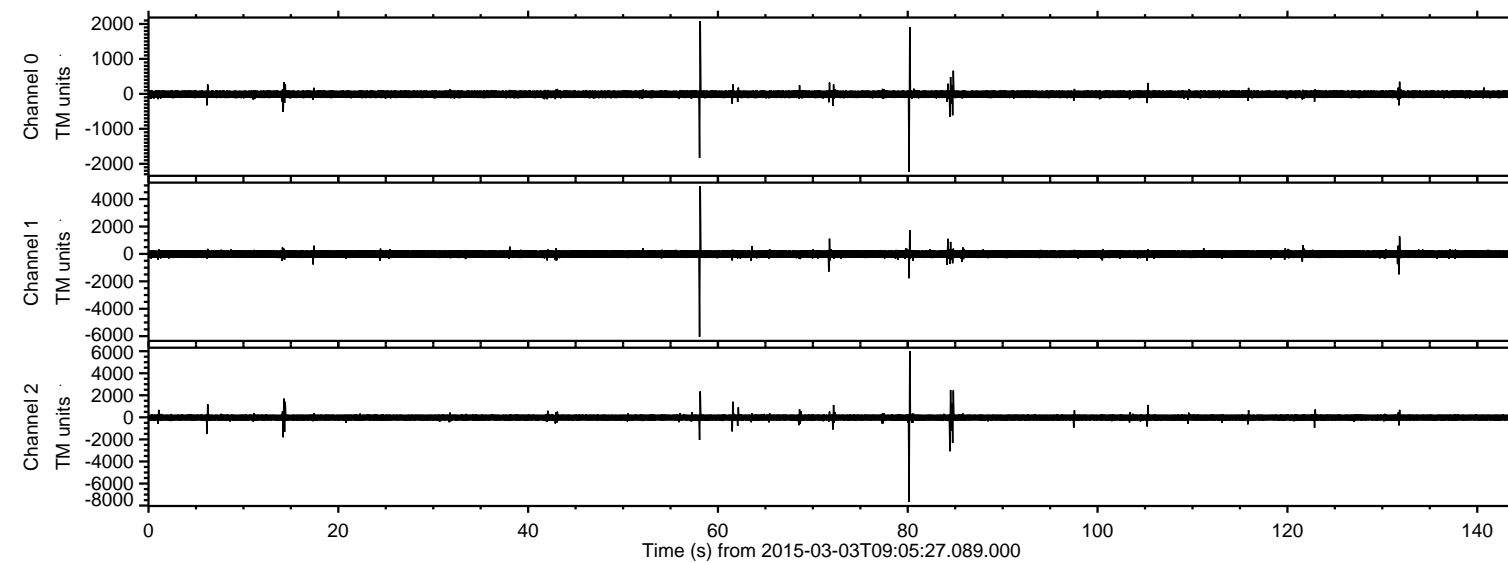
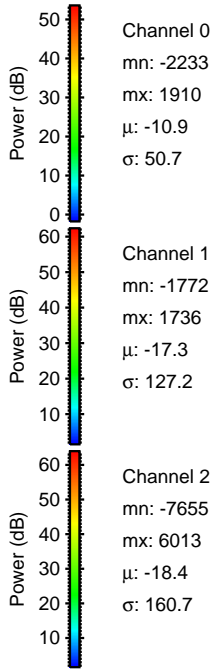
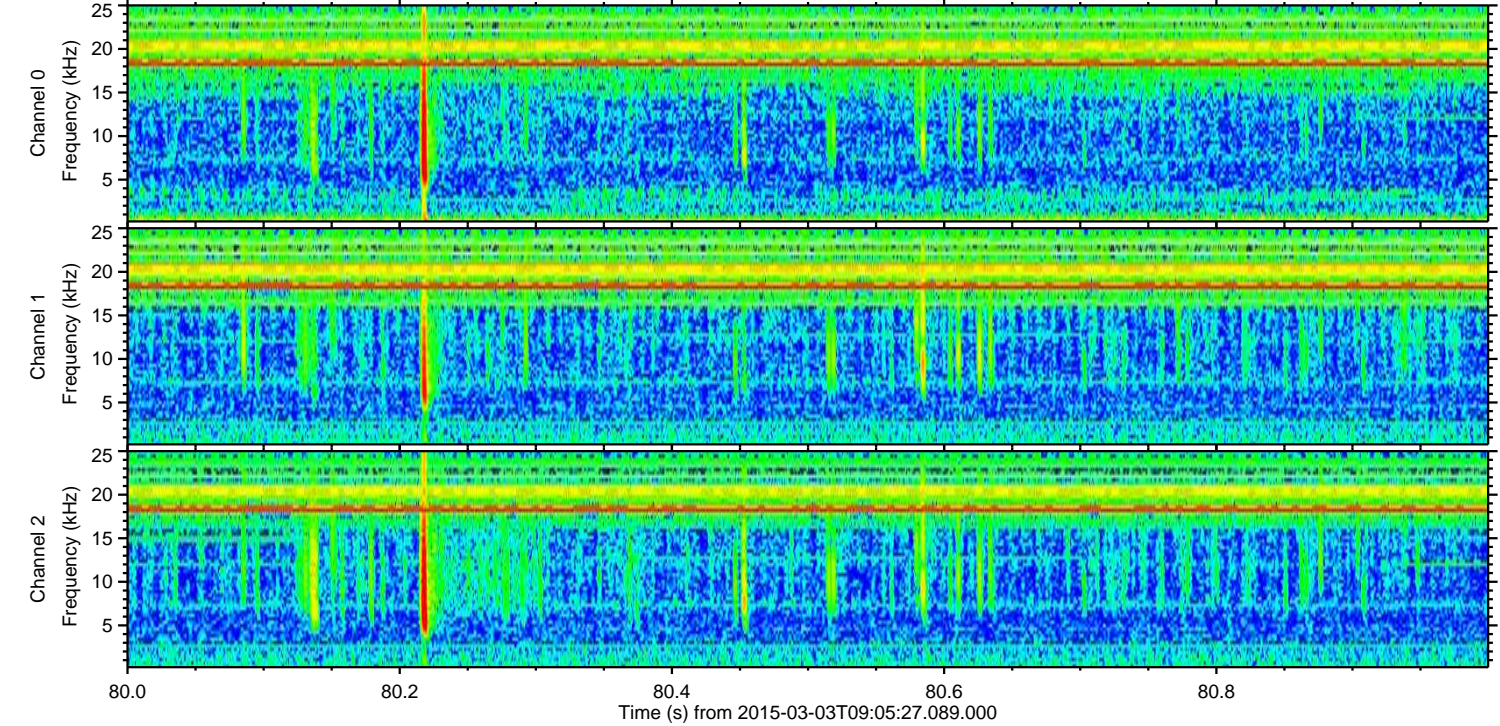
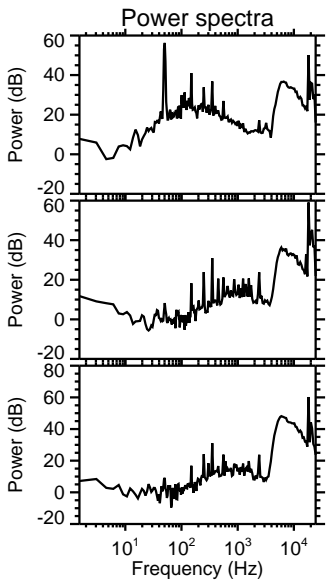
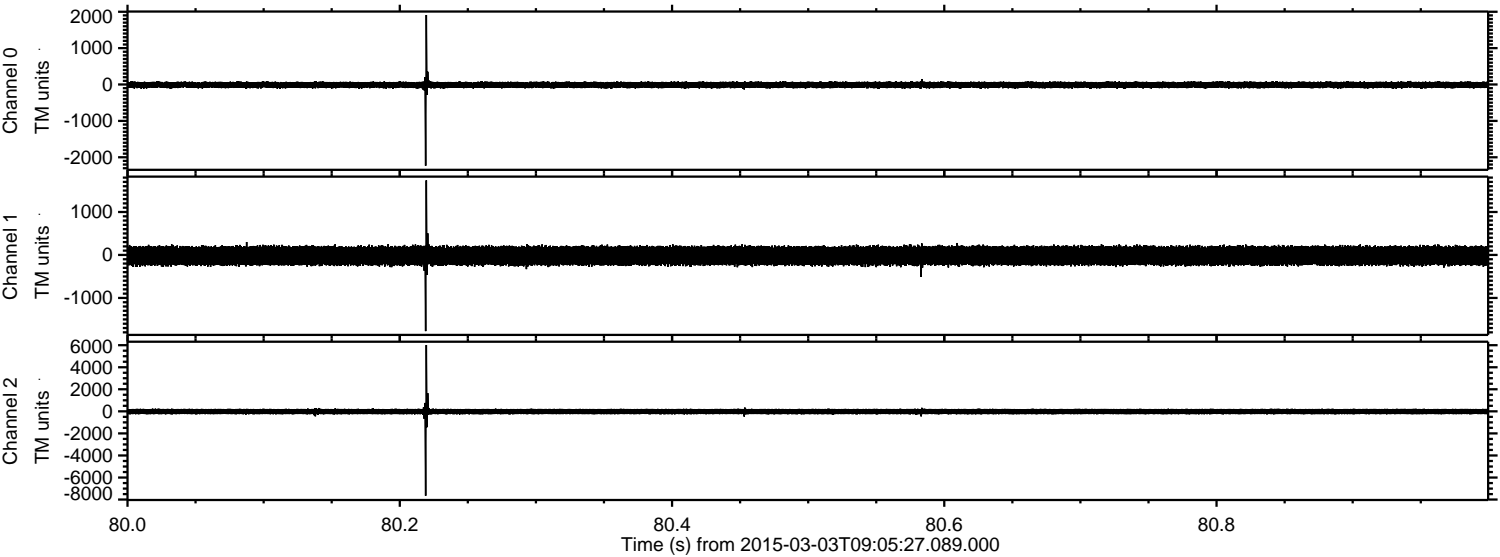


ELMAVAN 3D WAVEFORMS (Measured data sampled at 50 kHz) 49779 packets of 144 samples from 2015-03-03T09:05:27.089.000.

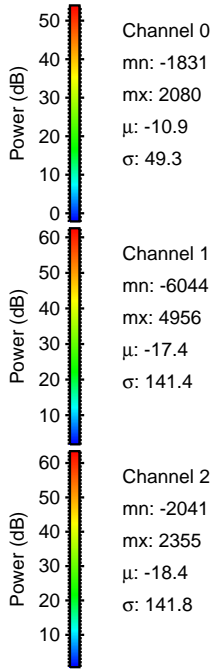
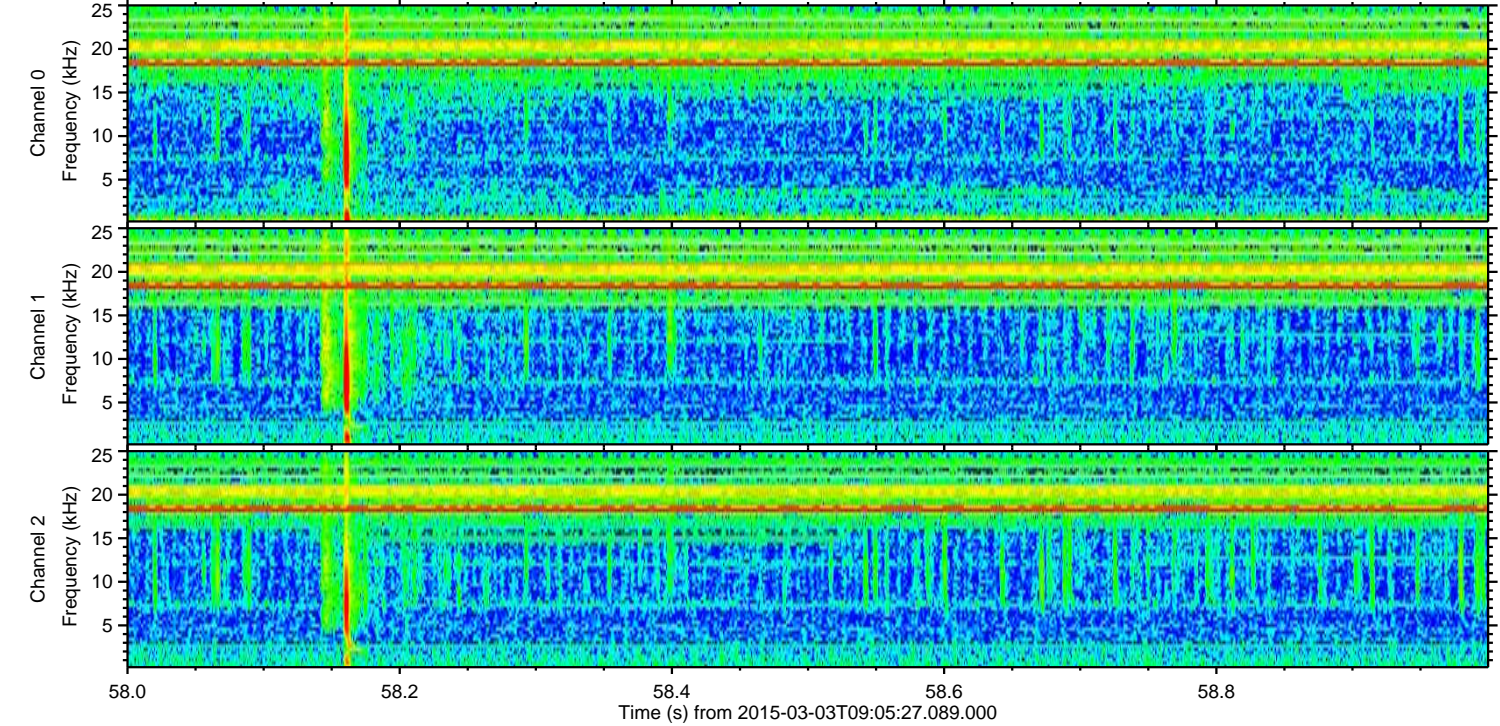
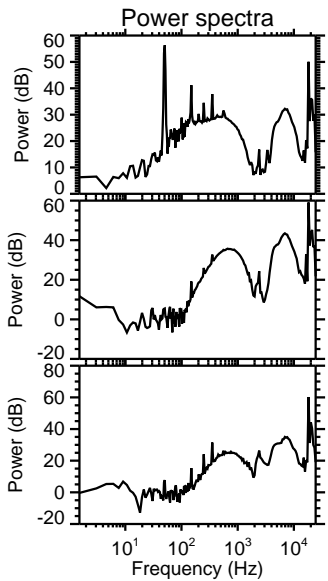
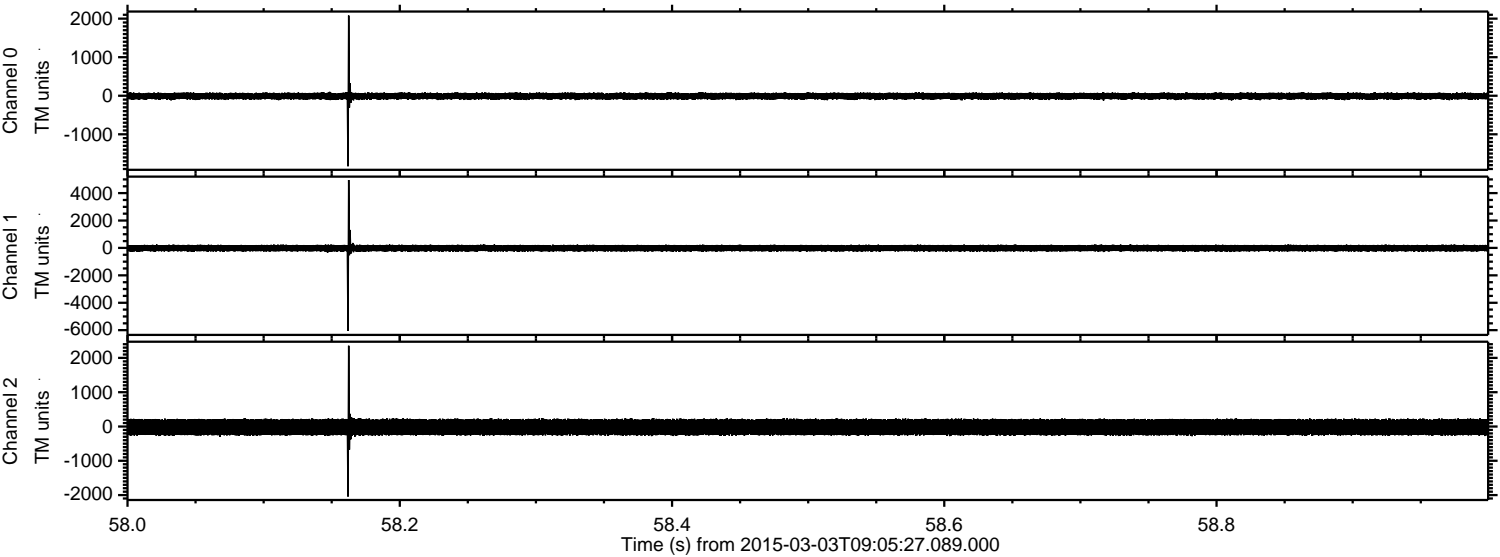
Processed Sat Mar 7 05:37:23 2015 by ELM ver.2012-10-06 from 001__elm20150303_090526__dat00.bin



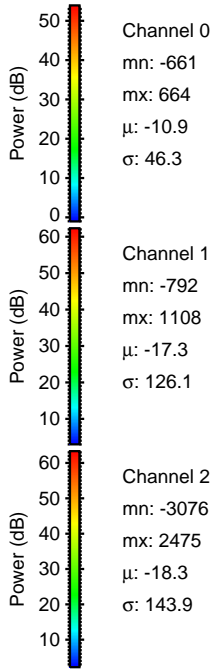
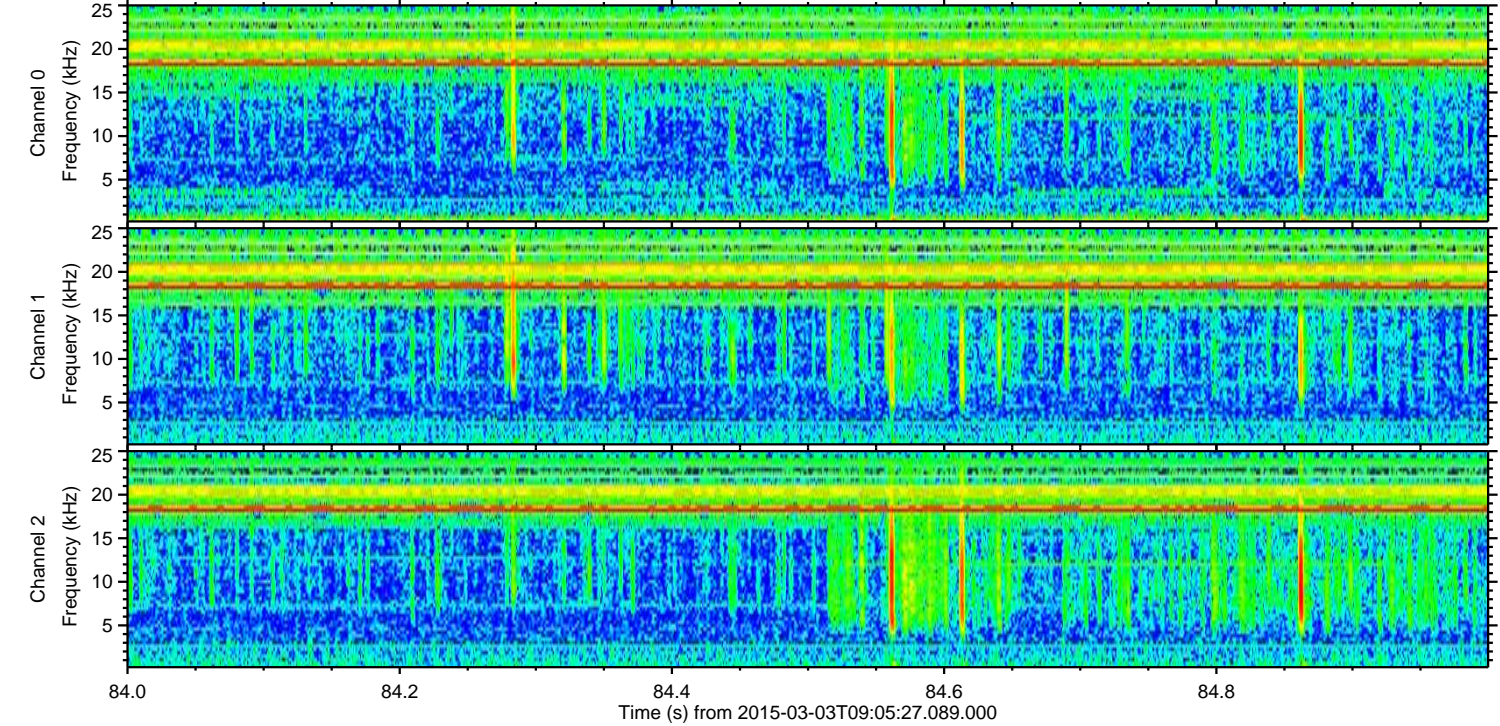
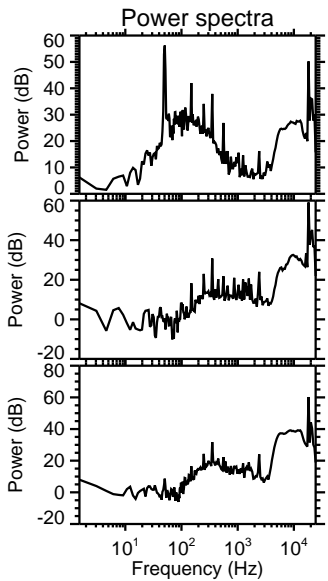
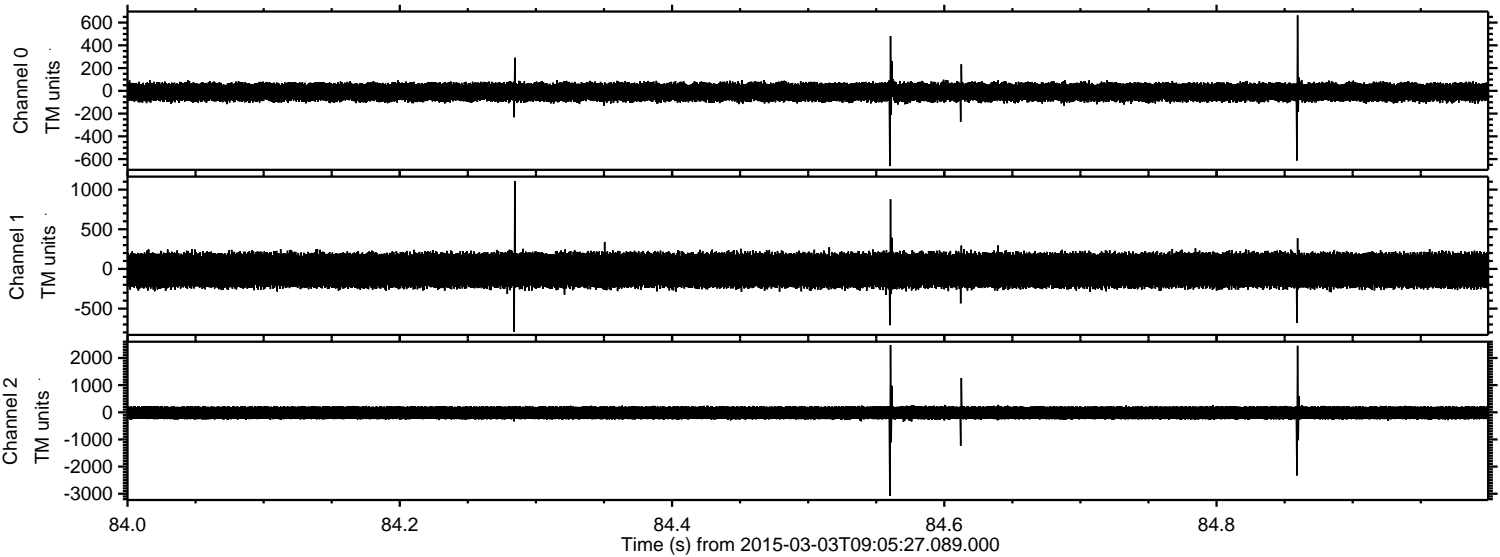
Processed Sat Mar 7 05:37:34 2015 by ELM ver.2012-10-06 from 001__elm20150303_090526__dat00.bin



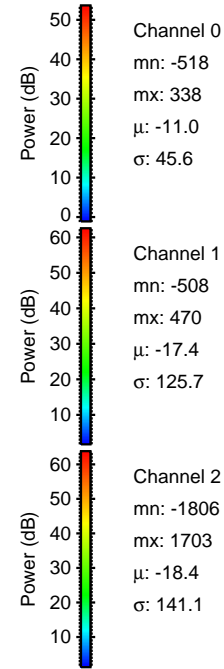
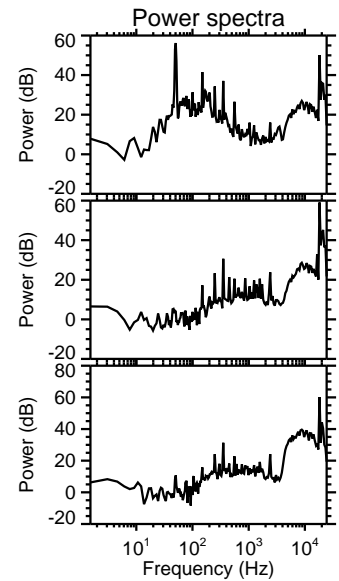
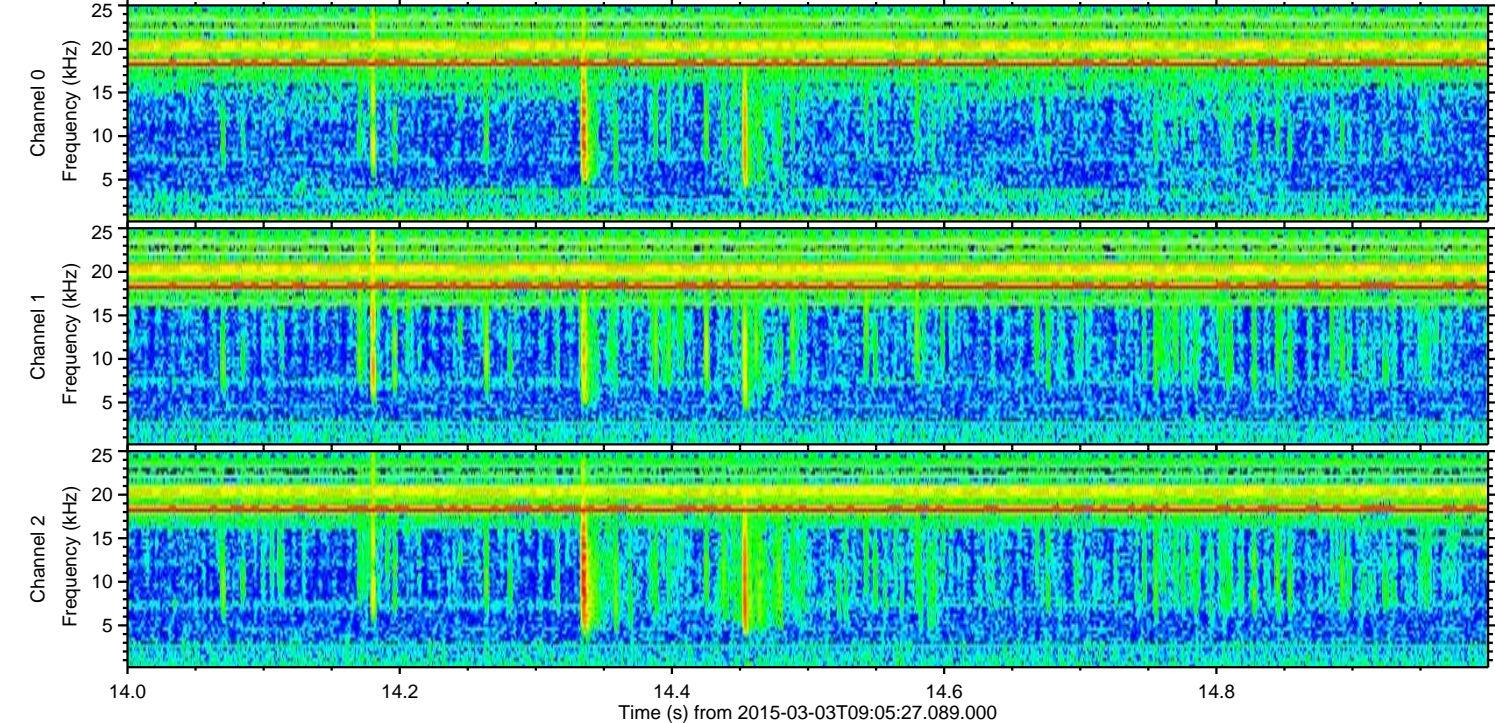
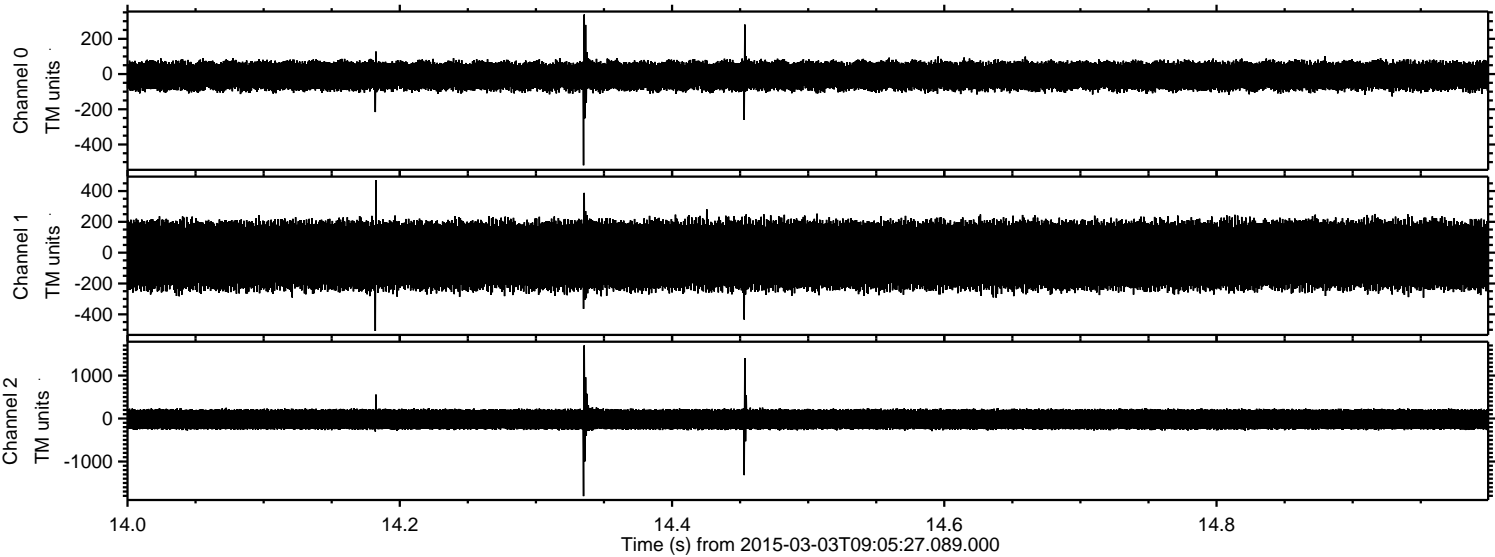
Processed Sat Mar 7 05:37:35 2015 by ELM ver.2012-10-06 from 001__elm20150303_090526__dat00.bin



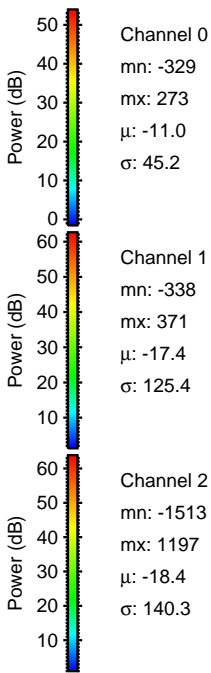
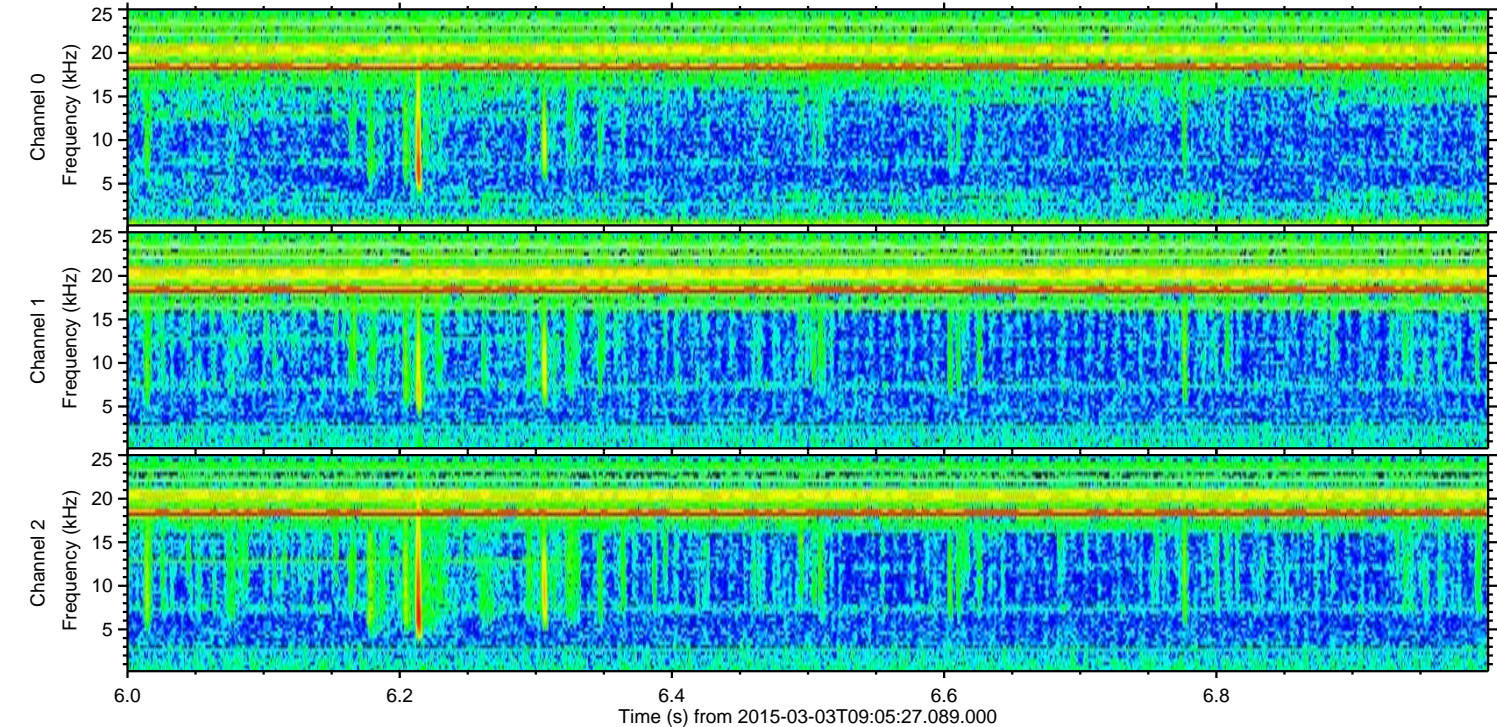
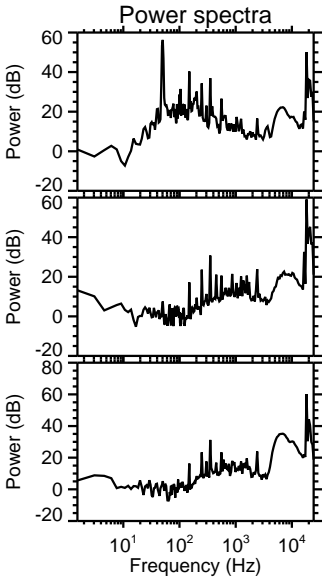
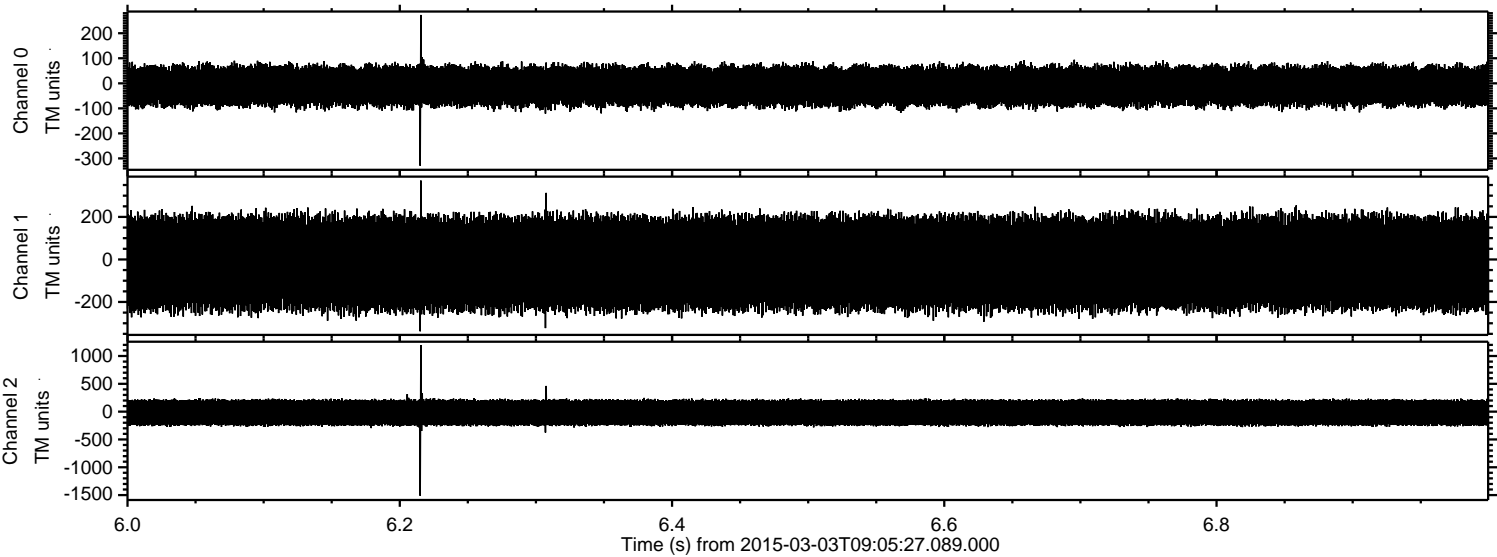
Processed Sat Mar 7 05:37:36 2015 by ELM ver.2012-10-06 from 001__elm20150303_090526__dat00.bin



Processed Sat Mar 7 05:37:37 2015 by ELM ver.2012-10-06 from 001__elm20150303_090526__dat00.bin

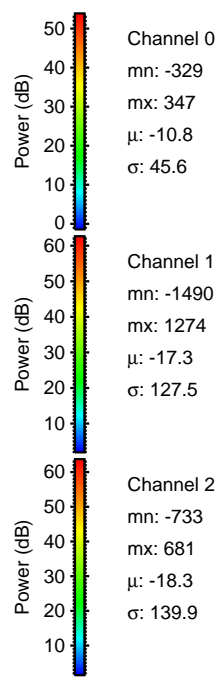
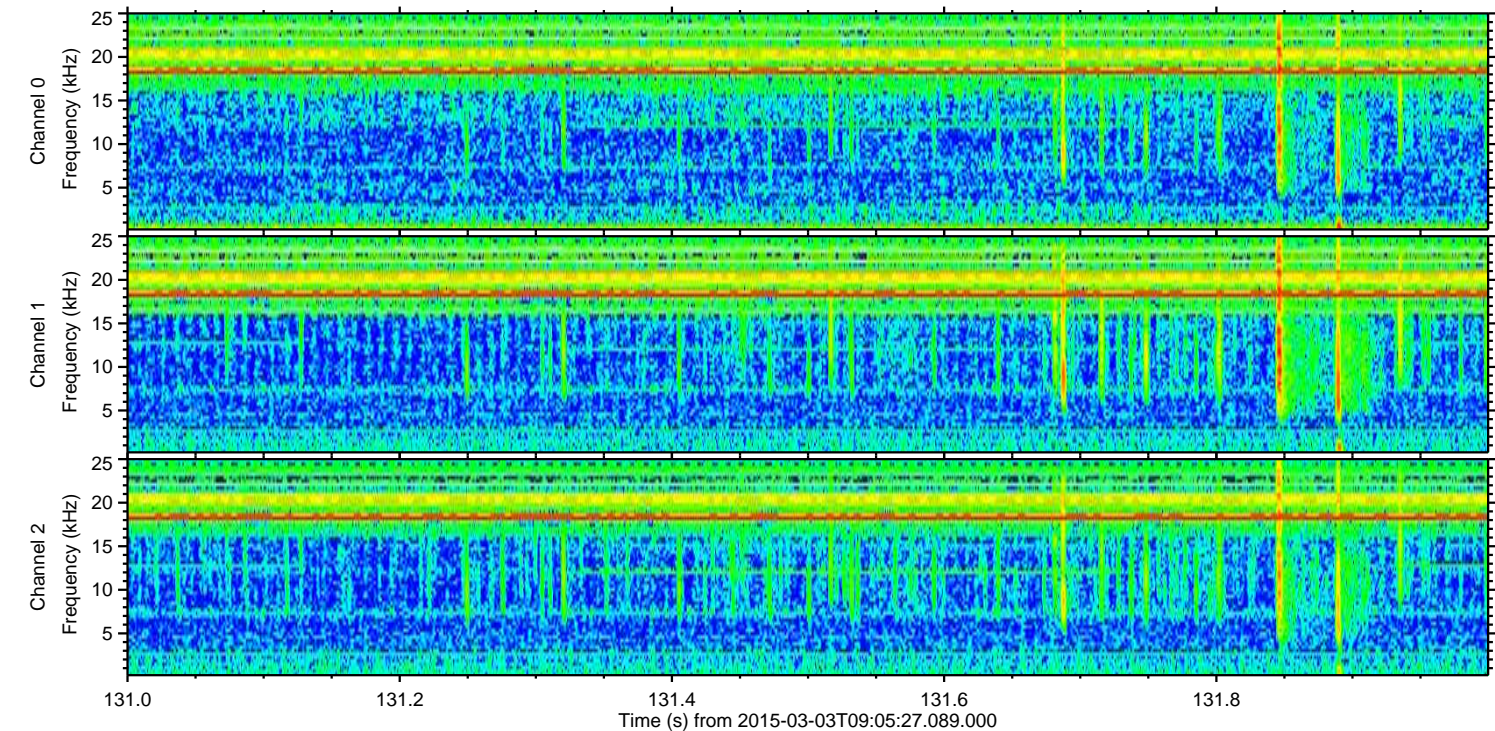
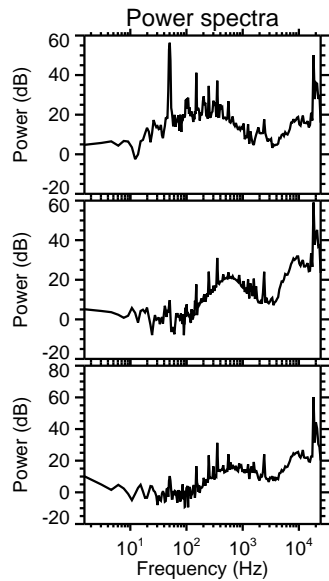
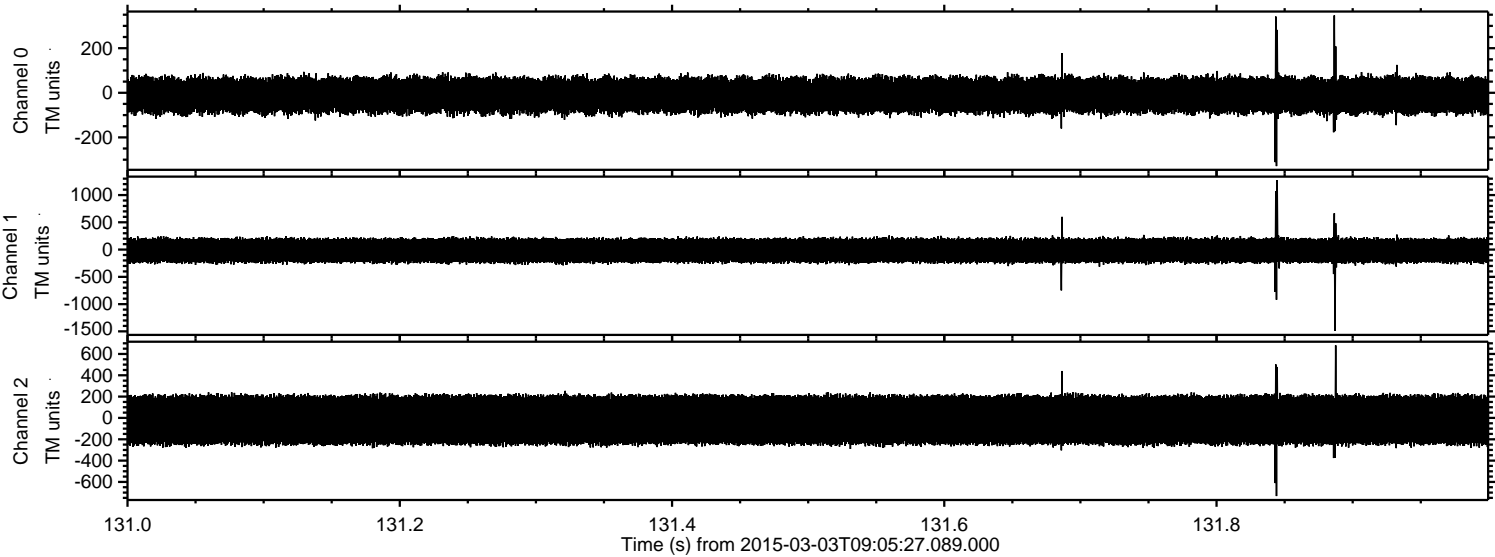


Processed Sat Mar 7 05:37:38 2015 by ELM ver.2012-10-06 from 001__elm20150303_090526__dat00.bin

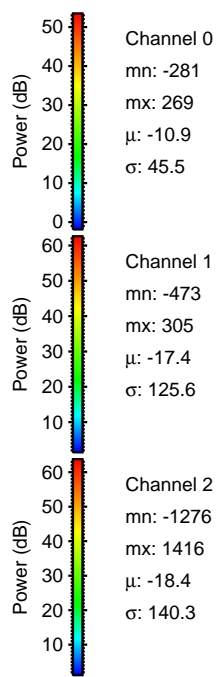
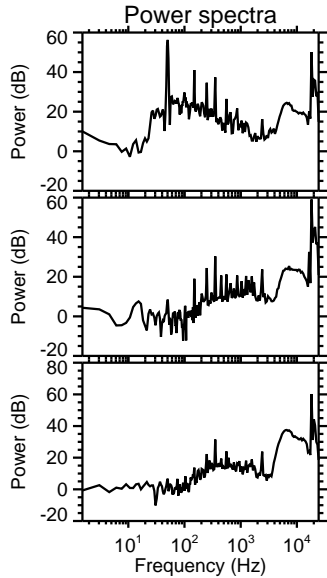
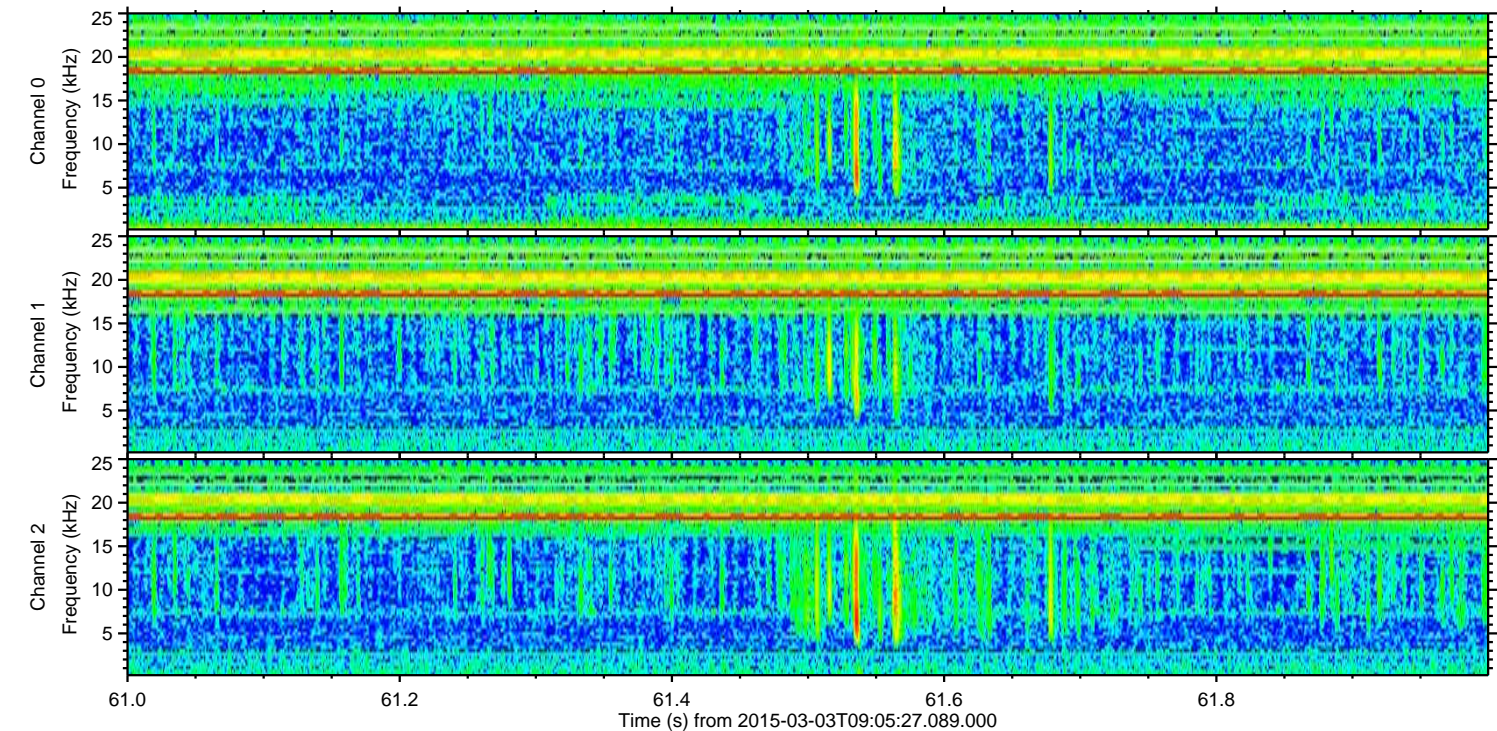
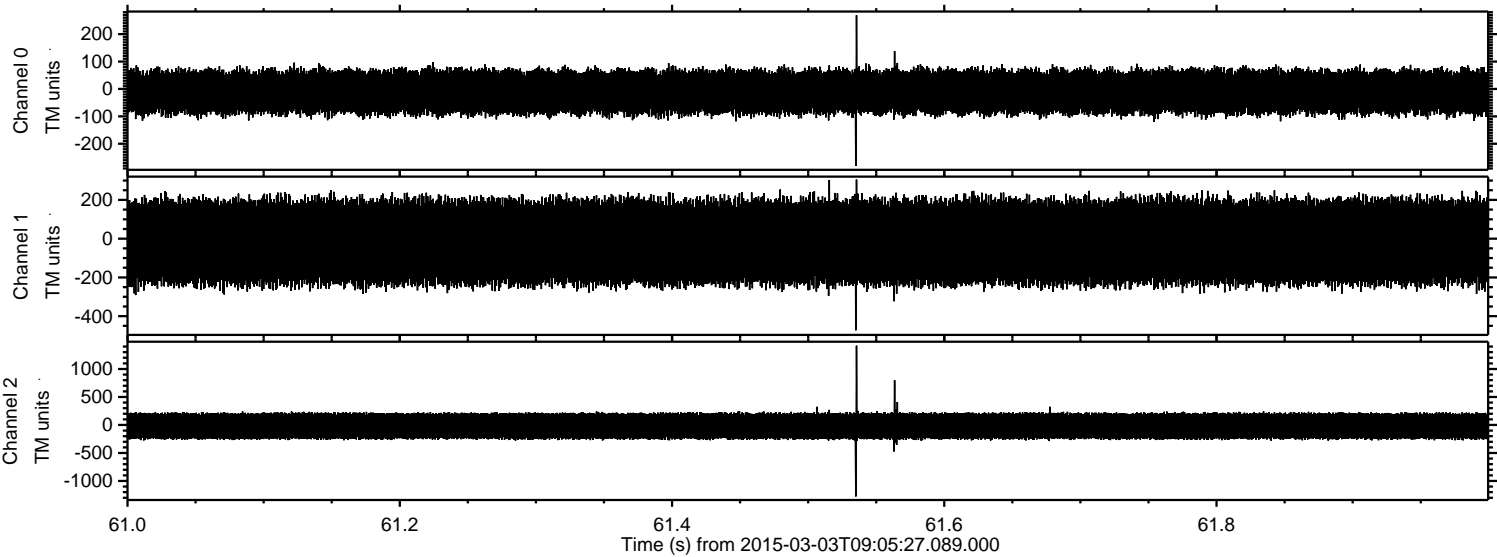


ELMAVAN 3D WAVEFORMS (Measured data sampled at 50 kHz) 49779 packets of 144 samples from 2015-03-03T09:05:27.089.000. Part 132/144

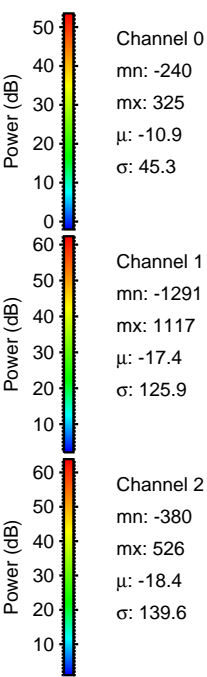
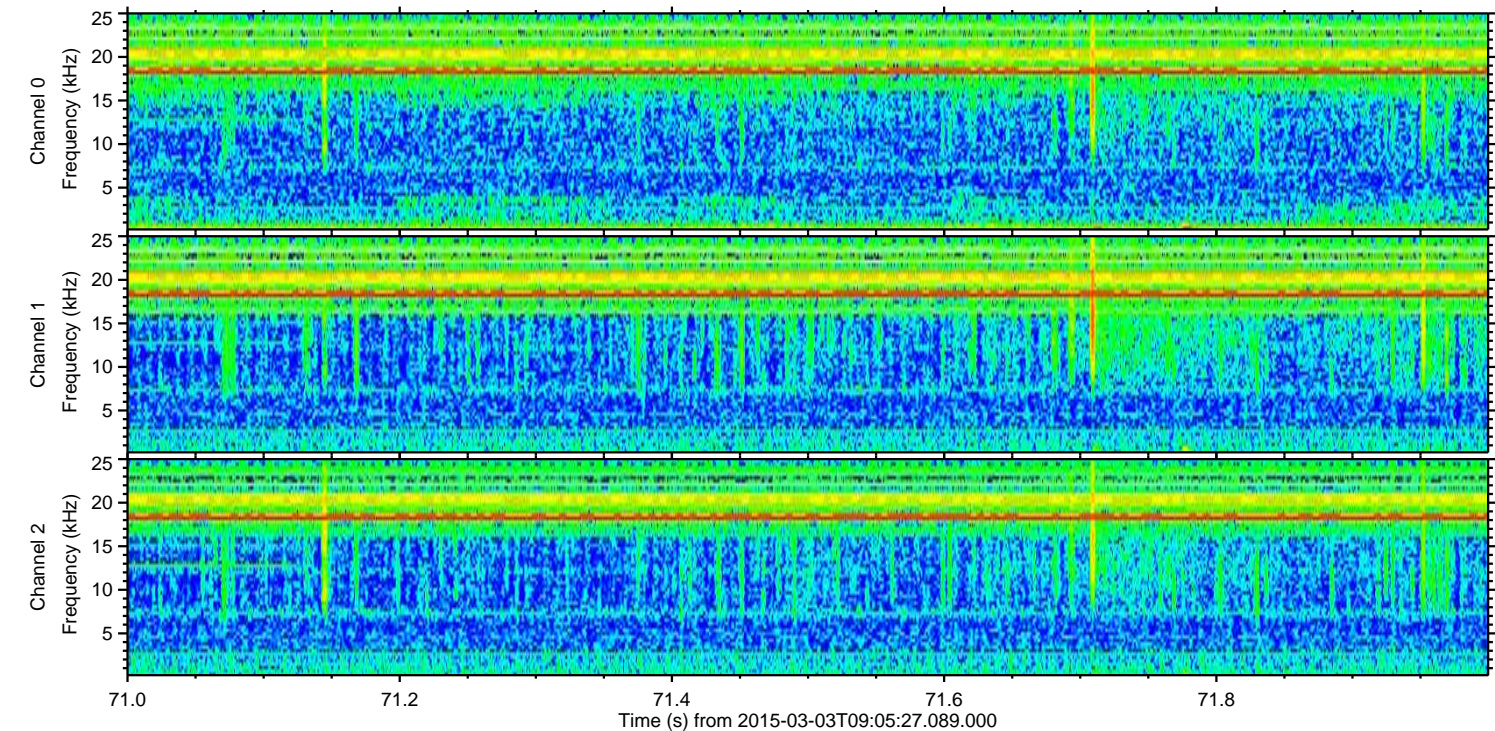
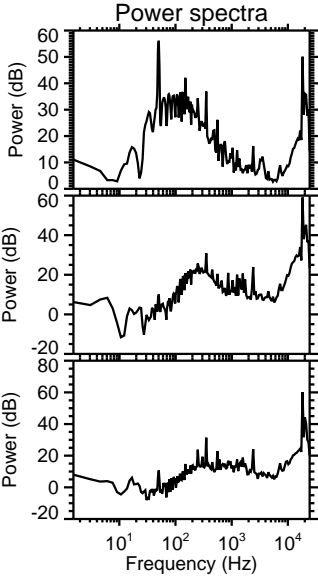
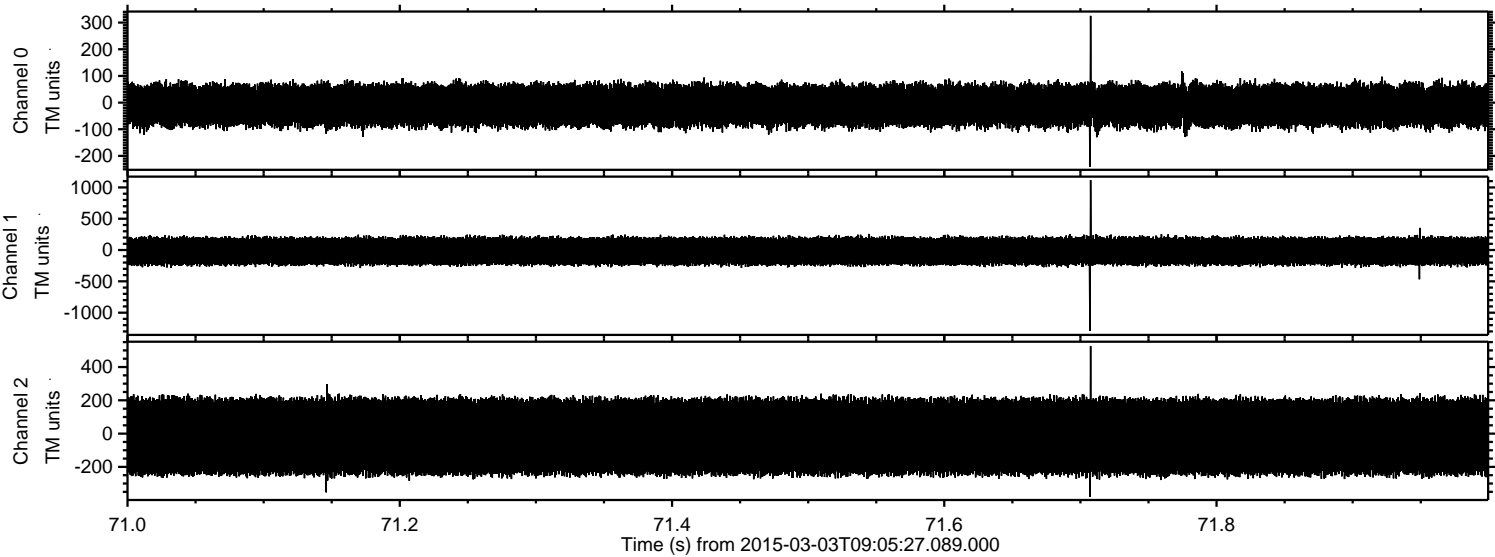
Processed Sat Mar 7 05:37:39 2015 by ELM ver.2012-10-06 from 001__elm20150303_090526__dat00.bin



Processed Sat Mar 7 05:37:40 2015 by ELM ver.2012-10-06 from 001__elm20150303_090526__dat00.bin

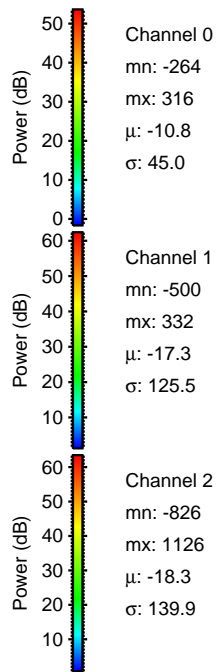
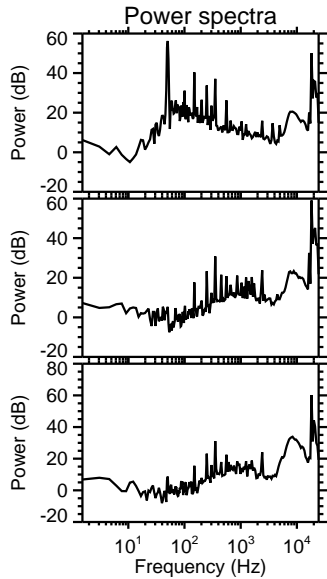
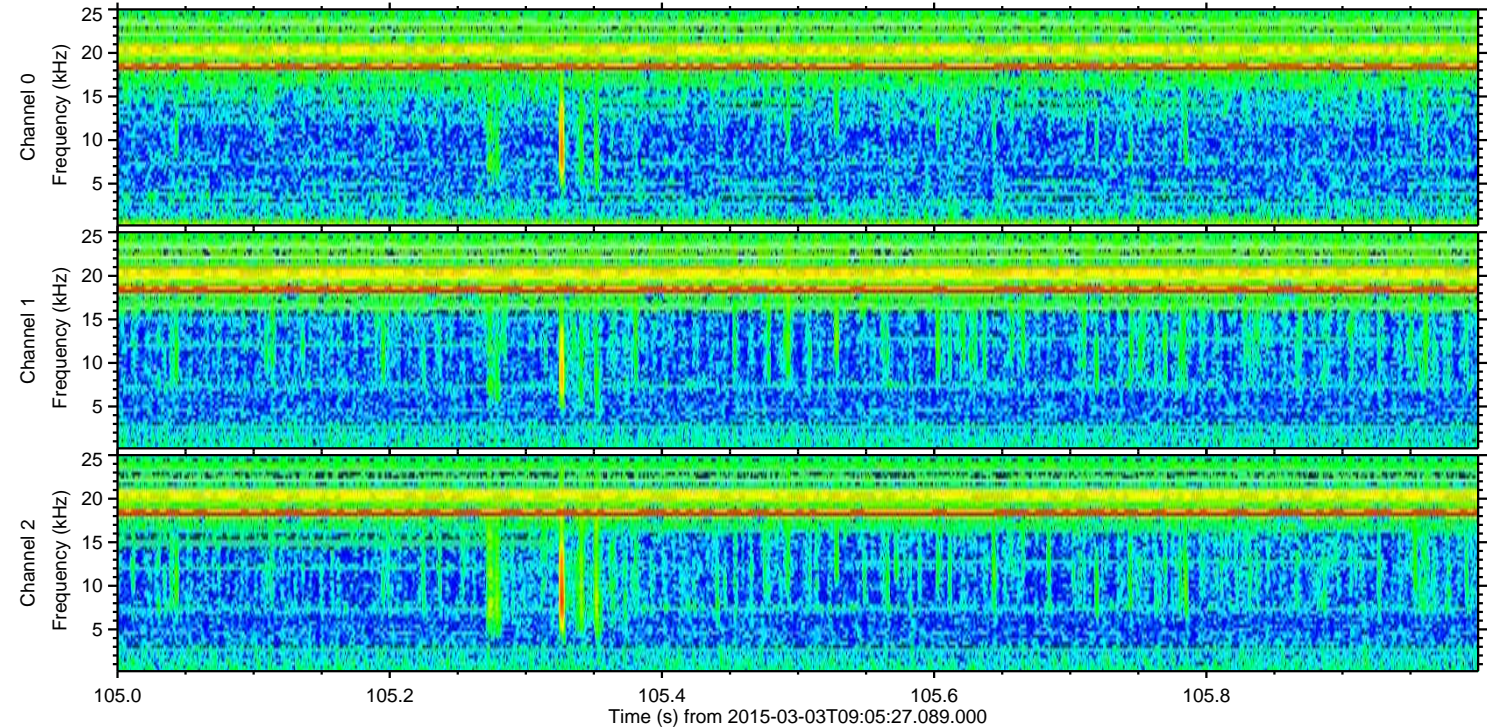
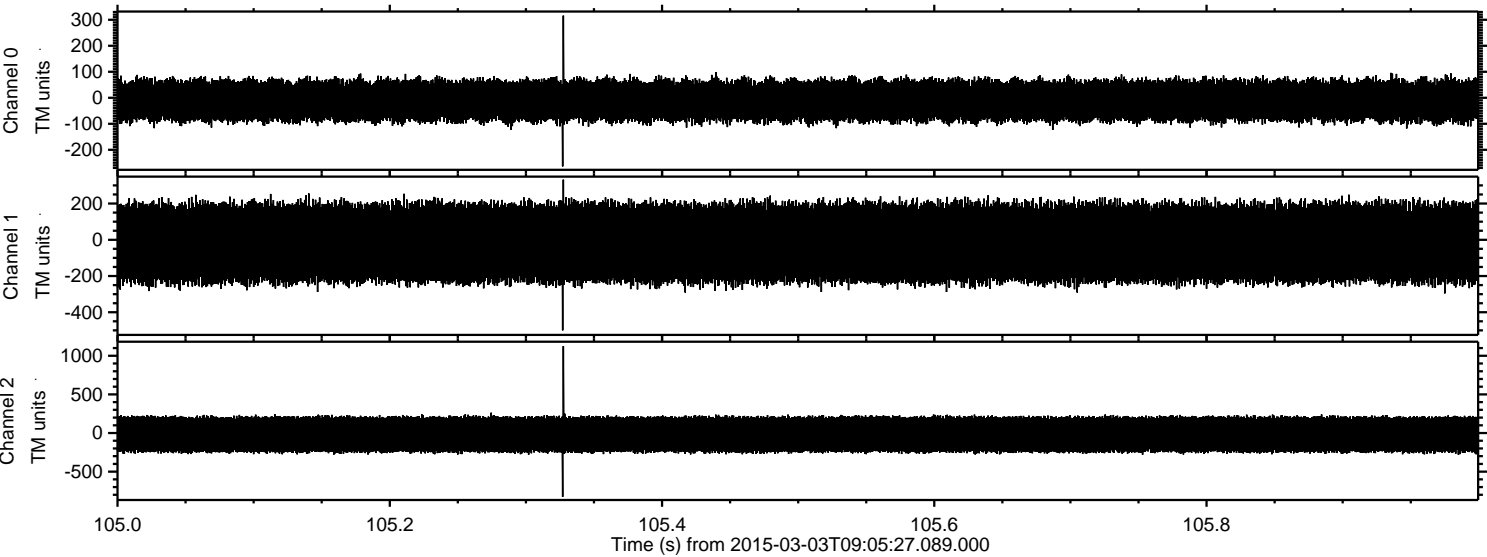


Processed Sat Mar 7 05:37:41 2015 by ELM ver.2012-10-06 from 001__elm20150303_090526__dat00.bin



ELMAVAN 3D WAVEFORMS (Measured data sampled at 50 kHz) 49779 packets of 144 samples from 2015-03-03T09:05:27.089.000. Part 106/144

Processed Sat Mar 7 05:37:42 2015 by ELM ver.2012-10-06 from 001__elm20150303_090526__dat00.bin



Channel 0
mn: -264
mx: 316
 μ : -10.8
 σ : 45.0

Channel 1
mn: -500
mx: 332
 μ : -17.3
 σ : 125.5

Channel 2
mn: -826
mx: 1126
 μ : -18.3
 σ : 139.9

Processed Sat Mar 7 05:37:43 2015 by ELM ver.2012-10-06 from 001__elm20150303_090526__dat00.bin

