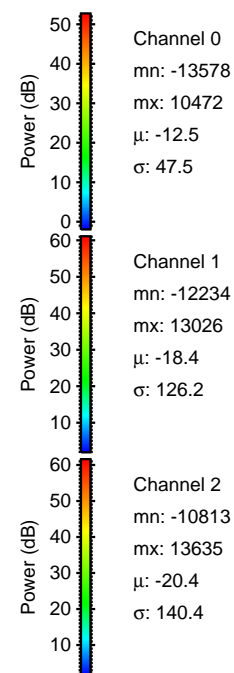
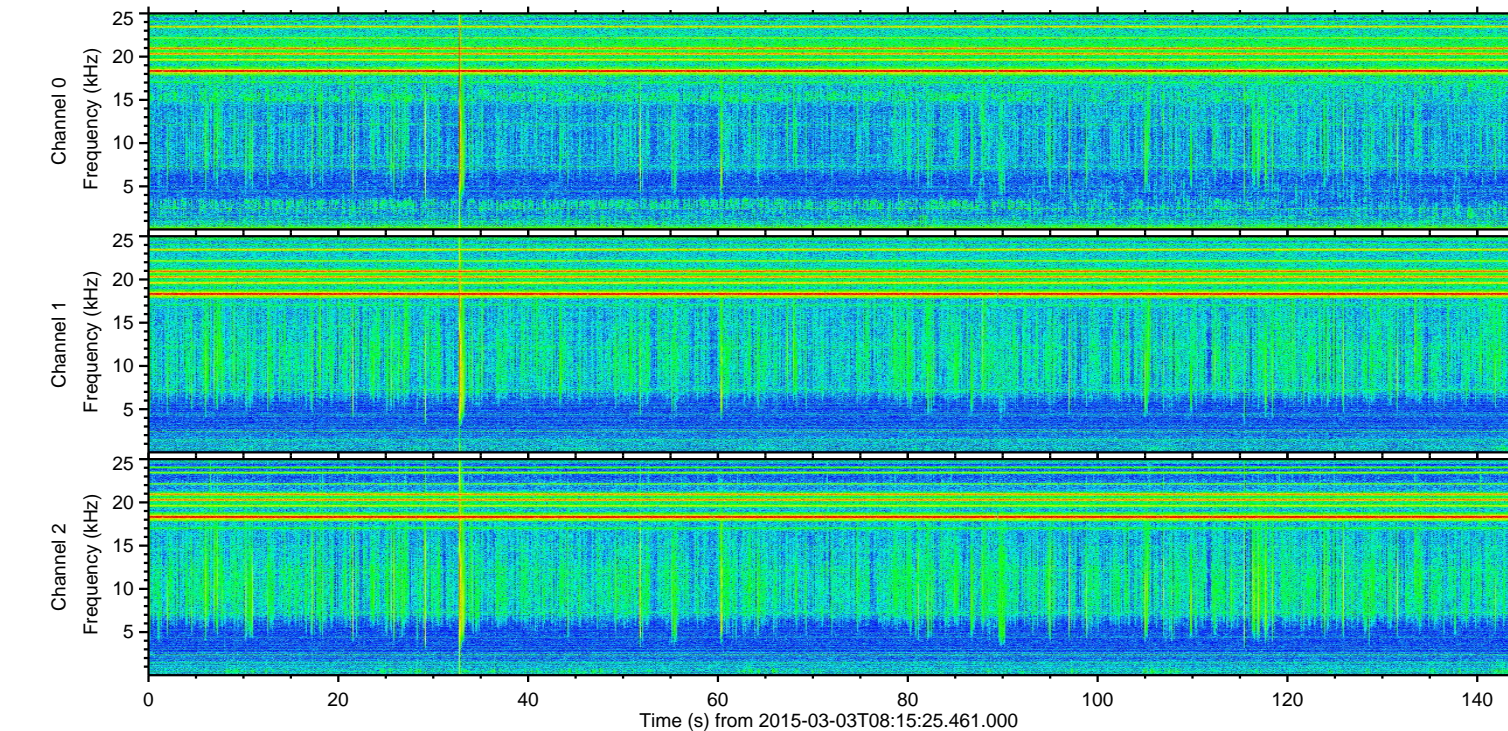
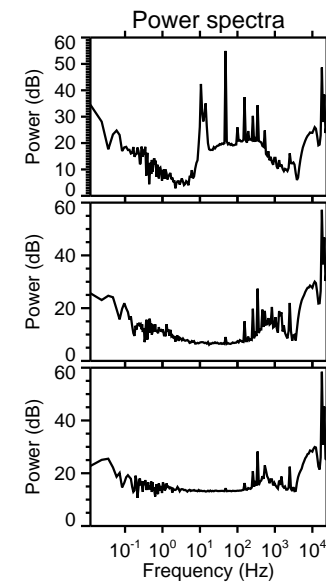
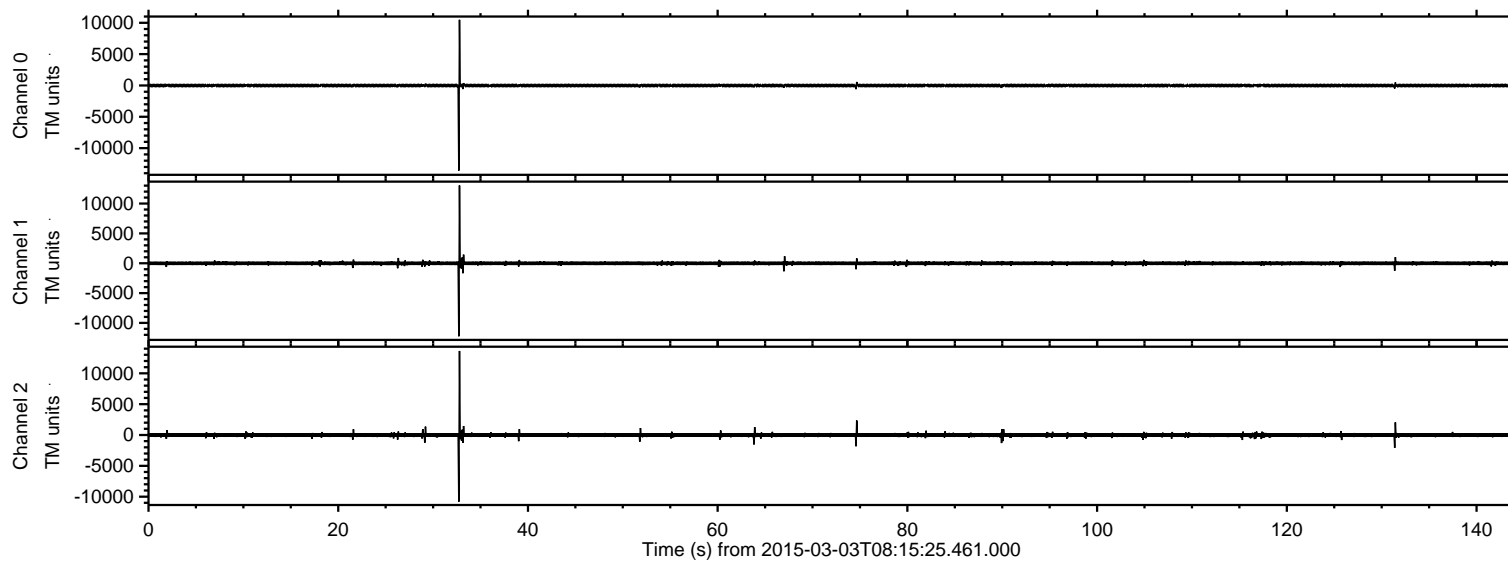


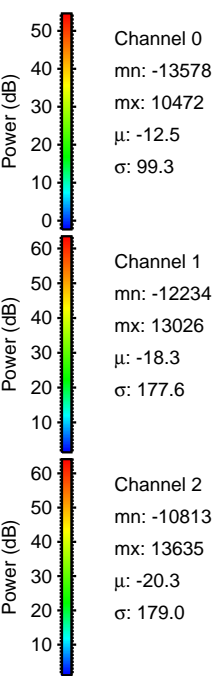
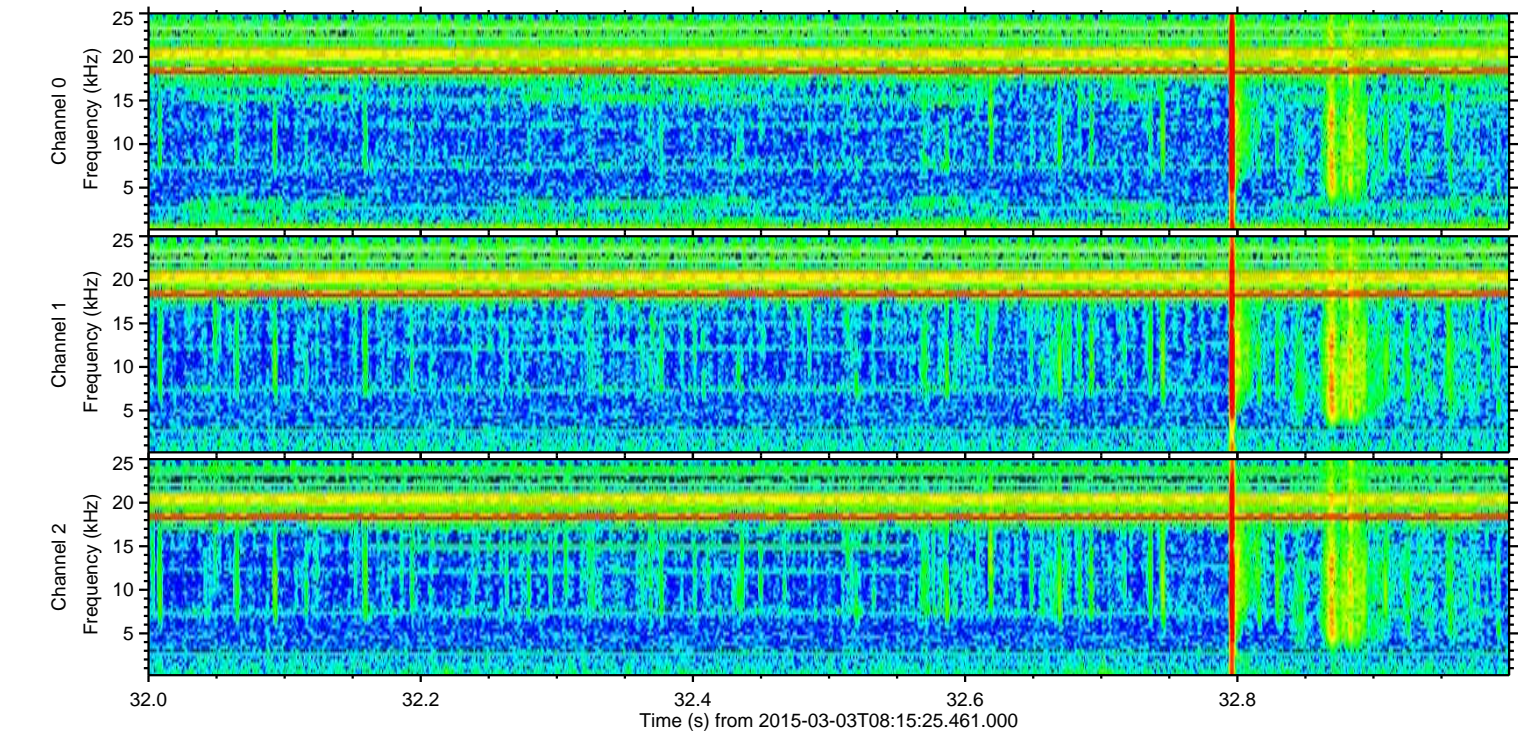
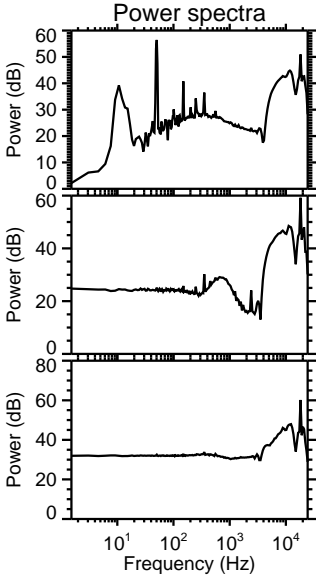
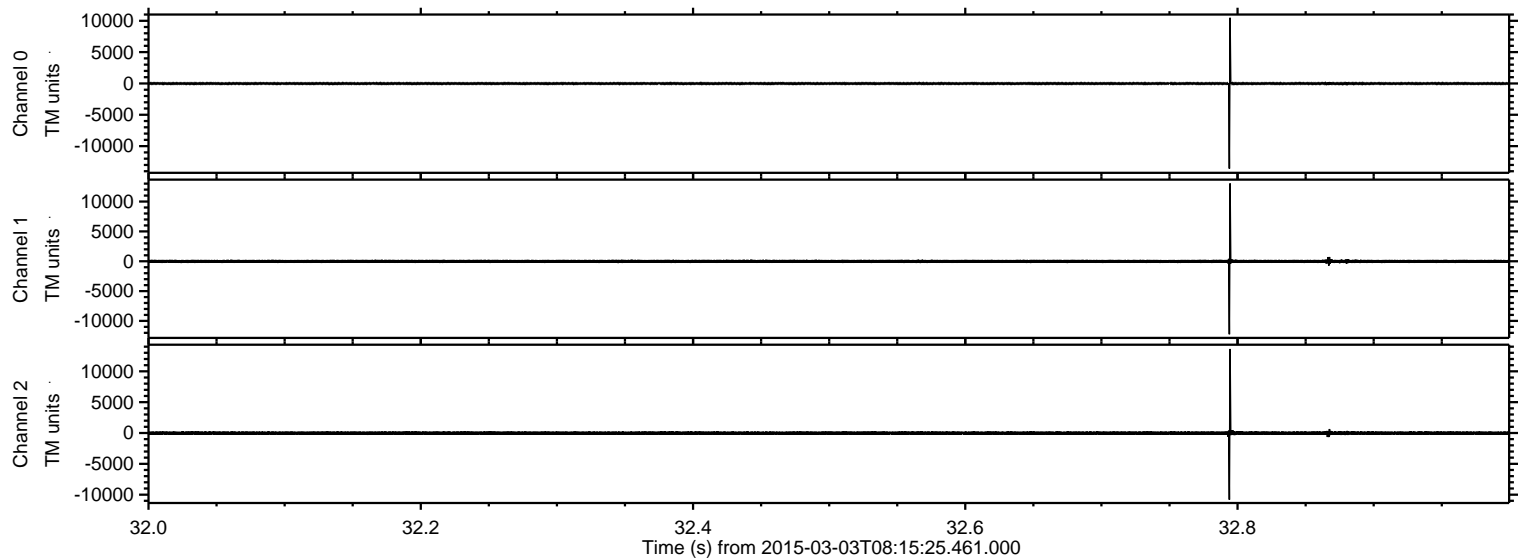
ELMAVAN 3D WAVEFORMS (Measured data sampled at 50 kHz) 49805 packets of 144 samples from 2015-03-03T08:15:25.461.000.

Processed Sat Mar 7 05:17:59 2015 by ELM ver.2012-10-06 from 001__elm20150303_081524__dat00.bin

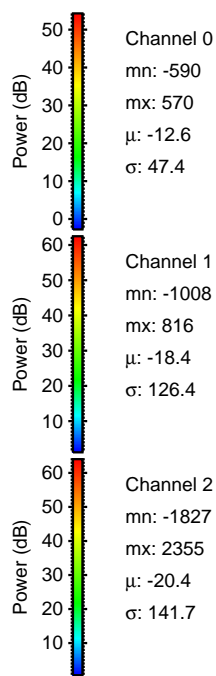
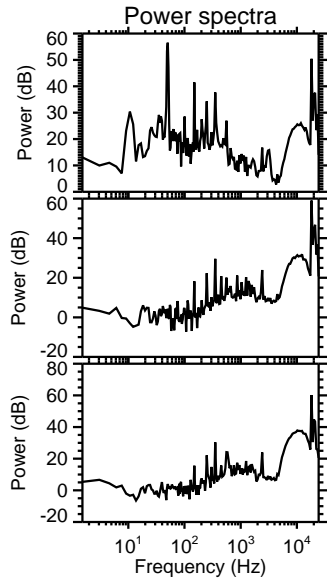
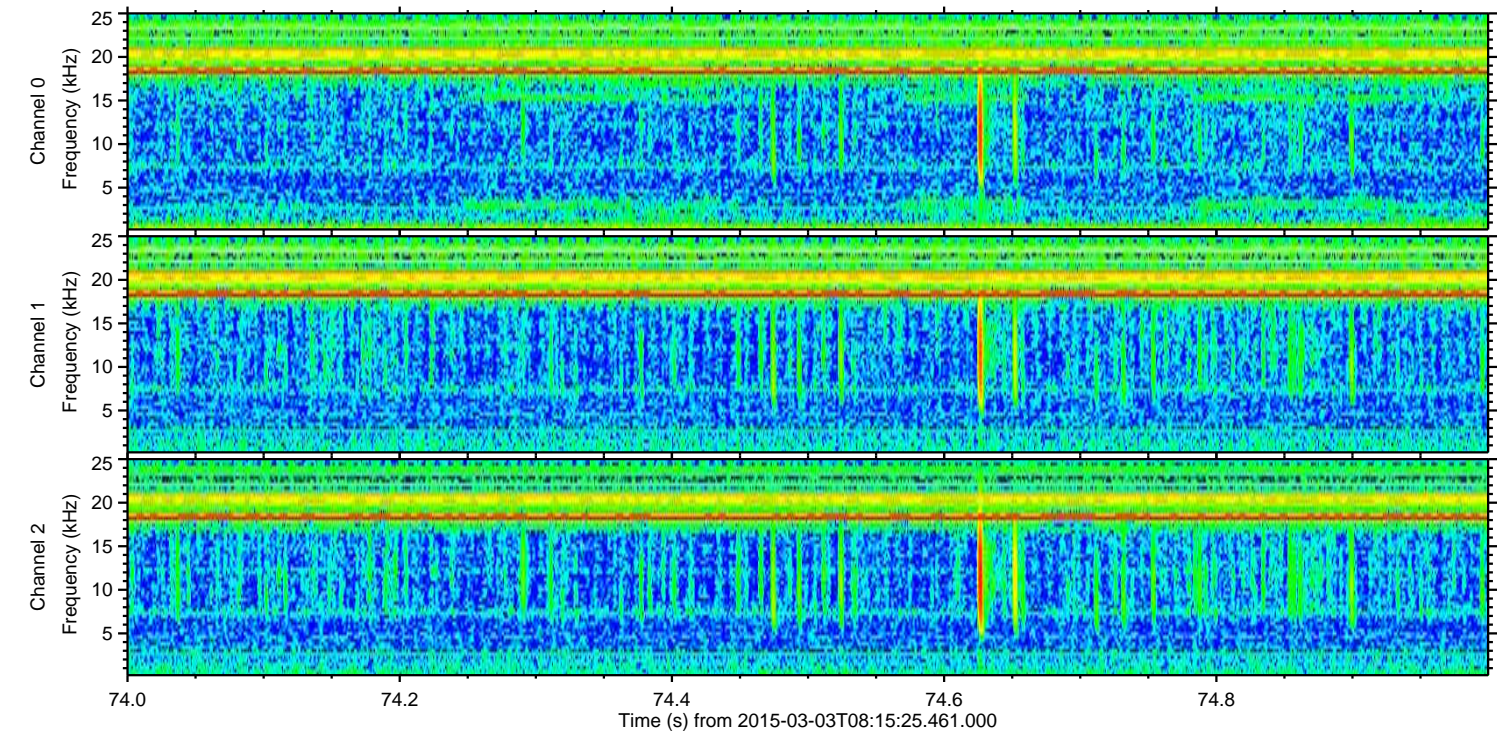
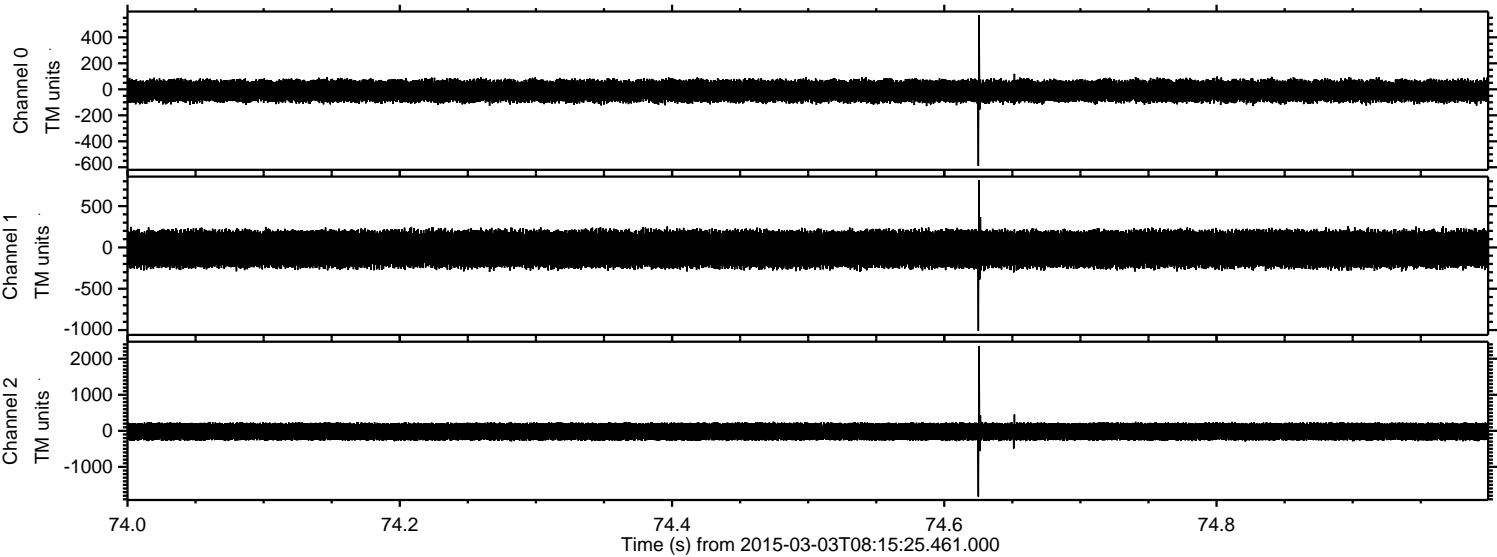


ELMAVAN 3D WAVEFORMS (Measured data sampled at 50 kHz) 49805 packets of 144 samples from 2015-03-03T08:15:25.461.000. Part 33/144

Processed Sat Mar 7 05:18:11 2015 by ELM ver.2012-10-06 from 001__elm20150303_081524__dat00.bin



Processed Sat Mar 7 05:18:12 2015 by ELM ver.2012-10-06 from 001__elm20150303_081524__dat00.bin

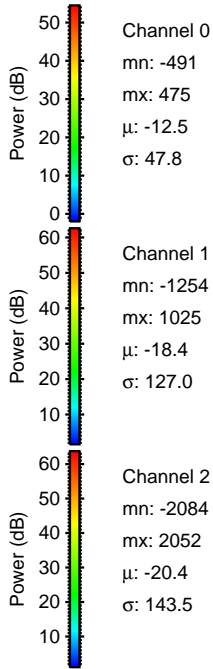
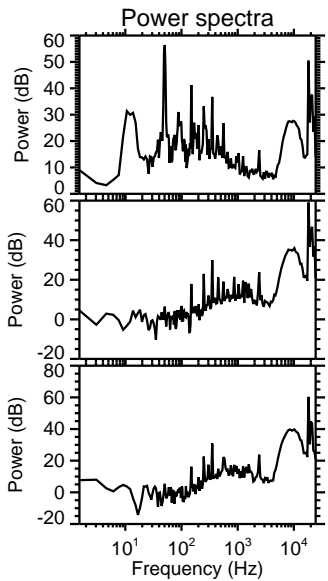
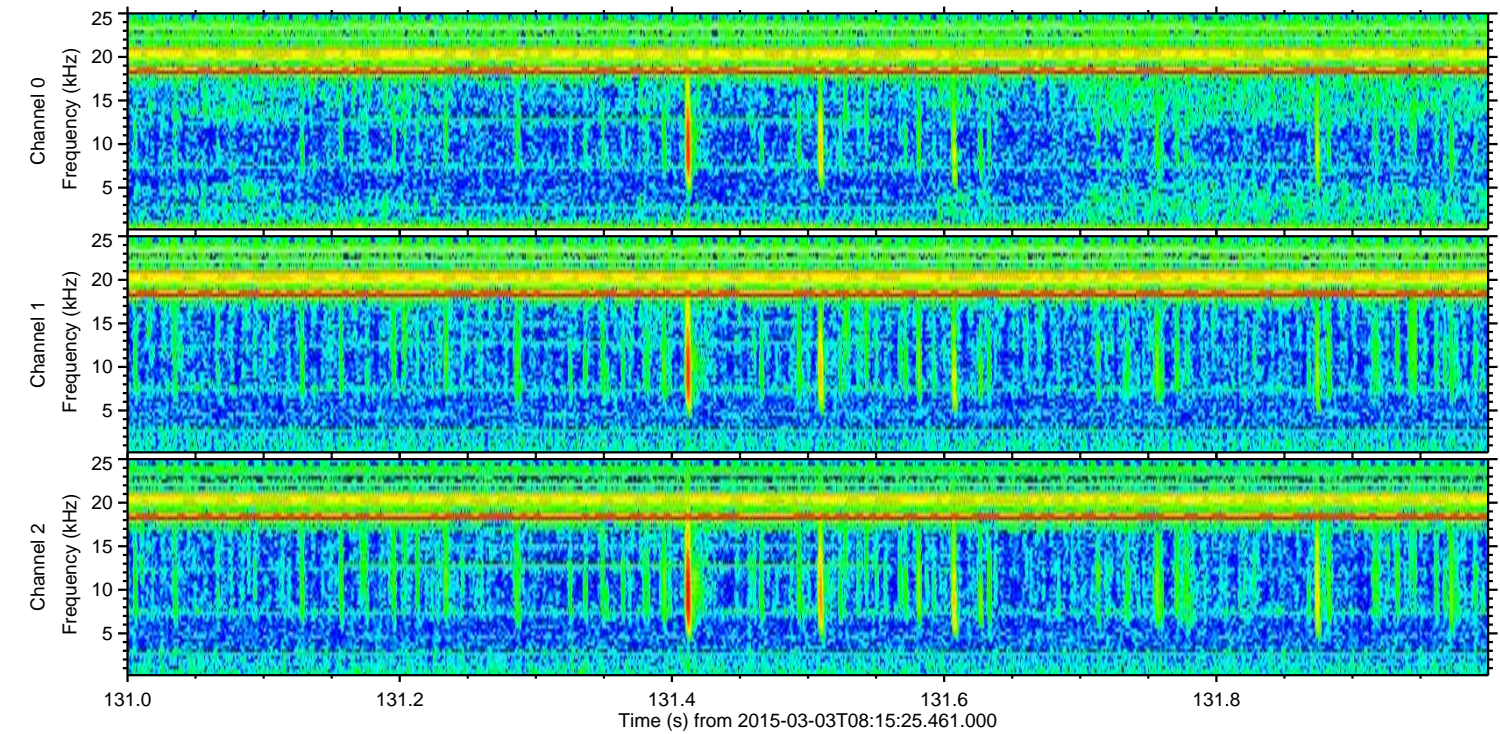
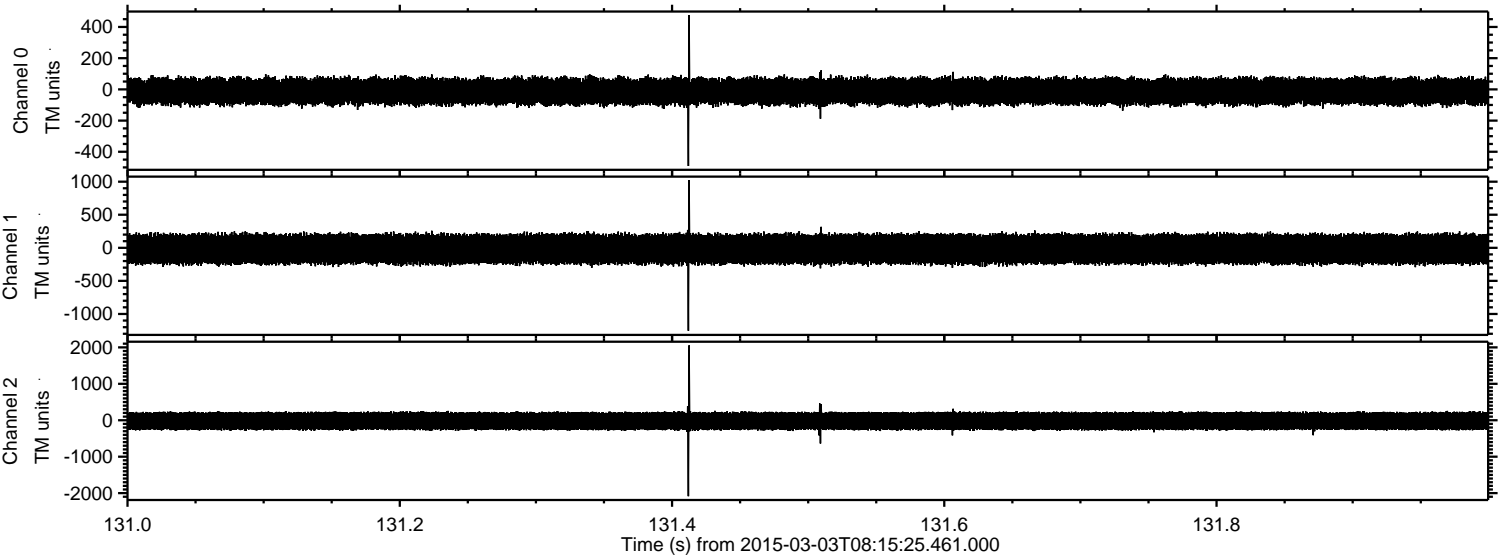


Channel 0
mn: -590
mx: 570
 μ : -12.6
 σ : 47.4

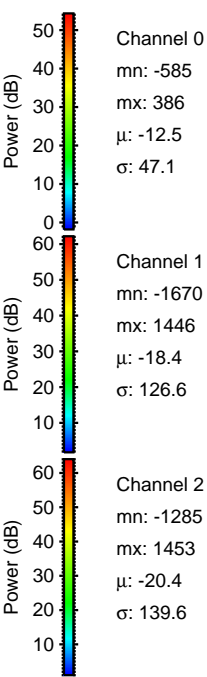
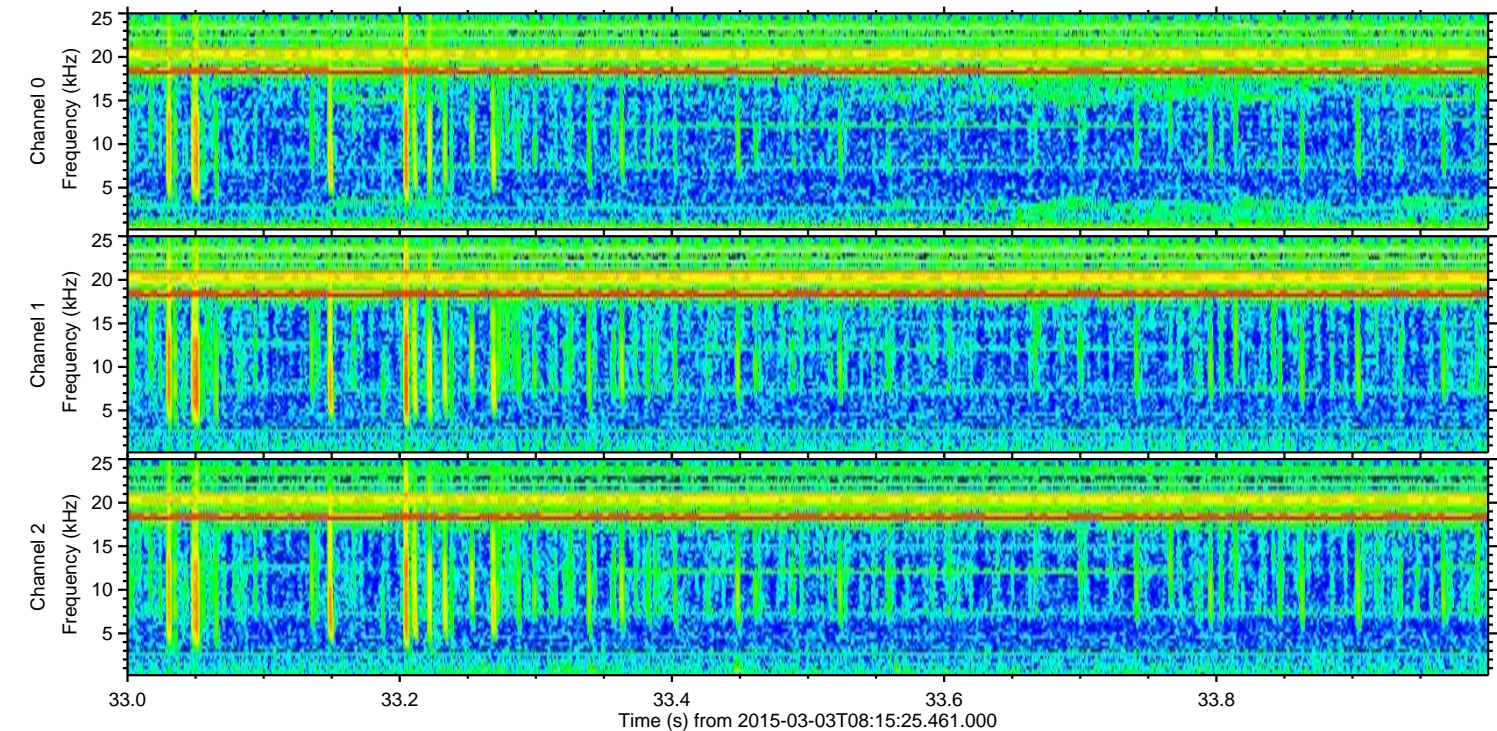
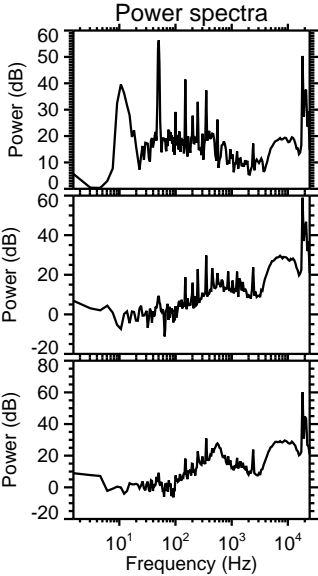
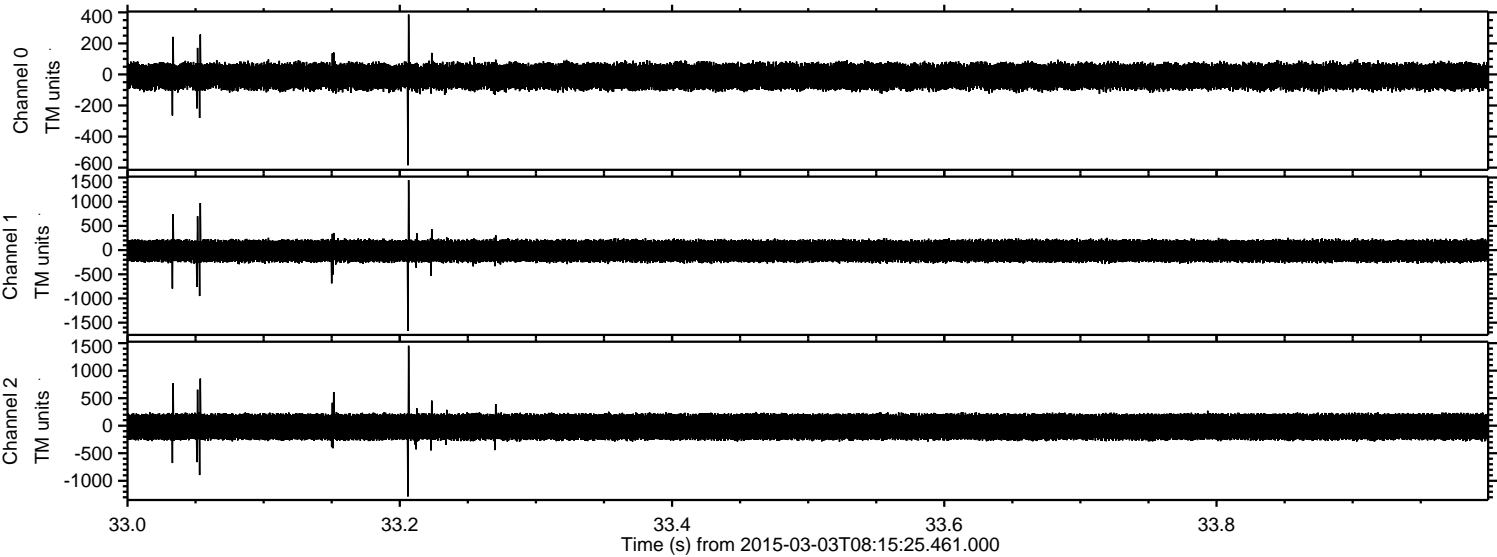
Channel 1
mn: -1008
mx: 816
 μ : -18.4
 σ : 126.4

Channel 2
mn: -1827
mx: 2355
 μ : -20.4
 σ : 141.7

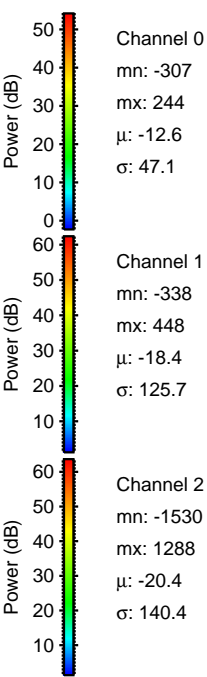
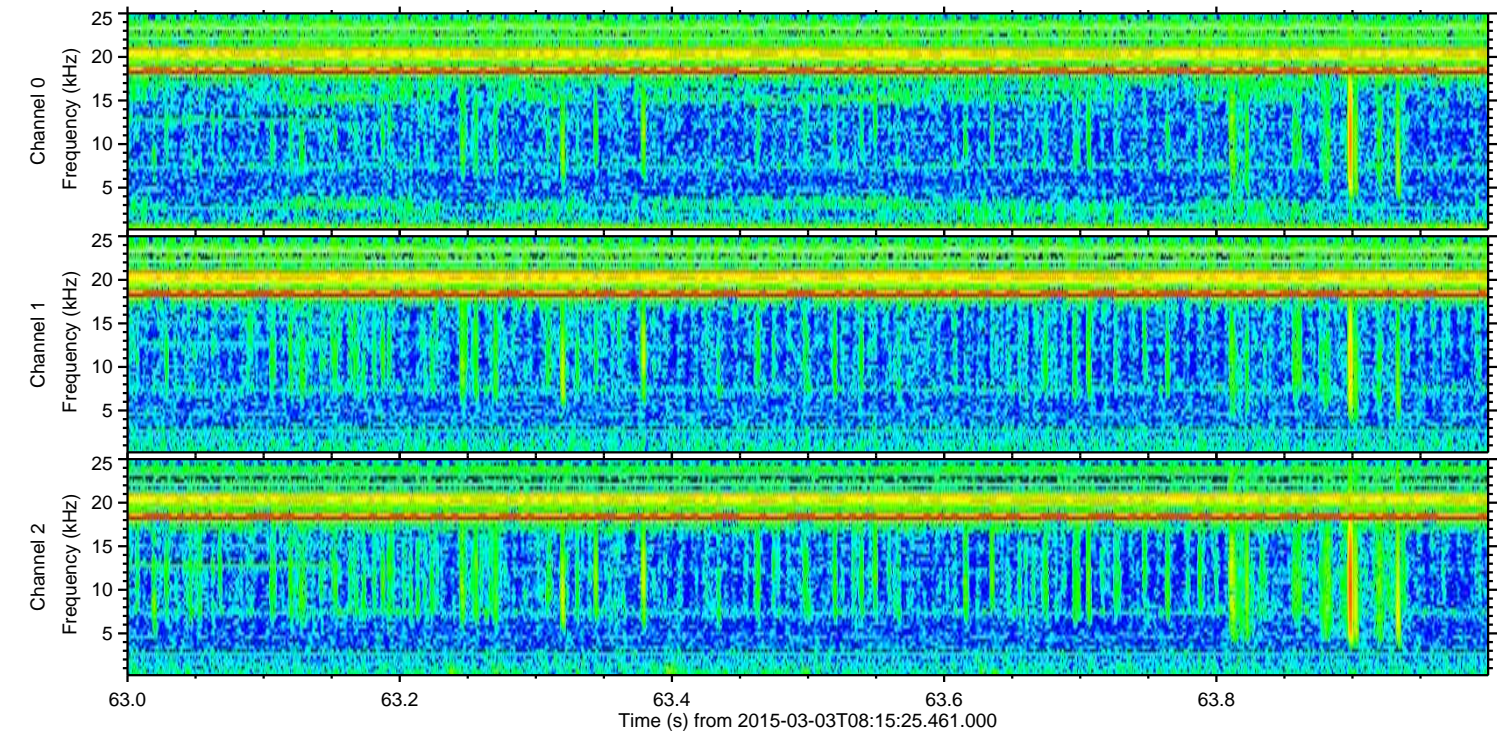
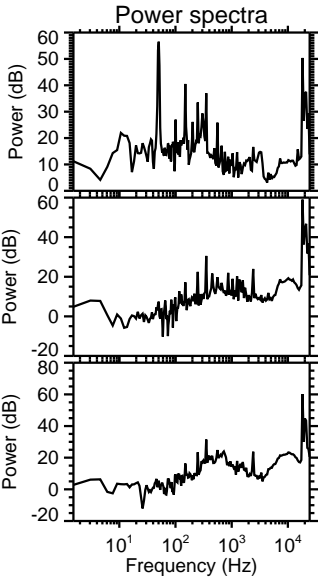
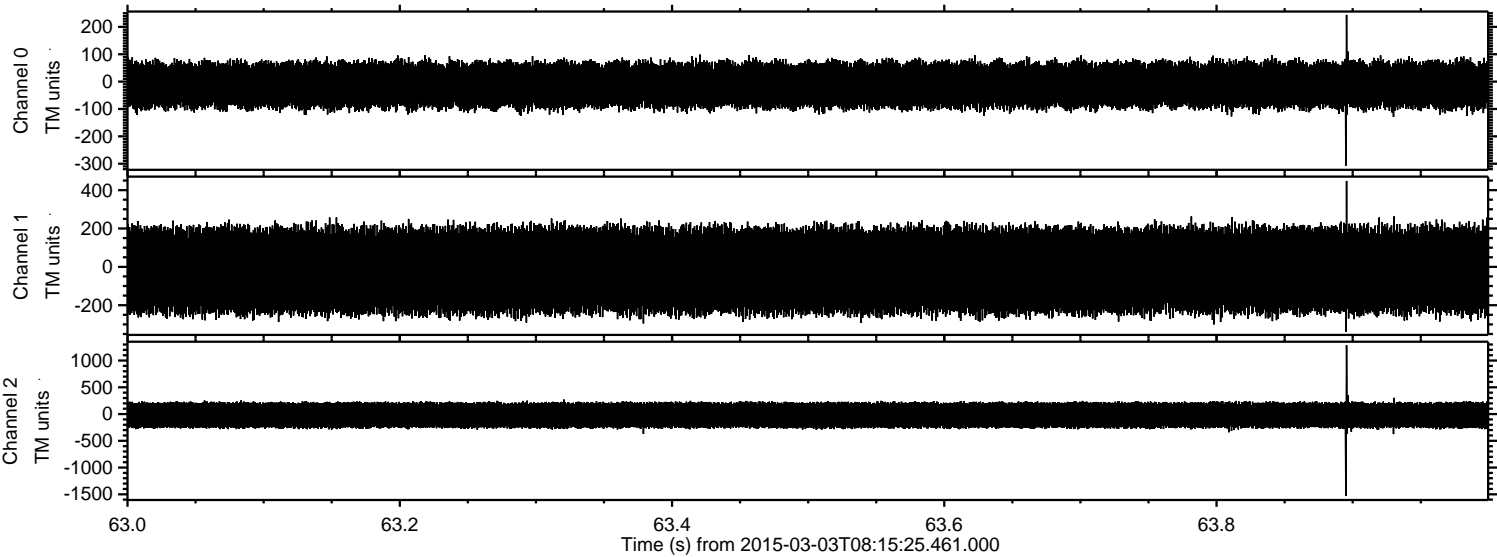
Processed Sat Mar 7 05:18:13 2015 by ELM ver.2012-10-06 from 001__elm20150303_081524__dat00.bin



Processed Sat Mar 7 05:18:14 2015 by ELM ver.2012-10-06 from 001__elm20150303_081524__dat00.bin

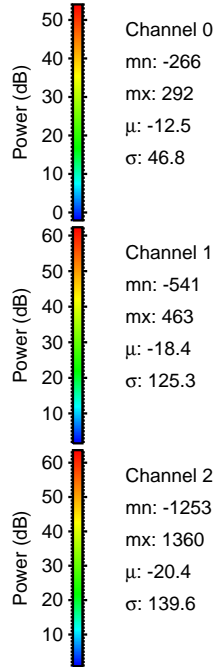
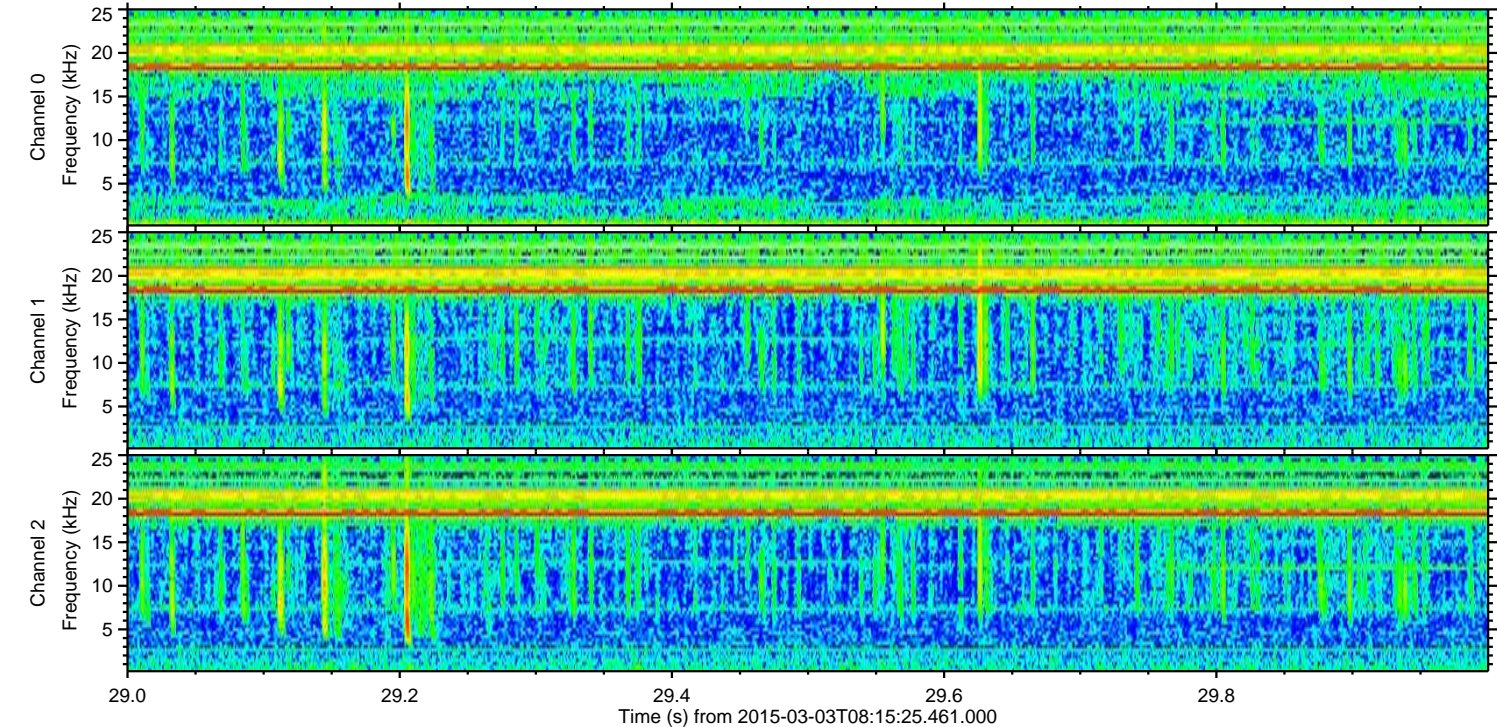
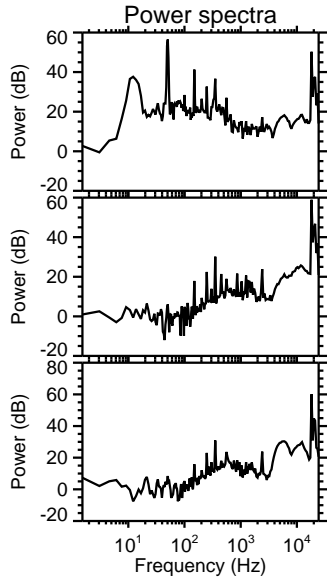
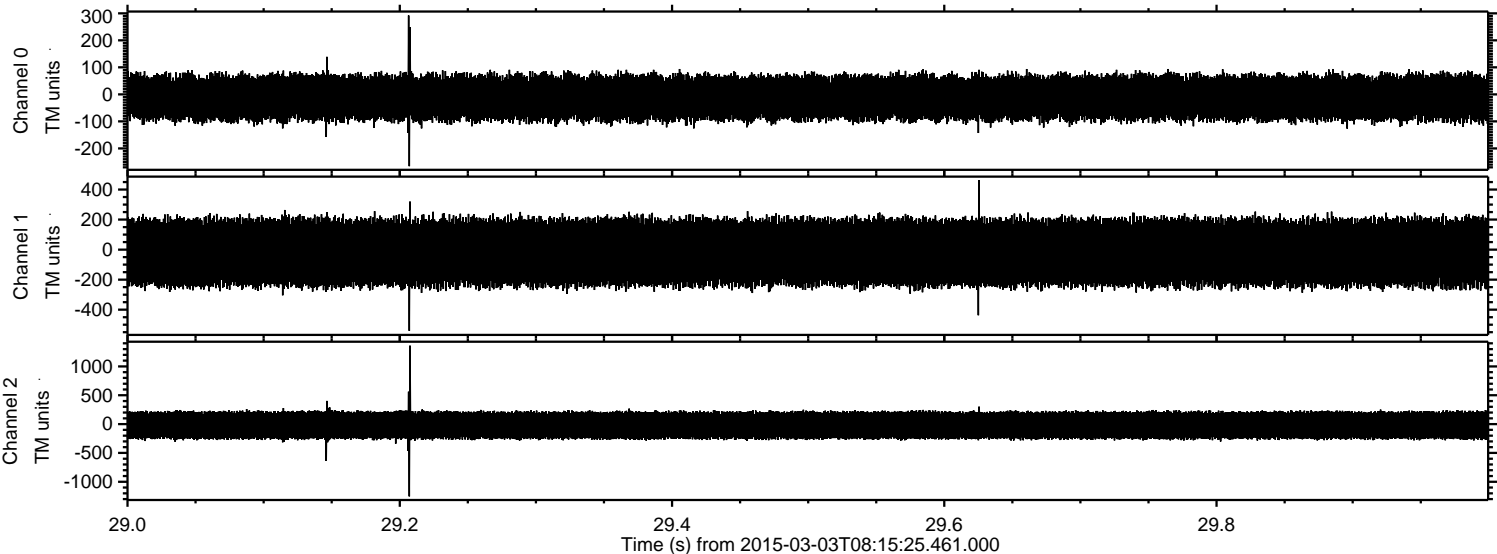


Processed Sat Mar 7 05:18:14 2015 by ELM ver.2012-10-06 from 001__elm20150303_081524__dat00.bin

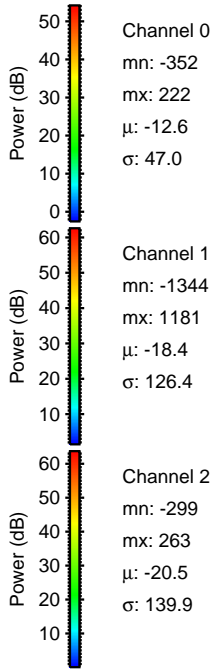
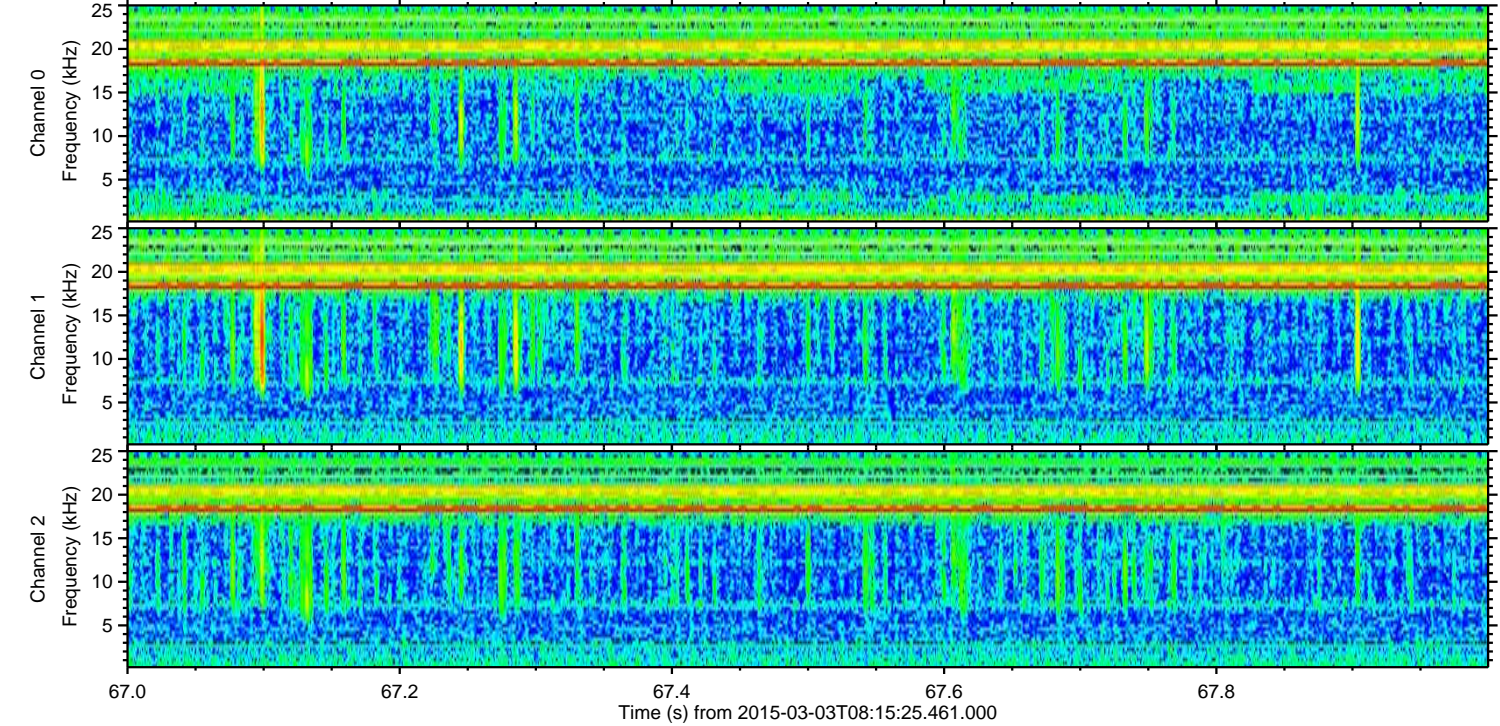
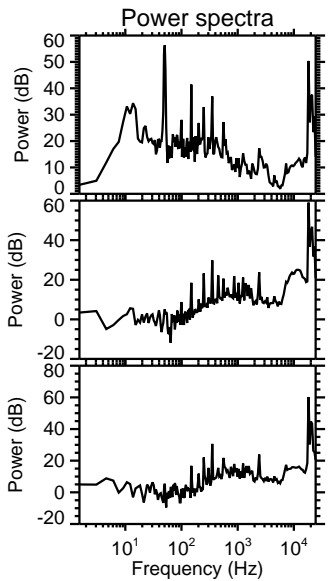
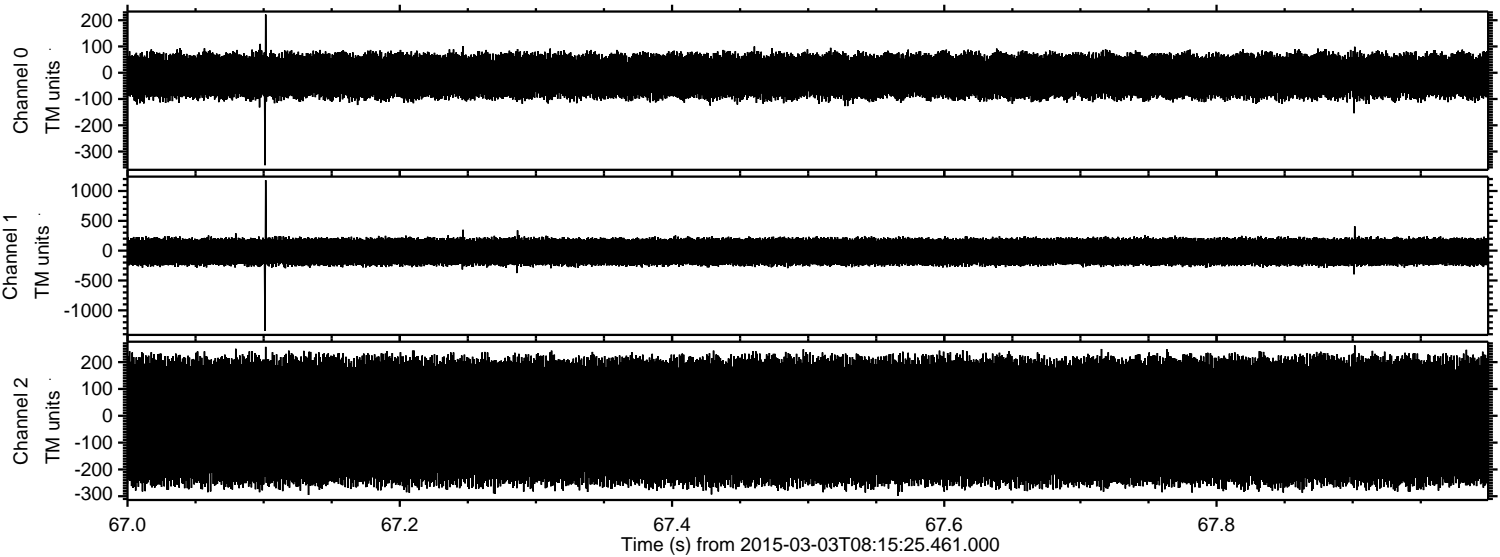


ELMAVAN 3D WAVEFORMS (Measured data sampled at 50 kHz) 49805 packets of 144 samples from 2015-03-03T08:15:25.461.000. Part 30/144

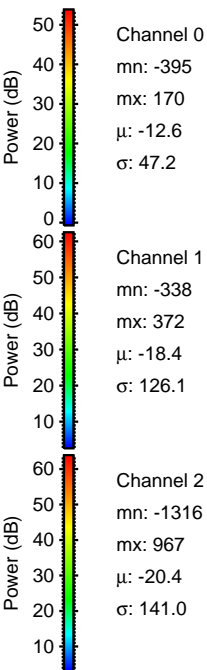
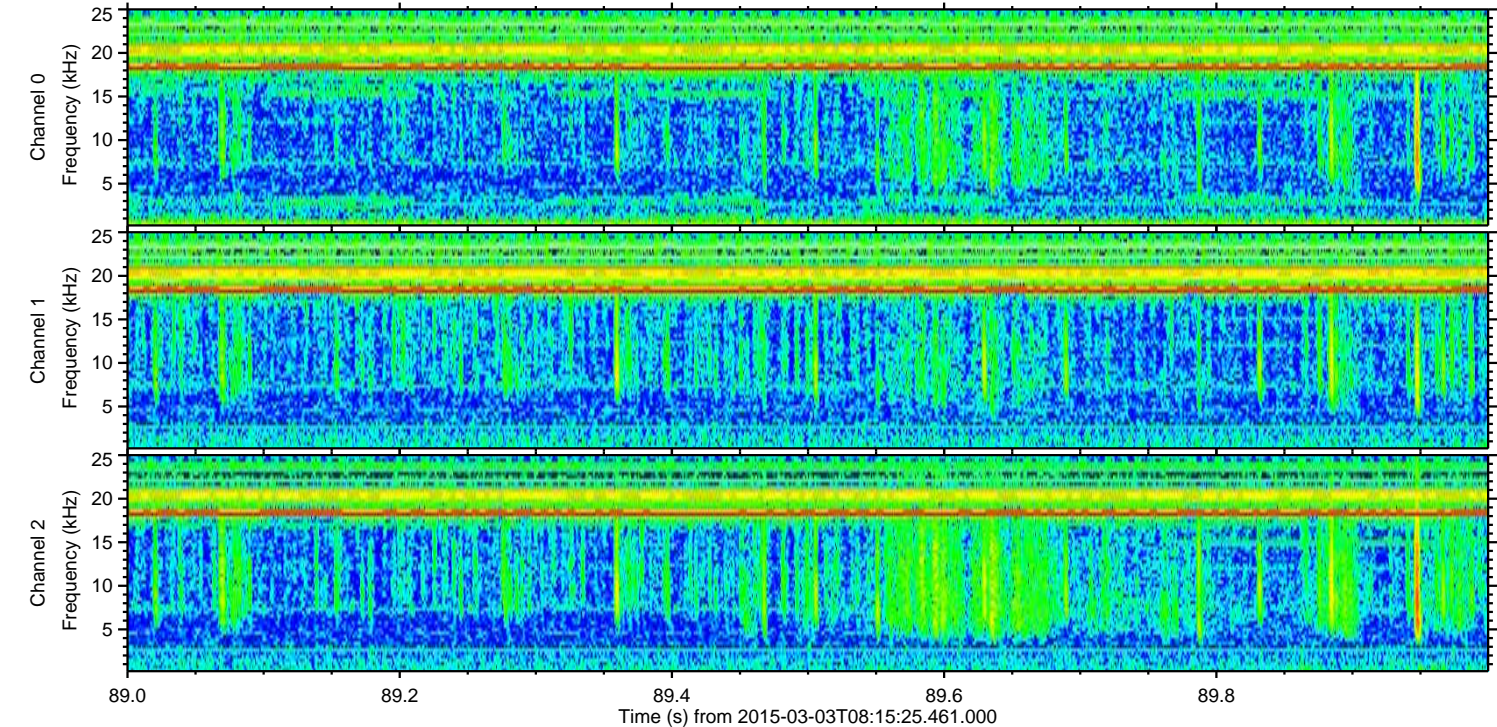
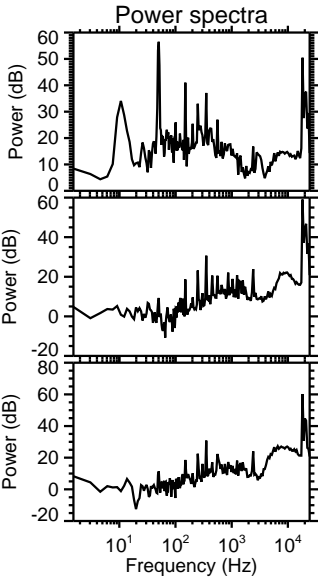
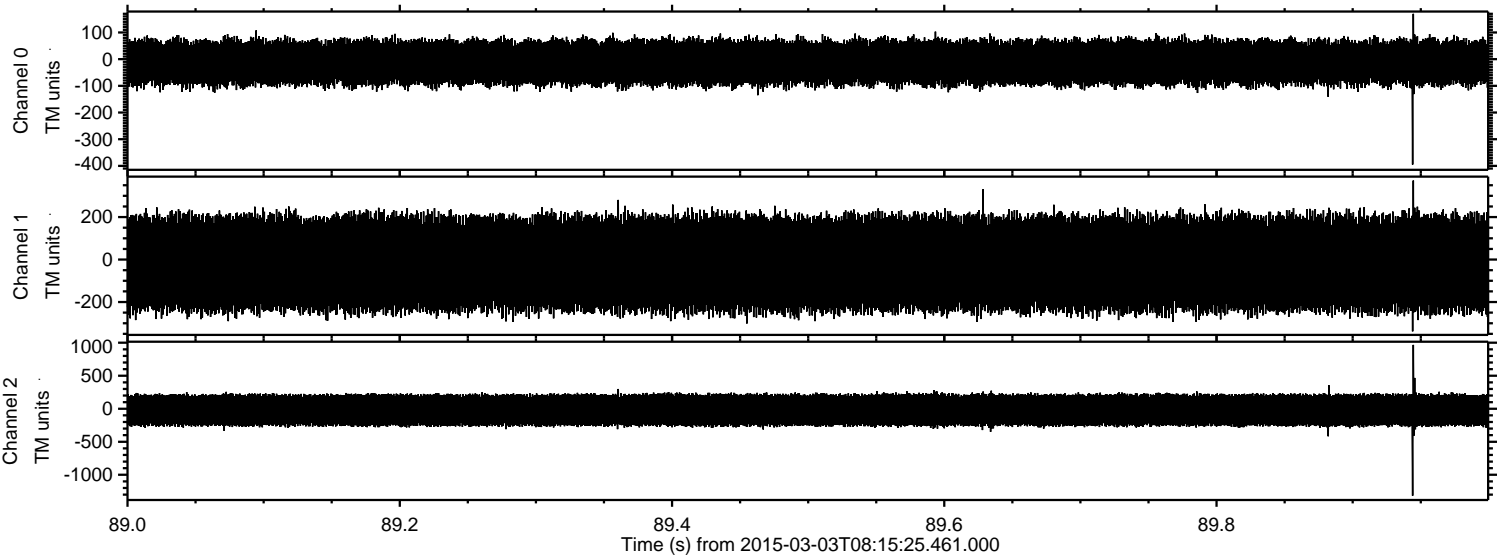
Processed Sat Mar 7 05:18:15 2015 by ELM ver.2012-10-06 from 001__elm20150303_081524__dat00.bin



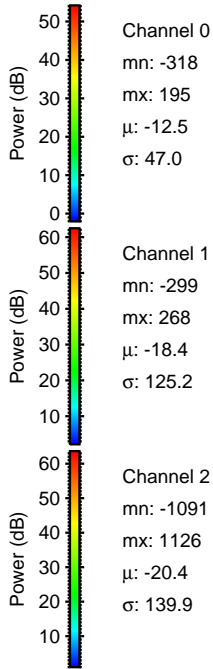
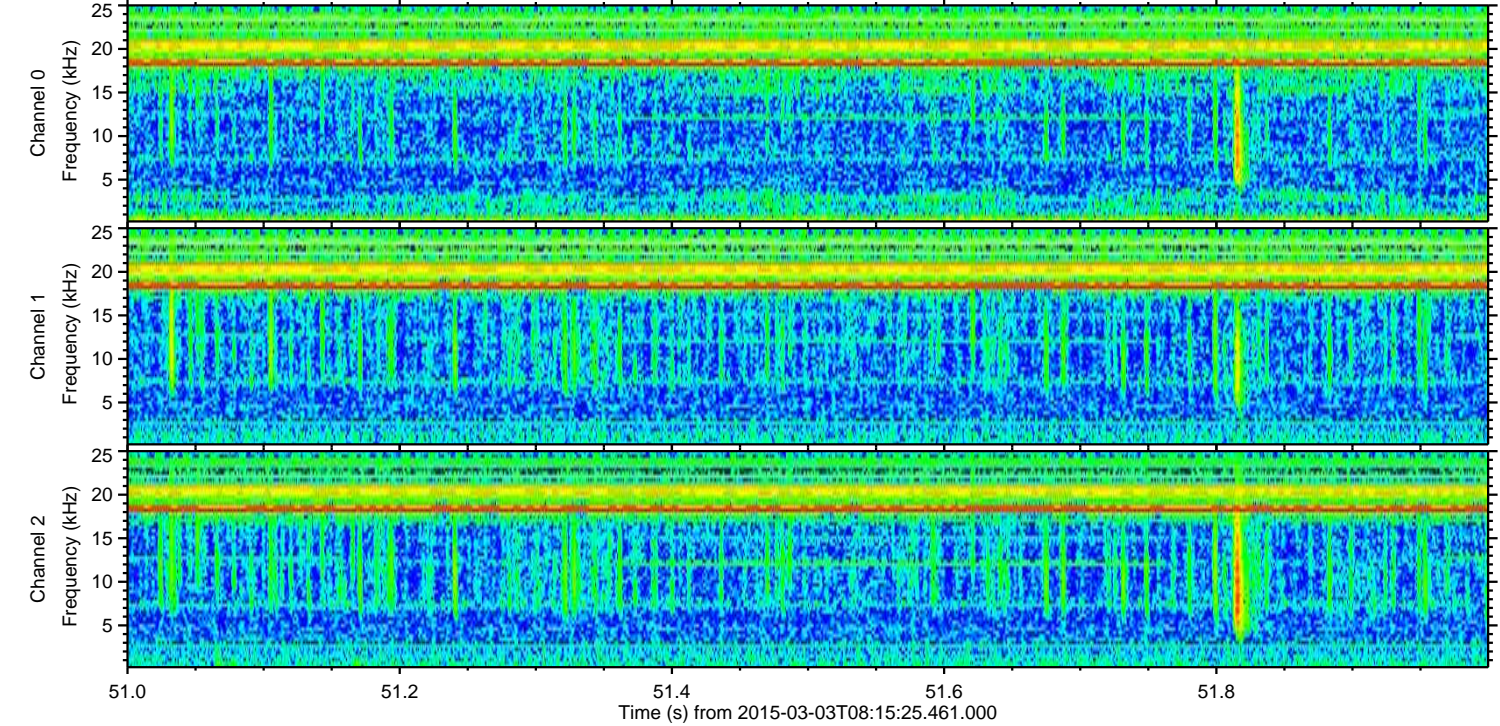
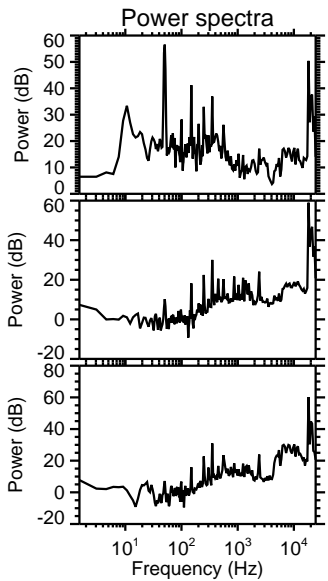
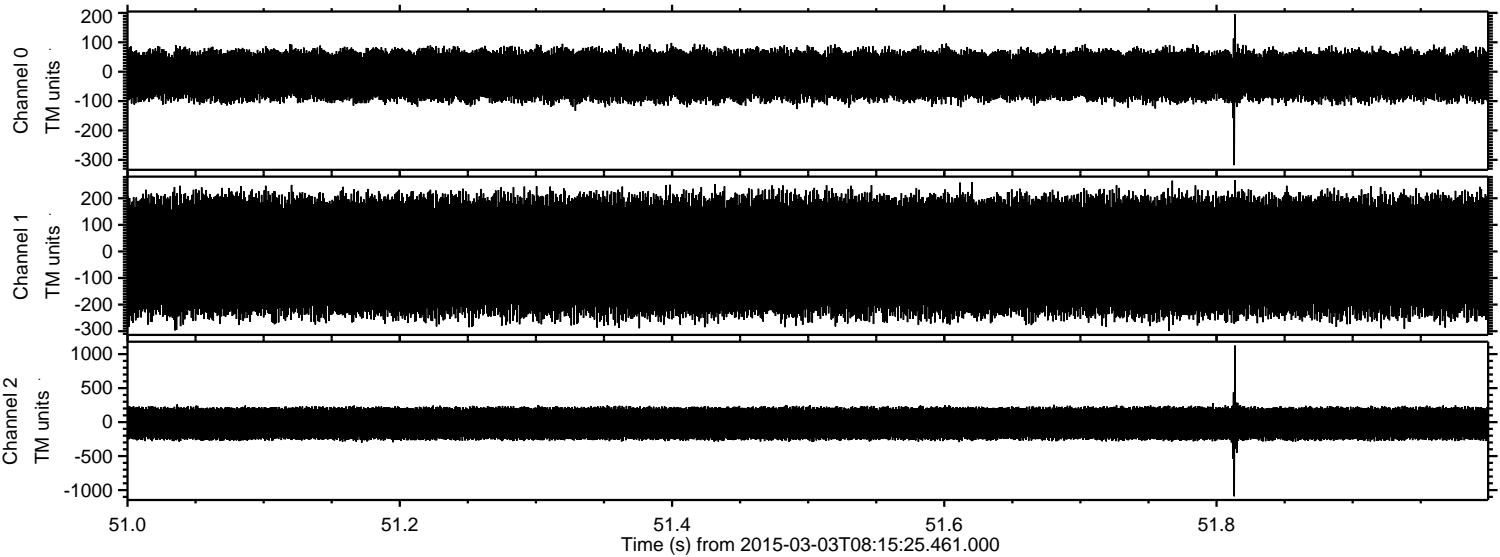
Processed Sat Mar 7 05:18:16 2015 by ELM ver.2012-10-06 from 001__elm20150303_081524__dat00.bin



Processed Sat Mar 7 05:18:17 2015 by ELM ver.2012-10-06 from 001__elm20150303_081524__dat00.bin



Processed Sat Mar 7 05:18:18 2015 by ELM ver.2012-10-06 from 001__elm20150303_081524__dat00.bin



Processed Sat Mar 7 05:18:19 2015 by ELM ver.2012-10-06 from 001__elm20150303_081524__dat00.bin

