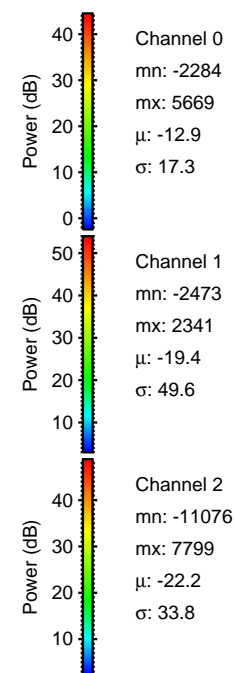
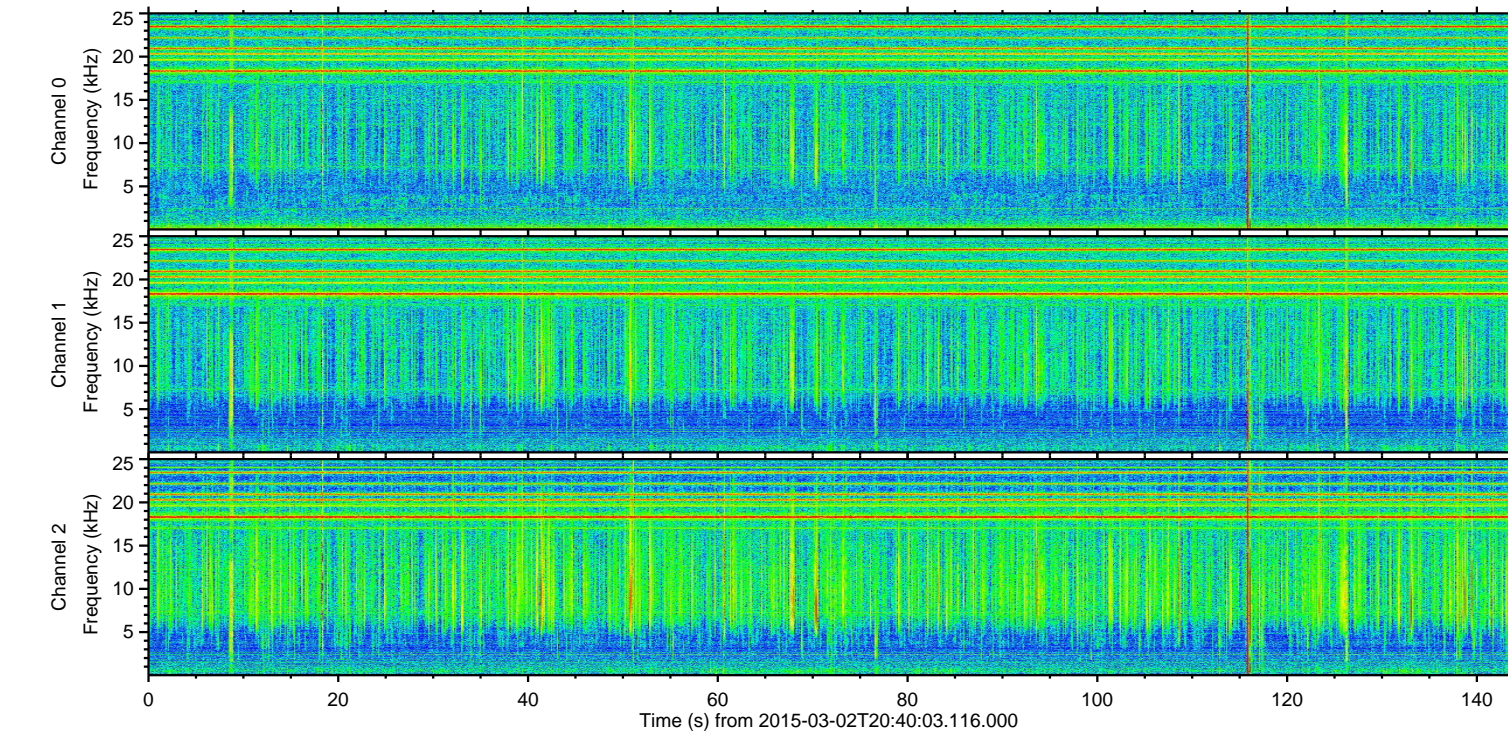
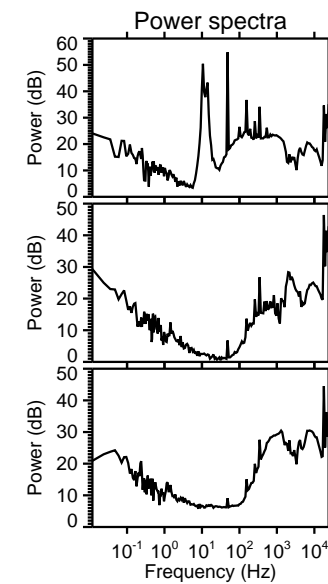
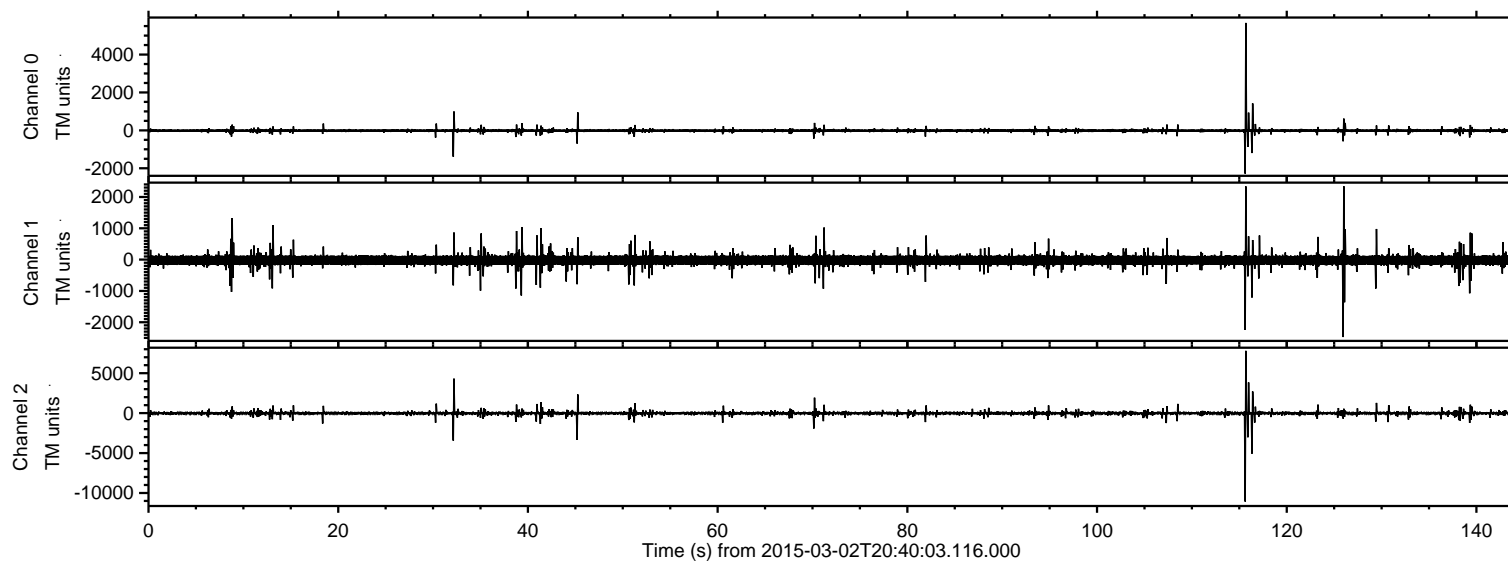


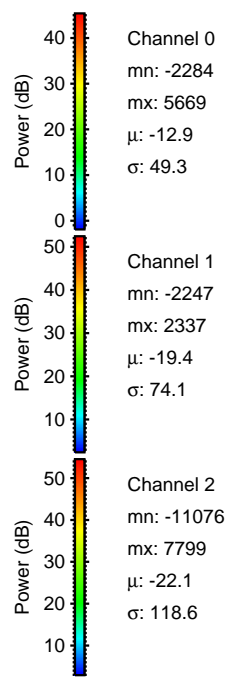
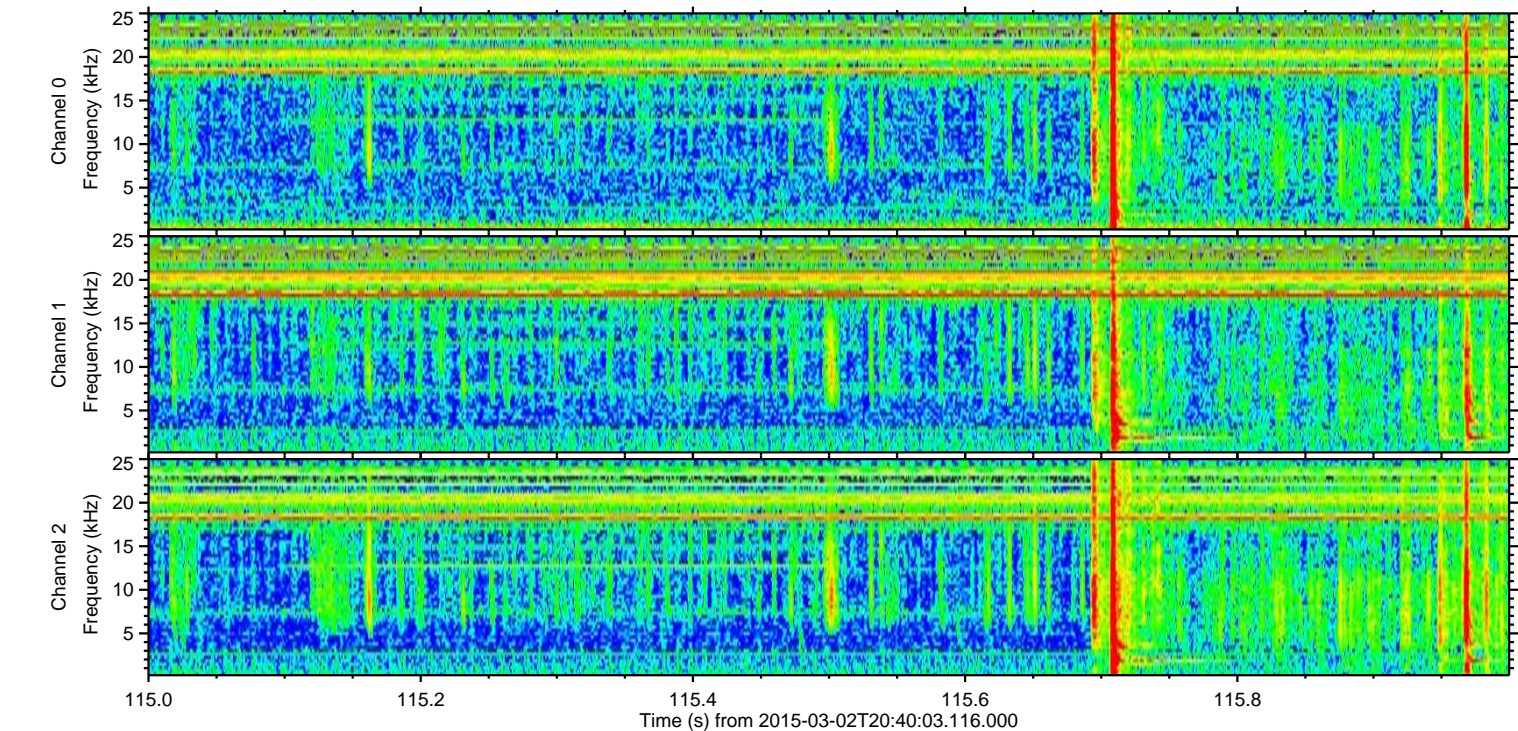
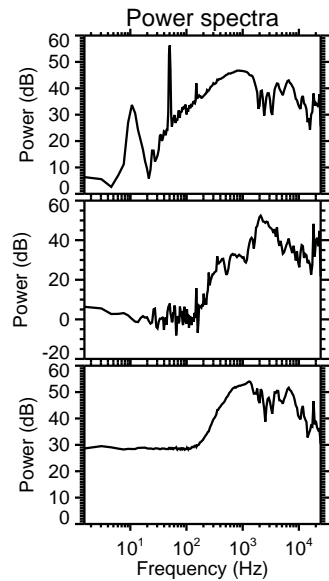
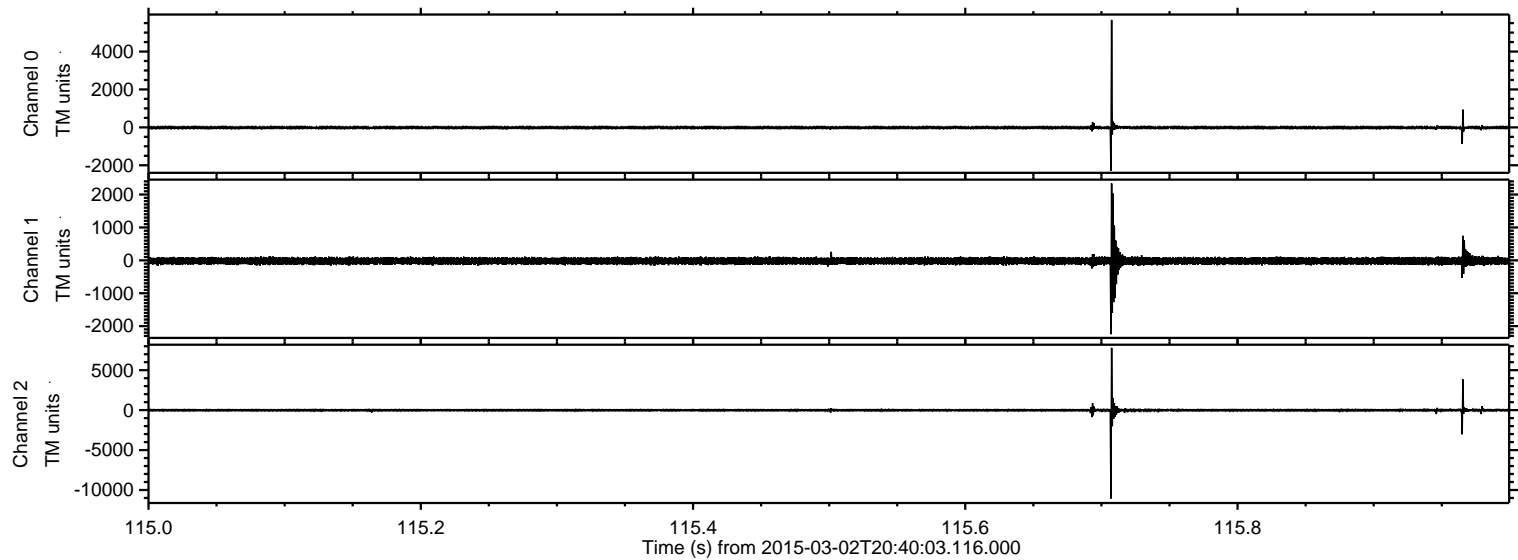
ELMAVAN 3D WAVEFORMS (Measured data sampled at 50 kHz) 49808 packets of 144 samples from 2015-03-02T20:40:03.116.000.

Processed Sat Mar 7 00:42:37 2015 by ELM ver.2012-10-06 from 001__elm20150302_204002__dat00.bin



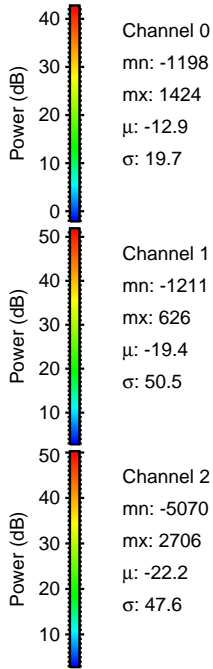
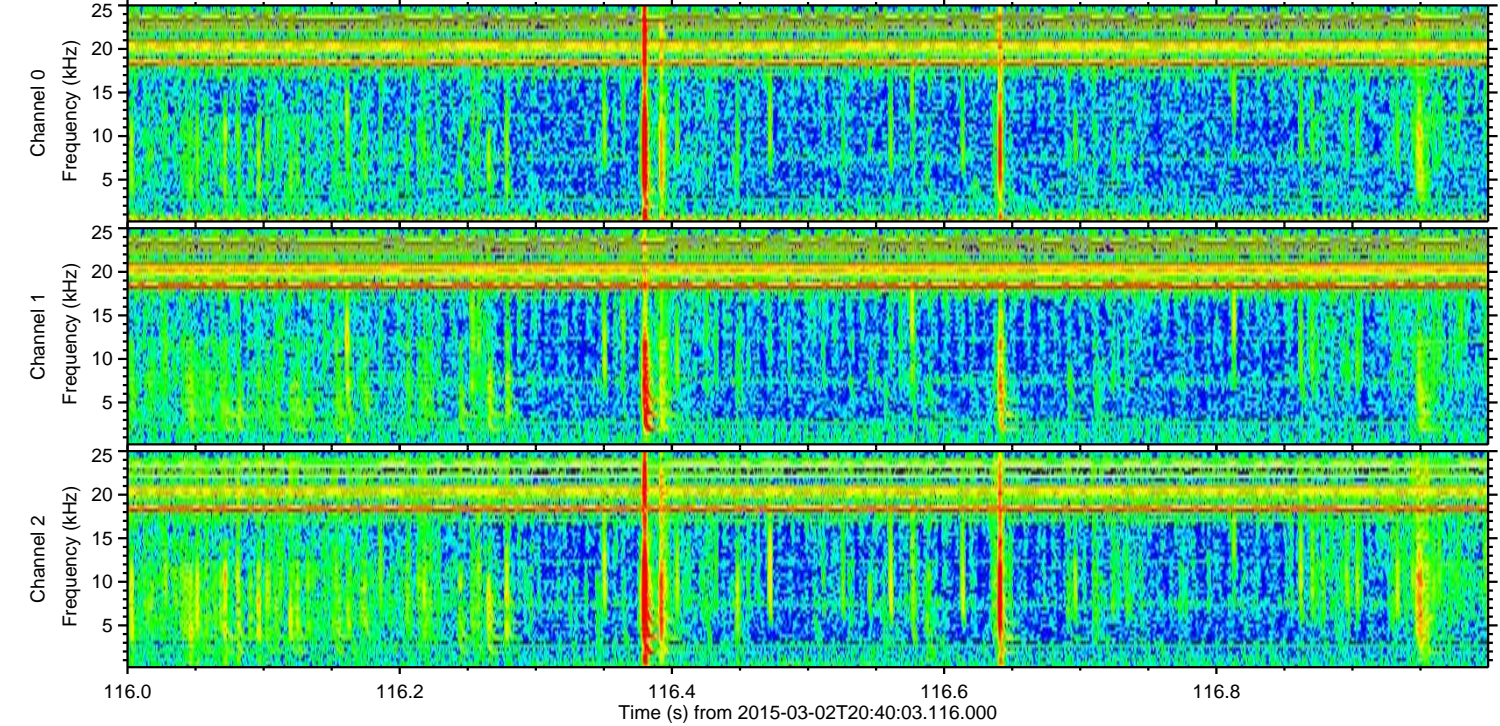
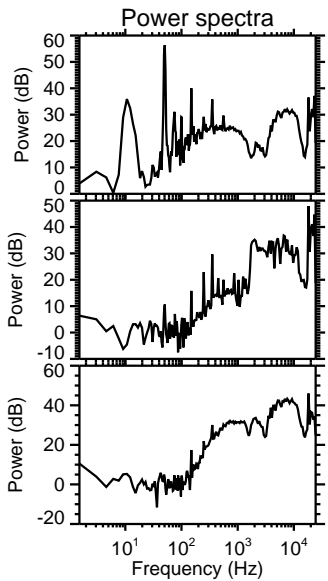
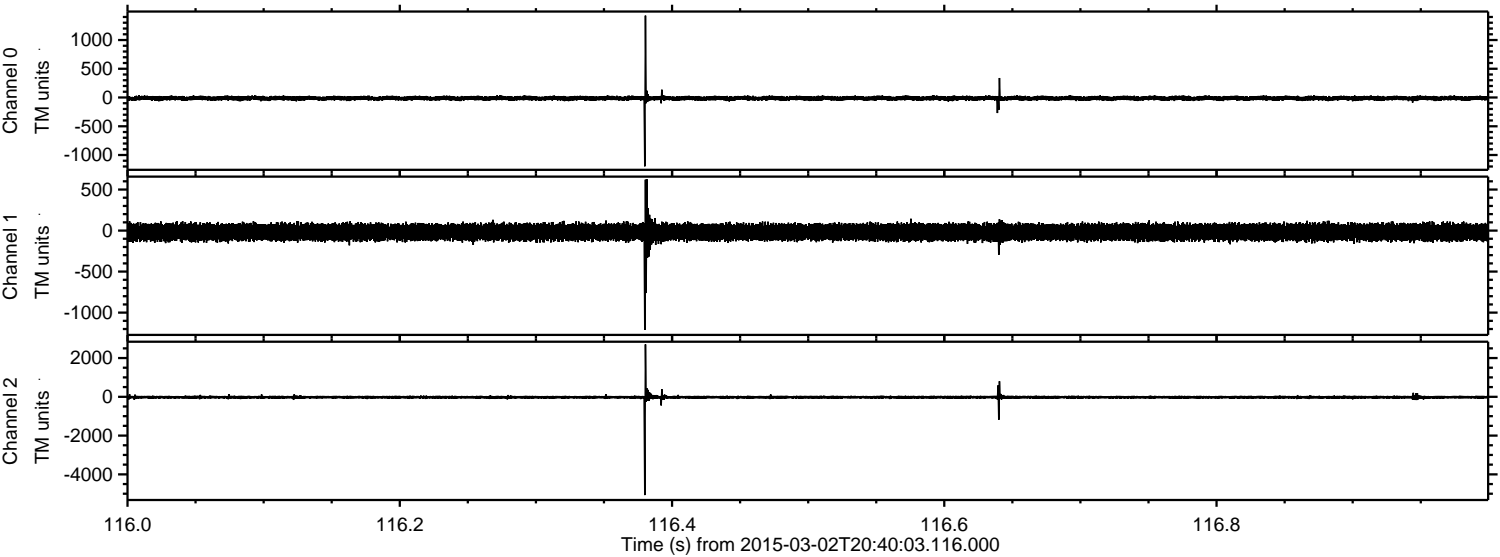
ELMAVAN 3D WAVEFORMS (Measured data sampled at 50 kHz) 49808 packets of 144 samples from 2015-03-02T20:40:03.116.000. Part 116/144

Processed Sat Mar 7 00:42:49 2015 by ELM ver.2012-10-06 from 001__elm20150302_204002__dat00.bin

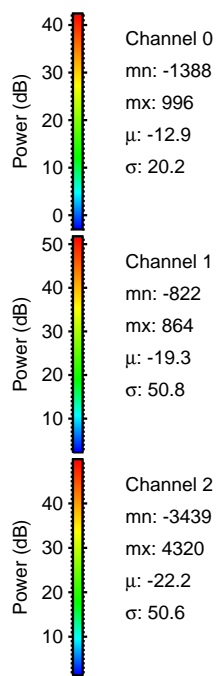
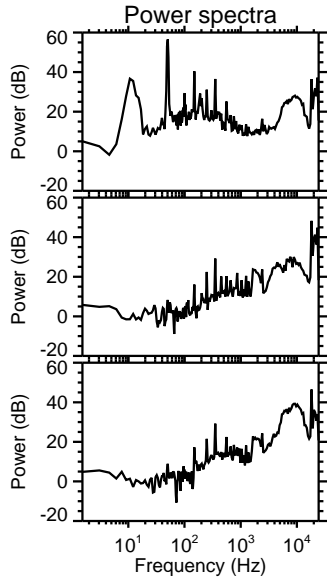
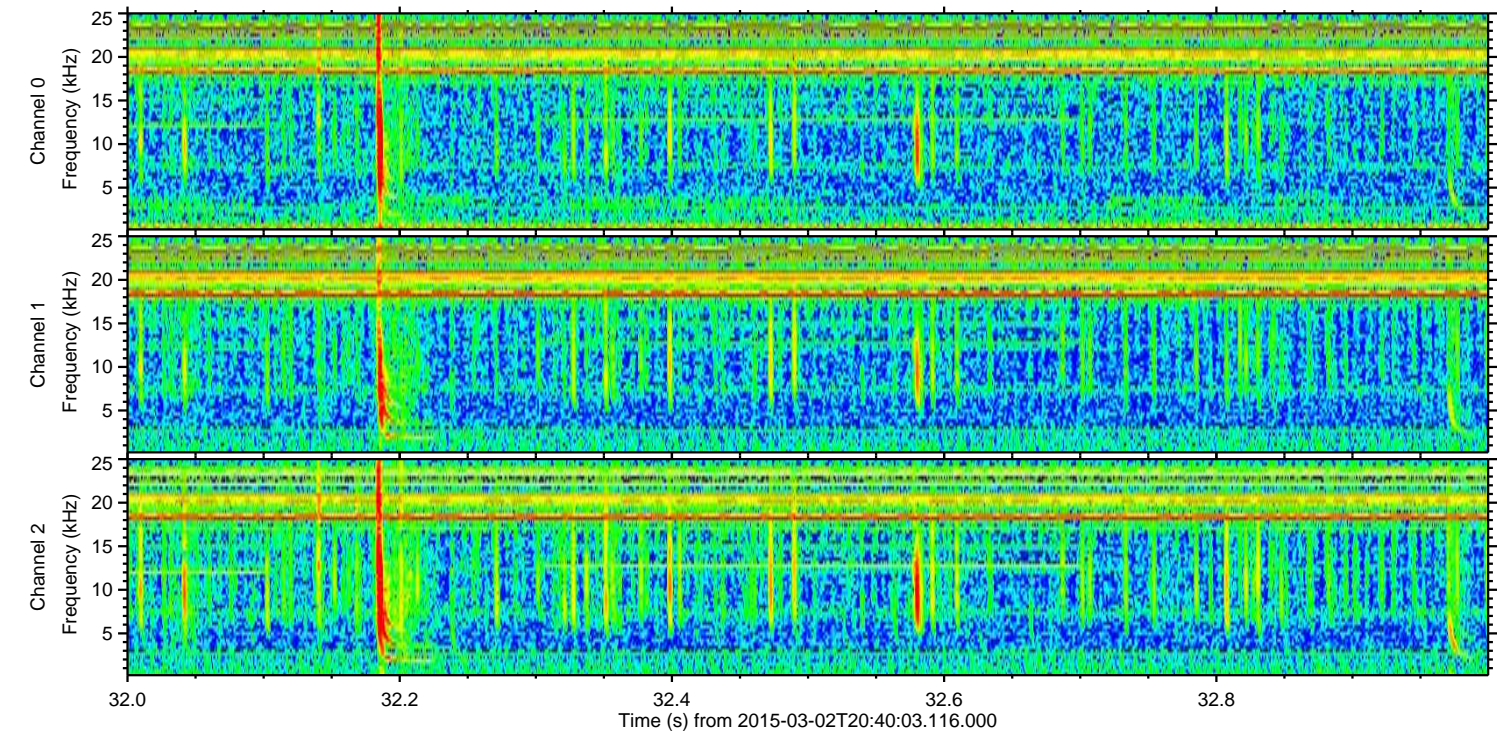
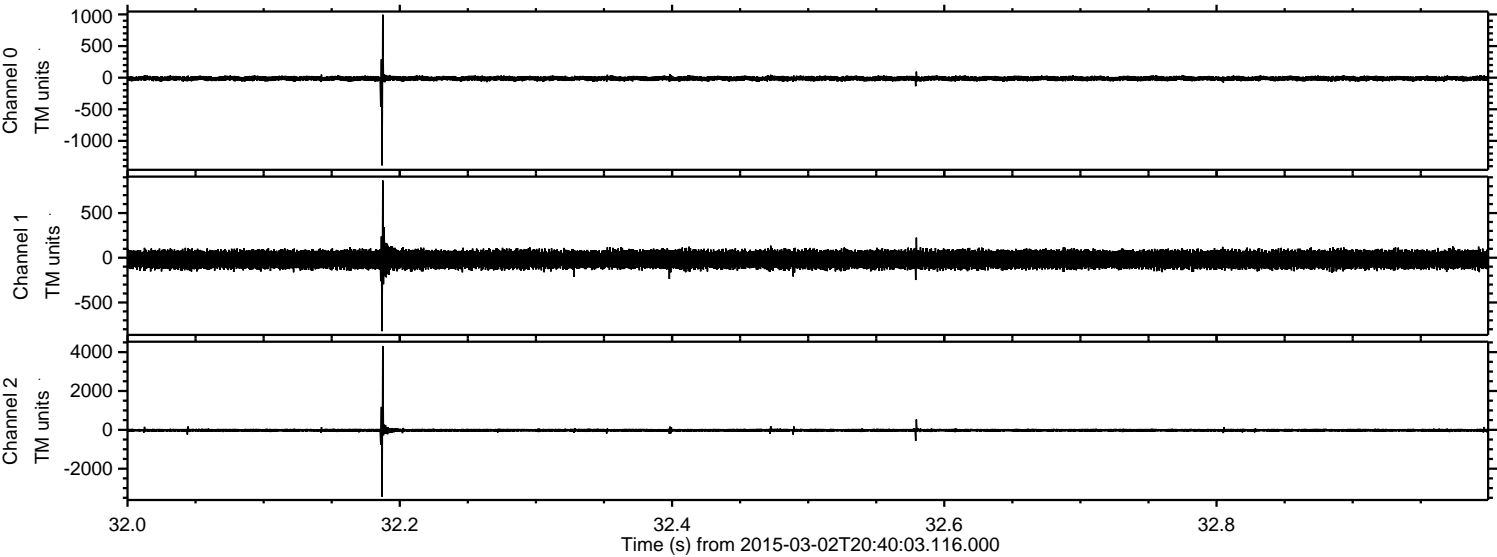


ELMAVAN 3D WAVEFORMS (Measured data sampled at 50 kHz) 49808 packets of 144 samples from 2015-03-02T20:40:03.116.000. Part 117/144

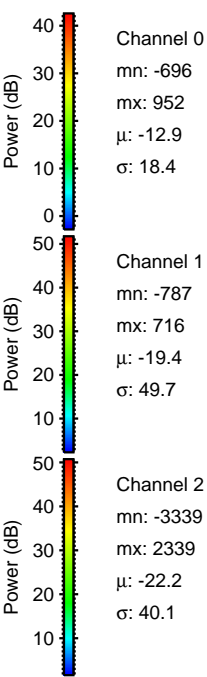
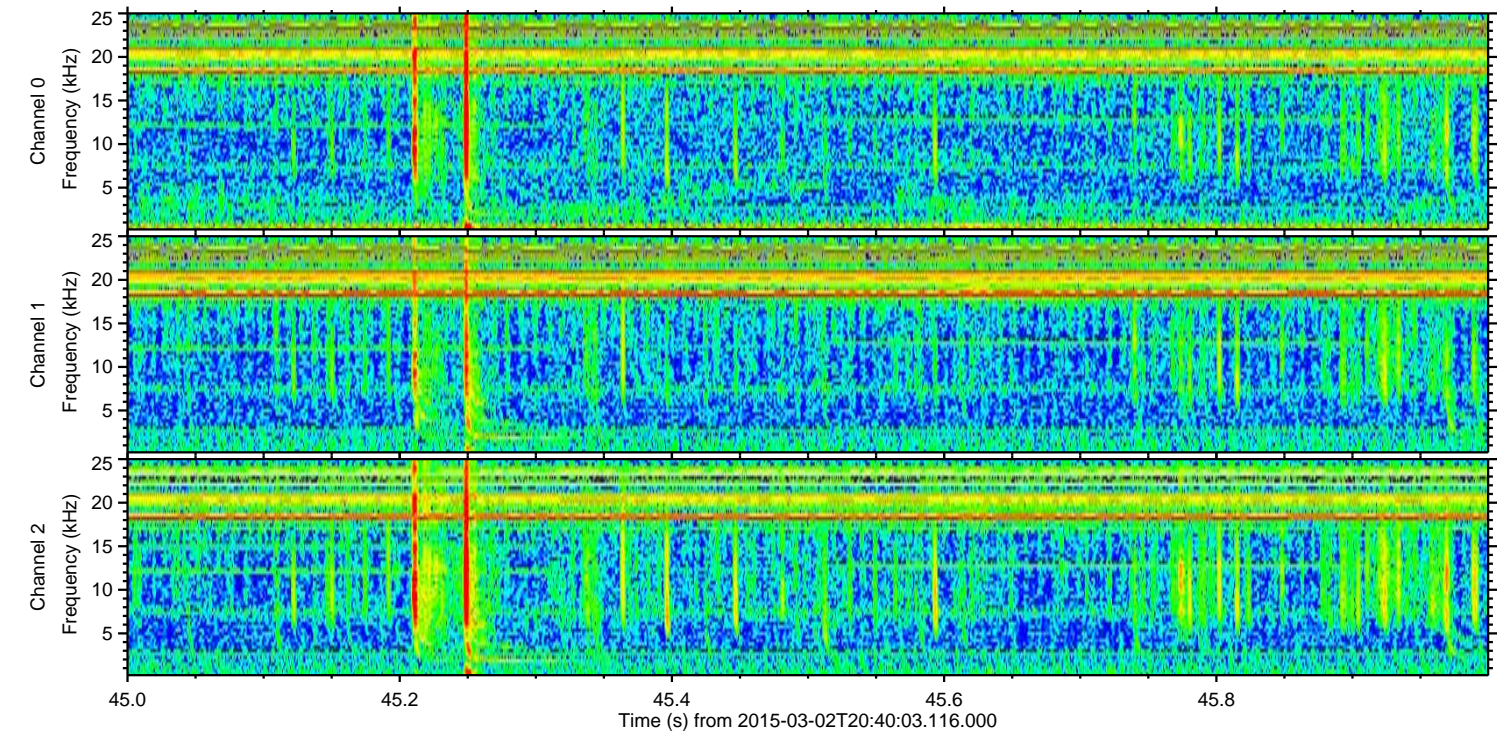
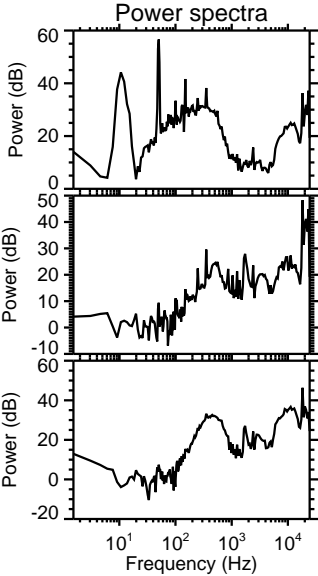
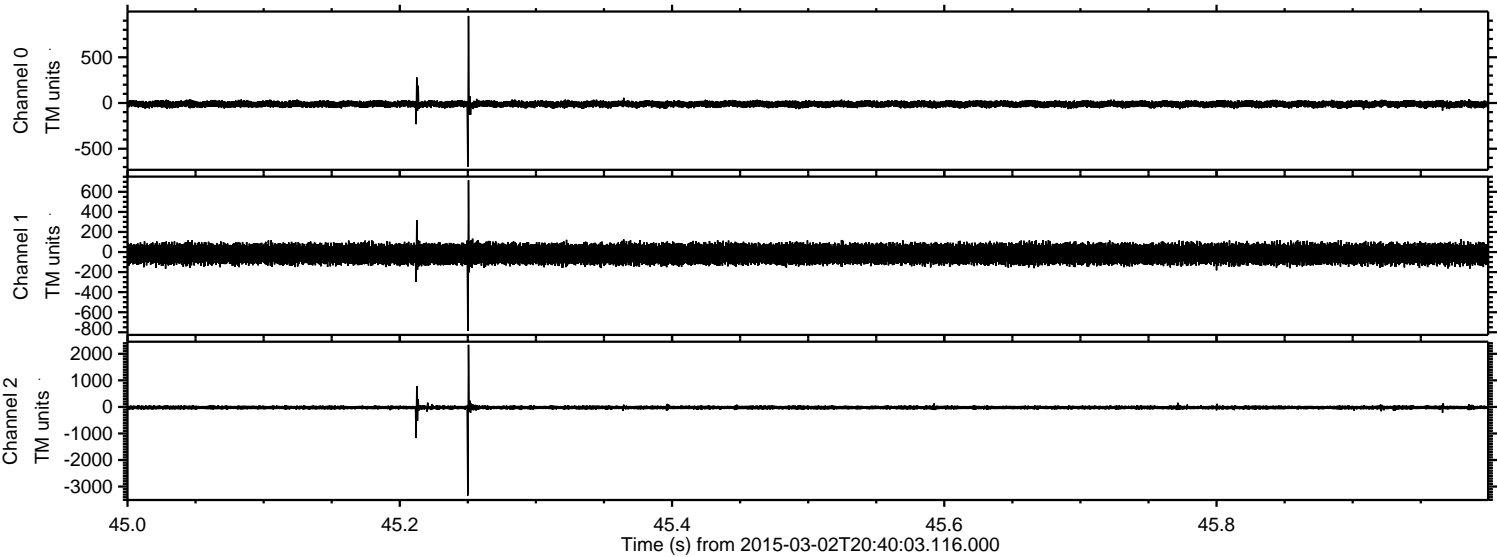
Processed Sat Mar 7 00:42:50 2015 by ELM ver.2012-10-06 from 001__elm20150302_204002__dat00.bin



Processed Sat Mar 7 00:42:51 2015 by ELM ver.2012-10-06 from 001__elm20150302_204002__dat00.bin

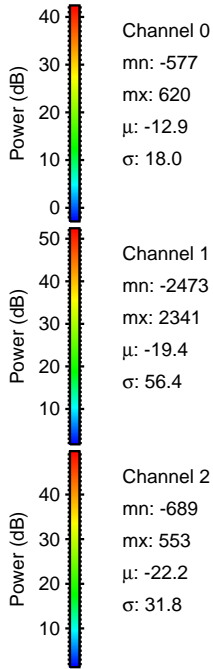
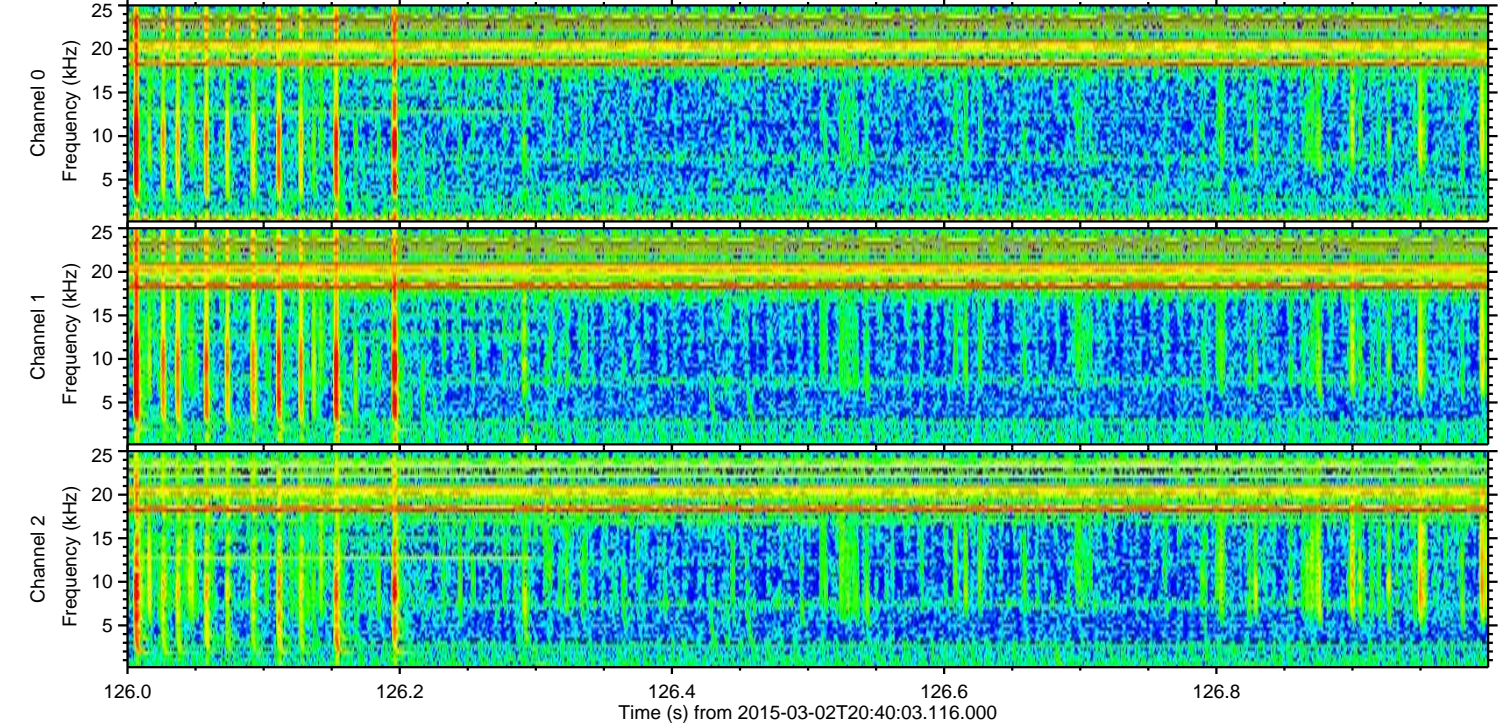
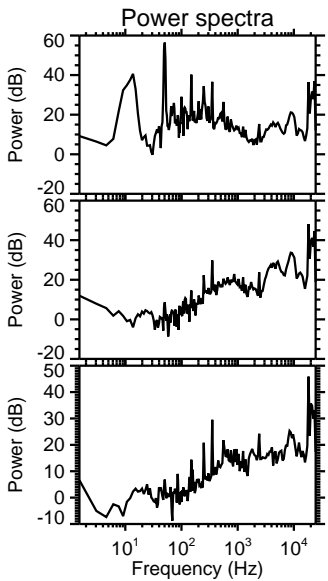
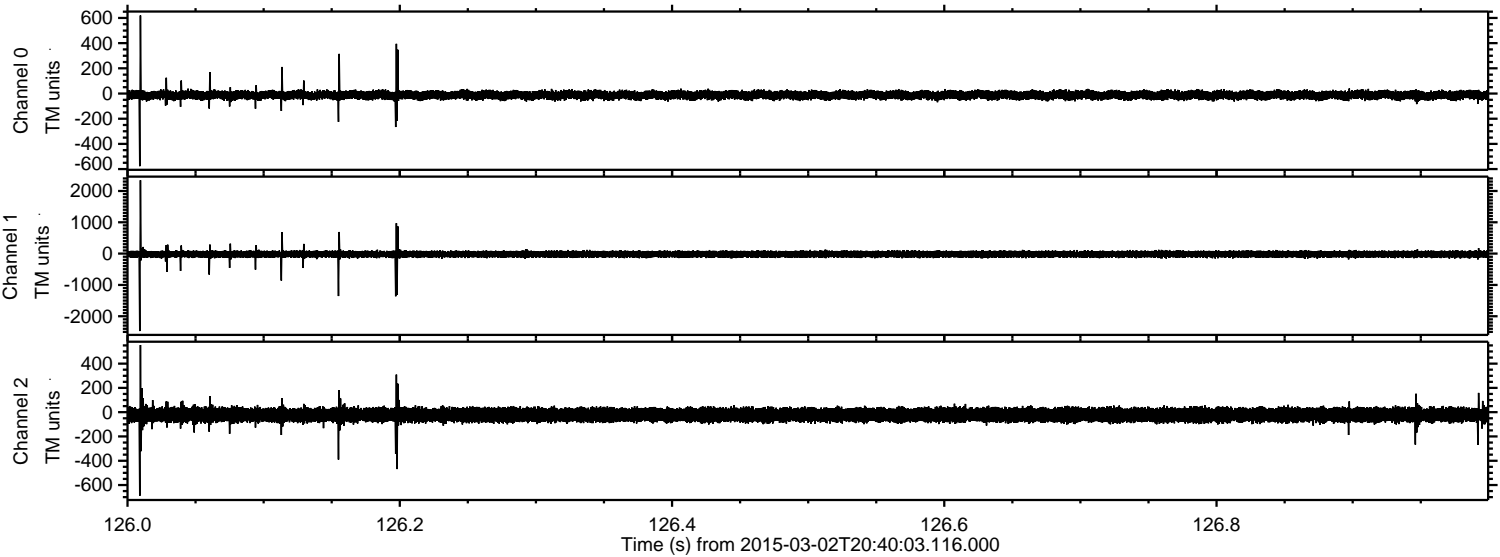


Processed Sat Mar 7 00:42:52 2015 by ELM ver.2012-10-06 from 001__elm20150302_204002__dat00.bin

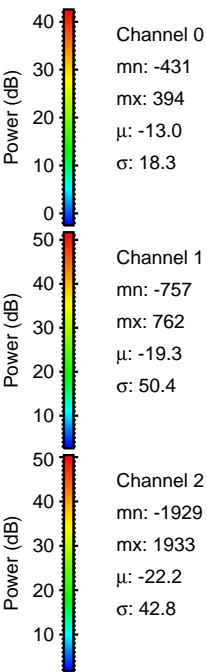
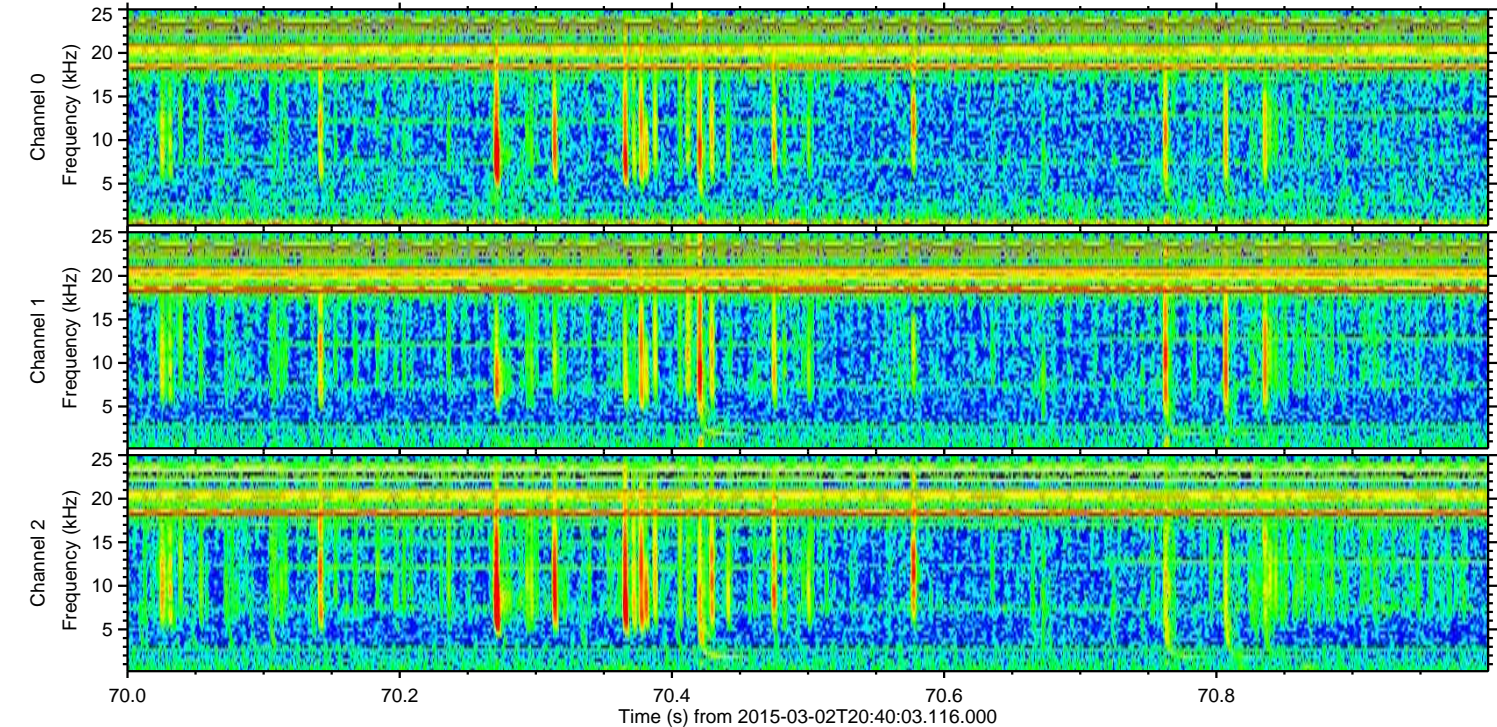
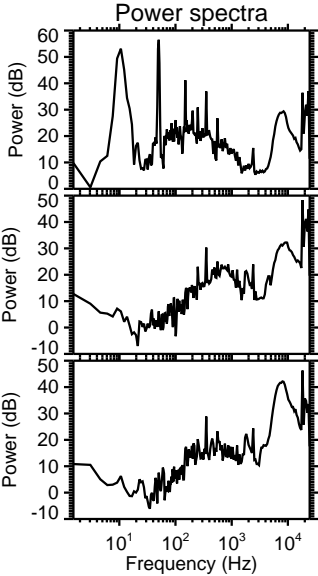
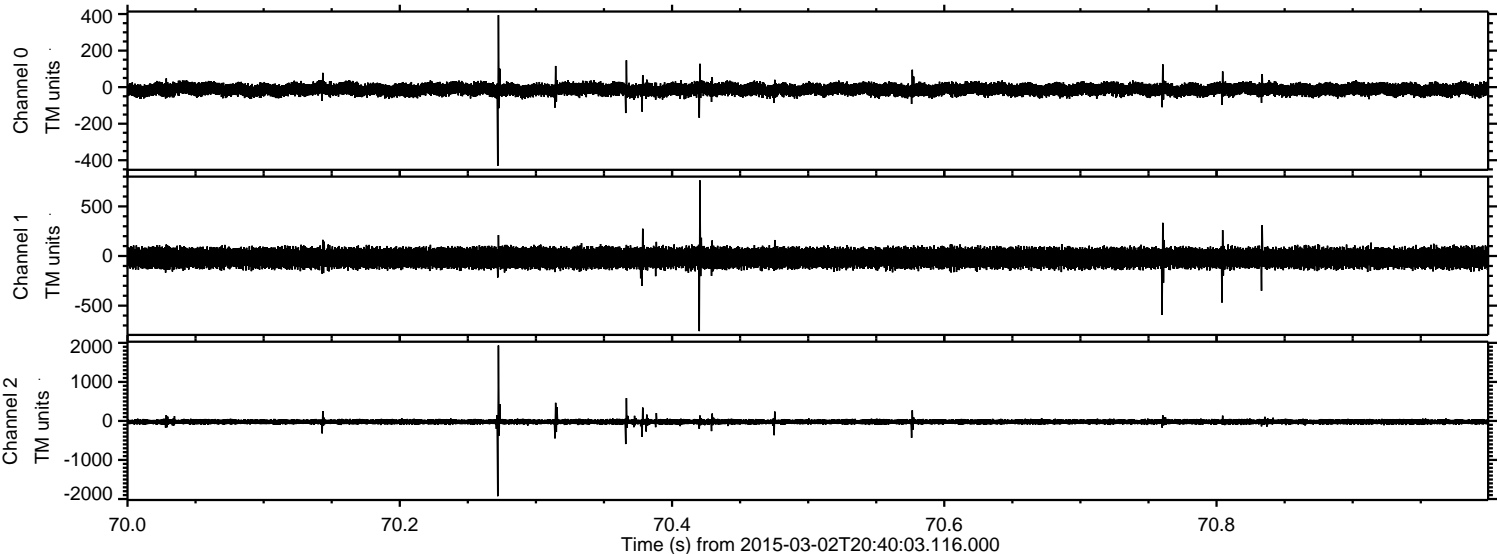


ELMAVAN 3D WAVEFORMS (Measured data sampled at 50 kHz) 49808 packets of 144 samples from 2015-03-02T20:40:03.116.000. Part 127/144

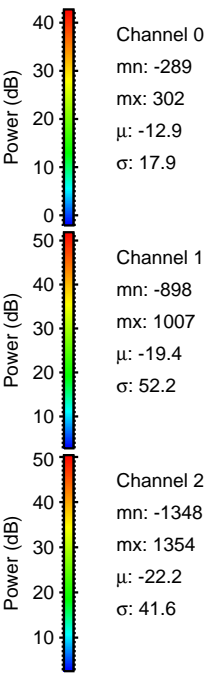
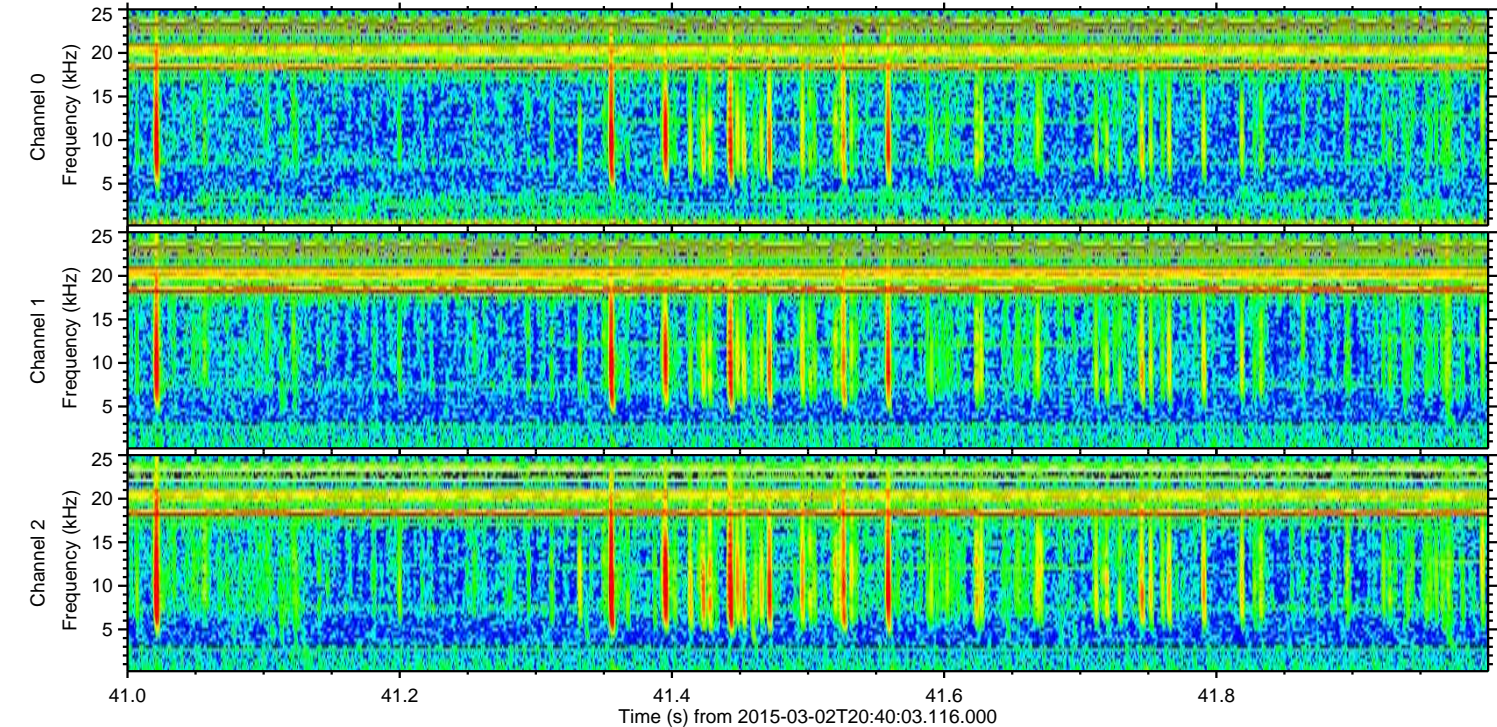
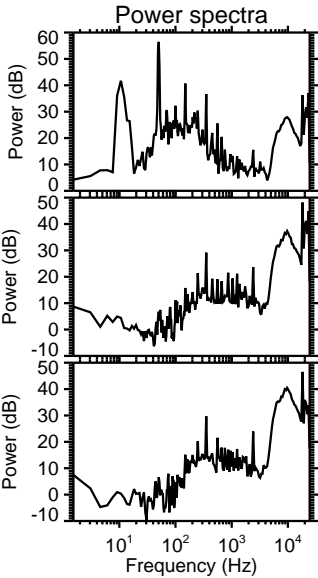
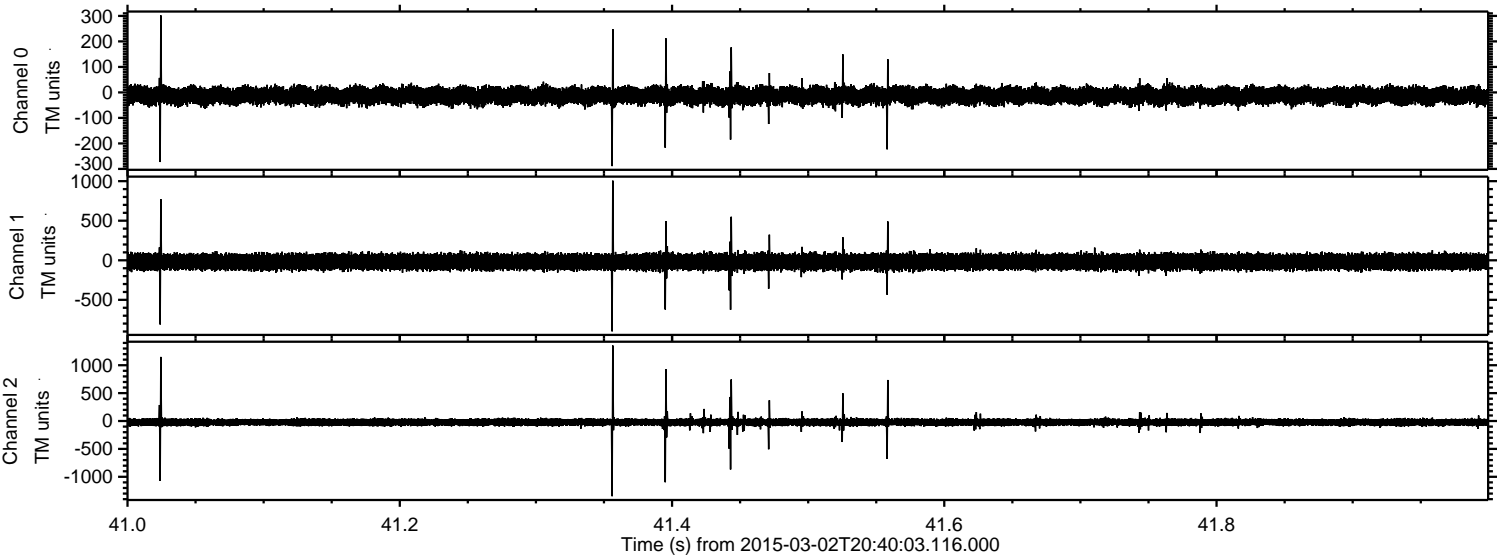
Processed Sat Mar 7 00:42:53 2015 by ELM ver.2012-10-06 from 001__elm20150302_204002__dat00.bin



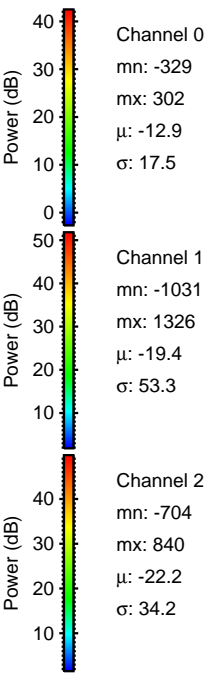
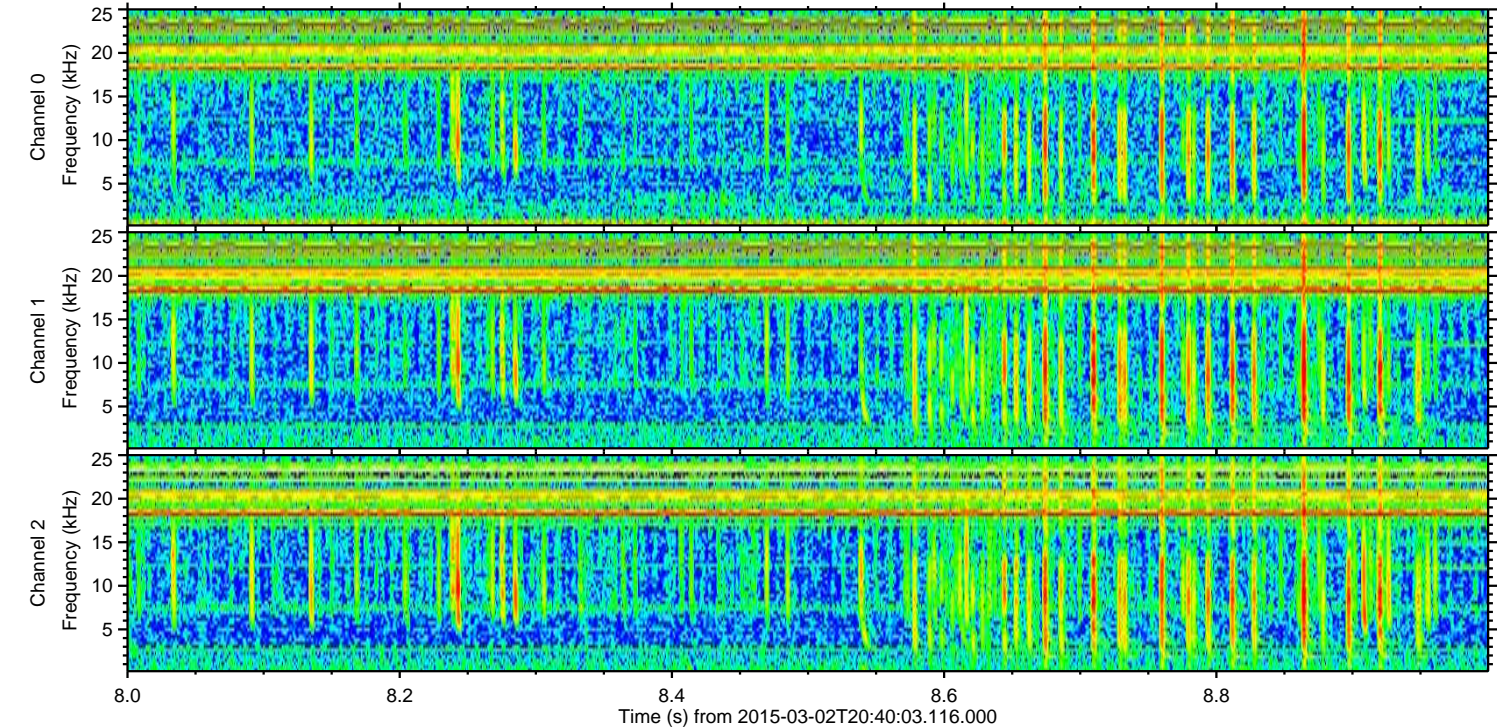
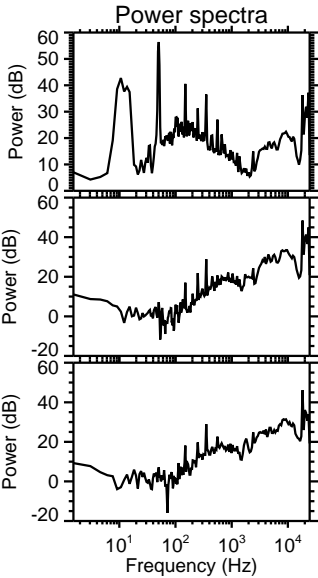
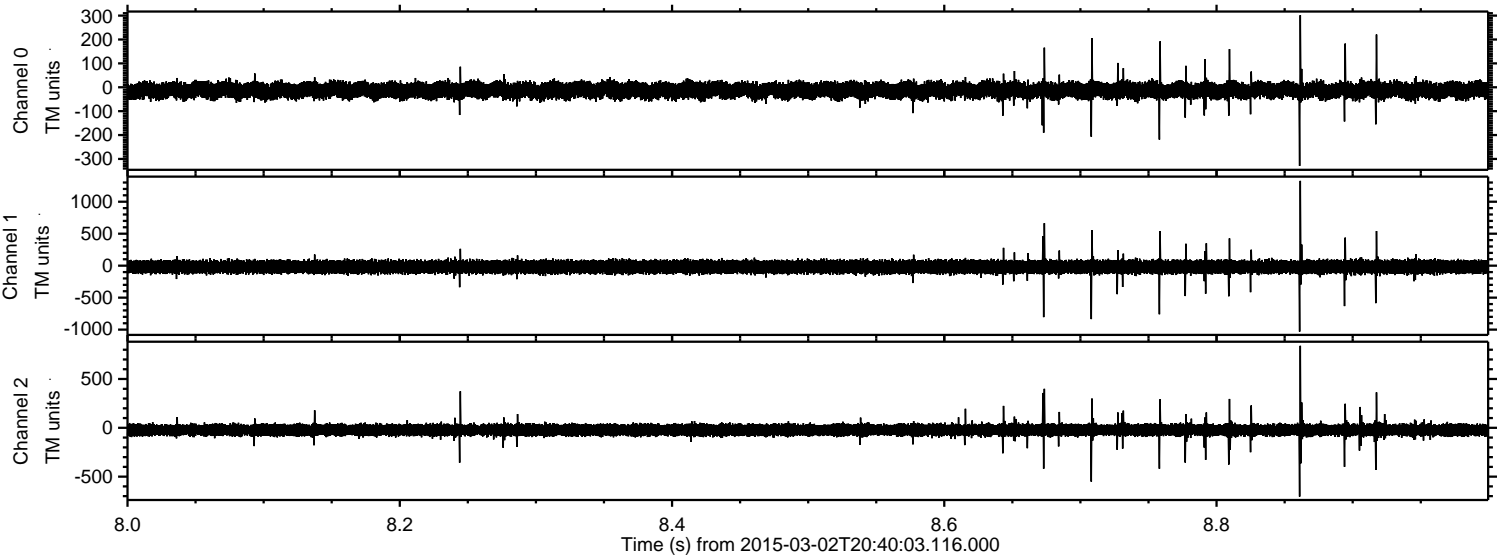
Processed Sat Mar 7 00:42:54 2015 by ELM ver.2012-10-06 from 001__elm20150302_204002__dat00.bin



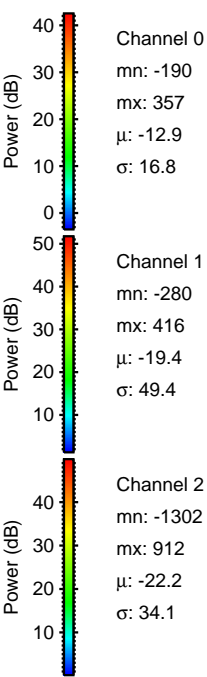
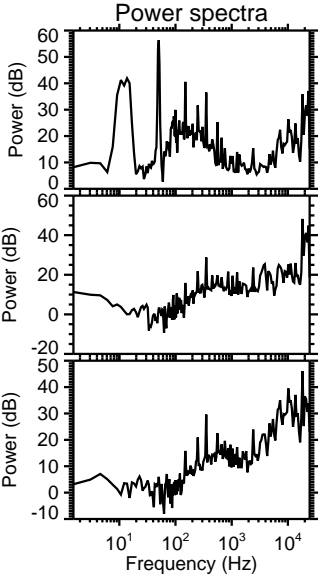
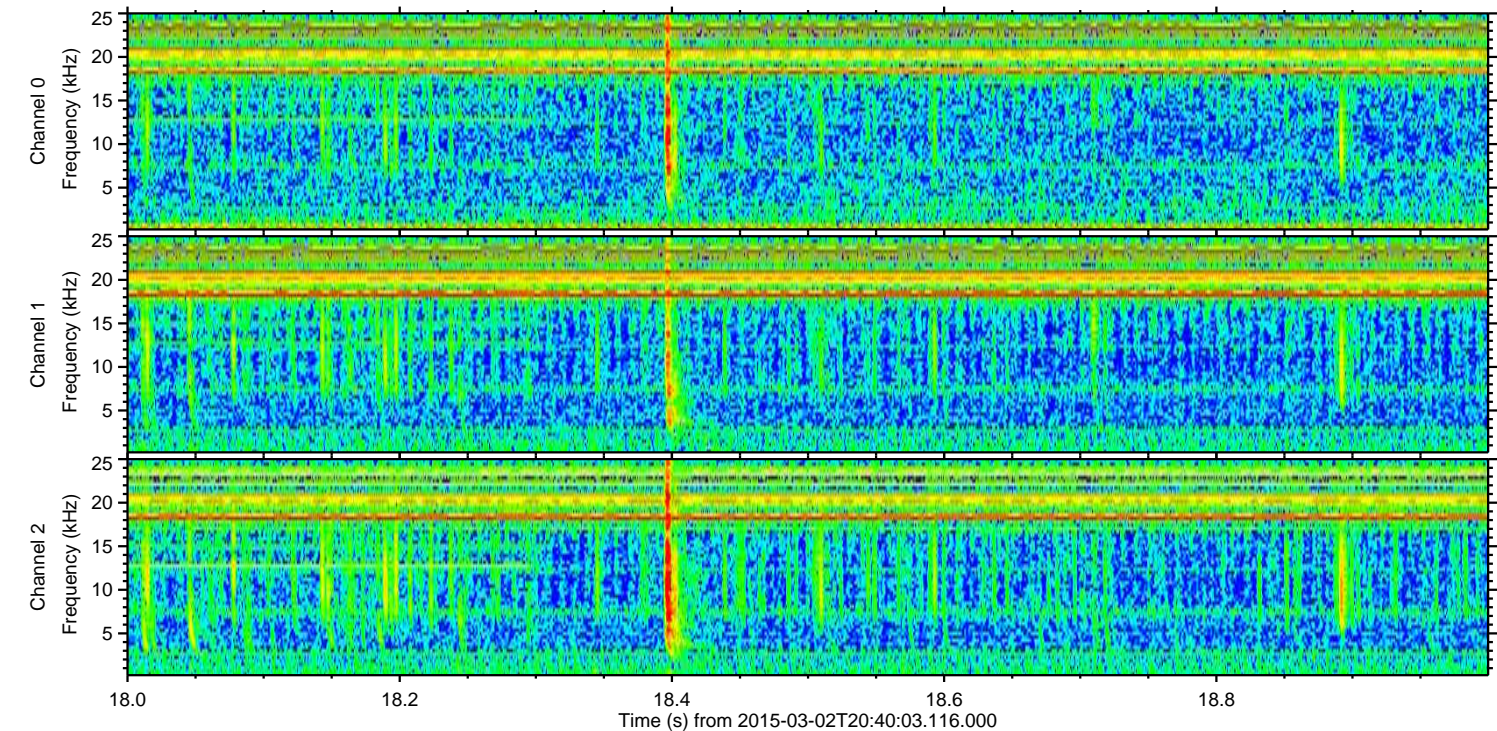
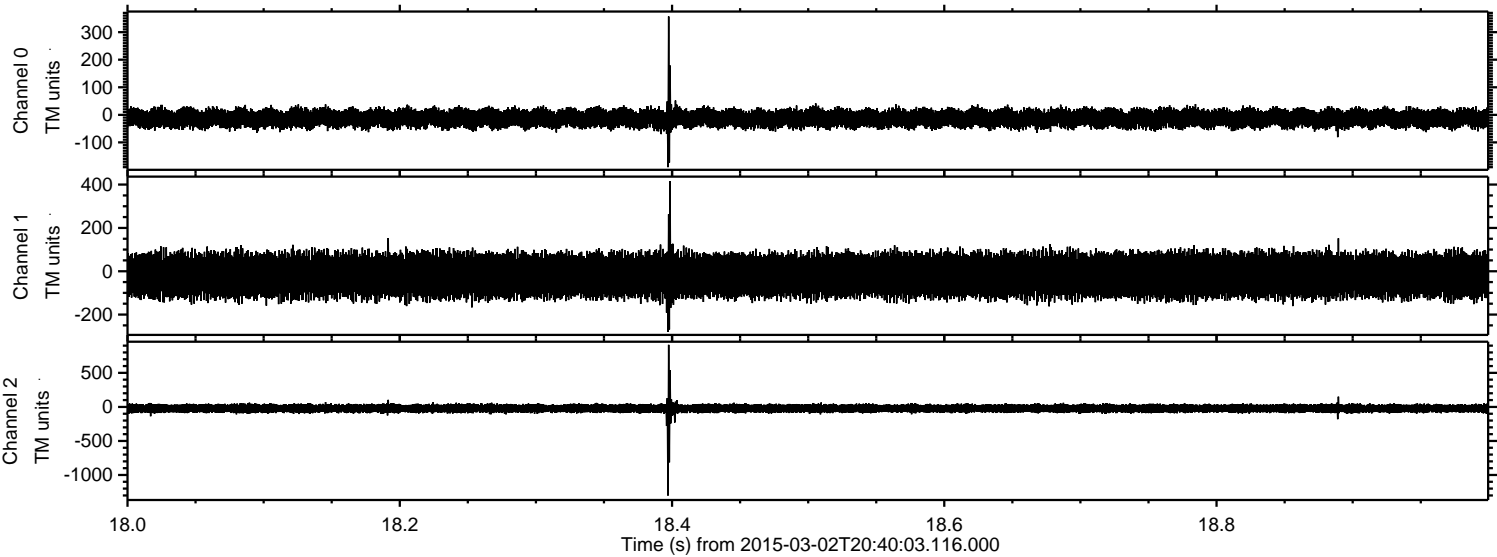
Processed Sat Mar 7 00:42:55 2015 by ELM ver.2012-10-06 from 001__elm20150302_204002__dat00.bin



Processed Sat Mar 7 00:42:55 2015 by ELM ver.2012-10-06 from 001__elm20150302_204002__dat00.bin



Processed Sat Mar 7 00:42:56 2015 by ELM ver.2012-10-06 from 001__elm20150302_204002__dat00.bin



Channel 0
mn: -190
mx: 357
 μ : -12.9
 σ : 16.8

Channel 1
mn: -280
mx: 416
 μ : -19.4
 σ : 49.4

Channel 2
mn: -1302
mx: 912
 μ : -22.2
 σ : 34.1

