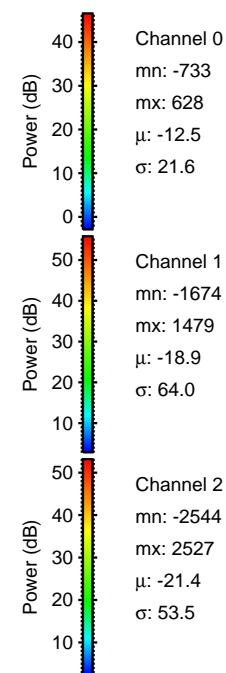
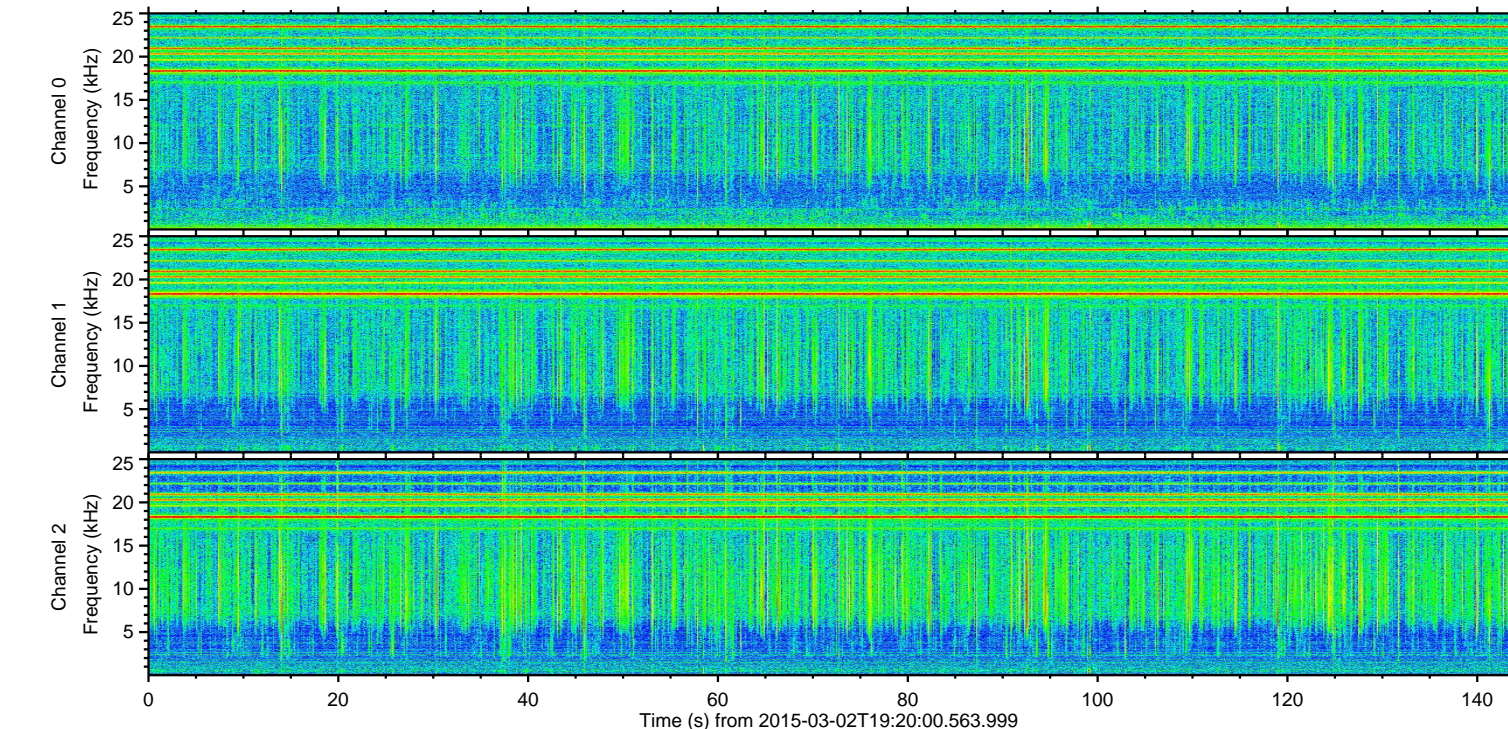
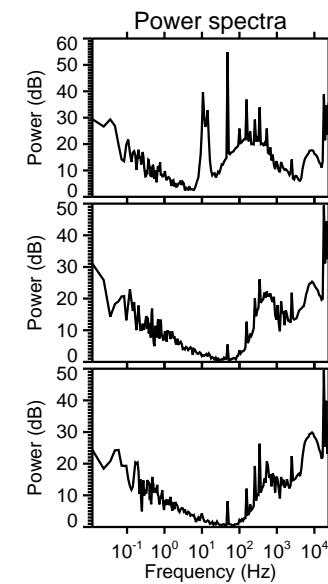
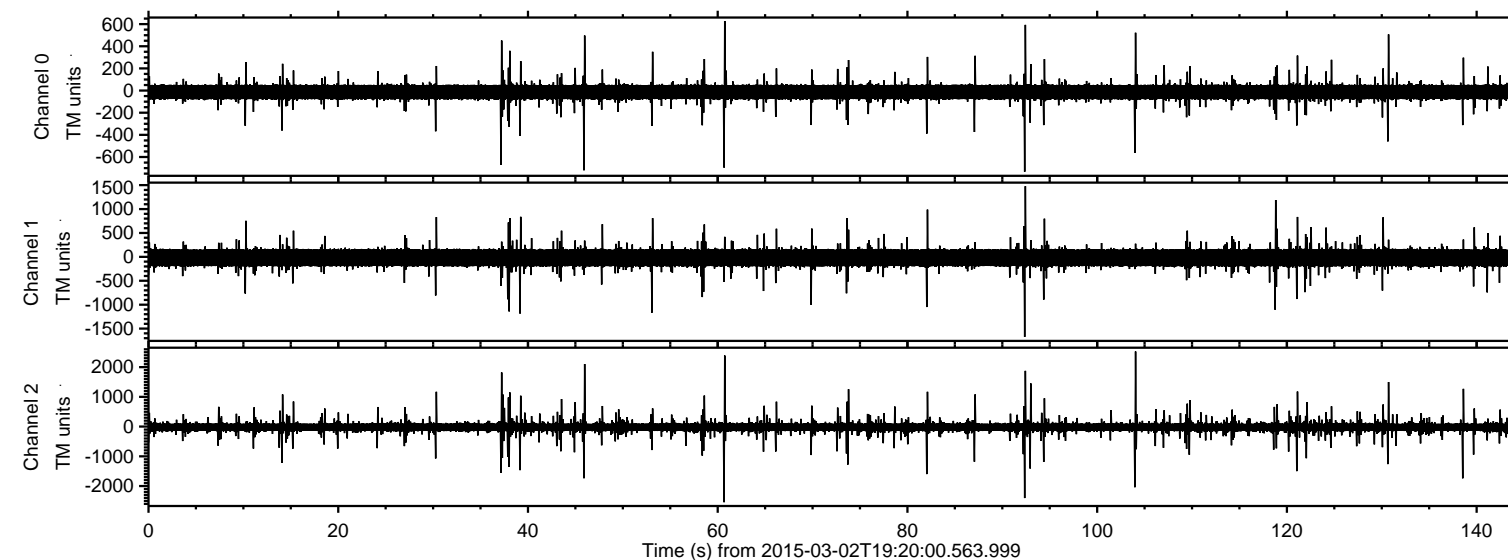
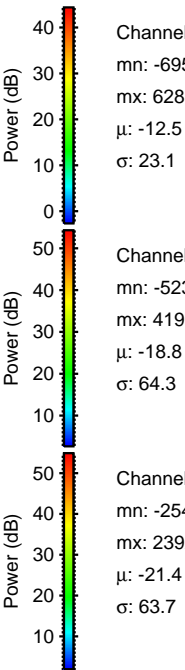
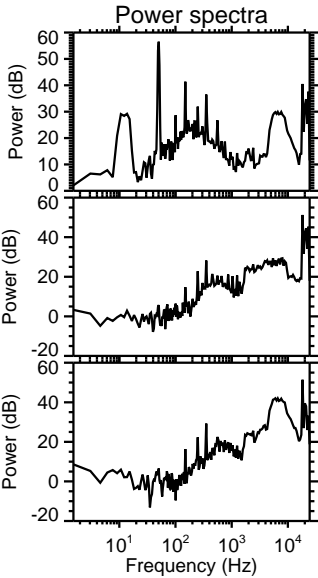
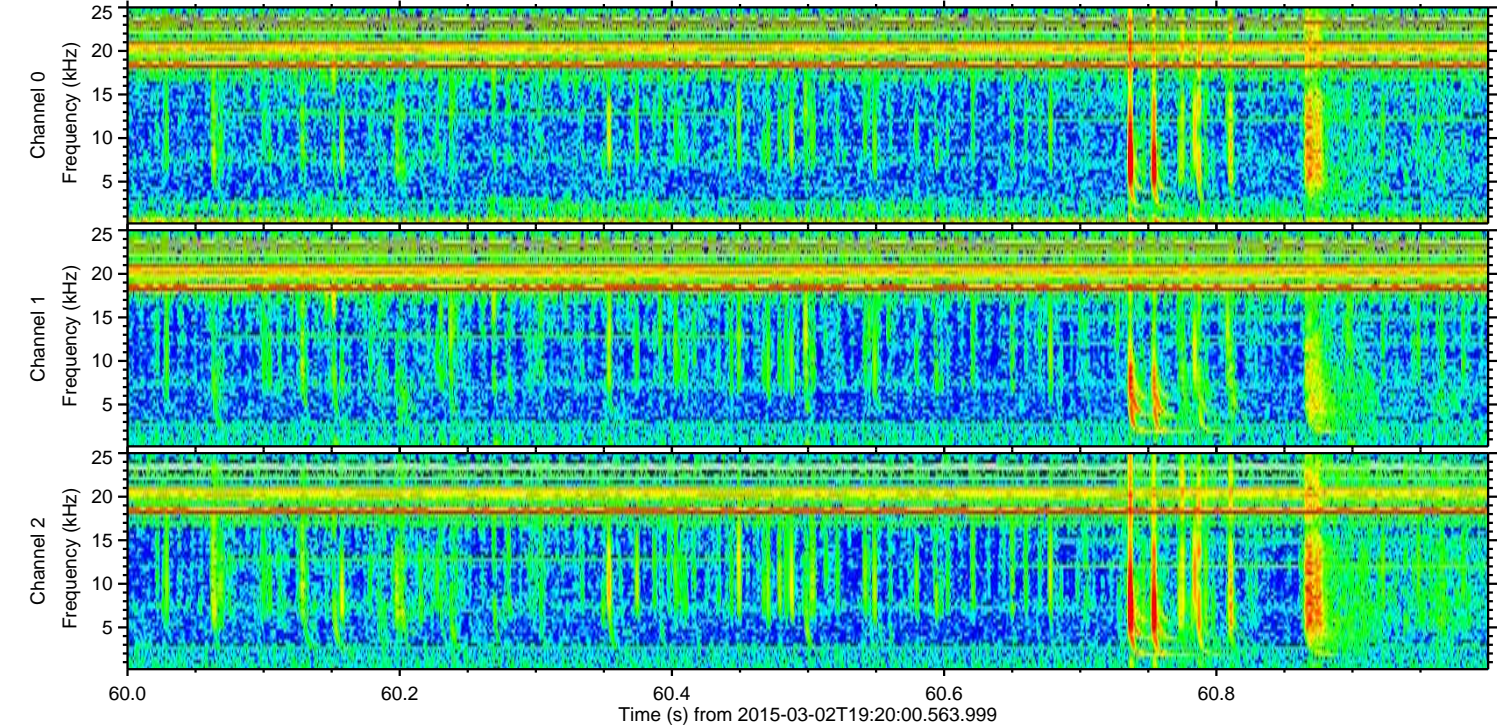
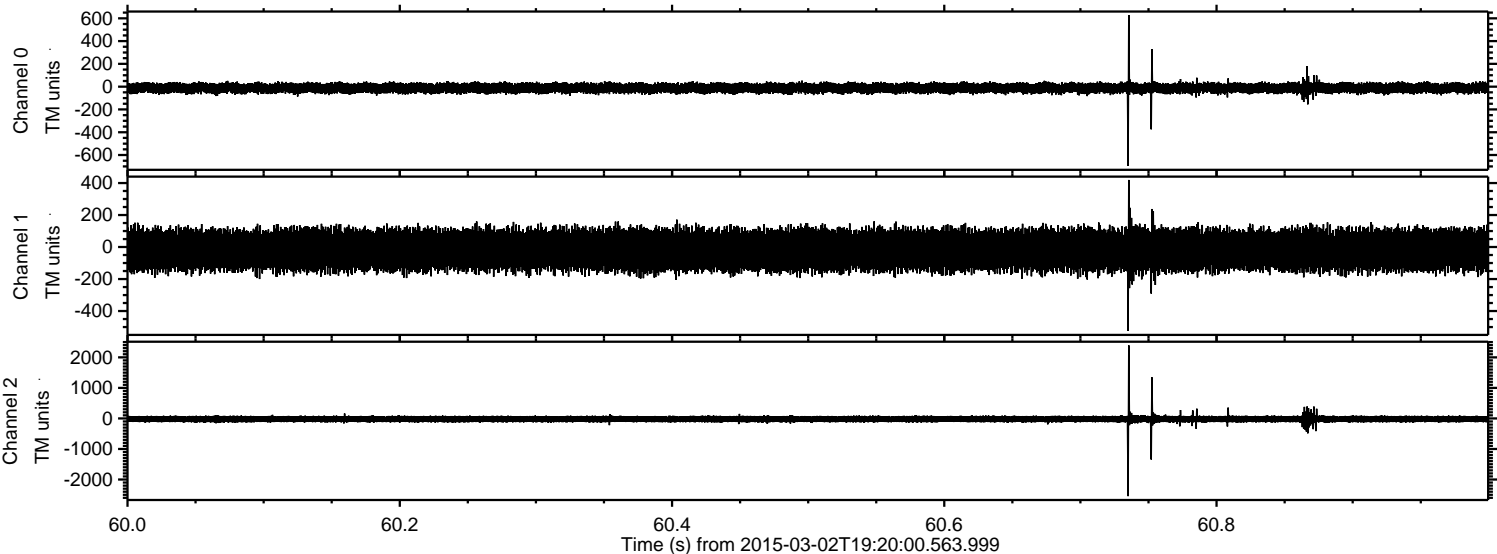


ELMAVAN 3D WAVEFORMS (Measured data sampled at 50 kHz) 49802 packets of 144 samples from 2015-03-02T19:20:00.563.999.

Processed Sat Mar 7 00:20:34 2015 by ELM ver.2012-10-06 from 001__elm20150302_191959__dat00.bin



Processed Sat Mar 7 00:20:45 2015 by ELM ver.2012-10-06 from 001__elm20150302_191959__dat00.bin



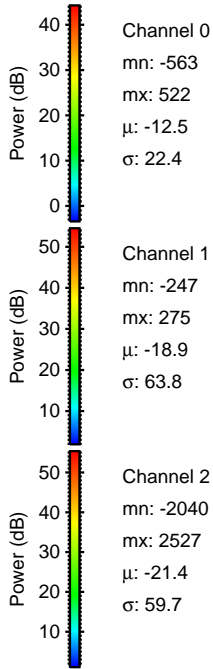
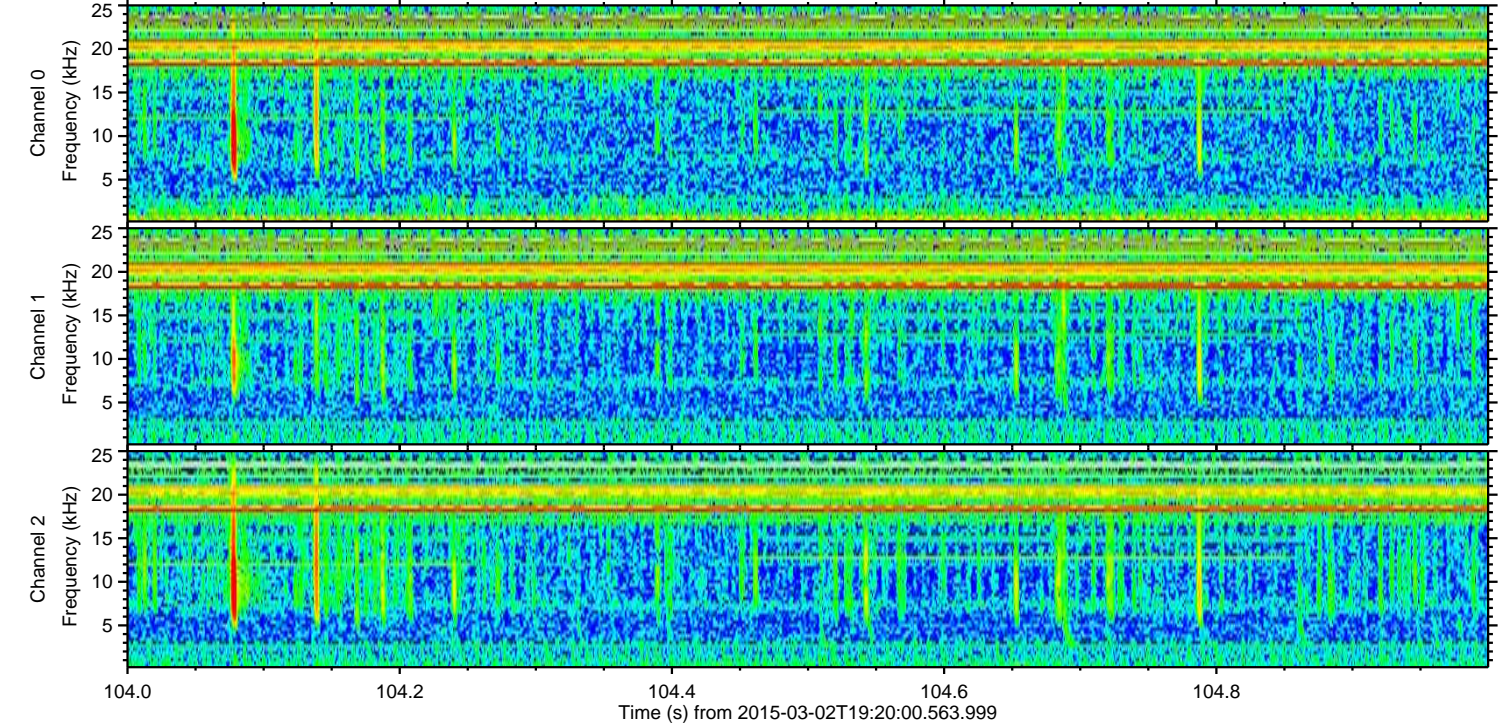
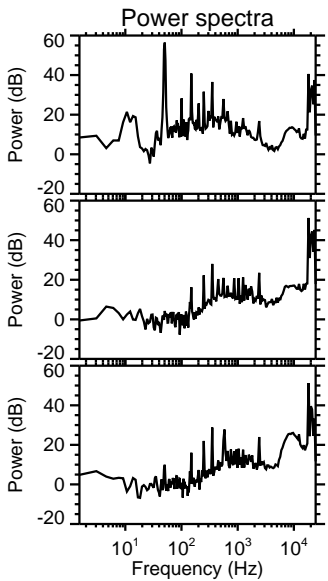
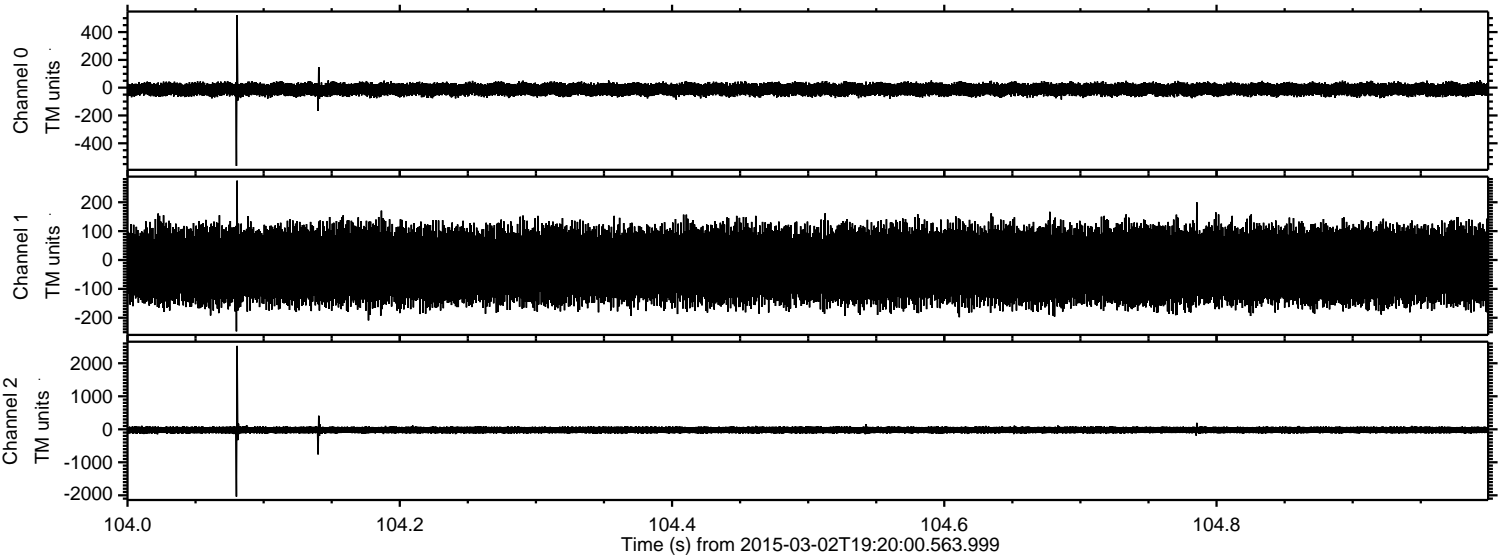
Channel 0
mn: -695
mx: 628
 μ : -12.5
 σ : 23.1

Channel 1
mn: -523
mx: 419
 μ : -18.8
 σ : 64.3

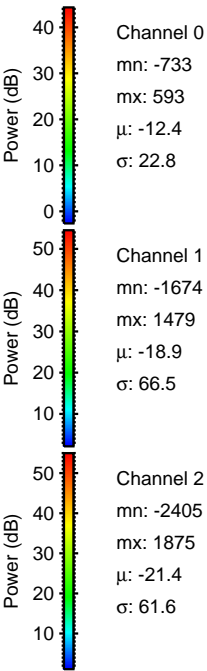
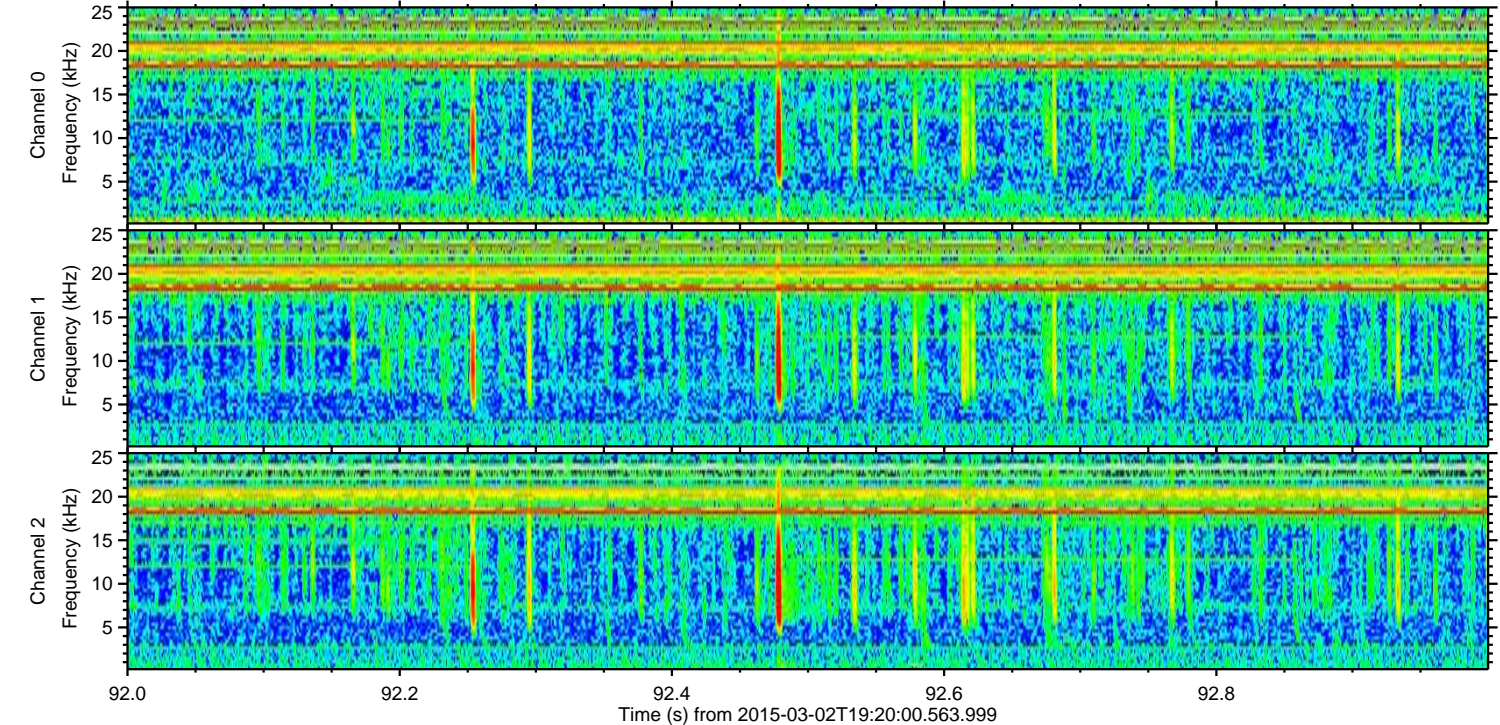
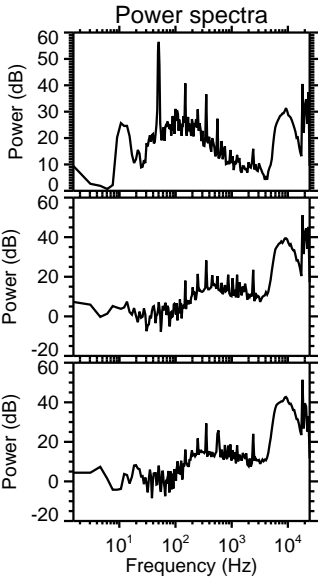
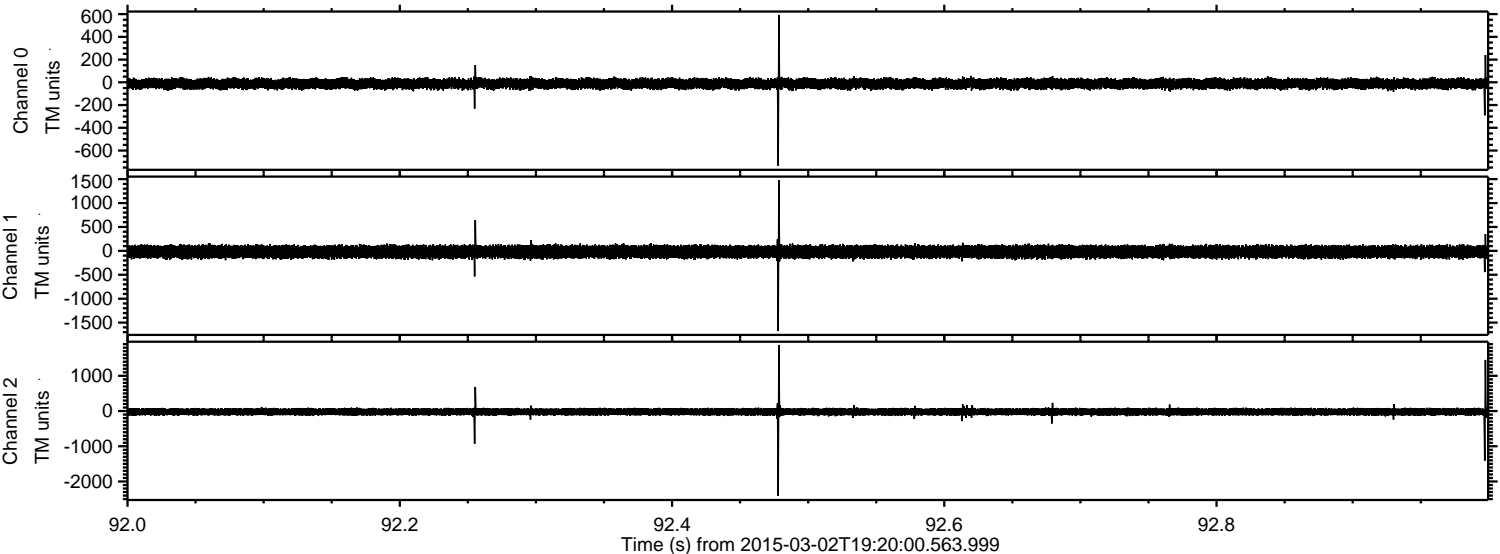
Channel 2
mn: -2544
mx: 2392
 μ : -21.4
 σ : 63.7

ELMAVAN 3D WAVEFORMS (Measured data sampled at 50 kHz) 49802 packets of 144 samples from 2015-03-02T19:20:00.563.999. Part 105/144

Processed Sat Mar 7 00:20:46 2015 by ELM ver.2012-10-06 from 001__elm20150302_191959__dat00.bin

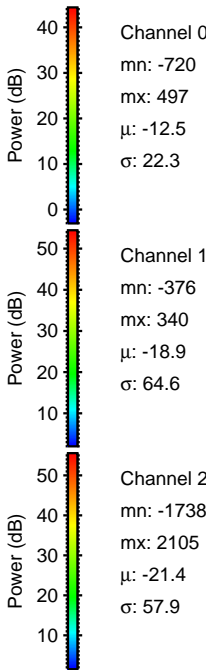
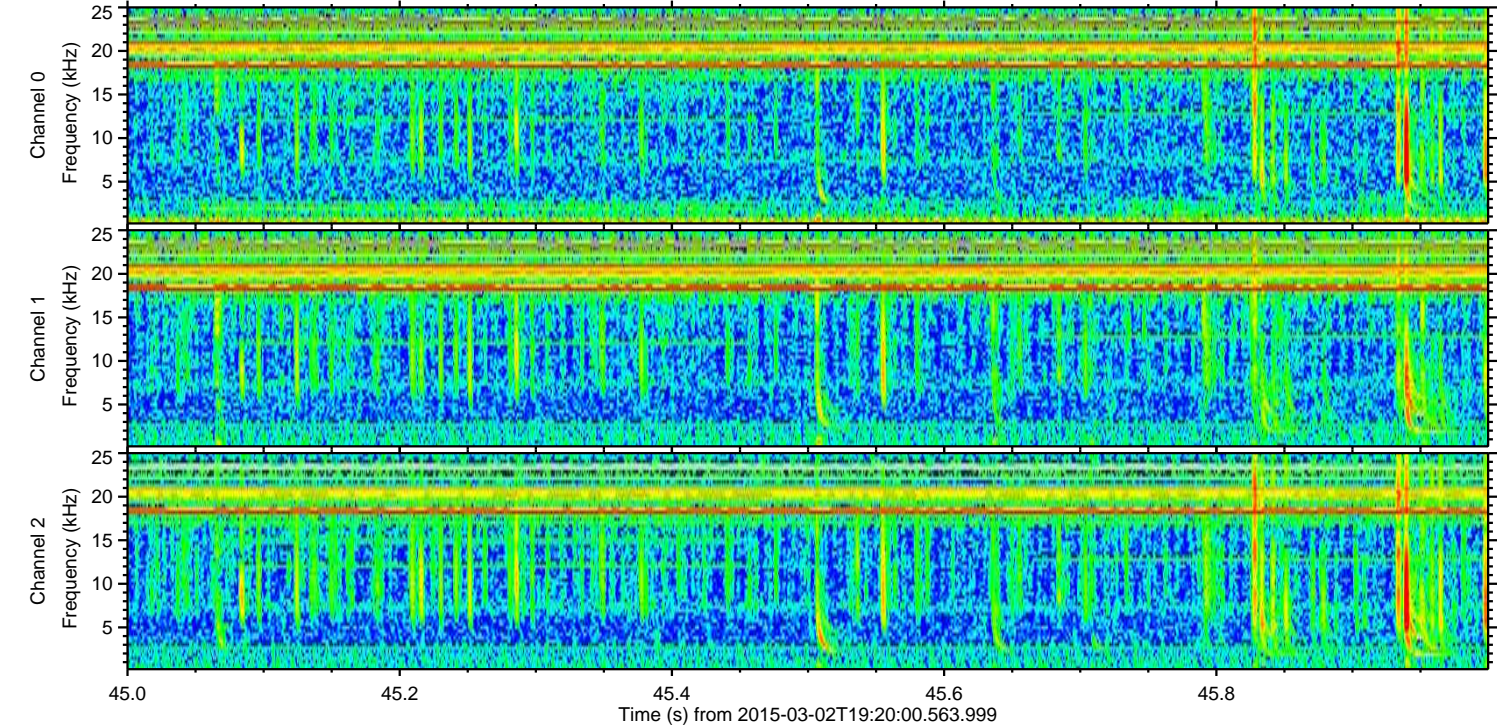
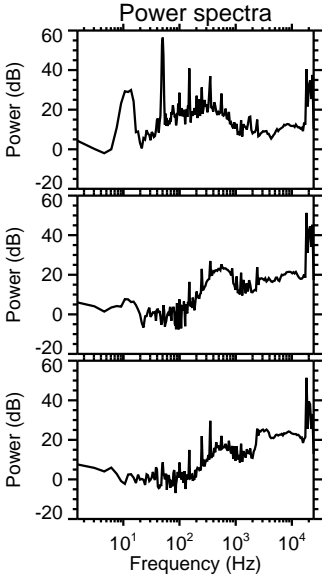
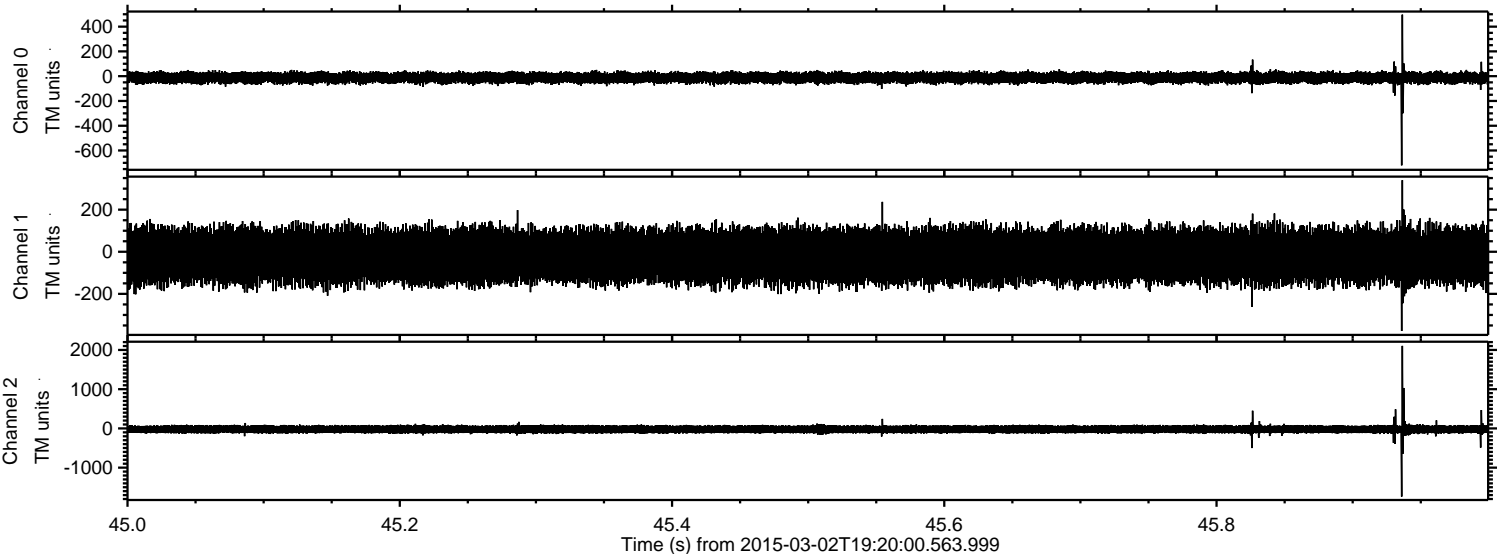


Processed Sat Mar 7 00:20:47 2015 by ELM ver.2012-10-06 from 001__elm20150302_191959__dat00.bin



ELMAVAN 3D WAVEFORMS (Measured data sampled at 50 kHz) 49802 packets of 144 samples from 2015-03-02T19:20:00.563.999. Part 46/144

Processed Sat Mar 7 00:20:48 2015 by ELM ver.2012-10-06 from 001__elm20150302_191959__dat00.bin

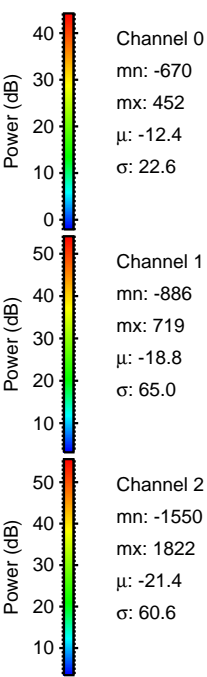
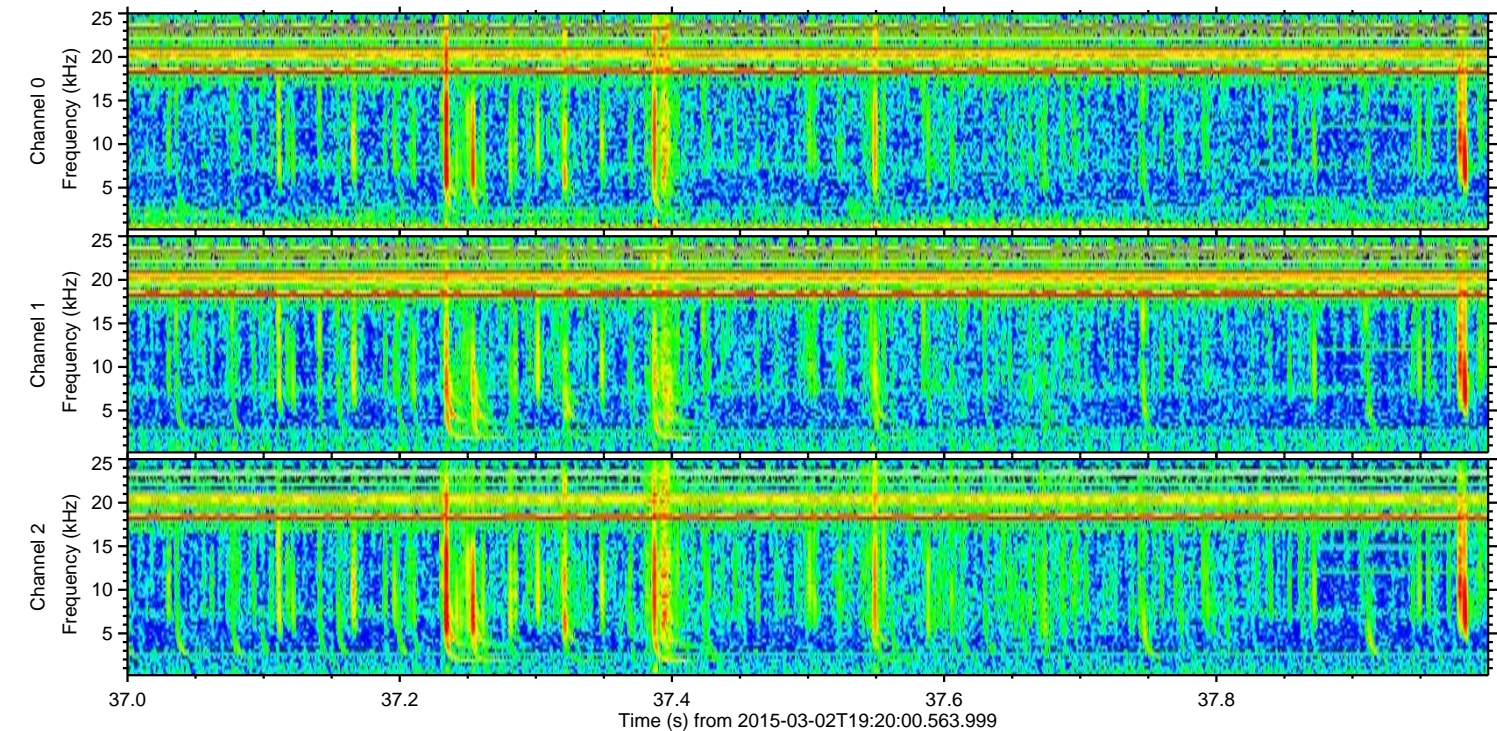
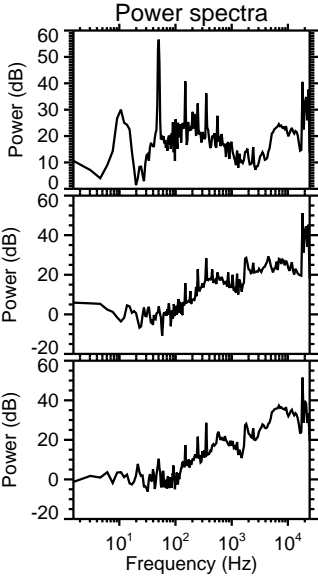
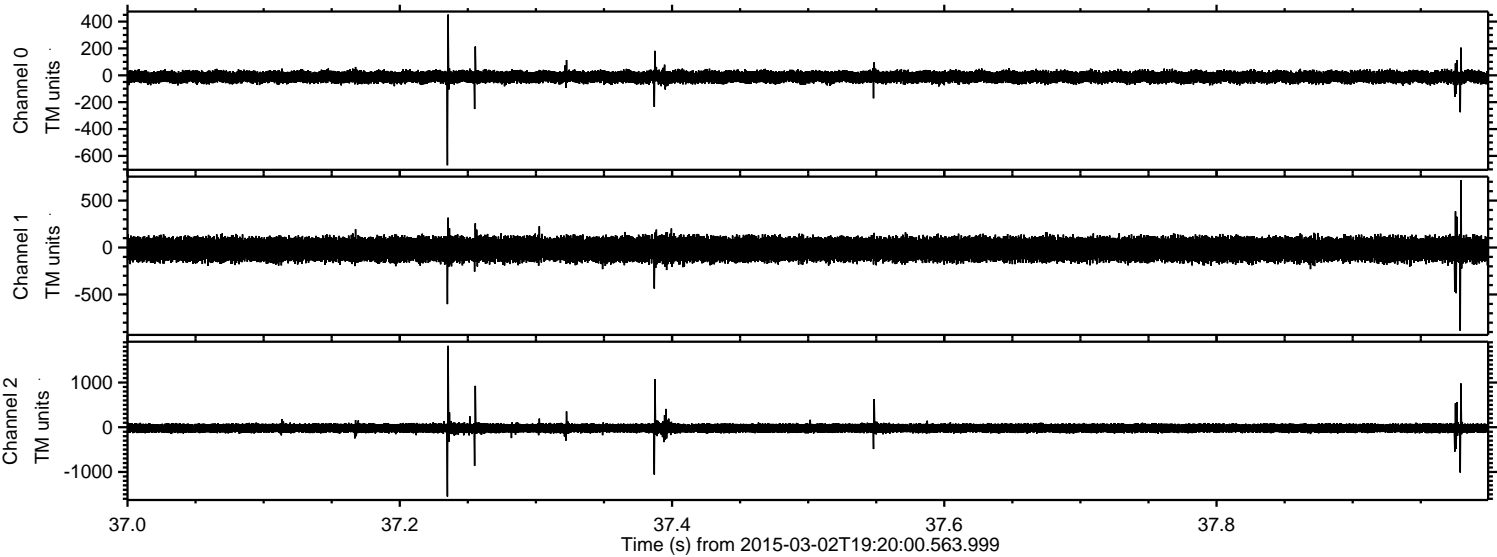


Channel 0
mn: -720
mx: 497
 μ : -12.5
 σ : 22.3

Channel 1
mn: -376
mx: 340
 μ : -18.9
 σ : 64.6

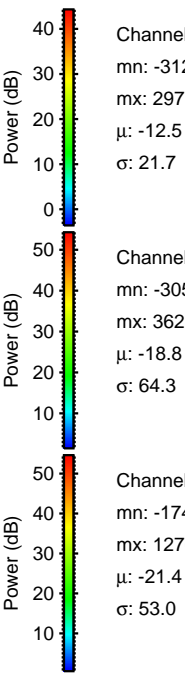
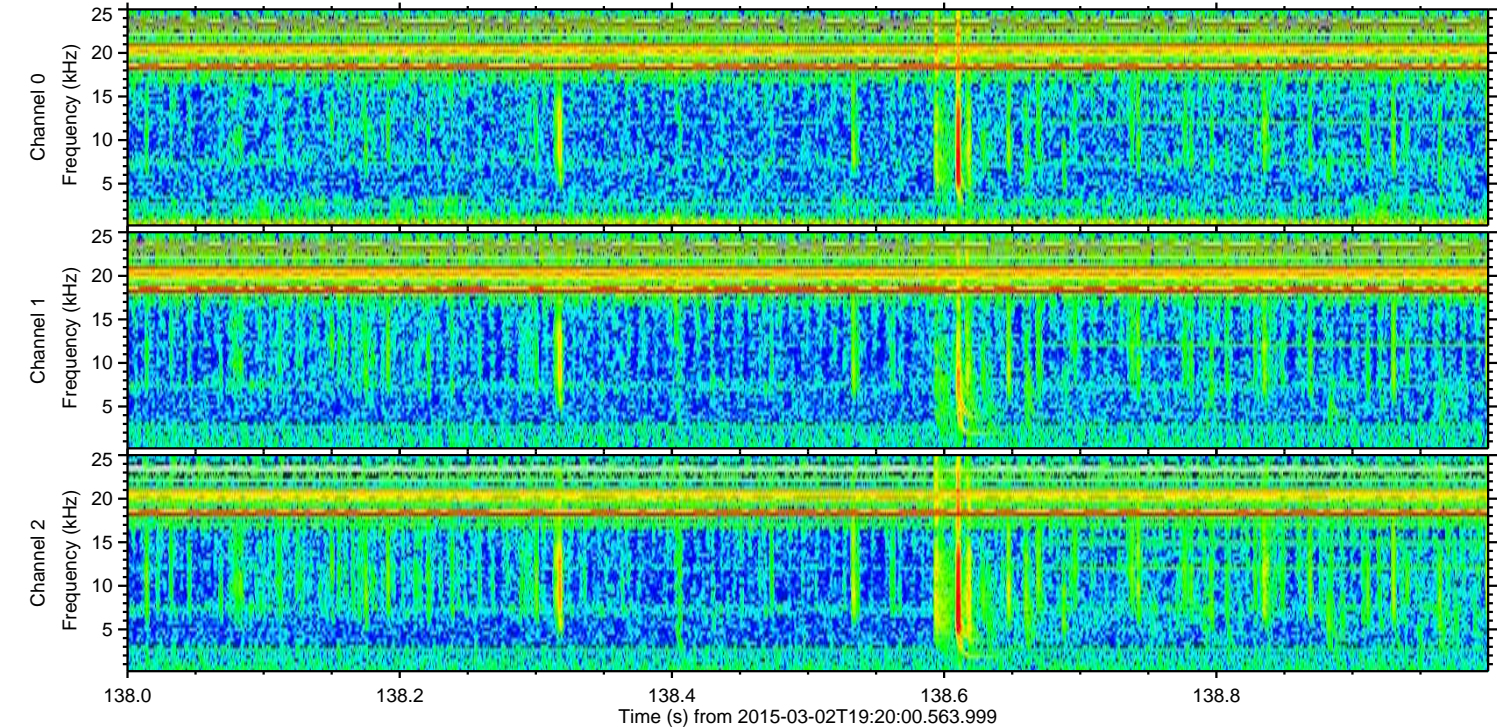
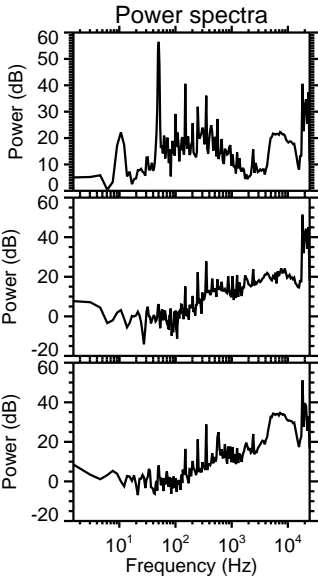
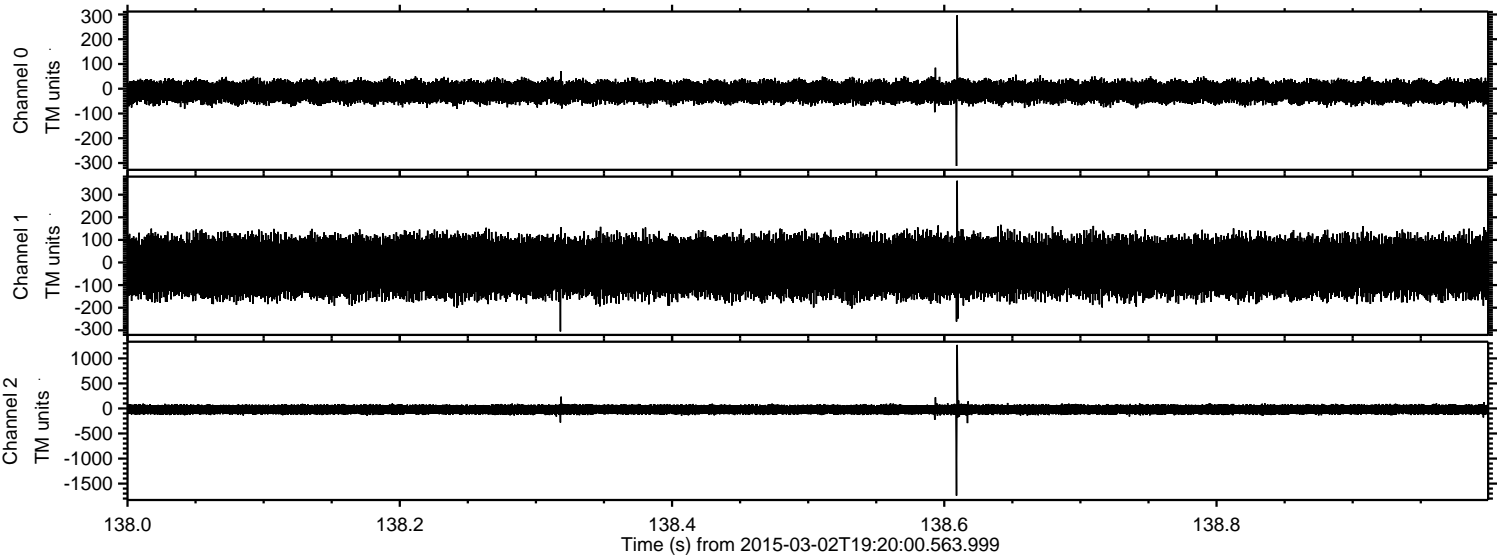
Channel 2
mn: -1738
mx: 2105
 μ : -21.4
 σ : 57.9

Processed Sat Mar 7 00:20:49 2015 by ELM ver.2012-10-06 from 001__elm20150302_191959__dat00.bin



ELMAVAN 3D WAVEFORMS (Measured data sampled at 50 kHz) 49802 packets of 144 samples from 2015-03-02T19:20:00.563.999. Part 139/144

Processed Sat Mar 7 00:20:50 2015 by ELM ver.2012-10-06 from 001__elm20150302_191959__dat00.bin

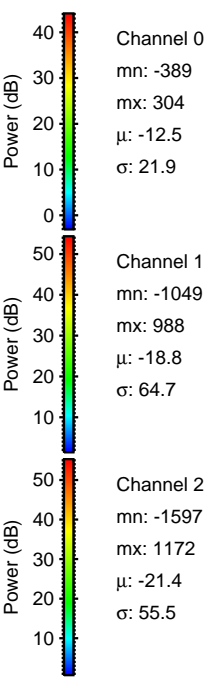
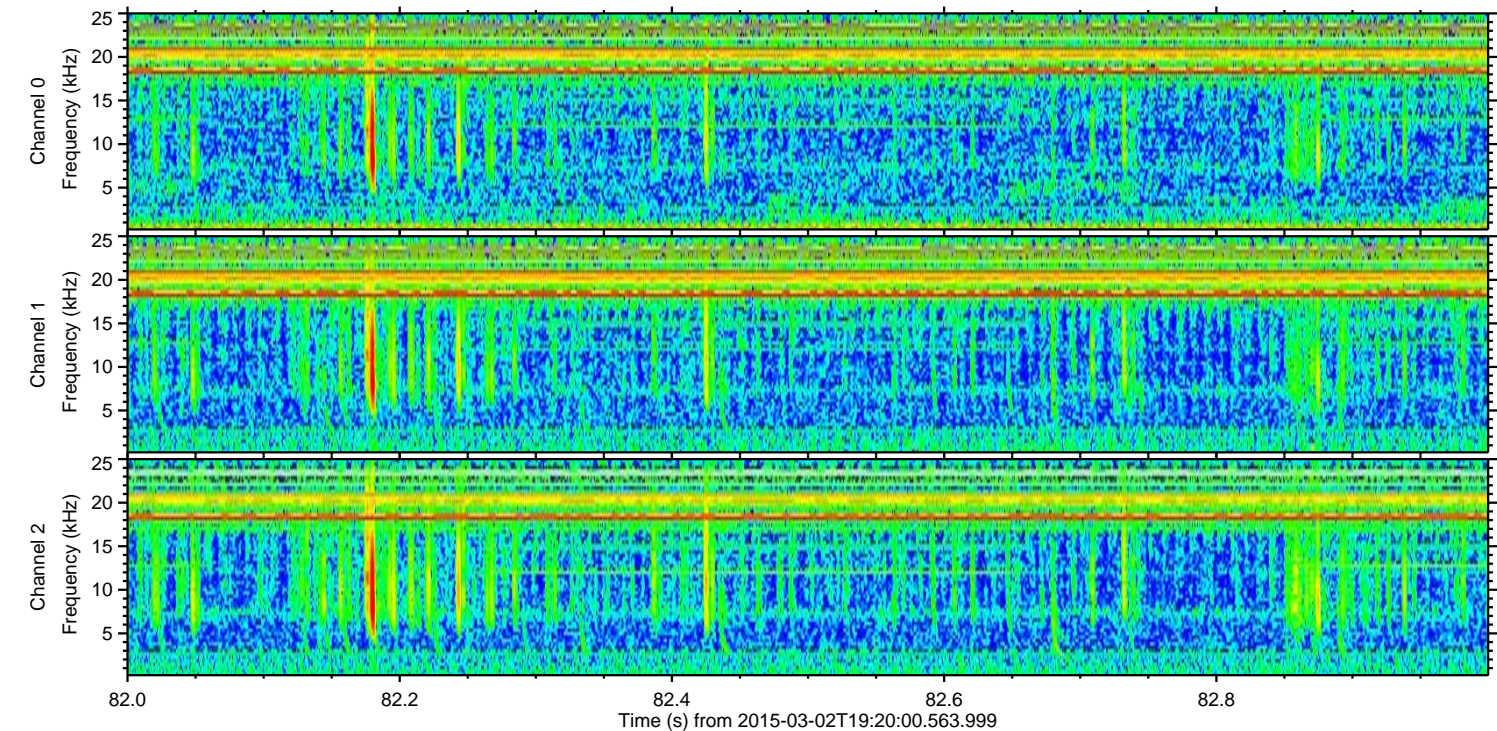
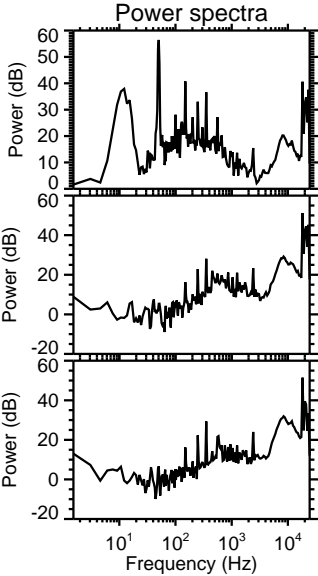
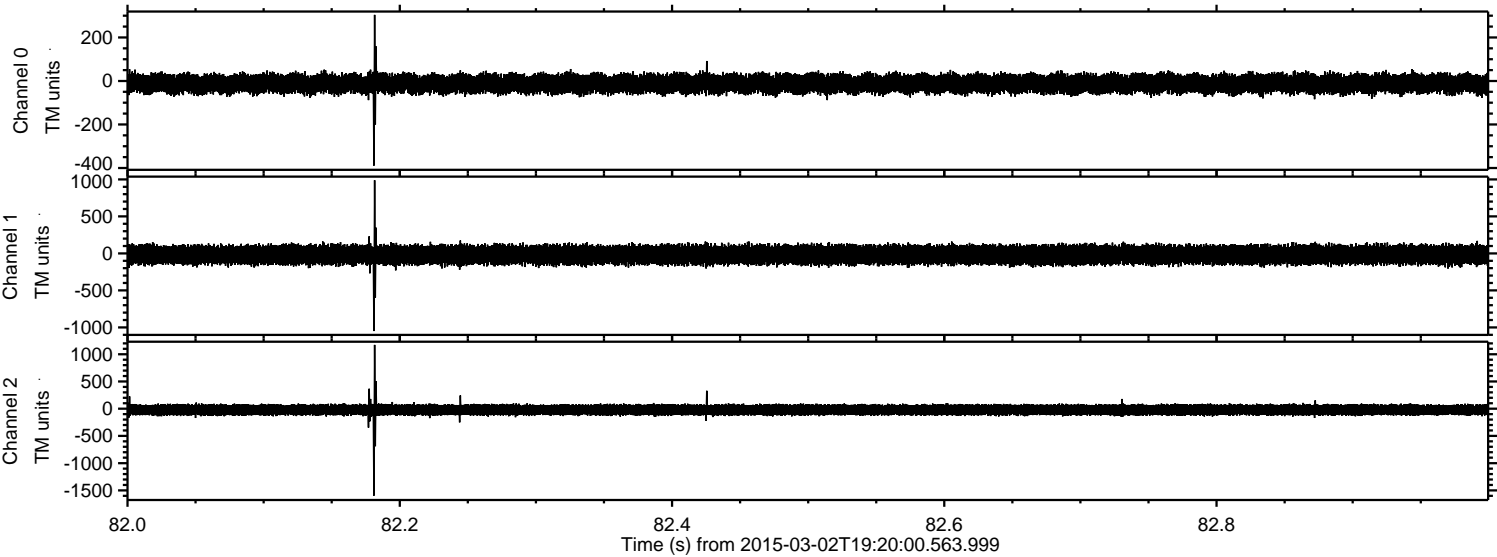


Channel 0
mn: -312
mx: 297
 μ : -12.5
 σ : 21.7

Channel 1
mn: -305
mx: 362
 μ : -18.8
 σ : 64.3

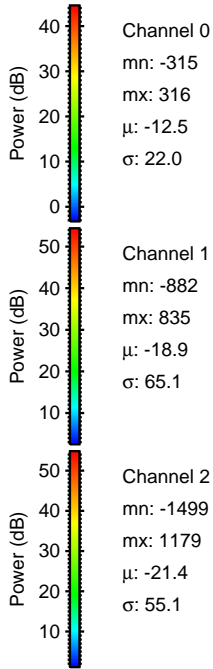
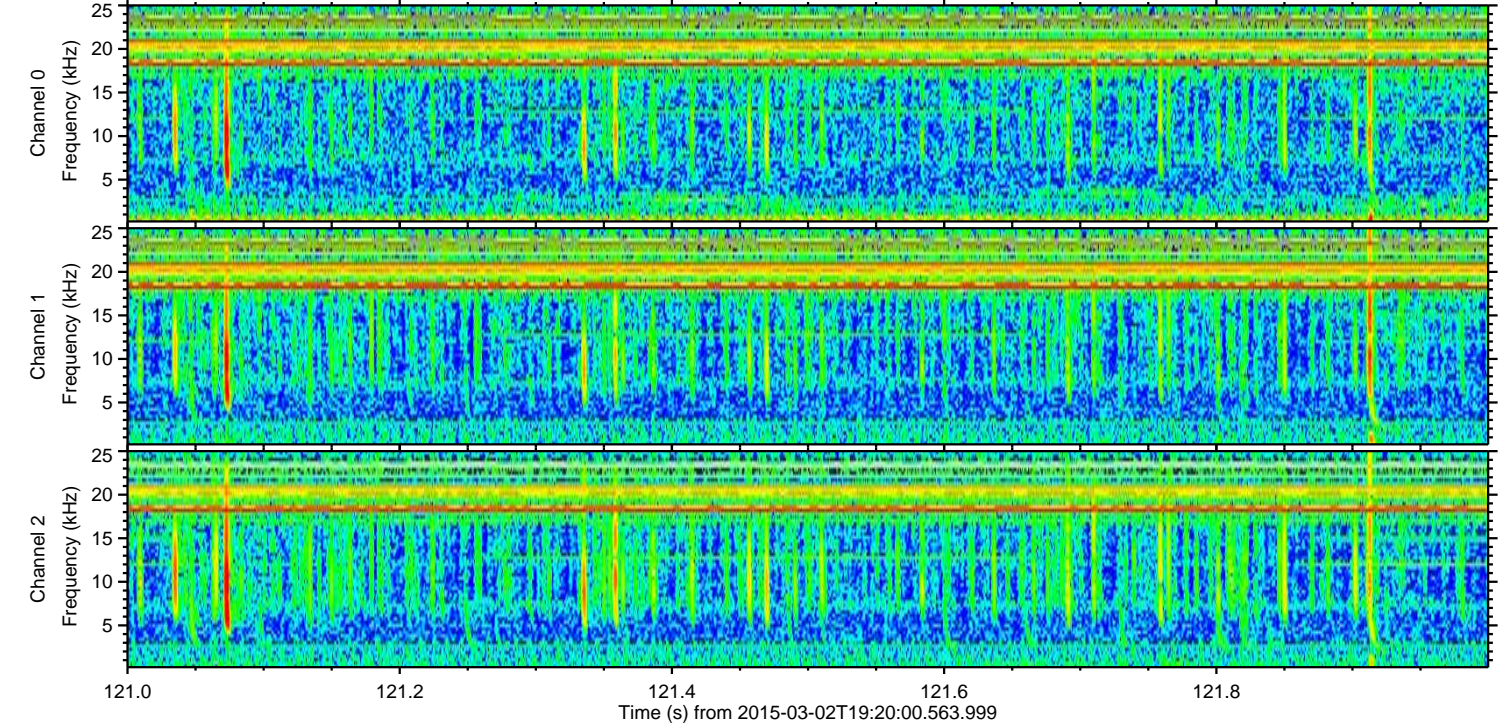
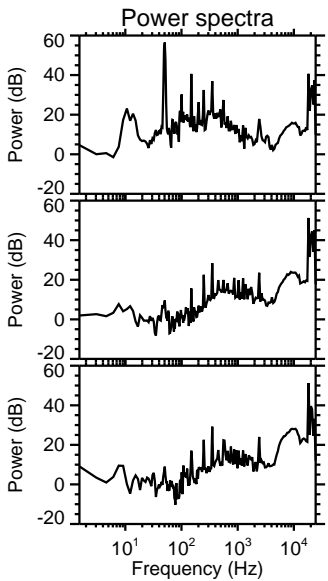
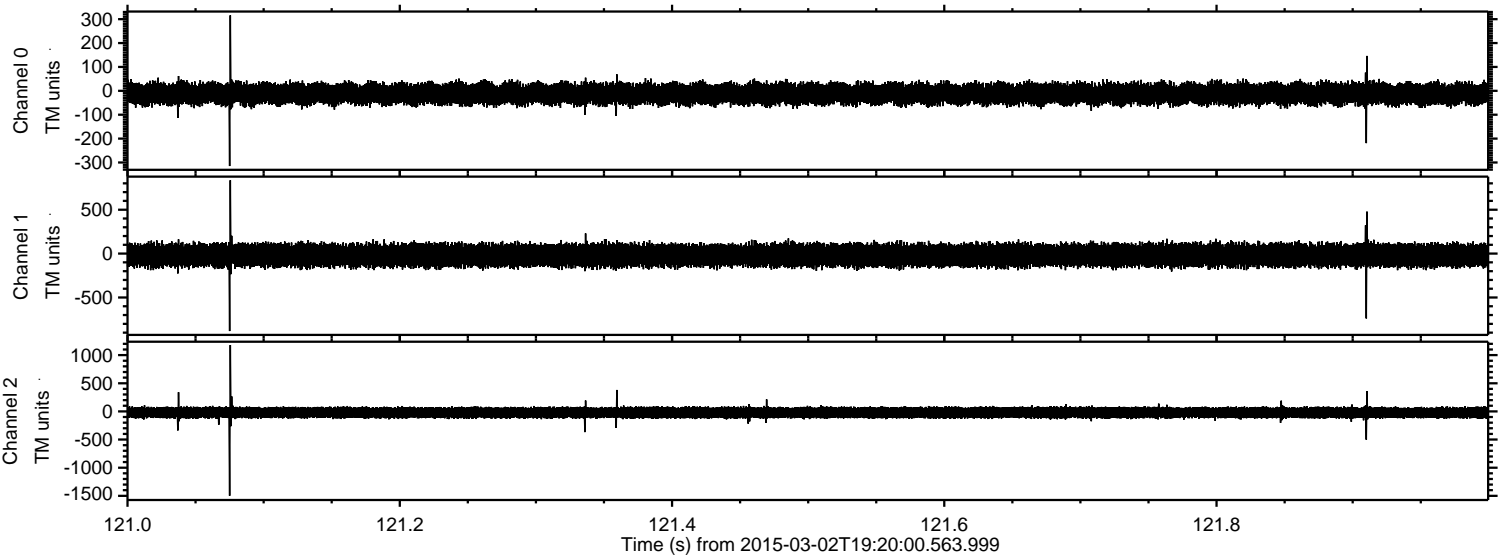
Channel 2
mn: -1741
mx: 1270
 μ : -21.4
 σ : 53.0

Processed Sat Mar 7 00:20:51 2015 by ELM ver.2012-10-06 from 001__elm20150302_191959__dat00.bin



ELMAVAN 3D WAVEFORMS (Measured data sampled at 50 kHz) 49802 packets of 144 samples from 2015-03-02T19:20:00.563.999. Part 122/144

Processed Sat Mar 7 00:20:52 2015 by ELM ver.2012-10-06 from 001__elm20150302_191959__dat00.bin



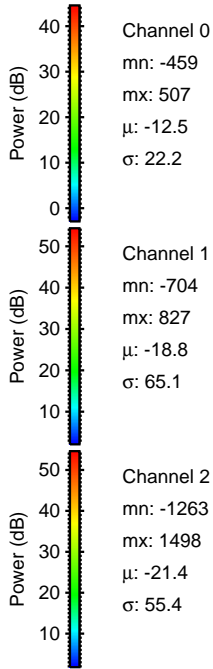
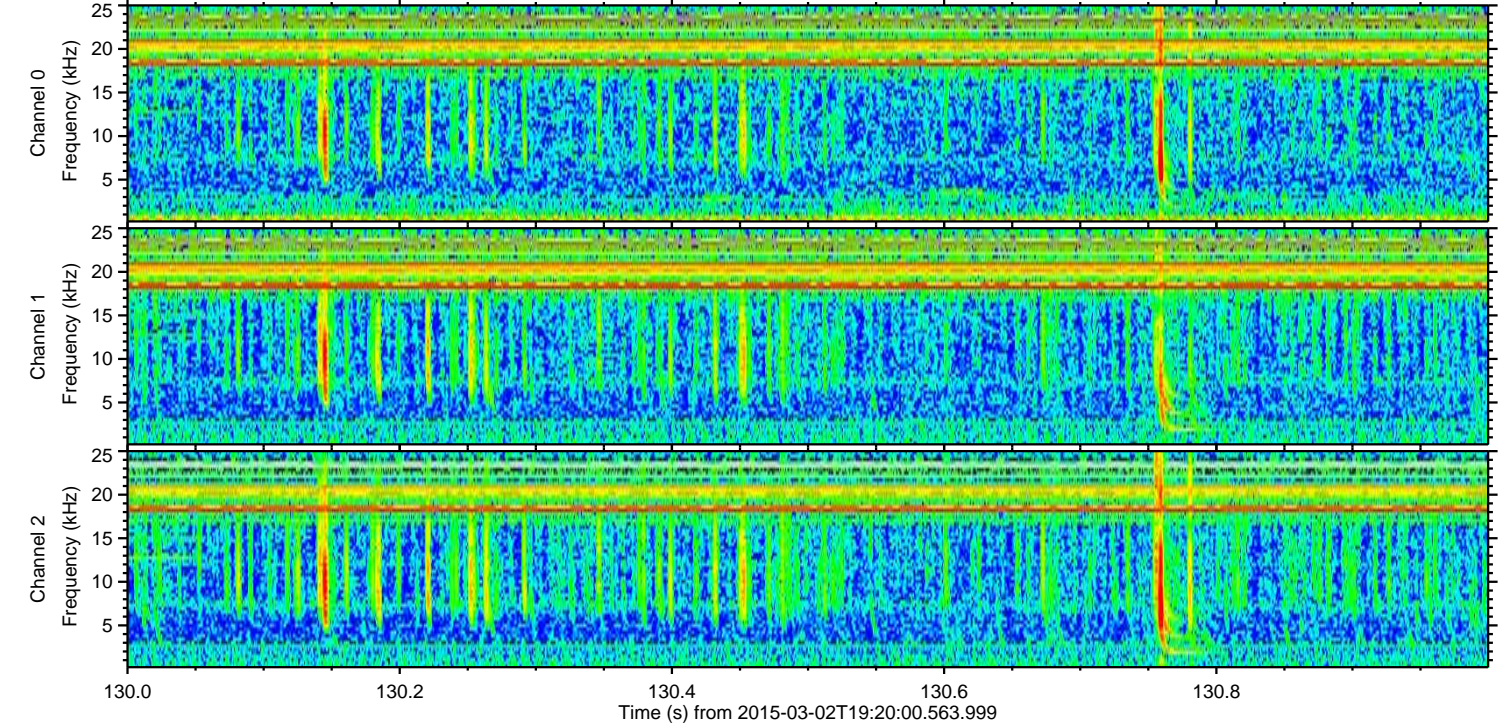
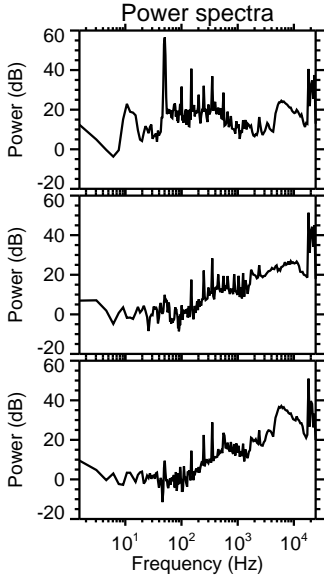
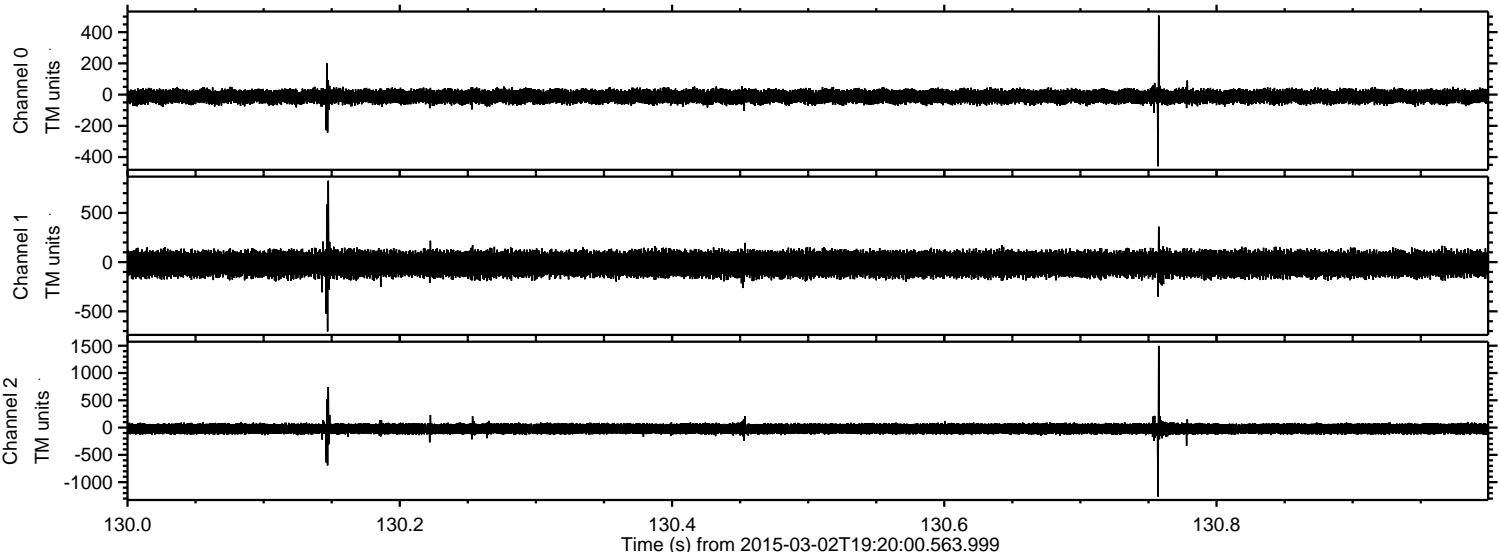
Channel 0
mn: -315
mx: 316
 μ : -12.5
 σ : 22.0

Channel 1
mn: -882
mx: 835
 μ : -18.9
 σ : 65.1

Channel 2
mn: -1499
mx: 1179
 μ : -21.4
 σ : 55.1

ELMAVAN 3D WAVEFORMS (Measured data sampled at 50 kHz) 49802 packets of 144 samples from 2015-03-02T19:20:00.563.999. Part 131/144

Processed Sat Mar 7 00:20:53 2015 by ELM ver.2012-10-06 from 001__elm20150302_191959__dat00.bin



Processed Sat Mar 7 00:20:54 2015 by ELM ver.2012-10-06 from 001__elm20150302_191959__dat00.bin

