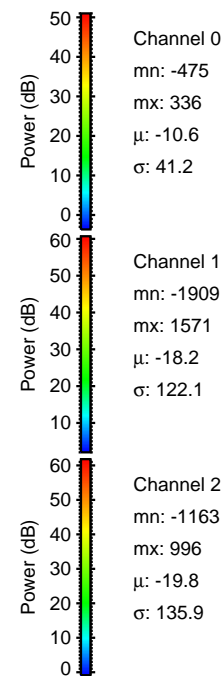
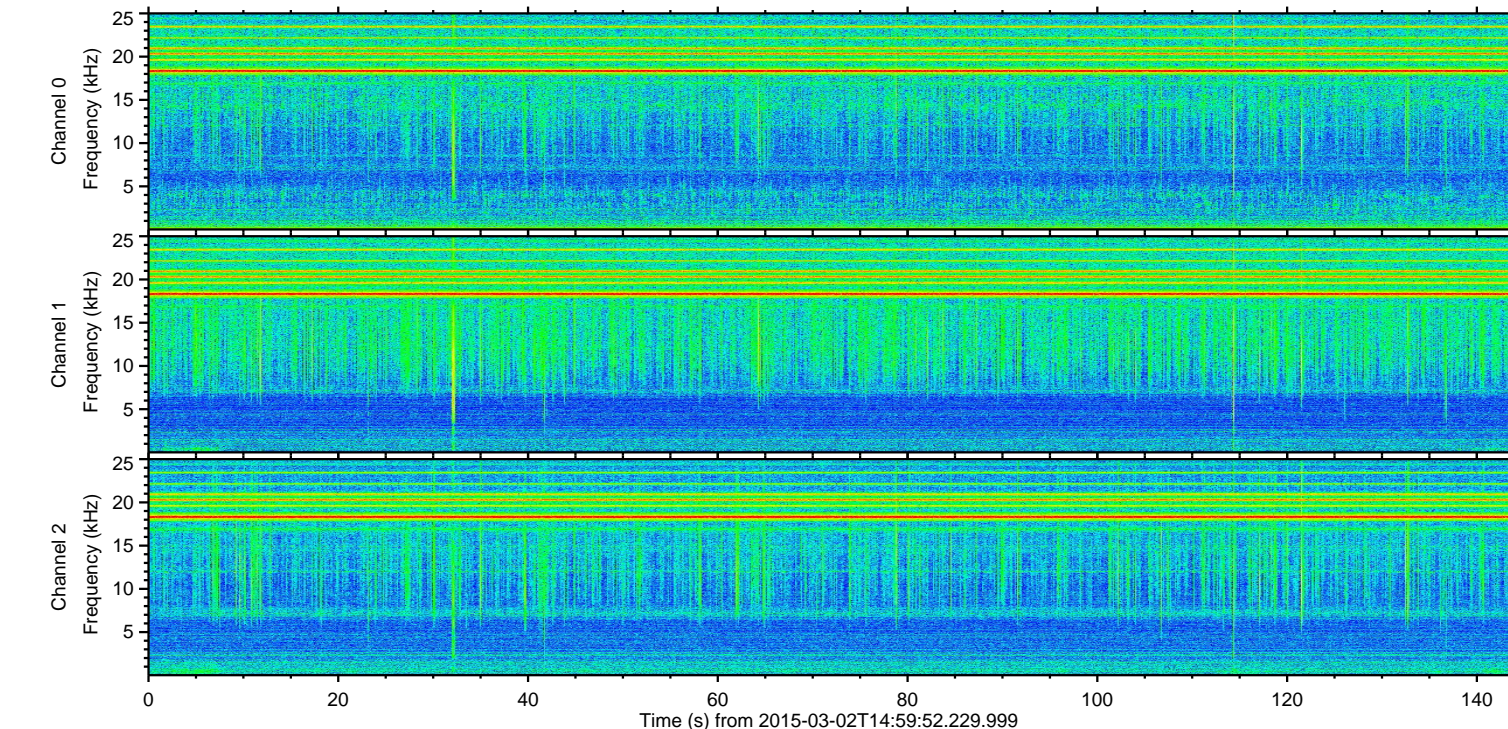
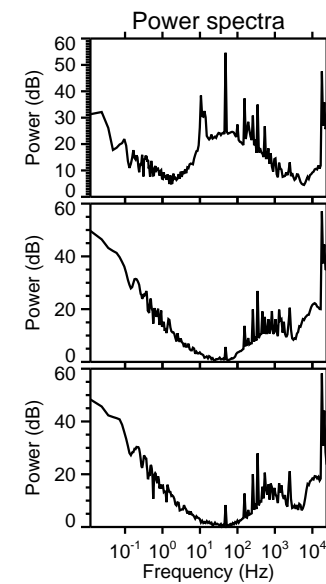
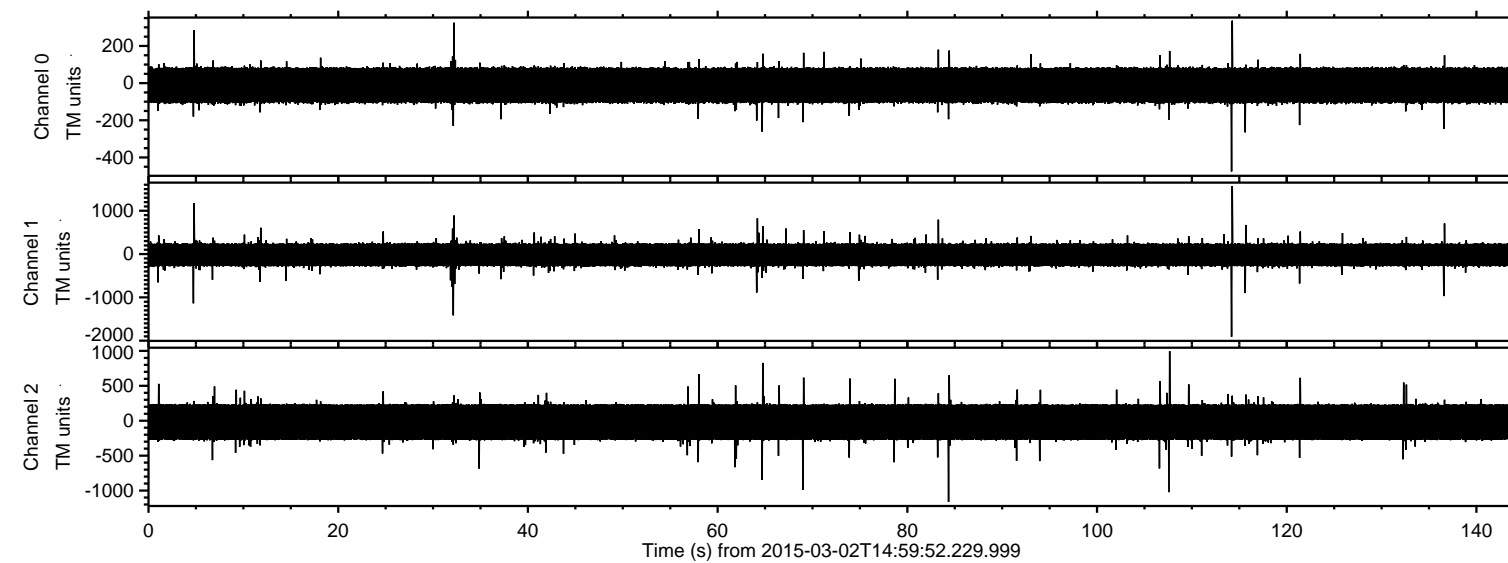


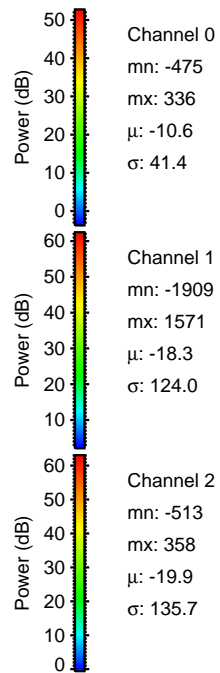
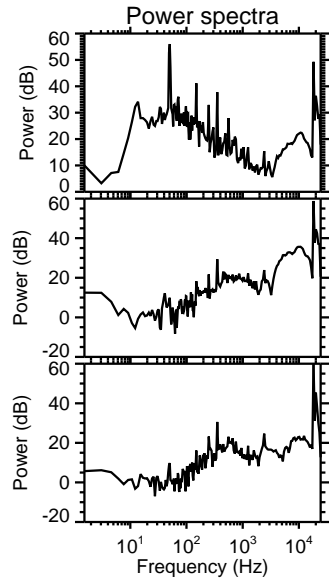
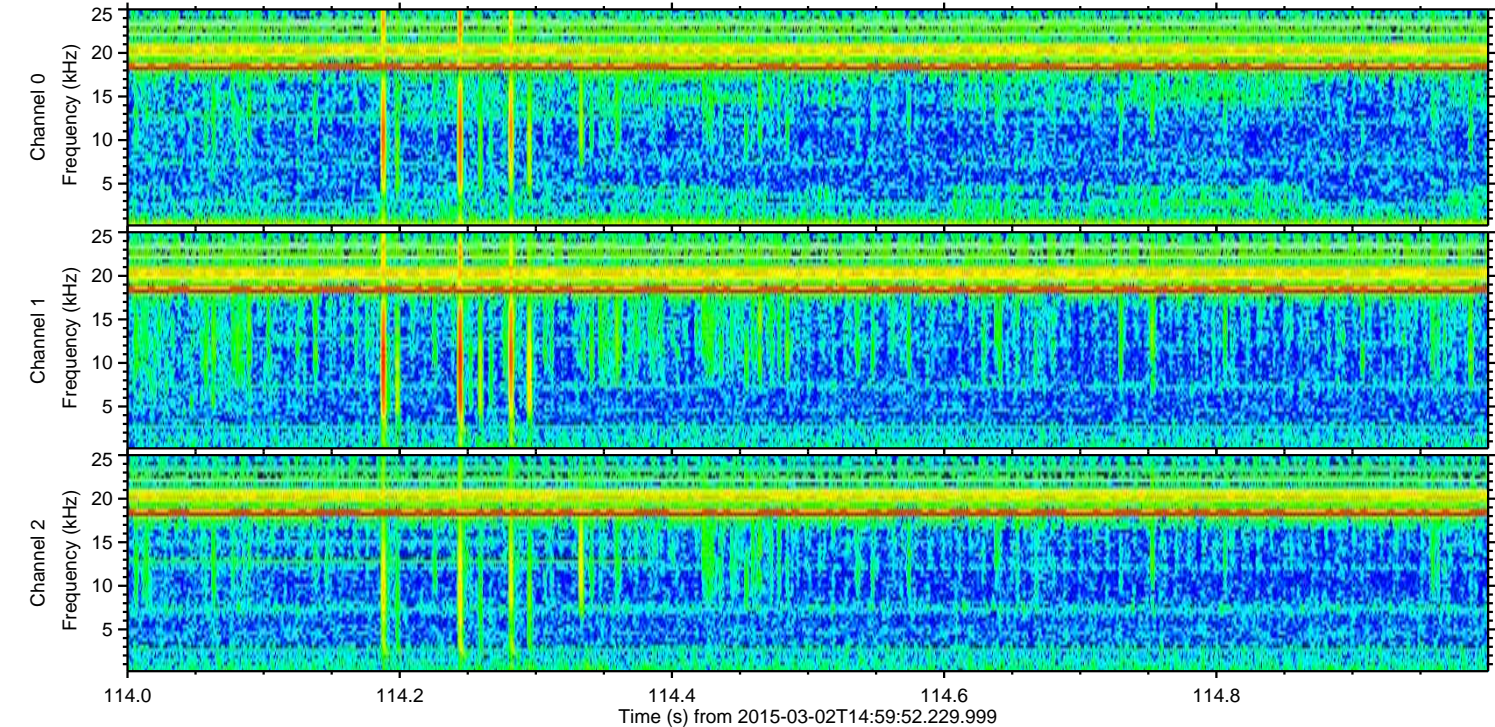
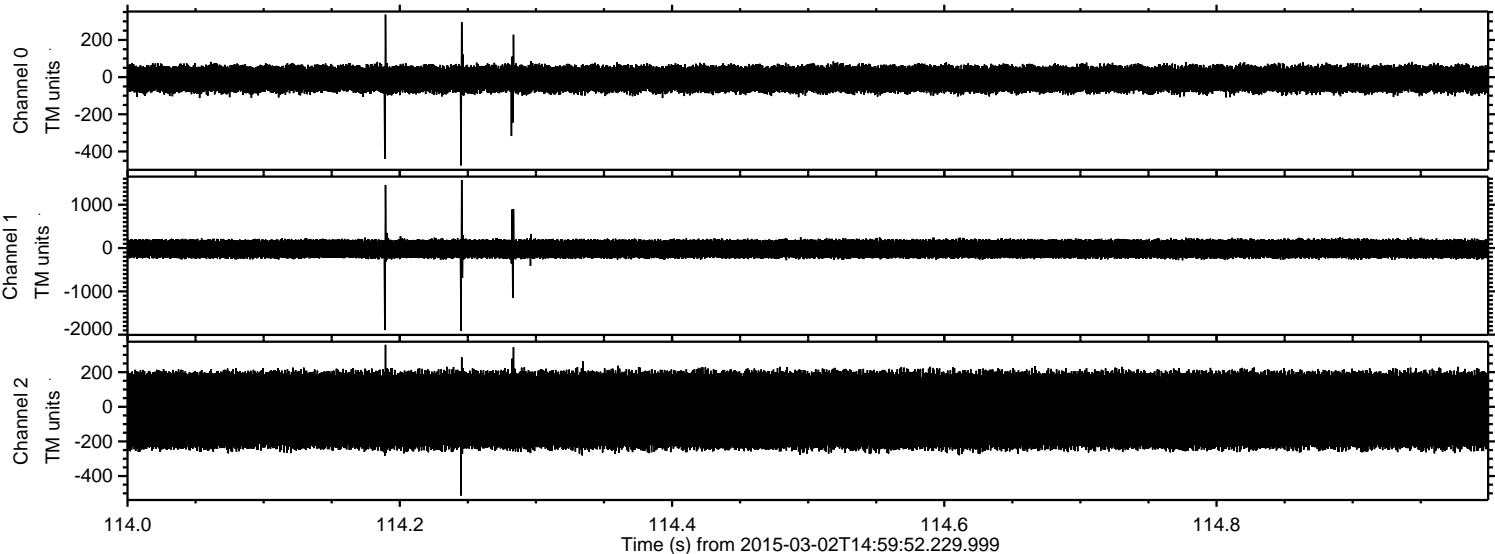
ELMAVAN 3D WAVEFORMS (Measured data sampled at 50 kHz) 49808 packets of 144 samples from 2015-03-02T14:59:52.229.999.

Processed Fri Mar 6 23:12:38 2015 by ELM ver.2012-10-06 from 001__elm20150302_145951__dat00.bin

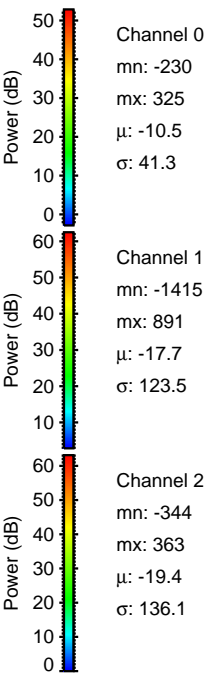
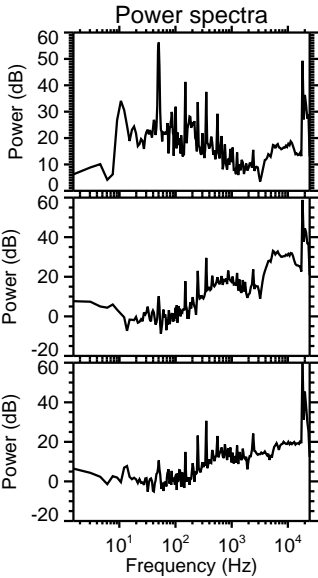
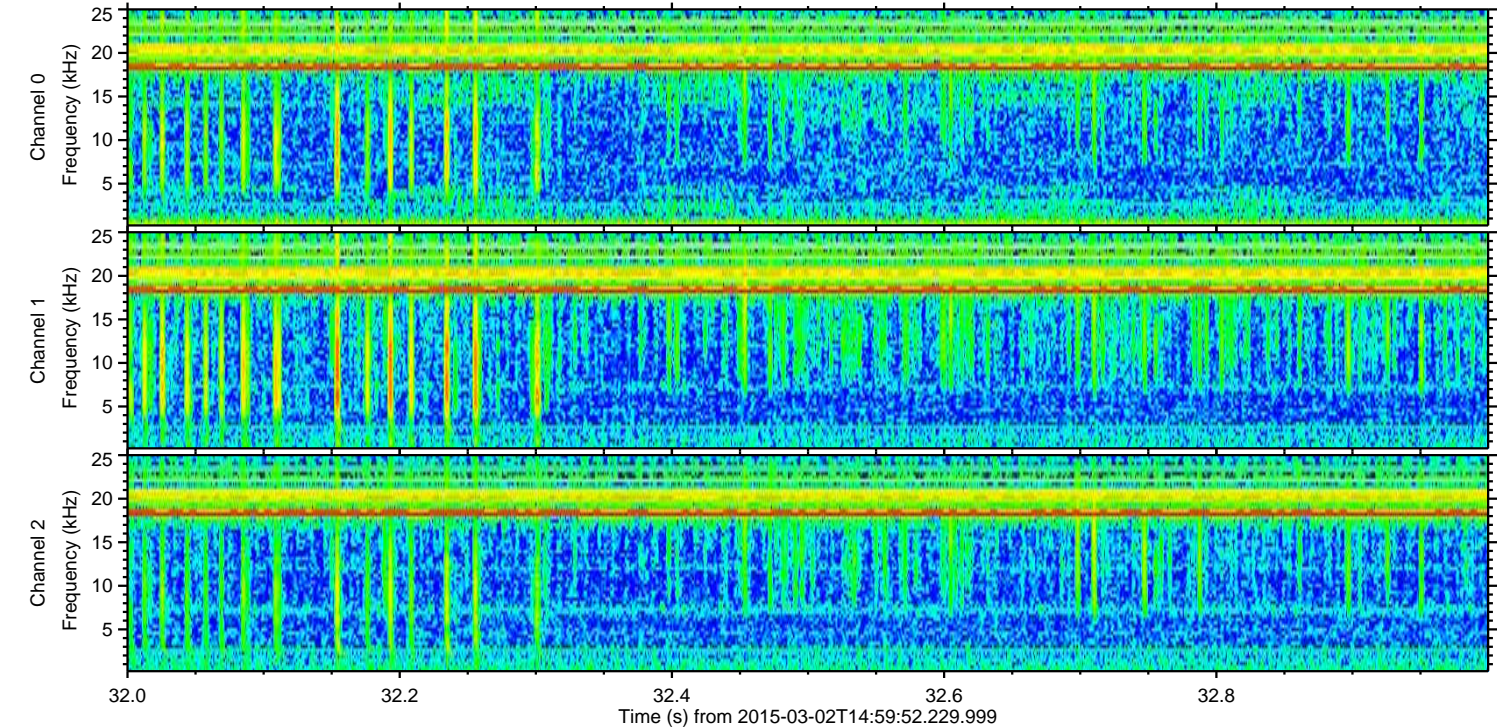
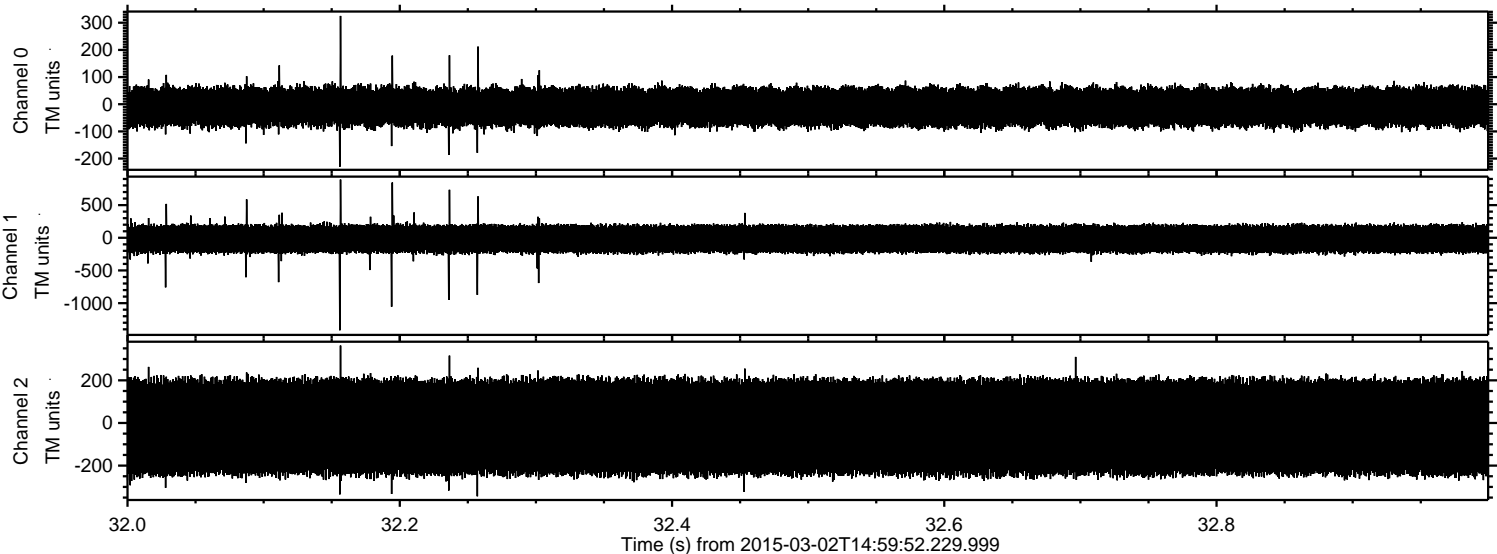


ELMAVAN 3D WAVEFORMS (Measured data sampled at 50 kHz) 49808 packets of 144 samples from 2015-03-02T14:59:52.229.999. Part 115/144

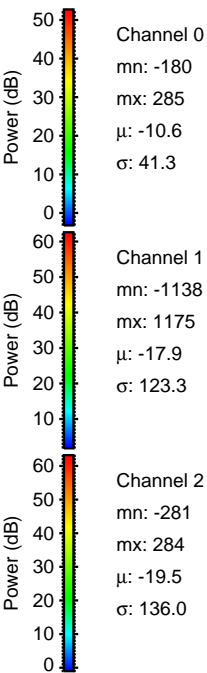
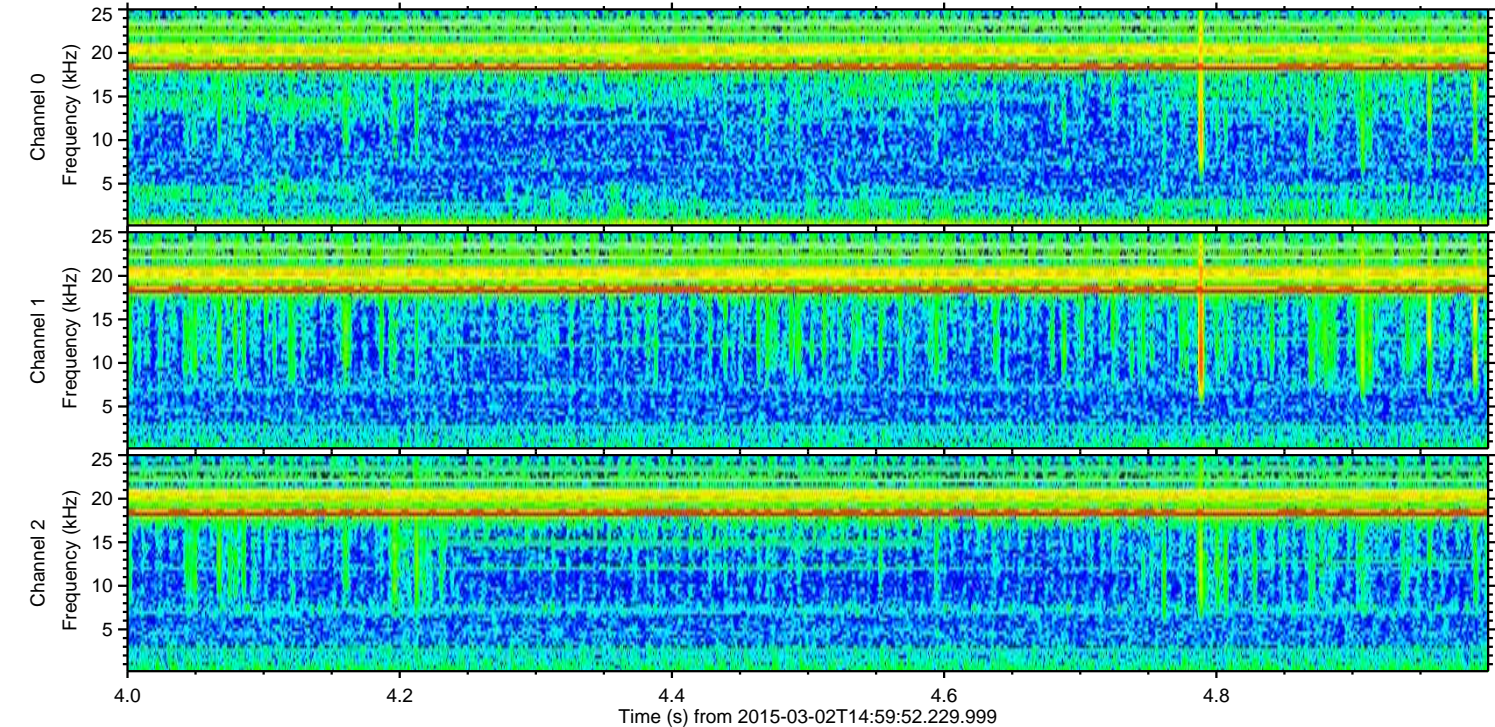
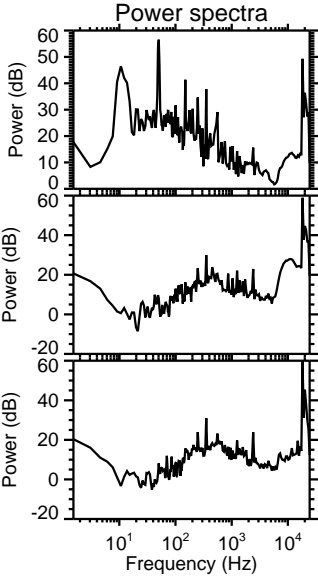
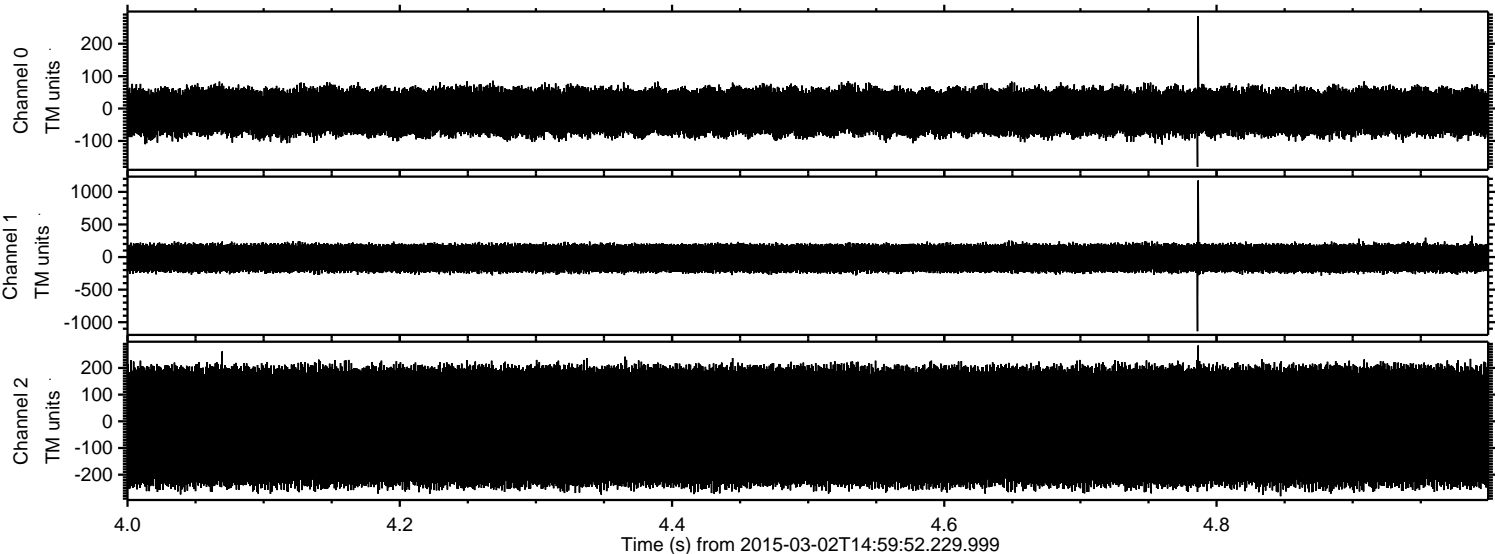
Processed Fri Mar 6 23:12:49 2015 by ELM ver.2012-10-06 from 001__elm20150302_145951__dat00.bin



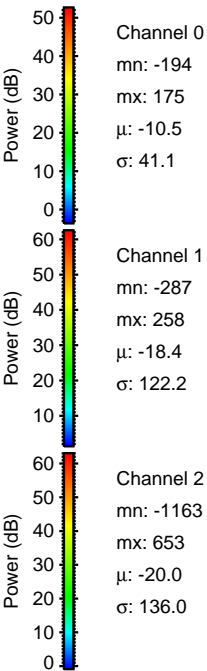
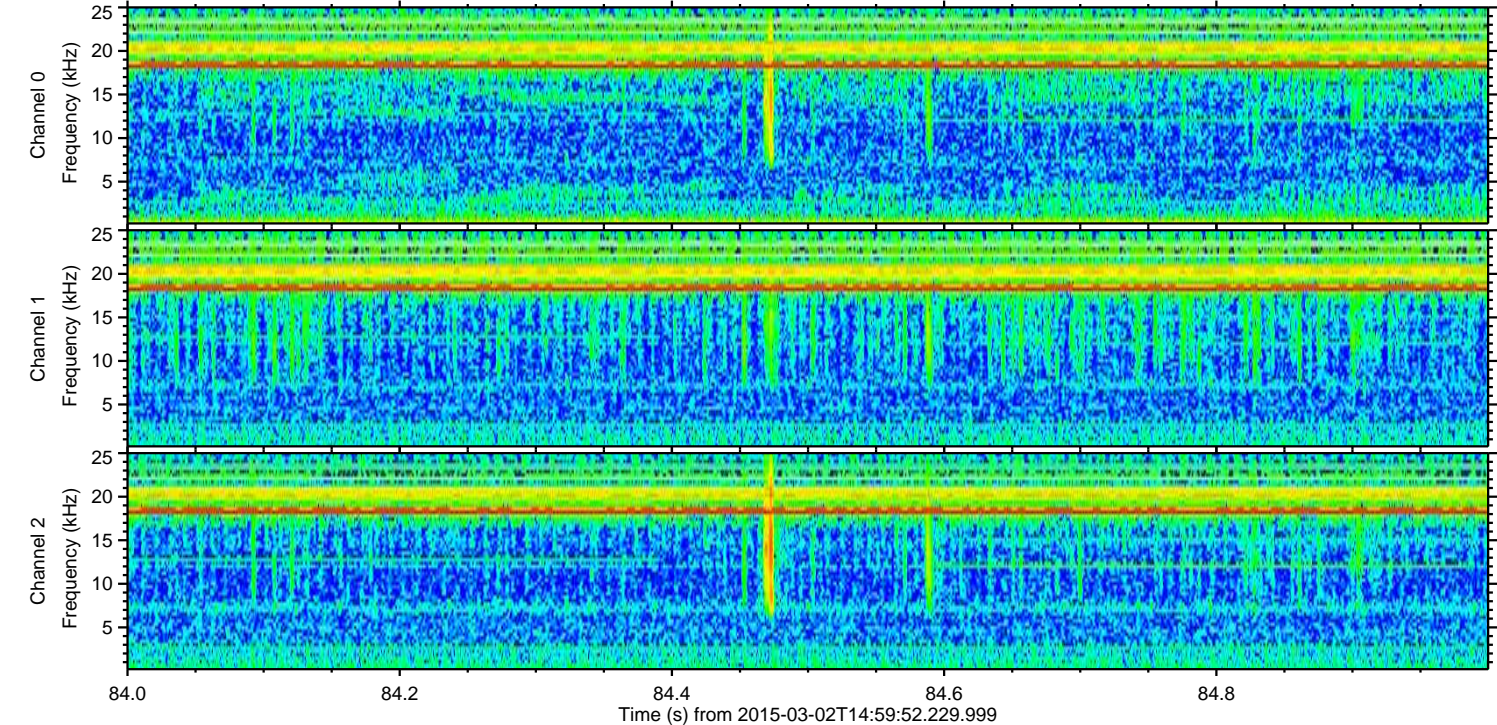
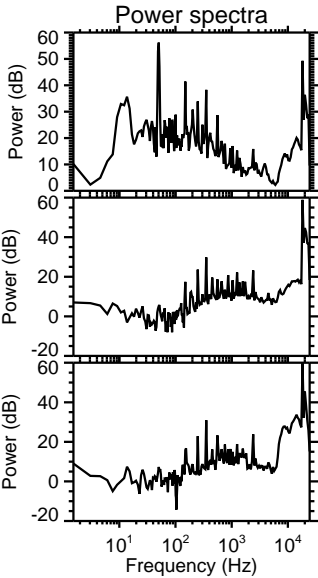
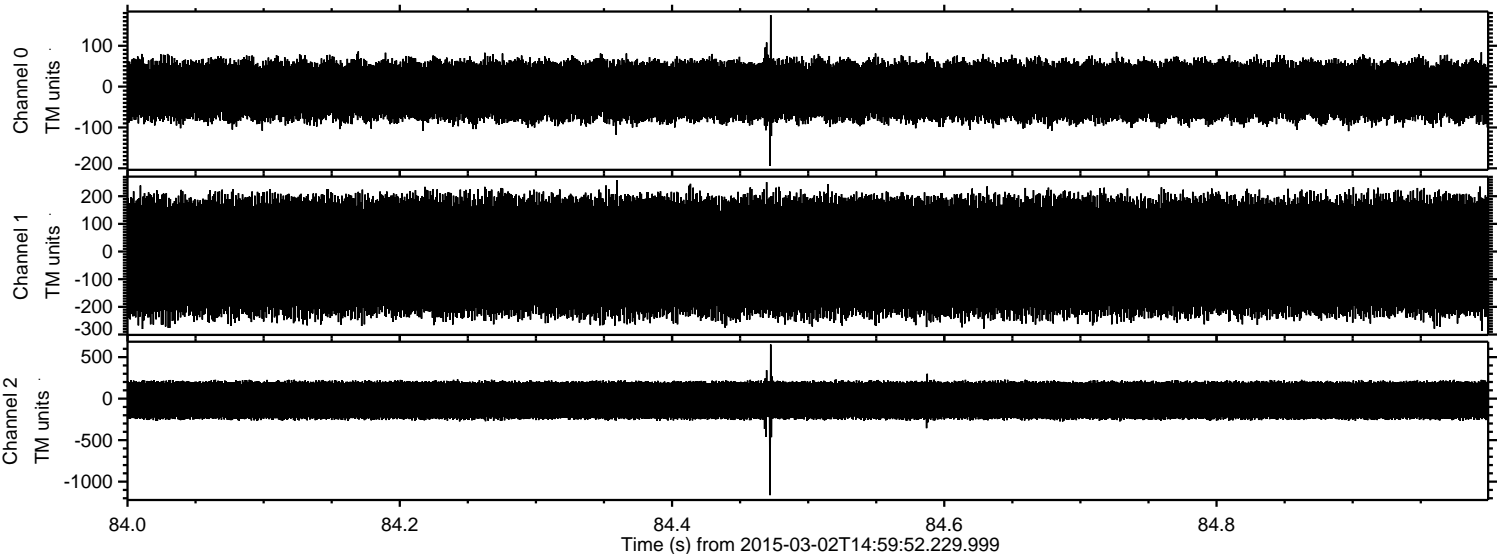
Processed Fri Mar 6 23:12:50 2015 by ELM ver.2012-10-06 from 001__elm20150302_145951__dat00.bin



Processed Fri Mar 6 23:12:51 2015 by ELM ver.2012-10-06 from 001__elm20150302_145951__dat00.bin

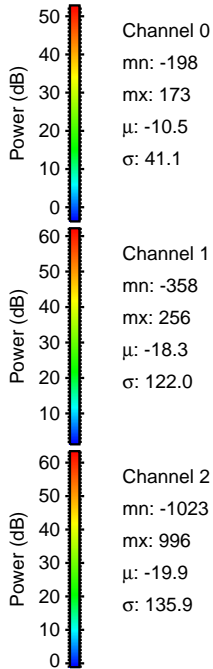
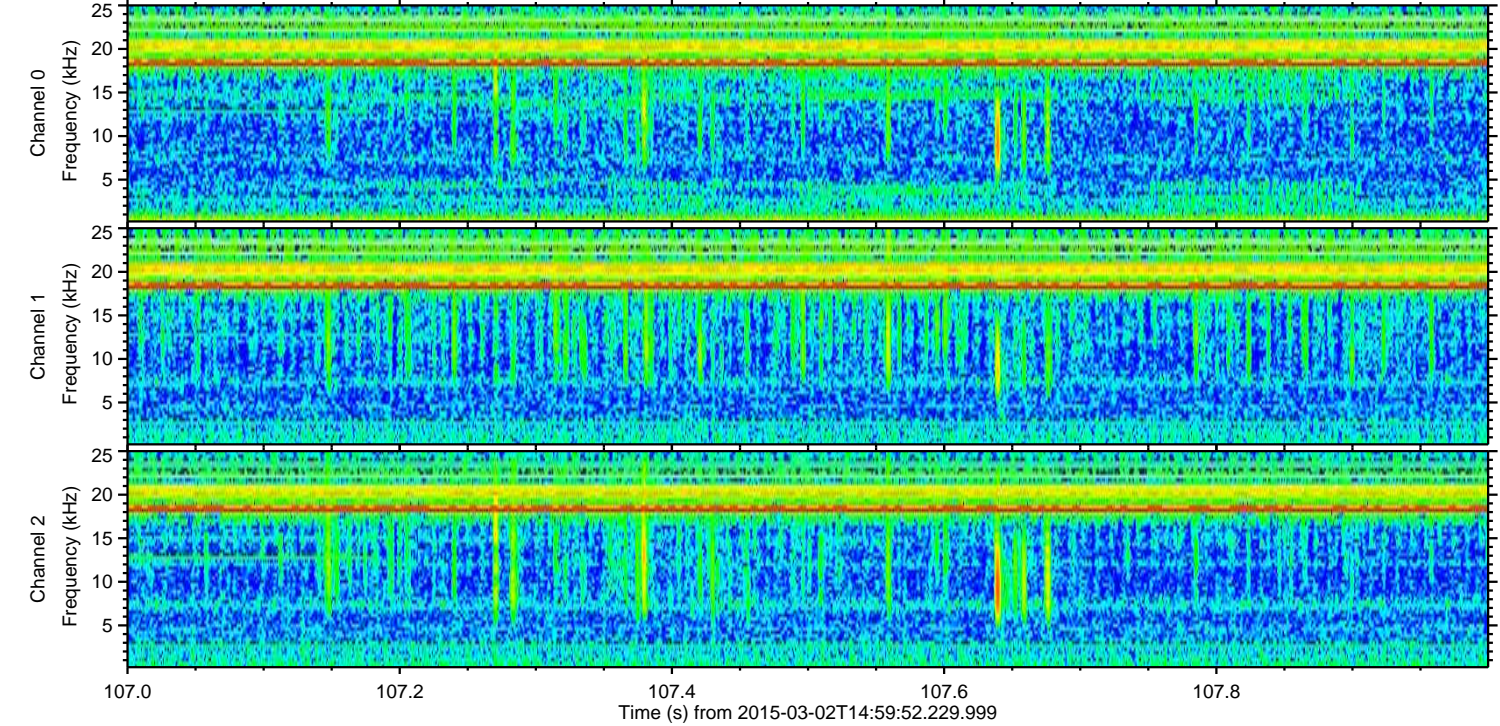
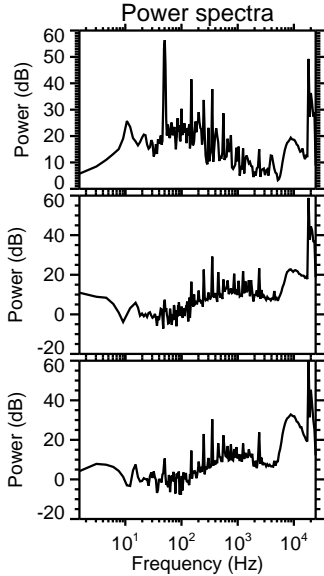
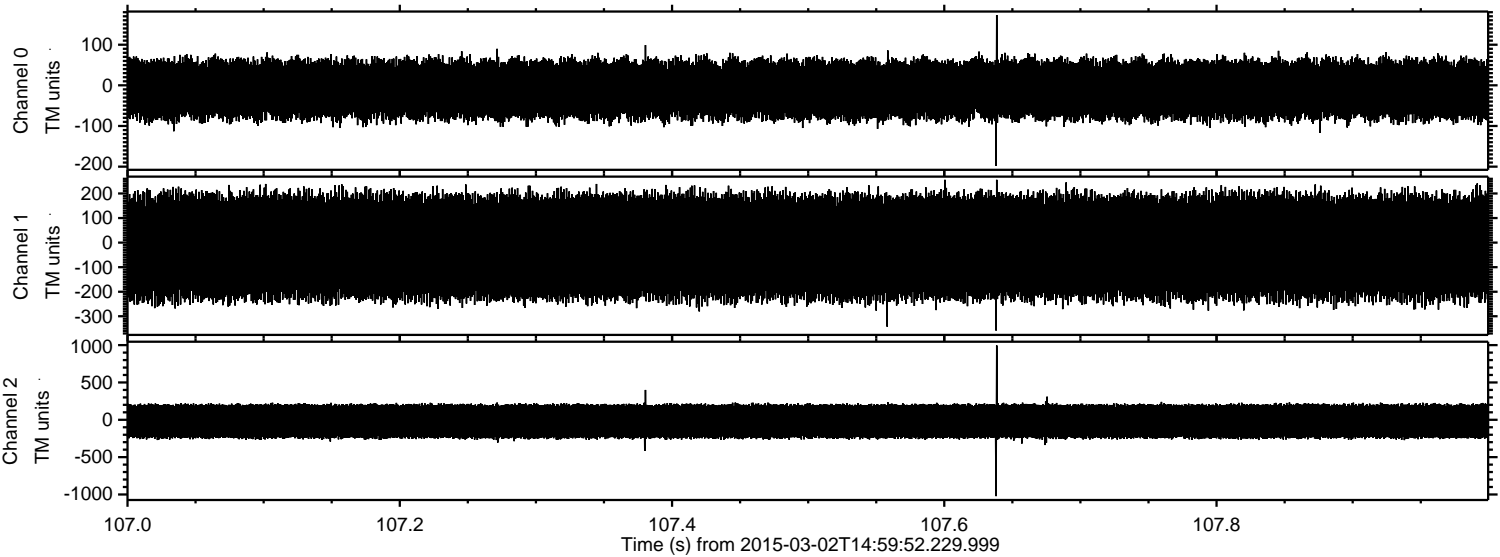


Processed Fri Mar 6 23:12:52 2015 by ELM ver.2012-10-06 from 001__elm20150302_145951__dat00.bin

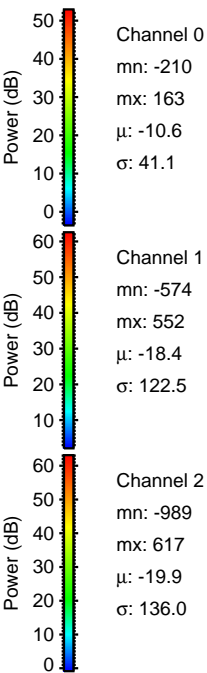
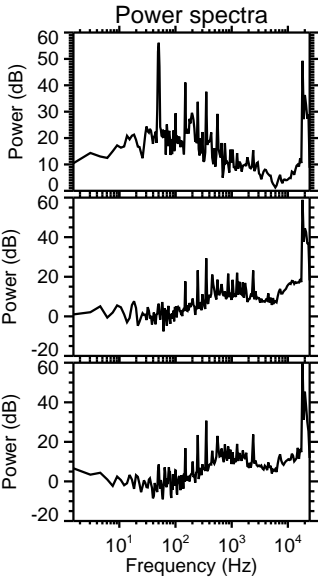
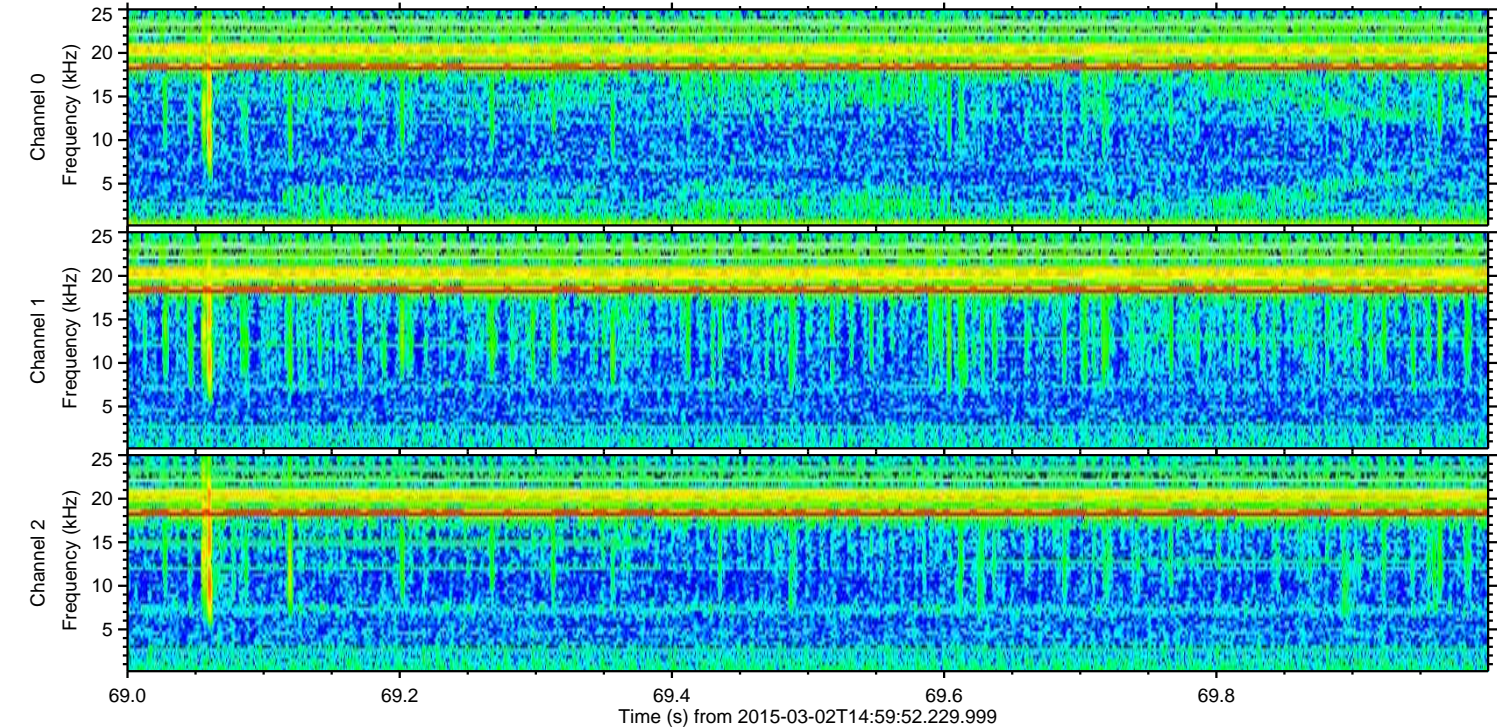
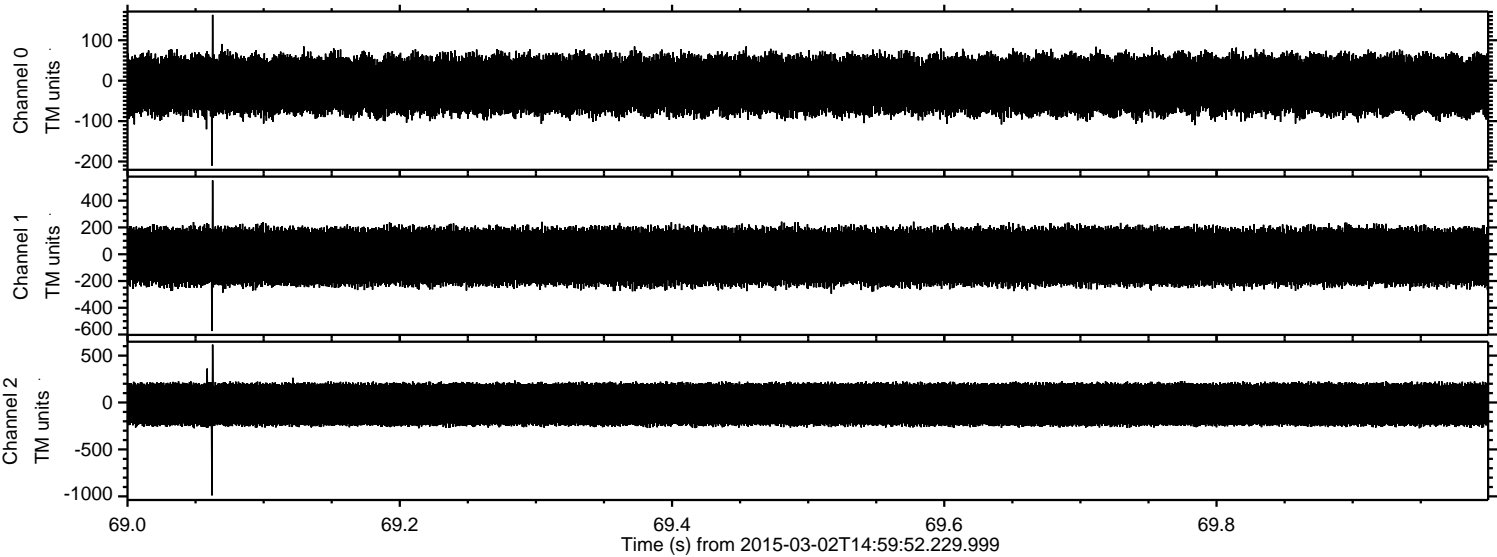


ELMAVAN 3D WAVEFORMS (Measured data sampled at 50 kHz) 49808 packets of 144 samples from 2015-03-02T14:59:52.229.999. Part 108/144

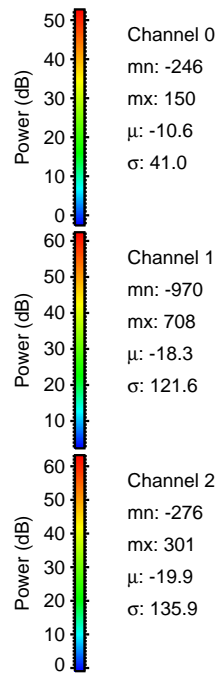
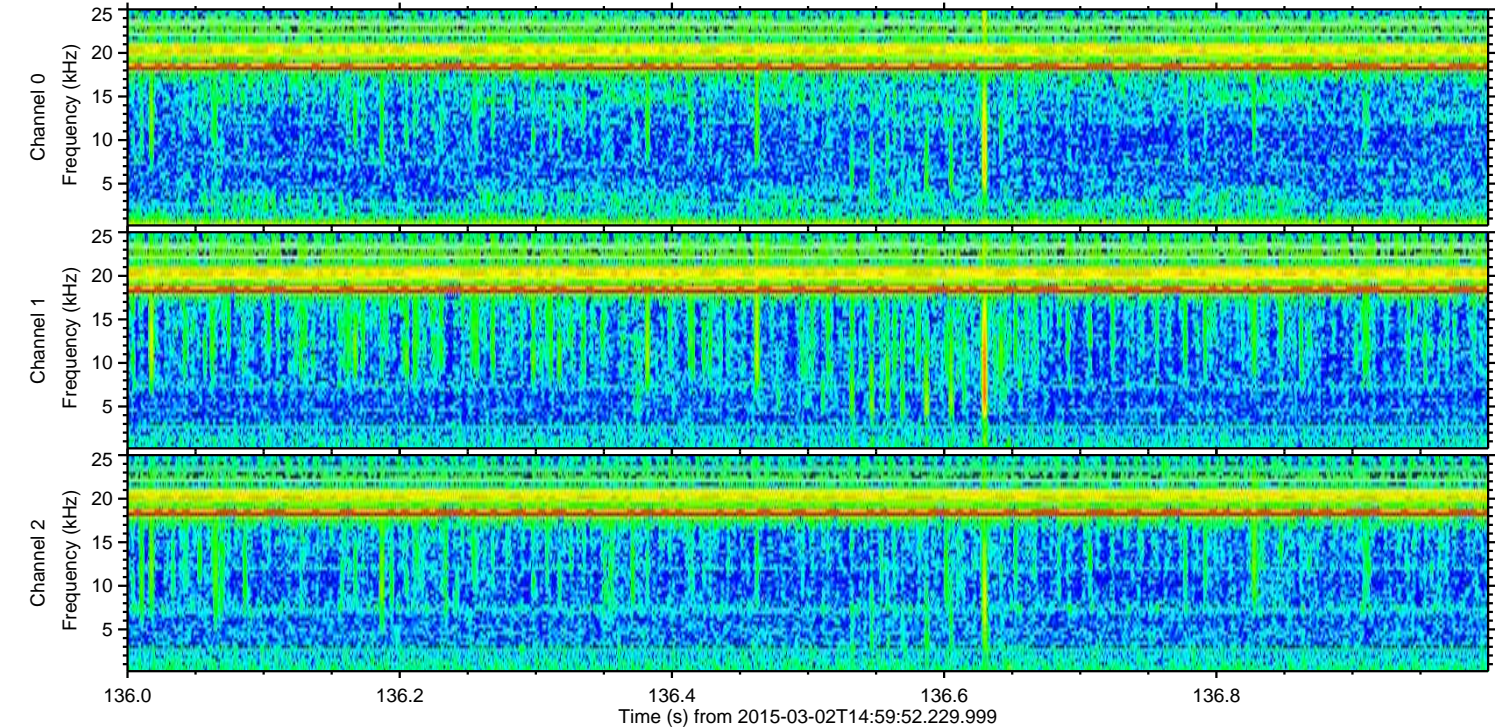
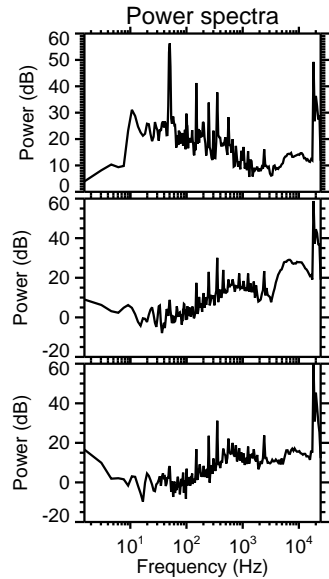
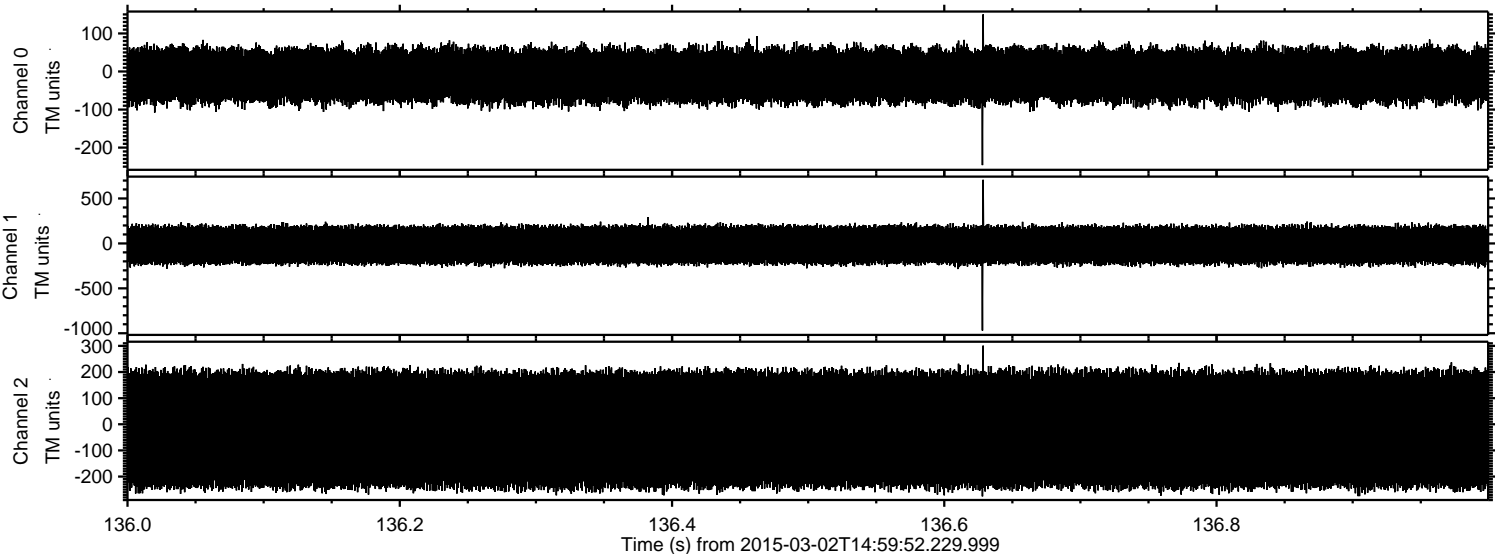
Processed Fri Mar 6 23:12:53 2015 by ELM ver.2012-10-06 from 001__elm20150302_145951__dat00.bin



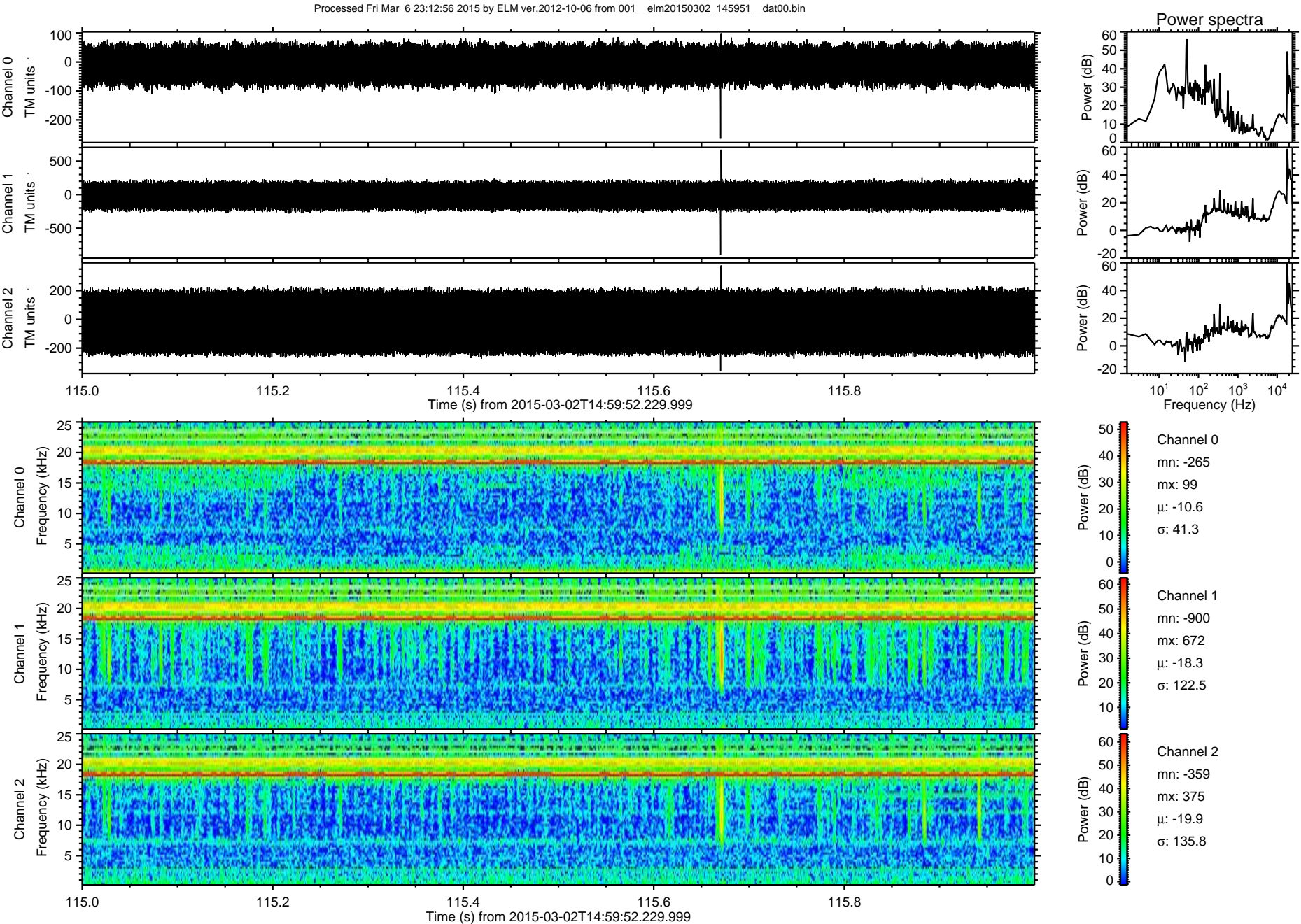
Processed Fri Mar 6 23:12:54 2015 by ELM ver.2012-10-06 from 001__elm20150302_145951__dat00.bin



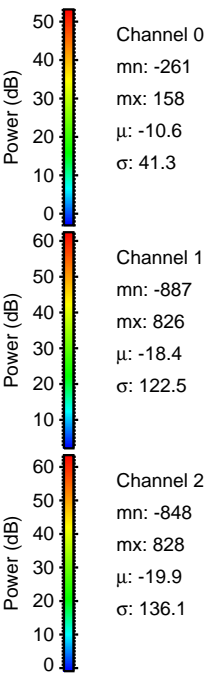
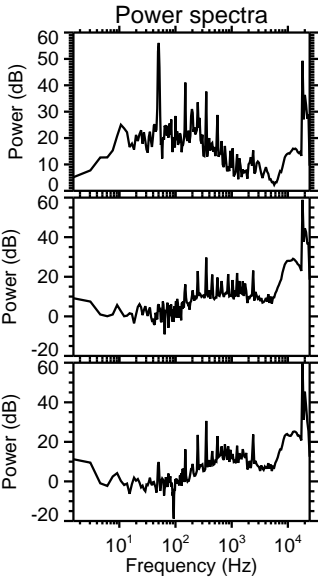
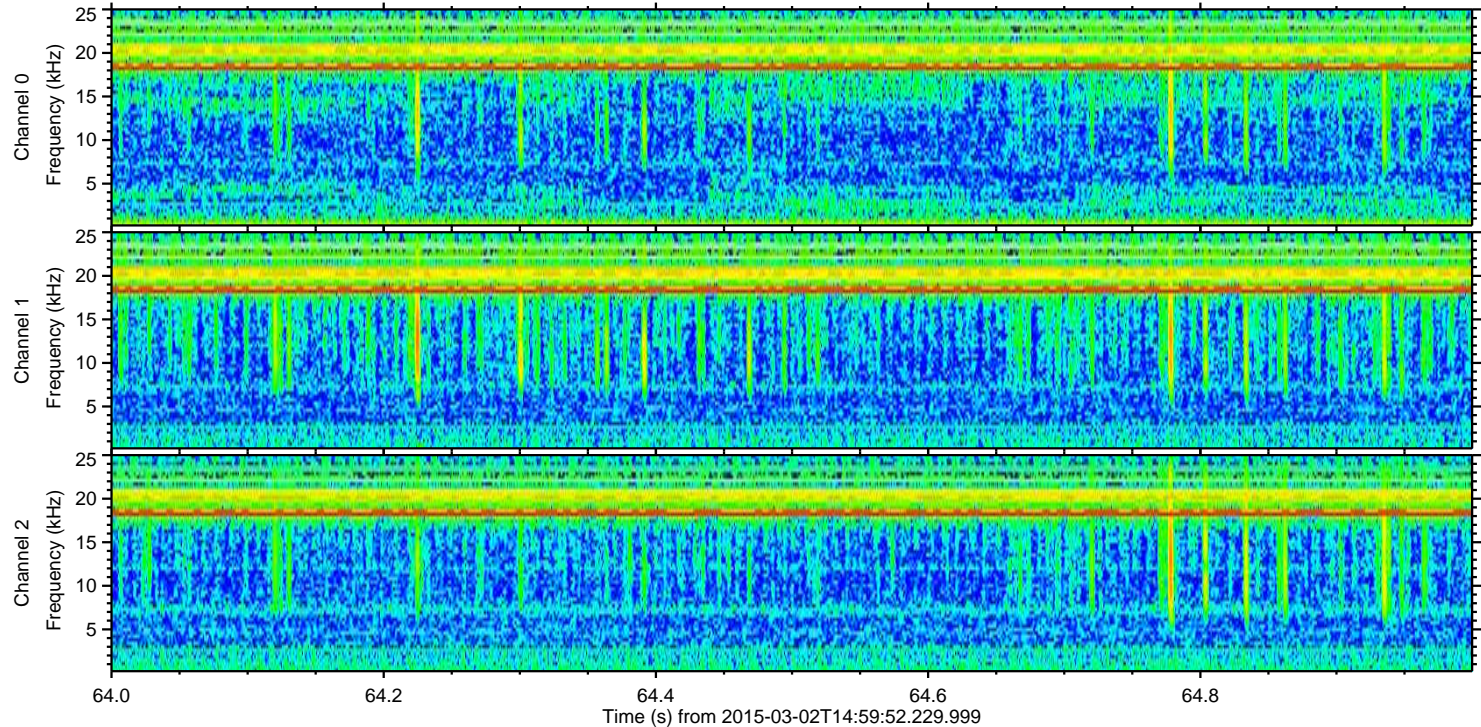
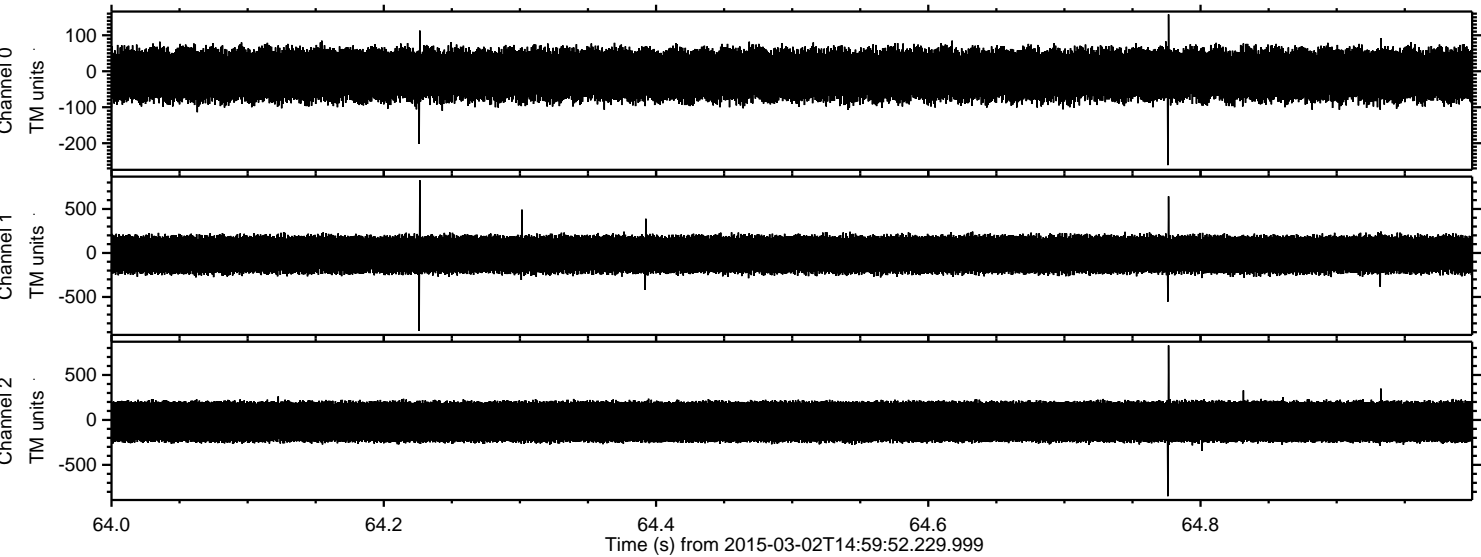
Processed Fri Mar 6 23:12:55 2015 by ELM ver.2012-10-06 from 001__elm20150302_145951__dat00.bin



ELMAVAN 3D WAVEFORMS (Measured data sampled at 50 kHz) 49808 packets of 144 samples from 2015-03-02T14:59:52.229.999. Part 116/144



Processed Fri Mar 6 23:12:57 2015 by ELM ver.2012-10-06 from 001__elm20150302_145951__dat00.bin



Channel 0
mn: -261
mx: 158
 μ : -10.6
 σ : 41.3

Channel 1
mn: -887
mx: 826
 μ : -18.4
 σ : 122.5

Channel 2
mn: -848
mx: 828
 μ : -19.9
 σ : 136.1

Processed Fri Mar 6 23:12:58 2015 by ELM ver.2012-10-06 from 001__elm20150302_145951__dat00.bin

