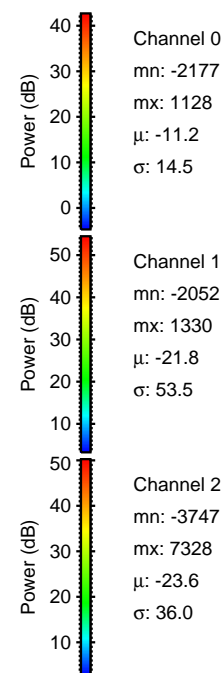
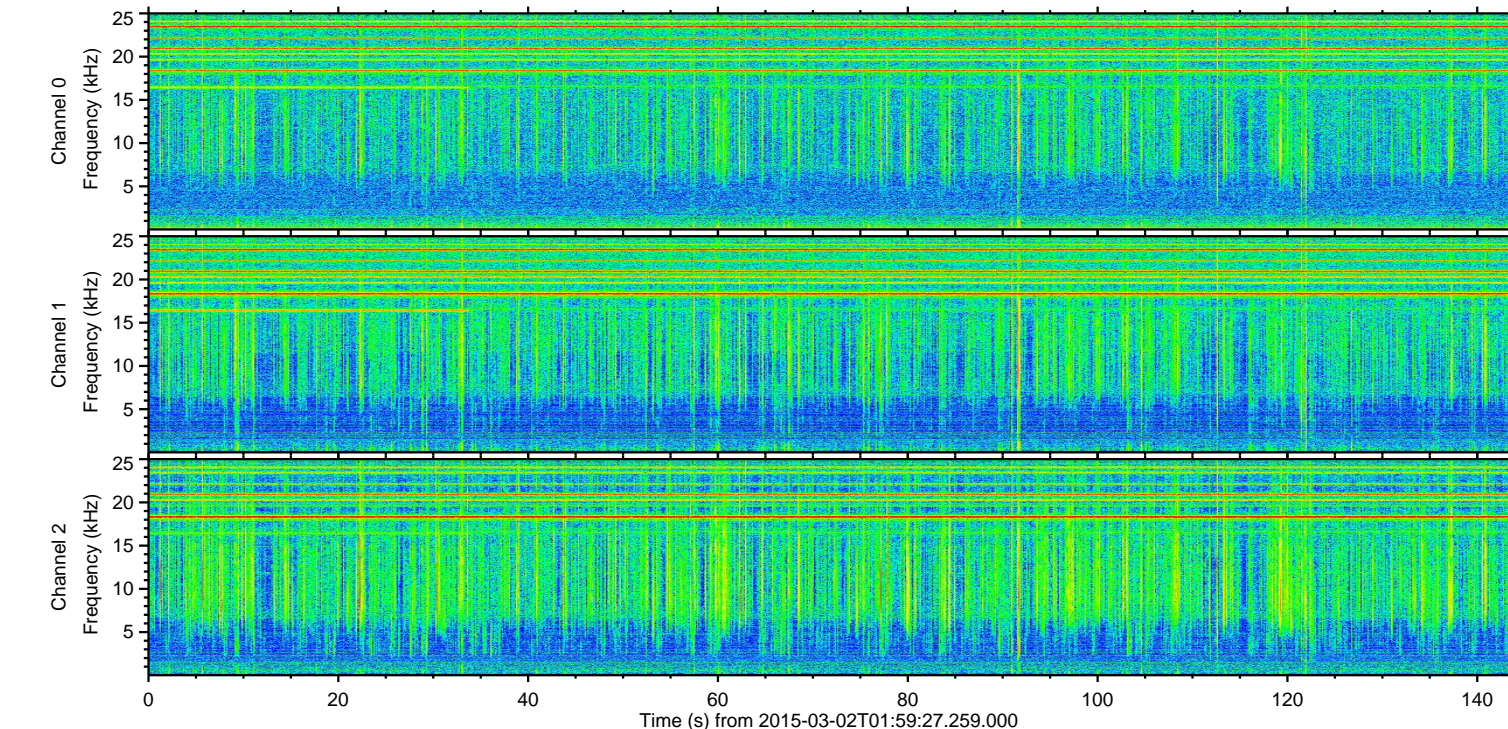
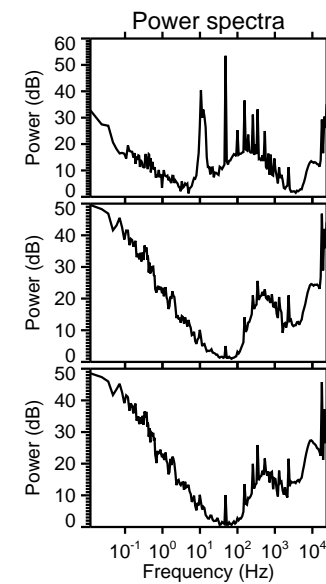
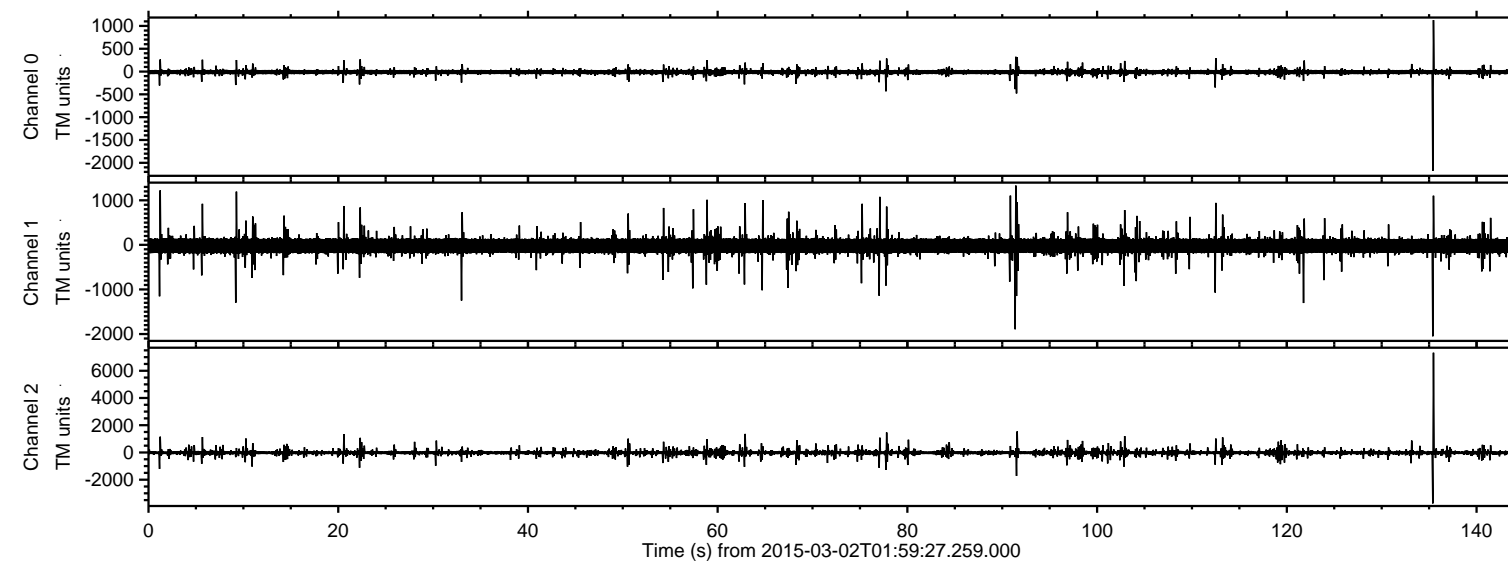


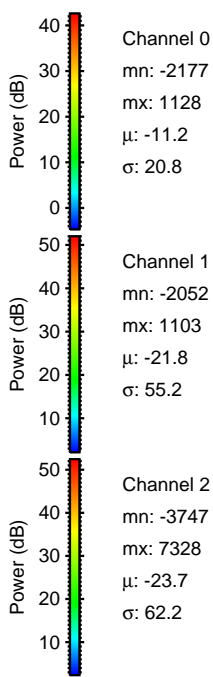
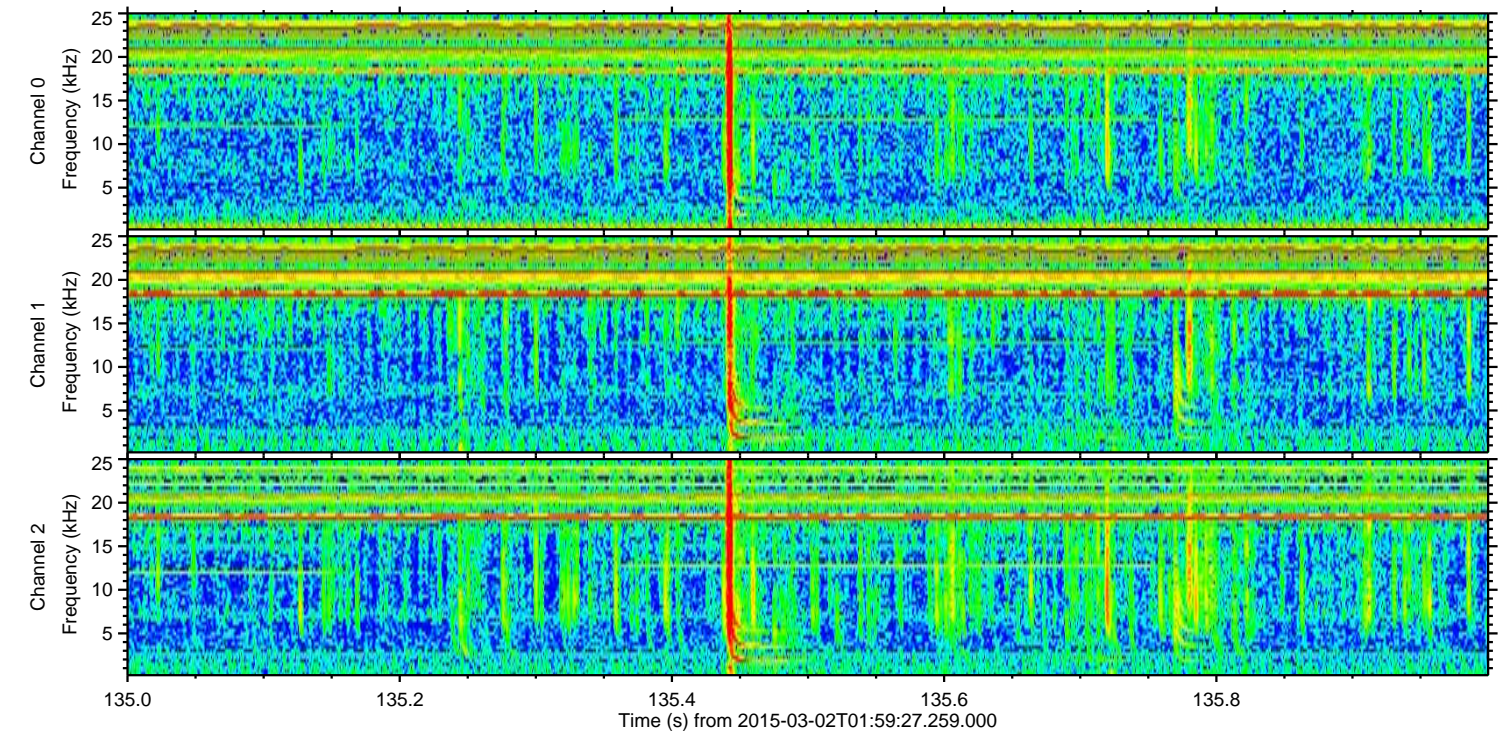
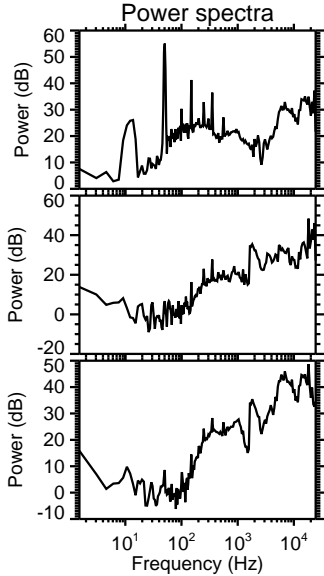
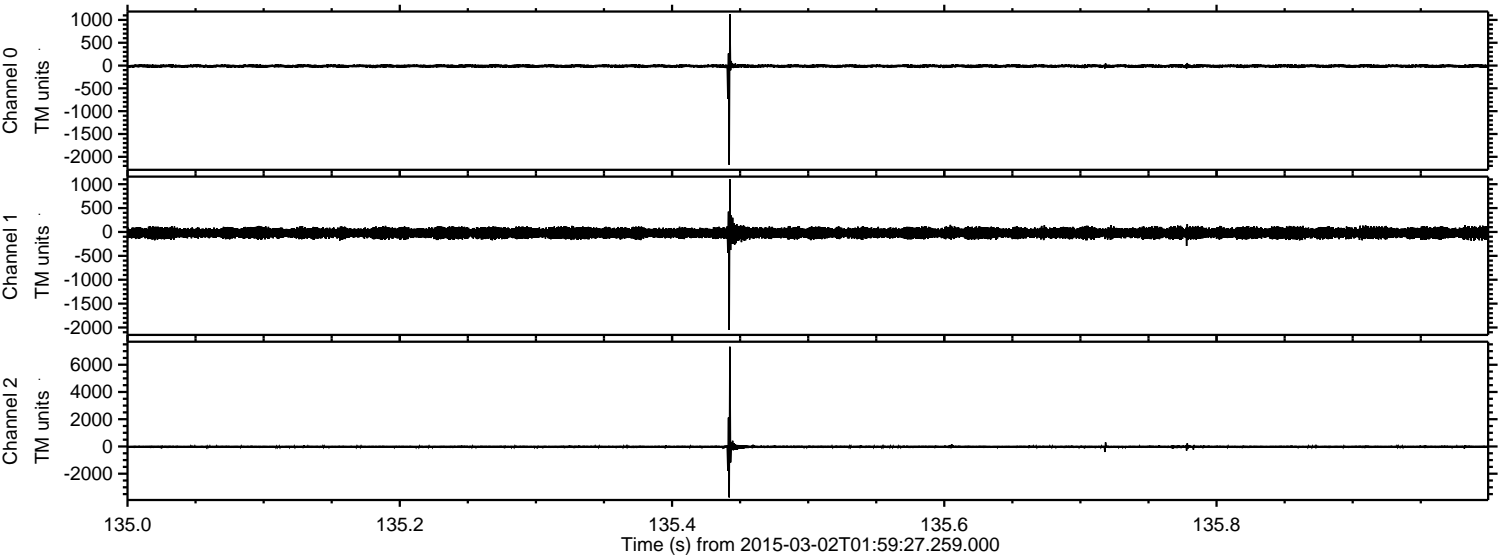
ELMAVAN 3D WAVEFORMS (Measured data sampled at 50 kHz) 49805 packets of 144 samples from 2015-03-02T01:59:27.259.000.

Processed Fri Mar 6 20:12:12 2015 by ELM ver.2012-10-06 from 001__elm20150302_015926__dat00.bin

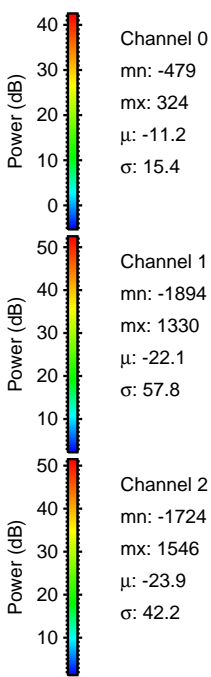
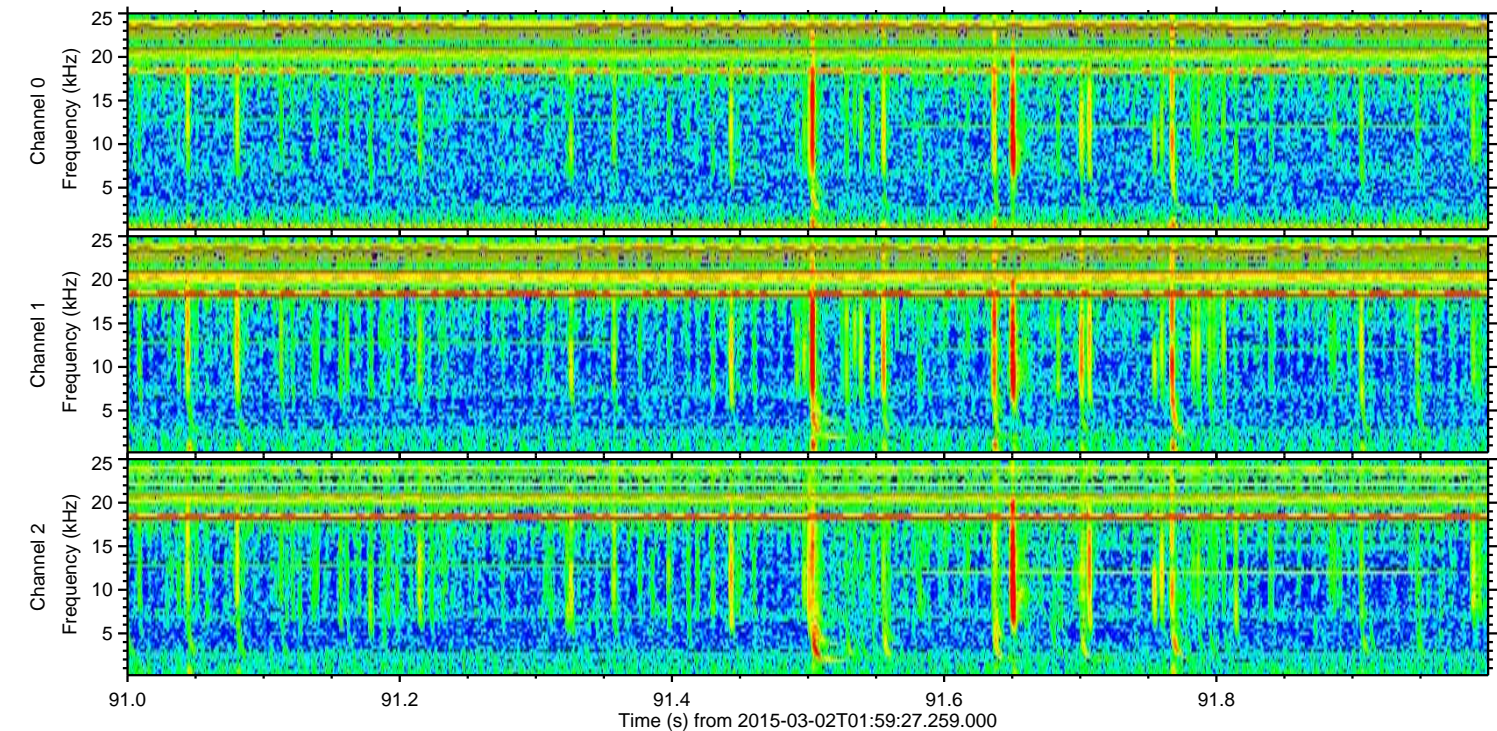
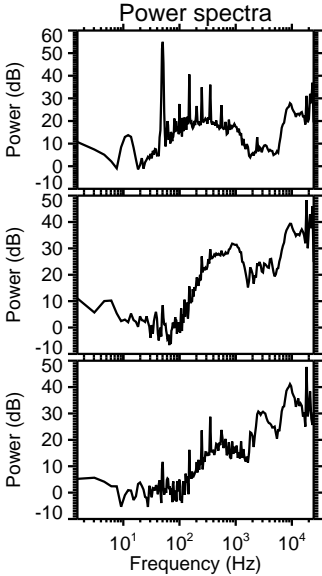
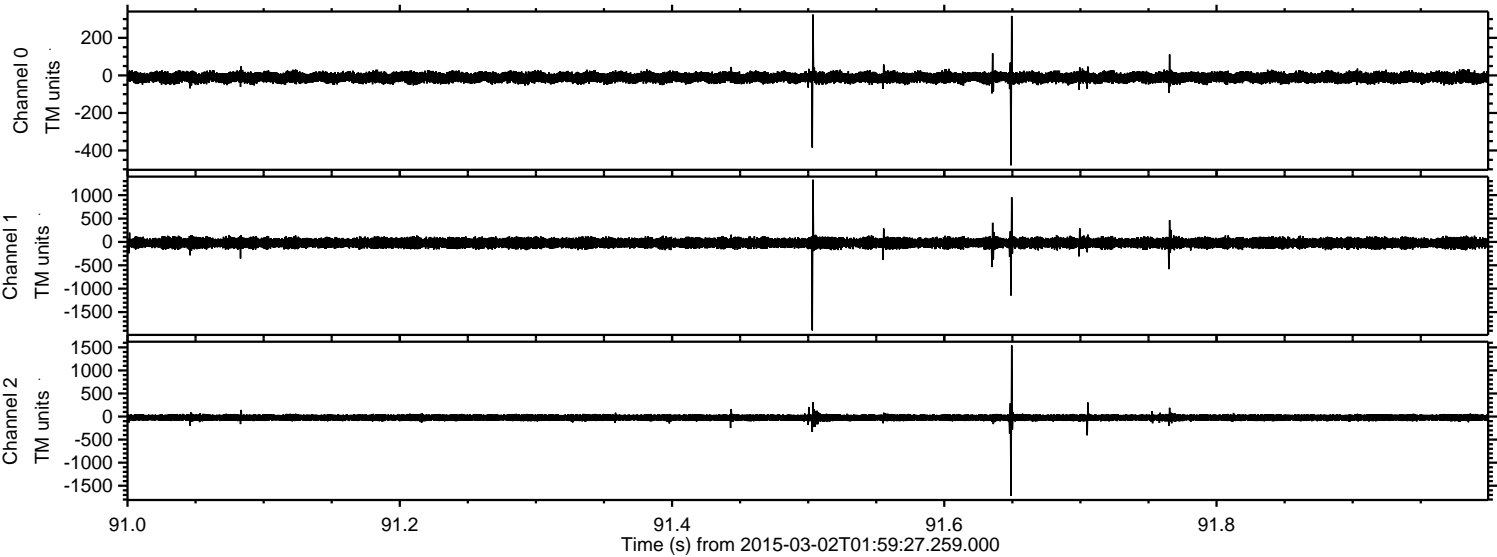


ELMAVAN 3D WAVEFORMS (Measured data sampled at 50 kHz) 49805 packets of 144 samples from 2015-03-02T01:59:27.259.000. Part 136/144

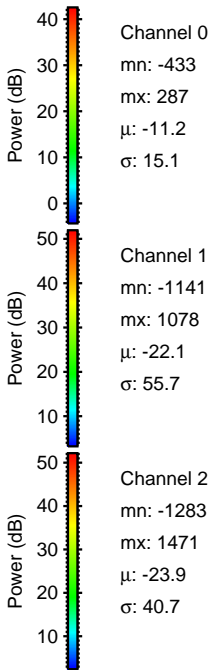
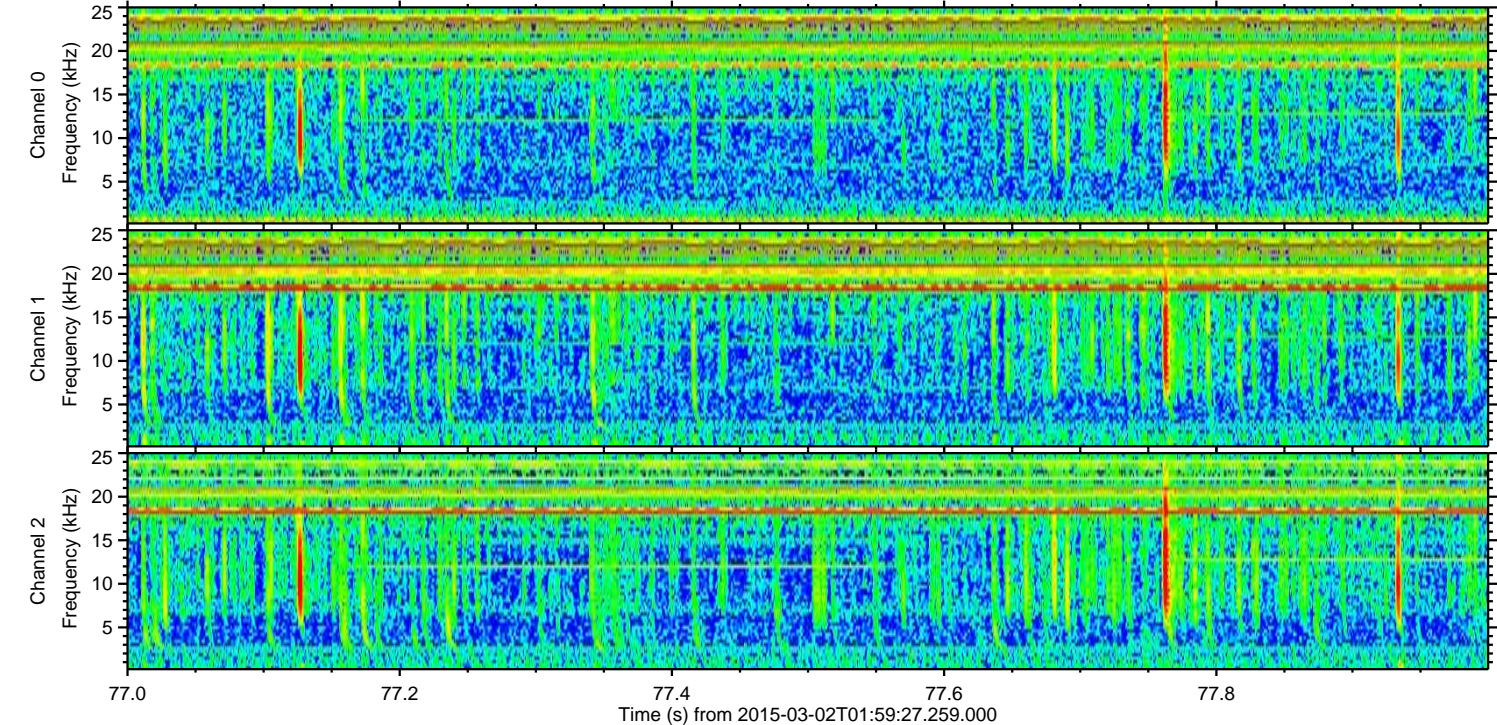
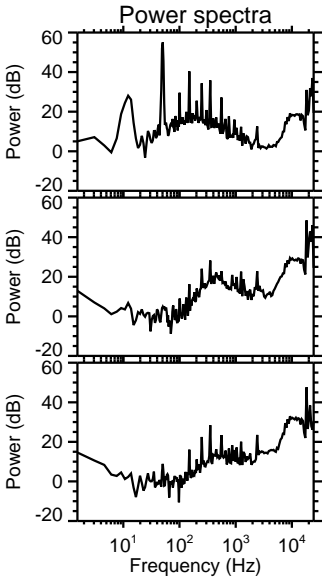
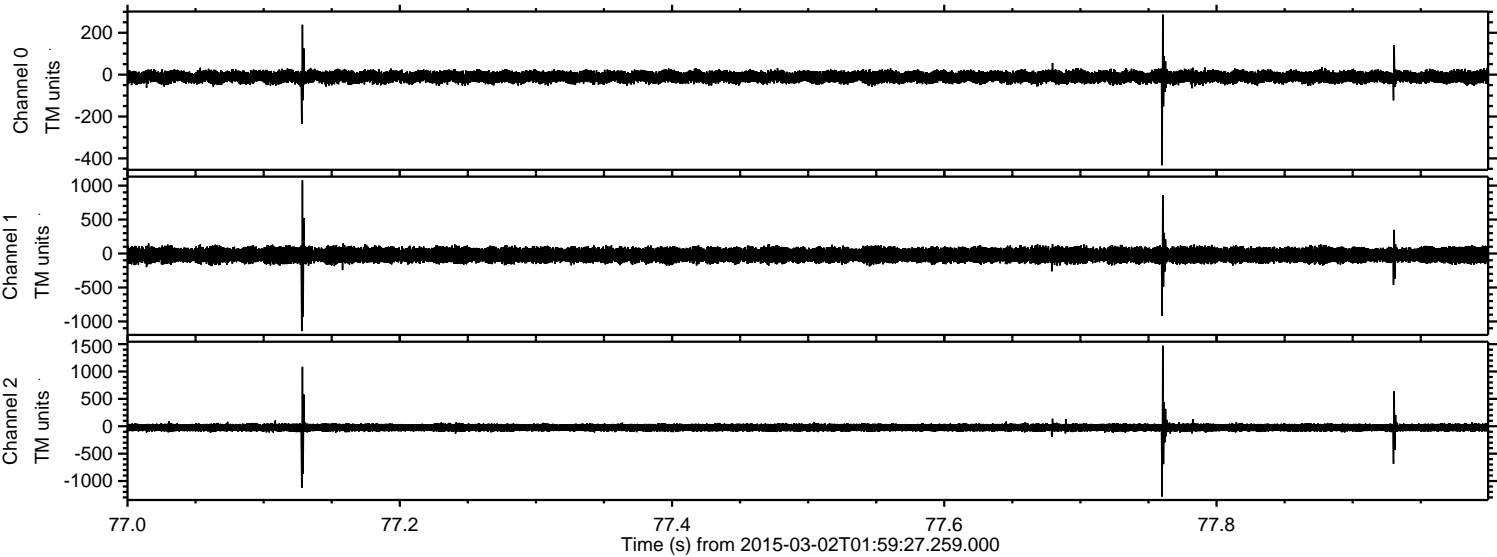
Processed Fri Mar 6 20:12:24 2015 by ELM ver.2012-10-06 from 001__elm20150302_015926__dat00.bin



Processed Fri Mar 6 20:12:25 2015 by ELM ver.2012-10-06 from 001__elm20150302_015926__dat00.bin



Processed Fri Mar 6 20:12:26 2015 by ELM ver.2012-10-06 from 001__elm20150302_015926__dat00.bin

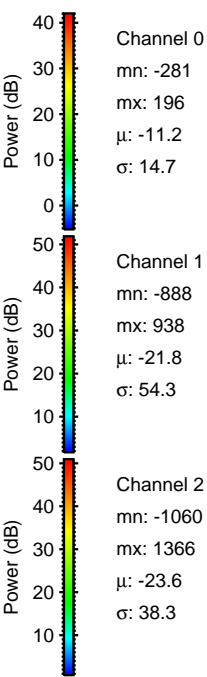
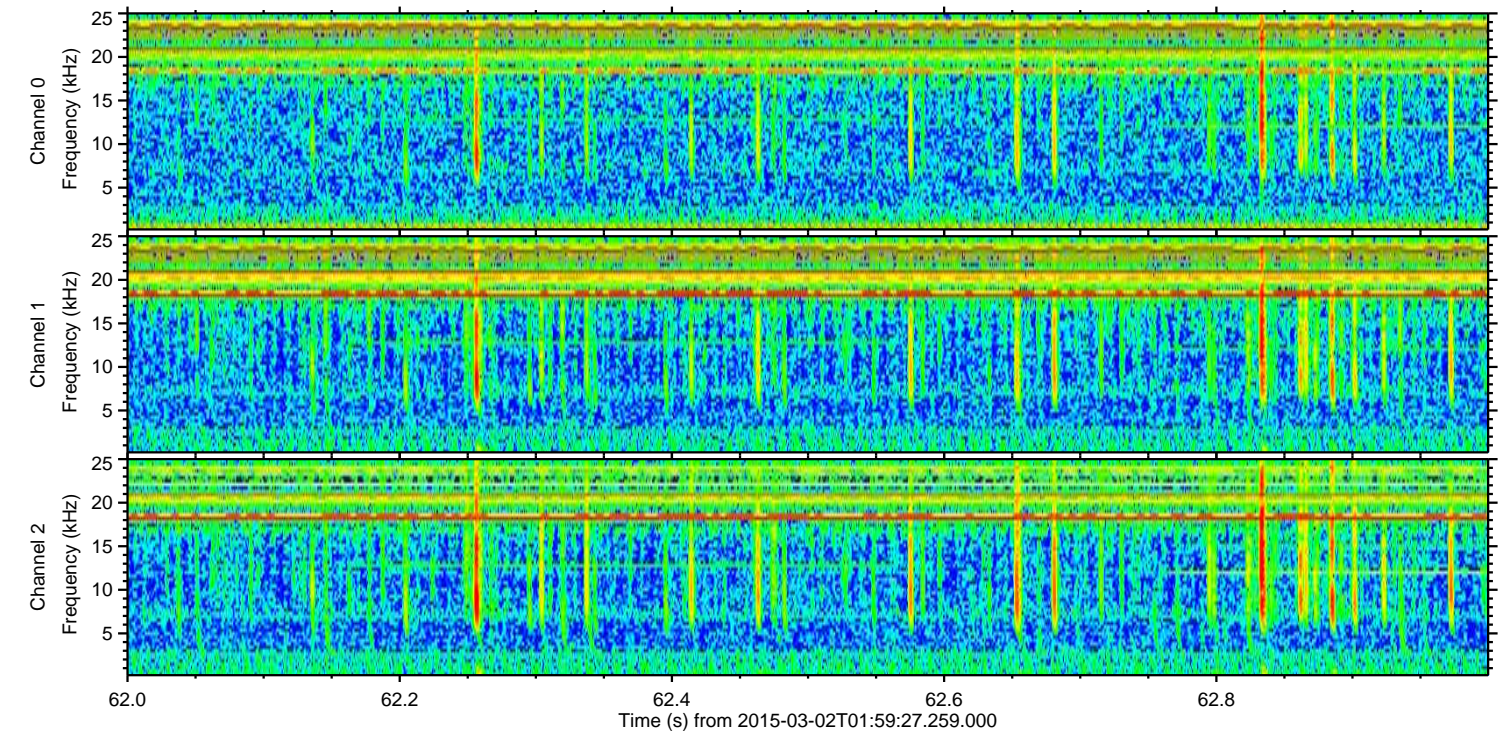
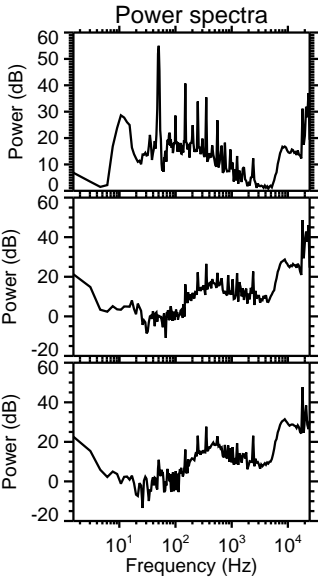
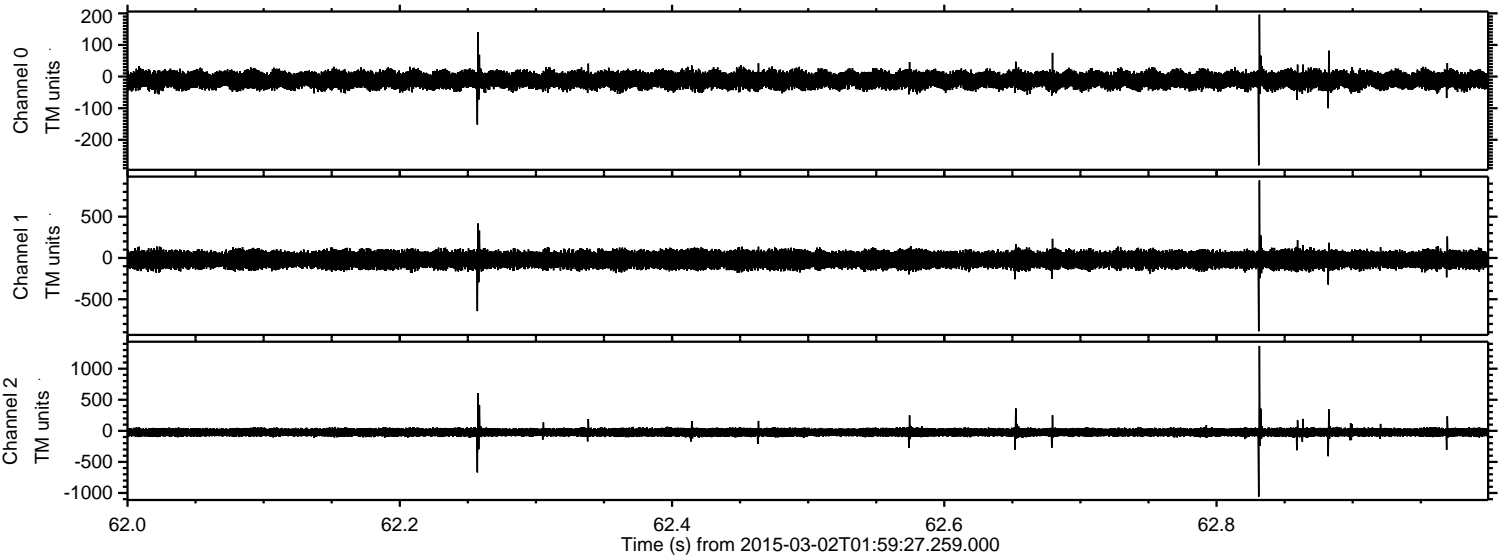


Channel 0
mn: -433
mx: 287
 μ : -11.2
 σ : 15.1

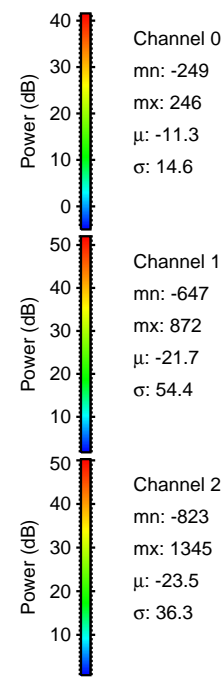
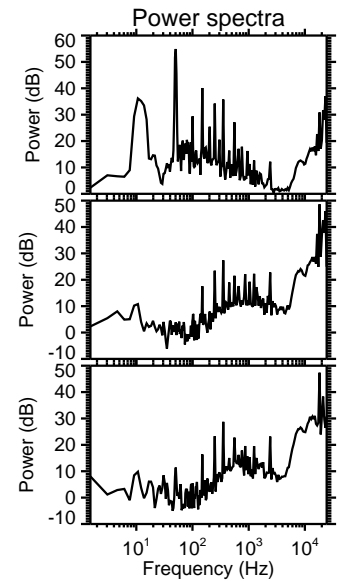
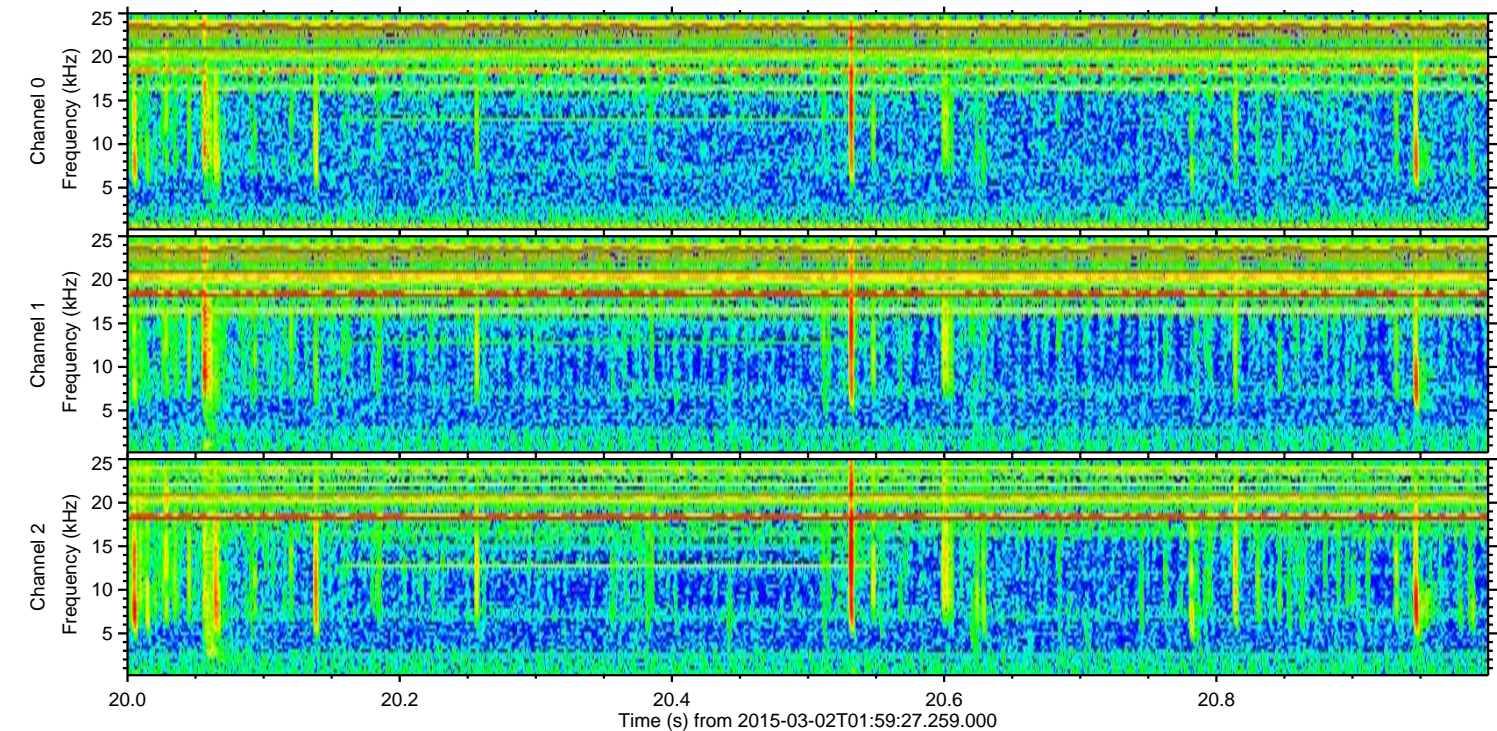
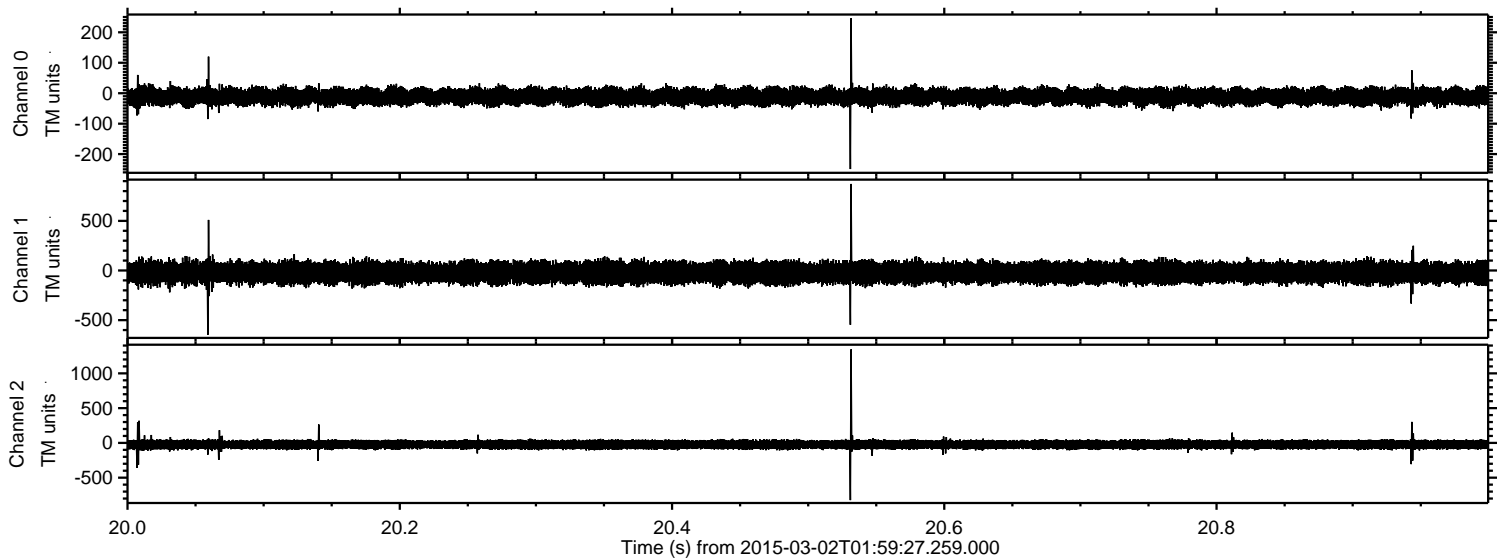
Channel 1
mn: -1141
mx: 1078
 μ : -22.1
 σ : 55.7

Channel 2
mn: -1283
mx: 1471
 μ : -23.9
 σ : 40.7

Processed Fri Mar 6 20:12:27 2015 by ELM ver.2012-10-06 from 001__elm20150302_015926__dat00.bin

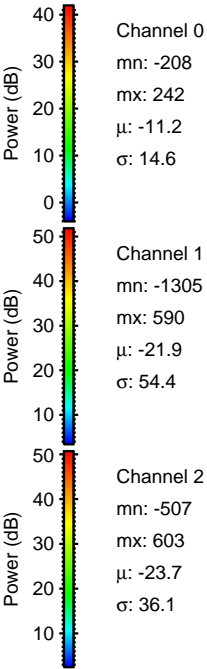
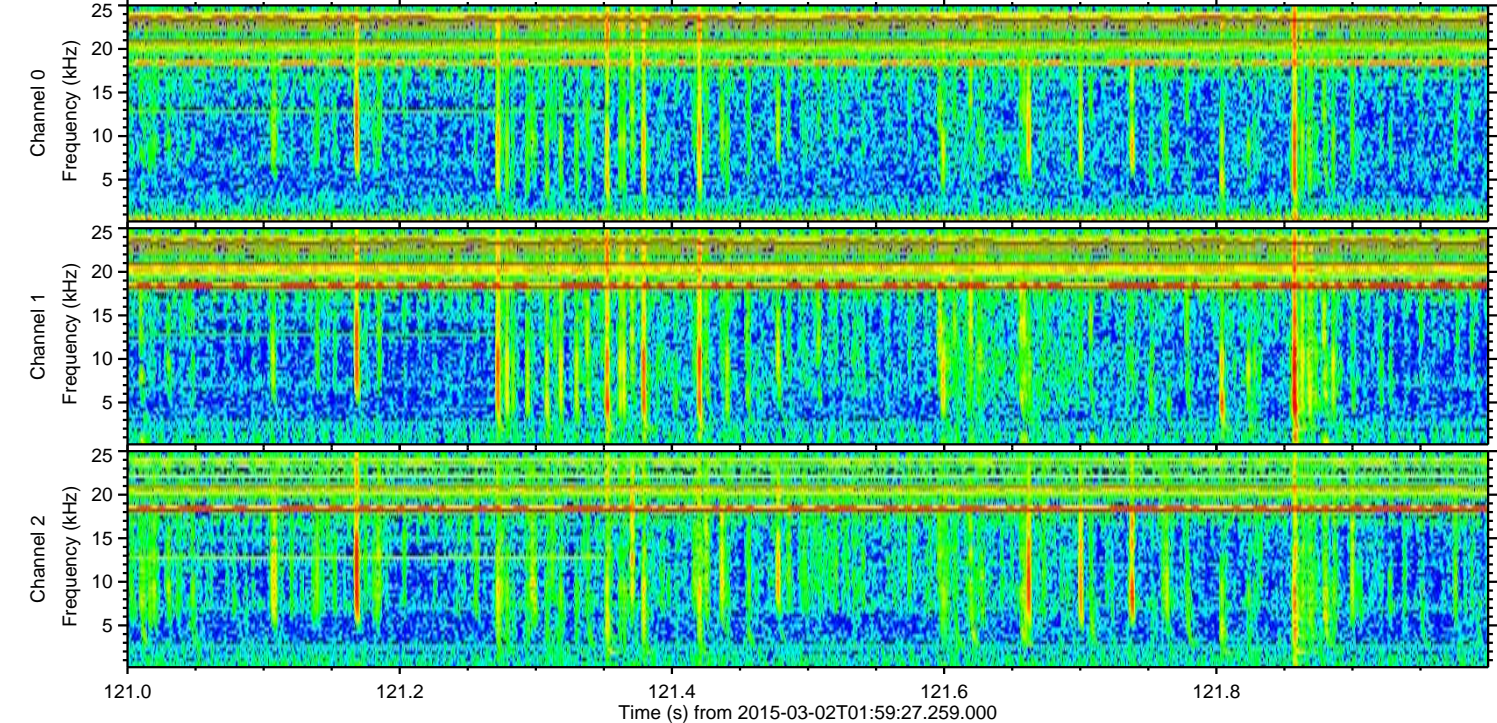
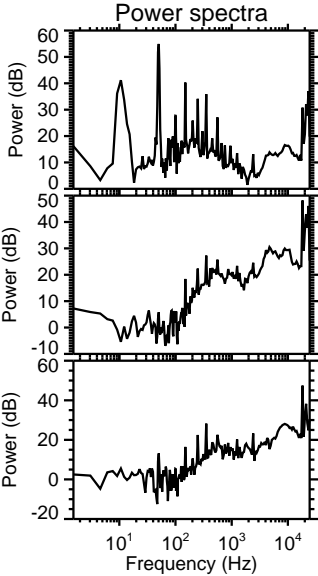
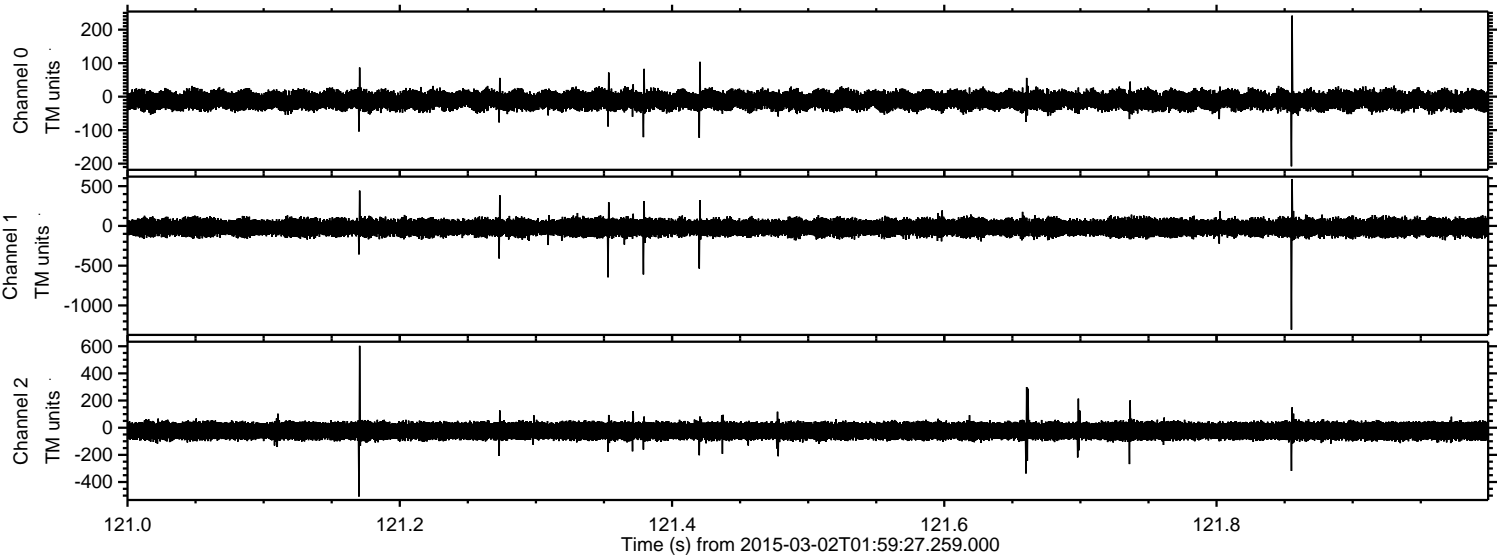


Processed Fri Mar 6 20:12:28 2015 by ELM ver.2012-10-06 from 001__elm20150302_015926__dat00.bin

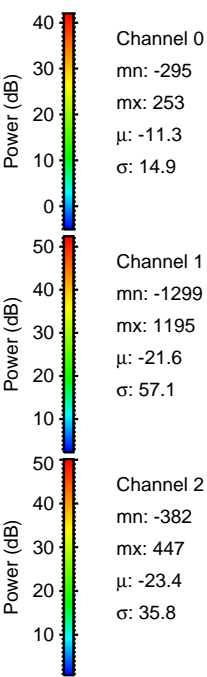
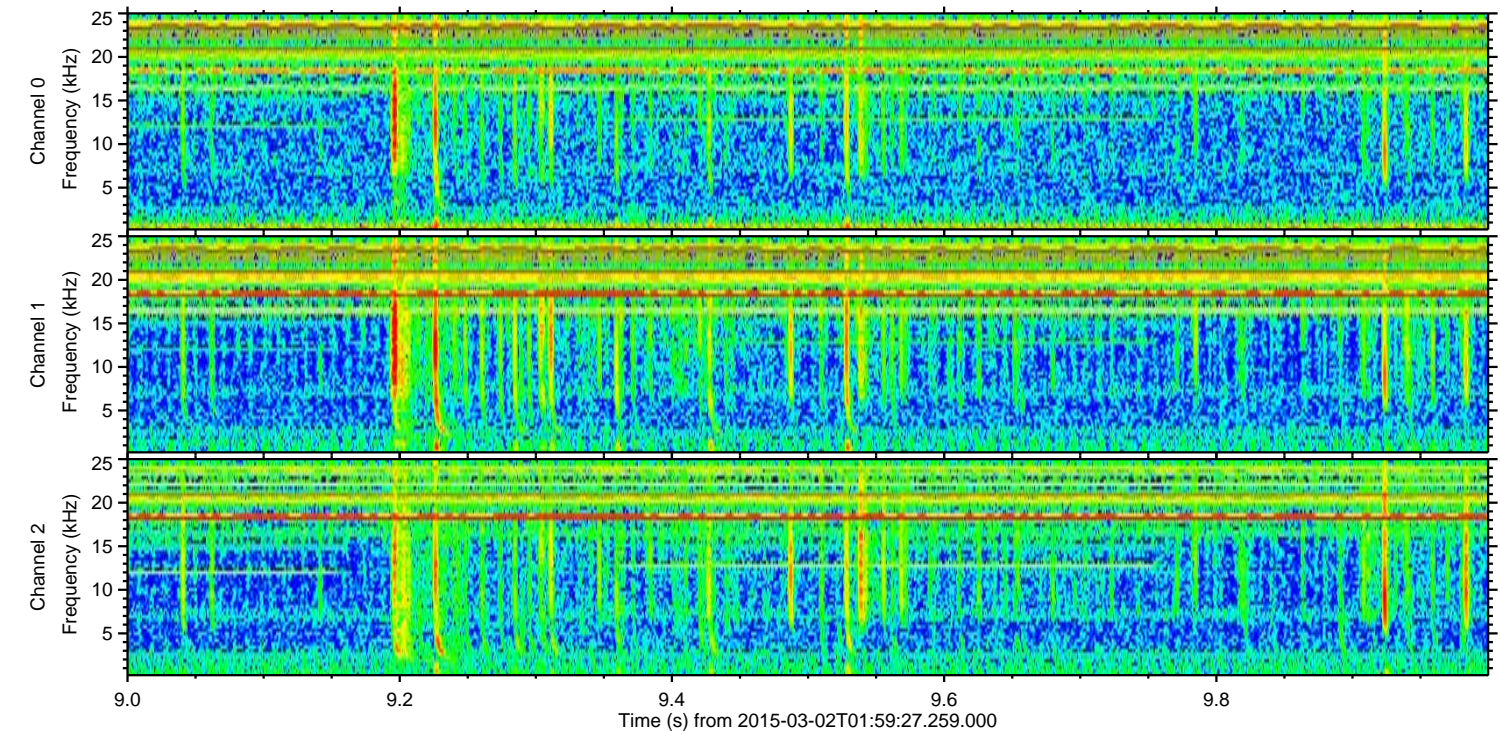
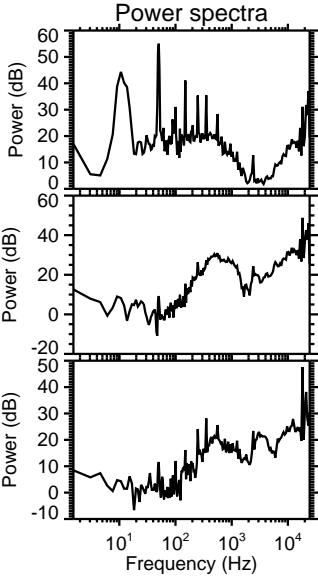
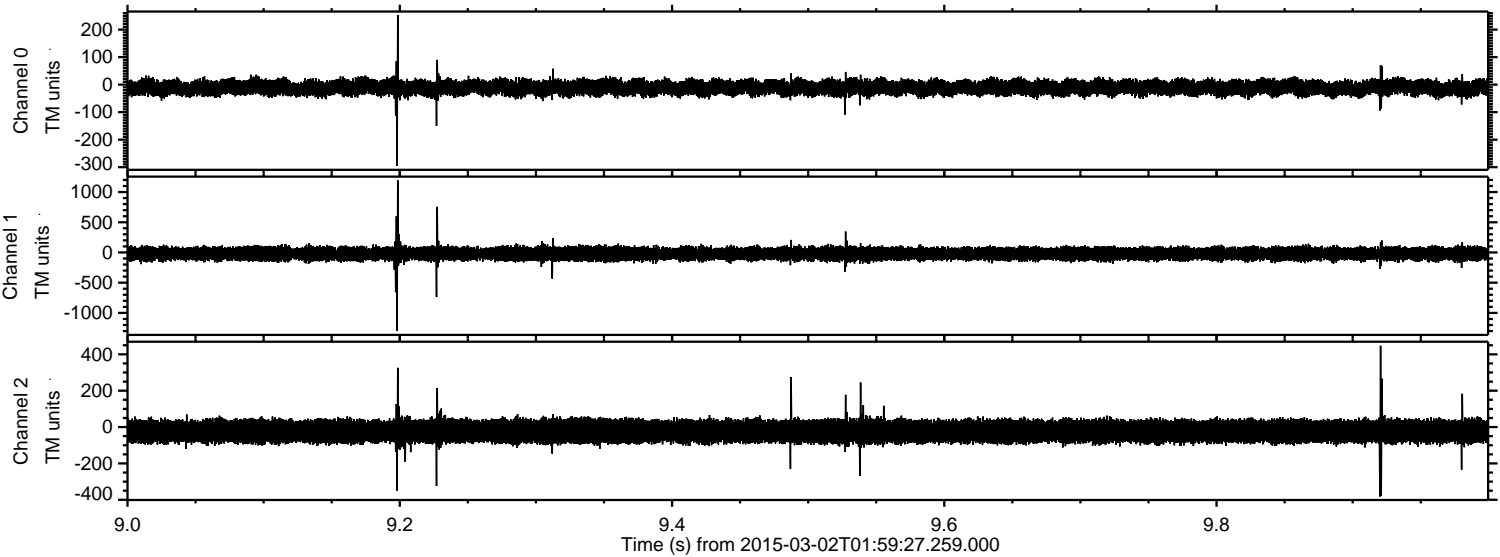


ELMAVAN 3D WAVEFORMS (Measured data sampled at 50 kHz) 49805 packets of 144 samples from 2015-03-02T01:59:27.259.000. Part 122/144

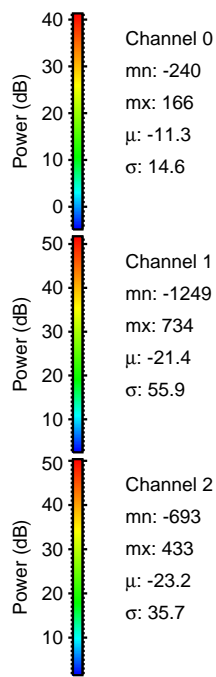
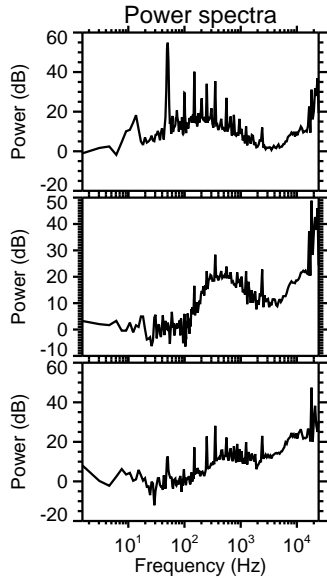
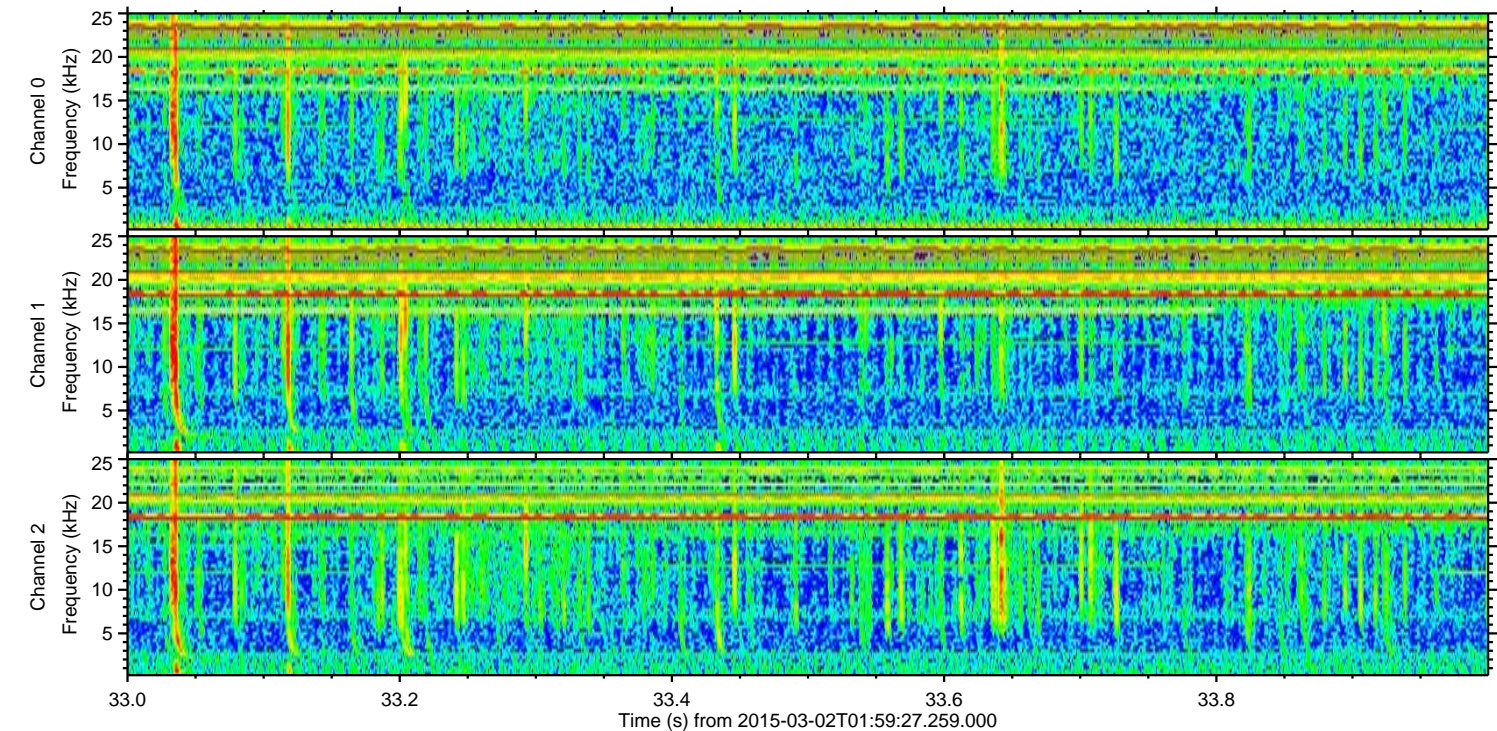
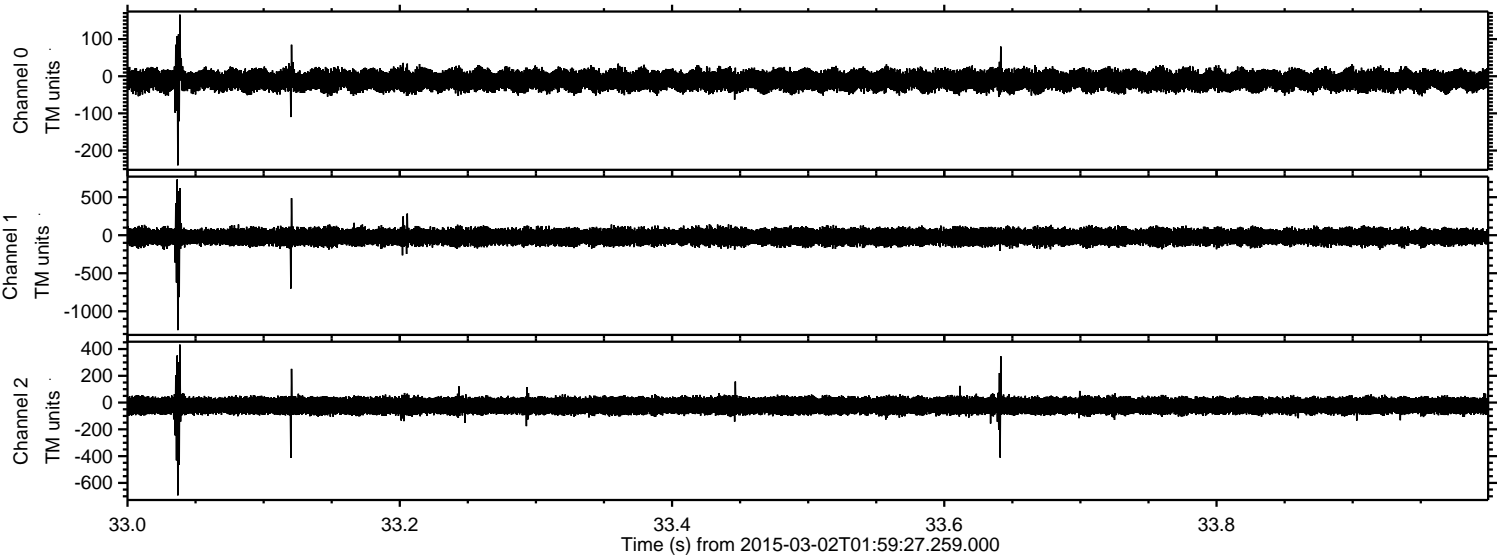
Processed Fri Mar 6 20:12:29 2015 by ELM ver.2012-10-06 from 001__elm20150302_015926__dat00.bin



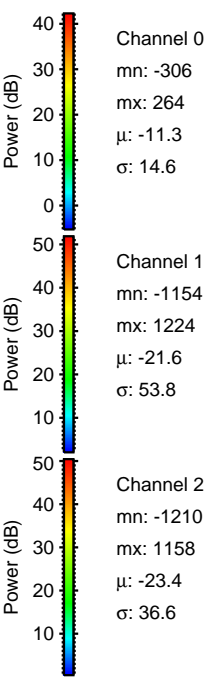
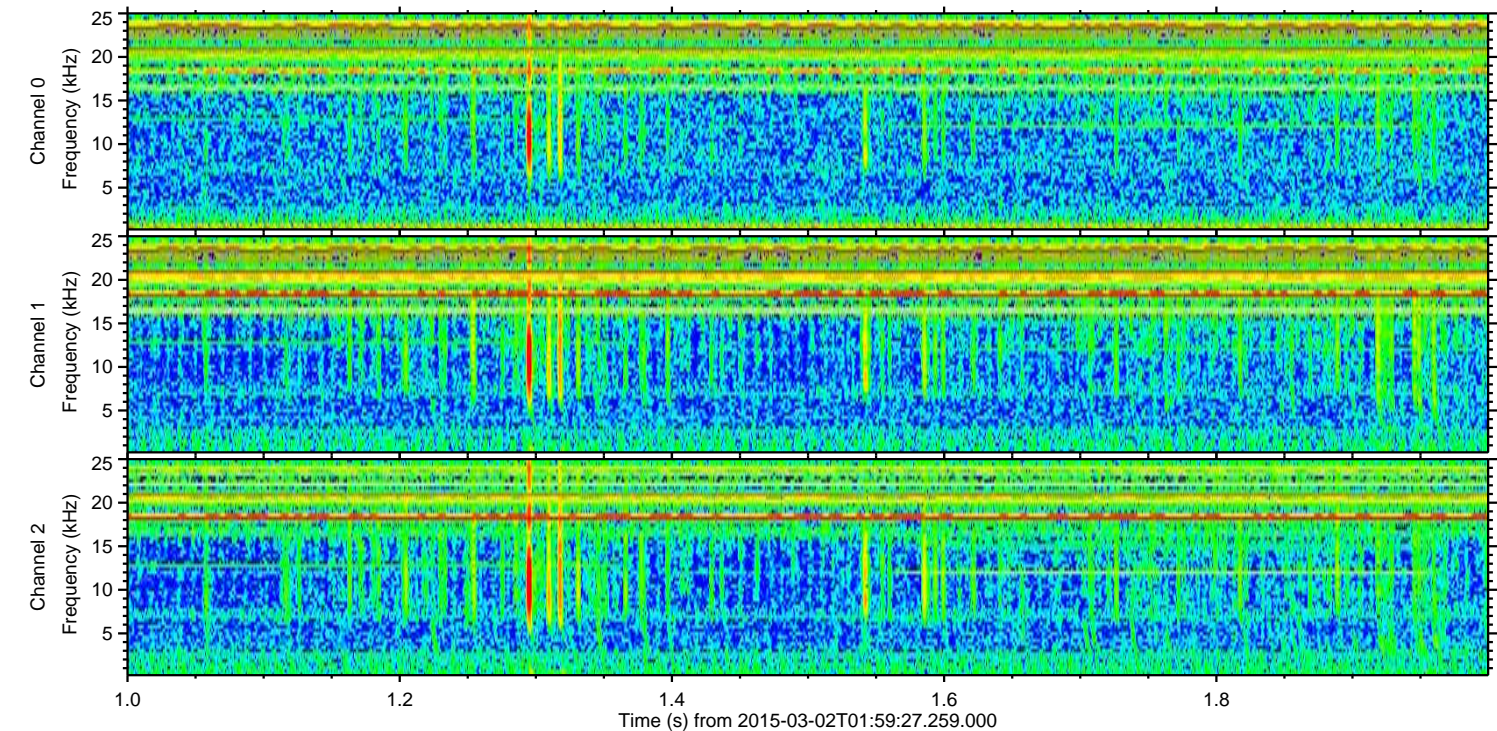
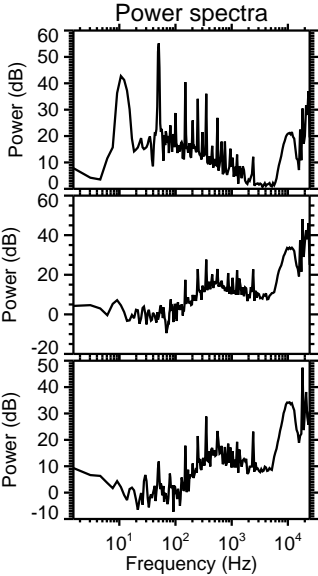
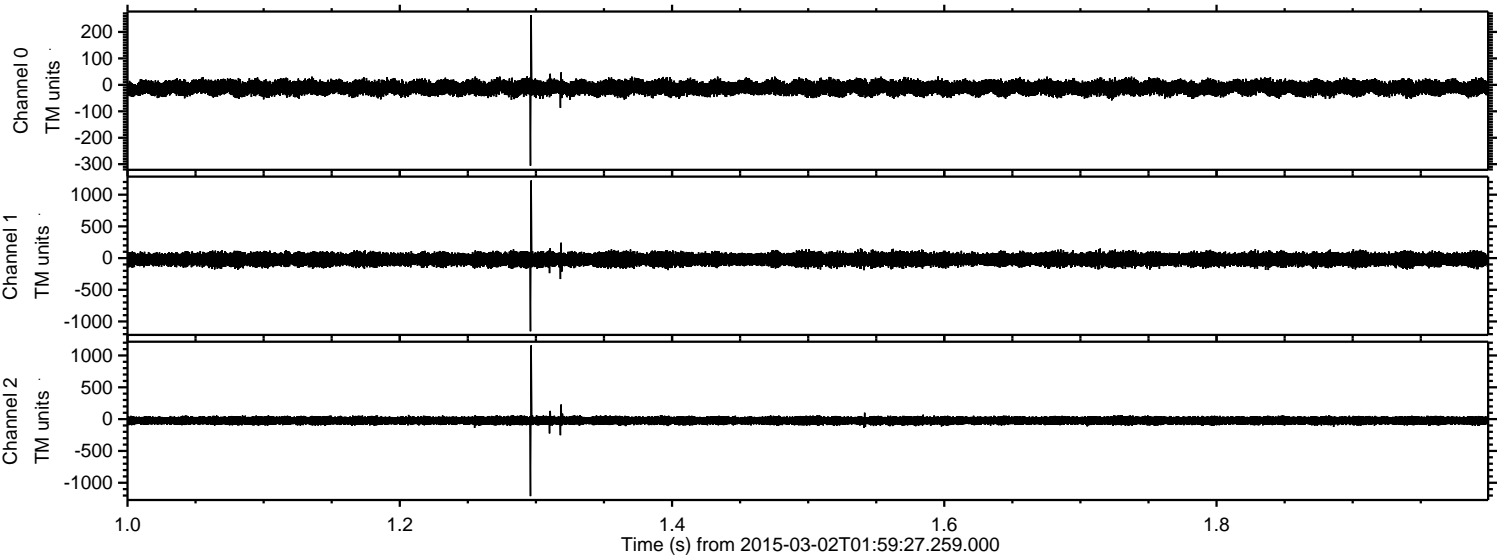
Processed Fri Mar 6 20:12:30 2015 by ELM ver.2012-10-06 from 001__elm20150302_015926__dat00.bin



Processed Fri Mar 6 20:12:31 2015 by ELM ver.2012-10-06 from 001__elm20150302_015926__dat00.bin



Processed Fri Mar 6 20:12:31 2015 by ELM ver.2012-10-06 from 001__elm20150302_015926__dat00.bin



Processed Fri Mar 6 20:12:32 2015 by ELM ver.2012-10-06 from 001__elm20150302_015926__dat00.bin

