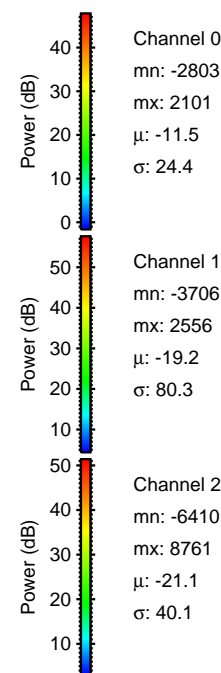
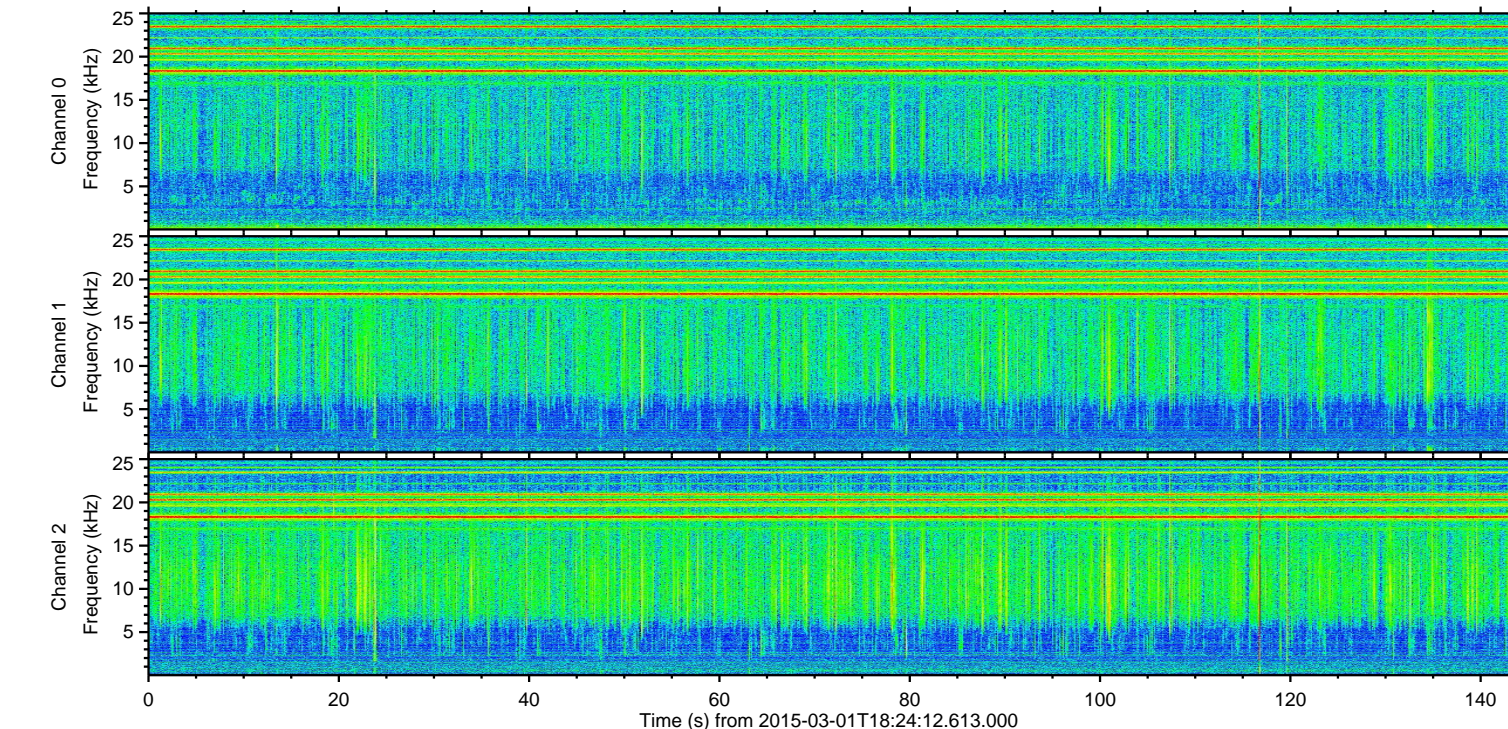
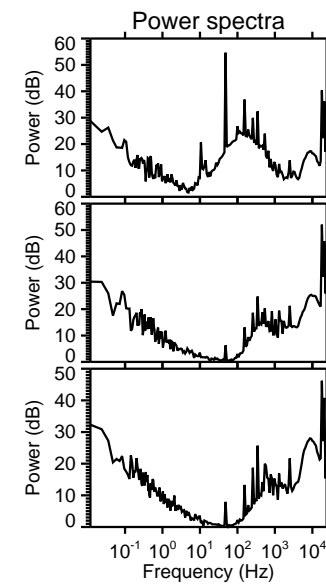
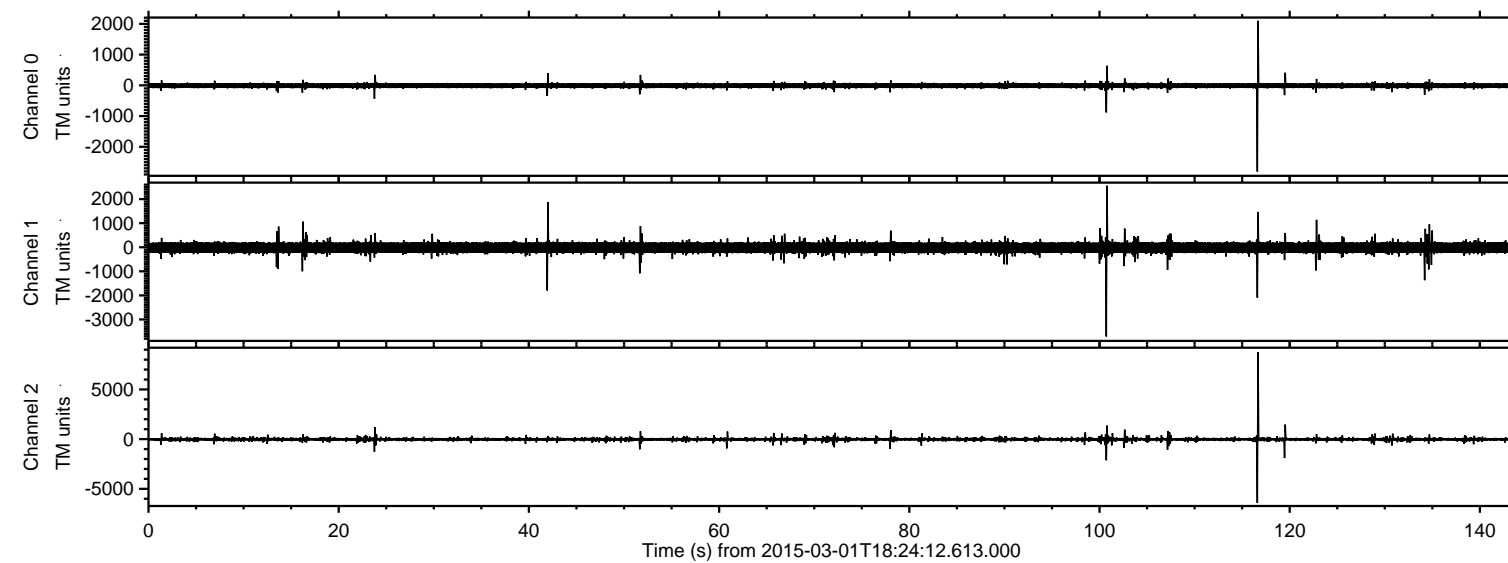


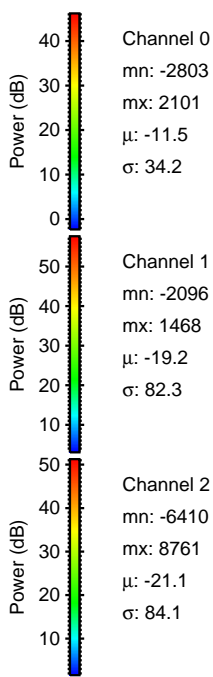
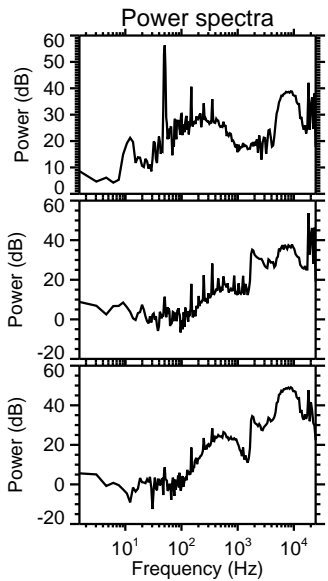
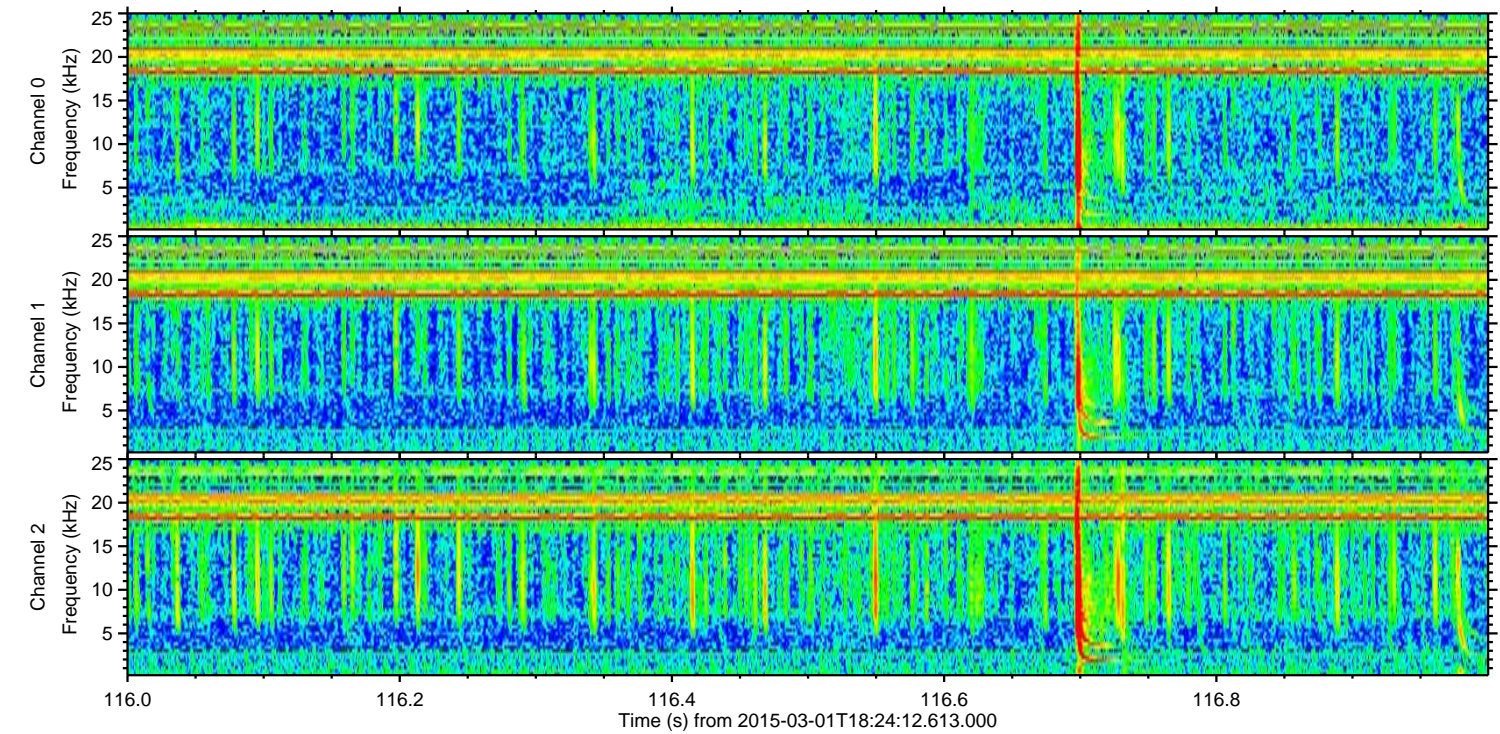
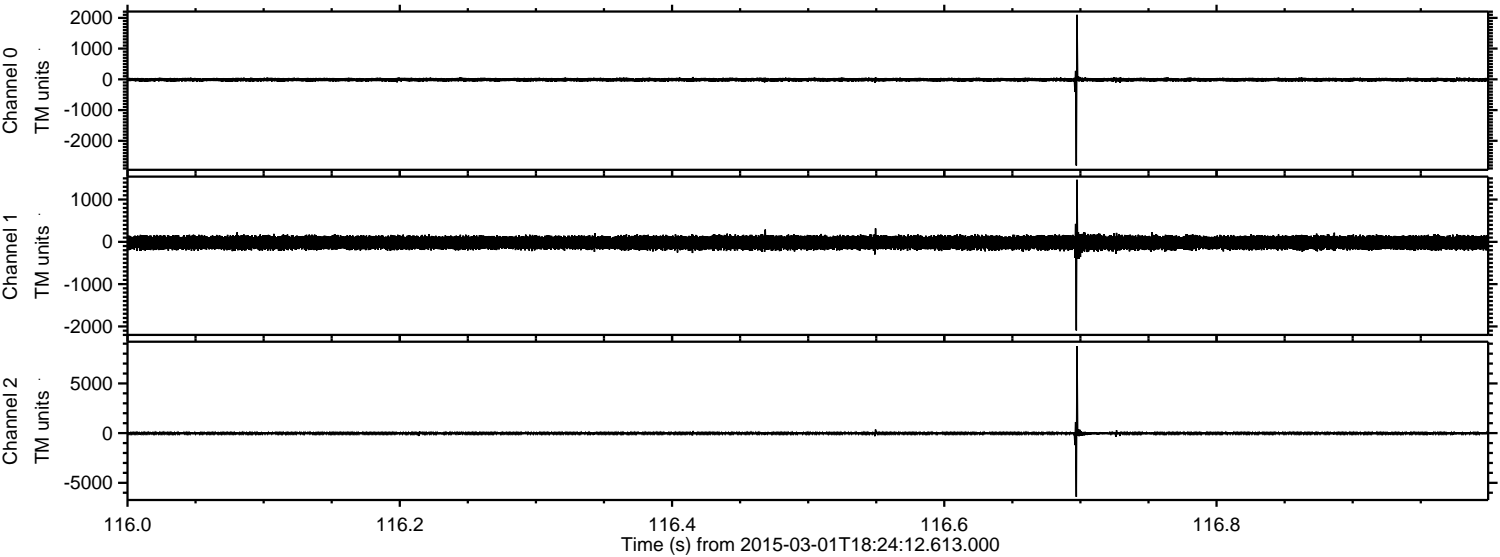
ELMAVAN 3D WAVEFORMS (Measured data sampled at 50 kHz) 49678 packets of 144 samples from 2015-03-01T18:24:12.613.000.

Processed Fri Mar 6 18:08:39 2015 by ELM ver.2012-10-06 from 001__elm20150301_182411__dat00.bin



ELMAVAN 3D WAVEFORMS (Measured data sampled at 50 kHz) 49678 packets of 144 samples from 2015-03-01T18:24:12.613.000. Part 117/144

Processed Fri Mar 6 18:08:54 2015 by ELM ver.2012-10-06 from 001__elm20150301_182411__dat00.bin



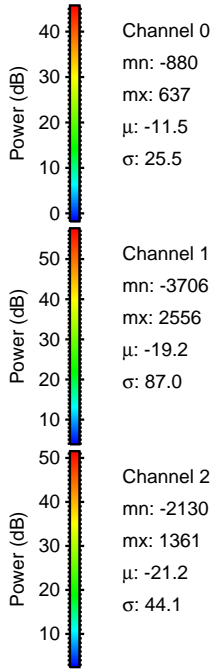
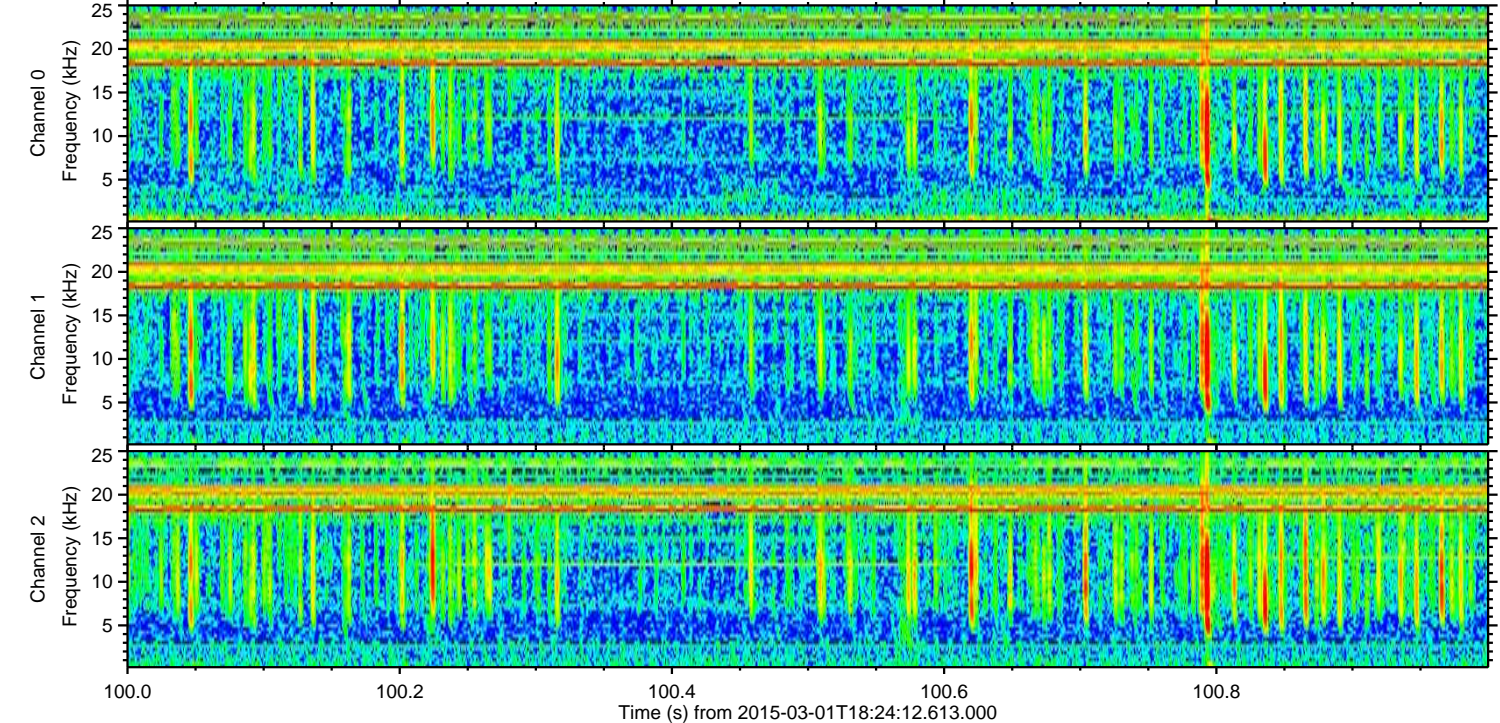
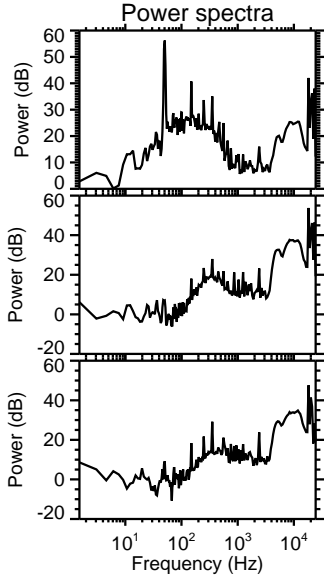
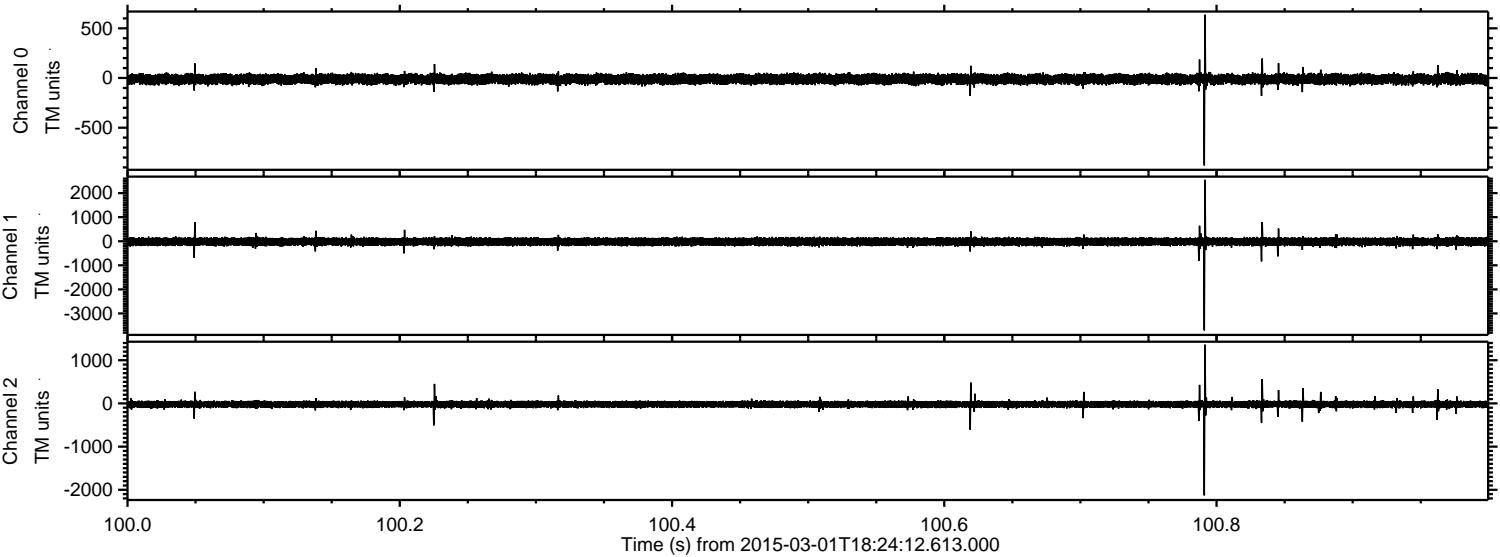
Channel 0
mn: -2803
mx: 2101
 μ : -11.5
 σ : 34.2

Channel 1
mn: -2096
mx: 1468
 μ : -19.2
 σ : 82.3

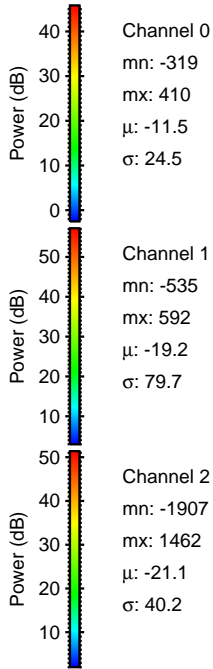
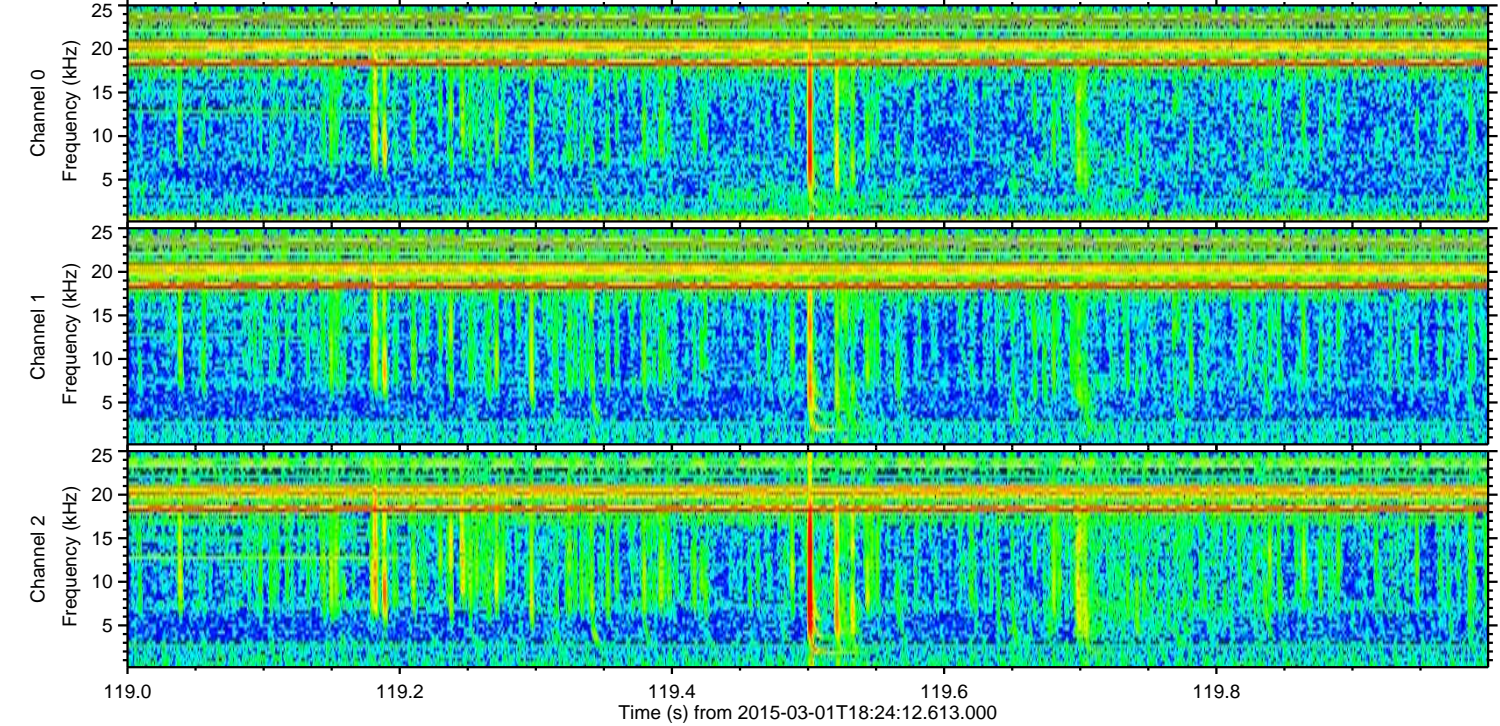
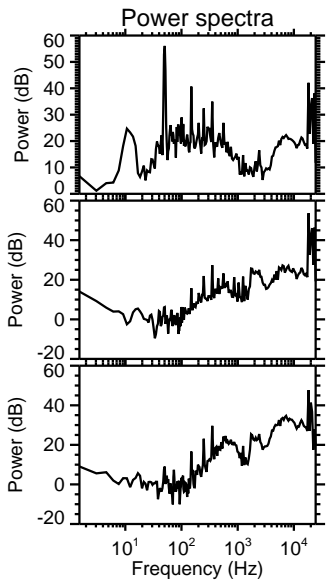
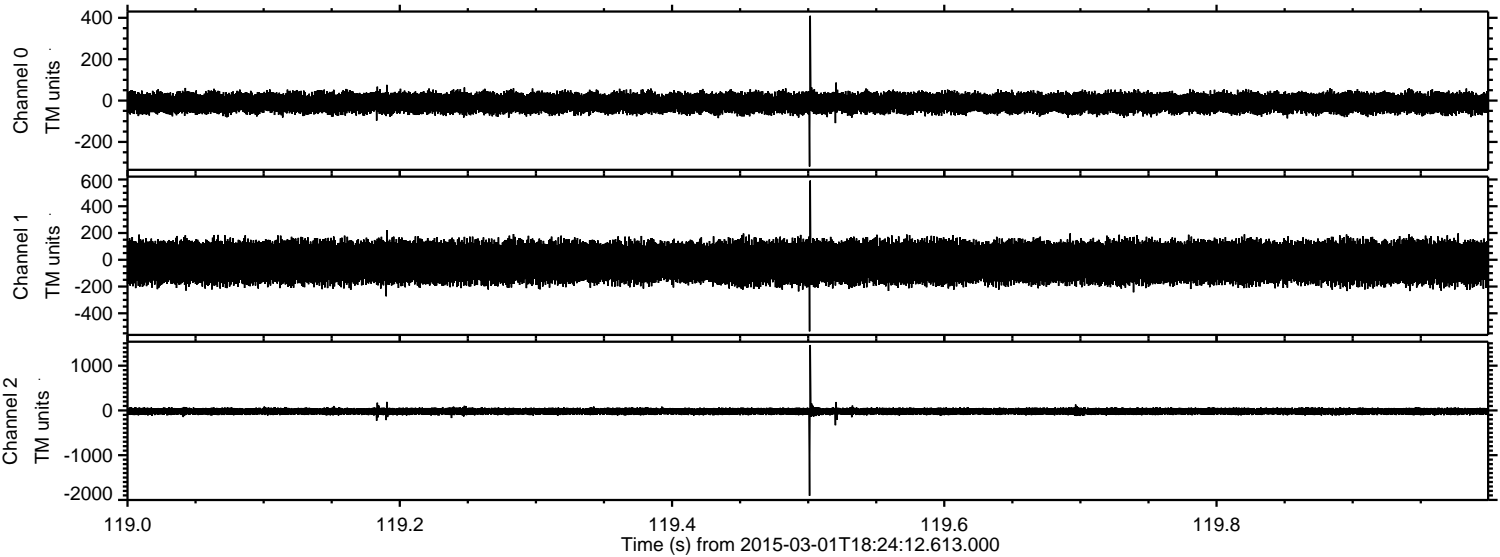
Channel 2
mn: -6410
mx: 8761
 μ : -21.1
 σ : 84.1

ELMAVAN 3D WAVEFORMS (Measured data sampled at 50 kHz) 49678 packets of 144 samples from 2015-03-01T18:24:12.613.000. Part 101/144

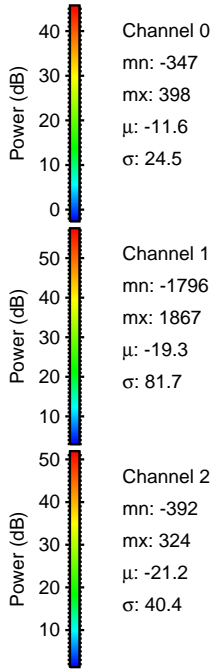
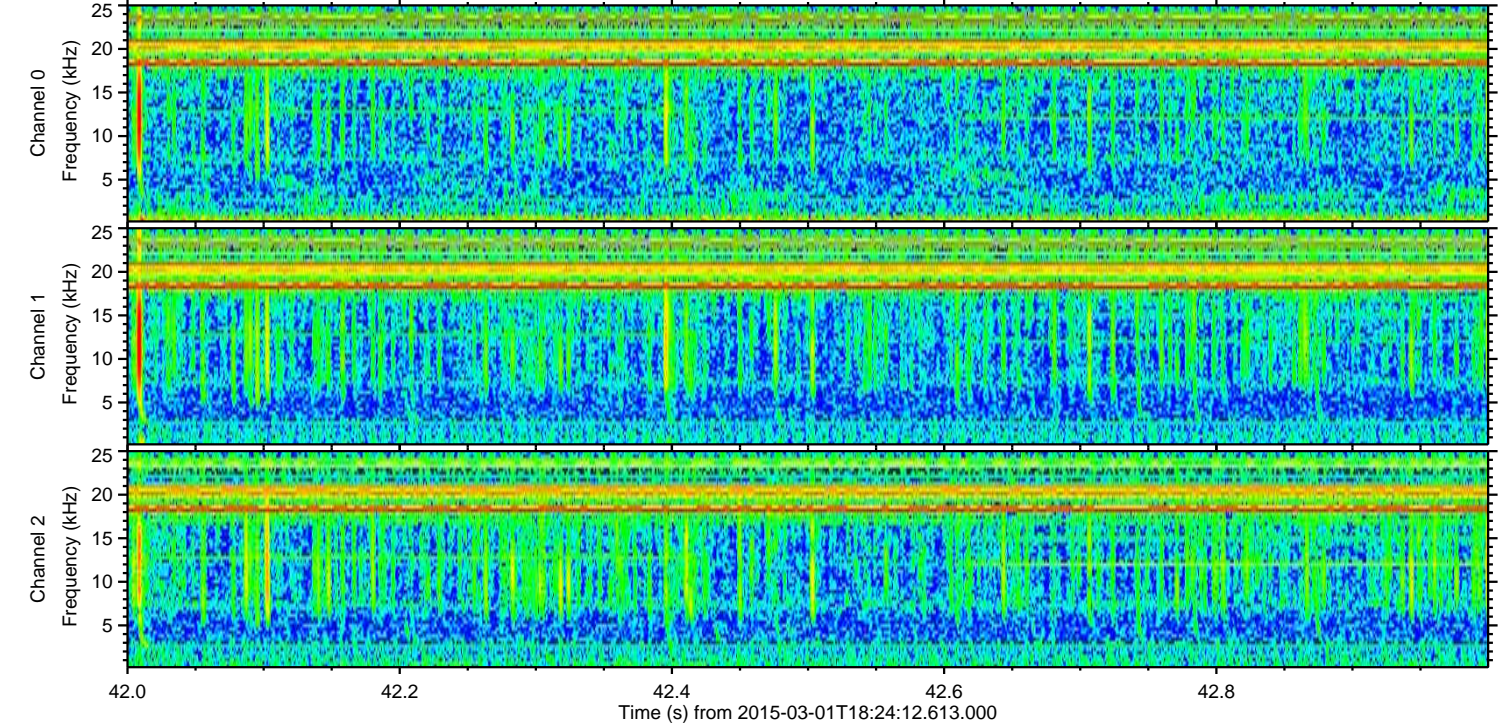
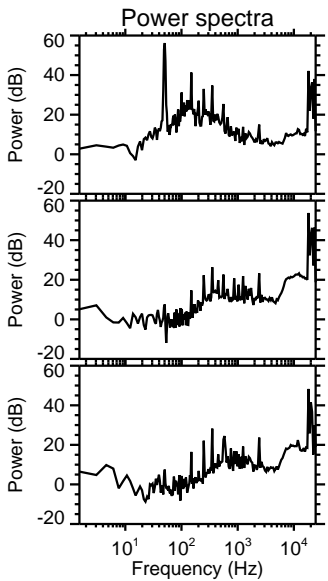
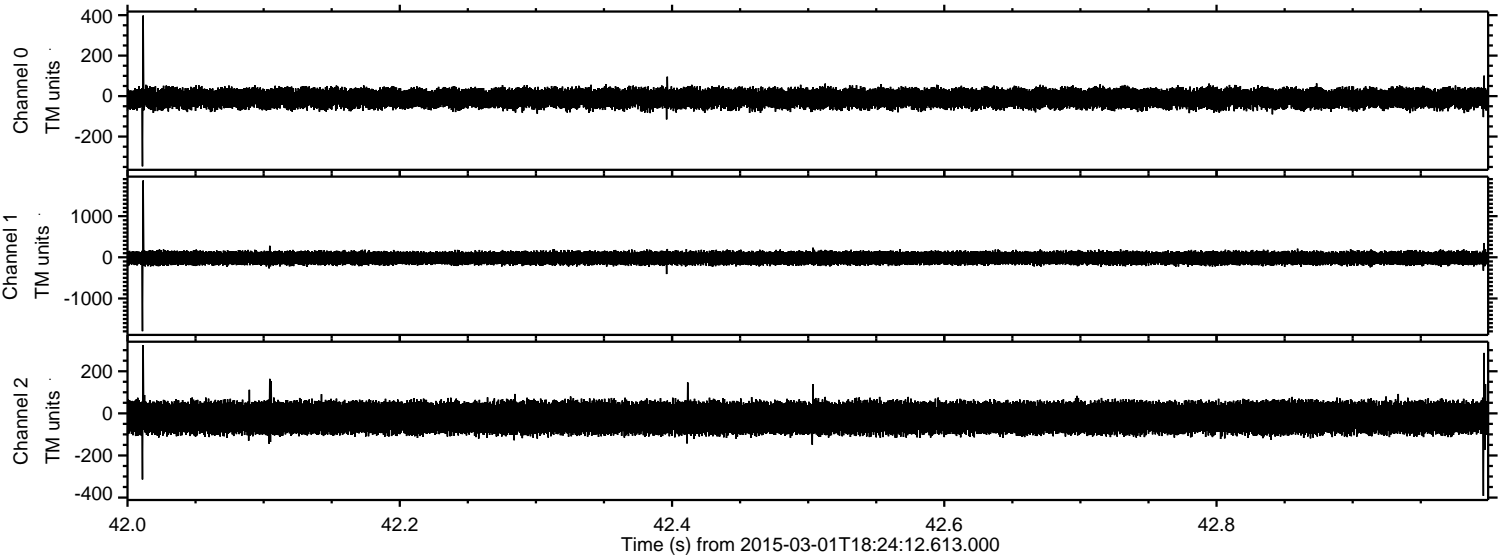
Processed Fri Mar 6 18:08:55 2015 by ELM ver.2012-10-06 from 001__elm20150301_182411__dat00.bin



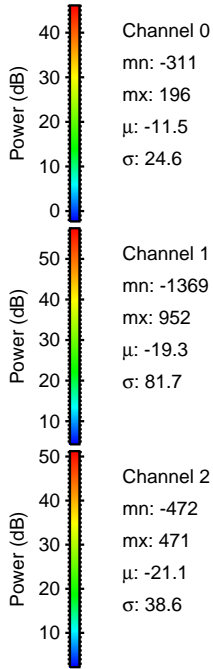
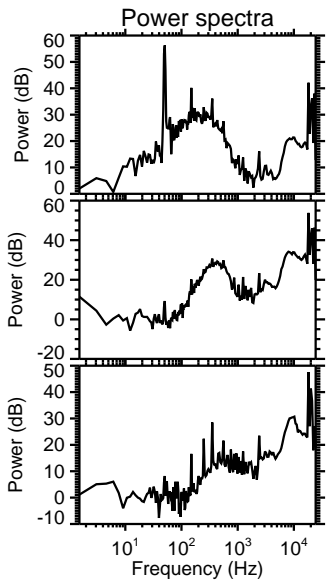
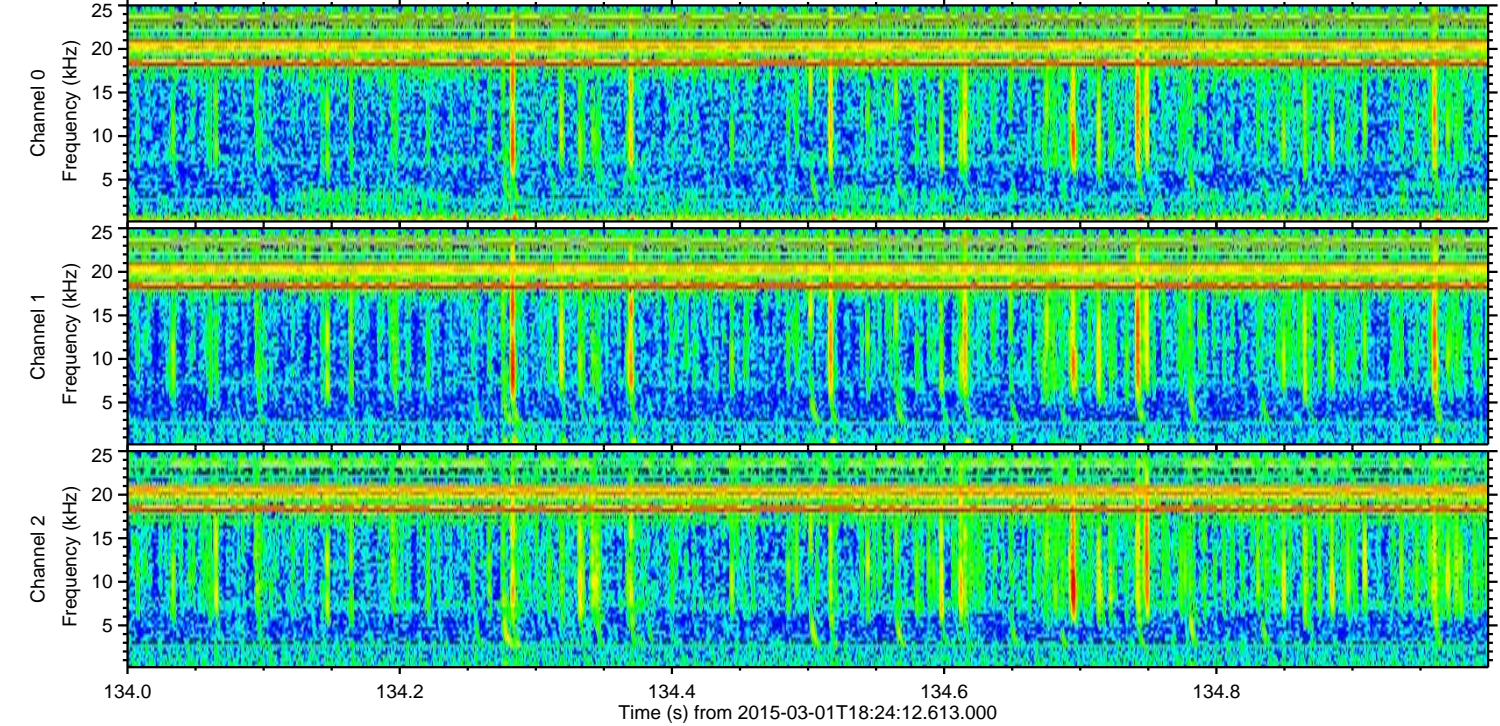
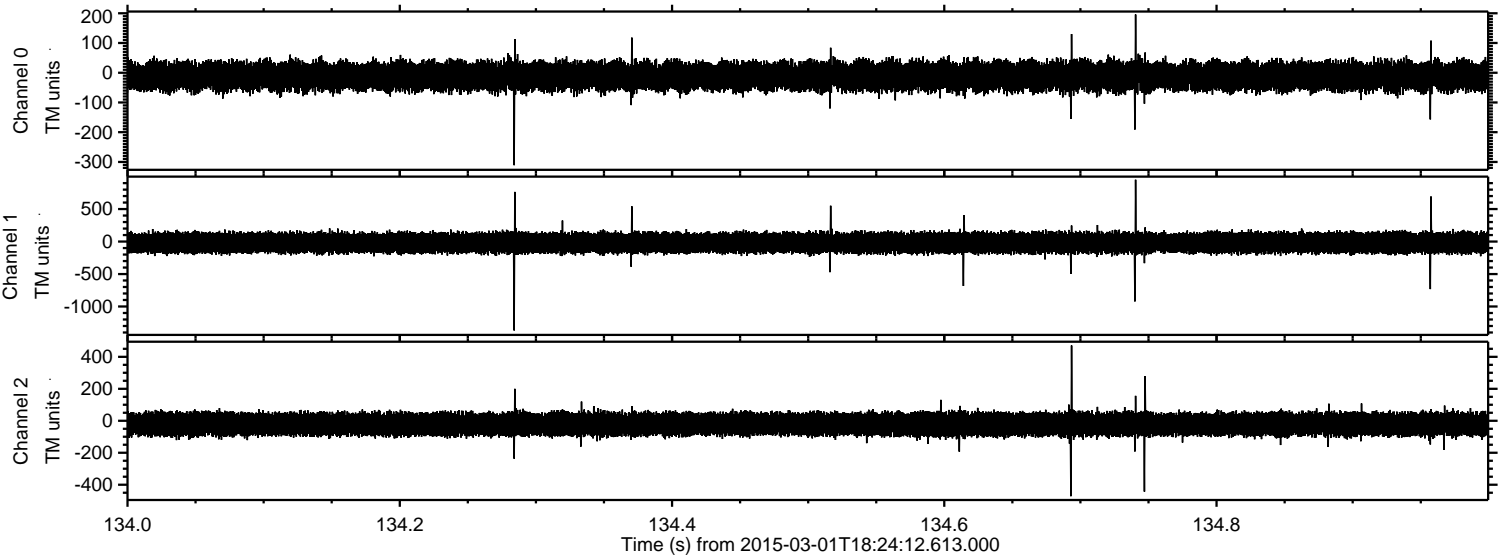
Processed Fri Mar 6 18:08:56 2015 by ELM ver.2012-10-06 from 001__elm20150301_182411__dat00.bin



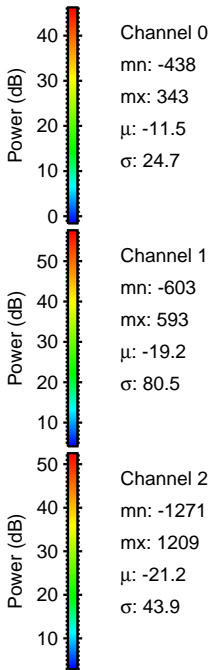
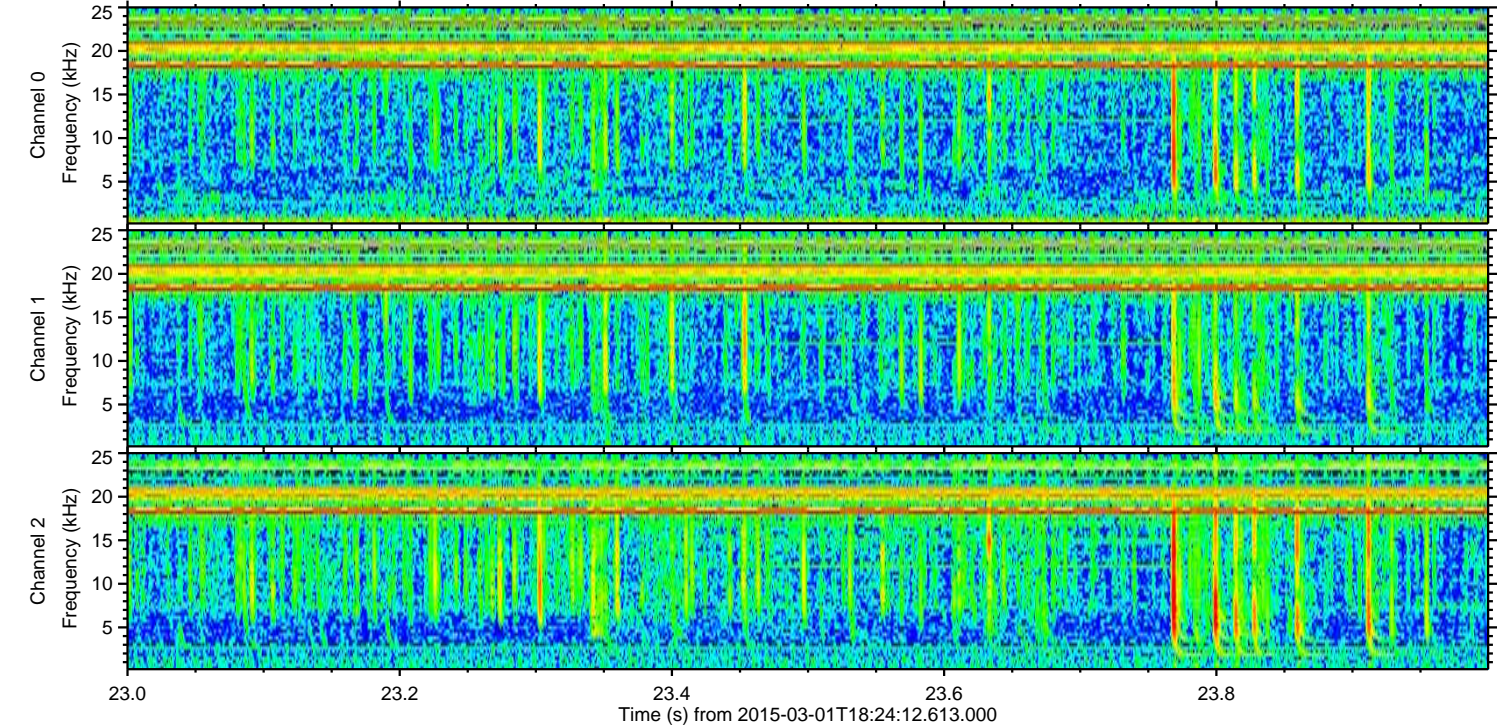
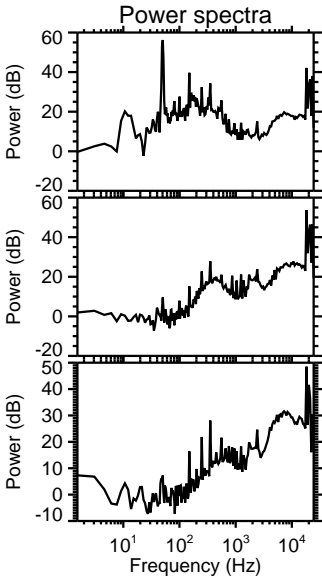
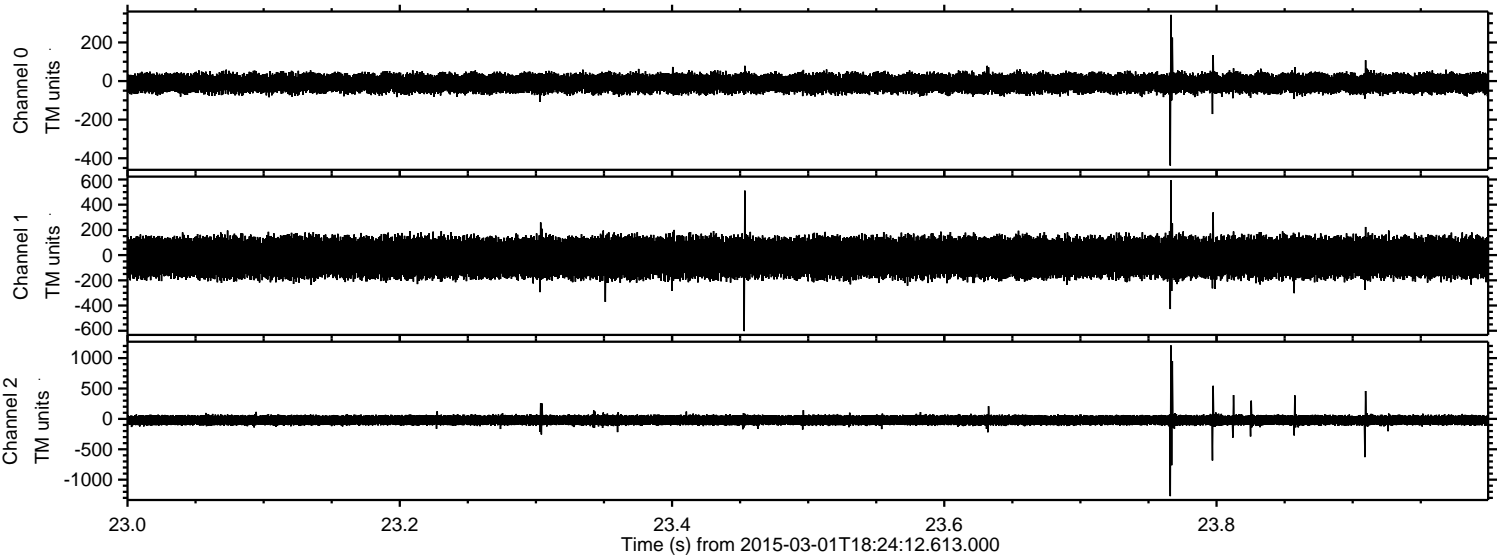
Processed Fri Mar 6 18:08:57 2015 by ELM ver.2012-10-06 from 001__elm20150301_182411__dat00.bin



Processed Fri Mar 6 18:08:58 2015 by ELM ver.2012-10-06 from 001__elm20150301_182411__dat00.bin

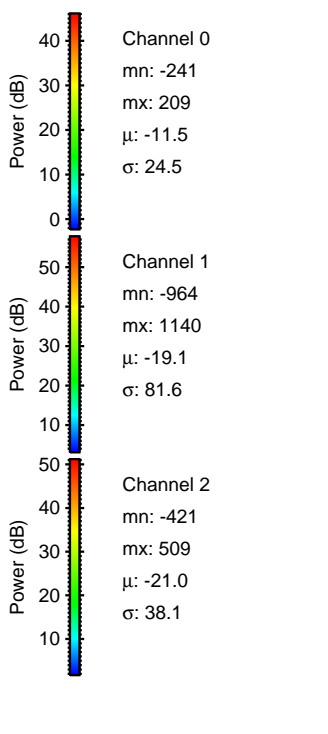
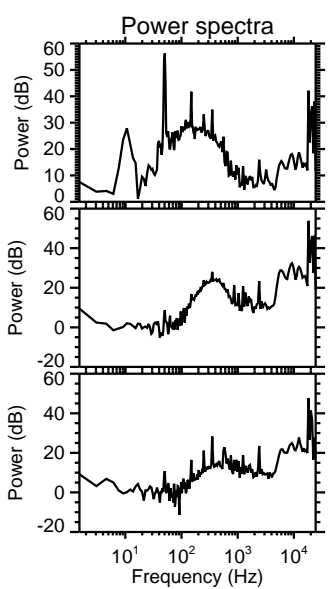
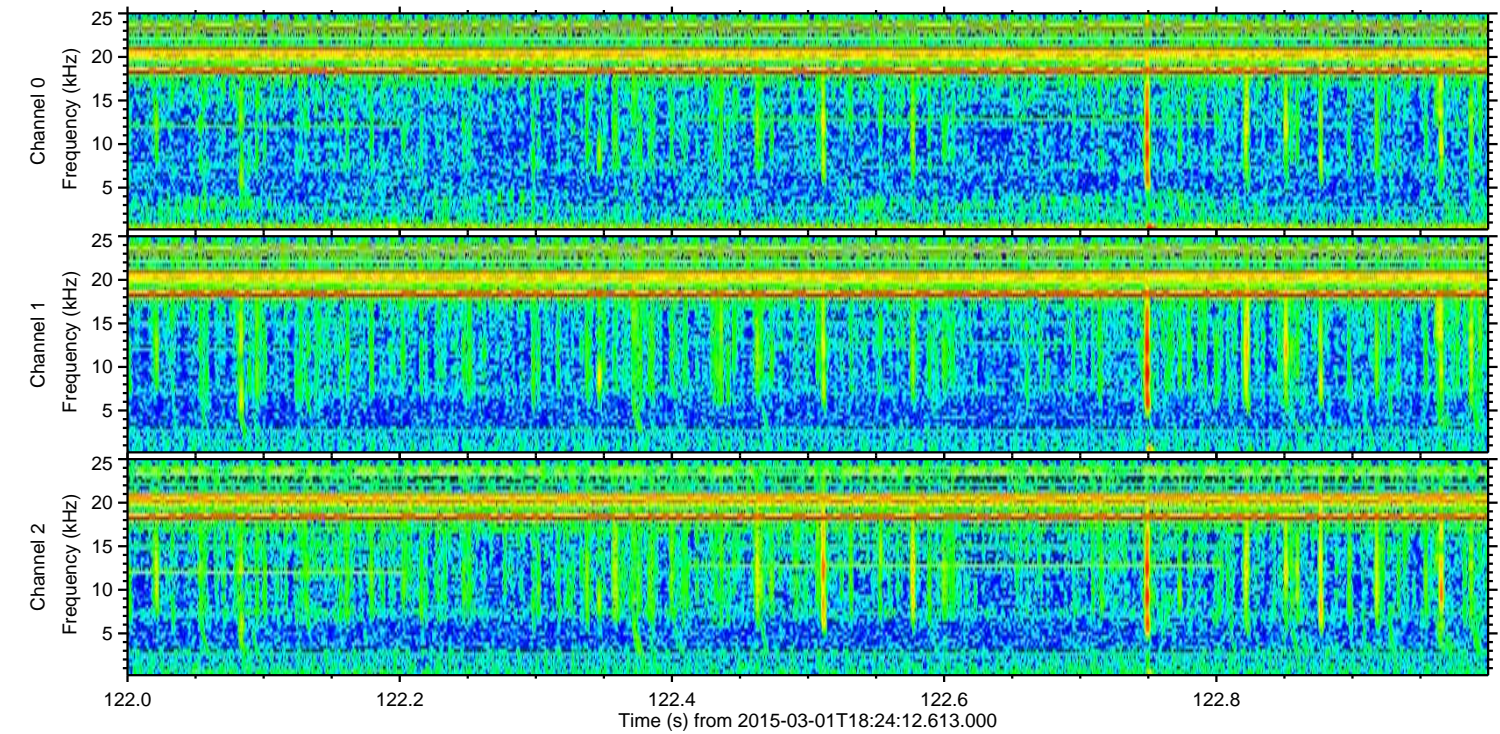
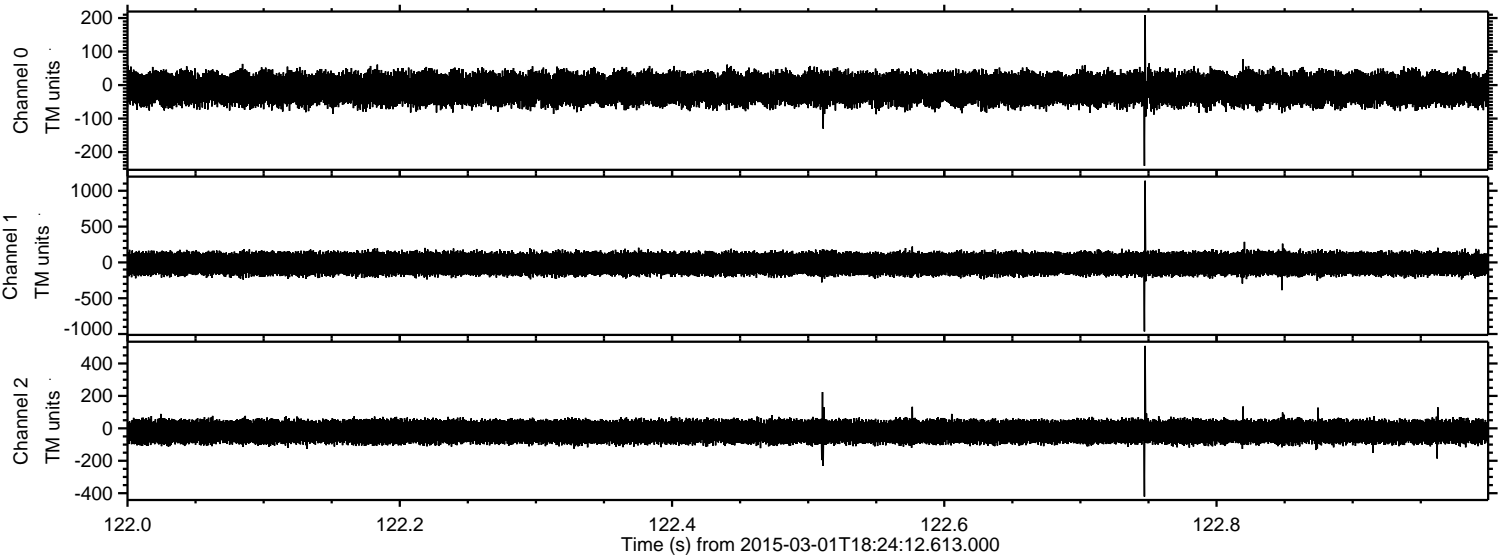


Processed Fri Mar 6 18:08:59 2015 by ELM ver.2012-10-06 from 001__elm20150301_182411__dat00.bin

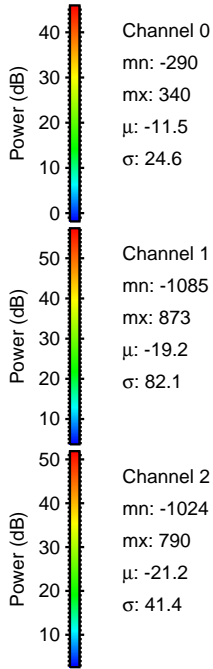
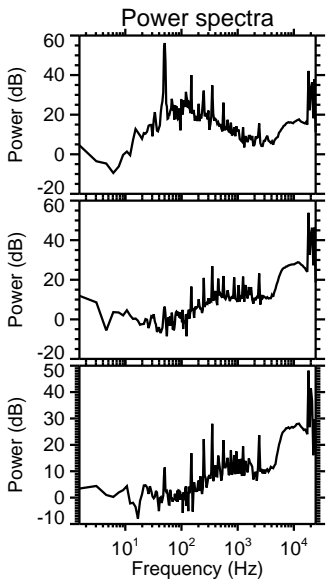
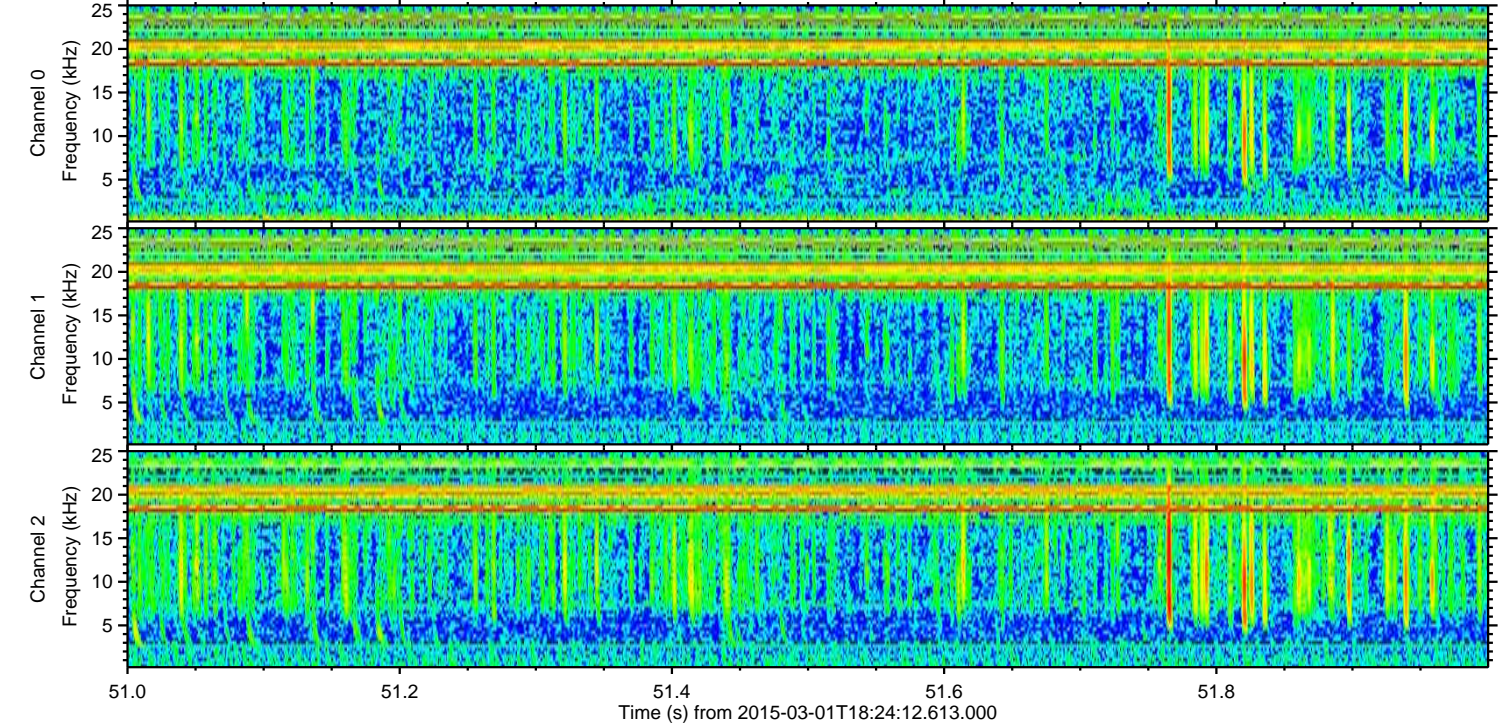
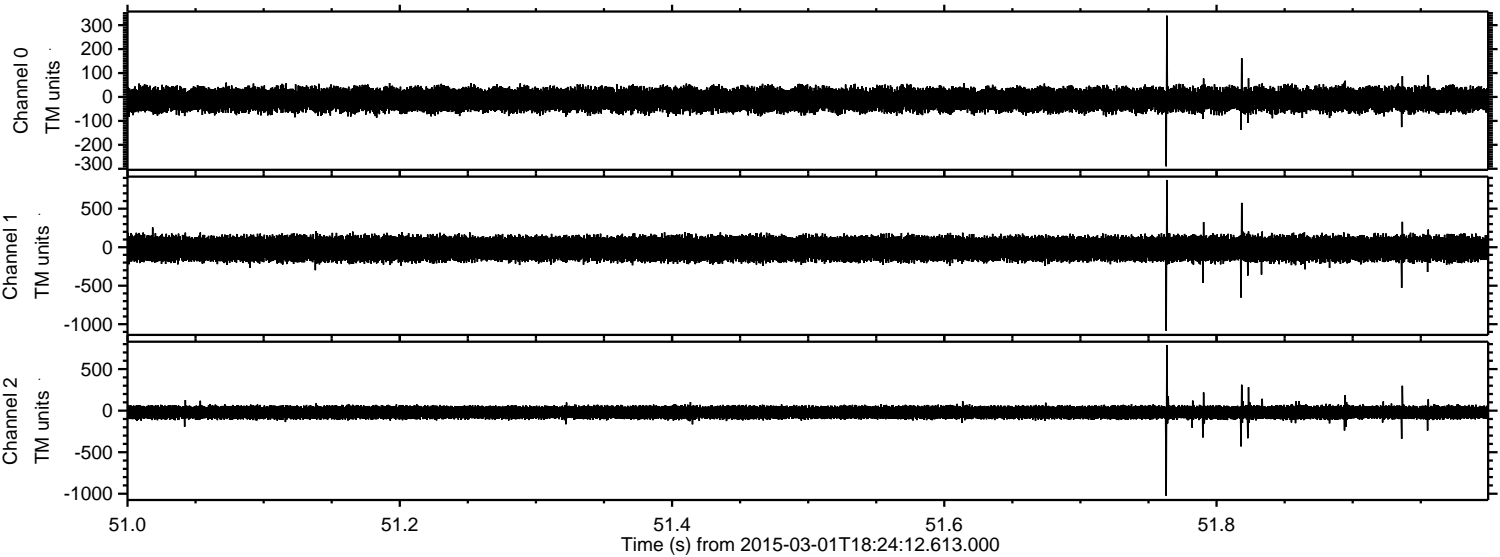


ELMAVAN 3D WAVEFORMS (Measured data sampled at 50 kHz) 49678 packets of 144 samples from 2015-03-01T18:24:12.613.000. Part 123/144

Processed Fri Mar 6 18:09:00 2015 by ELM ver.2012-10-06 from 001__elm20150301_182411__dat00.bin



Processed Fri Mar 6 18:09:02 2015 by ELM ver.2012-10-06 from 001__elm20150301_182411__dat00.bin



Channel 0
mn: -290
mx: 340
 μ : -11.5
 σ : 24.6

Channel 1
mn: -1085
mx: 873
 μ : -19.2
 σ : 82.1

Channel 2
mn: -1024
mx: 790
 μ : -21.2
 σ : 41.4

