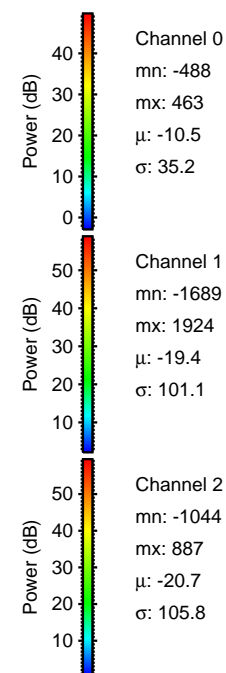
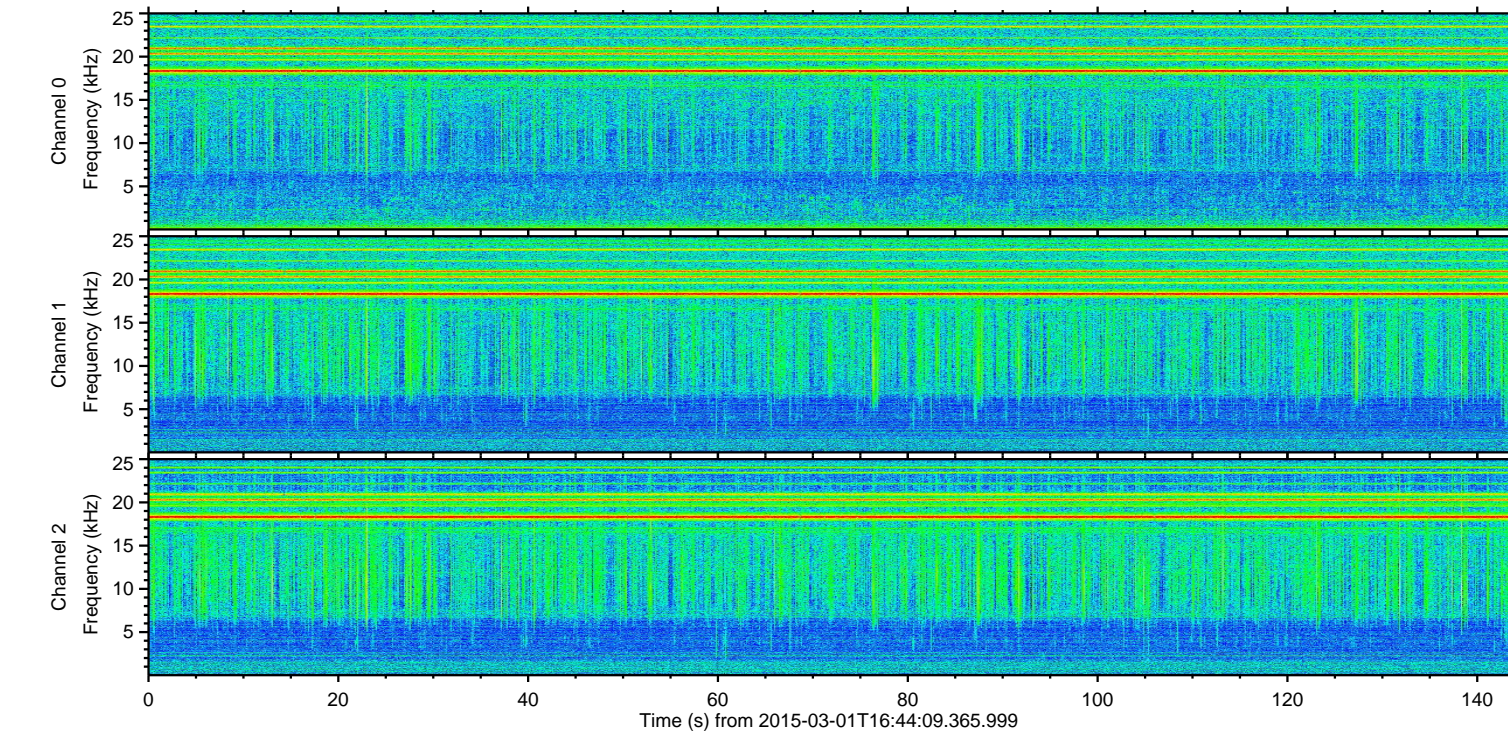
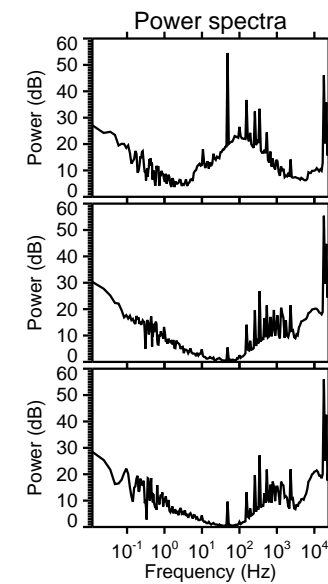
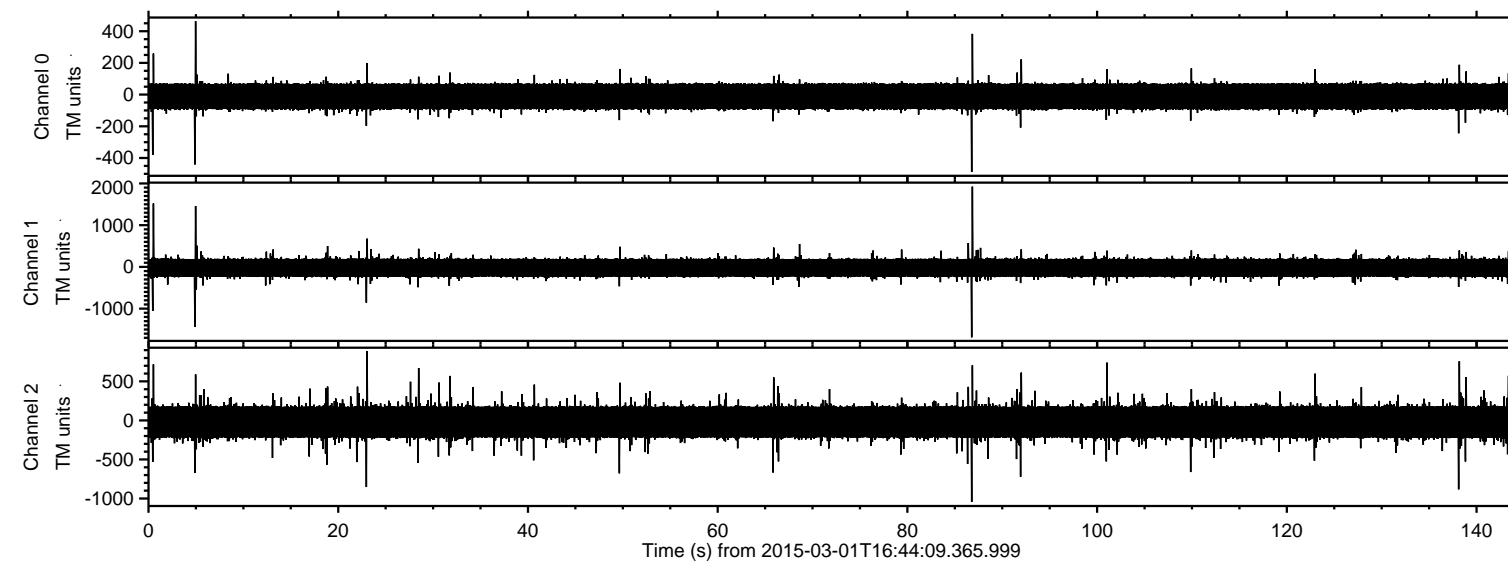
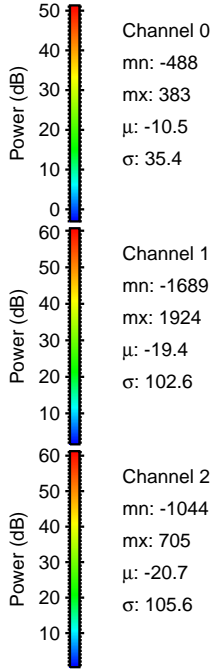
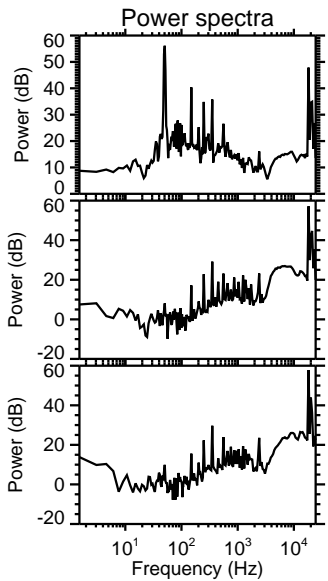
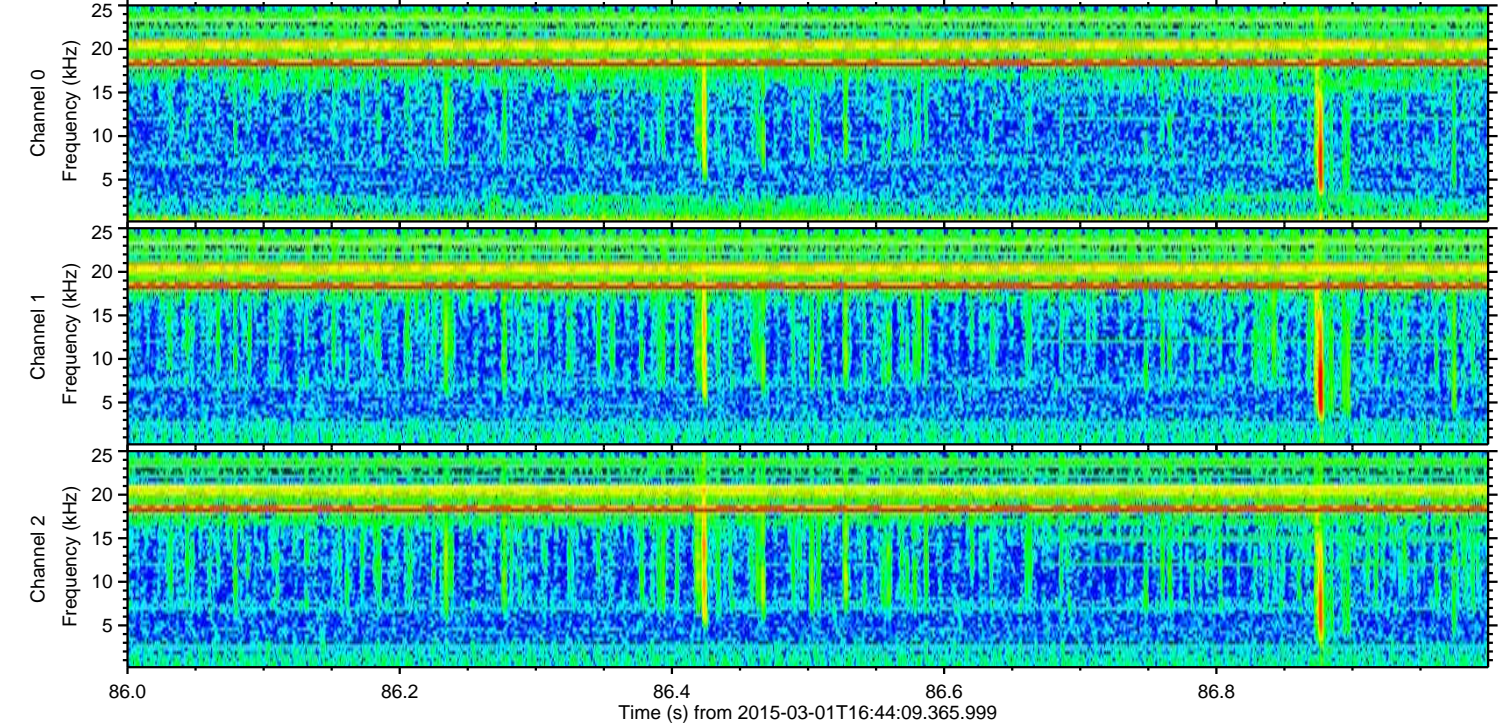
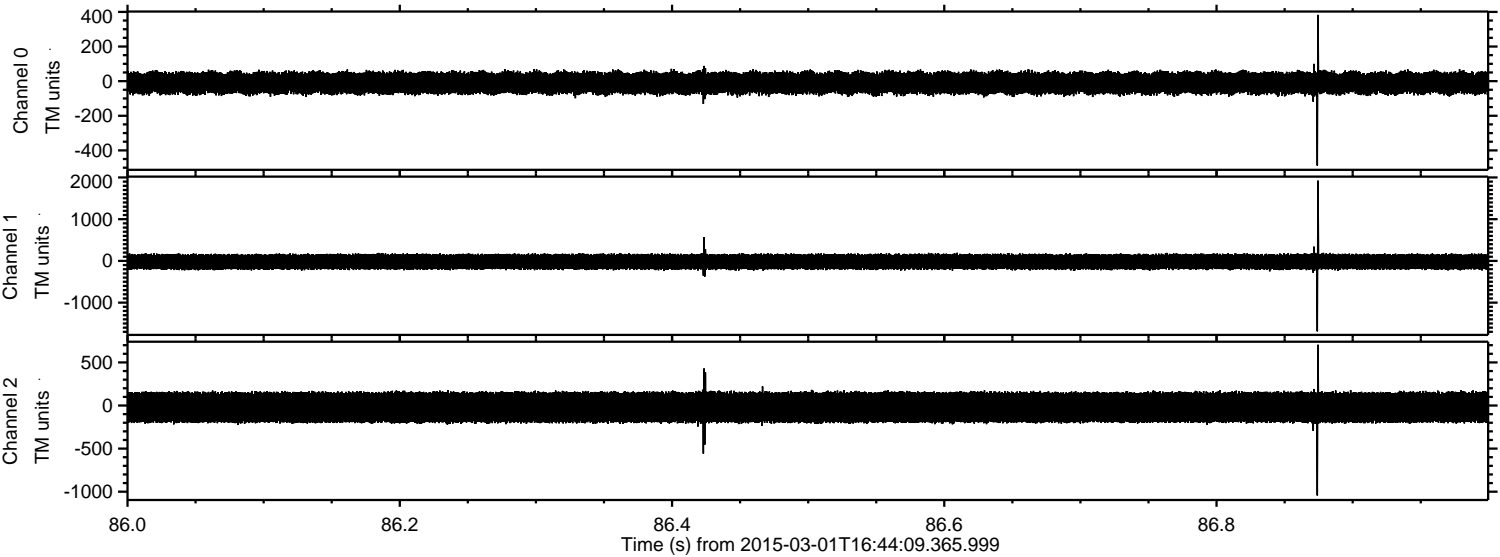


ELMAVAN 3D WAVEFORMS (Measured data sampled at 50 kHz) 49804 packets of 144 samples from 2015-03-01T16:44:09.365.999.

Processed Fri Mar 6 17:46:38 2015 by ELM ver.2012-10-06 from 001__elm20150301_164408__dat00.bin

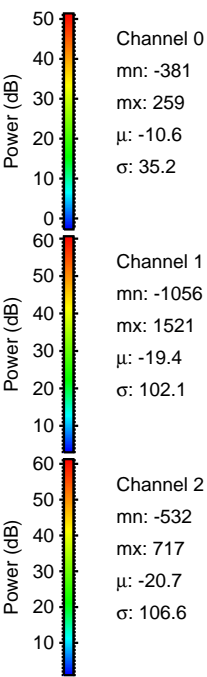
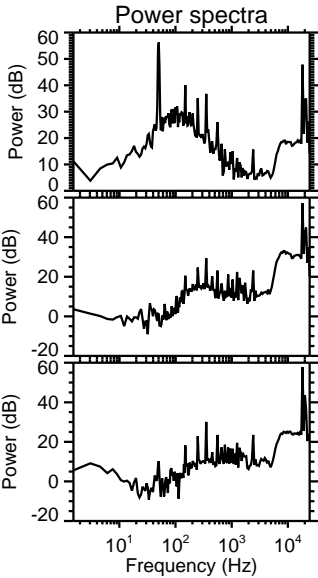
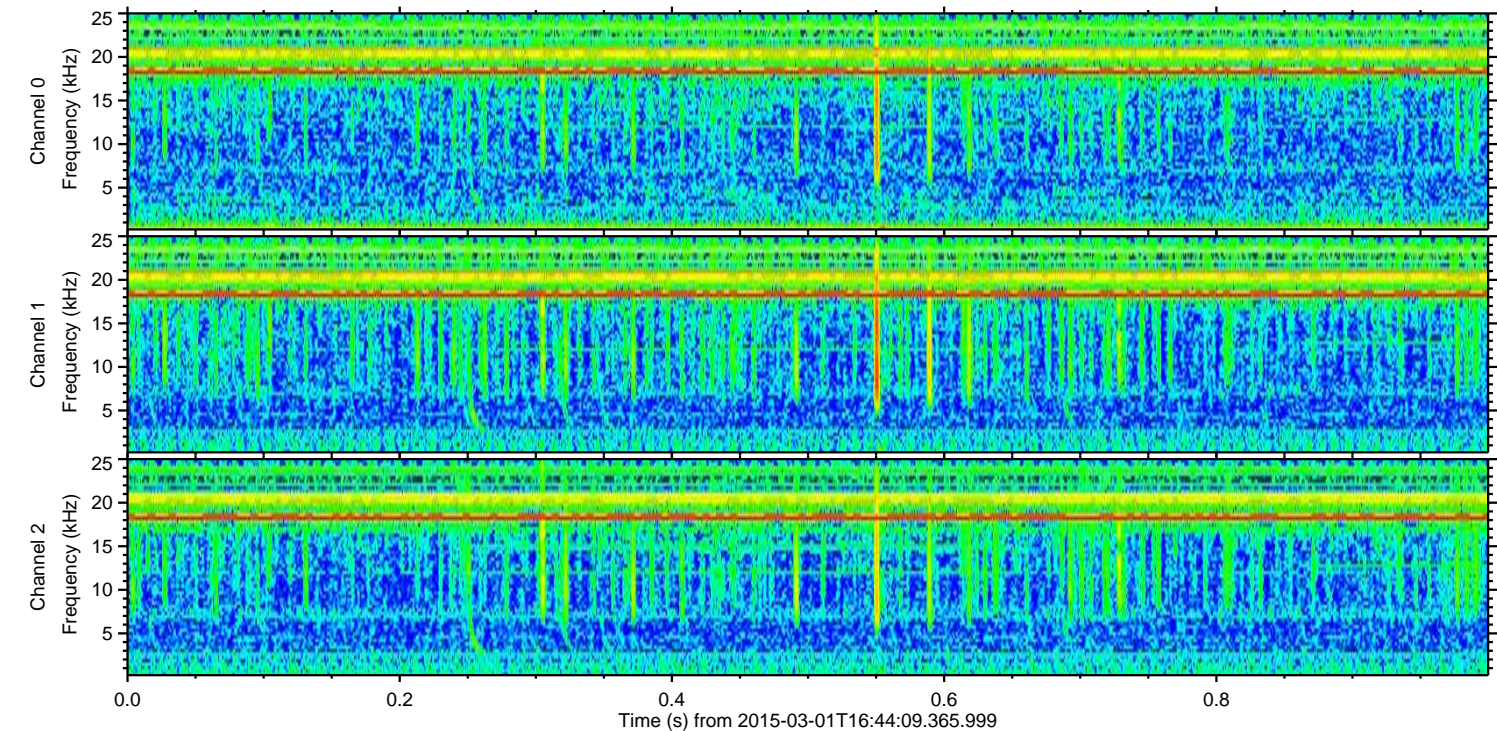
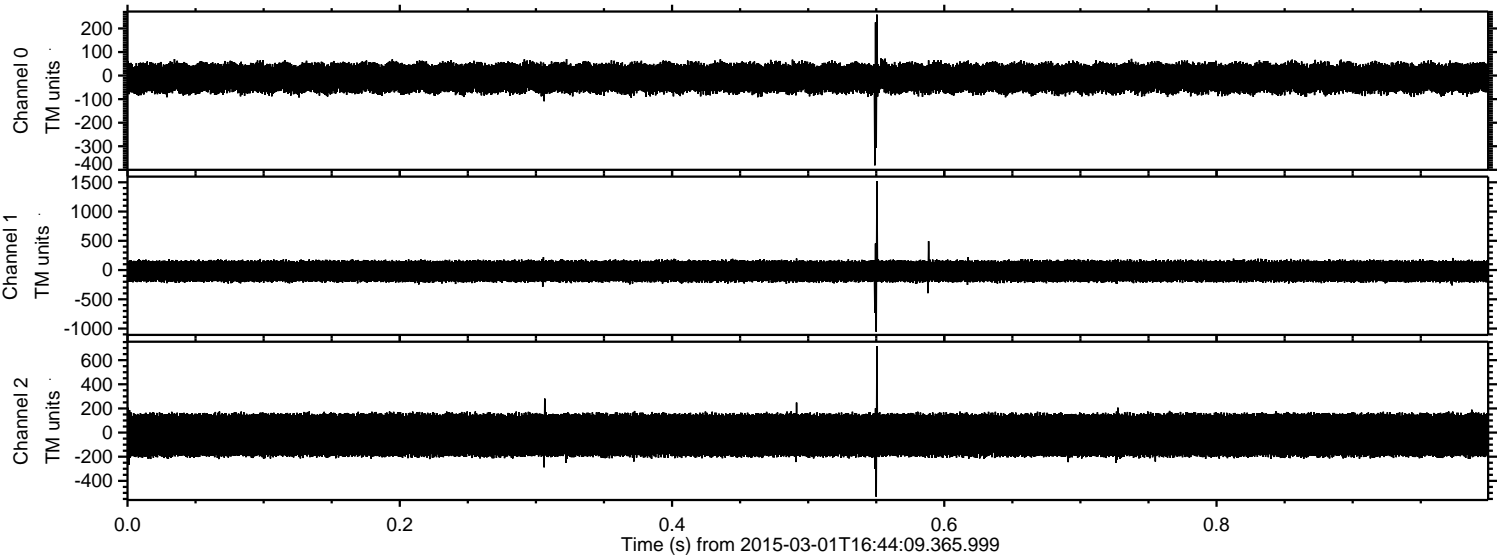


Processed Fri Mar 6 17:46:57 2015 by ELM ver.2012-10-06 from 001__elm20150301_164408__dat00.bin

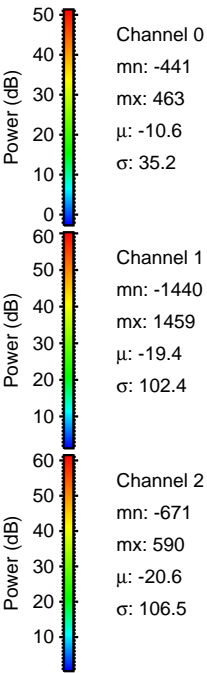
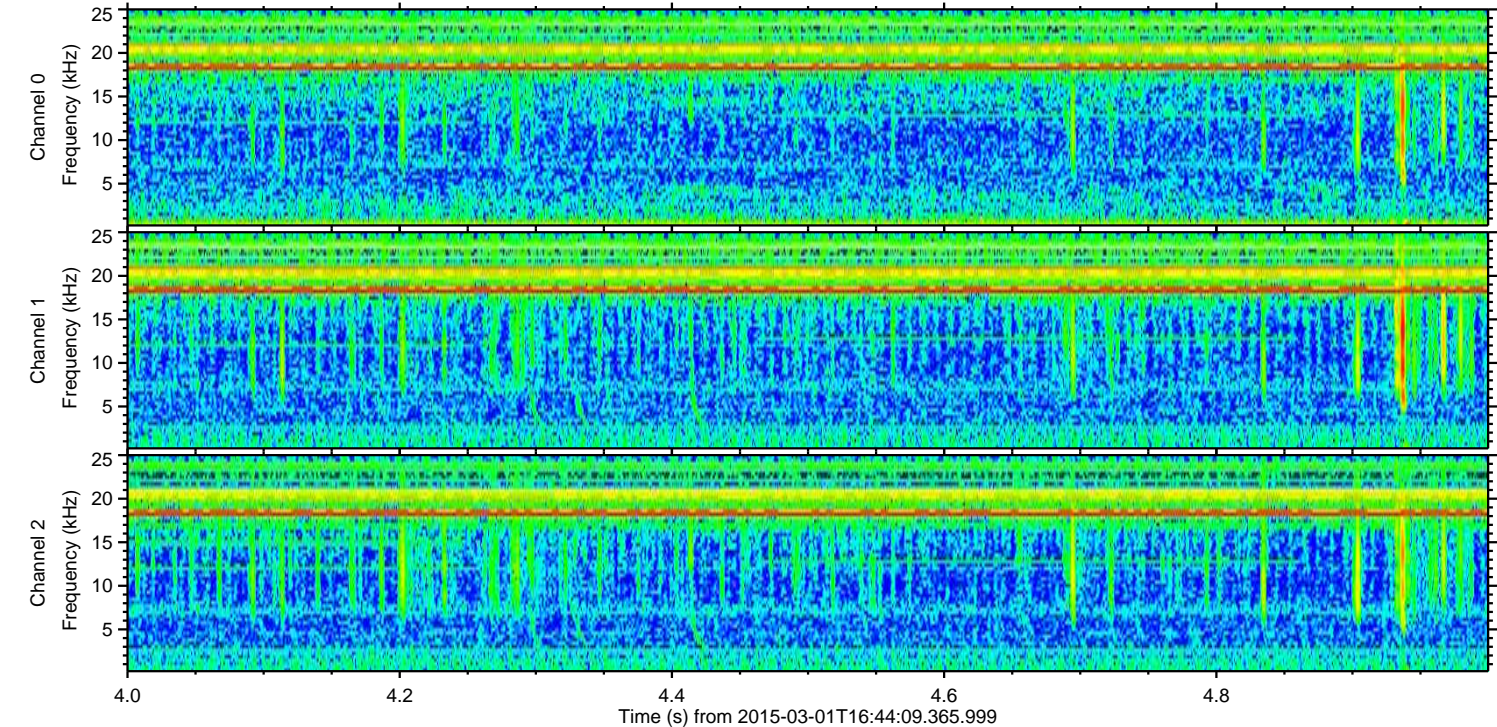
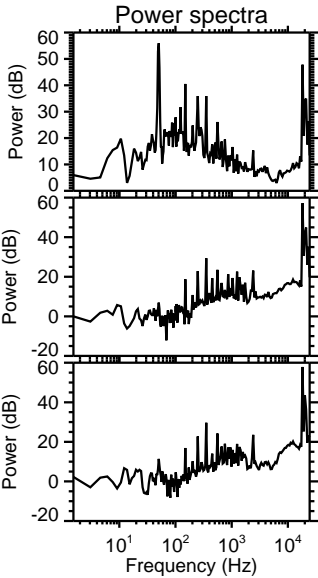
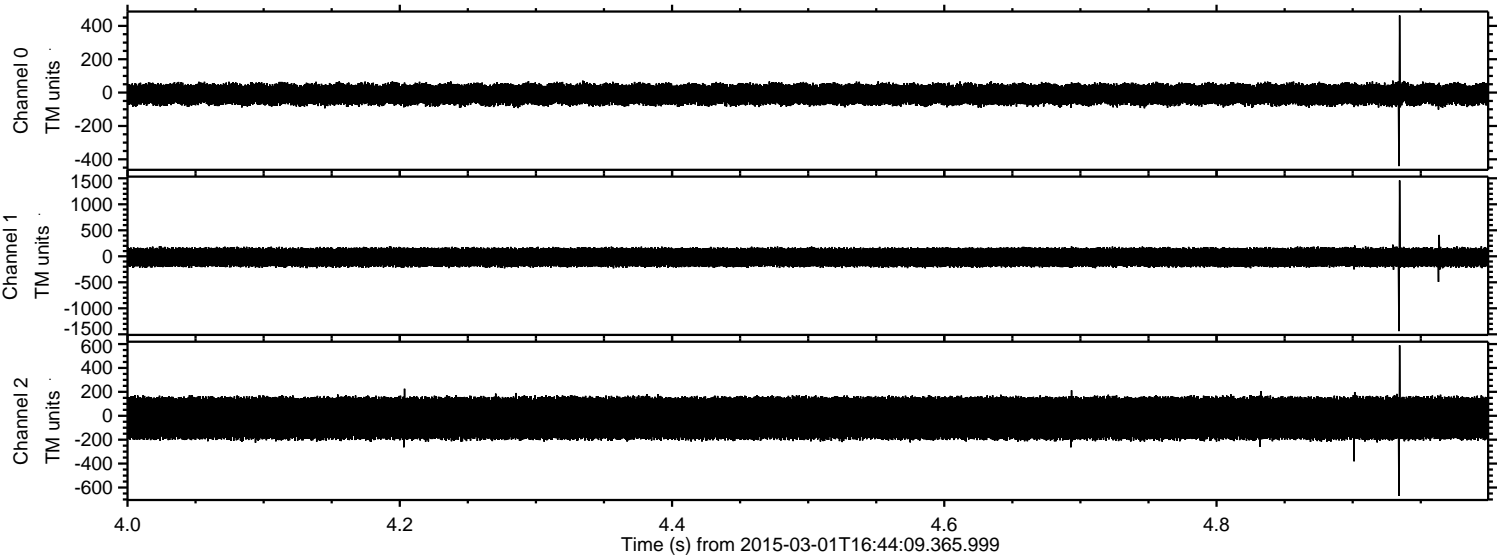


ELMAVAN 3D WAVEFORMS (Measured data sampled at 50 kHz) 49804 packets of 144 samples from 2015-03-01T16:44:09.365.999. Part 1/144

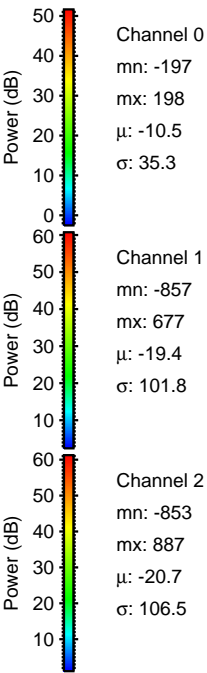
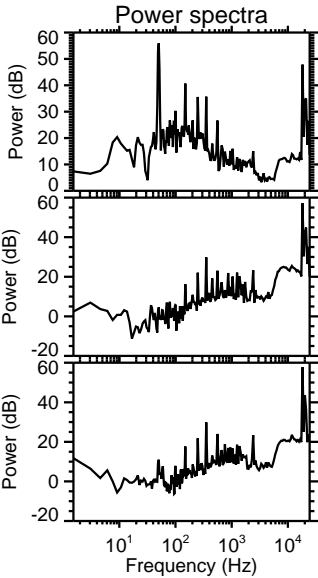
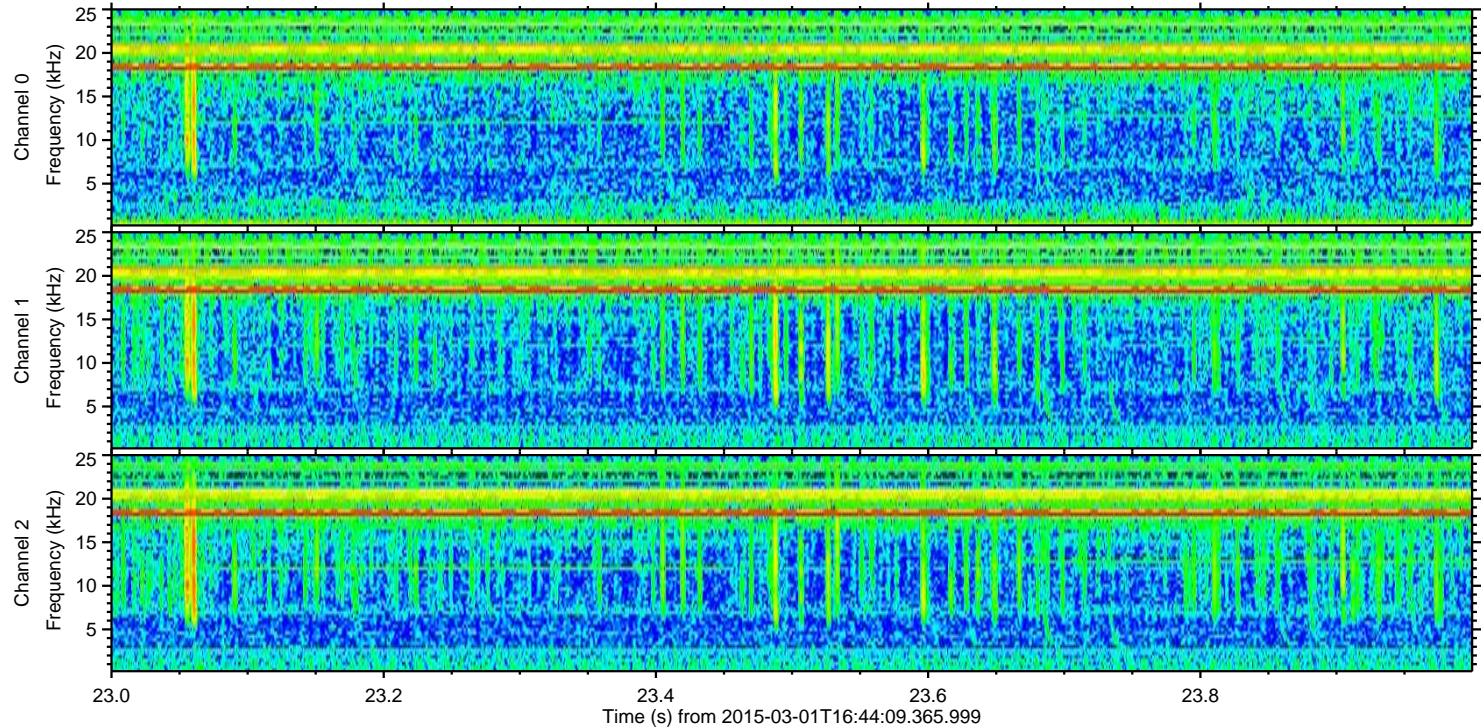
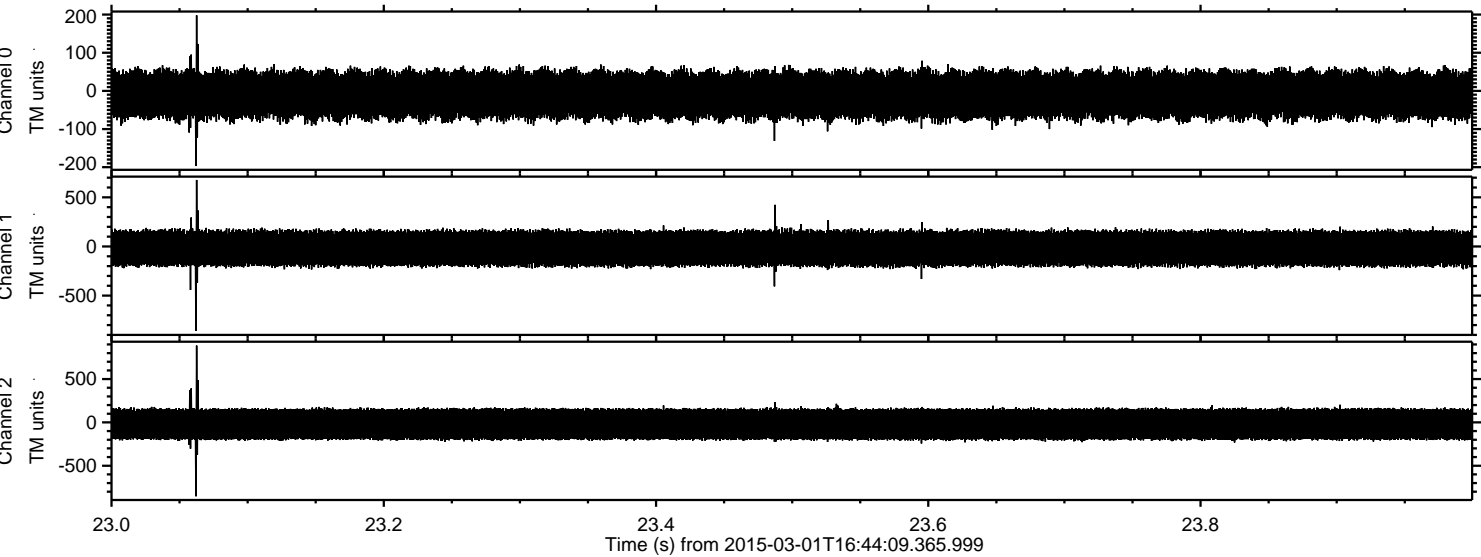
Processed Fri Mar 6 17:46:59 2015 by ELM ver.2012-10-06 from 001__elm20150301_164408__dat00.bin



Processed Fri Mar 6 17:47:01 2015 by ELM ver.2012-10-06 from 001__elm20150301_164408__dat00.bin



Processed Fri Mar 6 17:47:02 2015 by ELM ver.2012-10-06 from 001__elm20150301_164408__dat00.bin

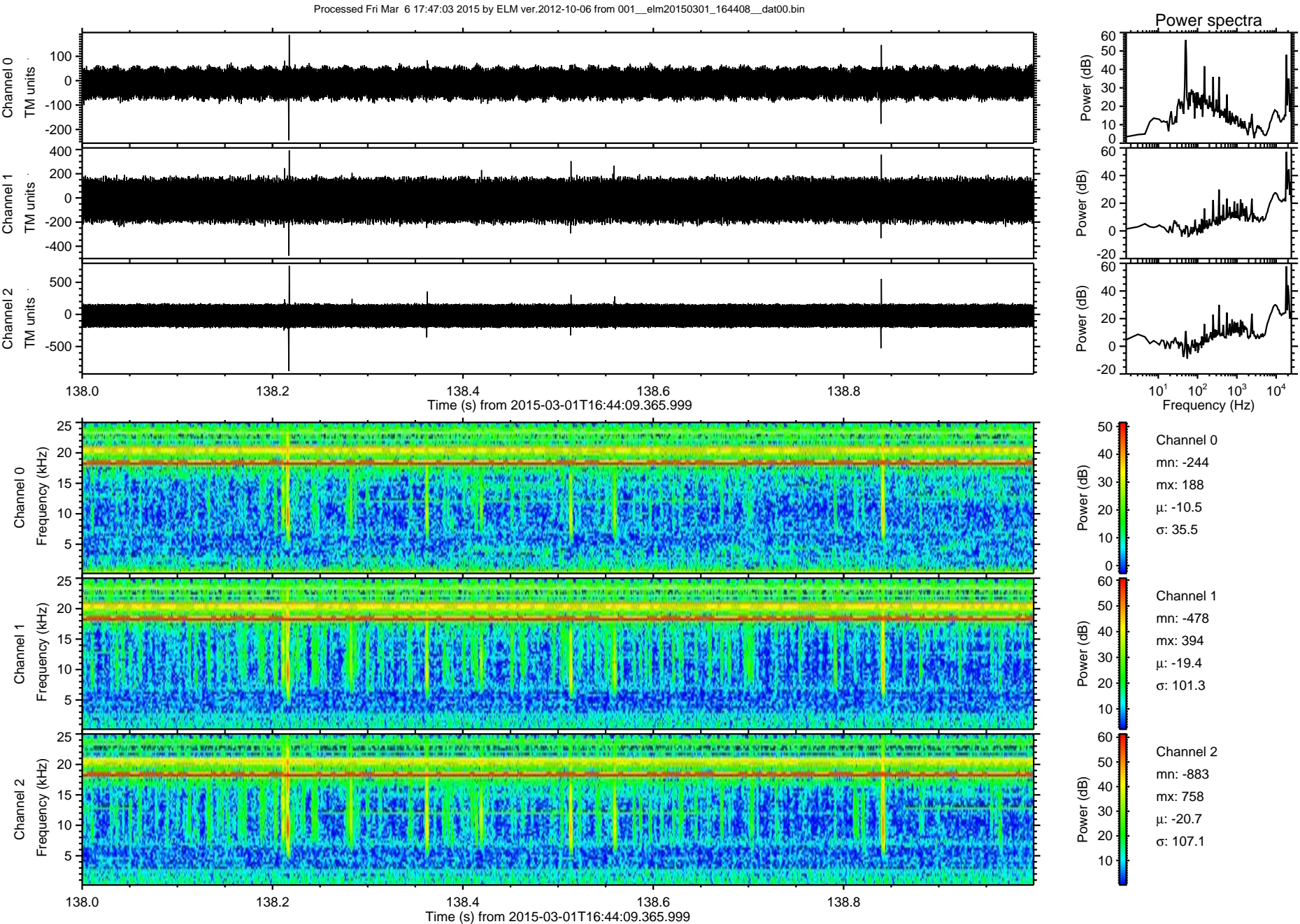


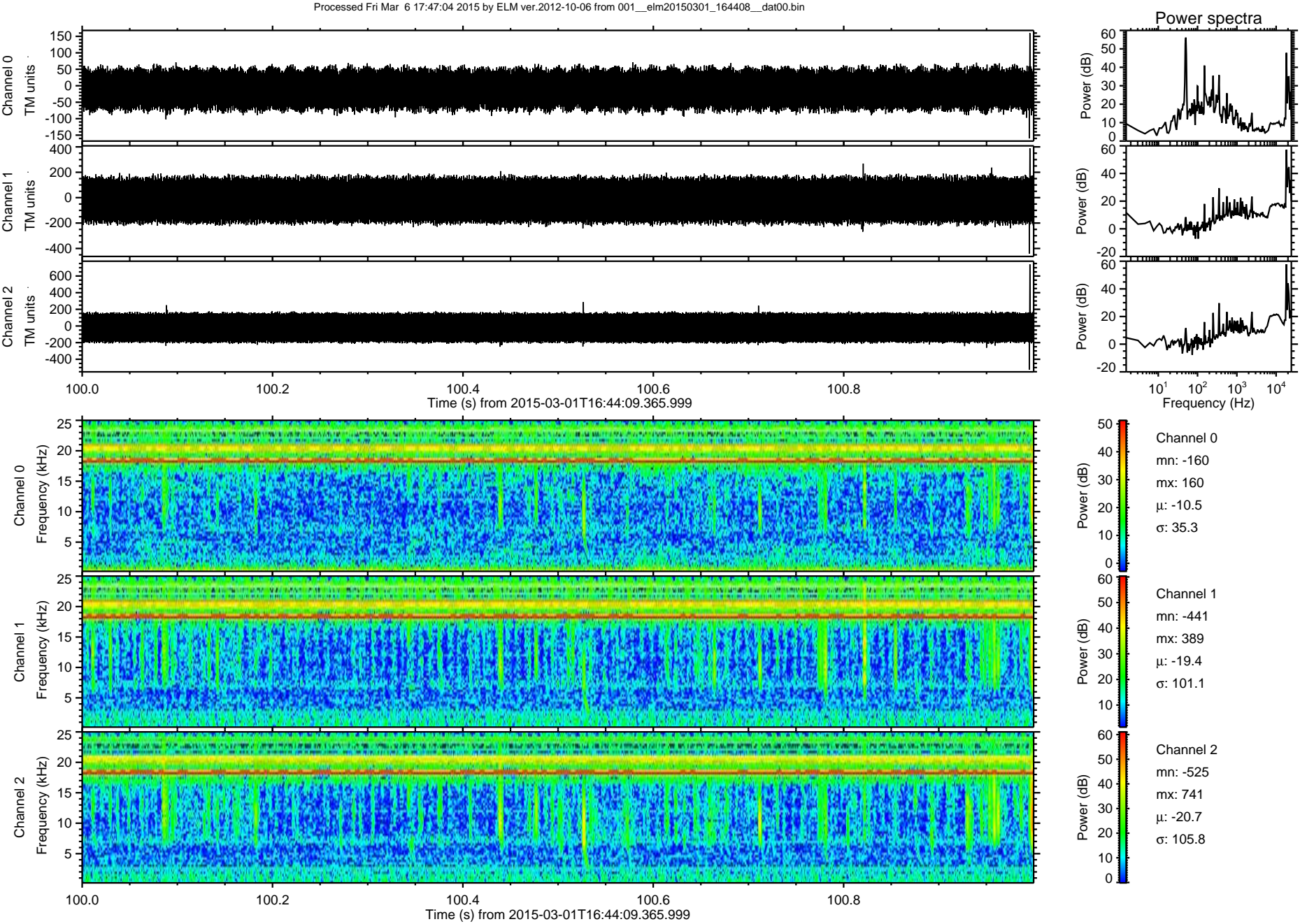
Channel 0
mn: -197
mx: 198
 μ : -10.5
 σ : 35.3

Channel 1
mn: -857
mx: 677
 μ : -19.4
 σ : 101.8

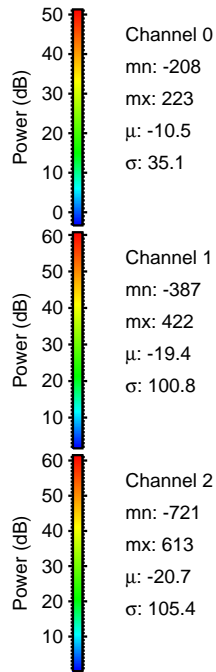
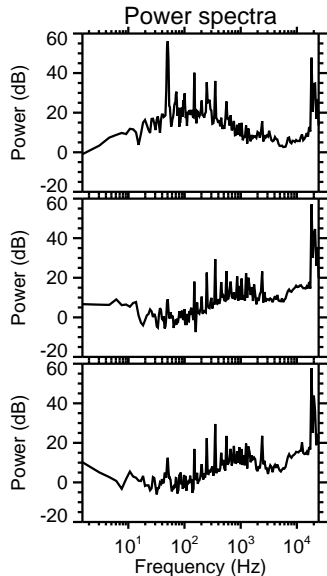
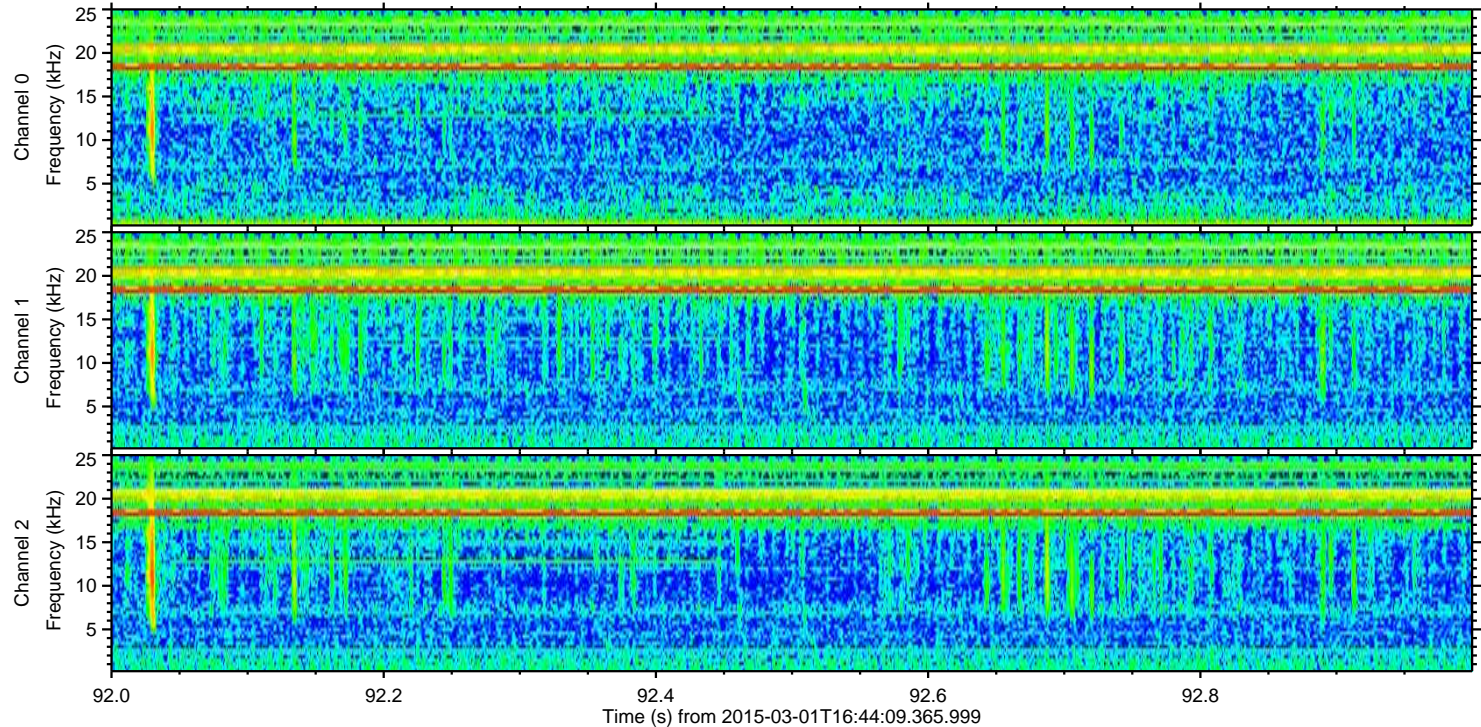
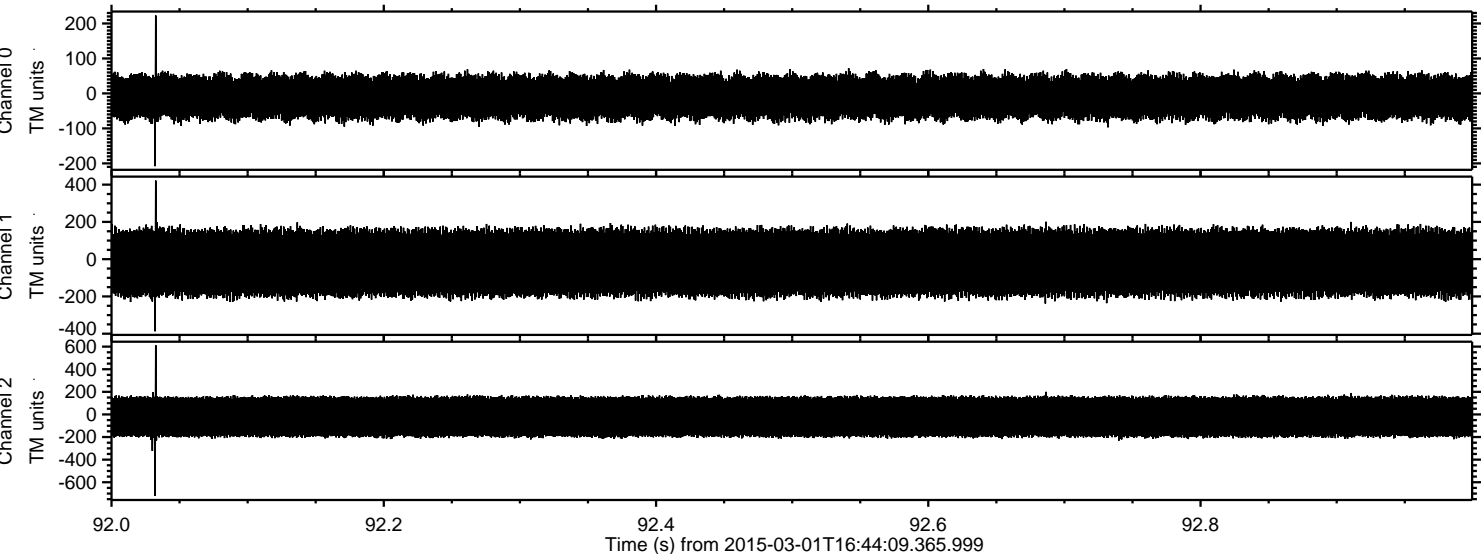
Channel 2
mn: -853
mx: 887
 μ : -20.7
 σ : 106.5

ELMAVAN 3D WAVEFORMS (Measured data sampled at 50 kHz) 49804 packets of 144 samples from 2015-03-01T16:44:09.365.999. Part 139/144





Processed Fri Mar 6 17:47:05 2015 by ELM ver.2012-10-06 from 001__elm20150301_164408__dat00.bin

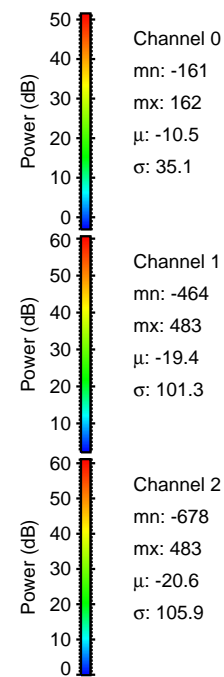
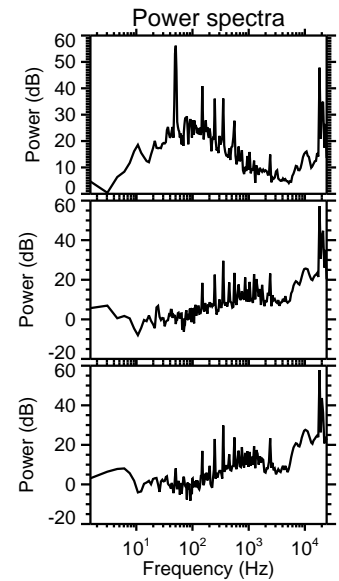
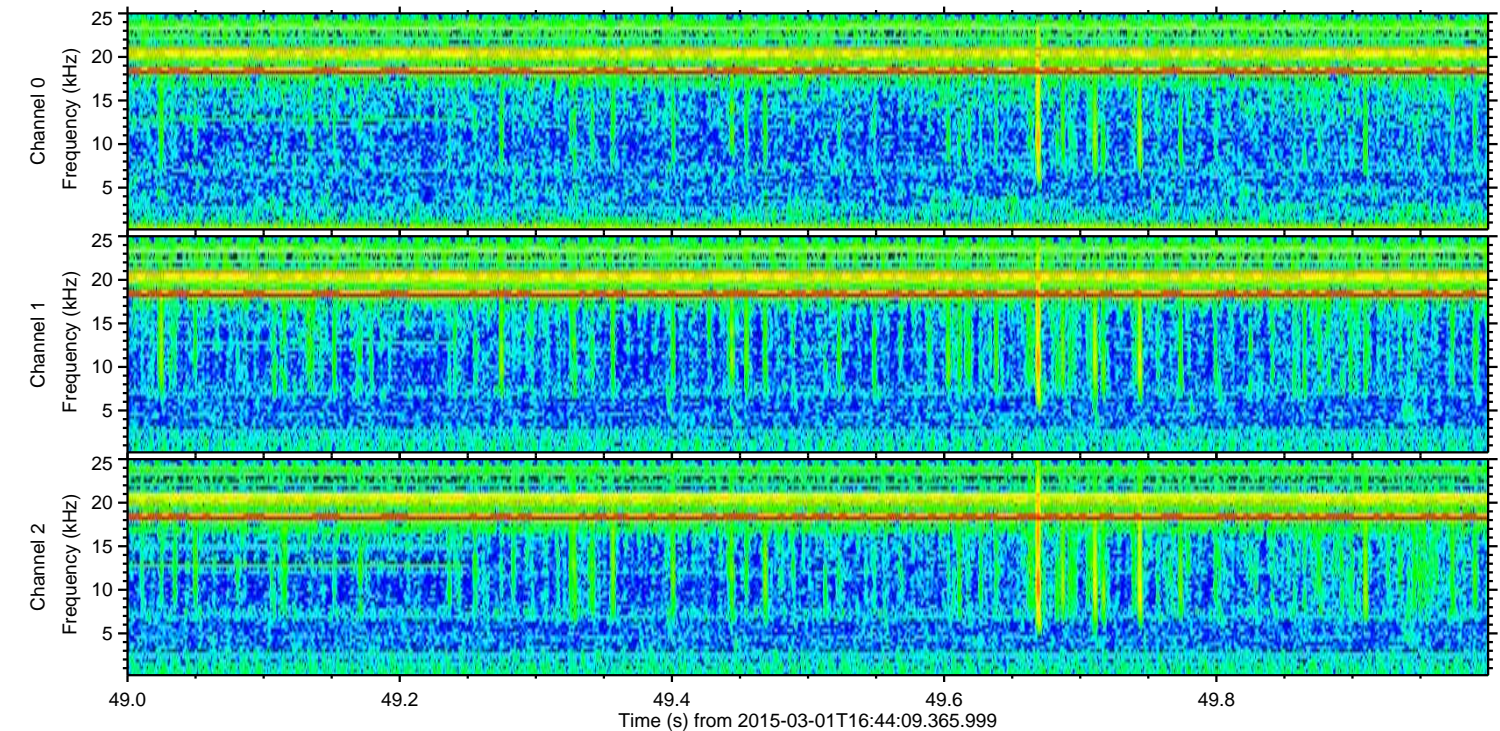
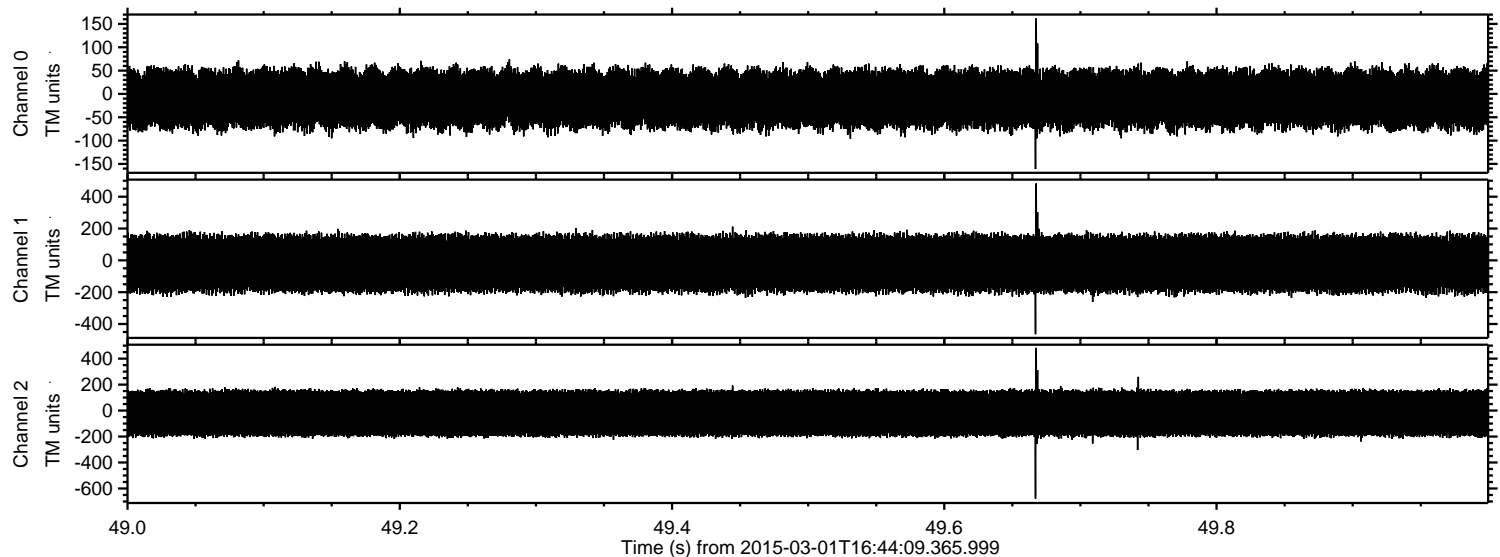


Channel 0
mn: -208
mx: 223
 μ : -10.5
 σ : 35.1

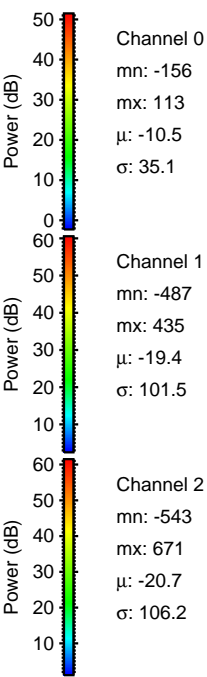
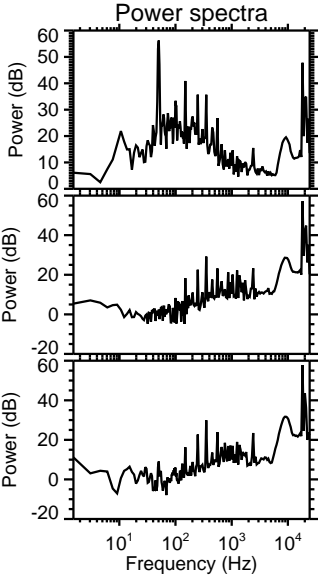
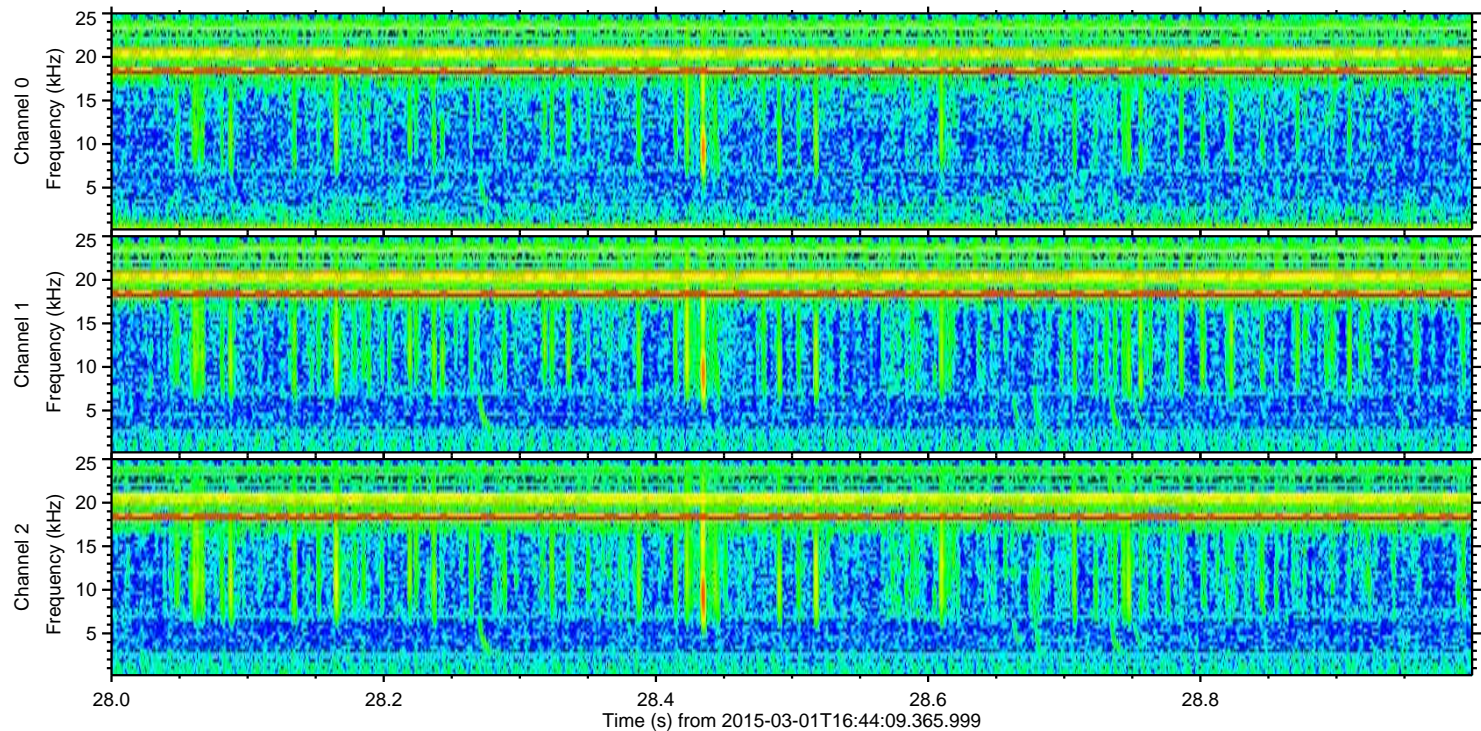
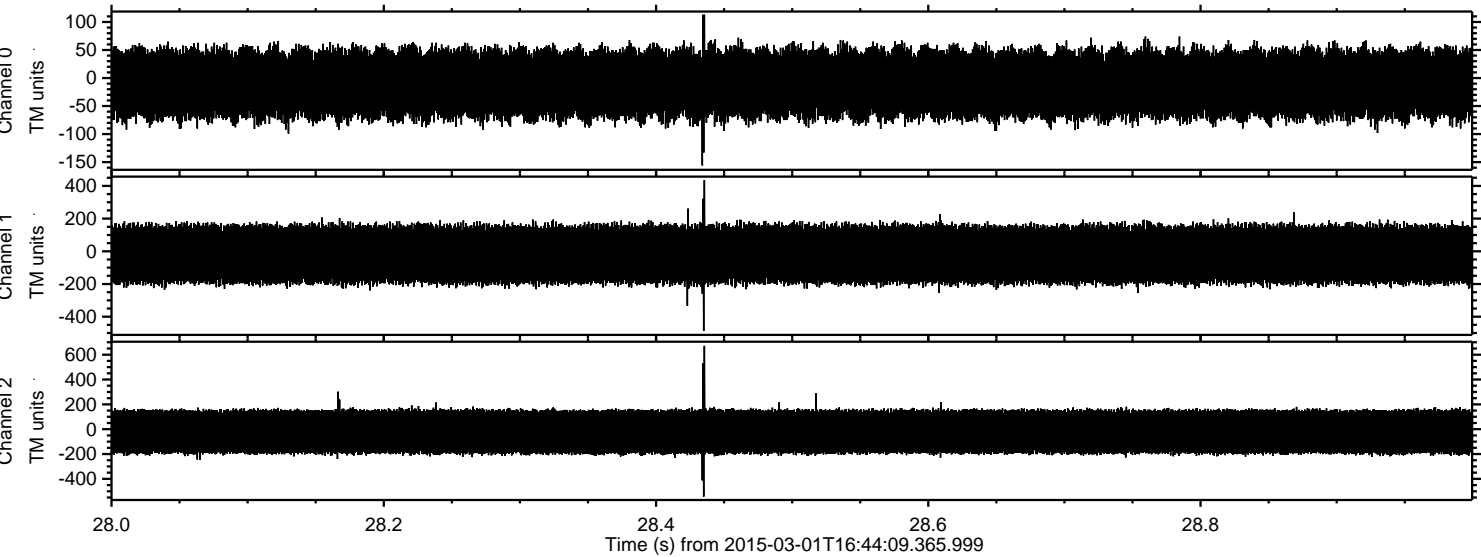
Channel 1
mn: -387
mx: 422
 μ : -19.4
 σ : 100.8

Channel 2
mn: -721
mx: 613
 μ : -20.7
 σ : 105.4

Processed Fri Mar 6 17:47:06 2015 by ELM ver.2012-10-06 from 001__elm20150301_164408__dat00.bin



Processed Fri Mar 6 17:47:06 2015 by ELM ver.2012-10-06 from 001__elm20150301_164408__dat00.bin



Channel 0
mn: -156
mx: 113
 μ : -10.5
 σ : 35.1

Channel 1
mn: -487
mx: 435
 μ : -19.4
 σ : 101.5

Channel 2
mn: -543
mx: 671
 μ : -20.7
 σ : 106.2

Processed Fri Mar 6 17:47:07 2015 by ELM ver.2012-10-06 from 001__elm20150301_164408__dat00.bin

