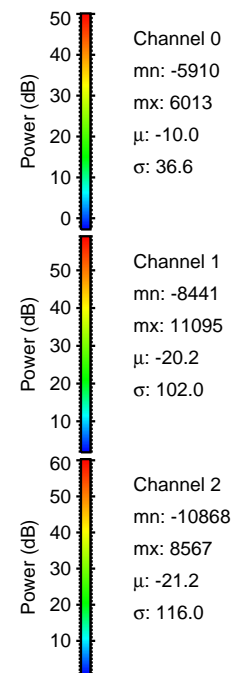
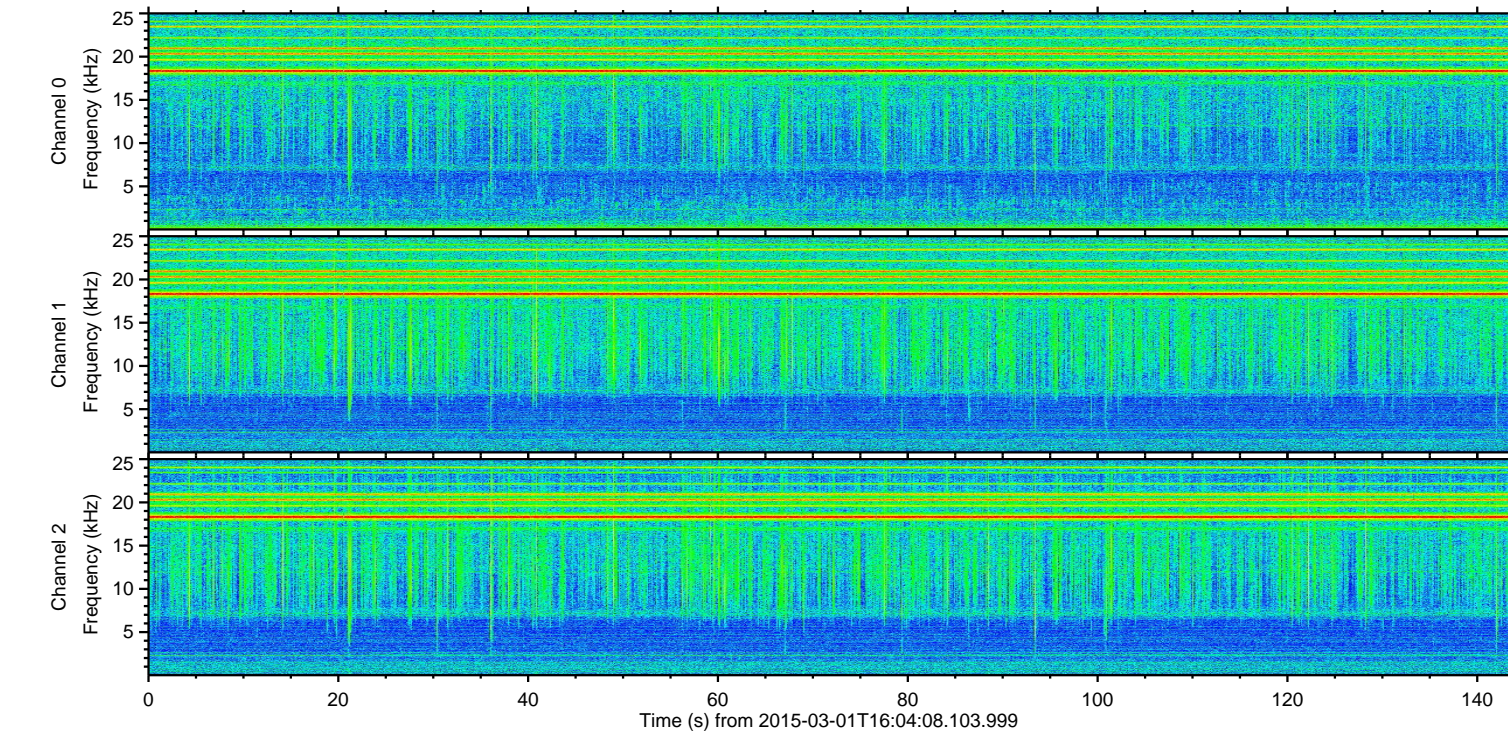
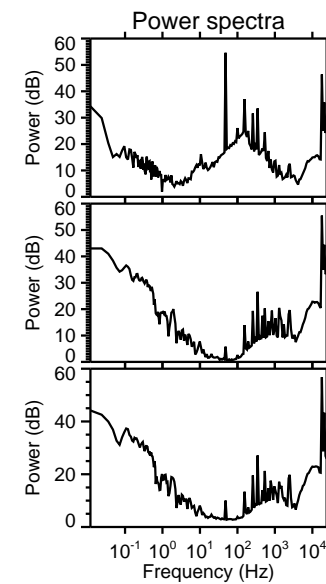
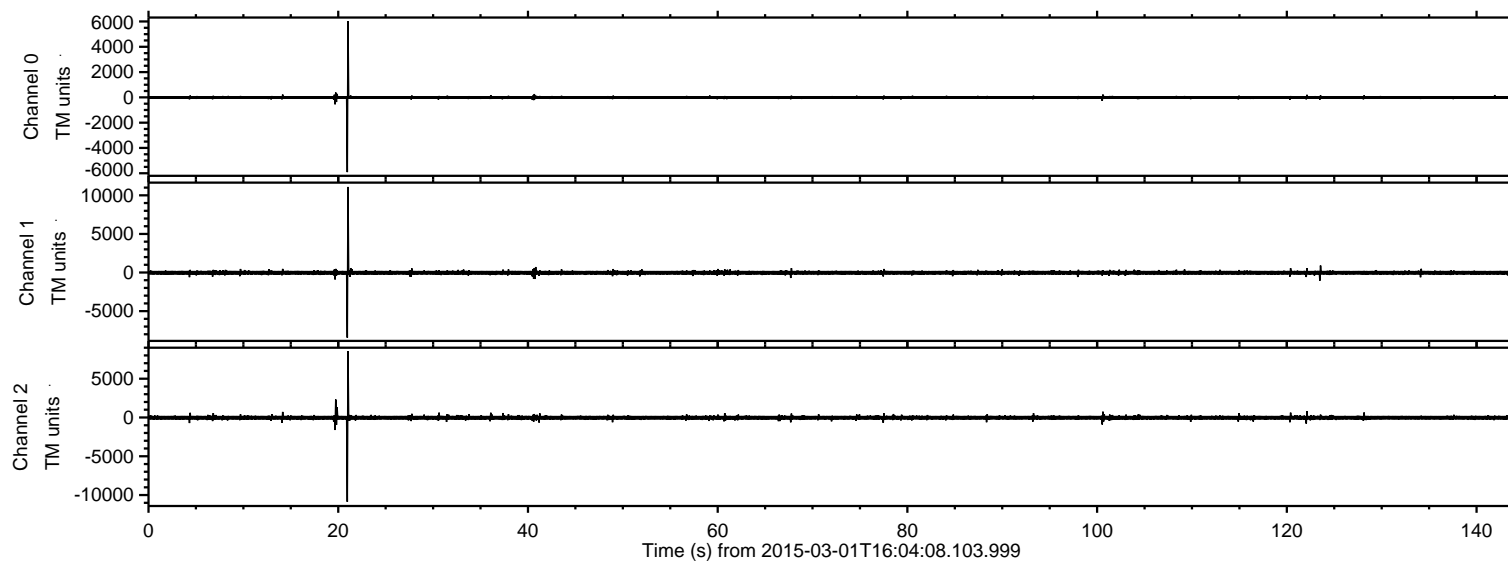
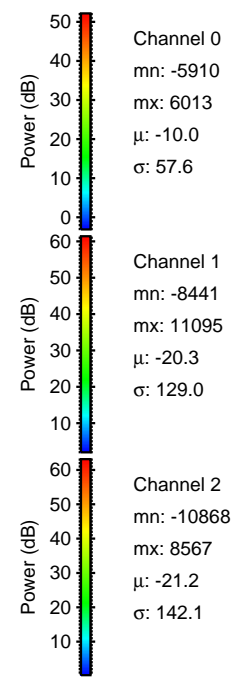
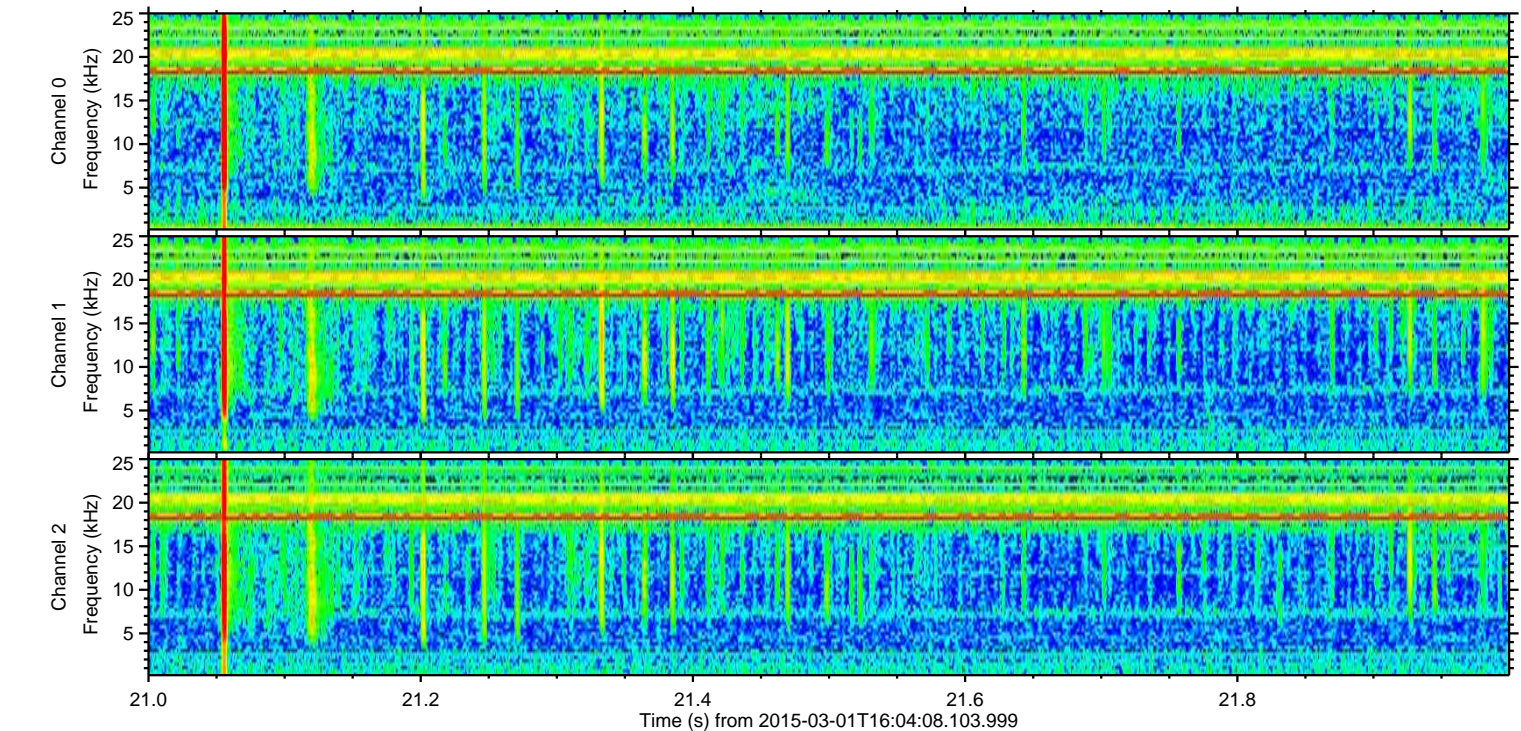
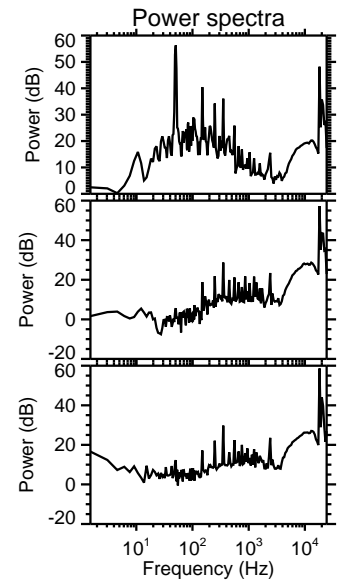
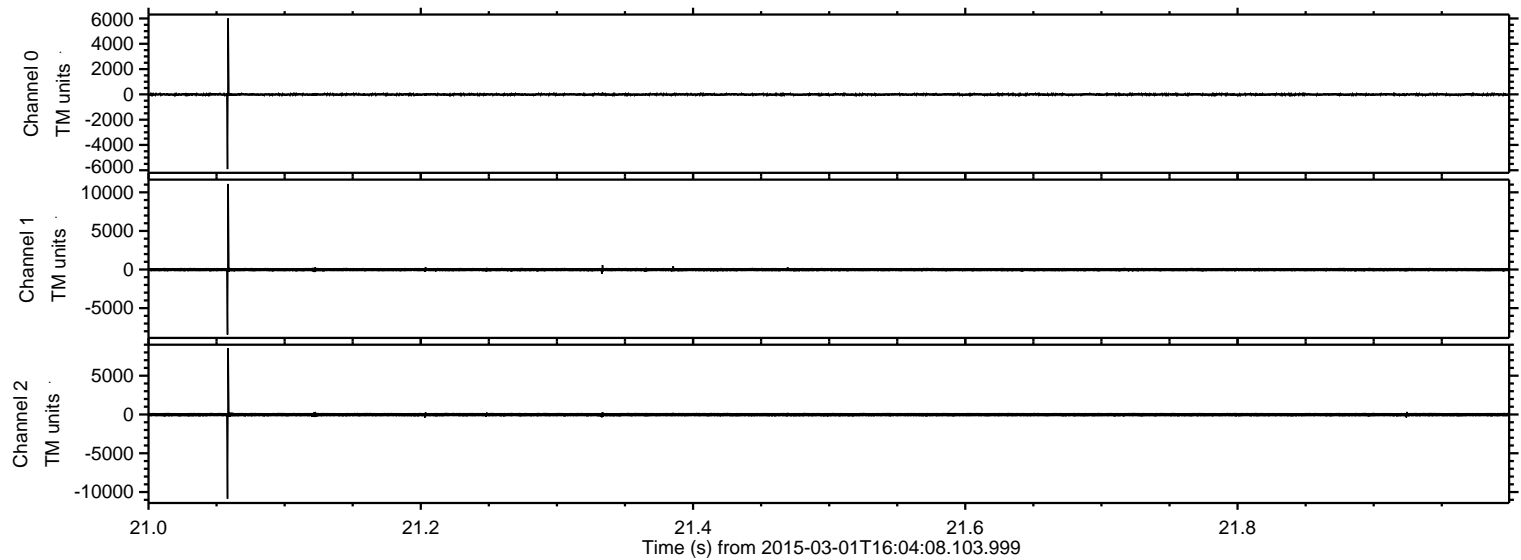


ELMAVAN 3D WAVEFORMS (Measured data sampled at 50 kHz) 49804 packets of 144 samples from 2015-03-01T16:04:08.103.999.

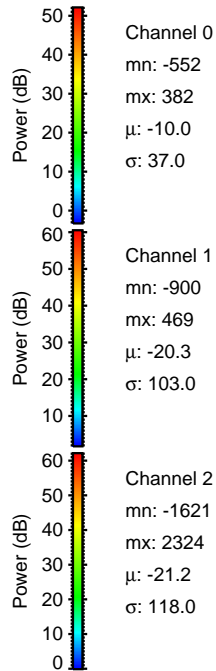
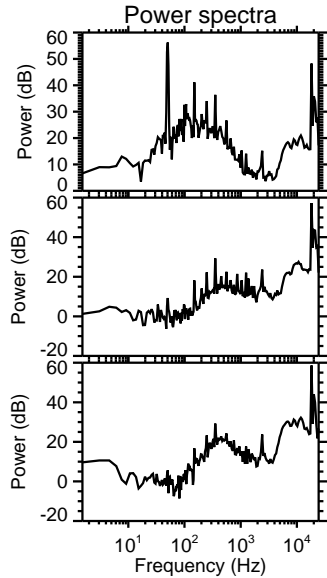
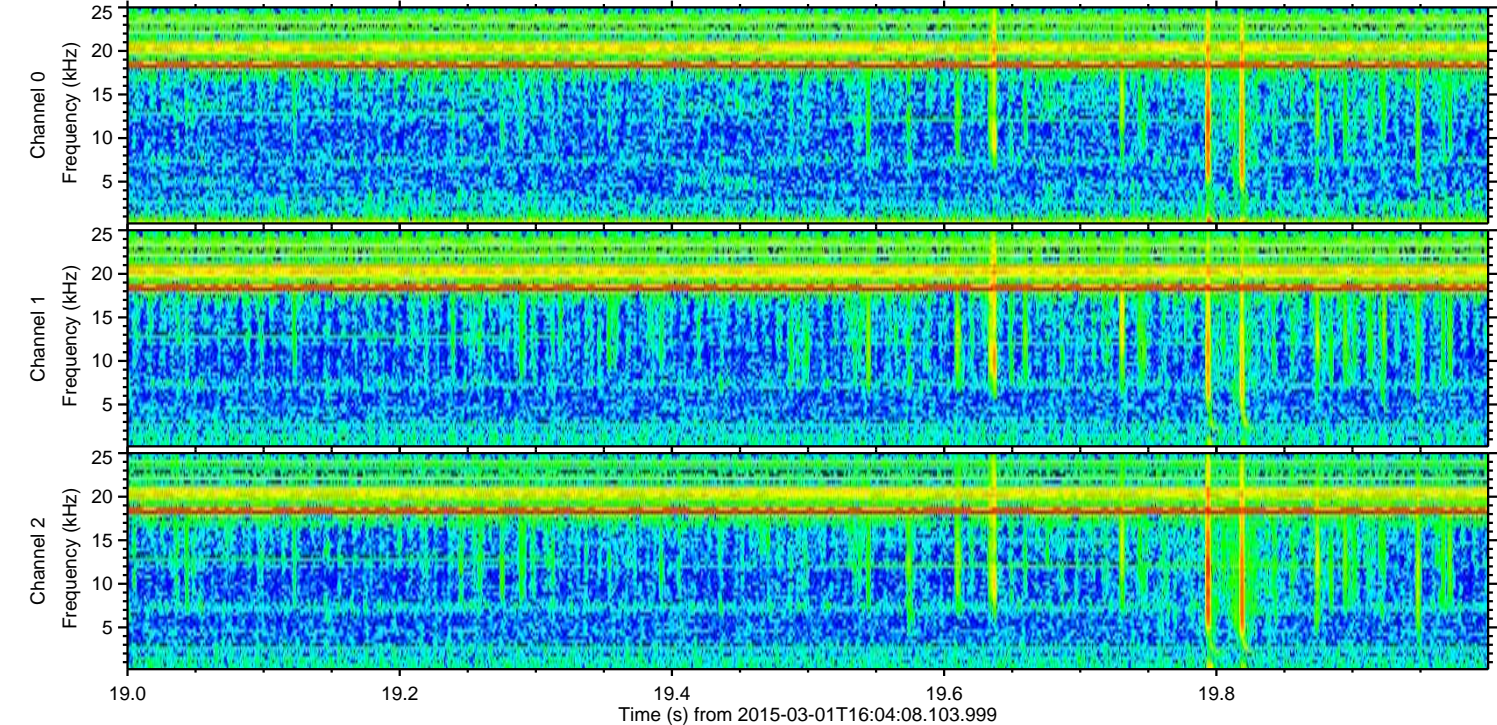
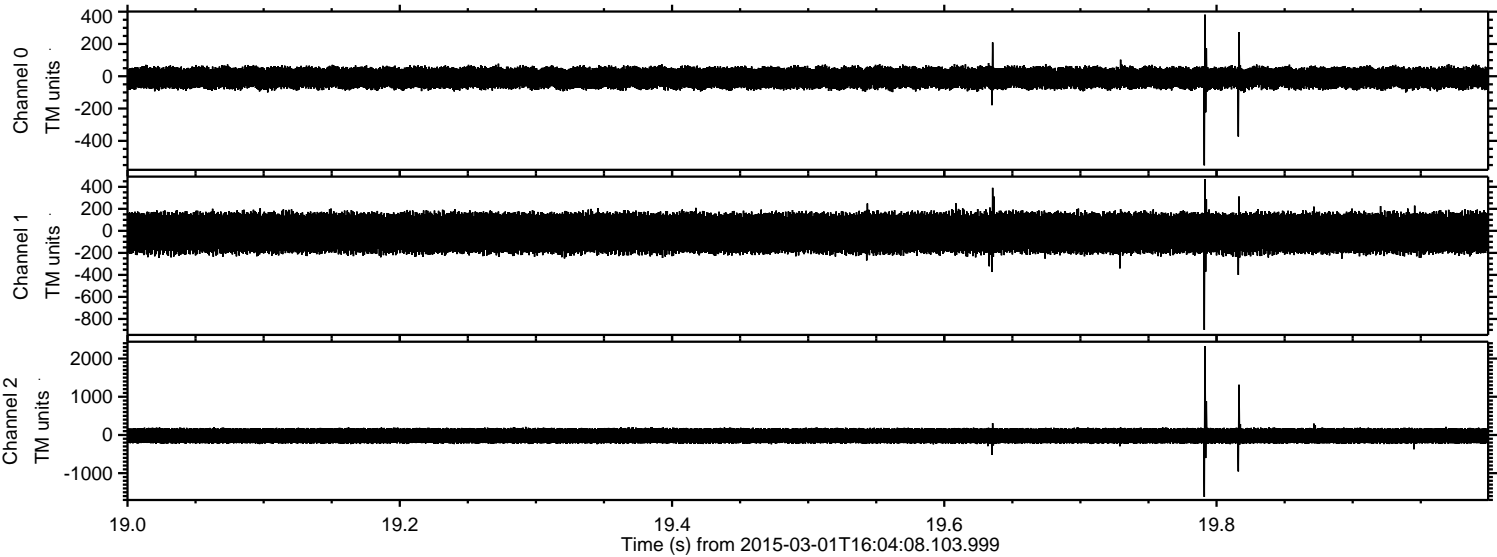
Processed Fri Mar 6 17:37:30 2015 by ELM ver.2012-10-06 from 001__elm20150301_160407__dat00.bin



Processed Fri Mar 6 17:37:45 2015 by ELM ver.2012-10-06 from 001__elm20150301_160407__dat00.bin



Processed Fri Mar 6 17:37:46 2015 by ELM ver.2012-10-06 from 001__elm20150301_160407__dat00.bin



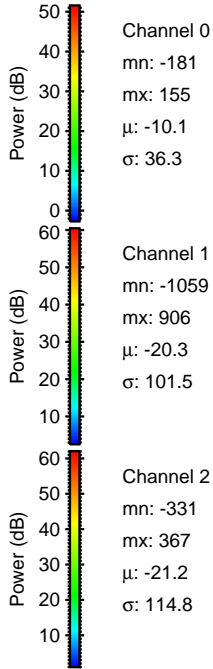
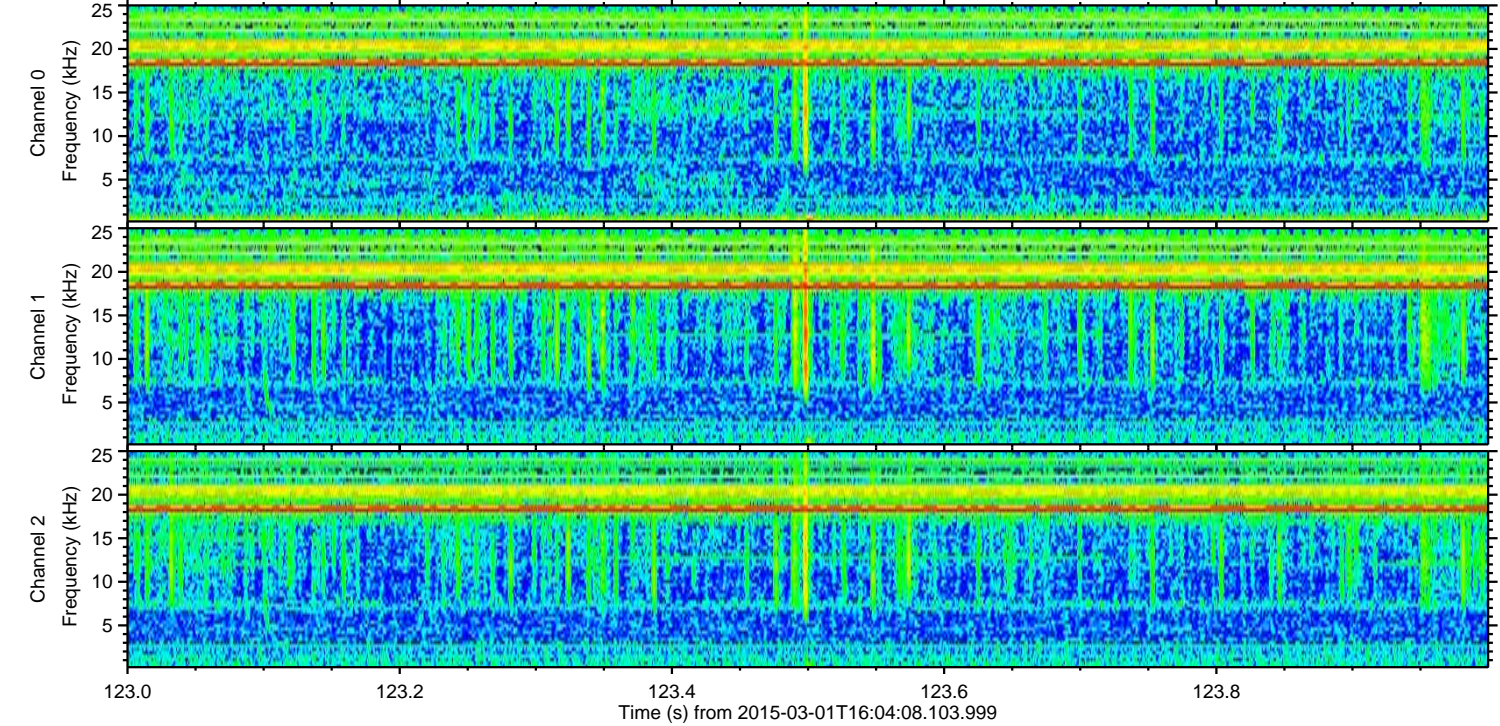
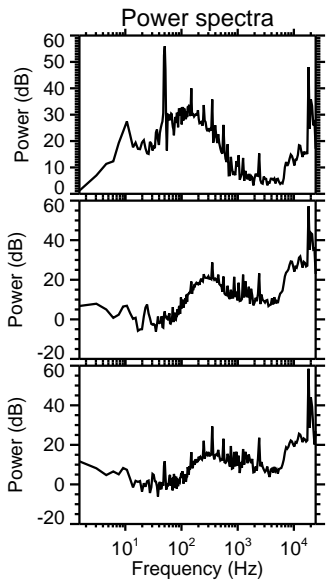
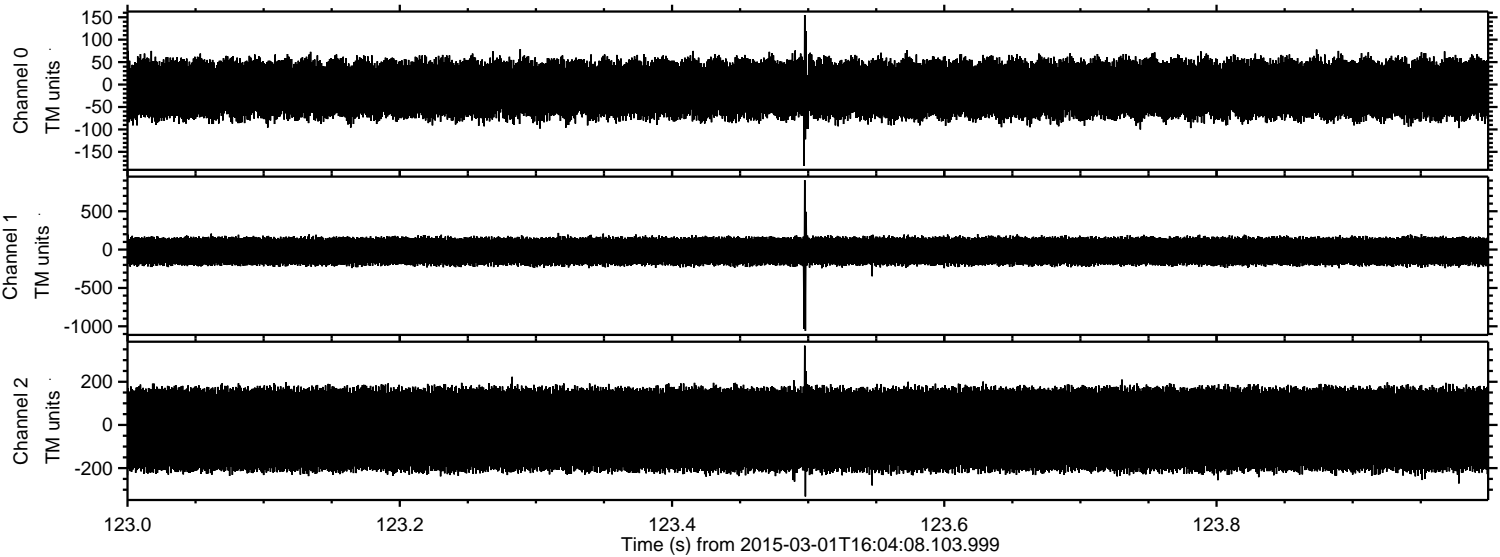
Channel 0
mn: -552
mx: 382
μ: -10.0
σ: 37.0

Channel 1
mn: -900
mx: 469
μ: -20.3
σ: 103.0

Channel 2
mn: -1621
mx: 2324
μ: -21.2
σ: 118.0

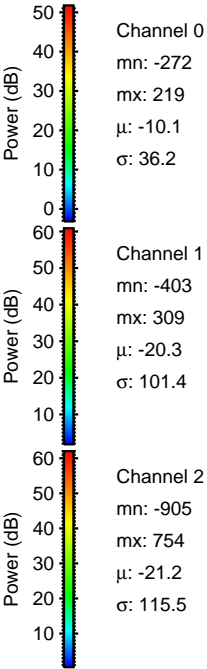
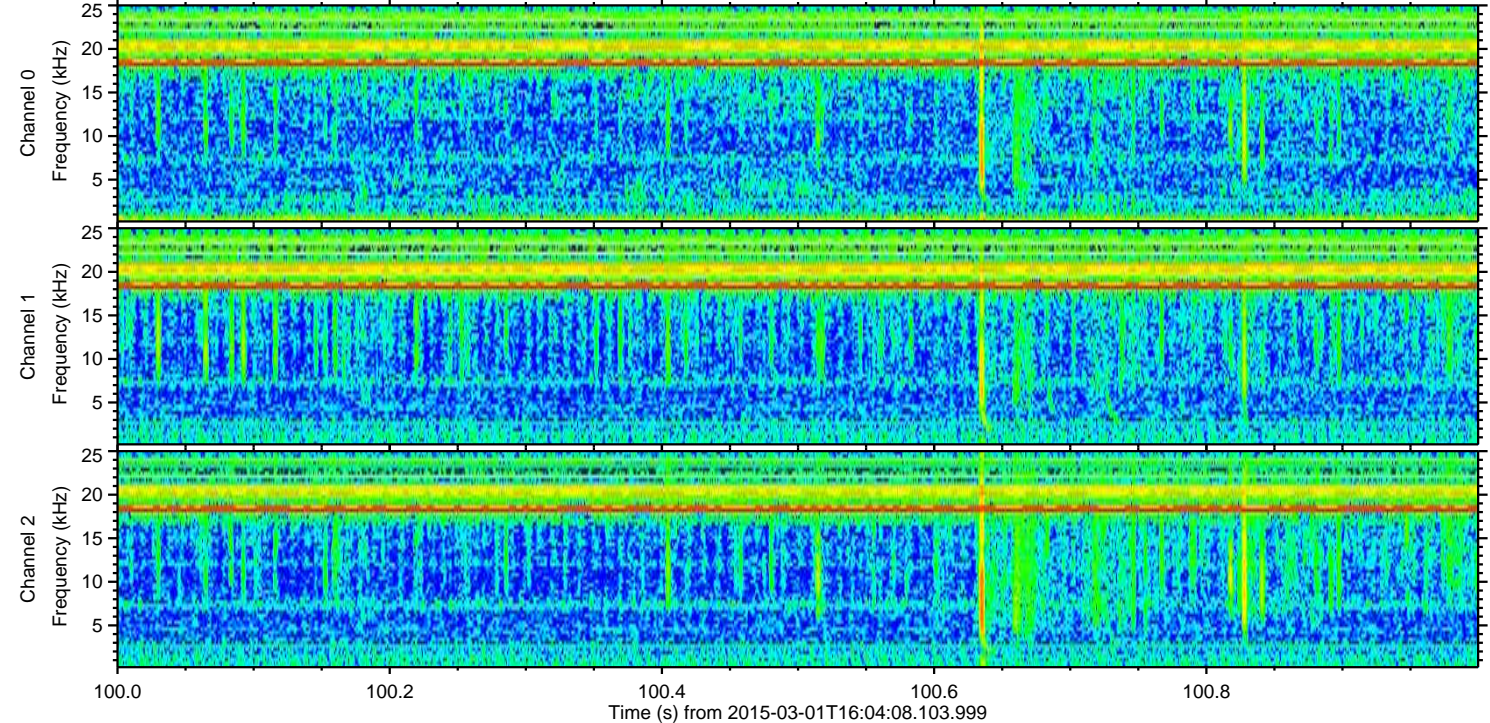
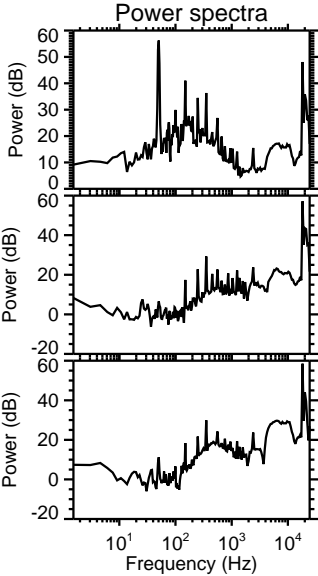
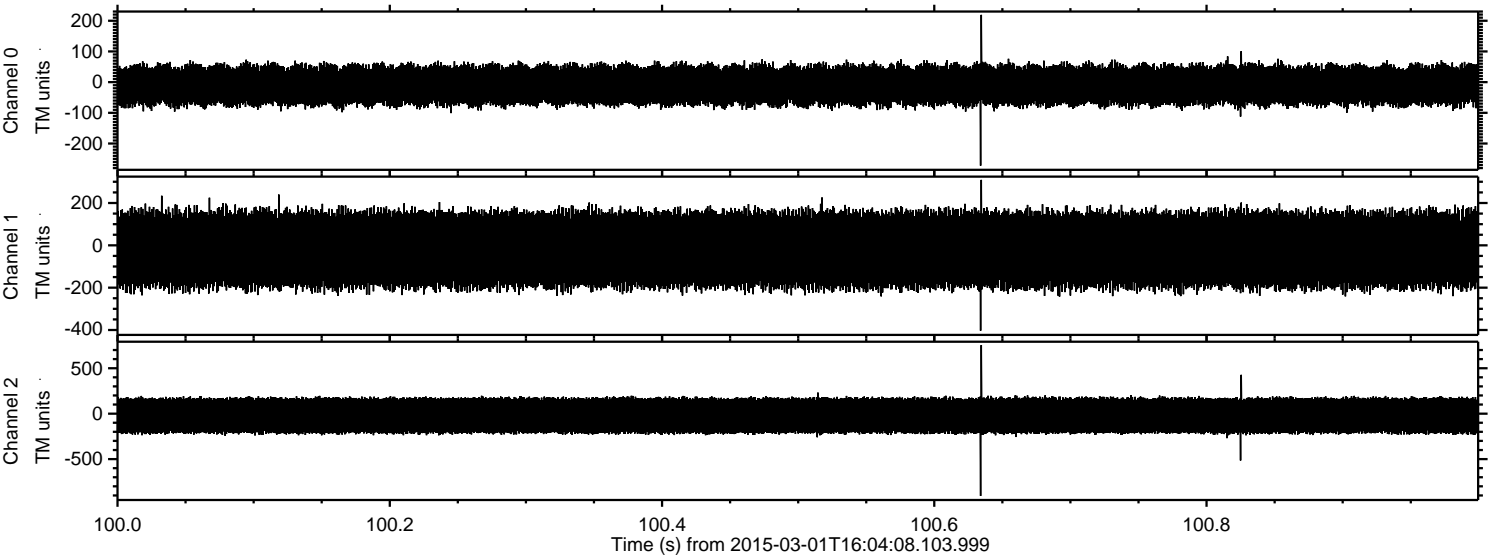
ELMAVAN 3D WAVEFORMS (Measured data sampled at 50 kHz) 49804 packets of 144 samples from 2015-03-01T16:04:08.103.999. Part 124/144

Processed Fri Mar 6 17:37:48 2015 by ELM ver.2012-10-06 from 001__elm20150301_160407__dat00.bin

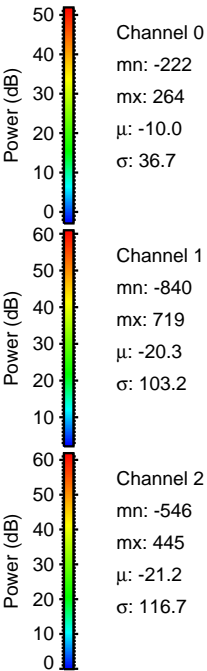
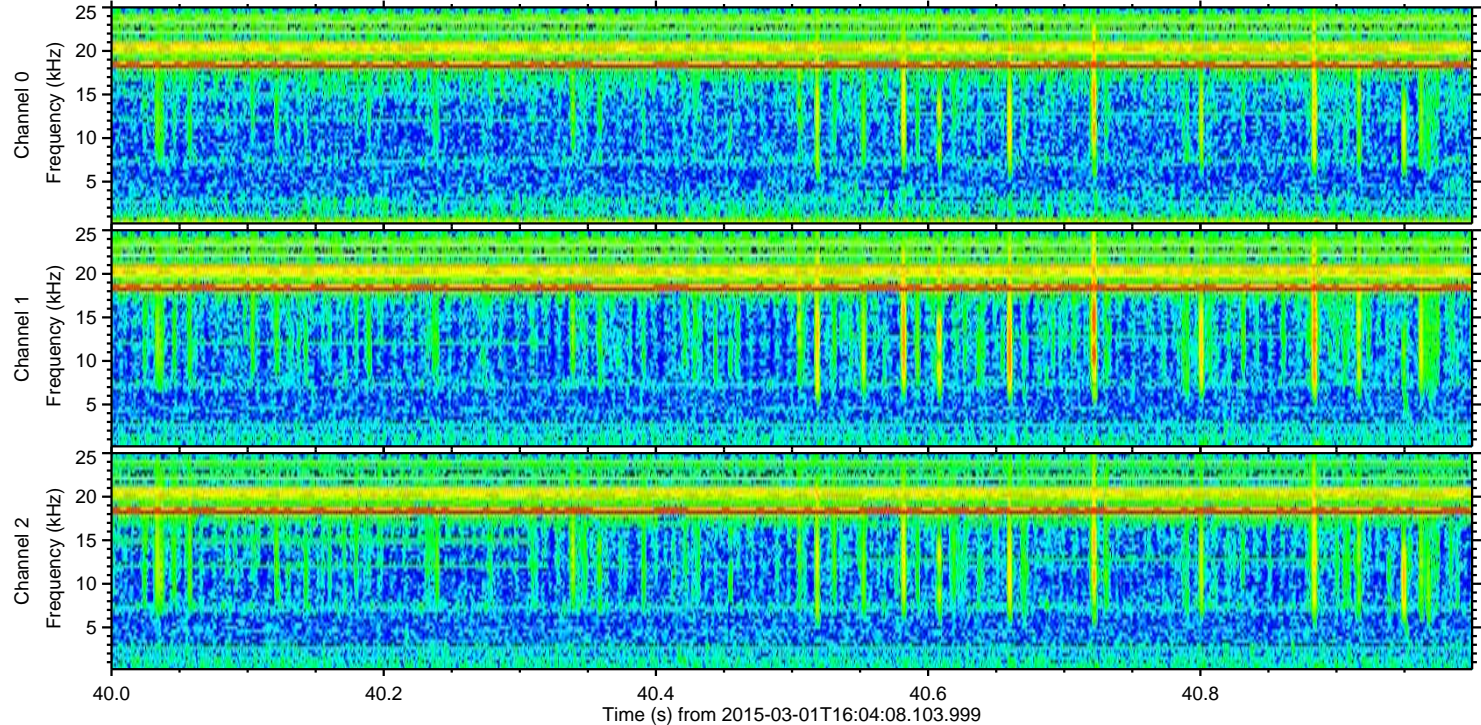
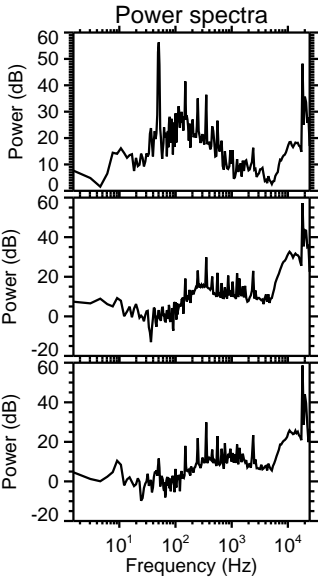
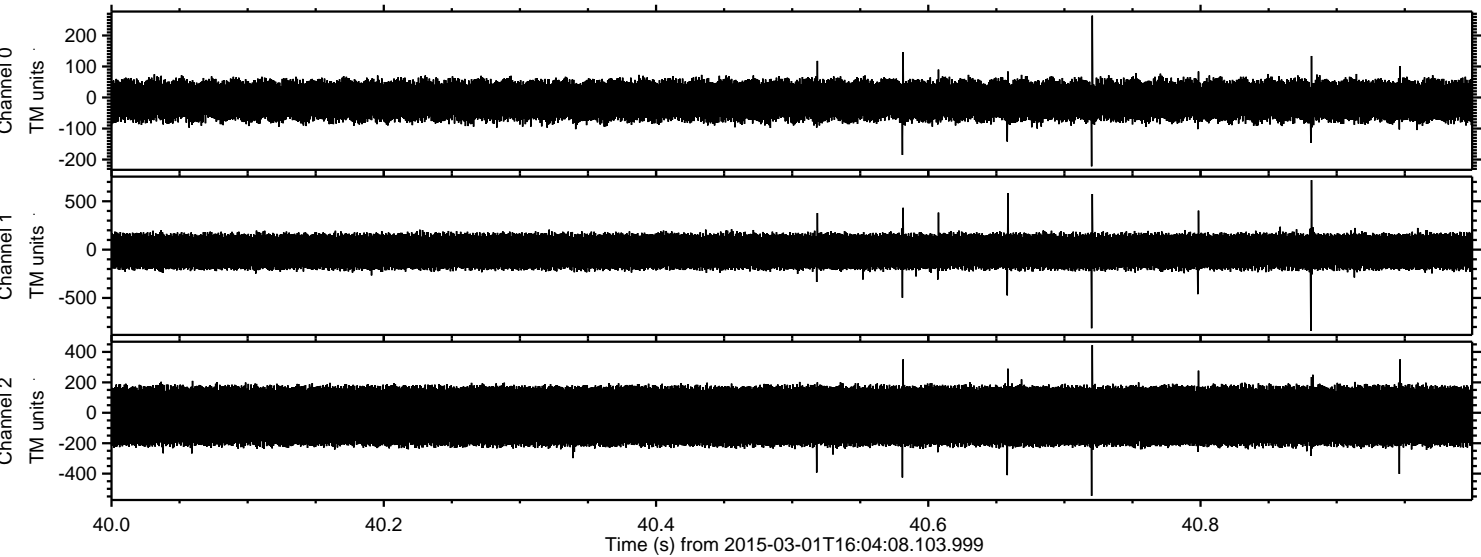


ELMAVAN 3D WAVEFORMS (Measured data sampled at 50 kHz) 49804 packets of 144 samples from 2015-03-01T16:04:08.103.999. Part 101/144

Processed Fri Mar 6 17:37:50 2015 by ELM ver.2012-10-06 from 001__elm20150301_160407__dat00.bin

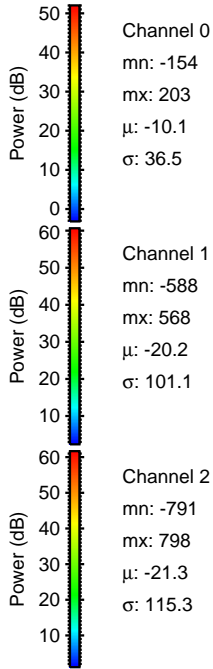
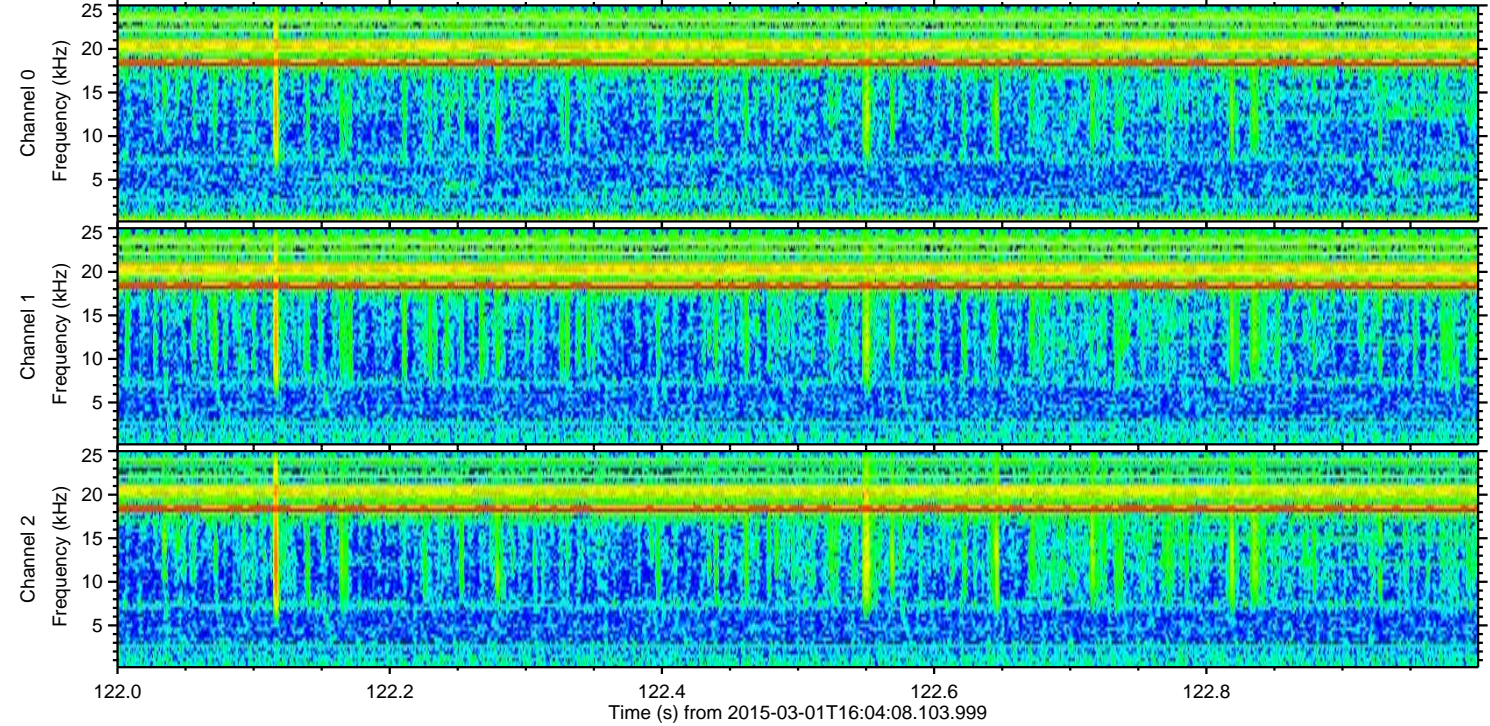
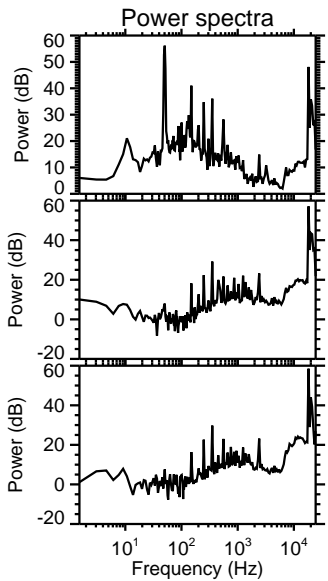
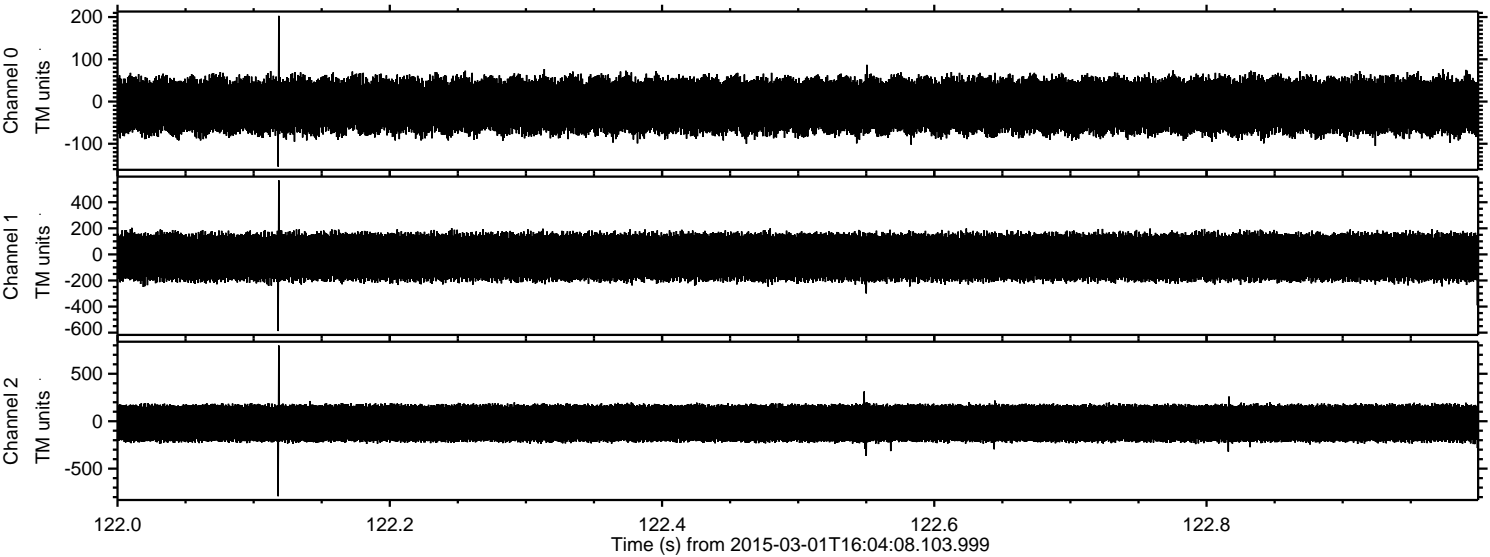


Processed Fri Mar 6 17:37:52 2015 by ELM ver.2012-10-06 from 001__elm20150301_160407__dat00.bin

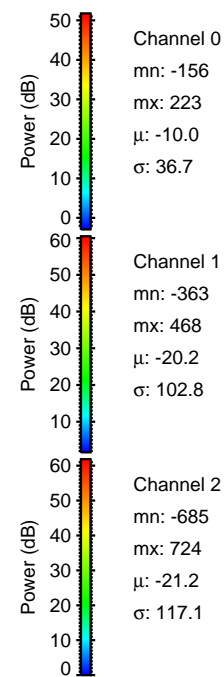
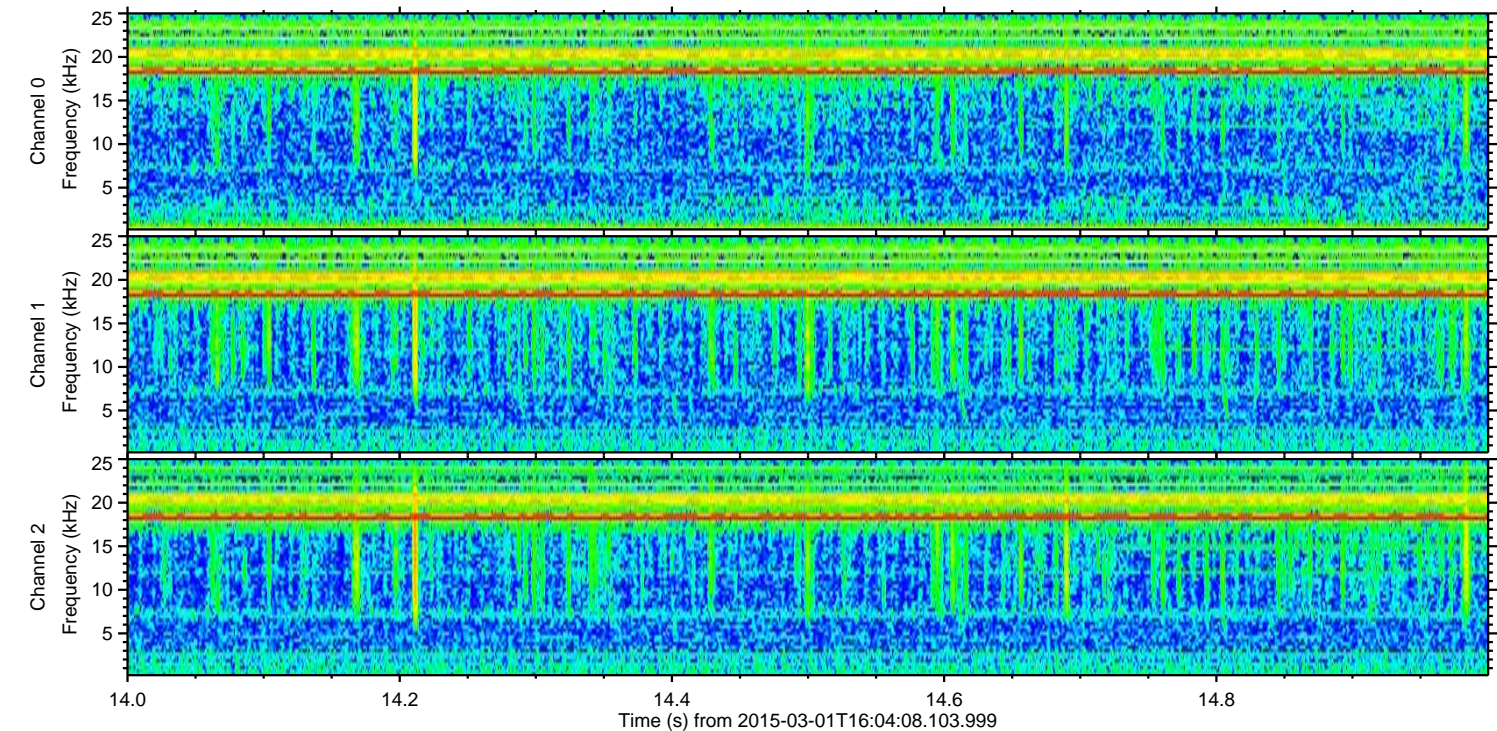
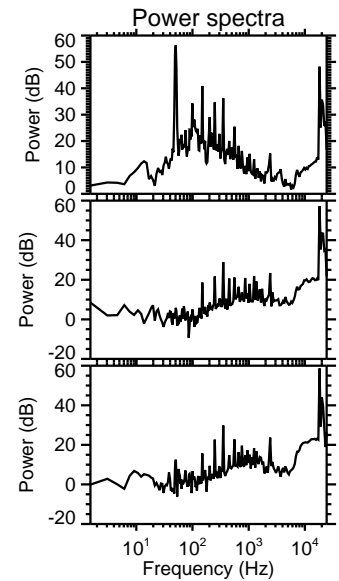
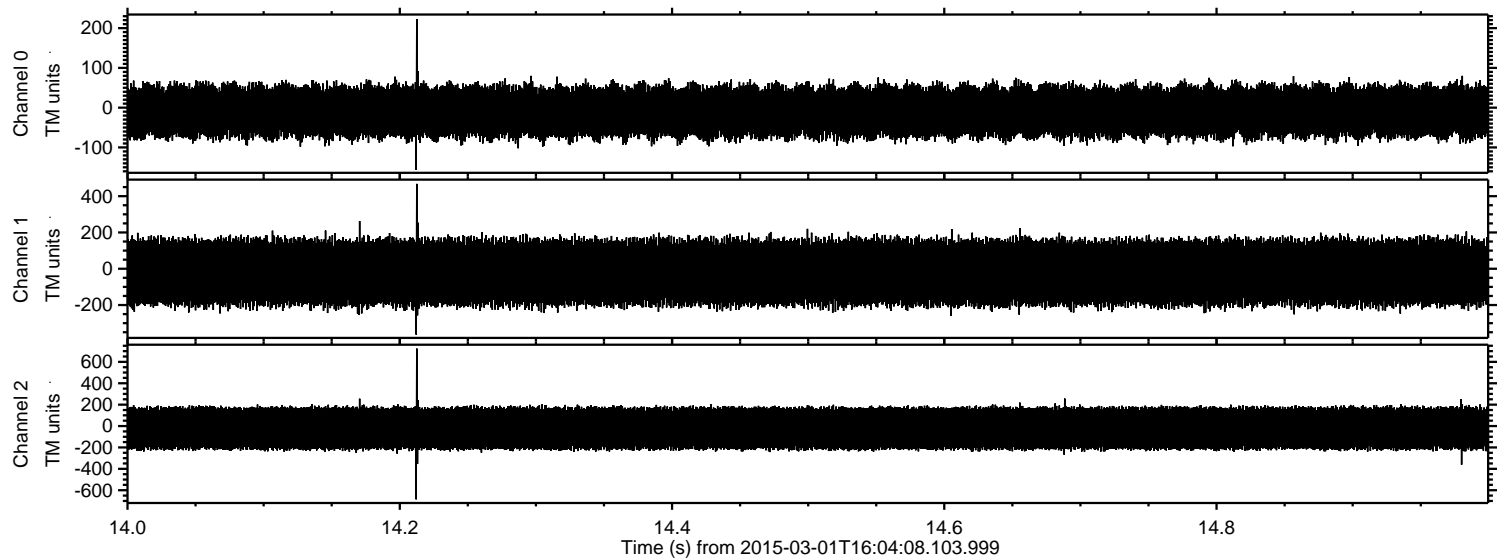


ELMAVAN 3D WAVEFORMS (Measured data sampled at 50 kHz) 49804 packets of 144 samples from 2015-03-01T16:04:08.103.999. Part 123/144

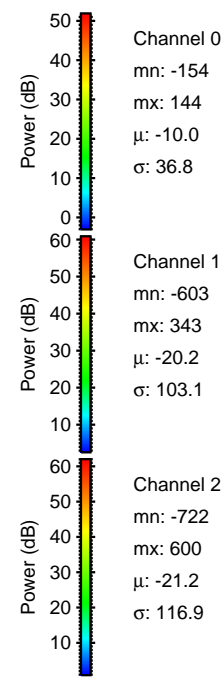
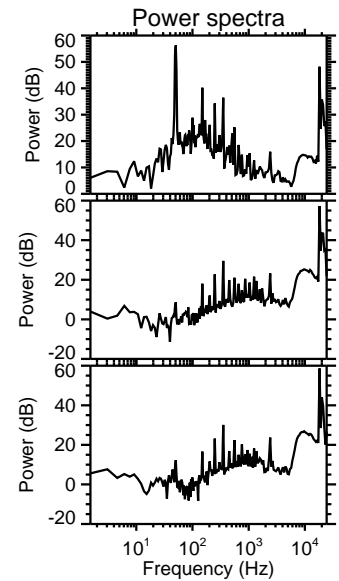
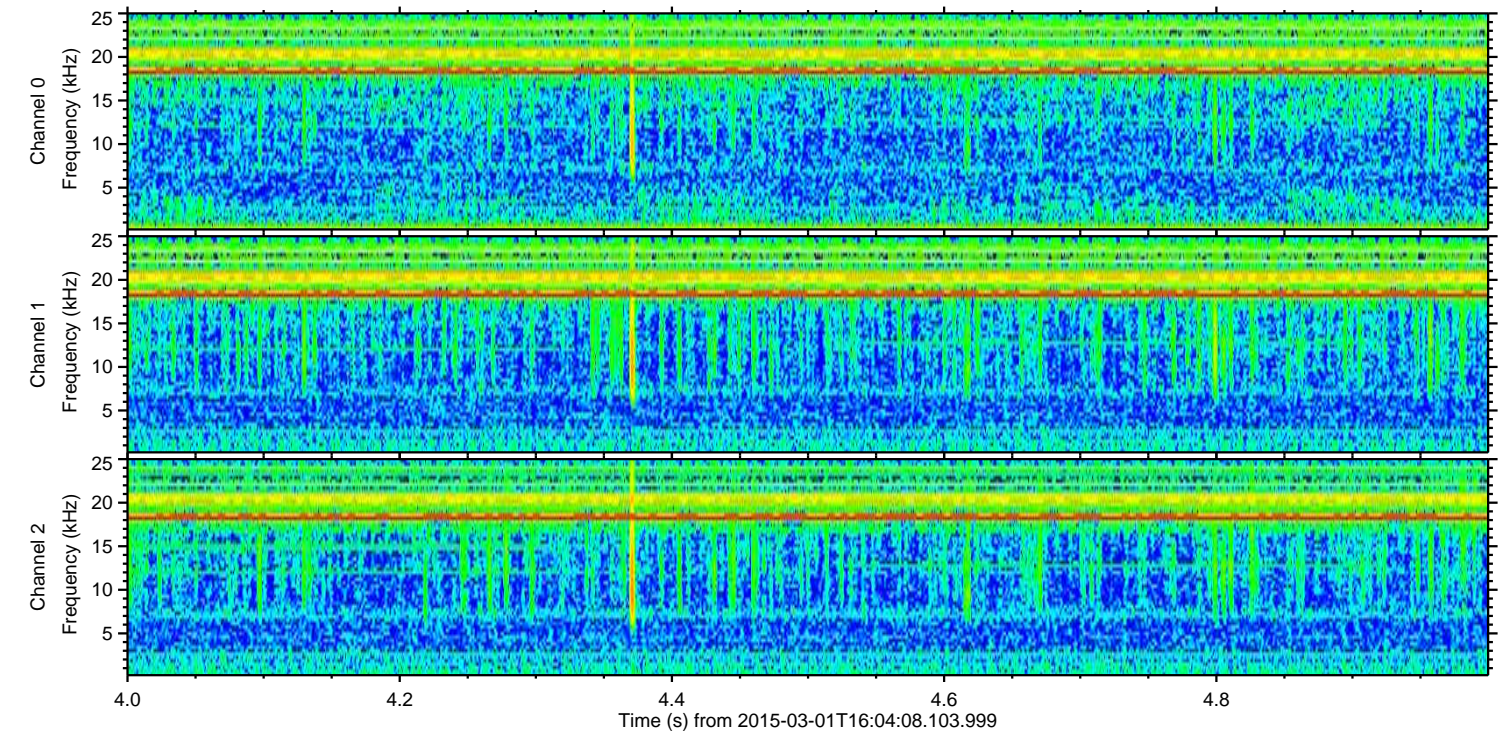
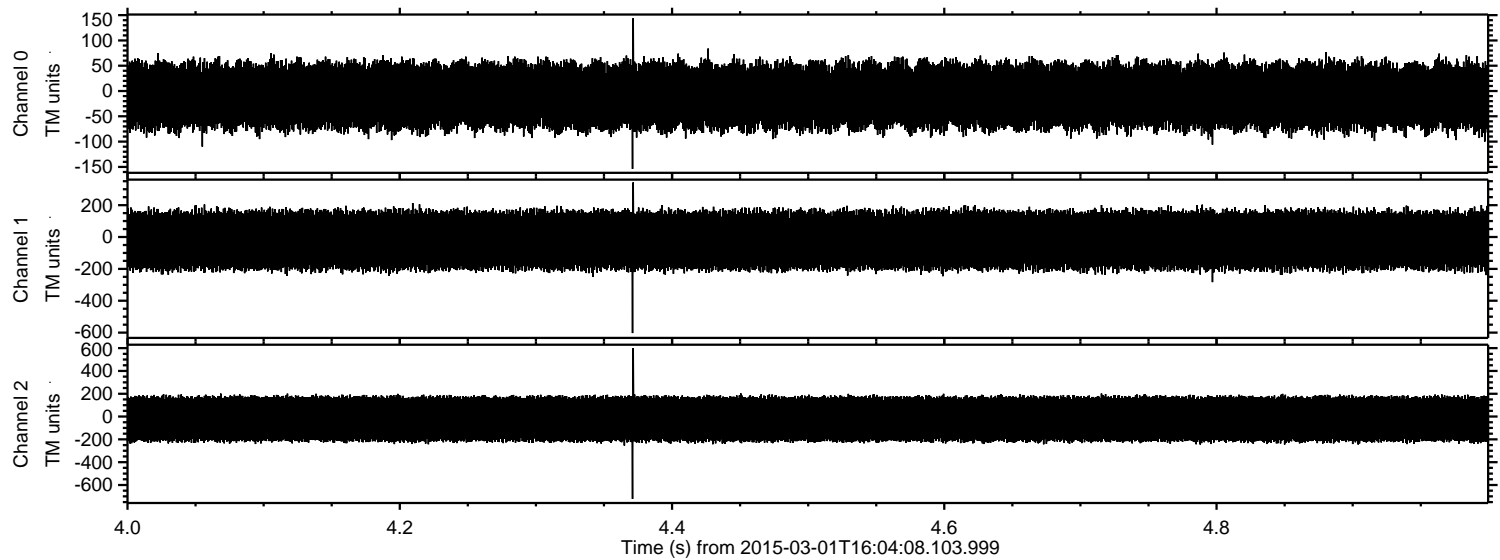
Processed Fri Mar 6 17:37:54 2015 by ELM ver.2012-10-06 from 001__elm20150301_160407__dat00.bin



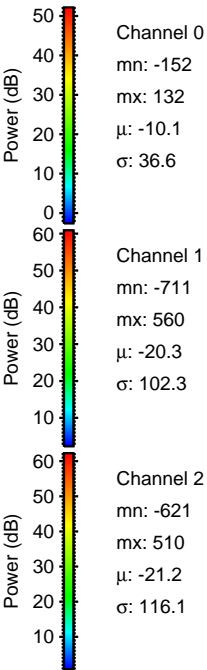
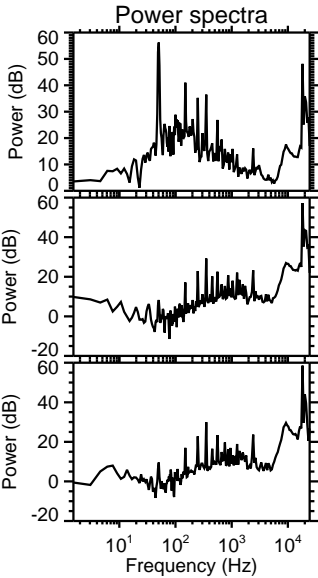
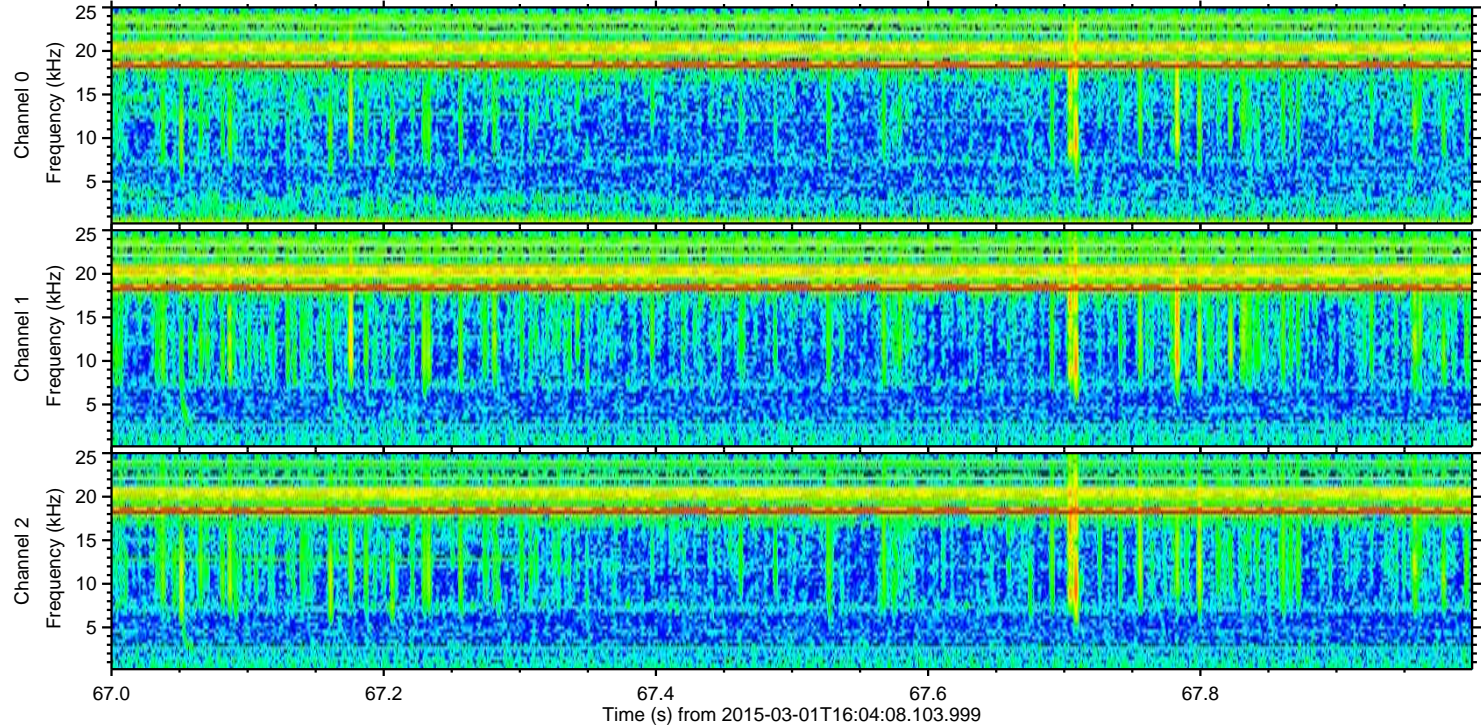
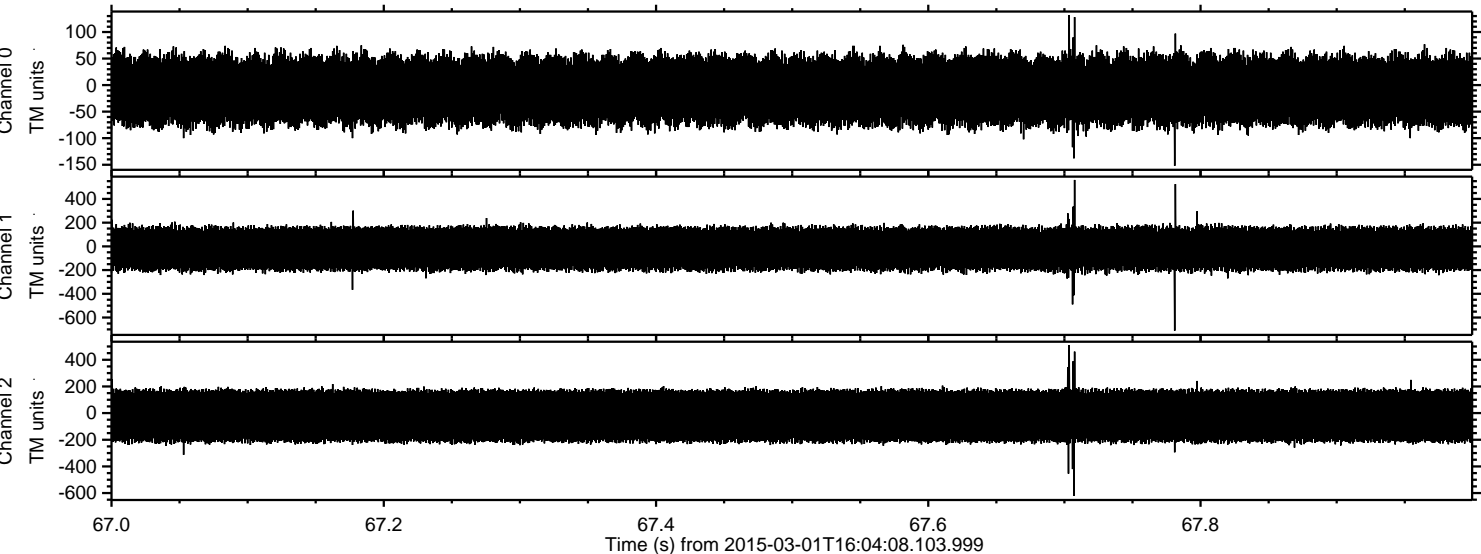
Processed Fri Mar 6 17:37:56 2015 by ELM ver.2012-10-06 from 001__elm20150301_160407__dat00.bin



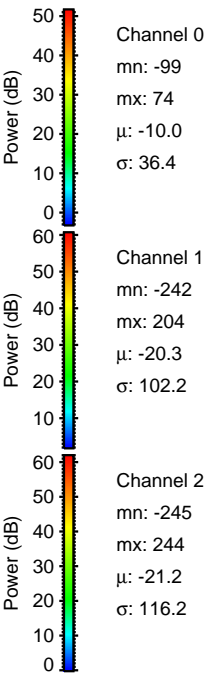
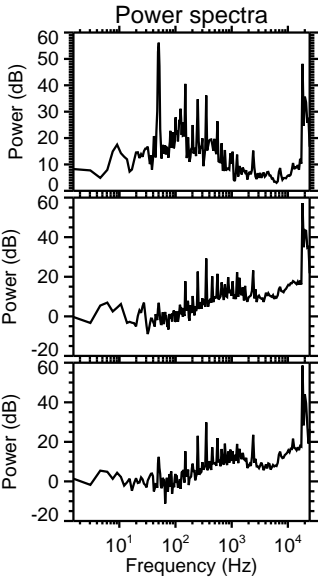
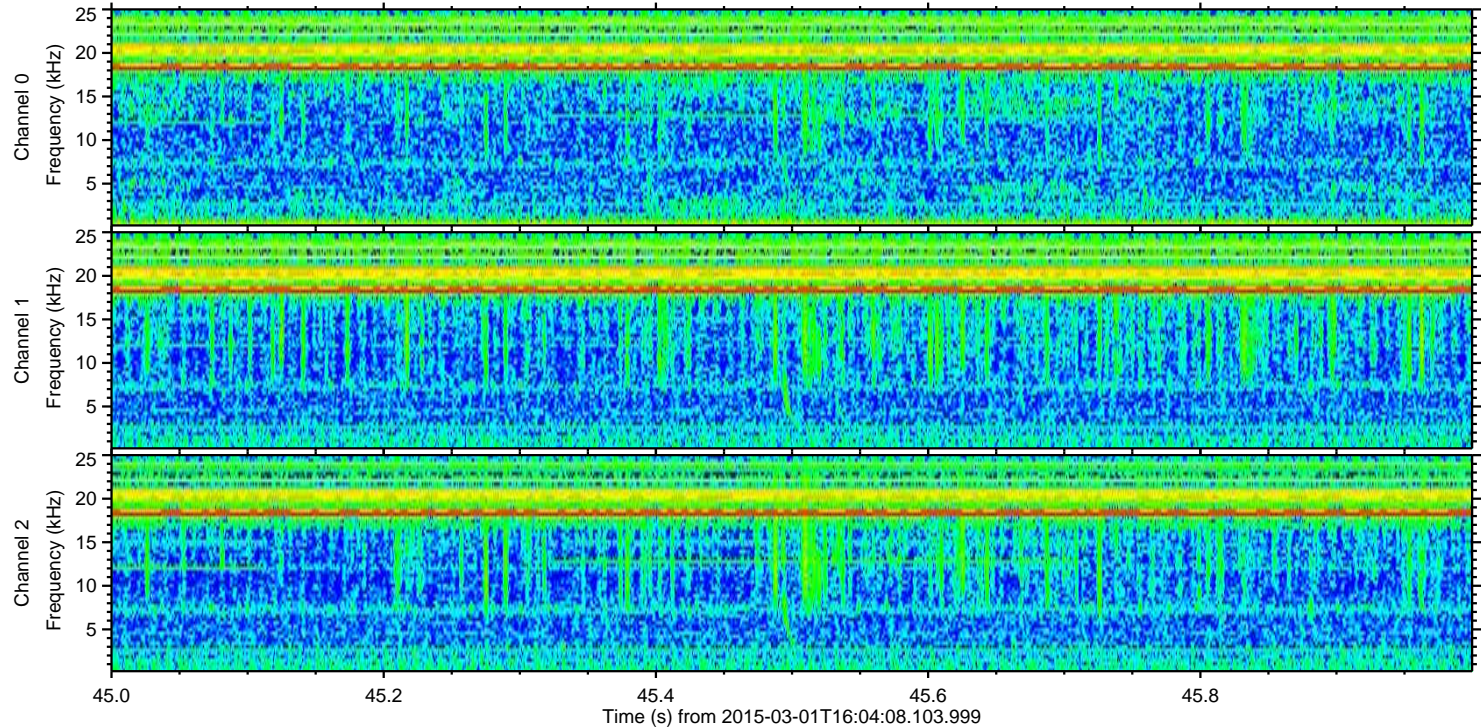
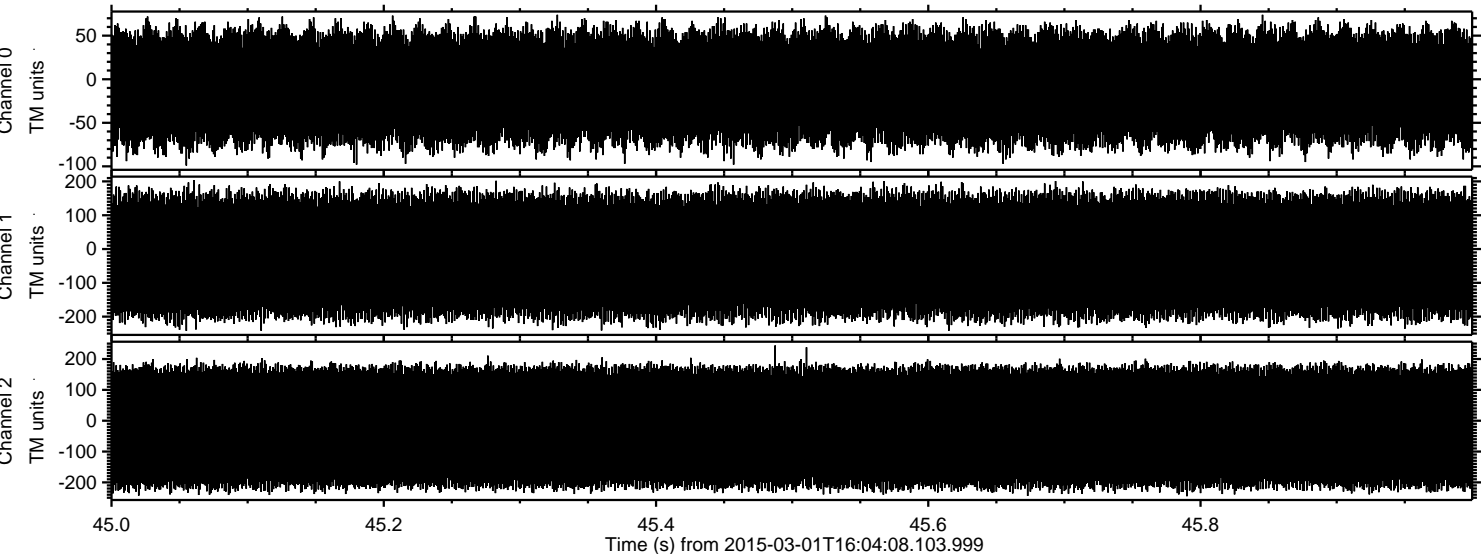
Processed Fri Mar 6 17:37:58 2015 by ELM ver.2012-10-06 from 001__elm20150301_160407__dat00.bin



Processed Fri Mar 6 17:38:00 2015 by ELM ver.2012-10-06 from 001__elm20150301_160407__dat00.bin



Processed Fri Mar 6 17:38:01 2015 by ELM ver.2012-10-06 from 001__elm20150301_160407__dat00.bin



Channel 0
mn: -99
mx: 74
 μ : -10.0
 σ : 36.4

Channel 1
mn: -242
mx: 204
 μ : -20.3
 σ : 102.2

Channel 2
mn: -245
mx: 244
 μ : -21.2
 σ : 116.2