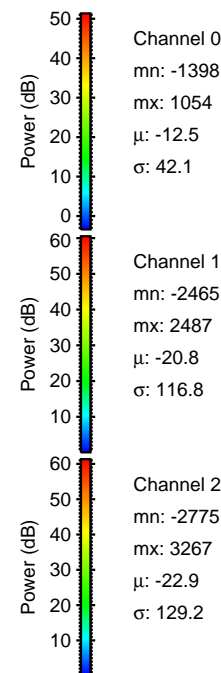
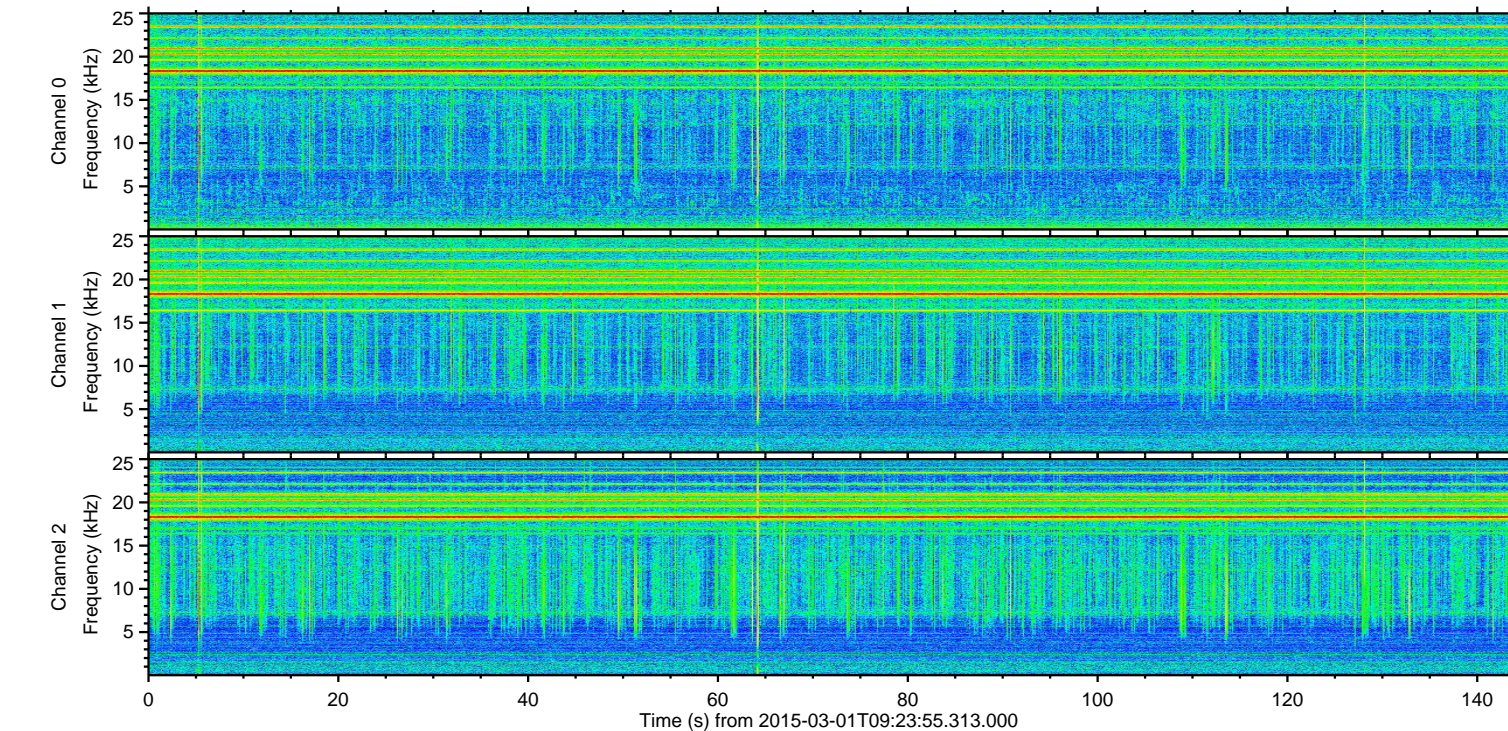
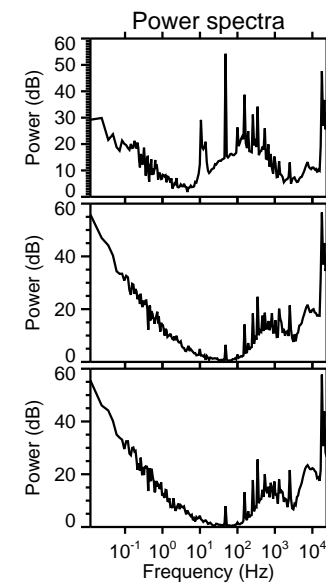
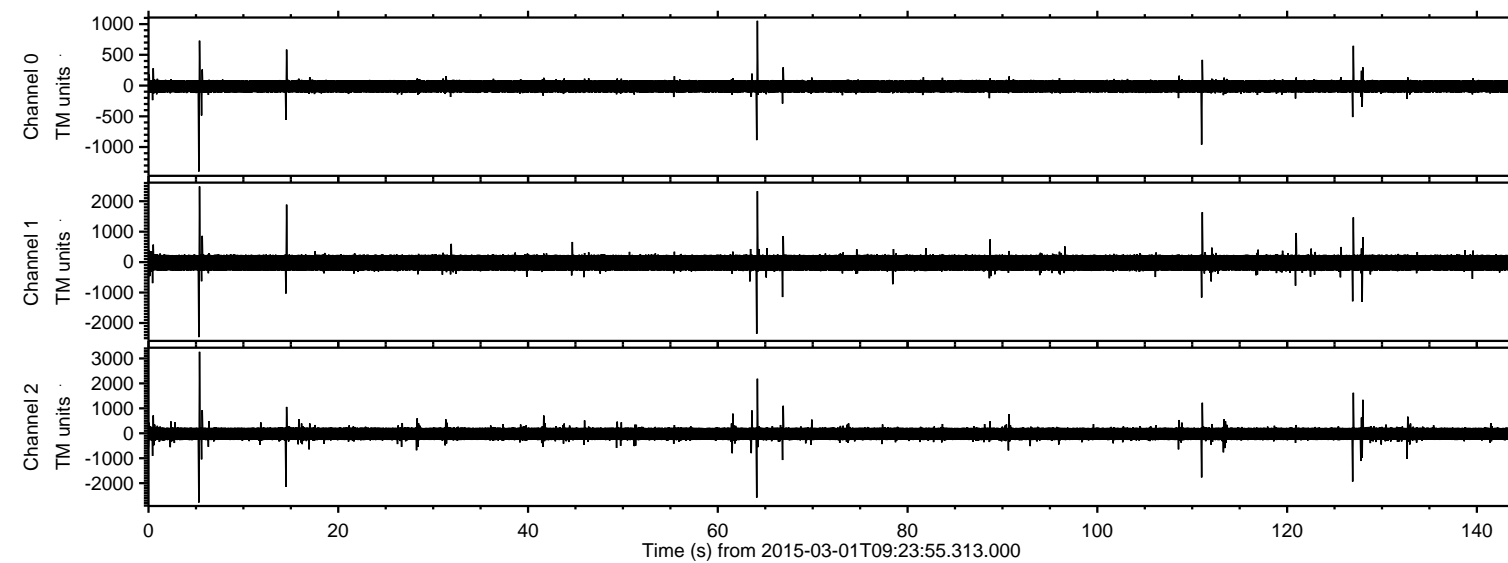
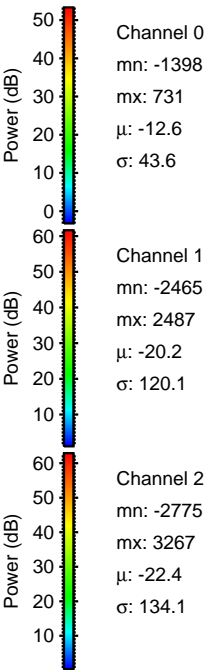
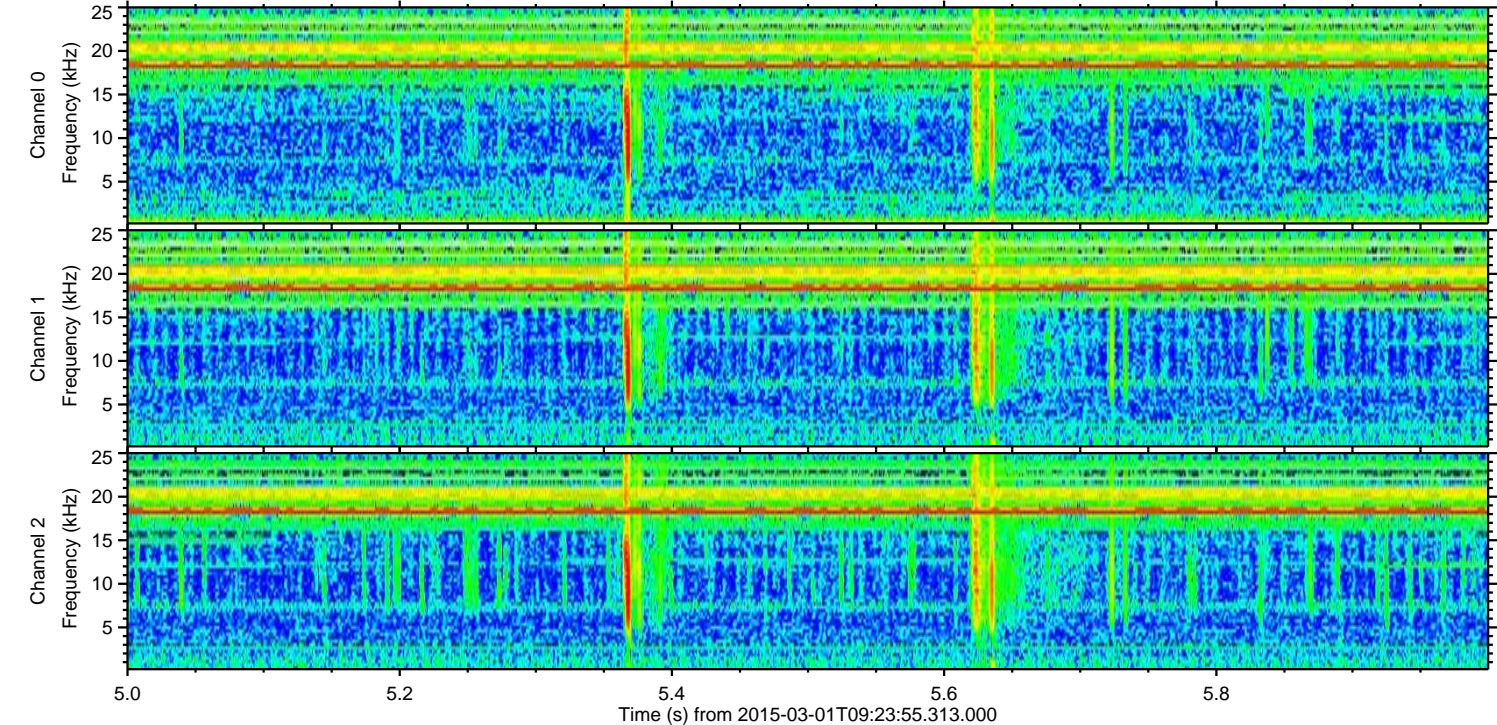
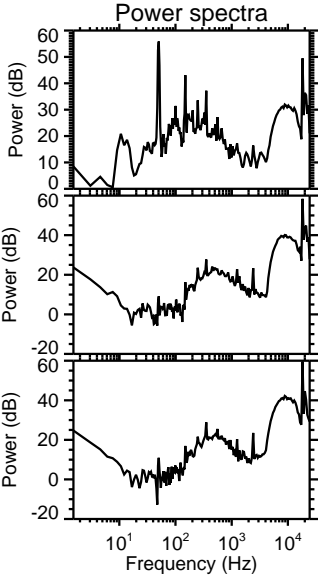
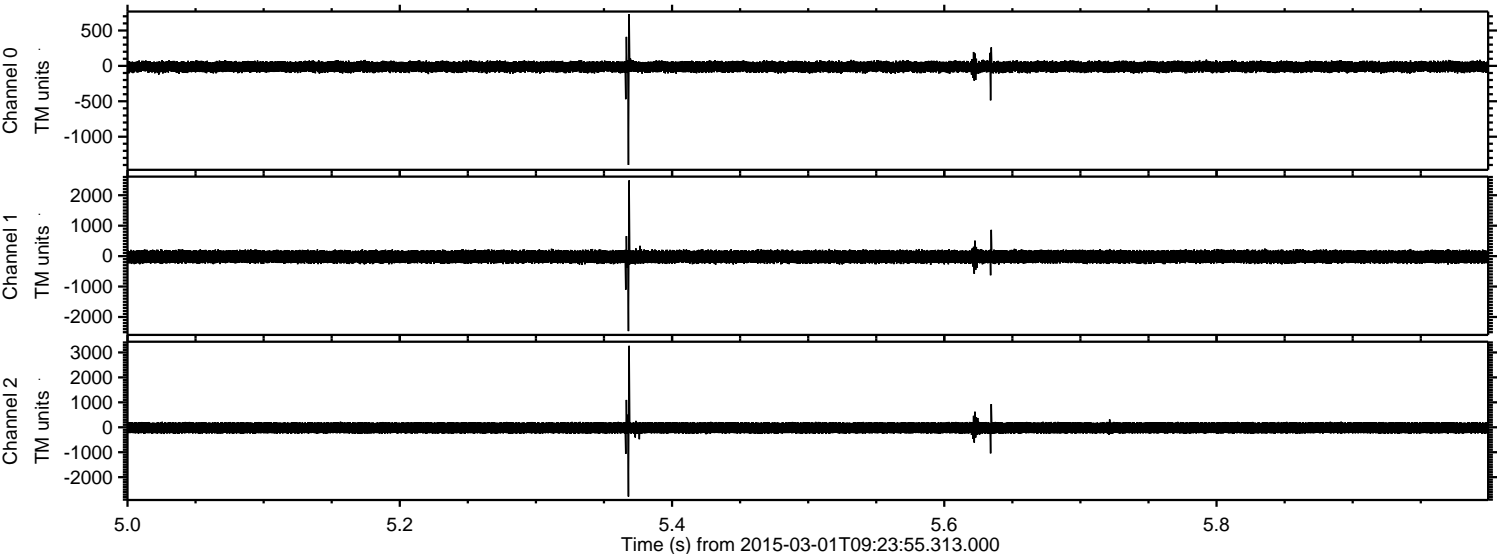


ELMAVAN 3D WAVEFORMS (Measured data sampled at 50 kHz) 49792 packets of 144 samples from 2015-03-01T09:23:55.313.000.

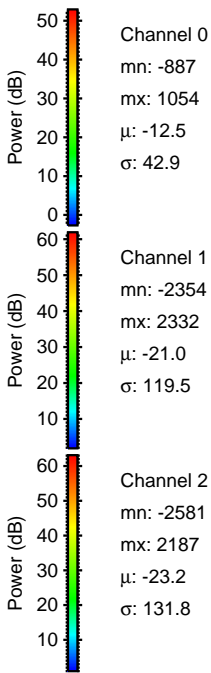
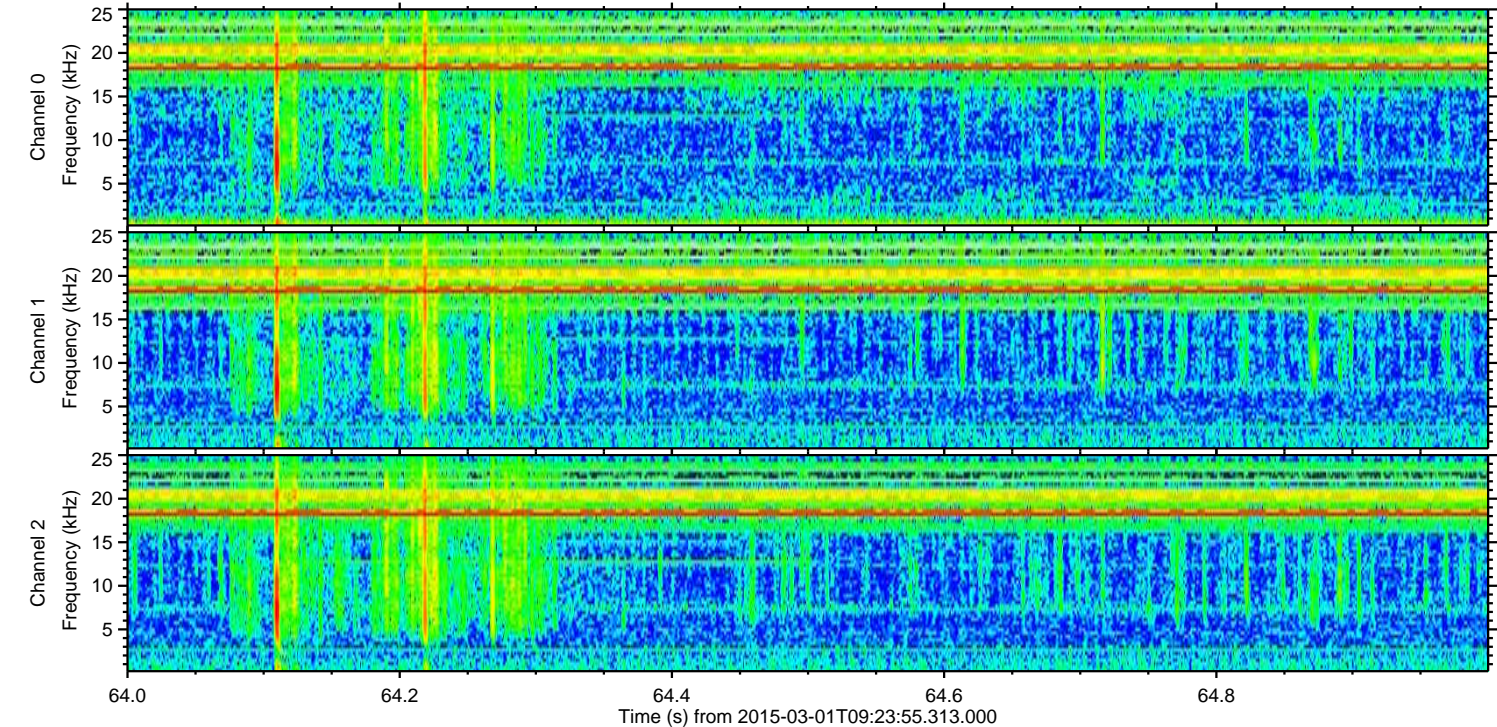
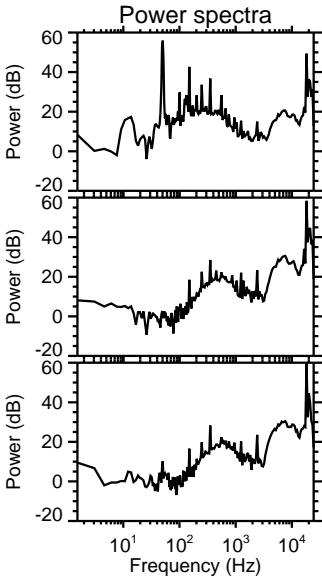
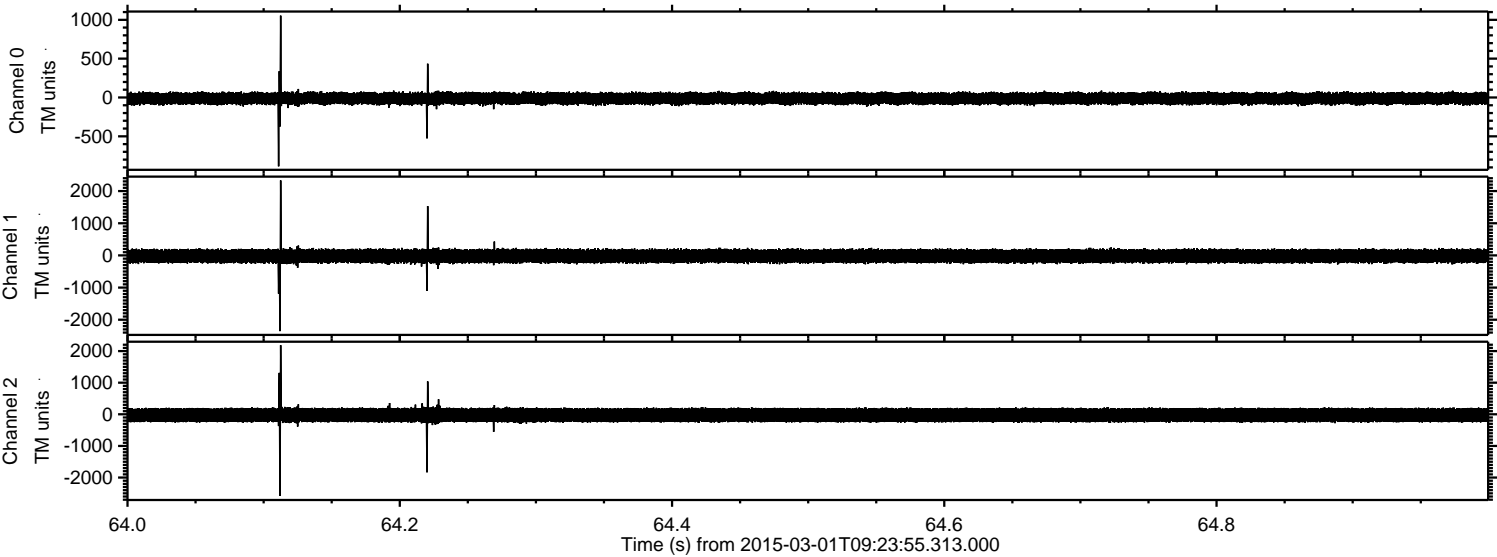
Processed Fri Mar 6 15:31:33 2015 by ELM ver.2012-10-06 from 001__elm20150301_092354__dat00.bin



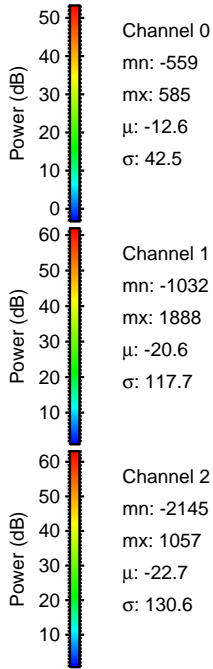
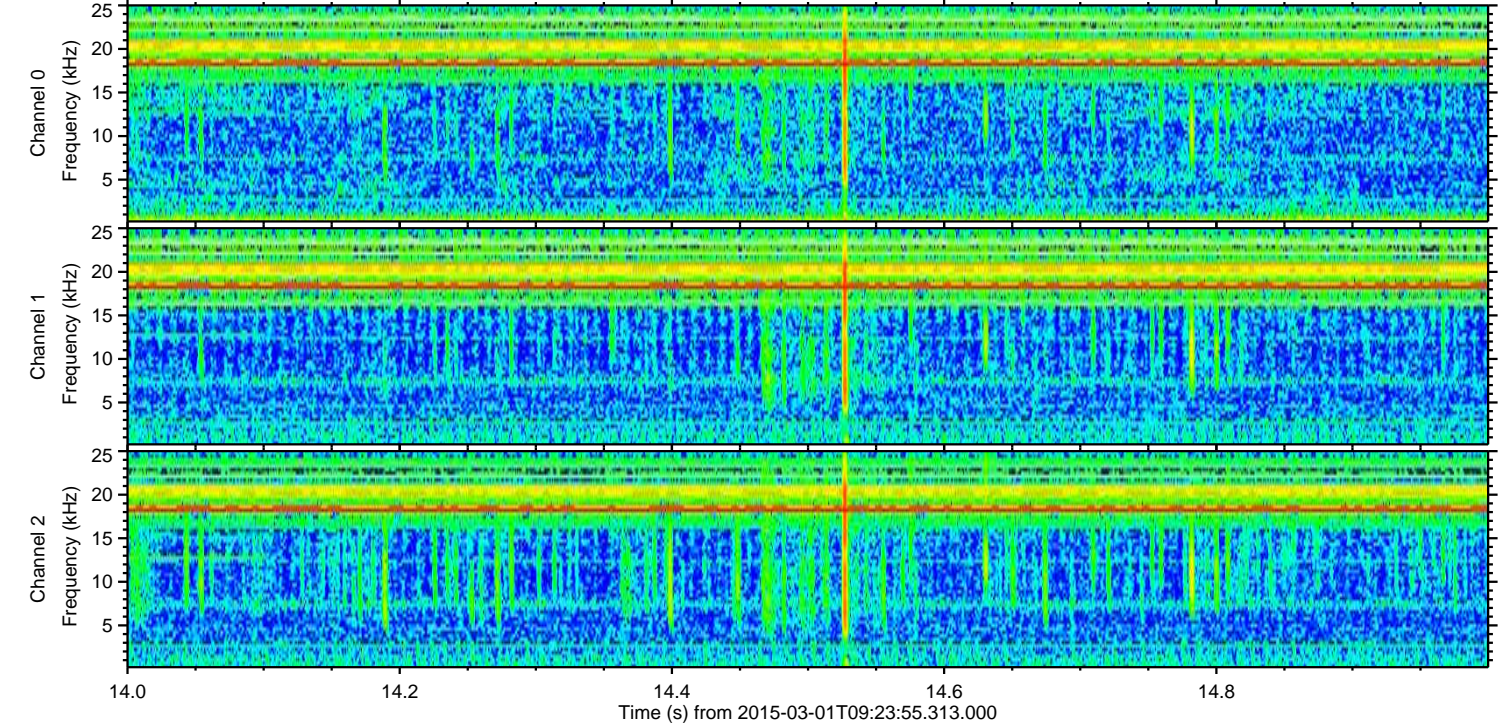
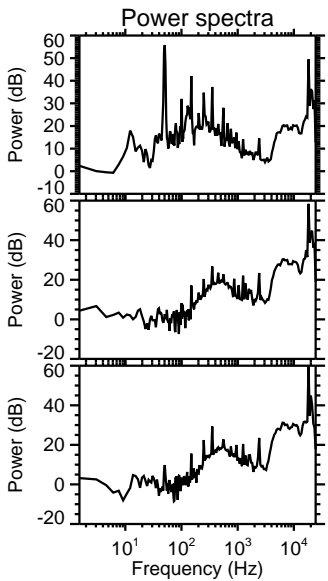
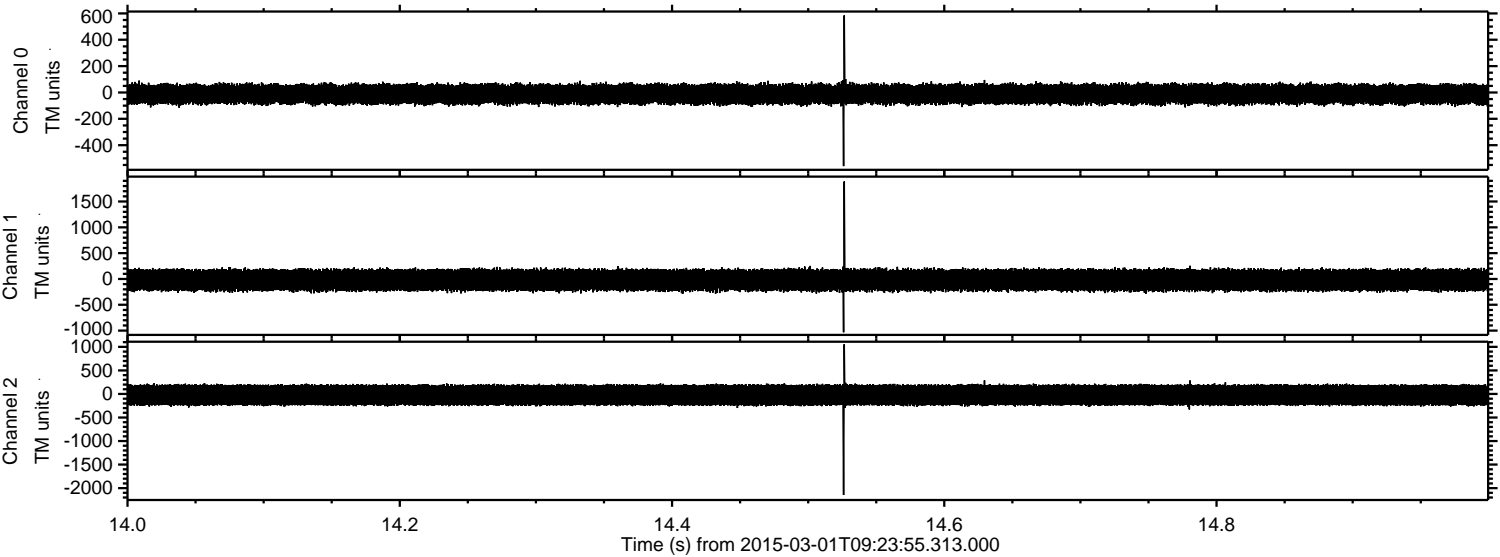
Processed Fri Mar 6 15:31:44 2015 by ELM ver.2012-10-06 from 001__elm20150301_092354__dat00.bin



Processed Fri Mar 6 15:31:45 2015 by ELM ver.2012-10-06 from 001__elm20150301_092354__dat00.bin

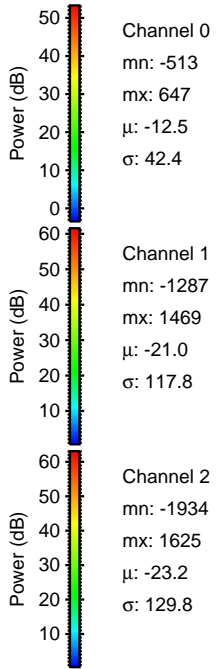
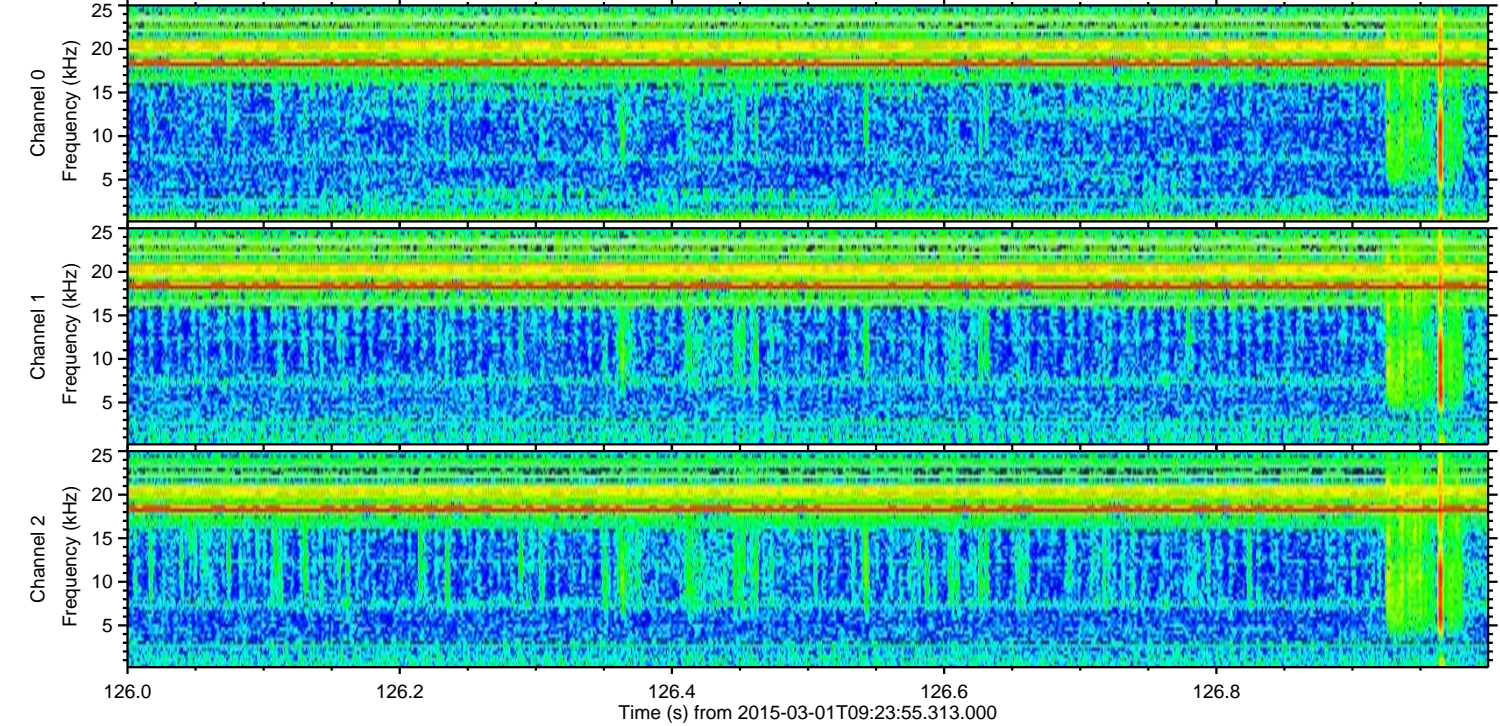
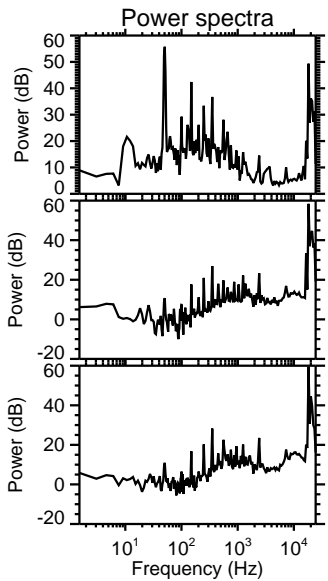
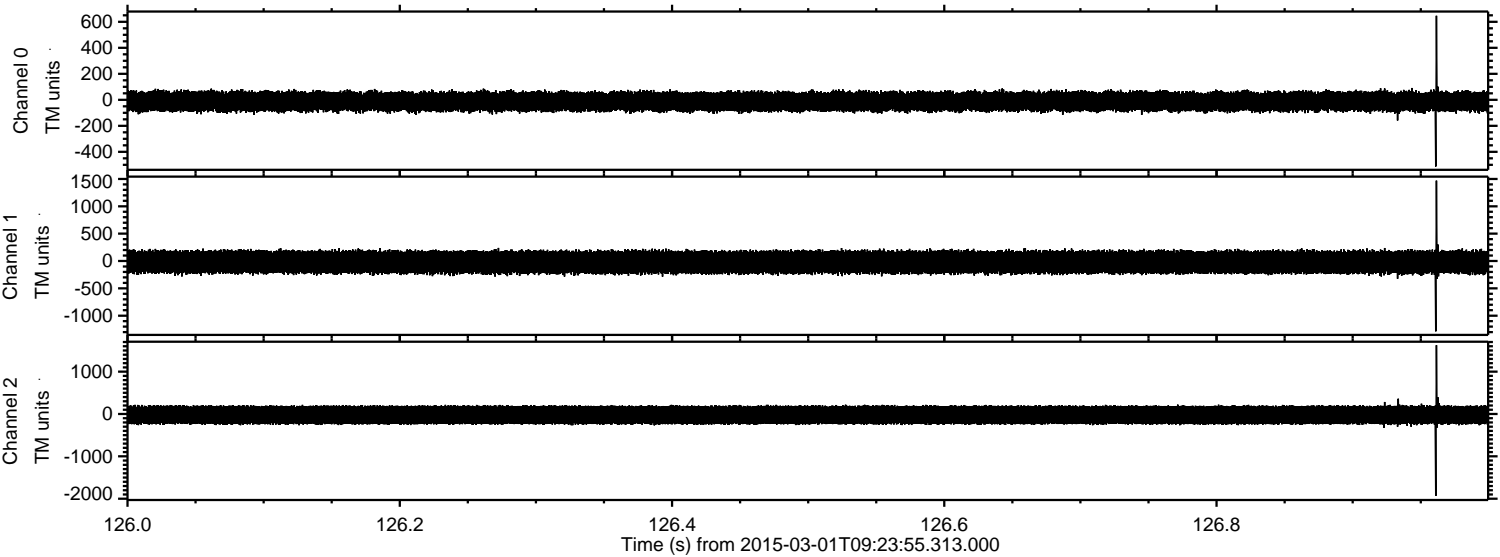


Processed Fri Mar 6 15:31:46 2015 by ELM ver.2012-10-06 from 001__elm20150301_092354__dat00.bin



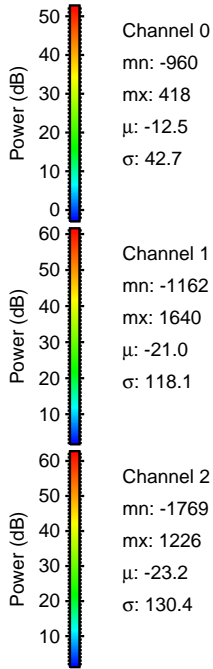
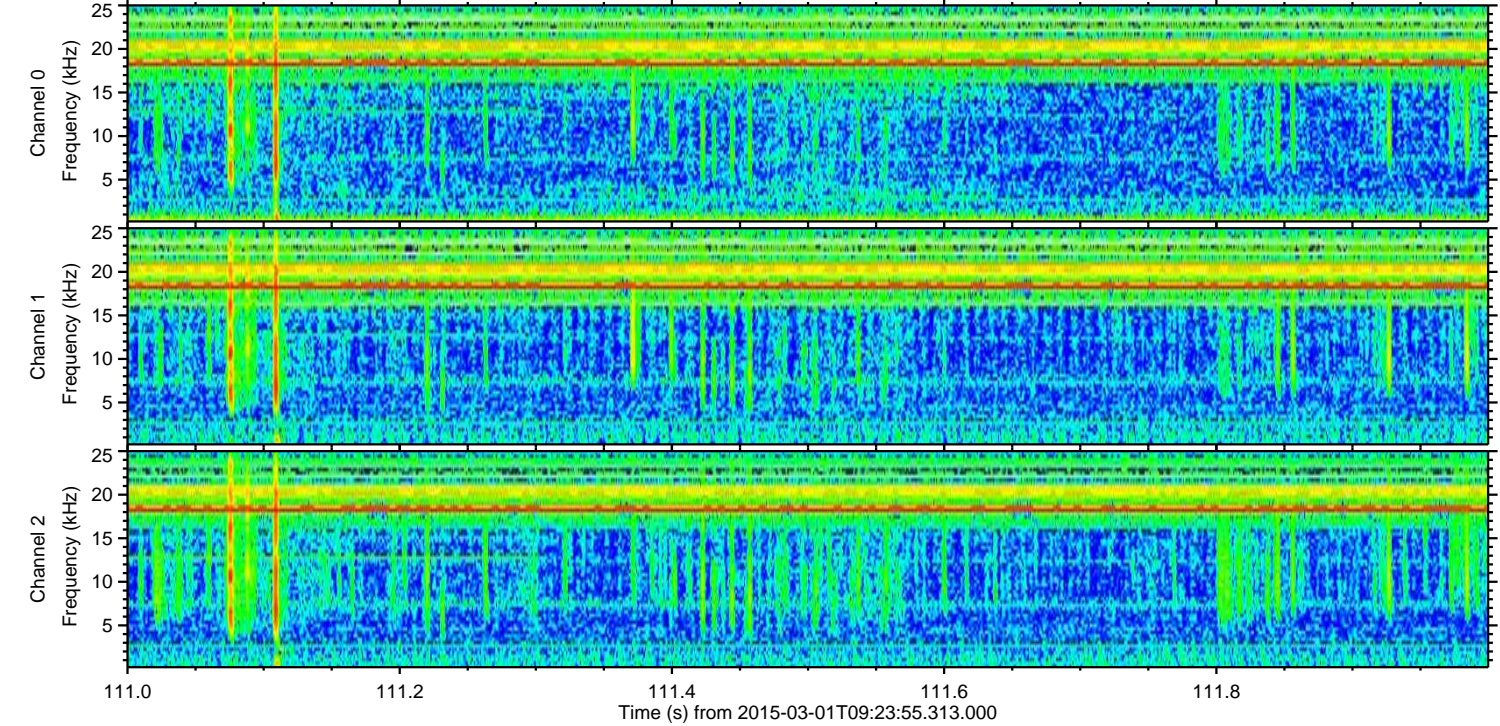
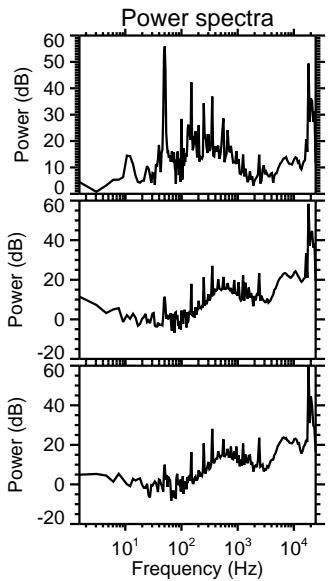
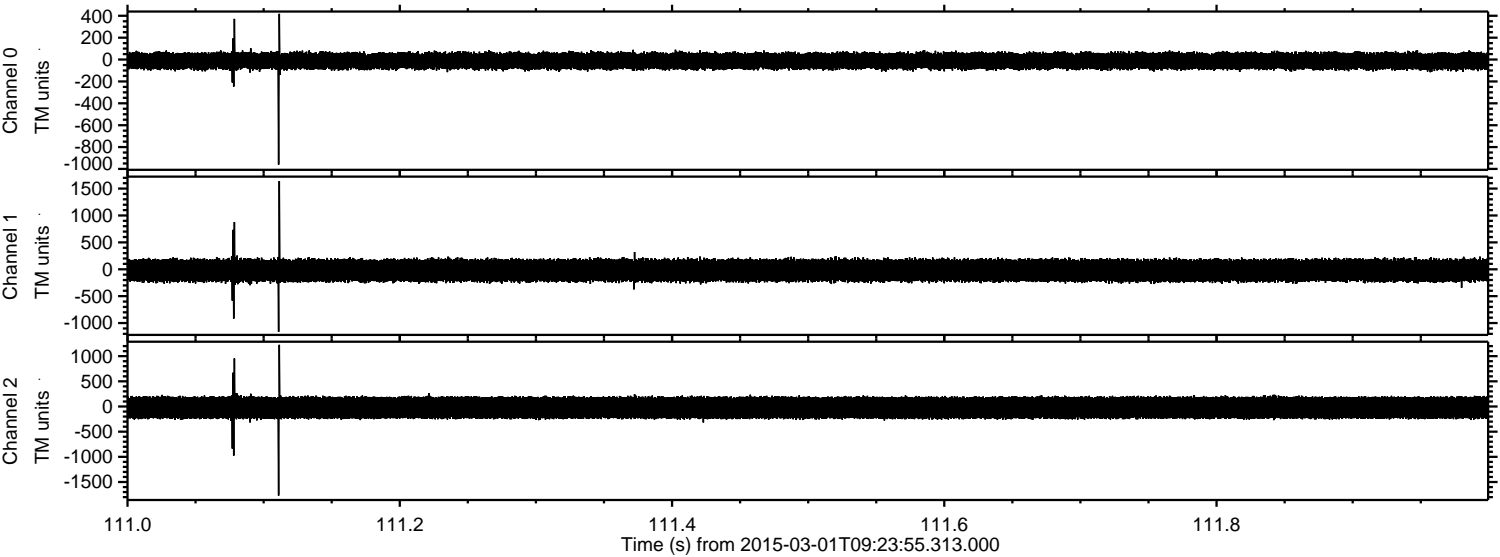
ELMAVAN 3D WAVEFORMS (Measured data sampled at 50 kHz) 49792 packets of 144 samples from 2015-03-01T09:23:55.313.000. Part 127/144

Processed Fri Mar 6 15:31:47 2015 by ELM ver.2012-10-06 from 001__elm20150301_092354__dat00.bin

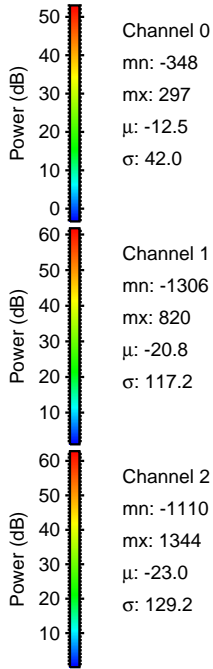
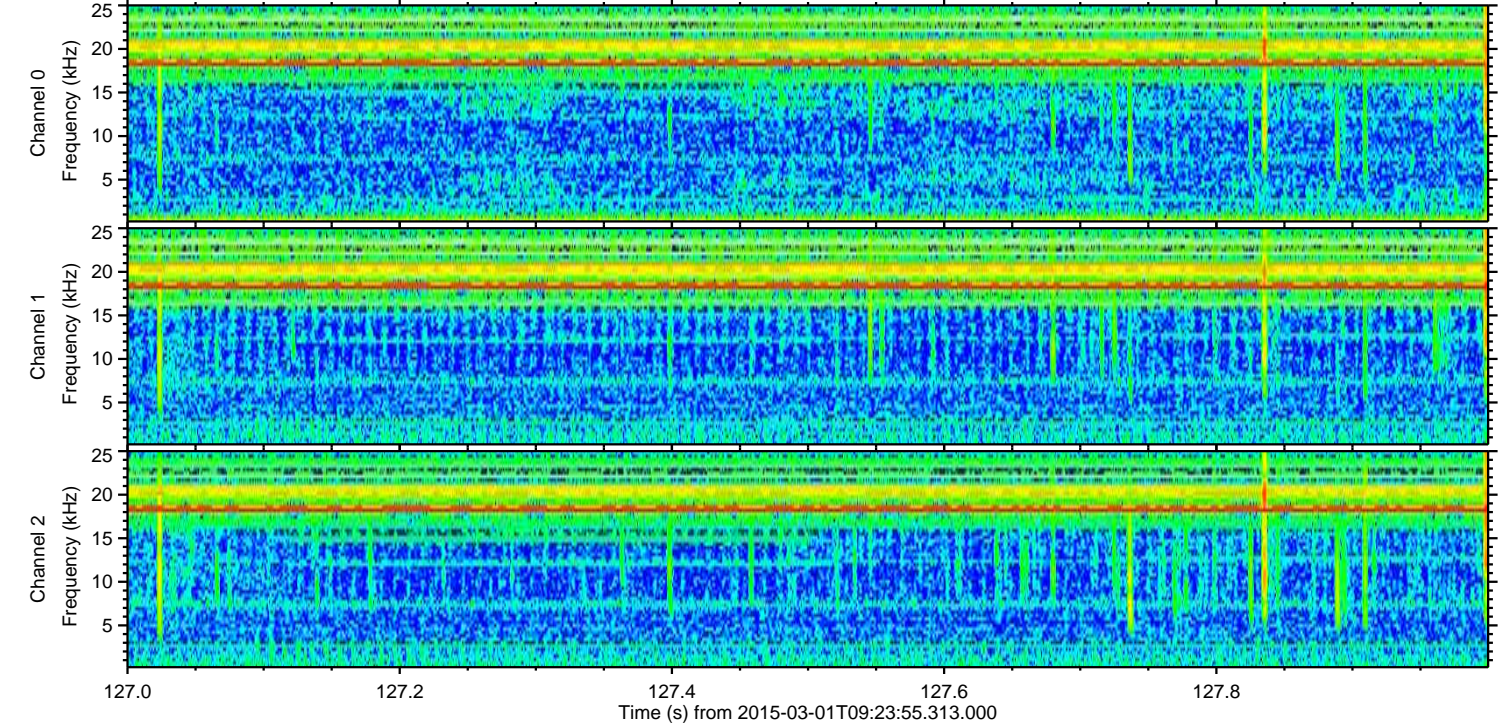
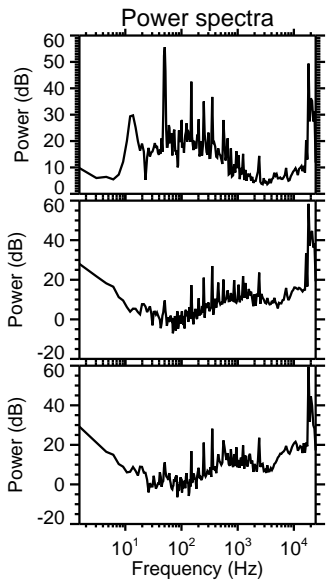
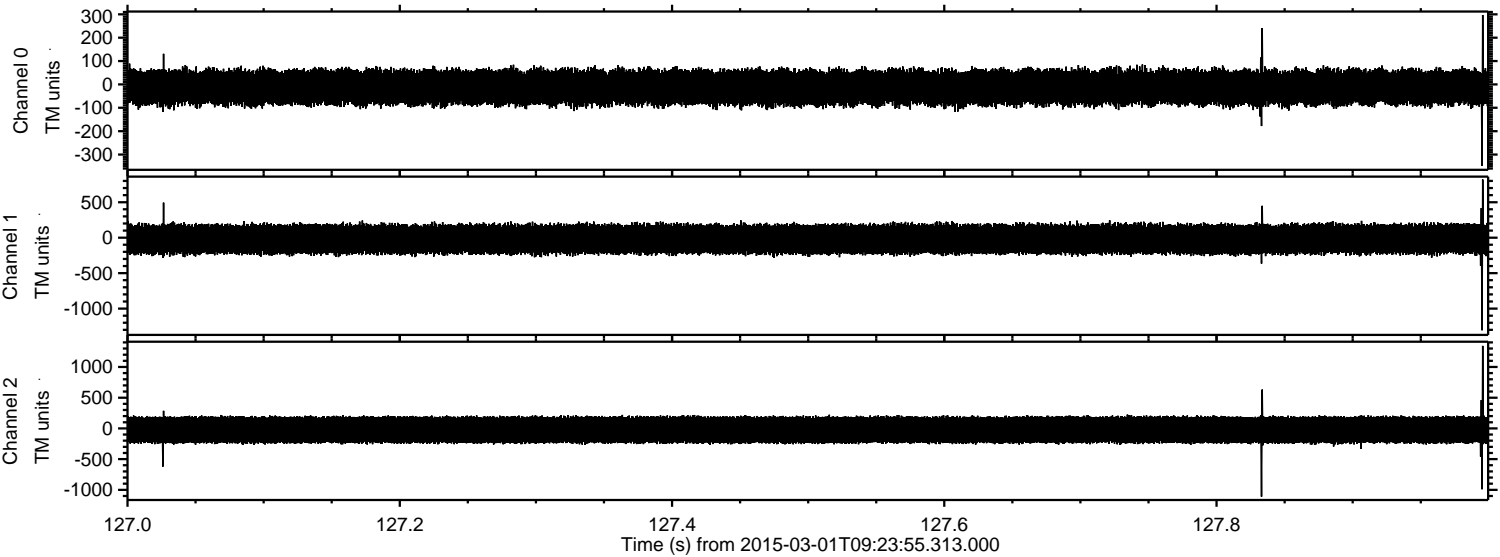


ELMAVAN 3D WAVEFORMS (Measured data sampled at 50 kHz) 49792 packets of 144 samples from 2015-03-01T09:23:55.313.000. Part 112/144

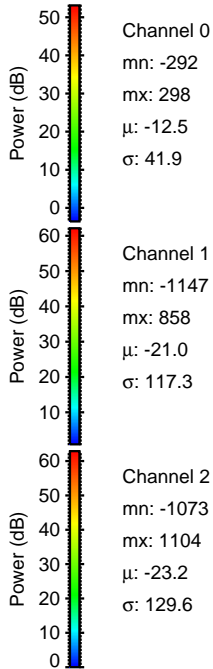
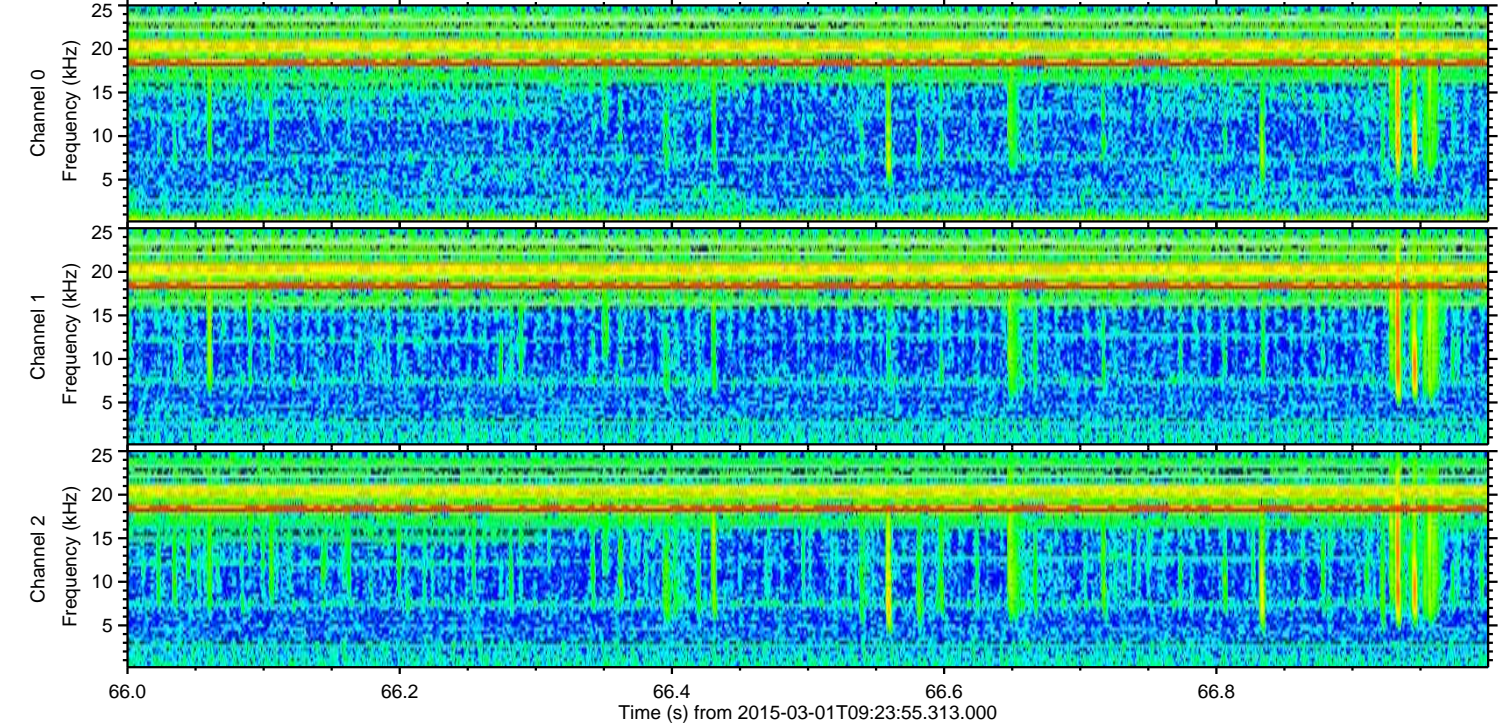
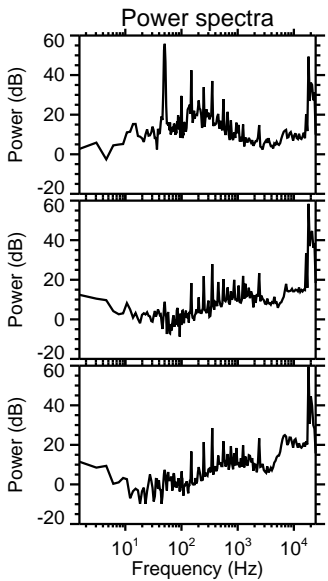
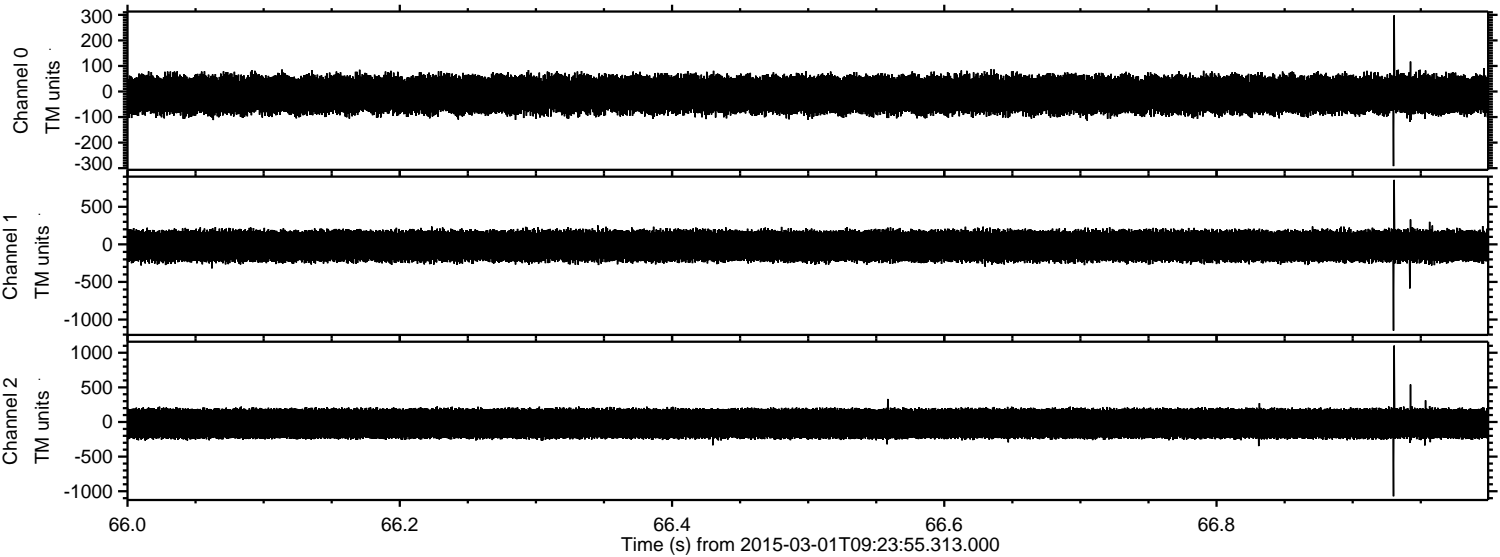
Processed Fri Mar 6 15:31:48 2015 by ELM ver.2012-10-06 from 001_elm20150301_092354_dat00.bin



Processed Fri Mar 6 15:31:49 2015 by ELM ver.2012-10-06 from 001__elm20150301_092354__dat00.bin

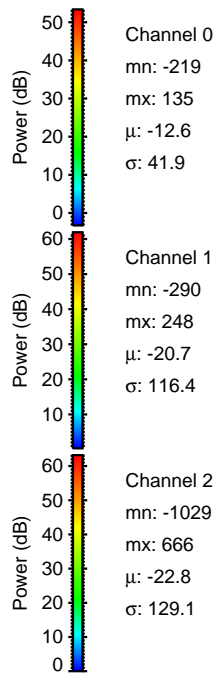
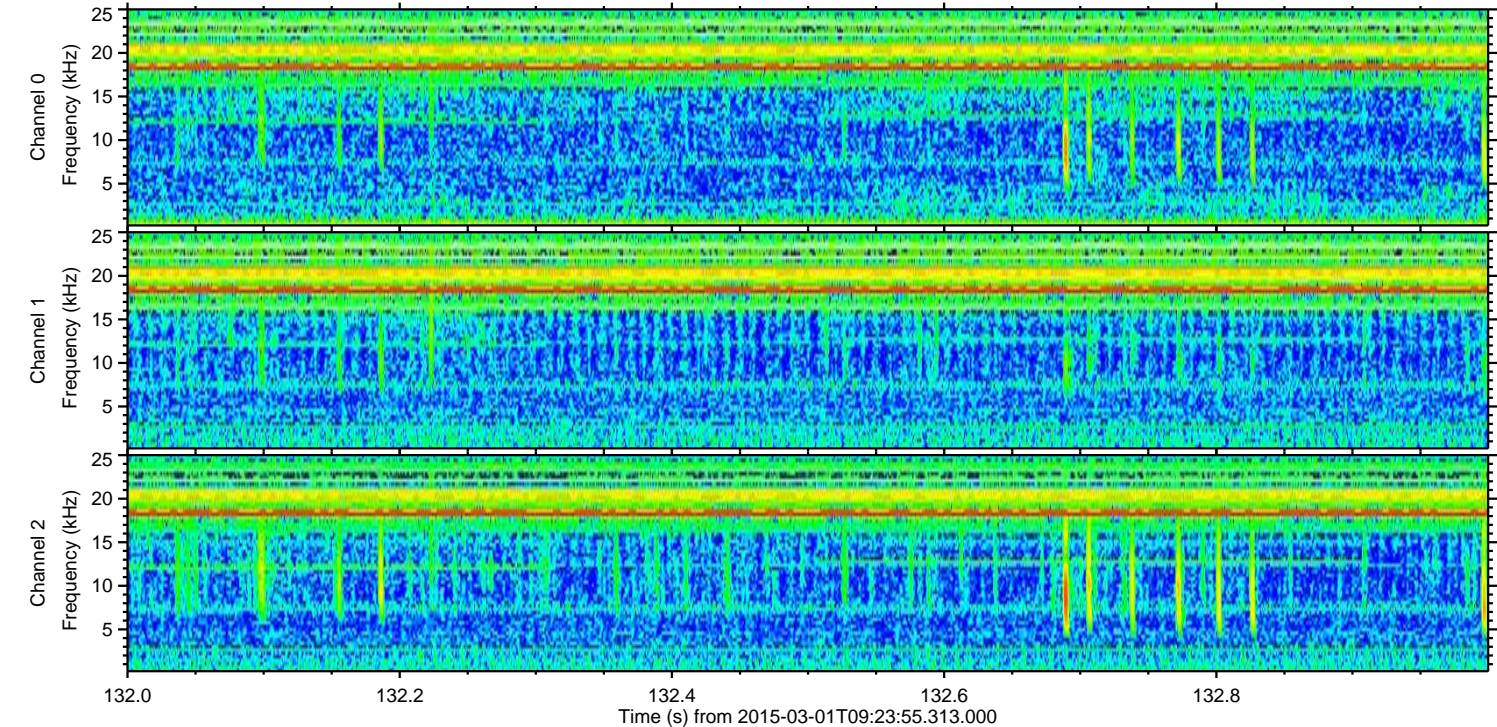
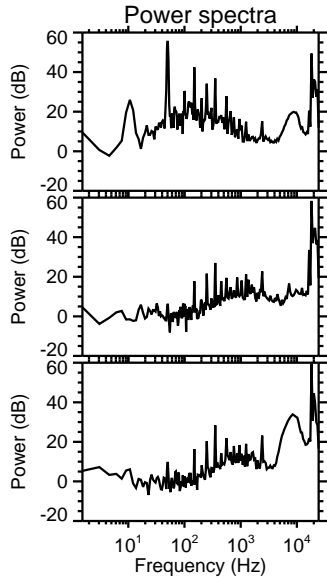
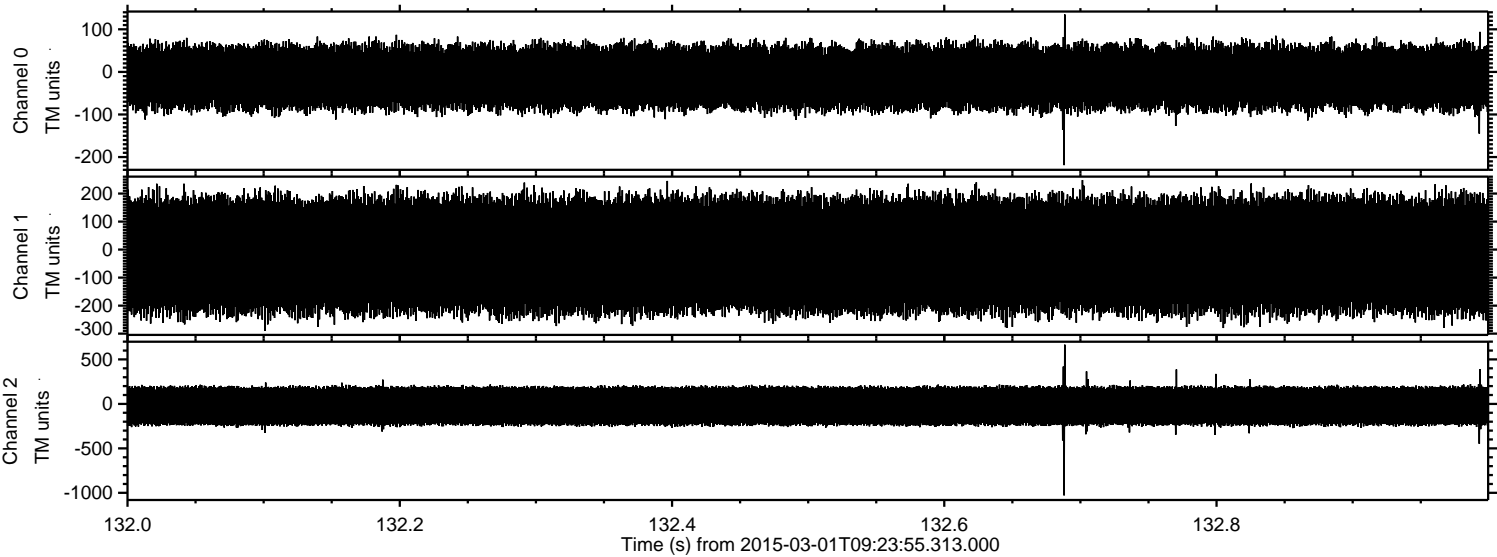


Processed Fri Mar 6 15:31:50 2015 by ELM ver.2012-10-06 from 001__elm20150301_092354__dat00.bin



ELMAVAN 3D WAVEFORMS (Measured data sampled at 50 kHz) 49792 packets of 144 samples from 2015-03-01T09:23:55.313.000. Part 133/144

Processed Fri Mar 6 15:31:51 2015 by ELM ver.2012-10-06 from 001__elm20150301_092354__dat00.bin

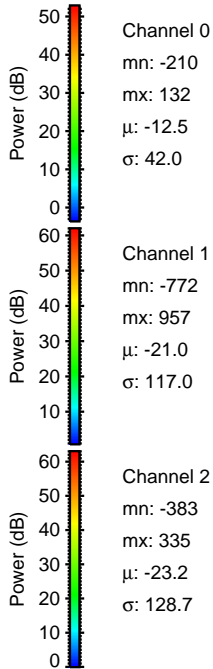
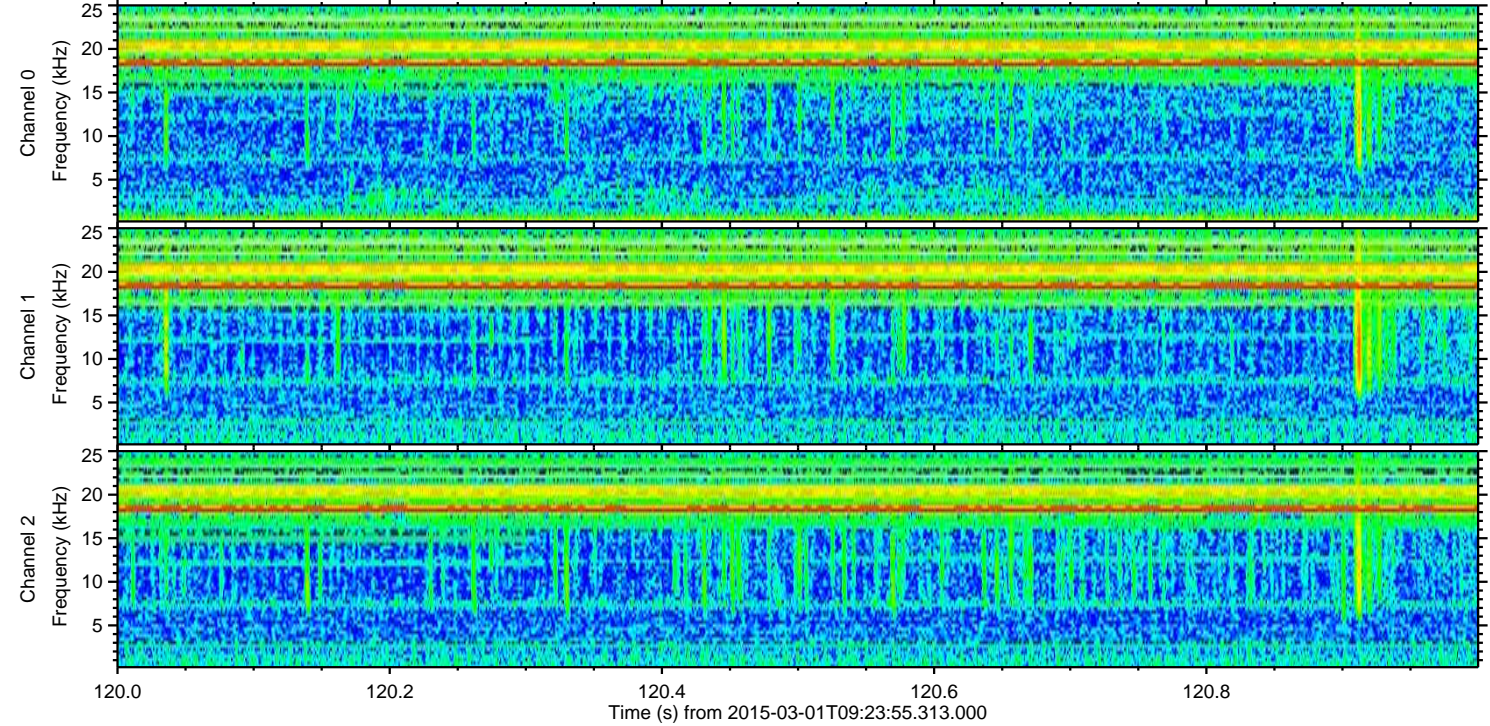
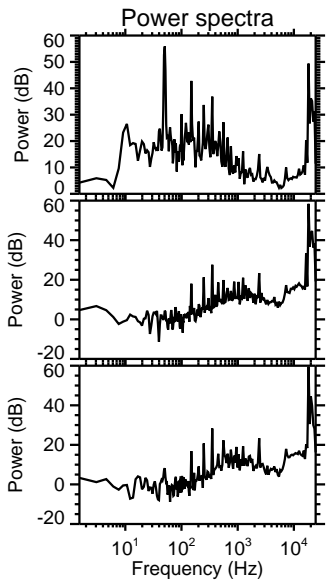
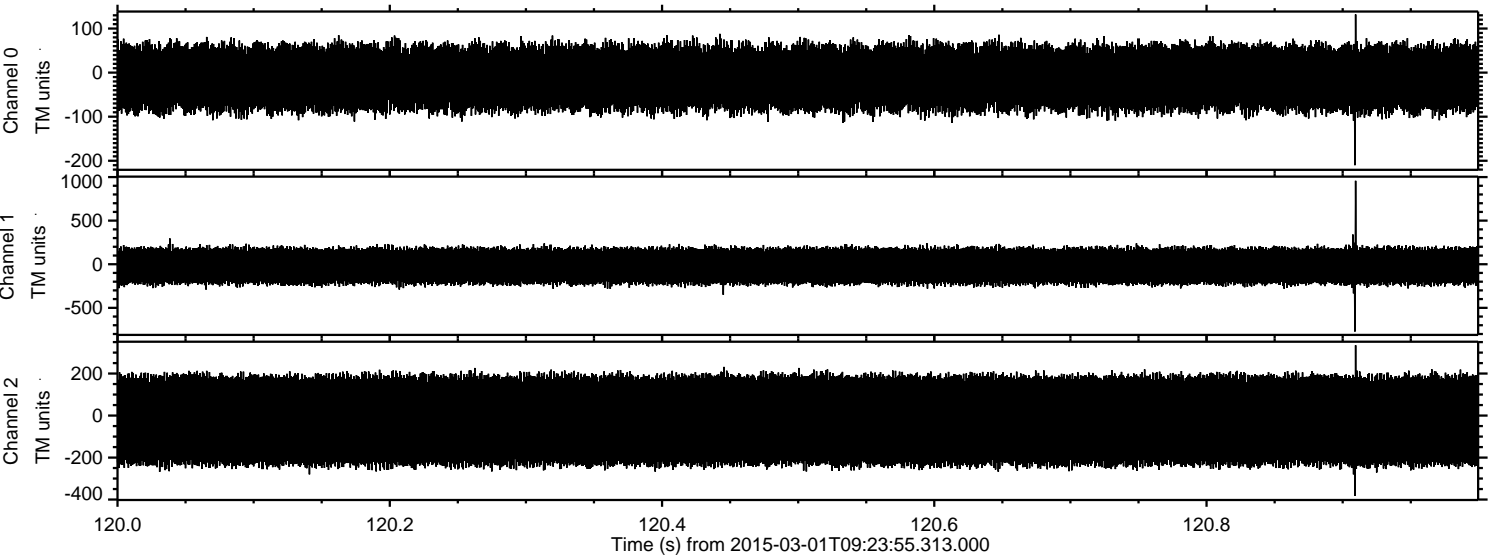


Channel 0
mn: -219
mx: 135
 μ : -12.6
 σ : 41.9

Channel 1
mn: -290
mx: 248
 μ : -20.7
 σ : 116.4

Channel 2
mn: -1029
mx: 666
 μ : -22.8
 σ : 129.1

Processed Fri Mar 6 15:31:52 2015 by ELM ver.2012-10-06 from 001__elm20150301_092354__dat00.bin



Processed Fri Mar 6 15:31:53 2015 by ELM ver.2012-10-06 from 001__elm20150301_092354__dat00.bin

