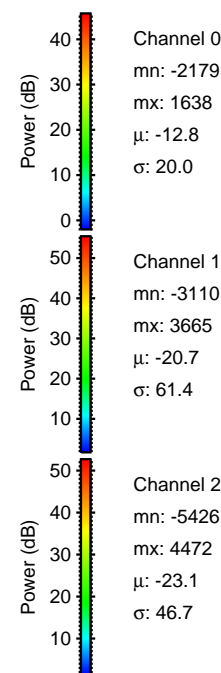
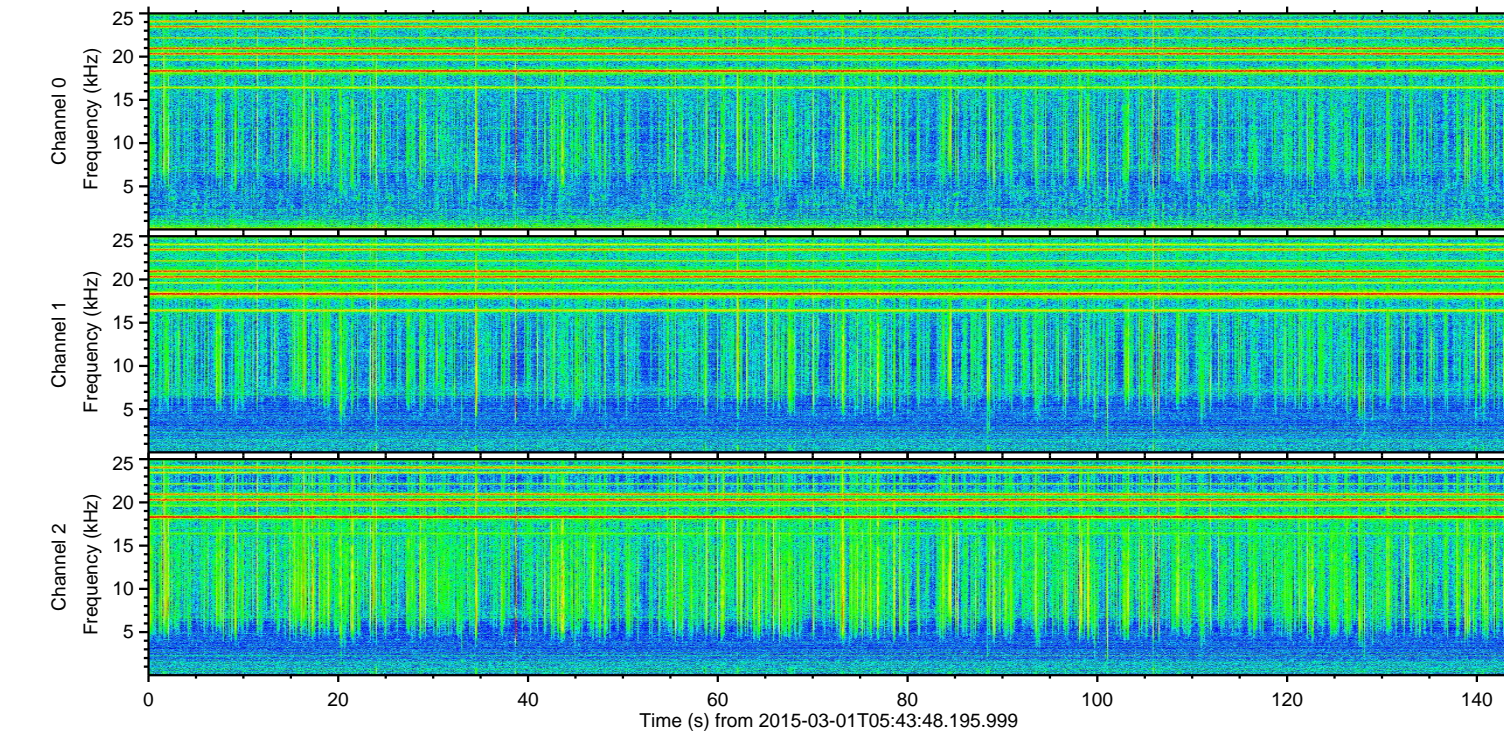
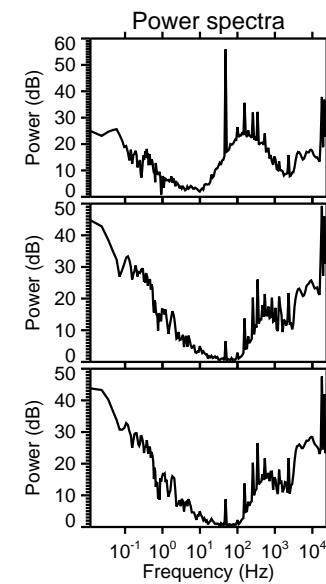
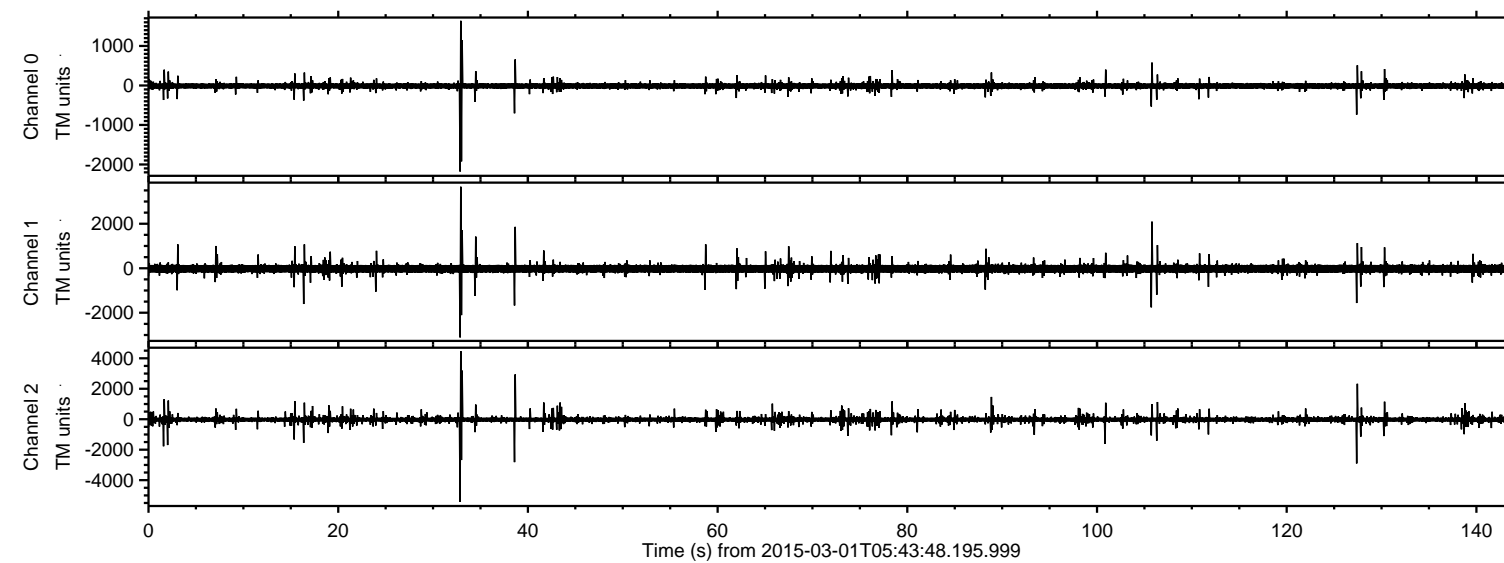
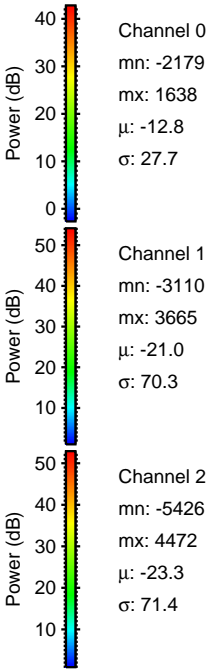
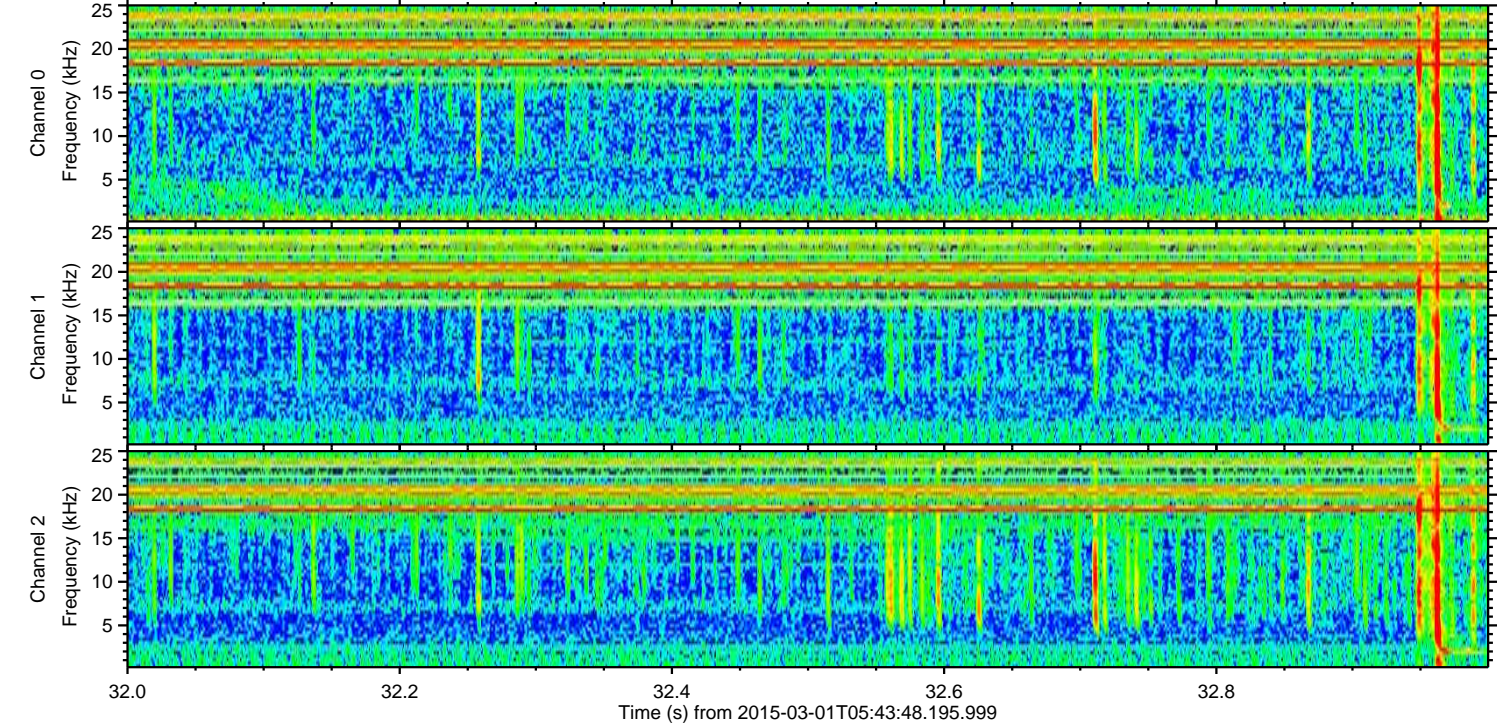
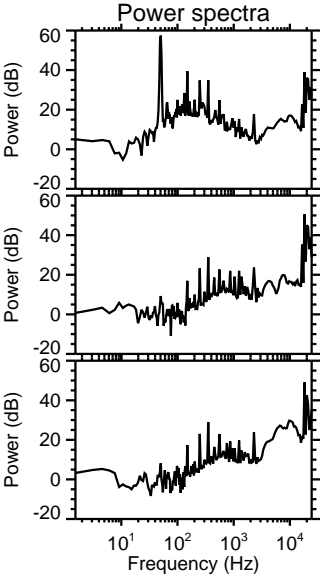
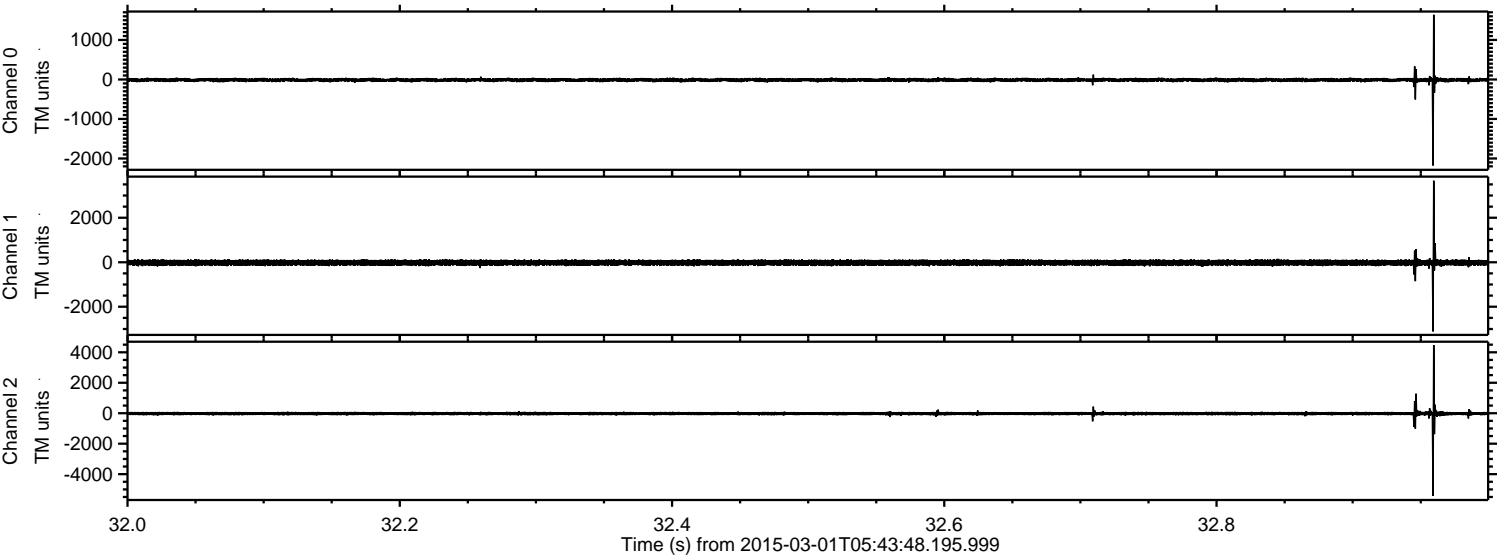


ELMAVAN 3D WAVEFORMS (Measured data sampled at 50 kHz) 49810 packets of 144 samples from 2015-03-01T05:43:48.195.999.

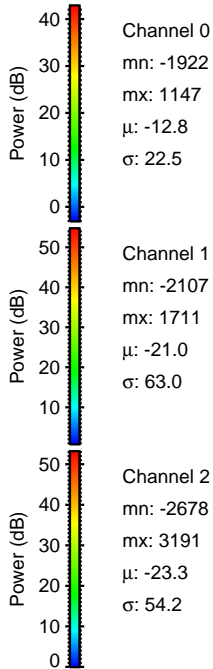
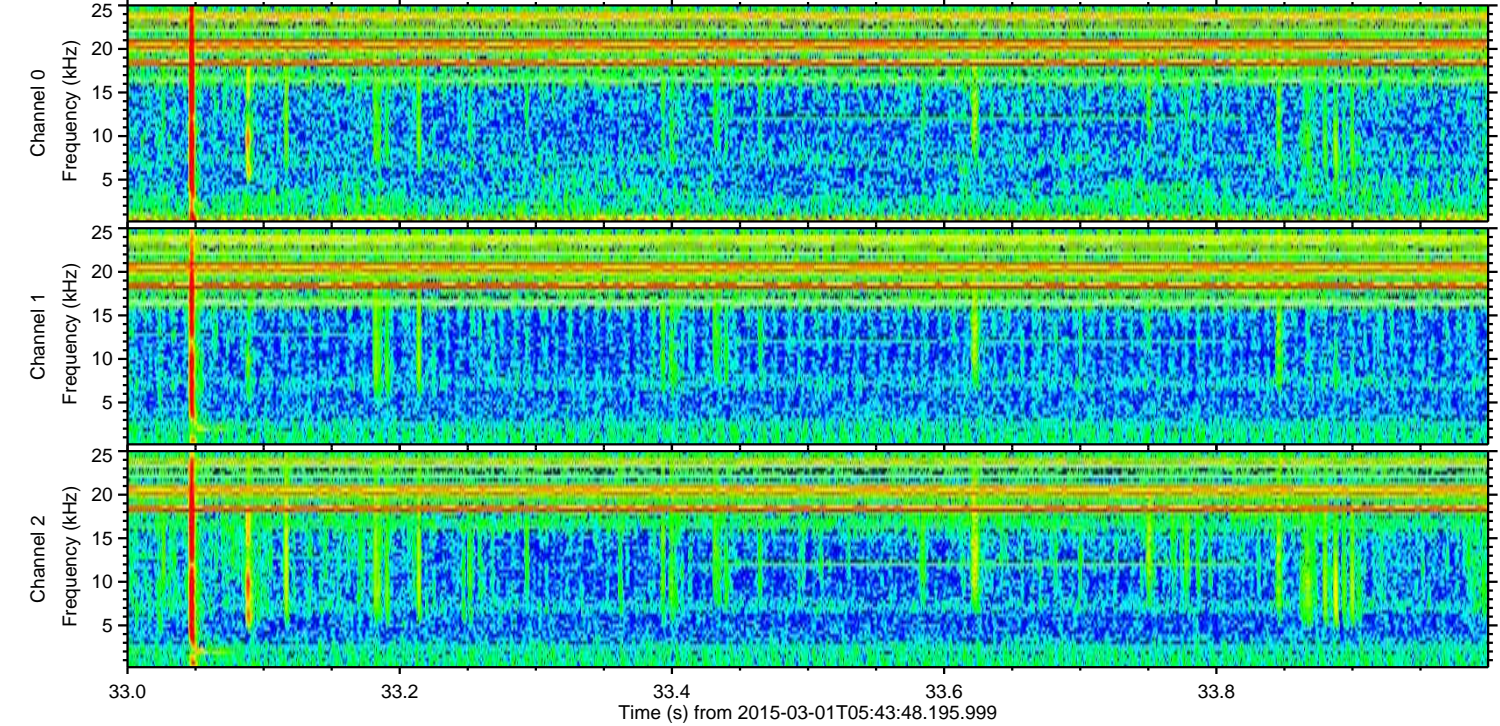
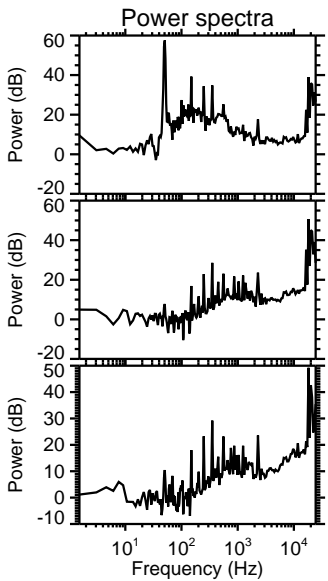
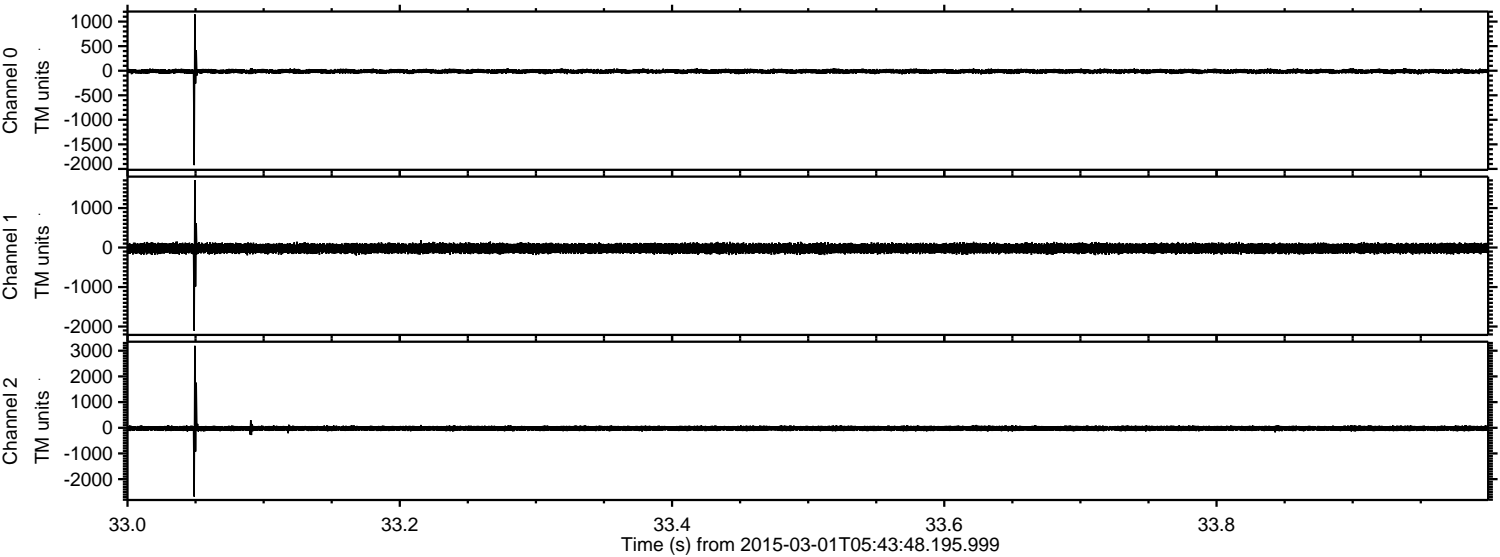
Processed Fri Mar 6 14:12:19 2015 by ELM ver.2012-10-06 from 001__elm20150301_054347__dat00.bin



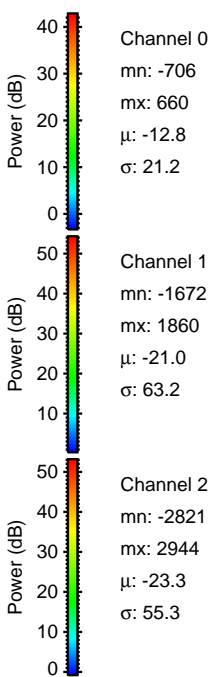
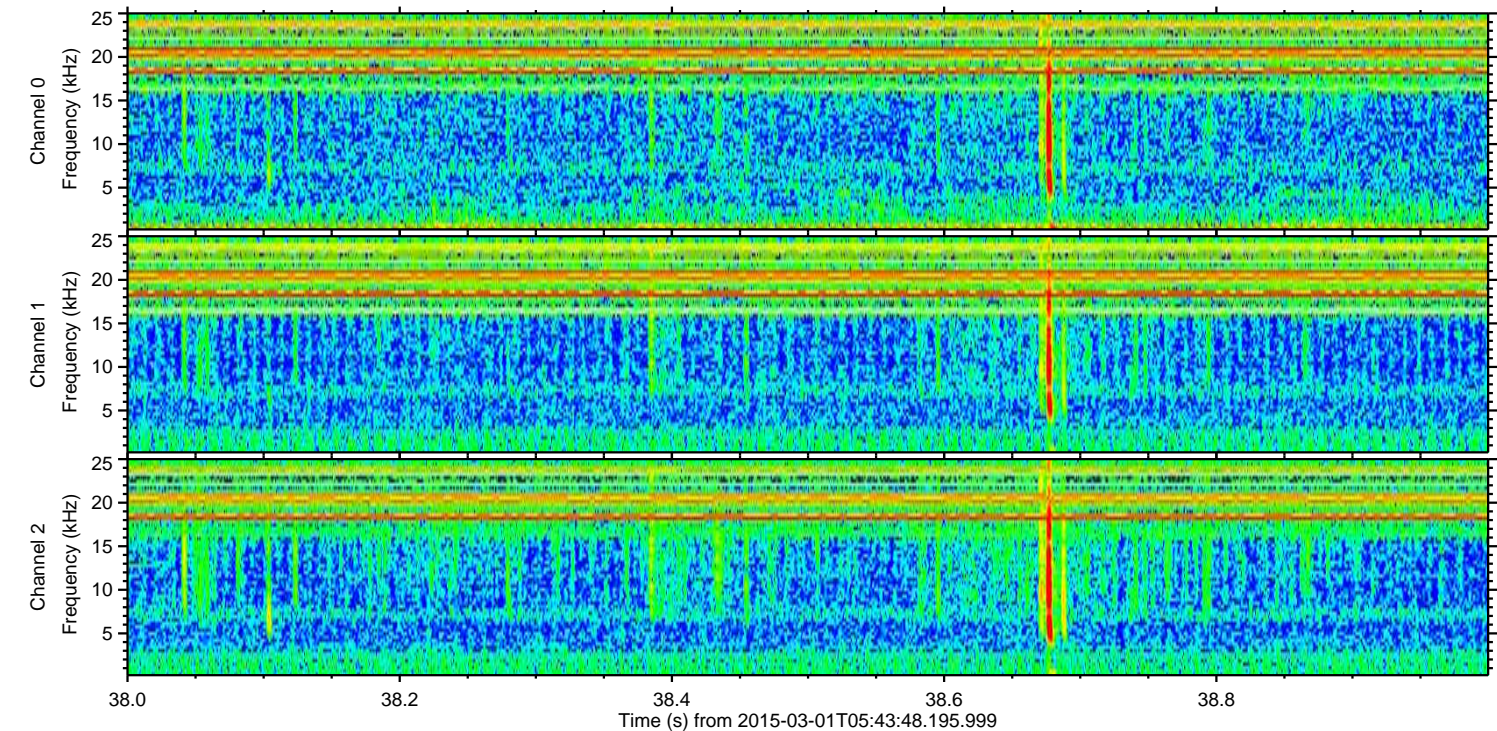
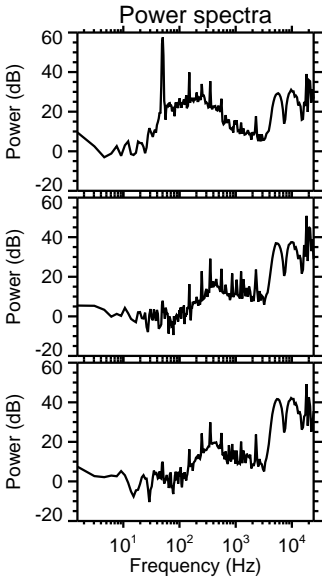
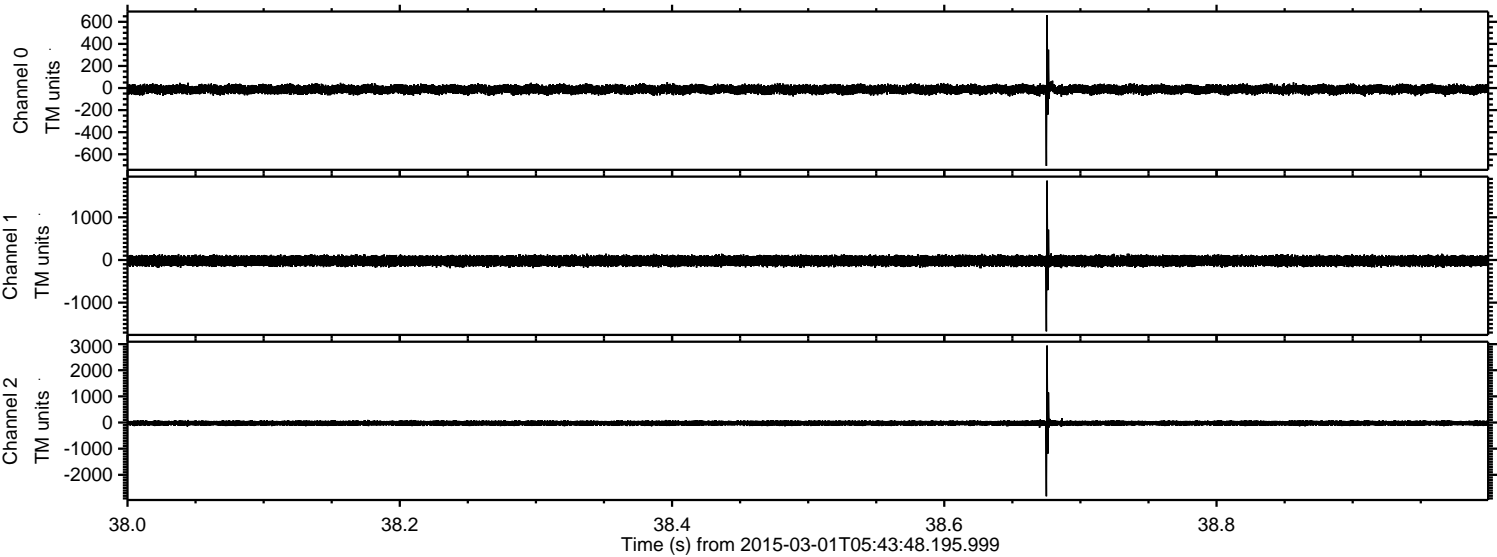
Processed Fri Mar 6 14:12:30 2015 by ELM ver.2012-10-06 from 001__elm20150301_054347__dat00.bin



Processed Fri Mar 6 14:12:31 2015 by ELM ver.2012-10-06 from 001__elm20150301_054347__dat00.bin

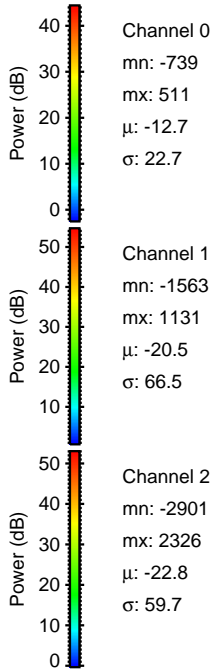
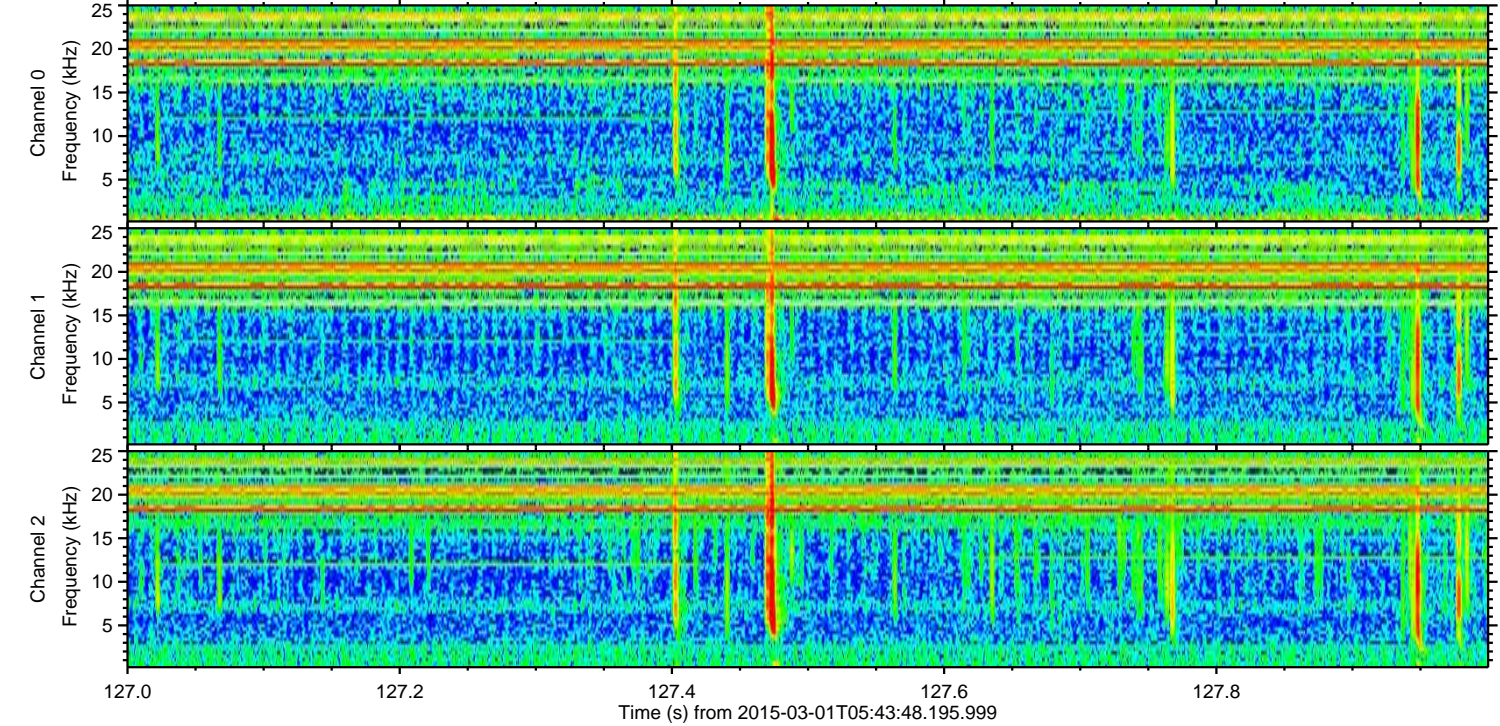
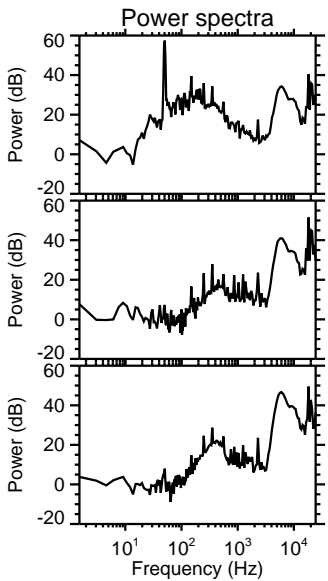
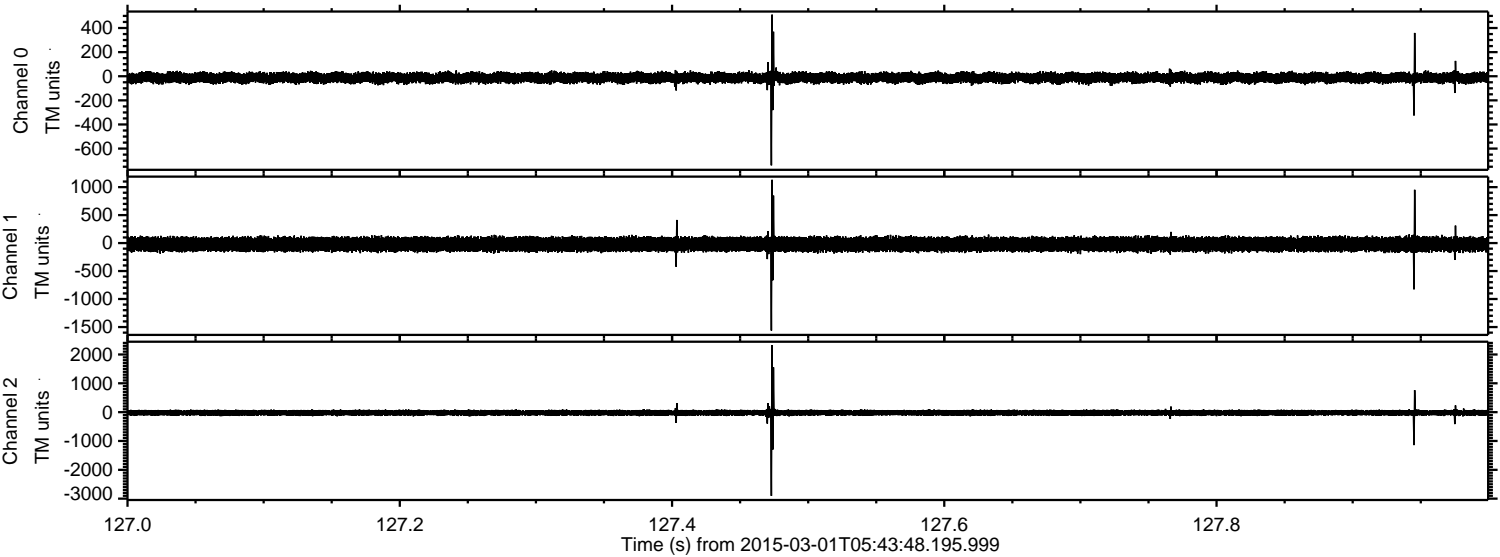


Processed Fri Mar 6 14:12:32 2015 by ELM ver.2012-10-06 from 001__elm20150301_054347__dat00.bin



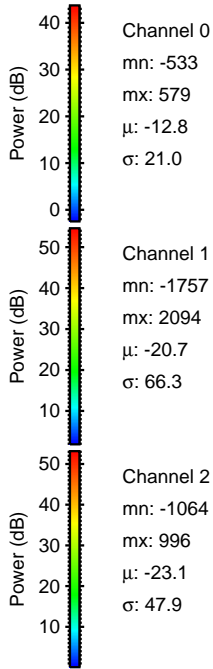
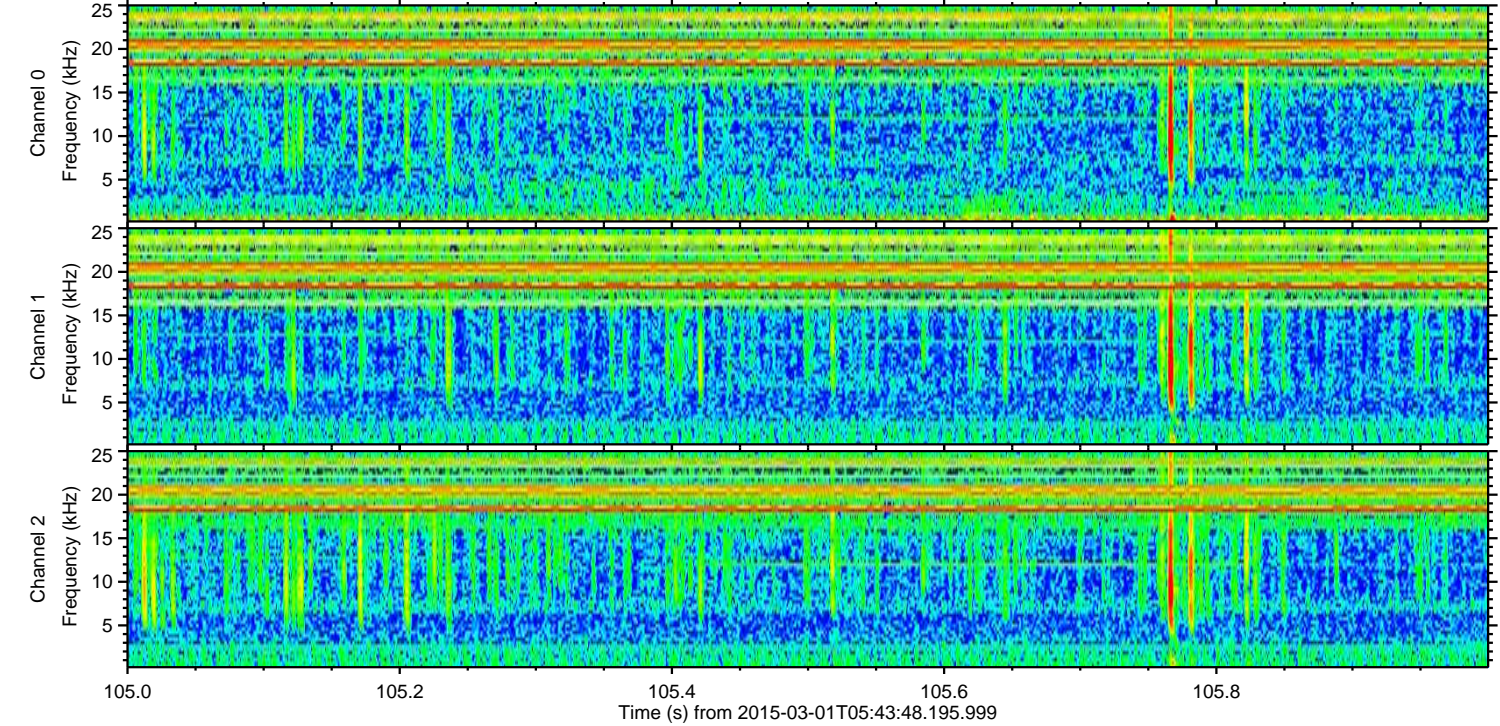
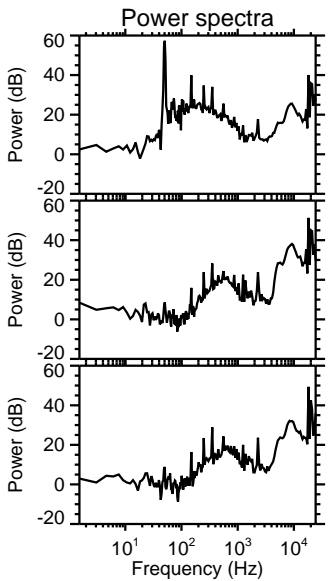
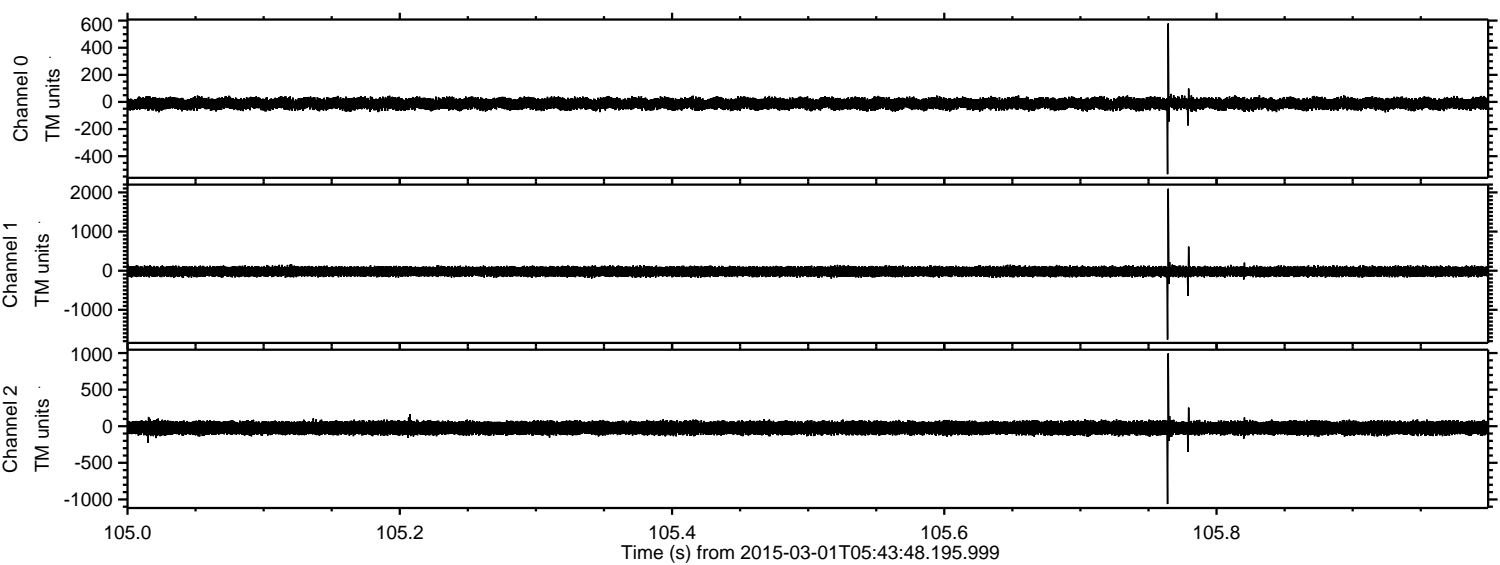
ELMAVAN 3D WAVEFORMS (Measured data sampled at 50 kHz) 49810 packets of 144 samples from 2015-03-01T05:43:48.195.999. Part 128/144

Processed Fri Mar 6 14:12:33 2015 by ELM ver.2012-10-06 from 001__elm20150301_054347__dat00.bin



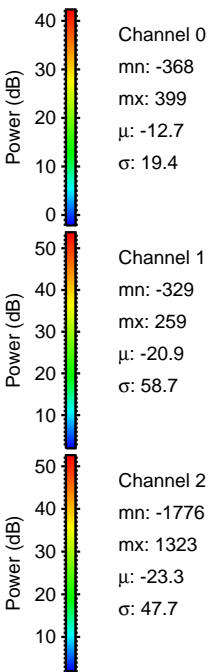
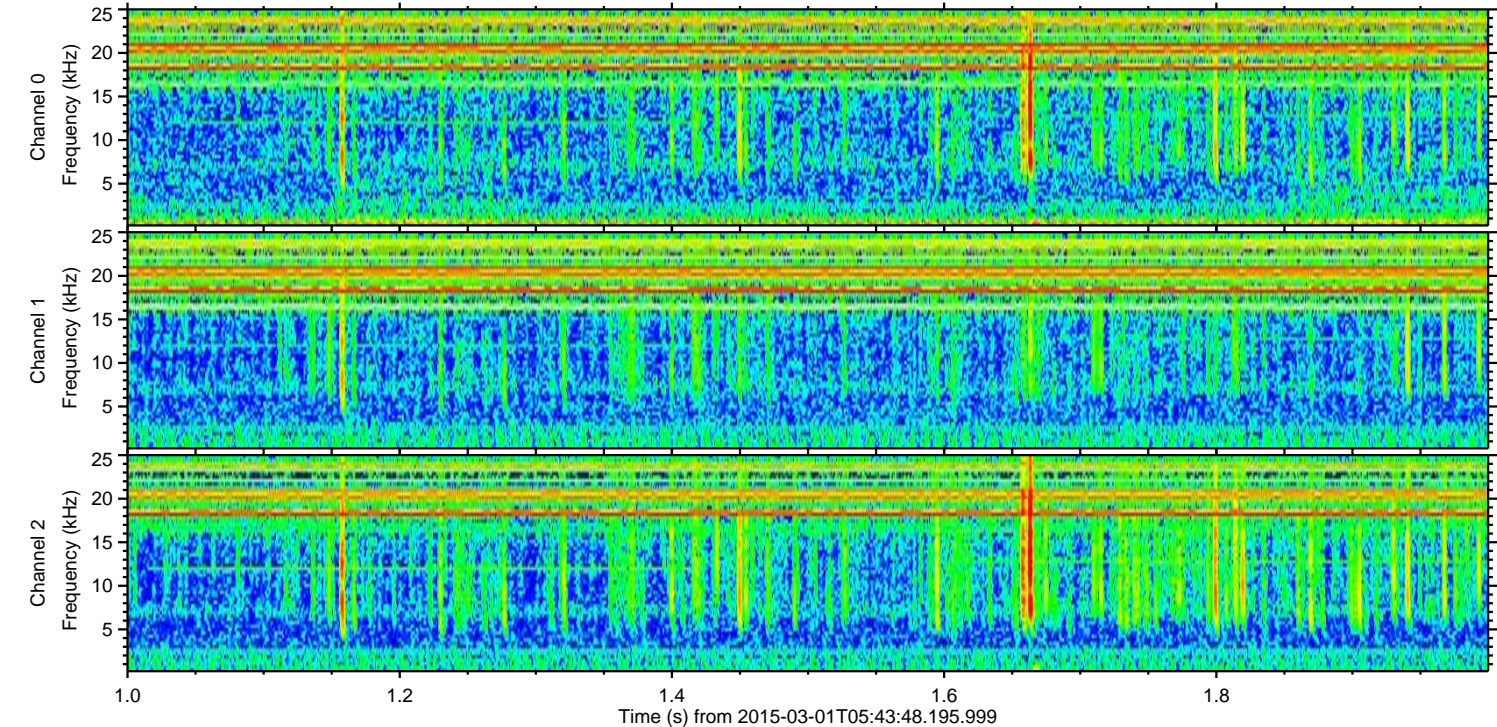
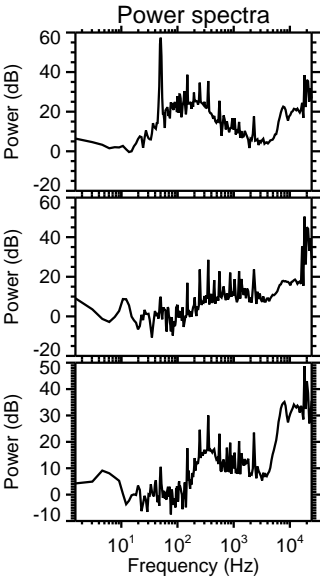
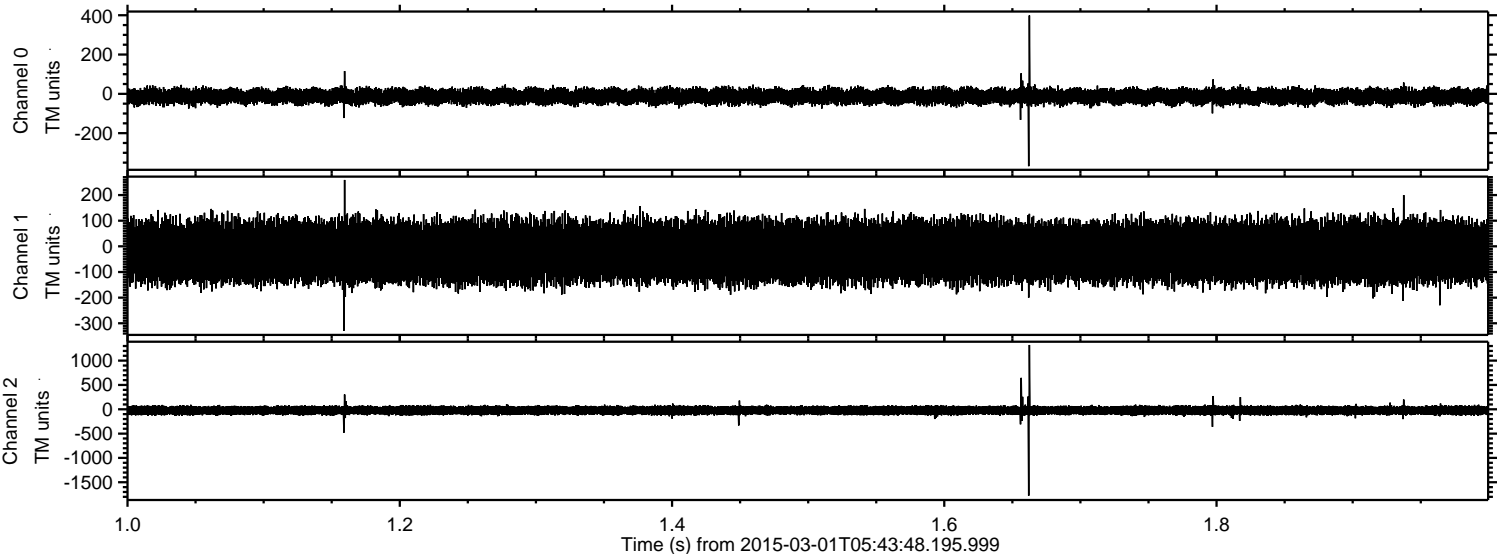
ELMAVAN 3D WAVEFORMS (Measured data sampled at 50 kHz) 49810 packets of 144 samples from 2015-03-01T05:43:48.195.999. Part 106/144

Processed Fri Mar 6 14:12:34 2015 by ELM ver.2012-10-06 from 001__elm20150301_054347__dat00.bin

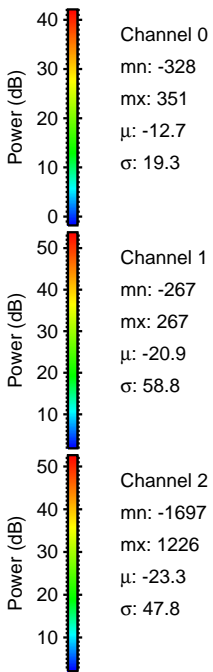
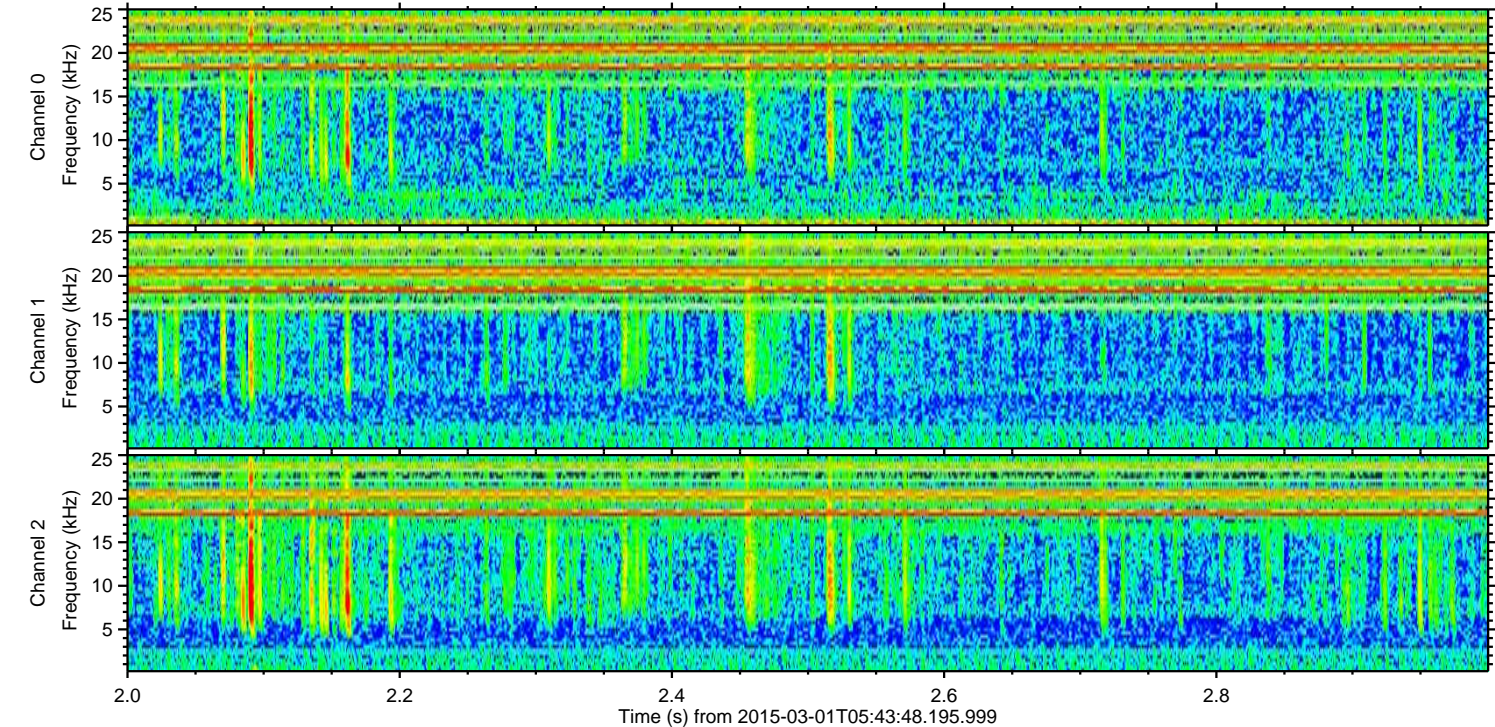
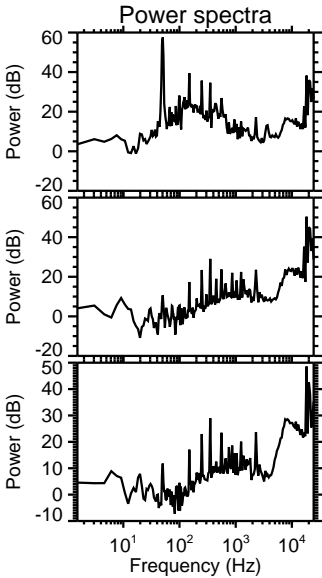
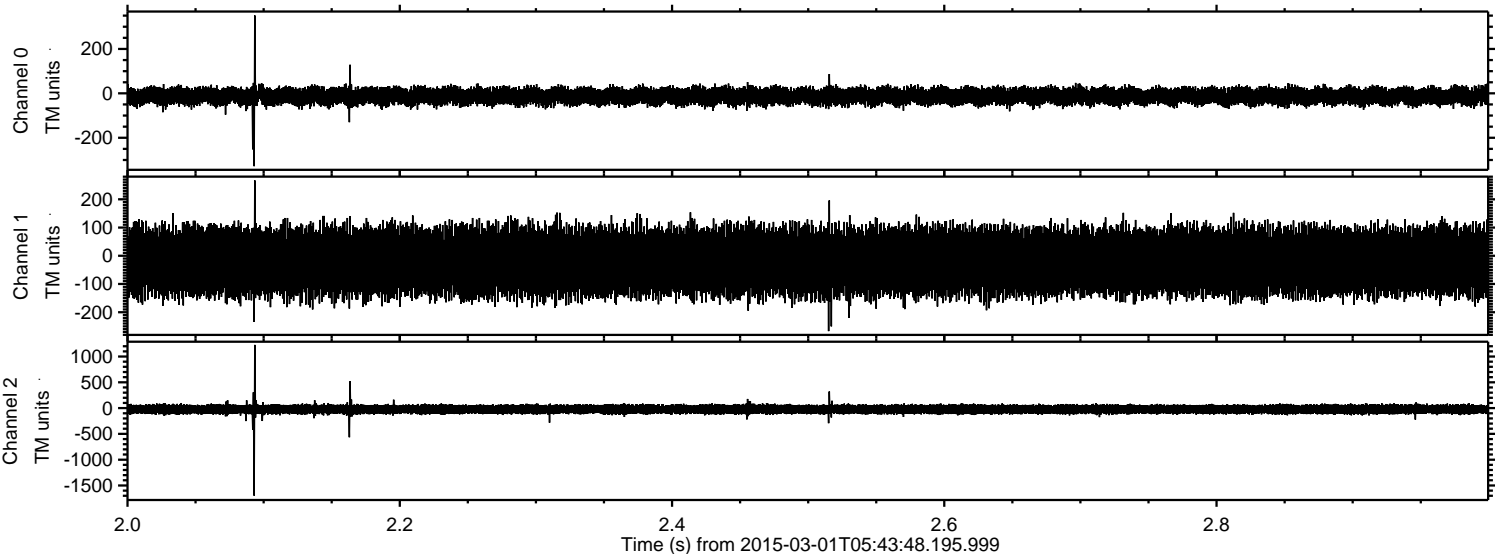


ELMAVAN 3D WAVEFORMS (Measured data sampled at 50 kHz) 49810 packets of 144 samples from 2015-03-01T05:43:48.195.999. Part 2/144

Processed Fri Mar 6 14:12:35 2015 by ELM ver.2012-10-06 from 001__elm20150301_054347__dat00.bin

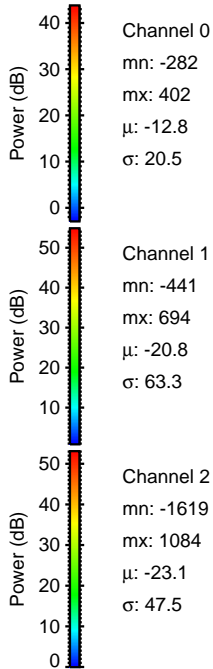
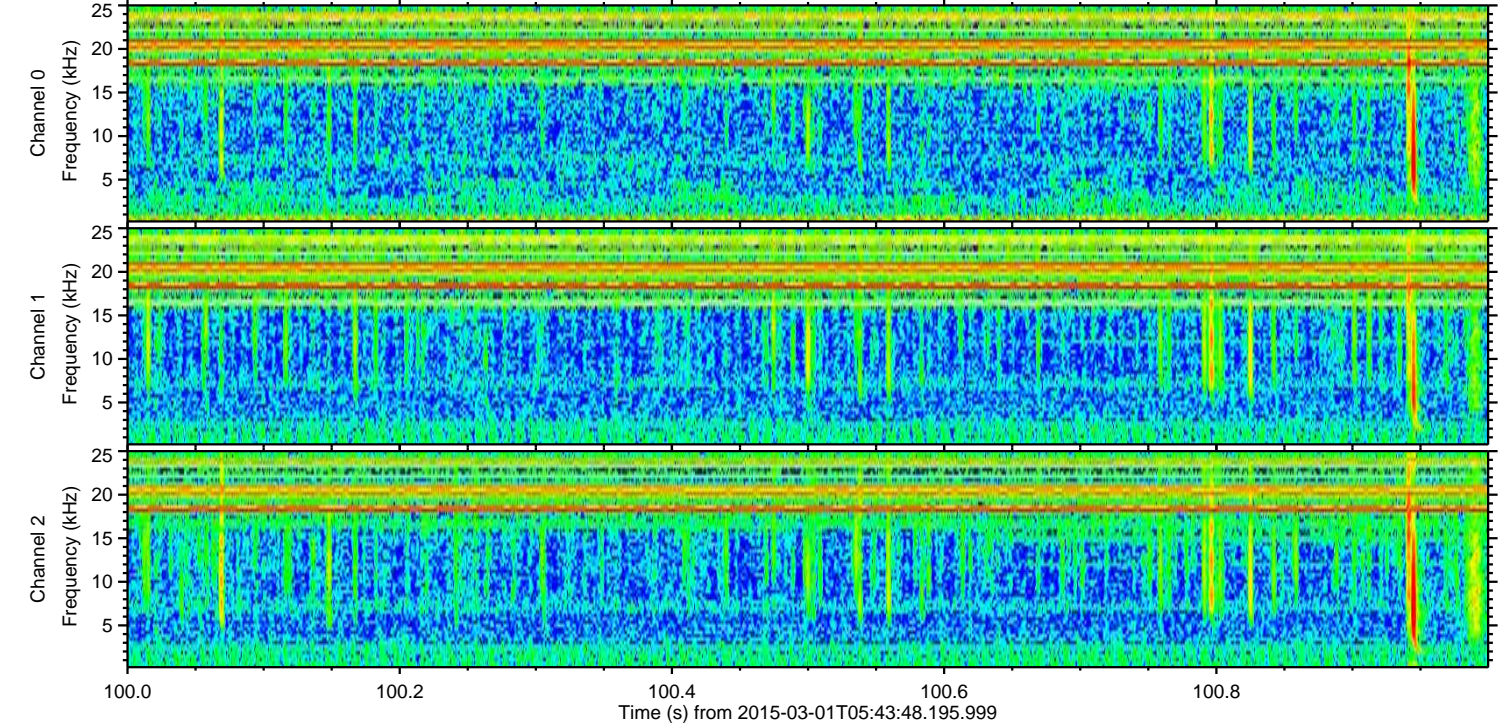
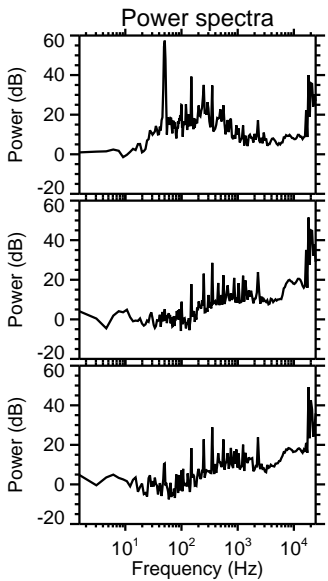
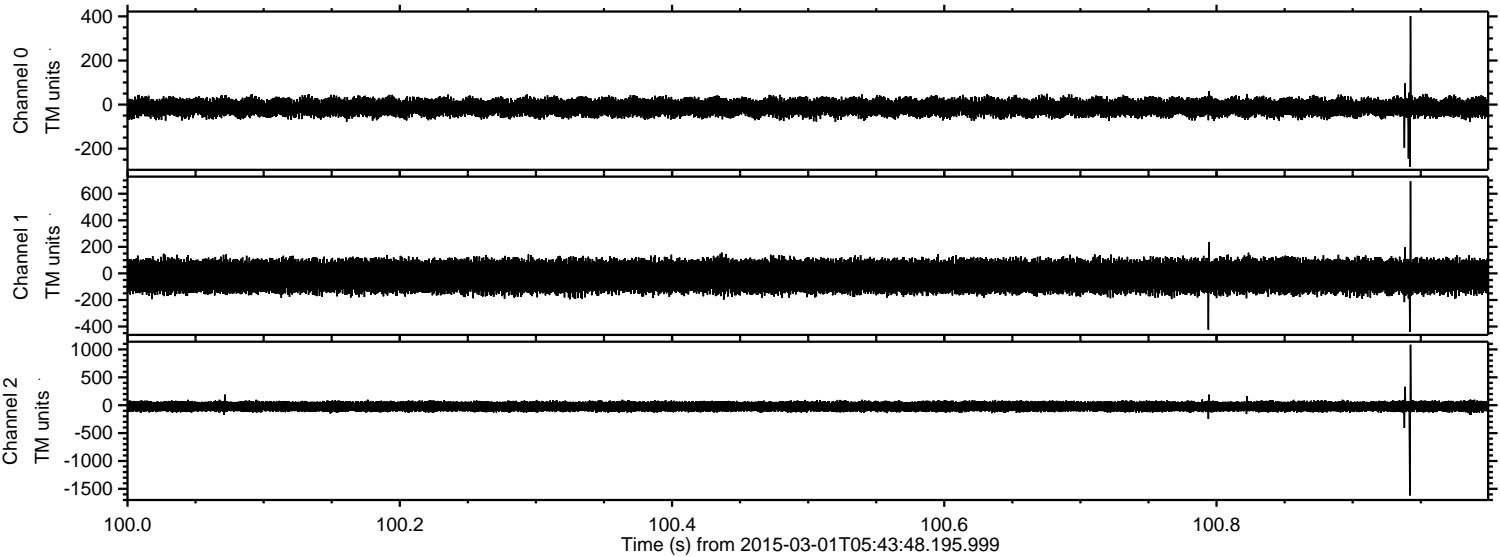


Processed Fri Mar 6 14:12:36 2015 by ELM ver.2012-10-06 from 001__elm20150301_054347__dat00.bin



ELMAVAN 3D WAVEFORMS (Measured data sampled at 50 kHz) 49810 packets of 144 samples from 2015-03-01T05:43:48.195.999. Part 101/144

Processed Fri Mar 6 14:12:37 2015 by ELM ver.2012-10-06 from 001__elm20150301_054347__dat00.bin



Channel 0
mn: -282
mx: 402
 μ : -12.8
 σ : 20.5

Channel 1
mn: -441
mx: 694
 μ : -20.8
 σ : 63.3

Channel 2
mn: -1619
mx: 1084
 μ : -23.1
 σ : 47.5

Processed Fri Mar 6 14:12:38 2015 by ELM ver.2012-10-06 from 001__elm20150301_054347__dat00.bin

