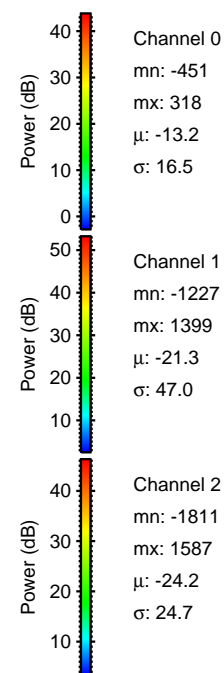
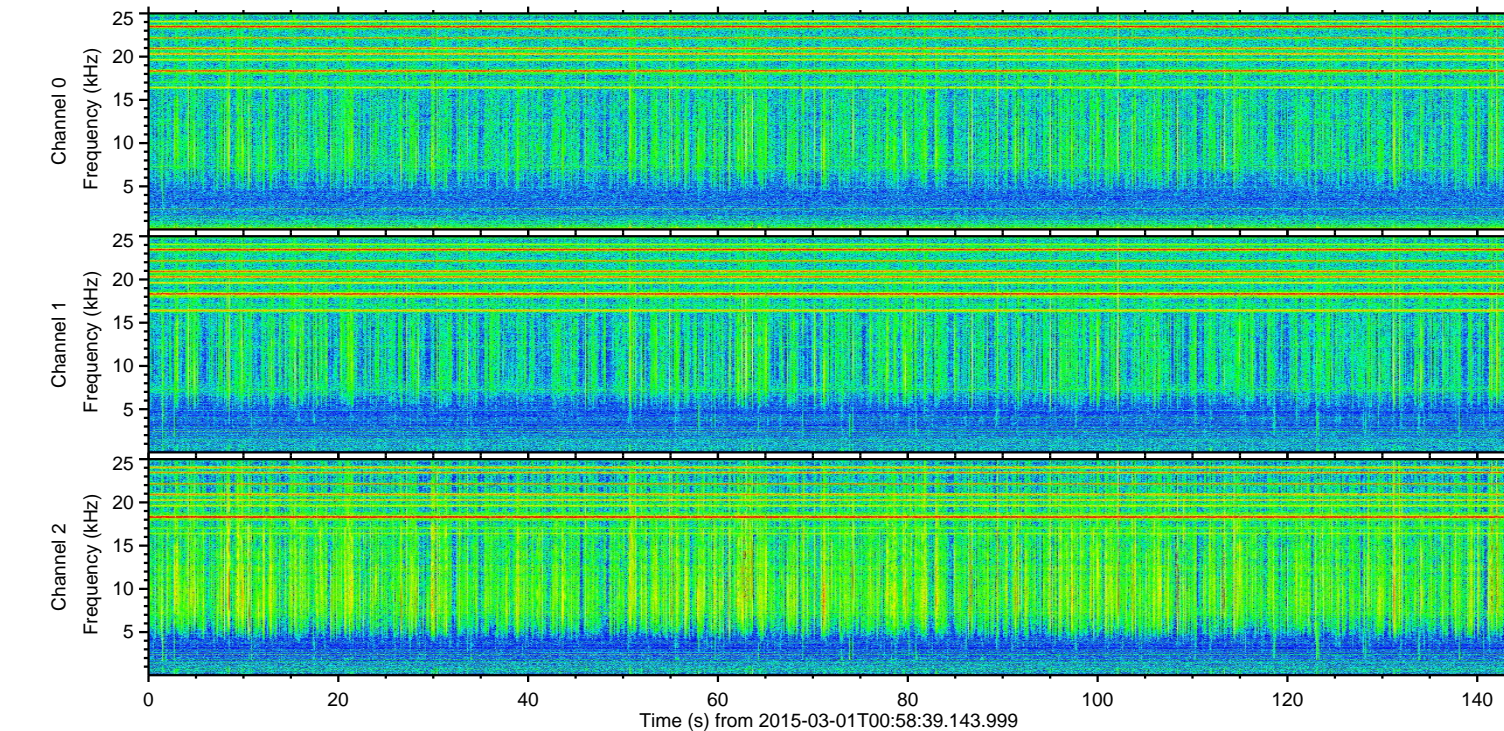
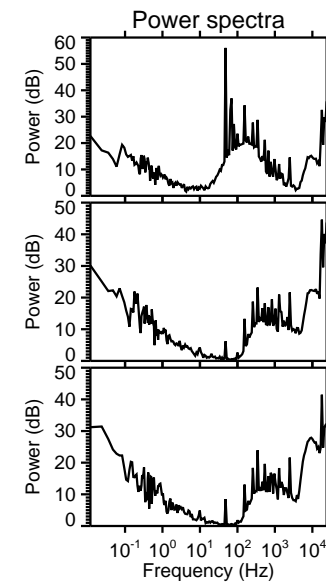
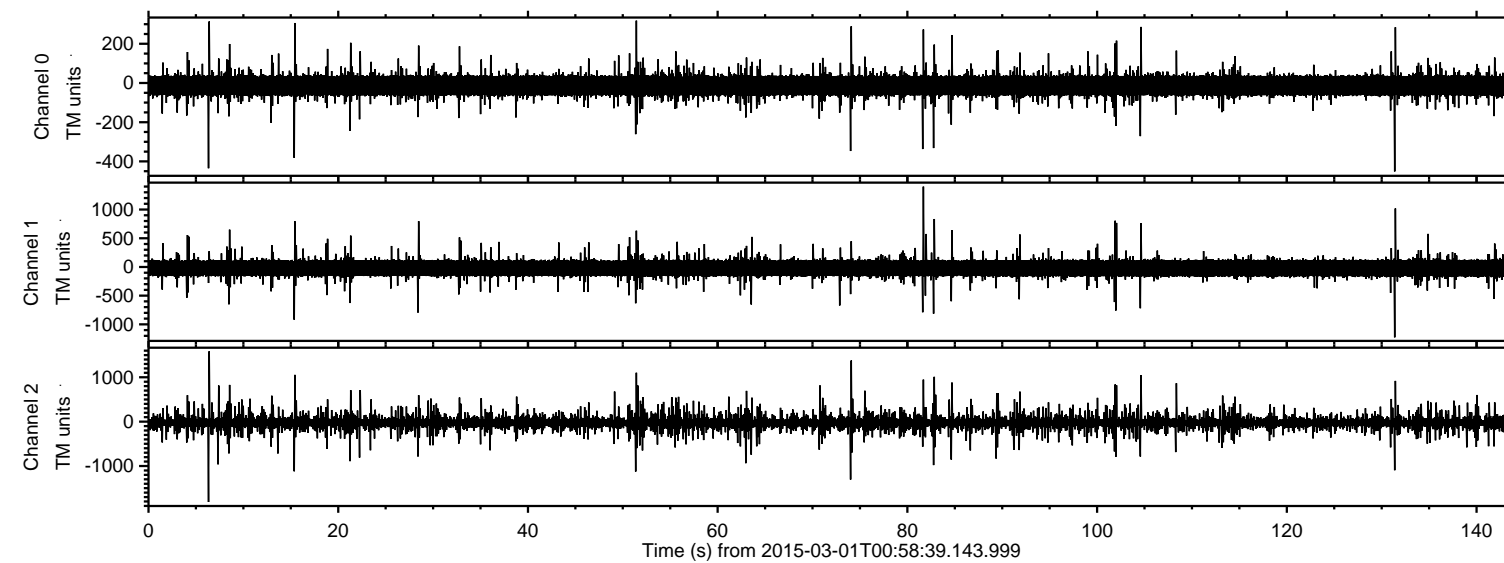


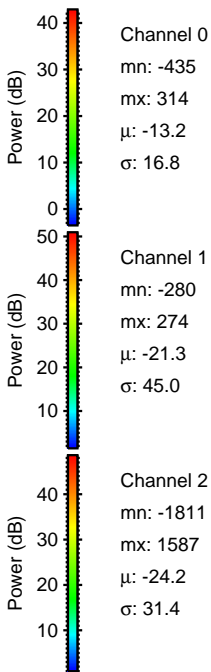
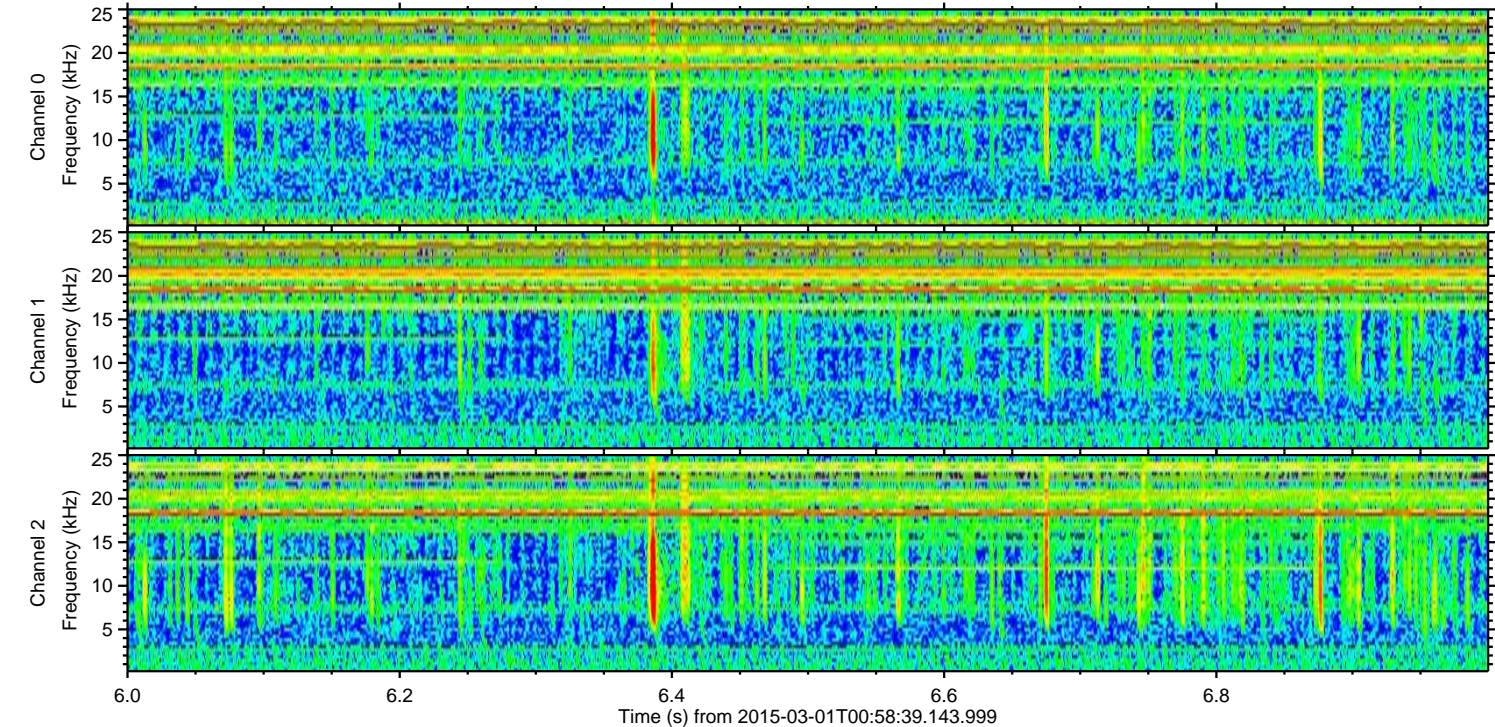
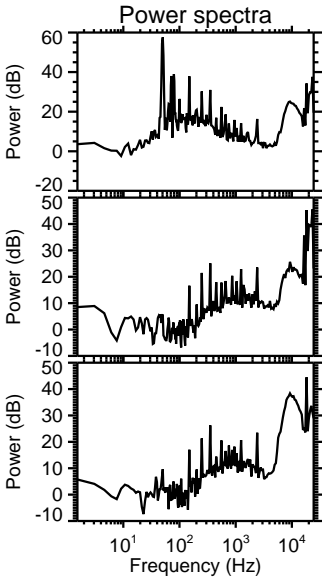
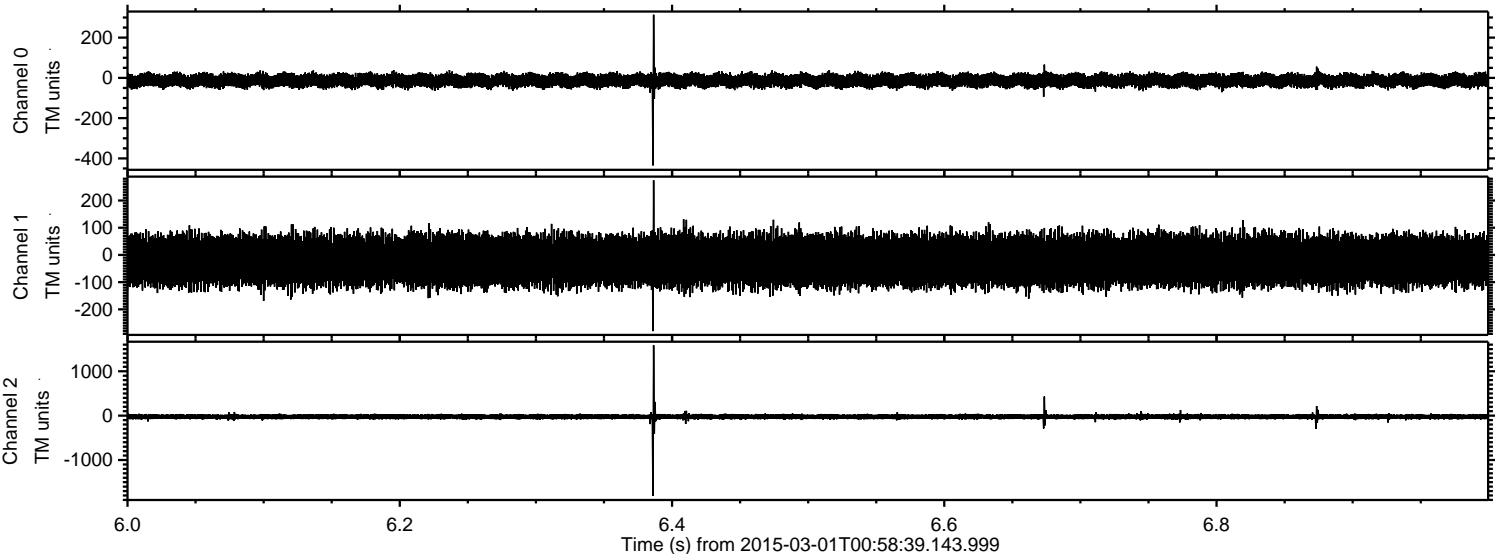
ELMAVAN 3D WAVEFORMS (Measured data sampled at 50 kHz) 49805 packets of 144 samples from 2015-03-01T00:58:39.143.999.

Processed Fri Mar 6 12:12:39 2015 by ELM ver.2012-10-06 from 001\_\_elm20150301\_005838\_\_dat00.bin



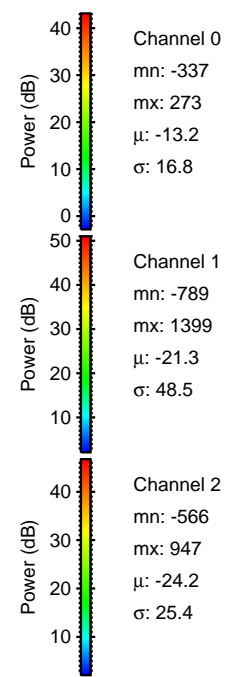
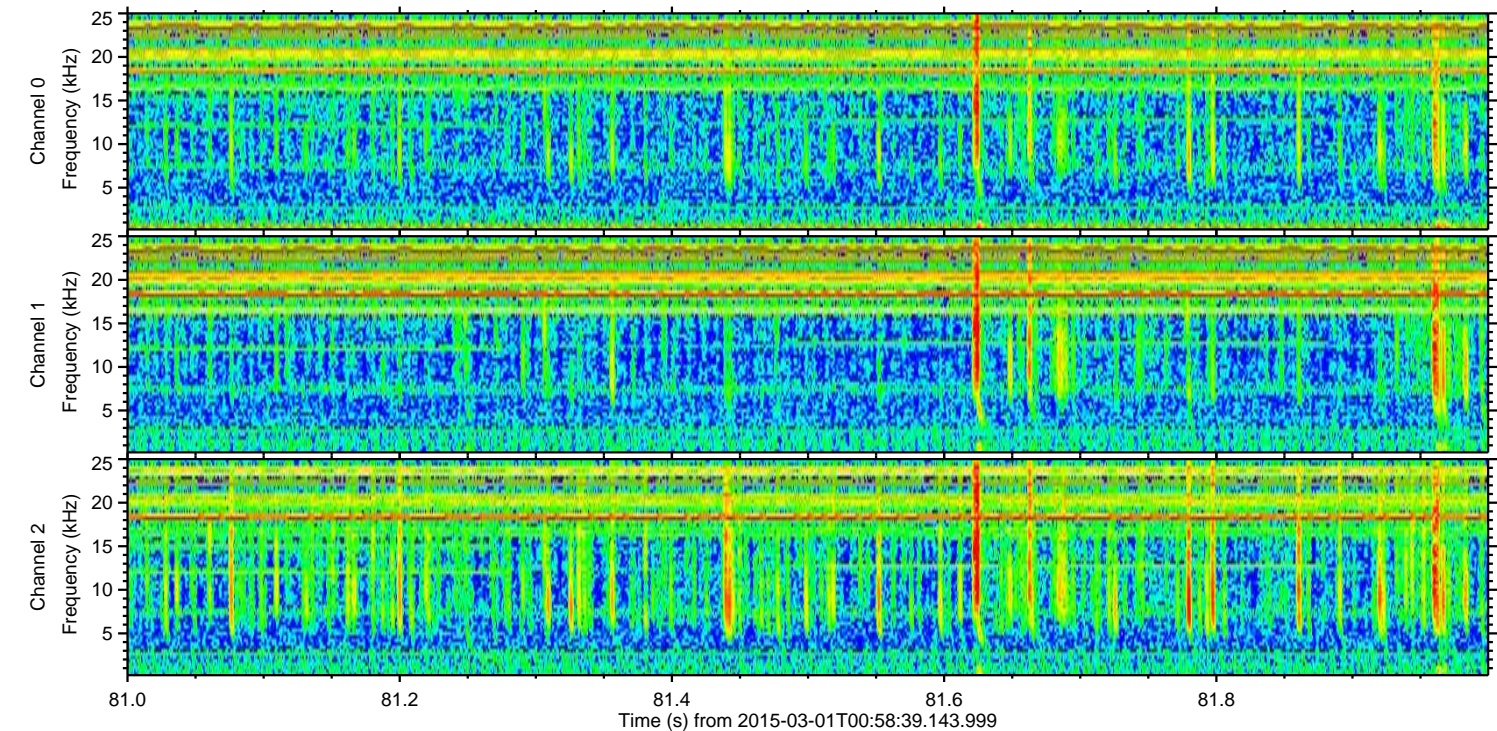
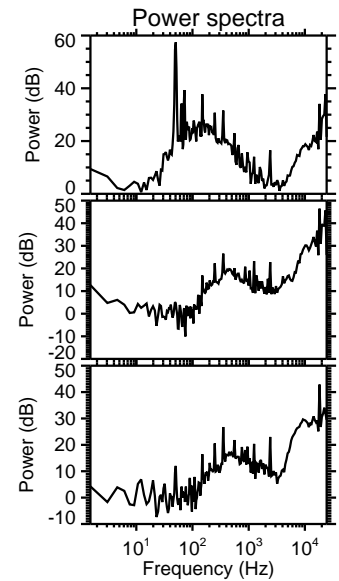
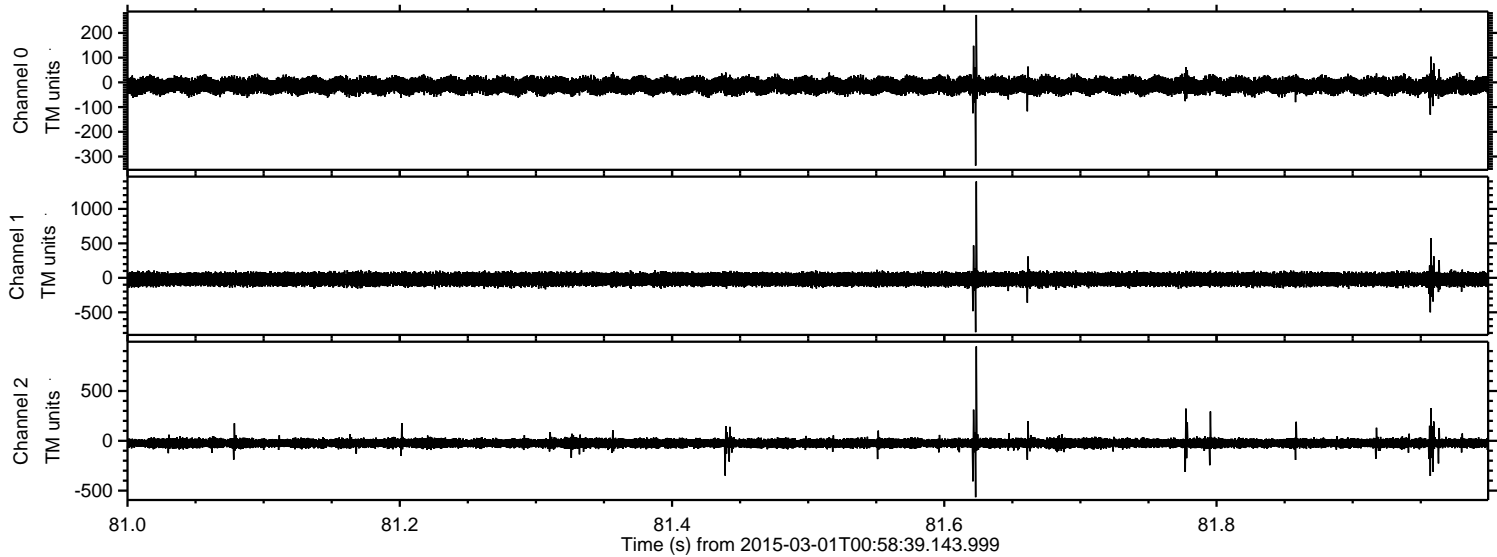


Processed Fri Mar 6 12:12:51 2015 by ELM ver.2012-10-06 from 001\_\_elm20150301\_005838\_\_dat00.bin



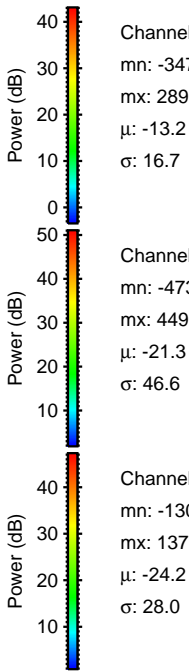
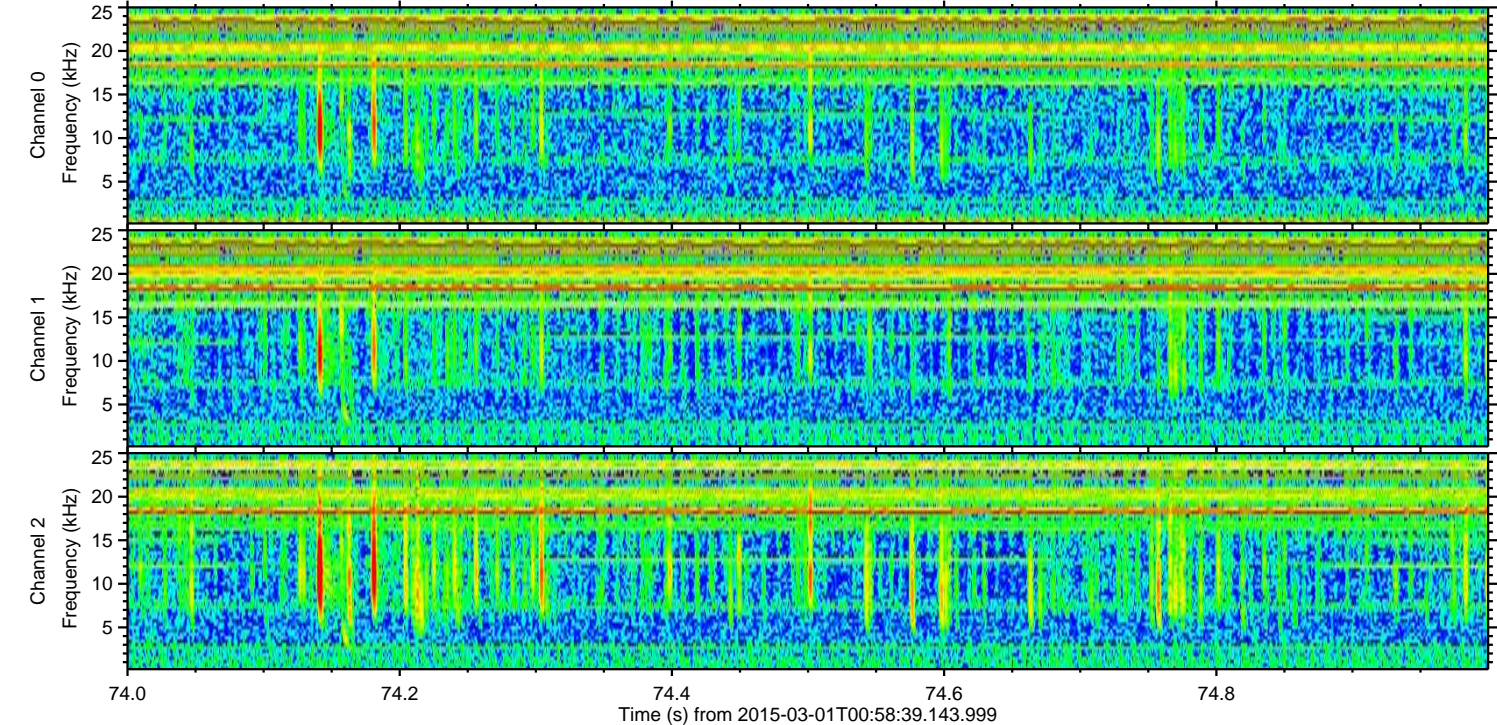
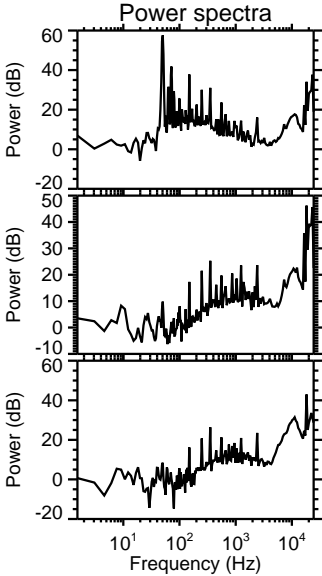
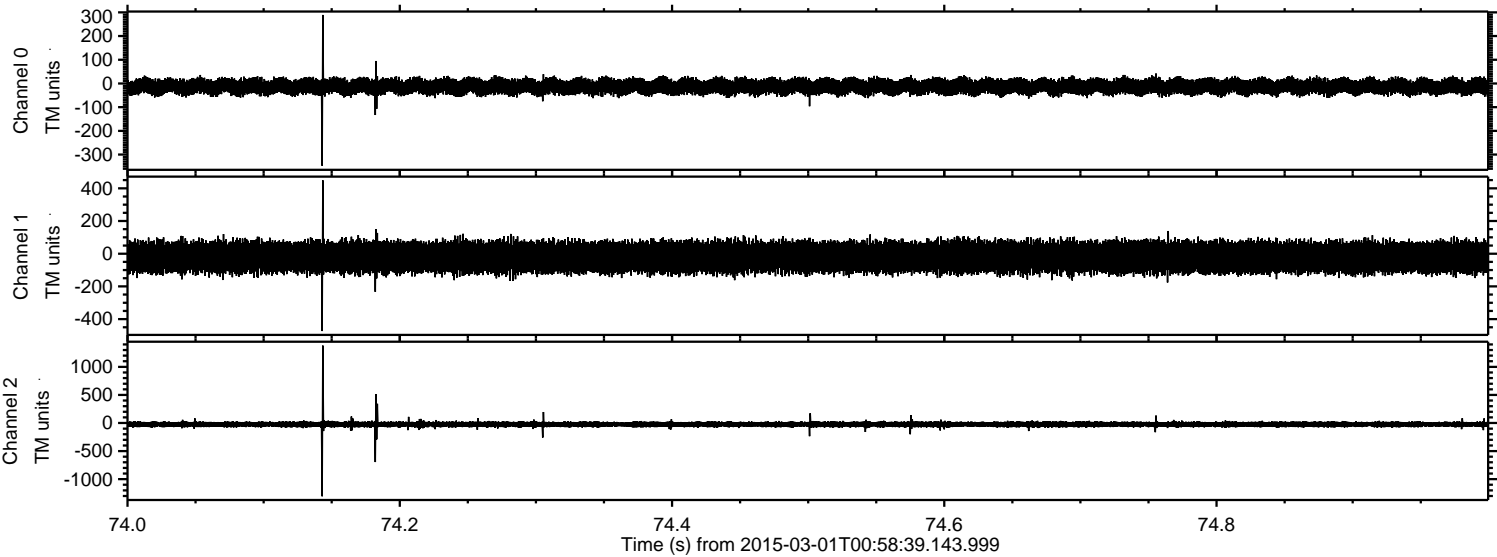


Processed Fri Mar 6 12:12:52 2015 by ELM ver.2012-10-06 from 001\_\_elm20150301\_005838\_\_dat00.bin





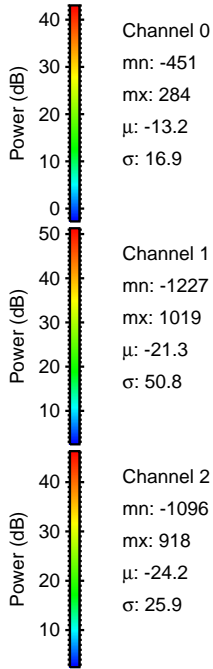
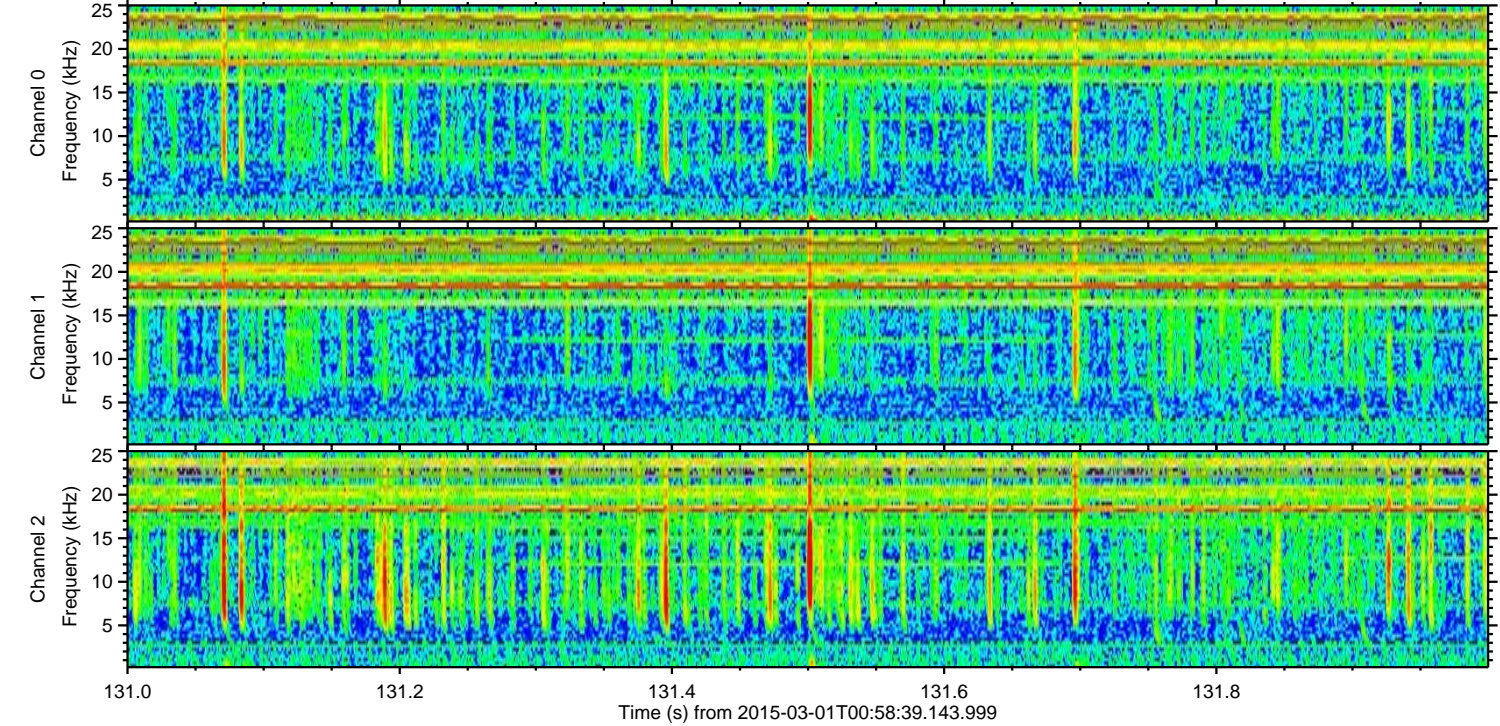
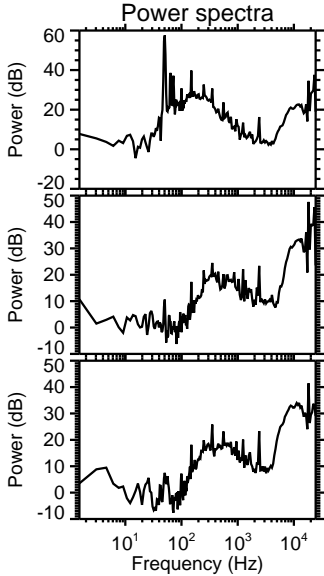
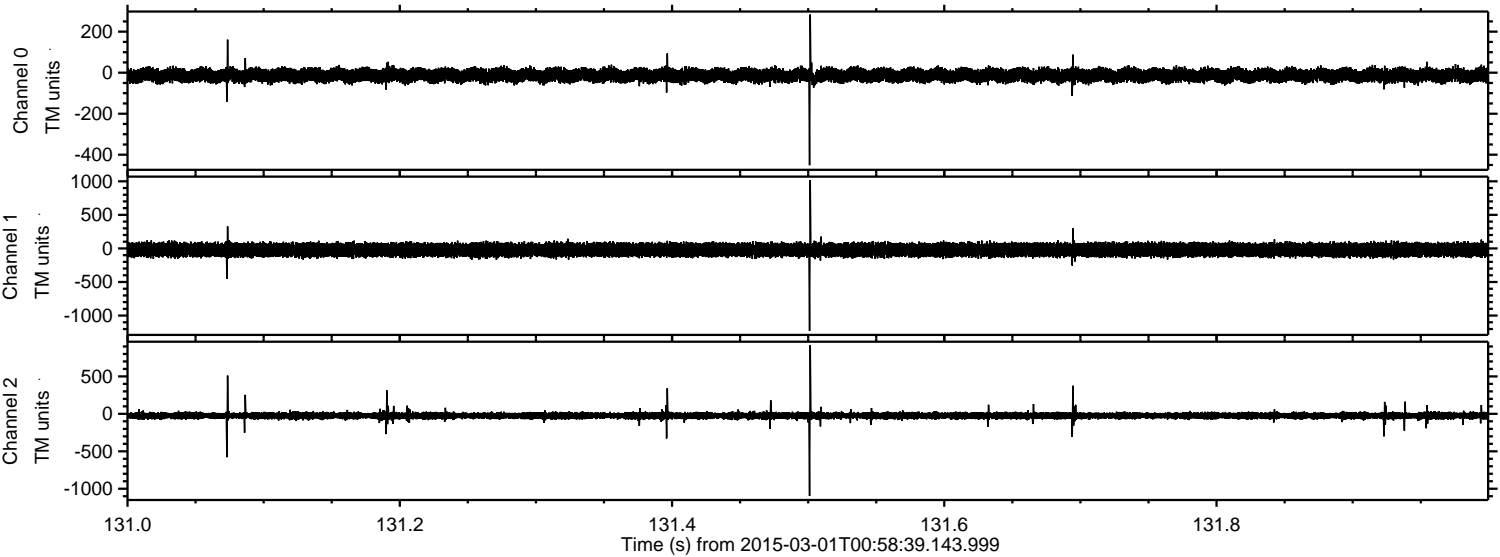
Processed Fri Mar 6 12:12:53 2015 by ELM ver.2012-10-06 from 001\_\_elm20150301\_005838\_\_dat00.bin





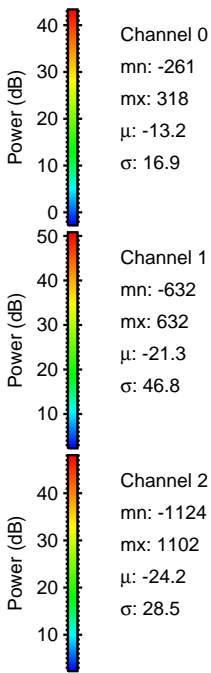
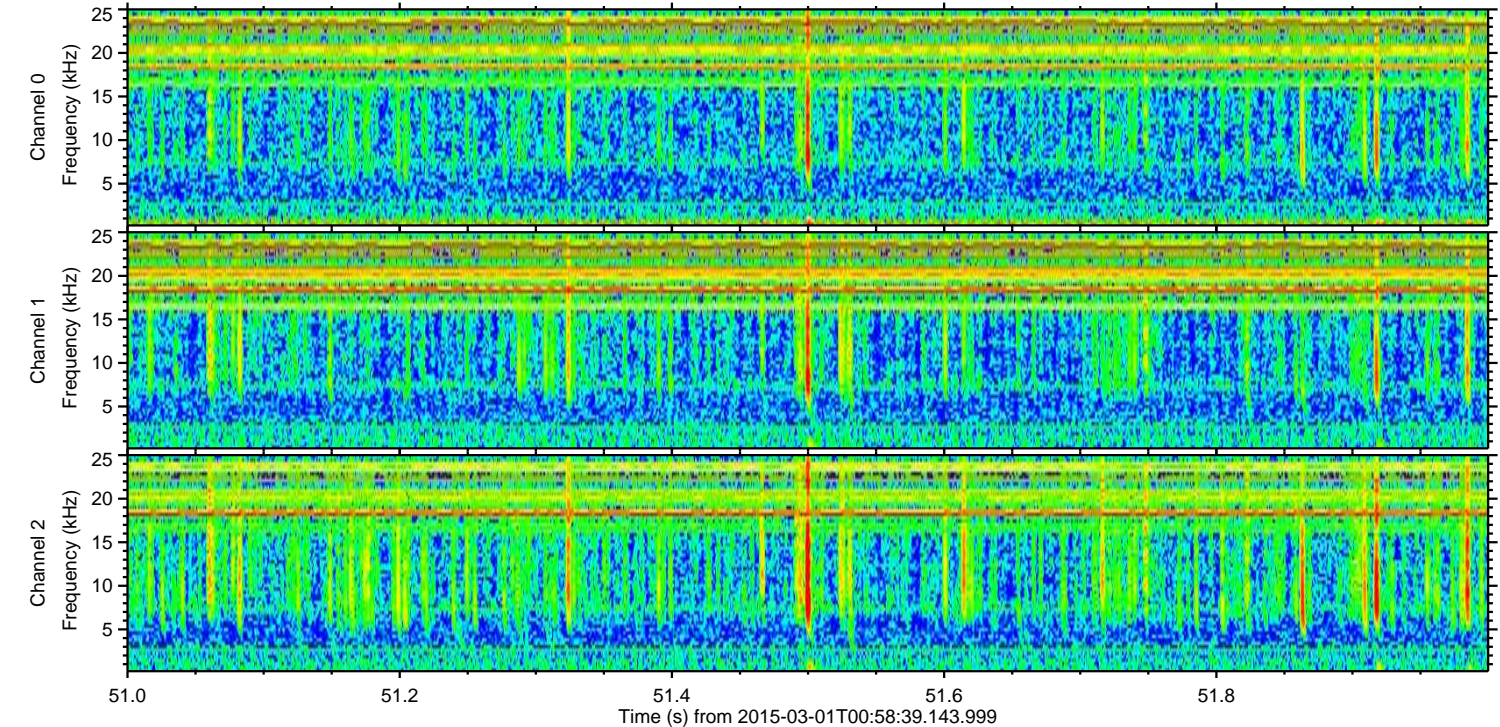
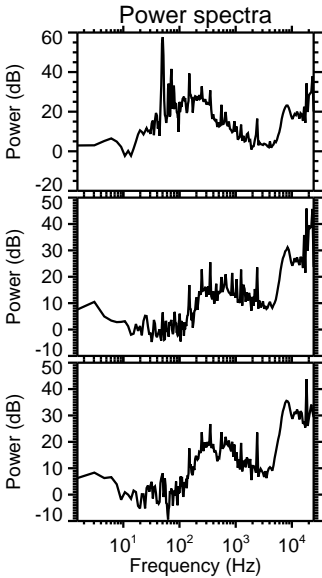
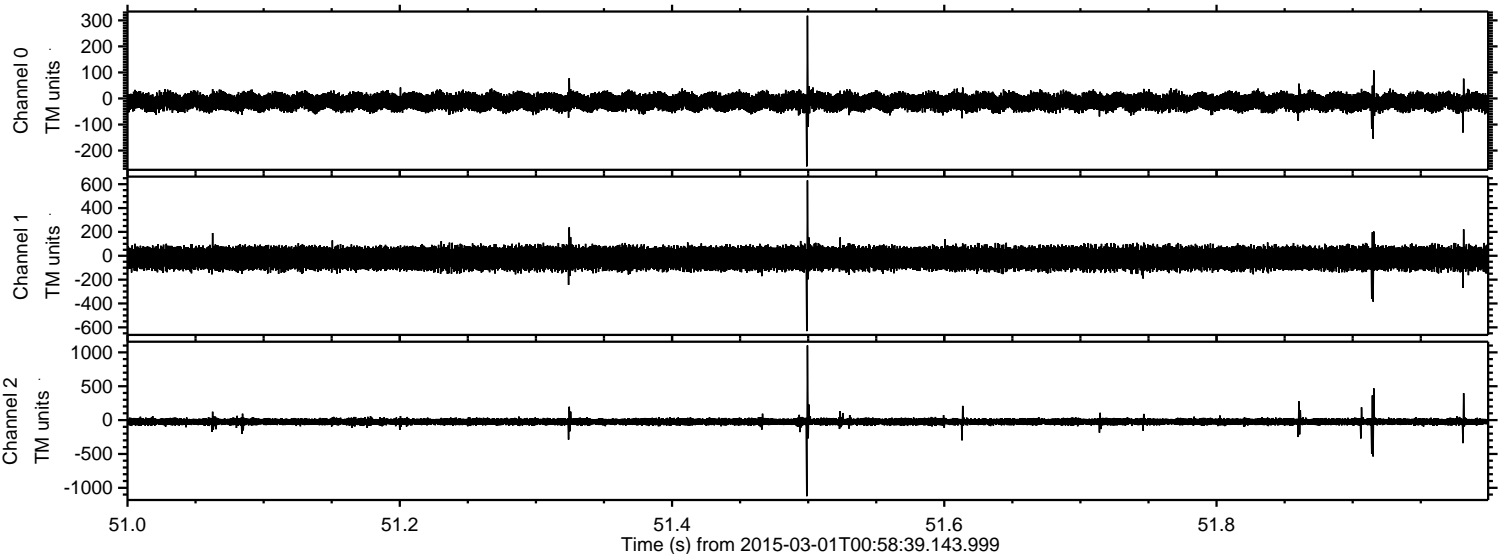
ELMAVAN 3D WAVEFORMS (Measured data sampled at 50 kHz) 49805 packets of 144 samples from 2015-03-01T00:58:39.143.999. Part 132/144

Processed Fri Mar 6 12:12:54 2015 by ELM ver.2012-10-06 from 001\_\_elm20150301\_005838\_\_dat00.bin



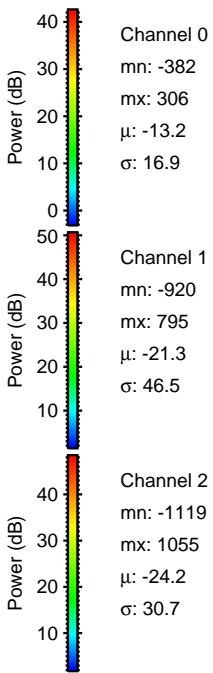
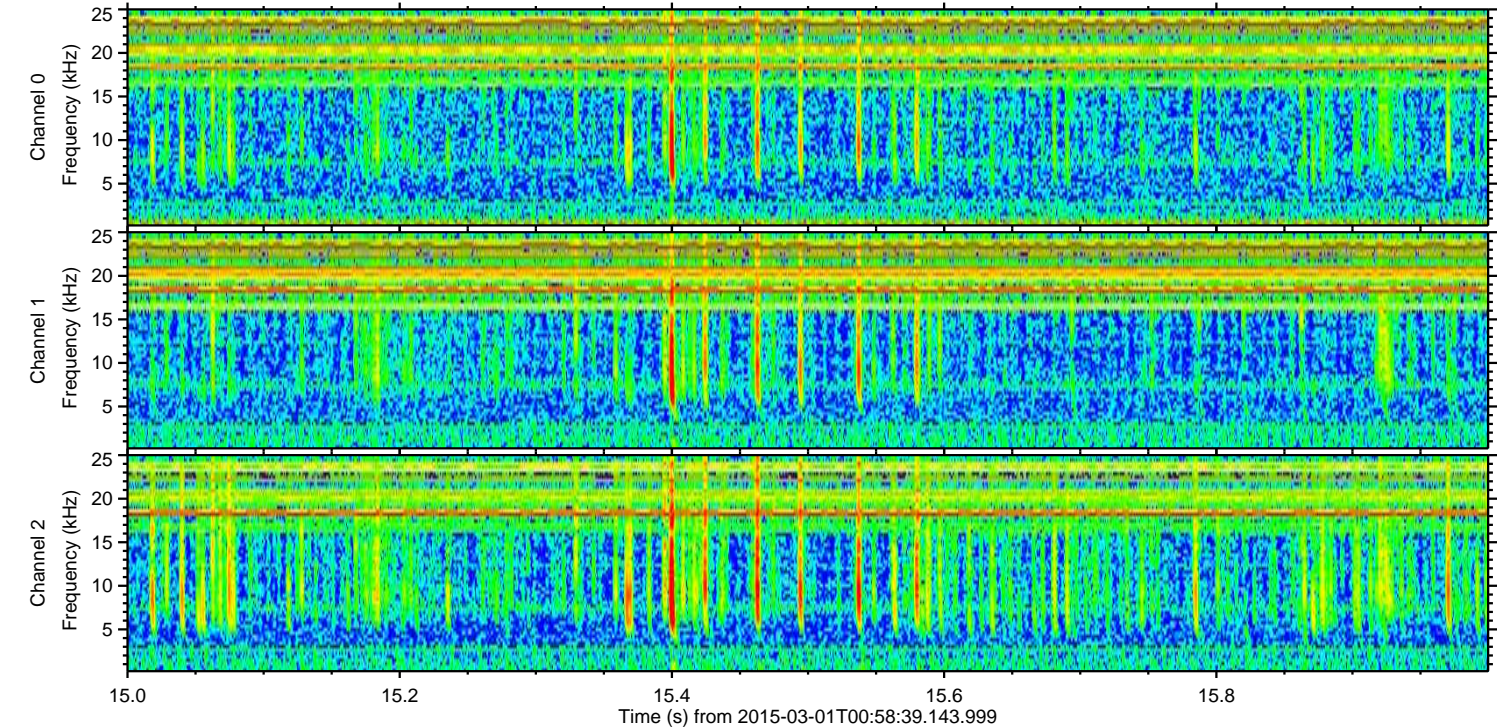
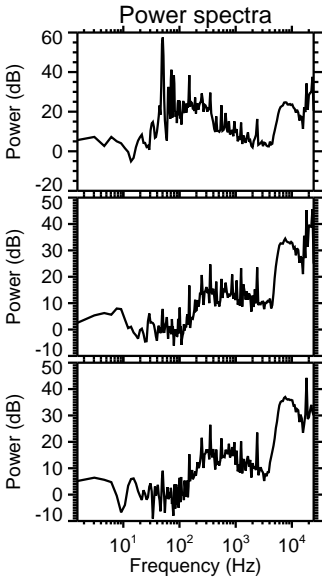
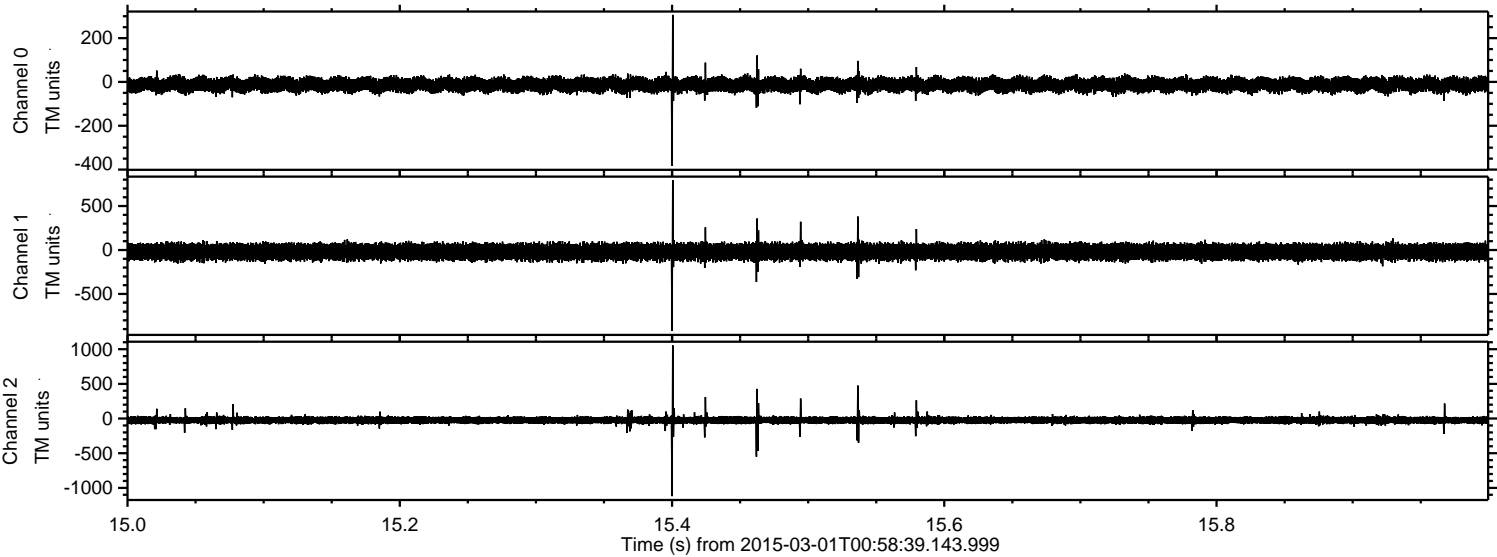


Processed Fri Mar 6 12:12:55 2015 by ELM ver.2012-10-06 from 001\_\_elm20150301\_005838\_\_dat00.bin



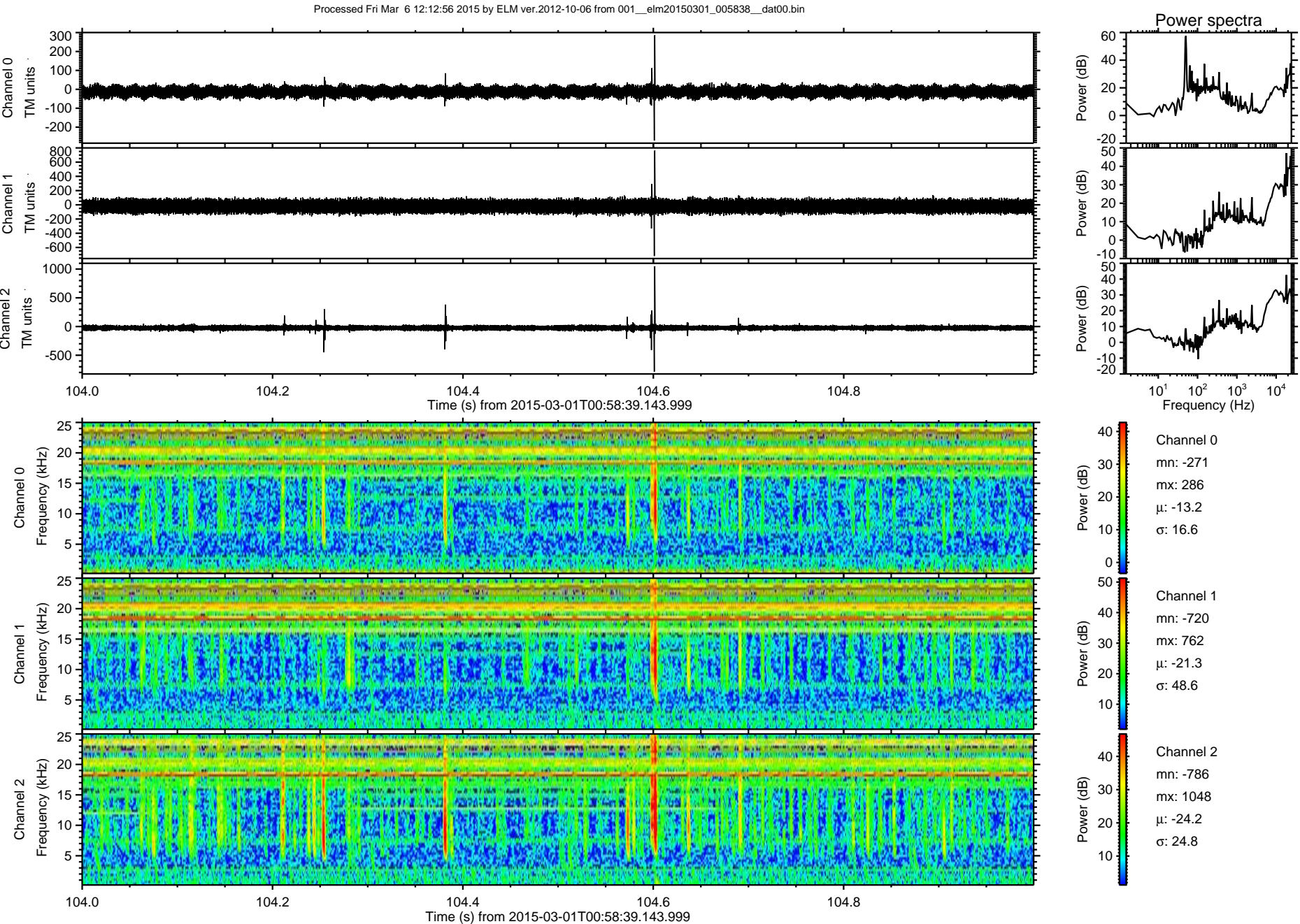


Processed Fri Mar 6 12:12:55 2015 by ELM ver.2012-10-06 from 001\_\_elm20150301\_005838\_\_dat00.bin



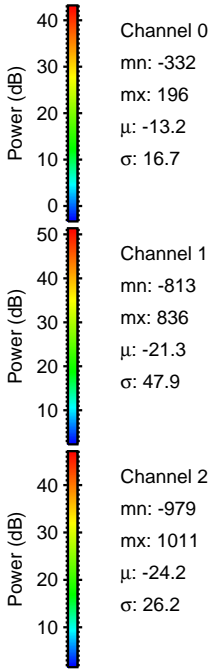
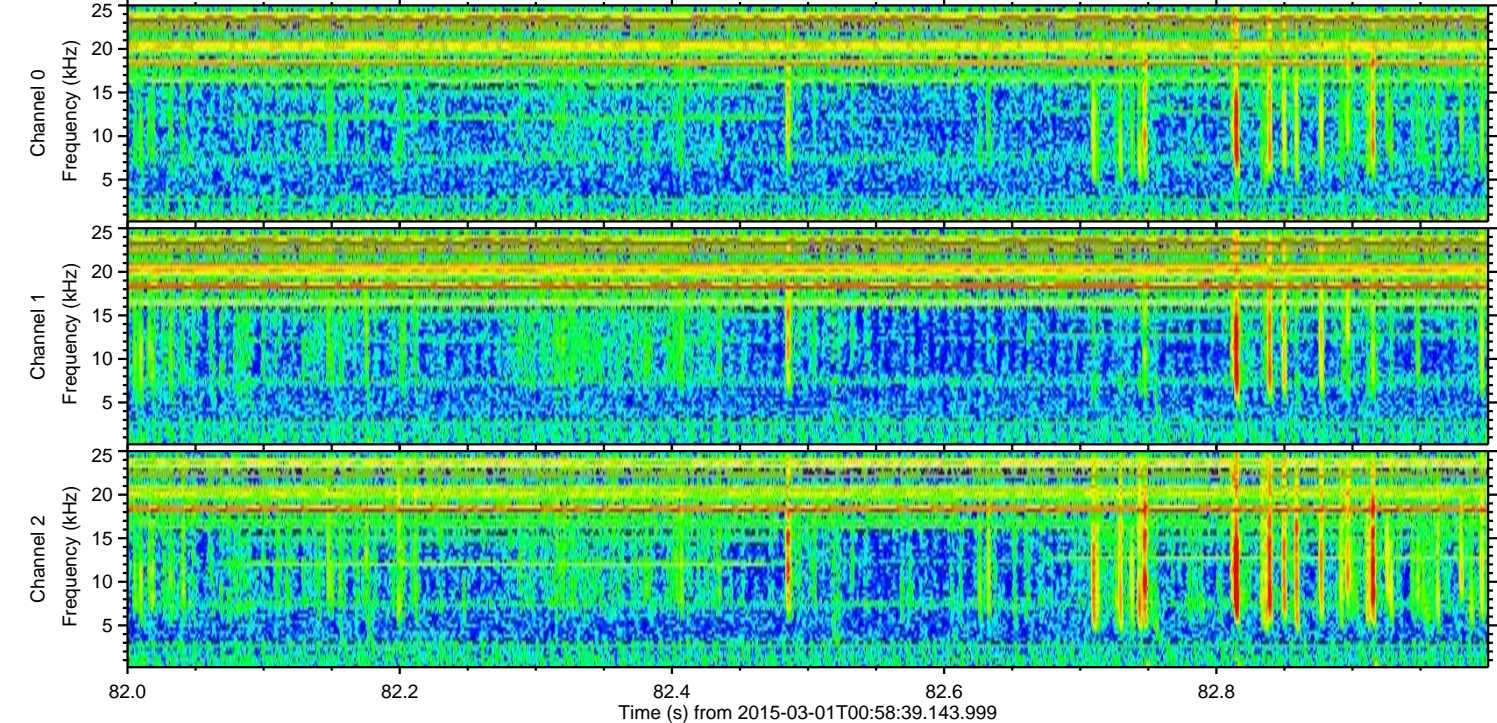
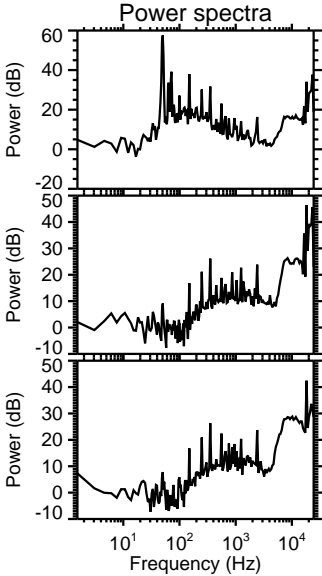
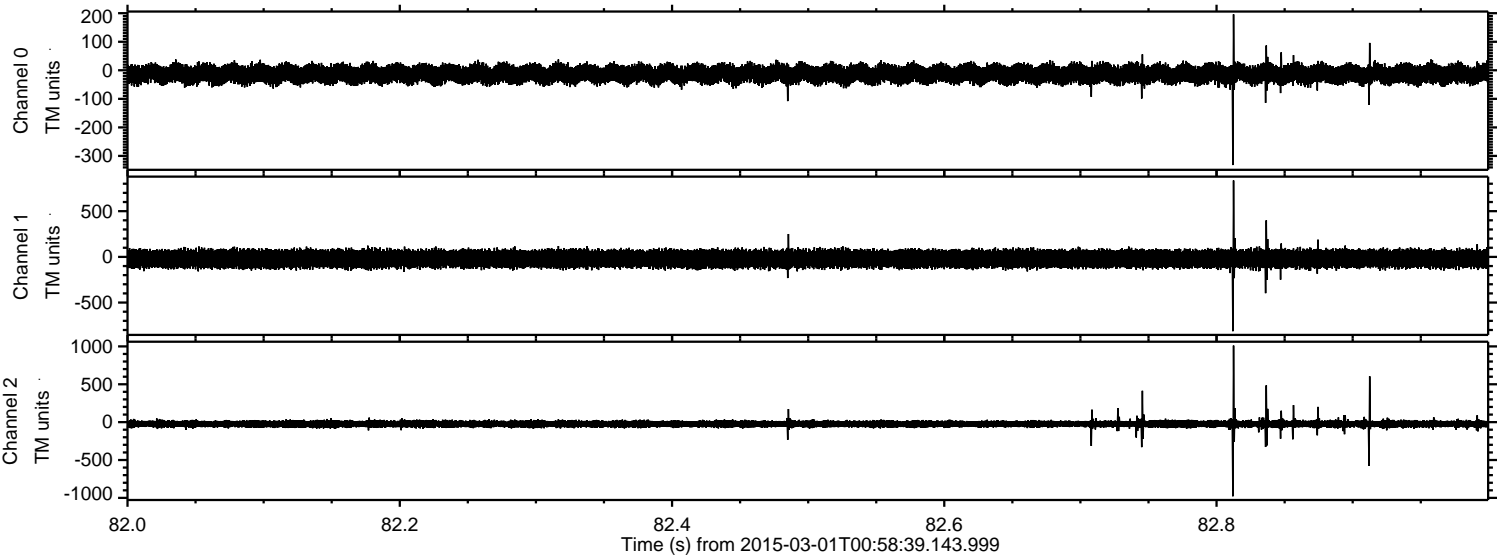


ELMAVAN 3D WAVEFORMS (Measured data sampled at 50 kHz) 49805 packets of 144 samples from 2015-03-01T00:58:39.143.999. Part 105/144



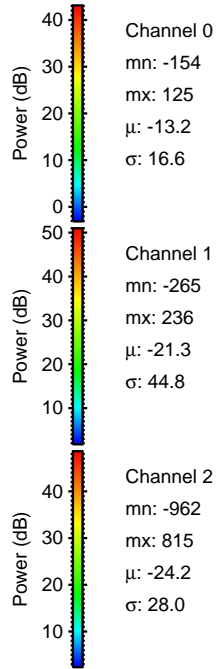
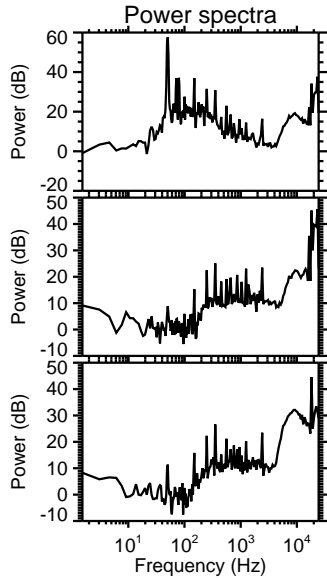
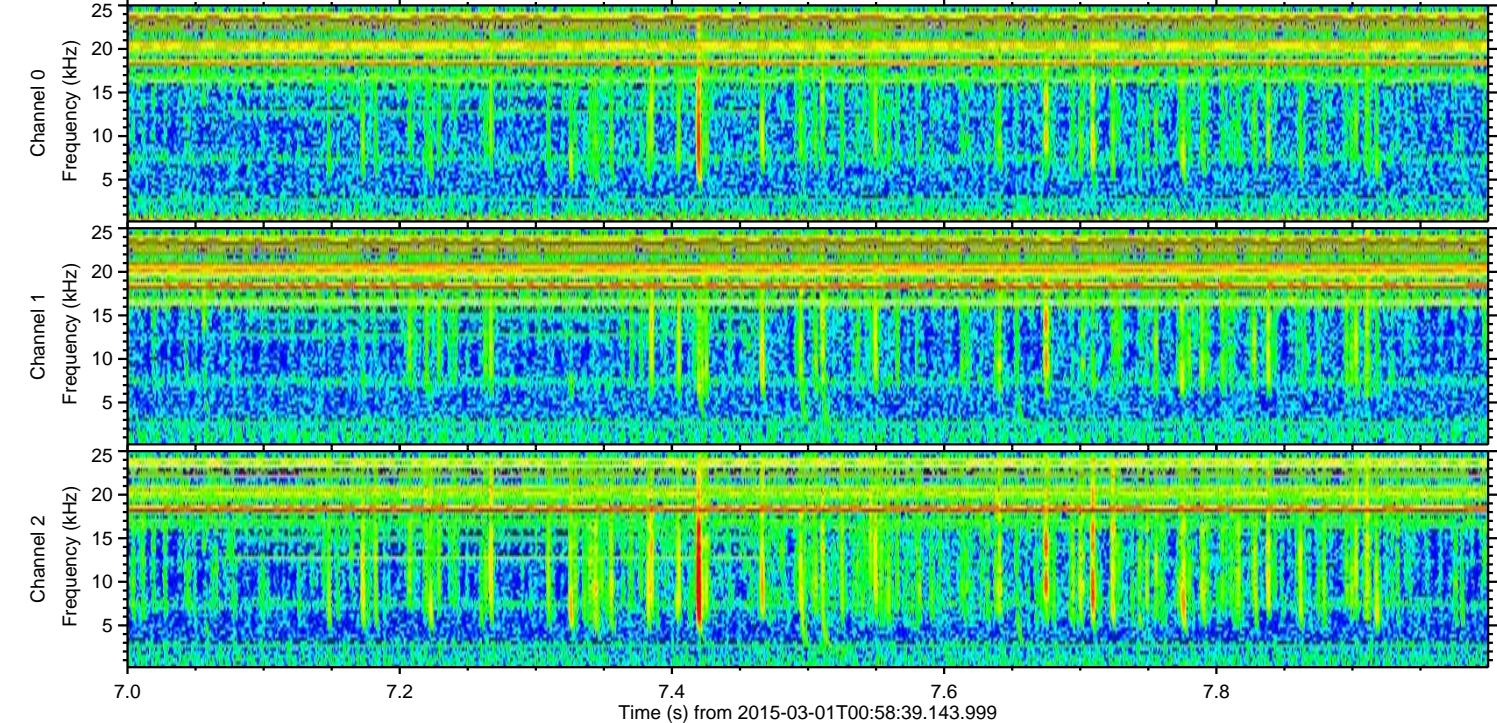
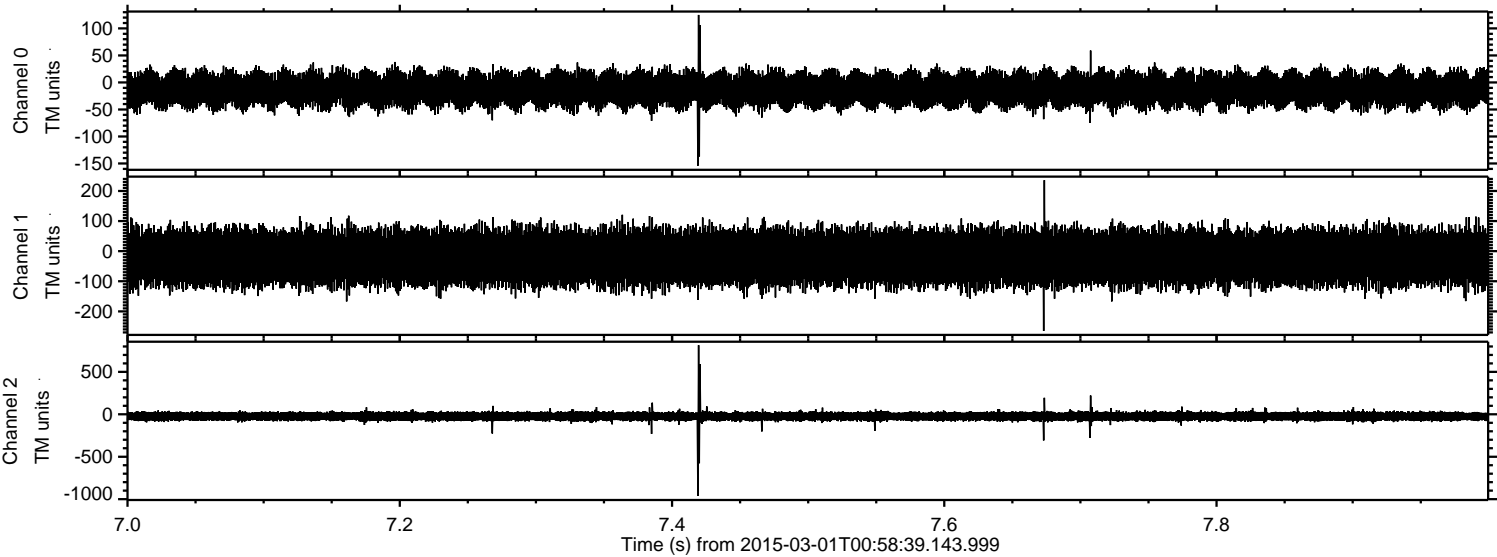


Processed Fri Mar 6 12:12:57 2015 by ELM ver.2012-10-06 from 001\_\_elm20150301\_005838\_\_dat00.bin





Processed Fri Mar 6 12:12:58 2015 by ELM ver.2012-10-06 from 001\_\_elm20150301\_005838\_\_dat00.bin



Channel 0  
mn: -154  
mx: 125  
 $\mu$ : -13.2  
 $\sigma$ : 16.6

Channel 1  
mn: -265  
mx: 236  
 $\mu$ : -21.3  
 $\sigma$ : 44.8

Channel 2  
mn: -962  
mx: 815  
 $\mu$ : -24.2  
 $\sigma$ : 28.0



