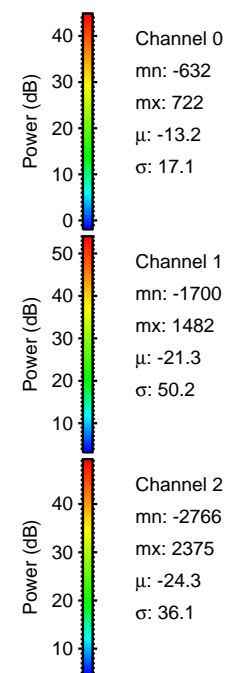
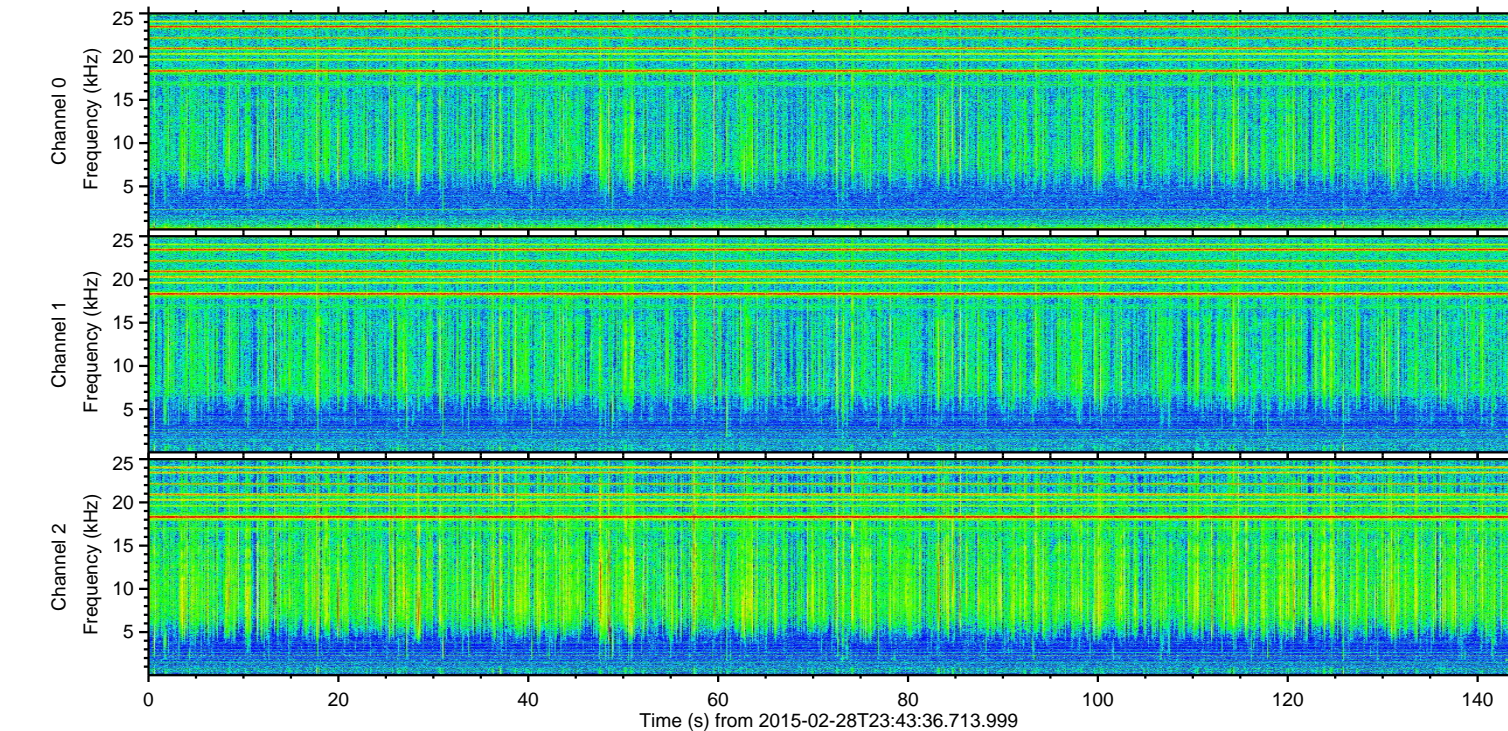
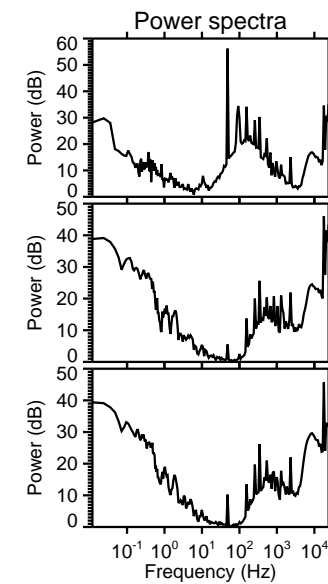
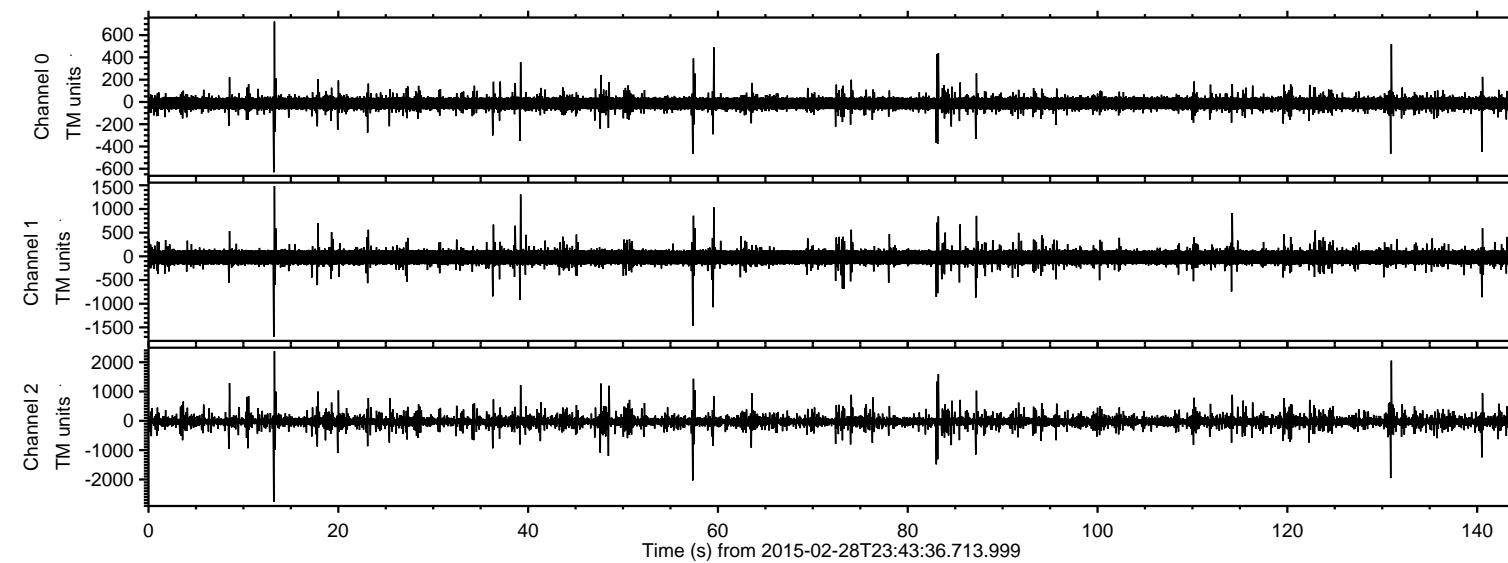


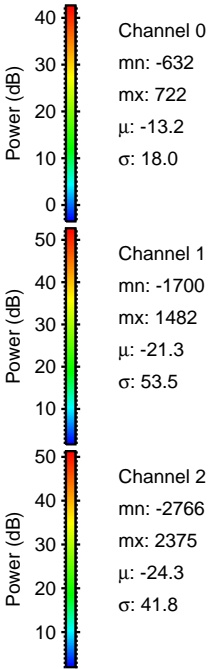
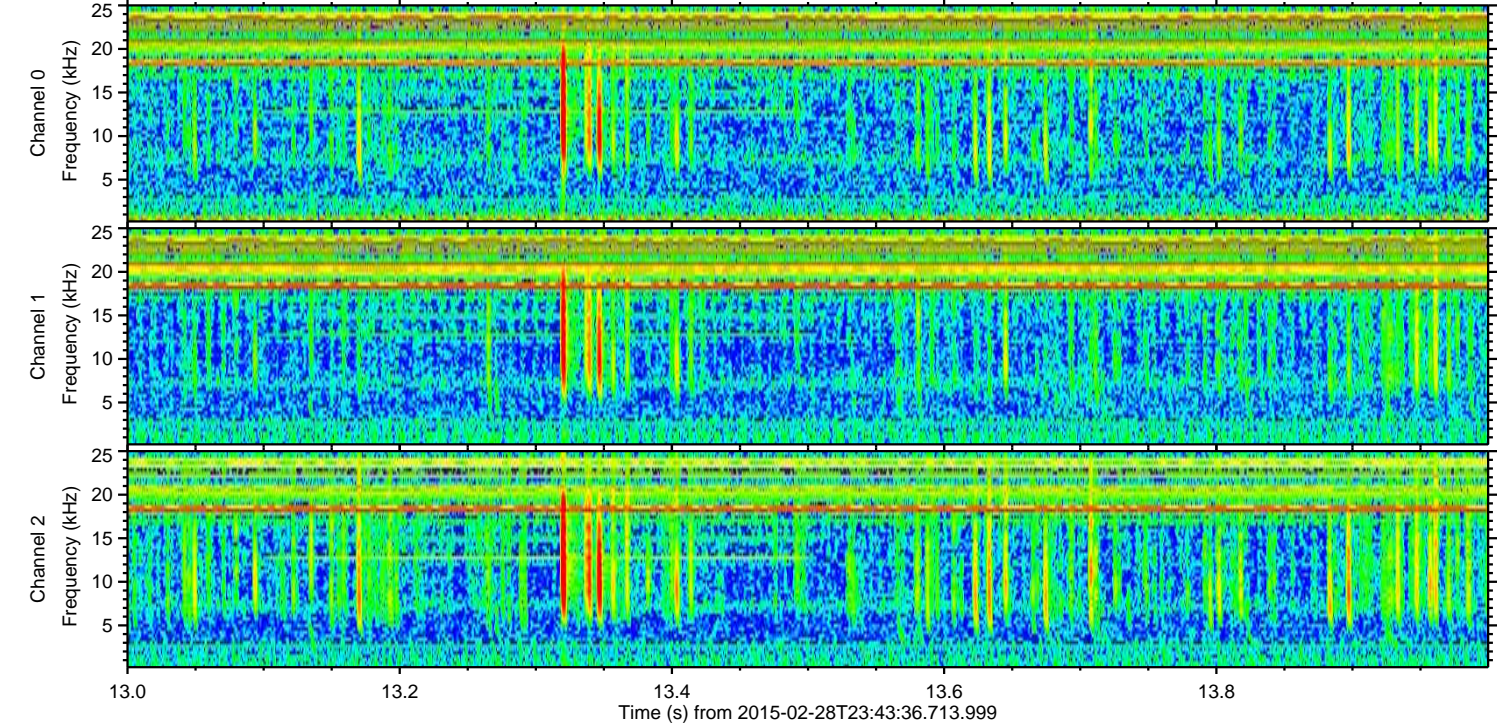
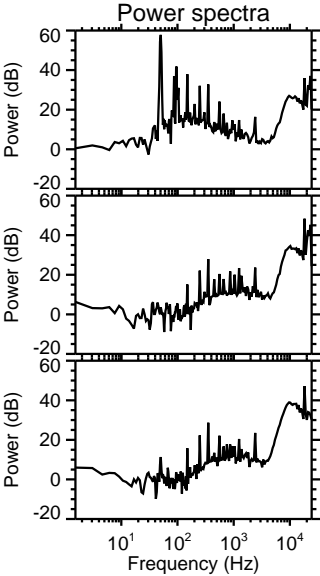
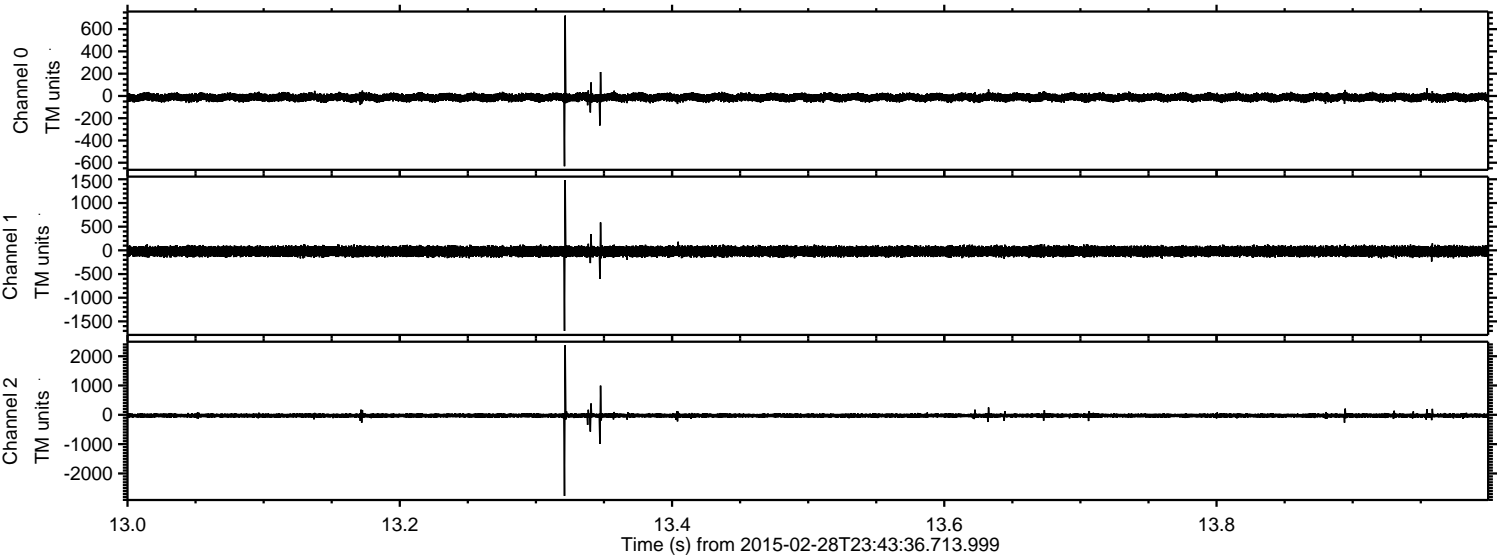
ELMAVAN 3D WAVEFORMS (Measured data sampled at 50 kHz) 49782 packets of 144 samples from 2015-02-28T23:43:36.713.999.

Processed Fri Mar 6 11:26:07 2015 by ELM ver.2012-10-06 from 001__elm20150228_234335__dat00.bin



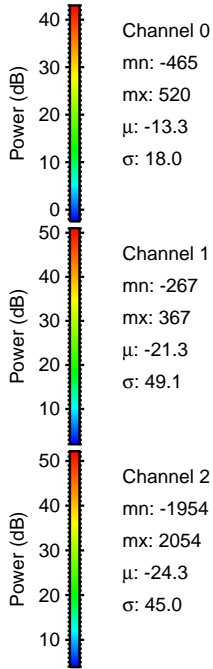
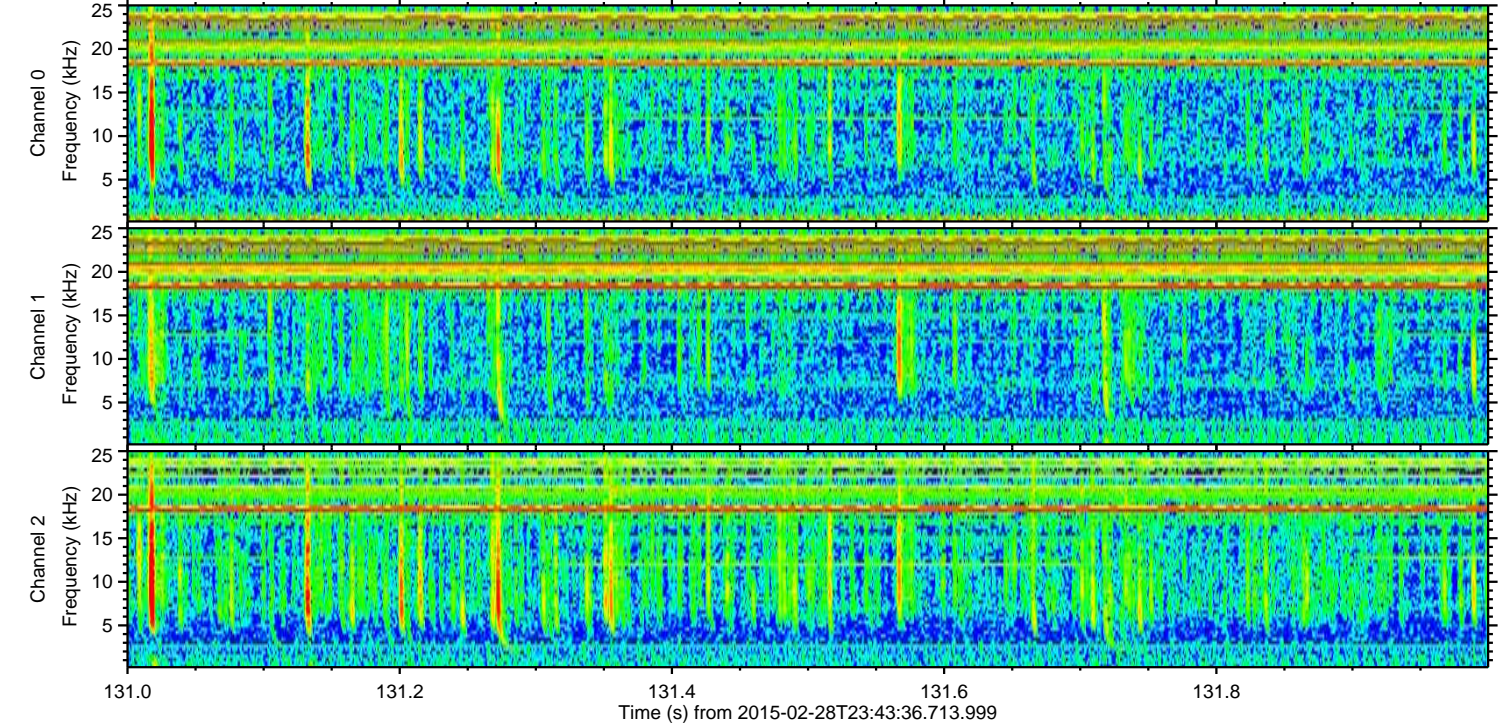
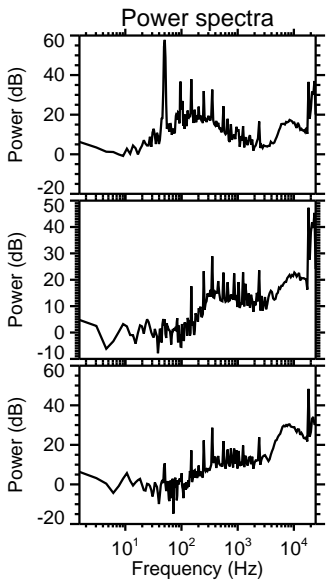
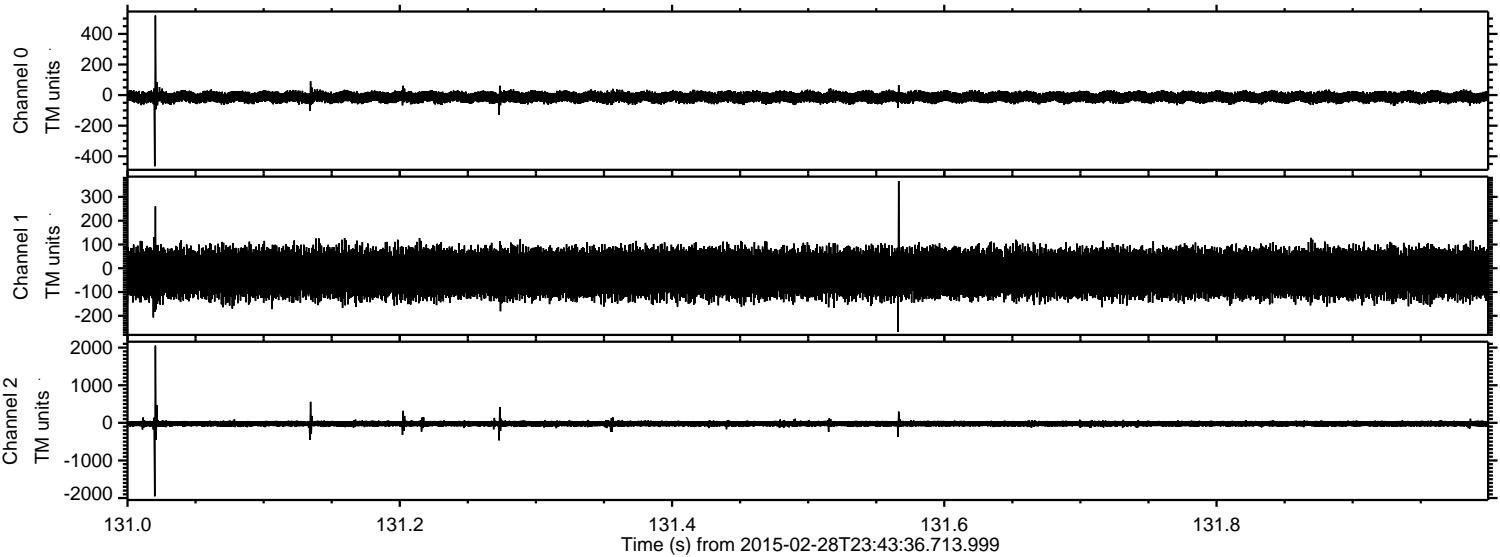
ELMAVAN 3D WAVEFORMS (Measured data sampled at 50 kHz) 49782 packets of 144 samples from 2015-02-28T23:43:36.713.999. Part 14/144

Processed Fri Mar 6 11:26:18 2015 by ELM ver.2012-10-06 from 001__elm20150228_234335__dat00.bin



ELMAVAN 3D WAVEFORMS (Measured data sampled at 50 kHz) 49782 packets of 144 samples from 2015-02-28T23:43:36.713.999. Part 132/144

Processed Fri Mar 6 11:26:19 2015 by ELM ver.2012-10-06 from 001__elm20150228_234335__dat00.bin

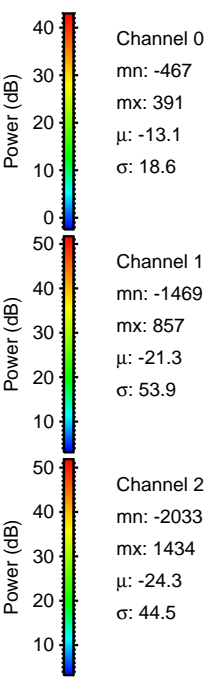
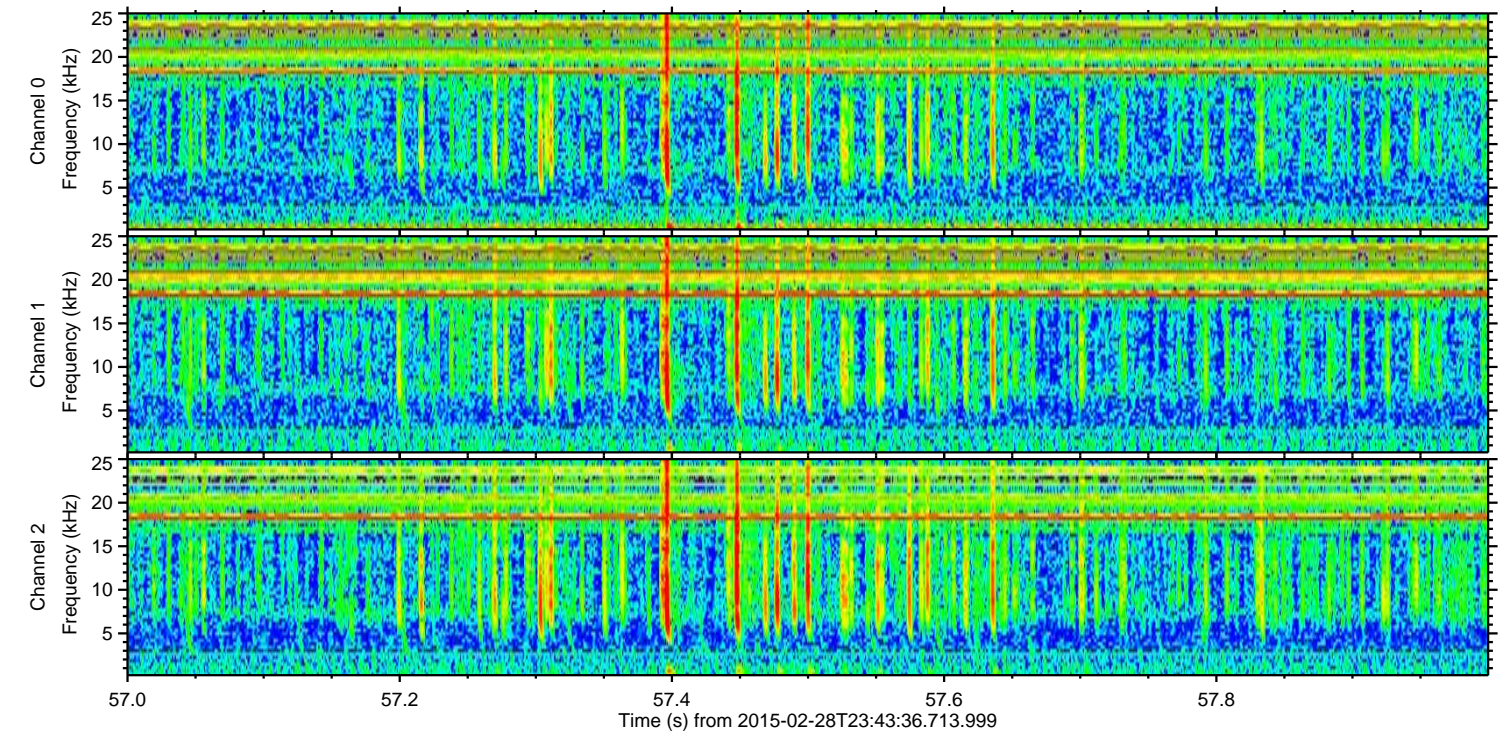
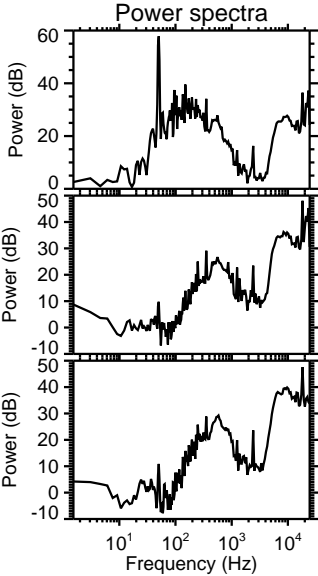
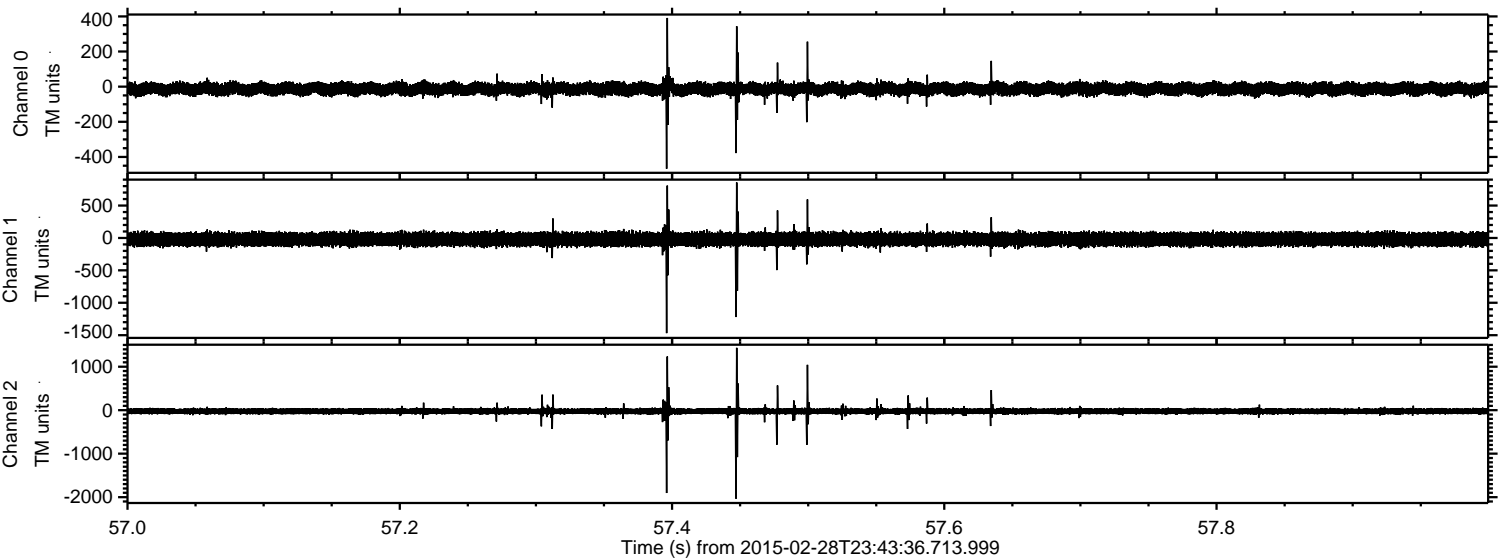


Channel 0
mn: -465
mx: 520
 μ : -13.3
 σ : 18.0

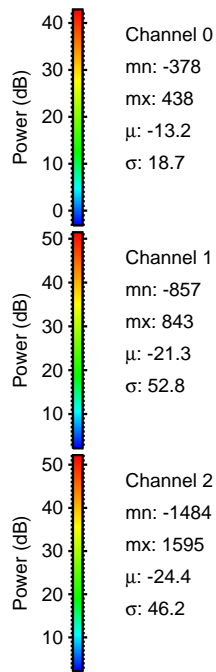
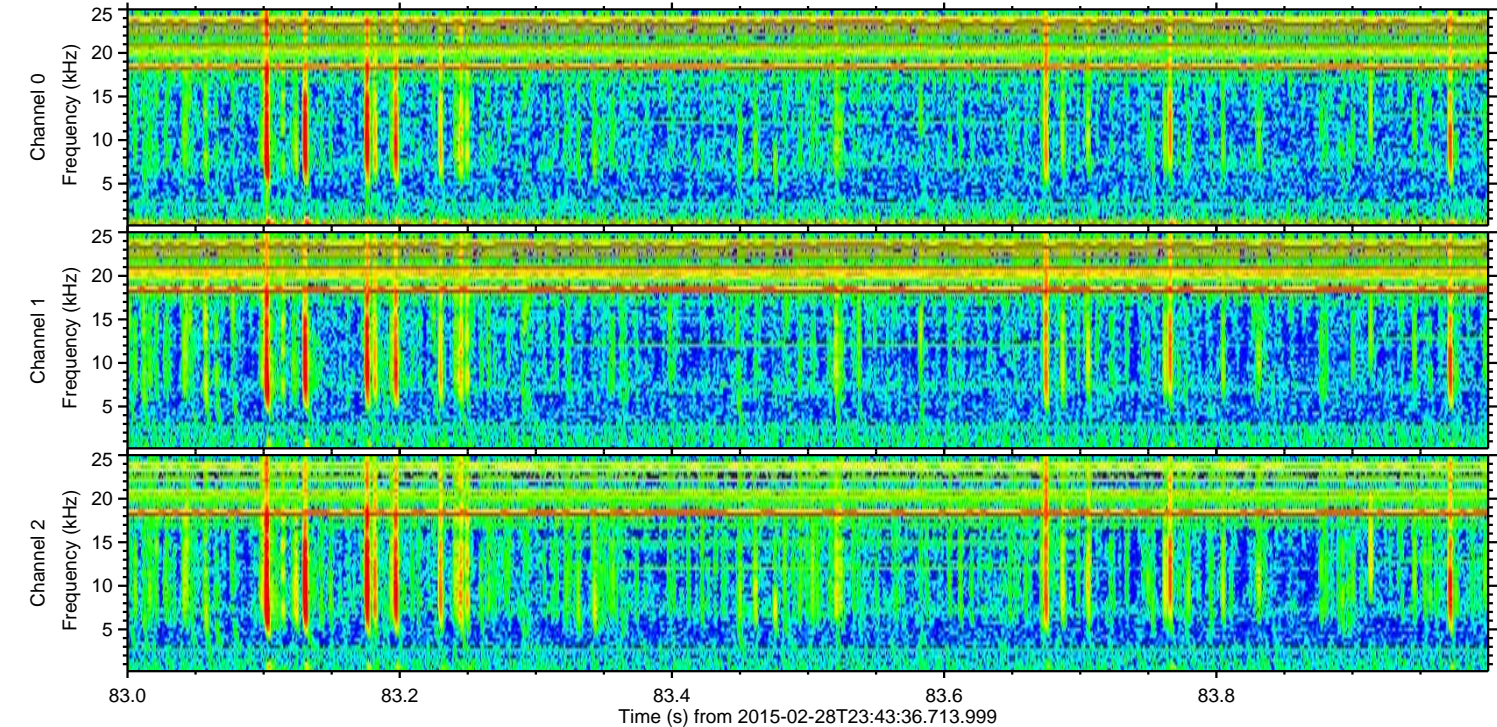
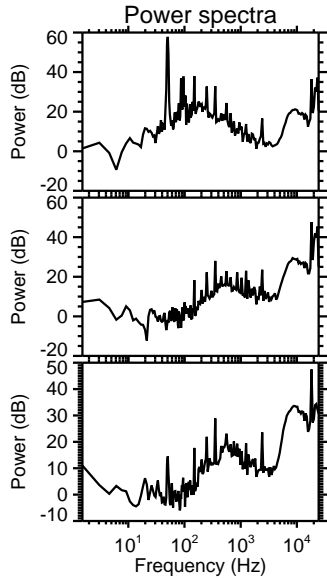
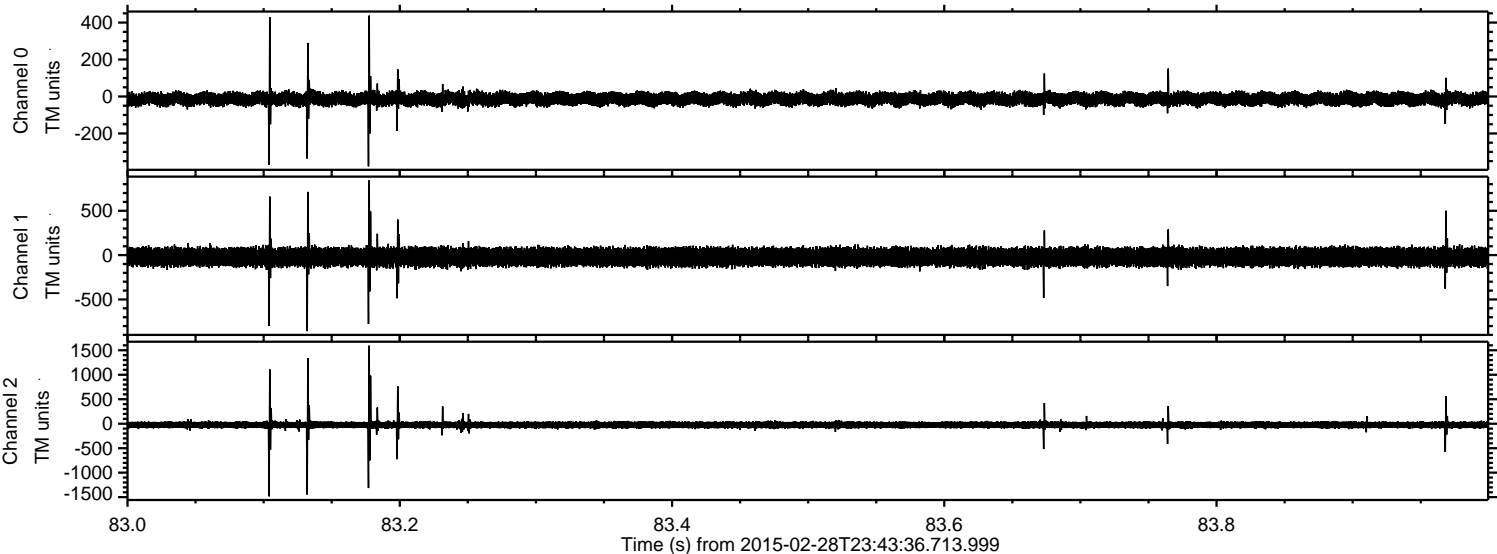
Channel 1
mn: -267
mx: 367
 μ : -21.3
 σ : 49.1

Channel 2
mn: -1954
mx: 2054
 μ : -24.3
 σ : 45.0

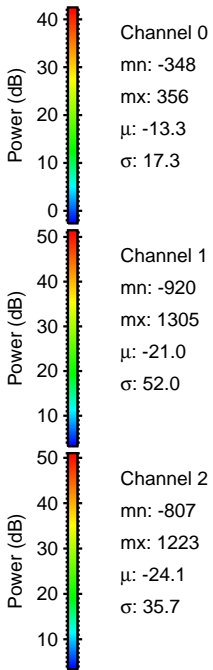
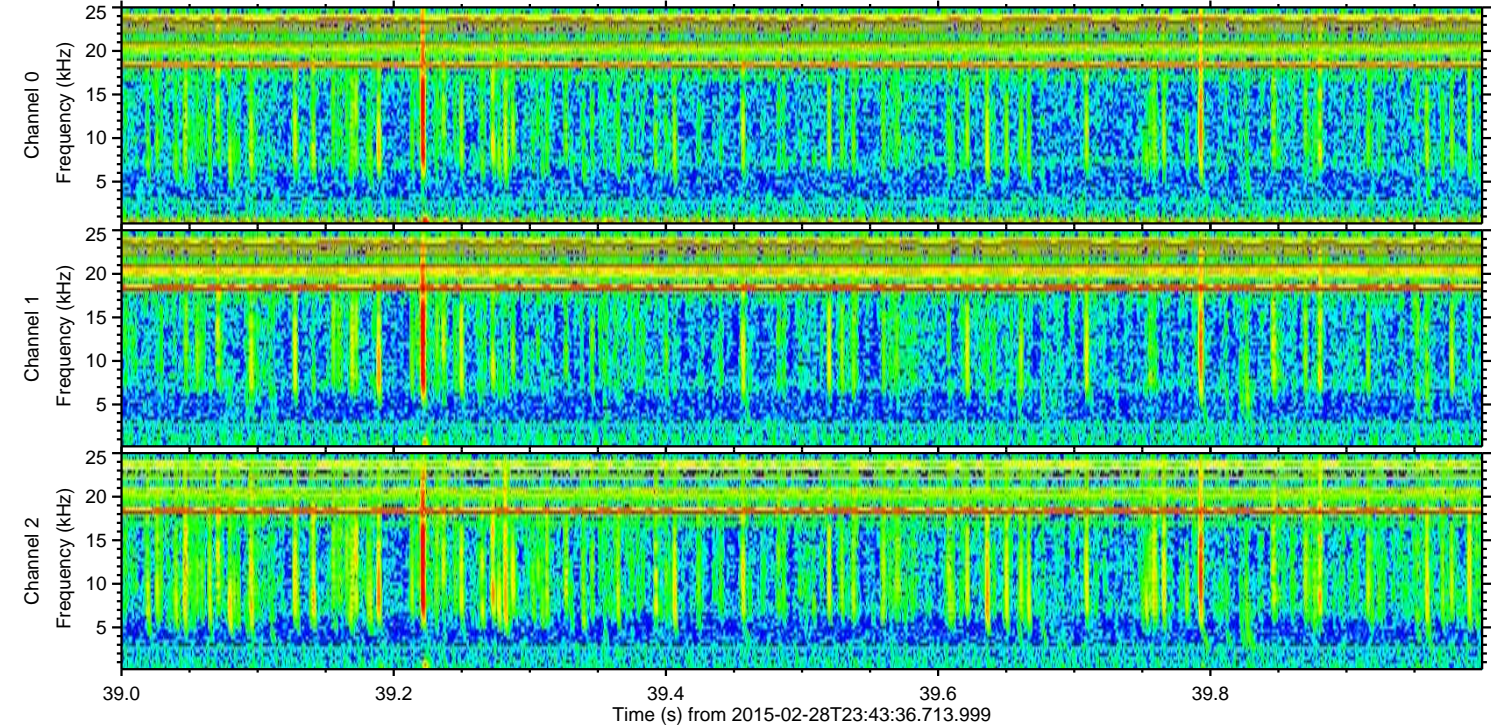
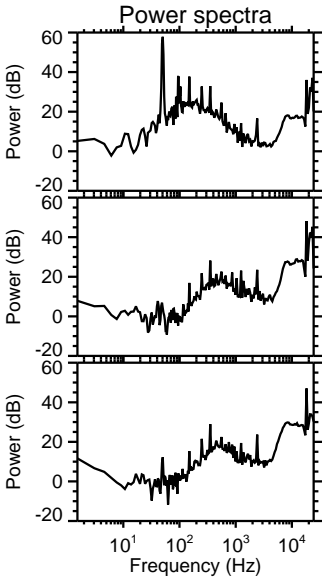
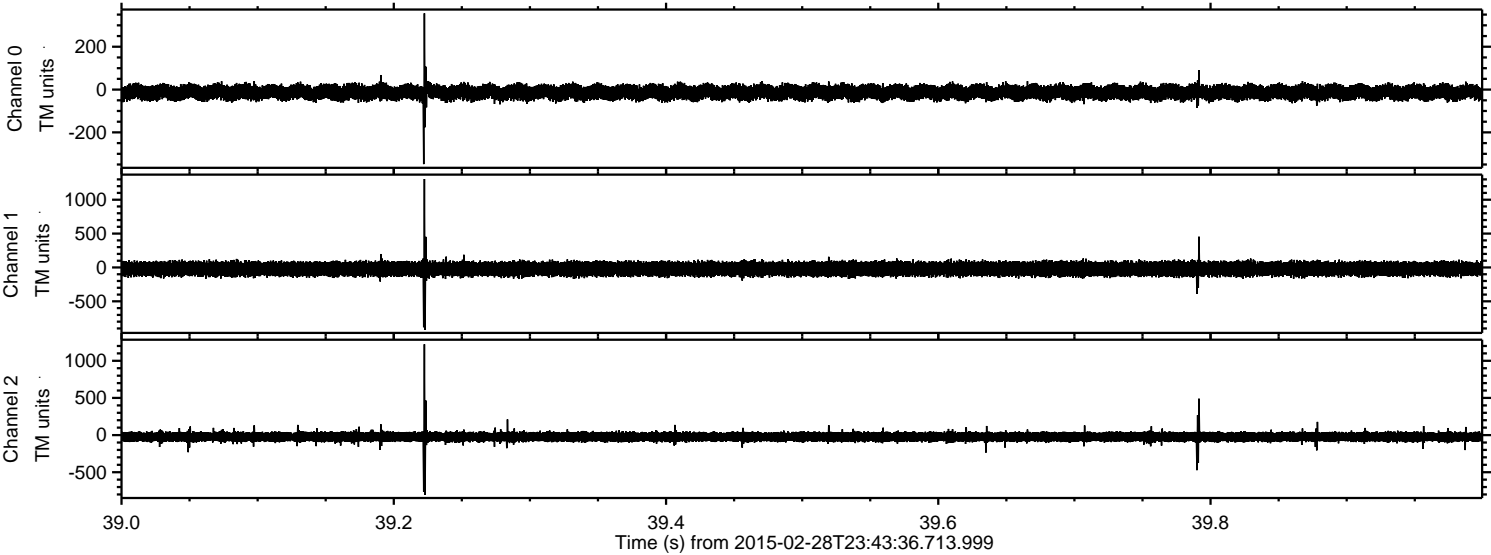
Processed Fri Mar 6 11:26:20 2015 by ELM ver.2012-10-06 from 001__elm20150228_234335__dat00.bin



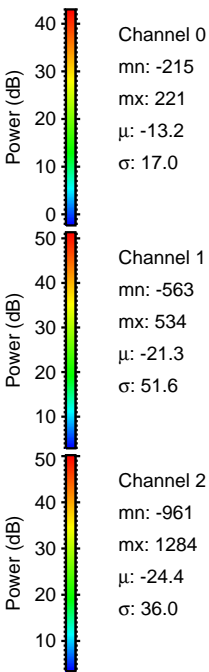
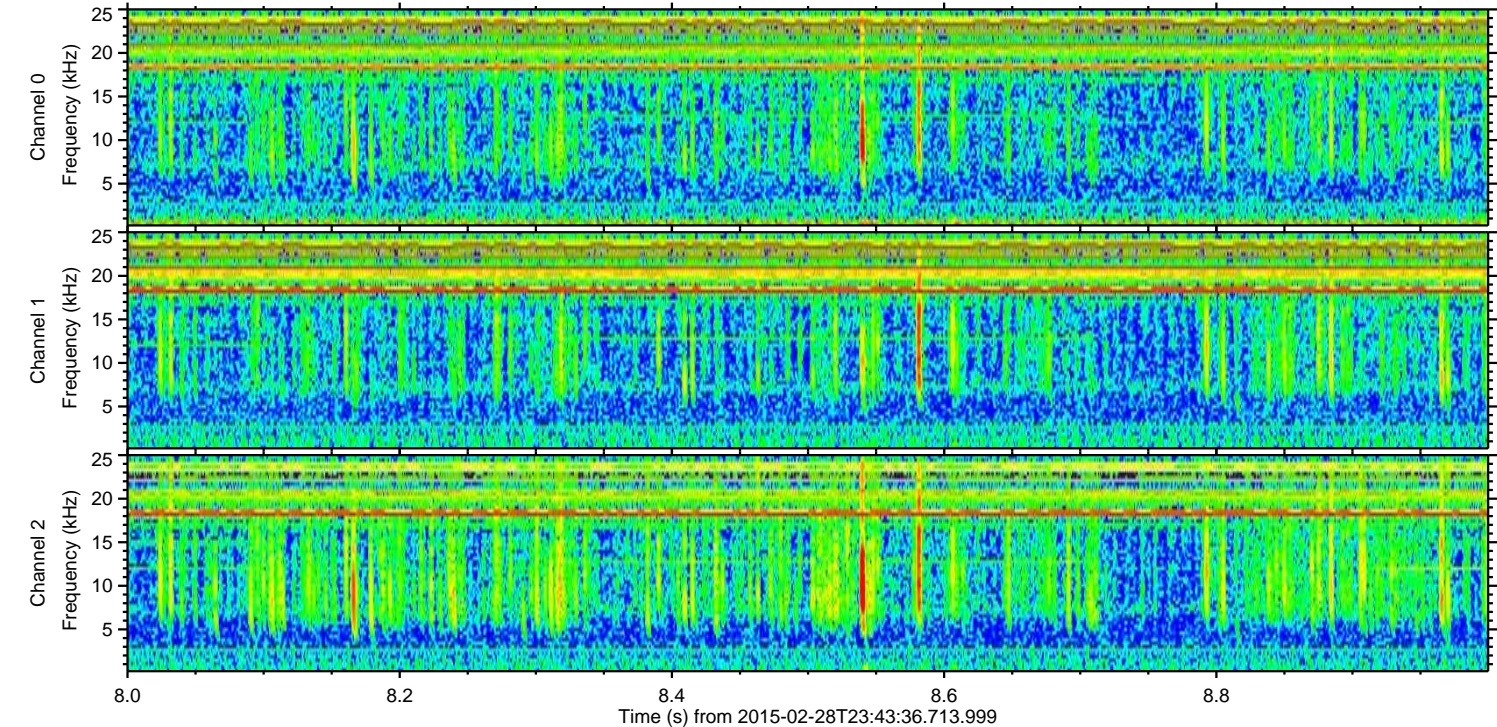
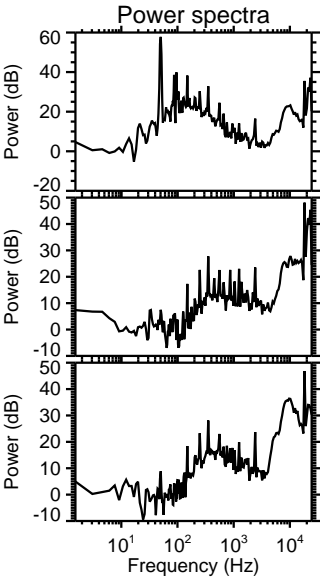
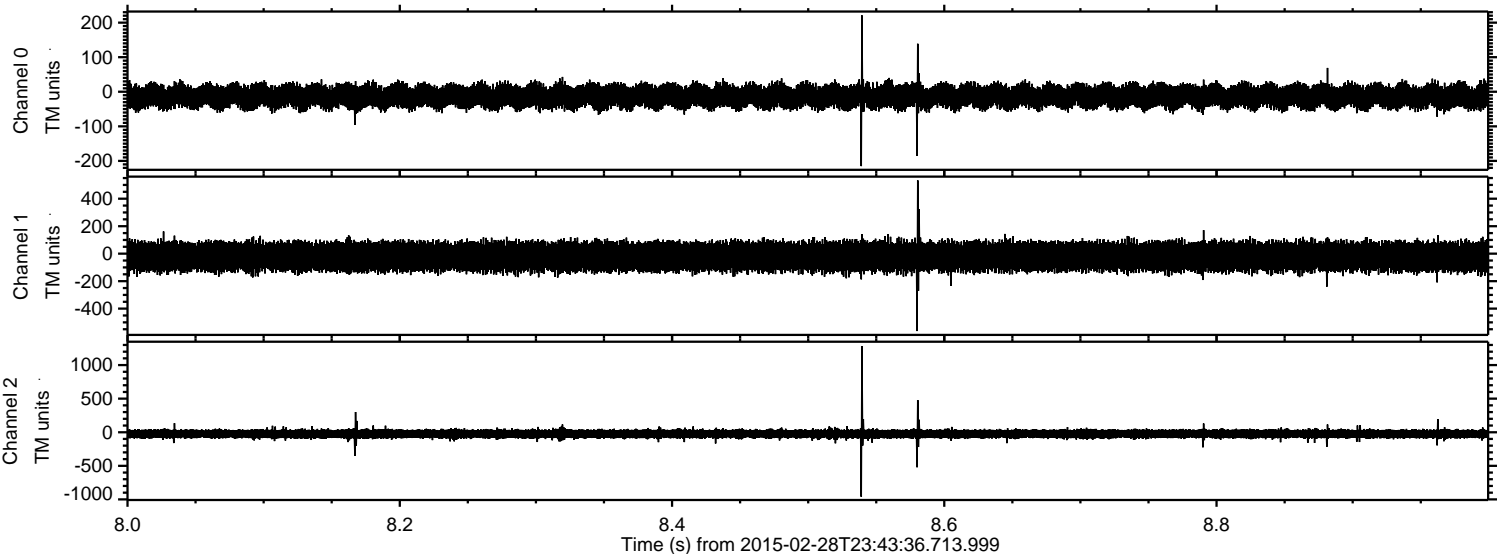
Processed Fri Mar 6 11:26:21 2015 by ELM ver.2012-10-06 from 001__elm20150228_234335__dat00.bin



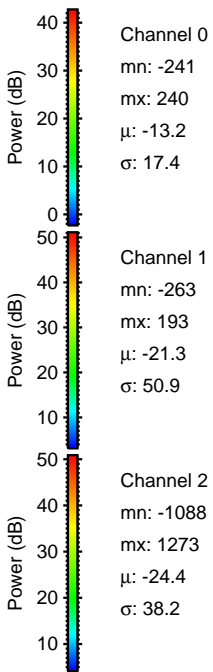
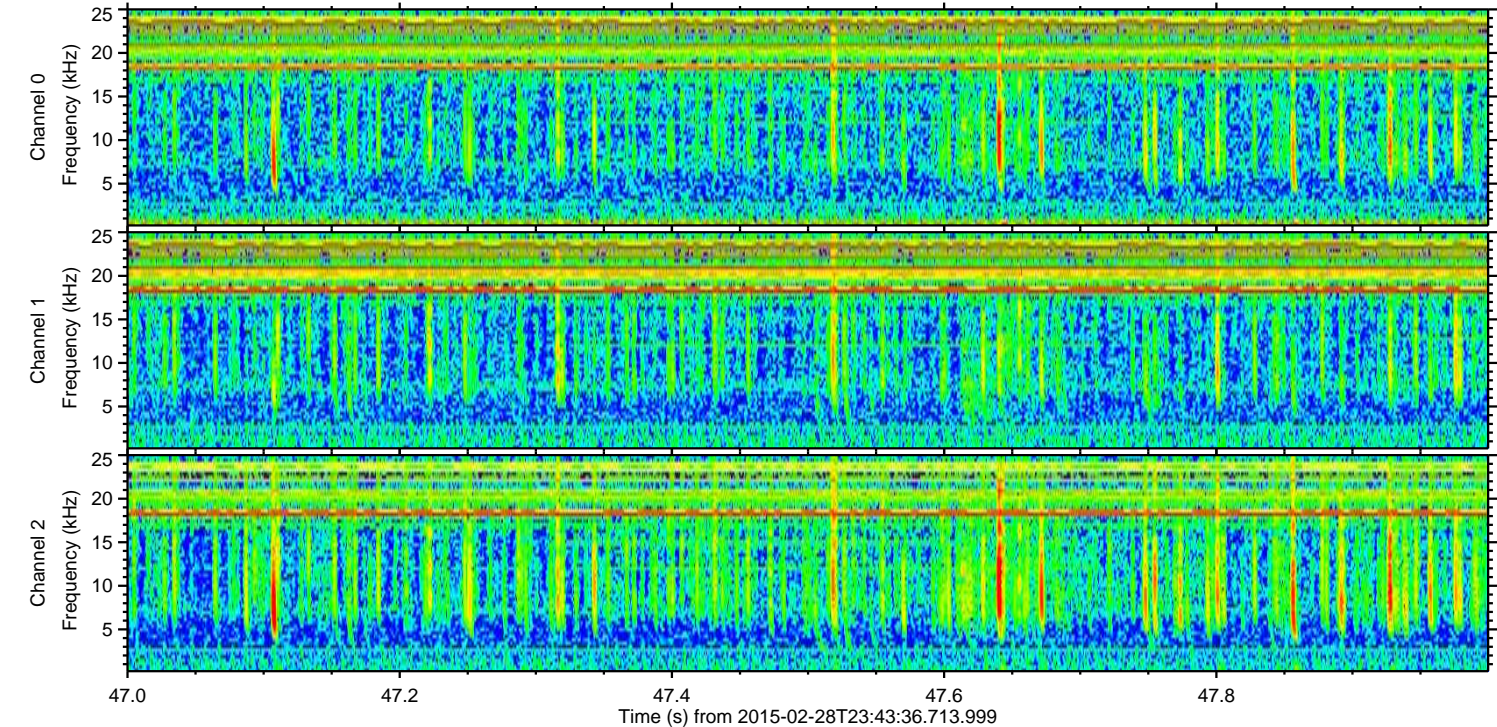
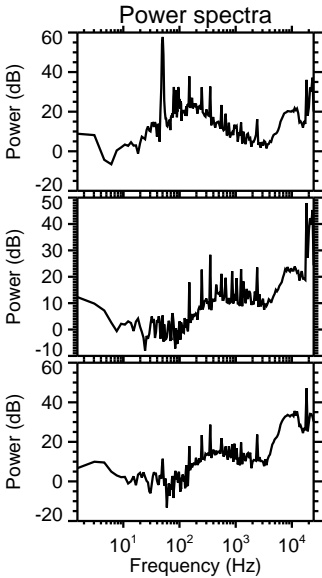
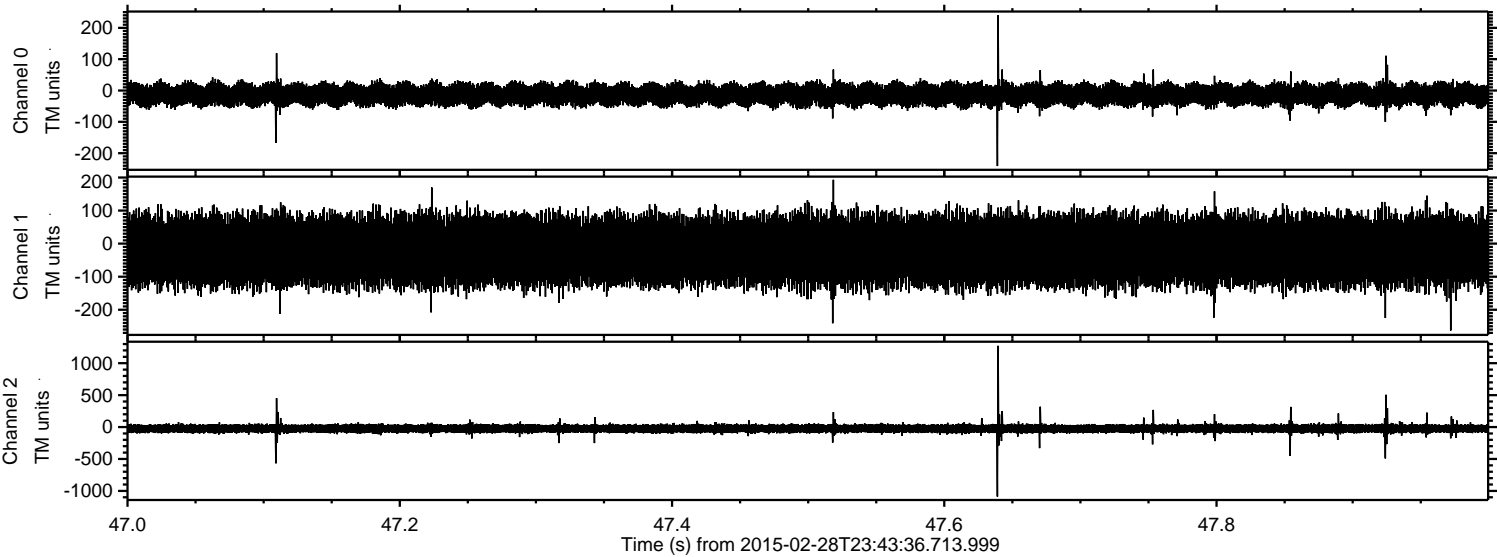
Processed Fri Mar 6 11:26:22 2015 by ELM ver.2012-10-06 from 001__elm20150228_234335__dat00.bin



Processed Fri Mar 6 11:26:23 2015 by ELM ver.2012-10-06 from 001__elm20150228_234335__dat00.bin

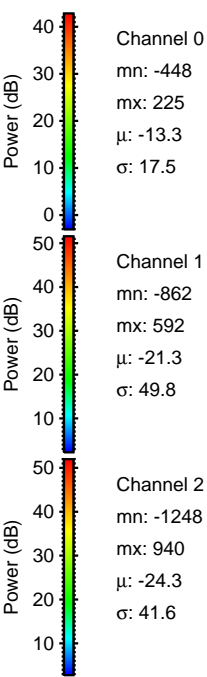
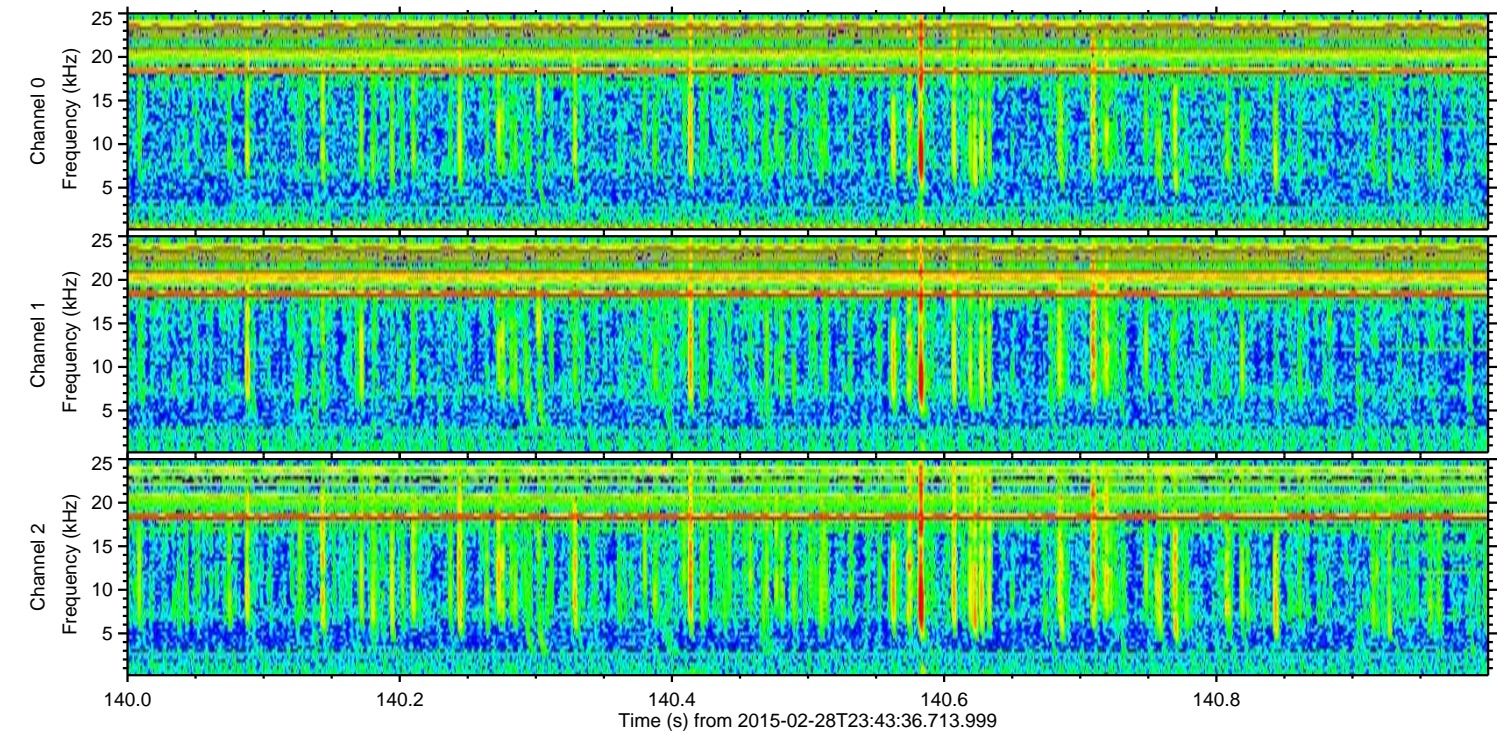
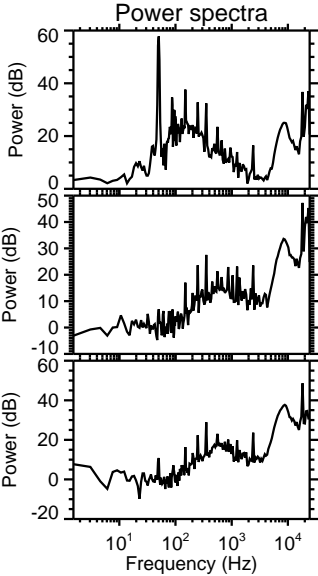
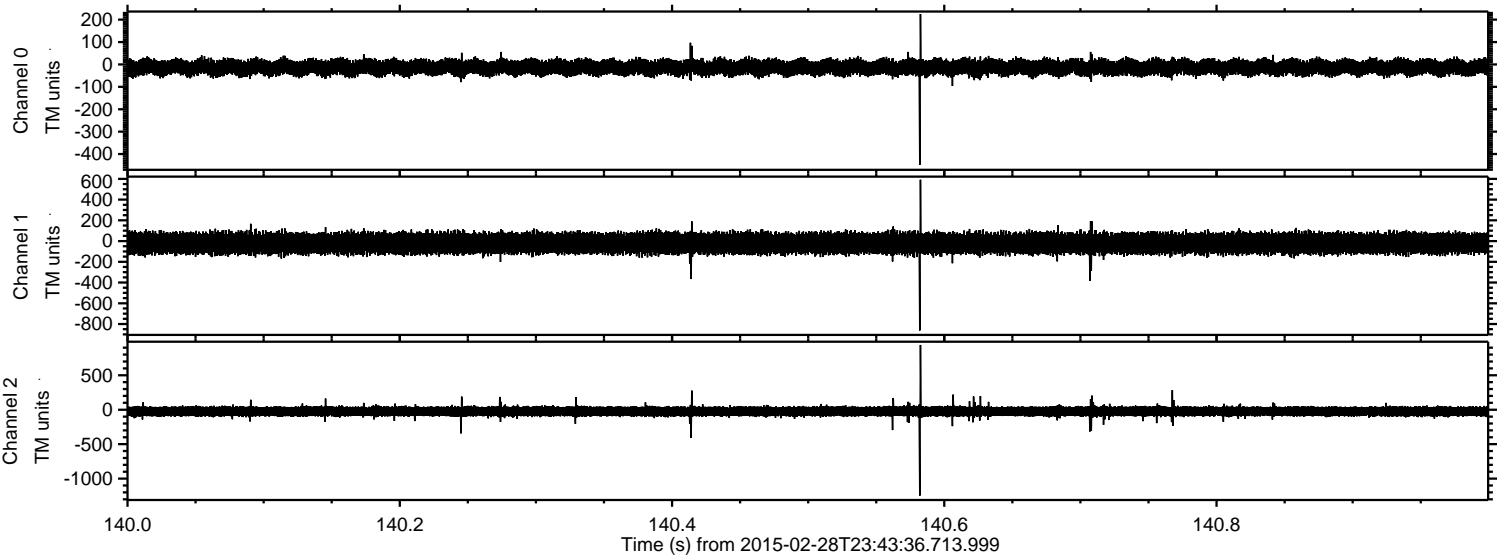


Processed Fri Mar 6 11:26:24 2015 by ELM ver.2012-10-06 from 001__elm20150228_234335__dat00.bin



ELMAVAN 3D WAVEFORMS (Measured data sampled at 50 kHz) 49782 packets of 144 samples from 2015-02-28T23:43:36.713.999. Part 141/144

Processed Fri Mar 6 11:26:25 2015 by ELM ver.2012-10-06 from 001__elm20150228_234335__dat00.bin



Channel 0
mn: -448
mx: 225
 μ : -13.3
 σ : 17.5

Channel 1
mn: -862
mx: 592
 μ : -21.3
 σ : 49.8

Channel 2
mn: -1248
mx: 940
 μ : -24.3
 σ : 41.6

Processed Fri Mar 6 11:26:26 2015 by ELM ver.2012-10-06 from 001__elm20150228_234335__dat00.bin

