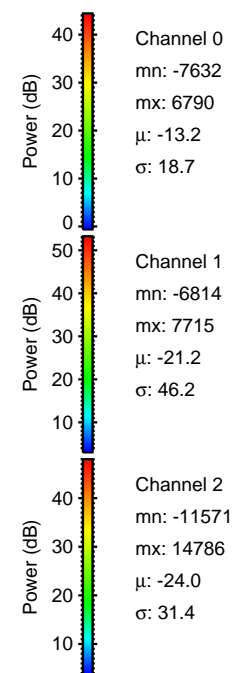
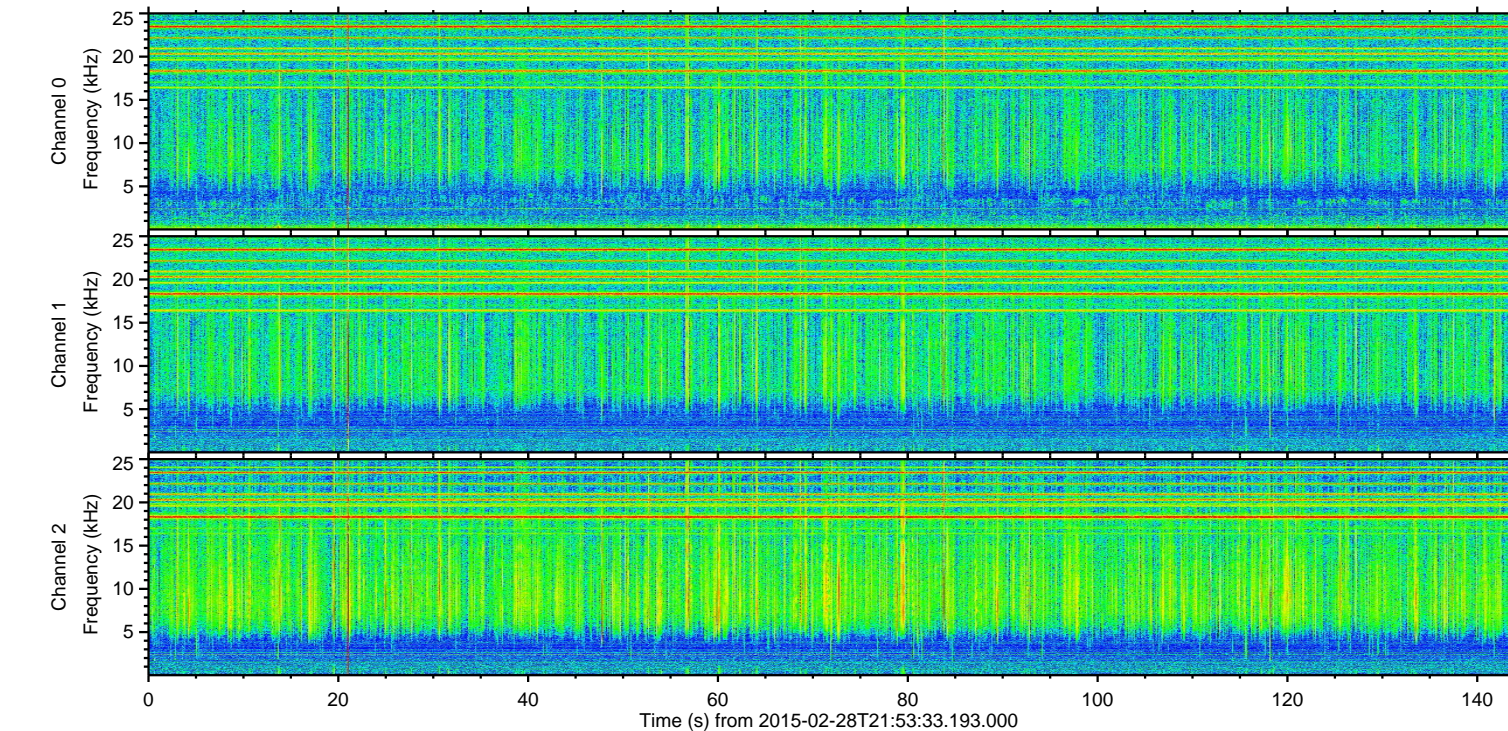
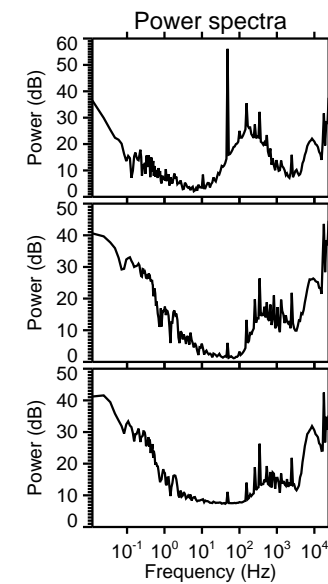
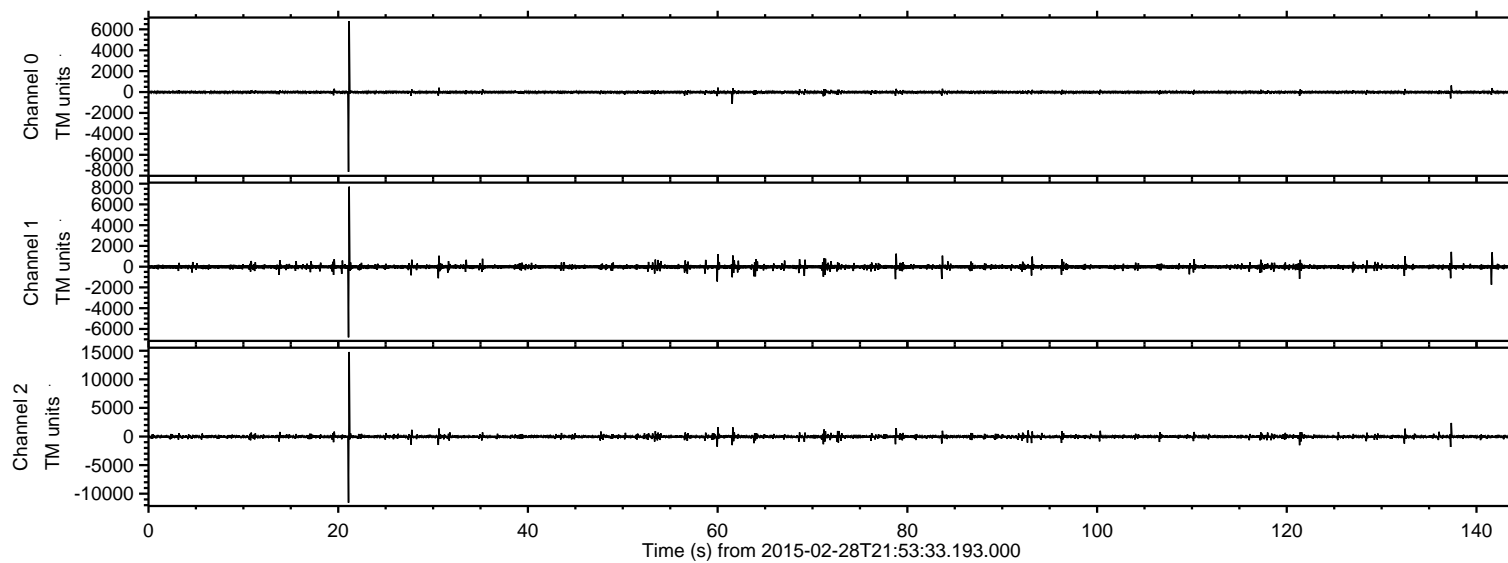
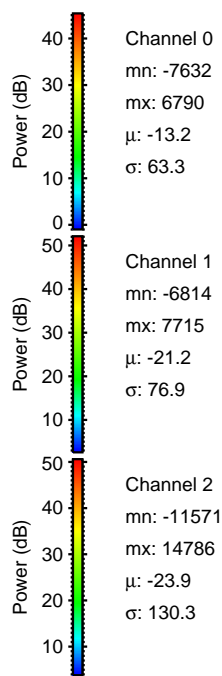
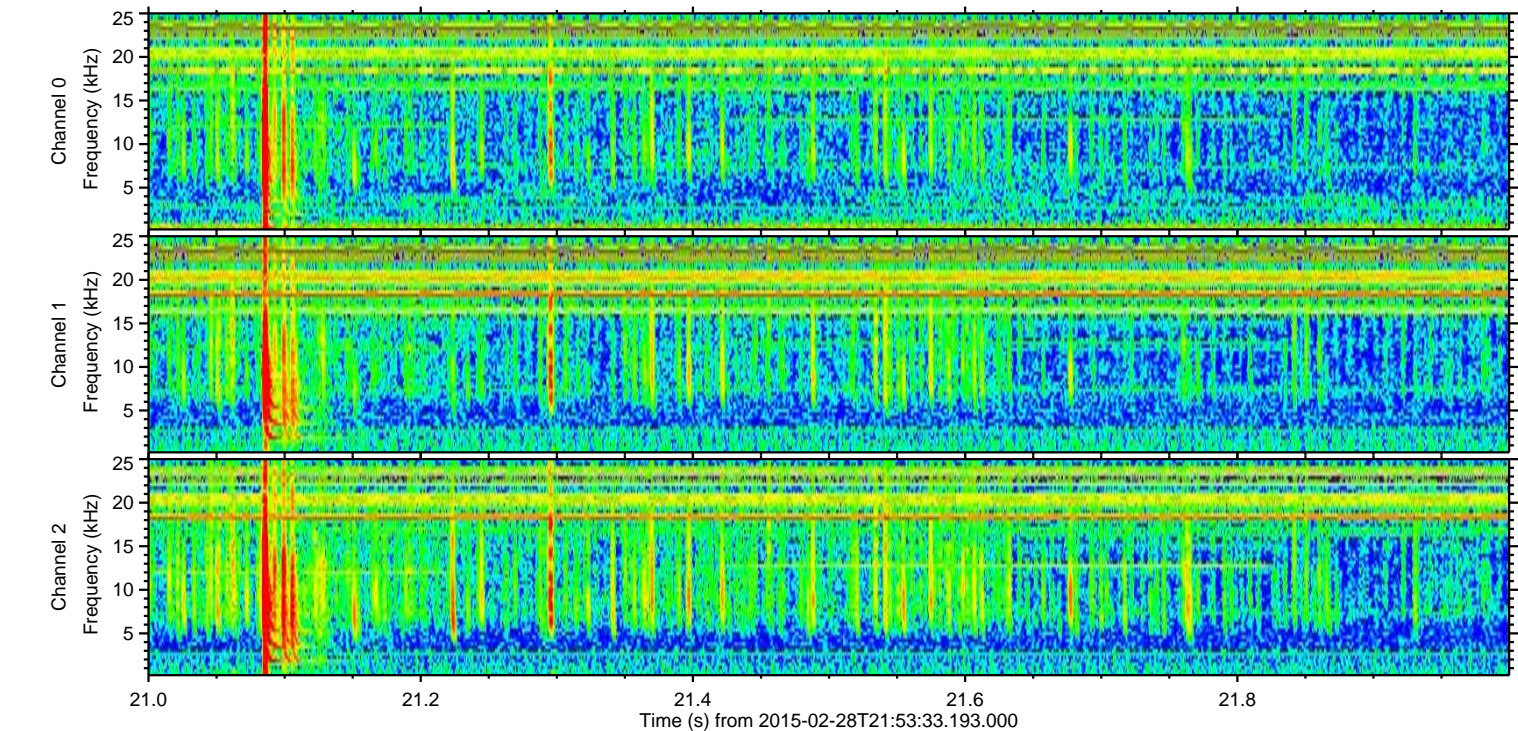
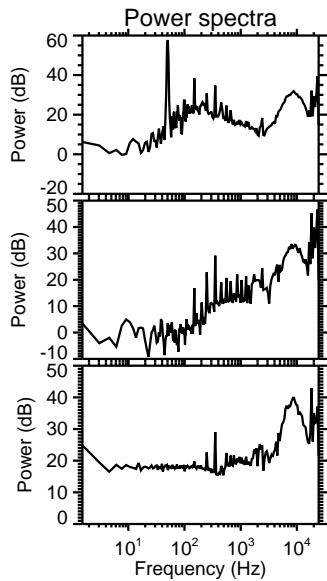
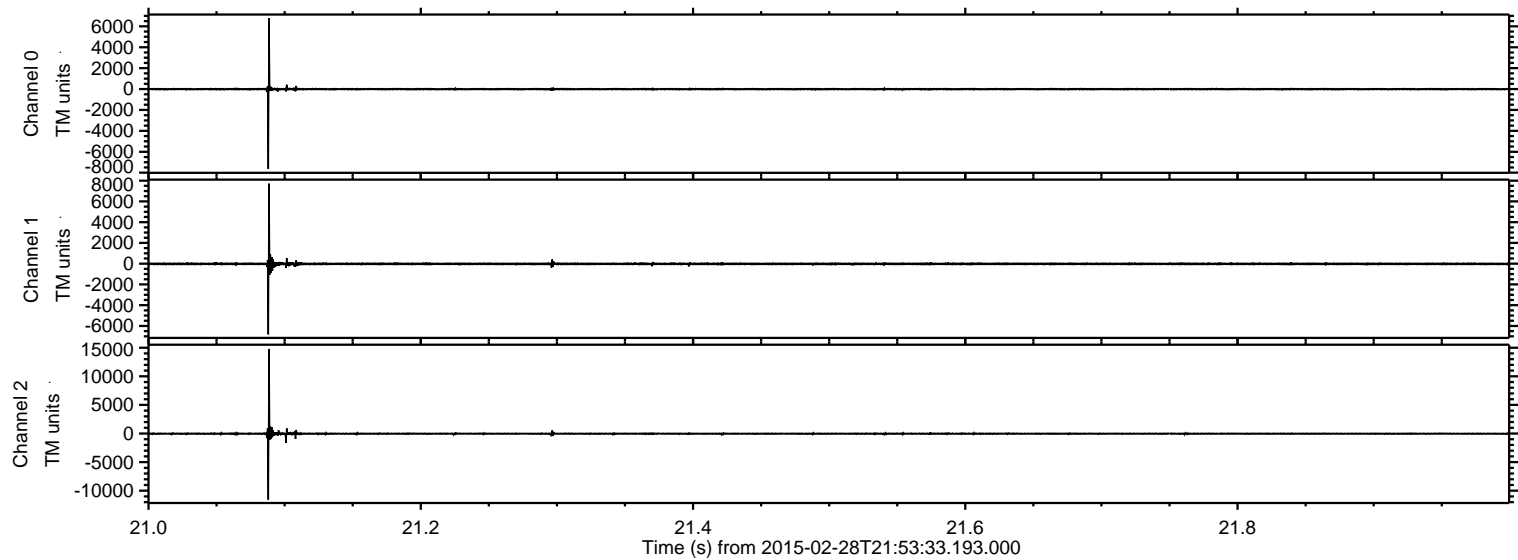


ELMAVAN 3D WAVEFORMS (Measured data sampled at 50 kHz) 49806 packets of 144 samples from 2015-02-28T21:53:33.193.000.

Processed Fri Mar 6 09:39:02 2015 by ELM ver.2012-10-06 from 001__elm20150228_215332__dat00.bin

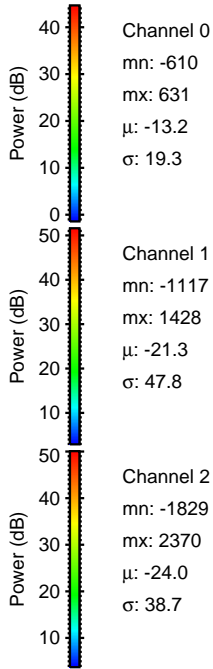
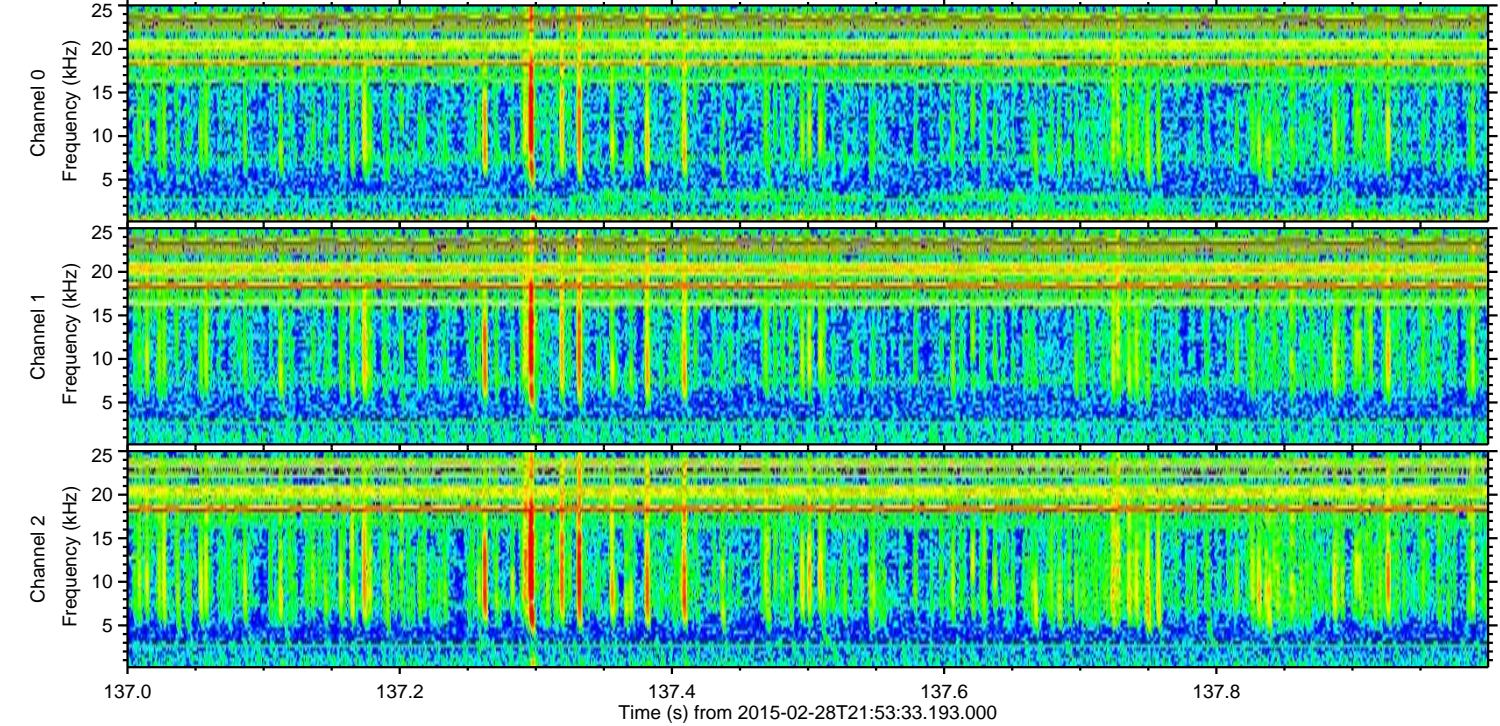
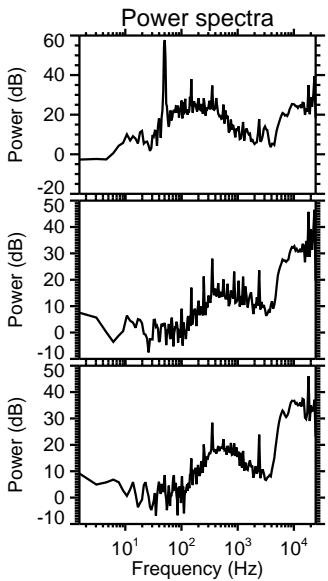
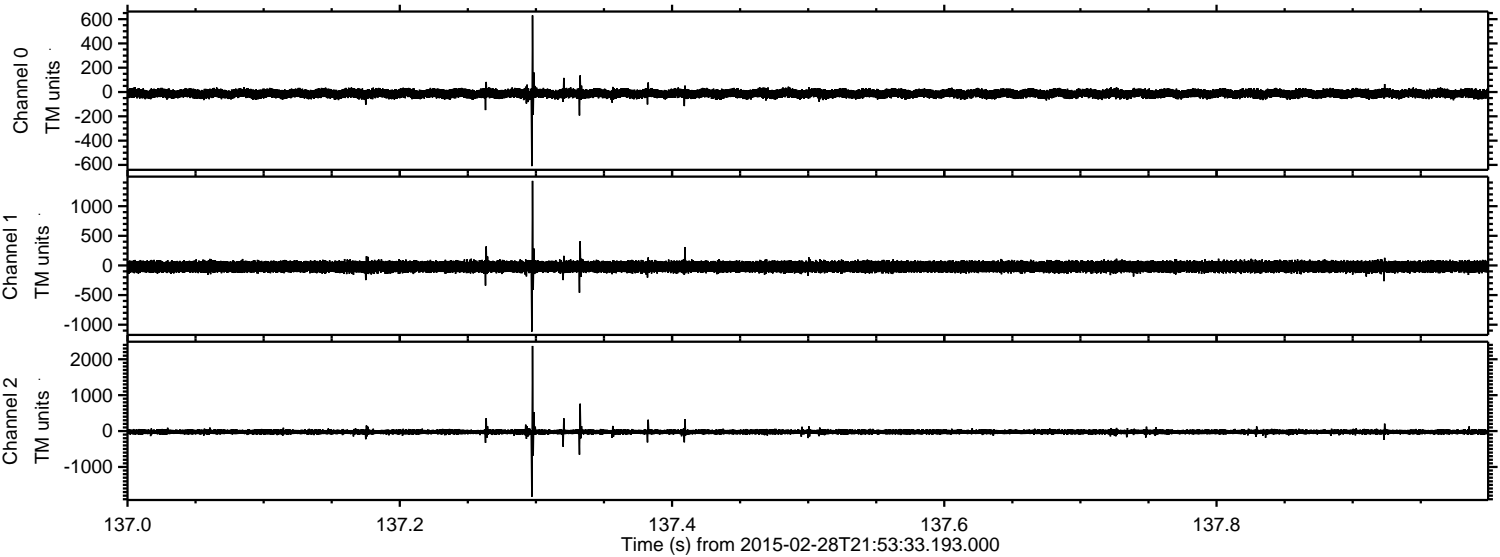


Processed Fri Mar 6 09:39:14 2015 by ELM ver.2012-10-06 from 001__elm20150228_215332__dat00.bin

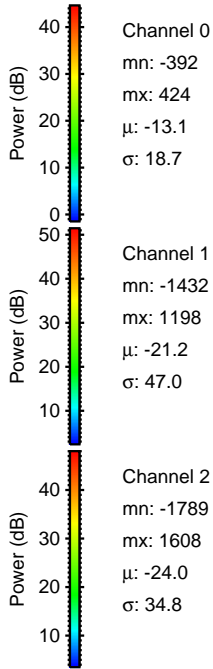
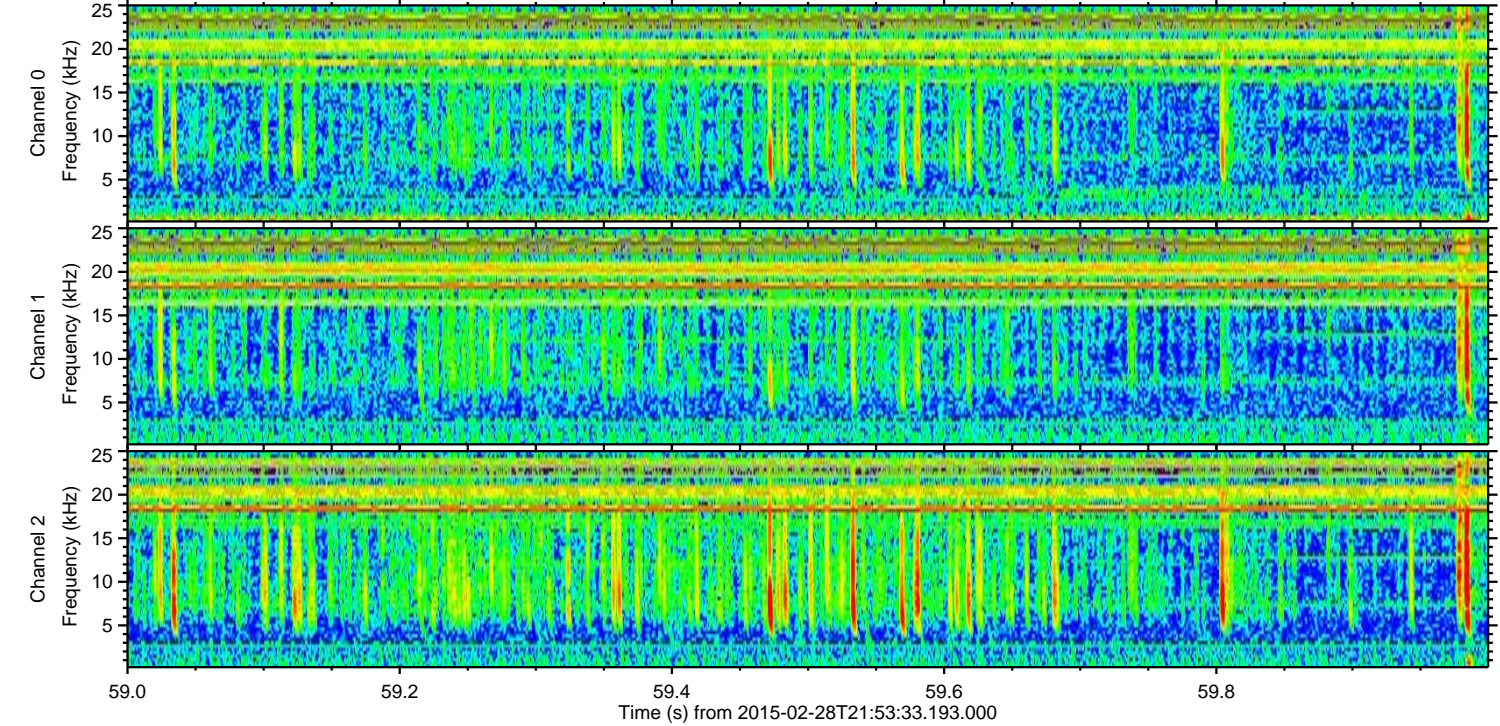
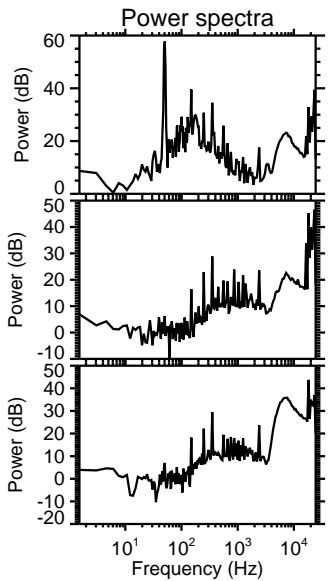
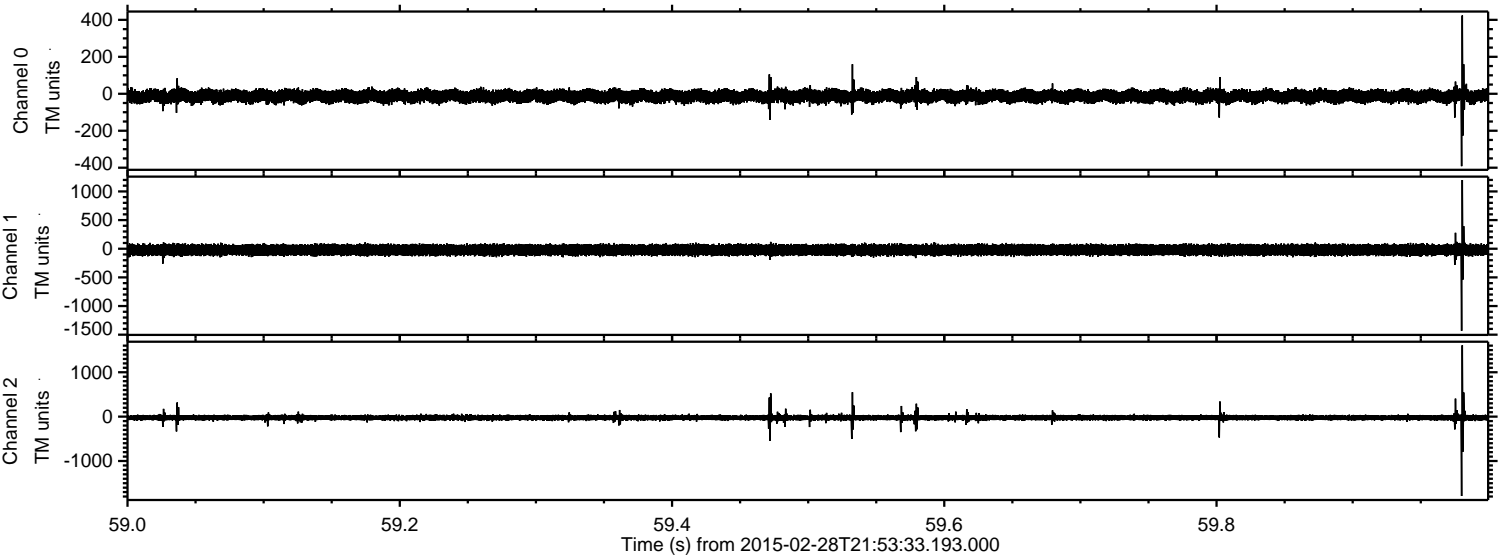


ELMAVAN 3D WAVEFORMS (Measured data sampled at 50 kHz) 49806 packets of 144 samples from 2015-02-28T21:53:33.193.000. Part 138/144

Processed Fri Mar 6 09:39:15 2015 by ELM ver.2012-10-06 from 001__elm20150228_215332__dat00.bin



Processed Fri Mar 6 09:39:16 2015 by ELM ver.2012-10-06 from 001__elm20150228_215332__dat00.bin



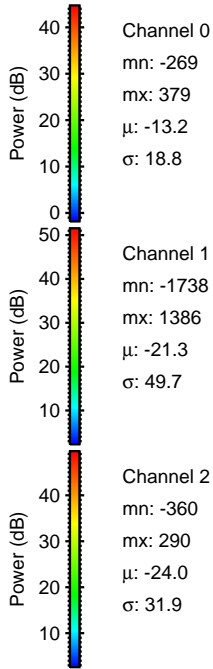
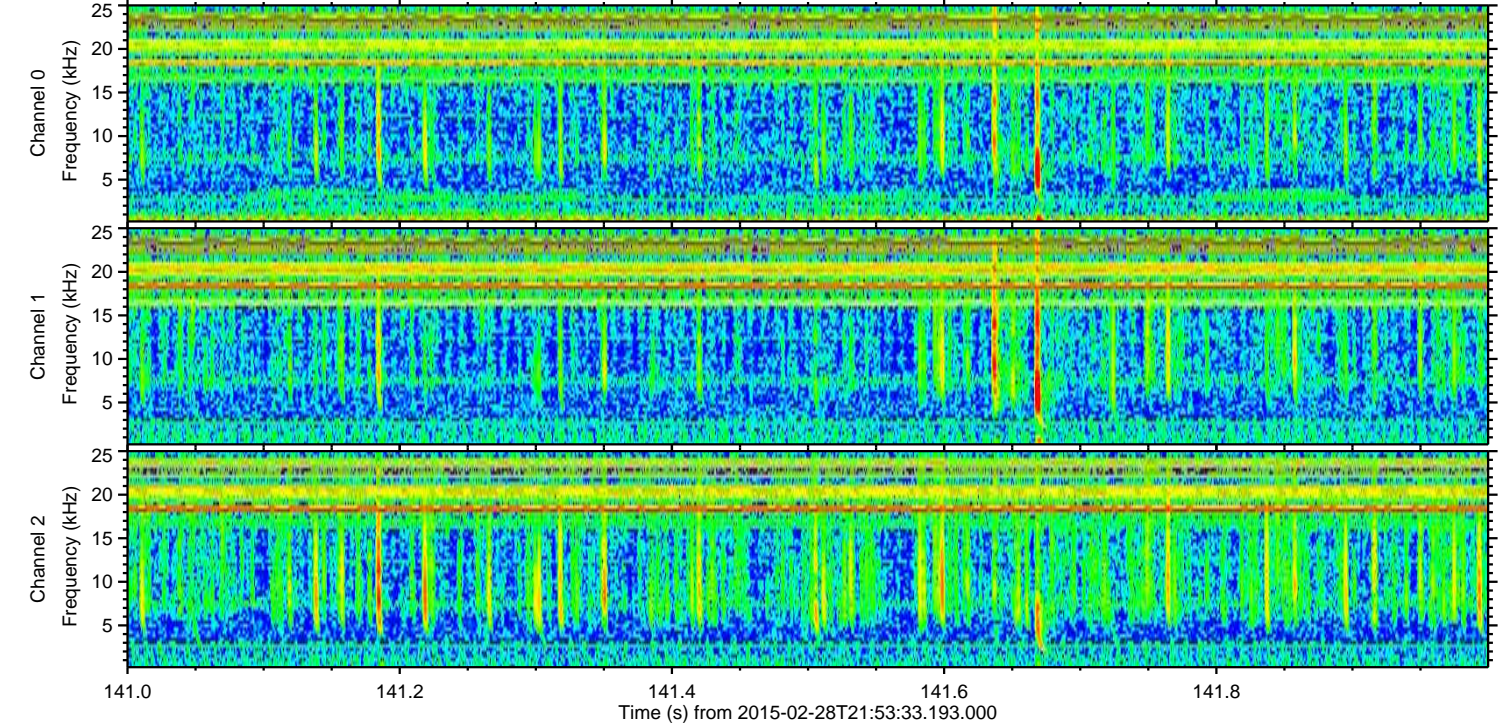
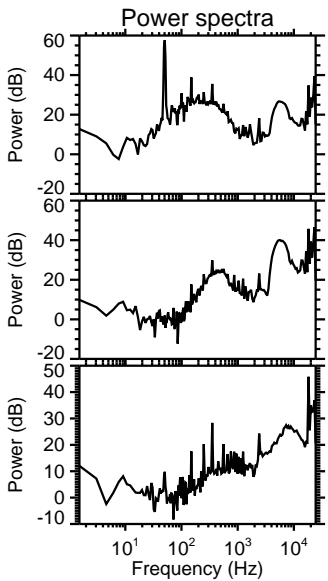
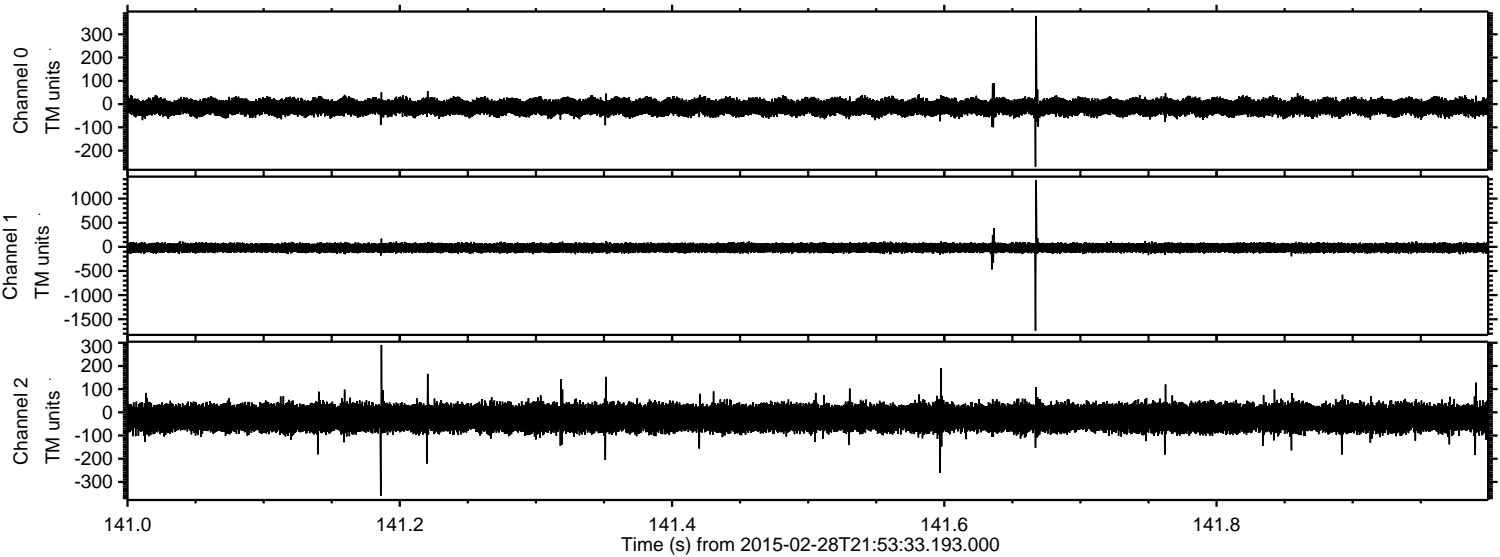
Channel 0
mn: -392
mx: 424
 μ : -13.1
 σ : 18.7

Channel 1
mn: -1432
mx: 1198
 μ : -21.2
 σ : 47.0

Channel 2
mn: -1789
mx: 1608
 μ : -24.0
 σ : 34.8

ELMAVAN 3D WAVEFORMS (Measured data sampled at 50 kHz) 49806 packets of 144 samples from 2015-02-28T21:53:33.193.000. Part 142/144

Processed Fri Mar 6 09:39:17 2015 by ELM ver.2012-10-06 from 001__elm20150228_215332__dat00.bin

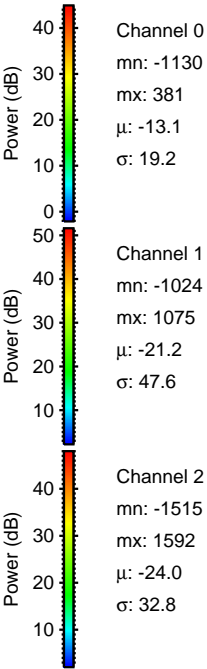
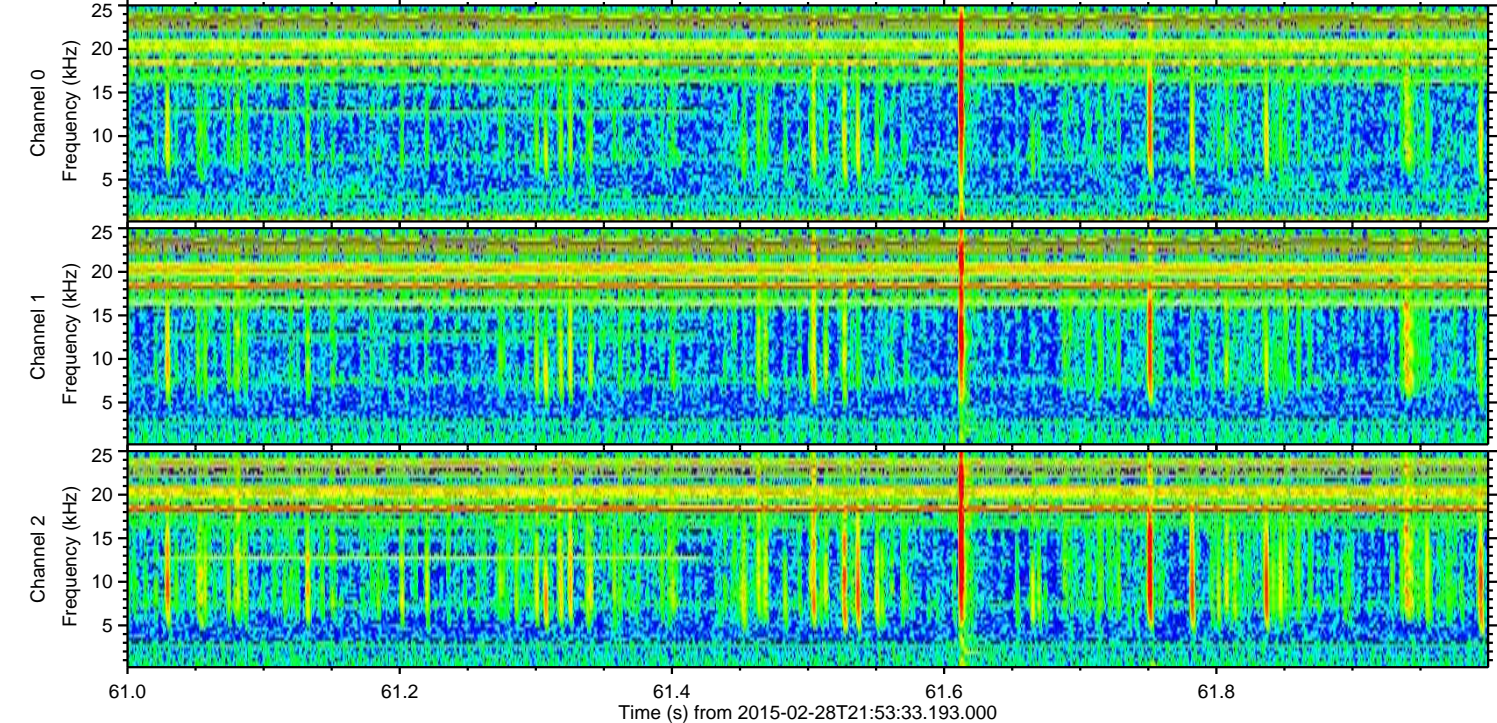
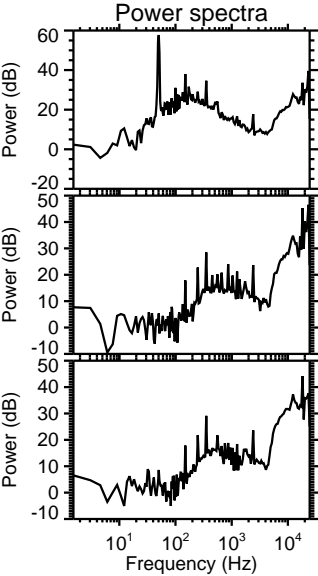
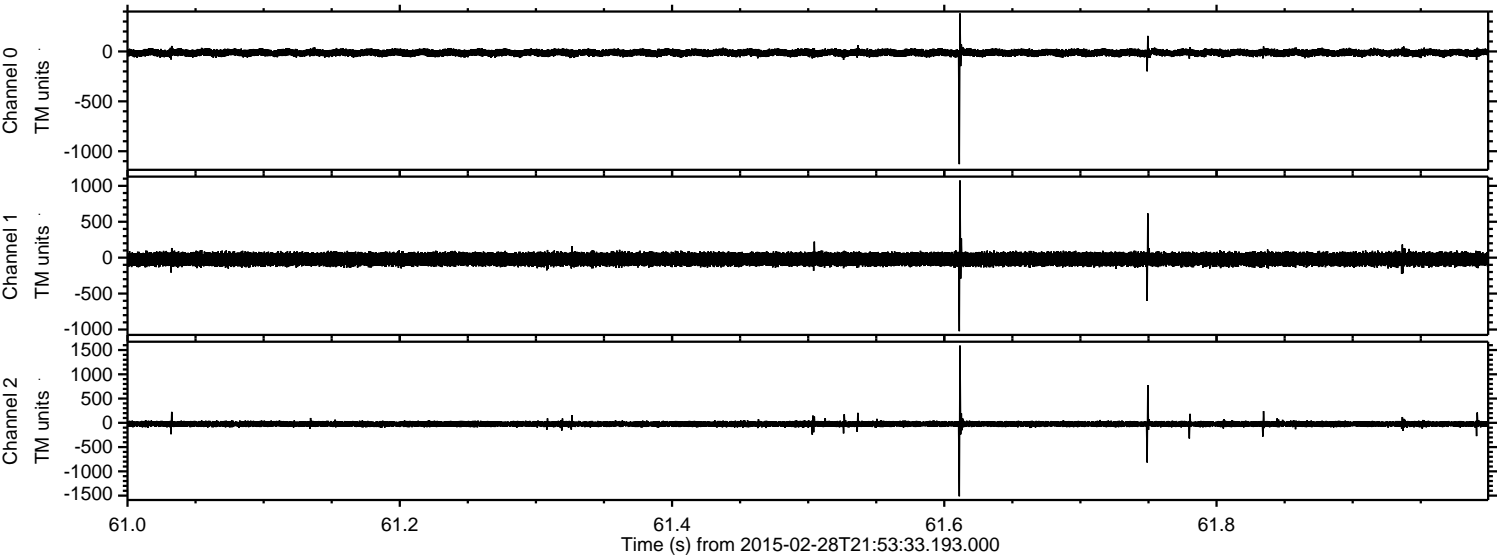


Channel 0
mn: -269
mx: 379
 μ : -13.2
 σ : 18.8

Channel 1
mn: -1738
mx: 1386
 μ : -21.3
 σ : 49.7

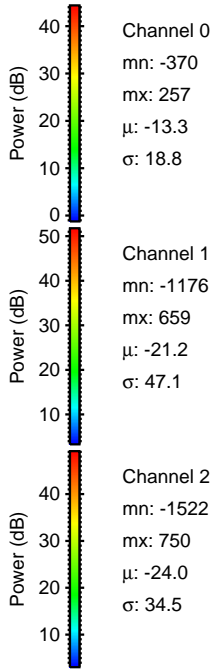
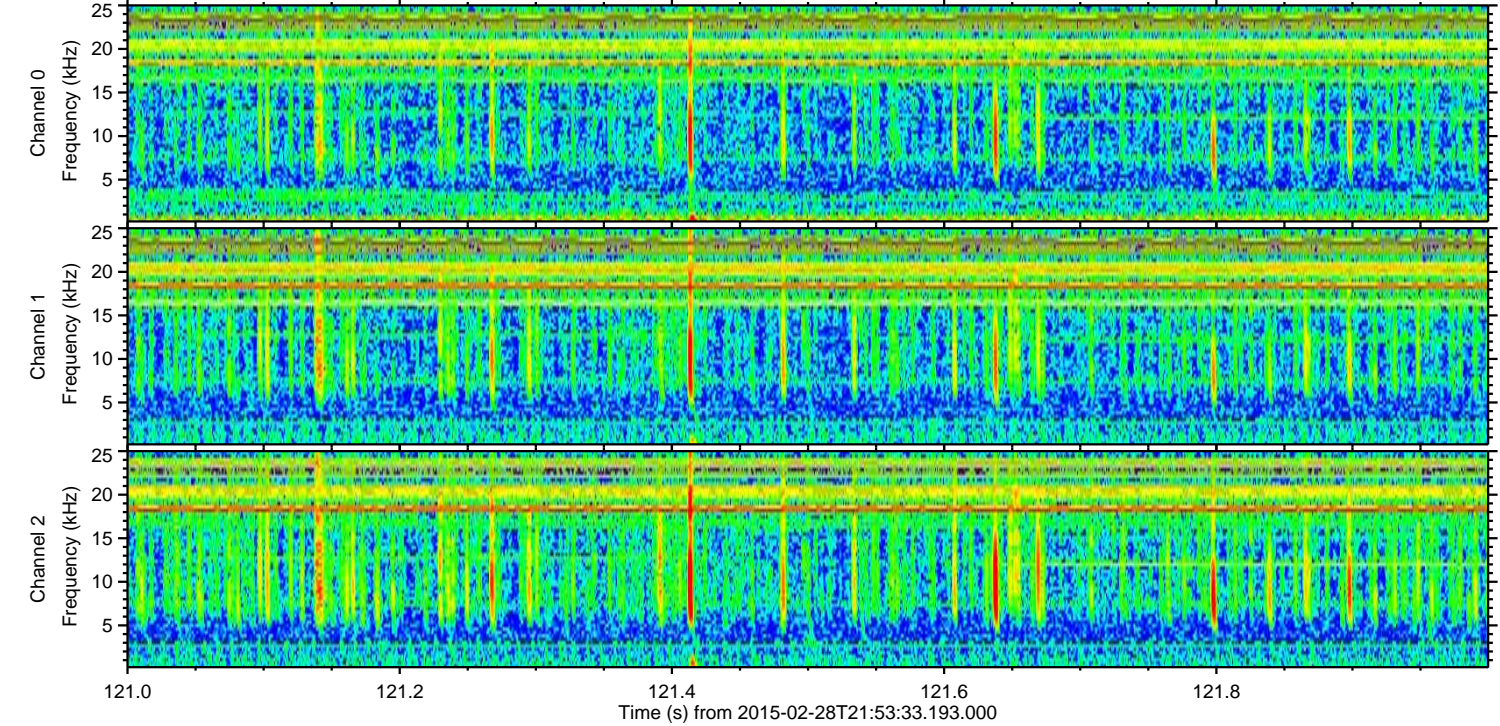
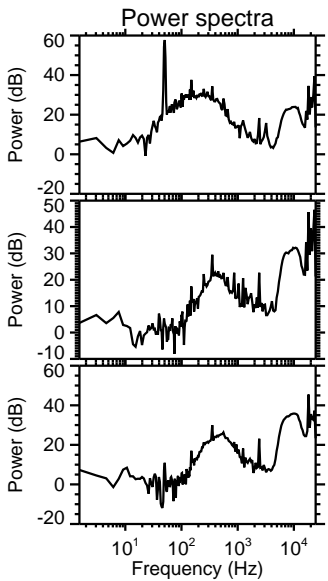
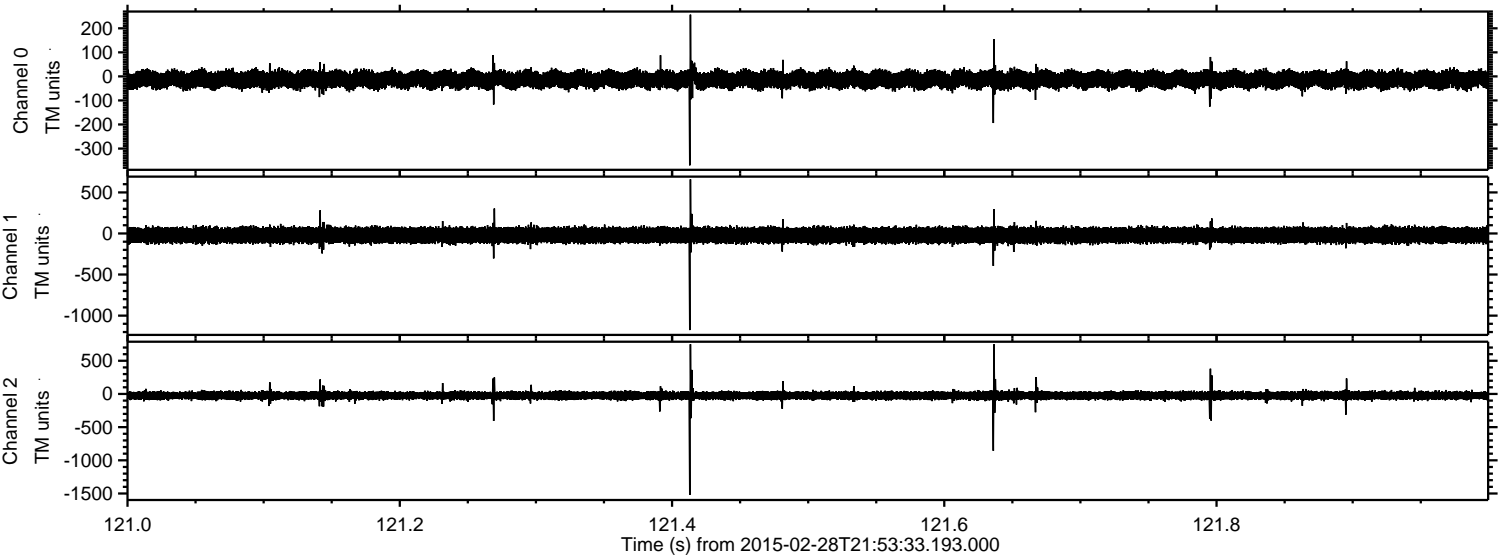
Channel 2
mn: -360
mx: 290
 μ : -24.0
 σ : 31.9

Processed Fri Mar 6 09:39:18 2015 by ELM ver.2012-10-06 from 001__elm20150228_215332__dat00.bin

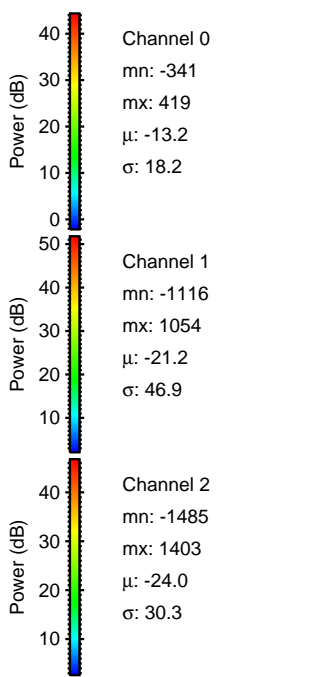
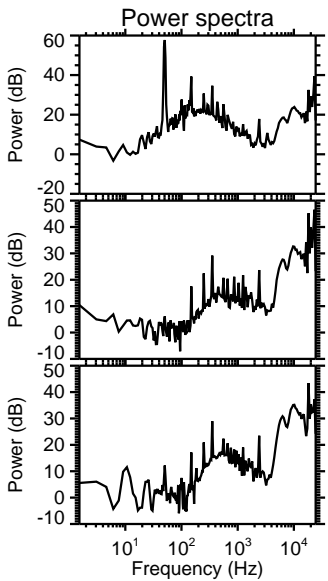
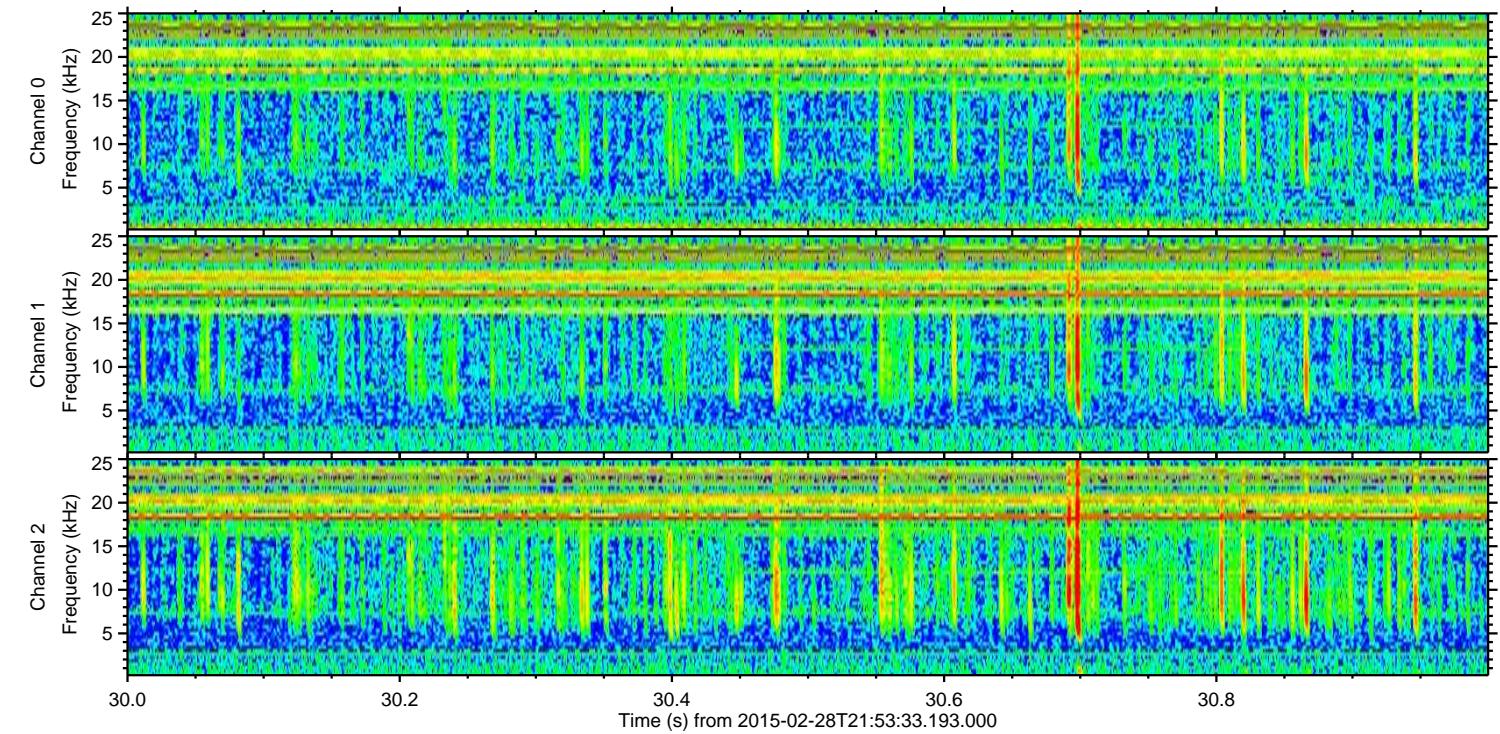
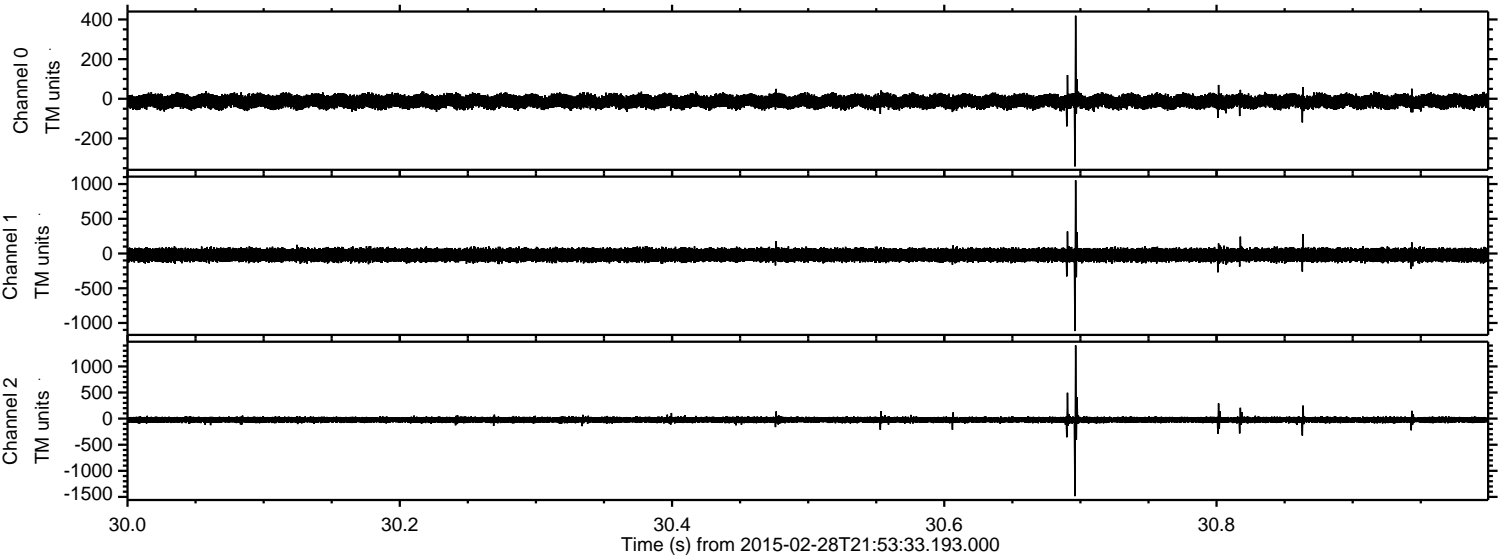


ELMAVAN 3D WAVEFORMS (Measured data sampled at 50 kHz) 49806 packets of 144 samples from 2015-02-28T21:53:33.193.000. Part 122/144

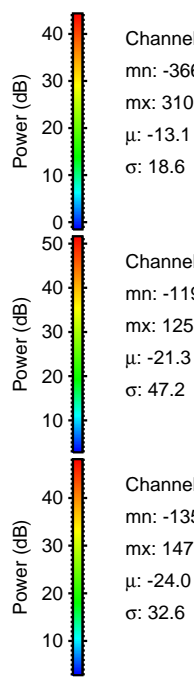
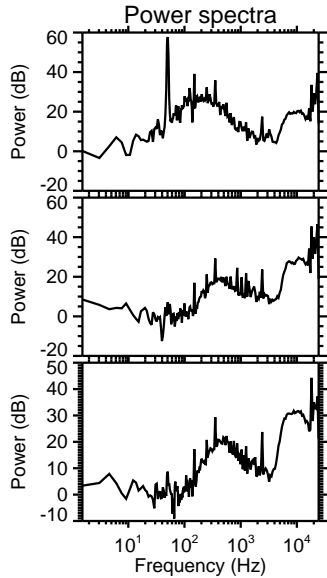
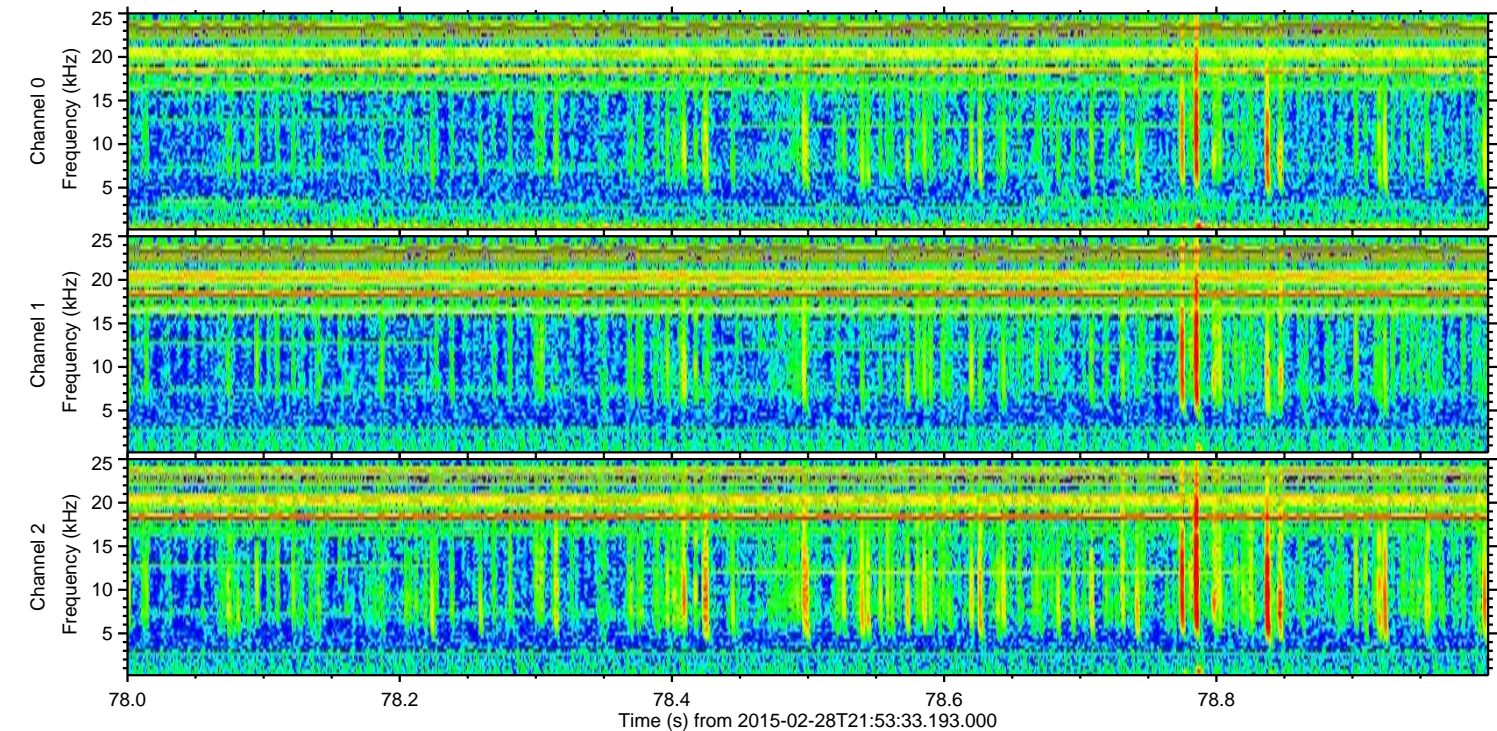
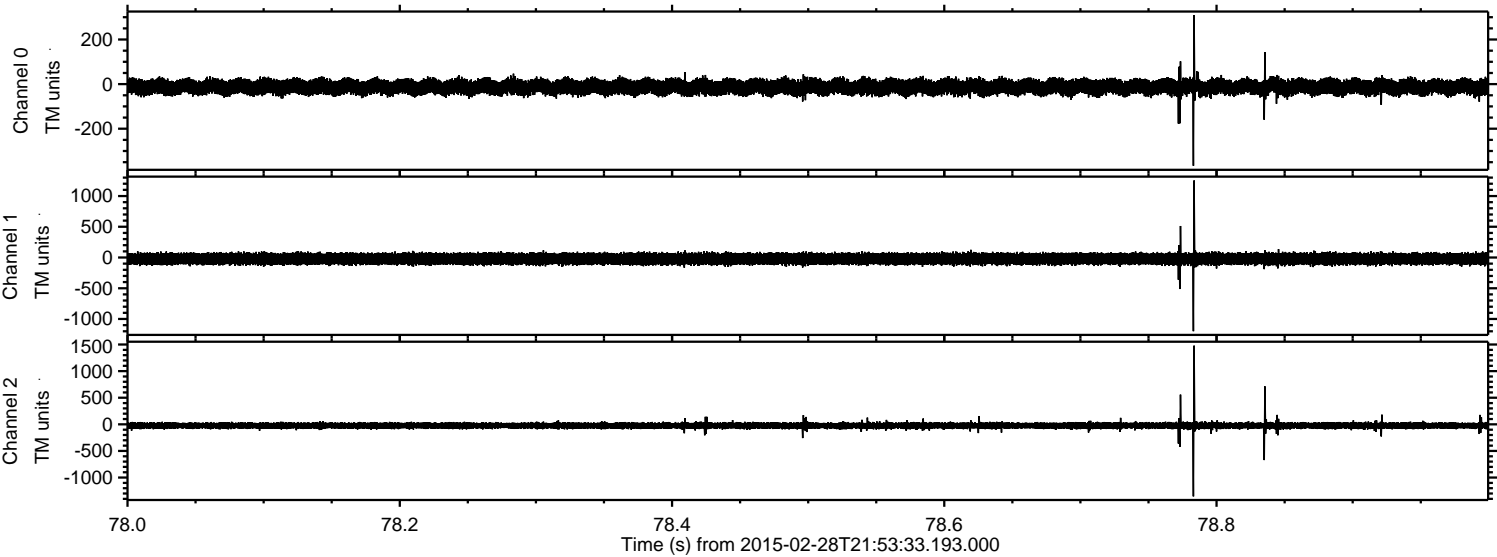
Processed Fri Mar 6 09:39:18 2015 by ELM ver.2012-10-06 from 001__elm20150228_215332__dat00.bin



Processed Fri Mar 6 09:39:19 2015 by ELM ver.2012-10-06 from 001__elm20150228_215332__dat00.bin



Processed Fri Mar 6 09:39:20 2015 by ELM ver.2012-10-06 from 001__elm20150228_215332__dat00.bin



Channel 0
mn: -366
mx: 310
 μ : -13.1
 σ : 18.6

Channel 1
mn: -1199
mx: 1253
 μ : -21.3
 σ : 47.2

Channel 2
mn: -1354
mx: 1479
 μ : -24.0
 σ : 32.6

Processed Fri Mar 6 09:39:21 2015 by ELM ver.2012-10-06 from 001__elm20150228_215332__dat00.bin

