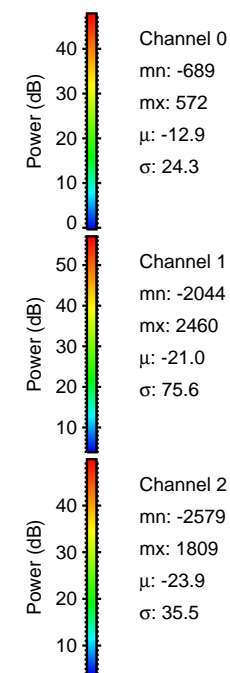
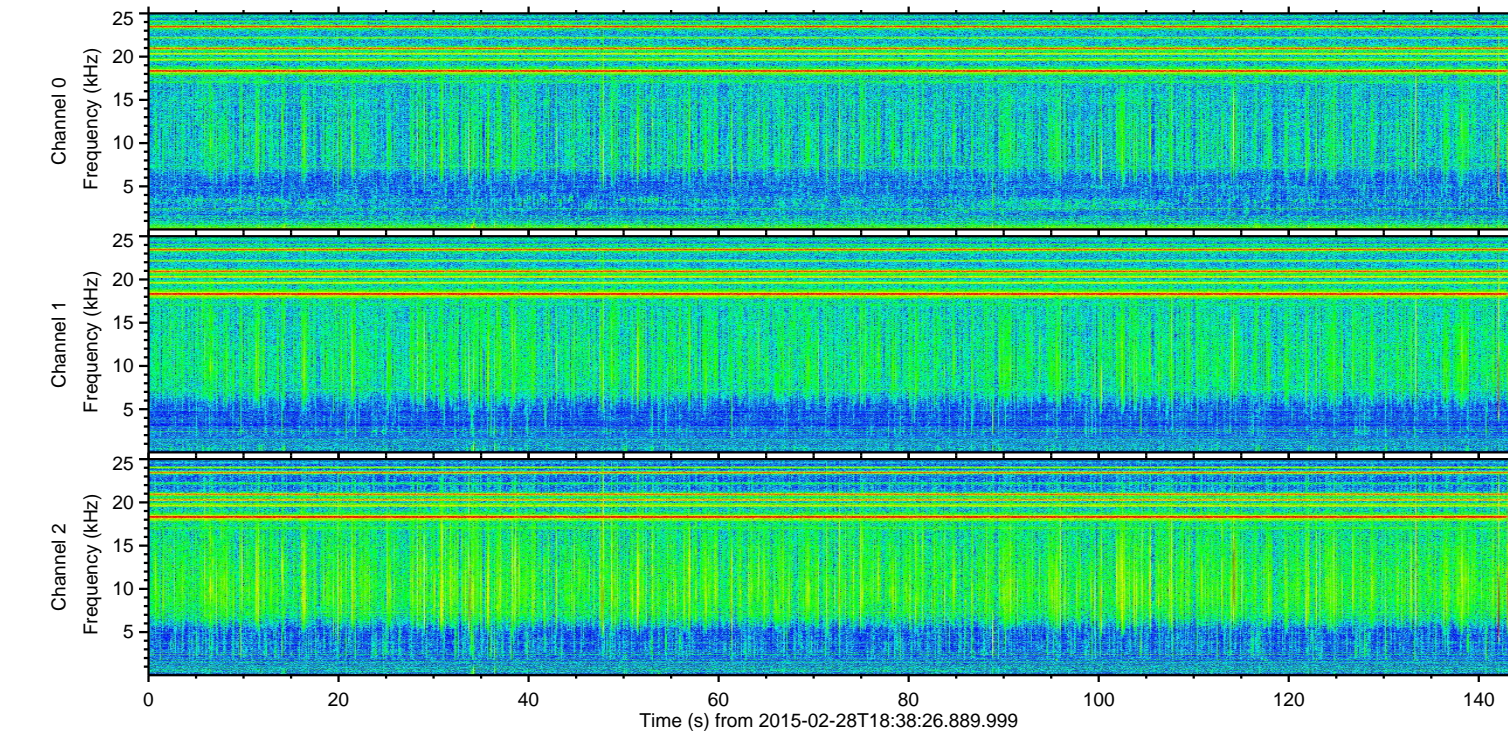
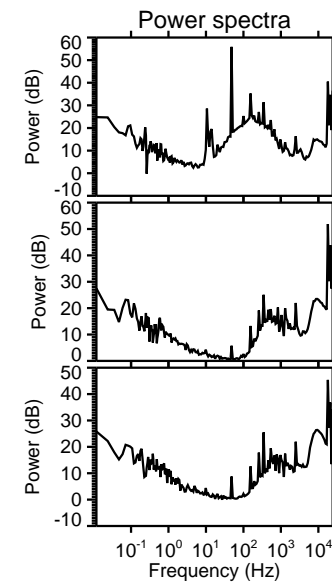
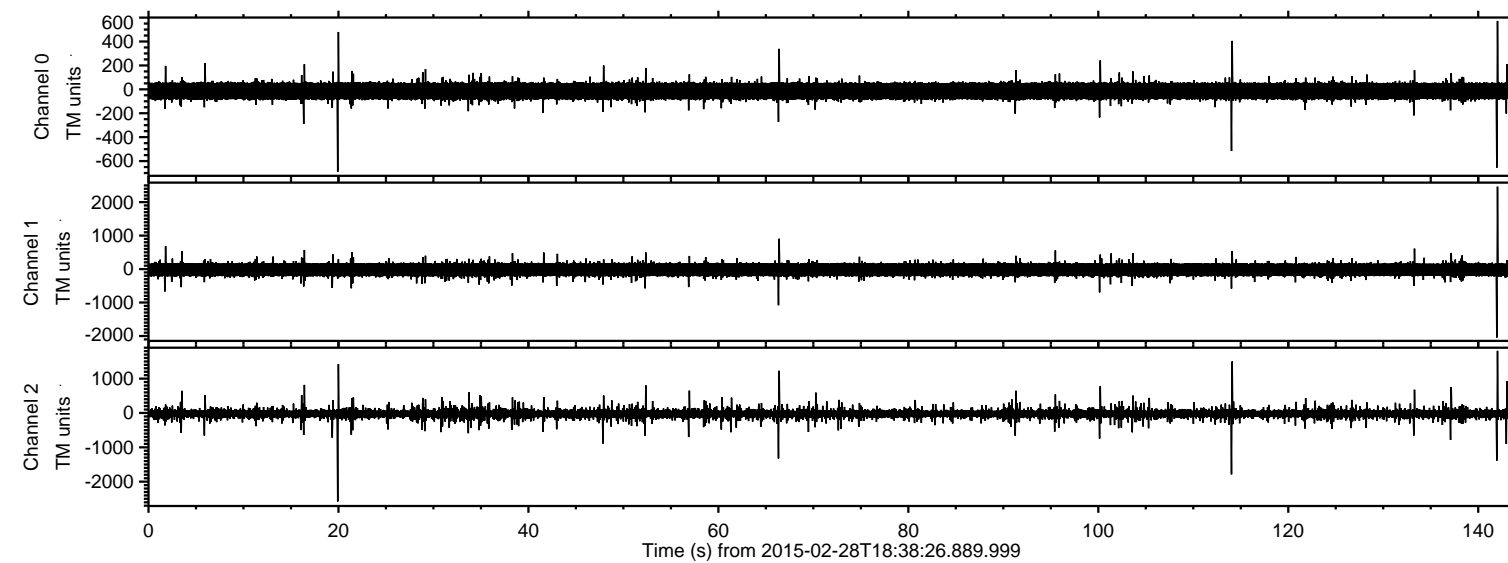
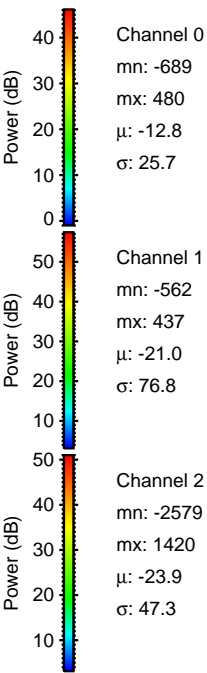
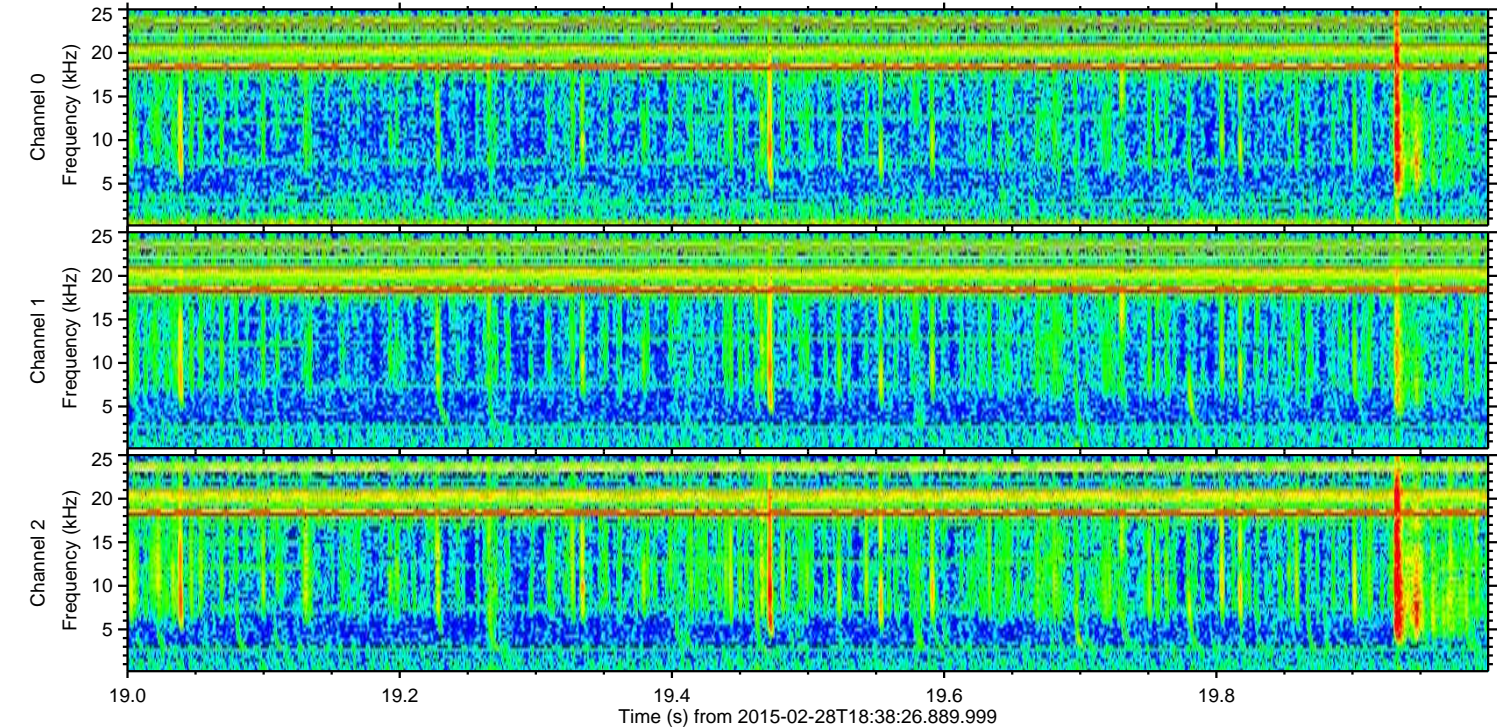
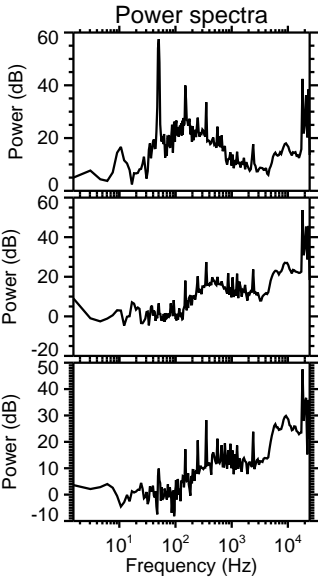
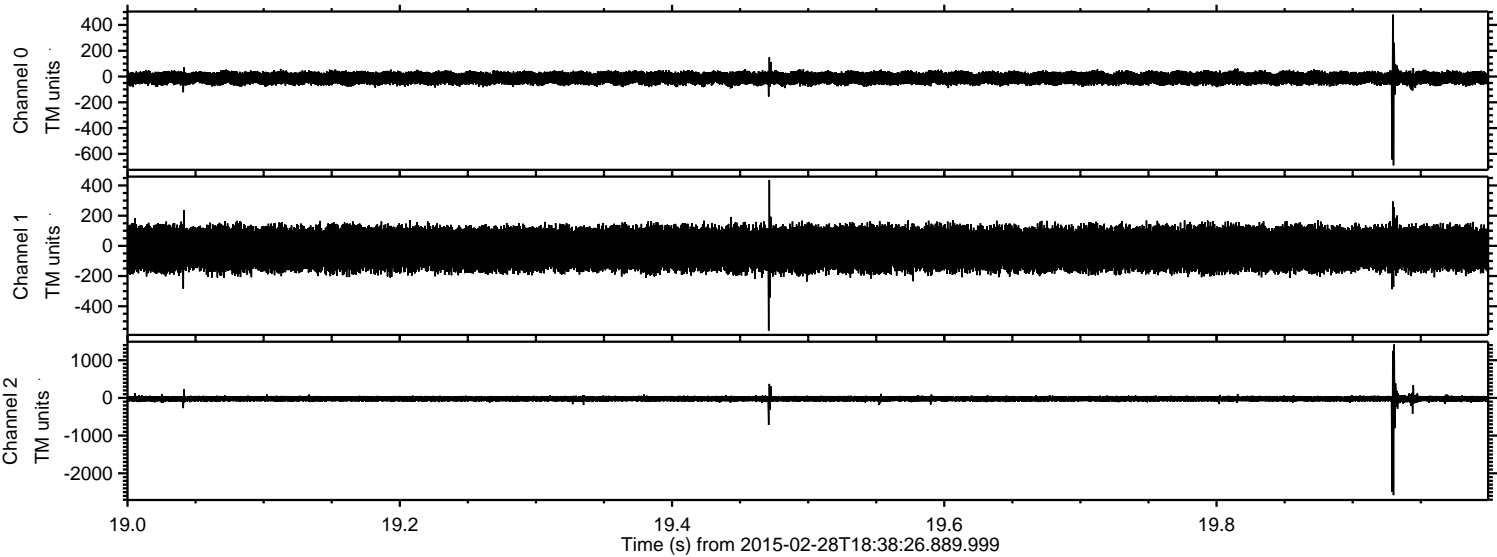


ELMAVAN 3D WAVEFORMS (Measured data sampled at 50 kHz) 49742 packets of 144 samples from 2015-02-28T18:38:26.889.999.

Processed Fri Mar 6 02:22:19 2015 by ELM ver.2012-10-06 from 001__elm20150228_183825__dat00.bin

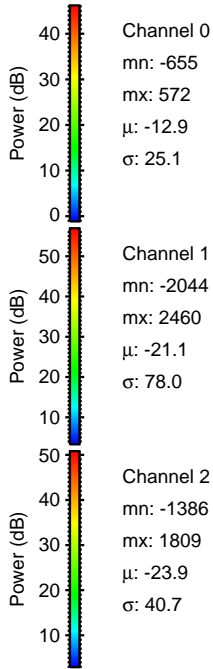
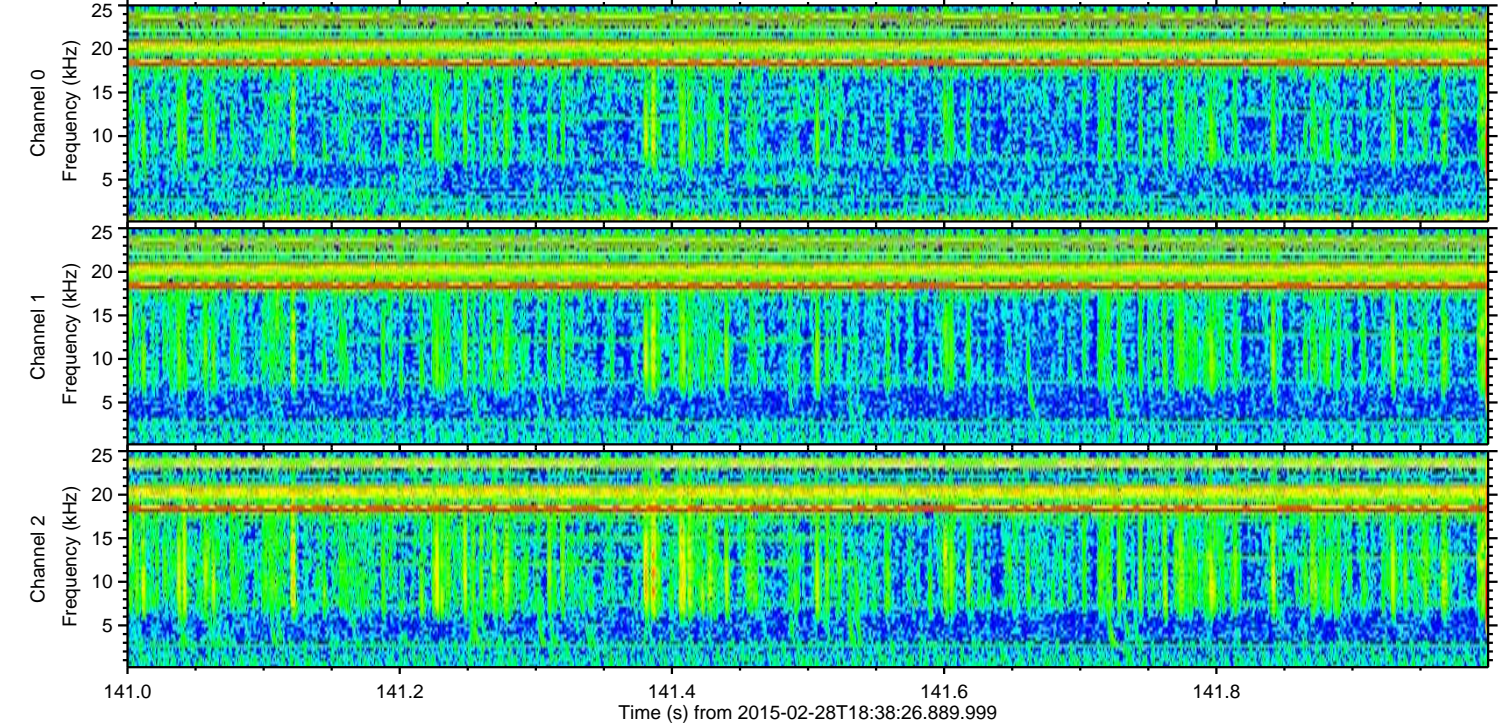
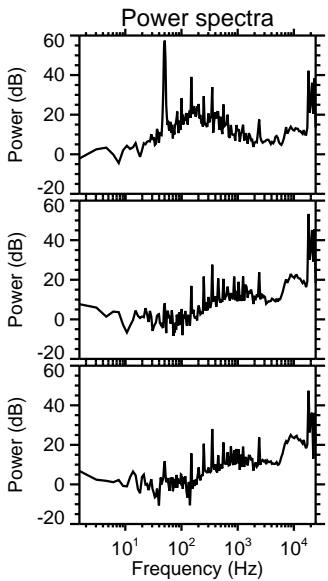
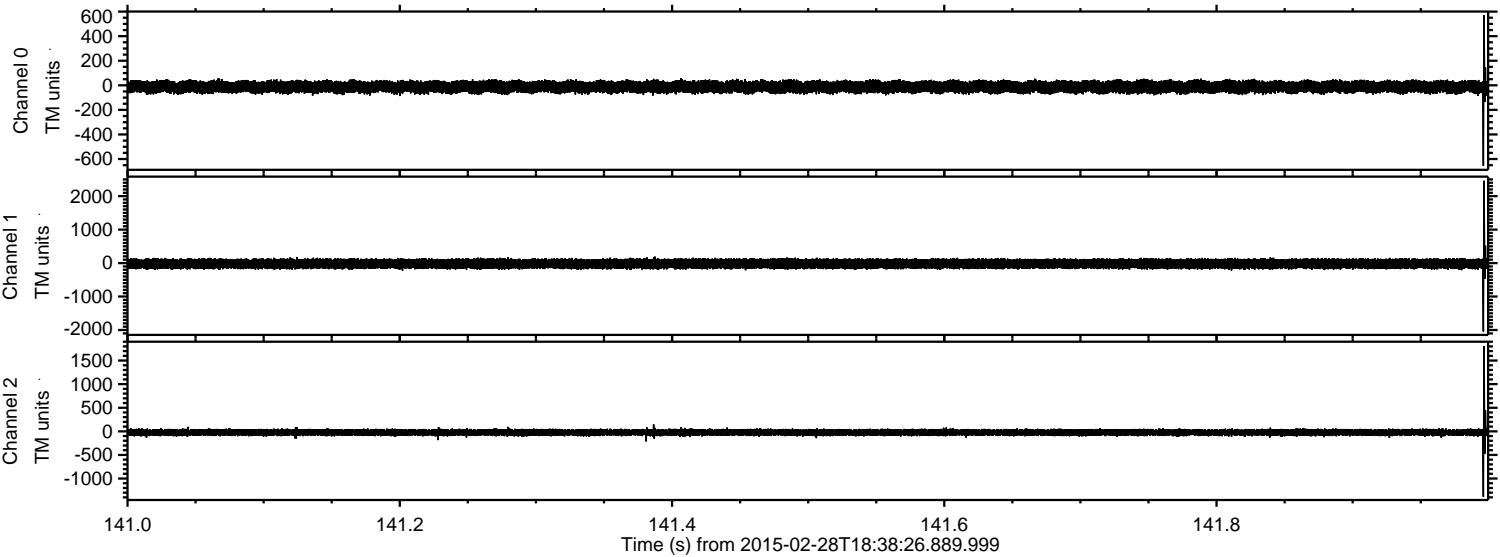


Processed Fri Mar 6 02:22:31 2015 by ELM ver.2012-10-06 from 001__elm20150228_183825__dat00.bin



ELMAVAN 3D WAVEFORMS (Measured data sampled at 50 kHz) 49742 packets of 144 samples from 2015-02-28T18:38:26.889.999. Part 142/144

Processed Fri Mar 6 02:22:32 2015 by ELM ver.2012-10-06 from 001__elm20150228_183825__dat00.bin



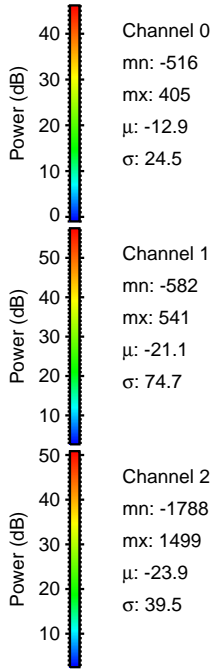
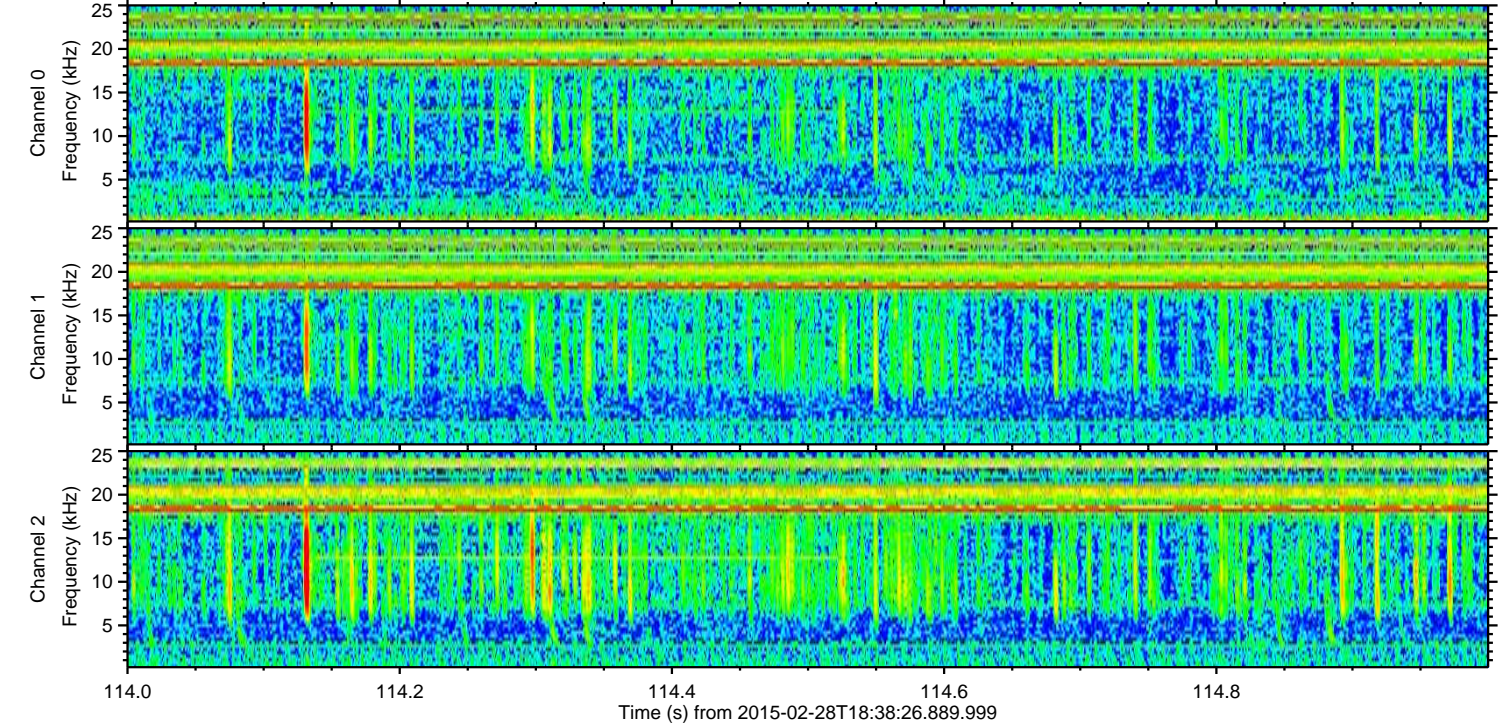
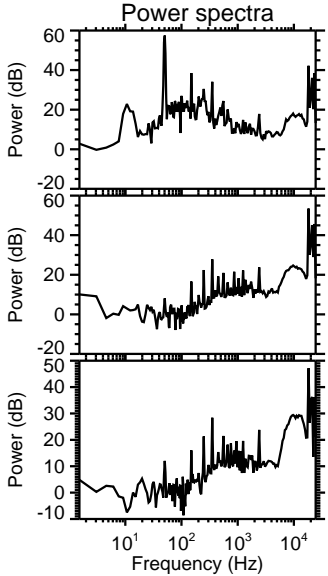
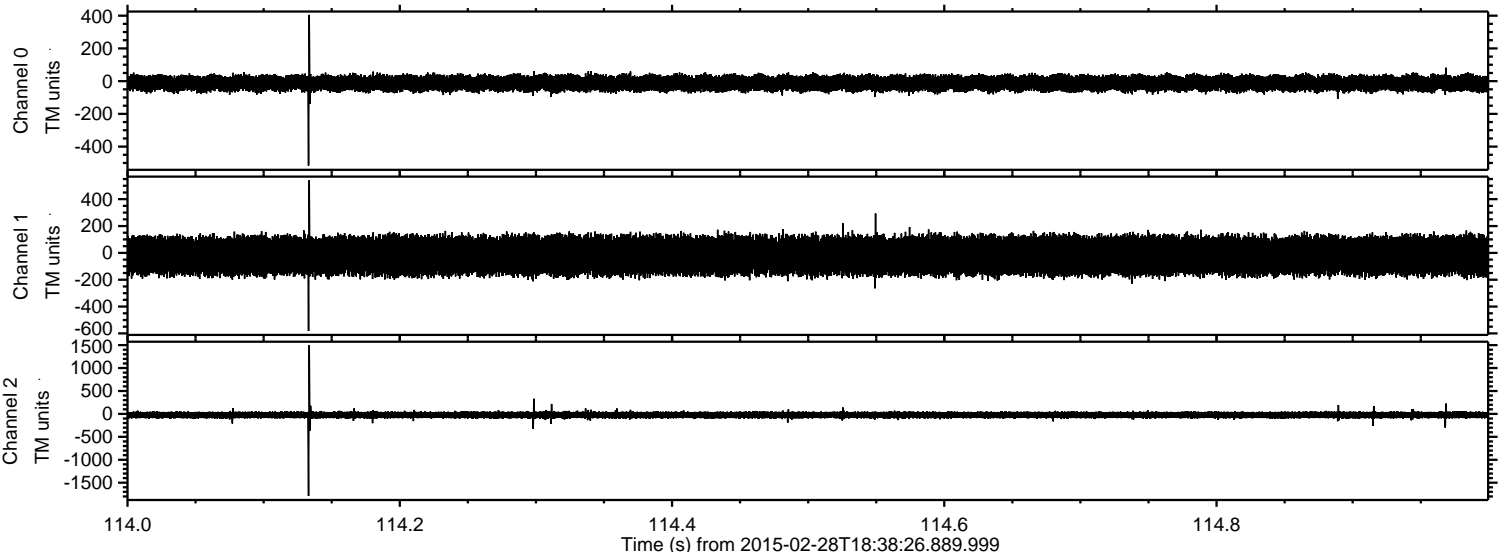
Channel 0
mn: -655
mx: 572
 μ : -12.9
 σ : 25.1

Channel 1
mn: -2044
mx: 2460
 μ : -21.1
 σ : 78.0

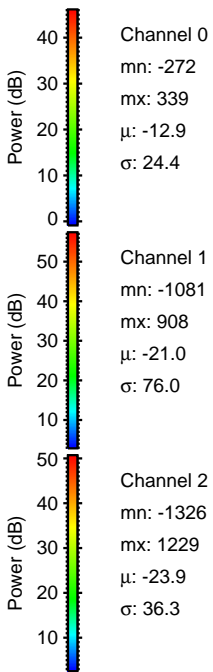
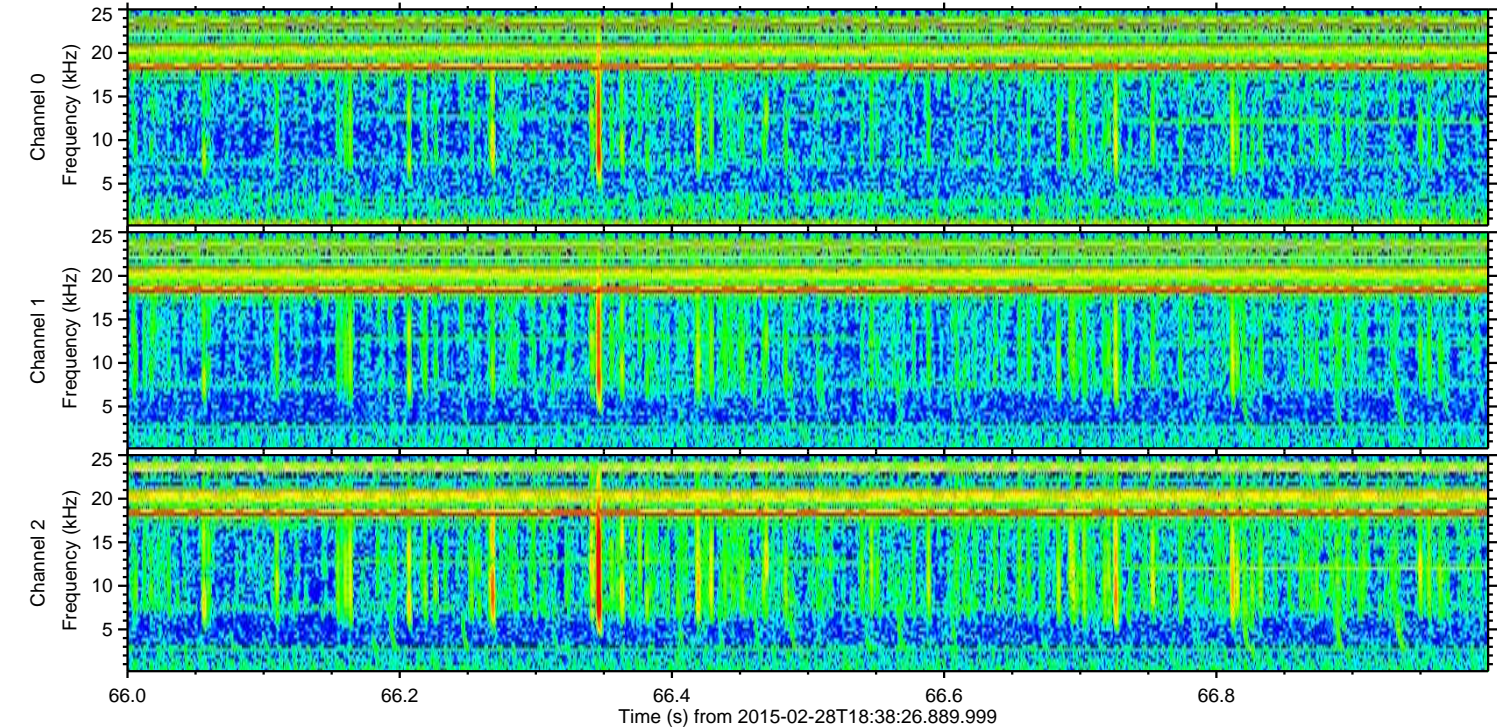
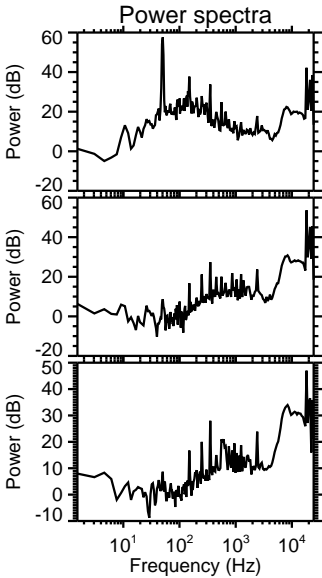
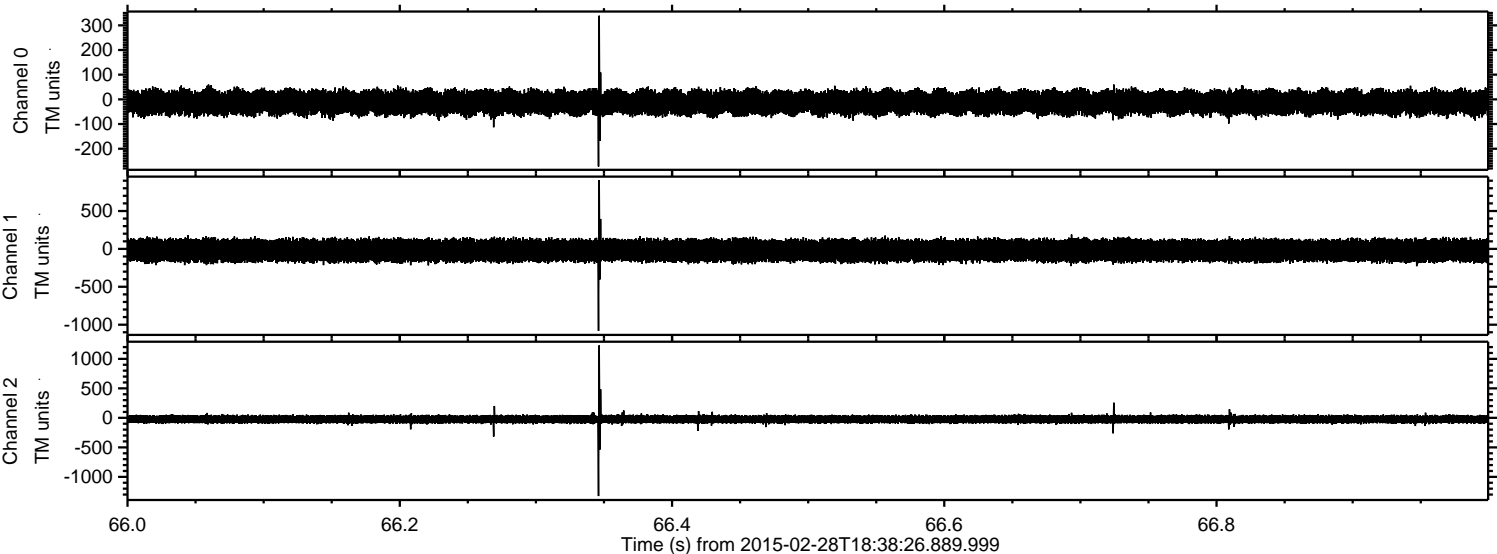
Channel 2
mn: -1386
mx: 1809
 μ : -23.9
 σ : 40.7

ELMAVAN 3D WAVEFORMS (Measured data sampled at 50 kHz) 49742 packets of 144 samples from 2015-02-28T18:38:26.889.999. Part 115/144

Processed Fri Mar 6 02:22:33 2015 by ELM ver.2012-10-06 from 001__elm20150228_183825__dat00.bin



Processed Fri Mar 6 02:22:34 2015 by ELM ver.2012-10-06 from 001__elm20150228_183825__dat00.bin



Processed Fri Mar 6 02:22:35 2015 by ELM ver.2012-10-06 from 001__elm20150228_183825__dat00.bin

