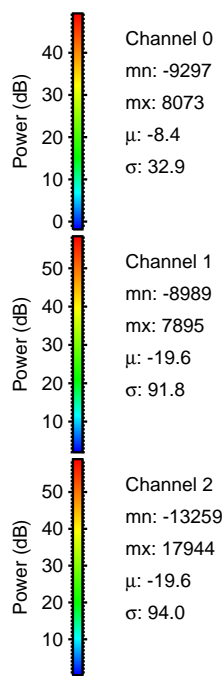
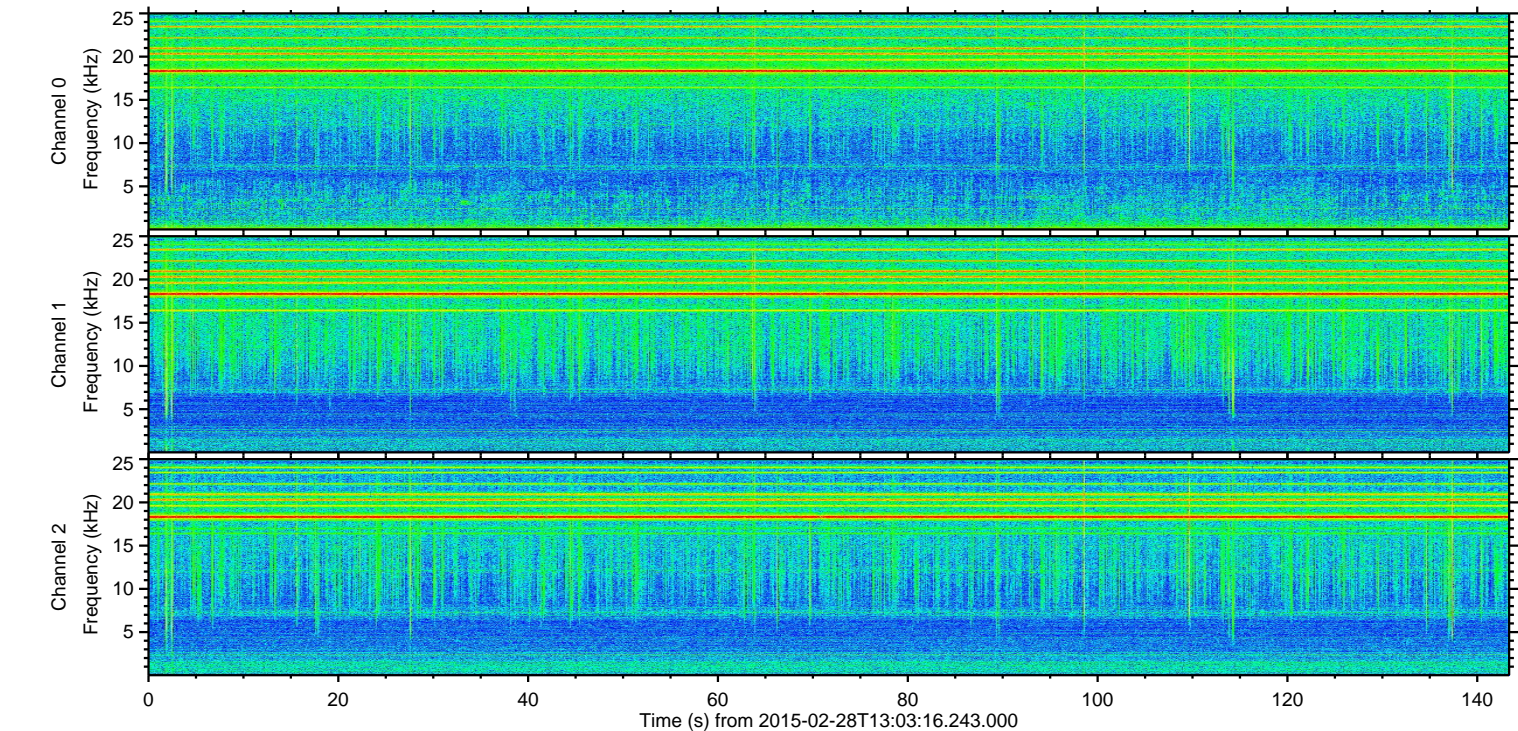
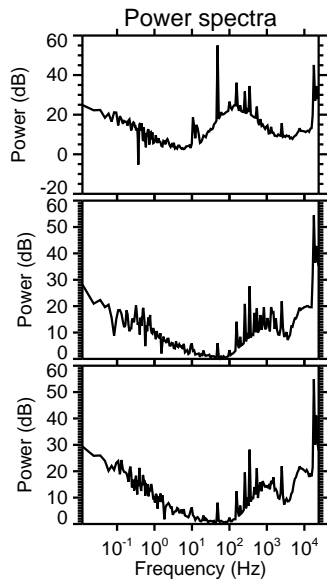
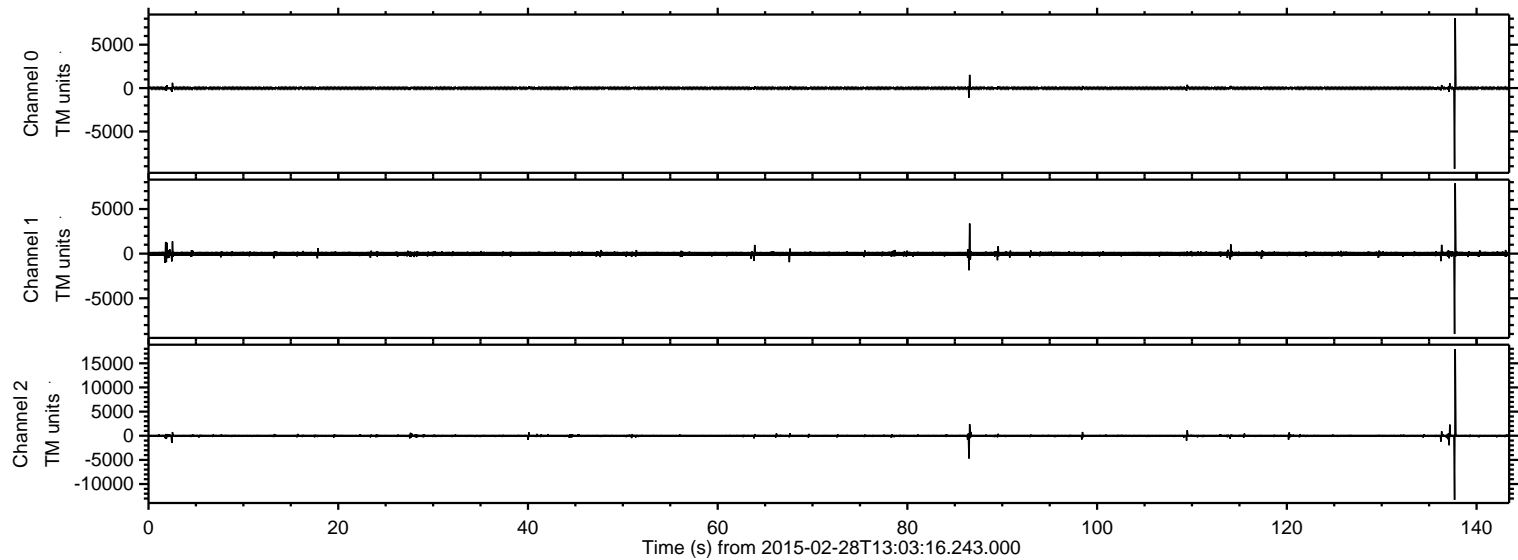


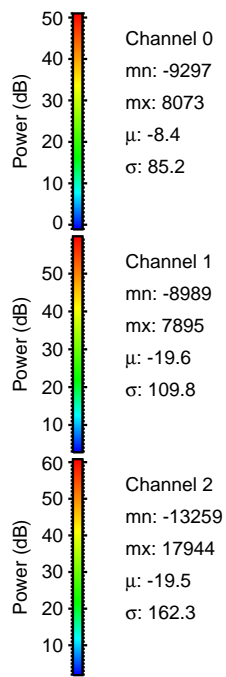
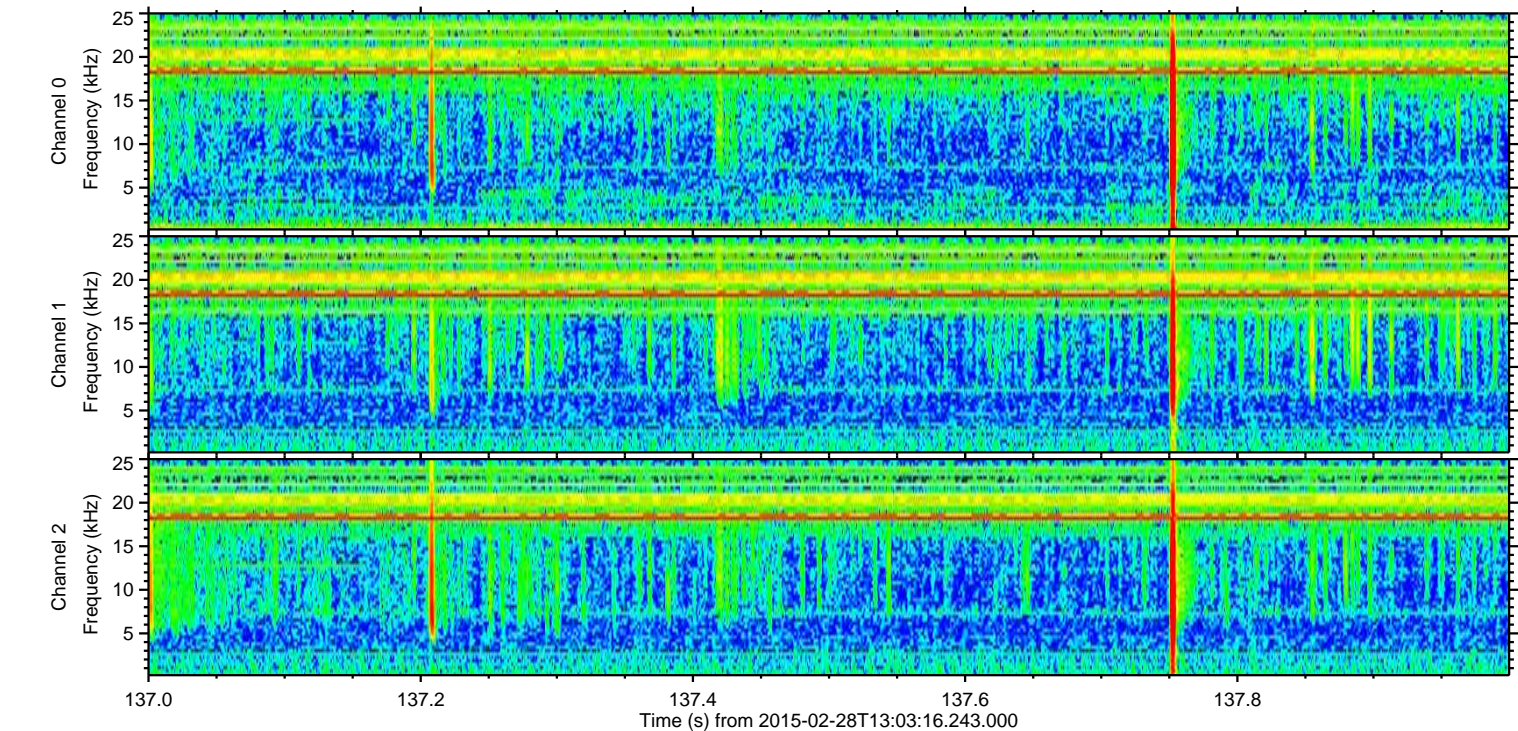
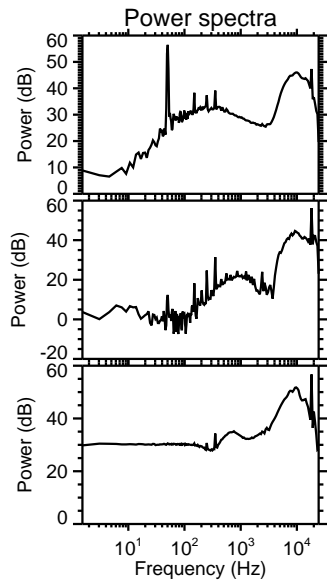
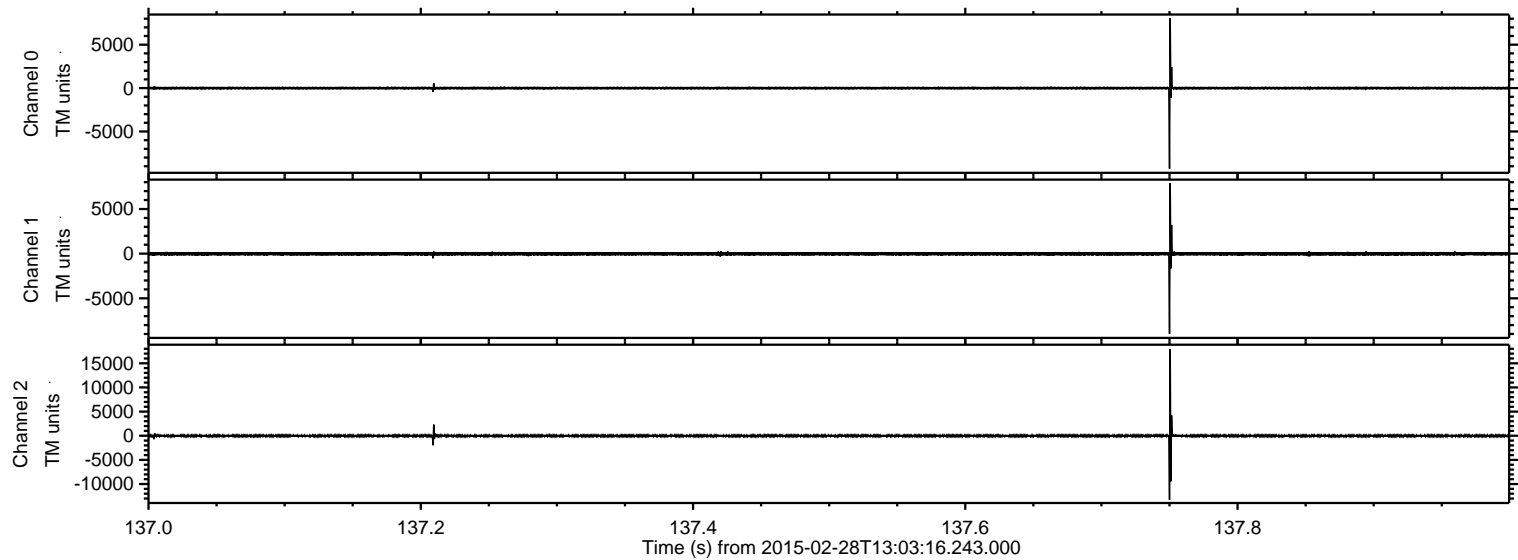
ELMAVAN 3D WAVEFORMS (Measured data sampled at 50 kHz) 49804 packets of 144 samples from 2015-02-28T13:03:16.243.000.

Processed Thu Mar 5 21:38:49 2015 by ELM ver.2012-10-06 from 001\_\_elm20150228\_130315\_\_dat00.bin



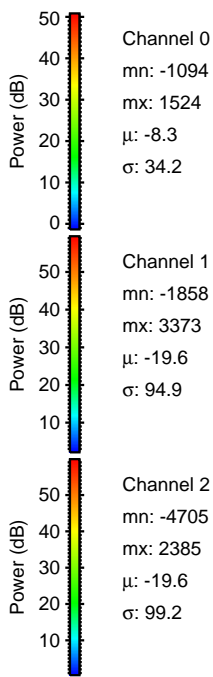
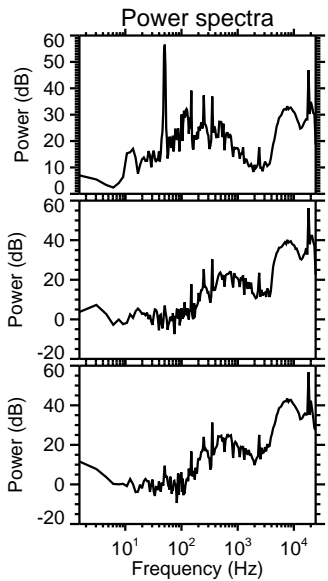
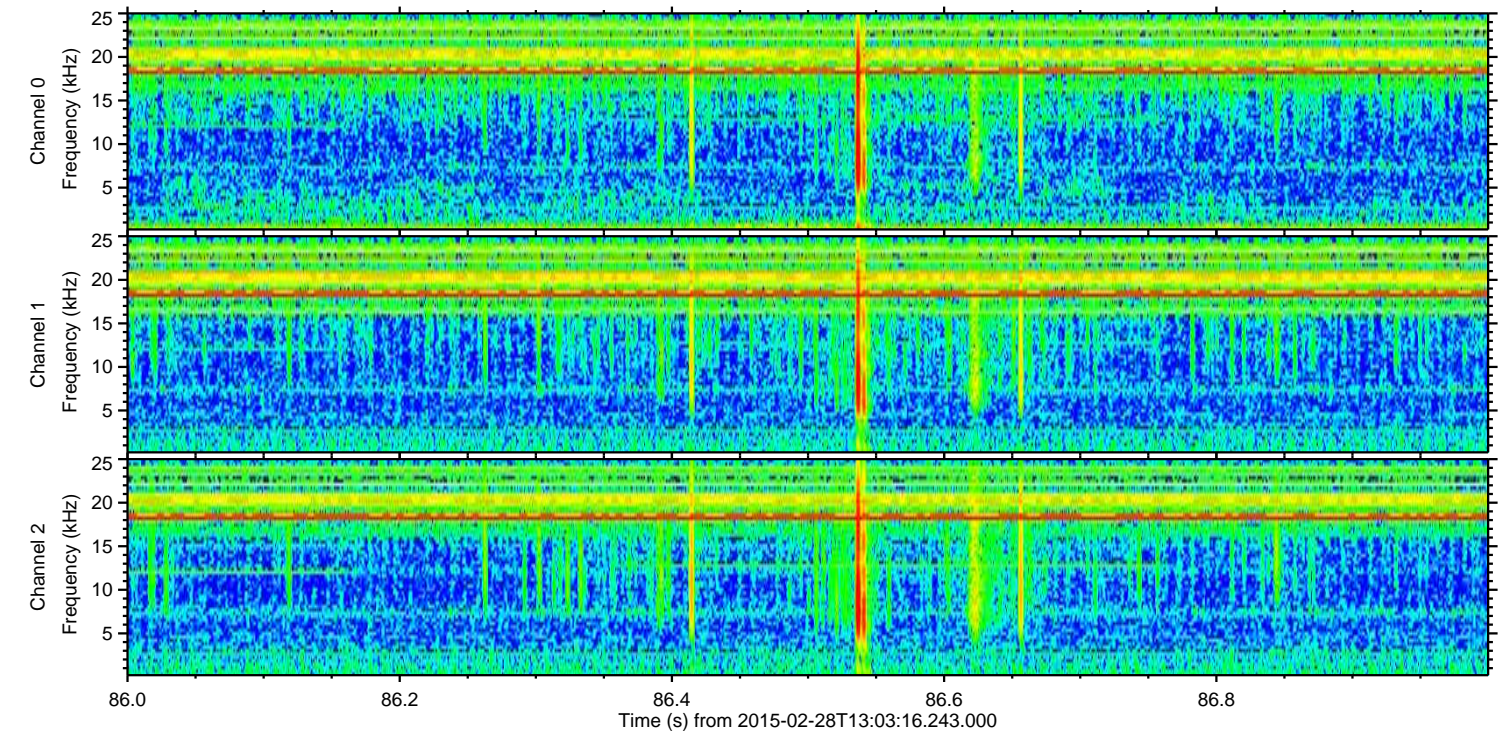
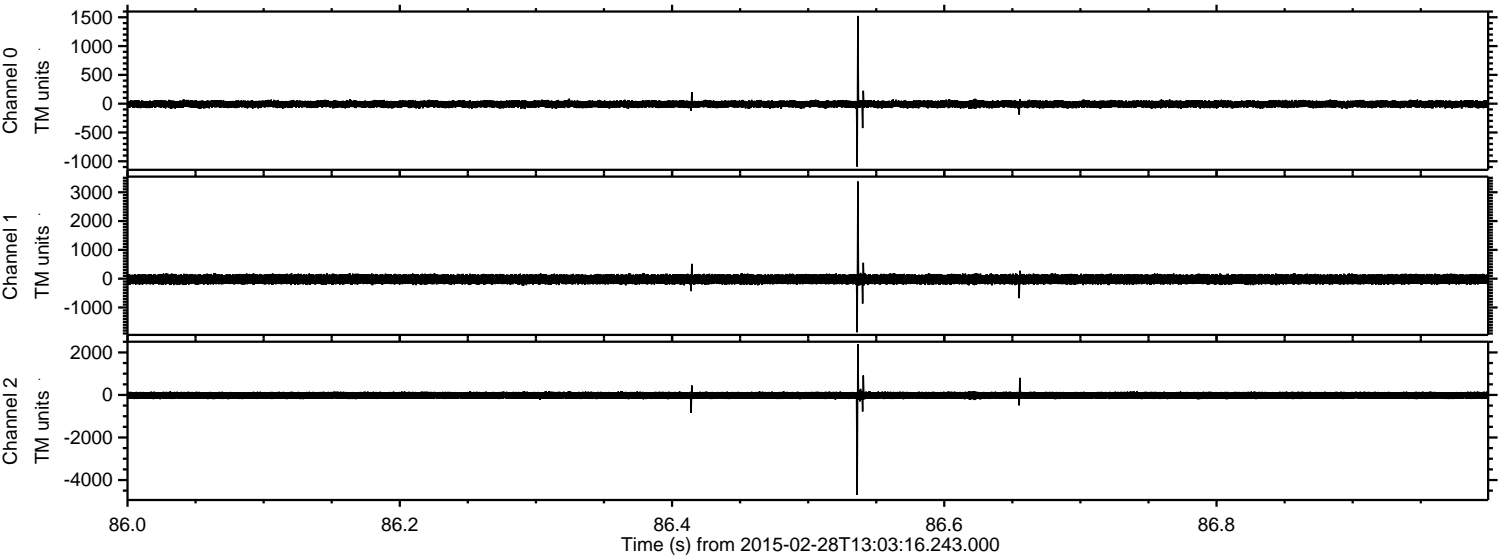


Processed Thu Mar 5 21:39:01 2015 by ELM ver.2012-10-06 from 001\_\_elm20150228\_130315\_\_dat00.bin





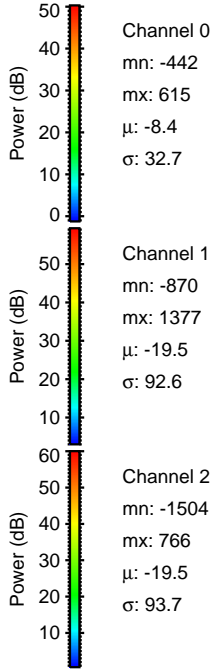
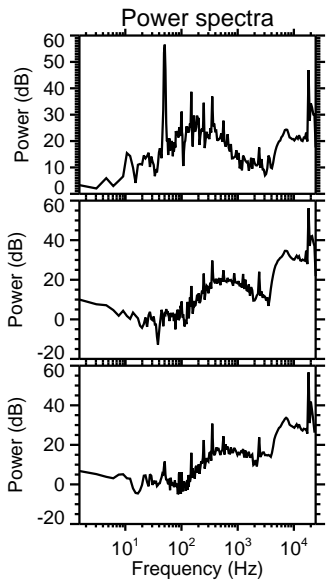
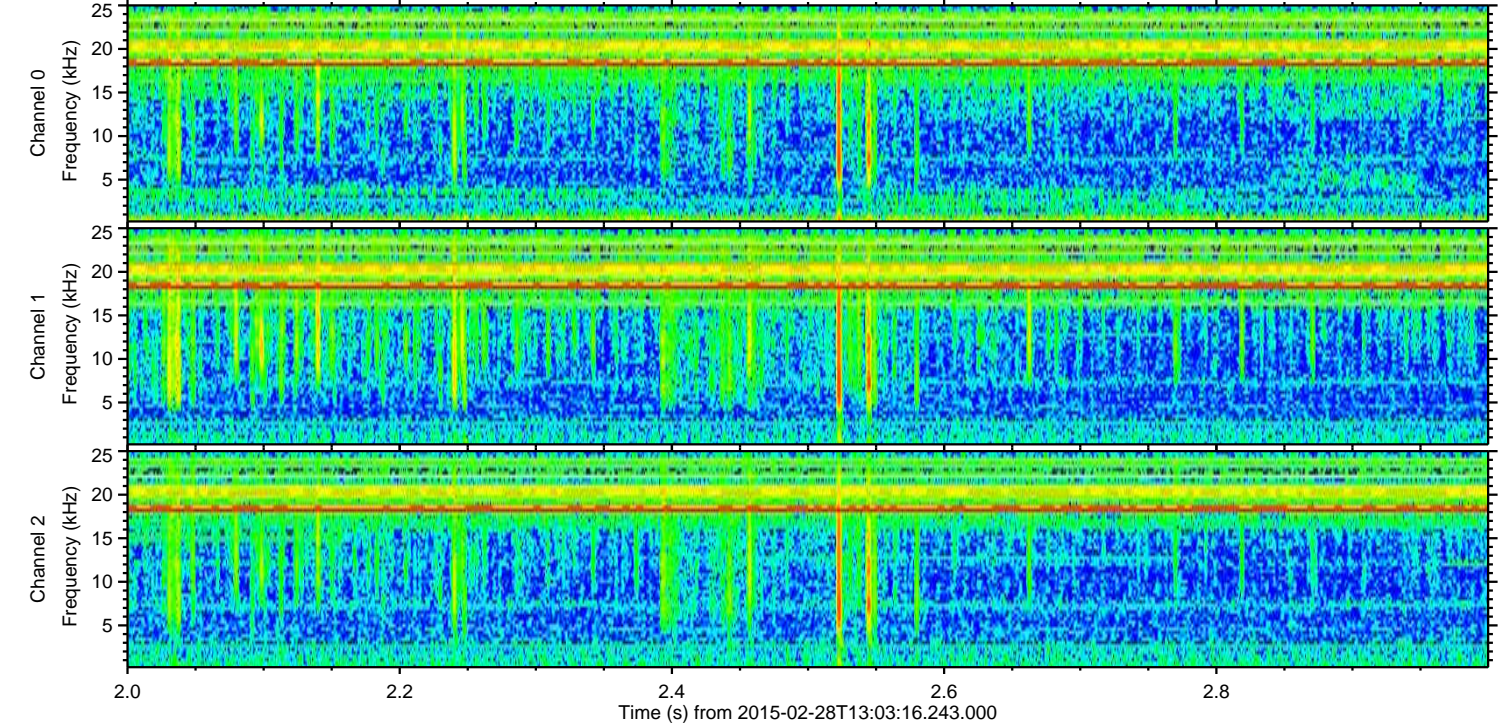
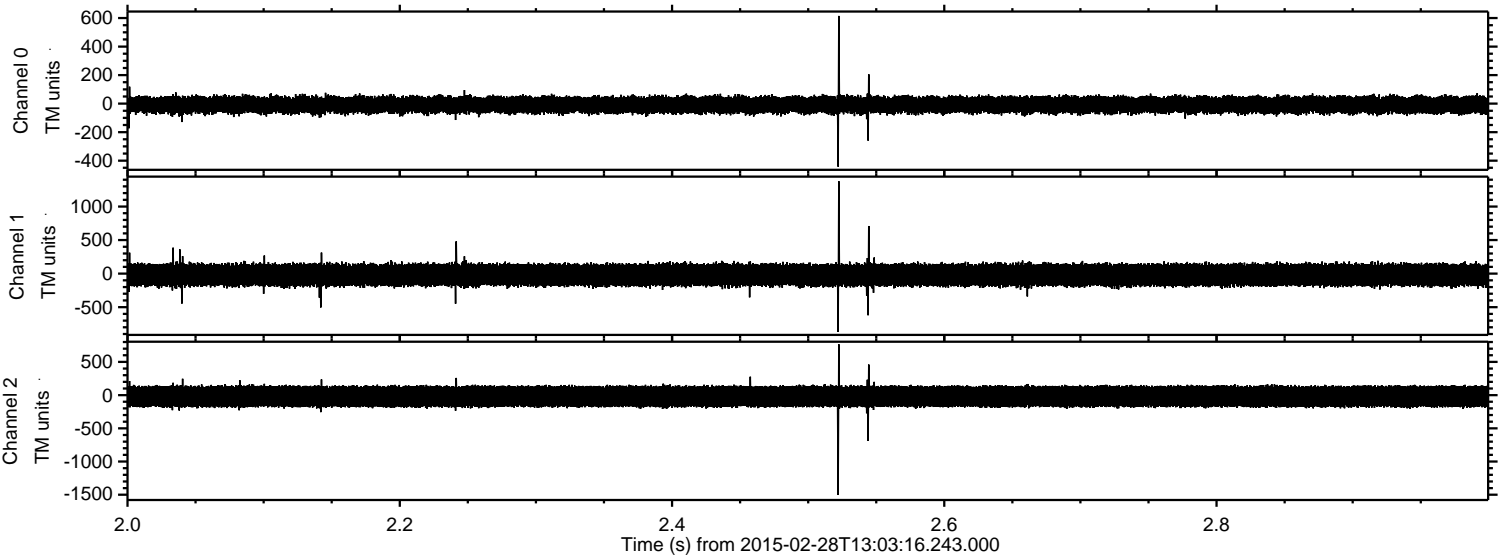
Processed Thu Mar 5 21:39:02 2015 by ELM ver.2012-10-06 from 001\_\_elm20150228\_130315\_\_dat00.bin





ELMAVAN 3D WAVEFORMS (Measured data sampled at 50 kHz) 49804 packets of 144 samples from 2015-02-28T13:03:16.243.000. Part 3/144

Processed Thu Mar 5 21:39:03 2015 by ELM ver.2012-10-06 from 001\_\_elm20150228\_130315\_\_dat00.bin



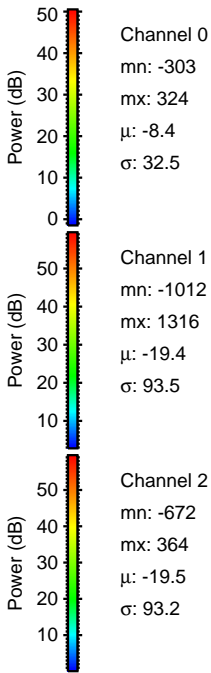
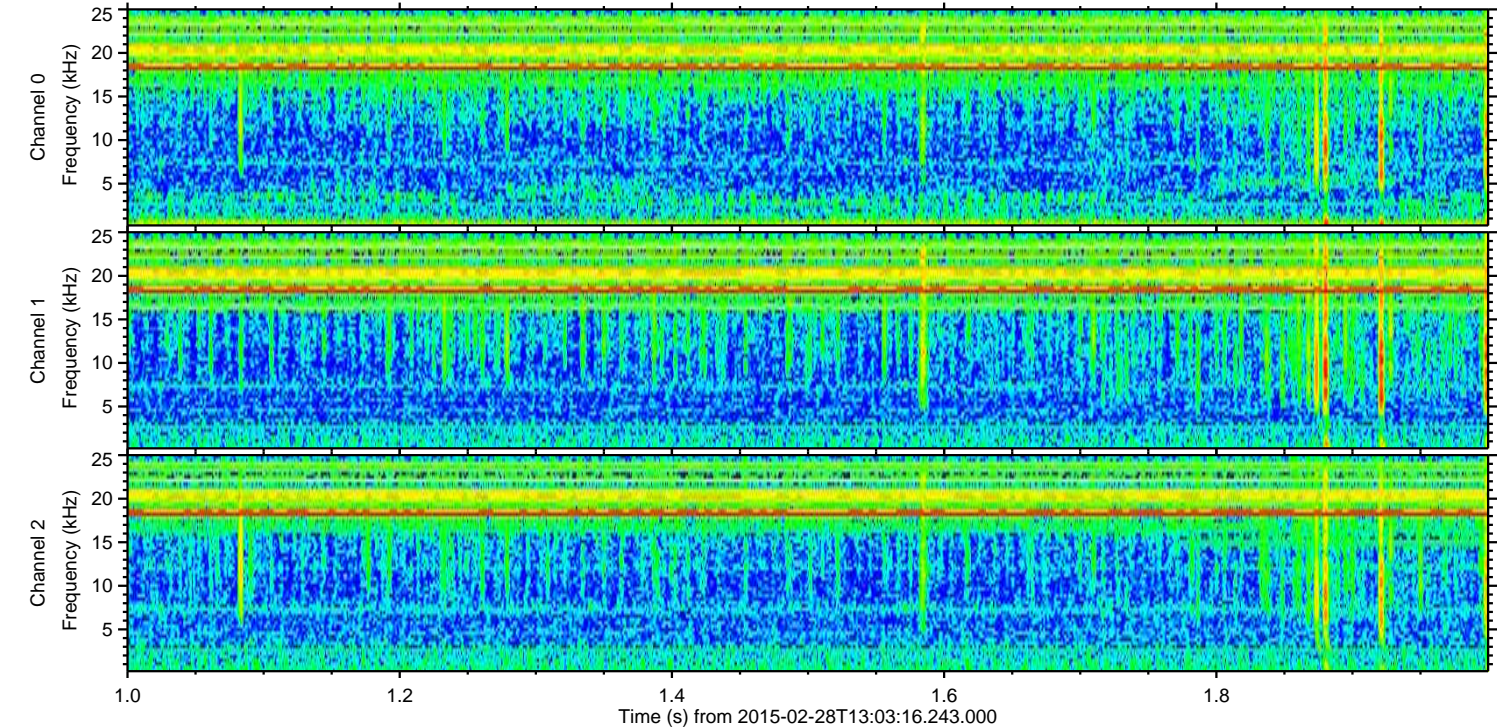
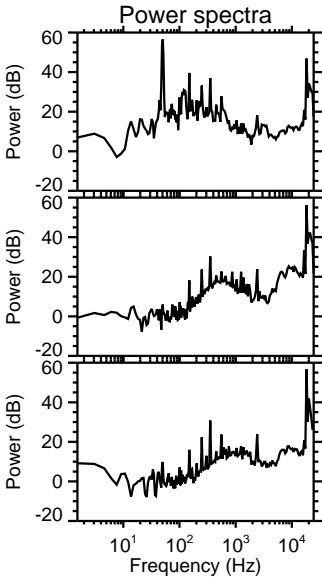
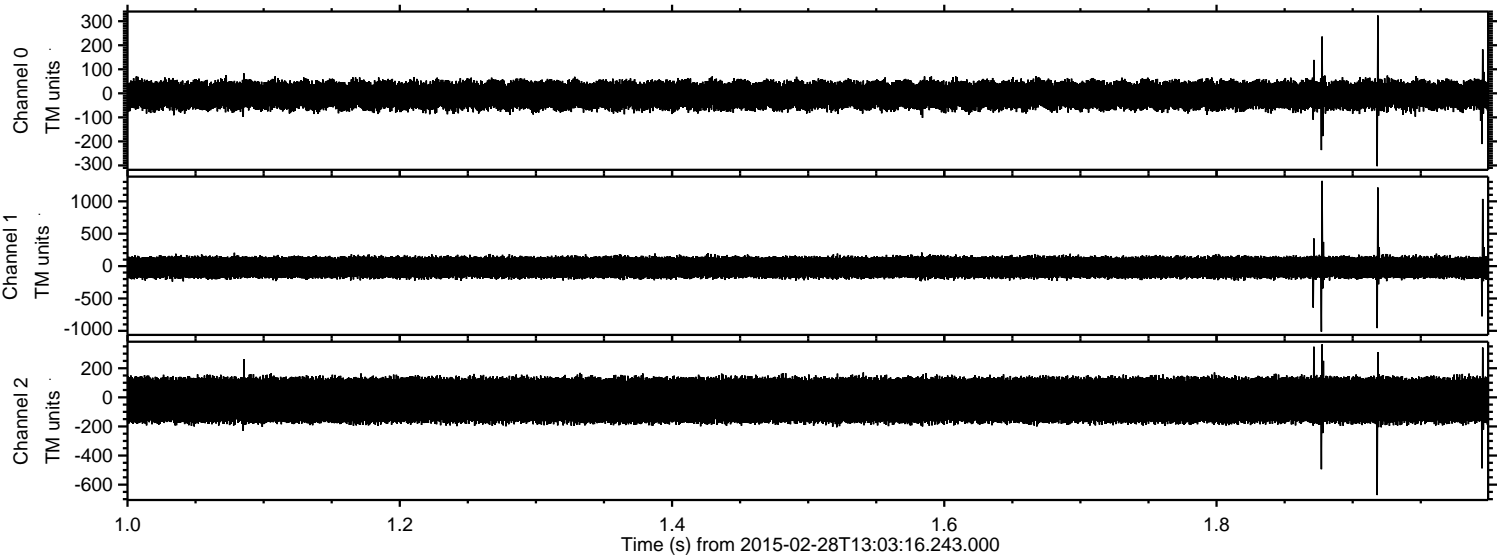
Channel 0  
mn: -442  
mx: 615  
 $\mu$ : -8.4  
 $\sigma$ : 32.7

Channel 1  
mn: -870  
mx: 1377  
 $\mu$ : -19.5  
 $\sigma$ : 92.6

Channel 2  
mn: -1504  
mx: 766  
 $\mu$ : -19.5  
 $\sigma$ : 93.7



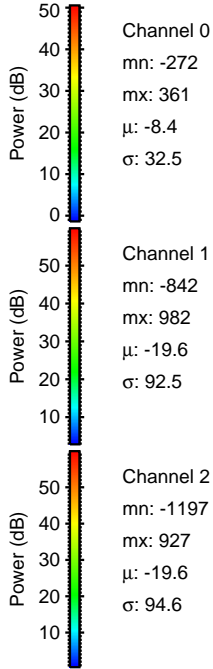
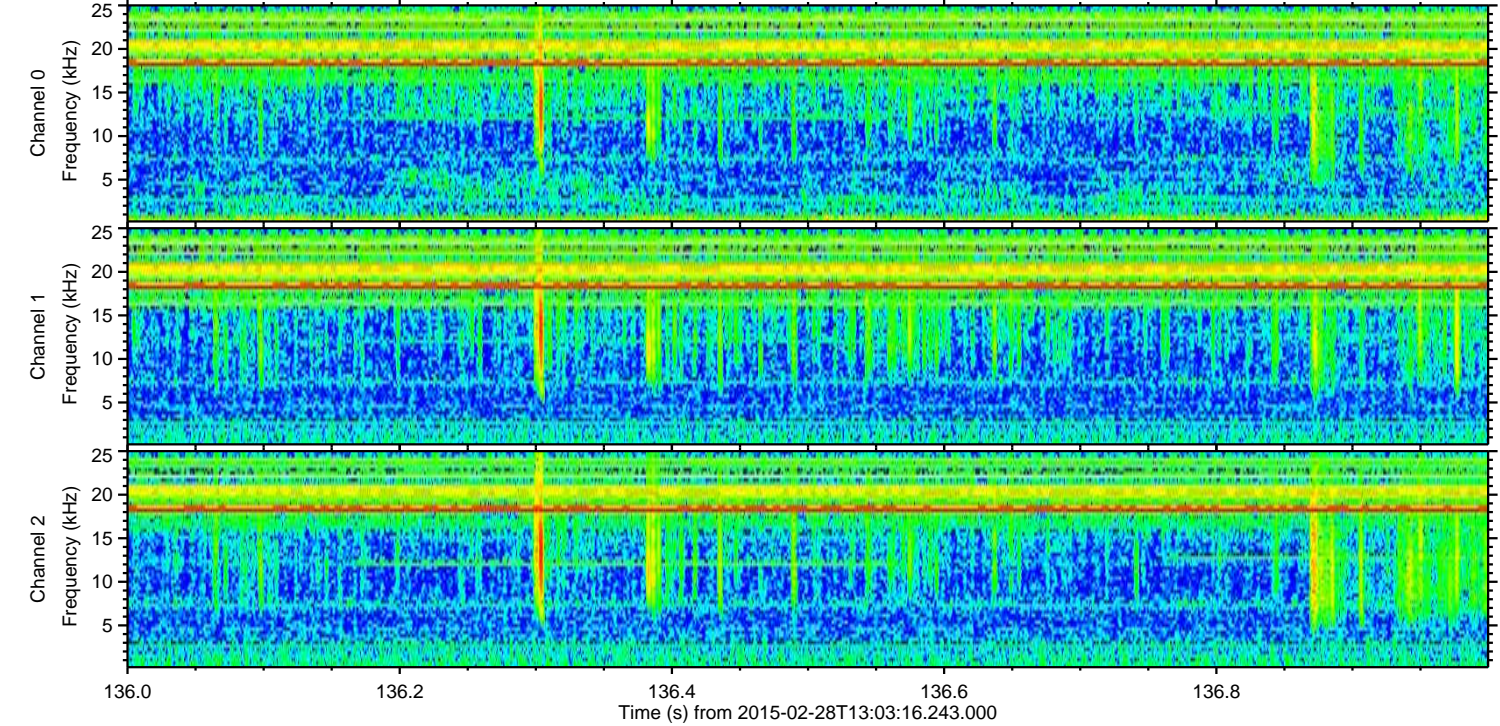
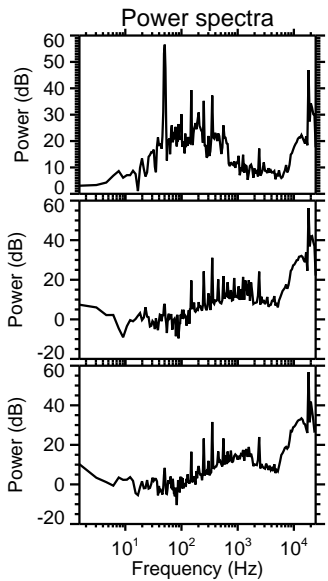
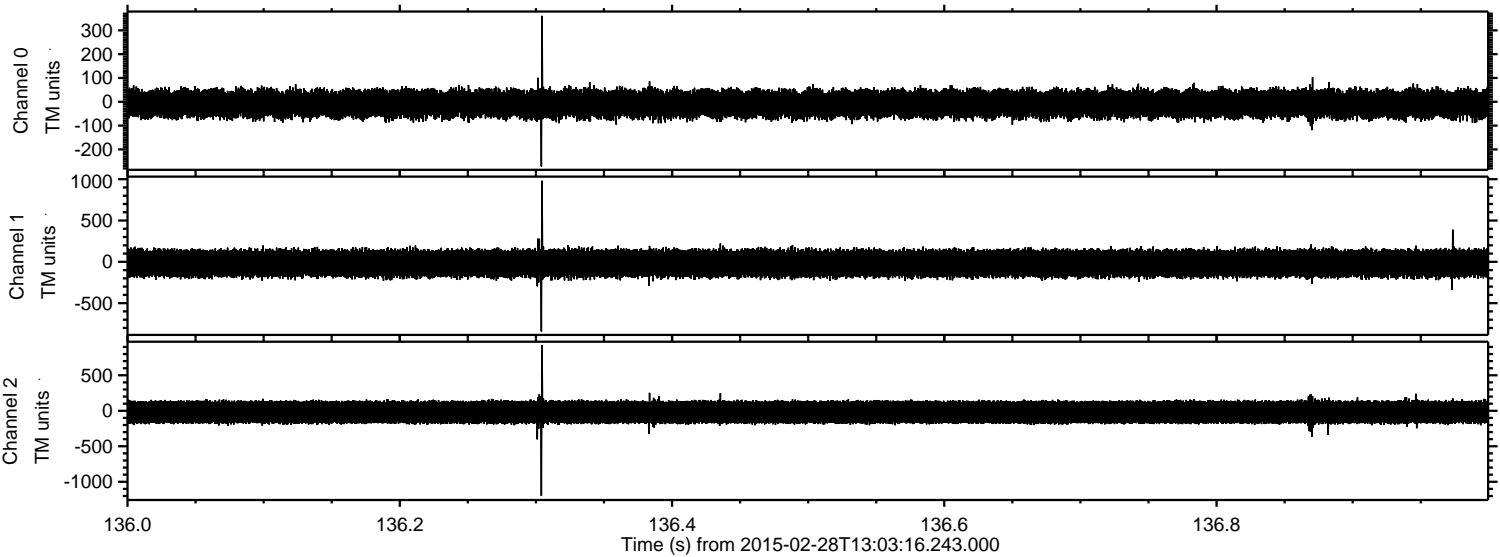
Processed Thu Mar 5 21:39:03 2015 by ELM ver.2012-10-06 from 001\_\_elm20150228\_130315\_\_dat00.bin





ELMAVAN 3D WAVEFORMS (Measured data sampled at 50 kHz) 49804 packets of 144 samples from 2015-02-28T13:03:16.243.000. Part 137/144

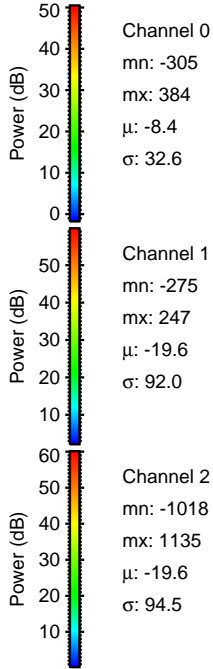
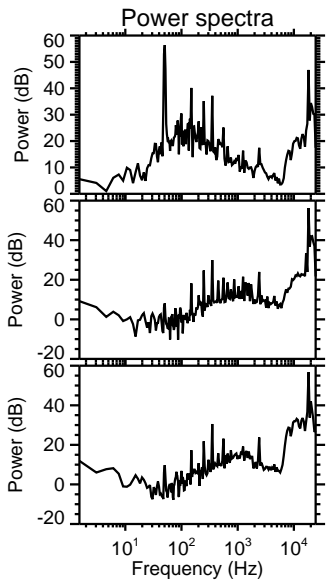
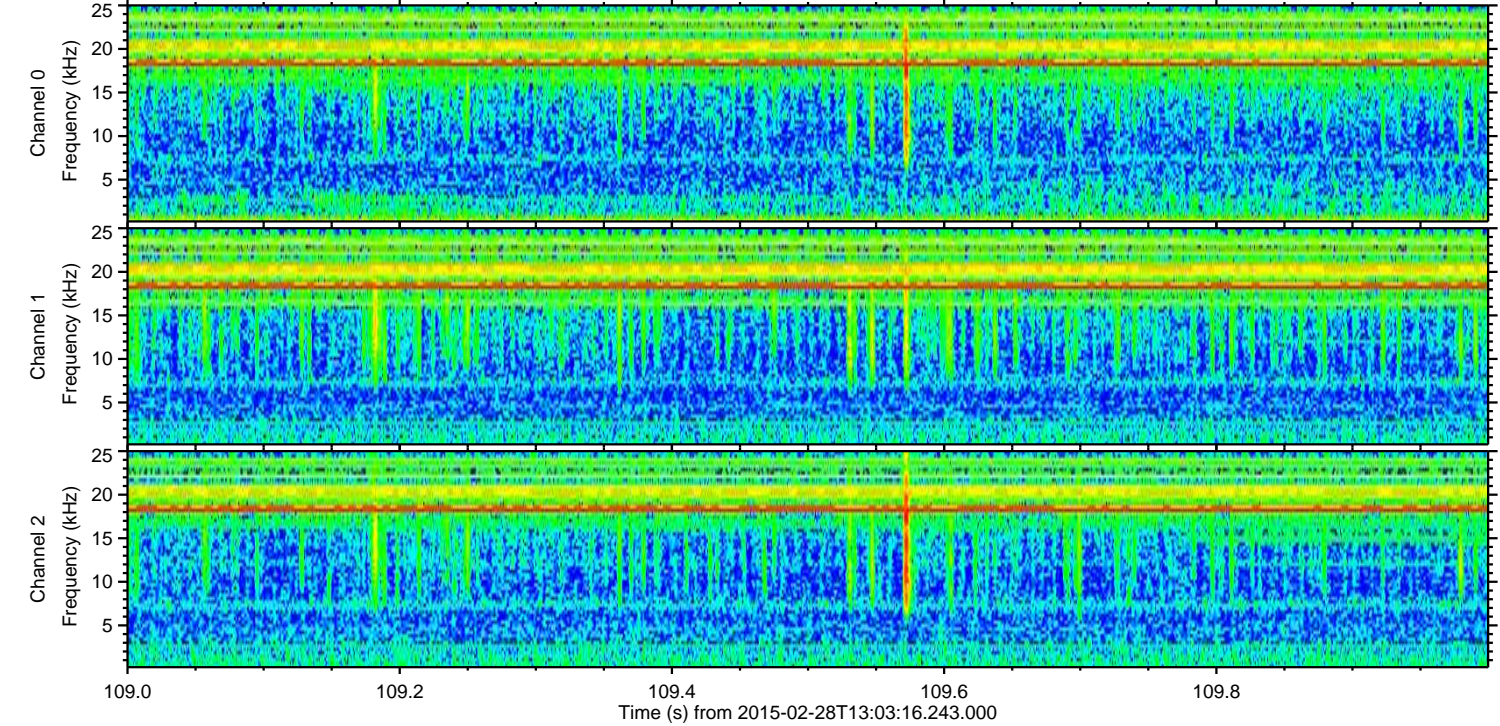
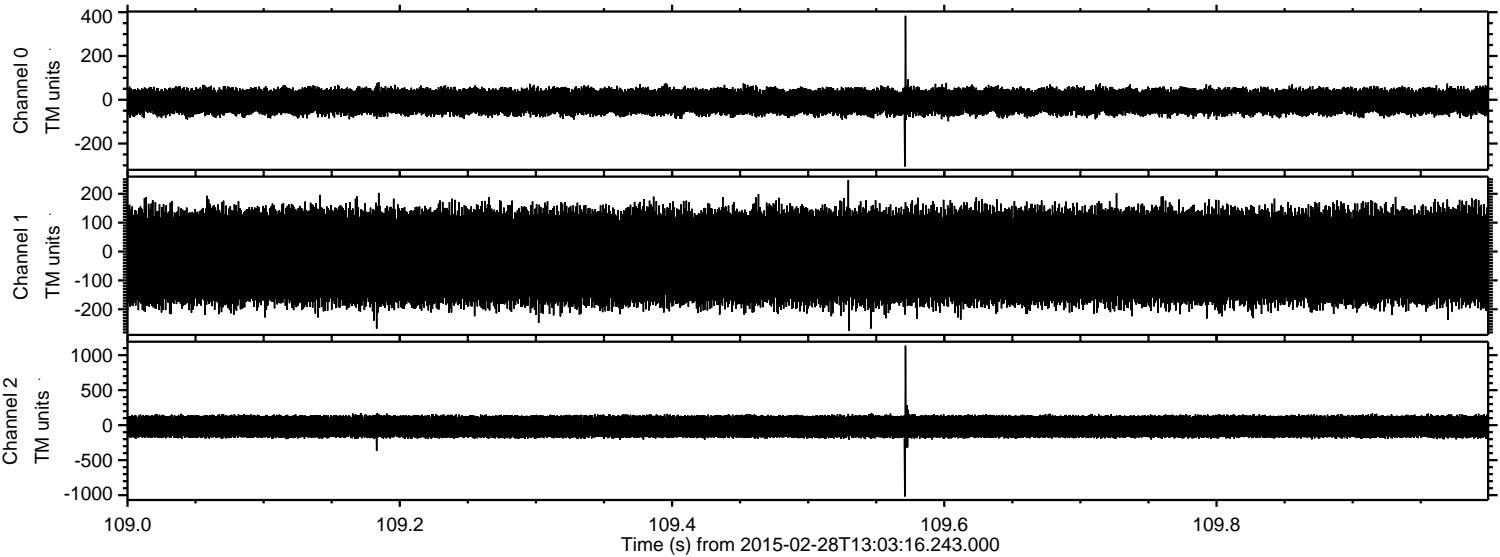
Processed Thu Mar 5 21:39:04 2015 by ELM ver.2012-10-06 from 001\_\_elm20150228\_130315\_\_dat00.bin





ELMAVAN 3D WAVEFORMS (Measured data sampled at 50 kHz) 49804 packets of 144 samples from 2015-02-28T13:03:16.243.000. Part 110/144

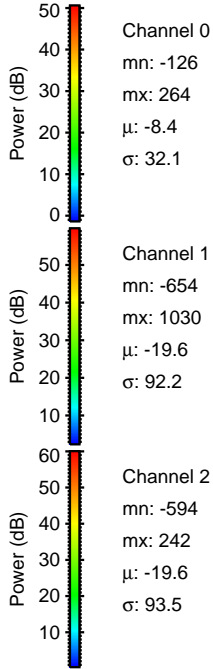
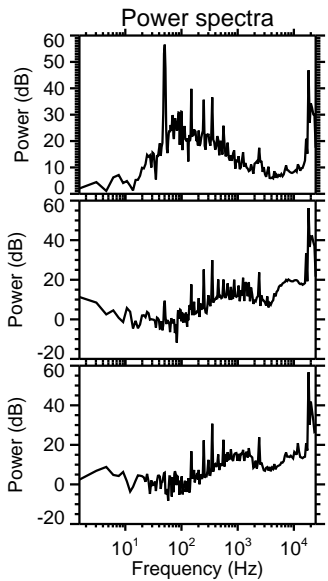
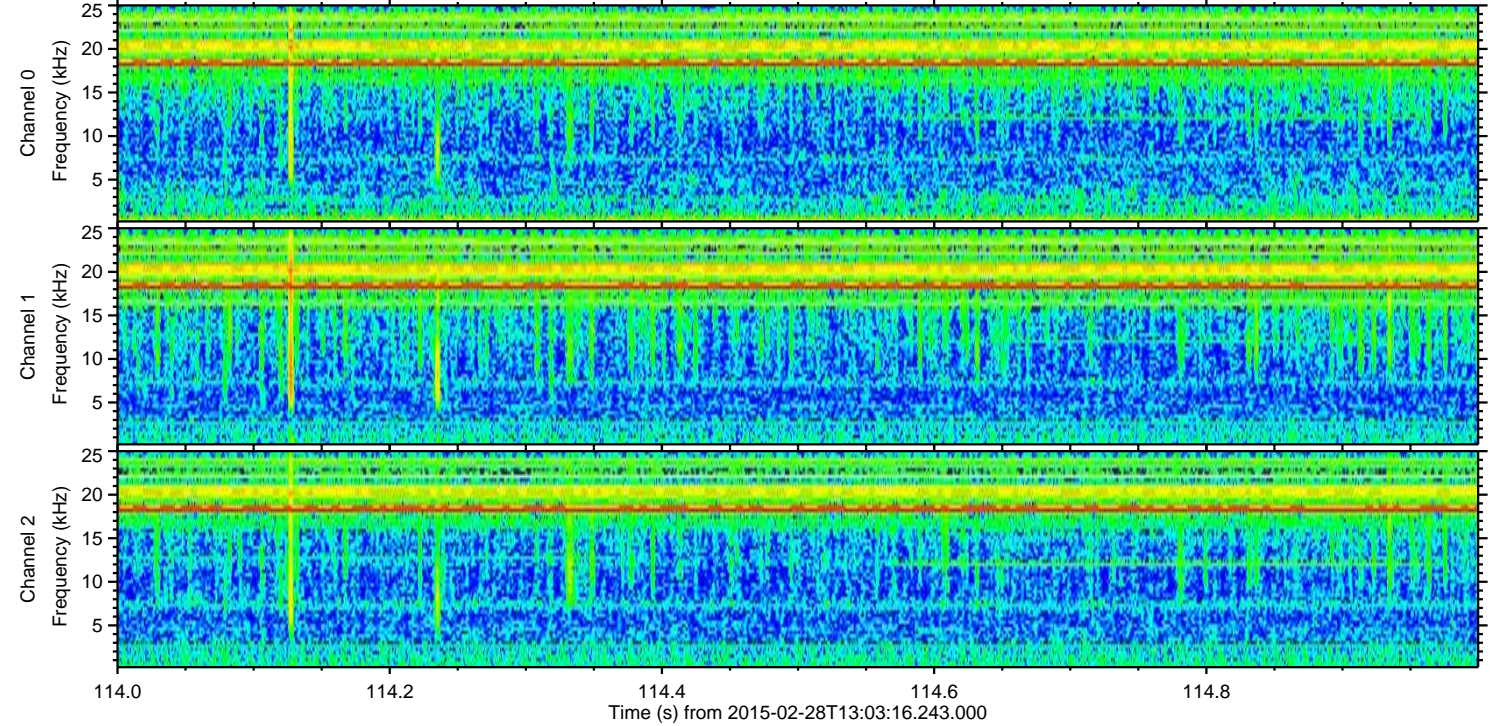
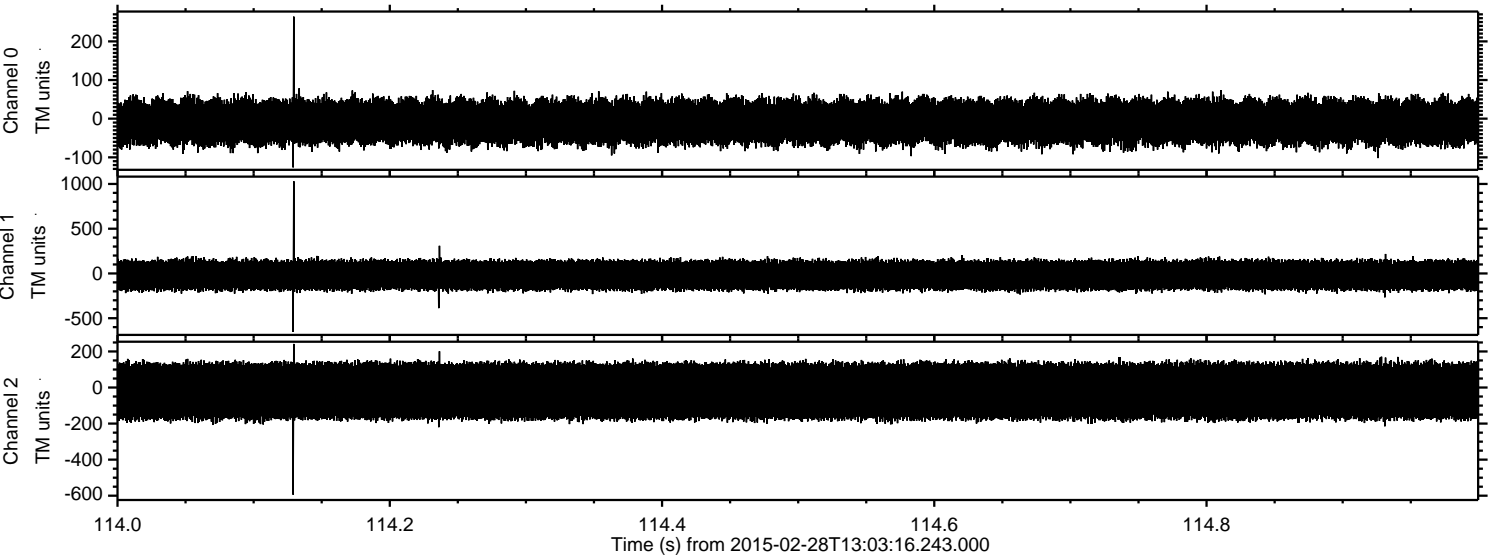
Processed Thu Mar 5 21:39:05 2015 by ELM ver.2012-10-06 from 001\_\_elm20150228\_130315\_\_dat00.bin





ELMAVAN 3D WAVEFORMS (Measured data sampled at 50 kHz) 49804 packets of 144 samples from 2015-02-28T13:03:16.243.000. Part 115/144

Processed Thu Mar 5 21:39:06 2015 by ELM ver.2012-10-06 from 001\_\_elm20150228\_130315\_\_dat00.bin



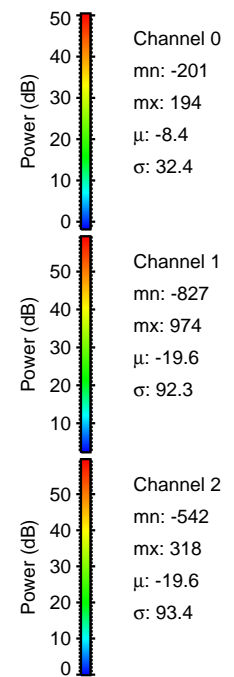
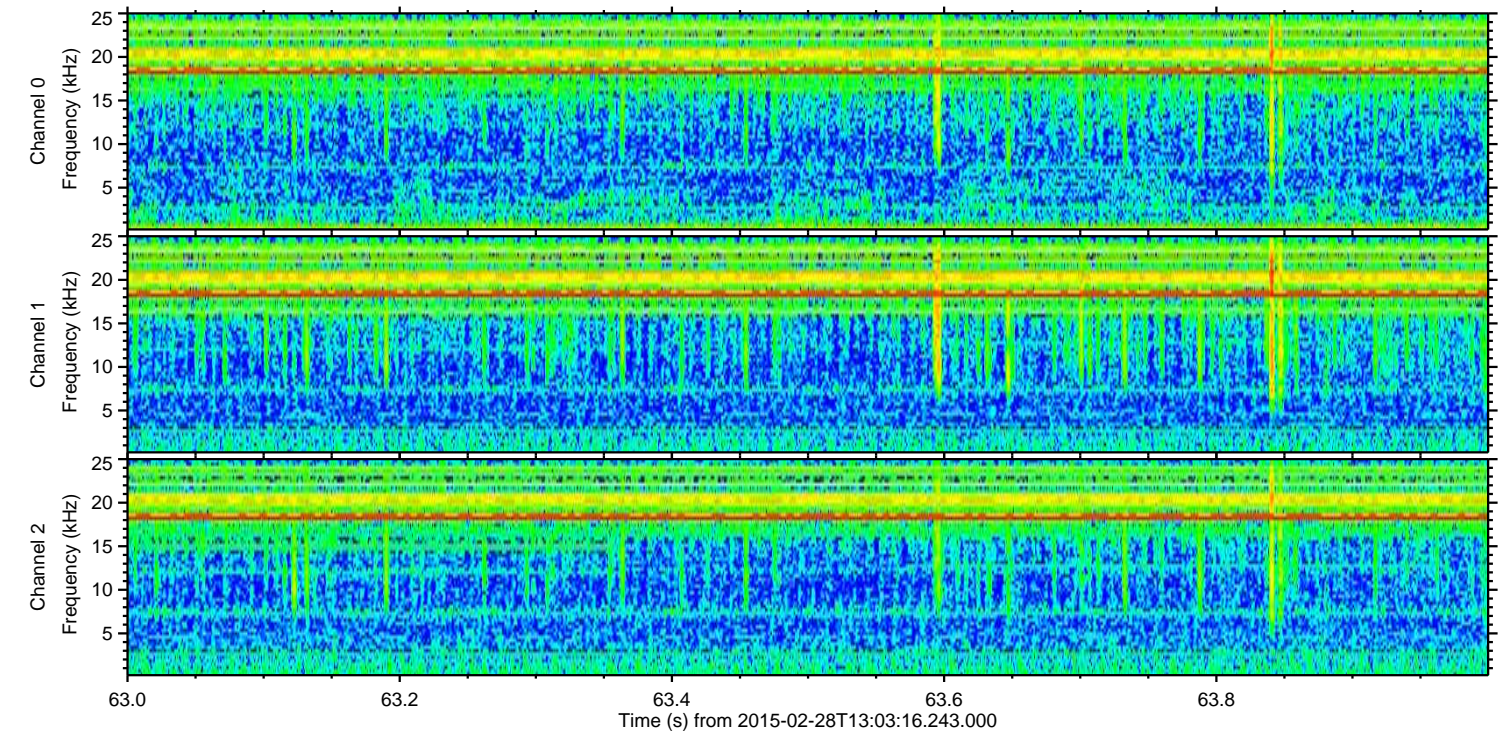
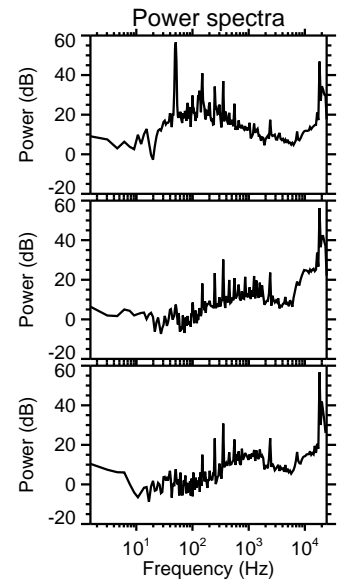
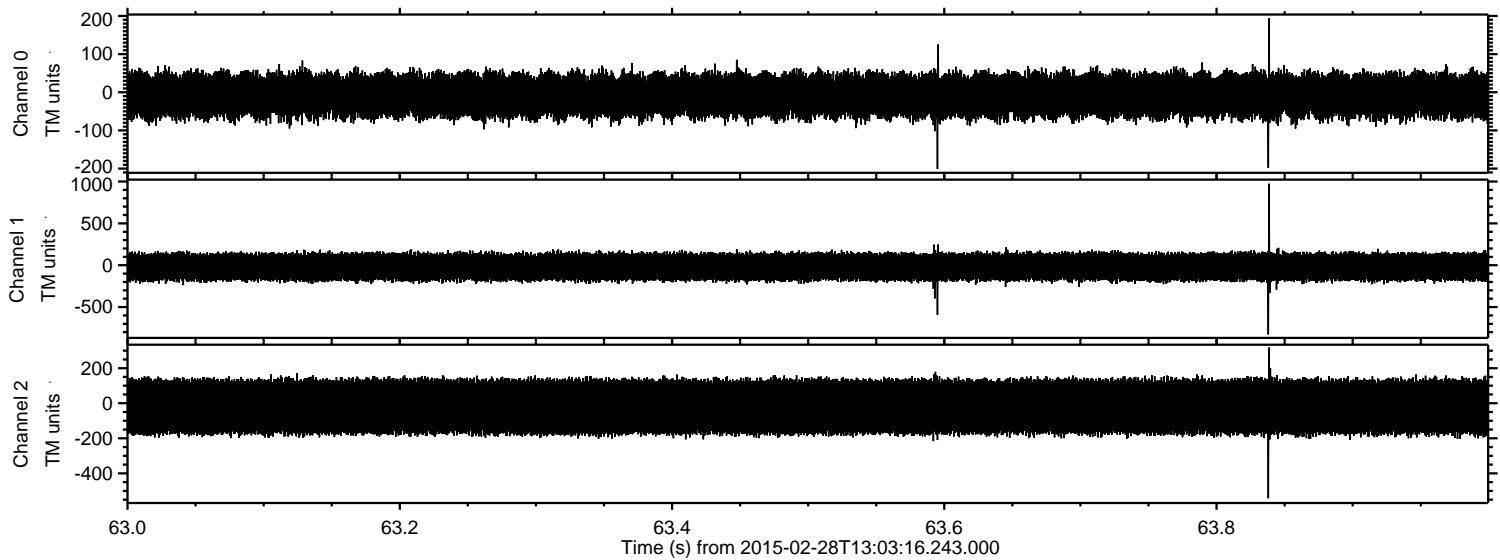
Channel 0  
mn: -126  
mx: 264  
 $\mu$ : -8.4  
 $\sigma$ : 32.1

Channel 1  
mn: -654  
mx: 1030  
 $\mu$ : -19.6  
 $\sigma$ : 92.2

Channel 2  
mn: -594  
mx: 242  
 $\mu$ : -19.6  
 $\sigma$ : 93.5

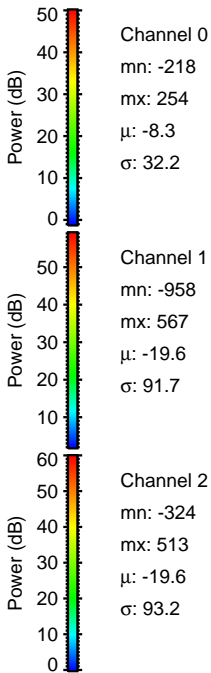
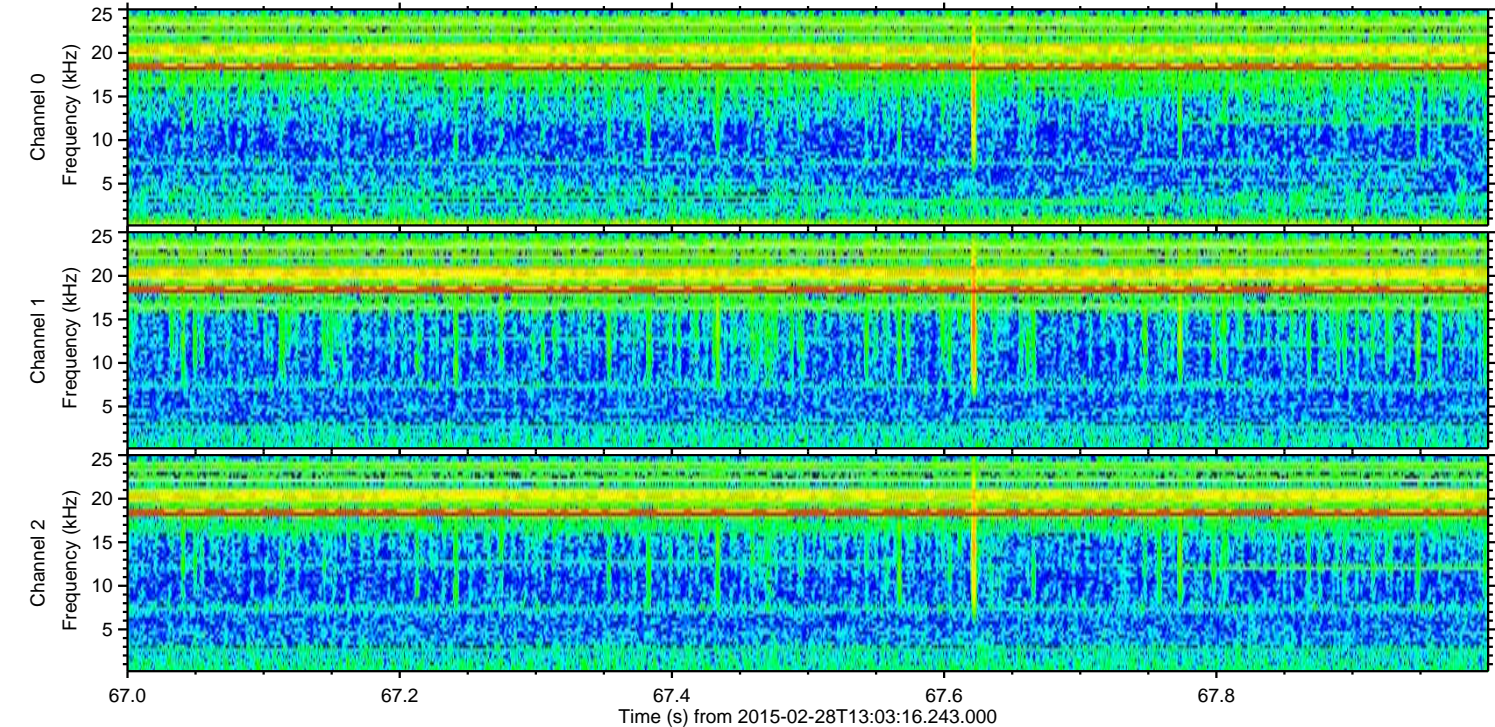
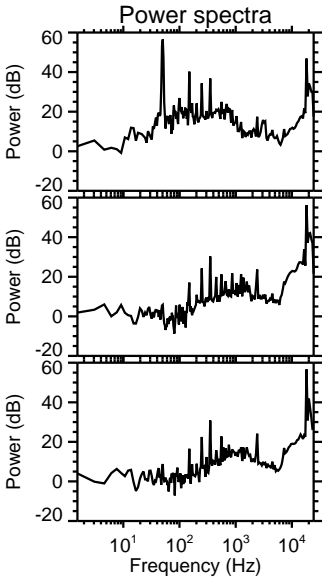
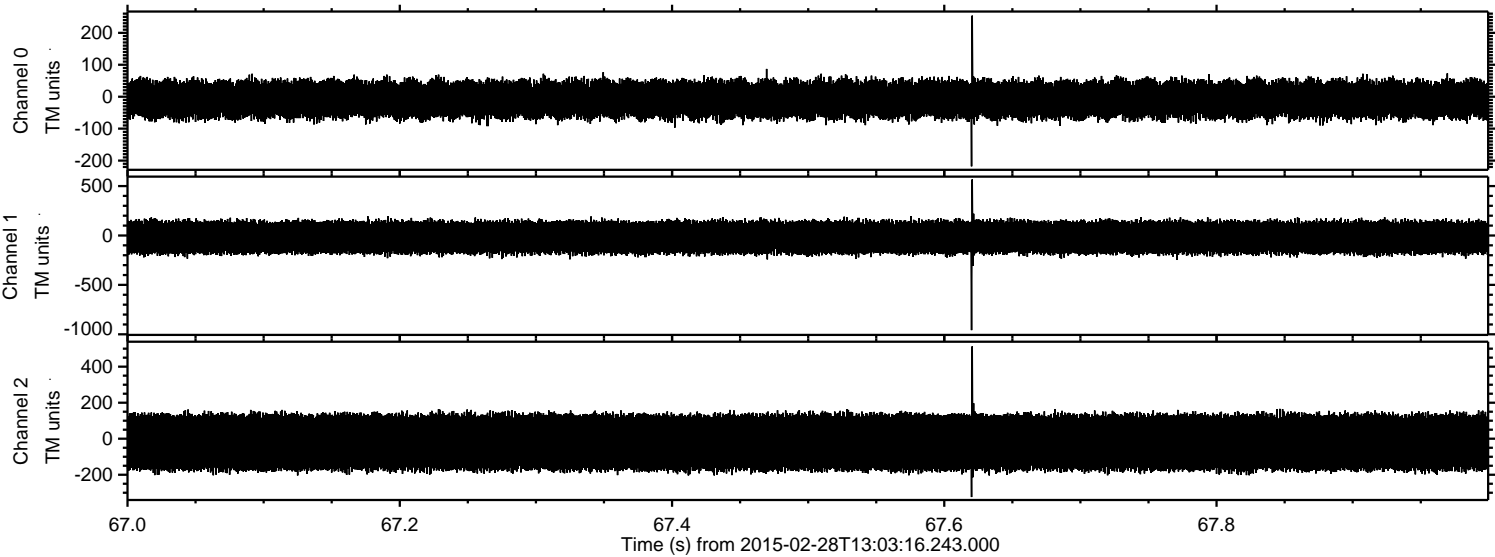


Processed Thu Mar 5 21:39:07 2015 by ELM ver.2012-10-06 from 001\_\_elm20150228\_130315\_\_dat00.bin





Processed Thu Mar 5 21:39:08 2015 by ELM ver.2012-10-06 from 001\_\_elm20150228\_130315\_\_dat00.bin





Processed Thu Mar 5 21:39:09 2015 by ELM ver.2012-10-06 from 001\_\_elm20150228\_130315\_\_dat00.bin

