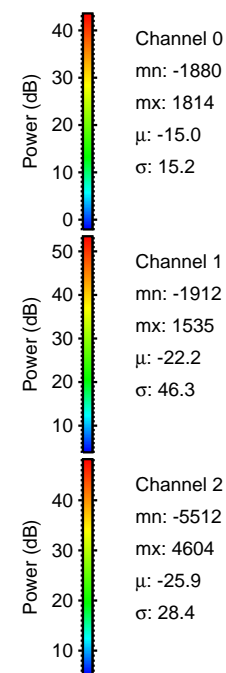
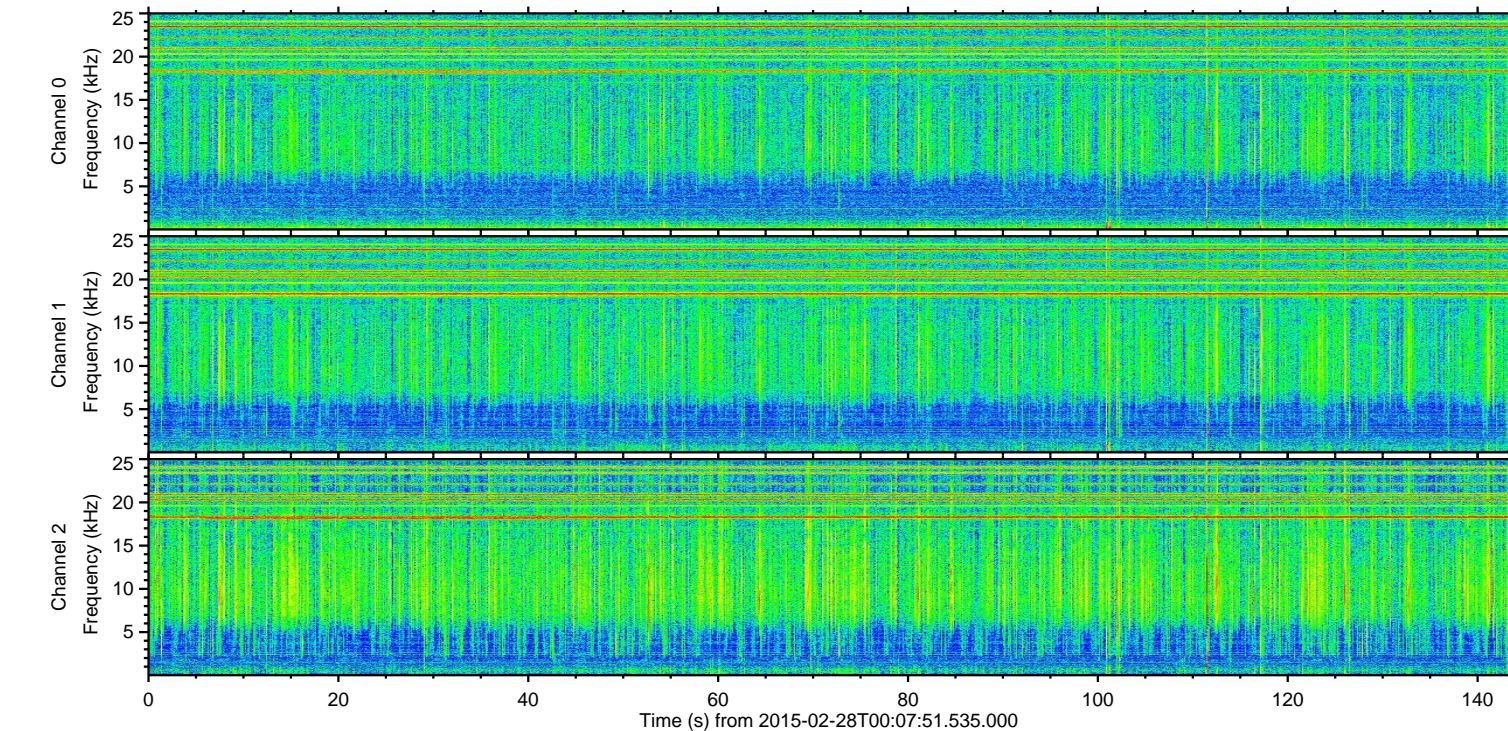
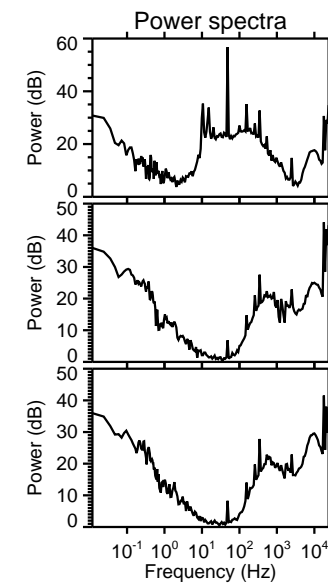
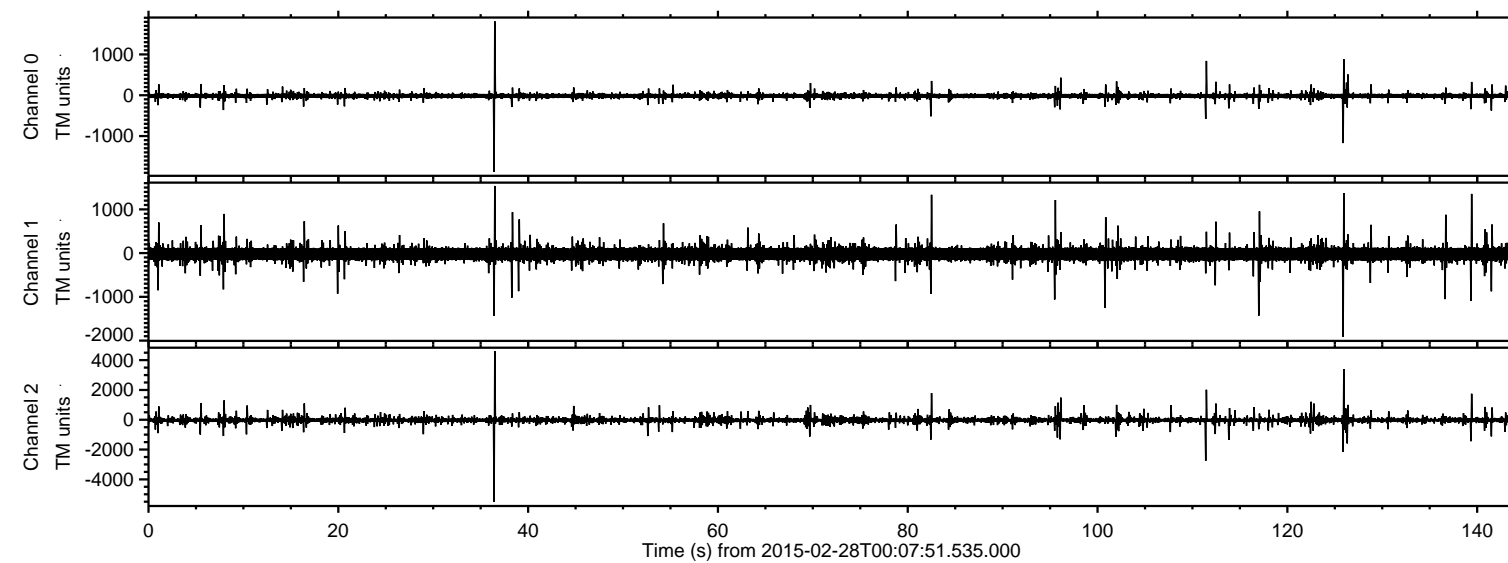


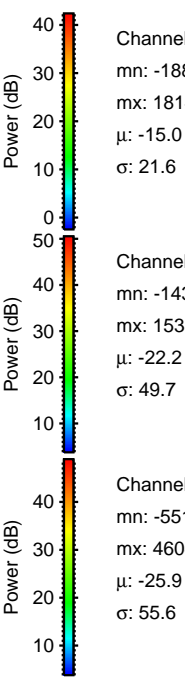
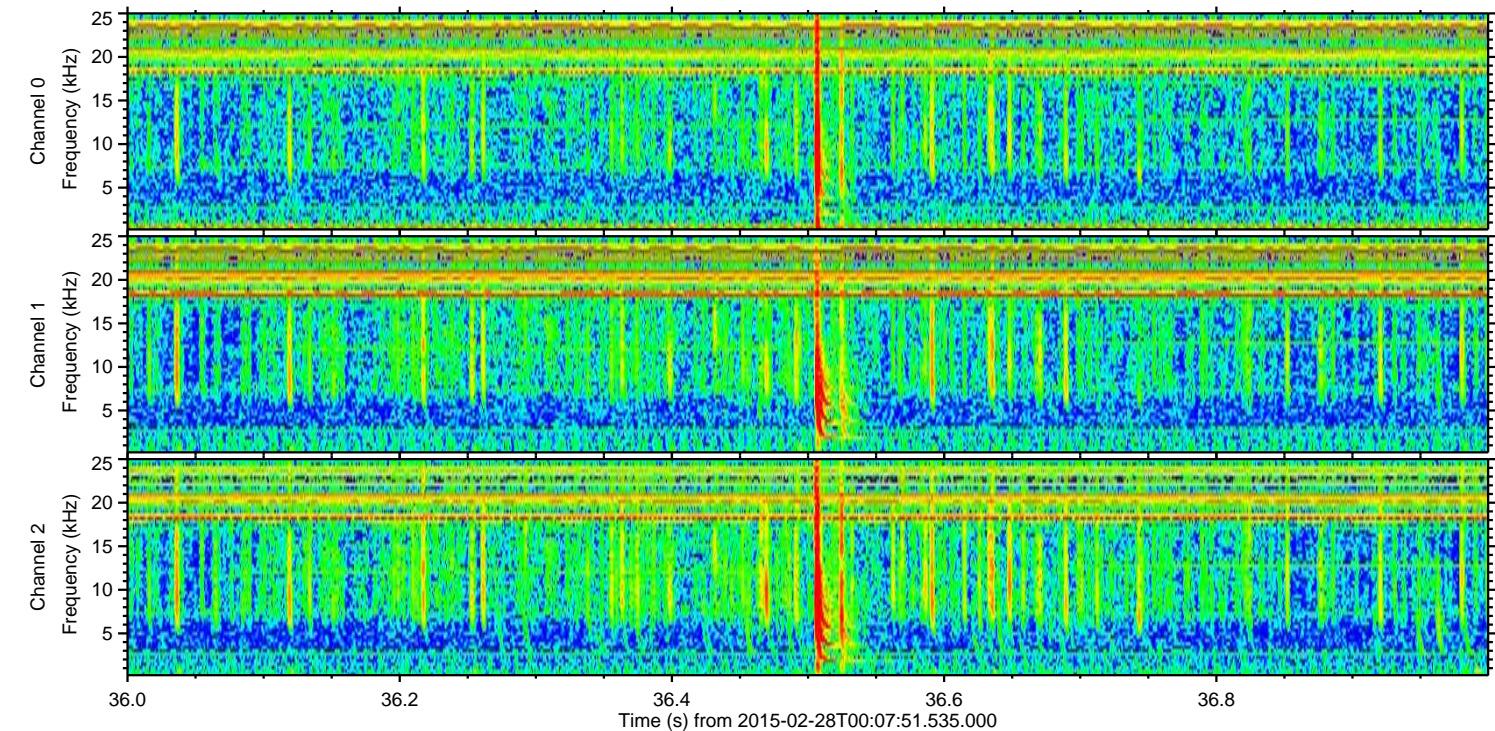
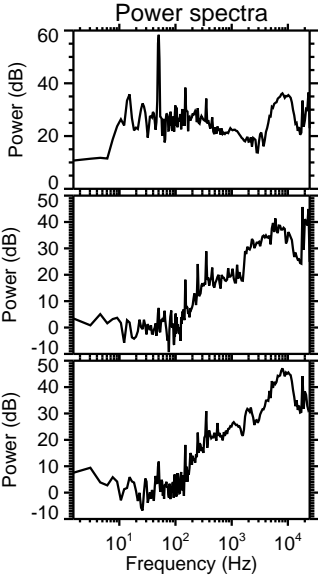
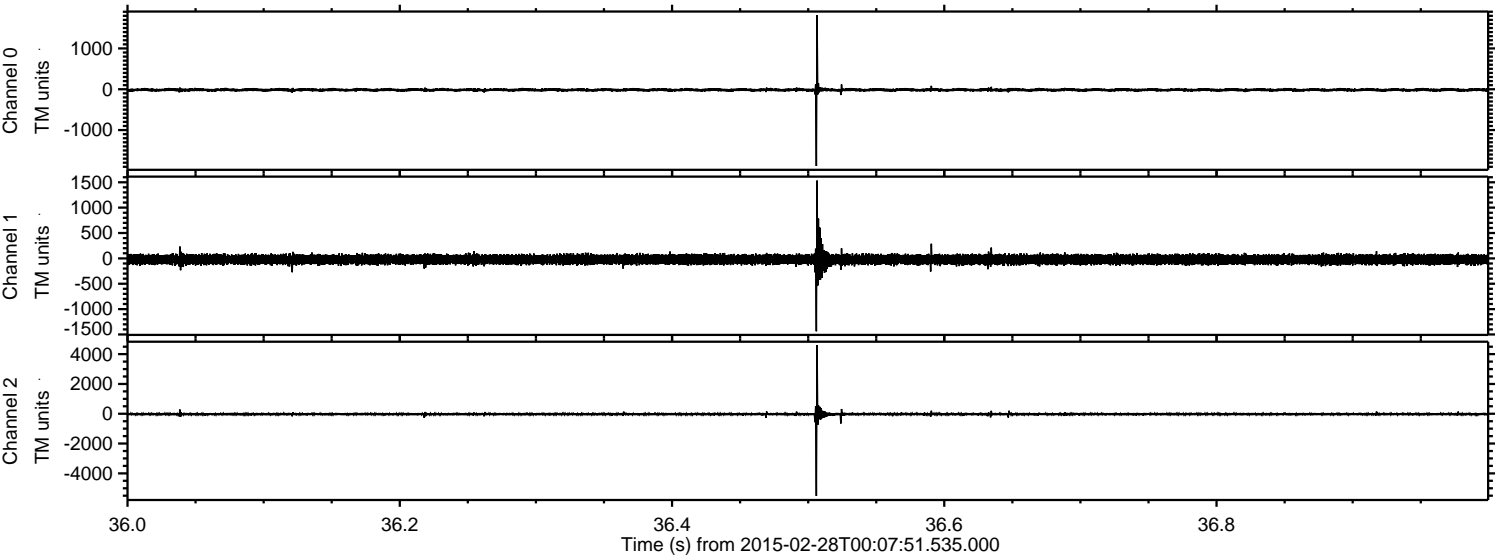
ELMAVAN 3D WAVEFORMS (Measured data sampled at 50 kHz) 49781 packets of 144 samples from 2015-02-28T00:07:51.535.000.

Processed Thu Mar 5 14:21:20 2015 by ELM ver.2012-10-06 from 001__elm20150228_000750__dat00.bin



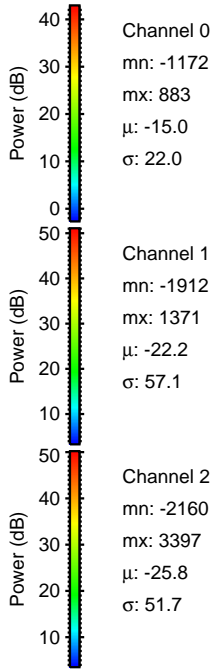
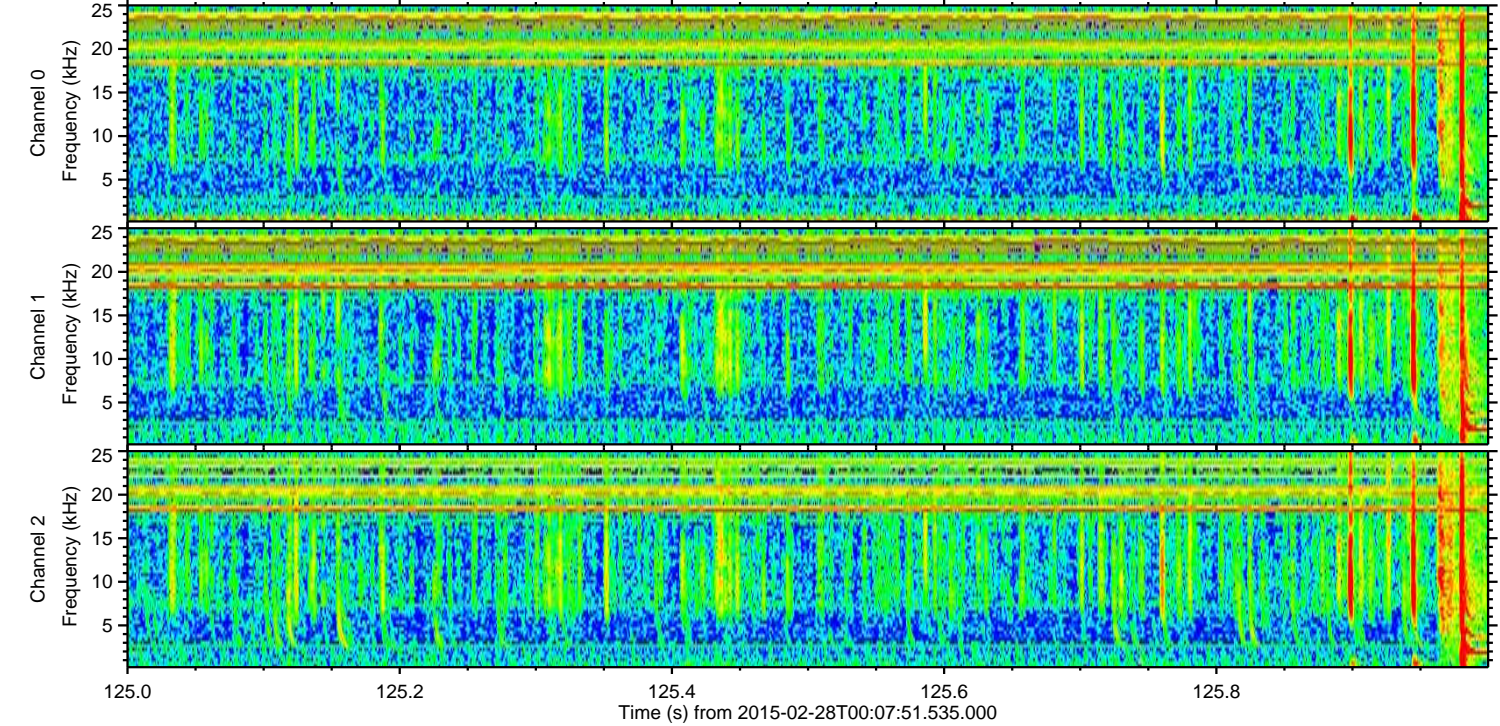
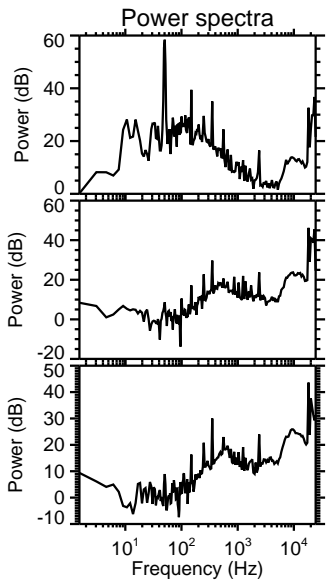
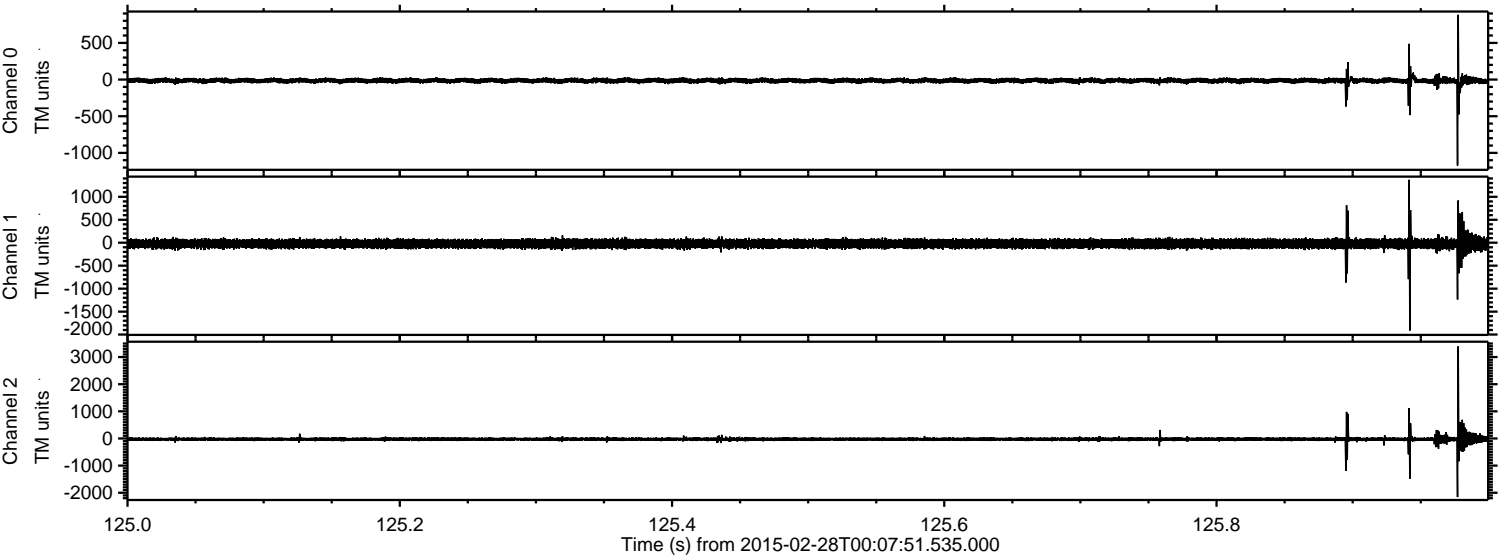
ELMAVAN 3D WAVEFORMS (Measured data sampled at 50 kHz) 49781 packets of 144 samples from 2015-02-28T00:07:51.535.000. Part 37/144

Processed Thu Mar 5 14:21:32 2015 by ELM ver.2012-10-06 from 001__elm20150228_000750__dat00.bin



ELMAVAN 3D WAVEFORMS (Measured data sampled at 50 kHz) 49781 packets of 144 samples from 2015-02-28T00:07:51.535.000. Part 126/144

Processed Thu Mar 5 14:21:33 2015 by ELM ver.2012-10-06 from 001__elm20150228_000750__dat00.bin



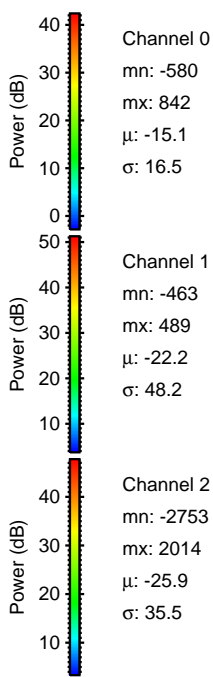
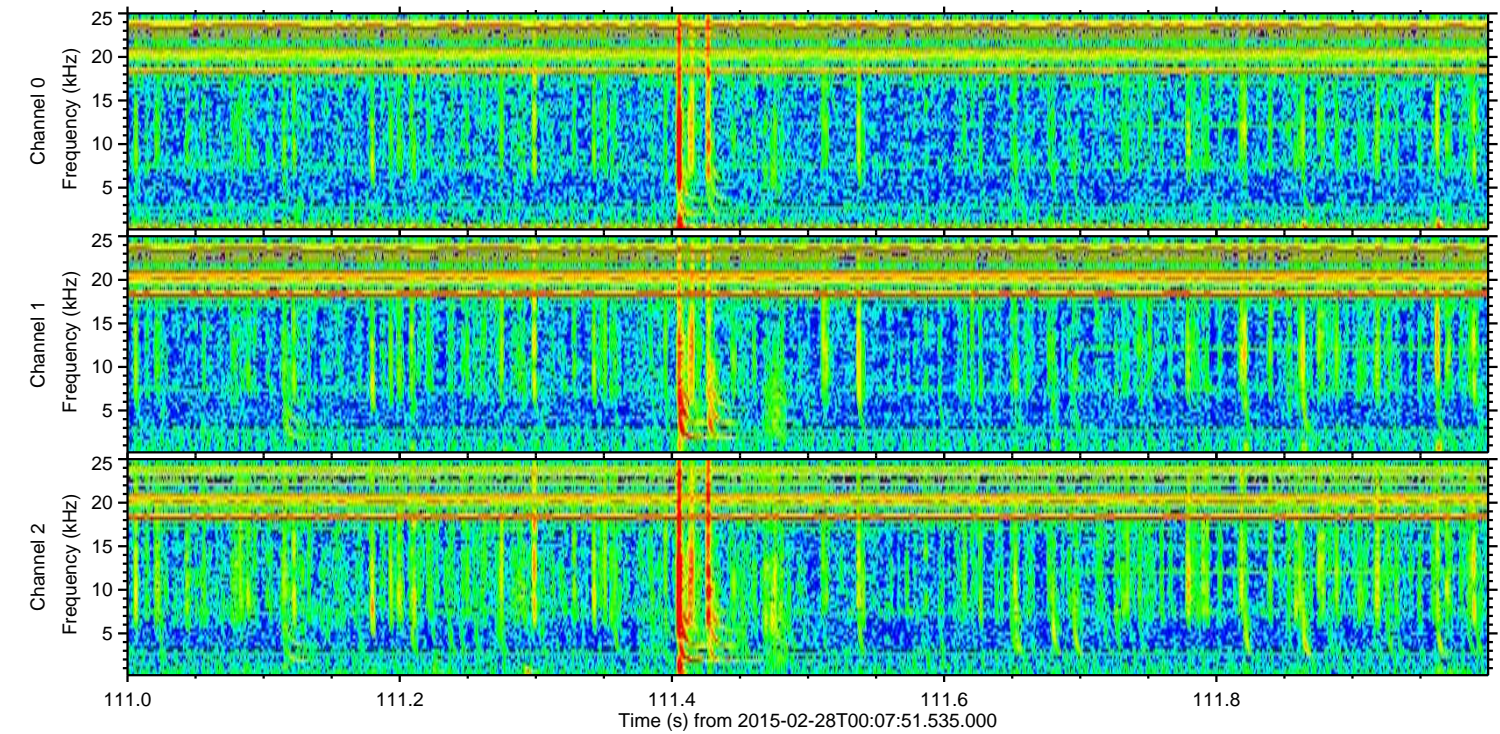
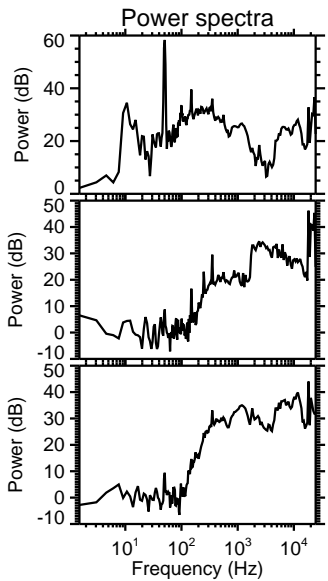
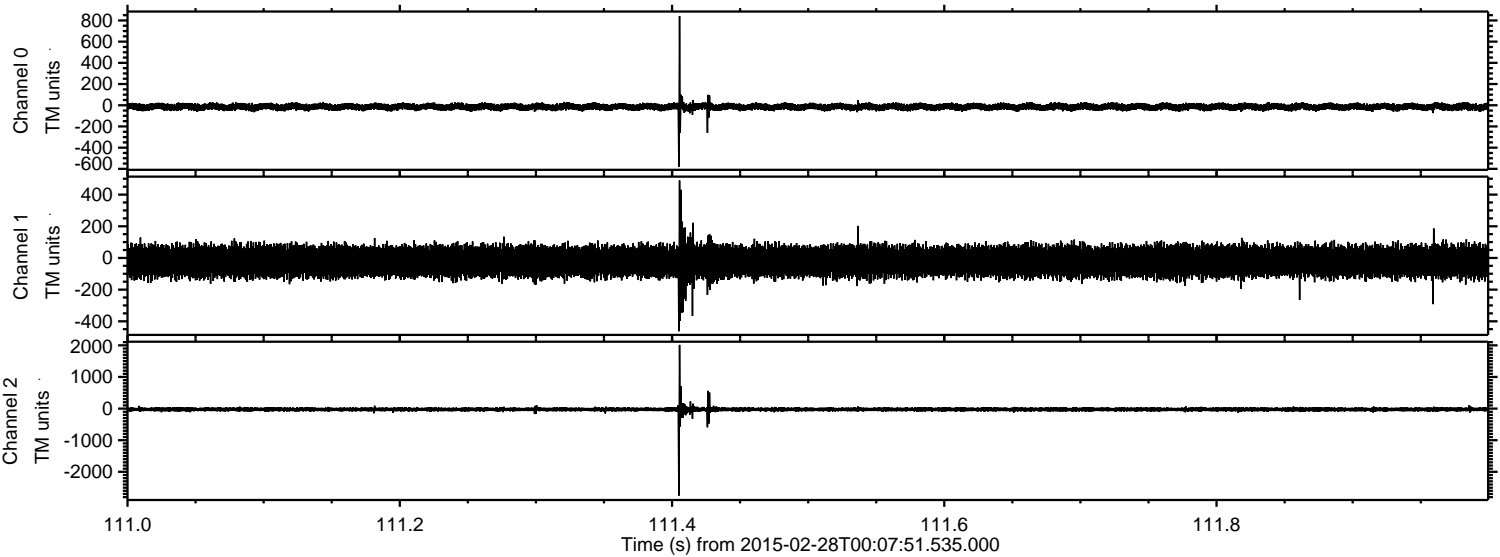
Channel 0
mn: -1172
mx: 883
 μ : -15.0
 σ : 22.0

Channel 1
mn: -1912
mx: 1371
 μ : -22.2
 σ : 57.1

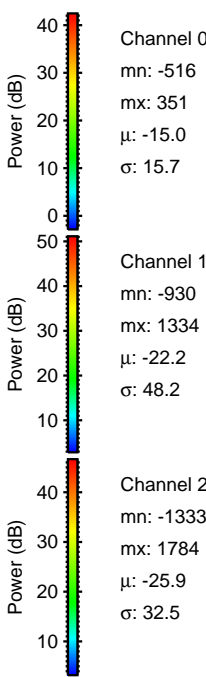
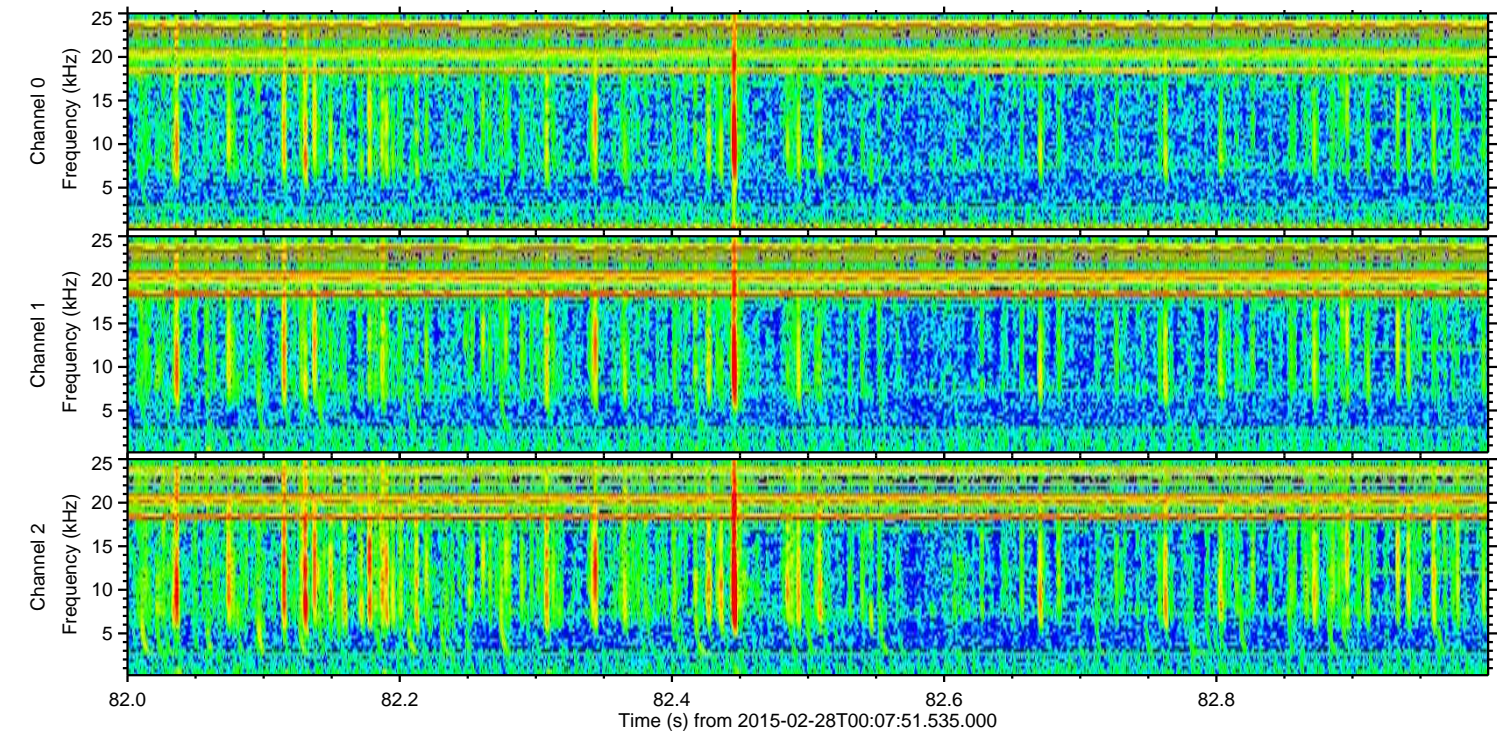
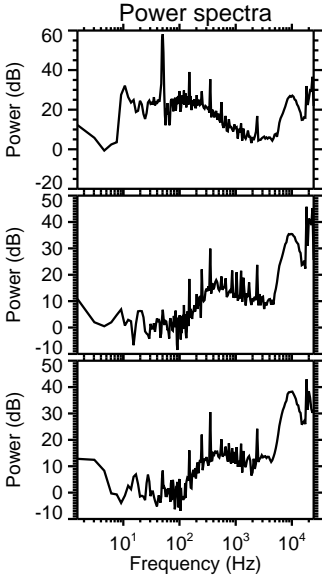
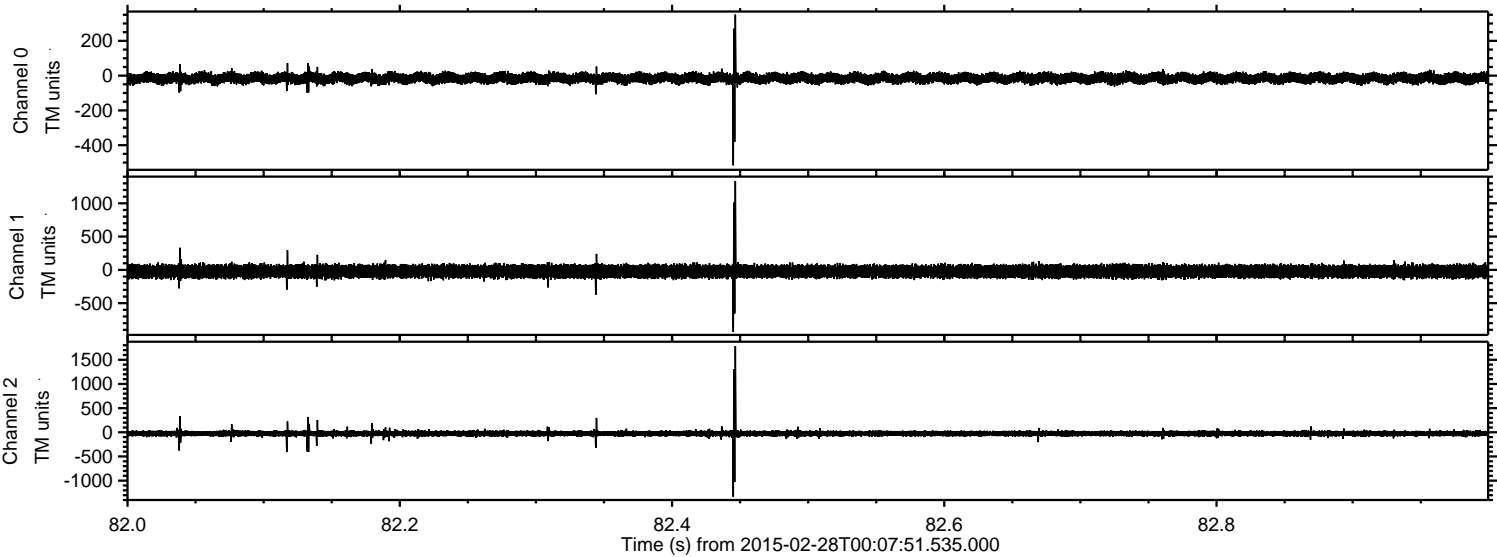
Channel 2
mn: -2160
mx: 3397
 μ : -25.8
 σ : 51.7

ELMAVAN 3D WAVEFORMS (Measured data sampled at 50 kHz) 49781 packets of 144 samples from 2015-02-28T00:07:51.535.000. Part 112/144

Processed Thu Mar 5 14:21:34 2015 by ELM ver.2012-10-06 from 001__elm20150228_000750__dat00.bin



Processed Thu Mar 5 14:21:35 2015 by ELM ver.2012-10-06 from 001__elm20150228_000750__dat00.bin



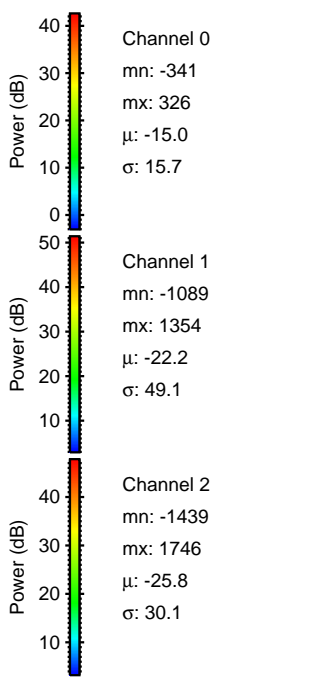
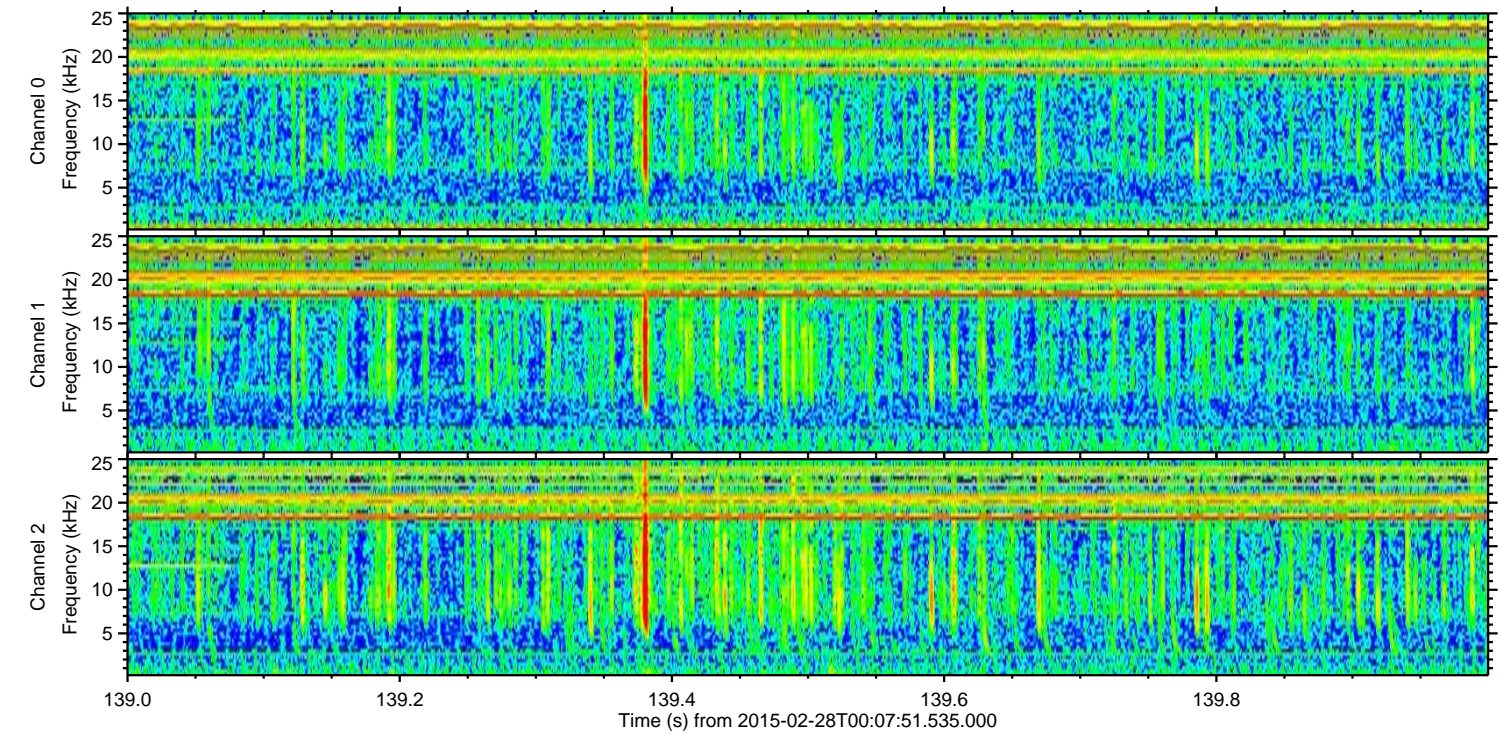
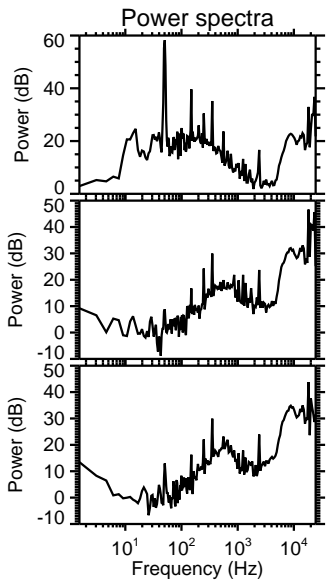
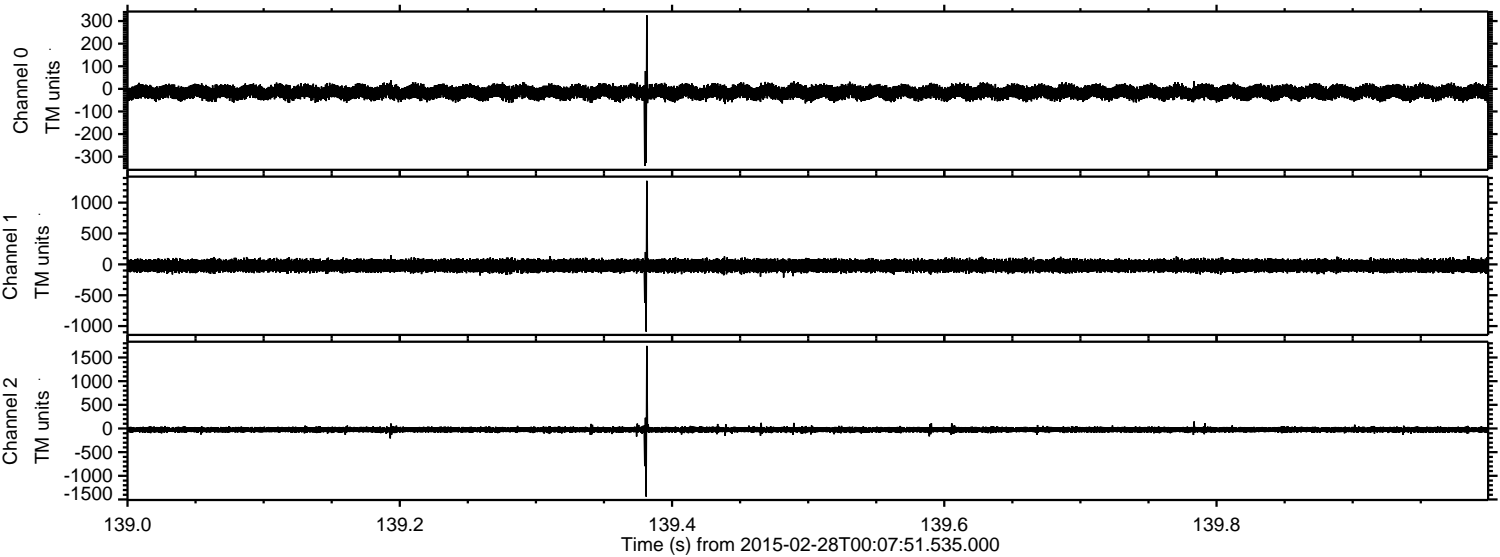
Channel 0
mn: -516
mx: 351
 μ : -15.0
 σ : 15.7

Channel 1
mn: -930
mx: 1334
 μ : -22.2
 σ : 48.2

Channel 2
mn: -1333
mx: 1784
 μ : -25.9
 σ : 32.5

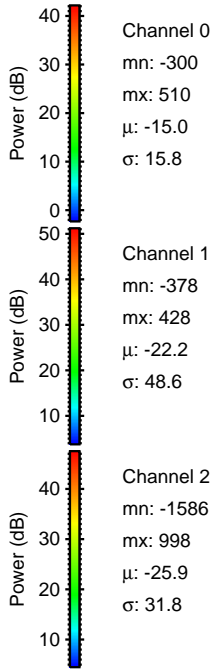
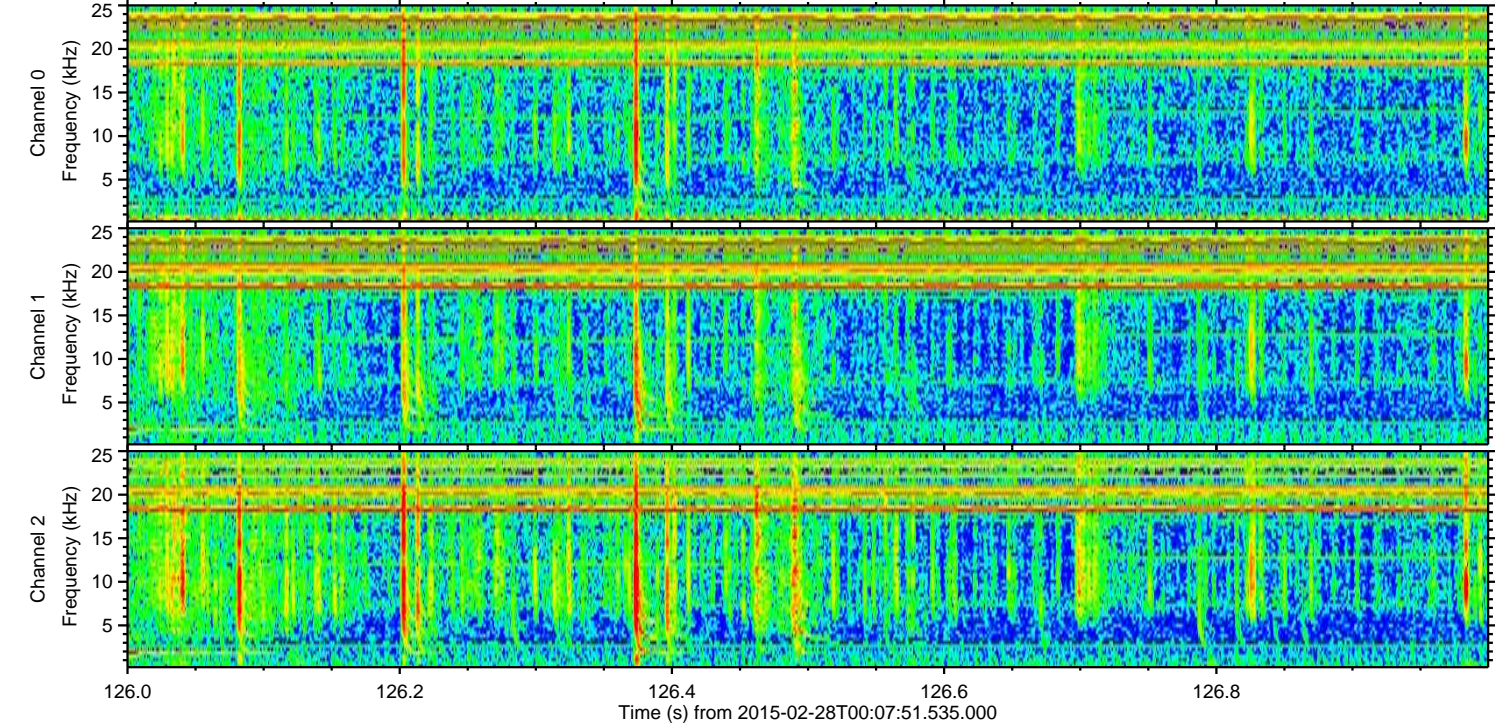
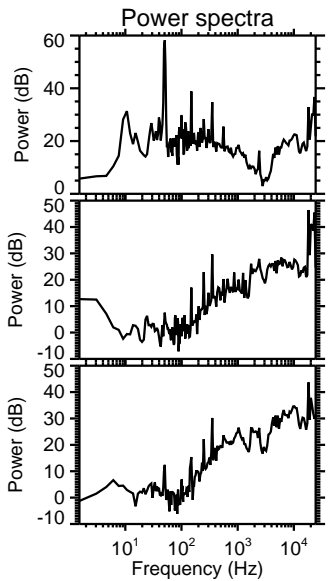
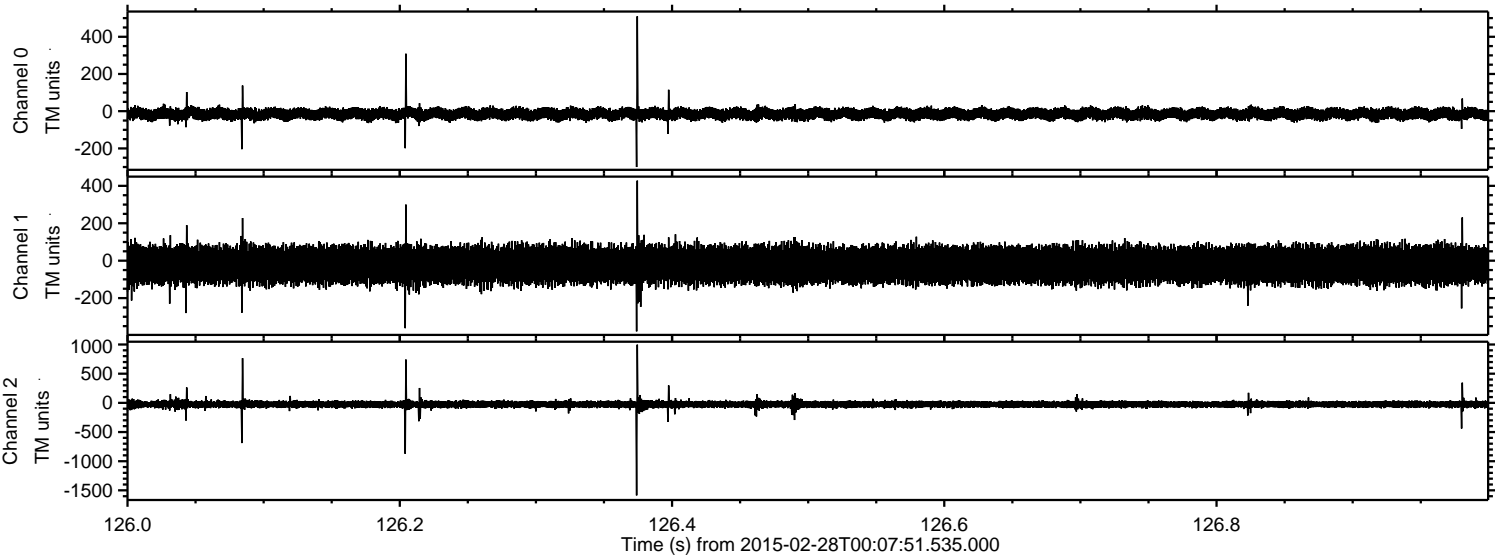
ELMAVAN 3D WAVEFORMS (Measured data sampled at 50 kHz) 49781 packets of 144 samples from 2015-02-28T00:07:51.535.000. Part 140/144

Processed Thu Mar 5 14:21:36 2015 by ELM ver.2012-10-06 from 001__elm20150228_000750__dat00.bin

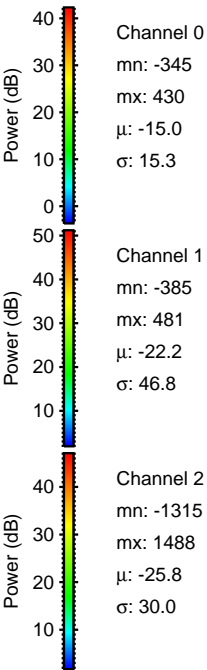
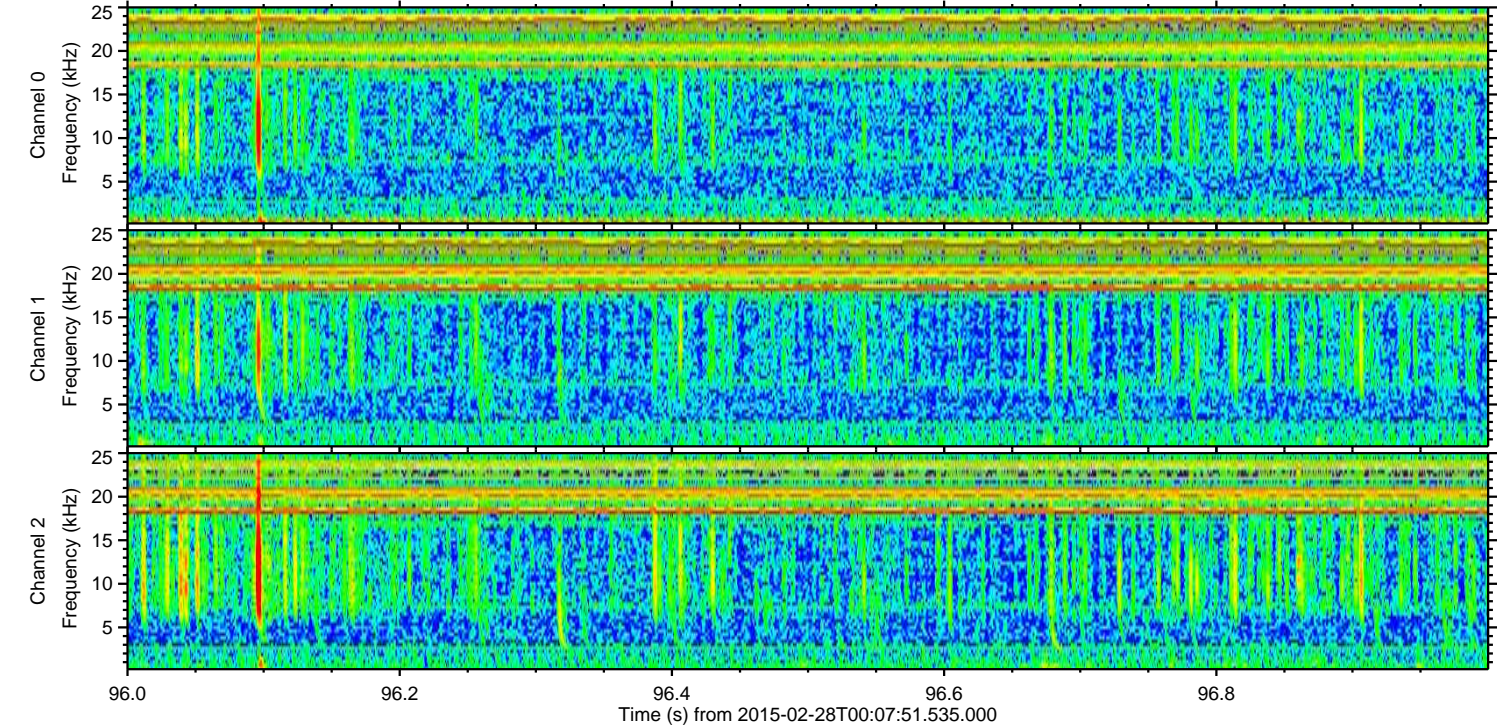
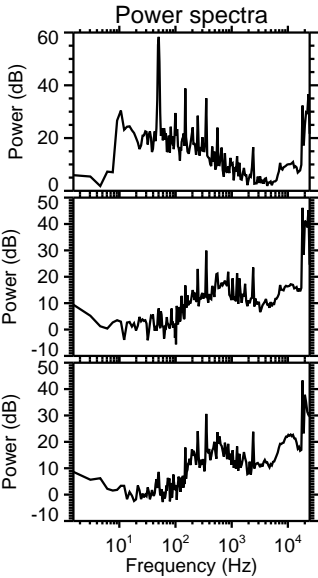
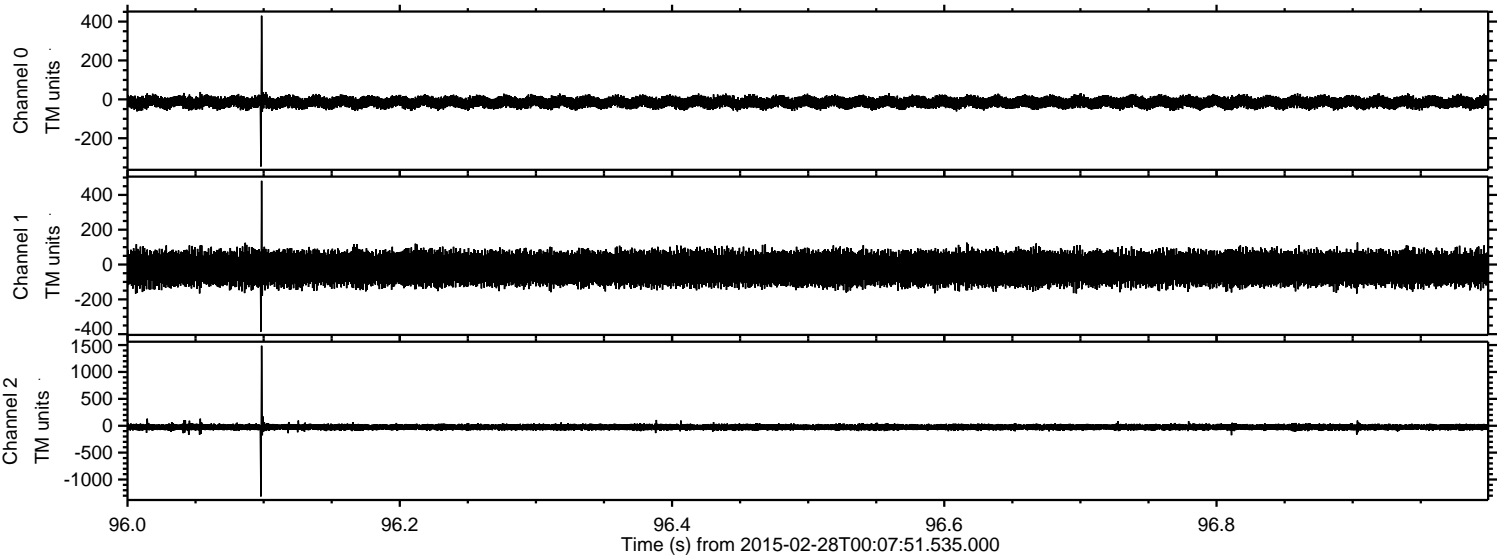


ELMAVAN 3D WAVEFORMS (Measured data sampled at 50 kHz) 49781 packets of 144 samples from 2015-02-28T00:07:51.535.000. Part 127/144

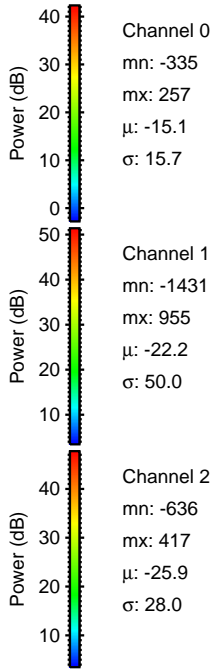
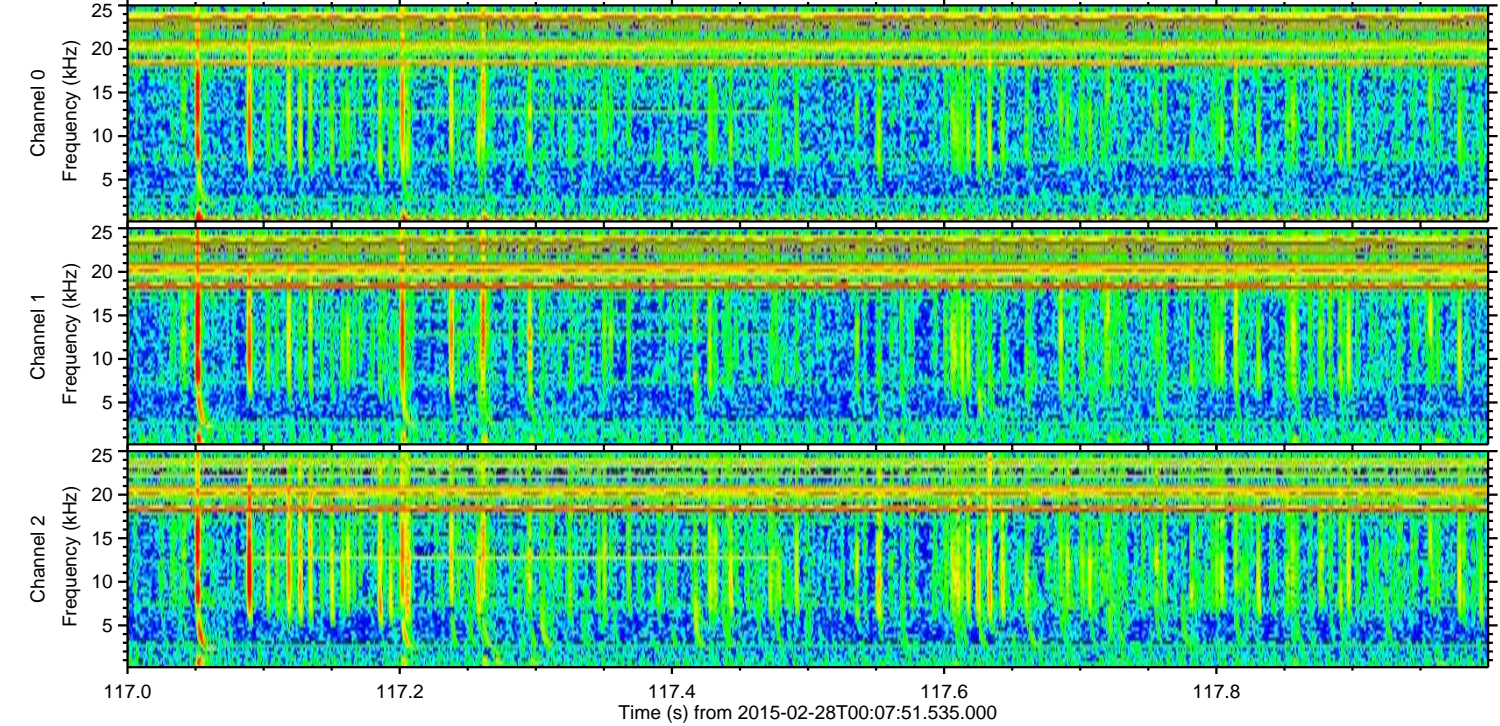
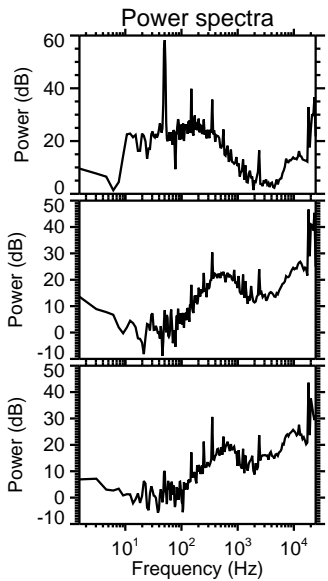
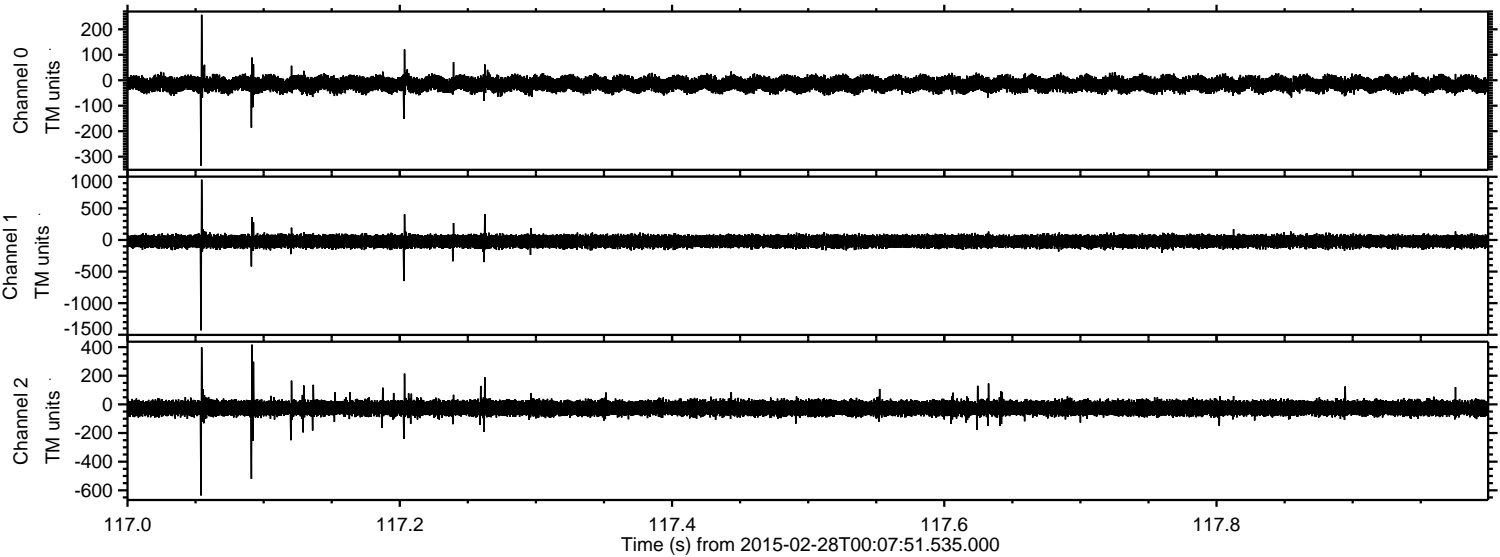
Processed Thu Mar 5 14:21:37 2015 by ELM ver.2012-10-06 from 001__elm20150228_000750__dat00.bin



Processed Thu Mar 5 14:21:38 2015 by ELM ver.2012-10-06 from 001__elm20150228_000750__dat00.bin



Processed Thu Mar 5 14:21:38 2015 by ELM ver.2012-10-06 from 001__elm20150228_000750__dat00.bin



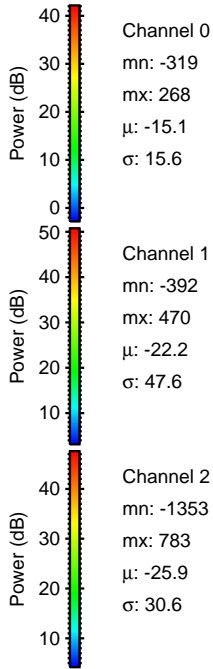
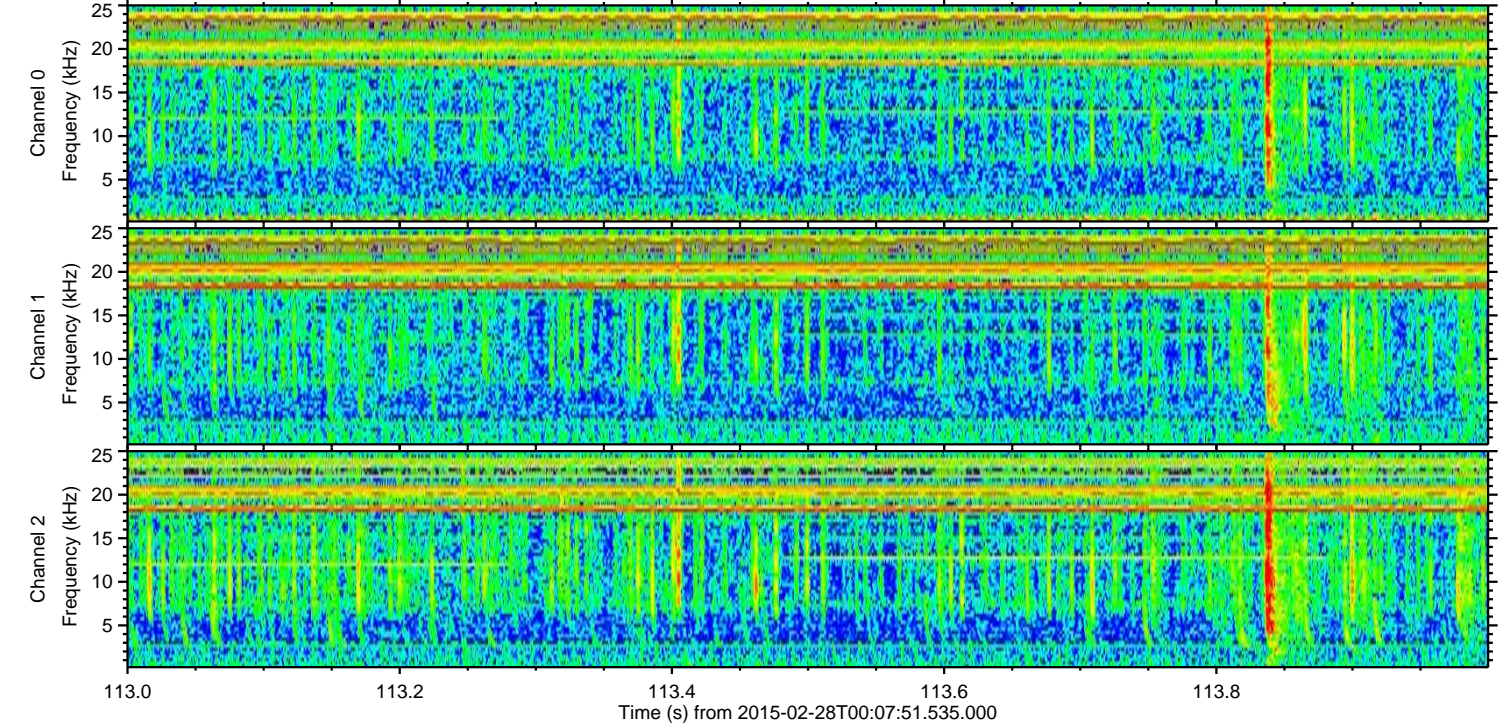
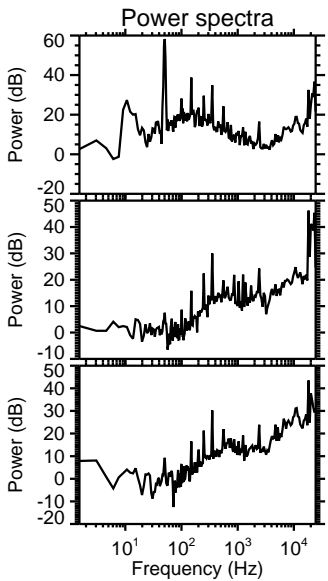
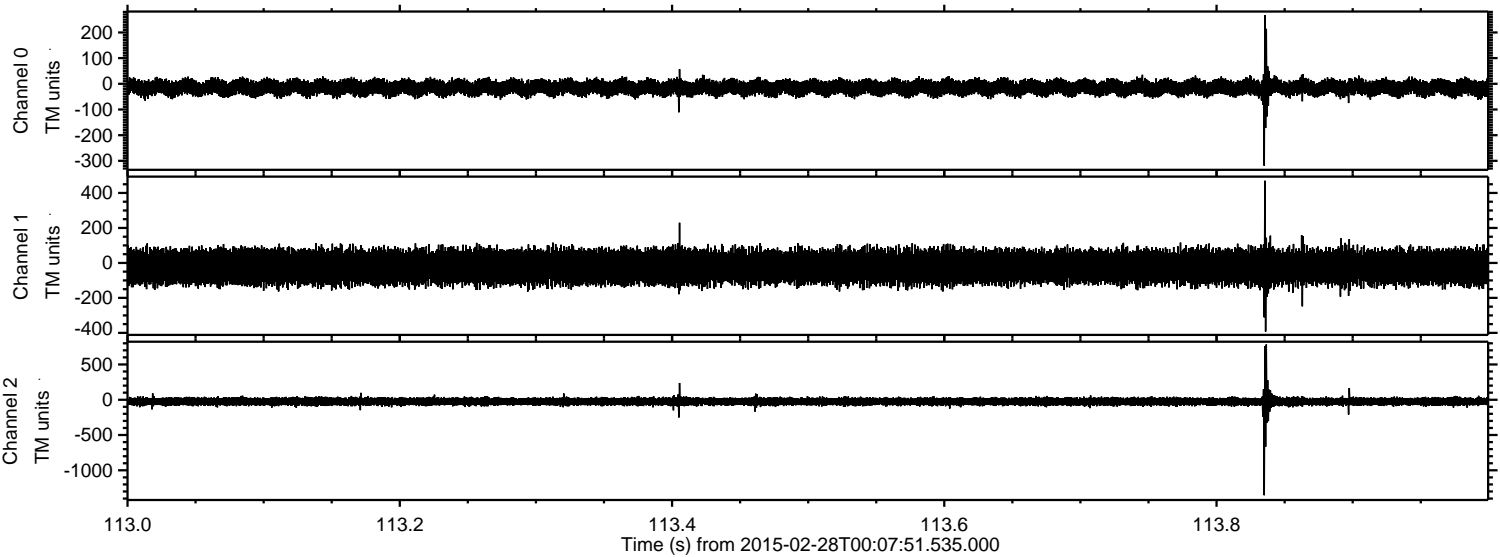
Channel 0
mn: -335
mx: 257
 μ : -15.1
 σ : 15.7

Channel 1
mn: -1431
mx: 955
 μ : -22.2
 σ : 50.0

Channel 2
mn: -636
mx: 417
 μ : -25.9
 σ : 28.0

ELMAVAN 3D WAVEFORMS (Measured data sampled at 50 kHz) 49781 packets of 144 samples from 2015-02-28T00:07:51.535.000. Part 114/144

Processed Thu Mar 5 14:21:39 2015 by ELM ver.2012-10-06 from 001__elm20150228_000750__dat00.bin



ELMAVAN 3D WAVEFORMS (Measured data sampled at 50 kHz) 49781 packets of 144 samples from 2015-02-28T00:07:51.535.000. Part 12/144

Processed Thu Mar 5 14:21:40 2015 by ELM ver.2012-10-06 from 001__elm20150228_000750__dat00.bin

