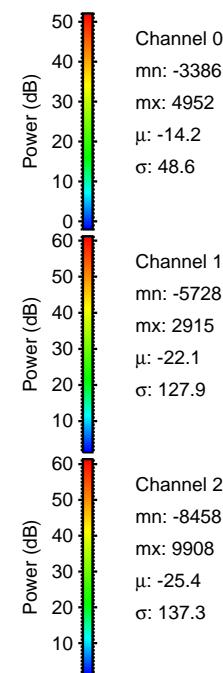
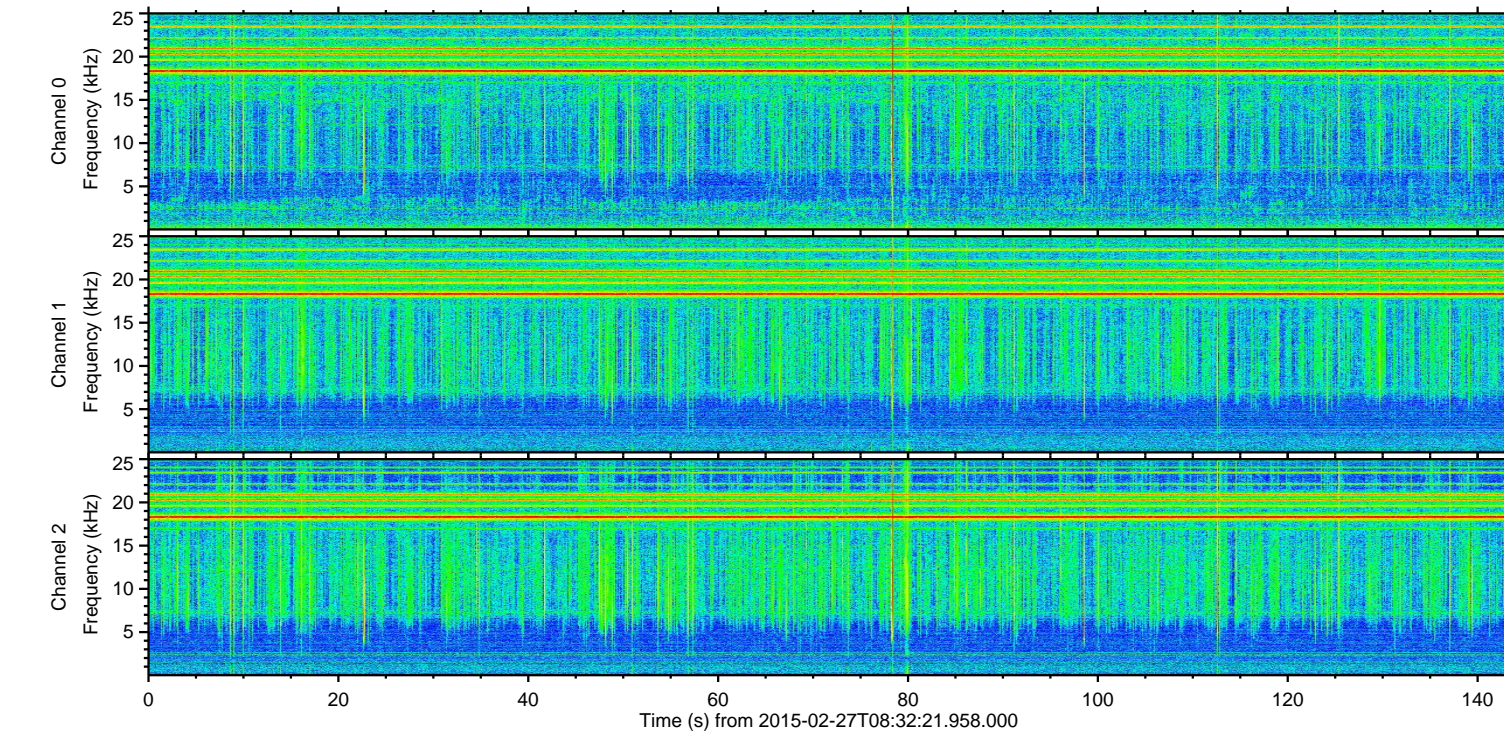
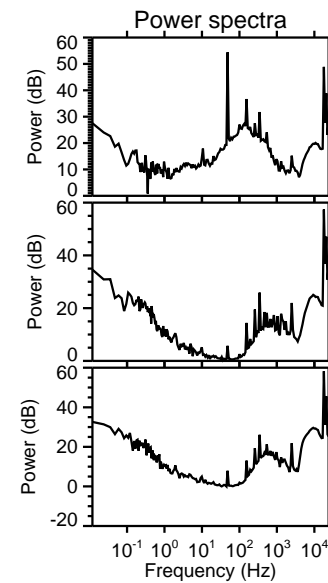
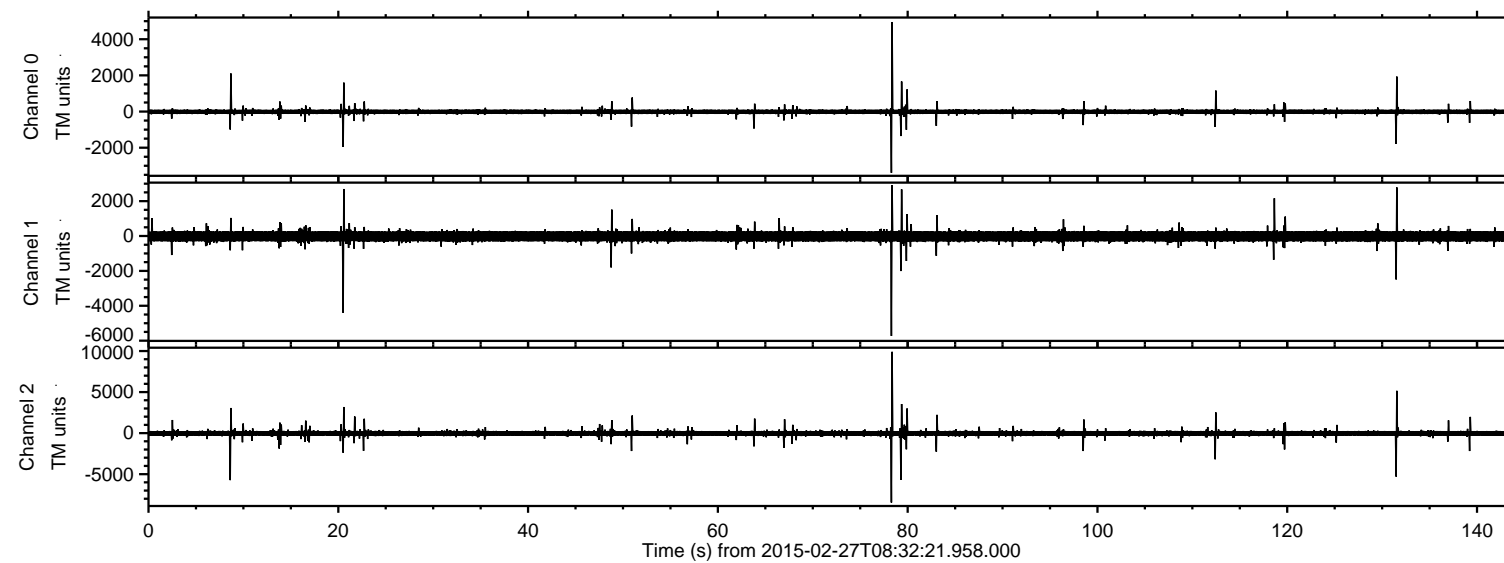
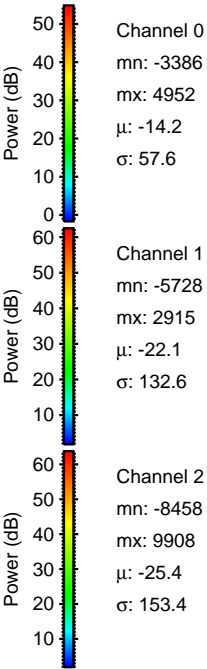
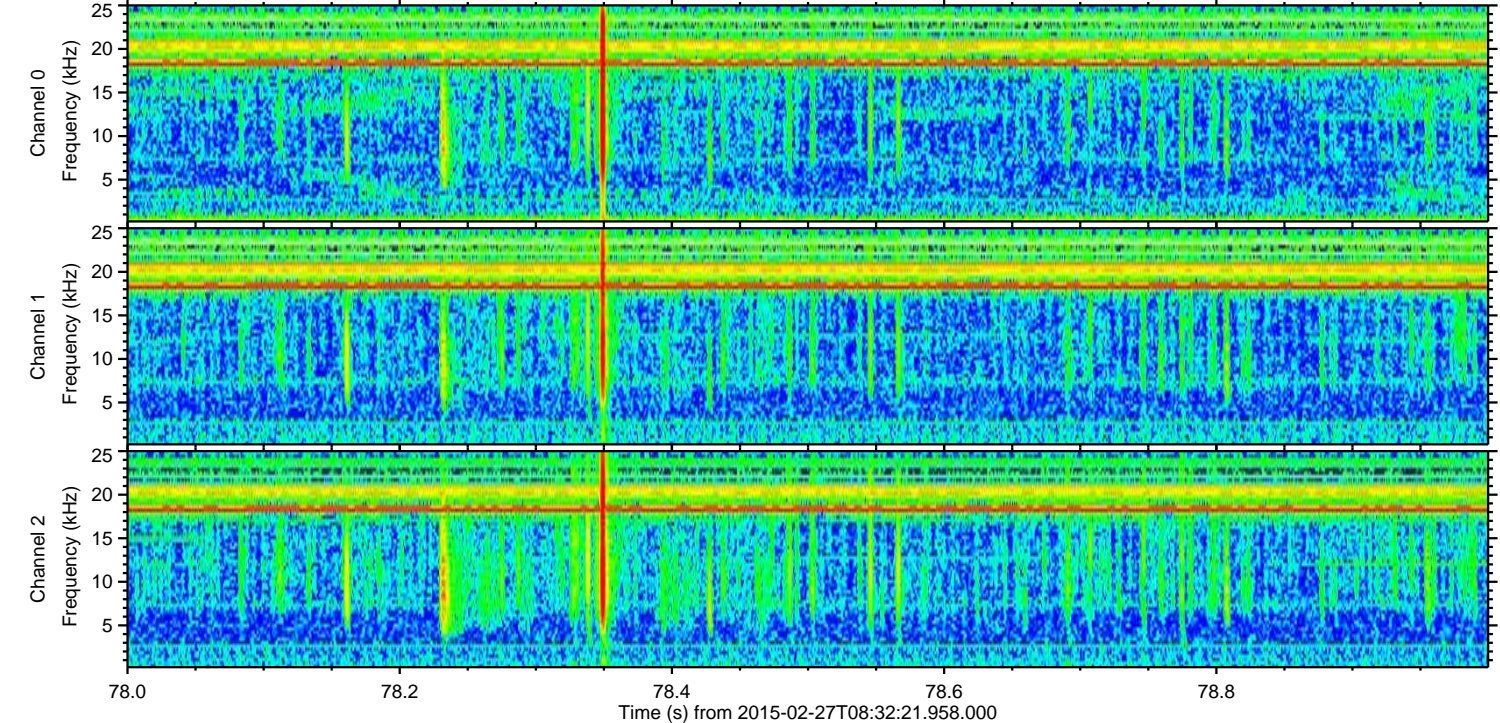
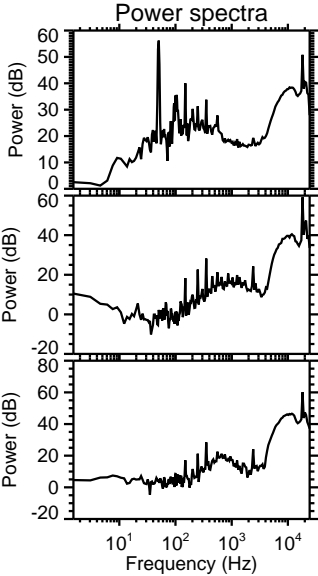
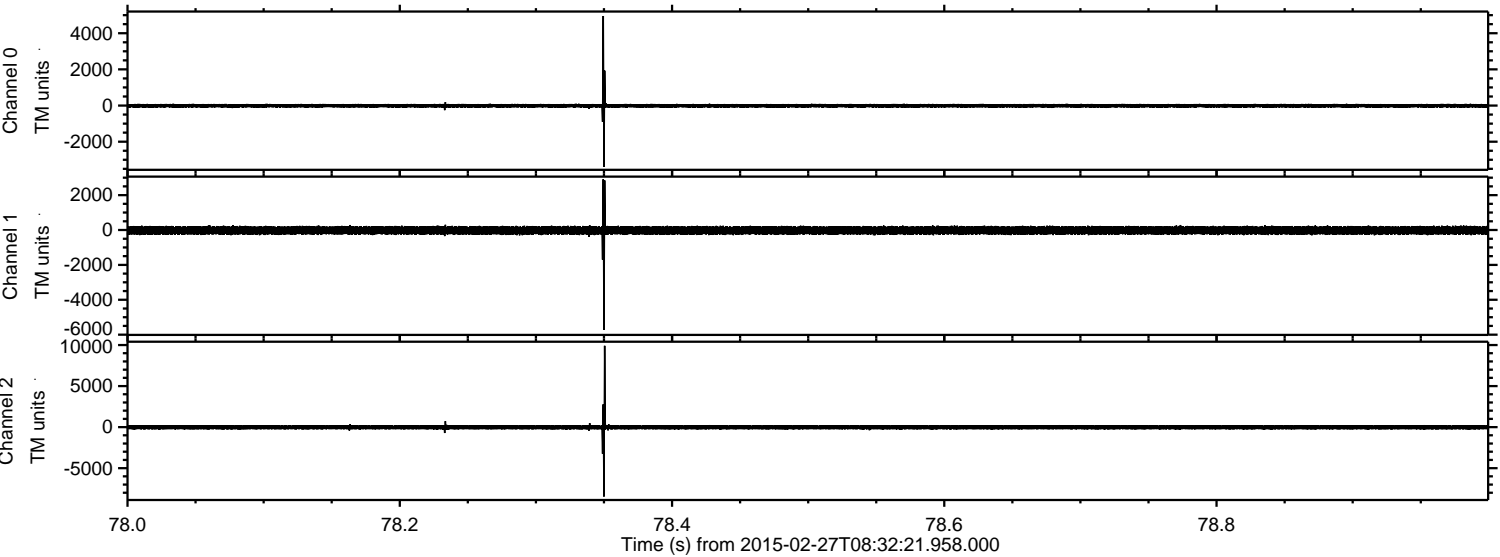


ELMAVAN 3D WAVEFORMS (Measured data sampled at 50 kHz) 49786 packets of 144 samples from 2015-02-27T08:32:21.958.000.

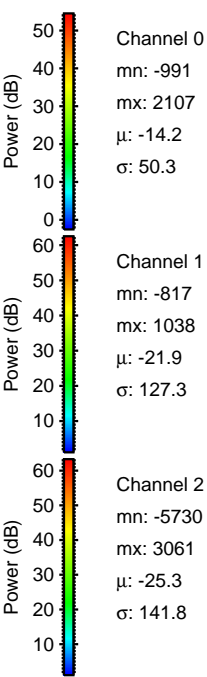
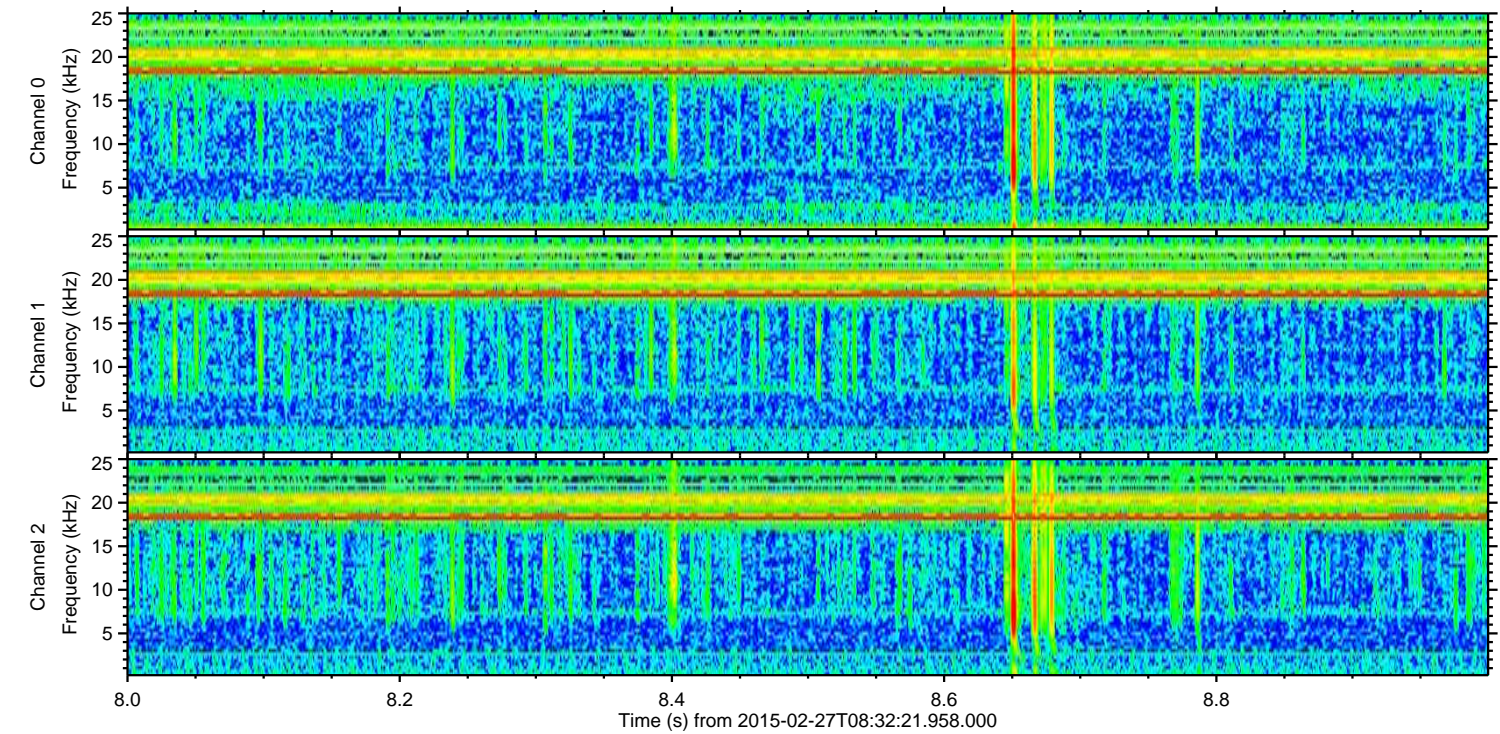
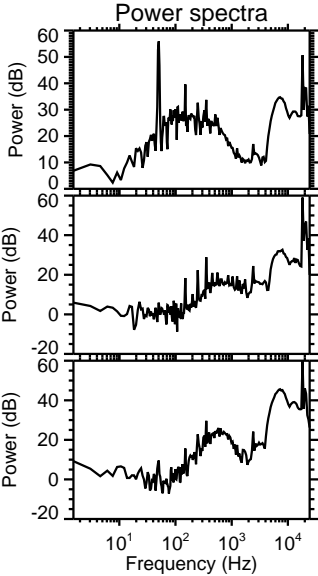
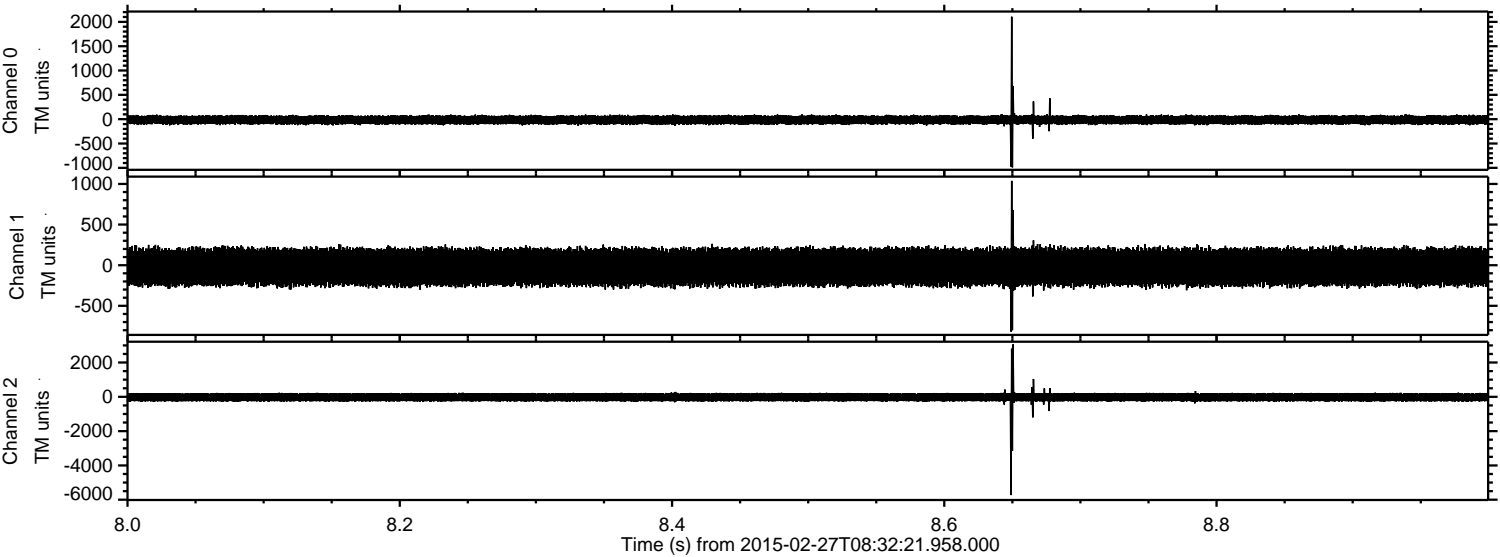
Processed Wed Mar 4 15:22:34 2015 by ELM ver.2012-10-06 from 001__elm20150227_083220__dat00.bin



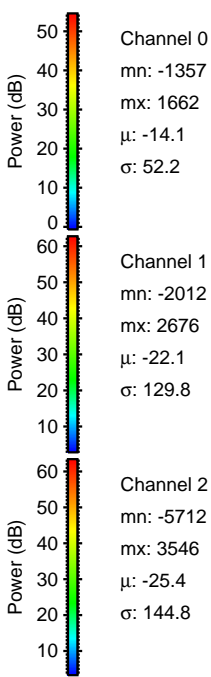
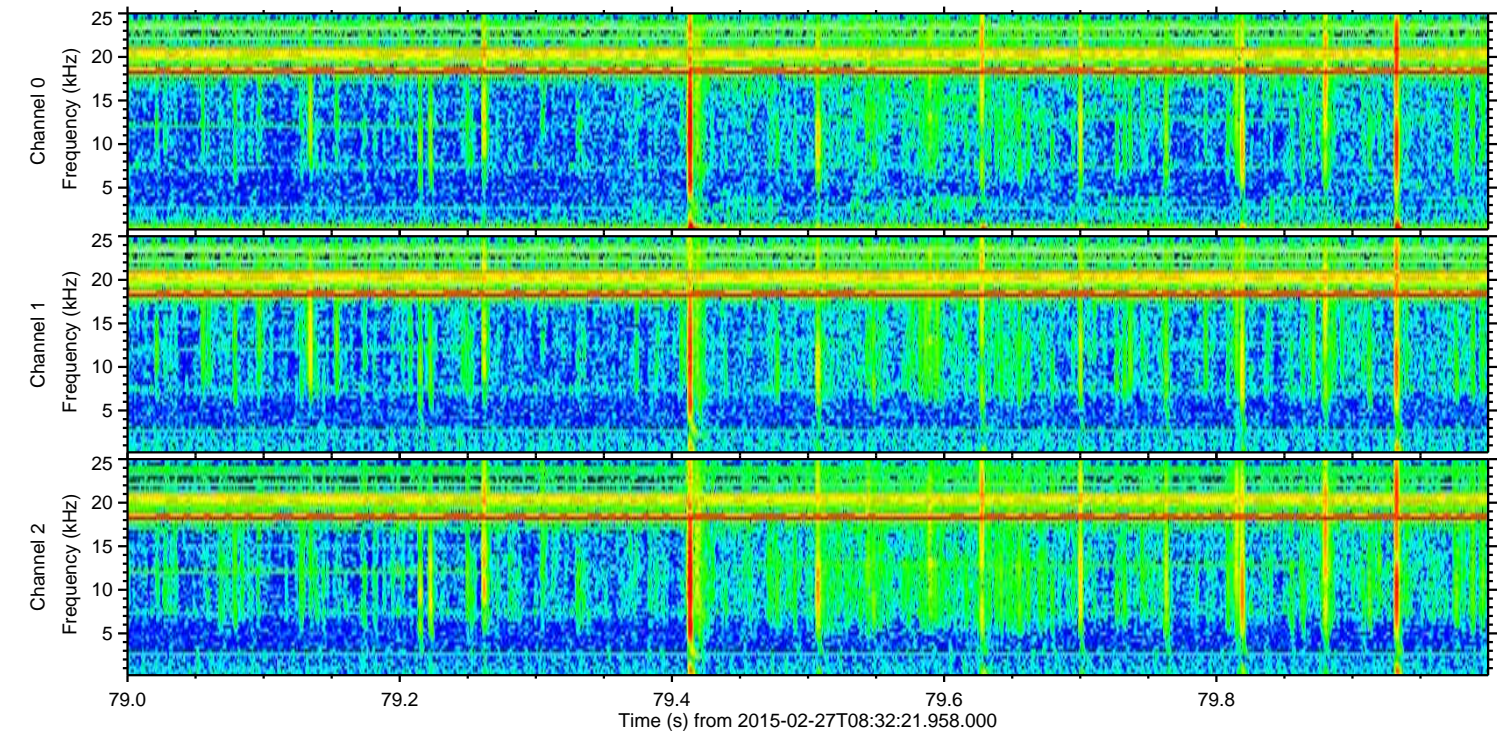
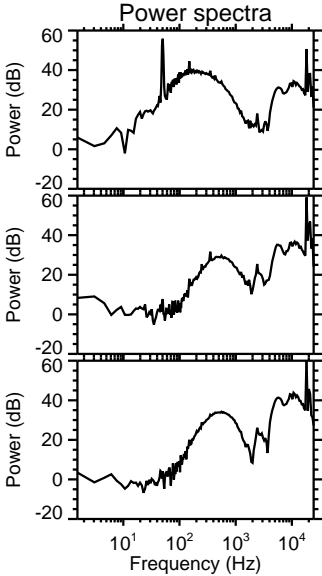
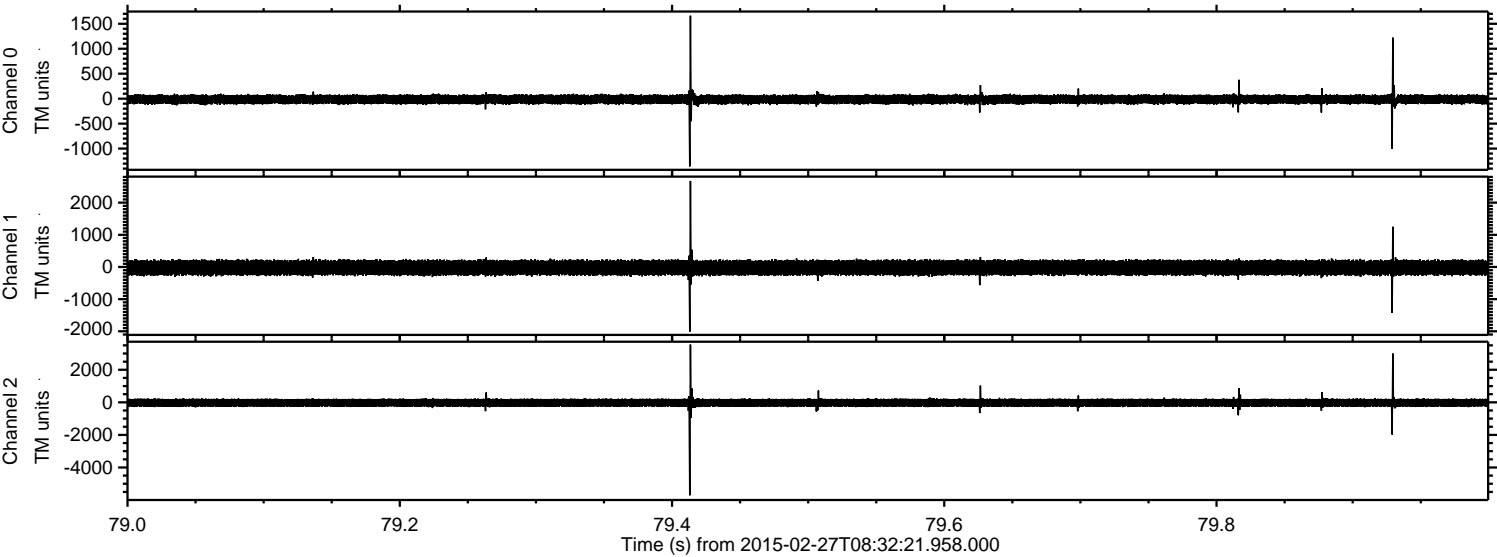
Processed Wed Mar 4 15:22:46 2015 by ELM ver.2012-10-06 from 001__elm20150227_083220__dat00.bin



Processed Wed Mar 4 15:22:47 2015 by ELM ver.2012-10-06 from 001__elm20150227_083220__dat00.bin

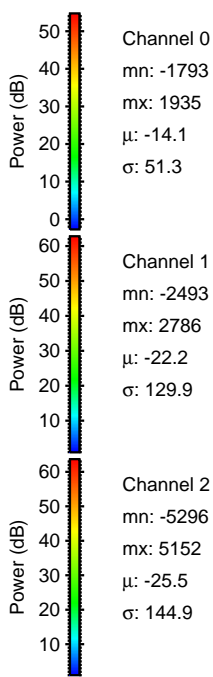
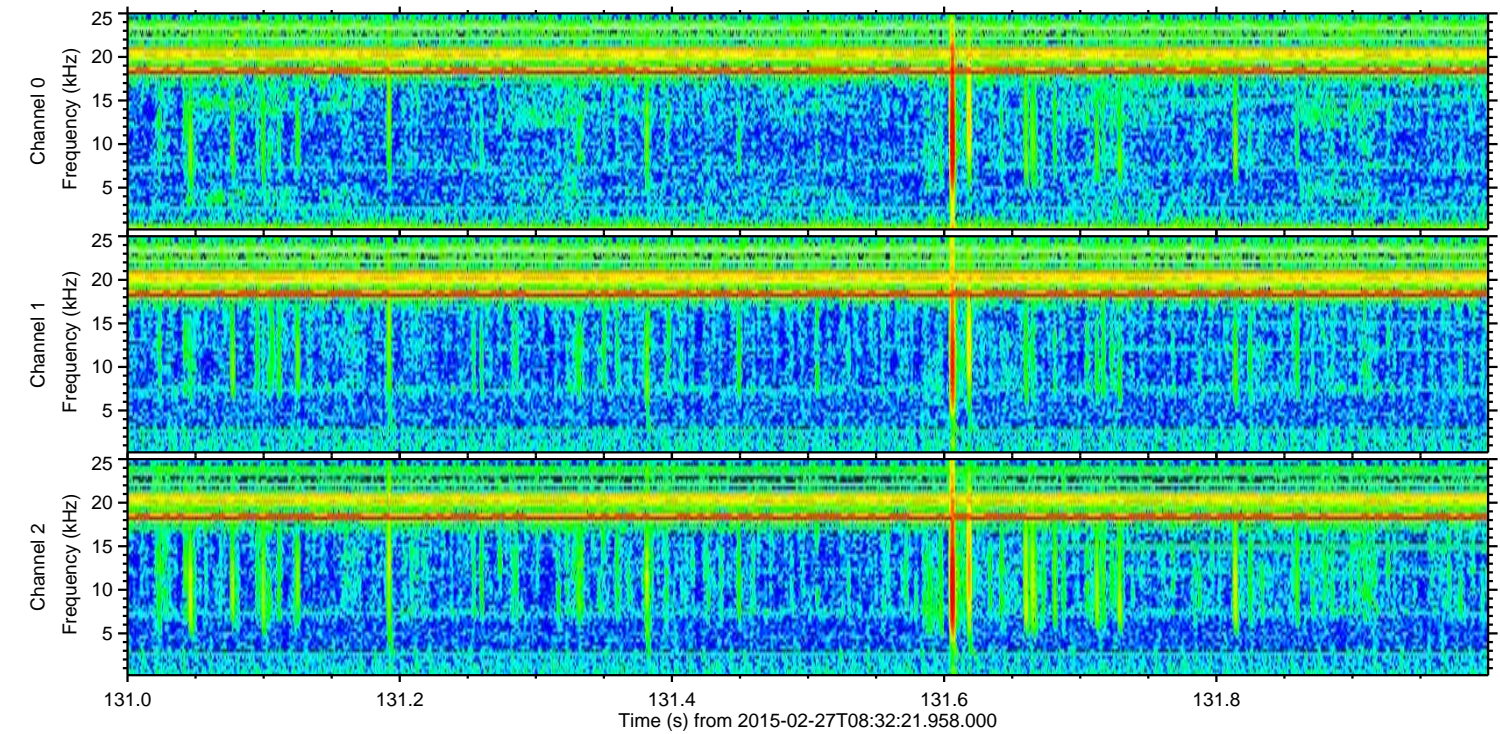
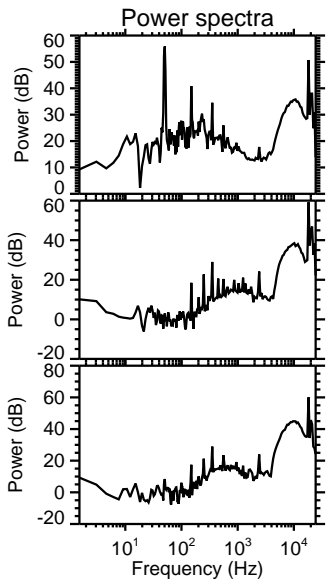
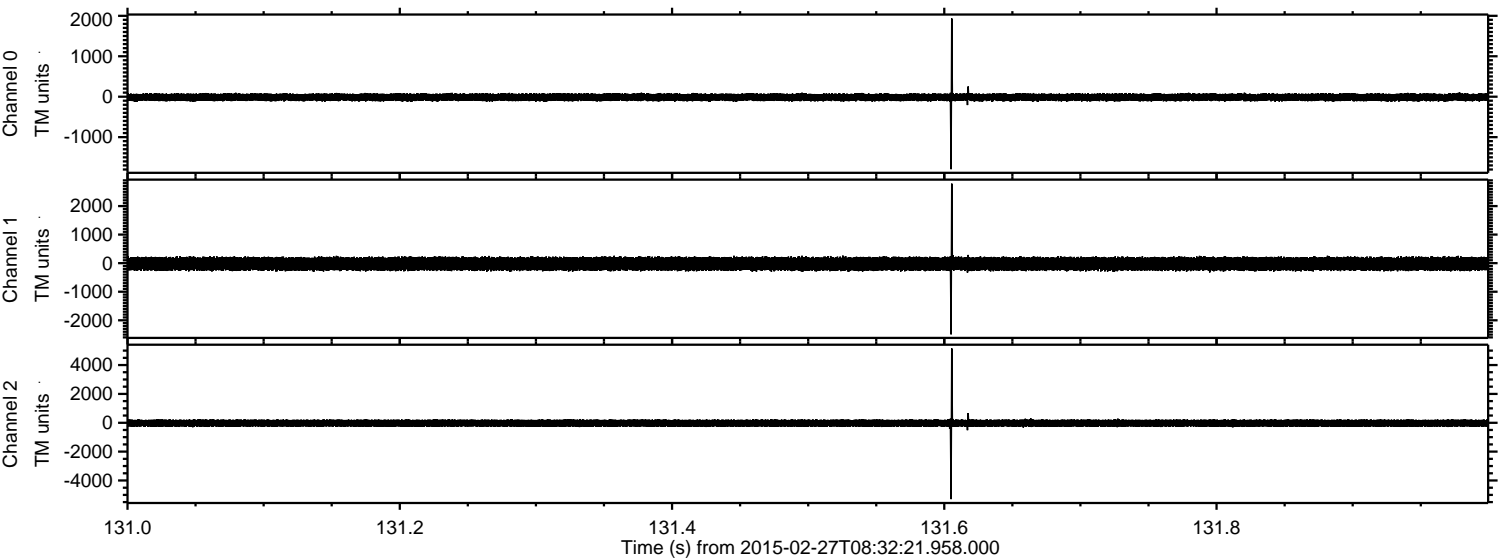


Processed Wed Mar 4 15:22:48 2015 by ELM ver.2012-10-06 from 001__elm20150227_083220__dat00.bin

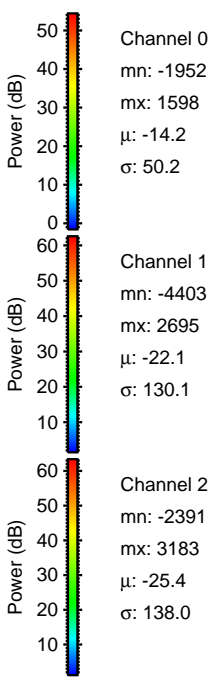
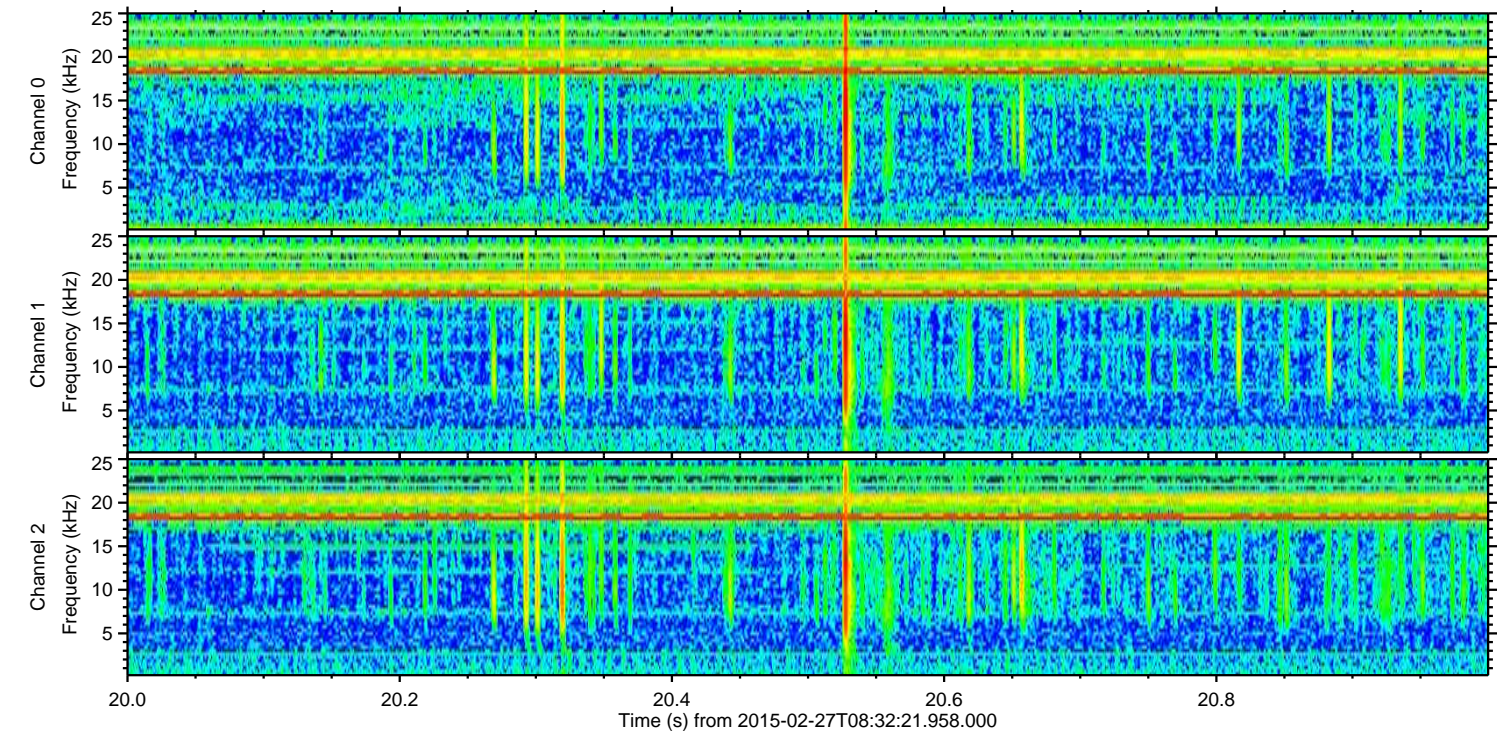
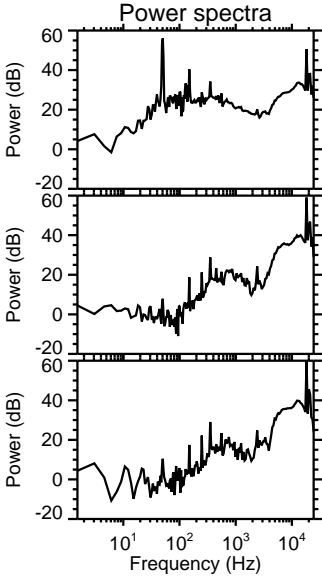
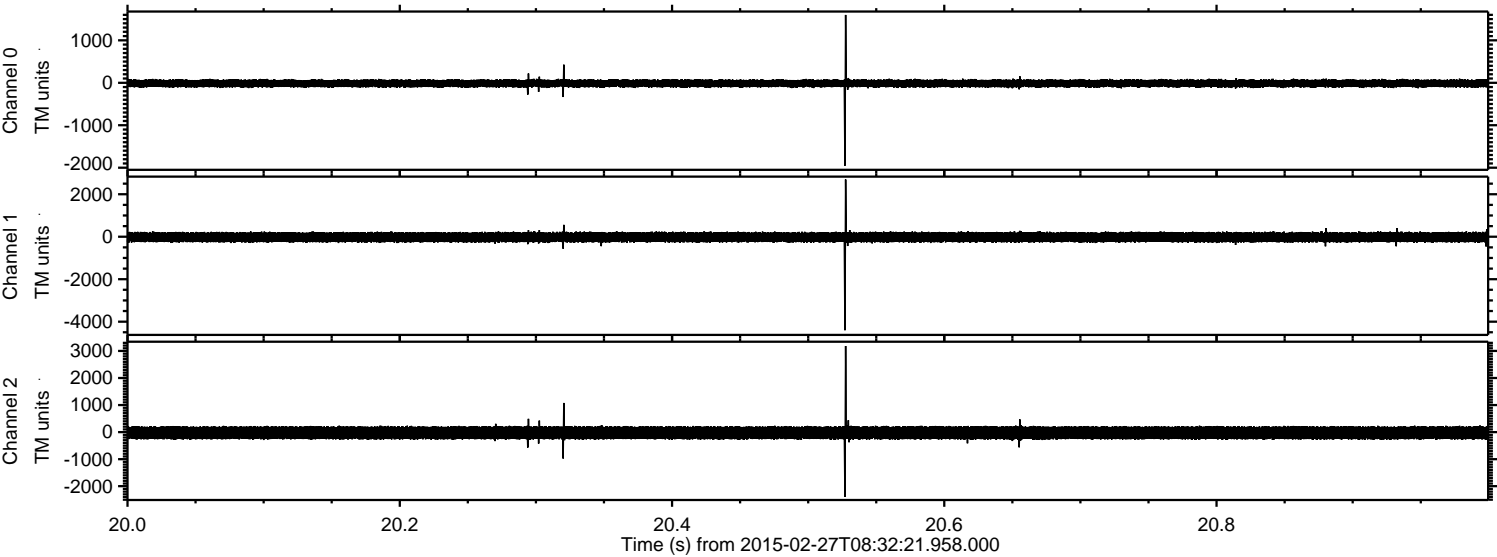


ELMAVAN 3D WAVEFORMS (Measured data sampled at 50 kHz) 49786 packets of 144 samples from 2015-02-27T08:32:21.958.000. Part 132/144

Processed Wed Mar 4 15:22:49 2015 by ELM ver.2012-10-06 from 001__elm20150227_083220__dat00.bin

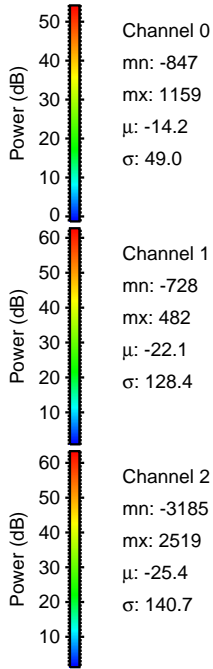
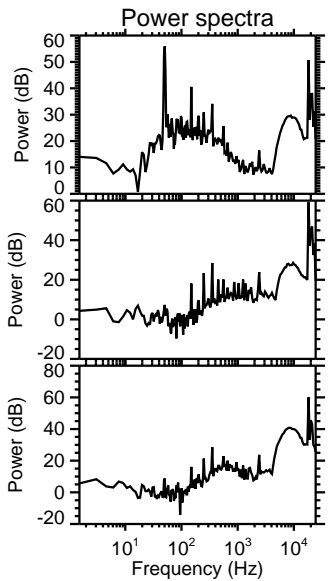
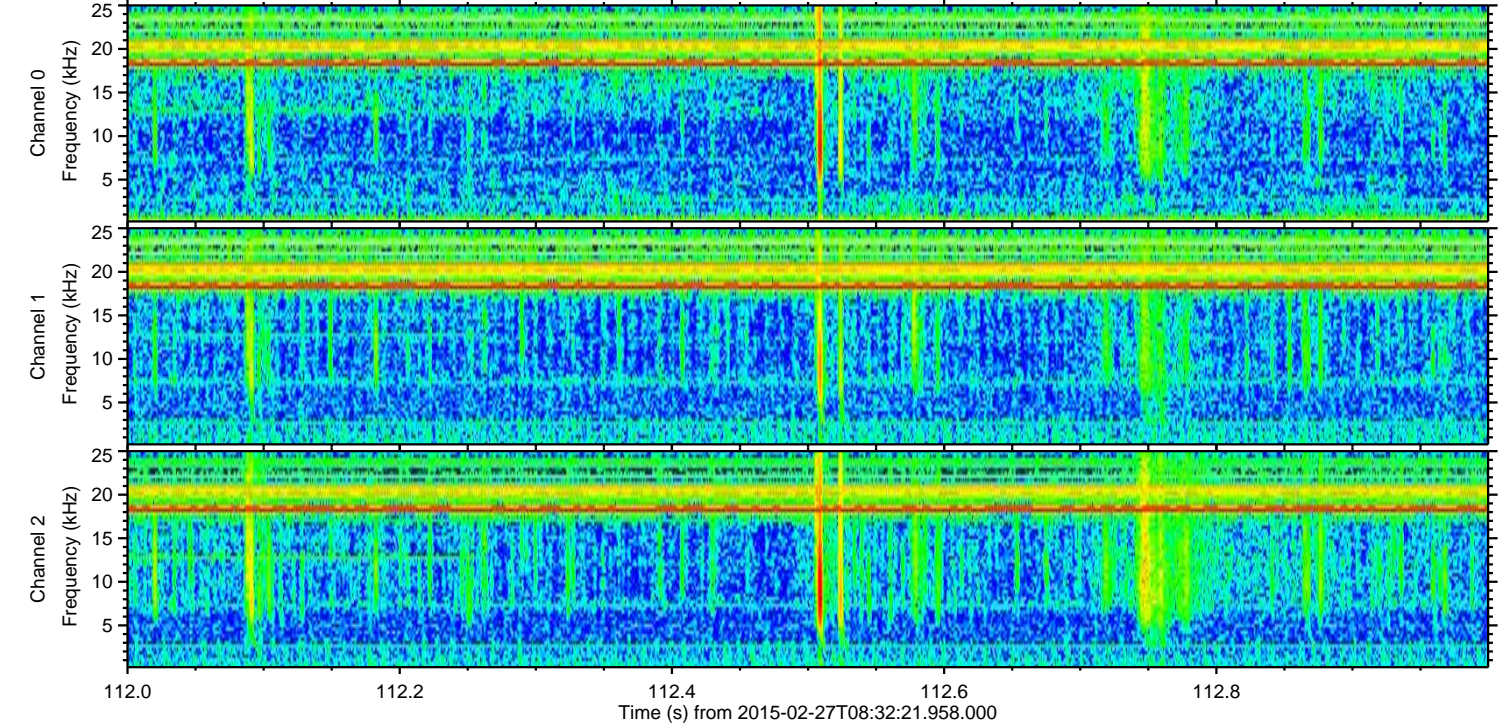
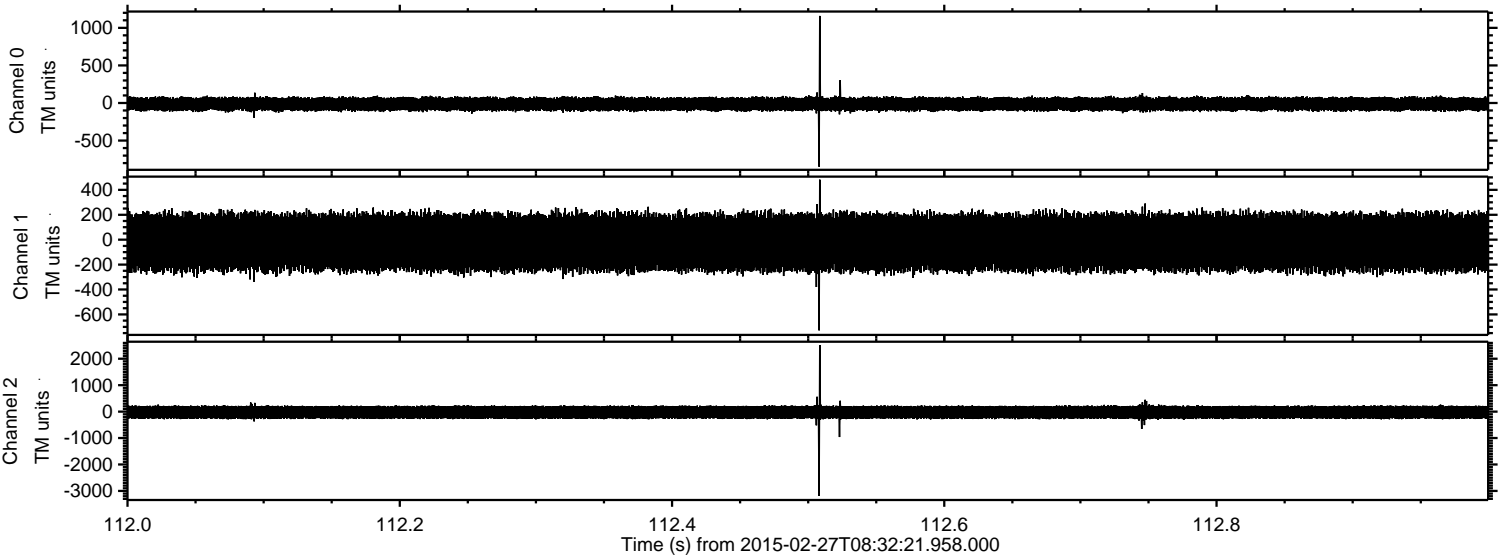


Processed Wed Mar 4 15:22:50 2015 by ELM ver.2012-10-06 from 001__elm20150227_083220__dat00.bin

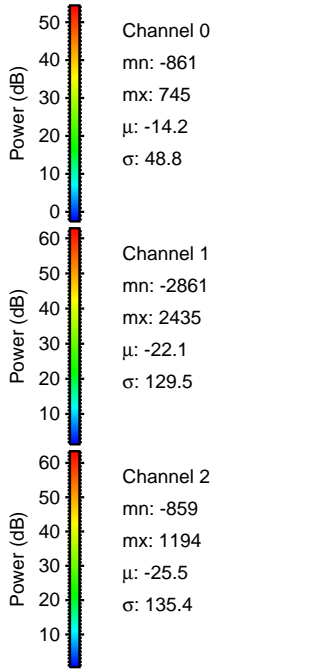
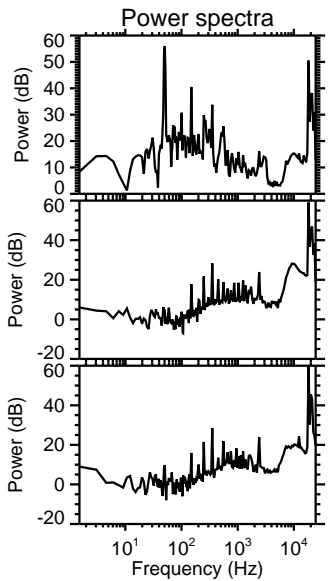
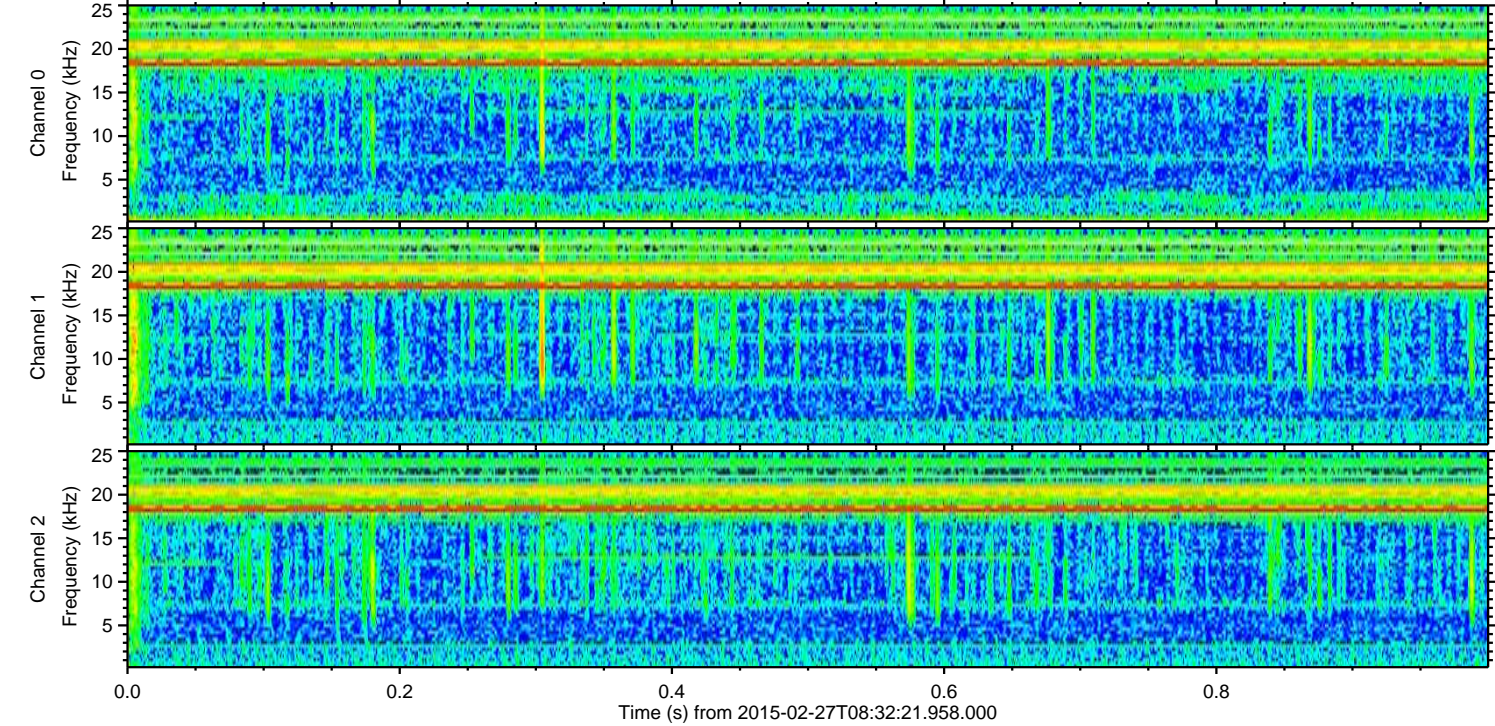
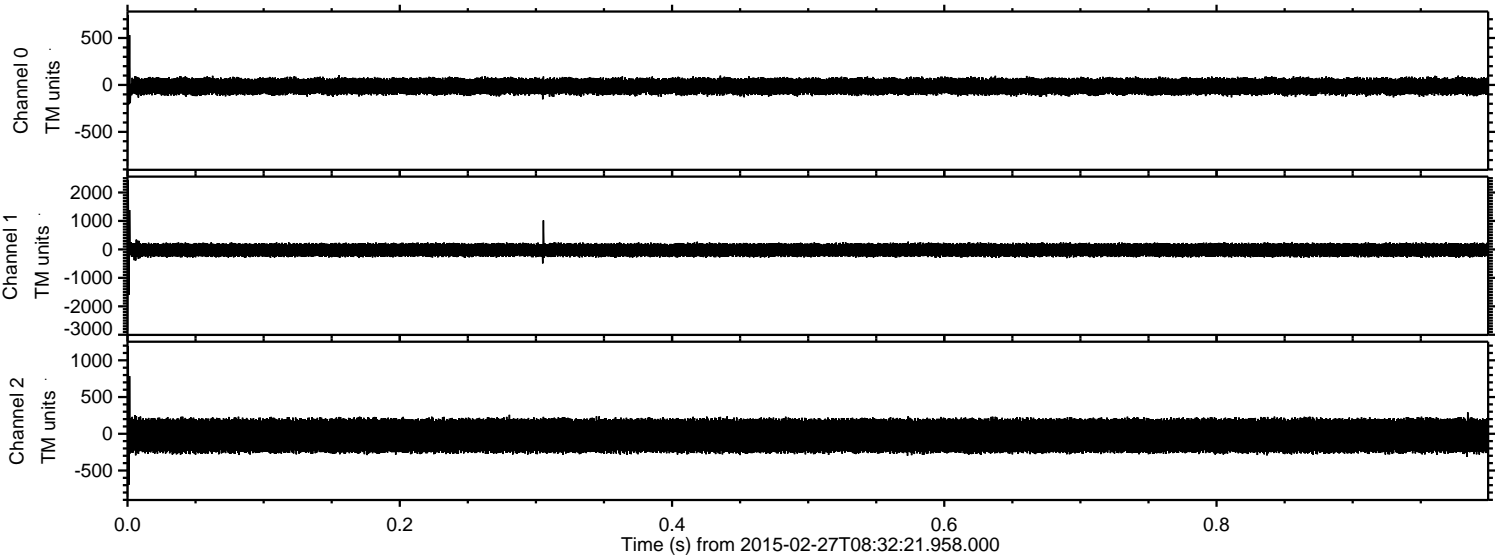


ELMAVAN 3D WAVEFORMS (Measured data sampled at 50 kHz) 49786 packets of 144 samples from 2015-02-27T08:32:21.958.000. Part 113/144

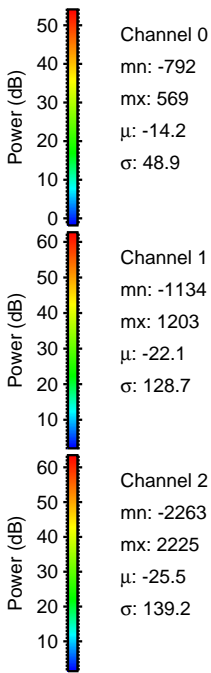
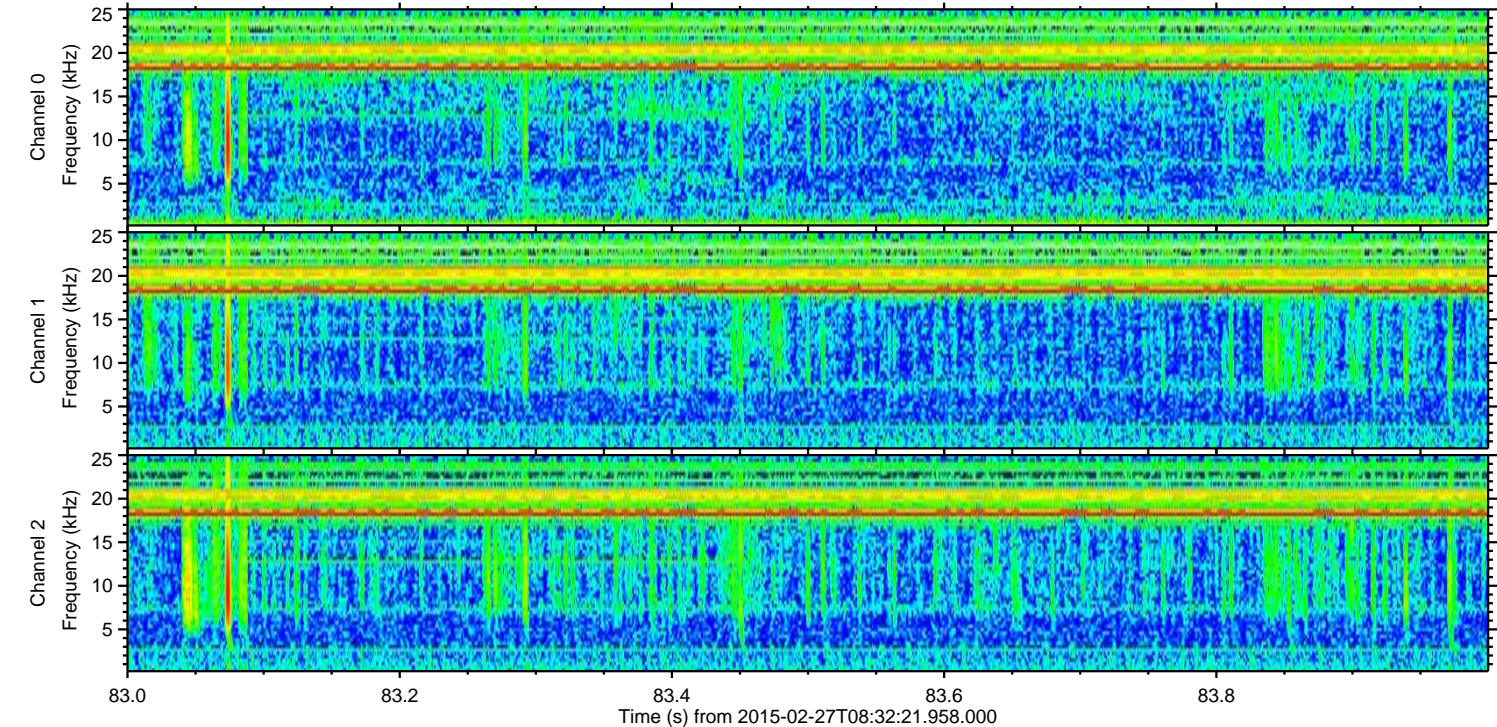
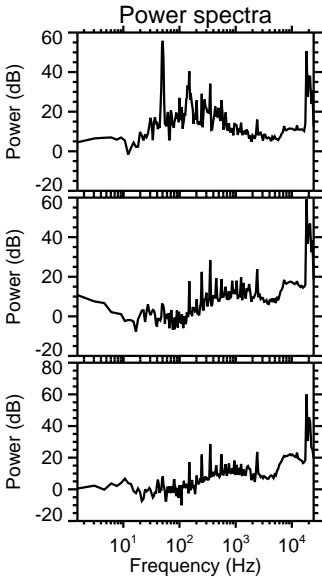
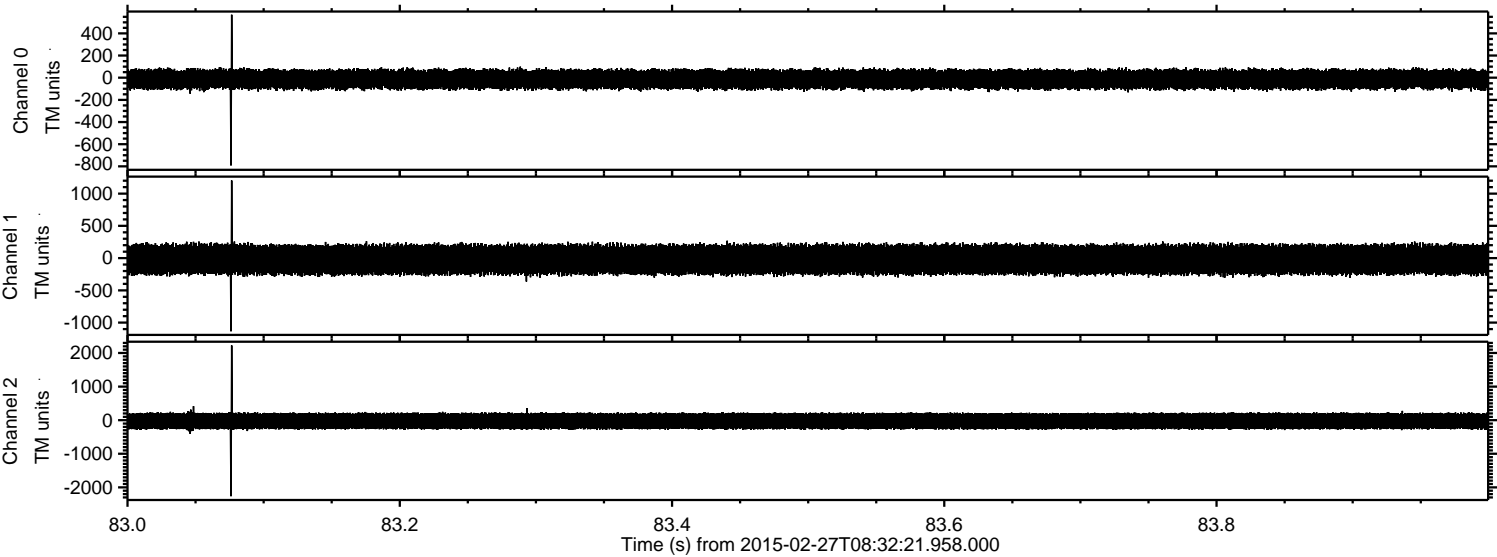
Processed Wed Mar 4 15:22:50 2015 by ELM ver.2012-10-06 from 001__elm20150227_083220__dat00.bin



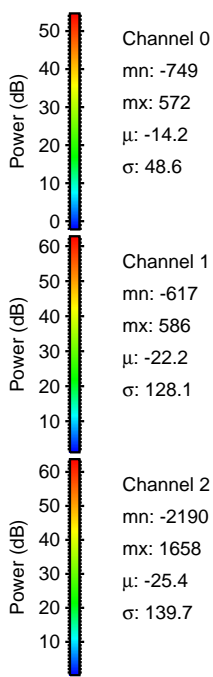
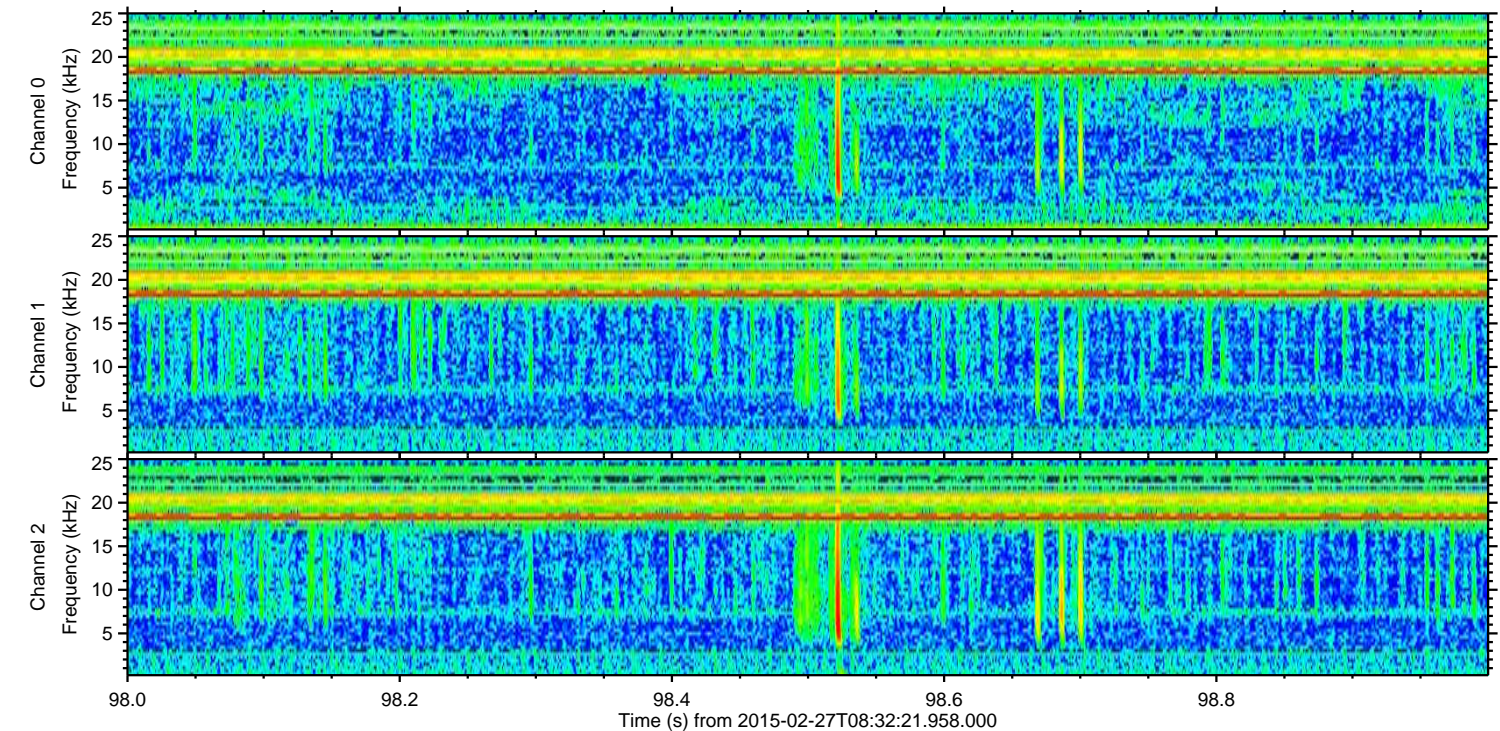
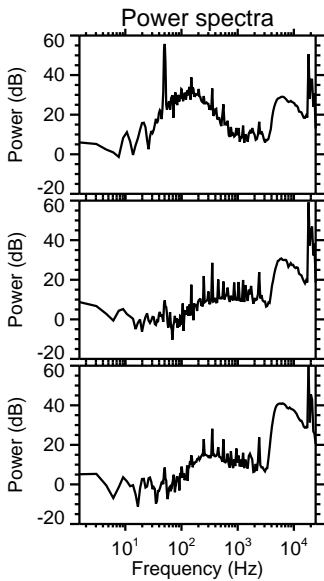
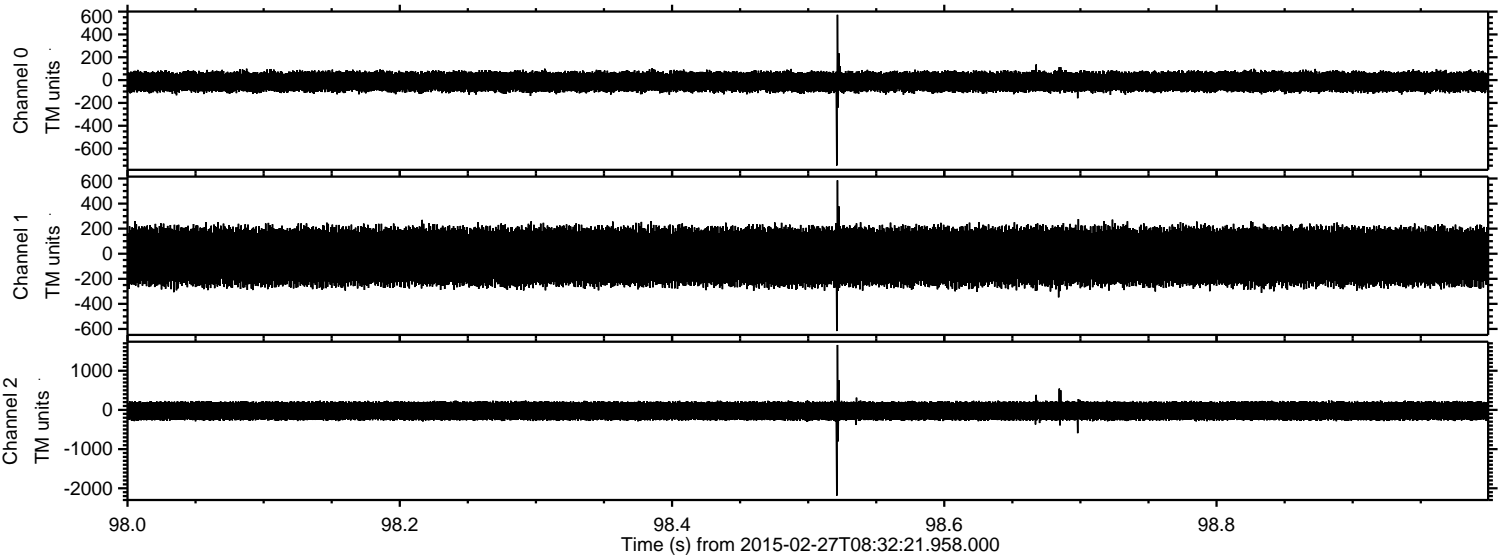
Processed Wed Mar 4 15:22:51 2015 by ELM ver.2012-10-06 from 001__elm20150227_083220__dat00.bin



Processed Wed Mar 4 15:22:52 2015 by ELM ver.2012-10-06 from 001__elm20150227_083220__dat00.bin



Processed Wed Mar 4 15:22:53 2015 by ELM ver.2012-10-06 from 001__elm20150227_083220__dat00.bin



Channel 0
mn: -749
mx: 572
 μ : -14.2
 σ : 48.6

Channel 1
mn: -617
mx: 586
 μ : -22.2
 σ : 128.1

Channel 2
mn: -2190
mx: 1658
 μ : -25.4
 σ : 139.7

Processed Wed Mar 4 15:22:54 2015 by ELM ver.2012-10-06 from 001__elm20150227_083220__dat00.bin

