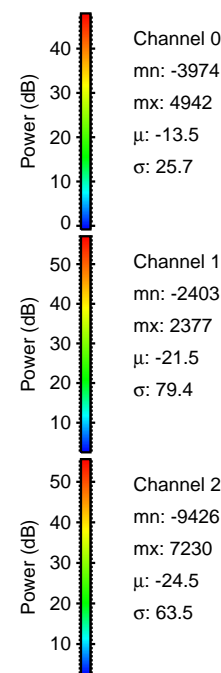
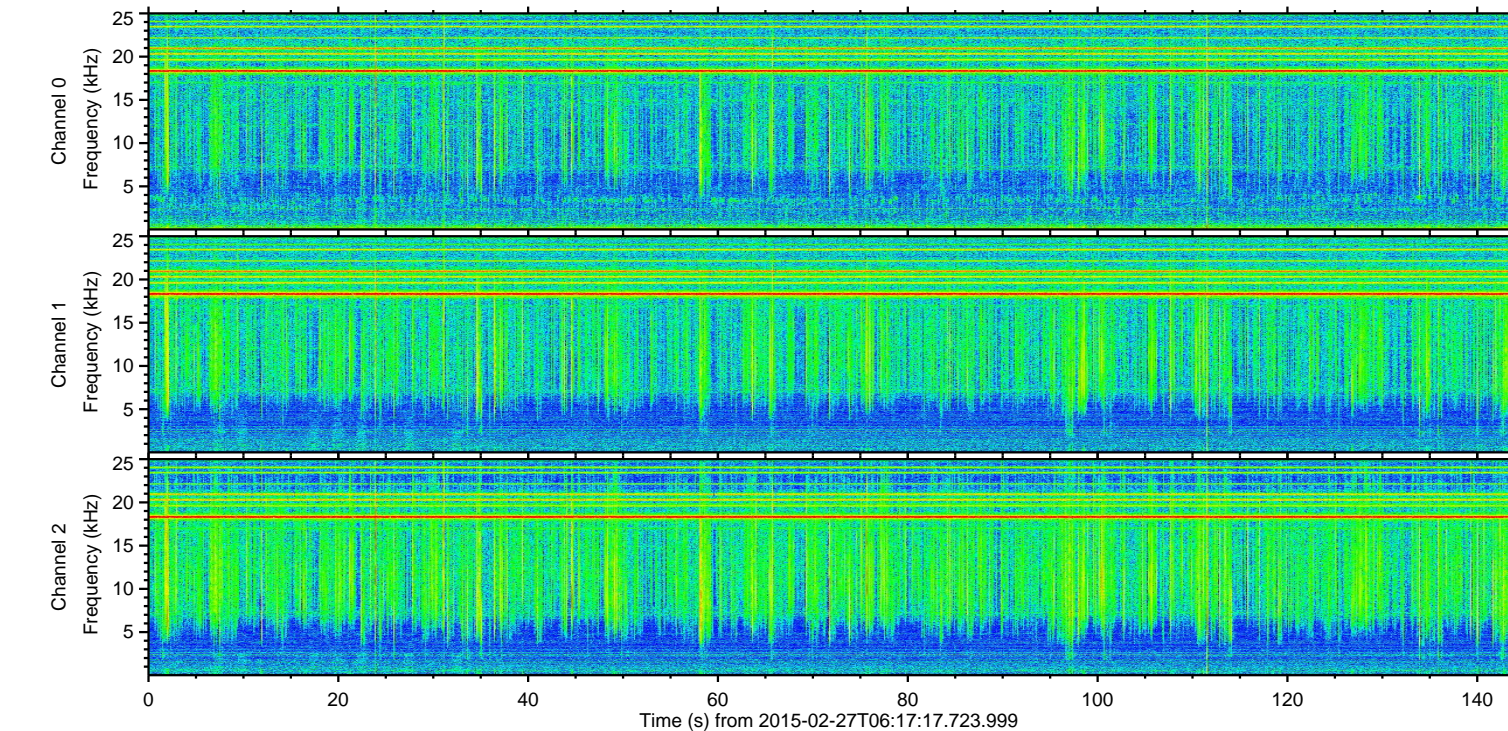
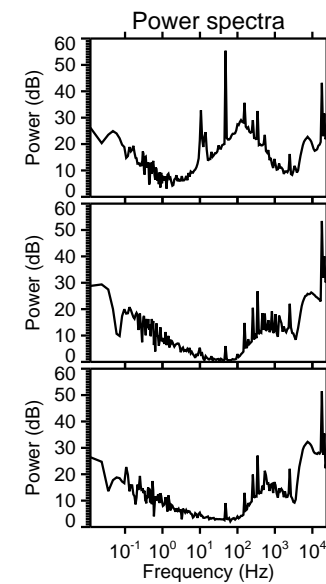
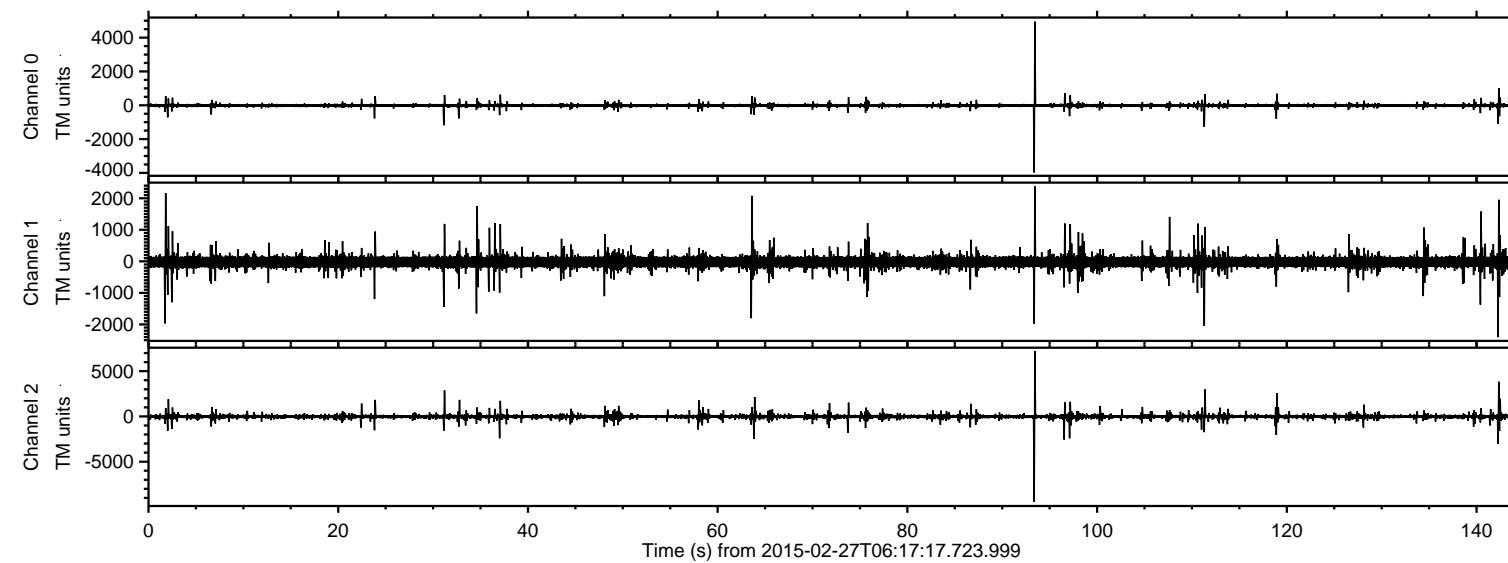
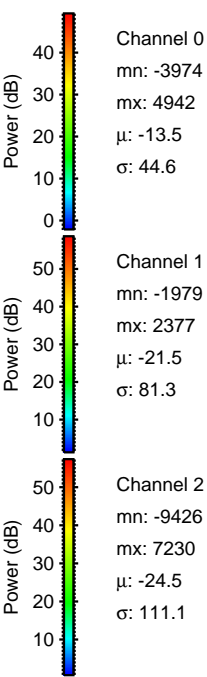
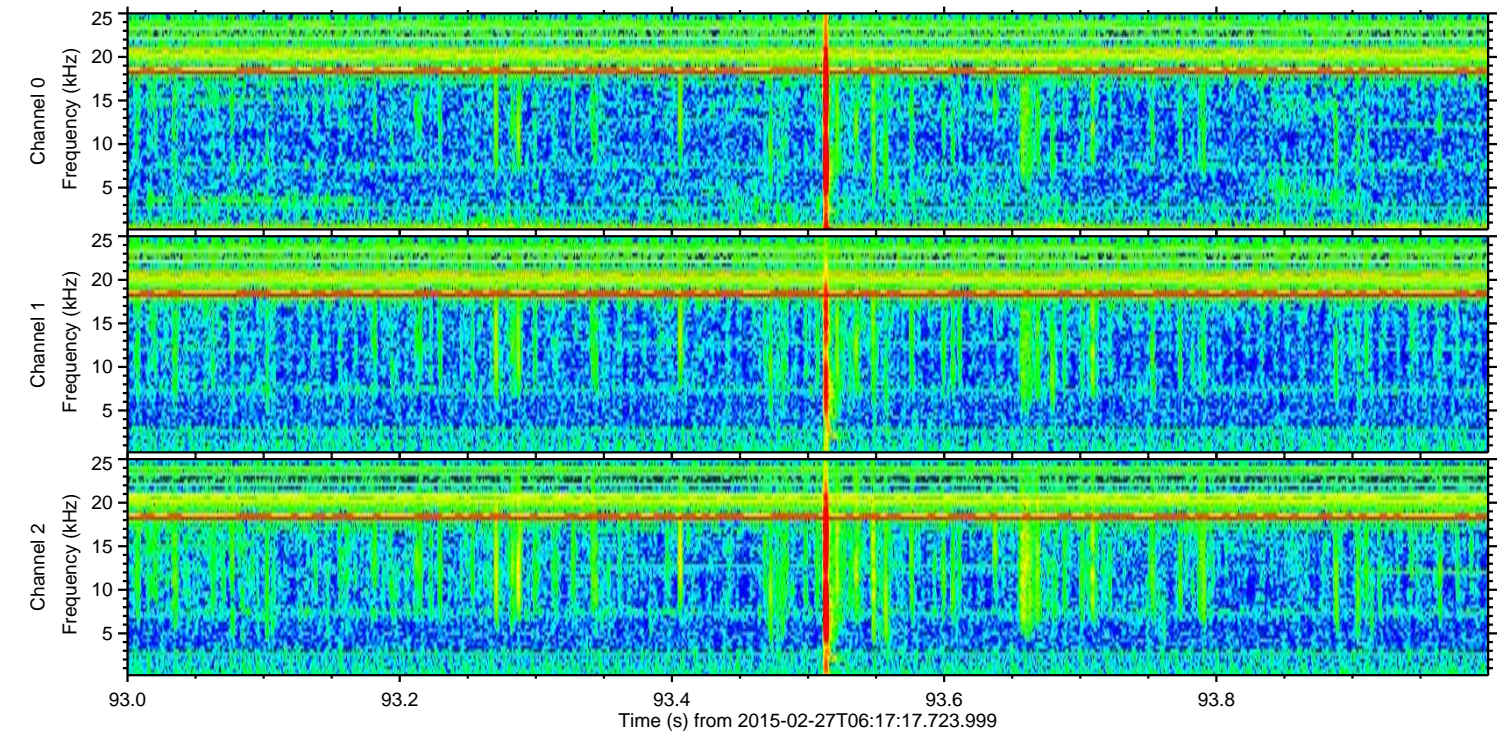
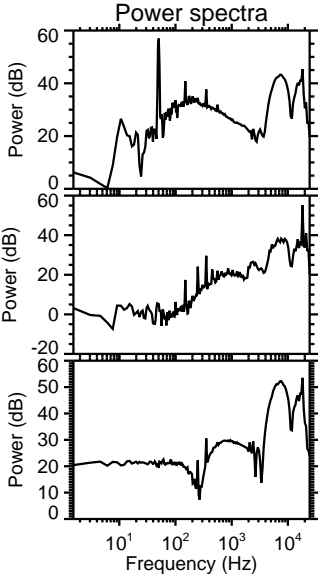
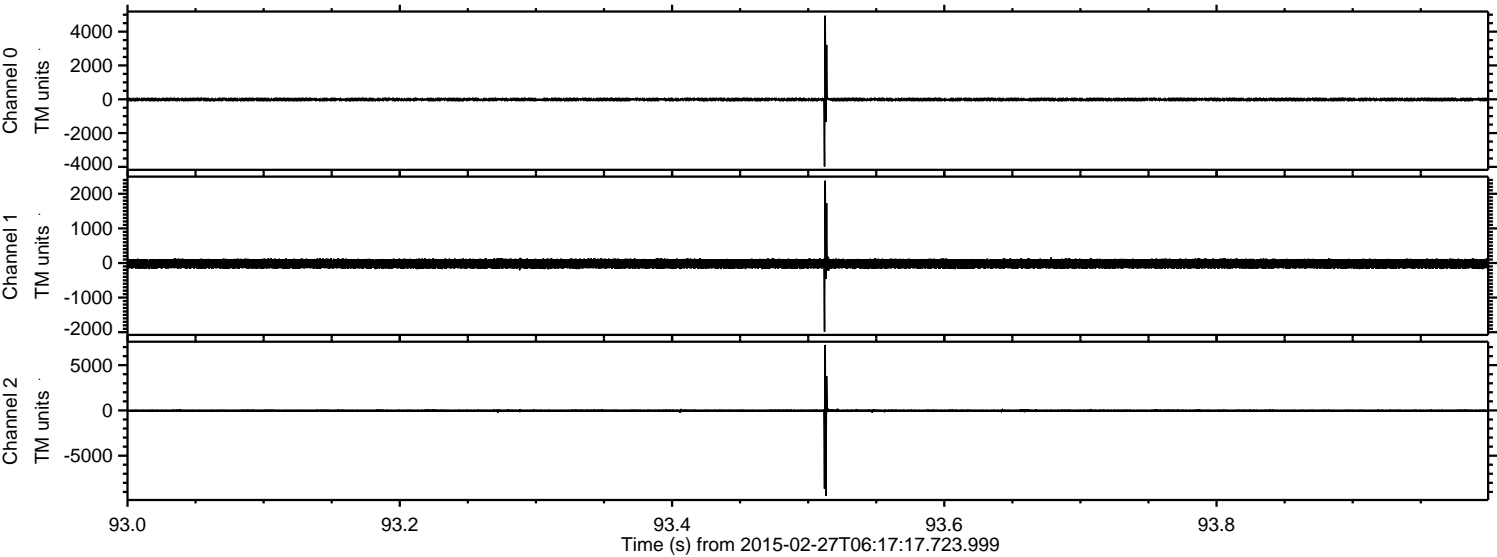


ELMAVAN 3D WAVEFORMS (Measured data sampled at 50 kHz) 49805 packets of 144 samples from 2015-02-27T06:17:17.723.999.

Processed Wed Mar 4 14:15:53 2015 by ELM ver.2012-10-06 from 001__elm20150227_061716__dat00.bin

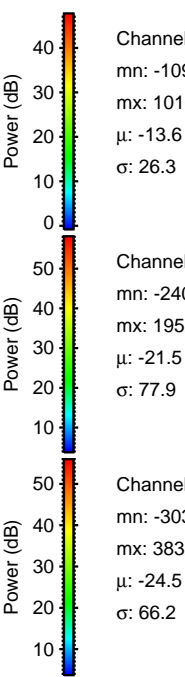
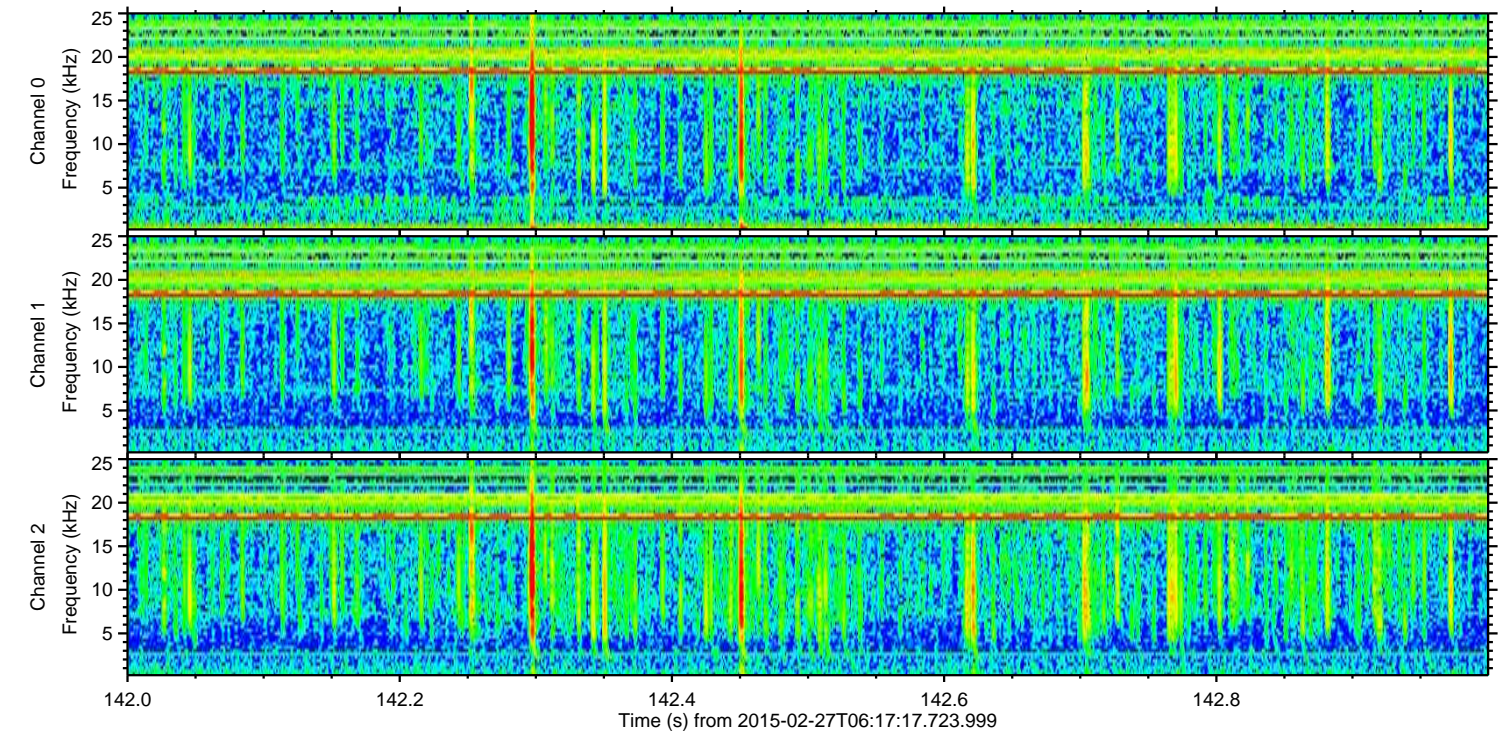
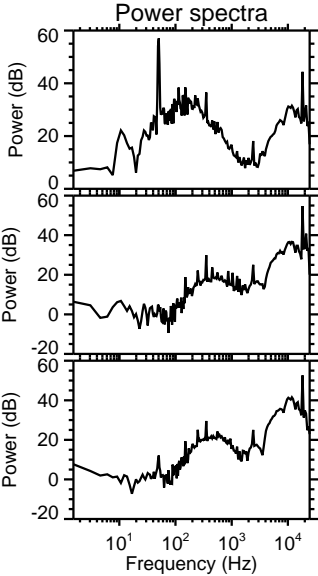
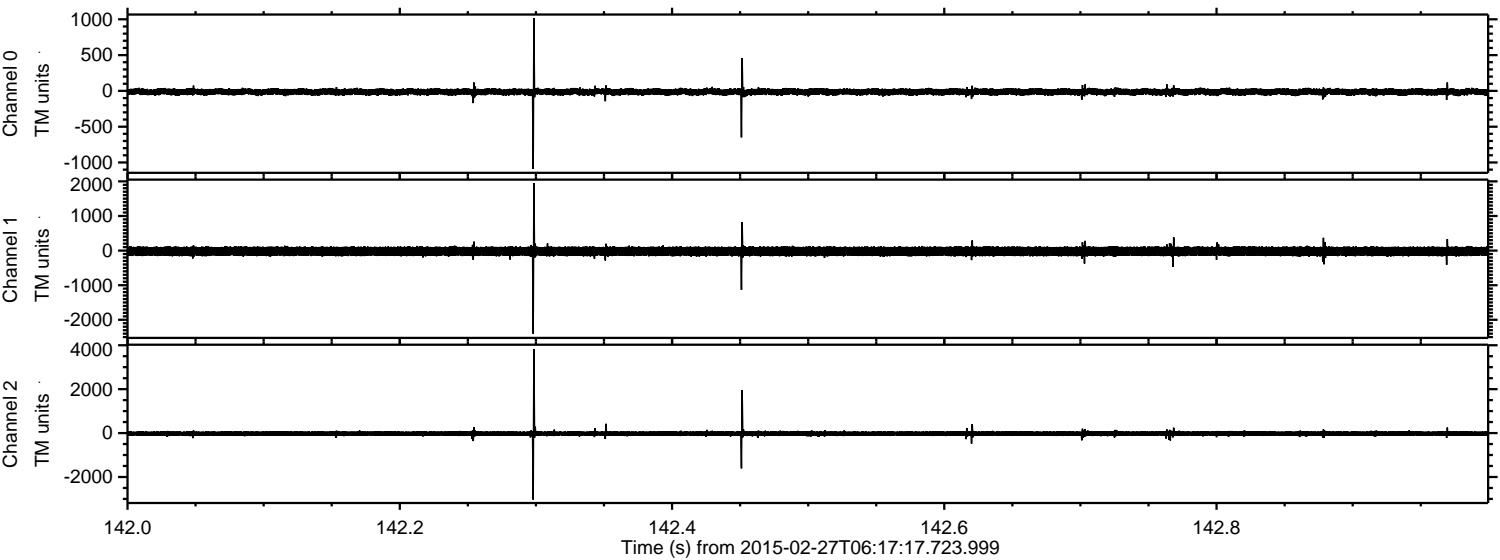


Processed Wed Mar 4 14:16:04 2015 by ELM ver.2012-10-06 from 001__elm20150227_061716__dat00.bin



ELMAVAN 3D WAVEFORMS (Measured data sampled at 50 kHz) 49805 packets of 144 samples from 2015-02-27T06:17:17.723.999. Part 143/144

Processed Wed Mar 4 14:16:05 2015 by ELM ver.2012-10-06 from 001__elm20150227_061716__dat00.bin



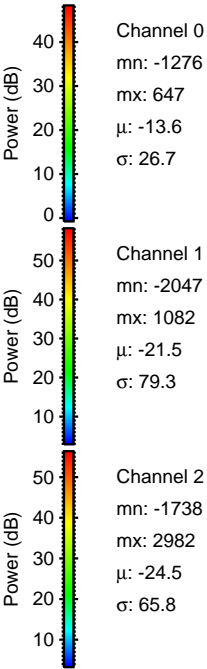
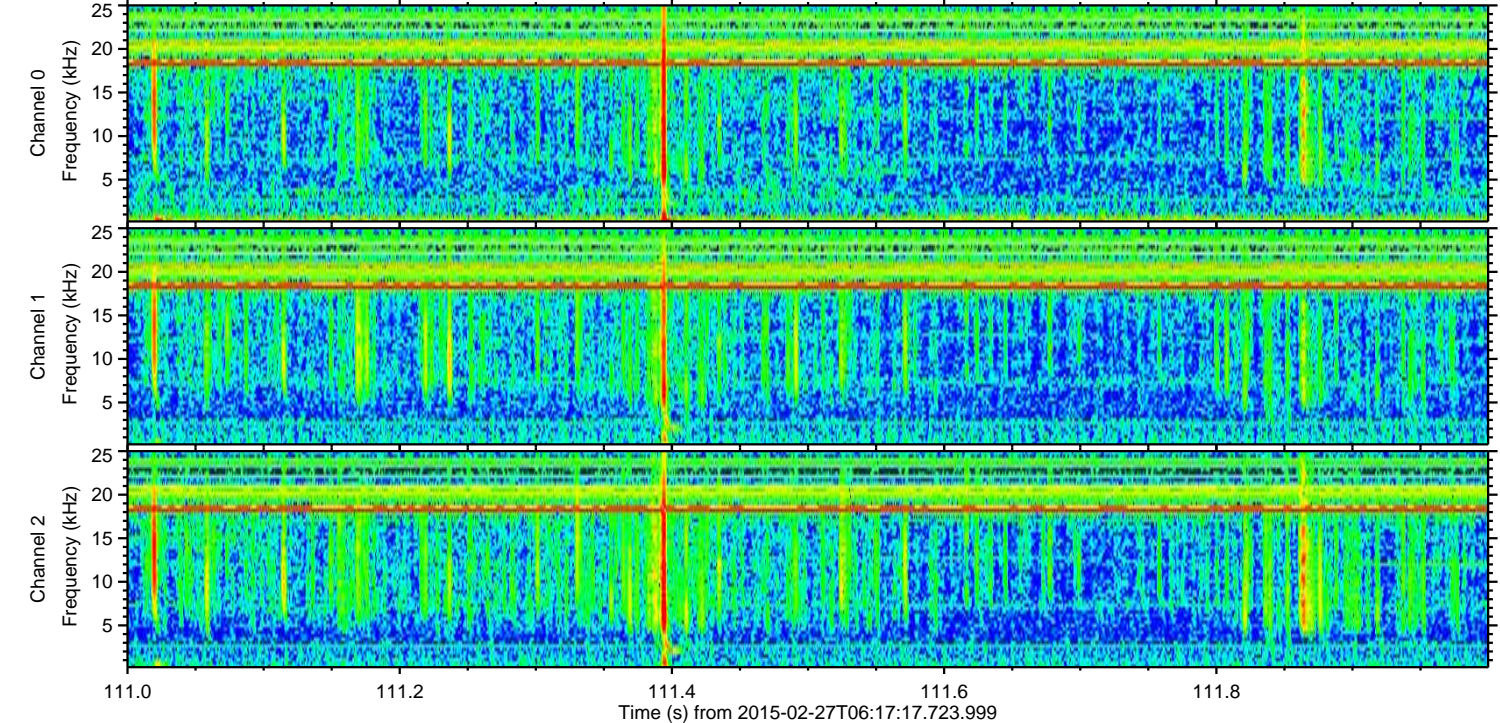
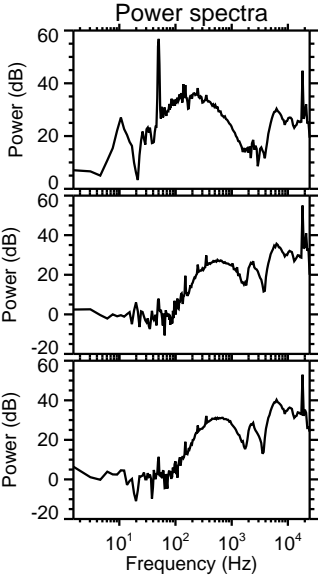
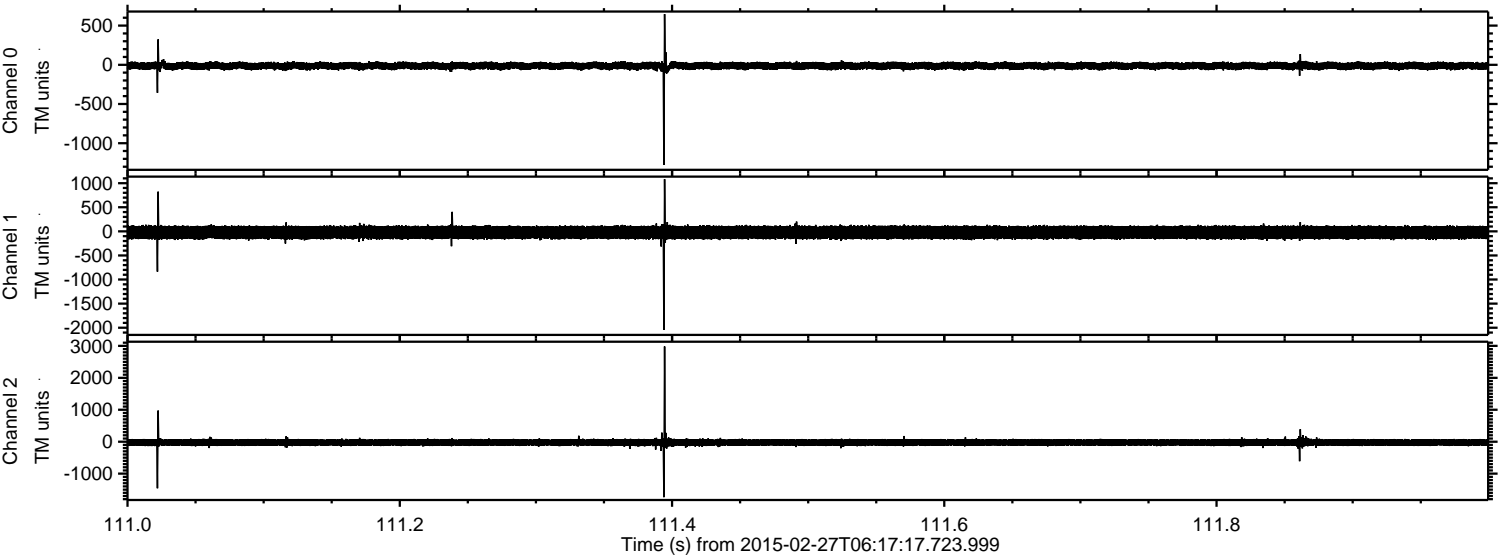
Channel 0
mn: -1090
mx: 1016
 μ : -13.6
 σ : 26.3

Channel 1
mn: -2403
mx: 1952
 μ : -21.5
 σ : 77.9

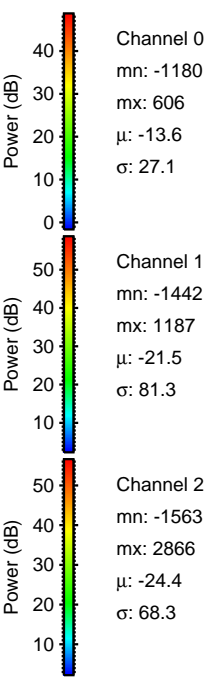
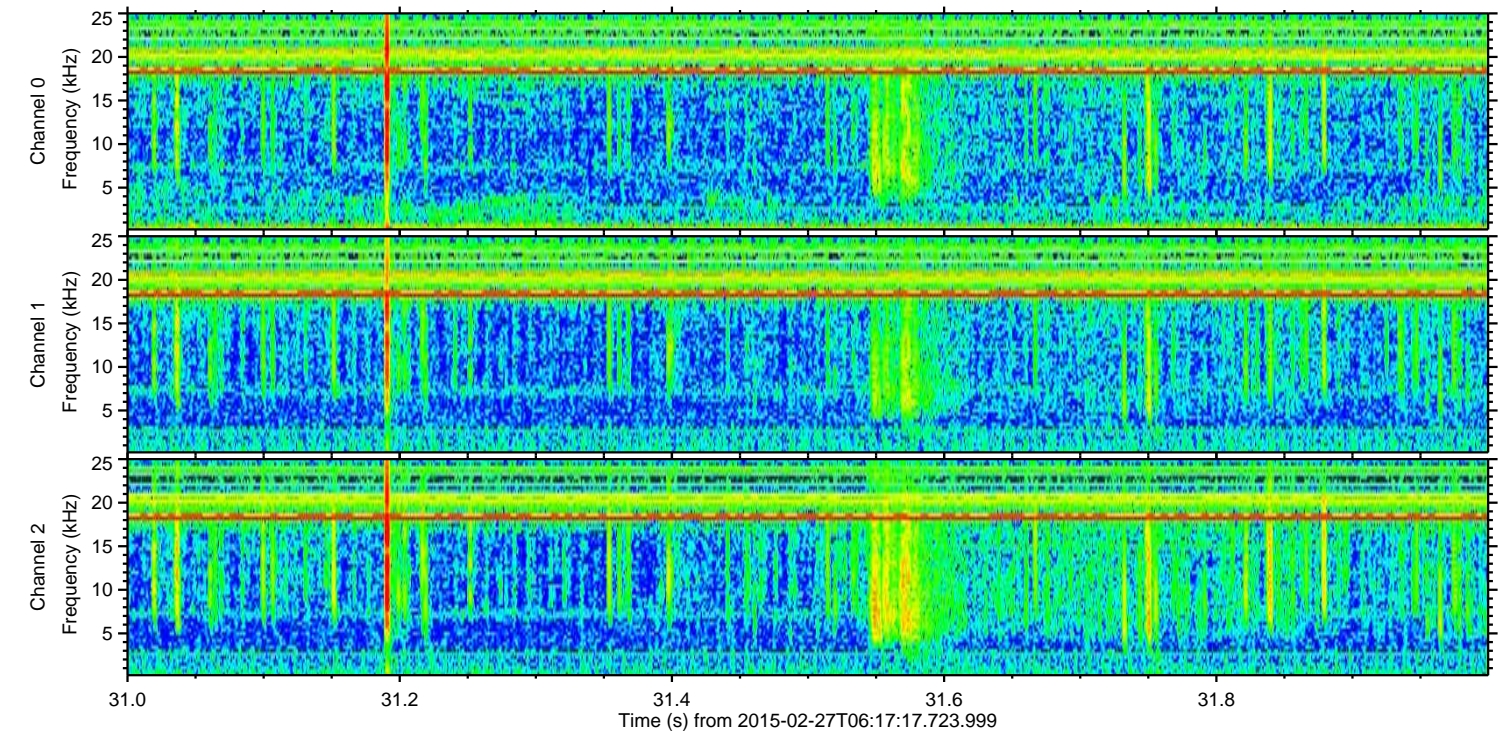
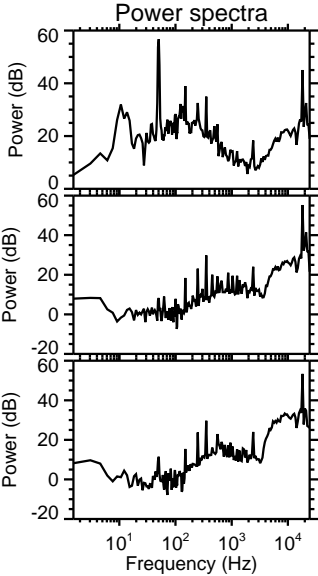
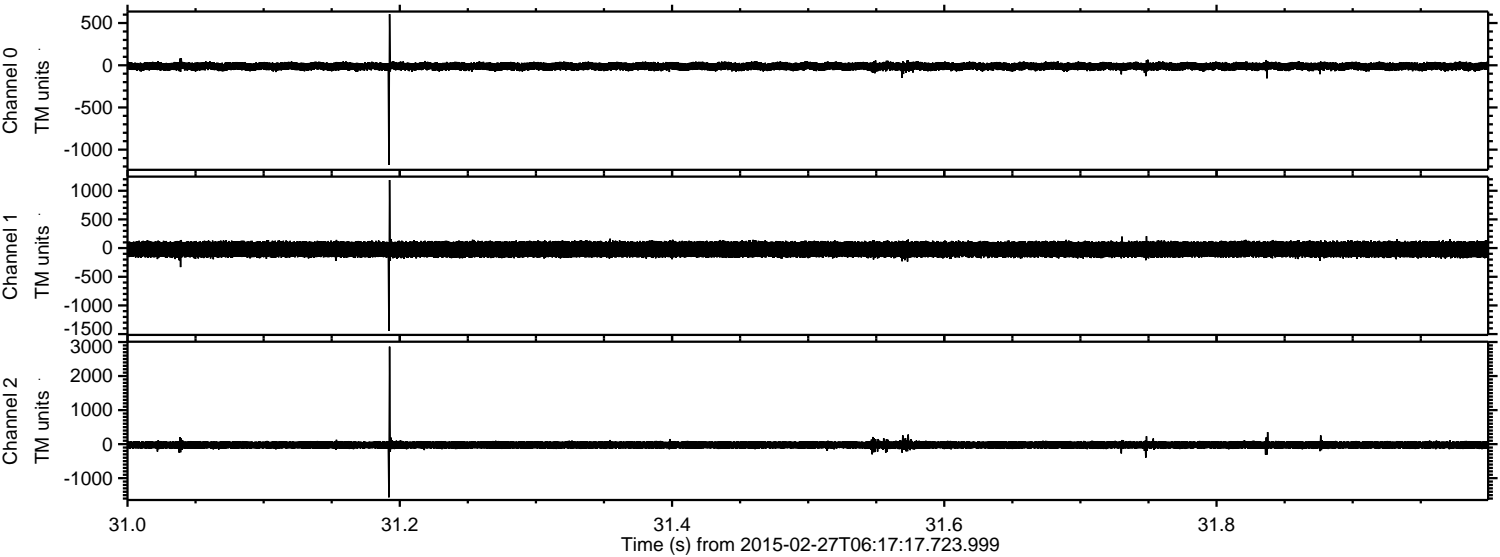
Channel 2
mn: -3034
mx: 3832
 μ : -24.5
 σ : 66.2

ELMAVAN 3D WAVEFORMS (Measured data sampled at 50 kHz) 49805 packets of 144 samples from 2015-02-27T06:17:17.723.999. Part 112/144

Processed Wed Mar 4 14:16:06 2015 by ELM ver.2012-10-06 from 001__elm20150227_061716__dat00.bin

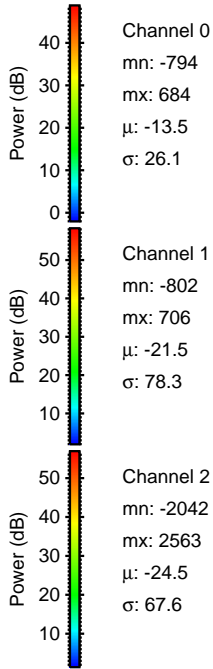
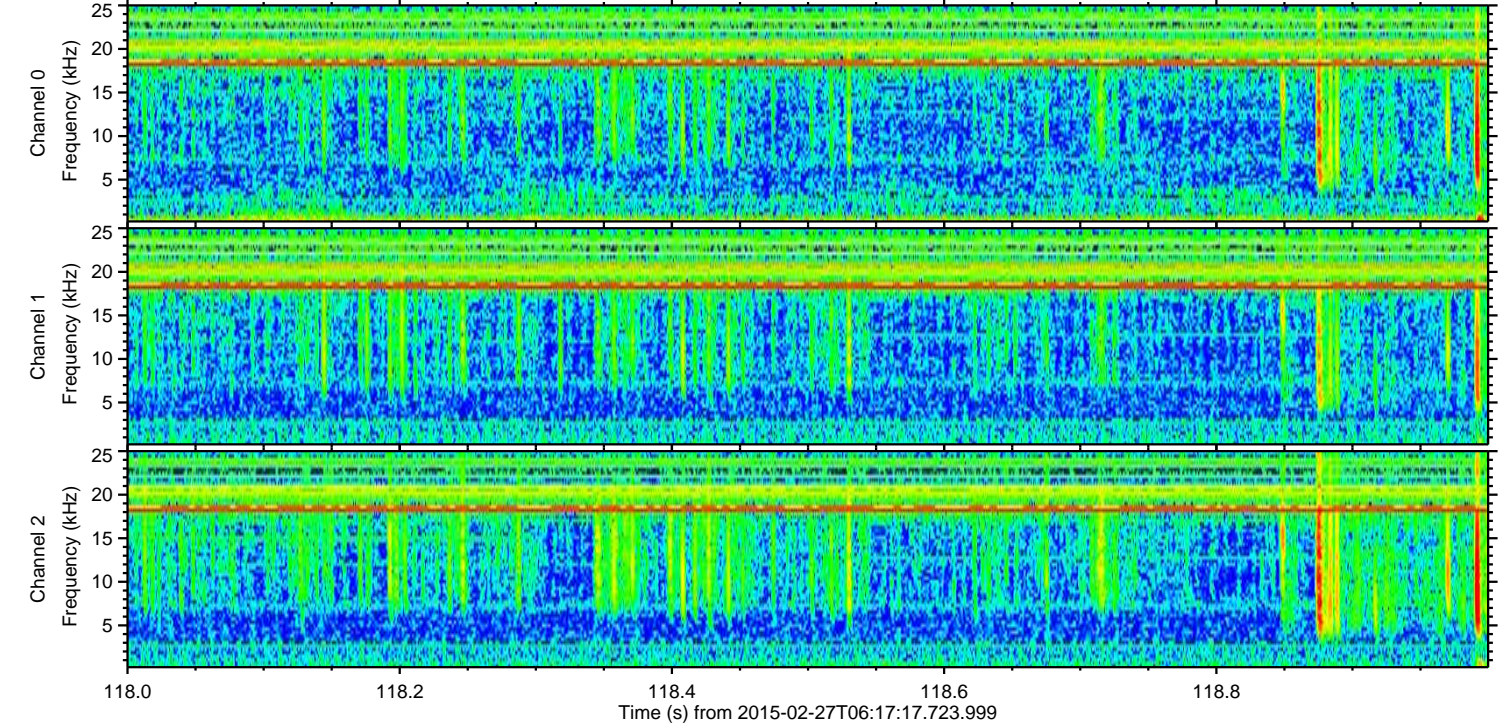
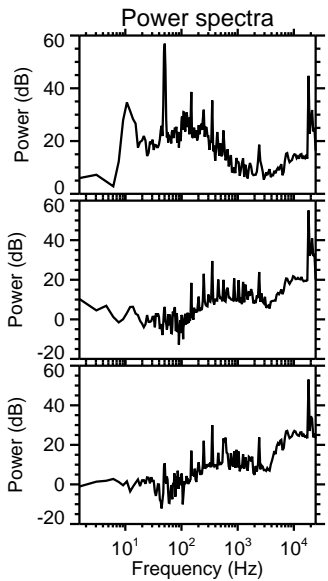
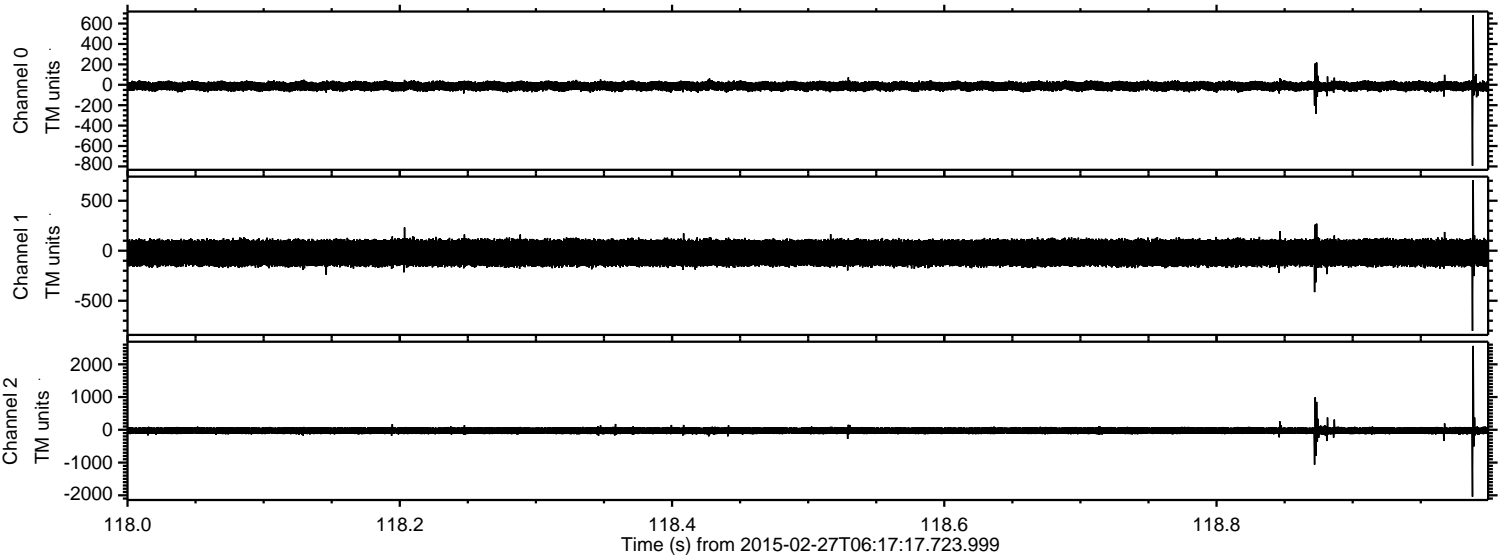


Processed Wed Mar 4 14:16:07 2015 by ELM ver.2012-10-06 from 001__elm20150227_061716__dat00.bin



ELMAVAN 3D WAVEFORMS (Measured data sampled at 50 kHz) 49805 packets of 144 samples from 2015-02-27T06:17:17.723.999. Part 119/144

Processed Wed Mar 4 14:16:08 2015 by ELM ver.2012-10-06 from 001__elm20150227_061716__dat00.bin



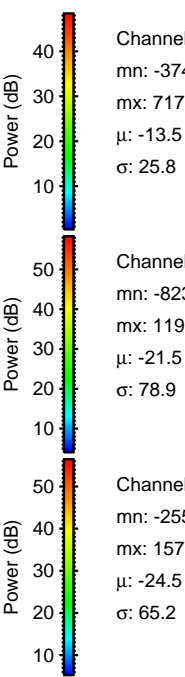
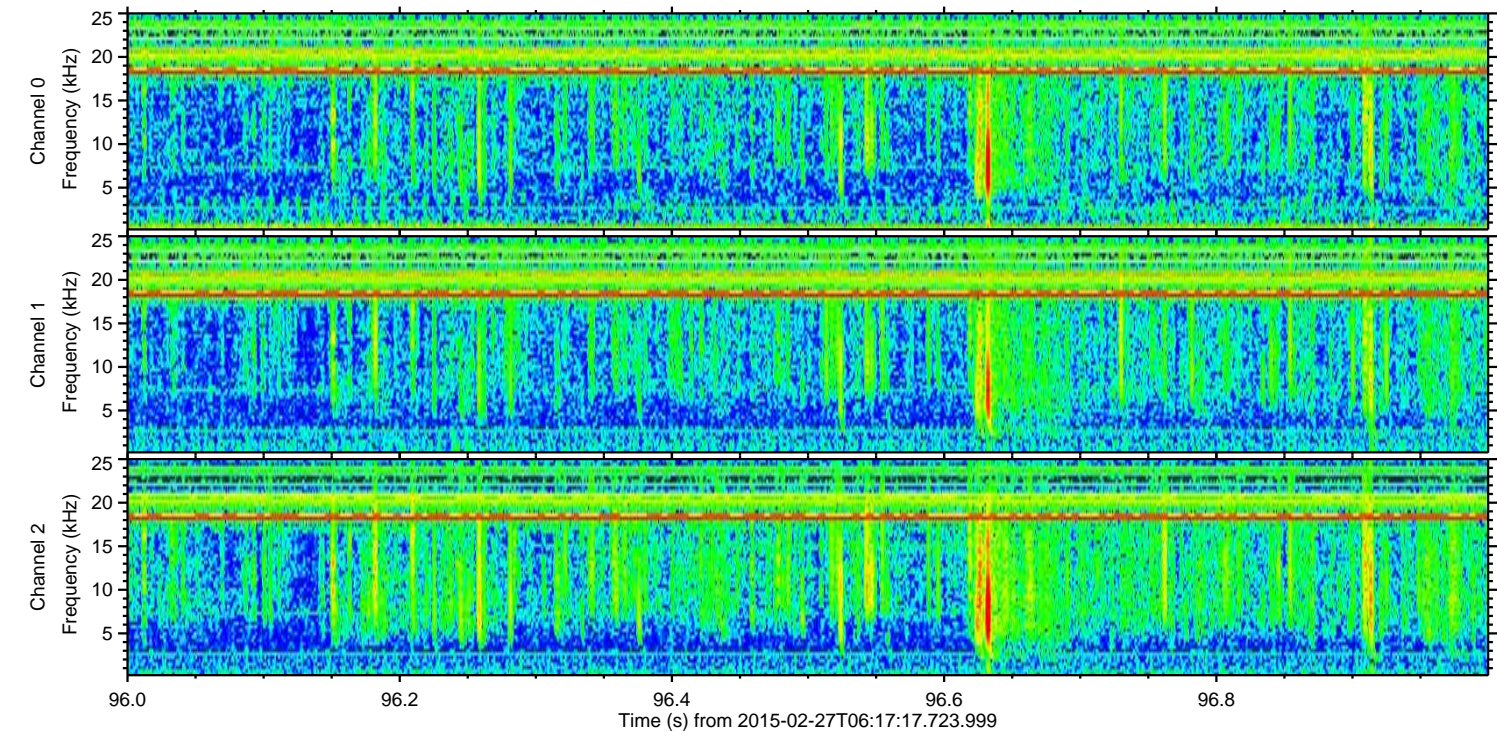
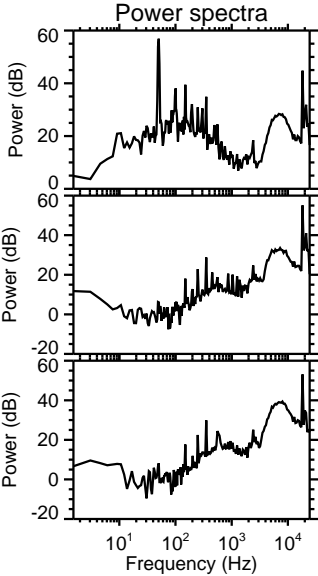
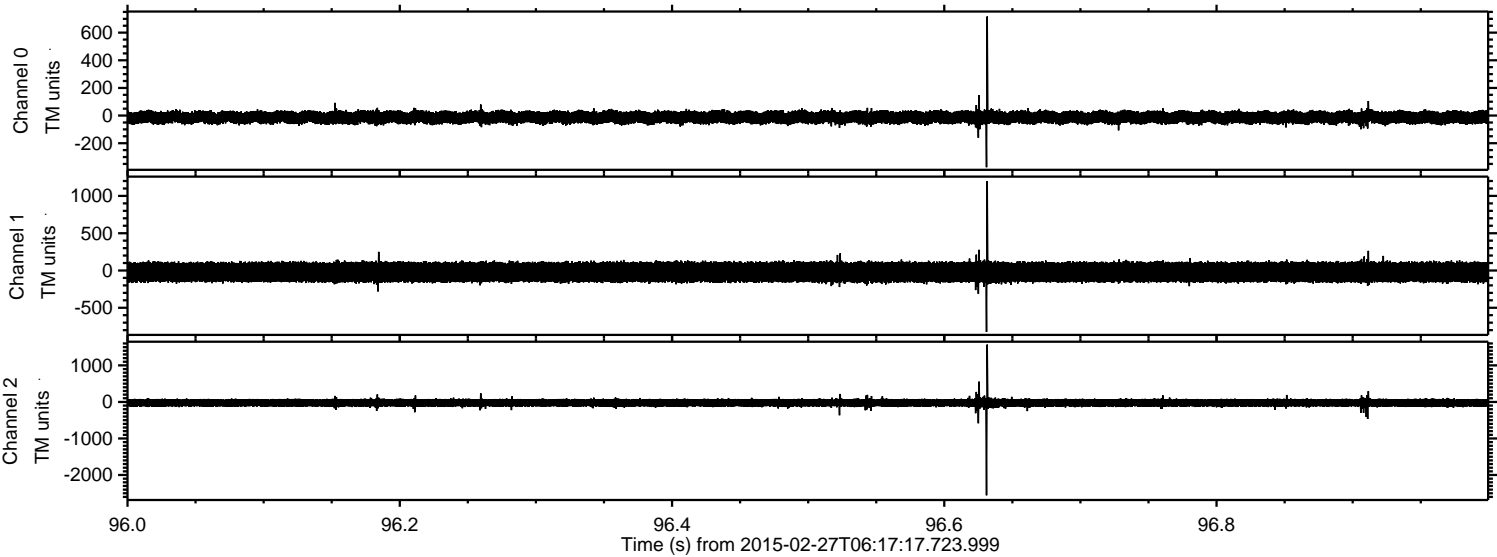
Channel 0
mn: -794
mx: 684
 μ : -13.5
 σ : 26.1

Channel 1
mn: -802
mx: 706
 μ : -21.5
 σ : 78.3

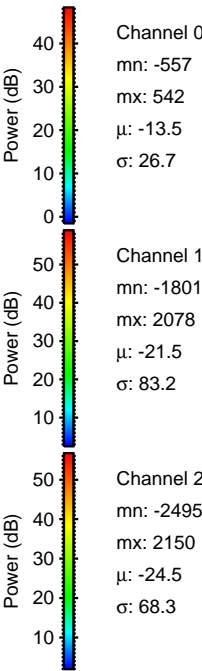
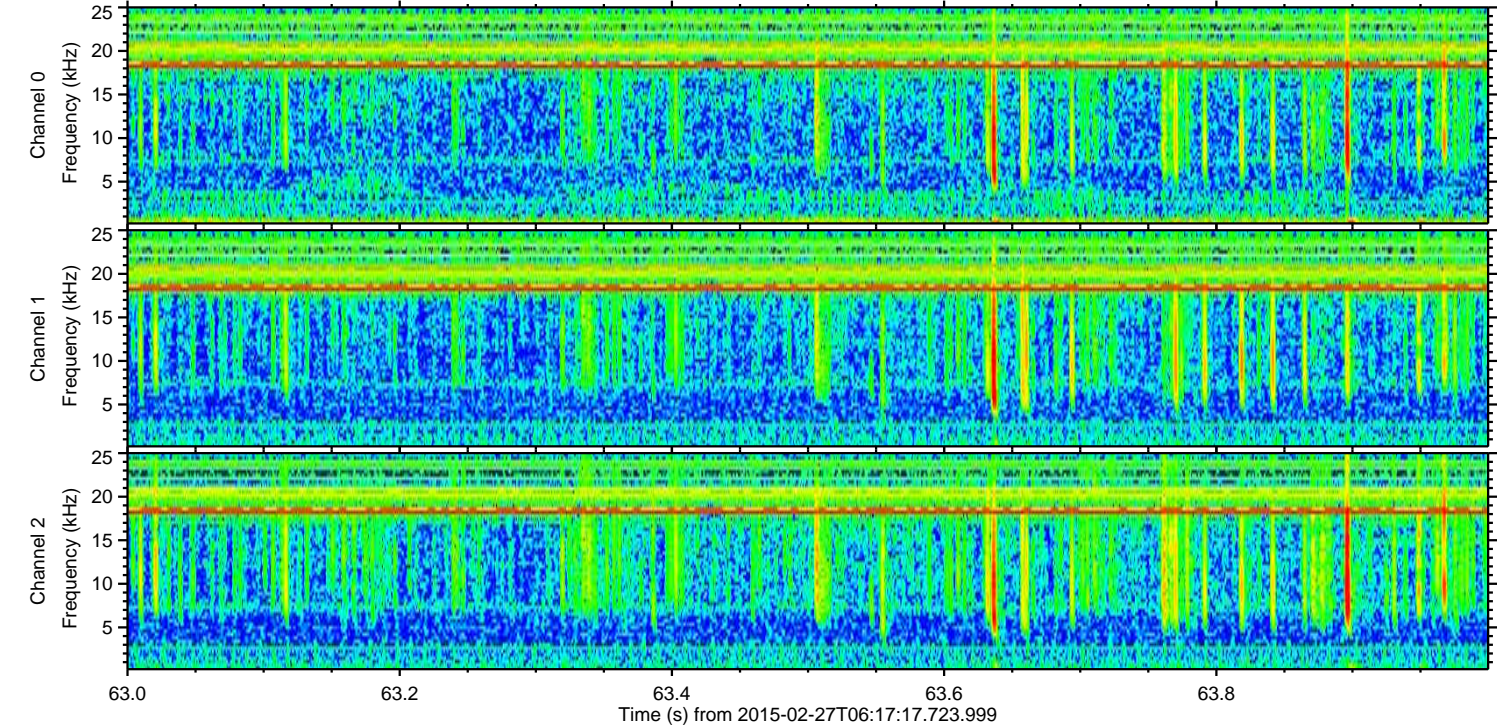
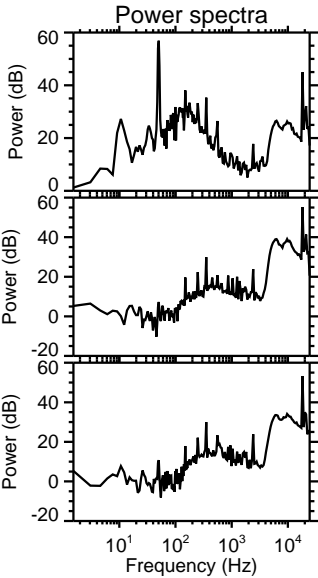
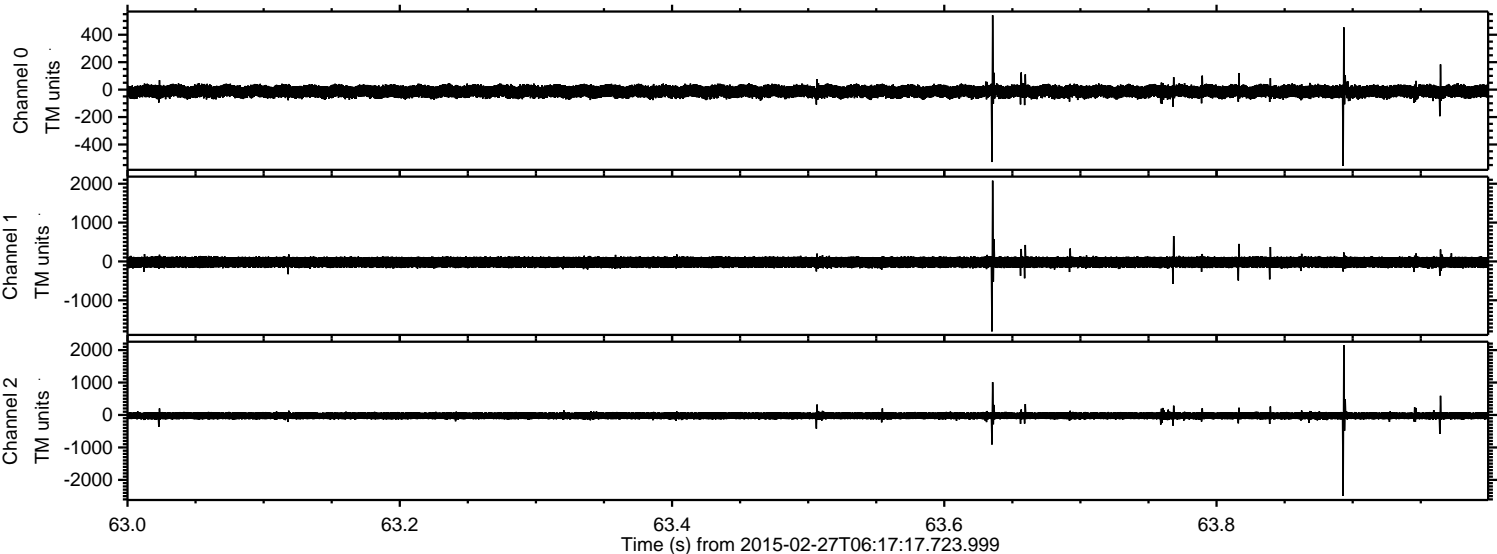
Channel 2
mn: -2042
mx: 2563
 μ : -24.5
 σ : 67.6

ELMAVAN 3D WAVEFORMS (Measured data sampled at 50 kHz) 49805 packets of 144 samples from 2015-02-27T06:17:17.723.999. Part 97/144

Processed Wed Mar 4 14:16:09 2015 by ELM ver.2012-10-06 from 001__elm20150227_061716__dat00.bin



Processed Wed Mar 4 14:16:10 2015 by ELM ver.2012-10-06 from 001__elm20150227_061716__dat00.bin

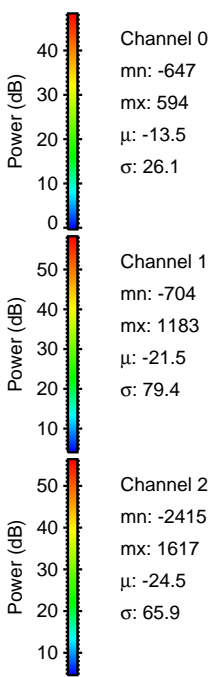
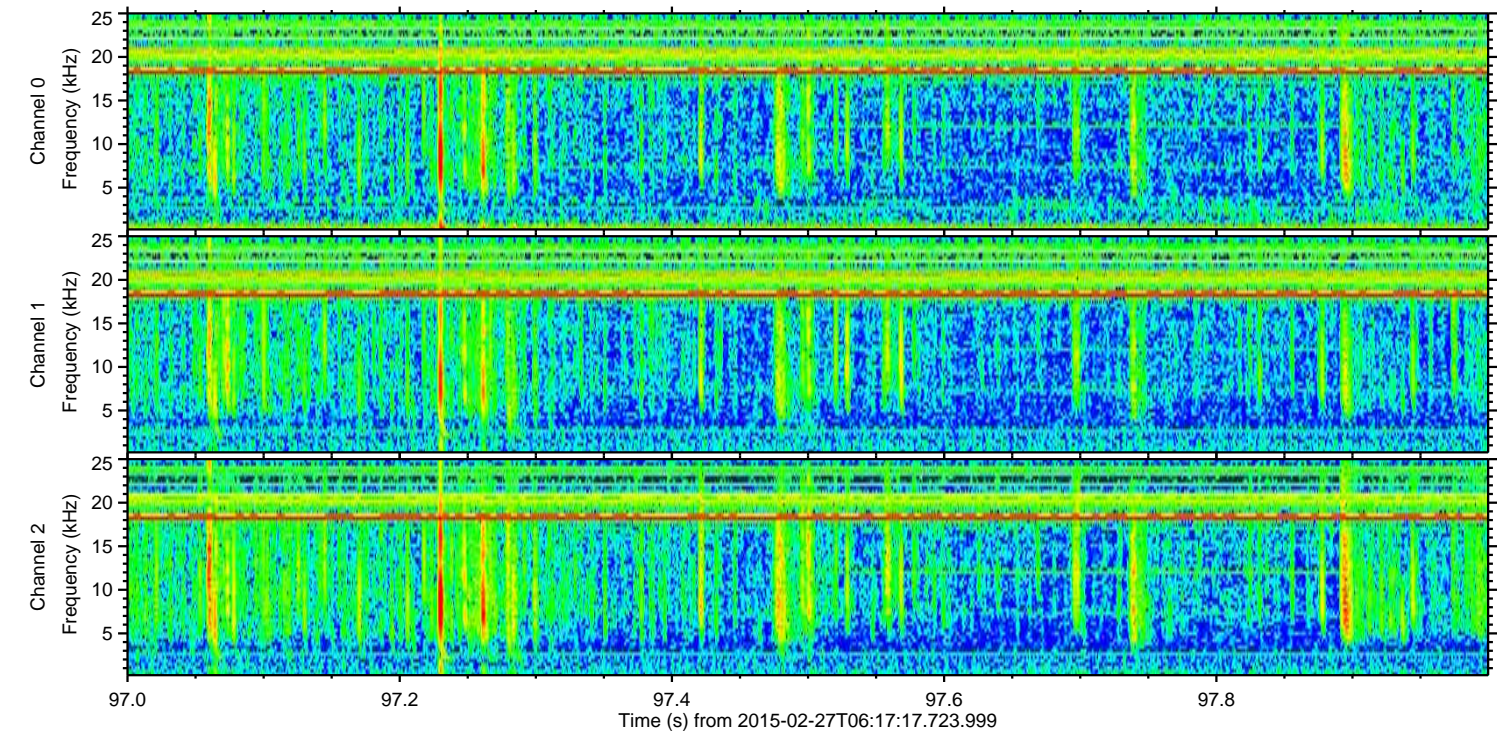
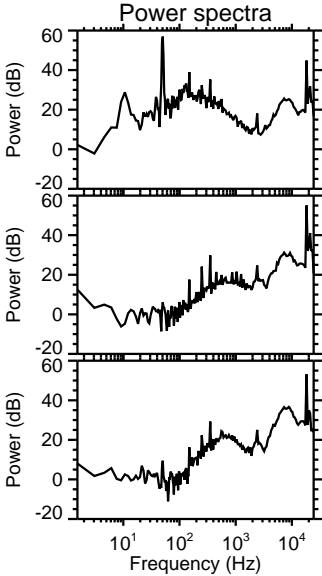
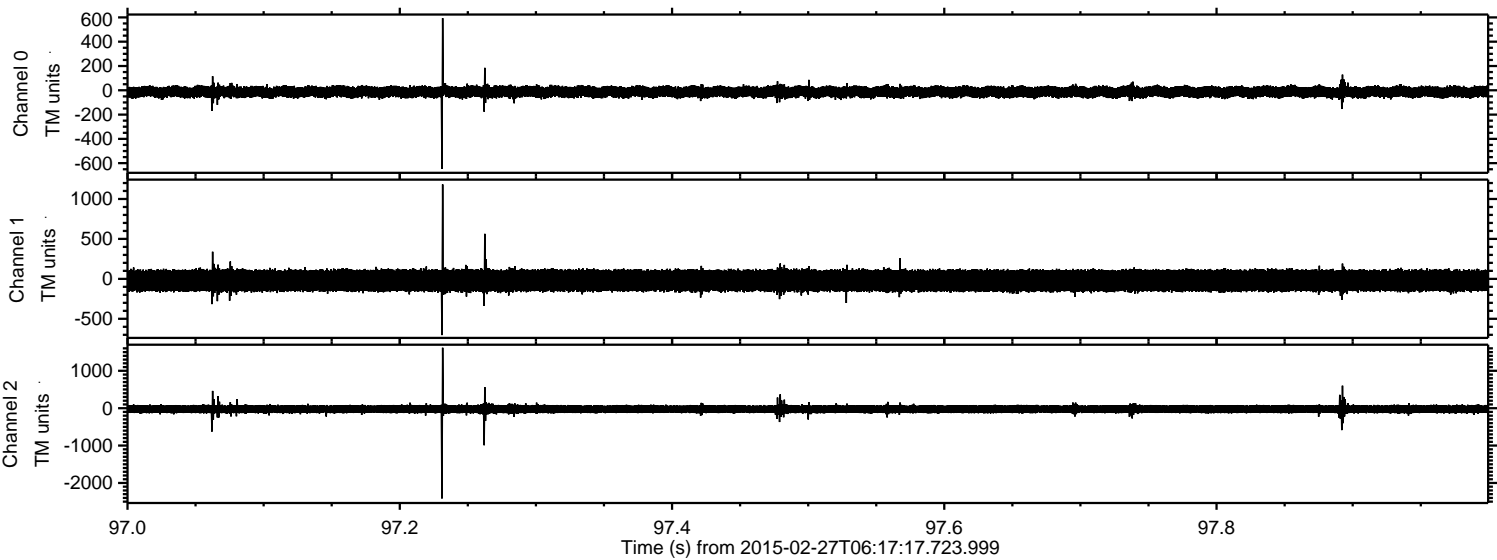


Channel 0
mn: -557
mx: 542
 μ : -13.5
 σ : 26.7

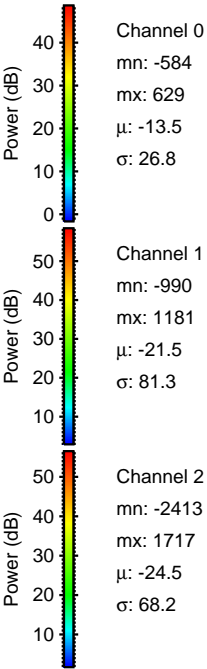
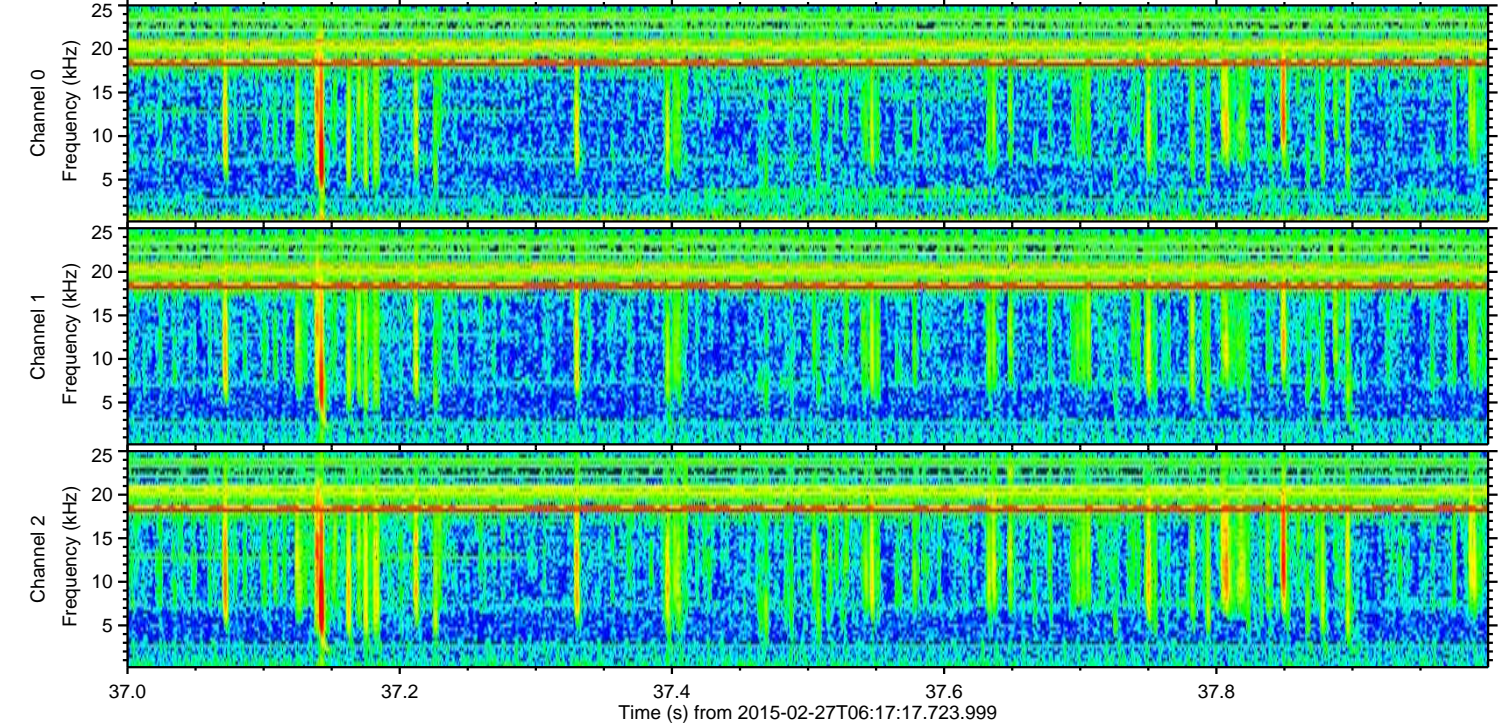
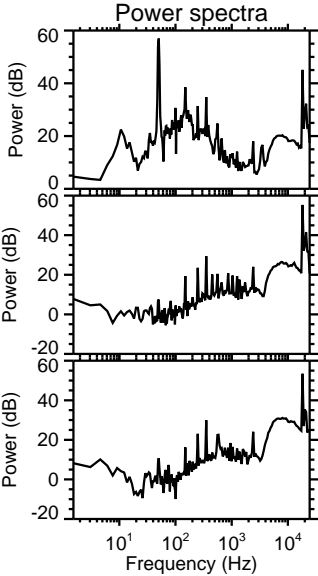
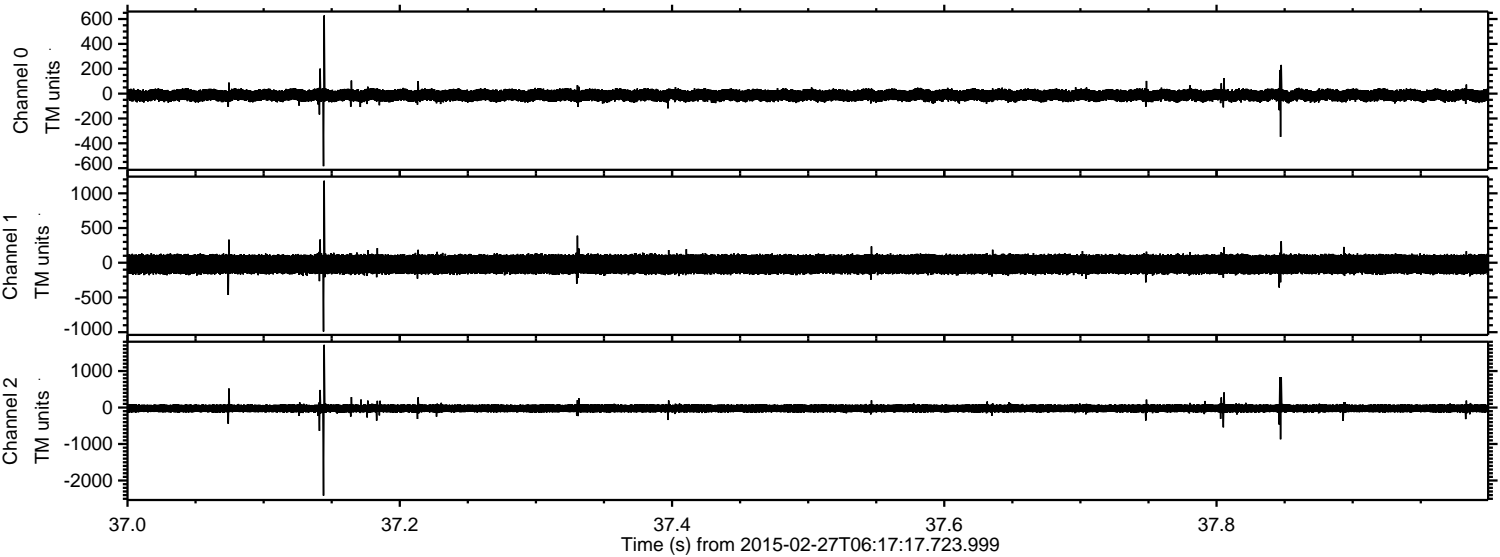
Channel 1
mn: -1801
mx: 2078
 μ : -21.5
 σ : 83.2

Channel 2
mn: -2495
mx: 2150
 μ : -24.5
 σ : 68.3

Processed Wed Mar 4 14:16:11 2015 by ELM ver.2012-10-06 from 001__elm20150227_061716__dat00.bin



Processed Wed Mar 4 14:16:12 2015 by ELM ver.2012-10-06 from 001__elm20150227_061716__dat00.bin



Processed Wed Mar 4 14:16:13 2015 by ELM ver.2012-10-06 from 001__elm20150227_061716__dat00.bin

