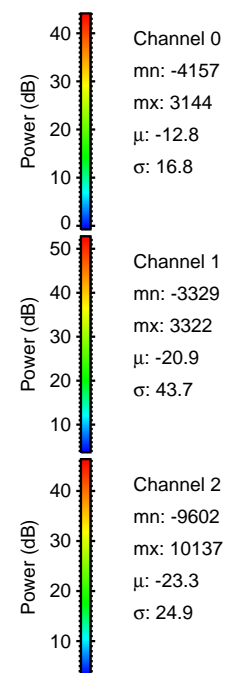
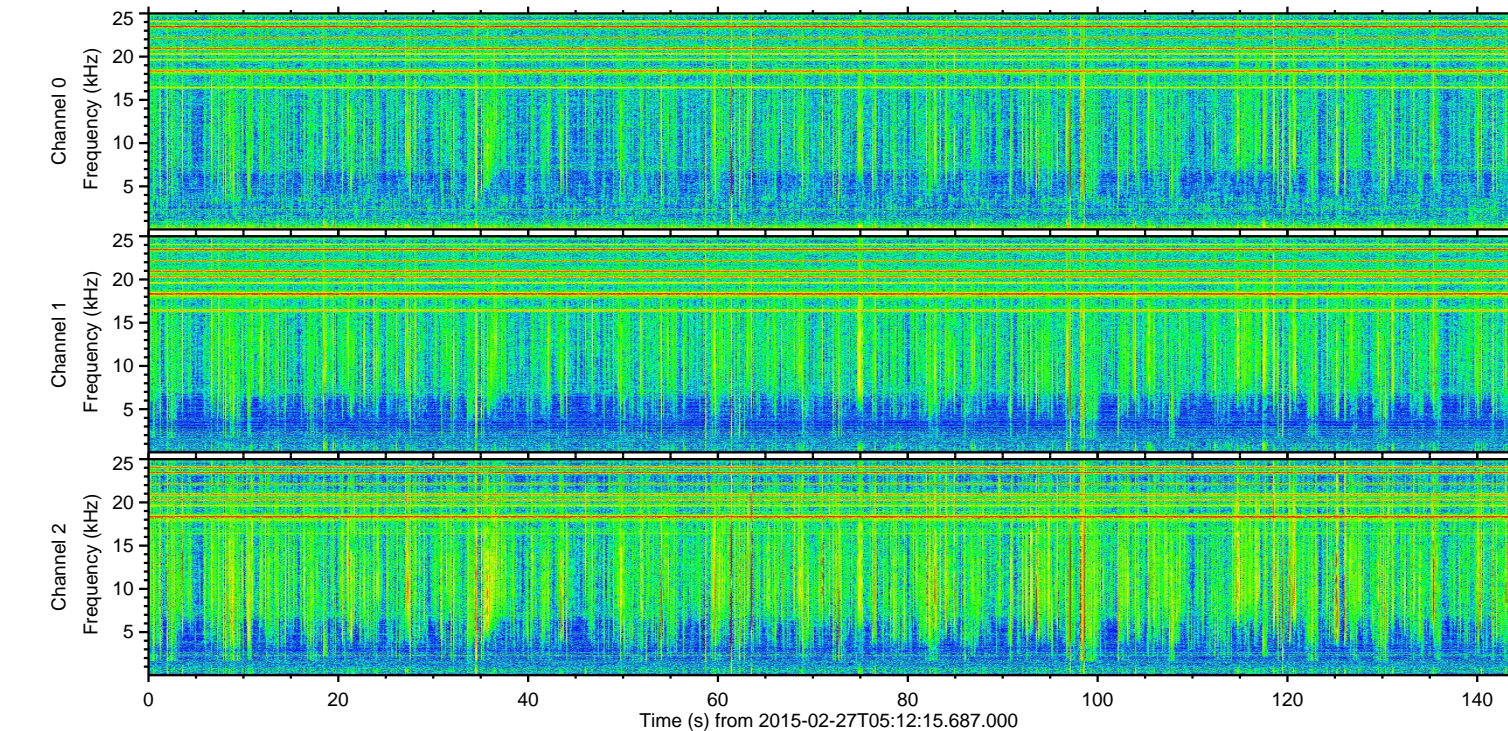
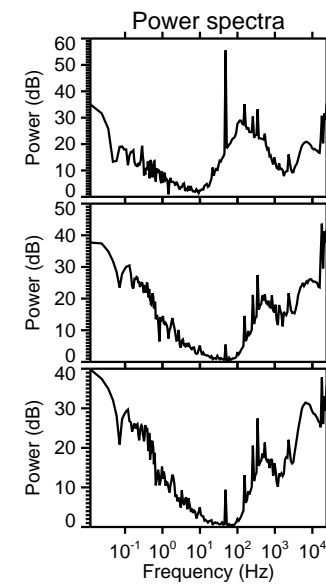
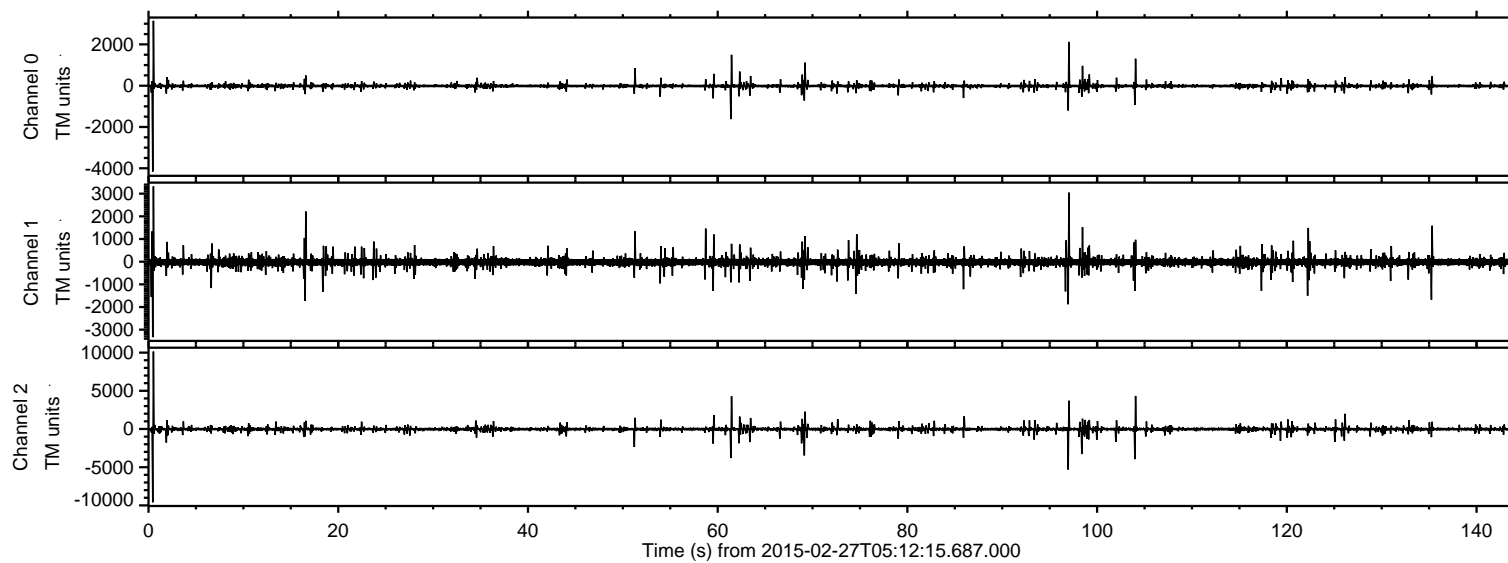


ELMAVAN 3D WAVEFORMS (Measured data sampled at 50 kHz) 49804 packets of 144 samples from 2015-02-27T05:12:15.687.000.

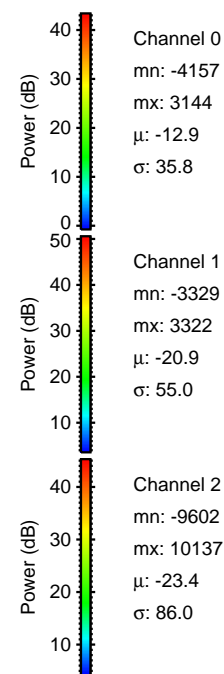
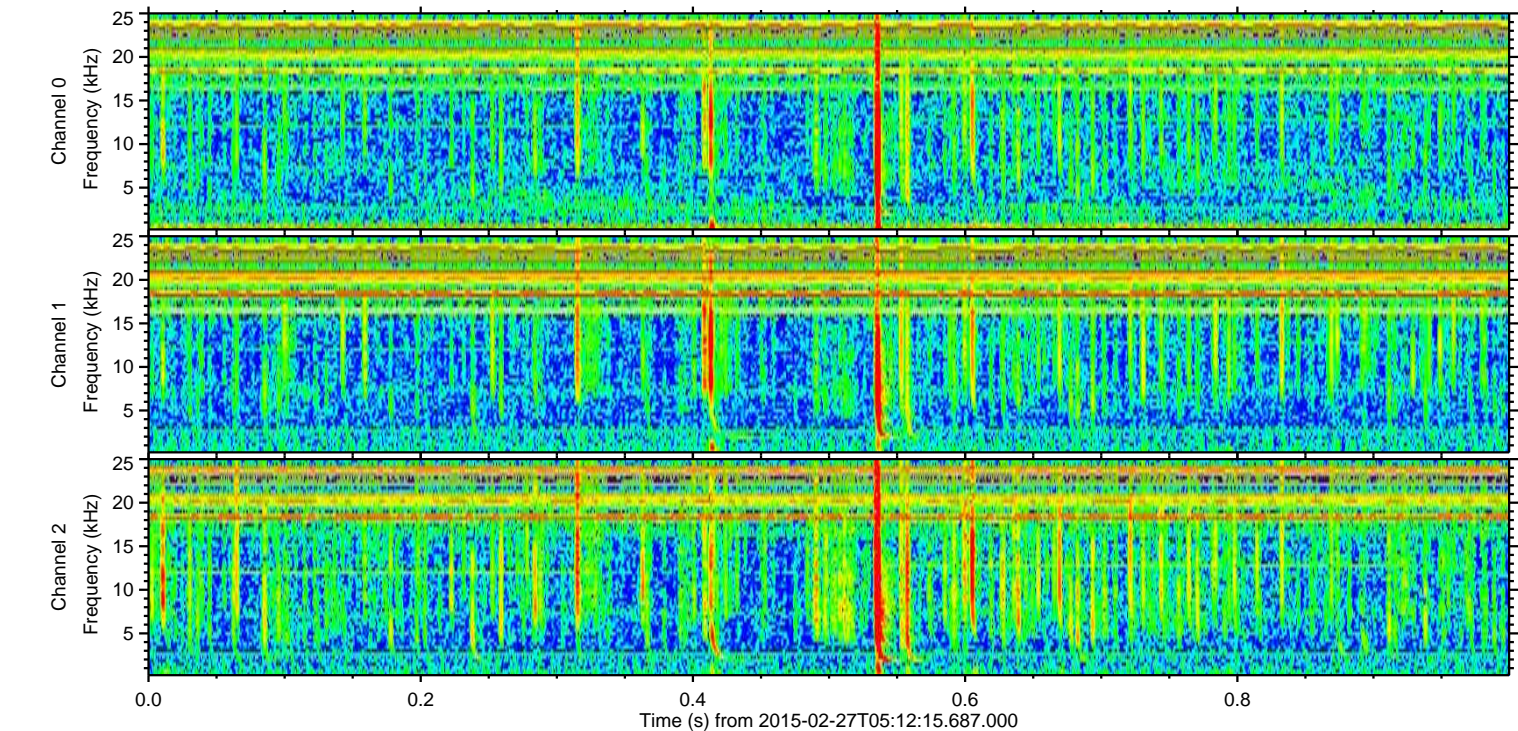
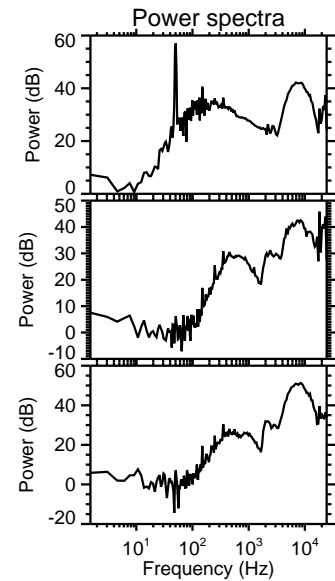
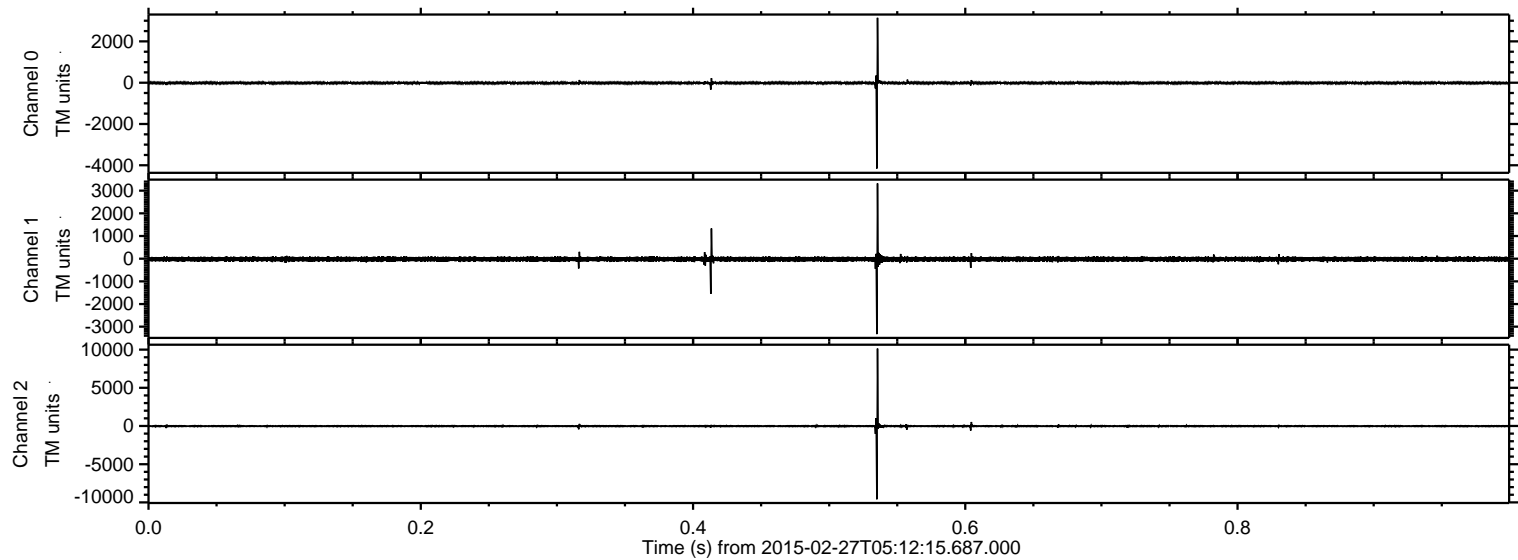
Processed Wed Mar 4 13:48:01 2015 by ELM ver.2012-10-06 from 001\_\_elm20150227\_051214\_\_dat00.bin





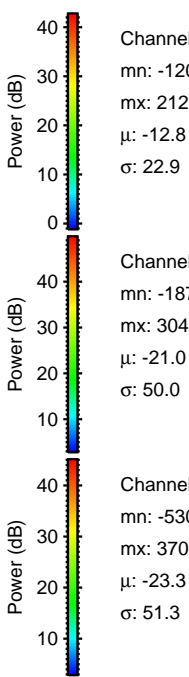
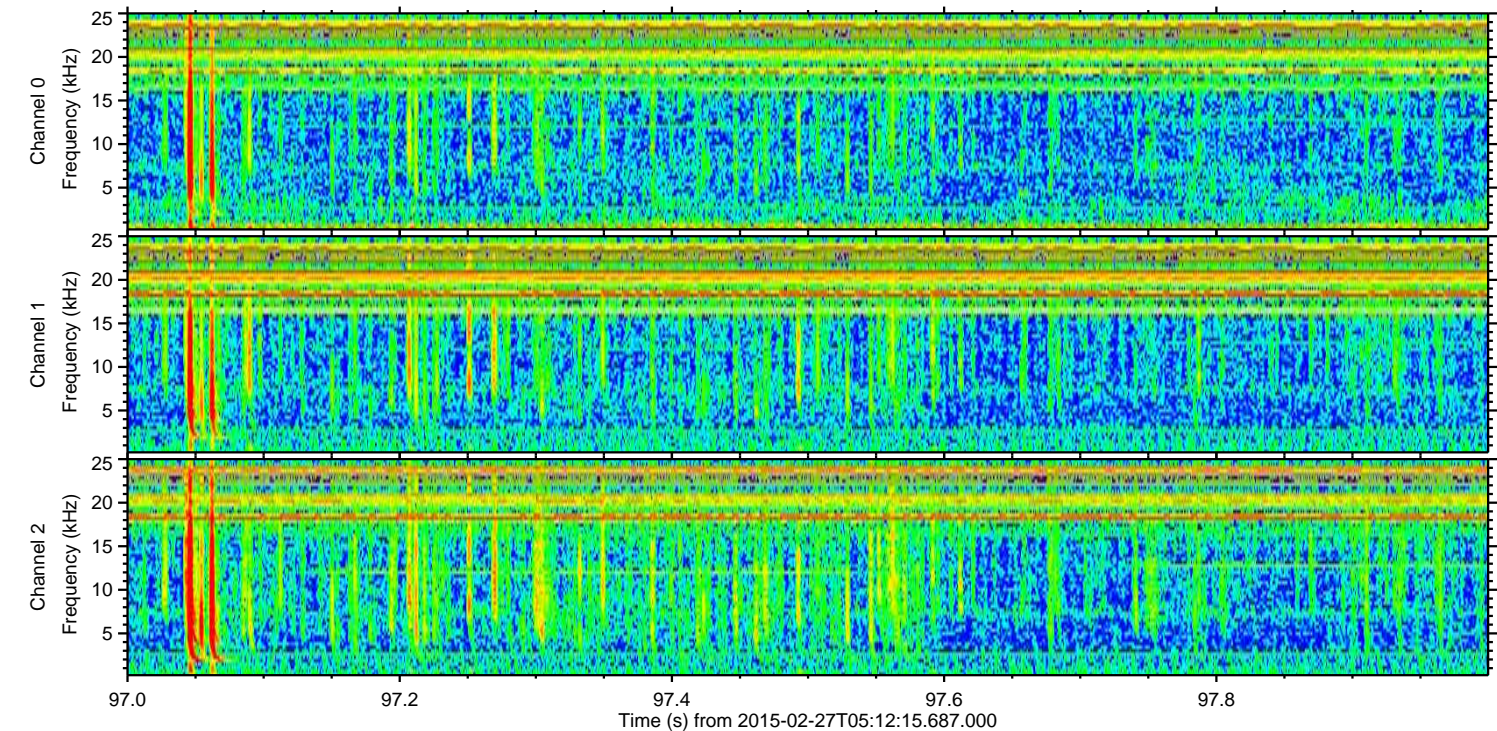
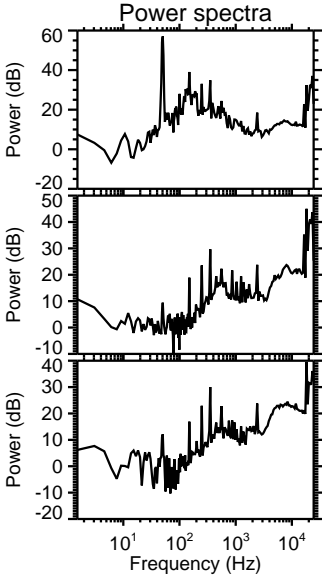
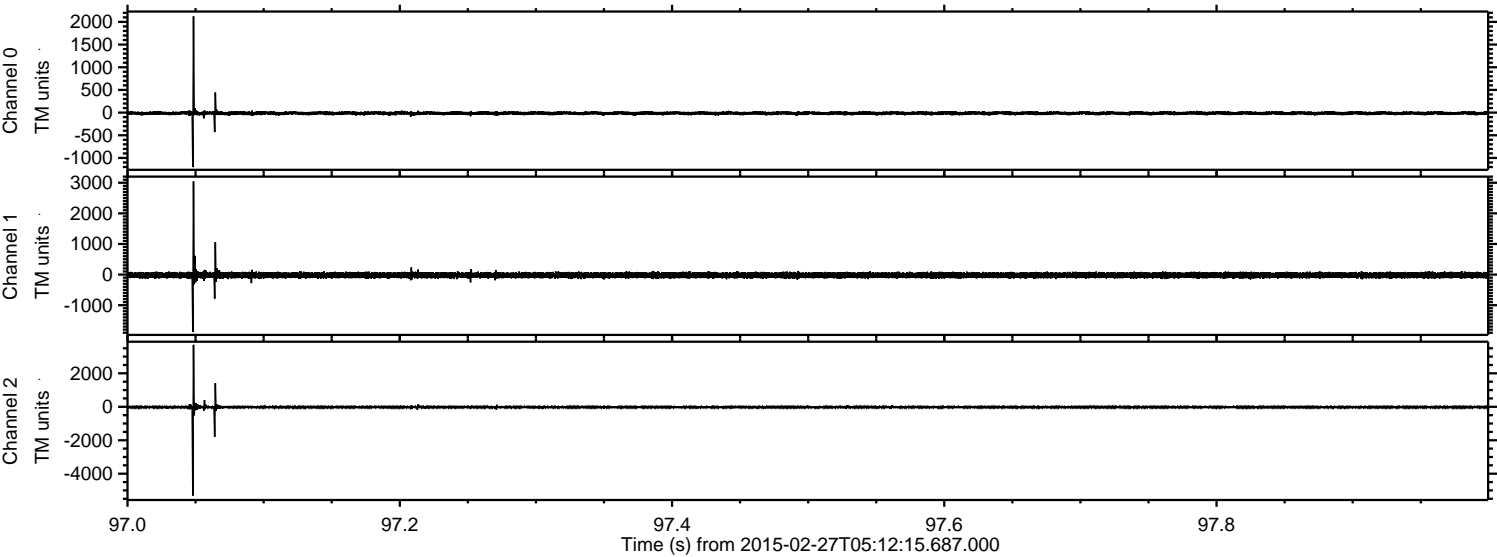
ELMAVAN 3D WAVEFORMS (Measured data sampled at 50 kHz) 49804 packets of 144 samples from 2015-02-27T05:12:15.687.000. Part 1/144

Processed Wed Mar 4 13:48:13 2015 by ELM ver.2012-10-06 from 001\_\_elm20150227\_051214\_\_dat00.bin





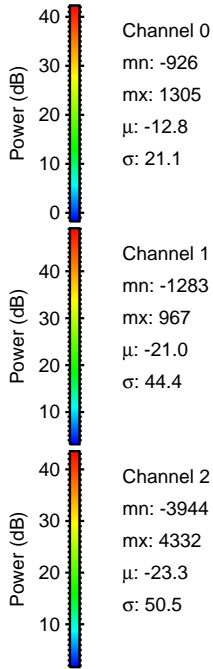
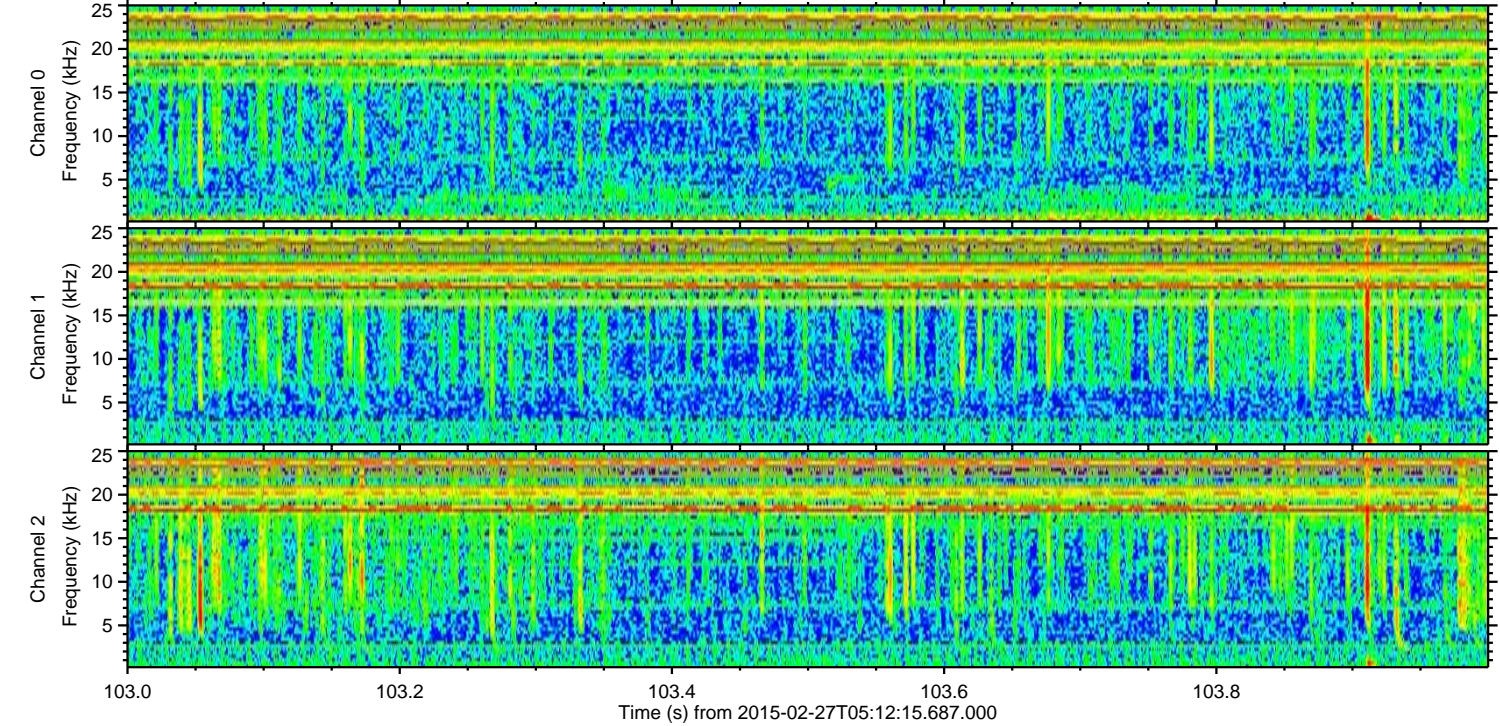
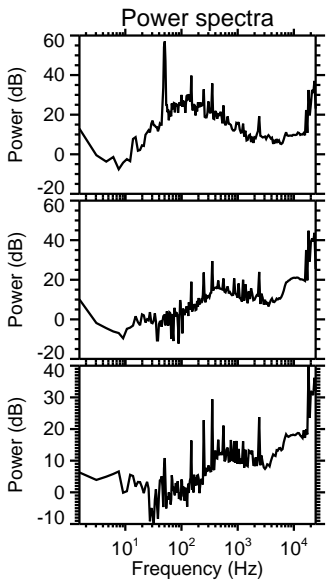
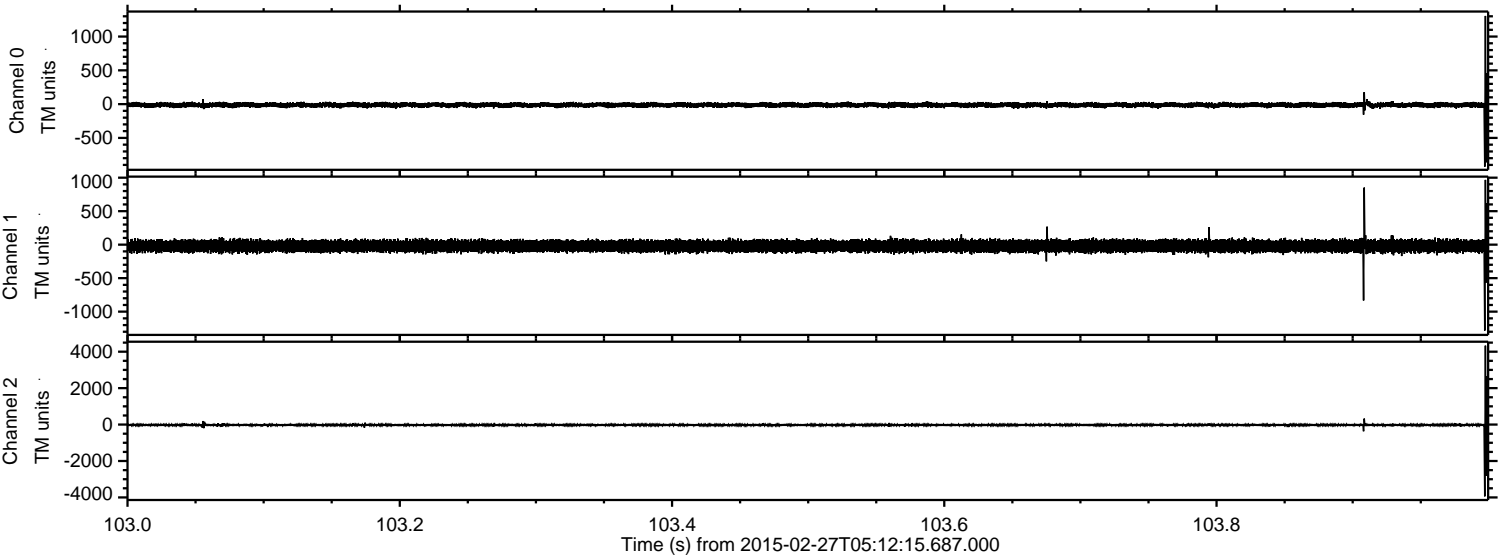
Processed Wed Mar 4 13:48:14 2015 by ELM ver.2012-10-06 from 001\_\_elm20150227\_051214\_\_dat00.bin





ELMAVAN 3D WAVEFORMS (Measured data sampled at 50 kHz) 49804 packets of 144 samples from 2015-02-27T05:12:15.687.000. Part 104/144

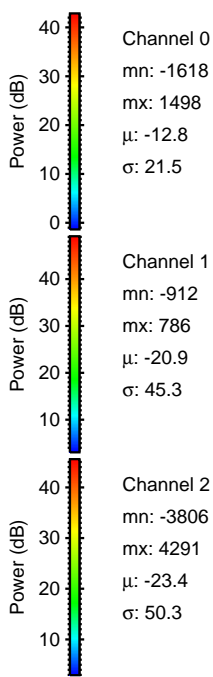
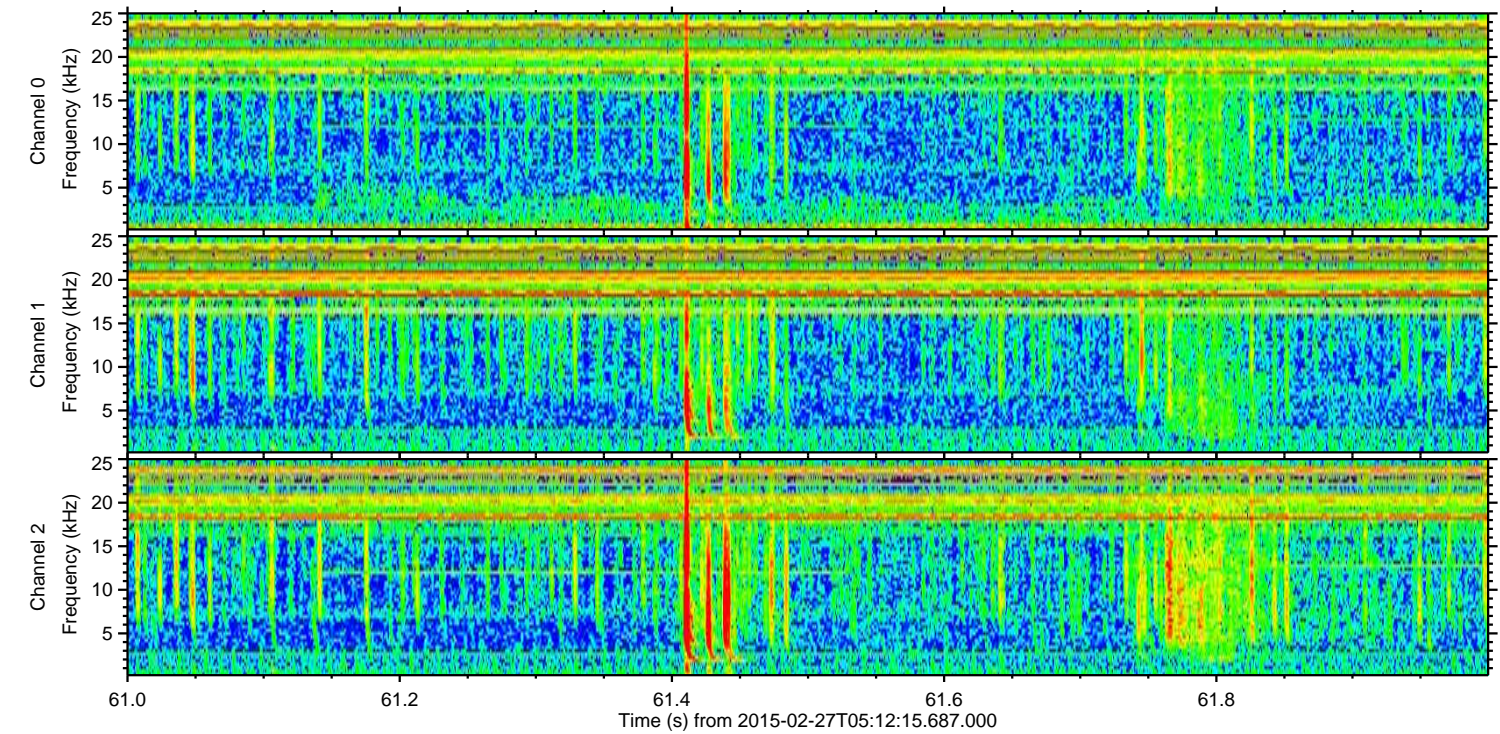
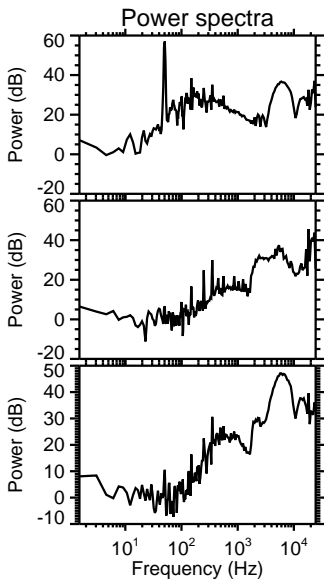
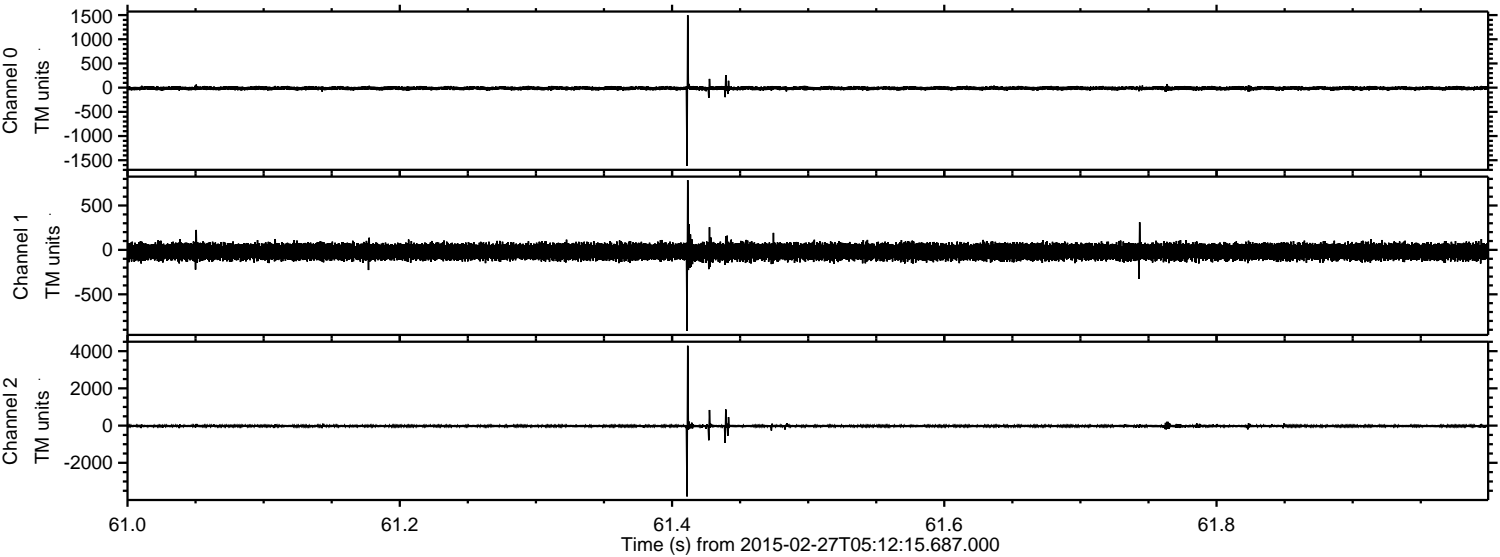
Processed Wed Mar 4 13:48:15 2015 by ELM ver.2012-10-06 from 001\_\_elm20150227\_051214\_\_dat00.bin





ELMAVAN 3D WAVEFORMS (Measured data sampled at 50 kHz) 49804 packets of 144 samples from 2015-02-27T05:12:15.687.000. Part 62/144

Processed Wed Mar 4 13:48:16 2015 by ELM ver.2012-10-06 from 001\_\_elm20150227\_051214\_\_dat00.bin



Channel 0  
mn: -1618  
mx: 1498  
 $\mu$ : -12.8  
 $\sigma$ : 21.5

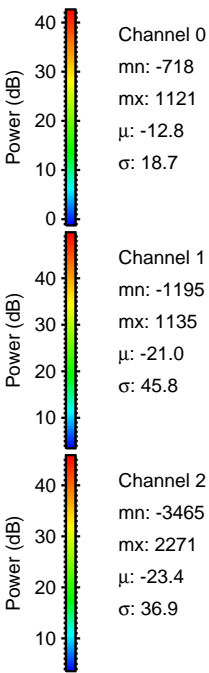
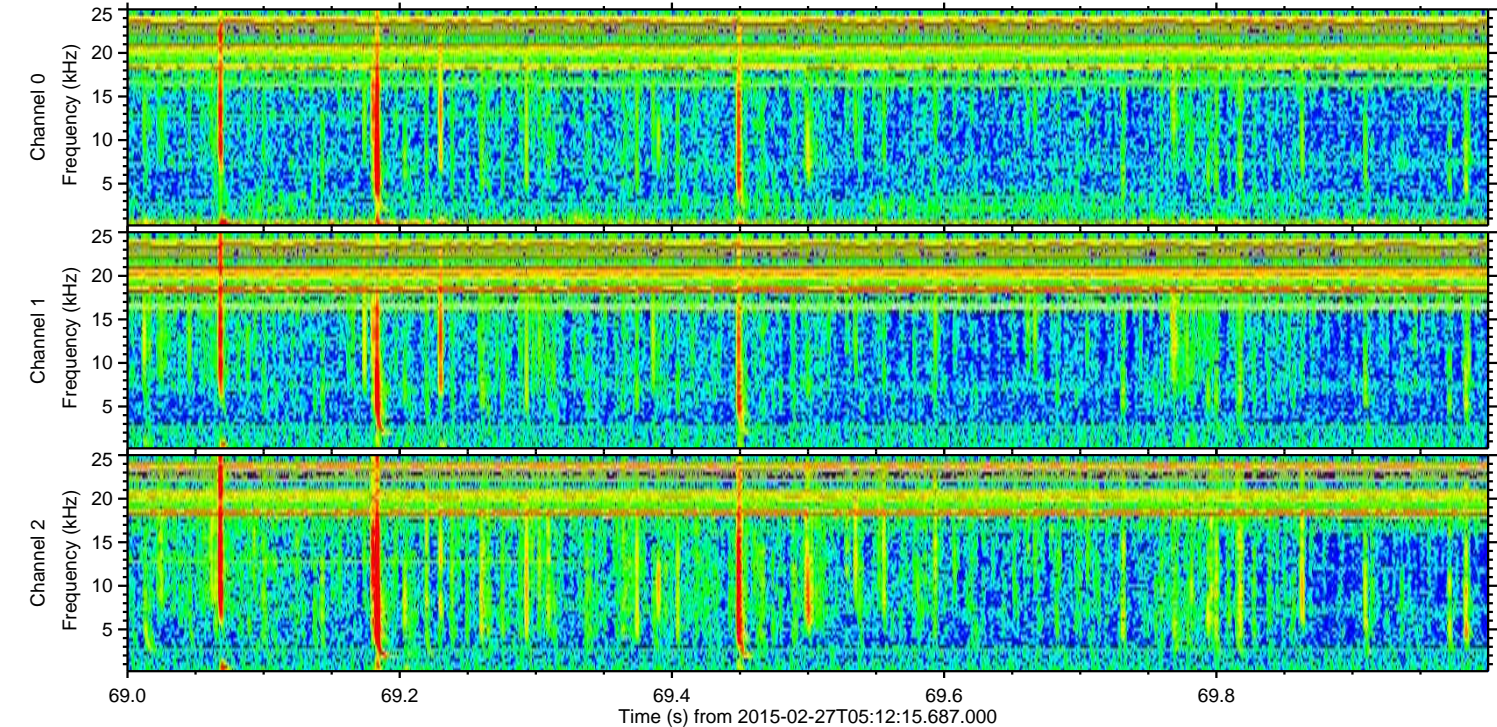
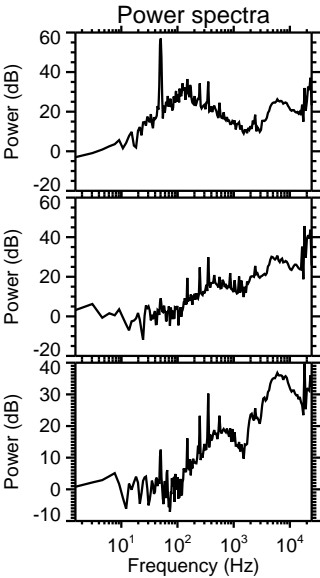
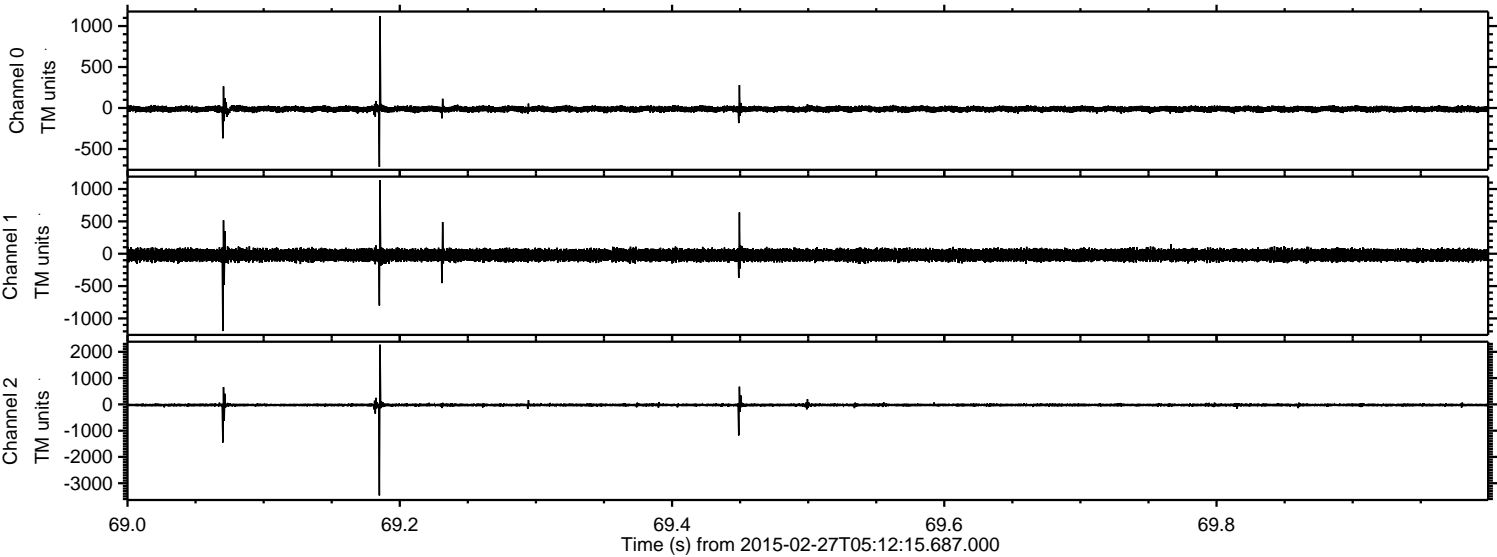
Channel 1  
mn: -912  
mx: 786  
 $\mu$ : -20.9  
 $\sigma$ : 45.3

Channel 2  
mn: -3806  
mx: 4291  
 $\mu$ : -23.4  
 $\sigma$ : 50.3



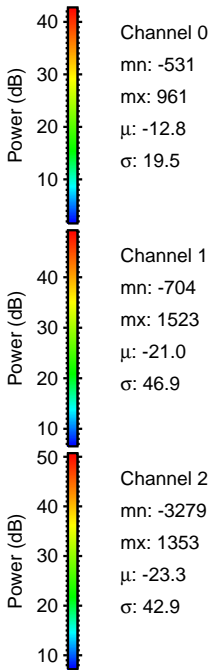
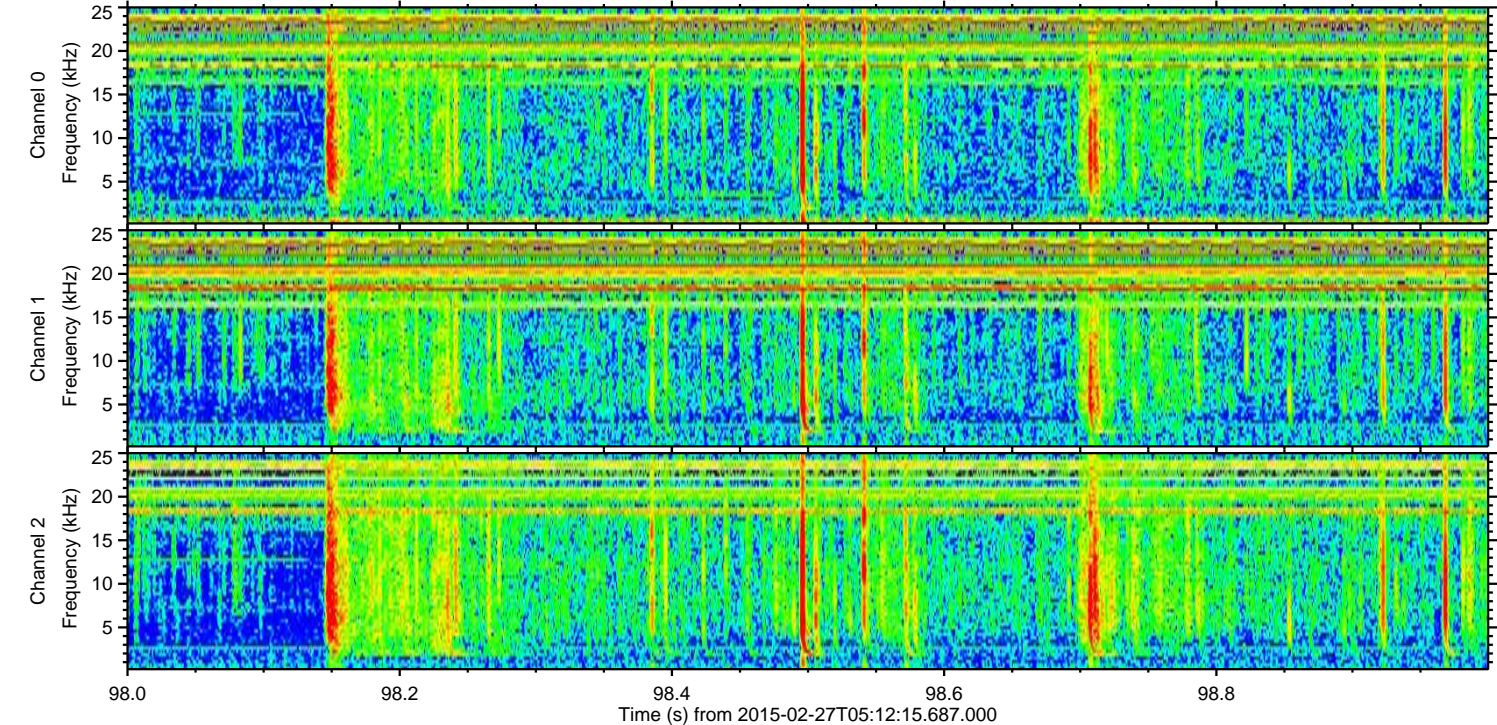
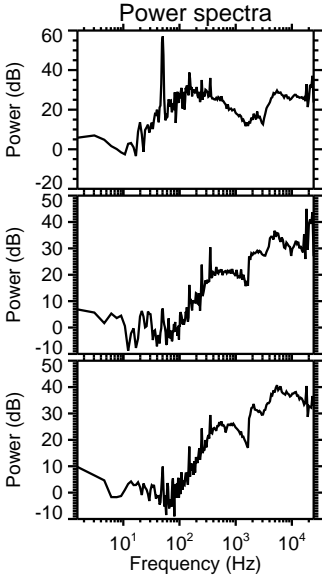
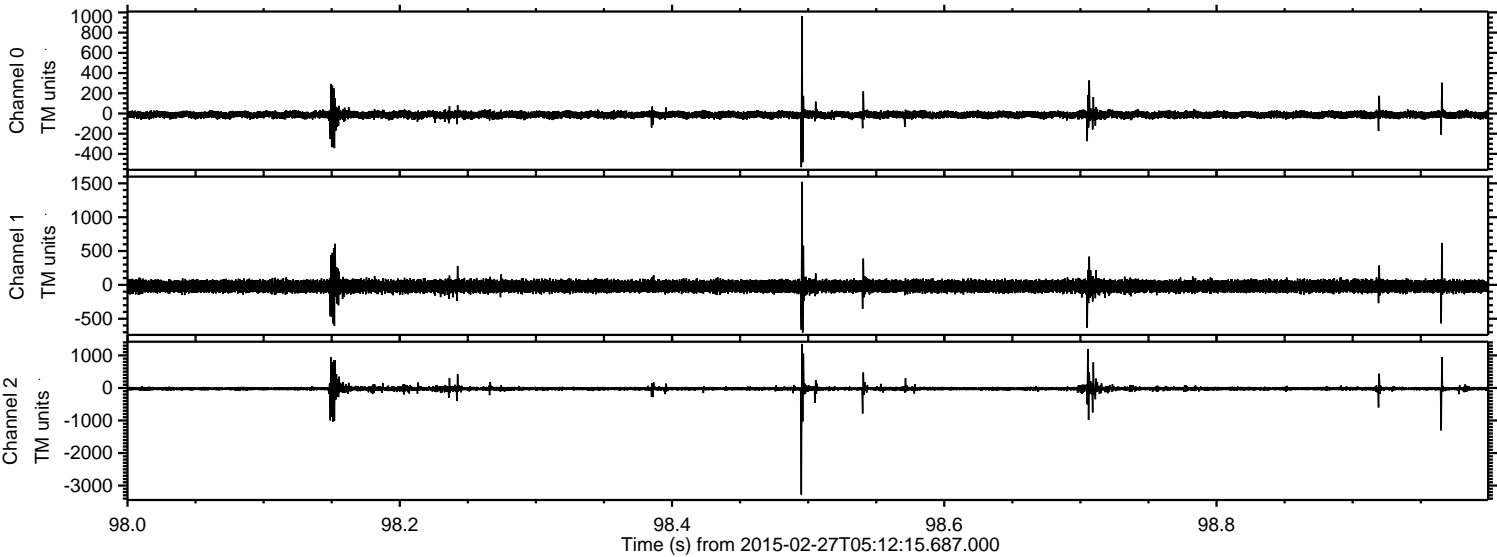
ELMAVAN 3D WAVEFORMS (Measured data sampled at 50 kHz) 49804 packets of 144 samples from 2015-02-27T05:12:15.687.000. Part 70/144

Processed Wed Mar 4 13:48:17 2015 by ELM ver.2012-10-06 from 001\_\_elm20150227\_051214\_\_dat00.bin



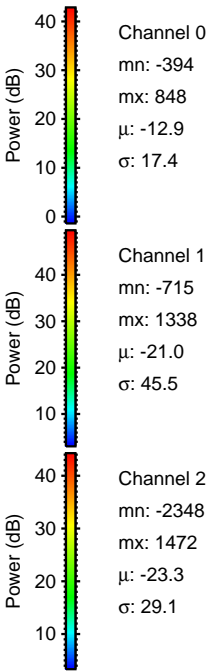
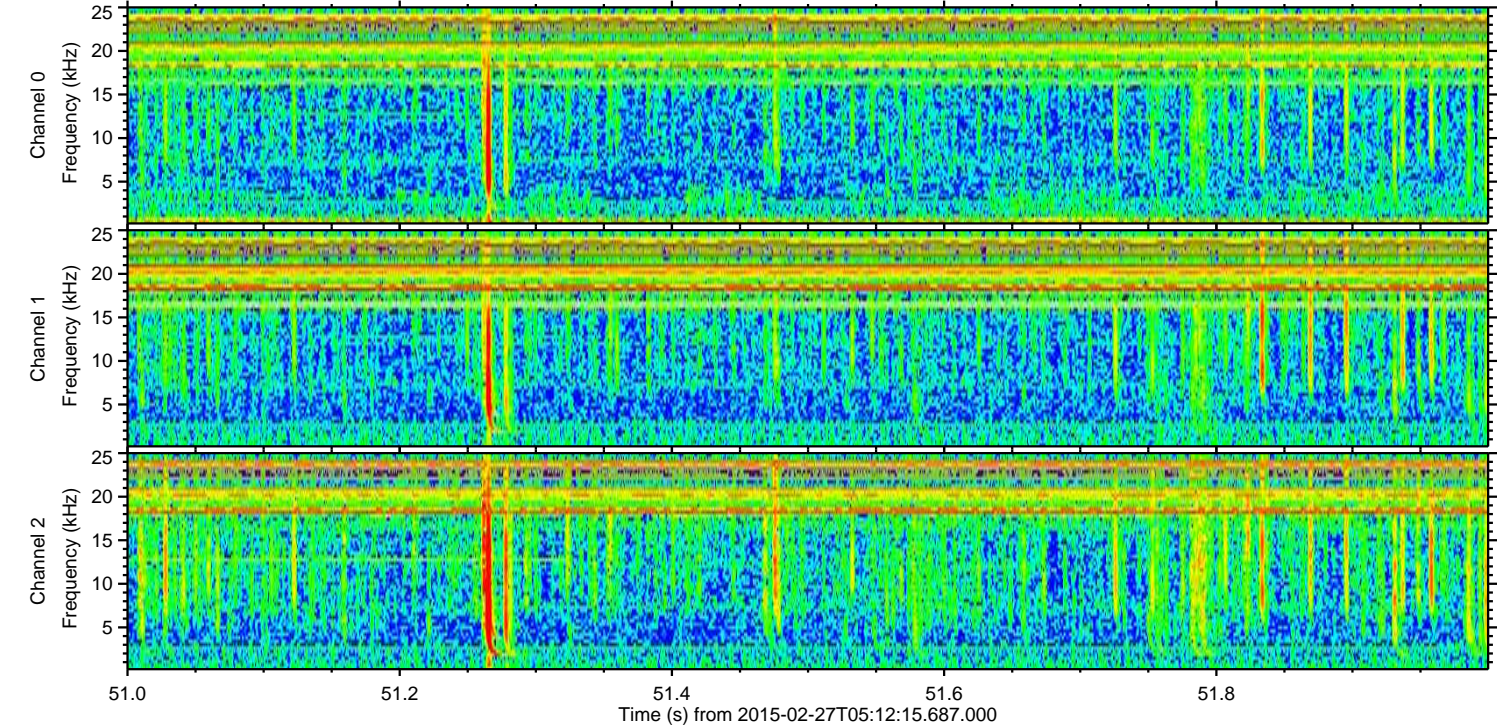
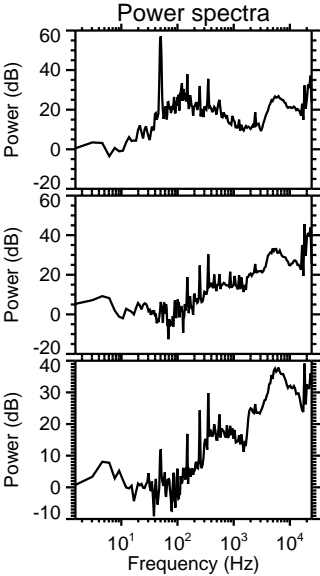
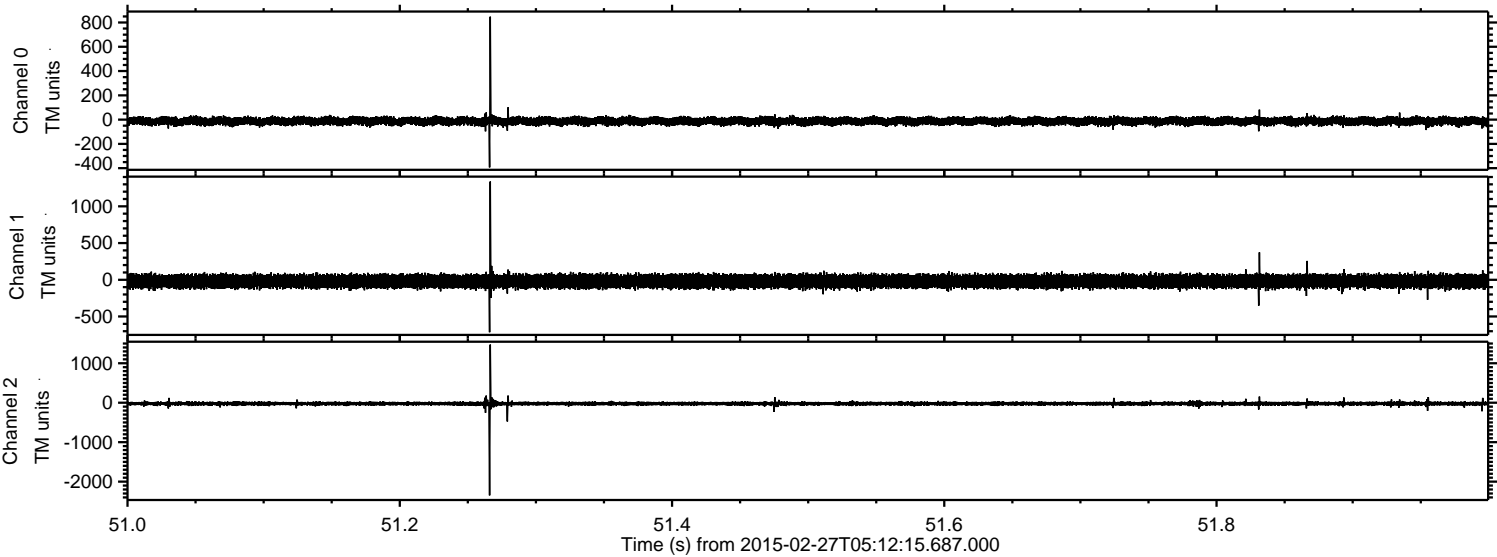


Processed Wed Mar 4 13:48:18 2015 by ELM ver.2012-10-06 from 001\_\_elm20150227\_051214\_\_dat00.bin





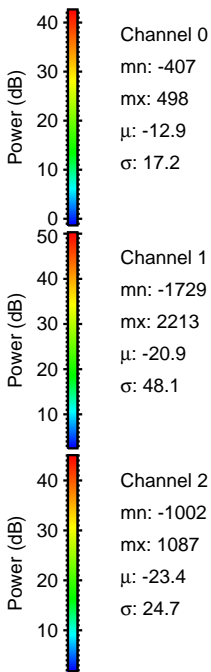
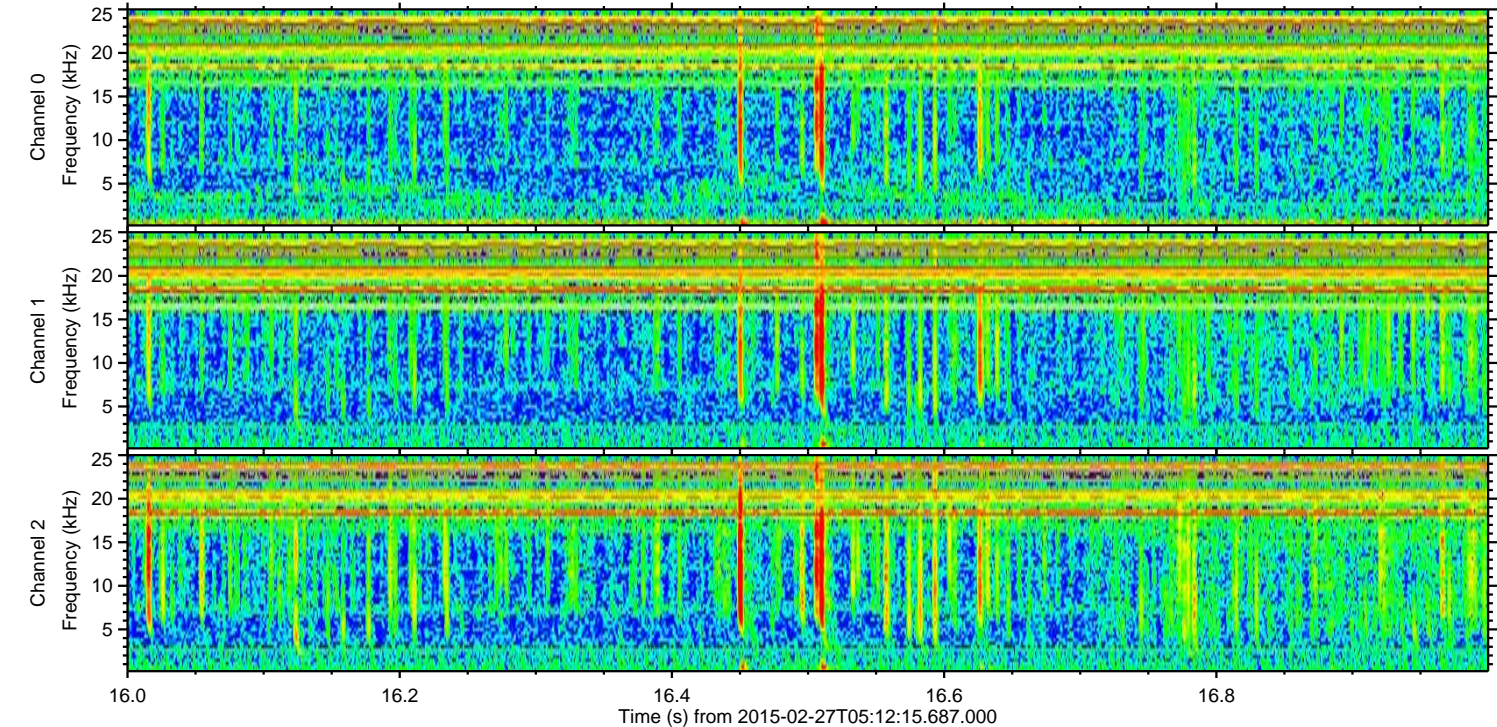
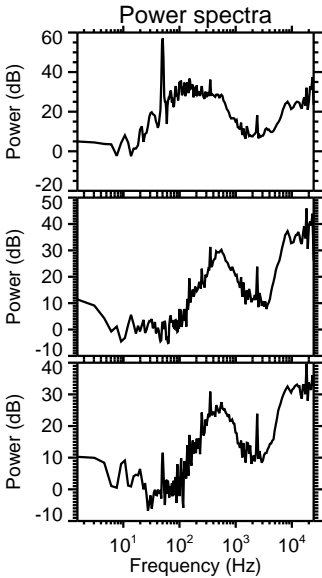
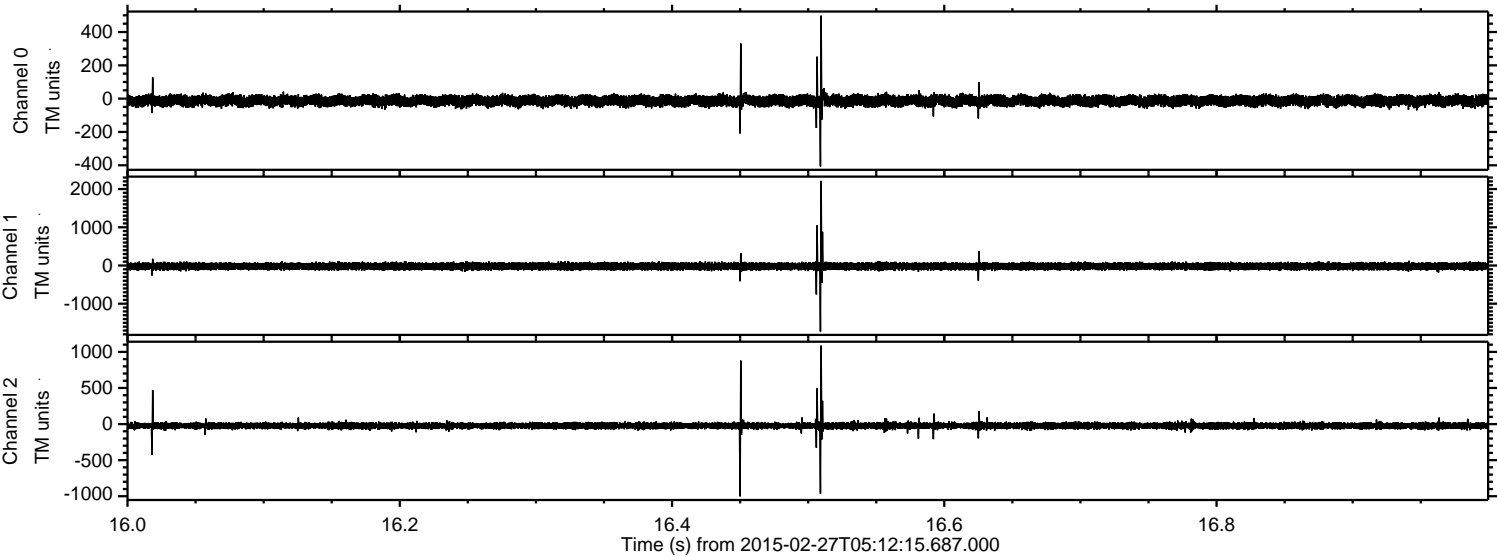
Processed Wed Mar 4 13:48:19 2015 by ELM ver.2012-10-06 from 001\_\_elm20150227\_051214\_\_dat00.bin





ELMAVAN 3D WAVEFORMS (Measured data sampled at 50 kHz) 49804 packets of 144 samples from 2015-02-27T05:12:15.687.000. Part 17/144

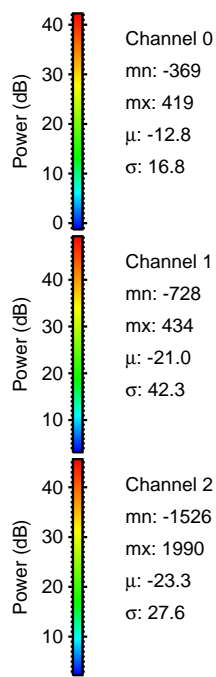
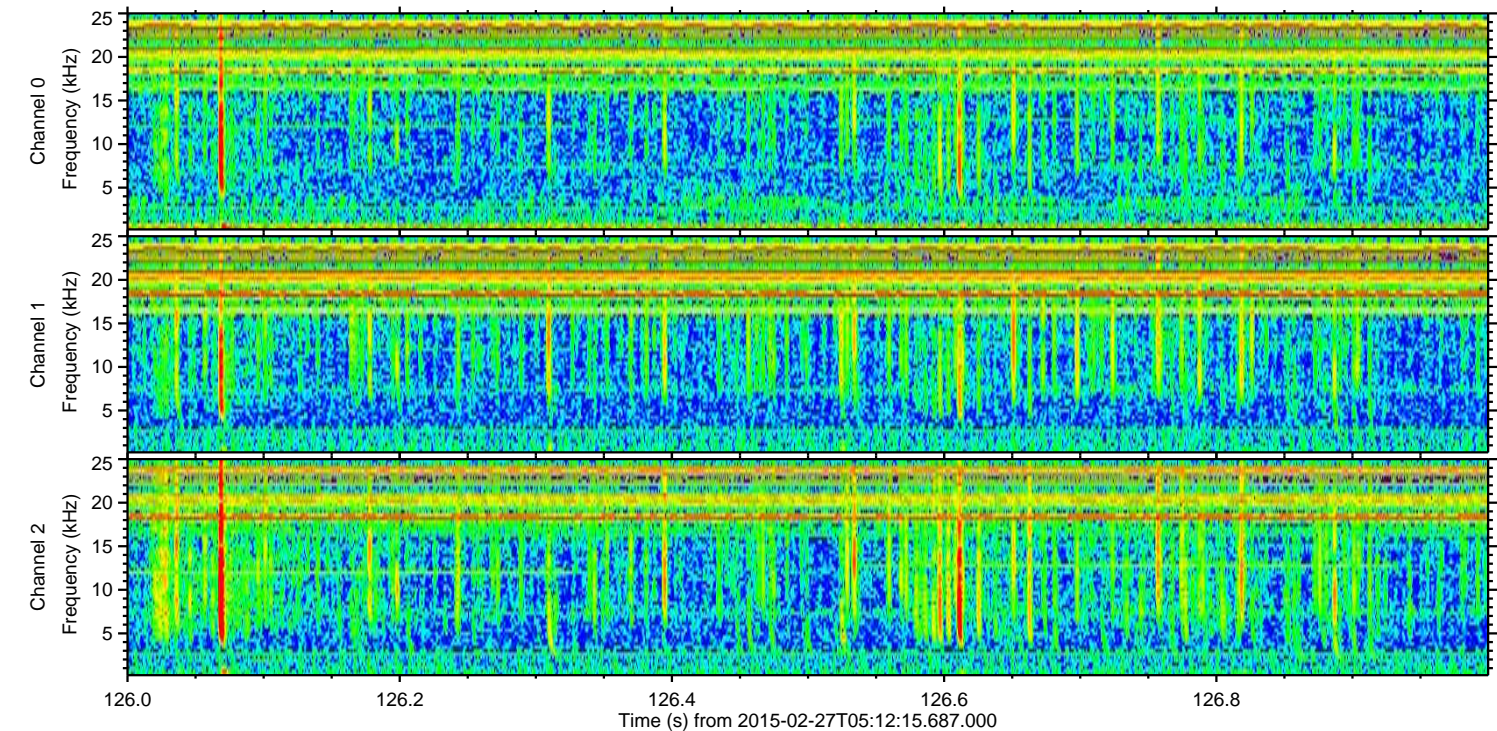
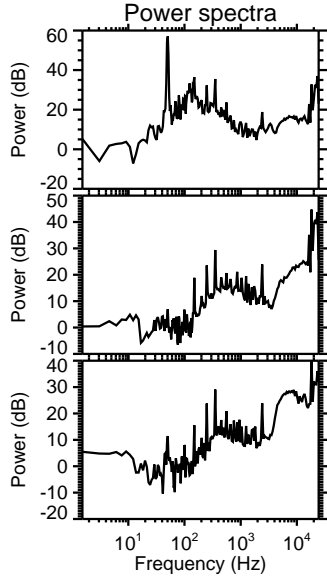
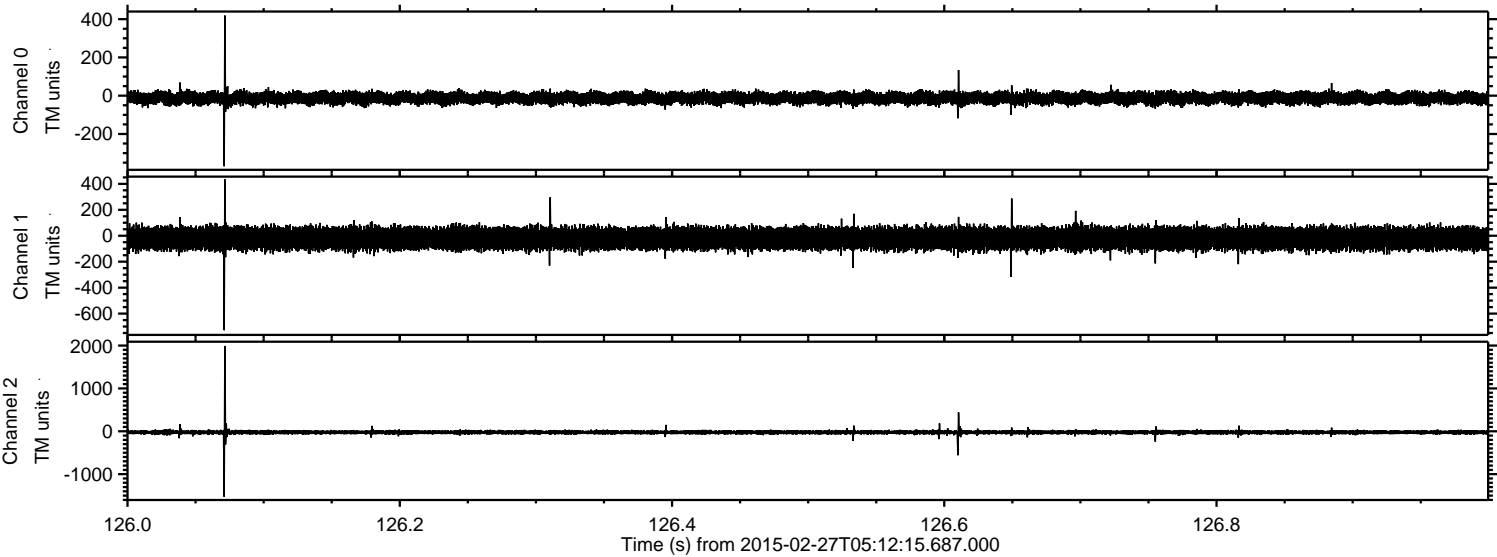
Processed Wed Mar 4 13:48:20 2015 by ELM ver.2012-10-06 from 001\_\_elm20150227\_051214\_\_dat00.bin





ELMAVAN 3D WAVEFORMS (Measured data sampled at 50 kHz) 49804 packets of 144 samples from 2015-02-27T05:12:15.687.000. Part 127/144

Processed Wed Mar 4 13:48:21 2015 by ELM ver.2012-10-06 from 001\_\_elm20150227\_051214\_\_dat00.bin



Channel 0  
mn: -369  
mx: 419  
 $\mu$ : -12.8  
 $\sigma$ : 16.8

Channel 1  
mn: -728  
mx: 434  
 $\mu$ : -21.0  
 $\sigma$ : 42.3

Channel 2  
mn: -1526  
mx: 1990  
 $\mu$ : -23.3  
 $\sigma$ : 27.6



ELMAVAN 3D WAVEFORMS (Measured data sampled at 50 kHz) 49804 packets of 144 samples from 2015-02-27T05:12:15.687.000. Part 138/144

