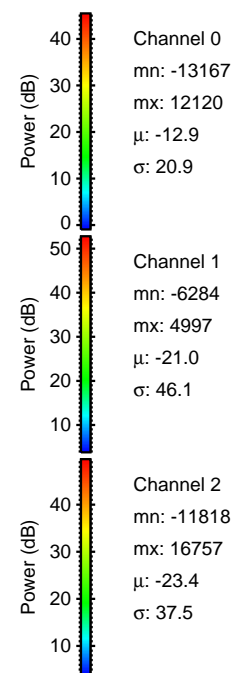
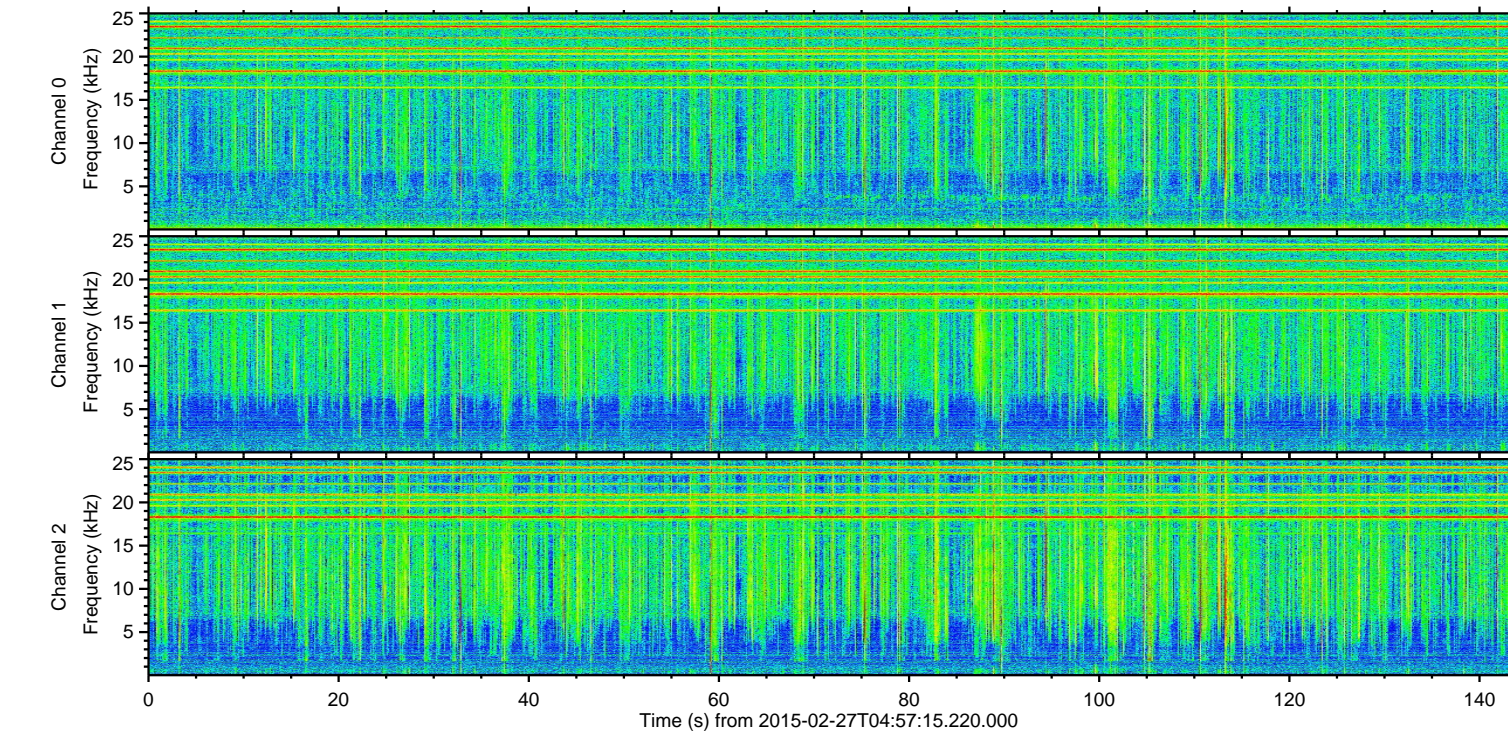
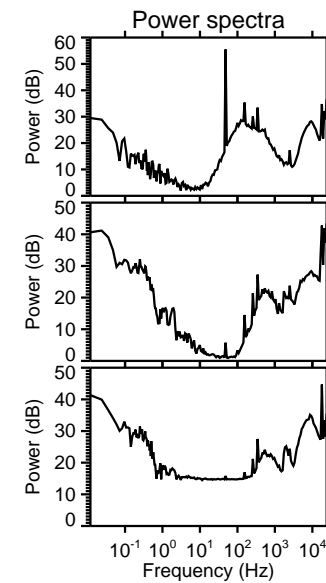
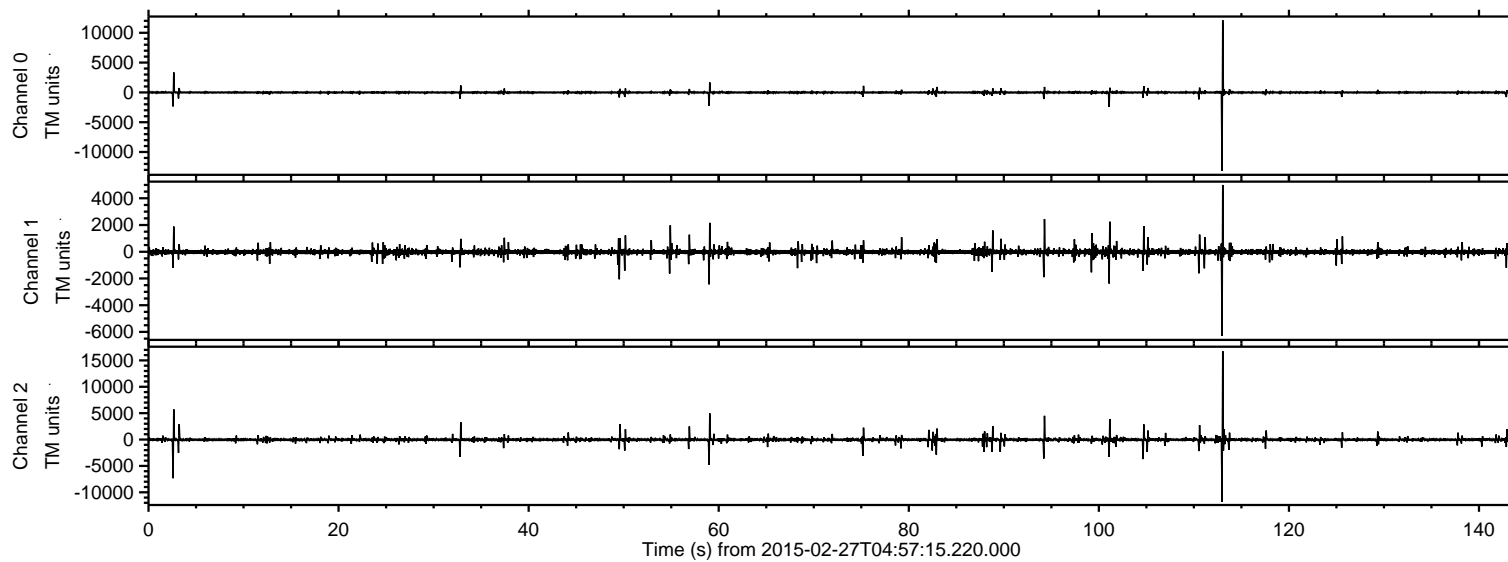


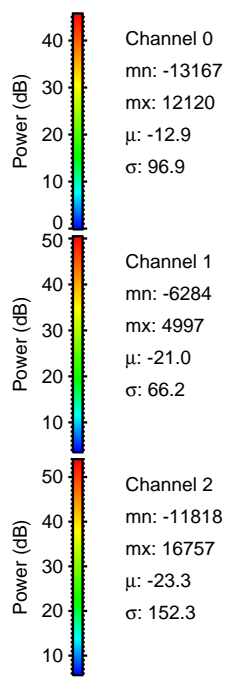
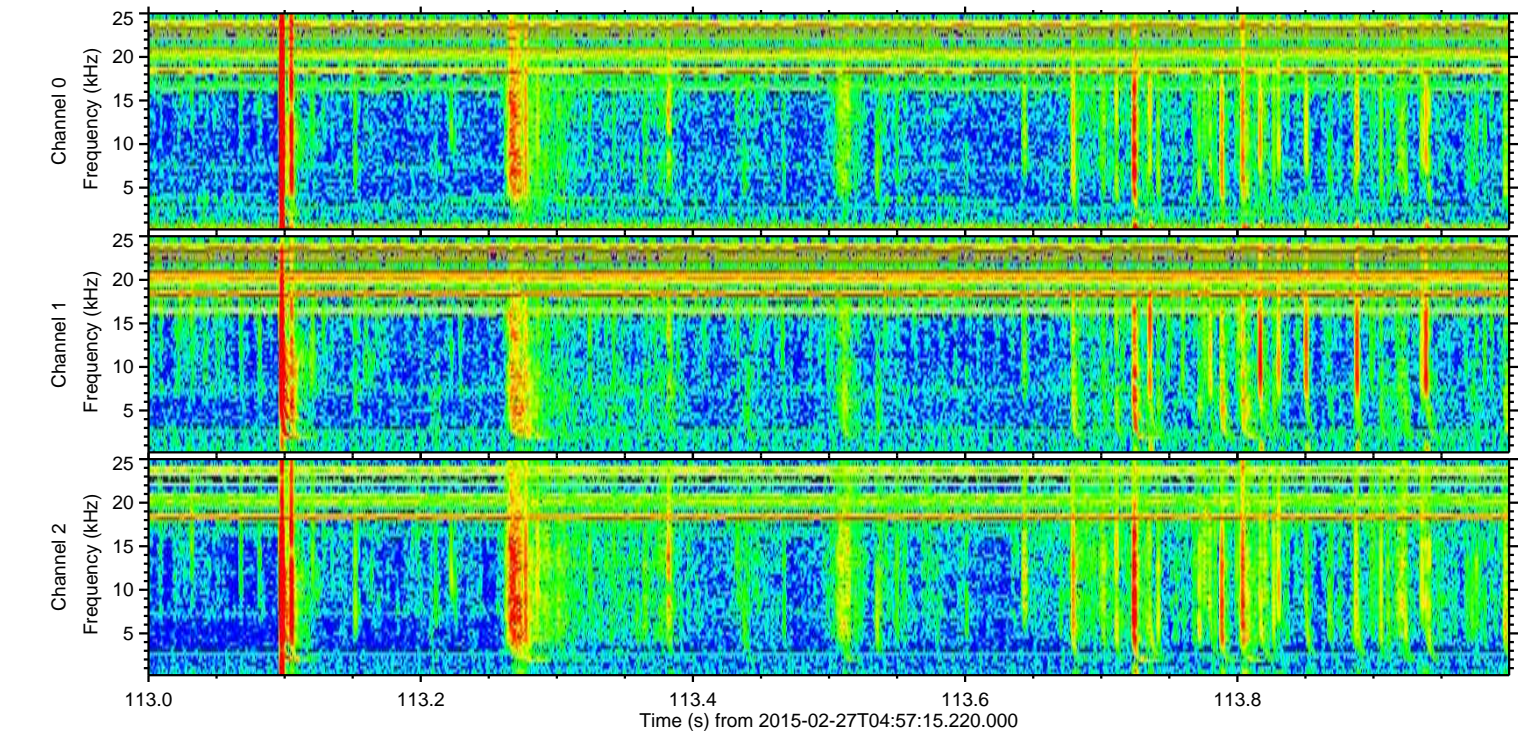
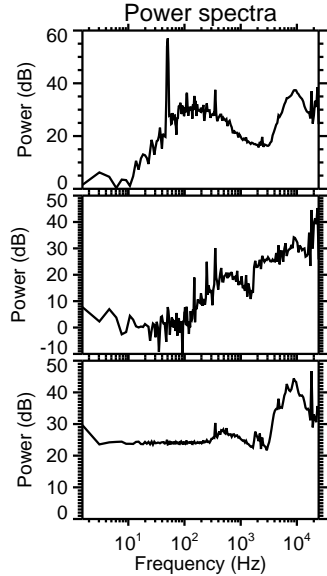
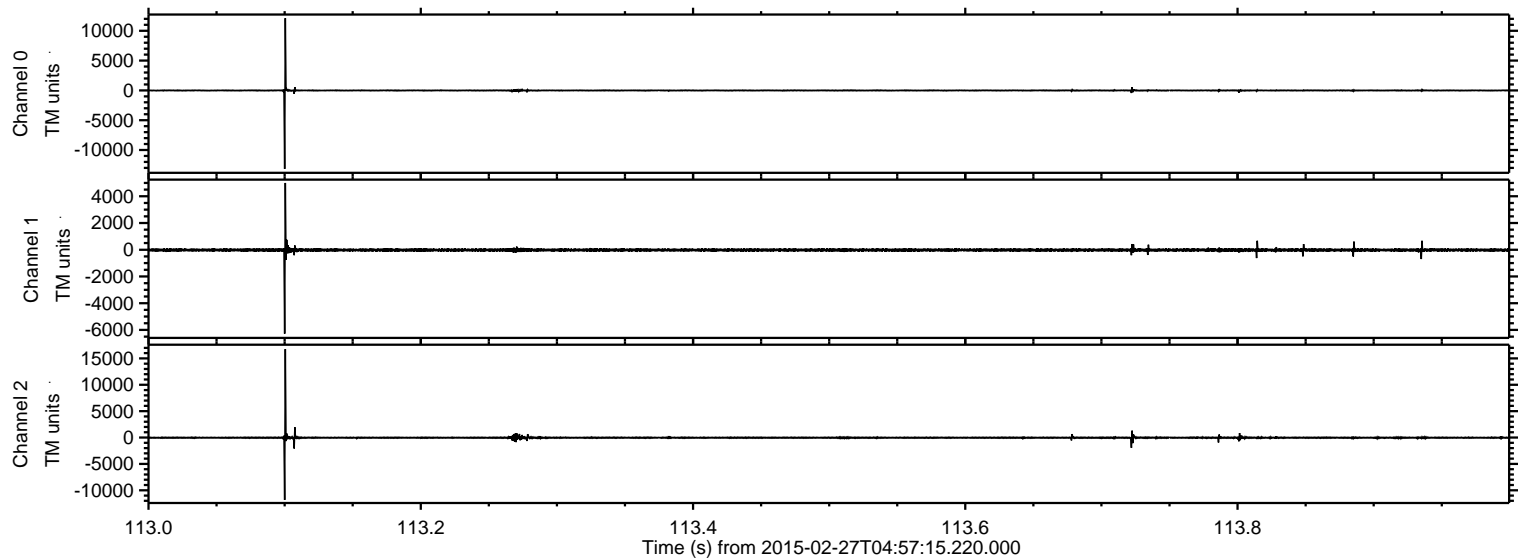
ELMAVAN 3D WAVEFORMS (Measured data sampled at 50 kHz) 49713 packets of 144 samples from 2015-02-27T04:57:15.220.000.

Processed Wed Mar 4 13:44:40 2015 by ELM ver.2012-10-06 from 001__elm20150227_045714__dat00.bin



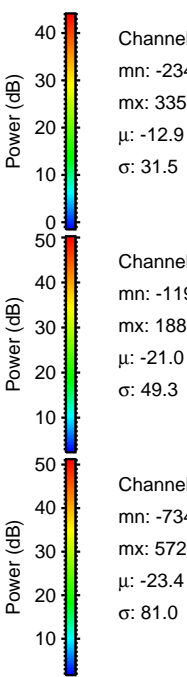
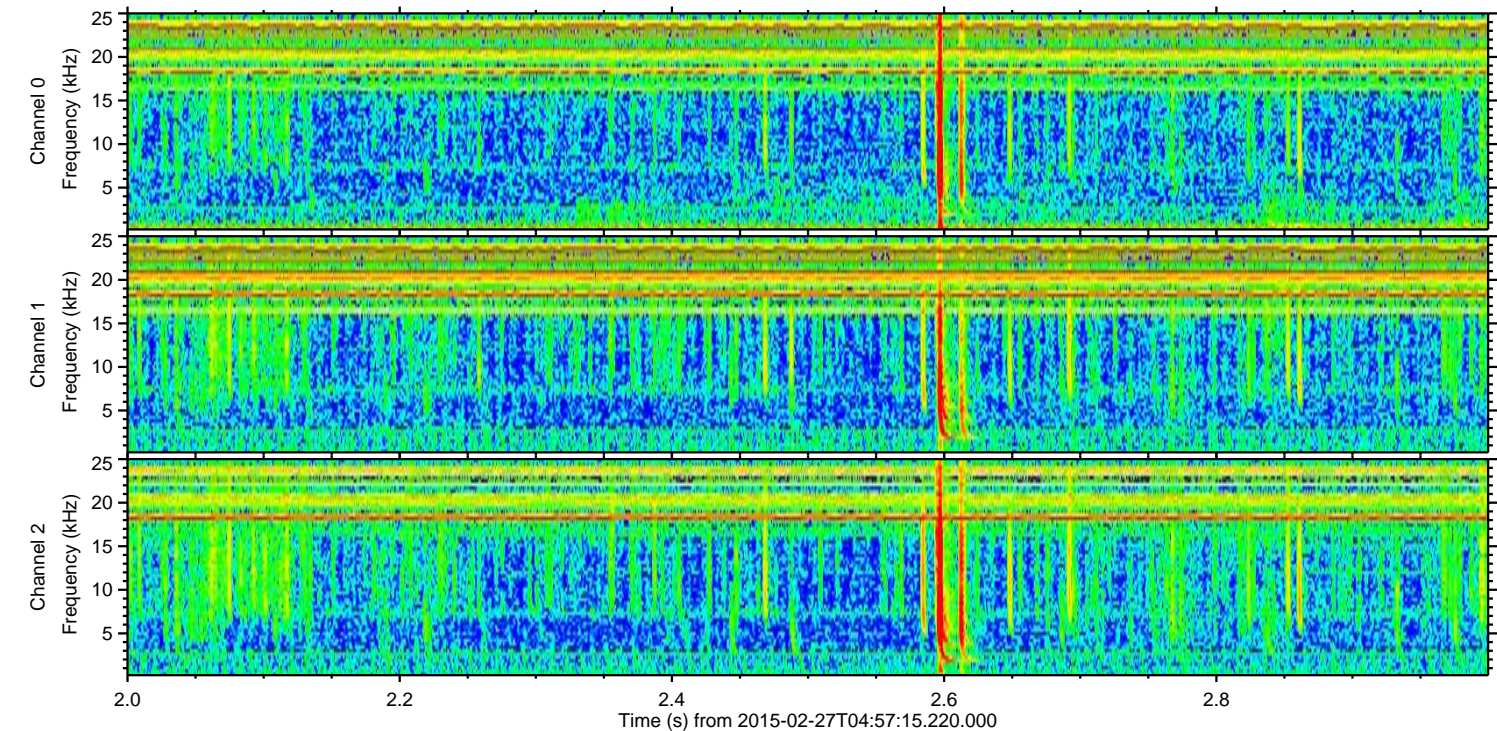
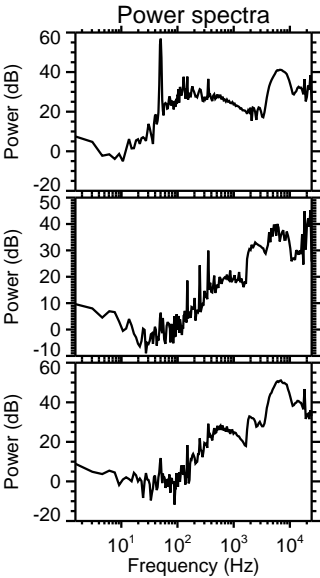
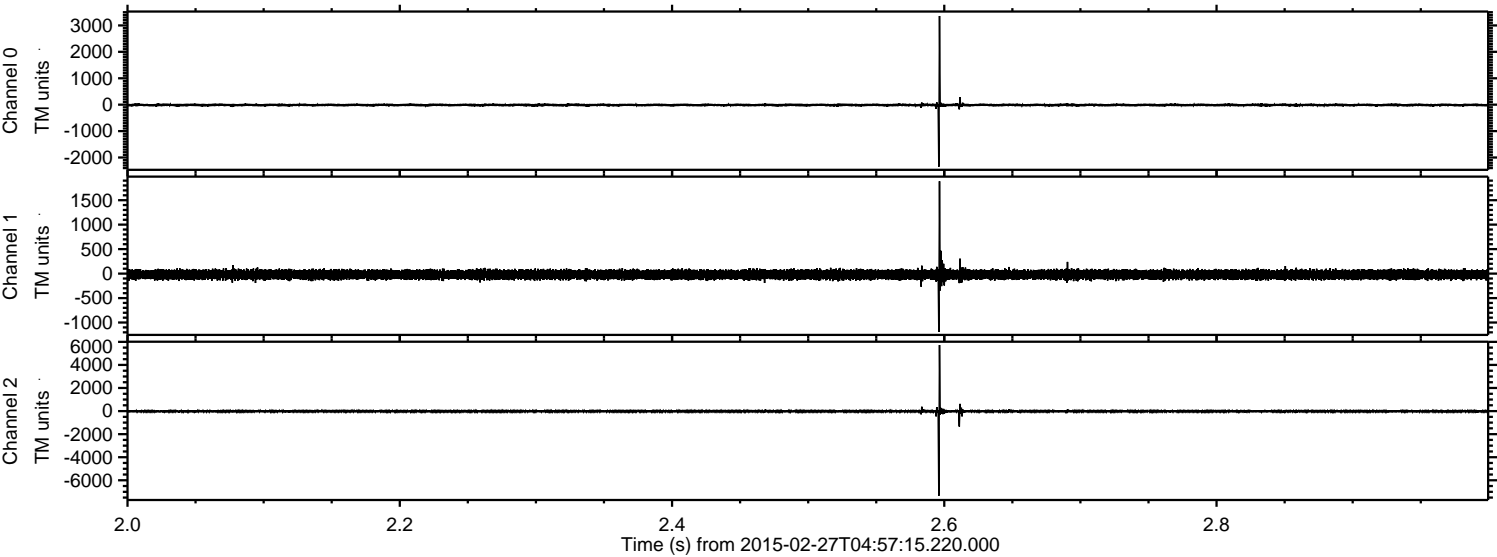
ELMAVAN 3D WAVEFORMS (Measured data sampled at 50 kHz) 49713 packets of 144 samples from 2015-02-27T04:57:15.220.000. Part 114/144

Processed Wed Mar 4 13:44:55 2015 by ELM ver.2012-10-06 from 001__elm20150227_045714__dat00.bin



ELMAVAN 3D WAVEFORMS (Measured data sampled at 50 kHz) 49713 packets of 144 samples from 2015-02-27T04:57:15.220.000. Part 3/144

Processed Wed Mar 4 13:44:56 2015 by ELM ver.2012-10-06 from 001__elm20150227_045714__dat00.bin

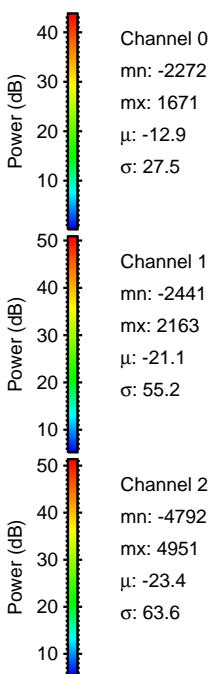
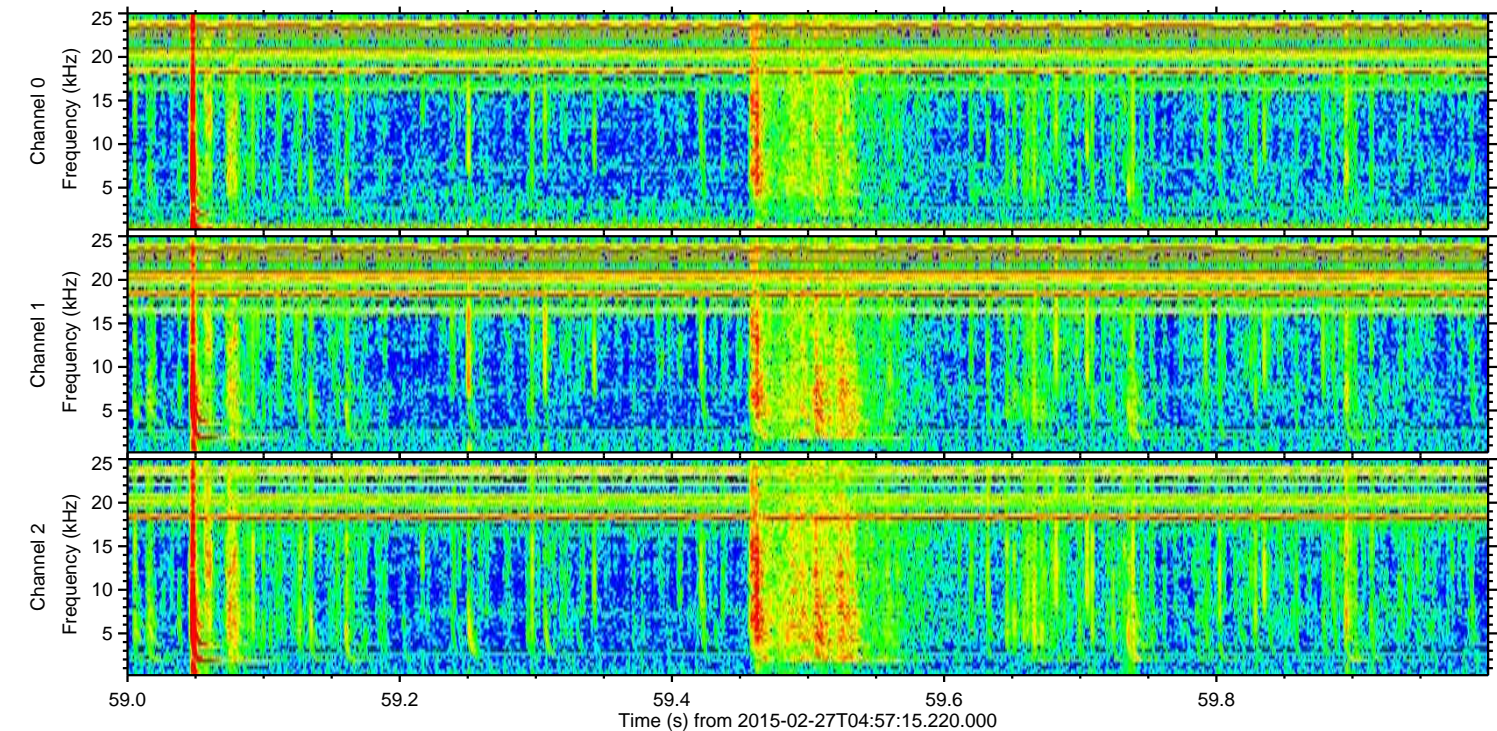
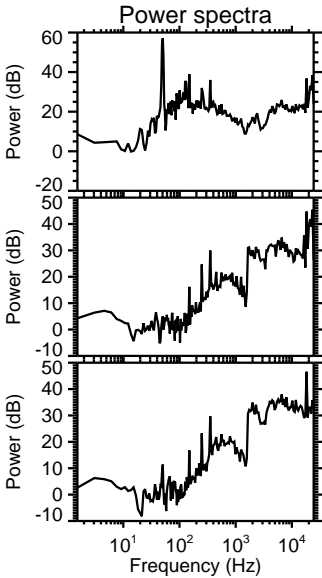
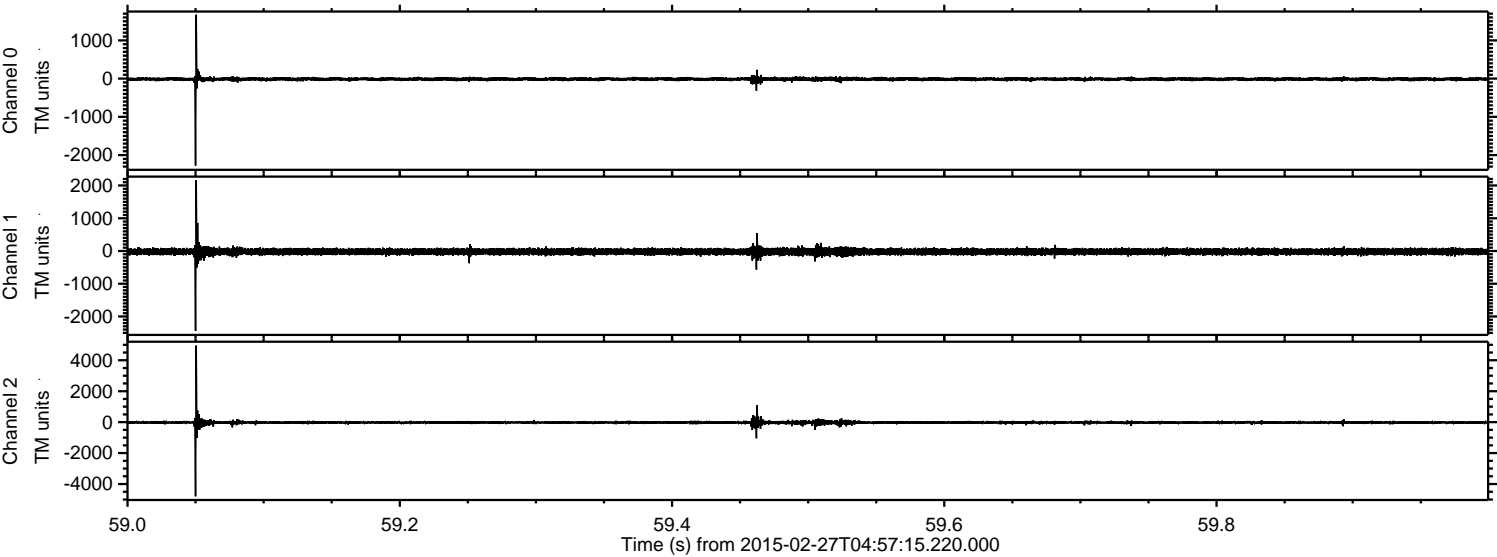


Channel 0
mn: -2349
mx: 3358
 μ : -12.9
 σ : 31.5

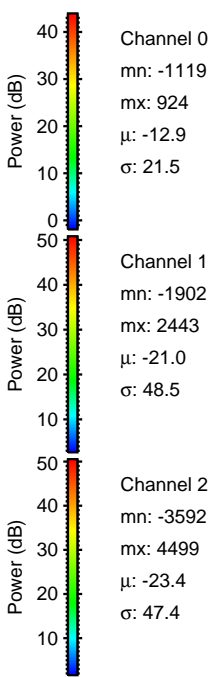
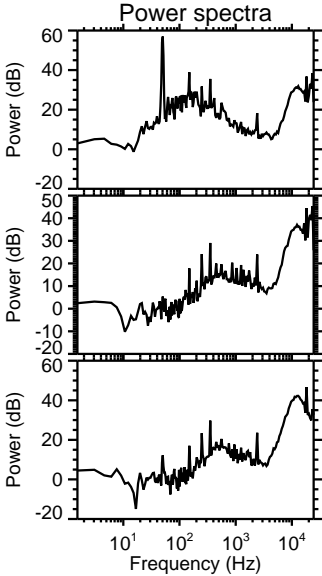
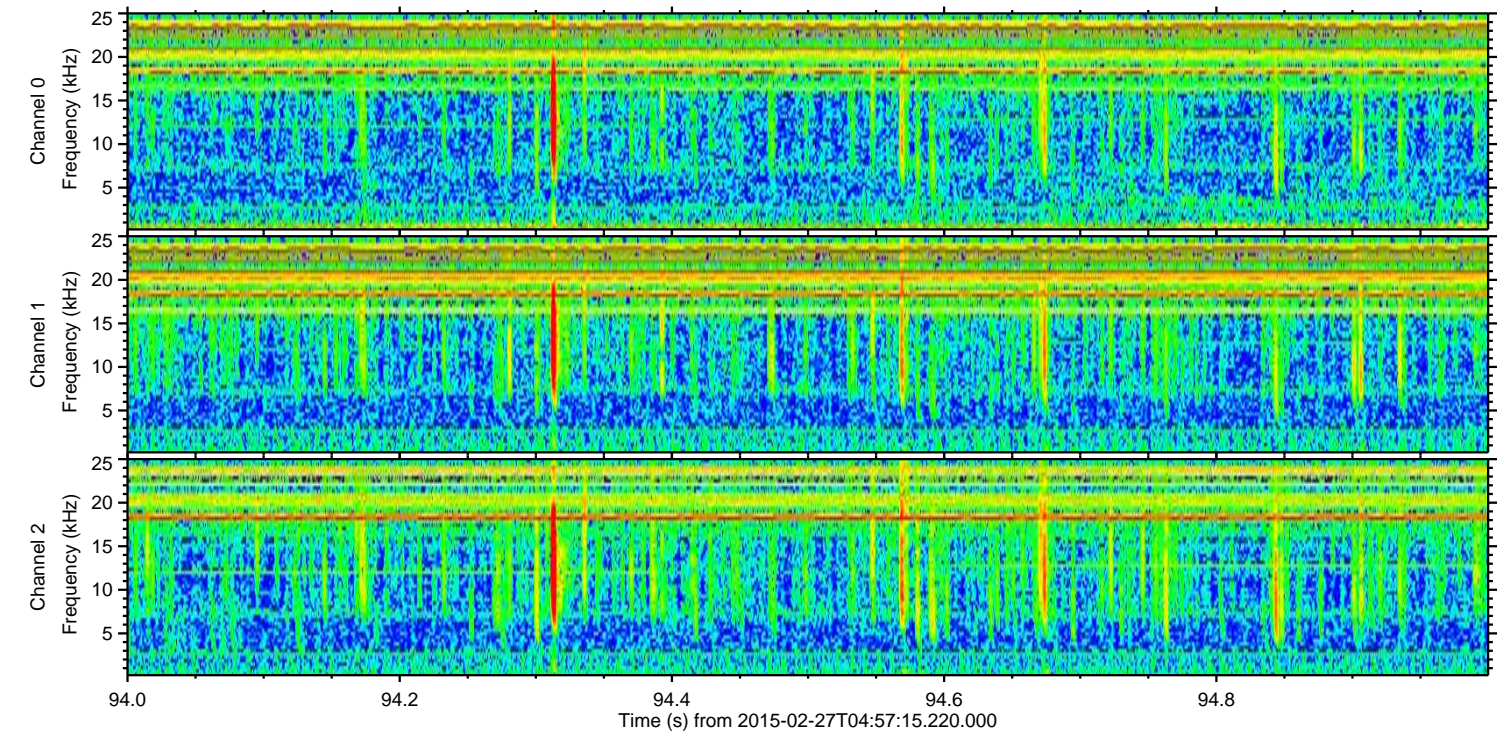
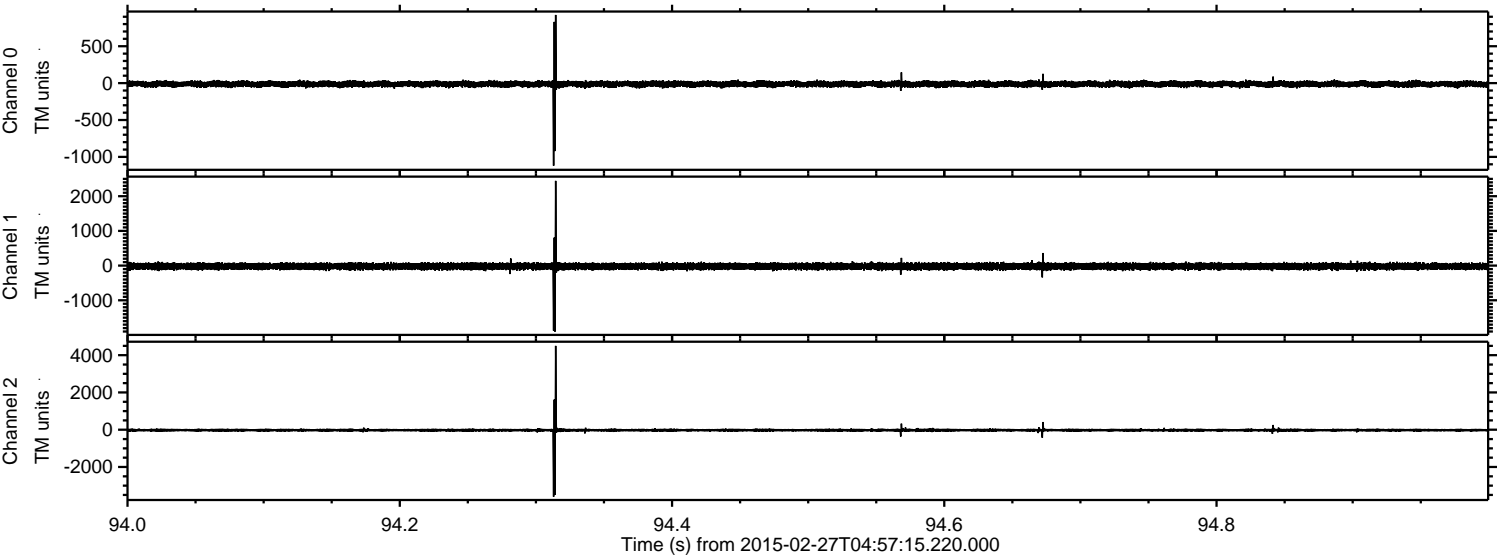
Channel 1
mn: -1193
mx: 1887
 μ : -21.0
 σ : 49.3

Channel 2
mn: -7343
mx: 5728
 μ : -23.4
 σ : 81.0

Processed Wed Mar 4 13:44:57 2015 by ELM ver.2012-10-06 from 001__elm20150227_045714__dat00.bin

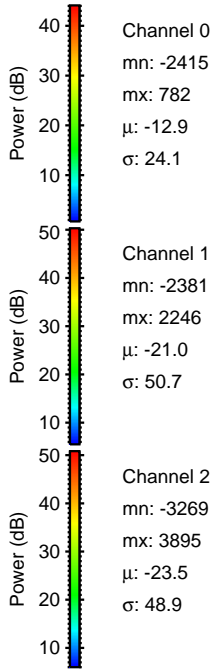
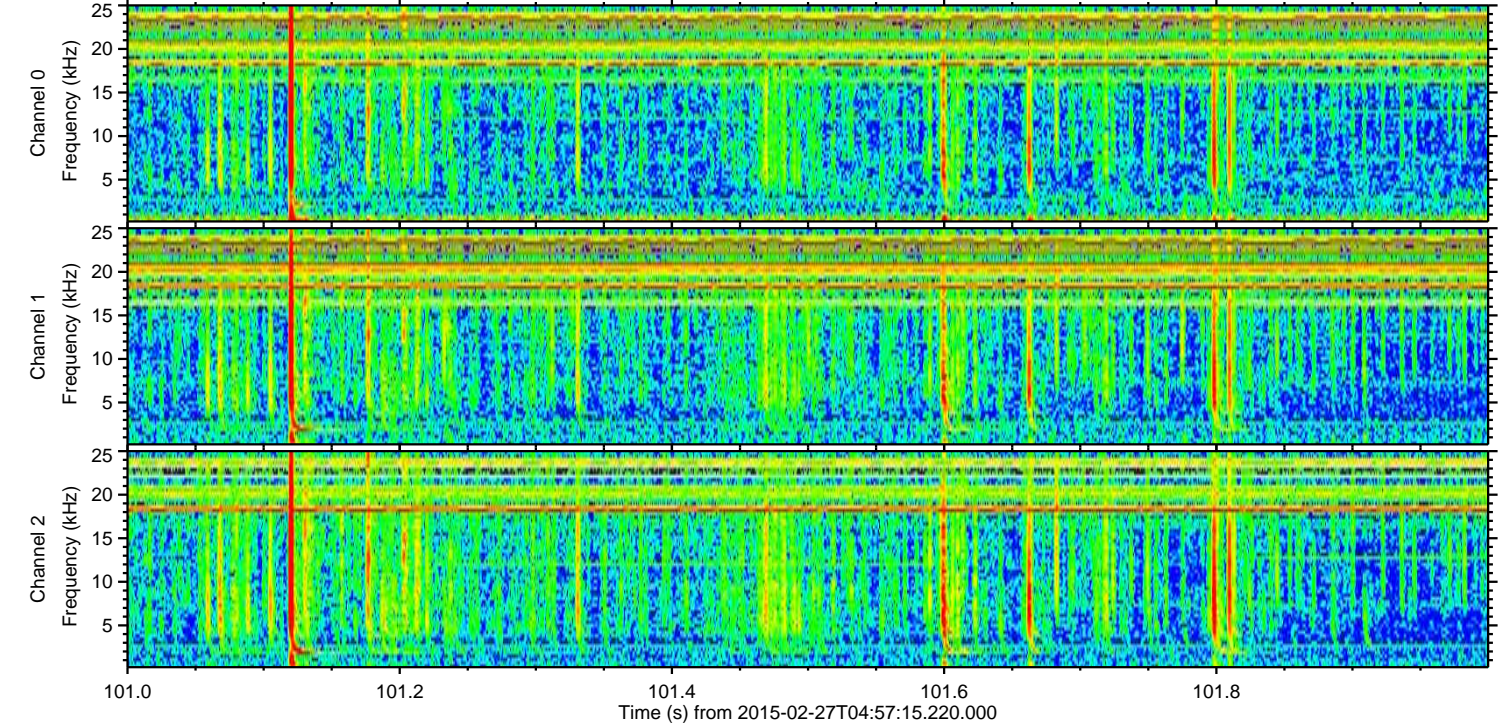
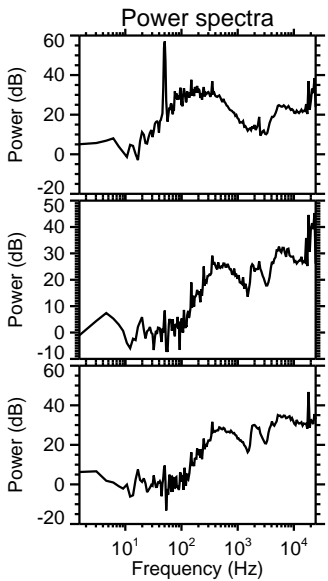
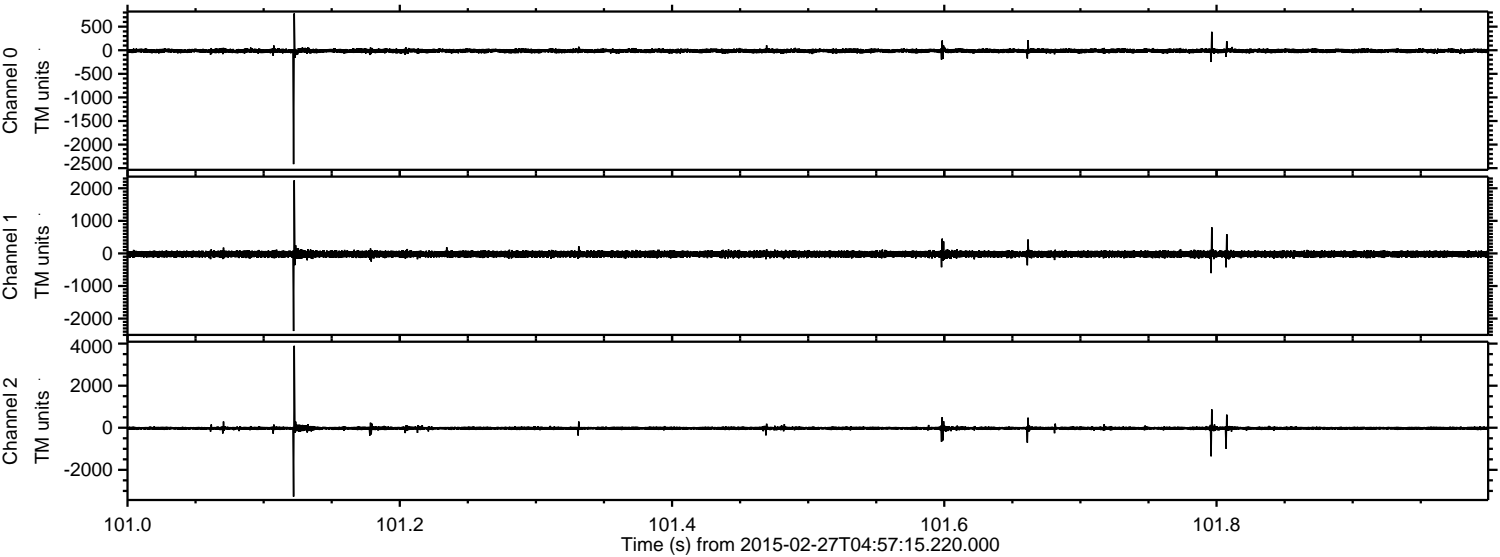


Processed Wed Mar 4 13:44:58 2015 by ELM ver.2012-10-06 from 001__elm20150227_045714__dat00.bin



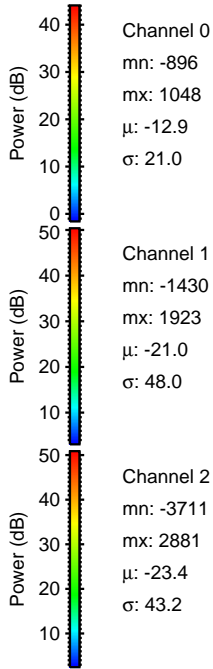
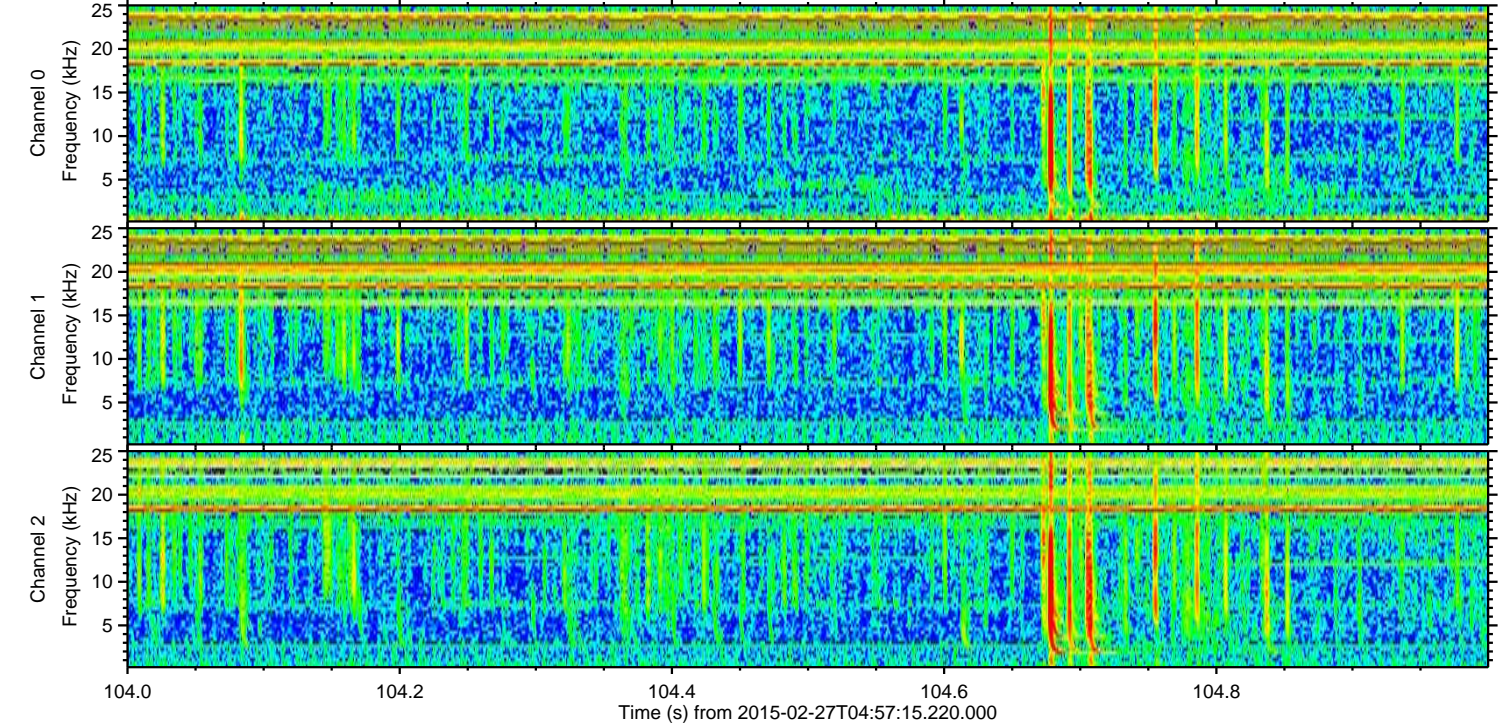
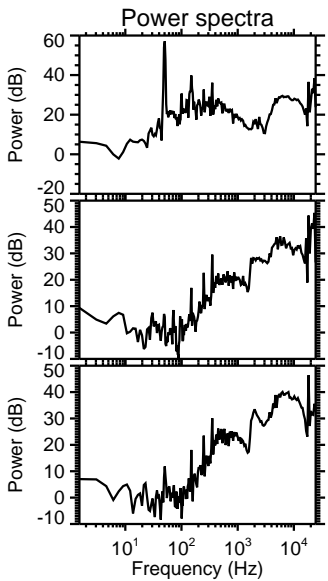
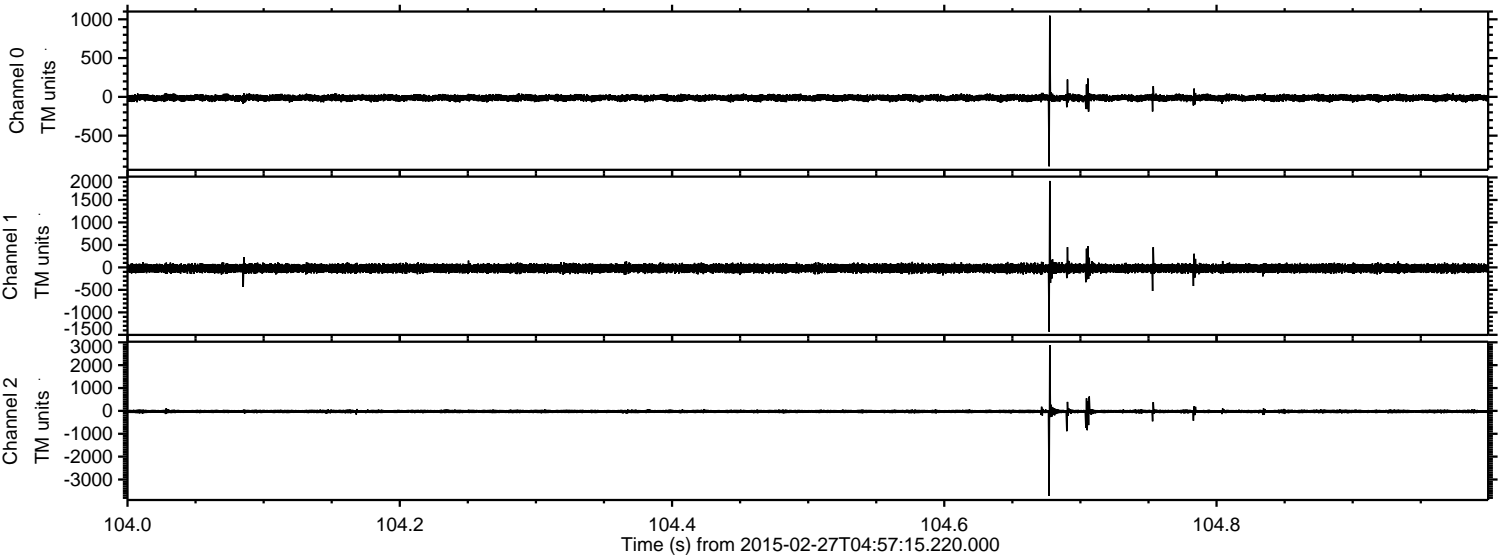
ELMAVAN 3D WAVEFORMS (Measured data sampled at 50 kHz) 49713 packets of 144 samples from 2015-02-27T04:57:15.220.000. Part 102/144

Processed Wed Mar 4 13:44:59 2015 by ELM ver.2012-10-06 from 001__elm20150227_045714__dat00.bin

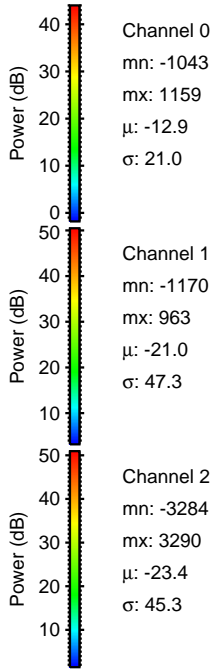
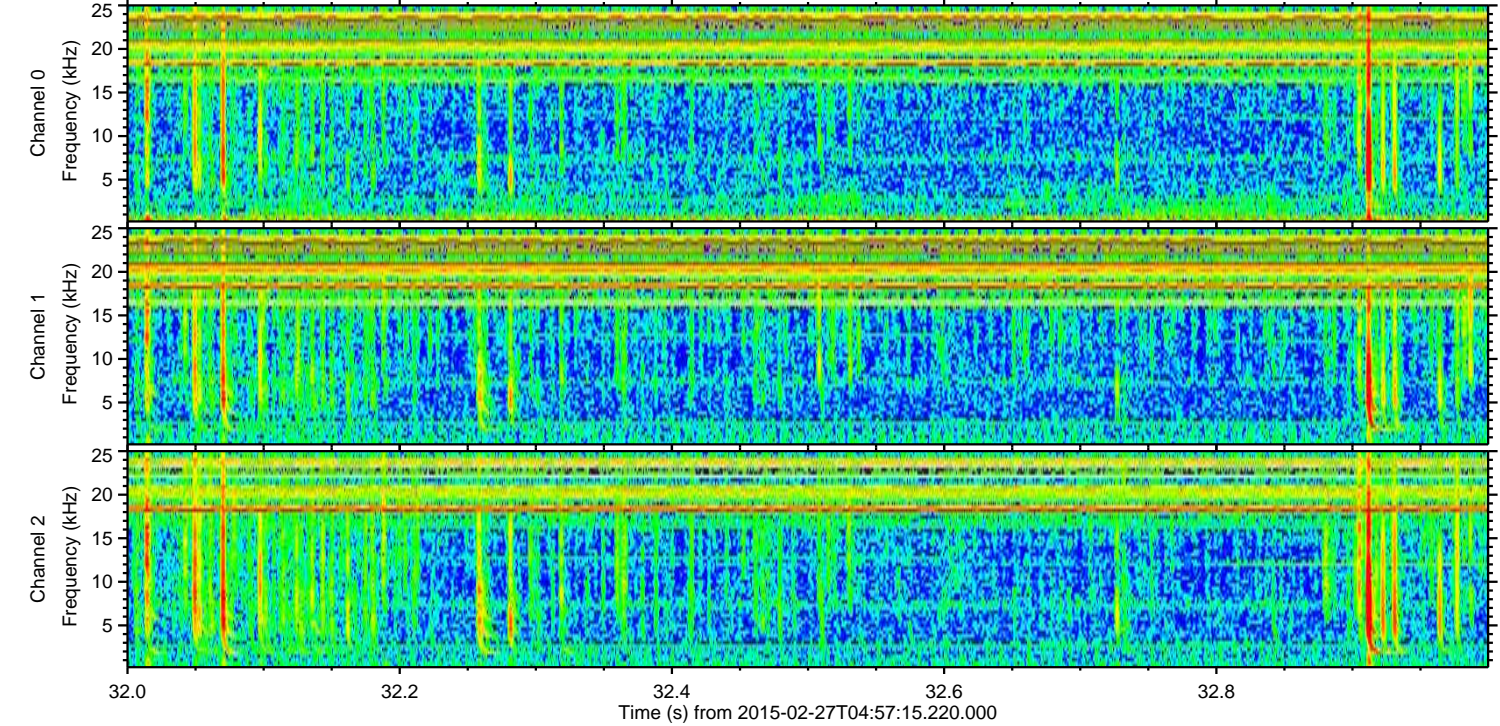
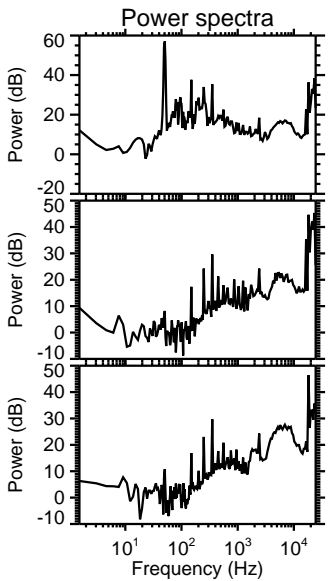
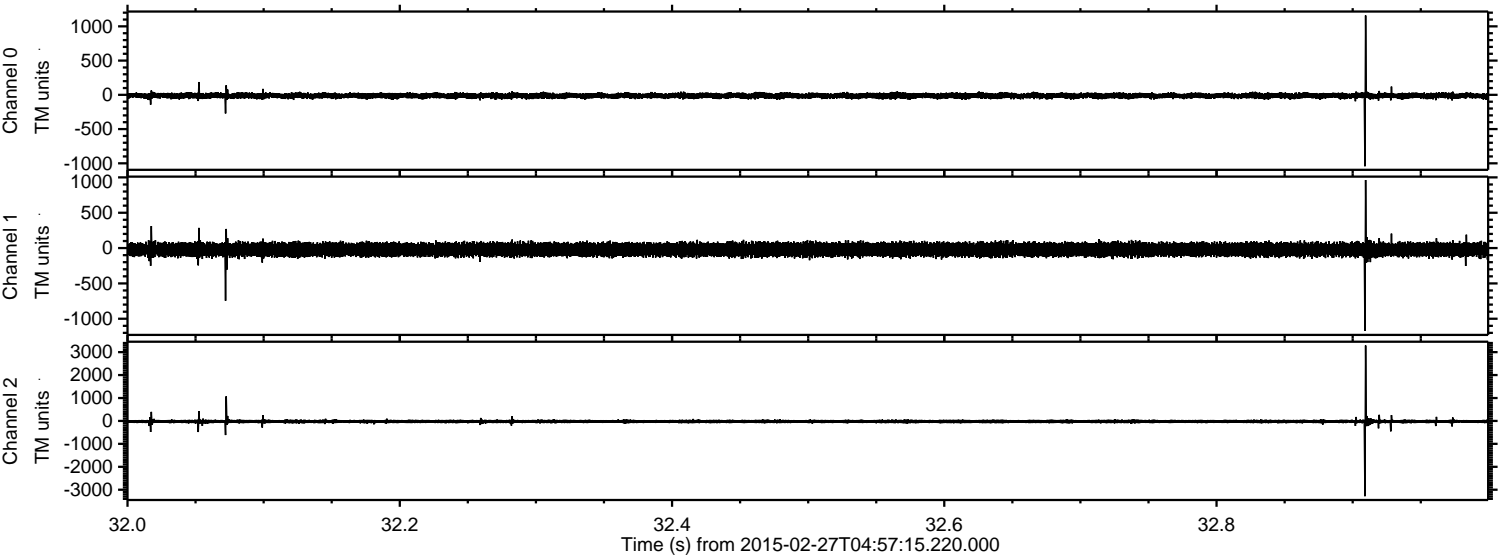


ELMAVAN 3D WAVEFORMS (Measured data sampled at 50 kHz) 49713 packets of 144 samples from 2015-02-27T04:57:15.220.000. Part 105/144

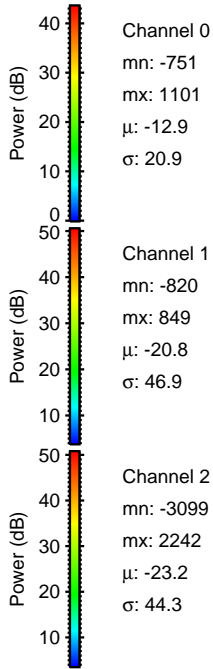
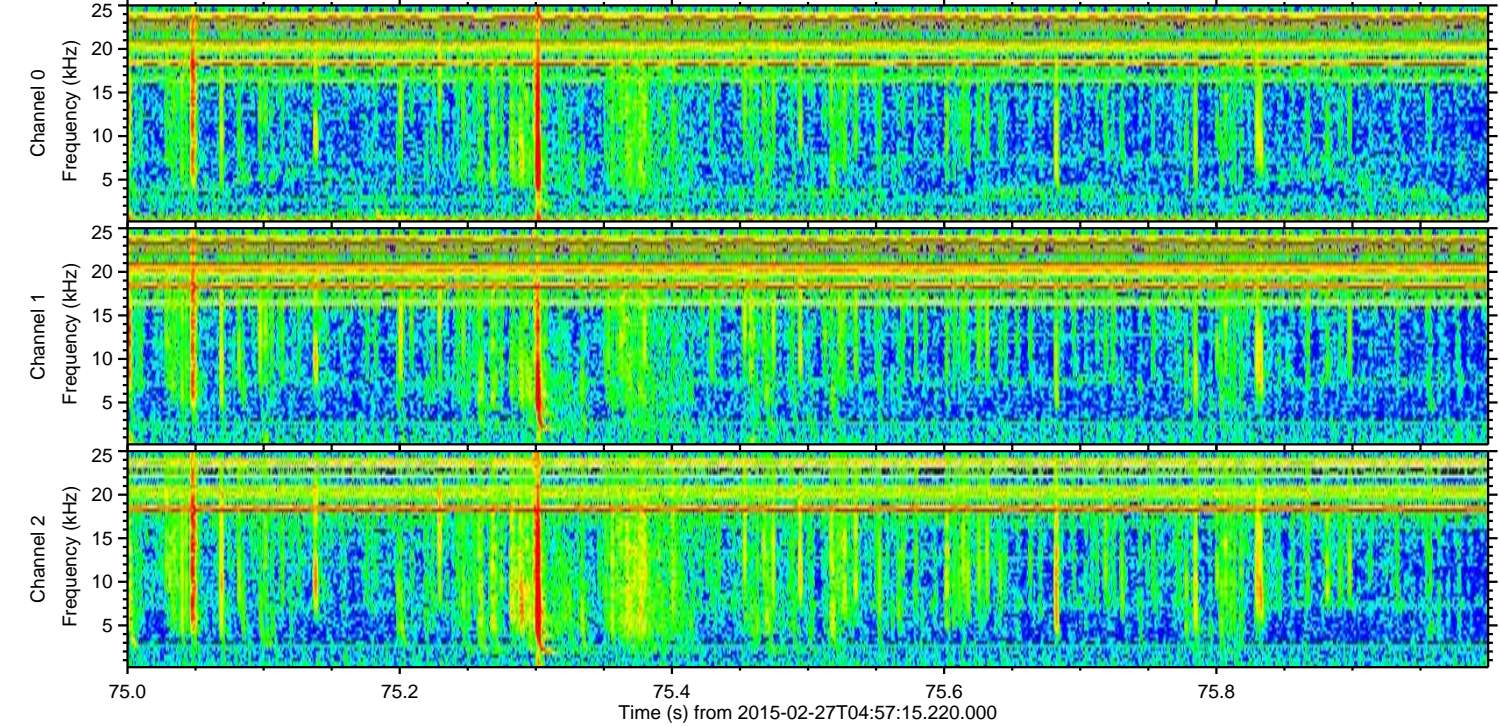
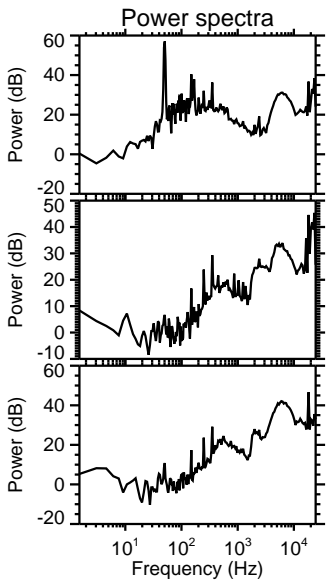
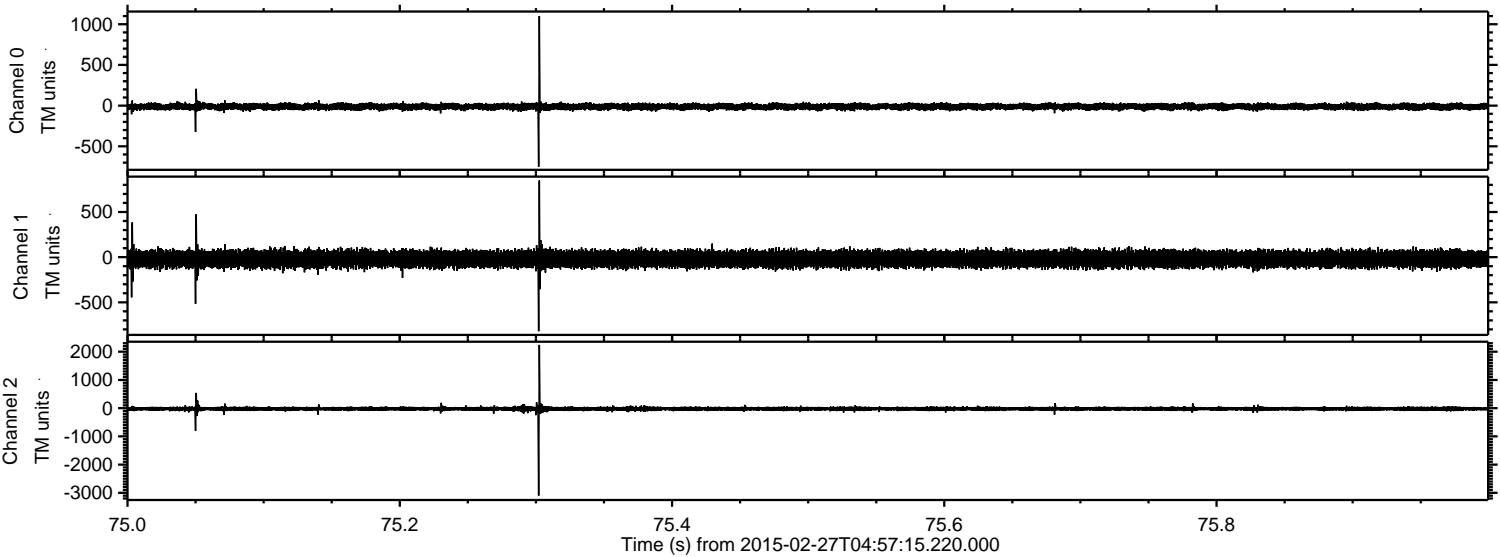
Processed Wed Mar 4 13:45:00 2015 by ELM ver.2012-10-06 from 001__elm20150227_045714__dat00.bin



Processed Wed Mar 4 13:45:02 2015 by ELM ver.2012-10-06 from 001__elm20150227_045714__dat00.bin



Processed Wed Mar 4 13:45:03 2015 by ELM ver.2012-10-06 from 001__elm20150227_045714__dat00.bin

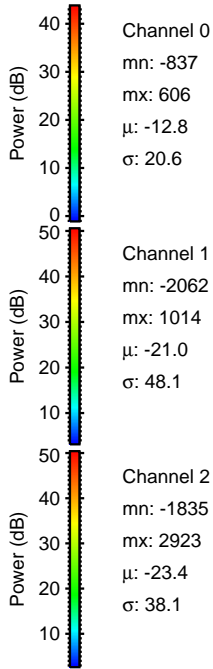
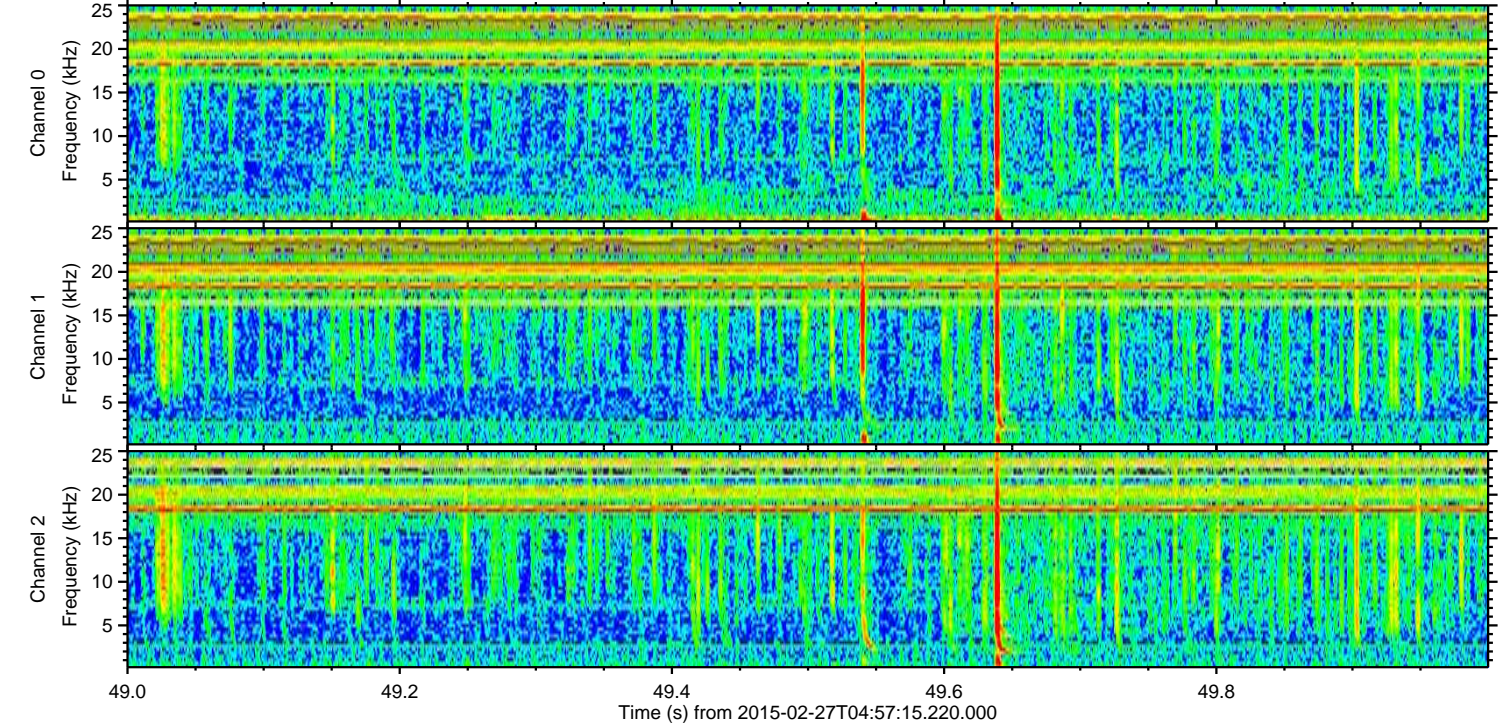
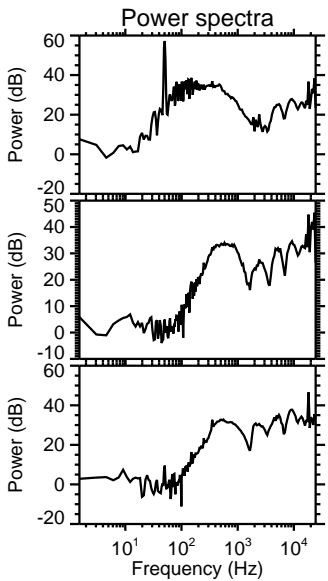
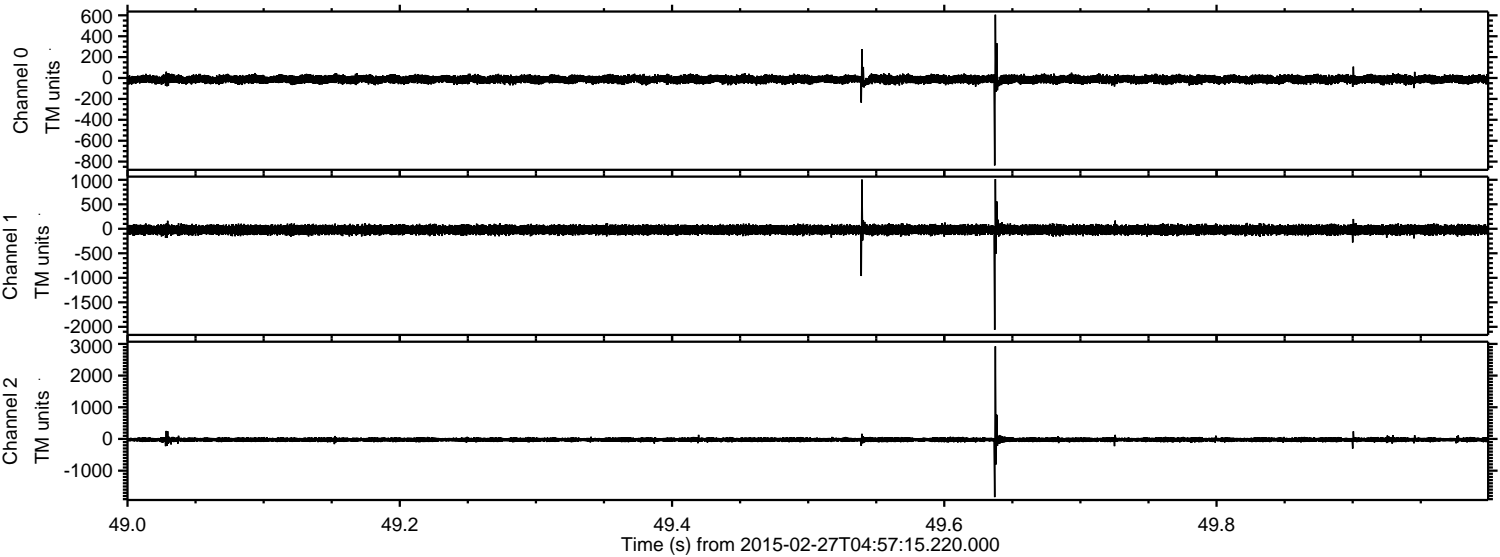


Channel 0
mn: -751
mx: 1101
 μ : -12.9
 σ : 20.9

Channel 1
mn: -820
mx: 849
 μ : -20.8
 σ : 46.9

Channel 2
mn: -3099
mx: 2242
 μ : -23.2
 σ : 44.3

Processed Wed Mar 4 13:45:04 2015 by ELM ver.2012-10-06 from 001__elm20150227_045714__dat00.bin



Processed Wed Mar 4 13:45:05 2015 by ELM ver.2012-10-06 from 001__elm20150227_045714__dat00.bin

