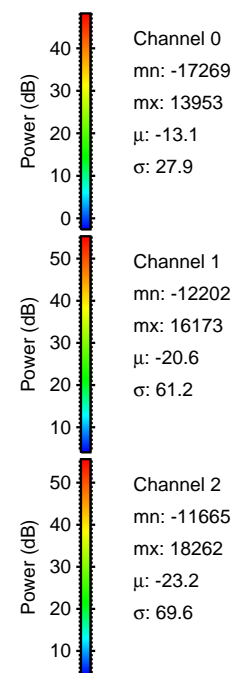
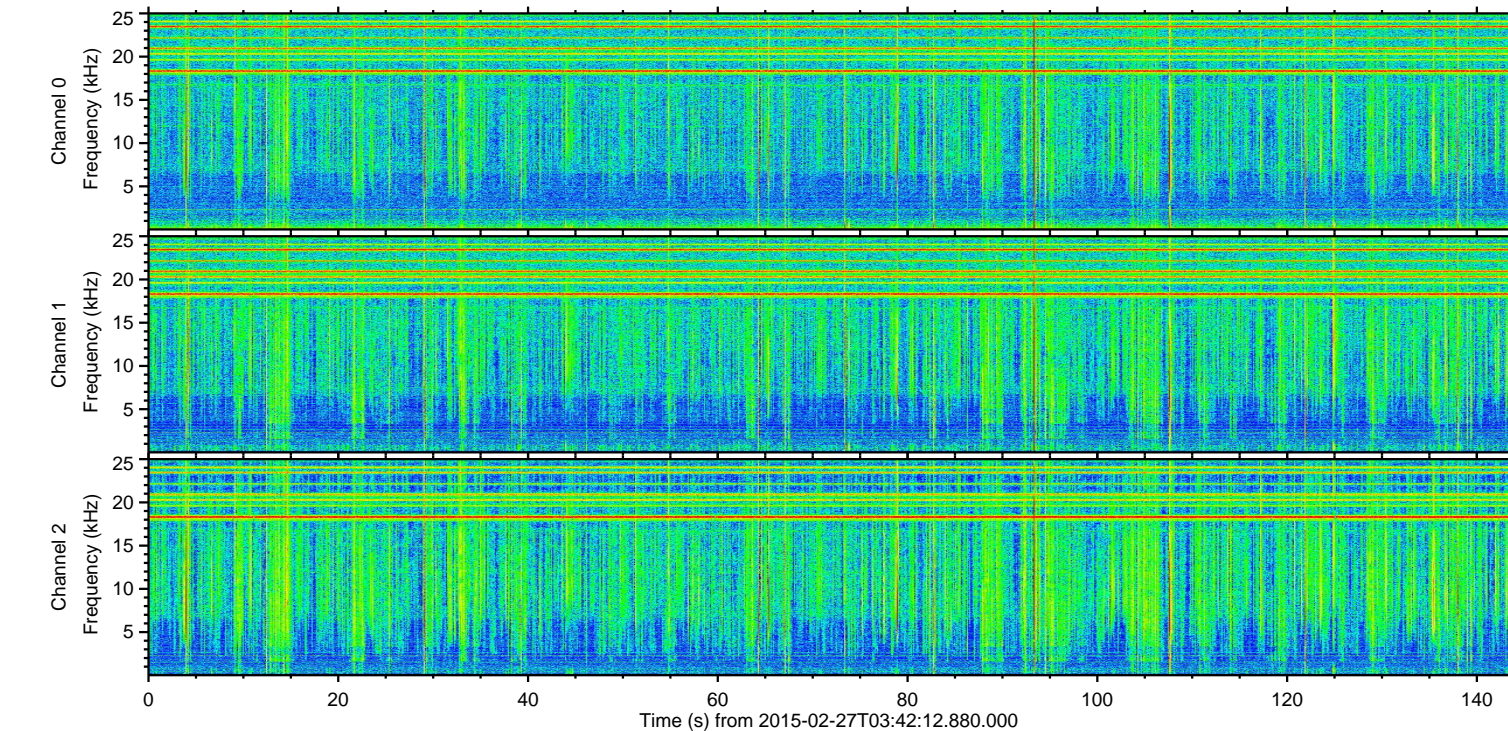
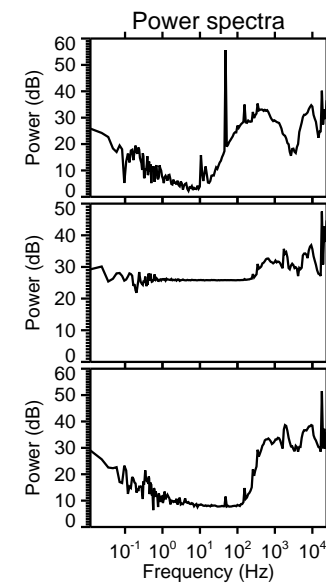
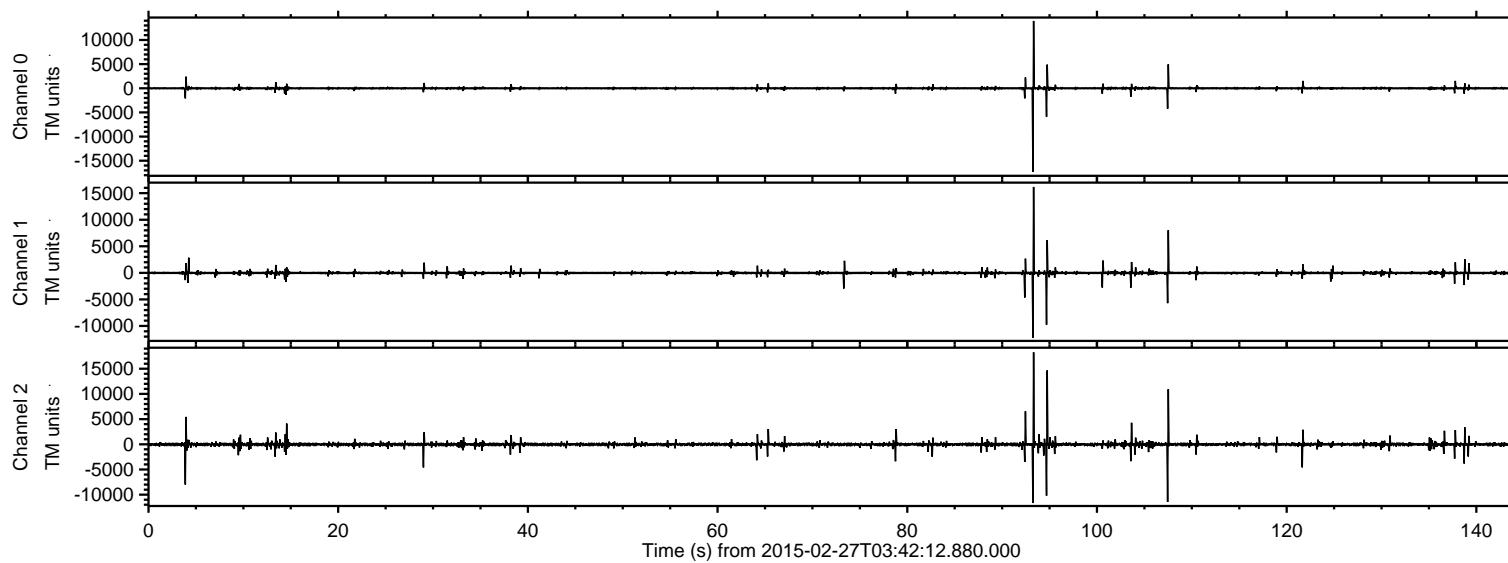


# ELMAVAN 3D WAVEFORMS (Measured data sampled at 50 kHz) 49811 packets of 144 samples from 2015-02-27T03:42:12.880.000.

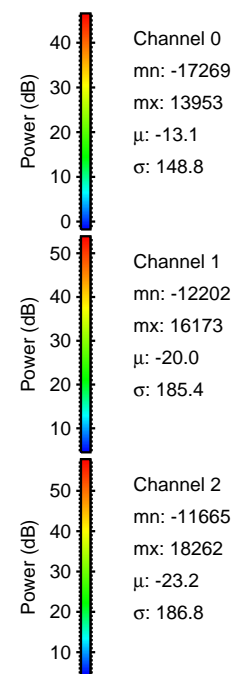
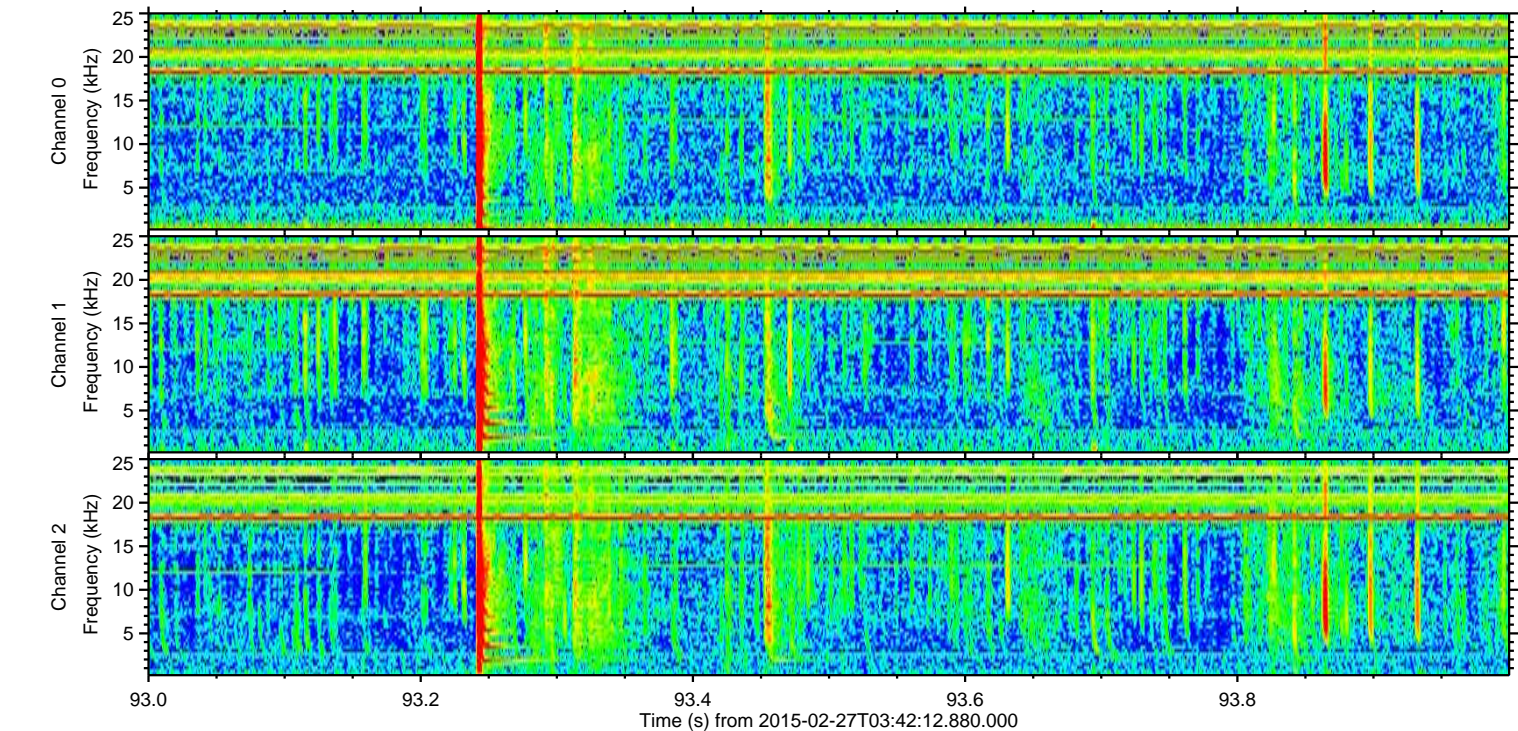
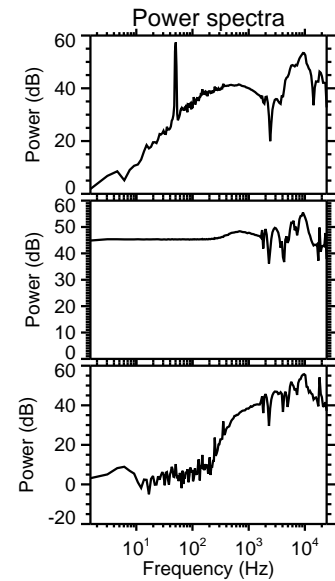
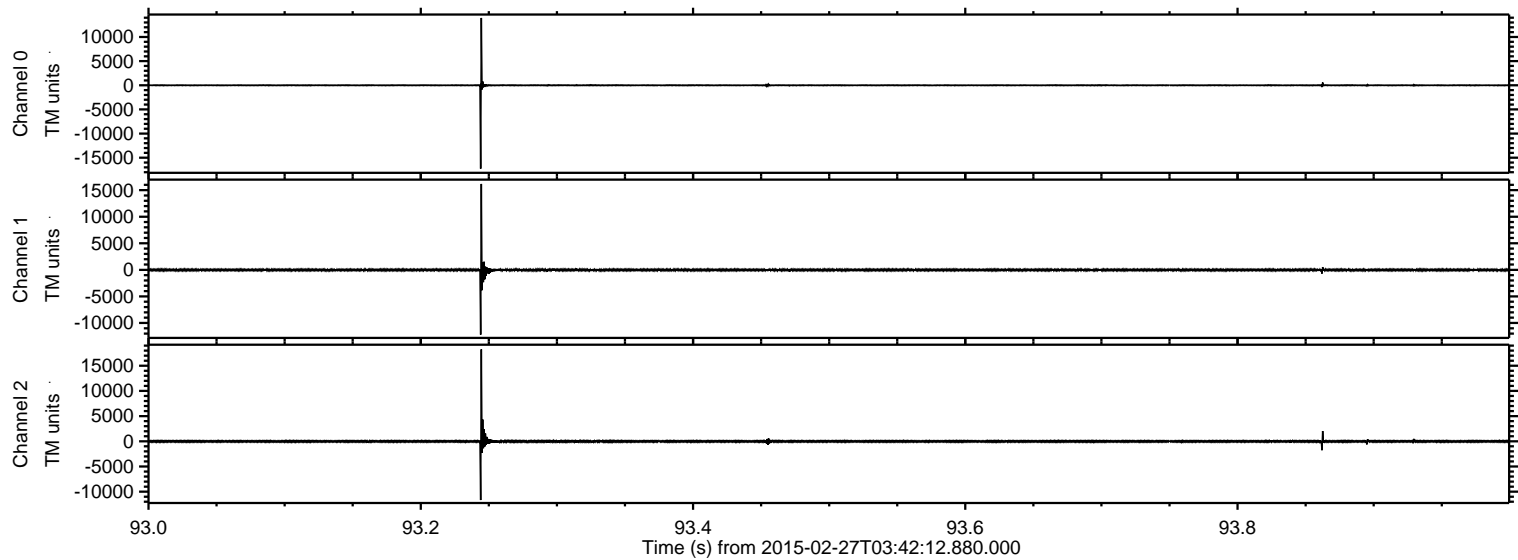
Processed Wed Mar 4 13:17:44 2015 by ELM ver.2012-10-06 from 001\_\_elm20150227\_034211\_\_dat00.bin





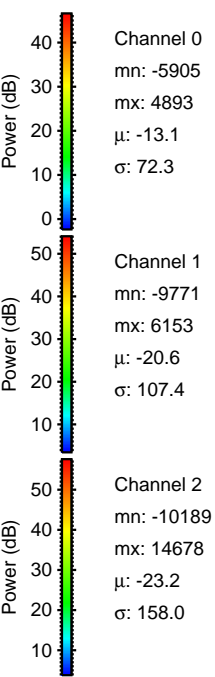
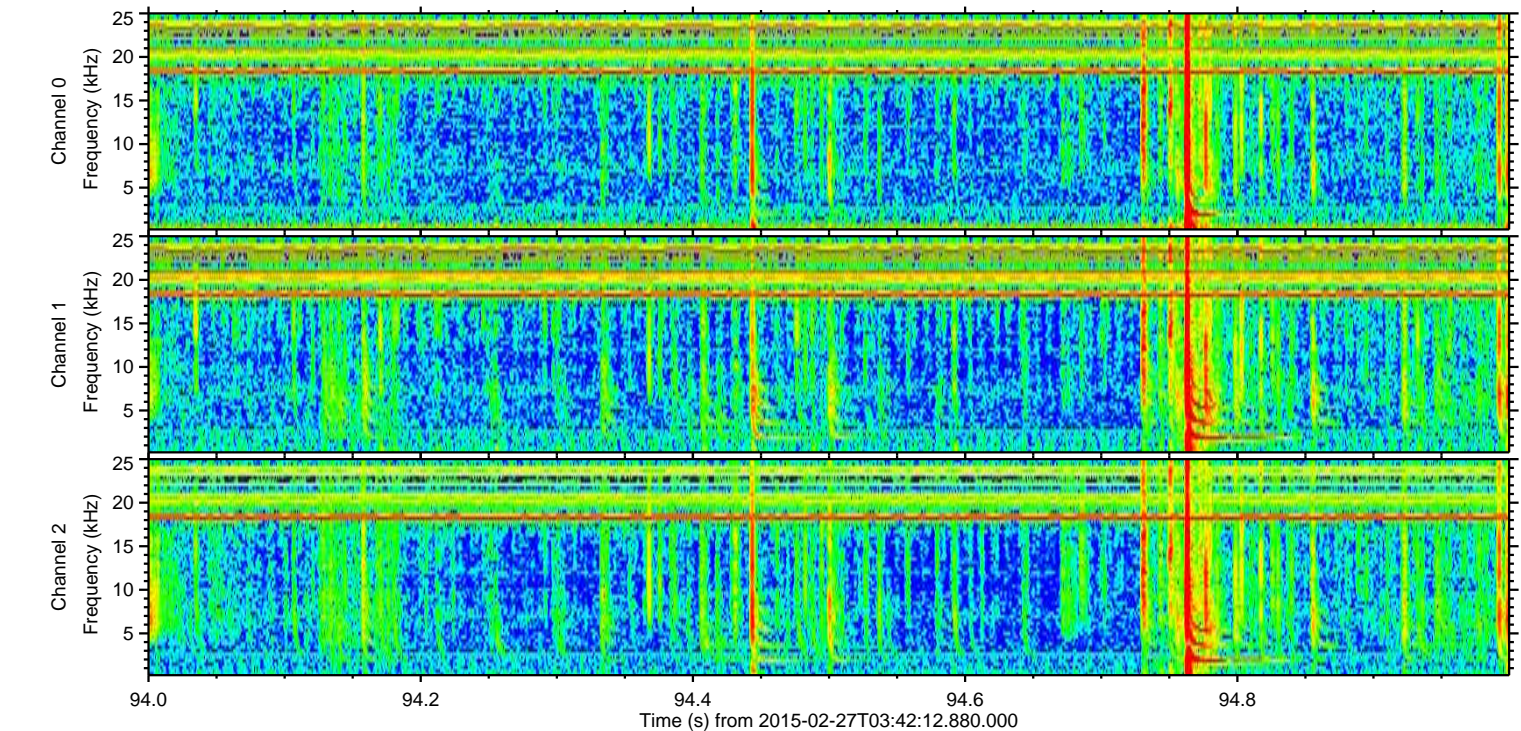
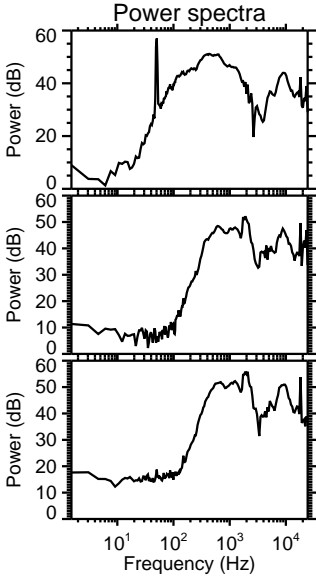
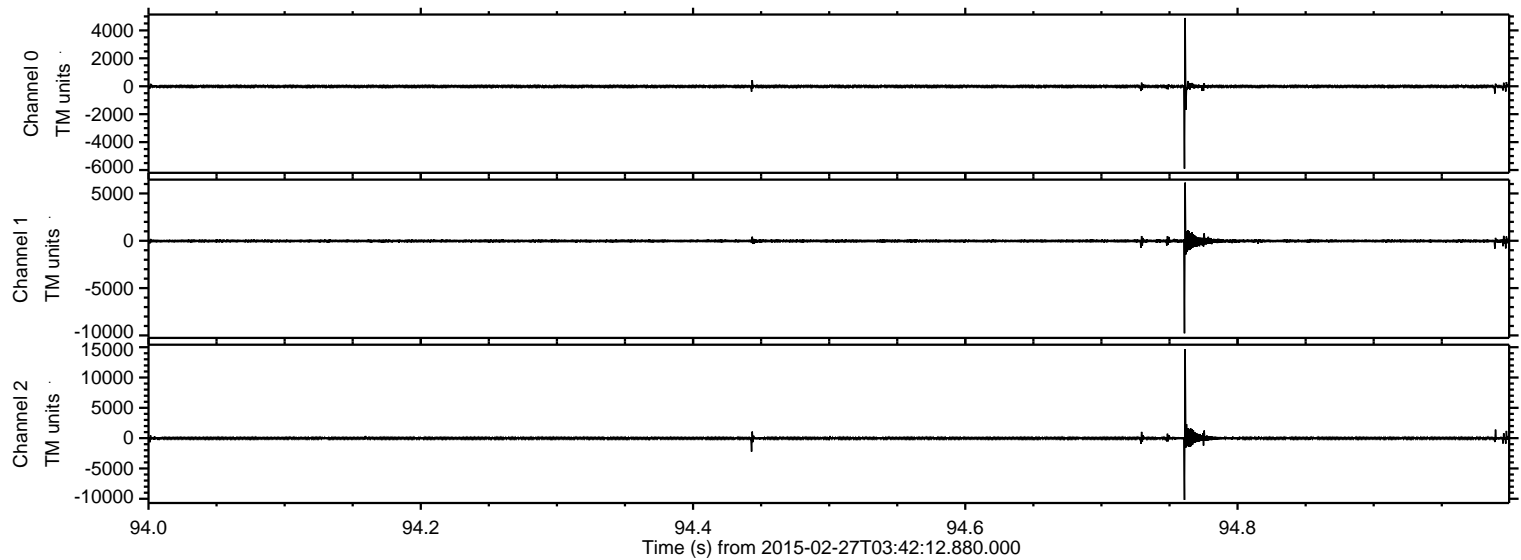
ELMAVAN 3D WAVEFORMS (Measured data sampled at 50 kHz) 49811 packets of 144 samples from 2015-02-27T03:42:12.880.000. Part 94/144

Processed Wed Mar 4 13:17:55 2015 by ELM ver.2012-10-06 from 001\_\_elm20150227\_034211\_\_dat00.bin





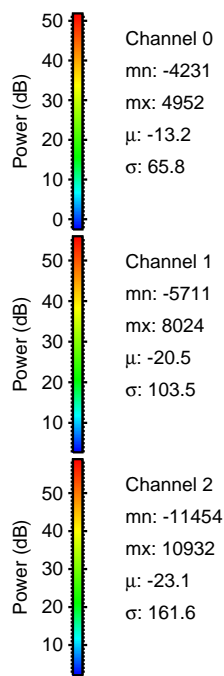
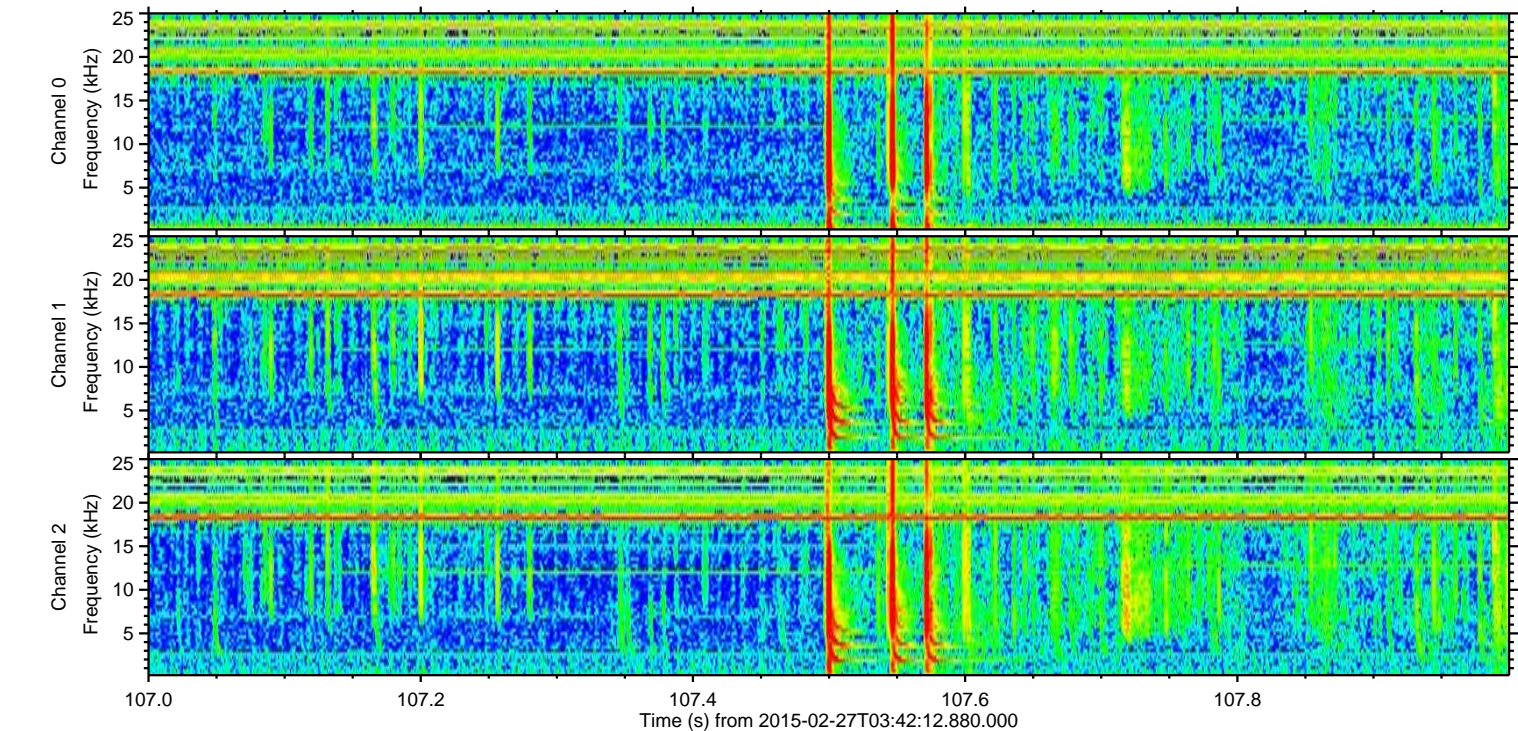
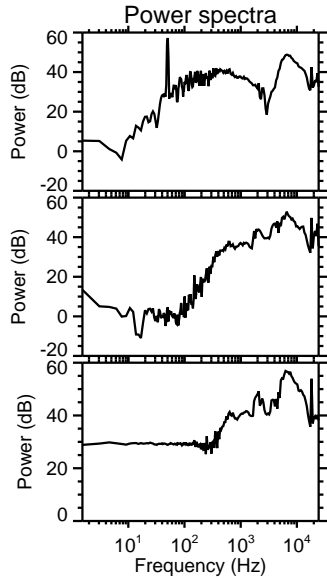
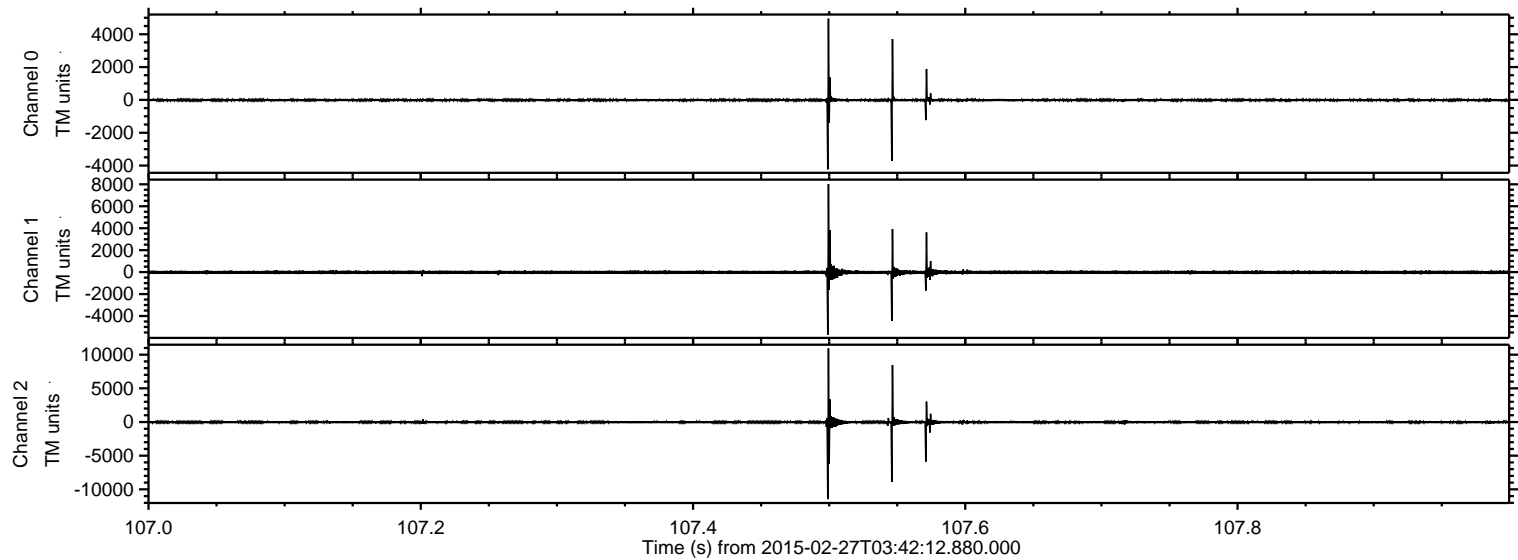
Processed Wed Mar 4 13:17:56 2015 by ELM ver.2012-10-06 from 001\_\_elm20150227\_034211\_\_dat00.bin





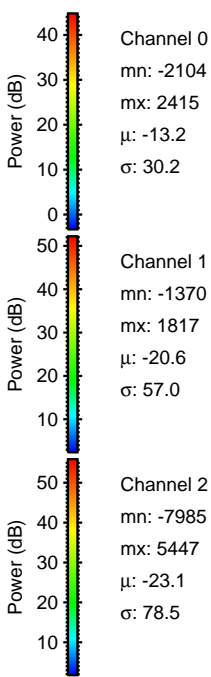
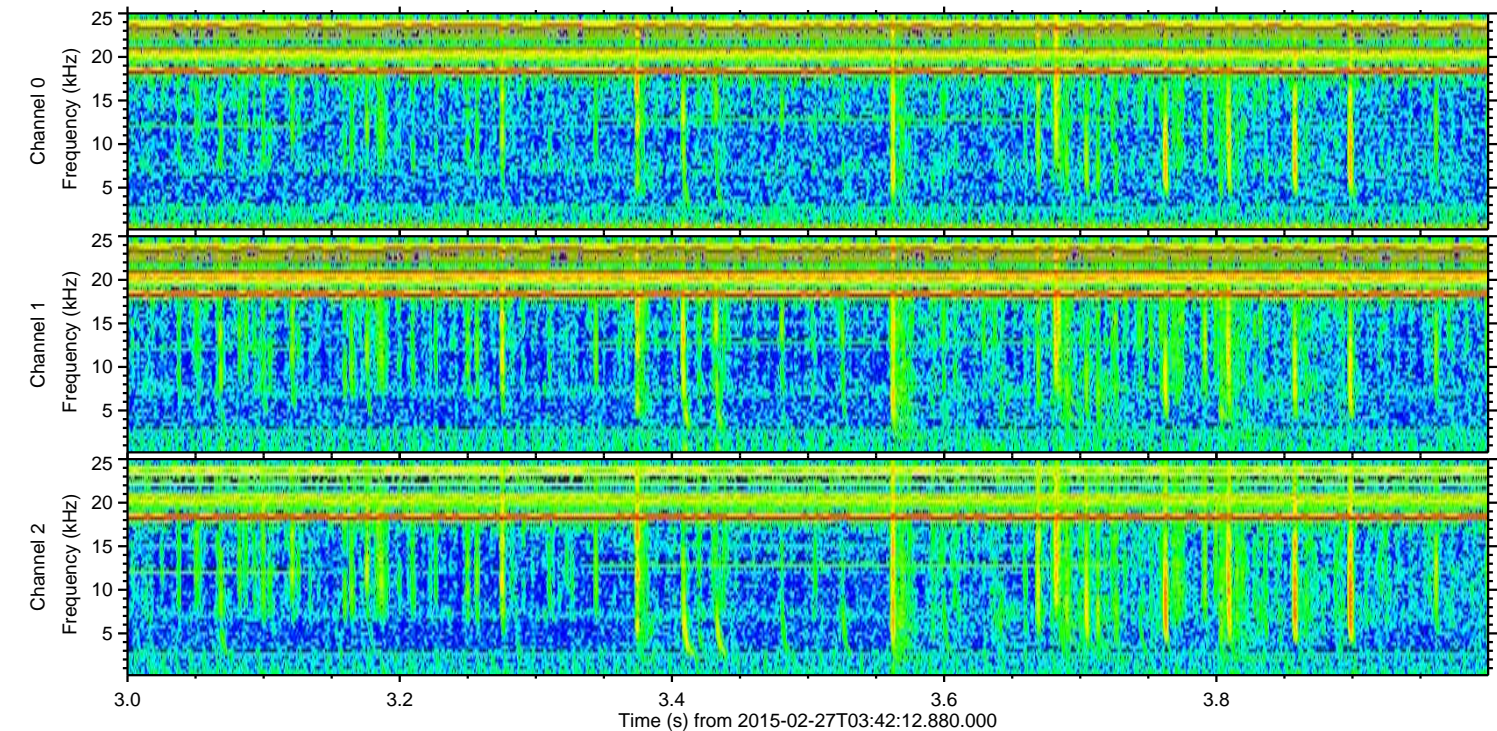
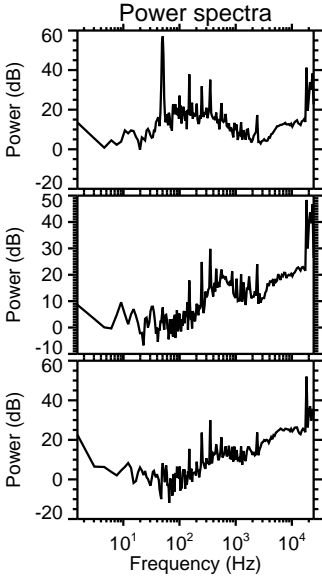
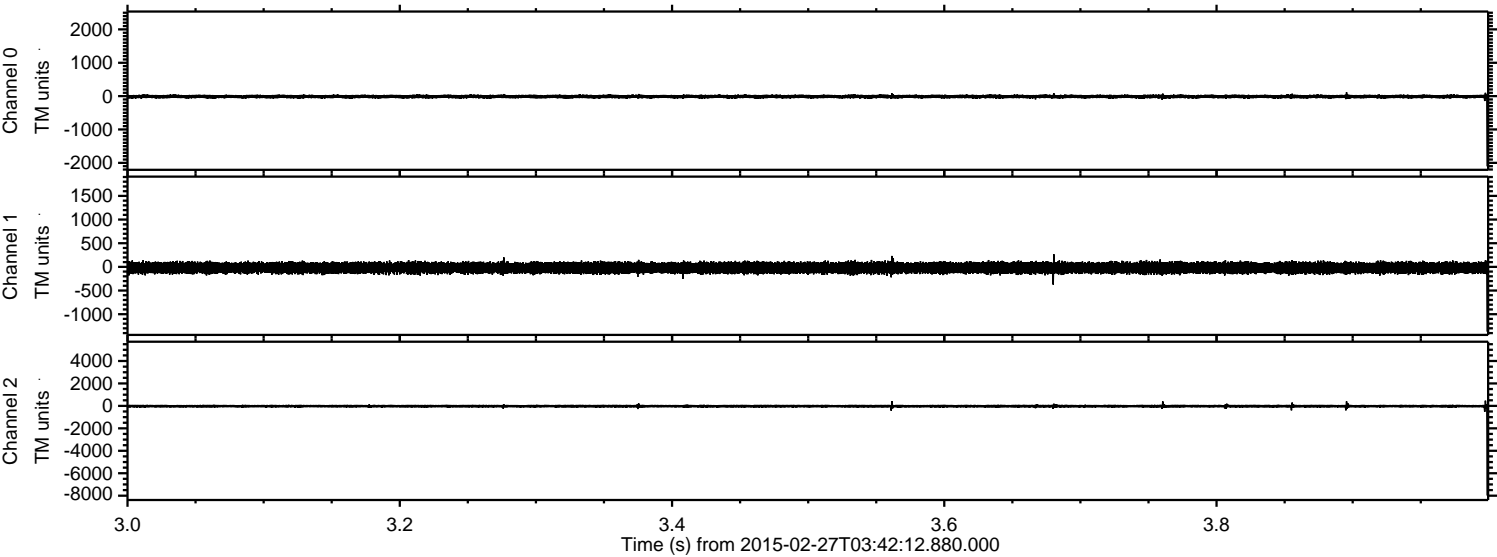
ELMAVAN 3D WAVEFORMS (Measured data sampled at 50 kHz) 49811 packets of 144 samples from 2015-02-27T03:42:12.880.000. Part 108/144

Processed Wed Mar 4 13:17:57 2015 by ELM ver.2012-10-06 from 001\_\_elm20150227\_034211\_\_dat00.bin



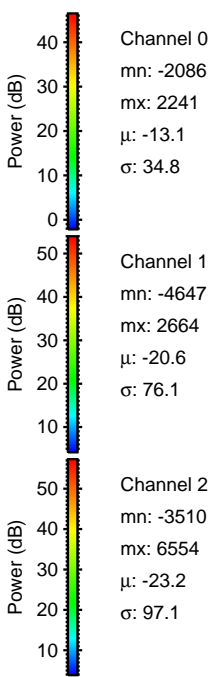
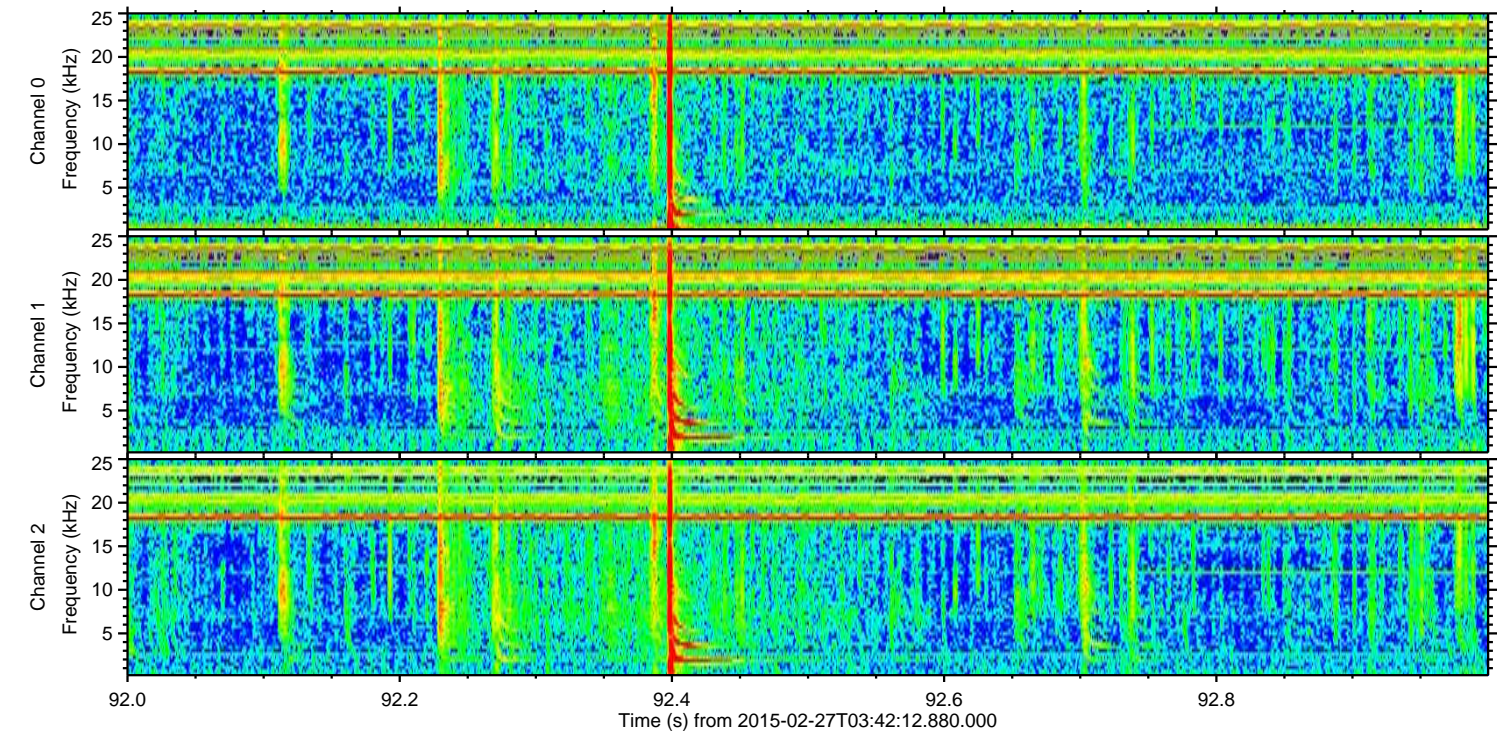
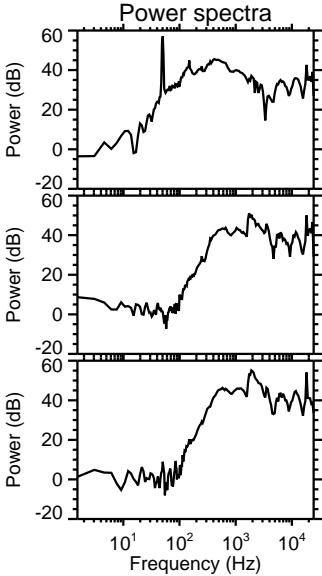
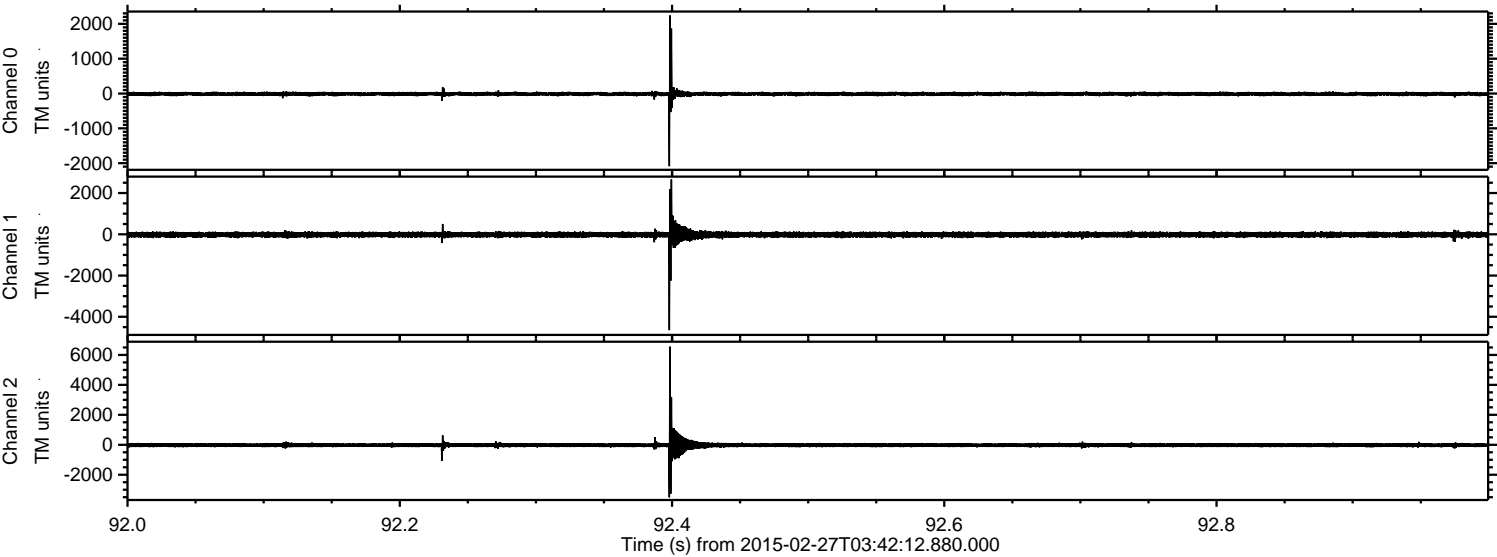


Processed Wed Mar 4 13:17:58 2015 by ELM ver.2012-10-06 from 001\_\_elm20150227\_034211\_\_dat00.bin



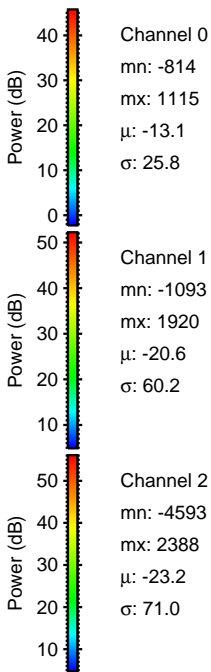
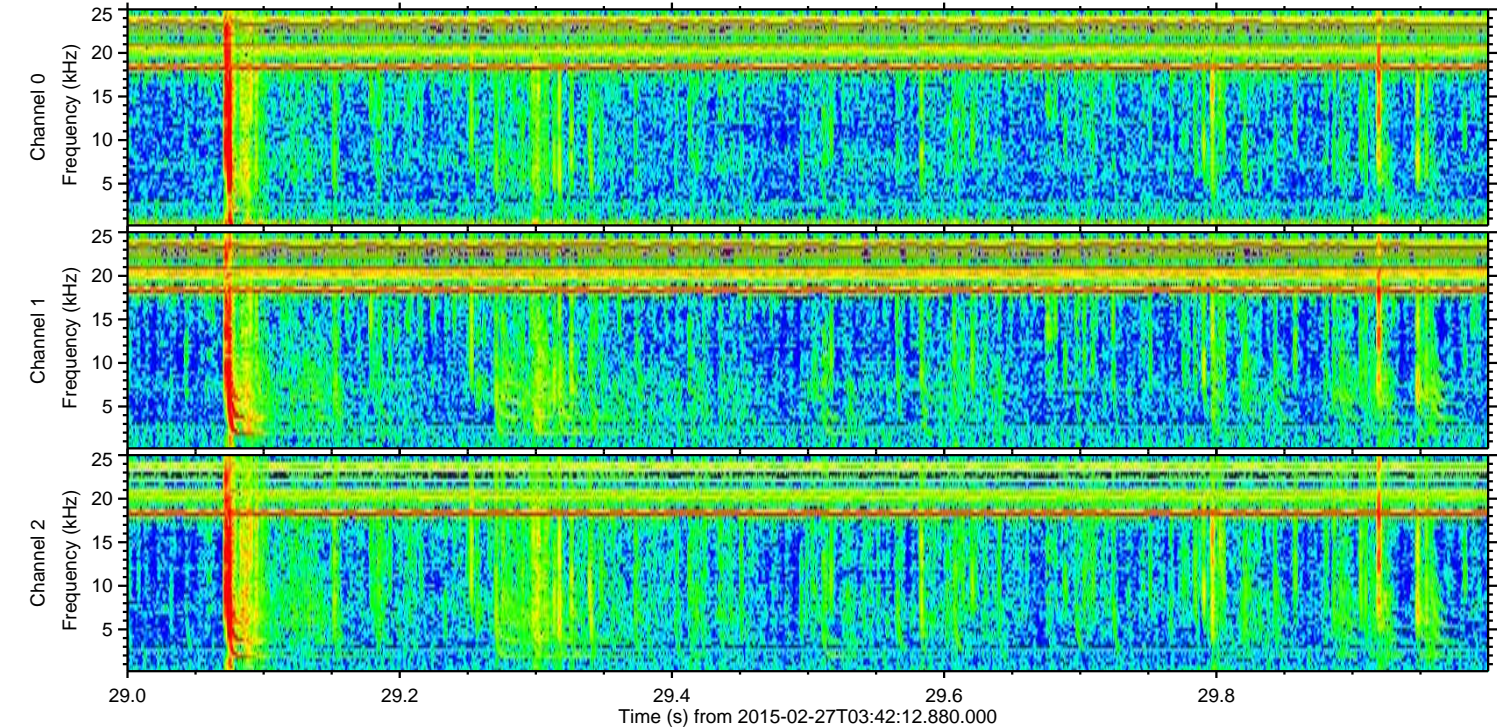
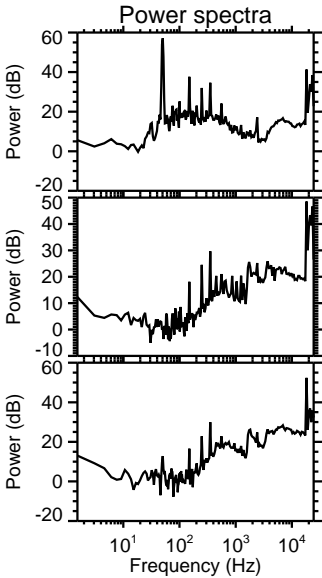
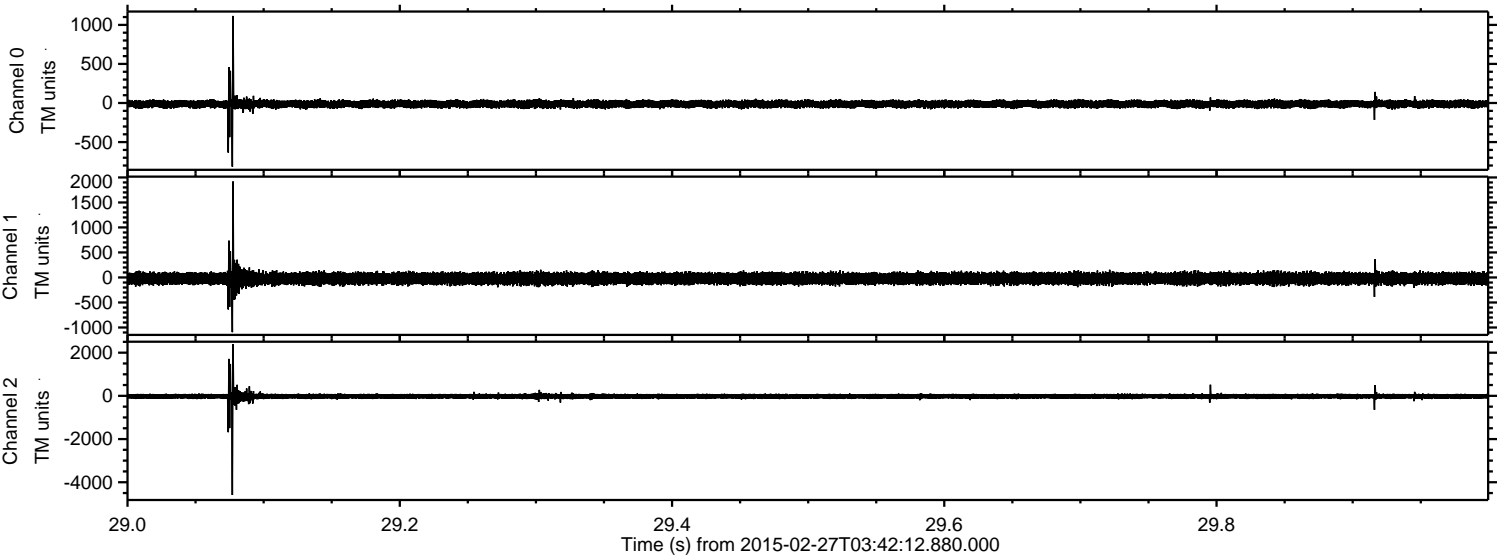


Processed Wed Mar 4 13:17:59 2015 by ELM ver.2012-10-06 from 001\_\_elm20150227\_034211\_\_dat00.bin





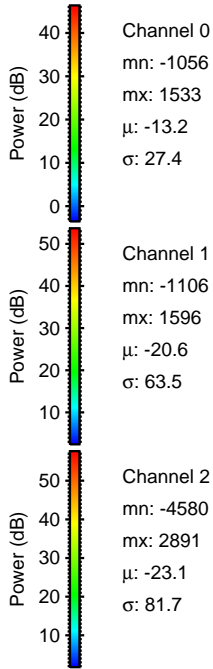
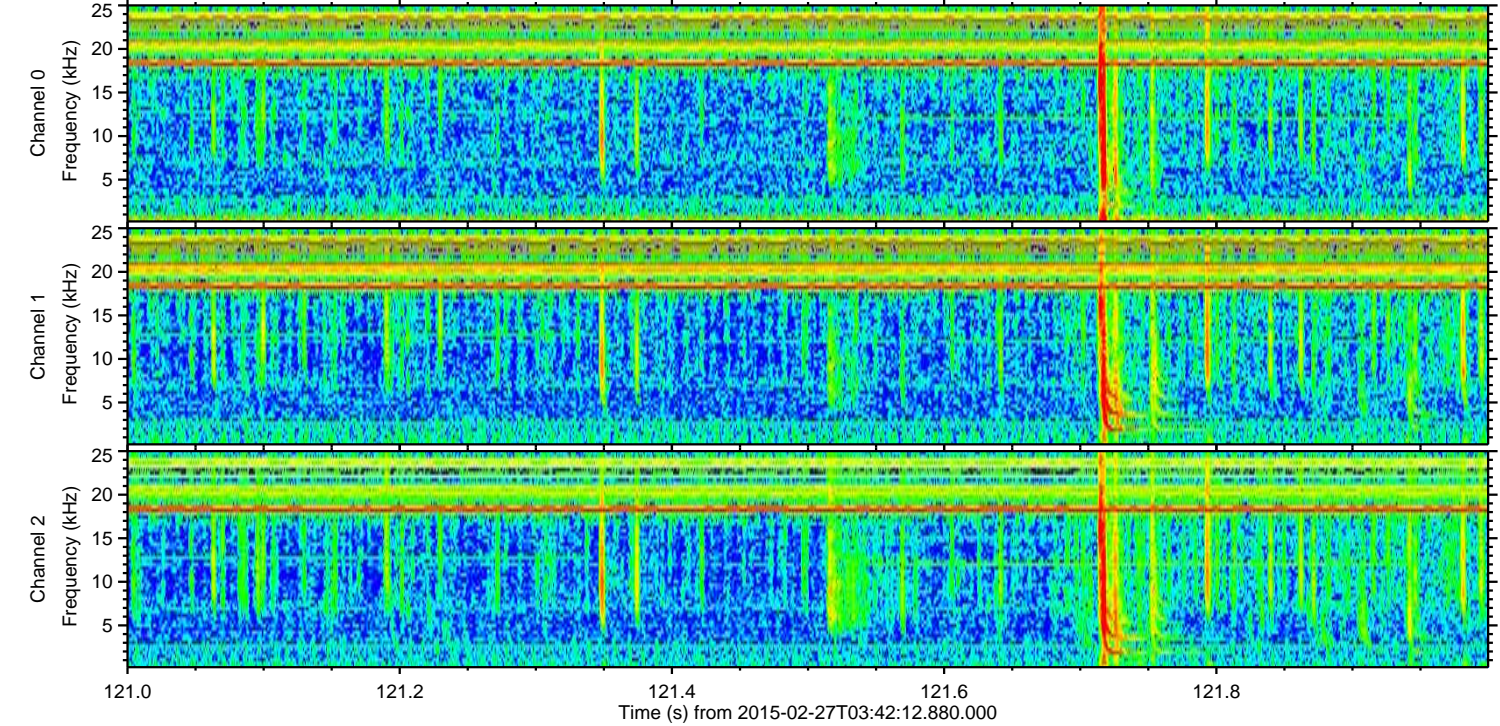
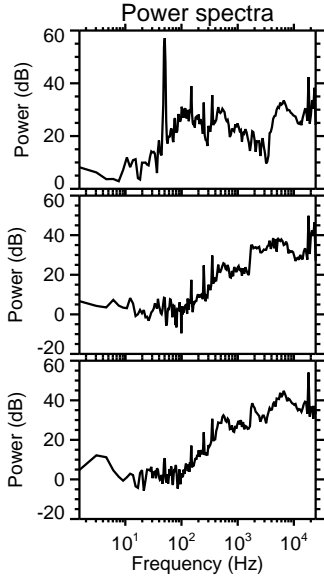
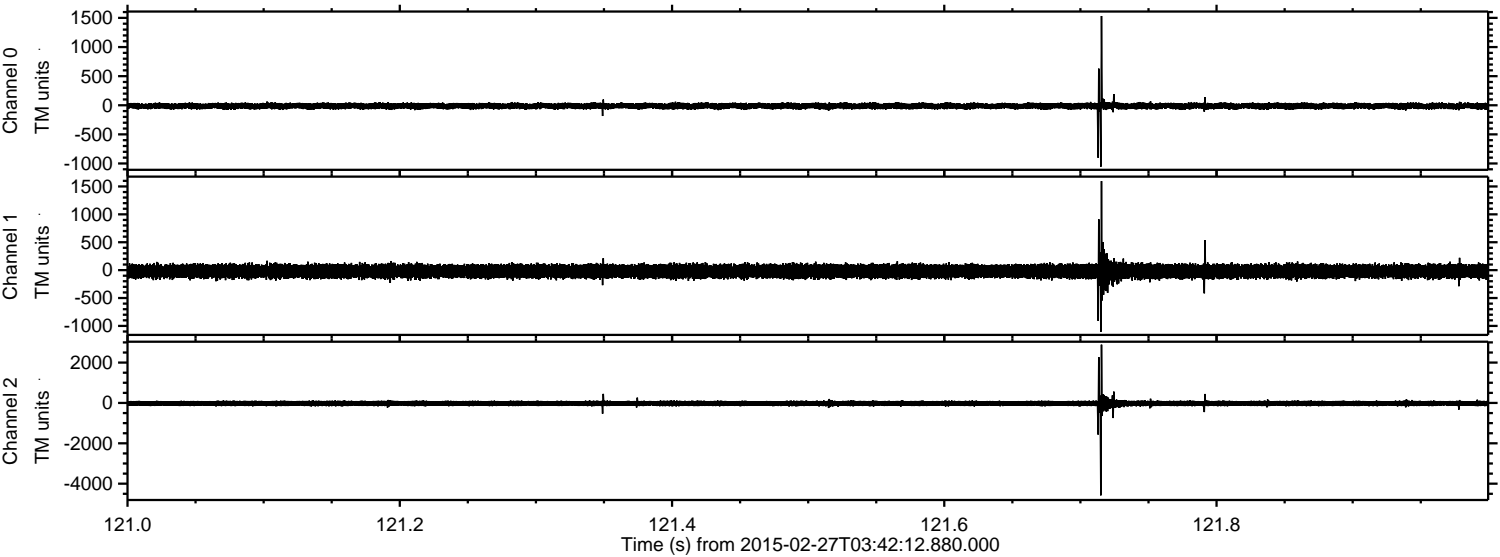
Processed Wed Mar 4 13:18:00 2015 by ELM ver.2012-10-06 from 001\_\_elm20150227\_034211\_\_dat00.bin





ELMAVAN 3D WAVEFORMS (Measured data sampled at 50 kHz) 49811 packets of 144 samples from 2015-02-27T03:42:12.880.000. Part 122/144

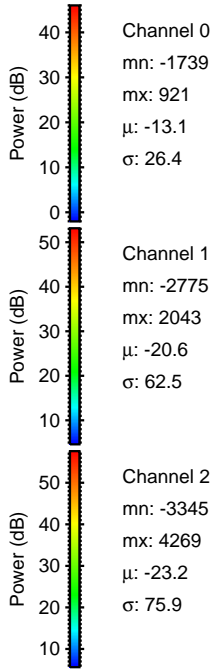
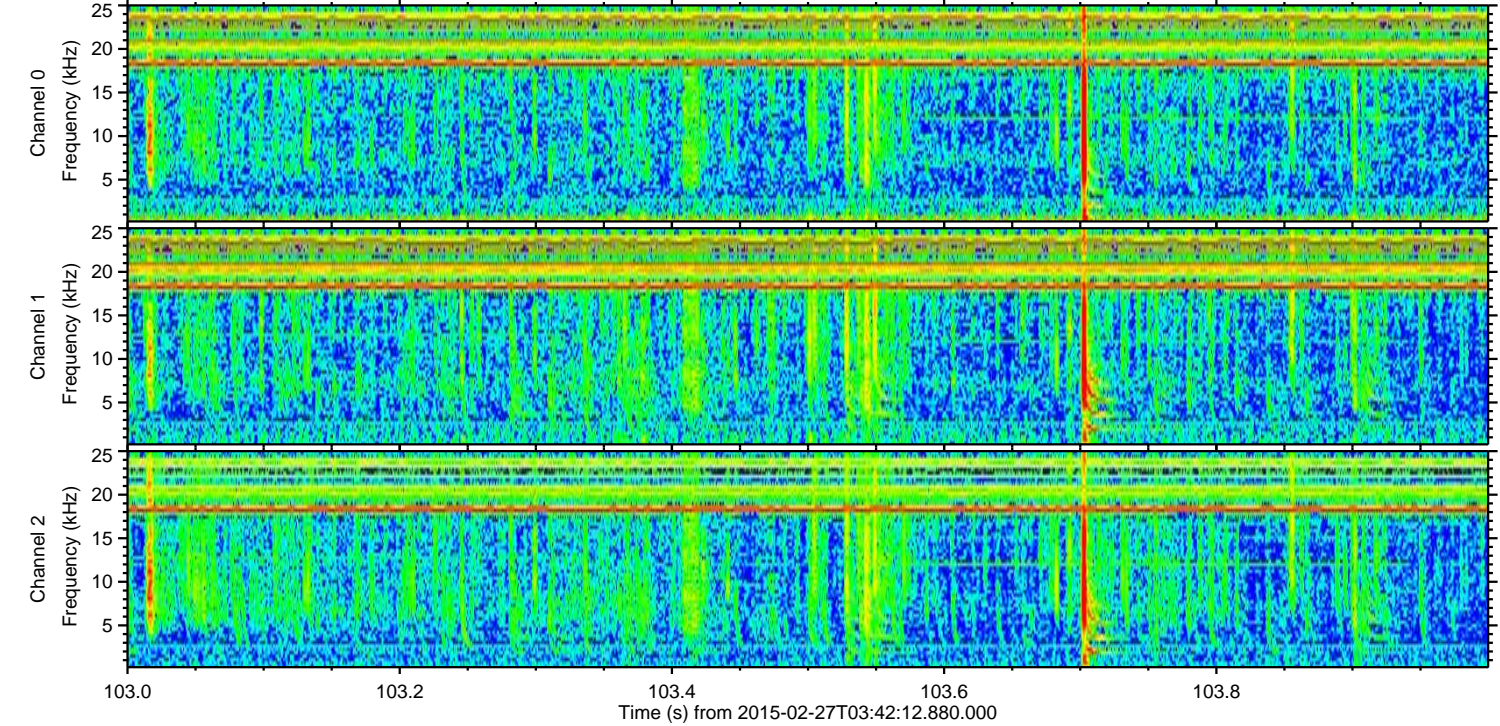
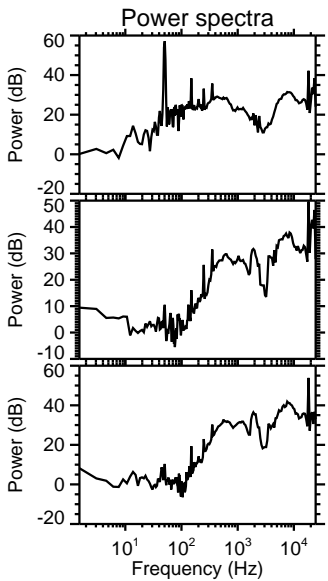
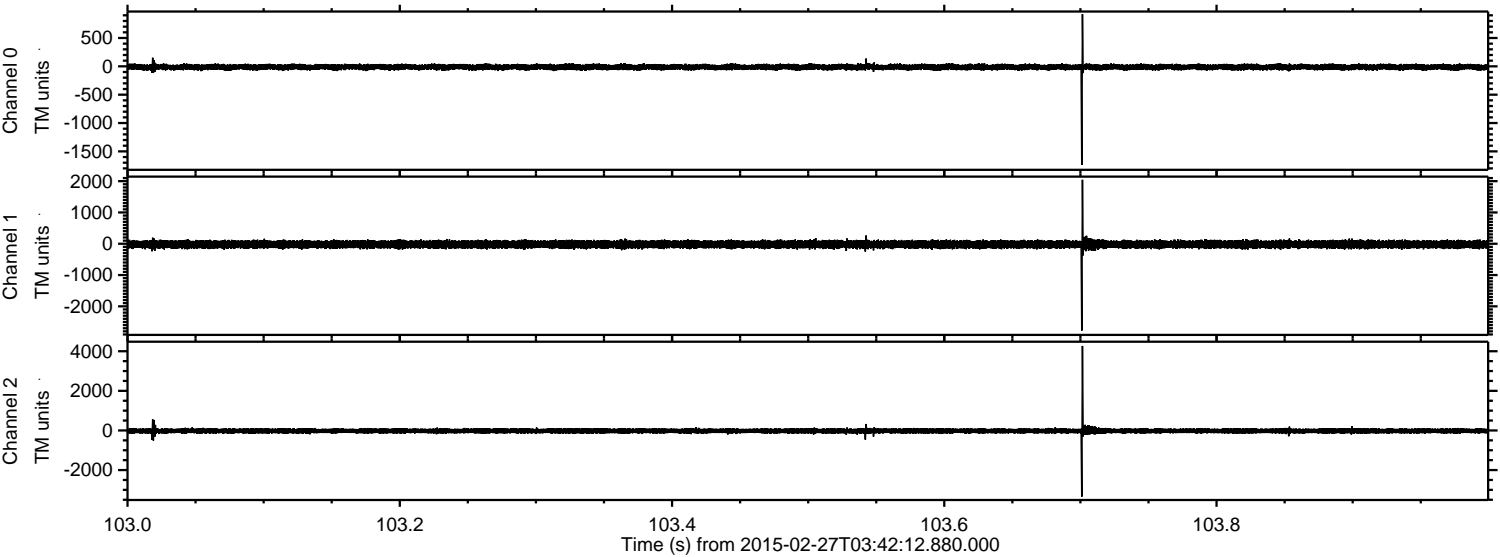
Processed Wed Mar 4 13:18:01 2015 by ELM ver.2012-10-06 from 001\_\_elm20150227\_034211\_\_dat00.bin





ELMAVAN 3D WAVEFORMS (Measured data sampled at 50 kHz) 49811 packets of 144 samples from 2015-02-27T03:42:12.880.000. Part 104/144

Processed Wed Mar 4 13:18:02 2015 by ELM ver.2012-10-06 from 001\_\_elm20150227\_034211\_\_dat00.bin



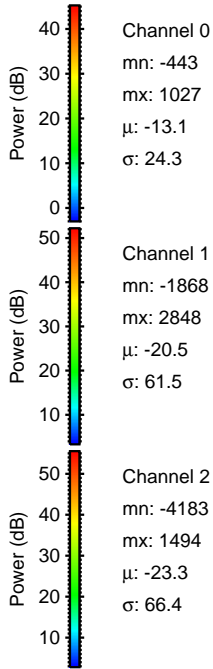
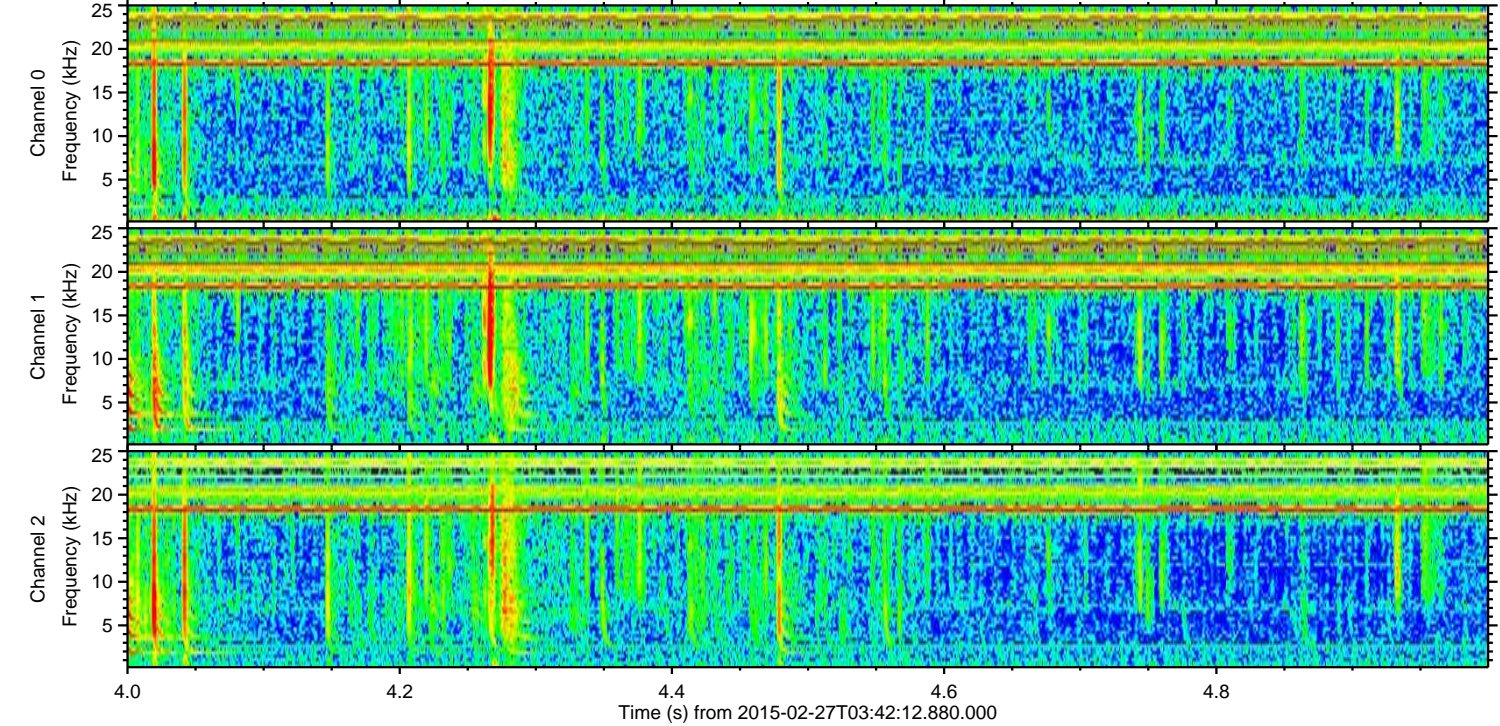
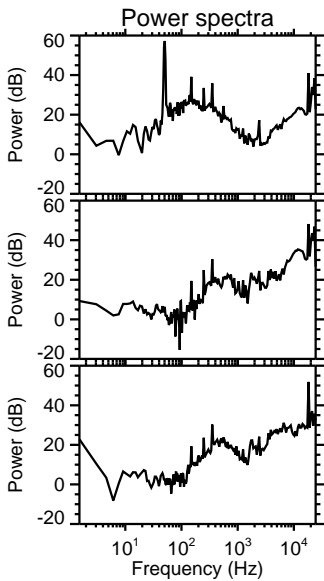
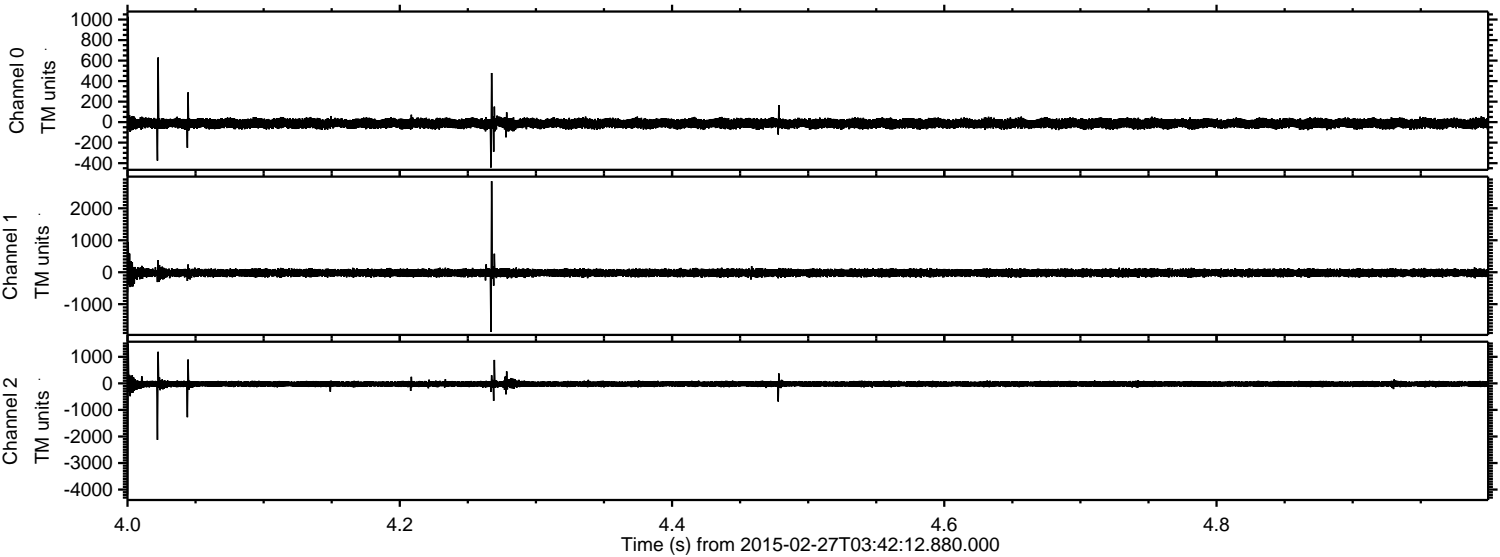
Channel 0  
mn: -1739  
mx: 921  
 $\mu$ : -13.1  
 $\sigma$ : 26.4

Channel 1  
mn: -2775  
mx: 2043  
 $\mu$ : -20.6  
 $\sigma$ : 62.5

Channel 2  
mn: -3345  
mx: 4269  
 $\mu$ : -23.2  
 $\sigma$ : 75.9



Processed Wed Mar 4 13:18:03 2015 by ELM ver.2012-10-06 from 001\_\_elm20150227\_034211\_\_dat00.bin



Channel 0  
mn: -443  
mx: 1027  
 $\mu$ : -13.1  
 $\sigma$ : 24.3

Channel 1  
mn: -1868  
mx: 2848  
 $\mu$ : -20.5  
 $\sigma$ : 61.5

Channel 2  
mn: -4183  
mx: 1494  
 $\mu$ : -23.3  
 $\sigma$ : 66.4



Processed Wed Mar 4 13:18:04 2015 by ELM ver.2012-10-06 from 001\_\_elm20150227\_034211\_\_dat00.bin

