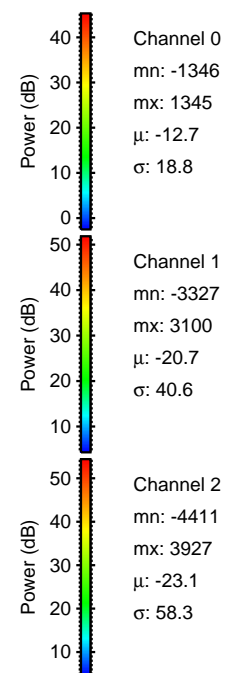
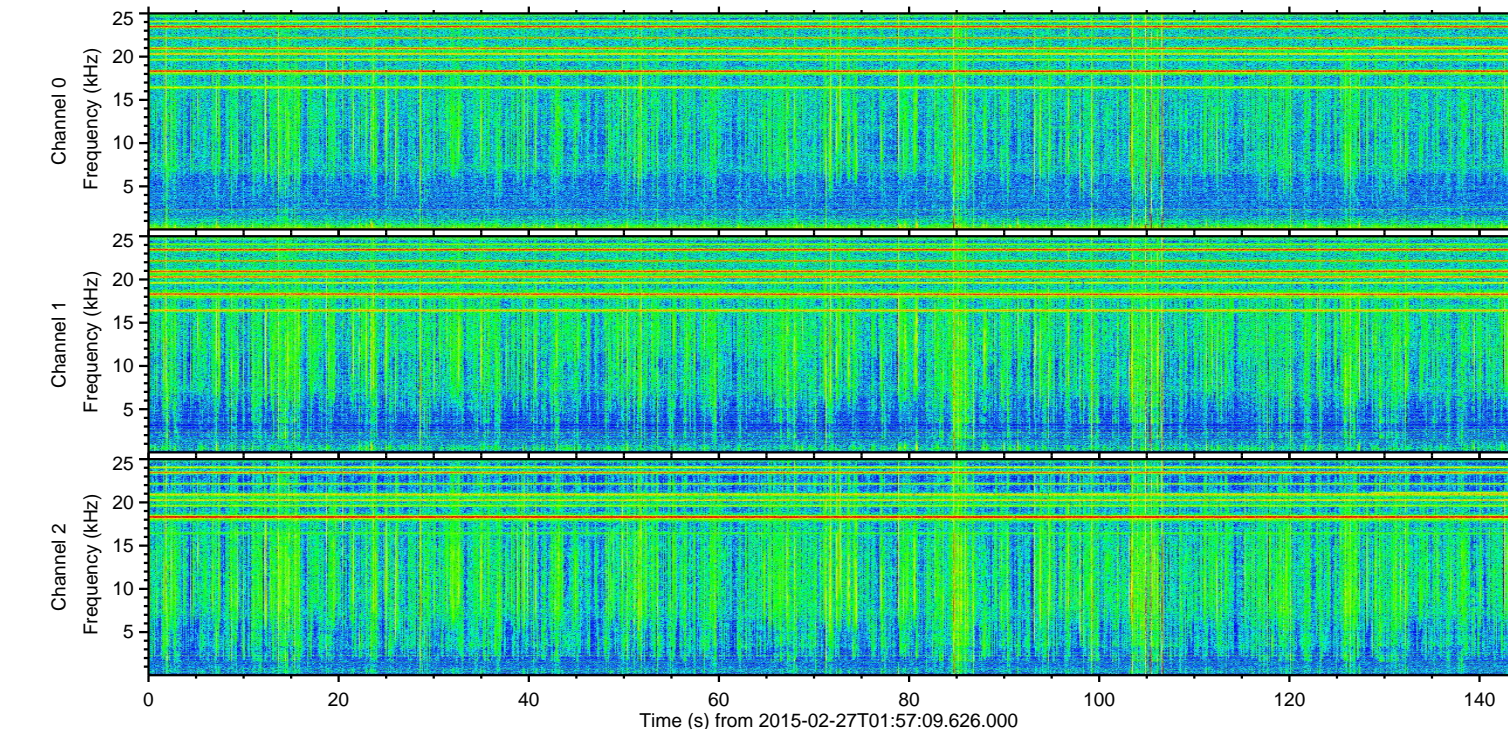
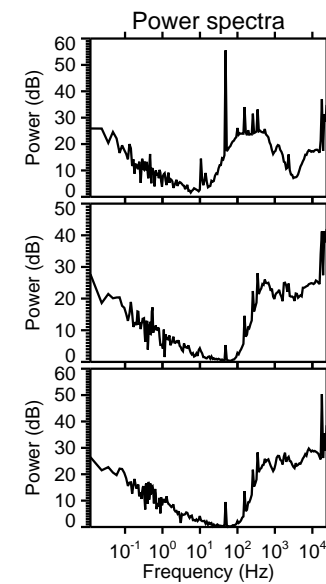
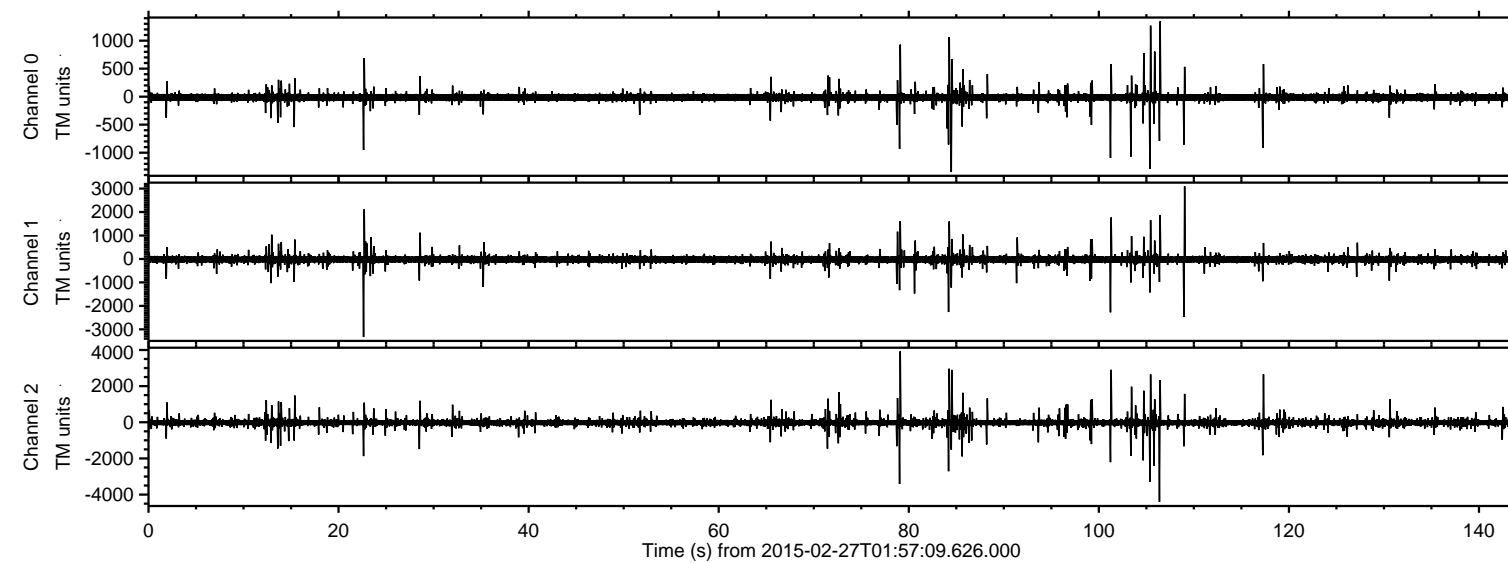


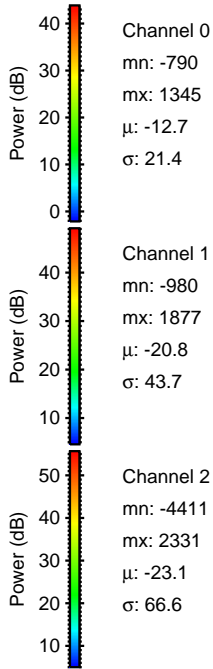
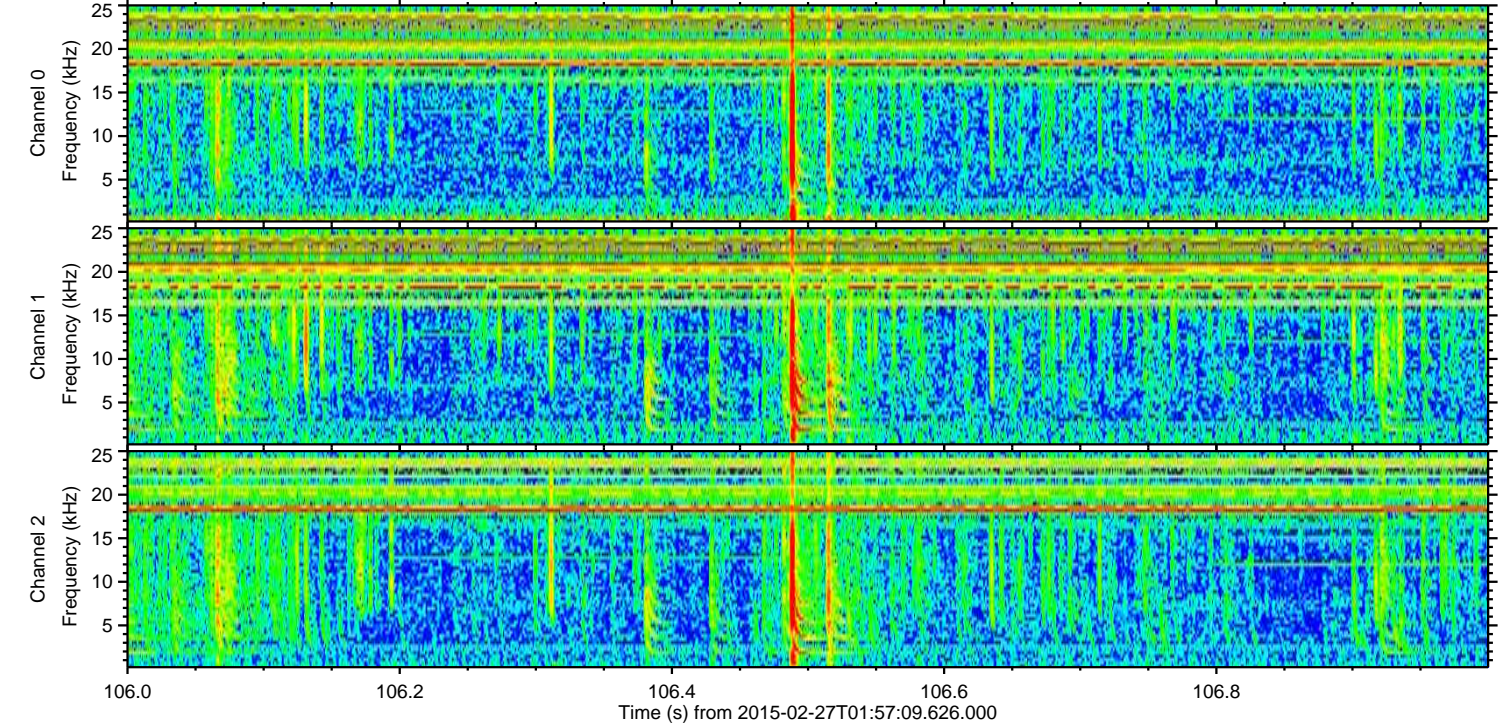
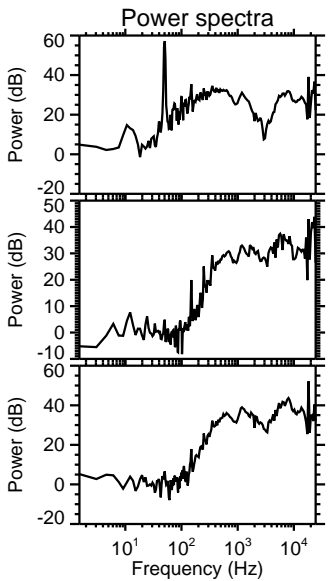
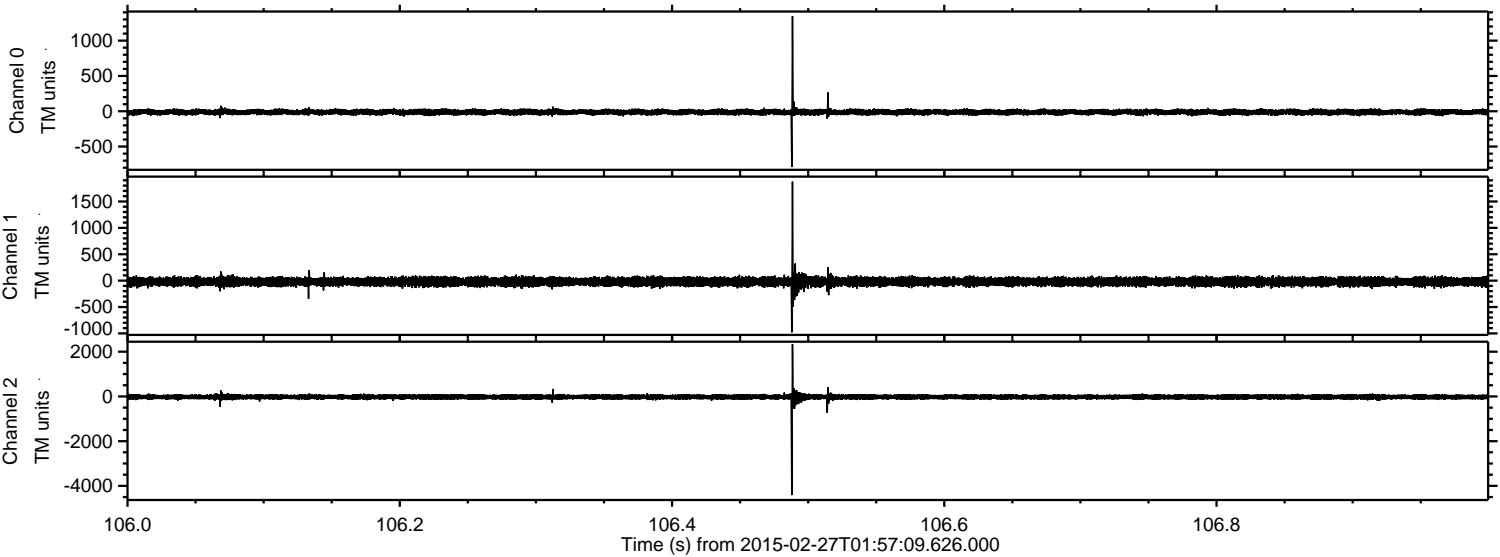
ELMAVAN 3D WAVEFORMS (Measured data sampled at 50 kHz) 49713 packets of 144 samples from 2015-02-27T01:57:09.626.000.

Processed Wed Mar 4 12:42:01 2015 by ELM ver.2012-10-06 from 001__elm20150227_015708__dat00.bin



ELMAVAN 3D WAVEFORMS (Measured data sampled at 50 kHz) 49713 packets of 144 samples from 2015-02-27T01:57:09.626.000. Part 107/144

Processed Wed Mar 4 12:42:16 2015 by ELM ver.2012-10-06 from 001__elm20150227_015708__dat00.bin

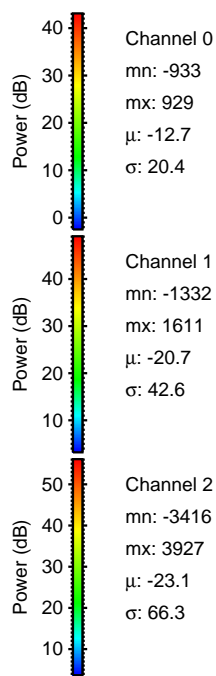
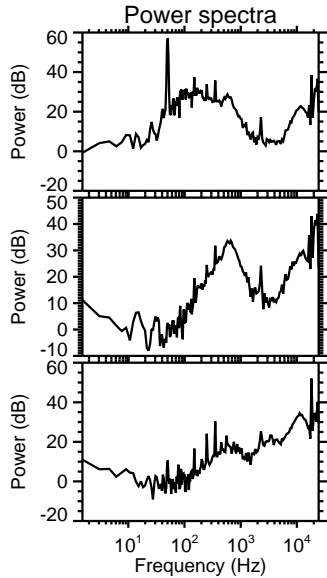
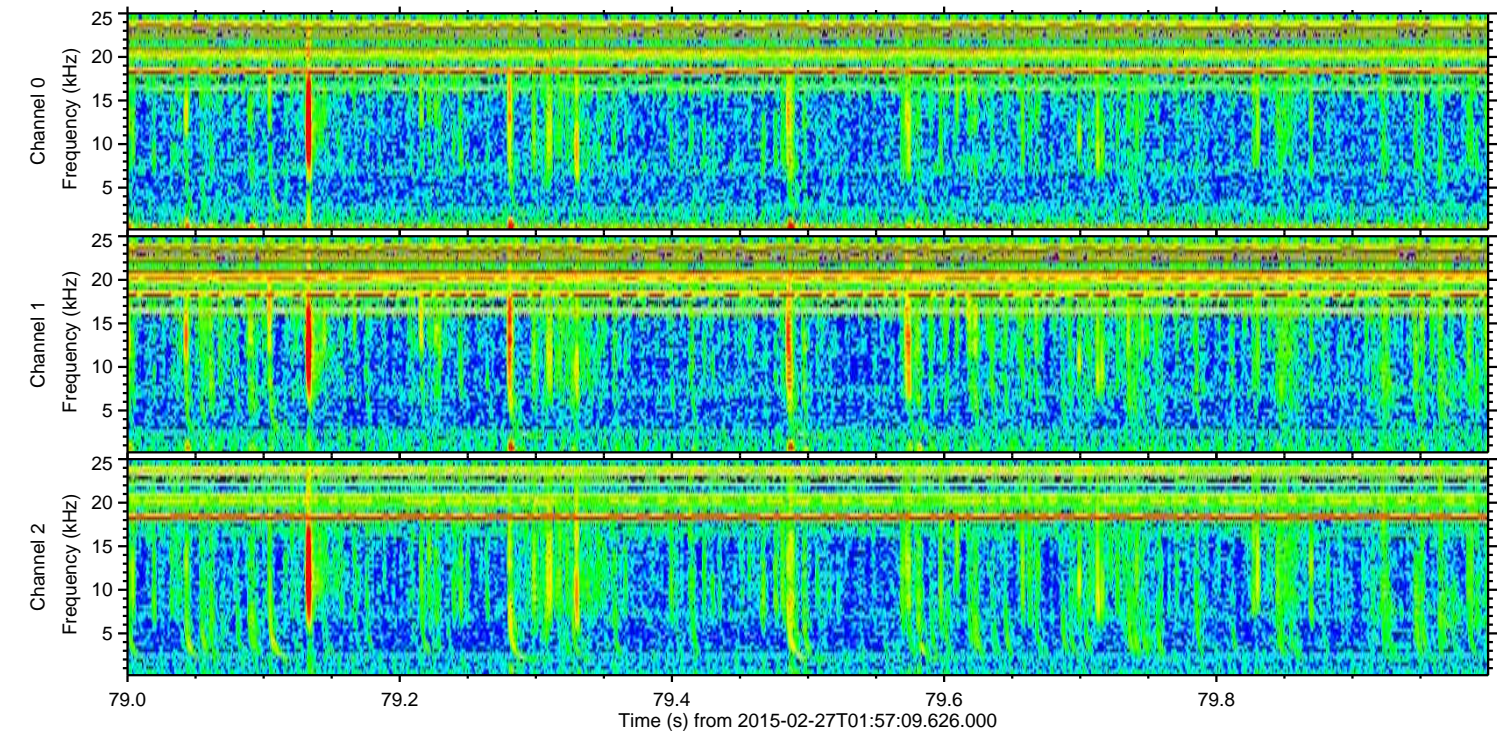
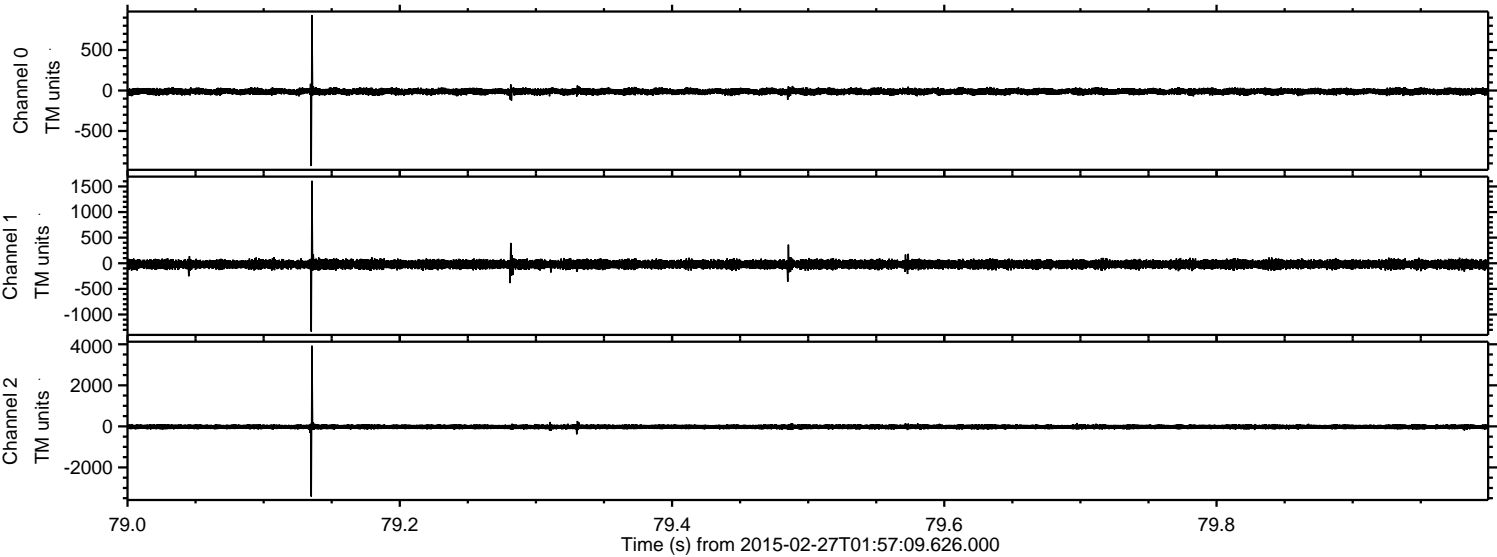


Channel 0
mn: -790
mx: 1345
 μ : -12.7
 σ : 21.4

Channel 1
mn: -980
mx: 1877
 μ : -20.8
 σ : 43.7

Channel 2
mn: -4411
mx: 2331
 μ : -23.1
 σ : 66.6

Processed Wed Mar 4 12:42:18 2015 by ELM ver.2012-10-06 from 001__elm20150227_015708__dat00.bin



Power spectra

Channel 0

mn: -933
mx: 929
 μ : -12.7
 σ : 20.4

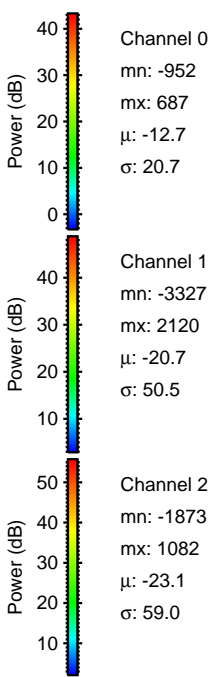
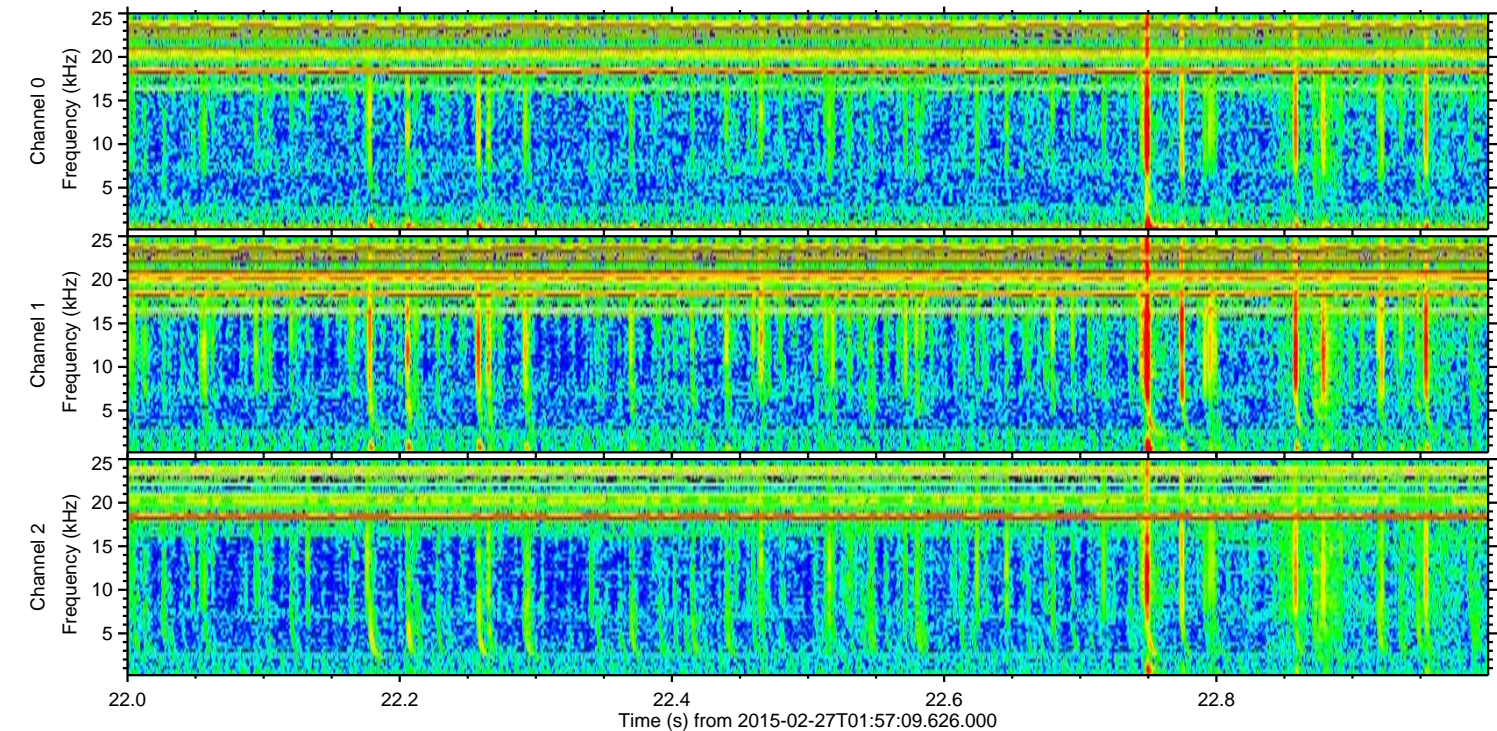
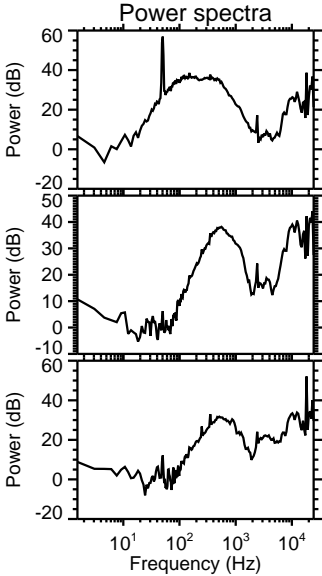
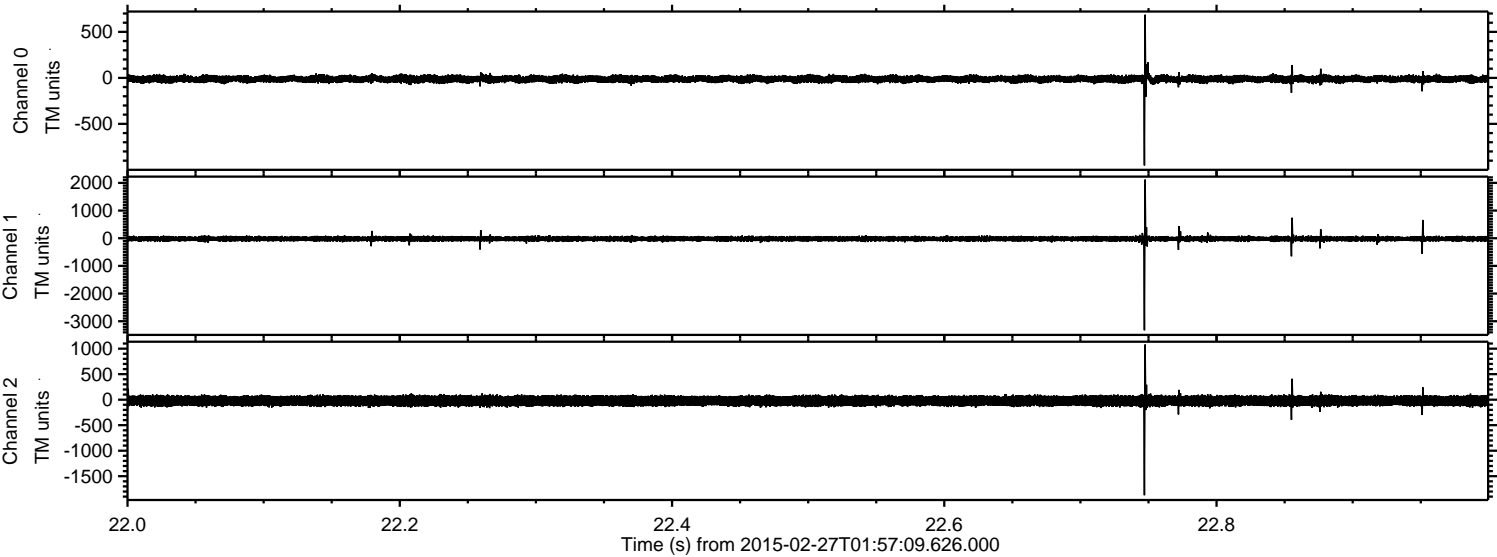
Channel 1

mn: -1332
mx: 1611
 μ : -20.7
 σ : 42.6

Channel 2

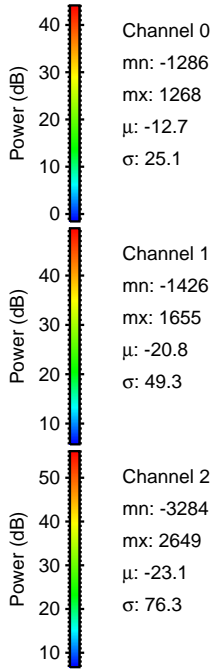
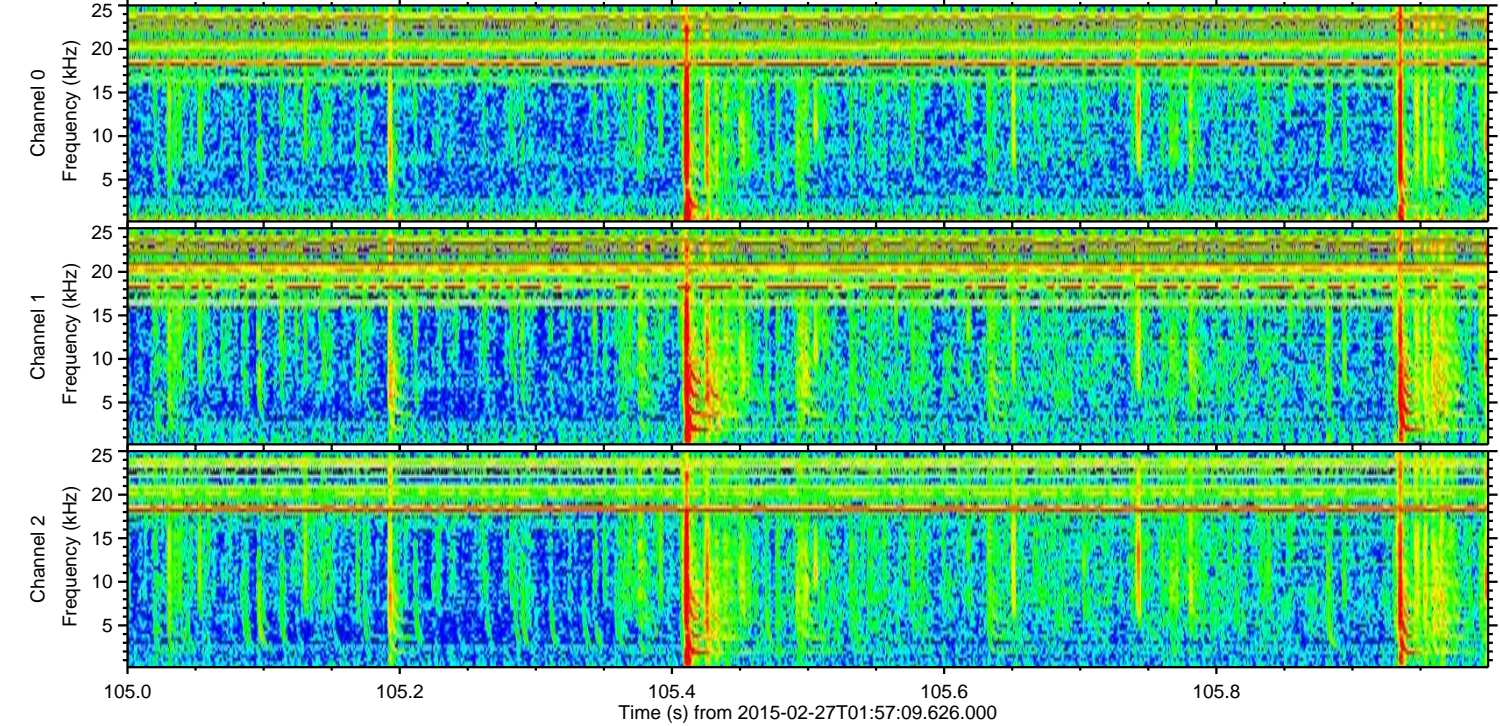
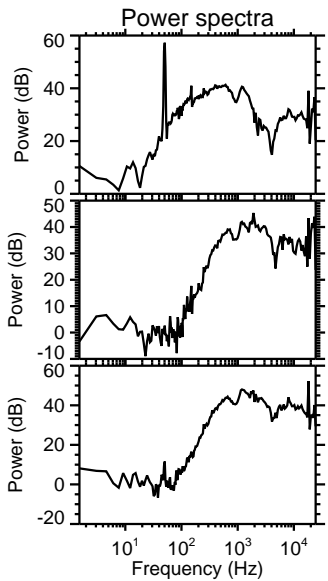
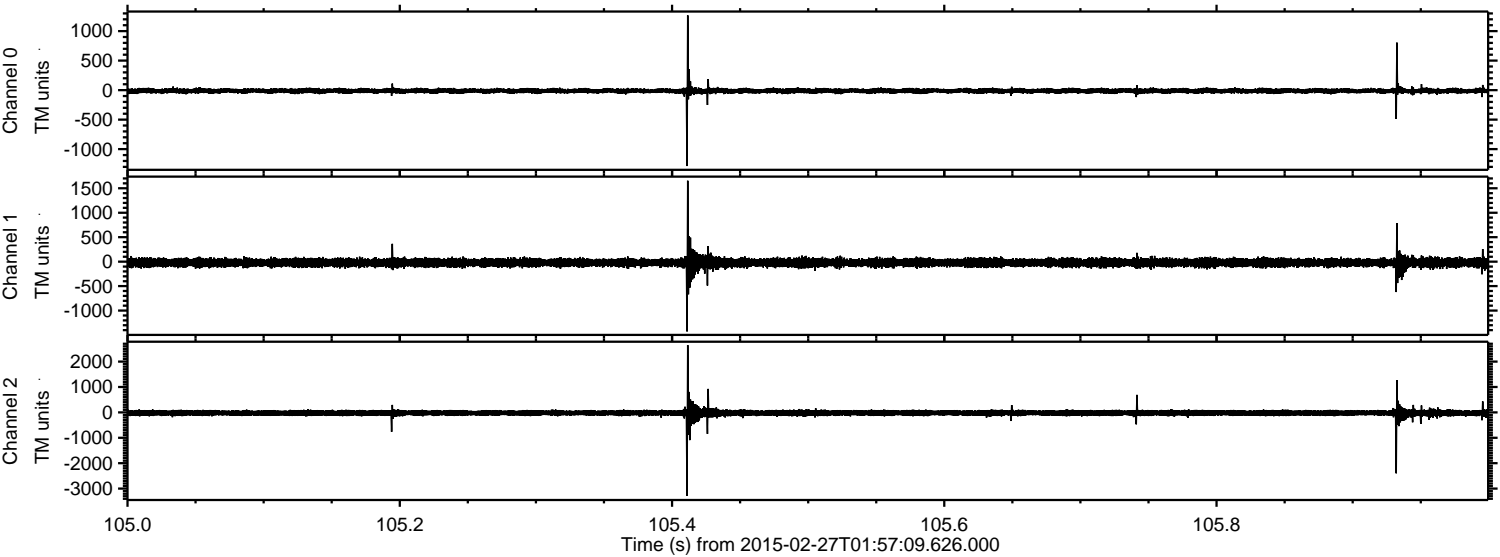
mn: -3416
mx: 3927
 μ : -23.1
 σ : 66.3

Processed Wed Mar 4 12:42:19 2015 by ELM ver.2012-10-06 from 001__elm20150227_015708__dat00.bin



ELMAVAN 3D WAVEFORMS (Measured data sampled at 50 kHz) 49713 packets of 144 samples from 2015-02-27T01:57:09.626.000. Part 106/144

Processed Wed Mar 4 12:42:20 2015 by ELM ver.2012-10-06 from 001__elm20150227_015708__dat00.bin



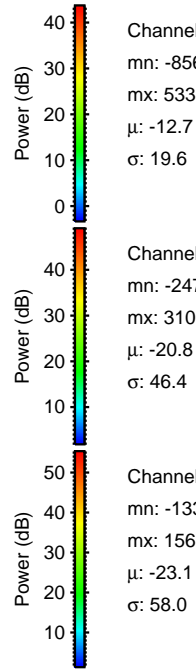
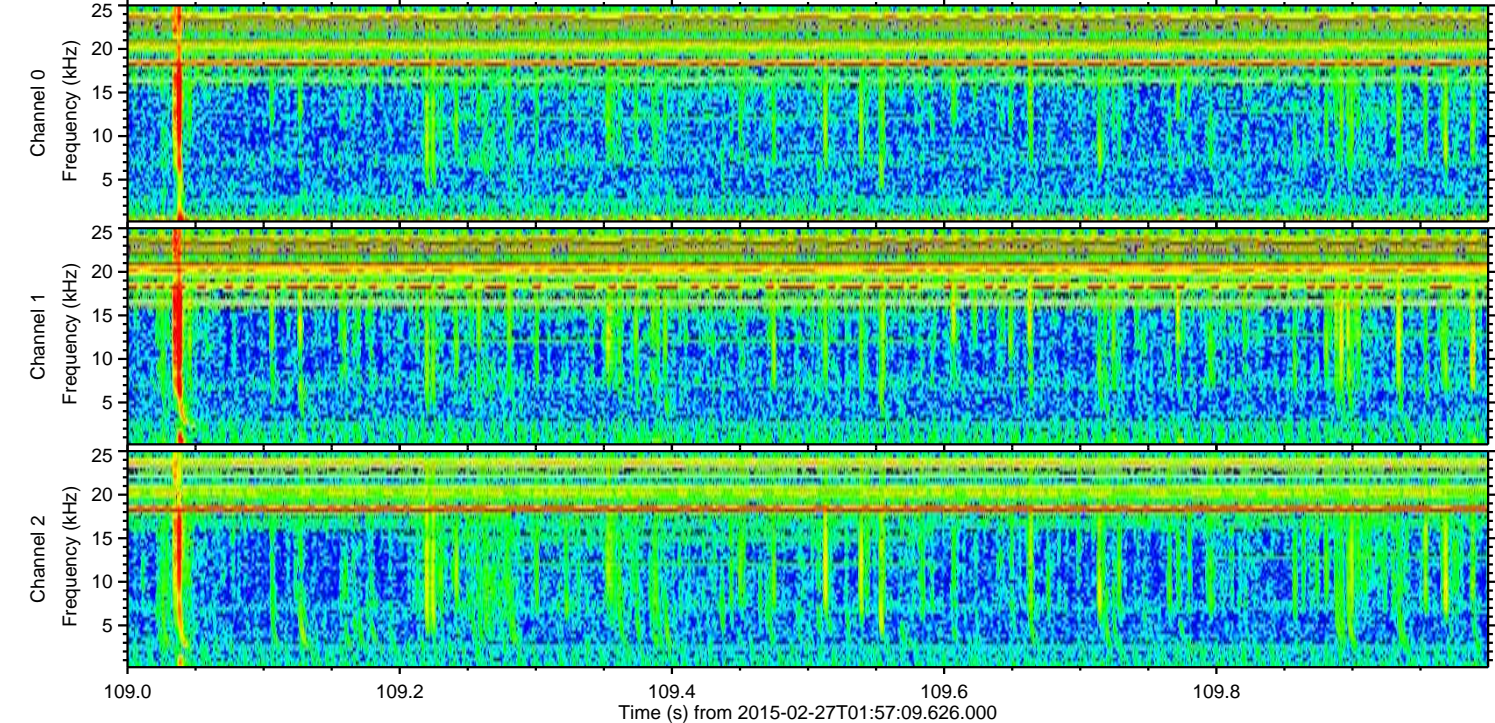
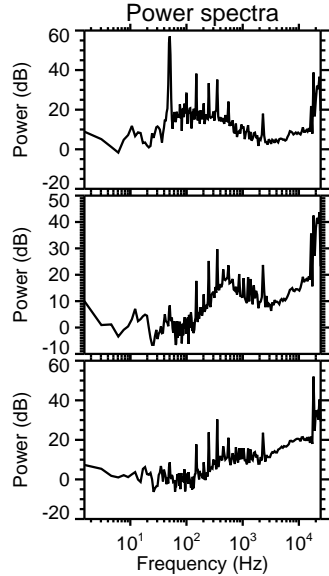
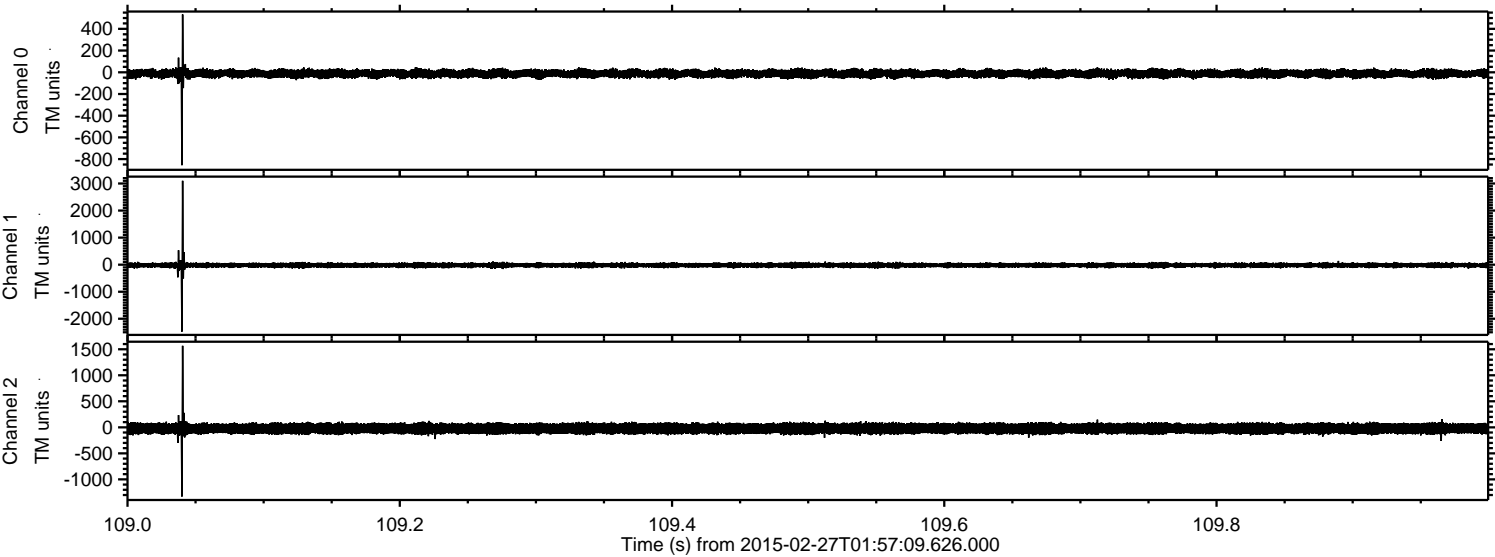
Channel 0
mn: -1286
mx: 1268
 μ : -12.7
 σ : 25.1

Channel 1
mn: -1426
mx: 1655
 μ : -20.8
 σ : 49.3

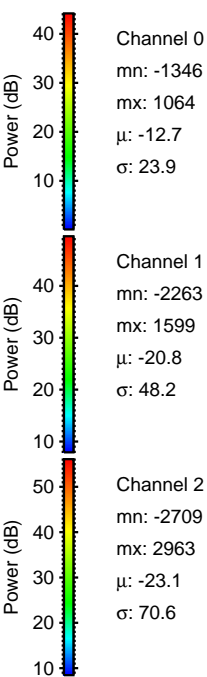
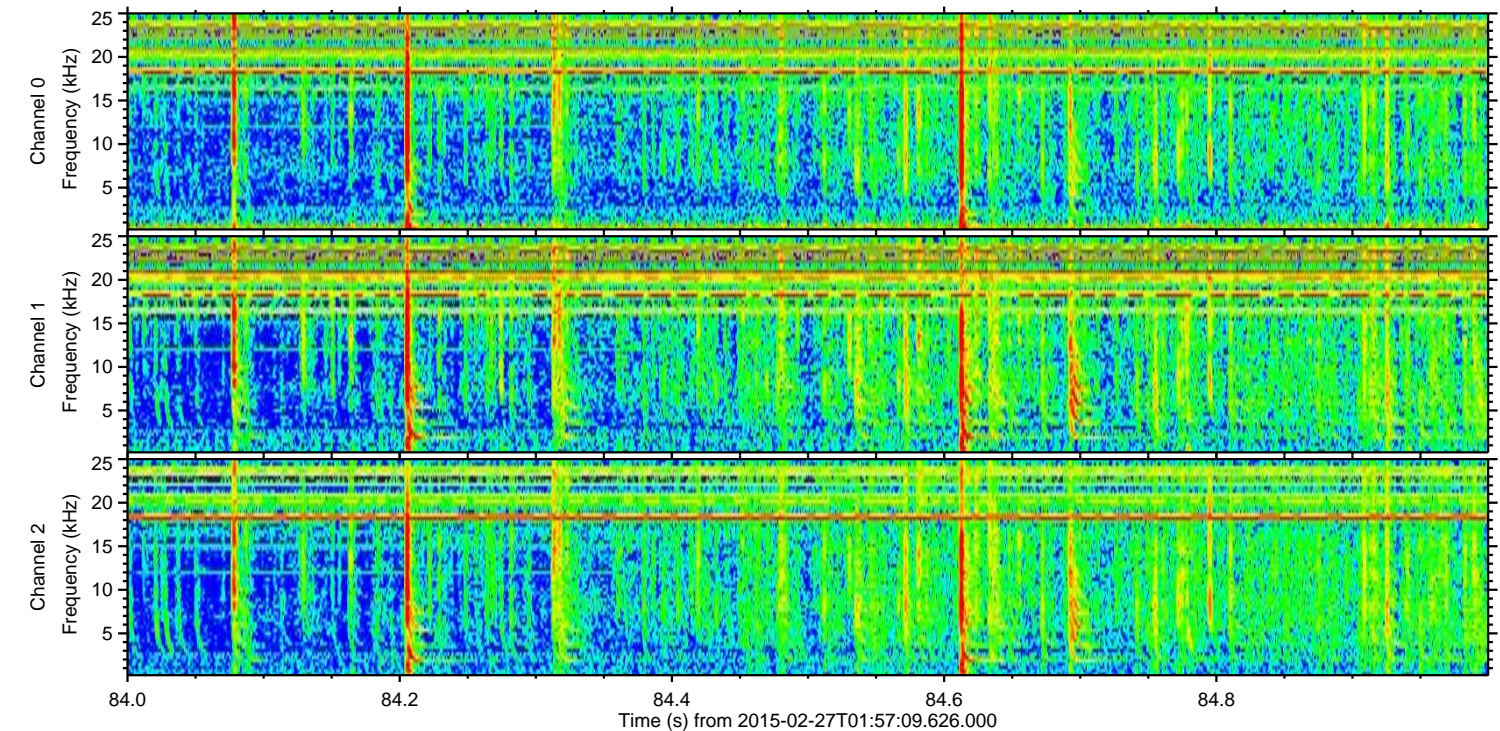
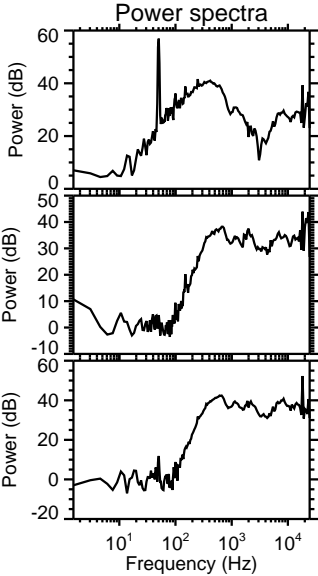
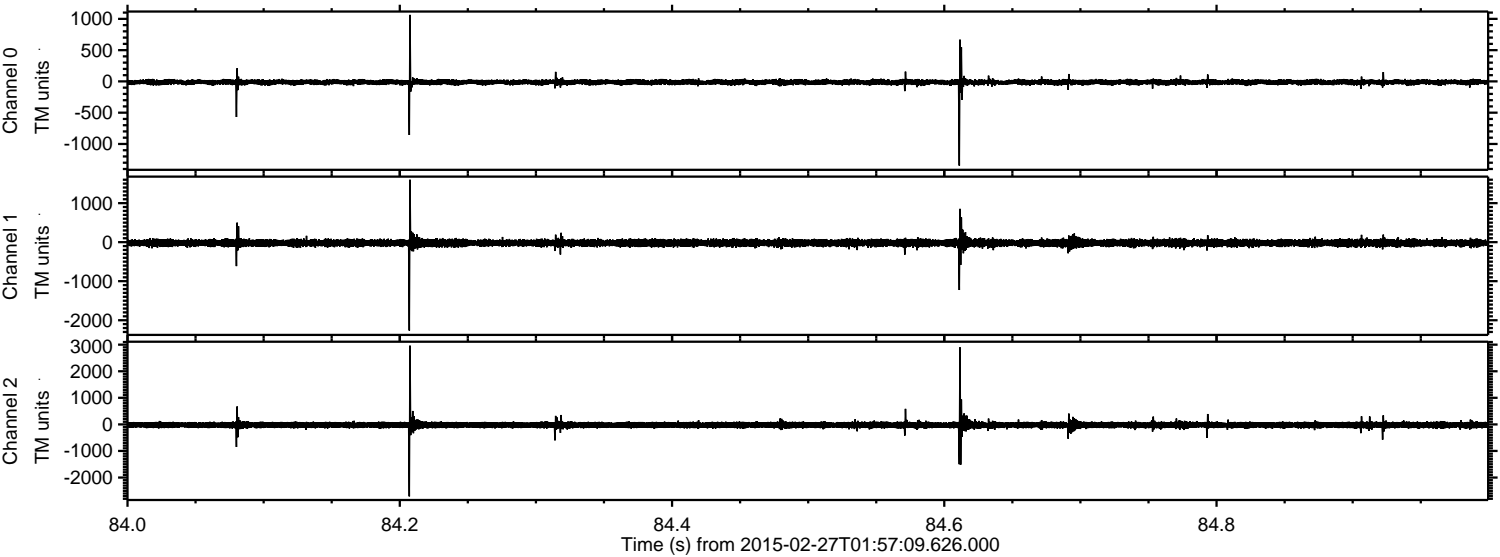
Channel 2
mn: -3284
mx: 2649
 μ : -23.1
 σ : 76.3

ELMAVAN 3D WAVEFORMS (Measured data sampled at 50 kHz) 49713 packets of 144 samples from 2015-02-27T01:57:09.626.000. Part 110/144

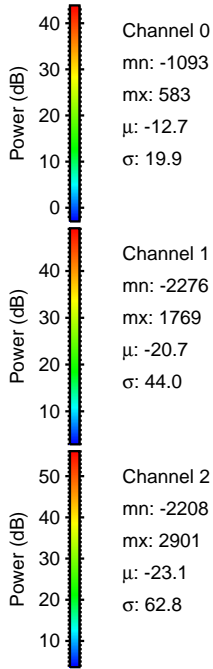
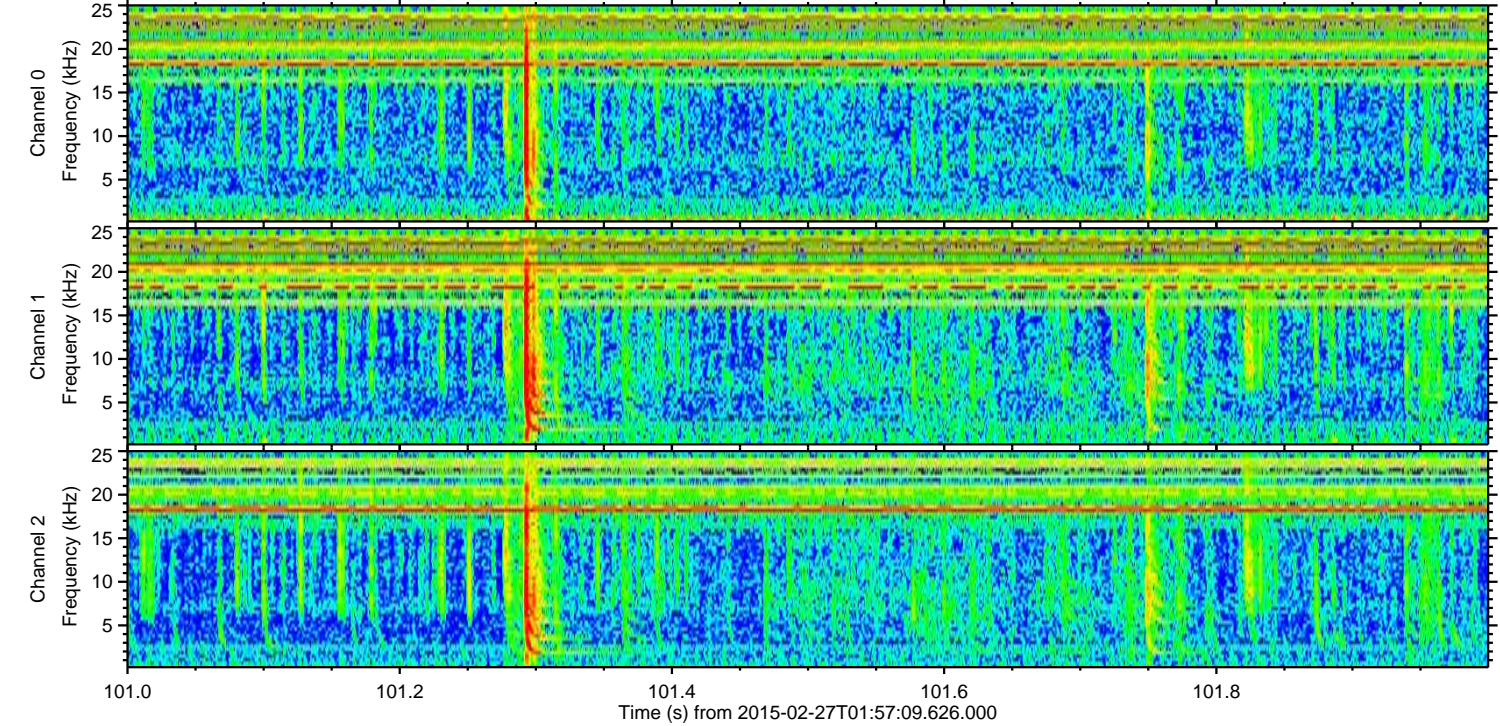
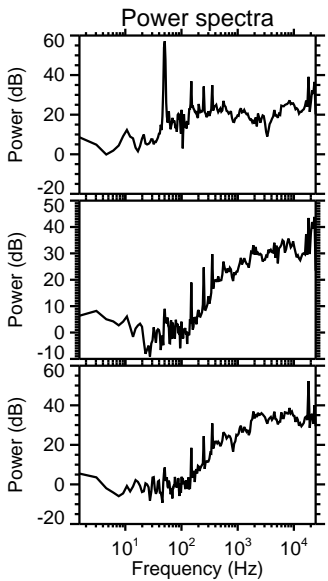
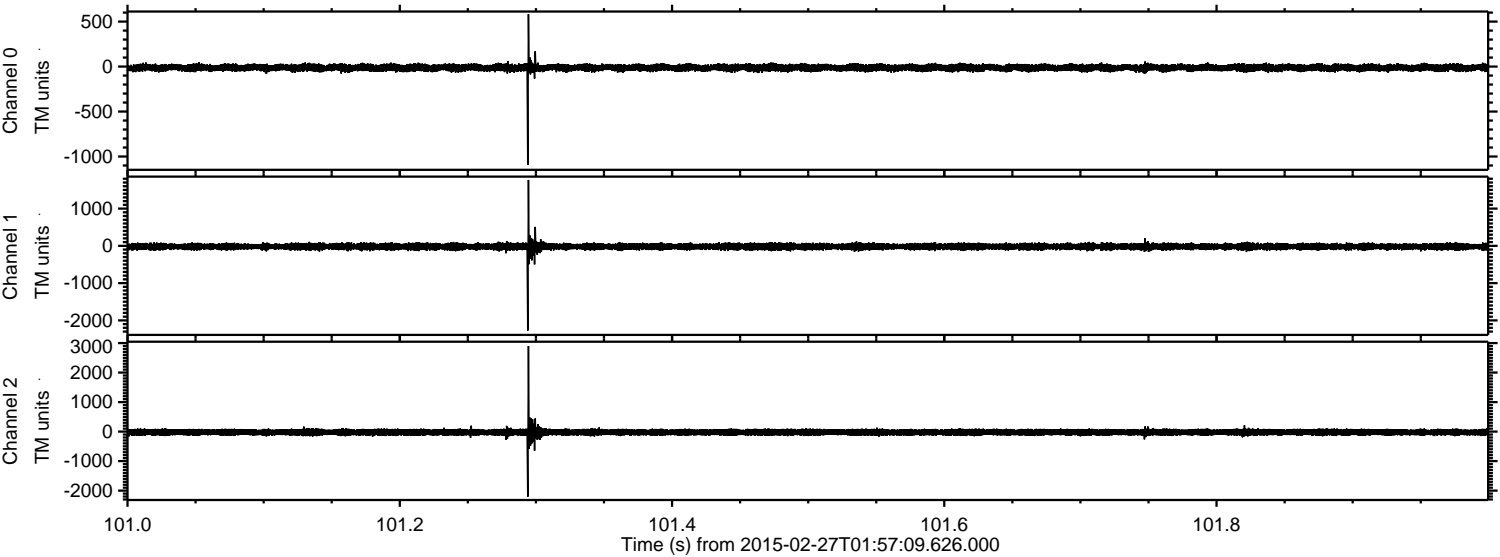
Processed Wed Mar 4 12:42:21 2015 by ELM ver.2012-10-06 from 001__elm20150227_015708__dat00.bin



Processed Wed Mar 4 12:42:22 2015 by ELM ver.2012-10-06 from 001__elm20150227_015708__dat00.bin



Processed Wed Mar 4 12:42:23 2015 by ELM ver.2012-10-06 from 001__elm20150227_015708__dat00.bin



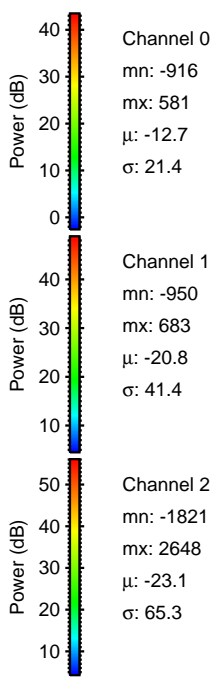
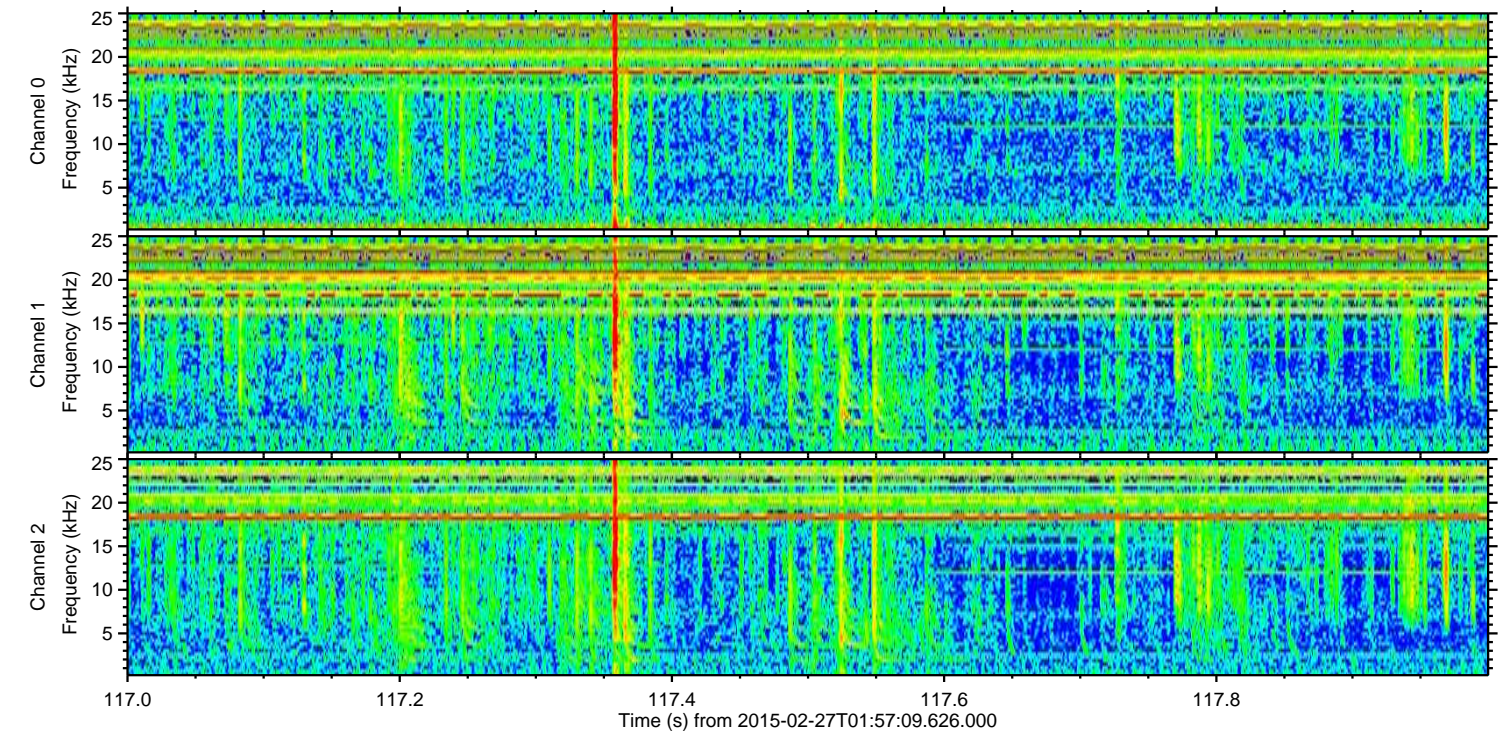
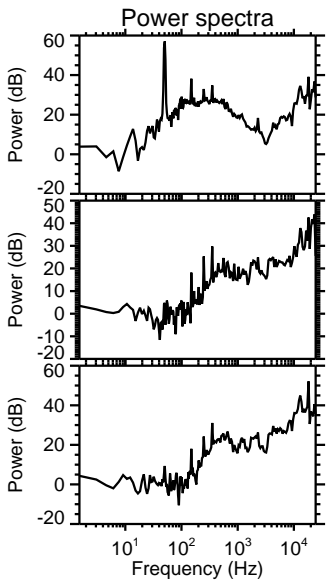
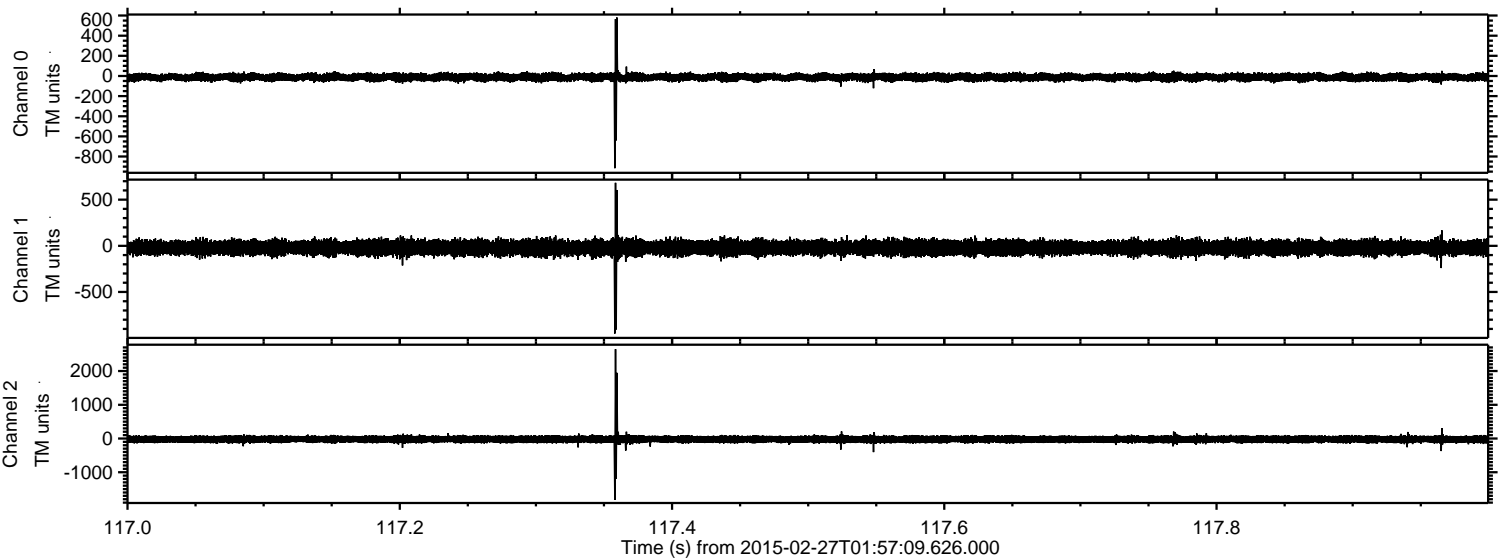
Channel 0
mn: -1093
mx: 583
 μ : -12.7
 σ : 19.9

Channel 1
mn: -2276
mx: 1769
 μ : -20.7
 σ : 44.0

Channel 2
mn: -2208
mx: 2901
 μ : -23.1
 σ : 62.8

ELMAVAN 3D WAVEFORMS (Measured data sampled at 50 kHz) 49713 packets of 144 samples from 2015-02-27T01:57:09.626.000. Part 118/144

Processed Wed Mar 4 12:42:24 2015 by ELM ver.2012-10-06 from 001__elm20150227_015708__dat00.bin



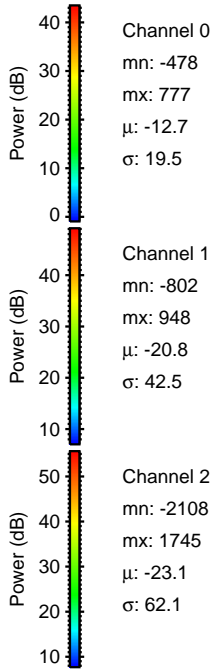
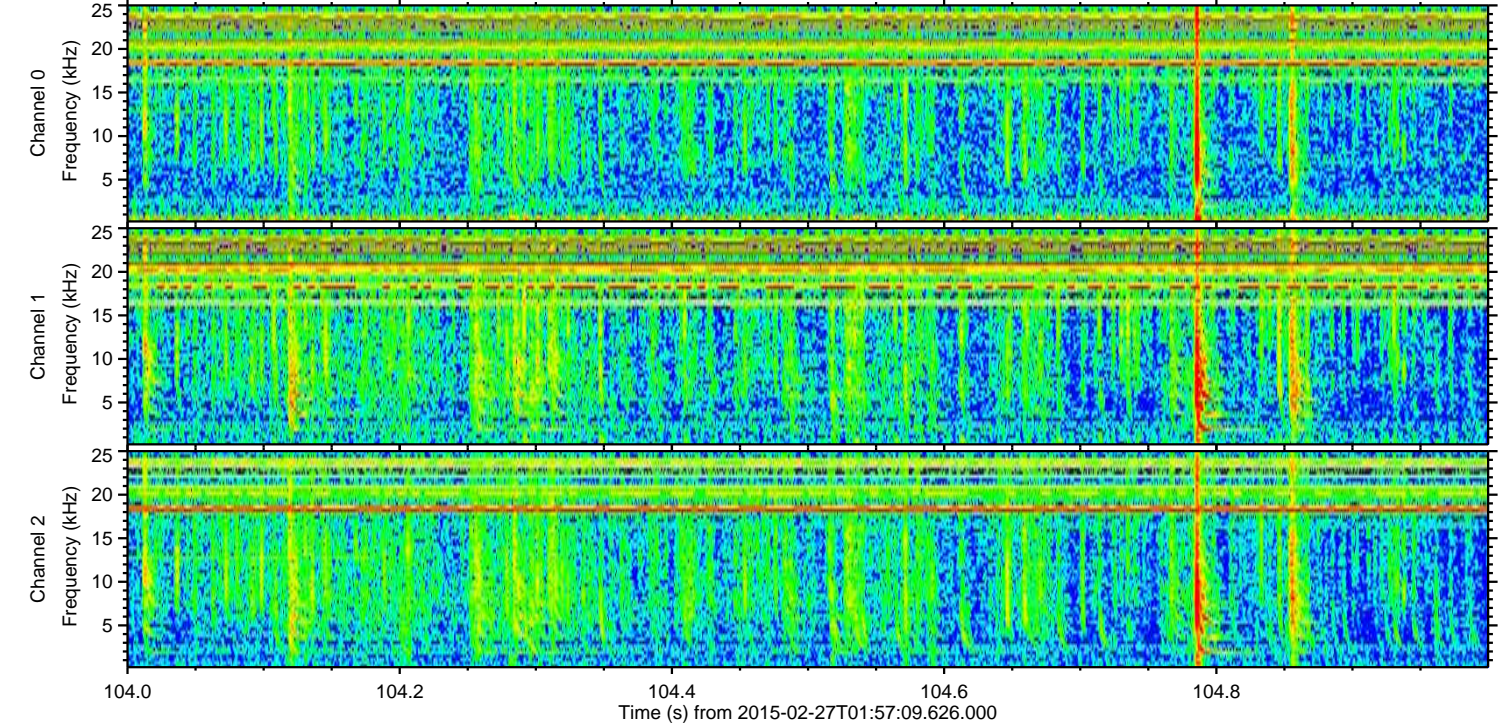
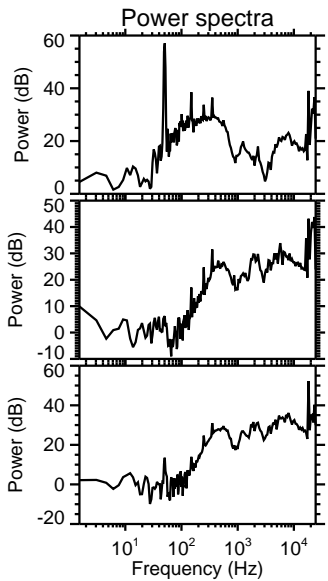
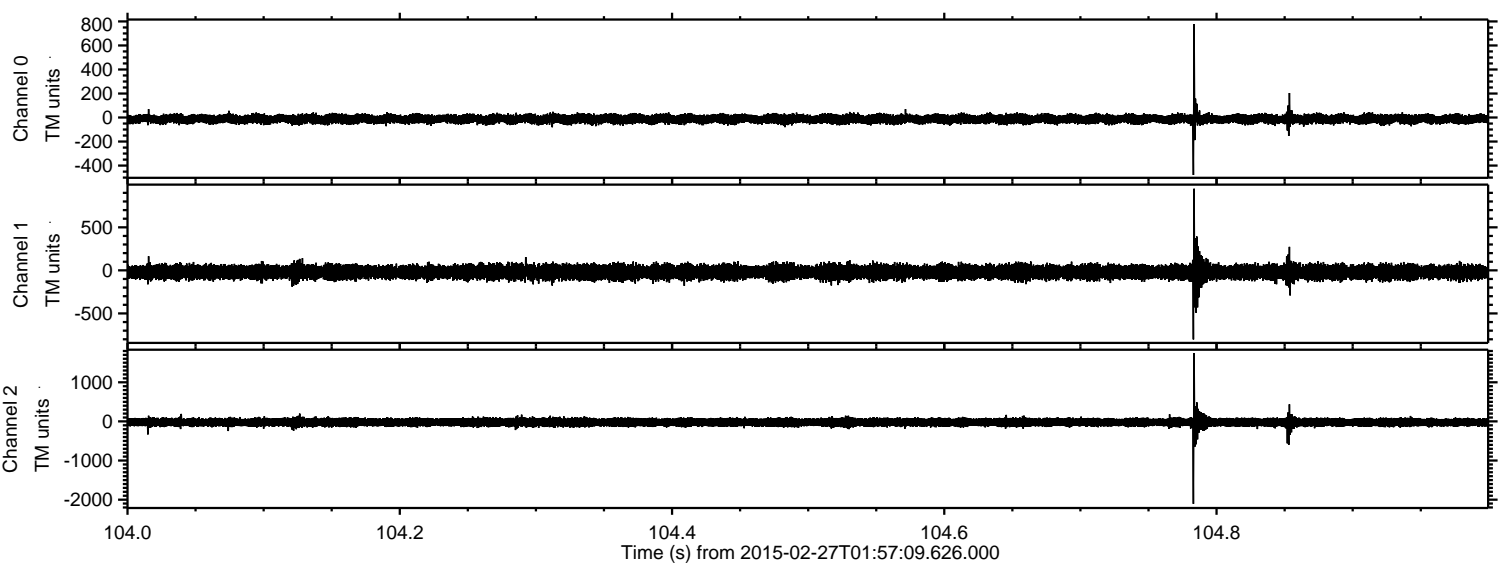
Channel 0
mn: -916
mx: 581
 μ : -12.7
 σ : 21.4

Channel 1
mn: -950
mx: 683
 μ : -20.8
 σ : 41.4

Channel 2
mn: -1821
mx: 2648
 μ : -23.1
 σ : 65.3

ELMAVAN 3D WAVEFORMS (Measured data sampled at 50 kHz) 49713 packets of 144 samples from 2015-02-27T01:57:09.626.000. Part 105/144

Processed Wed Mar 4 12:42:25 2015 by ELM ver.2012-10-06 from 001__elm20150227_015708__dat00.bin



Channel 0
mn: -478
mx: 777
 μ : -12.7
 σ : 19.5

Channel 1
mn: -802
mx: 948
 μ : -20.8
 σ : 42.5

Channel 2
mn: -2108
mx: 1745
 μ : -23.1
 σ : 62.1

Processed Wed Mar 4 12:42:26 2015 by ELM ver.2012-10-06 from 001__elm20150227_015708__dat00.bin

