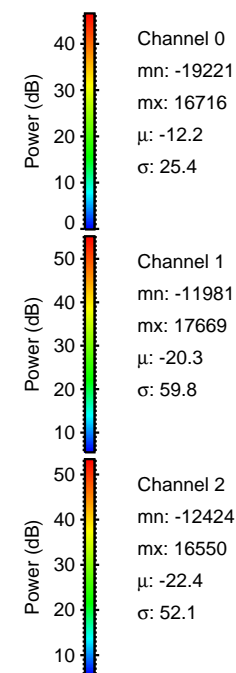
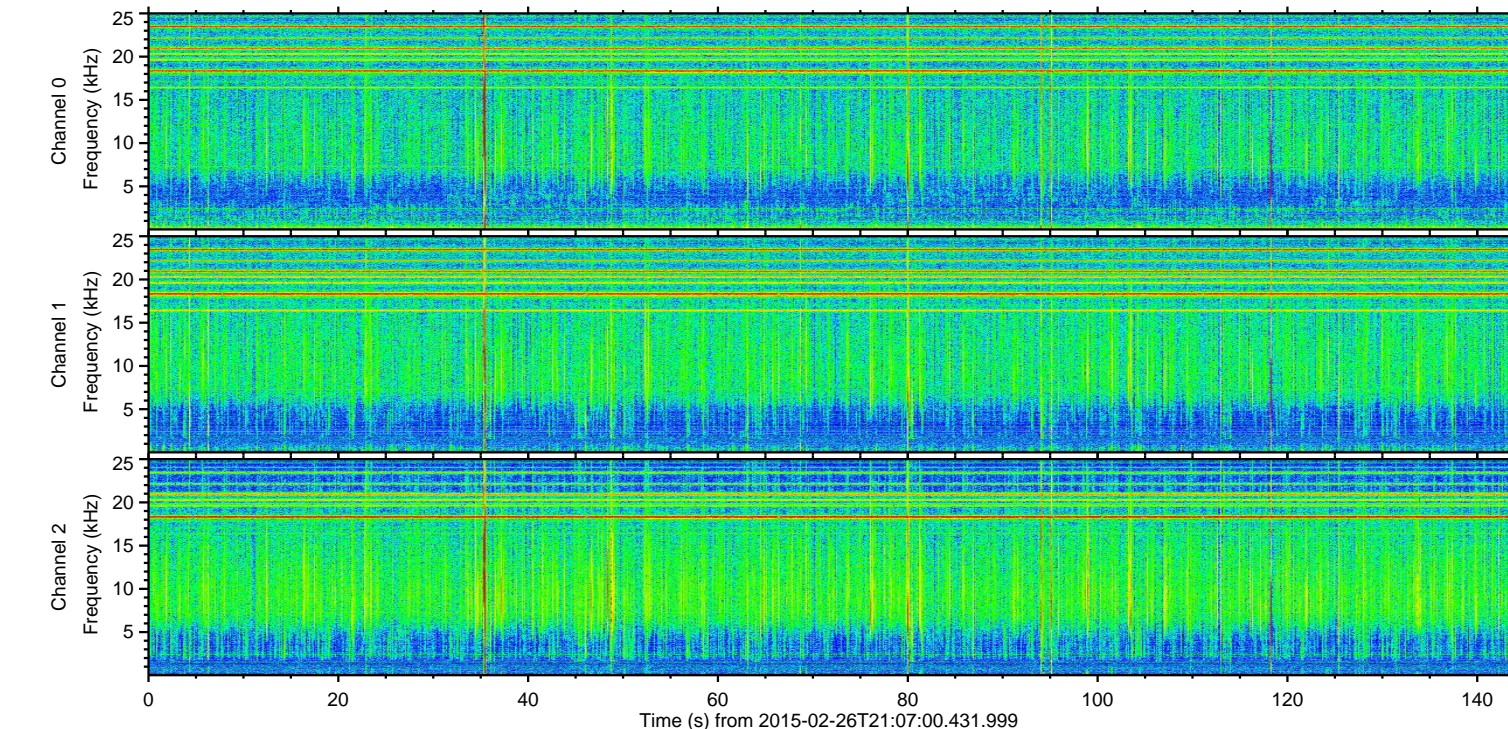
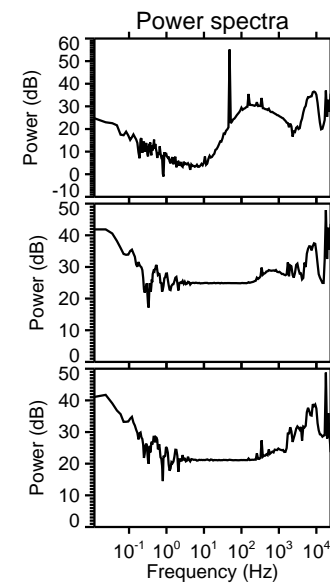
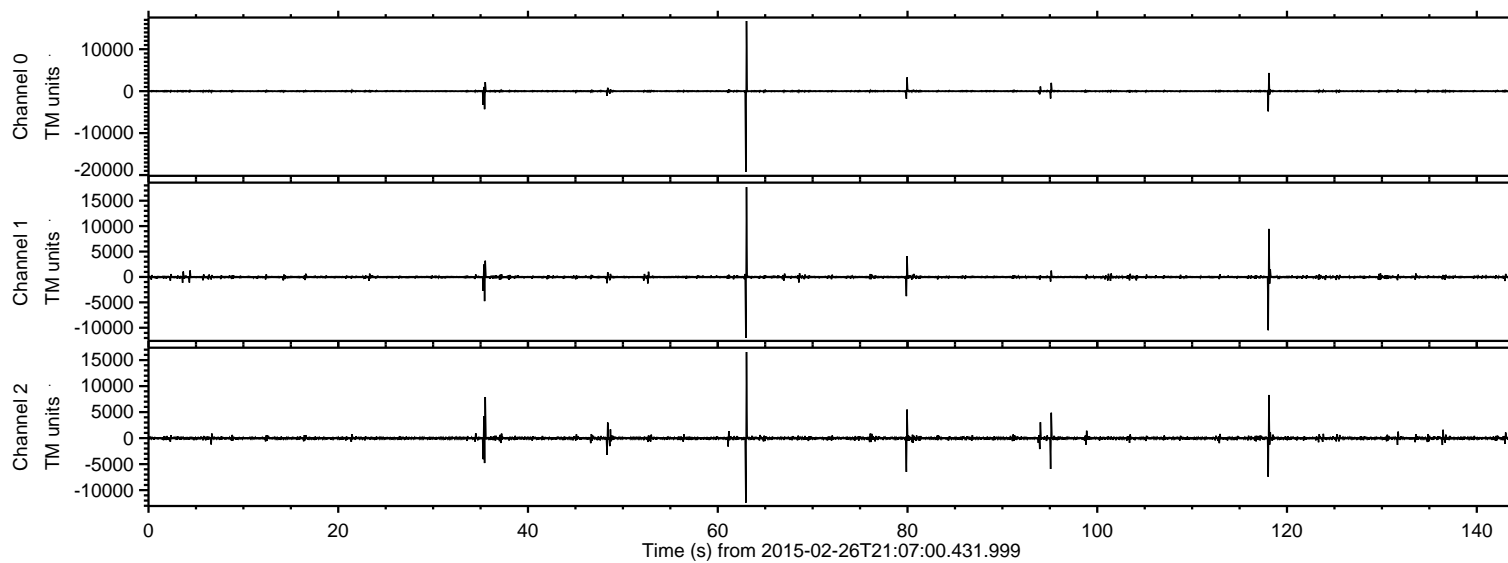
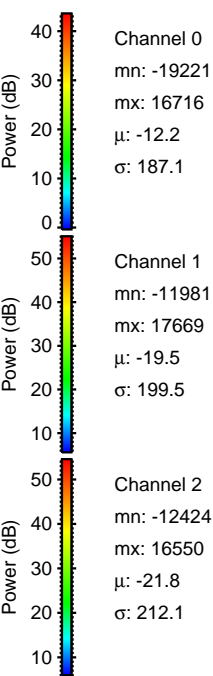
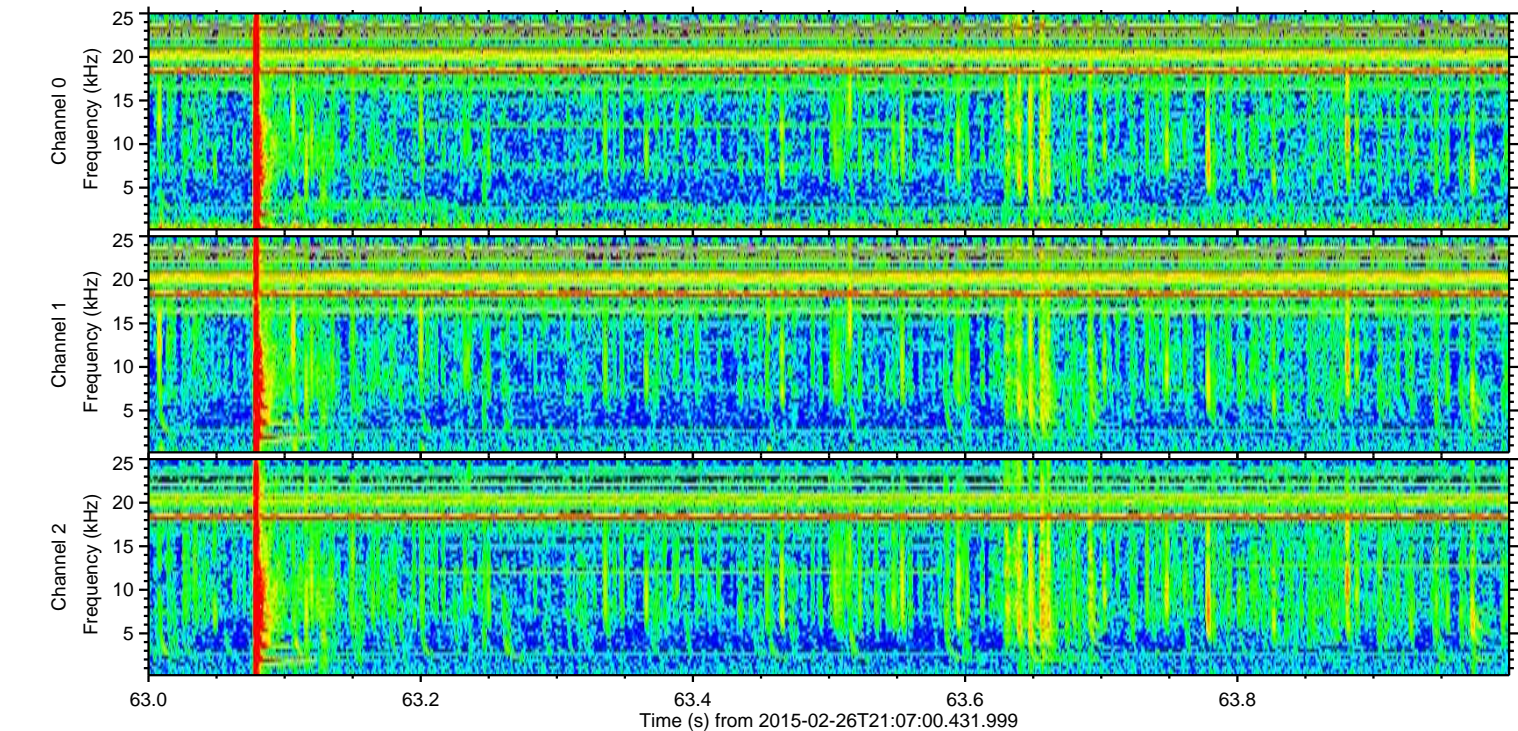
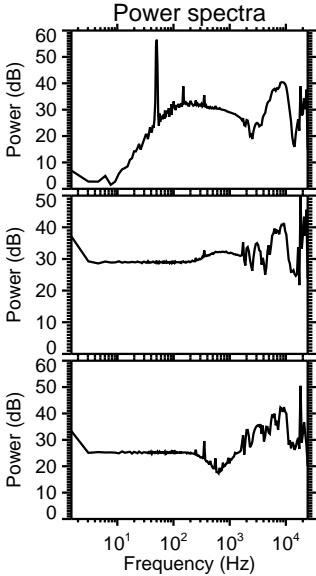
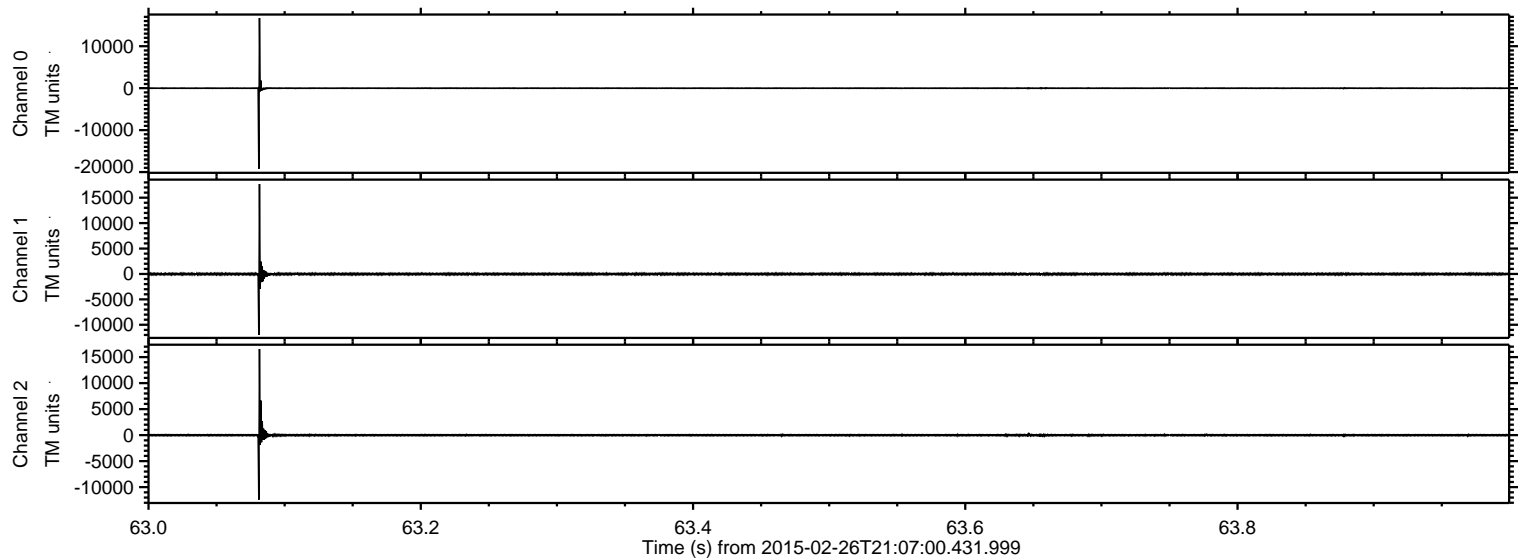


ELMAVAN 3D WAVEFORMS (Measured data sampled at 50 kHz) 49796 packets of 144 samples from 2015-02-26T21:07:00.431.999.

Processed Wed Mar 4 10:48:34 2015 by ELM ver.2012-10-06 from 001__elm20150226_210659__dat00.bin

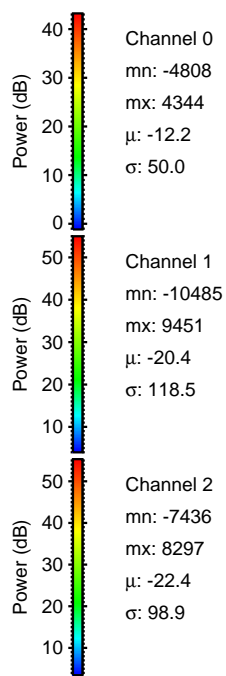
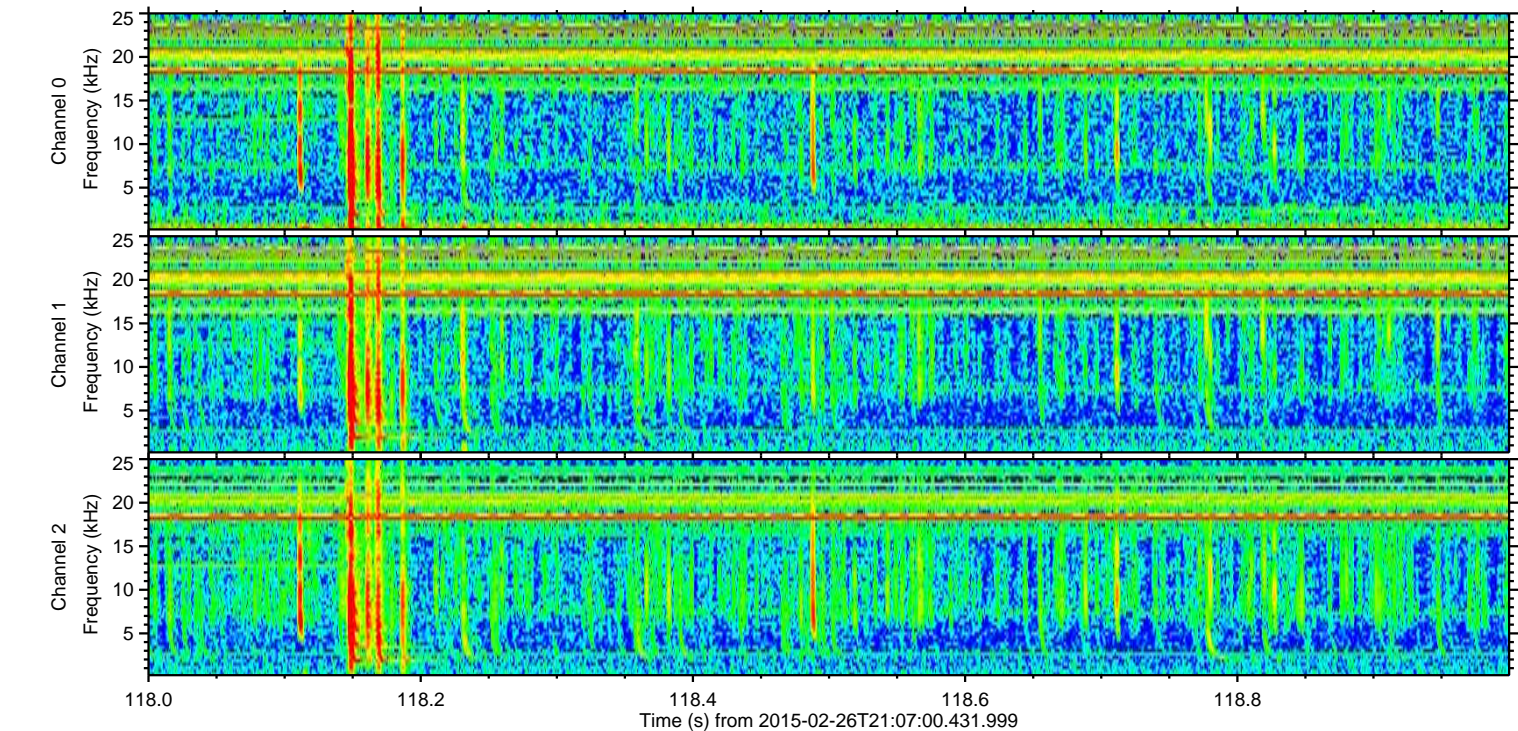
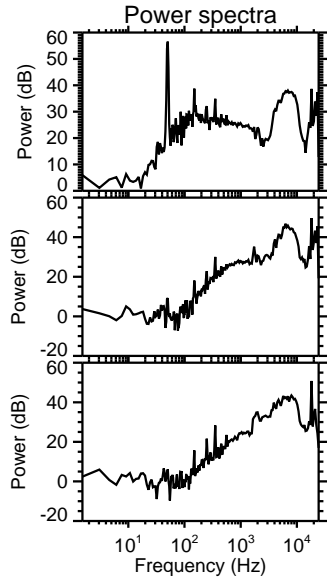
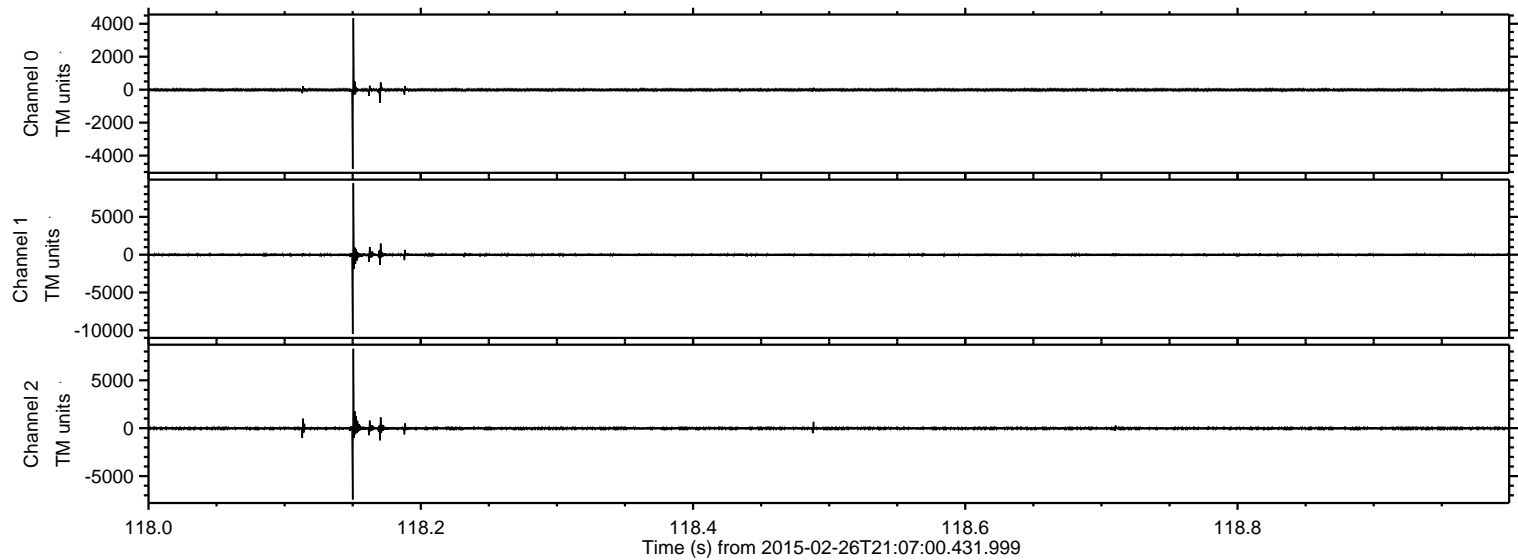


Processed Wed Mar 4 10:48:45 2015 by ELM ver.2012-10-06 from 001__elm20150226_210659__dat00.bin

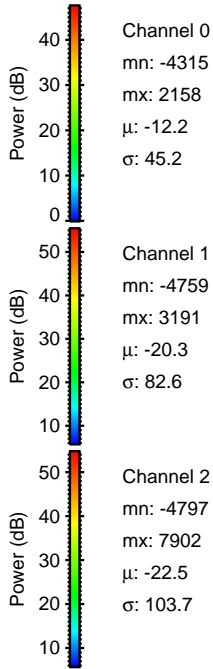
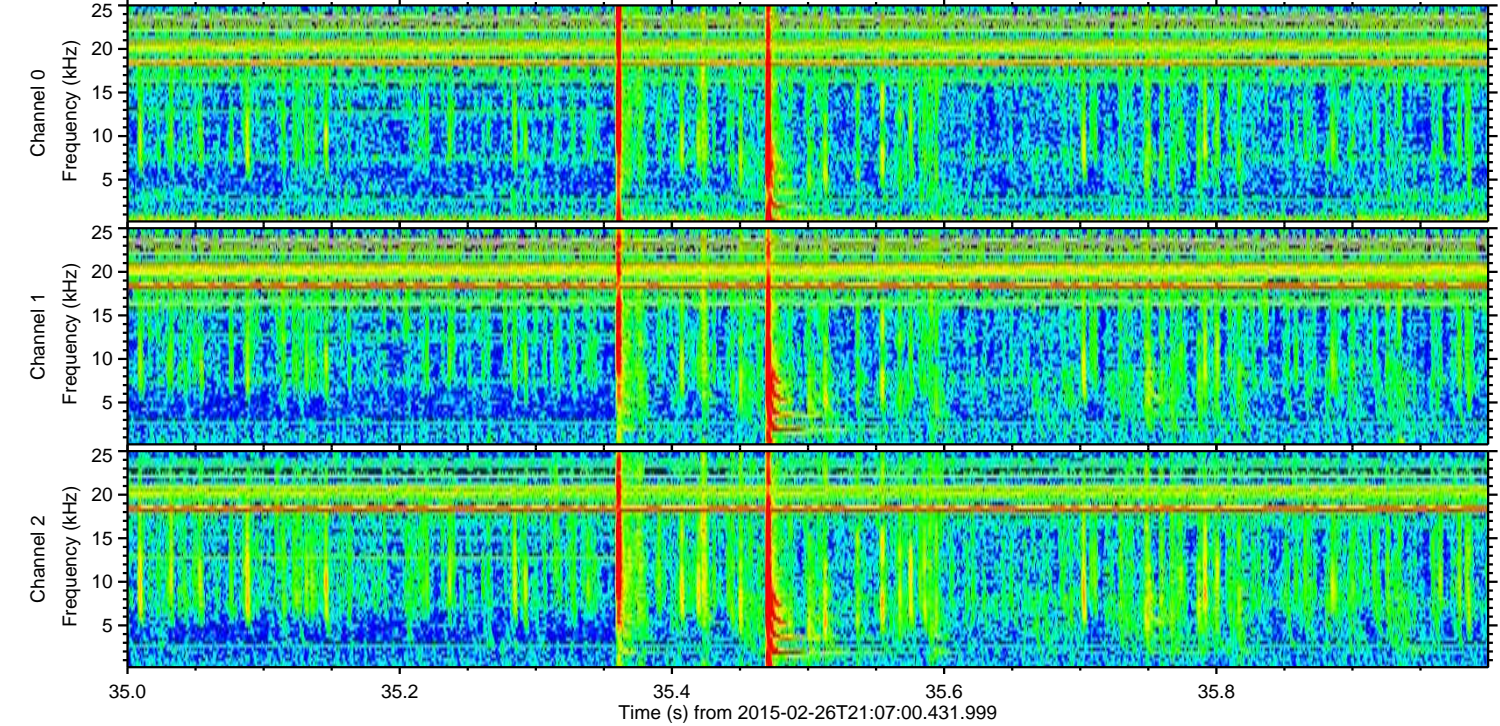
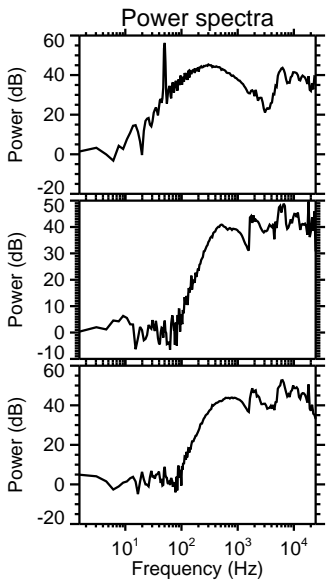
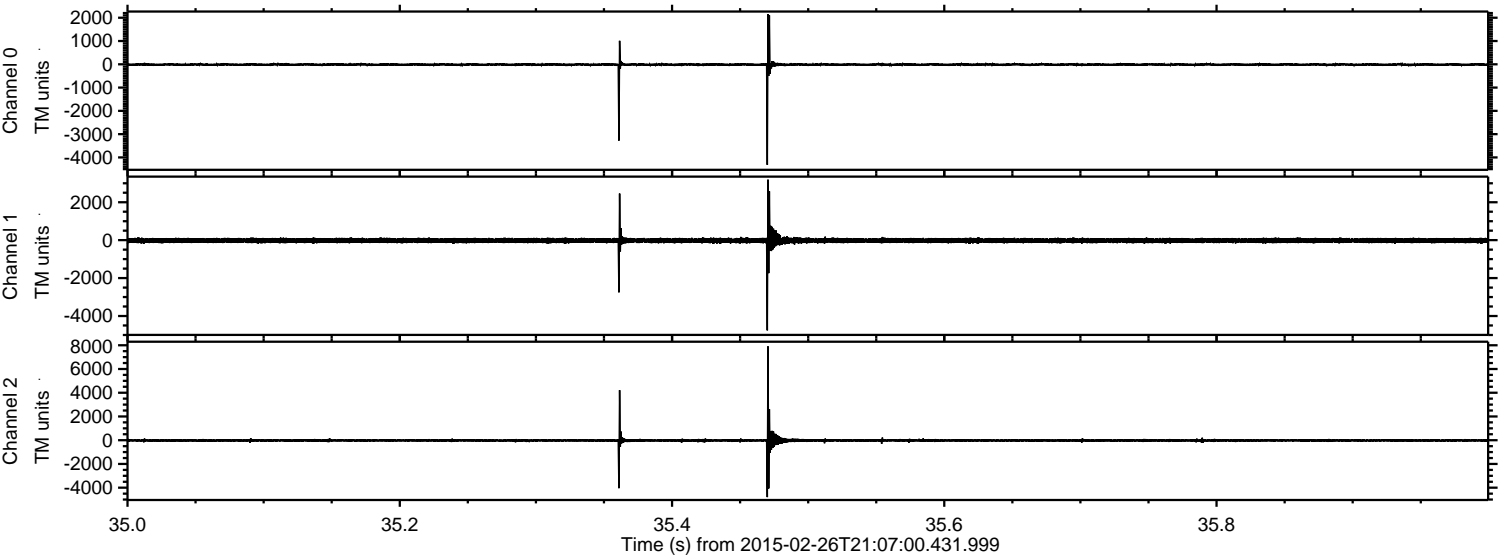


ELMAVAN 3D WAVEFORMS (Measured data sampled at 50 kHz) 49796 packets of 144 samples from 2015-02-26T21:07:00.431.999. Part 119/144

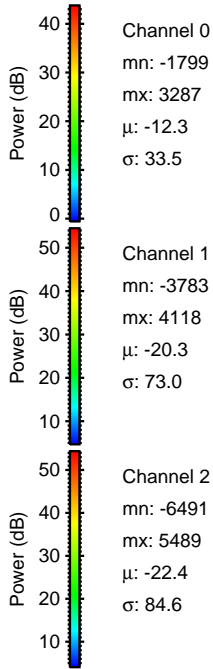
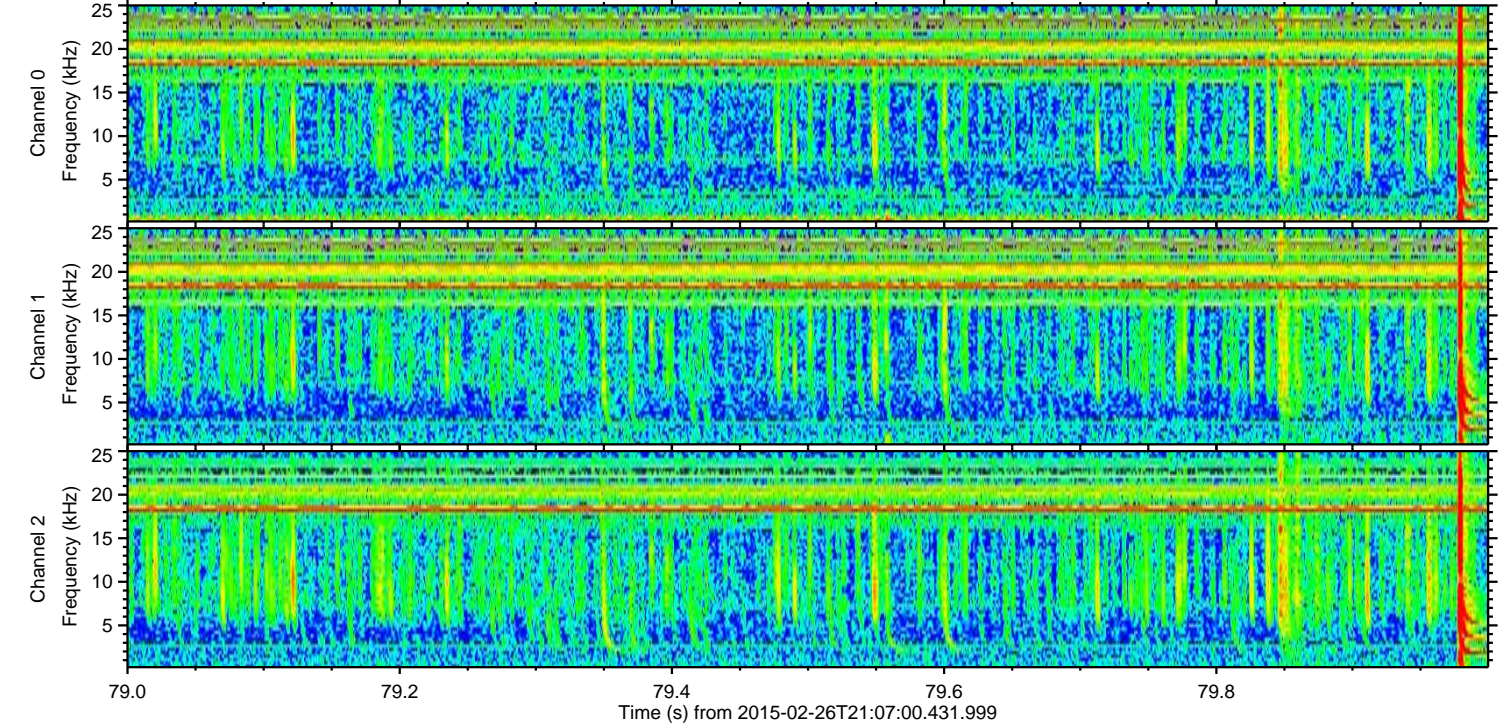
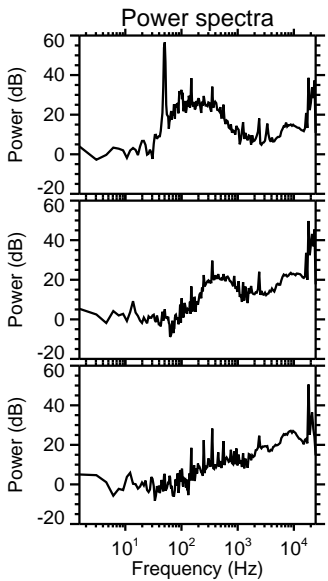
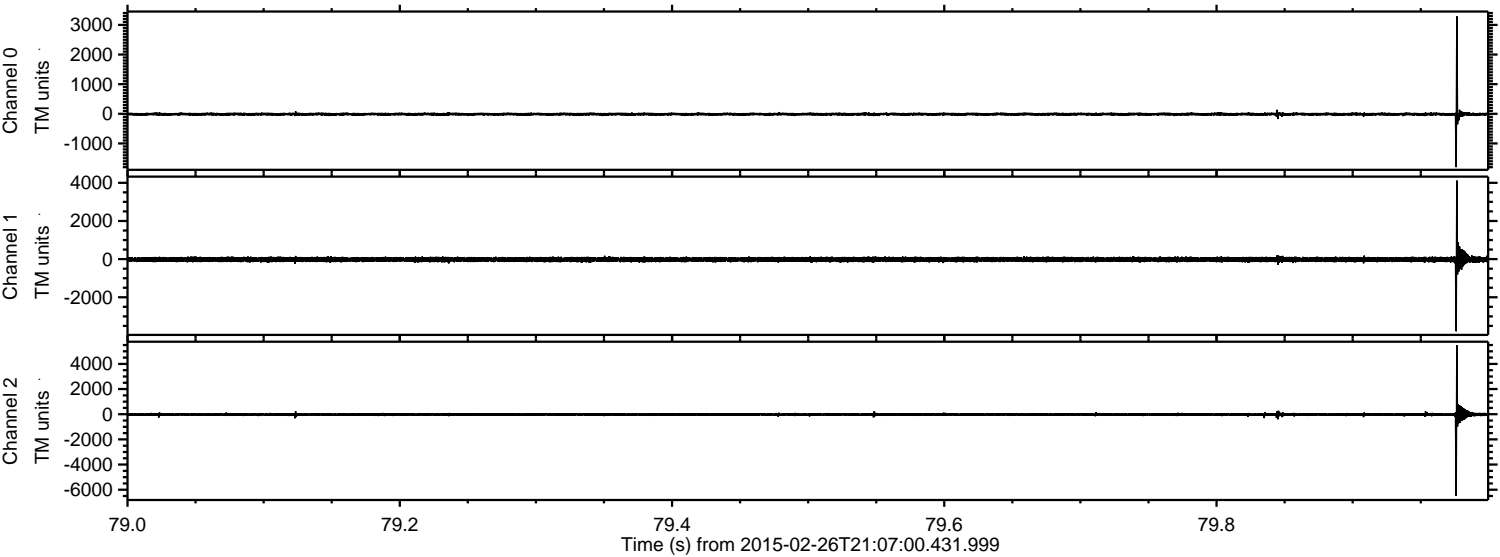
Processed Wed Mar 4 10:48:46 2015 by ELM ver.2012-10-06 from 001__elm20150226_210659__dat00.bin



Processed Wed Mar 4 10:48:47 2015 by ELM ver.2012-10-06 from 001__elm20150226_210659__dat00.bin

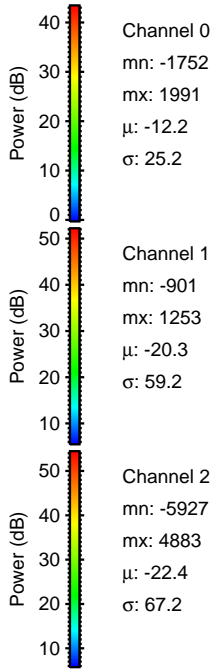
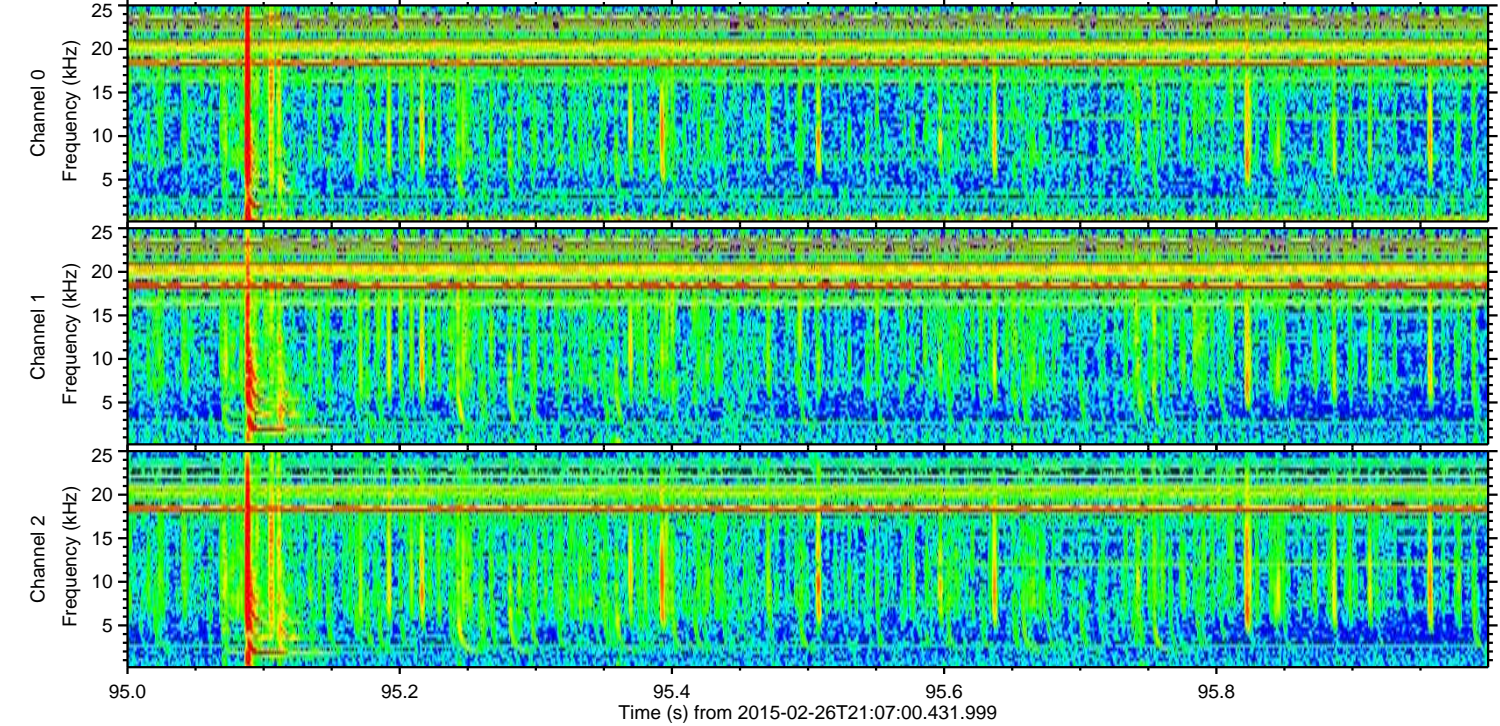
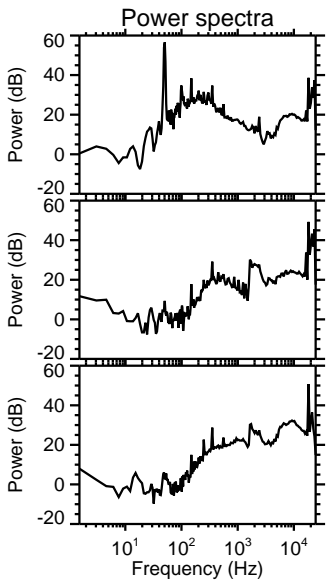
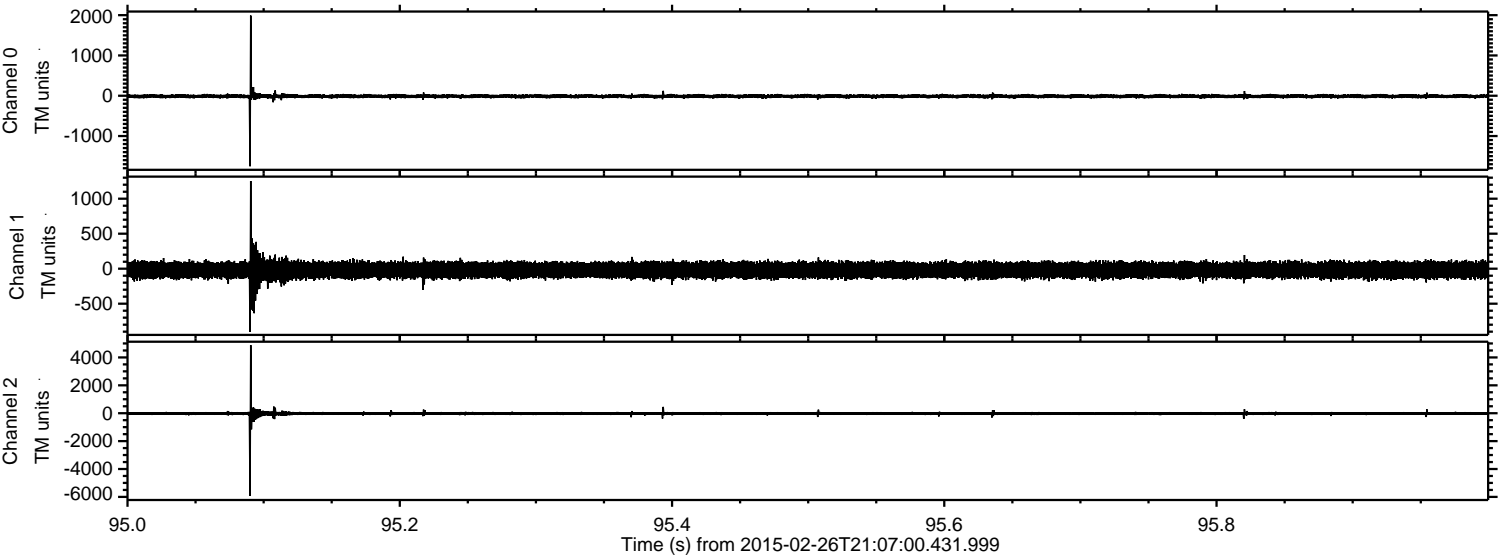


Processed Wed Mar 4 10:48:48 2015 by ELM ver.2012-10-06 from 001__elm20150226_210659__dat00.bin

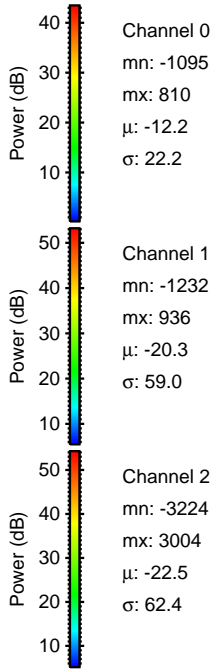
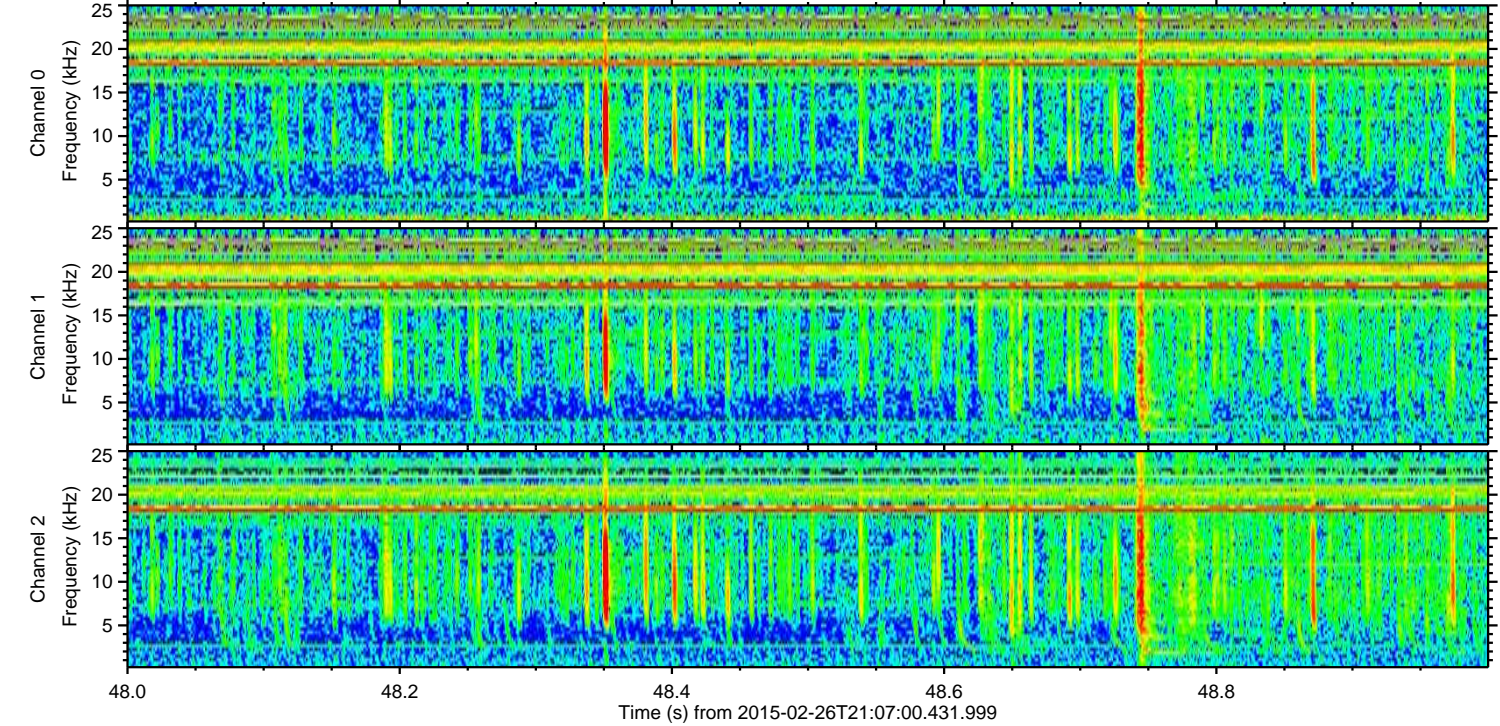
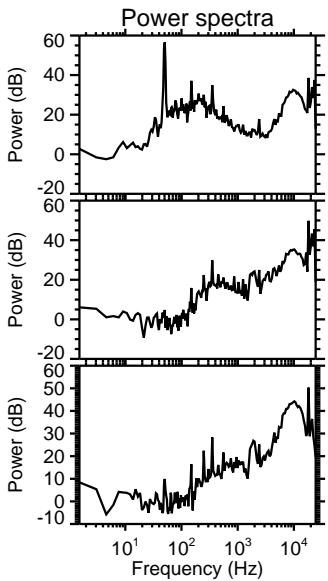
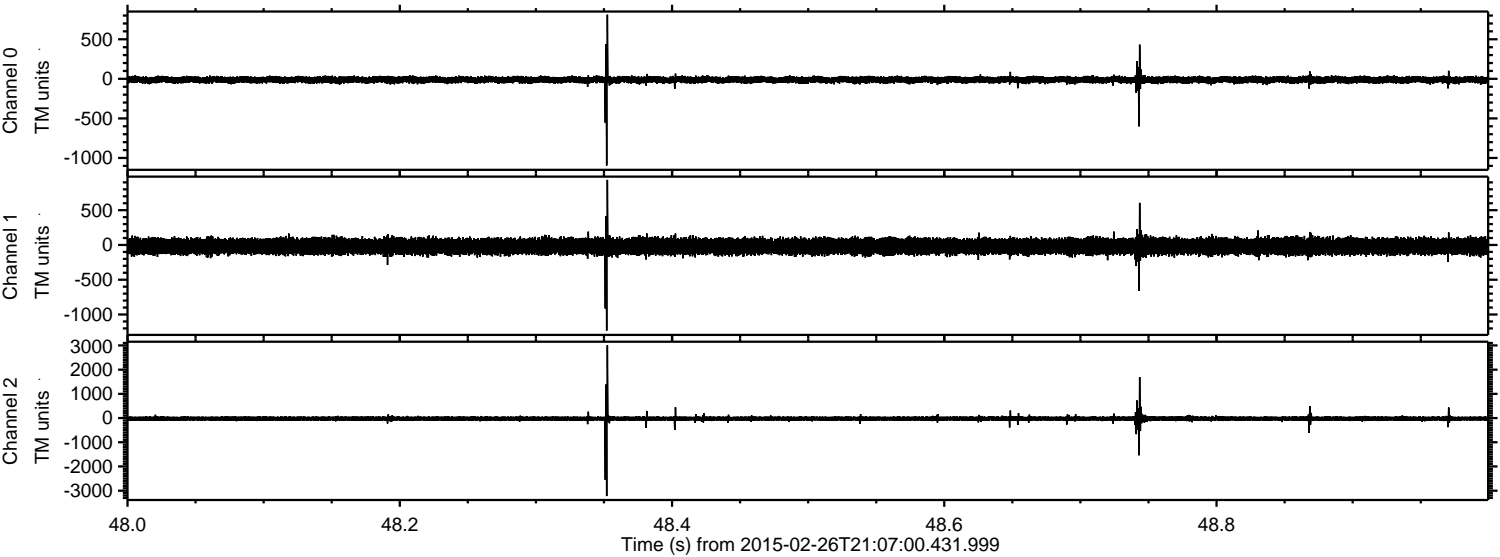


ELMAVAN 3D WAVEFORMS (Measured data sampled at 50 kHz) 49796 packets of 144 samples from 2015-02-26T21:07:00.431.999. Part 96/144

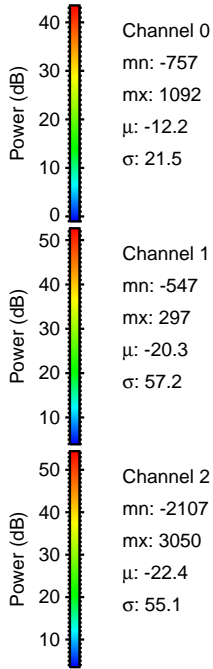
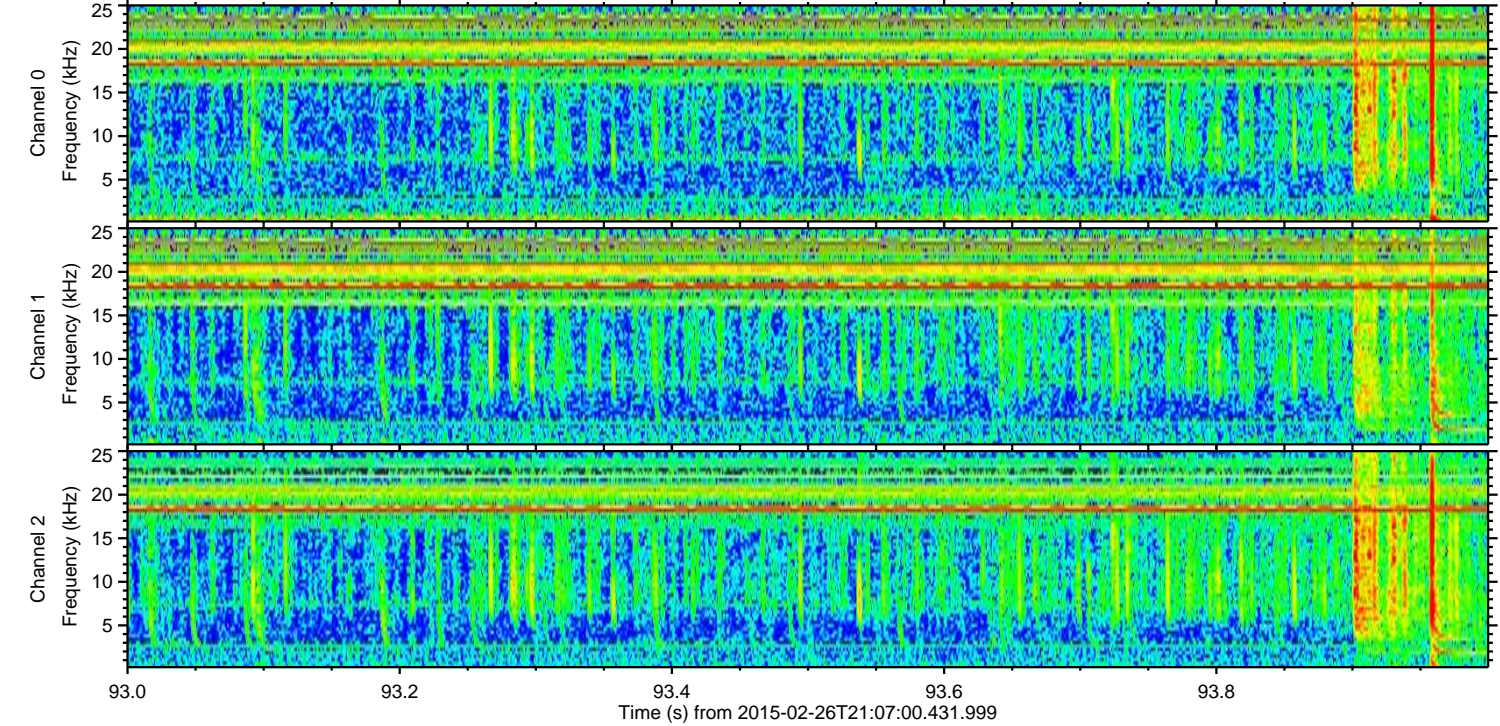
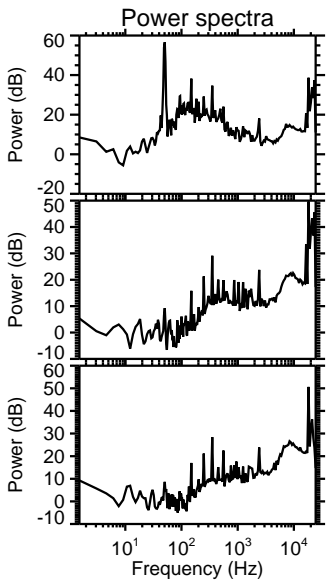
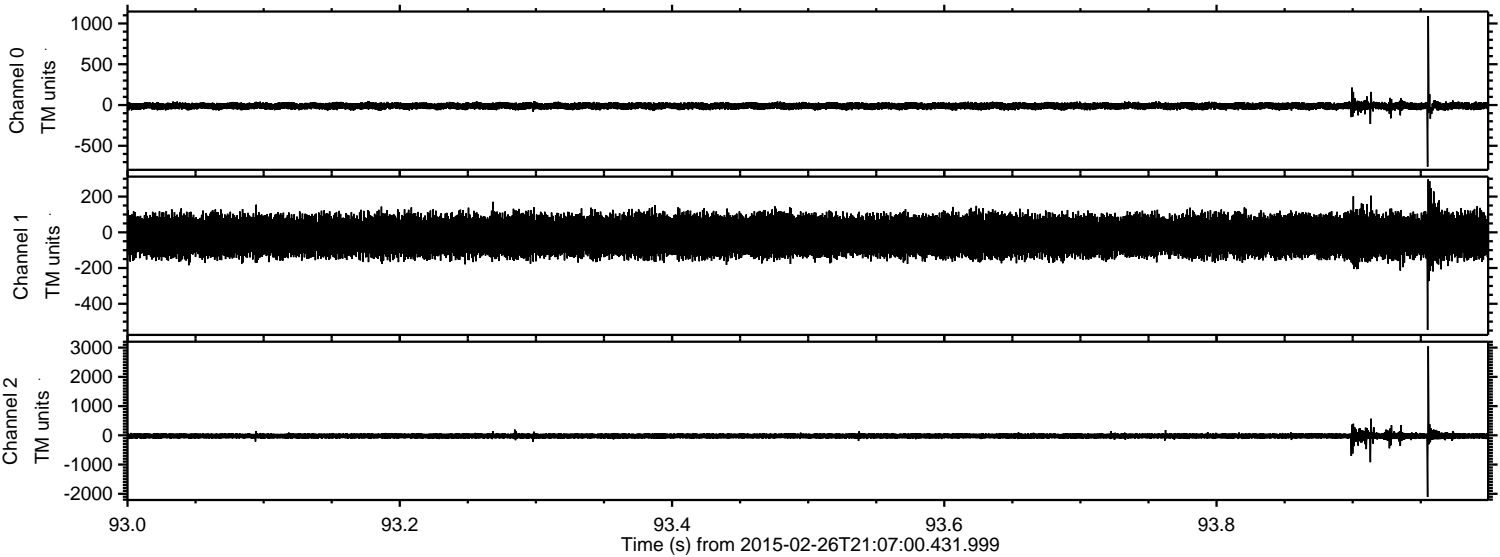
Processed Wed Mar 4 10:48:49 2015 by ELM ver.2012-10-06 from 001__elm20150226_210659__dat00.bin



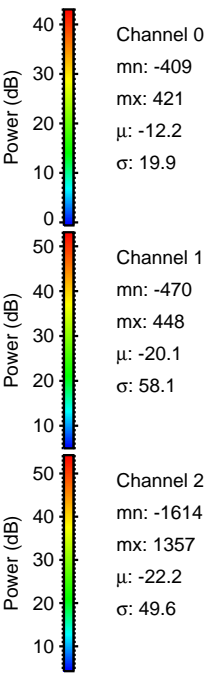
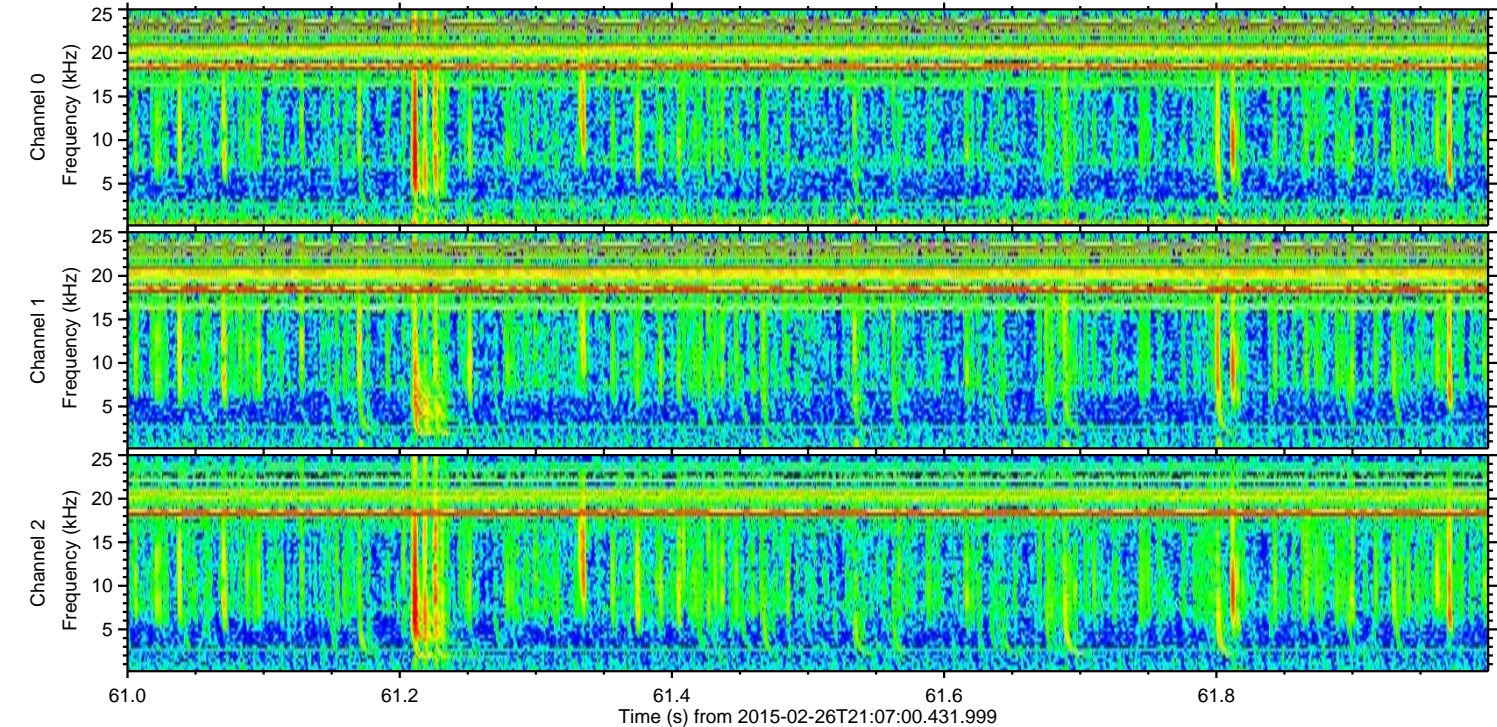
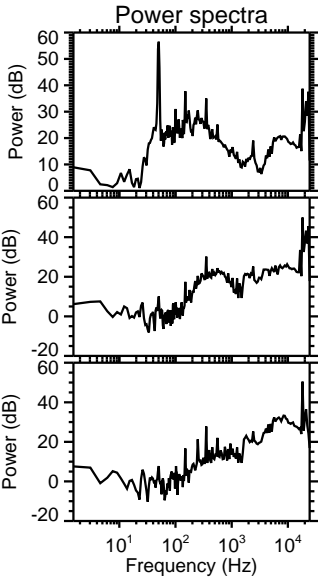
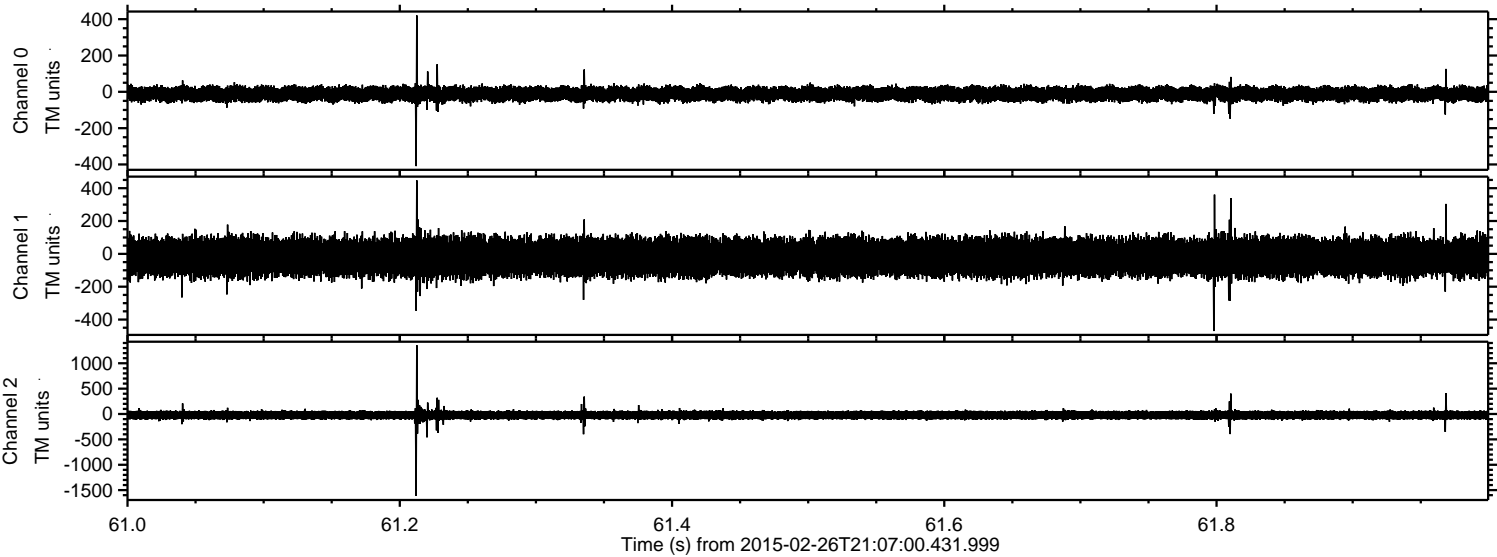
Processed Wed Mar 4 10:48:50 2015 by ELM ver.2012-10-06 from 001__elm20150226_210659__dat00.bin



Processed Wed Mar 4 10:48:51 2015 by ELM ver.2012-10-06 from 001__elm20150226_210659__dat00.bin

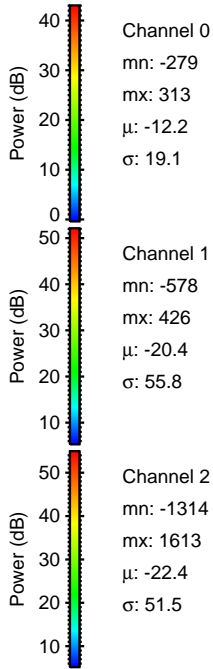
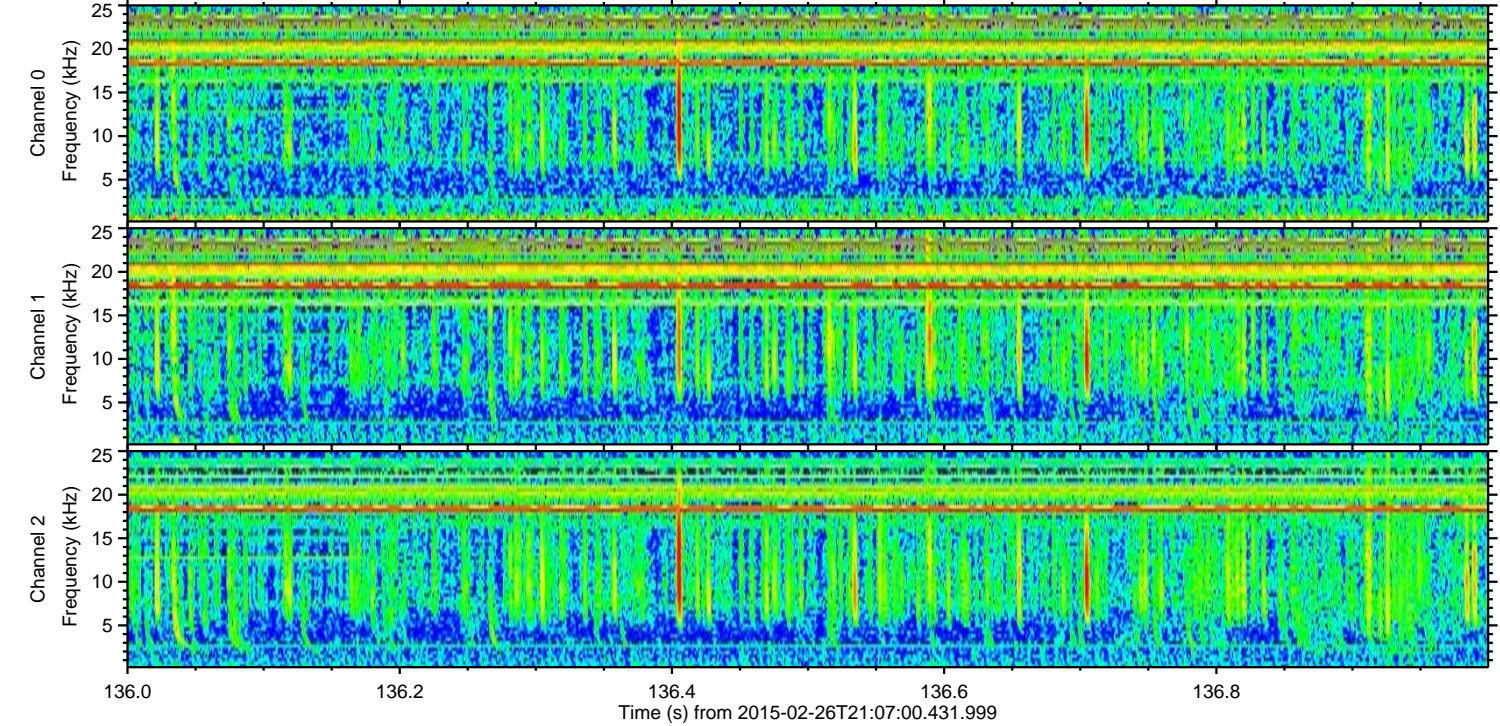
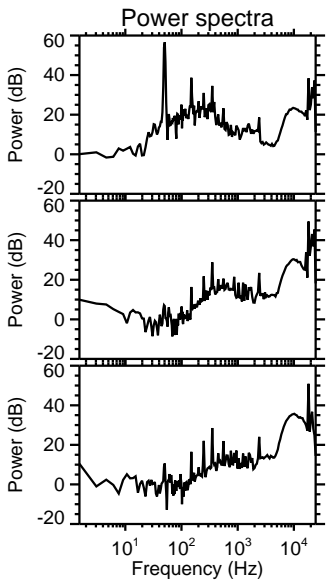
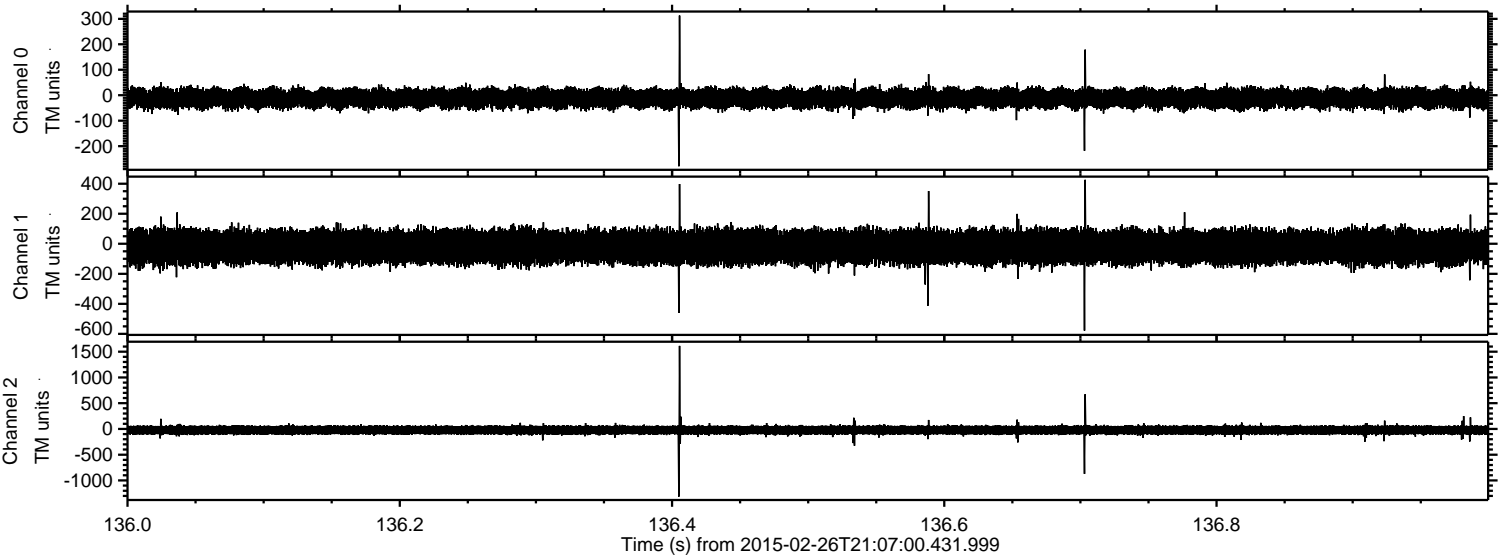


Processed Wed Mar 4 10:48:52 2015 by ELM ver.2012-10-06 from 001__elm20150226_210659__dat00.bin



ELMAVAN 3D WAVEFORMS (Measured data sampled at 50 kHz) 49796 packets of 144 samples from 2015-02-26T21:07:00.431.999. Part 137/144

Processed Wed Mar 4 10:48:53 2015 by ELM ver.2012-10-06 from 001__elm20150226_210659__dat00.bin



Channel 0
mn: -279
mx: 313
 μ : -12.2
 σ : 19.1

Channel 1
mn: -578
mx: 426
 μ : -20.4
 σ : 55.8

Channel 2
mn: -1314
mx: 1613
 μ : -22.4
 σ : 51.5

Processed Wed Mar 4 10:48:54 2015 by ELM ver.2012-10-06 from 001__elm20150226_210659__dat00.bin

