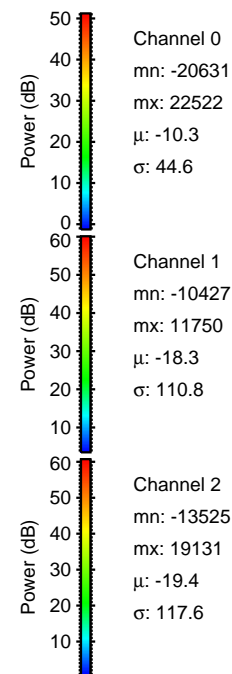
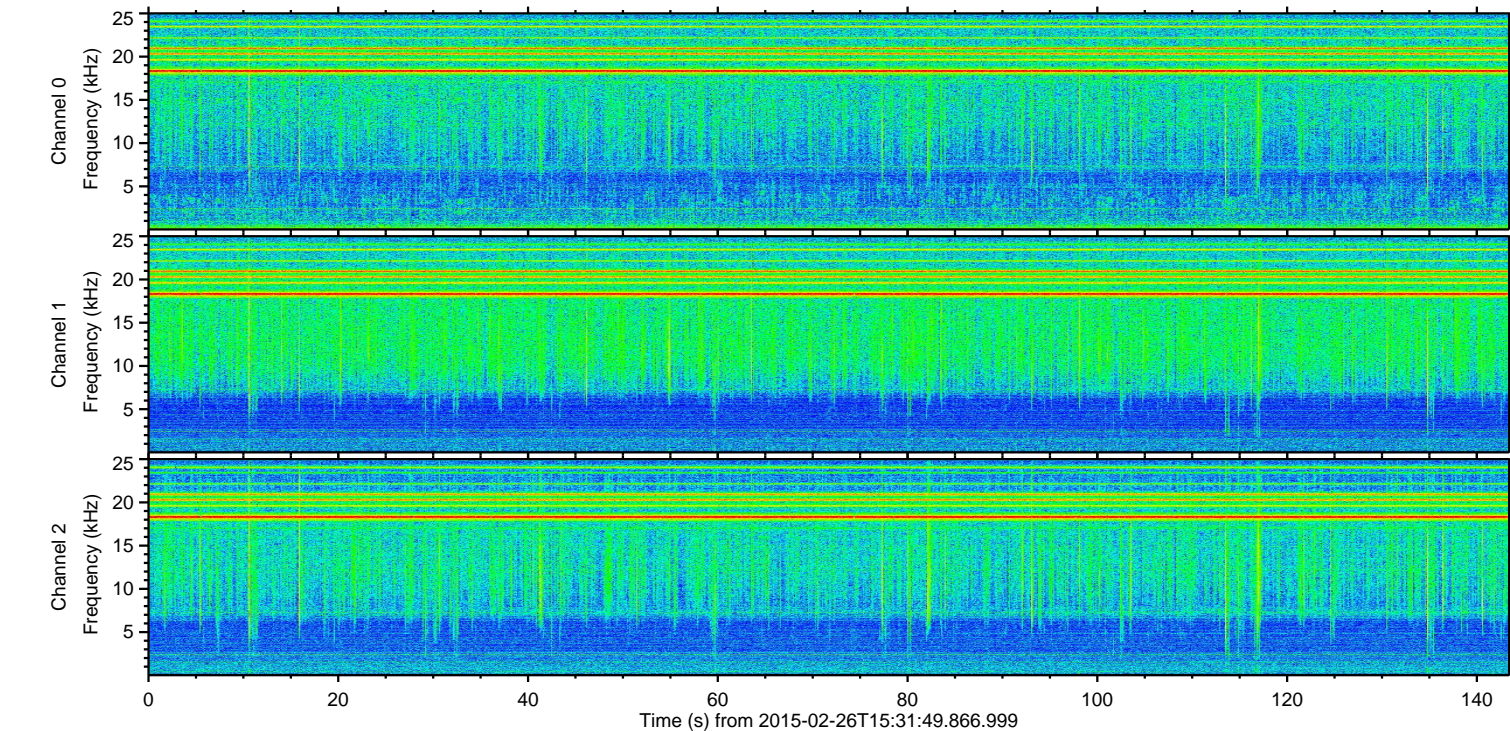
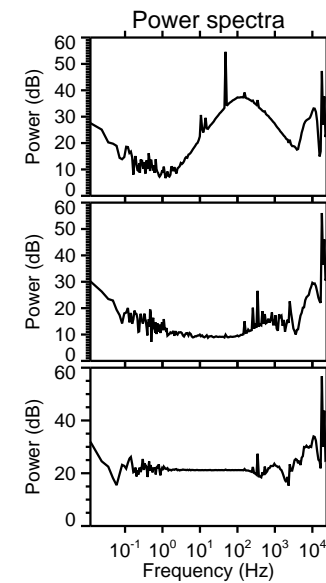
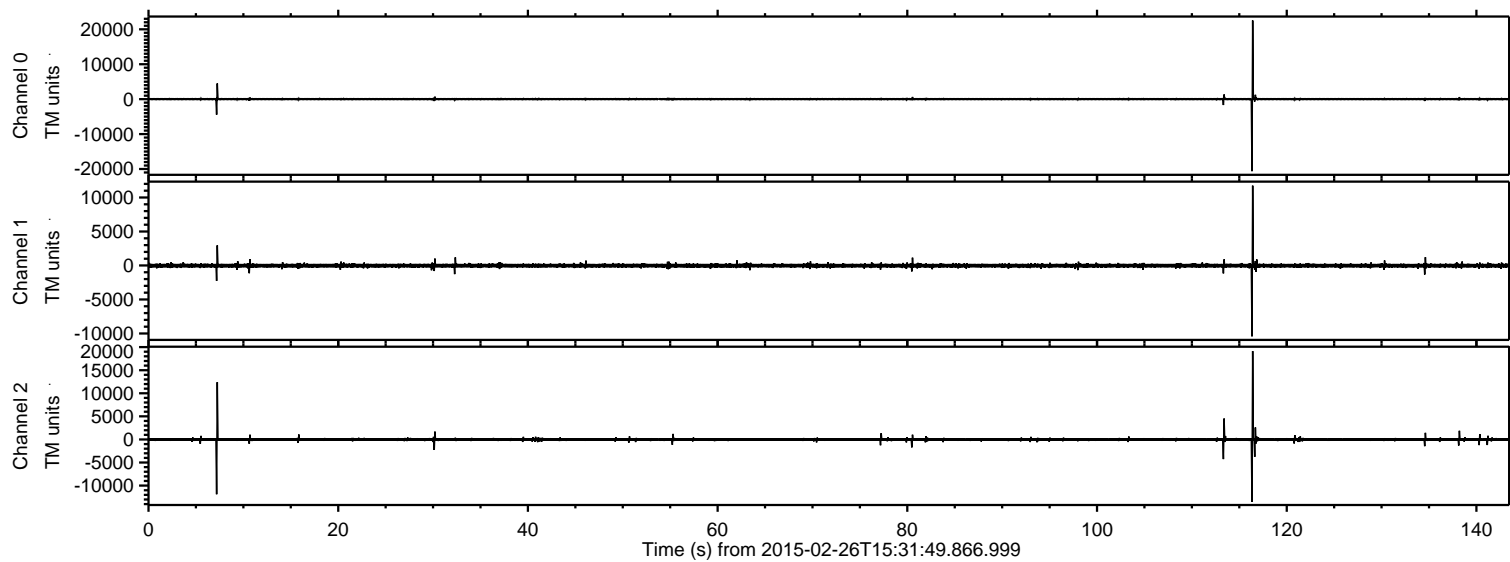


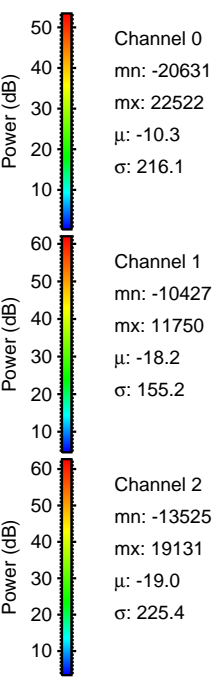
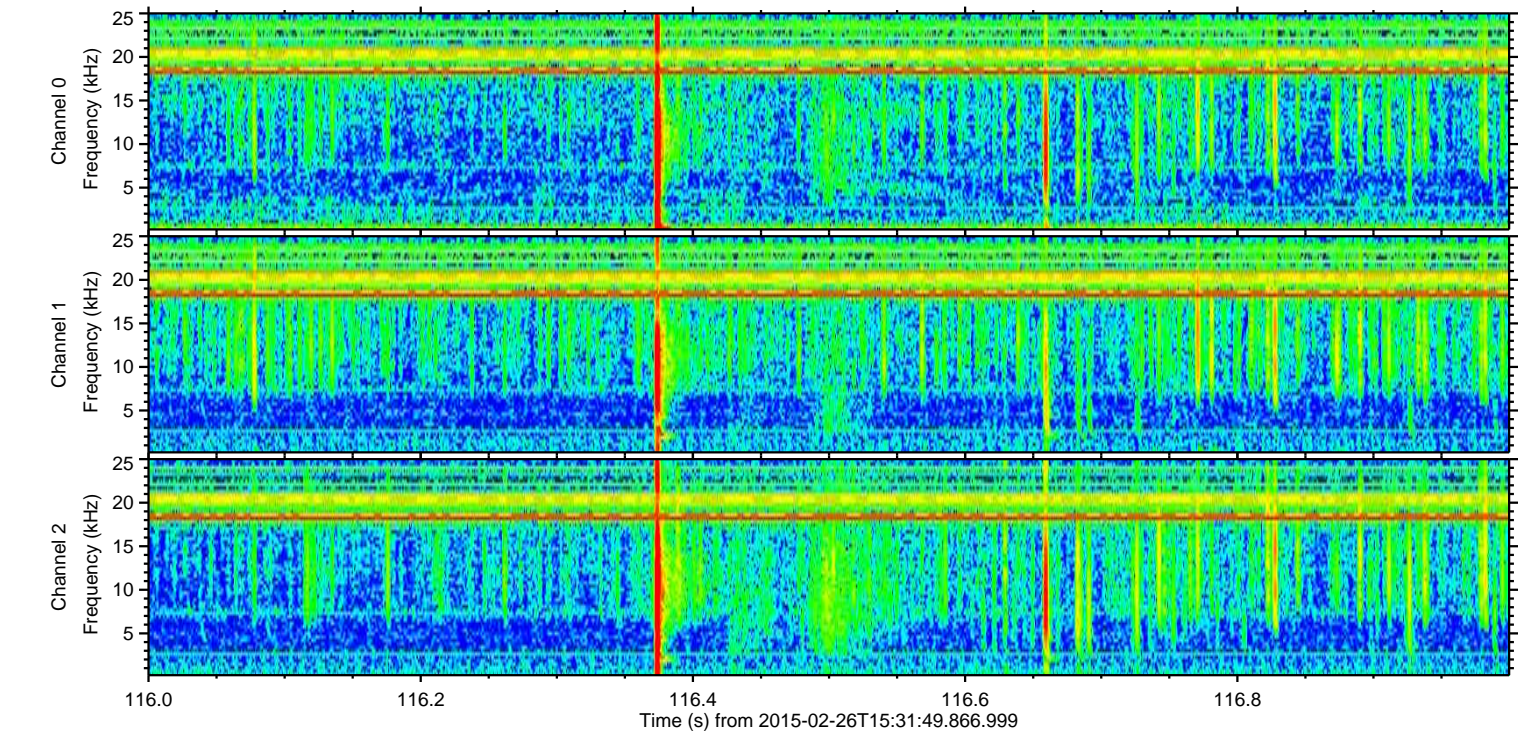
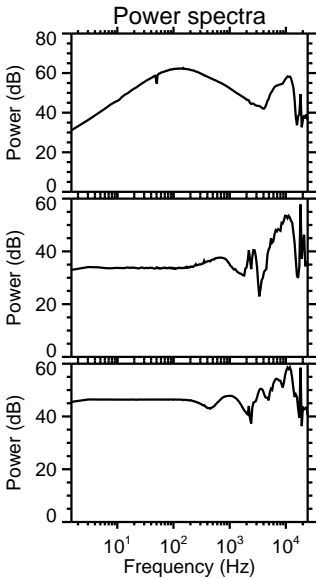
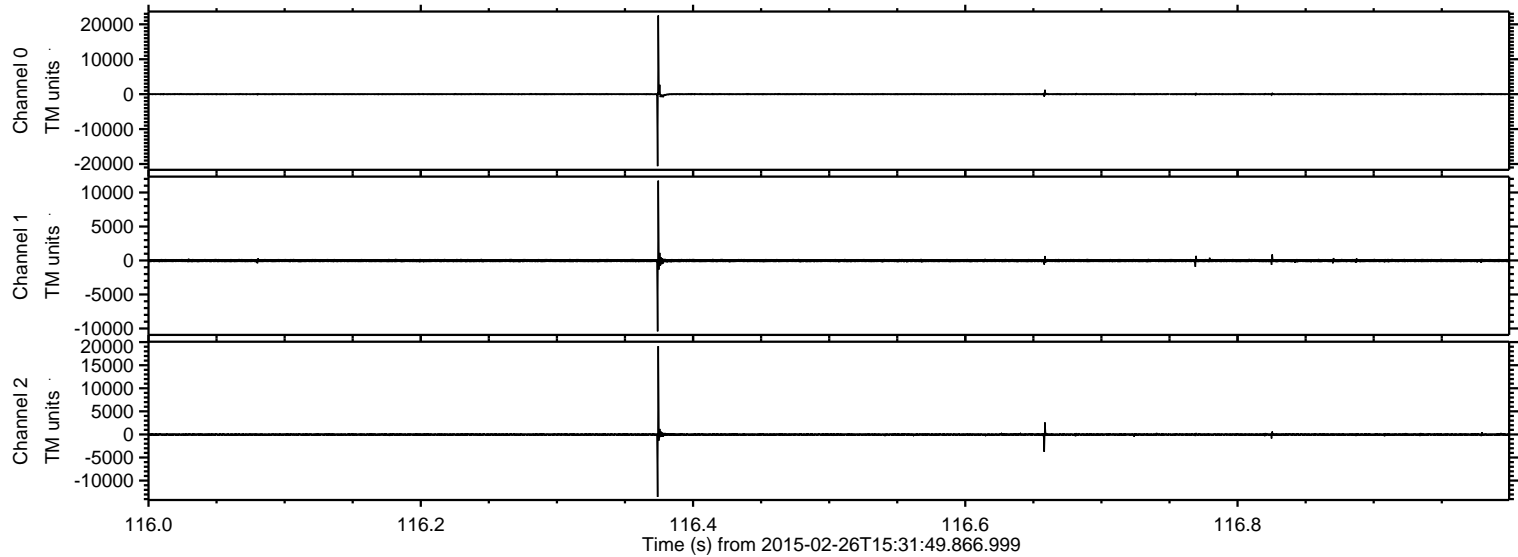
ELMAVAN 3D WAVEFORMS (Measured data sampled at 50 kHz) 49809 packets of 144 samples from 2015-02-26T15:31:49.866.999.

Processed Wed Mar 4 08:07:51 2015 by ELM ver.2012-10-06 from 001__elm20150226_153148__dat00.bin

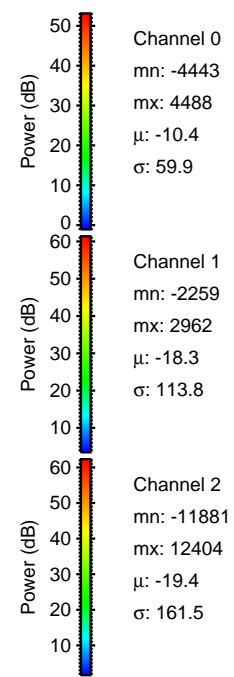
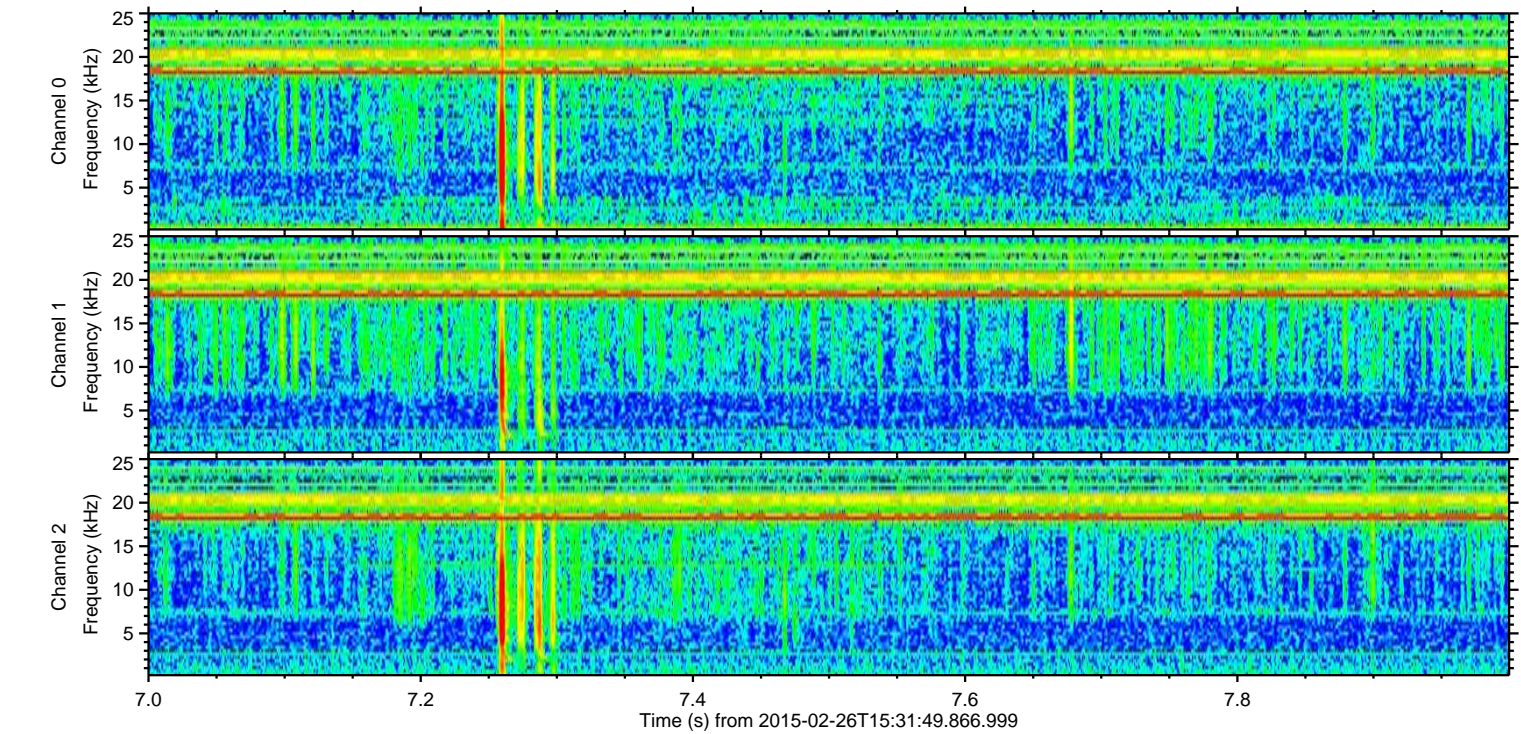
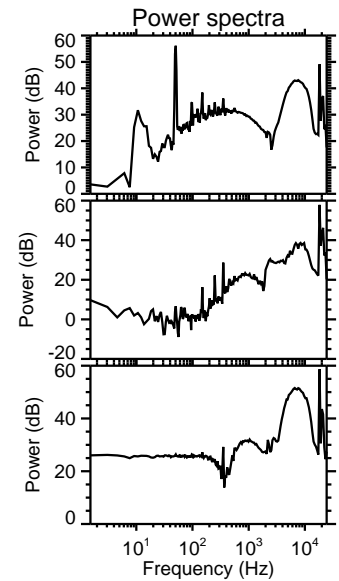
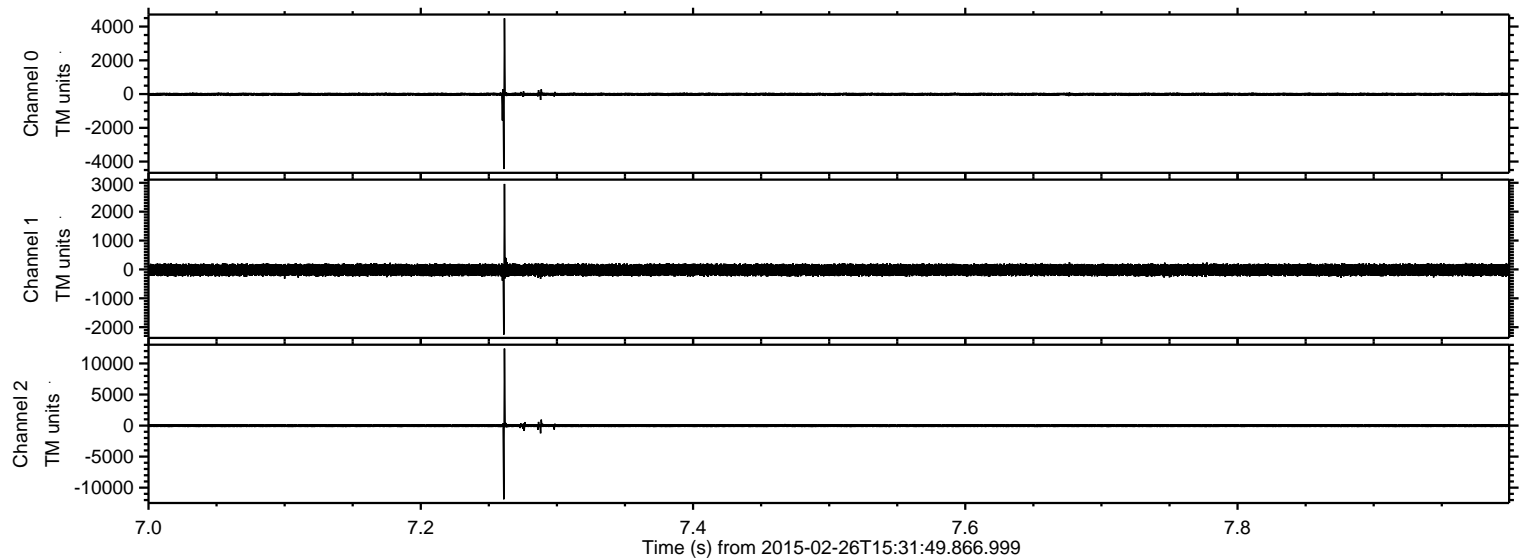


ELMAVAN 3D WAVEFORMS (Measured data sampled at 50 kHz) 49809 packets of 144 samples from 2015-02-26T15:31:49.866.999. Part 117/144

Processed Wed Mar 4 08:08:02 2015 by ELM ver.2012-10-06 from 001__elm20150226_153148__dat00.bin

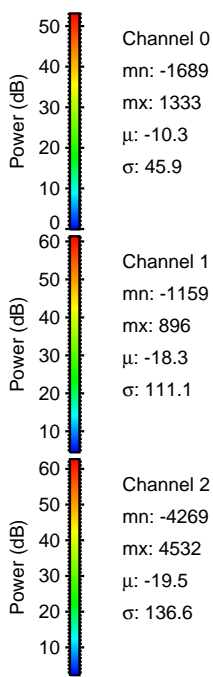
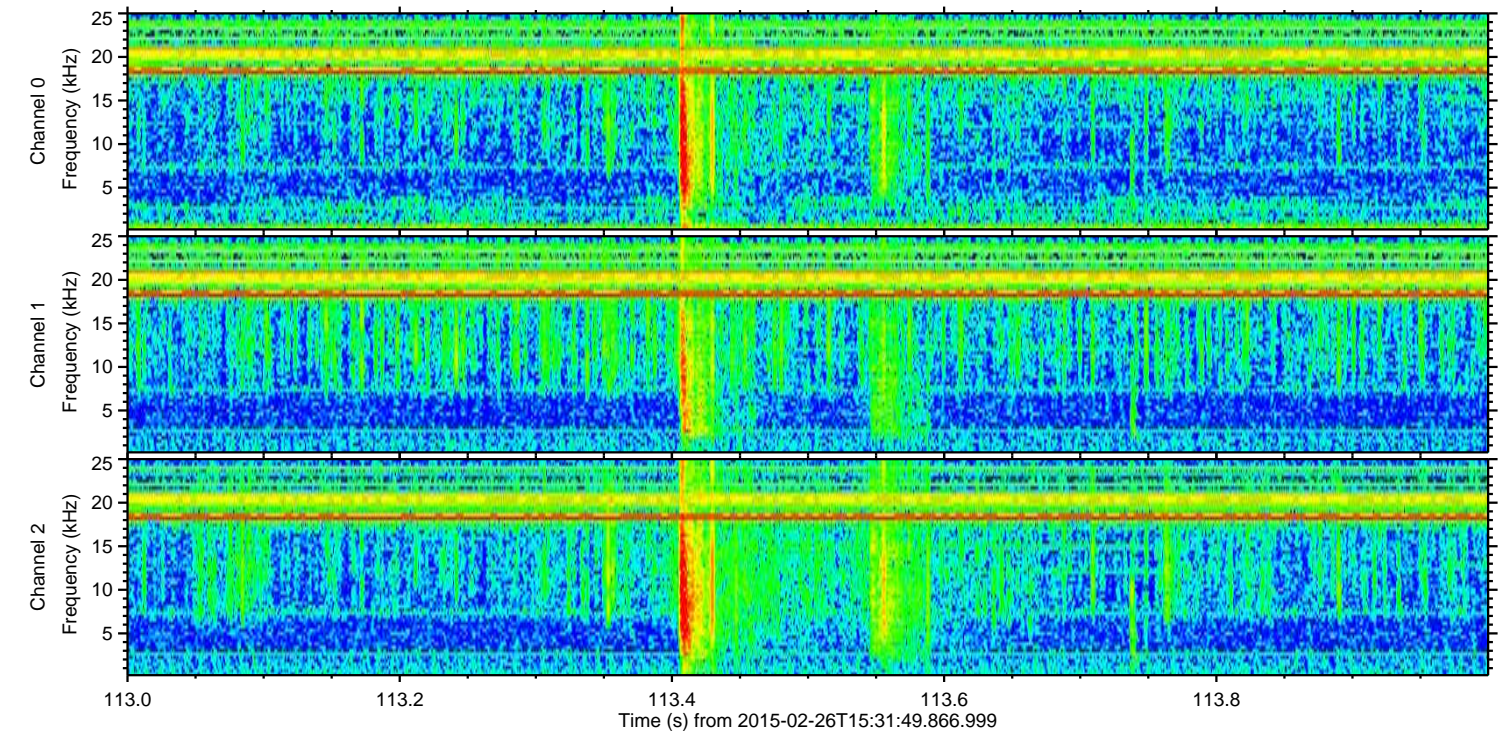
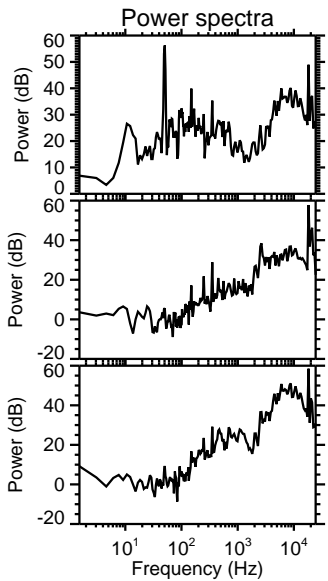
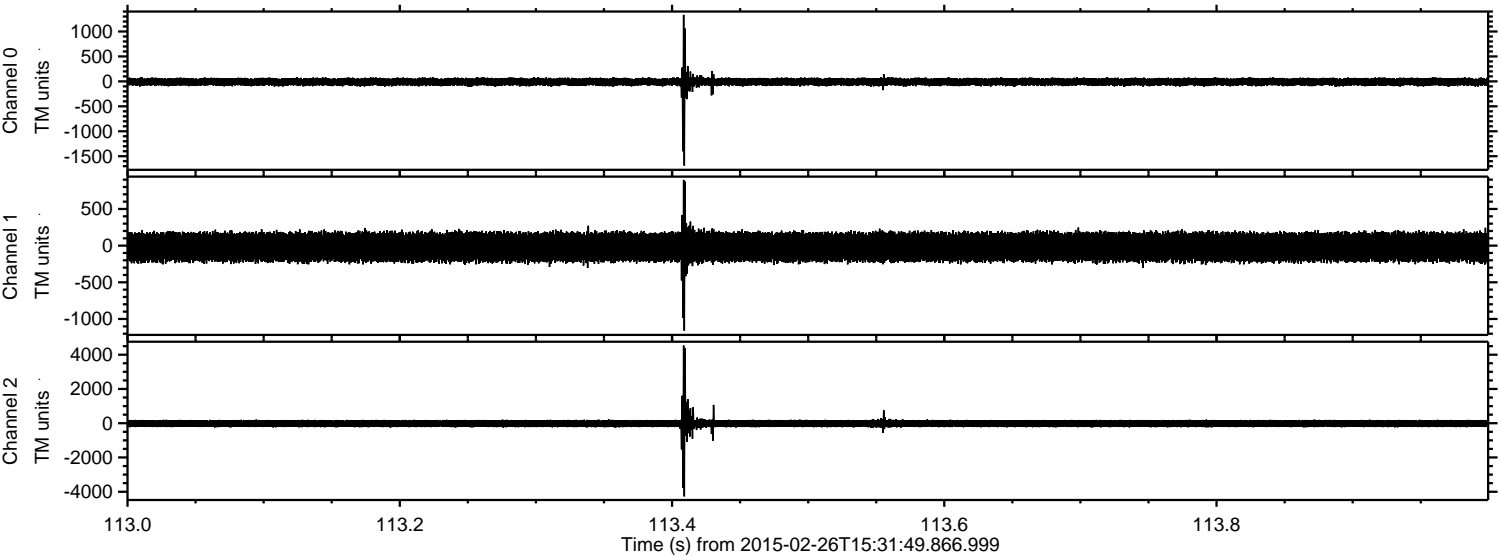


Processed Wed Mar 4 08:08:03 2015 by ELM ver.2012-10-06 from 001__elm20150226_153148__dat00.bin

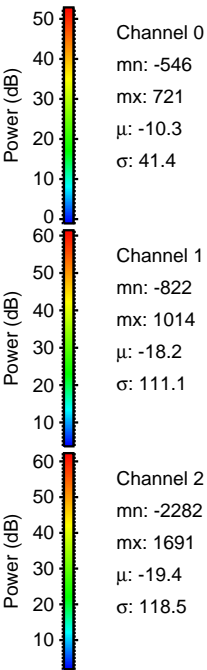
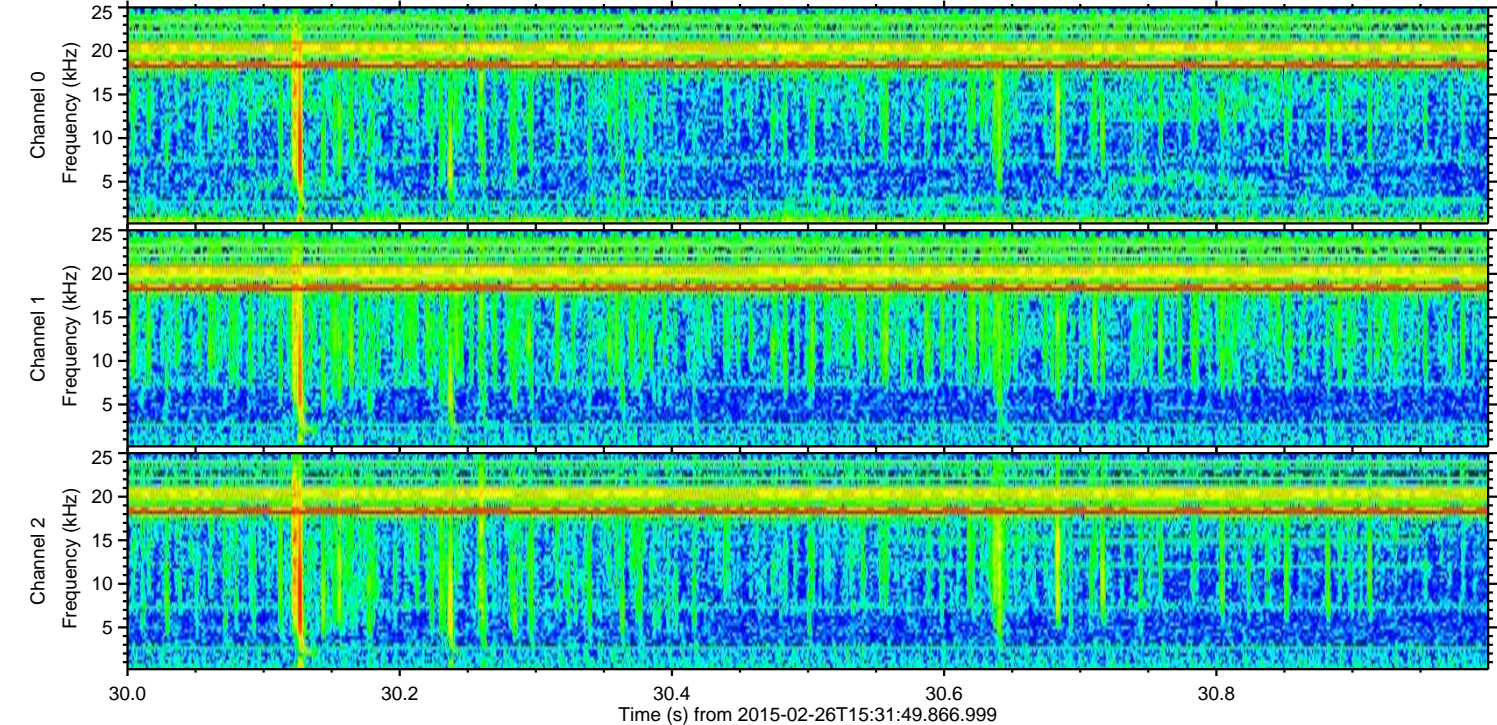
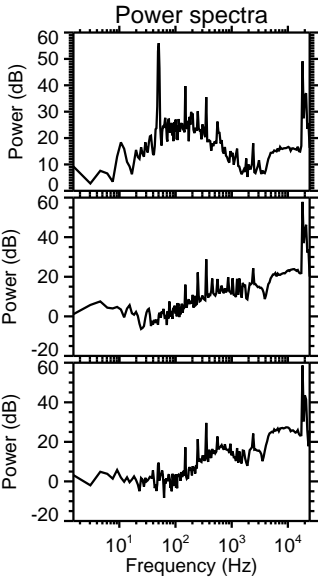
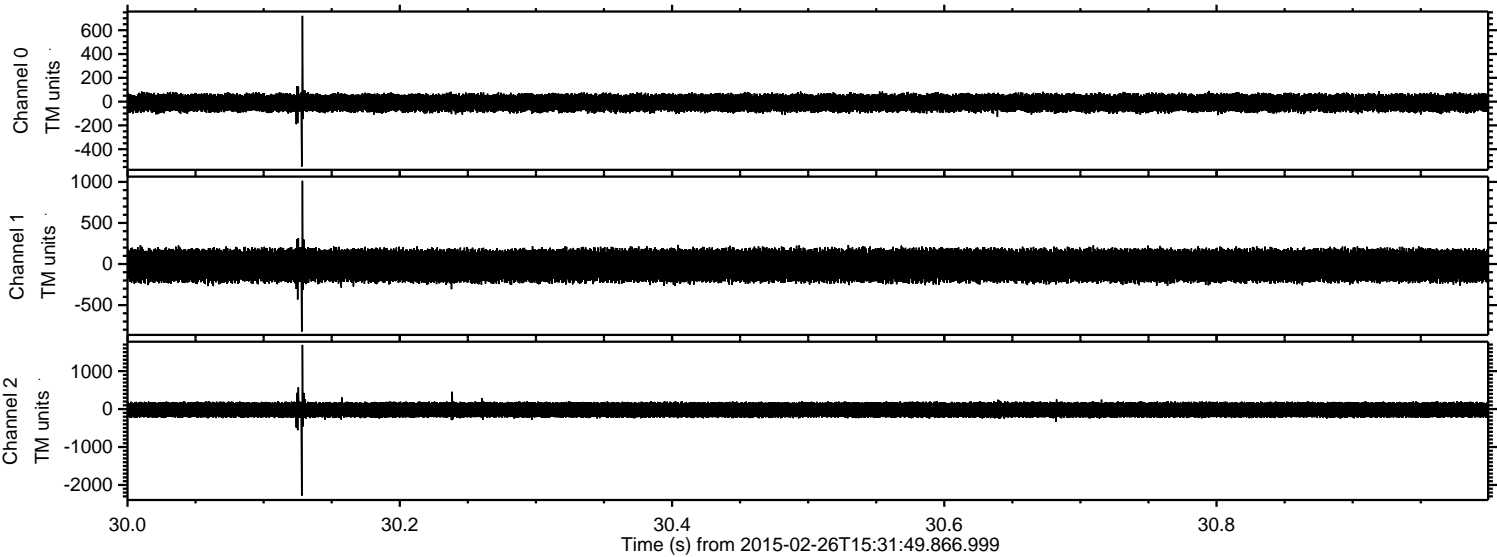


ELMAVAN 3D WAVEFORMS (Measured data sampled at 50 kHz) 49809 packets of 144 samples from 2015-02-26T15:31:49.866.999. Part 114/144

Processed Wed Mar 4 08:08:04 2015 by ELM ver.2012-10-06 from 001__elm20150226_153148__dat00.bin

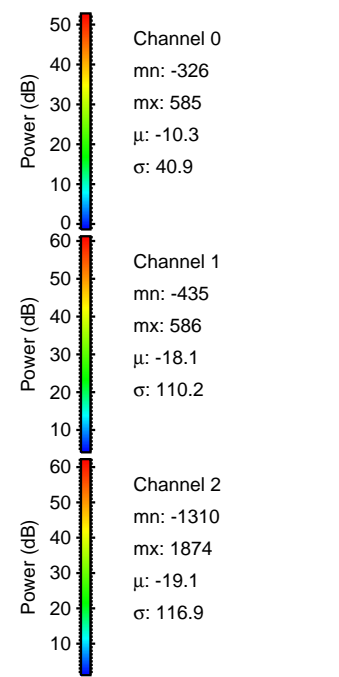
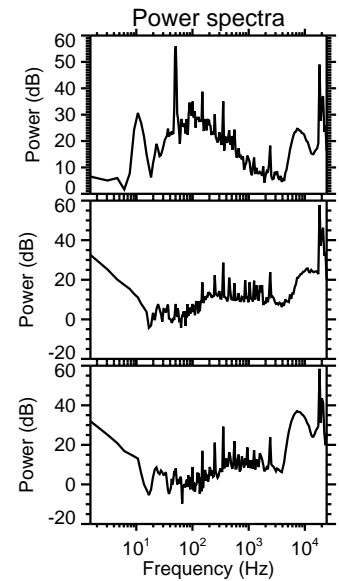
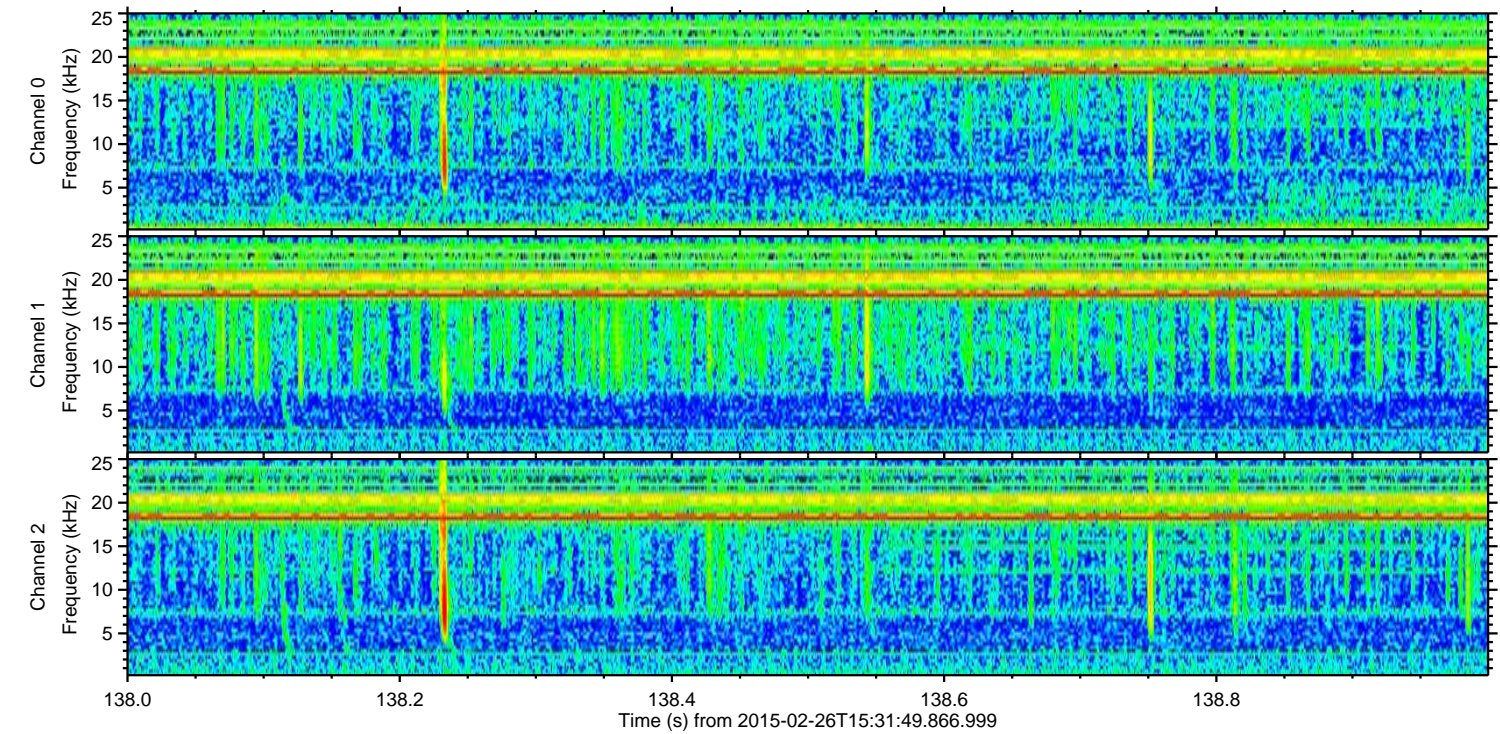
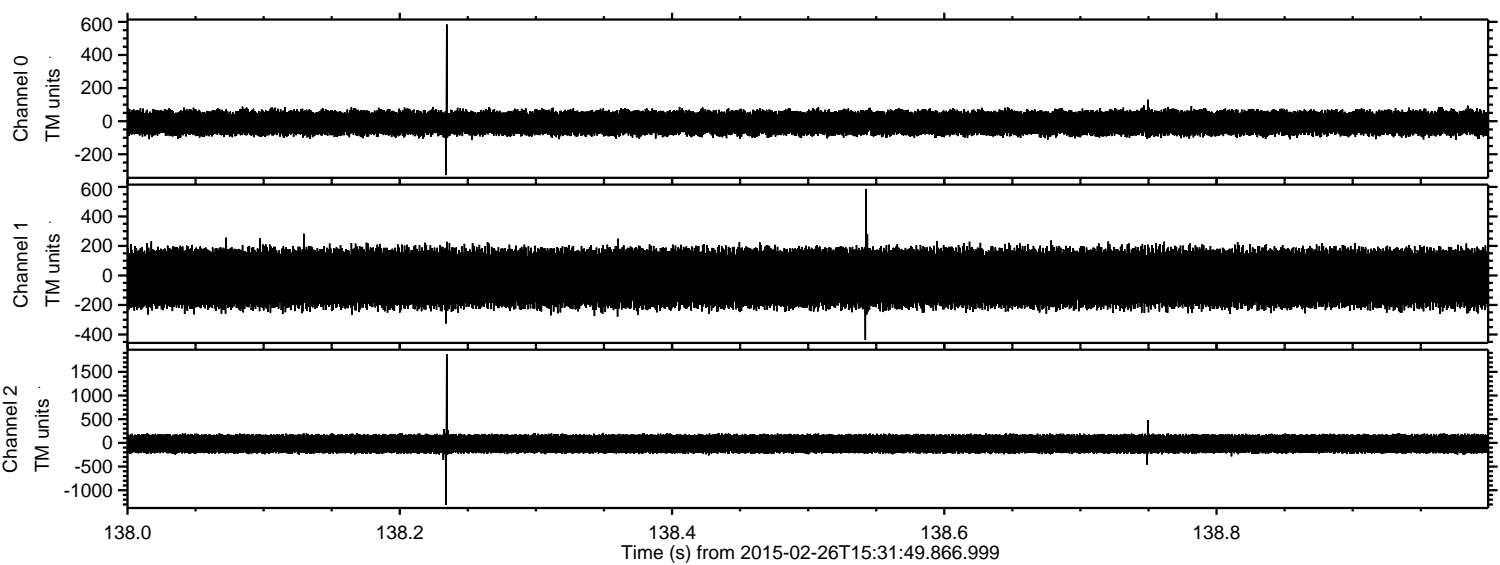


Processed Wed Mar 4 08:08:05 2015 by ELM ver.2012-10-06 from 001__elm20150226_153148__dat00.bin

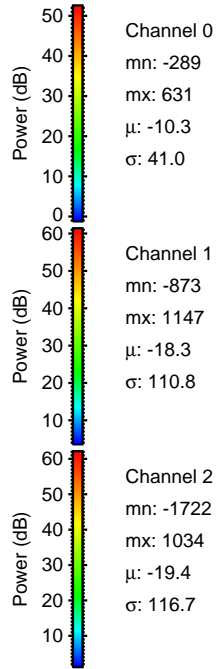
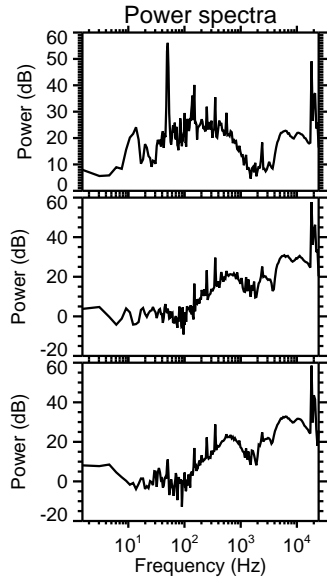
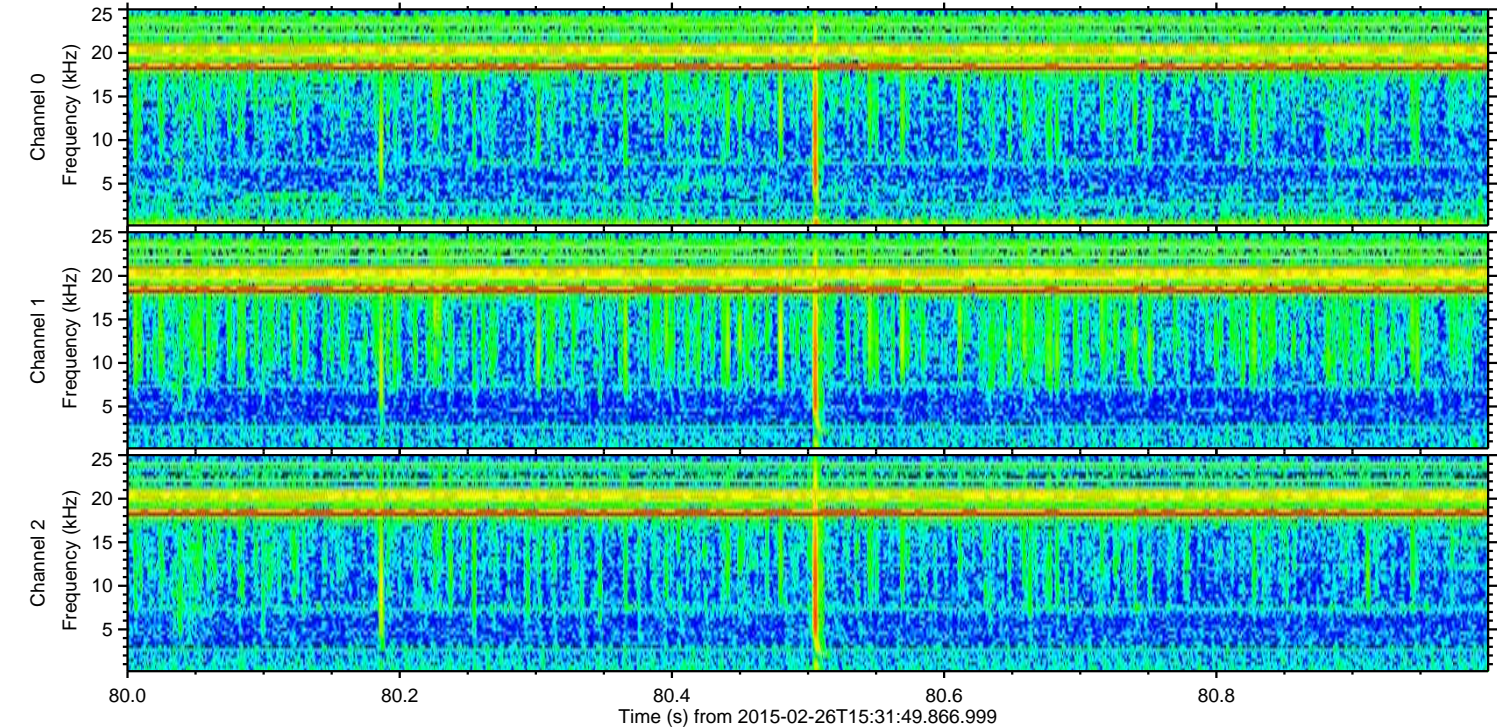
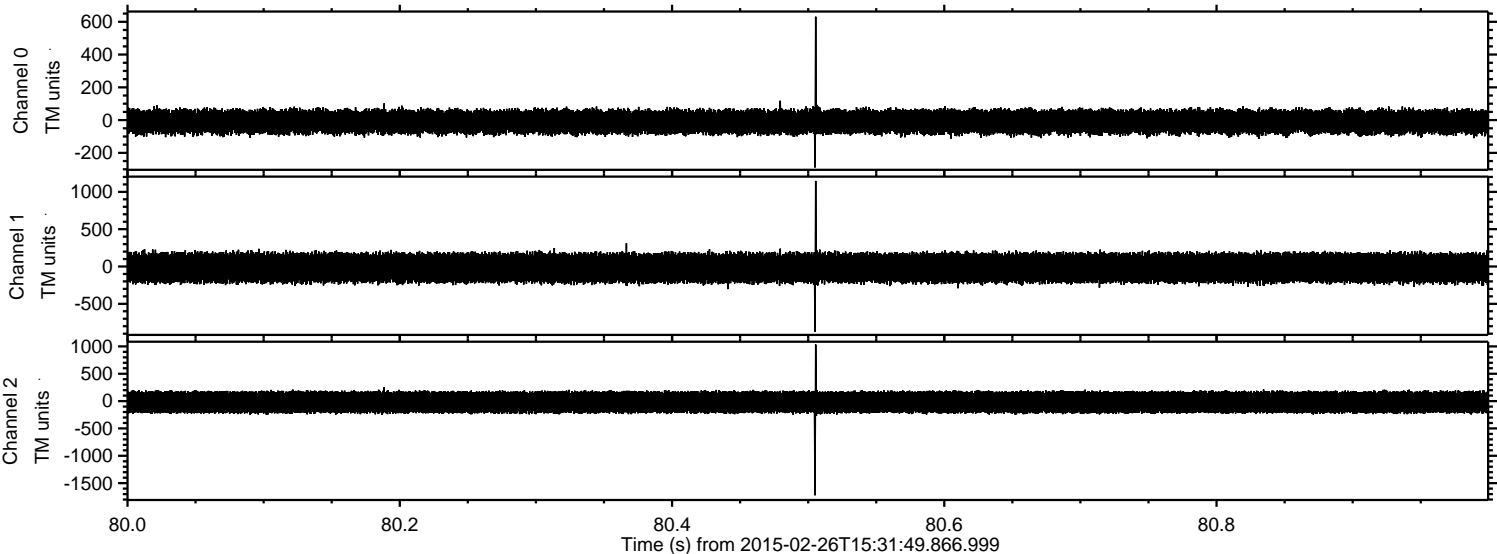


ELMAVAN 3D WAVEFORMS (Measured data sampled at 50 kHz) 49809 packets of 144 samples from 2015-02-26T15:31:49.866.999. Part 139/144

Processed Wed Mar 4 08:08:06 2015 by ELM ver.2012-10-06 from 001__elm20150226_153148__dat00.bin

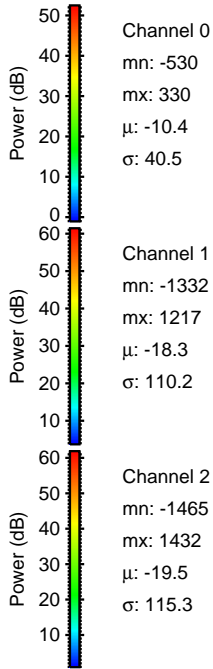
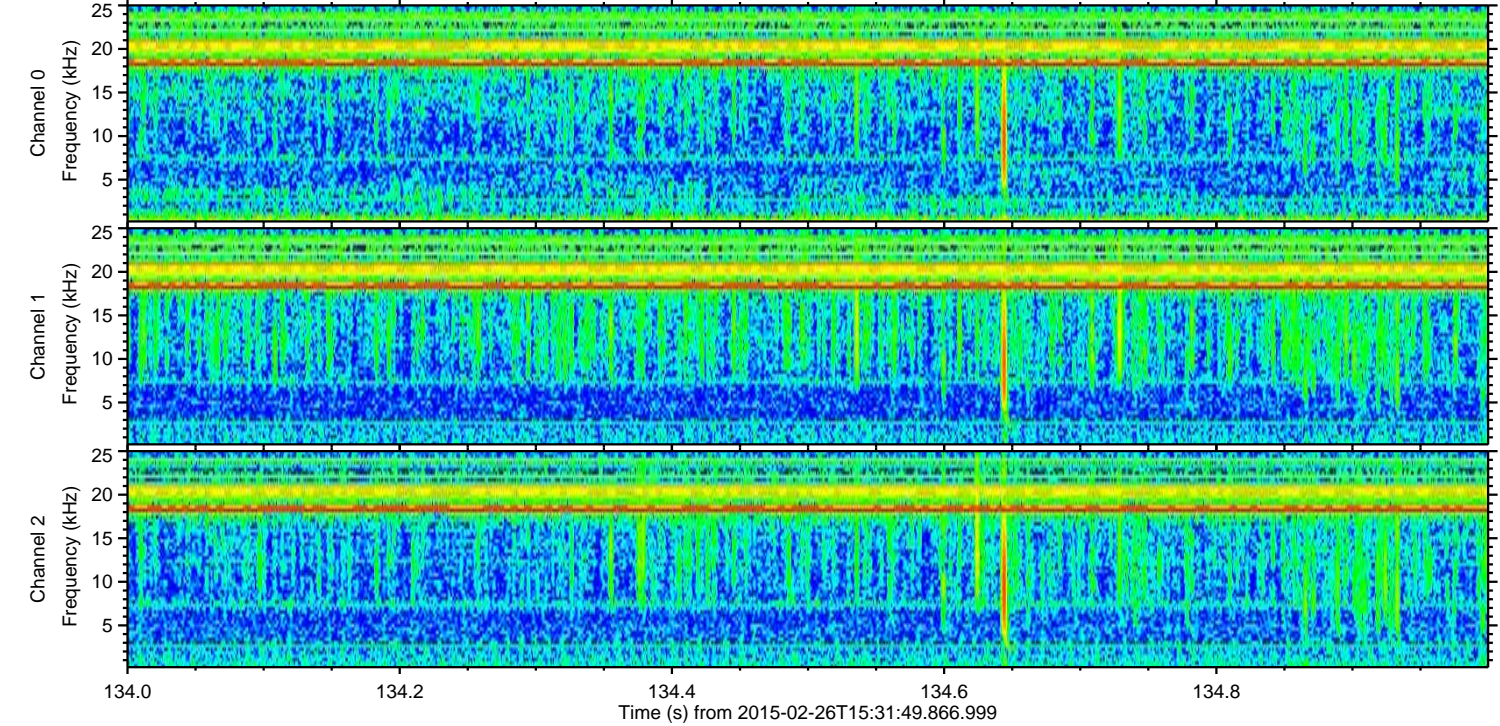
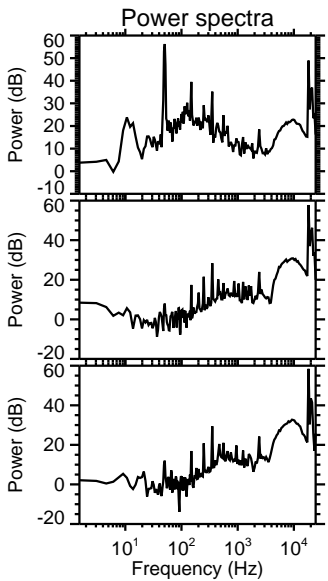
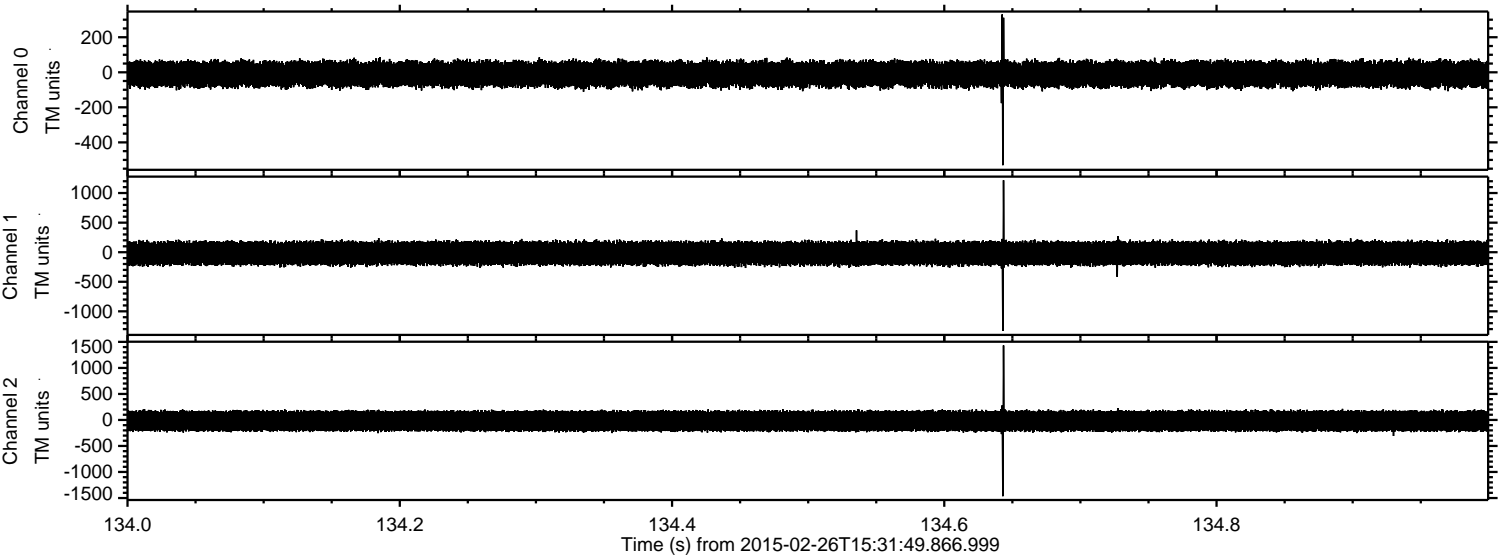


Processed Wed Mar 4 08:08:07 2015 by ELM ver.2012-10-06 from 001__elm20150226_153148__dat00.bin

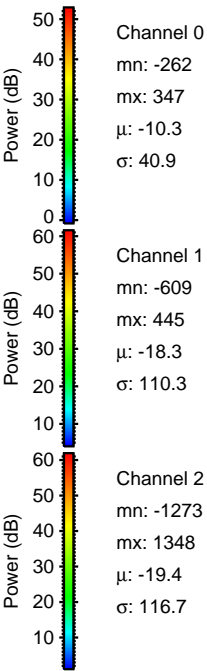
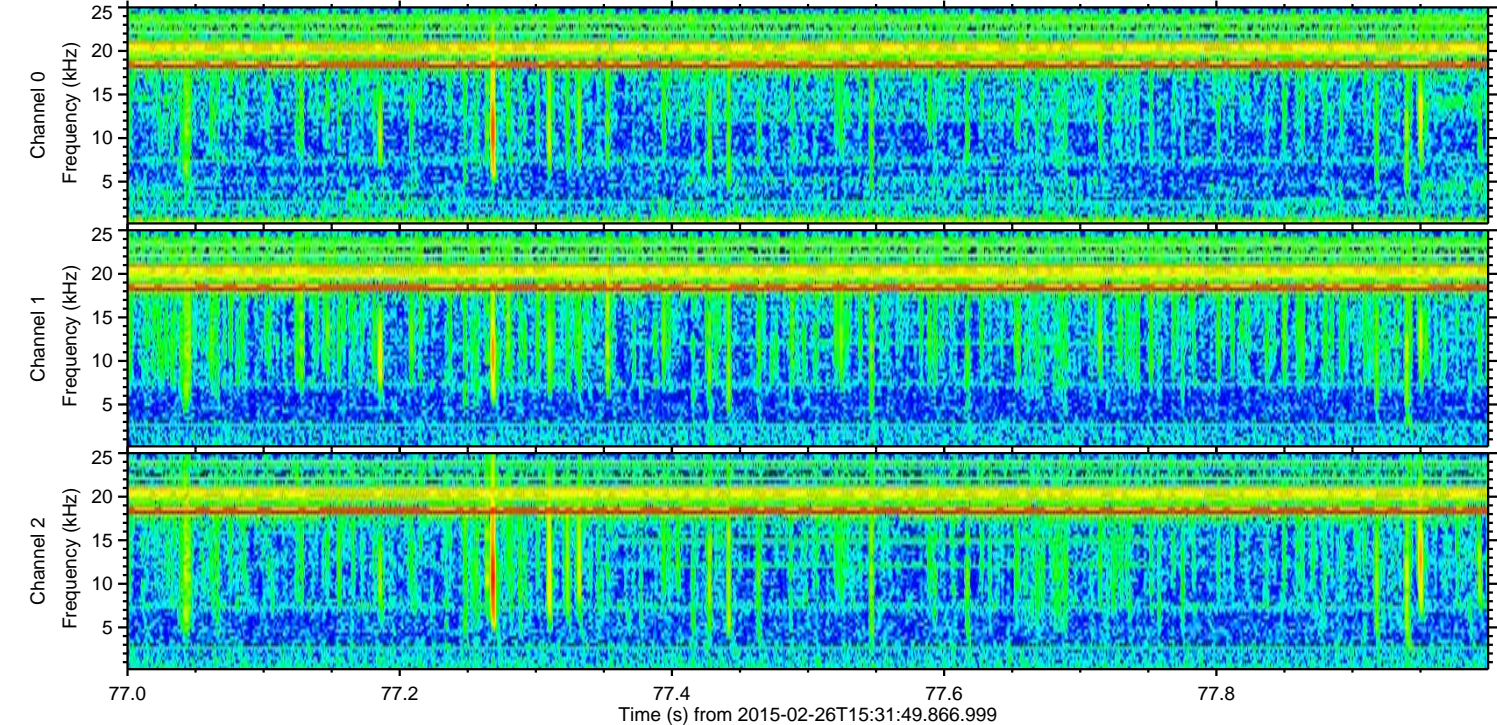
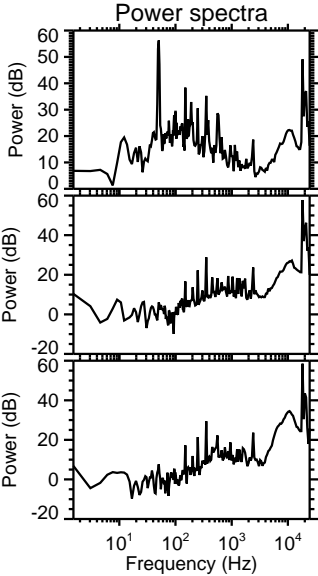
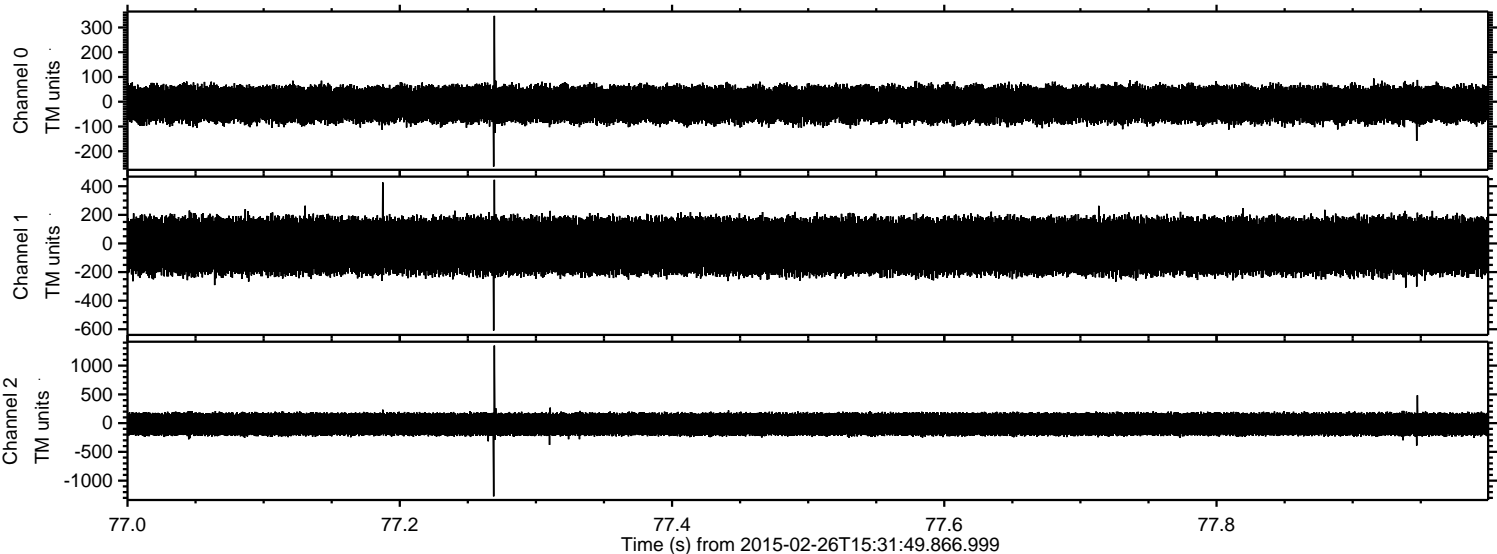


ELMAVAN 3D WAVEFORMS (Measured data sampled at 50 kHz) 49809 packets of 144 samples from 2015-02-26T15:31:49.866.999. Part 135/144

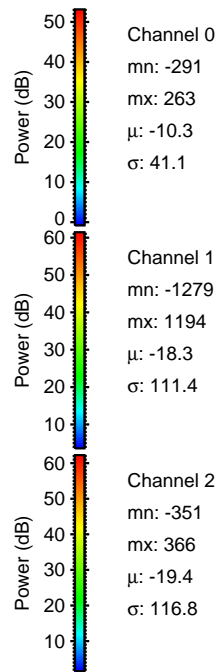
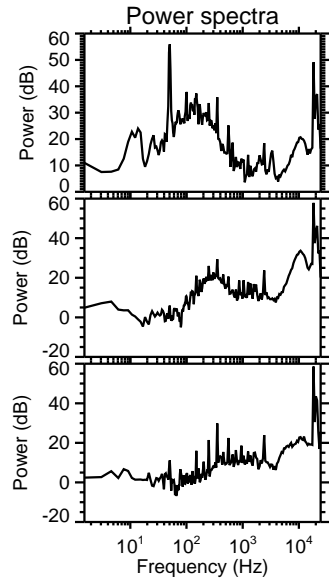
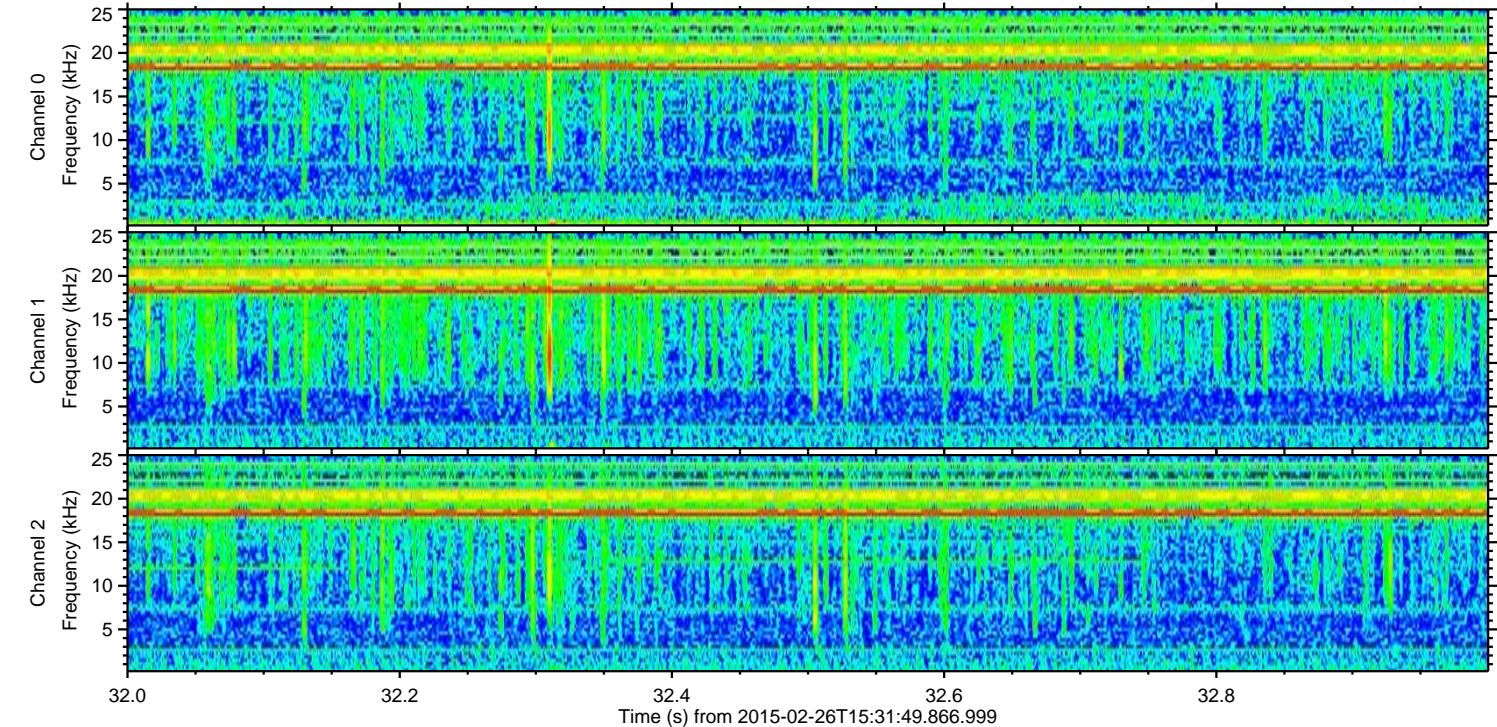
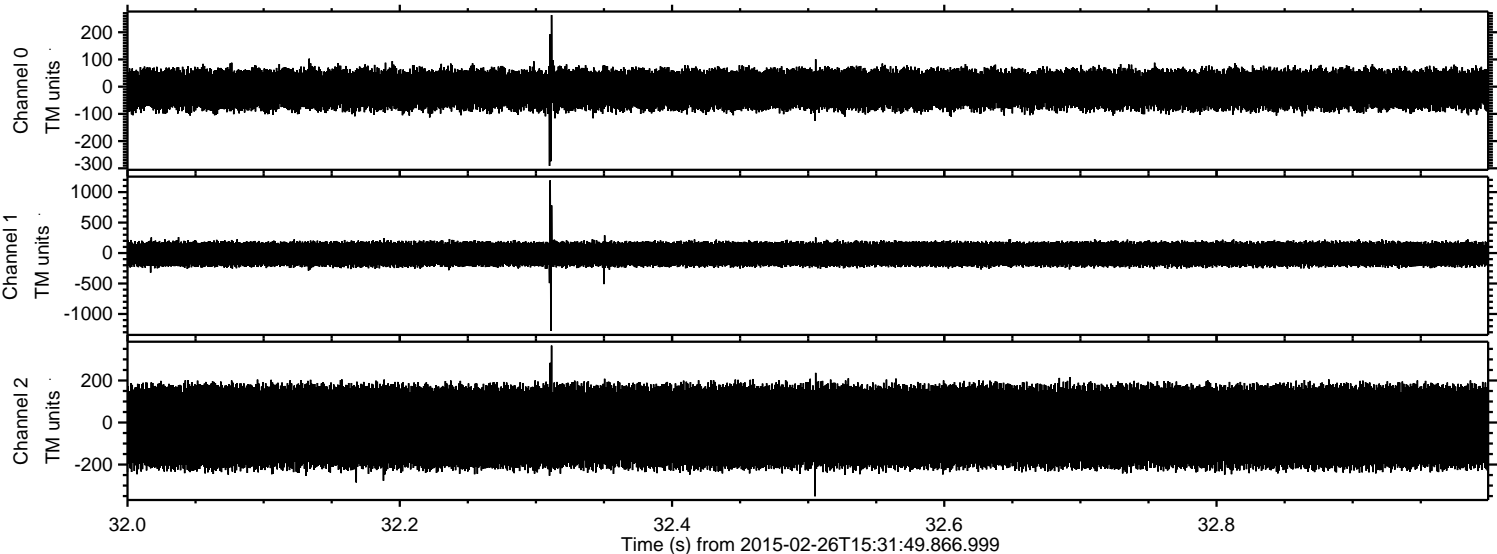
Processed Wed Mar 4 08:08:08 2015 by ELM ver.2012-10-06 from 001__elm20150226_153148__dat00.bin



Processed Wed Mar 4 08:08:09 2015 by ELM ver.2012-10-06 from 001__elm20150226_153148__dat00.bin



Processed Wed Mar 4 08:08:10 2015 by ELM ver.2012-10-06 from 001__elm20150226_153148__dat00.bin



Channel 0
mn: -291
mx: 263
 μ : -10.3
 σ : 41.1

Channel 1
mn: -1279
mx: 1194
 μ : -18.3
 σ : 111.4

Channel 2
mn: -351
mx: 366
 μ : -19.4
 σ : 116.8

Processed Wed Mar 4 08:08:11 2015 by ELM ver.2012-10-06 from 001__elm20150226_153148__dat00.bin

