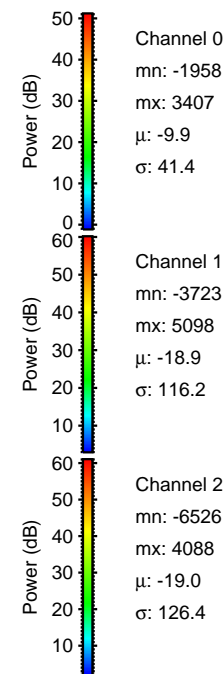
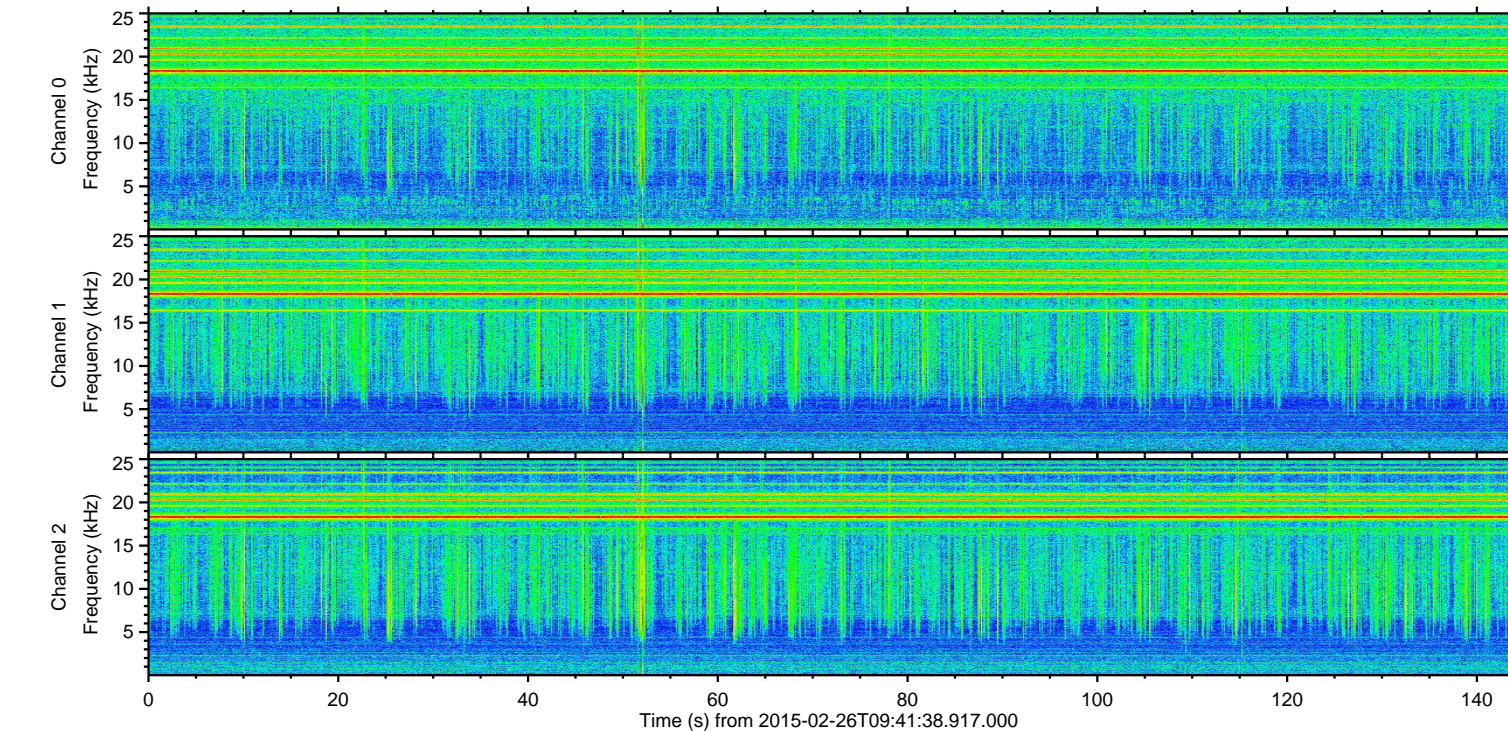
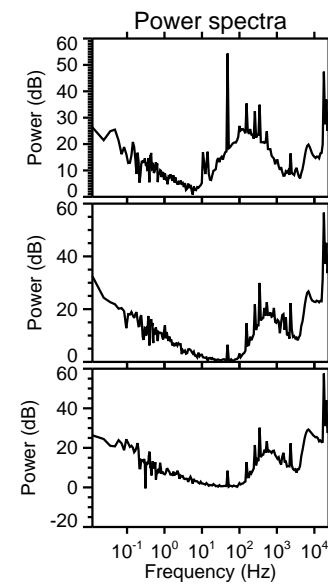
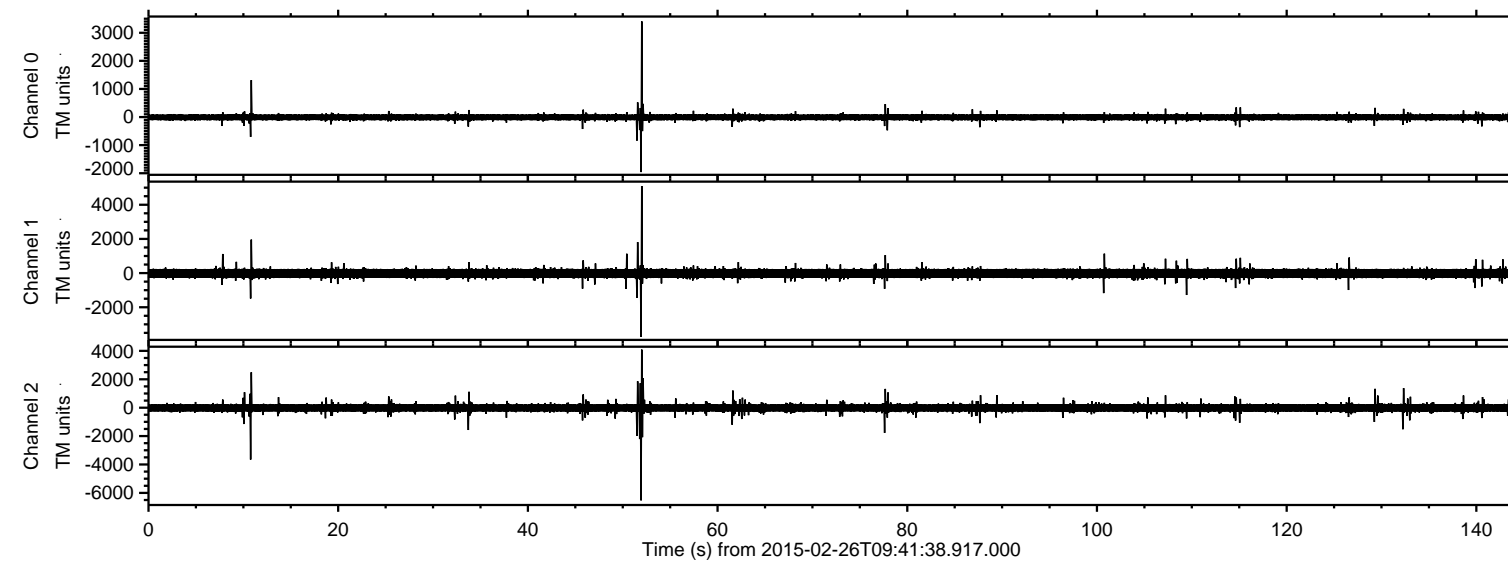


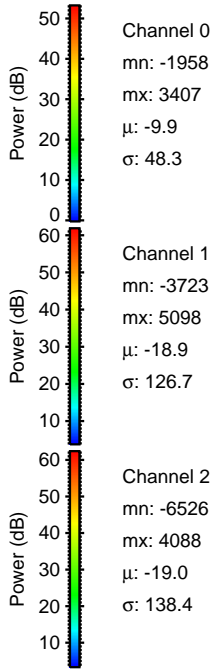
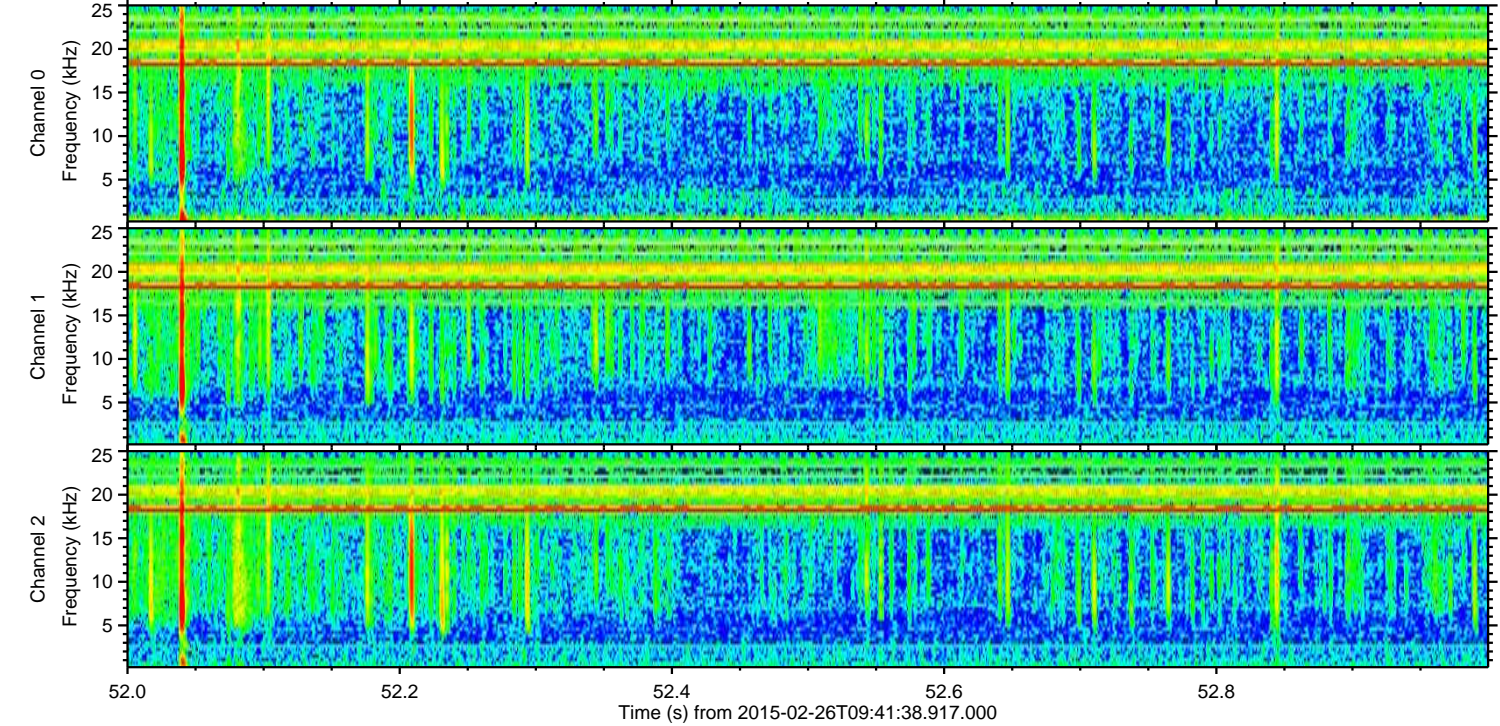
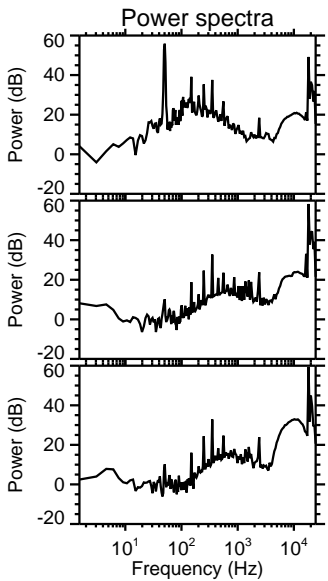
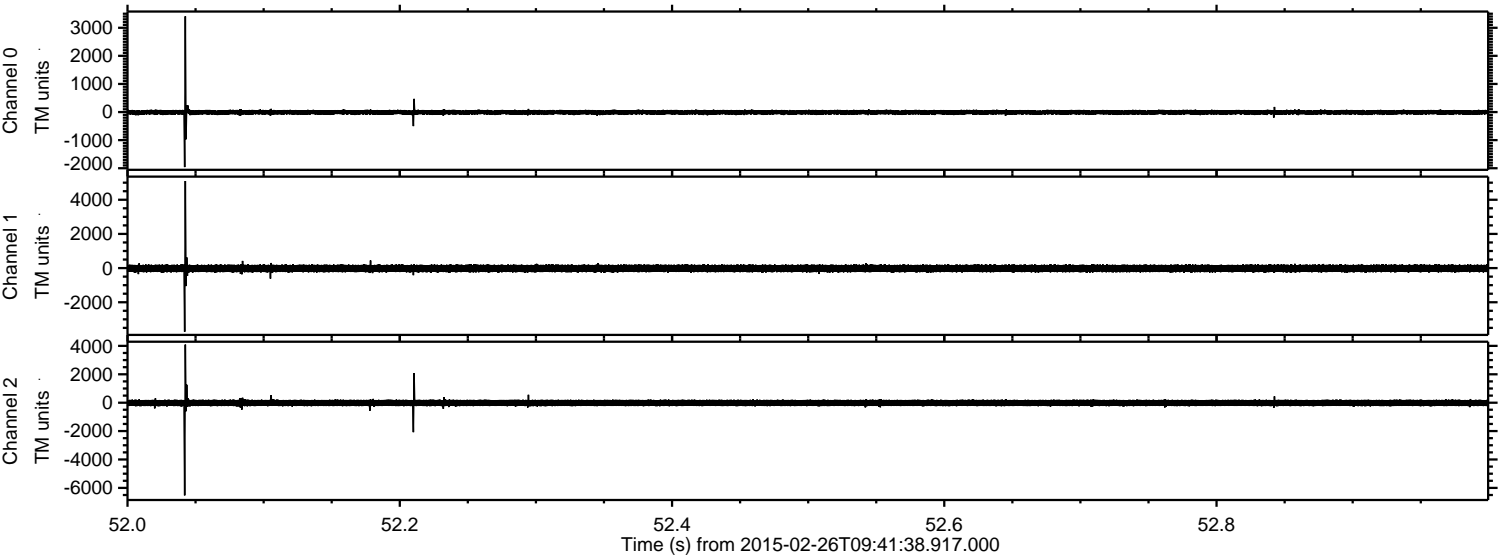
# ELMAVAN 3D WAVEFORMS (Measured data sampled at 50 kHz) 49812 packets of 144 samples from 2015-02-26T09:41:38.917.000.

Processed Wed Mar 4 04:02:33 2015 by ELM ver.2012-10-06 from 001\_\_elm20150226\_094137\_\_dat00.bin





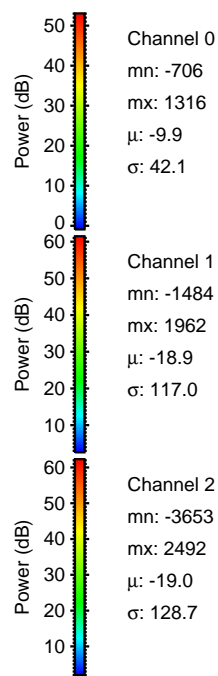
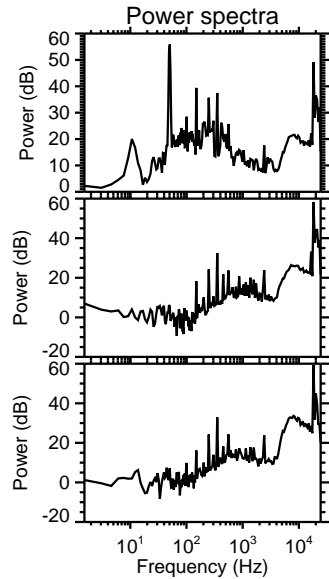
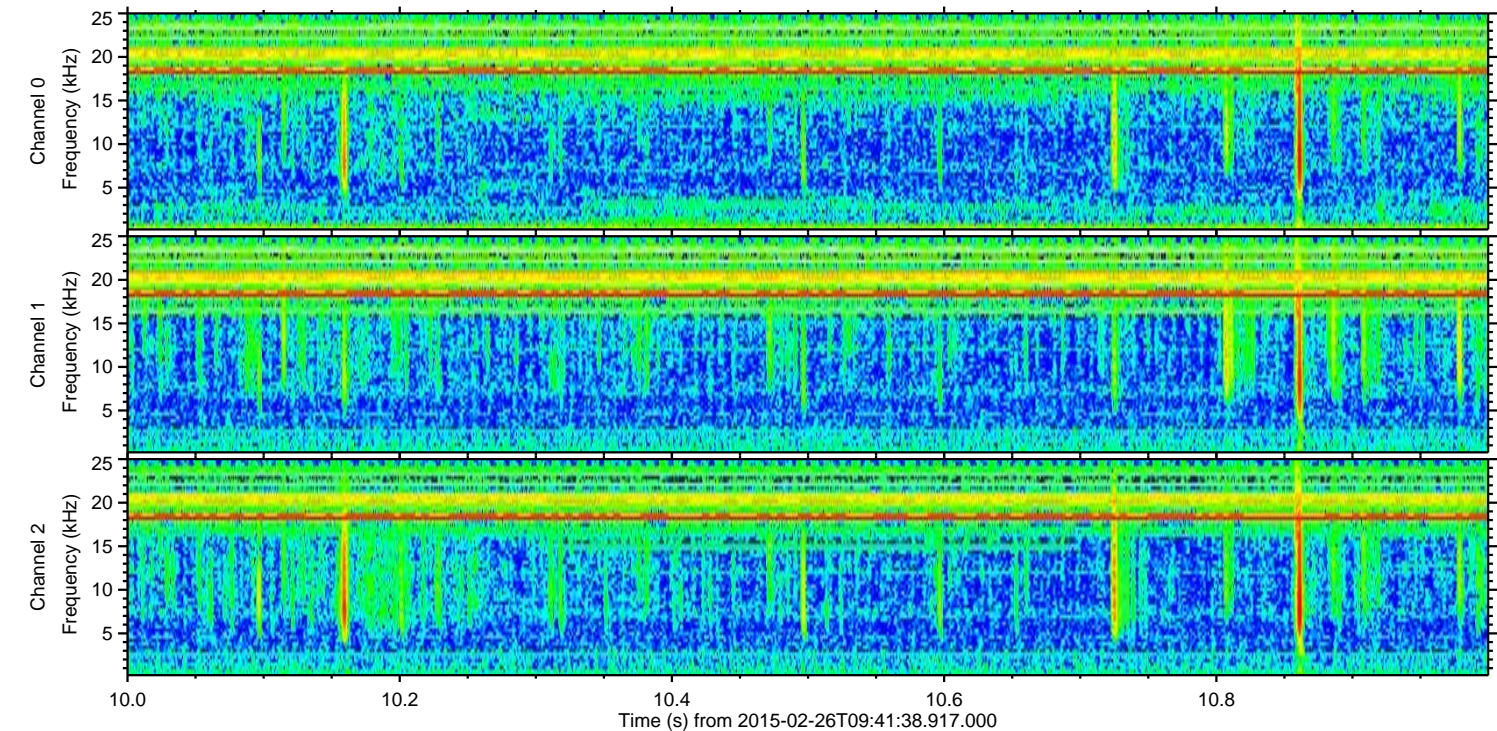
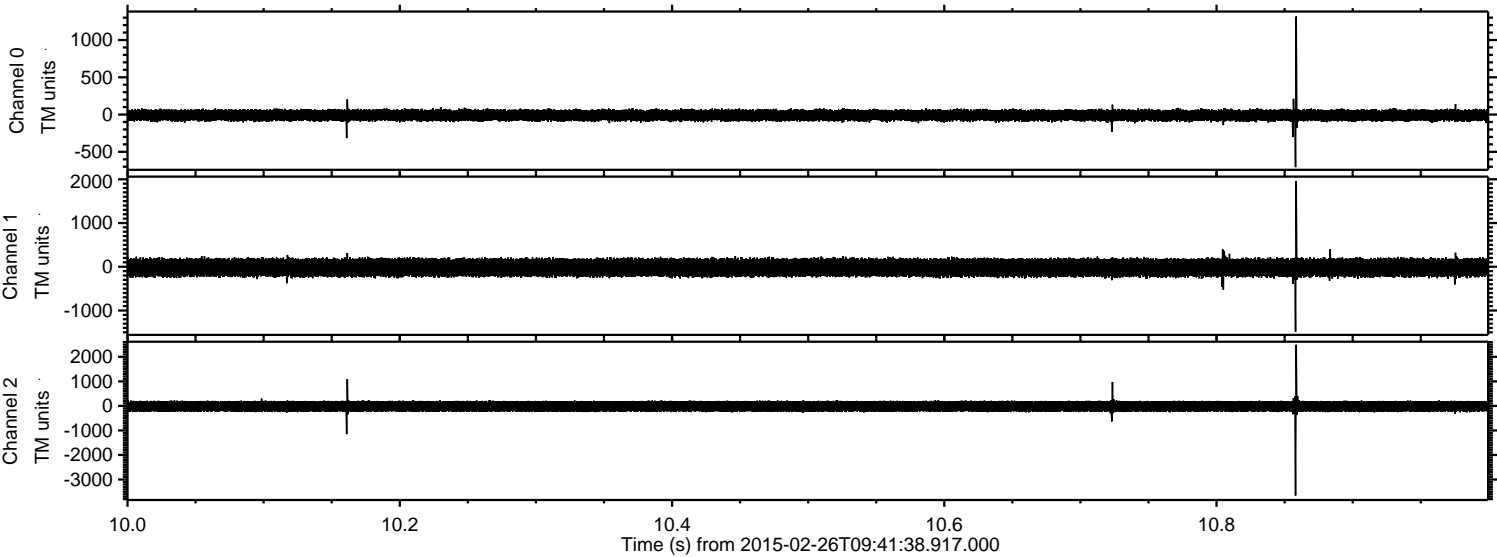
Processed Wed Mar 4 04:02:45 2015 by ELM ver.2012-10-06 from 001\_\_elm20150226\_094137\_\_dat00.bin





ELMAVAN 3D WAVEFORMS (Measured data sampled at 50 kHz) 49812 packets of 144 samples from 2015-02-26T09:41:38.917.000. Part 11/144

Processed Wed Mar 4 04:02:46 2015 by ELM ver.2012-10-06 from 001\_\_elm20150226\_094137\_\_dat00.bin



Channel 0  
mn: -706  
mx: 1316  
 $\mu$ : -9.9  
 $\sigma$ : 42.1

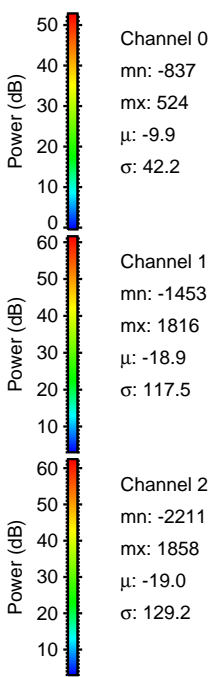
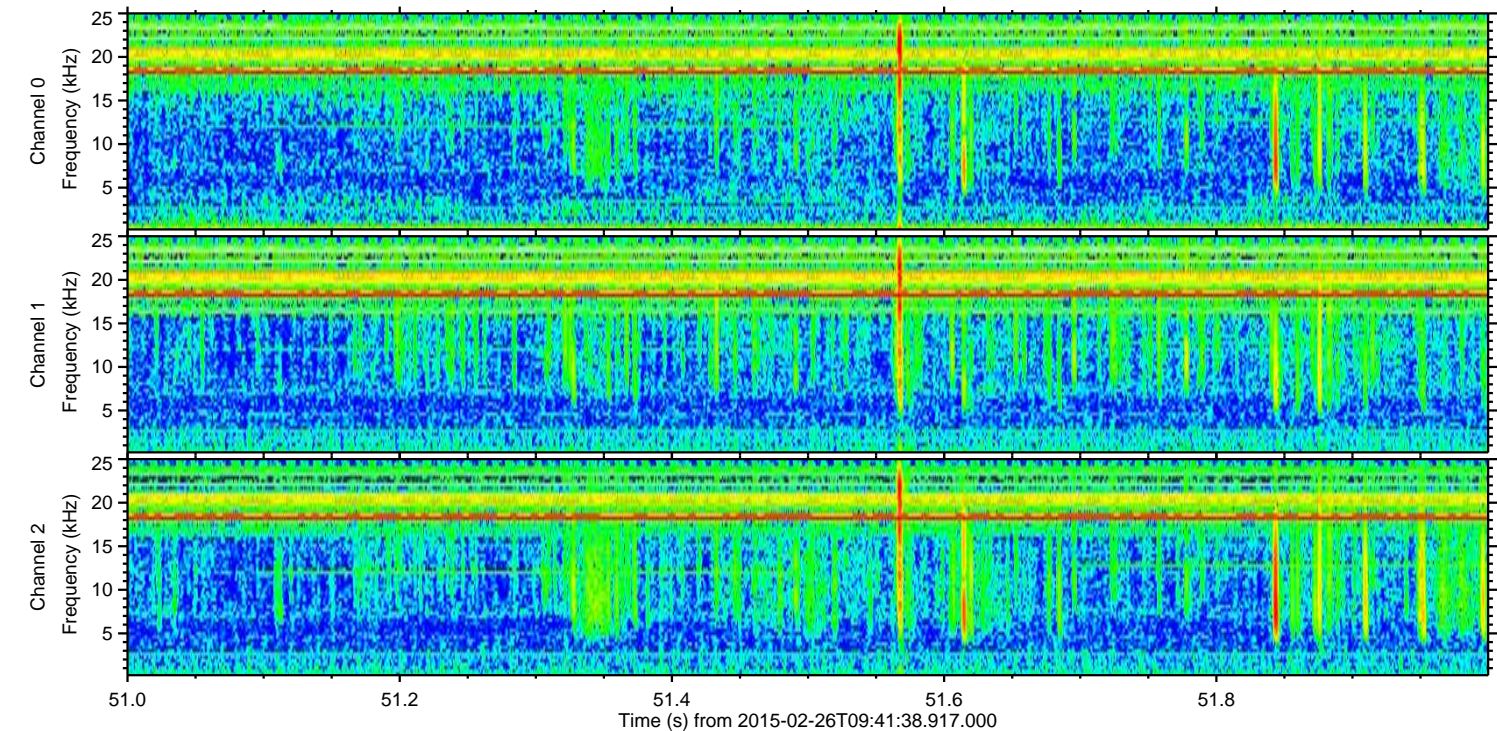
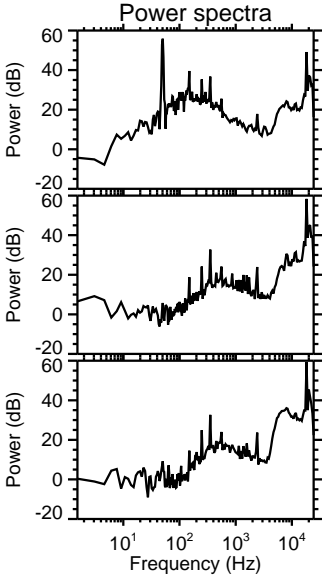
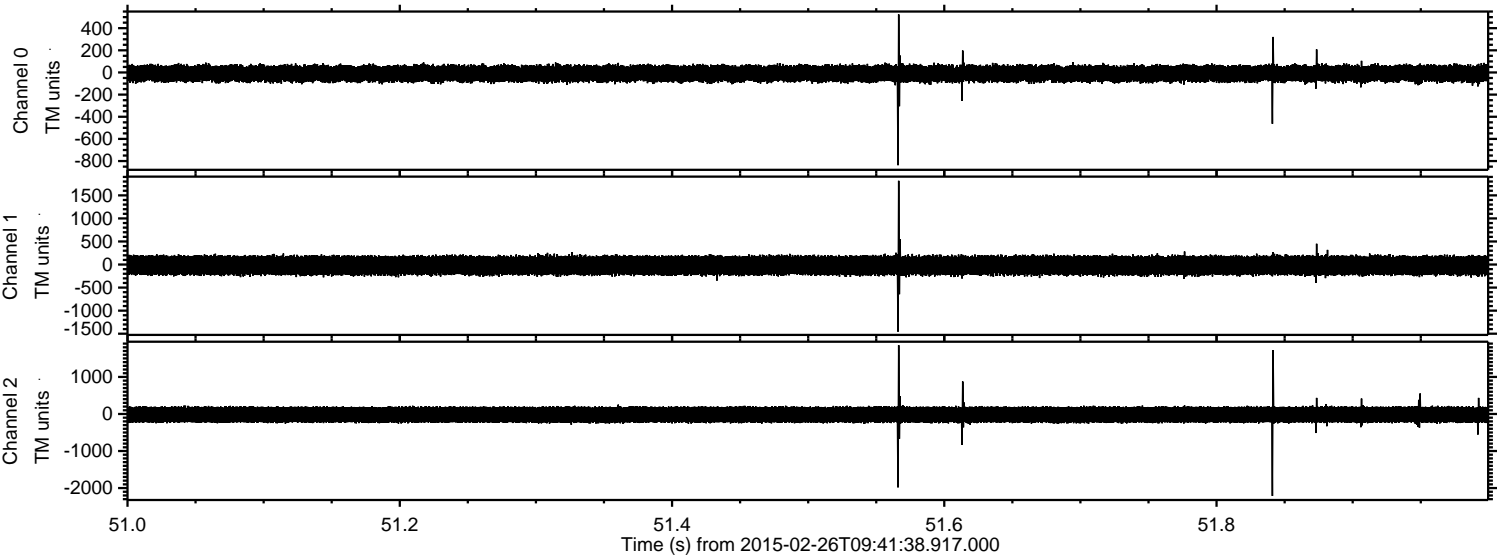
Channel 1  
mn: -1484  
mx: 1962  
 $\mu$ : -18.9  
 $\sigma$ : 117.0

Channel 2  
mn: -3653  
mx: 2492  
 $\mu$ : -19.0  
 $\sigma$ : 128.7



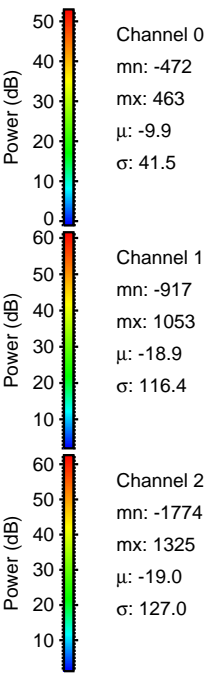
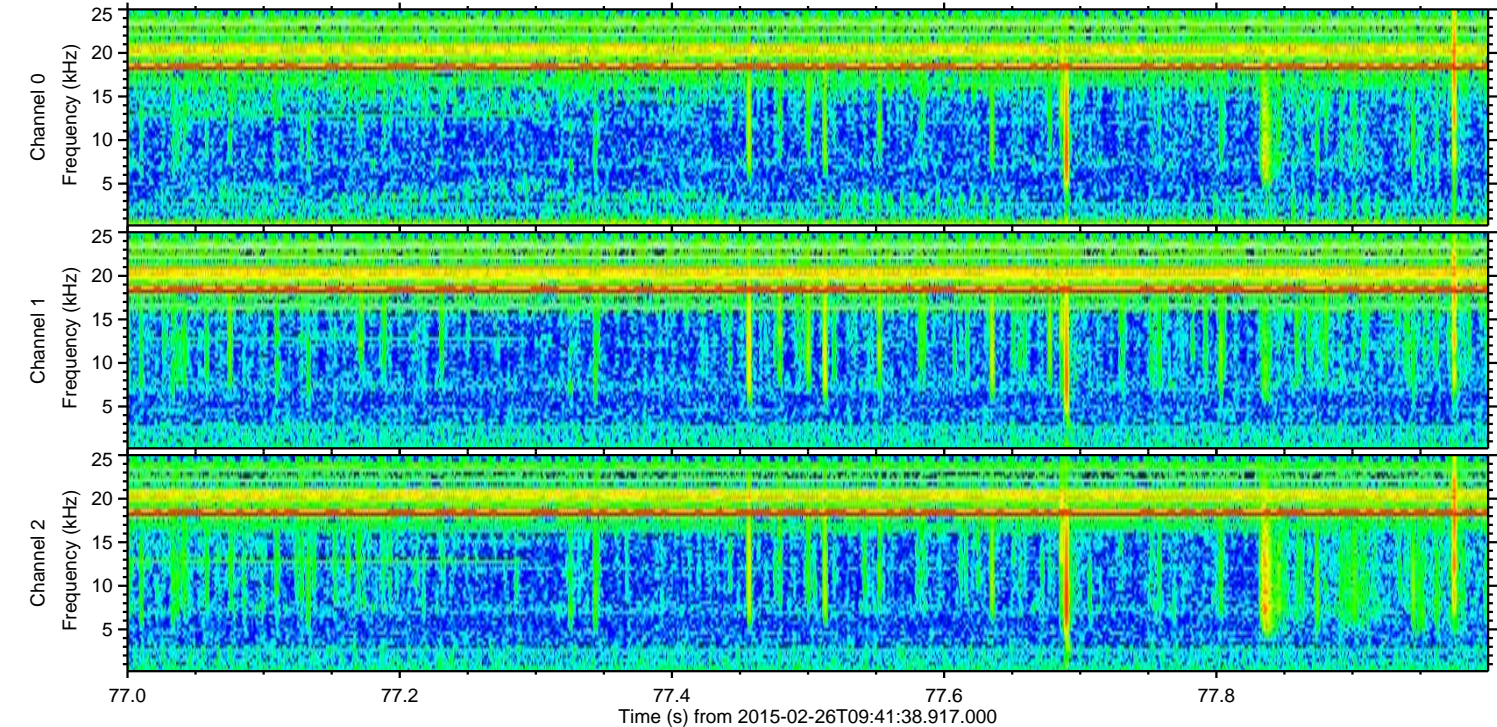
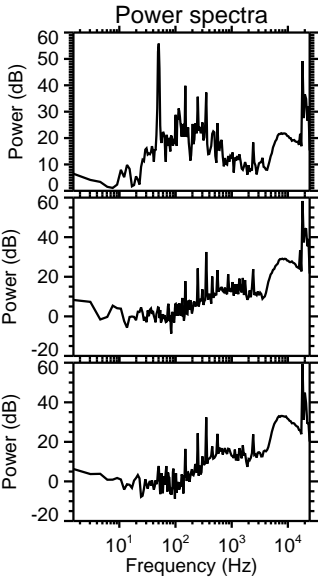
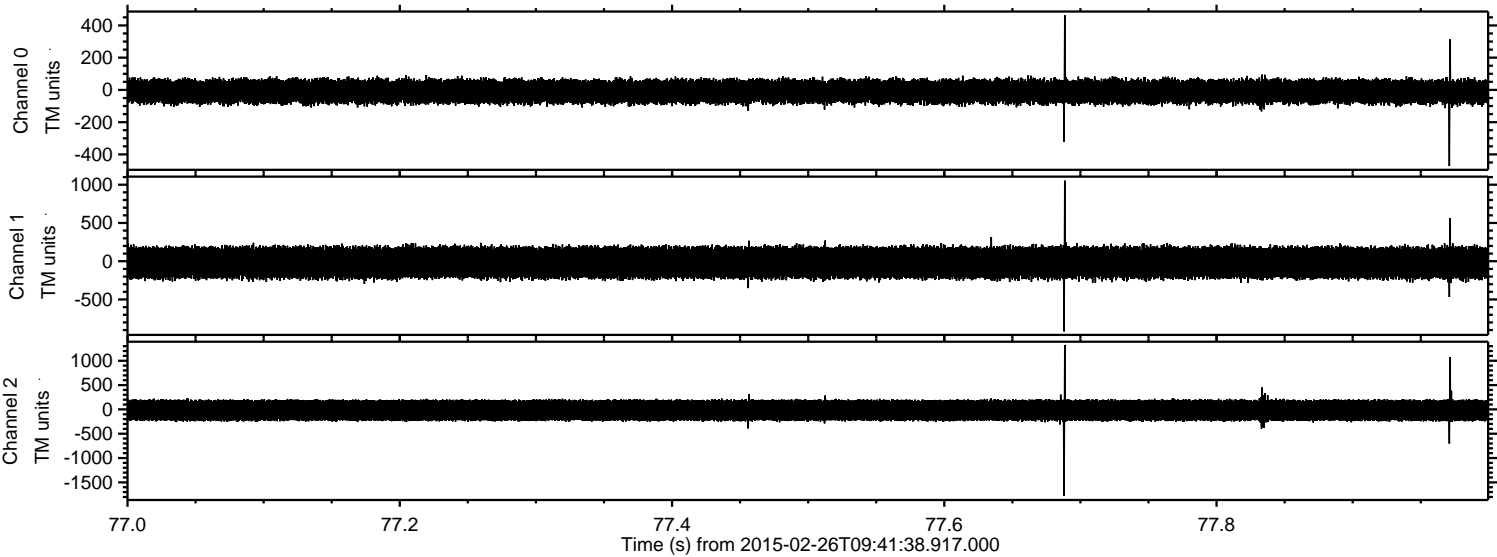
ELMAVAN 3D WAVEFORMS (Measured data sampled at 50 kHz) 49812 packets of 144 samples from 2015-02-26T09:41:38.917.000. Part 52/144

Processed Wed Mar 4 04:02:47 2015 by ELM ver.2012-10-06 from 001\_\_elm20150226\_094137\_\_dat00.bin



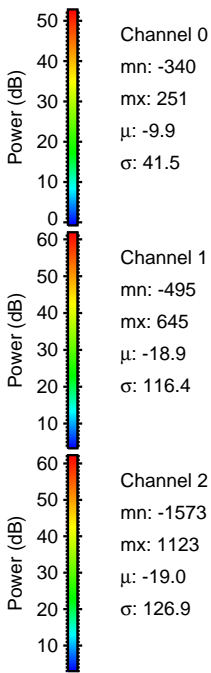
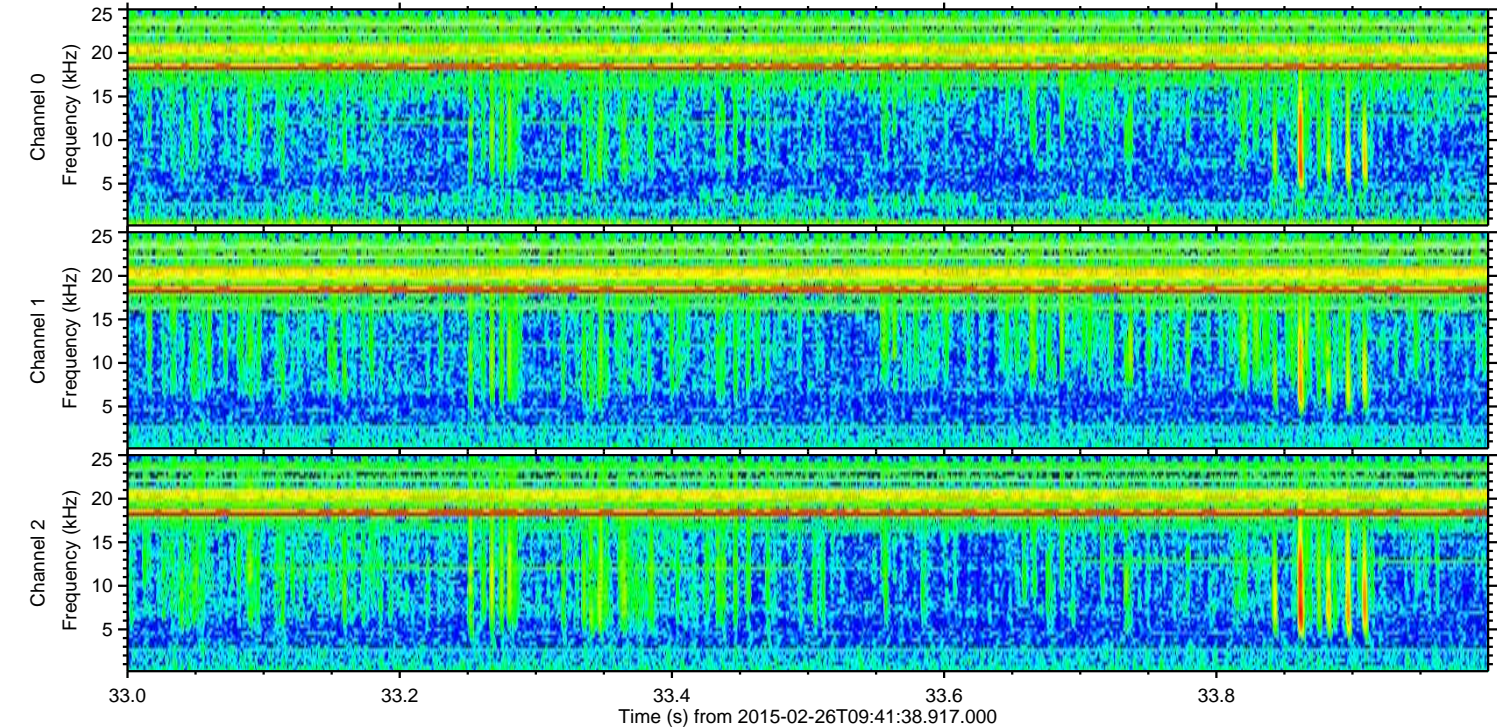
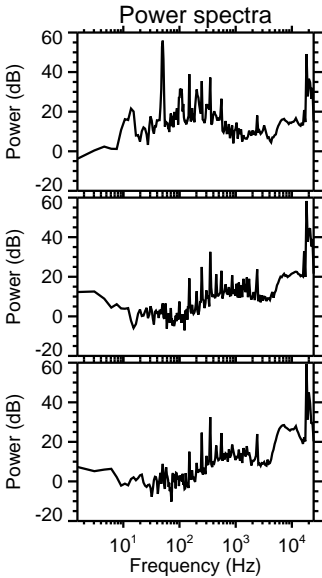
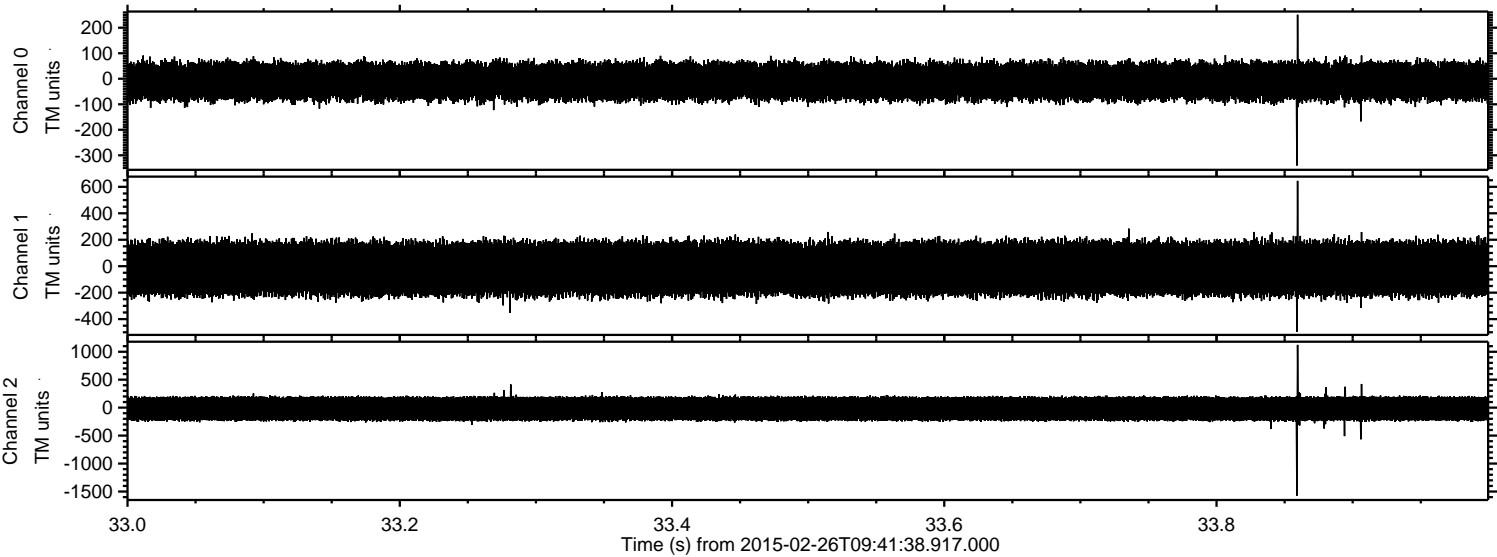


Processed Wed Mar 4 04:02:47 2015 by ELM ver.2012-10-06 from 001\_\_elm20150226\_094137\_\_dat00.bin





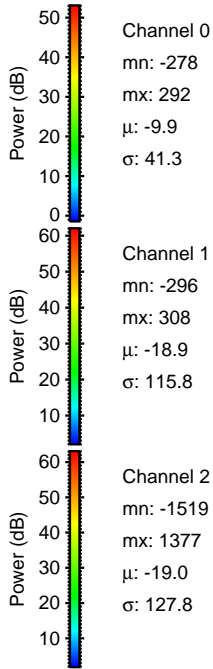
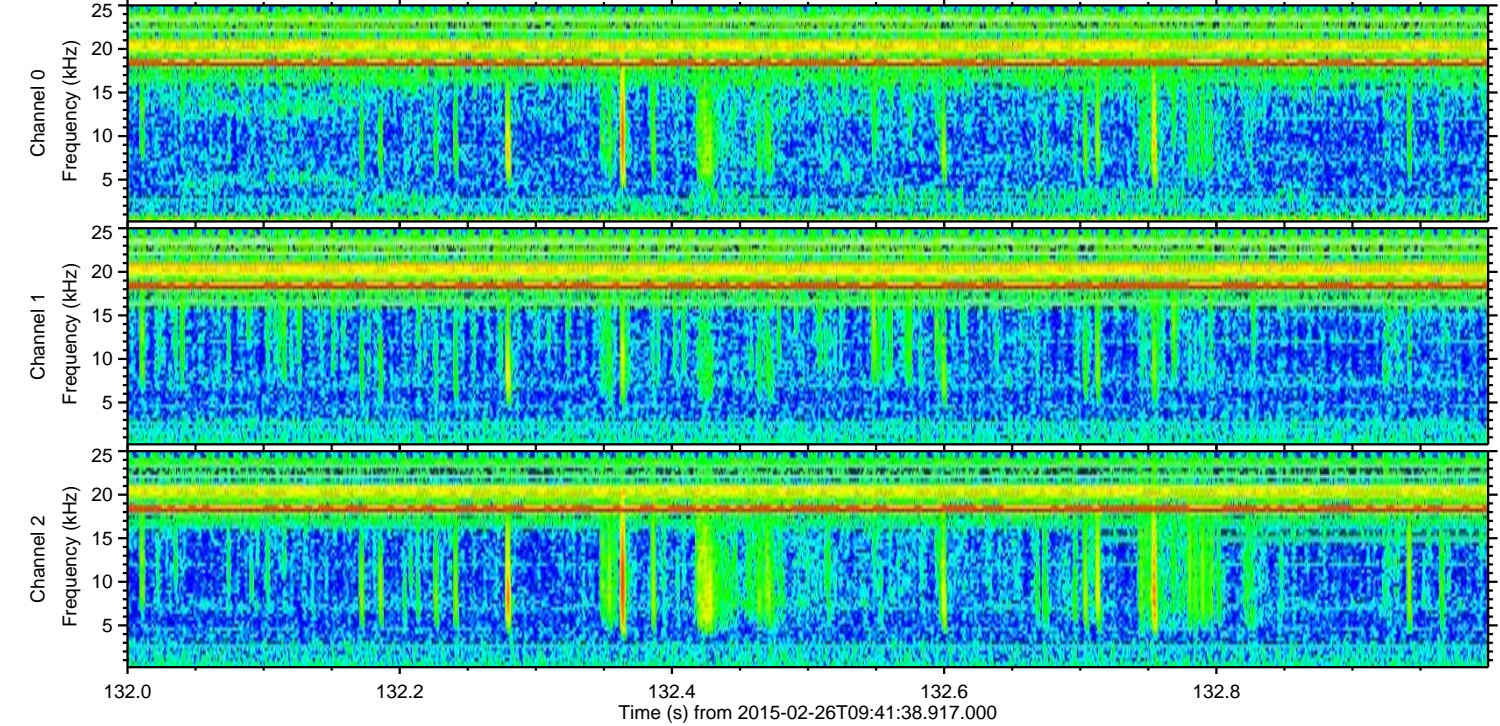
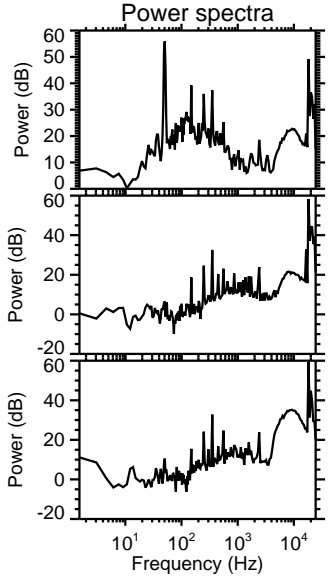
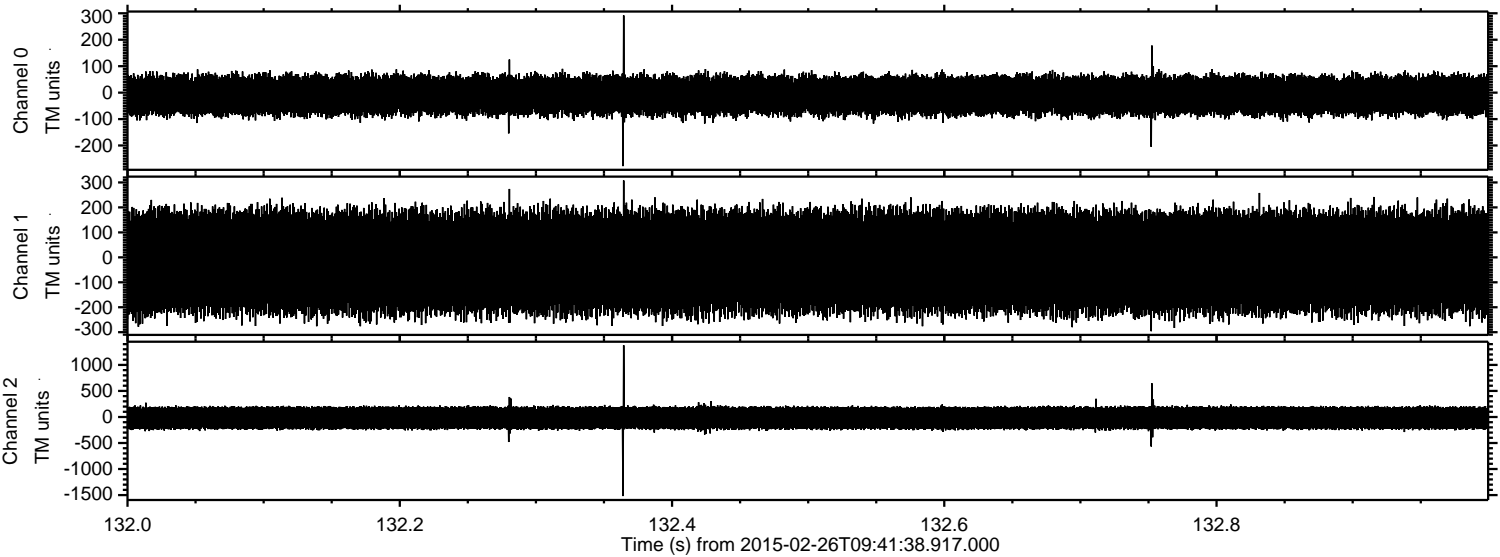
Processed Wed Mar 4 04:02:48 2015 by ELM ver.2012-10-06 from 001\_\_elm20150226\_094137\_\_dat00.bin





ELMAVAN 3D WAVEFORMS (Measured data sampled at 50 kHz) 49812 packets of 144 samples from 2015-02-26T09:41:38.917.000. Part 133/144

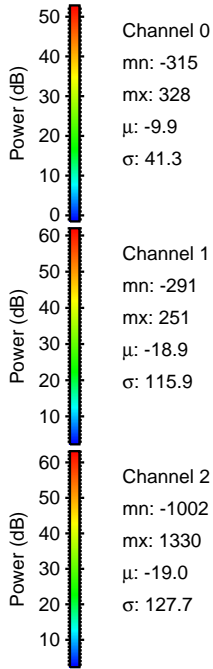
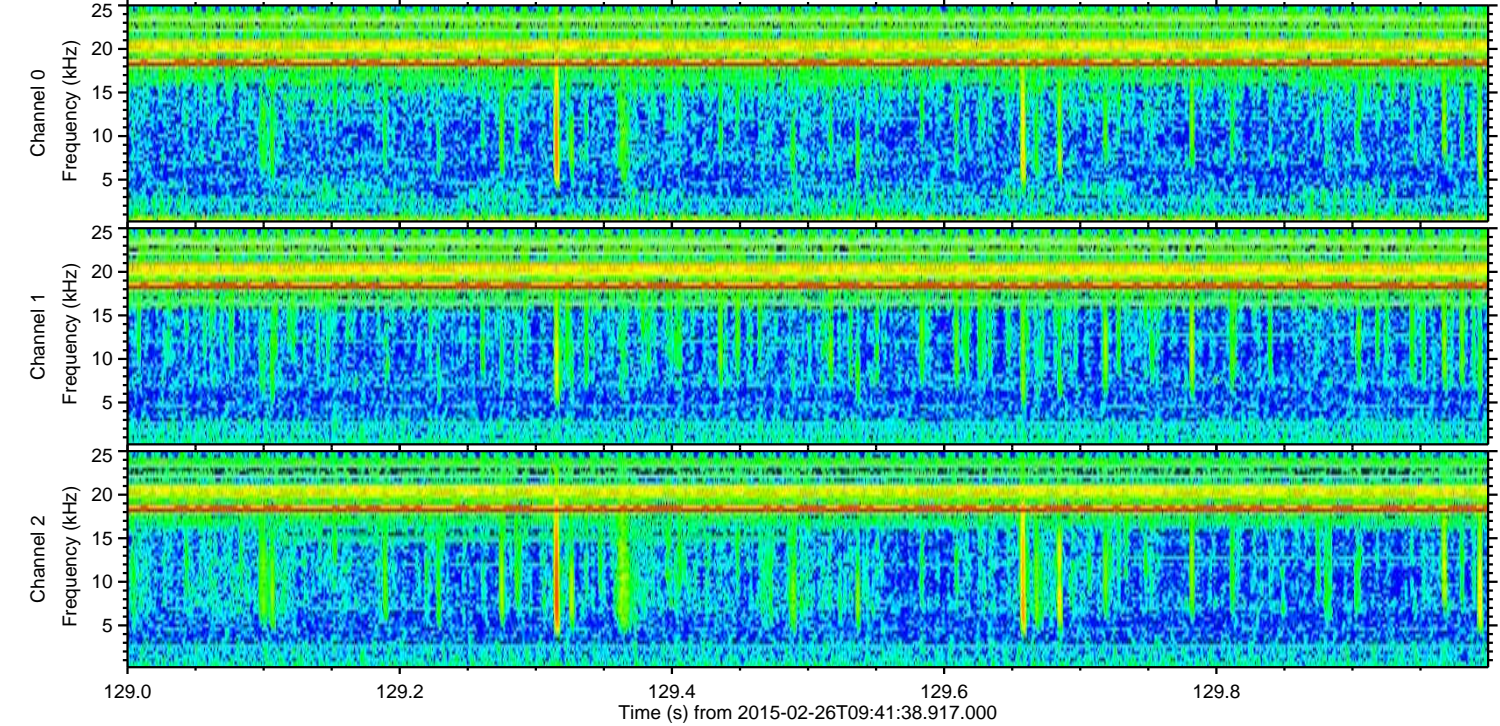
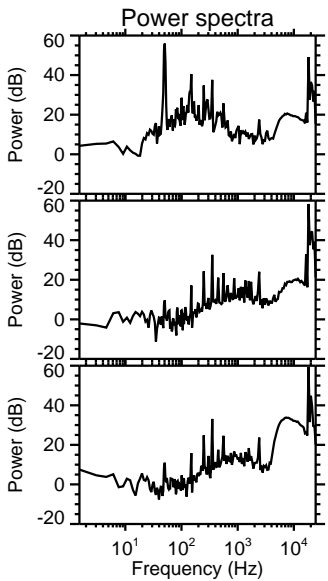
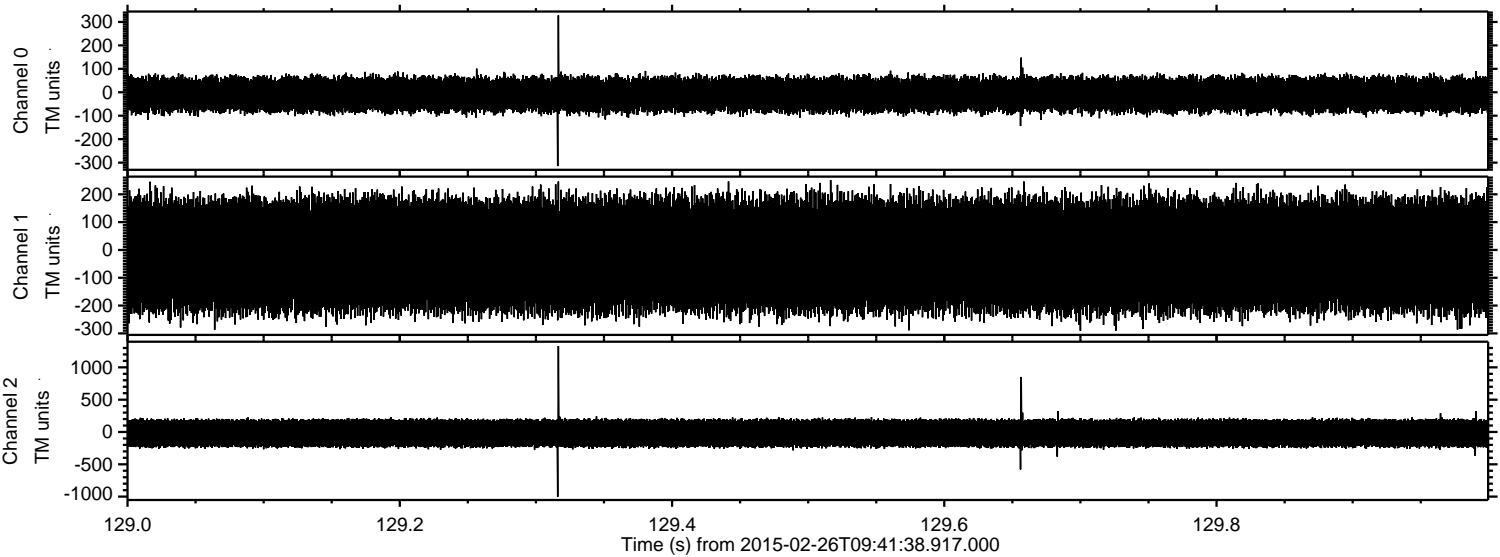
Processed Wed Mar 4 04:02:49 2015 by ELM ver.2012-10-06 from 001\_\_elm20150226\_094137\_\_dat00.bin





ELMAVAN 3D WAVEFORMS (Measured data sampled at 50 kHz) 49812 packets of 144 samples from 2015-02-26T09:41:38.917.000. Part 130/144

Processed Wed Mar 4 04:02:50 2015 by ELM ver.2012-10-06 from 001\_\_elm20150226\_094137\_\_dat00.bin



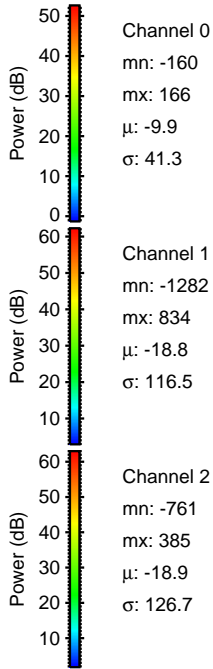
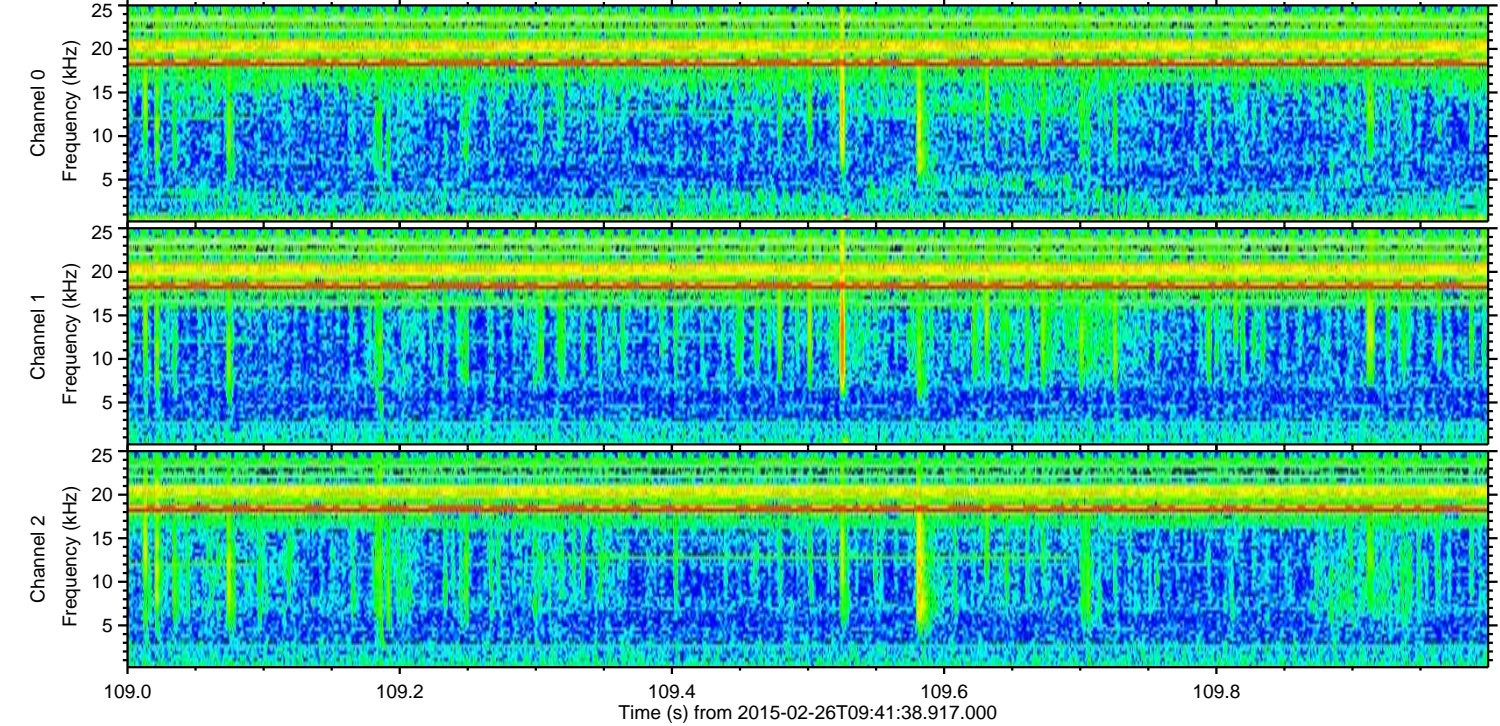
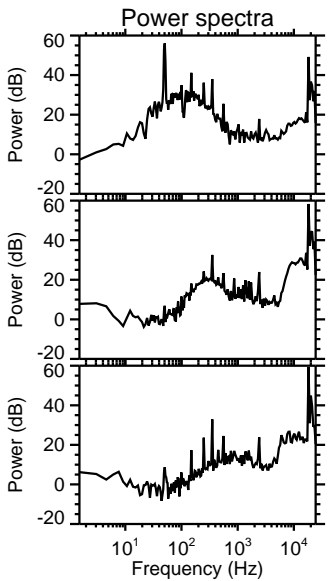
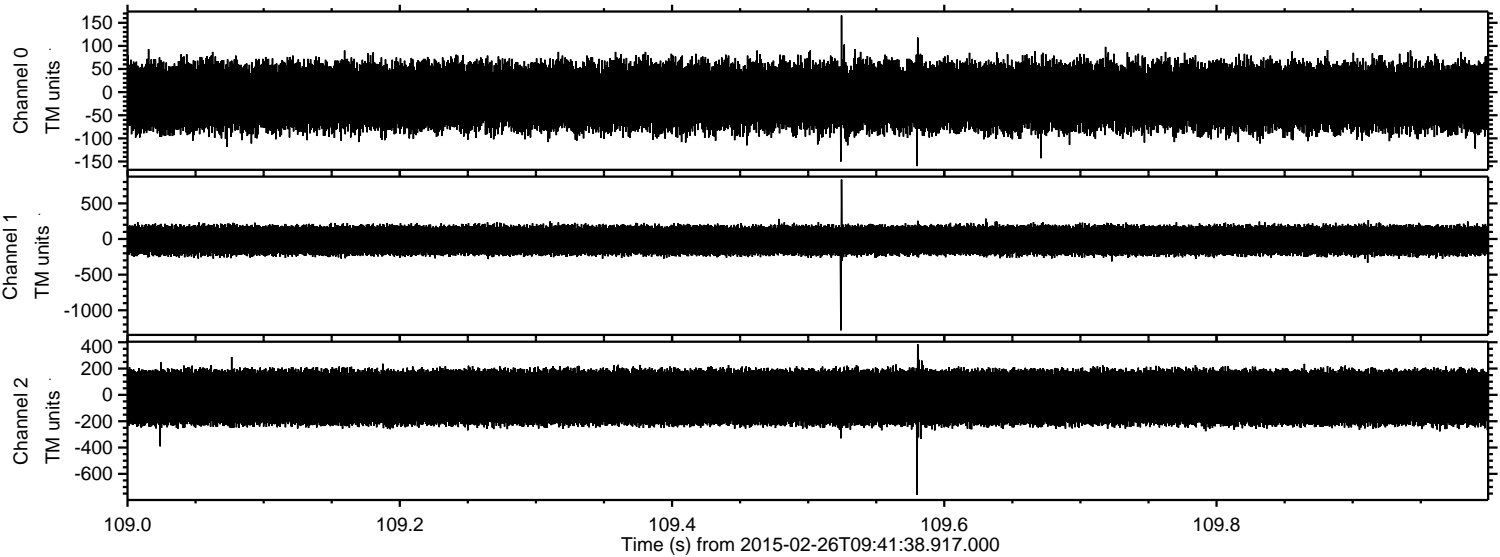
Channel 0  
mn: -315  
mx: 328  
 $\mu$ : -9.9  
 $\sigma$ : 41.3

Channel 1  
mn: -291  
mx: 251  
 $\mu$ : -18.9  
 $\sigma$ : 115.9

Channel 2  
mn: -1002  
mx: 1330  
 $\mu$ : -19.0  
 $\sigma$ : 127.7



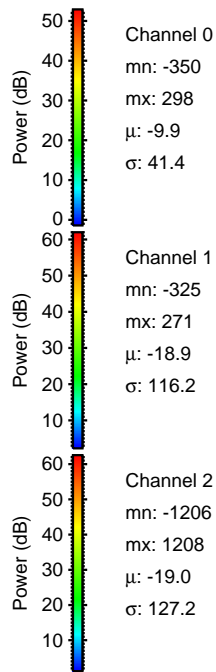
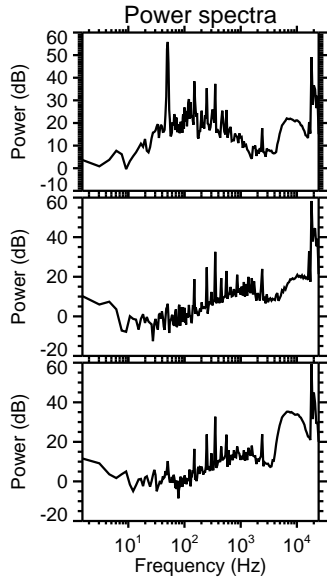
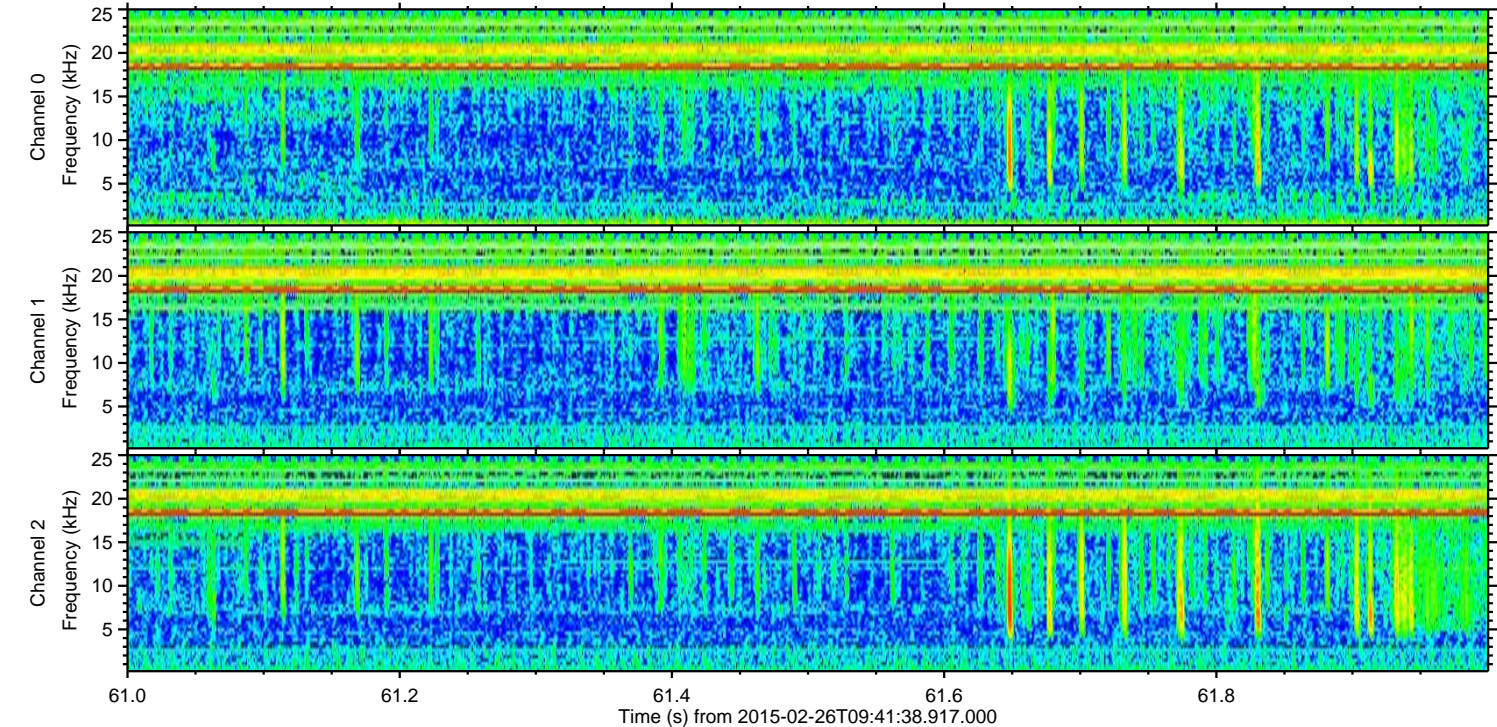
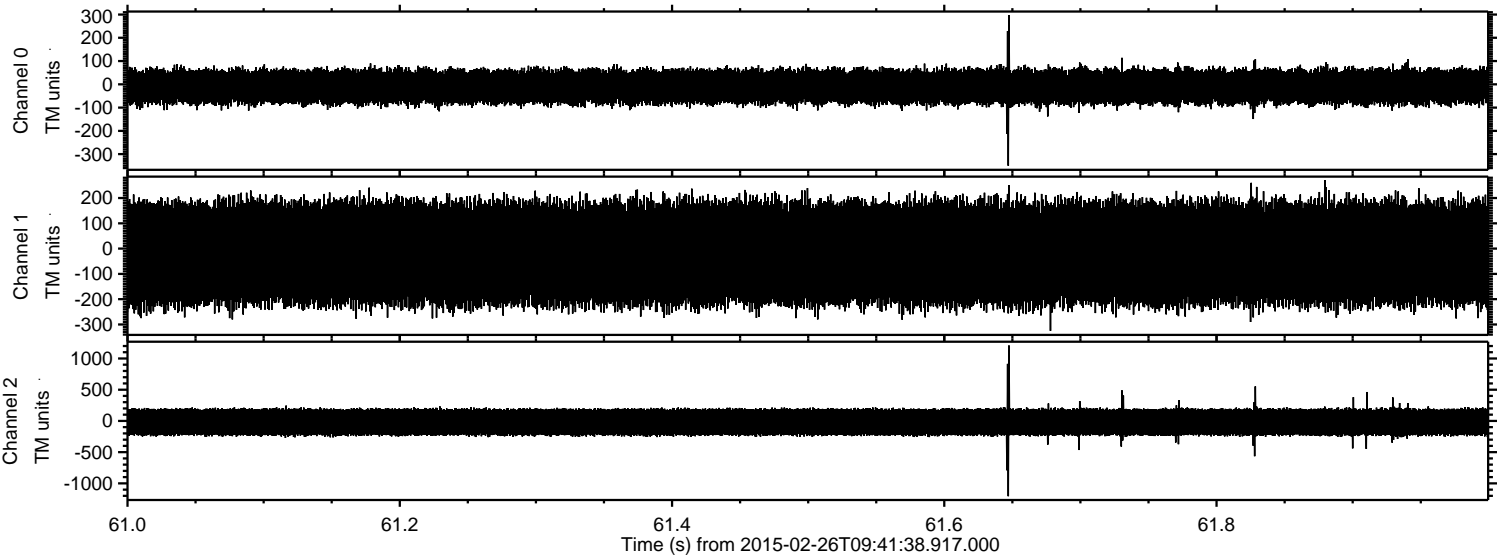
Processed Wed Mar 4 04:02:51 2015 by ELM ver.2012-10-06 from 001\_\_elm20150226\_094137\_\_dat00.bin





ELMAVAN 3D WAVEFORMS (Measured data sampled at 50 kHz) 49812 packets of 144 samples from 2015-02-26T09:41:38.917.000. Part 62/144

Processed Wed Mar 4 04:02:52 2015 by ELM ver.2012-10-06 from 001\_\_elm20150226\_094137\_\_dat00.bin



Power spectra

Channel 0

mn: -350  
mx: 298  
 $\mu$ : -9.9  
 $\sigma$ : 41.4

Channel 1

mn: -325  
mx: 271  
 $\mu$ : -18.9  
 $\sigma$ : 116.2

Channel 2

mn: -1206  
mx: 1208  
 $\mu$ : -19.0  
 $\sigma$ : 127.2



