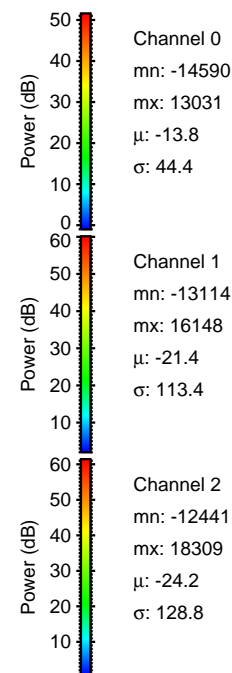
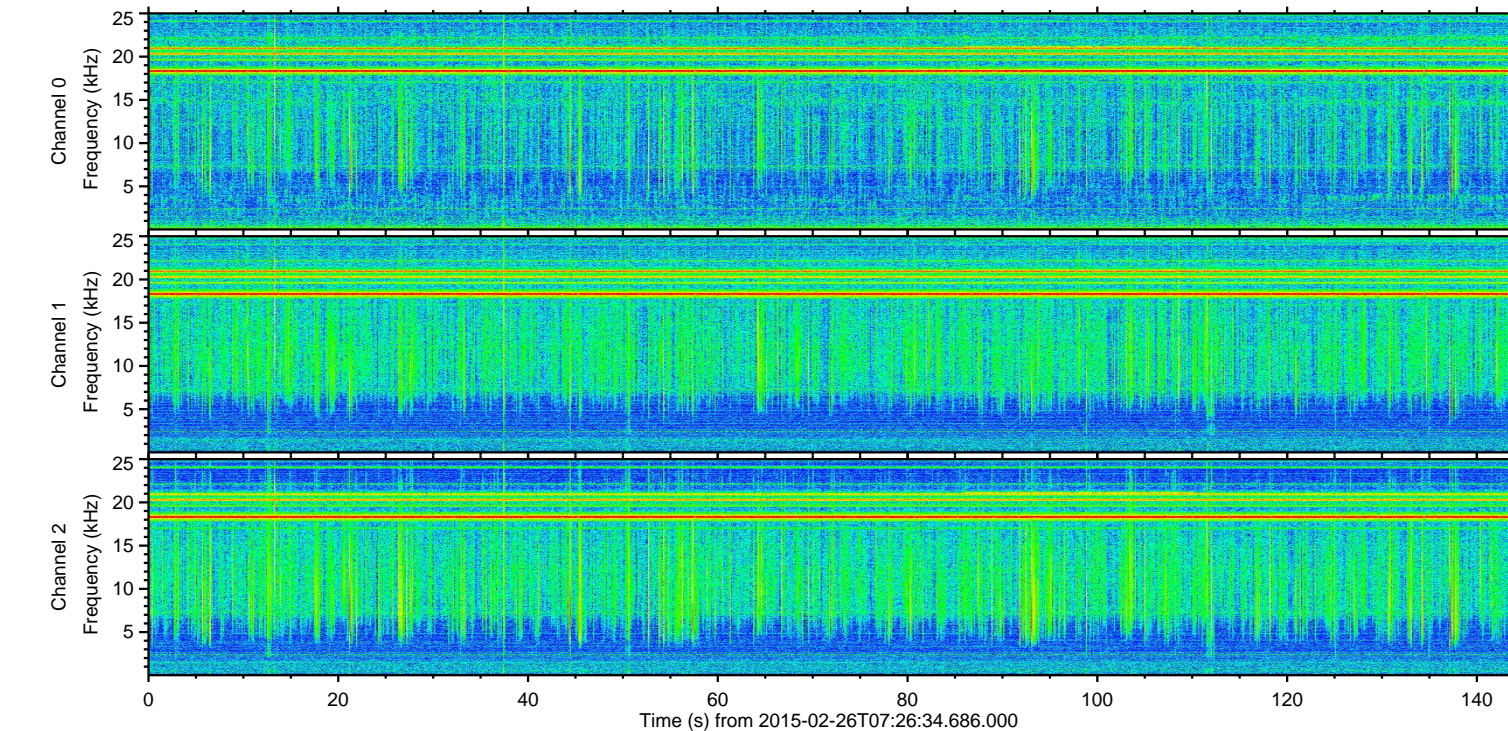
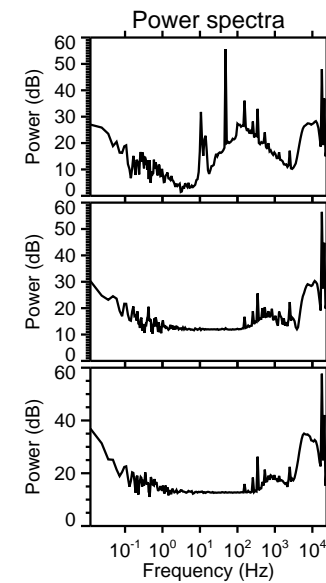
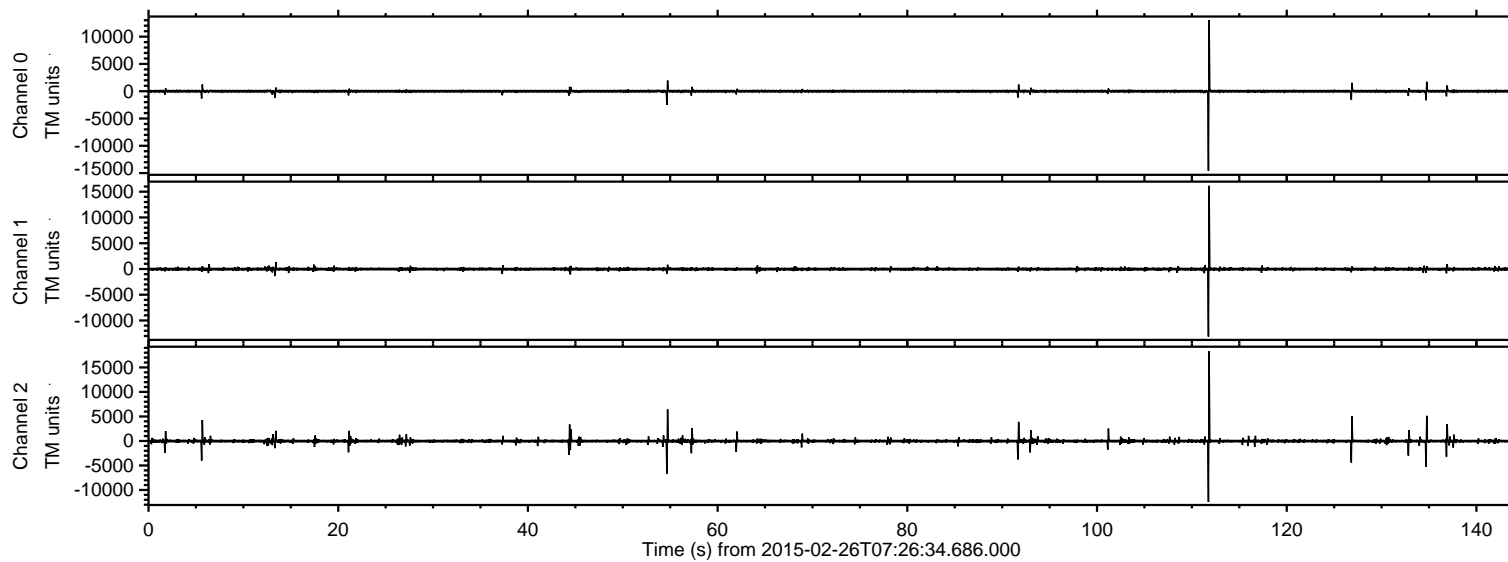


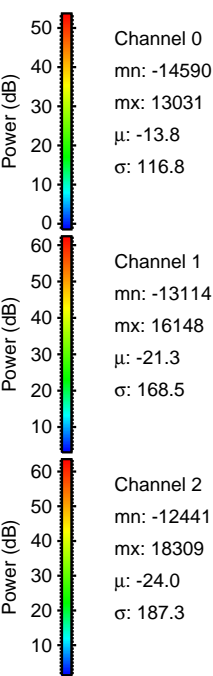
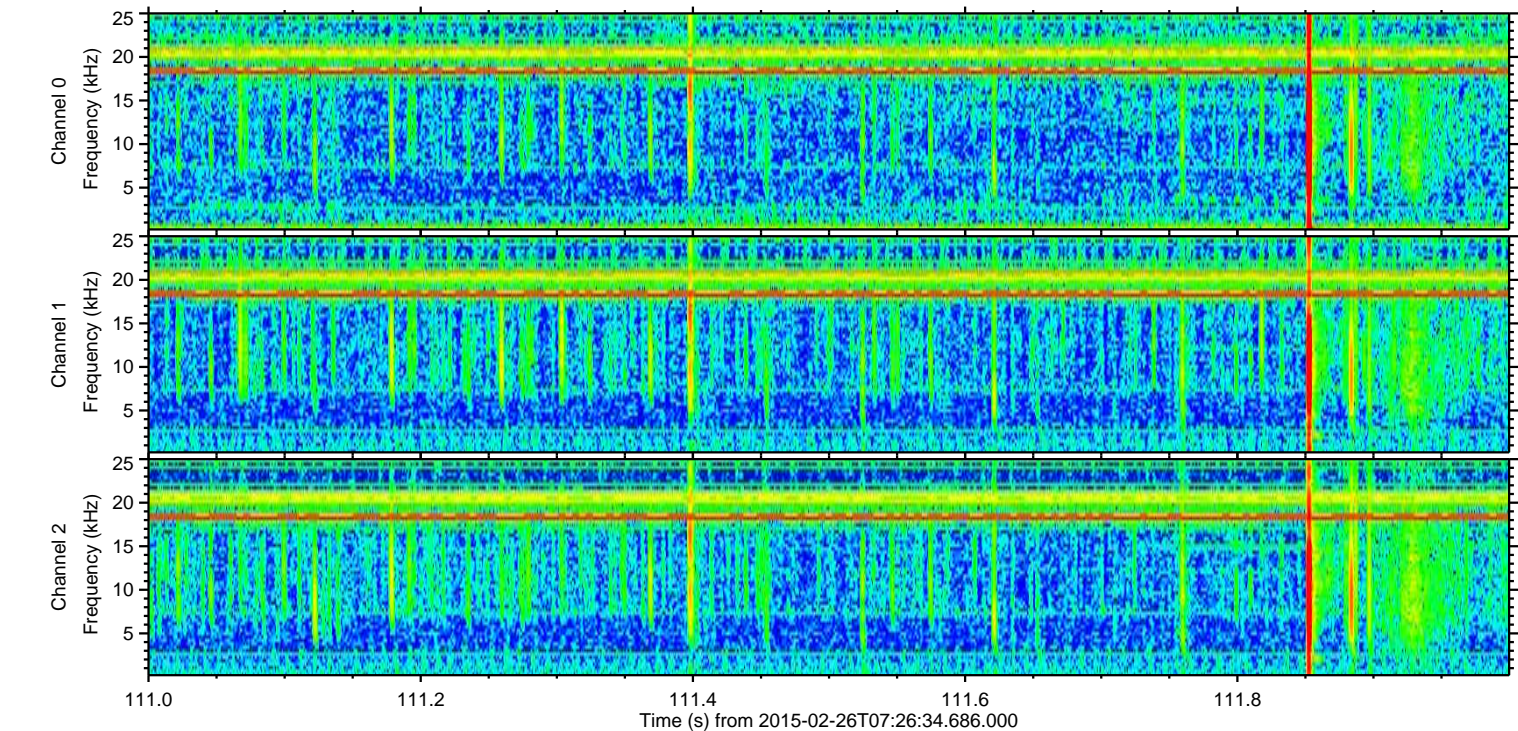
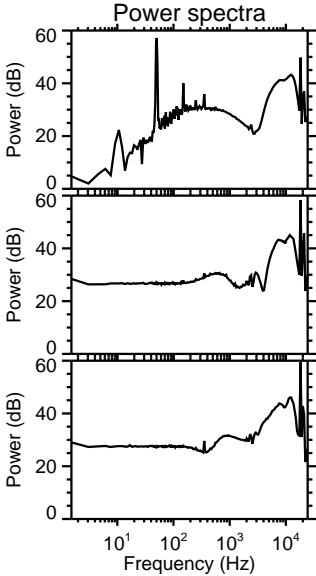
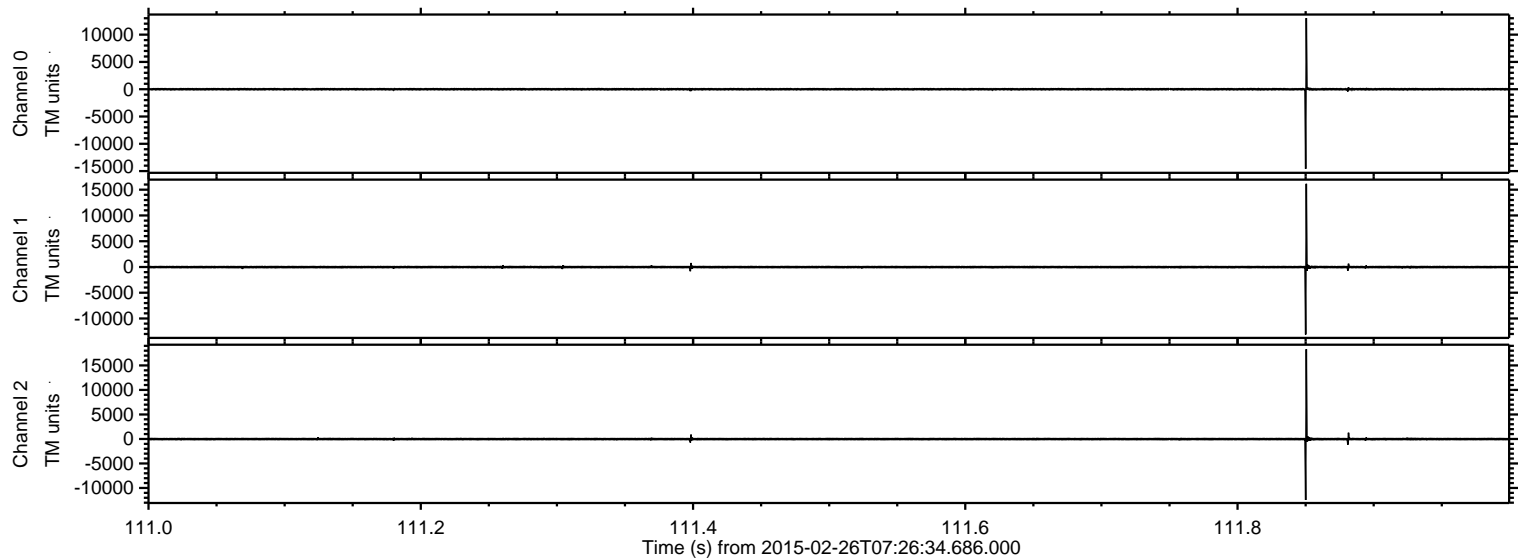
ELMAVAN 3D WAVEFORMS (Measured data sampled at 50 kHz) 49809 packets of 144 samples from 2015-02-26T07:26:34.686.000.

Processed Wed Mar 4 03:09:11 2015 by ELM ver.2012-10-06 from 001__elm20150226_072633__dat00.bin

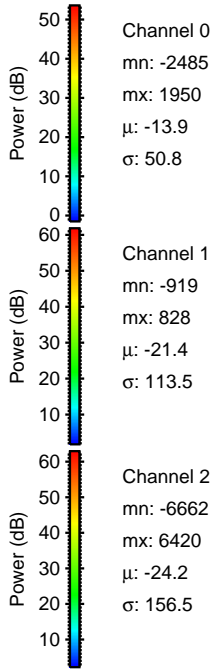
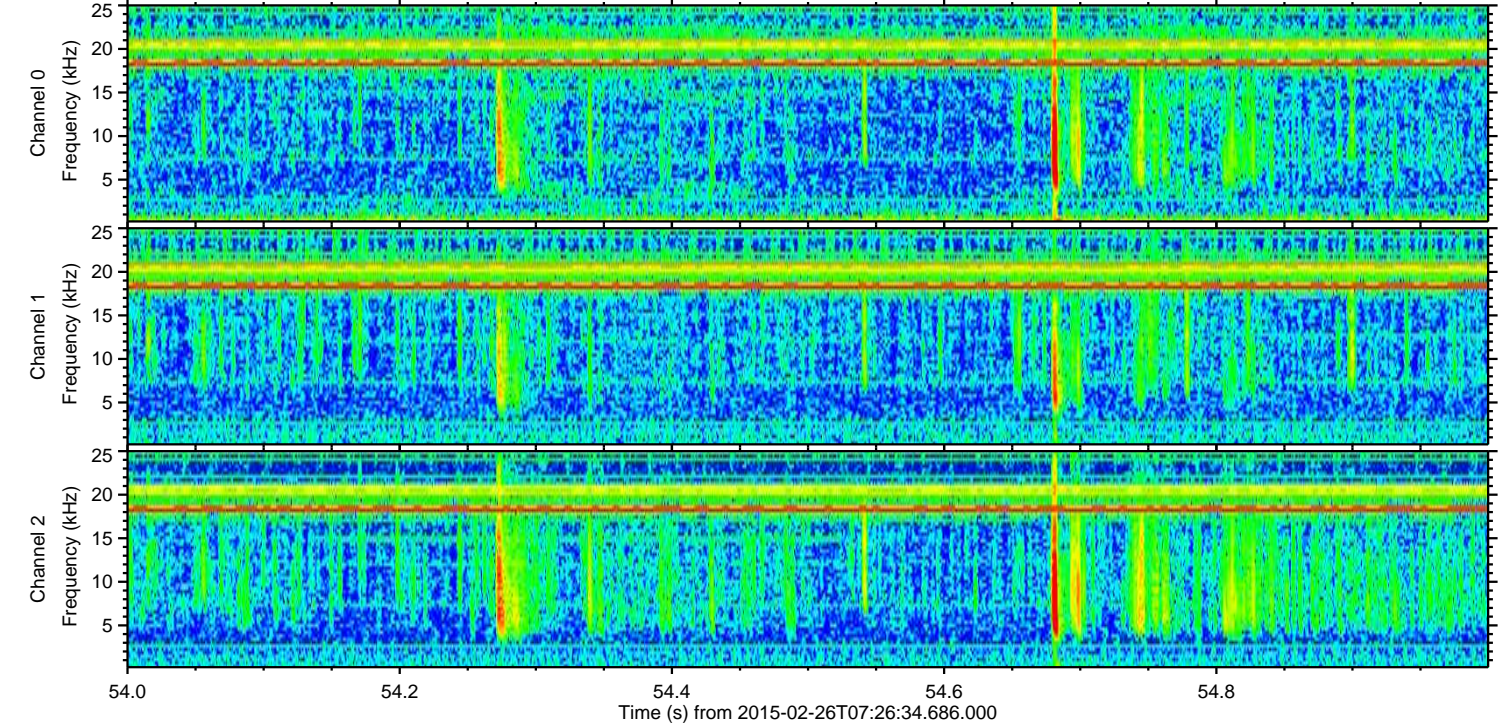
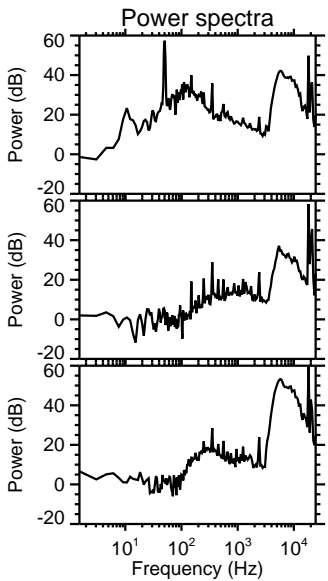
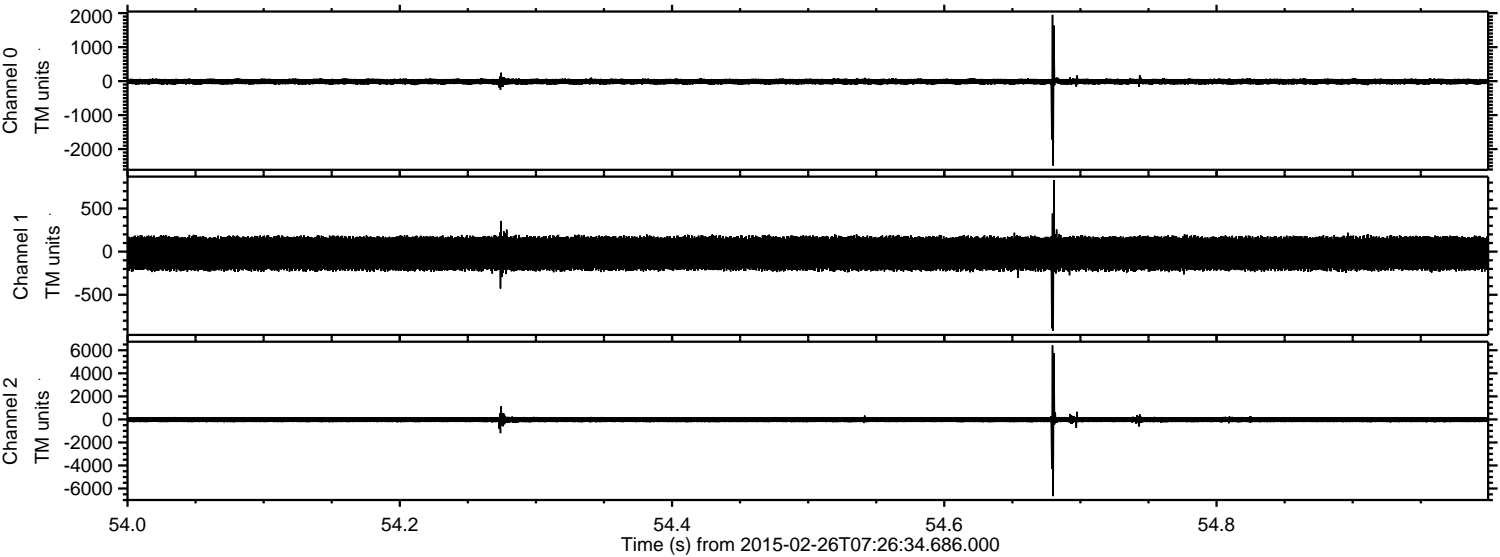


ELMAVAN 3D WAVEFORMS (Measured data sampled at 50 kHz) 49809 packets of 144 samples from 2015-02-26T07:26:34.686.000. Part 112/144

Processed Wed Mar 4 03:09:23 2015 by ELM ver.2012-10-06 from 001__elm20150226_072633__dat00.bin

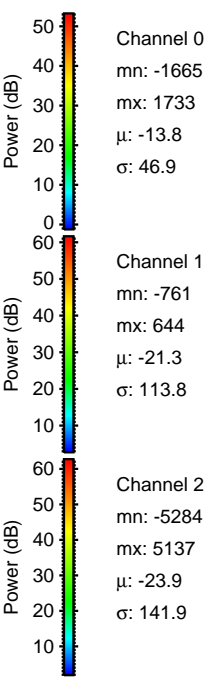
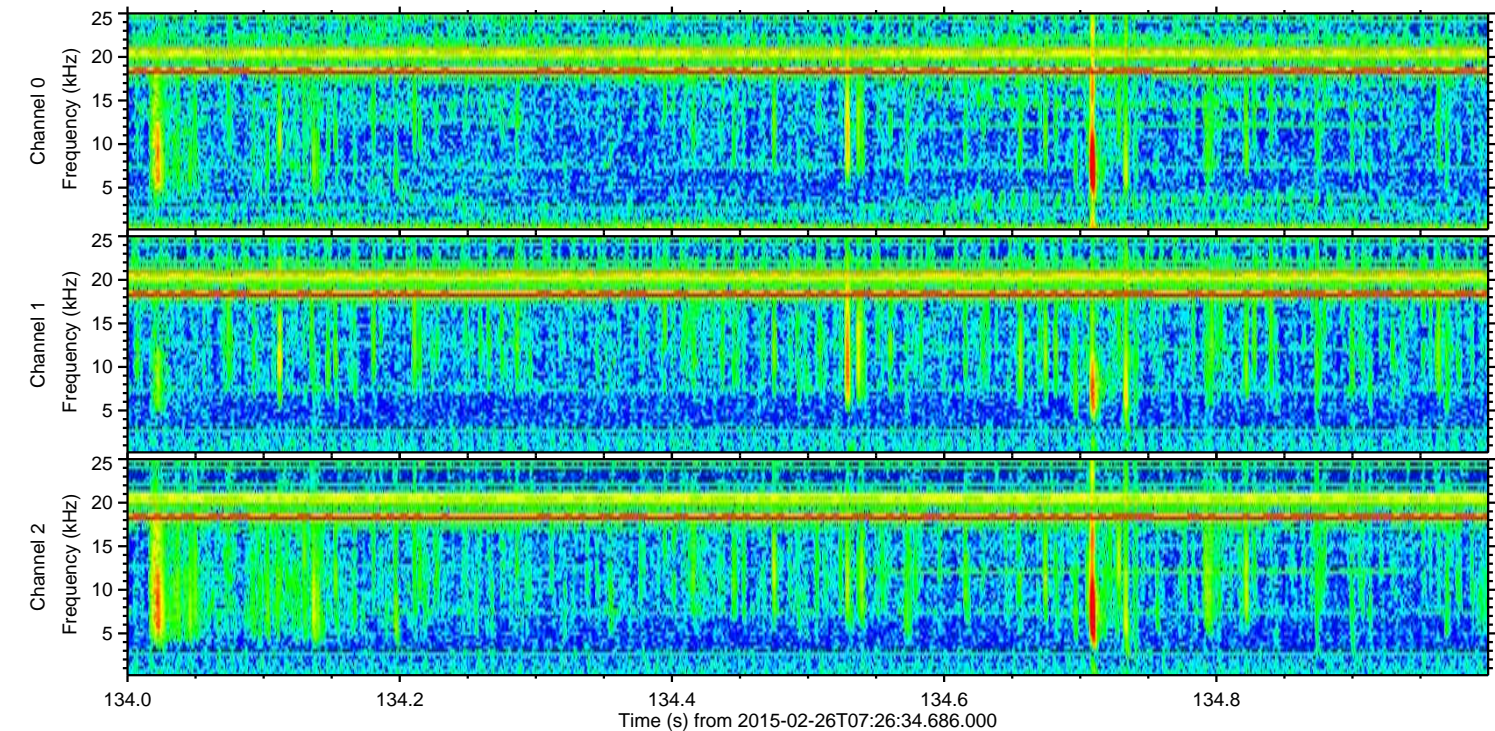
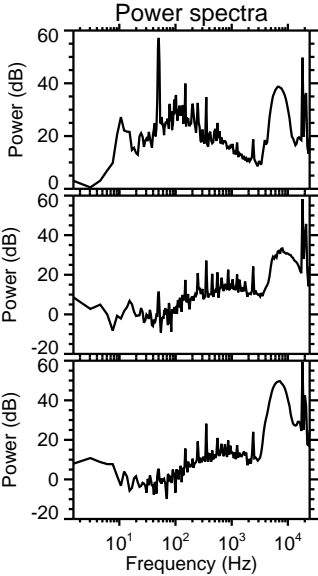
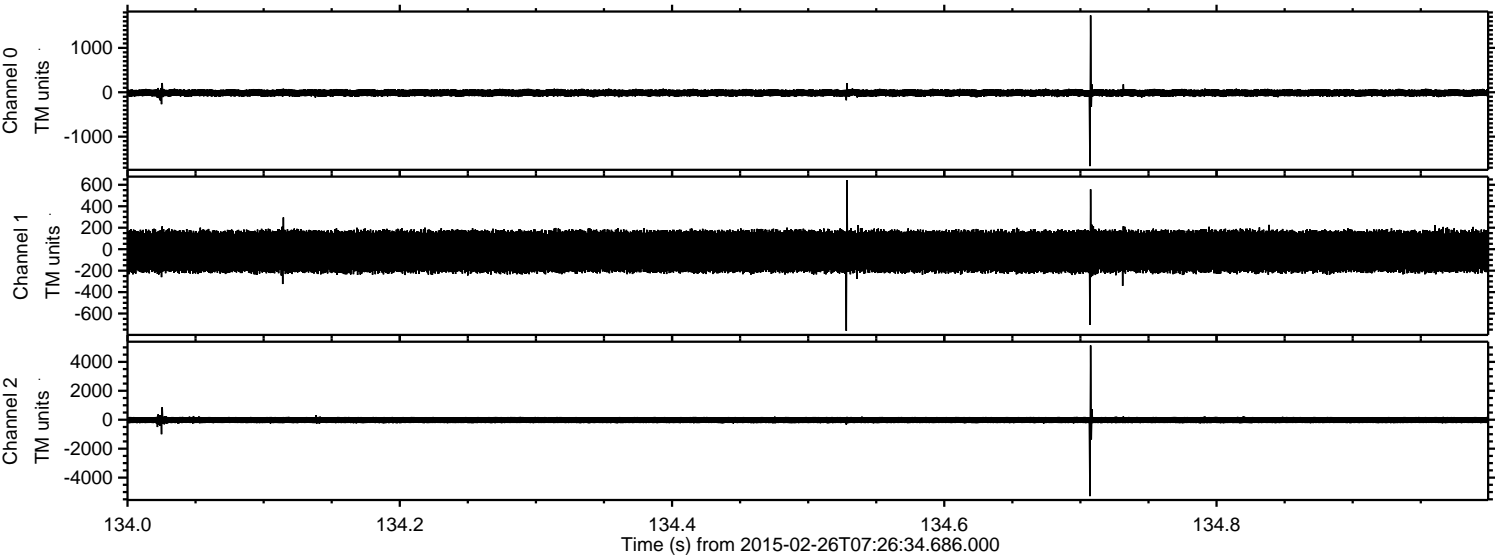


Processed Wed Mar 4 03:09:24 2015 by ELM ver.2012-10-06 from 001__elm20150226_072633__dat00.bin



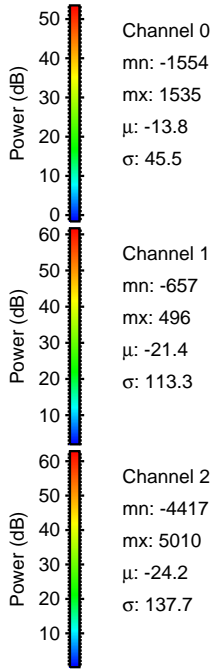
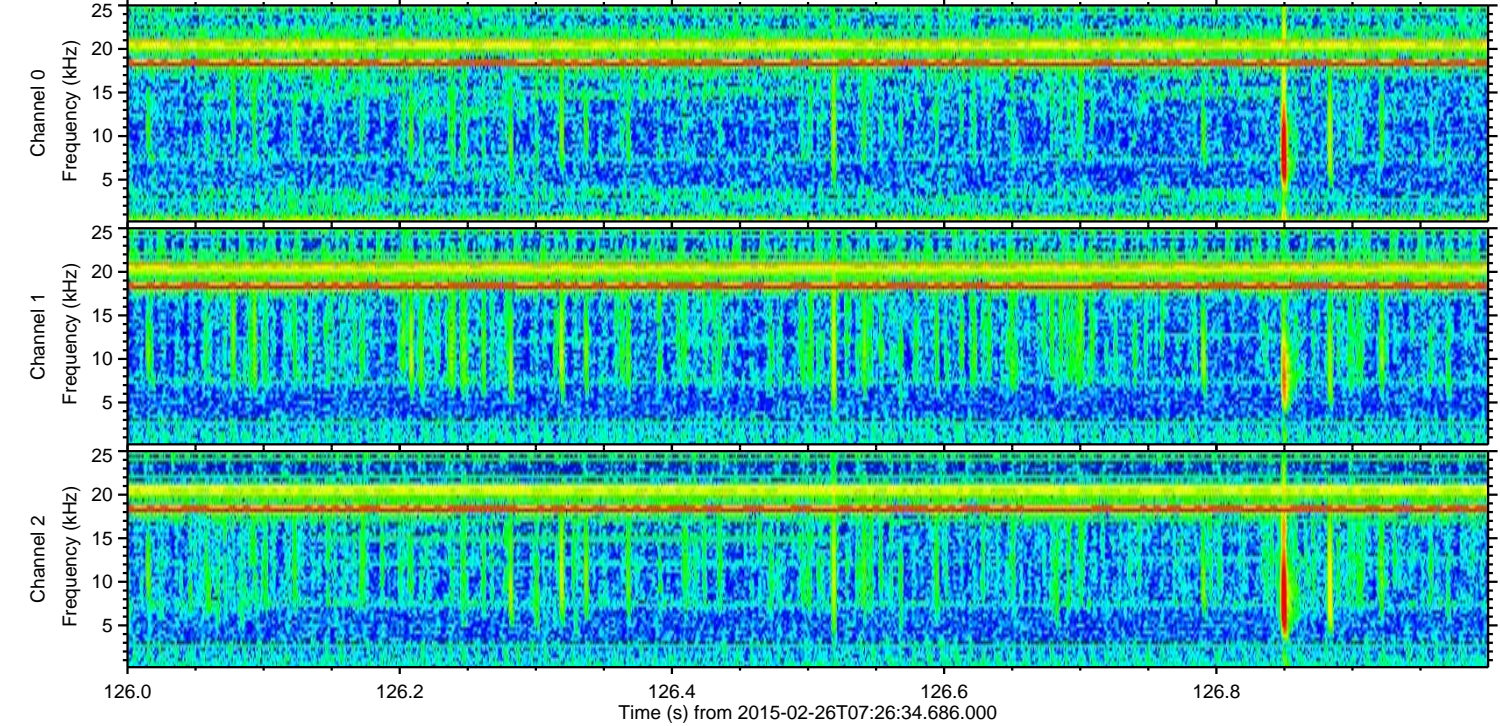
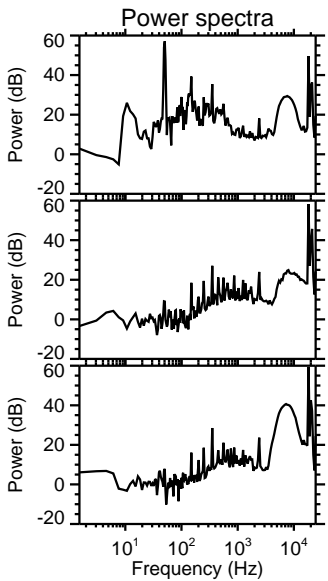
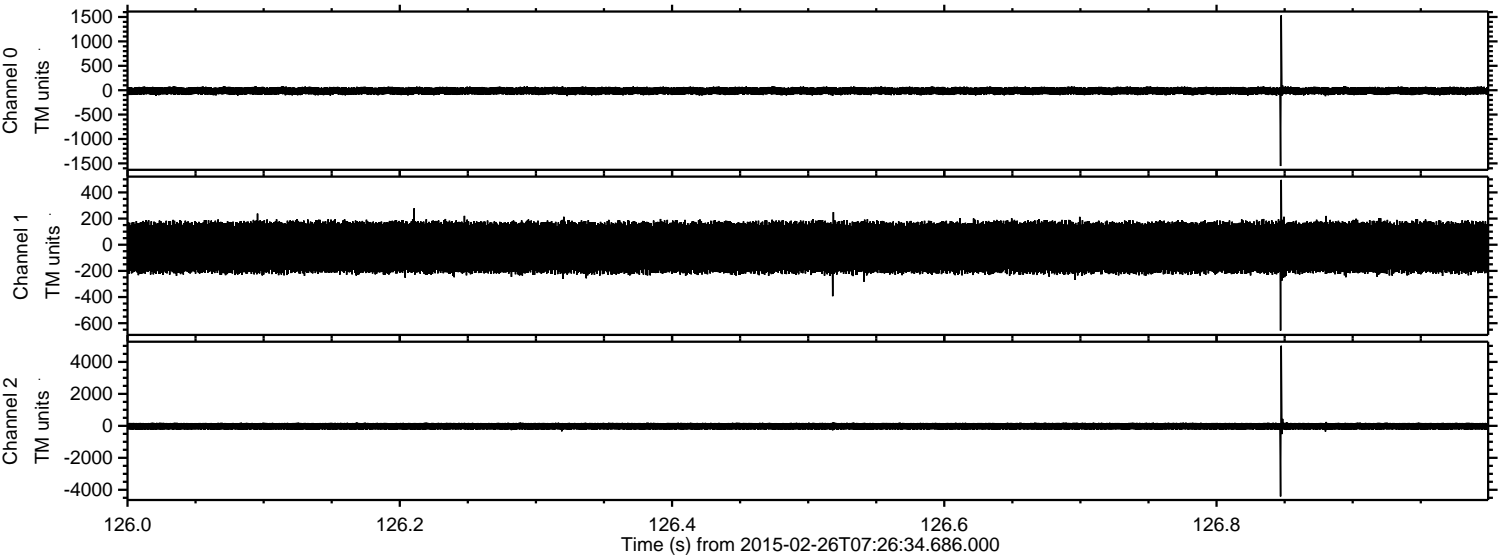
ELMAVAN 3D WAVEFORMS (Measured data sampled at 50 kHz) 49809 packets of 144 samples from 2015-02-26T07:26:34.686.000. Part 135/144

Processed Wed Mar 4 03:09:24 2015 by ELM ver.2012-10-06 from 001__elm20150226_072633__dat00.bin



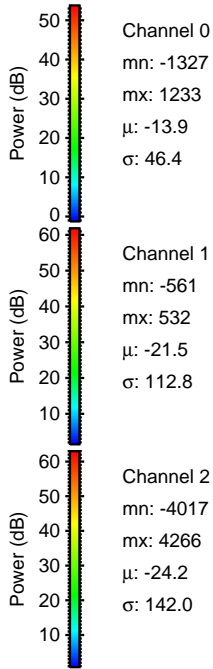
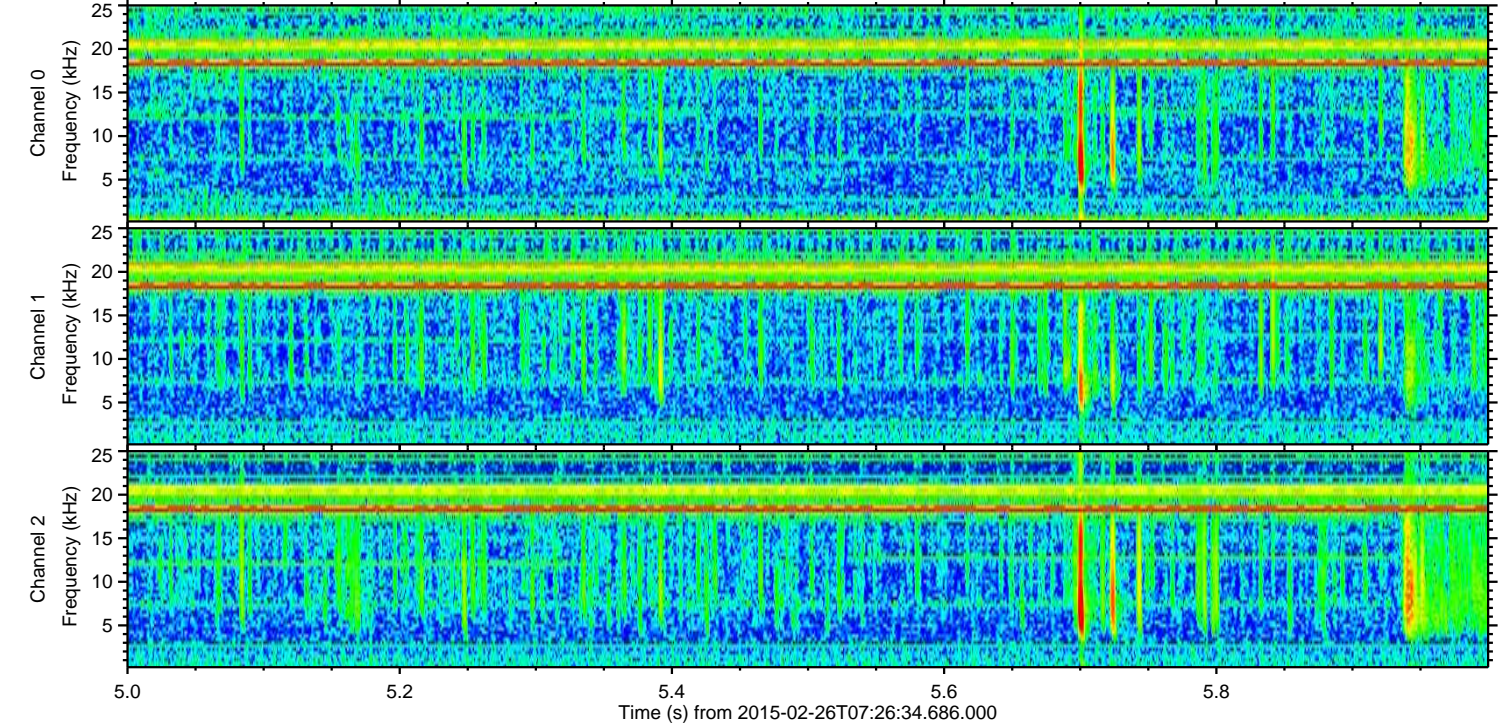
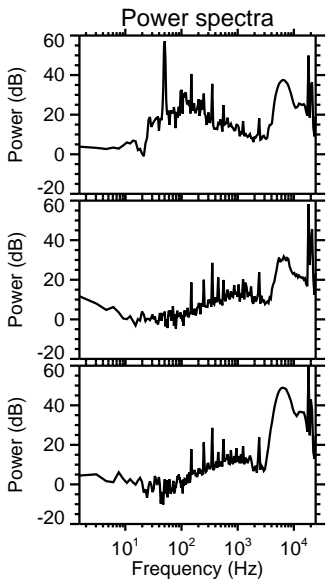
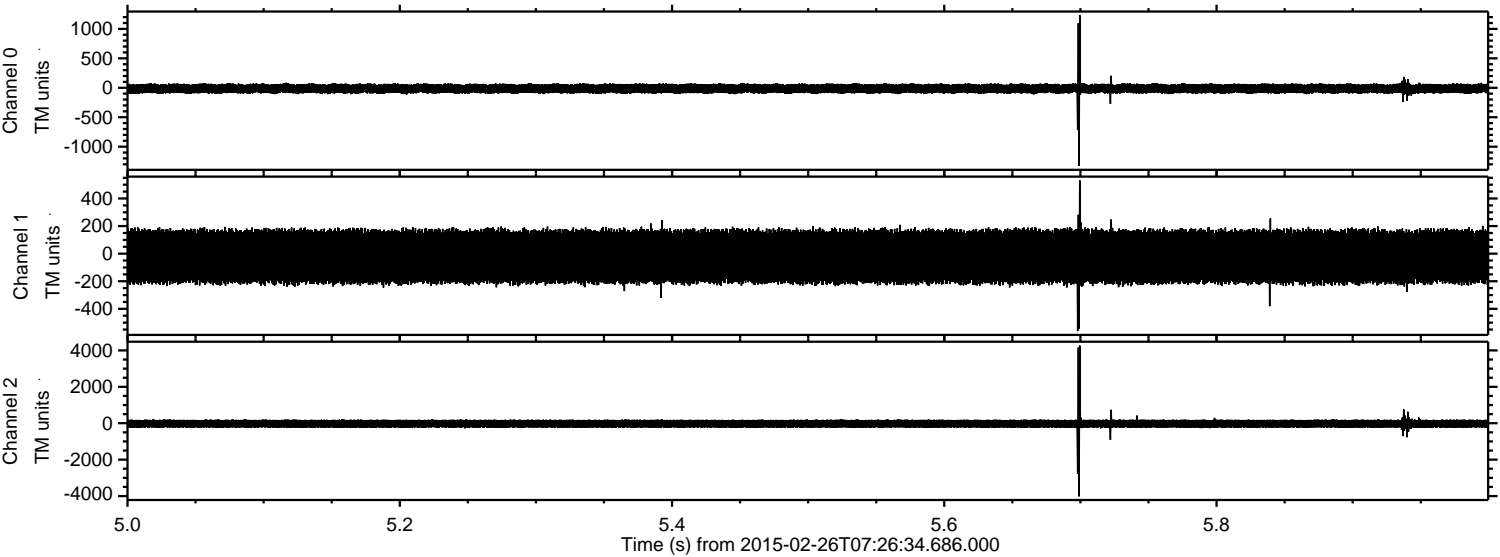
ELMAVAN 3D WAVEFORMS (Measured data sampled at 50 kHz) 49809 packets of 144 samples from 2015-02-26T07:26:34.686.000. Part 127/144

Processed Wed Mar 4 03:09:25 2015 by ELM ver.2012-10-06 from 001__elm20150226_072633__dat00.bin

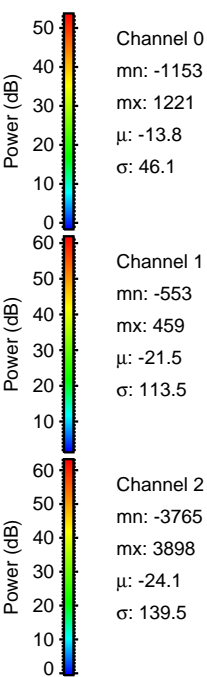
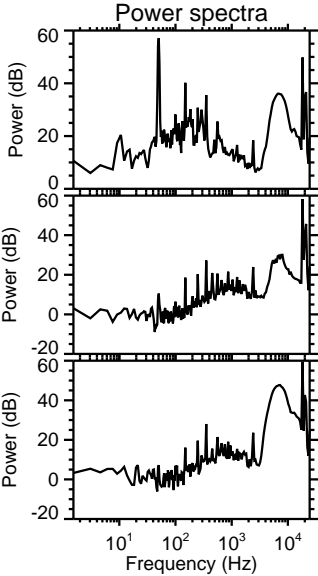
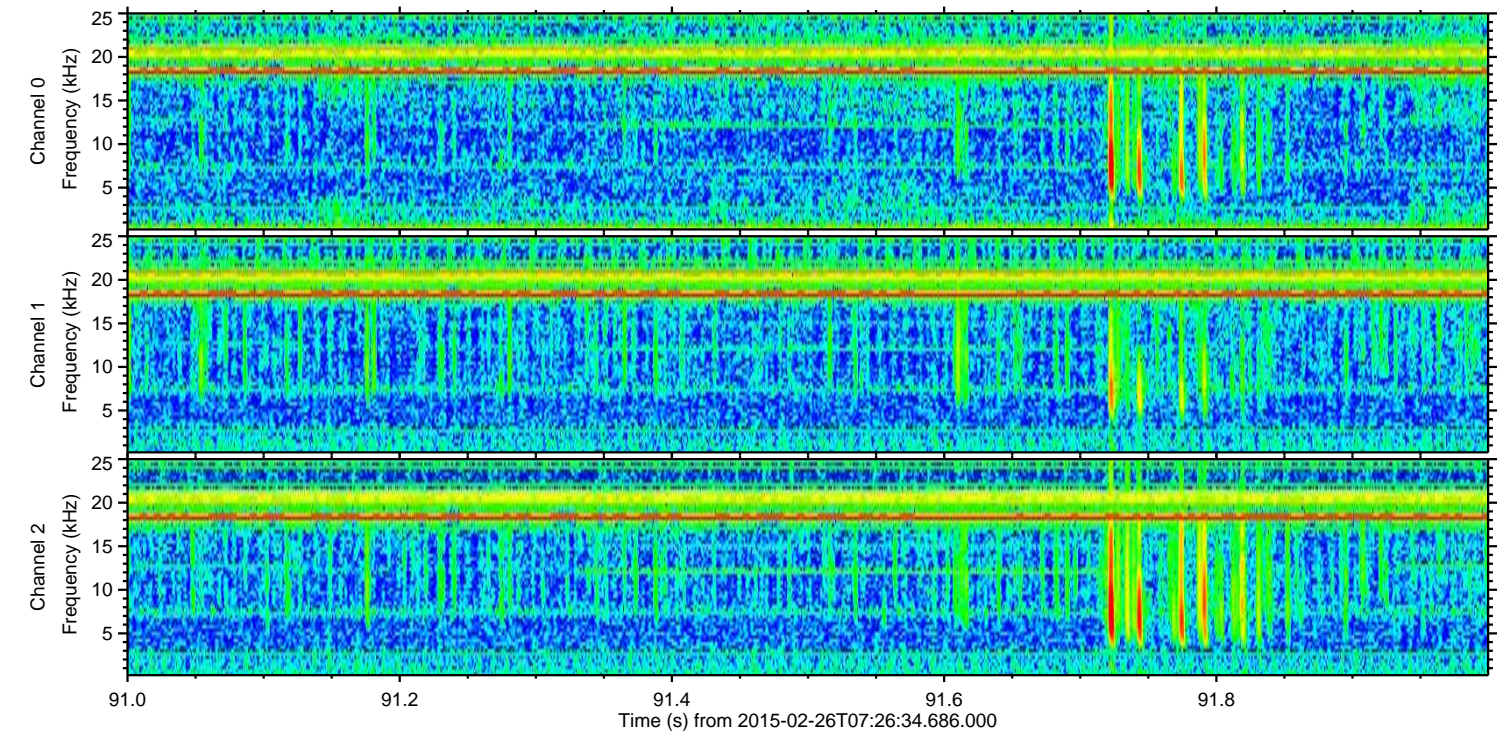
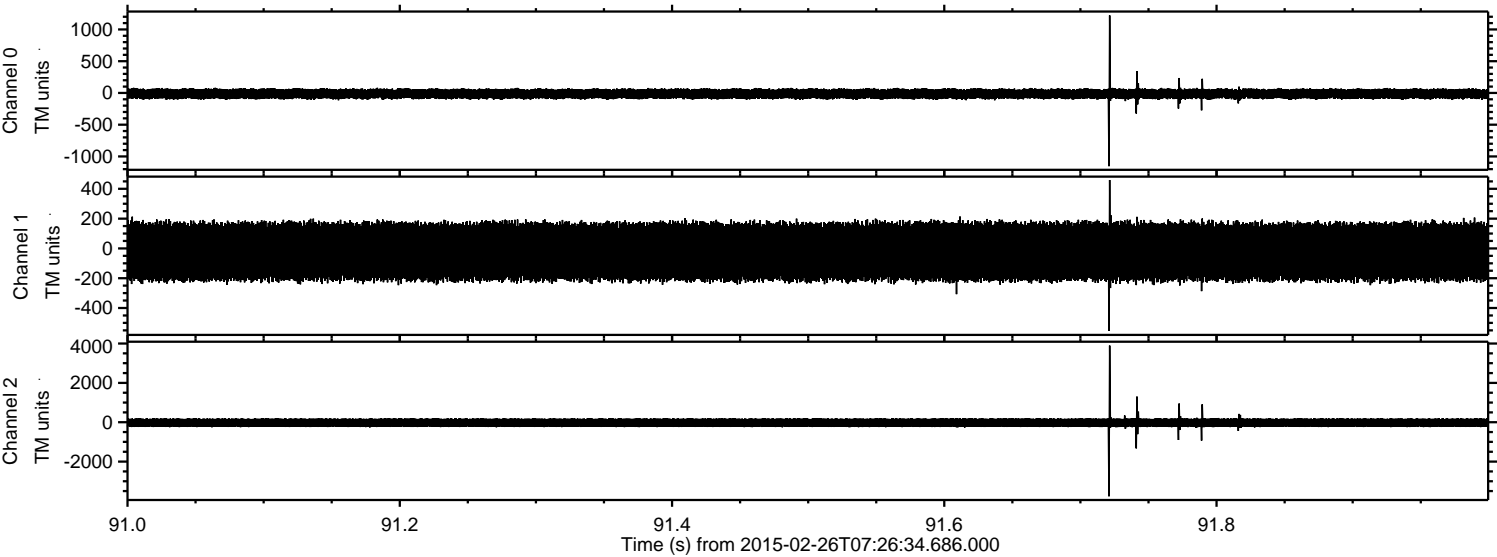


ELMAVAN 3D WAVEFORMS (Measured data sampled at 50 kHz) 49809 packets of 144 samples from 2015-02-26T07:26:34.686.000. Part 6/144

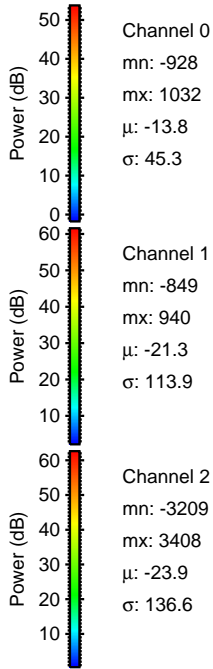
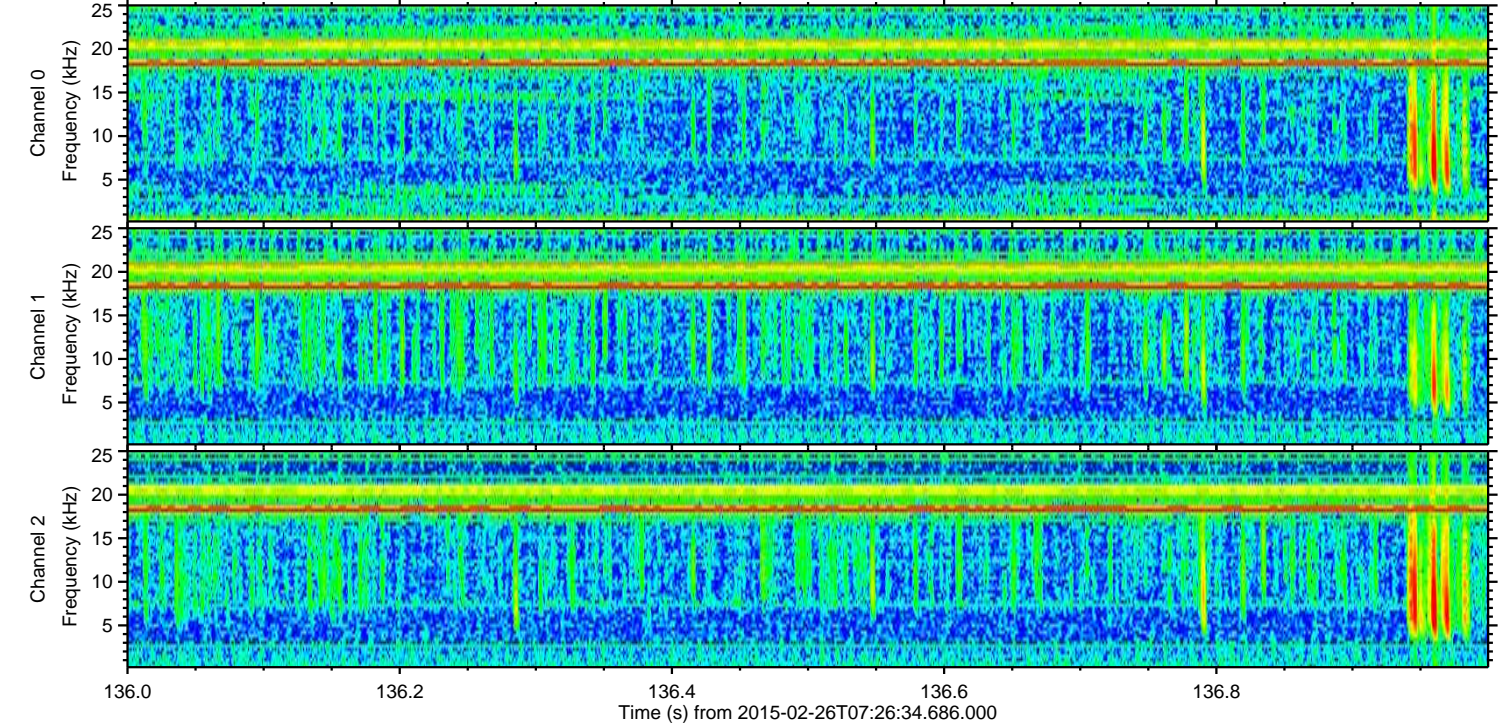
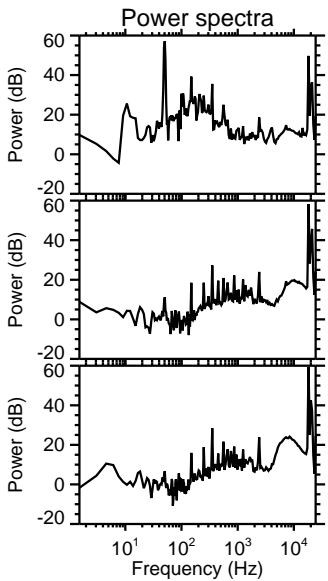
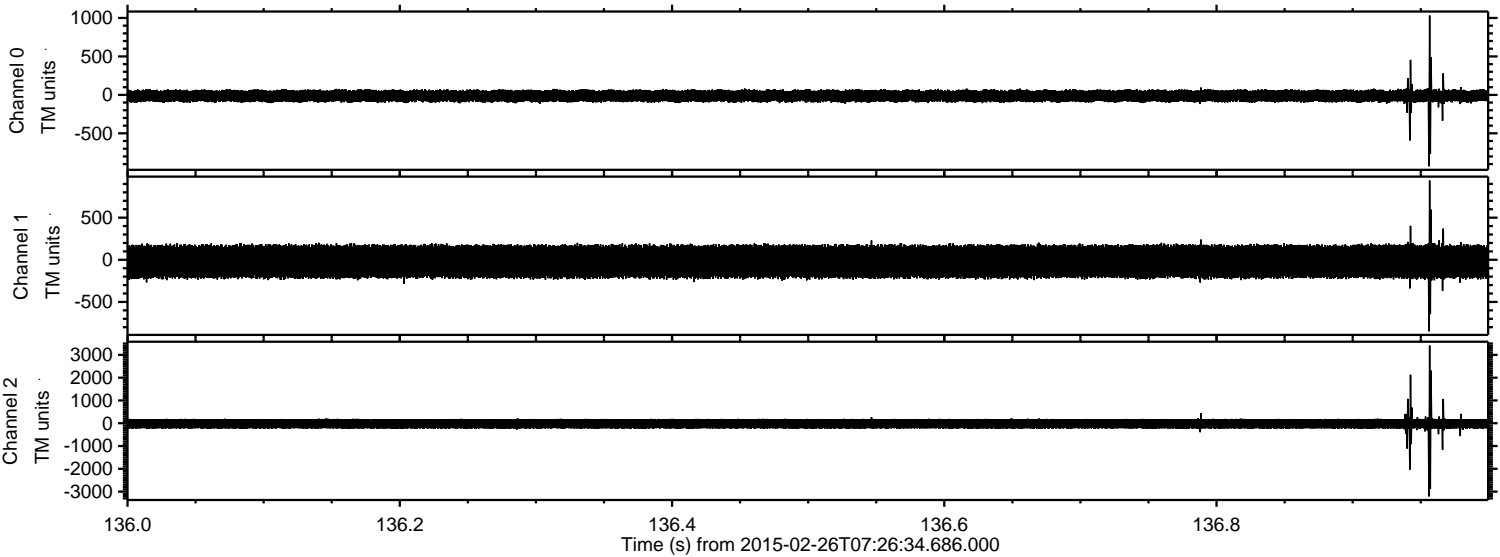
Processed Wed Mar 4 03:09:26 2015 by ELM ver.2012-10-06 from 001__elm20150226_072633__dat00.bin



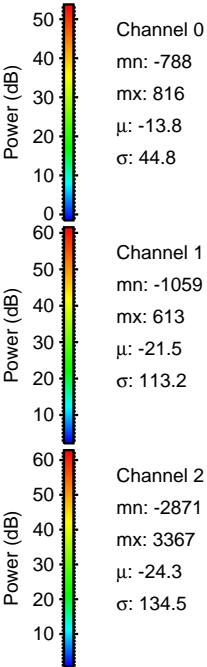
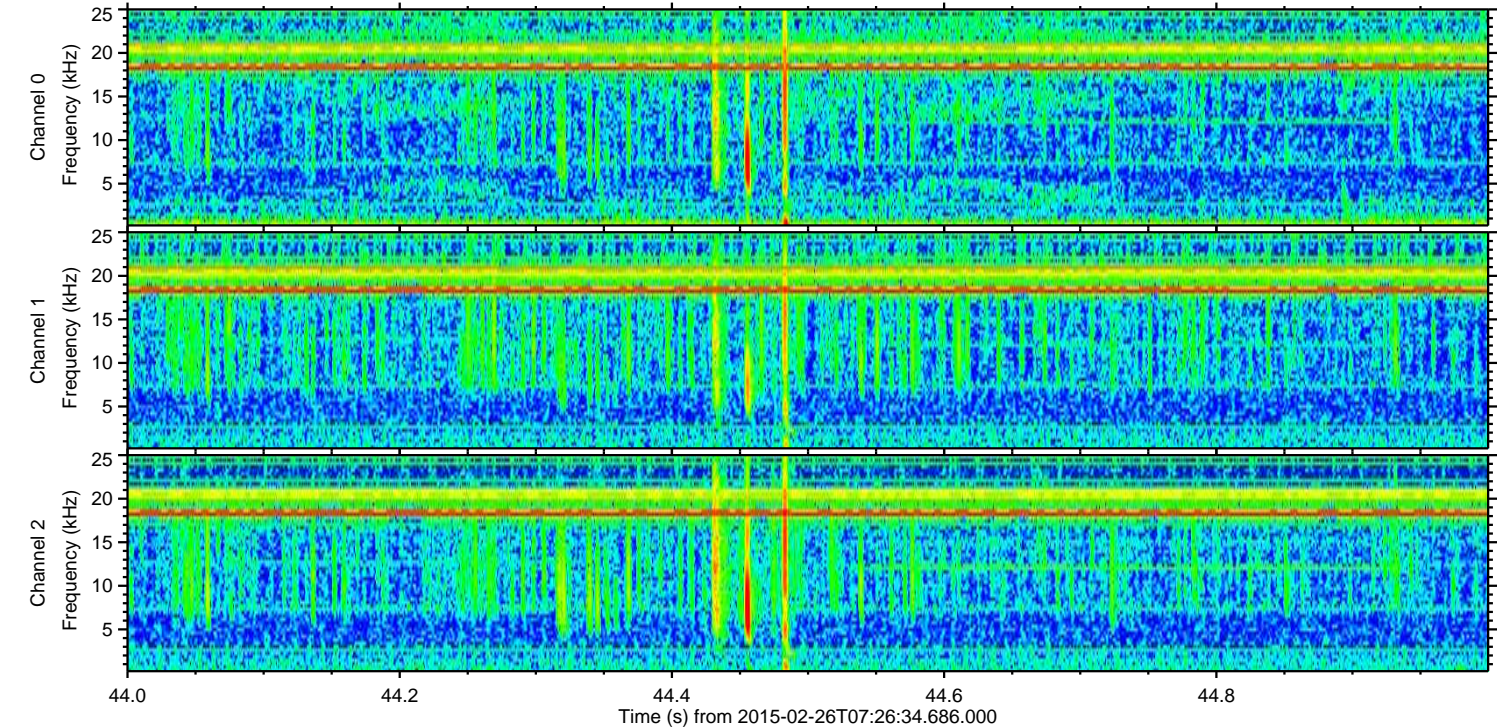
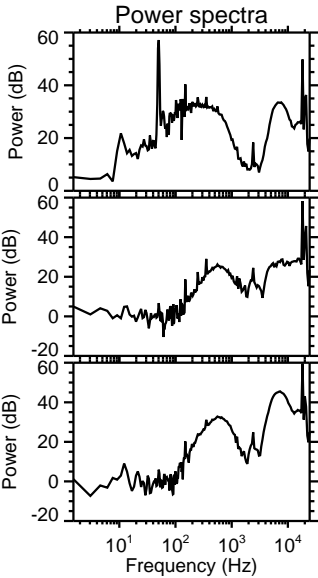
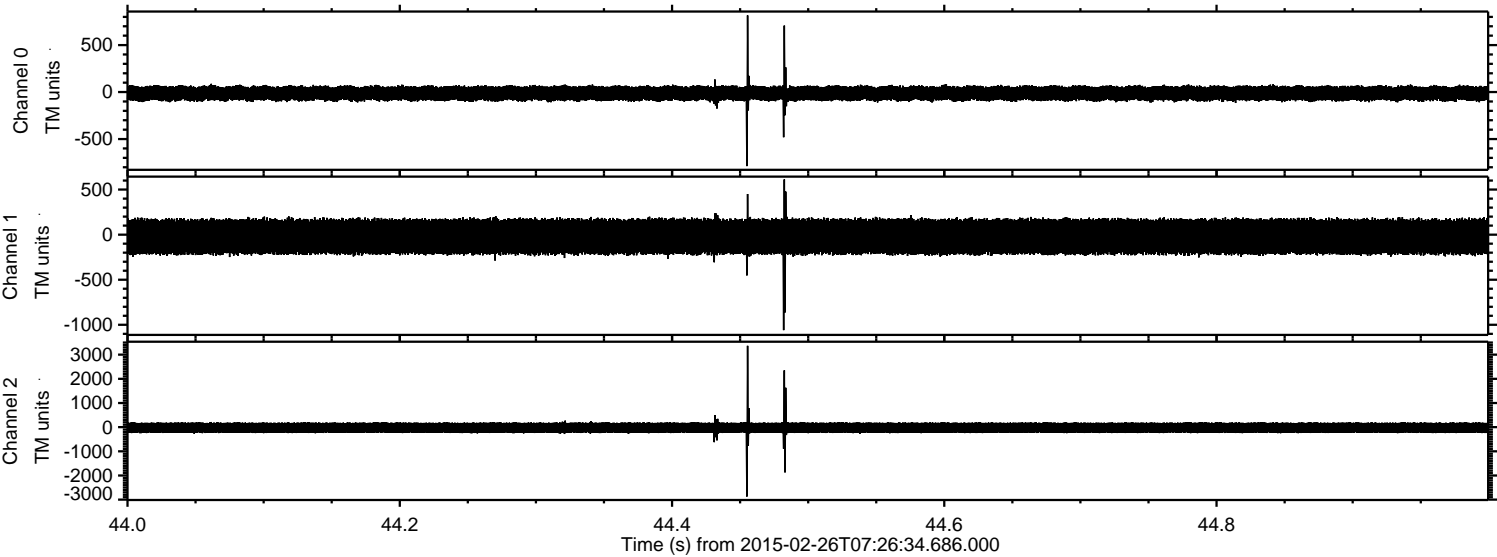
Processed Wed Mar 4 03:09:27 2015 by ELM ver.2012-10-06 from 001__elm20150226_072633__dat00.bin



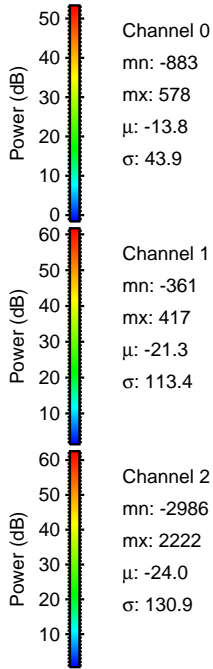
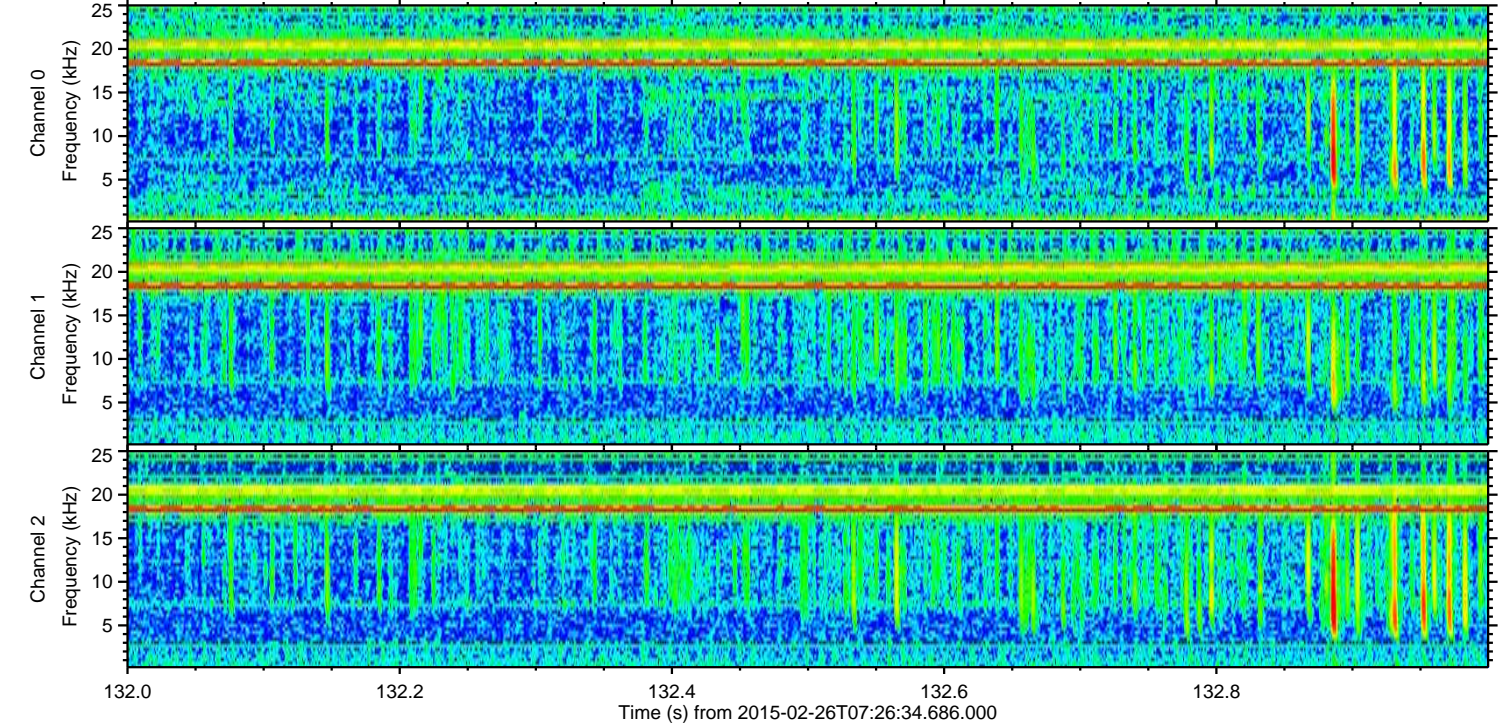
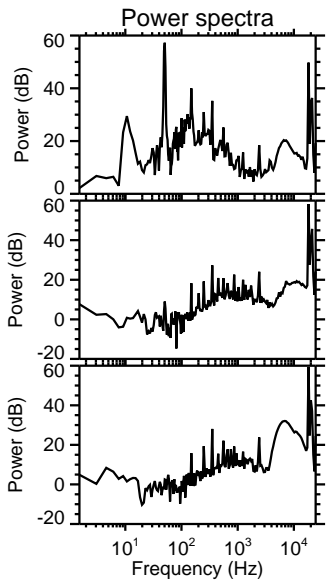
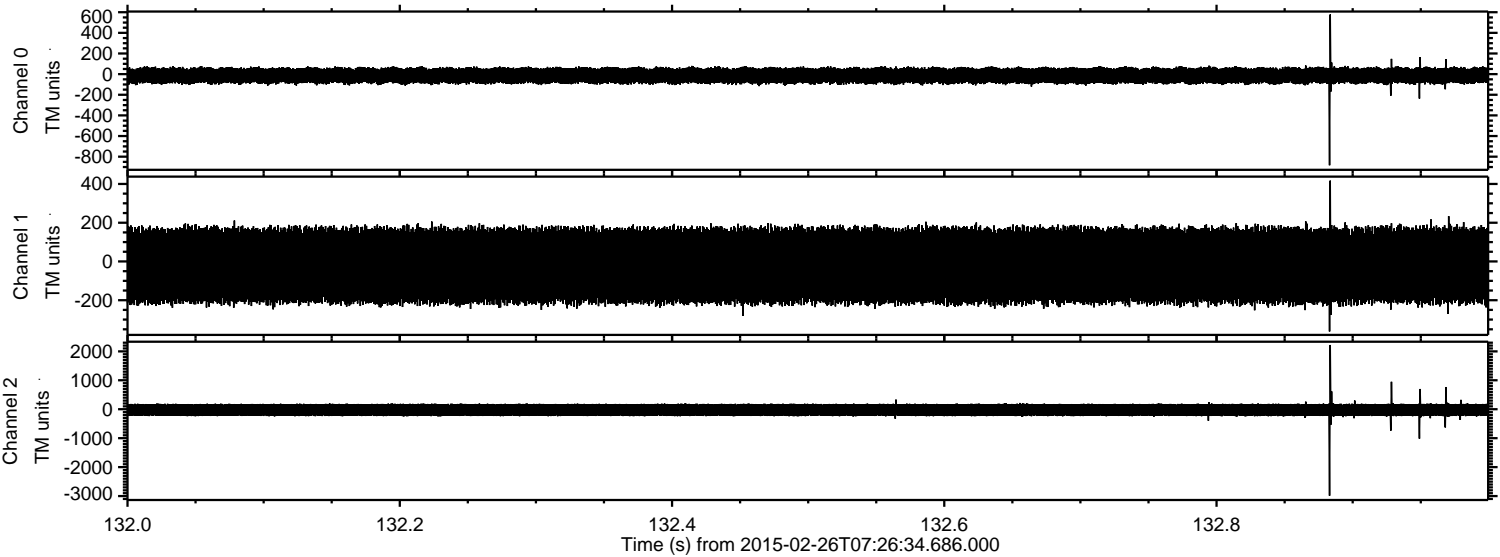
Processed Wed Mar 4 03:09:28 2015 by ELM ver.2012-10-06 from 001__elm20150226_072633__dat00.bin



Processed Wed Mar 4 03:09:29 2015 by ELM ver.2012-10-06 from 001__elm20150226_072633__dat00.bin



Processed Wed Mar 4 03:09:30 2015 by ELM ver.2012-10-06 from 001__elm20150226_072633__dat00.bin



Processed Wed Mar 4 03:09:31 2015 by ELM ver.2012-10-06 from 001__elm20150226_072633__dat00.bin

