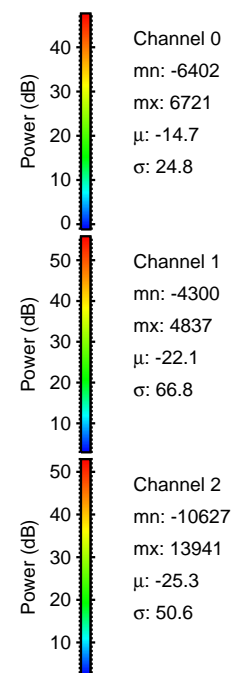
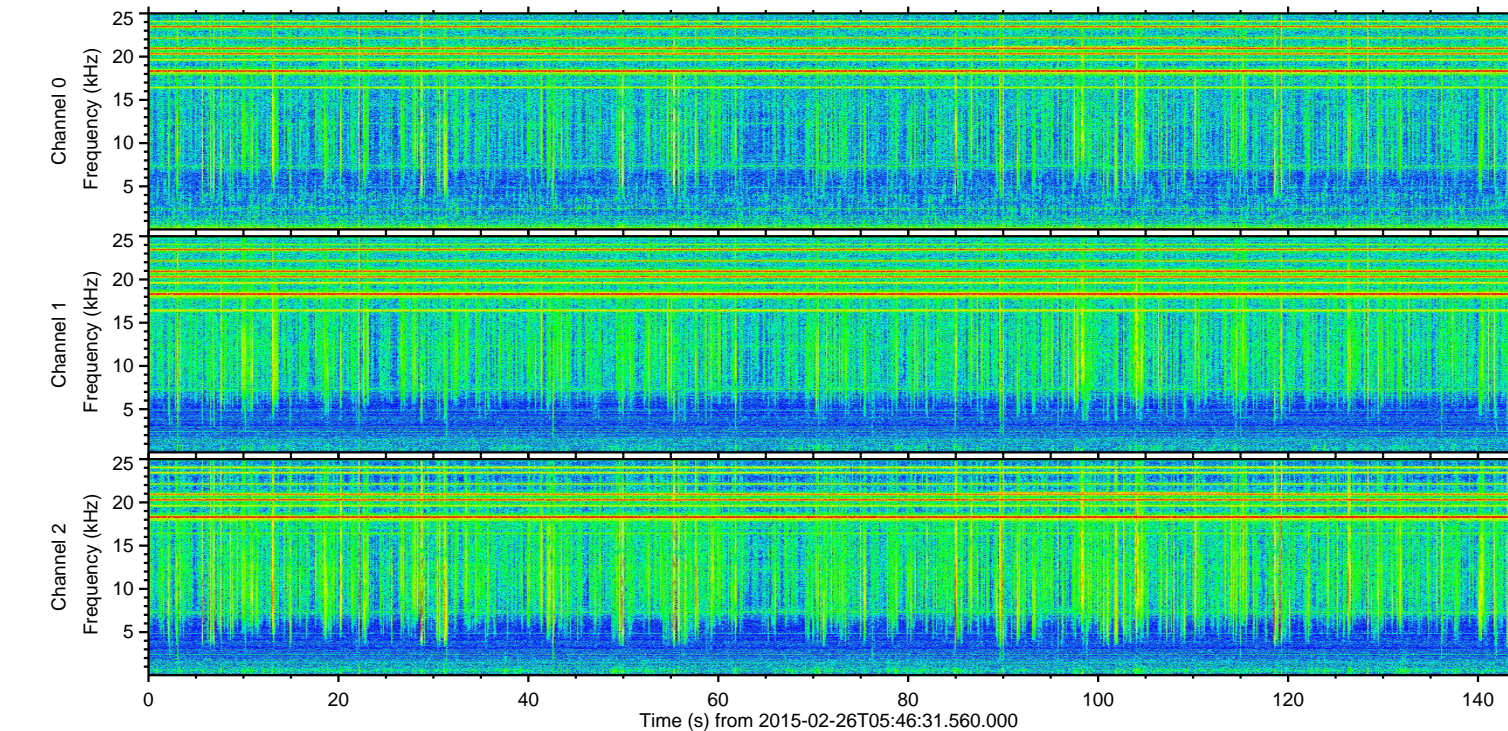
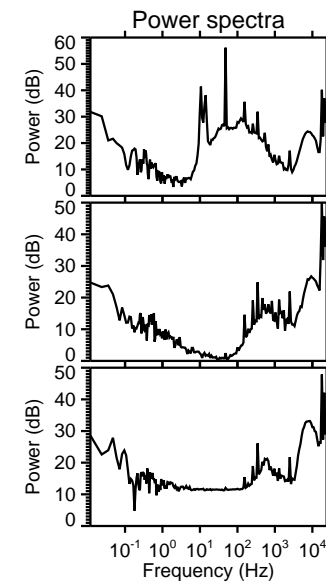
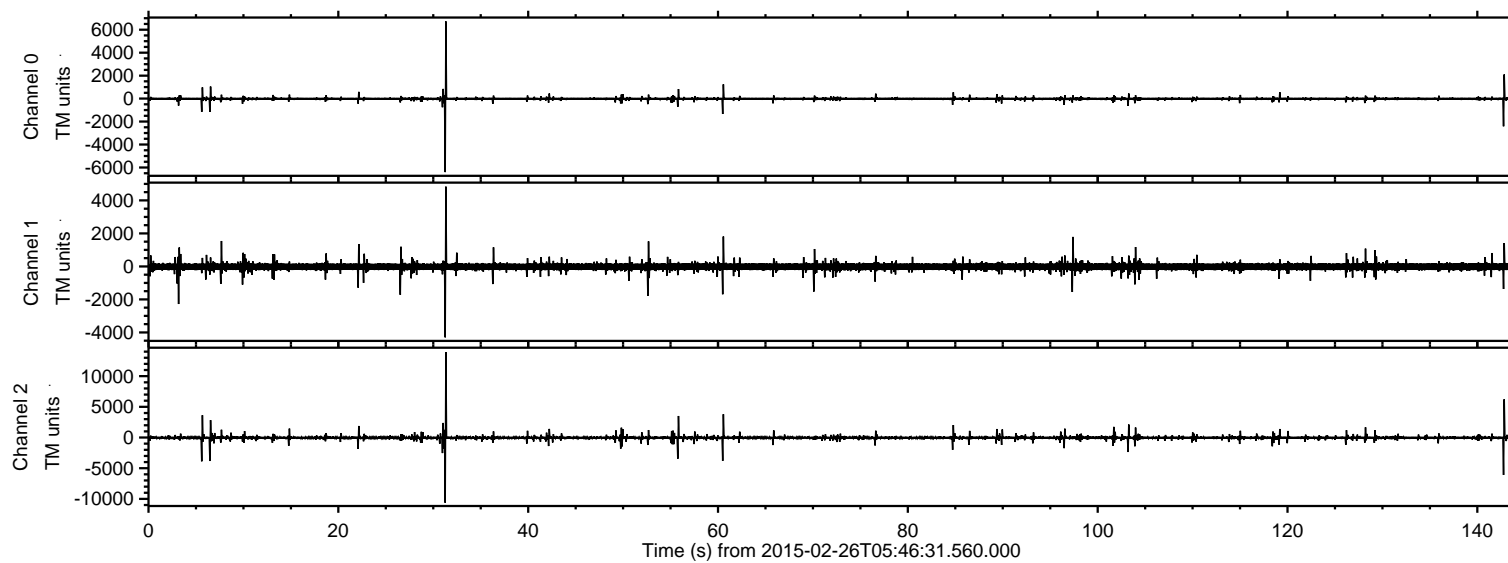
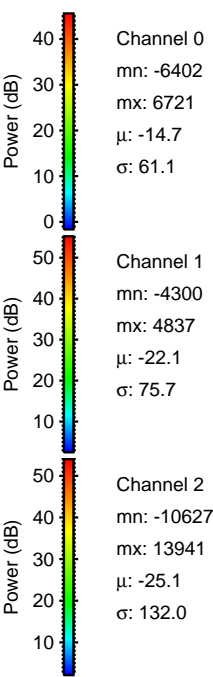
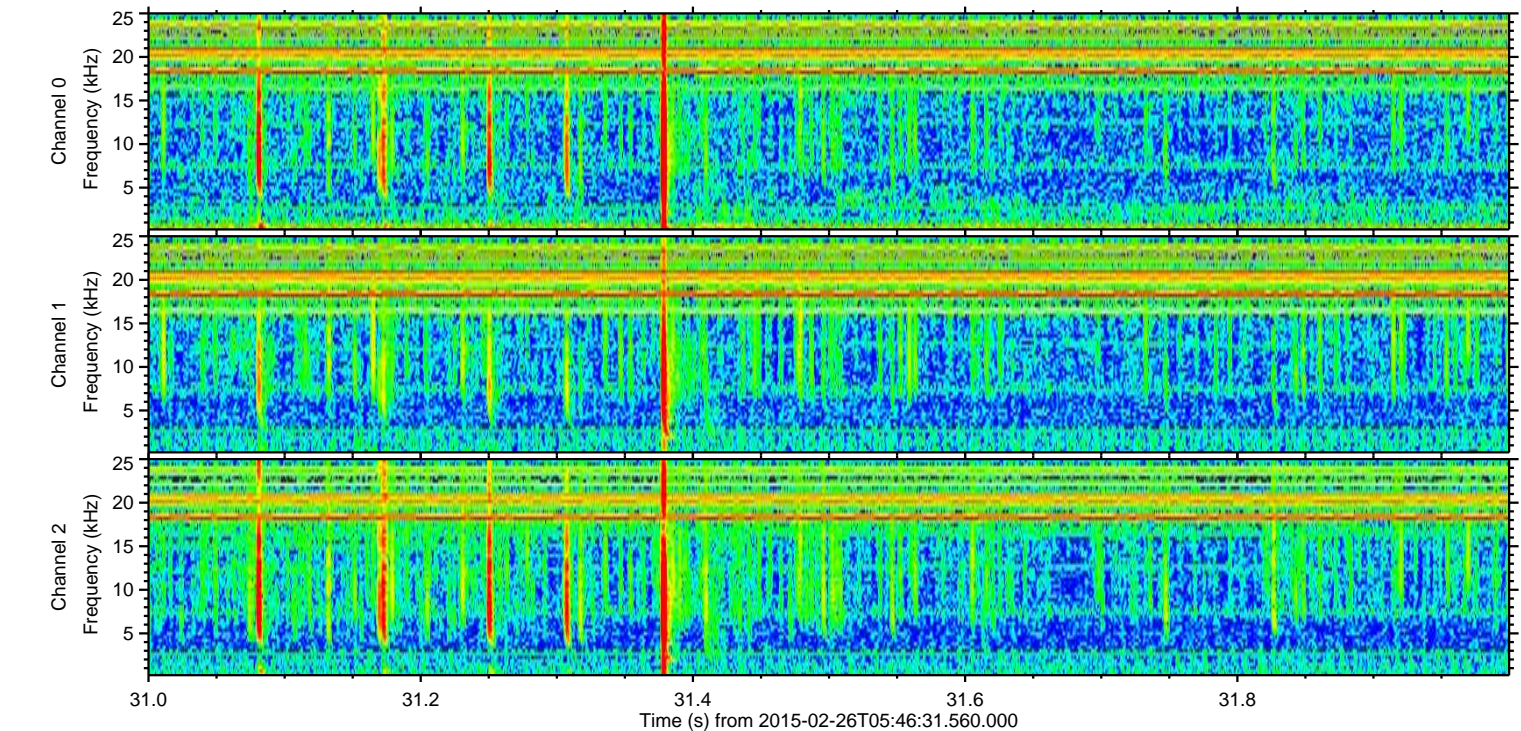
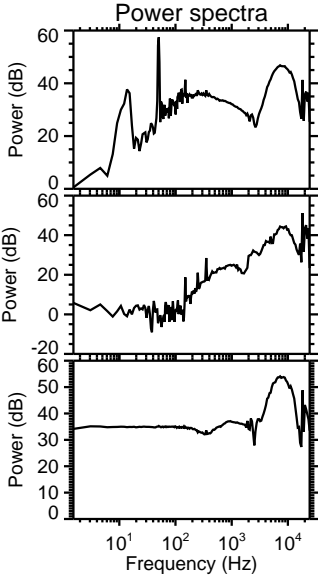
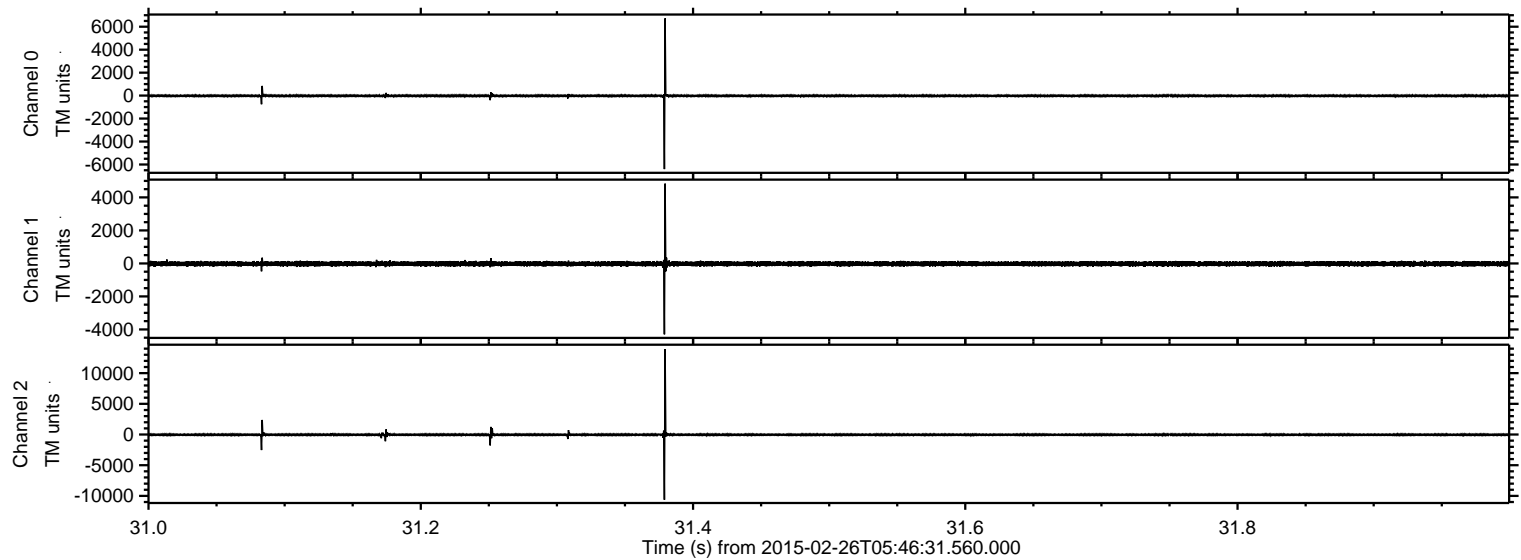


ELMAVAN 3D WAVEFORMS (Measured data sampled at 50 kHz) 49774 packets of 144 samples from 2015-02-26T05:46:31.560.000.

Processed Wed Mar 4 02:34:00 2015 by ELM ver.2012-10-06 from 001__elm20150226_054630__dat00.bin

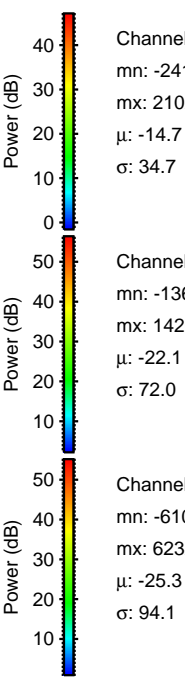
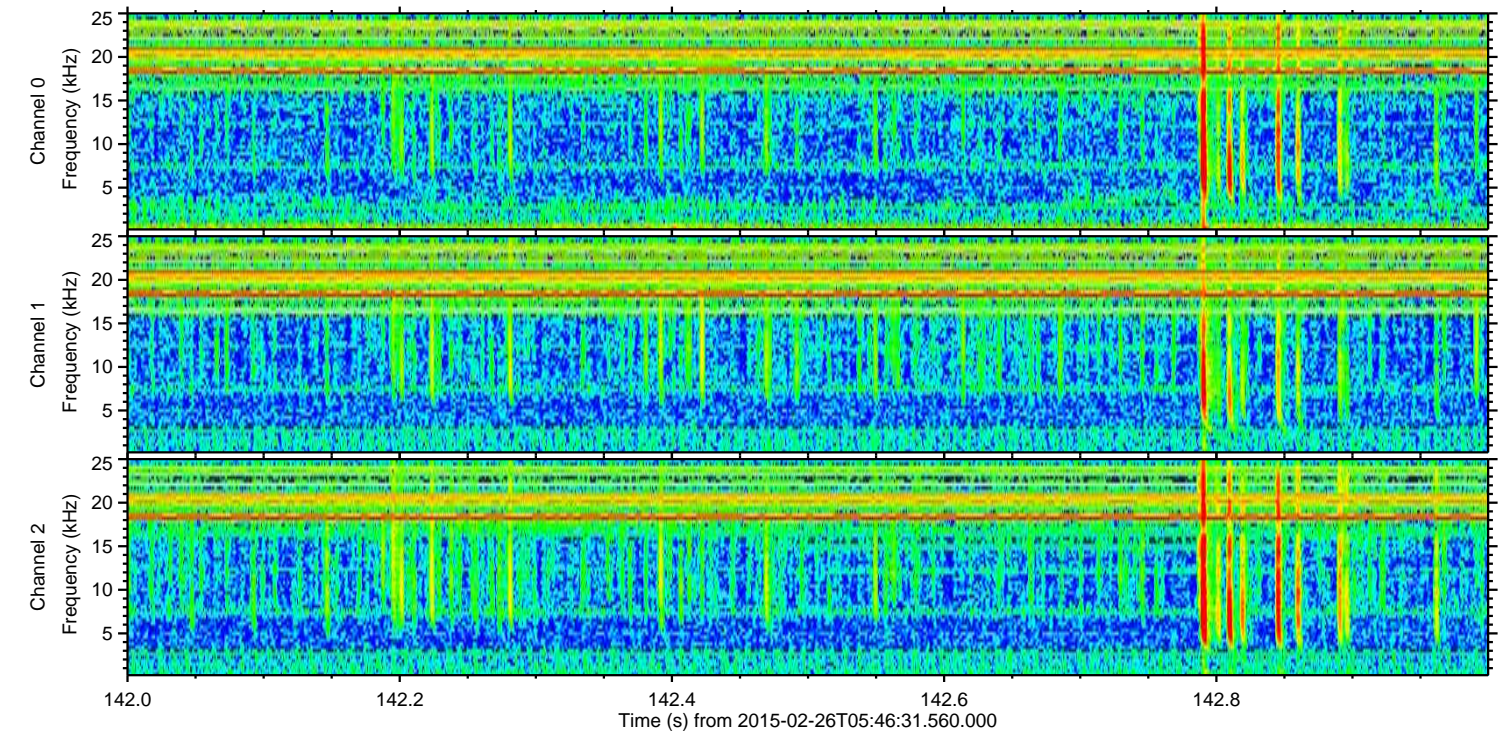
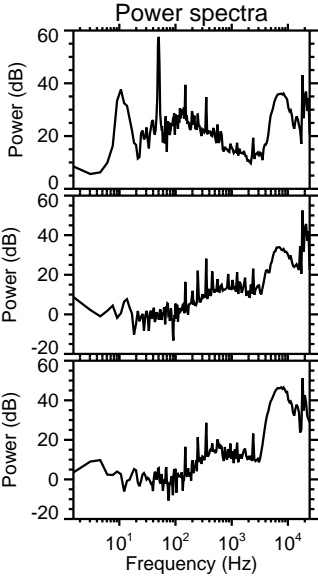
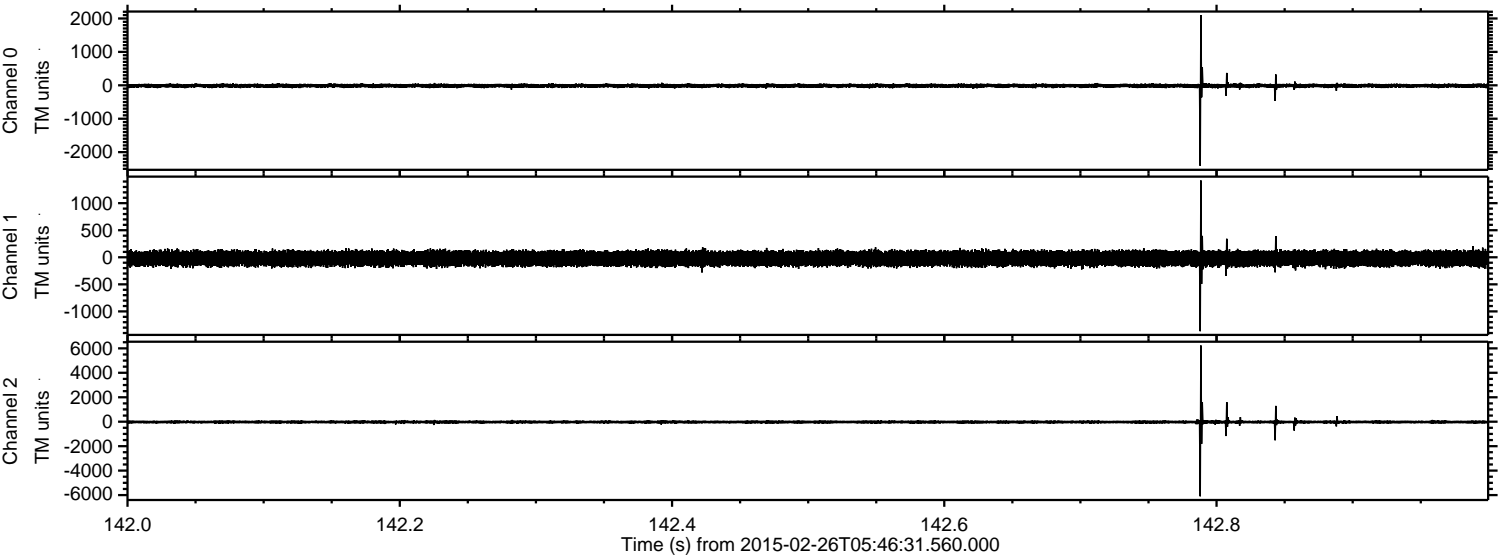


Processed Wed Mar 4 02:34:11 2015 by ELM ver.2012-10-06 from 001__elm20150226_054630__dat00.bin



ELMAVAN 3D WAVEFORMS (Measured data sampled at 50 kHz) 49774 packets of 144 samples from 2015-02-26T05:46:31.560.000. Part 143/144

Processed Wed Mar 4 02:34:12 2015 by ELM ver.2012-10-06 from 001__elm20150226_054630__dat00.bin



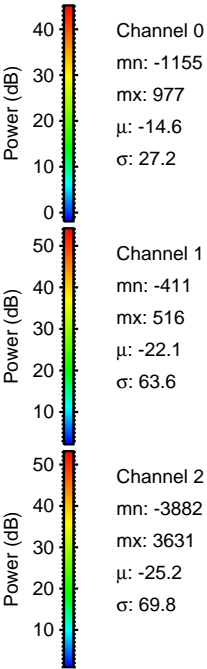
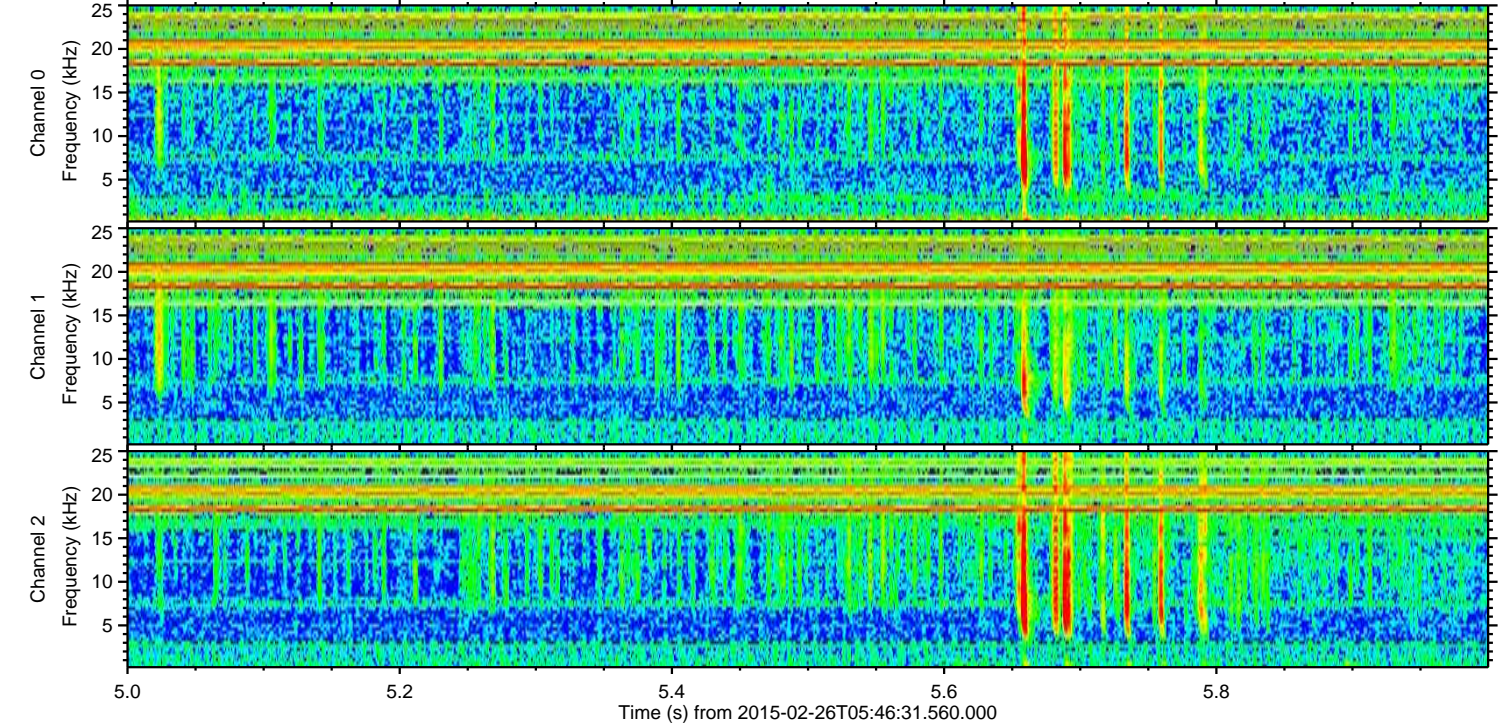
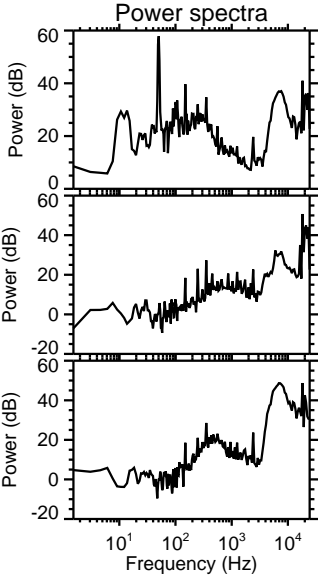
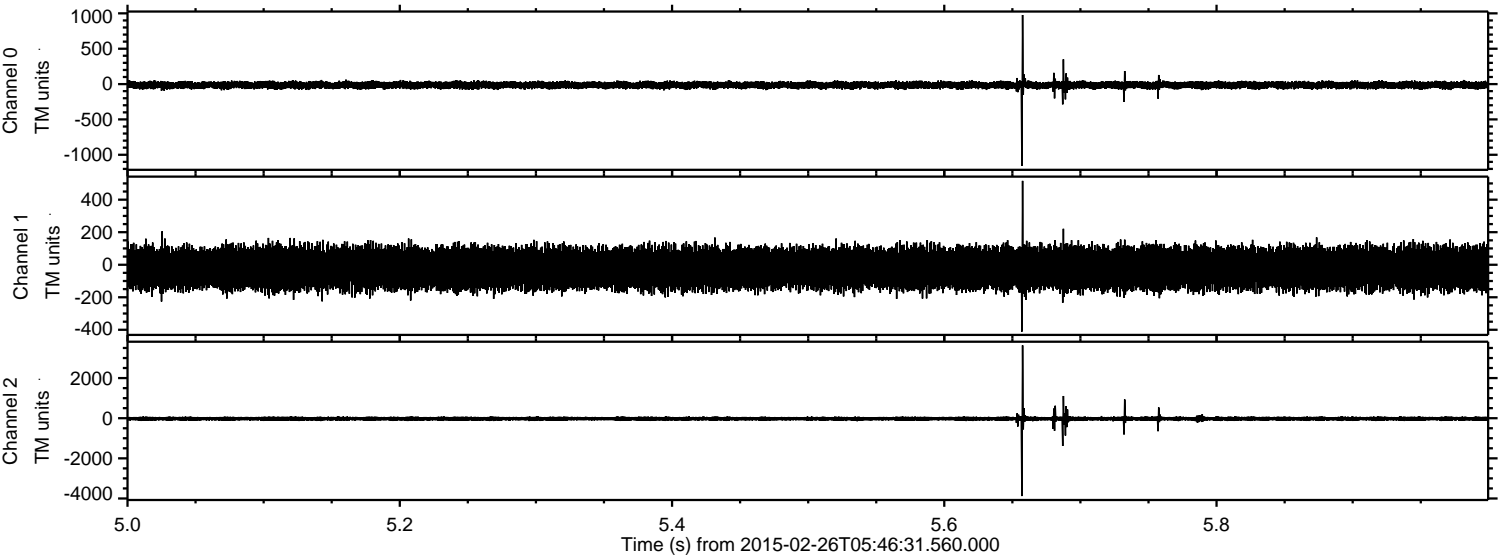
Channel 0
mn: -2410
mx: 2102
 μ : -14.7
 σ : 34.7

Channel 1
mn: -1366
mx: 1420
 μ : -22.1
 σ : 72.0

Channel 2
mn: -6100
mx: 6232
 μ : -25.3
 σ : 94.1

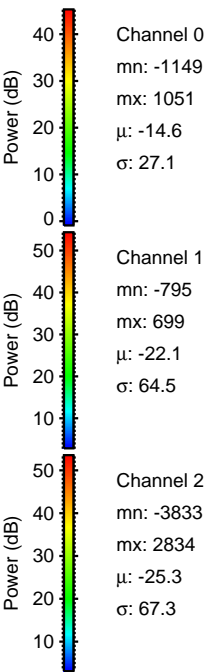
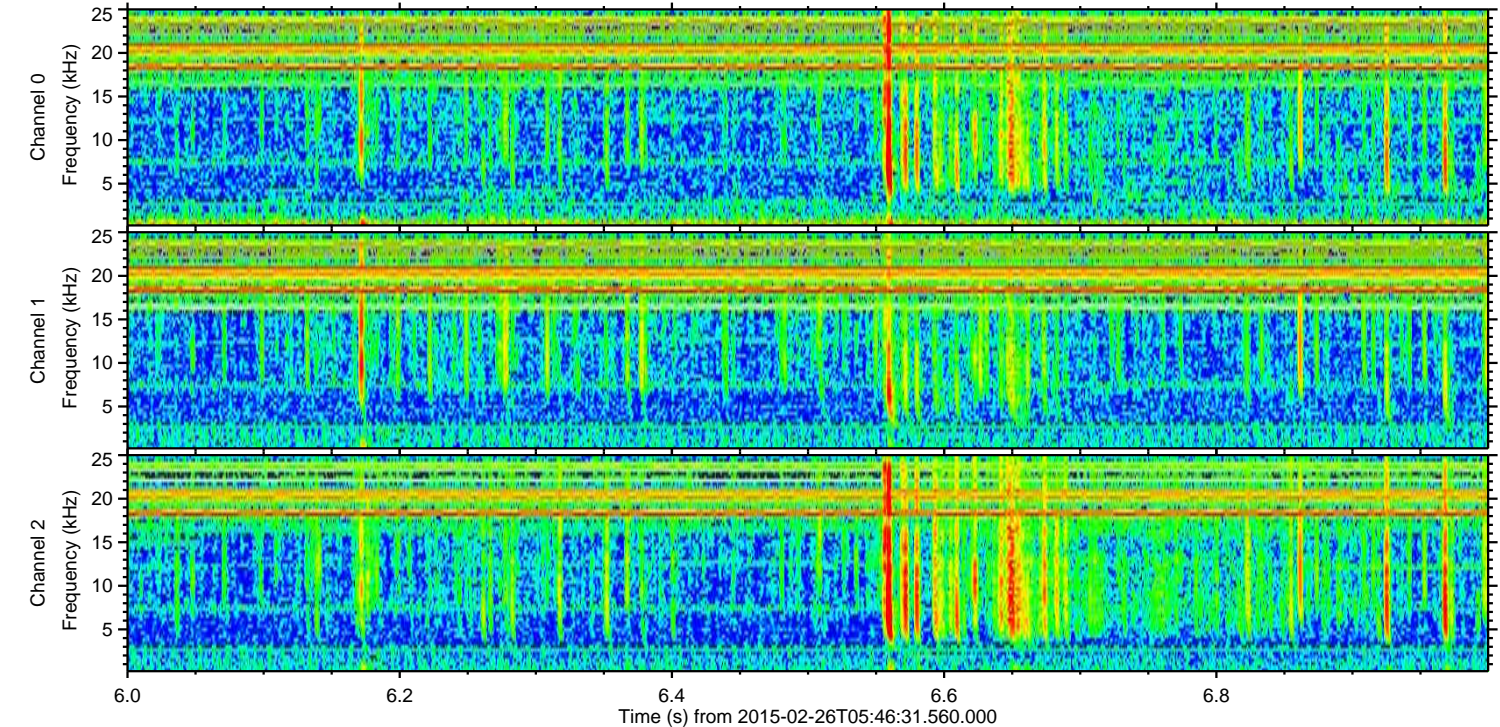
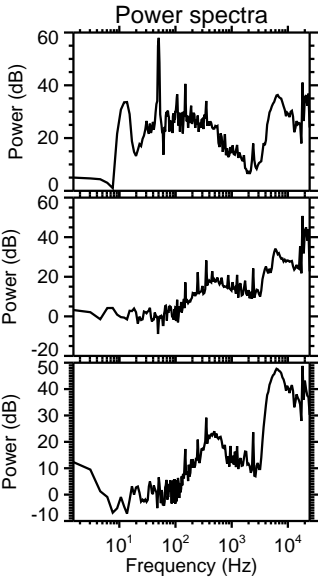
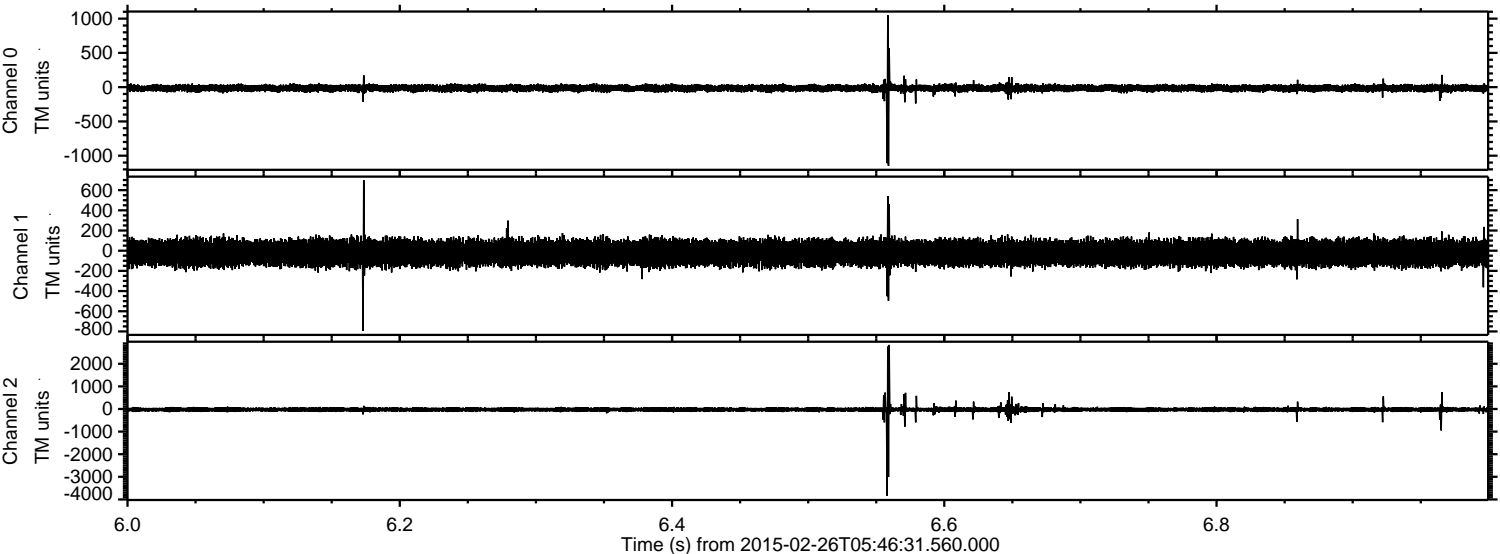
ELMAVAN 3D WAVEFORMS (Measured data sampled at 50 kHz) 49774 packets of 144 samples from 2015-02-26T05:46:31.560.000. Part 6/144

Processed Wed Mar 4 02:34:13 2015 by ELM ver.2012-10-06 from 001__elm20150226_054630__dat00.bin

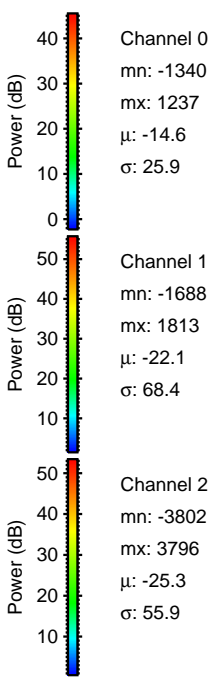
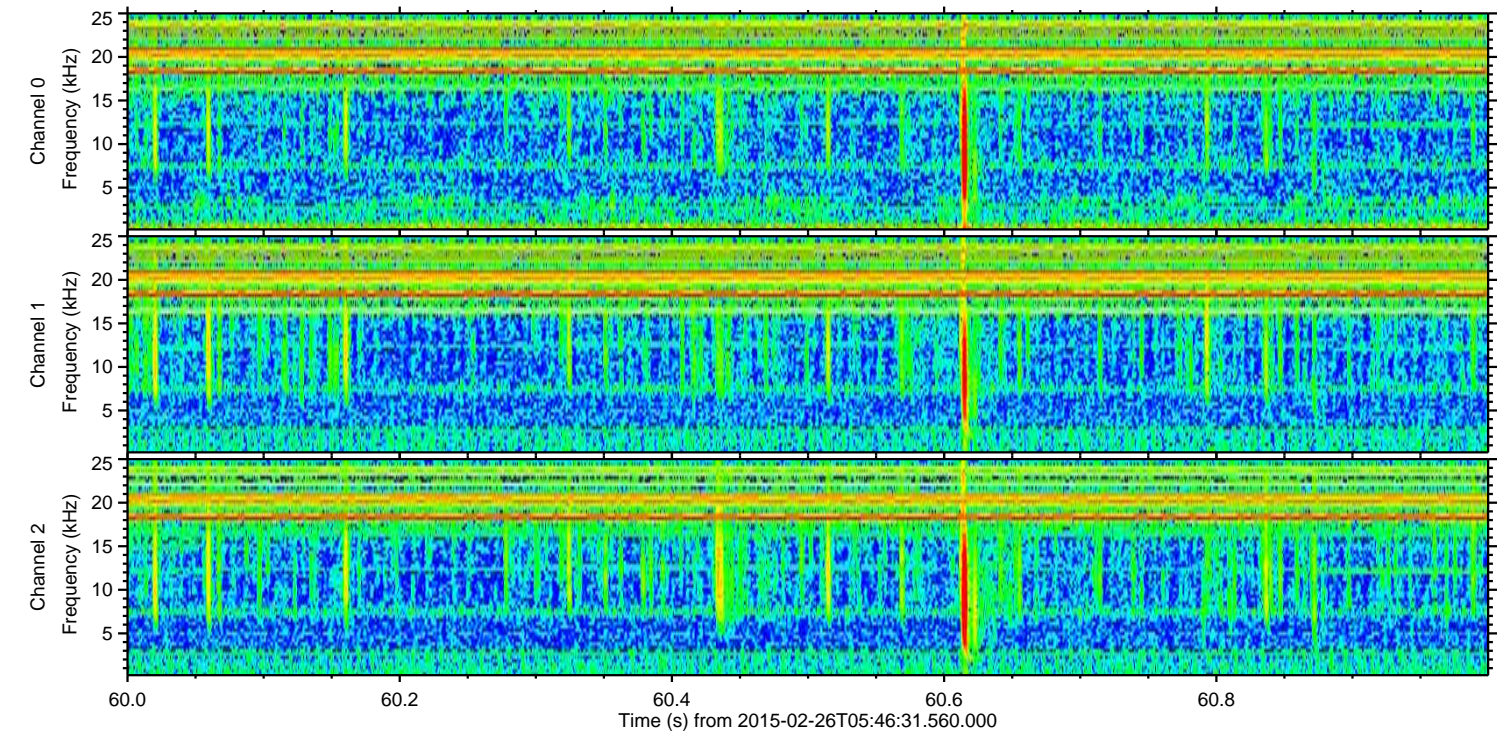
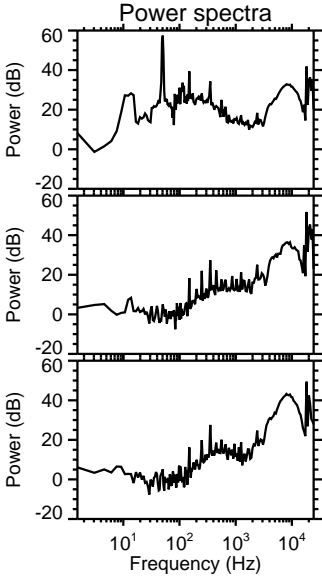
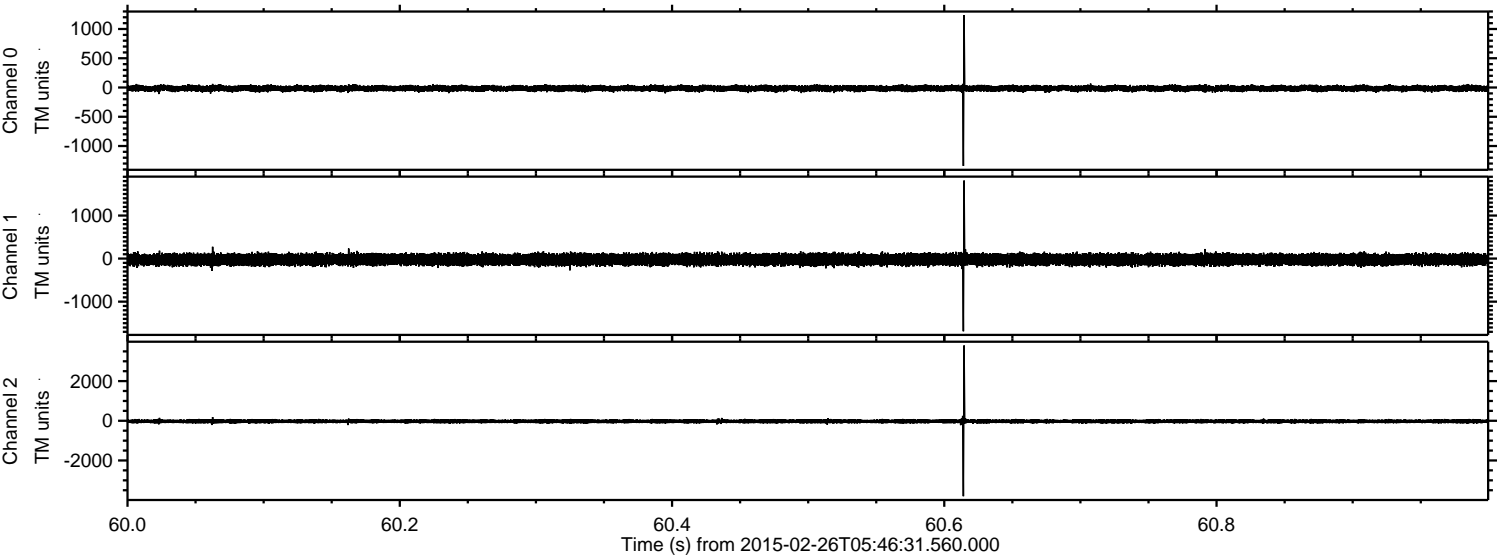


ELMAVAN 3D WAVEFORMS (Measured data sampled at 50 kHz) 49774 packets of 144 samples from 2015-02-26T05:46:31.560.000. Part 7/144

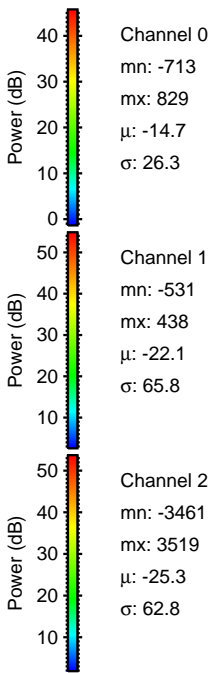
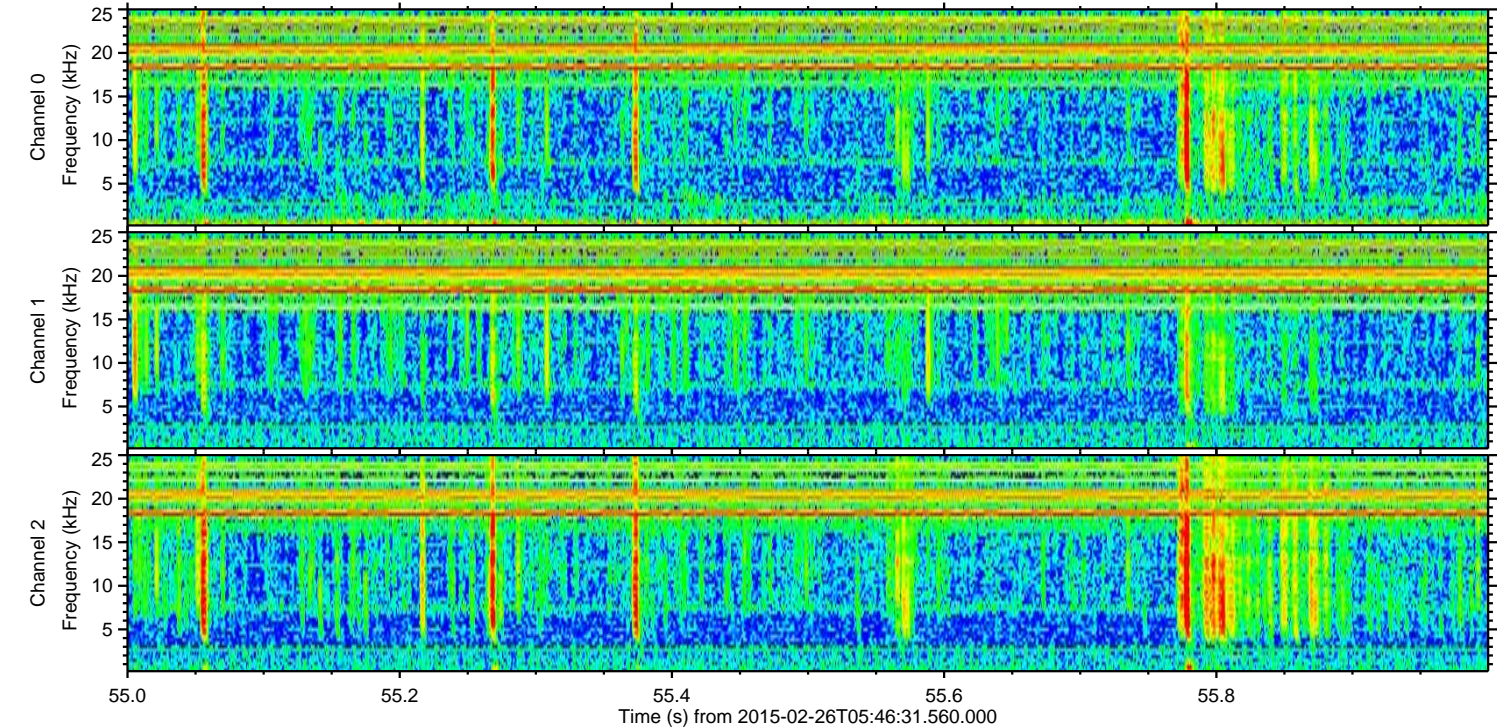
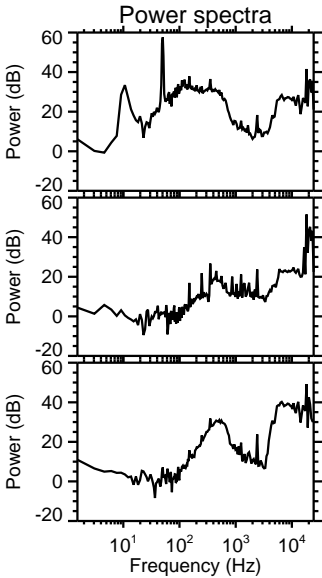
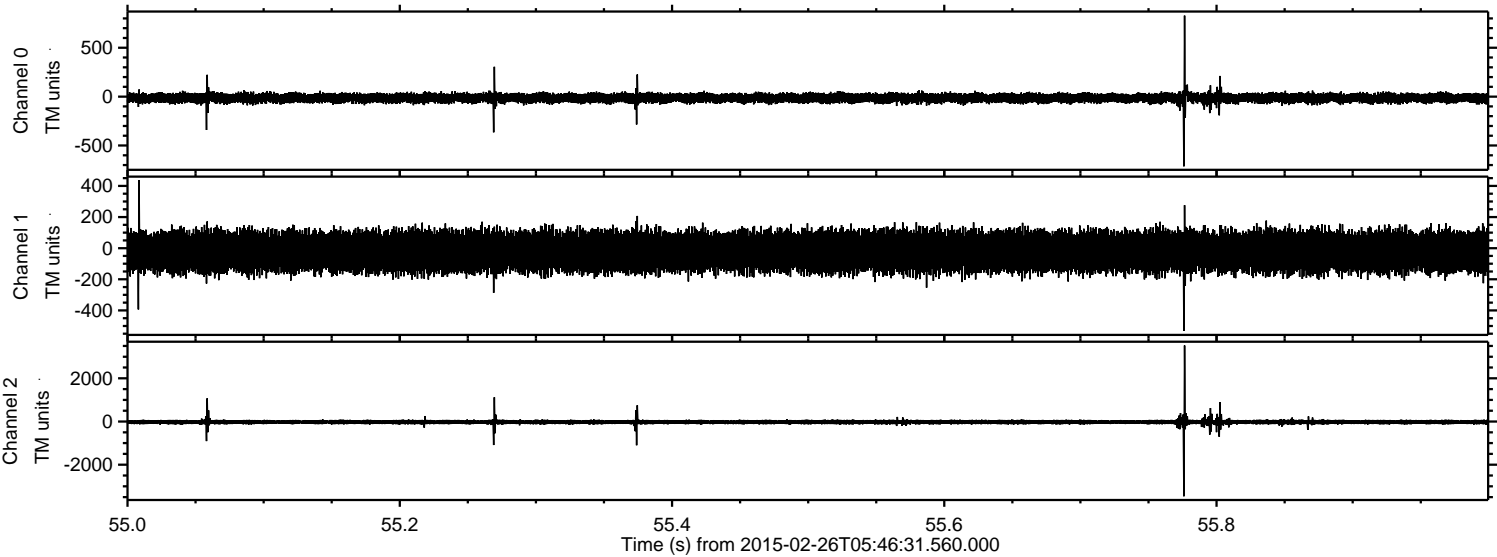
Processed Wed Mar 4 02:34:14 2015 by ELM ver.2012-10-06 from 001__elm20150226_054630__dat00.bin



Processed Wed Mar 4 02:34:15 2015 by ELM ver.2012-10-06 from 001__elm20150226_054630__dat00.bin

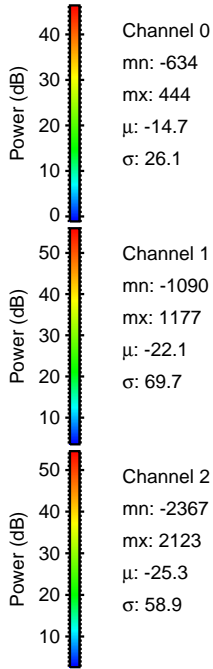
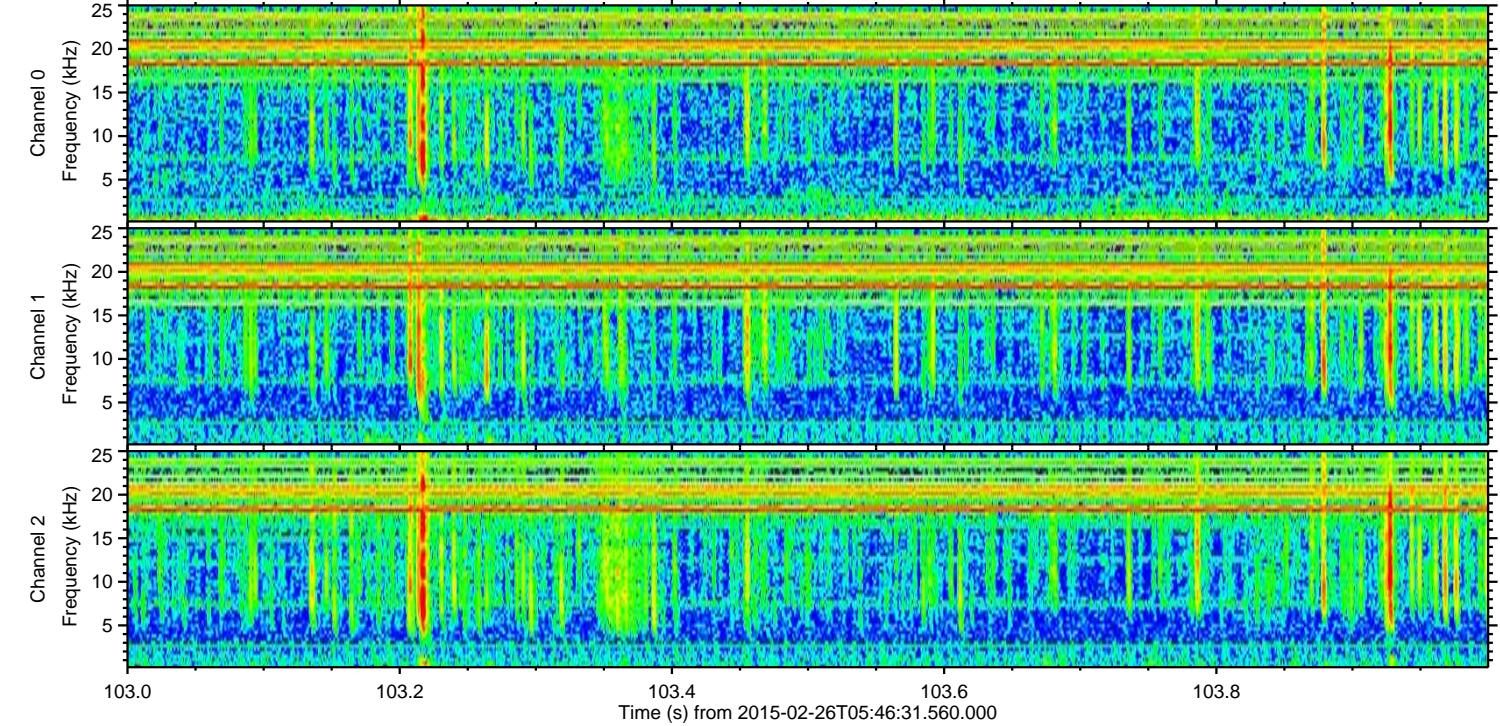
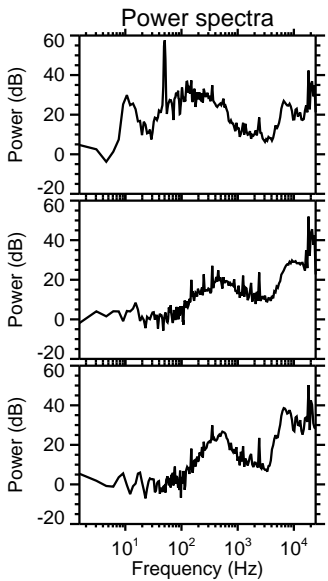
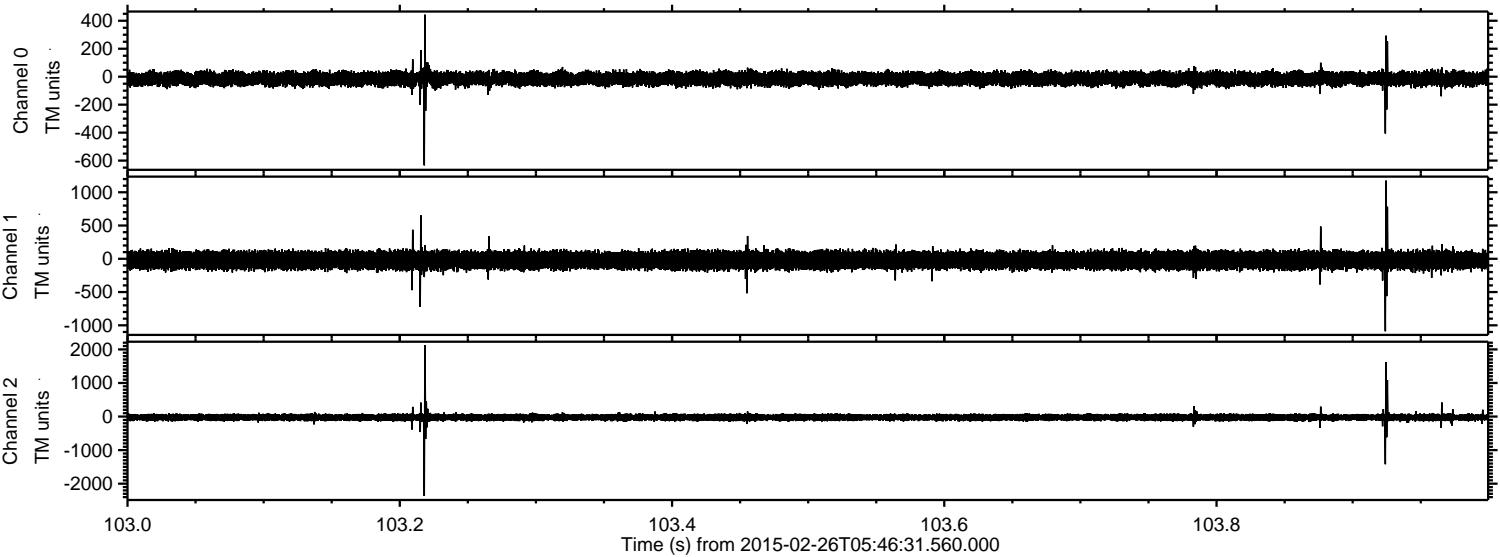


Processed Wed Mar 4 02:34:16 2015 by ELM ver.2012-10-06 from 001__elm20150226_054630__dat00.bin



ELMAVAN 3D WAVEFORMS (Measured data sampled at 50 kHz) 49774 packets of 144 samples from 2015-02-26T05:46:31.560.000. Part 104/144

Processed Wed Mar 4 02:34:17 2015 by ELM ver.2012-10-06 from 001__elm20150226_054630__dat00.bin

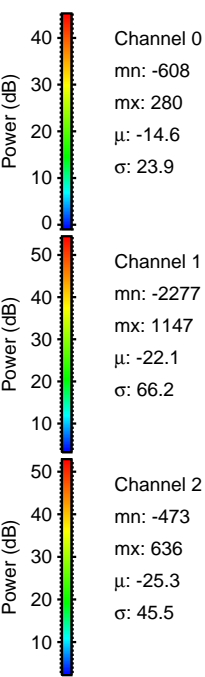
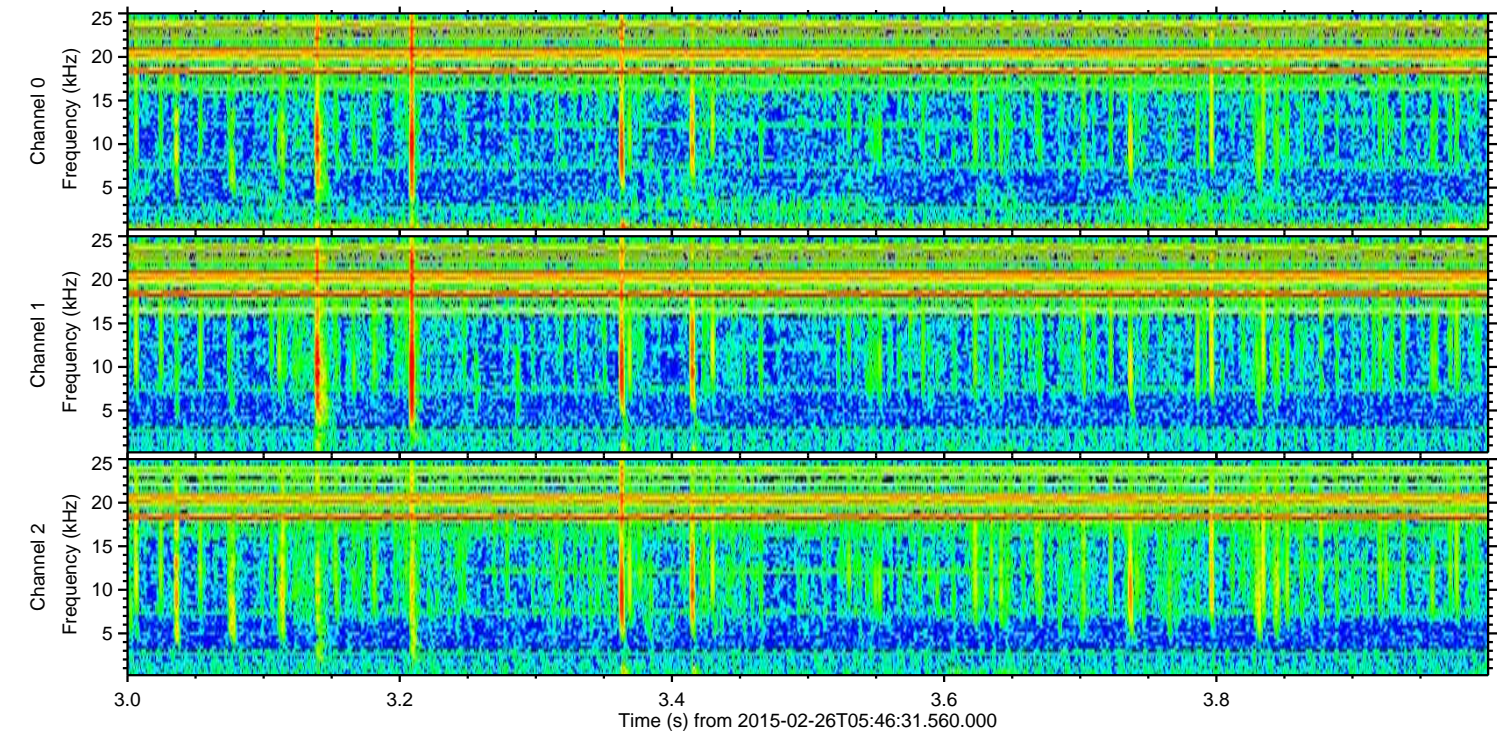
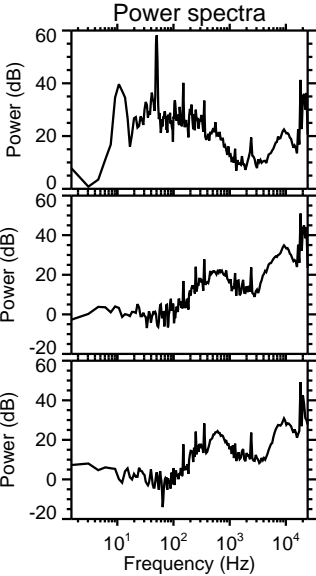
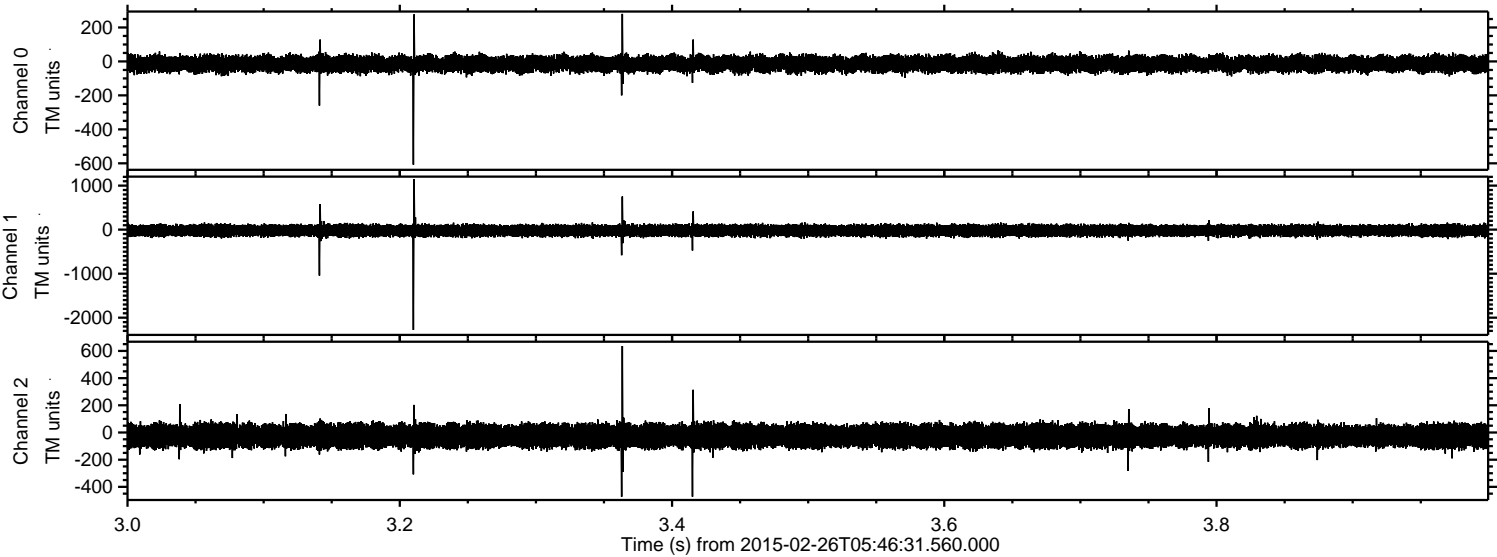


Channel 0
mn: -634
mx: 444
 μ : -14.7
 σ : 26.1

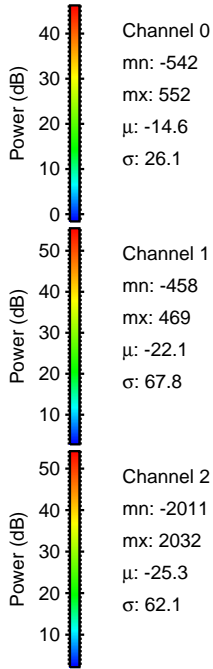
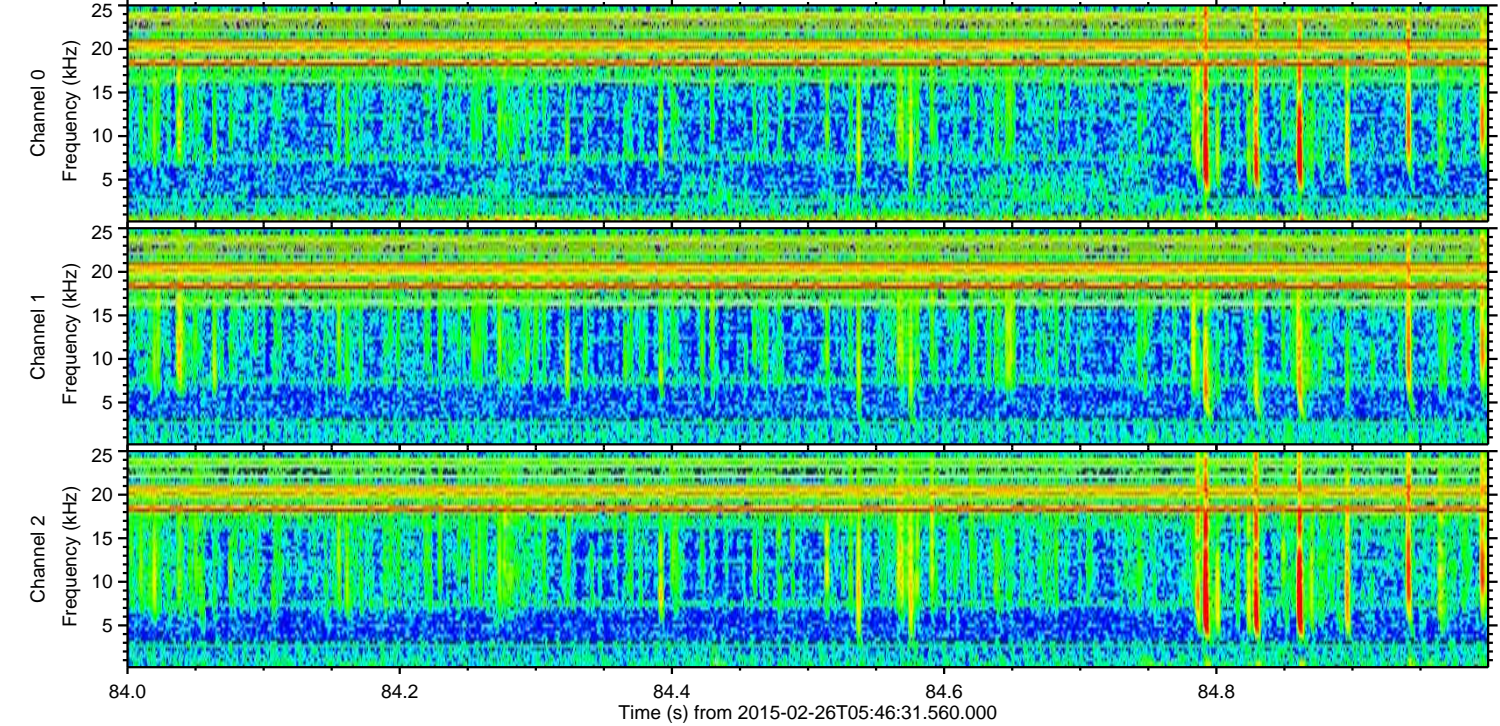
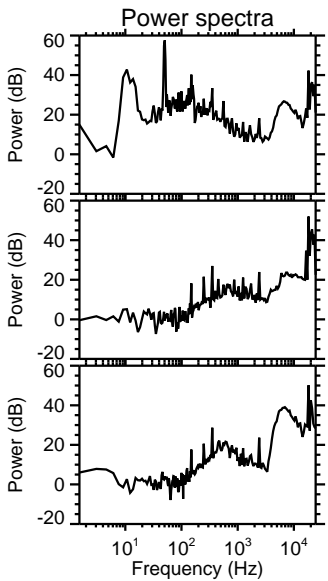
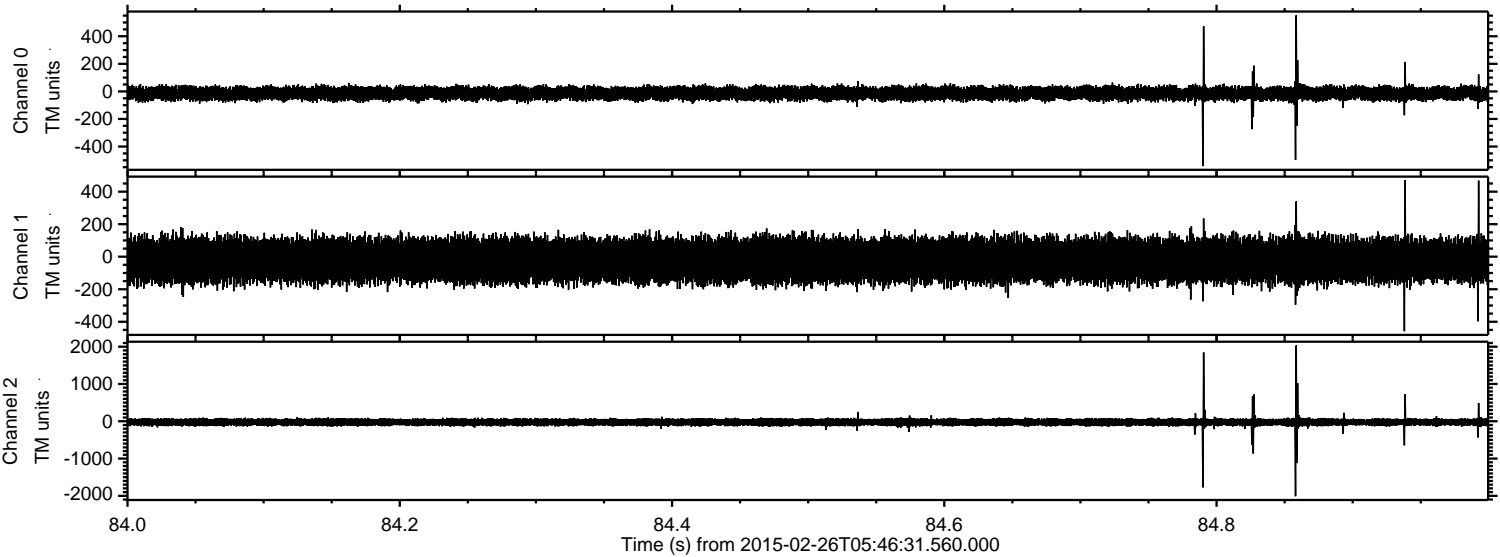
Channel 1
mn: -1090
mx: 1177
 μ : -22.1
 σ : 69.7

Channel 2
mn: -2367
mx: 2123
 μ : -25.3
 σ : 58.9

Processed Wed Mar 4 02:34:18 2015 by ELM ver.2012-10-06 from 001__elm20150226_054630__dat00.bin



Processed Wed Mar 4 02:34:19 2015 by ELM ver.2012-10-06 from 001__elm20150226_054630__dat00.bin



Processed Wed Mar 4 02:34:20 2015 by ELM ver.2012-10-06 from 001__elm20150226_054630__dat00.bin

