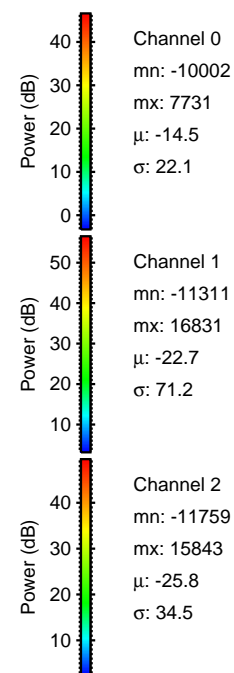
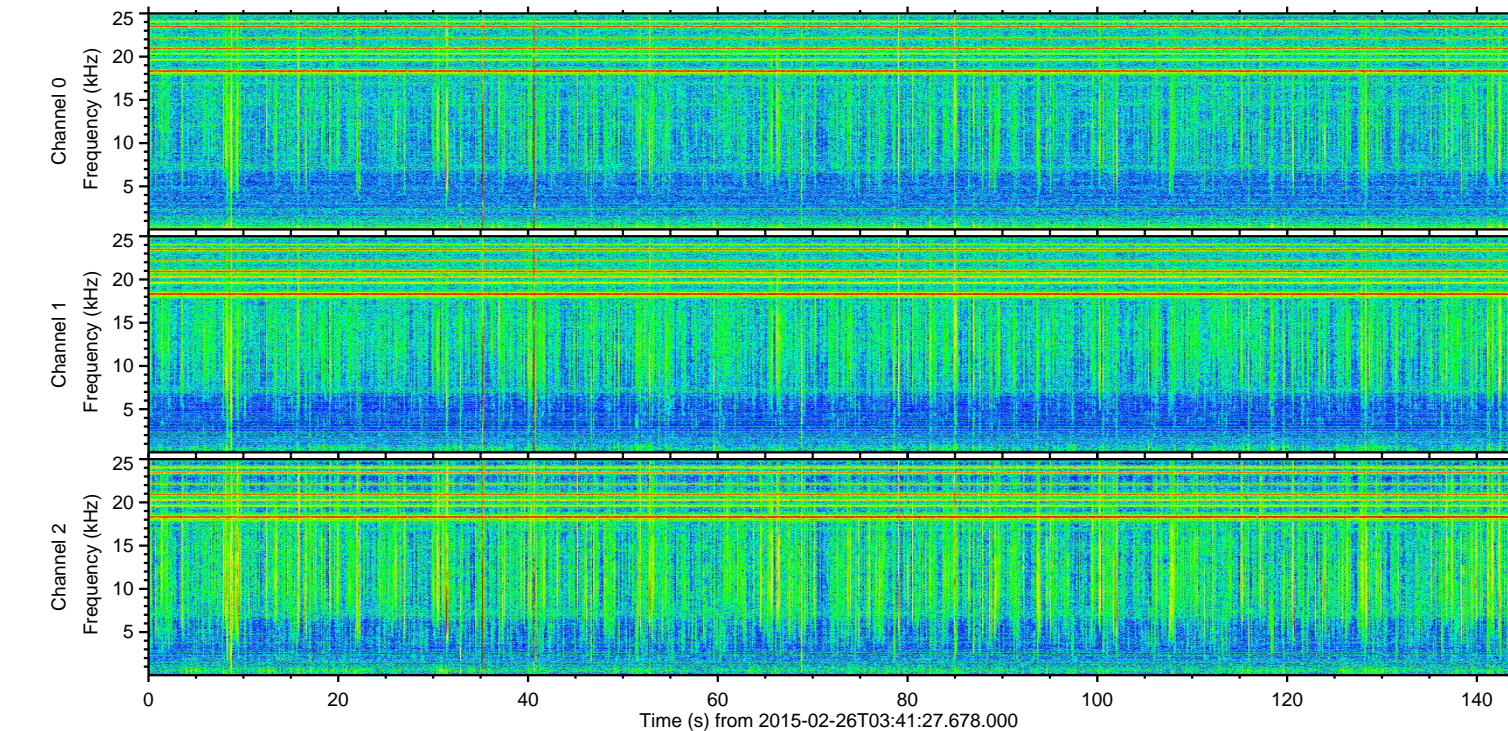
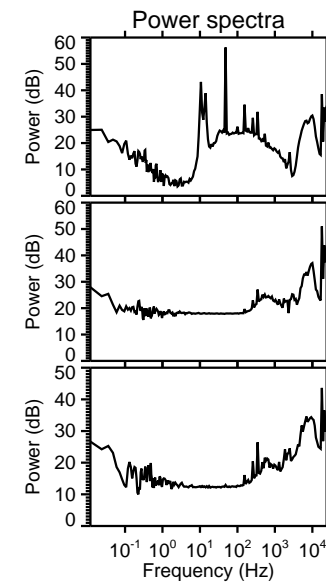
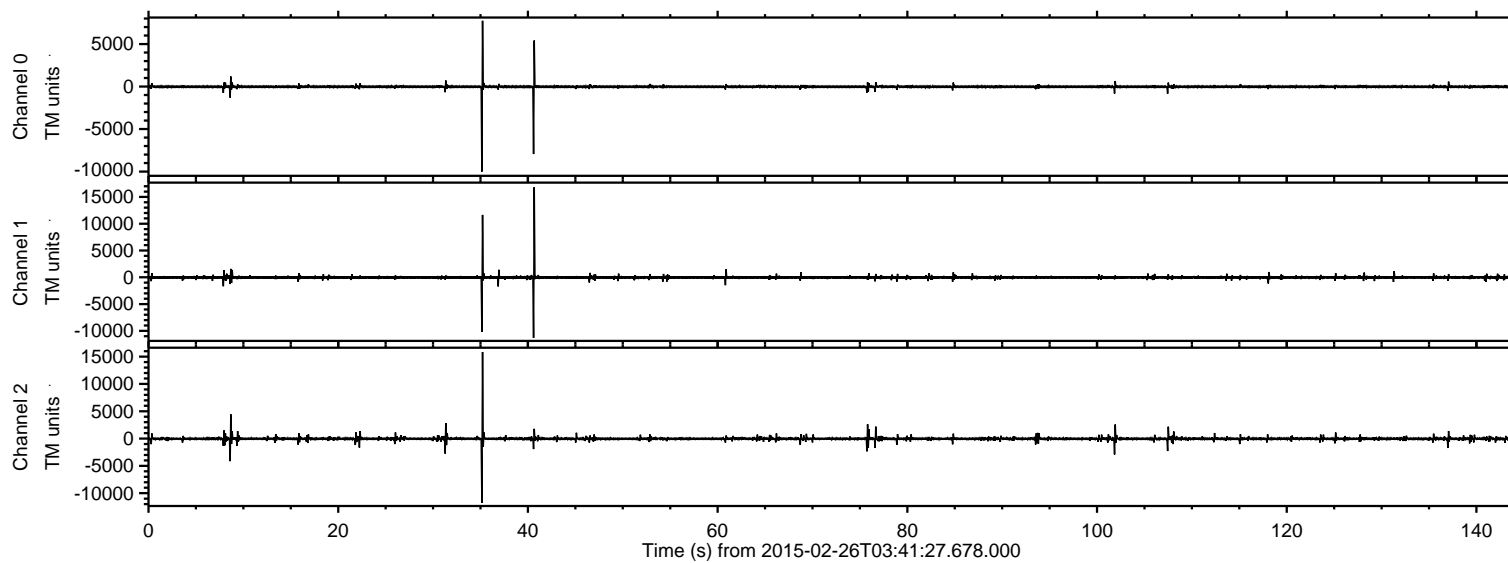
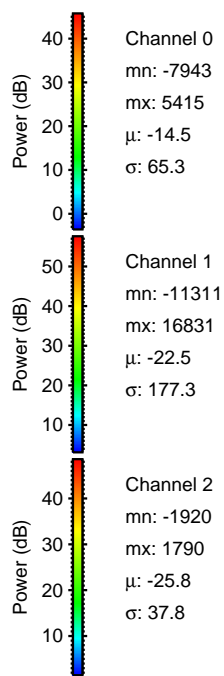
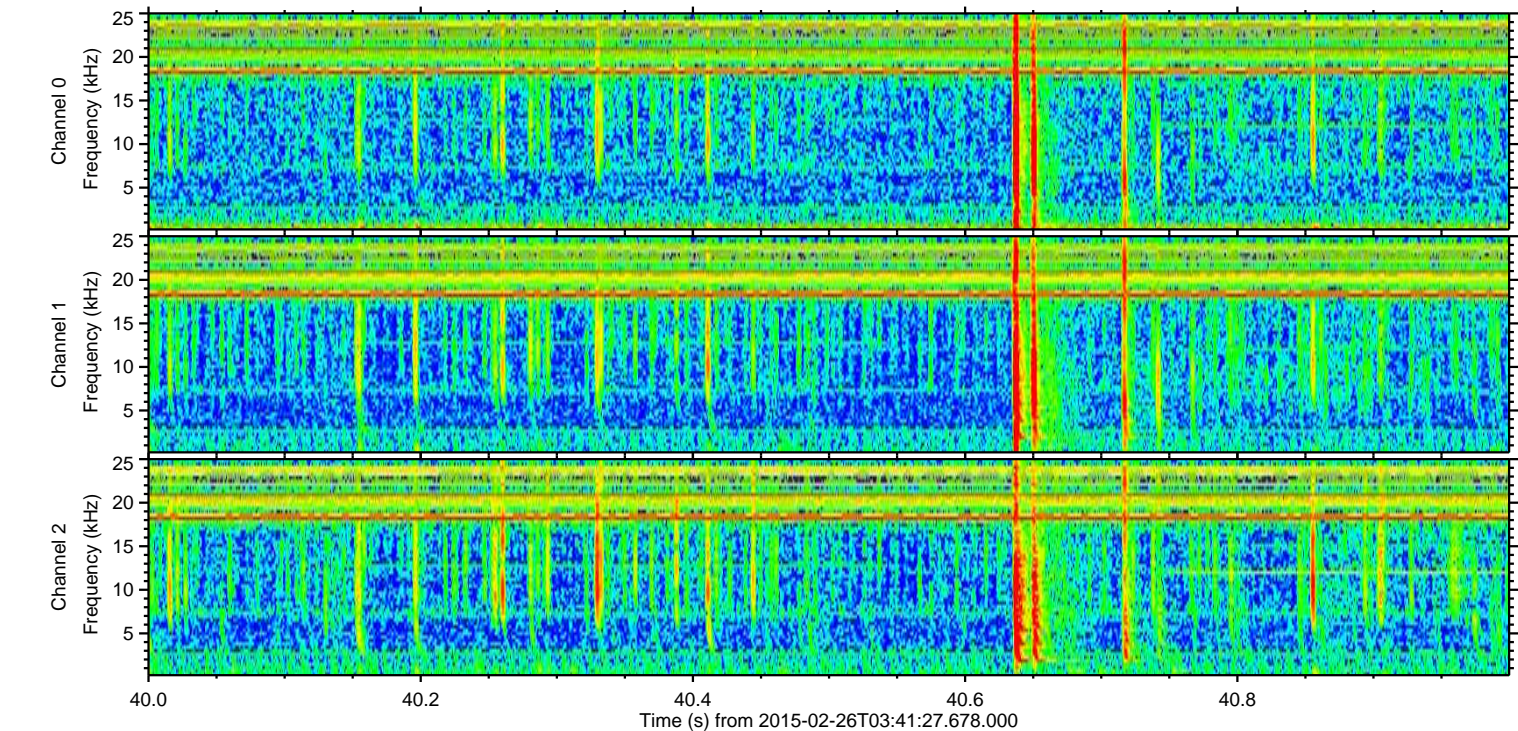
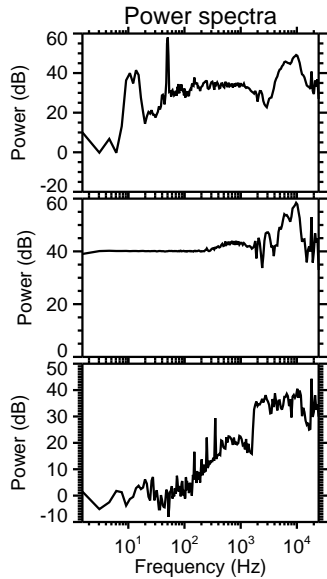
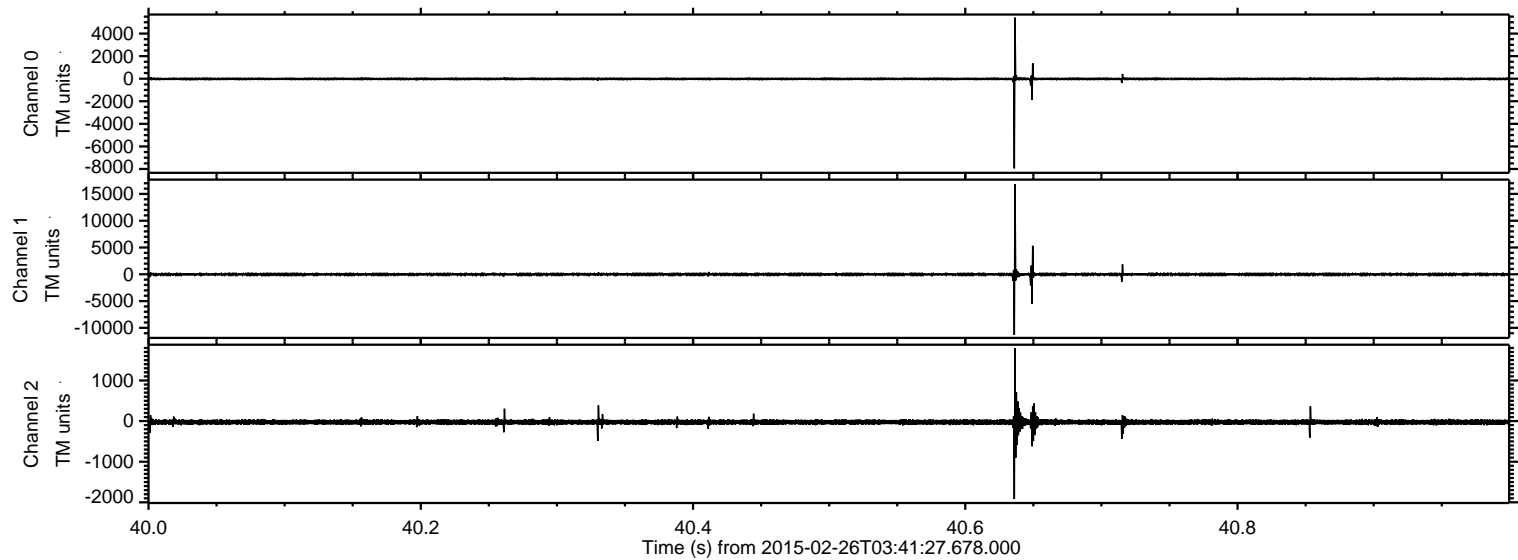


ELMAVAN 3D WAVEFORMS (Measured data sampled at 50 kHz) 49808 packets of 144 samples from 2015-02-26T03:41:27.678.000.

Processed Wed Mar 4 01:56:16 2015 by ELM ver.2012-10-06 from 001__elm20150226_034126__dat00.bin

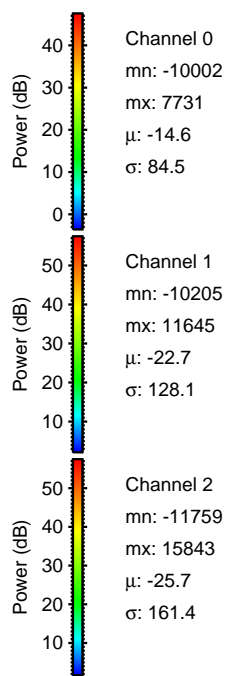
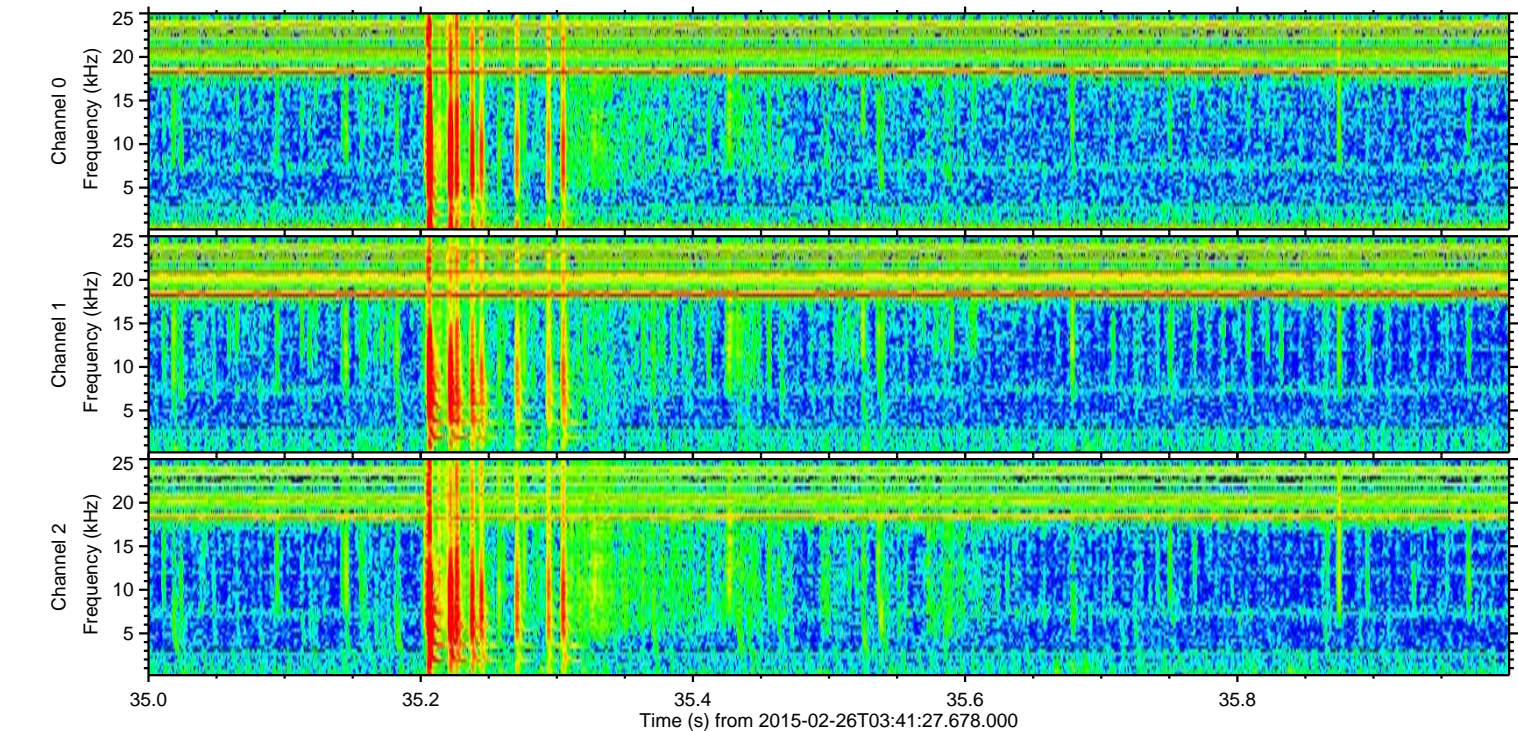
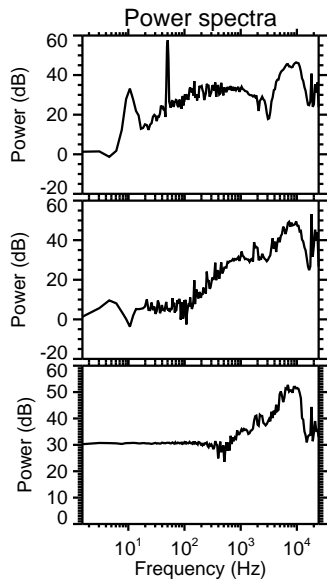
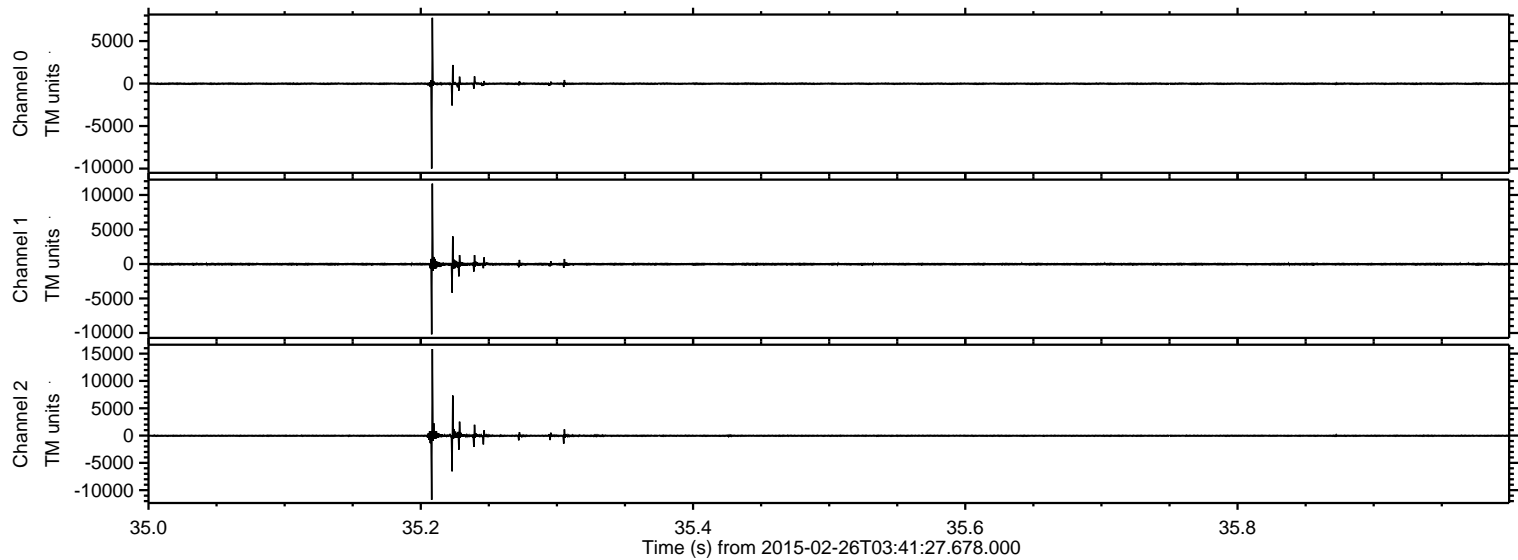


Processed Wed Mar 4 01:56:27 2015 by ELM ver.2012-10-06 from 001__elm20150226_034126__dat00.bin

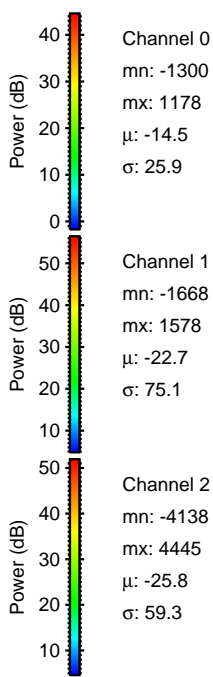
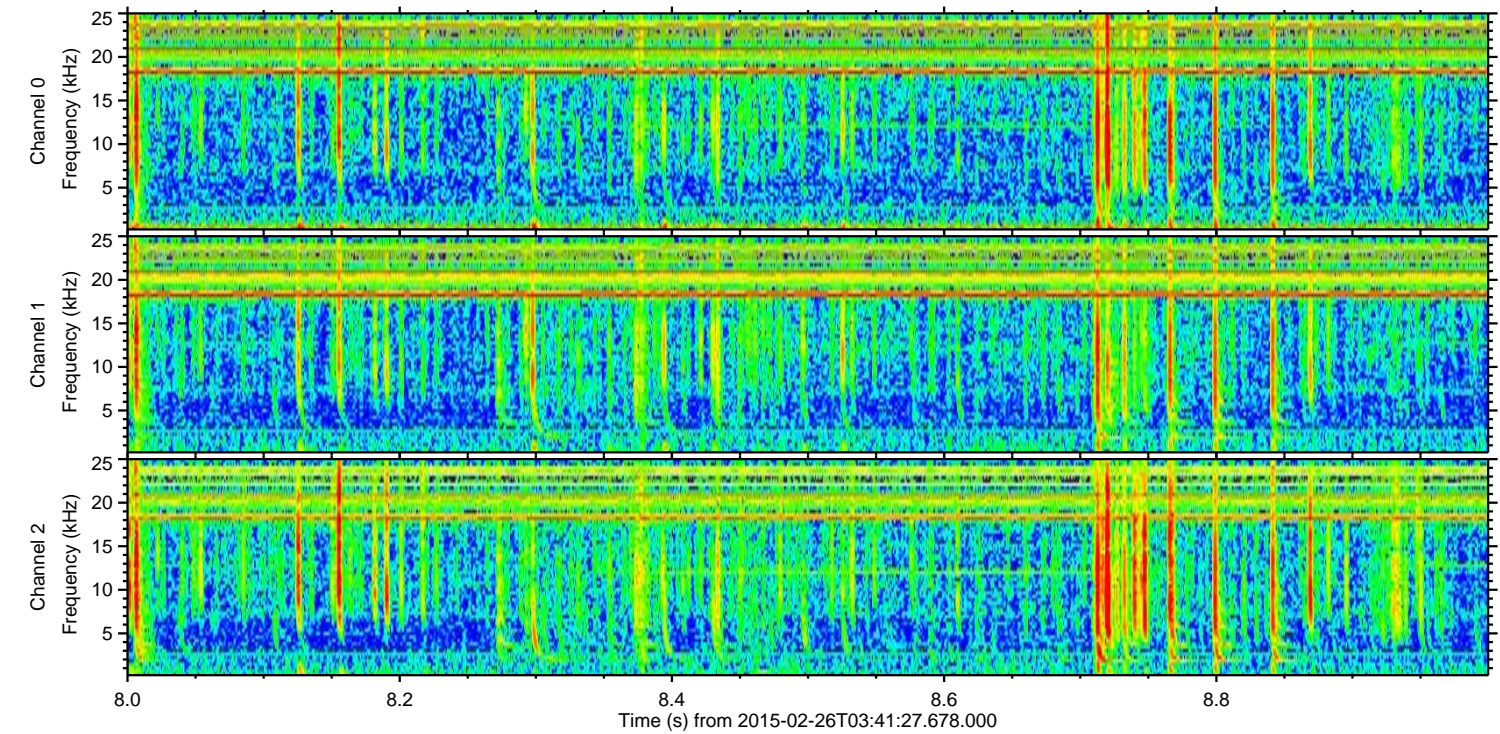
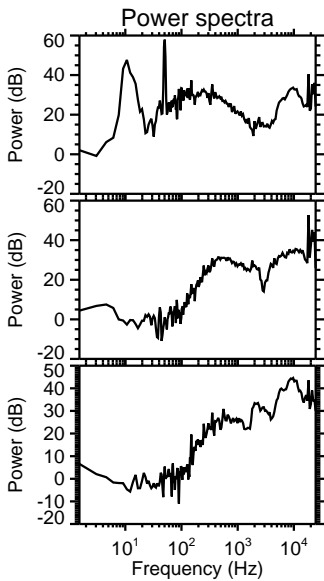
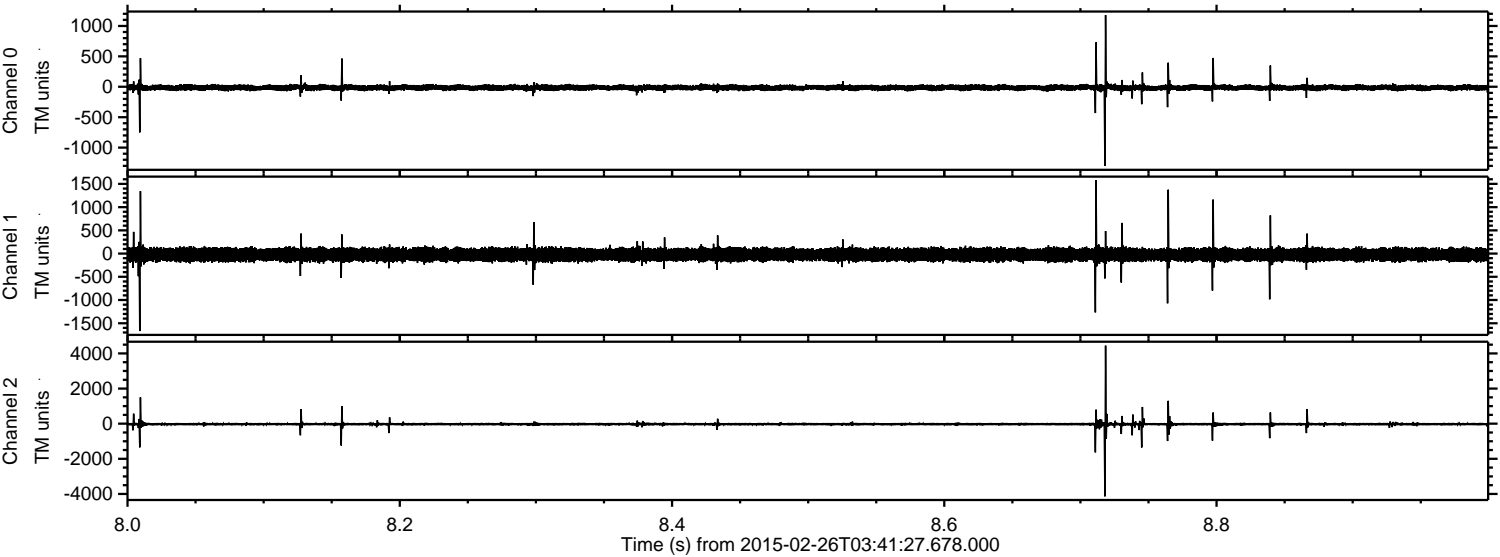


ELMAVAN 3D WAVEFORMS (Measured data sampled at 50 kHz) 49808 packets of 144 samples from 2015-02-26T03:41:27.678.000. Part 36/144

Processed Wed Mar 4 01:56:28 2015 by ELM ver.2012-10-06 from 001__elm20150226_034126__dat00.bin



Processed Wed Mar 4 01:56:29 2015 by ELM ver.2012-10-06 from 001__elm20150226_034126__dat00.bin

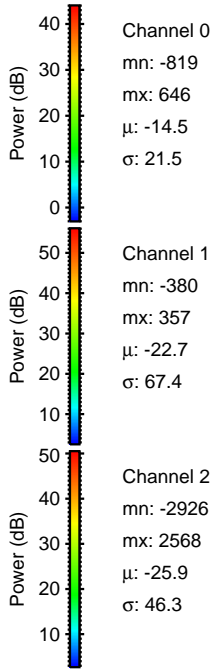
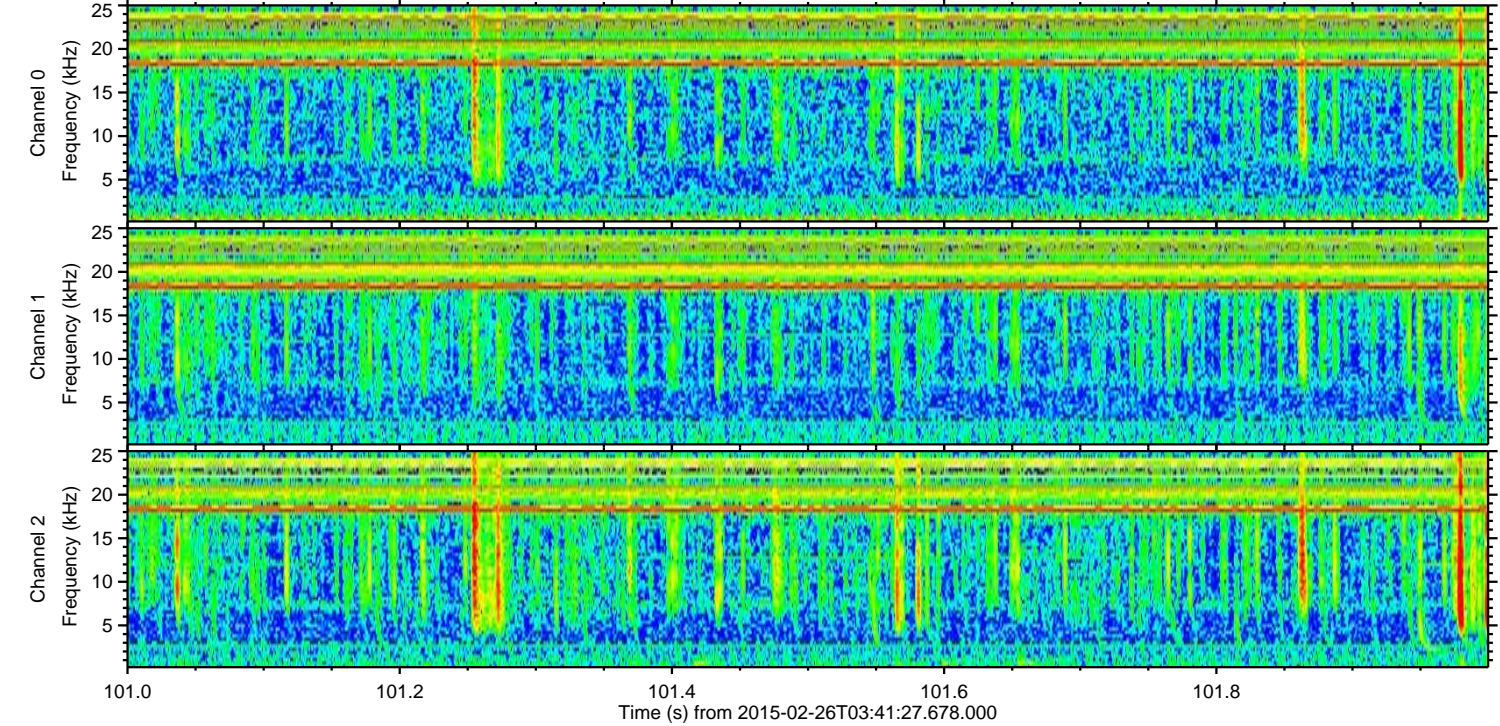
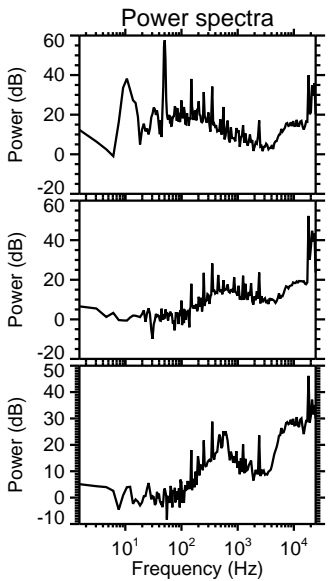
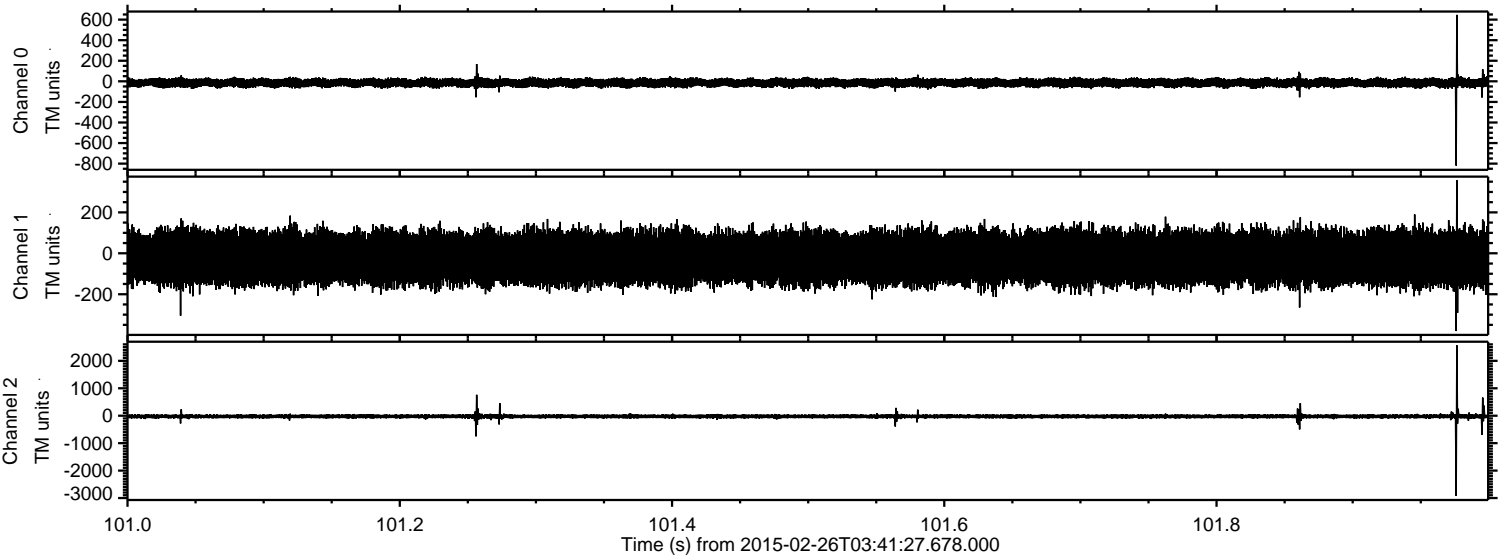


Channel 0
mn: -1300
mx: 1178
 μ : -14.5
 σ : 25.9

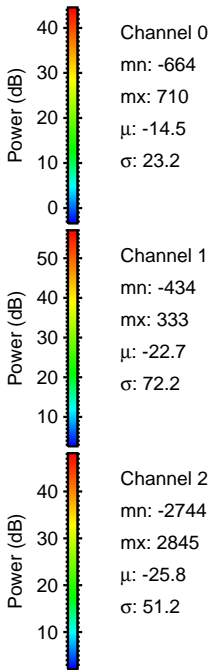
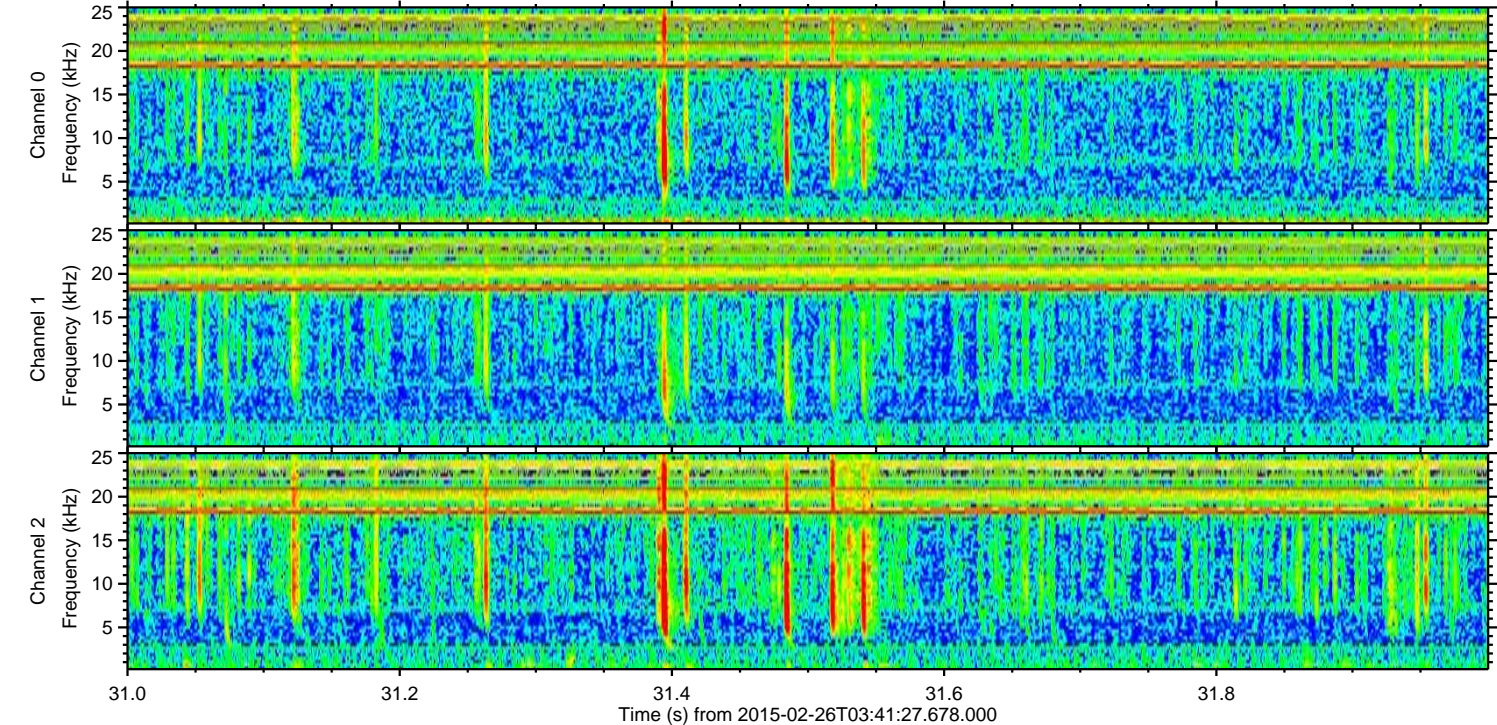
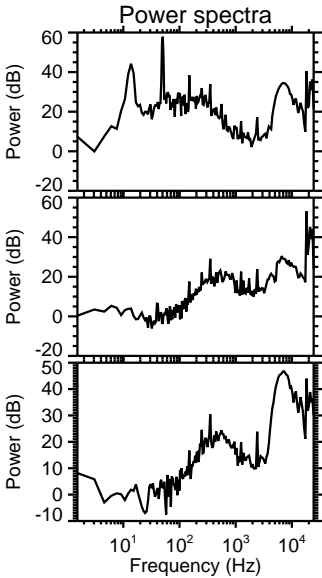
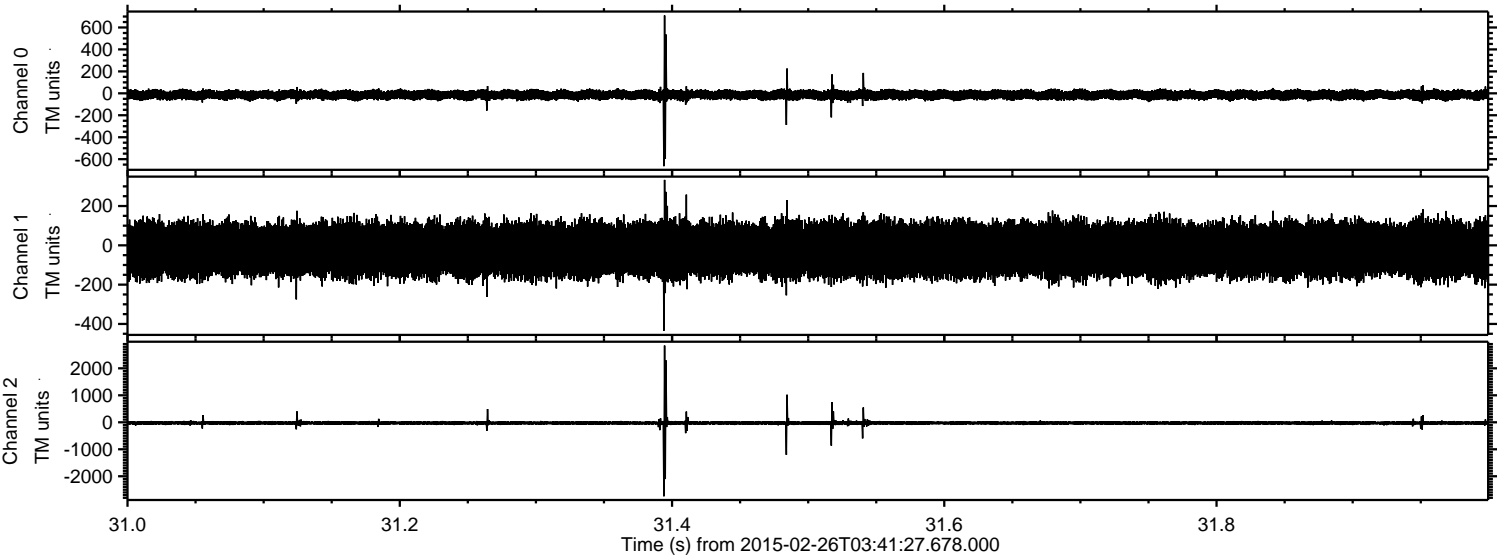
Channel 1
mn: -1668
mx: 1578
 μ : -22.7
 σ : 75.1

Channel 2
mn: -4138
mx: 4445
 μ : -25.8
 σ : 59.3

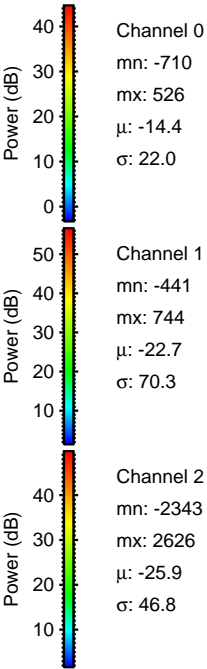
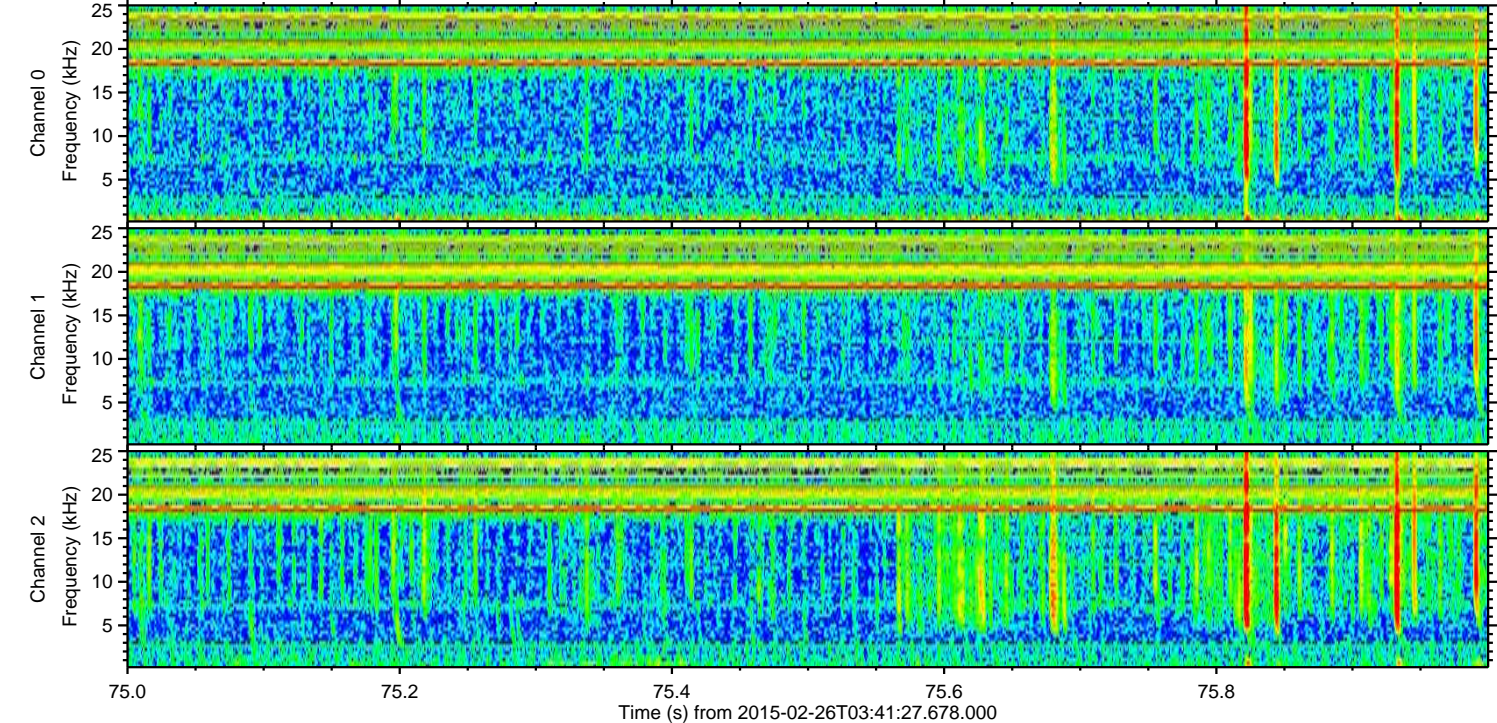
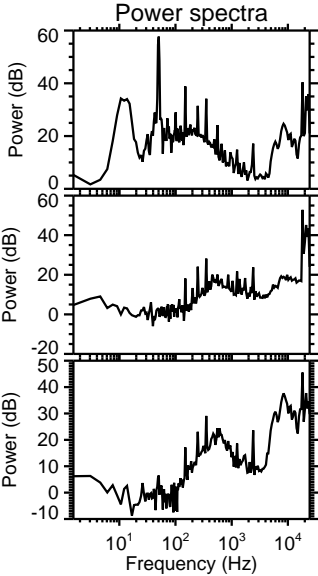
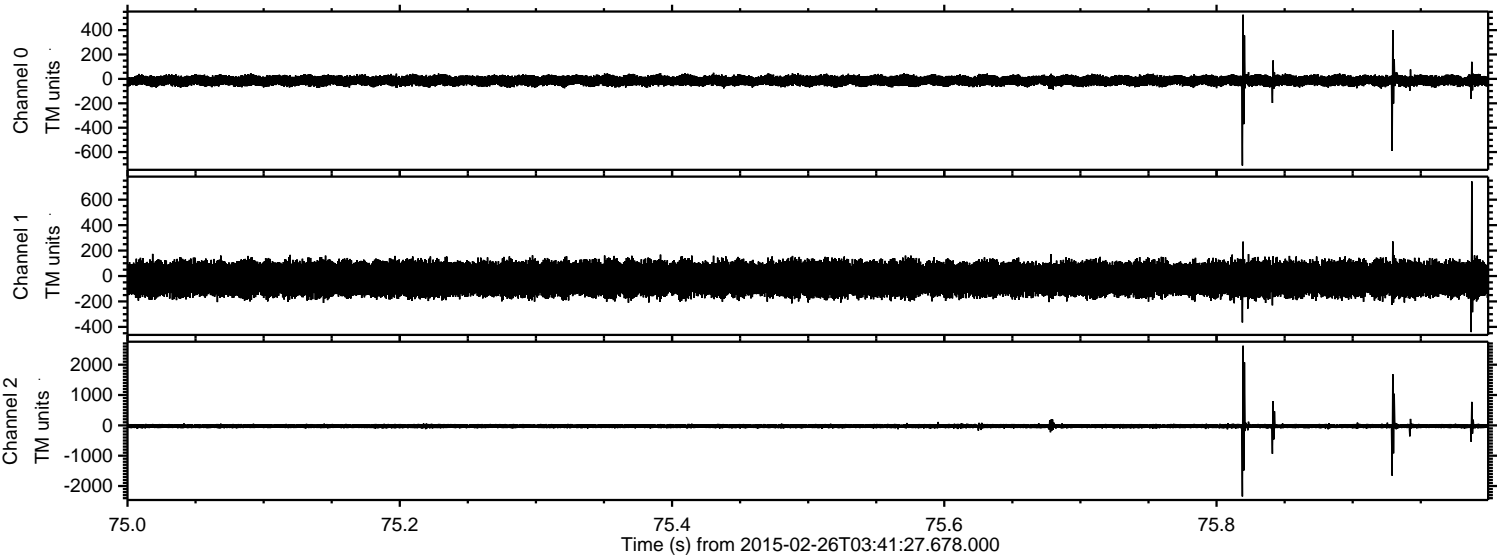
Processed Wed Mar 4 01:56:30 2015 by ELM ver.2012-10-06 from 001__elm20150226_034126__dat00.bin



Processed Wed Mar 4 01:56:31 2015 by ELM ver.2012-10-06 from 001__elm20150226_034126__dat00.bin

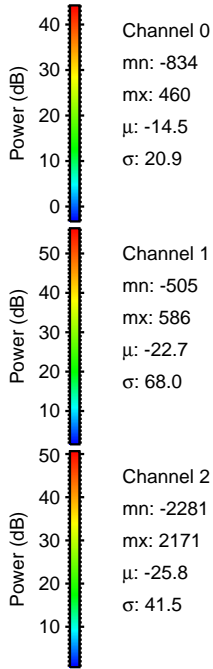
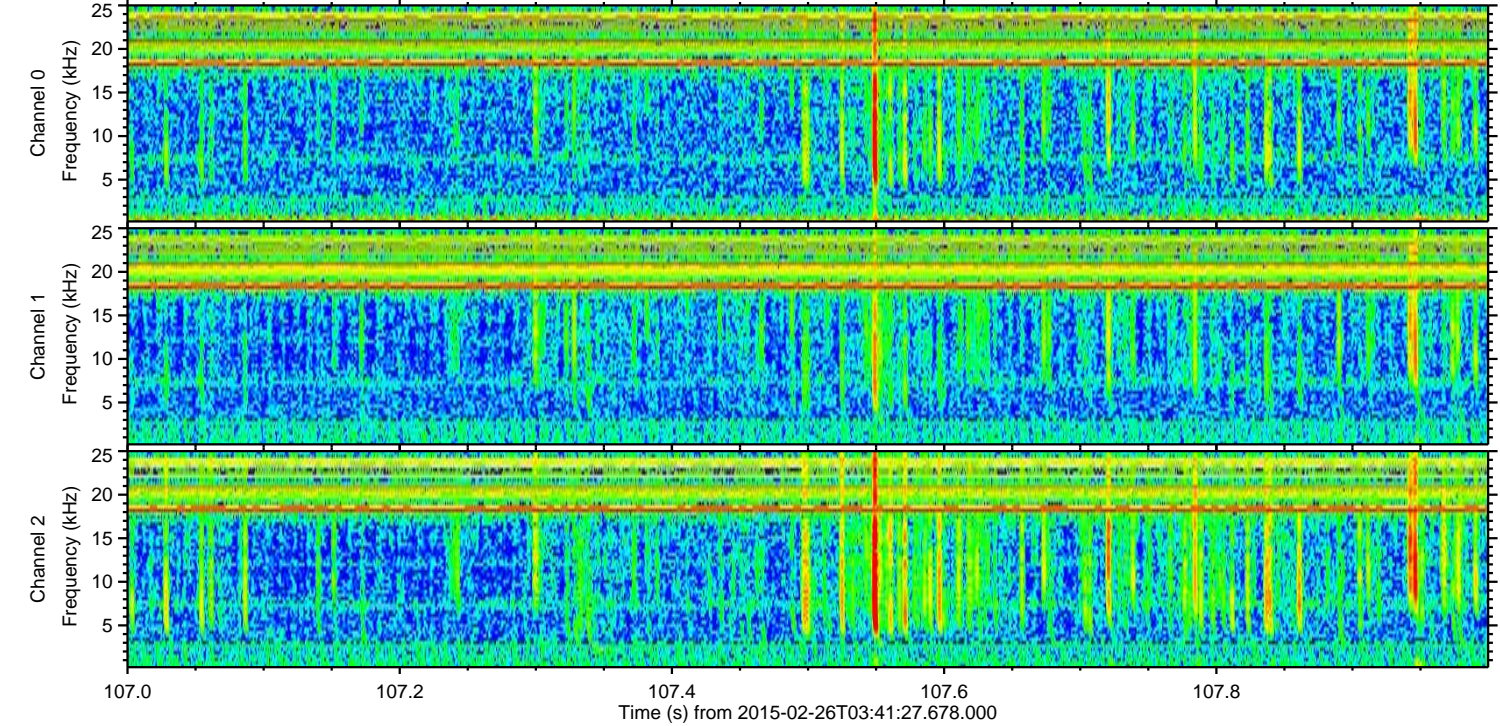
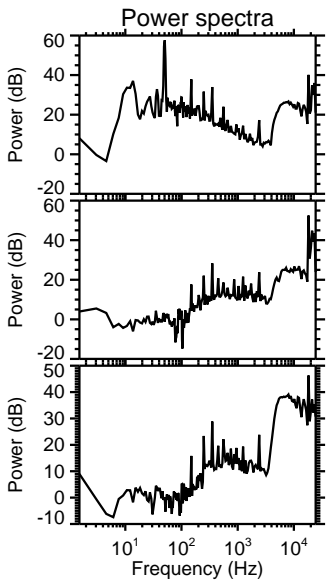
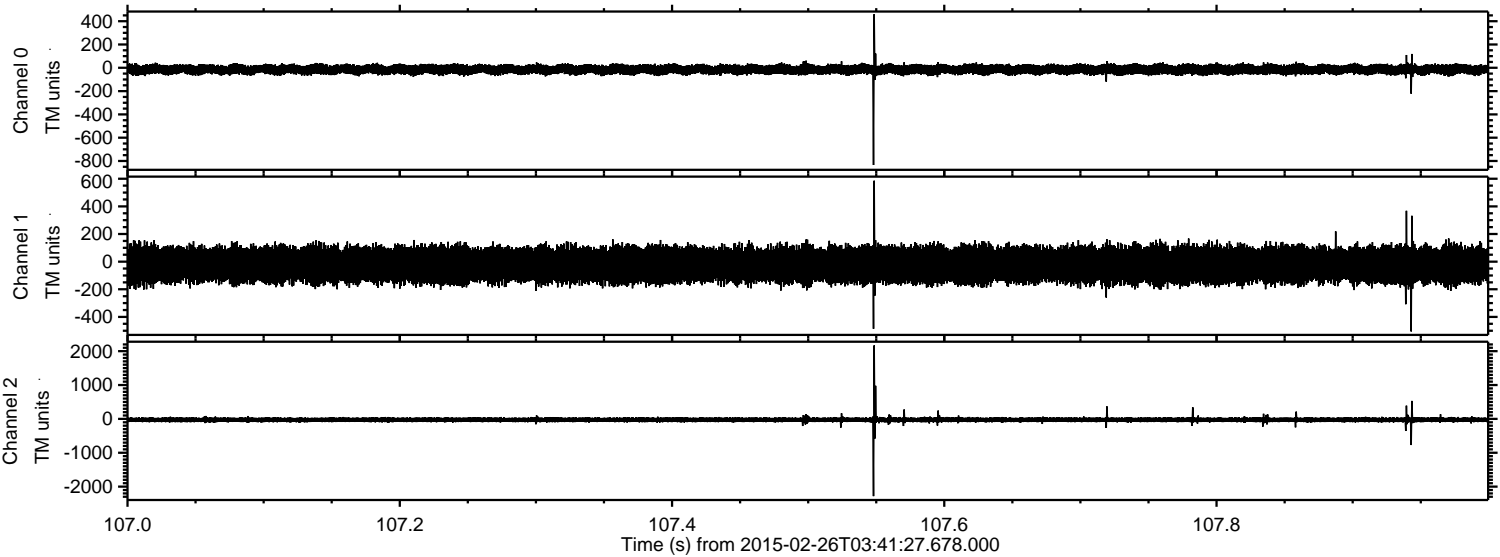


Processed Wed Mar 4 01:56:32 2015 by ELM ver.2012-10-06 from 001__elm20150226_034126__dat00.bin

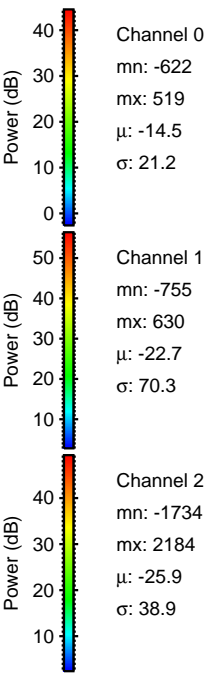
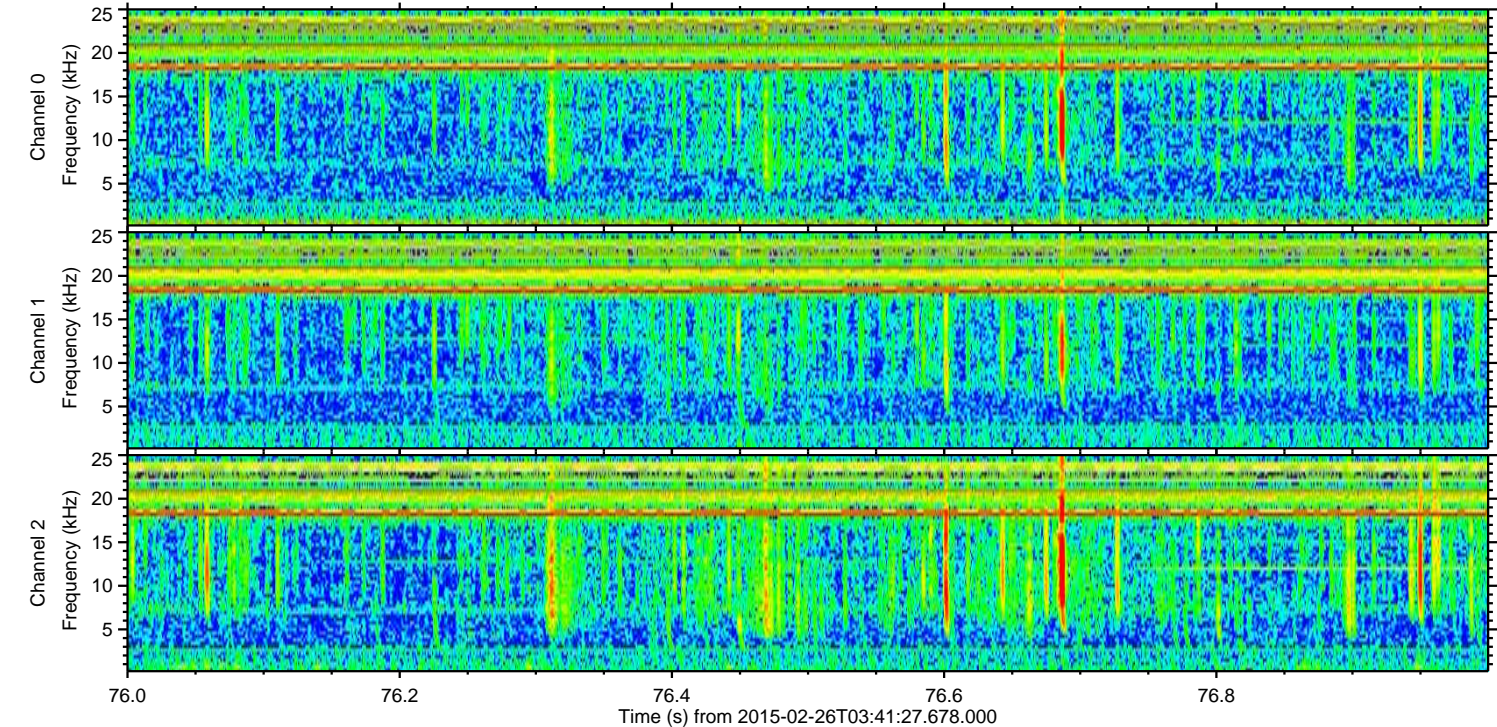
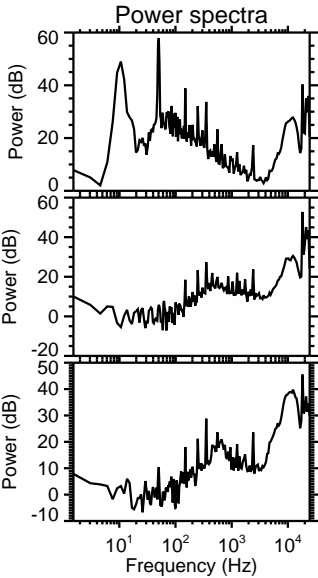
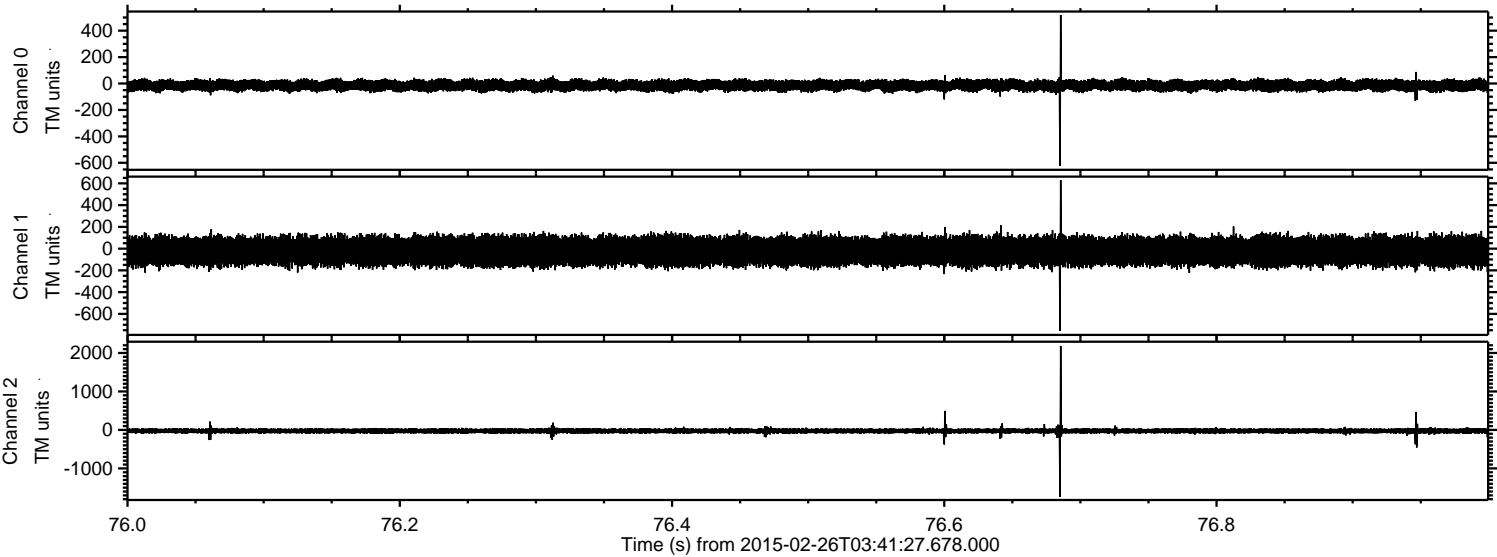


ELMAVAN 3D WAVEFORMS (Measured data sampled at 50 kHz) 49808 packets of 144 samples from 2015-02-26T03:41:27.678.000. Part 108/144

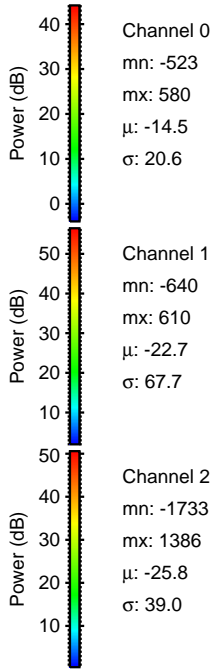
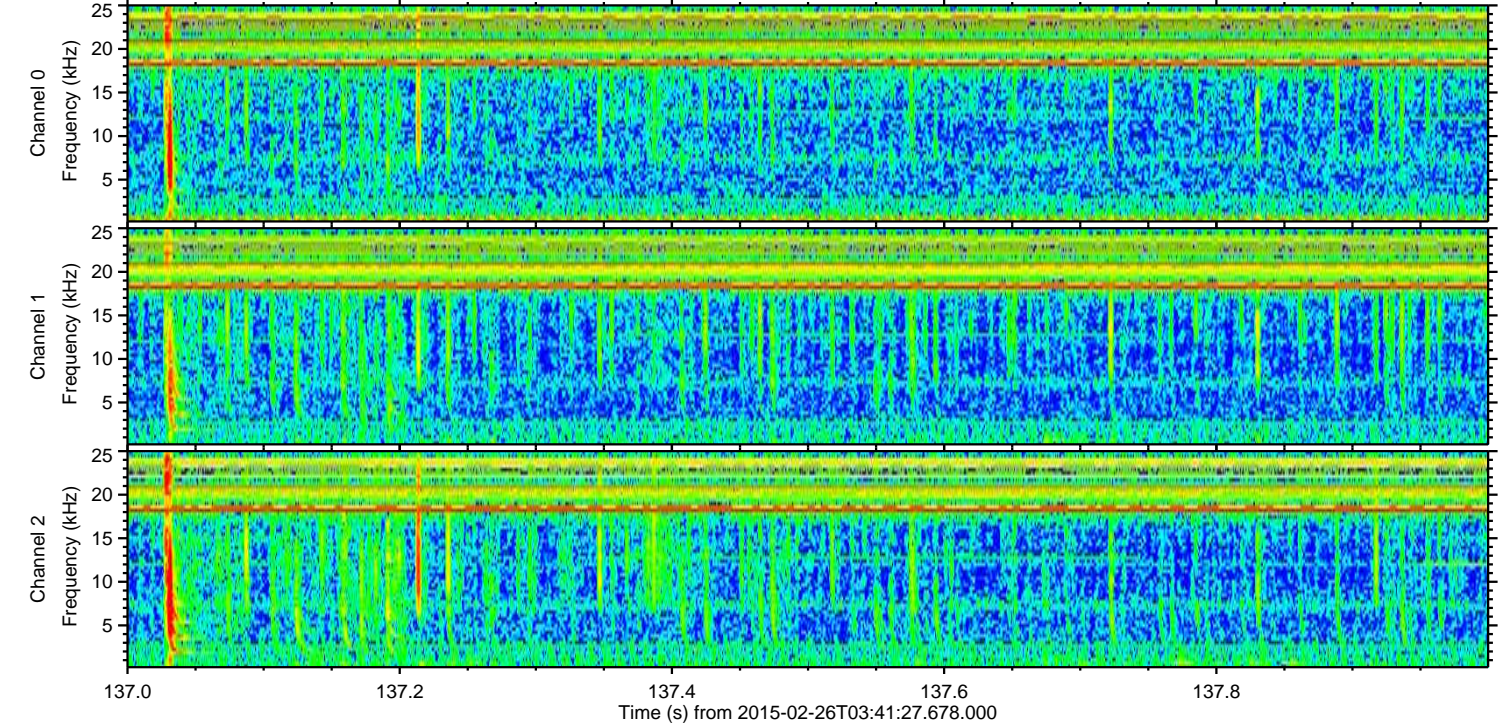
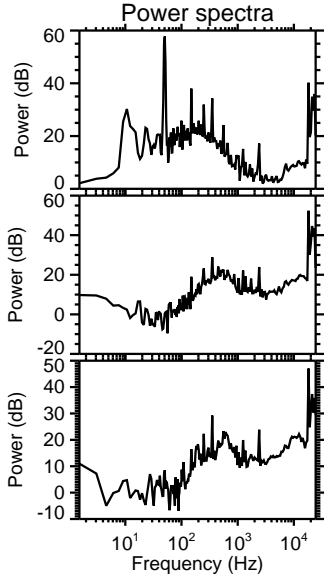
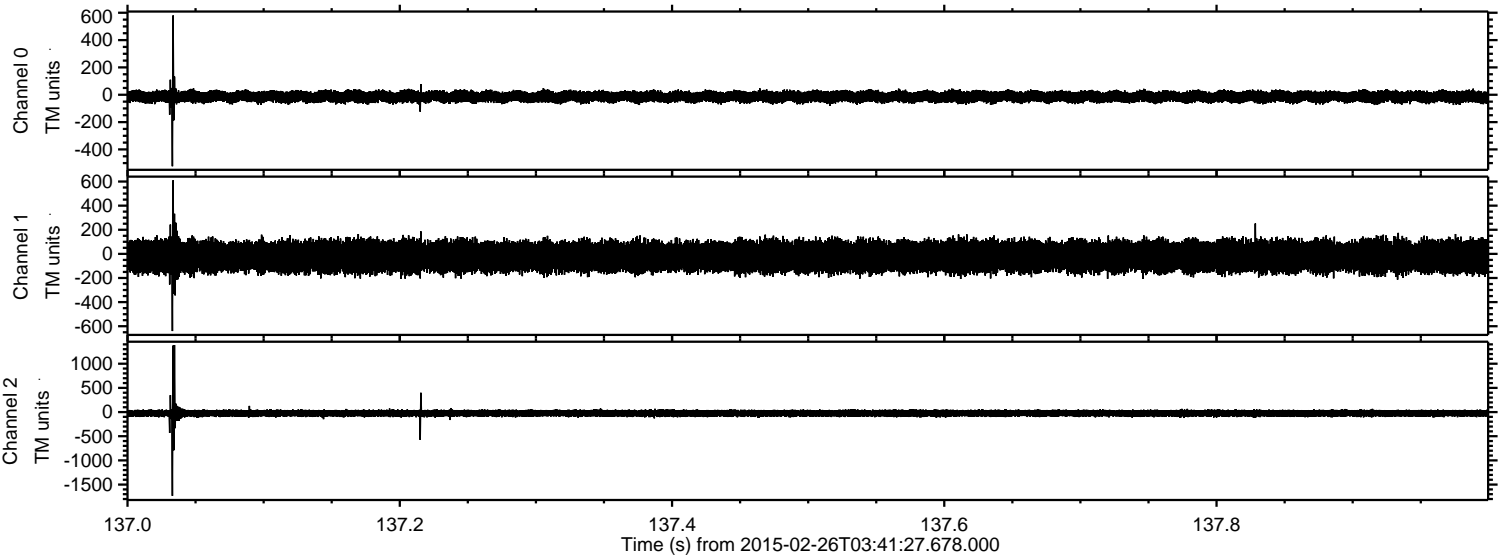
Processed Wed Mar 4 01:56:33 2015 by ELM ver.2012-10-06 from 001__elm20150226_034126__dat00.bin



Processed Wed Mar 4 01:56:34 2015 by ELM ver.2012-10-06 from 001__elm20150226_034126__dat00.bin



Processed Wed Mar 4 01:56:35 2015 by ELM ver.2012-10-06 from 001__elm20150226_034126__dat00.bin



Processed Wed Mar 4 01:56:36 2015 by ELM ver.2012-10-06 from 001__elm20150226_034126__dat00.bin

