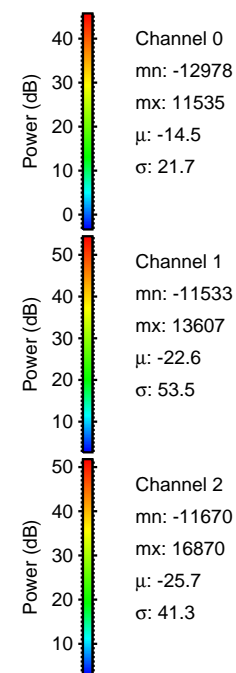
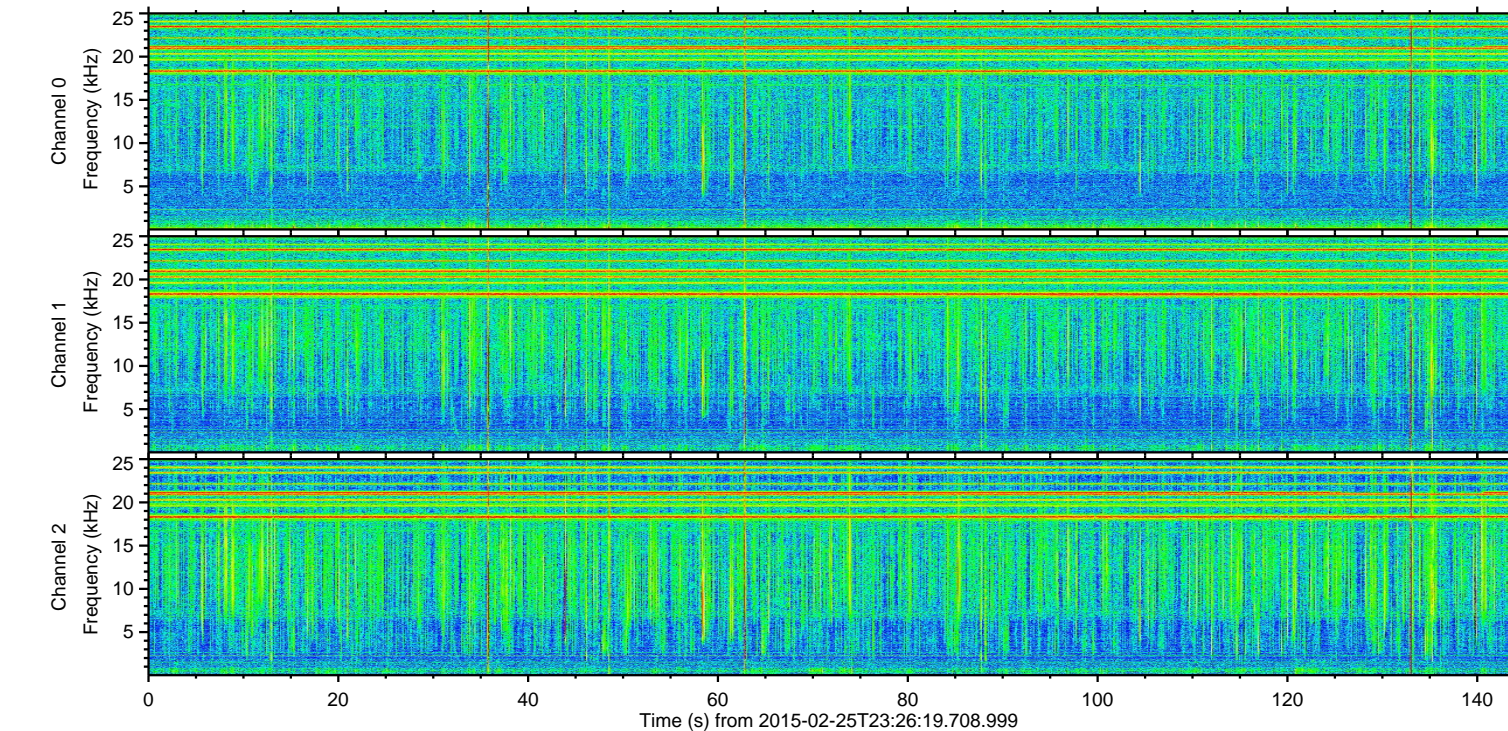
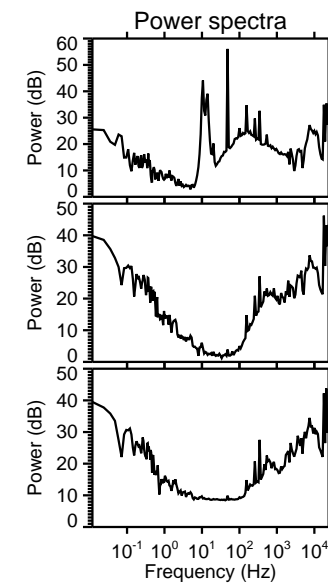
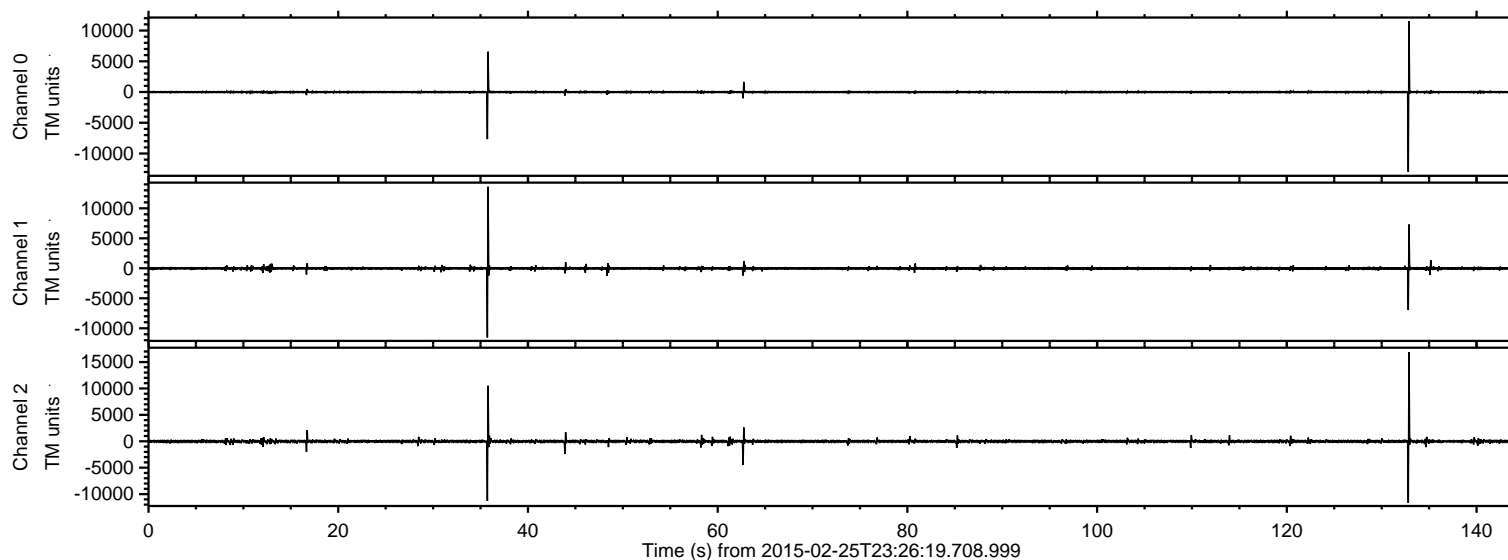


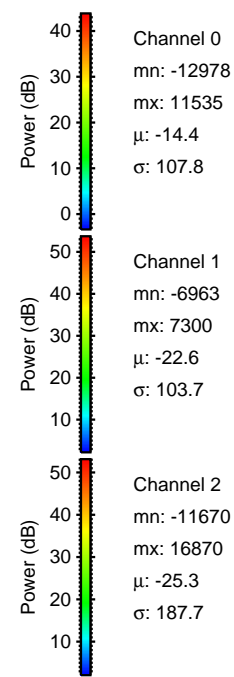
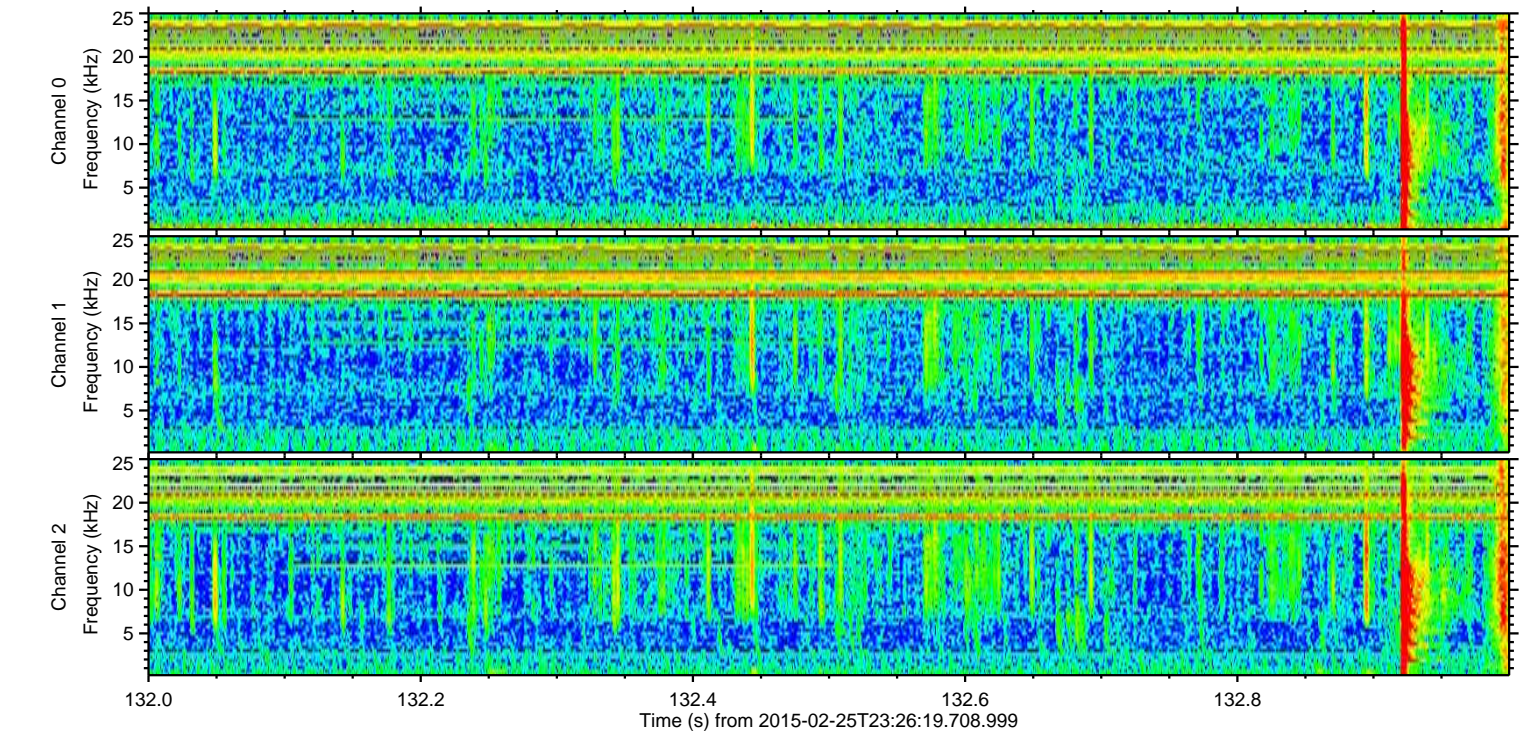
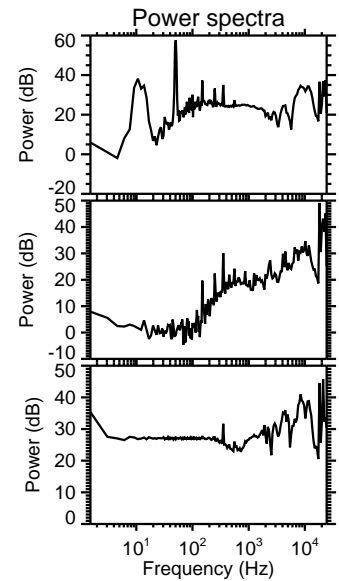
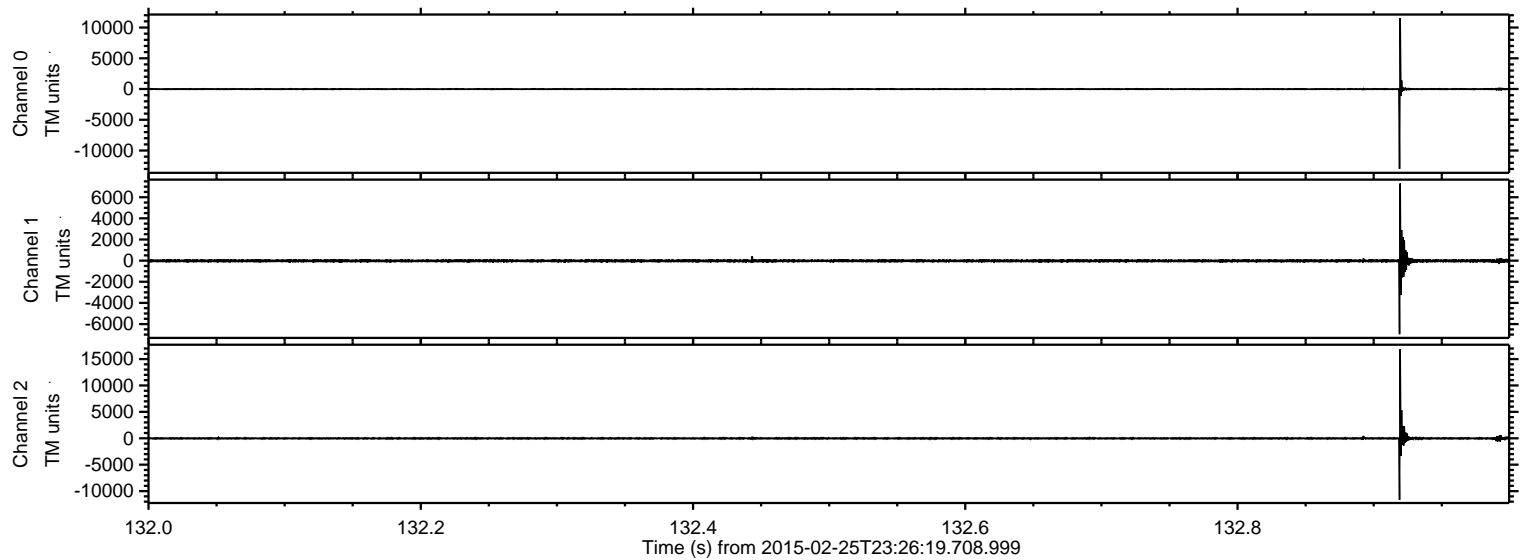
ELMAVAN 3D WAVEFORMS (Measured data sampled at 50 kHz) 49804 packets of 144 samples from 2015-02-25T23:26:19.708.999.

Processed Wed Mar 4 00:37:21 2015 by ELM ver.2012-10-06 from 001__elm20150225_232618__dat00.bin

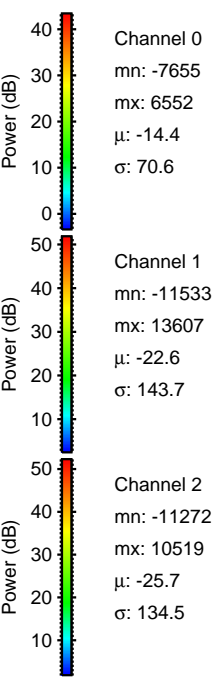
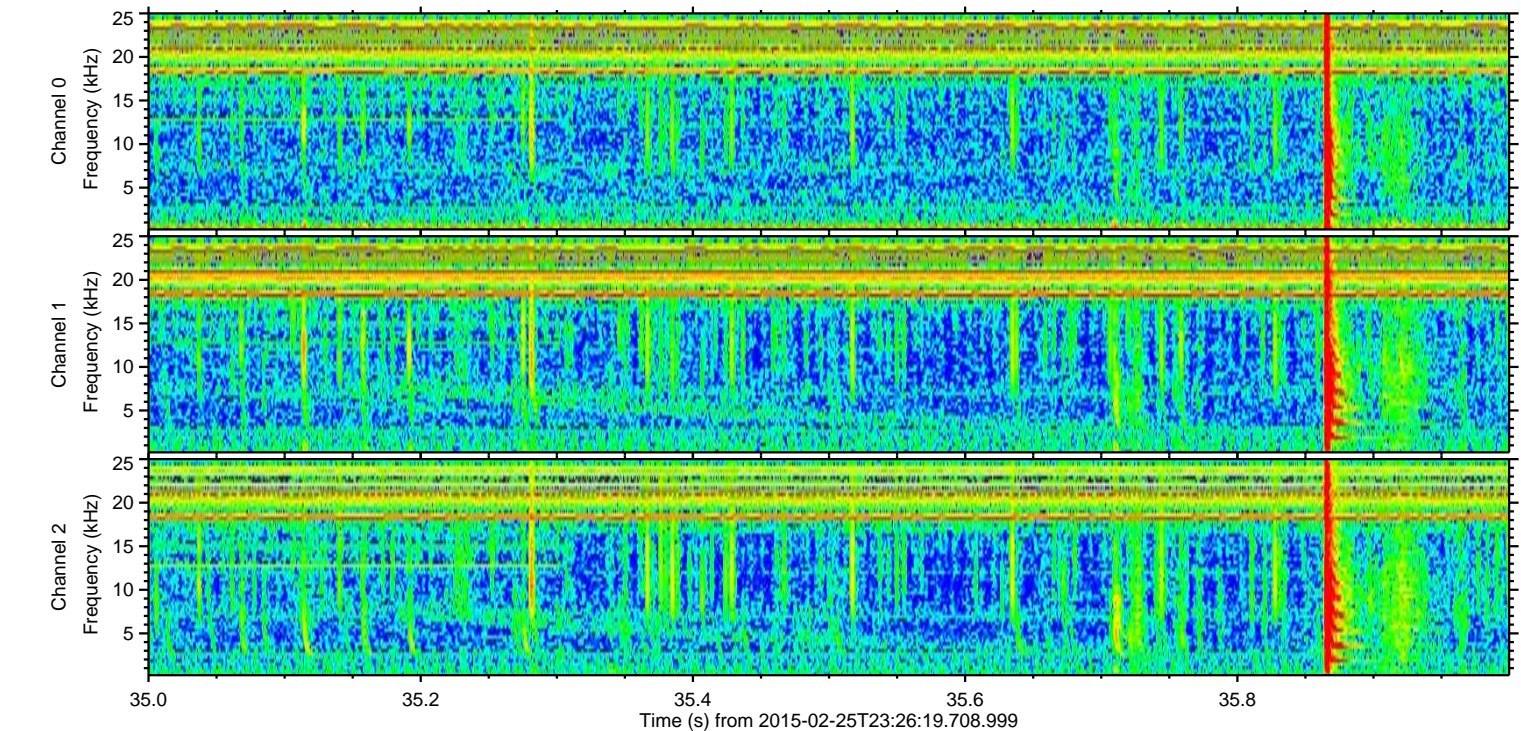
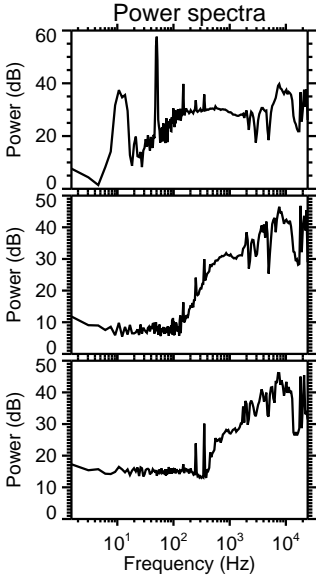
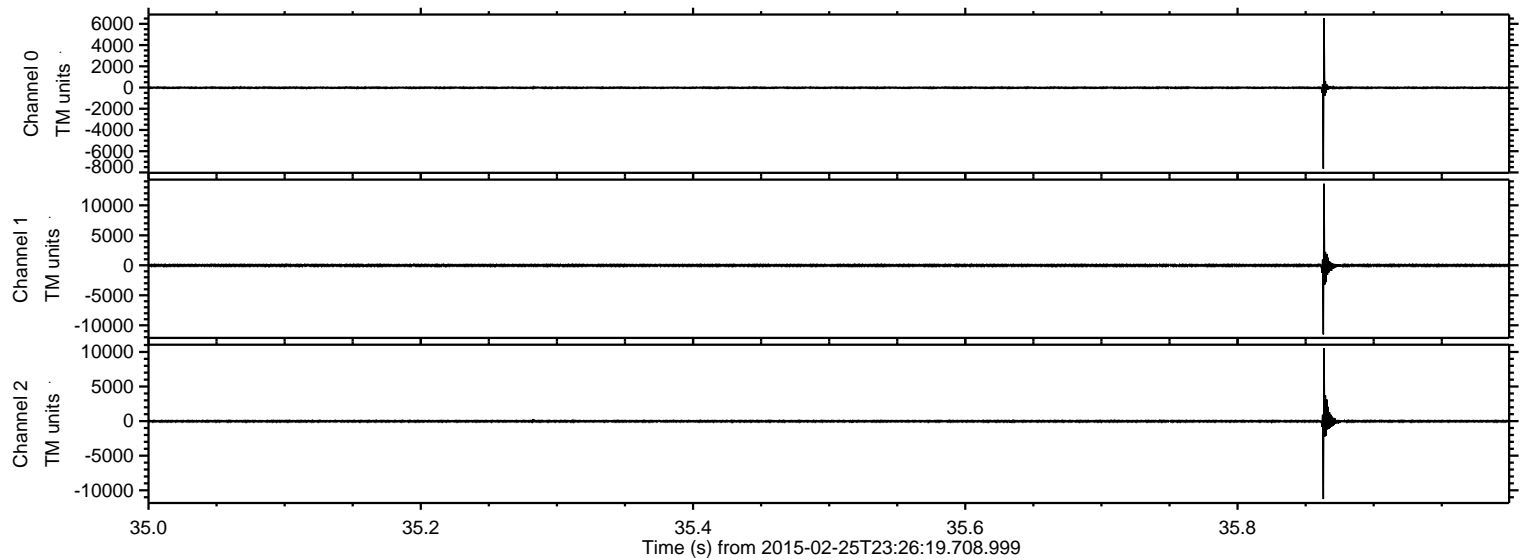


ELMAVAN 3D WAVEFORMS (Measured data sampled at 50 kHz) 49804 packets of 144 samples from 2015-02-25T23:26:19.708.999. Part 133/144

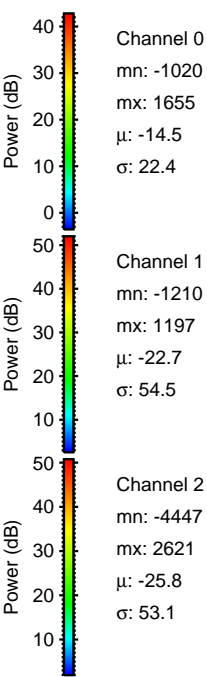
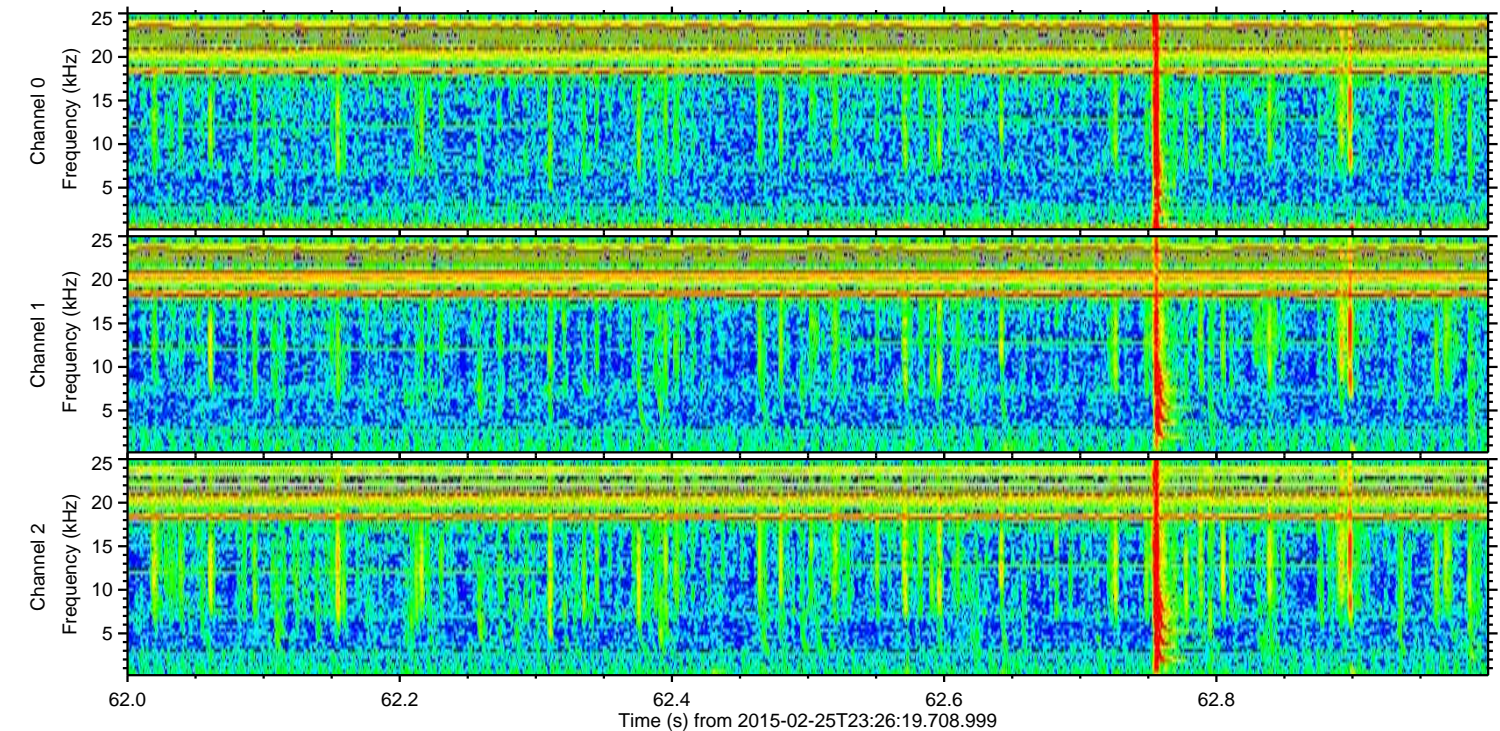
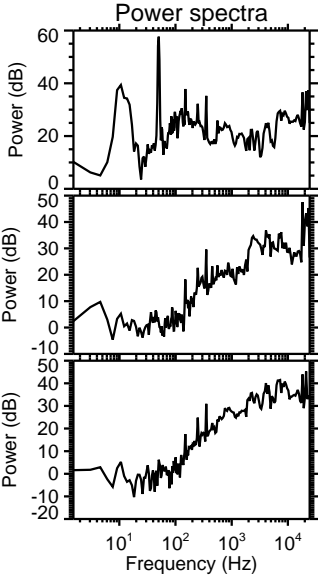
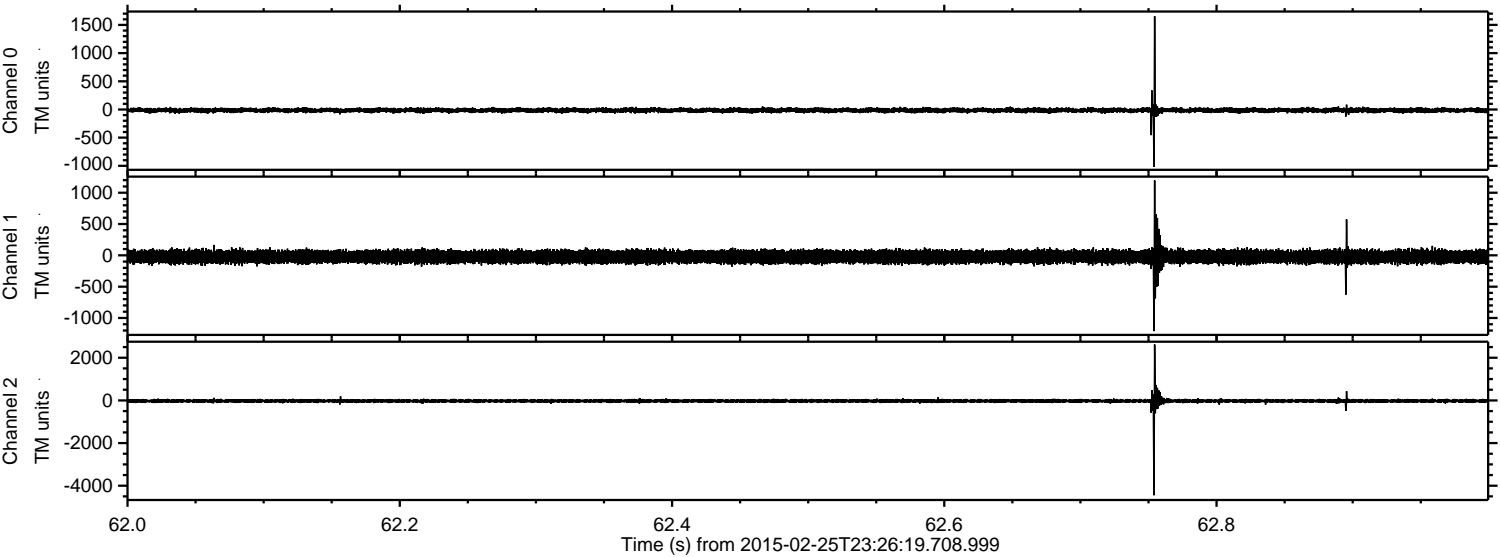
Processed Wed Mar 4 00:37:32 2015 by ELM ver.2012-10-06 from 001__elm20150225_232618__dat00.bin



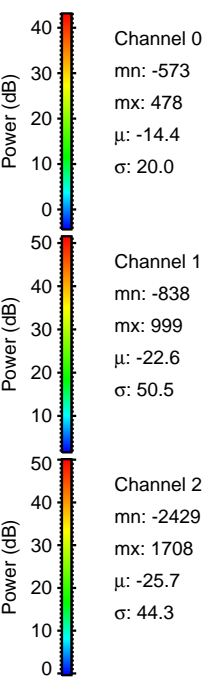
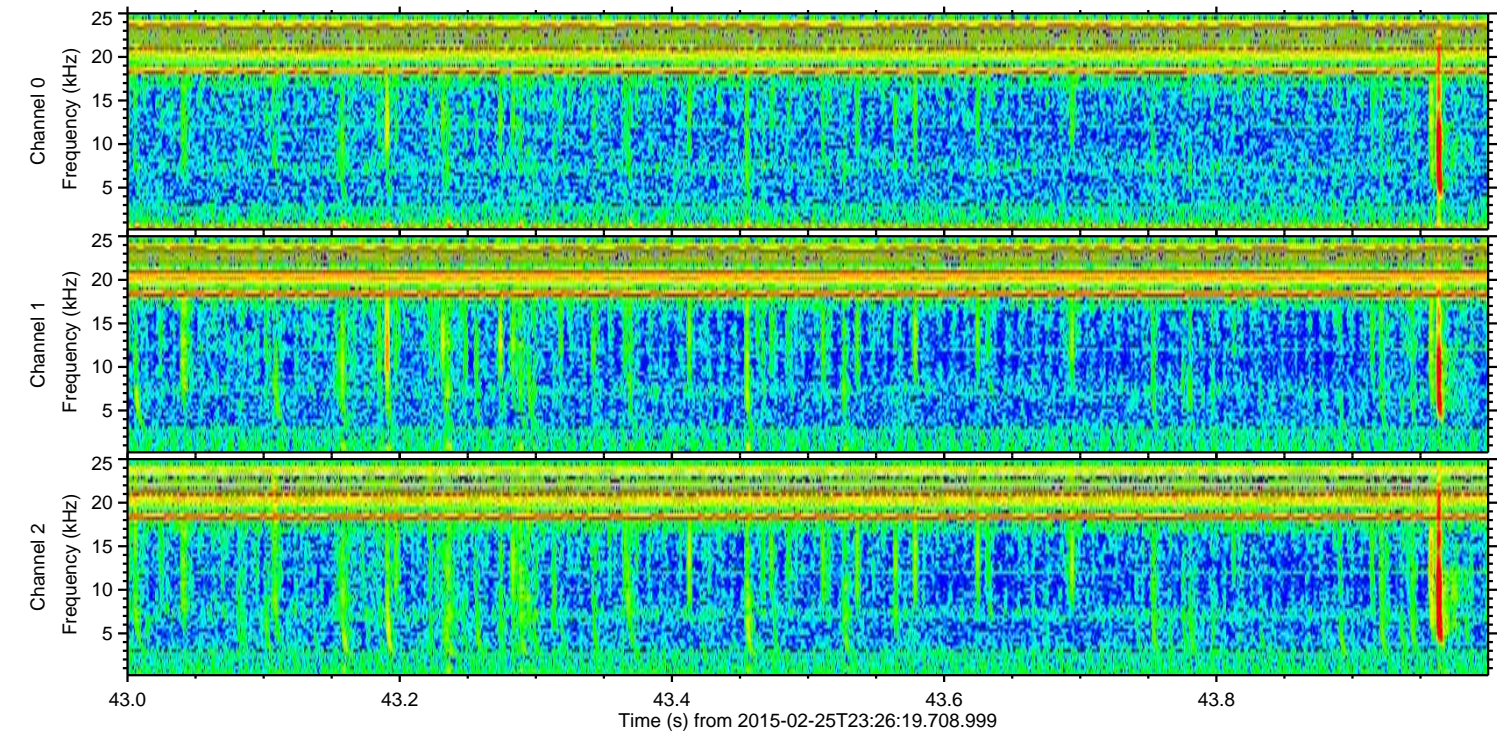
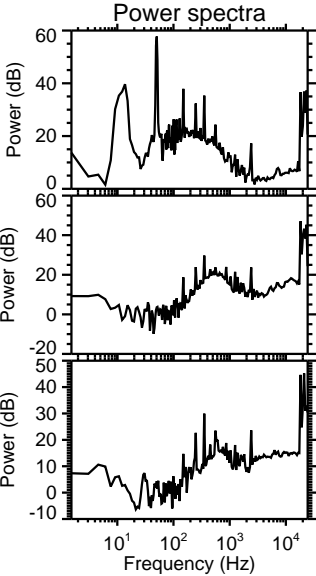
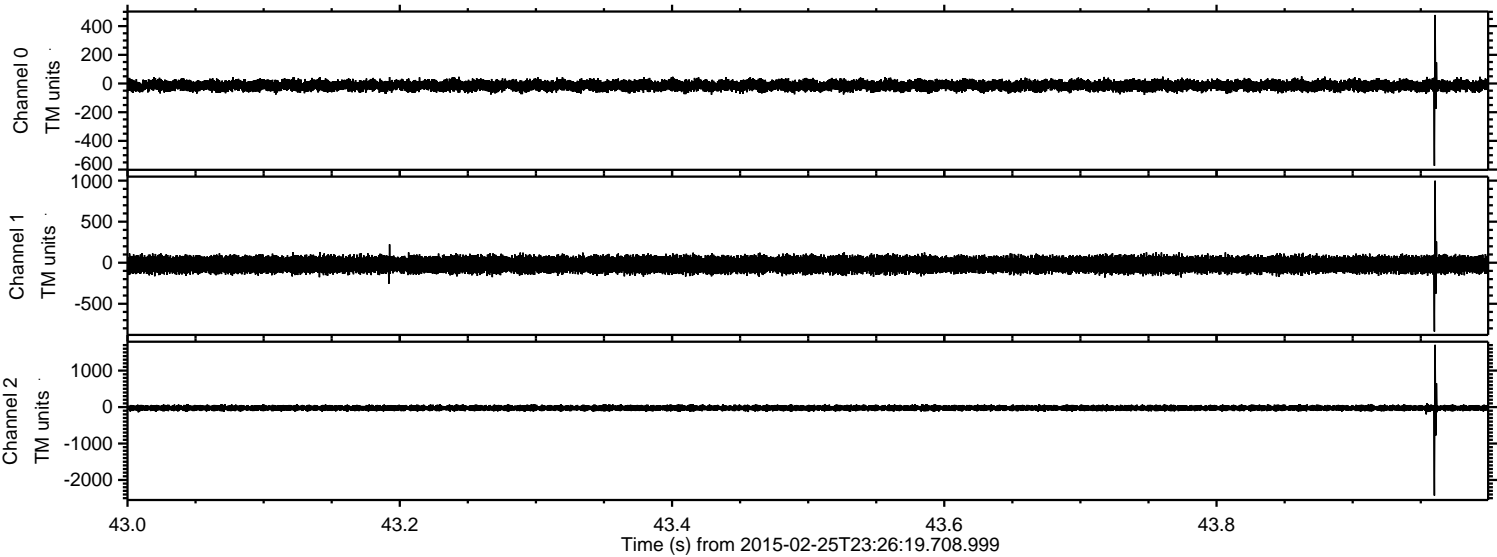
Processed Wed Mar 4 00:37:33 2015 by ELM ver.2012-10-06 from 001__elm20150225_232618__dat00.bin



Processed Wed Mar 4 00:37:34 2015 by ELM ver.2012-10-06 from 001__elm20150225_232618__dat00.bin



Processed Wed Mar 4 00:37:35 2015 by ELM ver.2012-10-06 from 001__elm20150225_232618__dat00.bin

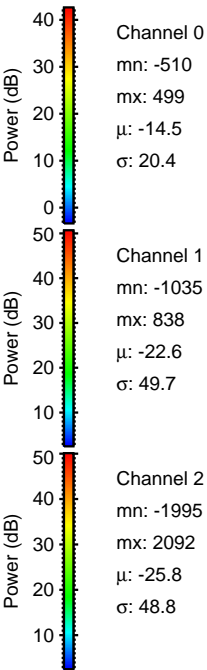
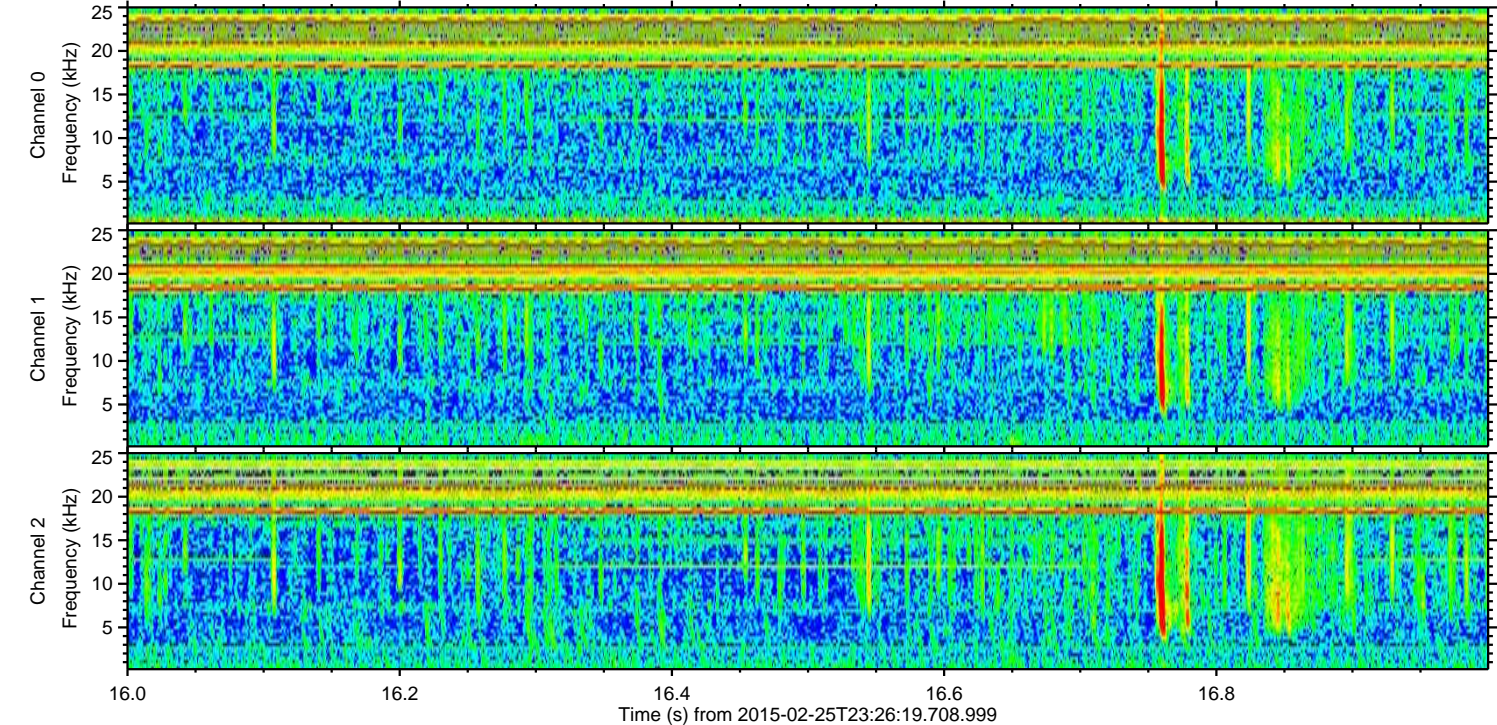
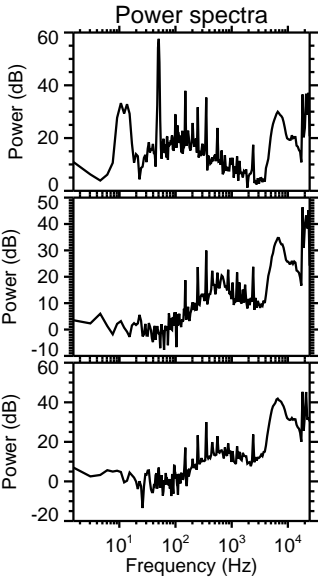
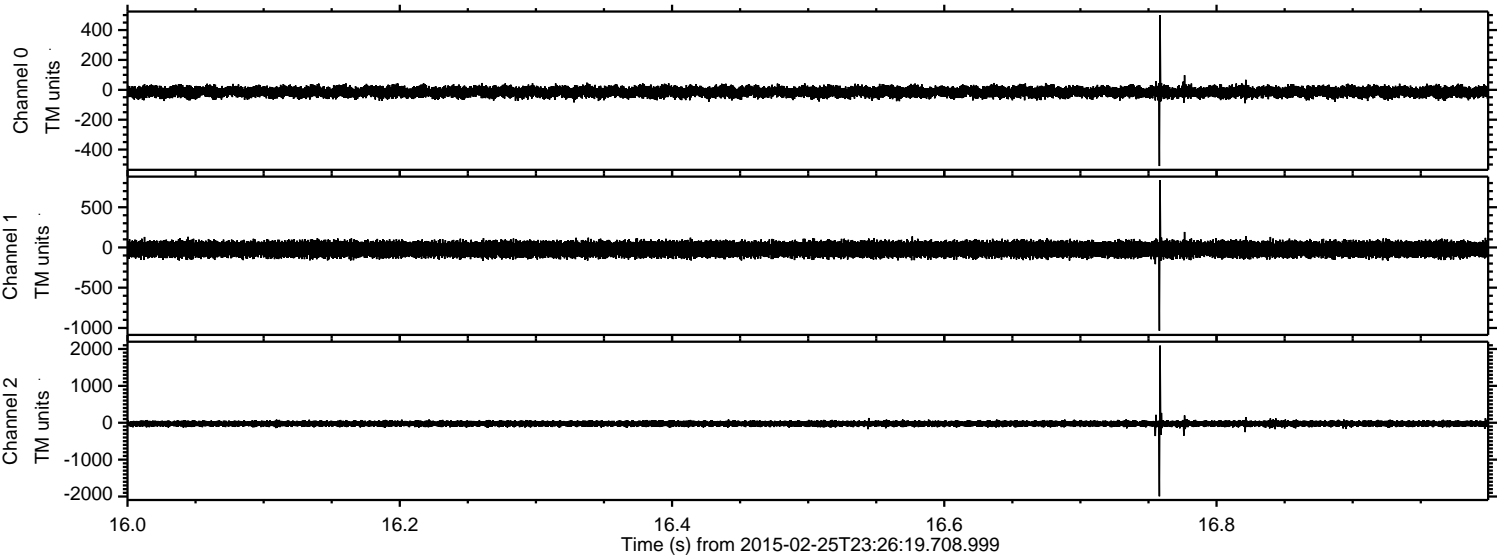


Channel 0
mn: -573
mx: 478
 μ : -14.4
 σ : 20.0

Channel 1
mn: -838
mx: 999
 μ : -22.6
 σ : 50.5

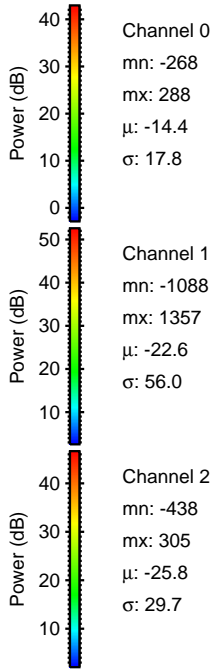
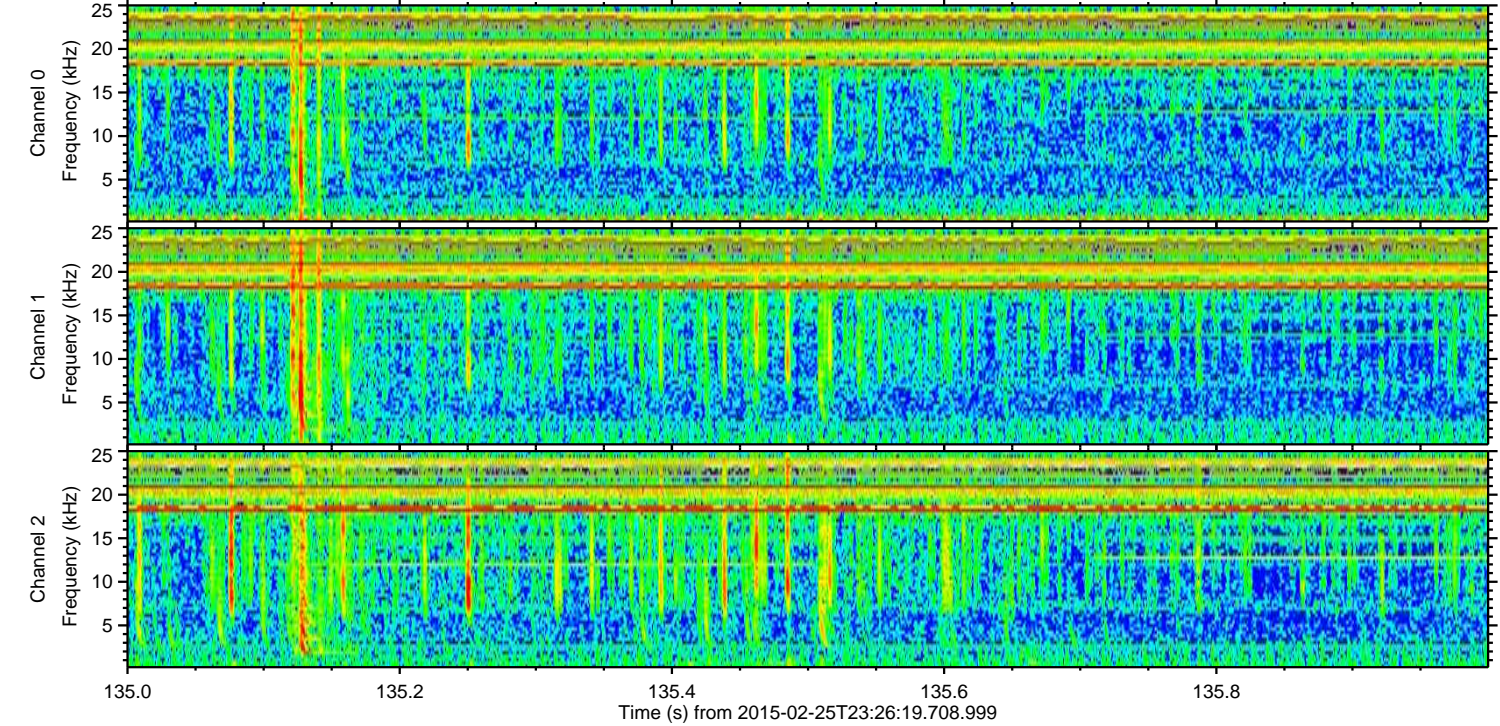
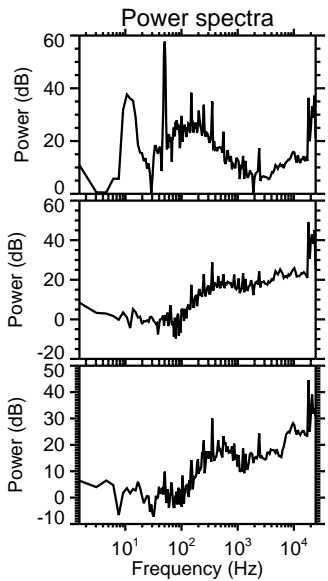
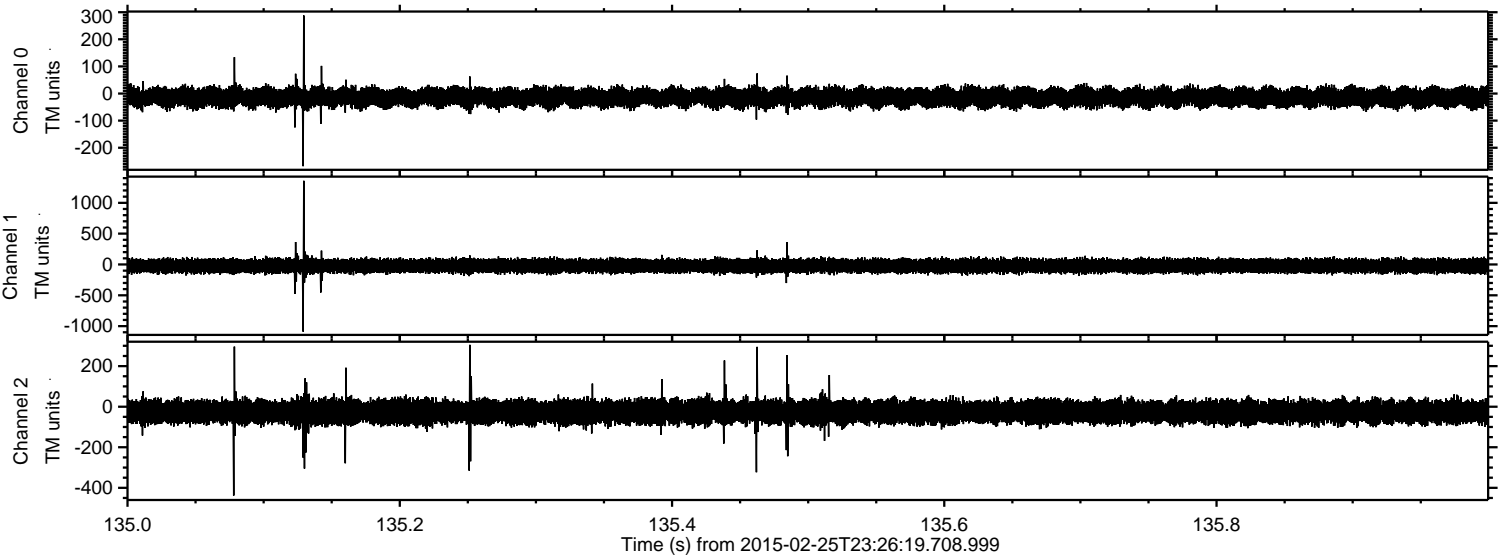
Channel 2
mn: -2429
mx: 1708
 μ : -25.7
 σ : 44.3

Processed Wed Mar 4 00:37:36 2015 by ELM ver.2012-10-06 from 001__elm20150225_232618__dat00.bin



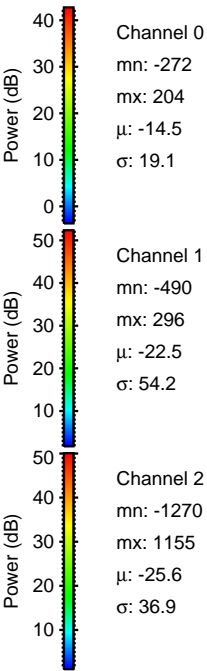
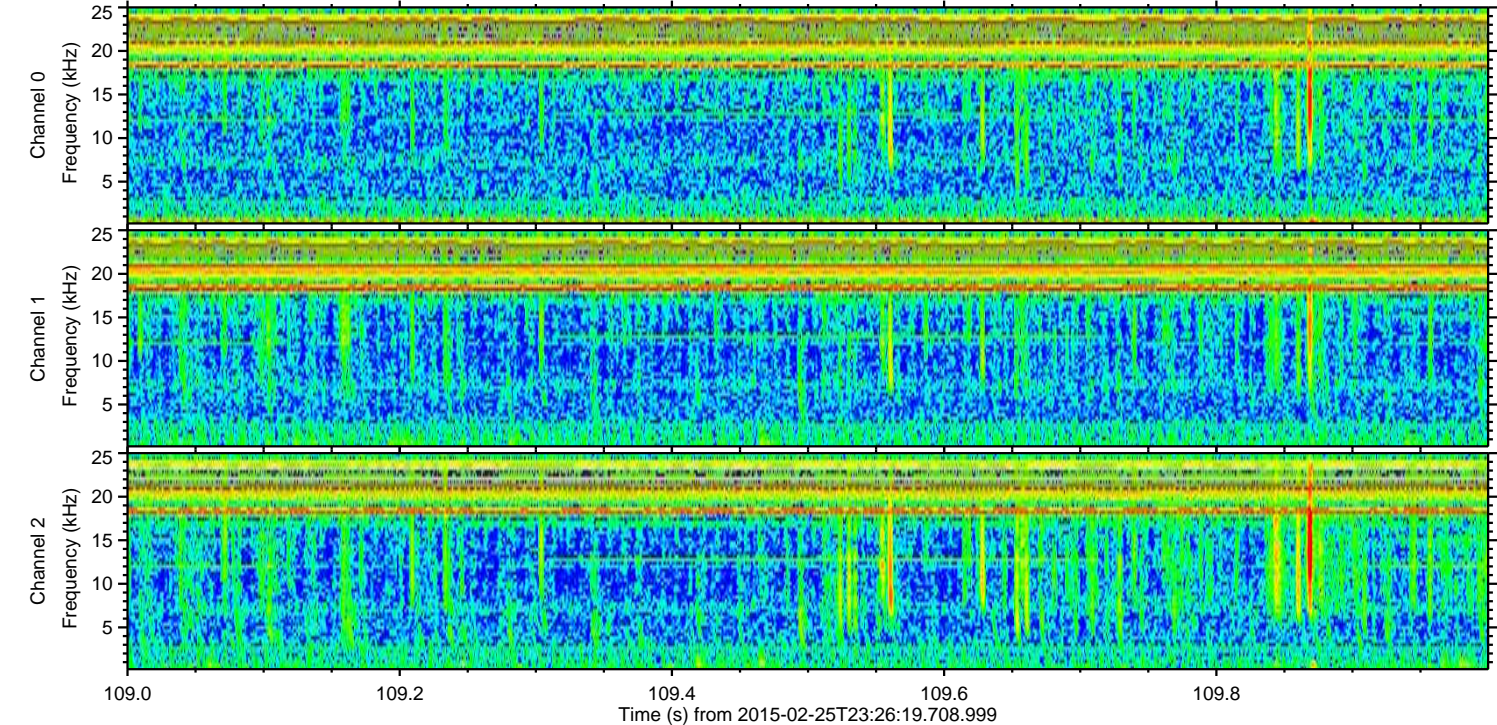
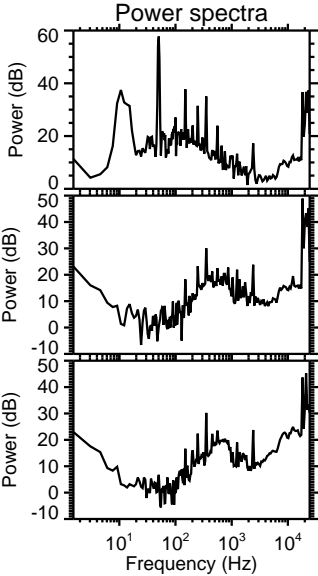
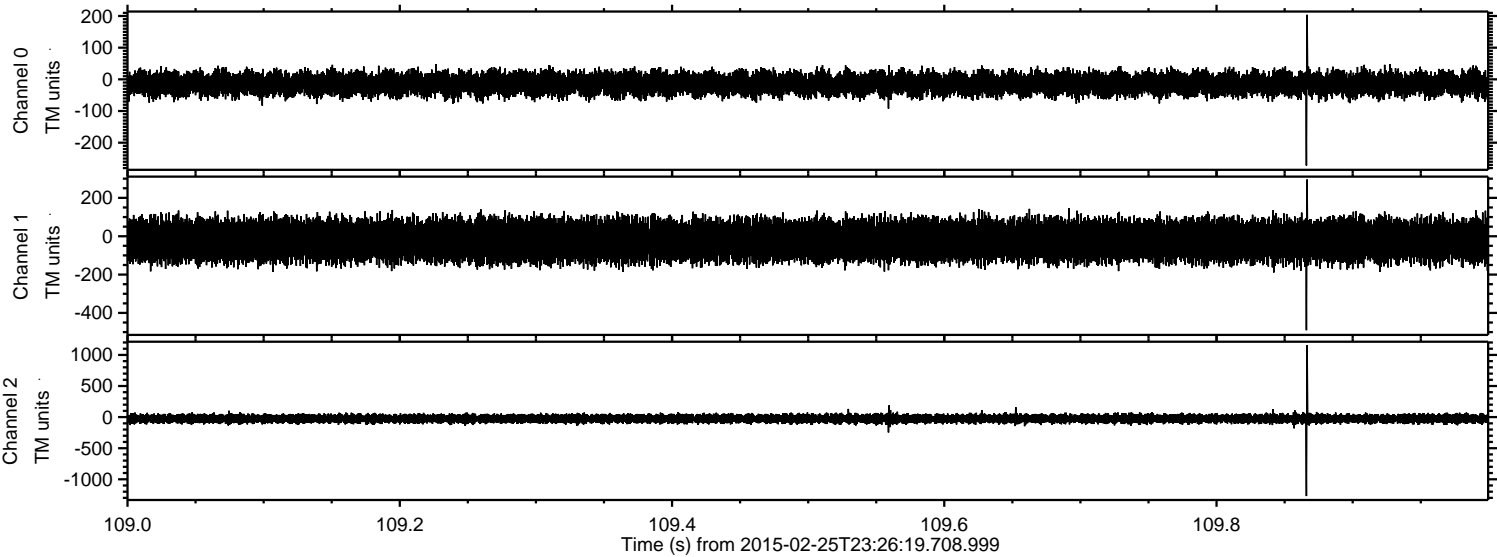
ELMAVAN 3D WAVEFORMS (Measured data sampled at 50 kHz) 49804 packets of 144 samples from 2015-02-25T23:26:19.708.999. Part 136/144

Processed Wed Mar 4 00:37:37 2015 by ELM ver.2012-10-06 from 001__elm20150225_232618__dat00.bin



ELMAVAN 3D WAVEFORMS (Measured data sampled at 50 kHz) 49804 packets of 144 samples from 2015-02-25T23:26:19.708.999. Part 110/144

Processed Wed Mar 4 00:37:38 2015 by ELM ver.2012-10-06 from 001__elm20150225_232618__dat00.bin

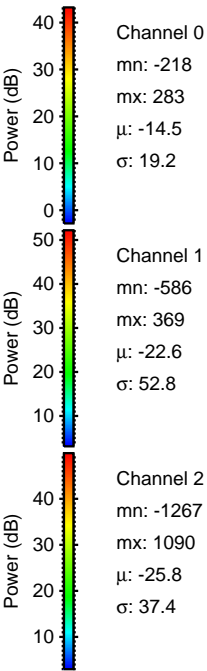
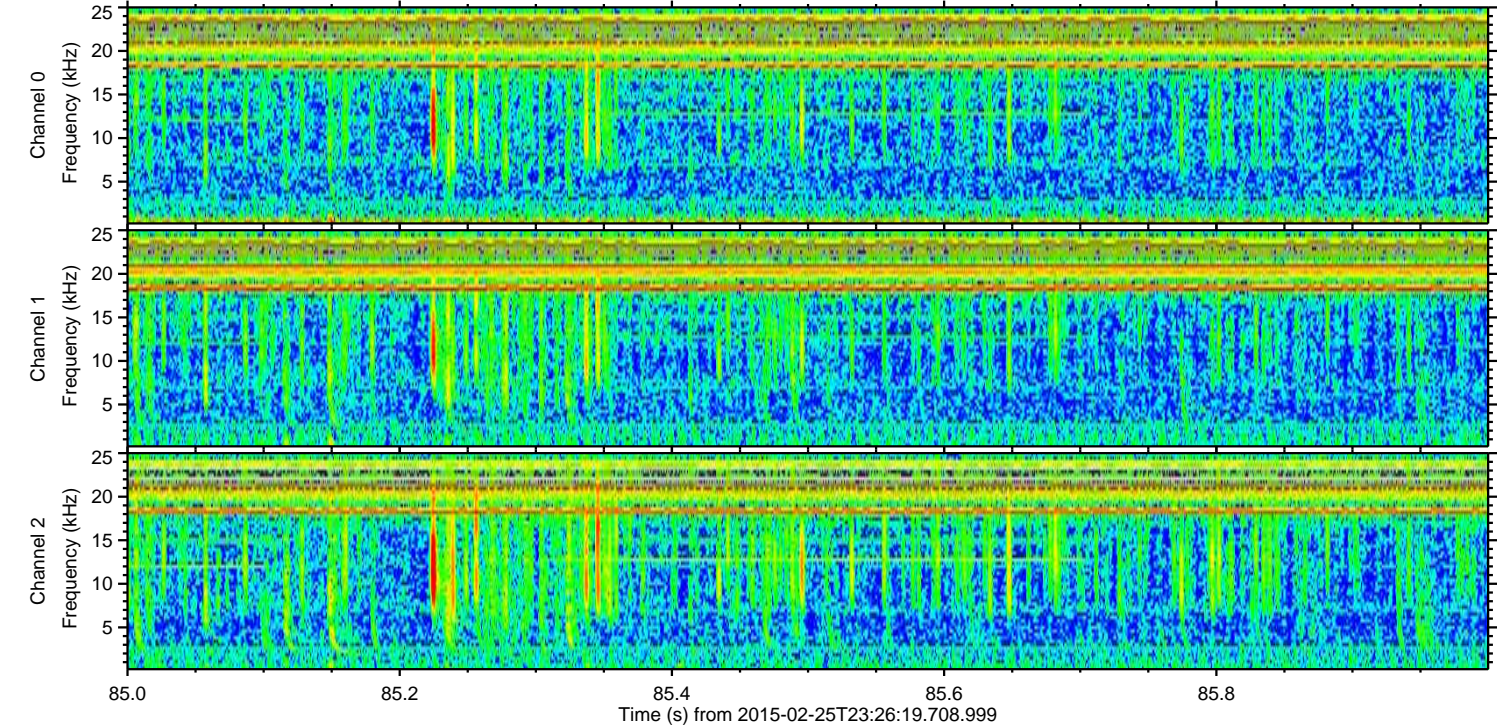
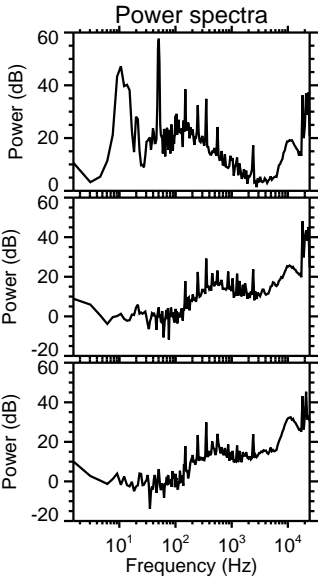
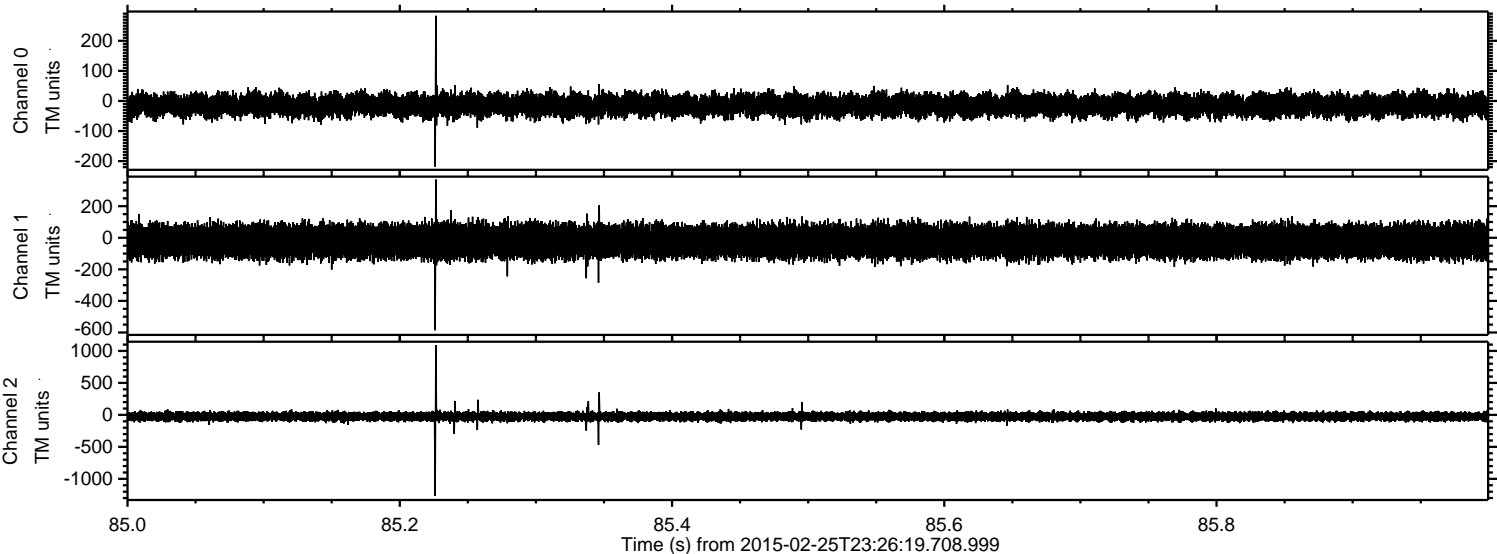


Channel 0
mn: -272
mx: 204
 μ : -14.5
 σ : 19.1

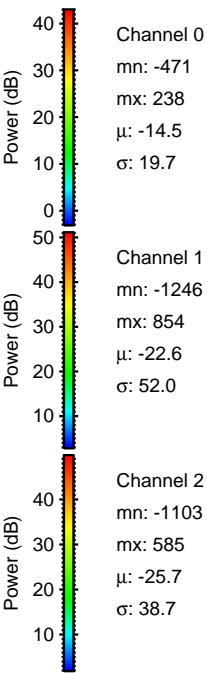
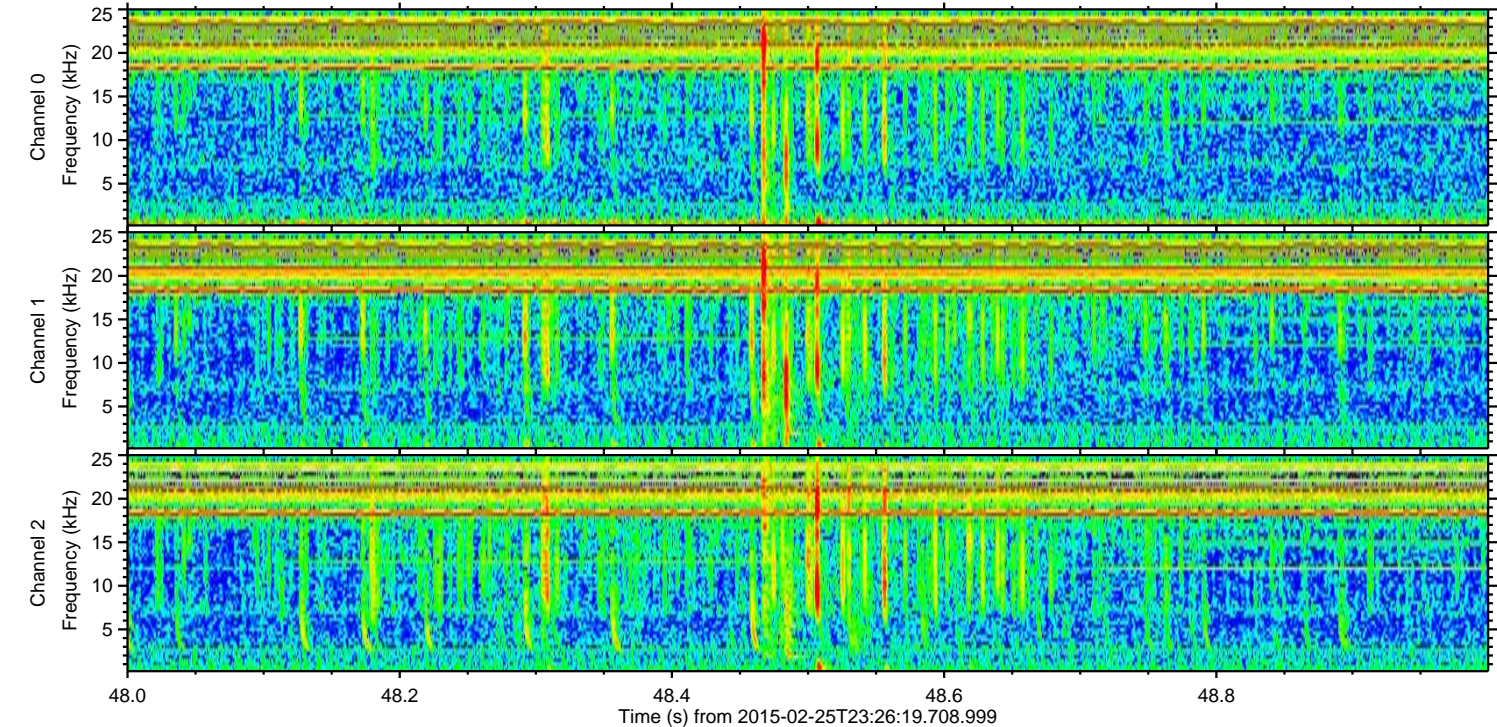
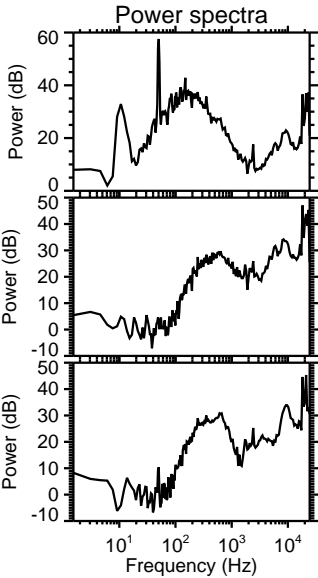
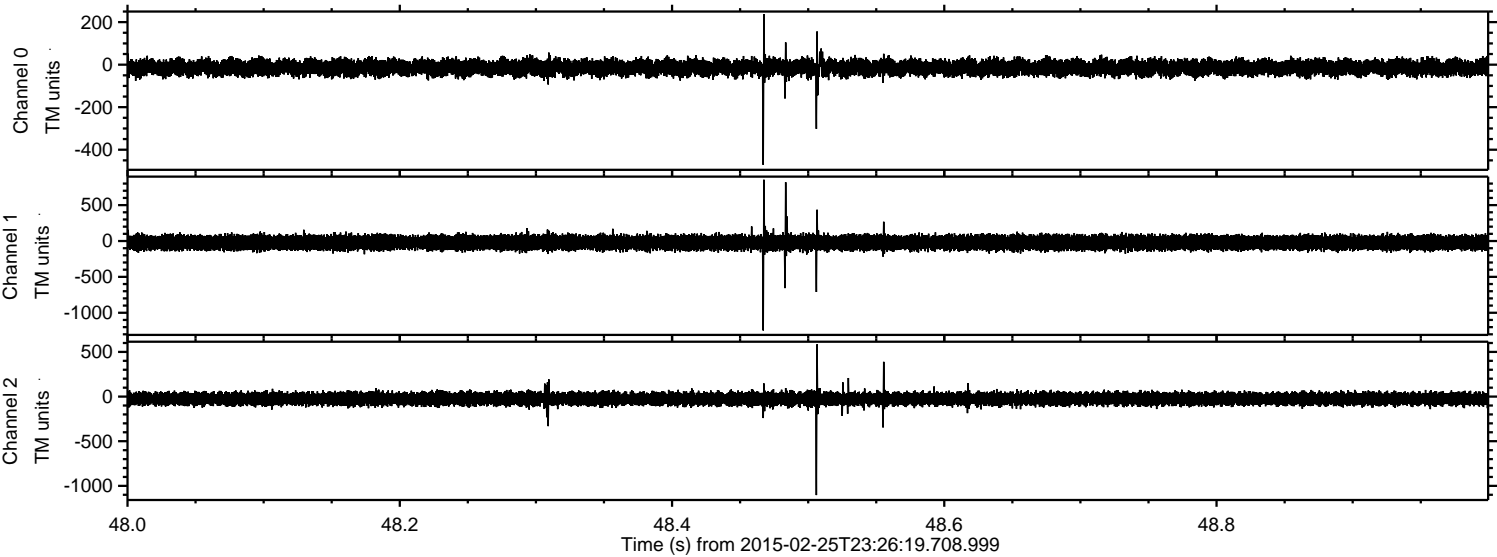
Channel 1
mn: -490
mx: 296
 μ : -22.5
 σ : 54.2

Channel 2
mn: -1270
mx: 1155
 μ : -25.6
 σ : 36.9

Processed Wed Mar 4 00:37:39 2015 by ELM ver.2012-10-06 from 001__elm20150225_232618__dat00.bin



Processed Wed Mar 4 00:37:40 2015 by ELM ver.2012-10-06 from 001__elm20150225_232618__dat00.bin



Processed Wed Mar 4 00:37:41 2015 by ELM ver.2012-10-06 from 001__elm20150225_232618__dat00.bin

