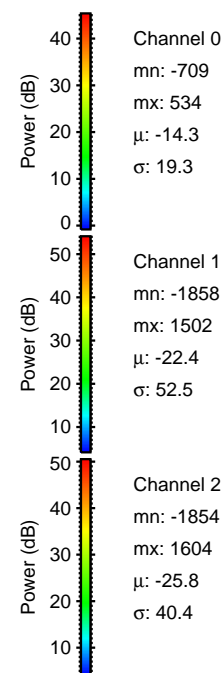
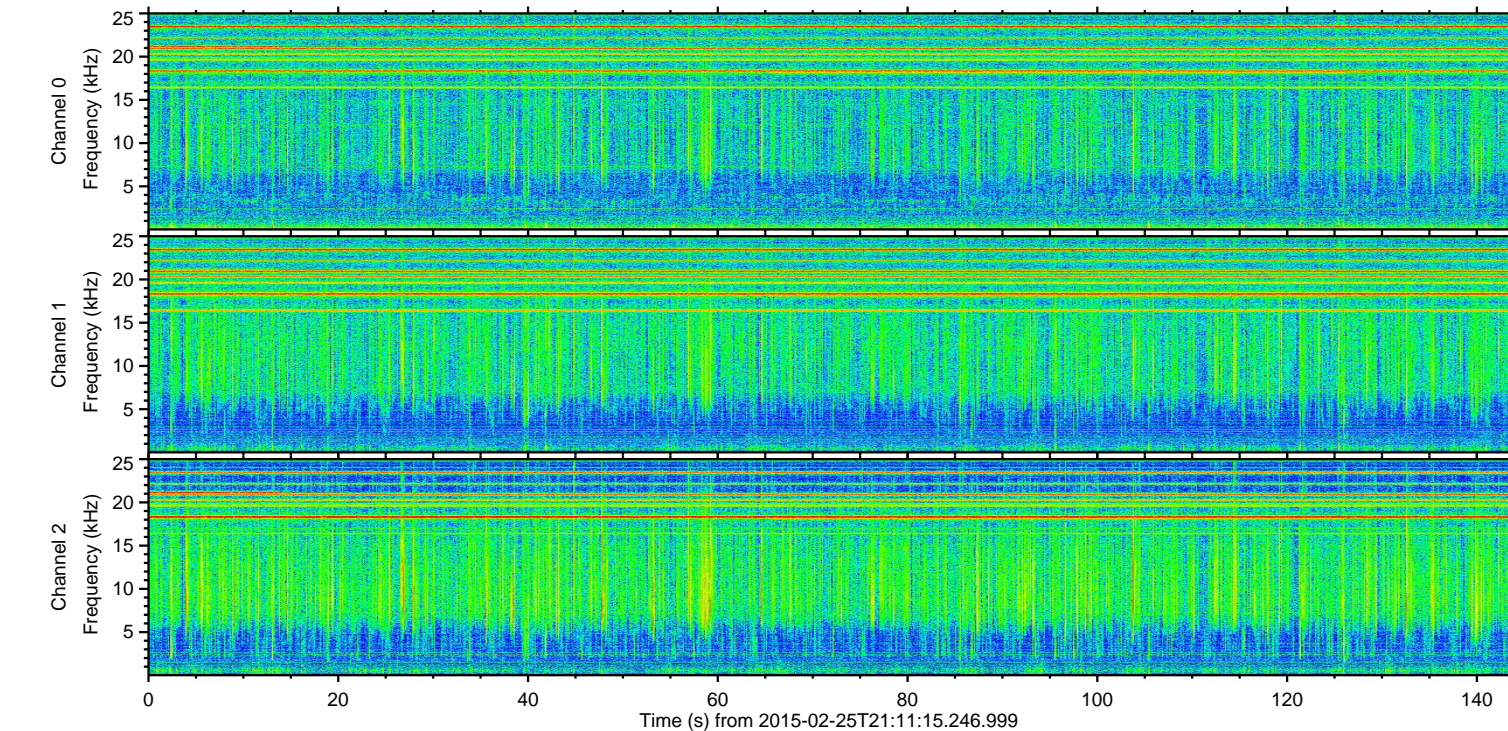
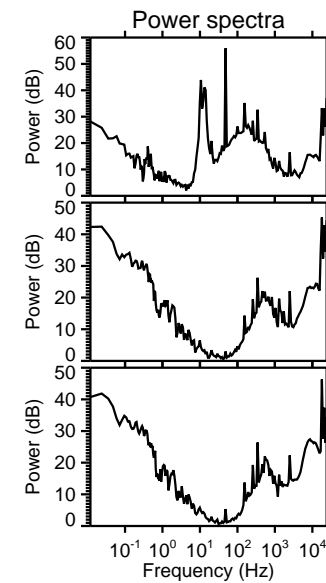
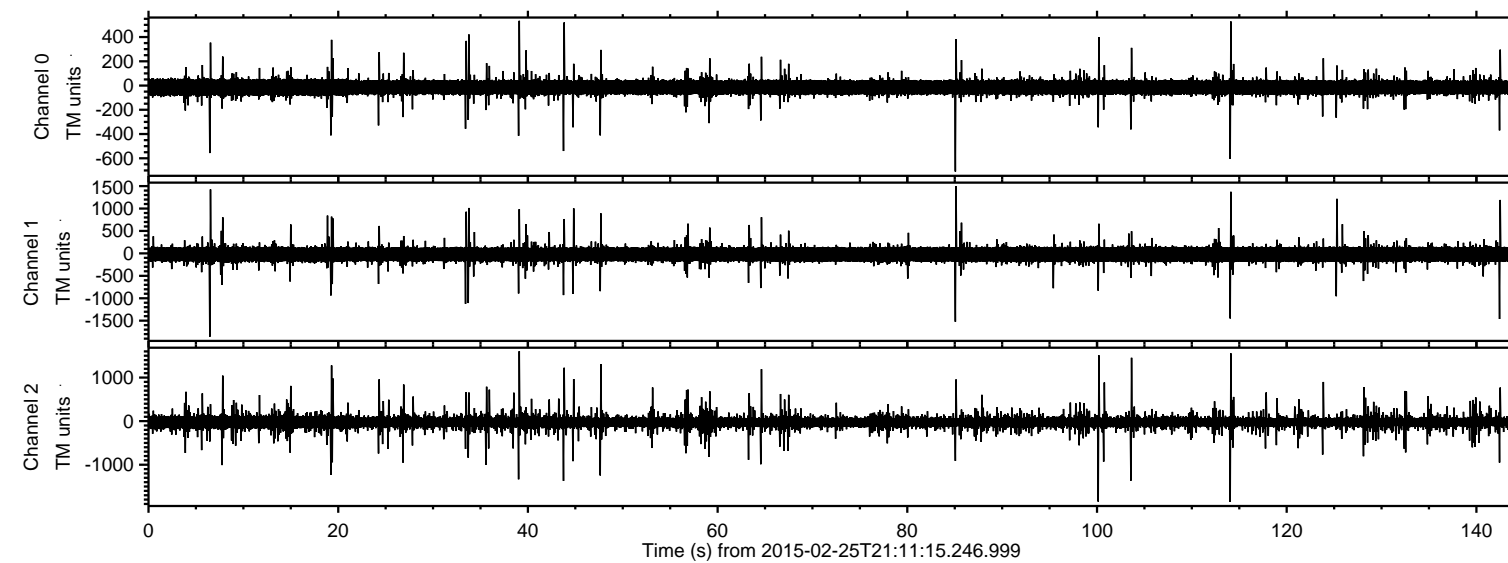
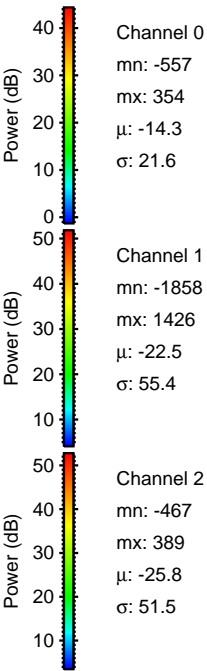
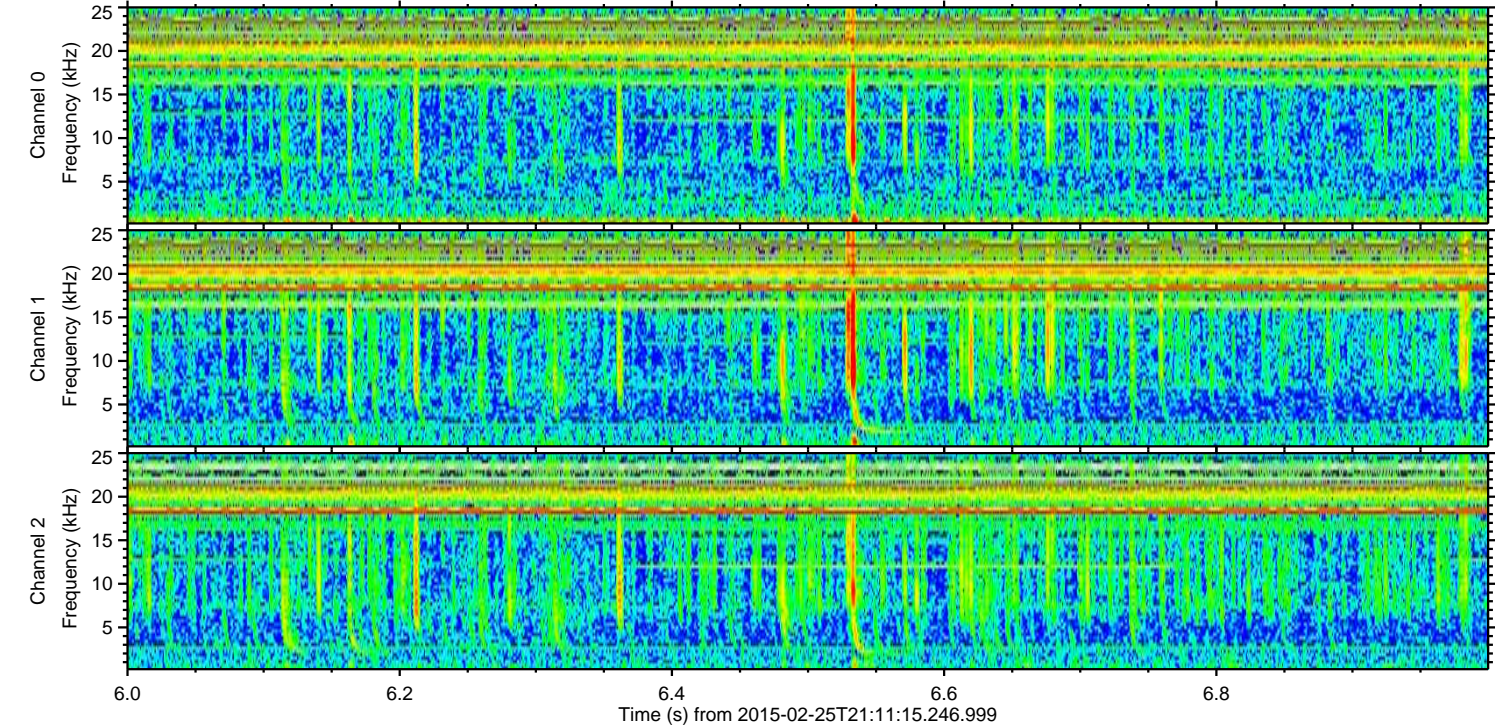
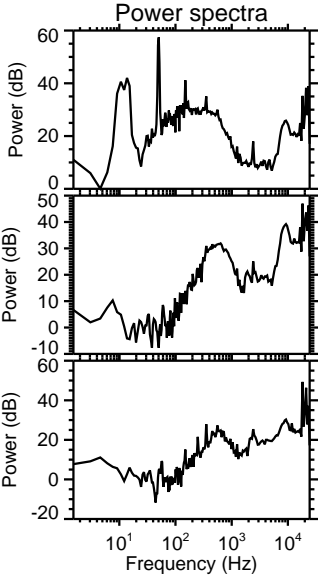
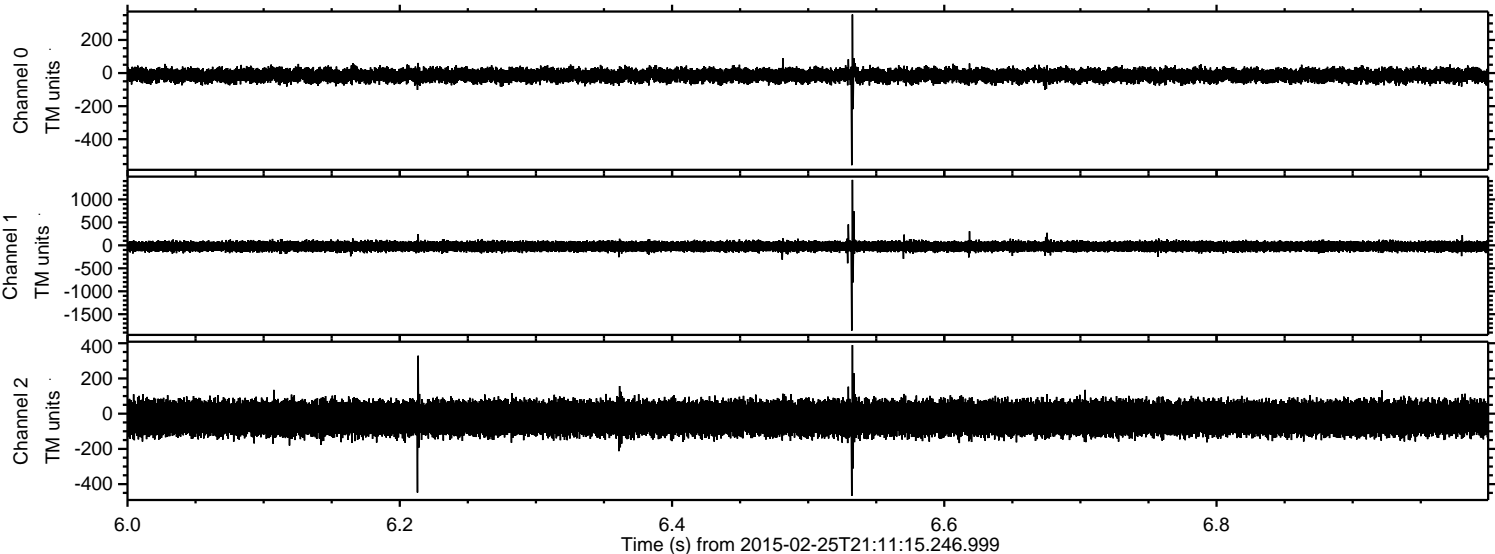


ELMAVAN 3D WAVEFORMS (Measured data sampled at 50 kHz) 49810 packets of 144 samples from 2015-02-25T21:11:15.246.999.

Processed Tue Mar 3 23:54:49 2015 by ELM ver.2012-10-06 from 001__elm20150225_211114__dat00.bin

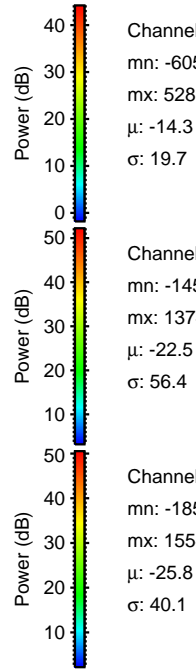
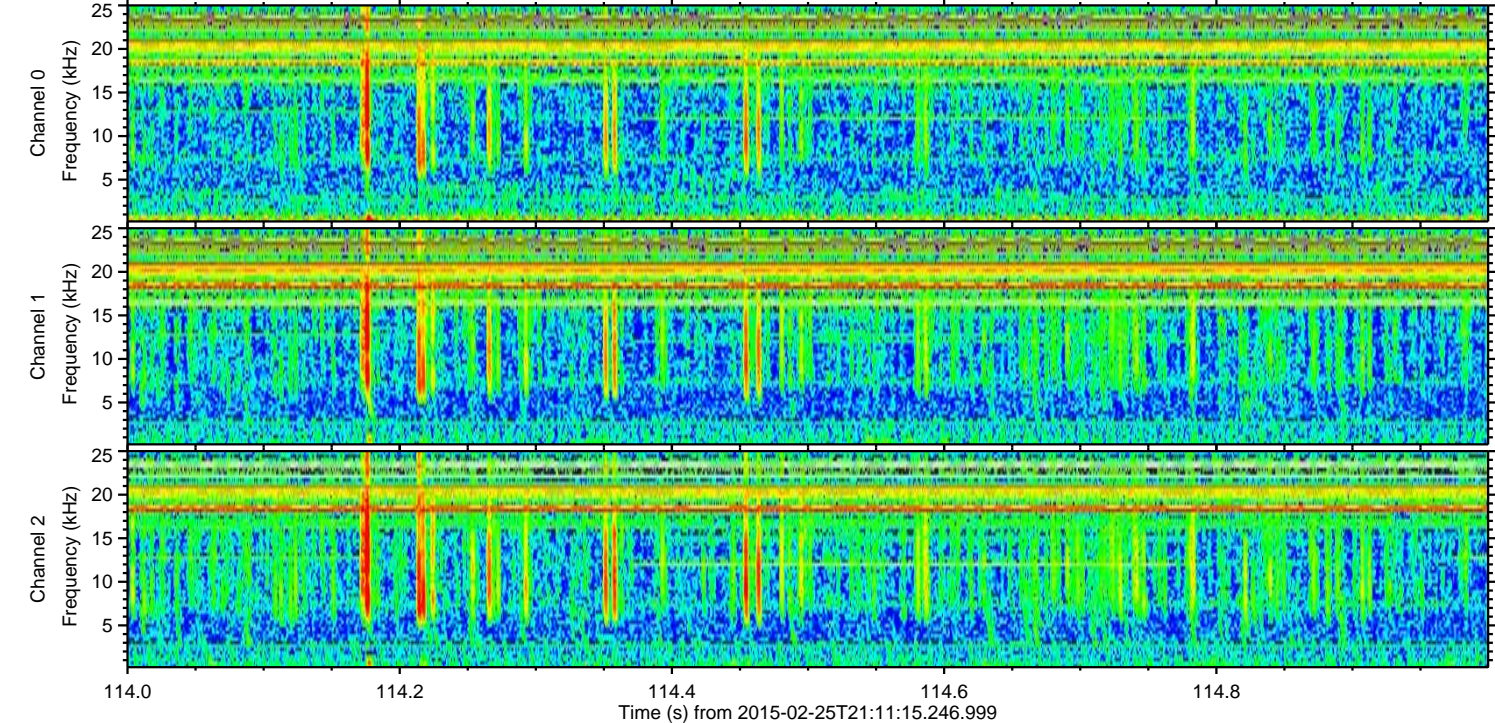
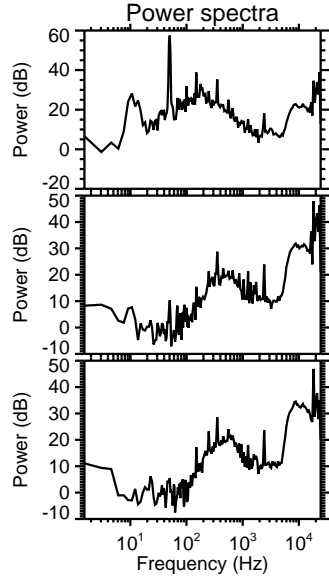
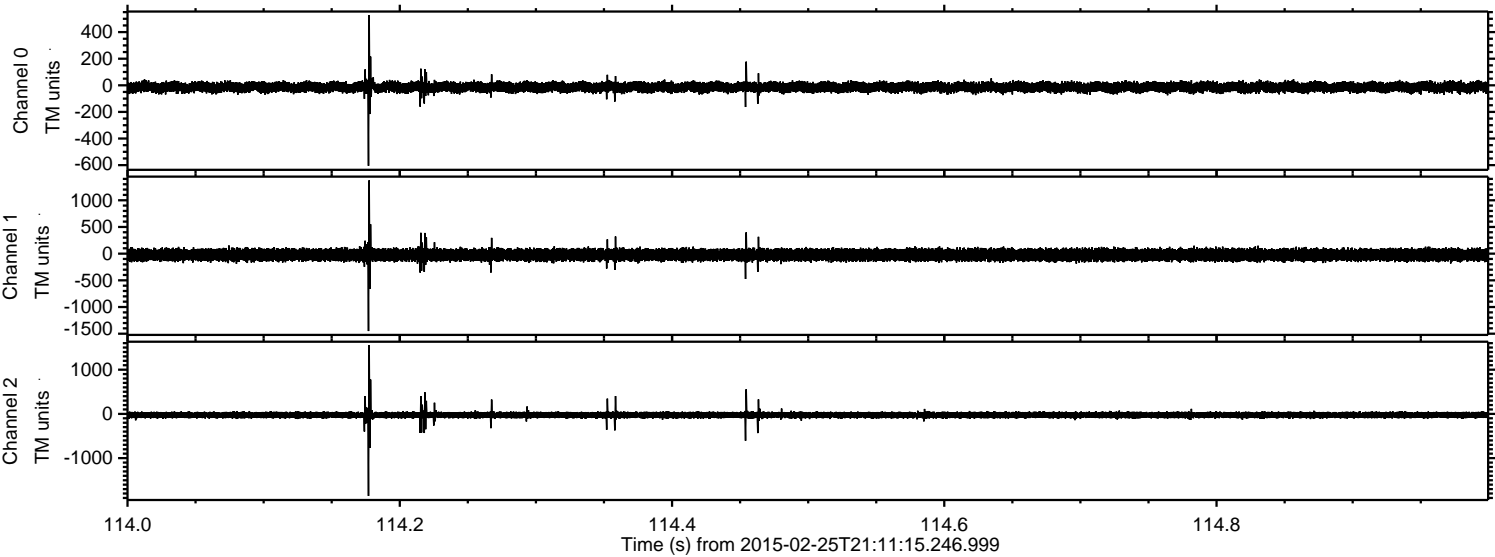


Processed Tue Mar 3 23:55:00 2015 by ELM ver.2012-10-06 from 001__elm20150225_211114__dat00.bin



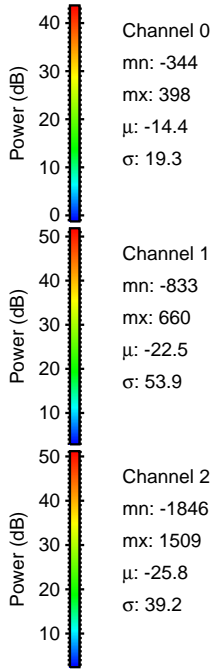
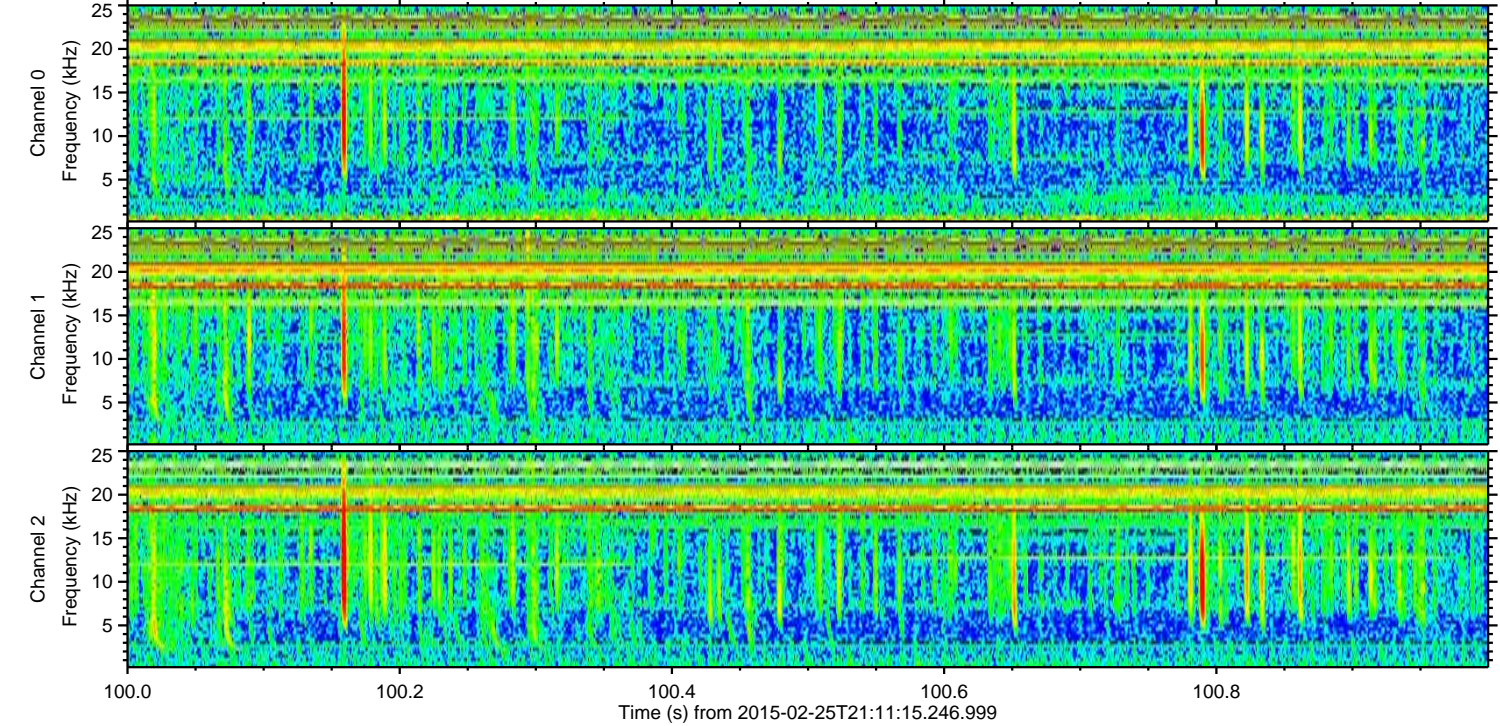
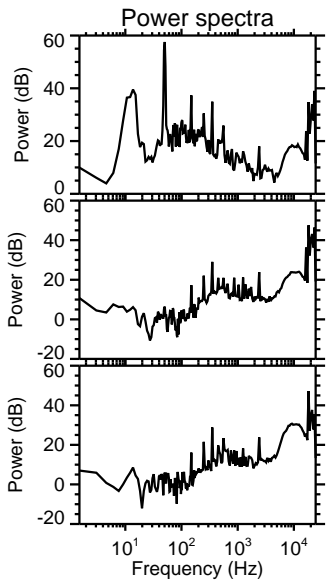
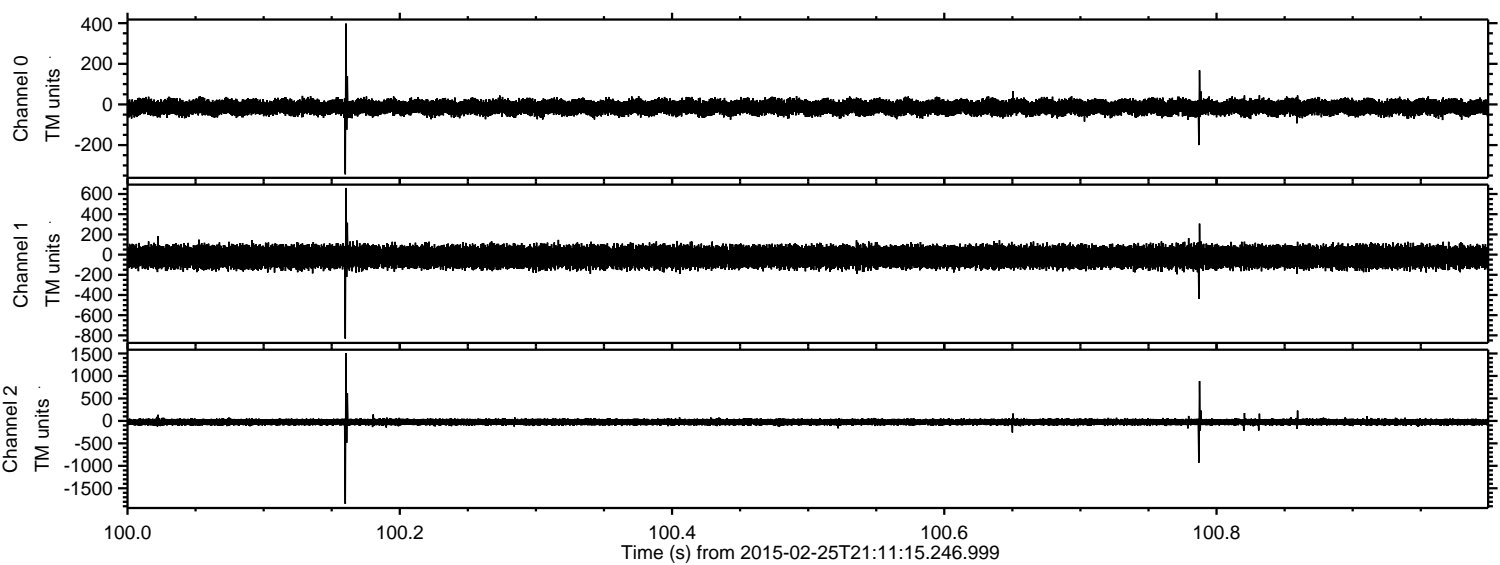
ELMAVAN 3D WAVEFORMS (Measured data sampled at 50 kHz) 49810 packets of 144 samples from 2015-02-25T21:11:15.246.999. Part 115/144

Processed Tue Mar 3 23:55:01 2015 by ELM ver.2012-10-06 from 001__elm20150225_211114__dat00.bin

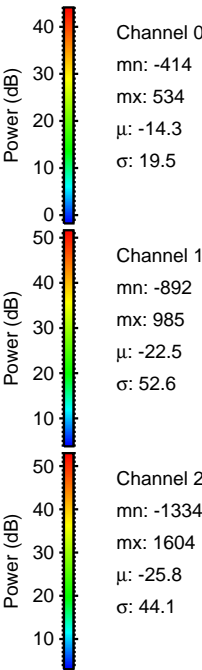
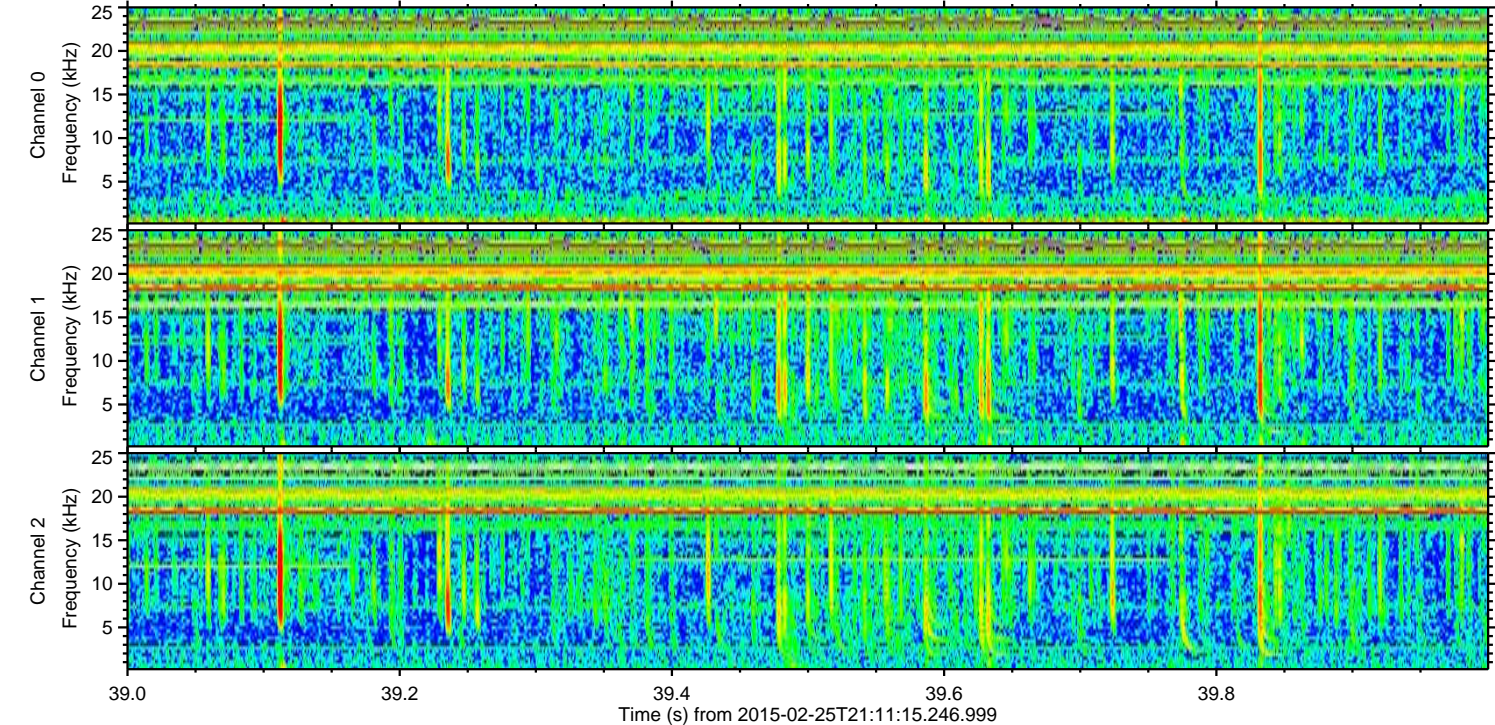
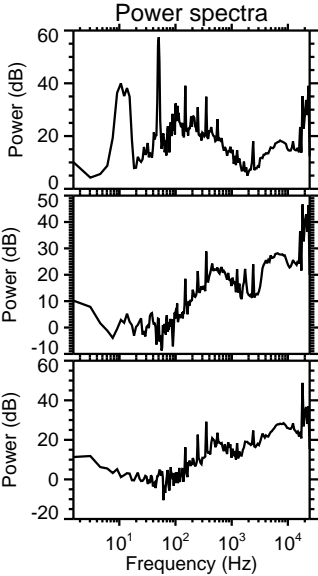
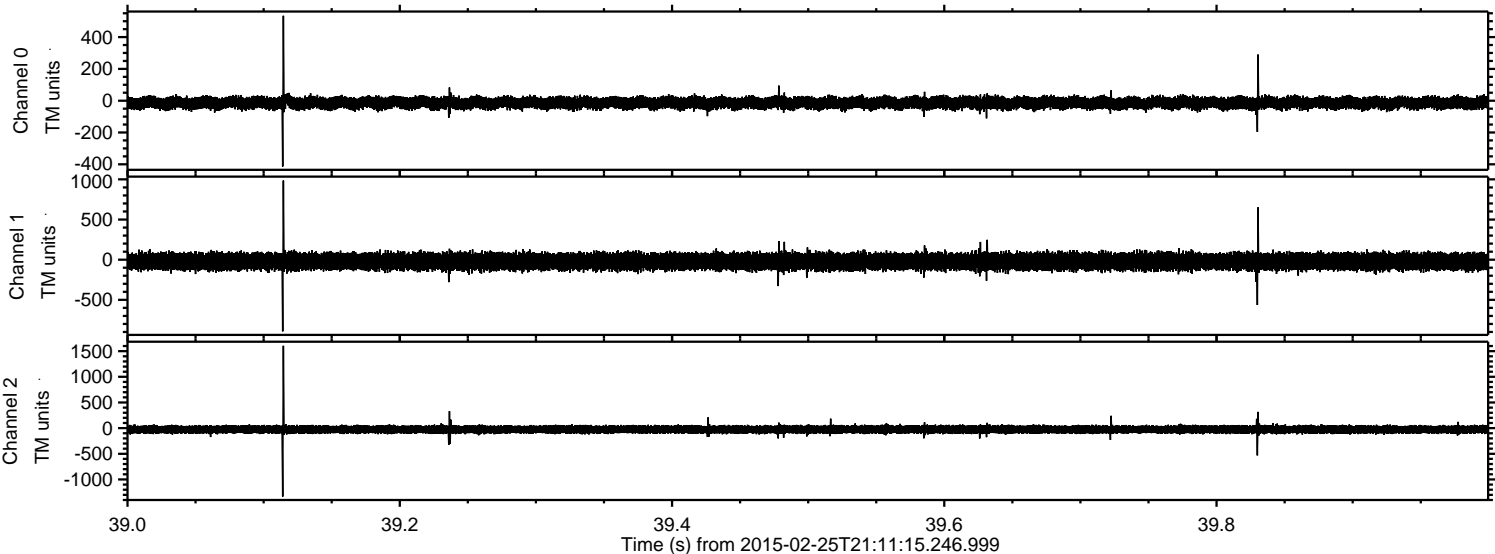


ELMAVAN 3D WAVEFORMS (Measured data sampled at 50 kHz) 49810 packets of 144 samples from 2015-02-25T21:11:15.246.999. Part 101/144

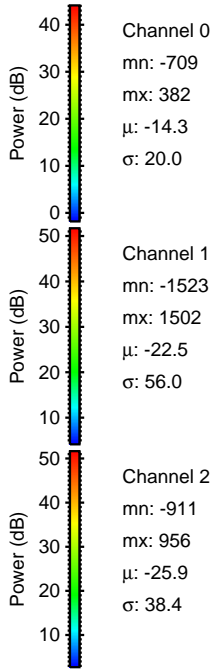
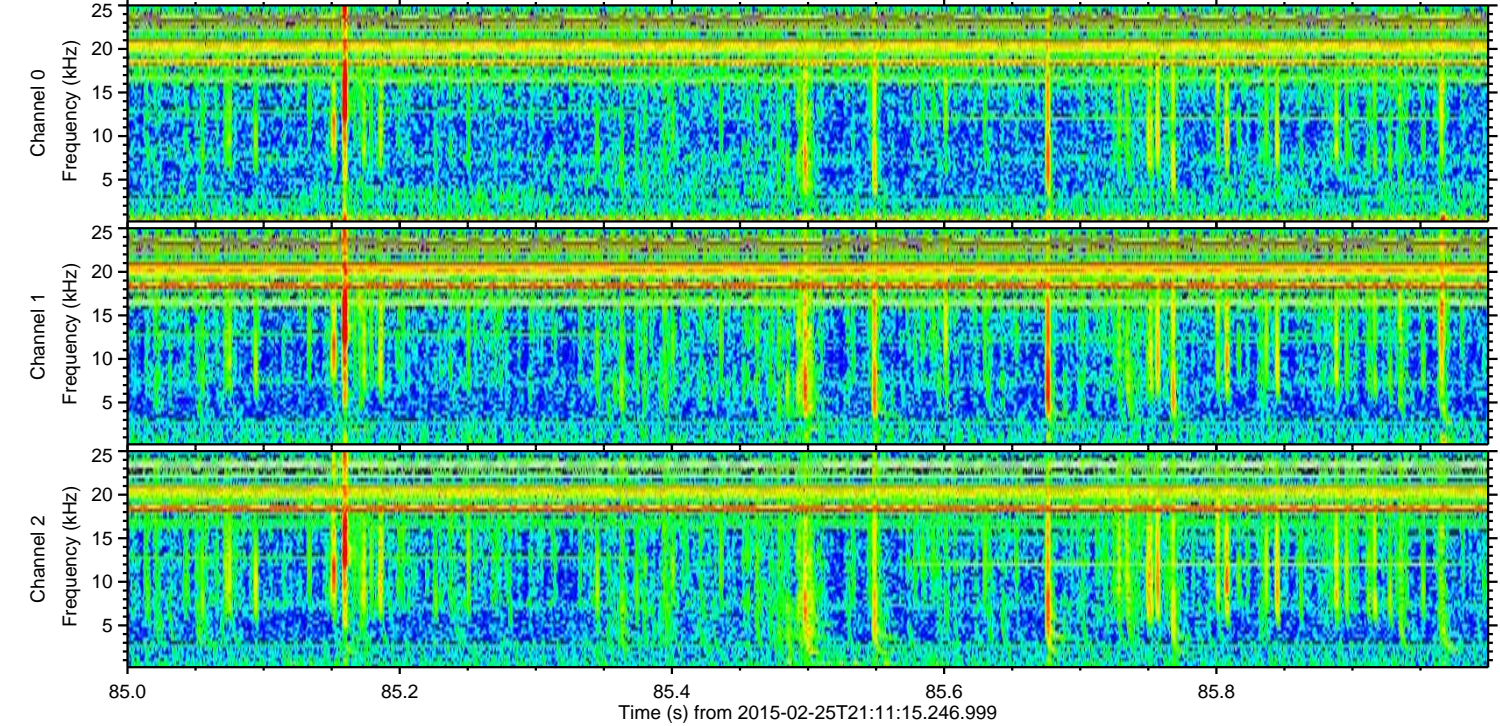
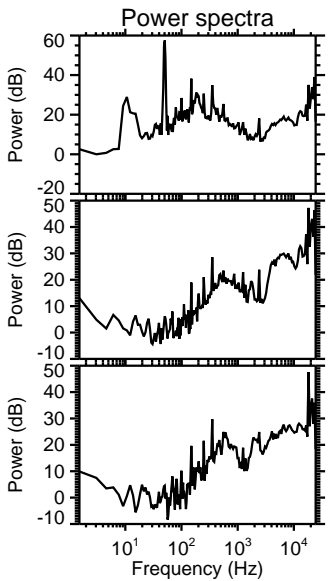
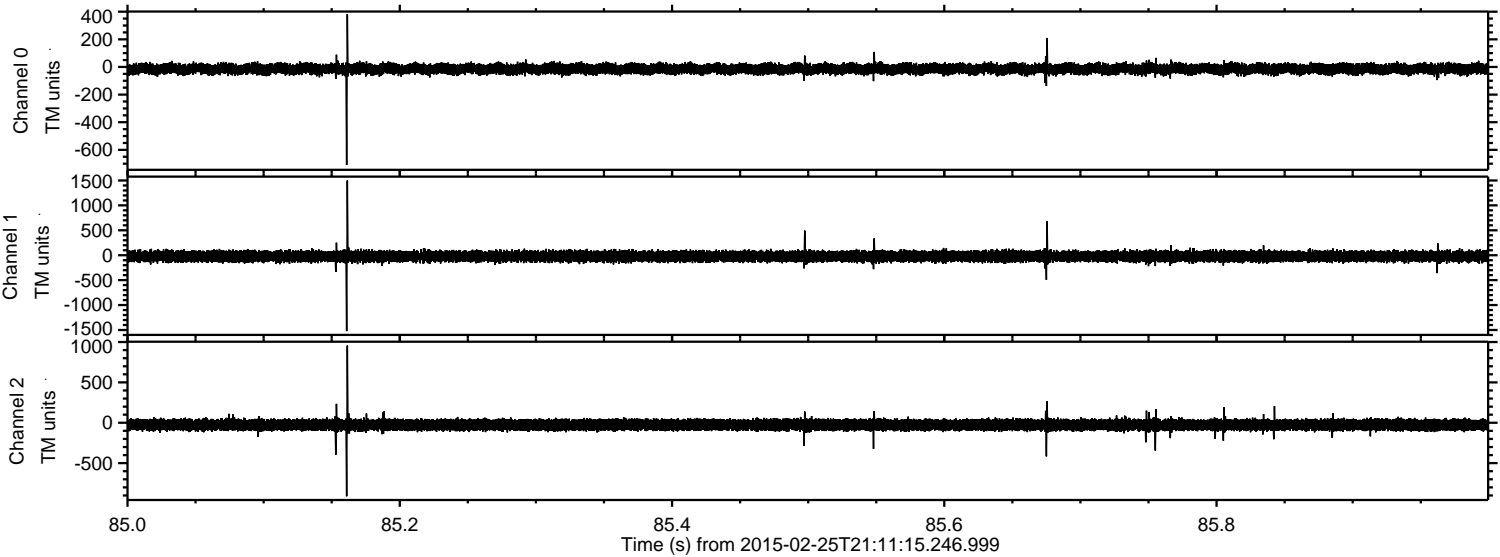
Processed Tue Mar 3 23:55:02 2015 by ELM ver.2012-10-06 from 001__elm20150225_211114__dat00.bin



Processed Tue Mar 3 23:55:03 2015 by ELM ver.2012-10-06 from 001__elm20150225_211114__dat00.bin



Processed Tue Mar 3 23:55:04 2015 by ELM ver.2012-10-06 from 001__elm20150225_211114__dat00.bin



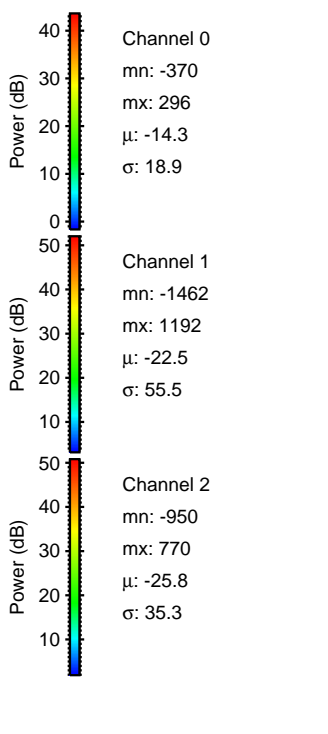
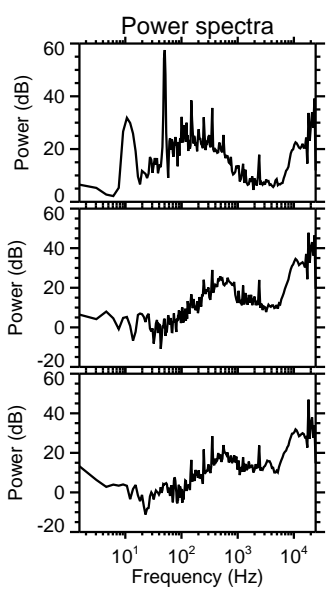
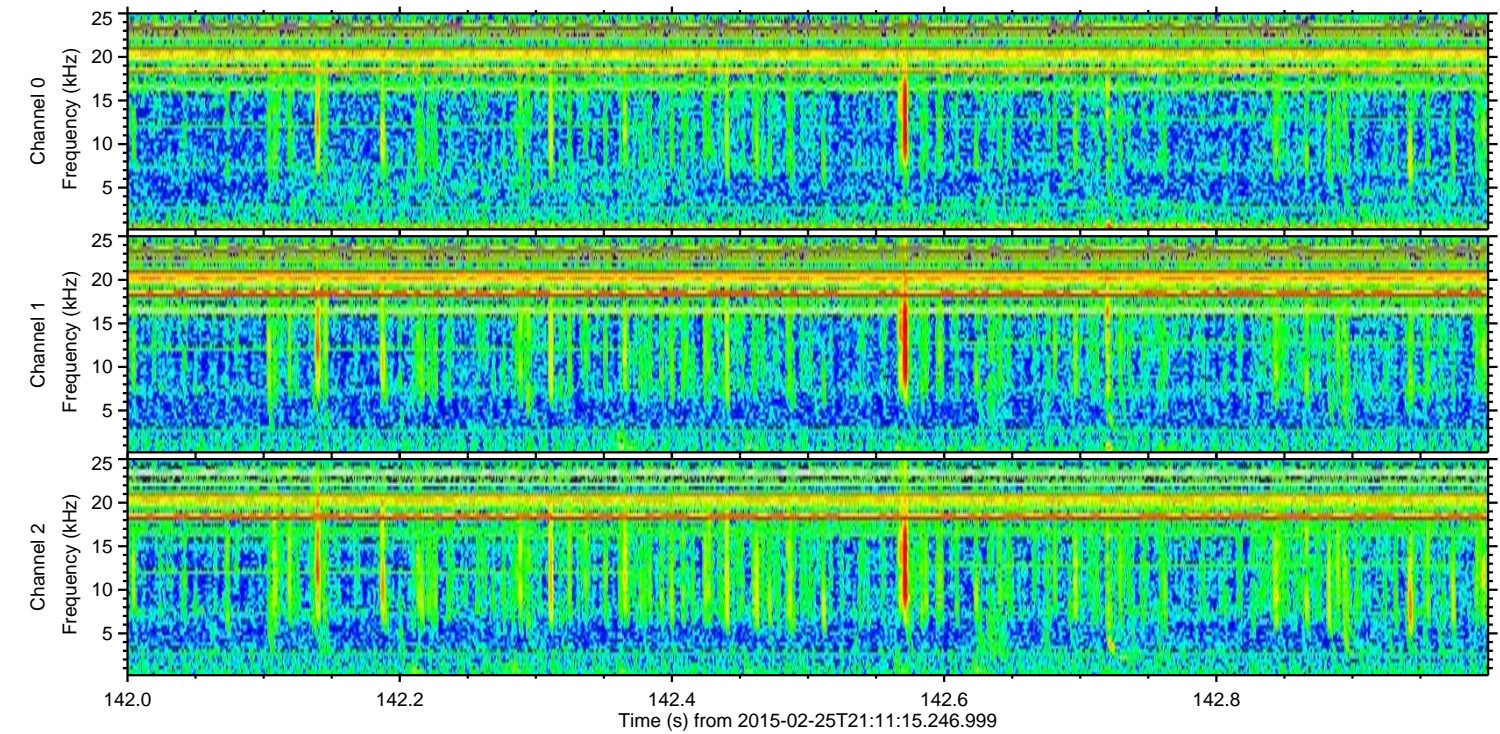
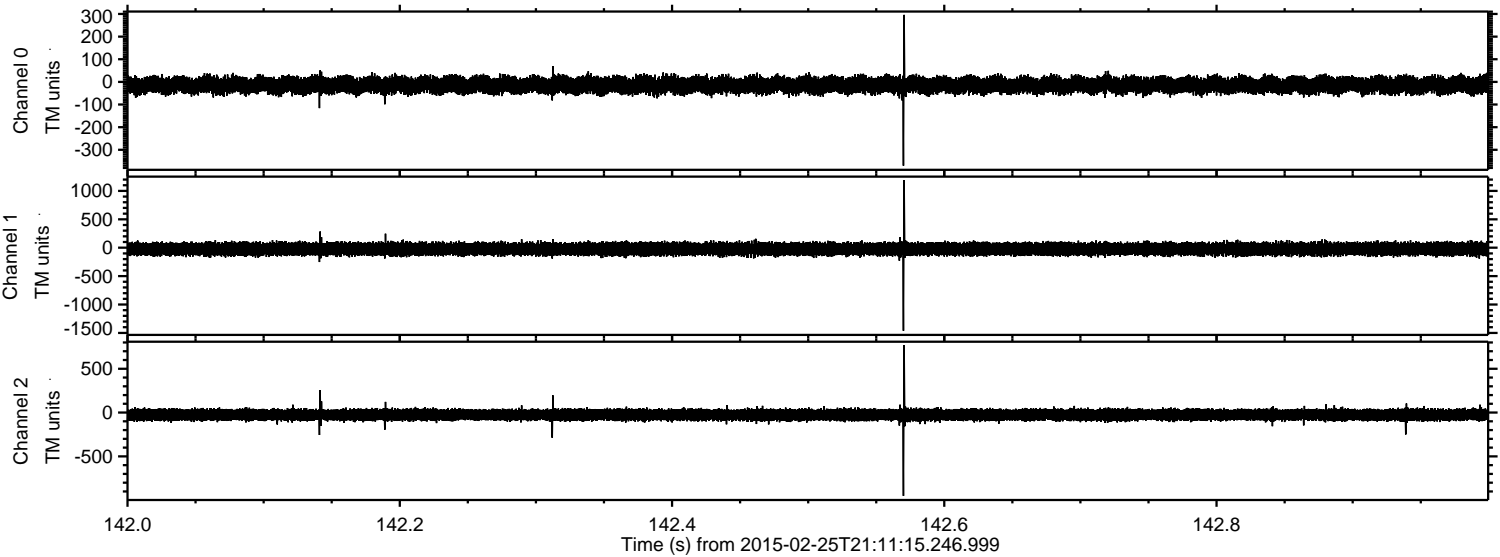
Channel 0
mn: -709
mx: 382
 μ : -14.3
 σ : 20.0

Channel 1
mn: -1523
mx: 1502
 μ : -22.5
 σ : 56.0

Channel 2
mn: -911
mx: 956
 μ : -25.9
 σ : 38.4

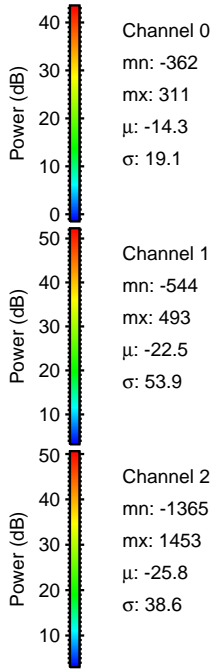
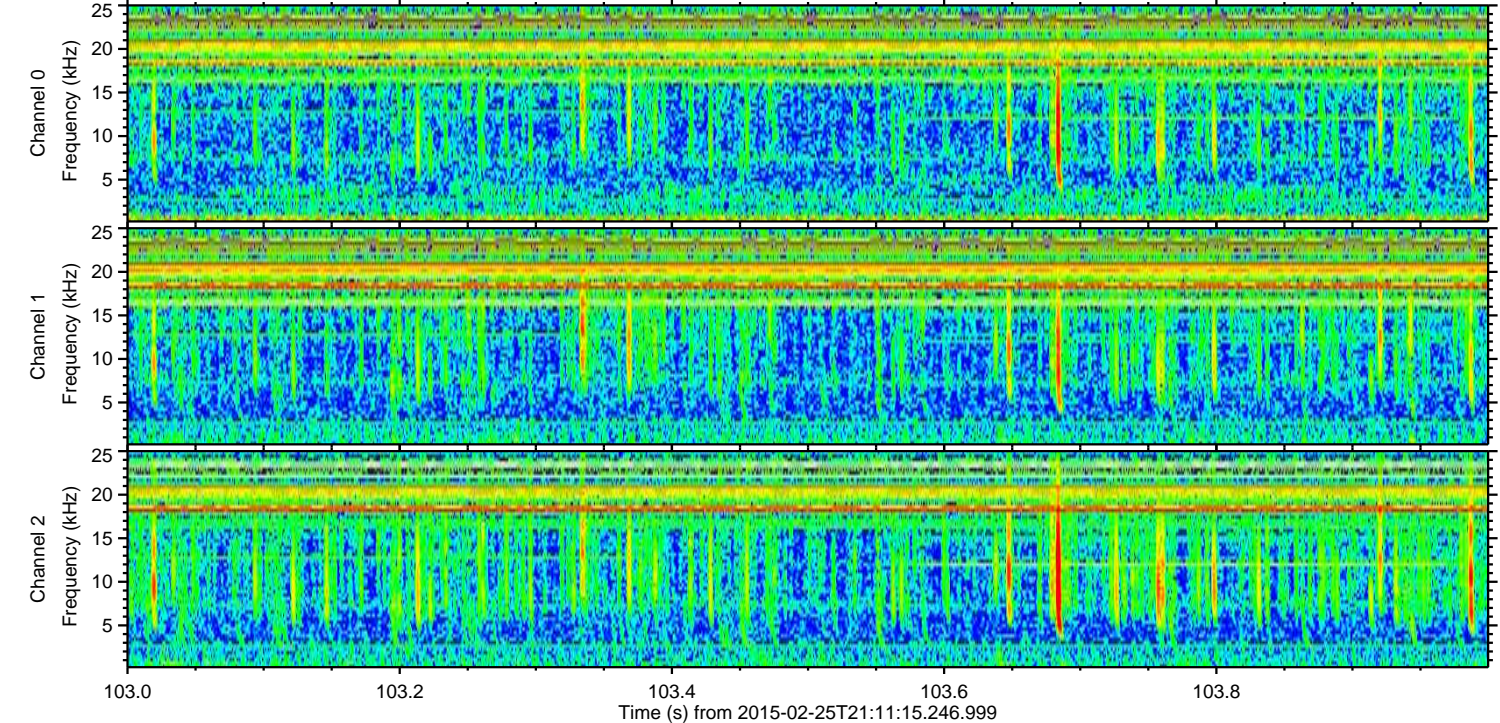
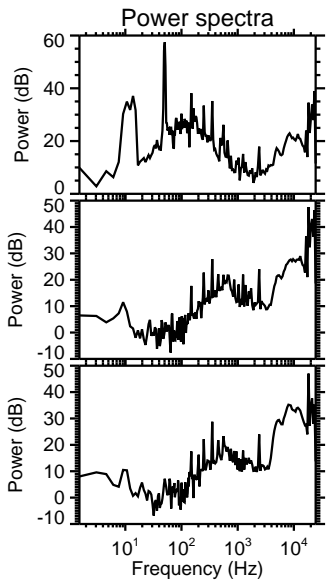
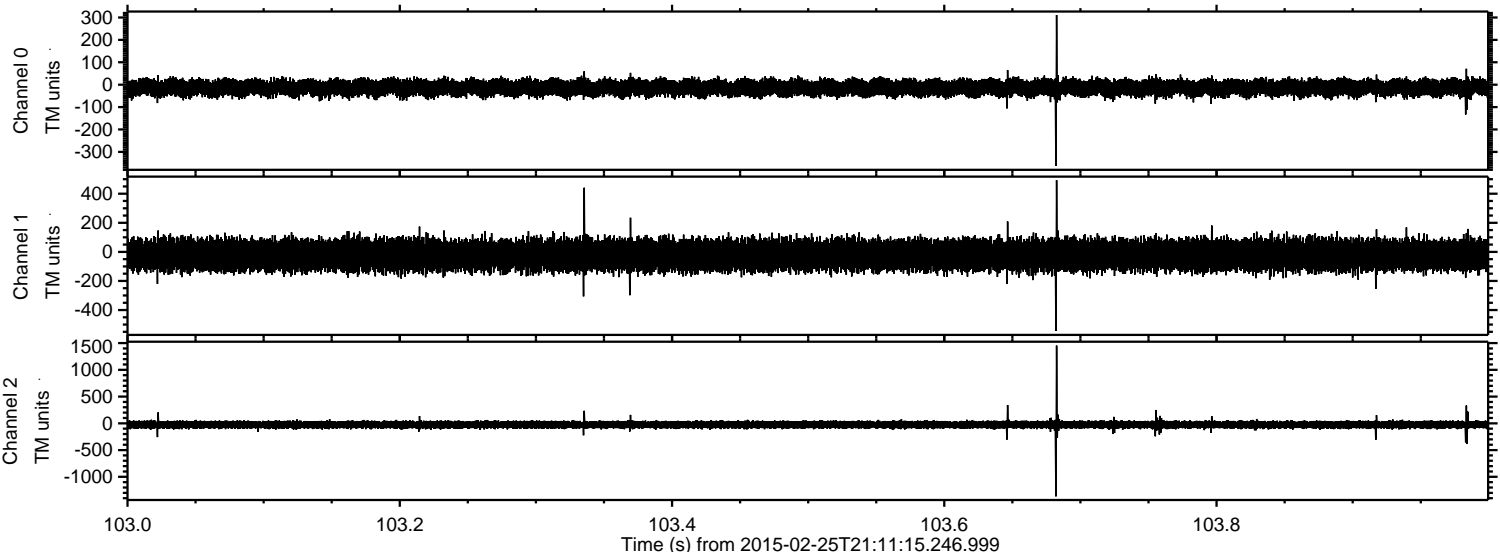
ELMAVAN 3D WAVEFORMS (Measured data sampled at 50 kHz) 49810 packets of 144 samples from 2015-02-25T21:11:15.246.999. Part 143/144

Processed Tue Mar 3 23:55:05 2015 by ELM ver.2012-10-06 from 001__elm20150225_211114__dat00.bin

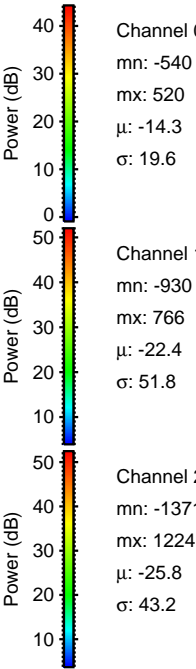
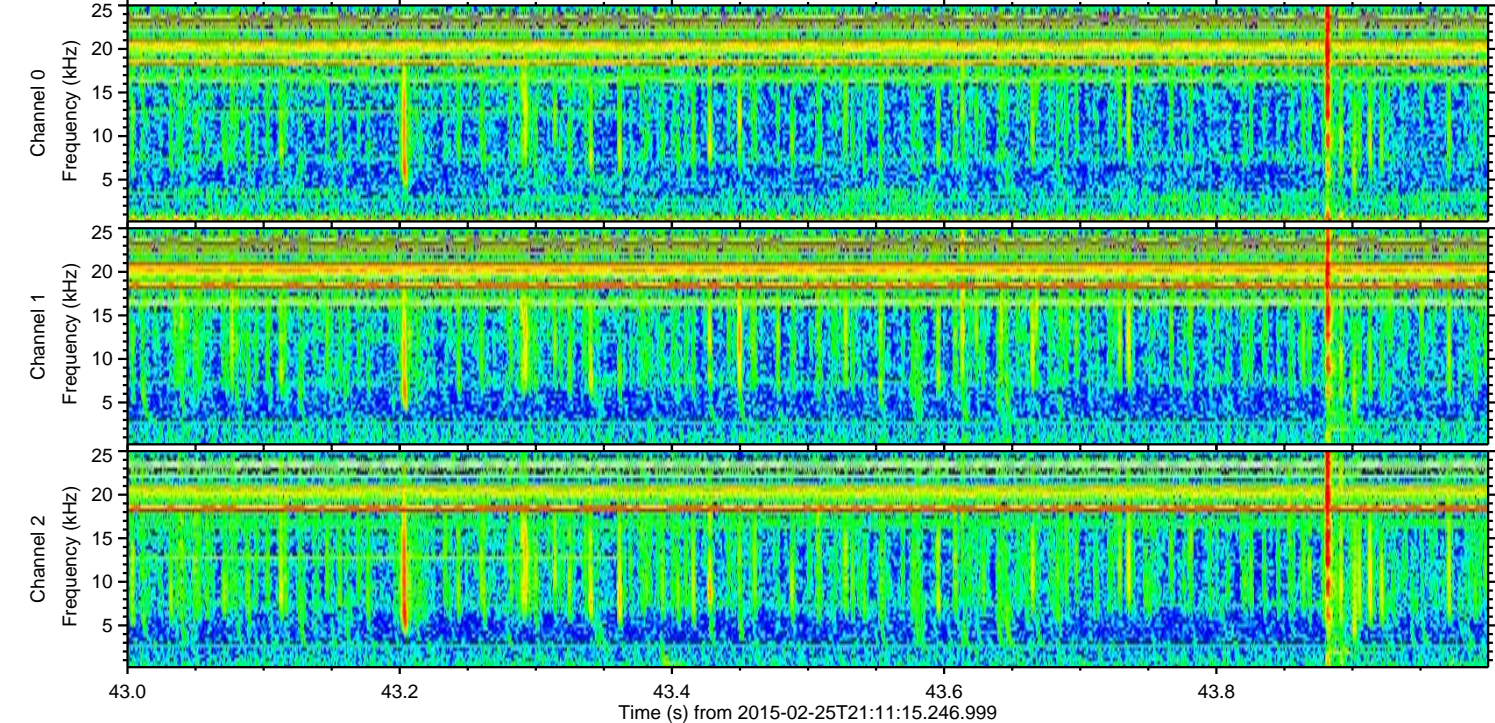
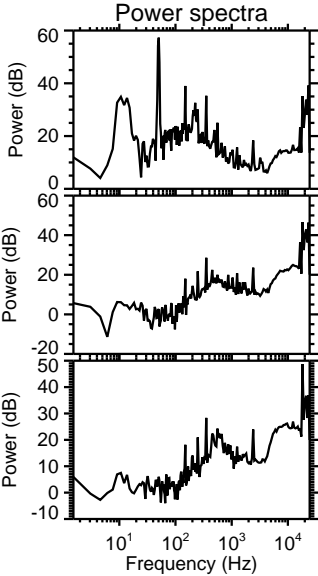
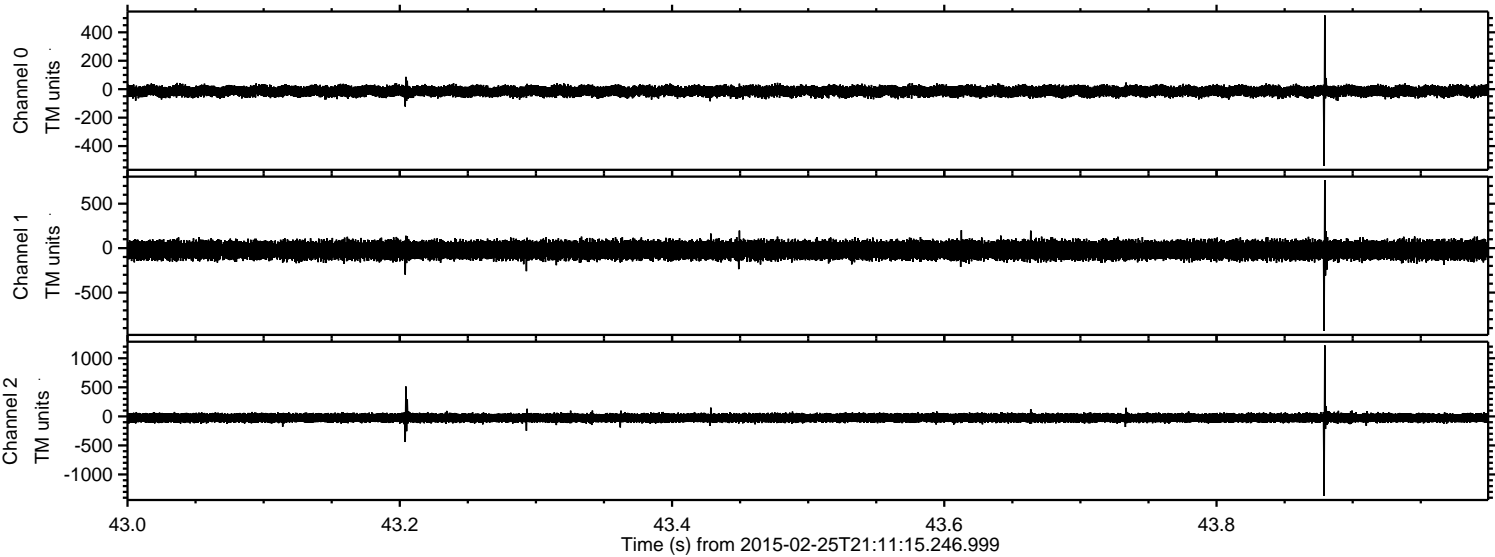


ELMAVAN 3D WAVEFORMS (Measured data sampled at 50 kHz) 49810 packets of 144 samples from 2015-02-25T21:11:15.246.999. Part 104/144

Processed Tue Mar 3 23:55:06 2015 by ELM ver.2012-10-06 from 001__elm20150225_211114__dat00.bin



Processed Tue Mar 3 23:55:07 2015 by ELM ver.2012-10-06 from 001__elm20150225_211114__dat00.bin



Processed Tue Mar 3 23:55:08 2015 by ELM ver.2012-10-06 from 001__elm20150225_211114__dat00.bin

