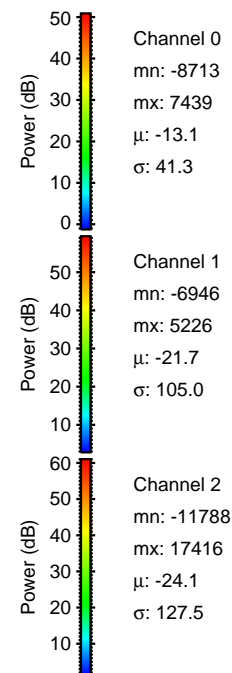
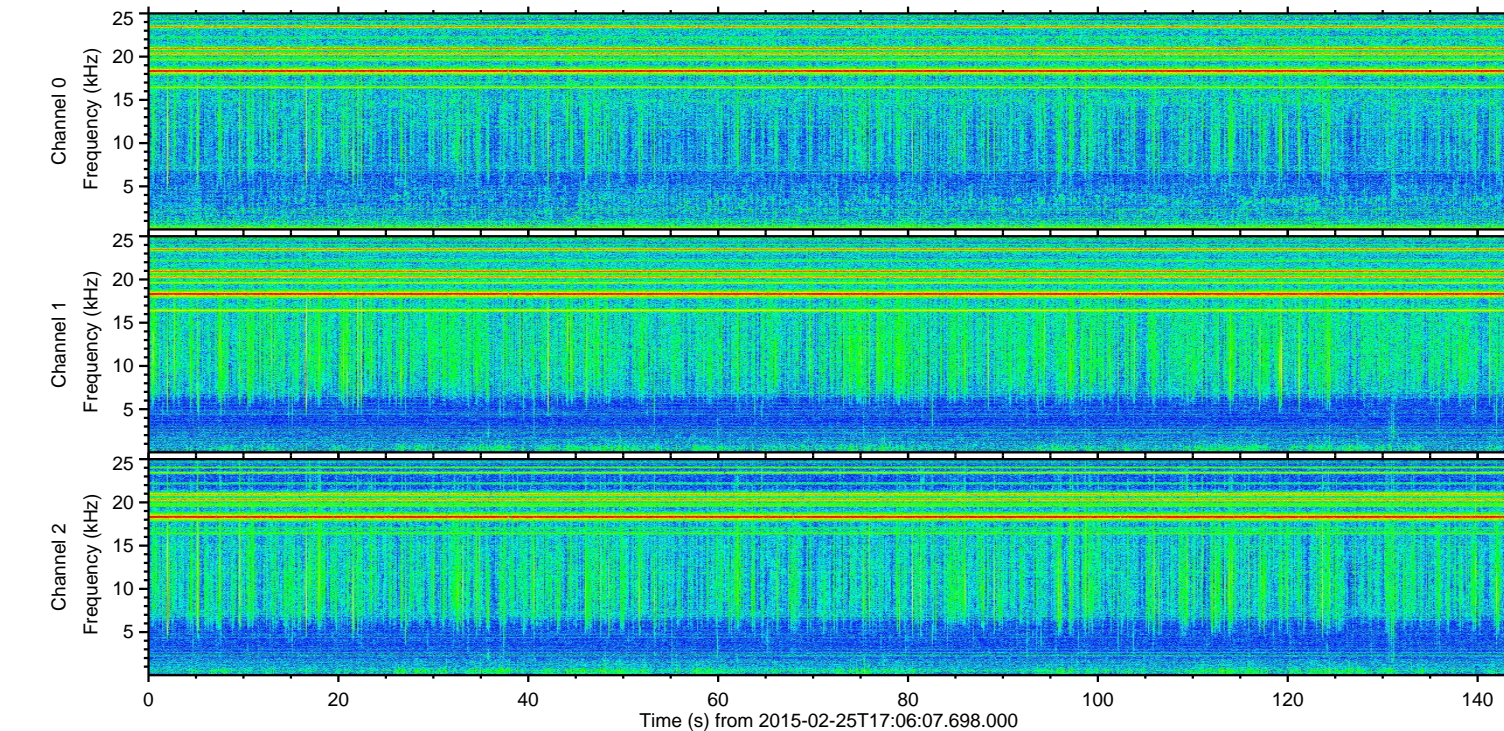
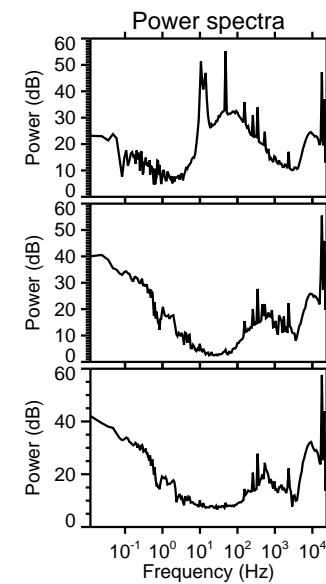
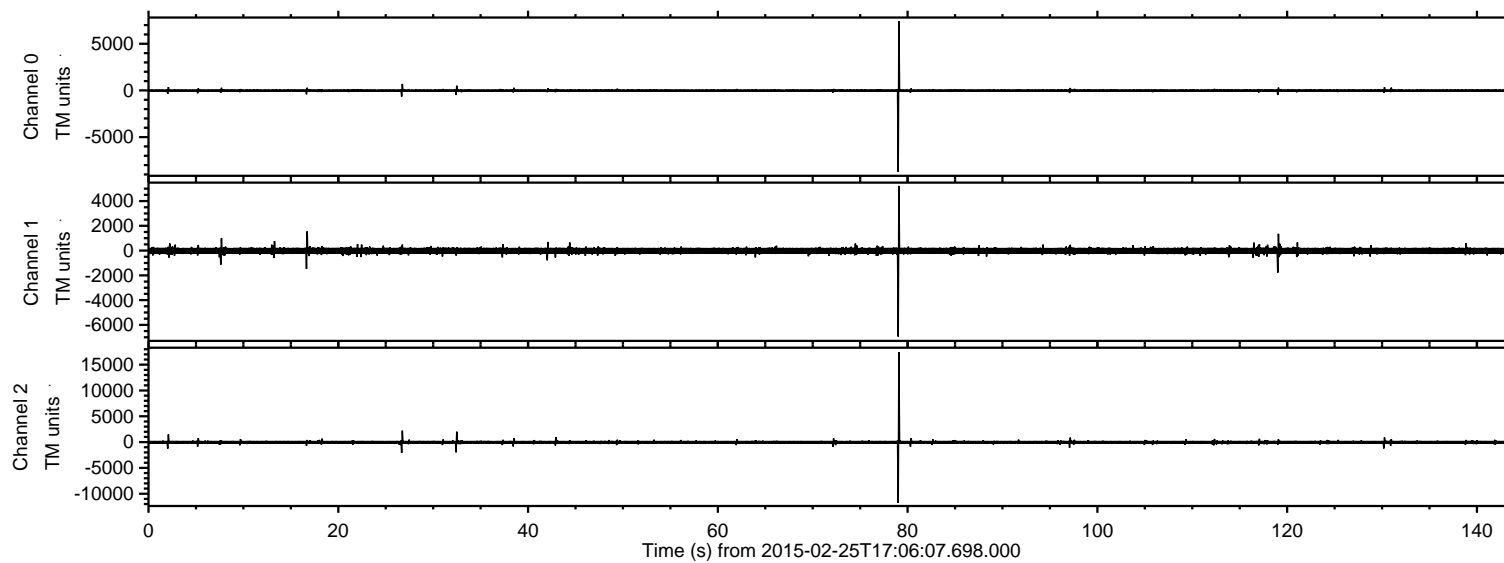
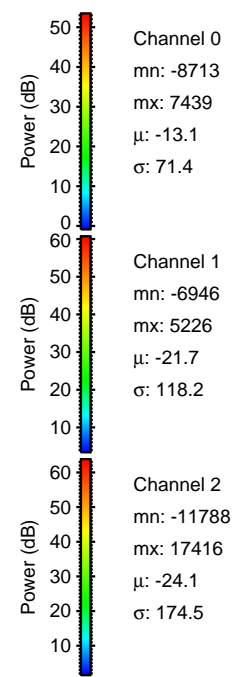
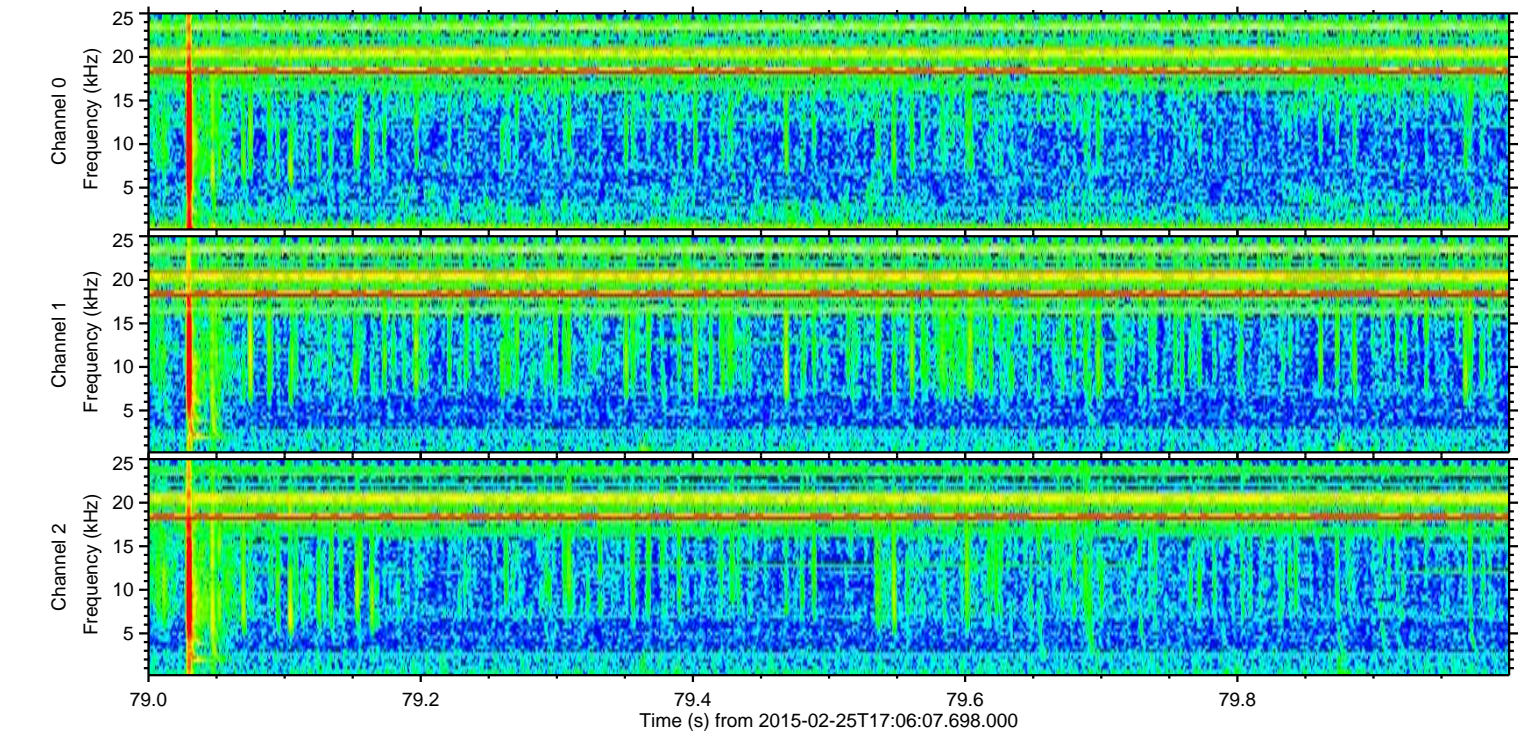
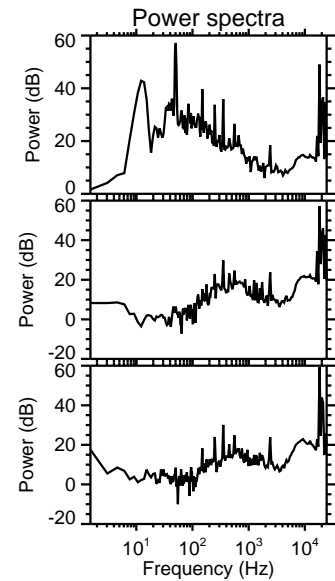
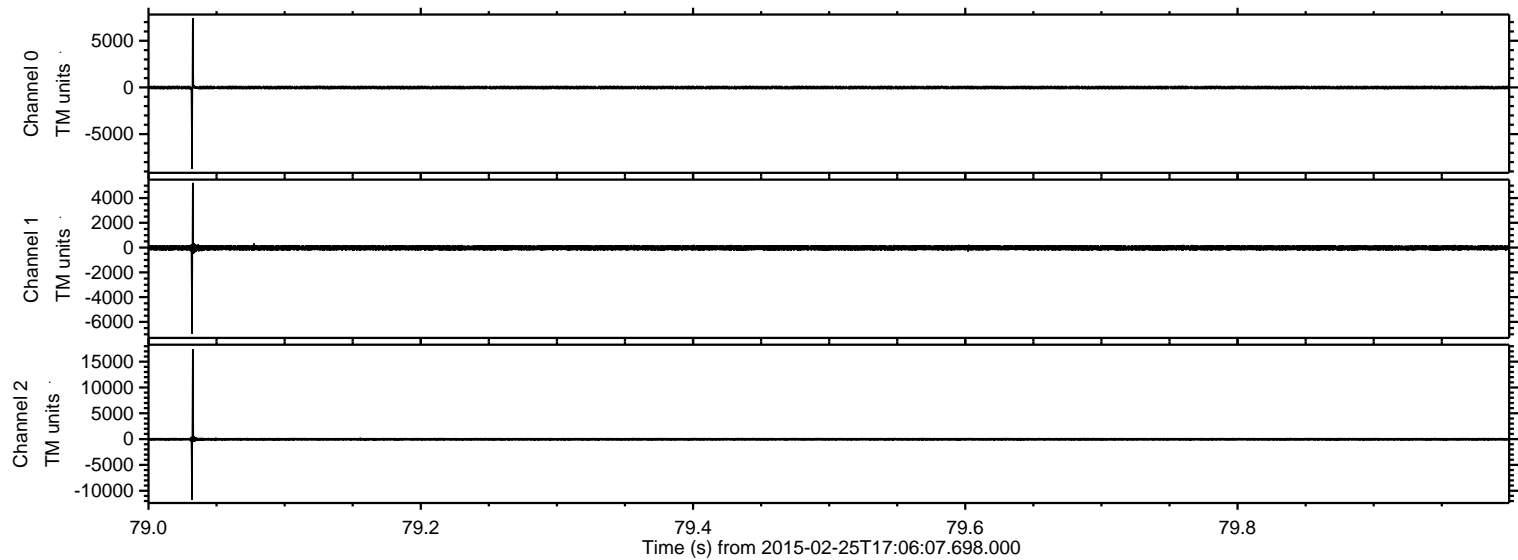


ELMAVAN 3D WAVEFORMS (Measured data sampled at 50 kHz) 49790 packets of 144 samples from 2015-02-25T17:06:07.698.000.

Processed Tue Mar 3 22:27:08 2015 by ELM ver.2012-10-06 from 001__elm20150225_170606__dat00.bin

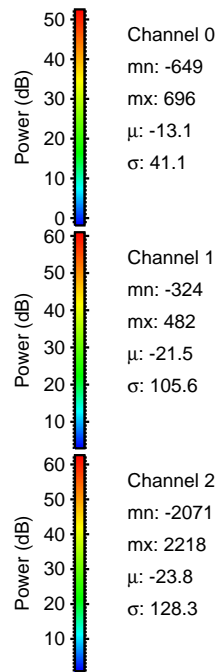
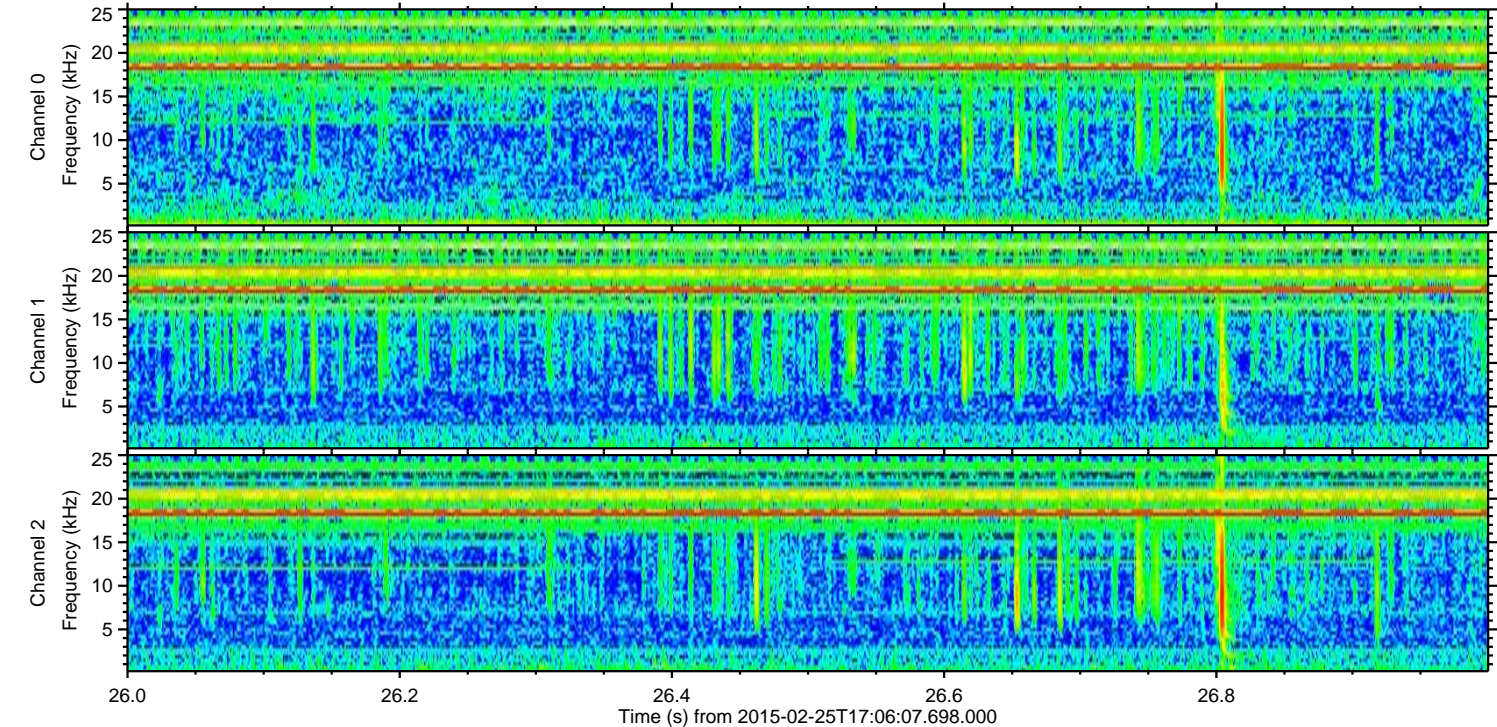
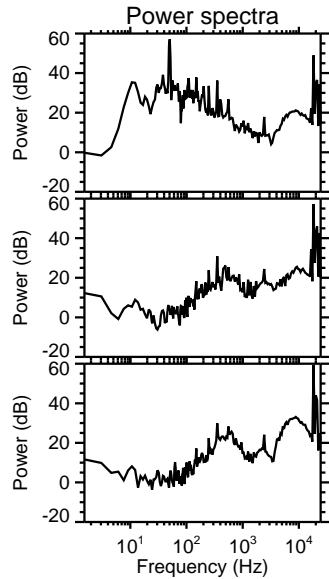
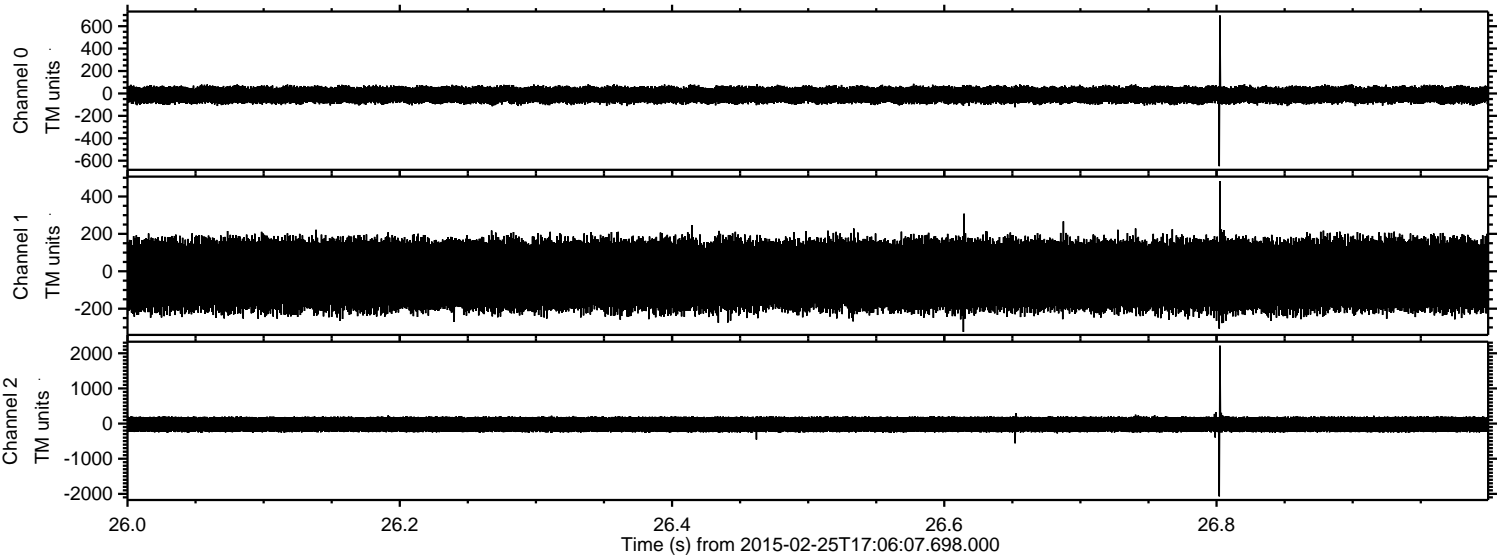


Processed Tue Mar 3 22:27:19 2015 by ELM ver.2012-10-06 from 001__elm20150225_170606__dat00.bin

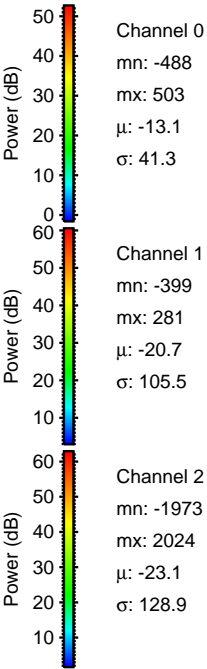
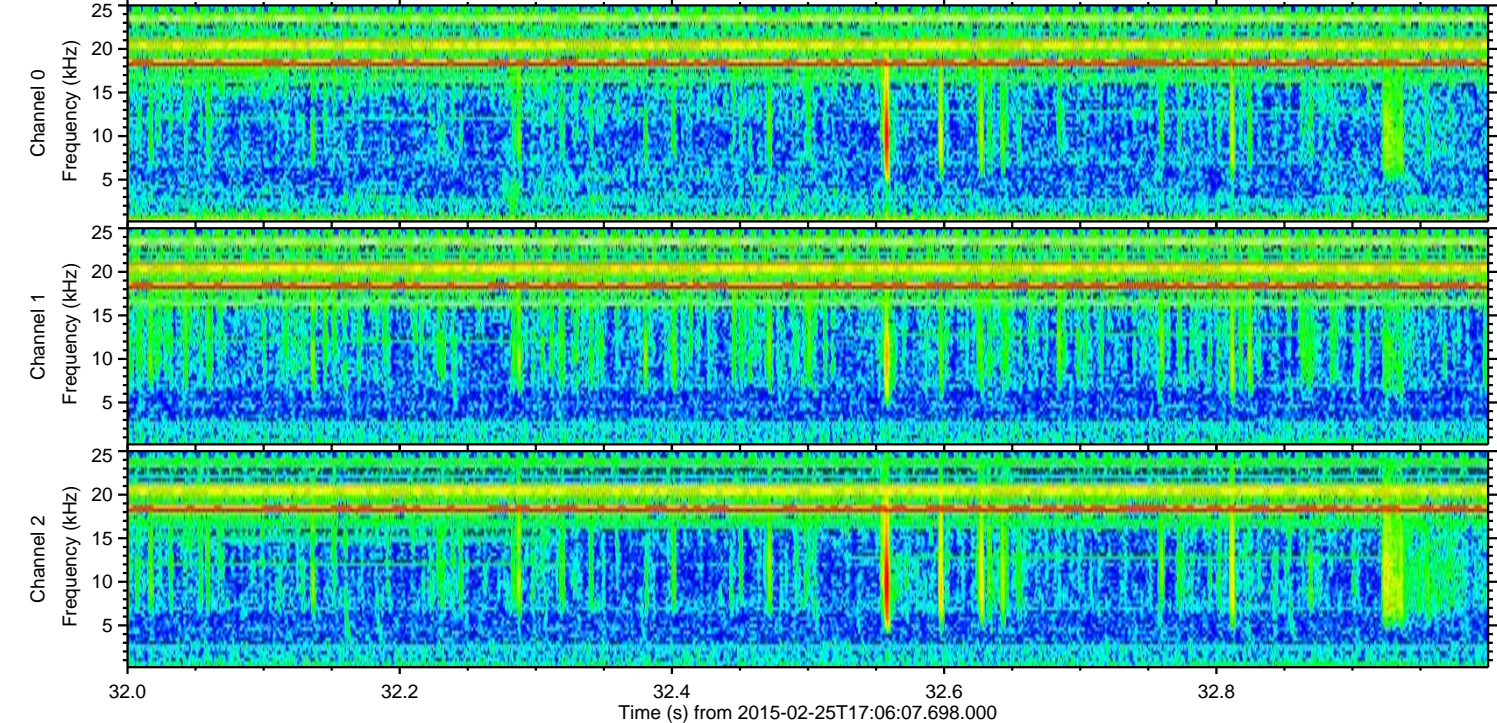
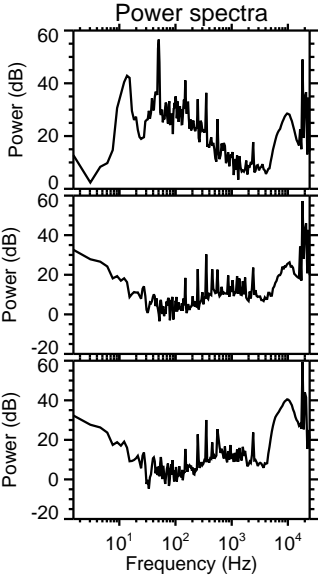
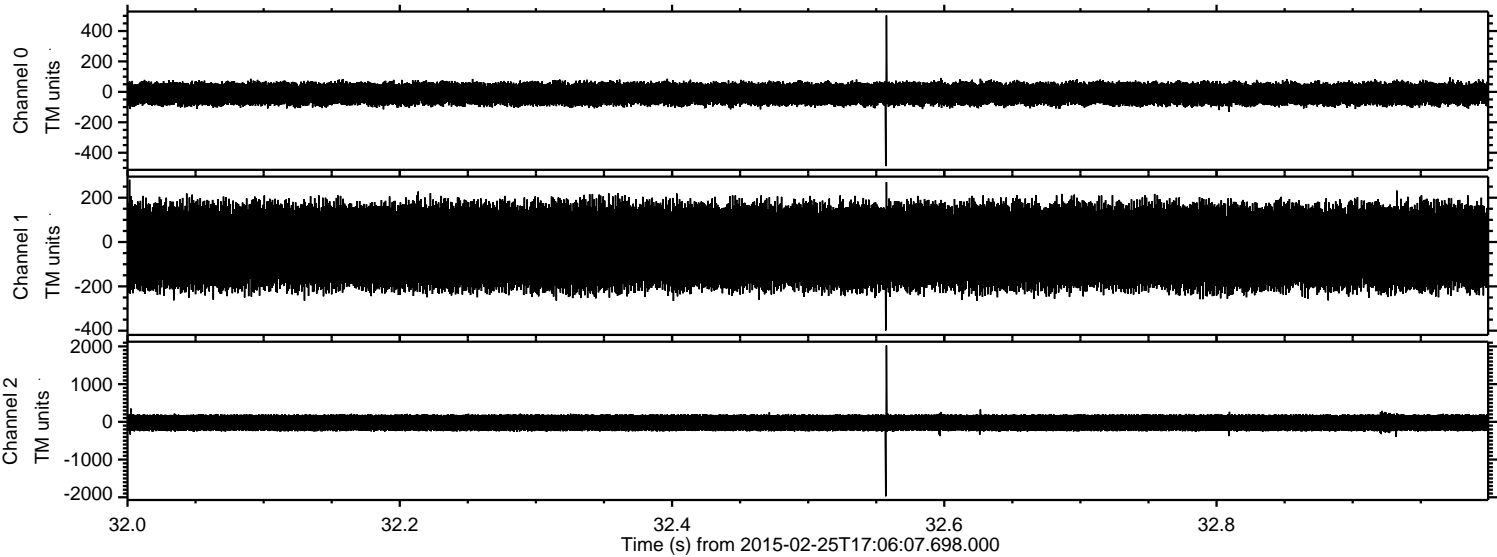


ELMAVAN 3D WAVEFORMS (Measured data sampled at 50 kHz) 49790 packets of 144 samples from 2015-02-25T17:06:07.698.000. Part 27/144

Processed Tue Mar 3 22:27:20 2015 by ELM ver.2012-10-06 from 001__elm20150225_170606__dat00.bin

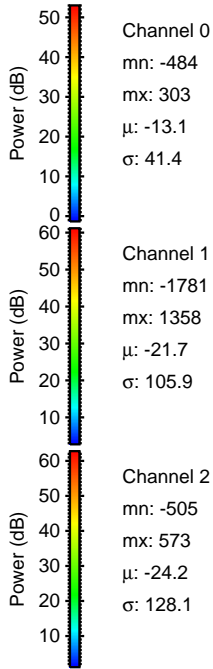
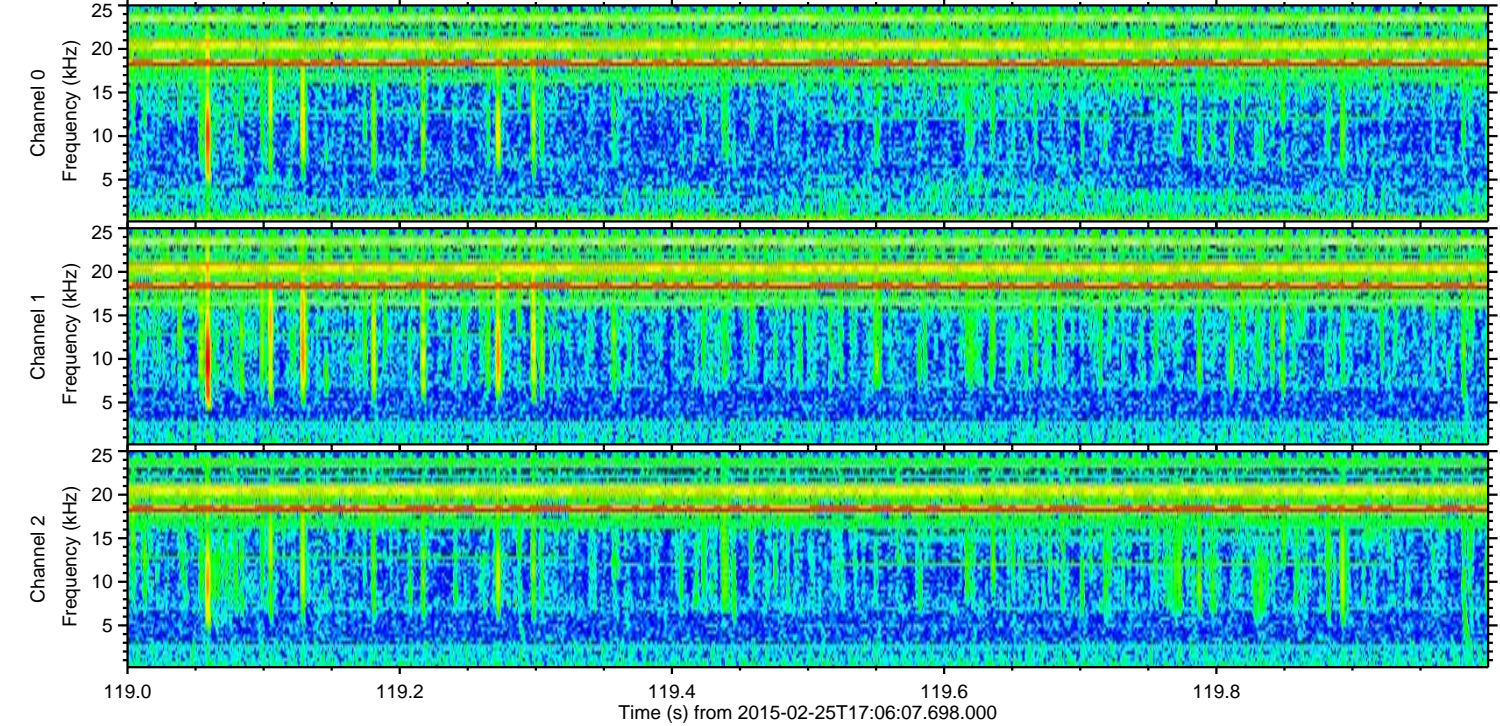
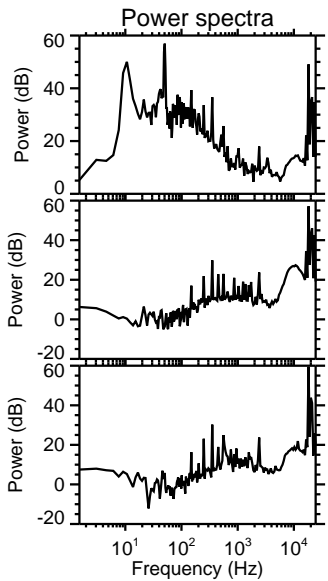
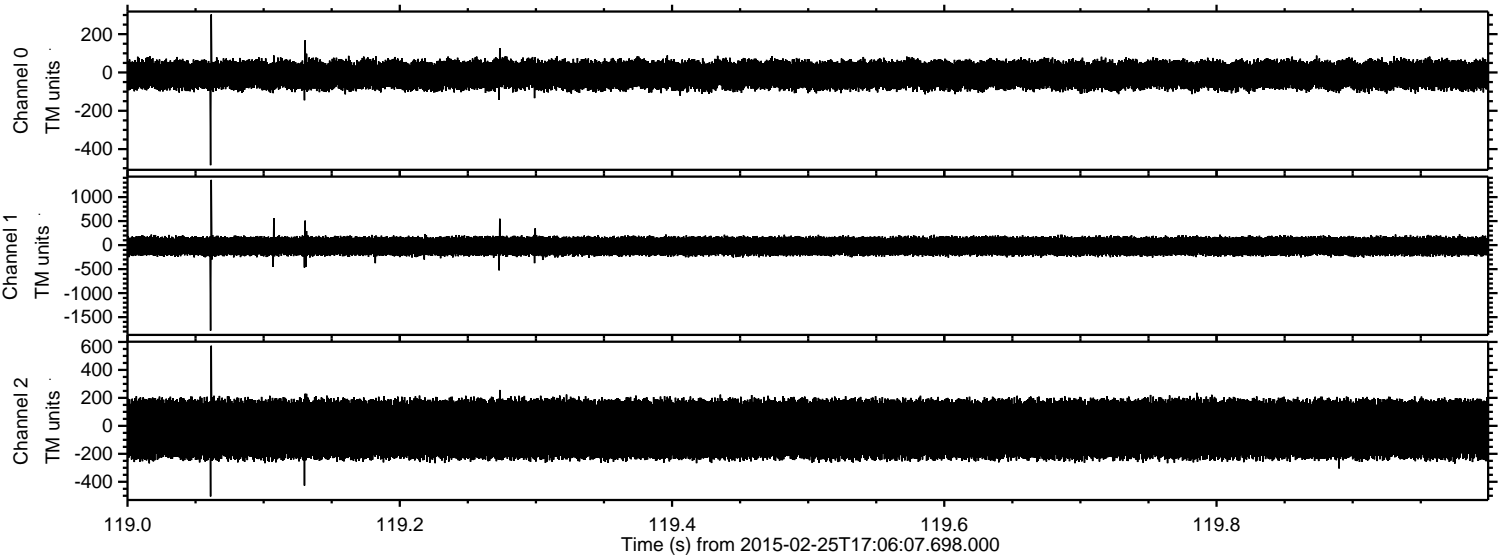


Processed Tue Mar 3 22:27:21 2015 by ELM ver.2012-10-06 from 001__elm20150225_170606__dat00.bin

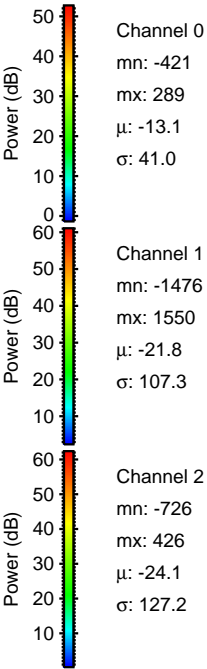
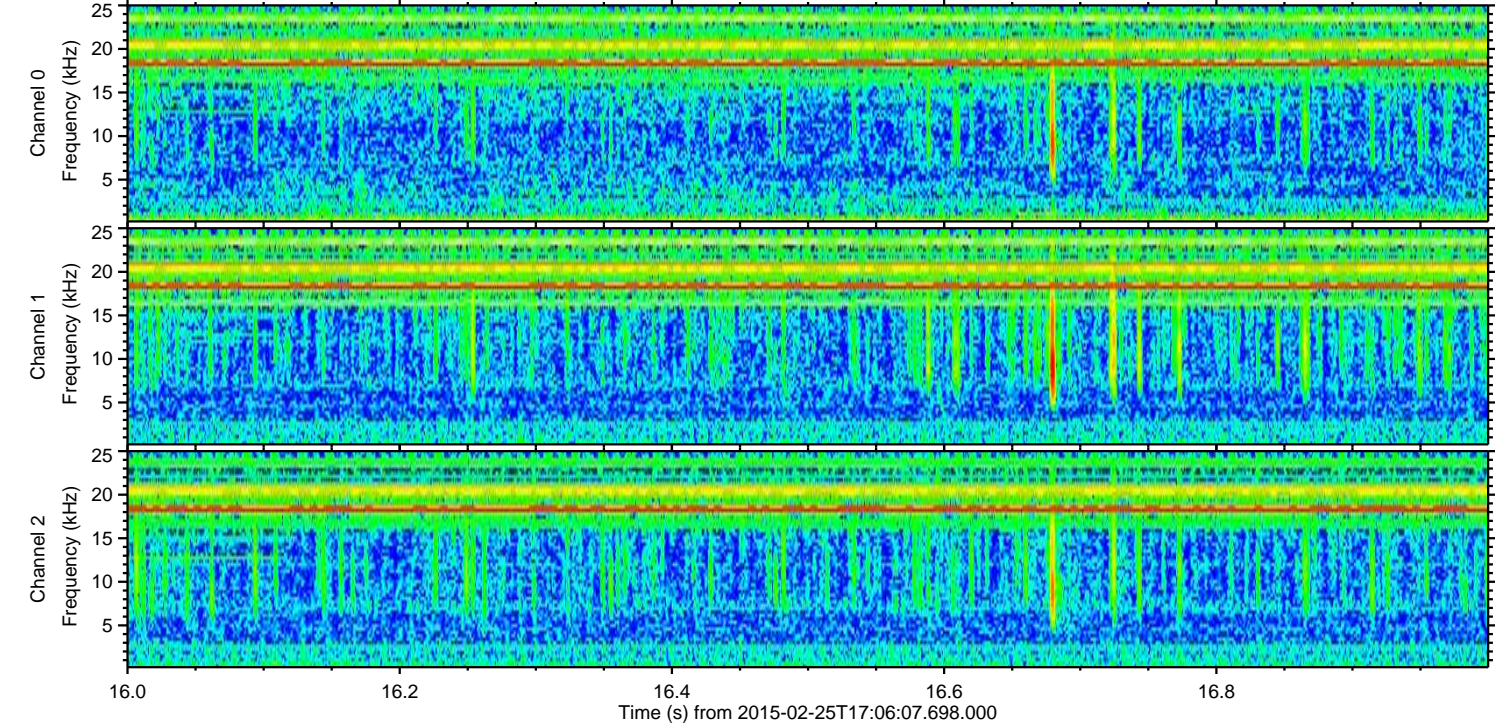
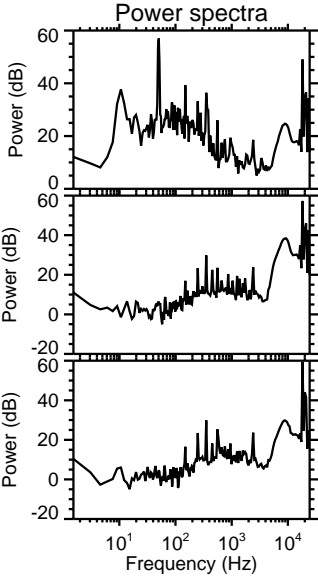
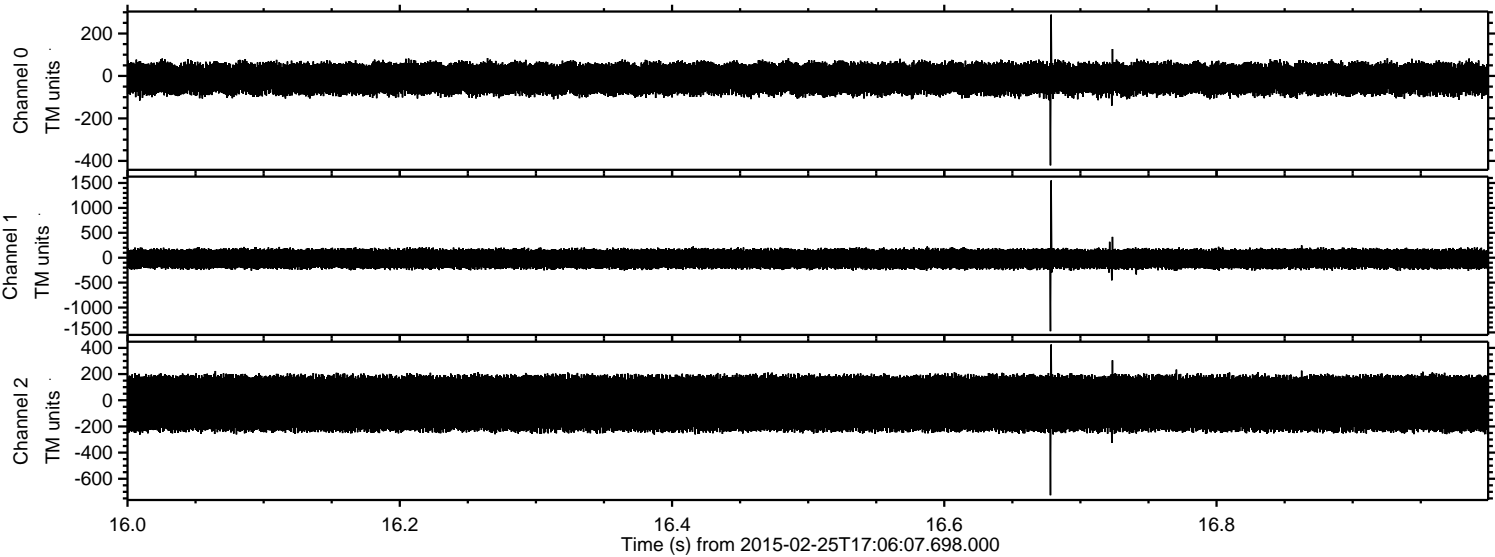


ELMAVAN 3D WAVEFORMS (Measured data sampled at 50 kHz) 49790 packets of 144 samples from 2015-02-25T17:06:07.698.000. Part 120/144

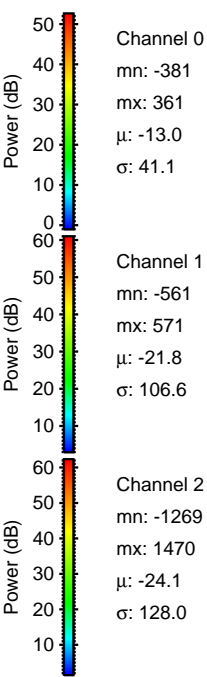
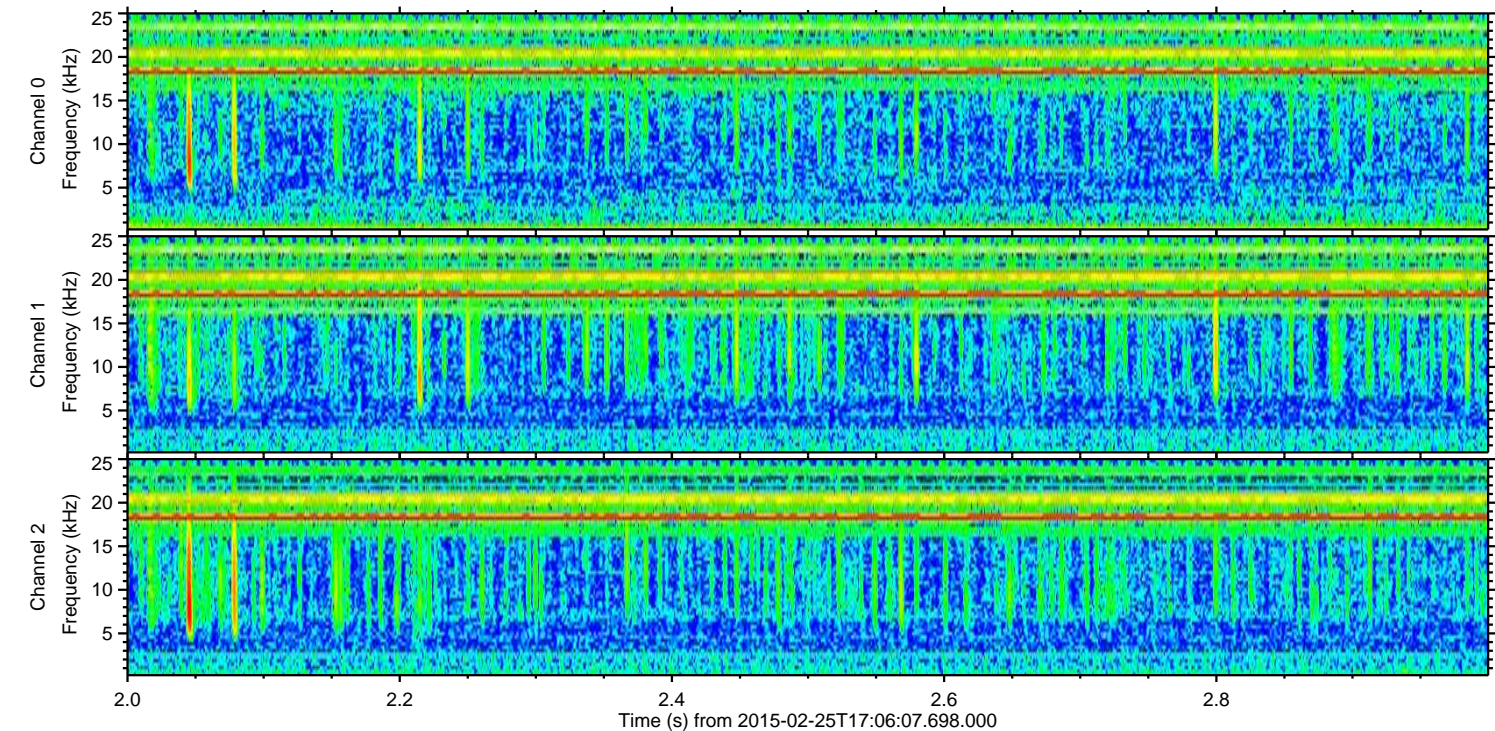
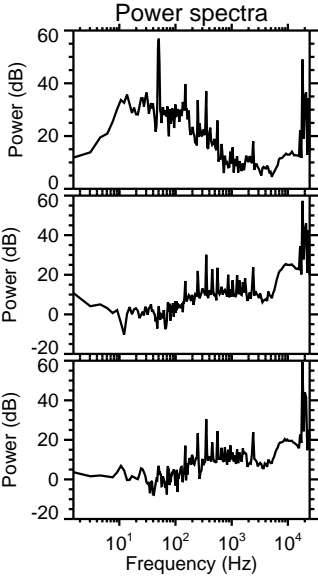
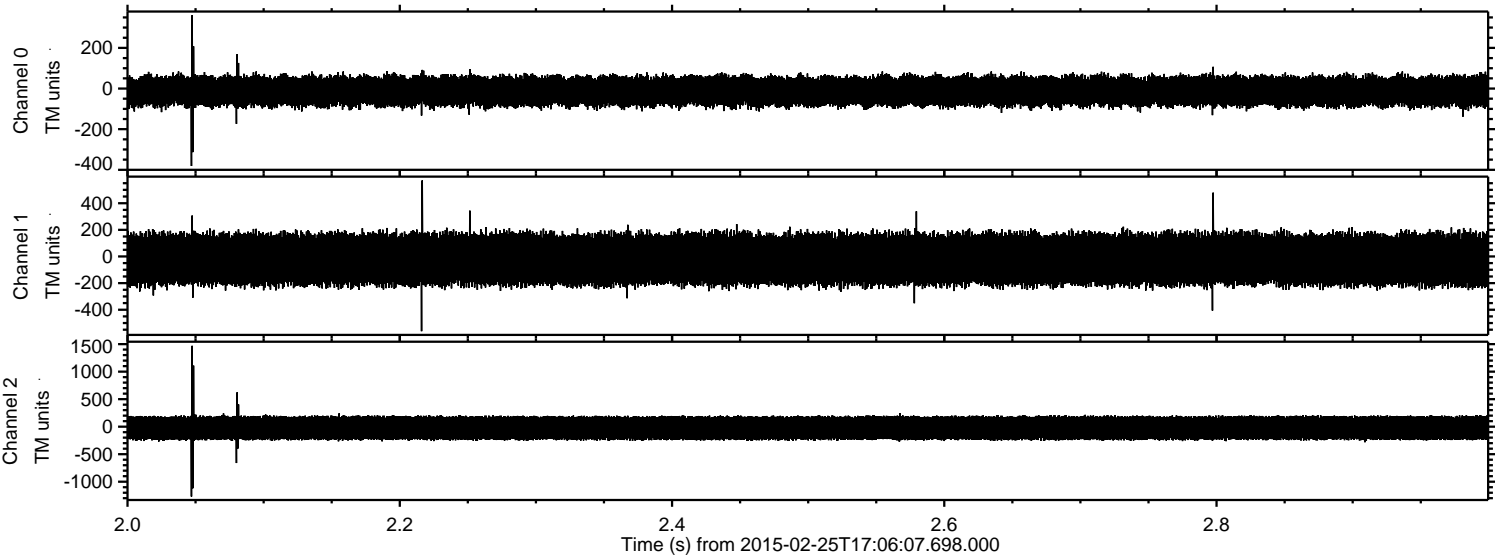
Processed Tue Mar 3 22:27:22 2015 by ELM ver.2012-10-06 from 001__elm20150225_170606__dat00.bin



Processed Tue Mar 3 22:27:23 2015 by ELM ver.2012-10-06 from 001__elm20150225_170606__dat00.bin

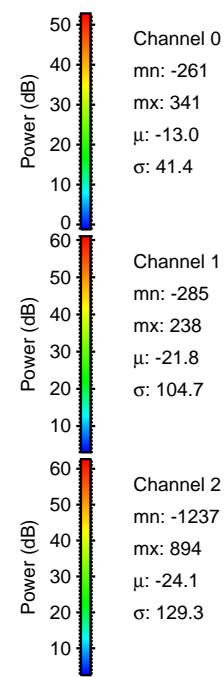
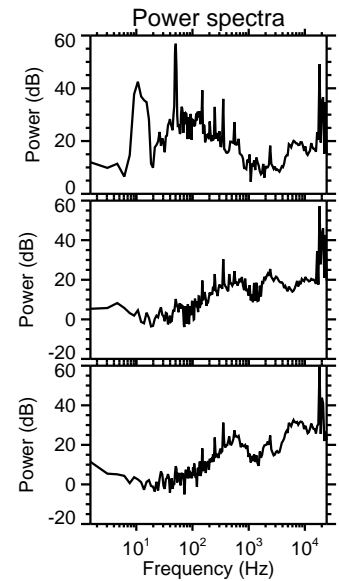
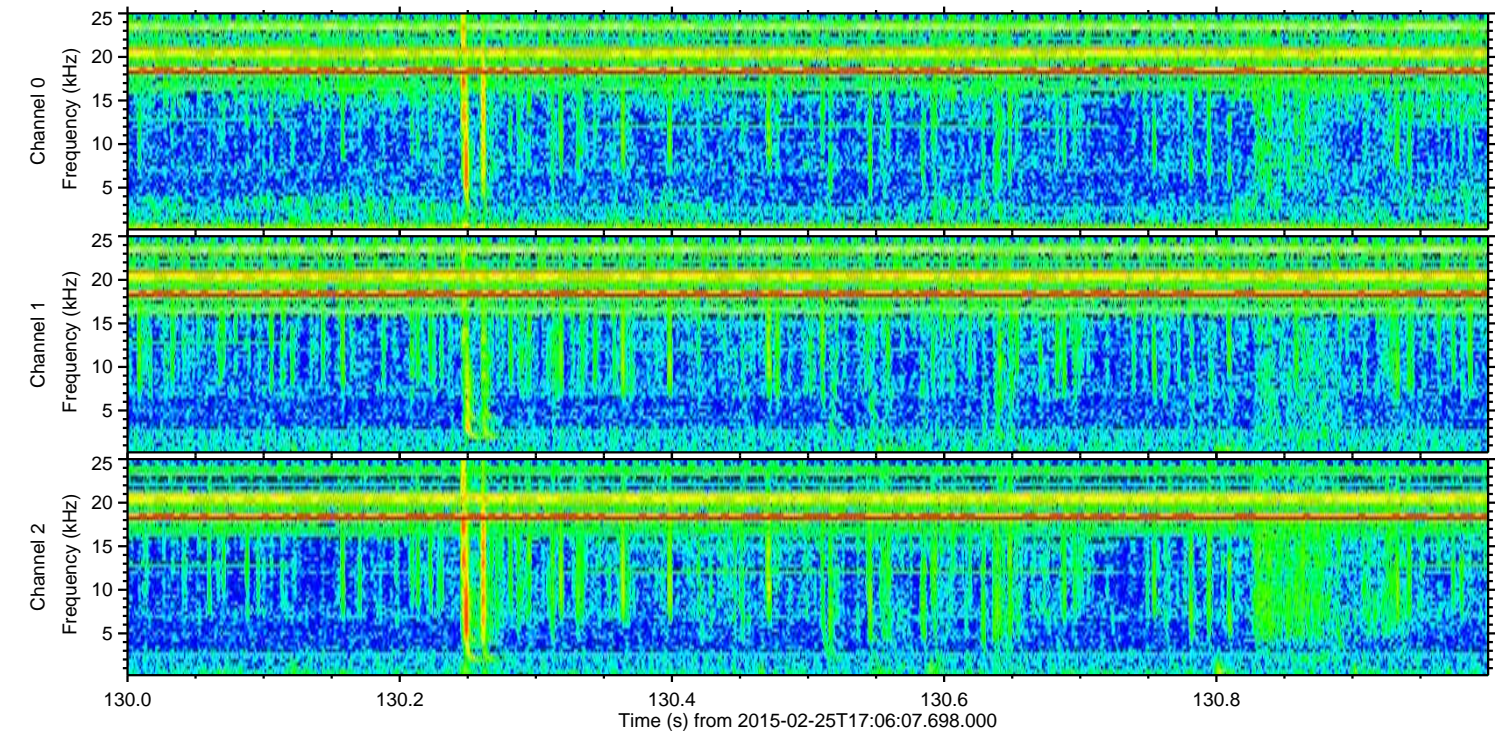
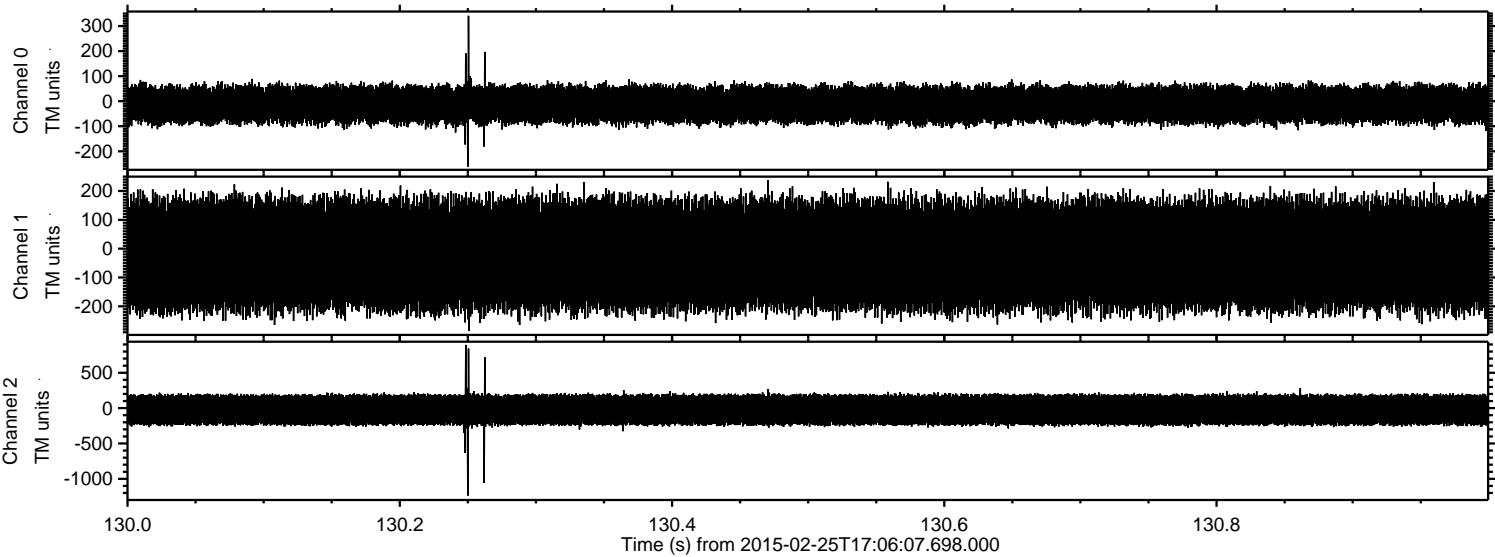


Processed Tue Mar 3 22:27:24 2015 by ELM ver.2012-10-06 from 001__elm20150225_170606__dat00.bin

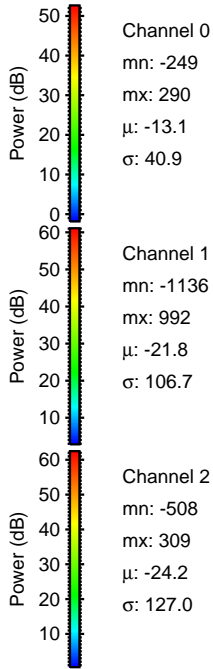
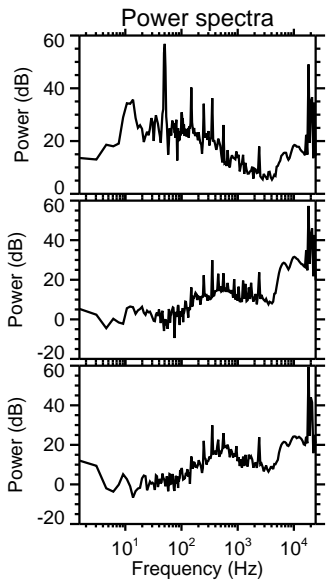
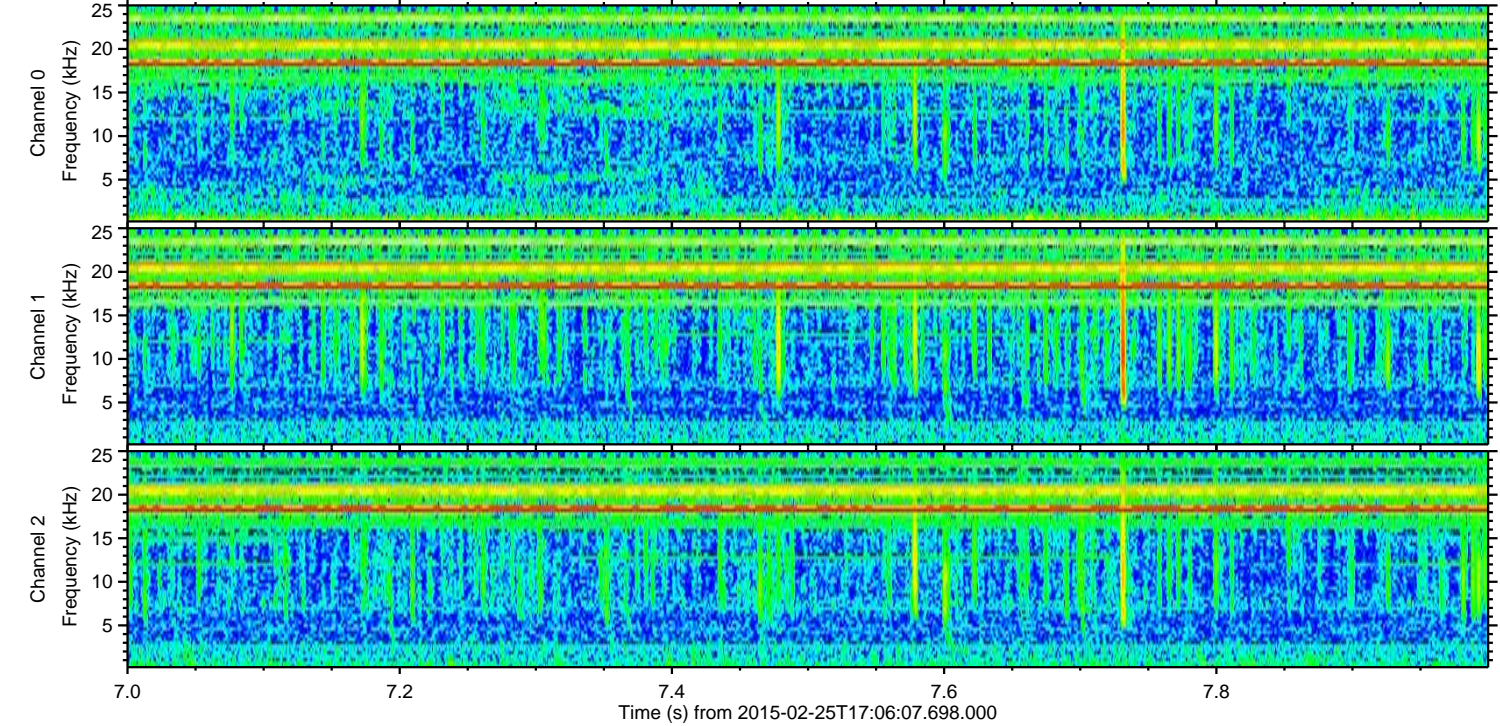
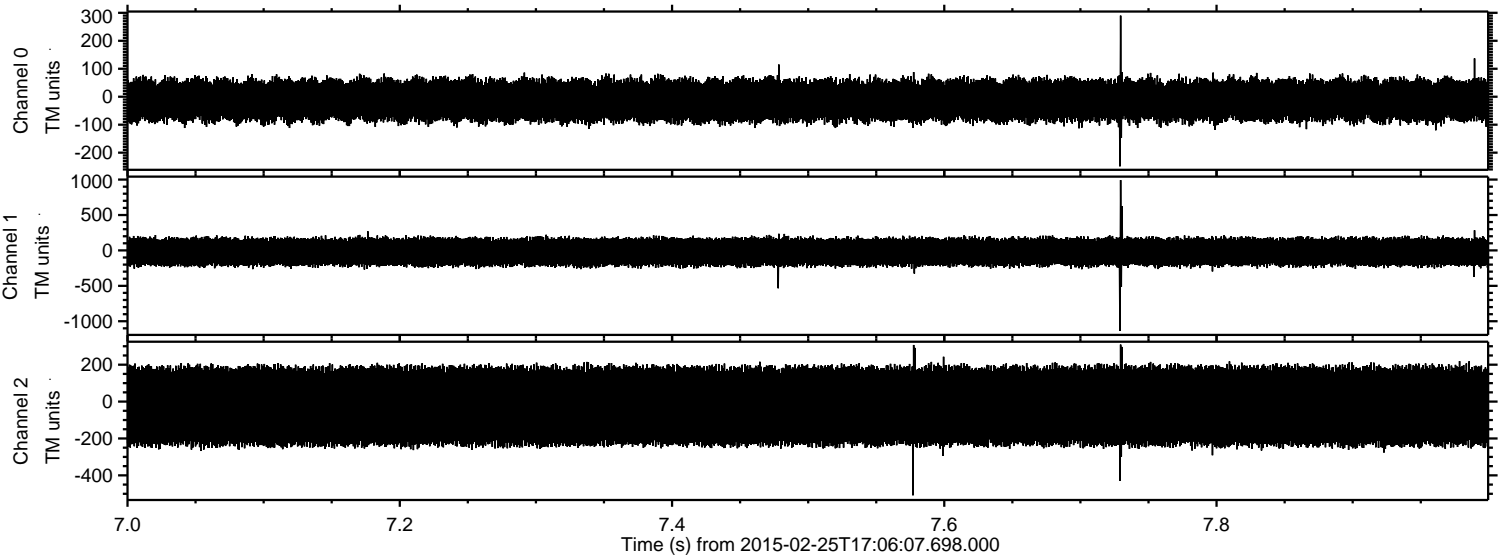


ELMAVAN 3D WAVEFORMS (Measured data sampled at 50 kHz) 49790 packets of 144 samples from 2015-02-25T17:06:07.698.000. Part 131/144

Processed Tue Mar 3 22:27:25 2015 by ELM ver.2012-10-06 from 001__elm20150225_170606__dat00.bin



Processed Tue Mar 3 22:27:26 2015 by ELM ver.2012-10-06 from 001__elm20150225_170606__dat00.bin

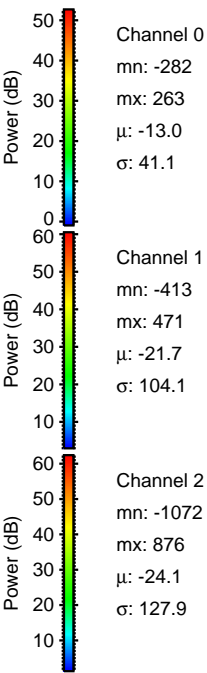
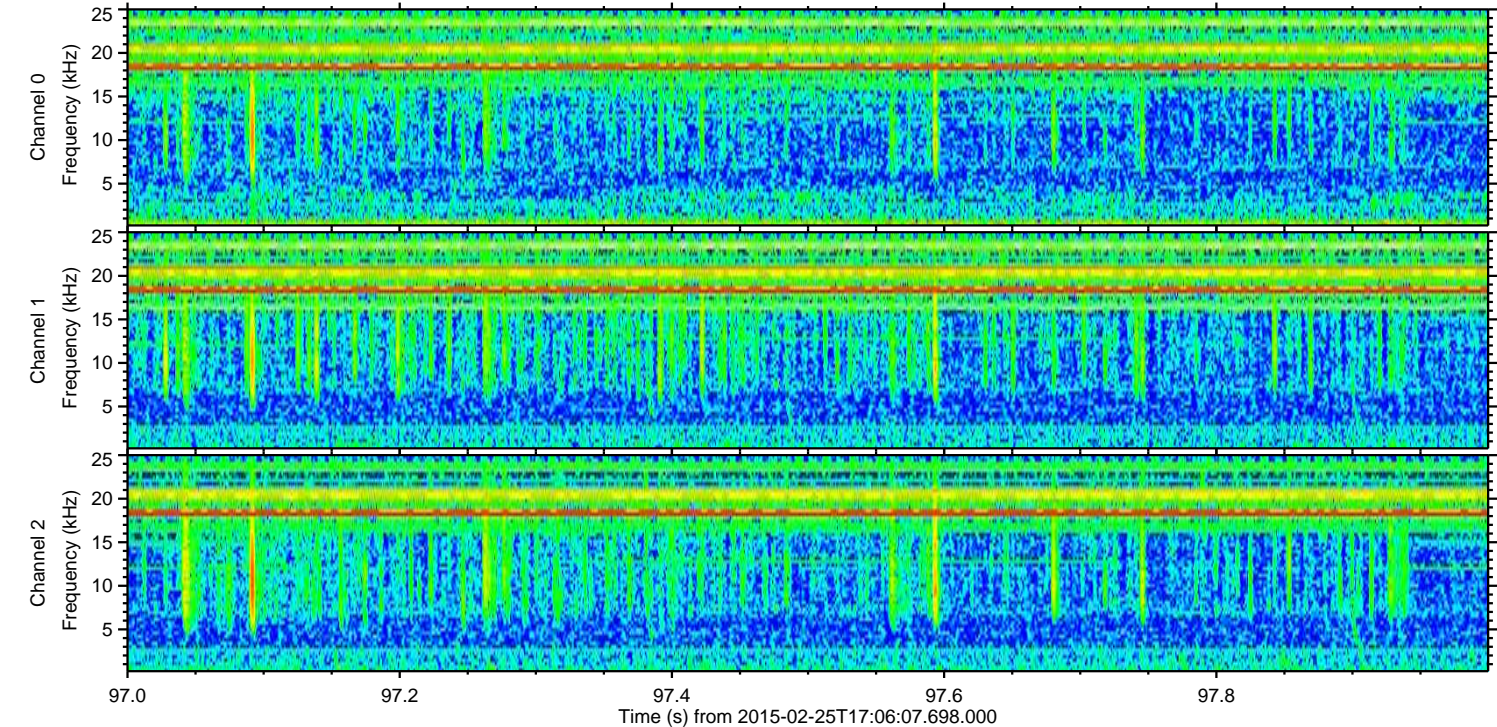
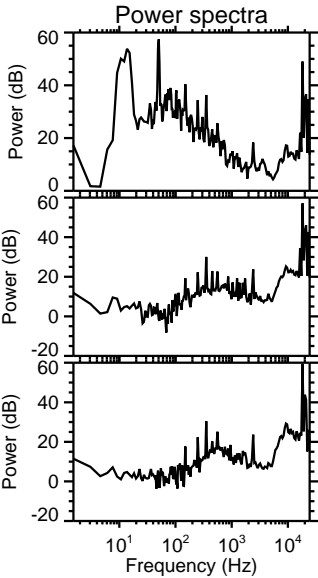
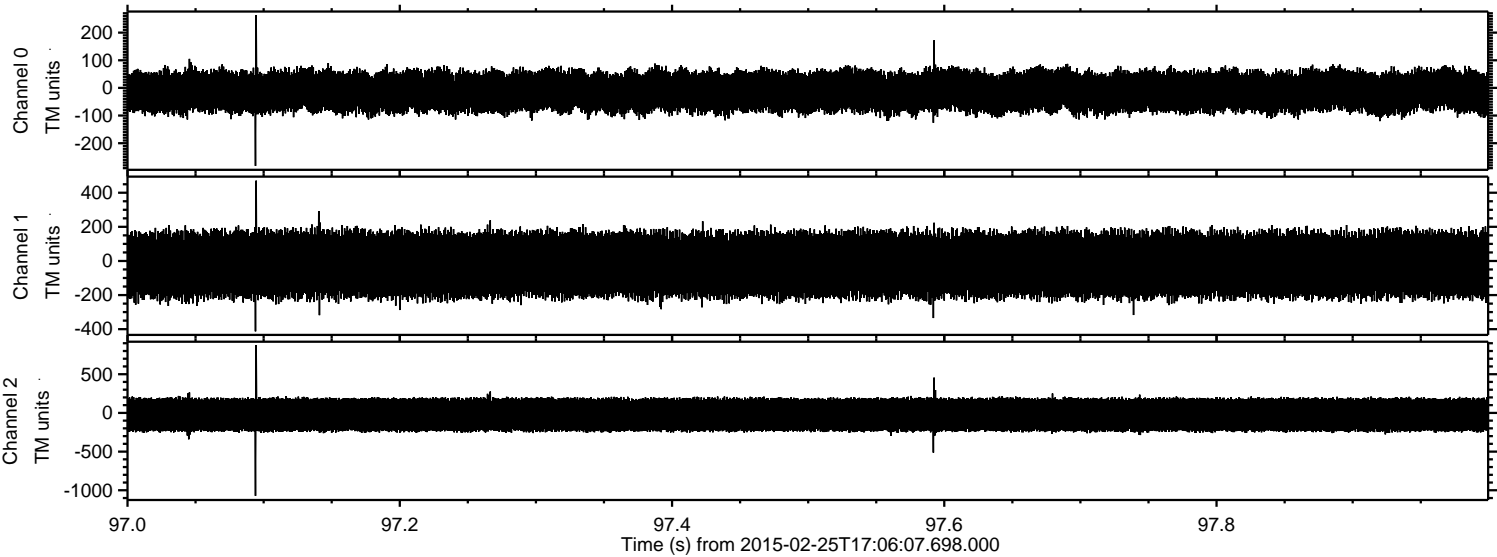


Channel 0
mn: -249
mx: 290
 μ : -13.1
 σ : 40.9

Channel 1
mn: -1136
mx: 992
 μ : -21.8
 σ : 106.7

Channel 2
mn: -508
mx: 309
 μ : -24.2
 σ : 127.0

Processed Tue Mar 3 22:27:27 2015 by ELM ver.2012-10-06 from 001__elm20150225_170606__dat00.bin



Processed Tue Mar 3 22:27:28 2015 by ELM ver.2012-10-06 from 001__elm20150225_170606__dat00.bin

