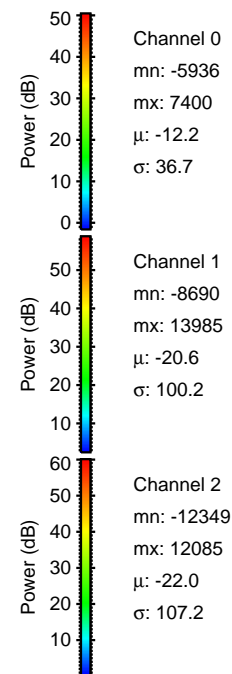
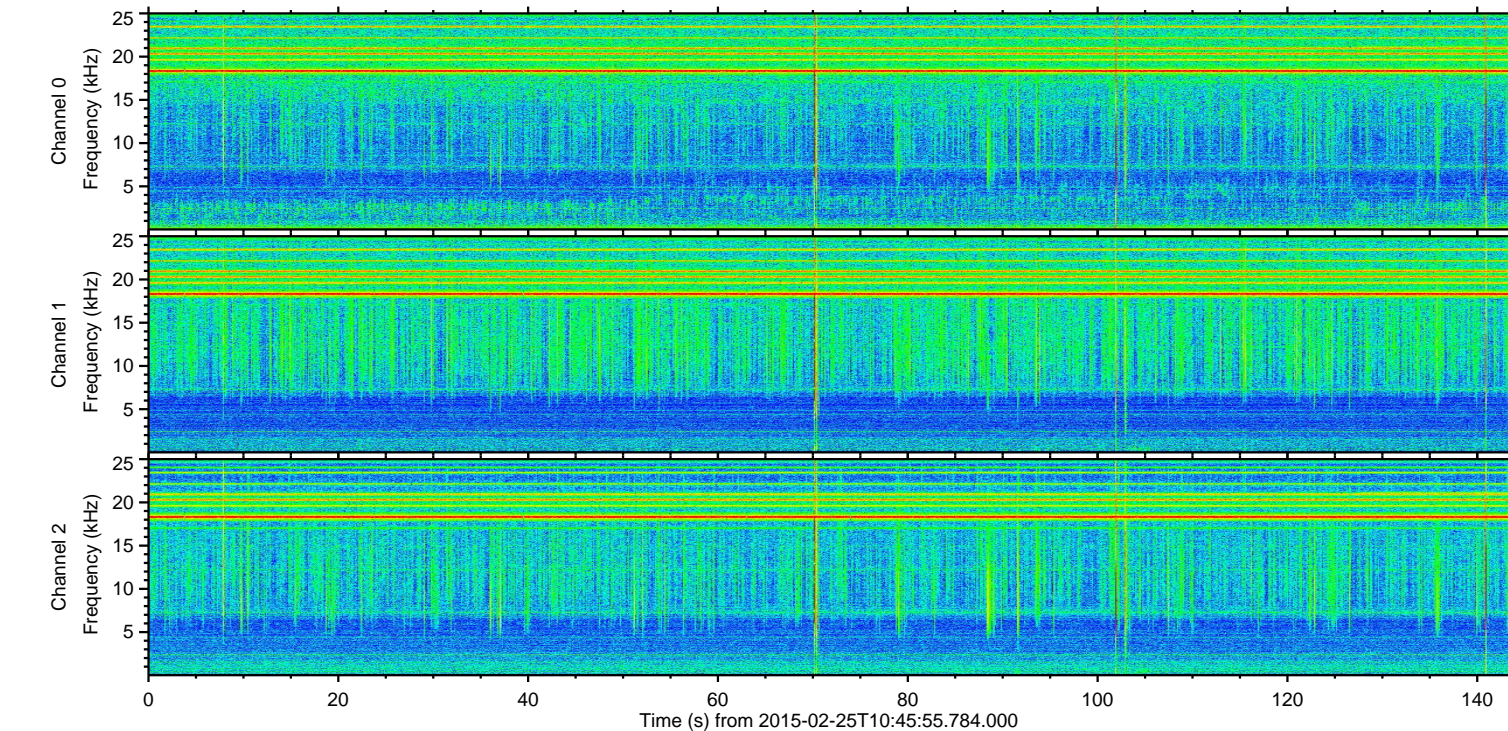
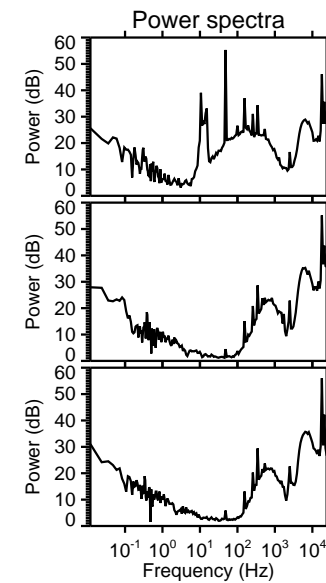
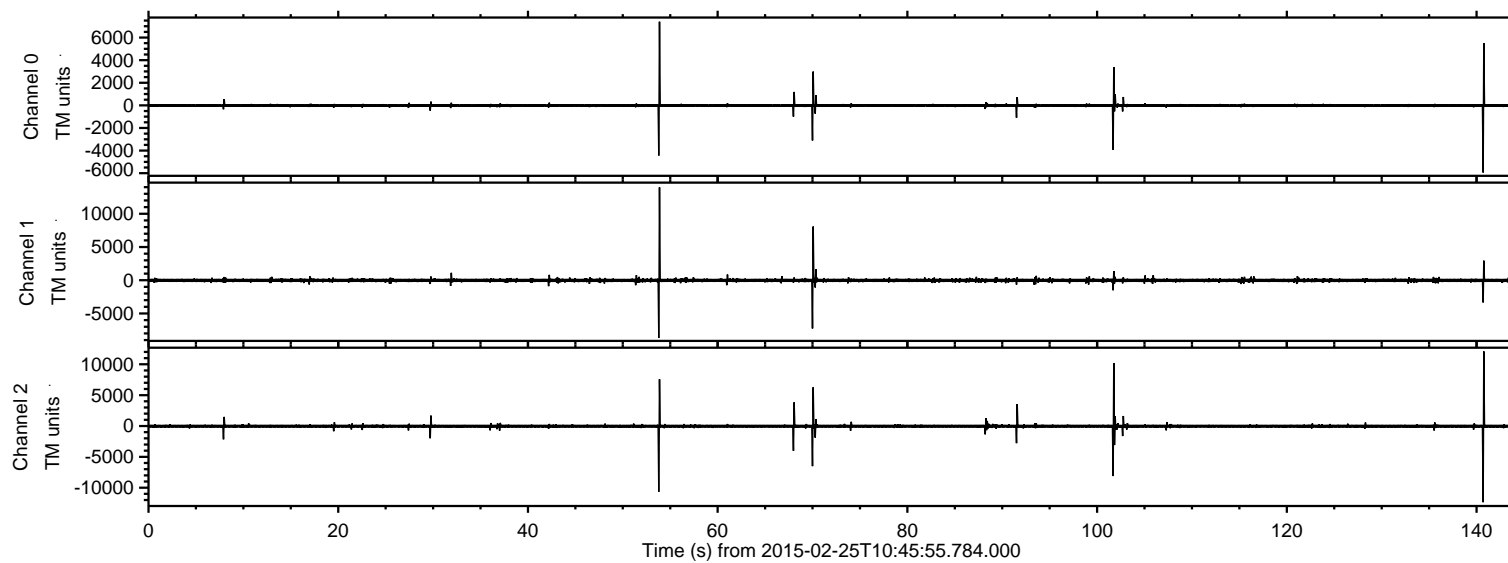


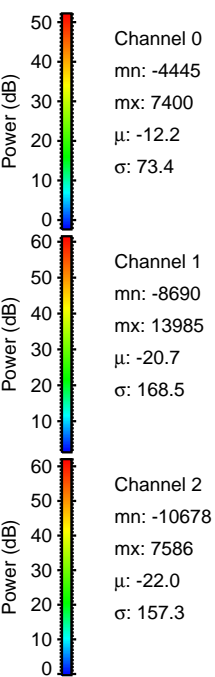
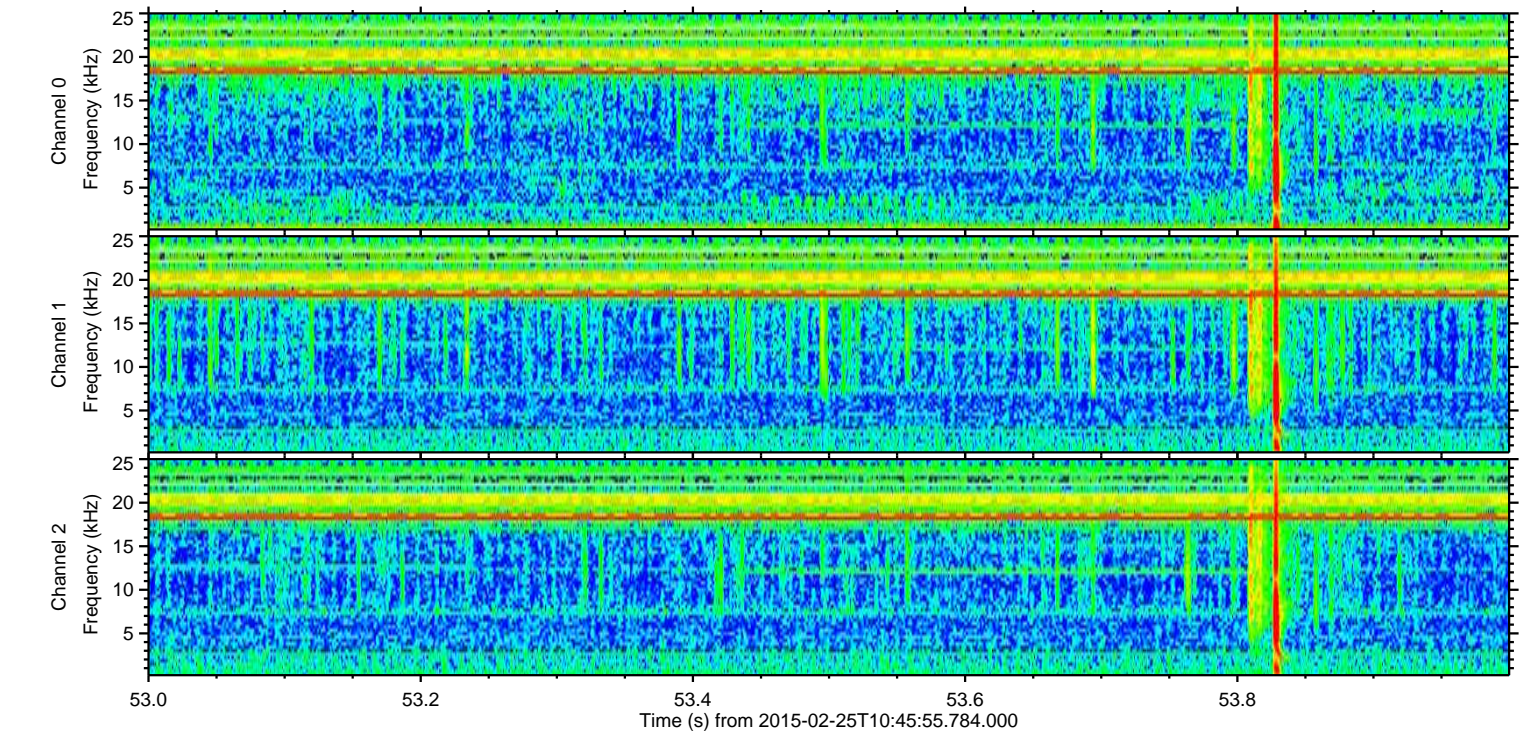
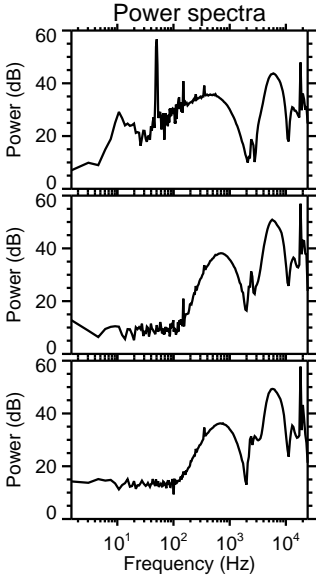
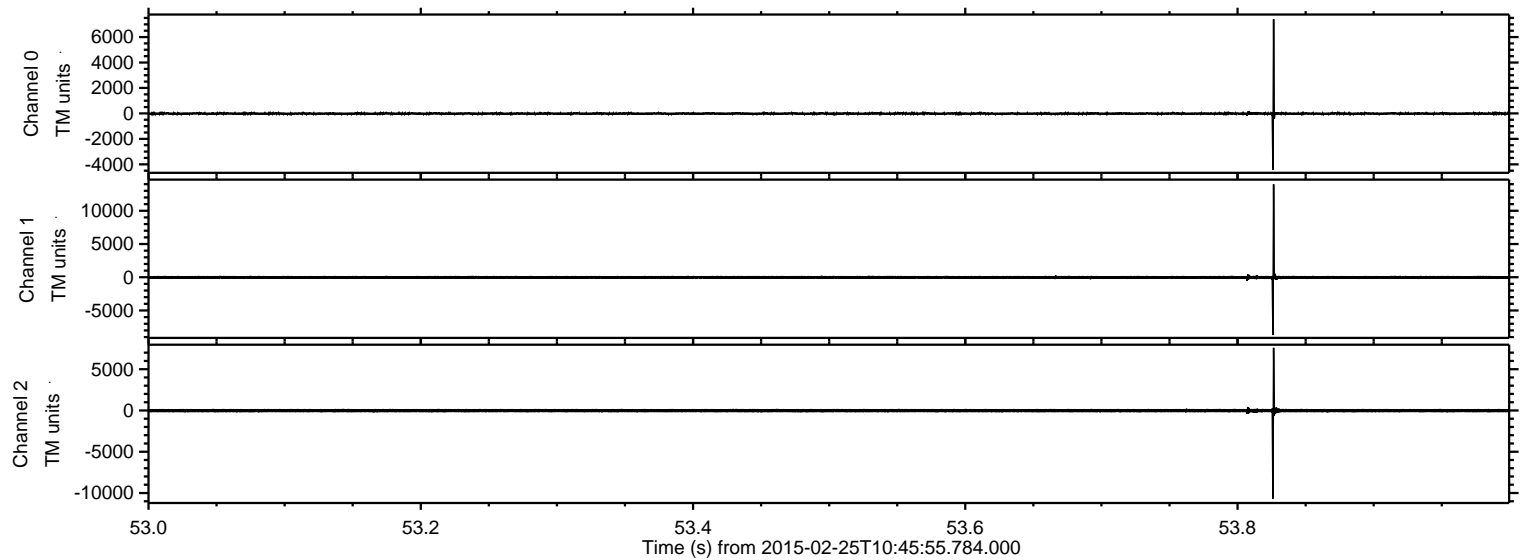
ELMAVAN 3D WAVEFORMS (Measured data sampled at 50 kHz) 49805 packets of 144 samples from 2015-02-25T10:45:55.784.000.

Processed Tue Mar 3 20:50:38 2015 by ELM ver.2012-10-06 from 001__elm20150225_104554__dat00.bin



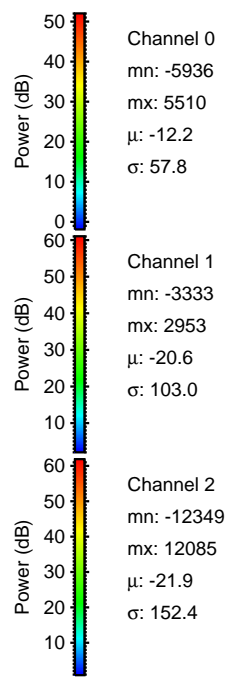
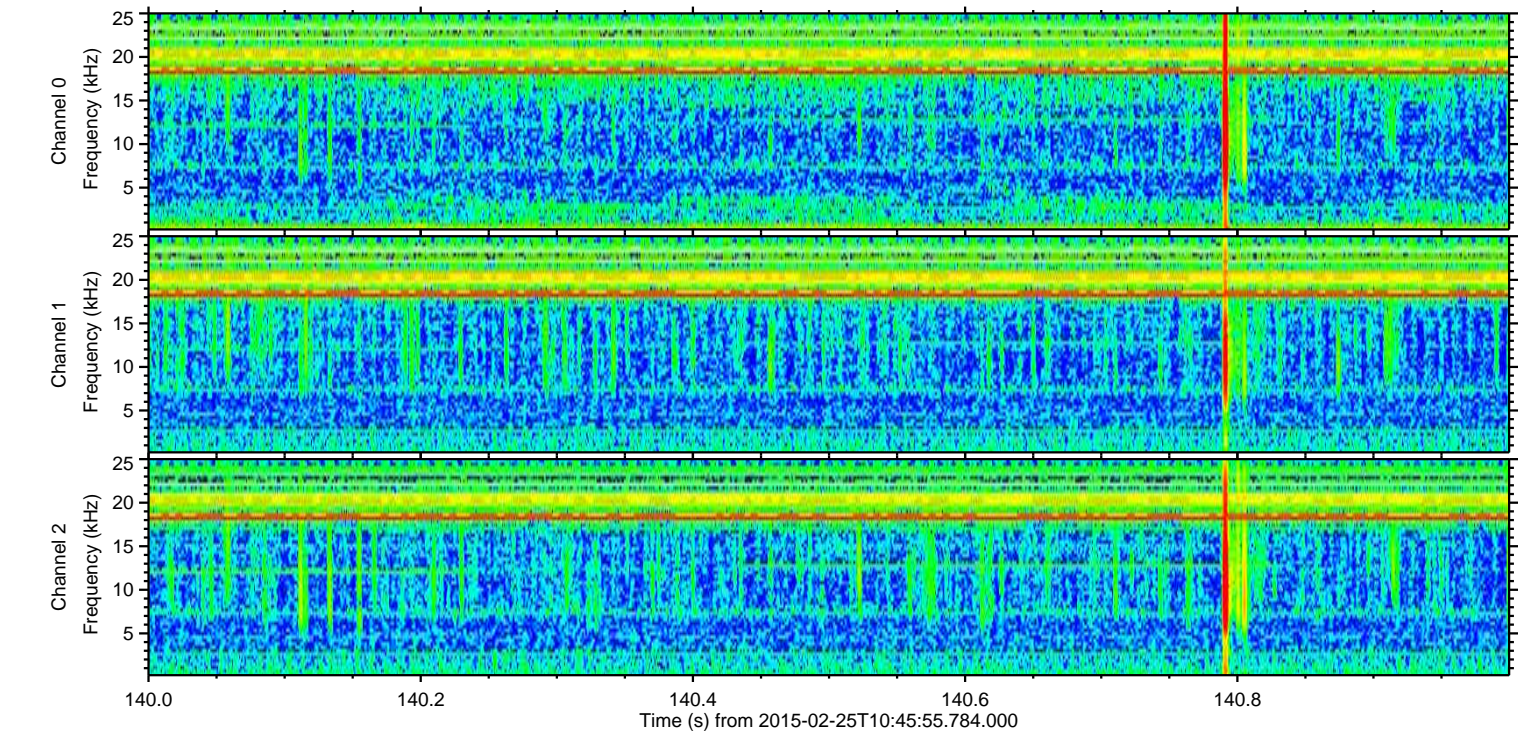
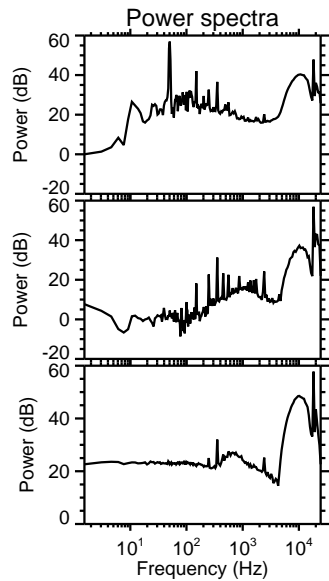
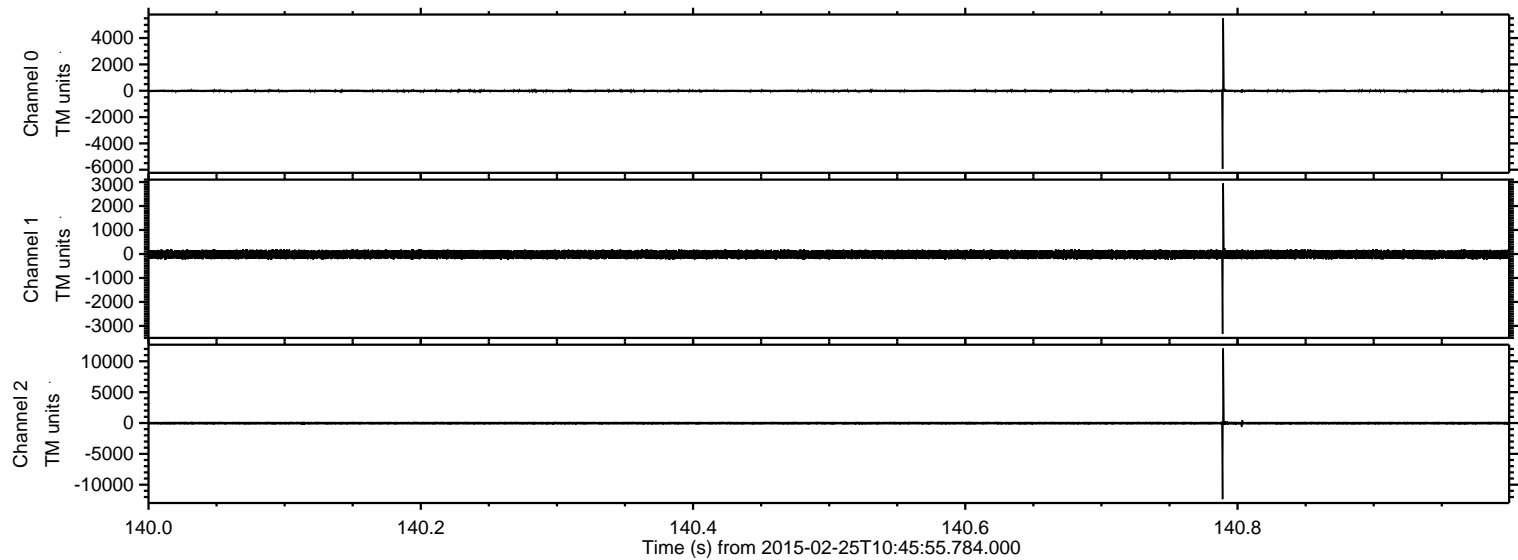
ELMAVAN 3D WAVEFORMS (Measured data sampled at 50 kHz) 49805 packets of 144 samples from 2015-02-25T10:45:55.784.000. Part 54/144

Processed Tue Mar 3 20:50:49 2015 by ELM ver.2012-10-06 from 001__elm20150225_104554__dat00.bin



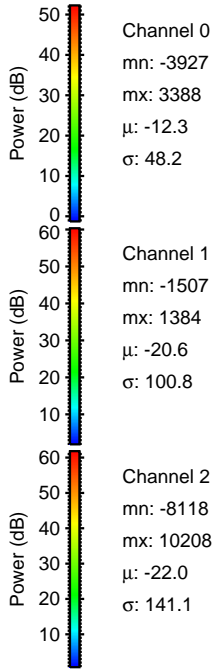
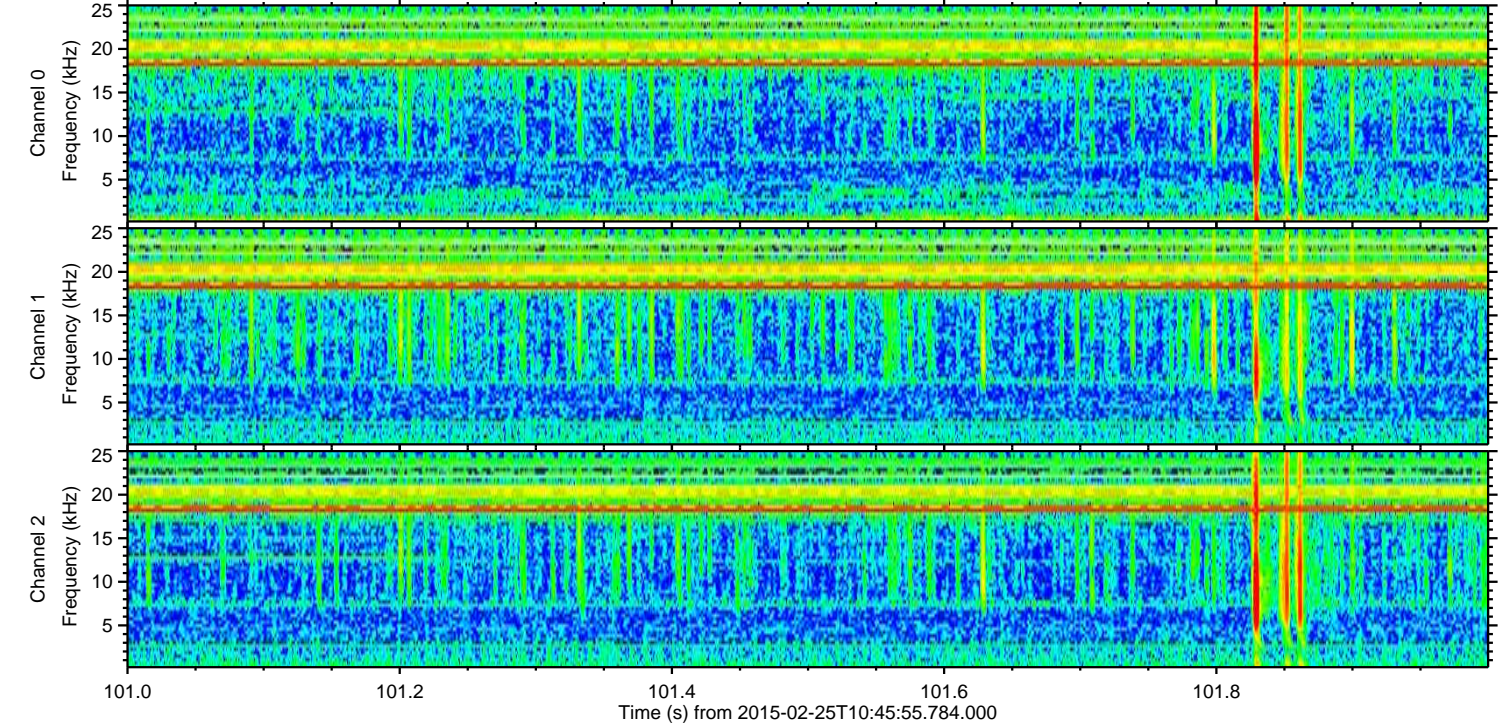
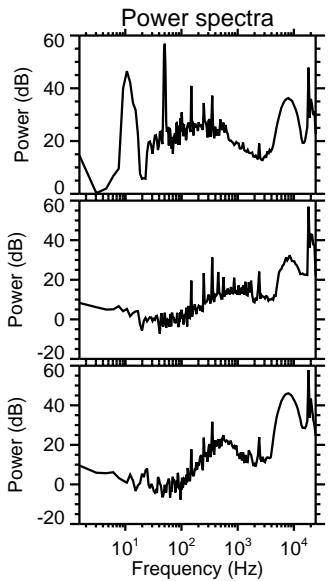
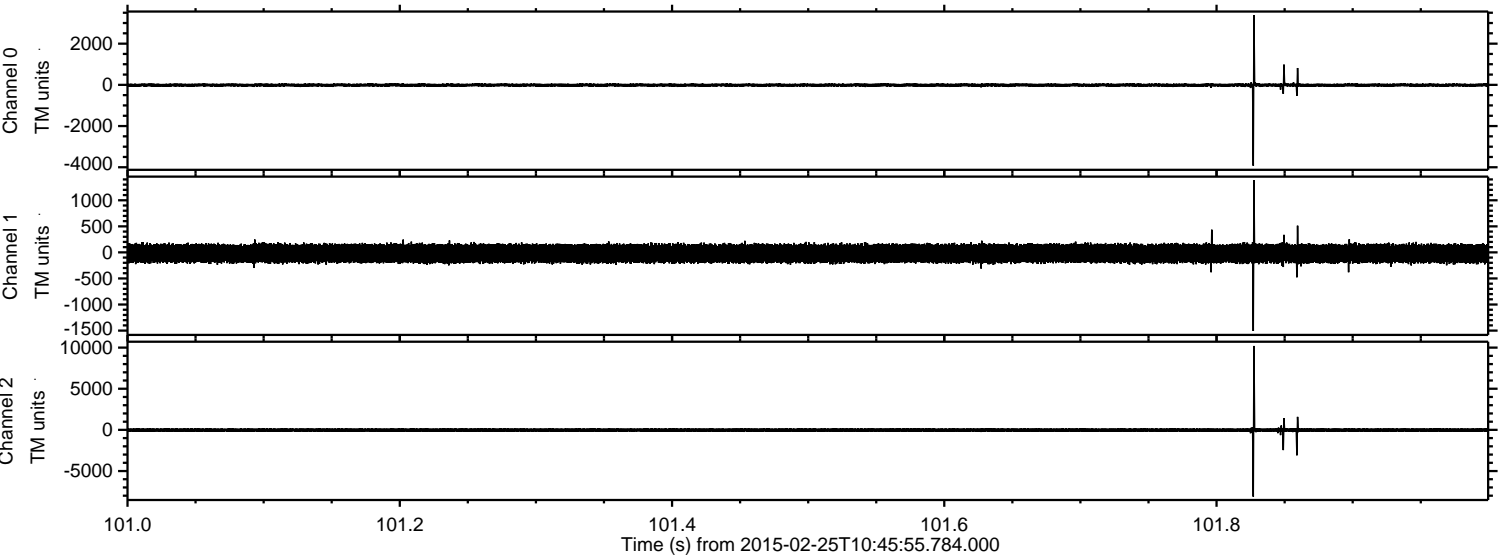
ELMAVAN 3D WAVEFORMS (Measured data sampled at 50 kHz) 49805 packets of 144 samples from 2015-02-25T10:45:55.784.000. Part 141/144

Processed Tue Mar 3 20:50:50 2015 by ELM ver.2012-10-06 from 001__elm20150225_104554__dat00.bin

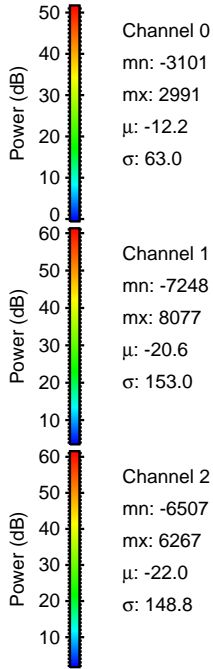
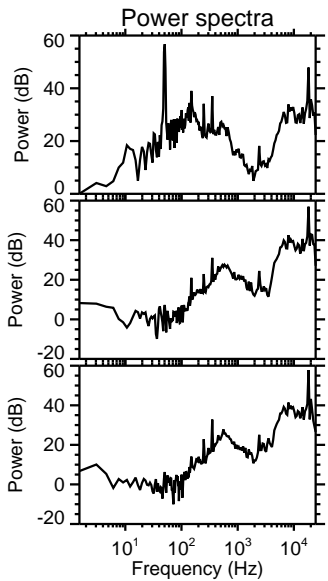
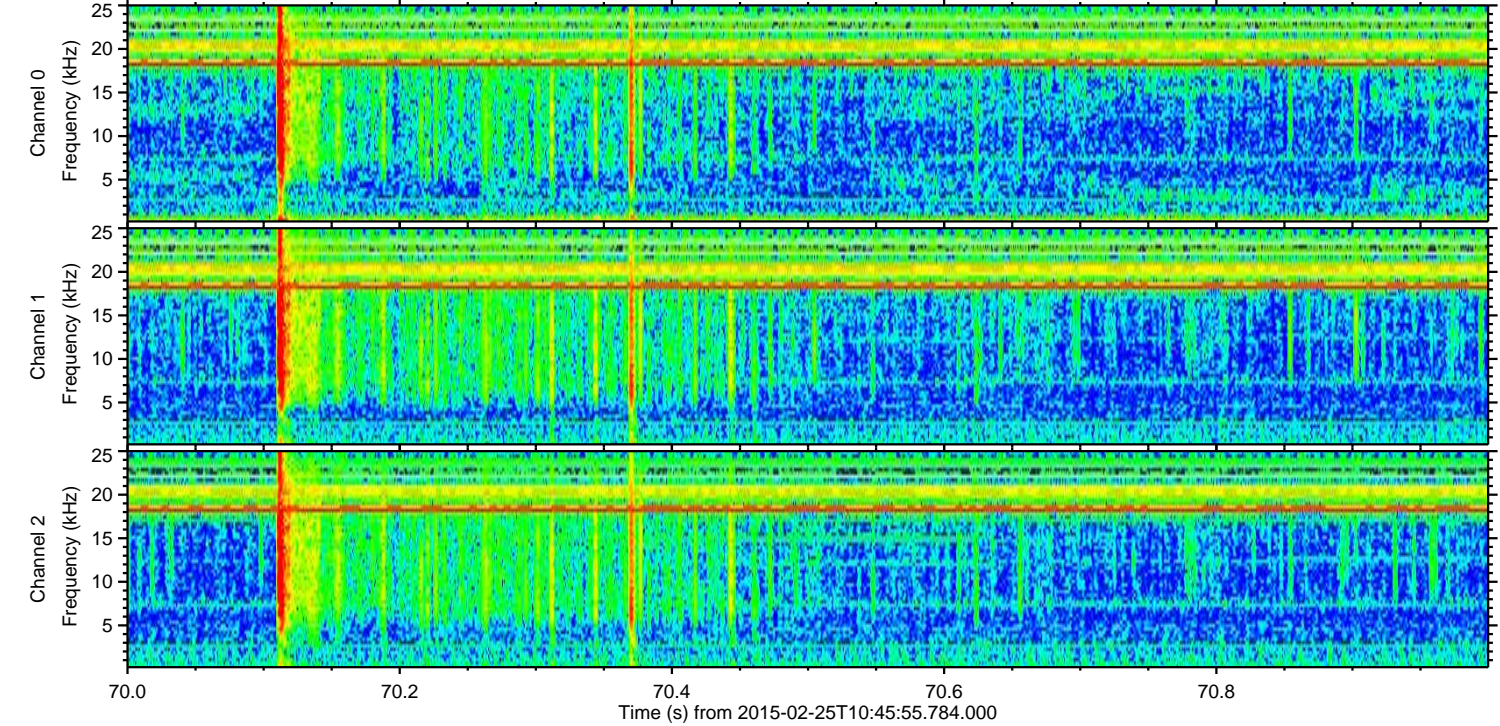
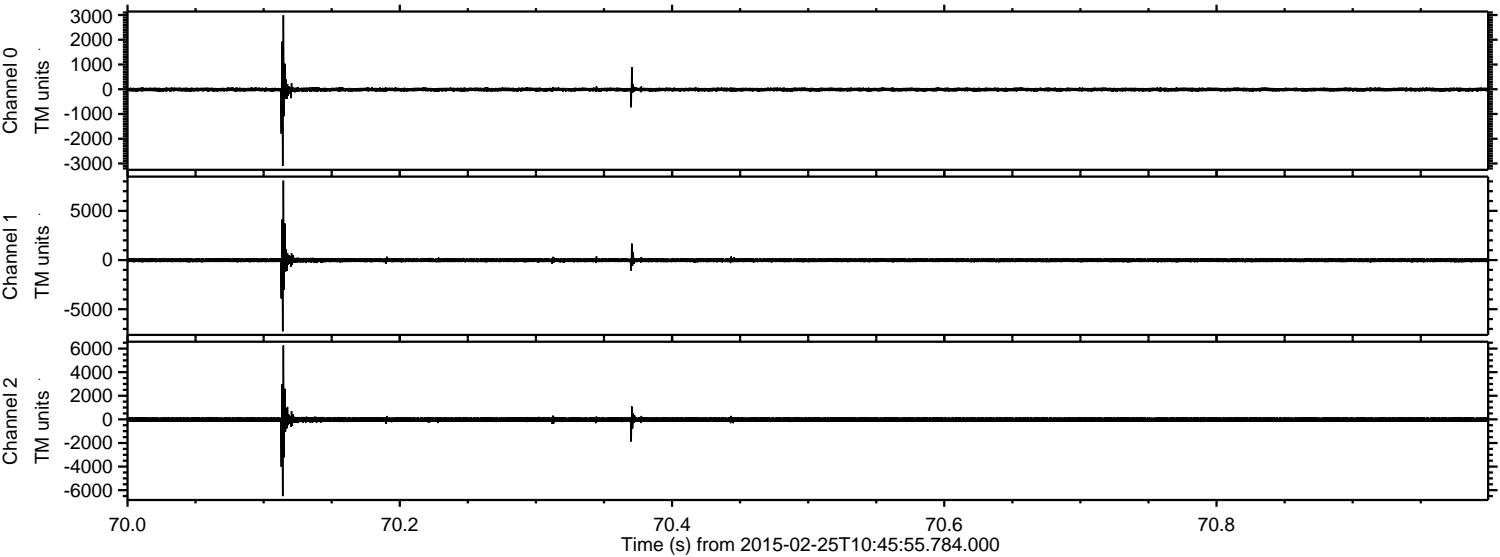


ELMAVAN 3D WAVEFORMS (Measured data sampled at 50 kHz) 49805 packets of 144 samples from 2015-02-25T10:45:55.784.000. Part 102/144

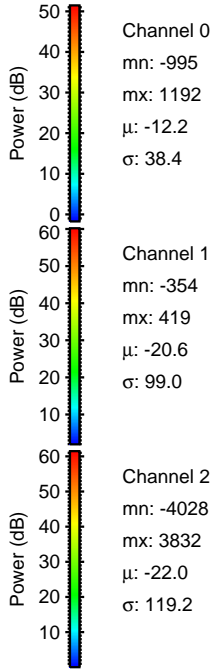
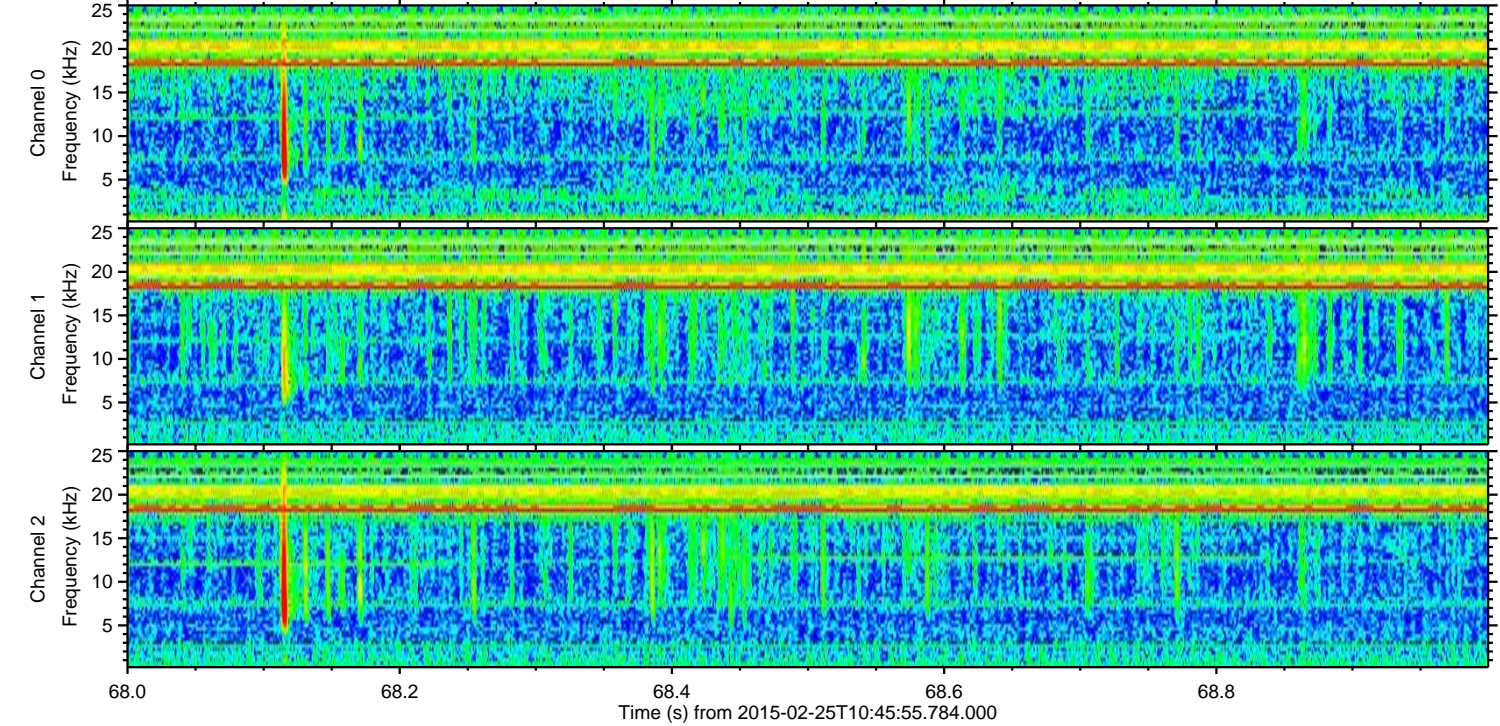
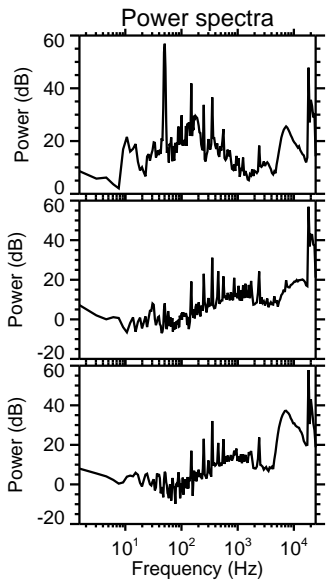
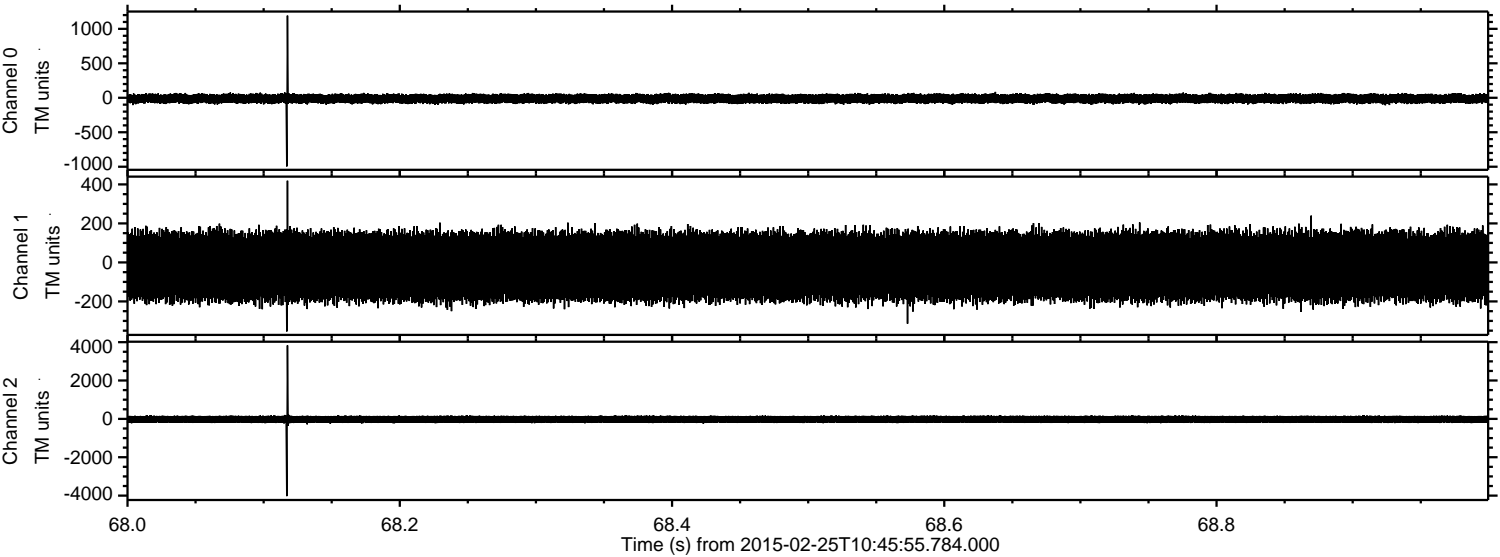
Processed Tue Mar 3 20:50:51 2015 by ELM ver.2012-10-06 from 001__elm20150225_104554__dat00.bin



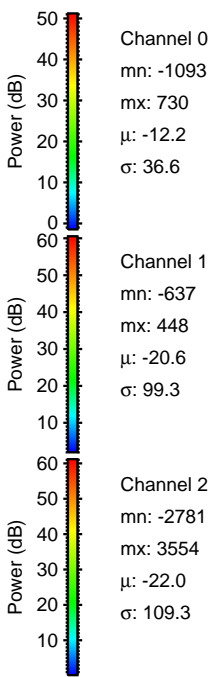
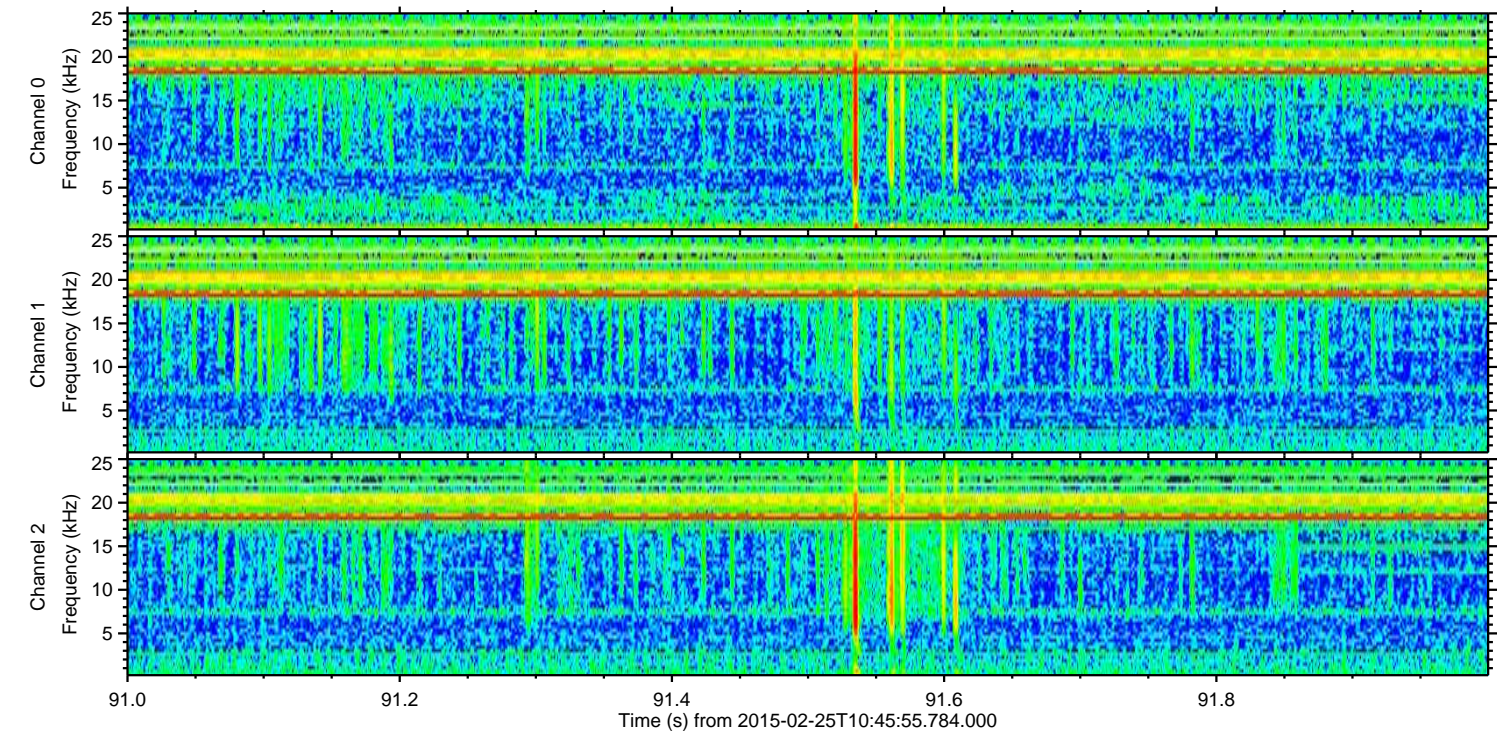
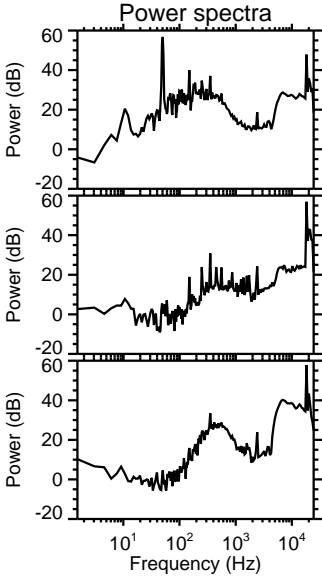
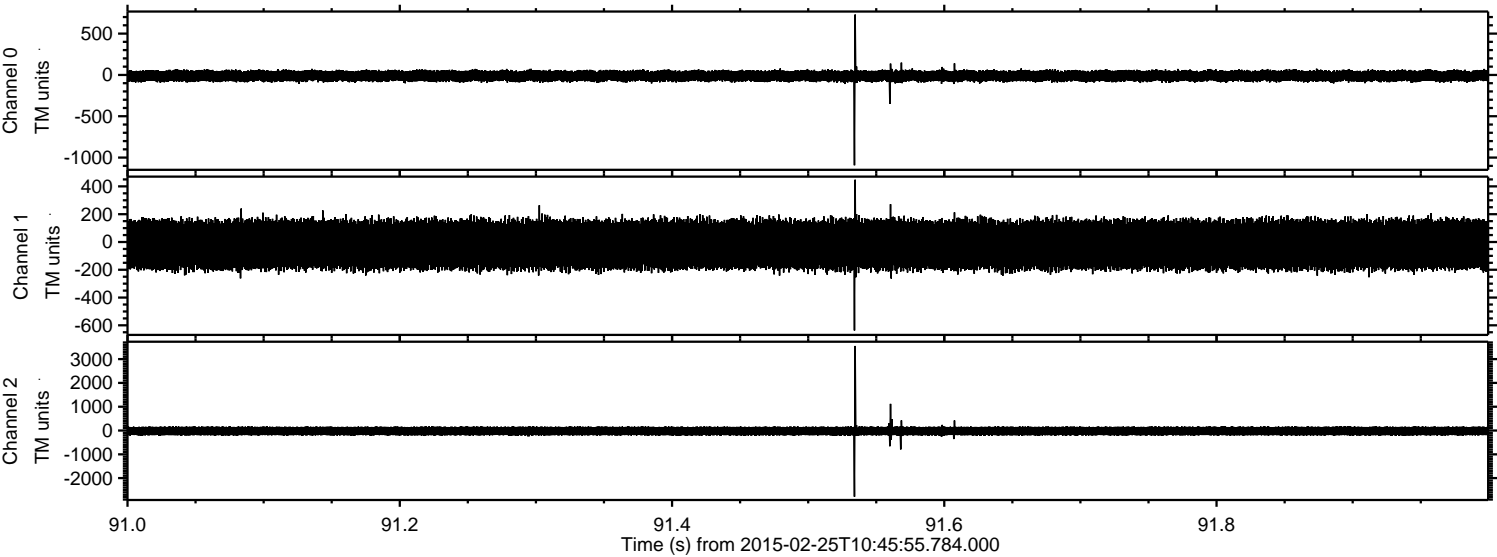
Processed Tue Mar 3 20:50:52 2015 by ELM ver.2012-10-06 from 001__elm20150225_104554__dat00.bin



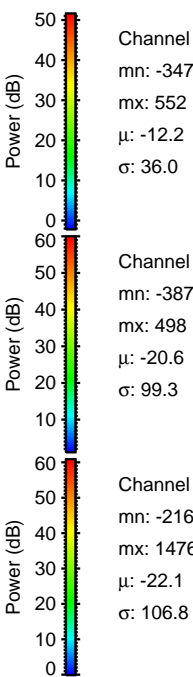
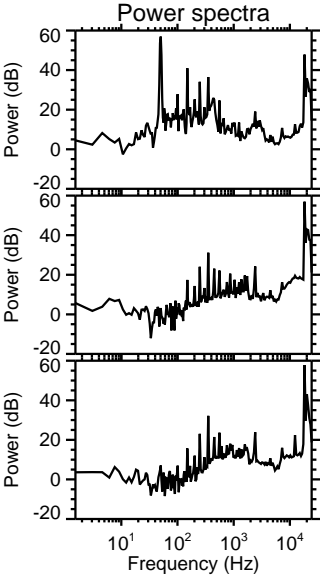
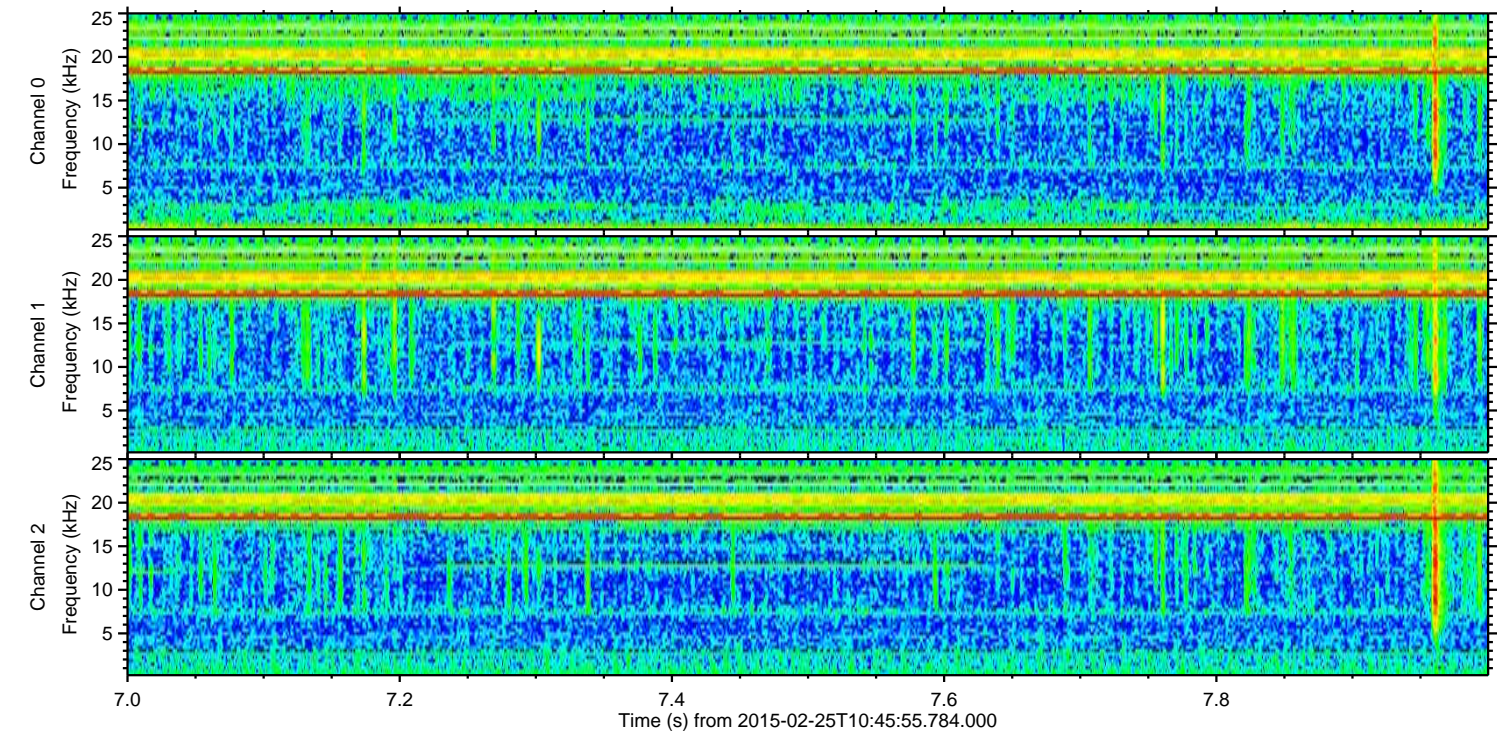
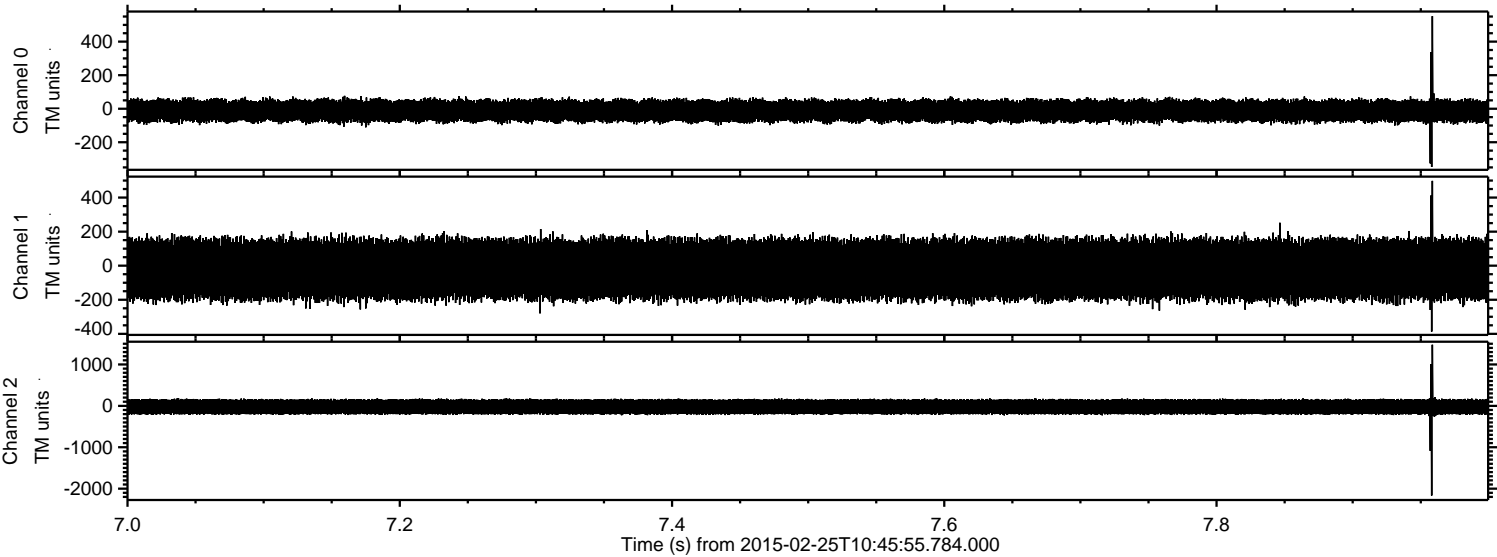
Processed Tue Mar 3 20:50:53 2015 by ELM ver.2012-10-06 from 001__elm20150225_104554__dat00.bin



Processed Tue Mar 3 20:50:54 2015 by ELM ver.2012-10-06 from 001__elm20150225_104554__dat00.bin



Processed Tue Mar 3 20:50:55 2015 by ELM ver.2012-10-06 from 001__elm20150225_104554__dat00.bin

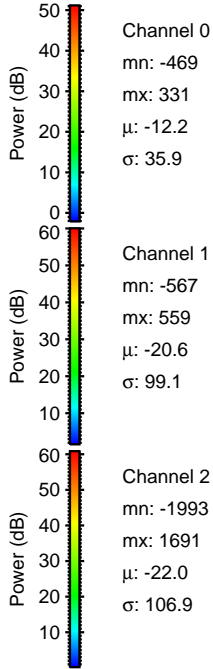
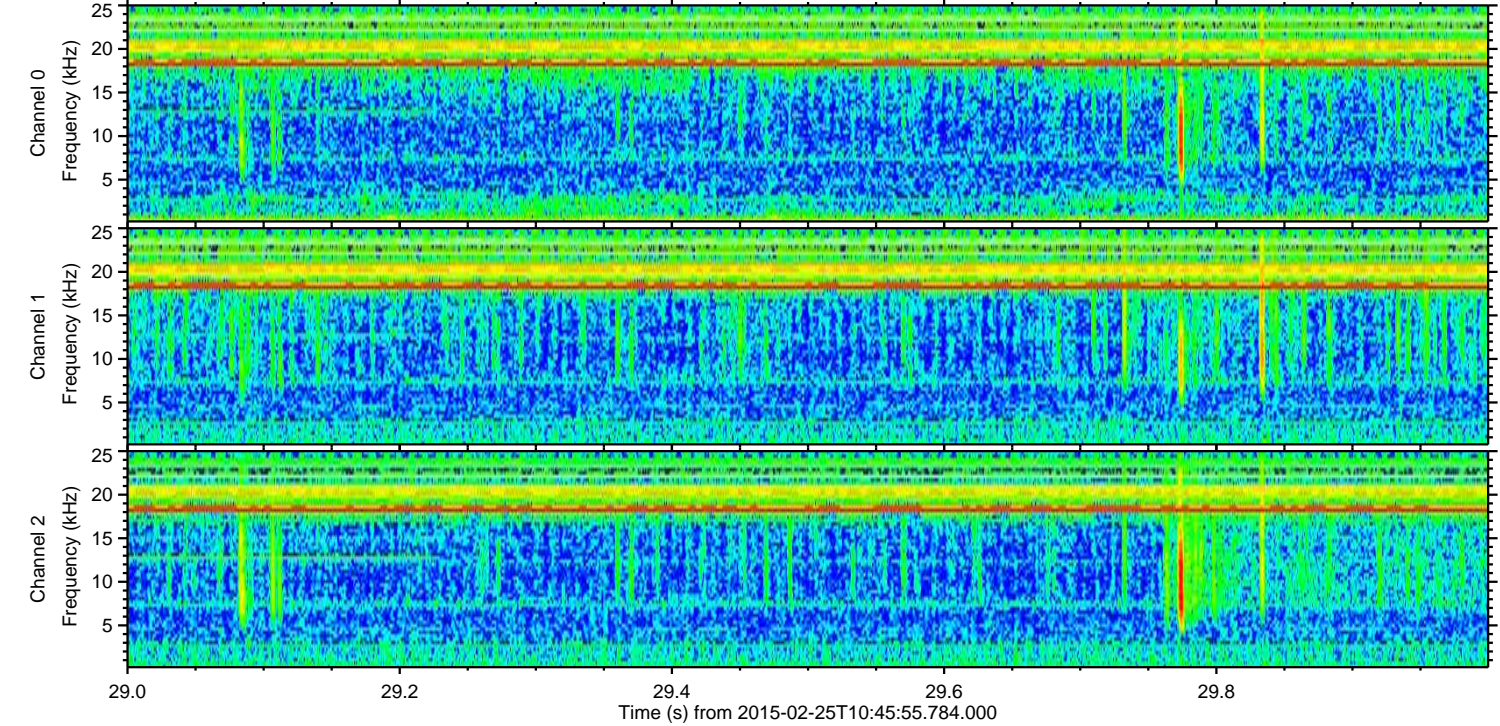
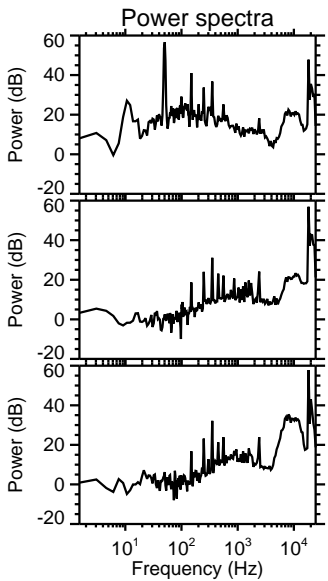
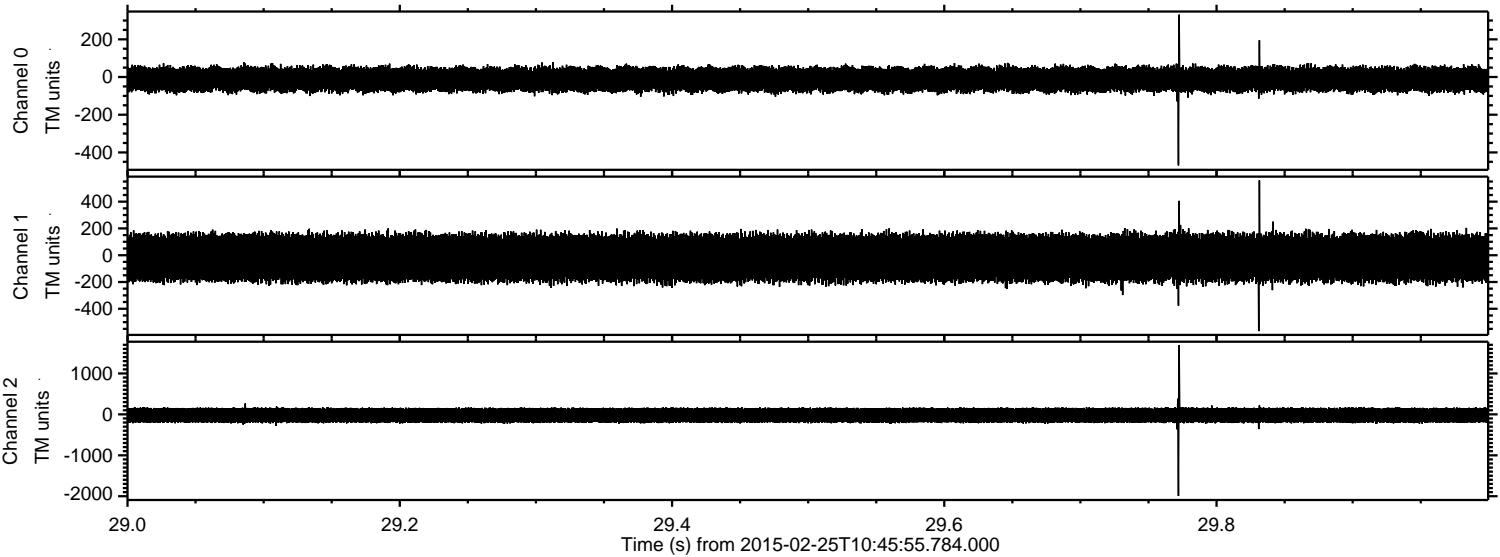


Channel 0
mn: -347
mx: 552
 μ : -12.2
 σ : 36.0

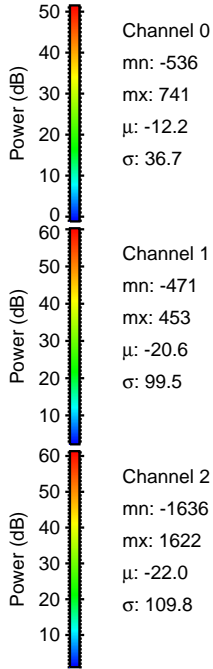
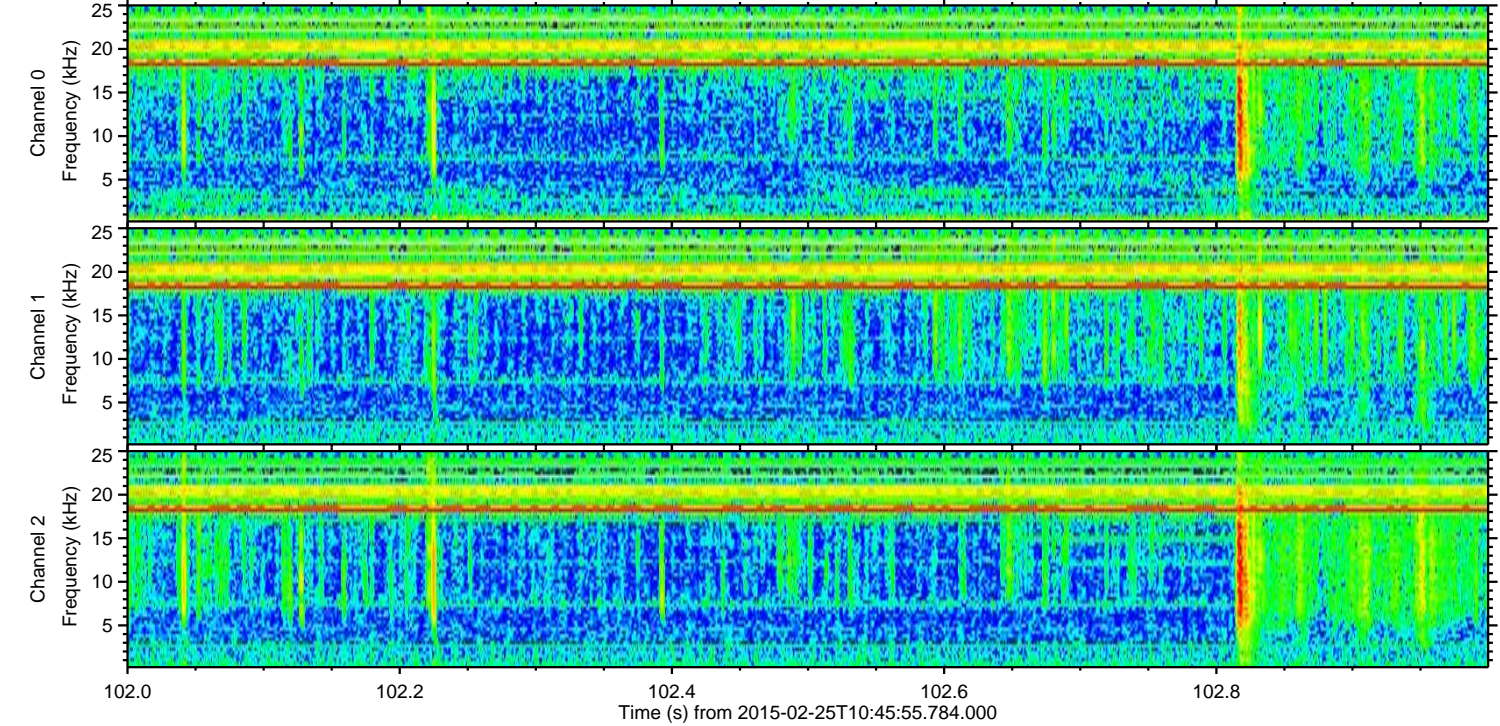
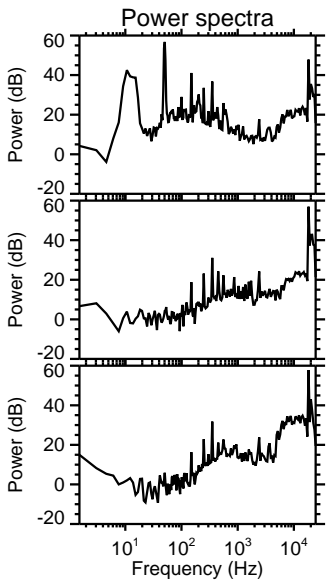
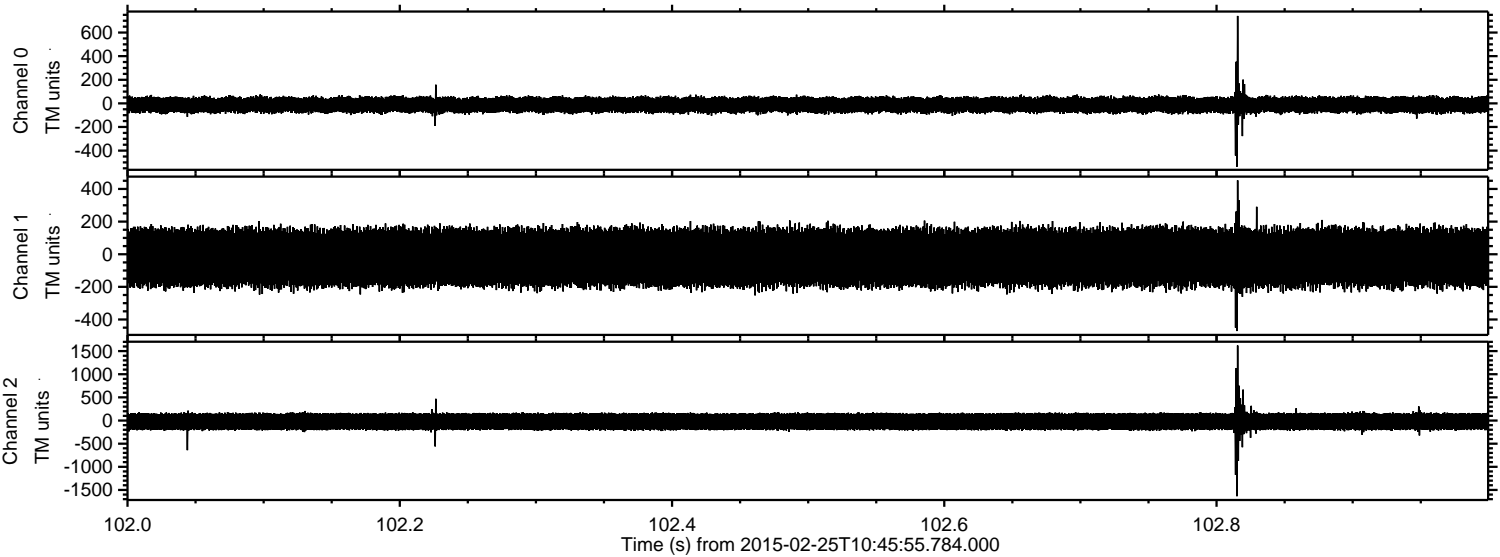
Channel 1
mn: -387
mx: 498
 μ : -20.6
 σ : 99.3

Channel 2
mn: -2166
mx: 1476
 μ : -22.1
 σ : 106.8

Processed Tue Mar 3 20:50:56 2015 by ELM ver.2012-10-06 from 001__elm20150225_104554__dat00.bin



Processed Tue Mar 3 20:50:57 2015 by ELM ver.2012-10-06 from 001__elm20150225_104554__dat00.bin



Processed Tue Mar 3 20:50:58 2015 by ELM ver.2012-10-06 from 001__elm20150225_104554__dat00.bin

