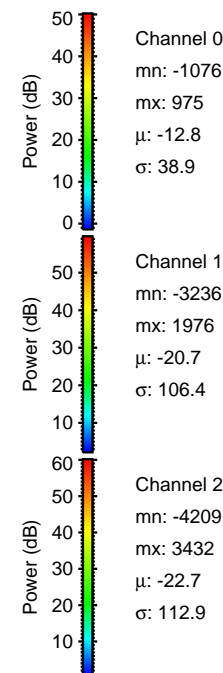
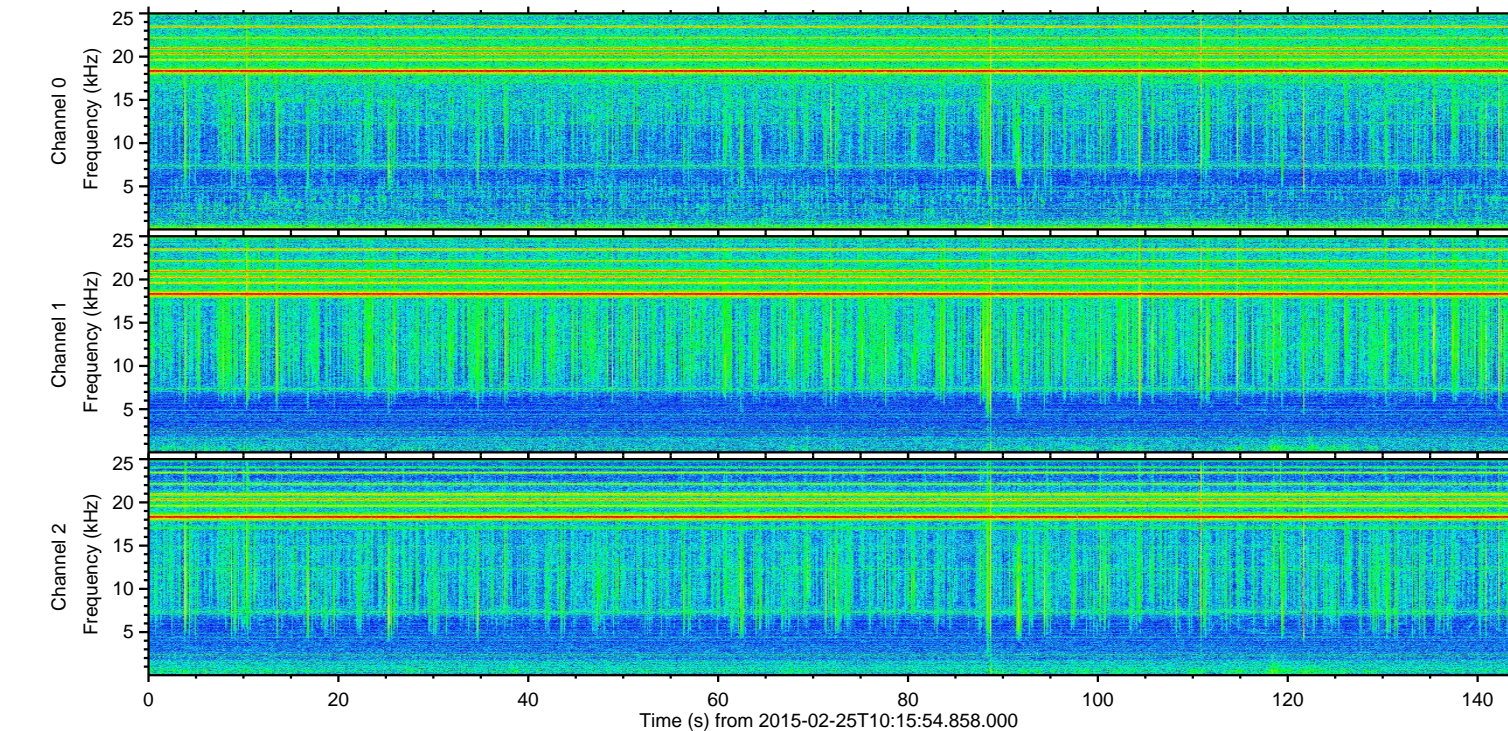
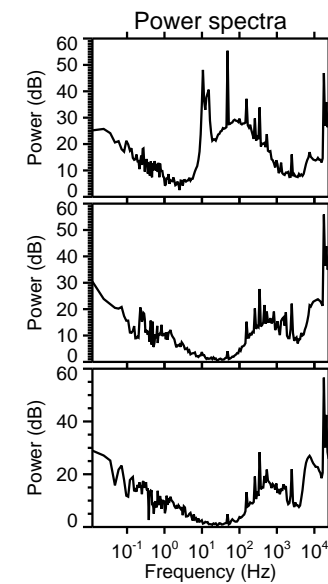
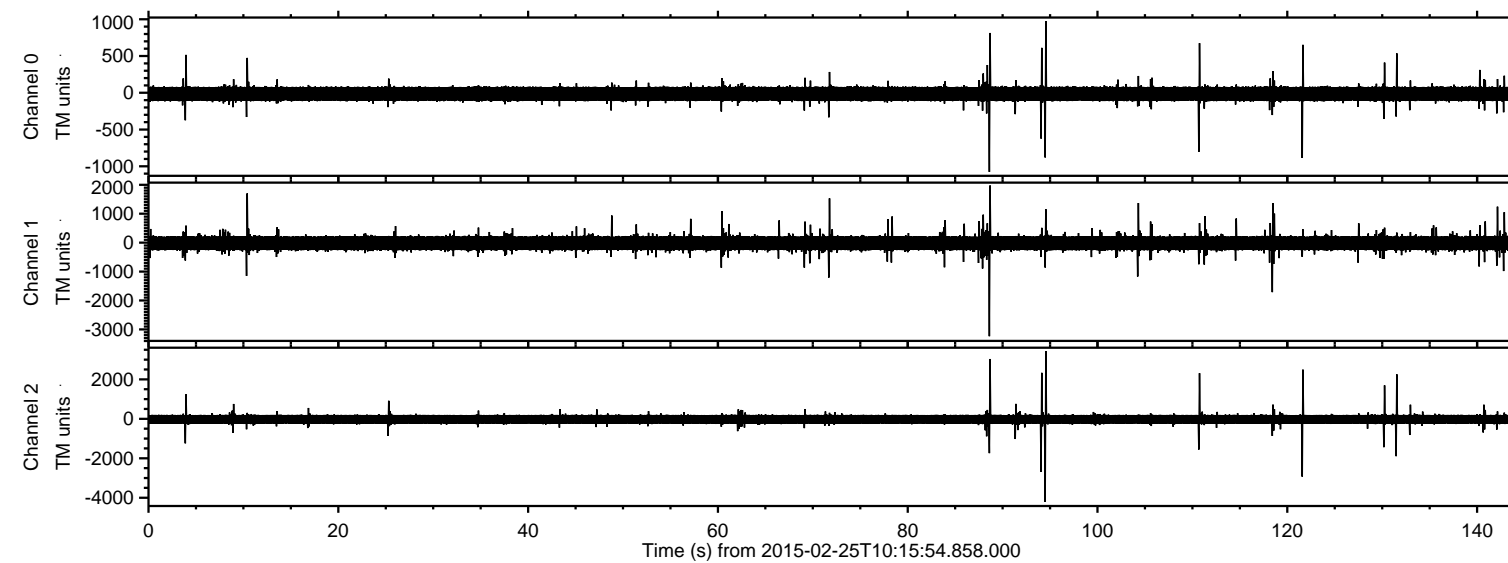
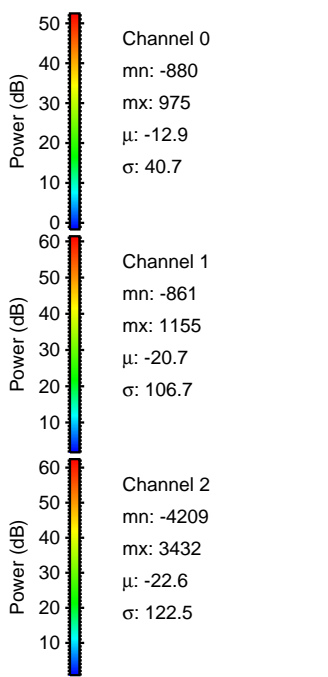
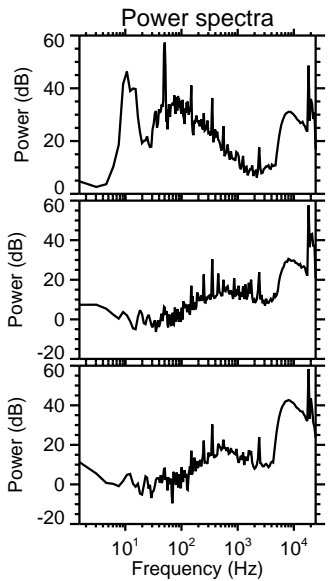
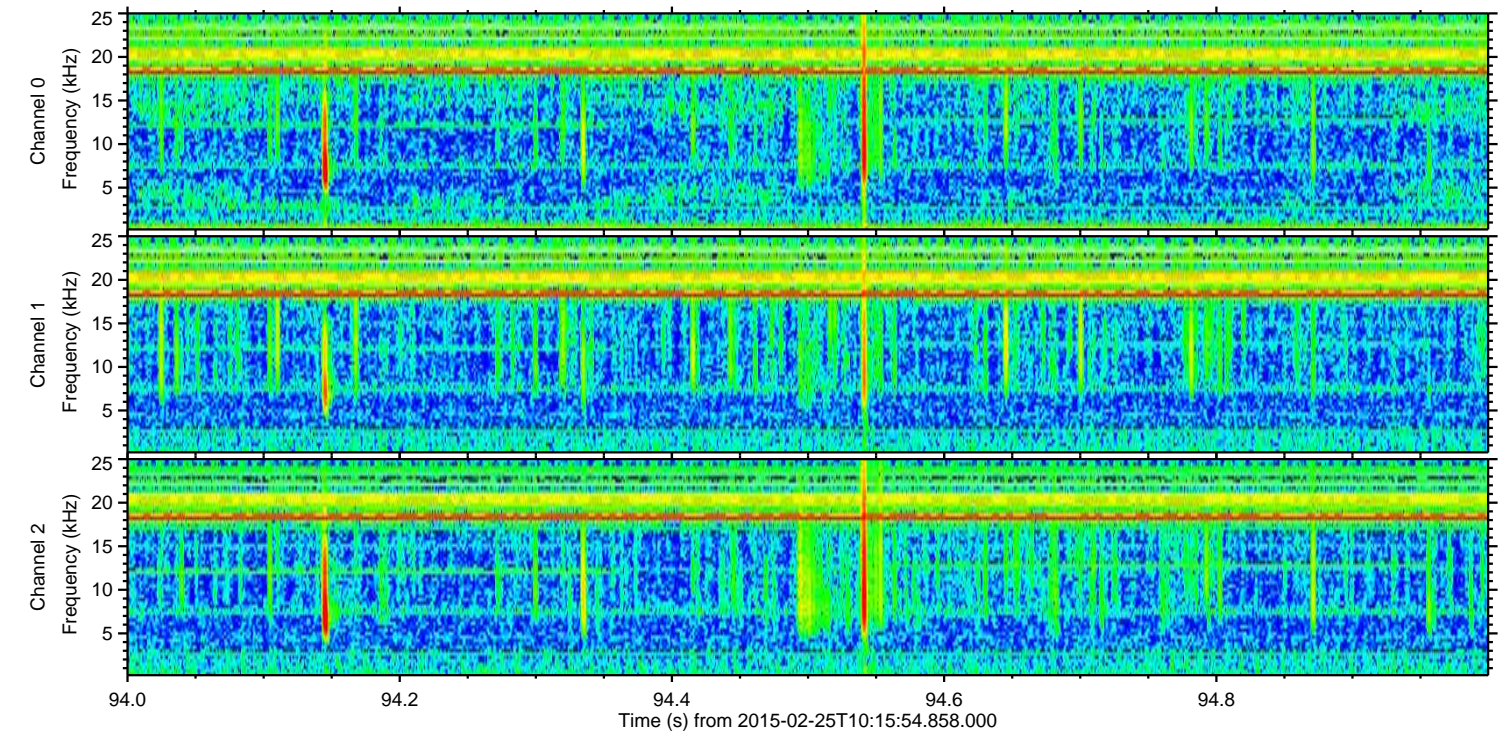
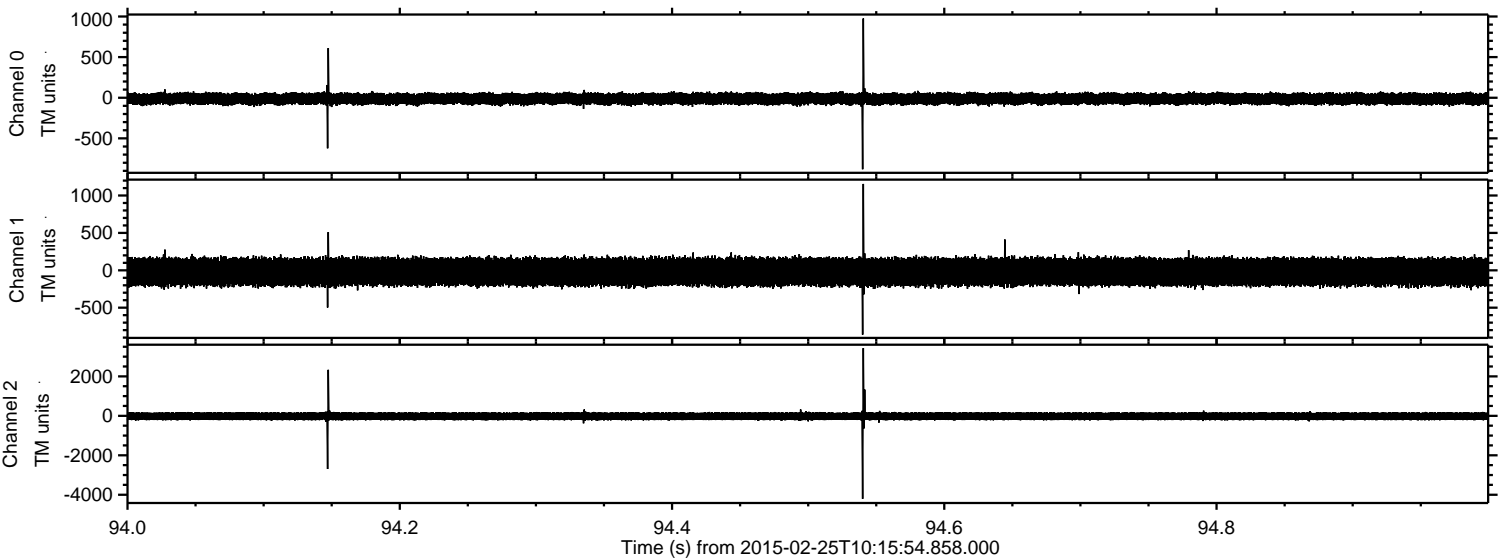


ELMAVAN 3D WAVEFORMS (Measured data sampled at 50 kHz) 49783 packets of 144 samples from 2015-02-25T10:15:54.858.000.

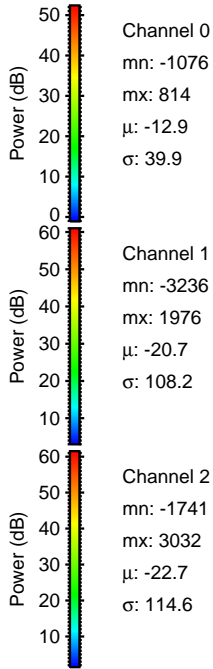
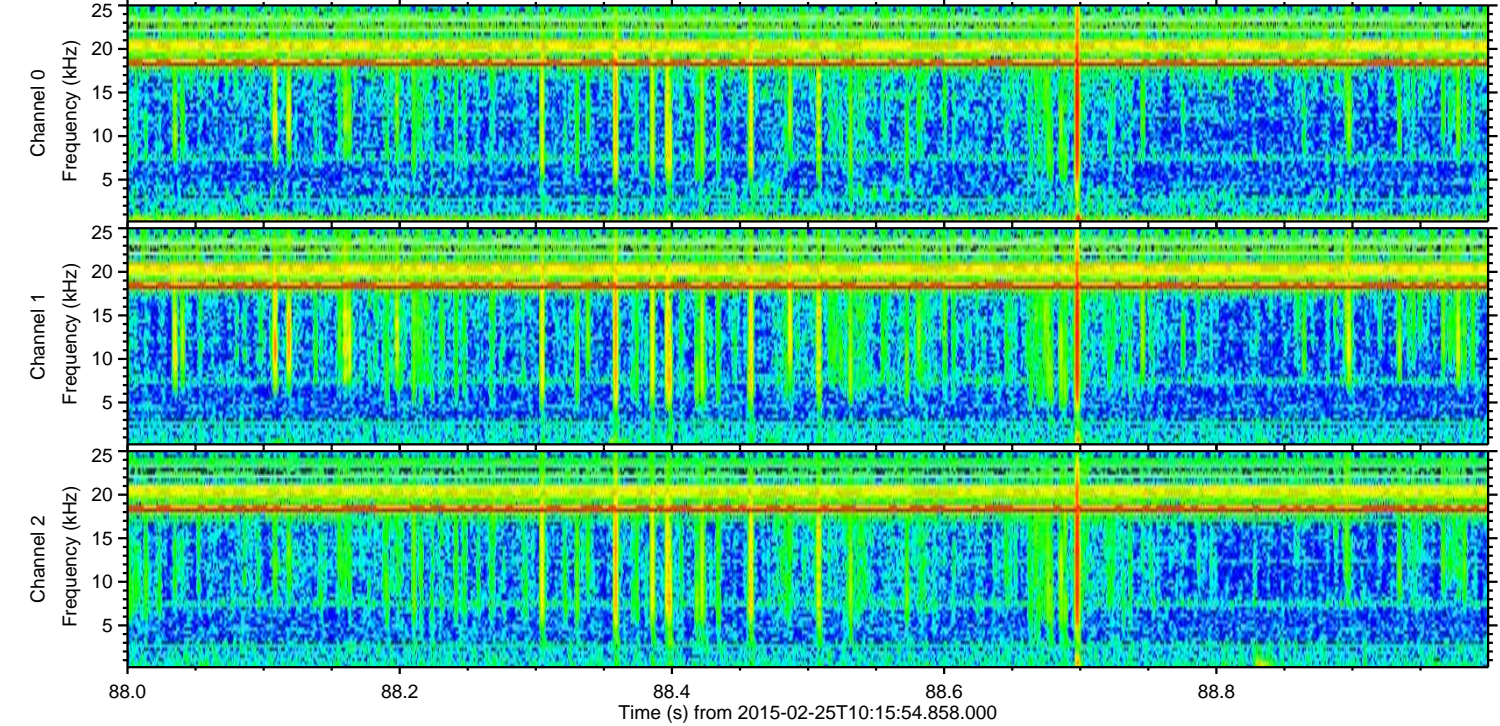
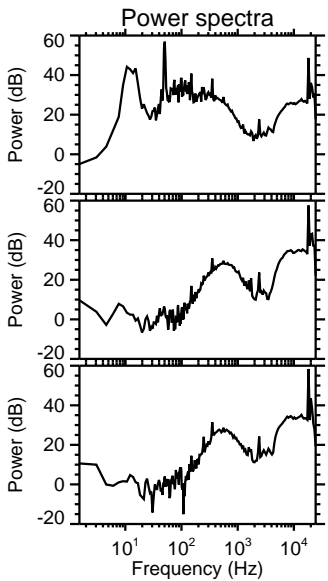
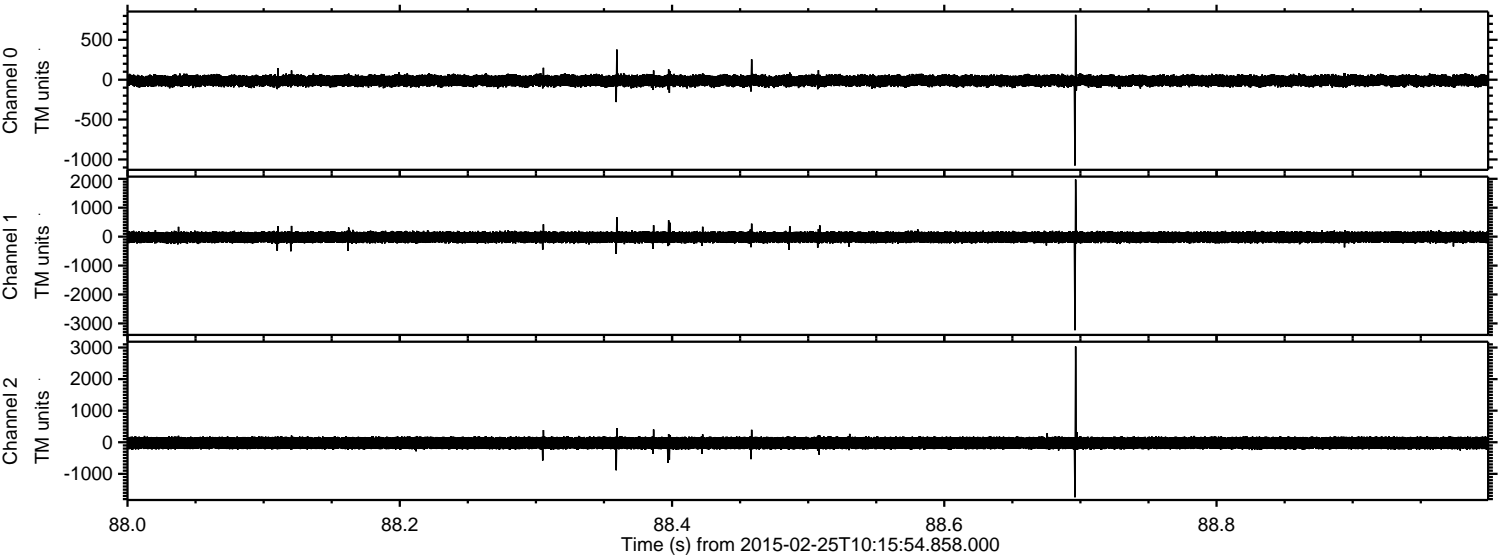
Processed Tue Mar 3 20:42:01 2015 by ELM ver.2012-10-06 from 001__elm20150225_101553__dat00.bin



Processed Tue Mar 3 20:42:13 2015 by ELM ver.2012-10-06 from 001__elm20150225_101553__dat00.bin

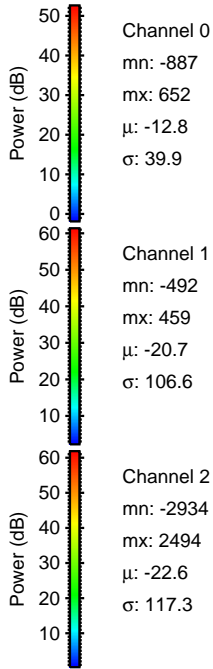
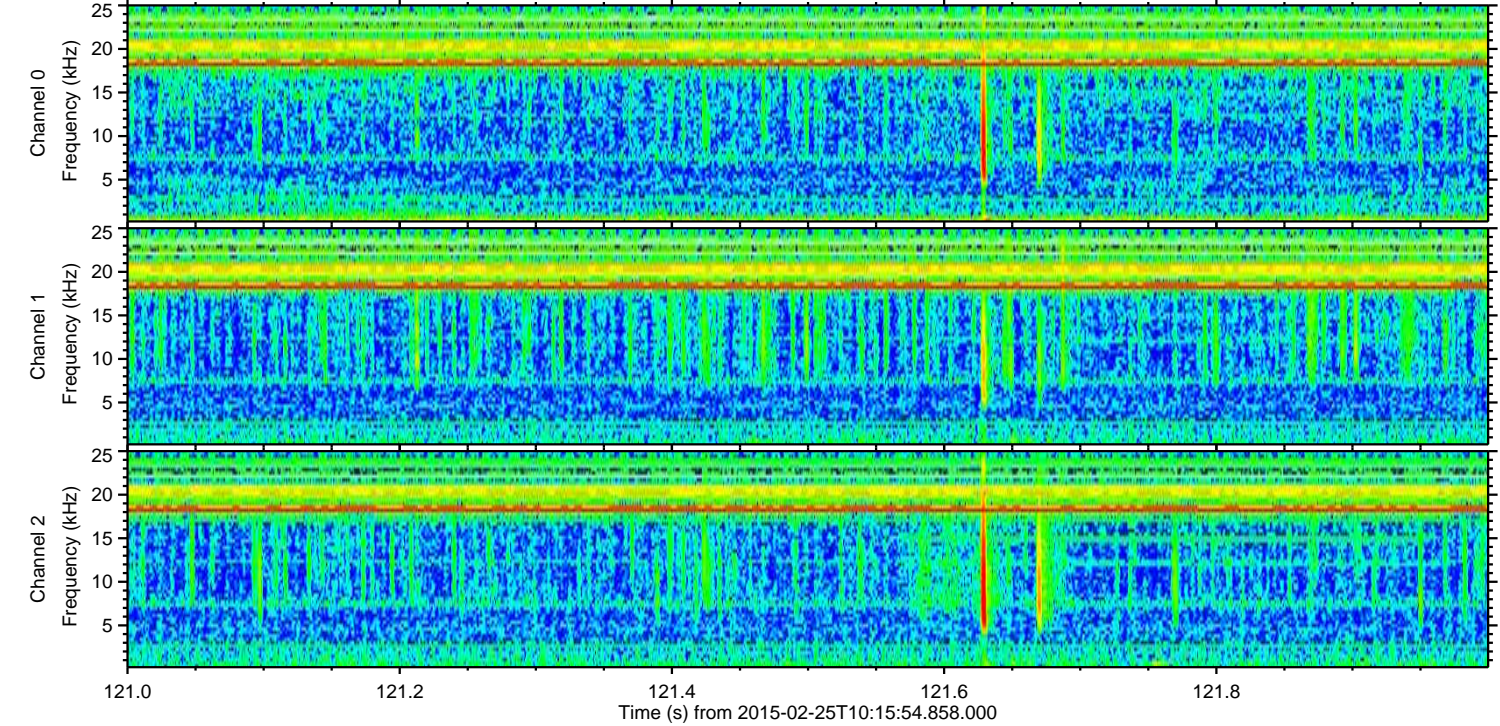
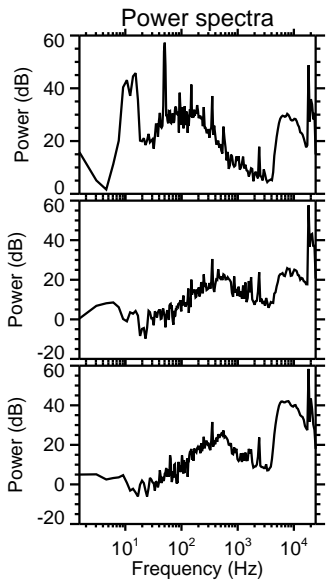
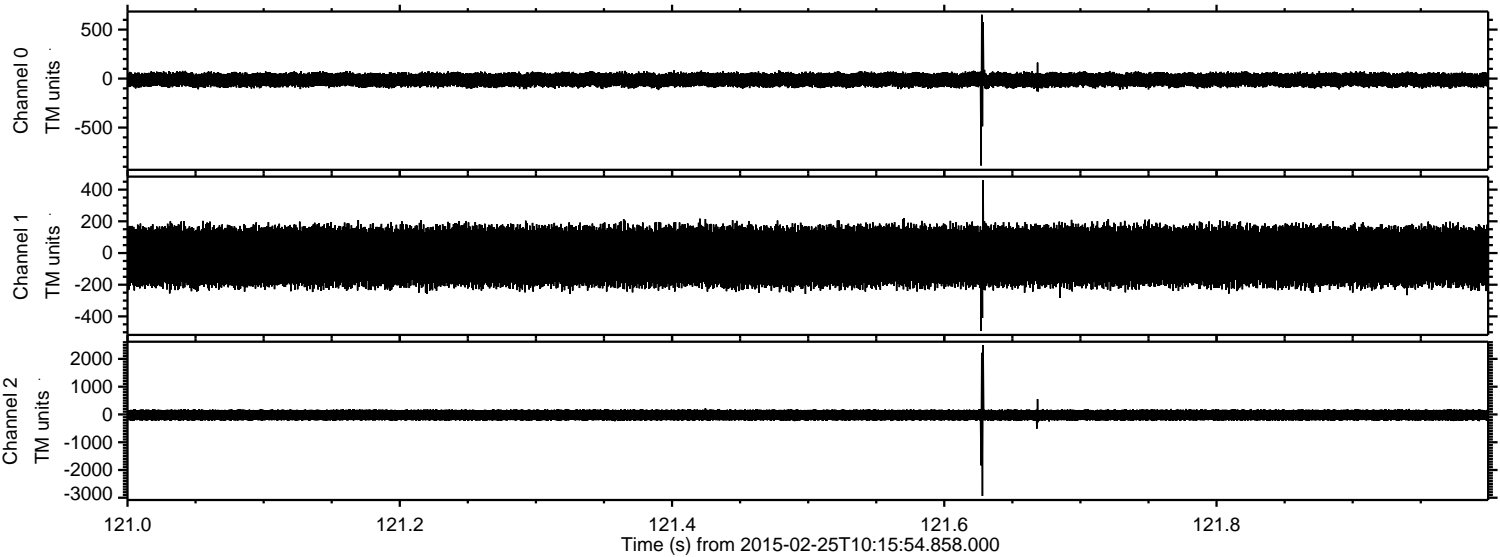


Processed Tue Mar 3 20:42:14 2015 by ELM ver.2012-10-06 from 001__elm20150225_101553__dat00.bin



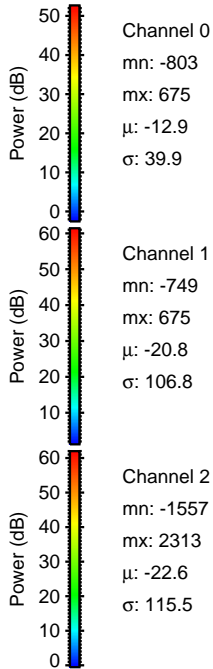
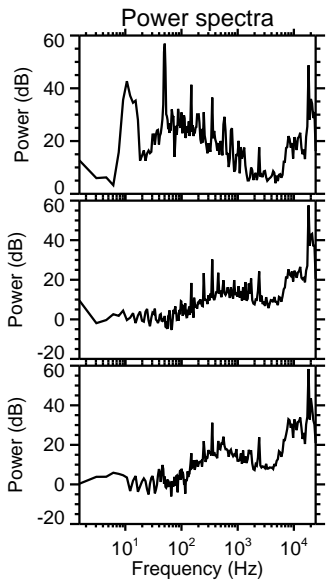
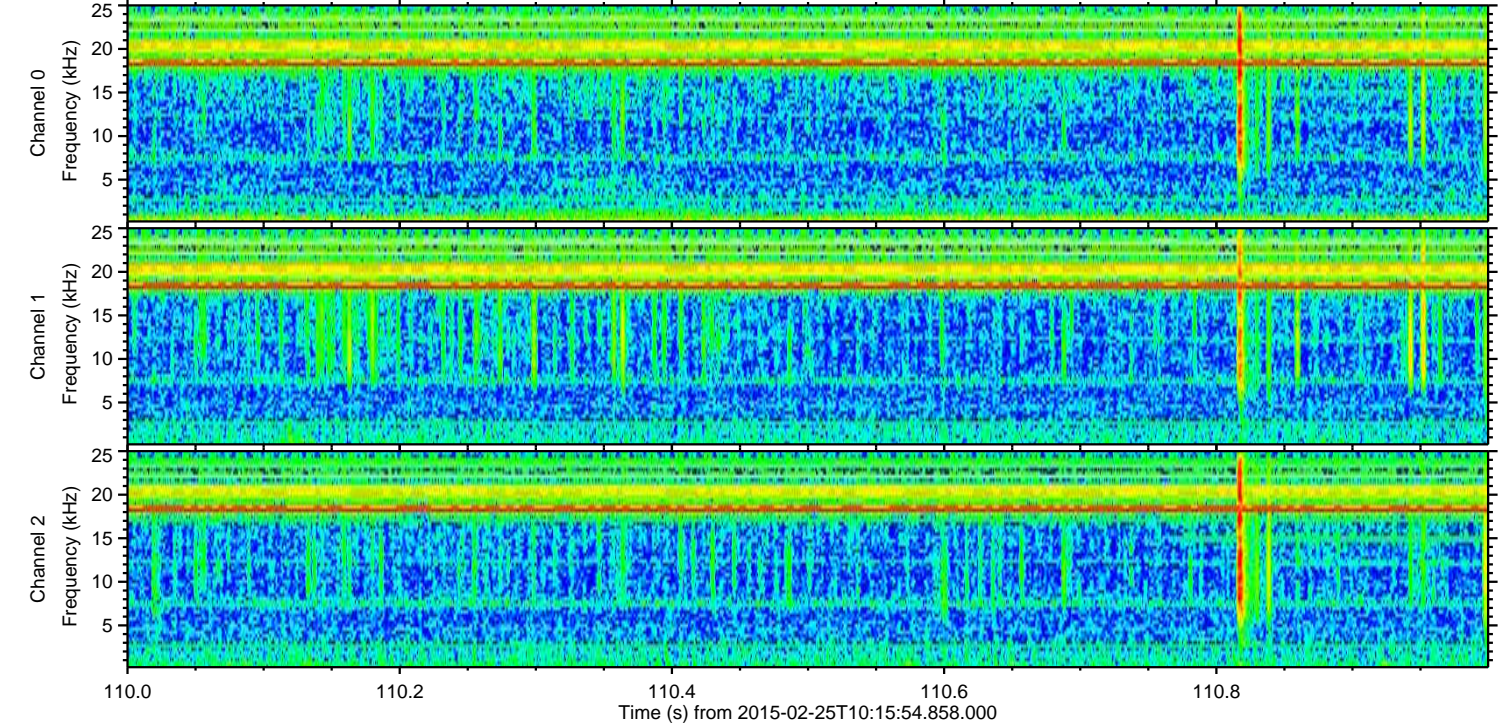
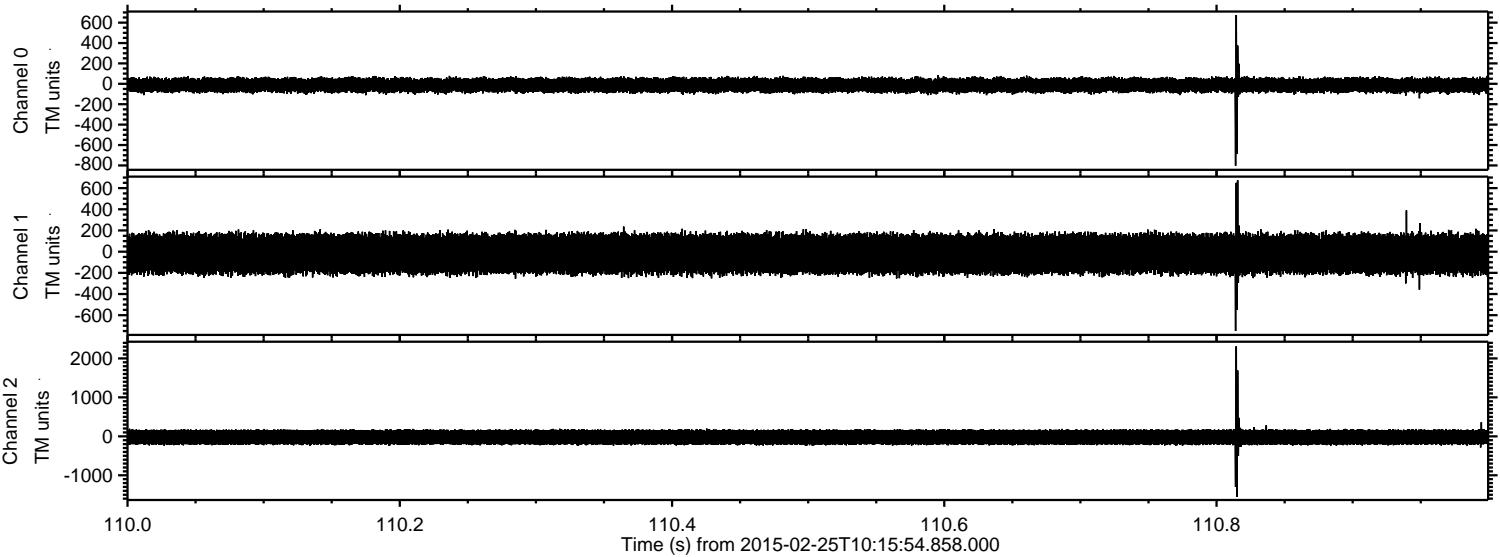
ELMAVAN 3D WAVEFORMS (Measured data sampled at 50 kHz) 49783 packets of 144 samples from 2015-02-25T10:15:54.858.000. Part 122/144

Processed Tue Mar 3 20:42:15 2015 by ELM ver.2012-10-06 from 001__elm20150225_101553__dat00.bin

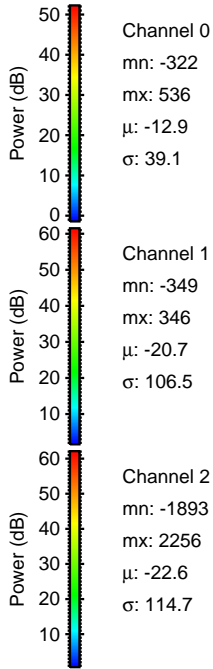
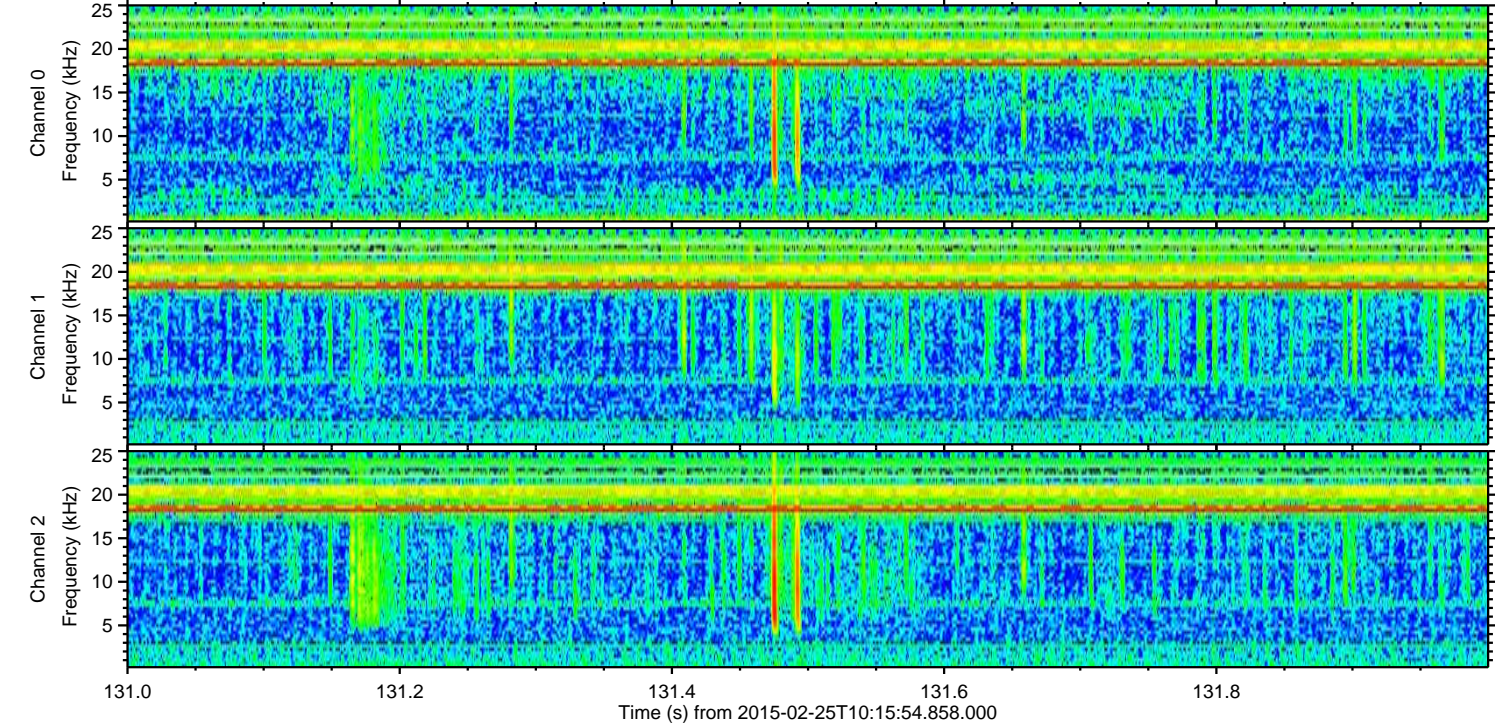
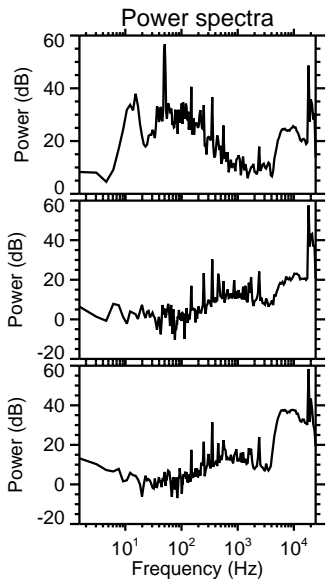
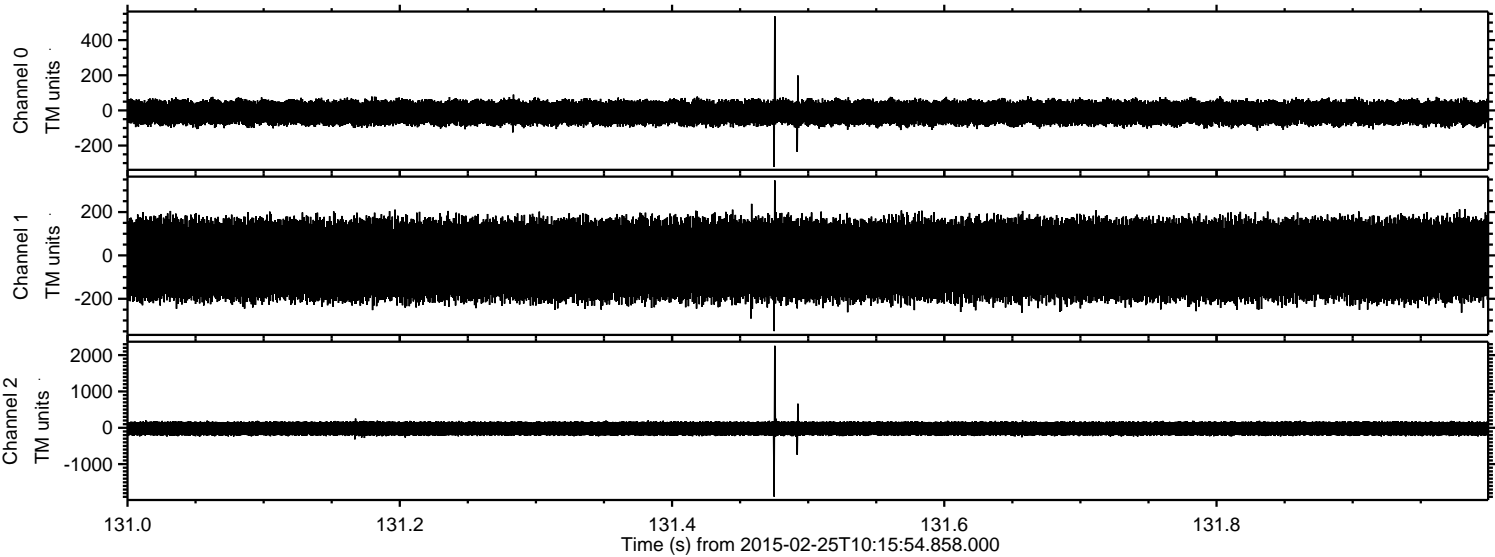


ELMAVAN 3D WAVEFORMS (Measured data sampled at 50 kHz) 49783 packets of 144 samples from 2015-02-25T10:15:54.858.000. Part 111/144

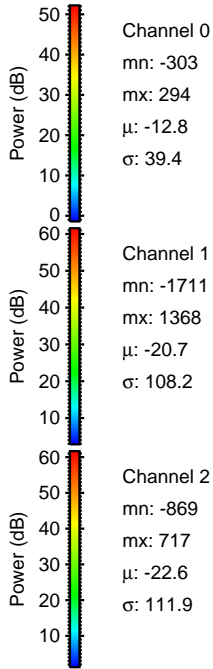
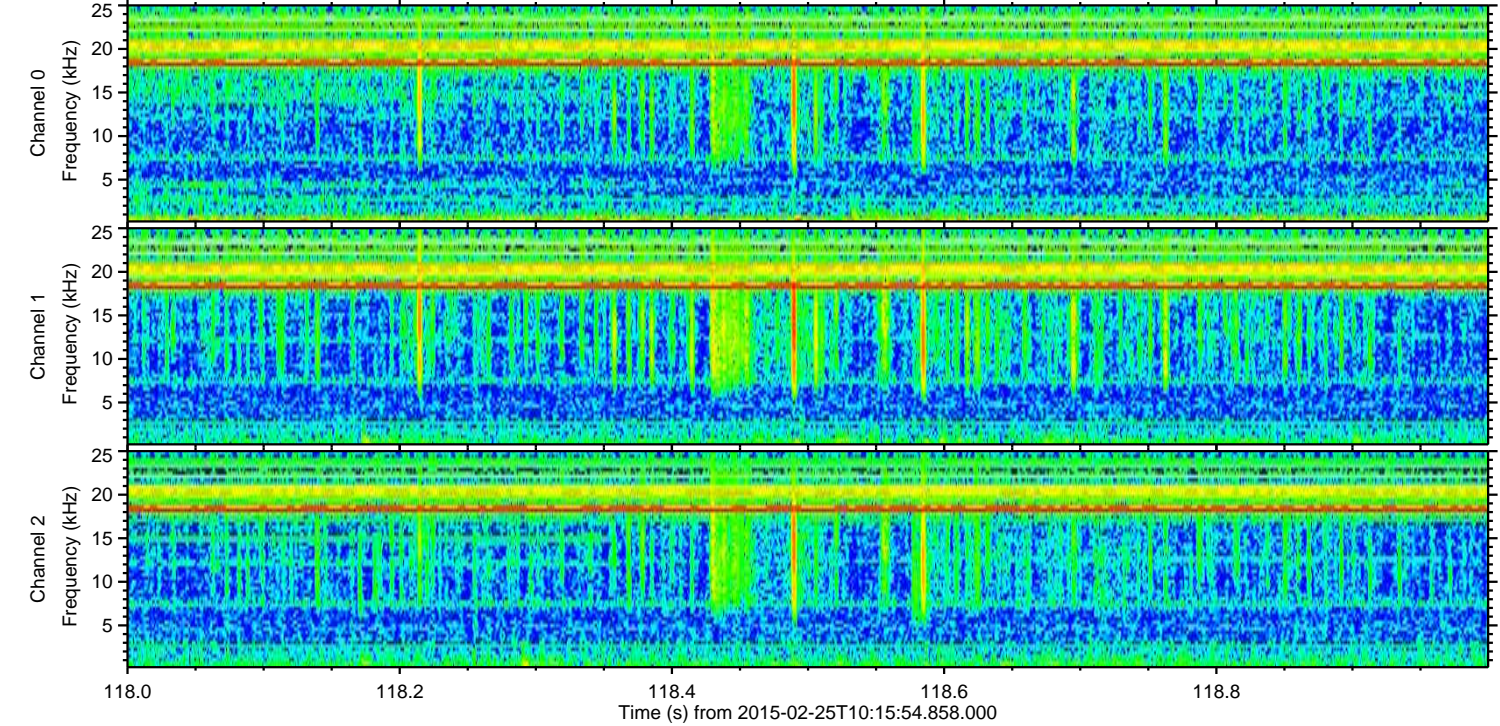
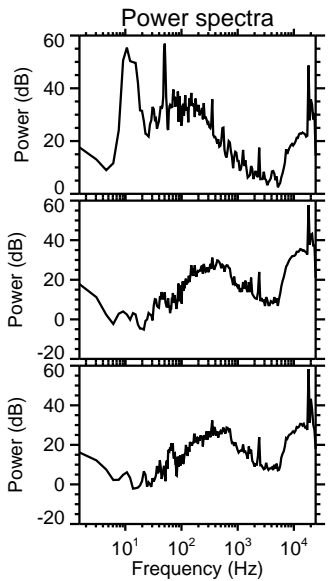
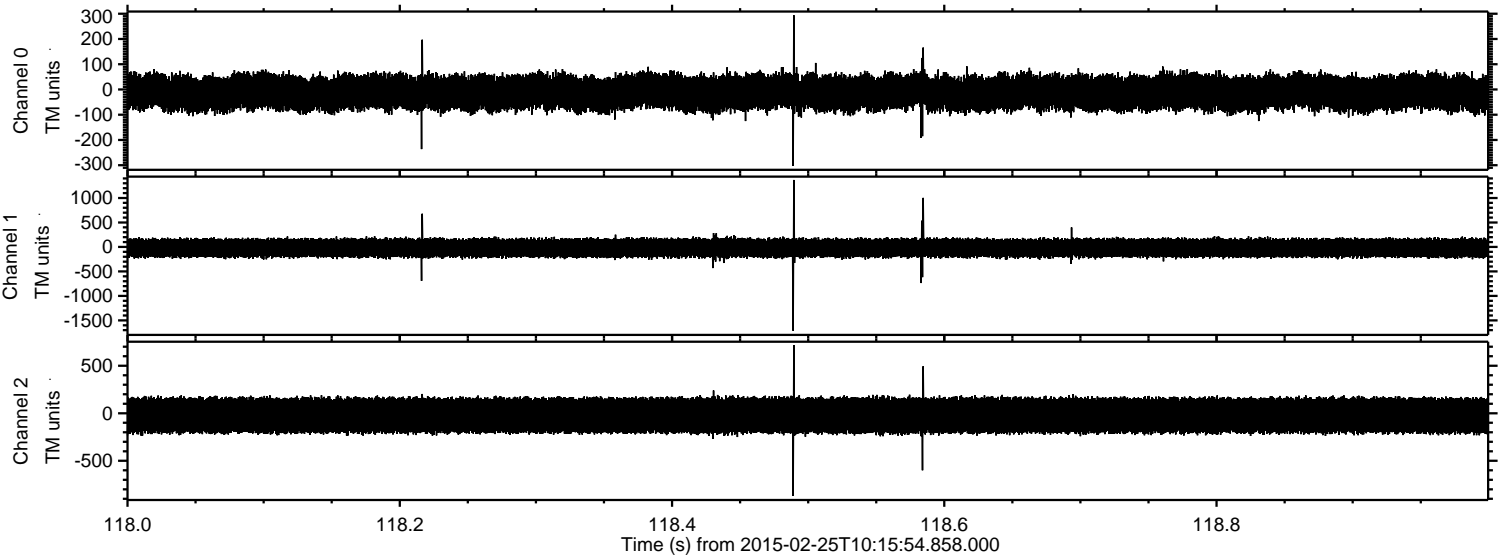
Processed Tue Mar 3 20:42:15 2015 by ELM ver.2012-10-06 from 001__elm20150225_101553__dat00.bin



Processed Tue Mar 3 20:42:16 2015 by ELM ver.2012-10-06 from 001__elm20150225_101553__dat00.bin

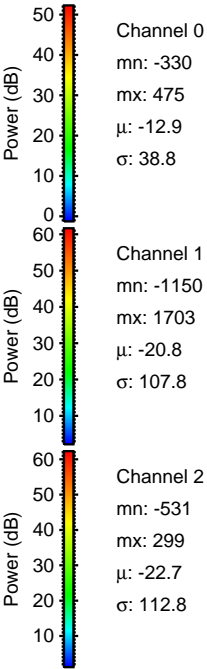
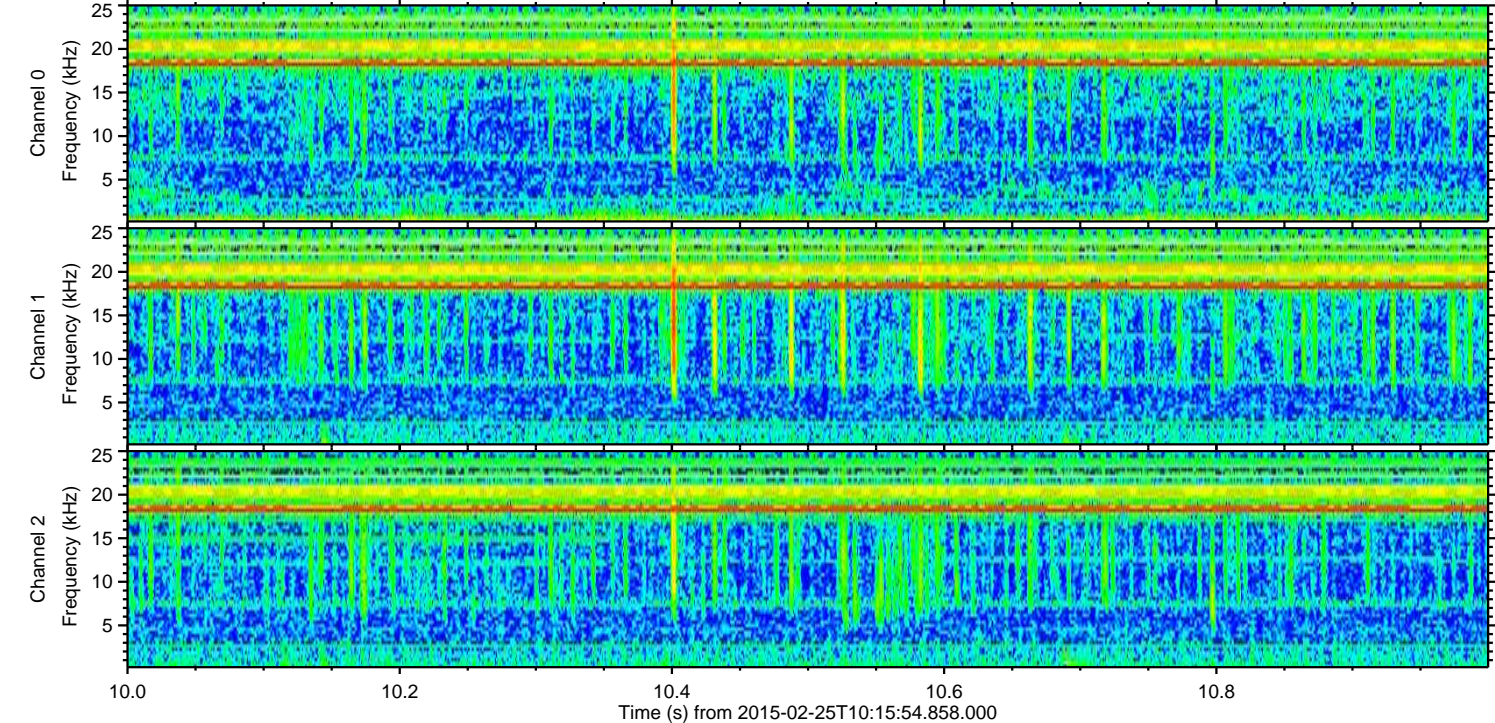
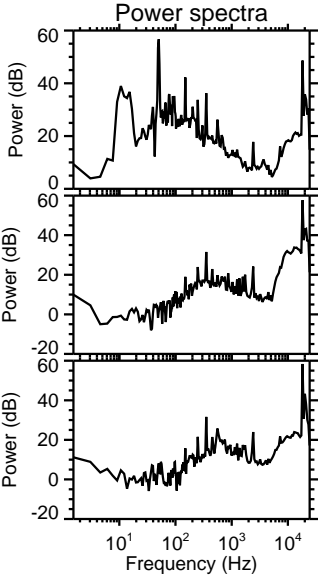
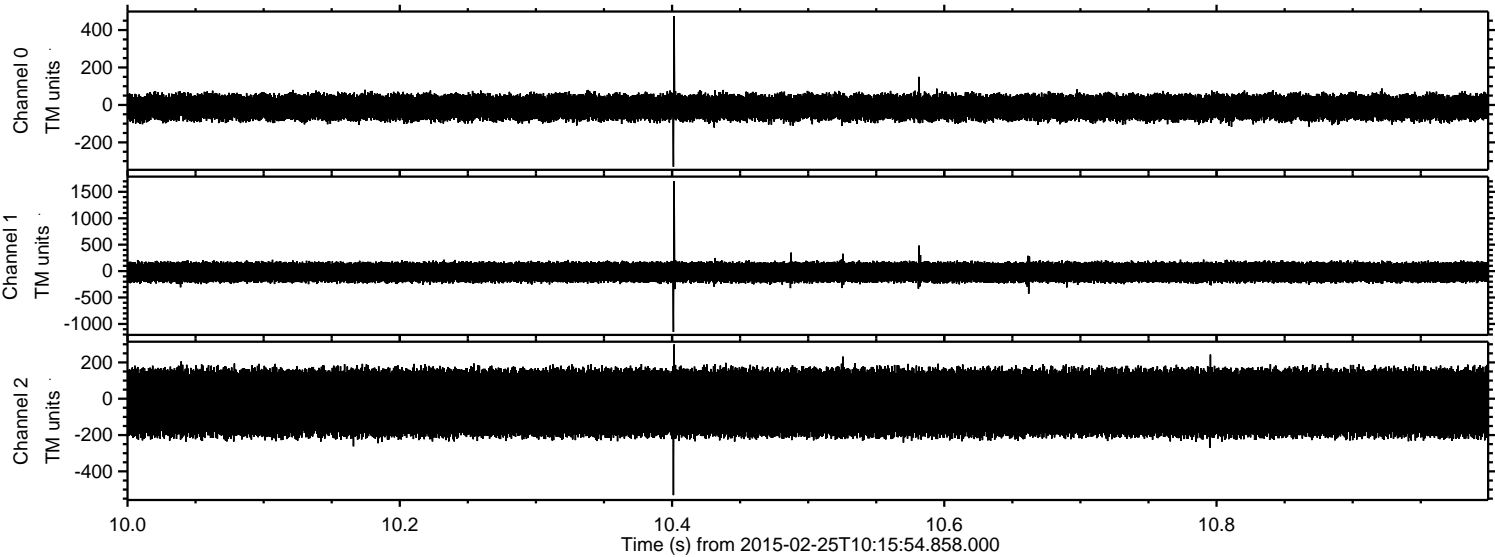


Processed Tue Mar 3 20:42:17 2015 by ELM ver.2012-10-06 from 001__elm20150225_101553__dat00.bin

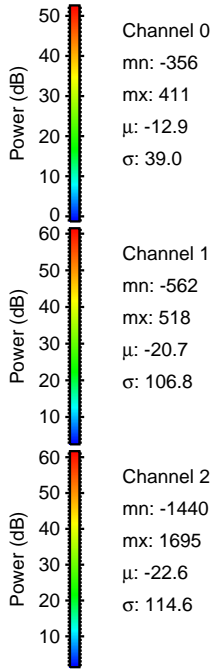
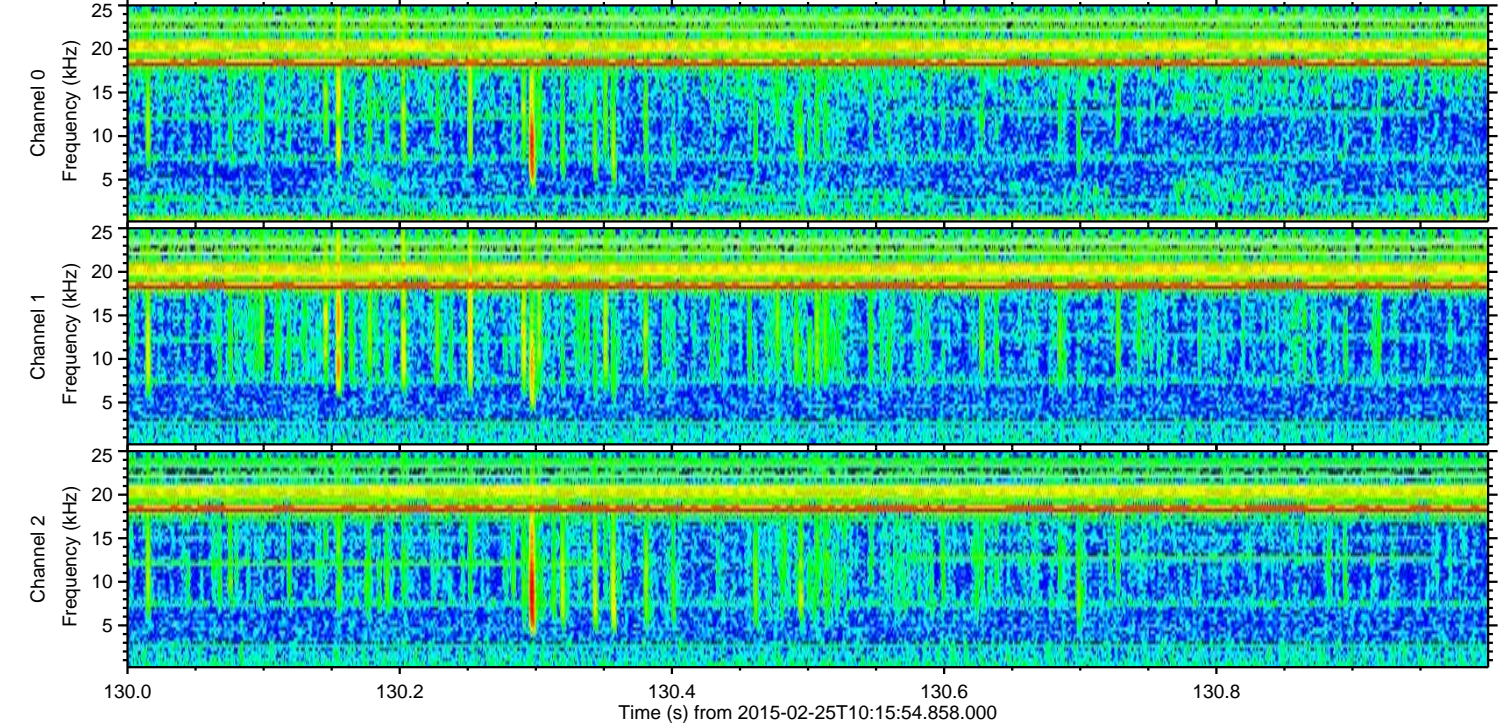
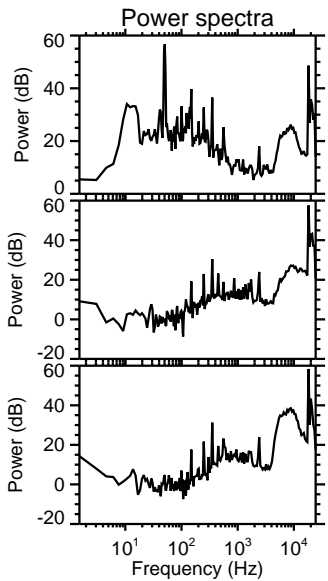
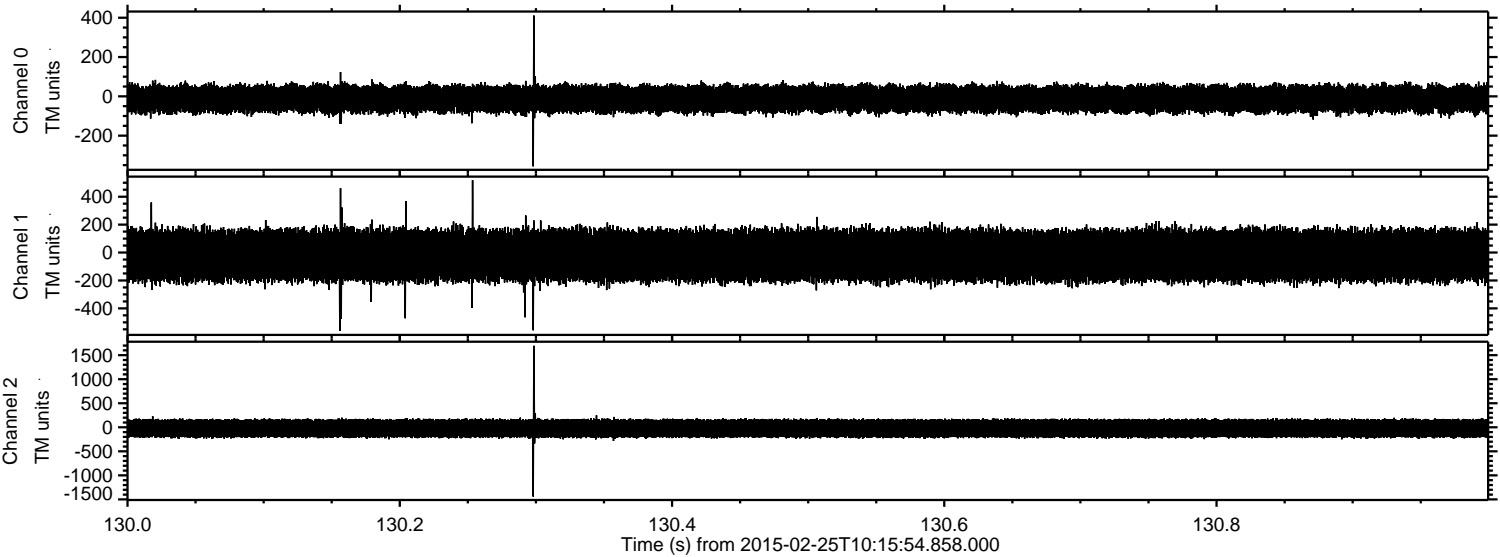


ELMAVAN 3D WAVEFORMS (Measured data sampled at 50 kHz) 49783 packets of 144 samples from 2015-02-25T10:15:54.858.000. Part 11/144

Processed Tue Mar 3 20:42:18 2015 by ELM ver.2012-10-06 from 001__elm20150225_101553__dat00.bin



Processed Tue Mar 3 20:42:19 2015 by ELM ver.2012-10-06 from 001__elm20150225_101553__dat00.bin

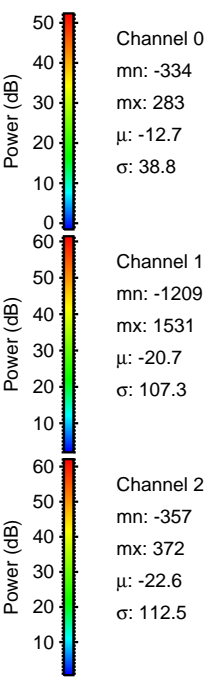
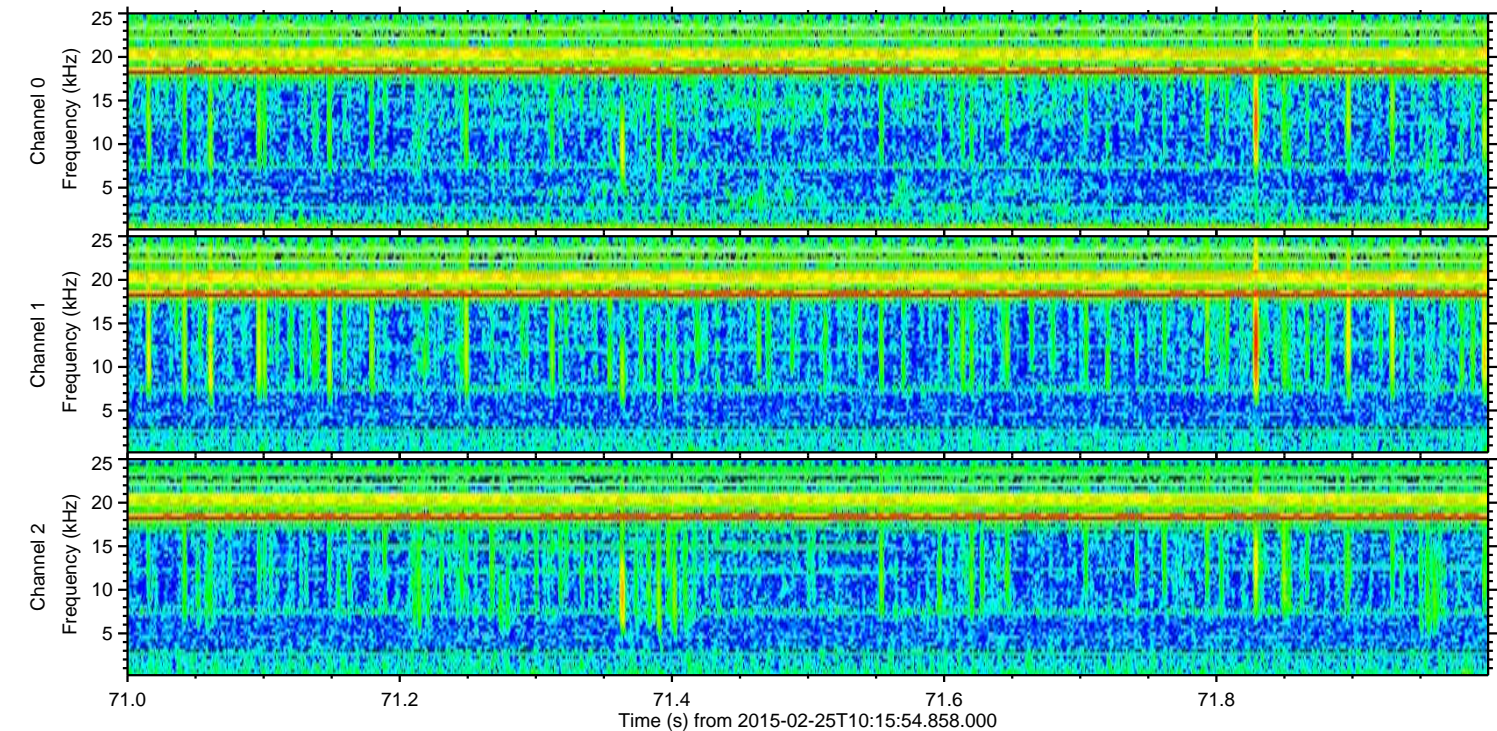
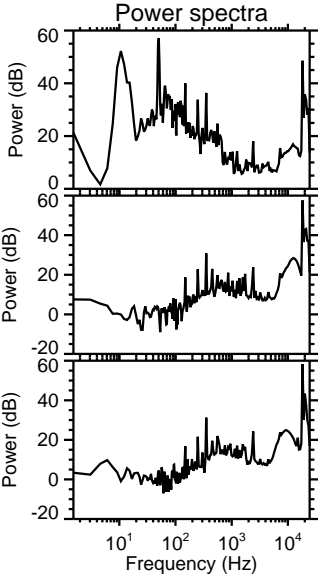
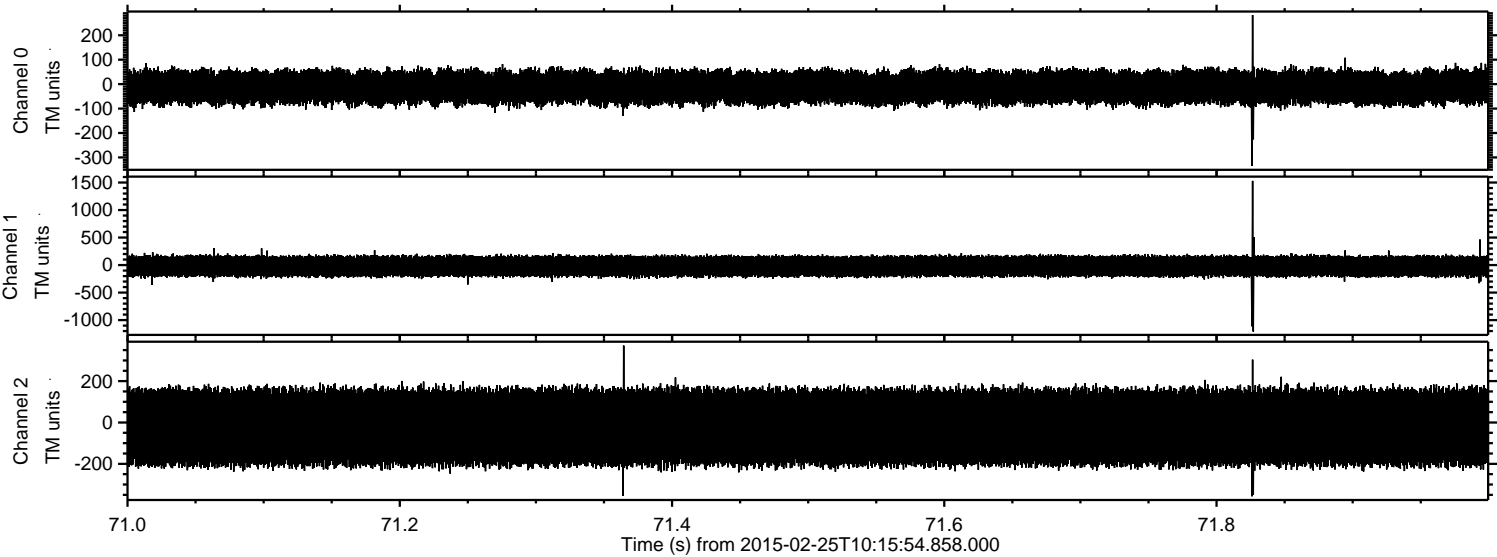


Channel 0
mn: -356
mx: 411
 μ : -12.9
 σ : 39.0

Channel 1
mn: -562
mx: 518
 μ : -20.7
 σ : 106.8

Channel 2
mn: -1440
mx: 1695
 μ : -22.6
 σ : 114.6

Processed Tue Mar 3 20:42:20 2015 by ELM ver.2012-10-06 from 001__elm20150225_101553__dat00.bin



Processed Tue Mar 3 20:42:21 2015 by ELM ver.2012-10-06 from 001__elm20150225_101553__dat00.bin

