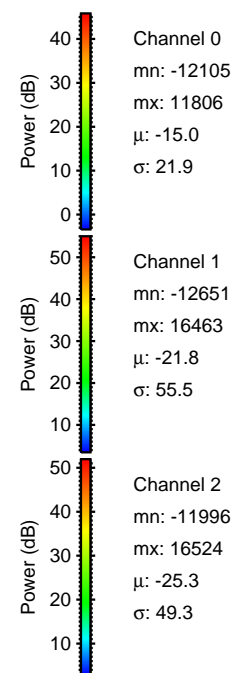
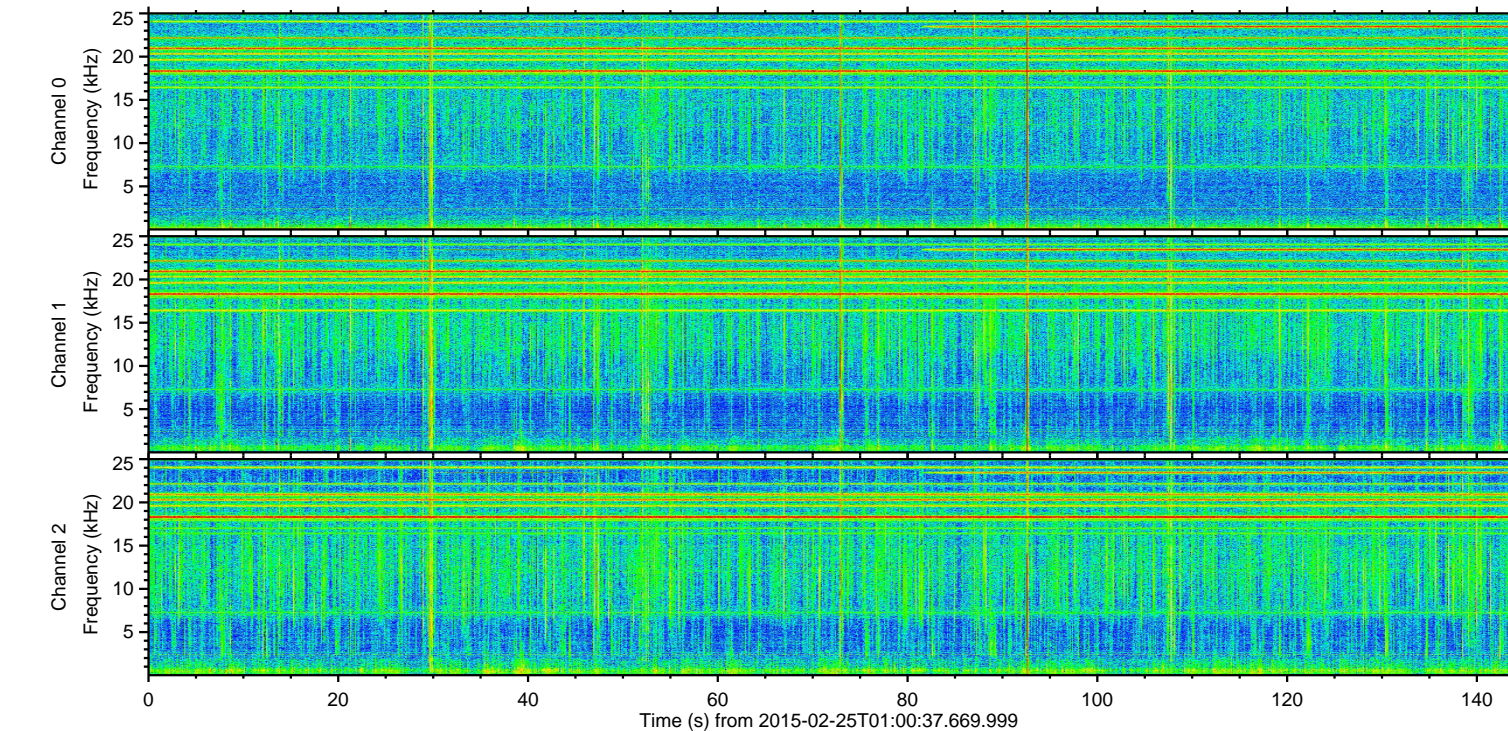
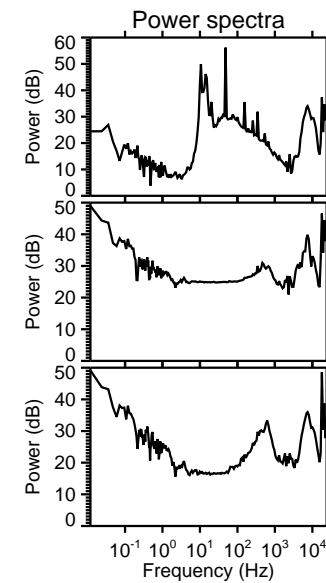
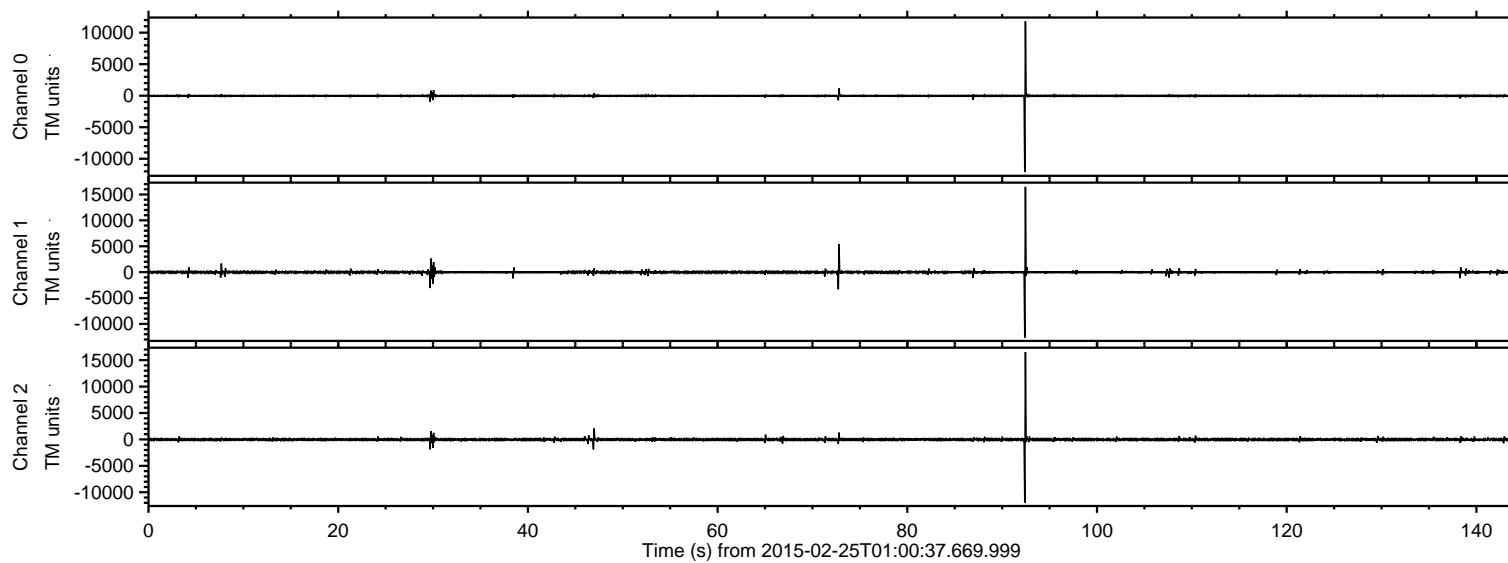


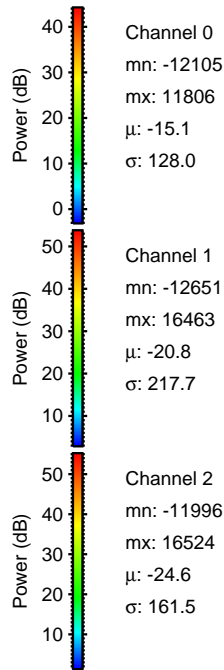
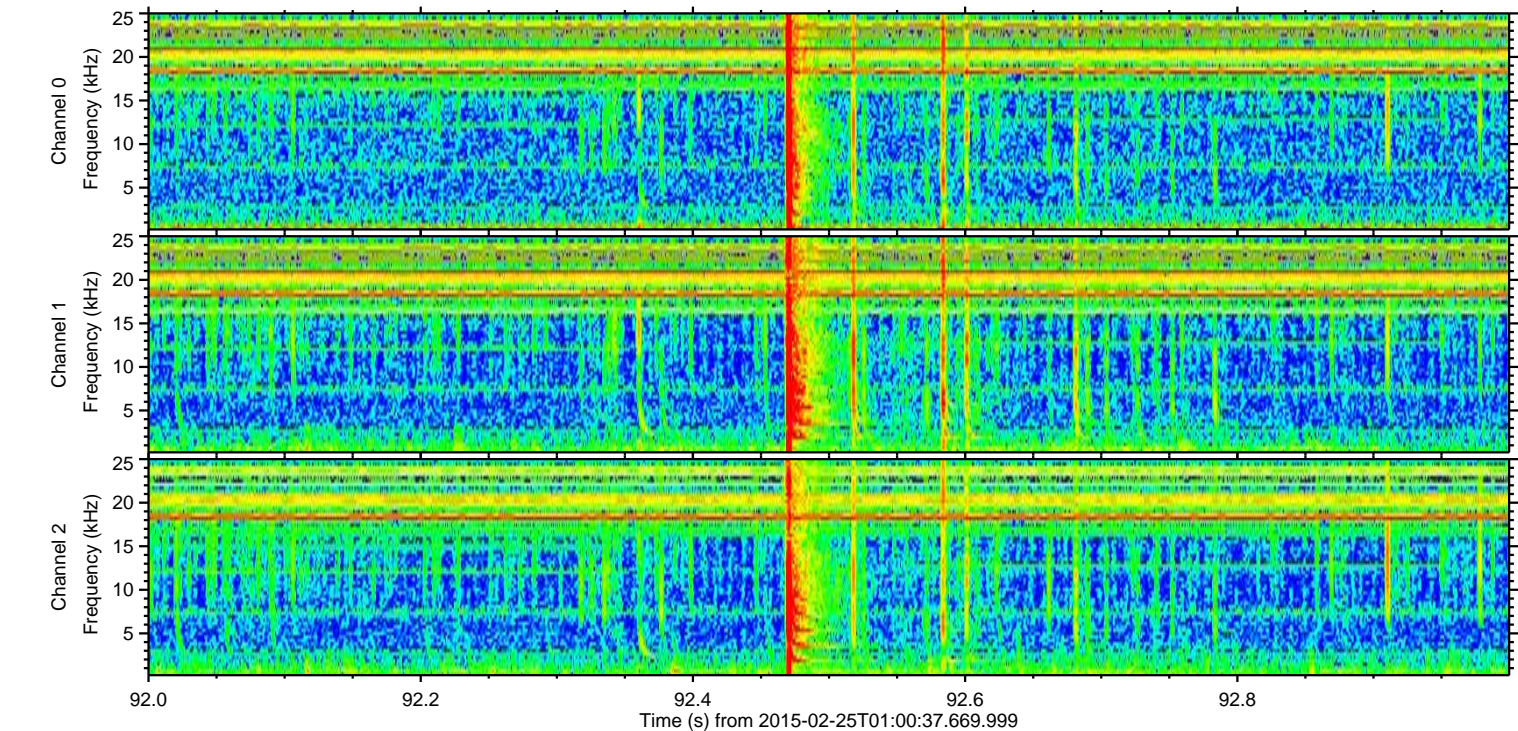
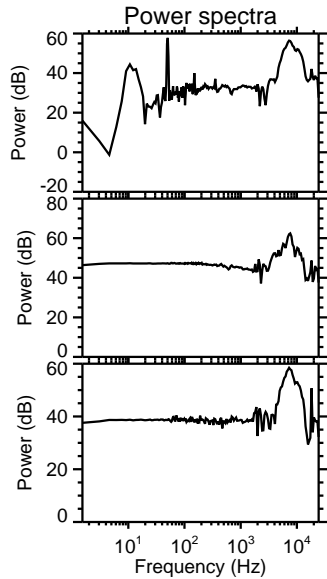
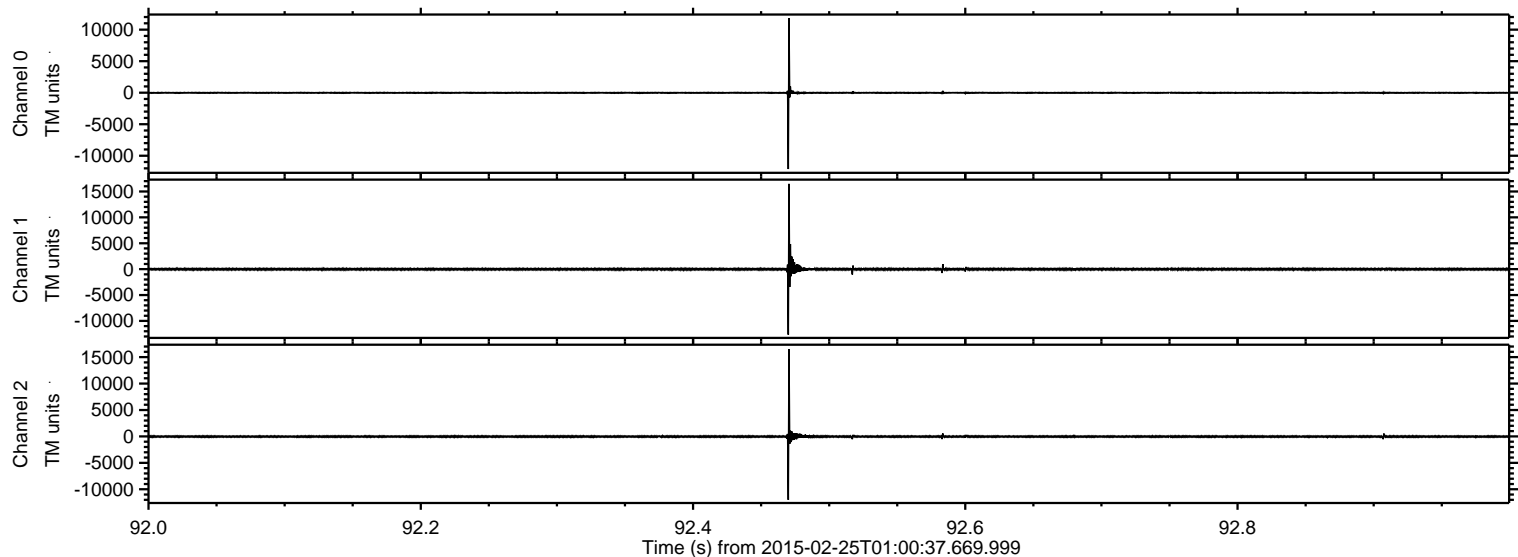
# ELMAVAN 3D WAVEFORMS (Measured data sampled at 50 kHz) 49810 packets of 144 samples from 2015-02-25T01:00:37.669.999.

Processed Tue Mar 3 18:30:32 2015 by ELM ver.2012-10-06 from 001\_\_elm20150225\_010036\_\_dat00.bin



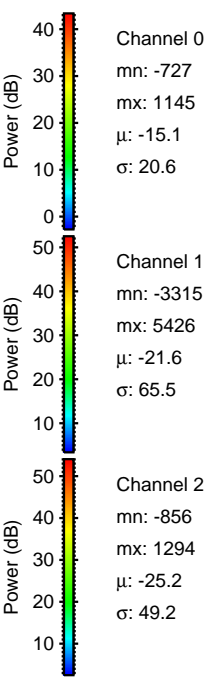
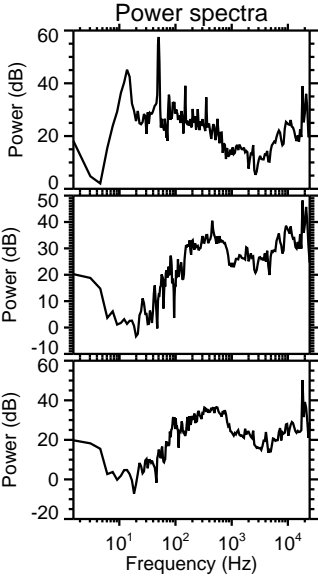
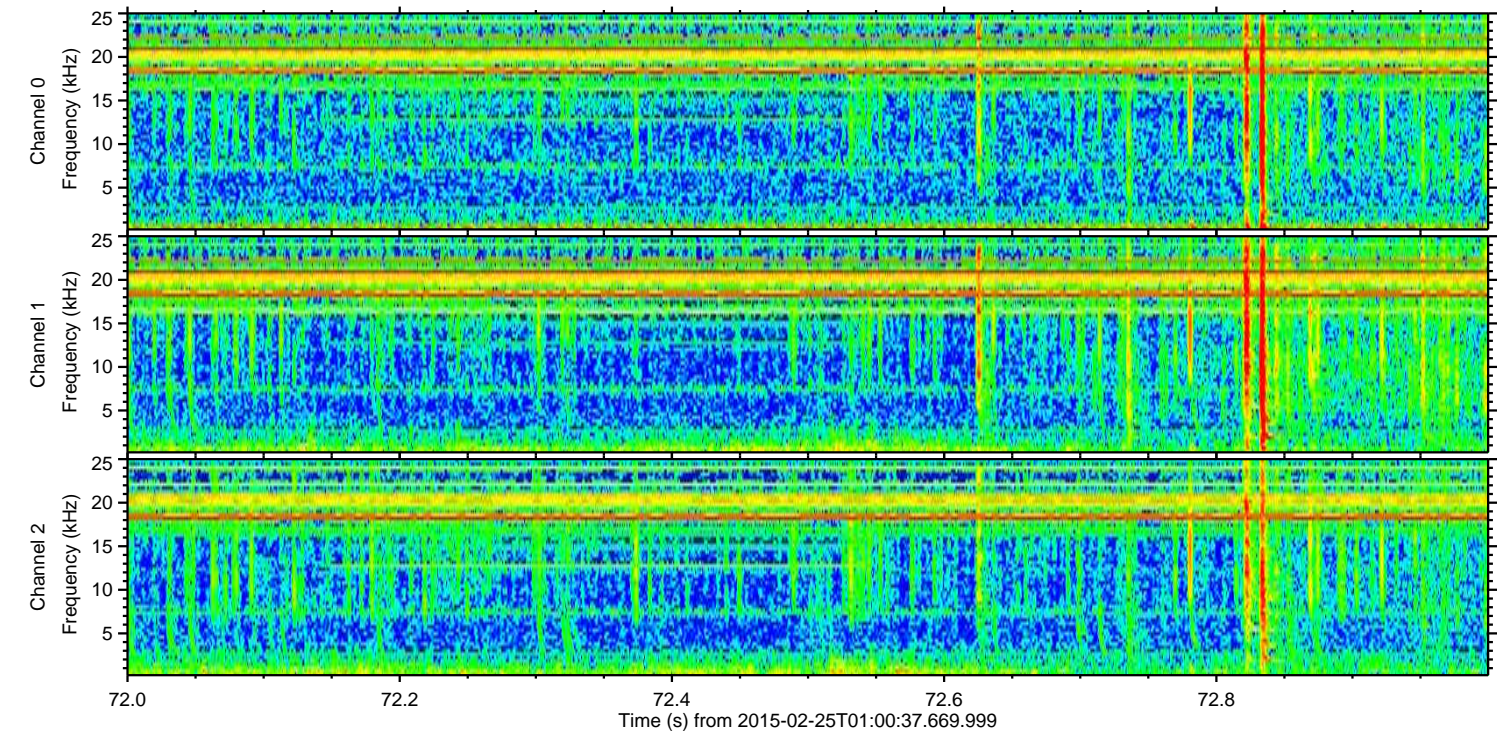
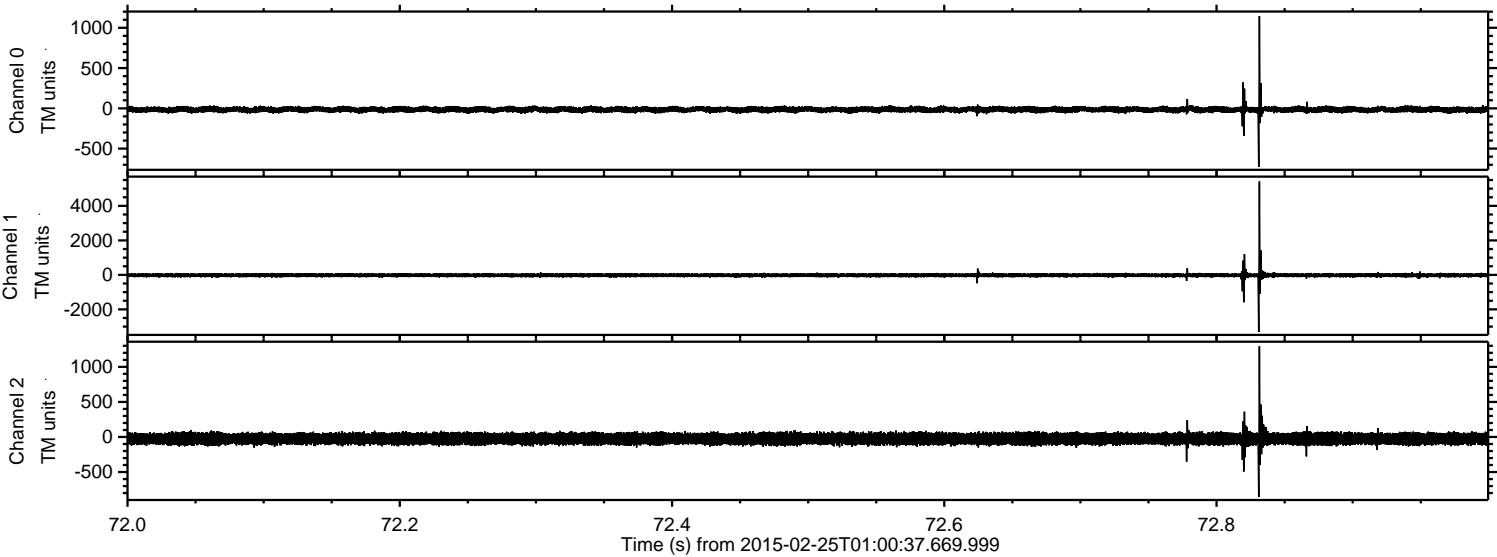


Processed Tue Mar 3 18:30:52 2015 by ELM ver.2012-10-06 from 001\_\_elm20150225\_010036\_\_dat00.bin



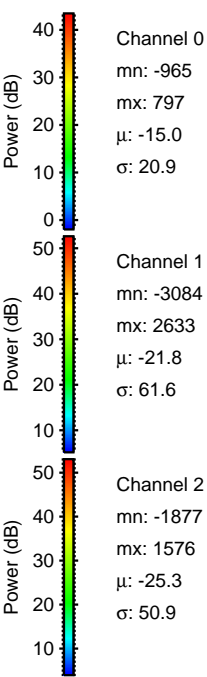
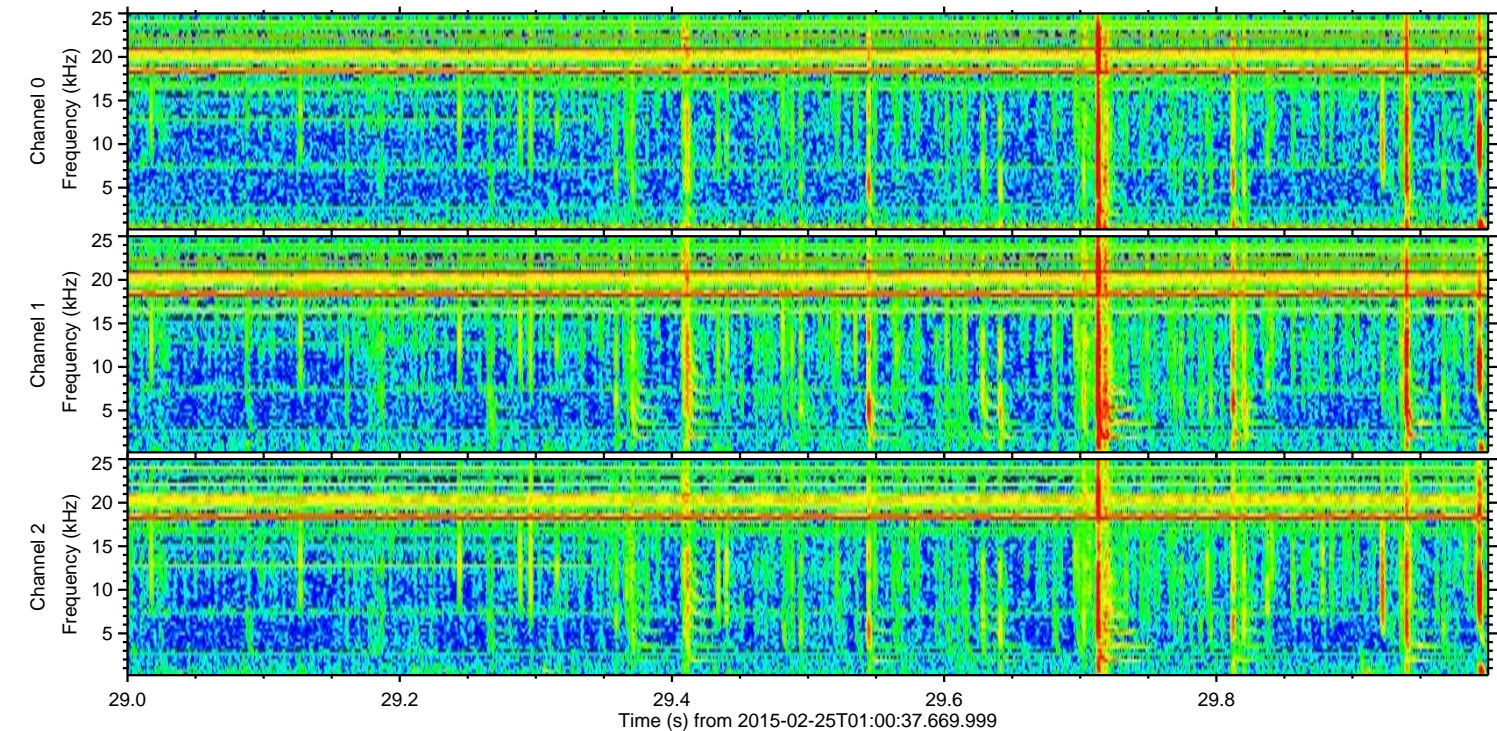
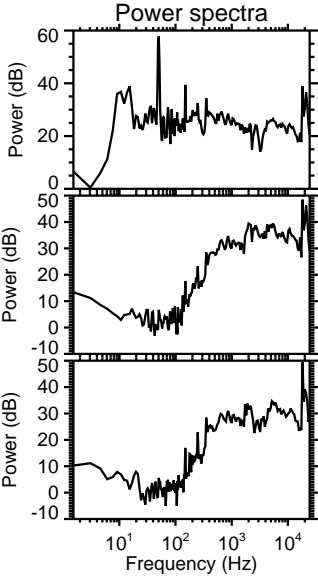
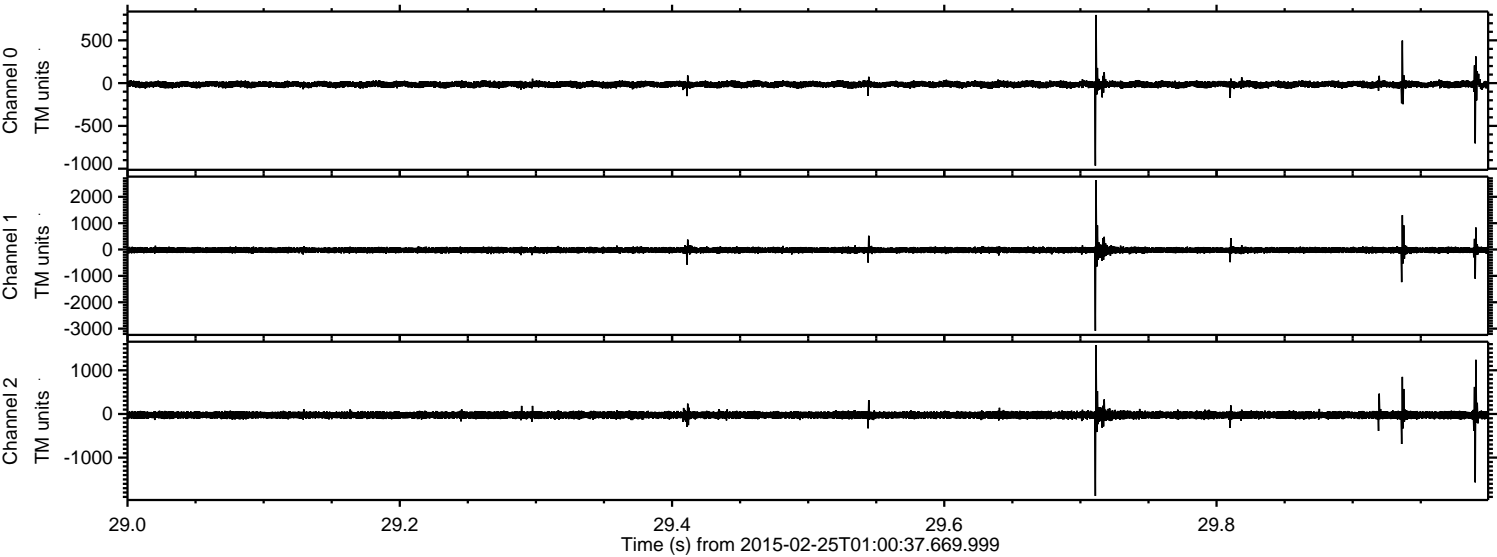


Processed Tue Mar 3 18:30:53 2015 by ELM ver.2012-10-06 from 001\_\_elm20150225\_010036\_\_dat00.bin



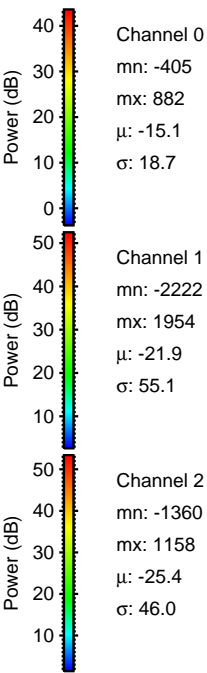
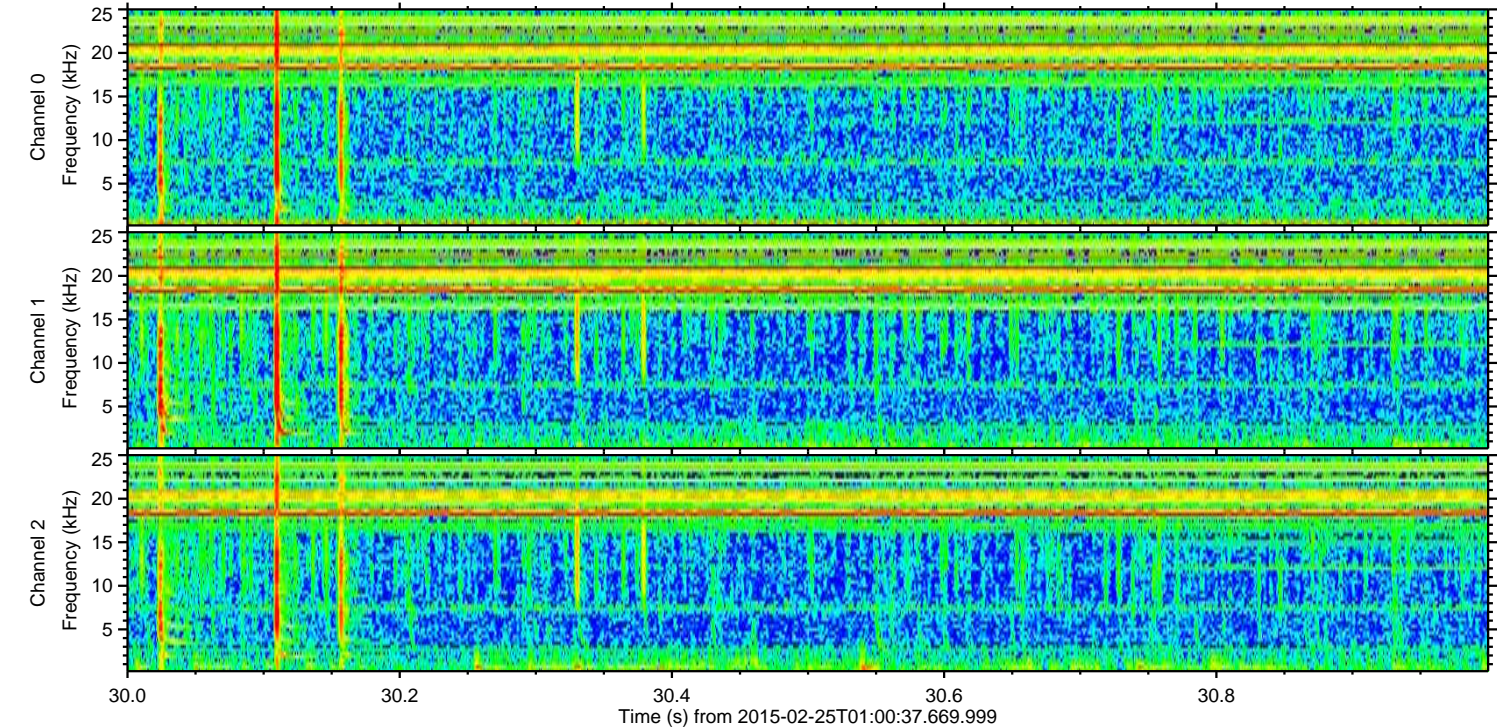
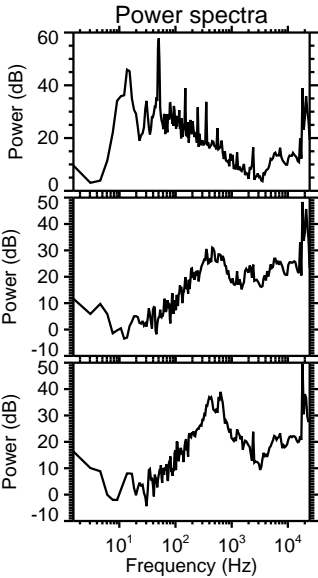
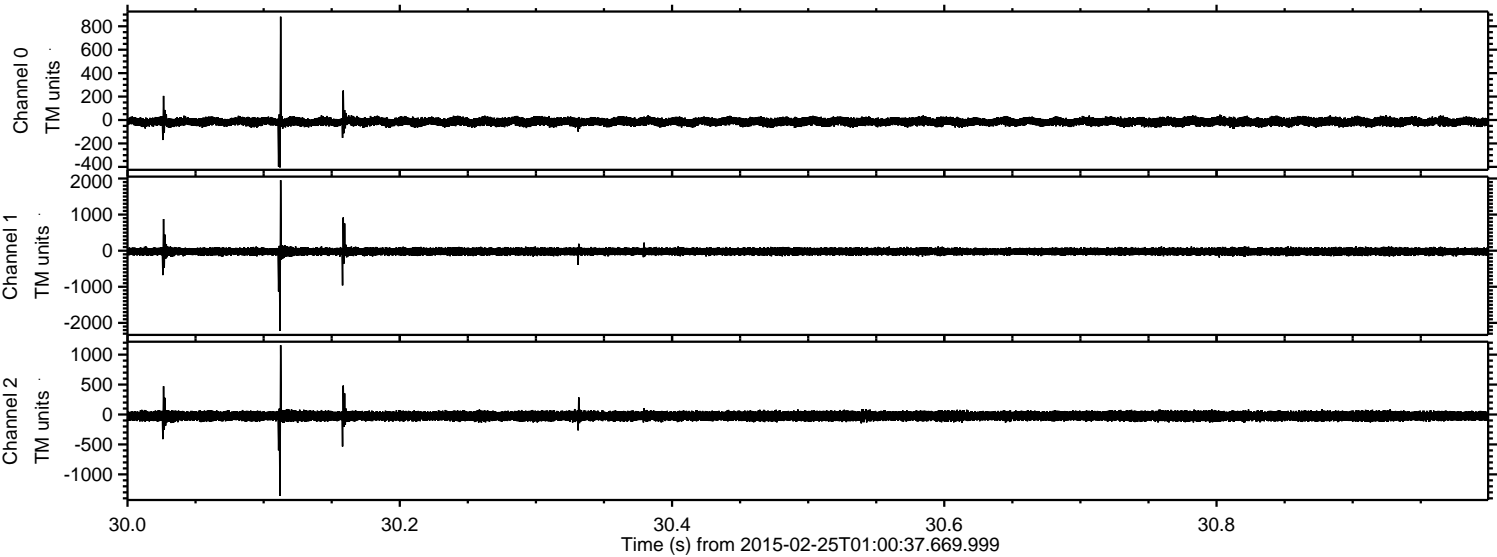


Processed Tue Mar 3 18:30:54 2015 by ELM ver.2012-10-06 from 001\_\_elm20150225\_010036\_\_dat00.bin



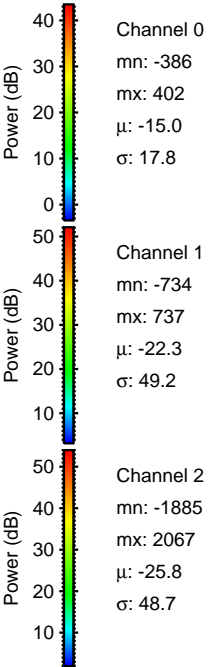
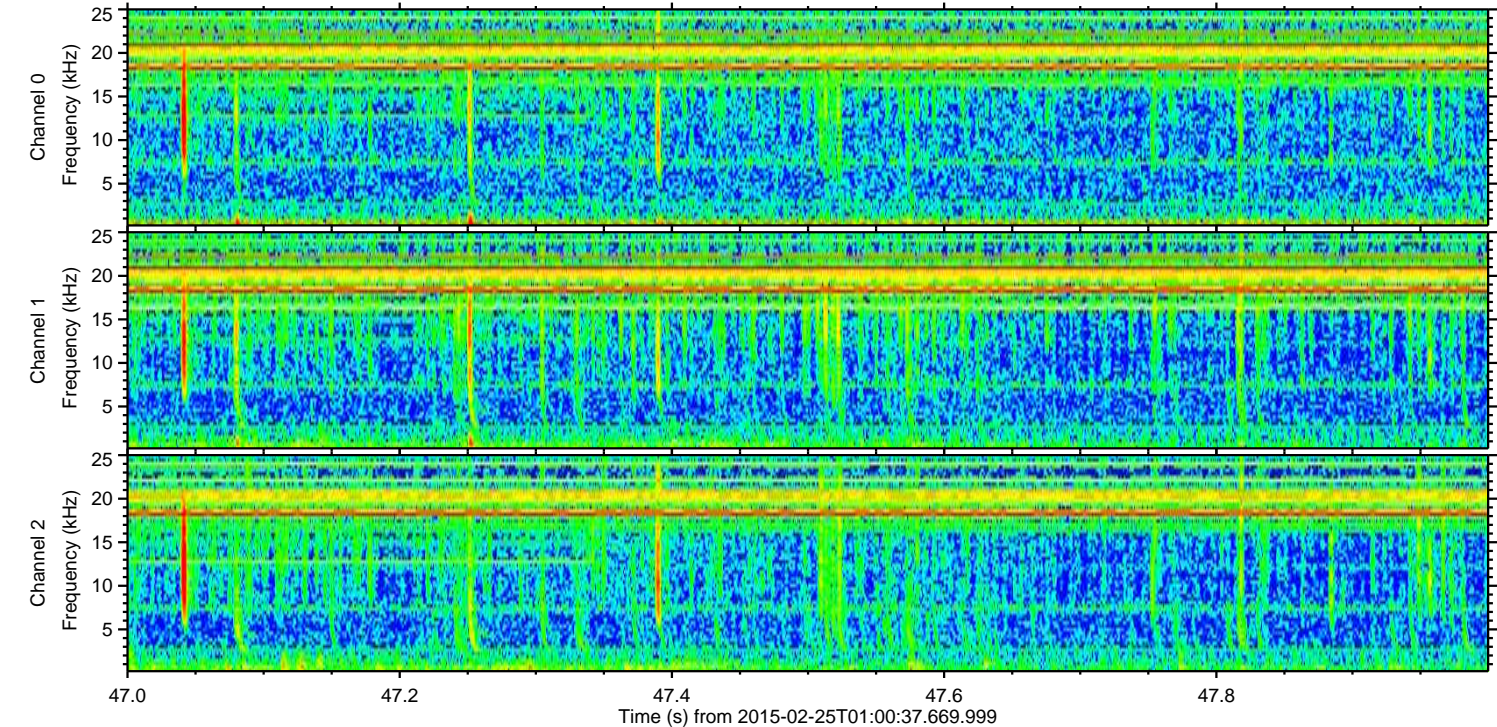
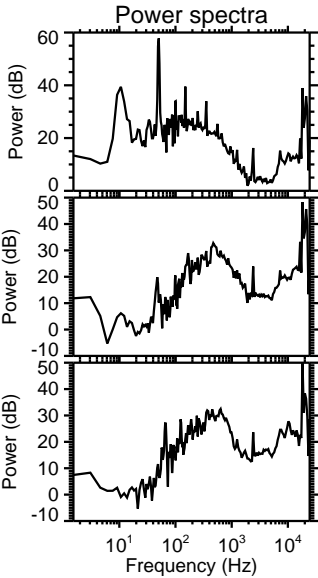
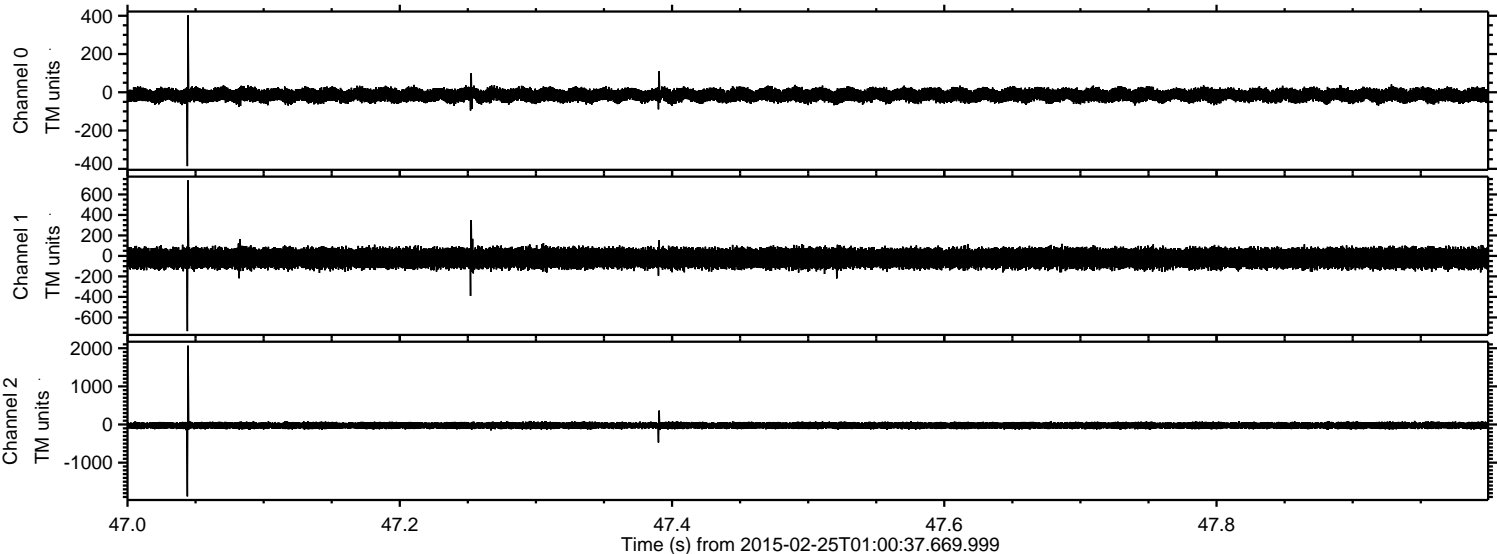


Processed Tue Mar 3 18:30:55 2015 by ELM ver.2012-10-06 from 001\_\_elm20150225\_010036\_\_dat00.bin



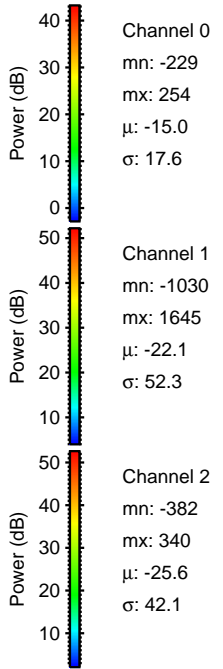
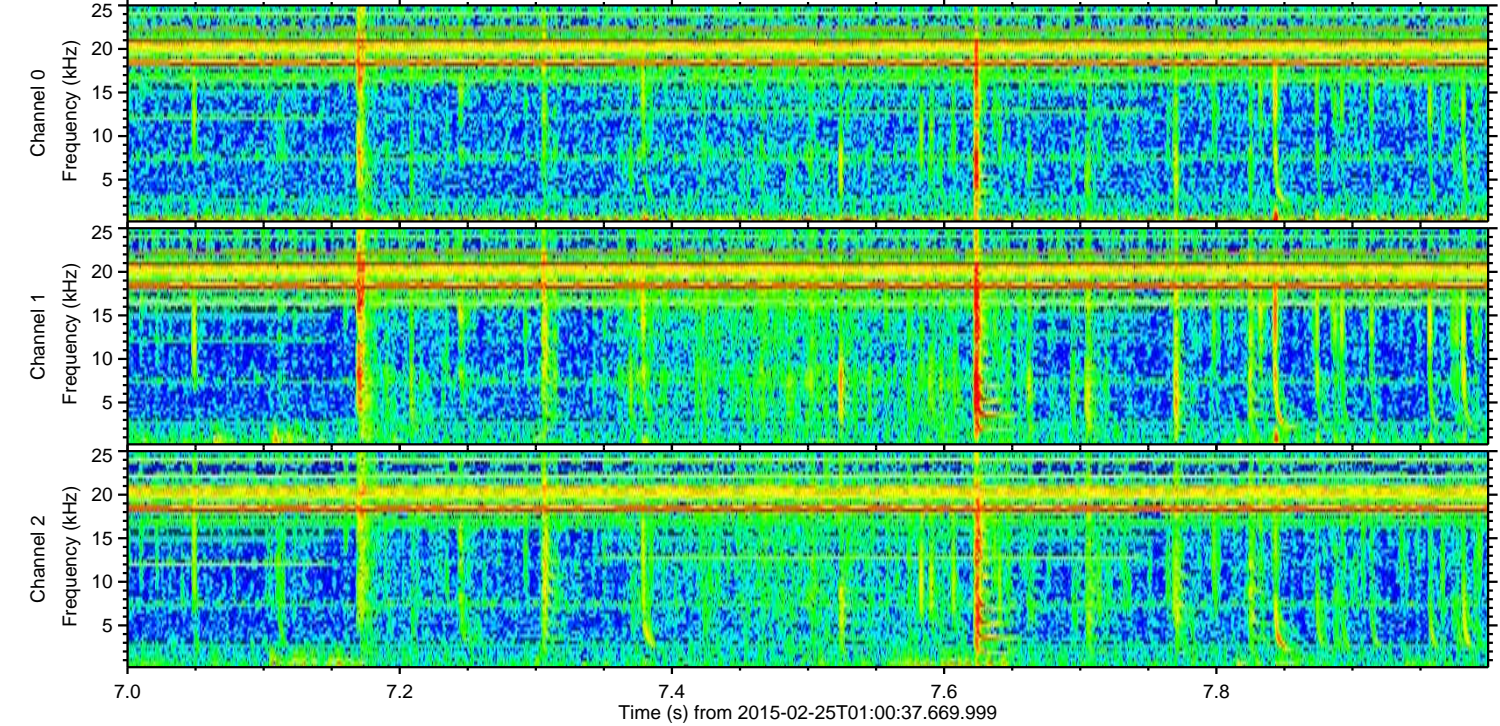
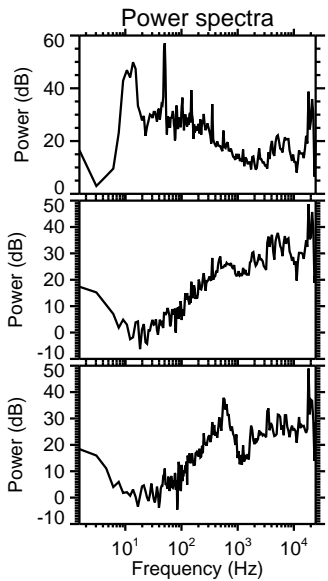
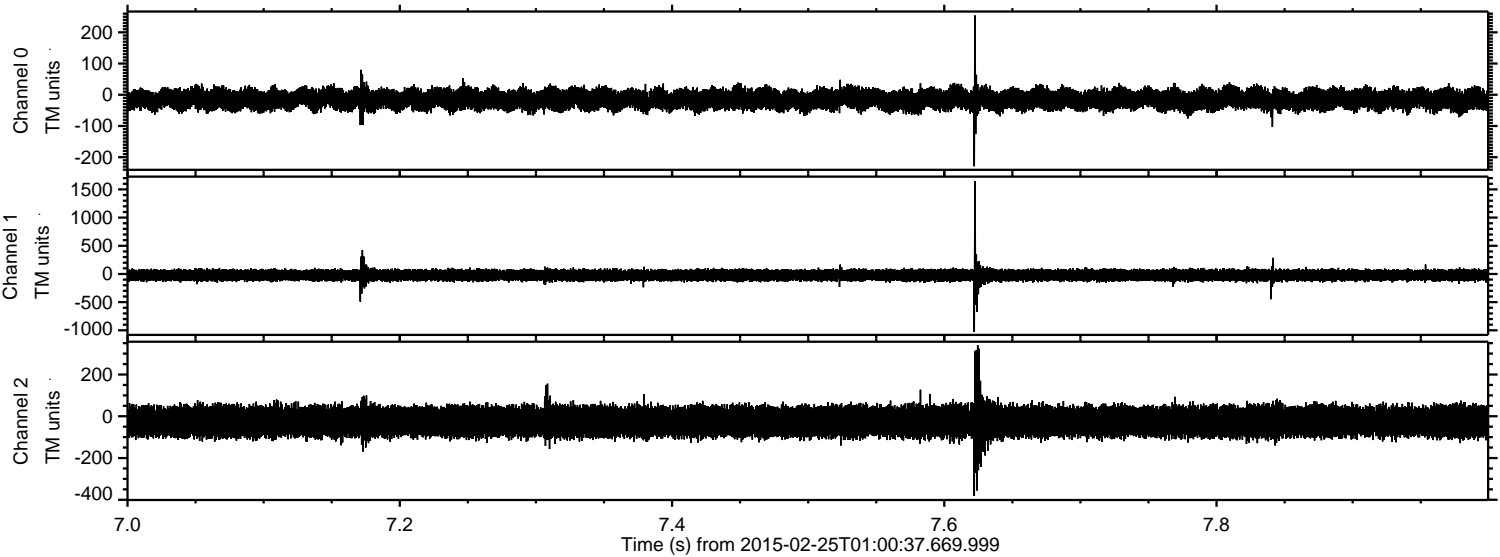


Processed Tue Mar 3 18:30:56 2015 by ELM ver.2012-10-06 from 001\_\_elm20150225\_010036\_\_dat00.bin



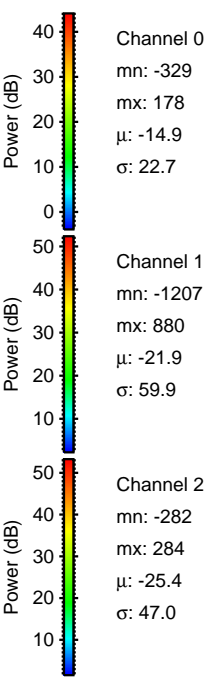
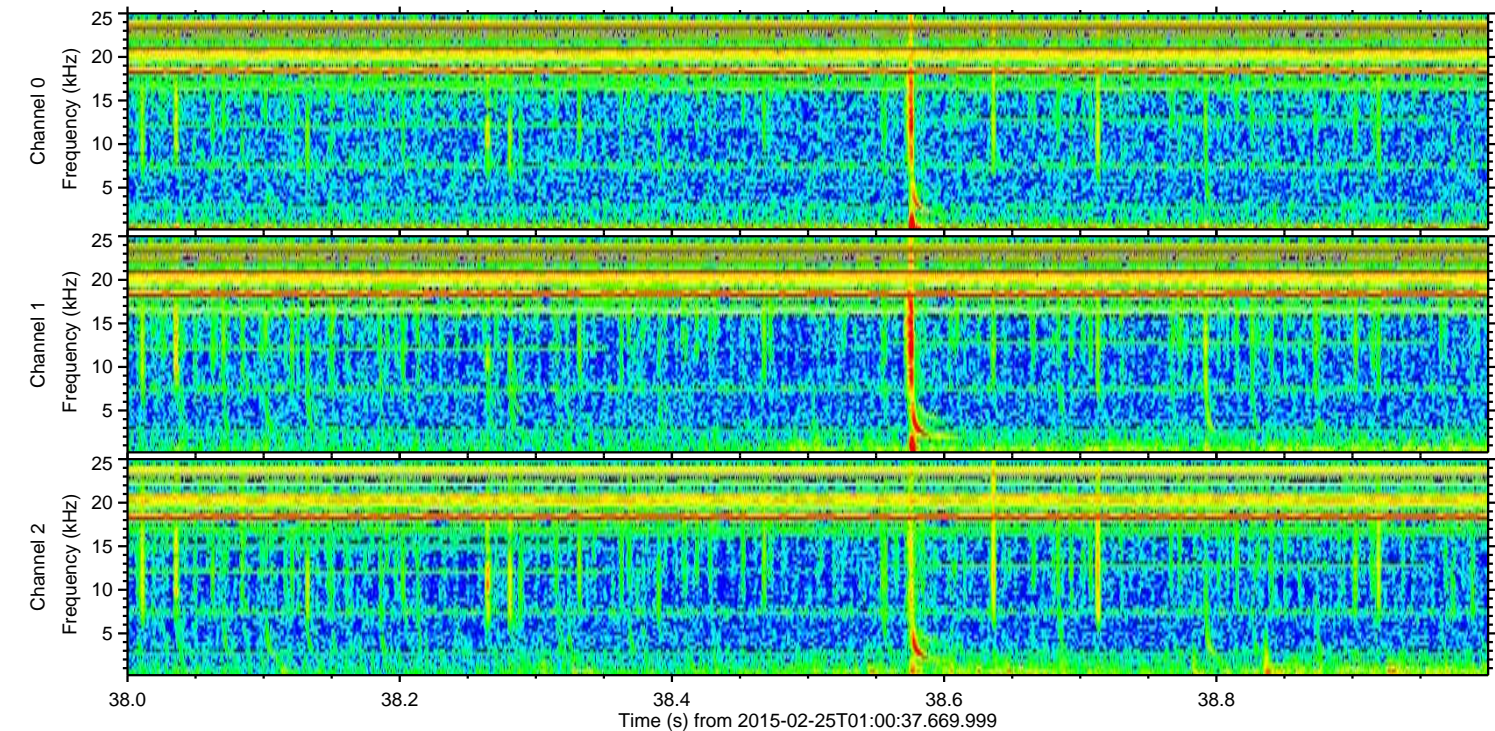
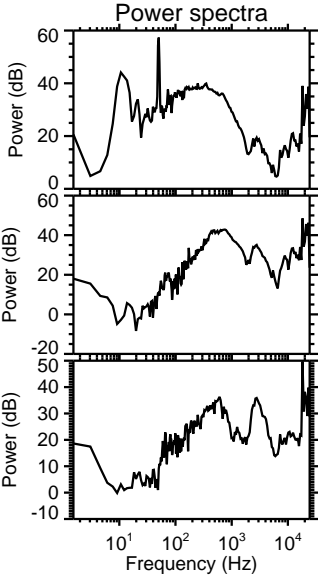
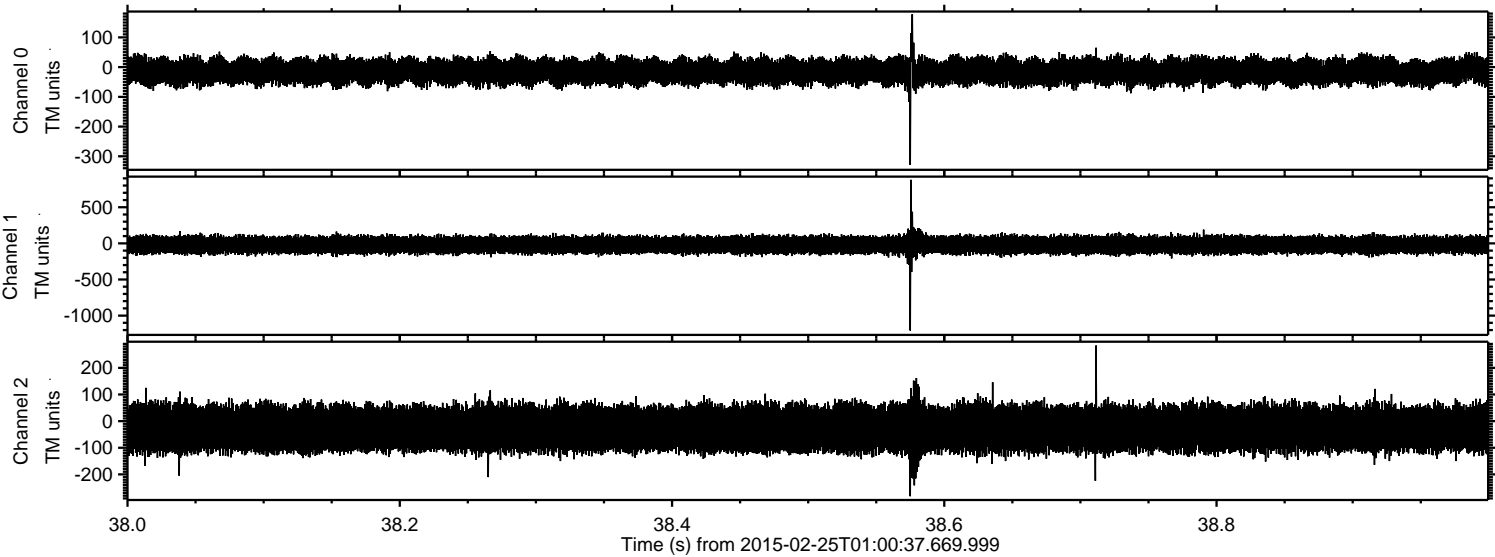


Processed Tue Mar 3 18:30:57 2015 by ELM ver.2012-10-06 from 001\_\_elm20150225\_010036\_\_dat00.bin





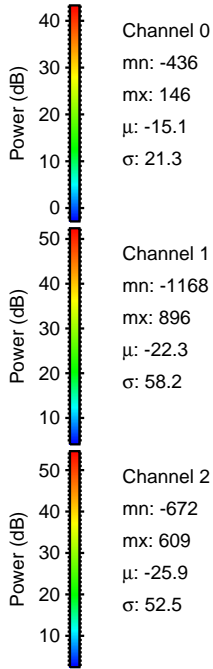
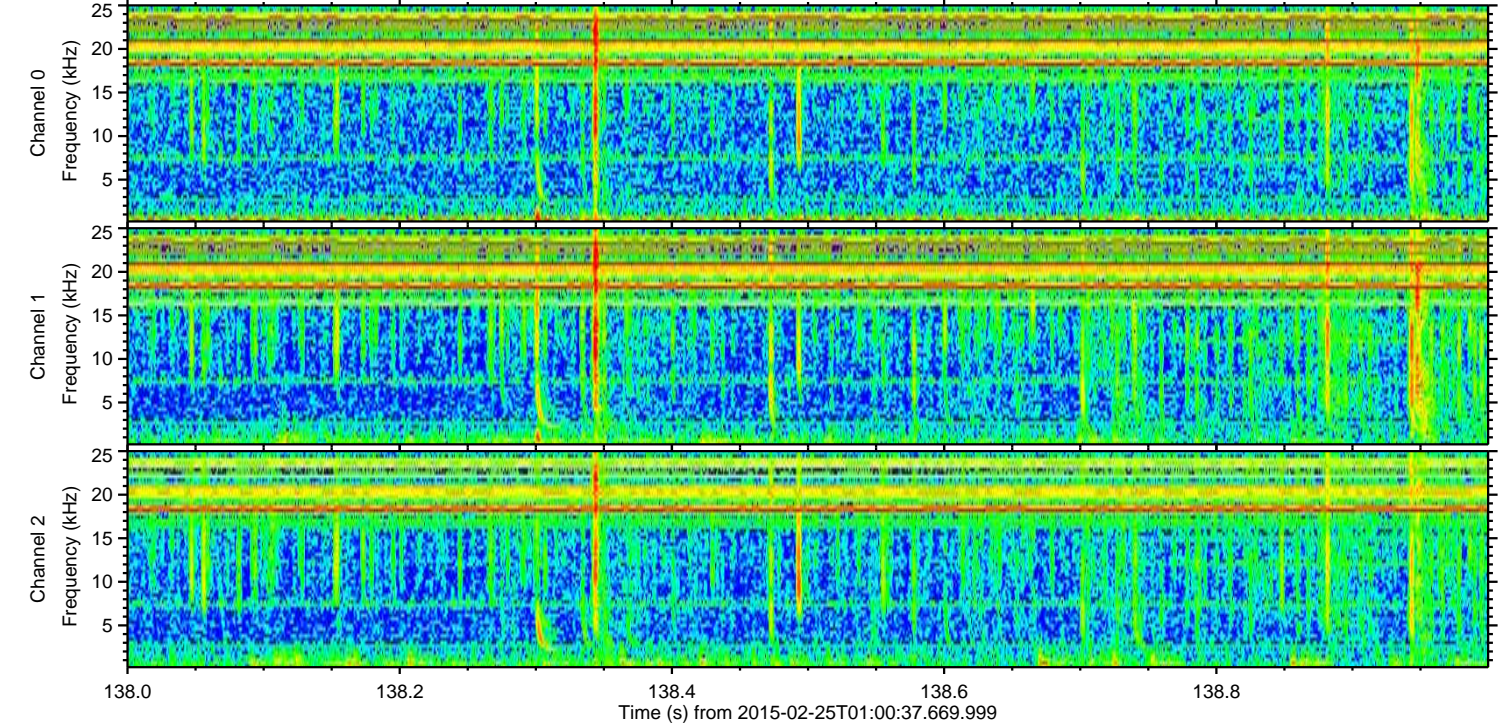
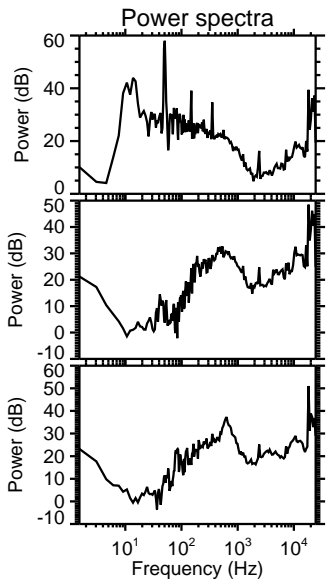
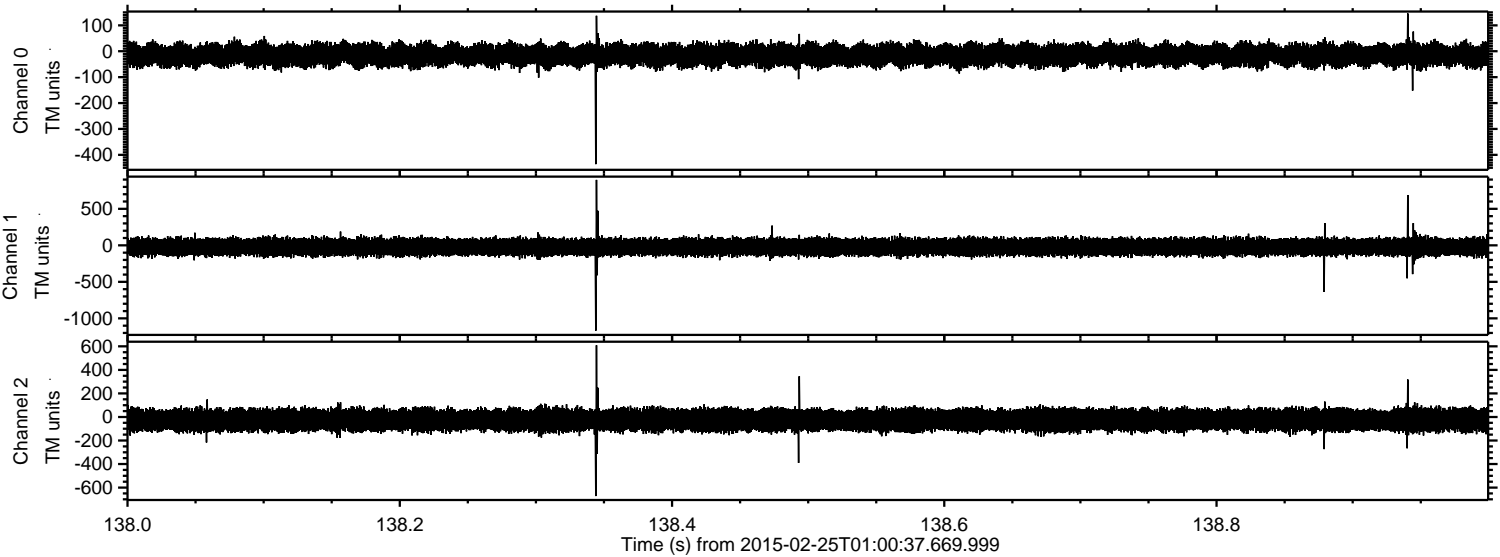
Processed Tue Mar 3 18:30:58 2015 by ELM ver.2012-10-06 from 001\_\_elm20150225\_010036\_\_dat00.bin





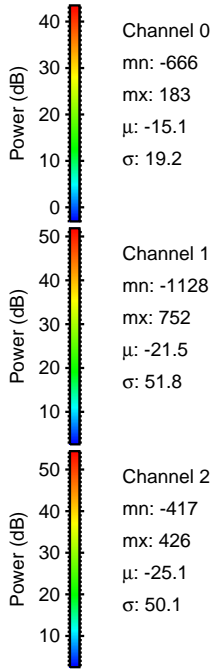
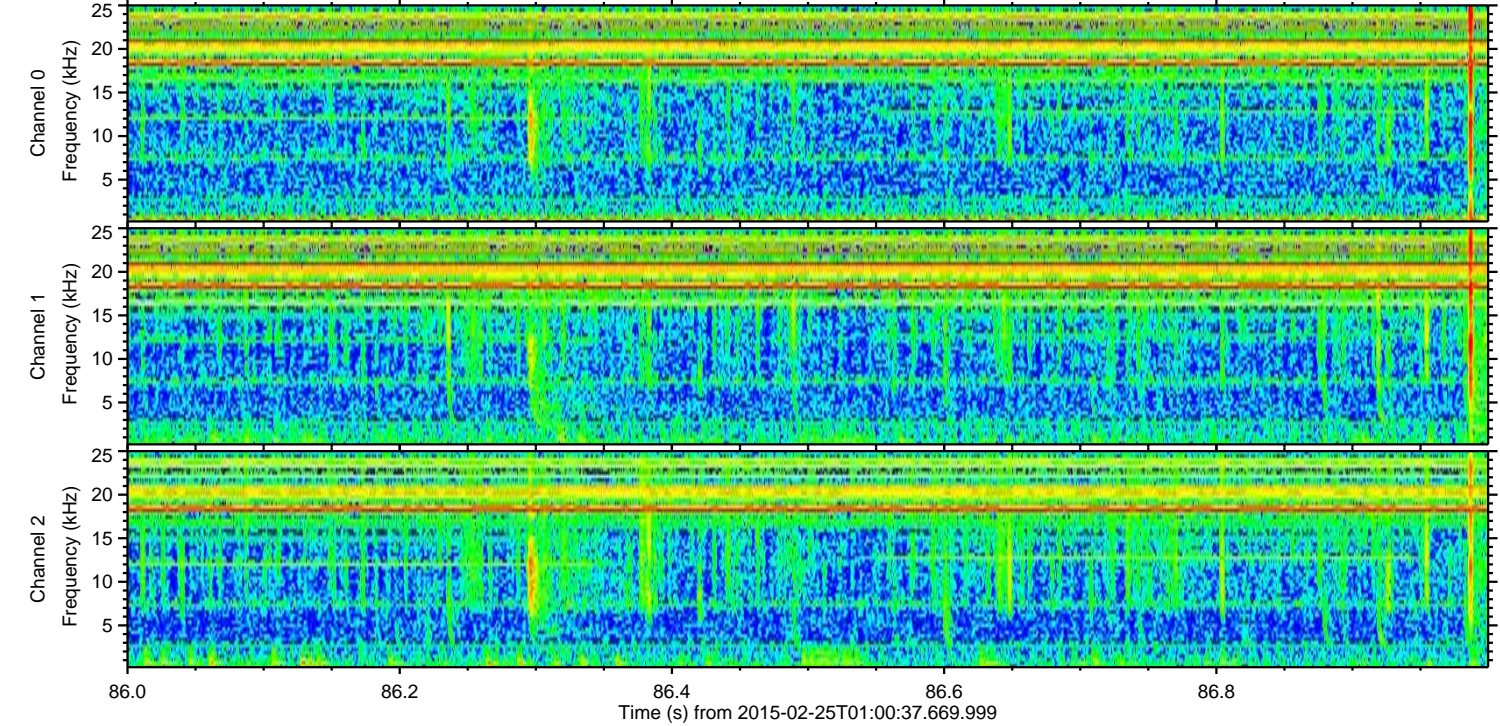
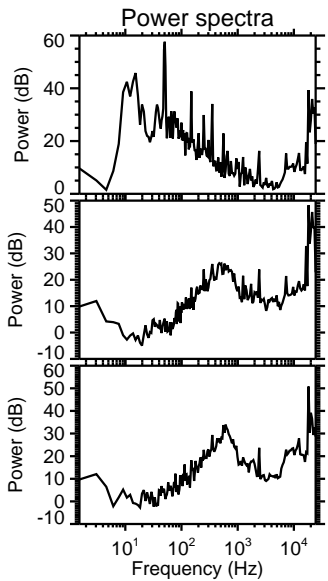
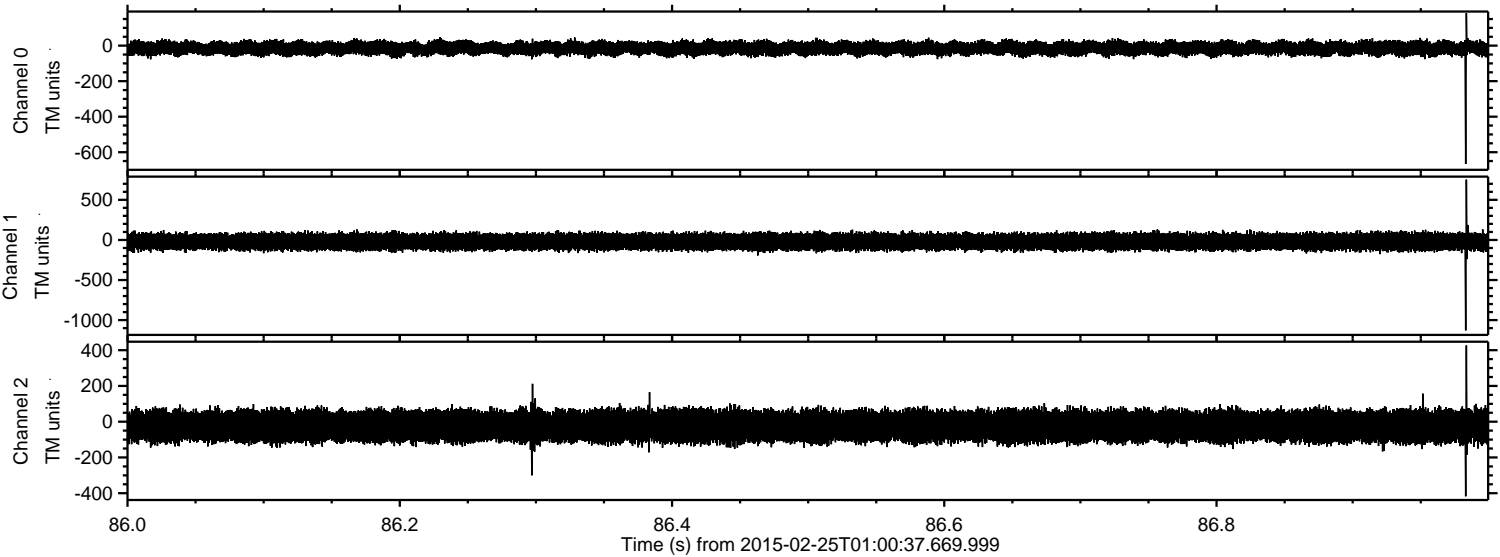
ELMAVAN 3D WAVEFORMS (Measured data sampled at 50 kHz) 49810 packets of 144 samples from 2015-02-25T01:00:37.669.999. Part 139/144

Processed Tue Mar 3 18:30:59 2015 by ELM ver.2012-10-06 from 001\_\_elm20150225\_010036\_\_dat00.bin





Processed Tue Mar 3 18:31:00 2015 by ELM ver.2012-10-06 from 001\_\_elm20150225\_010036\_\_dat00.bin



Channel 0  
mn: -666  
mx: 183  
 $\mu$ : -15.1  
 $\sigma$ : 19.2

Channel 1  
mn: -1128  
mx: 752  
 $\mu$ : -21.5  
 $\sigma$ : 51.8

Channel 2  
mn: -417  
mx: 426  
 $\mu$ : -25.1  
 $\sigma$ : 50.1



