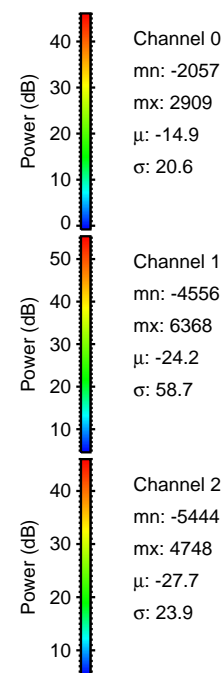
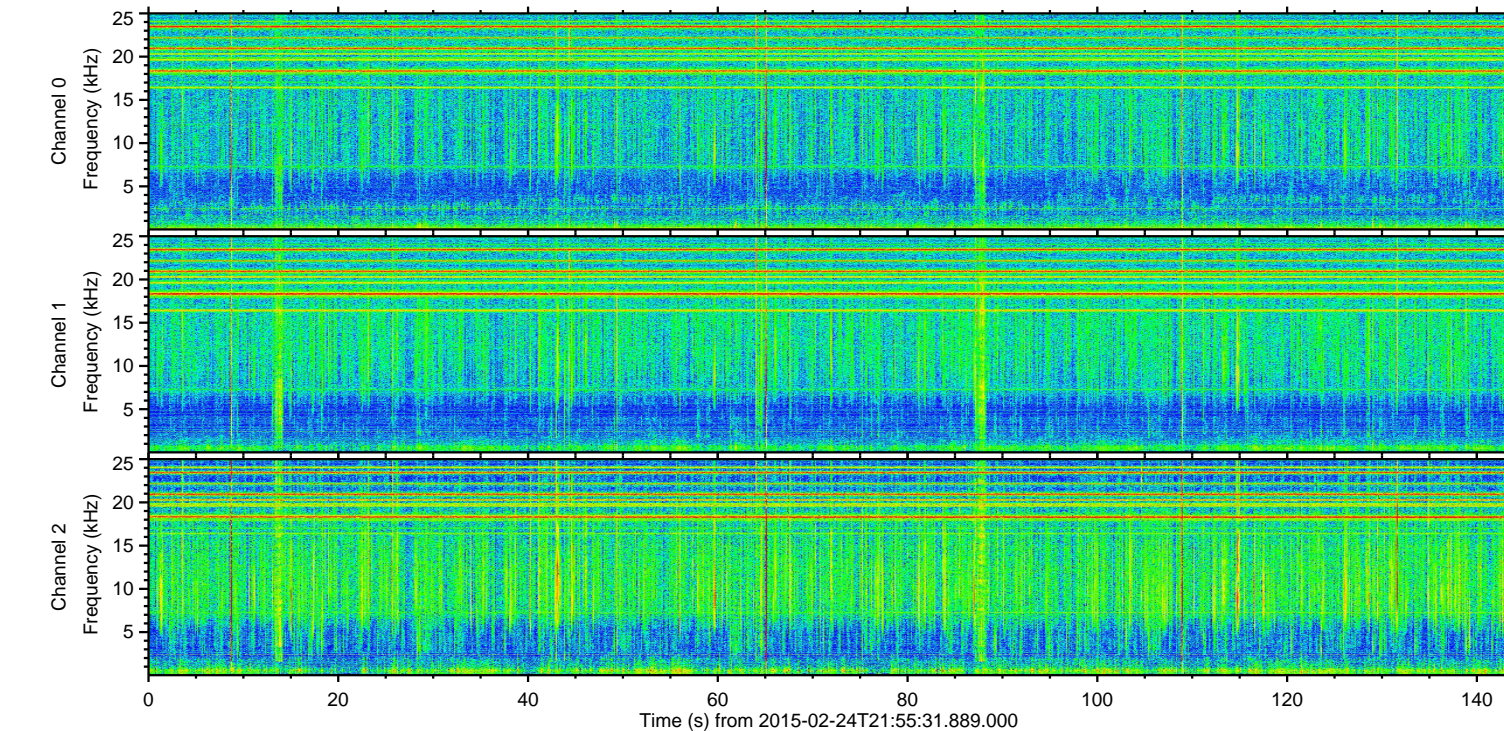
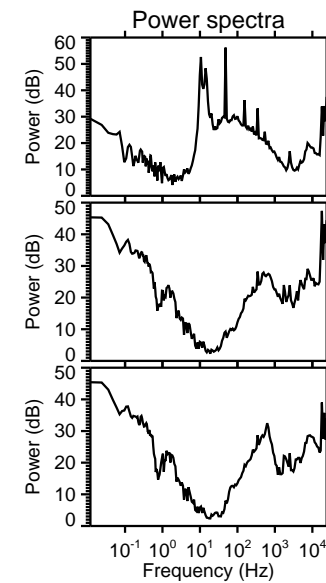
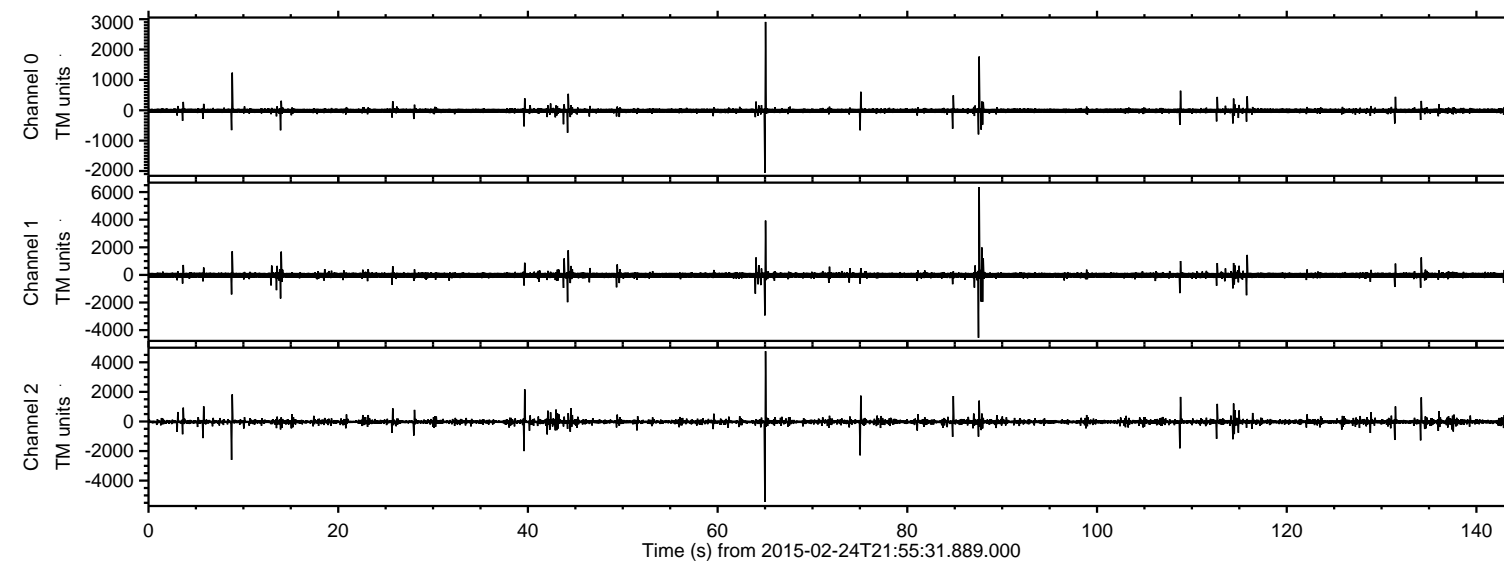


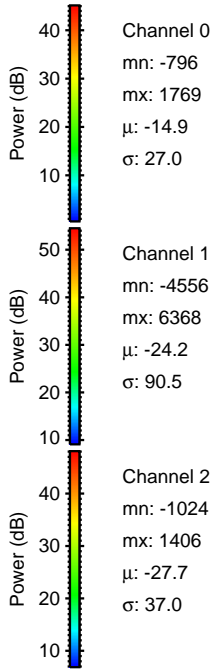
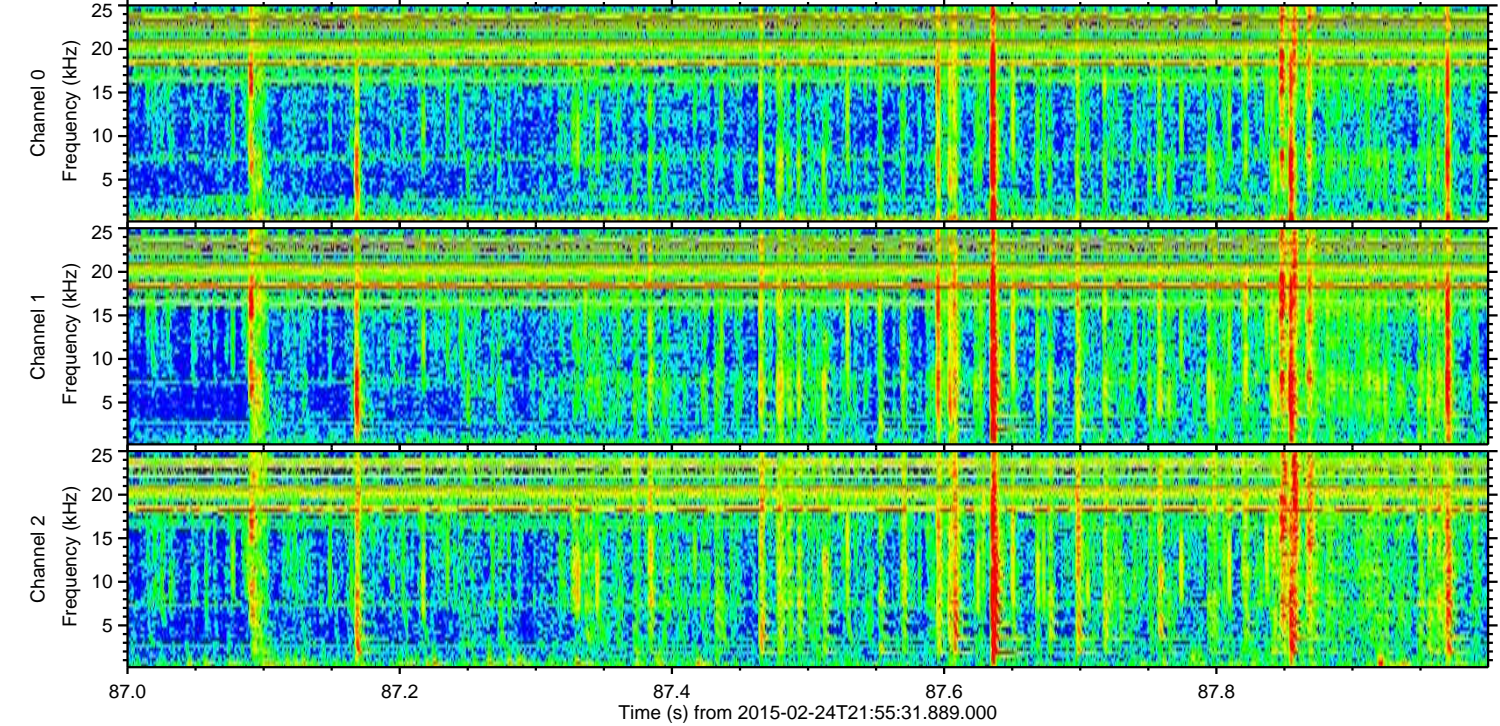
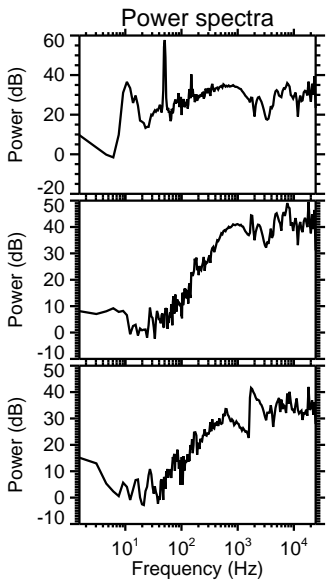
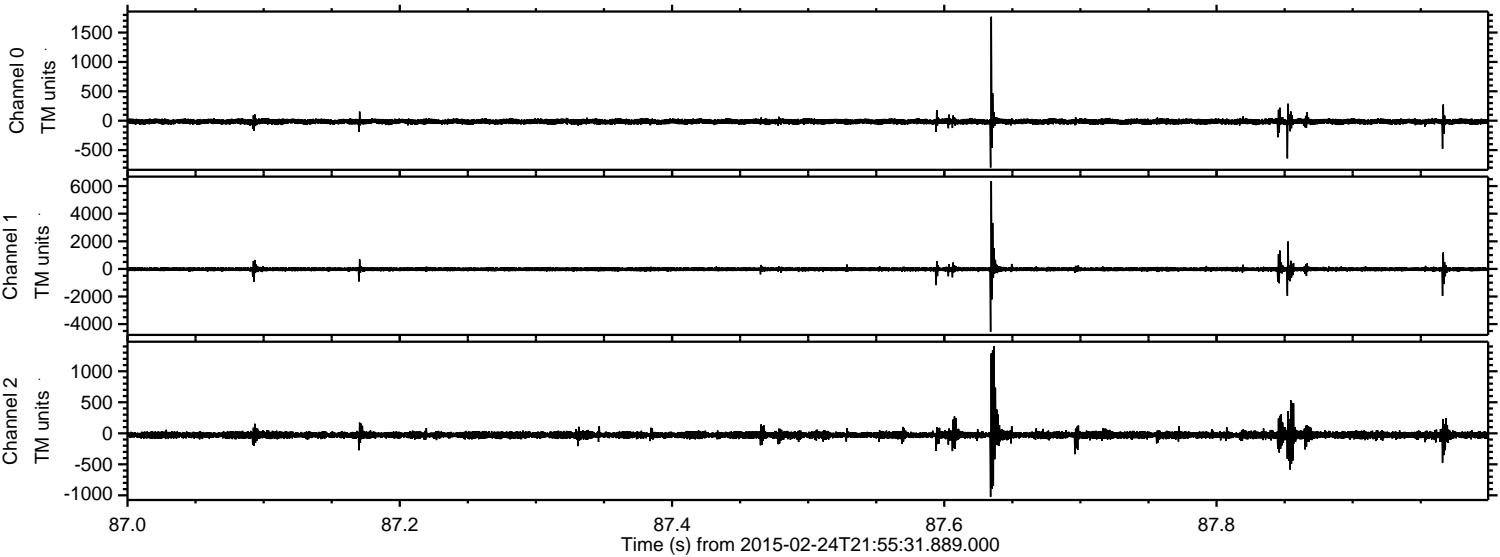
# ELMAVAN 3D WAVEFORMS (Measured data sampled at 50 kHz) 49809 packets of 144 samples from 2015-02-24T21:55:31.889.000.

Processed Tue Mar 3 17:46:04 2015 by ELM ver.2012-10-06 from 001\_\_elm20150224\_215530\_\_dat00.bin





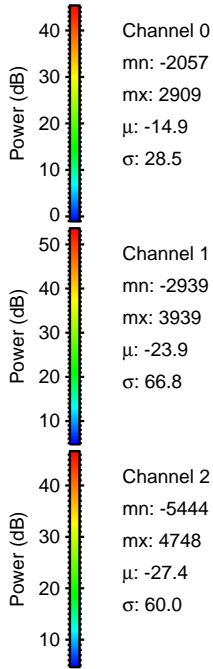
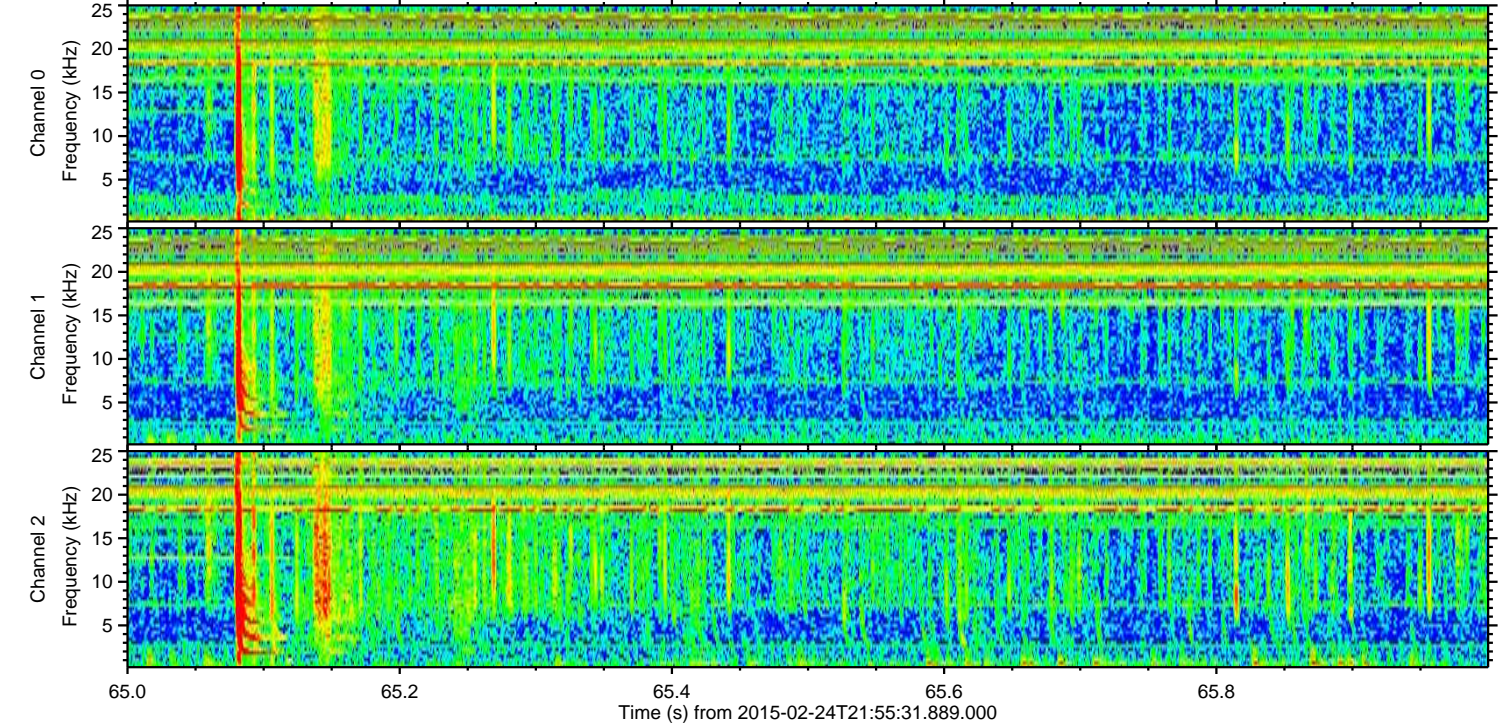
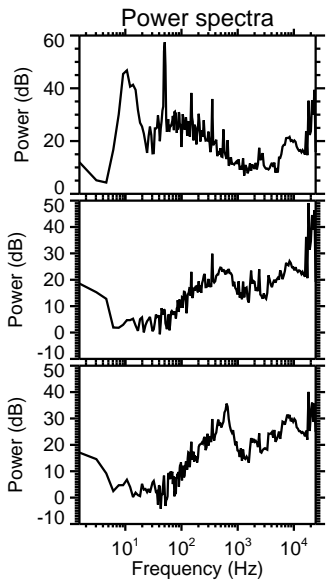
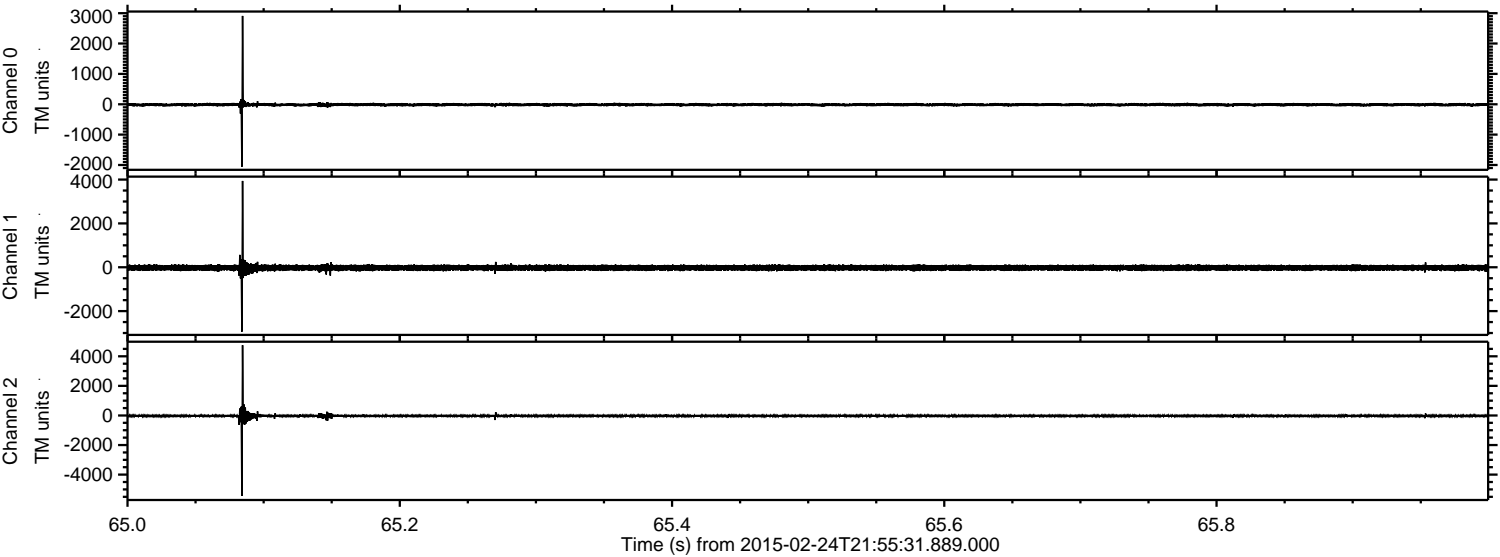
Processed Tue Mar 3 17:46:16 2015 by ELM ver.2012-10-06 from 001\_\_elm20150224\_215530\_\_dat00.bin





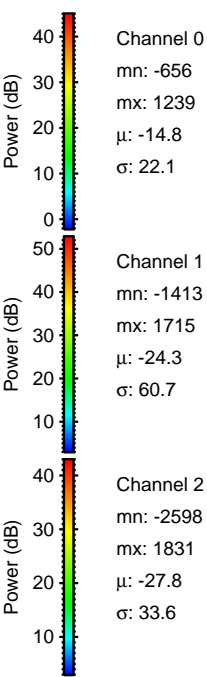
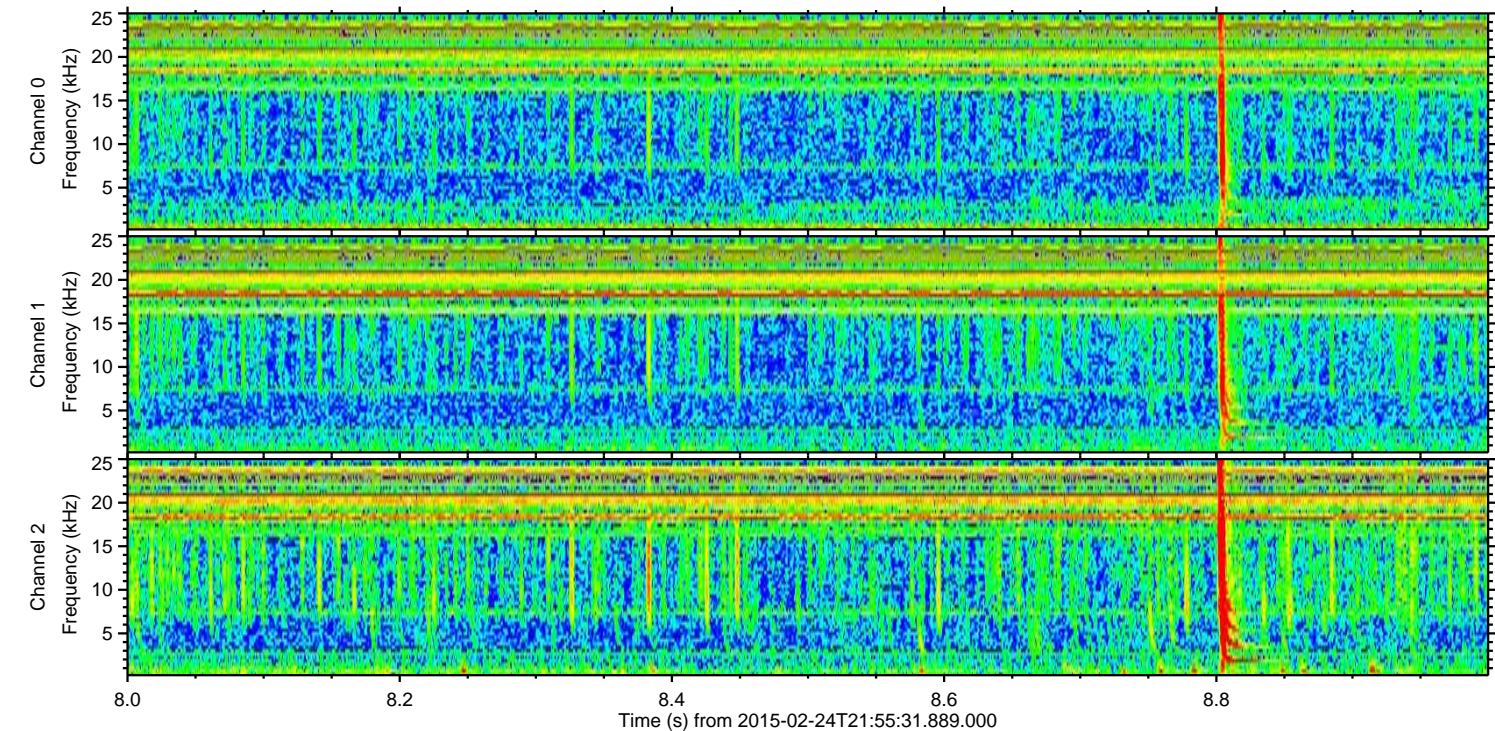
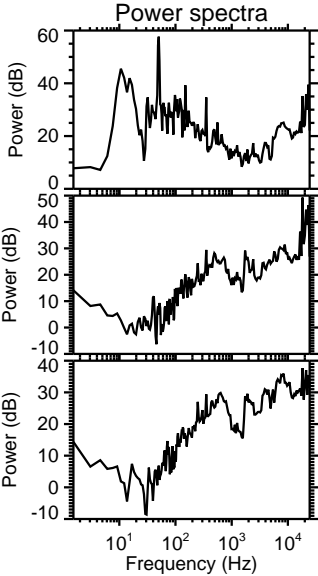
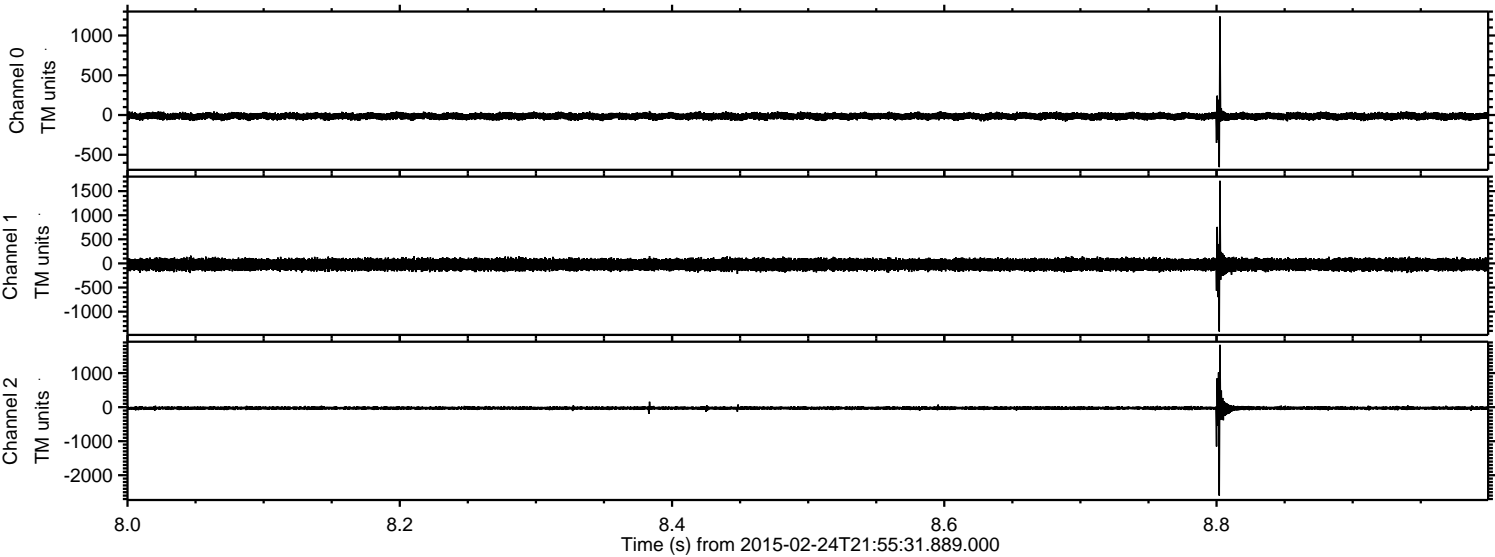
ELMAVAN 3D WAVEFORMS (Measured data sampled at 50 kHz) 49809 packets of 144 samples from 2015-02-24T21:55:31.889.000. Part 66/144

Processed Tue Mar 3 17:46:17 2015 by ELM ver.2012-10-06 from 001\_\_elm20150224\_215530\_\_dat00.bin





Processed Tue Mar 3 17:46:18 2015 by ELM ver.2012-10-06 from 001\_\_elm20150224\_215530\_\_dat00.bin



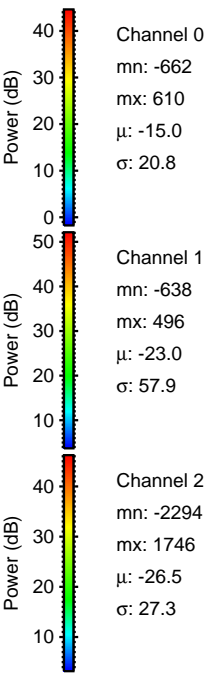
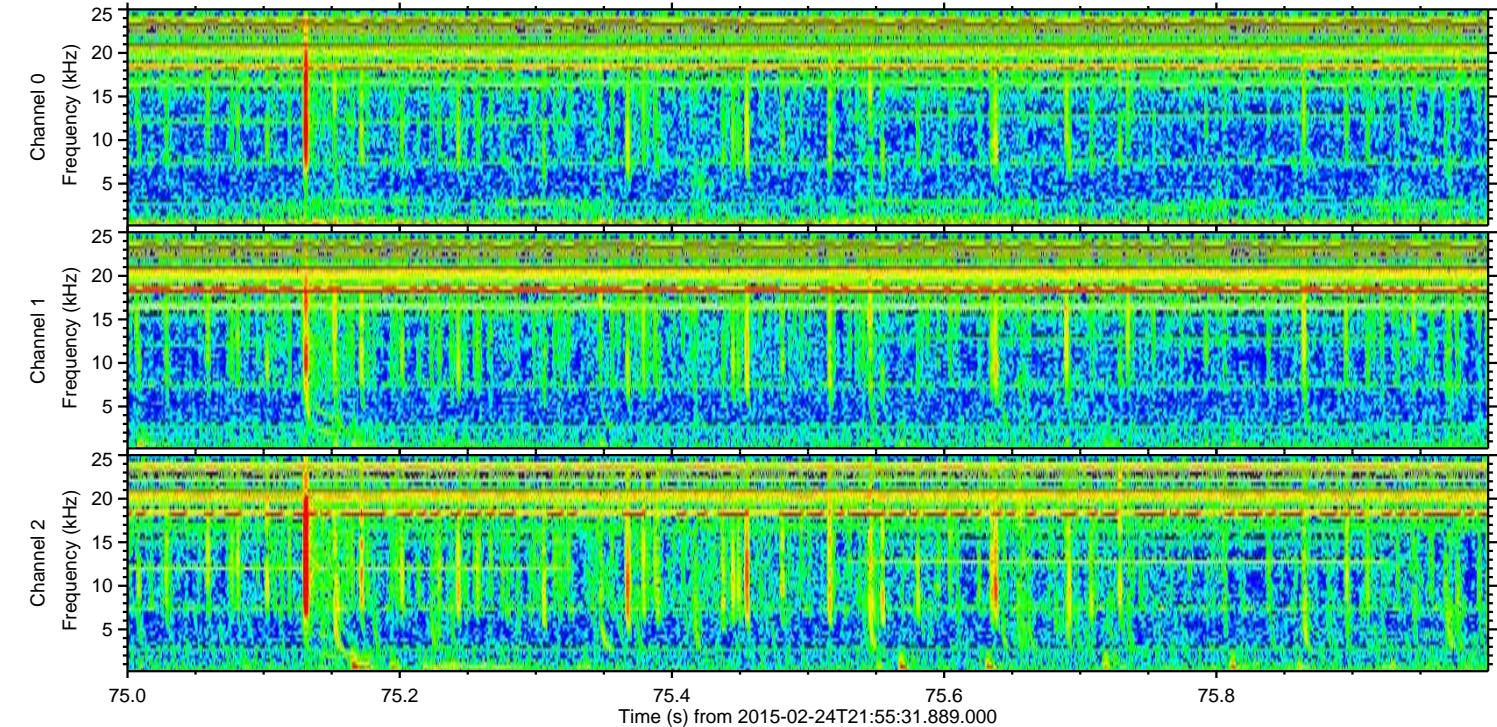
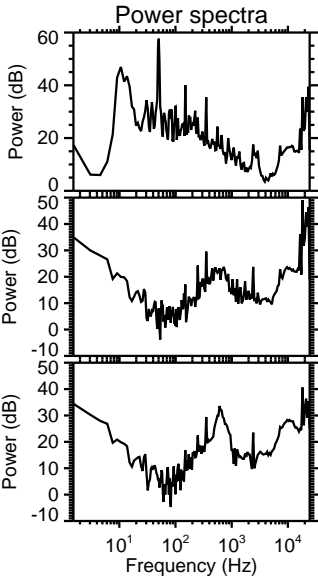
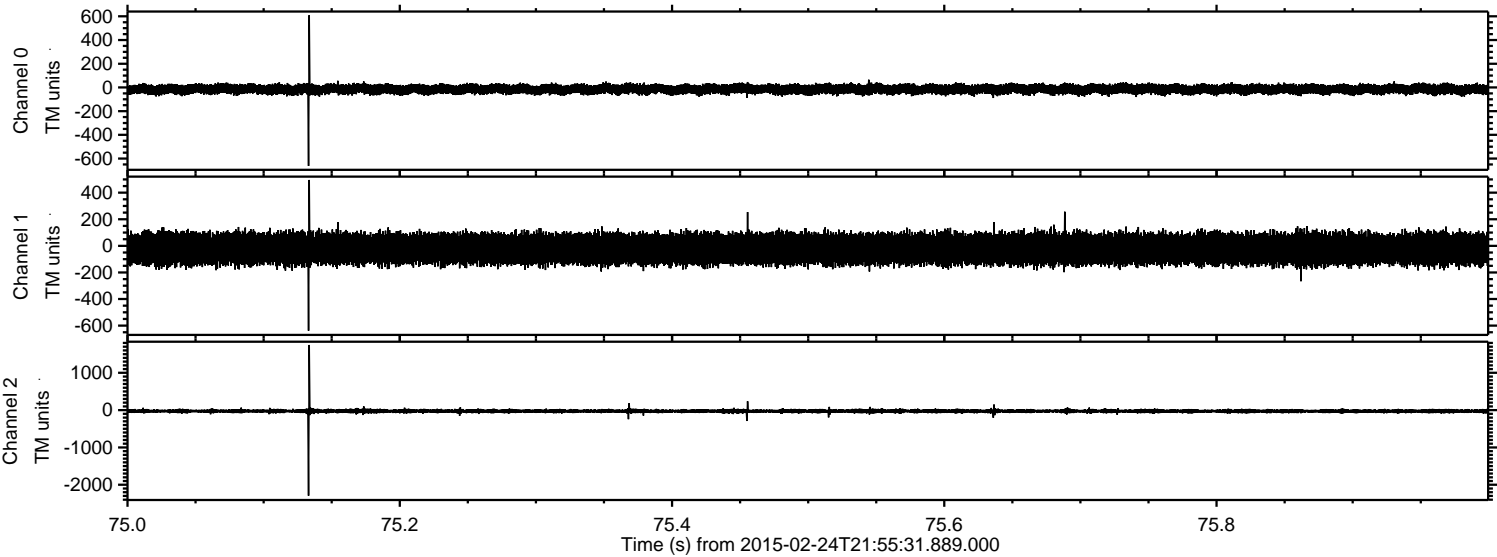
Channel 0  
mn: -656  
mx: 1239  
 $\mu$ : -14.8  
 $\sigma$ : 22.1

Channel 1  
mn: -1413  
mx: 1715  
 $\mu$ : -24.3  
 $\sigma$ : 60.7

Channel 2  
mn: -2598  
mx: 1831  
 $\mu$ : -27.8  
 $\sigma$ : 33.6

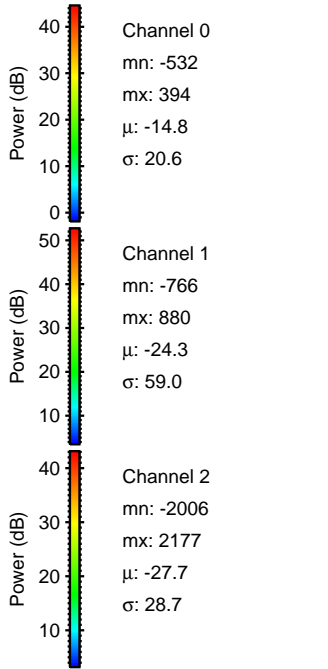
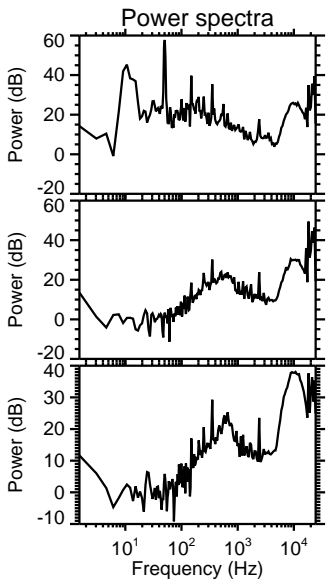
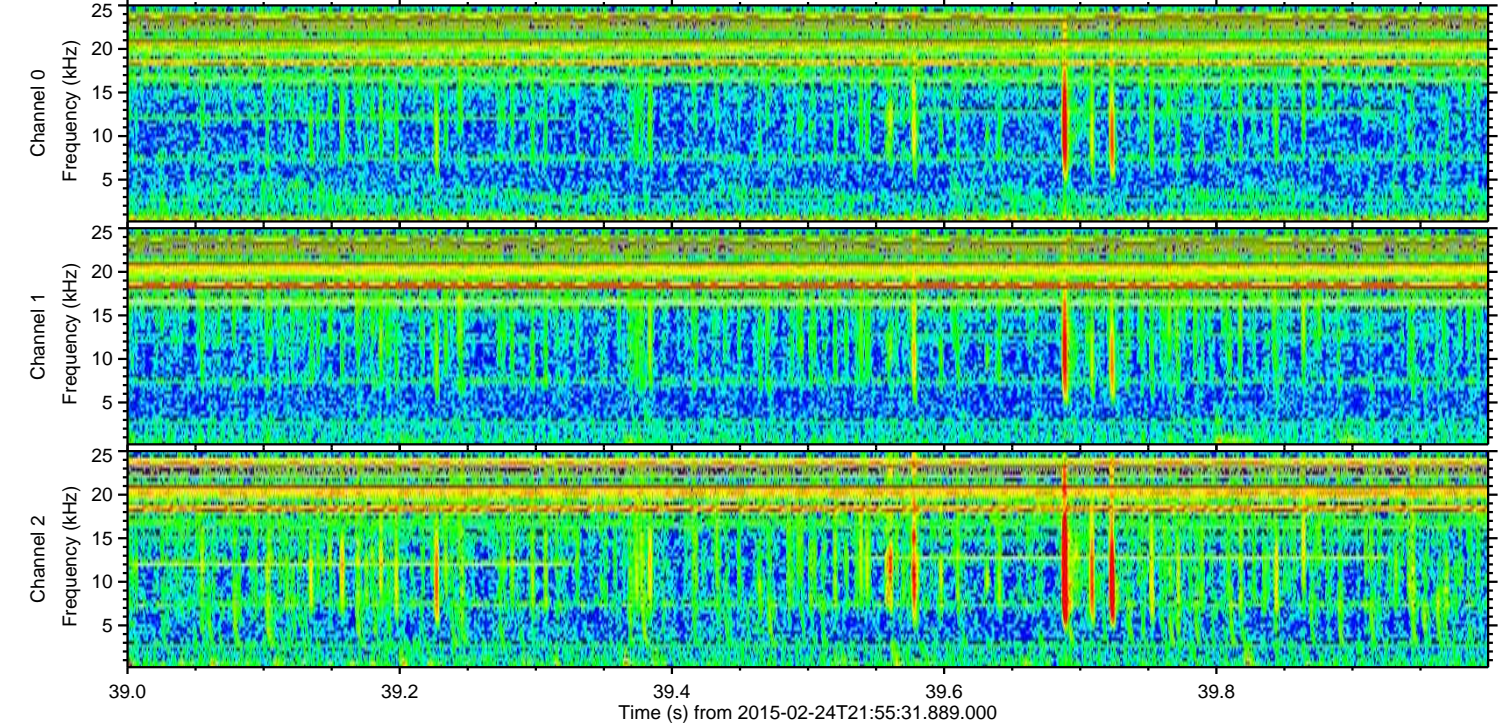
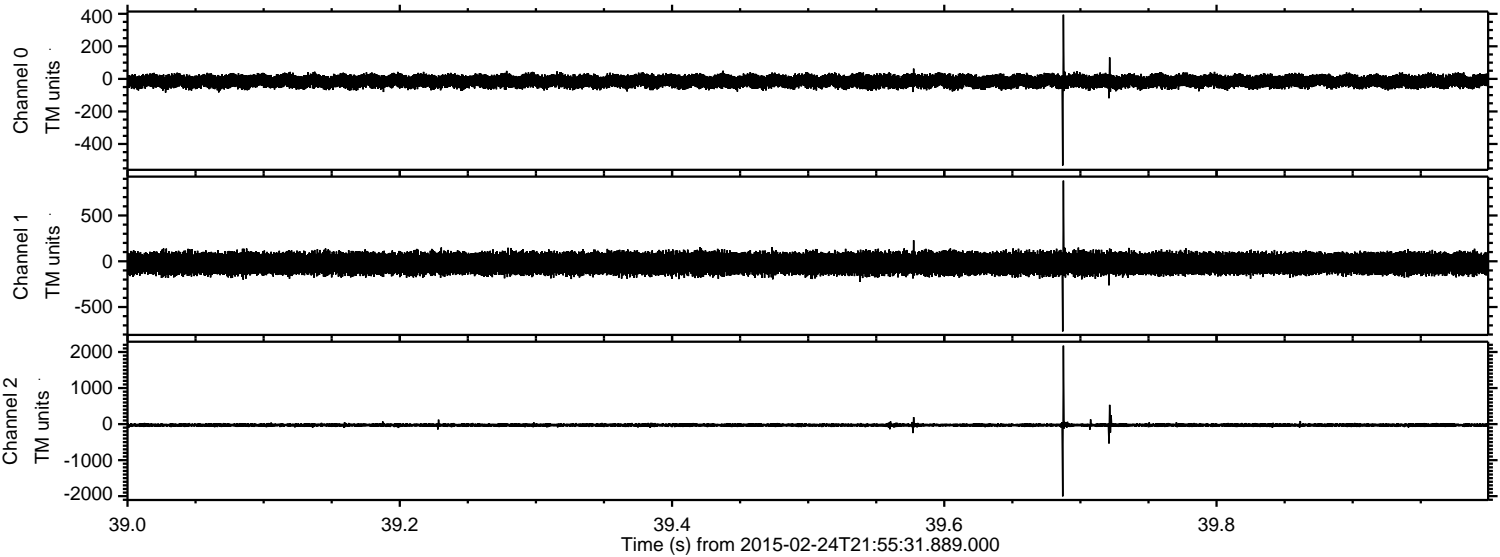


Processed Tue Mar 3 17:46:19 2015 by ELM ver.2012-10-06 from 001\_\_elm20150224\_215530\_\_dat00.bin



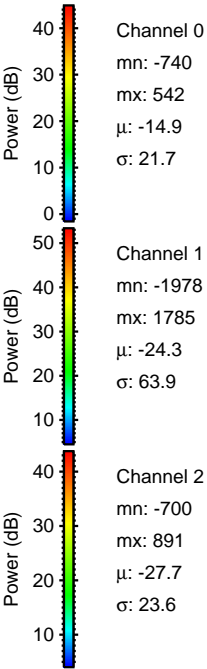
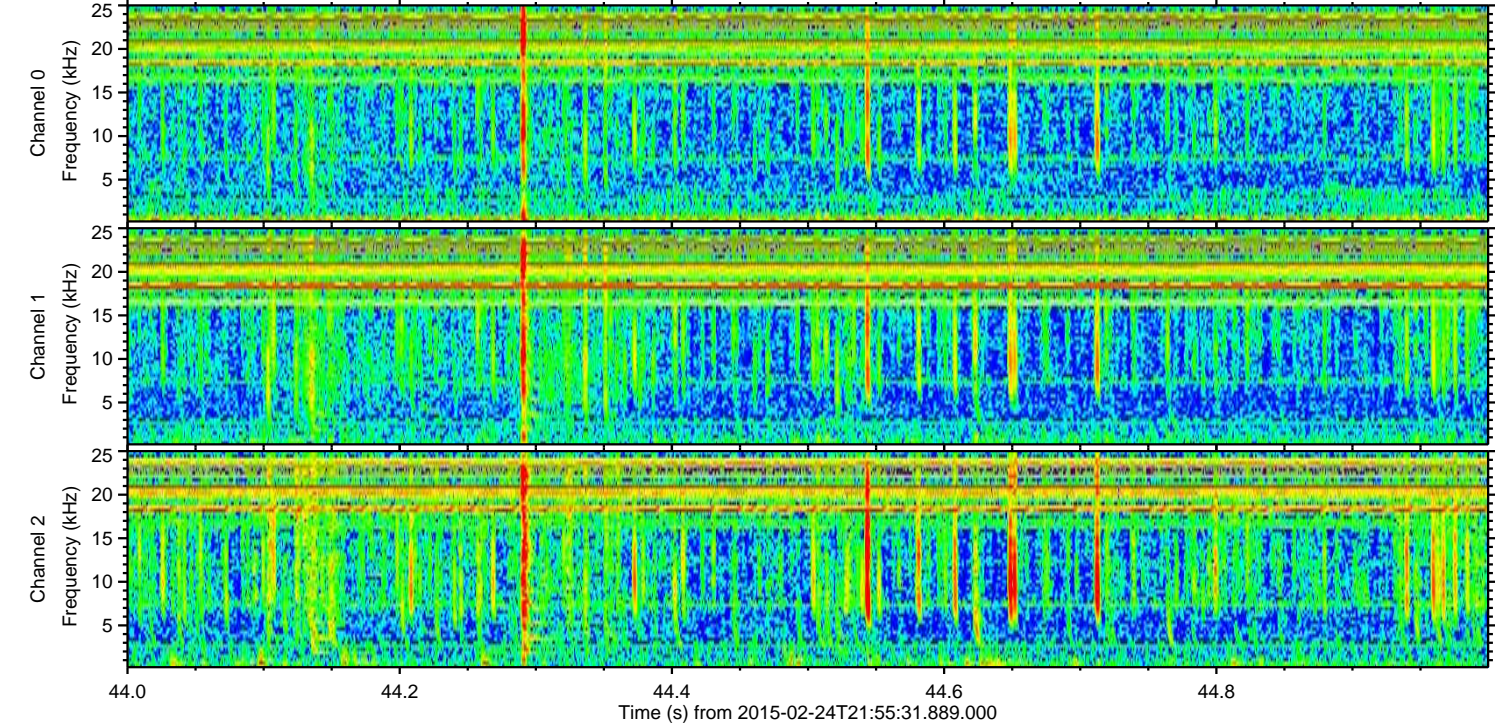
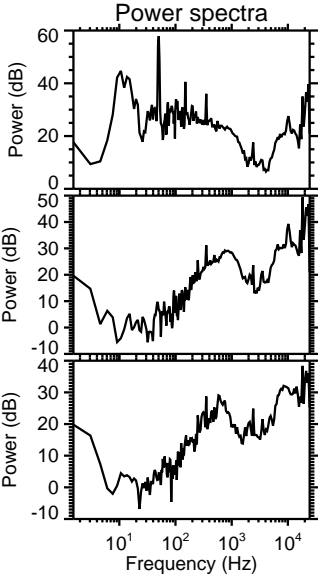
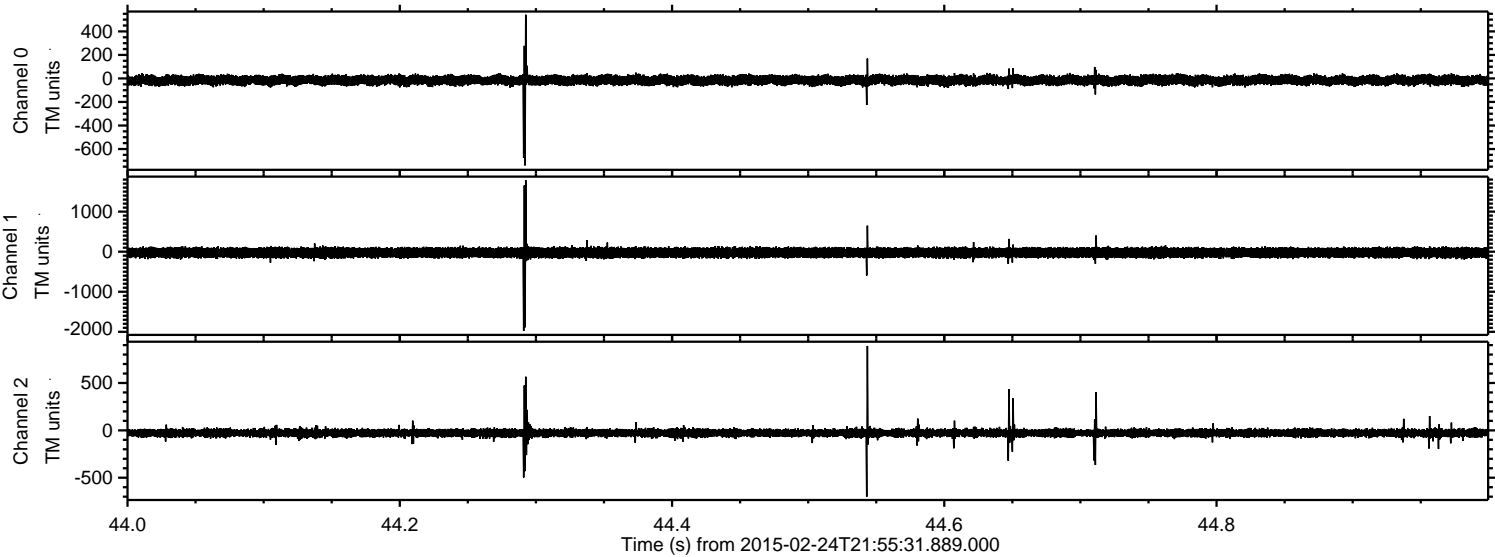


Processed Tue Mar 3 17:46:20 2015 by ELM ver.2012-10-06 from 001\_\_elm20150224\_215530\_\_dat00.bin





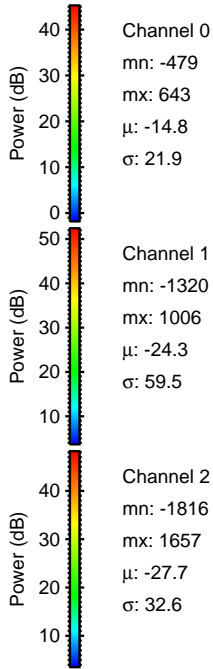
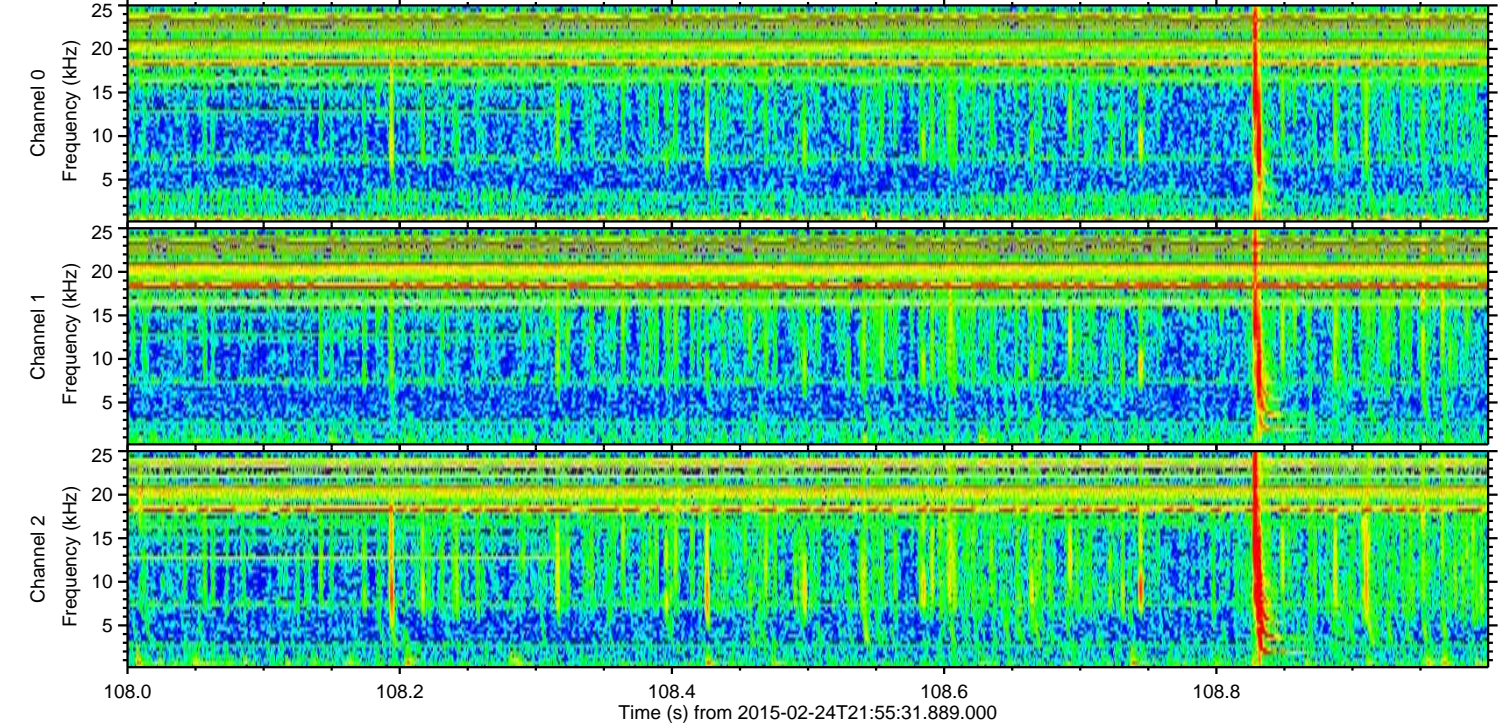
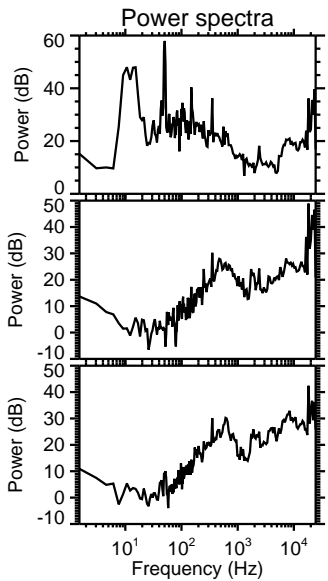
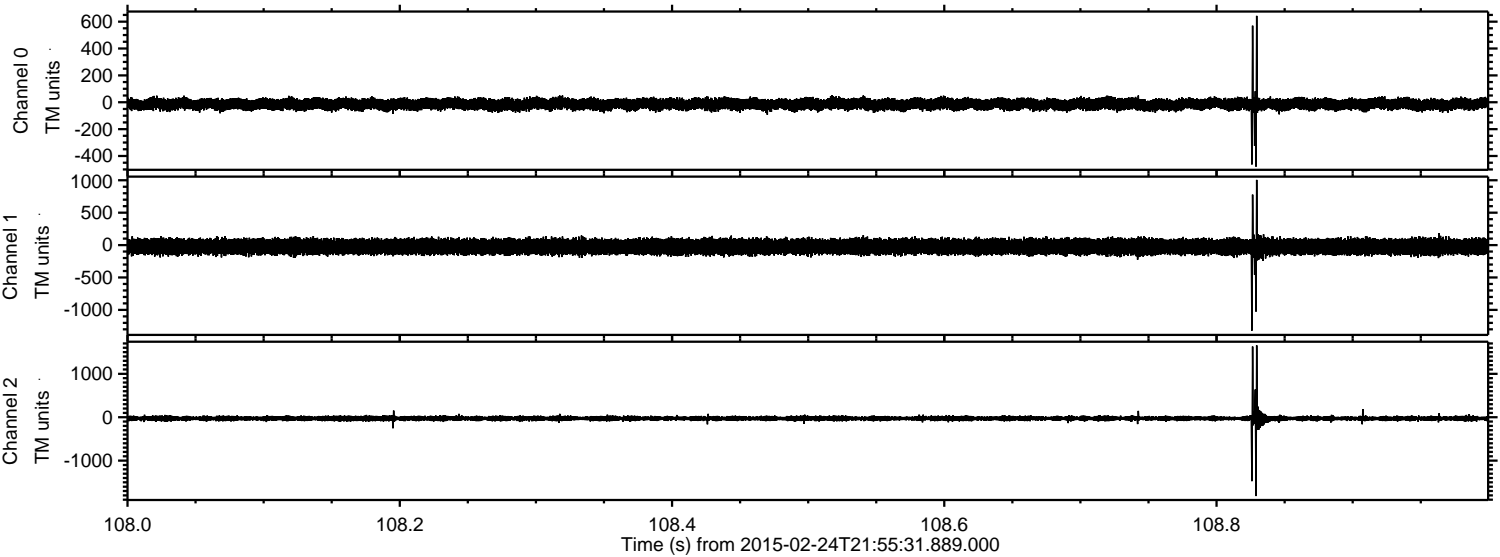
Processed Tue Mar 3 17:46:21 2015 by ELM ver.2012-10-06 from 001\_\_elm20150224\_215530\_\_dat00.bin





ELMAVAN 3D WAVEFORMS (Measured data sampled at 50 kHz) 49809 packets of 144 samples from 2015-02-24T21:55:31.889.000. Part 109/144

Processed Tue Mar 3 17:46:22 2015 by ELM ver.2012-10-06 from 001\_\_elm20150224\_215530\_\_dat00.bin



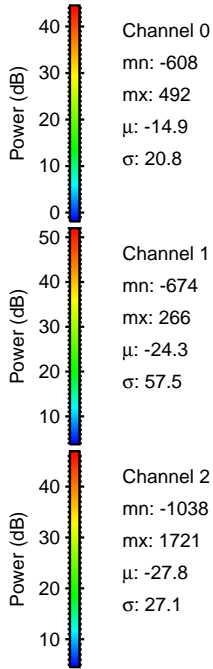
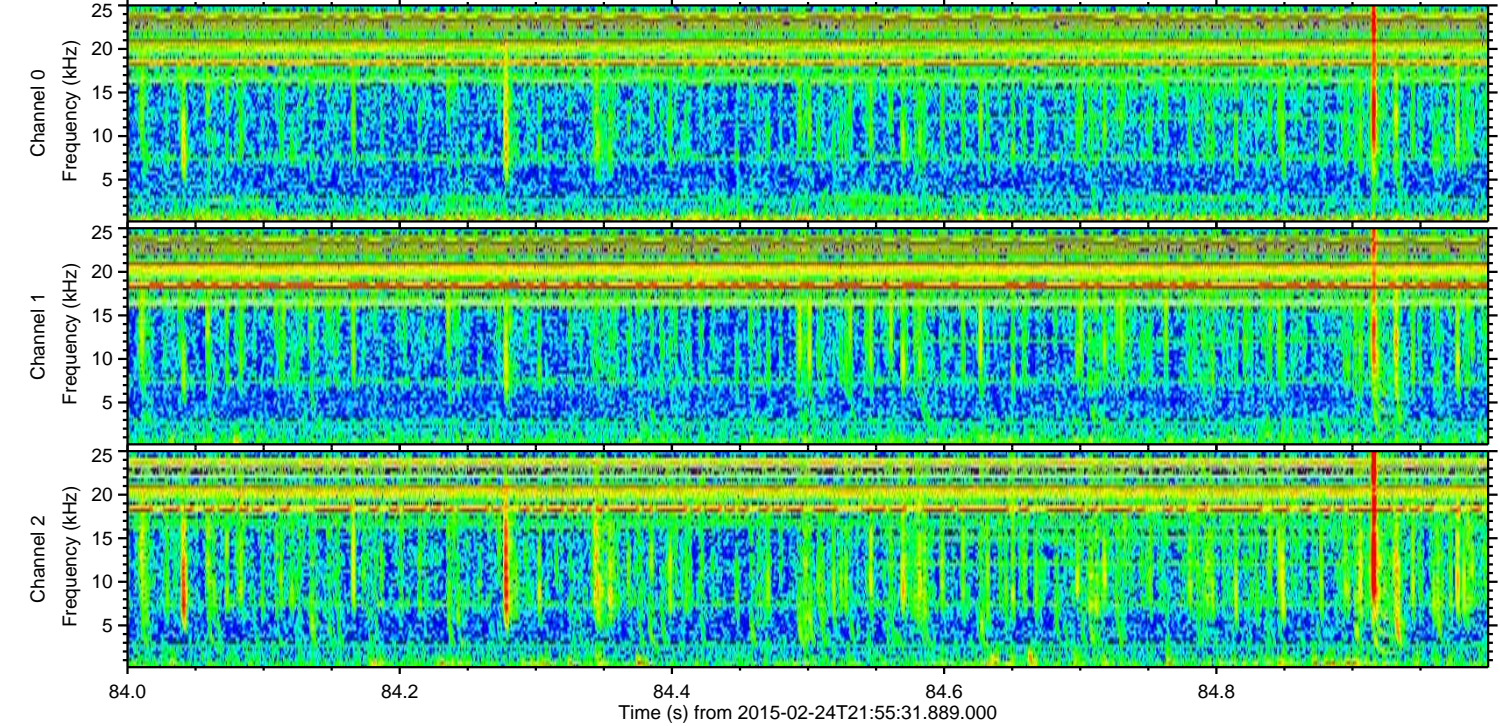
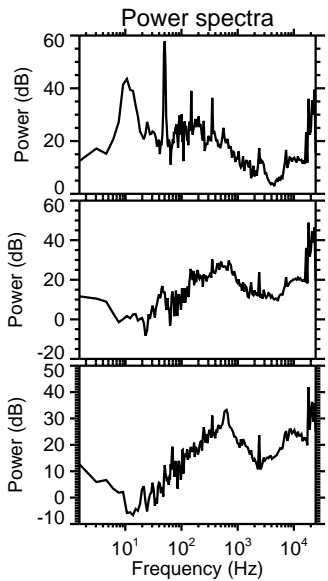
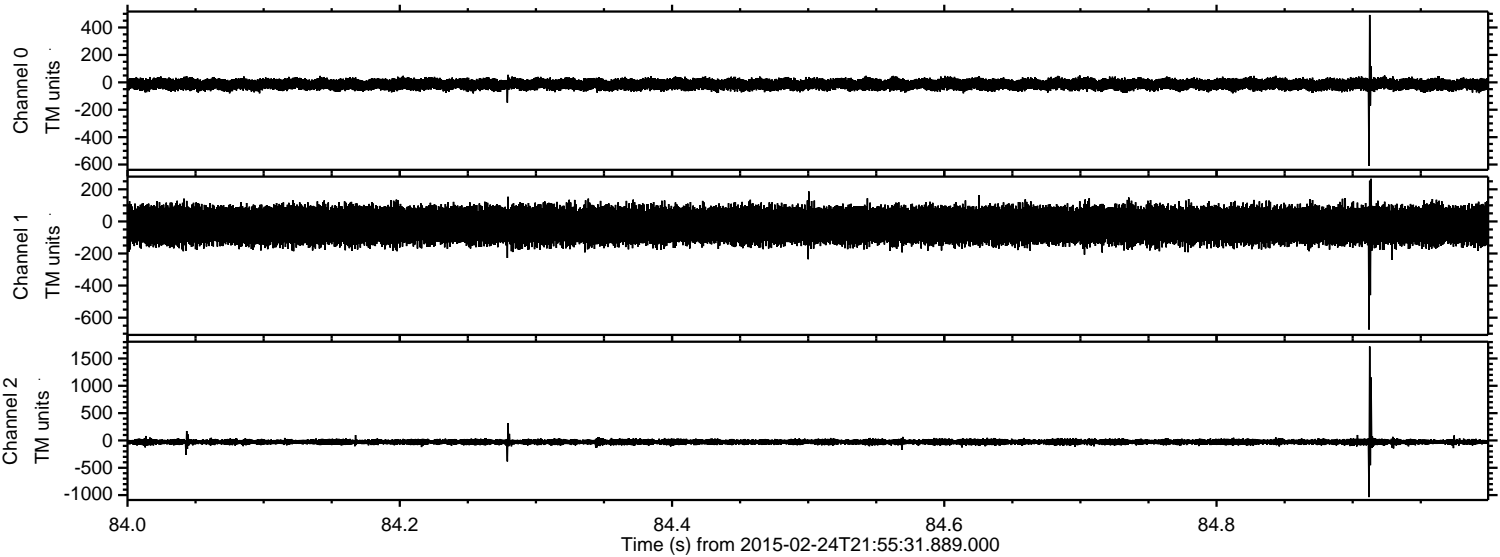
Channel 0  
mn: -479  
mx: 643  
 $\mu$ : -14.8  
 $\sigma$ : 21.9

Channel 1  
mn: -1320  
mx: 1006  
 $\mu$ : -24.3  
 $\sigma$ : 59.5

Channel 2  
mn: -1816  
mx: 1657  
 $\mu$ : -27.7  
 $\sigma$ : 32.6



Processed Tue Mar 3 17:46:23 2015 by ELM ver.2012-10-06 from 001\_\_elm20150224\_215530\_\_dat00.bin





Processed Tue Mar 3 17:46:23 2015 by ELM ver.2012-10-06 from 001\_\_elm20150224\_215530\_\_dat00.bin

