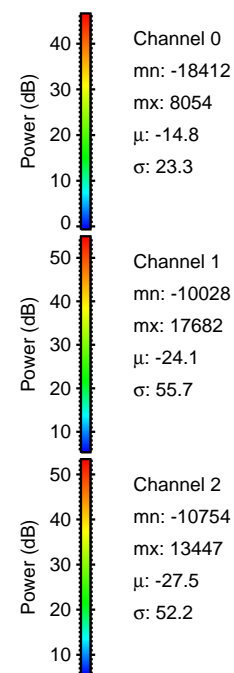
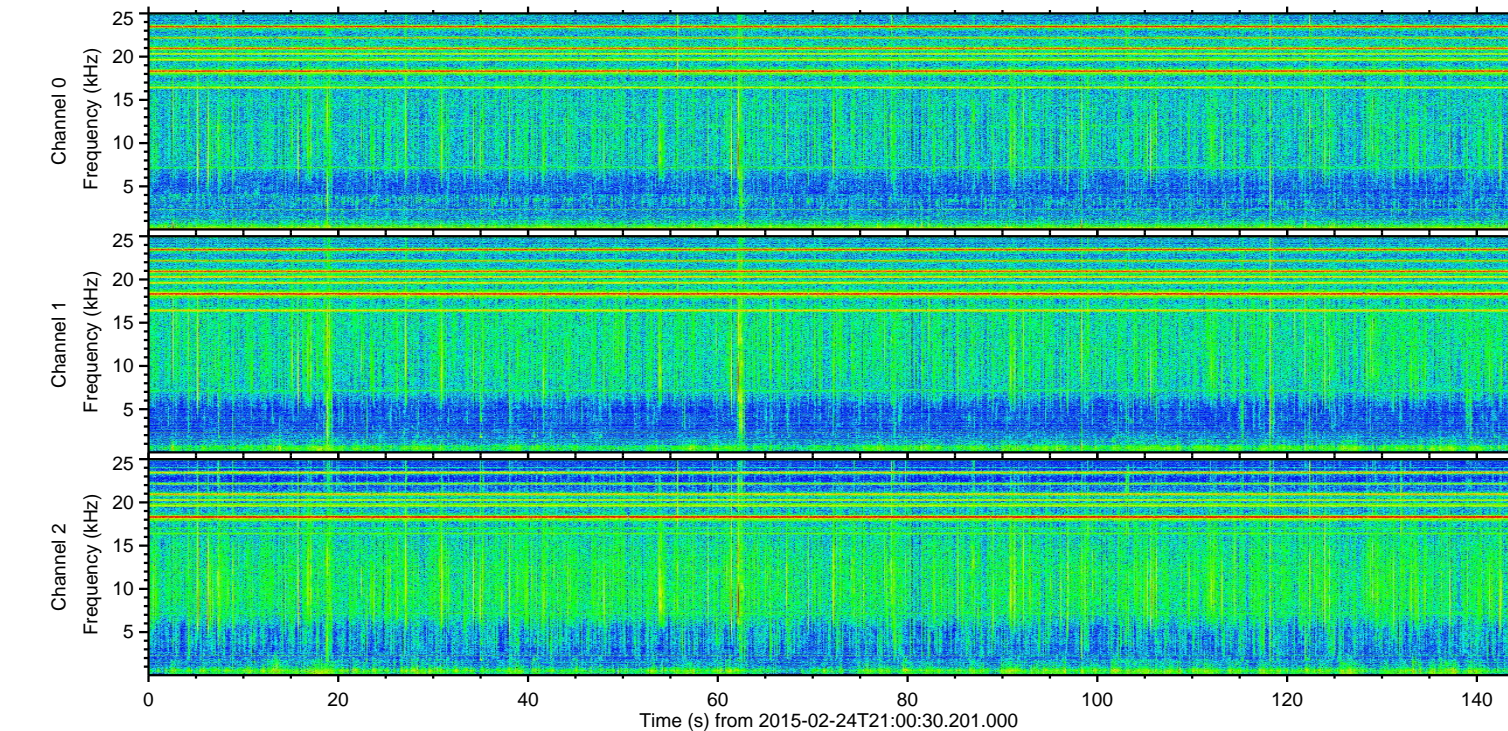
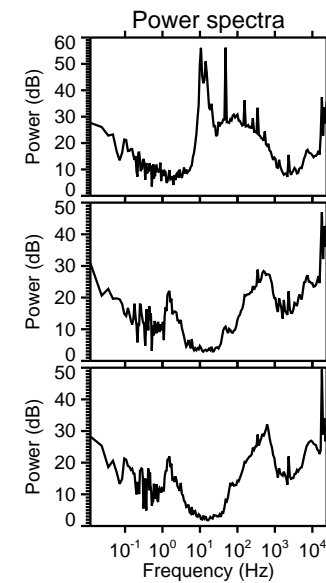
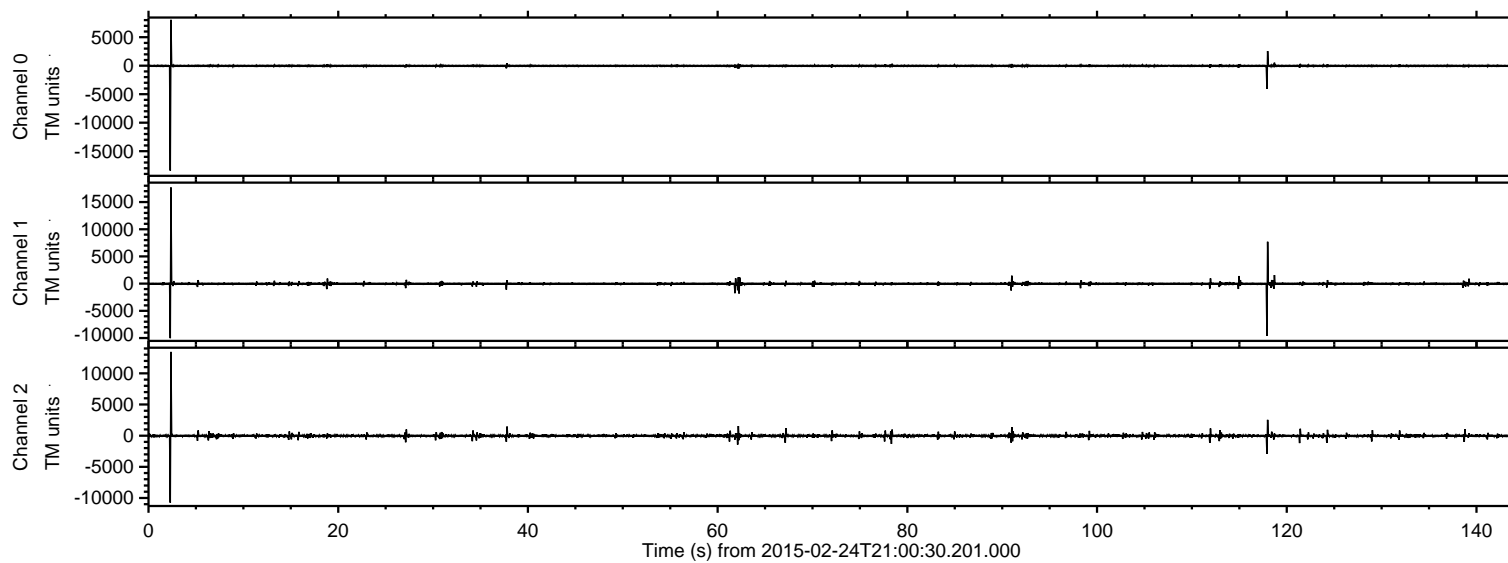


ELMAVAN 3D WAVEFORMS (Measured data sampled at 50 kHz) 49807 packets of 144 samples from 2015-02-24T21:00:30.201.000.

Processed Tue Mar 3 17:31:18 2015 by ELM ver.2012-10-06 from 001__elm20150224_210029__dat00.bin

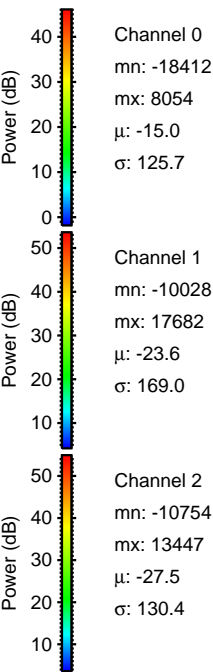
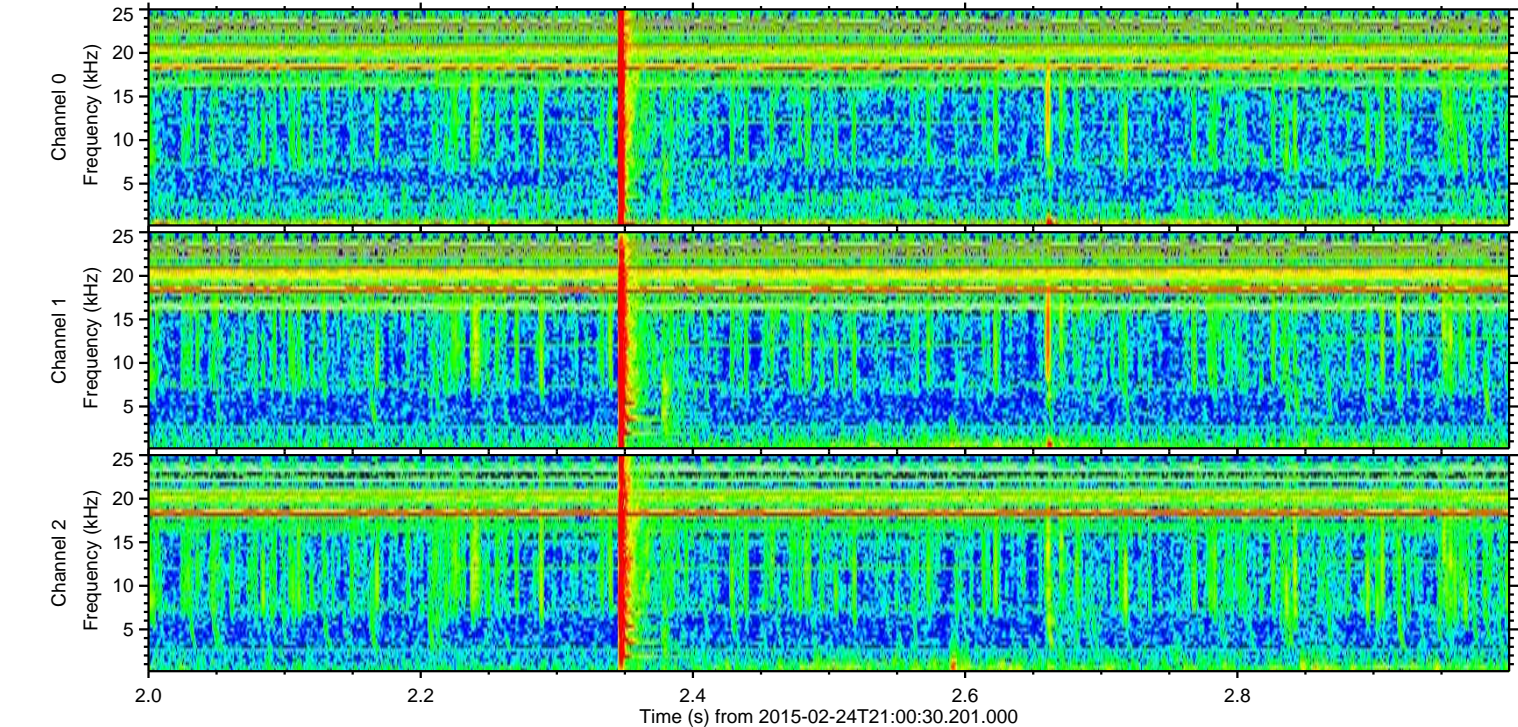
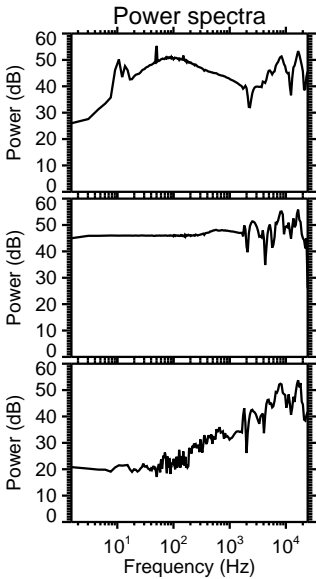
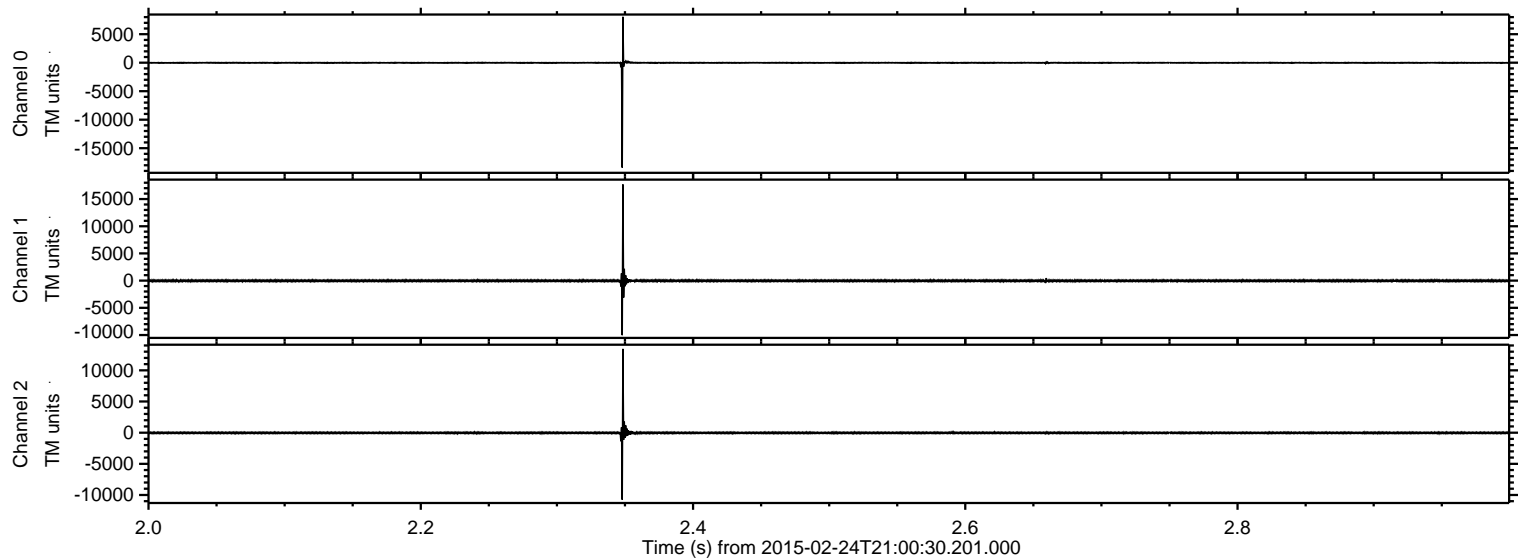


Channel 0
mn: -18412
mx: 8054
 μ : -14.8
 σ : 23.3

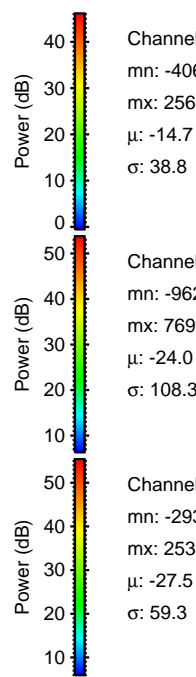
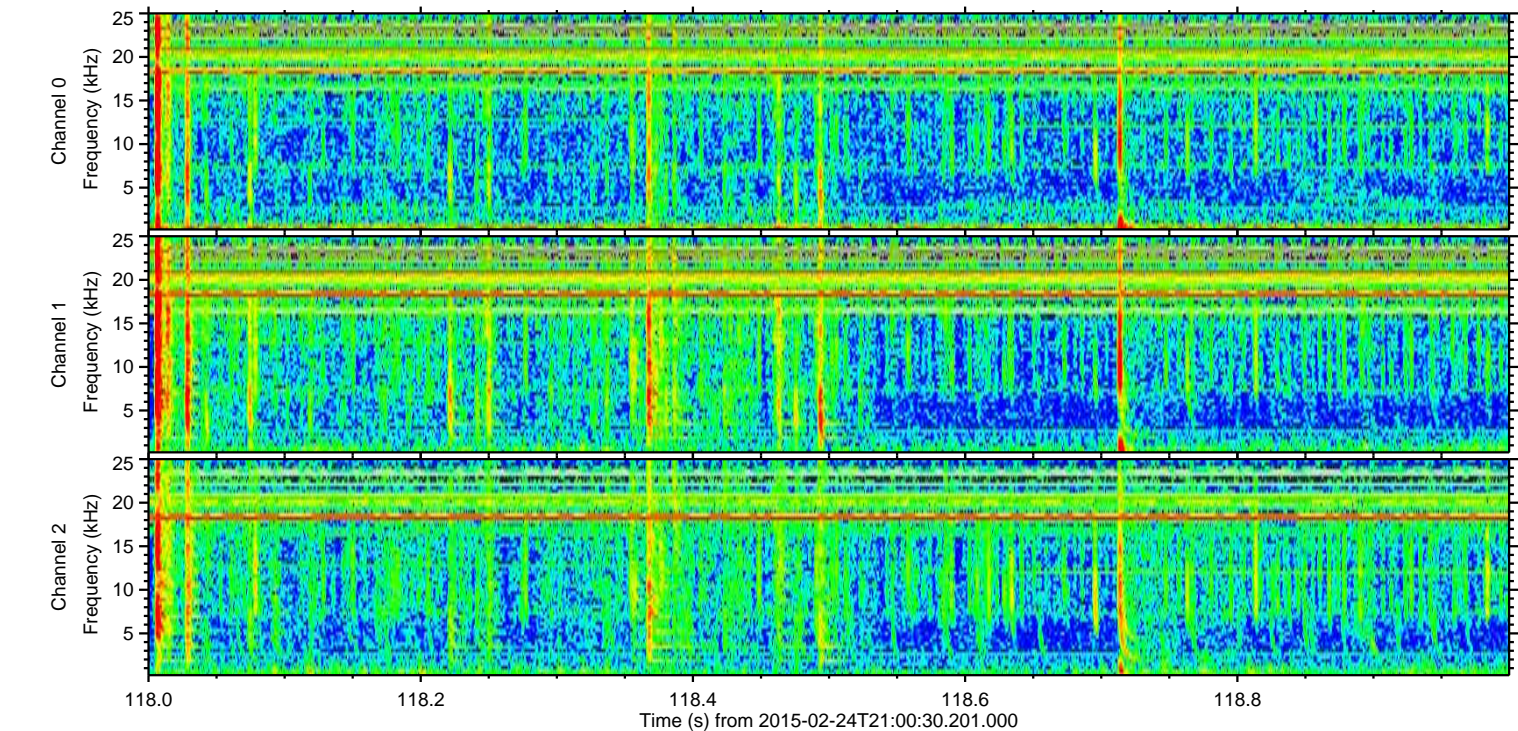
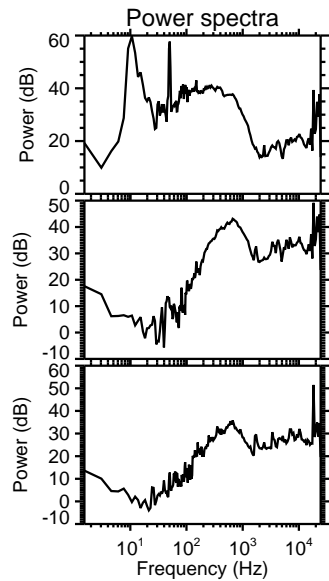
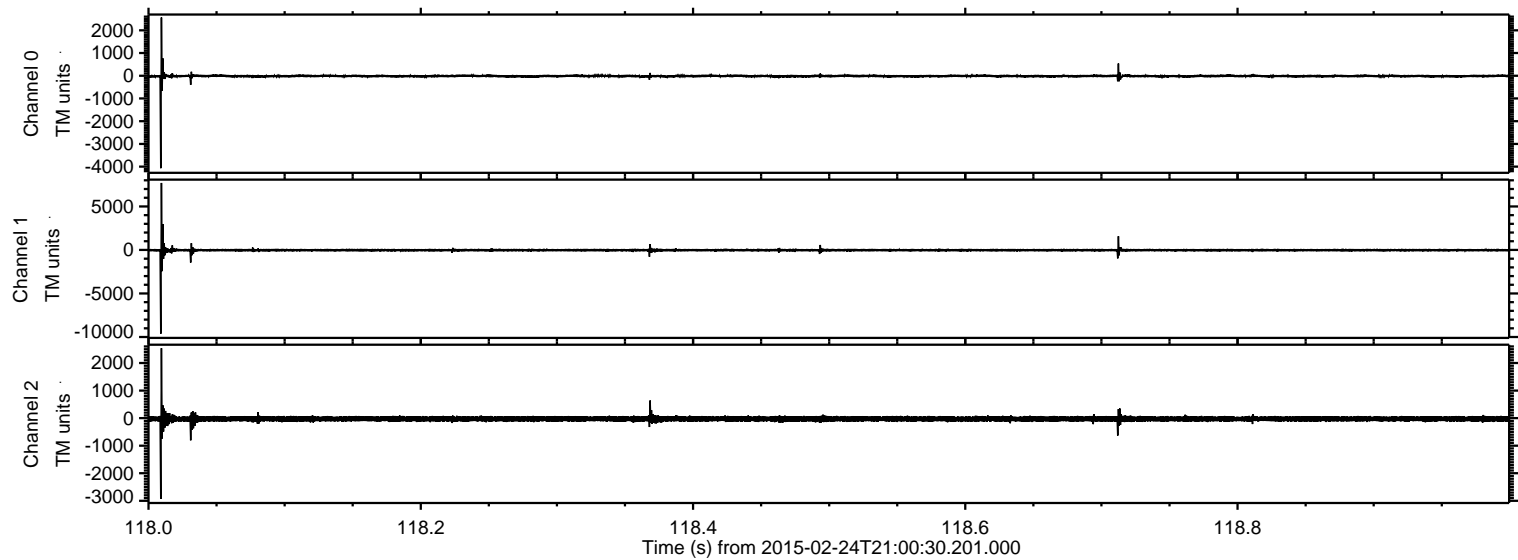
Channel 1
mn: -10028
mx: 17682
 μ : -24.1
 σ : 55.7

Channel 2
mn: -10754
mx: 13447
 μ : -27.5
 σ : 52.2

Processed Tue Mar 3 17:31:30 2015 by ELM ver.2012-10-06 from 001__elm20150224_210029__dat00.bin



Processed Tue Mar 3 17:31:31 2015 by ELM ver.2012-10-06 from 001__elm20150224_210029__dat00.bin

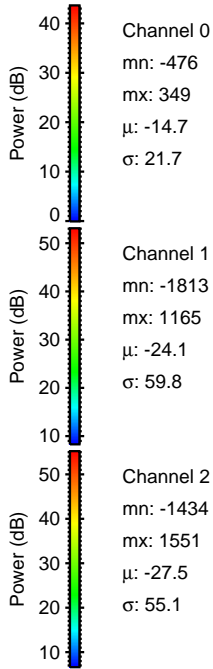
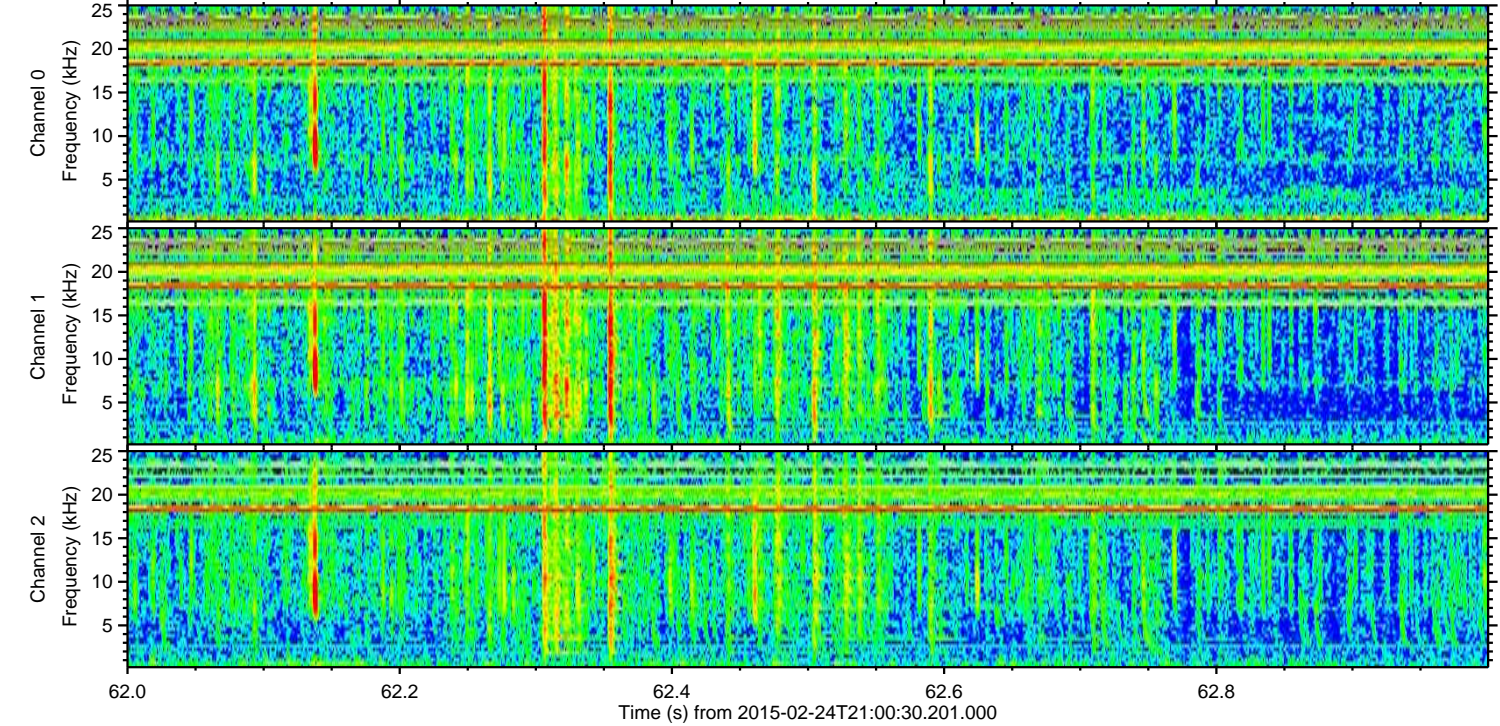
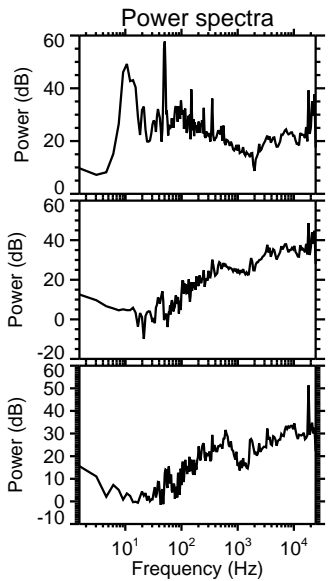
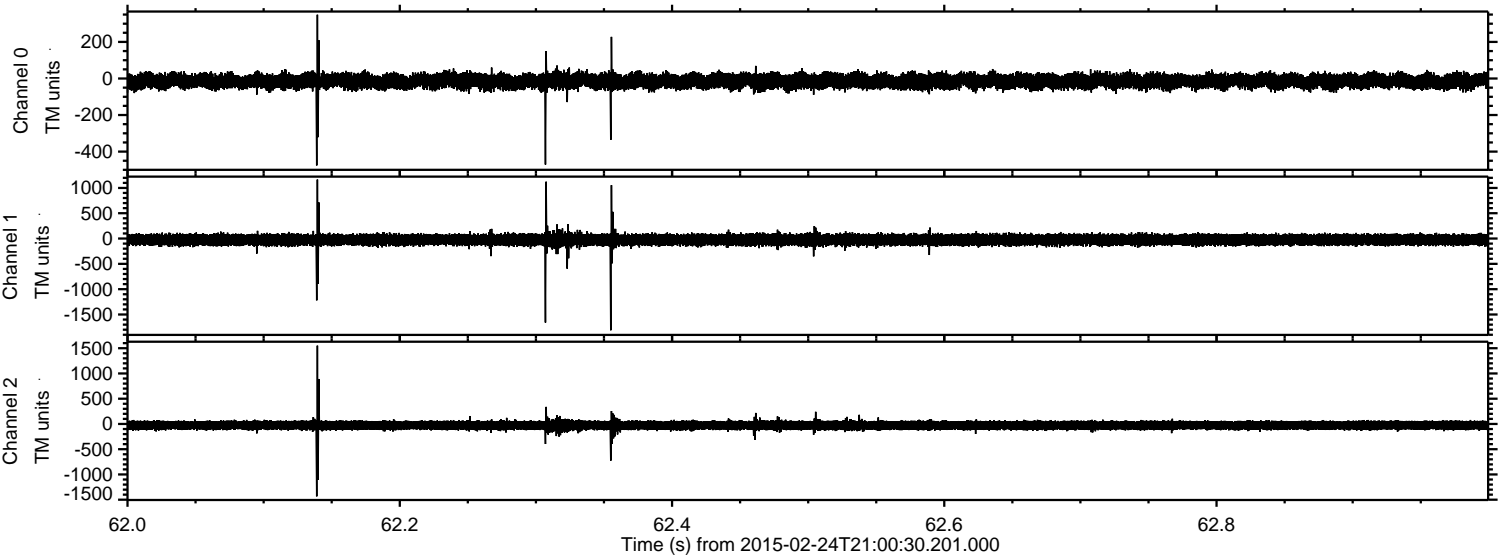


Channel 0
mn: -4069
mx: 2566
 μ : -14.7
 σ : 38.8

Channel 1
mn: -9624
mx: 7696
 μ : -24.0
 σ : 108.3

Channel 2
mn: -2933
mx: 2537
 μ : -27.5
 σ : 59.3

Processed Tue Mar 3 17:31:32 2015 by ELM ver.2012-10-06 from 001__elm20150224_210029__dat00.bin

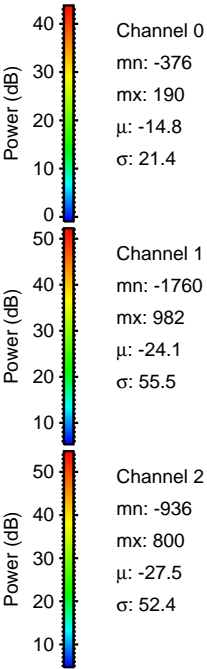
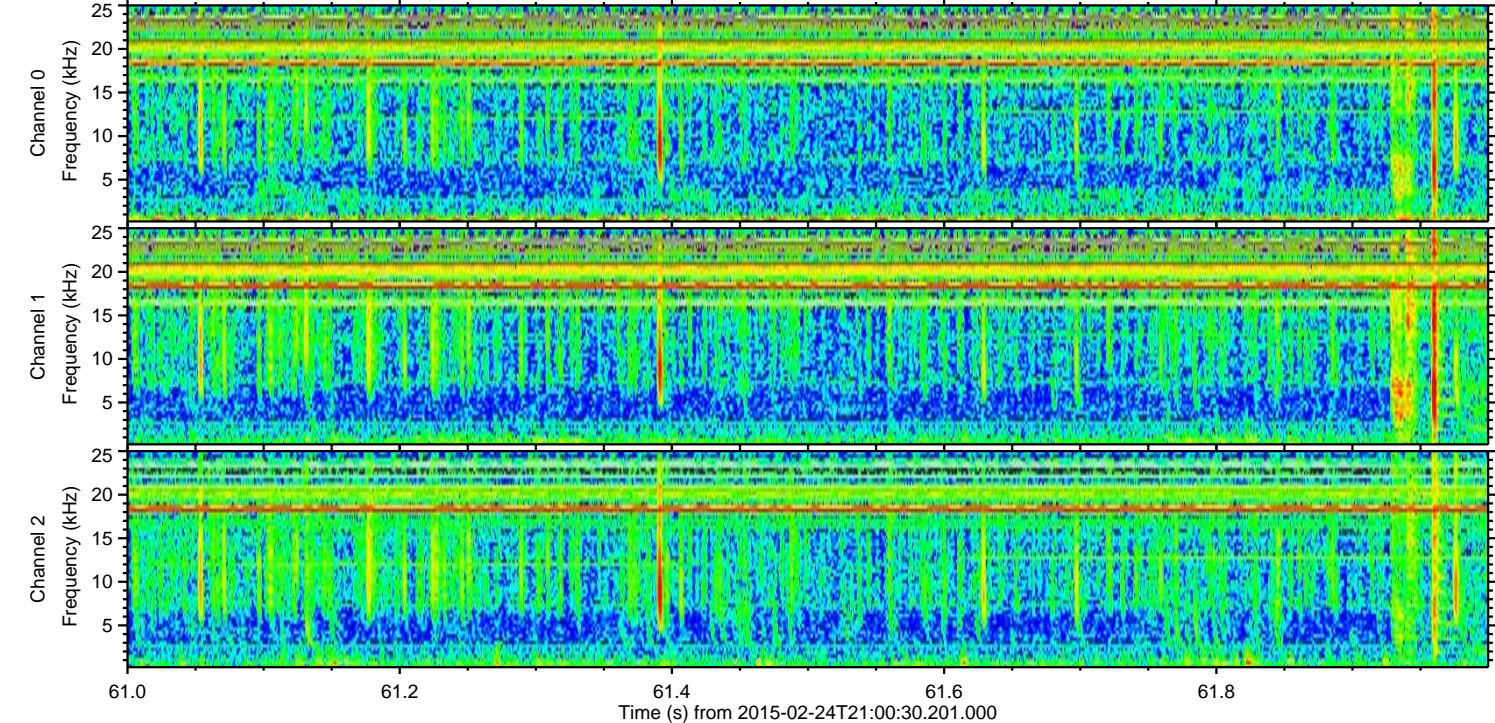
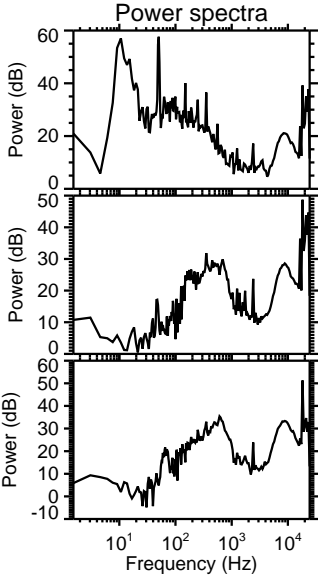
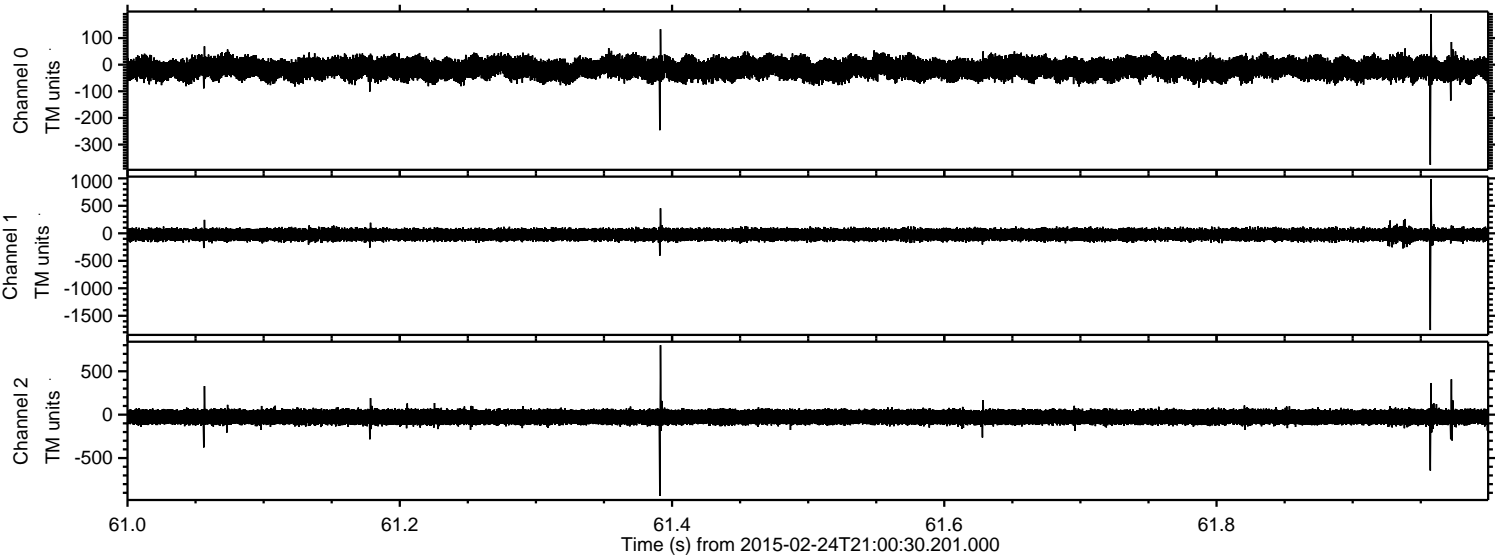


Channel 0
mn: -476
mx: 349
 μ : -14.7
 σ : 21.7

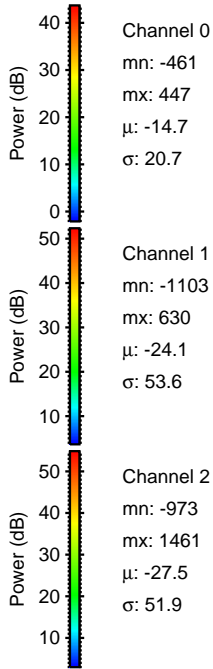
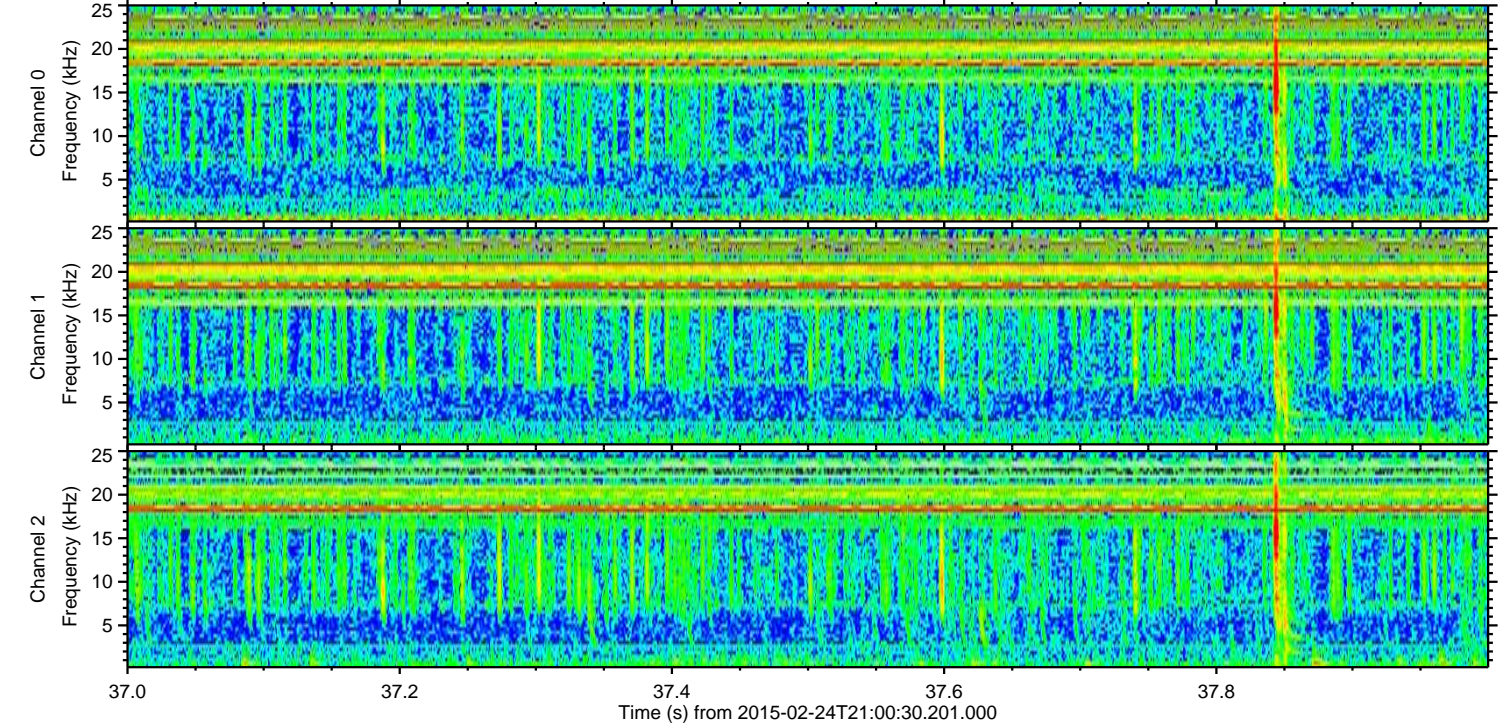
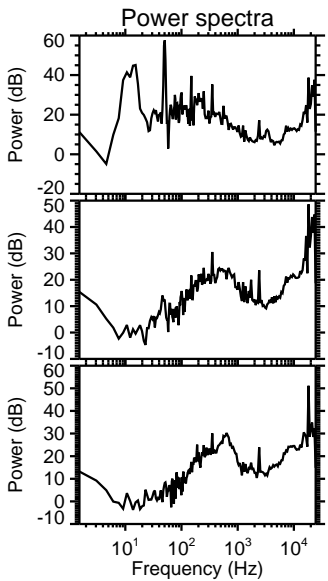
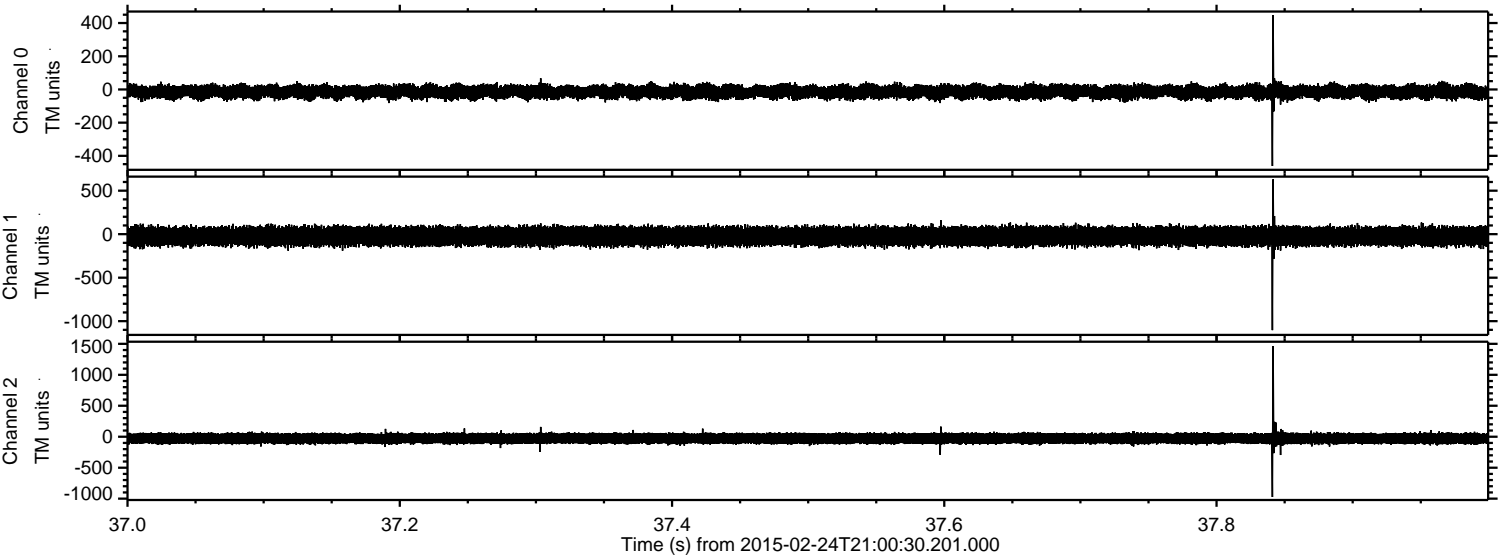
Channel 1
mn: -1813
mx: 1165
 μ : -24.1
 σ : 59.8

Channel 2
mn: -1434
mx: 1551
 μ : -27.5
 σ : 55.1

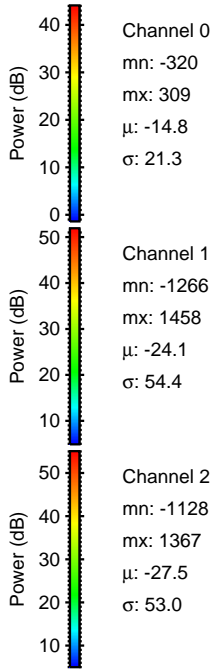
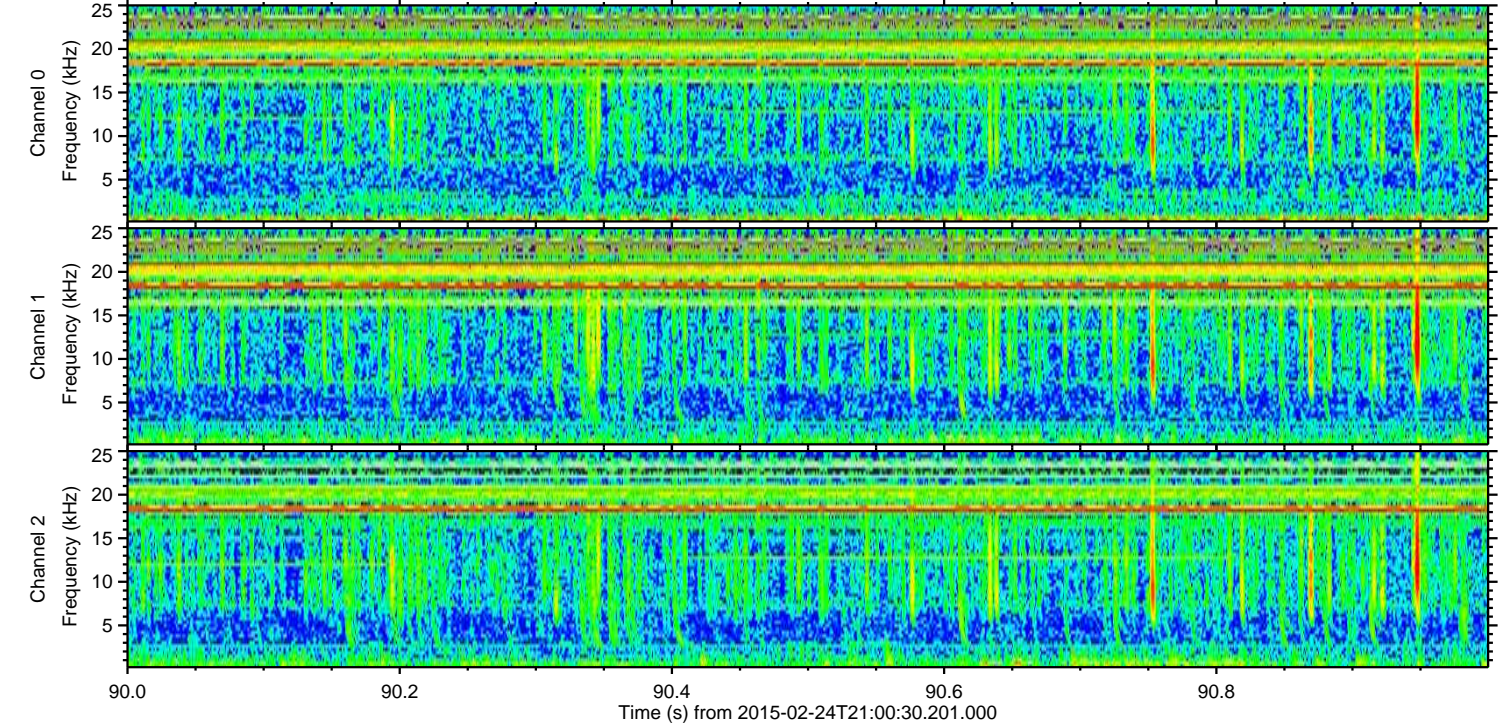
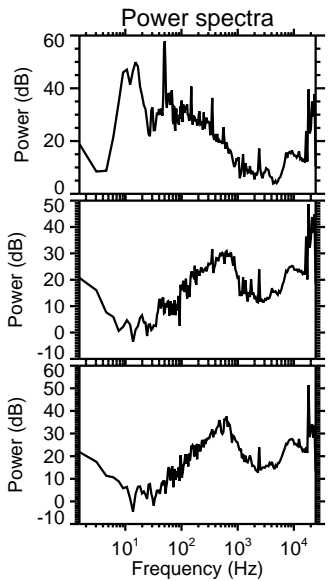
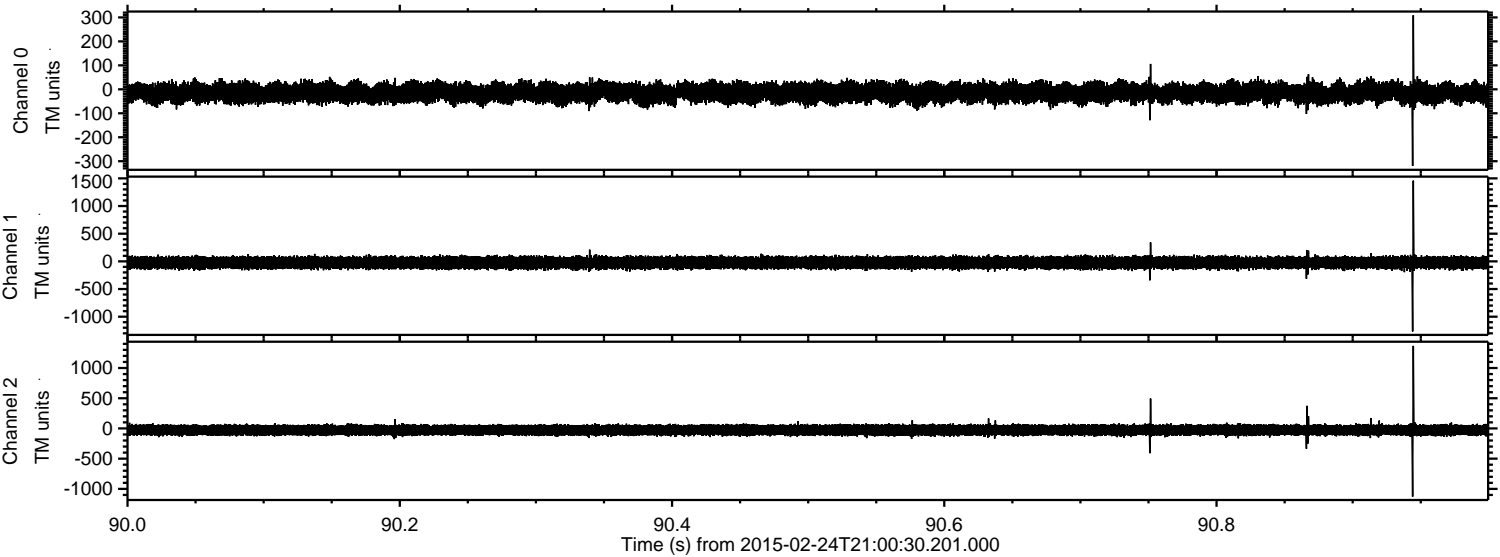
Processed Tue Mar 3 17:31:33 2015 by ELM ver.2012-10-06 from 001__elm20150224_210029__dat00.bin



Processed Tue Mar 3 17:31:34 2015 by ELM ver.2012-10-06 from 001__elm20150224_210029__dat00.bin



Processed Tue Mar 3 17:31:35 2015 by ELM ver.2012-10-06 from 001__elm20150224_210029__dat00.bin



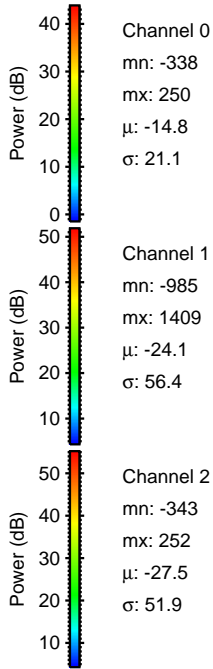
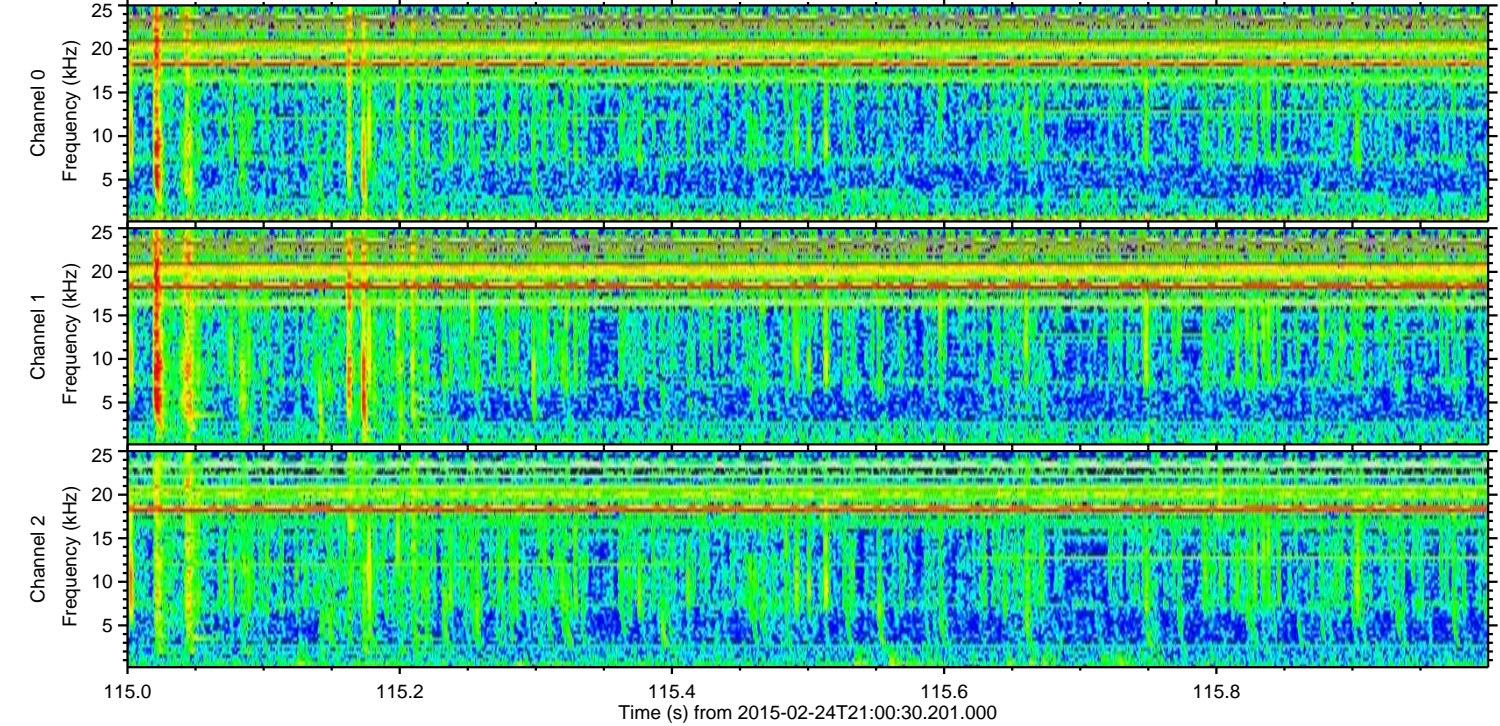
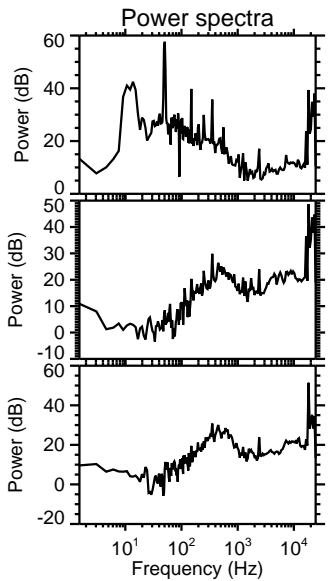
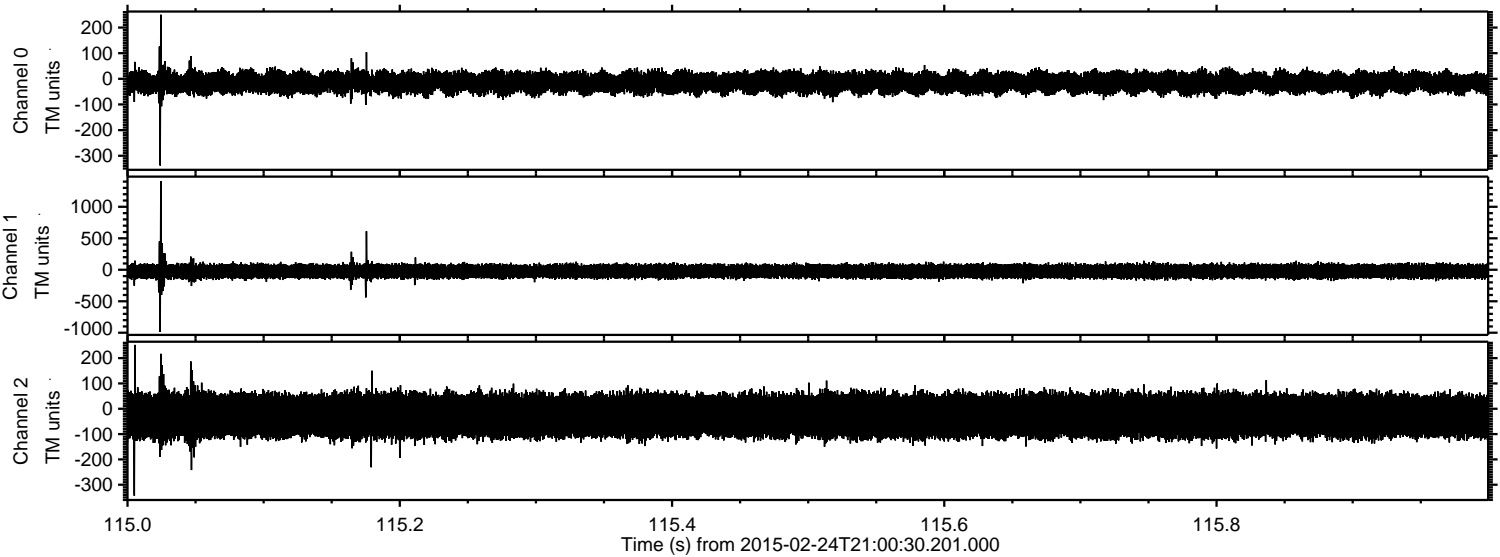
Channel 0
mn: -320
mx: 309
 μ : -14.8
 σ : 21.3

Channel 1
mn: -1266
mx: 1458
 μ : -24.1
 σ : 54.4

Channel 2
mn: -1128
mx: 1367
 μ : -27.5
 σ : 53.0

ELMAVAN 3D WAVEFORMS (Measured data sampled at 50 kHz) 49807 packets of 144 samples from 2015-02-24T21:00:30.201.000. Part 116/144

Processed Tue Mar 3 17:31:36 2015 by ELM ver.2012-10-06 from 001__elm20150224_210029__dat00.bin

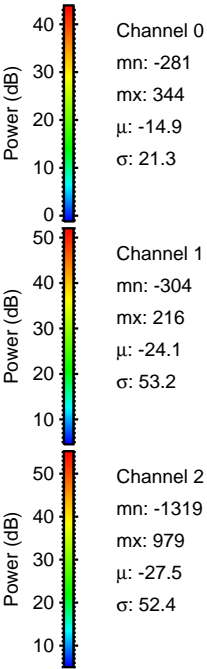
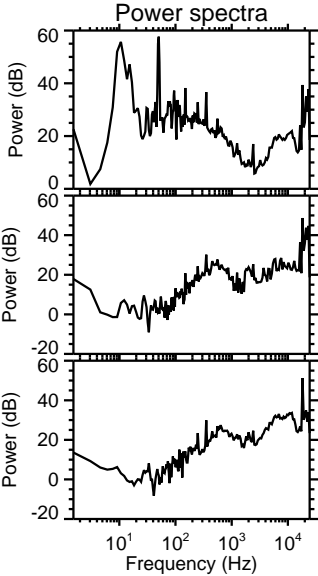
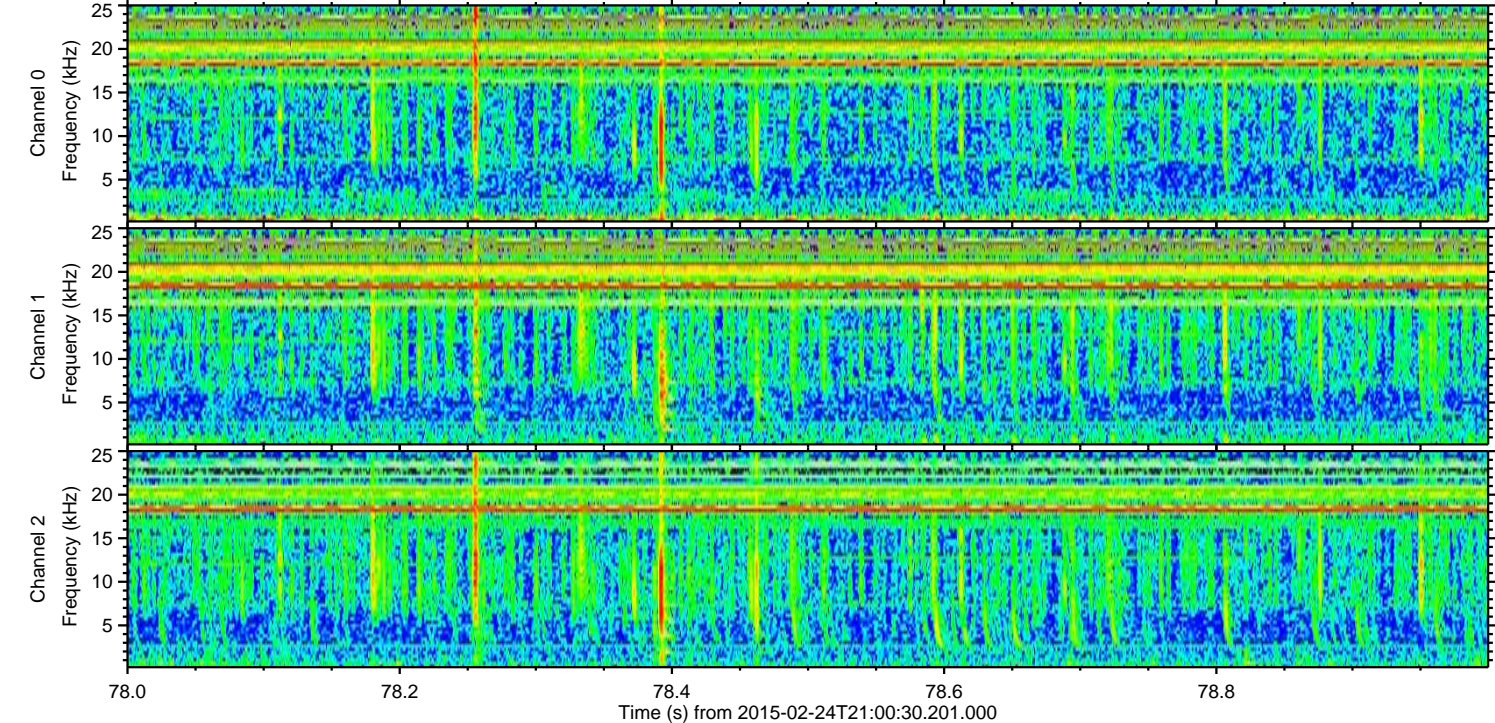
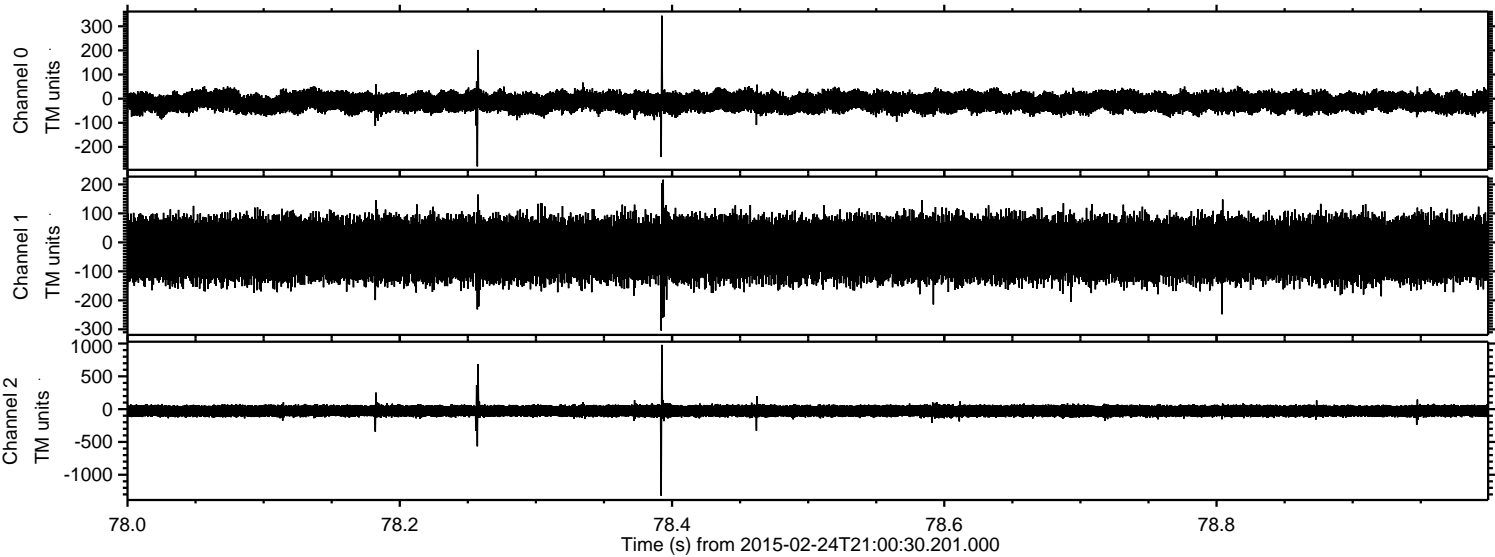


Channel 0
mn: -338
mx: 250
 μ : -14.8
 σ : 21.1

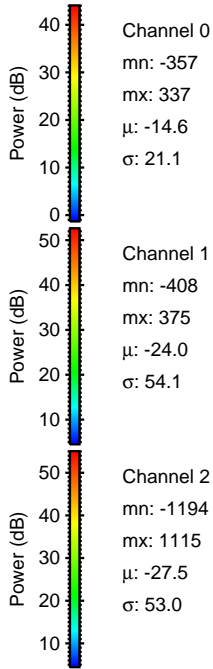
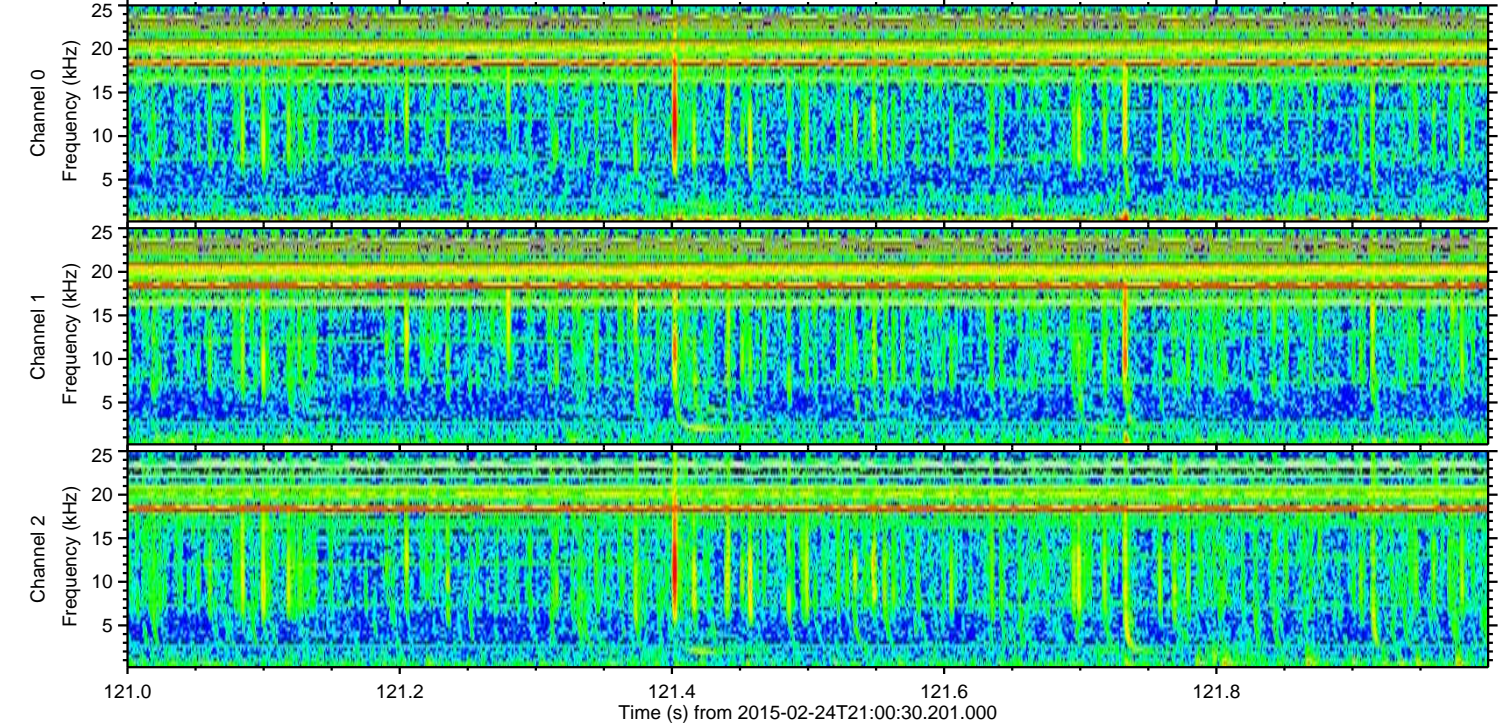
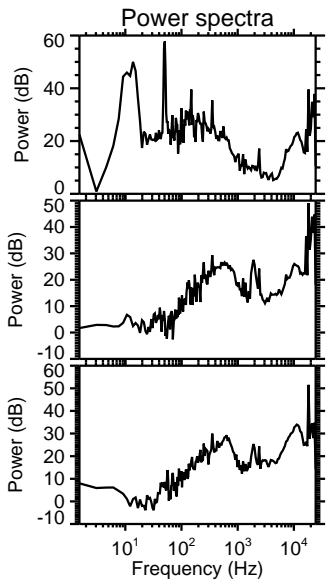
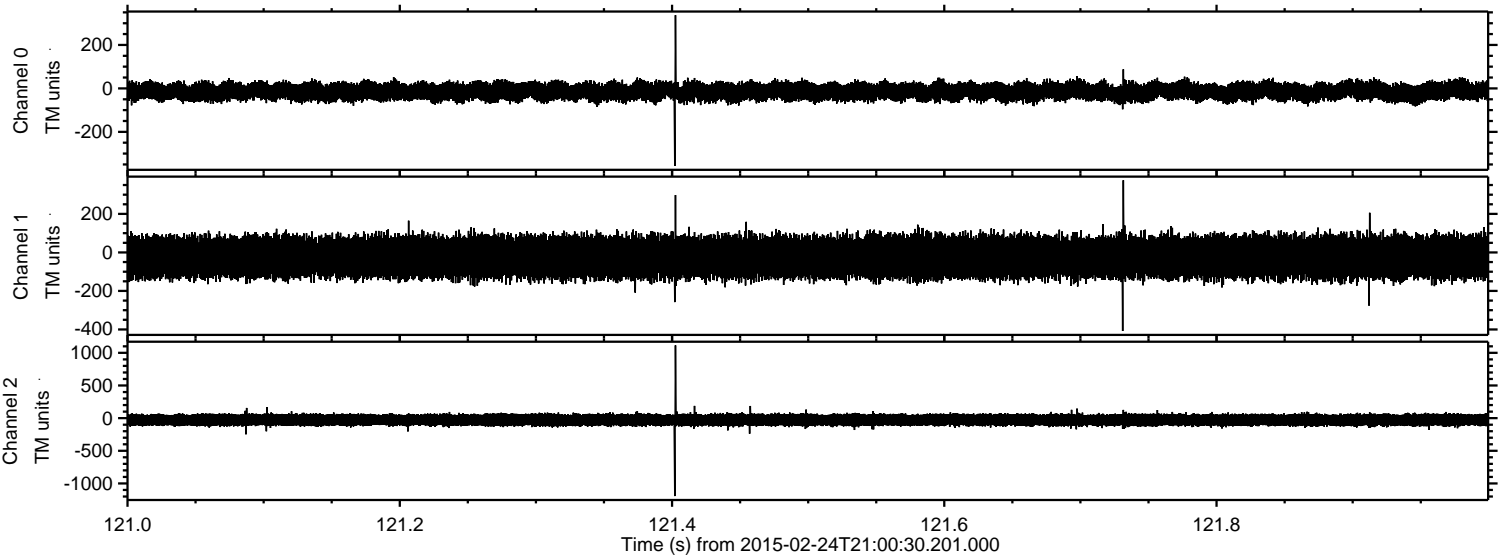
Channel 1
mn: -985
mx: 1409
 μ : -24.1
 σ : 56.4

Channel 2
mn: -343
mx: 252
 μ : -27.5
 σ : 51.9

Processed Tue Mar 3 17:31:36 2015 by ELM ver.2012-10-06 from 001__elm20150224_210029__dat00.bin



Processed Tue Mar 3 17:31:37 2015 by ELM ver.2012-10-06 from 001__elm20150224_210029__dat00.bin



Channel 0
mn: -357
mx: 337
 μ : -14.6
 σ : 21.1

Channel 1
mn: -408
mx: 375
 μ : -24.0
 σ : 54.1

Channel 2
mn: -1194
mx: 1115
 μ : -27.5
 σ : 53.0

