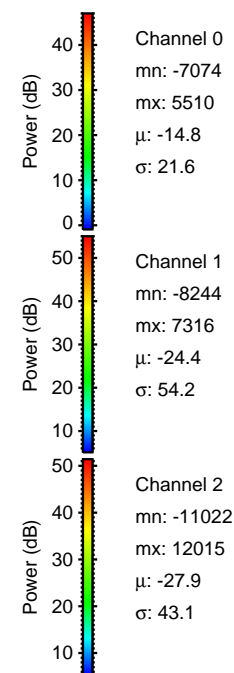
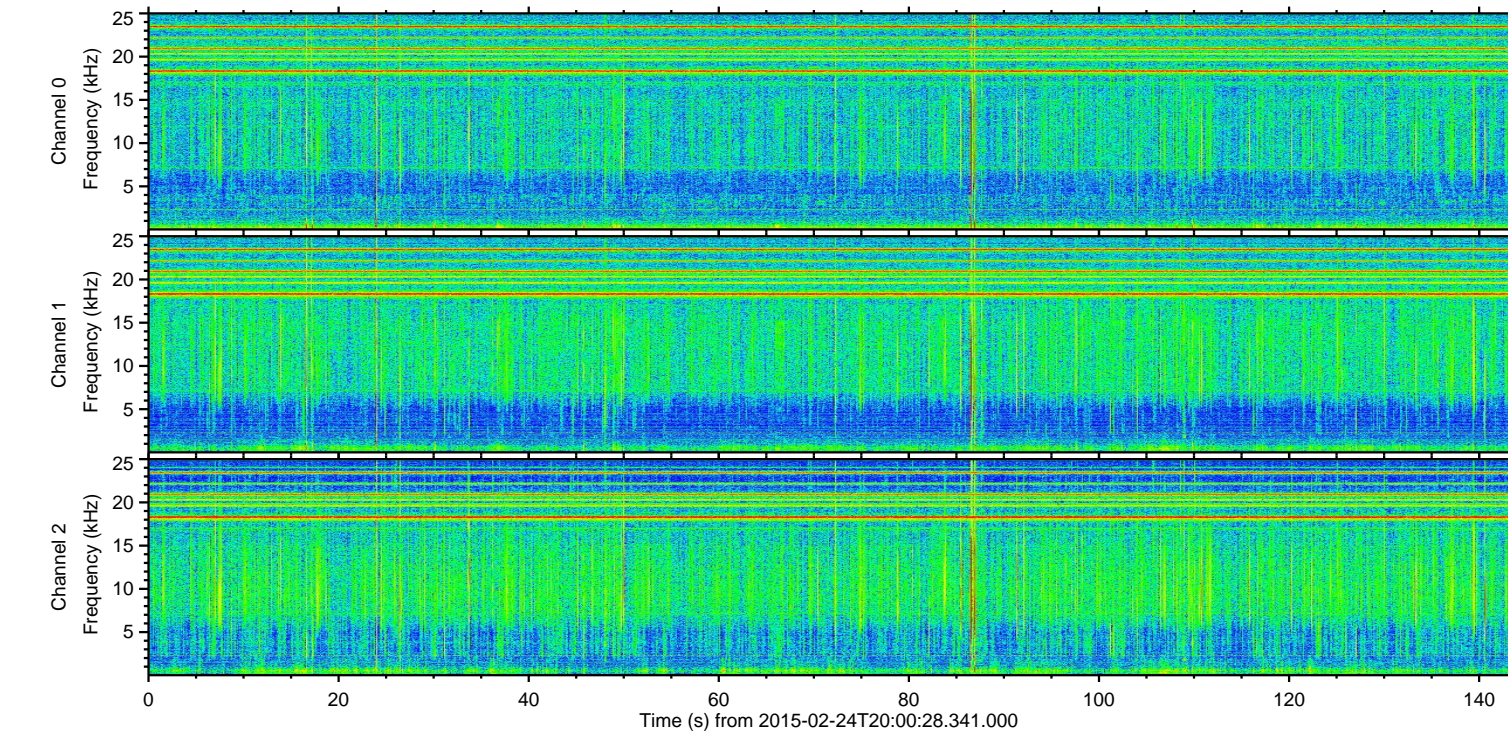
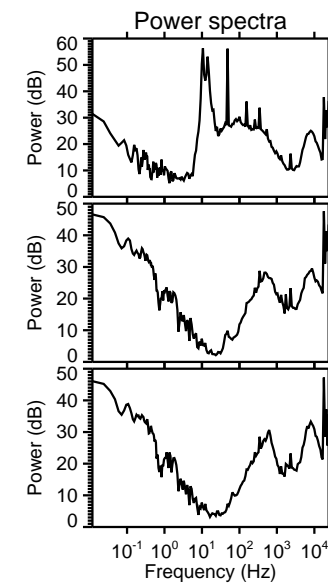
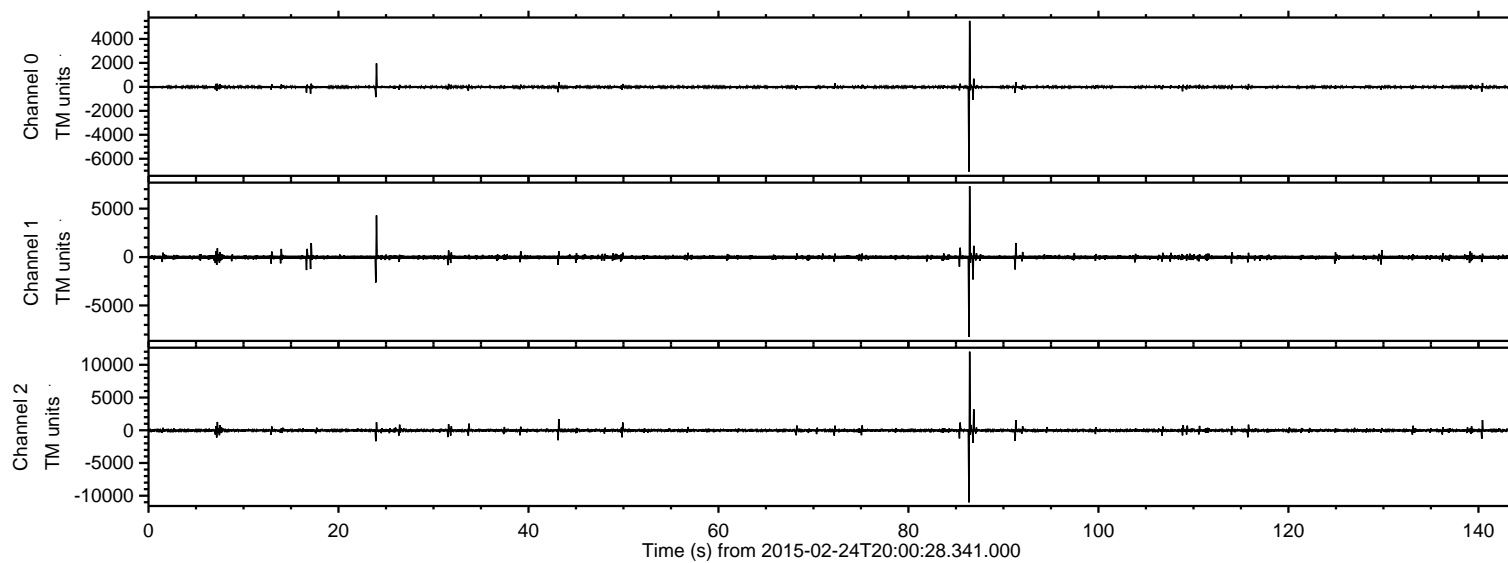
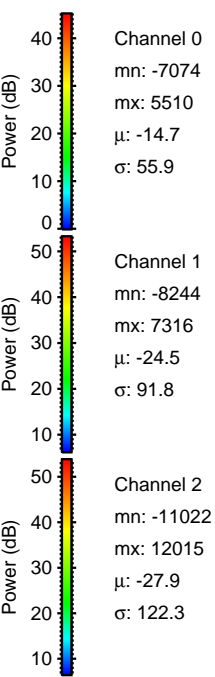
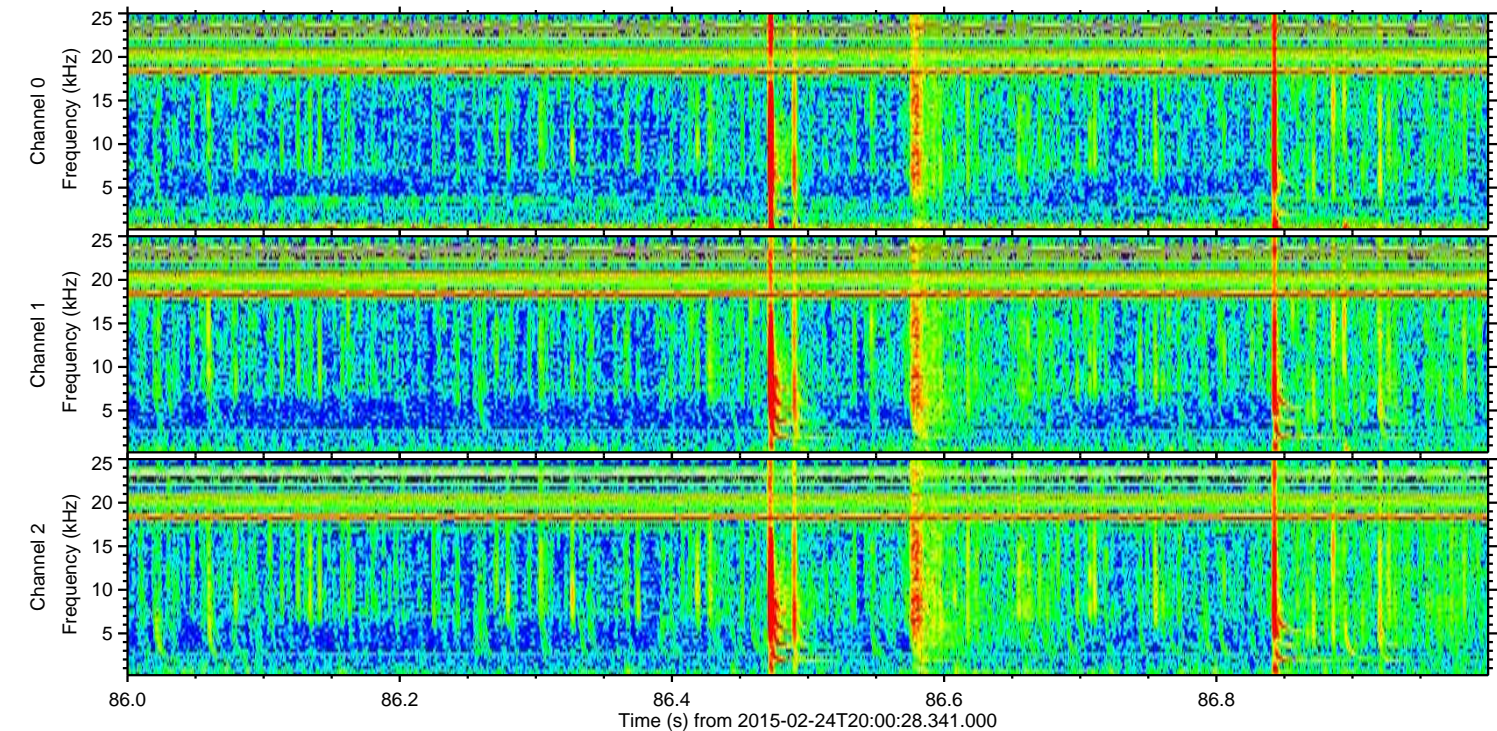
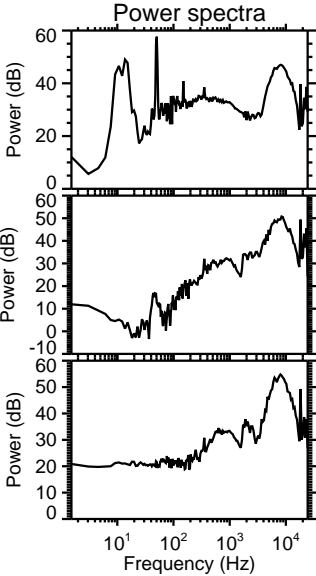
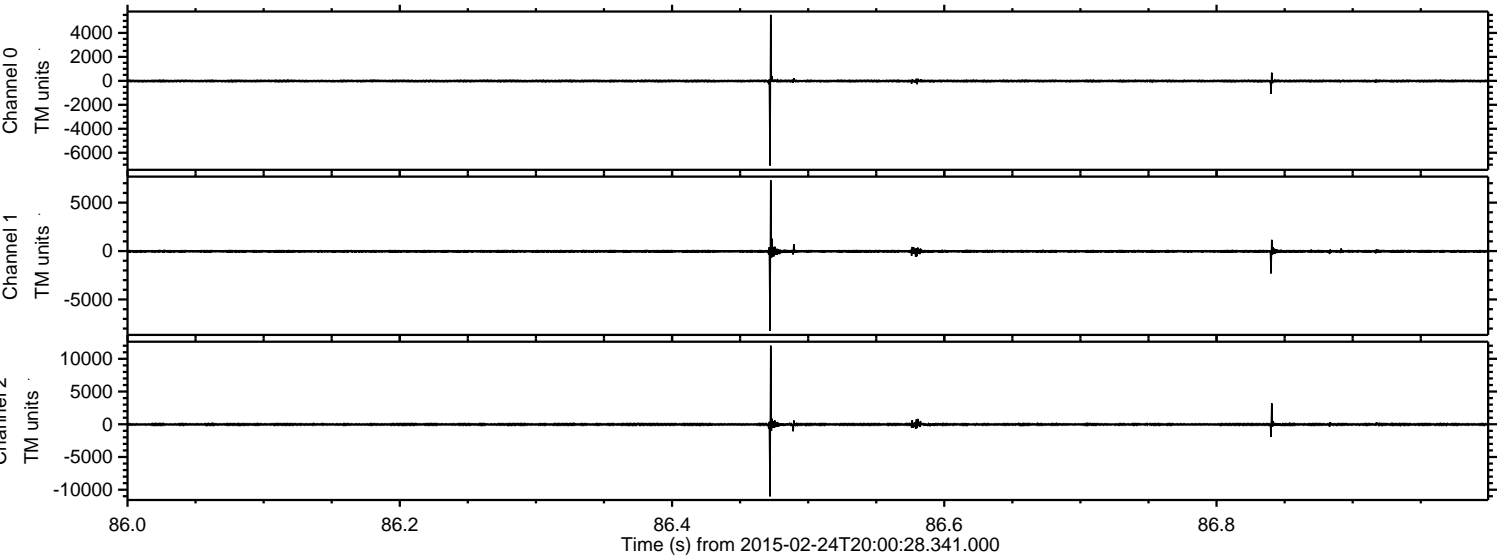


ELMAVAN 3D WAVEFORMS (Measured data sampled at 50 kHz) 49734 packets of 144 samples from 2015-02-24T20:00:28.341.000.

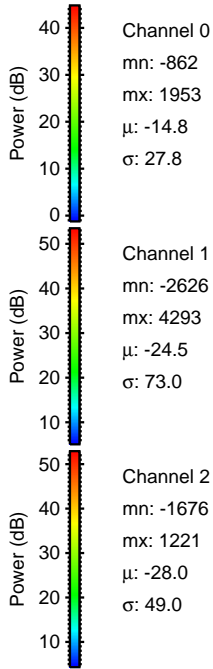
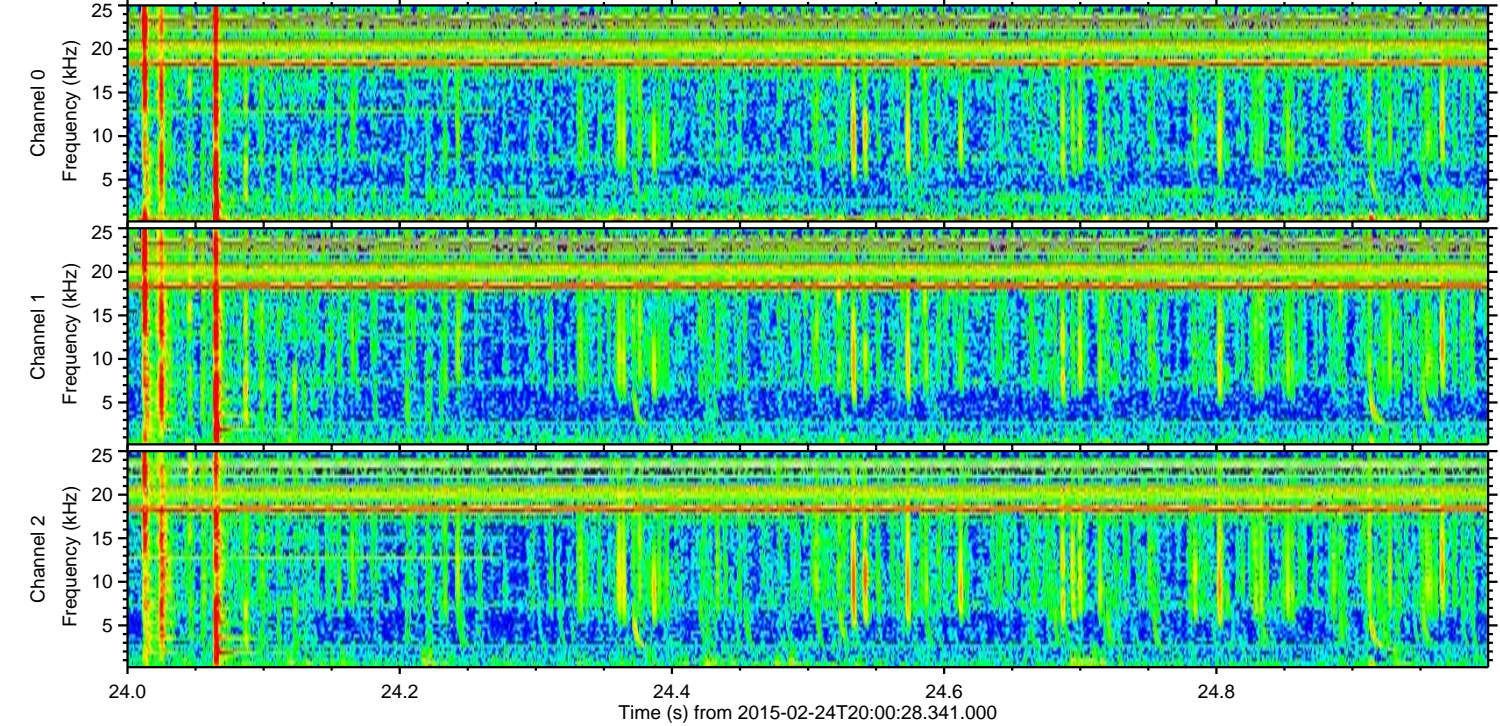
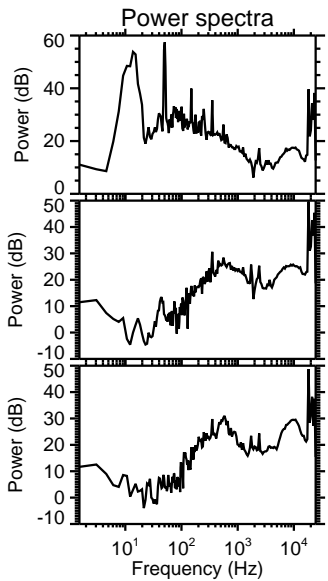
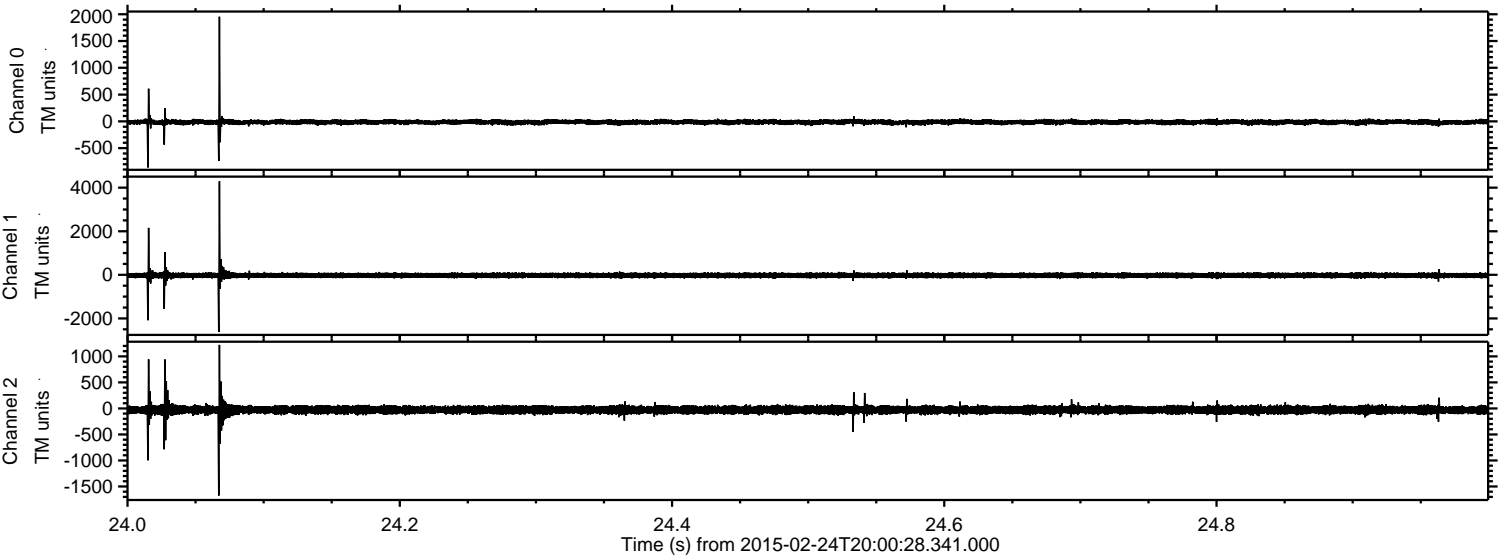
Processed Tue Mar 3 16:47:36 2015 by ELM ver.2012-10-06 from 001__elm20150224_200027__dat00.bin



Processed Tue Mar 3 16:47:47 2015 by ELM ver.2012-10-06 from 001__elm20150224_200027__dat00.bin



Processed Tue Mar 3 16:47:48 2015 by ELM ver.2012-10-06 from 001__elm20150224_200027__dat00.bin

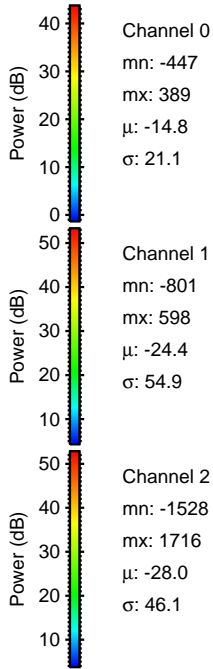
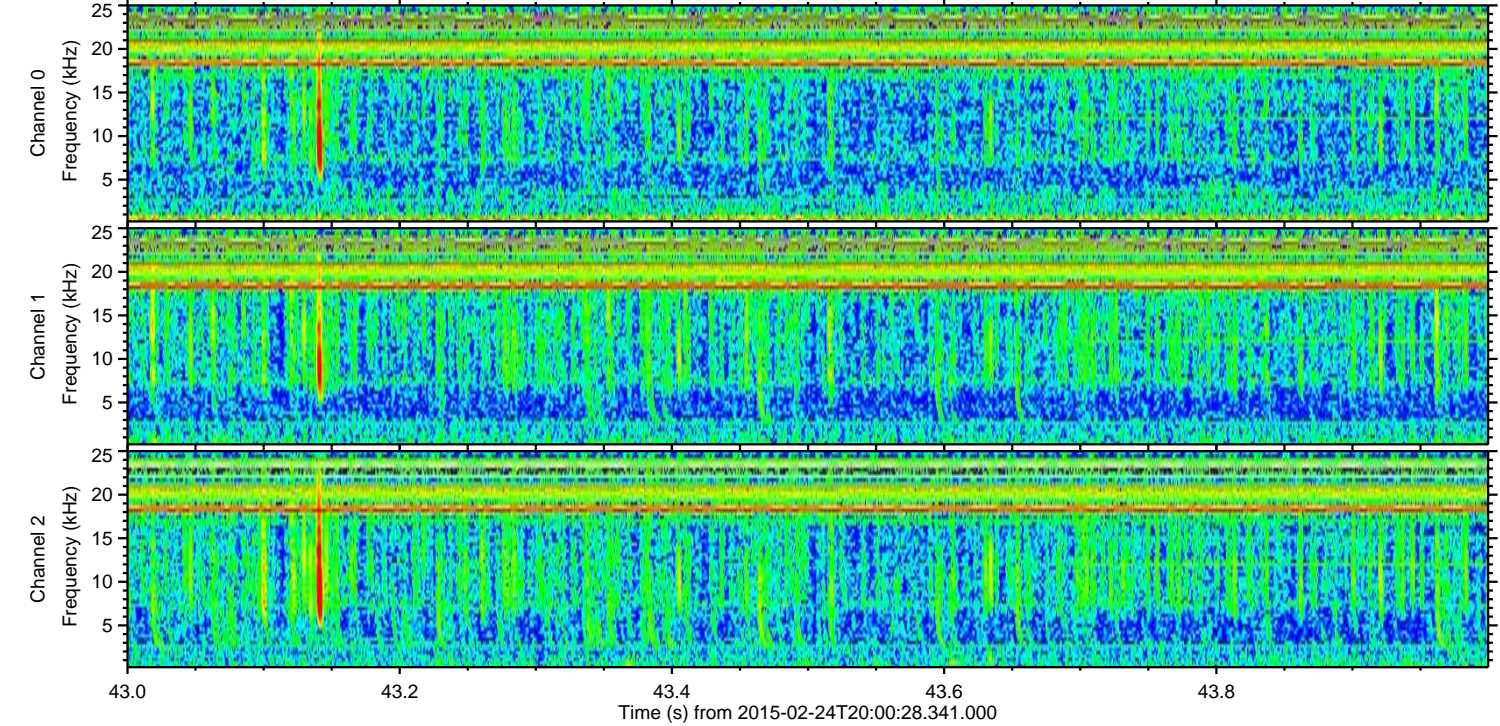
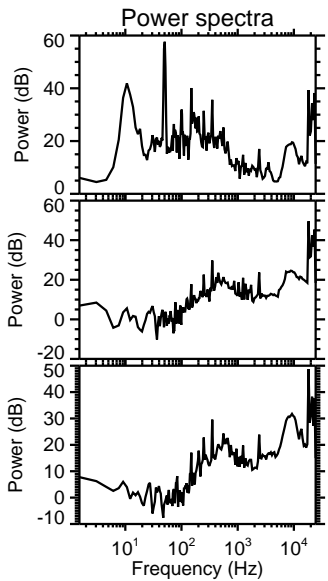
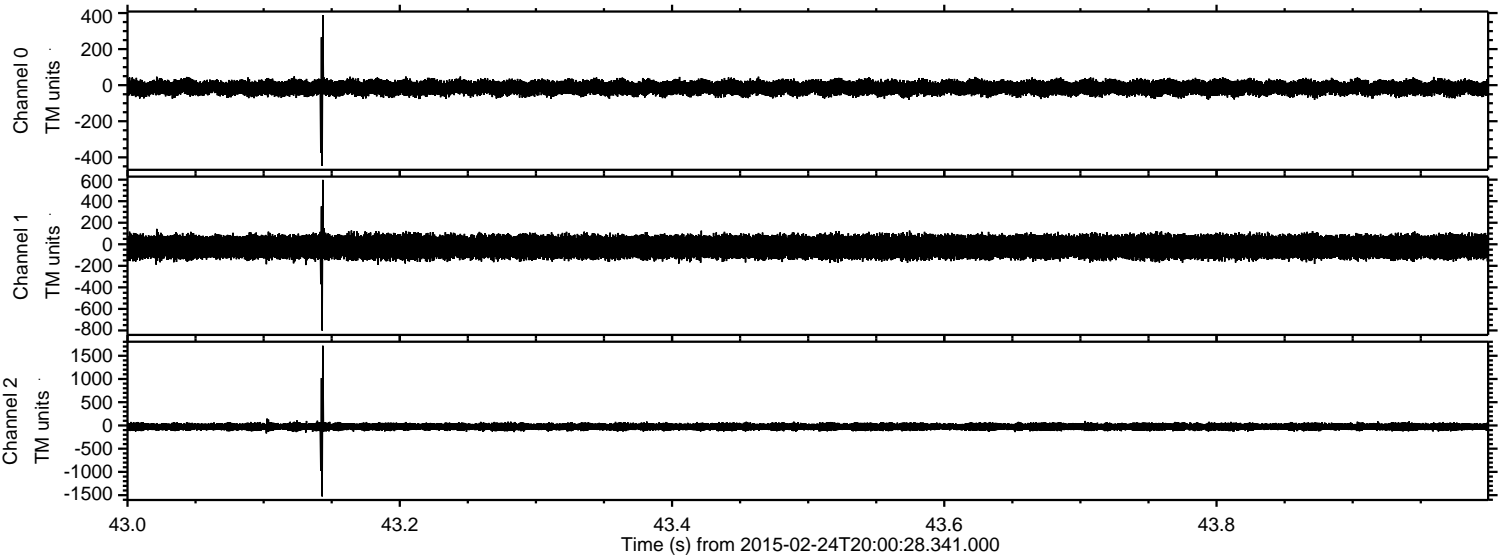


Channel 0
mn: -862
mx: 1953
 μ : -14.8
 σ : 27.8

Channel 1
mn: -2626
mx: 4293
 μ : -24.5
 σ : 73.0

Channel 2
mn: -1676
mx: 1221
 μ : -28.0
 σ : 49.0

Processed Tue Mar 3 16:47:49 2015 by ELM ver.2012-10-06 from 001__elm20150224_200027__dat00.bin

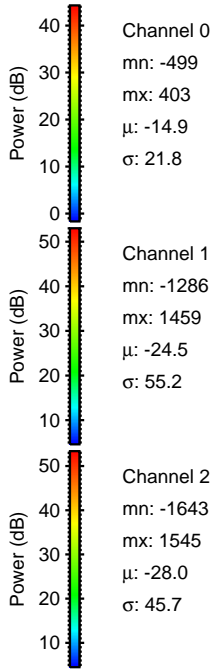
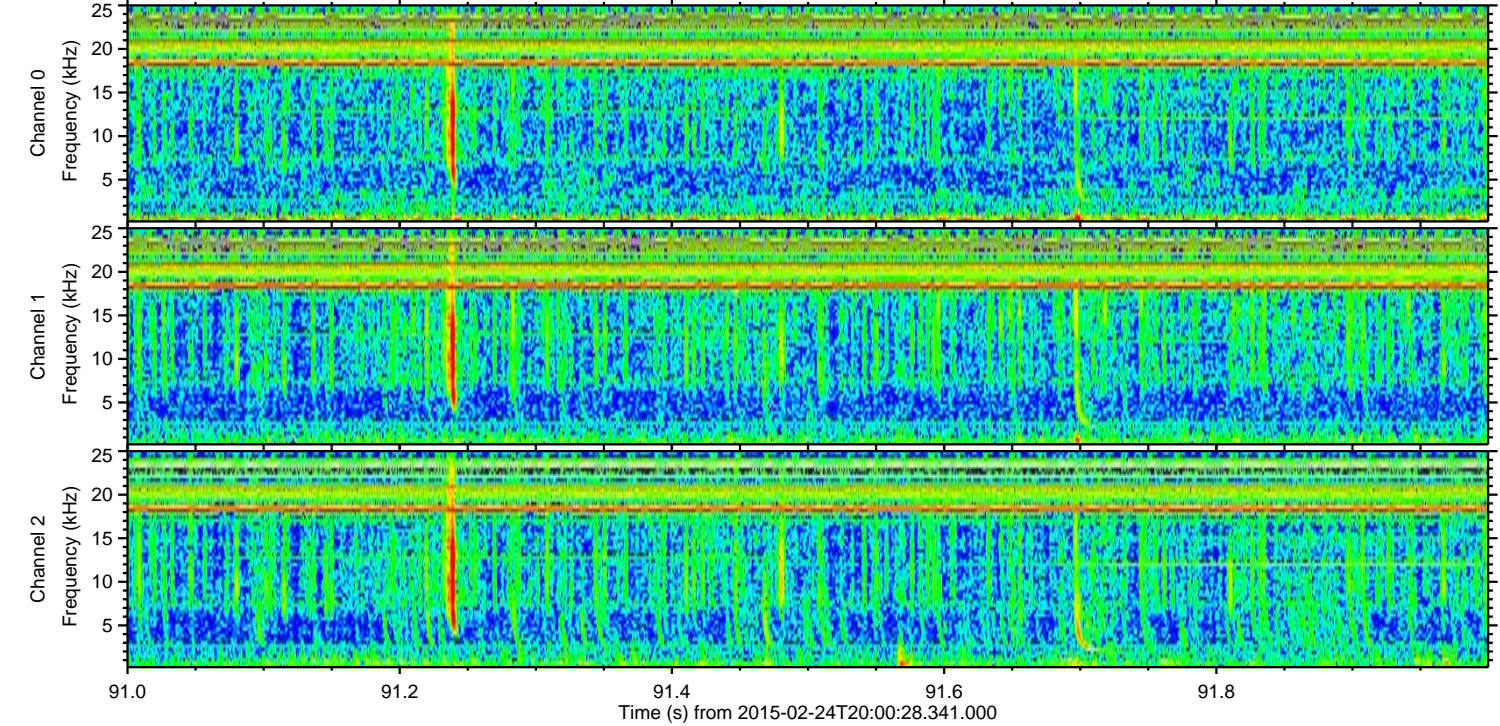
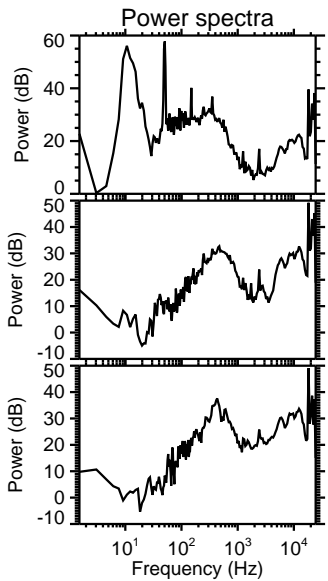
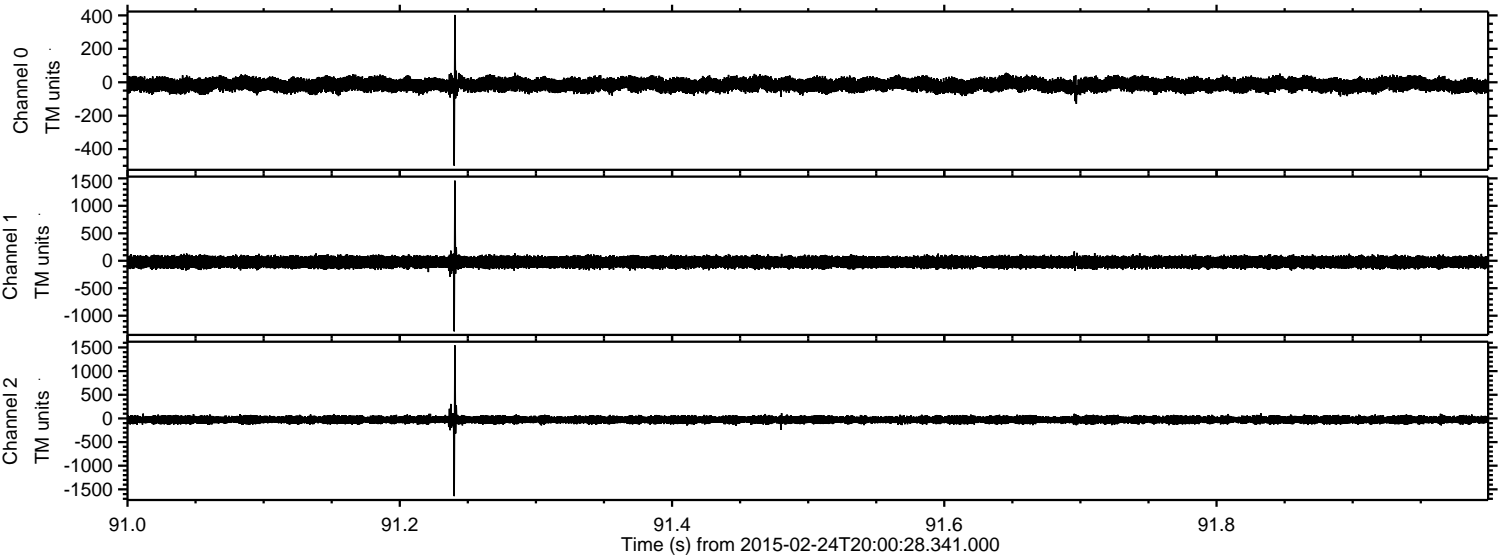


Channel 0
mn: -447
mx: 389
 μ : -14.8
 σ : 21.1

Channel 1
mn: -801
mx: 598
 μ : -24.4
 σ : 54.9

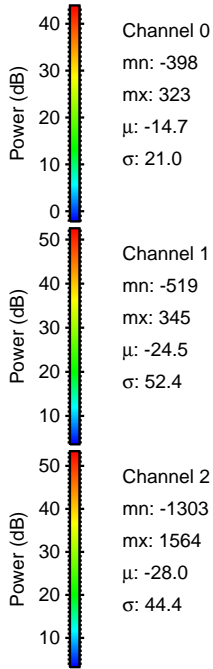
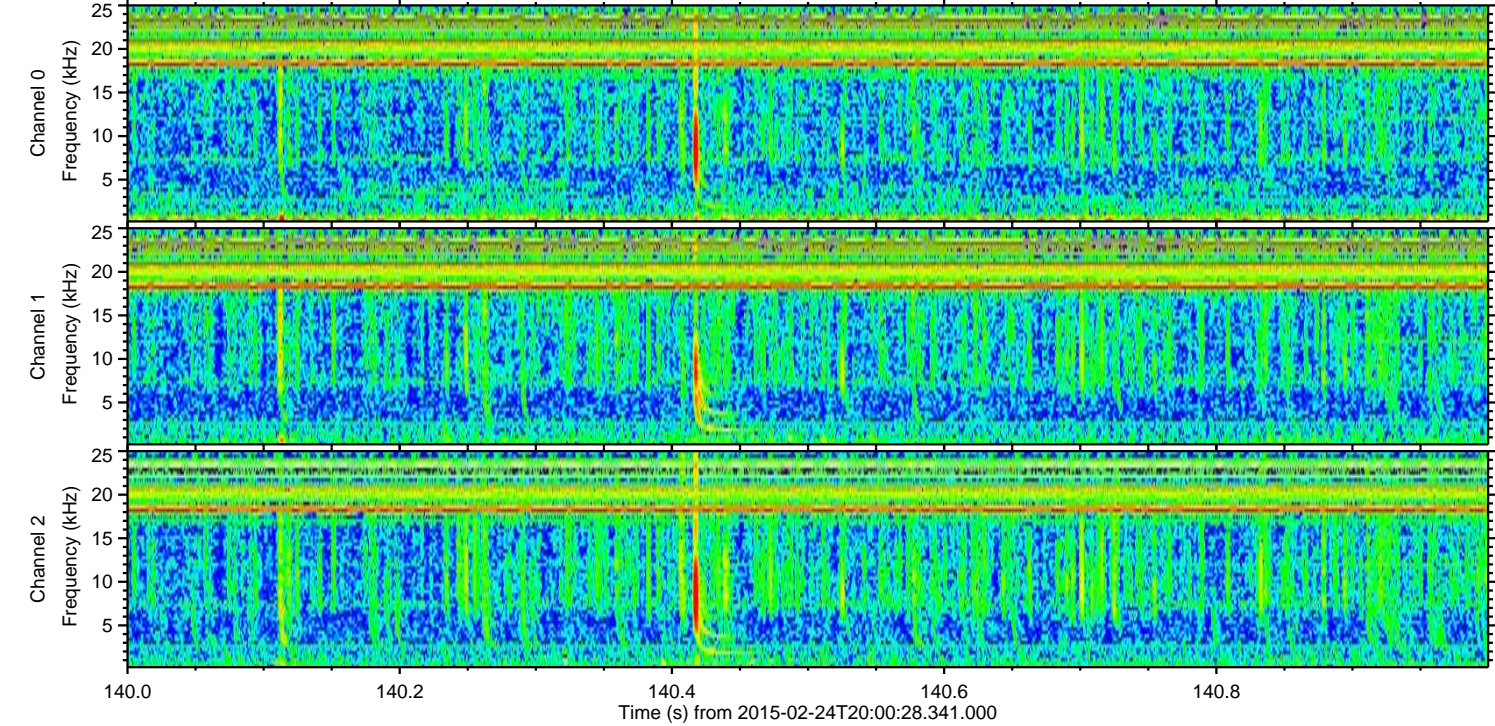
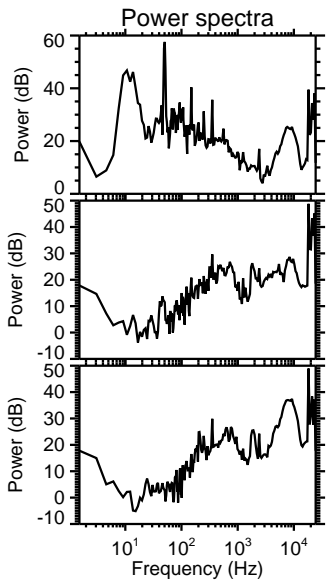
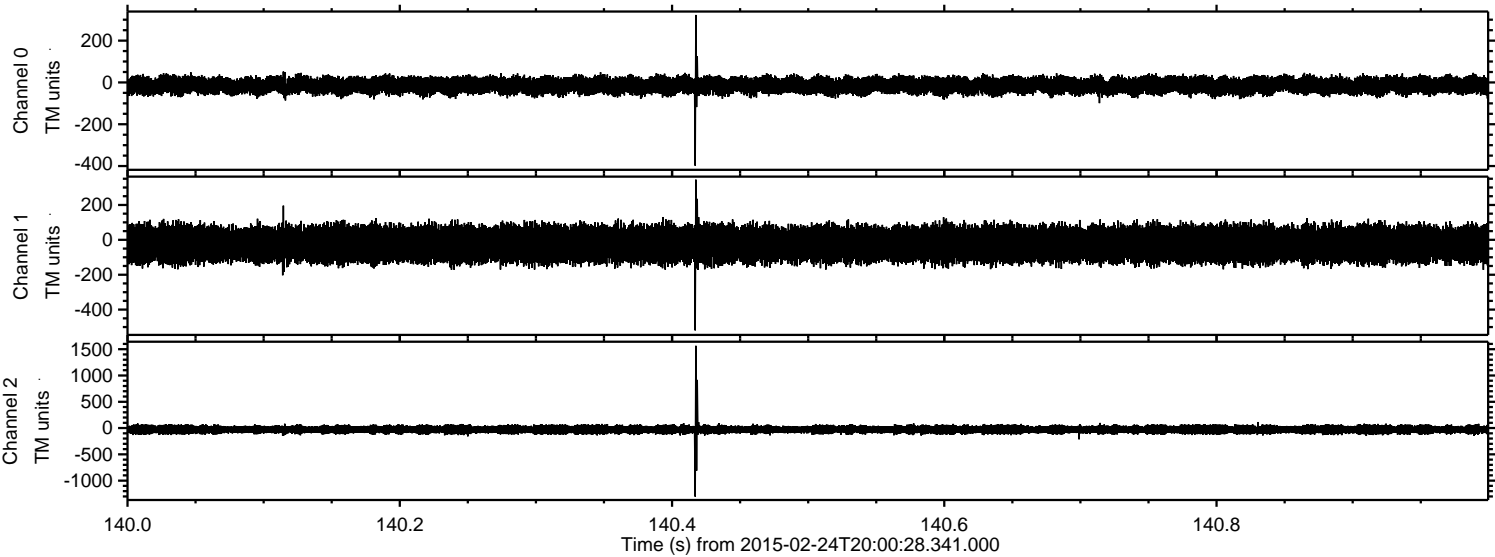
Channel 2
mn: -1528
mx: 1716
 μ : -28.0
 σ : 46.1

Processed Tue Mar 3 16:47:50 2015 by ELM ver.2012-10-06 from 001__elm20150224_200027__dat00.bin

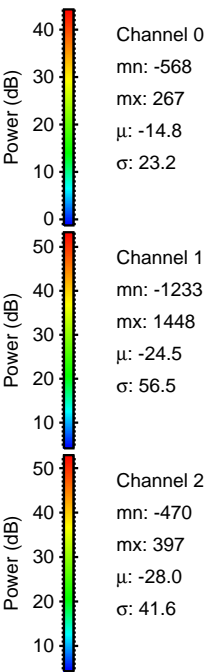
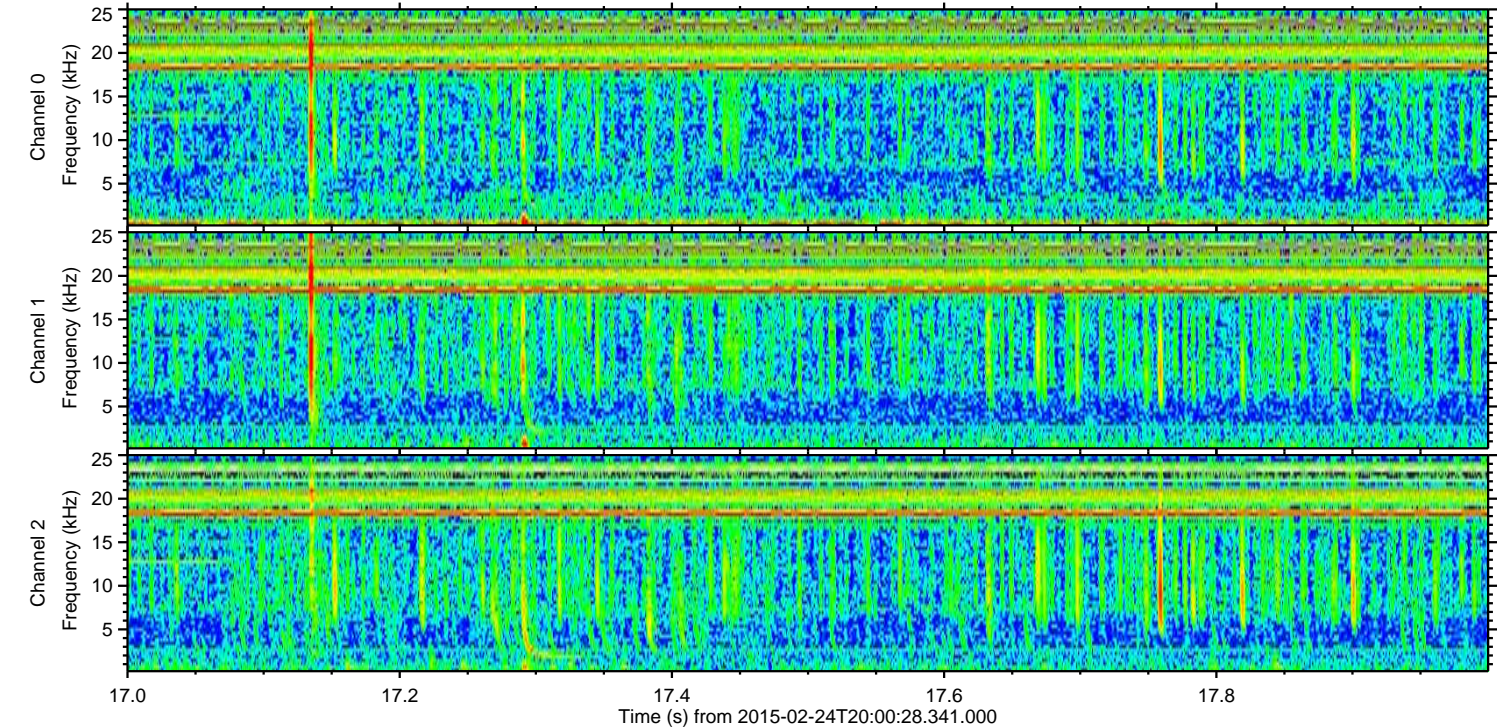
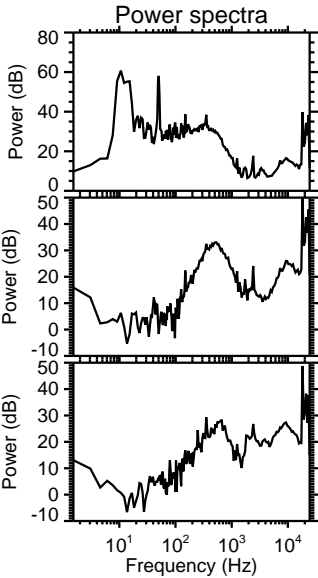
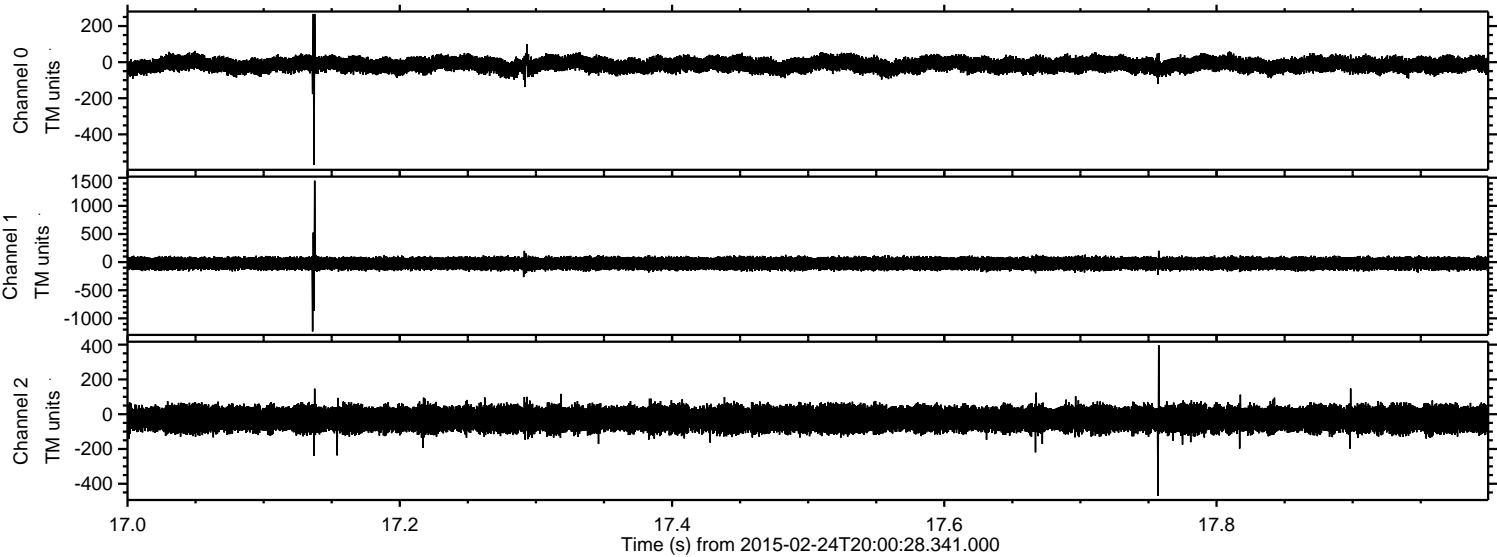


ELMAVAN 3D WAVEFORMS (Measured data sampled at 50 kHz) 49734 packets of 144 samples from 2015-02-24T20:00:28.341.000. Part 141/144

Processed Tue Mar 3 16:47:51 2015 by ELM ver.2012-10-06 from 001__elm20150224_200027__dat00.bin

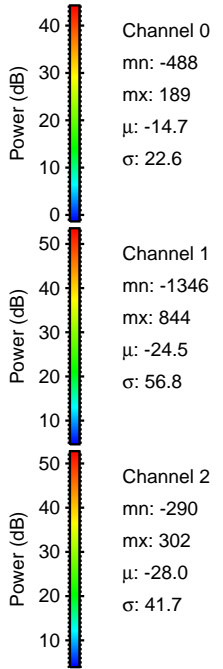
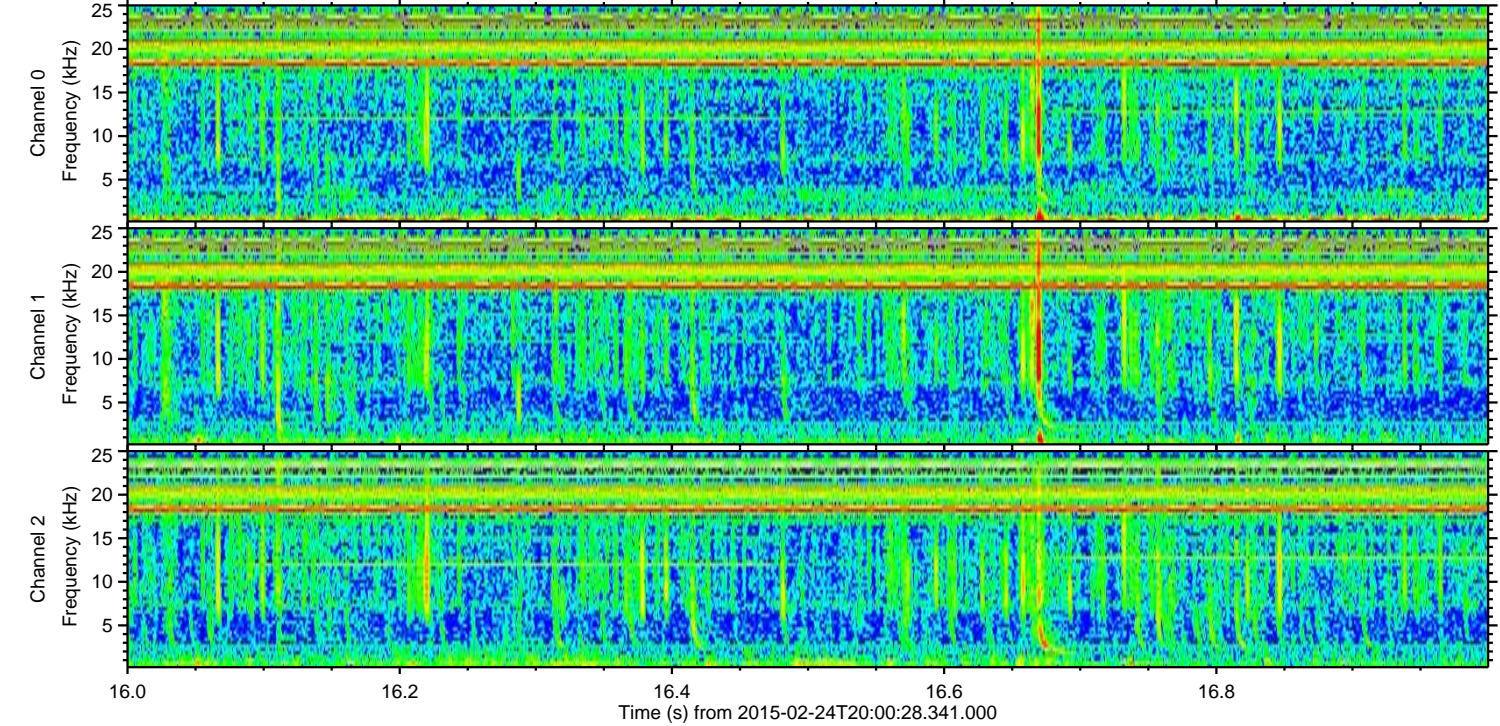
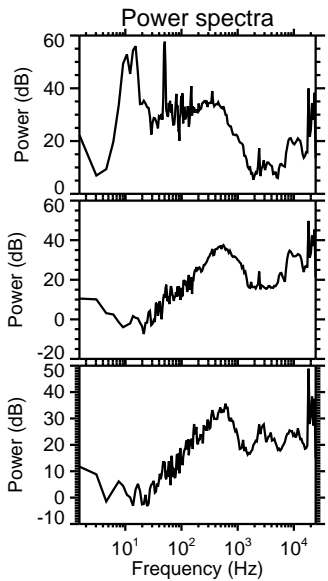
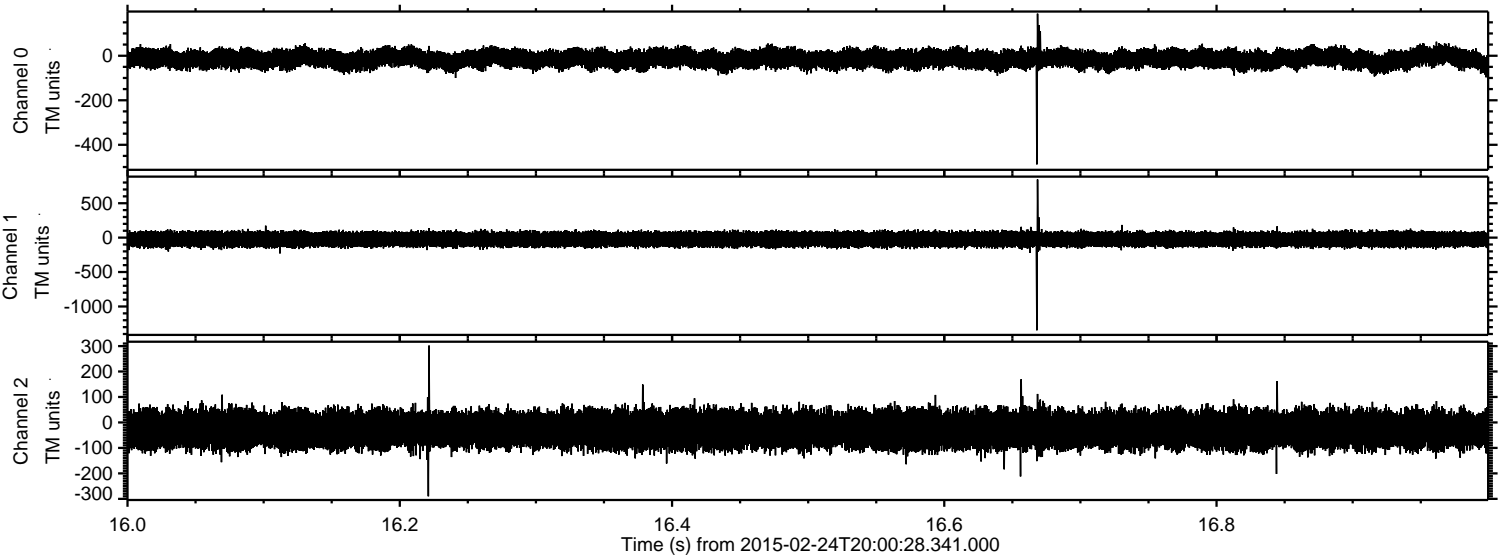


Processed Tue Mar 3 16:47:52 2015 by ELM ver.2012-10-06 from 001__elm20150224_200027__dat00.bin

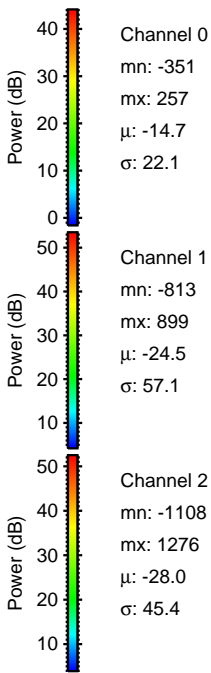
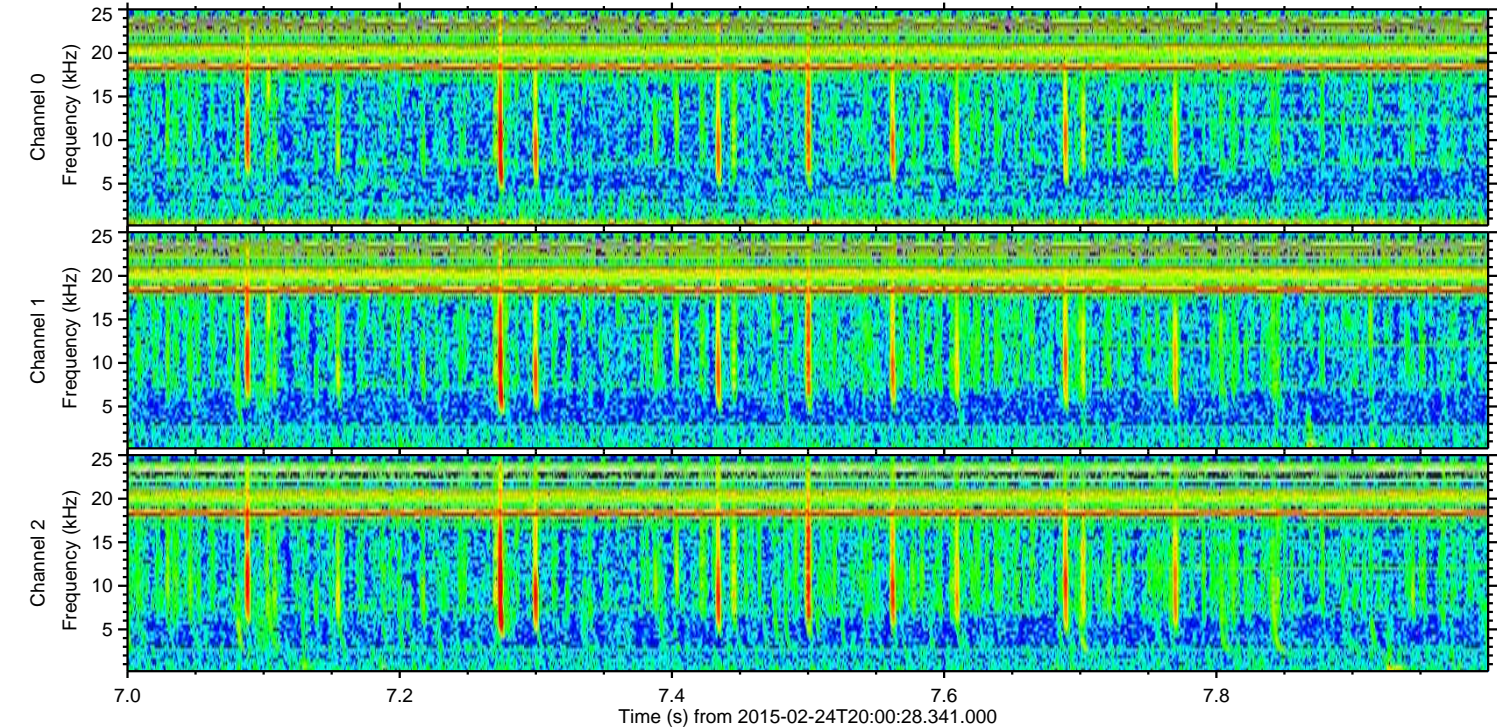
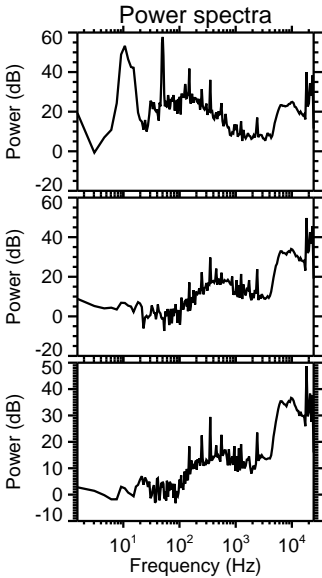
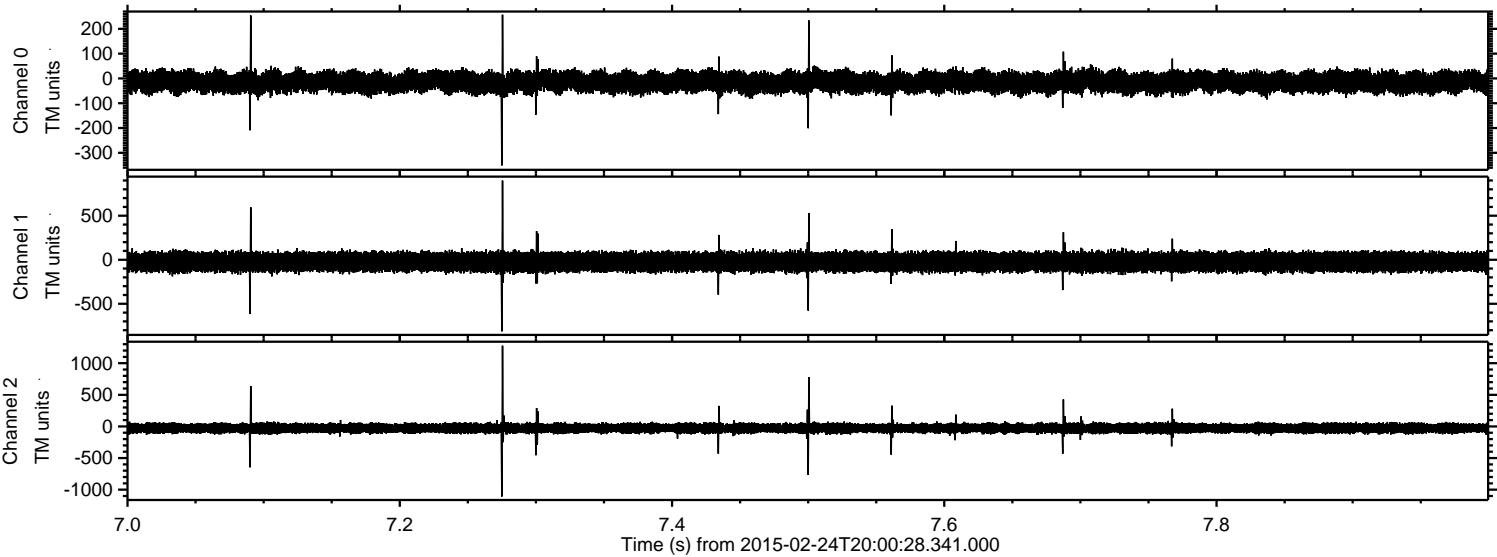


ELMAVAN 3D WAVEFORMS (Measured data sampled at 50 kHz) 49734 packets of 144 samples from 2015-02-24T20:00:28.341.000. Part 17/144

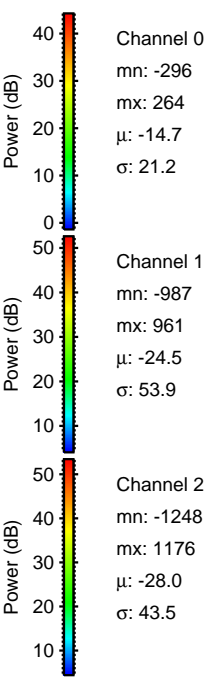
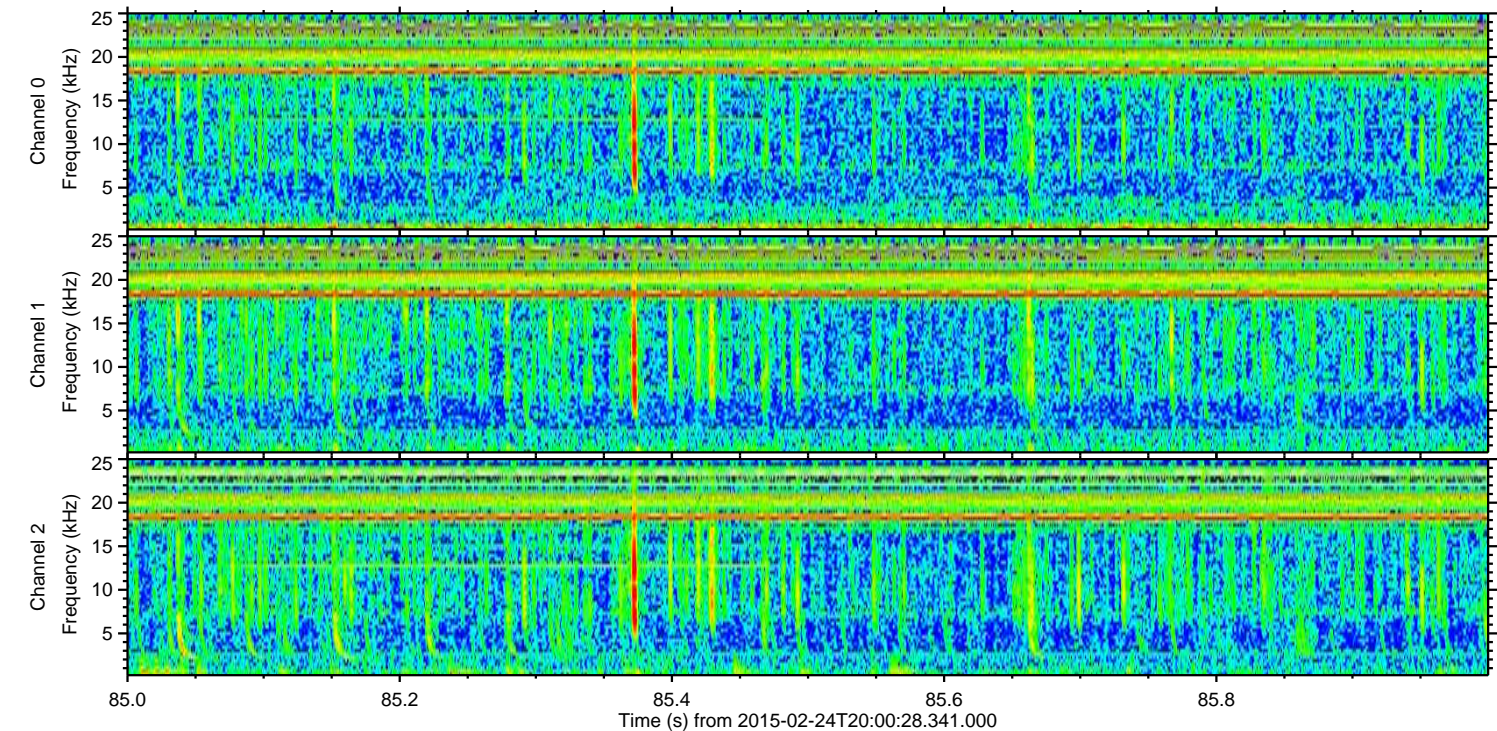
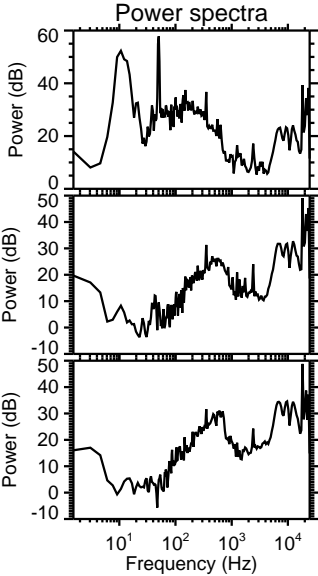
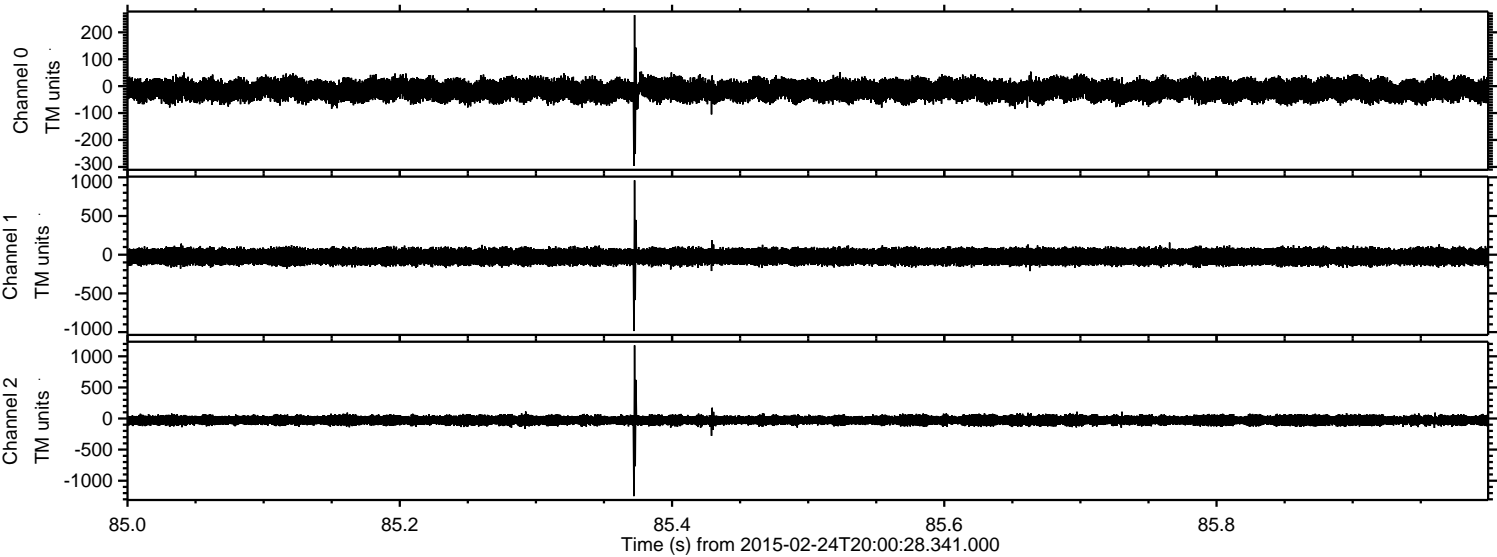
Processed Tue Mar 3 16:47:53 2015 by ELM ver.2012-10-06 from 001__elm20150224_200027__dat00.bin



Processed Tue Mar 3 16:47:54 2015 by ELM ver.2012-10-06 from 001__elm20150224_200027__dat00.bin



Processed Tue Mar 3 16:47:55 2015 by ELM ver.2012-10-06 from 001__elm20150224_200027__dat00.bin



Processed Tue Mar 3 16:47:56 2015 by ELM ver.2012-10-06 from 001__elm20150224_200027__dat00.bin

